

Mobility limiting scattering mechanisms in nitride-based two-dimensional heterostructures with the InGaN channel

S Gokden^{1,6}, R Tulek¹, A Teke¹, J H Leach², Q Fan², J Xie², U Ozgür²,
H Morkoc², S B Lisesivdin^{3,4} and E Ozbay⁵

¹ Department of Physics, Faculty of Science and Letters, Balıkesir University, Çağış Kampüsü, 10145 Balıkesir, Turkey

² Department of Electrical and Computer Engineering, Virginia Commonwealth University, Richmond, VA 23284, USA

³ Nanotechnology Research Center-NANOTAM, Bilkent University, 06800 Ankara, Turkey

⁴ Department of Physics, Faculty of Science and Arts, Gazi University, Teknikokullar, 06500 Ankara, Turkey

⁵ Department of Physics, Department of Electrical and Electronics Engineering,

Nanotechnology Research Center-NANOTAM, Bilkent University, 06800 Ankara, Turkey

E-mail: sozalp@balikesir.edu.tr

Received 24 November 2009, in final form 2 February 2010

Published 16 March 2010

Online at stacks.iop.org/SST/25/045024

Abstract

The scattering mechanisms limiting the carrier mobility in AlInN/AlN/InGaN/GaN two-dimensional electron gas (2DEG) heterostructures were investigated and compared with devices without InGaN channel. Although it is expected that InGaN will lead to relatively higher electron mobilities than GaN, Hall mobilities were measured to be much lower for samples with InGaN channels as compared to GaN. To investigate these observations the major scattering processes including acoustic and optical phonons, ionized impurity, interface roughness, dislocation and alloy disorder were applied to the temperature-dependent mobility data. It was found that scattering due mainly to interface roughness limits the electron mobility at low and intermediate temperatures for samples having InGaN channels. The room temperature electron mobilities which were determined by a combination of both optical phonon and interface roughness scattering were measured between 630 and 910 cm² (V s)⁻¹ with corresponding sheet carrier densities of 2.3–1.3 × 10¹³ cm⁻². On the other hand, electron mobilities were mainly limited by intrinsic scattering processes such as acoustic and optical phonons over the whole temperature range for Al_{0.82}In_{0.18}N/AlN/GaN and Al_{0.3}Ga_{0.7}N/AlN/GaN heterostructures where the room temperature electron mobilities were found to be 1630 and 1573 cm² (V s)⁻¹ with corresponding sheet carrier densities of 1.3 and 1.1 × 10¹³ cm⁻², respectively. By these analyses, it could be concluded that the interfaces of HEMT structures with the InGaN channel layer are not as good as that of a conventional GaN channel where either AlGaN or AlInN barriers are used. It could also be pointed out that as the In content in the AlInN barrier layer increases the interface becomes smoother resulted in higher electron mobility.

(Some figures in this article are in colour only in the electronic version)

1. Introduction frequency and high-power microwave applications because nitride-based material systems have desirable fundamental Al(In)GaN/(In)GaN-based high electron mobility transistors physical properties, such as a large band gap, large breakdown (HEMTs) have attracted a great deal of attention for high- field and strong spontaneous and piezoelectric polarization ⁶ Author to whom any correspondence should be addressed. fields [1]. To improve the performance of devices, various

0268-1242/10/045024+07\$30.00

© 2010 IOP Publishing Ltd Printed in the UK & the USA

barriers and channel alternatives have been used in nitridebased HEMTs [2–10]. Several achievements have been made by optimizing the growth and design parameters. In recent years, an AlInN barrier layer has been implemented instead of AlGaN to improve the HEMT performance after the original proposal of Kuzm'ik [11]. The advantage of using an AlInN barrier lies in the ability to adjust the composition of the alloys to obtain a lattice- or polarization-matched heterostructure. The HEMTs with nearly lattice-matched AlInN barrier layers were essentially predicted to provide higher carrier densities than in those with an AlGaN barrier layer [12], promising for high-power and high-frequency transistor operations [13].

It has also been reported that the incorporation of an InGaN layer between an AlGaN barrier and a GaN channel in conventional heterostructures leads to a higher carrier density induced by larger polarization fields and its tighter confinement at the interface due to the larger conduction band offset [14]. Lanford *et al* reported an improvement in the electron transport characteristics by suppressing current collapse with the inclusion of an InGaN channel compared to the conventional AlGaN/GaN heterostructure [15]. However, it is quite difficult to improve the quality of the InGaN channel, so the mobility of two-dimensional electron gas (2DEG) in the InGaN channel is limited to be lower than $800 \text{ cm}^2 (\text{V s})^{-1}$ with an $\sim 2 \times 10^{13} \text{ cm}^{-2}$ sheet carrier density at room temperature [16]. An InGaN layer has also been used as a back barrier in the AlGaN/GaN/InGaN/GaN DH to improve the confinement of the 2DEG and increase the electron mobility in the GaN channel [17–19].

Recently, Xie *et al* studied the effect of barrier layers on the electron mobility in InGaN channel HEMTs [2]. They reported that with the proper choice of a barrier, such as $\text{Al}_{0.24}\text{In}_{0.01}\text{Ga}_{0.75}\text{N}$, the HEMT containing a 12 nm $\text{In}_{0.04}\text{Ga}_{0.96}\text{N}$ channel exhibited a $1230 \text{ cm}^2 (\text{V s})^{-1}$ Hall mobility at room temperature, which is higher than previously reported mobilities in InGaN channels with a conventional AlGaN barrier. Despite these results reported in the literature, there are only a few reports in terms of the detailed analysis of the transport characteristics of HEMTs with the InGaN channel [13, 20, 21].

In the present work, we investigate the transport properties of AlInN/AlN/InGaN/GaN heterostructures with different alloy compositions of the AlInN barrier layer in conjunction with conventional AlGaN/AlN/GaN and AlInN/AlN/GaN using temperature-dependent Hall effect measurements. Analytical models were applied to the experimental data in order to understand scattering mechanisms that govern the transport properties of devices in a temperature range of 10–300 K. If

the scattering mechanisms that are dominant for high-density 2DEGs can be identified, it will guide the optimization of the growth and/or the layer structure that will be necessary to further improve the conductivity. This work has emphasized that although the mobilities of samples with InGaN channels are lower than those of the conventional HEMT structures with either AlGaN or AlInN barrier layers, their two-dimensional sheet resistances are comparable due to higher sheet carrier densities of the former. This indicates that the overall performance of HEMTs with InGaN channels can

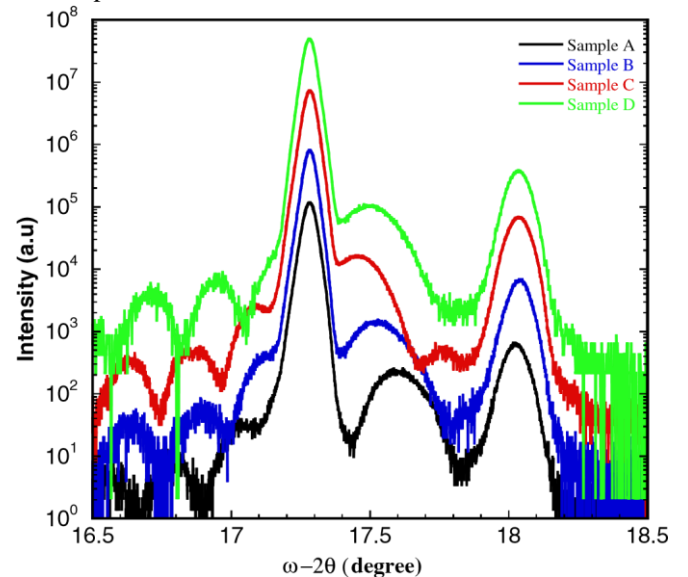


Figure 1. High-resolution XRD (0002) $\omega - 2\theta$ scans of samples A, B, C and D. The curves are shifted for clarity.

be further improved by optimization of the growth conditions and device parameters.

2. Experimental details

Three HEMT structures with 12 nm thick InGaN channel layers were grown on 2 inch (0001) sapphire substrates in a vertical low-pressure metal-organic chemical vapor deposition (MOCVD) system. The growth was initiated with the deposition of a 200 nm AlN buffer layer grown at $\sim 1050 \text{ }^\circ\text{C}$, followed by a $4\text{-}\mu\text{m}$ thick nominally undoped GaN layer grown at $\sim 1000 \text{ }^\circ\text{C}$. The wafer was cooled down to $800 \text{ }^\circ\text{C}$ for the growth of the $\text{In}_{0.04}\text{Ga}_{0.96}\text{N}$ channel. The $\sim 1 \text{ nm}$ AlN spacer layer was grown after InGaN channel growth. Next, 17 nm thick $\text{Al}_{1-x}\text{In}_x\text{N}$ barrier layers with compositions of 0.16, 0.18 and 0.20 (will be referred to as samples A, B and C,

respectively throughout the text) were grown afterward. Finally, the samples were capped with 2–3 nm thick GaN layers. As references, two samples without InGaN channels were used for comparison of transport properties. One has an $\text{Al}_{0.3}\text{Ga}_{0.7}\text{N}$ barrier and the other has a lattice-matched $\text{Al}_{0.82}\text{In}_{0.18}\text{N}$ barrier. The former will be referred to as sample D and the latter as sample E. The details of growth conditions for sample E can be found in [21]. After growth, the samples were characterized by high-resolution x-ray diffraction (HRXRD), atomic force microscopy (AFM) and variable temperature Hall measurements.

3. Experimental results

The structural quality and the alloy compositions of all samples were determined by high-resolution x-ray diffraction measurements (HRXRD). X-ray data were collected on the (0002) reflections with $\omega - 2\theta$ scans. Figure 1 shows XRD patterns around the (0002) reflection for all structures.

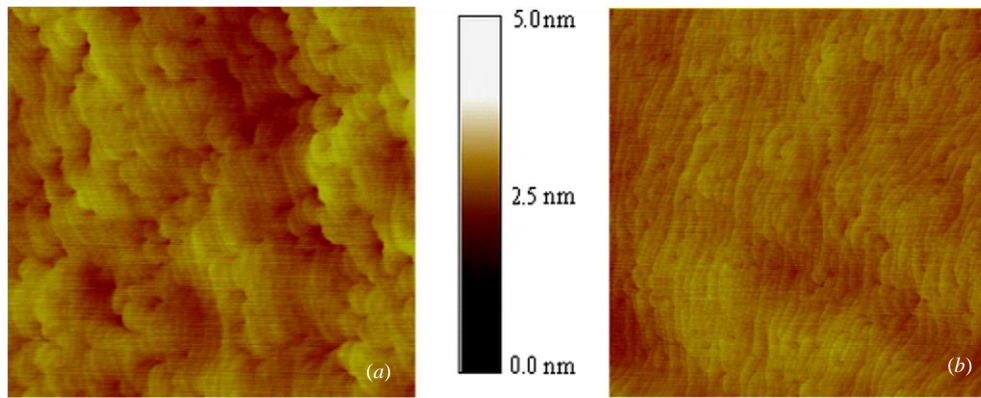


Figure 2. $5 \times 5 \mu\text{m}^2$ AFM images of (a) sample B and (b) sample D.

Table 1. Summary of the main structural parameters as In content and AlN spacer layer thickness and characterization results: AFM rms, Hall mobility, sheet carrier density, sheet resistance at low and room temperature.

Sample	Barrier (%)		Channel (%)	rms Δ (nm)	t_i	Mobility ($\text{cm}^2 (\text{V s})^{-1}$)		2DEG ($\times 10^{13} \text{cm}^{-2}$) density		Sheet resistance (Ωsq^{-1})		
	$\text{Al}_{1-x}\text{In}_x\text{N}$	$\text{Al}_x\text{Ga}_{1-x}\text{N}$				10 K	300 K	10 K	300 K	10 K	300 K	
A	16	–	$\text{In}_x\text{Ga}_{1-x}\text{N}$ 4	0.44	9.09	1310	628	2.12	2.29	225	435	
B	18	–	4	0.59	12.6	1950	820	2.14	2.12	150	360	
C	20	–	4	0.45	13.0	2060	903	1.22	1.32	249	524	
D	–	30	–	GaN	0.37	53.0	12000	1573	1.10	1.13	48	350
E _a	18	–	–	GaN	0.40	55.0	23100	1630	1.16	1.20	23	320

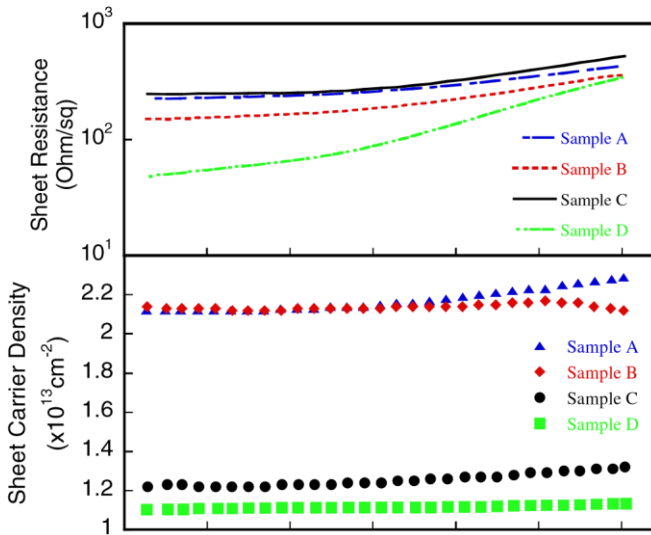
^aReference [21].

The structural qualities of the samples were revealed by Pendellosung fringes, clearly resolved in HRXRD curves. The well-resolved diffraction peaks related to AlInN barrier layers for samples A, B and C are observed at 17.60° , 17.52° , and 17.46° , respectively. The peak related to the InGaN layer could not be resolved due to a wider GaN peak which possibly obstructs the observation of such a layer with low In content (only 0.04% estimated from the growth conditions). From the relative XRD peak positions and by using the lattice constants of GaN, AlN and InN given in table 1 and Vegard's law, the In compositions in AlInN were determined to be around 20, 18 and 16% for samples A, B and C. The diffraction peak related to the AlGa_{1-x}N barrier layer for sample D is observed at 17.50° corresponding to an Al composition of 30%. The actual In and Al compositions are still somewhat debatable due to the deviation from Vegard's law reported in the literature [22]. However, such a variation would not violate the arguments made on the transport properties of the studied samples.

Figure 2 shows the representative AFM images of samples B and D. The other samples have similar surface morphology. Since the sample surface is strongly affected by the surfaces of the under-layers, the rms roughness values obtained from AFM scans listed in table 1 could mimic one of the interface

parameters used in the theoretical calculation of mobility limited by interface roughness scattering.

Temperature-dependent Hall measurements were carried out from 10 to 300 K using a van der Pauw geometry in a LakeShore Hall measurement system. Ohmic contacts were prepared by 60 s rapid thermal annealing of Ti/Al/Ti/Au (30/100/30/30 nm) at 850°C . Figure 3 shows the temperature-dependent Hall sheet carrier density and two-dimensional sheet resistance for all HEMT structures. As seen in the figure, the sheet carrier densities for all samples remain nearly constant through the studied temperature ranges. This temperature-dependent behavior of sheet carrier densities implies that the conduction is dominated almost exclusively by the carriers at the AlN/(In)Ga_{1-x}N heterointerfaces. In the same figure, the temperature dependences of corresponding two-dimensional sheet resistances are also shown. The temperature dependence of two-dimensional sheet resistances of all samples is determined by their temperature-dependent mobility, which decreases as the temperature increases, as will be discussed later. The corresponding sheet carrier densities and sheet resistance values at ~ 10 K and room temperatures are listed in table 1. The minimum room temperature sheet resistance is obtained as $360 \Omega \text{sq}^{-1}$ (the corresponding sheet carrier density and mobility are $2.12 \times 10^{13} \text{cm}^{-2}$ and $820 \text{cm}^2 (\text{V s})^{-1}$, respectively) for sample B with the lattice-matched $\text{Al}_{0.82}\text{In}_{0.18}\text{N}$ barrier layer. This value is comparable to samples



D (GaN channel with the $\text{Al}_{0.3}\text{Ga}_{0.7}\text{N}$ barrier layer) and E (GaN channel with the $\text{Al}_{0.82}\text{In}_{0.18}\text{N}$ barrier layer), where the room temperature sheet resistances are measured to be $350 \Omega \text{ sq}^{-1}$ and $320 \Omega \text{ sq}^{-1}$, respectively (corresponding sheet carrier densities and mobilities are $1.13 \times 10^{13} \text{ cm}^{-2}$ and $1573 \text{ cm}^2 (\text{V s})^{-1}$ and $1.20 \times 10^{13} \text{ cm}^{-2}$ and $1630 \text{ cm}^2 (\text{V s})^{-1}$ respectively).

To calculate the 2D sheet carrier concentrations from the polarization-induced sheet charge densities and compare them with the observed values for samples A, B, C and D, the theory presented by Ambacher *et al* [8] and Asbeck *et al* [23] has been

$$\frac{1}{0.50} \frac{1}{100} \frac{1}{150} \frac{1}{200} \frac{1}{250} \frac{1}{300} \text{ Temperature (K)}$$

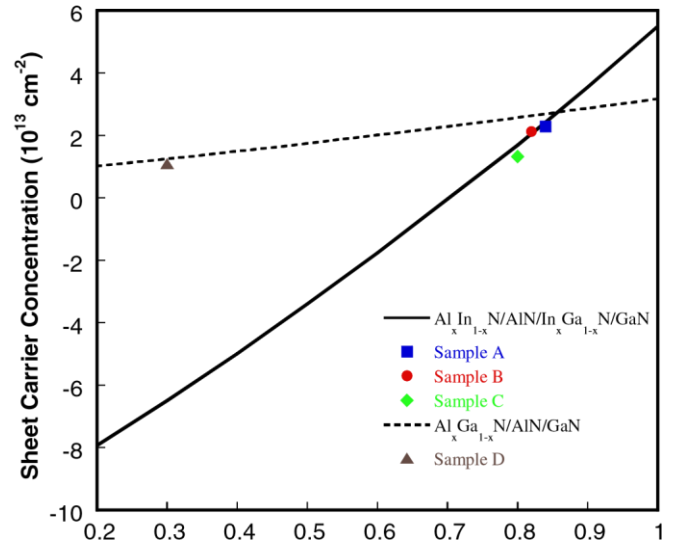
Figure 3. The temperature dependence of measured sheet carrier density and sheet resistance for all samples.

Table 2. The constants used for the calculation of the polarization and sheet carrier density in $\text{AlInN}/\text{AlN}/\text{GaN}$ heterostructures.

	AlN	GaN	InN
$P_{SP} (\text{cm}^{-2})$	-0.081	-0.029	-0.032
$e_{33} (\text{cm}^{-2})$	1.46	0.73	0.97
$e_{31} (\text{cm}^{-2})$	-0.60	-0.49	-0.57
$C_{13} (\text{GPa})$	108	103	92
$C_{33} (\text{GPa})$	373	405	224
$a_0 (\text{Å})$	3.112	3.189	3.540

pursued. The constants used in our calculations were taken from Bernardini *et al* [24] and Wright [25] and are given in table 2. Figure 4 shows the calculated maximum sheet electron densities $n_s(x)$ as a function of Al composition that exist at the $\text{AlN}/(\text{In})\text{GaN}$ interface of the $\text{AlGa}(\text{In})\text{N}/\text{AlN}/(\text{In})\text{GaN}$ HEMT structures along with the experimental data obtained from Hall measurements. In these calculations, the effects of the AlN spacer layer and GaN cap layer were taken into

account. The calculated sheet carrier densities were in excellent agreement with the experimental values for samples A, B and D. However, the experimental value of sheet carrier



density for sample C is slightly lower than the calculated one due to probably partial relaxation of the InGaN layers [26].

Here, we will discuss the temperature-dependent Hall mobilities for all samples along with the results of the theoretical model. The model accounts for the major scattering mechanisms such as optical phonon, acoustic phonon, through deformation potential and piezoelectric, interface roughness, background impurity and alloy disorder. The details of the calculations are given in [27] and the references therein. The parameters used in these calculations are taken from [1] and tabulated in table 3. In these calculations, since the measured sheet carrier densities were nearly constant through the whole temperature range, they were accepted as constants. The

Al Composition

Figure 4. Composition dependence of the maximum sheet carrier concentration of the 2DEG confined at $\text{Al}_x\text{Ga}_{1-x}\text{N}/\text{AlN}/\text{GaN}$ and $\text{Al}_x\text{In}_{1-x}\text{N}/\text{AlN}/\text{InGaN}/\text{GaN}$ interfaces including the GaN cap layer and AlN spacer layer. For comparison, the experimental sheet carrier densities obtained by Hall measurement at room temperature are also indicated.

Table 3. Values of GaN material constants used in the calculation of scattering mechanisms.

Electron effective mass (m_0)	$m^* = 0.22$
High frequency dielectric constant (ϵ_0)	$\epsilon_\infty = 5.35$
Static dielectric constant (ϵ_0)	$\epsilon_s = 8.9$
LO-phonon energy (meV)	$\hbar\omega^- = 92$
Longitudinal acoustic phonon velocity (ms^{-1})	$v_L = 6.56 \times 10^3 \text{ m/s}$
Density of the crystal (kgm^{-3})	$\rho = 6.15 \times 10^3 \text{ kg/m}^3$
Deformation potential (eV)	$E_D = 8.3 \text{ eV}$
Elastic constants (Nm^2)	$C_{LA} = 2.65 \times 10^{11} \text{ Nm}^2$
Electromechanical coupling coefficient	$c_{TA2} = 0.442 \times 10^{11}$
Electron wave vector (m^{-1})	$k = 7.27 \times 10^8 \text{ m}^{-1}$
Effective Bohr radius in the material (Å°)	$a_B = 23.1 \text{ Å}$
Lattice constant in the (0001) direction (Å°)	$c_0 = 5.185 \text{ Å}$
2D Thomas Fermi wave vector (m^{-1})	$q_{TF} = 8.68 \times 10^8 \text{ m}^{-1}$

results are shown in figure 5. The calculated total mobility as a function of lattice temperature is in very good agreement with the experimental data for all samples. The temperature-dependent Hall mobility revealed that the Hall mobilities in samples A (figure 5(a)), B (figure 5(b)) and C (figure 5(c)) are mainly determined by interface roughness scattering at low temperatures. As the temperature increases (above ~ 100 K), acoustic phonon scattering in addition to the interface roughness becomes operative in the determination of the overall mobilities. At higher temperatures, the mobilities are limited by a combination of both interface roughness and optical phonon, and to a lesser degree, acoustic phonon scattering mechanisms.

On the other hand, as seen in figure 5(d), which shows the experimental and calculated temperature-dependent Hall mobilities of sample D, the high temperature ($T > 240$ K)

dominate the Hall mobility. As the temperature decreases further, the mobility is characterized by the combination of all (except optical phonon) scattering mechanisms. Therefore, the low field transport in this sample is assumed to be nearly intrinsic. The weaknesses of extrinsic scattering mechanisms are indicative of a high-quality GaN channel with a low dislocation density and a smooth interface. The same argument can be made on the transport characteristics of sample E, as discussed in [21].

To compare the transport properties in detail, the conduction band potential profiles and the spatial distribution of the amplitude of the electron wavefunctions are calculated by solving 1D nonlinear self-consistent Schrodinger–Poisson equation [28]. The results are shown in figure 6. The material parameters of alloys for simulation were deduced using Vegard's law and the layers were assumed to be

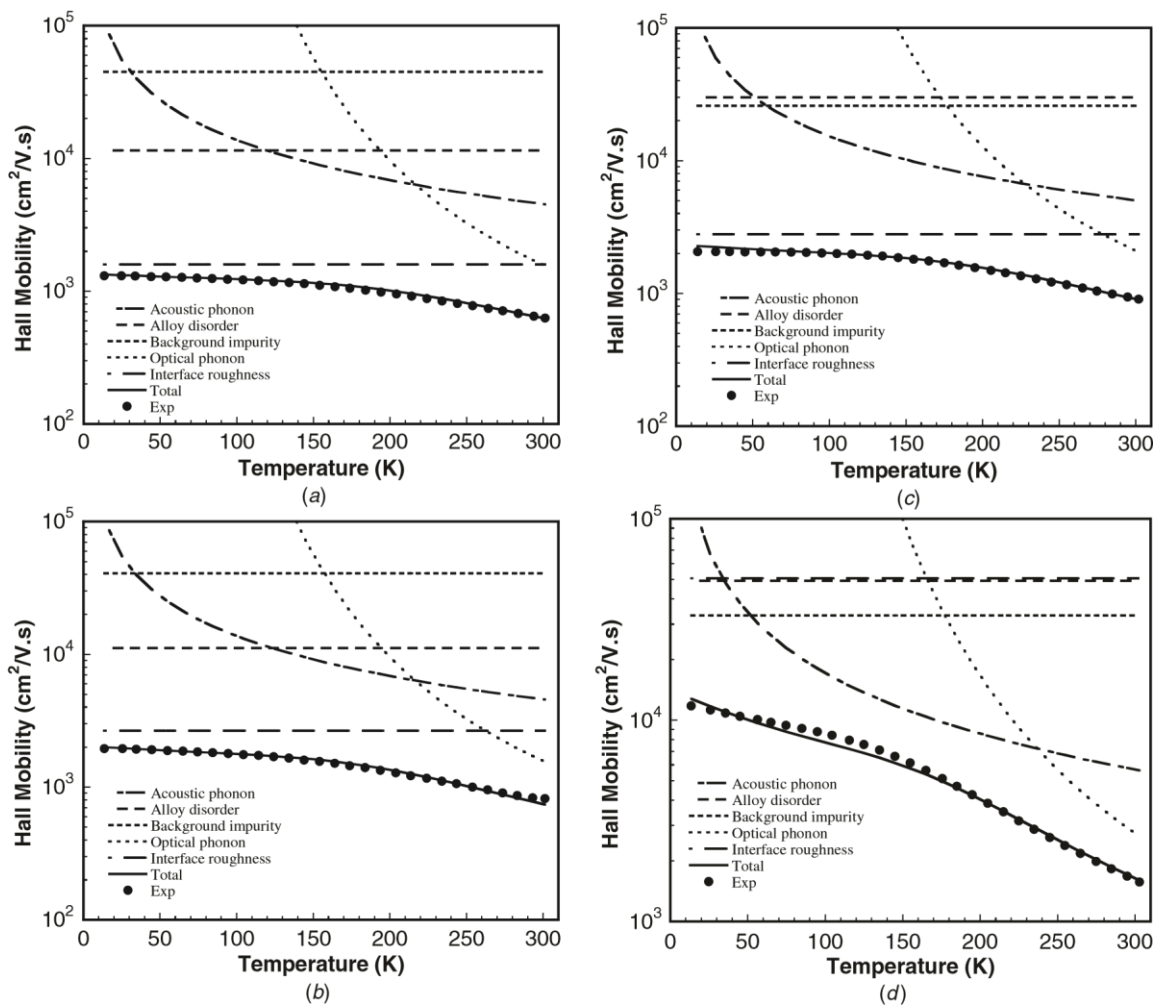


Figure 5. The temperature evolution of the measured Hall mobility in comparison with the theoretical calculations including major scattering mechanisms for (a) sample A, (b) sample B, (c) sample C and (d) sample D.

mobility is mainly determined by both acoustic and polar optical phonon scattering with increasing strength of the optical phonon component as the temperature increases to room temperature. At moderate temperature ranges, the acoustic phonon scattering through both deformation potential and piezoelectric interactions with nearly equal strength

pseudomorphically grown. As seen in the figure, the spatial variation of the electron wavefunctions, particularly its penetration into the barrier, decreases due to the higher band offset of AlN. Keeping the carriers in the channel away from the scattering centers (the ternary barrier) results in effective suppression of the scattering due to alloy disorder for all

samples. The unavoidable (intrinsic) scattering mechanisms associated with acoustic and optical phonons are mostly influenced by charge carrier density, effective well width at the heterointerface and the position of the Fermi level. As seen in figure 6, the pseudo-triangular potential wells are deeper for samples with the InGaN channel compared to the sample with the GaN channel only. In the calculation of the mobility limited by phonon scattering, we used the effective potential well widths deduced from the full width at half maximum of the electron wavefunctions.

Since the potential depth and hence the effective well width of samples A, B and C is almost the same, the mobility values purely limited by optical phonons are found to be the same for samples A and B ($1556 \text{ cm}^2 (\text{V s})^{-1}$), but lower than that of sample C ($2057 \text{ cm}^2 (\text{V s})^{-1}$) due to lower sheet carrier density of the latter. The effect of other scattering mechanisms (excluding the interface roughness) would be expected to give close mobility values as calculated. Therefore, the interface roughness scattering should be considered as the

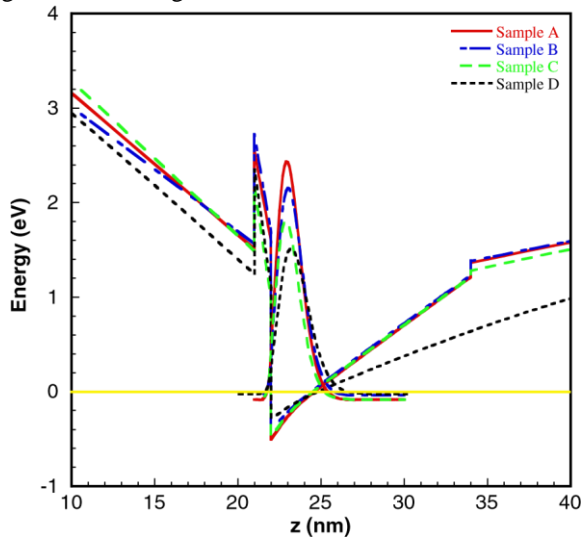


Figure 6. The calculated conduction band potential profiles and spatial distribution of the amplitude of the electron wavefunctions for all samples.

main scattering mechanism limiting the mobility in these samples. In general, there are two parameters used in the calculation of the mobility limited purely by interface roughness scattering, namely the correlation length and the lateral size at the AlN/GaN interface, respectively. In the calculation, the root mean square (rms) roughness values obtained from AFM scans were taken as the lateral size parameter (σ). The correlation length was taken in the range of 5–25 nm [29] as a free parameter to fit the experimental mobility data. The mobility increases as σ decreases and increases and hence the larger the σ , the smoother the interface. In this calculation, the effect of the sheet carrier density and the shifting of the centroid of the electron distribution toward the interface on the effectiveness of the interface roughness scattering [30] was also taken into account.

When the mobilities limited by interface roughness are compared for samples with InGaN channels, one can see the effect of the alloy composition of the AlInN barrier layer on the AlN/InGaN interface. When the average lateral roughness (σ) deduced from the mobility analysis is considered, the channel/barrier interface becomes smoother as the In content increases in the AlInN barrier. This helps to reduce the interface roughness scattering which results in higher electron mobility as seen in table 1. On the other hand, the interfaces of the samples with GaN channels only (samples D and E) are remarkably much smoother compared to the samples with InGaN channels when both σ and λ parameters are considered. The larger roughness of the AlN/InGaN interfaces can be attributed to the fluctuations in In composition and layer thickness.

4. Conclusions

We studied the transport properties of AlInN/AlN/InGaN/GaN heterostructures with different alloy compositions of AlInN barrier layers as well as conventional AlGaN/AlN/GaN and AlInN/AlN/GaN heterostructures using temperature dependent Hall effect measurements. The scattering mechanisms were successfully analyzed and the dominant scattering mechanisms in the low- and high-temperature regimes were determined for all heterostructures. After studying the scattering mechanisms governing the transport properties of our samples, we concluded that the interface roughness is the main mobility limiting mechanism for the samples with InGaN channels. It has also been observed that the channel/barrier interface becomes smoother as the In content increases in the AlInN barrier. When these results are compared with the conventional GaN channel HEMTs, which have either AlGaN or AlInN barrier, mobilities are mainly limited by intrinsic scattering mechanisms such as optical and acoustic phonons indicating much smoother interfaces as deduced from AFM images. On the other hand, as far as the sheet resistance is concerned, we obtained the lowest sheet resistance value of $360 \Omega \text{ sq}^{-1}$ for sample B with the optimal In content of 18% in an AlInN barrier layer. This sheet resistance is comparable with that of the conventional HEMTs. Therefore, the sheet resistance of HEMT structures with InGaN channels can be reduced further once the AlN/InGaN/GaN interface is improved by optimizing the growth conditions. However, this is not an easy task due to the very different growth dynamics of the constitutive components. To overcome this problem, using a double heterostructure of Al(In)GaN/AlN/GaN/InGaN/GaN can be considered as another alternative design for the usage of the advantageous InGaN channel.

Acknowledgments

The VCU portion of this work has been funded by a grant from the US Air Force Office of Scientific Research under the

direction of Drs Kitt Reinhardt and Don Silversmith. The NANOTAM portion of this work is supported by TUBITAK under project numbers 104E090, 105E066, 105A005, 106E198 and 106A017 and the European Union under the projects EU-METAMORPHOSE, EU-PHOREMOST, EUPHOME and EU-ECONAM. One of the authors (EO) acknowledges partial support from the Turkish Academy of Sciences.

References

- [1] Morkoc, H 2008 *Handbook of Nitride Semiconductors and Devices* vols 1–3 (New York: Wiley-VCH)
- [2] Xie J, Leach J H, Ni X, Wu M, Shimada R, Ozgür U and Morkoc, H 2007 *Appl. Phys. Lett.* **91** 262102
- [3] Miyoshi M, Egawa T, Ishikawa H, Asai K-I, Shibata T, Tanaka M and Oda O 2005 *J. Appl. Phys.* **98** 063713
- [4] Xie J, Ni X, Wu M, Leach J H, Ozgür U and Morkoc, H 2007 *Appl. Phys. Lett.* **91** 132116
- [5] Gonschorek M, Carlin J-F, Feltrin E, Py M A and Grandjean N 2006 *Appl. Phys. Lett.* **89** 062106
- [6] Lisesivdin S B, Acar S, Kasap M, Ozcelik S, Gokden S and Ozbay E 2007 *Semicond. Sci. Technol.* **22** 543
- [7] Smorchkova I P, Chen L, Mates T, Shen L, Heikman S, Moran B, Keller S, DenBaars S P, Speck J S and Mishra U K 2001 *J. Appl. Phys.* **90** 3998
- [8] Ambacher O *et al* 1999 *J. Appl. Phys.* **85** 3222
- [9] Cao Y and Jena D 2007 *Appl. Phys. Lett.* **90** 182112
- [10] Palacios T, Rajan S, Chakraborty A, Heikman S, Keller S, DenBaars S P and Mishra U K 2005 *IEEE Trans. Electron Devices* **52** 2117
- [11] Kuzm'ik J 2001 *IEEE Trans. Electron Devices* **22** 510
- [12] Kuzm'ik J 2002 *Semicond. Sci. Technol.* **17** 540
- [13] Tulek R, Ilgaz A, Gokden S, Teke A, Ozturk M K, Kasap M, Ozcelik S, Arslan E and Ozbay E 2009 *J. Appl. Phys.* **105** 013707
- [14] Simin G, Hu X H, Taraku A, Zhang J P, Koudymov A, Saygi S, Yang J W, Khan A, Shur M S and Gaska R 2001 *Japan. J. Appl. Phys.* **40** L1142
- [15] Lanford W, Kumar V, Schwindt R, Kuliev A, Adesida I, Dabiran A M, Wowchak A M, Chow P P and Lee J-W 2004 *Electr. Lett.* **40** 771
- [16] Simin G, Koudymov A, Fatima H, Zhang J P, Yang J W, Khan M A, Hu X, Tarakji A, Gaska R and Shur M S 2002 *IEEE Electron Device Lett.* **23** 458
- [17] Tang J, Wang X, Xiao H, Ran J, Wang C, Wang X, Hu G and Jinmin L 2008 *Phys. Status Solidi c* **5** 2982
- [18] Palacios T, Chakraborty A, Heikman S, Keller S, DenBaars S P and Mishra U K 2006 *IEEE Electron Device Lett.* **27** 13
- [19] Adivarahan V, Gaeovski M E, Islam M, Zhang B, Deng Y and Khan M A 2008 *IEEE Trans. Electron Devices* **55** 495
- [20] Wang C X, Tsubaki K, Kobayashi N and Makimoto T 2004 *Appl. Phys. Lett.* **84** 2313
- [21] Teke A, Gokden S, Tulek R, Leach J H, Fan Q, Xie J, Ozgür U, Morkoc, H, Lisesivdin S B and Ozbay E 2009 *New J. Phys.* **11** 063031
- [22] Hums C, Blasing J, Dadgar A, Diez A, Hempel T, Christen J, Krost A, Lorenz K and Alves E 2007 *Appl. Phys. Lett.* **90** 022105
- [23] Asbeck P M, Yu E T, Lau S S, Sullivan G J, van Hove J and Redwing J 1997 *Electron. Lett.* **33** 1230
- [24] Bernardini F, Fiorentini V and Vanderbilt D 1997 *Phys. Rev. B* **56** R10024
- [25] Wright A F 1997 *J. Appl. Phys.* **82** 2833
- [26] Chu R M, Zheng Y D, Zhou Y G, Gu S L, Shen B and Zhang R 2003 *Opt. Mater.* **23** 207
- [27] Gokden S, Baran R, Balkan N and Mazzucato S 2004 *Physica E* **24** 249
Gokden S, Ilgaz A, Balkan N and Mazzucato S 2004 *Physica E* **25** 86
- [28] Birner S, Hackenbuchner S, Sabathil M, Zandler G, Majewski J A, Andlauer T, Zibold T, Morschl R, Trellaki A and Vogl P 2006 *Acta Phys. Pol. A* **110** 111
- [29] Corekc, i S, Usanmaz D, Tekeli Z, Cakmak M, Ozcelik S and Ozbay E 2008 *J. Nanosci. Nanotechnol.* **8** 640
- [30] Lisesivdin S B, Yildiz A and Kasap M 2007 *Optoelectron. Adv. Mater.* **1** 467