

# Once Burned, Twice Shy: Money Market Fund Responses to a Systemic Liquidity Shock

Philip E. Strahan and Başak Tanyeri\*

## Abstract

After Lehman's collapse in 2008, investors ran from risky money market funds. In 27 funds, outflows overwhelmed cash inflows, thus forcing asset sales. These funds sold their safest and most liquid holdings. Funds were thus left with riskier and longer maturity assets. Over the subsequent quarter, however, the hard-hit funds reduced risk more than other funds. In contrast, money funds hit by idiosyncratic liquidity shocks before Lehman did not alter portfolio risk. The result suggests that moral hazard concerns with the Treasury Guarantee of investor claims did not increase risk taking. Funds that benefited most from the government bailout reduced risk.

## I. Introduction

This article studies how money market fund portfolios changed after the run that followed the bankruptcy of Lehman Brothers on Sept. 15, 2008. We focus on how money funds met withdrawal demands through portfolio reallocations in both the short run and the long run. Funds hardest hit by investor runs reacted initially by meeting withdrawal demands with cash generated from maturing assets and by selling off the safest and most liquid holdings. As a result, immediately after the run ended, hard-hit funds had increased portfolio risk and lengthened asset maturity relative to other funds. By the end of 2008, however, these hard-hit funds had reallocated their investments to safer and shorter term investments than what they had held on the eve of the crisis.

Consistent with other research (McCabe (2010), Kacperczyk and Schnabl (2013)), we start by showing that fund flows responded rationally to the sharp change in expectations about the risks of commercial paper investments. Due to its large exposure to Lehman Brothers' commercial paper, the Reserve Primary Fund "broke the buck" on Sept. 16, 2008. This announcement initiated a run across the money market industry, whereby institutional investors withdrew funds en masse from risky prime funds (a major holder of commercial paper) and, in aggregate,

---

\*Strahan (corresponding author), philip.strahan@bc.edu, Carroll School of Management, Boston College, Chestnut Hill, MA 02467; Tanyeri, basak@bilkent.edu.tr, Faculty of Business Administration, Bilkent University, Ankara 06800, Turkey. We thank an anonymous referee, Stephen Brown (the editor), Philipp Schnabl, and seminar participants at Boston College and Bilkent University for helpful comments.

reallocated their investments to safer funds holding mainly U.S. government securities and repurchase agreements (repos). Retail investors also withdrew from risky funds, but on a somewhat smaller scale than institutional investors. Cross-sectional regressions suggest that funds most heavily invested in risky assets, such as commercial paper, faced the largest outflows.

Figure 1 graphs the evolution of total net assets (TNA) in the mutual fund business over time. The figure separates the data into four groups based on the fund's main asset class and investor type: prime-institutional, prime-retail, government-institutional, and government-retail. First, the figure shows that institutional investors dominate TNA and aggregate flows in the industry. Second, the figure shows a dramatic reallocation of total investment from the prime (risky) to the government (safe) funds. Figure 2 shows the percentage change in TNA during the days surrounding the Lehman collapse: just before (Sept. 9–12), during (Sept. 15–19), and after (Sept. 22–23), again separated by clientele and investment strategy.

We focus on how funds adjusted their positions in response to these large flows. In general, funds facing liquidity pressure can minimize short-run costs first by using cash from maturing assets to pay claims, and second by selling their most liquid (and safe) nonmaturing assets before selling less liquid (and less safe) assets. Because such a strategy leaves the fund holding riskier and less liquid assets than before the shock, however, long-run stability could be jeopardized by continued outflows. Hence, a fund facing outflows that it fears may continue could instead opt to sell some of its less liquid positions to maintain a liquidity buffer to insure against continued outflows. We find strong evidence consistent with the first strategy. This behavior likely reflects, first, the reality that selling risky holdings such as commercial paper became all but impossible in the days

FIGURE 1  
Aggregate TNA by Category (billions of \$)

Figure 1 reports the time series of aggregate total net assets (TNA) held by money market mutual funds from Sept. 2005 to the end of 2011 for the four segments of the money market mutual fund industry.

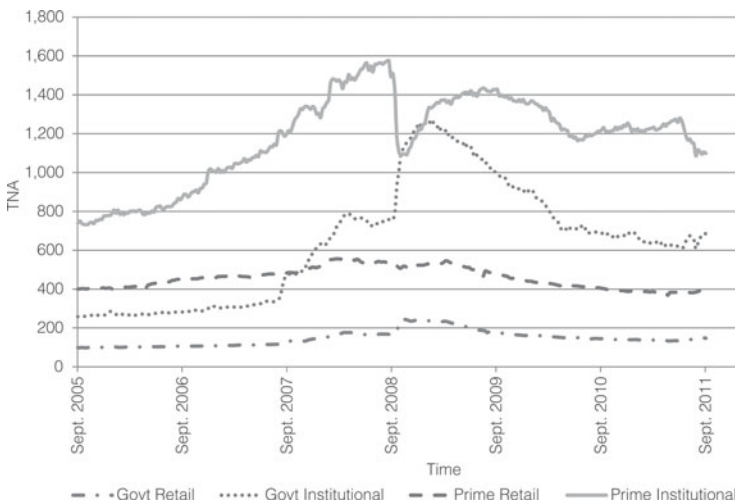
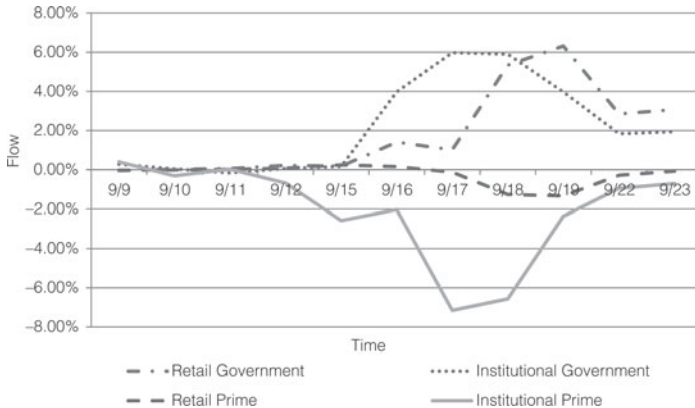


FIGURE 2

## Flow as Percentage of TNA during the Days Surrounding Lehman's 2008 Bankruptcy

Figure 2 reports the daily percentage change in aggregate TNA during the days just before and just after the Lehman bankruptcy (Sept. 15, 2008) for the four segments of the money market mutual fund industry.



following the Lehman bankruptcy. Most potential buyers would have been other prime funds, which themselves faced liquidity pressures. Second, the rapid initiation of government protection provided to investors obviated concerns about long-run viability for liquidity-stressed funds. The U.S. Treasury provided an ex post, across-the-board guarantee against breaking the buck for all money market funds on Sept. 19, 2008 (excluding the Reserve Primary Fund, which had already broken the buck). As should be clear from Figure 2, this policy action stopped the run after just 4 days. The Treasury program was available to all money funds for 1 basis point per dollar of net asset value. We find that funds more exposed to outflows and holding a greater share of high-risk, high-yield assets were more likely to enter the program.

We then test whether mutual funds made long-run changes to their portfolio allocations after the crisis. We focus on prime funds because these faced the greatest outflows during the crisis. Prime funds hardest hit by the runs, that is, those initially holding relatively riskier and longer maturity assets and those facing the largest cash withdrawals, reduced risk relative to other prime funds by the end of 2008. These hard-hit funds increased their holding of safe assets and shortened the weighted-average maturity of their holdings. We find that the move toward safer assets persisted up to 2 years after the Lehman collapse. We also compare these long-run changes with similar cases of illiquidity observed before 2008. During the earlier period, illiquidity occurred idiosyncratically rather than clustering around a systemic event like Lehman's collapse. Our results suggest that funds shorten maturity after idiosyncratic liquidity shocks, but they do not alter their relative weight in risky assets.

Our findings suggest that reasonable concerns about moral hazard effects of government bailouts on risk-taking incentives may not be justified, at least in this setting. The Treasury bailout had differential effects across the mutual fund industry, with the greatest benefits accruing to funds that had the most risk precrisis, as these funds suffered the highest outflows during the crisis. Rather than increase

risk, as standard moral hazard arguments would predict, we find that these “bailed out” funds reduced their risk relative to other funds. We also test whether funds that actually purchased Treasury protection changed their risk profile over the subsequent months but find little robust evidence that they did. Thus, our results do not support the idea that the Treasury Guarantee Program, to the extent that it embedded expectations of future guarantees, led money market fund managers to increase risk.

Our article contributes to a small literature on the causes and consequences of the run on the money market industry after Lehman’s failure.<sup>1</sup> McCabe (2010) shows that runs were “rational” in that they were concentrated in high-risk funds, using reasonable measures of investment risk and the likelihood of sponsor support. Similarly, Schmidt, Timmermann, and Wermers (2013) find that runs were more pronounced among institutional investors, with such investors tending to move their money from a prime (risky) fund to a government (safe) fund, often within the same family. Most recently, Chernenko and Sunderam (2014) show that institutional investors again fled risk associated with money funds’ exposure to European banks during the summer of 2011, when concerns about sovereign risk peaked.

Kacperczyk and Schnabl (2013) study precrisis risk taking by money funds. They describe the behavior of the Reserve Primary Fund, which expanded its investment into high-risk, high-yield assets (e.g., asset-backed commercial paper (ABCP)) very aggressively during the run-up to Lehman and, as a result, were able to induce huge investor inflows (due to high yields). They find a similar pattern across other funds that, like the Reserve Primary Fund, were not sponsored by financial conglomerates. Funds owned by large financial institutions with substantial nonfund business, in contrast, did not plunge into risky investments, suggesting that sponsor “skin in the game,” in the form of reputational capital at risk, can mitigate risk-taking incentives by money fund managers. Our article complements Kacperczyk and Schnabl’s (2013) study by documenting that this risk-taking behavior seems to have reversed following the Lehman collapse. Risky funds hit hard by the crisis reallocated their investments away from risk and toward liquidity between the Lehman collapse and the end of 2008, reversing the run-up in risk behavior before the crisis.

This article is organized as follows: Section II briefly describes the evolution of the money market fund industry leading up to the 2008 crisis. Section III then describes our data, methods, and results. Section IV contains a short conclusion.

## II. Industry Description

Money market mutual funds originated during the high-interest-rate environment of the 1970s. Checkable money market mutual funds such as the Merrill Lynch Cash Management Account demonstrated to savers that banking by mail

---

<sup>1</sup>Qian and Tanyeri (2011) and Chen, Goldstein, and Jiang (2010) analyze the potential for runs in equity mutual funds before Lehman. Qian and Tanyeri analyze flows and returns to equity funds under investigation for market timing and late trading in 2003 and show how fire-sale costs might provide incentives for early withdrawal. Chen et al. investigate how incentives for early withdrawal might be amplified in equity funds with illiquid investments.

and telephone could provide a convenient alternative to branch-based deposits. Moreover, in the 1970s commercial banks faced limits on their ability to pay interest on deposits; such regulations did not constrain money market funds. By offering stable but liquid claims with limited check-writing features, these accounts provided a close substitute for bank deposits. The competitive advantage of money market accounts grew dramatically during the latter part of the 1970s because short-term interest rates soared to nearly 20%. With bank deposit rates constrained by regulation, funds flowed from banks to money market accounts; this disintermediation induced banks to support deregulation of restrictions on interest rates payable on deposits. Thus, from 0 in 1970, money market mutual funds grew to roughly one-third the size of deposits held at banks by the 1980s (Kroszner and Strahan (2006)).

In the 1990s and 2000s, money market funds became a major supplier of savings to support the shadow banking system (Gorton and Metrick (2012), Gorton, Lewellen, and Metrick (2012), and Krishnamurthy, Nagel, and Orlov (2014)). Money funds became major buyers of ABCP, thereby financing securitized assets that had been held on the balance sheets of traditional banks (Acharya, Schnabl, and Suarez (2013)). Money market funds also began to supply large-scale funds to lightly regulated investment banks in the repo market that these institutions in turn used to finance their holdings of securitized assets. Between 1990 and 2007, for example, assets held by investment banks rose from 5% to 25% of assets held by commercial banks, and 50% of those assets were financed in the repo market using funds held in money market accounts (Gorton and Metrick (2012)). Thus, much of the asset transformation that occurred on the balance sheets of heavily regulated commercial banks moved to the less regulated shadow banking system, with money market funds playing the deposit-taking role and investment banks and ABCP conduits playing the lending role (by holding securitized assets).<sup>2</sup>

Despite its rapid expansion and growing importance as a source of savings to the financial system, the money market business enjoyed a track record of stability and safety until 2008. Money market funds are regulated by the Securities and Exchange Commission (SEC) under Rule 2a-7, which limits their credit- and liquidity-risk exposures. Money funds, for example, may not purchase assets with maturity greater than 13 months, they must not have a weighted-average maturity greater than 60 days, and they must hold mainly highly rated instruments such as commercial paper, repos, and U.S. government securities. Moreover, many money market funds are sponsored by large financial institutions that have, in a few cases before 2008, stepped in to support their funds rather than allow investors to experience losses of principal (McCabe (2010)). Brady, Anadu, and Cooper (2012) systematically study parent-firm noncontractual support (in the form of a cash contribution or a purchase of fund securities at above-market prices) to their money market funds from 2007 to 2011. They find more than 100 instances of such support, although in most cases the infusions of capital are very small (<0.5% of assets).

---

<sup>2</sup>For a policy discussion of shadow banking as regulatory arbitrage, see Kroszner and Strahan (2011).

The money market funds aim to maintain a stable net asset value, paying a periodic return to investors much as banks pay interest to depositors. The industry is segmented into four groups based on clientele (retail vs. institutional) and portfolio risk (government funds vs. prime funds). Retail funds serve small investors. Institutional funds serve corporations, governments, and other large pooled investment vehicles. Typically, institutional funds require large minimum balances but come with lower fees than retail funds. Government funds hold mainly U.S. government securities and repos, whereas prime funds hold mainly commercial paper and unsecured short-term claims issued by financial institutions (mainly banks). Despite the safety and short maturity of their assets, the market value of claims can vary; hence, money market funds are required to disclose losses to investors that exceed 0.5%. Such events, known as breaking the buck, were rare until the 2008 financial crisis. Perception about money fund safety, however, shifted dramatically after the Lehman bankruptcy when the Reserve Primary Fund announced that it had incurred losses on its large holdings of Lehman-issued commercial paper. This announcement triggered a run concentrated among prime funds catering to institutional investors (recall Figure 1). Below we explore cross-sectional patterns in these outflows.

The reallocation of fund investments out of the prime segment severely constrained the functioning of the commercial paper market because these money market funds had been the most important holder of commercial paper. Concern about the inability of large issuers to roll over commercial paper as it came due led the U.S. Treasury to announce the Treasury Guarantee Program for Money Market Mutual Funds on Friday, Sept. 19, 2008, just 4 days after Lehman declared bankruptcy.<sup>3</sup> This program permitted funds invested up to the 19th to be insured against breaking the buck by the U.S. government without limit, but required the individual money market fund itself to voluntarily enter the program for a fee of 1 basis point per dollar insured. The program was not available to any fund that broke the buck before the close of business on Sept. 19, 2008; therefore, the program was not available to the Reserve Primary Fund. On the same day, the Federal Reserve announced the creation of the Asset-Backed Commercial Paper Money Market Mutual Fund Liquidity Facility, which extended nonrecourse loans to U.S. depository institutions and bank holding companies to finance their purchase of high-quality, ABCP from money market mutual funds. Two weeks later, the Federal Reserve created the Commercial Paper Funding Facility to provide additional support to U.S. issuers of commercial paper.<sup>4</sup>

Together these government programs halted the run on money market funds and restored liquidity to the commercial paper market (Duygan-Bump, Parkinson, Rosengren, Suarez, and Willen (2013)).<sup>5</sup> In fact, Figure 1 shows that funds began flowing from the government sector back into the prime sector shortly after Treasury's announcement. Commercial paper outstanding follows a similar pattern

---

<sup>3</sup>See <http://www.finra.org/investors/protectyourself/investoralerts/mutualfunds/p117136>

<sup>4</sup>See <http://timeline.stlouisfed.org/index.cfm?p=timeline#2008-9>

<sup>5</sup>Liquidity was not restored to the interbank funding markets until Oct. 14, 2008, when the nine largest banks agreed to receive capital injections from the U.S. Treasury under the Troubled Asset Relief Program (TARP) legislation.

over time, with a sharp drop in commercial paper issued by financial companies just after Lehman, and a subsequent gradual recovery over the subsequent months (Kacperczyk and Schnabl (2010)).

### III. Data, Empirical Methods, and Results

#### A. Data

We compile the sample of taxable money market mutual funds using the iMoneyNet database. iMoneyNet provides data on share-level and master-level funds. A master-level fund can have many types of shares with different expense structures and a common investment portfolio. For example, the same portfolio may have an institutional share class and a retail share class. Because we are interested in how fund managers adjust their portfolios in response to a large liquidity shock, we focus on master-level funds rather than share-level funds.<sup>6</sup> Funds at the master level are defined as either retail or institutional in their prospectus, although some funds offer both share classes. In our sample, most funds defined as institutional have the vast majority of TNA in the institutional share class category (with an average of 85%), and for funds defined as retail, the majority of TNA are in retail share classes (with an average of 99%). Each master-level fund is used only once in our regressions. We collect data on TNA (reported on a daily basis), portfolio composition (reported on a weekly basis as of each Tuesday), and fund characteristics.

Table 1 contains a description of money market portfolios at year end from 2005 to 2010, as well as on Tuesday, Sept. 9, 2008, the last reporting date before the Lehman collapse. We split the data into four bins based on investor type (retail vs. institutional) and fund risk (prime funds vs. government funds). On the eve of Lehman collapse, Sept. 9, 2008, 16% of sample funds were classified as government-retail, 29% as government-institutional, 25% as prime-retail, and 31% as prime-institutional.

The data show that the government funds invest mainly in safe assets such as government securities and repos, whereas prime funds invest mainly in riskier assets, such commercial paper and non-deposit-bank obligations. These portfolio differences are reflected in yields, which are consistently higher in the prime funds. The yield differentials are greatest between 2007 and 2008, reflecting increased risk premiums during the subprime crisis and the ensuing financial crisis. We see very little difference in yields between retail and institutional money market funds, although in the government sector the institutional funds invest more in repos, which allows them to operate with lower weighted-average maturities. The most striking change over time is the decline in risk and shortening of maturity in the prime segment relative to the government segment at the end of 2008. This aggregate shift makes sense because these funds were hardest hit by the liquidity shock following Lehman's collapse. As we will show, the same patterns emerge

---

<sup>6</sup>We also looked at flow data at the share-class level and found similar results to those reported below.

TABLE 1  
Portfolio Composition of Money Market Mutual Funds

Table 1 reports the mean portfolio composition of four types of money market mutual funds (government-retail, government-institutional, prime-retail, prime-institutional) at year-end 2005 through 2010, along with the last report before Lehman's collapse. GROSS YIELD is the gross (before expenses) weekly dividend payout; RISKY SHARE is the sum of commercial paper and non-deposit-bank obligations as a percentage of assets; and WAM is the weighted-average maturity.

	Year-End			On the Eve of Lehman: 9/9/2008	Year-End		
	2005	2006	2007		2008	2009	2010
<i>Panel A. Government-Retail Money Market Mutual Funds</i>							
GROSS YIELD (%)	4.1	5.2	4.1	2.2	0.9	0.2	0.2
RISKY SHARE (%)	4.8	3.9	5.6	10.1	7.3	8.9	11.3
WAM (days)	36.6	37.1	40.7	40.4	49.0	45.7	40.5
No. of funds	86	81	75	73	68	63	57
<i>Panel B. Government-Institutional Money Market Mutual Funds</i>							
GROSS YIELD (%)	4.2	5.2	4.0	2.1	0.8	0.2	0.2
RISKY SHARE (%)	5.4	5.2	6.1	10.7	8.1	8.1	8.6
WAM (days)	26.3	25.0	29.2	32.0	40.2	42.3	42.9
No. of funds	122	125	128	128	124	115	104
<i>Panel C. Prime-Institutional Money Market Mutual Funds</i>							
GROSS YIELD (%)	4.3	5.4	4.9	2.7	1.7	0.3	0.3
RISKY SHARE (%)	77.4	80.7	75.8	75.5	71.0	73.0	66.5
WAM (days)	34.7	41.6	39.0	42.6	38.3	42.8	38.6
No. of funds	131	130	137	137	132	120	111
<i>Panel D. Prime-Retail Money Market Mutual Funds</i>							
GROSS YIELD (%)	4.3	5.4	5.0	2.7	1.7	0.4	0.3
RISKY SHARE (%)	83.6	87.3	83.3	81.9	75.6	77.0	68.9
WAM (days)	37.4	42.1	43.1	44.7	41.8	46.8	37.9
No. of funds	123	114	109	111	109	101	93

in the cross section of funds, meaning that funds hardest hit by the post-Lehman runs reduced risk and shortened maturity the most.

## B. Measuring Money Market Liquidity Shocks

We want to estimate how money market funds respond to liquidity shocks, and contrast their behavior following idiosyncratic shocks (e.g., instances of cash redemption demands before the Lehman collapse) with their responses to systemic liquidity shocks that occurred in the days after Lehman's fall. Most outflows can be met using cash from maturing assets because money market funds hold short-term assets with an average dollar-weighted maturity of about 40 days (recall Table 1). In other words, each week nearly 20% of TNA mature for the typical fund. Very large outflows, however, may overwhelm a fund's ability to meet withdrawal demands with maturing assets, thereby forcing the fund to sell non-maturing assets. Thus, we are interested in measuring the effects of two variables related to flow, one simply measuring the fraction of investment lost and the other measuring the degree to which the fund is forced to sell assets. Hence, we define OUTFLOW as follows (with fund-level subscripts temporarily suppressed):

$$\text{OUTFLOW}_{t \rightarrow t+k} = -(\text{TNA}_{t+k} - \text{TNA}_t) / \text{TNA}_t.$$

OUTFLOW simply measures a fund's net loss (gain if negative) of investment during a  $k$ -day interval from  $t$  to  $t+k$ . (Adjusting for the portfolio return in our



case has a tiny impact on the flow measure because the typical yield over a 2-week period is roughly 10 basis points.) We define ILLIQUIDITY as follows:

If  $TNA_{t+k} - TNA_t + \text{ASSETS MATURING}_{t+k} < 0$ , then

$$\text{ILLIQUIDITY}_{t \rightarrow t+k} = -(\text{TNA}_{t+k} - \text{TNA}_t + \text{ASSETS MATURING}_{t+k}) / \text{TNA}_t.$$

Otherwise,

$$\text{ILLIQUIDITY}_{t \rightarrow t+k} = 0.$$

ILLIQUIDITY measures the fraction of a fund's assets that must be sold to meet redemption demands during the  $k$ -day interval. ILLIQUIDITY equals 0 during most intervals because outflows tend to be small relative to asset maturity. During the days after Lehman's collapse, however, 27 money market funds could meet redemptions only by selling assets.

Our data allow us to observe TNA each day, so we can measure precisely the loss of assets that occurred between the Lehman collapse and the Treasury Guarantee announcement (Sept. 15–19, 2008). As Figure 2 shows, the outflows dropped sharply immediately following this announcement. Between Sept. 15 and 19, for example, the prime-institutional fund category in aggregate lost almost \$300 billion; during Sept. 22 and 23, the Monday and Tuesday of the following week, these outflows dropped to less than \$20 billion. Thus, the run effectively was stanching by the U.S. Treasury's commitment to backstop all existing investments. We are able to measure fund portfolio characteristics (e.g., maturing assets) only each Tuesday, however; therefore, we can measure holdings on Tuesday, Sept. 9 (prerun); Tuesday, Sept. 16 (midrun); and Tuesday, Sept. 23 (postrun). Because of this data constraint, we are not able to estimate perfectly the outcomes of interest, namely, portfolio allocation and maturity measures timed to match the exact days of the post-Lehman run. Instead, we estimate both OUTFLOW and ILLIQUIDITY over the 2-week interval that overlaps the run, beginning a few days before its onset (Sept. 9) and ending a few days after its end (Sept. 23, 2008). So, for each fund  $i$ , we build the following flow measures:

$$\text{OUTFLOW}_i = -(\text{TNA}_{9/23/08,i} - \text{TNA}_{9/9/08,i}) / \text{TNA}_{9/9/08,i}.$$

To build our variable measuring how much a fund must fire sale its assets (ILLIQUIDITY), we approximate the amount of funds maturing that would have been available to meet the run by assuming that each fund's assets mature evenly across time. Hence, we build ILLIQUIDITY as follows:

If  $\text{TNA}_{9/23/08,i} - \text{TNA}_{9/9/08,i} + \text{ASSETS MATURING}_{9/23/08,i} < 0$ , then

$$\text{ILLIQUIDITY}_i = -(\text{TNA}_{9/23/08,i} - \text{TNA}_{9/9/08,i} + \text{ASSETS MATURING}_{9/23/08,i}) / \text{TNA}_{9/9/08,i}.$$

Otherwise,

$$\text{ILLIQUIDITY}_i = 0.$$

To construct  $\text{ASSETS MATURING}_{9/23/08}$ , we assume that assets mature evenly across time. For example, if a fund has a weighted-average maturity (WAM) of 40 days, we would assume that 1/40 of the portfolio matures each day. Because we

can measure WAM on Sept. 9, we assume that the fraction  $14/WAM_{9/9/08,i}$  of the portfolio generates cash that could be paid to investors in fund  $i$  on Sept. 23 (thereby obviating the need to sell assets).<sup>7</sup> Thus:

$$\text{ASSETS MATURING}_{9/23/08,i} \cong (14/WAM_{9/9/08,i}) \times \text{TNA}_{9/9/08,i}.$$

Table 2 reports summary statistics on biweekly OUTFLOW for the full sample (2005–2008) and for the single cross section around the Lehman collapse. Money market fund flows are highly variable over short intervals of time, with a mean OUTFLOW of  $-0.7\%$  (i.e., a  $+0.7\%$  inflow) overall in the full sample and a standard deviation of almost  $9\%$  over 2-week horizons. Outflows over short

TABLE 2  
Summary Statistics for Biweekly Gross Outflow and Illiquidity Measures

Table 2 reports summary statistics on OUTFLOW and ILLIQUIDITY, along with other fund characteristics, for the full sample of nonoverlapping 2-week periods between 2005 and Sept. 23, 2008. OUTFLOW = percentage change in total net assets (TNA), with a positive value indicating a decline in TNA; ILLIQUIDITY = (the negative of) the change in TNA plus assets maturing half-way through the 2-week interval as a percentage of TNA; RISKY SHARE is the sum of commercial paper and non-deposit-bank obligations as a percentage of assets; GROSS YIELD is the annualized gross (before expenses) weekly dividend payout; WAM is the weighted-average maturity; EXPENSE RATIO is the annual fund operating expense, net of waivers and reimbursements, shown as a percentage of average TNA; FUND TNA is the TNA of the fund; and FAMILY TNA is the TNA of the fund family.

	No. of Obs.	Mean	Std. Dev.	Minimum	Maximum	Percent Positive
	1	2	3	4	5	6
<i>Panel A. Jan. 2005–Sept. 2008</i>						
OUTFLOW (%)	44,987	-0.66	9.18	-98.88	99.61	46.81%
ILLIQUIDITY (%)	44,987	0.02	0.74	0.00	57.54	0.19%
ILLIQUIDITY, when positive (%)	85	12.08	12.13	0.00	57.54	
RISKY SHARE (%)	44,987	46.94	40.87	0.00	100.00	
GROSS YIELD (%)	44,943	4.10	1.16	0.33	5.92	
WAM (days)	44,919	35.19	15.92	1.00	89.00	
EXPENSE RATIO (%)	44,987	0.43	0.26	0.00	1.58	
FUND TNA (millions of \$)	44,987	4,334	9,745	0.10	128,255	
FAMILY TNA (millions of \$)	44,987	49,326	60,852	2.50	342,787	
<i>Panel B. Week Ending Sept. 23, 2008</i>						
OUTFLOW (%)	439	-2.39	24.06	-95.24	90.87	48.06%
ILLIQUIDITY (%)	439	1.00	5.21	0.00	57.54	6.15%
ILLIQUIDITY, when positive (%)	27	16.26	14.10	0.43	57.54	
RISKY SHARE (%)	439	47.14	38.67	0.00	100.00	
GROSS YIELD (%)	439	2.40	0.64	0.62	4.46	
WAM (days)	437	37.77	15.23	1.00	88.00	
EXPENSE RATIO (%)	439	0.40	0.25	0.00	1.51	
FUND TNA (millions of \$)	439	6,458	12,807	1.00	127,892	
FAMILY TNA (millions of \$)	439	74,638	94,337	10.80	342,787	
<i>Panel C. Week Ending Sept. 23, 2008: For Prime Funds</i>						
OUTFLOW (%)	247	7.71	16.76	-82.65	80.39	67.61%
ILLIQUIDITY (%)	247	1.27	5.02	0.00	42.55	9.72%
ILLIQUIDITY, when positive (%)	24	13.08	10.42	0.43	42.55	
RISKY SHARE (%)	247	75.96	22.10	0.00	100.00	
GROSS YIELD (%)	247	2.78	0.35	1.59	4.46	
WAM (days)	246	40.63	13.06	1.00	88.00	
EXPENSE RATIO (%)	247	0.41	0.25	0.01	1.51	
FUND TNA (millions of \$)	247	6,898	14,891	1.00	127,892	
FAMILY TNA (millions of \$)	247	67,066	90,592	44.70	342,787	

<sup>7</sup>Asset maturity is not measured correctly in our data for floating-rate notes. Because a few funds hold a large fraction of this asset class, we estimated our main models in Tables 4 and 7 without them and found similar results; we also controlled explicitly in our regressions for the share of assets held in floating-rate notes and again found similar results, in terms of both magnitudes and statistical significance.

intervals are very common, with OUTFLOW positive about 47% of the time (Panel A). During the post-Lehman days, however, outflows were large enough to overwhelm many funds' ability to meet withdrawal demands with maturing assets. OUTFLOW averages about  $-2\%$  during the 2 weeks surrounding Lehman with a standard deviation of 24% (Panel B); for prime funds, outflow averages more than 7% (Panel C). The high cross-sectional variation in OUTFLOW reflects the drastic reallocation of investments across fund types, where money flew out of high-risk prime funds and into low-risk government funds (recall Figure 1). Table 2 also shows that ILLIQUIDITY was much higher during the Lehman weeks than during the earlier weeks, with a mean of 1%. During these 2 weeks, 27 funds, which before Lehman controlled 15% of industry assets, had positive ILLIQUIDITY, meaning that sales of assets were necessary to meet redemptions. For these funds, the typical fund had to sell more than 16% of its assets to meet redemptions.

As shown in Panel C of Table 2, 24 of the 27 funds with positive ILLIQUIDITY were prime funds; thus, we focus our attention below on this segment of the money fund industry. The Lehman interval is the only 2-week period in our sample where more than 5 funds experienced outflows large enough to require asset sales. Hence, we consider the earlier instances of ILLIQUIDITY as being idiosyncratic rather than systemic.

### C. Outflow during the Crisis

McCabe (2010) shows that money market outflows during the days following Lehman's collapse were concentrated among funds holding high-risk assets. We start by replicating this basic finding by regressing OUTFLOW on fund risk measures and other characteristics. We test how the fraction of assets invested in risky assets (RISKY SHARE) and the gross yield affect flows during the critical days following Lehman's demise. Because portfolio composition is measured crudely in our data set, gross yield offers a second strategy to isolate differences in risk across funds. Thus, we estimate cross-sectional regressions, where fund-level subscripts are now included with the dependent variable measured from  $t$  (= prerun: Sept. 9, 2008) to  $t + k$  (= postrun: Sept. 23, 2008), and the explanatory variables are observed at time  $t$ :

$$(1a) \quad \text{OUTFLOW}_i = \alpha + \beta_1^F \text{RISKY SHARE}_i + \beta_2^F \text{GROSS YIELD}_i \\ + \text{Other Fund-Level Controls}_i + \varepsilon_i.$$

In equation (1a), all right-hand-side variables are measured as of  $t$ , so they are predetermined with respect to the dependent variable.

We report equation (1a) overall, and we then split the sample by customer type (institutional vs. retail) because, as suggested by aggregate flow data, institutional investors seemed to react more strongly to risk in reallocating funds than did retail investors. We follow Kacperczyk and Schnabl (2013) by defining risky assets, the numerator of RISKY SHARE, as commercial paper plus floating-rate notes plus non-deposit-bank obligations. They show that yields on these asset categories exceeded those of government securities by 40 to 60 basis points in 2007 and early 2008. Other (nonrisky) asset categories include U.S. Treasuries, repos, and bank deposits. Yields on repos and bank deposits exceed those on Treasuries by only about 15 basis points.

To establish whether flow behaves differently during the crisis relative to situations under which a fund may face an idiosyncratic liquidity shock, we also report panel regression analogs to equation (1a). These models allow us to test whether coefficients shift significantly during the systemic liquidity events (when it may be harder to sell assets) relative to other times. The panel models are structured as follows:

$$(1b) \quad \text{OUTFLOW}_{i,t} = \alpha^i + \gamma^t + \beta_1^F (\text{RISKY SHARE})_{i,t} \\ + \beta_2^F \text{CRISIS}_t \times (\text{RISKY SHARE})_{i,t} \\ + \beta_3^F (\text{GROSS YIELD})_{i,t} \\ + \beta_4^F \text{CRISIS}_t \times (\text{GROSS YIELD})_{i,t} \\ + \text{Fund-Level Controls and interaction} + \varepsilon_{i,t}.$$

As in equation (1a), all right-hand-side variables in equation (1b) are measured at time  $t$ , while OUTFLOW is measured from  $t$  to  $t+k$ .

The panel regressions control for unobserved cross-sectional heterogeneity with fund-level fixed effects ( $\alpha^i$ ) and year-level fixed effects ( $\gamma^t$ ) in addition to providing convenient coefficients to test whether fund flow differs in response to risky assets (or yield) during crisis times versus noncrisis other times ( $\beta_2^F$  and  $\beta_4^F$ ). The variable CRISIS equals 1 during the weeks of Sept. 9, 2008–Sept. 23, 2008 cross section, and 0 otherwise. We estimate equation (1b) over all nonoverlapping 2-week periods between 2005 and Sept. 23, 2008; hence, the last cross section in equation (1b) occurs during the crisis weeks. We end the panel then because the Lehman shock changed the way investors reacted to risk, as well as the way managers allocated their portfolios (as we show below). Because we include many biweekly observations during the pre-Lehman weeks, our sample increases from 439 in estimating the cross-sectional regressions (equation (1a)) to almost 45,000 (about 450 funds  $\times$  about 100 biweekly intervals) in the panel (equation (1b)). The panel approach compares flow responses to risk in the crisis weeks with those responses during precrisis weeks.

The control variables in these equations include the weighted average maturity, an indicator for bank-sponsored funds, the log of lagged TNA, total expenses per dollar of average assets, and the log of the lag of the total assets of the fund family. We also include a government-fund indicator variable, which in itself absorbs a substantial amount of the variation in RISKY SHARE across the sample. In the panel regressions, we cluster by fund in building standard errors to account for an unobserved fund-level heterogeneity that may create correlated errors across observations within the same fund and include the CRISIS indicator.<sup>8</sup>

Table 3 reports the flow regression estimates. Columns 1, 3, and 5 report the cross-sectional regressions using just the biweekly period surrounding Lehman's collapse. The other columns report the panel regressions.

<sup>8</sup>We also estimated similar models without the GOVERNMENT FUND INDICATOR and its interactions with the CRISIS indicator. In these models, RISKY SHARE is much more important statistically because most of the variation in risky assets comes across investment-style categories rather than across funds within the same style category.

TABLE 3  
Regressions of Fund Outflows on Portfolio Risk

Table 3 shows regressions of biweekly  $\text{OUTFLOW} (-(\text{TNA}_{t+k} - \text{TNA}_t) / \text{TNA}_t)$  on portfolio risk and other fund characteristics.  $\text{OUTFLOW}$  is percentage change in TNA, with a positive value indicating a decline in TNA;  $\text{RISKY SHARE}$  is the sum of commercial paper and non-deposit-bank obligations as a percentage of assets;  $\text{GROSS YIELD}$  is the annualized gross (before expenses) weekly dividend payout;  $\text{WAM}$  is the weighted-average maturity;  $\text{GOVERNMENT FUND INDICATOR}$  takes on the value 1 if the fund is a government fund, and 0 otherwise;  $\text{INSTITUTIONAL FUND INDICATOR}$  takes on the value 1 if the fund is an institutional fund, and 0 otherwise;  $\text{BANK PARENT INDICATOR}$  takes on the value 1 if the fund parent is a bank, and 0 otherwise;  $\text{EXPENSE RATIO}$  is the annual fund operating expense, net of waivers and reimbursements, shown as a percentage of average TNA;  $\text{LEHMAN WEEK INDICATOR}$  takes on the value 1 during the 2 weeks from Sept. 9, 2008 to Sept. 23, 2008, and 0 otherwise;  $\text{FUND TNA}$  is the TNA of the fund; and  $\text{FAMILY TNA}$  is the TNA of the fund family. Columns 1, 3, and 5 end on Sept. 23, 2008 (the Lehman week). The other columns cover all nonoverlapping 2-week periods from 2005 through Sept. 23, 2008. All independent variables are lagged 2 weeks. All models include an intercept or fixed effects as noted (coefficients not reported). Standard errors are clustered at the fund level (in panel models). Absolute values of  $t$ -statistics are in parentheses. \* and \*\* indicate significance at the 5% and 1% levels, respectively. NA indicates not applicable.

	Full Sample		Institutional Funds		Retail Funds	
	Cross Section, OUTFLOW Ending 09/23/08	Panel Model, with Fund- and Year-Fixed Effects	Cross Section, OUTFLOW Ending 09/23/08	Panel Model, with Fund- and Year-Fixed Effects	Cross Section, OUTFLOW Ending 09/23/08	Panel Model, with Fund- and Year-Fixed Effects
	1	2	3	4	5	6
RISKY SHARE (%)	0.00 (0.04)	-0.02 (2.48)*	0.13 (0.89)	-0.03 (2.59)*	-0.04 (0.72)	-0.01 (0.53)
GROSS YIELD (%)	24.40 (3.35)**	-0.60 (7.92)**	18.62 (1.36)	-0.76 (6.45)**	24.52 (3.12)**	-0.41 (5.13)**
WAM (days)	-0.19 (2.38)*	-0.03 (4.97)**	-0.25 (2.15)*	-0.04 (4.07)**	-0.14 (1.47)	-0.02 (2.97)**
GOVERNMENT FUND INDICATOR	-12.43 (2.54)*		-13.60 (1.83)		-6.31 (1.46)	
INSTITUTIONAL FUND INDICATOR	3.33 (1.50)					
BANK PARENT INDICATOR	-2.79 (1.32)		-4.48 (1.35)		0.58 (0.24)	
log(FAMILY TNA)	-0.60 (1.01)	-0.11 (0.32)	0.24 (0.25)	-0.19 (0.40)	-1.33 (2.02)*	0.10 (0.20)
log(FUND TNA)	-0.23 (0.25)	2.05 (4.89)**	-1.39 (0.95)	2.25 (3.89)**	0.48 (0.80)	1.85 (3.80)**
EXPENSE RATIO	-14.86 (2.87)**	3.37 (2.08)*	-27.10 (2.28)*	11.91 (1.96)	-7.91 (1.73)	1.88 (1.28)
RISKY SHARE (%) × LEHMAN WEEK INDICATOR		0.02 (0.23)		0.16 (1.14)		-0.03 (0.67)
GROSS YIELD (%) × LEHMAN WEEK INDICATOR		24.17 (3.36)**		17.48 (1.30)		24.82 (3.23)**
WAM (days) × LEHMAN WEEK INDICATOR		-0.18 (2.36)*		-0.25 (2.17)*		-0.14 (1.42)
GOVERNMENT FUND INDICATOR × LEHMAN WEEK INDICATOR		-11.28 (2.44)*		-12.25 (1.75)		-6.04 (1.43)
INSTITUTIONAL FUND INDICATOR × LEHMAN WEEK INDICATOR		3.26 (1.47)				
BANK PARENT INDICATOR × LEHMAN WEEK INDICATOR		-2.45 (1.18)		-3.76 (1.15)		0.45 (0.19)
log(FAMILY TNA) × LEHMAN WEEK INDICATOR		-0.61 (1.09)		0.19 (0.21)		-1.28 (1.98)*
log(FUND TNA) × LEHMAN WEEK INDICATOR		-0.15 (0.19)		-1.27 (0.99)		0.44 (0.73)
EXPENSE RATIO × LEHMAN WEEK INDICATOR		-15.00 (3.00)**		-26.25 (2.36)*		-8.52 (1.90)
No. of obs.	439	44,895	257	25,348	182	19,547
Adj. $R^2$	29.40%	3.21%	32.47%	3.56%	25.72%	3.37%
No. of clusters	NA	579	NA	330	NA	257

These flow regressions strongly suggest that during the post-Lehman days, investors fled risk. This finding is strong for both investor types, although magnitudes are larger for institutional investors. In the full sample, the RISKY SHARE coefficient is not significant but both the GOVERNMENT FUND INDICATOR and GROSS YIELD coefficients enter the model significantly, indicating the high-risk, high-return investments were associated with outflows (column 1 of Table 3). To understand the magnitude, consider comparing a typical prime fund (where RISKY SHARE = 80%, GROSS YIELD = 2.7%) with a typical government fund (where RISKY SHARE = 10%, GROSS YIELD = 2.2%). Based on the coefficients from column 1, the prime fund would face outflows of about 25% of TNA relative to the government fund ( $= 0.00 \times (80 - 10) + 24.40 \times (2.7 - 2.2) + 12.43$ ). This magnitude is very similar to what we observe in the panel regressions, using the interaction terms (column 2).

When we split the sample based on customer type (columns 3–6 of Table 3), we find similar effects of GROSS YIELD for both types of investors; for retail investors, however, GOVERNMENT FUND INDICATOR has a smaller effect on flow. Combining the effects of the risk variables, the overall effect of risk on flow is greater for the institutional investor class, although both share classes do flee risk. Consider again comparing the typical prime fund with the typical government fund. For institutional investors, the cross-sectional model (column 3) predicts outflow of 32% for prime funds relative to government funds ( $= 0.13 \times (80 - 10) + 18.62 \times (2.7 - 2.2) + 13.60$ ); for retail investors, the cross-sectional model (column 5) predicts a relative outflow of just 16% ( $= -0.04 \times (80 - 10) + 24.52 \times (2.7 - 2.2) + 6.31$ ). The panel models have similar effects, again based on the interactive coefficients. The direct effects suggest that during normal market conditions, gross yield is negatively associated with outflow, reflecting a sensible flow–performance link.

#### D. Short-Run Responses: Changes in Portfolio Allocation and the Treasury Guarantee Program

The flow results establish what earlier researchers have found, namely, that institutional investors responded very dramatically to the crisis by pulling money away from high-risk funds and toward low-risk funds. What is less appreciated but also true: Retail investors responded similarly, albeit less dramatically (with smaller magnitudes in the cross section).

We focus on how this liquidity shock affected money market fund managers. How did fund managers respond to the outflows? In this subsection we explore, first, short-run portfolio changes and, second, the decision of whether to enter the Treasury Guarantee Program. As noted above, this program insured all fund investments invested as of Sept. 19, 2008, provided that the fund itself entered the program for a fee of 1 basis point per dollar of insured. Money market funds had to decide whether to enter the program by Oct. 8, 2008. (The program could not be entered by individual investors.)<sup>9</sup>

<sup>9</sup>The program was initially in effect for 3 months but was later extended through Sept. 18, 2009.

To understand how liquidity-stressed funds adjusted their portfolio allocations, we first estimate cross-sectional models with the following structure:

$$(2a) \quad \Delta\text{PORTFOLIO}_i = \alpha + \beta_1^{\text{PC}}\text{OUTFLOW}_i + \beta_2^{\text{PC}}\text{ILLIQUIDITY}_i \\ + \text{Fund-Level Controls}_i + \varepsilon_i.$$

As dependent variables, we consider changes in the share invested in risky assets ( $\Delta\text{RISKY SHARE}$ ) and changes in the weighted-average maturity ( $\Delta\text{WAM}$ ) between Sept. 9, 2008 and Sept. 23, 2008. We define  $\text{RISKY SHARE}$  as before: commercial paper plus floating-rate notes plus non-deposit-bank obligations divided by assets. Also as before, we report panel regressions (again, with a much larger sample size reflecting the many precrisis observations included) that allow us to test whether illiquidity during the post-Lehman weeks affected fund management differently than during other earlier idiosyncratic instances of illiquidity. Thus, we estimate a second set of panel models such as:

$$(2b) \quad \Delta\text{PORTFOLIO}_{i,t} = \alpha^i + \gamma^t + \beta_1^{\text{PC}}\text{OUTFLOW}_{i,t} + \beta_2^{\text{PC}}\text{ILLIQUIDITY}_{i,t} \\ + \beta_3^{\text{PC}}\text{CRISIS}_t \times \text{OUTFLOW}_{i,t} \\ + \beta_4^{\text{PC}}\text{CRISIS}_t \times \text{ILLIQUIDITY}_{i,t} \\ + \text{Fund-Level Controls}_{i,t} + \varepsilon_{i,t}.$$

We model short-run portfolio adjustments at a biweekly frequency because the key event in our data set, the post-Lehman run, straddles 2 weeks, yet we observe portfolio attributes only at a weekly frequency (Tuesday to Tuesday).

As another dimension of non-portfolio-related adjustments to the liquidity shock, we estimate a probit model, where the dependent variable equals 1 if a fund decides to enter the Treasury Guarantee Program, on the same set of explanatory variables. This model allows us to test whether riskier funds and funds more affected by the liquidity shock were more likely to buy government insurance. In our final set of tests (next subsection), we test for moral hazard effects of the program by estimating how portfolio weights and investment choices change over the longer run, conditional on entering the Treasury Guarantee Program.

Tables 4 and 5 report the cross-sectional and panel estimates (equations (2a) and (2b), respectively), and Table 6 reports the estimates regarding the decision to enter the Treasury Guarantee Program. Because the prime funds faced the bulk of the liquidity risk, we estimate these models for prime funds only.

Table 4 shows that money funds hit by large outflows responded by using maturing assets to meet cash demands and, when necessary, by selling their most liquid claims. As a result, the liquidity shock led such funds to be stuck holding high-risk assets such as commercial paper. In columns 1 and 2, both  $\text{ILLIQUIDITY}$  and  $\text{OUTFLOW}$  are positively related to  $\Delta\text{RISKY SHARE}$ , with  $\text{OUTFLOW}$  entering at better than 1% significance. Liquidity pressure ( $\text{OUTFLOW}$ ) led to short-run declines in repos (a component of the safe category), which also tend to have the shortest average maturity of money market fund holdings, thus leading to an increase in weighted-average maturity (columns 3 and 4). The magnitude suggests that a 1-standard-deviation increase in outflow ( $\sigma = 17$ ; recall Table 2) was associated with an increase in risky assets of 2.4% of TNA ( $= 0.14 \times 17$ ).

TABLE 4  
 Regressions of Short-Run Changes in Portfolio Holdings on Illiquidity and Fund Characteristics (Prime Money Market Funds)

Table 4 reports cross-sectional regressions of changes in portfolio holdings and maturity between Sept. 9, 2008 and Sept. 23, 2008 on ILLIQUIDITY and OUTFLOW, along with other measures of risk and mutual fund control variables. ILLIQUIDITY equals the fraction of total net assets (TNA) that a fund must sell to meet redemptions; OUTFLOW equals the percentage of TNA that flows out of the fund during the 2-week period from Sept. 9, 2008 to Sept. 23, 2008 (see text for details). RISKY SHARE is the sum of commercial paper and non-deposit-bank obligations as a percentage of assets; WAM is the weighted-average maturity; GROSS YIELD is the annualized gross (before expenses) weekly dividend payout; BANK PARENT INDICATOR takes on the value 1 if the fund parent is a bank, and 0 otherwise; INSTITUTIONAL FUND INDICATOR takes on the value 1 if the fund is an institutional fund, and 0 otherwise; EXPENSE RATIO is the annual fund operating expense, net of waivers and reimbursements, shown as a percentage of average TNA; FUND TNA is the TNA of the fund; and FAMILY TNA is the TNA of the fund family. All independent variables are lagged 2 weeks (except for OUTFLOW and ILLIQUIDITY). Absolute values of *t*-statistics are in parentheses. \* and \*\* indicate significance at the 5% and 1% levels, respectively.

	ΔRISKY SHARE		ΔWAM	
	1	2	3	4
ILLIQUIDITY	0.06 (0.43)	0.03 (0.24)	-0.08 (0.73)	-0.04 (0.37)
OUTFLOW (%)	0.14 (2.95)**	0.14 (2.88)**	0.17 (4.89)**	0.16 (4.40)**
RISKY SHARE (%)		0.10 (3.55)**		0.03 (1.50)
WAM (days)		-0.02 (0.45)		-0.06 (1.67)
GROSS YIELD (%)		5.46 (1.52)		4.18 (1.58)
BANK PARENT INDICATOR	-2.74 (2.53)*	-3.19 (2.96)**	-0.38 (0.48)	-0.40 (0.50)
log(FAMILY TNA)	-0.58 (2.05)*	-0.48 (1.65)	-0.03 (0.13)	0.01 (0.04)
log(FUND TNA)	1.77 (5.06)**	1.98 (5.65)**	0.40 (1.50)	0.50 (1.85)
INSTITUTIONAL FUND INDICATOR	-0.76 (0.55)	-1.40 (1.03)	1.64 (1.64)	1.33 (1.33)
EXPENSE RATIO	-2.67 (0.93)	-2.16 (0.75)	1.84 (0.88)	1.95 (0.92)
Intercept	-8.52 (2.70)**	-16.12 (2.01)*	-8.35 (3.59)**	-15.14 (2.54)*
No. of obs.	247	247	246	246
Adj. $R^2$	22.88%	26.06%	20.21%	21.03%
Mean of dependent variable		-2.34		-2.95
Std. dev. of dependent variable		8.98		6.42

Maturity also increases substantially; a 1-standard-deviation increase in outflow was associated with an increase in maturity of nearly 3 days ( $= 0.17 \times 17$ ).

Table 5 offers a broader perspective on the first set of results by allowing us to compare how funds respond to systemic liquidity shocks (after the fall of Lehman) with idiosyncratic liquidity shocks that had occurred earlier.<sup>10</sup> The first set of coefficients reflects the typical response to illiquidity, whereas the second set of interaction terms reflects the differential effect of illiquidity

<sup>10</sup> Although we cannot determine why every money market fund faced illiquidity, about one-fourth of the funds that faced pre-Lehman illiquidity were very small and simply overwhelmed by large outflows. In some other cases for large funds, shocks to the sponsor's reputation seem to have generated large outflows. For example, a Legg-Mason-owned money market fund experienced a large outflow when another (equity) fund sponsored by Legg Mason incurred large losses in a single day due to a large exposure to Google. In another case, a money market fund sponsored by Oppenheimer faced large outflows when the firm and its chief executive officer (CEO) were named in a suit by the National Association of Securities Dealers.



TABLE 5  
Panel Regressions of Short-Run Changes in Portfolio Holdings on Illiquidity and Fund Characteristics (Prime Money Market Funds)

Table 5 reports panel regressions of changes in portfolio holdings and maturity on ILLIQUIDITY and OUTFLOW, along with other measures of risk and mutual fund control variables. ILLIQUIDITY equals the fraction of total net assets (TNA) that a fund must sell to meet redemptions; OUTFLOW equals the percentage of TNA that flows out of the fund during the 2-week period (see text for details). RISKY SHARE is the sum of commercial paper and non-deposit-bank obligations as a percentage of assets; WAM is the weighted-average maturity; GROSS YIELD is the annualized gross (before expenses) weekly dividend payout; LEHMAN WEEK INDICATOR takes on the value 1 during the 2 weeks from Sept. 9, 2008 to Sept. 23, 2008, and 0 otherwise; EXPENSE RATIO is the annual fund operating expense, net of waivers and reimbursements, shown as a percentage of average TNA; BANK PARENT INDICATOR takes on the value 1 if the fund parent is a bank, and 0 otherwise; INSTITUTIONAL FUND INDICATOR takes on the value 1 if the fund is an institutional fund, and 0 otherwise; FUND TNA is the TNA of the fund; and FAMILY TNA is the TNA of the fund family. All independent variables (except for OUTFLOW and ILLIQUIDITY) are lagged 2 weeks. All models include intercept and fixed effects as noted (coefficients not reported). Standard errors are clustered at the fund level. Absolute values of *t*-statistics are in parentheses. \* and \*\* indicate significance at the 5% and 1% levels, respectively.

	$\Delta$ RISKY SHARE		$\Delta$ WAM	
	1	2	3	4
ILLIQUIDITY	-0.62 (5.33)**	-0.60 (5.34)**	-0.03 (0.15)	0.06 (0.27)
OUTFLOW	0.19 (10.93)**	0.18 (11.24)**	0.13 (13.16)**	0.12 (13.03)**
RISKY SHARE (%)		-0.19 (13.28)**		-0.02 (3.26)**
WAM (days)		0.00 (0.45)		-0.19 (27.87)**
GROSS YIELD (%)		0.45 (6.01)**		0.56 (8.11)**
ILLIQUIDITY × LEHMAN WEEK INDICATOR	0.67 (4.34)**	0.65 (4.08)**	-0.08 (0.31)	-0.08 (0.29)
OUTFLOW × LEHMAN WEEK INDICATOR	-0.04 (0.84)	-0.03 (0.53)	0.04 (1.10)	0.04 (0.94)
RISKY SHARE (%) × LEHMAN WEEK INDICATOR		-0.05 (1.64)		-0.03 (1.77)
WAM (days) × LEHMAN WEEK INDICATOR		-0.03 (0.44)		0.03 (0.93)
GROSS YIELD (%) × LEHMAN WEEK INDICATOR		5.57 (1.28)		2.84 (1.60)
log(FAMILY TNA)	-0.06 (0.35)	-0.07 (0.23)	0.17 (1.64)	0.45 (1.65)
log(FUND TNA)	0.16 (1.32)	0.65 (2.81)**	0.09 (1.04)	0.43 (2.12)*
EXPENSE RATIO	-0.44 (0.85)	0.28 (0.31)	-0.62 (0.58)	0.07 (0.07)
BANK PARENT INDICATOR × LEHMAN WEEK INDICATOR	-2.73 (2.64)**	-3.16 (3.15)**	-0.36 (0.47)	-0.49 (0.63)
INSTITUTIONAL FUND INDICATOR × LEHMAN WEEK INDICATOR	-0.96 (0.76)	-1.51 (1.28)	1.65 (1.82)	1.14 (1.28)
log(FAMILY TNA) × LEHMAN WEEK INDICATOR	-0.65 (2.08)*	-0.47 (1.45)	-0.06 (0.33)	0.08 (0.40)
log(FUND TNA) × LEHMAN WEEK INDICATOR	1.79 (4.52)**	1.87 (4.50)**	0.40 (1.53)	0.31 (1.15)
Expense ratio × LEHMAN WEEK INDICATOR	-2.38 (1.00)	-2.47 (1.05)	2.15 (1.17)	1.13 (0.60)
No. of obs.	24,545	24,493	24,472	24,457
No. of groups	319	319	319	319
Adj. $R^2$	6.53%	15.78%	3.89%	13.38%
Mean of dependent variable		-0.019		-0.007
Std. dev. of dependent variable		5.75		5.41

(and other effects) during the post-Lehman panic. We see stark differences for variation in risky assets (but not for maturity) in the prime fund segment. Under normal market conditions, funds that face outflows use maturing assets

for cash; this behavior increases weighted-average maturity. The relative weight on the other asset classes (i.e., classes with longer maturities) increases, leading to higher weighted-average maturity. However, under liquidity stress such that our ILLIQUIDITY variable is nonzero, before Lehman, money market funds would sell risky assets such as commercial paper to meet demands. These declines in risky assets (e.g., commercial paper) suggest that before Lehman, such assets could be sold with little market effect to meet cash demands. In contrast, following the Lehman collapse, risky asset classes are difficult to impossible to sell without facing large losses; hence, the interaction of ILLIQUIDITY with the CRISIS indicator is positive and significant.

The differential effect of ILLIQUIDITY on investments in  $\Delta$ RISKY SHARE highlights the truly unique aspects of the post-Lehman run on money market funds. Our results imply that only funds that faced outflows large enough to overwhelm incoming cash from maturing assets behaved differently with respect to withdrawal demands compared to firms under normal conditions: The interaction of the Lehman indicator with OUTFLOW is not statistically significant. The effect of ILLIQUIDITY on  $\Delta$ RISKY SHARE, however, is statistically and significantly larger during the crisis. OUTFLOW shows no difference relative to its effects on risk or maturity following idiosyncratic shocks. This makes sense because the systemic nature of the crisis made it difficult to sell risky paper, thus forcing these funds to allow the relative weight of risky assets to increase beyond what would normally be tolerable.  $\Delta$ WAM, however, does not respond differentially to either OUTFLOW or ILLIQUIDITY during the crisis, probably because funds always use incoming cash to meet redemptions, regardless of market circumstances. What differs in the crisis is that the sale of assets such as commercial paper becomes nearly impossible.

According to Table 6, mutual funds with greater risk (prime funds) and higher gross yield were more apt to enter the Treasury Guarantee Program. Table 6

TABLE 6  
Probit Model of Mutual Fund Choice to Enter Treasury Guarantee Program

Table 6 reports marginal effects from a probit regression where the dependent variable, INSURANCE, takes the value 1 if a fund decides to opt into the Treasury Guarantee Program, and 0 otherwise. ILLIQUIDITY equals the fraction of total net assets (TNA) that a fund must sell to meet redemptions; OUTFLOW equals the percentage of TNA that flows out of the fund during the 2-week period (see text for details). RISKY SHARE is the sum of commercial paper and non-deposit-bank obligations as a percentage of assets; WAM is the weighted-average maturity; GROSS YIELD is the annualized gross (before expenses) weekly dividend payout; EXPENSE RATIO is the annual fund operating expense, net of waivers and reimbursements, shown as a percentage of average TNA; BANK PARENT INDICATOR takes on the value 1 if the fund parent is a bank, and 0 otherwise; INSTITUTIONAL FUND INDICATOR takes on the value 1 if the fund is an institutional fund, and 0 otherwise; GOVERNMENT FUND INDICATOR takes on the value 1 if the fund is a government fund, and 0 otherwise; FUND TNA is the TNA of the fund; and FAMILY TNA is the TNA of the fund family. All other independent variables are as of Sept. 9, 2008. Absolute values of *t*-statistics are in parentheses. \* and \*\* indicate significance at the 5% and 1% levels, respectively.

	All Funds	Prime Funds
	1	2
ILLIQUIDITY	-0.02 (2.50)*	-0.005 (1.70)
OUTFLOW (%)	0.003 (2.12)*	0.000 (0.43)
RISKY SHARE (%)	0.000 (0.06)	0.001 (1.45)
GROSS YIELD (%)	0.55 (4.11)**	0.06 (1.01)

(continued on next page)

TABLE 6 (continued)  
 Probit Model of Mutual Fund Choice to Enter Treasury Guarantee Program

	All Funds	Prime Funds
	1	2
WAM (days)	0.003 (1.57)	0.002 (2.43)*
INSTITUTIONAL FUND INDICATOR	-0.04 (0.55)	0.00 (0.09)
GOVERNMENT FUND INDICATOR	-0.24 (2.55)*	
BANK PARENT INDICATOR	0.20 (3.73)**	0.09 (2.84)**
log(FUND TNA)	0.01 (0.40)	0.00 (0.40)
log(FAMILY TNA)	-0.01 (0.39)	0.01 (1.14)
EXPENSE RATIO	-0.03 (0.21)	-0.04 (0.83)
No. of obs.	439	247
Pseudo $R^2$	37%	33%
INSURANCE (mean)	69%	91%

reports marginal effects, so the coefficients suggest that a government fund was 24% less likely to enter the program and a 50-basis-point yield differential would lead to another 22.5% difference. These large magnitudes make sense, as 91% of the prime funds entered the program, as opposed to 41% for the government funds. When we split the sample, GROSS YIELD continues to play a significant role for the government funds (not reported for the government sample). For both groups, we find that bank ownership is positively associated with entering the Treasury Guarantee Program.

## E. Long-Run Portfolio Adjustments

In the Lehman crisis, severely stressed funds added risk in its immediate aftermath because market liquidity dried up, forcing these funds to hold assets they normally would have sold to meet redemptions. Moreover, high-risk funds were more likely to enter the Treasury Guarantee Program than low-risk funds, and they benefited most from this program because, in its absence, such funds would have been forced to close or halt redemptions. These facts raise the following question: How did such funds respond once market conditions returned to normal? Standard moral hazard arguments might suggest that funds would add risk to exploit expectations of continued Treasury support, particularly because high-risk funds had gained market share in the months leading up to the Lehman collapse. Yet these funds faced a near-death experience. Managers' concerns about the long-run stability of their positions could offset risk-taking concerns associated with newly embedded bailout expectations.

In our last set of tests, we address these issues by estimating whether the effects of the Lehman liquidity shock had a permanent effect on portfolio allocation decisions. We first extend the time for constructing portfolio change variables to the end of 2008 to create the dependent variable in equation (2a). To do so, we leave constant the right-hand-side variables, as well as the sample, but we

change the dependent variable to reflect a 3-month adjustment period for the portfolio, to the end of the year. Thus, we replace the dependent variable in equation (2a), which represented 2-week changes beginning Sept. 9, 2008, with changes in risky assets (and changes in maturity) from Sept. 9, 2008 to the end of 2008 (a 3-month change).<sup>11</sup>

Some of the explanatory variables in our short-run regressions, namely, the *ex ante* levels of RISKY SHARE, WAM, and even GROSS YIELD, capture dimensions of fund risk that both contributed to the liquidity shock (recall Table 3) and go beyond liquidity (e.g., by capturing credit risk). We control for the beginning-of-period levels of these variables in the short-run analysis (Tables 4 and 5), but their effects are small and generally not statistically significant. We continue to include these additional dimensions of risk in the long-run regressions. By including them, we can test whether fund managers changed their portfolio decisions in reaction to risk dimensions that go beyond the post-Lehman liquidity shock but nevertheless could increase the likelihood of future liquidity risk. More generally, if investors shun risk after Lehman, a “flight to quality” might lead money market fund managers with high-risk portfolios to move most aggressively toward safe assets.

Table 7 reports the results, again focusing on the sample of prime funds.<sup>12</sup> The timing of all but one of the right-hand-side variables remains the same as before; that is, these explanatory variables are predetermined as of the time of the Lehman shock. As an additional explanatory variable, we introduce an indicator equal to 1 for funds that entered the Treasury Guarantee Program. With this variable, we can test whether the program distorted risk-taking decisions. Because the indicator for the Treasury Guarantee Program depends on actions taken by early Oct. 2008, however, it is not strictly predetermined. We have thus verified that leaving this variable out of the model has almost no effect on the other coefficients or their statistical significance.

The results suggest that funds “burned” during the crisis, that is, high-risk funds and funds with insufficient liquidity to meet withdrawal demands without selling assets, responded over the longer run by lowering asset risk and shortening maturity. The increase in portfolio risk for illiquid funds in the immediate aftermath of Lehman is more than fully reversed, such that by the end of the year the most affected funds had reduced risk relative to those less affected (compared to their risk levels before the Lehman shock). Our ILLIQUIDITY variable, which again measures the fraction of assets that had to be sold, is negatively related to both  $\Delta$ RISKY SHARE (columns 1–4 of Table 7) and  $\Delta$ WAM (columns 5–8). The magnitudes are large and economically significant. For example, the typical illiquid prime fund had to sell about 13% of its assets to meet withdrawals (recall Table 2). This degree of illiquidity was associated with a decrease in risky asset of

<sup>11</sup>Eight prime funds and 12 government funds drop out of the sample by the end of 2008.

<sup>12</sup>We also tested whether the gross yield declines more for funds that faced large outflows as an alternative measure of risk taking. These results are consistent with those for the change in risky share and change in maturity reported in Table 7: Both ILLIQUIDITY and OUTFLOW enter the model with negative coefficients, with the coefficient of ILLIQUIDITY significant at the 5% level and OUTFLOW insignificant. When we test the joint significance of the two, the *F*-statistic equals 4.38, significant at the 5% level.

TABLE 7  
 Regressions of Long-Run Changes in Portfolio Holdings on Illiquidity and Fund Characteristics (Prime Money Market Funds)

Table 7 reports cross-fund regressions of changes in portfolio holdings and maturity between Sept. 9, 2008 and Dec. 30, 2008 on ILLIQUIDITY and OUTFLOW, along with risk and other mutual fund control variables. ILLIQUIDITY equals the fraction of total net assets (TNA) that a fund must sell to meet redemptions; OUTFLOW equals the percentage of TNA that flows out of the fund during the 2-week period (see text for details). RISKY SHARE is the sum of commercial paper and non-deposit-bank obligations as a percentage of assets; WAM is the weighted-average maturity; GROSS YIELD is the annualized gross (before expenses) weekly dividend payout; EXPENSE RATIO is the annual fund operating expense, net of waivers and reimbursements, shown as a percentage of average TNA; BANK PARENT INDICATOR takes on the value 1 if the fund parent is a bank, and 0 otherwise; INSTITUTIONAL FUND INDICATOR takes on the value 1 if the fund is an institutional fund, and 0 otherwise; TREASURY GUARANTEE takes on the value 1 if the fund entered the Treasury Guarantee Program, and 0 otherwise; FUND TNA is the TNA of the fund; and FAMILY TNA is the TNA of the fund family. All independent variables (except for OUTFLOW and ILLIQUIDITY) are lagged 2 weeks. Absolute values of t-statistics are in parentheses. \* and \*\* indicate significance at the 5% and 1% levels, respectively.

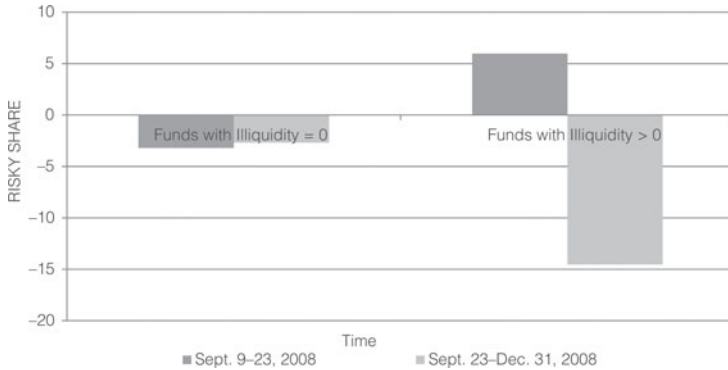
	ΔRISKY SHARE				ΔWAM			
	1	2	3	4	5	6	7	8
ILLIQUIDITY	-0.59 (2.25)*	-0.45 (1.80)	-0.82 (2.50)*	-0.60 (1.89)	-0.62 (2.97)**	-0.45 (2.27)*	-0.53 (1.99)*	-0.21 (0.83)
OUTFLOW (%)			0.12 (1.18)	0.08 (0.78)			-0.05 (0.58)	-0.12 (1.50)
RISKY SHARE (%)		-0.29 (4.81)**		-0.29 (4.83)**		-0.12 (2.40)*		-0.11 (2.36)*
WAM (days)		-0.32 (3.13)**		-0.30 (2.90)**		-0.36 (4.36)**		-0.39 (4.59)**
GROSS YIELD (%)		15.60 (2.14)*		15.22 (2.08)*		-0.33 (0.06)		0.34 (0.06)
BANK PARENT INDICATOR	0.66 (0.28)	-0.95 (0.42)	0.69 (0.30)	-0.96 (0.42)	-0.54 (0.29)	-1.62 (0.90)	-0.57 (0.30)	-1.63 (0.90)
log(FAMILY TNA)	0.90 (1.45)	1.34 (2.24)*	0.84 (1.36)	1.30 (2.17)*	-0.95 (1.91)	-0.39 (0.81)	-0.93 (1.86)	-0.33 (0.69)
log(FUND TNA)	-0.04 (0.05)	0.42 (0.59)	-0.26 (0.33)	0.27 (0.37)	0.94 (1.55)	1.23 (2.15)*	1.03 (1.64)	1.46 (2.48)*
INSTITUTIONAL FUND INDICATOR	0.24 (0.08)	-1.62 (0.59)	-0.08 (0.03)	-1.82 (0.65)	-0.53 (0.22)	-1.50 (0.67)	-0.37 (0.16)	-1.15 (0.51)
EXPENSE RATIO	-2.64 (0.42)	1.16 (0.19)	-1.43 (0.22)	1.84 (0.30)	3.02 (0.59)	7.16 (1.48)	2.58 (0.50)	6.17 (1.27)
TREASURY GUARANTEE	-2.08 (0.48)	2.36 (0.56)	-2.00 (0.46)	2.35 (0.56)	2.07 (0.60)	6.81 (2.02)*	2.03 (0.59)	6.80 (2.02)*
Intercept	-10.88 (1.48)	-27.47 (1.68)	-9.69 (1.30)	-26.15 (1.58)	-4.32 (0.73)	8.67 (0.66)	-4.83 (0.81)	6.39 (0.48)
No. of obs.	237	237	237	237	235	235	235	235
Adj. R <sup>2</sup>	0.33%	12.53%	0.50%	12.38%	4.17%	15.93%	3.89%	16.40%
Mean of dependent variable			-5.78				-4.44	
Std. dev. of dependent variable			16.42				13.36	

8% ( $= -0.59 \times 13$ , from column 1) of assets by the end of 2008. These funds shortened average maturity by 8 days ( $= -0.62 \times 13$ , from column 5), relative to the average of around 40 days. These effects are smaller when we control for RISKY SHARE, WAM, and GROSS YIELD, which makes sense because the high-risk funds were more likely to face large outflows (so adding these absorbs some of the liquidity effects).

Figure 3 illustrates perhaps the simplest way to digest the combined results of our short- and long-run analyses. Among the prime funds not hit hard by outflows (those with ILLIQUIDITY = 0), risky assets fell by 3.2% on average during the run (from Sept. 9 to Sept. 23) and fell an additional 2.7% of net assets by the end of the year. In contrast, among prime funds hit hard by outflows (those with ILLIQUIDITY > 0), risky assets rose by 6.0% during the run (because they were forced to sell nonmaturing, safe assets), but then fell by 14.5% of assets

FIGURE 3  
Change in RISKY SHARE

Figure 3 reports the mean percentage-point change in RISKY SHARE during the 2 weeks surrounding the Lehman bankruptcy (dark-colored bars) and from Sept. 23, 2008 to the end of the year (light-colored bars). The bars on the left represent funds not forced to sell assets during the run; the bars on the right represent funds hit with outflows large enough to force them to sell assets.



by year-end, leading to a net drop in risk of 8.5% ( $= 6.0\% - 14.5\%$ ) relative to their position on the eve of the run. Comparing changes from the end of the run to the end of the year is striking: Illiquid funds cut risk by 14.5%, relative to just 2.7% for liquid funds.

Table 7 also suggests that high-risk funds in general moved toward safer and shorter maturity investments by the end of 2008. Both RISKY SHARE and WAM enter the  $\Delta$ RISKY SHARE and  $\Delta$ WAM regressions with negative and statistically significant coefficients (columns 2, 4, 6, and 8). The effects are large economically. For example, increasing the prerun level of RISKY SHARE by 1 standard deviation would lead to a decline in risky assets of 7% of assets ( $= -0.29 \times 22$ ) by the end of the 2008; similarly, a fund with 1 standard deviation above average WAM would reduce risk assets by 4% of assets ( $= -0.32 \times 13$ ) more than average by year-end 2008. We do find, oddly, that GROSS YIELD enters the regression for  $\Delta$ RISKY SHARE with a positive effect, but this result is not robust to dropping the other risk dimensions, nor does gross yield affect  $\Delta$ WAM (columns 5–8).

Table 7 offers little evidence that the Treasury Guarantee Program affected fund asset allocation decisions or incentivized risk taking, as moral hazard arguments would predict. The indicator never enters the  $\Delta$ RISKY ASSETS regression with a statistically significant coefficient (and its sign flips depending on the model). In the  $\Delta$ WAM model, the indicator has a positive effect in two of the four specifications. Together with the fact that the funds that benefited most from the government bailout, funds facing the largest outflows, reduced risk over the subsequent 3 months, this evidence provides little support for the idea that the Treasury Guarantee Program encouraged excessive risk taking by money market fund managers.

Table 8 extends the time for portfolio adjustment from the 3-month horizon to 1-year and to 2-year horizons. As in Table 7, we leave the explanatory variables at their pre-Lehman levels and alter only the time window to build the

TABLE 8  
 Regressions of Long-Run Changes in Portfolio Holdings on Illiquidity and Fund Characteristics (Prime Money Market Funds)

Table 8 reports cross-fund regressions of changes in portfolio holdings and maturity for prime funds between Sept. 9, 2008 and Sept. 22, 2009 (columns 1–4) and between Sept. 9, 2008 and Sept. 21, 2010 (columns 5–8) on ILLIQUIDITY, along with risk and other mutual fund control variables. ILLIQUIDITY equals the fraction of total net assets (TNA) that a fund must sell to meet redemptions; OUTFLOW equals the percentage of TNA that flows out of the fund during the 2-week period (see text for details); RISKY SHARE is the sum of commercial paper and non-deposit-bank obligations as a percentage of assets; WAM is the weighted-average maturity; GROSS YIELD is the annualized gross (before expenses) weekly dividend payout; EXPENSE RATIO is the annual fund operating expense, net of waivers and reimbursements, shown as a percentage of average TNA; BANK PARENT INDICATOR takes on the value 1 if the fund parent is a bank, and 0 otherwise; INSTITUTIONAL FUND INDICATOR takes on the value 1 if the fund is an institutional fund, and 0 otherwise; TREASURY GUARANTEE takes on the value 1 if the fund entered the Treasury Guarantee Program, and 0 otherwise; FUND TNA is the TNA of the fund; and FAMILY TNA is the TNA of the fund family. All independent variables (except for ILLIQUIDITY) are lagged 2 weeks. Absolute values of *t*-statistics are in parentheses. \* and \*\* indicate significance at the 5% and 1% levels, respectively.

	1-Year Change				2-Year Change			
	$\Delta$ RISKY SHARE		$\Delta$ WAM		$\Delta$ RISKY SHARE		$\Delta$ WAM	
	1	2	3	4	5	6	7	8
ILLIQUIDITY	-0.23 (0.81)	-0.06 (0.21)	-0.61 (2.71)**	-0.36 (1.72)	-0.49 (1.43)	-0.28 (0.95)	-0.60 (2.95)**	-0.29 (1.69)
RISKY SHARE (%)		-0.30 (5.03)**		-0.07 (1.57)		-0.55 (6.70)**		-0.01 (0.12)
WAM (days)		-0.18 (1.58)		-0.43 (4.77)**		-0.03 (0.25)		-0.57 (7.25)**
GROSS YIELD (%)		-7.42 (0.98)		-8.71 (1.46)		-4.94 (0.51)		-10.25 (1.80)
BANK PARENT INDICATOR	-1.57 (0.63)	-5.11 (2.17)*	-4.00 (2.04)*	-5.87 (3.16)**	-0.49 (0.16)	-5.39 (1.96)	-1.14 (0.61)	-2.90 (1.78)
log(FAMILY TNA)	-0.06 (0.08)	0.92 (1.48)	-0.99 (1.90)	-0.17 (0.35)	-0.69 (0.83)	0.31 (0.41)	0.27 (0.54)	1.23 (2.80)**
log(FUND TNA)	0.29 (0.35)	0.57 (0.75)	0.73 (1.11)	0.89 (1.48)	0.97 (0.92)	1.09 (1.22)	0.08 (0.13)	0.11 (0.21)
INSTITUTIONAL FUND INDICATOR	3.79 (1.18)	1.91 (0.65)	-3.01 (1.20)	-3.85 (1.66)	6.84 (1.65)	3.12 (0.87)	3.29 (1.32)	2.16 (1.02)
EXPENSE RATIO	5.03 (0.73)	9.61 (1.52)	-7.48 (1.38)	-2.53 (0.50)	12.79 (1.39)	17.75 (2.26)*	-4.94 (0.90)	-0.08 (0.02)
TREASURY GUARANTEE	-0.84 (0.19)	7.61 (1.74)	6.63 (1.87)	14.02 (4.06)**	0.71 (0.12)	11.12 (2.12)*	-3.96 (1.15)	3.74 (1.21)
Intercept	-10.51 (1.35)	22.52 (1.31)	7.88 (1.29)	39.36 (2.90)**	-19.91 (1.96)	20.52 (1.00)	-3.94 (0.65)	31.92 (2.65)**
No. of obs.	214	214	214	214	191	191	190	190
Adj. $R^2$	-2.14	15.58	7.47	22.75	-0.51	27.78	4.63	32.75
Mean of dependent variable	-6.47		2.79		-10.27		-5.72	
Std. dev. of dependent variable	16.32		13.48		19.59		11.95	

dependent variables,  $\Delta$ RISKY SHARE and  $\Delta$ WAM. The results suggest that the portfolio changes that occurred during the first 3 months after the crisis persist. ILLIQUIDITY, RISKY SHARE, and WAM all continue to enter the regressions with negative coefficients. The coefficients are less statistically significant generally, which is not surprising given the long time lag, although the effect of RISKY SHARE (again, measured before the Lehman crash) on  $\Delta$ RISKY SHARE increases in both magnitude and statistical significance when we extend the horizon to 2 years. This increased magnitude may reflect tougher SEC regulations for money market fund investments that were implemented in the summer of 2010.<sup>13</sup>

<sup>13</sup>The sample also falls as we lengthen the time horizon because some funds drop out of the data set. For the short-run regressions in Table 4, we have 247 prime funds; of these, 237 survive to the end

In our final test, we compare how funds affected by systemic liquidity shocks (i.e., the 27 funds forced to sell assets after Lehman) adjust their portfolios relative to funds hit by similar-sized but idiosyncratic liquidity shocks, using a nonparametric empirical matched-sample comparison.<sup>14</sup> We first identify a sample of funds hit by idiosyncratic liquidity shocks using funds that experienced a positive value for ILLIQUIDITY at some point before 2008. There are 42 such cases, 40 of which survive in our data set for the subsequent 3 months.<sup>15</sup> We then stratify these data into 20 ILLIQUIDITY bins, based on the distribution of ILLIQUIDITY for the 27 post-Lehman cases of illiquidity. For each of these 27 funds (the treatment group), we find if possible a same-class mutual fund in the same or closest ILLIQUIDITY bin with the closest TNA (the control group). Based on this matching procedure, the average illiquid fund in the treatment group had to sell 16% of its portfolio, and its TNA before Lehman's collapse was \$16 billion. The average ILLIQUIDITY in the control sample was 14% of the portfolio, but average TNA before the liquidity shock was \$2 billion. Hence, we are not able to match perfectly based on size.

Table 9 compares average 3-month changes in risky asset holdings and changes in weighted-average maturity for the treatment group with two control groups: all funds that faced illiquidity events (i.e., had positive values for ILLIQUIDITY) before 2008 ( $n = 40$ ) and the matched sample described above

TABLE 9  
Change in Portfolio Holdings and Maturity in the Long Run for Illiquid Funds  
(Prime Money Market Funds)

Table 9 compares the 3-month change in RISKY SHARE and WAM from the Lehman collapse to the end of the year for funds hit by outflows large enough to force asset sales (the treatment group) with changes observed at similarly illiquid funds before 2008 (the control group). There were initially 27 funds in the treatment group but only 23 are observed at the end of 2008. The first control group contains all cases in which a money fund experienced an outflow large enough to force a sale of assets before 2008 that survived the subsequent 3 months; the second control group filters the first one to match the magnitude of the illiquidity event in the treatment group (see text for a full explanation). RISKY SHARE is the sum of commercial paper and non-deposit-bank obligations as a percentage of assets; WAM is the weighted-average maturity; and TNA is total net assets.

	Treatment Group		First Control Group		Second Control Group		Difference-in-Means Tests	
	Illiquid Funds during the Lehman Run	<i>N</i>	Illiquid Funds, before 2008	<i>N</i>	Illiquid Funds, before 2008, Matched on TNA and Illiquidity	<i>N</i>	<i>t</i> -Test: (1) = (2)	<i>t</i> -Test: (1) = (3)
	1		2		3			
ΔRISKY SHARE	-8.57	23	4.78	40	4.26	23	2.62	1.98
ΔWAM	-13.09	23	-10.50	40	-7.22	23	0.54	1.08

of 2008, 214 to the third quarter of 2009, and 191 to the third quarter of 2010. That said, survivorship is not strongly correlated with the liquidity shock. For example, about 6.2% of the total sample faced positive illiquidity during the Lehman collapse; by the end of 2010, the share of surviving funds that faced positive illiquidity was 5.7% of the total sample.

<sup>14</sup>Regressions would be awkward to design consistently because the pre-Lehman liquidity events are short-lived and spread out sporadically over time.

<sup>15</sup>Table 2 reports 85 funds having faced illiquidity events: 42 occurred before 2008, 16 during the first 8 months of 2008 (before Lehman), and 27 during the 2 weeks after Lehman's bankruptcy.



( $n = 23$ ).<sup>16</sup> We find, consistent with the regressions in Table 7, that firms hit by illiquidity after Lehman both reduced their risky asset portfolio weight (by 8.6% of TNA on average) and shortened asset maturity (by 13 days). For both sets of control firms, however, we find an increase rather than a decrease in risky asset holding, with a statistically significant difference between the mean change in the two samples. In contrast, we find no difference in maturity adjustments. All of the funds seem to react to liquidity shocks, either systemic (post-Lehman) or idiosyncratic (pre-Lehman) by shortening maturity.

#### F. Why Did Money Market Funds Reduce Risk?

We have found that money market mutual fund managers responded to the post-Lehman run by moving toward safer investments. In aggregate, prime institutional money market funds cut their RISKY SHARE from 76% to 67% from the eve of Lehman's collapse to the end of 2010; prime retail funds cut back risk even more, from 82% to 69% (Table 1). The cross-sectional regression shows that these changes were greatest among *ex ante* riskier funds and among funds hit hardest by outflows. Some of the changes likely occurred in response to tighter SEC regulations finalized in the middle of 2010 that required money market funds to hold more liquid and higher credit-quality assets. But many of the adjustments, in both our aggregate and our cross-sectional analyses, occurred within 3 months of the Lehman bankruptcy, well before SEC regulations came into effect. This behavior reversed the risk taking that occurred during the run-up to the crash. It may reflect investor preferences (flight to quality) or managerial preferences (career concerns) for safety, or some combination of the two. For example, managers of high-risk funds faced a near-death experience in late Sept. 2008 and watched as the oldest and one of the largest funds collapsed (the Reserve Primary Fund). The Treasury Guarantee Program itself was designed to prevent an extension of the safety net beyond pre-existing money market accounts (new investments were not covered) so money fund managers may also have been catering to new investors' desire for high-liquidity, low-risk investments.

### IV. Conclusion

We study how money market mutual funds weathered systemic runs that occurred after the collapse of Lehman Brothers in the fall of 2008. In the immediate aftermath, funds facing outflows large enough to overwhelm cash resources available from maturing assets resorted to selling their most liquid holdings. As a result, these funds found themselves holding higher risk and longer maturity assets than desired. Over the subsequent quarters, the funds hit hardest responded by reducing risk relative to their initial holdings before the crisis. Once burned, twice shy. The result suggests that moral hazard concerns associated with the Treasury Guarantee of money market investor claims did not lead to increased risk taking. Rather than increase risk, funds that benefited most from the government bailout reduced risk relative to other funds.

<sup>16</sup>Four funds in the treatment group drop out of the sample by Dec. 2008, so we have 23 observations in both treatment and control groups in the matched-sample approach.

## References

- Acharya, V.; P. Schnabl; and G. Suarez. "Securitization without Risk Transfer." *Journal of Financial Economics*, 107 (2013), 515–536.
- Brady, S. A.; K. A. Anadu; and N. R. Cooper. "The Stability of Prime Money Market Mutual Funds: Sponsor Support from 2007 to 2011." Working Paper, Federal Reserve Bank of Boston (2012).
- Chen, Q.; I. Goldstein; and W. Jiang. "Payoff Complementarities and Financial Fragility: Evidence from Mutual Fund Outflows." *Journal of Financial Economics*, 97 (2010), 239–262.
- Chernenko, S., and A. Sunderam. "Frictions in Shadow Banking: Evidence from the Lending Behavior of Money Market Funds." *Review of Financial Studies*, 27 (2014), 1717–1750.
- Duygan-Bump, B.; P. M. Parkinson; E. S. Rosengren; G. Suarez; and P. S. Willen. "How Effective Were the Federal Reserve Emergency Liquidity Facilities? Evidence from the Asset-Backed Commercial Paper Money Market Mutual Fund Liquidity Facility." *Journal of Finance*, 68 (2013), 715–737.
- Gorton, G.; S. Lewellen; and A. Metrick. "The Safe Asset Share." NBER Working Paper No. 17777 (2012).
- Gorton, G., and A. Metrick. "Securitized Banking and the Run on the Repo." *Journal of Financial Economics*, 104 (2012), 425–451.
- Kacperczyk, M., and P. Schnabl. "When Safe Proved Risky: Commercial Paper during the Financial Crisis." *Journal of Economic Perspectives*, 24 (2010), 29–50.
- Kacperczyk, M., and P. Schnabl. "How Safe Are Money Market Funds?" *Quarterly Journal of Economics*, 128 (2013), 1073–1122.
- Krishnamurthy, A.; S. Nagel; and D. Orlov. "Sizing Up Repo." *Journal of Finance*, 69 (2014), 2381–2417.
- Kroszner, R. S., and P. E. Strahan. "Regulation & Deregulation of the U.S. Banking Industry: Causes, Consequences and Implications for the Future." In *Regulation*, N. Rose, ed., Chicago, IL: University of Chicago Press (2006), 485–543.
- Kroszner, R. S., and P. E. Strahan. "Financial Regulatory Reform: Challenges Ahead." *American Economic Review*, 101 (2011), 242–246.
- McCabe, P. E. "The Cross Section of Money Market Fund Risk and Financial Crises." Working Paper, Federal Reserve Board of Governors (2010).
- Qian, M., and B. Tanyeri. "Adverse Information and Mutual Fund Runs." National University of Singapore and Bilkent University Working Paper, available at SSRN: [http://papers.ssrn.com/sol3/papers.cfm?abstract\\_id=1362492](http://papers.ssrn.com/sol3/papers.cfm?abstract_id=1362492) (2011).
- Schmidt, L. D. W.; A. G. Timmerman; and R. Wermers. "Money Fund Runs." Working Paper, available at SSRN: [http://papers.ssrn.com/sol3/papers.cfm?abstract\\_id=1784445](http://papers.ssrn.com/sol3/papers.cfm?abstract_id=1784445) (2013).