



Slowing surface plasmon polaritons on plasmonic coupled cavities by tuning grating grooves

Sinan Balci, Askin Kocabas, Coskun Kocabas, and Atilla Aydinli

Citation: [Applied Physics Letters](#) **97**, 131103 (2010); doi: 10.1063/1.3495781

View online: <http://dx.doi.org/10.1063/1.3495781>

View Table of Contents: <http://scitation.aip.org/content/aip/journal/apl/97/13?ver=pdfcov>

Published by the [AIP Publishing](#)

Articles you may be interested in

[Efficient out-coupling and beaming of Tamm optical states via surface plasmon polariton excitation](#)

Appl. Phys. Lett. **104**, 231116 (2014); 10.1063/1.4882180

[Excitations of surface plasmon polaritons in double layer metal grating structures](#)

Appl. Phys. Lett. **100**, 091111 (2012); 10.1063/1.3690947

[Groove-gratings to optimize the electric field enhancement in a plasmonic nanoslit-cavity](#)

J. Appl. Phys. **108**, 034319 (2010); 10.1063/1.3457017

[Excitation of dielectric-loaded surface plasmon polariton observed by using near-field optical microscopy](#)

Appl. Phys. Lett. **93**, 073306 (2008); 10.1063/1.2973355

[Analysis of the propagation of terahertz surface plasmon polaritons on semiconductor groove gratings](#)

J. Appl. Phys. **101**, 023707 (2007); 10.1063/1.2409895



AIP | Journal of
Applied Physics

Journal of Applied Physics is pleased to
announce **André Anders** as its new Editor-in-Chief

Slowing surface plasmon polaritons on plasmonic coupled cavities by tuning grating grooves

Sinan Balci,^{1,a)} Askin Kocabas,² Coskun Kocabas,¹ and Atilla Aydinli¹

¹*Department of Physics, Advanced Research Laboratories and Turk Telekom Laboratory, Bilkent University, 06800 Ankara, Turkey*

²*FAS Center for Systems Biology, Harvard University, Cambridge, Massachusetts 02138, USA*

(Received 30 July 2010; accepted 3 September 2010; published online 28 September 2010)

We investigate slow surface plasmon polaritons (SPPs) in plasmonic waveguiding bands formed by coupled plasmonic cavities on Moiré surfaces. We demonstrate controlling the group velocity and dispersion of the SPPs by varying the depth of the plasmonic Bragg grating groove. Changing the grating depth results in modification of coupling coefficients between the cavities and hence the SPPs group velocity is altered. Variation in the group velocity and dispersion of SPPs can be measured with polarization dependent spectroscopic reflection measurements. Dispersion of SPPs has been calculated by finite-difference time-domain method in agreement with the experimental data. © 2010 American Institute of Physics. [doi:10.1063/1.3495781]

Slow light,¹⁻⁵ light propagation with very low group velocities in different media such as an ultracold atomic gas,¹ semiconductor quantum wells,² photonic crystal waveguides,³ and photonic and plasmonic cavities⁴⁻⁷ attracted great attention in recent years because they offer an alternative level of control in the enhancement of light and matter interaction. Small group velocities result in an increase in the electric field amplitude and enhancement of nonlinear properties which can speed up all-optical data processing and increase the sensitivity of biosensors.⁸ Surface plasmon polaritons (SPPs), electromagnetic surface waves propagating along metal-dielectric interface with evanescently decaying electric field intensity into both of the neighboring media, can be slowed down by using plasmonic Bragg gratings.⁹⁻¹³ The decay length of SPPs into the metal is comparable to the skin depth of the metal, i.e., ~ 20 nm at the visible frequencies, whereas the decay length of SPPs into the dielectric is on the order of ~ 100 nm in the visible range. Therefore, the electromagnetic energy of SPPs is strongly localized in the vicinity of the surface which allows confinement of optical waves at the nanoscale. When the period of the plasmonic grating is half the wavelength of the SPP mode, scattering leads to the formation of SPP standing waves leading to stopgaps in the dispersion diagrams. At the edges of these stopgaps; slow SPP modes occur. Although metallic losses can never be completely eliminated in plasmonic systems, in recent studies, SPP propagation lengths of many centimeters were predicted with long range SPPs.¹¹ Another way of slowing SPPs is the use of plasmonic cavities.⁵⁻⁷ Plasmonic cavities provide lateral confinement along the propagation direction on the metallic surface.⁵⁻⁷ These cavities can be fabricated by selective loading of metal or dielectric on a flat metallic surface. A Moiré surface formed by superimposing two periodic patterns with slightly different periodicities can also form a plasmonic cavity.⁵ It has gradually varying surface profile which minimizes the scattering of plasmons from higher order harmonic components of the grating. The quality factor of Moiré cavities is significantly higher than the cavities formed by metallic

Bragg mirrors owing to the suppression of radiative losses.⁵ In our previous work,⁵ SPP waveguides formed by coupled plasmonic cavities on metallic Moiré surfaces have been studied. The waveguiding band was modeled by using the tight binding approach as it was also applied to coupled resonator optical resonators (CROWs) type devices.⁵ Previously, the effects of uniform grating depth on the enhancement of Raman signals and band gap tuning were studied.^{12,13} However, the effects of the grating groove depth of the plasmonic cavity on the group velocity and dispersion of SPPs have not been investigated. In this letter, we study the effects of the grating groove depth on the propagation of SPPs in coupled cavities on Moiré surfaces in order to manipulate the coupling coefficients between the plasmonic cavities. We tune the group velocity and the dispersion curves of the SPPs. SPPs with the cavity mode energy can be slowed down considerably when the coupling coefficients between the coupled cavities are very small. In contrast with our previous work, where we controlled the coupling coefficient by changing only the cavity size, we now in this study, study the effects of the groove depth on slowing down the SPPs in addition to varying cavity size.

The Moiré surfaces were fabricated by holographic interference lithography on a $170 \mu\text{m}$ thick glass substrate which was coated with a polymer S 1800-4 (Microchem) after having been coated with an anti reflection coating BARLi (Microchem). After developing in AZ 400 K, the surface was coated with Ag film thickness of 40 nm. Dispersion curves have been obtained by using an ellipsometer—WVASE32 (J. A. Woollam Co., Inc.). The grating groove depth was characterized by using atomic force microscope.

The Moiré surface contains Bragg type reflectors with varying grating groove depths in silver film with a period (~ 300 nm) equal to the half of the SPPs wavelength. For a $9.0 \mu\text{m}$ long SPP cavity, for example, the surface is generated by two uniform periodic structures with slightly different periodicities of 295 nm and 305 nm [Fig. 1(a)]. Merging two uniform grating periodicities on a single surface, adds to produce nodes and antinodes at the beat frequency of the interfering periods resulting in a superperiodicity which is expressed as the distance between the nodes. The amplitude

^{a)}Electronic mail: balci@fen.bilkent.edu.tr.

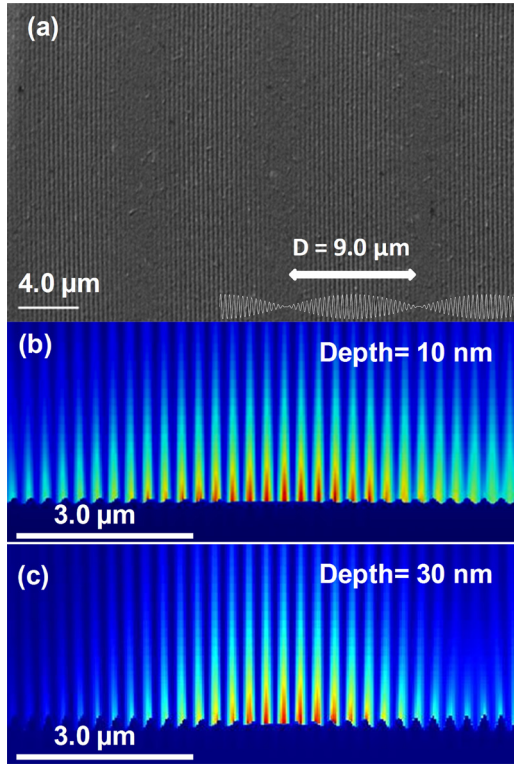


FIG. 1. (Color online) (a) Scanning electron microscopy image of adjacent SPP cavities on a Moiré surface separated by $9.0 \mu\text{m}$. FDTD calculated two-dimensional electric field distribution in a $9.0 \mu\text{m}$ long SPP cavity at the cavity wavelength of the cavity mode for a grating groove depth of (b) 10 nm and (c) 30 nm indicating the stronger localization of the cavity mode upon increasing the grating groove depth.

of the Moiré surface approaches to zero in the vicinity of the nodes where the cavity is located. When the cavity is excited with the cavity mode energy, localization of SPPs occurs in the cavity. Stronger localization of the SPPs around the cavity region upon increasing the grating depth is shown in Figs. 1(b) and 1(c).

Figure 2 shows the dispersion diagrams extracted from the polarization dependent spectroscopic reflectivity maps of the corresponding Moiré surfaces with the indicated cavity sizes and grating groove depths. It should be noted that when the SPPs at Ag-air interface are excited, angle dependent reflectivity reveals the dispersion characteristics of SPP modes. In optical reflection measurements, the spot size of the incident collimated beam is $\sim 1 \text{ mm}$ which means that we measure very large number of SPP cavities adjacent to each other. Therefore, the SPP dispersion curves in Fig. 2 can be assumed to belong to an infinite number of adjacent SPP cavities. It should be noted that the cavity-to-cavity lengths on Moiré surfaces and hence the degree of coupling between the cavities can be adjusted by changing the superperiodicity of the Moiré surface. Thus, cavity sizes and grating groove depths on Moiré surfaces have been changed from $2.5 \mu\text{m}$ to $15.0 \mu\text{m}$, and 15 nm to 50 nm , respectively. The dispersion curves show a band gap where a band of wavelengths are forbidden and a well localized cavity mode around 620 nm inside the band gap appears. At wavelengths below $\sim 500 \text{ nm}$, the reflection decreases due to the absorption in the silver film coated on the coupled cavities. The experimental dispersion curves [Fig. 2] have been reproduced by using finite-difference time-domain (FDTD) calculations for

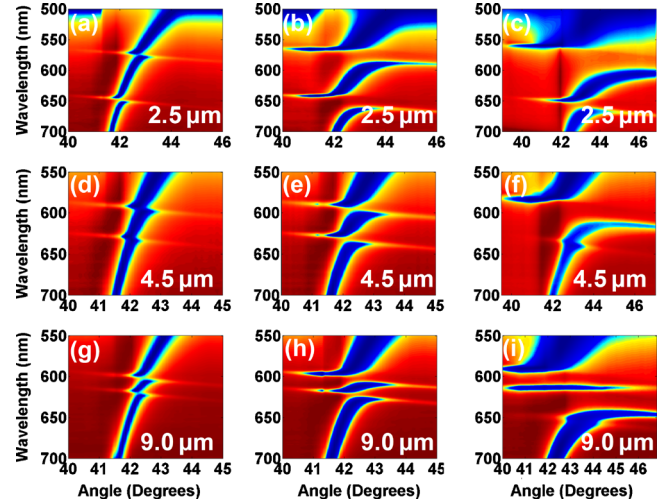


FIG. 2. (Color online) Experimental dispersion curves reflecting band gap and cavity states of SPPs on Ag coated Moiré surface with varying grating groove depths. [(a)–(c)] Dispersion curves of SPP for a $2.5 \mu\text{m}$ long SPP cavity. Color map shows the normalized reflectivity of the sample. The blue color is the reflectivity minima whereas the red color is the reflectivity maxima. The upper and lower branches of the band gap are around 600 nm and 650 nm , respectively. The cavity state is at 620 nm . The slope of the cavity mode decreases slowly as the grating groove depth increases. [(d)–(f)] Dispersion curves of SPP for a $4.5 \mu\text{m}$ long SPP cavity. [(g)–(i)] Dispersion curves of SPP for a $9.0 \mu\text{m}$ long SPP cavity.

grating groove depths of 15 nm , 30 nm , and 50 nm . It is well known that periodically patterned metallic surfaces show an energy band gap which prohibits the propagation of modes over a range of wavelengths.¹³ An analytical model for the band gap width and central frequency of the SPP mode has also been proposed. The analytical expression for the mode frequencies at the band edges is of the following form:¹³

$$\left(\frac{\omega_{\pm}}{c}\right)^2 = \left(\frac{\omega_0}{c}\right)^2 [1 - 2(Kd)^2] \pm 2(Kd) \frac{K^2}{\sqrt{-\epsilon_m \epsilon_d}} [1 - 3(Kd)^2], \quad (1)$$

where ω_{\pm} , ω_0 , ϵ_m , ϵ_d , K , and d are the lower and upper branch mode stop frequencies, central frequency of the SPP mode, dielectric constant of the metal, dielectric constant of the dielectric material, the grating wave vector, and grating groove depth, respectively. The difference of the lower and upper branch mode stop frequencies gives the width of the plasmonic band gap¹³

$$\frac{\Delta\omega^2}{c^2} = \left[\frac{\omega_+}{c}\right]^2 - \left[\frac{\omega_-}{c}\right]^2 = \frac{4K^2(Kd)}{\sqrt{-\epsilon_m \epsilon_d}} [1 - 3(Kd)^2]. \quad (2)$$

From the above equation, we find that the band gap strongly depends on the grating wave vector and the grating groove depth. Here, we control the central frequency and width of the band gap by tuning the depth of the grating groove and cavity size while the grating period is fixed to $\sim 300 \text{ nm}$. The width of the band gap of the fabricated Moiré surfaces for different cavity sizes increases as the depth of the grating groove increases¹³ [Fig. 3(a)].

Within the band gap region in the dispersion curves, a clearly noticeable SPP mode can easily be identified. This narrow band indicates the presence of a waveguiding mode of the plasmonic coupled cavities on Moiré surfaces. In a

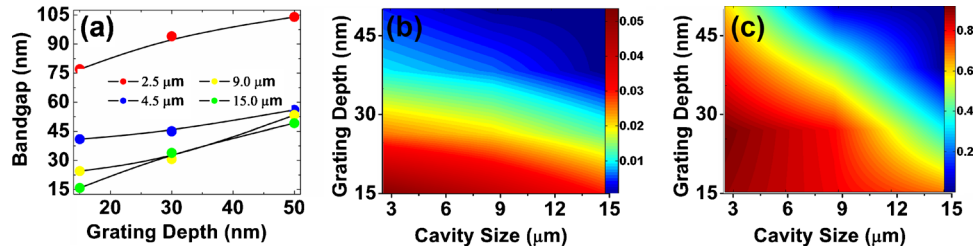


FIG. 3. (Color online) (a) Plasmonic band gap of Moiré surfaces with different cavity sizes as a function of the grating depth. (b) Group velocities in c and (c) coupling coefficients of SPP cavities on Moiré surfaces calculated from the experimental dispersion curves. The colored bars in the right hand side of (b) and (c) indicate the coupling coefficient and the group velocity, respectively. The calculated data are extrapolated in MATLAB for a better view.

previous work, we showed that this wave guiding band can be modeled by using the tight binding approach as it was also applied to CROW type devices. The dispersion of the cavity SPP mode can be described as⁵

$$\omega(k) = \Omega[1 + \kappa \cos(kD)], \quad (3)$$

where Ω , κ , and D are the resonance frequency of the individual cavity, coupling coefficient, and the size of the cavity, respectively. From the above equation, the group velocity of the SPPs can be found

$$v_g(k) = d\omega(k)/dk = -\Omega D \kappa \sin(kD), \quad (4)$$

which can be quite small when the cavities are weakly coupled. Therefore, the slope of the dispersion curves gives the group velocity of the SPP cavity modes [Fig. 2]. The group index, $n_g \equiv c/v_g$, a slow-down factor for the velocity, c , can also be used in order to express the deviation from vacuum velocity of light, c . It is clear that the group velocity and the dispersion of SPPs are characterized by the coupling coefficient. This means that in order to slow down SPPs the coupling coefficient, κ , has to be very small. The calculated group velocities from the experimental dispersion curves are extrapolated in a MATLAB routine for a better display and shown in Fig. 3(a). Similarly, the coupling coefficient which is expressed as $\kappa = \Delta\omega/2\Omega$ can be extracted from the dispersion curves [Fig. 2]. The calculated coupling coefficients from the experimental dispersion curves are extrapolated also in a MATLAB routine for a better representation [Fig. 3(b)]. As it is clear from Fig. 3(c), the slow SPPs at the cavity mode can be obtained at large cavity sizes and large grating groove depths. For a given cavity size, as the depth of the grating groove increases the width of the band gap increases¹³ and the group velocity decreases. Varying the depth of the grating grooves leads to a change in the coupling coefficient of the plasmonic coupled cavities, thereby affecting the group velocity of SPPs on plasmonic waveguiding band because the coupling coefficient between the cavities is directly proportional to the group velocity. It is important to mention here that SPPs with zero group velocity indicates that counter propagation forms a standing wave inside the cavity region and optical energy is stored in the cavity. Slowing down electromagnetic radiation is very important for applications such as enhancing nonlinear processes and improving optical conversion efficiencies. For ex-

ample, in stimulated emission applications, the effective gain can be increased by slowing down the electromagnetic wave since the effective gain is inversely proportional to the group velocity ($1/v_g$).¹⁴

In conclusion, we have investigated, through experiments and simulations, slow SPPs and controlled the group velocity of SPPs on plasmonic coupled cavities. The SPPs have been slowed down by varying the depth of the grating groove as well as the cavity size. The group velocity of the coupled cavity mode depends strongly on the coupling coefficients between the adjacent cavities. The slow SPPs at the coupled cavity modes can be reached at large cavity sizes and large grating groove depths. Stronger localization of the SPP cavity mode can be achieved when the grating groove depth is increased. Small group velocities and confined behavior of SPPs are promising for plasmonic nonlinear and spectroscopic applications, and coupled plasmonic cavities on Moiré surfaces are good candidates for this purpose.

S. Balci would like to acknowledge financial support of TUBITAK through a BİDEB grant. This work has been supported in part by a grant from TUBITAK (Grant No. 104M421) and by EU 7th Framework Project, Unam-Regpot (Grant No. 203953).

¹L. V. Hau, S. E. Harris, Z. Dutton, and C. H. Behroozi, *Nature (London)* **397**, 594 (1999).

²P. C. Ku, F. Sedgwick, C. J. C. Hasnain, P. Palinginis, T. Li, H. Wang, S. W. Chang, and S. L. Chuang, *Opt. Lett.* **29**, 2291 (2004).

³T. Baba, *Nat. Photonics* **2**, 465 (2008).

⁴A. Yariv, Y. Xu, R. K. Lee, and A. Scherer, *Opt. Lett.* **24**, 711 (1999).

⁵A. Kocabas, S. S. Senlik, and A. Aydinli, *Phys. Rev. Lett.* **102**, 063901 (2009).

⁶J. C. Weeber, A. Bouhelier, G. C. Frangs, S. Massenot, J. Grandier, L. Markey, and A. Dereux, *Phys. Rev. B* **76**, 113405 (2007).

⁷Y. Gong and J. Vuckovic, *Appl. Phys. Lett.* **90**, 033113 (2007).

⁸W. D. Wilson, *Science* **295**, 2103 (2002).

⁹H. Raether, *Surface Plasmons* (Springer, Berlin, 1986).

¹⁰S. C. Kitson, W. L. Barnes, and J. R. Sambles, *Phys. Rev. B* **52**, 11441 (1995).

¹¹P. Berini, *Adv. Opt. Photon.* **1**, 484 (2009).

¹²L. Baltog, N. Primeau, R. Reinisch, and J. L. Coutaz, *Appl. Phys. Lett.* **66**, 1187 (1995).

¹³W. L. Barnes, T. W. Preist, S. C. Kitson, J. R. Sambles, N. P. K. Cotter, and D. J. Nash, *Phys. Rev. B* **51**, 11164 (1995).

¹⁴K. Sakoda, *Opt. Express* **4**, 167 (1999).