



TITLE:

Development and evaluation of PCR primers for environmental DNA (eDNA) metabarcoding of Amphibia

AUTHOR(S):

Sakata, Masayuki K.; Kawata, Mone U.; Kurabayashi, Atsushi;
Kurita, Takaki; Nakamura, Masatoshi; Shirako, Tomoyasu;
Kakehashi, Ryosuke; ... Kabamoto, Junichi; Miya, Masaki;
Minamoto, Toshifumi

CITATION:

Sakata, Masayuki K. ...[et al]. Development and evaluation of PCR primers for environmental DNA (eDNA) metabarcoding of Amphibia. *Metabarcoding and Metagenomics* 2022, 6: 15-26: e76534.

ISSUE DATE:

2022

URL:

<http://hdl.handle.net/2433/268026>

RIGHT:

© 2022 Masayuki K. Sakata, Mone U. Kawata, Atsushi Kurabayashi, Takaki Kurita, Masatoshi Nakamura, Tomoyasu Shirako, Ryosuke Kakehashi, Kanto Nishikawa, Mohamad Yazid Hossman, Takashi Nishijima, Junichi Kabamoto, Masaki Miya, Toshifumi Minamoto.; This is an open access article distributed under the terms of the Creative Commons Attribution License (CC BY 4.0), which permits unrestricted use, distribution, and reproduction in any medium, provided the original author and source are credited.

Development and evaluation of PCR primers for environmental DNA (eDNA) metabarcoding of Amphibia

Masayuki K. Sakata¹, Mone U. Kawata¹, Atsushi Kurabayashi^{2,3,4}, Takaki Kurita⁵, Masatoshi Nakamura⁶, Tomoyasu Shirako⁶, Ryosuke Kakehashi², Kanto Nishikawa^{7,8}, Mohamad Yazid Hossman⁹, Takashi Nishijima¹⁰, Junichi Kabamoto¹⁰, Masaki Miya⁵, Toshifumi Minamoto¹

- 1 Graduate School of Human Development and Environment, Kobe University, 3-11, Tsurukabuto, Nada-ku, Kobe City, Hyogo 657-8501, Japan
- 2 Department of Bio-Science, Nagahama Institute of Bio-Science and Technology, 1266, Tamura-cho, Nagahama City, Shiga 526-0829, Japan
- 3 Amphibian Research Center, Hiroshima University, Hiroshima 739-8526, Japan
- 4 Unit for Environmental Sciences and Management, North-West University, Potchefstroom 2520, South Africa
- 5 Natural History Museum and Institute, Chiba, Chiba 260-8682, Japan
- 6 IDEA Consultants, Inc. 3-15-1 Komazawa, Setagaya-ku, Tokyo 154-8585, Japan
- 7 Graduate School of Human and Environmental Studies, Kyoto University, Yoshida Nihonmatsu-cho, Sakyo-ku, Kyoto, 606-8501, Japan
- 8 Graduate School of Global Environmental Studies, Kyoto University, Yoshida Hon-machi, Sakyo-ku, Kyoto 606-8501, Japan
- 9 Research Development and Innovation Division, Section of Biodiversity Fauna, Forest Department Sarawak, Kuching, 93250, Sarawak, Malaysia
- 10 Ministry of Agriculture, Forestry and Fisheries, 1-2-1, Kasumigaseki, Chiyoda-ku, Tokyo 100-8950, Japan

Corresponding author: Masayuki K. Sakata (masa2k_mskk1518@yahoo.co.jp)

Academic editor: Kristy Deiner | Received 28 October 2021 | Accepted 31 January 2022 | Published 21 February 2022

Abstract

Biodiversity monitoring is important for the conservation of natural ecosystems in general, but particularly for amphibians, whose populations are pronouncedly declining. However, amphibians' ecological traits (e.g. nocturnal or aquatic) often prevent their precise monitoring. Environmental DNA (eDNA) metabarcoding – analysis of extra-organismal DNA released into the environment – allows the easy and effective monitoring of the biodiversity of aquatic organisms. Here, we developed and tested the utility of original PCR primer sets. First, we conducted *in vitro* PCR amplification tests with universal primer candidates using total DNA extracted from amphibian tissues. Five primer sets successfully amplified the target DNA fragments (partial 16S rRNA gene fragments of 160–311 bp) from all 16 taxa tested (from the three living amphibian orders Anura, Caudata and Gymnophiona). Next, we investigated the taxonomic resolution retrieved using each primer set. The results revealed that the universal primer set “Amph16S” had the highest resolution amongst the tested sets. Finally, we applied Amph16S to the water samples collected in the field and evaluated its detection capability by comparing the species detected using eDNA and physical survey (capture-based sampling and visual survey) in multiple agricultural ecosystems across Japan (160 sites in 10 areas). The eDNA metabarcoding with Amph16S detected twice as many species as the physical surveys (16 vs. 8 species, respectively), indicating the effectiveness of Amph16S in biodiversity monitoring and ecological research for amphibian communities.

Key Words

Agricultural ecosystem, Amphibia, biodiversity monitoring, environmental DNA, metabarcoding, universal primer

Introduction

Biodiversity loss has a major impact on the global environment (Butchart et al. 2010). Degradation of ecosystem

services, in association with biodiversity loss, is a growing concern (Su et al. 2021). This biodiversity loss is particularly critical for freshwater organisms (Dudgeon et al. 2006) such as amphibians, which face serious threats, in-

cluding habitat loss, water pollution, spread of infectious diseases and the impact of invasive species (Stuart et al. 2004). As the decline in amphibians diversity is on-going worldwide (Hof et al. 2011), their conservation is an urgent issue. Monitoring is important for collecting basic information (e.g. distribution) necessary for conservation (Costanza and Mageau 1999). Traditional amphibians' monitoring includes physical surveys (capture or visual observation) and call surveys (for frogs; Heyer, Donnelly, Roy, Hayek and Foster 2014); however, amphibians' monitoring may be hindered by their small body size or ecological features, such as cryptic or inaccessible habitat (e.g. muddy water, litter, subterrain and forest canopy), opportunistic appearance (weather and seasonality) and nocturnal activity (Fellers et al. 2005).

Ficetola et al. (2008) first applied the environmental DNA (eDNA) technique to macro-organisms and succeeded in detecting eDNA derived from the American bullfrog, *Lithobates catesbeianus*, from pond water. Subsequently, eDNA analysis was applied to the monitoring of various species and ecosystems (Goldberg et al. 2016; Deiner et al. 2017). eDNA analysis allows for low-cost and extensive surveys (Jerde et al. 2011; Laramie et al. 2015) and it has been used to monitor rare and endangered species (Bylemans et al. 2016; Sakata et al. 2017; Stat et al. 2019). Both species-specific eDNA analysis, which detects a specific species and estimates biomass (Takahara et al. 2012; Pilliod et al. 2013; Goldberg et al. 2018) and eDNA metabarcoding, which exhaustively detects target taxa by using high-throughput sequencing (HTS), have been applied for monitoring (Valentini et al. 2016; Yamamoto et al. 2017; Stat et al. 2019; Hayami et al. 2020). In eDNA metabarcoding for fish, universal primer sets have been sufficiently investigated and evaluated and field applications are advanced (Miya et al. 2015, 2020; Deiner et al. 2017; Zhang et al. 2020; Miya 2021). In the case of amphibians, previous studies have used eDNA metabarcoding in various aquatic ecosystems, such as wetlands (Kačergytė et al. 2021; Saenz-Agudelo et al. 2021), tropical forests (Lopes et al. 2017; Sasso et al. 2017; Li et al. 2021a) and ponds (Bálint et al. 2018; Charvoz et al. 2021). The technique has been used for multiple purposes, including monitoring biodiversity (Li et al. 2021a; Saenz-Agudelo et al. 2021), estimating abundance (Li et al. 2021b), investigating co-occurrence with fish (Kačergytė et al. 2021) and examining the properties of eDNA (Evans et al. 2016; Brys et al. 2021). However, there has been no comparison or evaluation amongst universal primer sets, as has been performed in eDNA metabarcoding studies on fish. For example, eDNA metabarcoding analysis, using relatively short DNA sequences (< 100 bp), occasionally provides genus-level resolution (Valentini et al. 2016). As amphibians have low migration capacity and occasionally have region-specific genetic characteristics (Nishizawa et al. 2011; Tominaga et al. 2013), developing a metabarcoding assay applicable to taxa with intraspecific genetic diversity is desirable. Therefore, the development of universal

primer sets, based on a proper evaluation of their characteristics, is important.

In eDNA metabarcoding, the choice of PCR primers for amplification of target sequences (i.e. barcodes) is possibly one of the most influential factors in determining the detection probability of specific species or taxonomic groups (Freeland 2017; Alberdi et al. 2018). Ideally, universal PCR primers should have broad intra-group coverage, non-biased amplification across species and high taxonomic resolution (Riaz et al. 2011). Some studies have evaluated the usability of the primers for fish eDNA metabarcoding (Bylemans et al. 2018; Collins et al. 2019; Zhang et al. 2020; Shu et al. 2021), focusing on several parameters, such as amplification length, taxonomic coverage, primer universality and interspecies resolution, which enables the use of appropriate primer sets that are consistent with the research objectives.

Here, we aimed to develop primer sets for amphibians metabarcoding assays with species- and/or subspecies-level resolution and to evaluate the effectiveness of the assay system herein proposed. To achieve these aims, we designed five universal primer sets for amphibians in the mitochondrial 16S rRNA region. We then evaluated them using several criteria, such as taxonomic resolution and taxonomic coverage, via *in silico* and *in vitro* tests. Finally, we examined the applicability and effectiveness of the best universal primer sets by conducting extensive field surveys and comparing the detected species between eDNA metabarcoding and physical surveys.

Materials and methods

Primer development

Primer design

The 16S rRNA gene has been suggested as a suitable DNA barcoding marker for amphibians (Vences et al. 2005). To design universal primers for amphibians' metabarcoding analyses, a total of 1,034 sequences of the mitochondrial 16S rRNA region of amphibians from 58 (/75: 77.3%) families and 293 (/564: 52.0%) genera were downloaded from the National Center for Biotechnology Information database (NCBI, <https://www.ncbi.nlm.nih.gov>). These sequences were all amphibian sequences that were available from the NCBI, which included data from amphibians worldwide. To extract the taxonomic information of the 16S rRNA sequences from NCBI text (GenBank format), the programme Taxonparser was used (newly written for this study; available from <https://github.com/RyosukeKakehashi/taxonparser>). The 16S rRNA sequences were aligned using MAFFT (Katoh and Standley 2013) with the default parameters of the MAFFT server (<https://mafft.cbrc.jp/alignment/software/>). Based on the alignments, several candidate universal primer sets were designed from the conserved regions (Fig. 1; Table 1), using Primer3web (Untergasser et al. 2012) and visual observation.

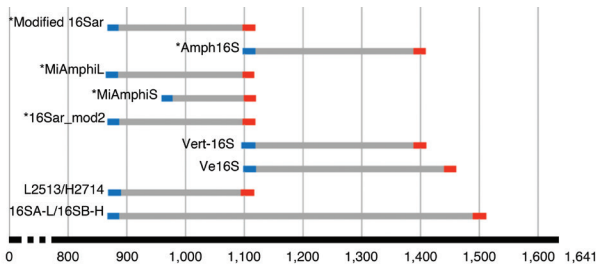


Figure 1. Locations of the nine amphibian metabarcoding primer pairs and amplicons on the target mitochondrial 16S rRNA gene. The target gene sequence of *Xenopus laevis* (Accession ID: MN259073.1) was used as template. Asterisk shows the primer set evaluated in this study. Note that the amplicon sizes of the primer sets may vary depending on the amphibian species. Others are existing primer sets: Vert-16S (Vences et al. 2016), Ve16S (Evans et al. 2016), L2513/H2714 (Kitano, Umetsu, Tian and Osawa 2007), 16SA-L/16SB-H (Vences, Thomas, Van Der Meijden, Chiari and Vieites 2005).

In silico and *in vitro* evaluations of designed primer sets

To characterise each primer set, we performed *in silico* tests of the following three parameters: 1) universality of

calculated using the “dist.dna” function of the ape package in R ver. 3.6.3 (R Development Core Team 2019). The average length and dissimilarity of the internal amplified regions were then used to calculate the expected number of different bases amongst species in order to evaluate the taxonomic resolution of the primer sets. These numbers were compared amongst the primer sets by ANOVA and post-hoc Tukey-Kramer test.

In vitro tests were performed using tissue-derived DNA from 16 amphibians, including 13 species from the Anura clade, one from the Caudata clade and two from the Gymnophiona clade (Suppl. material 1: Table S1). The total DNA, used as PCR templates, was extracted from previous studies and newly obtained in the present study (Kurabayashi et al. 2006, 2008, Kurabayashi and Sumida 2009, 2013). Five newly designed and existing primer sets were used, which were chosen, based on the Tm value and presence of mixed bases (Table 1). The PCRs were conducted in a 10 µl solution containing 5 ng template DNA, 10× TaKaRa Ex Taq Buffer, 0.25 U TaKaRa Ex Taq DNA polymerase, 0.25 mM each dNTP and 0.5 µM forward and reverse primers (each). PCR conditions were as follows: initial denaturation at 94 °C for 30

Table 1. List of primers for the mitochondrial 16S rRNA gene region of amphibians evaluated in this study.

Primer set name	Primer name	Sequences (5' to 3')	Start ¹	End ¹	Primer length	Amplicon size ²	Reference
16Sar_mod2	16Sar_mod2	CGCCTGTTTAYCAAAAACA	1953	1971	19	250	modified from Palumbi (1996)
	Amph_16S_1070R	AGYTCCAYRGGGTCTTCTCGT	2183	2203	21	-	This study
Amph16S	Amph_16S_1070F	ACGAGAAGACCCYRTGGARCTT	2183	2204	22	311	This study
	Amph_16S_1340R	ATCCAACATCGAGGTCGTAA	2474	2493	20	-	This study
MiAmphiL	MiAmphiL-F	CCTCGCTGTTACCAAAAAC	1951	1971	21	252	This study
	MiAmphiL-R	CTCCATGGGGTCTTCTCGT	2183	2201	19	-	This study
MiAmphiS	MiAmphiS-F	CTGACCGTGCGAAGGTAGC	2045	2063	19	160	This study
	MiAmphiS-R	AAGTCCATGGGGTCTTCTC	2185	2204	19	-	This study
Modified 16Sar	Modified 16Sar	CGCCTGTTTAYCAAAAACAT	1953	1972	20	251	Bossuyt and Milinkovitch (2000)
	Amph_16S_1070R	AGYTCCAYRGGGTCTTCTCGT	2183	2203	21	-	This study

¹ Start and end positions corresponding to the mitochondrial gene of *Xenopus laevis* (Accession ID: MN259073.1); ² amplified product length, based on the mitochondrial gene of *Xenopus laevis* (Accession ID: MN259073.1).

each priming site, 2) specificity of the priming site for target taxa and 3) resolution of the internal amplified regions. To examine the universality of each primer, the frequency of bases at each locus of the primers was visualised using the sequence logo from the aforementioned 1,034 sequences, which were the same as those used for the primer design. The specificity of each primer set was confirmed using *in silico* PCR, which was performed using the “search_pcr” command implemented in USEARCH v.10.0.240 (Edgar 2010), targeting the full-length mitochondrial DNA reference database of vertebrates. This database was created from the mtDNA data deposited in NCBI (see Supporting Information) and comprises 26,096 sequences (fish: 7861, amphibia: 959, reptile: 1170, bird: 2988, mammalian: 13,118). For each primer set, *in silico* PCR was performed with minimum and maximum amplicon sizes of 100 and 1,000, respectively and with varying maximum acceptable primer mismatches of 0, 1 and 2 (“maxdiff” option). The dissimilarity of the internal amplified regions of each primer set was cal-

culated using the “dist.dna” function of the ape package in R ver. 3.6.3 (R Development Core Team 2019). The average length and dissimilarity of the internal amplified regions were then used to calculate the expected number of different bases amongst species in order to evaluate the taxonomic resolution of the primer sets. These numbers were compared amongst the primer sets by ANOVA and post-hoc Tukey-Kramer test.

Testing the effectiveness of universal primers

Field surveys

From July to September 2019, field surveys were conducted at 160 agricultural ecosystem sites across 10 areas of Japan (Fig. 2; Suppl. material 1: Table S2). In each area, the study sites included various types of agricultural water environments, including streams, irrigation waterways, and ponds. These study areas covered a wide geographic region of Japan and included multiple local populations of some amphibian species. Most amphibians found in agricultural ecosystems are anurans and these areas harbour approximately half of the Japanese

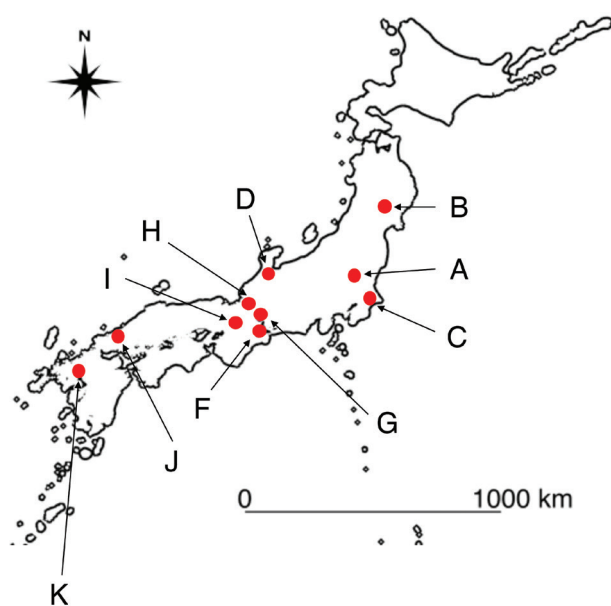


Figure 2. Map of the area surveyed in this study.

anuran species (19/43 species) (Ministry of Agriculture, Forestry and Fisheries 2009; <https://www.maff.go.jp/j/nousin/keityo/tanbo/>). In 122 of the 160 sites, both eDNA

and compared the amphibian detectability between the physical and eDNA metabarcoding surveys. Water sampling for eDNA metabarcoding was performed prior to the physical surveys. Physical surveys were conducted with constant capture efforts; specifically, for each site, three people collected amphibians for 30 min in a 50 m section. The collections were performed using either a fixed net, hand net, net casting or boxed net. To ensure safety when conducting the surveys at the water's edge, including physical surveys, water sampling and measuring water parameters, surveys were performed during daylight hours (07:00–16:00 h). The surveys were conducted in agricultural water environments, which included streams, irrigation waterways and ponds in each area.

Environmental DNA sample processing

Filtration and eDNA extraction were performed according to the Environmental DNA Sampling and Experiment Manual ver. 2.1 (The eDNA Society 2019). We filtered water samples using a glass fibre filter with nominal pore size of 0.7 µm (GF/F; GE Healthcare Life Science). However, two filters were used for processing samples with high turbidity to avoid the potential filter clogging, as

Table 2. Results of the *in vitro* test for primer amplification.

Order	Family	Species	Primer set name				
			16Sar_mod2	Amph16S	MiAmphiL	MiAmphiS	Modified 16Sar
Anura	Bombinatoridae	<i>Bombina orientalis</i>	1	1	1	1	1
Anura	Bufo	<i>Bufo japonicus japonicus</i>	1	1	1	1	1
Anura	Dicroglossidae	<i>Fejervarya kawamurai</i>	1	1	1	1	1
Anura	Hylidae	<i>Dryophytes japonicus</i>	1	1	1	1	1
Anura	Megophryidae	<i>Megophrys nasuta</i>	1	1	1	1	1
Anura	Microhylidae	<i>Chaperina fusca</i>	1	1	1	1	1
Anura	Microhylidae	<i>Kalophrynus meizon</i>	1	1	1	1	1
Anura	Microhylidae	<i>Microhyla malang</i>	1	1	1	1	1
Anura	Pipidae	<i>Xenopus laevis</i>	1	1	1	1	1
Anura	Ranidae	<i>Pelophylax nigromaculatus</i>	1	1	1	1	1
Anura	Rhacophoridae	<i>Buergeria buergeri</i>	1	1	1	1	1
Anura	Rhacophoridae	<i>Rhacophorus nigropalmatus</i>	1	1	1	1	1
Anura	Scaphiopodidae	<i>Scaphiopus holbrookii</i>	1	1	1	1	1
Gymnophiona	Ichthyophiidae	<i>Ichthyophis biangularis</i>	1	1	1	1	1
Caudata	Salamandridae	<i>Cynops pyrrhogaster</i>	1	1	1	1	0/1
Caudata	Hynobiidae	<i>Hynobius naevius</i>	1	1	1	1	1

"1" indicates positive amplification.

"0/1" indicates that only one of two specimens were amplified in the experiment using two DNA samples from two individuals.

and physical surveys (capturing and visual surveys) were conducted. For the remaining 38 sites, only the eDNA survey was performed.

Water sampling was performed according to the Environmental DNA Sampling and Experiment Manual ver. 2.1 (The eDNA Society, 2019). We sampled 1 litre of surface water at each site and, after sampling, we added 1 ml benzalkonium chloride (final concentration = 0.1%) to prevent eDNA degradation (Yamanaka et al. 2017). To monitor potential contamination during the filtration and eDNA extraction processes, 1 litre of distilled water was used as the negative control for each sampling date.

We performed physical surveys of amphibian species at the 122 sampling sites (Suppl. material 1: Table S1)

39 samples being processed this way. Filters were preserved individually (but paired filters from turbid samples were pooled together) in tubes at -30 °C. The eDNA on the filter was extracted using a Salivette (Sarstedt) and DNeasy Blood & Tissue Kit (QIAGEN Science, Hilden, Germany). Salivette was used to centrifuge the GF/F filter to elute the DNA solution from the filter. The eluate was then purified using a DNeasy Blood and Tissue kit. A final elution volume of 100 µl of DNA was obtained and then stored at -25 °C. To prevent cross-contamination, all equipment used in the water collection and filtration steps, including plastic bottles, filter funnels and tweezers, were decontaminated using > 0.1% sodium hypochlorite solution (The eDNA Society 2019).

Application of the developed universal primers to environmental DNA analysis

To detect amphibian species from environmental samples, we amplified the partial 16S rRNA gene of amphibians and then performed high-throughput sequencing using a MiSeq platform (Illumina, San Diego, CA, USA). Amongst the primer sets, Amph16S, – consisting of 16S rRNA gene specific primers (Amph16S_1070_F + Amph16S_1340_R) – was used to amplify the gene fragments from the eDNA samples for the following reasons: 1) this primer combination successfully amplified the target gene fragment of all 16 species tested belonging to all three amphibian orders (Table 3) and 2) the amplified region of this primer set was estimated to have the highest resolution in species identification amongst the primer sets tested (see Results). The first-round PCR (1st PCR) was performed in eight rep-

Size Selection Kit (QIAGEN Science, Hilden, Germany) according to the Environmental DNA Sampling and Experiment Manual (Version 2.1; The eDNA Society 2019).

We carried out a second-round PCR (2nd PCR) using the purified products from the 1st PCR as templates. The 2nd PCR was performed using P5-i5-R1 (5' – AATGATACGGCGACCACCGAGATCTACAXXXXXXXXXX-ACACTCTTCCCTACACGACGCTCTTCCGATCT – 3') and P7-i7-R2 (5' – CAAGCAGAAGACGGCATACGAGATXXXXXXXXXXGTGACTGGAGTTCAGACGTGTGCTCTTCCGATCT – 3') primers to add MiSeq adapter sequences and 8-bp index sequences to both ends of the amplicons. The octo-X segments represent dual-index sequences. The 2nd PCR was conducted in a 12 µl solution containing 6.0 µl of 2× KAPA HiFi Hot-Start ReadyMix (KAPA Biosystems, Wilmington, WA, USA), 3.6 pmol each primer and 1 µl 1st PCR product.

Table 3. Detection (1) or not (0) of amphibian species by eDNA metabarcoding and physical surveys (phy).

area	A		B		C		D		F		G		H		I		J		K		
	eDNA	phy	eDNA	phy	eDNA	phy	eDNA	phy	eDNA	phy	eDNA	phy	eDNA	phy	eDNA	phy	eDNA	phy	eDNA	phy	
<i>Buergeria buergeri</i>	0	0	0	0	0	0	0	0	0	0	0	0	0	0	0	0	0	0	0	1	0
<i>Bufo japonicus</i>	1	0	0	0	0	0	0	0	0	0	0	0	0	0	0	0	0	0	0	0	0
<i>Bufo torrenticola</i>	0	0	0	0	0	0	1	0	0	0	0	0	0	0	0	0	0	0	0	0	0
<i>Fejervarya limnocharis</i>	0	0	0	0	0	0	0	0	1	1	1	1	0	0	1	1	0	0	0	1	0
<i>Dryophytes japonica</i>	1	1	1	0	1	1	1	1	1	0	1	0	1	1	1	0	1	1	1	1	0
<i>Lithobates catesbeianus</i>	0	0	0	0	1	1	0	0	1	0	1	1	1	0	0	0	0	0	1	0	0
<i>Pelophylax</i> sp.	0	0	0	0	0	0	0	0	0	0	0	0	0	0	0	0	0	0	0	1	0
<i>Pelophylax nigromaculatus</i>	0	0	0	0	0	0	1	1	1	1	1	1	1	1	1	0	1	1	0	0	0
<i>Pelophylax porosus</i> subsp.	1	1	1	0	1	1	0	0	1	0	0	0	1	0	0	0	0	0	0	0	0
<i>Rana japonica</i>	1	1	0	0	1	0	0	0	0	0	0	0	0	0	0	0	1	1	1	1	0
<i>Rana ornativentris</i>	0	0	0	0	0	0	0	0	0	0	0	0	1	0	0	0	0	0	0	0	0
<i>Rana tagoi tagoi</i>	0	0	1	0	0	0	0	0	0	0	0	0	1	0	0	0	1	0	1	0	0
<i>Zhangixalus arboreus</i>	0	0	0	0	0	0	0	0	0	0	1	0	1	0	0	0	0	0	0	0	0
<i>Zhangixalus schlegelii</i>	0	0	1	0	1	0	0	0	0	0	0	0	0	0	0	0	1	0	1	0	0
<i>Glandirana rugosa</i>	1	1	1	1	0	0	1	1	1	0	0	0	1	0	1	0	1	1	1	1	0
<i>Cynops pyrrhogaster</i>	0	0	0	0	0	0	0	0	0	0	0	0	0	0	0	0	0	0	1	0	0

licates with KOD-Plus-Neo polymerase (Toyobo, Osaka, Japan). Each PCR reaction (25 µl final volume) contained 300 nM primers, 2.5 µl 10× KOD buffer, 2.5 µl dNTPs (2 mM), 1.5 µl MgSO₄ (25 mM), 0.5 µl KOD-Plus-Neo polymerase, 1 µl DNA template and ultrapure water. The thermal cycle profile was 3 min at 95 °C; 40 cycles of 20 s at 98 °C, 15 s at 58 °C and 15 s at 72 °C; and 72 °C for 5 min. We used MiSeq-R1 tailed forward (5'-ACACTCTTCCCTACACGACGCTCTTCCGATCTNNNNNN + gene-specific sequences (Amph16S_1070_F) – 3') and R2 tailed reverse (5'-GTGACTGGAGTTCAGACGTGTGCTCTTCCGATCTNNNNNN + gene-specific sequences (Amph16S_1340_R) – 3') primers. These primers included six random hexamers (N) to enhance cluster separation on the flow cells during initial base call calibrations on the MiSeq platform. Ultrapure water was used instead of eDNA in the eight reaction mixtures (non-template negative controls). After the eight technical replicates were pooled into a single tube, we removed unreacted reagents and primer dimers from the 1st PCR products using the GeneRead

The PCR profile was as follows: 3 min at 95 °C; 15 cycles of 20 s at 98 °C, 15 s at 72 °C and 72 °C for 5 min.

The 2nd PCR products were pooled in equal volumes into a single 1.5-ml tube. Target amplicons were selected by electrophoresis using E-Gel SizeSelect 2% (Thermo Fisher Scientific, Waltham, MA, USA) with the E-Gel Precast Agarose Electrophoresis System (Thermo Fisher Scientific, Waltham, MA, USA). DNA concentration was measured using real-time PCR assays (QuantStudio3; Thermo Fisher Scientific, Waltham, MA, USA) and the library size distribution was confirmed using TapeStation 4200 (Agilent, Tokyo, Japan). The concentration of the DNA library was adjusted to 4 nM. Finally, the library was sequenced using an Illumina MiSeq v.2 Reagent kit for 2× 250 bp PE (Illumina, San Diego, CA, USA).

Bioinformatics

Raw sequencing reads were converted to FASTQ format using Illumina bcl2fastq2 v.2.17 software allowing

zero mismatches. To perform the species identification from the MiSeq output, FASTQ data were processed using the pipeline of the metabarcoding programme package Claident version 0.2.2017.05.22 (Tanabe and Toju 2013; downloaded from <https://www.claident.org/>). We demultiplexed the data and removed any reads with low-quality index sequences (i.e. Phred score < 30) using the *clsplitseq* command with the option *minqualtag* = 30. Paired-end reads were then merged using the *clconcatpair* command with the option *maxnmismatch* = 20 and *minovllen* = 20. We then trimmed low-quality tails until the Phred scores of the last base were 30 or higher. We removed low-quality sequences (Phred score < 30) using the *clfilterseq* command with the options *minqual* = 30 and *maxplowqual* = 0.1. In addition, apparently noisy and chimeric reads were removed using the *clcleanseqv* command with the options *primary-maxnmismatch* = 0, *secondary-maxnmismatch* = 1 and *pnoisycluster* = 0.5. After quality control, we classified the reads with > 99% sequence similarity into a molecular operational taxonomic unit (MOTU) using the *clclassseqv* command with the option of *minident* = 0.99. We obtained denoising sequence data and identified each MOTU as a species using online BLASTN (<https://blast.ncbi.nlm.nih.gov/Blast.cgi>), based on a 97% homology criterion.

MOTUs with less than 10 reads per sample were discarded because of potential contamination. The remaining sequence reads assigned to amphibians were vetted, based on habitat and species assignments were finalised. For all samples, the read depth was sufficiently large to saturate the number of amphibian species detected (checked using the “rarecurve” function in the vegan package version 2.5–4 (Oksanen et al. 2019)). Therefore, rarefaction was not performed.

Comparison with physical surveys

To compare the monitoring results between eDNA metabarcoding and physical surveys, the following analyses were performed using the vegan package version 2.5–4 and lme4 package version 1.1–21 (Bates et al. 2015) in R ver. 3.6.3 (R Development Core Team 2019). We used the VennDiagram package version 1.6.20 and ggplot2 package version 3.2.0.9000 to draw figures. The site-species read matrix was converted to the presence/absence of each species and the data of 122 sites, where both eDNA survey and physical surveys were carried out, were used for comparison (Suppl. material 1: Table S2). First, we compared the species composition of the monitoring methods. Non-metric multidimensional scaling (NMDS) with 10,000 permutations depicted the similarity of species composition amongst sites and methods measured using the Jaccard Similarity Coefficient and *PERMANOVA*, with 10,000 permutations, was conducted using the “*adonis*” function in vegan. In addition, to compare the beta dispersion of the methods, *PERMDISP* analysis was performed with the “*betadisper*” function in vegan. Sec-

ond, we compared the number of amphibian species detected between the monitoring methods. We fitted a generalised linear mixed model with a Poisson distribution, using the function “*glmer*”. In this model, the number of species was used as the response variable. The monitoring methods (i.e. eDNA metabarcoding or physical surveys) were set as explanatory variables and the survey area ID was set as a random effect to consider differences in the number of species inhabiting the survey areas. Finally, we visualised the detected community composition between the two methods in each area by drawing a Venn diagram.

Results

Performance comparison of the PCR primer sets

We tested five sets of universal primer candidates for the amphibian 16S rRNA genes (Table 1). The sets of “MiAmphiS” and “Amphi16S” had the shortest and longest amplicon sizes, respectively. The universality of each primer set was shown by the sequence logo (Suppl. material 1: Fig. S1). Both forward and reverse primers of “MiAmphiL” and “MiAmphiS” had no degenerated bases in both forward and reverse primers and high universality at the 3'-end of both primers; however, there were several mismatches in the region between the 5'-end and the centre of both primers, which was located on a variable region amongst species. The primers of “Modified 16Sar” and “16Sar_mod2” contained some degenerated bases, resulting in high universality. “Amphi16S” had mixed bases in the forward primer and no mixed base in the reverse primer and also showed high universality.

Regarding the power of amplification, we performed *in vitro* amplification tests for all five primer sets using DNA templates extracted from the 16 amphibian species belonging to all three amphibian orders and all primer sets amplified the target fragments tested. We performed *in silico* PCR using vertebrate 16S rRNA gene data reported to date (7861 fishes, 959 amphibians, 1170 reptiles, 2988 birds and 13,118 mammals). The specificity of each primer set, examined by *in silico* PCR, is shown in Suppl. material 1: Table S3. When we did not allow any mismatch between the primers and target 16S rRNA gene sequences (maxdiff = 0), Amphi16S showed the highest amplification rate (925/959 sequences; 96.4%). However, this primer set also had the highest amplification rate for non-amphibian taxa. MiAmphiL and MiAmphiS had the lowest amplification rates for non-amphibian taxa (3.1% and 5.4%, respectively), but they had the lowest amplification rates for amphibians. Even when we allowed two mismatches (maxdiff = 2), Amphi16S showed the highest amplification rate for amphibians (98.7%). Under maxdiff = 2, the amplification rates for reptiles and birds were clearly lower for MiAmphiL and MiAmphiS (8.2% and 28.9% for reptiles and 0% and 4.9% for birds, respectively) than for Amphi16S (90.3% and

99.4%, respectively), whereas the amplification rates for fishes and mammals did not differ significantly amongst these primer sets.

In the context of taxonomic resolution, Amph16S had the highest expected number of bases that differ amongst species (mean: 92.90, range: 68.77–163.23) (Fig. 3, Suppl. material 1: Fig. S2), whereas MiAmphiS had the lowest value (mean: 23.00, range: 17.17–34.53). The means of 16S_mod2, MiAmphiL and Modified 16Sar were 43.61, 43.50 and 44.89, respectively.

Amph16S had the highest universality for PCR amplification and taxonomic resolution in eDNA metabarcoding. Therefore, we regarded this primer set as the most useful and was applied in the subsequent field surveys.

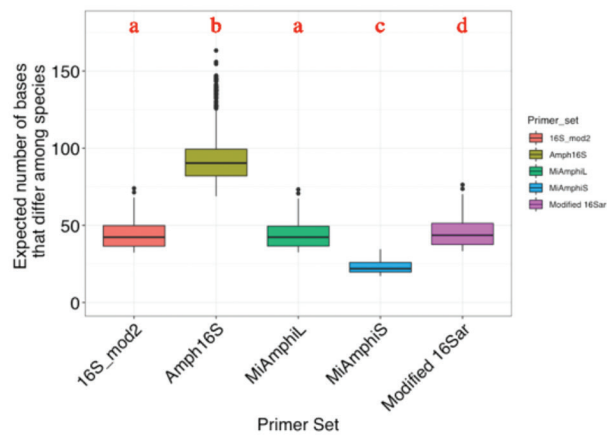


Figure 3. Comparison of the taxonomic resolutions amongst primer sets. The vertical axis indicates the expected number of bases that differ amongst species within the amplified region in each primer set. Each category indicates a set of primers; 16Sar_mod2: 16Sar_mod2 and Amph_16S_1070R, Amph16S: Amph_16S_1070F and Amph_16S_1340R, MiAmphiL: MiAmphiL-F and MiAmphiL-R, MiAmphiS: MiAmphiS-F and MiAmphiS-R, Modified 16Sar: Modified 16Sar and Amph_16S_1070R. The expected number of bases differed significantly amongst primer sets (ANOVA: $p < 0.05$). Significant differences were indicated by different letters (Tukey-Kramer test: $p < 0.05$).

Evaluating the effectiveness of Amph16S in field survey

In the actual metabarcoding analysis, using eDNA with Amph16S for the 160 field sites, we detected a total of 15 Anuran and one Caudate species from 122 water samples (see Discussion and Suppl. material 1: Table S4). None of the negative controls detected any of the species. Seven Anuran and one Caudate species were detected in the physical surveys (Suppl. material 1: Table S5). Combining the eDNA metabarcoding and physical surveys, 16 amphibian species were detected (Table 3). Amongst them, seven species were detected by both eDNA metabarcoding and physical surveys. Eight species (*Buergeria buergeri*, *Bufo japonicus*, *Bufo torrenticola*, *Pelophylax* sp., *Rana ornativentris*, *R. tagoi tagoi*, *Zhangixalus*

arboreus and *Z. schlegelii*) were detected only in the eDNA metabarcoding and only one species (*Cynops pyrrhogaster*) was detected by physical surveys. Seven sequences from multiple geographic areas were assigned to the single anuran species *Glandirana rugosa* (Suppl. material 1: Fig. S3), although they showed a $> 3\%$ nucleotide divergence. This is consistent with a previous report of many local populations with high genetic divergence in this species (Sekiya et al. 2013).

Community composition differed significantly between the eDNA metabarcoding and physical surveys (PERMANOVA: $p < 0.001$; Fig. 4; Table 4). The subsequent PERMDISP analysis further indicated that the amphibian community composition was significantly heterogeneous between the monitoring methods ($p < 0.001$; Table 5) and the number of species detected by eDNA metabarcoding was higher than that of physical surveys (GLMM: $p < 0.001$; Table 6). The amphibian community composition detected by the eDNA metabarcoding method encompassed that of the physical survey in all areas excluding area J (Fig. 5; Table 3).

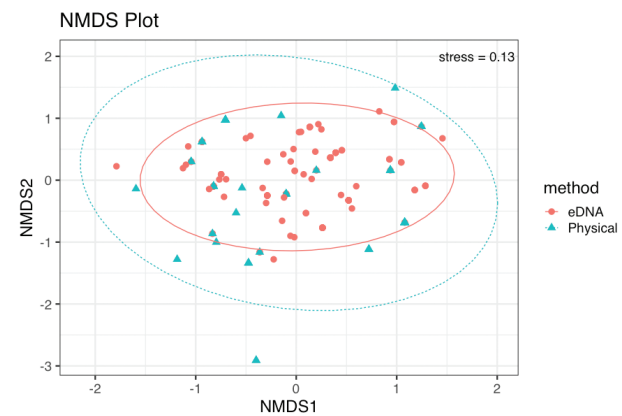


Figure 4. Comparison of amphibian community structures for each area and method. The NMDS plot showed variation of composition. The composition is significantly different between monitoring methods (PERMANOVA: $p < 0.001$). The ellipses show the 95% confidence level, based on the centroid calculated for each monitoring method.

Table 4. Summary of the results of the PERMANOVA between monitoring methods (eDNA metabarcoding and physical survey) for amphibian community composition.

	df	Sums of Sqs	Mean Sqs	F	R ²	p
Methods	1	1.746	1.74645	5.5987	0.03083	< 0.001
Residuals	176	54.9	0.31194		0.96917	
Total	177	56.65				

Table 5. Summary of the results of the PERMDISP between monitoring methods (eDNA metabarcoding and physical survey) for amphibian community composition.

	df	Sums of Sqs	Mean Sqs	F	p
Methods	1	0.1196	0.119603	12.024	< 0.001
Residuals	176	1.7506	0.009947		

Table 6. Result of the generalised mixed linear model for comparison of the number of species detected between monitoring methods.

Coefficients	Estimate	Std. Error	z value	p
Intercept	1.12138	0.07909	14.18	< 0.001
Physical survey	-1.26615	0.10976	-11.54	< 0.001

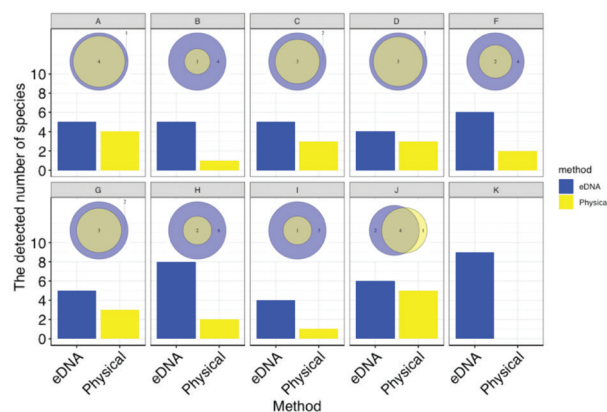


Figure 5. Comparison of the number of species detected between monitoring methods. The number of species detected by eDNA metabarcoding is higher than that of physical surveys (GLMM: $p < 0.001$). Comparison of community composition at each area was shown via Venn diagrams. Blue and yellow show eDNA metabarcoding and physical surveys, respectively. The number indicates the number of detected species.

Discussion

In monitoring for amphibian conservation, it is essential to design a universal primer that is comparable across survey areas and has a high detection performance. To achieve this, some candidate universal primers were designed using DNA sequences from amphibians worldwide. The primer set Amph16S was found to be the best after thorough multiplex evaluation using *in silico* tests, *in vitro* tests and field surveys. With regard to the usability of universal primers for eDNA metabarcoding, amplicon length and consistency with the priming site are important factors. Long DNA fragments have a faster degradation rate than short DNA fragments (Jo et al. 2017), resulting in a disadvantage in detection sensitivity for the former. However, a long amplification length increases taxonomic resolution. Thus, there is a trade-off between detectability and resolution depending on the amplification length. The introduction of degenerate bases is another point to consider in primer design. A primer with a degenerate site can reduce the mismatch between the primer and template DNA, but it may also cause non-specific amplification of non-target taxa (Zhang et al. 2020). Therefore, when designing and selecting primer sets, as herein performed, it is recommended to consider the sensitivity, taxonomic resolution and specificity of each primer set through *in silico* and *in vitro* tests and to select the primers according to the target ecosystem and purpose of the study.

In the current study, the number of amphibian species detected, using eDNA metabarcoding, was higher

than that from physical surveys. In addition, the amphibian community composition detected by eDNA metabarcoding encompassed that from physical surveys in almost all sampling areas. Similar to the results of previous studies on eDNA metabarcoding for fishes (Miya et al. 2015; Valentini et al. 2016; Yamamoto et al. 2017), metabarcoding had higher detectability of amphibian taxa than physical surveys. However, it should be noted that, if the physical surveys had been conducted at night – when most amphibians are more active – the detection rate may have been higher than that reported in the present study. Compared to the current physical survey, only the Japanese fire belly newt, *Cynopus pyrrhogaster*, was missing in the results from the eDNA analysis; however, this does not necessarily indicate a failure of the eDNA amplification of the newt, as it may be because of an insufficient number of reference sequences, as discussed below. eDNA metabarcoding can play an important role in amphibian monitoring. Besides, the technique can be better than physical surveys for investigating amphibians with ease. However, there exist issues, such as an insufficient number of reference databases and the incidence of false positives (Guillera-Arroita et al. 2017). Therefore, it would be preferable to conduct eDNA metabarcoding alongside physical surveys to comprehensively document biodiversity within the study area.

In physical surveys, the number or composition of species identified in each area is likely to vary amongst surveys due to factors such as season, weather and the experience and ability of the surveyors. The results of eDNA surveys should be less variable than in physical surveys because eDNA distribution is less susceptible to these factors. Therefore, eDNA metabarcoding of amphibians may be suitable for large-scale (e.g. national scale) monitoring studies in which the standardisation of conditions is necessary. On the other hand, when interpreting the results of future studies, it should be taken into consideration that the eDNA detection may be affected by seasons, water quality and the density of individuals present (Pilliod et al. 2014; Strickler et al. 2015; Buxton et al. 2018; Beentjes et al. 2019).

All five of the universal primer set candidates tested amplified the 16S rRNA gene fragments from the 16 taxa (with members of all three amphibian orders). Furthermore, Amph16S detected regional intraspecific polymorphisms found in *G. rugosa*, indicating that this primer set with long amplicon length would contribute to revealing intraspecific diversity, as well as high taxonomic resolution. In total, eDNA metabarcoding with Amph16S may be used, not only for investigating species distribution, but also the genetic diversity of amphibians prone to intraspecific polymorphism (Nishizawa et al. 2011; Tomi-naga et al. 2013; Oike et al. 2020).

C. pyrrhogaster, was not detected in the BLAST results. This newt is the only species of the family Salamandridae in this study area and is categorised as “Near Threatened” by the Red List of the Ministry of the Environment. With-in sampling area J, *C. pyrrhogaster* was detected by the

physical surveys, but not by eDNA metabarcoding. However, a sequence with 93% nucleotide similarity and the closest phylogenetic relationship with the *C. pyrrhogaster* 16S rRNA gene (Suppl. material 1: Fig. S4) was found in the eDNA metabarcoding output. A previous study, based on a 1407-bp mtDNA sequence (NADH6-tRNA-glu-cytb genes), showed that this species contains more than 100 mt haplotypes and that the intraspecific genetic divergence amongst major clades of *C. pyrrhogaster* is very large (Tominaga et al. 2013). This large intraspecific variation and lack of 16S rRNA gene data of local *C. pyrrhogaster* populations may have caused the misidentification of this species in the eDNA metabarcoding at site J. In fact, only one 16S rRNA region sequence of this species is available (GenBank: [EU880313.1](#)). Our query sequence was undoubtedly a member of Caudata (Suppl. material 1: Fig. S4) and, considering the known caudate species in the study site, the sequence is probably of *C. pyrrhogaster* (i.e. Amph16 amplified its DNA). Therefore, this lack of detection should not be due to any sampling error or PCR amplification, but due to the lack of a reference database. The accumulation of sequences in databases covering local populations is a future challenge and will solve this problem.

Amphibian populations often have various intra-species lineages and show highly structured spatial-genetic patterns (Nishizawa et al. 2011; Tominaga et al. 2013; Oike et al. 2020). The enhancement of reference sequences is crucial for adequately assigning MOTUs to appropriate taxa (Shaw et al. 2016; Deiner et al. 2017); therefore, collecting representative reference sequences for all populations of each area is desirable and would allow an accurate identification of species of local populations. Although the mitochondrial cytochrome c oxidase I (COI) gene region is generally used for DNA barcoding in animals (Hebert et al. 2003), universal primers for eDNA metabarcoding are often not designed for this region, but for the mitochondrial 16S and 12S rRNA regions (see also Miya et al. 2015; Valentini et al. 2016; Ushio et al. 2017; Deiner et al. 2017). Considering that species-specific detection eDNA assays are mostly designed for protein-coding genes, such as cytb, NADH 1, NADH2 and COI (see also Fukumoto et al. 2015; Sakata et al. 2017; Schumer et al. 2019; Klymus et al. 2020), more complete sequence databases are needed. In future studies, the entire mitochondrial genome will be sequenced and registered to enrich the database. Although the 16S rRNA region has been recommended as a target for barcoding in amphibians from early stages (Vences et al. 2005), accumulation of reference sequences is still ongoing. Accumulation of reference sequences from a wider geographic range of individuals must be accelerated to maximise the advantage of the higher resolution of the newly-designed primer. In addition, the fact that the interspecific differences within a species were detected is important for the application of eDNA metabarcoding in population genetics. In recent years, the detection of different haplotypes using eDNA has been focused (Tsuji et al. 2020). In amphibians, studies investigating the genetically-distinct lineages of the Chinese giant salamander (*Andrias davidianus*) have been

reported (Wang et al. 2021). These applications will be valuable in population genetics as well as the future conservation of genetic diversity.

While factors, such as weather and season, can destabilise the results of physical amphibian surveys that involve capture and visual surveillance, eDNA metabarcoding is less susceptible to these factors and can, thus, provide more stable results. Here, we designed and evaluated some primer sets in the 16S rRNA region, of which there is a relatively rich database of reference sequences available for amphibians. Amongst them, Amph16S showed relatively good performance in terms of taxonomic resolution and sufficient detectability. eDNA metabarcoding using Amph16S may contribute to rapid surveys of the distribution of amphibian species, especially for species with low population density and rare species. As it allows more consistent detection of amphibians than physical surveys, the use of eDNA metabarcoding will allow comparisons across different survey areas and ecosystems. To maximise the benefits of eDNA metabarcoding, however, a primer set needs to be developed using a number of validation procedures (e.g. *in silico* test, *in vitro* test and field survey) as performed in this study. Our approach, used in the current study, provides a practical framework for designing new primer sets for eDNA metabarcoding.

Author contributions

MKS, AK, TN, JK, MM and TM conceived and designed the study. AK, KN and MYH selected and provided appropriate materials. MKS, MUK, AK, TK, RK, MM and TM designed and evaluated the universal primer sets. MN and TS performed the field survey. MKS, MUK, TK, MN, TS and MM performed the laboratory experiments and environmental DNA analysis. MKS and TM wrote and edited the first draft of the manuscript. All authors discussed the results and contributed to the development of the manuscript.

Acknowledgements

The State Government of Sarawak permitted us to conduct the project (Permit No. NCCD.907.4.4(JLD.12)-185 and Park Permit No. 436/2015) and to export the collected specimens (Permit No. 16537) and the RDID provided facilities for conducting research. We are grateful to R. ak S. Pungga, P. ak Meleng and T. Itioka for their support in obtaining permission to conduct research and export specimens. This study was partly supported by JSPS KAKENHI (Grant Numbers: JP16H04735 and JP20H03326), JSPS Core-to-Core Program B to M. Motokawa, Kondo Grant of the Asahi Glass Foundation to K. Nishikawa, JST/JICA, SATREPS to T. Itioka and the Environment Research and Technology Development Fund (Grant Number JPMEERF20164002) to M. Miya. We thank Dr. Tim Cutajar and an anonymous reviewer for their valuable comments on the previous version of the manuscript.

References

- Alberdi A, Aizpurua O, Gilbert MTP, Bohmann K (2018) Scrutinizing key steps for reliable metabarcoding of environmental samples. *Methods in Ecology and Evolution* 9: 134–147. <https://doi.org/10.1111/2041-210X.12849>
- Bálint M, Nowak C, Márton O, Pauls SU, Wittwer C, Aramayo JL, Schulze A, Chambert T, Cocchiarraro B, Jansen M (2018) Accuracy, limitations and cost efficiency of eDNA-based community survey in tropical frogs. *Molecular Ecology Resources* 18: 1415–1426. <https://doi.org/10.1111/1755-0998.12934>
- Bates D, Mächler M, Bolker BM, Walker SC (2015) Fitting Linear Mixed-Effects Models Using lme4. *Journal of Statistical Software* 67 pp. <https://doi.org/10.18637/jss.v067.i01>
- Beentjes KK, Speksnijder AGCL, Schilthuizen M, Hoogeveen M, Van Der Hoorn BB (2019) The effects of spatial and temporal replicate sampling on eDNA metabarcoding. *PeerJ* 7: e7335. <https://doi.org/10.7717/peerj.7335>
- Brys R, Haegeman A, Halfmaerten D, Neyrinck S, Staelens A, Auwerx J, Ruttink T (2021) Monitoring of spatiotemporal occupancy patterns of fish and amphibian species in a lentic aquatic system using environmental DNA. *Molecular Ecology* 30: 3097–3110. <https://doi.org/10.1111/mec.15742>
- Butchart SHM, Walpole M, Collen B, von Strien A, Scharlemann JPW, Almond REA, Baillie JEM, Bomhard B, Brown C, Bruno J, Carpenter KE, Carr GM (2010) Global Biodiversity: Indicators of Recent Declines. *Science* 328: 1164–1168. <https://doi.org/10.1126/science.1187512>
- Buxton AS, Groombridge JJ, Griffiths RA (2018) Seasonal variation in environmental DNA detection in sediment and water samples. *PLOS ONE* 13(1): e0191737. <https://doi.org/10.1371/journal.pone.0191737>
- Bylemans J, Gleeson DM, Hardy CM, Furlan E (2018) Toward an ecoregion scale evaluation of eDNA metabarcoding primers: A case study for the freshwater fish biodiversity of the Murray-Darling Basin (Australia). *Ecology and Evolution* 8: 8697–8712. <https://doi.org/10.1002/ece3.4387>
- Bylemans J, Furlan EM, Pearce L, Daly T, Gleeson DM (2016) Improving the containment of a freshwater invader using environmental DNA (eDNA) based monitoring. *Biological Invasions* 18: 3081–3089. <https://doi.org/10.1007/s10530-016-1203-5>
- Charvoz L, Apothéloz-Perret-Gentil L, Reo E, Thiébaud J, Pawlowski J (2021) Monitoring newt communities in urban area using eDNA metabarcoding. *PeerJ* 9: e12357. <https://doi.org/10.7717/peerj.12357>
- Collins RA, Bakker J, Wangenstein OS, Soto AZ, Corrigan L, Sims DW, Genner MJ, Mariani S (2019) Non-specific amplification compromises environmental DNA metabarcoding with COI. Yu D (Ed.). *Methods in Ecology and Evolution* 10: 1985–2001. <https://doi.org/10.1111/2041-210X.13276>
- Costanza R, Mageau M (1999) What is a healthy ecosystem? In: *Aquatic Ecology*. Springer, 105–115. <https://doi.org/10.1023/A:1009930313242>
- Deiner K, Bik HM, Mächler E, Seymour M, Lacoursière-Roussel A, Altermatt F, Creer S, Bista I, Lodge DM, de Vere N, Pfrender ME, Bernatchez L (2017) Environmental DNA metabarcoding: Transforming how we survey animal and plant communities. *Molecular Ecology* 26: 5872–5895. <https://doi.org/10.1111/mec.14350>
- Dudgeon D, Arthington AH, Gessner MO, Kawabata ZI, Knowler DJ, Lévêque C, Naiman RJ, Prieur-Richard AH, Soto D, Stiassny MLJ, Sullivan CA (2006) Freshwater biodiversity: Importance, threats, status and conservation challenges. *Biological Reviews of the Cambridge Philosophical Society* 81: 163–182. <https://doi.org/10.1017/S1464793105006950>
- Edgar RC (2010) Search and clustering orders of magnitude faster than BLAST. *Bioinformatics* 26: 2460–2461. <https://doi.org/10.1093/bioinformatics/btq461>
- Evans NT, Olds BP, Renshaw MA, Turner CR, Li Y, Jerde CL, Mahon AR, Pfrender ME, Lamberti GA, Lodge DM (2016) Quantification of mesocosm fish and amphibian species diversity via environmental DNA metabarcoding. *Molecular Ecology Resources* 16: 29–41. <https://doi.org/10.1111/1755-0998.12433>
- Fellers G, Muths E, Dodd CK, Green DE, Battaglin W, Corn PS, Adams M, Gallant A, Fisher R, Schwalbe C, Bailey L, Sadinski W, Jung R, Walls S (2005) Amphibian Research and Monitoring Initiative (ARMI): A successful start to a national program in the United States. *Applied Herpetology* 2: 355–371. <https://doi.org/10.1163/157075405774483139>
- Freeland JR (2017) The importance of molecular markers and primer design when characterizing biodiversity from environmental DNA. *Genome* 60: 358–374. <https://doi.org/10.1139/gen-2016-0100>
- Fukumoto S, Ushimaru A, Minamoto T (2015) A basin-scale application of environmental DNA assessment for rare endemic species and closely related exotic species in rivers: A case study of giant salamanders in Japan. *Journal of Applied Ecology* 52: 358–365. <https://doi.org/10.1111/1365-2664.12392>
- Goldberg CS, Turner CR, Deiner K, Klymus KE, Thomsen PF, Murphy MA, Spear SF, McKee A, Oyler-McCance SJ, Cormman RS, Laramie MB, Mahon AR, Lance RF, Pilliod DS, Strickler KM, Waits LP, Fremier AK, Takahara T, Herder JE, Taberlet P (2016) Critical considerations for the application of environmental DNA methods to detect aquatic species. *Methods in Ecology and Evolution* 7: 1299–1307. <https://doi.org/10.1111/2041-210X.12595>
- Goldberg CS, Strickler KM, Fremier AK (2018) Degradation and dispersion limit environmental DNA detection of rare amphibians in wetlands: Increasing efficacy of sampling designs. *Science of the Total Environment* 633: 695–703. <https://doi.org/10.1016/j.scitotenv.2018.02.295>
- Guillera-Arroita G, Lahoz-Monfort JJ, van Rooyen AR, Weeks AR, Tingley R (2017) Dealing with false-positive and false-negative errors about species occurrence at multiple levels. *Methods in Ecology and Evolution* 8: 1081–1091. <https://doi.org/10.1111/2041-210X.12743>
- Hayami K, Sakata MK, Inagawa T, Okitsu J, Katano I, Doi H, Nakai K, Ichiyangi H, Gotoh RO, Miya M, Sato H, Yamanaka H, Minamoto T (2020) Effects of sampling seasons and locations on fish environmental DNA metabarcoding in dam reservoirs. *Ecology and Evolution* 10(12): 5354–5367. <https://doi.org/10.1002/ece3.6279>
- Hebert PDN, Cywinska A, Ball SL, DeWaard JR (2003) Biological identifications through DNA barcodes. *Proceedings of the Royal Society B: Biological Sciences* 270: 313–321. <https://doi.org/10.1098/rspb.2002.2218>
- Heyer WR, Donnelly AM, Roy WM, Hayek L-AC, Foster MS [Eds] (2014) *Measuring and monitoring biological diversity: Standard methods for amphibians*. Smithsonian Institution.
- Hof C, Araújo MB, Jetz W, Rahbek C (2011) Additive threats from pathogens, climate and land-use change for global amphibian diversity. *Nature* 480: 516–519. <https://doi.org/10.1038/nature10650>
- Jerde CL, Mahon AR, Chadderton WL, Lodge DM (2011) “Sight-unseen” detection of rare aquatic species using environmental DNA.

- Conservation Letters 4: 150–157. <https://doi.org/10.1111/j.1755-263X.2010.00158.x>
- Jo T, Murakami H, Masuda R, Sakata MK, Yamamoto S, Minamoto T (2017) Rapid degradation of longer DNA fragments enables the improved estimation of distribution and biomass using environmental DNA. *Molecular Ecology Resources* 17: e25–e33. <https://doi.org/10.1111/1755-0998.12685>
- Kačergytė I, Petersson E, Arlt D, Hellström M, Knape J, Spens J, Žmihorski M, Pärt T (2021) Environmental DNA metabarcoding elucidates patterns of fish colonisation and co-occurrences with amphibians in temperate wetlands created for biodiversity. *Freshwater Biology* 66: 1915–1929. <https://doi.org/10.1111/fwb.13800>
- Katoh K, Standley DM (2013) MAFFT Multiple Sequence Alignment Software Version 7: Improvements in Performance and Usability. *Molecular Biology and Evolution* 30: 772–780. <https://doi.org/10.1093/molbev/mst010>
- Kitano T, Umetsu K, Tian W, Osawa M (2007) Two universal primer sets for species identification among vertebrates. *International Journal of Legal Medicine* 121: 423–427. <https://doi.org/10.1007/s00414-006-0113-y>
- Klymus KE, Ruiz Ramos DV, Thompson NL, Richter CA (2020) Development and testing of species-specific quantitative PCR assays for environmental DNA applications. *Journal of Visualized Experiments*: 165: e61825. <https://doi.org/10.3791/61825>
- Kurabayashi A, Sumida M (2009) PCR primers for the neobatrachian mitochondrial genome. *Current Herpetology* 28: 1–11. <https://doi.org/10.3105/018.028.0101>
- Kurabayashi A, Sumida M (2013) Afrobatrachian mitochondrial genomes: Genome reorganization, gene rearrangement mechanisms, and evolutionary trends of duplicated and rearranged genes. *BMC Genomics* 14: e633. <https://doi.org/10.1186/1471-2164-14-633>
- Kurabayashi A, Sumida M, Yonekawa H, Glaw F, Vences M, Hasegawa M (2008) Phylogeny, recombination, and mechanisms of stepwise mitochondrial genome reorganization in mantellid frogs from Madagascar. *Molecular Biology and Evolution* 25: 874–891. <https://doi.org/10.1093/molbev/msn031>
- Kurabayashi A, Usuki C, Mikami N, Fujii T, Yonekawa H, Sumida M, Hasegawa M (2006) Complete nucleotide sequence of the mitochondrial genome of a Malagasy poison frog *Mantella madagascariensis*: Evolutionary implications on mitochondrial genomes of higher anuran groups. *Molecular Phylogenetics and Evolution* 39: 223–236. <https://doi.org/10.1016/j.ympev.2005.11.021>
- Laramie MB, Pilliod DS, Goldberg CS (2015) Characterizing the distribution of an endangered salmonid using environmental DNA analysis. *Biological Conservation* 183: 29–37. <https://doi.org/10.1016/j.biocon.2014.11.025>
- Li W, Tianjian S, Hou X, Qin M, Xu C, Li Y (2021a) Application of eDNA metabarcoding for detecting anura on a tropical island. *Diversity* 13: e440. <https://doi.org/10.3390/d13090440>
- Li W, Hou X, Xu C, Qin M, Wang S, Wei L, Wang Y, Liu X, Li Y (2021b) Validating eDNA measurements of the richness and abundance of anurans at a large scale. *Journal of Animal Ecology* 90: 1466–1479. <https://doi.org/10.1111/1365-2656.13468>
- Lopes CM, Sasso T, Valentini A, Dejean T, Martins M, Zamudio KR, Haddad CFB (2017) eDNA metabarcoding: a promising method for anuran surveys in highly diverse tropical forests. *Molecular Ecology Resources* 17: 904–914. <https://doi.org/10.1111/1755-0998.12643>
- Miya M, Sato Y, Fukunaga T, Sado T, Poulsen JY, Sato K, Minamoto T, Yamamoto S, Yamanaka H, Araki H, Kondoh M, Iwasaki W (2015) MiFish, a set of universal PCR primers for metabarcoding environmental DNA from fishes: detection of more than 230 subtropical marine species. *Royal Society Open Science* 2: e150088. <https://doi.org/10.1098/rsos.150088>
- Miya M (2022) Environmental DNA Metabarcoding: A novel method for biodiversity monitoring of marine fish communities. *Annual Review of Marine Science* 14: 161–185. <https://doi.org/10.1146/annurev-marine-041421-082251>
- Miya M, Gotoh RO, Sado T (2020) MiFish metabarcoding: a high-throughput approach for simultaneous detection of multiple fish species from environmental DNA and other samples. *Fisheries Science* 86: 939–970. <https://doi.org/10.1007/s12562-020-01461-x>
- Nishizawa T, Kurabayashi A, Kunihara T, Sano N, Fujii T, Sumida M (2011) Mitochondrial DNA diversification, molecular phylogeny, and biogeography of the primitive rhacophorid genus *Buergeria* in East Asia. *Molecular Phylogenetics and Evolution* 59: 139–147. <https://doi.org/10.1016/j.ympev.2011.01.015>
- Oike A, Mochizuki M, Tojo K, Matsuo T, Nakamura Y, Yasumasu S, Ito E, Arai T, Nakamura M (2020) A phylogenetically distinct group of *Glandirana rugosa* found in Kyushu, Japan. *Zoological Science* 37: e193. <https://doi.org/10.2108/zs190007>
- Oksanen J, Blanchet FG, Friendly M, Kindt R, Legendre P, Mcglinn D, Minchin PR, O'hara RB, Simpson GL, Solymos P, Henry M, Stevens H, Szoecs E, Maintainer HW (2019) Package “vegan” Title Community Ecology Package. *Community ecology package 2*. <https://cran.r-project.org/web/packages/vegan/vegan.pdf>
- Pilliod DS, Goldberg CS, Arkle RS, Waits LP (2014) Factors influencing detection of eDNA from a stream-dwelling amphibian. *Molecular Ecology Resources* 14: 109–116. <https://doi.org/10.1111/1755-0998.12159>
- Pilliod DS, Goldberg CS, Arkle RS, Waits LP, Richardson J (2013) Estimating occupancy and abundance of stream amphibians using environmental DNA from filtered water samples. *Canadian Journal of Fisheries and Aquatic Sciences* 70: 1123–1130. <https://doi.org/10.1139/cjfas-2013-0047>
- Riaz T, Shehzad W, Viari A, Pompanon F, Taberlet P, Coissac E (2011) EcoPrimers: Inference of new DNA barcode markers from whole genome sequence analysis. *Nucleic Acids Research* 39(21): e145. <https://doi.org/10.1093/nar/gkr732>
- Saenz-Agudelo P, Delrieu-Trottin E, DiBattista JD, Martínez-Rincon D, Morales-González S, Pontigo F, Ramírez P, Silva A, Soto M, Correa C (2021) Monitoring vertebrate biodiversity of a protected coastal wetland using eDNA metabarcoding. *Environmental DNA* 4(1): 77–92. <https://doi.org/10.1002/edn3.200>
- Sakata MK, Maki N, Sugiyama H, Minamoto T (2017) Identifying a breeding habitat of a critically endangered fish, *Acheilognathus typus*, in a natural river in Japan. *The Science of Nature* 104: e100. <https://doi.org/10.1007/s00114-017-1521-1>
- Sasso T, Lopes CM, Valentini A, Dejean T, Zamudio KR, Haddad CFB, Martins M (2017) Environmental DNA characterization of amphibian communities in the Brazilian Atlantic forest: Potential application for conservation of a rich and threatened fauna. *Biological Conservation* 215: 225–232. <https://doi.org/10.1016/j.biocon.2017.09.015>
- Schumer G, Hansen EC, Anders PJ, Blankenship SM (2019) Development of a quantitative polymerase chain reaction assay and environmental DNA sampling methods for Giant Gartersnake (*Thamnophis gigas*). *Kalendar R (Ed.)*. *PLOS ONE* 14: e0222493. <https://doi.org/10.1371/journal.pone.0222493>
- Sekiya K, Miura I, Ogata M (2013) Erratum: A new frog species of the genus *Rugosa* from Sado Island, Japan (Anura, Ranidae) (<https://mbmg.pensoft.net>)

- Zootaxa (2012) 3575 (49–62)). Zootaxa 3636: e200. <https://doi.org/10.11646/zootaxa.3636.1.10>
- Shaw JLA, Clarke LJ, Wedderburn SD, Barnes TC, Weyrich LS, Cooper A (2016) Comparison of environmental DNA metabarcoding and conventional fish survey methods in a river system. *Biological Conservation* 197: 131–138. <https://doi.org/10.1016/j.biocon.2016.03.010>
- Shu L, Ludwig A, Peng Z (2021) Environmental DNA metabarcoding primers for freshwater fish detection and quantification: In silico and in tanks. *Ecology and Evolution* 11: 8281–8294. <https://doi.org/10.1002/ece3.7658>
- Stat M, John J, DiBattista JD, Newman SJ, Bunce M, Harvey ES (2019) Combined use of eDNA metabarcoding and video surveillance for the assessment of fish biodiversity. *Conservation Biology*: 33(1): 196–205. <https://doi.org/10.1111/cobi.13183>
- Strickler KM, Fremier AK, Goldberg CS (2015) Quantifying effects of UV-B, temperature, and pH on eDNA degradation in aquatic microcosms. *Biological Conservation* 183: 85–92. <https://doi.org/10.1016/j.biocon.2014.11.038>
- Stuart SN, Chanson JS, Cox NA, Young BE, Rodrigues ASL, Fischman DL, Waller RW (2004) Status and trends of amphibian declines and extinctions worldwide. *Science* 306: 1783–1786. <https://doi.org/10.1126/science.1103538>
- Su G, Logez M, Xu J, Tao S, Villéger S, Brosse S (2021) Human impacts on global freshwater fish biodiversity. *Science* 371: 835–838. <https://doi.org/10.1126/science.abd3369>
- Takahara T, Minamoto T, Yamanaka H, Doi H, Kawabata Z (2012) Estimation of fish biomass using environmental DNA. *PLOS ONE* 7: e35868. <https://doi.org/10.1371/journal.pone.0035868>
- Tanabe AS, Toju H (2013) Two new computational methods for universal DNA barcoding: A benchmark using barcode sequences of bacteria, Archaea, animals, fungi, and land plants. Fontaneto D (Ed.). *PLOS ONE* 8: e76910. <https://doi.org/10.1371/journal.pone.0076910>
- Tominaga A, Matsui M, Yoshikawa N, Nishikawa K, Hayashi T, Misawa Y, Tanabe S, Ota H (2013) Phylogeny and historical demography of *Cynops pyrrhogaster* (Amphibia: Urodela): Taxonomic relationships and distributional changes associated with climatic oscillations. *Molecular Phylogenetics and Evolution* 66: 654–667. <https://doi.org/10.1016/j.ympev.2012.10.015>
- Tsuji S, Shibata N, Sawada H, Ushio M (2020) Quantitative evaluation of intraspecific genetic diversity in a natural fish population using environmental DNA analysis. *Molecular Ecology Resources* 20: 1323–1332. <https://doi.org/10.1111/1755-0998.13200>
- Untergasser A, Cutcutache I, Koressaar T, Ye J, Faircloth BC, Remm M, Rozen SG (2012) Primer3-new capabilities and interfaces. *Nucleic Acids Research* 40: e115. <https://doi.org/10.1093/nar/gks596>
- Ushio M, Fukuda H, Inoue T, Makoto K, Kishida O, Sato K, Murata K, Nikaido M, Sado T, Sato Y, Takeshita M, Iwasaki W, Yamanaka H, Kondoh M, Miya M (2017) Environmental DNA enables detection of terrestrial mammals from forest pond water. *Molecular Ecology Resources* 17: e63–e75. <https://doi.org/10.1111/1755-0998.12690>
- Valentini A, Taberlet P, Miaud C, Civade R, Herder J, Thomsen PF, Bellemain E, Besnard A, Coissac E, Boyer F, Gaboriaud C, Jean P, Poullet N, Roset N, Copp GH, Geniez P, Pont D, Argillier C, Baudoin JM, Peroux T, Crivelli AJ, Olivier A, Acqueberge M, Le Brun M, Møller PR, Willerslev E, Dejean T (2016) Next-generation monitoring of aquatic biodiversity using environmental DNA metabarcoding. *Molecular Ecology* 25: 929–942. <https://doi.org/10.1111/mec.13428>
- Vences M, Lyra ML, Perl RGB, Bletz MC, Stanković D, Lopes CM, Jarek M, Bhujji S, Geffers R, Haddad CFB, Steinfartz S (2016) Freshwater vertebrate metabarcoding on Illumina platforms using double-indexed primers of the mitochondrial 16S rRNA gene. *Conservation Genetics Resources* 8: 323–327. <https://doi.org/10.1007/s12686-016-0550-y>
- Vences M, Thomas M, Van Der Meijden A, Chiari Y, Vieites DR (2005) Comparative performance of the 16S rRNA gene in DNA barcoding of amphibians. *Frontiers in Zoology* 2: e5. <https://doi.org/10.1186/1742-9994-2-5>
- Wang J, Liu P, Chang J, Li C, Xie F, Jiang J (2021) Development of an eDNA metabarcoding tool for surveying the world's largest amphibian. *Current Zoology*. <https://doi.org/10.1093/cz/zoab094>
- Yamamoto S, Masuda R, Sato Y, Sado T, Araki H, Kondoh M, Minamoto T, Miya M (2017) Environmental DNA metabarcoding reveals local fish communities in a species-rich coastal sea. *Scientific Reports* 7: e40368. <https://doi.org/10.1038/srep40368>
- Yamanaka H, Minamoto T, Matsuura J, Sakurai S, Tsuji S, Motozawa H, Hongo M, Sogo Y, Kakimi N, Teramura I, Sugita M, Baba M, Kondo A (2017) A simple method for preserving environmental DNA in water samples at ambient temperature by addition of cationic surfactant. *Limnology* 18: 233–241. <https://doi.org/10.1007/s10201-016-0508-5>
- Zhang S, Zhao J, Yao M (2020) A comprehensive and comparative evaluation of primers for metabarcoding eDNA from fish. *Methods in Ecology and Evolution* 11: 1609–1625. <https://doi.org/10.1111/2041-210X.13485>

Supplementary material 1 Supporting Information

Author: Masayuki K. Sakata, Mone U. Kawata, Atsushi Kurabayashi, Takaki Kurita, Masatoshi Nakamura, Tomoyasu Shirako, Ryosuke Kakehashi, Kanto Nishikawa, Mohamad Yazid Hossman, Takashi Nishijima, Junichi Kabamoto, Masaki Miya, Toshifumi Minamoto

Data type: Docx file.

Explanation note: Conditions used for downloading sequences from NCBI to create the vertebrate reference database.

Copyright notice: This dataset is made available under the Open Database License (<http://opendatacommons.org/licenses/odbl/1.0/>). The Open Database License (ODbL) is a license agreement intended to allow users to freely share, modify, and use this Dataset while maintaining this same freedom for others, provided that the original source and author(s) are credited.

Link: <https://doi.org/10.3897/mbmg.6.76534.suppl1>