



**Calhoun: The NPS Institutional Archive**  
**DSpace Repository**

---

Faculty and Researchers

Faculty and Researchers' Publications

---

2013-09-30

# Field and Numerical Study of the Columbia River Mouth

Gelfenaum, Guy; MacMahan, Jamie; Reniers, Ad

Naval Postgraduate School

---

<http://hdl.handle.net/10945/69373>

---

This publication is a work of the U.S. Government as defined in Title 17, United States Code, Section 101. Copyright protection is not available for this work in the United States.

*Downloaded from NPS Archive: Calhoun*



Calhoun is the Naval Postgraduate School's public access digital repository for research materials and institutional publications created by the NPS community. Calhoun is named for Professor of Mathematics Guy K. Calhoun, NPS's first appointed -- and published -- scholarly author.

**Dudley Knox Library / Naval Postgraduate School**  
**411 Dyer Road / 1 University Circle**  
**Monterey, California USA 93943**

<http://www.nps.edu/library>

## **Field and Numerical Study of the Columbia River Mouth**

Guy Gelfenbaum  
400 Natural Bridges Dr.  
Santa Cruz, CA 95060  
Phone: (831) 460-7417 email: [ggelfenbaum@usgs.gov](mailto:ggelfenbaum@usgs.gov)

Jamie MacMahan  
Oceanography Department, Spanagel 327c  
Naval Postgraduate School  
Monterey, CA 93943  
Phone: (831) 656-2379 email: [jmacmah@nps.edu](mailto:jmacmah@nps.edu)

Ad Reniers  
Rosentiel School of Marine and atmospheric Science  
Miami, FL 33149  
Phone: (305) 421-4223 email: [areniers@rsmas.miami.edu](mailto:areniers@rsmas.miami.edu)

USGS Award Number: N0001413IP2004

### **LONG-TERM GOALS**

The overall goal is to improve the predictive capability and skill of Delft3D to simulate complex hydrodynamics in an inlet setting in which tides, river discharge, winds, waves, and bottom friction are all important.

### **OBJECTIVES**

The main objectives of our effort are to measure and model from the inner-shelf to the Columbia River estuary: 1) the three-dimensional flow velocity distribution spatially and temporally during a range of conditions, 2) the tidal exchange of sediments, optics, salinity, and temperature, 3) the surface particle pathways, horizontal mixing, transport, and corresponding Lagrangian Coherent Structure (LCSs) as a function of tidal flow and stratification, 4) the sea-swell and infragravity wave-current interactions, 5) the spatial variability of bed sediment grain size and the concomitant bedform development to evaluate the spatial distribution of bottom friction required for model validation, and 6) the residual flow circulation associated with the forcing by waves, wind and density differences. In addition, our effort will utilize unique measurement platforms for collecting data in this harsh environment using autonomous and mobile platforms and new inexpensive tracking drifters.

### **APPROACH**

USGS scientists and staff from the Pacific Coastal and Marine Science Center in Santa Cruz CA teamed with co-PIs Dr. Jamie MacMahan, Naval Postgraduate School and Dr. Ad Reniers, University of Miami, as well as Dr. Chris Sherwood, USGS Woods Hole to deploy instruments to measure

# Report Documentation Page

Form Approved  
OMB No. 0704-0188

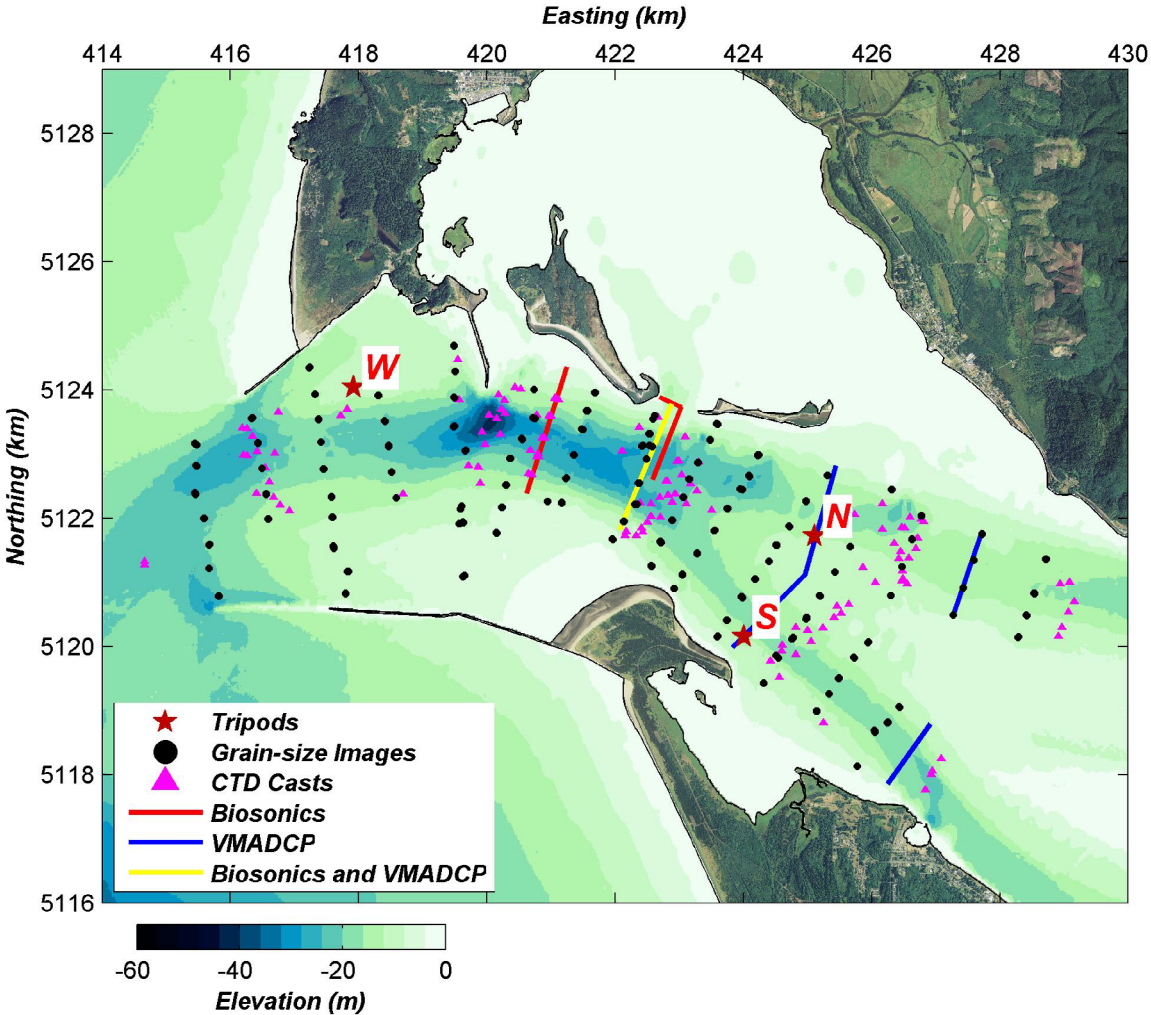
Public reporting burden for the collection of information is estimated to average 1 hour per response, including the time for reviewing instructions, searching existing data sources, gathering and maintaining the data needed, and completing and reviewing the collection of information. Send comments regarding this burden estimate or any other aspect of this collection of information, including suggestions for reducing this burden, to Washington Headquarters Services, Directorate for Information Operations and Reports, 1215 Jefferson Davis Highway, Suite 1204, Arlington VA 22202-4302. Respondents should be aware that notwithstanding any other provision of law, no person shall be subject to a penalty for failing to comply with a collection of information if it does not display a currently valid OMB control number.

1. REPORT DATE <b>30 SEP 2013</b>		2. REPORT TYPE		3. DATES COVERED <b>00-00-2013 to 00-00-2013</b>	
4. TITLE AND SUBTITLE <b>Field and Numerical Study of the Columbia River Mouth</b>				5a. CONTRACT NUMBER	
				5b. GRANT NUMBER	
				5c. PROGRAM ELEMENT NUMBER	
6. AUTHOR(S)				5d. PROJECT NUMBER	
				5e. TASK NUMBER	
				5f. WORK UNIT NUMBER	
7. PERFORMING ORGANIZATION NAME(S) AND ADDRESS(ES) <b>Naval Postgraduate School, Department of Oceanography, Monterey, CA, 93943</b>				8. PERFORMING ORGANIZATION REPORT NUMBER	
9. SPONSORING/MONITORING AGENCY NAME(S) AND ADDRESS(ES)				10. SPONSOR/MONITOR'S ACRONYM(S)	
				11. SPONSOR/MONITOR'S REPORT NUMBER(S)	
12. DISTRIBUTION/AVAILABILITY STATEMENT <b>Approved for public release; distribution unlimited</b>					
13. SUPPLEMENTARY NOTES					
14. ABSTRACT					
15. SUBJECT TERMS					
16. SECURITY CLASSIFICATION OF:			17. LIMITATION OF ABSTRACT	18. NUMBER OF PAGES	19a. NAME OF RESPONSIBLE PERSON
a. REPORT <b>unclassified</b>	b. ABSTRACT <b>unclassified</b>	c. THIS PAGE <b>unclassified</b>			

hydrodynamics, map bathymetry, bedforms and seabed grain size, and deploy drifters around the Mouth of the Columbia River (MCR) during the spring freshet 2013. USGS is also working with Dr. Edwin Elias, Deltares to test Delft3D hydrodynamic and sediment transport model in MCR during high river discharge conditions.

**WORK COMPLETED**

The observations at the MCR consist of time-series measurements from instrumented tripods at three locations between May 9 and June 16, 2013 (Figure 1; Table 1). Each tripod was equipped with an upward-looking ADCP, a near-bed ADV, and a pressure sensor to measure hydrodynamics, a CTD and OBS to measure water properties near the bed, and fan- and pencil-beam sonars to measure bedform geometry (Table 2).

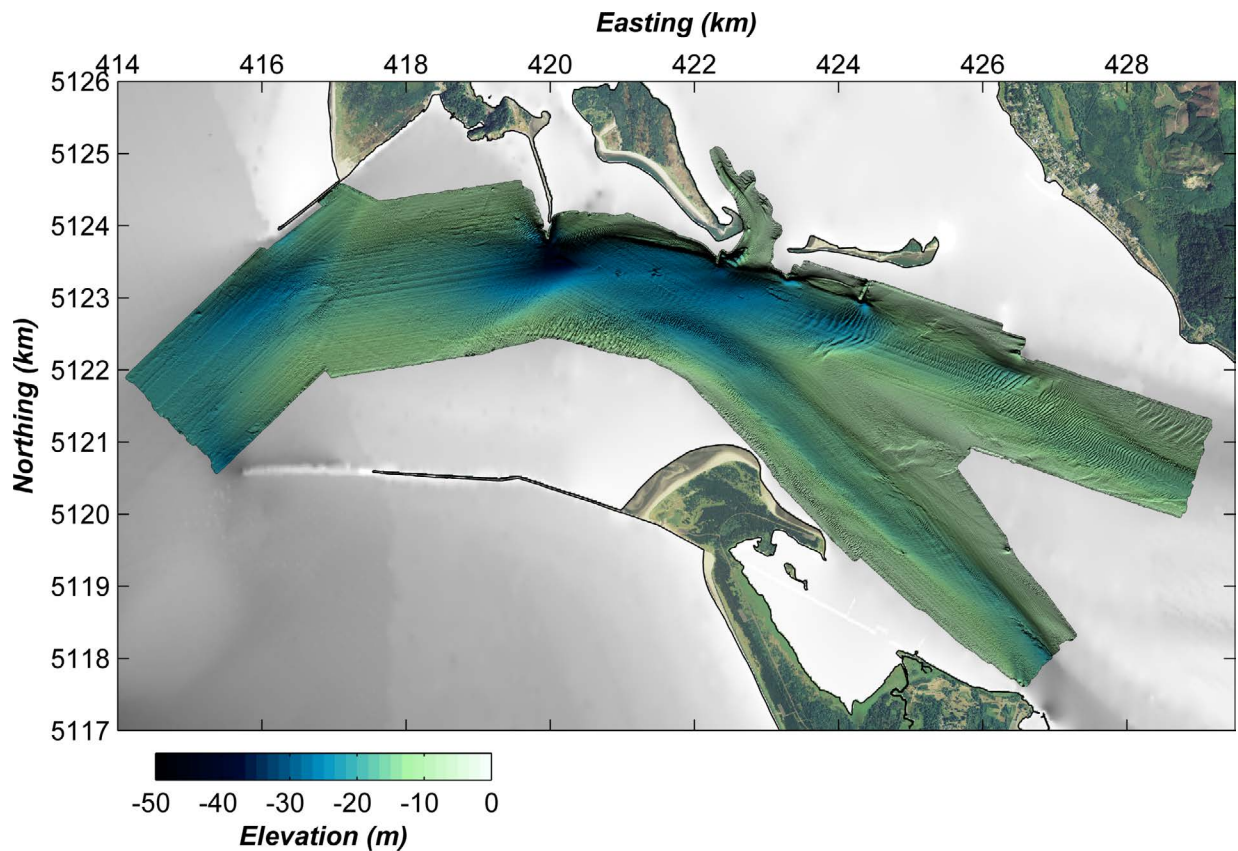


*Figure 1. Map showing the locations of 3 instrumented tripods deployed at the MCR between May 9 and Jun 16, 2013, locations of “flying eyeball” seabed grain size images, CTD casts, Biosonics and vessel-mounted ADCP transects.*

Digital images of the seabed were collected at 111 locations within the MCR using the “flying eyeball” (Rubin et al., 2007) from aboard the R/V *Parke Snavely* (Figure 1). For each location, between 3 and 5 replicate images were collected and will later be analyzed to characterize grain-size distributions (Buscombe, 2008) of surface sediments throughout the MCR.

High-resolution acoustic backscatter data were collected within the water column along three transects within the MCR (Figure 1) using a Biosonics 420 kHz echosounder. The transects were navigated between 4 and 19 times under a variety of tide and flow conditions and the data will be used to delineate plume and shear fronts (eg. Nash and Moum, 2005) within the inlet.

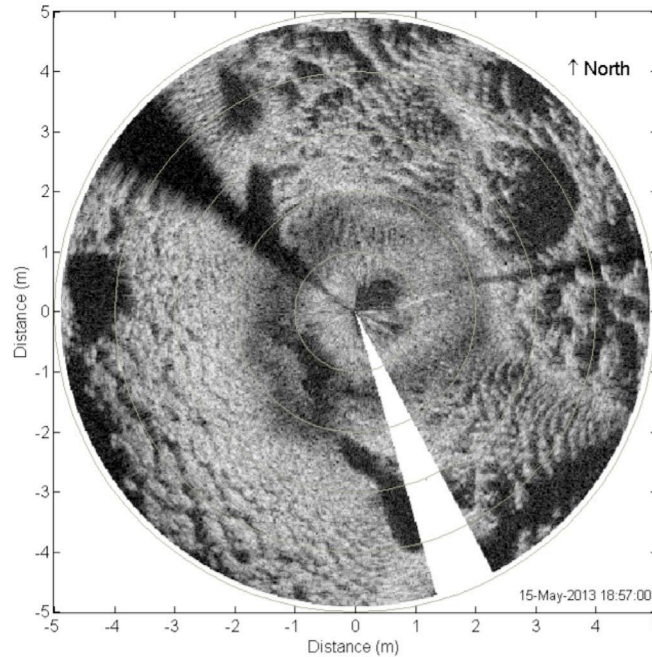
Bathymetry and co-registered acoustic backscatter were collected throughout the MCR with a Systems Engineering & Assessment, Ltd. SWATHplus-M interferometric sidescan sonar system pole-mounted to the USGS survey vessel R/V *Parke Snavely*. Positioning and orientation of the transducers were measured using an Applanix POS MV 320 and afterwards post-processed using Applanix POSpac MMS software. Continuous speed of sound measurements were collected using an Applied Micro Systems Micro SV mounted at the transducer and sound velocity profiles were collected regularly with a YSI CastAway CTD. The bathymetry and ancillary data were combined and rendered into a 5-m digital elevation model using Caris HIPS and SIPS (Figure 2). Final datum conversions from WGS84 Ellipsoid heights (Epoch 2013.54) into NAD83 (2011)/NAVD88 heights was done using the Proj4 library and then interpolation and application of the National Geodetic Survey Geoid12a offsets was done in Surfer. In total, more than 570 million soundings were collected along 1400 km of trackline.



**Figure 2. Map of 5-m DEM created from SWATHplus bathymetric data.**

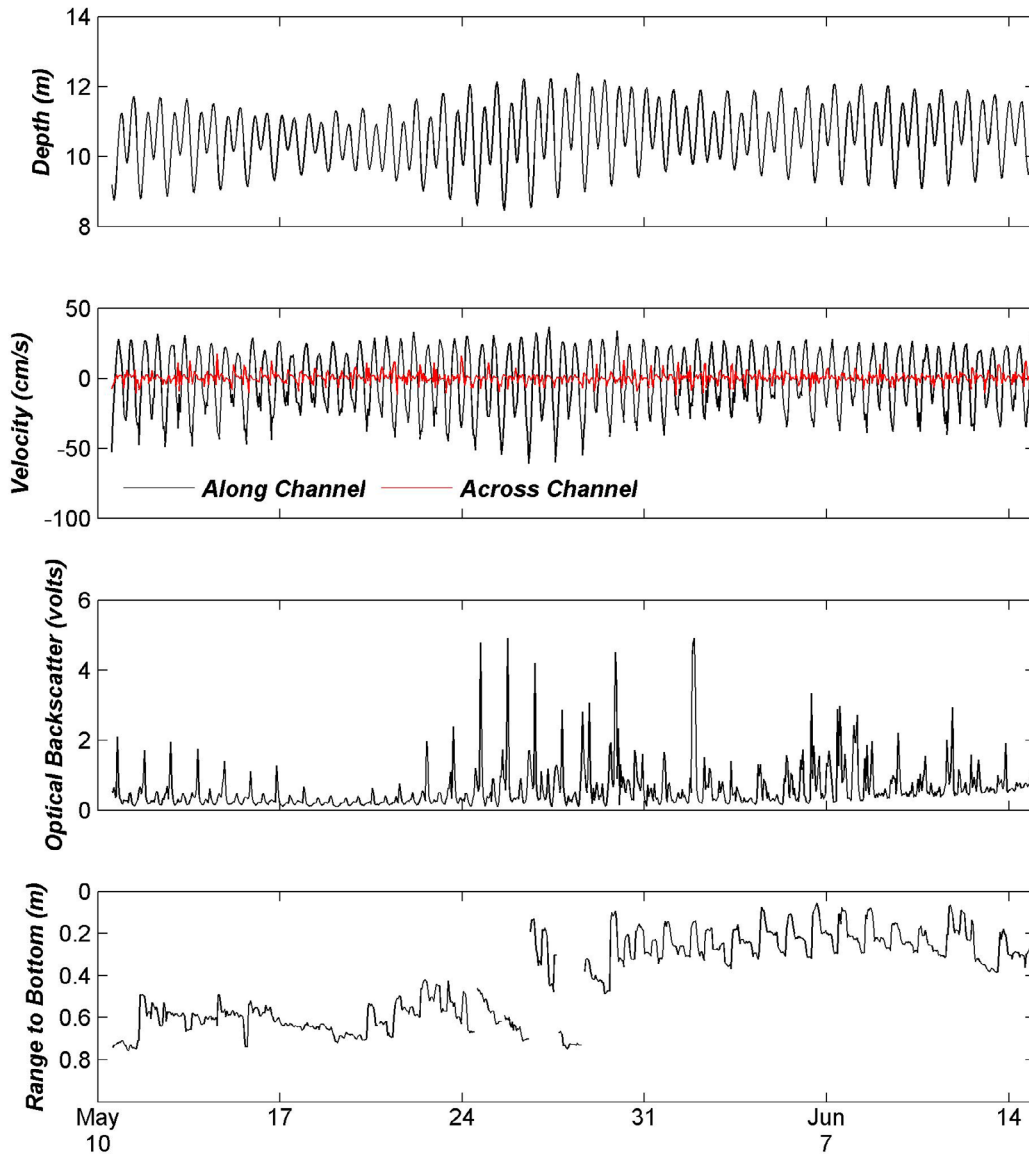
## RESULTS

USGS successfully employed a robust open tripod frame with a dual recovery method on the three instrumented tripods. All instruments successfully collected data for the full duration of the deployment (except two of the sonars due to limited battery life) (Figures 3 and 4). In August 2005 these tripods were successfully deployed during low river discharge conditions and small waves at MCR. One of the goals of the present experiment was to test whether these frames could withstand the more energetic conditions of the spring freshet. Data from the instrumented tripods are presently being processed and checked for QA/QC.



***Figure 3. Seabed image from rotary sonar mounted on North tripod showing multiple three-dimensional bedform fields.***

The SWATHplus successfully mapped bathymetry throughout the MCR characterizing large-scale inlet morphology as well as medium and large-scale bedforms. Important features including a deep hole adjacent to Jetty A, the shallow bar between the main jetties that induces wave shoaling, and a linear ledge along the north side of the channel were mapped in detail (Figure 2). Detailed seafloor mapping also characterized a variety of sand bedforms ranging in size from a few meters in wavelength to hundreds of meters.



**Figure 4. Time series from North Tripod of water depth, currents, optical backscatter, and range to the bottom from the ADV.**

**IMPACT/APPLICATIONS**

The field measurements collected during the MCR freshet experiment will allow rigorous testing of the Delft3D hydrodynamic and sediment transport model. The model was successfully validated against low river discharge and small wave conditions during August 2005 by Elias et al. (2012). Conditions during the recent experiment were more energetic, with larger waves and higher river discharge. Testing and validating the model during these more energetic conditions will extend the range of applicability of this important model. In addition, the surface drifter deployments (see MacMahan and Reniers annual report) are a new and challenging data set to test the model’s capacity to simulate shear and density fronts.

Detailed maps of bedforms observed in the new SWATHplus data will be used to test various bedform models as well as test various bottom roughness schemes in the Delft3D hydrodynamic and sediment transport model.

## **RELATED PROJECTS**

None

## **REFERENCES**

- Buscombe, D., 2008. Estimation of grain-size distributions and associated parameters from digital images of sediment. *Sedimentary Geology* 210: 1-10.
- Elias, E., Gelfenbaum, G., and Van der Westhuysen, A., 2012, Validation of a coupled wave-flow model in a high-energy setting: the Mouth of the Columbia River. *Journal of Geophysical Research – Oceans*, 117, C9, doi:10.1029/2012JC008105.
- Nash, J.D., Moum, J.N., 2005. River plumes as a source of large-amplitude internal waves in the coastal ocean. *Nature* 437: 400:403.
- Rubin, D.M., Chezar, H., Harney, J.N., Topping, D.J., Melis, T.S., Sherwood, C.R., 2007. Underwater microscope for measuring spatial and temporal changes in bed-sediment grain size. *Sedimentary Geology* 202: 402-408.



**Table 1. Tripod locations, depths, and times of deployment and recovery**

Location	Longitude (°E)	Latitude (°N)	Depth (m)	Deployed (GMT)		Recovered (GMT)	
				Date	Time	Date	Time
North Tripod	-123.97139	46.24498	11.2	9-May-13	16:35	15-Jun-13	20:37
West Tripod	-124.06505	46.26505	12.1	9-May-13	18:27	15-Jun-13	22:12
South Tripod	-123.98542	46.23073	13.0	9-May-13	19:51	16-Jun-13	1:47

**Table 2. Instruments, sampling scheme, and data products from tripods deployed at the MCR**

Instrument Type	Sampling Scheme	Quantity Measured
RDI ADCP	1 Hz Continuous Sampling	Velocity profiles from 2.9 m above bed to surface at 0.5-m resolution
Sontek ADV	22-min burst at 8 Hz every hour	Point measurement of velocity at 0.66 m above bed, range to bed from ADV sensor
OBS	22-min burst at 8 Hz every hour	Point measurement of optical backscatter at 0.67 m above bed
Pressure	22-min burst at 8 Hz every hour	Point measurement of velocity at 1.4 m above bed
RBR CTD	10-sec burst at 6 Hz every 5 min	Point measurement of temperature and salinity at 1.8 m above bed
Imagenex Fan Beam Sonar	1 scan every hour or every 3 hours	Side-scan imagery of bed forms
Imagenex Pencil Beam Sonar	1 scan every hour or every 3 hours	Profiles of bathymetry in vicinity of tripod