



Calhoun: The NPS Institutional Archive
DSpace Repository

Faculty and Researchers

Faculty and Researchers' Publications

2015-12-03

RT-137:ilities Tradespace and Affordability Resource Analysis Based on System Architecture Behavior

Farah-Stapleton, Monica; Madachy, Ray; Auguston,
Mikhail; Giammarco, Kristin

Systems Engineering Research Center (SERC)

<http://hdl.handle.net/10945/70123>

This publication is a work of the U.S. Government as defined in Title 17, United States Code, Section 101. Copyright protection is not available for this work in the United States

Downloaded from NPS Archive: Calhoun



Calhoun is the Naval Postgraduate School's public access digital repository for research materials and institutional publications created by the NPS community. Calhoun is named for Professor of Mathematics Guy K. Calhoun, NPS's first appointed -- and published -- scholarly author.

Dudley Knox Library / Naval Postgraduate School
411 Dyer Road / 1 University Circle
Monterey, California USA 93943

<http://www.nps.edu/library>

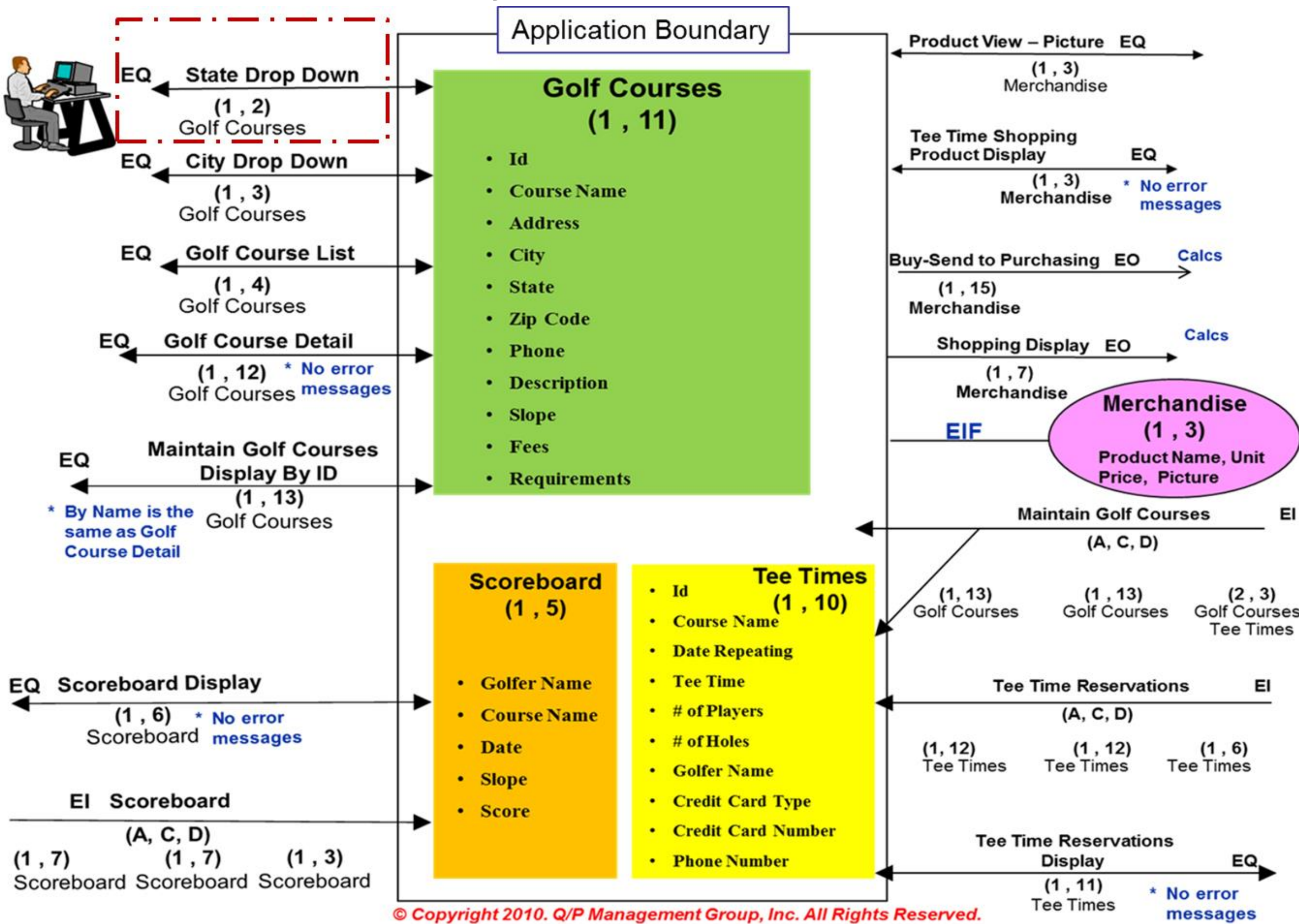
Research Task / Overview

This aspect of the RT-137 task leverages the following innovations of Monterey Phoenix Behavior Modeling:

- Behaviors and interactions of the system AND environment are described in **one uniform framework**
- System interactions among** components are **specified separately from system behaviors** of components
- A **library of all possible scenarios** (up to a specified scope limit) are generated from the separately specified behaviors and interactions, leveraging the **small scope hypothesis** that most flaws will be demonstrated on small counterexamples

Data & Analysis

Example: Tee Time System

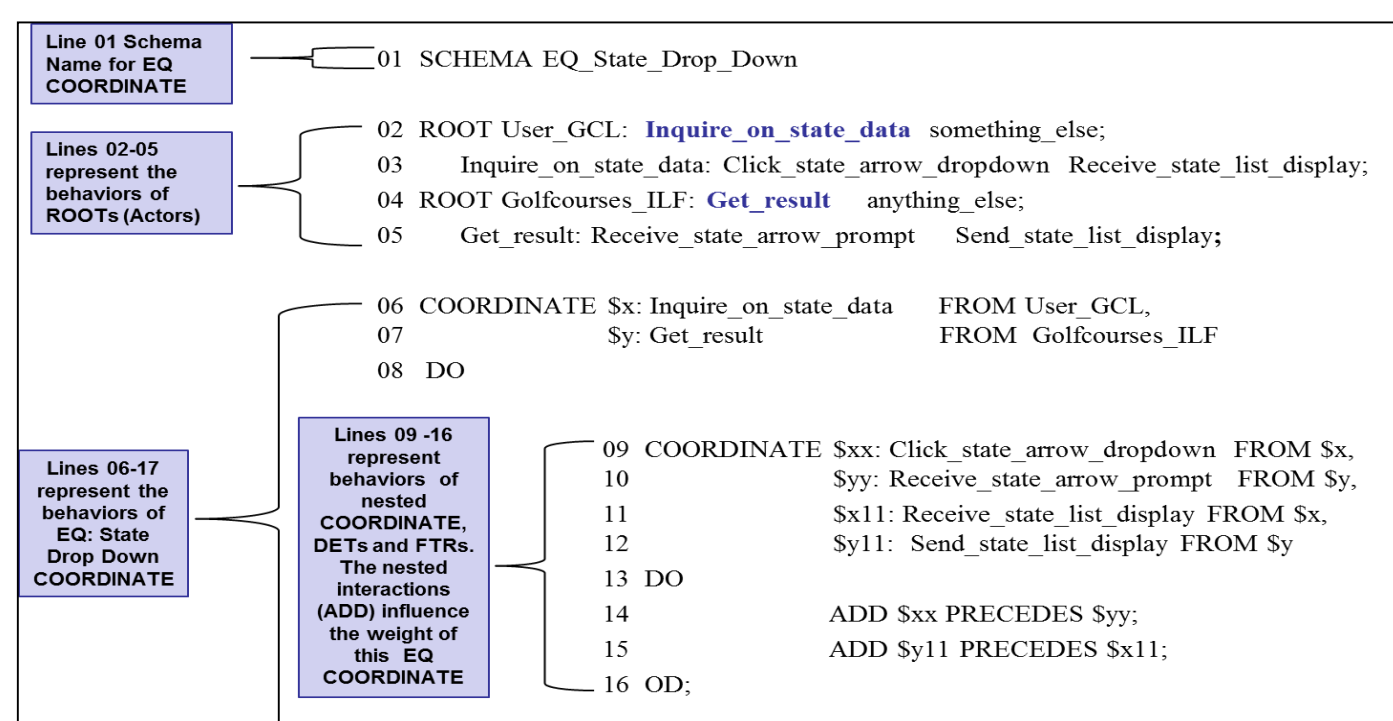


© Copyright 2010. Q/P Management Group, Inc. All Rights Reserved.

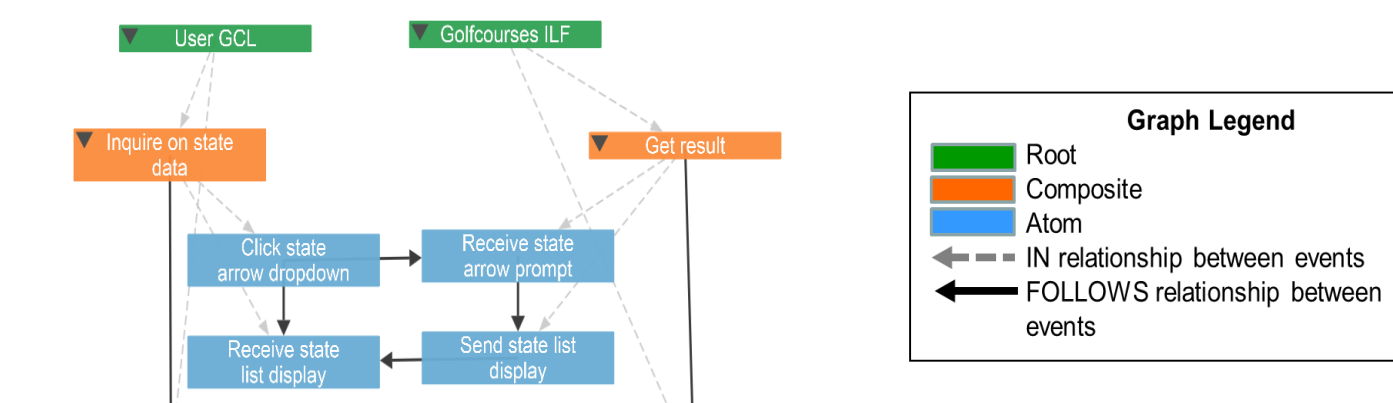
EP	Description	ILF/EIF	FTR/DET	Complex	UFP
EQ	State Drop Down	Golf Courses (1)	(1,2)	Low	3

UFP Calculation: FPA Manual Count
1 FTR and 2 DETs identified from the behavior of the State Drop Down EQ
0-1 FTRs and 1-5 DETs correspond to a Low functional complexity rating
A Low functional complexity rating corresponds to **3 UFPs**

Software Size	Sizing Method	Function Points
Unadjusted Function Points	200	200



UFP Calculation: Extracted From MP
•1 COORDINATE interaction associated with State Drop Down EQ behaviors
•State Drop down EQ COORDINATE contains a nested COORDINATE (2 ADDs)
•The 2 ADDs relate to 2 DETs
•ROOT Golfcourses_ILF relates to 1 FTR
•0 -1 FTRs and 1-5 DETs correspond to a Low functional complexity rating
•A Low functional complexity rating corresponds to 3 UFP
•EQ State Drop Down is equal to 1 COORDINATE with a weight of 3 or **3 UFPs**



- The MP architecture model is based on behavior modeling, providing a bridge between the requirements and high level design.
- MP as a **formal architecture model** is a source for **cost estimate** information early in the **design phase**.
- The concept of an **event** in MP is an abstraction for activity within the system. It is **rendered as a pseudo-code**, appropriate for capturing the functional aspects of requirements, and supportive of refinement.
- UFP** can be identified in the MP architecture model as an **interaction abstraction** (i.e. **COORDINATE** or **SHARE ALL** constructs).
- The structure and the complexity of interactions in MP provide a source for assigning weights contributing to the UFP.
- Since an MP model is precise and formal, FP **metrics** can be identified by **automated tools**.

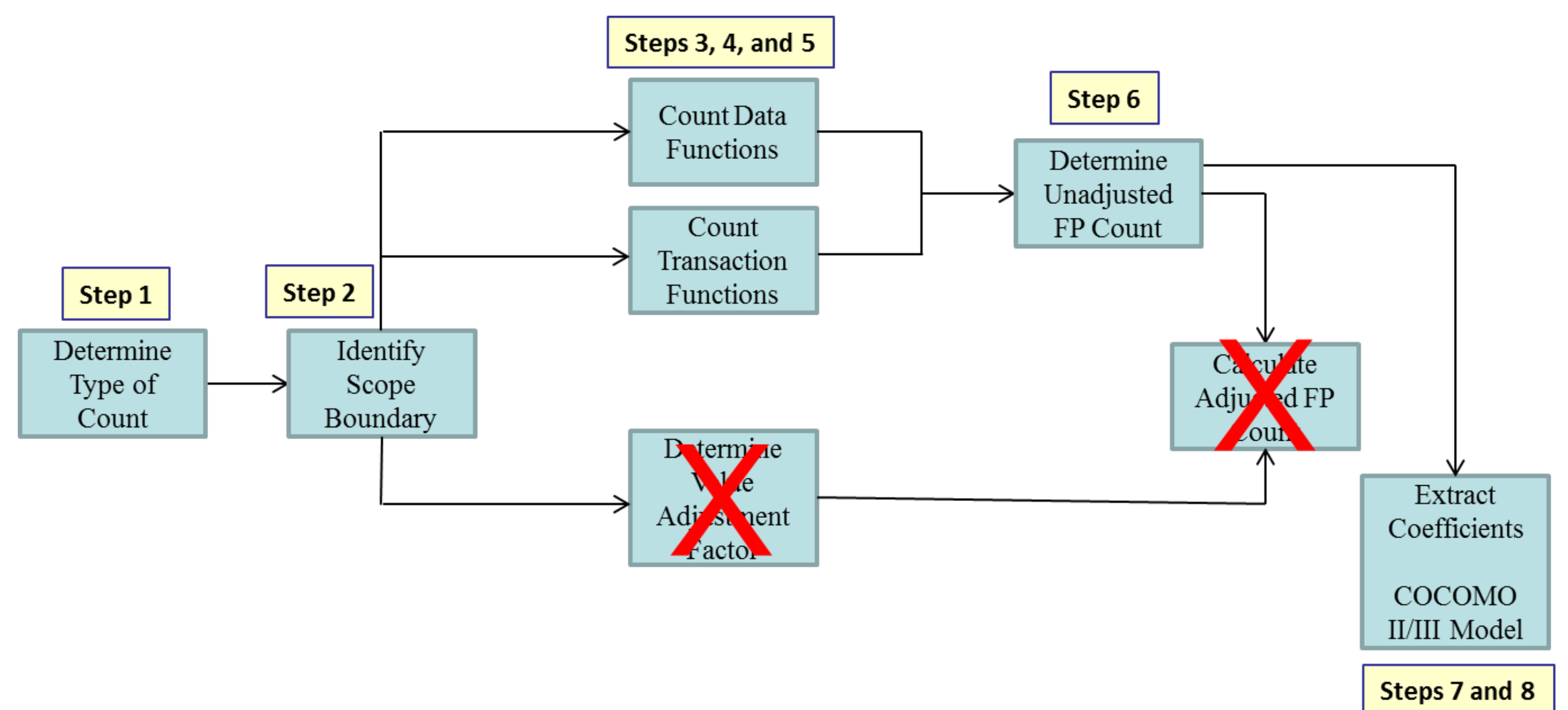
Goals & Objectives

- To enable **affordability tradeoffs** with **integrated software-hardware-human factors** through Total Ownership Cost (TOC) modeling
 - Integrated costing of systems across **full lifecycle** operations
 - Extensions and consolidations for DoD application domains
 - Tool interoperability and tailorability (service-oriented)
- To leverage **Monterey Phoenix (MP)**, a system and software architecture and workflow modeling framework based on **behavior modeling**.
- To **improve affordability-related decisions** across all joint services
- To assess MP for **automatically providing cost information** from architectural models

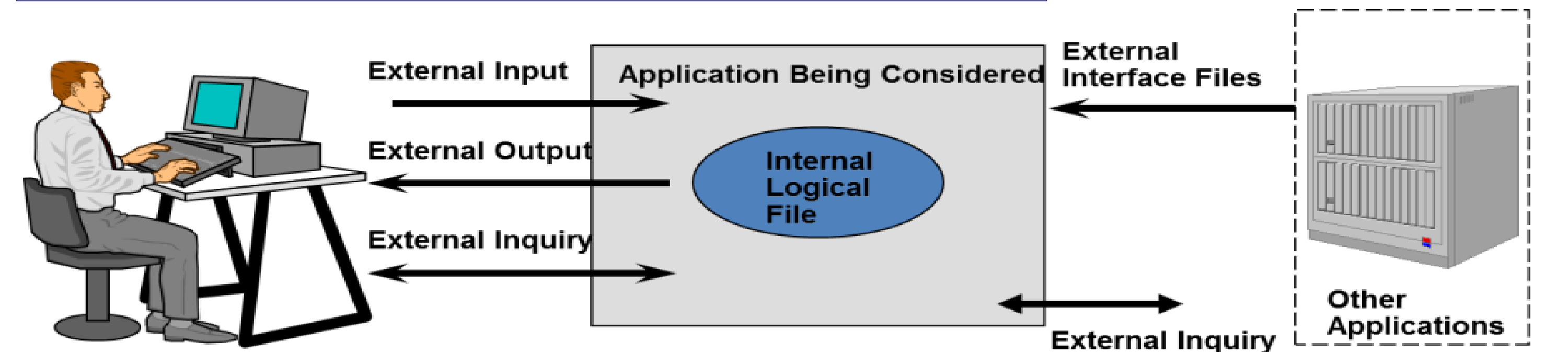
Methodology

Apply Function Point (FP) Counting Methodology to Monterey Phoenix (MP) Behavioral Model:

- Identify typical questions to be answered and determine type of count
- Describe system and environment behaviors using MP, and extract Unadjusted FP from the model
- Assess effort using MP-COCOMO II tool, and visualize results in views specific to stakeholders



Unadjusted Function Point (UFP) is a unit of measurement to express the amount of functionality in a system, and can be used to estimate system cost. Of specific interest are the *input/output activities* of the system.



Terminology:

- External Inputs (EI):** Data that is entering a system
- External Outputs (EO) and External Inquiries (EQ):** Data that is leaving the system
- Internal Logical Files (ILF):** Data that is processed and stored within the system
- External Interface Files (EIF):** Data that is maintained outside the system but is necessary to satisfy a particular process requirement

Sources: IFPUG

Future Research

- Refine weights for each Transactional Function
- Refine relationship between steps of a FP Analysis Elementary Process and MP descriptions
 - Nested COORDINATES
 - ILF and EIF behavioral representations in MP
- Apply methodology to iTAP UAV case study and IFPUG case study

Contacts/References

- Monterey Phoenix and Related Work: <http://faculty.nps.edu/maugusto>
- MP Wiki (including full bibliography): <https://wiki.nps.edu/display/MP>
- Public MP server with MP editor, trace generator, and trace graph visualization: <http://firebird.nps.edu/>
- MP COCOMO Tool: http://csse.usc.edu/tools/MP_COCOMO