

RESEARCH ARTICLE

A glycosylated recombinant subunit candidate vaccine consisting of *Ehrlichia ruminantium* major antigenic protein1 induces specific humoral and Th1 type cell responses in sheep

Bonto Faburay^{1*}, Jodi McGill¹, Frans Jongejan^{2,3}

1 Department of Diagnostic Medicine/Pathobiology, College of Veterinary Medicine, Kansas State University, Manhattan, Kansas, United States of America, **2** Utrecht Centre for Tick-Borne Diseases, FAO Reference Centre for Ticks and Tick-Borne Diseases, Faculty of Veterinary Medicine, Utrecht University, Yalelaan 1, Utrecht, The Netherlands, **3** Department of Veterinary Tropical Diseases, Faculty of Veterinary Science, University of Pretoria, Private Bag X04, Onderstepoort, South Africa

* bfaburay@vet.k-state.edu



OPEN ACCESS

Citation: Faburay B, McGill J, Jongejan F (2017) A glycosylated recombinant subunit candidate vaccine consisting of *Ehrlichia ruminantium* major antigenic protein1 induces specific humoral and Th1 type cell responses in sheep. PLoS ONE 12(9): e0185495. <https://doi.org/10.1371/journal.pone.0185495>

Editor: Daniela Flavia Hozbor, Universidad Nacional de la Plata, ARGENTINA

Received: June 24, 2017

Accepted: September 13, 2017

Published: September 28, 2017

Copyright: © 2017 Faburay et al. This is an open access article distributed under the terms of the [Creative Commons Attribution License](https://creativecommons.org/licenses/by/4.0/), which permits unrestricted use, distribution, and reproduction in any medium, provided the original author and source are credited.

Data Availability Statement: All relevant data are within the paper.

Funding: This project is the result of funding provided by the Science and Technology Directorate of the United States Department of Homeland Security (DHS) under Award Instrument Number: D15PC0027. The funders had no role in study design, data collection and analysis, decision to publish, or preparation of the manuscript.

Abstract

Heartwater, or cowdriosis, is a tick-borne disease of domestic and wild ruminants that is endemic in the Caribbean and sub-Saharan Africa. The disease is caused by an intracellular pathogen, *Ehrlichia ruminantium* and may be fatal within days of the onset of clinical signs with mortality rates of up to 90% in susceptible hosts. Due to the presence of competent tick vectors in North America, there is substantial risk of introduction of heartwater with potentially devastating consequences to the domestic livestock industry. There is currently no reliable or safe vaccine for use globally. To develop a protective DIVA (differentiate infected from vaccinated animals) subunit vaccine for heartwater, we targeted the *E. ruminantium* immunodominant major antigenic protein1 (MAP1) with the hypothesis that MAP1 is a glycosylated protein and glycans contained in the antigenic protein are important epitope determinants. Using a eukaryotic recombinant baculovirus expression system, we expressed and characterized, for the first time, a glycoform profile of MAP1 of two Caribbean *E. ruminantium* isolates, Antigua and Gardel. We have shown that the 37–38 kDa protein corresponded to a glycosylated form of the MAP1 protein, whereas the 31–32 kDa molecular weight band represented the non-glycosylated form of the protein frequently reported in scientific literature. Three groups of sheep ($n = 3–6$) were vaccinated with increasing doses of a bivalent (Antigua and Gardel MAP1) rMAP1 vaccine cocktail formulation with montanide ISA25 as an adjuvant. The glycosylated recombinant subunit vaccine induced *E. ruminantium*-specific humoral and Th1 type T cell responses, which are critical for controlling intracellular pathogens, including *E. ruminantium*, in infected hosts. These results provide an important basis for development of a subunit vaccine as a novel strategy to protect susceptible livestock against heartwater in non-endemic and endemic areas.

Competing interests: The authors have declared that no competing interests exist.

Introduction

Heartwater or cowdriosis is a tick-borne disease caused by an intracellular rickettsial pathogen *Ehrlichia ruminantium* and transmitted by ticks of the genus *Amblyomma*. The disease can cause high mortality of up to 90% in susceptible ruminants [1]. Heartwater is endemic in sub-Saharan Africa where it presents a serious constraint to livestock improvement programs [1]. Through its occurrence in the Caribbean [2,3,4], there is significant threat of introducing heartwater into North America, where the presence of competent vectors, *A. cajennense*, *A. maculatum* and *A. dissimile* have been confirmed [5,6,7].

There is no safe or reliable vaccine available. Due to safety concerns associated with the production and manufacture of live attenuated and inactivated vaccines, subunit vaccines are considered appropriate to control the disease in endemic and non-endemic areas [8]. Antigenic diversity amongst different isolates of *E. ruminantium*, resulting in lack of protection between heterologous strains, is the single major obstacle to heartwater vaccine development [8,9,10]. However, the observation that inactivated vaccines stimulate protective immunity [11,12,13] indicates that the development of a successful recombinant vaccine, using selected *E. ruminantium* genes, is possible. The Major Antigenic Protein 1 (MAP1), encoded by *map1* gene, is an immunodominant surface protein of *E. ruminantium* and a target for subunit vaccine development. However, sequence polymorphism of the gene among different isolates [14] suggests that any vaccine based on this gene would have to include variants of all important strains [8]. For the American continent, variants of these genes should ideally be obtained from strains in the Caribbean, which, due to geographic proximity, pose the greatest threat of imminent introduction. Previous studies using MAP1 as a subunit vaccine involved DNA vaccine constructs encoding MAP1 of the Crystal Springs isolate from Zimbabwe [15,16]. This vaccine formulation induced partially protective T_{H1} type immune responses in mice; and a subsequent study to improve protection involved boosting with recombinant MAP1 (rMAP1) resulting in survival rate of mice up to 67%. Protection was associated with induction of T_{H1} type immune responses characterized by production of IgG2a and IgG3 anti-MAP1 specific antibodies [15]. However, when delivered as recombinant protein, MAP1 induced a less protective immune response, which was characterized by anti-MAP1 antibodies of predominantly IgG1 isotype [15]. Although, the mechanism by which the *map1* DNA vaccine elicits protection is not fully elucidated, it clearly involves utilization of the host (eukaryotic) expression machinery to generate MAP1 antigen that induces the host anti-pathogen immune response.

MAP1 has been demonstrated to be a glycoprotein, and the protein is expressed in glycosylated form in eukaryotic (endothelial cells) expression systems [17]. Glycosylation of immunodominant surface proteins has also been reported in other *Ehrlichia* species, whereby weak immunoreactivity has been reported for unglycosylated immunodominant proteins of *E. canis* (gp36) and *E. chaffeensis* (gp47) [18,19,20]. This suggests that glycans are important epitope determinants. The rMAP1 protein used in prime-boost studies were expressed in a prokaryotic (*E. coli*) expression system, which is known to produce nonglycosylated proteins [21]. We postulate that lack of protein glycosylation could account for the suboptimal protective immune response observed in mice vaccinated with the rMAP1 protein. The overall hypothesis is that vaccination with glycosylated forms of rMAP1 proteins produced in a eukaryotic (baculovirus) expression system will elicit a more robust immune response that will confer protection against virulent *E. ruminantium* challenge. We have recently reported the successful use of a baculovirus expression system to produce Rift Valley fever virus (RVFV) glycoproteins as constituents of an efficacious vaccine against RVFV infection in a target host [22]. Here, we used a similar baculovirus expression system to produce

glycosylated MAP1 proteins from *E. ruminantium* and report for the first time the immunogenicity of a glycosylated rMAP1 subunit vaccine in sheep.

Materials and methods

Production of recombinant MAP1 protein

Cloning and recombinant protein expression. A recombinant baculovirus expression system was used to express glycosylated MAP1 proteins of the *E. ruminantium* isolates, Antigua and Gardel. Briefly, the complete *map1* coding sequences of both isolates were codon-optimized including insertion of a Kozak sequence to achieve high level of target protein expression in *Spodoptera frugiperda*, Sf9, insect cells. The sequences were synthesized and cloned into pUC57 vector by a manufacturer (Genewiz). The resulting recombinant plasmid, pUC57-*map1* was used as template in high fidelity PCR using a proof-reading DNA polymerase, Accuprime DNA polymerase (Life Technologies) and gene-specific primers BYF101F 5′-CACCATGAACTGCAA GAAGATCTTCATCACCTCC-3′ and BYF102R 5′-GAACACGAAACGACCACCGATCTCGATACC-3′. The PCR was performed per manufacturer's instruction. The PCR amplicon was cloned into pFastBac/CT/TOPO to create donor plasmids, pFastBac-Antigua and pFastBac-Gardel, containing *map1* coding sequences of Antigua and Gardel, respectively. The recombinant donor plasmids were used to create recombinant bacmid via site-specific transposition following transfection into an *E. coli* strain, DH10Bac per manufacturer's instruction (Life Technologies). Recombinant bacmids were purified using HiPure Plasmid kit (Life Technologies) and used to transfect Sf9 cells to rescue respective recombinant baculoviruses. Transfection of recombinant bacmid into Sf9 cells was performed using Cellfectin® reagent per manufacturer's instruction (Life Technologies). Recombinant baculoviruses, P2 and above, were used to express recombinant *E. ruminantium* MAP1 in Sf9 cells.

Recombinant protein purification. Recombinant MAP1 proteins were expressed with a C-terminal 6xHis-tag fusion protein that allowed purification by affinity chromatography using Ni-NTA superflow resin (Novagen, Rockland, MA). Purification was performed per manufacturer's instruction. Briefly, recombinant baculovirus-infected Sf9 cells expressing recombinant *E. ruminantium* MAP1 proteins were pelleted by centrifugation at 500 x g for 5 min. The pellet was resuspended in Ni-NTA binding buffer (300 mM NaCl, 50 mM Na₃PO₄, pH 8.0, and 10 mM imidazole) containing 1x complete protease inhibitor. Insect Popculture Reagent (Novagen) was then added at 0.05 volumes of original culture volume. The lysate was incubated at room temperature for 15 min and the supernatant further clarified by centrifugation at 1,500 x g for 10 min. The clarified lysate was mixed with previously equilibrated Ni-NTA superflow resin (Novagen-EMD Millipore, Billerica, MA). Binding was performed for 1 hour at 4°C. The suspension was loaded into a column and washed with 10 volumes of wash buffer (300 mM NaCl, 50 mM Na₃PO₄, pH 8.0, and 20 mM imidazole). Bound protein was eluted with elution buffer (300 mM NaCl, 50 mM Na₃PO₄, pH 8.0, and 250 mM imidazole). The eluate was dialyzed overnight against storage buffer, phosphate-buffered saline (PBS; pH 7.4), and 5% glycerol. Concentration of the purified proteins was determined using the bicinchoninic acid (BCA) assay (ThermoScientific) at an absorbance of 562 nm, using bovine serum albumin (BSA; Sigma-Aldrich) as the protein standard. Aliquots were stored at -80°C until used.

Protein analysis

Western blot. To assess expression of the target protein, approximately 5 µg of each purified recombinant protein was subjected to electrophoresis in 12% Bis-Tris polyacrylamide gel in 1x MOPS running buffer (Life Technologies). The proteins were transferred onto PVDF

membranes per standard protocols. The membrane was blocked in blocking solution containing 0.1% Tween-20 in PBS (pH 7.4) and 3% bovine serum albumin (BSA) for 1 hour at room temperature or overnight at 4°C. After 3 subsequent washes of 5 min each in 0.1% Tween-20 in PBS, the membrane was incubated with anti-His-(C-Terminal)-HRP monoclonal antibody (Life Technologies) diluted 1: 5,000 in blocking solution. Expression of the rMAP1 was further confirmed using mouse anti-*E. ruminantium* monoclonal antibody, 4F10B4 (Abcam) [23] at a dilution of 1: 2,000. Following three washing steps, the membrane was probed with a secondary antibody conjugate, goat anti-mouse IgG-HRP (1: 5,000) (Santa Cruz, Biotechnologies). Detection of specific reactivity was performed using ECL enhanced chemiluminescent detection system.

Analysis of protein glycosylation. To analyze glycosylation of rMAP1 proteins, approximately 50 µg of purified rMAP1 was pelleted at 100,000 x g for 30 min at 4°C. The pellet was resuspended in 2 µl of 10x denaturing buffer (New England Biolabs, Ipswich, MA) and 18 µl distilled water. An untreated rMAP1 protein was included as a negative control. The mixtures were heat-denatured at 100°C for 10 min. Thereafter, the following reagents were added to the reaction: 4 µl of 10x reaction buffer, 4 µl 10% NP40, 4 µl distilled water and 6 µl PNGase F (500,000 U/ml) (New England Biolabs). The mixture was incubated at 37°C for 1 hour and the reaction stopped by addition of SDS loading buffer. The samples were separated by sodium dodecyl sulfate polyacrylamide gel electrophoresis (SDS-PAGE) in NuPAGE 12% Bis-Tris gels (Life Technologies) and transferred onto polyvinylidene difluoride (PVDF) membranes per standard protocols. The membranes were probed with mouse anti-*E. ruminantium* monoclonal antibodies as described above. Anti-mouse-HRP conjugated secondary antibody (Santa Cruz Biotechnology) was used for detection. Detection of differentially migrating protein bands (treated and untreated rMAP1) was performed to determine glycosylation or non-glycosylation of the MAP1 proteins. Additional glycosylation analysis of rMAP1 was performed by glycan staining using Pierce in-gel glycan staining protocol (Pierce Thermo Scientific) per manufacturer's instructions.

Vaccine preparation

Recombinant *E. ruminantium* subunit vaccine was composed of purified glycosylated rMAP1 of Caribbean *E. ruminantium* isolates, Gardel and Antigua (a bivalent vaccine). To prepare the vaccine formulations, purified rMAP1 proteins from either isolate were mixed in equal ratios in three different doses: (i) 200 µg (low), (ii) 400 µg (intermediate) and (iii) 600 µg (high). The vaccine was adjuvanted with an montanide ISA25 VG (Seppic, France) per manufacturer's instruction.

Animals and vaccination

Twenty sheep (Dorper x Katahdin cross) aged 3–4 months were purchased from a private farm in Kansas and assigned to 4 groups. Group A ($n = 5$), group B ($n = 6$), group C ($n = 6$) and Group D ($n = 3$). Pre-vaccination blood was collected in EDTA from all animals and tested by nested pCS20 PCR to confirm their *E. ruminantium*-free status [24]. To assess the appropriate dose response, the vaccine was administered subcutaneously in three different doses. Sheep in group A were vaccinated with 200 µg of rMAP1 subunit vaccine, group B vaccinated with 400 µg, and group C with 600 µg. Group D served as mock-vaccinated control and received adjuvant only. At 21 days post-vaccination, each sheep was boosted with the same vaccine dose with adjuvant administered previously. Animals were bled weekly for serum on day 0 (pre-vaccination), days 7, 14, 21, 28, 35 and 42 post-vaccination. Additionally, at 35 post vaccination, blood was collected in acid citrate dextrose (ACD) tubes for isolation of

peripheral blood mononuclear cells (PBMCs) to measure T cell responses as described below. Injection sites and rectal temperatures were examined daily until day 3 post-vaccination for vaccine induced reactions.

Ethics statement

Research was performed per Institutional Animal Care and Use Committee-approved protocol of Kansas State University (IACUC #3675) in compliance with the Animal Welfare Act and other regulations relating to animals and experiments involving animals. The study was approved by the Institutional Animal Care and Use Committee of Kansas State University.

Detection of vaccine-induced antibody responses

Induction of MAP1-specific antibody responses was measured in the animals to assess vaccine-induced seroconversion. An indirect ELISA format using recombinant MAP1 of Antigua and Gardel isolates as diagnostic antigens was used in separate assays. Briefly, flat-bottom 96-well microtiter plates (Nunc, MaxiSorp) were coated with 150 ng per well of recombinant MAP1 antigen in 100 μ l of antigen coating buffer (Dulbecco's phosphate buffered saline, DPBS, pH 7.3) and incubated overnight at 4°C. The plates were blocked with PBS pH 7.3, supplemented with 0.1% Tween-20 and 1% non-fat dry milk before adding 100 μ l per well of diluted (1:200) serum. Each sample was tested in duplicate and each plate contained duplicate negative and positive control sera obtained from an experimentally infected sheep at Utrecht University in The Netherlands). After washing, plates were incubated with Protein G-HRP (Abcam), diluted 1: 50,000 in blocking solution, at 37°C for 1 hour. Thereafter, 100 μ l of substrate buffer containing 0.1 mg/ml 3,3',5,5'-tetramethyl-benzidine (TMB) (ThermoScientific) and H₂O₂ was added and plates were incubated in the dark for 25 min. The reaction was stopped with 2M H₂SO₄ and optical densities (OD) were measured at 450 nm using microplate reader Fluostar Omega (BMG Labtech). For each experimental group, the cut-off OD value was determined by addition of 2 standard deviations to the mean OD value of serum obtained from the animals prior to vaccination.

IgG isotype response

IgG isotype profiling was performed by determining the end titers of IgG1 and IgG2. Mean endpoint titer was determined for animals in group C (vaccinated with the highest vaccine dose 600 μ g of rMAP1 subunit vaccine) using day 28 post vaccination sera. Briefly, 5-fold serial dilutions of test serum were initially made and then incubated with rMAP1 antigen (Gardel) coated in 96-well ELISA plates as described above. After three washings, the plate was incubated for 1 hour with mouse anti-bovine IgG1-HRP (Cat. No. MCA2440P; 1:100 dilution) or mouse anti-bovine IgG2 (Cat. No. MCA626; 1:100) (BioRad); both antibodies showed cross-reactivity with sheep. The mouse anti-bovine IgG2 was further probed with Protein G-HRP (1:50,000) for 1 hr. After washing, reactivity was detected by addition of TMB and H₂O₂. The reaction was stopped with 2M H₂SO₄ and OD values measured at 450 nm as described above.

Measurement of T-cell responses

Antigen-specific CD4⁺ and CD8⁺ T cell proliferation and cytokine production was measured in peripheral blood on day 35 post vaccination using protocols we have previously published, modified for use in sheep [25,26]. Briefly, peripheral blood mononuclear cells (PBMCs) were isolated by density centrifugation, labeled with Cell Trace Violet proliferation dye (Life Technologies) and placed in culture for 6 days with 1 μ g/ml of purified rMAP1. Pokeweed mitogen

was included as a positive control and used at 1 µg/ml. On day 6, cells were labeled with the Live/Dead Fixable Aqua Dead Cell Stain Kit (Invitrogen) per manufacturer's instructions. Samples were then stained with 10 µg/ml mouse anti-ovine CD4 (clone GC1A, isotype IgG2a), and mouse anti-ovine CD8 (clone CACT80C, clone IgG1), both from Washington State University. After washing, samples were labeled with 5 µg/ml of the following secondary antibodies: anti-mouse IgG2a-Alexa Fluor 488 and anti-mouse IgG1-Alexa Fluor 647 (both from Southern Biotech). Cells were then collected on a BD LSR Fortessa X20 Flow Cytometer and analyzed using FlowJo Software (Treestar Inc.). Live cells were gated based upon expression of CD4⁺ or CD8⁺ and proliferation was assessed by dilution of the CellTrace Violet dye. T cell responses were measured by comparing responses to stimulation with rMAP1 from the respective *E. ruminantium* strains to mock-stimulated cultures and results are presented as change-over mock. For intracellular cytokine production, PBMC were stimulated overnight with 1 µg/mL *E. ruminantium* rMAP1-specific antigen in the presence of 10 µg/mL brefeldin A. After 18–24 hours, cells were surface stained as above. After washing, cells were then fixed with the BD Cytfix/Cytoperm kit per manufacturer's instructions and stained with 10 µg/mL mouse anti-ovine IFNγ-PE (BioRad Antibodies). Cells were analyzed via flow cytometry as above, gating on live, IFNγ⁺ CD4 and CD8 T cells. The frequency of antigen-specific cells was determined by comparing responses to stimulation with rMAP1 from the respective *E. ruminantium* strains to mock-stimulated cultures, and results are presented as change-over mock.

Statistics

Statistical analysis was performed using Prism V6.0f software (Graphpad Software, Inc.). Differences in antibody responses at various post-vaccination time-points between the vaccine-dose groups in response to either vaccine antigens, Antigua or Gardel, were analyzed using a 2-way repeated measures ANOVA. T cell responses were analyzed using a 1-way ANOVA followed by Tukey's Multiple Comparisons post-test analysis.

Results

Expression of glycosylated recombinant MAP1 proteins

In silico analysis of MAP1 amino acid sequences of Antigua and Gardel *E. ruminantium* isolates revealed the presence of putative sites for N- and O-linked glycosylation (Fig 1). To ensure that rMAP1 proteins were expressed in glycosylated form, cloning of *map1* gene sequences included signal peptide sequences at the N-terminus of the coding sequence (Fig 1), which allowed translocation of the protein into the lumen of endoplasmic reticulum where signal peptidases and glycosylation enzymes are located [27,28,29]. To rescue respective recombinant baculoviruses for expression of rMAP1 proteins, purified recombinant bacmids encoding *map1* genes of either isolate, Antigua and Gardel, were used to transfect Sf9 cells. The recombinant baculoviruses expressed the MAP1 proteins as demonstrated by detection of 32–33 kDa MAP1 proteins of *E. ruminantium*, and a previously undescribed 37–38 kDa protein using anti-His-HRP conjugated and anti-*E. ruminantium* monoclonal antibodies (Fig 2A and 2B). To confirm that the recombinant MAP1 proteins of both isolates were expressed in glycosylated form, a deglycosylation assay was performed. Enzymatic de-glycosylation treatment of rMAP1 proteins of both *E. ruminantium* isolates resulted in reduction in the molecular weight of the upper band demonstrated by a shift in electrophoretic migration (Fig 2B). The upper band corresponded to a 37–38 kDa glycosylated form of the immunodominant MAP1 (Fig 2B), whereas the 31–32 kDa molecular weight band represented a non-glycosylated form of the protein (Fig 2B). An in-gel glycan staining confirmed glycosylation of the rMAP1 protein

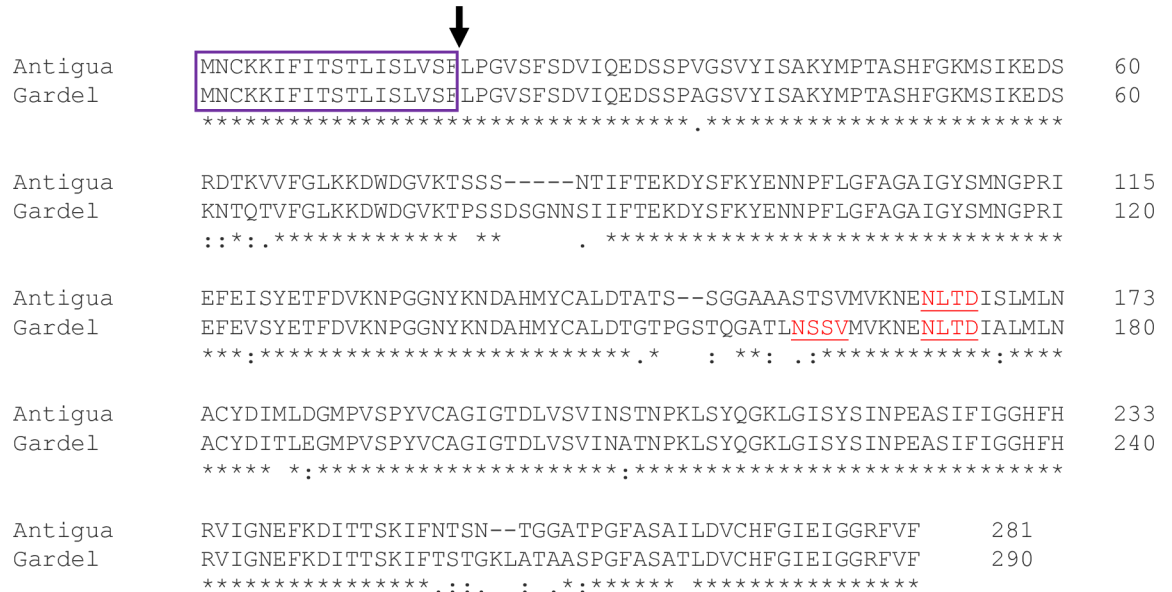


Fig 1. Amino acid sequence alignment of *E. ruminantium* MAP1, Antigua (Acc. No. U50830) and Gardel (Acc. no. U50832). Predicted N- and O-linked glycosylation sites are underlined. Rectangular box indicates signal peptide sequence; arrow indicates signal peptidase cleavage site.

<https://doi.org/10.1371/journal.pone.0185495.g001>

of both *E. ruminantium* isolates as indicated by the appearance of specific magenta bands in the stained gel (data not shown).

Analysis of serological response

To assess vaccine induced seroconversion and the kinetics of the antibody response, sera were collected from the vaccinated sheep at various time points post-vaccination (day 0, 7, 14, 21, 28, 35, 42) and were tested MAP1-specific indirect ELISAs. In response to vaccination with the three vaccine dose regimens (Group A = 200 µg, Group B = 400 µg and Group C = 600 µg in equal ratios of rMAP1 proteins of Antigua and Gardel isolates) of the recombinant subunit vaccine, 100% of the animals in all three dose categories seroconverted to both vaccine antigens, Antigua and Gardel rMAP1. Specifically, at day 14 post vaccination all vaccinated animals in the three vaccine dose groups exhibited detectable seroconversion to both vaccine antigens (Fig 3A and 3B). A strong anamnestic response occurred at 28 dpv, which corresponded to peak antibody activity, following administration of a booster at 21 dpv (Fig 3A and 3B). Detectable MAP1-specific antibody titers were maintained in animals in all dose groups until day 42, the study endpoint (Fig 3A and 3B). In response to both vaccine antigens, optical density (OD) values detected at various post-vaccination time-points for the different dose groups were not significantly different ($P = 0.0606$ response to Antigua antigens; $P = 0.4227$, response to Gardel antigen). The magnitude of seroconversion to either vaccine antigen was manifested by marked differences in the absorbance (OD) values in 28 dpv sera ($P < 0.05$) (Fig 3C and 3D).

Endpoint titration of MAP1-specific antibody activity in all three vaccine dose groups exhibited a time-dependent increase in antibody titers, with 28 dpv sera showing highest endpoint titers (Fig 4). Overall, antibody reactivity data showed persistence of MAP1-specific antibody titers in all vaccinated animals through the study endpoint. Characterization of immunoglobulin G (IgG) isotype responses in vaccinated sheep showed induction of both

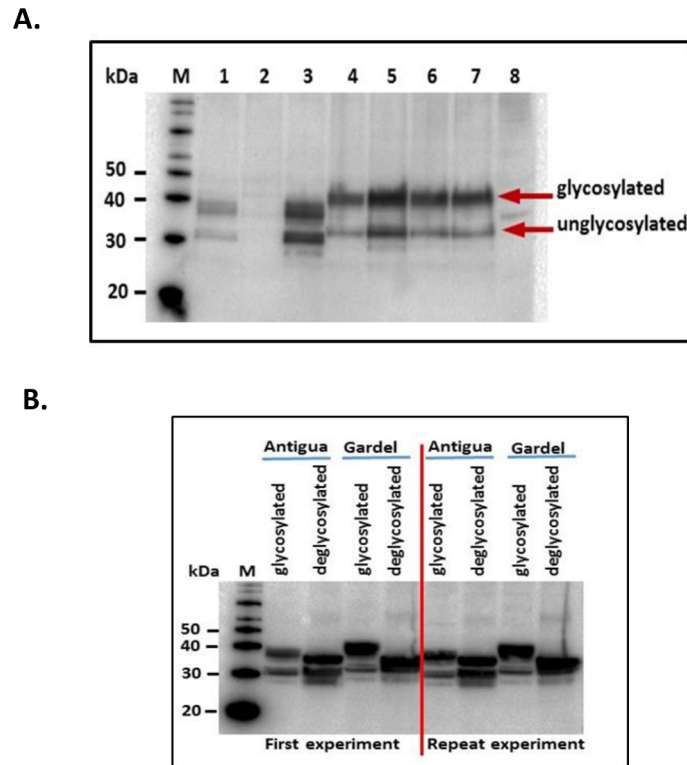


Fig 2. Analysis of recombinant baculovirus expression and glycosylation profile of MAP1 of *E. ruminantium* strains, Antigua and Gardel. A. shows detection of expression of rMAP1 by various recombinant baculovirus clones (Antigua: lanes 1,2,3; Gardel: lanes 4,5,6,7; lane 8 –uninfected cell culture control) using mouse anti-His-HRP monoclonal antibody. B. shows glycosylated and deglycosylated forms of the protein following enzymatic treatment of the recombinant protein. Detection was performed using mouse anti-*E. ruminantium* monoclonal antibody [23].

<https://doi.org/10.1371/journal.pone.0185495.g002>

IgG1 and IgG2 antibody responses, with the IgG1 isotype showing comparatively higher titers as determined by endpoint titration (Fig 5).

Analysis of CD4⁺ and CD8⁺ T cell responses

PBMC isolated from the vaccinated animals demonstrated significant antigen-specific CD4⁺ and CD8⁺ T cell proliferation in recall response to either recombinant antigen (Antigua or Gardel rMAP1) (Fig 6A and 6B). Animals vaccinated with 200 µg (group A) of rMAP1 demonstrated the highest frequency of proliferating CD4⁺ T cells compared to mock vaccinated animals (group D) when stimulated with rMAP1 of either *E. ruminantium* isolates, Antigua or Gardel ($P < 0.05$) (Fig 6A). The frequency of proliferating CD4⁺ T cells detected in animals in group B (vaccinated with 400 µg of subunit vaccine) and group C (vaccinated with 600 µg subunit vaccine) was not statistically different from the mock-vaccinated control group D ($P > 0.05$) (Fig 6A). Furthermore, vaccinated animals in groups A, B and C exhibited a higher frequency of proliferating CD8⁺ T cells following antigenic stimulation with Antigua rMAP1 than mock-vaccinated control group D ($P < 0.05$) (Fig 6B). Vaccinated animals in groups A and B also exhibited higher percentage proliferating CD8⁺ T cells than the mock control group D in response to stimulation with Gardel rMAP1 antigen ($P < 0.05$) (Fig 6B); however, the frequency of proliferating CD8⁺ T cells from animals in group C were not statistically different from the mock-vaccinated control group D ($P > 0.05$) (Fig 6B). Comparison of the frequency

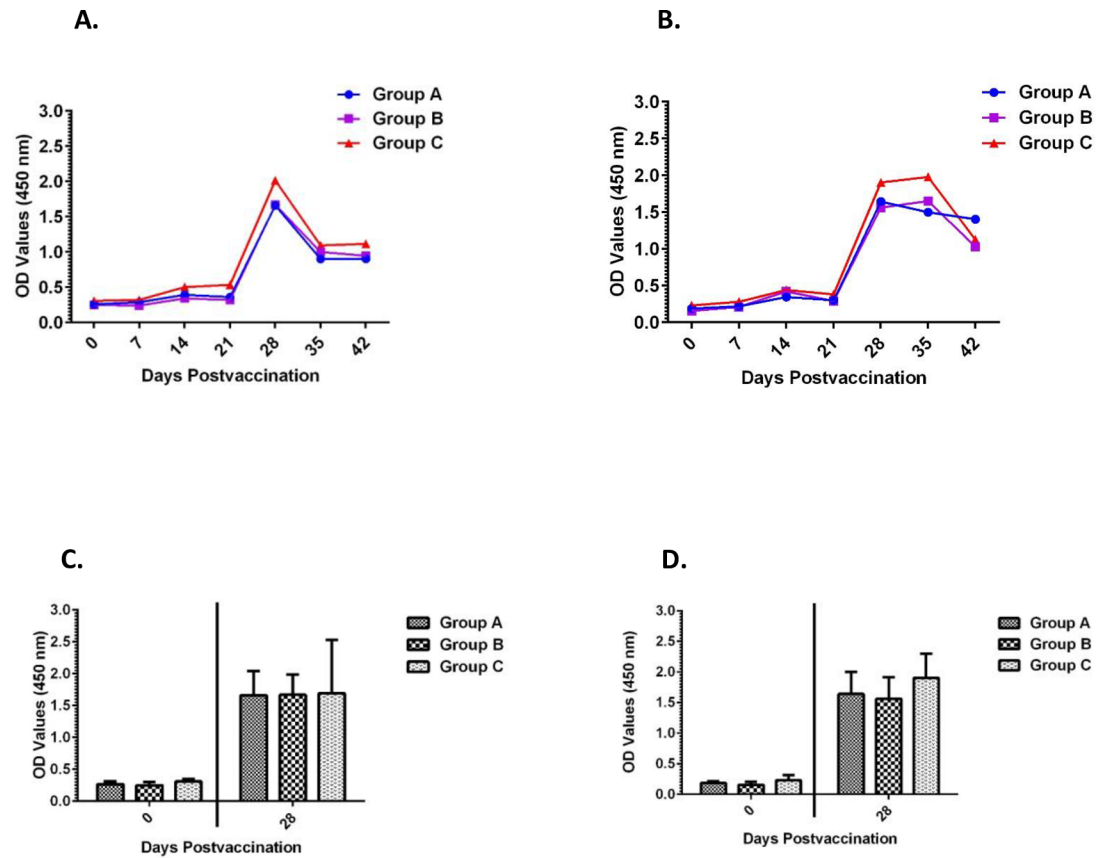


Fig 3. Analysis of MAP1-specific IgG responses in vaccinated sheep by indirect ELISA. A) shows kinetics of antibody responses in sheep vaccinated with Antigua rMAP1; B) shows antibody responses in sheep vaccinated with Gardel rMAP1. MAP1-specific antibody titers persisted through 42 dpv, the study endpoint. C, D) demonstrates the magnitude of rMAP1-specific antibody activity/seroconversion in 28 dpv sera as compared to 0 dpv sera in response to either vaccine antigens, Antigua (left panel) and Gardel (right panel). The cut-off points for Antigua MAP1-specific ELISAs: Group A = 0.237; Group B = 0.254; Group C = 0.356; Gardel MAP1-specific ELISAs: Group A = 0.354; Group B = 0.361; Group C = 0.391.

<https://doi.org/10.1371/journal.pone.0185495.g003>

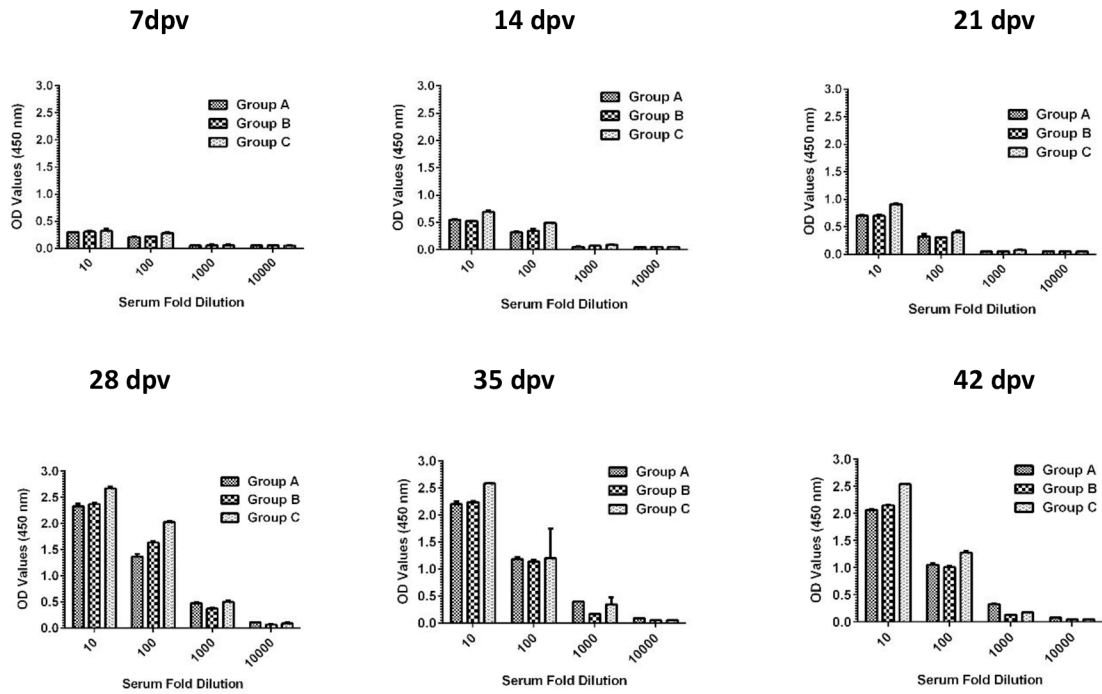
of proliferating CD4⁺ or CD8⁺ T cells between the various vaccine-dose groups (A, B, C) showed no statistically significant differences ($P > 0.05$).

To assess antigen-specific IFN γ production, CD4⁺ T cells were subjected to intracellular cytokine staining following antigenic stimulation with Antigua or Gardel rMAP1. Group A animals responded with higher percent of IFN γ -positive CD4⁺ T cells than the mock-vaccinated control group D ($P < 0.05$) (Fig 7). The frequency of IFN γ -positive CD4⁺ T cells detected in groups B and C animals was higher but statistically not different from the control group D animals ($P > 0.05$) (Fig 7). Comparison of the percent IFN γ -positive CD4⁺ T cells between the various vaccine-dose groups (A, B, C) revealed no statistically significant differences ($P > 0.05$). Similarly, a comparison of the frequency of IFN γ -positive CD8⁺ T cells revealed no statistically significant differences between the various vaccine-dose groups (data not shown).

Discussion

Current vaccines developed and evaluated for protecting ruminant livestock against heart-water are based on inactivated [12,13,24,30,31,32,33] and live-attenuated vaccines [24,34,35].

Antigua



Gardel

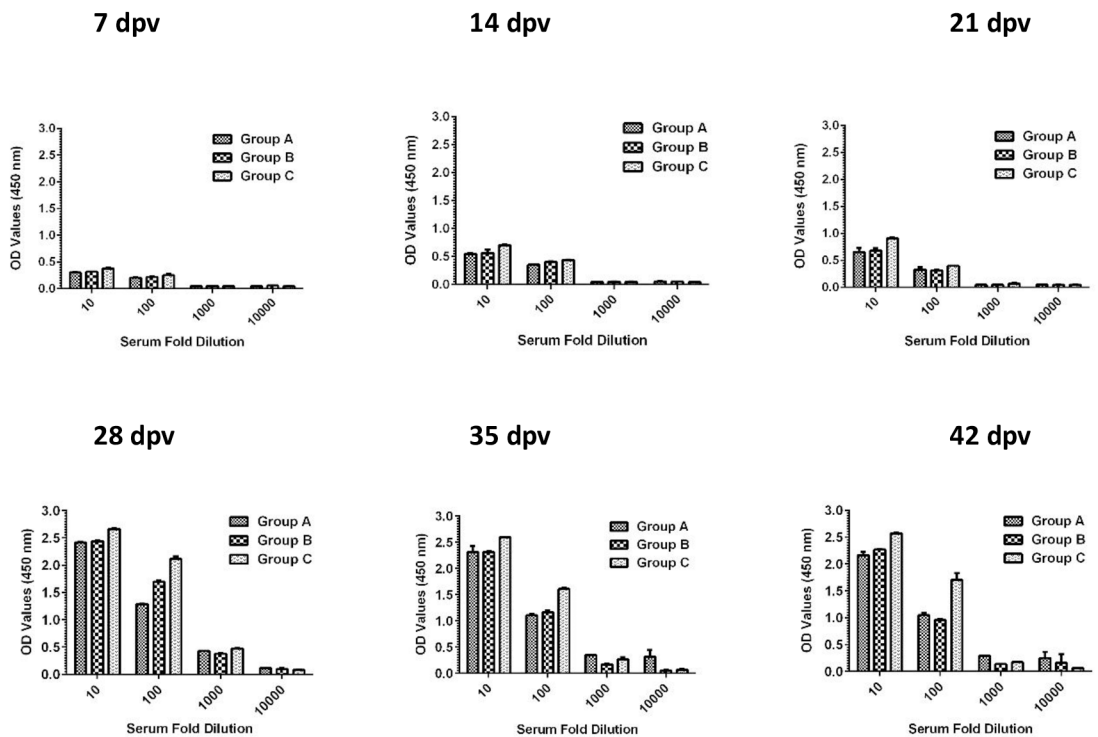


Fig 4. Shows endpoint titration of MAP1-specific antibodies in sera of sheep vaccinated with rMAP1 subunit vaccine. The kinetics of antibody response shows a time-dependent increase in antibody titers for all dose groups, with 28 dpv sera showing the highest endpoint titers in response to both vaccine antigens.

<https://doi.org/10.1371/journal.pone.0185495.g004>

These vaccines suffer from low immunogenicity (for killed vaccines), lack of cross-protection and/or safety concerns, especially for use in non-endemic areas. Beside a few sheep studies [36,37,38], most subunit vaccine studies were performed in mouse models [15,16,38,39]. This represents the first study wherein the immunogenicity of glycosylated forms of the major antigenic protein 1 (MAP1) of *E. ruminantium* is assessed in a ruminant model. The *E. ruminantium* MAP1 is an immunodominant membrane protein and considered a good target for vaccine development. Like most membrane proteins with potential sites for glycosylation [40], *in silico* analysis of *E. ruminantium* *map1* gene revealed putative *N*-linked and *O*-linked glycosylation sites (Fig 1). *O*-linked sites have been reported to serve as sites for *O*-linked mannosylation, which has been shown, in eukaryotes, to enhance immunogenicity of membrane proteins [40]. In this study, we confirmed expression of *E. ruminantium* rMAP1 (Antigua and Gardel isolates) protein in glycosylated form utilizing a eukaryotic expression system and demonstrated a distinct glycosylation profile of the protein (Fig 2). Vaccination of sheep with a subunit vaccine formulation induced both antibody and Th1 T cell responses, which are critical to controlling intracellular pathogens, including *E. ruminantium*, in infected hosts; suggesting that a glycosylated rMAP1 subunit vaccine could be potentially efficacious against virulent heartwater challenge.

Specifically, the recombinant MAP1 subunit vaccine induced a strong Th1 T cell response characterized by increased proliferation of CD4⁺ and CD8⁺ T cells, including production of IFN- γ , and induction of IgG2 isotype antibodies. The significance of this cellular response in terms of protective immunity in the ruminant host is unknown, as we were unable to perform efficacy testing in this study. However, in a mouse model, a polarized Th1 response characterized by induction of IgG2a and IgG3 antibodies, following a prime-boost vaccination regimen (DNA prime and *E. coli*-expressed rMAP1 boost), was associated with increased protection

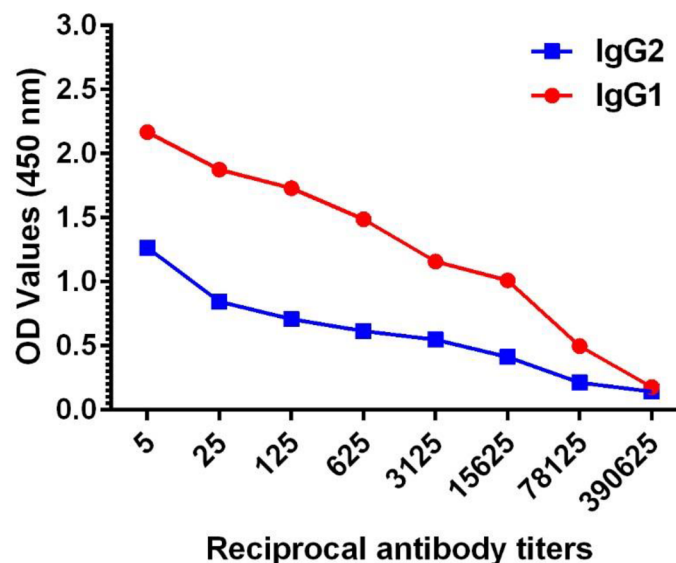


Fig 5. Titers of IgG1 and IgG2 isotypes in sera from sheep vaccinated with rMAP1 subunit vaccine. Mean titers of 28 dpv sera from group D sheep vaccinated with Gardel rMAP1 antigen are shown.

<https://doi.org/10.1371/journal.pone.0185495.g005>

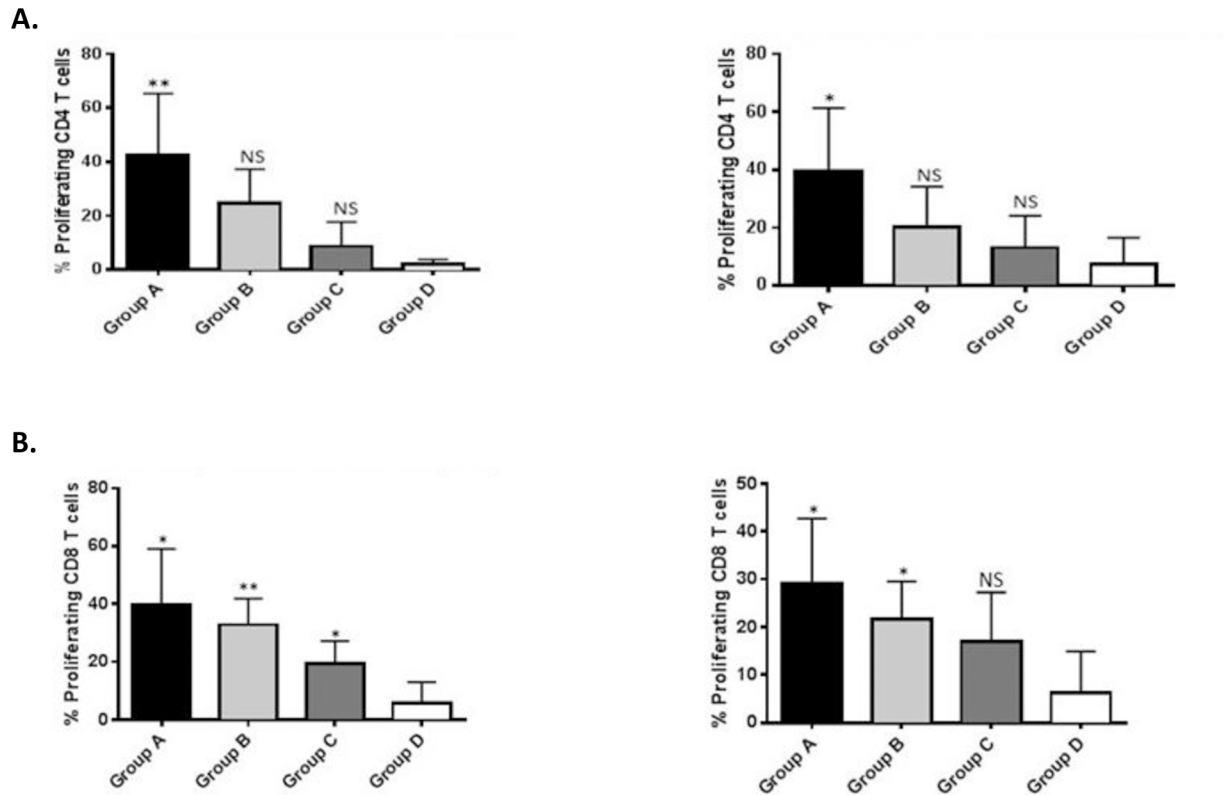


Fig 6. Measurement of T cell proliferation in response to rMAP1 subunit vaccination in sheep. A) Upper panel shows CD4⁺ T cell proliferation following antigenic stimulation with Antigua (upper left panel) or Gardel (upper right panel) rMAP1 proteins. B) Bottom panel shows CD8⁺ T cell proliferation in response to rMAP1 antigen stimulation with Antigua (bottom left panel) or Gardel (bottom right panel) rMAP1 proteins. Asterisks denote statistically significant; NS = not significant.

<https://doi.org/10.1371/journal.pone.0185495.g006>

against virulent heartwater challenge [15]. We postulate that increased protection is attributed to *in vivo* (eukaryotic) expression of glycosylated MAP1 from the DNA vector construct, since immunization with unglycosylated *E. coli*-expressed MAP1 proteins resulted in lower protective efficacy characterized by a Th2 response of predominantly IgG1 isotype [15]. Indeed, the potential role of glycans in antigenicity has been reported for glycoproteins of *E. ruminantium* (MAP1), and antigenically related pathogens, *E. canis* (gp36) and *E. chaffeensis* (gp47), for

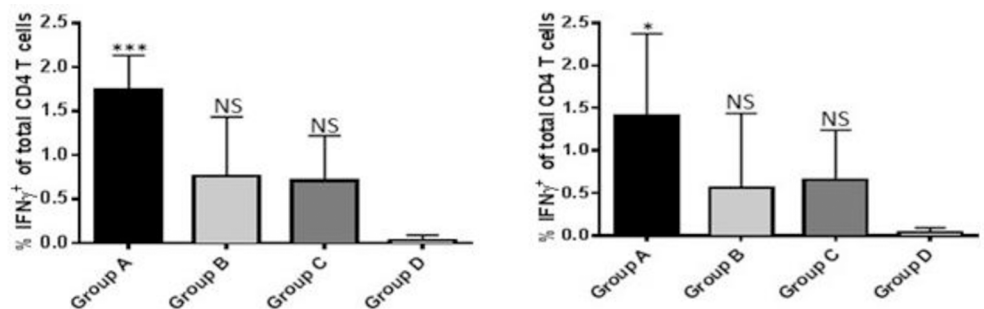


Fig 7. Analysis of IFN-γ production by CD4⁺ T cells isolated from sheep vaccinated with rMAP1 subunit vaccine. Antigenic stimulation was performed using Antigua (left panel) and Gardel (right panel) rMAP1 antigens. Asterisks denote statistically significant; NS = not significant.

<https://doi.org/10.1371/journal.pone.0185495.g007>

which glycosylated forms of the proteins exhibited stronger immunoreactivity in comparison to unglycosylated forms [17,18,19]. The enhanced T cell response observed in our study could be attributed to the presence of O-linked glycans, by facilitating recognition by mannose receptors on dendritic cells, resulting in efficient uptake, processing, and presentation of antigen to T cells [40]. Taken together, these results suggest that glycan residues in *E. ruminantium* MAP1 proteins are important antigenic determinants. Further studies are required to support this hypothesis including the potential ability to confer broad-spectrum protection amongst antigenically diverse strains of the pathogen.

Although immunity to *E. ruminantium* infection (heartwater), like other intracellular parasites, is mainly cell-mediated [41,42], the role of the humoral immune response has not been fully elucidated. In this study, the recombinant MAP1 subunit vaccine also induced strong anamnestic MAP1-specific antibody response in sheep; and even though antibodies produced in response to *E. ruminantium* infection have been reported to not correlate with protective immunity against heartwater [42], we speculate that their induction is an important vaccine attribute and could play a role as opsonizing agents and contribute to enhancing cell-mediated immunity.

With the aim of assessing the dosage of the subunit vaccine that induces enhanced immune response in sheep, we tested three doses (low, intermediate and high) of the vaccine. There was no significant difference between the different dose groups in inducing antibody responses, as assessed by the level of IgG antibody responses ($P > 0.05$) (Fig 3). In contrast, the dose of the antigen/vaccine appeared to influence the level of cellular responses; showing vaccination with a low dose inducing higher frequency of proliferating CD4+ and CD8+ T cells, including higher levels of secreted cytokine, IFN- γ , compared to vaccination with intermediate and high doses. The lack of positive correlation is unknown; however, studies in mice have shown that the dose of antigen may be a critical factor in determining what type of immune response will be elicited; with susceptible mice immunized with very low doses of *Leishmania major* demonstrating higher levels of protection than did mice immunized with higher doses of the organism [43]. It has been postulated that very small doses of antigen could imprint the immune response into a Th1-like cell-mediated mode or select T cells with high functional avidity, whereas higher immunizing doses inhibit this response [44, 45]. It is unknown if the comparatively low T cell response observed in the intermediate and high-dose vaccinated groups could be attributed to a similar phenomenon.

Conclusions

This study represents an important first step towards developing an efficacious heartwater subunit vaccine and defining the immunological correlates potentially associated with protection in ruminants, the target host species. Although we were not yet able to perform efficacy studies (due to lack of permit and virulent *E. ruminantium* isolate), the induction of strong Th1 type cellular and antibody responses in vaccinated animals is encouraging. Th1 helper T cells express IFN- γ , which has been shown to be essential for early protection against a range of intracellular pathogens by contributing to macrophage activation and other cell-mediated responses [46,47,48]. Given these results and the emerging threat of heartwater to livestock agriculture and food security, it is necessary to perform further studies to assess the efficacy of the subunit vaccine in experimental sheep.

Acknowledgments

We are grateful to Dr. Juergen A. Richt for his support to the project; Maira Cotton-Caballero who assisted with animal work and lab studies; Abaineh Endalew, Vinay Shivanna, Sun Young Sunwoo, Tammy Koopman, Haixia Liu and Rachel Rusk, who assisted with animal studies.

Author Contributions

Conceptualization: Bonto Faburay.

Formal analysis: Bonto Faburay, Jodi McGill.

Funding acquisition: Bonto Faburay, Frans Jongejan.

Investigation: Bonto Faburay, Jodi McGill.

Methodology: Bonto Faburay.

Project administration: Bonto Faburay.

Supervision: Bonto Faburay.

Writing – original draft: Bonto Faburay.

Writing – review & editing: Bonto Faburay, Jodi McGill, Frans Jongejan.

References

1. Uilenberg G (1983) Heartwater (*Cowdria ruminantium* infection): Current status. *Adv Vet Sci Comp Med* 27: 427–480. PMID: [6359836](#)
2. Birnie EF, Burridge MJ, Camus E, Barre N (1985) Heartwater in the Caribbean: isolation of *Cowdria ruminantium* from Antigua. *Vet Rec* 116: 121–123. PMID: [3984174](#)
3. Burridge MJ (1985) Heartwater invades the Caribbean. *Parasitology Today* 1: 1–5.
4. Vachieri N, Jeffery H, Pegram R, Aprelon R, Pinarello V, Kandassamy RL, et al. (2008) *Amblyomma variegatum* ticks and heartwater on three Caribbean Islands. *Ann N Y Acad Sci* 1149: 191–195. <https://doi.org/10.1196/annals.1428.081> PMID: [19120208](#)
5. Jongejan F (1992) Experimental transmission of *Cowdria ruminantium* (Rickettsiales) by the American reptile tick *Amblyomma dissimile* Koch, 1844. *Exp Appl Acarol* 15: 117–121. PMID: [1395974](#)
6. Uilenberg G (1982) Experimental transmission of *Cowdria ruminantium* by the Gulf Coast tick *Amblyomma maculatum*: danger of introducing heartwater and benign African theileriasis onto the American mainland. *Am J Vet Res* 43: 1279–1282. PMID: [6808870](#)
7. Faburay B (2007) Molecular epidemiology of heartwater (*Ehrlichia ruminantium* infection) in The Gambia. PhD Thesis, Utrecht University, The Netherlands.
8. Allsopp BA (2009) Trends in the control of heartwater. *Onderstepoort J Vet Res* 76: 81–88. PMID: [19967932](#)
9. Uilenberg G, Zivkovic D, Dwinger RH, Ter Huurne AAHM, Perie NM (1983) Cross-immunity between strains of *Cowdria ruminantium*. *Res Vet Sci* 35: 200–205. PMID: [6195703](#)
10. Jongejan F, Thielemans MJC, Briere C, Uilenberg G (1991) Antigenic diversity of *Cowdria ruminantium* isolates determined by cross-immunity. *Res Vet Sci* 51: 24–28. PMID: [1896626](#)
11. Mahan SM, Andrew HR, Tebele N (1995) Immunisation of sheep against heartwater with inactivated *Cowdria ruminantium*. *Res Vet Sci* 58: 46–49. PMID: [7709059](#)
12. Mahan SM, Kumbula D, M.J. B, Barbet AF (1998) The inactivated *Cowdria ruminantium* vaccine for heartwater protects against heterologous strains and against laboratory and field tick challenge. *Vaccine* 16: 1203–1211. PMID: [9682380](#)
13. Martinez D, Maillard JC, Coisne S, Sheikboudou C, Bensaid A (1994) Protection of goats against heartwater acquired by immunization with inactivated elementary bodies of *Cowdria ruminantium*. *Vet Immun Immunopathol* 41: 153–163.
14. Allsopp MT, Dorfling CM, Milliard JC, Bensaid A, Haydon DT, Van Heerden H, et al. (2001) *Ehrlichia ruminantium* major antigenic protein gene (*map1*) variants are not geographically constrained and show no evidence of having evolved under positive selection pressure. *J Clin Microbiol* 39: 4200–4203. <https://doi.org/10.1128/JCM.39.11.4200-4203.2001> PMID: [11682561](#)
15. Nyika A, Barbet AF, Burridge MJ, Mahan SM (2002) DNA vaccination with *map1* gene followed by protein boost augments protection against challenge with *Cowdria ruminantium*, the agent of heartwater. *Vaccine* 20: 1215–1225. PMID: [11803084](#)
16. Nyika A, Mahan SM, Burridge MJ, McGuire TC, Rurangirwa FR, Barbet AF, et al. (1998) A DNA vaccine protects mice against the rickettsial agent *Cowdria ruminantium*. *Parasite Immunol* 20: 111–119. PMID: [9568614](#)

17. Postigo M, Taoufik A, Bell-Sakyi L, Bekker CP, de Vries E, Morrison WI, et al. (2008) Host cell-specific protein expression *in vitro* in *Ehrlichia ruminantium*. *Vet Microbiol* 128: 136–147. <https://doi.org/10.1016/j.vetmic.2007.09.023> PMID: 18006251
18. McBride JW, Yu XJ, Walker DH (2000) Glycosylation of homologous immunodominant proteins of *Ehrlichia chaffeensis* and *Ehrlichia canis*. *Infect Immun* 68: 13–18. PMID: 10603362
19. Doyle CK, Nethery KA, Popov VL, McBride JW (2006) Differentially expressed and secreted major immunoreactive protein orthologs of *Ehrlichia canis* and *E. chaffeensis* elicit early antibody responses to epitopes on glycosylated tandem repeats. *Infect Immun* 74: 711–720. <https://doi.org/10.1128/IAI.74.1.711-720.2006> PMID: 16369028
20. Singu V, Peddireddi L, Sirigireddy KR, Cheng C, Munderloh U, Ganta RR, et al. (2006) Unique macrophage and tick cell-specific protein expression from the p28/p30-outer membrane protein multigene locus in *Ehrlichia chaffeensis* and *Ehrlichia canis*. *Cell Microbiol* 8: 1475–1487. <https://doi.org/10.1111/j.1462-5822.2006.00727.x> PMID: 16922866
21. Kamionka M (2011) Engineering of therapeutic proteins production in *Escherichia coli*. *Curr Pharm Biotechnol* 12: 268–274. <https://doi.org/10.2174/138920111794295693> PMID: 21050165
22. Faburay B, Lebedev M, McVey DS, Wilson W, Morozov I, Young A, et al. (2014) A glycoprotein subunit vaccine elicits a strong Rift Valley fever virus neutralizing antibody response in sheep. *Vector Borne Zoonotic Dis* 14: 746–756. <https://doi.org/10.1089/vbz.2014.1650> PMID: 25325319
23. Jongejan F, Thielemans MJC, De Groot M, Van Kooten PJ, Van Der Zeijst BAM (1991) Competitive enzyme linked immunosorbent assay for heartwater using monoclonal antibodies to a *Cowdria ruminantium*-specific 32-kilodalton protein. *Vet Microbiol* 28: 199–211. PMID: 1871954
24. Faburay B, Geysen D, Ceesay A, Marcelino I, Alves MP, Taoufik A, et al. (2007) Immunisation of sheep against heartwater in The Gambia using inactivated and attenuated *Ehrlichia ruminantium* vaccines. *Vaccine* 25: 7939–7947. <https://doi.org/10.1016/j.vaccine.2007.09.002> PMID: 17920167
25. McGill JL, Rusk RA, Guerra-Maupome M, Briggs RE, Sacco RE (2016) Bovine Gamma Delta T Cells Contribute to Exacerbated IL-17 Production in Response to Co-Infection with Bovine RSV and *Mannheimia haemolytica*. *PLoS One* 11: e0151083. <https://doi.org/10.1371/journal.pone.0151083> PMID: 26942409
26. McGill JL, Nair AD, Cheng C, Rusk RA, Jaworski DC, Ganta RR, et al. (2016) Vaccination with an Attenuated Mutant of *Ehrlichia chaffeensis* Induces Pathogen-Specific CD4+ T Cell Immunity and Protection from Tick-Transmitted Wild-Type Challenge in the Canine Host. *PLoS One* 11: e0148229. <https://doi.org/10.1371/journal.pone.0148229> PMID: 26841025
27. Faburay B, Wilson W, McVey DS, Drolet BS, Weingartl H, Madden D, et al. (2013) Rift Valley fever virus structural and nonstructural proteins: recombinant protein expression and immunoreactivity against antisera from sheep. *Vector Borne Zoonotic Dis* 13: 619–629. <https://doi.org/10.1089/vbz.2012.1285> PMID: 23962238
28. Gerrard SR, Nichol ST (2002) Characterization of the Golgi retention motif of Rift Valley fever virus G (N) glycoprotein. *J Virol* 76: 12200–12210. <https://doi.org/10.1128/JVI.76.23.12200-12210.2002> PMID: 12414959
29. Gerrard SR, Nichol ST (2007) Synthesis, proteolytic processing and complex formation of N-terminally nested precursor proteins of the Rift Valley fever virus glycoproteins. *Virology* 357: 124–133. <https://doi.org/10.1016/j.virol.2006.08.002> PMID: 16963099
30. Mahan SM, Smith GE, Kumbula D, Burr ridge MJ, Barbet AF (2001) Reduction of mortality from heartwater in cattle, sheep and goats exposed to field challenge using an inactivated vaccine. *Vet Parasitol* 97: 295–308. PMID: 11390083
31. Vachieri N, Lefrancois T, Esteves I, Molia S, Sheikboudou C, Kandassamy Y, et al. (2006) Optimisation of the inactivated vaccine dose against heartwater and *in vitro* quantification of *Ehrlichia ruminantium* challenge material. *Vaccine* 24: 4747–4756. <https://doi.org/10.1016/j.vaccine.2006.03.031> PMID: 16621174
32. Martinez D, Perez JM, Sheikboudou C, Debus A, Bensaid A (1996) Comparative efficacy of Freund's and Montanide ISA50 adjuvants for the immunization of goats against heartwater with inactivated *Cowdria ruminantium*. *Vet Parasitol* 67:175–184. PMID: 9017866
33. Adakal H, Stachurski F, Konkobo M, Zoungrana S, Meyer DF, Pinarello V, et al. (2010) Efficiency of inactivated vaccines against heartwater in Burkina Faso: impact of *Ehrlichia ruminantium* genetic diversity. *Vaccine* 28: 4573–4580. <https://doi.org/10.1016/j.vaccine.2010.04.087> PMID: 20470791
34. Jongejan F (1991) Protective immunity to heartwater (*Cowdria ruminantium* infection) is acquired after vaccination with *in vitro* attenuated rickettsiae. *Infect Immun* 59: 729–731. PMID: 1987089
35. Zweggarth E, Josemans AI, Van Strijp FM, Lopez-Rebollar L, Van Kleef M, Allsopp BA, et al. (2005) An attenuated *Ehrlichia ruminantium* (Welgevonden stock) vaccine protects small ruminants against

- virulent heartwater challenge. *Vaccine* 23:1695–1702. <https://doi.org/10.1016/j.vaccine.2004.09.030> PMID: [15705474](#)
36. Collins NE, Pretorius A, Van Kleef M, Brayton KA, Allsopp MT, Zweygarth E, et al. (2003) Development of improved attenuated and nucleic acid vaccines for heartwater: *Dev Biol (Basel)* 114: 121–136.
 37. Pretorius A, Collins NE, Steyn HC, Van Strijp F, Van Kleef M, Allsopp BA, et al. (2007) Protection against heartwater by DNA immunisation with four *Ehrlichia ruminantium* open reading frames. *Vaccine* 25: 2316–2324. <https://doi.org/10.1016/j.vaccine.2006.11.061> PMID: [17224211](#)
 38. Louw E, Brayton KA, Collins NE, Pretorius A, Van Strijp F, Allsopp BA, et al. (2002) Sequencing of a 15-kb *Ehrlichia ruminantium* clone and evaluation of the *cpg* 1 open reading frame for protection against heartwater. *Ann N Y Acad Sci* 969: 147–150. PMID: [12381580](#)
 39. Brayton KA, Van Der Walt M, Vogel SW, Allsopp BA (1998) A partially protective clone from *Cowdria ruminantium* identified by using a *Salmonella* vaccine delivery system. *Ann N Y Acad Sci* 849: 247–252. PMID: [9668471](#)
 40. Specht CA, Nong S, Dan JM, Lee CK, Levitz SM (2007) Contribution of glycosylation to T cell responses stimulated by recombinant *Cryptococcus neoformans* mannoprotein. *J Infect Dis* 196: 796–800. <https://doi.org/10.1086/520536> PMID: [17674324](#)
 41. Totté P, McKeever D, Martinez D, Bensaid A (1997) Analysis of T-cell responses in cattle immunized against heartwater by vaccination with killed elementary bodies of *Cowdria ruminantium*. *Infect Immun* 65: 236–241. PMID: [8975917](#)
 42. Totté P, Bensaid A, Mahan SM, Martinez D, McKeever DJ (1999) Immune response to *Cowdria ruminantium* infections. *Parasitology Today* 15: 286–290. PMID: [10377532](#)
 43. Bretscher PA, Wei G, Menon JN, Bielefeldt-Ohmann H (1992) Establishment of stable, cell-mediated immunity that makes "susceptible" mice resistant to *Leishmania major*. *Science* 257: 539–542. PMID: [1636090](#)
 44. Bretscher PA (1994) Prospects for low dose BCG vaccination against tuberculosis. *Immunobiology* 191: 548–554. [https://doi.org/10.1016/S0171-2985\(11\)80461-4](https://doi.org/10.1016/S0171-2985(11)80461-4) PMID: [7713569](#)
 45. Rogers PR, Dubey C, Swain SL (2000) Qualitative changes accompany memory T cell generation: faster, more effective responses at lower doses of antigen. *J Immunol* 164: 2338–2346. PMID: [10679068](#)
 46. Romagnani S (1992) Human TH1 and TH2 subsets: regulation of differentiation and role in protection and immunopathology. *Int Arch Allergy Immunol* 98: 279–285. PMID: [1422257](#)
 47. Flesch I, Kaufmann SH (1987) Mycobacterial growth inhibition by interferon-gamma-activated bone marrow macrophages and differential susceptibility among strains of *Mycobacterium tuberculosis*. *J Immunol* 138: 4408–4413. PMID: [3108389](#)
 48. Orme IM, Roberts AD, Griffin JP, Abrams JS (1993) Cytokine secretion by CD4 T lymphocytes acquired in response to *Mycobacterium tuberculosis* infection. *151*: 518–525. PMID: [8100846](#)