

OPEN

Neurology[®]

The most widely read and highly cited peer-reviewed neurology journal
The Official Journal of the American Academy of Neurology



Neurology Publish Ahead of Print

DOI: 10.1212/WNL.000000000200815

Multivariable Prediction Model for Futile Recanalization Therapies in Patients With Acute Ischemic Stroke

Author(s):

Thomas Meinel¹; Christine Lerch¹; Urs Fischer²; Morin Beyeler, MD¹; Adnan Mujanovic, MD³; Christoph Kurmann, MD³; Bernhard Siepen, MD¹; Adrian Scutelnic, MD¹; Madlaine Müller, MD¹; Martina Goeldlin, MD¹; Nebiyat Filate Belachew, MD³; Tomas Dobrocky, MD³; Jan Gralla, MD³; David Seiffge¹; Simon Jung, MD¹; Marcel Arnold, MD¹; Roland Wiest, MD^{3,4}; Raphael Meier, PhD^{3,4}; Johannes Kaesmacher, MD^{3,4,5}

Corresponding Author:

Thomas Meinel, thomas.meinel@students.unibe.ch

This is an open access article distributed under the terms of the Creative Commons Attribution-NonCommercial-NoDerivatives License 4.0 (CC BY-NC-ND), which permits downloading and sharing the work provided it is properly cited. The work cannot be changed in any way or used commercially without permission from the journal.

Neurology[®] Published Ahead of Print articles have been peer reviewed and accepted for publication. This manuscript will be published in its final form after copyediting, page composition, and review of proofs. Errors that could affect the content may be corrected during these processes.

Affiliation Information for All Authors:

1. Department of Neurology, University Hospital Bern, Inselspital, University of Bern, Bern, Switzerland;
2. Department of Neurology and Stroke Center, University Hospital Basel and University of Basel, Switzerland;
3. University Institute of Diagnostic and Interventional Neuroradiology, University Hospital Bern, Inselspital, University of Bern, Bern, Switzerland;
4. Support Center for Advanced Neuroimaging, University Hospital Bern, Inselspital, University of Bern, Bern, Switzerland;
5. Department of Diagnostic, Paediatric and Interventional Radiology, University Hospital Bern, Inselspital, University of Bern, Bern, Switzerland

Equal Author Contribution:

co-senior authors: Raphael Meier and Johannes Kaesmacher

Contributions:

Thomas Meinel: Drafting/revision of the manuscript for content, including medical writing for content; Study concept or design; Analysis or interpretation of data

Christine Lerch: Drafting/revision of the manuscript for content, including medical writing for content; Major role in the acquisition of data; Study concept or design

Urs Fischer: Drafting/revision of the manuscript for content, including medical writing for content; Study concept or design

Morin Beyeler: Drafting/revision of the manuscript for content, including medical writing for content; Major role in the acquisition of data

Adnan Mujanovic: Drafting/revision of the manuscript for content, including medical writing for content; Major role in the acquisition of data

Christoph Kurmann: Drafting/revision of the manuscript for content, including medical writing for content; Major role in the acquisition of data

Bernhard Siepen: Drafting/revision of the manuscript for content, including medical writing for content; Major role in the acquisition of data

Adrian Scutelnic: Drafting/revision of the manuscript for content, including medical writing for content; Major role in the acquisition of data

Madlaine Müller: Drafting/revision of the manuscript for content, including medical writing for content; Major role in the acquisition of data

Martina Goeldlin: Drafting/revision of the manuscript for content, including medical writing for content; Major role in the acquisition of data

Nebiyat Filate Belachew: Drafting/revision of the manuscript for content, including medical writing for content; Analysis or interpretation of data

Tomas Dobrocky: Drafting/revision of the manuscript for content, including medical writing for content; Study concept or design

Jan Gralla: Drafting/revision of the manuscript for content, including medical writing for content; Major role in the acquisition of data; Study concept or design

David Seiffge: Drafting/revision of the manuscript for content, including medical writing for content; Study concept or

design

Simon Jung: Drafting/revision of the manuscript for content, including medical writing for content; Study concept or design

Marcel Arnold: Drafting/revision of the manuscript for content, including medical writing for content; Major role in the acquisition of data; Study concept or design

Roland Wiest: Drafting/revision of the manuscript for content, including medical writing for content; Major role in the acquisition of data; Study concept or design

Raphael Meier: Drafting/revision of the manuscript for content, including medical writing for content; Study concept or design; Analysis or interpretation of data

Johannes Kaesmacher: Drafting/revision of the manuscript for content, including medical writing for content; Study concept or design; Analysis or interpretation of data

Figure Count:

3

Table Count:

2

Search Terms:

[2] All Cerebrovascular disease/Stroke, [323] Class III, futile thrombectomy, futile thrombolysis, machine learning

Acknowledgment:

Study Funding:

This study was supported by funding received from Swiss National Science Foundation (grant no. 320030L_170060 STRAY-CATS), the Swiss Heart Foundation (grant no. FF17033 & FF18059) and the University of Bern (A digital reference network platform for clinical and experimental neuroscience – deep phenotyping and data integration).

Disclosures:

U. Fischer has received research grants from Medtronic (SWIFT DIRECT and BEYOND SWIFT) and does consultancy for Medtronic, Stryker and CSL Behring outside the submitted work. J. Gralla has received research grants from Medtronic (SWIFT DIRECT and BEYOND SWIFT) and does consultancy for Medtronic outside the submitted work. M. Goeldlin: grants from Bangerter-Rhyner-Foundation, Swiss Stroke Society, Mittelbauvereinigung der Universität Bern. Congress grant from Pfizer. All other authors report no relevant disclosures.

Preprint DOI:**Received Date:**

2022-01-05

Accepted Date:

2022-04-19

Handling Editor Statement:

Submitted and externally peer reviewed. The handling editor was José Merino, MD, MPhil, FAAN.

Abstract

Background and Objectives: Very poor outcome despite intravenous thrombolysis (IVT) and mechanical thrombectomy (MT) occurs in about 1 of 4 patients with ischemic stroke and is associated with a high logistic and economic burden. We aimed to develop and validate a multivariable prognostic model to identify futile recanalization therapies (FRT) in patients undergoing those therapies.

Materials and Methods: Patients from a prospectively collected observational registry of a single academic stroke center treated with MT and/or IVT were included. The dataset was split into a training (N=1808, 80%) and internal validation (N=453, 20%) cohort. We used gradient boosted decision tree machine-learning models after k-NN imputation of 32 variables available at admission to predict FRT defined as modified Rankin-Scale (mRS) 5-6 at 3 months. We report feature importance, ability for discrimination, calibration and decision curve analysis.

Results: 2261 patients with a median (IQR) age 75 years (64-83), 46% female, median NIHSS 9 (4-17), 34% IVT alone, 41% MT alone, 25% bridging were included. Overall 539 (24%) had FRT, more often in MT alone (34%) as compared to IVT alone (11%). Feature importance identified clinical variables (stroke severity, age, active cancer, prestroke disability), laboratory values (glucose, CRP, creatinine), imaging biomarkers (white matter hyperintensities) and onset-to-admission time as the

most important predictors. The final model was discriminatory for predicting 3-month FRT (AUC 0.87, 95% CI 0.87-0.88) and had good calibration (Brier 0.12, 0.11-0.12). Overall performance was moderate (F1-score 0.63 ± 0.004) and decision curve analyses suggested higher mean net benefit at lower thresholds of treatment (up to 0.8).

Conclusions: This FRT prediction model can help inform shared decision making and identify the most relevant features in the emergency setting. While it might be particularly useful in low resource healthcare settings, incorporation of further multifaceted variables is necessary to further increase the predictive performance.

ACCEPTED

Introduction

Even with the outstanding efficacy of mechanical thrombectomy (MT) for treatment of large-vessel acute ischemic stroke (AIS), 1 in 5 patients in the randomized controlled trials¹ and 1 in 3 patients in real-world settings² have very poor long-term outcome (modified Rankin Scale mRS 5-6 at 90 days) despite a technically successful intervention. The term futile intervention was coined to elucidate this issue.³⁻⁵ Similarly, 1 in 5 patients receiving intravenous thrombolysis (IVT) has very poor long-term outcome despite best available treatment with even higher prevalence rates in elderly patients.⁶

Given the need for informed shared-decision making and the high societal and health economics burden of both treatments, there is a need to proof that MT remains (cost-)effective in patients at high risk for futile recanalization therapies (FRT).^{4,7} Although individual patients' preferences may vary, the five-year quality-adjusted-life-expectancy in stroke survivors reaching mRS 5 is minimal (0.06)⁸⁻¹⁰. Several clinical and imaging biomarkers associated with FRT have been identified.^{4,11-18} However, the models developed for MT are insufficient to reliably inform patient and proxies and to guide the decision-making in individual patients.¹⁹⁻²² Besides the MR PREDICT tool²³, which can be used for patients undergoing bridging IVT, no model for IVT-only patients not fulfilling endovascular trial criteria has been developed in the context of contemporary MT. A reliable prediction algorithm to identify patients that will have FRT with variables available at baseline is missing. Such an algorithm is needed to realistically inform patient and proxies about the potential risk/benefits of treatment and facilitate patient-oriented informed decision (e.g. withholding maximal therapy if advanced directives state that the patient does not wish to live with severe dependency). Additionally, since in several countries, access to MT and qualified personnel is limited²⁴, but with rising strain and workload²⁵, reliable FRT prediction could accommodate the rising demand, and increasing healthcare costs.

We hypothesized that the combination of several clinical, laboratory, imaging, and workflow variables would enable accurate prediction of FRT after both IVT and/or MT in order to better inform shared-decision making and possibly even to avoid futile therapies. Additionally, we wanted to perform internal validation of the developed model, analyze the clinical utility of the final model, and analyze potential differences in predictors of FRT between patients with and without detectable vessel occlusion.

Methods

This study adheres to the Transparent reporting of a multivariable prediction model for individual prognosis or diagnosis (TRIPOD) statement.^{26,27}

We included consecutive adult patients from the registry treated with IVT and/or MT between 01/2015-10/2020 and excluded patients with missing outcome at three months (12%, n=322). Patients with missing outcome had a slightly worse prognostic profile with a higher stroke severity, more history of TIA, longer onset-to-admission times and more frequent MT (see eTable 1 in the Supplement for full comparison). Patients had to receive either IVT alone, MT alone or a combination (bridging approach). At our center, we have a liberal approach of IVT and/or MT indications performing treatment also in borderline indications such as low stroke severity, distal occlusions, extended time window and pre-stroke impairment - see our guidelines for detailed indications/contraindications.²⁸

The purpose of the developed model is the prospective prediction of very poor 3-month functional outcome in AIS patients who are potential candidates for IVT and/or MT. The intended use of the machine learning (ML) algorithm in the acute stroke workflow has been published and is provided in figure 1.²⁹ In brief, is intended to inform shared-decision making with the patient and next of kin based on the probability of FRT, after the decision for IVT and/or MT treatment has been made, but before treatment has been actually started.

Standard Protocol Approvals, Registrations, and Patient Consents

Approval by local ethics committee was granted (Kantonale Ethikkommission, Bern, Switzerland: ID 231/2014 and ID 2020-01696) waiving consent of participants in accordance to Swiss Law.

[Figure 1 intended workflow]

We randomly split the final dataset (n=2261) in the training set (80%, n=1808) used for development and internal validation (20%, n=453). The flow chart showing patient inclusion and the study design is shown in eFigure 1 in the Supplement.

Clinical, laboratory, imaging and workflow variables were collected prospectively by dedicated research staff and missing values completed by using the clinical information system. Initially, 32 baseline admission variables were considered, but we dropped input variables (features) which were not routinely registered when more than 25% of the values were missing. Dropped variables included D-Dimer, HDL cholesterol, HbA1c, triglycerides, troponin and activated partial thromboplastin time. See eTable 2 in the Supplement for a full list of features considered and their respective definitions. The choice of independent variables was based on existing literature on pathophysiologically plausible associations with FRT that were available and documented in a sufficiently high data quality at our institution.

FRT was defined as mRS 5-6 at 3 months dichotomizing the outcome as a binary target variable, and was assessed by certified physicians during routine clinical visits or certified study nurses by semi-structured telephone interviews. Death was assessed through linkage with the national mortality registry. Assessors were not blinded, but unaware of this project at the time of assessment. Classes of FRT were imbalanced (24% mRS \geq 5, 76% mRS $<$ 5, ratio 3.2:1). We imputed missing data with k-Nearest Neighbor (k-NN, k=15 neighbors) imputation on normalized data of the training and validation separately. We normalized features to [0,1] interval with min-max normalization.

We implemented Gradient Boosting (XGBoost classifier), by means of Python's (3.7.7) scikit learn³⁰ (0.22.1), xgboost³¹ (1.2.0, for XGBoost classifier) based on a previous project showing that this algorithm had good overall performance and high robustness.²⁹

We used a nested, stratified 10-fold cross-validation strategy for model development (XGBoost classifier).²⁹ In the outer cross-validation loop, the training dataset was split into 10 equally sized subsets.²⁹ Nine out of the ten subsets were used for training and one for validation. In the inner loop, hyperparameter optimization was performed based on maximization of f1-score in a 10-fold randomized gridsearch using the data of the previously formed nine folds.²⁹

For validation, we trained ML algorithms using the setting of the nested cross validation's inner loop on the complete training data (10-fold randomized grid search) and applied the resulting ML model to

separate validation data (n=453).²⁹ We repeated this process 20 times using a different random seed for algorithm initialization in each run.

Statistical analysis

We assessed univariate associations of clinical variables with FRT in the overall cohort, as well as training and validation data separately using standard descriptive statistics: Chi squared and Fisher's exact tests for categorical variables, Whitney-Mann-U-Test for non-normally continuous or ordinally scaled variables, and Welsch's t-test for independent normally distributed data. We used the *pmsampsize* Stata Package (StataCorp. 2019. Stata Statistical Software: Release 16. College Station, TX: StataCorp LLC) to calculate the minimum sample size required using 40 candidate predictors based on an assumed outcome prevalence of 25% and a lower bound for the new model's R-squared value of 0.25.³² This resulted in a final sample size of 1230 patients.

We report model discrimination, calibration and clinical utility. For discrimination of the models at the threshold of $p=0.5$, we report precision, recall, F1-score, accuracy, balanced accuracy, specificity, and Matthew's correlation. Furthermore, we report the Area-Under-the Curve (AUC) of the Receiver operating characteristic (ROC) and the Average Precision (AP) score throughout all possible thresholds. For calibration of the model, we report Brier score and Expected Calibration Error (ECE) grounded on 10 bins. We computed feature importance using Shapley Values Feature Importance feature importance for the XGBClassifier. Permutation feature importance was defined as decrease in F1-score by shuffling the values of a single feature randomly. Decision curve analysis³³ is reported to quantify the clinical utility of the model on validation data. Since the a-priori probability threshold will vary according to healthcare resources, we did not define a fix a-priori threshold for risk of FRT to assess the net benefit. Results are reported as mean and confidence interval based on 10-fold cross-validation (model development). Performance on validation data was reported as mean \pm 1 standard deviation over 20 runs with different random seeds for algorithm initialization.

Data Availability

Investigators may request access to anonymized individual patient data including analysis-ready datasets, and dataset specifications, after publication. Prior to use of the data, proposals need to be approved by an independent review panel at <https://swissethics.ch/basec> and a signed data sharing agreement will then be approved.

ACCEPTED

Results

Baseline characteristics

The final cohort included 2261 patients: median (IQR) age 75 years (64-83), 46% female, median NIHSS 9 (4-17). 34% received IVT alone, 41% MT alone and 25% both acute recanalization treatments (bridging approach). FRT occurred overall in 24% of patients and more often in patients receiving MT alone (34%) as compared to bridging patients (26%) and IVT alone (11%).

Baseline characteristics of patients in training and validation set are shown in Table 1. Taken together, older age, higher stroke severity, active cancer, and a higher cardiovascular risk profile were associated with FRT on univariate analysis.

[Table 1]

Discrimination of ML methods was good. Performance and a complete overview of the results are provided in Table 2. Overall, discrimination for predicting FRT (AUC 0.87 95% CI 0.87-0.88) and calibration (Brier 0.12, 0.11-0.12) were good and overall performance moderate (F1 score 0.63 ± 0.004) in the validation dataset (see eFigure 2 and 3 in the Supplement for ROC curves of the full model in the derivation and validation cohort).

[Table 2]

Shapley Values Feature Importance revealed that the most important features included clinical variables (higher stroke severity, older age, active cancer, prestroke disability), laboratory values (higher glucose, higher CRP, less dyslipidemia), imaging biomarkers (more white matter hyperintensities) and longer onset-to-admission time. The feature importances are shown in Figure 2 (see eFigures 4 and 5 in the Supplement for all features in patients with and without detectable vessel occlusion).

[Figure 2 feature importance]

In patients without detectable vessel occlusion, higher INR, and atrial fibrillation seemed to be more important, whereas white matter hyperintensity severity and active cancer seemed to be less important.

The decision curve for XGBClassifier is shown in Figure 3. The mean net benefit for $p=0.8$ was minimal (0.02 ± 0.01), and relevant net benefit was only present in lower a-priori thresholds. The net benefit – in this context – is weighing the profit obtained by classifying an individual with the outcome and the loss caused by falsely classifying an individual without the outcome.³⁴ No evidence for harm was present throughout all thresholds.

[Figure 3 Decision Curve]

ACCEPTED

Discussion

The development and validation of a multivariable prediction model for futile thrombolysis and thrombectomy showed the following main findings:

(1) FRT overall occurs in 1 in 4 patients and more often in patients receiving MT alone (34%) as compared to IVT alone (11%). (2) The most relevant predictors of FRT included clinical variables (higher stroke severity, older age, active cancer, prestroke disability), laboratory values (higher glucose, higher CRP, higher creatinine), imaging biomarkers (more white matter hyperintensities) and longer onset-to-admission time. (3) The combination of several clinical, laboratory, neuroimaging and workflow variables at baseline showed good discrimination for prediction of FRT. (4) Our model will help to inform shared-decision making, but its usability to withhold treatment is uncertain and depends on healthcare resources. (5) Potential differences for prediction of FRT between patients with and without detectable vessel occlusion were identified.

Despite the success of IVT and MT in improving stroke outcome, rates of FRT remain considerable for both treatments²⁶. Given more liberal indications in the real-world as compared to the patients included in the original randomized controlled studies^{35,36}, for both treatments there is a gradual shift from selecting patients to deselecting patients. However, this development is likely to cause an increase in FRT. Although the costs of IVT and EVT are much lower as compared to established treatments e.g. for palliative cancer, the treatments pose enormous logistic, economic and ethical challenges in acute stroke treatment.

With this analysis, we have developed and internally validated a multivariable prediction algorithm to discriminate between patients which are likely or unlikely to have a very poor clinical outcome despite best available treatment with IVT and/or MT.

The lower rate of FRT in IVT patients might be related to the fact that patients meeting IVT criteria are early presenters, without extensive hemorrhagic changes. Some features included in our model have been partially described before^{14,37-40}, but several are novel and their relative importance can now be estimated (Figure 2). This allows clinicians to rapidly clarify the most relevant features in the

emergency setting. All variables considered in our model are available upon admission or can be obtained within a few minutes until the decision to perform IVT/MT has to be taken.

The intended use of our model are ischemic stroke patients before treatment has been started, but the decision for treatment with IVT and/or MT has been made. The derivation cohort is from a high-volume academic stroke center with low restrictions to perform those treatments. For clear-cut indications for MT, such as patients presenting early with severe stroke, the updated MR CLEAN predict tool²³ might be more useful, but it cannot be applied to borderline indications or to inform decision on IVT-only patients not fulfilling endovascular trial criteria.

Our model has good discrimination and reasonable calibration, both in the derivation as well as the validation cohort. The model output can be used to inform and discuss with patients and/or next of kin the high risk of poor outcome and help to set realistic expectations.⁴¹ However, in high-resource healthcare systems, the algorithm will probably not be used since no patients will be excluded from acute recanalization treatments despite high chances for FRT. Additionally, false positives (classifying patients as FRT, despite the fact that they might gain functional independence) should be weighted more than false negative classifications. In other words, the positive predictive value of any FRT algorithm has to be as great as possible to evade skipping an evidence-based treatment from appropriate patients which may benefit from IVT/MT. Hence, we caution colleagues to apply the appealing AUC reported here and by others^{37,42} to individual patients with regards to the clinical utility in excluding patients from reperfusion therapies.²⁹ However, there was no evidence of harm as shown by the decision curve analysis. Randomized controlled trials need to clarify whether the cost-effectiveness of MT is preserved in patients with high risk of poor outcome.

Nevertheless, the situation might be very different in low and mid income countries where access to IVT/MT is limited by shortage of MT devices, IVT medication, staff or other hurdles. Fittingly, our models exhibited net benefit in the lower probability thresholds. This means, that they might be most useful in settings of very limited healthcare resources. Cultural perception and individual preferences might also influence which a priori cut-off will be chosen in an individual scenario.

Additionally, this rather simple algorithm provides evidence that prediction of FRT is possible when different information sources (clinical, laboratory, imaging, time metrics) are combined. Further and more sophisticated information sources are promising additions for refinement of this algorithm. Those include ischemic core volume⁴³, ischemic core location⁴⁴, penumbra volume, covert brain infarctions, brain atrophy⁴⁵, masseter muscle⁴⁶, oxygen saturation, amongst others have not been accounted for. Reliable identification of FRT ahead of treatment is of utmost importance⁴⁷ and this model and proposed refinements can serve as a starting point to reach the intended use. However, a recent study found that a large part of the variance in outcome after MT is explained by variables that are only known after the treatment decision has been made challenging the possibility to predict FRT in the emergency setting before knowing the outcome of the intervention – at least for MT patients.⁴⁸ Regarding the model performance, previous studies have shown that for most tabulated datasets, the differences in performance between different analytical machine learning methods and conventional logistic regression are minimal or non-existent.^{21,29,37}

Strengths of this analysis include its large sample size with good quality data of predictors easily obtained in an emergency setting. This study has the limitations of a single center, retrospective registry potentially limiting its generalizability to other settings. Most importantly, no medical comparison group was available. Hence inference on a potential residual clinical benefit even in a patient with high probability for FRT is not possible. Additionally, 12% (322 patients) of the cohort had missing 3-month outcome and those had a slightly worse prognostic profile. Moreover, several advanced imaging parameters such as ischemic core volume, ischemic core location⁴⁴, penumbra volume and mismatch profile⁴⁹, covert brain infarctions, brain atrophy⁴⁵, masseter muscle volume, oxygen saturation amongst others have not been accounted for. Another limitation is the choice/availability of independent variables, since for example information on dementia/pre stroke cognitive impairment was unavailable. Information on medical history was obtained prospectively in the registry and includes variables obtained during hospital stay, so it is uncertain, how many of the predictors incorporated could be obtained within a short time period in an emergency setting. Hence,

our results need to be replicated by other groups and verified by upcoming randomized controlled trials on this issue in several subgroups with high-risk for FRT, such as low ASPECTS (NCT03805308, NCT03811769).

In conclusion, FRT occurs in 1 in 4 patients and more often in patients receiving MT alone (34%) as compared to IVT alone (11%). We identified clinical variables (higher stroke severity, older age, active cancer, prestroke disability), laboratory values (higher glucose, higher CRP, higher creatinine), imaging biomarkers (white matter hyperintensities) and time from onset-to-admission as the most relevant predictors of FRT. The prediction algorithm will help to inform shared-decision making and to set realistic expectations. Although the clinical benefit and usability of this algorithm for withholding treatments in settings with high healthcare resources is to be established in future studies, the development of a reliable algorithm for prediction of FRT seems to be within reach and should incorporate more advanced admission imaging features.

References

1. Goyal M, Menon BK, Van Zwam WH, et al. Endovascular thrombectomy after large-vessel ischaemic stroke: A meta-analysis of individual patient data from five randomised trials. *Lancet*. 2016;387(10029):1723-1731. doi:10.1016/S0140-6736(16)00163-X
2. Jansen IGH, Mulder MJHL, Goldhoorn RJB. Endovascular treatment for acute ischaemic stroke in routine clinical practice: Prospective, observational cohort study (MR CLEAN Registry). *BMJ*. 2018;360. doi:10.1136/bmj.k949
3. Lindsberg PJ, Sairanen T, Nagel S, Salonen O, Silvennoinen H, Strbian D. Recanalization treatments in basilar artery occlusion—Systematic analysis. *Eur Stroke J*. 2016;1(1):41-50. doi:10.1177/2396987316629889
4. Hussein HM, Saleem MA, Qureshi AI. Rates and predictors of futile recanalization in patients undergoing endovascular treatment in a multicenter clinical trial. *Neuroradiology*. 2018;60(5):557-563. doi:10.1007/s00234-018-2016-2
5. Ganesh A, Al-Ajlan FS, Sabiq F, et al. Infarct in a New Territory after Treatment Administration in the ESCAPE Randomized Controlled Trial (Endovascular Treatment for Small Core and Anterior Circulation Proximal Occlusion with Emphasis on Minimizing CT to Recanalization Times). *Stroke*. 2016;47(12):2993-2998. doi:10.1161/STROKEAHA.116.014852
6. Mishra NK, Ahmed N, Andersen G, et al. Thrombolysis in very elderly people: Controlled comparison of SITS international stroke thrombolysis registry and virtual international stroke trials archive. *BMJ*. 2010;341(7783):1144. doi:10.1136/bmj.c6046
7. Molina CA. Editorial: Futile recanalization in mechanical embolectomy trials: A call to improve selection of patients for revascularization. *Stroke*. 2010;41(5):842-843. doi:10.1161/STROKEAHA.110.580266
8. Ganesh A, Luengo-Fernandez R, Pendlebury ST, Rothwell PM. Weights for ordinal analyses of the modified Rankin Scale in stroke trials: A population-based cohort study. *EClinicalMedicine*. 2020;23. doi:10.1016/j.eclinm.2020.100415
9. Deb-Chatterji M, Konnopka A, Flottmann F, et al. Patient-reported, health-related, quality of life after stroke thrombectomy in clinical practice. *Neurology*. 2020;95(12):e1724-e1732. doi:10.1212/WNL.0000000000010356
10. Rangaraju S, Haussen D, Nogueira RG, Nahab F, Frankel M. Comparison of 3-Month Stroke Disability and Quality of Life across Modified Rankin Scale Categories. *Interv Neurol*. 2017;6(1-2):36-41. doi:10.1159/000452634
11. Lee SH, Kim BJ, Han MK, et al. Futile reperfusion and predicted therapeutic benefits after successful endovascular treatment according to initial stroke severity. *BMC Neurol*. 2019;19(1):1-9. doi:10.1186/s12883-019-1237-2
12. Alawieh A, Vargas J, Fargen KM, et al. Impact of Procedure Time on Outcomes of Thrombectomy for Stroke. *J Am Coll Cardiol*. 2019;73(8):879-890. doi:10.1016/j.jacc.2018.11.052
13. Gilberti N, Gamba M, Premi E, et al. Leukoaraiosis is a predictor of futile recanalization in acute ischemic stroke. *J Neurol*. 2017;264(3):448-452. doi:10.1007/s00415-016-8366-y

14. Havenon A De, Castonguay A, Nogueira R, et al. Prestroke Disability and Outcome After Thrombectomy for Emergent Anterior Circulation Large Vessel Occlusion Stroke. Published online 2021. doi:10.1212/WNL.0000000000012827
15. Deng G, Xiao J, Yu H, Chen M, Shang K, Qin C. Predictors of futile recanalization after endovascular treatment in acute ischemic stroke : a meta- - analysis. Published online 2021:1-6. doi:10.1136/neurintsurg-2021-017963
16. Pan H, Lin C, Chen L, et al. Multiple-Factor Analyses of Futile Recanalization in Acute Ischemic Stroke Patients Treated With Mechanical Thrombectomy. *Front Neurol.* 2021;12(August):1-11. doi:10.3389/fneur.2021.704088
17. Zhou T, Yi T, Li T, et al. Predictors of futile recanalization in patients undergoing endovascular treatment in the DIRECT-MT trial. *J Neurointerv Surg.* Published online 2021:neurintsurg-2021-017765. doi:10.1136/neurintsurg-2021-017765
18. Mohammaden MH, Stapleton CJ, Brunozzi D, et al. Predictors of Poor Outcome Despite Successful Mechanical Thrombectomy of Anterior Circulation Large Vessel Occlusions Within 6 h of Symptom Onset. *Front Neurol.* 2020;11(September):1-5. doi:10.3389/fneur.2020.00907
19. Rangaraju S, Liggins JTP, Aghaebrahim A, et al. Pittsburgh Outcomes After Stroke Thrombectomy Score Predicts Outcomes After Endovascular Therapy for Anterior Circulation Large Vessel Occlusions. *Stroke.* 2014;45(8):2298-2304. doi:10.1161/STROKEAHA.114.005595
20. Kent DM, Ruthazer R, Decker C, et al. Development and validation of a simplified Stroke–Thrombolytic Predictive Instrument. *Neurology.* 2015;85(11):942-949. doi:10.1212/WNL.0000000000001925
21. Van Os HJA, Ramos LA, Hilbert A, et al. Predicting outcome of endovascular treatment for acute ischemic stroke: Potential value of machine learning algorithms. *Front Neurol.* 2018;9(SEP):1-8. doi:10.3389/fneur.2018.00784
22. Alaka SA, Menon BK, Brobbey A, et al. Functional Outcome Prediction in Ischemic Stroke: A Comparison of Machine Learning Algorithms and Regression Models. *Front Neurol.* 2020;11(August):1-9. doi:10.3389/fneur.2020.00889
23. Venema E, Roozenbeek B, Mulder MJHL, et al. Prediction of Outcome and Endovascular Treatment Benefit: Validation and Update of the MR PREDICTS Decision Tool. *Stroke.* Published online 2021:2764-2772. doi:10.1161/STROKEAHA.120.032935
24. Aguiar de Sousa D, von Martial R, Abilleira S, et al. Access to and delivery of acute ischaemic stroke treatments: A survey of national scientific societies and stroke experts in 44 European countries. *Eur Stroke J.* 2019;4(1):13-28. doi:10.1177/2396987318786023
25. Fargen KM, Arthur AS, Leslie-Mazwi T, et al. A survey of burnout and professional satisfaction among United States neurointerventionalists. *J Neurointerv Surg.* 2019;11(11). doi:10.1136/neurintsurg-2019-014833
26. Heus P, Reitsma JB, Collins GS, et al. Transparent Reporting of Multivariable Prediction Models in Journal and Conference Abstracts: TRIPOD for Abstracts. *Ann Intern Med.* Published online 2020. doi:10.7326/M20-0193
27. Collins GS, Reitsma JB, Altman DG, Moons KGM. Transparent reporting of a multivariable prediction model for individual prognosis or diagnosis (TRIPOD): The TRIPOD statement. *Ann Intern Med.* 2015;162(1):55-63. doi:10.7326/M14-0697
28. S. Jung, H. Mattle, T. Horvath, D. Seiffge, M. Heldner, T. Meinel, M. Bühlmann UP, S. Salmen, A. Humm, S. Renaud, R. Bühler, J. Gralla, G. Schroth, P. Mordasini ME-K, A.

- Angelillo-Scherrer, W. Z Graggen, C. Bassetti, A. Raabe, U. Fischer MA. Stroke Guidelines of the Bern Stroke Network. Published 2021.
http://www.neurologie.insel.ch/fileadmin/Neurologie/Dokumente/Stroke_Center/Stroke_Guidelines_2021_English.pdf
29. Meier R, Burri M, Fischer S, et al. Beyond Accuracy: Investigating the Potential Clinical Utility of Predicting Functional Dependency and Severe Disability or Death in Successfully Reperused Patients using Machine Learning. *medRxiv*. Published online 2020:2020.11.17.20232280. doi:10.1101/2020.11.17.20232280
 30. Pedregosa F, Varoquaux G, Gramfort A, et al. Scikit-learn: Machine Learning in Python. *J Mach Learn Res*. 2011;12.
 31. Chen T, Guestrin C. XGBoost: A Scalable Tree Boosting System. In: *Proceedings of the 22nd ACM SIGKDD International Conference on Knowledge Discovery and Data Mining*. ACM; 2016:785-794. doi:10.1145/2939672.2939785
 32. Riley RD, Ensor J, Snell KIE, et al. Calculating the sample size required for developing a clinical prediction model. *BMJ*. 2020;368. doi:10.1136/bmj.m441
 33. Vickers AJ, Elkin EB. Decision Curve Analysis: A Novel Method for Evaluating Prediction Models. *Med Decis Mak*. 2006;26(6):565-574. doi:10.1177/0272989X06295361
 34. Vickers AJ, van Calster B, Steyerberg EW. A simple, step-by-step guide to interpreting decision curve analysis. *Diagnostic Progn Res*. 2019;3(1). doi:10.1186/s41512-019-0064-7
 35. Leischner H, Brekenfeld C, Meyer L, et al. Study Criteria Applied to Real Life—A Multicenter Analysis of Stroke Patients Undergoing Endovascular Treatment in Clinical Practice. *J Am Heart Assoc*. 2021;10(22):e017919. doi:10.1161/JAHA.120.017919
 36. Nguyen TN, Abdalkader M, Nagel S, et al. Noncontrast Computed Tomography vs Computed Tomography Perfusion or Magnetic Resonance Imaging Selection in Late Presentation of Stroke With Large-Vessel Occlusion. *JAMA Neurol*. Published online November 8, 2021. doi:10.1001/jamaneurol.2021.4082
 37. Ramos LA, Kappelhof M, Os HJA Van, Chalos V. Predicting Poor Outcome Before Endovascular Treatment in Patients With Acute Ischemic Stroke. 2020;11(October):1-12. doi:10.3389/fneur.2020.580957
 38. Xu H, Jia B, Huo X, et al. Predictors of Futile Recanalization After Endovascular Treatment in Patients with Acute Ischemic Stroke in a Multicenter Registry Study. *J Stroke Cerebrovasc Dis*. 2020;29(10):105067. doi:10.1016/j.jstrokecerebrovasdis.2020.105067
 39. Ryu W-S, Woo S-H, Schellingerhout D, et al. Stroke outcomes are worse with larger leukoaraiosis volumes. *Brain*. 2017;140(1):158-170. doi:10.1093/brain/aww259
 40. Su M, Zhou Y, Chen Z, et al. Cystatin C predicts futile recanalization in patients with acute ischemic stroke after endovascular treatment. *J Neurol*. Published online 2021. doi:10.1007/s00415-021-10680-w
 41. Ruiz A, Longstreth WT, Tirschwell DL, Creutzfeldt CJ. What defines success following reperfusion after mechanical thrombectomy for older patients in the real world? *J Neurol*. Published online 2021. doi:10.1007/s00415-021-10859-1
 42. Xie Y, Jiang B, Gong E, et al. JOURNAL CLUB: Use of Gradient Boosting Machine Learning to Predict Patient Outcome in Acute Ischemic Stroke on the Basis of Imaging, Demographic, and Clinical Information. *Am J Roentgenol*. 2019;212(1):44-51. doi:10.2214/AJR.18.20260
 43. Abdelkhaleq R, Kim Y, Khose S, et al. Automated Prediction Of Final Infarct Volume In

- Patients With Large-vessel Occlusion Acute Ischemic Stroke. *Neurosurg Focus*. 2021;51(1):1-5. doi:10.3171/2021.4.FOCUS21134
44. Haranhalli N, Mbabuike N, Grewal SS, et al. Topographic correlation of infarct area on CT perfusion with functional outcome in acute ischemic stroke. *J Neurosurg*. 2020;132(1):33-41. doi:10.3171/2018.8.JNS181095
 45. Schirmer MD, Donahue KL, Nardin MJ, et al. Brain Volume: An Important Determinant of Functional Outcome After Acute Ischemic Stroke. *Mayo Clin Proc*. 2020;95(5):955-965. doi:10.1016/j.mayocp.2020.01.027
 46. Lindström I, Protto S, Khan N, Hernesniemi J, Sillanpää N, Oksala N. Association of masseter area and radiodensity with three-month survival after proximal anterior circulation occlusion. *J Neurointerv Surg*. 2021;13(1):25-29. doi:10.1136/neurintsurg-2020-015837
 47. Chen M. Why futile recanalization matters. *J Neurointerv Surg*. 2020;12(10):925-926. doi:10.1136/neurintsurg-2020-016789
 48. Ospel JM, Ganesh A, et al. Evaluating Outcome Prediction Models in Endovascular Stroke Treatment Using Baseline, Treatment, and Posttreatment Variables. *Stroke Vasc Interv Neurol*. 2021;1(1). doi:10.1161/svin.121.000167
 49. Heit JJ, Mlynash M, Christensen S, et al. What predicts poor outcome after successful thrombectomy in early time window? *J Neurointerv Surg*. 2021;13(5):421-425. doi:10.1136/neurintsurg-2020-016125

Tables

Table 1. Baseline characteristics of all included patients .

Feature	Unit/ Definition	Training data (n=1808)			Validation data (n=453)		
		No FRT (n=1377)	FRT (n=431)	p-value	No FRT (n=345)	FRT (n=108)	p-value
Clinical Variables							
Age		72.6 (61.6-81)	82.4 (74.5-87.7)	<0.001	72.2 (62.4-80.9)	83.6 (75.5-88.1)	<0.001
Female Sex	Male	774 (56.2%)	206 (47.8%)	0.002	190 (55.1%)	55 (50.9%)	0.45
	Female	603 (43.8%)	225 (52.2%)		155 (44.9%)	53 (49.1%)	
National Institute of Health Stroke Severity Scale		7 (4-14)	17 (11-22)	<0.001	8 (4-15)	17 (11-21)	<0.001
Active Cancer		63 (4.6%)	65 (15.1%)	<0.001	15 (4.3%)	19 (17.6%)	<0.001
Prestroke disability	Modified Rankin Scale	0 (0-1)	1 (0-2)	<0.001	0 (0-1)	1 (0-2)	<0.001
Prestroke living situation	Home	1,303 (94.6%)	354 (82.1%)	<0.001	331 (95.9%)	90 (83.3%)	<0.001
	Nursing home	57 (4.1%)	70 (16.2%)		11 (3.2%)	13 (12.0%)	
	Other medical facility	12 (0.9%)	5 (1.2%)		2 (0.6%)	5 (4.6%)	
	Rehabilitation hospital	5 (0.4%)	2 (0.5%)		1 (0.3%)	0 (0.0%)	
Systolic blood pressure	mmHg	156 (139-176)	161 (135-180)	0.40	160 (142-178)	156 (131.5-184)	0.61
Diastolic blood pressure	mmHg	84 (71-97)	81.27 (69-95)	0.059	83 (74-95)	78 (69-93.5)	0.028
Medical History							
Atrial Fibrillation / Flutter		423 (30.7%)	185 (42.9%)	<0.001	100 (29.0%)	49 (45.4%)	0.002
Coronary heart disease		218 (15.8%)	100 (23.2%)	<0.001	53 (15.4%)	25 (23.1%)	0.061
Diabetes Mellitus		215 (15.6%)	101 (23.4%)	<0.001	54 (15.7%)	24 (22.2%)	0.11
Hyperlipidemia		903 (65.6%)	252 (58.5%)	0.007	236 (68.4%)	58 (53.7%)	0.005
Arterial Hypertension		1,010 (73.3%)	350 (81.2%)	<0.001	248 (71.9%)	86 (79.6%)	0.11
History of intracranial hemorrhage		23 (1.7%)	6 (1.4%)	0.69	3 (0.9%)	2 (1.9%)	0.39
Peripheral artery disease		50 (3.6%)	35 (8.1%)	<0.001	16 (4.6%)	6 (5.6%)	0.70
Prosthetic heart valves	None	1,329 (96.5%)	415 (96.3%)	0.93	337 (97.7%)	101 (93.5%)	0.10
	Biological	28 (2.0%)	10 (2.3%)		5 (1.4%)	4 (3.7%)	
	Mechanical	20 (1.5%)	6 (1.4%)		3 (0.9%)	3 (2.8%)	

Smoking		324 (23.5%)	46 (10.7%)	<0.001	83 (24.1%)	12 (11.1%)	0.004
History of stroke		179 (13.0%)	80 (18.6%)	0.004	37 (10.7%)	13 (12.0%)	0.70
History of transient ischemic attack		57 (4.1%)	17 (3.9%)	0.86	19 (5.5%)	5 (4.6%)	0.72
Neuroimaging							
White matter disease	0	355 (25.8%)	48 (11.1%)	<0.001	105 (30.4%)	15 (13.9%)	<0.001
	1	555 (40.3%)	127 (29.5%)		147 (42.6%)	34 (31.5%)	
	2	304 (22.1%)	131 (30.4%)		60 (17.4%)	34 (31.5%)	
	3	163 (11.8%)	125 (29.0%)		33 (9.6%)	25 (23.1%)	
Detectable vessel occlusion		645 (46.8%)	121 (28.1%)	<0.001	169 (49.0%)	24 (22.2%)	<0.001
Treatment							
Intraarterial treatment		834 (60.6%)	364 (84.5%)	<0.001	205 (59.4%)	94 (87.0%)	<0.001
Intravenous thrombolysis		874 (63.5%)	184 (42.7%)	<0.001	234 (67.8%)	43 (39.8%)	<0.001
Symptom onset to admission time	minutes	157 (82-321)	190 (107-400)	<0.001	135 (74-254)	215 (126-539)	<0.001
Laboratory Values							
Serum creatinine	umol/L	79 (67-92)	85 (66-108)	<0.001	80 (67-93)	85 (70-104)	0.18
C reactive protein (CRP)	mg/L	3.93 (3-8.6)	8 (3-19)	<0.001	2.5 (1.88-3.18)	2.4 (1.9-2.9)	0.10
Plasma glucose	mmol/L	6.4 (5.7-7.5)	7.1 (5.9-8.5)	<0.001	6.4 (5.8-7.4)	7.05 (6-8.65)	<0.001
Low-density lipoprotein cholesterol	mmol/L	2.6 (1.98-3.25)	2.4 (1.99-2.99)	0.006	2.5 (1.88-3.18)	2.4 (1.9-2.9)	0.10
Total cholesterol	mmol/L	4.66 (3.9-5.3)	4.34 (3.8-5.0)	<0.001	4.62 (3.9-5.3)	4.4 (3.9-4.9)	0.049
Haemoglobin	mg/L						
		137 (128-146)	127 (116-137)	<0.001	136 (128-144)	127 (116-138)	<0.001
International normalized ratio (INR)		1.02 (1-1.08)	1.06 (1.01-1.16)	<0.001	1.02 (1-1.06)	1.06 (1.02-1.13)	<0.001
Platelet count	G/L	222 (190-256)	224 (185-264)	0.82	224 (195-259)	225 (187-257)	0.45

Table 2. Performance of the model for mRS 5-6 prediction. Values are reported as mean and 95% CI for 10-fold cross validation and mean +/- SD for validation.

Dataset	10-fold cross-validation	Validation data	Subgroup with detectable vessel occlusion	Subgroup without detectable vessel occlusion
			Validation data	Validation data
Accuracy	0.84 (0.80-0.87)	0.84 (0.82-0.85)	0.78 (0.76-0.80)	0.88 (0.86-0.90)
Balanced Accuracy	0.73 (0.67-0.80)	0.78 (0.75-0.80)	0.72 (0.70-0.75)	0.72 (0.64-0.79)
Precision	0.71 (0.59-0.83)	0.65 (0.62-0.68)	0.66 (0.60-0.72)	0.64 (0.55-0.73)
Recall	0.53 (0.39-0.67)	0.67 (0.62-0.72)	0.58 (0.51-0.64)	0.48 (0.32-0.64)
F1-Score	0.60 (0.50-0.71)	0.66 (0.63-0.69)	0.61 (0.58-0.65)	0.54 (0.44-0.64)
Specificity	0.93 (0.88-0.98)	0.89 (0.88-0.90)	0.87 (0.82-0.91)	0.95 (0.92-0.98)
Brier score	0.12 (0.10-0.14)	0.12 (0.11-0.12)	0.15 (0.15-0.15)	0.10 (0.09-0.11)
ECE	0.07 (0.04-0.09)	0.06 (0.05-0.07)	0.07 (0.05-0.09)	0.11 (0.08-0.13)
ROC-AUC	0.86 (0.82-0.91)	0.87 (0.87-0.88)	0.83 (0.82-0.83)	0.84 (0.82-0.87)

Figure Legends

Figure 1. Intended use of the model in a stroke workflow.

IVT: intravenous thrombolysis; MT: mechanical thrombectomy; mRS: modified Rankin Scale; ML: machine learning. The ML model outputs a probability (risk score) for mRS 5-6 based on variables available ahead of recanalization therapies. This information is provided to the treating physicians after selection of patient for recanalization and could serve as a marker for futile recanalization. Workflow derived from Meier et al. with permission.²⁹

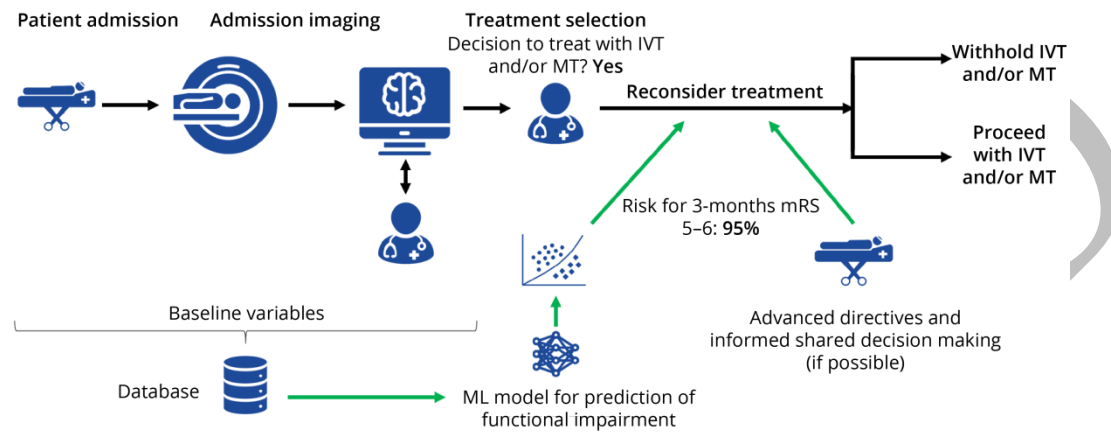


Figure 2. Shapley Values Feature Importance

computed for the XGBoost (mean values of 10 feature permutations and 20 random initializations). A) all patients B) only patients with detectable vessel occlusion C) only patients without detectable vessel occlusion. See the Supplement for full model and features. Frame indicates the ten most important variables.

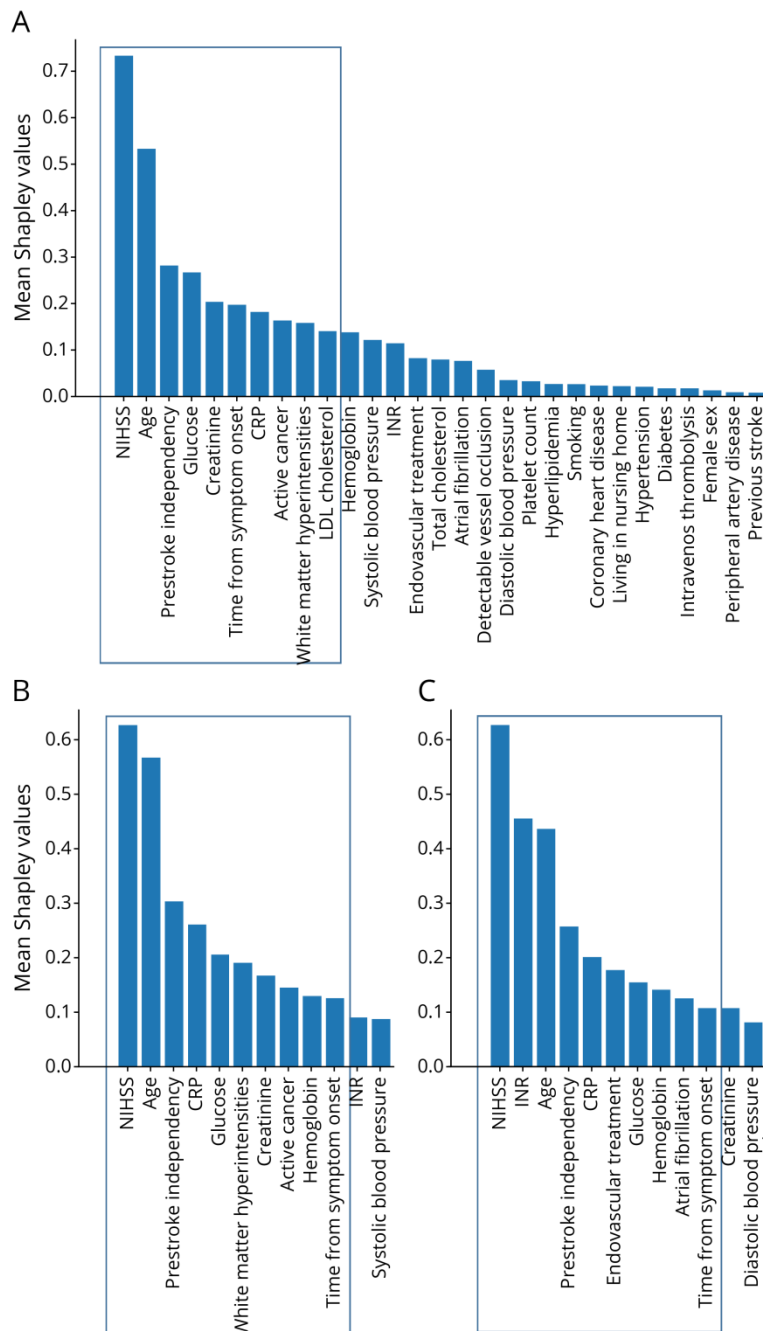
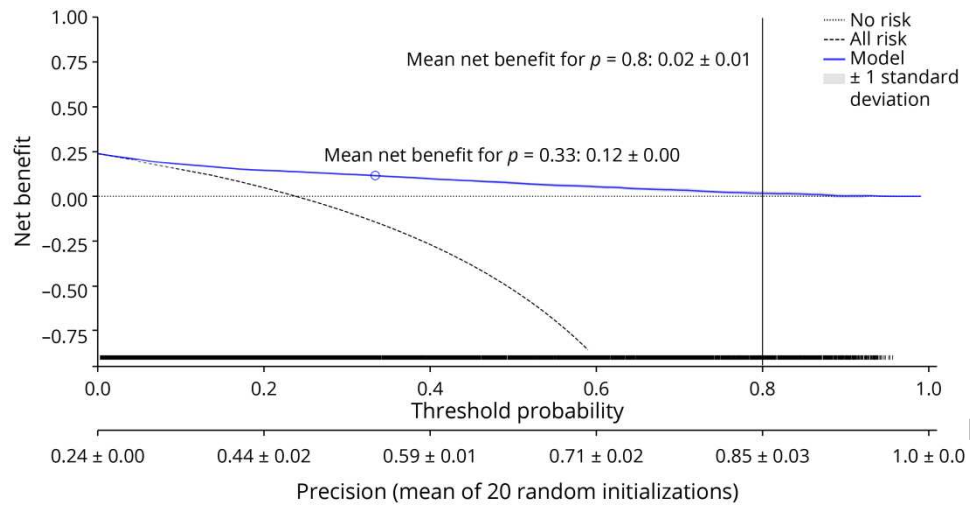


Figure 3. Decision curve analysis for XGBClassifier.

The blue line indicates the mean over 20 random initializations. The rug plot shows the samples used for computation of the decision curve. ‘No risk’ denotes the trivial strategy of always predicting mRS 0-4, and ‘All Risk’ denotes the strategy of always predicting mRS 5-6.



ACCEPTED

Neurology®

Multivariable Prediction Model for Futile Recanalization Therapies in Patients With Acute Ischemic Stroke

Thomas Meinel, Christine Lerch, Urs Fischer, et al.
Neurology published online July 8, 2022
DOI 10.1212/WNL.0000000000200815

This information is current as of July 8, 2022

Updated Information & Services	including high resolution figures, can be found at: http://n.neurology.org/content/early/2022/07/08/WNL.0000000000200815.full
Subspecialty Collections	This article, along with others on similar topics, appears in the following collection(s): All Cerebrovascular disease/Stroke http://n.neurology.org/cgi/collection/all_cerebrovascular_disease_stroke
Permissions & Licensing	Information about reproducing this article in parts (figures, tables) or in its entirety can be found online at: http://www.neurology.org/about/about_the_journal#permissions
Reprints	Information about ordering reprints can be found online: http://n.neurology.org/subscribers/advertise

Neurology® is the official journal of the American Academy of Neurology. Published continuously since 1951, it is now a weekly with 48 issues per year. Copyright © 2022 The Author(s). Published by Wolters Kluwer Health, Inc. on behalf of the American Academy of Neurology. All rights reserved. Print ISSN: 0028-3878. Online ISSN: 1526-632X.

