



NEMO on the shelf: assessment of the Iberia-Biscay-Ireland configuration.

Claire Maraldi, J. Chanut, Bruno Levier, Nadia Ayoub, Pierre De Mey, G. Reffray, Florent Lyard, Sylvain Cailleau, Marie Drévilion, E. Fanjul, et al.

► **To cite this version:**

Claire Maraldi, J. Chanut, Bruno Levier, Nadia Ayoub, Pierre De Mey, et al.. NEMO on the shelf: assessment of the Iberia-Biscay-Ireland configuration.. Ocean Science, European Geosciences Union, 2013, 9, pp.745-771. <10.5194/os-9-745-2013>. <hal-00766544>

HAL Id: hal-00766544

<https://hal.archives-ouvertes.fr/hal-00766544>

Submitted on 10 Jun 2014

HAL is a multi-disciplinary open access archive for the deposit and dissemination of scientific research documents, whether they are published or not. The documents may come from teaching and research institutions in France or abroad, or from public or private research centers.

L'archive ouverte pluridisciplinaire **HAL**, est destinée au dépôt et à la diffusion de documents scientifiques de niveau recherche, publiés ou non, émanant des établissements d'enseignement et de recherche français ou étrangers, des laboratoires publics ou privés.



NEMO on the shelf: assessment of the Iberia–Biscay–Ireland configuration

C. Maraldi^{1,*}, J. Chanut², B. Levier², N. Ayoub¹, P. De Mey¹, G. Reffray², F. Lyard¹, S. Cailleau², M. Drévillon², E. A. Fanjul³, M. G. Sotillo³, P. Marsaleix⁴, and the Mercator Research and Development Team²

¹LEGOS/CNRS/Université de Toulouse, UMR5566, 14 avenue Edouard Belin, 31400 Toulouse, France

²Mercator-Océan, Parc Technologique du Canal, 8–10 rue Hermès, 31520 Ramonville Saint Agne, France

³Puertos del Estado, Avda. del Partenón, 10 – 28042 Madrid, Spain

⁴Laboratoire d’Aérodynamique/CNRS/Université de Toulouse, 14 avenue Edouard Belin, 31400 Toulouse, France

* now at: Centre National d’Etudes Spatiales, Toulouse, France

Correspondence to: C. Maraldi (claire.maraldi@shom.fr)

Received: 8 December 2012 – Published in Ocean Sci. Discuss.: 15 January 2013

Revised: 12 June 2013 – Accepted: 16 June 2013 – Published: 26 August 2013

Abstract. This work describes the design and validation of a high-resolution ($1/36^\circ$) ocean forecasting model over the “Iberian–Biscay–Irish” (IBI) area. The system has been set-up using the NEMO model (Nucleus for European Modelling of the Ocean). New developments have been incorporated in NEMO to make it suitable to open- as well as coastal-ocean modelling. In this paper, we pursue three main objectives: (1) to give an overview of the model configuration used for the simulations; (2) to give a broad-brush account of one particular aspect of this work, namely consistency verification; this type of validation is conducted upstream of the implementation of the system before it is used for production and routinely validated; it is meant to guide model development in identifying gross deficiencies in the modelling of several key physical processes; and (3) to show that such a regional modelling system has potential as a complement to patchy observations (an integrated approach) to give information on non-observed physical quantities and to provide links between observations by identifying broader-scale patterns and processes. We concentrate on the year 2008. We first provide domain-wide consistency verification results in terms of barotropic tides, transports, sea surface temperature and stratification. We then focus on two dynamical subregions: the Celtic shelves and the Bay of Biscay slope and deep regions. The model–data consistency is checked for variables and processes such as tidal currents, tidal fronts, internal tides and residual elevation. We also examine the representation in the model of a seasonal pattern of the Bay of Biscay

circulation: the warm extension of the Iberian Poleward Current along the northern Spanish coast (Navidad event) in the winter of 2007–2008.

1 Introduction

The Northeast Atlantic (NEATL) region covers areas of important economic and social activities that include fisheries, transportation of oil and gas, commercial ship traffic, coastal management, coastal protection and energy production. The availability of validated estimates and forecasts of marine variables in this coastal region is expected to accompany the current development of user-driven activities and applications. The Iberia–Biscay–Ireland (IBI) regional modelling system is one of the seven MyOcean Monitoring and Forecasting Centres (<http://www.myocean.eu>), and has been developed with those needs in mind. The MyOcean and MyOcean2 projects aim at developing Marine Core Services within the Copernicus initiative (ex-GMES, Global Monitoring for Environment and Security). The IBI system is to serve downstream coastal modelling users and hence contribute to the development of better products for final users. The operational version of the IBI system described in this paper is now run daily, feeding the MyOcean data access portal with daily analyses and forecasts.

The IBI modelling domain (Fig. 1) has the singular property of concentrating a large spectrum of physical ocean

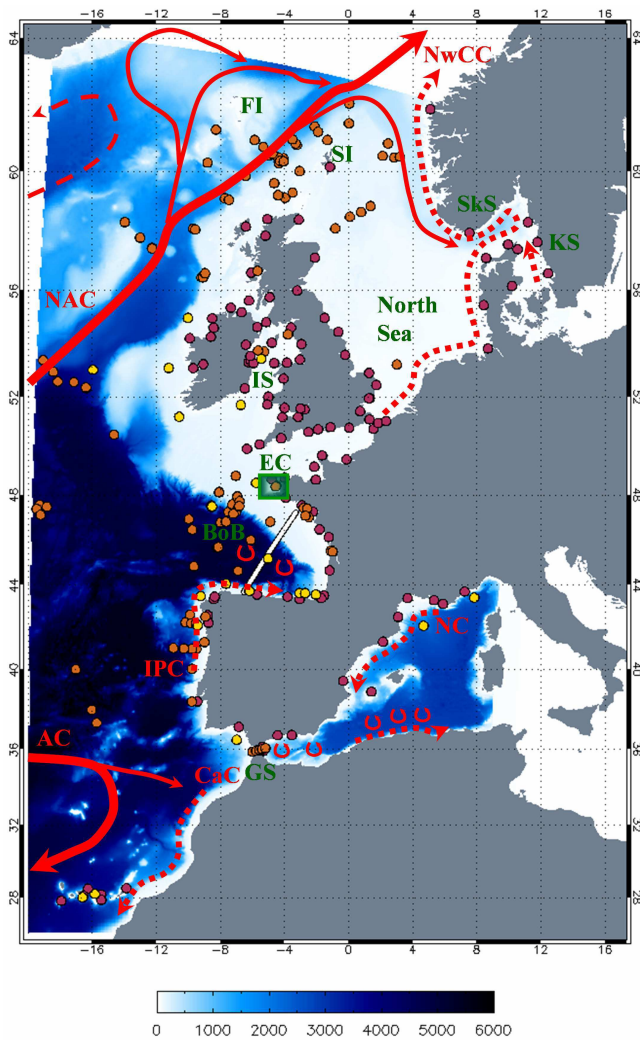


Fig. 1. Bathymetry of the domain (m). The black line indicates the 200 m bathymetry contour. Superposed are the tide gauge positions (red dots), the buoy locations (yellow dots), the current-meter data for tidal comparisons (orange dots), the altimeter track crossing the Bay of Biscay (white line) and HF radar surface current measurements off West Brittany (green box). The main surface dynamical features are also shown: the Azores Current (AC), the Canary Current (CaC), the Northern Current (NC), the Iberian Poleward Current (IPC), the Norwegian Coastal Current (NwCC) the North Atlantic Current (NAC). Red symbols represent mesoscale activity in the Mediterranean Sea and in the Bay of Biscay. Some geographical features of the area are also mentioned: the Strait of Gibraltar (GS), the Bay of Biscay (BoB), the English Channel (EC), the Irish Sea (IS), the Shetland Islands (SI) and the Faeroe Islands (FI), the Skagerrak Strait (SkS) and the Kattegat Strait (KS).

processes, including, for instance, large eddies spawned by the North Atlantic Current and the Azores Current, intense upwellings along Portuguese coasts and gravity currents flowing down the Gibraltar and Faeroe channels. Characteristic to the region is a relatively steep slope separating the

deep ocean from the shelf. Along these, poleward slope currents flow in the subsurface; they are observed as far north as Ireland (White and Bowyer, 1997). In the presence of stratification, strong bathymetric gradients trigger in very localized spots the conversion of barotropic tides into internal waves which propagate onto the shelf and into the deep ocean (Pingree et al., 1986). On the continental shelves, intense tidal motions provide the dominant source of energy. The associated turbulent-mixing shapes much of the water column properties, preventing under some conditions any surface stratification to setup (Simpson and Hunter, 1974).

From a modelling point of view, this remarkable variety of processes and scales is, however, particularly challenging. Historically, coastal and deep-ocean numerical models have followed more or less separate paths. The NEMO model (Nucleus for European Modelling of the Ocean; Madec, 2008) used in this study has been developed essentially to perform global climatic simulations. The recent desire shared by several European operational oceanography centres to hold a single tool for both global and regional applications has strongly influenced its development to that end (O’Dea et al., 2012). It is likely that, in turn, global-scale simulations will benefit from more realistic coastal modelling performance. As already explored in other models, explicit representation of tidal motions is likely to become a standard feature of global eddying models in the near future (see Arbic et al., 2010 for instance). Also, one particular aspect in the present model configuration is the relatively high (2–3 km) horizontal resolution used. This clearly pushes the model into the sub-mesoscale-permitting regime over much of the domain and allows a significant part of the internal wave spectrum to be resolved.

In this paper, we attempt to give a broad-brush account of one particular aspect of setting up an ocean model, namely consistency verification. This type of validation is often conducted upstream of the implementation of the system which will later be used for production and routinely validated; it is conducted by comparing model results with observations, and is meant to guide model development in identifying gross deficiencies in the modelling of several key physical processes. This work is applied research that develops a scientific framework and methodology for improving ocean model configurations at the development stage for use in basic research or operations. This paper’s approach is partly inspired by the works of Holt and James (2001), Holt et al. (2001, 2005) and Sotillo et al. (2007), partly by the specific needs of this project and partly by available observational data for this project. In particular, a challenging issue is the consistency verification of high-frequency dynamics, such as barotropic and internal tides, or circulation variability at daily timescales. Additionally, we aim at illustrating the potential use of this regional system to provide ocean state estimates which can help interpolate between local or patchy observations and integrate them in larger-scale patterns and processes. To better collaborate and meet My

Ocean objectives, we focus on evaluating the model configuration during the year 2008.

The paper is organized as follows. Section 2 focuses on the NEMO model, its new developments and the experimental protocol. Section 3 provides domain-wide consistency verification results in terms of transports, barotropic tides, sea surface temperature (SST) and upper layer stratification. Section 4 focuses on two dynamical subregions: the Celtic shelves and the Bay of Biscay slope and deep regions. The model–data consistency is checked for variables and processes such as tidal currents, tidal fronts, internal tides and residual elevation. We also examine the winter warm extension of the Iberian Poleward Current along the northern Spanish coast (Navidad event) in the winter of 2007–2008. Finally, Sect. 5 gives a summary, a discussion and perspectives for improving the model.

2 Modelling

2.1 NEMO physics and numerical aspects

The IBI model numerical core is based on the NEMO v2.3 ocean general circulation model (Madec et al., 1998; Madec, 2008). It solves the three-dimensional primitive equations in spherical coordinates, discretized on an Arakawa C-grid, assuming hydrostatic and Boussinesq approximations. NEMO is written in a generalized vertical coordinate framework allowing for some flexibility in the choice of the vertical discretization. Hence, one can easily switch from purely geopotential coordinates (with optionally partial bottom cells as used here) to, for instance, terrain-following vertical coordinates. The bulk of the numerical code used here is very similar to the one described in Barnier et al. (2006). This includes the vector invariant form of the momentum equations and the energy–enstrophy discretization of vorticity terms. There are, however, important differences related to the specific coastal and tidal dynamics studied here that are briefly described below.

In order to properly simulate tidal waves, the default “filtered” free-surface formulation (Roullet and Madec, 2000) must be discarded. This scheme has indeed been designed to damp fast external gravity waves in order to extend the permissible time step. As an alternative, a conventional time-splitting scheme is used here: the barotropic part of the dynamical equations is integrated explicitly with a short time step (3 s), while the more costly update of depth-varying prognostic variables (baroclinic velocities and tracers) is carried out with a larger time step (150 s). The mode-coupling procedure as well as the barotropic time-stepping scheme (a “generalized forward backward”) follows the work of Shchepetkin and McWilliams (2004) adapted to the standard NEMO leap-frog time stepping of depth-varying variables.

Because of the explicit simulations of tides, sea level elevation can become large on the shelf compared to the local

depth with the result that linear free-surface approximation needs to be relaxed. In practice, all model vertical thicknesses dz are remapped in the vertical at each time step to account for the varying fluid height according to

$$dz(x, y, z, t) = dz_0(z) \left(\frac{H(x, y) + \eta(x, y, t)}{H(x, y)} \right). \quad (1)$$

Here dz_0 stands for the “reference” vertical thicknesses, η is the sea level, H is the water depth at rest, (x, y, z) the model geographical coordinates and t the model time step. This vertical coordinate system is called z^* coordinate (Adcroft and Campin, 2004). This implies a correction (here in a standard density Jacobian form) of the hydrostatic pressure gradient force since computational surfaces are not horizontal anymore. The use of z^* coordinates reduces computational error significantly compared to terrain-following coordinates, with z^* surfaces having very faint slopes (Marsaleix et al., 2009).

The model turbulent-mixing scheme uses parameterization and equations from Warner et al. (2005) unless mentioned explicitly here. Vertical turbulent-mixing processes are parameterized with a k – ϵ two-equation model implemented in the generic form proposed by Umlauf and Burchard (2002). The model is complemented with the type “A” full equilibrium form of Canuto et al. (2001) stability functions. The turbulent kinetic energy background that accounts for unresolved internal wave breaking is set to $k_{\min} = 10^{-6} \text{ m}^2 \text{ s}^{-2}$. Dissipation is limited under stable stratification using a Galerpin coefficient $c_{\text{galp}} = 0.267$. As discussed by Holt and Umlauf (2008), these two important parameters control the magnitude of the background viscosities/diffusivities away from boundary layers.

Flux boundary conditions are used for their better accuracy (Burchard et al., 2005). Compared to clamped boundary conditions, Burchard et al. (2005) show that they better handle changes in vertical resolution, which is an important requirement here with the highly variable partial bottom cell thicknesses (Fig. 2a). At the bottom a steady balance between shear and dissipation characteristic of log-law behaviour is assumed. At the surface, turbulent kinetic injection through surface wave breaking is considered leading to a surface kinetic energy flux (Craig and Banner, 1994):

$$F_{\text{tke}} = \alpha u_*^3, \quad (2)$$

where $\alpha = 100$ is a parameter and u_* the ocean surface friction velocity scale deduced from the wind stress. Related to the wave breaking parameterization is the still largely uncertain choice for the surface roughness z_0 that brings the final piece in the vertical-mixing boundary conditions. A common assumption is to scale it with the wind sea wave height H_s :

$$z_0 = \gamma H_s; \quad (3)$$

γ is a free parameter ranging from 0.6 to 1.6 in the literature ($\gamma = 1.3$ in our case). If no observational nor modelling

data are available, various empirical formulae express H_s as a function of wind stress. We followed here the formulation of Rascle et al. (2008) so that

$$H_s = \frac{\beta}{0.85 g} u_*^2, \quad (4a)$$

$$\beta = 665 \left\{ 30 \tanh \left(\frac{w_{*ref}}{w_*} \right) \right\}^{1.5}, \quad (4b)$$

where g is the gravity acceleration, w_* the atmospheric friction velocity and $w_{*ref} = 0.6 \text{ m s}^{-1}$ a typical wind velocity scale above which wave growth is limited. Rascle et al. (2008) showed that Eq. (4b) better fits their model dataset compared to the classical approach that sets β to a constant value. From the various experiments we made, use of this formulation effectively tapers the effect of wave breaking in the case of strong winds, which was found to substantially improve the sea surface temperature (comparison with surface buoys).

Along lateral boundaries, free-slip boundary conditions are used everywhere except inside the Strait of Gibraltar, where no slip conditions are applied. This prevents the Alboran jet in the Mediterranean Sea from turning into an unrealistic quasi-permanent “coastal mode” (i.e. trapped along the African coast). At the bottom, a quadratic bottom drag with a logarithmic formulation is calculated as

$$Cd = \max \left[Cd_{\min} \left\{ \kappa^{-1} \ln \left(\frac{dz_b}{2 z_{0b}} \right) \right\}^{-2} \right], \quad (5)$$

where $\kappa = 0.4$ is the Von Karman constant, $Cd_{\min} = 2.5 \times 10^{-3}$ a minimum drag coefficient, dz_b is the lowermost bottom cell thickness and $z_{0b} = 3.5 \times 10^{-3} \text{ m}$ is the bottom roughness. With the reference geopotential discretization chosen here, the logarithmic formulation applies for depths shallower than 170 m, i.e. on most of the continental shelf (Fig. 2b). Although ocean models interchangeably assume constant or logarithmic formulations as bottom drag formulation, the use of Eq. (5) is mandatory here to ensure a continuous (i.e. not related to numerical settings such as the vertical discretization) representation of bottom stress as it should be in nature. This somewhat counterintuitive property owing to the largely spatially discontinuous drag coefficient (Fig. 2b) comes from the tight interplay between the modelled vertical shear and the vertical-mixing scheme (impact on model stability of this interplay was further evidenced by Burchard et al., 2005). The formulation of the bottom stress must agree with the assumed law of the wall in the vertical-mixing scheme, a requirement emphasized here by the use of partial bottom cells.

Tracers’ advection is computed with the QUICKEST scheme developed by Leonard (1979). This third-order scheme is well suited to the high resolution used here and the modelling of the sharp front characteristics of coastal environments. Lateral sub-grid-scale mixing are parameterized

according to horizontal biharmonic operators for both momentum ($A_m = -2.5 \times 10^8 \text{ m}^4 \text{ s}^{-1}$) and tracers ($A_t = -2.5 \times 10^7 \text{ m}^4 \text{ s}^{-1}$). Note that the latter value is particularly small, since significant inherent diffusion is also associated with the QUICKEST scheme.

2.2 Model setup

The model domain covers the Northeast Atlantic Ocean from the Canary Islands to Iceland and from about 20° W to 10° E (Fig. 1). Even if the focus of the IBI forecasting system remains on the Iberian, Biscay and Irish regions, the computational domain has been extended to include the western Mediterranean Sea and the North Sea. This strategy has been chosen to lessen the impact of northern and eastern boundaries with the parent model, PSY2V3. Indeed the PSY2V3 model, an operational forecasting system covering the North Atlantic and the Mediterranean Sea with a $1/12^\circ$ resolution, does not simulate all the physical processes of interest here (tides in particular). Moreover, such a strategy allows for the explicit computation of mass, heat and salt fluxes in the narrow Gibraltar and Kattegat straits, which we expect will be better resolved thanks to the improved horizontal resolution.

The primitive equations are discretized on an horizontal curvilinear grid which is a refined subset at $1/36^\circ$ ($\approx 2\text{--}3 \text{ km}$) of the so-called “ORCA” tripolar grid, commonly used in other NEMO-based large-scale and global modelling experiments (Barnier et al., 2006). This is also an exact 3:1 refinement of the PSY2V3 model grid that provides initial and boundary conditions. This strategy greatly simplifies interpolation procedures and allows for exact boundary fluxes/bathymetry matching, the latter increasing the overall robustness of the coupling. If we consider the common rule of thumb that sets the internal Rossby radius as the minimum horizontal grid spacing to resolve the first baroclinic instability mode, the chosen grid clearly moves the model into the eddy-resolving regime, at least over the deep ocean (the minimum Rossby radius as computed from climatology and for depths greater than 1000 m is around 5 km). On the shelf, much lower internal radii (2 km) only allow the model to be in an “eddy-permitting” regime. The same 50 reference z levels as in the parent grid model are used in the vertical, with a resolution decreasing from $\sim 1 \text{ m}$ in the upper 10 m to more than 400 m in the deep ocean. A partial step representation of the very last bottom wet cell is used with some constraints on the resulting minimum bottom cell thickness to guarantee model stability (it must be greater than 15 m or 20 % of the reference grid thickness).

The original bathymetry is derived from the 30 arc-second resolution GEBCO 08 dataset (Becker et al., 2009) merged with several local databases (F. Lyard, personal communication, 2010). The model bathymetry is linearly interpolated from the resulting composite and slightly smoothed using a Shapiro filter to remove grid scale noise and remaining discontinuities between local databases. At open boundaries,

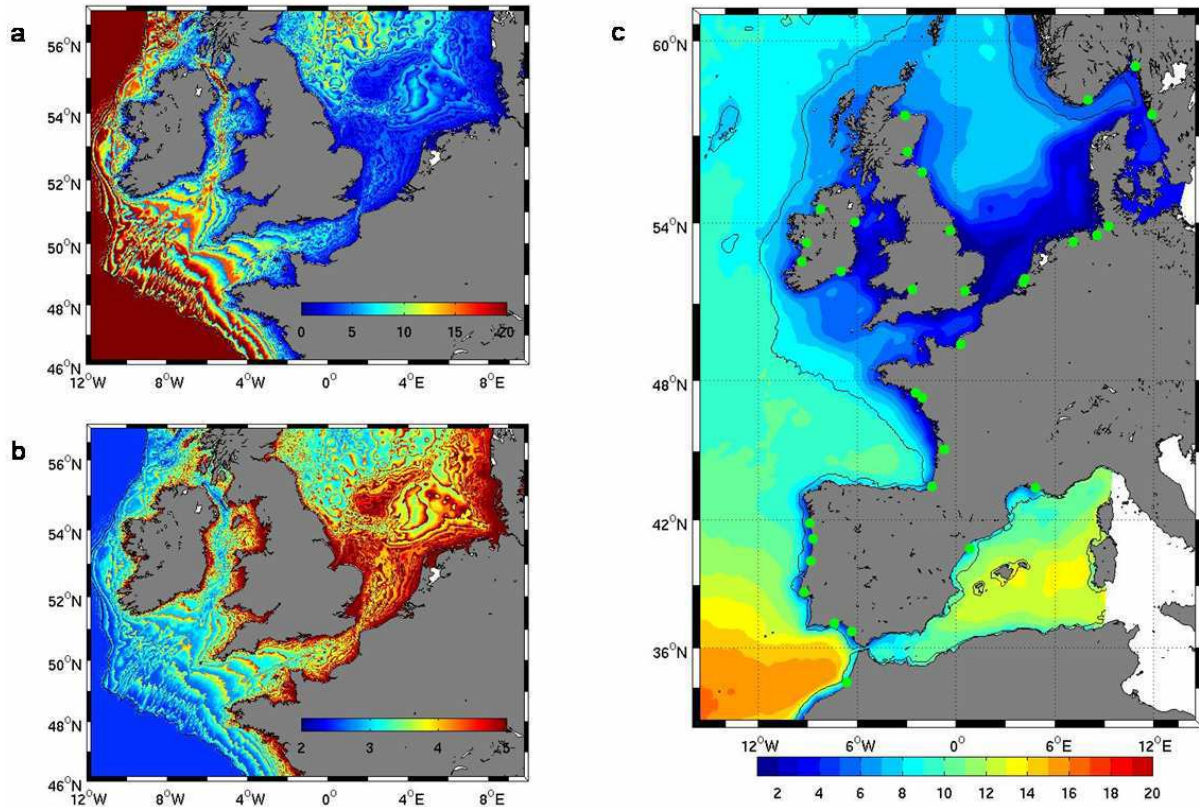


Fig. 2. (a) Partial bottom cell thickness on continental shelves (m). (b) Bottom drag coefficient Cd according to Eq. (5). (c) Annual climatological PAR (photosynthetically active radiation) attenuation depth derived from satellite observations (m). Green dots correspond to river input locations. On each figure, the black thin line is the 200 m isobath.

within 30-point-wide relaxation areas, bathymetry is exactly set to the parent grid model bathymetry and progressively merged with the interpolated dataset described above. This approach and the identical vertical grid as in the parent system imply that no vertical extrapolation of open boundary data is necessary.

Since no wetting and drying capability is presently available in NEMO, a minimum value for H , H_{\min} , has to be chosen to ensure that the fluid height $h = H + \eta$ always remains positive in Eq. (1). Sensitivity tests revealed that tidal propagation in the North Sea was highly dependent on the chosen H_{\min} value if simply set, for instance, to a uniform value greater than the maximum tidal amplitude in the area (≈ 10 m). We finally set

$$H_{\min}(x, y) = \max[5 \text{ m}, 1.2Atide_{\max}(x, y)], \quad (6)$$

where $Atide_{\max}(x, y)$ is the maximum tidal amplitude (we use here as a rough estimate the sum of FES2004 elevation amplitude harmonics; see Lyard et al., 2006, for a description of the FES2004 tidal atlas).

2.3 Forcing

2.3.1 Atmospheric forcing

Meteorological fields from the European Centre for Medium-Range Weather Forecasts (ECMWF) with a 3 h period and 0.25° horizontal resolution drive the present model simulations. According to Bernie et al. (2005), this temporal resolution associated with adequate vertical resolution in surface layers (typically 1 m, as used here, or less) is sufficient to model diurnal variations of SST. Evaporation, latent and sensible heat fluxes, and wind stresses are computed according to Large and Yeager (2004) bulk formulae. Net longwave heat flux is obtained from ECMWF downward flux to which the following blackbody radiation is added:

$$Q_{bb} = E\sigma(SST = 273.15)^4, \quad (7)$$

where σ is the Stefan–Boltzman constant and $E = 0.99$ the emissivity.

Penetrative solar radiation Q_{sr} is parameterized according to a two-band exponential scheme such that

$$Q_{sr}(z) = Q_{sr}(0) \left\{ Re^{-z/l} + (1 - R)e^{-zk_{PAR}} \right\}. \quad (8)$$

The first exponential term from the left corresponds to red and near-infrared radiation absorbed in surface layers (the chosen e-folding length scale is $l = 0.35$ m), while the second refers to shorter wavelengths mostly in visible and ultraviolet bands. $R = 0.54$ determines the fraction in each band of the available penetrative solar radiation at the surface $Q_{sr}(0)$ (we assume a constant albedo of 6.6%). The latter part of the spectrum penetrates at much greater depths and participates to photosynthesis such that it is often referred to as photosynthetically active radiation (PAR). While there is little variation of absorption depth in the first band, PAR absorption coefficient (k_{PAR}) is highly dependent on ocean turbidity. Since the IBI model domain encompasses areas with very different optical water properties (from highly turbid on the shelf to clear waters in the subtropical gyre; see Fig. 2c), a spatially variable k_{PAR} coefficient has been used. It is built from a 10 yr, 9 km, monthly climatology of SeaWiFS satellite diffuse attenuation coefficient at 490 nm (kd_{490}), transformed into an equivalent PAR attenuation coefficient according to Morel et al. (2007):

$$k_{PAR} = 0.0665 + 0.874 kd_{490} - 0.00121 \frac{1}{kd_{490}}. \quad (9)$$

Equation (9) and the different algorithms used for the retrieval of attenuation from satellite data are nevertheless only valid for Case-1 waters (where chlorophyll concentration controls optical properties). As a correction, Seawifs-based estimation is merged with a monthly climatology processed by Ifremer (Gohin et al., 2005) which is valid in coastal waters. The k_{PAR} threshold value between Case-1 and Case-2 waters (over which only Ifremer data are considered) has been set to 0.12 m^{-1} . This value is more or less the lower bound of agreement of the Gohin et al. (2005) estimate if compared to in situ measurements.

2.3.2 River runoffs

Climatological monthly flow rates are prescribed for 33 river-mouth locations (Fig. 2c). These have been obtained by averaging data from the Global Runoff Data Centre (<http://grdc.bafg.de>) and the French hydrographic database “Banque Hydro” (<http://hydro.eaufrance.fr>). Rivers are applied by specifying (i) a constant velocity in the vertical whose integral matches the specified transport, (ii) Neumann condition for temperature and (iii) a constant salinity (0.1 psu).

2.3.3 Open boundaries

After numerous tests, relatively simple yet robust open boundary formulations have been chosen. The method of characteristics is used for barotropic variables following Blayo and Debreu (2005). These conditions are expressed (for a western open boundary) as

$$\begin{aligned} \bar{U}_b &= \frac{1}{2} \left(\bar{U}_i + \bar{U}_{\text{ext}} + \sqrt{\frac{g}{h}} (\eta_i - \eta_{\text{ext}}) \right) \\ \bar{V}_b &= \bar{V}_{\text{ext}} \text{ if } \bar{U}_{\text{ext}} > 0 \text{ else } \bar{V}_b = \bar{V}_i, \end{aligned} \quad (10)$$

where \bar{U} and \bar{V} refer respectively to normal and tangential barotropic velocities; g is the gravity acceleration, h the water depth and η the sea level. Index “b” corresponds to the prescribed boundary value, index “i” to the model-computed value immediately inside the domain and index “ext” to external data. A Neumann condition for elevation is used, while baroclinic velocities, temperature and salinity are prescribed to external data. For the latter variables a 30-point relaxation area with a minimum timescale of 1 day is used, which strongly damps outgoing perturbations from the prescribed fields, while allowing for the explicit simulation of high-frequency fluctuations related to the atmosphere in the surface layers.

Temperature, salinity, velocities and sea surface height (hereafter SSH) from PSY2V3 daily outputs are used as the slow component of open boundary data. PSY2V3 does include a multivariate, Kalman-based weekly data assimilation procedure of along-track altimetry data, SST and hydrological observations (Dréville et al., 2008; Dombrowsky et al., 2009). SSH and barotropic velocities tidal components are then added as the sum of a maximum of 11 constituents (M2, S2, K2, N2, K1, O1, P1, Q1, M4, Mf, Mm) provided by the TPXO 7.1 global tide model (Egbert et al., 1994). A 35-day barotropic experiment (i.e. without stratification), with clamped boundary conditions for sea level and Neumann conditions for velocities, is computed to estimate the 6 major barotropic tidal velocities constituents used for the open boundary conditions (similar to the *runbt* experiment described below). This method, reminiscent of the iterative procedure of Flather (1987), clearly improved the overall tidal statistics (semidiurnal phases otherwise exhibit significant errors due to the inadequacy of TPXO velocities with the model physics).

Finally, since surface atmospheric pressure forcing is explicitly considered in the dynamical equations, the inverse barometer signal (IB) is added to sea level open boundary data. In the Atlantic part of the domain, IB is a fairly good approximation of the sea level response to pressure variations, while it has serious limitations in a semi-enclosed sea like the Mediterranean Sea (Le Traon and Gauzelin, 1997). Since we essentially focus on the Atlantic side of the basin, we have left for further study the use of more-sophisticated methods (such as the Candela (1991) analytical model in the Mediterranean Sea) or outputs from Baltic and Mediterranean Sea models that do explicitly include the pressure component. As demonstrated in the following, this simplification still allows for pretty realistic variations of Mediterranean outflow transport at Gibraltar, which can be considered as the boundary of our domain of interest.

2.4 Experiments

Results from two simulations will be considered in the next sections:

1. A “tide-only” run (hereafter “runbt”) which consists in a 35-day “barotropic-like” simulation (homogenous density, no atmospheric forcing, only tidal forcing). Since proper representation of bottom boundary layers is also of interest here, this experiment retains the 50 vertical levels distribution and the k -epsilon vertical-mixing scheme described above. Compared to realistic simulations, it will provide insights on the impact of stratification, and, in particular, changes due to internal waves on the simulation of tidal waves. Note that a reduced set of seven harmonics (M2, S2, N2, K1, O1, Q1, M4) is used since these waves are separable through harmonic analysis over such a short simulation period. Since these harmonics represent most of the tidal energy, it is expected that this will not hamper the comparison to the realistic experiment.
2. A realistic simulation with full forcing and stratification (hereafter “runbc”). It has been initialized on July 25 2007 from temperature, salinity, sea level and velocities linearly interpolated from PSY2V3 analysis. Tidal and atmospheric pressure forcing are smoothly introduced (both at open boundaries and in dynamical equations) thanks to a 2-day linear ramp. Meanwhile, horizontal viscosity linearly decreases from 4 times its nominal value to damp instabilities arising from the use of unbalanced initial fields. The simulation ends in February 2009. In the next sections, we focus on the year 2008 only.

3 General assessment

3.1 Barotropic tides

3.1.1 General comments

Since tidal motions are the dominant source of energy on the continental shelf, we give here some quantitative assessment of model performance on that particular aspect. Numerous modelling studies have already conducted such an exercise (Davies and Aldridge, 1993; Davies et al., 1997; Holt and James, 2001), which has proven to be sensitive to various numerical details, due in particular to the complex tidal propagation pattern in the English Channel and the North Sea. In order to keep the present account synthetic enough, a detailed description of the different tests performed to reach the present results cannot be given. The use of “equilibrated” boundary conditions as described in Sect. 2.3.3 is obviously one of the keys as well as the use of the tide-generating force owing to the size of the domain.

Here we solve this problem with the use of geopotential coordinates. Terrain-following coordinates have historically been preferred to maintain sufficient vertical resolution at the bottom and to have a continuous representation of the bathymetry. The use of partial bottom cells nevertheless partially restores the latter property with z coordinates. Moreover, the vertical discretization chosen here sets the level of the last wet cell at most at 10 m above the bottom for depths lower than 150 m (Fig. 2a), which should be enough to properly resolve the bottom boundary layer.

An aspect that also deserves some attention is the impact of stratification on tidal amplitudes. The high resolution used here is expected to allow for a significant part of the tidally induced internal wave spectrum to be resolved, which in turn provides an important sink of energy for barotropic tides. In forward global tide modelling, correctly accounting for this barotropic to baroclinic conversion explicitly or through ad-hoc parameterizations has now become key for further improvement (Arbic et al., 2010; Lyard et al., 2006). In the next paragraphs, we examine results of a 1 yr harmonic analysis on the runbc experiment. These are eventually compared to the barotropic experiment runbt with harmonic analysis performed over the last 30 days.

3.1.2 Tidal elevations

The M2 co-tidal chart is shown in Fig. 3a and depicts the complex wave propagation around amphidromes in the North Sea. The overall picture is in good agreement with published charts, including the position of the degenerate amphidrome south of Norway that has proven to be difficult to obtain in other modelling studies (O’Dea et al., 2012). Further insights of the model performance can be gained by comparing the result to FES2004 atlases (Lyard et al., 2006). The FES2004 solution has been obtained through the use of a finite-element hydrodynamical model assimilating altimetry and in situ harmonic data; it can be considered a fairly reliable reference, at least in the deep ocean. Figure 3b shows M2 difference with the FES2004 solution, amplitude differences being generally smaller than 1 cm in the deep ocean ($z > 1000$ m), phase errors (not shown) being negligible. Most of the differences there are related to the surface signature of internal waves, which are further investigated in Sect. 4.3.2. On the shelf, the regional model is close to the FES2004 solution, except in the Dover Strait area and in the German Bight. From the same comparison performed in the barotropic experiment, it is interesting to note that much larger differences arise when no stratification effects are present (Fig. 3c). The M2 wave amplitude in that case is systematically overestimated, a difference reaching more than 15 cm at the Western English Channel entrance and in the Irish Sea (phase is not significantly different between experiments). From the pattern of the amplitude difference between experiments (not shown), it is tempting to relate this difference to barotropic to baroclinic energy transfer: wave amplitude indeed undergoes a

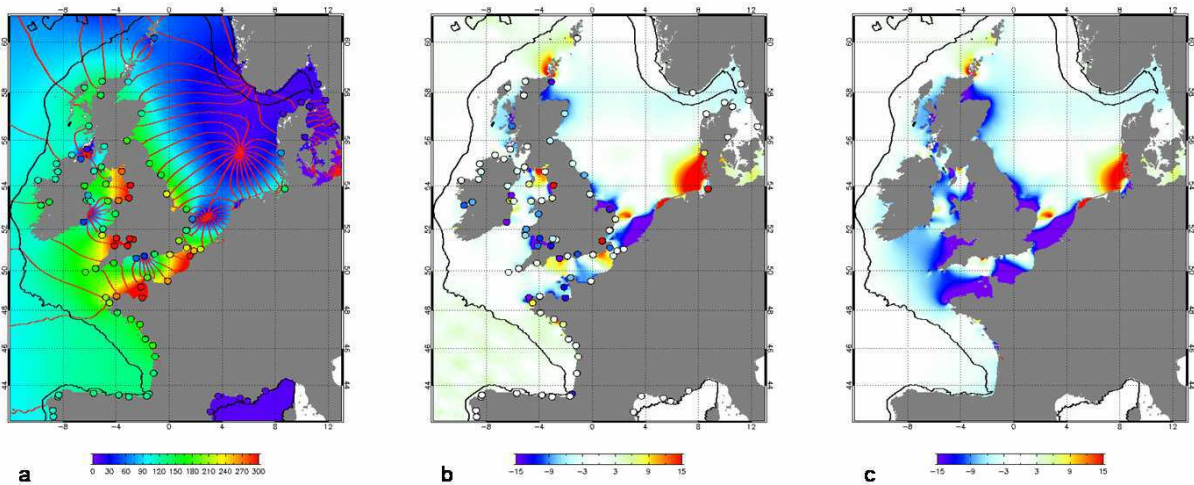


Fig. 3. (a) Amplitude in cm (colour) and phase (red lines) of modelled M2 tidal constituent. Overplotted filled dots are the M2 observed harmonic constants at the various tide gauges used for quantitative assessment. (b) M2 amplitude difference (cm) between the FES2004 solution (Lyard et al., 2006) and the model. Overplotted filled dots represent amplitude and phase differences between tide gauges and the model. (c) Same as (b) but in the barotropic experiment (runbt). On each figure, the black line indicates the 200 m isobath.

sharp decrease at 48°N along a well-observed spot of internal wave generation. Since other factors may explain the differences between experiments (effect of stratification on viscosity profiles for instance), a separate study beyond the present “global” assessment would, however, be needed to firmly reach that conclusion.

To gain some more quantitative measure of errors, comparisons are made at various tide gauge locations for the four main tidal constituents (M_2 , S_2 , K_1 , O_1). Comparison for M_4 compound wave is also considered, as an indicator of how well non-linear interactions are modelled, in particular those induced by the z^* coordinate (Eq. 1). For each tidal component, the RMS of the complex difference (see Davies et al., 1997 for the definition), which synthesizes both amplitude and phase errors, is given in Table 1. To appreciate how significant these errors are, it is instructive to make a comparison with modelling studies based on well-validated shelf sea models such as the POLCOMS model used in Holt et al. (2001, 2005). Considering the overlapping area between both models, the present experiment has similar accuracy for M_2 (21.6 cm compared to 24.1 cm in IBI). IBI has larger errors for the M_4 component, but it seems to outperform the Holt et al. (2001) model on the other components, with errors reduced by more than a half for the diurnal component. We however stress that measurement points differ between our study and that of Holt et al. (2001) the present dataset being essentially distributed along the coast.

3.1.3 Barotropic tidal currents

Only a brief account is given here on barotropic tidal velocities since a more detailed discussion on total surface tidal currents is given in the regional assessment section. Histori-

cal current moorings collected within the framework of the WOCE experiment are used for comparisons of modelled barotropic tidal ellipses (Fig. 1, orange dots). Table 2 gathers comparisons to in situ observations shown in Fig. 4 for the dominant M_2 tidal component in the runbt simulation. The overall agreement is rather good with a global RMS error of 4.5 cm s^{-1} for the semi-major axis, model velocities being generally slightly larger than observations. Along the shelf slope in the northern part of the Bay of Biscay, where plenty of measurement are available, absolute errors are smaller than 8 cm s^{-1} (75 % are smaller than 4 cm s^{-1}). This is of similar accuracy to the regional model of Pairaud et al. (2010). Results with full forcing and stratification exhibit very similar errors (RMS = 3.8 cm s^{-1}), velocities being, however, slightly underestimated.

3.2 Large-scale circulation

3.2.1 Transports

Transport estimates give access to broad lines of the model circulation. Monthly volume, heat and freshwater transports are computed across various sections and are compared to previous published estimates (Table 3). Note that published transport values from observations do not always contain transport error estimates. The standard deviation of published estimates from the monthly model transports is used to give an order of magnitude of the errors between model and observations (Table 3). This value includes model errors as well as transport interannual variability.

For Sect. 1, the transports associated with the Azores Current and the Mediterranean Water (MW) outflow (15.1 Sv and -12.3 Sv) are larger than the eastward and westward

Table 1. RMS error of the complex amplitude difference between observed and modelled tidal components for the sea surface elevation. Units are in cm. The studies of Holt et al. (2001, 2005) cover the 48° N–63° N, 12° W–13° E region and the 48° N–62° N, 12° W–13° E region, respectively, and results obtained in the studies of Holt et al. (2001, 2005) are presented for comparisons (values in brackets). The Gulf of Cadiz and West Iberian region is delimited by 36.5° N–44° N, 10.5° W–6.5° W; the Bay of Biscay region is delimited by 43° N–48.5° N, 10° W–1° W; the Irish Sea is delimited by 51° N–56° N, 9° W–3° W; the English Channel is delimited by 48.5° N–51.5° N, 5° W–2° E; the North Sea region is delimited by 51.5° N–60° N, 4.5° W–7.5° E; and the Baltic region is delimited by 56° N–59° N, 7.5° W–13° W.

Regional	M ₂	S ₂	K ₁	O ₁	M ₄
Global	21.6	8.0	1.8	1.3	7.1
Gulf of Cadiz and West Iberian Plateau	3.2	3.4	0.9	0.4	0.6
Bay of Biscay	29.5	10.6	1.2	0.8	0.8
Irish Sea	25.9	10.1	1.7	1.3	11.1
English Channel	23.6	8.1	1.5	1.9	7.5
North Sea	14.7	4.7	2.7	1.0	6.2
Baltic	29.8	9.0	2.4	2.1	0.9
Holt et al. (2001)	24.1	8.8	2.1	1.5	8.3
	(21.6)	(12.0)	(5.5)	(3.1)	(6.8)
Holt et al. (2005); Amplitudes only	12.6	4.2	1.7	1.0	7.0
	(16.3)	(7.3)	(2.4)	(2.6)	(5.0)

observed transports of 13.7 Sv and -4.7 Sv (Peliz et al., 2007). However, the observed estimates are deduced from data obtained in September–October of two consecutive years in 1991 and 1992, and the modelled estimates show high monthly variability, indicating that the eastward flow is of comparable magnitude with observations, while the westward flow is overestimated.

Across the Strait of Gibraltar, model transports have been computed from monthly averaged values of currents and salinity (Atlantic Water inflow of 0.48 Sv and the MW outflow of -0.49 Sv). Tsimplis and Bryden (2000) found values of 0.46 Sv and -0.35 Sv at the Strait of Gibraltar using currents averaged over several months (estimations not included in Table 3). However, the flow variability is dominated by high-frequency tidal currents through the Strait of Gibraltar (Tsimplis and Bryden, 2000) and transports across the Strait of Gibraltar are commonly computed from hourly or daily fields rather than from yearly averaged salinity and velocity fields. Using this method, we obtain transports of 0.51 Sv in the upper layer and of -0.71 Sv in the lower layer, which lie within the range of observation-based estimates. We also note that the outflow is larger than the inflow, while the inflow is normally larger to compensate for the excess of evaporation minus precipitation over the Mediterranean Sea. In the IBI solution, the outflow transport is mainly influenced by the open boundary conditions prescribed from the PSY2V3 solution which explains the larger outflow in the strait.

Table 2. RMS between observed and modelled (runbt) tidal ellipse parameters. Units are in cm s^{-1} for the semi-major axis (SEMA) and the semi-minor axis (SEMI) and in $^{\circ}$ for the inclination (Inc) and the phase (Pha). Statistics are also performed over the area covered by the studies of Holt et al. (2001, 2005) (48° N–62° N, 12° W–13° E), and results obtained in the studies of Holt et al. (2001, 2005) are presented for comparisons (values in brackets). The West Iberian Plateau region is delimited by 36.5° N–44° N, 10.5° W–6.5° W; the Bay of Biscay is delimited by 43° N–48.5° N, 10° W–1° W; the Irish Sea is delimited by 51° N–56° N, 9° W–3° W and the North Sea region is delimited by 51.5° N–60° N, 4.5° W–7.5° E.

	SEMA	SEMI	Inc	Pha
Barotropic ellipses (M ₂)				
IBI domain	4.8	3.9	23.8	27.0
West Iberian Plateau	4.2	0.4	31.6	22.6
Bay of Biscay	4.1	6.9	33.7	45.5
Irish Sea	5.3	3.0	3.0	3.9
North Sea	3.3	2.3	9.5	9.0
Holt et al. (2001, 2005)	3.5	2.0	9.2	12.0
	(11.4, 5.8)	(–, –)	(13.1, –)	(–, –)
Baroclinic ellipses (buoys, M ₂)				
IBI domain	4.4	2.6	22.1	31.3
Baroclinic ellipses (radar, M ₂)				
Iroise Sea (depth > 50 m)	4.6	2.5	5.1	5.6
Baroclinic ellipses (radar, M ₄)				
Iroise Sea (depth > 50 m)	1.1	0.3	17.1	39.6

In the Gulf of Cadiz the modelled transports (1.77 Sv/ -0.04 Sv) are very small compared to published values (3.1 Sv/ -2.8 Sv; Mauritzen et al., 2001). Previous estimates use a density of 31.7 to separate inflow of Atlantic Water from outflow of MW, but comparisons of hydrological fields with climatology have shown that the MW is too light in the model (not shown) and the 31.7 isodensity may not be appropriate to separate the two water masses. When choosing a density threshold value of 30.3 in the Gulf of Cadiz region, we obtain transports of 2.0 Sv and -1.1 Sv across the Gulf of Cadiz and a transport of -1.3 Sv for the MW. The results are closer to the estimates from observations and the transport lies within the range of published values for the inflow, but the westward flow is still underestimated (Howe, 1984; Rhein and Hinrichsen, 1993; Mauritzen et al., 2001). South of Portugal, the MW flows northward with a transport comparable with previous estimations (Da Silva, 1996; Mazé et al., 1997; Coelho et al., 2002). Off the west of the Iberian Peninsula the transport is slightly overestimated at 40° N but is in good agreement with previous estimates at 43° N (Sects. 6 and 7; Da Silva,

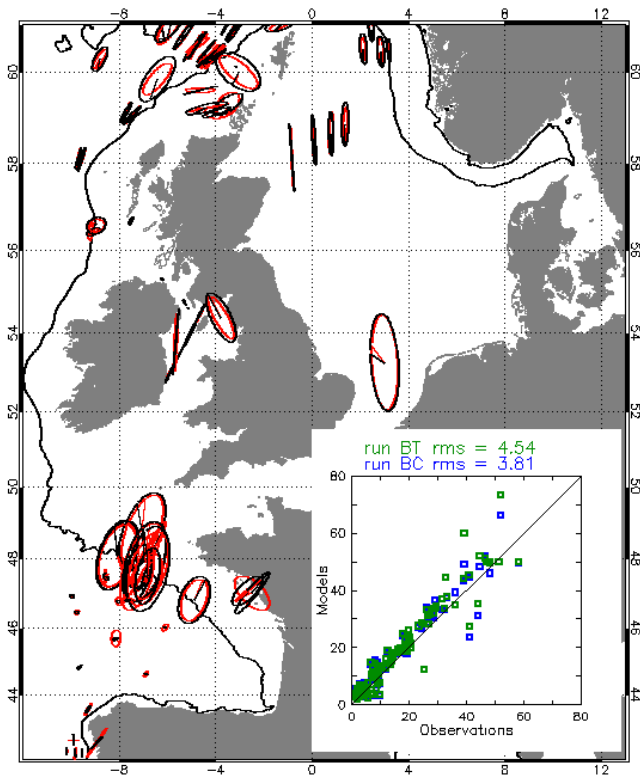


Fig. 4. Comparison of barotropic M2 tidal ellipses in situ measurements (black for model barotropic simulation, red for observations). The black line indicates the 200 m bathymetry isoline. The scatterplot represents comparisons between observed semi-major axis and modelled semi-major axis as computed from the barotropic simulation (runbt, green) and from the baroclinic simulation (runbc, blue).

1996; Mazé et al., 1997; Mauritzen et al., 2001; Coelho et al., 2002; Alvarez et al., 2004; Lherminier et al., 2007).

Transports of the slope current across the Celtic shelf slope and along the Ellett line are of the same orders of magnitude than published values (Ellett and Martin, 1973; Pingree and Le Cann, 1990; Holliday et al., 2000). However, we note that the transport across the Celtic slope is mainly constrained within the upper slope in the model, while it is more evenly distributed along the slope in the study of Pingree and Le Cann (1990). The distribution of the transport with depth is comparable with estimations from data across the Ellett line section. Through the Dover Strait, both observed and modelled transports are weak (Otto et al., 1990; Prandle et al., 1996), but the transport is slightly underestimated in IBI.

3.2.2 Mediterranean outflow

The transport through the Strait of Gibraltar is controlled by various processes at different time scales. Among these processes, tides are the most energetic one influencing the mean flow (Tsimplis and Bryden, 2000). Thus hourly trans-

port through the Strait of Gibraltar has been calculated to examine the outflow variability. Following the study of Sánchez Román et al. (2009) the interface to separate the inflow from the outflow has been defined as the time-dependent depth of the surface of zero low-pass frequency velocity. The modelled outflow transport estimated with this interface is denoted TMV (transport model velocity). The outflow transport computed using the commonly used 37.25 isohaline (TMS, transport model salinity) is also computed for comparisons. Figure 5 illustrates time series of observed and modelled transports for TMV and TMS over a period overlapping the model simulation and the transport estimates of Sánchez Román et al. (2009), denoted TOV (observation velocity). The definition of the interface based on the depth of the zero velocity gives better results than the isohaline interface. In comparison to the TOV mean transport of -0.72 Sv, the mean outflow of TMV is -0.74 Sv and the correlation coefficient with TOV is 0.71, while a lesser agreement is found for TMS with a too small transport of -0.69 Sv and a correlation coefficient of 0.66. Differences between peak values and lower values at neap tides reach 0.70 Sv both in TOV and TMV.

3.3 Sea surface temperature

3.3.1 SST datasets

We use SST processed at Météo-France/CMS for comparisons with the model SST (Le Borgne et al., 2011). Data consist in L3 multi-sensor products built from bias-corrected L3 mono-sensor products. SST satellite data fields are produced daily with a 0.05° resolution and an accuracy of 0.5°C . Sea surface temperature measured from in situ buoys is also used (Fig. 1, Table 4). The dataset consists in hourly time series which enable the computation of the diurnal cycle.

3.3.2 Daily to seasonal SST variability

Figure 6 represents maps of seasonal SST biases and RMS of differences between the satellite data and the model fields, for summer (July–August–September) and winter (January–February–March). The mean bias over the whole IBI area is low (less than 0.25°C) over the whole year but is not evenly distributed in space and time. In winter, the bias is lower than 0.2°C and the RMS of the difference is on average below 0.5°C . Discrepancies are higher in summer, with biases locally larger than 1°C over the Armorican shelf, in the English Channel and west of Iberia. West of Iberia the model is too warm in both seasons, with the SST overestimation being larger in summer during upwelling season. In the Irish Sea, at the entrance of the English Channel and in the Iroise Sea, the discrepancies of 1 – 1.5°C may be explained by the high variability of some thermal front positions which are tidally induced, as discussed in Sect. 4.2. In the Gulf of Cadiz (GC) the modelled SST is too warm along the slope, which reveals

Table 3. Transport estimates from the model and the literature. Model transports are estimated from monthly fields and mean and standard deviation values are presented. Units are in Sv. Values in green (red) indicate net northward transports (net southward transports) for meridional sections or net eastward transports (net westward transports) for zonal sections as computed from observations. Values in black indicate net transports. Transport classes are defined using temperature classes (T), salinity classes (S) density classes (σ), depth classes (z) or with no classes (NO).

Section name	Section number	Ext. 1	Ext. 2	Transport classes	Model values Mean/StdDev	Published Estimations	References
Azores Current	1	14.00E 33.00N	14.00E 37.00N	$z < 1500$	15.10/4.53 −12.25/6.17	13.7 −4.7	Peliz et al. (2007)
Gibraltar	2	5.74E 35.70N	5.74E 36.20N	$S < 37.25$ $S > 37.25$	0.48/0.05 −0.49/0.05	0.66–0.97 −0.84 to −0.57	Tsimplis and Bryden (2000); Lafuente et al. (2002)
Cadiz Gulf	3	8.50E 32.00N	8.50E 38.20N	$\sigma_I < 31.7$ $31.7 < \sigma_i$	1.77/0.24 −0.04/0.16	3.1 −2.8	Mauritzen et al. (2001)
North Cadiz Gulf	4	8.50E 35.40N	8.50E 38.20N	$32.0 < \sigma_I < 36.8$	−0.74/1.07	−6.5 to −2.7	Howe (1984); Rhein and Hinrichsen (1993); Mauritzen et al. (2001)
South Portugal	5	8.70E 37.60N	11.00E 37.60N	$\sigma < 27.25$ $27.25 < \sigma < 32.35$	0.15/0.42 3.02/2.73	2.7–5.7 1.2–5.2	Da Silva (1996); Mazé et al. (1997); Coelho et al. (2002)
Portugal	6	20.00E 40.10N	8.10E 40.00N	$\sigma < 27.7$ $27.7 < \sigma < 36.98$ $36.98 < \sigma < 45.85$ $45.85 < \sigma$	−1.07/0.61 −1.35/3.17 0.27/1.32 0.68/0.54	0.5–2.8 −1.4–0.5 −1.3–0.5 0.8–1.6	Alvarez et al. (2004); Lherminier et al. (2007)
Galicia	7	9.10E 43.00N	10.50E 43.00N	$\sigma < 27.25$ $27.25 < \sigma < 32.35$ $z < 400$ $400 < z < 900$ $900 < z < 1500$	0.32/0.33 3.63/1.66 1.71/1.11 1.72/0.69 1.23/0.81	1.31–4.7 0.42–1.8 0.9 0.7 0.2	Da Silva (1996); Mazé et al. (1997); Mauritzen et al. (2001); Coelho et al. (2002)
Biscay	8	4.00E 48.20N	8.10E 43.10N	$S < 35$ $35 < S < 35.6$ $35.6 < S$	−0.24/0.31 0.04/0.31 0.23/0.55	−0.1–0.1 −0.2–0.0 −2.6 to −2.0	Frail-Nuez et al. (2008)
Celtic shelf	9	10.10E 47.60N	9.40E 48.40N	$200 < z < 1500$ $200 < z < 3000$	4.31/2.85 4.71/3.49	1 3	Pingree and Le Cann (1990)
Ellett line	10	7.70E 56.80N	13.80E 57.50N	$z < 500$ $z < 1200$ $1200 < z < 1800$	2.86/0.54 3.89/0.93 −0.19/0.09	2.5–2.7 3.5–3.7 0.2	Ellett and Martin 1973; Holliday et al. (2000)
St Georges Channel	11	6.45E 52.30N	5.10E 51.80N	NO	0.08/0.06	0.18	Brown et al. (2003)
North Irish Sea Channel	12	5.00E 54.90N	5.60E 54.60N	NO	0.01/0.05	−0.175–0.14	Howarth (1982); Brown and Gmitrowitz (1995)
Dover Strait	13	1.80E 50.90N	1.35E 51.20N	NO	0.07/0.06	0.094–0.17	Otto et al. (1990); Prandle et al. (1996)

the model’s relative failure at representing the GC slope current (GCC). The GCC, intimately linked to the westward MW outflow at depth (Peliz et al., 2009), indeed advects cold upwelled water along the western Portuguese coast into the GC. This stresses the model’s limits, already outlined above, at representing MW outflow in its present version.

Figure 7a represents a Taylor diagram of the observed and modelled SST at buoy locations (Fig. 1, Table 4). SST time series have been previously 1-day low-pass-filtered to remove the diurnal cycle signal, which is discussed in the next section. SST is particularly well modelled in IBI with “normalized” standard deviation close to 1 and correlation greater than 0.95 (except at Cabo Silleiro and Villano-Sisargas,

Table 4. List of in situ buoys used in this study. For each buoy, the longitude, latitude, and variables available at the station and the organization providing the data are indicated. The available variables are: sea surface temperature (SST), sea surface salinity (SSS), currents (U , V) at the surface for Puertos del Estado buoys, temperature, salinity and currents profiles in the upper 200 m for AZTI buoys and atmospheric variables (AV) that include air temperature, atmospheric pressure and wind velocity. AZTI data include 18 depth levels of measurements in the upper 150 m for the currents (12, 20, 28, 36, 44, 52, 60, 68, 76, 84, 92, 100, 108, 116, 124, 132, 140 and 148 m) and measurements at 10, 20, 30, 50, 75, 100 and 200 m for temperature and salinity.

Mooring name	Long.	Lat.	SST	SSS	UV	AV	Organization
Cadiz_Buoy	−6.96	36.48	✓	✓	✓	✓	Puertos del Estado
Cabo Silleiro	−9.40	42.12	✓	✓	✓	✓	Puertos del Estado
Villano-Sisargas	−9.21	43.49	✓	✓	✓	✓	Puertos del Estado
Estaca Bares	−7.62	44.06	✓	✓	✓	✓	Puertos del Estado
Cabo Penas	−6.17	43.73	✓	✓	✓	✓	Puertos del Estado
Sanatander	−3.77	43.84	✓	✓	✓	✓	Puertos del Estado
Bilao	−3.04	43.63	✓	✓	✓	✓	Puertos del Estado
Tenerife	−16.58	28.00	✓	✓	✓	✓	Puertos del Estado
Gran Canaria	−15.81	28.19	✓	✓	✓	✓	Puertos del Estado
M1	−11.20	53.13	✓				Marine institute
M2	−5.42	53.48	✓				Marine institute
M3	−10.55	51.22	✓				Marine institute
M4	−10.00	55.00	✓				Marine institute
M5	−6.70	51.69	✓				Marine institute
M6	−15.93	53.06	✓				Marine institute
Brittany	−8.50	47.50	✓				Météo-France
Gascogne	−5.00	45.20	✓				Météo-France
Lion	4.70	42.10	✓				Météo-France
Ouessant	−5.75	48.50	✓				Météo-France
Donostia	−2.02	43.56	✓	✓	✓		AZTI
Matxitxako	−2.69	43.63	✓	✓	✓		AZTI

where the correlation coefficients are 0.85 and 0.89, respectively; these two locations are included in the “Iberia” sub-region described in Fig. 7). When looking regionally, larger discrepancies are found along the Armorican slope (included in the “Biscay” region) and within the Gulf of Cadiz (included in the Iberia region) due to overestimated modelled SST during summer. Warmer model SST during summer at these locations leads to a larger seasonal amplitude.

The IBI model ability to reproduce the SST variability results from the high spatial resolution and from model developments (see Sect. 2); the latter allow the model to simulate and predict slope and shelf processes (e.g. tidal mixing) better than deep-ocean configurations such as PSY2V3 (however, SST data assimilation leads to closer agreement with observations in PSY2V3). The model–data discrepancies in the upwelling areas suggest a need for investigation of the sensitivity of the model response in these areas to the wind product used to force the model.

3.3.3 Diurnal SST cycle

The combination of daily variations of atmospheric fluxes and weak winds can lead to strong SST diurnal anomalies (hereafter Dsst). The Dsst amplitudes are computed over a

24 h period as the difference between the maximum SST and the minimum SST previously corrected from the daily trend (Pimentel et al., 2008). The Dsst for the buoy data are only computed when the 24 SST values per day are available to avoid any miscalculations of the Dsst amplitudes.

Figure 7b displays box plots of the observed and the modelled Dsst amplitudes over the area covering the Bay of Biscay, the Celtic shelves and the North Sea (areas shown in Fig. 3); it illustrates the distribution of data by showing different values of Dsst amplitudes below which a certain percentage of data are observed. Globally Dsst amplitudes are underestimated in the model, and the median observed Dsst is 0.25 °C, while the median modelled Dsst is only 0.20 °C. When looking regionally at the distribution (not shown), we found that Dsst is underestimated almost everywhere for the 50 % of the data with smaller amplitudes (i.e. Dsst amplitudes below the median value). The resolution of the model and of the forcing, the surface heat fluxes and the vertical mixing in the upper ocean are critical aspects for the diurnal cycle modelling (Pimentel et al., 2008). According to Bernie et al. (2005), a minimum of a 1 m vertical resolution in the upper ocean and of a 3 h temporal resolution of surface fluxes is required to simulate 90 % of the observed Dsst. IBI is forced with 3 h atmospheric fields, but has a coarser

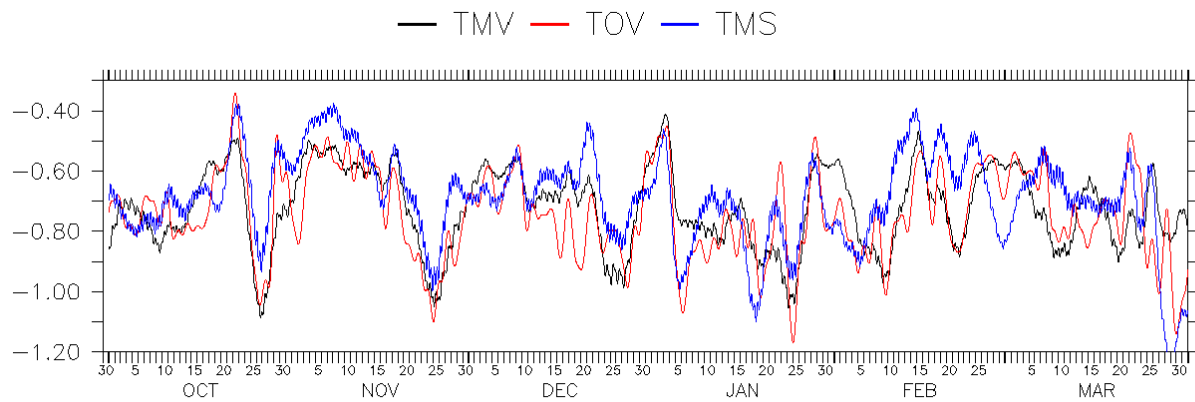


Fig. 5. Transports (outflow) in Sverdrup at the Strait of Gibraltar for TOV (transport observation velocity; the interface used to separate the inflow from the outflow is defined as the time-dependent depth of the surface of zero low-pass frequency velocity), TMV (transport model velocity) and TMS (transport model salinity; the outflow transport is computed using the commonly used 37.25 isohaline).

vertical resolution with 8 levels (18 levels) in the top 10 m (50 m), which only enables representation of 70 % of the Dsst (Bernie et al., 2005). This partly explains the underestimation of the Dsst in the model. Overestimated wind stress may also lead to an underestimation of the Dsst by inducing too strong vertical turbulent mixing and preventing diurnal heating. As for lower frequencies (see previous section), we recommend further assessment on the realism of the wind field forcing.

3.4 Upper layer stratification

The upper layers stratification is a key process to represent in a regional model for its implications on circulation and energetics, in particular at the air–sea interface, and for its strong influence, or even coupling, with biological processes. The subsurface ocean is sparsely sampled with observations. In the Bay of Biscay, for instance, only two moorings of hourly temperature and salinity (T/S) profiles are available to the community (see Sect. 4.3.3). The UK MetOffice provides the so-called EN3 dataset that gathers subsurface T/S profiles from different sensors (e.g. ARGO floats) with quality control based on a comprehensive set of checks (Ingleby and Huddleston, 2007). Figure 8 illustrates the available data for February and August 2008. The sampling is inadequate for a detailed investigation of the processes underlying the T/S distribution. Instead it allows an overall view of the model performance in different areas.

Figure 8 shows the RMS of the model–data misfits in temperature over the upper 200 m. We also compute the mixed layer depth (MLD) from the model and EN3 profiles using a criterion on density and a threshold of 0.02 kg m^{-3} (not shown). In February, modelled temperatures show very good agreement with data almost everywhere, with RMS globally lower than $0.5 \text{ }^\circ\text{C}$. The profile of temperature RMS computed over the whole IBI domain (not shown) indicates that maximum RMS values are reached between 50 and 130 m, which is consistent with differences in modelled and observed MLD

at these depth ranges. In August, larger RMS in temperature profiles (up to $2 \text{ }^\circ\text{C}$) are found on shelves as well as in the deep ocean, with a model overestimation of the temperature in the upper 200 m, in the Iroise Sea and in the English Channel. The MLD is underestimated in the model in summer.

Besides the difficulty of single-point comparison (in particular because of the mesoscale signals), these comparisons emphasize the need to further test the vertical-mixing physics: parameterization and values of parameters, as well as forcing fields (impact of over- or underestimation of wind forcing on turbulence). Another possible source of error may be the wave-mixing parameterization coefficient. Sensitivity experiments performed with a $1/12^\circ$ resolution configuration have shown that the modelled MLD (and consequently temperatures in the upper ocean layers) is very sensitive to the wave-mixing parameterization coefficient. The model MLD representation can be enhanced by tuning this parameter, but the parameterization seems to be as inadequate in semi-enclosed seas as in the Mediterranean Sea or the North Sea. Thus the parameter used is a compromise to minimize the MLD errors both in the open ocean and in the semi-enclosed seas.

4 Regional skill assessment

4.1 Introduction

We now focus on the Bay of Biscay and explore the model–data consistency for processes specific to the shelf (Sect. 4.2) as well as slope and deep regions (Sect. 4.3). The surface circulation in the Bay of Biscay is relatively weak over the abyssal plain (a few cm s^{-1} , Charria et al., 2011); it is mainly cyclonic in winter and anticyclonic in summer. Slope currents have been evidenced off the northern Iberian coast and over the Armorican shelf break (Pingree and Le Cann, 1990), with significant time variability (see Sect. 4.3.5 for the

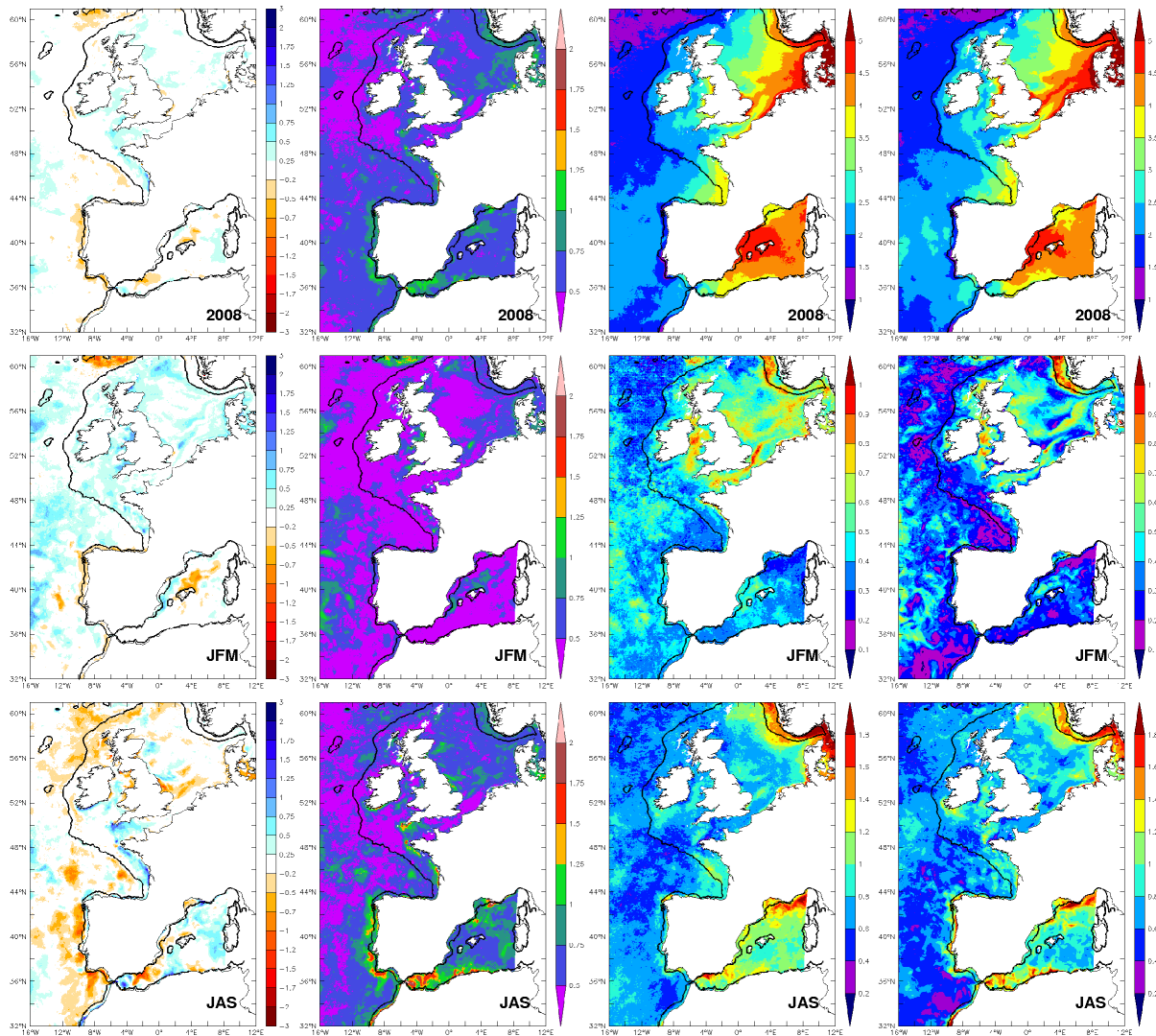


Fig. 6. Comparison to satellite SST observations ($^{\circ}\text{C}$). From left to right: bias (model–observation), RMS error, observation standard deviations and model standard deviation. The first row shows annual statistics, the middle one shows statistics for winter and the bottom row for summer. On each figure, the black line indicates the 200 m isobath.

Iberian Poleward Current). The circulation over the shelves is dominated by tidal currents; the residual currents are mostly wind-driven and are highly variable in time. Anticyclonic and cyclonic eddies are observed in the deep region; they mostly result from instabilities of the slope current developing at capes and canyons (Pingree and Le Cann, 1992). Internal tides are generated in regions of interaction between barotropic tidal currents and the shelf break. Two sites of generation have been described in the literature: the Armorican shelf break around 47°N (Pairaud et al., 2010) and the Galician coast (Pichon and Corréard, 2006).

We investigate the representation of these processes based upon the available observations. The emphasis is on shelves and slopes because of potential implication for users in biology or other downstream applications of the IBI system. We

also examine the representation of the Iberian Poleward Current flow along the northern Spanish coasts in winter. The objective is to show that such a regional modelling system has potential as a complement to observations (an integrated approach) to give information on non-observed physical quantities and to provide links between observations.

4.2 Celtic shelves

4.2.1 Surface tidal currents in the Iroise Sea

In an attempt to locally investigate the performance of the model at reproducing tidal surface ellipses in one particular region characterized by intense tidal currents (up to 4 m s^{-1} in some interisland passages; SHOM, 1994), we use surface current data from the HF WERA (Wellen Radar) radars at

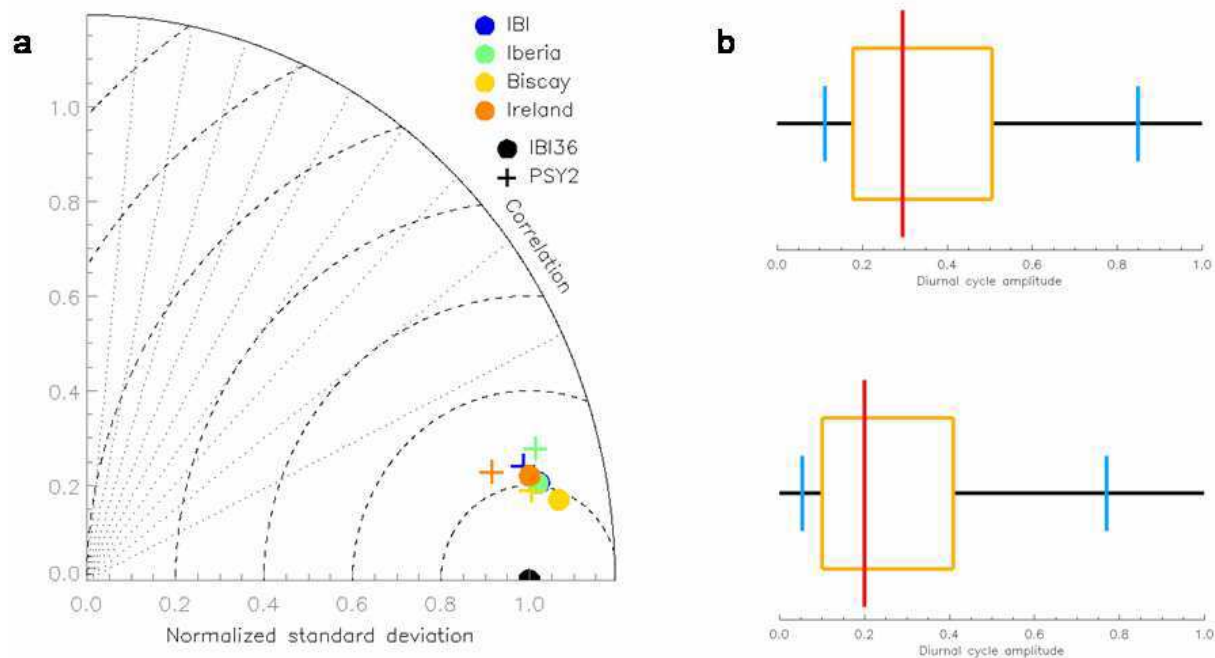


Fig. 7. Left (a): Taylor diagram of the 1-day low-pass-filtered SST at buoy locations in different regions. Filled dots are for comparisons with IBI and crosses are for comparisons with PSY2V3. Results are presented for the model domain and also for the following subregions: the “Iberia” region, delimited by 36.5° N–44° N, 10.5° W–6.5° W, the “Biscay” region delimited by 43° N–48.5° N, 8° W–1° W, the “Ireland” region delimited by 51° N–56° N, 9° W–3° W. Right (b): box plot of the diurnal cycle computed from data (top) and from model (bottom). The distribution is described with percentiles of data (vertical lines). From the left to the right, the positions of the 10th percentile (blue), the lower quartile (yellow), the median (red), the upper quartile (yellow) and the 90th percentile (blue) are indicated.

the Brezellec headland, 48° 04 N, 4° 40 W, and at the Garchine headland, 48° 30 N, 4° 46 W (Fig. 1). This system is operated by SHOM (the French Navy Hydrographic and Oceanographic Service) and provides radial surface currents every 20 min with a resolution of 1.5 km and an accuracy of a few centimetres per second (Le Boyer et al., 2009). The resulting radial currents have been interpolated on a regular grid with a 2 km spatial resolution extending from 6.78° W to 4.65° W and from 47.30° N to 49.26° N (Muller et al., 2009) using open-boundary modal analysis (OMA; Kaplan and Lekien, 2007). According to Le Boyer et al. (2009), radar-derived currents have an upper-bound uncertainty of 15 cm s⁻¹, which still allows us to compute the tidal current components as the latter are larger than the uncertainty and dominate the signal in the Iroise Sea. We use a 6-month dataset in 2007 to perform the harmonic analysis of nine tidal components (M2, S2, K2, N2, K1, O1, P1, Q1, M4).

Figure 9a (Fig. 9b) represents the observed and modelled tidal ellipses from runbc for the M2 (M4) component. In most areas, the modelled tidal currents magnitudes are found to be weaker by up to 15 % with respect to the observations, but within the assumed error bounds. Also, the model seems to slightly underestimate semi-major axes almost everywhere, the RMS difference between observed and modelled tidal semi-major axes being 4.6 cm s⁻¹, again arguably

within error bounds. The main differences between model and observations are found in the eastern (coastal) part of the domain, where islands channel and intensify tidal currents. It is, however, known that radar data quality is affected near islands and in the vicinity of the coast (Muller et al., 2009). In addition, Le Boyer et al. (2009) show that in that area the interpolated OMA outputs tend to significantly depart from the raw data. Therefore, more detailed or ad hoc studies will be required in order to better identify the source of the discrepancies whenever applications will require good estimates of tidal currents.

4.2.2 Tidal fronts

The occurrence of thermal fronts due to tidal mixing is a common feature on the European continental shelf. Thermal fronts appear in summer when tidal mixing prevents surface stratification induced by solar insolation from setting up. They separate tidally mixed waters from stratified waters. Following the study of Holt et al. (2008), we estimate the capability of the model in reproducing the location of tidal mixing fronts by comparisons with mean frontal positions as estimated from climatological ICES data (<http://www.ices.dk/>). We perform a similar analysis over 2008: data consist in all ICES temperature profiles available in June–August period,

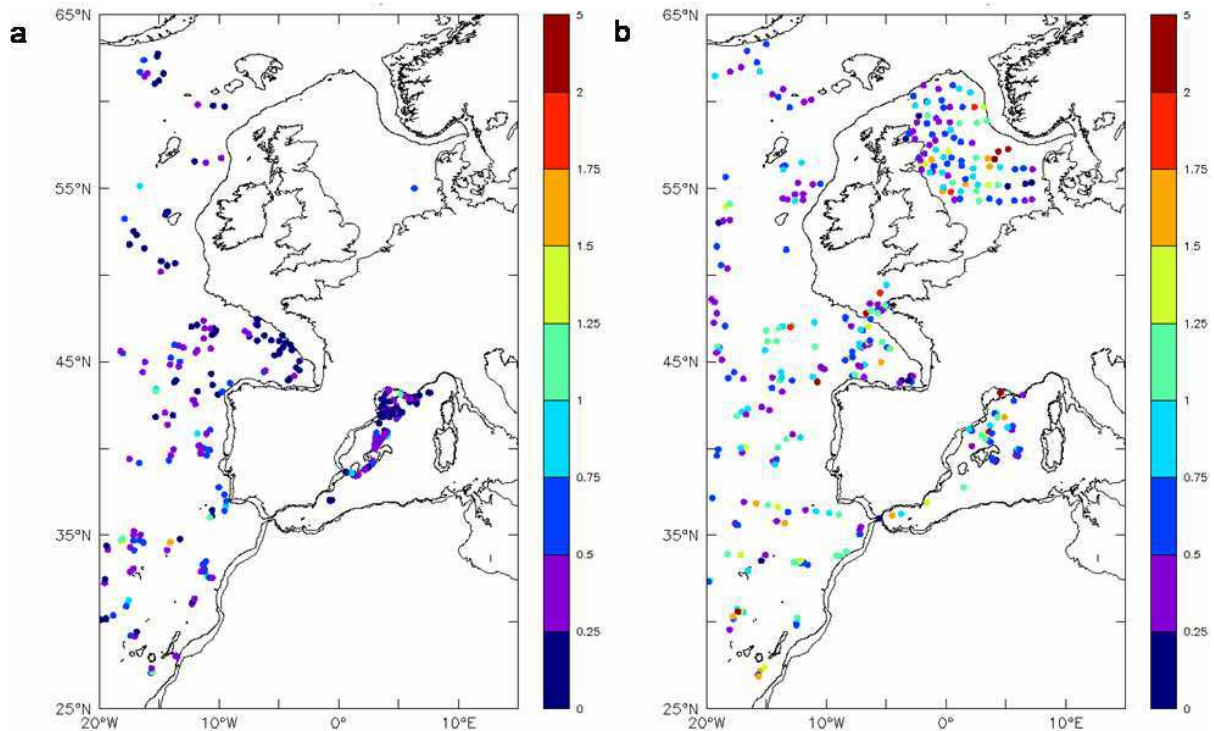


Fig. 8. RMS of temperature differences between EN3 profiles and model profiles computed over the first 200 m. Results are presented for February 2008 (a) and August 2008 (b). On each figure, the black line indicates the 200 m isobath.

and mean tidal fronts are deduced from the observed surface to bottom difference defined by $\Delta T = 0.5^\circ\text{C}$. The same approach is applied to model temperature profiles. Results are presented in Fig. 10. Over the shelf, SST fronts are due to the vertical turbulent mixing generated by tidal stresses at the seabed; the model shows reasonable agreement with observations in the main tidal front positions over the shelf, particularly for the Ushant front (northwest coast of Brittany), at the entrance of the English Channel, in the northern Irish Sea, off North Scotland and south of Doggar Bank (along $\sim 54^\circ\text{N}$). MODIS SST data have also been used to perform qualitative comparisons of the SST fronts (Fig. 11). The modelled SST shows very good agreement with observations in the main tidal front positions. Over the shelf, the model presents larger stratified regions in the Irish Sea and colder SST in the Ushant front (off West Brittany) and at the entrance of the English Channel. Elsewhere SST fronts are relatively well represented both in temperature and in extension. On the Armorican shelf break, internal tides induce strong vertical mixing, which prevents the formation of seasonal stratification and results in a cold SST tongue along the shelf break from 11°W to 5°W . The cold intrusion is also reproduced in the model: temperature is underestimated by 0.5°C and the southeastward extension is relatively well represented. The relatively good accuracy of the model in reproducing these tidal mixing fronts is mainly related to the good representation of the bottom stress which affects the propagation

of barotropic tidal waves, the k -epsilon two-equation model combined with the closure model of Canuto et al. (2001), the limitation of the dissipation under stable stratification and the tracers' advection (Holt et al., 2008). The model presents weaker stratification over Doggar Bank and to the west of England, and summer stratification is overestimated in the southern Irish Sea. Differences with observed mean frontal positions are also seen southwest of Denmark. Salinity stratification is important in this region (two major rivers including the Elbe river) and may impact frontal position (Holt et al., 2008).

4.2.3 Surges

For verification purposes, we diagnose the model's ability to reproduce surges by comparing residual elevations (i.e. detided sea levels) from the model with in situ measurements at time scales shorter than 10 days. At these time scales, the simulated coastal sea level is the signature of the static and non-static response to atmospheric pressure, of the response to wind forcing and of tidal interactions (see, for instance, Carrère and Lyard, 2003). The in situ sea level dataset consists of 115 tide gauges located along the European coasts (see red dots on Fig. 1). The harmonic analysis tool from Puertos del Estado is used to compute the tidal component from tide gauge elevations and to predict the tidal elevations; this software was developed to be used within the ENSURF

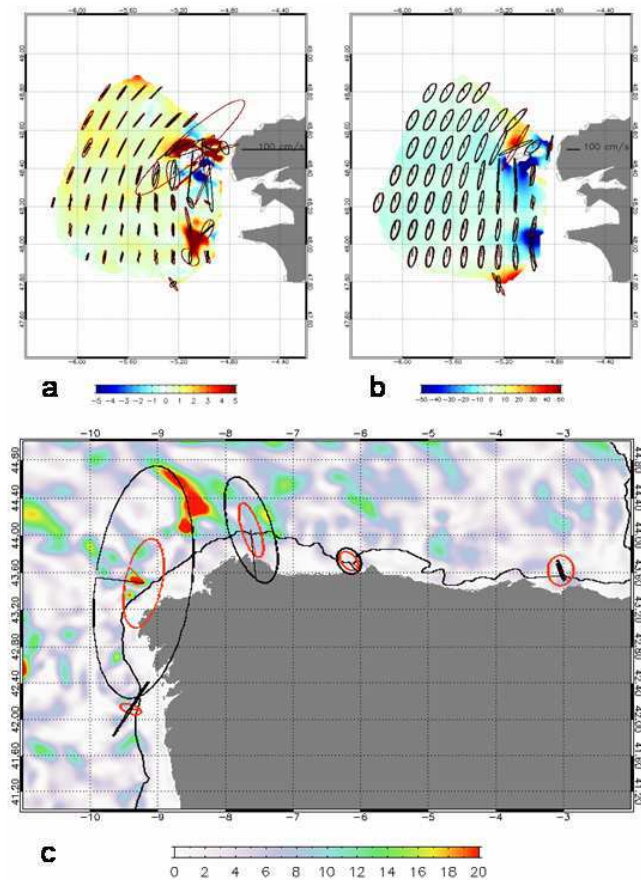


Fig. 9. (a) and (b): M2 (a) and M4 (b) modelled (black) and observed (red) surface tidal ellipses at HF radar measurements locations. Shaded contours represent the model–observation difference for semi-major axis (cm s^{-1}). (c) Modelled (black) and observed (red) near-surface M2 tidal ellipses at Puertos del Estado current-meter locations. Shaded contours: M2 surface velocity difference between the run with stratification (runbc) and the run without stratification (runbt). On each figure, the black line indicates the 200m bathymetry isoline.

ensemble system (Pérez et al., 2012) and is based on Foreman (1977) harmonic analysis software.

Comparisons between residual elevations from the model and the observations are shown in Fig. 12 for the Bay of Biscay and the English Channel. The elevations due to the static response of the ocean to atmospheric pressure (the so-called inverse barometer or IB effect) alone have been included in the comparison. The model shows very good agreement with data: 90 % (67 %), of RMS differences are smaller than 5 cm (3 cm), and 80 % of correlations are greater than 0.9 (results from detailed comparisons between observed and modeled values; results only synthesized on Fig. 12) and it performs better than the IB response (54 % with RMS difference smaller than 5 cm). It is most effective at high latitudes, which are more energetic areas, and where the ocean dynamical space and time scales are smaller, while at midlatitudes

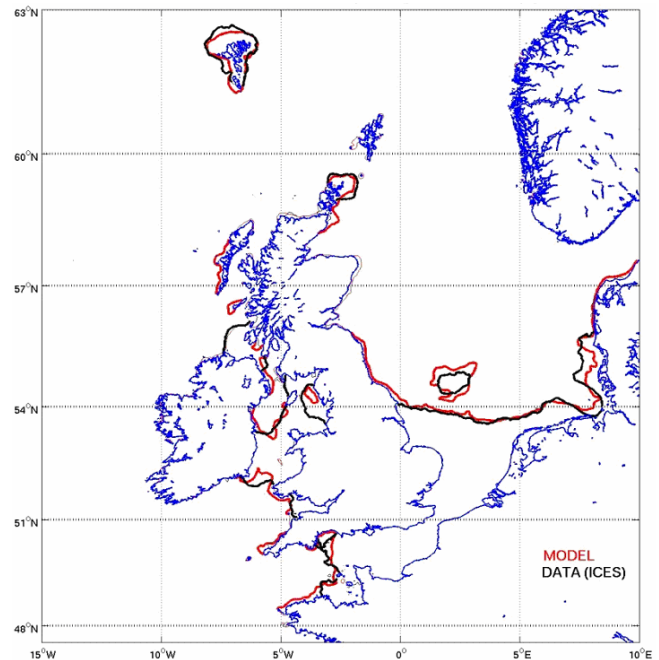


Fig. 10. Summer (June, July, August) tidal front positions as deduced from surface to bottom temperature difference ($\Delta T = 0.5 \text{ } ^\circ\text{C}$) from the model (red) and from ICES data (black).

the model response to atmospheric forcing is closer to the IB approximation (not shown).

4.3 IBI shelf breaks and deep ocean

4.3.1 Surface tidal currents over the slope

Surface tidal currents from runbc are compared to observed currents at buoy stations along the northern Iberian coast for the M2 constituent (Fig. 9c). The model tends to overestimate the current amplitudes almost everywhere. The largest differences are found at Villano-Sisargas: the modelled ellipse azimuth is remarkably consistent with the observations, but the modelled semi-major axis is more than twice as large as the observed one. García-Lafuente et al. (2006) also found the M2 barotropic tidal currents were much greater than expected in this area; they attributed it to internal tides of considerable amplitudes. Pichon and Corréard (2006) showed that the northwest Spanish continental slope is indeed an area of internal tide generation. In the vicinity of Villano-Sisargas, differences of the M2 surface current amplitudes between the run with stratification (runbc) and the run without stratification (runbt) present high values due to internal tides (Fig. 9c). As internal tide generation is very sensitive to the bathymetry gradient and as the bottom topography and the coastline geometry are complex in the Cape Finisterre area, we expect errors in the slope position in the model bathymetry to explain the differences observed at this station. Without any better estimate of the local bathymetry, we cannot further test this

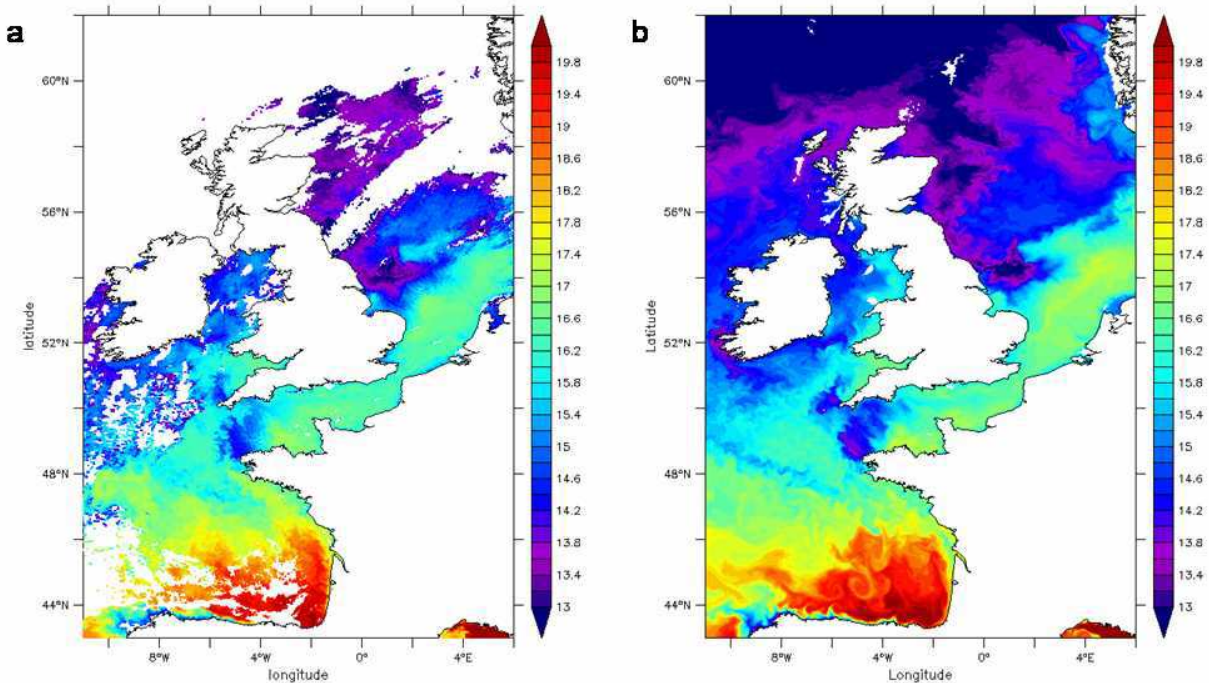


Fig. 11. Sea surface temperature ($^{\circ}\text{C}$) from MODIS data (a) and from the model (b) on 27 September 2008.

hypothesis. At Cabo Silleiro, tidal ellipse parameters are not correctly modelled. The model ellipse inclination is parallel to the isobaths, which is consistent with the study of Visser et al. (1994) in well-mixed conditions. Visser et al. (1994) also showed that in a region of freshwater influence, the stratification significantly influences the cross-shore component that can reach 40 % of along-shore component; this is consistent with the observed ellipse orientation. At Donostia and Matxitxako, modelled ellipses are also oriented along the slope, while observed ones are oriented across the slope. Indeed, the vertical profile of the observed M2 semi-major axis shows a clear stratification in the surface layers which is not represented in the model (Fig. 13). Below this layer (upper 30 m) the modelled profile is in good agreement with observations for the two current profiles. As discussed in Sect. 4.3.3, the surface layer's salinity suffers from an over- or underestimation in the model with respect to observations (Fig. 14).

It should be stressed that model–data comparisons at single locations are very challenging in the sense that the modelled field can vary a lot from one grid point to the other, especially in the slope area. Indeed, a small local error in the bathymetry (depth and slope) can generate large displacements of the circulation patterns. Therefore, such comparisons are not necessarily representative of the overall model performance. Here, we presented them to illustrate some physical processes at work in order to explain the model–data discrepancies.

4.3.2 Internal tides

We use 10 yr of TOPEX/Poseidon data combined with 7 yr of Jason-1 altimeter data spanning the period from September 1992 to January 2009 to obtain estimates of the internal tide signature in sea surface elevation. Altimetric data are not used for the validation of barotropic tides, as barotropic tides are compared to the FES2004 solution which assimilates altimetric data. The fraction of internal tides which is phase-locked with astronomical potential has sufficient coherence in both space and time for its surface signal to be detected in altimetric multi-year time series (Ray and Mitchum, 1997). We use an along-track harmonic analysis product provided by CTOH/LEGOS (F. Lyard, personal communication, 2010) to estimate the temporally coherent M2 component. We work with TOPEX/Poseidon/Jason1 track 137 that crosses the Armorican shelf slope at nearly a right angle (Fig. 1) as we expect the M2 internal tides to propagate almost in the same direction (internal tides propagate perpendicular to the shelf break, Pairaud et al., 2010). To separate the barotropic tides from the time-coherent internal tide signal, we then spatially filter the M2 real and imaginary parts so that we remove the barotropic large-scale signal (Ray and Mitchum, 1997). According to Pairaud et al. (2010), the wavelengths of baroclinic mode 1 and mode 2 are respectively 141 km and 75 km in the abyssal plain. Note that these values have been obtained using data collected during the period September–October 1994 and may vary with the stratification. To take into account the angle between the altimeter

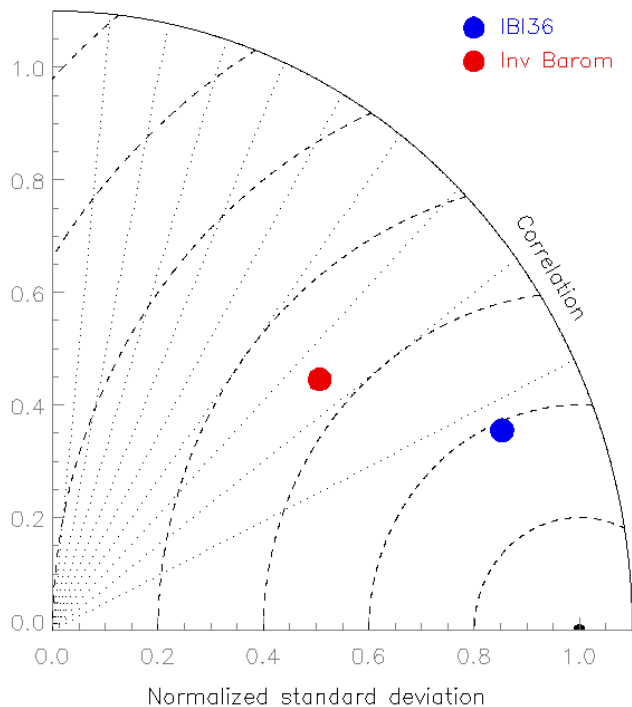


Fig. 12. Taylor diagram for comparisons between tide gauge data and the model residual elevations (blue) and the inverse barometer (red). Results are computed for periods below 10 days and for data located in the Bay of Biscay and in the English Channel. The radial coordinate indicates the standard deviation normalized by the data standard deviation; the concentric circles represent the RMS differences for time series normalized by the data standard deviation (the observations are indicated with the black point), and the angular coordinate represents the correlation with observations.

track and the internal tide direction of propagation we use a spatial cut-off slightly larger than the wavelength. We also filter at shorter scales to reduce the altimeter noise. Finally, along-track tidal components are filtered between 140 km and 210 km for mode 1 and between 60 km and 110 km for mode 2. The “residual tides” are obtained by removing the filtered signal from the harmonic components.

Figure 15 presents the along-track amplitude and phase as computed from the altimetric data and from the model for mode 1 and for mode 2. It also presents the along-track bathymetry. Indications attesting that the small oscillations are internal tides are as follows: (1) oscillations are generated in the Armorican shelf slope region (45.8°N – 46.0°N); (2) south of the shelf break the phase increases constantly in the Bay of Biscay, which indicates that the wave propagates away from the shelf; and (3) for mode 1 and mode 2 we find wavelengths of approximately $(\lambda_1, \lambda_2) = (197\text{ km}, 76\text{ km})$ in the altimetric data and the model; these values are slightly larger but in good agreement with theoretical values. The agreement between the altimetric and model estimates is remarkable: the misfits lie between 1 and 2 cm for the to-

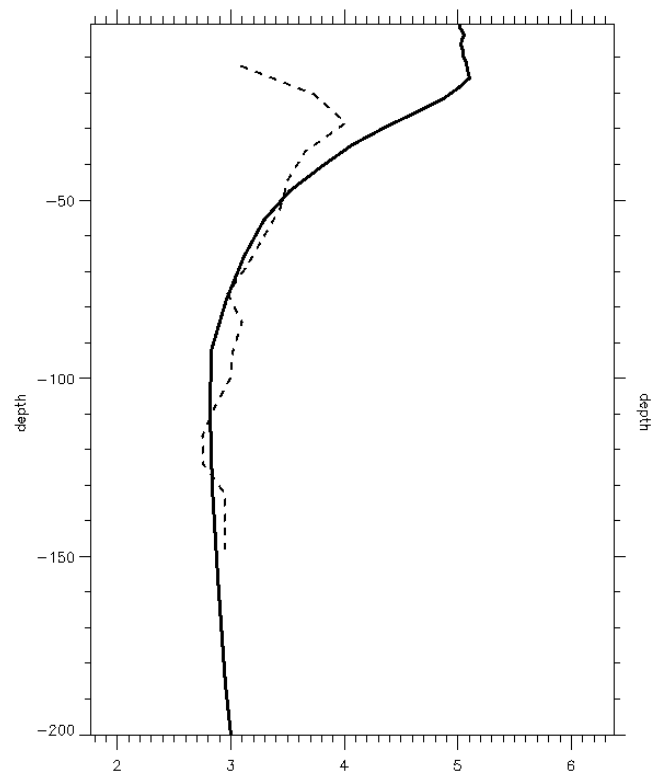


Fig. 13. Vertical profiles of the M2 semi-major axis (cm s^{-1}) as observed (dashed line) and modelled (full line) at the Matxitxako buoy location.

tal M2 amplitude and the model presents similar wavelengths than altimetric data. Interestingly, both the model and data indicate that the first mode does not have the dominant surface signature in the Bay of Biscay. Minor discrepancies in the baroclinic amplitudes and phases are, however, observed. For mode 1 (mode 2) there is a southward (northward) shift of the model sea surface signal. For the two modes, model amplitudes are slightly overestimated, especially near the generation site for mode 2. As previously mentioned, errors in the model bathymetry (here for the Armorican shelf slope representation) are expected to lead to uncertainties in the tidal representation, especially close to the generation sites of internal tides.

4.3.3 Local stratification off the Basque Country

The Donostia and Matxitxako deep-sea buoys deployed by AZTI-Tecnalia over the slope off the Basque Country provide hourly measurements of atmospheric parameters and ocean temperature and salinity from 10 to 200 m (Rubio et al., 2013; Fig. 1, Table 4). They represent very valuable data as they are the only available time series of temperature and salinity profiles over such a long period. The time evolutions of temperature and salinity as observed and modelled at the Matxitxako station are presented in Fig. 14. The

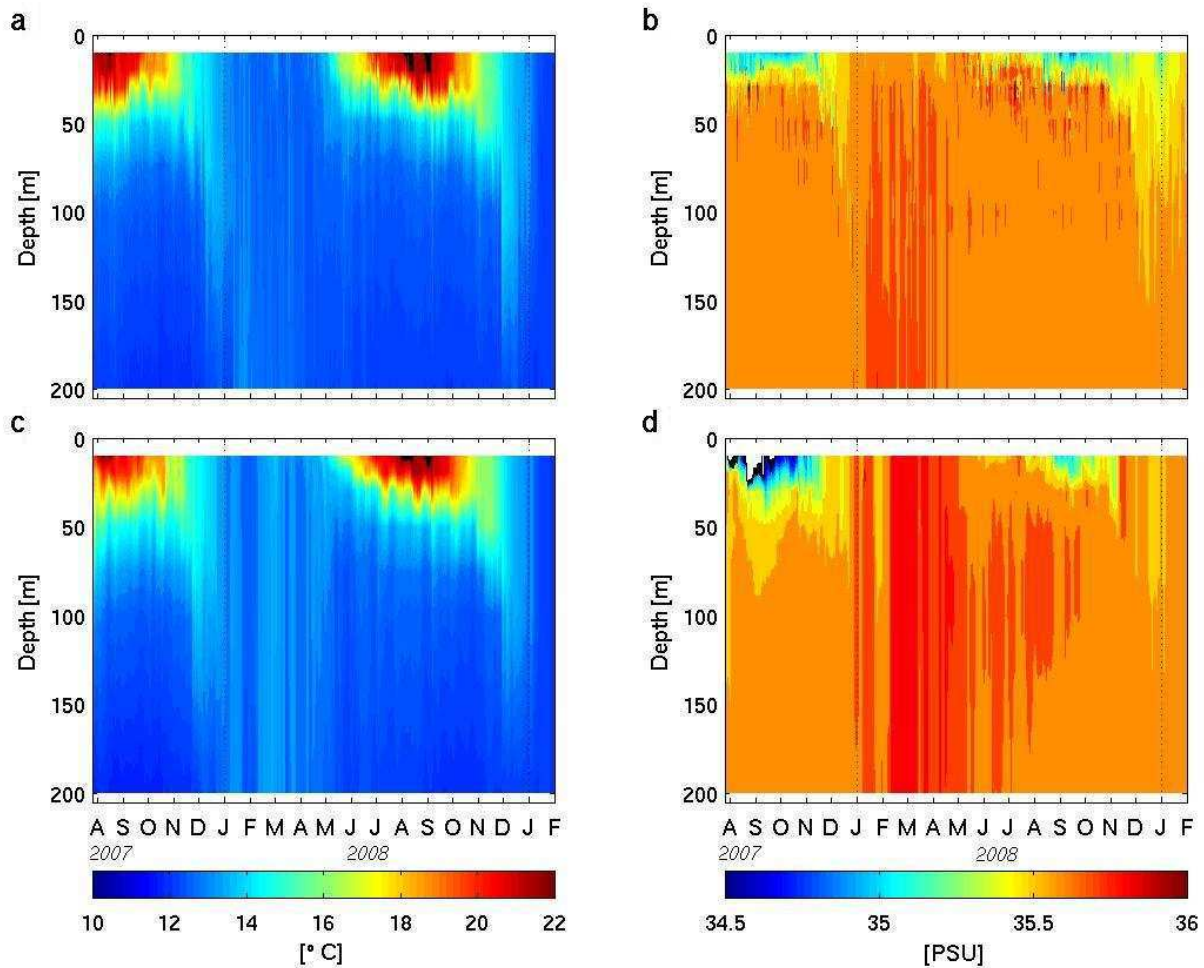


Fig. 14. Temperature ($^{\circ}\text{C}$) and salinity (psu) profiles in the upper 200 m at station Matxitxako as a function of time (August 2007 to February 2009) from the observations (a, b) and from the model (c, d). As no measurement is available above 10 m, we show the model results below 10 m.

profiles show clear seasonal stratification. The model reproduces reasonably well the rapid heating and freshening of spring 2008. The cooling and mixed-layer deepening during winter are also correctly represented. However, the model underestimates the MLD equivalent in winter (The MLD equivalent is computed as the depth at which the density changes from the density at 10 m by 0.02 kg m^{-3} ; results not shown). In summer 2007 we also notice that the model salinity is too low in the upper layers. This is due to the initialization from PSY2V3, which is too fresh in this region. On the contrary, the model is slightly saltier in the surface layers during summer 2008. However, rapid freshening pulses during September 2008 are well represented in the model. Surface salinity uncertainties reflect mainly those on the precipitation fields; the latter are unknown but are expected to be larger in coastal areas such as northern Iberia because of orographic effects. Furthermore, Ferrer et al. (2009) have shown that fresh water discharge from several Spanish rivers can im-

part the offshore salinity conditions under specific oceanometeorological conditions.

During the winter of 2007–2008, the ocean becomes warmer and saltier over the whole water column. This phenomenon is more marked in the model and affects the 350 m upper layer: it corresponds to a warm extension of the Iberian Poleward Current, also called the “Navidad event” (Pingree and Le Cann, 1992). This pattern is discussed later in Sect. 4.3.5.

4.3.4 Residual currents

Data used for comparisons consist of residual currents from the surface buoys of Puertos del Estado (Table 4). Figure 16 shows the observed and modelled residual currents at Bilbao (zonal component), Estaca de Bares (zonal component) and at Cabo Silleiro (meridional component). Both data and model time series are detided, filtered below 25 h and one-day-averaged. The results show that modelled residual

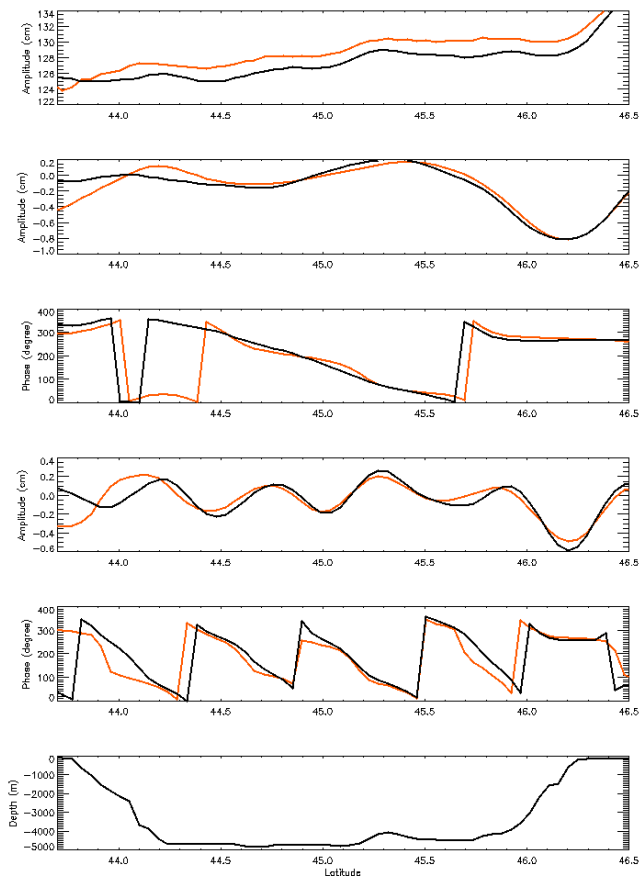


Fig. 15. (a) Along-track amplitudes (cm) deduced from the M2 harmonic analysis of altimetric data (red) and model (black). (b) Baroclinic amplitudes in cm and (c) phase of the residual tides for the altimetric data (red) and the model (black) and for the first baroclinic mode. (d) Baroclinic phase-locked elevations in cm and (e) phase of the residual tides for the altimetric data (red) and the model (black) and for the second baroclinic mode. (f) Along-track bathymetry (m).

currents have some discrepancies when currents are weak, but they are relatively well reproduced elsewhere. However the model tends to overestimate peak currents. Along the Iberian Coast, RMS errors vary between 5.8 and 9.1 cm s^{-1} . Comparisons between wind speed observed at buoy stations and extracted from ECMWF fields indicate that magnitudes are significantly higher in the ECMWF fields, especially during strong wind events (not shown). Along the Iberian coast, the main current component is the along-shore component: currents are predominantly meridional at the Cabo Silleiro station, while they have a predominant zonal orientation at Estaca de Bares, Cabo Peñas and Bilbao. This distribution of residual currents is well reproduced in the model. North of Spain, both observations and the model show clear eastward current intensifications during January. They are overestimated in the model and spread over a larger period. These intensifications are associated with the extension of the Iberian

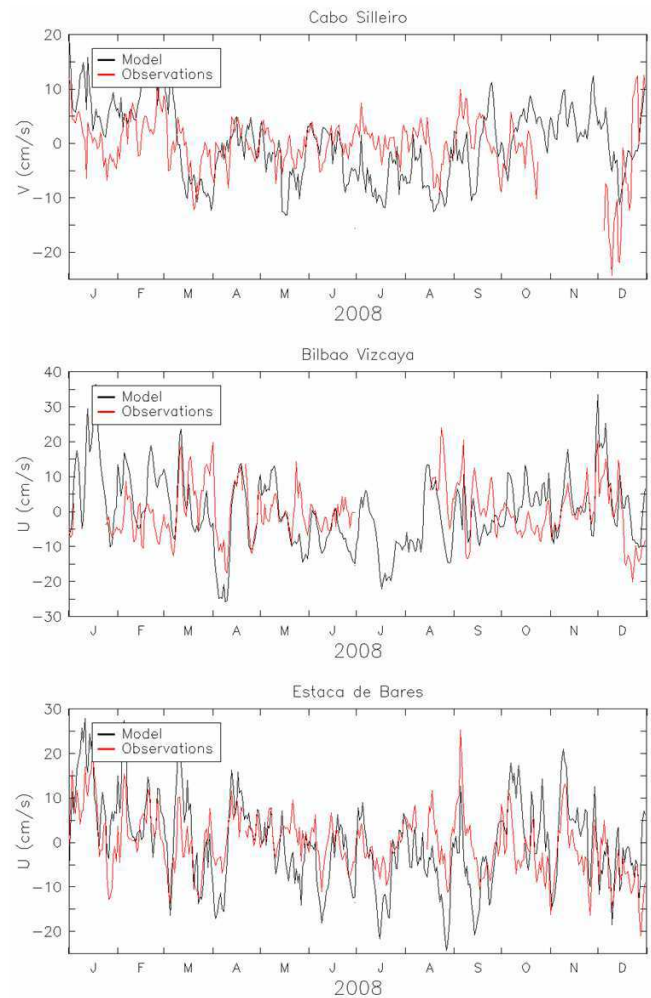


Fig. 16. Modelled (black) and observed (red) residual near-surface velocity (approximately along slope) at various moorings along the Iberian slope (cm s^{-1}): northern component at Cabo Silleiro, and eastward component at Estaca de Bares and Bilbao.

Poleward Current along the northern Spanish coast. In summer, some current pulses are also observed in the data from mid-June to late August 2008, and are well reproduced in the model.

4.3.5 A focus on the circulation in the southern Bay of Biscay

We now focus on the ability of the model in reproducing a typical dynamic feature of the southern Bay of Biscay: the warm extension of the Iberian Poleward Current along the northern Spanish coast during winter. In this section our objective is not consistency assessment; we analyse several variables or quantities that are relevant for the Navidad occurrence (e.g. temperature and salinity anomalies in the upper layers, poleward along-slope currents) and show how the model can be used as a complement to available

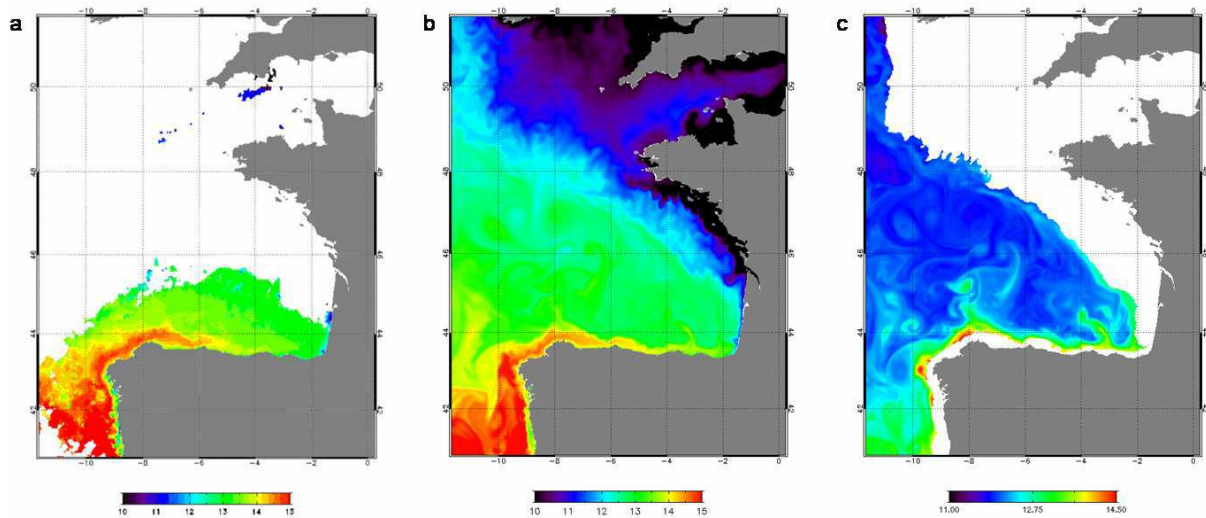


Fig. 17. Sea surface temperature ($^{\circ}\text{C}$) from AVHRR data (a) and from the model (b) for 20 January 2008. Modelled temperature at 200 m depth for 20 January 2008 (c).

observations. The analysis of the modelled SST and sea surface salinity (SSS) in the Bay of Biscay shows a warm and salty current flowing poleward along the western and the northern Iberian Peninsula and reaching the southwestern French coasts during winter of 2007–2008 (Fig. 17, SSS not shown; see also wintertime salinity anomalies on Fig. 14). The extension of the Iberian Poleward Current at or near surface along the northern Iberian coast is a recurrent feature of the autumn/winter circulation of the Bay of Biscay (Frouin et al., 1990; Garcia-Soto et al., 2002; Le Cann and Serpette; 2009) and has been referred to as the “Navidad event” (Pinsee and le Cann, 1992). The extension of the IPC and the associated warming are, however, very variable from one year to the other; furthermore, it also undergoes some variability at timescales of a few days, as discussed below. Its main signature is a surface warming along the coast as it carries poleward warm water masses from the western Iberian region. Satellite observations clearly show the warm intrusion of the Iberian Poleward Current extending poleward as far as the Cantabrian shelf slope north of Spain on 20 January 2008 (Fig. 17). The intrusion is represented by a similar spatial extent in IBI with its leading edge reaching 3.5°W at the same date. Modelled SST is slightly warmer than observed SST within the Iberian Poleward Current and in surrounding waters; moreover, the warm tongue appears to be narrower northwest of Spain. At the surface, the current thermal signature is about 1°C warmer than adjacent waters in the data and in the model. It decreases poleward, varying from more than 14.5°C off northwest Spain to about 13.5°C at 3°W . This corresponds to a drop of 1°C over a $\sim 450\text{ km}$ distance, which is in good agreement with the poleward temperature gradient obtained by Frouin et al. (1990) using satellite SST data. The current narrows from 40 km off northwest Spain to less than 30 km at 3°W . Vertical across-slope sections of

thermohaline fields along the warm current (not shown) indicate the core of warm and salty water flows over the upper shelf slope, and extend from the surface to 350 m . The temperature field structure is illustrated with the map of 200 m temperature (Fig. 17).

Comparisons between modelled and observed along-slope residual currents (Fig. 16) indicate that the time variability of currents in the model is in reasonable agreement with data. They also suggest that the model tends to overestimate the IPC surface currents at the Puertos del Estado buoys (e.g. Cabo Silleiro and Estaca de Bares). At Bilbao (Fig. 16) the eastward pulses in February and March are not observed; this suggests that the IPC may be penetrating too far into the Bay of Biscay in the model. The analysis of other Navidad events (i.e. over other years) should be necessary to determine whether the model overestimation of the zonal extension of the IPC is a systematic bias in this configuration or if it occurred specifically for these events of February–March 2008.

The warm current transport has been estimated along the slope for sections perpendicular to the flow (see definition in the caption of Fig. 18). Considering typical temperature and salinity values along the current in the model, the transport has been computed for water masses warmer than 13.0°C and saltier than 35.7 psu . Note that these values do not take into account the spatial gradient of temperature and salinity in the flow. The transport time evolution is shown in Fig. 18a. The warm intrusion is established in October 2007 northwest of Spain (Galicia). The flow progresses eastward along the slope around Cape Finisterre, reaches the coast off north Galicia in November and continues its intrusion in the Cantabrian Sea. North of Spain, the warm current is established until May. From the transport across each section we estimate the mean poleward flow to propagate at velocities

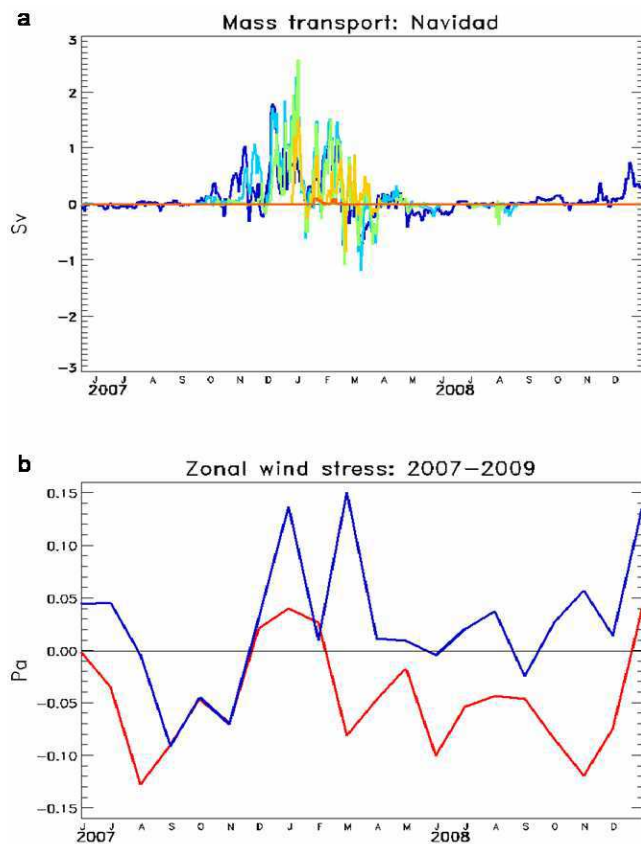


Fig. 18. (a) Transport (Sv) of the poleward flow for water mass warmer than 13.0°C and saltier than 35.7 psu at 43.24°N (blue), 7.61°W (turquoise blue), 6.2°W (green), 3.8°W (yellow) and 44.4°N (orange). (b) Meridional wind stress τ_y (Pa) off western Iberia (red) and of the zonal wind stress τ_x off northern Iberia (blue). Boxes chosen for the spatial average of τ_x and τ_y have been chosen following the study of Le Cann and Serpette (2009).

between 13 and 24 cm s^{-1} , which agree with typical values published (Frouin et al., 1990; Garcia-Soto et al., 2002). From Fig. 18a, we also notice the warm current transport is highly variable at periods of a few days and may vary from no transport to more than 2 Sv over a short period. Such variability at daily timescales has been described by Herbert et al. (2011) during the winter of 2004 from in situ observations and a numerical simulation. These authors suggest that the high-frequency variations are due to local wind forcing. When it is established, the current varies almost simultaneously at each section in response to forcing. The transport time series present a lag of 1 day between 8°W and 6°W (6°W and 3.8°W) and correlation of 0.75 (0.79) between the two transports.

Driving mechanisms of the poleward current are often attributed to the large-scale meridional pressure gradient in the North Atlantic and to local wind stress (Frouin et al., 1990; Le Cann and Serpette, 2009). Figure 18b represents the meridional wind stress off western Iberia and of the

zonal wind stress off northern Iberia averaged over boxes defined following Le Cann and Serpette (2009). Positive values of wind stress indicate downwelling-favourable conditions which are likely to force the poleward flow. West of Iberia, wind stress is upwelling favourable until October 2007; then it is northward until the end of the year and is expected to provide a driving mechanism of the poleward current. When the current has reached Cape Finisterre and turns eastward, its poleward flow is maintained by eastward winds.

5 Conclusions

A high-resolution simulation covering the Iberia–Biscay–Ireland (IBI) region was carried out over the period of July 2007–February 2009 within the MyOcean project (Cailleau et al., 2012). In this paper, we had three main objectives: (1) to give an overview of the model configuration used for the simulation; (2) to give a broad-brush account of one particular aspect of this work, namely consistency verification; this type of validation is conducted upstream of the implementation of the system before it is used for production and routinely validated; it is meant to guide model development in identifying gross deficiencies in the modelling of several key physical processes; and (3) to show that such a regional modelling system has potential as a complement to patchy observations (an integrated approach) to give information on non-observed physical quantities and to provide links between observations by identifying broader-scale patterns and processes. Objectives (2) and (3) were pursued in the year 2008.

We then examined domain-wide consistency verification results in terms of barotropic tides, transports, sea surface temperature and stratification. We also focused with more detail on two dynamical subregions: the Celtic shelves and the Bay of Biscay slope and deep regions; there, the model–data consistency was checked, not exhaustively, but for a few important variables and processes such as tidal currents, tidal fronts, internal tides and residual elevation. Although a number of relatively minor points have been raised in the paper and some of these points are not in the IBI system specifications (e.g. details of the MW outflow), no major discrepancy with respect to expectations was identified. However, the study highlighted a few grey areas requiring more specific attention and testing, as well as priorities for improvement.

For instance, the analysis of the tidal elevations and current fields suggests that local improvements in the bathymetry are essential to better represent the tidal propagation, the bottom mixing and the generation of internal tides. Such improvements are also essential in regions of downscaling to finer-grid models, as well as to facilitate point comparisons with observations, a small error in the bathymetry (depth and slope) being able to generate large displacements of the circulation patterns.

Another important forcing in coastal areas is freshwater discharge, mainly from rivers. The analysis of the baroclinic

tidal surface signal points out at least two regions in the Bay of Biscay where the surface stratification in the model was probably poorly represented (however, the lack of available subsurface hydrological data will not permit direct comparisons). In these regions and according to past studies (e.g. Ferrer et al., 2009), runoffs from the Galician and the Basque rivers have a significant impact on the local stratification but are not taken into account in our model configuration. Tests are necessary to quantify the impact of local changes of the surface stratification at different timescales on the baroclinic tidal currents. More generally, it becomes evident that a large effort for a more realistic representation of continental water discharge including the runoffs from small rivers is needed at least in these areas. Following some of our consistency checks, daily runoffs (instead of monthly climatological ones) are now prescribed in the operational version of this IBI configuration.

Other points follow. Further increases in horizontal and vertical resolution would allow for some types of applications to be better served, such as biological connectivity and surface currents, the latter being probably strongly influenced by wave–current interactions (Law-Chune et al., 2013). Further tuning of the bottom friction and its spatial dependence on the seabed type may improve the solution locally for tides and surges, with impacts on SST distribution in frontal regions. Uncertainties in atmospheric forcings are likely to drive model errors on surface circulation and on tracer distributions via wind-driven turbulence. Errors are expected to occur for high frequencies and small-scale patterns, especially close to the coasts where the effects of small-scale orography are poorly represented. Stochastic modelling would provide an interesting framework for the assessment of the impacts of atmospheric uncertainties (e.g. Quattrocchi et al., 2013). We also suggest that R&D studies should be carried out to accompany the development of atmospheric downscaling for operational systems.

The model–data comparisons presented in this paper did not include an error analysis; for this, we need reliable estimates of uncertainties on the data, which are generally unavailable. Such estimates are required, for instance, in order to better identify the source of the discrepancies between the simulations and the gridded HF radar data in the vicinity of the Ushant front. The representativeness of local measurements (such as T/S profiles from the EN3 database or current time series from the Puertos del Estado buoy network) is a general problem, linked to the problem of upscaling local information when comparing to increasingly high-resolution simulations. We also suggest to complement the datasets used for the consistency checks: for example, both Ferrybox T/S data and satellite altimetry data would be a nice complement, both datasets being characterized by repetitive sampling.

In the last section of this paper, we investigated the representation of the winter slope current along the northern Spanish coast (Navidad event). As very few data were available,

this test is an illustration of the potential of our modelling system as a complement to observations within an integrated approach. We examined diagnostics on observed (e.g. surface currents) and non-observed (e.g. along-slope transport) quantities that could serve as a basis to define indices and that provide links between observations.

Lastly, the relatively high (2–3 km) horizontal resolution used clearly pushes the model into the sub-mesoscale-permitting regime over much of the domain and allows for a significant part of the internal wave spectrum to be resolved. This seems to be the natural way forward to anticipate future high-resolution satellite observing systems such as SWOT (Surface Water and Ocean Topography).

Acknowledgements. The research leading to these results have received funding from the European Community's Seventh Framework Programme FP7/2007-2013 under grant agreement no. 218812 (MyOcean) and through its partnership with CNRS (Centre National de la Recherche Scientifique).

The regional bathymetries used for the study have been provided by Ifremer, the French Navy Hydrographic and Oceanographic Service (Service Hydrographique et Océanographique de la Marine, SHOM) and the North West Shelf Operational Oceanographic System. Tide gauge data used were provided by Puertos del Estado, the Marine Institute and the Danish Meteorological Institute; and tide gauge data from SHOM, the British Oceanographic Data Centre and GLOSS were provided by Collecte Localisation Satellites (CLS). The MODIS SST image was obtained through the online JPL PO.DAAC Ocean ESIP Tool (POET) at the Physical Oceanography Distributed Active Archive Center (PO.DAAC), NASA Jet Propulsion Laboratory, Pasadena, CA (<http://podaac.jpl.nasa.gov/poet>).

The authors gratefully acknowledge the receipt of buoy data from Puertos del Estado, Météo France, the Marine Institute and the Marine Institute and AZTI-Tecnalia, as well as along-track altimetric data from LEGOS/CTOH, historical current-meter data from BODC and radar HF data provided by Fabrice Arduin and SHOM.

Outflow estimates at the Strait of Gibraltar have been obtained through the monitoring station at Espartel sill, west Gibraltar, which is deployed and serviced within the frame of the Spanish-funded projects INGRES (REN2003-01608, CTM2006-02326, CTM2009-05810E and CTM2010-21229). We acknowledge J. Garcia Lafuente, PI of these projects, for providing us with this information.

We thank the Mercator Ocean teams, Charly Reignier and Clément Bricaud, whose hard work made this study possible. This study also benefited from fruitful discussions with Gildas Cambon concerning the Ushant thermal front.

Edited by: A. Schiller



The publication of this article is financed by CNRS-INSU.

References

- Adcroft, A. and Campin, J.-M.: Rescaled height coordinates for accurate representation of free-surface flows in ocean circulation models, *Ocean Model.*, 7, 269–284, 2004.
- Alvarez, M., Perez, F. F., Bryden, H. L., and Rios, A. F.: Physical and biochemical transports structure in the North Atlantic subpolar gyre, *J. Geophys. Res.*, 109, C03027, doi:10.1029/2003JC002015, 2004.
- Arbic, B. K., Wallcraft, A. J., and Metzger, E. J.: Concurrent simulation of the eddying general circulation and tides in a global ocean model, *Ocean Model.*, 32, 175–187, 2010.
- Barnier, B., Madec, G., Penduff, T., Molines, J.-M., Treguier, A.-M., Le Sommer, J., Beckmann, A., Biastoch, A., Böning, C., Dengg, J., Derval, C., Durand, E., Gulev, S., Remy, E., Talandier, C., Theetten, S., Maltrud, M., McClean, J., and De Cuevas, B.: Impact of partial steps and momentum advection schemes in a global ocean circulation model at eddy-permitting resolution, *Ocean Dynam.*, 56, 543–567, doi:10.1007/s10236-006-0082-1, 2006.
- Becker, J. J., Sandwell, D. T., Smith, W. H. F., Braud, J., B. Binder, B., Depner, J., Fabre, D., Factor, J., Ingalls, S., Kim, S.-H., Ladner, R., Marks, K., Nelson, S., Pharaoh, A., Trimmer, R., Von Rosenberg, J., Wallace, G., and Weatherall, P.: Global bathymetry and elevation data at 30 arc seconds resolution: SRTM30 PLUS, *Mar Geod.*, 32, 355–371, 2009.
- Benzhora, M. and Millot, C.: Characteristics and circulation of the surface and intermediate water masses off Algeria, *Deep-Sea Res.*, 42, 1803–1830, 1995.
- Bernie, D. J., Woolnough, S. J., Slingo, J. M., and Guilyardi, E.: Modelling diurnal and intraseasonal variability of the ocean mixed layer, *J. Climate*, 18, 1190–1202, 2005.
- Blayo, E. and Debreu, L.: Revisiting open boundary conditions from the point of view characteristic variables, *Ocean Model.*, 9, 231–253, 2005.
- Brown, J. and Gmitrowitz, E. M.: Observations of the transverse structure and dynamics of the low frequency flow through the North Channel of the Irish Sea, *Cont. Shelf Res.*, 15, 1133–1156, 1995.
- Brown, J., Carrillo, L., Fernanda, L., Horsburgh, K. J., Hill, A. E., Young, E. F., and Medler, K. J.: Observations of the physical structure and seasonal jet-like circulation of the Celtic Sea and St. George’s Channel of the Irish Sea, *Cont. Shelf Res.*, 23, 533–561, 2003.
- Burchard, H., Deleersnijder, E., and Stoyan, G.: Some numerical aspects of turbulence-closure models, in *Marine Turbulence: Theories, Observations, and Models. Results of the CARTUM Project*, Cambridge University Press, 2005.
- Cailleau, S., Chanut, J., Lellouche, J.-M., Levier, B., Maraldi, C., Reffray, G., and Sotillo, M. G.: Towards a regional ocean forecasting system for the IBI (Iberia-Biscay-Ireland area): developments and improvements within the ECOOP project framework, *Ocean Sci.*, 8, 143–159, doi:10.5194/os-8-143-2012, 2012.
- Candela, J.: The Gibraltar Strait and its role in the dynamics of the Mediterranean Sea, *Dynam. Atmos. Oceans*, 15, 267–300, 1991.
- Canuto, V. M., Howard, A. M., Cheng, Y., and Dubovikov, M. S.: Ocean turbulence. Part I: one-point closure model momentum and heat vertical diffusivities, *J. Phys. Oceanogr.*, 31, 1413–1426, 2001.
- Carrère, L. and Lyard, F.: Modelling the barotropic response of the global ocean to atmospheric wind and pressure forcing – comparisons with observations, *Geophys. Res. Lett.*, 30, 1275, doi:10.1029/2002GL016473, 2003.
- Charria, G., Lazure, P., Le Cann, B., Serpette, A., Reverdin, G., Louazel, S., Batifoulier, F., Dumas, F., Pichon, A., and Morel, Y.: Surface layer circulation derived from Lagrangian drifters in the Bay of Biscay, *J. Mar. Syst.*, 109–110, Supplement S60–S76, doi:10.1016/j.jmarsys.2011.09.015, 2011.
- Craig, P. D. and Banner, M. L.: Modeling wave-enhanced turbulence in the ocean surface layer, *J. Phys. Oceanogr.*, 24, 2546–2559, 1994.
- Coelho, H. S., Neves, R. J. J., White, M., Leitao, P. C., and Santos, A. J.: A model for ocean circulation on the Iberian coast, *J. Mar. Syst.*, 32, 153–179, 2002.
- Davies, A. M. and Aldridge, J. N.: A numerical model study of parameters influencing tidal currents in the Irish Sea, *J. Geophys. Res.*, 98, 7049–7067, 1993.
- Davies, A. M., Kwong, S. C. M., and Flather, R. A.: A three-dimensional model of diurnal and semidiurnal tides on the European shelf, *J. Geophys. Res.*, 102, 8625–8656, 1997.
- Drévilion, M., Bourdallé-Badie, R., Derval, C., Drillet, Y., Lellouche, J.-M., Rémy, E., Tranchant, B., Benkiran, M., Greiner, E., Guinehut, S., Verbrugge, N., Garric, G., Testut, C.-E., Laborie, M., Nouel, L., Bahurel, P., Bricaud, C., Crosnier, L., Dombrowsky, E., Durand, E., Ferry, N., Hernandez, F., Galloudec, O., Messal, F., and Parent, L.: The GODAE Mercator-Océan global ocean forecasting system: results, applications and prospects, *J. Oper. Oceanogr.*, 1, 51–57, 2008.
- Dombrowsky, E., Bertino, L., Brassington, G. B., Chassignet, E. P., Davidson, F., Hurlburt, H. E., Kamachi, M., Lee, T., Martin, M. J., Mei, S., and Tonani, M.: GODAE systems in operation, *Oceanography*, 22, 80–95, 2009.
- Egbert, G., Bennett, A., and Foreman, M.: TOPEX/Poseidon tides estimated using a global inverse model, *J. Geophys. Res.*, 99, 24821–24852, 1994.
- Ellett, D. J. and Martin, J. H. A.: The physical and chemical oceanography of the Rockall Channel, *Deep-Sea Res.*, 20, 585–625, 1973.
- Fanjul, E. A., Gomez, B. P., and Rodriguez, I.: A description of the tides in the Eastern North Atlantic, *Prog. Oceanogr.*, 40, 217–244, 1997.
- Ferrer, L., Fontán, A., Mader, J., Chust G., González, M., Valencia, V., Uriarte, A., and Collins, M. B.: Low-salinity plumes in the oceanic region of the Basque Country, *Cont. Shelf Res.*, 29, 970–984, doi:10.1016/j.csr.2008.12.014, 2009.
- Flather, R. A.: A tidal model of the North-East Pacific, *Atmos. Ocean*, 25, 22–45, 1987.
- Foreman, F. G. G.: Manual for tidal heights analysis and predictions, Institute of Ocean Sciences, Patricia Bay, Pacific Marine Report, 77, 101 pp., 1977.
- Frail-Nuez, E., Plaza, F., Hernandez-Guerra, A., Vargas-Yanez, M., and Lavin, A.: Mass transport in the Bay of Biscay from an inverse box model, *J. Geophys. Res.*, 113, C06023, doi:10.1029/2007JC004490, 2008.
- Frouin, R., Fiúza, A. F. G., Ambar, I., and Boyd, T.: Observations of poleward surface current off the coasts of Portugal and Spain during winter, *J. Geophys. Res.*, 95, 679–691, 1990.

- García-Lafuente, J., Díaz del Río, G., and Sánchez Berrocal, C.: Vertical and bottom intensification of tidal currents off North-western Spain, *J. Mar. Syst.*, 62, 55–70, 2006.
- García-Soto, C., Pingree, R. D., and Valdés, L.: Navidad development in the Southern Bay of Biscay: climate change and swaddy structure from remote sensing and in situ measurements, *J. Geophys. Res.*, 107, 28-1–28-29, doi:10.1029/2001JC001012, 2002.
- Gohin, F., Loyer, S., Lunven, M., Labry, C., Froidefond, J. M., Delmas, D., Huret, M., and Herbland, A.: Satellite-derived parameters for biological modelling in coastal waters: illustration over the eastern continental shelf of the Bay of Biscay, *Remote Sens. Environ.*, 112, 3329–3340, 2005.
- Herbert, G., Ayoub, N., Marsaleix, P., and Lyard, F.: Signature of the coastal circulation variability in altimetric data in the Southern Bay of Biscay during winter and fall 2004, *J. Mar. Syst.*, 88, 139–158, 2011.
- Holliday, N. P., Pollard, R. T., Read, J. F., and Leach, H.: Water mass properties and fluxes in the Rockall Trough, 1975–1998, *Deep-Sea Res. Pt. I*, 47, 1303–1332, 2000.
- Holt, J. T. and James, I. D.: An *s* coordinate density evolving model of the Northwest European continental shelf – 1, Model description and density structure, *J. Geophys. Res.*, 106, 14015–14034, 2001.
- Holt, J. T., James, I. D., and Jones, J. E.: An *s* coordinate density evolving model of the Northwest European continental shelf – 2, seasonal currents and tides, *J. Geophys. Res.*, 106, 14035–14053, 2001.
- Holt, J. T., Allen, J. I., Proctor, R., and Gilbert, F.: Error quantification of a high-resolution coupled hydrodynamic-ecosystem coastal-ocean model: Part 1 model overview and assessment of the hydrodynamics, *J. Mar. Syst.*, 57, 167–188, 2005.
- Holt, J. and Umlauf, L.: Modelling the tidal mixing fronts and seasonal stratification on the Northwest European shelf, *Cont. Shelf Res.*, 28, 887–903, 2008.
- Howarth, M. J.: Non-tidal flow in the North Channel of the Irish Sea. Hydrodynamics of Semi-Enclosed Seas: Proceedings of the 13th International Liege Colloquium on Ocean Hydrodynamics, edited by: Nihoul, J. C. J., Elsevier, 205–241, 1982.
- Howe, M. R.: Current and hydrological measurements in the Mediterranean Undercurrent near Cape St. Vincent, *Oceanol. Acta*, 7, 163–168, 1984.
- Ingleby, B. and Huddleston, M.: Quality control of ocean temperature and salinity profiles historical and real time data, *J. Mar. Syst.*, 65, 158–175, 2007.
- Da Silva, A. J.: The slope current off the West Iberian coast in autumn, *ICES C. M.*, 1996, 2 pp., 1996.
- Kaplan, D. M. and Lekien F.: Spatial interpolation and filtering of surface current data based on open-boundary modal analysis, *J. Geophys. Res.*, 112, C12007, doi:10.1029/2006JC003984, 2007.
- Large, W. G. and Yeager S. G.: Diurnal to decadal global forcing for ocean and sea-ice models: the data sets and flux climatologies, NCAR Technical Note: NCAR/TN-460+STR, CGD Division of the National Center for Atmospheric Research, 2004.
- Le Borgne, P., Marsouin, A., Orain, F., and Roquet, H.: Operational sea surface temperature bias adjustment using AATSR data, *Remote Sens. Environ.*, 116, 93–106, 2011.
- Le Boyer, A., Cambon, G., Daniault, N., Herbet, S., Le Cann, B., Marié, L., and Morin, P.: Observations of the Ushant tidal front in September 2007, *Cont. Shelf Res.*, 29, 1026–1037, 2009.
- Le Cann, B. and Serpette, A.: Intense warm and saline upper ocean inflow in the Southern Bay of Biscay in autumn-winter 2006–2007, *Cont. Shelf Res.*, 29, 1014–1025, 2009.
- Leonard, B. P.: A stable and accurate convective modelling procedure based on quadratic upstream interpolation, *Comp. Method. Appl. M.* 19, 59–98, 1979.
- Le Traon, P. Y. and Gauzelin, P.: Response of the Mediterranean mean sea level to atmospheric pressure forcing, *J. Geophys. Res.-Oceans*, 102, 973–984, 1997.
- Lherminier, P., Mercier, H., Gourcuff, C., Alvarez, M., Bacon, S., and Kermabon, C.: Transports across the 2002 Greenland–Portugal Ovide section and comparison with 1997, *J. Geophys. Res.*, 112, C07003, doi:10.1029/2006JC003716, 2007.
- Lyard, F., Lefevre, F., Letellier, T., and Francis, O.: Modelling the global ocean tides: modern insights from FES2004, *Ocean Dynam.*, 56, 394–415, 2006.
- Madec, G.: NEMO Ocean General Circulation Model Reference Manual, Internal Report, LODYC/IPSL, Paris, 2008.
- Madec, G., Delecluse, P., Imbard, M., and Lévy, C.: OPA 8.1 Ocean general circulation model reference manual, Institut Pierre-Simon Laplace, Paris, France, 20, 91 pp., 1998.
- Mariette, V. and Le Cann, B.: Simulation of the formation of Ushant thermal front, *Cont. Shelf Res.*, 4, 637–660, 1985.
- Marsaleix, P., Auclair, F., and Estournel, C.: Low-order pressure gradient schemes in sigma coordinate models: The seamount test revisited, *Ocean Model.*, 30, 169–177, doi:10.1016/j.ocemod.2009.06.011, 2009.
- Mauritzen, C., Morel, Y., and Paillet, J.: On the influence of Mediterranean water on the central waters of the North Atlantic Ocean, *Deep-Sea Res. Pt. I*, 48, 347–381, 2001.
- Mazé, J. P., Arhan, M., and Mercier, H.: Volume budget of the eastern boundary layer off the Iberian Peninsula, *Deep-Sea Res. Pt. I*, 44, 1543–1574, 1997.
- Morel, A., Huot, Y., Gentili, B., Werdell, P. J., Hooker, S. B., and Franz, B. A.: Examining the consistency of products derived from various ocean color sensors in open ocean (Case 1) waters in the perspective of a multi-sensor approach, *Remote Sens. Environ.*, 111, 69–88, 2007.
- Muller, H., Blanke, B., Dumas, F., Lekien, F., and Mariette, V.: Estimating the Lagrangian residual circulation in the Iroise Sea, *J. Mar. Syst.*, 78, S17–S36, 2009.
- O’Dea, E. J., Arnold, A. K., Edwards, K.P., Furner, R., Hyder, P., Martin, M.J., Siddorn, J. R., Storkey, D., While, J., Holt, J. T., and Liu, H.: An operational ocean forecast system incorporating NEMO and SST data assimilation for the tidally driven European North-West shelf, *J. Oper. Ocean.*, 5, 3–17, 2012.
- Otto, L., Zimmerman, J. T. F., Furnes, G. K., Mork, M., Saetre, R., and Becker, G.: Review of the physical oceanography of the North Sea, Netherlands, *J. Sea Res.*, 26, 161–238, 1990.
- Pairaud, I., Auclair, F., Marsaleix, P., Lyard, F., and Pichon, A.: Dynamics of the semi-diurnal and quarter-diurnal tides in the Bay of Biscay. Part 2: Baroclinic tides, *Cont. Shelf Res.*, 30, 253–269, 2010.
- Peliz, A., Dubert, J., Marchesiello, P., and Tele-Macado, A.: Surface circulation in the Gulf of Cadiz: model and mean flow structure, *J. Geophys. Res.*, 112, C11015, doi:10.1029/2007JC004159, 2007.
- Peliz, A., Marchesiello, P., Santos, A. M. P., Dubert, J., Tele-Macado, A., Marta-Almeida, M., and Le Cann, B.: Surface cir-

- ulation in the Gulf of Cadiz: 2. Inflow-Outflow coupling and the Gulf of Cadiz slope current, *J. Geophys. Res.*, 114, C03011, doi:10.1029/2008JC004771, 2009.
- Pérez, B., Brouwer, R., Beckers, J., Paradis, D., Balseiro, C., Lyons, K., Cure, M., Sotillo, M. G., Hackett, B., Verlaan, M., and Fanjul, E. A.: ENSURF: multi-model sea level forecast – implementation and validation results for the IBIROOS and Western Mediterranean regions, *Ocean Sci.*, 8, 211–226, doi:10.5194/os-8-211-2012, 2012.
- Pichon, A. and Correard, S.: Internal tides modelling in the Bay of Biscay. Comparisons with observations, *Sci. Mar.*, 70, 65–88, 2006.
- Pimentel, S., Haines, K., and Nichols, N. K.: Modeling the diurnal variability of sea surface temperatures, *J. Geophys. Res.*, 113, C11004, doi:10.1029/2007JC004607, 2008.
- Pingree, R. D. and Le Cann, B.: Structure, strength and seasonality of the slope currents in the Bay of Biscay region, *J. Mar. Biol. Assoc. UK*, 70, 857–885, doi:10.1017/S0025315400059117, 1990.
- Pingree, R. D. and Le Cann, B.: Three anticyclonic SlopeWater oceanic eDDIES (SWODDIES) in the Southern Bay of Biscay in 1990, *Deep-Sea Res.*, 39, 1147–1175, 1992.
- Pingree, R. D., Mardell, G. T., and New, A. L.: Propagation of internal tides from the upper slopes of the Bay of Biscay, *Nature*, 321, 154–158, 1986.
- Pinot, J.-M., Lopez-Jurado, J. L., and Riera, M.: The CANALES experiment (1990–1998). Interannual, seasonal, and mesoscale variability of the circulation in the Balearic Channels, *Prog. Oceanogr.*, 55, 335–370, 2002.
- Prandle, D., Ballard, G., Flatt, D., Harrison, A. J., Jones, S. E., Knight, P. J., Loch, S., Mc-Manus, J., Player, R., and Tappin, A.: Combining modelling and monitoring to determine fluxes of water, dissolved and particulate metals through the Dover Strait, *Cont. Shelf Res.*, 16, 237–257, 1996.
- Quattrocchi, G., De Mey, P., Testut, C.-E., Ayoub, N., Reffray, G., Chanut, J., and Drillet, Y.: Preliminary analysis of the ocean response to the wind forcing uncertainties: a key step towards the implementation of an ensemble data assimilation system for coastal seas, in preparation, 2013.
- Rasche, N., Arduin, F., Queffeuilou, P., and Croizé-Fillon, D.: A global wave parameter database for geophysical applications. Part I: Wave-current–turbulence interaction parameters for the open ocean based on traditional parameterizations, *Ocean Model.*, 25, 154–171, 2008.
- Ray, R. D. and Mitchum, G. T.: Surface manifestation of internal tides in the deep ocean: observation from altimetry and island gauges, *Prog. Oceanogr.*, 40, 135–162, 1997.
- Rhein, M. and Hinrichsen, H. H.: Modification of Mediterranean water in the Gulf of Cadiz, studied with hydrographic, nutrient and chlorofluoromethane data, *Deep-Sea Res. Pt. I*, 40, 267–291, 2003.
- Roulet, G. and Madec, G.: Salt conservation, free surface, and varying levels: A new formulation for ocean general circulation models, *J. Geophys. Res.*, 105, 23927–23942, 2000.
- Rubio, A., Fontan, A., Lazure, P., Gonzalez, M., Valencia, V., Ferrer, L., Mader, J., and Hernandez, C.: Seasonal to tidal variability of currents and temperature in waters of the continental slope, southeastern Bay of Biscay, *J. Mar. Syst.*, 109–110, Supplement S121–S133, 2013.
- Sánchez Román, A., Sannino, G., García Lafuente, J., Carillo, A., and Criado Aldeanueva, F.: Transport estimates at the western section of the Strait of Gibraltar: a combined experimental and numerical modelling study, *J. Geophys. Res.*, 114, C06002, doi:10.1029/2008JC005023, 2009.
- Shchepetkin, A. F. and McWilliams, J. C.: The regional ocean modelling system (ROMS): a split-explicit, free-surface, topography-following-coordinate oceanic model, *Ocean Model.*, 9, 347–404, 2004.
- SHOM: Courants de marée de la côte Ouest de Bretagne, de Goulven à Penmarch, SHOM publication 56, 1994.
- Simpson, J. H. and Hunter, J. R.: Fronts in the Irish Sea, *Nature*, 250, 404–406, 1974.
- Sotillo, M. G., Jordi, A., Ferre M. I., Conde, J., Tintoré, J., Alvarez-Fanjul, E.: The ESEOO Regional Ocean Forecasting System, Proceedings of the Seventeenth International Offshore and Polar Engineering Conference, Lisbon, Portugal, 1–6 July, 2007.
- Tsimplis, M. N. and Bryden, H. L.: Estimation of the transports through the Strait of Gibraltar, *Deep-Sea Res. Pt. I*, 47, 2219–2242, 2000.
- Umlauf, L. and Burchard, H.: A generic length-scale equation for geophysical turbulence models, *J. Mar. Res.*, 61, 235–265, 2002.
- Visser, A. W., Souza, A. J., Hessner, K., and Simpson, J. H.: The effect of stratification on tidal current profiles in a region of freshwater influence, *Oceanol. Acta*, 17, 369–382, 1994.
- Warner, J. C., Sherwood, C. R., Arango, H. G., and Signell, R. P.: Performance of four turbulence closure methods implemented using a generic length scale method, *Ocean Model.*, 8, 81–113, 2005.
- White, M. and Bowyer, P.: The shelf-edge current north-west of Ireland, *Ann. Geophys.*, 15, 1076–1083, doi:10.1007/s00585-997-1076-0, 1997.