



Tracing the glycogen cells with protocadherin 12 during mouse placenta development.

Stéphanie Bouillot, Christine Rampon, Emmanuelle Tillet, Philippe Huber

► **To cite this version:**

Stéphanie Bouillot, Christine Rampon, Emmanuelle Tillet, Philippe Huber. Tracing the glycogen cells with protocadherin 12 during mouse placenta development.. Placenta, Elsevier, 2006, 27 (8), pp.882-8. <10.1016/j.placenta.2005.09.009>. <inserm-00433138>

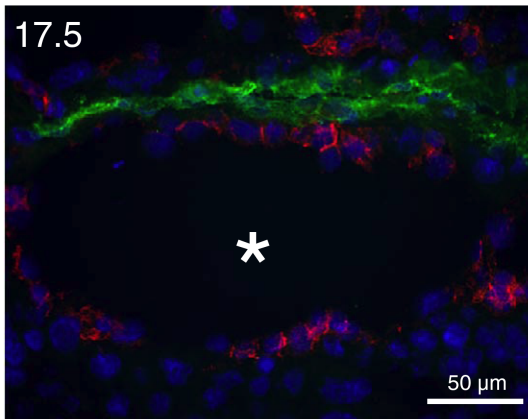
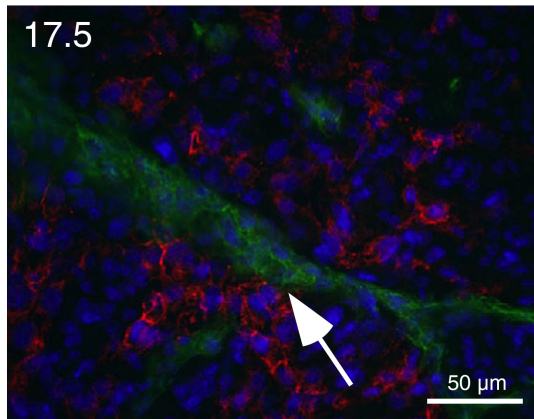
HAL Id: inserm-00433138

<http://www.hal.inserm.fr/inserm-00433138>

Submitted on 18 Nov 2009

HAL is a multi-disciplinary open access archive for the deposit and dissemination of scientific research documents, whether they are published or not. The documents may come from teaching and research institutions in France or abroad, or from public or private research centers.

L'archive ouverte pluridisciplinaire **HAL**, est destinée au dépôt et à la diffusion de documents scientifiques de niveau recherche, publiés ou non, émanant des établissements d'enseignement et de recherche français ou étrangers, des laboratoires publics ou privés.

A**PCDH12** **CD31****Hoechst****B****PAS****Hematoxylin**