



Towards a resolved Kennicutt-Schmidt law at high redshift

J. Freundlich, F. Combes, L. J. Tacconi, M. C. Cooper, R. Genzel, R. Neri, A. Bolatto, F. Bournaud, A. Burkert, P. Cox, et al.

► To cite this version:

J. Freundlich, F. Combes, L. J. Tacconi, M. C. Cooper, R. Genzel, et al.. Towards a resolved Kennicutt-Schmidt law at high redshift. *Astronomy and Astrophysics - A&A*, EDP Sciences, 2013, 553, pp.A130. <10.1051/0004-6361/201220981>. <hal-01094468>

HAL Id: hal-01094468

<https://hal-cea.archives-ouvertes.fr/hal-01094468>

Submitted on 12 Dec 2014

HAL is a multi-disciplinary open access archive for the deposit and dissemination of scientific research documents, whether they are published or not. The documents may come from teaching and research institutions in France or abroad, or from public or private research centers.

L'archive ouverte pluridisciplinaire **HAL**, est destinée au dépôt et à la diffusion de documents scientifiques de niveau recherche, publiés ou non, émanant des établissements d'enseignement et de recherche français ou étrangers, des laboratoires publics ou privés.

Towards a resolved Kennicutt-Schmidt law at high redshift

J. Freundlich¹, F. Combes¹, L. J. Tacconi², M. C. Cooper³, R. Genzel^{2,4,5}, R. Neri⁶, A. Bolatto⁷, F. Bournaud⁸, A. Burkert^{9,*}, P. Cox⁶, M. Davis⁵, N. M. Förster Schreiber², S. Garcia-Burillo¹⁰, J. Gracia-Carpio², D. Lutz², T. Naab¹¹, S. Newman⁵, A. Sternberg¹², and B. Weiner¹³

¹ LERMA, Observatoire de Paris, CNRS, 61 Av. de l'Observatoire, 75014 Paris, France
e-mail: jonathan.freundlich@obspm.fr

² Max-Planck-Institute für extraterrestrische Physik (MPE), Giessenbachstrasse 1, 85748 Garching, Germany

³ Dept. of Physics & Astronomy, Frederick Reines Hall, University of California, Irvine, CA 92697, USA

⁴ Dept. of Physics, Le Conte Hall, University of California, CA 94720 Berkeley, USA

⁵ Dept. of Astronomy, Campbell Hall, University of California, CA 94720 Berkeley, USA

⁶ IRAM, 300 rue de la Piscine, 38406 St. Martin d'Hères, Grenoble, France

⁷ Dept. of Astronomy, University of Maryland, College Park, MD 20742-2421, USA

⁸ CEA, IRFU, SAp, 91191 Gif-sur-Yvette, France

⁹ Universitätsternwarte der Ludwig-Maximiliansuniversität, Scheinerstrasse 1, 81679 München, Germany

¹⁰ Observatorio Astronómico Nacional – OAN, Apartado 1143, 28800 Alcalá de Henares, Madrid, Spain

¹¹ Max Planck Institut für Astrophysik, Karl Schwarzschildstrasse 1, 85748 Garching, Germany

¹² School of Physics and Astronomy, Tel Aviv University, 69978 Tel Aviv, Israel

¹³ Steward Observatory, 933 N. Cherry Ave., University of Arizona, Tucson, AZ 85721-0065, USA

Received 21 December 2012 / Accepted 24 March 2013

ABSTRACT

Massive galaxies in the distant Universe form stars at much higher rates than today. Although direct resolution of the star forming regions of these galaxies is still a challenge, recent molecular gas observations at the IRAM Plateau de Bure interferometer enable us to study the star formation efficiency on subgalactic scales around redshift $z = 1.2$. We present a method for obtaining the gas and star formation rate (SFR) surface densities of ensembles of clumps composing galaxies at this redshift, even though the corresponding scales are not resolved. This method is based on identifying these structures in position-velocity diagrams corresponding to slices within the galaxies. We use unique IRAM observations of the CO(3–2) rotational line and DEEP2 spectra of four massive star forming distant galaxies – EGS13003805, EGS13004291, EGS12007881, and EGS13019128 in the AEGIS terminology – to determine the gas and SFR surface densities of the identifiable ensembles of clumps that constitute them. The integrated CO line luminosity is assumed to be directly proportional to the total gas mass, and the SFR is deduced from the [OII] line. We identify the ensembles of clumps with the angular resolution available in both CO and [OII] spectroscopy; i.e., 1–1.5". SFR and gas surface densities are averaged in areas of this size, which is also the thickness of the DEEP2 slits and of the extracted IRAM slices, and we derive a spatially resolved Kennicutt-Schmidt (KS) relation on a scale of ~ 8 kpc. The data generally indicates an average depletion time of 1.9 Gyr, but with significant variations from point to point within the galaxies.

Key words. galaxies: evolution – galaxies: high-redshift – galaxies: structure – stars: formation – galaxies: ISM – galaxies: starburst

1. Introduction

Ten billion years ago, between redshifts 1 and 3, observed galaxies formed their stars at rates as high as ten times that of the Milky Way today (Noeske et al. 2007; Daddi et al. 2007). This implies a more abundant gas supply, either fueled by major mergers or by a semi-continuous gas accretion (Dekel et al. 2009a,b). Recent observations of normal, massive, star-forming distant galaxies tend to show that most of these galaxies ($\geq 80\%$) are not experiencing major mergers or interactions (Tacconi et al. 2013) and that their light profiles are similar to those of their low redshift counterparts (Wuyts et al. 2011b). Also, the Kennicutt-Schmidt (KS) relation between total molecular gas and star formation rate (SFR) surface densities is nearly linear at all redshifts (Kennicutt 1998a; Wyder et al. 2009; Genzel et al. 2010; Tacconi et al. 2010), implying that the star formation processes

seem to be largely independent of the cosmic epoch. The average fraction of molecular gas relative to the total baryonic mass must therefore have been up to ten times higher at high redshift than in today's nearby galaxies, which is indeed corroborated by direct observations (Tacconi et al. 2013).

Numerical simulations suggest that typical massive star forming galaxies at high redshift continually accrete gas from the intergalactic medium along cold and clumpy streams stemming from the cosmic web, while the disk fragments into a few clumps (Kereš et al. 2005; Bournaud & Elmegreen 2009; Dekel et al. 2009a; Van de Voort et al. 2011). Galactic disks of distant galaxies are indeed found to be fragmented in a number of giant molecular clouds, or clumps, which differs from local galaxies, in which the molecular gas is scattered in numerous lower mass giant molecular clouds. The high-redshift star-forming complexes are found to have typical scales of ~ 1 kpc and masses up to $10^9 M_{\odot}$, and they contribute 10–25% of the galaxy luminosity (Förster Schreiber et al. 2011). Most

* MPG-Fellow at MPE.

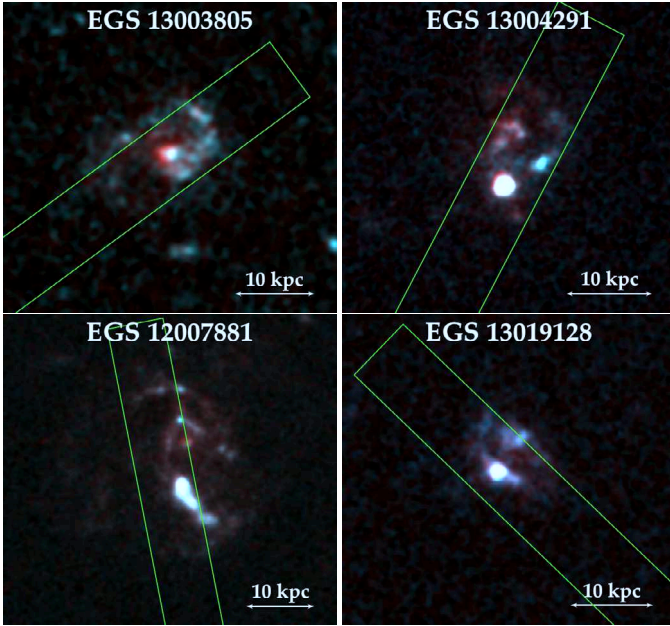


Fig. 1. Composite HST images of the four galaxies studied here, combining ACS *I* and *V* bands. The green box shows the DEEP2 slit used for each galaxy, whose size is indicated in Table 1. We assumed that the DEEP2 survey measured the position of the center of the galaxy more accurately than the HST, and shifted the HST image accordingly. North is up, east is left.

studies only consider averaged quantities for distant galaxies, as direct observations of the star forming regions of high redshift galaxies are still challenging. KS relations have been derived on subgalactic scales for nearby galaxies (Bigiel et al. 2008, 2011; Leroy et al. 2013) but not yet extensively at high redshift.

We use IRAM Plateau de Bure CO observations from the PHIBSS survey (Tacconi et al. 2013) and Keck DEEP2 spectra (Newman et al. 2012) of four massive galaxies at redshift $z \sim 1.2$ in order to investigate the star formation efficiency within their clumps, or groups of clumps. More precisely, our goal is to determine the SFR and the gas mass surface densities on subgalactic scales and examine their correlation.

The four galaxies were drawn from the All-wavelength Extended Groth strip International Survey (AEGIS), which provides deep imaging in all major wave bands from X-rays to radio, including *Hubble* Space Telescope (HST) images, and optical spectroscopy (DEEP2/Keck) over a large area of sky (Noeske et al. 2007; Davis et al. 2007; Cooper et al. 2011, 2012; Newman et al. 2012), thus providing a complete set of galaxies between $0.2 \leq z \leq 1.2$. The four galaxies studied here were selected from the sample analyzed by Tacconi et al. (2010, 2013), which gathered non-major-merger, luminous, star forming galaxies at $z \sim 1.2$, with stellar masses above $3 \times 10^{10} M_{\odot}$ and SFR above $40 M_{\odot} \text{ yr}^{-1}$. These four galaxies – named EGS13003805, EGS13004291, EGS12007881, and EGS13019128 in the AEGIS terminology – correspond to the massive end of the “normal” star forming galaxies at $z \sim 1.2$ (Tacconi et al. 2010). Figure 1 shows them in the *I* and *V* bands of the HST Advanced Camera for Surveys (ACS), as well as the DEEP2 slits we used. To compute the physical distances, we adopt a cosmology with $\Omega_{\Lambda} = 0.73$, $\Omega_{\text{m}} = 0.27$, and $H_0 = 70 \text{ km s}^{-1} \text{ Mpc}^{-1}$.

2. Determination of the total gas mass and the SFR

2.1. The gas mass

We use high resolution observations of the CO(3–2) transition shifted into the 2 mm band for $z \sim 1.2$ sources carried at the IRAM Plateau de Bure, including the most extended “A” configuration. The angular resolution obtained is between $0.5''$ and $1.5''$ for all galaxies (Table 1), corresponding to physical scales between 4 and 13 kpc. The CO luminosity associated to any region of flux can be expressed as

$$\left(\frac{L'_{\text{CO}}}{\text{K km s}^{-1} \text{ pc}^2} \right) = 3.25 \times 10^7 (1+z)^{-3} \left(\frac{S_{\text{CO}} \Delta V}{\text{Jy km s}^{-1}} \right) \left(\frac{\nu_{\text{obs}}}{\text{GHz}} \right)^{-2} \left(\frac{D_L}{\text{Mpc}} \right)^2$$

where $S_{\text{CO}} \Delta V$ is the velocity integrated flux, ν_{obs} the observed frequency, and D_L the luminosity distance (Solomon et al. 1997). To derive H_2 masses, we follow the approach used by Tacconi et al. (2010). This assumes a Milky-Way-like conversion factor of $\alpha = 3.2 M_{\odot} (\text{K km s}^{-1} \text{ pc}^2)^{-1}$ between the CO(1–0) luminosity and the H_2 mass, a factor 1.36 to account for interstellar helium, and a further correction by a factor 2 for the CO(3–2)/CO(1–0) luminosity ratio. The total gas masses of the four studied galaxies are indicated in Table 1.

2.2. The star formation rate

The $\text{H}\alpha$ recombination line is the most direct and reliable tracer of young massive stars, and thus of the SFR (Kennicutt 1998b). Since this line lies in the middle of a low atmospheric transmission band for the four galaxies considered here, ground-based $\text{H}\alpha$ spectroscopy is impossible, and we estimate the SFR from the collisionally excited [OII] line (rest frame wavelength 3727 \AA , shifted around 8200 \AA for $z \sim 1.2$ sources).

Though the [OII] forbidden line luminosity is not directly coupled to the ionizing luminosity, it is possible to establish it empirically as a quantitative SFR tracer. The Kennicutt (1998b) [OII] SFR calibration has been broadly used, but does not take reddening and metallicity into account. Here we use the calibration proposed by Kewley et al. (2004), which includes these two effects. The four galaxies studied here are particularly massive and should thus belong to the observed metallicity plateau at $12 + \log(\text{O}/\text{H}) = 9.07$ (Mannucci et al. 2010). Assuming this metallicity for all galaxies, the Kewley et al. (2004) [OII] SFR calibration gives

$$\left(\frac{\text{SFR}}{M_{\odot} \text{ yr}^{-1}} \right) \approx 3.5 \times 10^{-8} \left(\frac{L_{[\text{OII}]}}{L_{\odot}} \right)$$

where $L_{[\text{OII}]}$ is the intrinsic [OII] line luminosity. This calibration is expected to follow the reliable standard Kennicutt (1998b) $\text{H}\alpha$ SFR calibration with a scatter of 0.03–0.05 dex (Kewley et al. 2004).

To determine $L_{[\text{OII}]}$, we use spectra provided by the Keck DEEP2 survey, obtained with the high spectral resolution DEIMOS spectrograph (Faber et al. 2002) and taken along slits with a typical size of $5'' \times 1''$. The data was reduced using a dedicated pipeline (Newman et al. 2012; Cooper et al. 2012), and a velocity resolution of about 50 km s^{-1} ($R = \lambda/\Delta\lambda \approx 5000$) enables resolving the [OII] line (Davis et al. 2003). DEEP2 spectra are not flux-calibrated, and we use CFHT *I* band magnitudes (CFHT12K camera) to calibrate the galaxy-integrated “1D” spectrum (Coil et al. 2004).

The value of $L_{[\text{OII}]}$ has to be corrected for dust extinction. The Galactic extinction is taken into account in the CFHT

Table 1. Some global properties and observational details for the four galaxies studied here.

Properties	EGS 13003805	EGS 13004291	EGS 12007881	EGS 13019128
z^1	1.2318	1.19705	1.16105	1.3494
D_A [Mpc] ²	1753.0	1745.3	1736.4	1772.8
D_L [Mpc] ²	8731.5	8424.7	8108.8	9785.1
Scale [kpc/'']	8.50	8.46	8.42	8.60
DEEP2 slit size	$6.863'' \times 1''$	$5.149'' \times 1''$	$5.762'' \times 1''$	$10.343'' \times 1''$
DEEP2 slit orientation (PA)	-53.858°	-27.649°	11.142°	46.142°
IRAM CO(3–2) beam	$0.8'' \times 0.6''$	$0.6'' \times 0.5''$	$1.1'' \times 0.9''$	$1.6'' \times 1.4''$
SFR _[OII] [$M_\odot \text{ yr}^{-1}$] ³	98	182	119	202
SFR _{UV+24 μm} [$M_\odot \text{ yr}^{-1}$] ⁴	200	630	94	87
SFR _{[OII],B} [$M_\odot \text{ yr}^{-1}$] ⁵	63	231	265	213
M_{gas} [$10^{11} M_\odot$] ⁶	2.2	2.8	1.3	1.2
M_{star} [$10^{11} M_\odot$] ⁷	3.4	5.0	5.0	3.8
f_{gas} ⁸	0.39	0.36	0.21	0.24
$R_{1/2}$ [kpc] ⁹	5.7	3.1	5.7	5.2
$\log_{10}(\Sigma_{\text{gas}}/[M_\odot \text{ pc}^{-2}])^{10}$	3.03	3.67	2.80	2.86
$\log_{10}(\Sigma_{\text{SFR}}/[M_\odot \text{ yr}^{-1} \text{ kpc}^{-2}])^{10}$	-0.193	0.604	-0.095	0.204
$\log_{10}(\Sigma_{\text{star}}/[M_\odot \text{ pc}^{-2}])^{10}$	3.22	3.92	3.39	3.36
$A_{\text{H}\alpha}$ ¹¹	1.25	1.28	1.06	1.21
A_V ¹¹	1.56	1.60	1.30	1.50
$A_{\text{[OII]}}$ ¹¹	2.28	2.26	2.04	2.19
$A_{\text{[OII]}}/A_{\text{H}\alpha}$ ¹²	1.82	1.77	1.92	1.81

Notes. ⁽¹⁾ The redshift, as determined in the AEGIS catalogues from the [OII] line using DEEP2 spectra; ⁽²⁾ the angular distance D_A and the luminosity distance D_L ; ⁽³⁾ the SFR from the [OII] line luminosity in the galaxy-integrated “1D” spectrum, obtained according to Kewley et al. (2004) calibration; ⁽⁴⁾ the extinction-corrected SFR obtained from 24 μm and UV continuum by Tacconi et al. (2013); ⁽⁵⁾ the SFR extrapolated from the empirical calibration of Moustakas et al. (2006); ⁽⁶⁾ the gas mass derived from the IRAM Plateau de Bure observations; ⁽⁷⁾ the total star mass obtained by SED fittings from CFHT B , R , and I bands photometric data using `kcorrect` (Blanton & Roweis 2007), corrected for a Universe with $H_0 = 70 \text{ km s}^{-1} \text{ Mpc}^{-1}$; ⁽⁸⁾ the gas fraction $f_{\text{gas}} = M_{\text{gas}}/(M_{\text{gas}} + M_{\text{star}})$; ⁽⁹⁾ the optical half light radius $R_{1/2}$ as indicated in Tacconi et al. (2013); ⁽¹⁰⁾ the surface densities associated to the gas mass, the star formation rate, and the star mass, calculated within $R_{1/2}$, for example as $\Sigma_{\text{gas}} = 0.5 M_{\text{gas}}/\pi R_{1/2}^2$; ⁽¹¹⁾ $\text{H}\alpha$, visible, and [OII] extinctions as derived from the `kcorrect` SED reconstruction; and ⁽¹²⁾ the extinction ratio $A_{\text{H}\alpha}/A_{\text{[OII]}}$, $A_V/A_{\text{[OII]}}$, $A_{\text{H}\alpha}/A_{\text{[OII]}}$, $\text{SFR}_{24 \mu\text{m}+\text{UV}}$ and $\text{SFR}_{\text{[OII],B}}$ are given for information only. O’Donnell (1994) predicts that $A_{\text{H}\alpha}/A_{\text{[OII]}}$ is around 1.86 for a diffuse interstellar medium, and the variations here observed from one galaxy to the other are representative of the quality of the `kcorrect` fit. The comparison between $\text{SFR}_{\text{[OII]}}$, $\text{SFR}_{24 \mu\text{m}+\text{UV}}$, and $\text{SFR}_{\text{[OII],B}}$ gives an idea of the uncertainties in the SFR.

magnitudes, since they already include the dust corrections of Schlegel et al. (1998), but the dust present in the galaxies themselves is an even greater cause of extinction. The dust distribution was derived from the SED of the galaxies, obtained from the B , R , and I band CFHT magnitudes with the `kcorrect` software developed by Blanton & Roweis (2007) (version v4_2). This software finds the best non-negative linear combination of a number of template star formation histories fitting the CFHT magnitudes. The templates are based on stellar population synthesis models, which enables the software to provide approximate physical quantities related to the star formation history. It notably provides SED curves with and without extinction, from which we can deduce the extinction $A_{\text{[OII]}}$ at the [OII] wavelength. The values for $A_{\text{[OII]}}$ are indicated in Table 1, along with the visible extinction A_V and the extinction $A_{\text{H}\alpha}$ at $\text{H}\alpha$ wavelength, obtained from the SED curves. The $A_{\text{H}\alpha}/A_{\text{[OII]}}$ ratio varies up to 10% from galaxy to galaxy but remains comparable to the value predicted by O’Donnell (1994) for a diffuse interstellar medium: $A_{\text{H}\alpha}/A_{\text{[OII]}} = 1.86$. Since this ratio should remain constant for the different galaxies, the variations give an idea of the quality of the `kcorrect` fit. The obtained extinctions

are in approximate agreement with observations (e.g. Förster Schreiber et al. 2011), and the SFRs deduced from the [OII] luminosity are given in Table 1 as $\text{SFR}_{\text{[OII]}}$.

Moustakas et al. (2006) present an alternative empirical [OII] SFR calibration parametrized in terms of the B -band luminosity. This calibration is intended to remove, on average, the systematic effects of reddening and metallicity, as well as to reduce the scatter in the resulting SFR values. The SFR of the four galaxies studied here were also determined from UV and IR luminosities by Tacconi et al. (2013). Because UV light directly traces unobscured star formation and IR 24 μm emission originates in small dust grains mainly heated by UV photons from young stars, the combination of the two is a sensitive tracer of the global SFR (Leroy et al. 2008, 2012). Tacconi et al. (2013) derive the global SFR of the four galaxies studied here from a combination of UV and *Spitzer* 24 μm luminosities with the methods of Wuyts et al. (2011b). The SFR obtained through these two calibrations are given for information in Table 1. The values differ up to 3σ between the three methods, which gives an idea of the uncertainty of the SFR measurements. Since it gives a lower standard deviation, we use the Kewley et al. (2004) calibration in

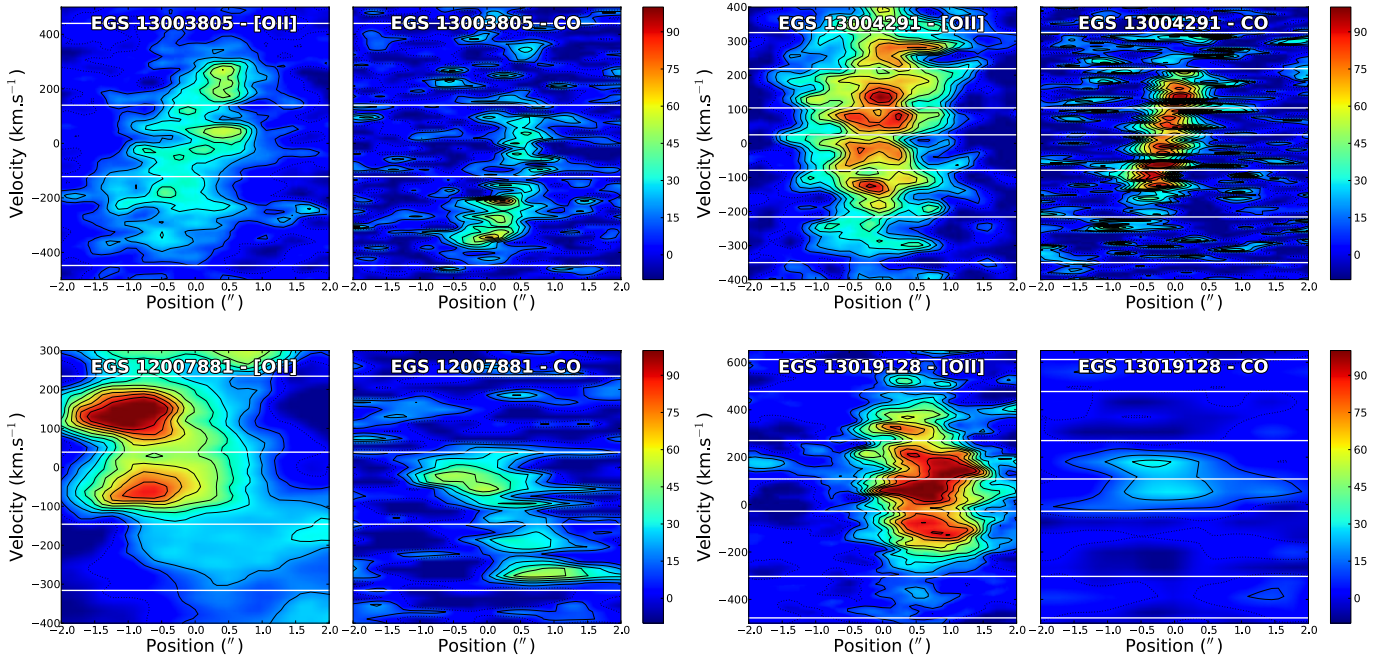


Fig. 2. [OII] line and CO luminosities (respectively *left and right panels* for each galaxy) in position-velocity planes corresponding to the DEEP2 slits. Smoothed ensembles of clumps are separated by eye along the vertical axis, as shown with the white horizontal lines. The [OII] diagrams were normalized in order to have fluxes proportional to the SFR, but all galaxies share the same arbitrary color scales. One arcsecond corresponds approximately to 8.5 kpc (Table 1).

our study. However, [OII] measurements may not reveal some dust-embedded star forming regions, which probably explains the higher values of the SFR traced by UV and IR luminosities determined by Tacconi et al. (2013).

3. A resolved Kennicutt-Schmidt law

HST images of Fig. 1 reveal kpc-sized clumps within diffuse regions, but these clumpy features ($\sim 0.1''$) are smoothed out at DEEP2 and IRAM resolutions, whose ranges are respectively 0.6–1.0'' and 0.5–1.6''. Spectroscopy, however, helps separate different components, thanks to their kinematics. DEEP2 spectra correspond to position-velocity diagrams (PV diagrams) along the galaxy major axis (Davis et al. 2007). Figure 2 compares the [OII] position-velocity diagrams with the corresponding slices in CO(3–2), both with the same 1'' width. Smoothed 1''-sized ensembles of clumps are separated by eye along the velocity axis of the PV diagrams. The characteristics of these ensembles are given in Table 2, and we aim at describing the star formation efficiency within them. We tried to compensate for the substructure separation by eye by taking all identifiable ensembles of clumps into account.

From the CO and [OII] lines, we estimate the gas mass and the SFR contained in areas of 1'' in diameter (corresponding to the width of the slice and approximately to the size of the ensembles of clumps), and obtain the corresponding averaged surface densities, Σ_{gas} and Σ_{SFR} . As shown in Fig. 3, the depletion time ($t_{\text{depl}} = M_{\text{gas}}/\text{SFR}$) is equal to 1.9 ± 0.3 Gyr, to be compared with results for samples of whole galaxies (2.1 Gyr at $z = 0$ in Kennicutt 1998b, 0.5–1.5 Gyr from $z \sim 2$ to $z \sim 0$ in Genzel et al. 2010, 1.05 ± 0.74 Gyr in Saintonge et al. 2011, ~ 0.7 Gyr at $z = 1$ –3 in Tacconi et al. 2013) and samples of subgalactic regions at low redshift (2.0 ± 0.8 Gyr in Bigiel et al. 2008 and 2.35 Gyr in Bigiel et al. 2011). The resulting KS diagram is displayed in Fig. 4. The data points scatter around the line of constant depletion time equal to 1.9 Gyr (such a line corresponding

to a power law $\Sigma_{\text{SFR}} \propto \Sigma_{\text{gas}}^N$ of exponent $N = 1$). However, the depletion time is locally very different from one data point to the other, suggesting that the star formation scaling laws are different from one ensemble of clumps to the next within a galaxy. The scatter is comparable to the ~ 0.3 dex scatter observed for resolved local galaxies (Bigiel et al. 2008, 2011). The corresponding values obtained with the SFR from Tacconi et al. (2013) and through the *B*-band calibration of Moustakas et al. (2006) are indicated in Table 3, and give an idea of the uncertainties due to the SFR calibration method. Our sample is too incomplete to compute a best fit slope, but the method developed here could be applied to more high redshift galaxies.

4. Discussion and conclusion

4.1. Advantages of the method

We have shown how the various ensembles of clumps can be separated by their kinematics in PV diagrams, even though the angular resolution of molecular gas and SFR data was not able to separate them in integrated intensity. As such, the KS diagram can be obtained within regions of the resolution size ($\sim 1''$).

Previous resolved KS work at high redshift was only obtained using serendipitous amplification by gravitational lenses. Decarli et al. (2012) carried out one of the first spatially resolved studies in high redshift galaxies, using [NII], FIR, and CO observations for two gravitationally lensed $z \sim 3.9$ galaxies. They obtain a steep relation of slope $N = 1.4 \pm 0.2$ between the dust continuum and the molecular gas surface brightness. Strong lenses are rare, and determination of the clumps physical parameters depend on the lensing model. Our method is probably more appropriate for a systematic study of the star formation at high redshift, until higher resolution instruments resolve the clumps.

In the absence of high resolution molecular gas data, Swinbank et al. (2012) report adaptive optics H α observations of eleven kpc-scale star forming regions identified in $z = 0.84$ –2.23

Table 2. Some properties of the clumps of EGS 13004291, EGS 13003805, EGS 12007881, and EGS 13019128 obtained from measurements in the position-velocity diagrams.

Clump	$M_{\text{gas}} [10^{10} M_{\odot}]^1$	SFR [$M_{\odot} \text{ yr}^{-1}$] ²	$\log_{10} \left(\frac{\Sigma_{\text{gas}}}{M_{\odot} \text{ pc}^{-2}} \right)^3$	$\log_{10} \left(\frac{\Sigma_{\text{SFR}}}{M_{\odot} \text{ yr}^{-1} \text{ kpc}^{-2}} \right)^3$	$t_{\text{depl}} [\text{Gyr}]^4$	$FWHM ["]^5$
EGS 13003805-I	11.85	38.23	3.019	-0.473	3.10	0.93
EGS 13003805-II	6.92	34.75	2.785	-0.514	1.99	0.78
EGS 13003805-III	3.18	24.99	2.447	-0.657	1.27	0.63
EGS 13004291-I	2.37	11.37	2.324	-0.995	2.09	0.78
EGS 13004291-II	5.80	27.08	2.713	-0.618	2.14	0.64
EGS 13004291-III	7.75	26.16	2.838	-0.633	2.96	0.74
EGS 13004291-IV	4.96	23.92	2.644	-0.672	2.07	0.79
EGS 13004291-V	6.28	33.83	2.761	-0.522	1.92	0.61
EGS 13004291-VI	3.99	23.45	2.550	-0.681	1.70	1.1
EGS 12007881-I	5.33	25.38	2.680	-0.642	2.10	1.35
EGS 12007881-II	7.26	41.88	2.814	-0.425	1.73	1.36
EGS 12007881-III	1.41	51.05	2.10	-0.339	0.28	1.57
EGS 13019128-I	1.70	4.03	2.165	-1.460	4.22	0.83
EGS 13019128-II	0.58	57.23	1.697	-0.307	0.10	1.14
EGS 13019128-III	7.08	52.78	2.785	-0.342	1.34	1.67
EGS 13019128-IV	5.25	47.51	2.655	-0.388	1.10	1.60
EGS 13019128-V	0.78	32.32	1.828	-0.555	0.24	1.62
EGS 13019128-VI	2.60	5.89	2.351	-1.295	4.42	1.86

Notes. ⁽¹⁾ The gas mass obtained as a fraction of the total mass of the galaxy from the CO position-velocity diagram; ⁽²⁾ the SFR obtained similarly from the [OII] position-velocity diagram, normalized with the total SFR determined according to Sect. 2.2; ⁽³⁾ the derived gas mass and SFR surface densities averaged over the same area of $1''$ in diameter; ⁽⁴⁾ the depletion time $t_{\text{depl}} = M_{\text{gas}}/\text{SFR}$; and ⁽⁵⁾ the FWHM obtained from the IRAM position-velocity diagram with a Gaussian fit in the direction of the slice (for information only). The FWHM roughly corresponds to the IRAM beam size, so we preferred to use the same $1''$ size for all clumps in the different calculations. Using the FWHM instead of a constant $1''$ diameter to calculate the surface densities gives a much larger scatter, but actually does not change the constant depletion time fit and the values of t_{depl} . The clumps are numbered from bottom to top according to the horizontal separation lines of Fig. 2.

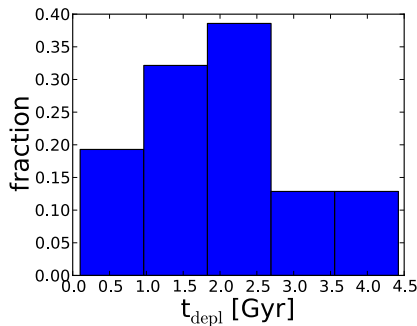


Fig. 3. Distribution of the depletion time for the 16 regions identified in the four galaxies studied here, using the Kewley et al. (2004) [OII] SFR calibration. The distribution has a mean of $t_{\text{depl}} = 1.9$ Gyr and a standard deviation of 1.2 Gyr, for a median value of 2.0 Gyr. Since we identified 18 ensembles of clumps, the standard error of the mean is 0.3 Gyr.

galaxies and measure the velocity dispersion of the ionized gas σ and the star formation surface density Σ_{SFR} . By assuming that σ also corresponds to the dispersion of the cold clumps and that the clumps are marginally stable with a Toomre parameter $Q \approx 1$, they claim a correlation between the gas surface density Σ_{gas} and Σ_{SFR} . But the method is highly indirect, relies on many assumptions, and underestimates beam-smearing effects in the determination of σ .

4.2. Biases and uncertainties

The four galaxies studied here are particularly luminous and were selected from a sample (Tacconi et al. 2010) with stellar masses and star formation rates that are respectively higher than $3 \times 10^{10} M_{\odot}$ and $40 M_{\odot} \text{ yr}^{-1}$. A high luminosity was also needed

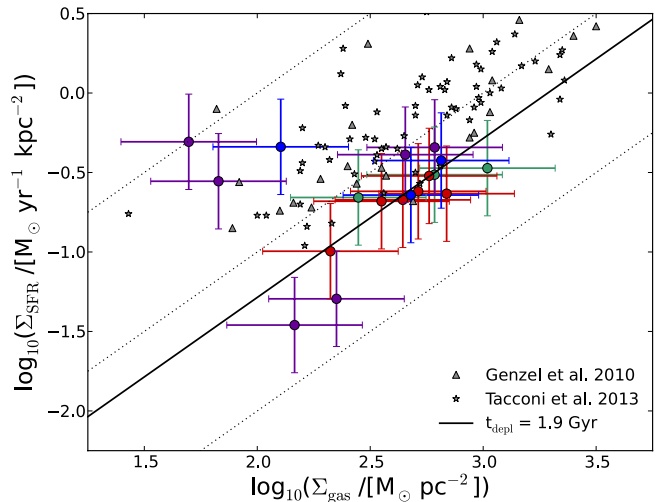


Fig. 4. Kennicutt-Schmidt diagram for $1''$ ensembles of clumps of EGS13003805 (green), EGS13004291 (red), EGS12007881 (blue), and EGS13019128 (purple), using the Kewley et al. (2004) [OII] SFR calibration. The dotted diagonal lines correspond to constant gas depletion times of 0.1, 1, and 10 Gyr from top to bottom, and the solid black line to a constant depletion time equal to the mean depletion time of the clumps, $t_{\text{depl}} = 1.9$ Gyr. The error bars of 0.3 dex yield a reduced χ^2 close to 1 and correspond to a factor 2 uncertainty, which is a lower estimate. The gray data points from Genzel et al. (2010) and Tacconi et al. (2013) are indicated for comparison with whole galaxies.

to visualize and isolate the clumps in the PV diagrams, so this method is intrinsically biased towards massive galaxies.

The main uncertainties for estimating gas and SFR surface densities come from the SFR calibration and from the values used for $\alpha = M_{\text{H}_2}/L'_{\text{CO}}$, for the CO(3-2)/CO(1-0) luminosity

Table 3. Mean, median, and standard deviation of the depletion time of the clumps obtained through three different calibrations of the SFR.

SFR calibration	Depletion time [Gyr]		
	mean	median	std. dev.
Kewley et al. (2004)	1.9	2.0	1.2
Tacconi et al. (2013)	2.1	0.7	2.9
Moustakas et al. (2006)	1.8	1.6	1.3

Notes. Kewley et al. (2004) [OII] calibration, UV + 24 μ m calibration from Tacconi et al. (2013) and Moustakas et al. (2006) [OII] *B*-band calibration.

ratio, and for the extinction $A_{H\alpha}$. These quantities could vary significantly from one galaxy to another and within each galaxy, thus increasing the scatter and the uncertainty of our measurements. For example, the CO(3–2) transition is less directly related to the molecular gas mass than the CO(1–0), and variations in the CO luminosity ratios as high as of a factor ~ 2 can be observed within a single galaxy (e.g. Koda et al. 2013). Significant variations in extinction values from one substructure to another within each galaxy are also expected, as observed in local galaxies (e.g. Scoville et al. 2001) and high redshift galaxies. Genzel et al. (2013) notably uses the CO(3–2) and $H\alpha$ lines, as well as HST multiband images of a high redshift galaxy belonging to the same sample as ours to show that the methodology used to correct for extinction has a certain influence on the shape of the KS relation, especially on its slope. We thus expect that using a resolved extinction map instead of a single value would significantly change the depletion time we obtain. Nevertheless, identifying the ensembles of clumps in PV diagrams and the low spatial resolution of the [OII] and CO measurements prevent us from finding the corresponding structures in two-dimensional images and deriving extinction maps for our ensembles of clumps. As seen in Sect. 2.2, the values of the SFR are highly dependent on the calibration and, since the scatter in the observed [OII]/ $H\alpha$ flux ratio is always higher than 32% (Moustakas et al. 2006), this remains a lower limit of the uncertainty in the SFR determined from [OII]. We expect our final values for the mass of gas and the SFR to be determined with uncertainty factors at least as high as 2 or 3.

4.3. Conclusion

Our results, as well as most other observations (Genzel et al. 2010; Tacconi et al. 2010, 2013; Decarli et al. 2012; Swinbank et al. 2012), indicate that the star formation scaling law between SFR and gas surface densities is not significantly different at high redshift than in the local Universe. Our limited sample of ~ 8 kpc-scale ensembles of clumps of distant galaxies is compatible with a constant depletion time of 1.9 Gyr, which is of the same order of magnitude as measurements at lower redshift. This adds to the growing evidence that the star formation processes ten billion years ago were similar to the ones that are observed

in the local Universe. The method developed here could be applied to a more significant sample of high redshift galaxies to obtain more statistically robust results.

Acknowledgements. J. Freundlich acknowledges support by the École Normale supérieure (ENS, Paris), and is thankful to Philippe Salomé for numerous technical tips and Martin Stringer for his proofreading and suggestions. The authors wish to thank the anonymous referee, whose comments have led to significant improvements in this paper. This work is based on observations carried out with the IRAM Plateau de Bure Interferometer. IRAM is supported by INSU/CNRS (France), MPG (Germany) and IGN (Spain). This work also makes use of data from AEGIS, a multiwavelength sky survey conducted with the *Chandra*, GALEX, *Hubble*, Keck, CFHT, MMT, Subaru, Palomar, *Spitzer*, VLA, and other telescopes and supported in part by the NSF, NASA, and the STFC.

References

- Bigiel, F., Leroy, A., Walter, F., et al. 2008, *ApJ*, 136, 2846
 Bigiel, F., Leroy, A., Walter, F., et al. 2011, *ApJ*, 730, L13
 Blanton, M. R., & Roweis, S. 2007, *ApJ*, 133, 734
 Bournaud, F., & Elmegreen, B. C. 2009, *ApJ*, 694, L158
 Coil, A. L., Newman, J. A., Kaiser, N., et al. 2004, *ApJ*, 617, 765
 Cooper, M. C., Aird, J. A., & Coil, A. L. 2011, *ApJS*, 193, 14
 Cooper, M. C., Newman, J. A., Davis, M., et al. 2012, *ASCL*, 1203.003
 Daddi, E., Dickinson, M., Morrison, G., et al. 2007, *ApJ*, 670, 156
 Davis, M., Faber, S. M., Newman, J. A., et al. 2003, *Proc. SPIE*, 4834, 161
 Davis, M., Guhathakurta, P., Konidaris, N. P., et al. 2007, *ApJ*, 660, L1
 Decarli, R., Walter, F., Neri, R., et al. 2012, *ApJ*, 752, 2
 Dekel, A., Birnboim, Y., Engel, G., et al. 2009a, *Nature*, 457, 451
 Dekel, A., Sari, R., & Ceverino, D. 2009b, *ApJ*, 703, 785
 Dickman, R. L., Snell, R. L., & Schoerb, F. P. 1986, *ApJ*, 309, 326
 Faber, S. M., Phillips, A. C., Kibrick, R. I., et al. 2002, *Proc. SPIE*, 4841, 1657
 Förster Schreiber, N. M., Shapley, A. E., Genzel, R., et al. 2011, *ApJ*, 739, 45
 Genzel, R., Tacconi, L. J., Gracia-Carpio, J., et al. 2010, *MNRAS*, 407, 2091
 Genzel, R., Tacconi, L. J., Kurk, J., et al. 2013, *ApJ*, submitted [[arXiv:1304.0668](https://arxiv.org/abs/1304.0668)]
 Kennicutt, R. C. Jr. 1998a, *ApJ*, 498, 541
 Kennicutt, R. C. Jr. 1998b, *ARA&A*, 36, 189
 Kereš, D., Katz, N., Weinberg, D. H., & Davé, R. 2005, *MNRAS*, 363, 2
 Kewley, L. J., Geller, M. J., & Jansen, R. A. 2004, *ApJ*, 127, 2002
 Koda, J., Scoville, N., Hasegawa, T., et al. 2012, *ApJ*, 761, 41
 Leroy, A. K., Walter, F., Brinks, E., et al. 2008, *ApJ*, 136, 2782
 Leroy, A. K., Bigiel, F., de Blok, W. J. G., et al. 2012, *ApJ*, 144, 3
 Leroy, A. K., Walter, F., Sandstrom, K., et al. 2013 [[arXiv:1301.2328](https://arxiv.org/abs/1301.2328)]
 Mannucci, F., Cresci, G., Maiolino, R., et al. 2010, *MNRAS*, 408, 2115
 Moustakas, J., Kennicutt, R. C., & Tremonti, C., 2006, *ApJ*, 642, 775
 Newman, J. A., Cooper, M. C., Davis, M., et al. 2012, *ApJS*, submitted [[arXiv:1203.3192](https://arxiv.org/abs/1203.3192)]
 Noeske, K. G., Weiner, B. J., Faber, S., et al. 2007, *ApJ*, 660, L43
 O'Donnell, J. E. 1994, *ApJ*, 422, 158
 Renaud, F., Kralkjic, K., & Bournaud, F. 2012, *ApJ*, 760, L16
 Saintonge, A., Kauffmann, G., Wang, J., et al. 2011, *MNRAS*, 415, 61
 Schlegel, D., Finkbeiner, D., & Davis, M. 1998, *ApJ*, 121, 161
 Scoville, N. Z., Polletta, M., Ewald, S., et al. 2001, *ApJ*, 122, 3017
 Solomon, P. M., Rivolo, A. R., Barrett, J., et al. 1987, *ApJ*, 319, 730
 Solomon, P. M., Downes, D., Radford, S. J. E., et al. 1997, *ApJ*, 478, 144
 Swinbank, A. M., Smail, I., Sobral, D., et al. 2012, *ApJ*, 760, 130
 Tacconi, L. J., Genzel, R., Neri, R., et al. 2010, *Nature*, 463, 781
 Tacconi, L. J., Neri, R., Genzel, R., et al. 2013, *ApJ*, 768, 74
 Van de Voort, F., Schaye, J., Booth, C. M., et al. 2011, *MNRAS*, 414, 2458
 Wyder, T. K., Martin, D. C., Barlow, T. A., et al. 2009, *ApJ*, 696, 1834
 Wuyts, S., Förster Schreiber, N., Lutz, D., et al. 2011a, *ApJ*, 738, 106
 Wuyts, S., Förster Schreiber, N. M., van der Wel, A., et al. 2011b, *ApJ*, 742, 96