



Imogolite nanotubes: a 2D x-ray scattering study of films of oriented samples

C. Mariette, M.-S. Amara, E.-N. Paineau, A. Thill, S. Rouziere, P. Launois

► To cite this version:

C. Mariette, M.-S. Amara, E.-N. Paineau, A. Thill, S. Rouziere, et al.. Imogolite nanotubes: a 2D x-ray scattering study of films of oriented samples. *Acta Cryst.*, 2014, A70, pp.C1133. <hal-01187820>

HAL Id: hal-01187820

<https://hal.archives-ouvertes.fr/hal-01187820>

Submitted on 17 Nov 2015

HAL is a multi-disciplinary open access archive for the deposit and dissemination of scientific research documents, whether they are published or not. The documents may come from teaching and research institutions in France or abroad, or from public or private research centers.

L'archive ouverte pluridisciplinaire **HAL**, est destinée au dépôt et à la diffusion de documents scientifiques de niveau recherche, publiés ou non, émanant des établissements d'enseignement et de recherche français ou étrangers, des laboratoires publics ou privés.

Microsymposium

MS76.O04

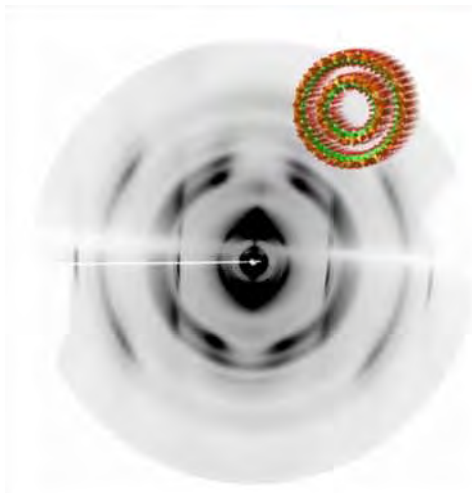
Imogolite nanotubes: a 2D x-ray scattering study of films of oriented samples

C. Mariette¹, M. Amara^{1,2}, E. Paineau¹, A. Thill², S. Rouzière¹, P. Launois¹

¹Laboratoire de Physique des Solides, UMR, Orsay, France, ²IRAMIS-LIONS, CEA Saclay, Gif-sur-Yvette, France

Inorganic nanotubes represent an emerging class of nanobuilding blocks. Among them, imogolites are alumino-silicate or alumino-germanate nanotubes with well controlled diameter and helicity. As such, they constitute a model platform for the study of molecular interactions and confinement at the nanoscale, complementing the one constituted by carbon nanotubes. We focus here on double-walled alumino-germanate nanotubes, discovered very recently [1]. They are formed of two concentric tubes (figure inset), with respective internal diameters of 1.6 and 3.1nm and up to 1 micron in length [2]. We report the first experimental study, using wide angle x-ray scattering, performed on films of oriented nanotubes (figure). Structural changes of the nanotubes and behavior of the confined water under heating are investigated in-situ. The study of oriented samples gives new information that is not available with powder diffraction. Above all, the contribution to the scattering signal of internal and external tubes can be separated as well as the translational/rotational correlations. The use of wide image plate detectors allows one to access large area of the reciprocal space in a single image. Simulations of the two-dimensionnal scattering diagrams will be presented. A key question, the correlation between internal and external tube, which is of great interest for understanding friction properties at the nanoscale, will be discussed.

[1] Maillet et al., *J. Am. Chem. Soc.*, 132, p. 1208-1209 (2010), [2] Amara et al. *Chem. commun.*, 49, p. 11284-11286 (2013)



Keywords: inorganic nanotubes, 2D scattering