

Soft Matter

Accepted Manuscript

This article can be cited before page numbers have been issued, to do this please use: L. Bartok-Partay and G. Hantal, *Soft Matter*, 2022, DOI: 10.1039/D2SM00491G.



This is an Accepted Manuscript, which has been through the Royal Society of Chemistry peer review process and has been accepted for publication.

Accepted Manuscripts are published online shortly after acceptance, before technical editing, formatting and proof reading. Using this free service, authors can make their results available to the community, in citable form, before we publish the edited article. We will replace this Accepted Manuscript with the edited and formatted Advance Article as soon as it is available.

You can find more information about Accepted Manuscripts in the [Information for Authors](#).

Please note that technical editing may introduce minor changes to the text and/or graphics, which may alter content. The journal's standard [Terms & Conditions](#) and the [Ethical guidelines](#) still apply. In no event shall the Royal Society of Chemistry be held responsible for any errors or omissions in this Accepted Manuscript or any consequences arising from the use of any information it contains.

Stability of the high-density Jagla liquid in 2D: sensitivity to parameterisation

Livia B. Pártay*

Department of Chemistry, University of Warwick, Coventry, CV4 7AL, UK

György Hantal

*Institute of Physics and Materials Science, University of Natural Resources
and Life Sciences, Peter-Jordan-Strasse 82, 1190 Vienna, Austria*

(Dated: June 27, 2022)

We computed the pressure-temperature phase diagram of the hard-core two-scale ramp potential in two-dimensions, with the parameterisation originally suggested by Jagla[E. A. Jagla, Phys. Rev. E 63, 061501 (2001)], as well as with a series of systematically modified variants of the model to reveal the sensitivity of the stability of phases. The nested sampling method was used to explore the potential energy landscape, allowing the identification of thermodynamically relevant phases, such as low- and high-density liquids and various crystalline forms, some of which have not been reported before. We also proposed a smooth version of the potential, which is differentiable beyond the hard-core. This potential reproduces the density anomaly, but forms a dodecahedral quasi-crystal structure at high pressure. Our results allow to hypothesise on the necessary modifications of the original model in order to improve the stability of the metastable high density liquid phase in 3D.

I. INTRODUCTION

The development of simple isotropic interaction potentials are largely motivated by the desire to construct analytically and computationally tractable models of real materials, which retain qualitative features or key properties. The family of core-softened models among these potentials has attracted particular attention, as they can display unusually rich and varied behaviour: anomalous thermodynamical and structural features, polymorphism, liquid-liquid transitions, or allegedly multiple critical points.[1]

Core-softened models are characterised by a harder repulsive core, and a softer region (often described by a ramp or shoulder), giving rise to two different characteristic lengths scales in the system: one at a shorter distance representing the core, and the other one at an intermediate distance corresponding to the penetrable softer shell. This gives the system the ability to form a variety of structures characterized by different competing interparticle distances and local arrangements. These characteristics can be achieved by a range of different potential functional forms: the hard sphere model with an added repulsive ramp[2, 3], step[4], or well[5–7], the smooth and continuous version of these models[8–14], as well as more complex functions constructed via e.g. sums of Gaussians combined with the Lennard-Jones model[15–19]. For an excellent review on the properties of core softened models, we recommend the work of Ryzhov et al[1].

Within the family of core softened models, particular attention has been given to those that can potentially form distinct liquid phases of different densities.[14, 20] While this phenomenon is well known for systems with directional interaction potentials, such as water[21] or

patchy particles[22], this is less obvious in the absence of directionality, that is, when the particles interact through a purely isotropic potential. In such cases, this can be achieved by using specific functional forms: e.g. the collapsing hard-spheres[23] or the double-step well potential[6], which can yet lead to qualitatively very different phase diagrams.

Special attention has been given to potentials showing a critical point at the end of the liquid-liquid phase boundary, (the liquid-liquid critical point, or LLCPC), as it has been speculated to be the source of the anomalous behaviour observed in some materials, such as in case of water or silicon.[21, 24] However, for most of these potentials the liquid-liquid transition is known to be metastable with respect to a crystalline solid phase, hence the LLCPC is also in the metastable region of the phase diagram making its direct studying challenging. A notable example which had been thought to be an exception until recently,[25] is the spherically symmetric hard-core double-ramp model. This potential was first studied by Hemmer and Stell, revealing the existence of a second critical point in case of the one-dimensional fluid.[2] Jagla showed in 2001 that this critical point manifests in the liquid region of the phase diagram both in the 2D and 3D cases.[3] Since then, the double-ramp model (often referred to as the 'Jagla model') has attracted considerable interest.[26–31] While the liquid phases of this model have been extensively studied, its solid phases (apart from the detailed work of Lomba et al[32], who determined the melting line accurately), and in particular, the question of solid polymorphism has received little attention. This is partly due to challenges related to equilibrating the simulations and observing crystallisation via simple gradual cooling of the liquid. On the other hand, relevant high temperature crystalline phases are usually not ground state structures, hence they are difficult to identify by global optimisation techniques. As we have shown in our recent work, this led to missing

* Livia.Bartok-Partay@warwick.ac.uk



crucial features of the Jagla phase diagram.[25] We performed an exhaustive unbiased search of the potential energy surface with the nested sampling method at multiple pressures, revealing the existence of a complex high-temperature and high-pressure phase, which is more stable than the HDLiq phase. Thus, this does not only show that the crystalline phases of the Jagla model are more complex than described before, but more importantly, that the high-density liquid is metastable.

In the current work we employ the same sampling technique as in our previous study, nested sampling[33], to compute the phase diagram of the Jagla model in two dimensions, where the LLCP is known to be in the stable liquid region of the phase diagram. Furthermore, we also explore the parameter space by varying the three potential parameters of the model (the slope of the linear ramps and the location of the potential minimum), in order to study their effect on the phase diagram. Understanding how these parameters affect phase stability - particularly that of the high-density liquid - is an impor-

tant step towards creating a parameterisation in the future, which has a thermodynamically stable liquid-liquid transition in 3D. Finally, we propose a smoothed and hence differentiable (beyond the hard sphere core) version of the Jagla model, highlighting that small changes to the shape of the particle interactions can induce qualitative changes in the macroscopic behaviour of the model material.

II. THE 2D JAGLA MODEL

A. Potential functions and parameterisations

The Jagla model is the combination of a hard-sphere core and two linear functions accounting for the repulsive and the attractive ramps. The potential can be defined in different, but mathematically equivalent forms.[29] Equation 1 describes the definition we adapt in our work, and Equation 2 shows our suggested smoothed version of the potential function.

$$U(r) = \begin{cases} \infty, & \text{if } r \leq r_0 \\ W_R - (W_R - W_A)(r - r_0)/(b - r_0), & \text{if } r_0 < r \leq b \\ W_A - W_A(r - b)/(c - b), & \text{if } b < r \leq c \\ 0, & \text{if } r > c \end{cases} \quad (1)$$

$$U(r) = \begin{cases} \infty, & \text{if } r \leq r_0 \\ W_A + 2(W_R - W_A) \left[3 \left(\frac{b-r}{2(b-r_0)} \right)^2 - 2 \left(\frac{b-r}{2(b-r_0)} \right)^3 \right], & \text{if } r_0 < r \leq b \\ W_A + W_A \left[3 \left(\frac{r-b}{c-b} \right)^2 - 2 \left(\frac{r-b}{c-b} \right)^3 \right], & \text{if } b < r \leq c \\ 0, & \text{if } r > c \end{cases} \quad (2)$$

In the current work we started with the original parameters presented in Jagla's publication. The hard sphere radius, r_0 , determines the length unit, and the depth of the potential well, U_0 , determines the energy unit of the model. In the 2D case, the remaining parameters are set as $b = 1.72r_0$ (the minimum energy distance), $c = 4.8r_0$ (where the potential goes to zero), $W_R = 3.336W_A$ (the height of the repulsive ramp) and $W_A = -U_0$ (the depth of the potential energy well).[3] The pressure and the temperature of the system can be conveniently given in units of U_0/r_0^2 and U_0/k_B , respectively. In order to explore the sensitivity of the phase behaviour to the potential parameters, we repeated our calculations with six further variants of the model, in each case changing one of the three parameters, W_R , b or c , both to a slightly lower and a slightly higher value than in the original model.

In order to allow continuous differentiation of the potential, and thus the calculation of forces, smoothed versions of the ramp and double-well type potentials have

been employed before.[12, 14] These modifications, however, often result in qualitatively different behaviours.[10, 18] To examine this effect, we propose a smoothed version of the model beyond the hard-core component. Since the customarily used spline functions require the introduction of new fitting constants, we decided to use a combination of two sigmoidal smooth step-functions (presented in Eq. 2), which preserves the physical meaning of the original characteristic potential parameters and closely follows the original shape. Figure 1 shows the potential with the original parameterisation, together with the modifications indicated by coloured dashed lines, as well as our proposed smoothed version of the potential.

B. Known phases

Despite their apparent simplicity, even one-component systems interacting through non-directional potentials



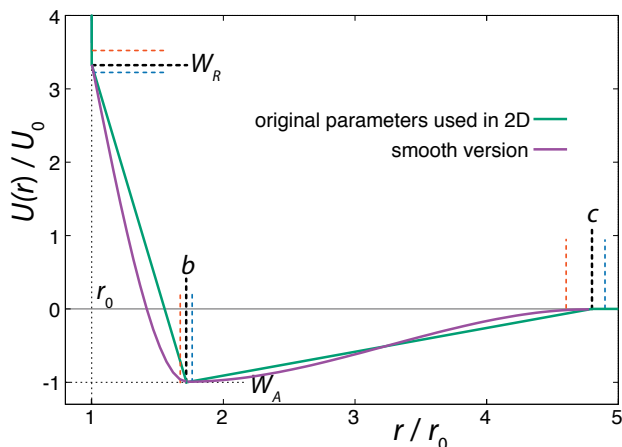


FIG. 1. Spherically symmetric Jagla ramp model, with the original parameters used in 2D[3] (green), and our smoothed version (purple). Coloured dashed lines represent the variation of the potential parameters we explored.

can show very complex phase behaviour in 2D: they can exhibit multiple critical points, anomalous properties[34], several stable crystalline polymorphs,[1, 35–39] as well as intriguing melting scenarios that can involve two continuous transitions with a new quasi-long-range orientationally ordered intermediate phase, the hexatic phase.[1, 40, 41]

The closest possible packing of monodisperse discs is the hexagonal packing, where each disc has six nearest neighbours. This structure is often the lowest energy configuration, however, it has been shown in several cases that depending on the details of the potential model, a wide range of exotic structures can be stabilised thermodynamically.[1, 35–38] To aid our discussion of the different solid phases, we will refer to the hexagonal lattice as the *triangular phase*, reflecting its triangular packing,[36, 42] and reserve the name *hexagonal phase*, where the particle positions represent tiling of the plane by regular hexagons. Having more than one characteristic distance of the potential can lead to the formation of isocrystalline structures: having the same spatial arrangement of particles, but with different lattice constants.[35, 36] To distinguish such phases, we will refer to them as low-density and high-density structures, e.g. LD triangular phase and HD triangular phase, the latter being the global minimum of the studied system.

III. SIMULATION DETAILS

The configuration space of the Jagla model was explored using the nested sampling (NS) method. NS is a Bayesian inference method developed by Skilling[43, 44] that has been adapted to sample the potential energy landscape of atomistic systems.[33, 45–47] NS is a “top-down” approach, starting from randomly generated configurations representing the high enthalpy region (or the

high energy in case of the canonical ensemble) of the phase-space, propagating towards the global minimum through a series of iterative steps which shrink the available phase space by a constant fraction. During the iterative step, the highest enthalpy configuration is substituted with a new lower enthalpy one, generated from a randomly chosen existing configuration through a series of uniform changes to atomic positions and simulation cell dimensions. One of the greatest advantages of the method is that this process allows the calculation of the partition function and hence gives access to thermodynamic properties, moreover, this can be achieved without any prior knowledge of the structure of relevant phases. The powerfulness of NS in calculating structural and thermodynamic properties under a wide range of conditions has been demonstrated in case of a range of bulk materials[45, 48–53] and clusters[46, 54–56]. For a detailed review of materials application of NS we recommend Ref[33].

NS calculations were performed using the pymatnest program package[57] and configurations were sampled by utilising single-atom MC moves, and changing the volume and shape of the simulation cell. The studied pressure range was chosen in every case such that it spans the entire HDLiq-LDLiq phase boundary with additional pressure values above the LLCPC. The simulation cell contained in most cases 120 particles, however, calculations with certain parameter sets were repeated using 60, 144 and 240 atoms in order to evaluate finite size effects and allow the formation of crystalline structures with potentially different unit cell symmetry. In all cases these extra runs identified the same stable phases, including the crystalline structures, as the original calculations, suggesting that we have not missed any thermodynamically relevant structures due to unit cell incommensurability. Using systems of 60–100 particles usually causes the melting temperature to be overestimated with NS by 5–8%. [33, 47] Our observation that increasing the system size from 120 to 240 particles decreased the melting temperature by 4% suggests that our results are only marginally affected by finite size effects.

There are two parameters controlling the convergence of NS calculations. The number of configurations constituting the *live set*, K , determines the resolution of the energy landscape, and the length of the random walk used to generate the new sample configurations, L . Our calculations showed that using $K = 560$ walkers and $L = 1200$ MC sweeps per iterations result in good convergence, with peaks of the heat capacity to vary less than $0.005U_0/k_B$.

To evaluate the expected value of an observable at a given temperature, we can calculate its weighted average over all the generated samples:[33, 46]

$$A(\beta, p) = \frac{1}{Z(\beta, p)} \sum_i A_i \Gamma_{i-(i+1)} \exp(-\beta H_i), \quad (3)$$

where A_i is the value of observable A at the i -th iteration, H is the enthalpy, $\beta = 1/(k_B T)$ is the thermodynamic



temperature, p is the pressure and Z is the partition function calculated from NS the following way:

$$Z(\beta, p) = \sum_i \Gamma_{i-(i+1)} \exp(-\beta H_i), \quad (4)$$

where Γ_i is the nested sampling weight associated with the phase space volume at a given enthalpy level, $\Gamma_{i-(i+1)} = [K/(K+1)]^i - [K/(K+1)]^{i+1}$. In our study we use this to characterise structures typical at a given temperature, e.g. calculate the weighted average of the radial distribution function of all the configurations generated during a single nested sampling run.

IV. RESULTS AND DISCUSSION

A. Original parameterisation

The overall phase diagram calculated by NS is compared to that published in the original work of Jagla in Figure 2. Samplings at lower pressures explored the low-density liquid phase (LDLiq), showing the density anomaly observed before. Upon freezing of the LDLiq, the low-density "triangular" solid is formed, with the nearest neighbour particles being at the distance corresponding to the location of the potential minimum, b , as seen in Figure 3(a). In further agreement to previous results, the melting line has a negative slope as the pressure increases. At $p = 0.26U_0/r_0^2$ the observed behaviour changes significantly, with two additional peaks appearing on the heat capacity curve, where the peak at the higher temperature is associated with a significant increase in density. In order to aid the identification of the phases, we calculated the weighted average of the radial distribution function at a series of temperatures, which are shown in Figure 4 for two different pressures along with the heat capacity and density curves. The high-temperature peak of the heat capacity corresponds to the transition from the low density liquid to the high density liquid as the temperature decreases (two example snapshots are shown in Fig. 3(b) and (c)). As the pressure increases, the HDLiq-LDLiq transition shifts to higher temperature while the heat capacity peak gradually broadens and then disappears suggesting that this transition ends in a critical point (see Fig. 4b). To locate the critical point we drew on the results of Bruce and Wilding[58]: at the temperature corresponding to the maximum of the heat capacity peak at a given pressure, the density distribution appears bimodal below the critical point and unimodal above it for finite systems. Hence, by calculating the density distribution we can determine whether the peak represents a first order phase transition, or the shallower and broader peak of the heat capacity corresponds to crossing the respective Widom-line (shown by open symbols in Fig. 2), providing an upper and lower estimate of the critical pressure. This analysis confirms that the LLCPP is in the range of $p_c = 0.3 - 0.35U_0/r_0^2$

and $T_c = 0.42 - 0.45U_0/k_B$, while the liquid-vapour critical point is in the range of $p_c = 0.06 - 0.1U_0/r_0^2$ and $T_c = 1.51 - 1.71U_0/k_B$.

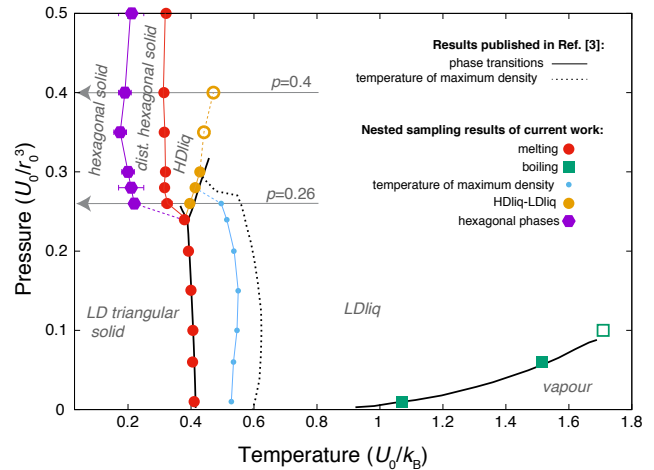


FIG. 2. Temperature-pressure phase diagram of the 2D Jagla model. Black line represent data from literature[3], coloured symbols are nested sampling results of the current work. Error bars represent the temperature range within which the heat capacity peaks were located. Open circles and square show where peaks on the heat capacity were found to be above the liquid-liquid and liquid-vapour critical point, respectively, corresponding to the respective Widom-lines. The dashed black line and smaller light-blue symbols correspond to the temperature of the maximum density line. Grey vertical arrows point to the two pressures where the radial distribution functions shown on Fig. 4 were calculated.

The two other peaks in the heat capacity (see Fig. 4a) correspond to two phase transitions: first the high density liquid phase freezes into a distorted hexagonal structure, which then undergoes a phase transformation to a regular hexagonal arrangement. In the distorted phase, the hexagons formed by the particles have two ~ 140 degree angles at opposite vertices, with the nearest neighbour particles being at the hard sphere distance, r_0 . The distortion also causes the second nearest neighbour distances to split, resulting in two distinct peaks around $2r_0$, as can be seen in the radial distribution functions in Figure 4. This structure has been known to be a ground state of repulsive ramp models at medium pressures[36, 39] and for the double-step potentials as a medium-pressure high-temperature phase.[59]

As the sampling progresses, and the lower energy part of the phase space is explored, we found this distorted structure to transform to regular hexagons at around $T = 0.2$, but found the transition temperature varying more in independent runs, suggesting that this transition is more challenging to converge. Characteristic structures of the solid phases are shown in Fig. 5.

While we identified the boundaries of two new solid phases at higher pressures, the rest of the phase diagram agrees excellently with Jagla's published work.[3]



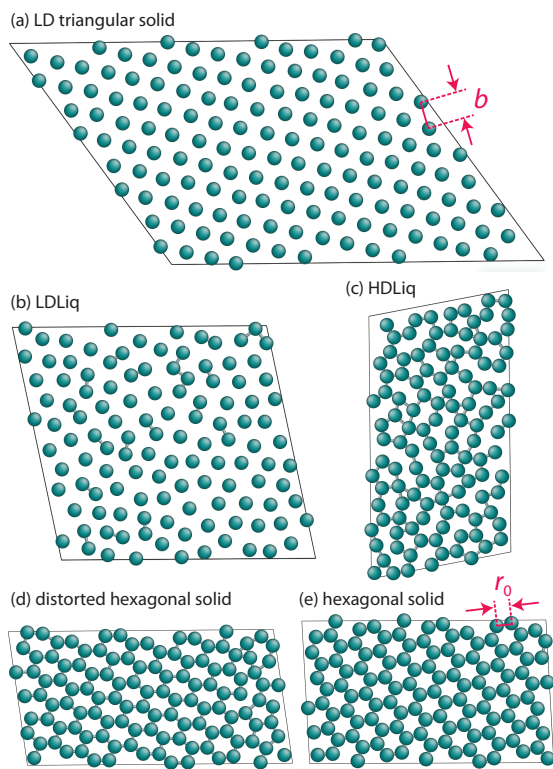


FIG. 3. Example configurations of typical structures taken from the nested sampling runs. Particles are represented with spheres of the hard-sphere diameter, and bonds are drawn if they are closer than $1.3r_0$.

The only difference appears in the temperature of the maximum densities at a given pressure. In order to examine this discrepancy, we performed a series of constant pressure Monte Carlo simulations of 400 Jagla particles using the HOOMD package[60, 61]. The equilibrium density of these NPT simulations agreed with our NS results perfectly. One also has to note that the ground state structure is the close-packed high-density triangular phase, with nearest neighbour distances at r_0 . This structure has not been explored by nested sampling at the current resolution, due to its anticipated very small phase space volume at the melting temperature, hence we do not provide an estimate for the transition.

B. Varied parameterisation

Our recent calculations on the 3D system have shown that the most widely used parameterisation of the Jagla potential displays, contrary to the earlier consensus, the LLC in a region where the liquid phases are metastable with respect to a newly identified solid phase.[25] Hence, the question naturally arises: is it possible to find a parameter set where the HDLiq phase becomes thermodynamically stable? Motivated by this question, we use the 2D system to explore the sensitivity of the phase be-

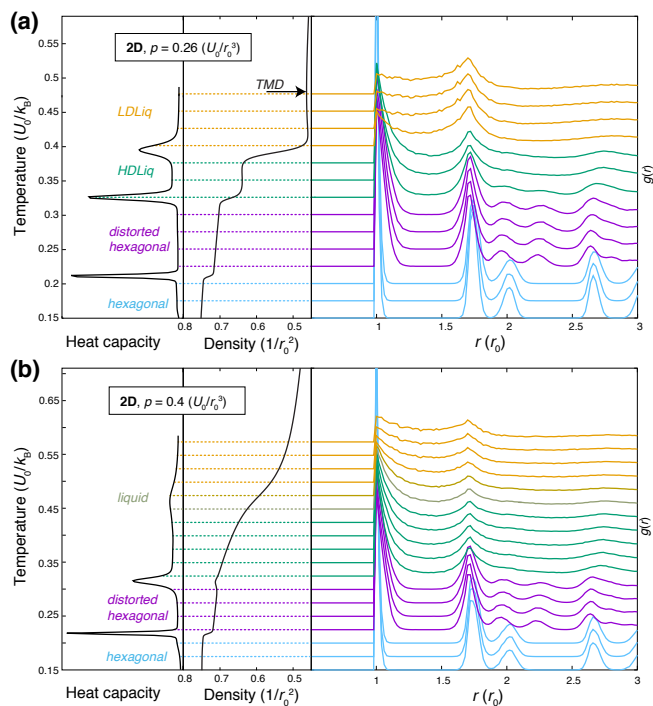


FIG. 4. Heat capacity (left panels), density (middle panels) and the weighted average (see Eq. 3) of the radial distribution function (RDF) at different temperatures (right panels), calculated by nested sampling, using the original parameterisation. RDFs are shifted vertically, such that their baseline matches the corresponding temperature. Panel (a) shows results below the liquid-liquid critical point at $p = 0.26U_0/r_0^2$, the black arrow points to the temperature of the maximum density (TMD), panel (b) shows results above the liquid-liquid critical point at $p = 0.4U_0/r_0^2$, where the transition from LDLiq to HDLiq is continuous. These two pressures are highlighted by grey arrows on the phase diagram shown in Fig. 2.

haviour to changes of the potential parameters: 2D systems are inherently simpler, with fewer crystalline structures emerging, moreover, the HDLiq appears to be a thermodynamically stable phase of the 2D Jagla model. In this section, we change each potential parameter independently, then calculate and compare the resulting phase diagrams. In the following, the results are discussed primarily from the point of view of the stability range of the HDLiq phase.

Figure 6 shows the phase diagrams of the six variants of the potential model. The main qualitative features of the phase diagram are not affected by the small parameter variations: the melting line of the low density solid has a negative slope, both liquid phases are thermodynamically stable in certain regions, and all systems show density anomaly. The significant shift of the phase boundaries to larger pressure is due to making the overall potential more repulsive (either by increasing the slope of the repulsive ramp, such as increasing W_R , or shortening the attractive region, i.e. decreasing c).



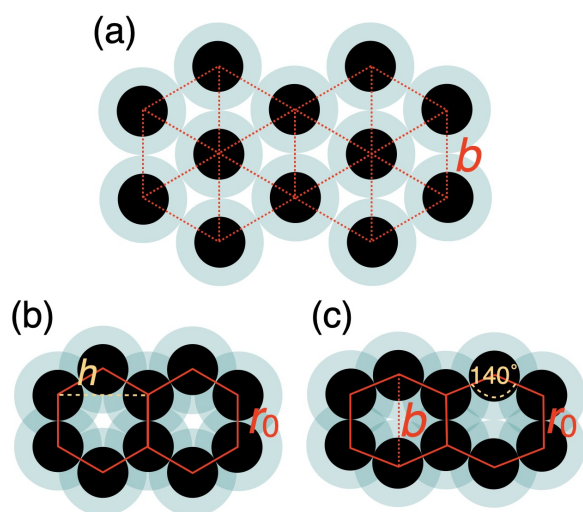


FIG. 5. Characteristic solid structures. Black circle represent the hard sphere core, r_0 , the blue shaded crown showing the penetrable repulsive region, with diameter b . (a) LD triangular arrangement at low pressure (b) close packed hexagonal packing, second nearest neighbours are at a distance $h = \sqrt{3}r_0$ (c) distorted hexagonal packing showing the two particles at the opposite vertices being at distance b from each other.

Increasing W_R causes the melting and solid-solid transitions to shift slightly towards higher temperatures, but as the LDLiq-HDLiq phase boundary does not change significantly, this only causes a minor change in the temperature range where the HDLiq phase is stable (see Fig. 6a). In contrast, varying the location of the potential minimum has a more complex and stronger effect. Changing the b parameter alters the steepness of both the repulsive and the attractive ramps, as well as the proportion of neighbour shells corresponding to these, hence also the number of particles contributing with forces of opposite signs. Therefore, it is expected that not only the phase boundaries will be shifted, but the stability of the solid phases might change as well, with potentially new structures emerging or disappearing from the phase diagram.

While the increase in the b parameter shifts the freezing of the LDLiq to lower temperatures, the effect is the opposite on the solid-HDLiq phase transition temperature. As is seen in Fig. 6b, at $b = 1.76r_0$ (that is, at the increased b value) the melting temperature of both the HDLiq and the LDLiq phases are almost the same, but they are becoming increasingly different as b decreases. Decreasing the b parameter shifts the stability region of HDLiq to higher pressures and lower temperatures. Furthermore, varying parameter b causes the disappearance of one of the solid phases. With $b = 1.68r_0$ the liquid freezes into the distorted hexagonal structure, where the distance of the opposite vertices is exactly the modified minimum energy distance ($1.68r_0$), with no evidence of further transition to regular hexagonal structure at

lower temperatures. However, using $b = 1.76r_0$ causes the liquid to freeze straight into the regular hexagonal structure. This might be explained by the fact that this minimum location is larger than the second neighbour distance (i.e. the height) of a regular hexagon, $h = \sqrt{3}$, and hence the distorted structure does not have an energetic advantage any more.

Increasing the value of parameter c shifts both the solid-solid and the LDLiq-HDLiq phase transitions to higher temperatures (as illustrated in Fig. 6c), while the melting temperature seems to be insensitive to these changes. As a consequence, the stability range of the HDLiq phase changes drastically upon variation of c . Decreasing c shrinks the stability region of HDLiq significantly, while increasing it widens the temperature range where HDLiq is stable.

C. Smoothed version of the potential

In the low-pressure region, the phase behaviour of the smoothed potential is very similar to that of the original linear ramp model (see Figure 7). The low-density liquid forms the LD triangular phase upon freezing, the slope of the melting line is negative and displays the density maximum anomaly, although both are shifted to lower temperatures. Interestingly, however, the high pressure behaviour is markedly different. The simulations do not show a clear transition to another liquid of different density at higher pressure, but the continuous increase in density is accompanied by the formation of orthogonal structural units. As Figure 8 demonstrates, as more particles move closer to the hard-core radius upon increasing the pressure, the characteristic angle between three nearest neighbours becomes 90° , but only a shoulder appears on the heat capacity curve, suggesting this transition is not of first-order. As the temperature decreases, a sharp peak marks the transition to a solid of a different angular order: characteristic angles become approximately 45° , 90° and 108° , as the explored structures are built up by regular pentagons surrounded by distorted pentagons, squares and right-angled triangles to form larger 12-membered rings. However, the relative orientation and packing of these motifs were different among different walkers, with a lack of obvious long-range periodicity except what is enforced by the periodic boundary conditions, hence we refer to this phase as quasi-crystalline. Similar structures have been described for hard-core shoulder[62, 63] and soft shoulder potentials[39], if the ratio of the two characteristic lengths scales of the model is around 1.4. This ratio is larger in our system, $b/r_0 = 1.72$, since our smoothed Jagla potential also has an attractive interaction range. Interestingly, Pattabhiraman et al. has also found the quasicrystalline phase to be preceded by a liquid phase dominated by orthogonal motifs.[63] This can originate from the thermodynamic competition between the tiling polygons: the square arrangement becomes less



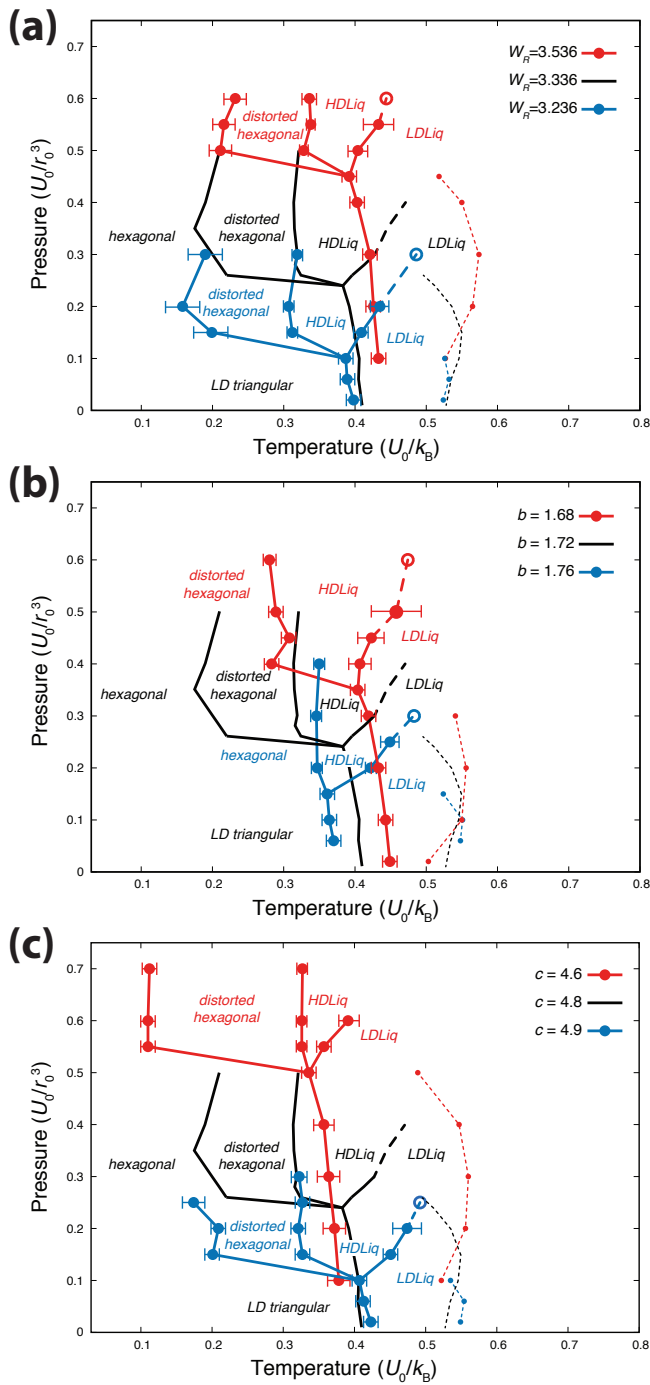


FIG. 6. Temperature-pressure phase diagram of the 2D Jagla model, with varying potential parameters. Panel (a) variation of the slope of the repulsive ramp (parameter W_R), panel (b) variation of the location of the minimum (parameter b), panel (c) variation of the length of the attractive ramp (parameter c). Black lines represent the phase boundaries of the original parameterisation, blue and red filled circles show phase transitions in the modified potential, where open circles represent peaks on the heat capacity above the LLCPC, corresponding to the Widom-line. Lines are only guides to the eye. Dotted lines and smaller symbols show the temperature of maximum density line. Error bars show the widths at half maximum of the heat capacity peaks.

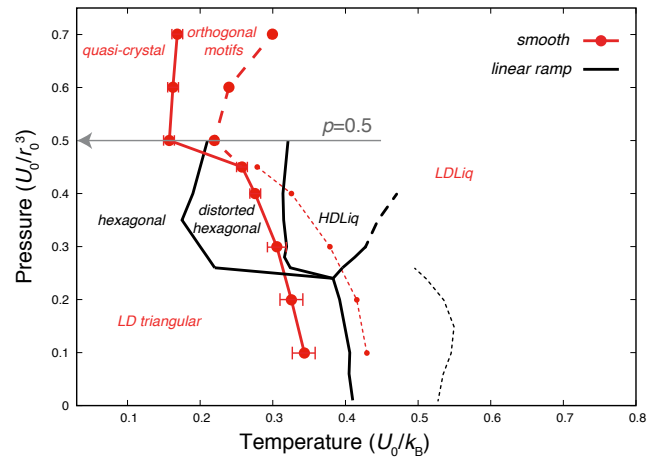


FIG. 7. Temperature-pressure phase diagram of the smoothed version of the 2D Jagla model (red symbols) compared to results obtained with the original linear ramp model (black lines). Lines are only guides to the eye. Dotted lines with smaller symbols show the temperature of maximum density line. The grey vertical arrow points to the pressure where the radial distribution functions shown on Fig. 8 were calculated.

favourable at higher density.

In order to examine the stability of both the liquid with orthogonal motifs and the quasi-crystalline phases, we performed a series of Monte Carlo simulations at $p = 0.5U_0/r_0^2$ using the HOOMD package with 400 particles interacting through the smoothed potential. In the temperature range 0.18 – 0.24 the orthogonal motifs are formed, but even starting from a perfect square lattice of various densities results in a partially disordered phase, suggesting that under these conditions the perfect square-lattice crystal structure is indeed unstable. Finding the quasi-crystal structure via cooling proved to be more challenging, with the simulation getting easily trapped in the LD triangular packing if the initial conditions were unfavourable. This highlights the powerfulness of phase space exploration methods, such as NS, which uses independent sample configurations to explore the phase space, unbiased by our intuition. However, when getting trapped in the triangular phase was avoided, the obtained structures showed great structural similarity with configurations sampled by NS, without any apparent periodicity in the simulation cell.

V. CONCLUSIONS

With the nested sampling technique, we performed an extensive exploration of the potential energy surface of the original two-dimensional hard-core double ramp model used by Jagla[3] as well as a series of modified versions of it, and computed their pressure-temperature phase diagram. Our calculations using Jagla's original parameterisation reproduced the known phase diagram.



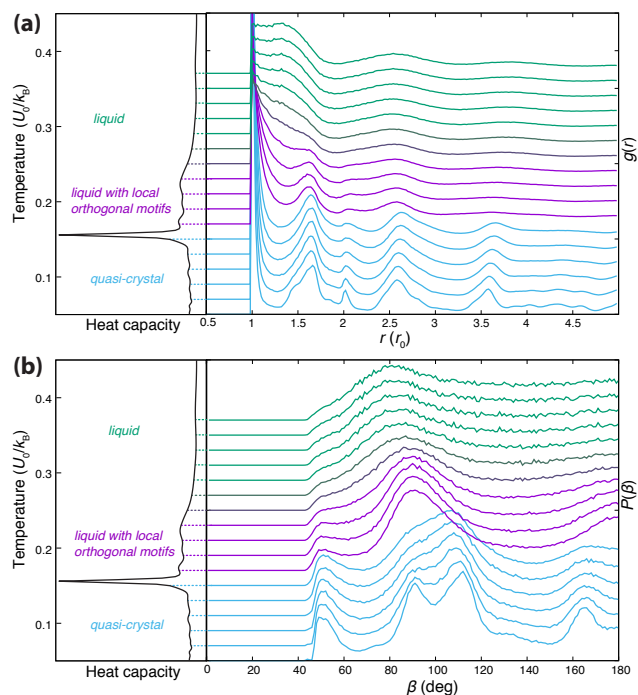


FIG. 8. Heat capacity, radial distribution functions, and angular distribution functions of nearest neighbours computed with the smoothed version of the 2D Jagla model, at $p = 0.5U_0/r_0^2$ (highlighted by a grey arrow in Fig. 7). Heat capacity is shown on the left of both panels, while the top panel (a) displays the weighted average of the radial distribution function (RDF) at different temperatures, and the bottom panel (b) shows the weighted average of the angular distribution function of nearest neighbours at different temperatures, computed on configurations sampled by NS, using Eq. 3. Distributions are vertically shifted such that the baseline matches the corresponding temperature on the heat capacity.

We extended our phase space exploration to higher pressures which allowed to identify two new solid phases of hexagonal arrangement.

We examined the impact of small modifications to the different potential parameters, to reveal their effect on the stability of different phases, with particular focus on the stability of the high density liquid.

Decreasing W_R , the slope of the short range repulsive ramp causes the closer neighbour shells to have a reduced repulsive contribution, which widens the stability region of the HDLiq phase. Increasing c , the length of the attractive ramp results in taking into account more neighbour shells, all with a negative contribution to the energy. This has a stronger effect, with the temperature range in which the HDLiq is stable being more sensitive to changes to c than to that of the W_R parameter. Changing b , the location of the potential minimum has a more complex consequence. It not only changes the slope of both ramps, but the most favourable neighbour distance as well, which significantly alters the stability of

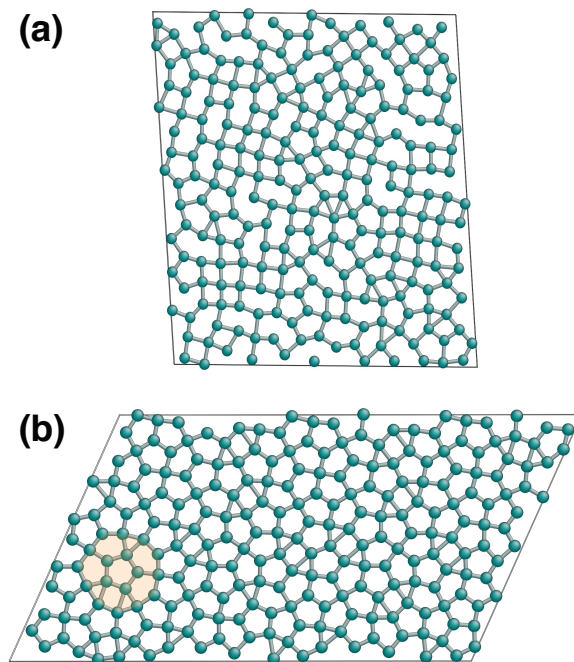


FIG. 9. Snapshots taken from the NS sampling performed with the smoothed version of the model and 240 atoms at $p = 0.5U_0/r_0^2$. (a) Configuration from the temperature range $0.2-0.21 U_0/k_B$, showing the local orthogonal arrangement, (b) final configuration of the quasi-crystal structure. Atoms are connected if closer than $1.3r_0$, which is the location of the first minimum on the RDF. The dodecagonal motif is highlighted with orange shade.

different crystalline configurations leading eventually to the disappearance of one of the solid phases.

Based on these results we hypothesise that making the potential more attractive by increasing the length of the attractive ramp or (to a lesser extent) decreasing the height of the repulsive ramp in 3D might increase the stability of the HDLiq phase. This could bring the LLC of the 3D model to the stable liquid range. Indeed, increasing c extends the range of particles that have a favourable energetic contribution, which is expected to be more pronounced in the high density phases. However, if the potential parameters are changed, the appearance of novel crystalline phases should be anticipated (this is in particular true in 3D), which could still render the HDLiq metastable.

We also proposed a continuously differentiable (beyond the hard-core) version of the Jagla model, which preserves its characteristic parameters. Similar smoothed potentials are often used as substitutes to discrete step or well potentials, to allow the easier use of molecular dynamics. While the proposed smooth model shows similar behaviour to the ramp model at low pressures, the high pressure behaviour is markedly different, with a quasi-crystal structure emerging. This highlights, that small changes to the potential function can result in a



qualitatively different phase behaviour. Consequently, a full exploration of the phase space becomes necessary every time an interaction potential is modified even to the slightest extent.

ACKNOWLEDGEMENT

L.B.P. acknowledges support from the EPSRC through an Early Career Fellowship (EP/T000163/1). Computing facilities were provided by the Scientific Com-

puting Research Technology Platform of the University of Warwick. Atomic structures were visualised using AtomEye[64] This research was funded in part by the EPSRC, EP/T000163/1. For the purpose of open access, the authors have applied a Creative Commons Attribution (CC BY) licence to any Author Accepted Manuscript version arising from this submission.

Simulation data, structures and thermodynamic data are available in the repository at <https://github.com/albapa/Jagla>

- [1] V. N. Ryzhov, E. E. Tareyeva, Y. D. Fomin, and E. N. Tsiok, Complex phase diagrams of systems with isotropic potentials: results of computer simulations, *Physics - Uspekhi* **63**, 417 (2020).
- [2] P. C. Hemmer and G. Stell, Fluids with several phase transitions, *Phys. Rev. Lett.* **24**, 1284 (1970).
- [3] E. A. Jagla, *Phys. Rev. E* **63**, 061501 (2001).
- [4] J. Fornleitner and G. Kahl, Pattern formation in two-dimensional square-shoulder systems, *J. Phys.: Condens. Matter* **22**, 104118 (2010).
- [5] G. Franzese, G. Malescio, A. Skibinsky, S. V. Buldyrev, and H. E. Stanley, Generic mechanism for generating a liquid-liquid phase transition, *Nature* **409**, 692 (2001).
- [6] G. Franzese, G. Malescio, A. Skibinsky, S. V. Buldyrev, and H. E. Stanley, Metastable liquid-liquid phase transition in a single-component system with only one crystal phase and no density anomaly, *Physical Review E* **66**, 051206 (2002).
- [7] A. Skibinsky, S. V. Buldyrev, G. Franzese, G. Malescio, and H. E. Stanley, Liquid-liquid phase transitions for soft-core attractive potentials, *Physical Review E* **69**, 061206 (2004).
- [8] Y. D. Fomin, N. V. Gribova, V. N. Ryzhov, S. M. Stishov, and D. Frenkel, Quasibinary amorphous phase in a three-dimensional system of particles with repulsive-shoulder interactions, *J. Chem. Phys.* **129**, 064512 (2008).
- [9] N. V. Gribova, Y. D. Fomin, D. Frenkel, and V. N. Ryzhov, Waterlike thermodynamic anomalies in a repulsive-shoulder potential system, *Phys. Rev. E* **79**, 051202 (2009).
- [10] Y. D. Fomin, E. N. Tsiok, and V. N. Ryzhov, Complex phase behavior of the system of particles with smooth potential with repulsive shoulder and attractive well, *J. Chem. Phys.* **134**, 044523 (2011).
- [11] A. Jain, J. R. Errington, and T. M. Truskett, Inverse design of simple pairwise interactions with low-coordinated 3d lattice ground states, *Soft Matter* **9**, 3866 (2013).
- [12] G. Franzese, Differences between discontinuous and continuous soft-core attractive potentials: The appearance of density anomaly, *J. Mol. Liq.* **136**, 267 (2007).
- [13] E. O. Rizzatti, M. A. A. Barbosa, and M. C. Barbosa, Core-softened potentials, multiple liquid-liquid critical points, and density anomaly regions: An exact solution, *Front. Phys.* **13**, 136102 (2018).
- [14] S. Pant, T. Gera, and N. Choudhury, Effect of attractive interactions on the water-like anomalies of a core-softened model potential, *J. Chem. Phys.* **139**, 244505 (2013).
- [15] T. Urbic, Two-dimensional core-softened model with water like properties: Monte carlo and integral equation study, *J. Chem. Phys.* **139**, 164515 (2013).
- [16] A. B. de Oliveira, P. A. Netz, T. Colla, and M. C. Barbosa, Thermodynamic and dynamic anomalies for a three-dimensional isotropic core-softened potential, *J. Chem. Phys.* **124**, 084505 (2006).
- [17] A. Metere, P. Oleynikov, M. Dzugutov, and M. O’Keeffe, Formation of a new archetypal metal-organic framework from a simple monatomic liquid, *J. Chem. Phys.* **141**, 234503 (2014).
- [18] D. Quigley and M. I. J. Probert, Phase behavior of a three-dimensional core-softened model system, *Phys. Rev. E* **71**, 065701 (2005).
- [19] E. Salcedo, A. B. de Oliveira, N. M. Barraza, C. Chakravarty, and M. C. Barbosa, Core-softened fluids, water-like anomalies, and the liquid-liquid critical points, *J. Chem. Phys.* **135**, 044517 (2011).
- [20] M. A. A. Barbosa, E. Salcedo, and M. C. Barbosa, Multiple liquid-liquid critical points and density anomaly in core-softened potentials, *Phys. Rev. E* **87**, 032303 (2013).
- [21] P. H. Poole, F. Sciortino, U. Essmann, and H. E. Stanley, Phase behaviour of metastable water, *Nature* **360**, 324 (1992).
- [22] F. Smallenburg, L. Filion, and F. Sciortino, Erasing no-man’s land by thermodynamically stabilizing the liquid-liquid transition in tetrahedral particles, *Nature physics* **10**, 653 (2014).
- [23] V. N. Ryzhov and S. M. Stishov, A liquid-liquid phase transition in the “collapsing” hard sphere system, *J. Exp. Theor. Phys.* **95**, 710 (2002).
- [24] F. Sciortino, E. La Nave, and P. Tartaglia, Physics of the Liquid-Liquid Critical Point, *Physical Review Letters* **91**, 155701 (2003).
- [25] A. P. Bartok, G. Hantal, and L. B. Partay, Insight into liquid polymorphism from the complex phase behavior of a simple model, *Phys. Rev. Lett.* **127**, 015701 (2021).
- [26] L. Xu, I. Ehrenberg, S. V. Buldyrev, and H. E. Stanley, *J. Phys.: Condens. Matter* **18**, 2239 (2006).
- [27] L. Xu, S. V. Buldyrev, N. Giovambattista, and H. E. Stanley, *Int. J. Mol. Sci.* **11**, 5184 (2010).
- [28] H. M. Gibson and N. B. Wilding, Metastable liquid-liquid coexistence and density anomalies in a core-softened fluid, *Phys. Rev. E* **73**, 061507 (2006).
- [29] F. Ricci and P. G. Debenedetti, A free energy study of the liquid-liquid phase transition of the jagla two-scale



- potential, *J. Chem. Sci.* **129**, 801 (2017).
- [30] N. B. Wilding and J. E. Magee, Phase behavior and thermodynamic anomalies of core-softened fluids, *Physical Review E* **66**, 031509 (2002).
- [31] M. L. de Haro, A. Rodríguez-Rivas, S. B. Yuste, and A. Santos, Structural properties of the Jagla fluid, *Phys. Rev. E* **98**, 012138 (2018).
- [32] E. Lomba, N. G. Almarza, C. Martin, and C. McBride, Phase behavior of attractive and repulsive ramp fluids: Integral equation and computer simulation studies, *J. Chem. Phys.* **126**, 244510 (2007).
- [33] L. B. Pártay, G. Csányi, and N. Bernstein, Nested sampling for materials, *Eur. Phys. J. B* **94**, 159 (2021).
- [34] A. Scala, M. R. Sadr-Lahijany, N. Giovambattista, S. V. Buldyrev, and H. E. Stanley, Waterlike anomalies for core-softened models of fluids: Two-dimensional systems, *Phys. Rev. E* **63**, 041202 (2001).
- [35] G. Stell and P. C. Hemmer, Phase transitions due to softness of the potential core, *J. Chem. Phys.* **56**, 4274 (1972).
- [36] E. A. Jagla, Phase behavior of a system of particles with core collapse, *Phys. Rev. E* **58**, 1478 (1998).
- [37] E. A. Jagla, Minimum energy configurations of repelling particles in two dimensions, *J. Chem. Phys.* **110**, 451 (1999).
- [38] N. P. Kryuchkov, S. O. Yurchenk, Y. D. Fomin, E. N. Tsiok, and V. N. Ryzhov, Complex crystalline structures in a two-dimensional core-softened system, *Soft Matter* **14**, 2152 (2018).
- [39] W. R. C. Somerville, A. D. Law, M. Rey, N. Vogel, A. J. Archer, and D. M. A. Buzz, Pattern formation in two-dimensional hard-core/soft-shell systems with variable soft shell profiles, *Soft Matter* **16**, 3564 (2020).
- [40] D. R. Nelson and B. I. Halperin, *Phys. Rev. B: Condens. Matter Mater. Phys.* **19**, 2457 (1979).
- [41] A. P. Young, *Phys. Rev. B: Condens. Matter Mater. Phys.* **19**, 1855 (1979).
- [42] R. Connelly and W. Dickinson, Periodic planar disc packings, *Phil. Trans. R. Soc. A* **372**, 20120039 (2014).
- [43] J. Skilling, *Bayesian Anal.* **1**, 833 (2006).
- [44] G. Ashton, N. Bernstein, J. Buchner, X. Chen, G. Csányi, F. Feroz, A. Fowlie, M. Griffiths, M. Habeck, W. Handley, E. Higson, M. Hobson, A. Lasenby, D. Parkinson, L. B. Pártay, M. Pitkin, D. Schneider, L. South, J. S. Speagle, J. Veitch, P. Wacker, D. J. Wales, and D. Yallup, Nested Sampling for physical scientists, *Nat. Rev. Methods Primer* **2**, 39 (2022).
- [45] R. J. N. Baldock, N. Bernstein, K. M. Salerno, L. B. Pártay, and G. Csányi, *Phys. Rev. E* **96**, 43311 (2017).
- [46] L. B. Pártay, A. P. Bartók, and G. Csányi, *J. Phys. Chem B* **114**, 10502 (2010).
- [47] R. J. N. Baldock, L. B. Pártay, A. P. Bartók, M. C. Payne, and G. Csányi, *Phys. Rev. B* **93**, 174108 (2016).
- [48] J. Dorrell and L. B. Pártay, Pressure–Temperature Phase Diagram of Lithium, Predicted by Embedded Atom Model Potentials, *J. Phys. Chem. B* **124**, 6015 (2020).
- [49] A. Gola and L. Pastewka, Embedded atom method potential for studying mechanical properties of binary Cu–Au alloys, *Modelling Simul. Mater. Sci. Eng* **26**, 055006 (2018).
- [50] L. B. Pártay, A. P. Bartók, and G. Csányi, Nested sampling for materials: The case of hard spheres, *Phys. Rev. E* **89**, 022302 (2014).
- [51] C. W. Rosenbrock, K. Gubaev, A. V. Shapeev, L. B. Pártay, N. Bernstein, G. Csányi, and G. L. W. Hart, Machine-learned interatomic potentials for alloys and alloy phase diagrams, *npj Comp. Mat.* **7**, 24 (2021).
- [52] L. B. Pártay, On the performance of interatomic potential models of iron: comparison of the phase diagrams, *Comput. Mater. Sci* **149**, 153 (2018).
- [53] M. J. Pfeiferberger, M. Rumetshofer, and W. von der Linden, Nested sampling, statistical physics and the Potts model, *Journal of Computational Physics* **375**, 368 (2018).
- [54] J. Dorrell and L. B. Pártay, Thermodynamics and the potential energy landscape: case study of small water clusters, *Physical Chemistry Chemical Physics* **21**, 7305 (2019).
- [55] K. Rossi, L. Pártay, G. Csányi, and F. Baletto, Thermodynamics of CuPt nanoalloys, *Scientific Reports* **8**, 9150 (2018).
- [56] S. Martiniani, J. D. Stevenson, D. J. Wales, and D. Frenkel, Superposition enhanced nested sampling, *Phys. Rev. X* **4**, 031034 (2014).
- [57] N. Bernstein, R. J. N. Baldock, L. B. Pártay, J. R. Kermode, T. D. Daff, A. P. Bartók, and G. Csányi, pymatnest, <https://github.com/libAtoms/pymatnest> (2016).
- [58] A. D. Bruce and N. B. Wilding, *Phys. Rev. Lett.* **68**, 193 (1992).
- [59] A. M. Almudallal, S. V. Buldyrev, and I. Saika-Voivod, Phase diagram of a two-dimensional system with anomalous liquid properties, *J. Chem. Phys.* **137**, 034507 (2012).
- [60] J. A. Anderson, C. D. Lorenz, and A. Travesset, General purpose molecular dynamics simulations fully implemented on graphics processing units, *Journal of Computational Physics* **227**, 5342 (2008), hOOMD-blue feature: hOOMD-blue.
- [61] J. Glaser, T. D. Nguyen, J. A. Anderson, P. Liu, F. Spiga, J. A. Millan, D. C. Morse, and S. C. Glotzer, Strong scaling of general-purpose molecular dynamics simulations on gpus, *Computer Physics Communications* **192**, 97 (2015), hOOMD-blue feature: hOOMD-blue.
- [62] T. Dotera, T. Oshiroi, and P. Ziherl, Mosaic two-lengthscale quasicrystals, *Nature* **506**, 208 (2014).
- [63] H. Pattabhiraman, A. P. Gantapara, and M. Dijkstra, On the stability of a quasicrystal and its crystalline approximant in a system of hard disks with a soft corona, *J. Chem. Phys.* **143**, 164905 (2015).
- [64] J. Li, AtomEye: an efficient atomistic configuration viewer, *Modelling Simul. Mater. Sci. Eng* **11**, 173 (2003).

