

# Northumbria Research Link

Citation: Perrone, Valentina, Gocha, Timothy P., Randolph-Quinney, Patrick and Procopio, Noemi (2022) Tooth Cementum Annulation: A Literature Review. *Forensic Sciences*, 2 (3). pp. 516-550. ISSN 2673-6756

Published by: MDPI

URL: <https://doi.org/10.3390/forensicsci2030038>  
<<https://doi.org/10.3390/forensicsci2030038>>

This version was downloaded from Northumbria Research Link:  
<http://nrl.northumbria.ac.uk/id/eprint/49580/>

Northumbria University has developed Northumbria Research Link (NRL) to enable users to access the University's research output. Copyright © and moral rights for items on NRL are retained by the individual author(s) and/or other copyright owners. Single copies of full items can be reproduced, displayed or performed, and given to third parties in any format or medium for personal research or study, educational, or not-for-profit purposes without prior permission or charge, provided the authors, title and full bibliographic details are given, as well as a hyperlink and/or URL to the original metadata page. The content must not be changed in any way. Full items must not be sold commercially in any format or medium without formal permission of the copyright holder. The full policy is available online: <http://nrl.northumbria.ac.uk/policies.html>

This document may differ from the final, published version of the research and has been made available online in accordance with publisher policies. To read and/or cite from the published version of the research, please visit the publisher's website (a subscription may be required.)



Review

# Tooth Cementum Annulation: A Literature Review

Valentina Perrone <sup>1</sup>, Timothy P. Gocha <sup>2</sup> , Patrick Randolph-Quinney <sup>1,3</sup> and Noemi Procopio <sup>1,2,\*†</sup>

<sup>1</sup> Forensic Science Research Group, Department of Applied Sciences, Faculty of Health and Life Sciences, Northumbria University, Newcastle upon Tyne NE1 8ST, UK; valentina.perrone@northumbria.ac.uk (V.P.); patrick.randolph-quinney@northumbria.ac.uk (P.R.-Q.)

<sup>2</sup> Forensic Anthropology Center, Department of Anthropology, Texas State University, San Marcos, TX 78666, USA; tim.gocha@txstate.edu

<sup>3</sup> Department of Human Anatomy and Physiology, Faculty of Health Sciences, University of Johannesburg, Johannesburg 2094, South Africa

\* Correspondence: nprocopio@uclan.ac.uk

† Current address: School of Natural Sciences, University of Central Lancashire, Preston PR1 2HE, UK.

**Abstract:** Tooth Cementum Annulation (or TCA) is a technique that relies on the analysis of the incremental growth of dental cementum for age and season at death estimation. It has been extensively adopted as a “black box technique”, despite numerous controversies. Its potential in forensics called for this review, which aims to provide the reader with an overarching critical synthesis of what has been done and what is known about the TCA from different perspectives. Results have been divided according to three different themes: human, animal and evolutionary studies, as well as biological studies. The summary and comparison of these show the complexity of this topic, its limits, and how the scientific community can collectively collaborate for improvements. Overall, it is clear that the potential of the TCA is significant in terms of age and season at death estimation and that (as long as its biology is still addressed and researched for) there should not be any reason to not consider this technique as valid as the other anthropological methods adopted for biological profiling.

**Keywords:** tooth cementum; forensic odontology; forensic anthropology



**Citation:** Perrone, V.; Gocha, T.P.; Randolph-Quinney, P.; Procopio, N. Tooth Cementum Annulation: A Literature Review. *Forensic Sci.* **2022**, *2*, 516–550. <https://doi.org/10.3390/forensicsci2030038>

Academic Editors: Ricardo Dinis-Oliveira, Francisca Alves Cardoso and Pier Matteo Barone

Received: 22 June 2022

Accepted: 14 July 2022

Published: 20 July 2022

**Publisher's Note:** MDPI stays neutral with regard to jurisdictional claims in published maps and institutional affiliations.



**Copyright:** © 2022 by the authors. Licensee MDPI, Basel, Switzerland. This article is an open access article distributed under the terms and conditions of the Creative Commons Attribution (CC BY) license (<https://creativecommons.org/licenses/by/4.0/>).

## 1. Introduction

Tooth Cementum Annulation (or TCA) is the name attributed to a phenomenon that has been observed on the thinnest of the dental tissues: the cementum. Similarly to the other mineralised tissues, dentine and enamel, it shows a growth pattern strictly correlated to time. However, what makes the cementum (and specifically the acellular extrinsic fibre cementum—AEFC) more appealing is its property of growing throughout the individual's life without incurring in major remodelling. The term “annulation” (from the Latin word *annuli* for rings) refers to the tissue's characteristic of being laid down in “rings” made of alternating dark and light-coloured layers that correspond to winter and summer seasons. The combination of these factors (lifetime growth, extremely limited remodelling, and different seasonal layers) makes the cementum a sort of “time capsule” that scientists could use not only to determine an individual's chronological age, but also to infer some of their life history events.

Since the first publication about TCA (Laws [1]), enormous steps ahead have been taken towards the improvement and application of this technique. The focus and approach of these studies have been of the most diverse, e.g.,:

1. Age estimation
2. Season at death estimation
3. Nutritional/pathological factors
4. The biology of the tissue
5. Differences in methodologies and protocols
6. Improvement in histological practices

7. Adoption of formulae and measurements studies
8. Application of the technique on archaeological remains for historical studies, and on pathological and healthy samples either for biological studies or forensic investigations.

Interestingly, like Dawkins [2] would say, all these studies boomed as “not high-fidelity replicators” of the original Laws’s theory [1], branching out in the most disparate directions, and are now being narrowed down (or, still following Dawkins, are now being “naturally selected”) into the most efficient technique, so as to perfect our understanding of the phenomenon and its potential as an anthropological tool. However, what is really needed, rather than other ways of counting the increments or measuring them for age assessments, is to go deep down to the causes behind the banding pattern and draw an evolutionary line that would answer questions such as “why did animals evolve in having this pattern?”, “what is its real function?”, and “how/why its deposition is regulated in a circannual rhythm?”. Filling these gaps with answers significantly and scientifically consistent would not only provide a better understanding of the biology of this elusive tissue, but would conclusively pose an end to all the controversies concerning the protocol to follow first and, eventually, to a less arguable acceptance of this technique in the forensic arena.

### 1.1. Brief History of TCA: First Studies

The first publication mentioning the TCA was in the 1950s, when Laws [1] claimed the development of “a new and accurate method of determining age, depending upon cyclical variation in the rate and manner of calcification of the teeth” from observations made on elephant seals. Since then, numerous other studies were carried out on animals (over 40 species of mammals according to Fancy [3] and over 50 according to Grue and Jensen [4]). Already in this first review, Fancy mentioned the variety of methodologies adopted and finally stressed the necessity of developing “standardized preparation and interpretation methods (. . .) for each species”. Only in the 1980s, Stott et al. [5] presented the first study of the TCA on humans. This laid the basis of the future Cementochronology, as it would later be called by Colard and colleagues in 2015 [6]. Later, Charles et al. [7] and Condon et al. [8] also applied the TCA on human samples, introducing for the first time some of the methodological issues that are still debated in the current literature (e.g., transverse/longitudinal sections; stained/unstained; demineralised or not; etc.). This represented a turning point in the history of the TCA studies. Afterwards, the research proceeded with animal studies on one side and humans on the other (sometimes both, such as in Klezeval [9]). These mostly pursued the improvement of the technique for age estimation but were also investigating secondary aspects according to the typology of the sample available (e.g., experiments on the development of the tissues, attempts on adopting the TCA as an identification tool, etc.). After the discovery of the phenomenon and the first successes of its applications, a few researchers started to address some of the main questions regarding its biological mechanisms. Significant to this was the research led by Lieberman (Lieberman and Meadow [10]; Lieberman [11,12]). In these papers, the author(s) outline for the first time the problem of the TCA: from its confusing terminology to the necessity of a better understanding of the biological differences between acellular and cellular cementum, to the necessity of a standardised protocol. In the following few years, another major contribution to the study of the TCA was given in 1996 by Klezeval [9], whose work was a massive compendium on the so-called “recording structures” in humans and several other animal species. In this book, the author gives details on the biology, functioning, and application of the “recording structures”—bones and teeth (cementum included). However, despite being a key point in the study of the TCA thanks to its systematic approach to the subject, this work is still significantly confusing in terms of terminology and methodology to adopt.

### 1.2. The Technique Based on the TCA Phenomenon

The general principle on which the technique for determining age-at-death from the TCA is based is that each pair of layers (one dark and one light) represents one chronological

year and that the sum of all of them added to the specific eruption age of a tooth (or to its root completion) can give an estimate of the individual's chronological age at the moment of death. Determination of age-at-death from skeletal remains is one of the top aims of biological anthropology and, at the same time, one of its weakest points especially when it comes to adult individuals. All of the traditional anthropological methodologies for age estimation, in fact, produce estimates so wide as to become of little help the more mature the skeleton is (to cite only the main ones, see Brooks and Suchey [13]; Lovejoy et al. [14]; Buckberry and Chamberlain [15]; Meindl and Lovejoy [16]; Acsadi and Nemeskeri [17]; Iscan et al. [18,19]). Contrary to that, Cementochronology produced incredibly accurate estimates with a margin of error between 2.5 years [20] and 2.9 years [6]. Following experiments on animals also proved that the different bands' colour indicated a summer and winter season of about six months each. The analysis of the TCA for seasonal estimation is now called "Dental Cementum Increments Analysis" (or DCIA) by some, from Wedel and Wescott [21]. Likewise, the matter of age estimation, if not more importantly, the optimization of the DCIA in narrowing seasonal range estimations would finally open the possibility of assessing season-at-death and, thus, add an incredibly useful anthropological tool towards the determination of the post-mortem interval (PMI) in skeletal remains. Finally, cementochronology, TCA, and DCIA are really just different names to ultimately indicate the analysis of the dental cementum annulations. For the ease of the reader, this review will refer to it as simply TCA (see the paragraph Terminology for more on this matter).

## 2. Materials and Methods

This review was performed following the Preferred Reporting Items for Systematic Reviews and Meta-Analyses (PRISMA) guidelines [22]. The search and collection of articles relevant to this work was carried out in three separate phases, in accordance with the three main sections in which the review is divided: Human Studies; Animal Studies; and Biological Studies. The search for articles was carried out in two stages. The first search included the topics of all the three sections and was performed on Google Scholar by using the following keywords: "TCA [and] age estimation"; "Tooth Cementum Annulation"; "Tooth Cementum Annulation "estimation of age""; "cementochronology"; "seasonality [and] TCA"; "human teeth [and] age-at-death"; "DCIA analysis cementum"; "tooth cementum annulations "death estimation"; "cementum annulations age determination"; "biology cementum"; "cementum composition". The second stage of the search addressed the reference lists of articles selected during stage one and included a further search in SCOPUS and Web of Science database by using more "section-specific" keywords:

- For the human studies section, keywords were: "age at death, dental cementum"; "cementum, age, human, TCA estimation"; "cementum, forensics"; "TCA, human, season"; "tooth cementum annulation, season".
- For the animal studies section, keywords were: "TCA, animals"; "TCA, age estimation, animals"; "cementum, animals"; "cementum, seasonality".
- For the biological studies section, keywords were: "cementum, development"; "cementum, biology"; "cementum, proteomics".

Only the first stage of the search resulted in ca. 190,818 articles. These included duplicates and non-relevant works and were further screened by titles and abstracts first and by aims and objectives after. A graphic representation of the results of this search can be found in the Supplementary Materials (Figures S1 and S2). For the Human and Animal section, research that was not directly relevant to the dental cementum was excluded and given a "year of publication limit" to September 2021. As for the Biological section, instead, only papers published between 2018–2022 were considered, as to give the reader the most up-to-date summary on the current knowledge regarding the dental cementum. References to older papers and/or books might have been added only when delivering concepts essential to the understanding of current issues and if considered fundamentally relevant to the present work. Ultimately, a total of 149 articles were selected (i.e., 66 for Humans,

31 for Animals, and 52 for Biology) and further narrowed down following the selection criteria above mentioned to 129 (i.e., 55 for Humans, 28 for Animals, and 43 for Biology), which were then included in this review. A further note regarding the studies dealing with the TCA estimation of age and season at death is that they seem to adopt either a qualitative or quantitative approach, or both. The first kind mainly reports about quality of visibility, description of the increments and/or tissue, statement of success or not of the technique, applicability in case of dental pathologies, etc. In quantitative studies, instead, there is a clear statement and representation of the statistical success/unsuccessfulness of their results (e.g., reference to the “*r*” and “*p*” values and/or other statistical tests). Although the studies showing both quantitative and qualitative results are to be preferred, for the purpose of this review, they have been both taken into account. Along with the inconsistency in reporting the results, another challenge was represented by referring to the sample size in terms of (a) *n*° of individuals; (b) *n*° of sections; (c) *n*° of teeth. Therefore, to the reader’s benefit, the specifics of each study have been summarised and collected as they were reported by their authors in Tables S1 and S2 (in Supplementary Materials). These tables were completed only for the Human and Animal sections, as the research regarding the investigation of the biology of dental cementum follows completely different approaches and protocols that are not comparable with the methodologies for age and season estimations.

The principal aim of this review is that of providing the reader with the most comprehensive understanding of the TCA phenomenon by approaching it from all the different angles that have been so far investigated.

### 3. Results and Discussion

The results of this review have been divided in three sections: Biological Studies, Animal Studies, and Human Studies.

#### 3.1. Biological Studies

The core of years of misinterpretations and inconsistencies in TCA analysis stems from a general lack of knowledge regarding the biology of cementum, from its development to its daily mechanisms. Understanding its biology should be the first milestone to a significant improvement of the technique.

This necessary step was identified by a few authors at the early beginning of the TCA application. One of those was Lieberman, who did not only urge future research to address this issue, but also provided one of the first summaries on cementum biology (Lieberman and Meadow [10]; Lieberman [12]), drawing the attention on the existence of different types of cementum, their composition, and their structure.

##### 3.1.1. Cementum: The Tissue

Histologically, teeth consist of three main tissues: enamel, dentine, and cementum. Despite sharing some features (i.e., the incremental growth), dental tissues are significantly different in terms of function, microstructure, cellular morphology, and behaviour.

The cementum in humans coats the external surface of the root and can be broadly divided into acellular extrinsic fibre cementum (AEFC) (ca. coronal half of the root) and cellular intrinsic fibre cementum (CIFC) (ca. apical half of the root) (Nanci and Bosshardt [23]). However, other scholars identified further types and varieties of cementum other than the two above-mentioned (i.e., afibrillar cementum, extrinsic fibre cementum, intrinsic fibre cementum, and mixed fibre cementum (Hillson [24]); cellular mixed stratified cementum (CMSC), acellular afibrillar cementum (AAC), and intermediate cementum (Yamamoto et al. [25]).

As suggested by the names, differences are found in presence/absence of cells/cementocytes, type of fibres found, and co-existence of one or more types of cementum.

When assessing age and season at death, it is always highly recommended to base the assessments on the analysis of the acellular extrinsic fibre cementum, which is normally

more regular and “reliable” because it is less subjected to the activity of the cells reacting to tooth movements and damages. Therefore, for the purpose of this review, a deeper look into the characteristics of this specific type of cementum will follow.

The AEFC (also called primary or acellular cementum) can vary from 50 to 200  $\mu\text{m}$  in thickness, according to age (Yamamoto et al. [25]) and develops slowly, leaving its forming cells right on top of its surface rather than entrapped in the matrix as in the cellular cementum (Nanci and Bosshardt [23]). It is ca. 45–60% mineralised with its inner layers less mineralised than the outer ones (Nanci and Bosshardt [23]). Besides the absence of cementocytes, its main features are the presence of extrinsic fibres of the periodontal ligament (PDL) (also called Sharpey’s fibres) that runs perpendicular to the cementodentinal junction, and the presence of growth incremental lines (Yamamoto et al. [25]; Hillson [24] and Nanci and Bosshardt [23]).

### 3.1.2. Composition, Structure, and Properties

The cementum has been often regarded as a “bone-like” tissue, even though, as rightly pointed out by Yamamoto et al. [25], the “cementum is avascular, does not undergo dynamic remodelling, and increases in thickness throughout life. On these points, cementum is markedly different from bone.” The parallel with bone tissues, however, mostly relates to its composition. In fact, contrary to enamel and dentine (whose inorganic components are ca. 96% and 70%, respectively), the cementum is the only dental tissue to also be made of a consistent organic part. Despite scholars not always agreeing on the exact percentages of organic and inorganic material in the cementum, it can be said that they all reported values between 65–50% for the inorganic part and 50–30% for the organic one (Nanci and Bosshardt [23]; Berkovitz et al. [26]; Colard et al. [27]; Perez-Berberia et al. [28]).

About 90% of the organic part consists of collagen fibres, and more specifically collagen type I (COL1). Other types of collagen found in cementum are type III (COL3A1) (which is highly found during development and regeneration of mineralised tissues) and type XII (COL12A1) (which is linked to fibres) (Nanci and Bosshardt [23]). More recently, another study (Lira Dos Santos et al. [29]) also identified the presence of collagen type XIV (COL14A1), which is usually found in association with high mechanical stress tissues (such as tendons and skin). The rest of the organic component, instead, consists of non-collagenous matrix proteins such as sialoproteins, dentin matrix protein 1 (DMP1), dentine sialoprotein (DSPP), fibronectin (FINC), osteocalcin (OC), osteonectin (SPARC), osteopontin (OPN), tenascin (TENA), proteoglycans, proteolipids, and several growth factors (e.g., cementum growth factor, which seems to be an insulin-like growth factor molecule) (Nanci and Bosshardt [23]). The presence of enamel-related proteins has been proposed by some scholars (Berkovitz et al. [26]) as important for cementoblast-inducing activity, but it is at present still controversial (Yamamoto et al. [25]).

The inorganic component of cementum, instead, is mostly made of calcium and phosphate in the form of thin and plate-like hydroxyapatite crystals (on average 55 nm wide and 8 nm thick) (Berkovitz et al. [26]) with traces of other elements, such as copper, fluorine, iron, lead, potassium, silicon, sodium, and zinc (Perez-Berberia et al. [28]). According to Edinborough et al. [30], the atomic average Ca/P ratio in the cementum (up to 1.65 for the majority of their sample) is below the average ratio in standard bioapatite (1.69–1.71), concluding that the cementum is overall hypomineralised.

Structurally, the main features of the cementum is the type and organisation of collagen fibres, which seem to be radial in acellular cementum and woven in radial and circumferential fibres in the cellular cementum (Ho et al. [31]; Aboulfadl and Hulliger [32]).

Finally, according to Ho et al. [31], the elastic modulus of cementum is between 14–17 GPa, which would set the cementum between the cortical bone (20.7–18.6 GPa) and the trabecular bone (14.8–10.4 GPa) in terms of elasticity (Rho et al. [33]).

### 3.1.3. Lines of Salter

The incremental lines in the cementum have been called in numerous ways, often leading to confusion and misinterpretations. However, they are already known in the medical literature as “lines of Salter” (Berkovitz et al. [26]; Kumar [34]), a term that would be more appropriate to adopt hereafter in the studies of dental cementum.

The lines of Salter indicate the so-called resting lines, darker in colour, which are alternated with lighter bands of tissue when seen under transmitted light microscopy. Their nature and the mechanism behind their deposition is still debated. Amongst the reasons behind the banding phenomenon, scholars have ventured:

- (1) A change in collagen orientation due to consumption of a hard/soft/less or more nutritious diet (Lieberman [12]).
- (2) A change in the degree of mineralisation of each band, where the darker band (in these papers also called “incremental line” or “resting line”) is more mineralised than the lighter one (also called “growth band”) (Klezeval [9]; Nanci and Bosshardt [23]; Yamamoto et al. [25]; Colard et al. [27]; Mani-Caplazi et al. [35]).
- (3) A multi-approach including changes in collagen orientation, degree of mineralisation, density of cementocytes lacunae, density of collagen fibres versus extrinsic fibres or ground substance, etc. (Hillson [24]). A similar approach was taken by Berkovitz et al. [26] when they suggested that the banding phenomenon might be correlated not only to differences in the degree of mineralisation, but also in matrix composition, for which, according to these authors, the lines of Salter would be rich in OPN, whereas the matrix would be rich in sialoproteins.
- (4) A change in the shape or orientation of the mineral crystals (Cool et al. [36]). In this study, the authors found that demineralisation was the only process that altered the pattern, and composition did not seem to change between one layer and the other.
- (5) An optical effect. Berkovitz et al. [26] hypothesised that the extrinsic fibres might have an unmineralised core, which, during preparation of ground sections, might be lost causing that to be replaced by air or debris and resulting in an internal reflection of the light.
- (6) A difference in elemental composition. A study carried out on great apes (Dean et al. [37]) showed that Ca, Zn, and Sr mapping presented evidence of incremental growth layers, whereas the concentration of P was constant. They also claimed that peaks in Zn and Ca and in carbonated hydroxyapatite coincided with the brighter bands.

### 3.1.4. Brief Summary of Dental Development

Dental development starts already in the embryo, when at ca. 28 days an ectodermal epithelial thickening appears where the future maxillary and mandibular arches are going to form. When they finally join in the midline, a week after, they keep developing in arch-shaped plates, where the primary epithelial bands are seen. From these, the vestibular and dental laminae will develop (Cunningham et al. [38]).

Following these preliminary formations, ten swellings (called enamel organs) will form from each dental lamina during the bud stage. The enamel organs consist of an epithelial component, under which mesenchyme is aggregated to later form the dental papilla during the cap stage. At week 10, the now-tooth germ is surrounded by the dental follicle, in which ameloblasts and odontoblasts are already working on the formation of their respective tissues (i.e., enamel and dentine) during the bell stage. The late and last bell stage already sees the main component of the future deciduous tooth formed (Cunningham et al. [38]).

### 3.1.5. Dental Root Development

The first dental tissue to be deposited is the dentine (Hillson [24]; Cunningham et al. [38]) and, more specifically its organic matrix on which the later differentiated ameloblasts will start depositing the enamel. Once the crown is completed, the development of the root can

begin, which, in time, will eventually push the tooth through the dental crypt and finally into occlusion.

A double layer of epithelial cells, known as Hertwig's epithelial root sheath (HERS), plays a major role in the development of the root. It forms from the external and internal enamel epithelia at the cervical loop of the enamel organ, and it proliferates apically in the shape of the future root (Berkovitz et al. [26]). The elongation of the epithelial sheath happens within the dental follicle (from which cementum, periodontal ligament—PDL—and probably alveolar bone are formed) until it eventually encloses the dental papilla entirely except for the area of the future apical foramen (Berkovitz et al. [26]).

HERS is therefore a double epithelial layer found in between the undifferentiated mesenchyme of the dental papilla on the inside and the dental follicle on the outside, which also is divided in layers; the most internal one (adjacent to the HERS) is of ectomesenchymal origin (neural crest cells), and the remaining two (intermediate and outer ones) are of mesodermal origin. The cells of the internal layer of HERS induce the dental papilla to differentiate into odontoblasts, whereas the mesenchymal cells of the dental follicle differentiate into cementoblasts (Berkovitz et al. [26]). Interestingly, cementoblasts seem to differentiate from the ectomesenchymal inner layer of the dental follicle (Berkovitz et al. [26]; Hye-Sun Kim et al. [39]), whereas the other two layers will later differentiate into the fibroblasts of the PDL after cementogenesis has begun (Berkovitz et al. [26]). For all these differentiation processes to happen, the HERS needs to eventually disintegrate by local apoptosis into a mesh network first (Li et al. [40]) and, finally, into clusters called epithelial cell rests of Malassez, which remain in the PDL (Yamamoto et al. [25]).

The real role of HERS, however, is still debated. The idea that it merely stands as a “cast” for the future root (Luan et al. [41]) seems to have been overall abandoned by the majority of scholars. The presence of organelles capable of synthesis and secretion of bioactive molecules (e.g., endoplasmic reticulum, Golgi material, and mitochondria) in HERS cells, in fact, would point to a more active role of HERS in the development of the root (Berkovitz et al. [26]). More recent studies (Li et al. [40]) are suggesting that HERS might be more significantly involved in these cellular differentiation processes, acting as a sort of “signalling centre” for the development of the root and the periodontium. Li et al. [40] suggested that HERS might actually be promoting the differentiation of both odontoblasts (when HERS interacts with the CNC (cranial neural crest-derived mesenchyme cells) and cementoblasts (by allowing the interaction between dentine and dental follicle cells—FCs—during HERS's initial perforation, also in Hye-Sun Kim et al. [39]). Similarly, Wu et al. [42] claimed that in their *in vitro* and *in vivo* experiments, they observed how dNCPs (dentine non-collagenous proteins) were key to induce the DFCs to differentiate into cementoblasts, which was only possible during HERS's apoptosis. On this, Hye-Sun Kim et al. [39] expanded by saying that dNCPs not only contribute to the differentiation of cementoblasts, but also to their mineralisation, as this in cementoblasts would take place not by matrix vesicles but by specific soluble factors or signalling molecules secreted by the odontoblasts. In their study, dNCPs were found to increase the production of important proteins for mineralisation, such as OC, ALP, and BSP mRNA in cementoblasts.

### 3.1.6. Cementogenesis

As previously mentioned, cementum is broadly distinguished in two main types: acellular and cellular, which are also respectively called primary and secondary, referring to their time of formation. Berkovitz et al. [26] gave a comprehensive description of the known steps of cementogenesis. Keys to the onset of cementogenesis are the perforation of HERS and the formation of the hyaline layer between dentine and cementum. As already summarised, the perforation of HERS in a mesh network allows the interaction between epithelial and mesenchymal cells, which will eventually initiate the differentiation processes of the main cellular types of the periodontium: odontoblasts, cementoblasts, and fibroblasts.



The formation of the acellular cementum is preceded by the differentiation of the odontoblasts from the dental papilla that start secreting the organic matrix of the root predentine. This first secretion appears, once mineralised, as a structureless and “glass-like” layer, called “hyaline layer (of Hopewell-Smith)” (Berkovitz et al. [26]). The role of this first layer (to be found between the granular layer of Tomes in the dentine and the first lines of Salter in the cementum) is paramount to the onset of acellular cementogenesis. At this point, the cementoblasts (a different type of fibroblasts-like cells) differentiate from the dental follicle and, through HERS, lie on the surface of the still unmineralised hyaline layer (Berkovitz et al. [26]). These cells produce collagen fibrils that will connect to the fibrils already present in the hyaline layer on one side, and to those of the PDL on the other side, thus creating a particularly strong bond among these three structures, especially once mineralisation starts (Berkovitz et al. [26]). Mineralisation begins somewhat in the middle of the hyaline layer by matrix vesicles and later spreads both inwards and outwards (Berkovitz et al. [26]). However, mineralisation of the acellular cementum does not proceed by matrix vesicles (Berkovitz et al. [26]; Hye-Sun Kim et al. [39]) and might instead be influenced by the presence of hydroxyapatite crystals in the dentine, that of alkaline phosphatase in the PDL, and/or the presence of non-collagenous proteins (e.g., BSP) on its surface (Berkovitz et al. [26]). Cementogenesis also proceeds in alternating periods of activity and rest, which are associated with the formation of the lines of Salter.

Once the cementogenesis of the acellular cementum has started and the root formation carries out apically, a different type of cementoblasts (more cuboidal in shape and with more cytoplasmic processes) appears on the surface of the root. They are responsible for the increase in speed deposition and the formation of intrinsic fibres (Berkovitz et al. [26]). Due to these characteristics, the cellular (or secondary) cementum can be visually recognised by the presence of cementocytes (cells that have been entrapped in the matrix) and the more widely spaced lines of Salter.

### 3.1.7. Back to the Cells

At a cellular level, the cementoblasts producing acellular and cellular cementum seem to have phenotypical differences not only in terms of their shape, but also in terms of their secretory activity (Table 1). The reason why two different types of cementoblasts are both differentiating from the dental follicle is still unclear (Berkovitz et al. [26]).

**Table 1.** Comparison of cementoblasts in acellular and cellular cementum (amended from Berkovitz et al. [26]).

Cementoblasts in Acellular Cementum	Cementoblasts in Cellular Cementum
○ Identifiable for a short time;	○ Identifiable for a long period;
○ <b>Fibroblast-like</b> morphology;	○ Osteoblast-like morphology;
○ Derived <b>from epithelial root sheath</b> ;	○ Derived <b>from mesenchyme</b> ;
○ Express cytokeratin;	○ Do not express cytokeratin;
○ Do not express osteocalcin;	○ Express osteocalcin;
○ Do not express parathormone receptors;	○ Express parathormone receptors;
○ Do not express TGF $\beta$ (transforming growth factor) and IGF (insulin-like growth factor);	○ Express TGF $\beta$ (transforming growth factor) and IGF (insulin-like growth factor);
○ Do not react with E11 antibody (a marker that reacts with osteoblast and osteocytes).	○ React with E11 antibody (a marker that reacts with osteoblast and osteocytes).

The classification shown in Table 1 is not completely agreed upon. Dean et al. [37], for example, also suggested that cementoblasts forming the acellular cementum might derive from or be influenced by the epithelial root sheath, but, contrary to Berkovitz et al. [26], they claimed that this type of cementoblast might actually be able to express cytokeratins, parathormone (PTH) receptors, TGF $\beta$ , and IGF.

Furthermore, because of the parallel with osteocytes, the cementocytes (being cementoblasts entrapped in the cellular cementum) have always been thought to be inactive (or destined to inactivity). However, more recent studies have highlighted a new perspective of their role within the periodontal system. The observation made so far by Salmon et al. [43] of the activation of a cementocyte metabolism during experimentally induced apposition, suggested that cementocytes might actually have an active role in neocementogenesis, dental cementum apposition, and mineralisation. Additionally, Lira Dos Santos et al. [29] showed the mechanoresponsive nature of these cells by experimentally inducing controlled orthodontic movements (OTM). In these experiments, the authors found an increase in the nuclear size and proportion of euchromatin (which indicates cellular activity); a different protein expression from the control sample (with COL14A1 and several extracellular matrix proteins, including decorin (DCN), biglycan (BGN), asporin (ASPN), and periostin (POSTN) being downregulated during OTM); and finally 11 keratins, which were significantly increased by OTM and mainly localised on the epithelial remnants of Hertwig's epithelial root sheath (Lira Dos Santos et al. [29]).

### 3.1.8. Molecular Signalling Pathways

The understanding of root formation has become increasingly important, especially in the field of regenerative dentistry, as scientists try to figure out a successful therapy to promote the regeneration of periodontal tissues, when these deteriorate over time or following pathological conditions. To this regard, the "riddle" of cementogenesis is a major setback. Root formation and cementogenesis have therefore been addressed also from a different point of view, which is that of genes and molecular signalling pathways.

In their review on the signalling pathways in root formation, Wang and Feng [44] reported the importance of the coordinated interaction amongst Wnt- $\beta$  catenin, Osterix (Osx), and Hedgehog (Hh) signalling pathways. They also highlighted the role of NFIC, as the "master gene" of dental root formation, as it expresses NFIC (nuclear factor IC), whose downstream molecule is osterix (also known as Sp7), a zinc finger transcription factor associated with skeletal and cementum formation (Wang and Feng [44]). The importance of Osx in root development stands in its ability of interrupting Wnt- $\beta$  catenin signalling by attaching to  $\beta$  catenin. Similarly, Hh signalling plays a role in this process as it can also inhibit cementum apposition by repressing Wnt- $\beta$  catenin and Osx expression (Choi et al. [45]). A negative feedback loop has been recognised for Hh-Smo and Wnt- $\beta$  catenin signalling, for which a minimum level of Hh-Smo is needed for proper cellular cementum apposition (Choi et al. [45]). Nottmeier et al. [46] also found that Wnt 1 ligand also influences alveolar and cementum formation. Its expression, in fact, increases both acellular and cellular cementum and, if prolonged, brings to the formation of ectopic cementum-like calcification in the pulp and destruction of the PDL.

From the literature, it seems like the main pathway connected to cementum formation is that of Osx-Wnt/ $\beta$  catenin. An alternative route has been identified in the transcription factor 7-like 2 (TCF7L2), which is the transcription factor able to stimulate the mineralisation of the cementum by activating the nuclear factor kappa B (NF- $\kappa$ B) signalling pathway (Zhao et al. [47]).

From a genetic point of view, circular RNA low-density lipoprotein receptor-related protein 6 (circLRP6) seems to regulate the expression of runt-related transcription factor 2 (RUNX2), OPN, and bone sialoprotein (BSP) via the miR-145-5p/Zeb2 axis to promote cementoblasts differentiation and mineralisation. More in detail, RUNX2 is found in precementoblasts and cementoblasts but not in cementocytes, and it is strictly connected to tooth development; OPN is an extracellular matrix protein found in mineralised connective tissues and secreted by cementoblasts; BSP is also an extracellular matrix protein found in cementum and alveolar bone (Li et al. [48]).

Interestingly, the observations made by Lira Dos Santos et al. [29] on the mechanoresponsive nature of cementocytes seemed to have been found also in another study (Yun Wu et al. [49]) where changes caused by mechanical forces were noticed on the miR-

NAs of PDL cells, which resulted in a higher expression of osteogenic/cementoblastic genes and proteins, and in the upregulation of RUNX2, SATB2, and MSX2 genes after mechanical loading.

### 3.1.9. Proteomic Studies

A few studies addressed the issue of cementogenesis by focusing on the expression of its proteins. Phosphoproteins and glycoproteins (such as BSP, OPN, DMP1), mineralisation-regulating enzyme tissue-nonspecific alkaline phosphatase (TNAP), proteoglycans (such as DCN, BGN, fibromodulin (FMOD), ASPN, lumican (LUM), osteomodulin/osteoaderin (OSAD)), POSTN, vimentin (VIM), TNA, and vitronectin (VTN), were all identified in dental cementum (Salmon et al. [43]). Other 12 proteins were seen specifically during experimentally induced apposition, whose main four secreted factors were serpin 1a (A1AT), procollagen C-proteinase enhancer-1 (PCPE1), tenascin X (TNX), and ASPN (Salmon et al. [43]). Differences were also seen in the proteins expressed in permanent and deciduous dental cementum, with only 50.8% of the identified proteins being shared between the two (Giovani et al. [50]). Similarly, differences in the secretory activity of the cells in acellular and cellular cementum should be considered as, for instance, DSPP, FINC, and TENA, and proteoglycans such as versican (CSPG2), DCN, and BGN are present in cellular cementum but not acellular cementum (Berkovitz et al. [26]).

Salmon et al. [51] also added that most of the dental cementum proteins were involved in cell communication and signal transduction. Of these, they found extracellular superoxide dismutase (SOD3) to be present in all their human subjects, especially lining the cervical root and around the most apical cementocytes, which made them hypothesise that SOD3 might play a protective role in cementum formation and maintenance.

Other studies (Carmona-Rodriguez et al. [52]; Hoz et al. [53]), instead, agreed on the role of CEMP1 (cementum protein 1) as cellular promoter and differentiation regulator of PDL cells. CEMP1 has been found to be expressed by cementoblasts, PDL cells, and mesenchymal stem cells (found in the PDL). When it was transfected into “non-mineralising cells” (i.e., fibroblasts), it resulted in the production of ALP, OCN, BSP, cementum-derived attachment protein (CAP), the transcription factor Cbfa1 (responsible for mineralisation of bone and cartilage) (Carmona-Rodriguez et al. [52]; Hoz et al. [53]), and the formation of mineralised nodules and calcium deposition (Carmona-Rodriguez et al. [52]). Similar results were found by Arroyo et al. [54], where it was found that CEMP1-p4 (CEMP1 C-terminal-derived synthetic 15 amino acid-long peptide) also promotes the differentiation of the HOMSCs (human oral mucosa stem cells) into a mineralizing-like phenotype by activating  $\beta$  catenin signalling cascade.

Another protein was also identified that is exclusive to cementum (and not to be found in bones): CAP was mentioned by Carmona-Rodriguez et al. [52] as one of the products of the CEMP1 transfection into fibroblasts, but also considered to be, in Berkovitz et al. [26], a collagenous protein located in the matrix of mature cementum and in its cementoblasts.

### 3.1.10. PPi and Cementum

The work of Foster et al. [55] on the importance of pyrophosphate (PPi) especially in connection with acellular cementum formation inspired a number of research studies (Thumbigere-Math et al. [56]; Almeida et al. [57]; Chu et al. [58]) that further explored the link between PPi homeostasis mechanisms and cementum formation.

The link between cementum and PPi was firstly found in relation to pathological conditions, such as hypophosphatasia (HPP) (Foster et al. [55]) and hypercementosis (Thumbigere-Math et al. [56]). Foster et al. [55] also claimed that the levels of PPi mostly affects acellular cementum rather than cellular cementum. In their experiments on genetically mutated mice, in fact, they observed that an increase in PPi inhibited the development of AEFC, whereas a reduced PPi produced a significantly thicker AEFC. Experiments in vitro suggested that PPi regulates cementoblast mineralisation and associated genes, and more specifically that a loss of TNAP (tissue-nonspecific alkaline phosphatase) causes

underdevelopment/absence of AEFC, whereas loss of ANK (progressive ankylosis protein) or ENPP1 (ectonucleotide pyrophosphatase phosphodiesterase-1) causes loss of control in the apposition of the cementum, resulting in hypercementosis (Foster et al. [55]). Later investigations between hypercementosis and GACI (generalised arterial calcification of infancy) condition suggested they are both caused by a mutation of the ENPP1 gene (Thumbigere-Math et al. [56]). Similarly, the loss of ANK also resulted in a thicker cementum (Thumbigere-Math et al. [56]), possibly suggesting its role as a redundant mechanism of cementum growth, along with ENPP1 and PPi levels (Chu et al. [58]).

As already mentioned for the histology, composition, and genetics of cementocytes, differences have been highlighted also in their response to inorganic phosphate (Pi) levels. In a study conducted by Almeida et al. [57], cementocytes treated with Pi were found to express more DMP1 and OPN, with further differences in the expression of OCN and TNAP mRNA between cementoblasts and cementocytes treated with Pi. These findings would again suggest that cementocytes play a different role from that of cementoblasts, and that they might actively be involved in periodontal homeostasis and regeneration (Almeida et al. [57]).

#### 3.1.11. Parathyroid Hormones

Parathormone (PTH) also seems to be strictly connected to calcium and phosphate homeostasis (Xu et al. [59]), and its presence (as well as that of parathormone receptor proteins) has already been confirmed in osteoblasts as well as cementoblasts (Berkovitz et al. [26]). Experimental administration of PTH showed interesting results in terms of cementogenesis. When continuously administered, it seemed to regulate phosphate homeostasis by downregulating DMP1; whereas, when administered in an intermittent fashion, it seemed to promote cementogenesis by increasing the expression of OCN, BSP, and COL1 (Xu et al. [59]).

Gotz et al. [60] also explored the presence of components of the insulin growth factor (IGF) system in the periodontium, which is stimulated by the growth hormone (in chondrocytes), and by PTH (in osteoblasts) (Lombardi et al. [61]). The IGF system plays an important role in the development, homeostasis, and regeneration of the periodontium. More specifically, in the cementum, IGFs were found to be connected to roles of homeostasis and attachment; in the acellular cementum, only IGF-II (who mostly plays a role during prenatal development) was detected; and finally, the PDL cells seemed to function as a reservoir for IGFs, which worked in a paracrine manner (Gotz et al. [60]).

#### 3.1.12. The Role of Vitamin D

Last but not least, the major role that vitamin D plays in the maintenance of the skeleton is currently very well-known and recognized, and that is true for bones as well as for teeth (Botelho et al. [62]). Vitamin D is likewise strictly linked to phosphate and calcium homeostasis and can act as a paracrine and autocrine agent (Swapna and Abdulsalam [63]). In cases of severe vitamin D deficiencies, for instance, the resulting hypophosphatemia and hypocalcemia (which, in response, also causes secondary hyperparathyroidism) are addressed by the organism with bone turnover that then allows the levels of serum  $\text{Ca}^{2+}$  to increase and the levels of serum Pi to decrease. Furthermore, vitamin D receptors (VDR) (ligand-activated transcription elements) can also activate a signalling pathway capable of controlling gene expression (Swapna and Abdulsalam [63]).

Since vitamin D seems to have an influence and/or a connection to phosphate/calcium homeostasis, PTH, and to also have a potential action as a signalling pathway, further research addressing the role that it plays on cementum and cementogenesis might also be significant in the understanding of this tissue.

### 3.2. Animal Studies

The analyses of incremental growth in teeth started on animal dentition already in the 1950s with the work of Laws [1] on the dentine of South Atlantic elephant seals (only later to be followed by that on the cementum of crabeater seals—Laws et al. [64]).

The animal studies selected for this review (Supplementary Materials Table S2), mostly focused on age assessments and seasonality (here also achieved with the so-called “traditional methods”). A small portion of them (7 out of 28) tried to investigate the biology of the tissue and understand the mechanisms behind the formation of the incremental layers.

Supplementary Materials Table S2 gives a summary of methods and materials adopted in these studies as well as their outcome. Similarly to what was discussed for the human section of this review, these studies showed a variety of approaches (i.e., mineralised/demineralised; stained or not; longitudinal/transverse sections; etc.), which again reflects the confusion and inconsistencies of the academic approach to the TCA, really only agreeing on the basic principles of this phenomenon (i.e., yearly forming increments made of two 6-month seasonal sub-increments). To this regard, the issue concerning the seasonal interpretation of the bands' colour is unresolved also in the animal studies. From the collection of those selected for this review, it seems like the majority agrees in interpreting the light-coloured bands as indicative of the summer season and the dark ones of the winter season. However, a few of them agree, instead, with Klezeval's [9] interpretation (Beasley et al. [65]; Burke and Castanet [66]; Pagh et al. [67]; Cipriano [68]).

A closer look to the research addressing the biological formation of the incremental lines is in order, especially if we are to truly understand this phenomenon. Fundamental to the discussion regarding the biology of cementum are the works of Lieberman and Meadow [10] and Lieberman [11,12], which still lead the conversation on this topic. Especially interesting to this discussion is Lieberman [11], where the author carried out several “feeding experiments” on goats to study the effect of diet on the cementum. From this study, Lieberman concluded that the banding phenomenon is a consequence of the variations in collagen fibres' orientation and mineralisation strictly connected to the hardness and protein/mineral content of the food consumed by the animals, and this is associated with the seasonality of the diet.

In 1995, instead, Burke and Castanet [66] attempted the TCA analyses on samples processed with different protocols (i.e., decalcified and non-decalcified sections) and observed through different technologies (i.e., polarised, transmitted, and reflected light microscopy, SEM and microradiography), finally concluding that the cemental lines were visible in each sample subgroup.

More recent studies addressed questions such as the rate of deposition of the cementum, such as in Pérez-Barbería et al. [28], where the authors found that the rate is not constant in every part of the root, but it is on the inter-radicular pads of red deer molars with an increase of 0.26 mm per year. They also claimed that the dentine thickness had no effect on the cementum, concluding that the dental cementum deposition is independent of tooth wear other than that associated with age. In the same year, Akbulut et al. [69] also ran one of the few taphonomic experiments on the cementum where they found that in comparison to enamel (which showed signs of abrasion in the group of animals collected between 30 to 90 days postmortem), the cementum did not present such signs at any of the PMI intervals here tested (0 h; 7 days; 15 days; 30 days; 60 days; 90 days).

On a deeper level, Cipriano [68] in their study of the TCA in wild and captive apes, highlighted a couple of key points that are extremely noteworthy regarding the biology of the tissue. First, they noticed that the cemental lines were more irregular in the captive individuals than in the wild ones, flagging the possible effect of “domestication” on this phenomenon. Secondly, they observed how a particularly cold winter showed on the TCA of each captive individual as a wider white band coinciding with the relative chronological year. This finding led the author to hypothesise that a hormonal response (i.e., thyroid hormones T3 and T4 and catecholamines) to the cold stress and consequent calcium metabolism might play an important role in the deposition of the dental cementum.

### 3.2.1. TCA on Animals: A Less Problematic Issue

TCA analysis for age and season estimations on animals is more accepted and applied as a technique, especially for wildlife management. This is so for several reasons: from an easier visualisation of the increments in animal specimens (as opposed to the human ones) to a greater availability of samples, less ethical implications and, above all, no forensic involvement, which is really the field that requires most of the rigorousness for any technique to be accepted as evidence in court.

As shown here, the research attempted the visualisation of the cemental increments in numerous different species and again followed different protocols for preparation and processing of the samples. Some of them in the US employed a specialised service (Matson's Laboratory (<https://matsonslab.com/the-science/cementum-aging/> (accessed on 9 February 2022) (here for their protocol: <https://matsonslab.com/the-science/cementum-aging/> [accessed on 9 February 2022])), which is an example of how the application of the TCA analysis on animals is more widely accepted and less problematic.

### 3.2.2. A Protocol for Each Tooth

It is the authors' opinion that animal teeth do not need one standardised protocol to be processed for TCA analysis. The variability of animal dentition and their internal microstructure, in fact, should suggest a species-specific or, even better, a tooth-specific protocol rather than a single standardised one, as is the case for humans.

Dentitions can be categorised by the number of dental sets developed during the animal's life: monophyodont (1 set), diphyodont (2 sets: deciduous and permanent), and polyphyodont (2+ sets) (Ungar [70]; Berkovitz and Shellis [71]).

However, they can also be distinguished by whether they attach to the:

1. jawbone:
  - through the alveolus (thecodont, as in humans).
  - fused to the surface of the jawbone through a fibrous membrane (acrodont, as in some reptiles, amphibians, and fish).
  - fused to the inner side of the jawbone (pleurodont, as in some reptiles).
2. palate (as in some fish and reptiles)
3. pharynx (as in ray-finned fish).

A further difference can be drawn between non-ever-growing teeth (i.e., they stop growing once they reach their final shape, as in humans) or ever-growing teeth (i.e., also called hypselodont in Berkovitz and Shellis [71], they keep growing in response to high-wear functional movements, as in rodents) (Klezeval [9]; Ungar [70]).

Animal dentition can be also categorised according to their teeth morphology from a general point of view (homologous dentition (homodont or isodont, same type of teeth) and heterogeneous dentition (heterodont, different types of teeth as in humans: incisors, canines, premolars, and molars)), to a more form-specific subdivision (as shown in Table 2) (Ungar [70]; Berkovitz and Shellis [71]).

Considering all the above-mentioned differences, a proper understanding of the type of dentition to be analysed and its microstructural anatomy (i.e., location and typologies of cementum) is truly important for the application of an appropriate TCA protocol.

For instance, in the majority of the studies shown in Supplementary Materials Table S2, the samples consisted of hypsodont teeth, which were processed in longitudinal sections (contrarily to the more common and also advised transverse sections produced for human teeth). In fact, being the cementum both above and below the gum line, this sectioning choice allows a complete overview of the tissue, leading the research to select the most visible and suitable region of interest (ROI) for analysis.

**Table 2.** Categories of teeth according to their morphology and cusps.

Type of Tooth	Characteristics	Animals	Location of the Cementum
Hypsodont	High-crowned teeth. Occlusal surface is flat and rough, good for grinding They can be ever-growing	e.g., cattle, horses	Cementum covers the tooth body over and below the gum line. Below this, a layer of enamel covers the whole body. Both cementum and enamel invaginate in the dentine.
Brachyodont	Low-crowned teeth.	e.g., humans	Cementum is only found on the root below the gingival line.
Crown and cusps shape	Characteristics	Animals	-
Bunodont	Low and rounded molar cusps	Omnivores (e.g., pigs, bears, humans)	-
Zalambdodont	Molars with 3 cusps (the largest on the lingual side) joined by two crests that form a V-shape.	e.g., golden moles, solenodons	-
Dilambdodont	Similar to zalambdodont molars but differ in a W-shaped crest.	e.g., moles, shrews and some bats	-
Selenodont	Elongated half-moon-shaped cusp.	e.g., cattle, deer	-
Lophodont	Elongated teeth with occlusal surface characterised by different patterns of enamel ridges ( <i>lophs</i> )	Mostly herbivores (from lagomorphs, such as hares and rabbits) to elephants.	-
Secodont	Enlarged blade-like teeth, good for slicing and chopping (also called <i>carnassials</i> )	Mostly carnivores	-

### 3.2.3. Evolutionary Considerations

As listed in Supplementary Materials Table S2, TCA analyses have been applied on a variety of species from domesticated animals, such as pigs, horses, and cats, to wilder ones, such as deer and boars, including also fossils and archaeological remains, such as *Titanosaurus* (Dinosauria; Sauropoda) (García and Zurriaguz [72]).

This wide application reflects an aspect of dental biology unfortunately often overseen, which is our shared evolutionary background with the rest of the animal world. The fact that our periodontal structure behaves somehow in similar ways to that of so many other animal species and with similar timings (seasonal banding phenomenon) as well implies several interesting considerations on the evolution of this tissue.

Teeth have an incredible history. Several organisms, even evolutionarily far away from each other, have these “feeding” structures that might share microstructural elements and/or morphological features. Not only mammals, but also fish and molluscs can have them. Theories about their evolution are currently two: the outside-in and the inside-out theory. The first hypothesises that teeth developed from original placoid scales (as seen on sharks’ skin), which eventually migrated within the mouth after the development of the jaw. The second theory, instead, links our teeth to extinct eel-like animals (conodonts) that presented organised tooth-like elements within their throat, which only after the development of the jaw migrated to its edges (suggesting a development of teeth first and jaws after). Evidence is found for both theories. In fact, different organisms showed traits typical of each specific theory and others, such as the *Loganellia scotica* (with dermal scales on their skins and pharyngeal denticles in their throats), presented both kinds of features simultaneously. Interestingly, all of these elements (dermal skins, pharyngeal denticles, and teeth) are serial homologues, meaning that they are formed by the same set of genetic controls (Ungar [70]; Donoghue and Rücklin [73]).

However similar and made of similar tissues, a direct evolutionary line between the human dentition and that of all these other “toothed” organisms cannot be drawn nor proved.

Our teeth are considered to be evolutionarily different and pertaining to the same subgroup of mammalian teeth. The common ancestor of mammalian teeth is found in a vertebrate that sets our teeth apart from other animal species because of its embryonic development. The main difference of vertebrate and mammalian teeth in comparison to other organisms, in fact, resides in the involvement of the neural crest cells (which are specific to vertebrates) in the making of teeth (Ungar [70]).

Additionally to this and especially from a TCA perspective, it is noteworthy to highlight that, by definition, a mammal is considered so also by the presence of a “true mammalian” temporo-mandibular joint (TMJ), as we know it in humans (Ungar [70]). This is so because the evolution of endothermic organisms has been closely linked to the development of this specific form of dentitions and masticatory apparatus. Given that mammals are endothermic, they have a higher need of fuel (i.e., more complex brain, improved eyesight and hearing, capacity of function at night, etc.) that is provided by a better mastication-breakage of the food consumed. The “true mammalian” TMJ and a high specialised dentition (in terms of tissue-resistant and heterodont specialisation) provide for that need by supplying the animal with specific “tools” and musculature for a strong but also precise and more effective bite (i.e., anatomical functionality of the temporalis, masseter and pterygoids muscles as well as perfect occlusive dental surfaces) (Ungar [70]; Berkovitz and Shellis [71]).

Whether the cementum and the TCA phenomenon are inherently connected to this specific oral biology or not should be the topic of further investigations and comparisons between tooth attachments in mammalian and non-mammalian vertebrates first and between vertebrates and invertebrates after.

The presence and concurrent seasonal timing of the banding phenomenon in different mammals would suggest that the TCA might be strictly correlated to the thecodont arrangement of their dentition (which is shared by all mammals). Although the study on the growth increments in the Titanosaurus tooth sample (Garcia and Zurriaguz [72]) would hint a different answer, the fact that crocodylians are presently the only non-mammal vertebrates to also have their roots embedded in sockets and covered by cementum (Berkovitz and Shellis [71]) again would suggest that there might be a relationship between thecodont teeth and TCA.

### 3.3. Human Studies

A summary of the main studies carried out on human samples can be found in Table S1. This may help the reader navigate the abundant and varied literature regarding TCA and will also allow a quick access and comparison of the main features/information collected from each study. Specifics include details about the purpose of the study; sample type, size, condition/preservation and provenance; data availability; approach, methods, and histological procedure; final results and statistical significance (when provided).

#### 3.3.1. A Matter of Protocol

A standardised protocol that is followed by all researchers dealing with the same technique (and, most of the time, the same research questions) is essential to the reproducibility and thus success and improvement of a technique. Despite this remark being made already during the early life of the TCA investigations, and despite the current presence of at least three published protocols (Wittewer-Backofen [74]; Naji et al. [75]; Colard et al. [6]) for TCA analysis on human teeth, the vast majority of researchers still do not fully comply with them and keep trying alternative methodologies. A possible reason behind this, likewise the general confusion and misunderstanding/misinterpretation of the technique, might still reside in the overall lack of scientific knowledge when it comes to the biology of the cementum. However, until that knowledge is reached, to experiment randomly might



actually be counterproductive, jeopardizing the chances of learning from each other on one hand and, on the other, risking a definitive halt to the adoption of a technique that bears a significant potential. Having said so, the authors of this review are also fully aware of the necessity of “readjusting” the protocol, as often equipment and materials available are not always the same in different laboratories.

The following comparison (Table 3) was made amongst studies that reported a precise sample size and a quantitative outcome, expressed in terms of correlation between real and estimated age/season ( $r$ ), statistical significance ( $p$ ) and margin of error—or mean standard deviation of the estimated age/season from the real one. This analysis aimed to identify the most successful studies on the basis of quantitative results and to propose them as guidelines to future research, highlighting key points of the protocol that should not be changed. Studies that wish to change these “key points” should clearly state their reasons for doing so, explain how the protocol has been changed, list the limitations encountered and the improvements achieved with the modified protocol, and assess their reliability accordingly.

**Table 3.** Comparison of the 31 studies that quantified their results in terms of sample size and statistical values (see Table S1 in Supplementary Materials for more information regarding these studies and complete references).

Study	Type of Study	Sample Size	r value	p Value	Margin of Error
Bertrand et al. (2019) [76]	Age	400 teeth	0.927	0	4.45–5.25 years
Cerrito et al. (2020) [77]	Life History	47 teeth	0.92 ( $r^2$ )	<0.05	1.7 years
Charan Gowda et al. (2014) [78]	Age	30 teeth	0.97	-	-
Colard et al. (2015) [6]	Age	9 teeth	0.77	-	2.3–9 years
Condon et al. (1986) [8]	Age	77 teeth	0.78	-	4.7 to 9.7 years
de Broucker et al. (2016) [79]	Age	41 teeth	0.92–0.85–0.62	<0.01	-
Dias et al. (2010) [80]	Age	55 teeth	0.58	<0.01	9.7 years
Gauthier and Schutkowski (2013) [81]	Age	21 individuals	0.86	0.01	±2–5 years
Geetha et al. (2018) [82]	Age	100 teeth	0.877, 0.875, and 0.866 (respectively with polarised microscope, light microscope, and phase contrast microscope)	-	±11.31 years
Gocha and Schutkowski (2013) [83]	Age	30 teeth	0.522 for all samples. 0.868, 0.249, and –0.185, respectively, for teeth burned at 600 °C, 800 °C, and 1000 °C.	<0.05 for all samples. <0.01 (600 °C sample), >0.05 (800 °C and 1000 °C samples).	-

Table 3. Cont.

Study	Type of Study	Sample Size	r value	p Value	Margin of Error
Goutham et al. (2016) [84]	Age	353 teeth	0.9952 (PH); 0.9760 (BFM); 0.9833 (POL)	<0.05	±8/9 years
Gupta et al. (2014) [85]	Age	100 teeth	-	0.01	-
Jankauskas et al. (2001) [86]	Age	97 individuals	0.879	-	6.46/6.27 years
Kagerer and Grupe (2001) [87]	Age + Life History	80 teeth (91 roots)	-	-	±5.7 years
Kasetty et al. (2010) [88]	Age	200 teeth	0.42	< 0.001	±12 years
Kulkarni et al. (2018) [89]	Age	10 teeth	-	-	0.3–34.5 years
Lanteri et al. (2018) [90]	Age	109 individuals	-	-	1.49–4.57 years
Le Cabec et al. (2018) [91]	Age	20 teeth	0.76	<0.001	16.1 years
Mahalakshmi Loganathan et al. (2019) [92]	Age	50 teeth	-	-	<±4 years in 88% of cases
Mallar et al. (2015) [93]	Age	50 teeth	0.102 and 0.194 (cross sections); 0.588 and 0.581 (longitudinal sections)	0.626 and 0.352 (cross sections); 0.002 and 0.002 (longitudinal sections)	± from 10 to 16 years
Mohan et al. (2018) [94]	Age	20 teeth	-	<0.01	-
Neetu Sinha et al. (2017) [95]	Season	20 teeth	0.9467	0.0001	-
Oliveira-Santos et al. (2017) [96]	Age	60 teeth	-	0.244 to 0.914 (Traditional Counting); 0.449 to 0.484 (Extrapolation Approach)	19 to 21 years (Traditional Counting); 10 to 14 years (Extrapolation Approach)
Petrovic et al. (2021) [97]	Visualization	3 teeth	-	0	5.56 years
Pradeep et al. (2021) [98]	Age	50 teeth	0.97, 0.96, and 0.98 (light, polarised, and phase-contrast microscopy, respectively); 0.96 and 0.97 (demineralised sections stained with H and E and PSR, respectively).	-	1 year (phase contrast mic.); 2.88 years (light mic.); 3.34 years (polarised mic.)
Schug et al. (2012) [99]	Age	24 teeth	0.642	0.013	4.89 years (±9 years)
Sousa et al. (1999) [100]	Age	17 individuals	0.94 (r squared)	<0.001	-

Table 3. Cont.

Study	Type of Study	Sample Size	r value	p Value	Margin of Error
Swetha et al. (2018) [101]	Age	80 sections	-	≥0.05	±11.55 years
Thete et al. (2020) [102]	Age	140 teeth	0.3625	-	-
Wedel (2007) [103]	Season	92 teeth	-	<0.0001	-
Wittwer-Backofen et al. (2004) [20]	Age	363 teeth	0.970 (men) and 0.978 (women)	-	2.5 years

Out of the 55 studies selected for this section of the review, only 31 presented a quantitative outcome (Table 3) and only 2 proved to have obtained the most significant results in their research: these being Wittwer-Backofen et al. [20] and Bertrand et al. [76], who presented the highest correlation between real and estimated age with a relative low margin of error (1–5 years) on a significantly wide sample size (respectively, 363 and 400 teeth). A further comparison of these two studies is presented in Table 4 with the aim of highlighting similarities and differences in their methodologies.

Table 4. Comparison of two successful TCA methods for age estimation.

Studies	Approach	Sample Specifics	Histological Procedure and Analyses
Wittwer-Backofen et al. (2004) [20]	Age determination = Total count of the cementum annulations + tooth and sex-specific <b>mean eruption age</b>	<ul style="list-style-type: none"> <li>• Mostly <b>single-rooted</b> (incisors, canines and premolars);</li> <li>• 12–96 years old—85% &gt; 35 years old;</li> <li>• Modern;</li> <li>• Healthy and pathological.</li> </ul>	<ul style="list-style-type: none"> <li>• Staining of the samples in 1% Fuchsin water solution in order to calculate an “index of periodontal regression” so that the impact of periodontal diseases could be observed;</li> <li>• Embedding in resin;</li> <li>• Production of 3 sequential <b>non-decalcified transverse sections from the middle of the root at 70–80 µm</b> with Leica Biosystems® SP1600 (Leica Microsystems (UK) Ltd, Milton Keynes, UK) with a diamond-coated blade;</li> <li>• Analyses under a <b>bright-field transmitted light microscope</b>;</li> <li>• Digital pictures were taken, and digital aids were used for counting.</li> </ul>
Bertrand et al. (2019) [76]	Age determination = Average count of the cementum annulation + <b>age of completion of the root.</b>	<ul style="list-style-type: none"> <li>• <b>Single-rooted</b> (canines);</li> <li>• 19–90 years old;</li> <li>• Modern and Archaeological;</li> <li>• Healthy.</li> </ul>	<ul style="list-style-type: none"> <li>• Embedding in a mixture of Epoxy resin and hardener;</li> <li>• Production of 5 sequential <b>non-decalcified transverse sections from the middle of the root at 100 µm</b> with a Buehler® IsoMet Low Speed Saw fitted with a diamond-coated blade, followed by polishing;</li> <li>• Analyses under a <b>polarised light microscope</b> (not specified if transmitted or reflected light was used);</li> <li>• Digital pictures were taken, and digital aids and software (e.g., Photoshop) were used both for counting and measurements.</li> </ul>

In both studies, the authors adopted the traditional approach for age estimation (i.e., direct count of the incremental pairs added to the mean age of tooth eruption or root completion).

As for the sample specifics, both studies preferred single-rooted teeth, whereas the real age, if pathological or not, if modern or archaeological, did not seem to significantly affect the results.

Coming to the histological preparation and processing of the samples, the two protocols agree on the necessity of embedding the roots (even if Wittwer-Backofen specifies that in case of fresh teeth, the embedding might not be necessary) and the production of

consecutive non-decalcified cross-section between 70–100  $\mu\text{m}$  from the middle cervical part of the root. As for the option of staining the sections, Wittewer-Backofen clearly explains how teeth were stained with the aim to assess the level of periodontal diseases present in their samples and not to improve the visualisation of the TCA. Similarly, Bertrand did not stain the sections, as he claimed to have followed the ISO-9001 protocol (Colard et al. [6]), thus not only validating that methodology, but also the one of Naji et al. [75], which was a sort of preface to the final ISO-9001 and eventually became a major contribution to it.

It is also worth mentioning other studies that adopted this same protocol and still claimed positive results (even if sometimes partial) on smaller sample sizes, such as Jankauskas et al. [86]; Gauthier and Schutkowski [81]; Gocha and Schutkowski [83]; de Broucker et al. [79]; Lanteri et al. [90].

In conclusion, the key points resulting from this comparison are:

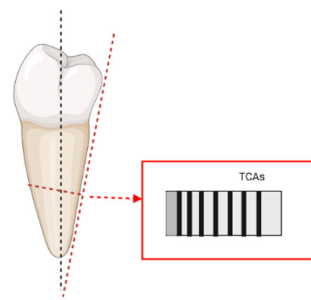
- single rooted teeth;
- embedding in resin (avoidable in fresh specimens);
- non-decalcified sections;
- non-stained sections;
- transverse cross-sections;
- production of 3 to 5 sequential sections from the mid-cervical part of the root;
- thickness of the sections: 70 to 100  $\mu\text{m}$ .

Worthy of note are also the results obtained by Goutham et al. [84]. Despite reporting a higher margin of error (ca. 8–9 years), they still claimed a high correlation between real and estimated age as well as a positive statistical significance. Whereas they agreed with most of the above-mentioned protocols, they only differed in the choice of the sections' orientation, which were here cut longitudinally rather than transversally.

### 3.3.2. Planes and Methods of Sectioning. Longitudinal or Transverse?

As good practice, all the successful above-mentioned protocols recommend the production of multiple consecutive cross-sections from the same tooth. The rationale behind this sectioning procedure is that, first of all, producing sequential cross-sections allows total coverage of the acellular cementum and, secondly, it assures a certain margin of security by increasing the chances of obtaining sections suitable for analysis. This has also been reported by Naji et al. [75], where they performed multiple sections (4–6 per tooth) and evaluated multiple areas (4–6 per section) to “stabilise the average number of lines by identifying outlier counts within the series produced by phenomenon such as the “doubling effect””. In this way, they averaged the number of lines and added this number to the age of tooth eruption to produce a more precise estimate.

One of the major contributions in terms of sectioning techniques was given by Maat et al. [104]. In their work, the authors suggested that adjusting the angle of cut of the sections would improve the visualisation of the increments under light microscopy. Given that the cementum is a mineralised tissue and given that the TCA phenomenon is also possibly related to the orientation/size of its crystals (Cool et al. [36]), adopting an appropriate procedure for the sectioning becomes paramount in order to avoid artefacts and/or undesired optical effects (e.g., “doubling phenomenon”). What Maat et al. [104] proposed (which was then included also in the ISO-9001 protocol) was to cut transverse sections perpendicular to the external surface of the root, rather than to its long axis (as shown in Figure 1).



**Figure 1.** Representation of the “adjusted transverse sections” cut perpendicularly to the exterior of the root and following visualization of the TCAs (based on Maat et al. [104], image realised in BioRender© (available online at <https://app.biorender.com/>, accessed on 21 June 2022)).

Despite numerous recommendations indicating that transverse sections are more suitable for the TCA analysis on human teeth, the literature has been bouncing between longitudinal and transverse sectioning since the very beginning of the TCA investigations (Stott et al. [5]; Charles et al. [7]; Condon et al. [8]). Longitudinal sections were most commonly used for TCA analysis on animal teeth (Supplementary Materials Table S2). The reason behind this different choice was most probably related to the fact that some animal teeth do not share the same characteristics of humans. More specifically, the cementum in some animal species (e.g., horses) grows alongside the enamel (Hillson [24]), instead of coating only the root surface like in the human dentition. That being the case, a longitudinal section would indeed be more appropriate as it would allow a wider surface of investigation. Since the technique of TCA was originally devised on animal dentition, this might explain why some scholars originally adopted some of the same protocols on human teeth. The studies that have more recently tried longitudinal sections on human teeth (Kasetty et al. [88]; Schug et al. [99]; Goutham et al. [84]; Geetha et al. [82]; Kulkarni et al. [89]; Mohan et al. [94]; Swetha et al. [101]; Mahalakshmi Loganathan et al. [92]) show a variety of results (see Table 3 and Supplementary Materials Table S1). Amongst the ones listed here, the most successful seem to be those where sections were not stained or demineralised (Goutham et al. [84]; Geetha et al. [82]; Mallar et al. [93]). When Mallar et al. [93] state that in their study the  $p$  value between actual and estimated age was more significant in longitudinal sections than in cross sections, it is necessary to also consider their sectioning procedure. This, in fact, could have been easily biased by the fact that sections were produced manually and not by using a microtome, thus affecting their evenness and thickness.

The studies that, instead, preferred to stain their sections (Schug et al. [99] and Kasetty et al. [88]) showed a lower success in the assessments.

As for the others, unfortunately, they cannot be properly assessed as they lack consistent information about their results, mostly stating a positive correlation with no further information. The undoubtedly good results in terms of correlation to real age,  $p$  value and sample size obtained by Goutham et al. [84] with longitudinal sections could make their protocol a valid alternative to the two previously suggested (Wittewer-Backofen et al. [20] and Bertrand et al. [76]) despite a slightly higher margin of error of 8–9 years, and might also suggest that the use of longitudinal or transverse sections is ultimately at the discretion of the researchers and does not affect the analysis in a significant way.

### 3.3.3. Demineralisation and Staining: Is It Really Necessary for the TCA?

What really seems to be more damaging to the TCA is the demineralisation and staining of the sections. As these are basic techniques in histology and are widely and commonly used when analysing tissues, they have been carried out also on the first examinations of human cementum (Condon et al. [8]; Klezeval [9]).

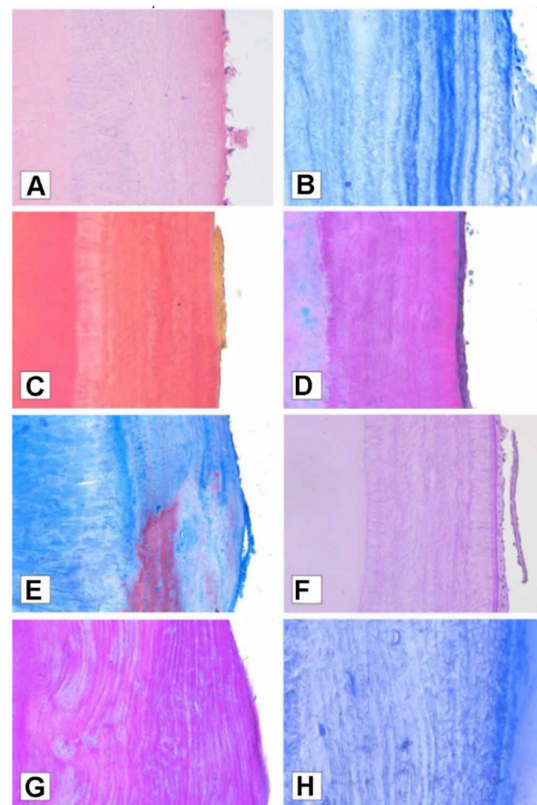
However, in our opinion, until the biological structure and composition of the tissue is better understood, it would be best not to chemically destroy (demineralisation) or alter (staining) any of it.

So far, the study of the literature has shown that annulations are visible in mineralised, demineralised, stained, and unstained sections. While this raises more questions on their biology, it is the degree of their visibility that should matter when the TCA is used for age and season assessments.

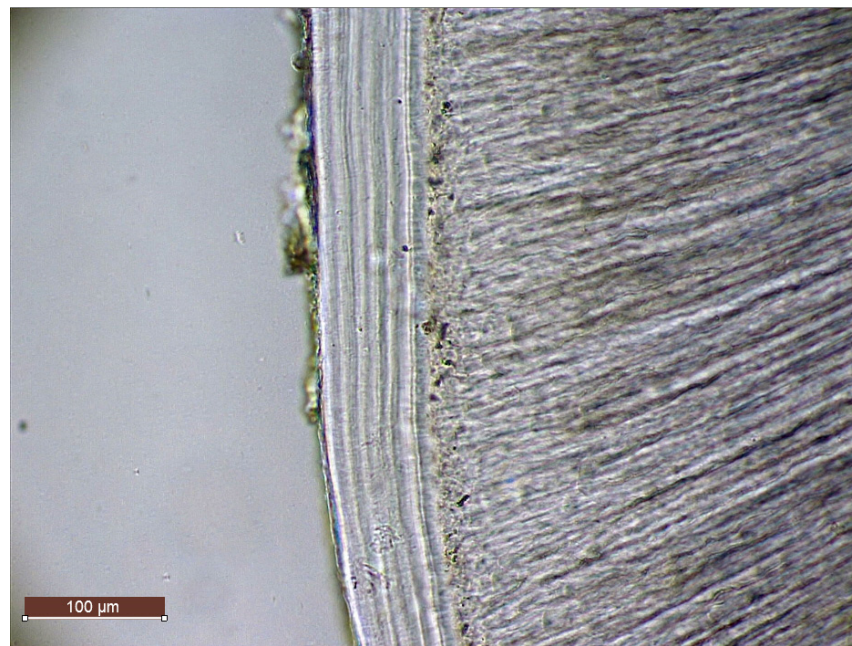
The results collected here clearly show that visibility is not as clear in demineralised and stained sections as it is in the non-demineralised and unstained ones. Thete et al. [102], for instance, based their observations on decalcified and stained sections and reported one of the lowest  $r$  values amongst the quantitative studies here reviewed.

A visual example of the outcome obtained by staining the sections is presented by the experiments run by Petrovic et al. [97]. The sections were here stained in standard histological Hematoxylin and Eosin (H&E), Toluidine Blue (TB), Van Gieson, Mallory Trichrome, Masson Trichrome, Periodic Acid Schiff, and Crocein Scarlet/Acid Fuchsin. Eventually, the authors claimed that through Toluidine blue “the dentinocemental line was recognizable and incremental lines were distinct and simple to count”. Similarly, Shukla et al. [105] tested different stains on decalcified sections and concluded that cresyl violet better highlighted the increments, thus helping in the count of the annulations (on this topic, see also a review by Devi et al. [106]).

However, by looking at their results, in our opinion, the stained sections (Figure 2) are not in any way clearer than the natural increments (Figure 3).



**Figure 2.** Cementum annulations visualised with different stains: (A) Hematoxylin and Eosin staining; (B) Toluidine blue staining at standard cross section; (C) Van Gieson staining; (D) Masson Trichrome staining; (E) Mallory Trichrome; (F) Periodic Acid Schiff staining; (G) Crocein Scarlet/Acid Fuchsin staining; (H) Toluidine blue staining at semi-thin section. Reprinted with permission from [97]. 2022, Petrovic.



**Figure 3.** TCA visualization in mineralised unstained transverse section (Tooth FDI: 3.1; Sex: F; Age: 46; Status: Pathological; Mic. Leica DM750 with ICC50W camera module, Transmitted Light; Magnification: 20×)—Original Image by Perrone V.

Sousa et al. [100] also carried out a similar experiment and concluded that the best results in terms of positive correlation between estimated and real age were obtained from mineralised and unstained sections. More recently, Pradeep et al. [98] seconded this by clearly stating that mineralised ground sections analysed in phase-contrast microscopy are more reliable in age determination, whereas (despite achieving a positive correlation:  $r = 0.96/0.97$ ), they added that “there was a statistically significant difference observed between actual and calculated age in decalcified sections stained with H and E and PSR” and therefore “further studies have to be done to prove the reliability of estimating the age from PSR stained sections”.

In conclusion, it could be said that, so far, the majority of quantitative successful studies agrees in saying that mineralised and unstained transverse sections are to be preferred in TCA analysis. Promising results might also be achieved from mineralised and unstained longitudinal sections, even if assessments on longitudinal sections seem to bear a general higher margin of error in the estimation of age. A lower rate of success and an overall decrease in the visualisation of the increments appear to be linked to demineralisation and staining techniques, which should therefore be avoided in future TCA analysis.

#### 3.3.4. Age Estimation: Age at Eruption VS Age at Root Completion

The traditional approach to the TCA studies for age estimation consists in the sum of the total annulations to the tooth-specific age of eruption or to the root completion.

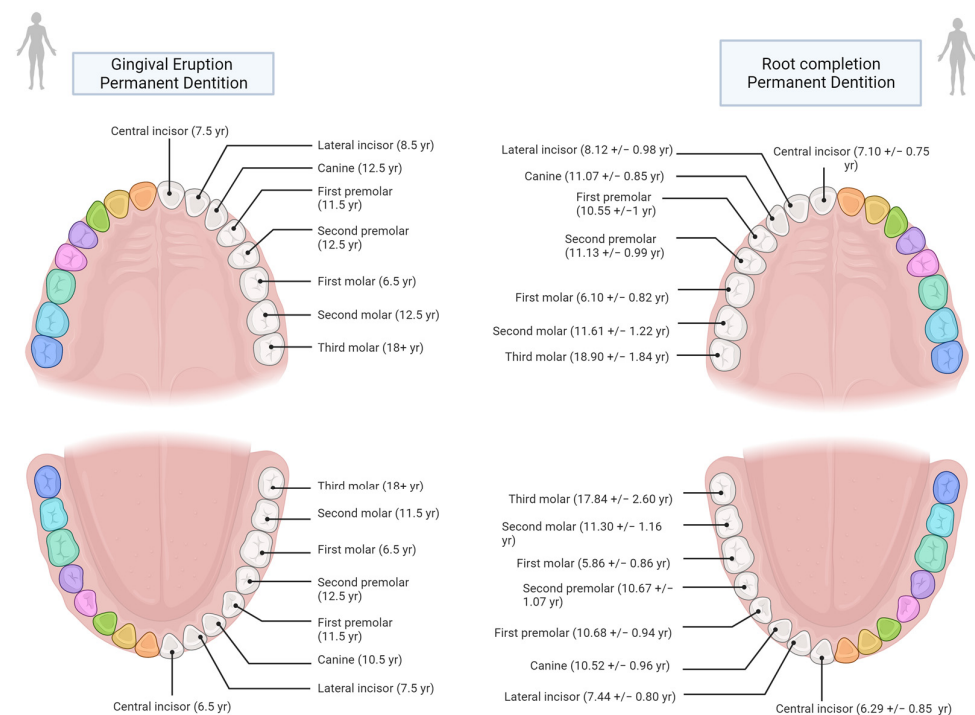
It is important to understand that “eruption” is, as Liversidge [107] says, “the process of movement of a tooth from within the jaw to a functional position in the oral cavity and subsequent movement thereafter” rather than a one-time event. Similarly, Hillson [108] clarifies that dental eruption, despite being the most reliable ageing factor in the human skeleton (especially up to 18 years of age), is, however, also the “most variable of all the dental development stages”. If the development of the crown, for instance, follows very strictly timed steps, the time of eruption, instead, varies upon a number of different factors (diet, environment, genetics, etc.). Hillson, adding that this variability might be caused by the fact that eruption is not only the result of dental development, but also that of the surrounding jaw and soft tissues, fundamentally agrees with Liversidge in saying

that dental eruption is a continuum, and as such follows a tempo of growth (term from Franz Boas [109]) that might differ intra- and inter-population.

Having established that dental eruption is a process, then a further distinction should be made (and taken into consideration when determining age) between alveolar eruption and gingival eruption (also known as clinical eruption). While the first one describes the moment in which the alveolar crypt opens to let the tooth through (visible only in dry and archaeological specimens), the latter instead relates to the emergence of the cusps through the gum (Hillson [108]).

In this regard, another important observation was made by Liversidge [107], who showed that there are differences in the development of the roots at gingival emergence: “Permanent teeth erupt clinically when three-fourths (R3/4) of the root have formed (Grøn [110]). Mandibular M1 and I1 (i.e., first molar and incisor) exhibit generally less root development (R1/2) and canines more root (Rc) at emergence than other teeth”.

As shown in Supplementary Materials Table S1, the margin of error amongst studies that have used the age at eruption and those that have used the age at root completion does not vary significantly. This is due to the fact that there is no major difference between the two in terms of years (Figure 4). Nonetheless, following Hillson [108], an effort should be made to create reference tables tailored to each specific population and its sexual dimorphism.



**Figure 4.** Age comparison at teeth gingival eruption (based on AlQuahtan et al. [111]) and at half to complete root formation based on Liversidge [107])—Image created in BioRender© (available online at <https://app.biorender.com/>, accessed on 21 June 2022)).

### 3.3.5. Counting the Increments: Old and New Approaches

Traditionally, the increments are “manually” counted either directly from the microscope eyepiece or from digital pictures. Researchers have raised a few issues concerning this, such as being time-consuming and bound to error, as the count can be tiring and subjective to the observer. A solution sometimes adopted for this (Bertrand et al. [76]) is that the count of a random subset of the sample is performed again after an established amount of time (in this case 6 months) by the same observer to assess the intraobserver error.

A further step ahead was attempted by automatising the increments count via a software (AutoTCA) that, using Fourier analysis and algorithms, was able to analyse the TCA digital pictures and create graphs with peaks corresponding to the darker increments. The



peaks count would ultimately be easier to perform and less subjective (Czermak et al. [112]). The final outcome of this study, however, showed a general underestimation of the total number of the increments. Therefore, the software, despite resulting in a slightly better count to the one manually obtained, still needs improvements (on the use of algorithms, see also Streso and Lagona [113]). Another digital approach was tested by Wall-Scheffler and Foley [114] on animal teeth by using a tool called Digital Cementum Luminance Analysis (DCLA). With this method, a selected area for analysis would be graphed and given numerical values for each pixel. A minimum luminance value for low luminance (LL) bands and a maximum value for high luminance (HL) bands was also given. However, in this case the authors clearly state that this approach is not to be seen as an alternative to the traditional method for the age estimation from TCA (as in Czermak et al. [112]), but rather a complement to it. In fact, it seems to have a correlation to the differences in seasonal temperatures, carrying a potential insight into the seasonality of this phenomenon.

This effort towards objectivity might have led more recent studies into tackling the same issue by adopting a completely different approach that relies on measurements rather than visual counting of the increments.

Some of the studies that preferred longitudinal sections (Gupta et al. [85]; Geetha et al. [82]; Kulkarni et al. [89]; Mahalakshmi Loganathan et al. [92]) also shared the same “mathematical approach”, which consists of dividing the total thickness of the cementum (from the cemento-dentinal junction, CDJ, to the external surface) by the width of two consecutive well-defined incremental lines. This would result in the total number of increments which then is added to the specific tooth age at eruption. However, as already mentioned above, the results of these studies are not always clearly presented and appear significantly inconsistent (see Tables 3 and S1). Amongst these studies, only Charan Gowda et al. [78] and Pradeep et al. [98] showed a more positive correlation to real age ( $r = 0.97$ ;  $r = 0.98/0.96$ , respectively) by using the same calculation but, contrary to the others, they were carried out on transverse sections instead of longitudinal. Due to these inconsistencies, a fair judgement on this approach and sectioning protocol cannot be currently obtained.

Another original but dubious attempt was made by Thete et al. [102], where the authors, attesting a “positive correlation” (+0.3625) between age and cementum thickness, calculated two regression formulae, claiming that “for every 1  $\mu\text{m}$  increase in cementum thickness, the age increases by 0.3603 years” and “for every 1-year increase in age, the cementum thickness increases by 0.2453  $\mu\text{m}$ ”. Also in this case, the uncertainty regarding the biology of the tissue as well as the fact that certain life events seem to affect and cause variations in the thickness of the increments (e.g., childbirth, kidney diseases, etc.—see Kagerer and Grupe [87], Cerrito et al. [115], Penezić et al. [116]) should suggest caution, and extended supporting evidence should be reported before making such a claim.

On a brighter note, the use of measurements brought some alternative solutions to the study of more challenging samples and to answer different research questions. An example is given by the works carried out by Oliveira-Santos et al. [96] and Cerrito et al. [115].

The first is a comparison of the traditional TCA method for age estimation and the so-called Increments Extrapolation Approach (ILE) in experimentally burnt human teeth. The ILE is similar to the mathematical approach already discussed above, but follows a different formula:  $\text{ILE} = (L/2) \times C$  (where  $L$  = thickness of two contiguous lines and  $C$  = total thickness of the cementum from CDJ to its external surface). While on one side, the results of this study showed that annulations are still visible in teeth that were burnt at 400 °C (also up to 600 °C, and still visible but with decreasing quality in samples burnt at 800 °C and 1000 °C in Gocha and Schutkowski [83]), on the other, it proved that the ILE approach estimated age with a reduced margin of error in comparison to the traditional method (which was, in this case, hindered by the dimensional changes induced by heat).

In Cerrito et al. [115], instead, a ratio between the cementum thickness and the number of years of deposition was established. The year corresponding to each band was also calculated. This way, the authors were able to identify pathologies and stressful events

through the increments and date them. Likewise, Panezić et al. [116] used a similar approach to identify “stress layers” during the Neolithic demographic transition in Europe.

A further use of measurements consisted in the statistical prediction of age on the basis of cementum thickness. An example was given by the work of Pinchi et al. [117] where the authors relied on the thickness of the cementum (taken at different sides of the tooth) and on regression models to predict age. Similarly, Birimiša et al. [118] took the measurements at four different points on each section and on several levels from apex to dental cervix and by multiple statistical analyses observed that thickness can vary between males and females and can be used as a reliable tool for predicting age. However, both studies highlight the necessity to test this approach to a wider sample size, including a wider age range diversity.

### 3.3.6. Season at Death Estimation

Along with age, the TCA is also adopted for determining season at death. The assessment is carried out by observing the colour of the outer increment. Each colour (i.e., light or dark) corresponds to roughly six months either in the fall/winter or spring/summer period.

The first attempt in narrowing the estimation down to a shorter time interval was performed by Wedel [103]. In this case, the author measured the increments of the same colour as the outer increment and calculated an average of growth. That average was then used to estimate a percentage of growth of the outer band. The same approach coupled with the traditional method for age estimation was attempted again in Wedel and Wescott [21], where the authors were able to link the season at death of eleven individuals to the peak seasonal timing of an epidemic of infectious diseases. Later, Wedel and Gocha [119] reassessed the seasonality method proposed in 2007 [103] and found that the accuracy was 78% instead of the 99% reported before.

Additionally, Sinha et al. [95] based their seasonal estimation on the calculation of percentage of growth, following the formula:  $x = b/a \times 100$  (where  $x$  = percentage of growth;  $b$  = outer increment thickness;  $a$  = average of the same colour increments thickness). This study also confirmed a strong correlation between the thickness of the increments and the progression into the next seasonal period.

The question of seasonality in the TCA, however, needs further clarification. Up to the most recent studies, the seasonal TCA has been applied on samples that were collected in the Northern Hemisphere, whose countries mostly share the same seasonal pattern. A few studies concerning seasonality included in their sample specimens coming from Colombia (Ralston [120]) and Latin America (Swearingner [121]). Ralston claimed that the geographical origin of the sample did not appear to have any impact on the determination of season-at-death, even though Colombia is still mostly part of the Northern Hemisphere, despite being closer to the Equatorial line. We believe that only samples collected from countries belonging to the Southern Hemisphere that present a proper reversed seasonality from the Northern one might give a more sensible and significant indication on the effects of seasons on the tissue.

As for Swearingner, instead, as the individuals here analysed were unidentified, they were presumed to be migrants of “Latin American origin”—a definition that anyways includes a number of different countries at different latitudes, thus not giving any further insight on this matter.

Understanding how seasons affect the cementum would also shed a better light on the direction that biological studies of the tissue should take, since it would clarify at what degree the environment plays a role in the formation of the increments. Future studies are therefore strongly advised to pursue such an investigation.

### 3.3.7. Analysis and Interpretation. The Use of Microscopy

The analysis and interpretation of the data is the last but not least important step in the TCA analysis.

Researchers differed in the choice of type of microscopes (i.e., transmitted or reflected light microscopes) and in the choice of illumination techniques with the bright-field microscope being the most commonly used. Interestingly, Geetha et al. [82] ran their analyses through a light microscope, a phase contrast, polarised, and stereomicroscope. Then, by comparing the  $r$  value obtained with each one of these, they found that the best performing microscopes for TCA analyses were the polarised, light, and phase contrast microscope (respectively,  $r = 0.877$ ;  $0.875$ ;  $0.866$ ). Similarly, but with different results, Goutham et al. [84] confirmed what already said in Charan Gowda et al. [78] by claiming that phase-contrast is to be preferred to brightfield and polarised light microscopy (respectively,  $r = 0.9952$ ;  $0.9760$ ;  $0.9833$ ).

More attention should be paid to the thickness of the sections and the microscope light chosen for analysis. As a rule of thumb, materials that are transparent or semi-transparent (which allow the light to travel through them, e.g., tissues, cells, crystalline components, etc. (<https://jordilabs.com/lab-testing/technique/microscopy/tlm/> [accessed on 16 April 2021])) should be analyzed in transmitted light microscopes, whereas more opaque materials (e.g., metals, ceramics, etc. (<http://zeiss-campus.magnet.fsu.edu/articles/basics/reflected.html> [accessed on 16 April 2021]; <http://zeiss-campus.magnet.fsu.edu/articles/basics/contrast.html> [accessed on 16 April 2021])) should be analyzed in reflected light microscopes.

In the TCA studies, both types of light have been used because both thin and thick sections have been analyzed, as also stated by Lieberman and Meadow [10]. The implications of using different types of sections and microscope light on the TCA were brought up only by Burke and Castanet [66], Klezeval [9], and Hillson [24]. These authors warned about the changing appearance of the increments' colours according to the type of light adopted for the analysis. In the following 30 years of application, however, the vast majority of research was conducted on thin sections with transmitted light (Supplementary Materials Table S1) and mostly agreed on the seasonal interpretation of the increments as light bands indicating the spring/summer season and dark bands indicating the fall/winter season. This caused future researchers to overlook the distinction between transmitted and reflected light, which, coupled with the use of ambiguous terminology to indicate the increments, added to following misinterpretations and confusion that led authors to disregard the TCA as unreliable.

An example of "ambiguous terminology" can be found in Klezeval and Shishlina [122], where the authors claimed that under transmitted light "one annual layer consists of a rather wide opaque band bordered by a transparent incremental line" and that "the incremental line forms from late autumn to early spring and the wide band of the layer forms from spring to autumn". In Klezeval's main work [9], it is also said that "A growth layer of cementum consists of a band of tissue bordered by an incremental line (. . .). This layer is presented on a ground section in transmitted light as a wide dark band and narrow light incremental line. In reflected light, the incremental line looks dark", and then she adds "it is the translucent band (i.e., incremental line), which is hypercalcified" (Klezeval p. 38 [9]).

However, as above-mentioned, numerous more recent authors claimed the opposite to be true, as in Wedel and Wescott [21]. In fact, they claimed to have used a transmitted light microscope for seasonal estimation and interpreted the "less mineralised opaque or dark band" (also called "winter or arrested cementum increment") for the winter season and the "translucent or light band" (also called "summer or growth increment") for the spring/summer period.

In conclusion, more recent and quantitative results demonstrated that Wedel's seasonal interpretation of the increments (Wedel [103], Wedel et al. [123], and Wedel and Wescott [21]) is more correlated with the real season at death.

From an issue as such, it appears clear how important it is for future studies to develop an appropriate terminology to refer to the TCA and its features.

Future studies comparing the tissue under transmitted and reflected light are strongly recommended in order to ascertain and highlight this phenomenon, which, if not stressed

accordingly, might easily be overlooked (as it has already happened) leading to a cascade of future misinterpretations.

### 3.3.8. New Tech

New innovative technologies have been adopted with the aim of avoiding the destructive procedure that TCA analysis requires. In particular, it is worth mentioning the work presented by Le Cabec et al. [91]. In this study, 20 canines were scanned in transverse sections with a Propagation Phase contrast X-ray synchrotron  $\mu$ CT (PPC-SR- $\mu$ CT). The overall result showed a promising correlation but a general age underestimation, which might be explained by the fact that at the synchrotron, the so-called “stress events” are more easily visible than the regular ones, thus compromising the count for ageing. However, the possibility of being able to see the cementum, one of the thinnest hard tissues of the human body, without destroying the sample is remarkable, especially when dealing with rare or archaeological specimens. In case of such exceptional specimens (if a better image quality is not reached in the meantime), age estimation could be carried out on the images obtained with the synchrotron by applying methods such as the ILE approach proposed by Oliveira-Santos et al. [96] for severely damaged specimens.

Another interesting approach is the one proposed by Colard et al. [27] (and further discussed in the paragraph “Lines of Salter”), where Raman spectroscopy was used to determine the mineralisation level of the cementum lines showing that smaller and darker incremental lines are associated with heavily mineralised tissues and with fall-winter periods, whereas thicker and brighter bands are correlated with lower mineralisation levels and can be attributed to spring-summer months.

### 3.3.9. A Decades-Long Debate: Controversial Issues

In nearly 70 years of application, the debate surrounding the TCA never stopped. On the contrary, it is still ongoing.

Numerous issues have been discussed by a few scholars that eventually agreed on the unreliability of the technique, discouraging further studies (Renz and Radlanski [124]).

Issues mostly go from protocol difficulties such as breaking of the cementum during sectioning and grinding (Renz and Radlanski [124]), unevenness of the sections, and saw marks (Cobb [125]) to poor visibility (Renz and Radlanski [124] and Roksandic et al. [126]).

In some cases, the state of preservation of the specimens might have affected the analysis (as clarified in Roksandic et al. [126] and also favoured by Bertrand [127]). Unfortunately, there are not enough studies exploring taphonomic effects on the TCA, an area that undoubtedly also needs further research.

In other cases (such as in Cobb [125]) the inexperience of the researcher(s) played a major role in the unsuccess of the analysis. As the purpose of their study was to evaluate the ease of the TCA technique for non-expert examiners, they eventually concluded by saying that an inexperienced researcher could not produce sections suitable to cementochronology, again discouraging new researchers from applying it. However, a statement as such easily goes for any other anthropological technique. As you need to have some familiarity with human anatomy in order to determine age at death from skeletal remains, likewise researchers need some practice and familiarity with teeth and histological procedures before dealing with the TCA (see again Bertrand [127] for more on this topic).

Smith [128] mentions a problem that, in our opinion, is closer to the real issue regarding the cementum. Besides all that has been said so far, she also refers to the fact that ignoring the rate at which the cementum is deposited makes this whole technique uncertain. With that said, the ignorance of this tissue on a basic level, from its early development to its seasonal behaviour throughout an individual's life, remains the most considerable flaw of all. In fact, it is from this flaw that all the others stem. If we were to understand its underlying mechanisms, then we could also theorise and agree to a more efficient and standardised protocol, putting a halt to all the different and often incongruent experimentations and interpretation carried out so far (on this see also Colard et al. [6]).

This is the reason why the future of the TCA depends on studies dealing with its biology rather than those still concerned with the assessments of age, season, and life events. Yet, even the most recent TCA studies are still “predictive studies”. A clear example of that (and also of how this debate is still current) is the latest discussion between Edinborough et al. [129] and Panezic et al. [130]. Here, the first criticises the latter’s previously published work (Panezic et al. [116]), questioning how the authors were able to identify and directly connect “irregularities” in the increments’ appearance to pregnancies, when (1) it is not clear how and why the increments form and what are they affected from and (2) the main problem of the TCA is its own irregularity (i.e., the increments are rarely regular).

Other authors mentioned the potential of using the TCA to identify specific life events. However, we believe that, again, until the biology of the tissue is well understood and clarified, we should refrain from such claims and from the temptation of looking for the “Holy Grail” of biological anthropology. TCA has, in fact, great potential but it is, as all anthropological techniques, a tool to be used along with the others in a multi-approach method and not standing alone. While we crave for that one technique that answers all of our questions, what should really matter is how much a technique can help in drawing the final biological profile, how much it can say, what its limits are, and how we can complete the missing information with the other methods we already have. In fact, if we were to disregard a technique because it is not 100% accurate, then we could not perform anthropology.

### 3.3.10. A Note on the Terminology

To the new researcher approaching the TCA for the first time, a number of different terms are listed in the literature when referring to the colours and pattern of the cementum.

Only in the 55 papers selected for this review, the phenomenon is referred to with the following terms:

- lines (19)
- annulations (17)
- bands (15)
- layers (13)
- increments (5)
- rings (both referring to one single band or to a couple of bands) (2)
- annual layer (referring to a pair of bands) (1)
- annuli (1)

Sometimes a few different terms are used in the same study to refer to the same phenomenon.

Klezeval [9] describes the cementum pattern as one band of tissue followed by one incremental line. This description is the closest to what is found in the clinical literature, where, instead, the increments are called “lines of Salter”: “Incremental lines called as lines of Salter are seen in cementum as during the process of cementogenesis, there are periods of rest and periods of activity. The periods of rests are associated with these lines” (Kumar [34]).

The width of the banding phenomenon is generally defined as “wide/narrow” and/or “thicker/thinner”, while the colours might be referred to as “translucent/opaque”, “transparent/opaque”, “bright/dark” and/or “light/dark” (with the latter being the most commonly used in recent publications).

Furthermore, additional names have been introduced to refer to the technique in itself. Since the acronym “TCA” (Tooth Cementum Annulation) indicates the banding phenomenon rather than the technique, the word “Cementochronology” (Colard et al. [6]) was created in order to talk about the use of the TCA in age estimation, whereas “Dental Cementum Increment Analysis” (or “DCIA”) was introduced to refer to the use of the same phenomenon for season estimation (Wedel and Wescott [21]).

The variety of terms adopted to describe the phenomenon observed on the cementum has unfortunately increased confusion amongst researchers and misinterpretation of their work.

Ideally, all researchers working with the TCA should adopt the same terminology when referring to the features of the phenomenon they are observing. Especially when referring to colours, terms such as “transparent” or “opaque” should be avoided since they might not be interpreted in the same way by everybody.

A greater effort towards objectivity should be collectively made when working with the TCA. An example is given in Oliveira-Santos et al. [96] when they adopt acronyms such as IL for Incremental Lines, despite the fact that this adds a new acronym in the field of cementochronology that could introduce confusion in regards to past publications.

In the meantime, if a terminology for the TCA that is internationally recognised and adopted is not yet present, researchers are strongly advised to include a key in their papers that would clearly describe what they are referring to and with which terms.

### 3.3.11. A Proposal

A proposal on how to report data and results related to the TCA is here described in the following steps:

1. Definition of the purpose of the study.
2. Sample specifications: The sample size should ideally be expressed in the number of sections, in addition to the number of teeth and individuals. In fact, having only one of these three factors would give only a partial understanding of the sample analysed. For instance, knowing the number of teeth is not indicative of how many sections have been produced per tooth, and therefore it is not indicative of how many times the count/analysis has been carried out.
3. Personal data. When possible, until the TCA is still to be understood, studies should be carried out on a known sample (i.e., known sex, age, pathologies, and place of origin/residence). The place of origin/residence is here included mostly in case of seasonal studies.
4. Protocol. It is strongly advised to follow protocols that already proved to be valid and with successful outcomes. The adoption of the same protocol from the majority of researchers would allow the collection of comparable data. If the proposed protocols are not followed, a clear description and rationale of the chosen procedure should be given and explained step by step.
5. Microscopes. Further details on the type of microscope and light adopted in the study should be added. This information would significantly increase our understanding of the tissue's behaviour when visualised under different types of light.
6. Results should be presented in a quantitative way, clearly stating correlation value, statistical significance, and margin of error.
7. Terminology. Ambiguous terms should be avoided in the description of the increments' colours or in the definition of the TCA. The adoption of the clinical name “lines of Salter” to indicate the incremental lines and/or the use of acronyms with shared meanings are suggested.

## 4. Conclusions

It is overall clear that the potential of the TCA as an anthropological tool towards age estimation and ultimately identification is significant and needs a major reassessment in order to be properly validated. That reassessment needs to be collectively and internationally achieved by agreeing on an overall standardisation of the method, which means the adoption of the same (or similar) protocols and terminology. It is strongly recommended that future research focuses on the existing gaps concerning the biology of the tissues (e.g., development and differentiation, biomechanisms, taphonomic alterations, etc.) and that researchers also include clinical studies in their body of literature. To this regard, a most recent publication deserves to be mentioned here, which was not included in this

work because it is not yet public while completing this review. The work of Naji and colleagues [131] looks to be one of the most promising in the field, collecting perspectives and studies of several researchers currently or previously involved in the TCA studies, and definitely a must-read for future scholars.

While standardisation and protocols are key to the use of cementochronology in human samples, for the animal ones that is not the case. In the section regarding the animal studies, in fact, we have showed that variations in the protocol are in these cases more justifiable as dentitions also differ in different animals, even though a stronger effort towards the standardisation of species-specific protocols should be made. Further discussions about the evolution of dentitions and dental tissues might yield significant insights regarding the mechanisms of the cementum, especially if there were to be more comparative studies about the periodontal anatomy of non-mammal vertebrate and invertebrate animals.

Biologically speaking, the takeaway from this work is that the cementum is not only one tissue, but, instead, consists of many variations of the same tissue that change in their composition, cell types, and structure. The biological complexity of cementum was here analysed on three different levels: (1) Morphological and compositional; (2) Cellular, molecular, and genetic; and (3) Phosphate and calcium homeostasis level. The clinically called lines of Salter, on which the cementochronology is based, are still highly debated and not well understood in terms of their composition, structure, and mechanisms. While having a clear understanding of the lines of Salter would be ideal in tackling the issues regarding the TCA, researchers are joining forces to regularly add up little pieces of the puzzles together. In the last section of this review, we have seen that cementogenesis seems to be the consequence of the mesenchymal and epithelial interactions following HERS disintegration, and that a number of potential factors have been identified that might be connected to cementoblast differentiation and mineralization (although the reason behind the differences in cementoblasts of the acellular and cellular cementum and those between cementoblasts and cementocytes are also still to be understood). Amongst all the above-mentioned factors, a few seem to recur more consistently, which are dentine non-collagenous proteins; cementum-specific proteins (SOD3 and CEMP1); the *osx-wnt*/ $\beta$  catenin signalling pathway; and finally, gene *RUNX2* and proteins *OPN* and *BSP* (regulated by *circLRP6*). Lastly but not less importantly, the connection found between cementum and the regulation of *Ppi*, *PTH*, and vitamin D clearly deserves further exploration in order to understand how phosphate and calcium homeostasis interact with all these factors and affect the cementum, as we know it.

In fact, how are we to understand the cementum if we do not go to the roots of its problems?

**Supplementary Materials:** The following supporting information can be downloaded at: <https://www.mdpi.com/article/10.3390/forensicsci2030038/s1>, Figure S1: Mapping of the main keywords for the studies regarding the dental cementum, when searched in Web of Science. Map produced in VOSviewer©; Figure S2: Mapping of the authors for the studies regarding the human dental cementum, visualised by year (searched in Web of Science). Map produced in VOSviewer©; Table S1: Microsoft Excel table for the human studies selected for this review (Table S1.xlsx); Table S2: Microsoft Excel table for the animal studies selected for this review (Table S2.xlsx).

**Author Contributions:** Conceptualization, V.P., P.R.-Q. and N.P.; methodology, V.P.; software, V.P.; validation, V.P., P.R.-Q., T.P.G. and N.P.; formal analysis, V.P.; investigation, V.P.; data curation, V.P.; writing—original draft preparation, V.P.; writing—review and editing, P.R.-Q., T.P.G. and N.P.; visualization, V.P.; supervision, P.R.-Q. and N.P.; project administration, N.P.; funding acquisition, N.P. All authors have read and agreed to the published version of the manuscript.

**Funding:** This research was funded by UK Research and Innovation (UKRI), grant number MR/S032878/1 (N.P.).

**Institutional Review Board Statement:** Not applicable.

**Informed Consent Statement:** Not applicable.

**Data Availability Statement:** Not applicable.

**Acknowledgments:** My most sincere thanks go to Bonicelli for the use of BioRender©, and to everyone that supported and helped in this work.

**Conflicts of Interest:** The authors declare no conflict of interest.

## References

1. Laws, R.M. A New Method of Age Determination for Mammals. *Nature* **1950**, *169*, 972–973. [[CrossRef](#)] [[PubMed](#)]
2. Dawkins, R. *The Selfish Gene*; Oxford University Press: New York, NY, USA, 1976.
3. Fancy, S.G. Preparation of Mammalian Teeth for Age Determination by Cementum Layers: A Review. *Wildl. Soc. Bull. (1973–2006)* **1980**, *8*, 242–248.
4. Grue, H. Jensen B Review of the Formation of Incremental Lines in Tooth Cementum of Terrestrial Mammals. *Dan. Rev. Game Biol.* **1979**, *11*, 1–48.
5. Stott, G.G.; Sis, R.F.; Levy, B.M. Cemental Annulation as an Age Criterion in Forensic Dentistry. *J. Dent. Res.* **1982**, *61*, 814–817. [[CrossRef](#)]
6. Colard, T.; Bertrand, B.; Naji, S.; Delannoy, Y.; Bécart, A. Toward the Adoption of Cementochronology in Forensic Context. *Int. J. Leg. Med.* **2015**, *132*, 1117–1124. [[CrossRef](#)]
7. Charles, D.K.; Condon, K.; Cheverud, J.M.; Buikstra, J.E. Cementum Annulation and Age Determination in Homo Sapiens. I. Tooth Variability and Observer Error. *Am. J. Phys. Anthropol.* **1986**, *71*, 311–320. [[CrossRef](#)]
8. Condon, K.; Charles, D.K.; Cheverud, J.M.; Buikstra, J.E. Cementum Annulation and Age Determination in Homo Sapiens. II. Estimates and Accuracy. *Am. J. Phys. Anthropol.* **1986**, *71*, 321–330. [[CrossRef](#)]
9. *Klezeval G Recording Structures of Mammals: Determination of Age and Reconstruction of Life History*; Balkema: Rotterdam, The Netherlands, 1996.
10. Lieberman, D.E.; Meadow, R.H. The Biology of Cementum Increments (with an Archaeological Application). *Mammal Rev.* **1992**, *22*, 57–77. [[CrossRef](#)]
11. Lieberman, D.E. Life History Variables Preserved in Dental Cementum Microstructure. *Science* **1993**, *261*, 1162–1164. [[CrossRef](#)]
12. Lieberman, D.E. The Biological Basis for Seasonal Increments in Dental Cementum and Their Application to Archaeological Research. *J. Archaeol. Sci.* **1994**, *21*, 525–539. [[CrossRef](#)]
13. Brooks, S.; Suchey, J.M. Skeletal Age Determination Based on the Os Pubis: A Comparison of the Acsádi-Nemeskéri and Suchey-Brooks Methods. *Hum. Evol.* **1990**, *5*, 227–238. [[CrossRef](#)]
14. Lovejoy, C.O.; Meindl, R.S.; Pryzbeck, T.R.; Mensforth, R.P. Chronological Metamorphosis of the Auricular Surface of the Ilium: A New Method for the Determination of Adult Skeletal Age at Death. *Am. J. Phys. Anthropol.* **1985**, *68*, 15–28. [[CrossRef](#)]
15. Buckberry, J.L.; Chamberlain, A.T. Age Estimation from the Auricular Surface of the Ilium: A Revised Method. *Am. J. Phys. Anthropol.* **2002**, *119*, 231–239. [[CrossRef](#)]
16. Meindl, R.S.; Lovejoy, C.O. Ectocranial Suture Closure: A Revised Method for the Determination of Skeletal Age at Death Based on the Lateral-anterior Sutures. *Am. J. Phys. Anthropol.* **1985**, *68*, 57–66. [[CrossRef](#)]
17. Acsadi, G.; Nemeskéri, J. *History of Human Life Span and Mortality*; Akademiai Kiado: Budapest, Hungary, 1970. [[CrossRef](#)]
18. Iscan, M.Y.; Loth, S.R.; Wright, R.K. Age Estimation from the Rib by Phase Analysis: White Males. *J. Forensic Sci.* **1984**, *29*, 1094–1104.
19. Iscan, M.Y.; Loth, S.R.; Wright, R.K. Age Estimation from the Rib by Phase Analysis: White Females. *J. Forensic Sci.* **1985**, *29*, 853–863.
20. Wittwer-Backofen, U.; Gampe, J.; Vaupel, J.W. Tooth Cementum Annulation for Age Estimation: Results from a Large Known-Age Validation Study. *Am. J. Phys. Anthropol.* **2004**, *123*, 119–129. [[CrossRef](#)]
21. Wedel, V.; Wescott, D. Using Dental Cementum Increment Analysis to Estimate Age and Season of Death in African Americans from an Historical Cemetery in Missouri. *Int. J. Paleopathol.* **2016**, *15*, 134–139. [[CrossRef](#)]
22. PRISMA. PRISMA Guidelines for Systematic Reviews. Available online: <http://www.prisma-statement.org/> (accessed on 5 April 2021).
23. Nanci, A.; Bosshardt, D.D. Structure of Periodontal Tissues in Health and Disease. *Periodontology 2000* **2006**, *40*, 11–28. [[CrossRef](#)]
24. Hillson, S. *Teeth*, 2nd ed.; Cambridge University Press: Cambridge, UK; New York, NY, USA, 2006.
25. Yamamoto, T.; Hasegawa, T.; Yamamoto, T.; Hongo, H.; Amizuka, N. Histology of Human Cementum: Its Structure, Function, and Development. *Jpn Dent Sci Rev* **2016**, *52*, 63–74. [[CrossRef](#)]
26. Berkovitz, B.K.B.; Holland, G.R.; Moxham, B.J. *Oral Anatomy, Histology and Embryology*, 4th ed.; Mosby Elsevier: Edinburgh, Scotland, 2009.
27. Colard, T.; Falgayrac, G.; Bertrand, B.; Naji, S.; Devos, O.; Balsack, C.; Delannoy, Y.; Penel, G. New Insights on the Composition and the Structure of the Acellular Extrinsic Fiber Cementum by Raman Analysis. *PLoS ONE* **2016**, *11*, e0167316. [[CrossRef](#)]
28. Pérez-Barbería, F.J.; Guinness, F.E.; López-Quintanilla, M.; García, A.J.; Gallego, L.; Cappelli, J.; Serrano, M.P.; Landete-Castillejos, T. What Do Rates of Deposition of Dental Cementum Tell Us? Functional and Evolutionary Hypotheses in Red Deer. *PLoS ONE* **2020**, *15*, e0231957. [[CrossRef](#)]



29. Lira Dos Santos, E.J.; de Almeida, A.B.; Chavez, M.B.; Salmon, C.R.; Mofatto, L.S.; Camara-Souza, M.B.; Tan, M.H.; Kolli, T.N.; Mohamed, F.F.; Chu, E.Y.; et al. Orthodontic Tooth Movement Alters Cementocyte Ultrastructure and Cellular Cementum Proteome Signature. *Bone* **2021**, *153*, 1116139. [[CrossRef](#)]
30. Edinborough, M.; Pilgrim, M.; Fearn, S.; Cvetković, A.; Mihailović, B.; Grbić, R.; Edinborough, K. Mineralisation within Human Tooth Cementum Identified by Secondary Ion Mass Spectrometry. *J. Anal. At. Spectrom.* **2020**, *35*, 1199–1206. [[CrossRef](#)]
31. Ho, S.P.; Yu, B.; Yun, W.; Marshall, G.W.; Ryder, M.I.; Marshall, S.J. Structure, Chemical Composition and Mechanical Properties of Human and Rat Cementum and Its Interface with Root Dentin. *Acta Biomater* **2009**, *5*, 707–718. [[CrossRef](#)] [[PubMed](#)]
32. Aboulfadl, H.; Hulliger, J. Absolute Polarity Determination of Teeth Cementum by Phase Sensitive Second Harmonic Generation Microscopy. *J. Struct. Biol.* **2015**, *192*, 67–75. [[CrossRef](#)] [[PubMed](#)]
33. Rho, J.Y.; Ashman, R.B.; Turner, C.H. Young's Modulus of Trabecular and Cortical Bone Material: Ultrasonic and Microtensile Measurements. *J. Biomech.* **1993**, *26*, 111–119. [[CrossRef](#)]
34. Kumar, G.S. Cementum. In *Orban's Oral Histology & Embryology*, 14th ed.; Elsevier: Chennai, India, 2015.
35. Mani-Caplazi, G.; Schulz, G.; Deyhle, H.; Hotz, G.; Vach, W.; Wittwer-Backofen, U.; Muller, B. Imaging of the Human Tooth Cementum Ultrastructure of Archeological Teeth, Using Hard x-Ray Microtomography to Determine Age-at-Death and Stress Periods. In Proceedings of the Developments in X-ray Tomography XI, San Diego, CA, USA, 8–10 August 2017; p. 103911C.
36. Cool, S.M.; Forwood, M.R.; Campbell, P.; Bennett, M.B. Comparisons between Bone and Cementum Compositions and the Possible Basis for Their Layered Appearances. *Bone* **2002**, *30*, 386–392. [[CrossRef](#)]
37. Dean, C.; le Cabec, A.; Spiers, K.; Zhang, Y.; Garrevoet, J. Incremental Distribution of Strontium and Zinc in Great Ape and Fossil Hominin Cementum Using Synchrotron X-Ray Fluorescence Mapping. *J. R. Soc. Interface* **2018**, *15*, 20170626. [[CrossRef](#)]
38. Cunningham, C.; Scheuer, L.; Black, S. Developmental Juvenile Osteology, 2nd ed. 2016, pp. 1–618. Available online: <https://discovery.dundee.ac.uk/ws/portalfiles/portal/9352044/9780123821065.pdf> (accessed on 21 June 2022).
39. Kim, H.-S.; Lee, D.-S.; Lee, J.H.; Kang, M.-S.; Lee, N.-R.; Kim, H.J.; Ko, J.-S.; Cho, M.-I.; Park, J.-C. The Effect of Odontoblast Conditioned Media and Dentin Non-Collagenous Proteins on the Differentiation and Mineralization of Cementoblasts in Vitro. *Arch. Oral Biol.* **2009**, *54*, 71–79. [[CrossRef](#)]
40. Li, J.; Parada, C.; Chai, Y. Cellular and Molecular Mechanisms of Tooth Root Development. *Development* **2017**, *144*, 374–384. [[CrossRef](#)]
41. Luan, X.; Ito, Y.; Diekwisch, T.G. Evolution and Development of Hertwig's Epithelial Root Sheath. *Dev. Dyn.* **2006**, *235*, 1167–1180. [[CrossRef](#)]
42. Wu, J.; Jin, F.; Tang, L.; Yu, J.; Xu, L.; Yang, Z.; Wu, G.; Duan, Y.; Jin, Y. Dentin Non-Collagenous Proteins (DNCPs) Can Stimulate Dental Follicle Cells to Differentiate into Cementoblast Lineages. *Biol. Cell* **2008**, *100*, 291–302. [[CrossRef](#)]
43. Salmon, C.R.; Giorgetti, A.P.; Paes Leme, A.F.; Domingues, R.R.; Sallum, E.A.; Alves, M.C.; Kolli, T.N.; Foster, B.L.; Nociti, F.H., Jr. Global Proteome Profiling of Dental Cementum under Experimentally-Induced Apposition. *J. Proteom.* **2016**, *141*, 12–23. [[CrossRef](#)]
44. Wang, J.; Feng, J.Q. Signaling Pathways Critical for Tooth Root Formation. *J. Dent. Res.* **2017**, *96*, 1221–1228. [[CrossRef](#)]
45. Choi, H.; Liu, Y.; Yang, L.; Cho, E.S. Suppression of Hedgehog Signaling Is Required for Cementum Apposition. *Sci. Rep.* **2020**, *10*, 7285. [[CrossRef](#)]
46. Nottmeier, C.; Liao, N.; Simon, A.; Decker, M.G.; Luther, J.; Schweizer, M.; Yorgan, T.; Kaucka, M.; Bockamp, E.; Kahl-Nieke, B.; et al. Wnt1 Promotes Cementum and Alveolar Bone Growth in a Time-Dependent Manner. *J. Dent. Res.* **2021**, *100*, 1501–1509. [[CrossRef](#)]
47. Zhao, Z.; Dai, J.; Yin, C.; Wang, X.; Wang, J.; Jia, X.; Zhao, Q.; Fu, H.; Zhang, Y.; Xia, H. Transcription Factor 7-like 2-Associated Signaling Mechanism in Regulating Cementum Generation by the NF-KappaB Pathway. *J. Cell Physiol.* **2019**, *234*, 20790–20800. [[CrossRef](#)]
48. Li, M.; Du, M.; Wang, Y.; Zhu, J.; Pan, J.; Cao, Z.; He, H. CircRNA Lrp6 Promotes Cementoblast Differentiation via MiR-145a-5p/Zeb2 Axis. *J. Periodontal Res.* **2021**, *56*, 1200–1212. [[CrossRef](#)]
49. Wu, Y.; Ou, Y.; Liao, C.; Liang, S.; Wang, Y. High-Throughput Sequencing Analysis of the Expression Profile of MicroRNAs and Target Genes in Mechanical Force-Induced Osteoblastic/Cementoblastic Differentiation of Human Periodontal Ligament Cells. *Am. J. Transl. Res.* **2019**, *11*, 3398–3411.
50. Giovani, P.A.; Martins, L.; Salmon, C.R.; Mofatto, L.S.; Leme, A.F.P.; Puppini-Rontani, R.M.; Kolli, T.N.; Foster, B.L.; Nociti, F.H.; Kantovitz, K.R. Comparative Proteomic Analysis of Dental Cementum from Deciduous and Permanent Teeth. *J. Periodontal Res.* **2021**, *56*, 173–185. [[CrossRef](#)]
51. Salmon, C.R.; Tomazela, D.M.; Ruiz, K.G.; Foster, B.L.; Paes Leme, A.F.; Sallum, E.A.; Somerman, M.J.; Nociti, F.H., Jr. Proteomic Analysis of Human Dental Cementum and Alveolar Bone. *J. Proteom.* **2013**, *91*, 544–555. [[CrossRef](#)]
52. Carmona-Rodriguez, B.; Alvarez-Perez, M.A.; Narayanan, A.S.; Zeichner-David, M.; Reyes-Gasga, J.; Molina-Guarneros, J.; Garcia-Hernandez, A.L.; Suarez-Franco, J.L.; Chavarria, I.G.; Villarreal-Ramirez, E.; et al. Human Cementum Protein 1 Induces Expression of Bone and Cementum Proteins by Human Gingival Fibroblasts. *Biomech. Biophys. Res. Commun.* **2007**, *358*, 763–769. [[CrossRef](#)]
53. Hoz, L.; Romo, E.; Zeichner-David, M.; Sanz, M.; Nunez, J.; Gaitan, L.; Mercado, G.; Arzate, H. Cementum Protein 1 (CEMP1) Induces Differentiation by Human Periodontal Ligament Cells under Three-Dimensional Culture Conditions. *Cell Biol. Int.* **2012**, *36*, 129–136. [[CrossRef](#)]

54. Arroyo, R.; Lopez, S.; Romo, E.; Montoya, G.; Hoz, L.; Pedraza, C.; Garfias, Y.; Arzate, H. Carboxy-Terminal Cementum Protein 1-Derived Peptide 4 (Cemp1-P4) Promotes Mineralization through Wnt/Beta-Catenin Signaling in Human Oral Mucosa Stem Cells. *Int. J. Mol. Sci.* **2020**, *21*, 1307. [[CrossRef](#)]
55. Foster, B.L.; Nagatomo, K.J.; Nociti, F.H.; Fong, H.; Dunn, D.; Tran, A.B.; Wang, W.; Narisawa, S.; Millán, J.L.; Somerman, M.J. Central Role of Pyrophosphate in Acellular Cementum Formation. *PLoS ONE* **2012**, *7*, e38393. [[CrossRef](#)]
56. Thumbigere-Math, V.; Alqadi, A.; Chalmers, N.I.; Chavez, M.B.; Chu, E.Y.; Collins, M.T.; Ferreira, C.R.; FitzGerald, K.; Gafni, R.I.; Gahl, W.A.; et al. Hypercementosis Associated with ENPP1 Mutations and GACI. *J. Dent. Res.* **2018**, *97*, 432–441. [[CrossRef](#)]
57. Almeida, A.B.; Santos, E.J.L.d.; Abuna, G.F.; Ribeiro, C.S.; Casati, M.Z.; Ruiz, K.G.S.; Nociti, F.H., Jr. Isolation and Characterization of a Human Cementocyte-like Cell Line, HCY-23. *Braz. Oral Res.* **2019**, *33*, e058. [[CrossRef](#)]
58. Chu, E.Y.; Vo, T.D.; Chavez, M.B.; Nagasaki, A.; Mertz, E.L.; Nociti, F.H.; Aitken, S.F.; Kavanagh, D.; Zimmerman, K.; Li, X.; et al. Genetic and Pharmacologic Modulation of Cementogenesis via Pyrophosphate Regulators. *Bone* **2020**, *136*, 115329. [[CrossRef](#)]
59. Xu, Y.; Lv, C.; Zhang, J.; Li, Y.; Li, T.; Zhang, C.; Chen, J.; Bai, D.; Yin, X.; Zou, S. Intermittent Parathyroid Hormone Promotes Cementogenesis in a PKA- and ERK1/2-Dependent Manner. *J. Periodontol.* **2019**, *90*, 1002–1013. [[CrossRef](#)]
60. Gotz, W.; Heinen, M.; Lossdorfer, S.; Jager, A. Immunohistochemical Localization of Components of the Insulin-like Growth Factor System in Human Permanent Teeth. *Arch. Oral Biol.* **2006**, *51*, 387–395. [[CrossRef](#)] [[PubMed](#)]
61. Lombardi, G.; di Somma, C.; Vuolo, L.; Guerra, E.; Scarano, E.; Colao, A. Role of IGF-I on PTH Effects on Bone. *J. Endocrinol. Investig.* **2010**, *33*, 22–26.
62. Bothelho, J.; Machado, V.; Proenca, L.; Delgado, A.S.; Mendes, J.J. Vitamin D Deficiency and Oral Health: A Comprehensive Review. *Nutrients* **2020**, *12*, 1471. [[CrossRef](#)] [[PubMed](#)]
63. Swapna, L.A.; Abdulsalam, R. Vitamin D Deficiency and Its Effects on Tooth Structure and Pulpal Changes. *Maced. J. Med. Sci.* **2021**, *9*, 81–87. [[CrossRef](#)]
64. Laws, R.M.; Baird, A.; Bryden, M.M. Age Estimation in Crabeater Seals (*Lobodon Carcinophagus*). *J. Zool.* **2002**, *258*, 197–203. [[CrossRef](#)]
65. Beasley, M.J.; Brown, W.A.B.; Legge, A.J. Incremental Banding in Dental Cementum: Methods of Preparation for Teeth from Archaeological Sites and for Modern Comparative Specimens. *Int. J. Osteoarchaeol.* **1992**, *2*, 37–50. [[CrossRef](#)]
66. Burke, A.; Castanet, J. Histological Observations of Cementum Growth in Horse Teeth and Their Application to Archaeology. *J. Archaeol. Sci.* **1995**, *22*, 479–493. [[CrossRef](#)]
67. Pagh, S.; Pertoldi, C.; Chriell, M.; Petersen, H.H.; Jensen, T.H.; Madsen, S.; Kraft, D.C.E.; Schou, T.M.; Hansen, M.S. Estimation of the Age and Reproductive Performance of Wild-Born and Escaped Mink (*Neovison Vison*) Caught in the Wild in Denmark. *Animals* **2021**, *11*, 162. [[CrossRef](#)]
68. Cipriano, A. Cold Stress in Captive Great Apes Recorded in Incremental Lines of Dental Cementum. *Folia Primatol.* **2002**, *73*, 21–31. [[CrossRef](#)]
69. Akbulut, N.; Çetin, S.; Bilecenoglu, B.; Altan, A.; Akbulut, S.; Ocak, M.; Orhan, K. The Micro-CT Evaluation of Enamel-Cement Thickness, Abrasion, and Mineral Density in Teeth in the Postmortem Interval (PMI): New Parameters for the Determination of PMI. *Int. J. Leg. Med.* **2019**, *134*, 645–653. [[CrossRef](#)]
70. Ungar, P.S. *Teeth. A Very Short Introduction*; Oxford University Press: Oxford, UK, 2014.
71. Berkovitz, B.; Shellis, P. *The Teeth of Mammalian Vertebrates*; Academic Press: Amsterdam, The Netherlands; Elsevier: New York, NY, USA, 2018.
72. García, R.A.; Zurriaguz, V. Histology of Teeth and Tooth Attachment in Titanosaurs (Dinosauria; Sauropoda). *Cretac. Res.* **2016**, *57*, 248–256. [[CrossRef](#)]
73. Donoghue, P.C.J.; Rücklin, M. The Ins and Outs of the Evolutionary Origin of Teeth. *Evol. Dev.* **2016**, *18*, 19–30. [[CrossRef](#)]
74. Wittwer-Backofen, U. Age Estimation Using Tooth Cementum Annulation. *Methods Mol. Biol.* **2012**, *915*, 129–143. [[CrossRef](#)]
75. Naji, S.; Colard, T.; Blondiaux, J.; Bertrand, B.; d’Incau, E.; Bocquet-Appel, J.P. Cementochronology, to Cut or Not to Cut? *Int. J. Paleopathol.* **2016**, *15*, 113–119. [[CrossRef](#)]
76. Bertrand, B.; Cunha, E.; Bécart, A.; Gosset, D.; Hédouin, V. Age at Death Estimation by Cementochronology: Too Precise to Be True or Too Precise to Be Accurate? *Am. J. Phys. Anthropol.* **2019**, *169*, 464–481. [[CrossRef](#)]
77. Cerrito, P.; Bailey, S.E.; Hu, B.; Bromage, T.G. Parturitions, Menopause and Other Physiological Stressors Are Recorded in Dental Cementum Microstructure. *Sci. Rep.* **2020**, *10*, 5381. [[CrossRef](#)]
78. Charan Gowda, B.K.; Srinivasa Reddy, P.; Kokila, G.; Pradeep, L. Cemental Annulation and Phase Contrast Microscope; Tool for Age Estimation. *J. South India Med. Assoc.* **2014**, *6*, 9–13.
79. De Broucker, A.; Colard, T.; Penel, G.; Blondiaux, J.; Naji, S. The Impact of Periodontal Disease on Cementochronology Age Estimation. *Int. J. Paleopathol.* **2016**, *15*, 128–133. [[CrossRef](#)]
80. Dias, P.E.M.; Beaini, T.L.; Melani, R.F.H. Age Estimation from Dental Cementum Incremental Lines and Periodontal Disease. *J. Forensic Odonto-Stomatol.* **2010**, *28*, 13–21.
81. Gauthier, J.; Schutkowski, H. Assessing the Application of Tooth Cementum Annulation Relative to Macroscopic Aging Techniques in an Archeological Sample. *HOMO-J. Comp. Hum. Biol.* **2013**, *64*, 42–57. [[CrossRef](#)]
82. Geetha, H.; Baghisath, V.; Vinay, H.; Sudheer, B.; Kumar, V.; Gayathri, C. Age Estimation Using Tooth Cementum Annulations Method by Different Types of Microscope: A Comparative Study. *Int. J. Oral Health Sci.* **2018**, *8*, 73. [[CrossRef](#)]

83. Gocha, T.P.; Schutkowski, H. Tooth Cementum Annulation for Estimation of Age-at-Death in Thermally Altered Remains. *J. Forensic Sci.* **2013**, *58*, S151–S155. [[CrossRef](#)]
84. Goutham, B.S.; Ramachandra, S.; Dhull, K.S.; Kumar, H.; Walia, C.; Poosarla, C.S. Age Estimation in Odisha Population Using Cemental Annulation Count: A Comparison of Field, Phase-Contrast, and Polarized Microscopy. *J. Int. Oral Health* **2016**, *8*, 1065–1068. [[CrossRef](#)]
85. Gupta, P.; Kaur, H.; Madhu Shankari, G.S.; Jawanda, M.K.; Sahi, N. Human Age Estimation from Tooth Cementum and Dentin. *J. Clin. Diagn. Res.* **2014**, *8*, 5–8. [[CrossRef](#)]
86. Jankauskas, R.; Barakauskas, S.; Bojarun, R. Incremental Lines of Dental Cementum in Biological Age Estimation. *HOMO- J. Comp. Hum. Biol.* **2001**, *52*, 59–71. [[CrossRef](#)]
87. Kagerer, P.; Grupe, G. Age-at-Death Diagnosis and Determination of Life-History Parameters by Incremental Lines in Human Dental Cementum as an Identification Aid. *Forensic Sci. Int.* **2001**, *118*, 75–82. [[CrossRef](#)]
88. Kasetty, S.; Rammanohar, M.; Raju Ragavendra, T. Dental Cementum in Age Estimation: A Polarized Light and Stereomicroscopic Study. *J. Forensic Sci.* **2010**, *55*, 779–783. [[CrossRef](#)]
89. Kulkarni, N.; Swetha, M.; Gokul, S. Dental Age Estimation Using Incremental Lines of Cementum. *Int. J. Oral Health Dent.* **2018**, *4*, 202–204.
90. Lanteri, L.; Bizot, B.; Saliba-Serre, B.; Gaudart, J.; Signoli, M.; Schmitt, A. Cementochronology: A Solution to Assess Mortality Profiles from Individual Age-at-Death Estimates. *J. Archaeol. Sci. Rep.* **2018**, *20*, 576–587. [[CrossRef](#)]
91. Le Cabec, A.; Tang, N.K.; Ruano Rubio, V.; Hillson, S. Nondestructive Adult Age at Death Estimation: Visualizing Cementum Annulations in a Known Age Historical Human Assemblage Using Synchrotron X-Ray Microtomography. *Am. J. Phys. Anthropol.* **2018**, *168*, 25–44. [[CrossRef](#)]
92. Loganathan, M.; Harikrishnan, P.; Loganathan, M.S.A.; Muthusamy, R. Estimation of Age through Cementum Annulations in Different Age Group. *Univ. J. Med. Med. Spec. ISSN* **2019**, *4*, 4–7.
93. Mallar, K.; Girish, H.; Murgod, S.; Yathindra Kumar, B. Age Estimation Using Annulations in Root Cementum of Human Teeth: A Comparison between Longitudinal and Cross Sections. *J. Oral Maxillofac. Pathol.* **2015**, *19*, 396–404. [[CrossRef](#)] [[PubMed](#)]
94. Mohan, N.; Gokulraj, S.; Thomas, M. Age Estimation by Cemental Annulation Rings. *J. Forensic Dent. Sci.* **2018**, *10*, 79. [[CrossRef](#)] [[PubMed](#)]
95. Sinha, N.; Sahni, P.; Hm, J.; Kumar, A.; Gujjar, P. Determination of Season of Death Using Dental Cementum Annulations: A Study in Humans. *Int. J. Oral Health Med. Res.* **2017**, *4*, 19–21.
96. Oliveira-Santos, I.; Gouveia, M.; Cunha, E.; Gonçalves, D. The Circles of Life: Age at Death Estimation in Burnt Teeth through Tooth Cementum Annulations. *Int. J. Leg. Med.* **2017**, *131*, 527–536. [[CrossRef](#)]
97. Petrovic, B.; Pantelinac, J.; Capo, I.; Miljkovic, D.; Popovic, M.; Penezic, K.; Stefanovic, S. Using Histological Staining Techniques to Improve Visualization and Interpretability of Tooth Cementum Annulation Analysis. *Int. J. Morphol.* **2021**, *39*, 216–221. [[CrossRef](#)]
98. Pradeep, L.; Kokila, G.; Gopinathan, P.; Guruswamy, S.; Nazir, S.; Chatterjee, A. Age Estimation with Cemental Annulation Using Light, Phase Contrast and Polarized Microscopy. *J. Microsc. Ultrastruct.* **2021**, *9*, 55–60. [[CrossRef](#)]
99. Robbins Schug, G.; Brandt, E.T.; Lukacs, J.R. Cementum Annulations, Age Estimation, and Demographic Dynamics in Mid-Holocene Foragers of North India. *HOMO- J. Comp. Hum. Biol.* **2012**, *63*, 94–109. [[CrossRef](#)]
100. Sousa, E.M.D.; Stott, G.G.; Alves, J.B. Determination of Age from Cemental Incremental Lines for Forensic Dentistry. *Biotech. Histochem.* **1999**, *74*, 185–193. [[CrossRef](#)]
101. Swetha, G.; Kattappagari, K.K.; Poosarla, C.S.; Chandra, L.P.; Gontu, S.R.; Badam, V.R.R. Quantitative Analysis of Dental Age Estimation by Incremental Line of Cementum. *J. Oral Maxillofac. Pathol.* **2018**, *22*, 138–142.
102. Thete, S.G.; Vikhe, D.M.; Patil, R.B.; Sabnis, S.L.; Mahajan, N.; Bramhecha, A.; Misal, K. Cementum Thickness as a Parameter for Age Estimation. *Int. J. Drug Res. Dent. Sci.* **2020**, *2*, 1–6.
103. Wedel, V.L. Determination of Season at Death Using Dental Cementum Increment Analysis. *J. Forensic Sci.* **2007**, *52*, 1334–1337. [[CrossRef](#)]
104. Maat, G.J.R.; Gerretsen, R.R.R.; Aarents, M.J. Improving the Visibility of Tooth Cementum Annulations by Adjustment of the Cutting Angle of Microscopic Sections. *Forensic Sci. Int.* **2006**, *159*, 11–14. [[CrossRef](#)]
105. Shukla, D.; Kale, A.D.; Hallikerimath, S. Cementum Made More Visual. *J. Forensic Odonto-Stomatol.* **2012**, *30*, 29–36.
106. Devi, S.; Don, K.R.; Mohanraj, K.G. Different Histological Stains Used for Assessing the Morphology of Cementum—a Review. *Indian J. Forensic Med. Toxicol.* **2020**, *14*, 4639–4646. [[CrossRef](#)]
107. Liversidge, H.M. Tooth Eruption and Timing. In *A Companion to Dental Anthropology*; Irish, J.D., Richard Scott, G., Eds.; Wiley Blackwell, John Wiley & Sons, Inc.: Chichester, UK, 2016; pp. 159–171.
108. Hillson, S. *Tooth Development in Human Evolution and Bioarchaeology. Tooth Development in Human Evolution and Bioarchaeology*; Cambridge University Press: Cambridge, UK, 2013; pp. 1–307. [[CrossRef](#)]
109. Boas, F. The Tempo of Growth of Fraternities. *Proc. Natl. Acad. Sci. USA* **1935**, *21*, 413–418. [[CrossRef](#)]
110. Grøn, A.M. Prediction of Tooth Emergence. *J. Dent. Res.* **1962**, *41*, 573–585. [[CrossRef](#)]
111. AlQahtani, S.J.; Hector, M.P.; Liversidge, H.M. Brief Communication: The London Atlas of Human Tooth Development and Eruption. *Am. J. Phys. Anthropol.* **2010**, *142*, 481–490. [[CrossRef](#)]
112. Czermak, A.; Czermak, A.; Ernst, H.; Grupe, G. A New Method for the Automated Age-at-Death Evaluation by Tooth-Cementum Annulation (TCA). *Anthrop. Anz.* **2006**, *64*, 25–40. [[CrossRef](#)]

113. Streso, K.; Lagona, F. Hidden Markov Random Field and Frame Modelling for TCA Image Analysis. In Proceedings of the Third IASTED International Conference on Signal Processing, Pattern Recognition, and Applications, Innsbruck, Austria, 14–16 February 2007; ACTA Press: Calgary, AB, Canada, 2007; pp. 310–315.
114. Wall-Scheffler, C.M.; Foley, R.A. Digital Cementum Luminance Analysis (DCLA): A Tool for the Analysis of Climatic and Seasonal Signals in Dental Cementum. *Int. J. Osteoarchaeol.* **2008**, *18*, 11–27. [[CrossRef](#)]
115. Cerrito, P.; Cerrito, L.; Hu, B.; Bailey, S.E.; Kalisher, R.; Bromage, T.G. Weaning, Parturitions and Illnesses Are Recorded in Rhesus Macaque (*Macaca Mulatta*) Dental Cementum Microstructure. *Am. J. Primatol.* **2021**, *83*, e23235. [[CrossRef](#)]
116. Panezic, K.; Porcic, M.; Urban, P.K.; Wittwer-Backofen, U.; Stefanovic, S. Stressful Times for Women—Increased Physiological Stress in Neolithic Females Detected in Tooth Cementum. *J. Archaeol. Sci.* **2020**, *122*, 105217. [[CrossRef](#)]
117. Pinchi, V.; Forestieri, A.; Calvitti, M. Thickness of the dental (radicular) cementum: A parameter for estimating age. *J. Forensic Odonto-Stomatol.* **2007**, *25*, 1–6.
118. Birimiša, M.; Dumančić, J.; Vodanović, M.; Anić Milošević, S.; Marić, S.; Brkić, H. Forensic Determination of Dental Age by Cementum Thickness of Human Teeth. *J. Forensic Odontostomatol.* **2021**, *39*, 41–48.
119. Wedel, V.; Gocha, T. Reassessing Determining Season at Death Using Dental Cementum Increment Analysis (DCIA) in Young Adults. In Proceedings of the American Academy of Forensic Sciences, 71st Annual Scientific Meeting, Atlanta, GA, USA, 18–23 February 2019; p. A18.
120. Ralston, C.E. *Dental Cementum Increment Analysis and Estimating Season at Death in Humans*; Boston University: Boston, MA, USA, 2016.
121. Swearinger, M.C. *Application of Dental Cementochronology in Unidentified Migrants in South Texas*; Texas State University: San Marcos, TX, USA, 2018.
122. Klezeval, G.; Shishlina, N. Assessment of the Season of Death of Ancient Human from Cementum Annual Layers. *J. Archaeol. Sci.* **2001**, *28*, 481–486.
123. Wedel, V.L.; Found, G.; Nusse, G. A 37-Year-Old Cold Case Identification Using Novel and Collaborative Methods. *J. Forensic Identif.* **2013**, *65*, 733–749.
124. Renz, H.; Radlanski, R.J. Incremental Lines in Root Cementum of Human Teeth—A Reliable Age Marker? *HOMO-J. Comp. Hum. Biol.* **2006**, *57*, 29–50. [[CrossRef](#)]
125. Cobb, E.M. Evaluation of Cementochronology As an Aging Method for Inexperienced Researchers. Bachelor's Thesis, Appalachian State University, Boone, NC, USA, 2017.
126. Roksandic, M.; Vlak, D.; Schillaci, M.A.; Voicu, D. Technical Note: Applicability of Tooth Cementum Annulation to an Archaeological Population. *Am. J. Phys. Anthropol.* **2009**, *140*, 583–588. [[CrossRef](#)]
127. Bertrand, B. Age-at-Death Estimation by Cementochronology—Somewhere between Indifference and Overconfidence. *Forensic Sci. Int.* **2019**, *302*, 109886. [[CrossRef](#)]
128. Smith, T. *The Tales Teeth Tell. Development, Evolution, Behavior*; The MIT Press: Cambridge, MA, USA, 2018.
129. Edinborough, M.; Djotunović, I.; Edinborough, K. Tooth Cementum Annulation: Confounding Difficulties Remain When Inferring Life History Parameters from Archeological Tooth Samples. *J. Archaeol. Sci.* **2021**, *134*, 105417. [[CrossRef](#)]
130. Panezic, K.; Porcic, M.; Urban, P.K.; Wittwer-Backofen, U.; Stefano, S. Stressful Times for Women—Reply to Edinborough et al. (2021). *J. Archaeol. Sci.* **2021**, *134*, 105464. [[CrossRef](#)]
131. Naji, S.; Rendu, W.; Gourichon, L. *Dental Cementum in Anthropology*; Cambridge University Press: Cambridge, UK, 2022.