



A geometric-based method for recognizing overlapping polygonal-shaped and semi-transparent particles in gray tone images

Ola Suleiman Ahmad, Johan Debayle, Jean-Charles Pinoli

► To cite this version:

Ola Suleiman Ahmad, Johan Debayle, Jean-Charles Pinoli. A geometric-based method for recognizing overlapping polygonal-shaped and semi-transparent particles in gray tone images. *Pattern Recognition Letters*, Elsevier, 2011, 32 (15), pp.2068-2079. <10.1016/j.patrec.2011.09.004>. <hal-00632468>

HAL Id: hal-00632468

<https://hal.archives-ouvertes.fr/hal-00632468>

Submitted on 14 Oct 2011

HAL is a multi-disciplinary open access archive for the deposit and dissemination of scientific research documents, whether they are published or not. The documents may come from teaching and research institutions in France or abroad, or from public or private research centers.

L'archive ouverte pluridisciplinaire **HAL**, est destinée au dépôt et à la diffusion de documents scientifiques de niveau recherche, publiés ou non, émanant des établissements d'enseignement et de recherche français ou étrangers, des laboratoires publics ou privés.

A geometric-based method for recognizing overlapping polygonal-shaped and semi-transparent particles in gray tone images

Ola Ahmad*, Johan Debayle, Jean-Charles Pinoli

Ecole Nationale Supérieure des Mines de Saint-Etienne

CIS-SPIN-LPMG / CNRS

158 cours Fauriel, 42023 Saint-Etienne cedex 2, France

Abstract

A geometric-based method is proposed to recognize the overlapping particles of different polygonal shapes such as rectangular, regular and/or irregular prismatic particles in a gray tone image. The first step consists in extracting the salient corners, identified by their locations and orientations, of the overlapping particles. Although there are certain difficulties like the perspective geometric projection, out of focus, transparency and superposition of the studied particles. Then, a new clustering technique is applied to detect the shape by grouping its correspondent salient corners according to the geometric properties of each shape. A simulation process is carried out for evaluating the performance of the proposed method. Then, it is particularly applied on a real application of batch cooling crystallization of the ammonium oxalate in pure water. The experimental results show that the method is efficient to recognize the overlapping particles of different shapes and sizes.

Keywords: Salient corner detection, Contour detection, Clustering method, Overlapping particles recognition

1. Introduction

The detection of overlapping particles of polygonal shapes has attracted the attention of many researchers in various applications in chemical engineering, biology,

*Corresponding author.

Email address: ahmad@emse.fr (Ola Ahmad)

computer vision, pattern recognition and many others. Its importance comes from the need to get accurate particle's characterization, measurement or localization. Thus, several approaches have been developed to detect overlapping particles in 2D gray tone images. Some of them are based on line detection algorithms (Jang and Hong, 2002; Illingworth and Kittler, 1988; Burns et al., 1986; Liu et al., 2007, and etc.) which extract line segments from an edge image. Then, these line segments are used as essential features for the proposed clustering system such as (Larsen et al., 2006, 2007; Liu et al., 2007). However, the accuracy of detecting lines and grouping segments highly decreases in the case of agglomeration or overlap, and with the out of focus problem. Besides the line segment detection, Yu and Bajaj (2004) proposed a method based on shape matching between the object boundaries and a template of the desired shape. The method is developed to detect objects of pre-determined shape and size. Thus, it is not sufficient to extract overlapping objects of varied size and different shapes. A neural-network-based method has been developed by Su and Hung (2007) to detect rectangular overlapping objects using edges as data inputs to the neural network. It shows efficiency in detecting different cases of overlapping rectangles, but it is sensitive to the initialization process of the neural network and to the number of the data points brought from the edges, and it is also limited to detect rectangles with perspective distortion. Wan et al. (2008) have presented a method to detect the L-glutamic acid particles in gray tone images with high overlapping particles, which is based on analyzing the convexity of the particle's boundaries obtained from a multi-scale segmentation (Anda et al., 2005). Then, the concave points are defined as markers for the marker-controlled watershed algorithm (Beucher, 1991), which identifies each marked particle as an individual one. Its results illustrate high efficiency to separate the attached particles of different sizes. However the concave points are not sufficient as markers to give an accurate detection of the particles for such difficult cases of overlap that are presented in the current study.

The goal of the present paper is to introduce a novel geometric method based on image analysis for recognizing overlapping particles of different polygonal shapes and sizes, even in high overlap cases. The problem becomes more critical if the real particles have different sizes and orientations in 3D space. So, the projection onto an image plane will change the geometric properties of the shape, and the perspective geometric projection will lead to a large variety of 2D anisotropic shapes. Several specific characteristics of the studied particles such as the heterogeneity, transparency and anisotropy strongly affect the recognition problem. In Figure 1A gray tone image of ammonium oxalate crystals in pure water (size 640×480 pixels), showing illumination heterogeneity, perspective geometric projection, out of focus imaging, transparency and overlapping of particlesfigure.1, these difficulties are clearly illustrated in a real ex-

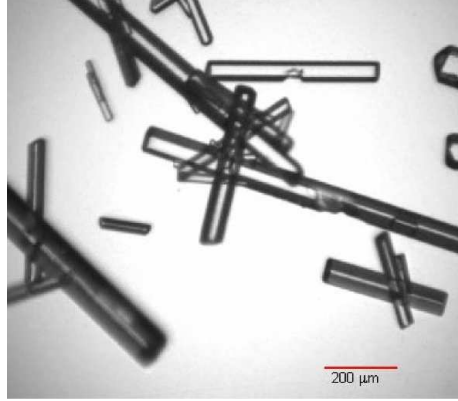


Figure 1: A gray tone image of ammonium oxalate crystals in pure water (size 640×480 pixels), showing illumination heterogeneity, perspective geometric projection, out of focus imaging, transparency and overlapping of particles.

ample of ammonium oxalate crystals image which is obtained during batch cooling crystallization process in pure water.

The proposed geometric-based method first detects the salient corners from overlapping particles, of rectangular and regular/irregular prismatic shapes, using both gray tone and edge analysis. Thereafter, the correspondent salient corners that belong to the same particle are clustered according to the geometric properties of the particle's shape.

The present paper is organized as follows. The detection of salient corners is introduced in Section 2. The clustering technique of the correspondent salient corners is presented in Section 3. In Section 4. the results are illustrated on both artificial and real overlapping particles, and a quantitative comparison with the manual detection is also presented. Finally, a conclusion and some perspectives are discussed in Section 5.

2. Detection of the salient corners

Before detecting the salient corners of the particles, a pre-processing step is needed to remove the heterogeneity of the background illumination as seen in Figure 1A gray tone image of ammonium oxalate crystals in pure water (size 640×480 pixels), showing illumination heterogeneity, perspective geometric projection, out of focus imaging, transparency and overlapping of particlesfigure.1, and to increase the contrast between the particle's corners and the background. The background image is acquired at the beginning of the video acquisition before the particles formation, and

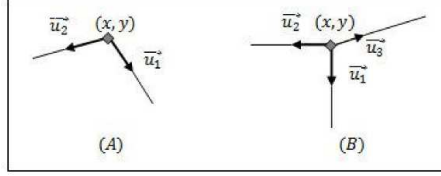


Figure 2: A salient corner (vertex) is illustrated in (A), and a non-salient corner (junction) is illustrated in (B).

then it is subtracted from the studied image of particles (see figure 3(c)Subfigure 3(c)subfigure.3.3). From now, the initial image I which will be mentioned in the following of this paper is the gray tone image after the background removing.

2.1. Definition of a salient corner

Let D be the image spatial support defined by a set of pixels $\{P = (x, y) \in D\}$. Let $\{\vec{u}_i\}_{i \geq 1}$ be a set of normalized vectors that define the orientations of all possible intersected edges (lines) at each pixel P in D , such that $\forall P_i \in D$, $\vec{u}_i = \frac{\overrightarrow{PP_i}}{\|\overrightarrow{PP_i}\|_2}$ where the vector $\overrightarrow{PP_i}$ is related with the existence of an edge between P and P_i . Then, the pixel P defines a salient corner, denoted C_s , if and only if exists two intersected lines of directions \vec{u}_1, \vec{u}_2 at P such that:

$$C_s = \{(x, y, \vec{u}_1, \vec{u}_2) : (x, y) \in D, \|\vec{u}_1\|^2 = 1, \|\vec{u}_2\|^2 = 1\} \quad (1)$$

Other pixels at which three or more intersected lines are found (called junctions) should be removed. Figure 2A salient corner (vertex) is illustrated in (A), and a non-salient corner (junction) is illustrated in (B)figure.2 illustrates a salient corner in (A) and a sample junction in (B).

2.2. Detection of candidate corners

Many approaches have been developed and reported for detecting the corners because of their importance in computer vision, and pattern recognition applications. Some of them deal directly with the gray tone values such as (Harris and Stephens, 1988; Smith and Brady, 1995; Rosten and Drummond, 2005). Other approaches extract firstly the boundaries of the objects and then detect the corners from the planar curves or arc segments like (Zhang et al., 2009; Dosch et al., 2000; Teh and Chin, 1989). Some of those methods are not sufficient to get accurate corner detection as declared in Shen and Wang (2002), and a combination between edge and

intensity analysis for detecting the corners could be more robust. The candidate corners are detected from the gray tone image directly using Rosten and Drummond (2005) algorithm. A Bresenham circle, of radius 3 centered at each pixel P in the gray tone image, is calculated. Then, the corner detector (Rosten and Drummond, 2005) applies an optimized test on P according to its neighbors inside the circle, so as to be classified as a corner or to be rejected as no corner. The algorithm shows good performance comparing to other methods such as (Harris and Stephens, 1988; Smith and Brady, 1995). The resulting candidate corners are illustrated in figure 3(d)Subfigure 3(d)subfigure.3.4.

2.3. Extraction of contours

Finding the contour of the particles is the second step for detecting the salient corners defined in Eq. 1Definition of a salient cornerequation.2.1. Different difficulties are encountered for precisely extracting the edges of the studied particles, such as:

1. the transparency of the particles leads to get many insignificant edges.
2. the geometric projection of the 3D particle's shapes on the image plane provides different levels of edge thickness and appearance.
3. blur particles have weak-contrast edges and corners.
4. the level of overlap is probably high.

All these reasons lead to apply a multi-scale edge detection followed by a set of non-linear filter operations for removing most of non-relevant information and to extract the significant edges as illustrated in figure 4Contour extraction applied on a gray tone image of ammonium oxalate crystals. (a)Subfigure 4(a)subfigure.4.1 Original image. (b)Subfigure 4(b)subfigure.4.2 Image after background removing. (c)Subfigure 4(c)subfigure.4.3 The image after the multi-scale edge detection. (d)Subfigure 4(d)subfigure.4.4, (e)Subfigure 4(e)subfigure.4.5 Convex hull applied iteratively on two binary edge images, the first one is obtained after a multi-scale edge detection, and the second is the result of the first iteration. (f)Subfigure 4(f)subfigure.4.6 Edge image after filteringfigure.4.

2.3.1. Multi-scale edge detection

The basic idea is to extract the edges at different scales from the initial image I , and then to combine the information obtained from these scales. As a result, poor and broken edges at certain scales will appear strongly at higher scales as reported in Anda et al. (2005). The edge detector is related to Canny (1986). The multi-scale is affected by changing the kernel width of the smoothing Gaussian filter (σ) involved in Canny detector. Then, two thresholds with hysteresis, t_1, t_2 , are generally

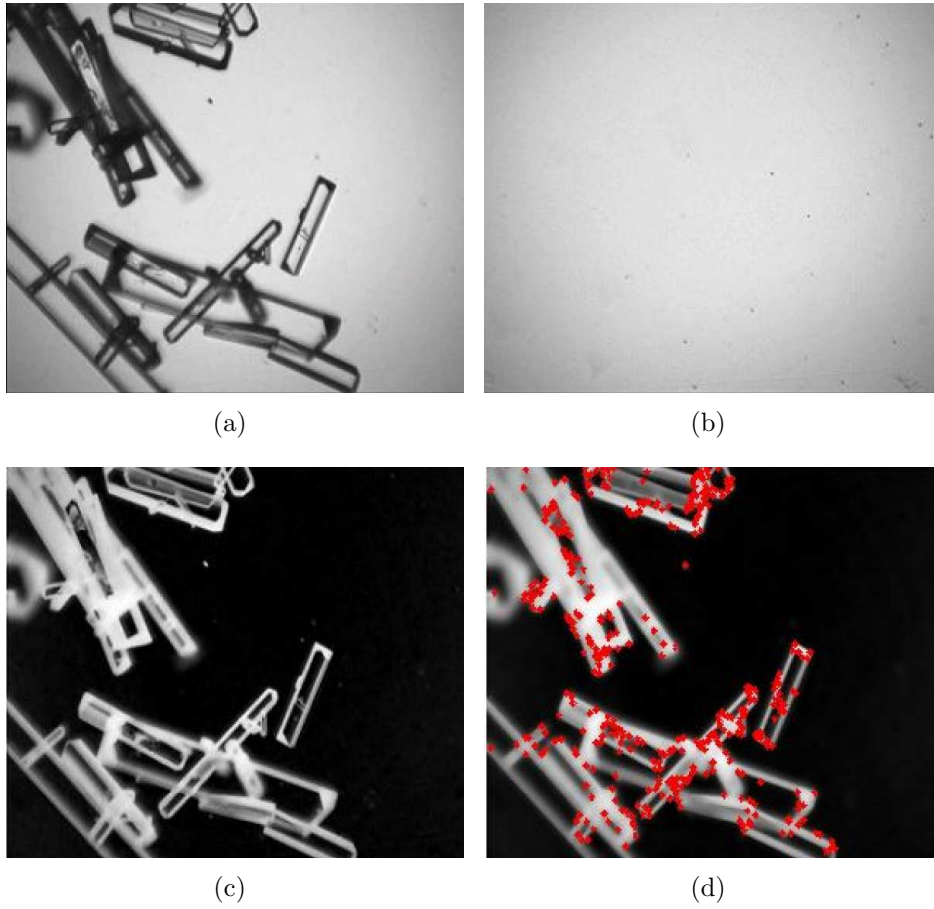


Figure 3: Example of the detection of candidate corners applied on an image of ammonium oxalate crystals. (a)Subfigure 3(a)subfigure.3.1 Original image. (b)Subfigure 3(b)subfigure.3.2 Background image. (c)Subfigure 3(c)subfigure.3.3 Removing background from (a)Subfigure 3(a)subfigure.3.1. (d)Subfigure 3(d)subfigure.3.4 Image with candidate corners in overlay.

applied on the filtered image in order to obtain a binary image of all edges. In the present study, three kernels are chosen as follows: $\sigma_1 = 1$, $\sigma_2 = 1.5$, and $\sigma_3 = 2$, and a thresholding without hysteresis ($t_1 = t_2$) is applied, which are sufficient to obtain all edges of the overlapping particles (see figure 4(c)Subfigure 4(c)subfigure.4.3).

2.3.2. Filter operations

The next stage after the multi-scale edge detection is to use the morphological filters (Soille, 2003) for removing the noise and the internal edges that are obtained from thick lines or intersections. A closing operation is firstly applied to insure closing all the breaks of the edges. Then a convex hull is used to determine the envelop that surrounds each of the connected segments in the binary edge image (see figures 4(d)Subfigure 4(d)subfigure.4.4- 4(e)Subfigure 4(e)subfigure.4.5). Hence, certain criteria such as the standard deviation σ_R of the gray tone region R included inside each envelop, its mean intensity \bar{I}_R and its area size A_R are used in this filtering stage as follows:

1. if $A_R < A_{th}$, then the region R is considered as noise and removed.
2. if $\sigma_R < \sigma_{th}$, the region R is considered homogeneous, and if $\bar{I}_R < \bar{I}_{th}$ then R is considered as a rejected region if its area size $A_R < A_o$, and the region's envelop is included inside another bigger one.

where $A_{th}, A_o, \sigma_{th}, \bar{I}_{th}$ are determined thresholds.

The first condition means that the region R inside the envelop is identified by isolated small particles considered as noises. Whereas the second condition means that the region R is identified either by the internal edges of the particles or as a result of the intersection of overlapping particles, so R is removed. The filtering stage could be repeated iteratively if required. As a result, all significant edges are preserved and most of insignificant ones are removed, see figure 4(f)Subfigure 4(f)subfigure.4.6. The results showed that the final edge image is relevant for analyzing the corners and detecting their orientations.

2.4. Finding salient corners

The edge analysis is essential for calculating the orientations of the detected candidate corners, and then for obtaining only the salient ones. The process of evaluating the locations and orientations of the salient corners involves three main steps:

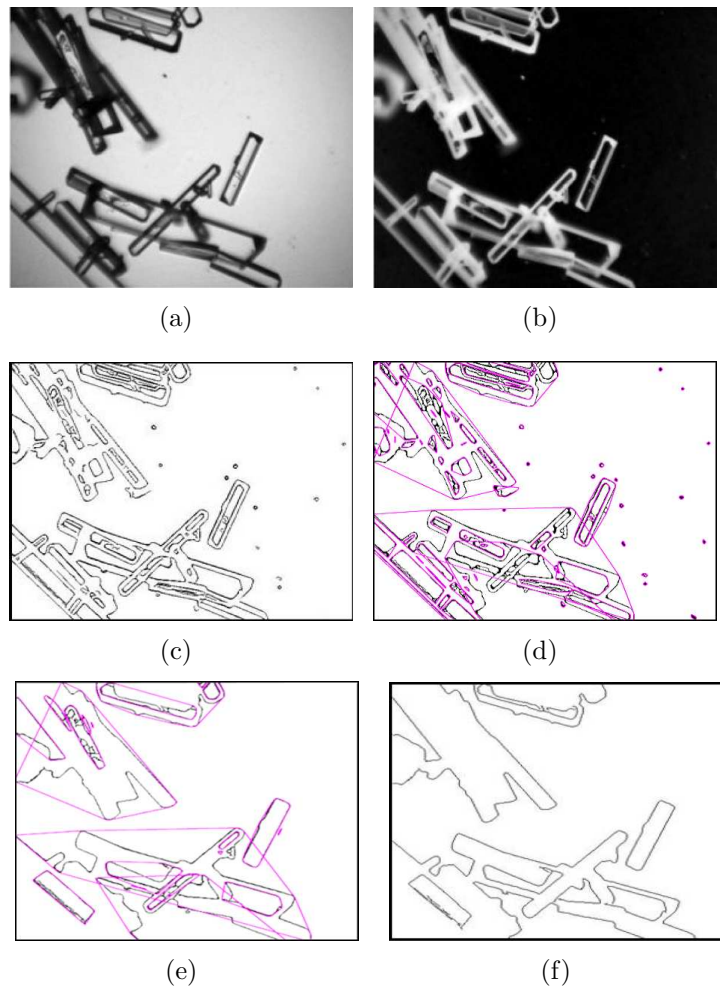


Figure 4: Contour extraction applied on a gray tone image of ammonium oxalate crystals. (a)Subfigure 4(a)subfigure.4.1 Original image. (b)Subfigure 4(b)subfigure.4.2 Image after background removing. (c)Subfigure 4(c)subfigure.4.3 The image after the multi-scale edge detection. (d)Subfigure 4(d)subfigure.4.4, (e)Subfigure 4(e)subfigure.4.5 Convex hull applied iteratively on two binary edge images, the first one is obtained after a multi-scale edge detection, and the second is the result of the first iteration. (f)Subfigure 4(f)subfigure.4.6 Edge image after filtering.

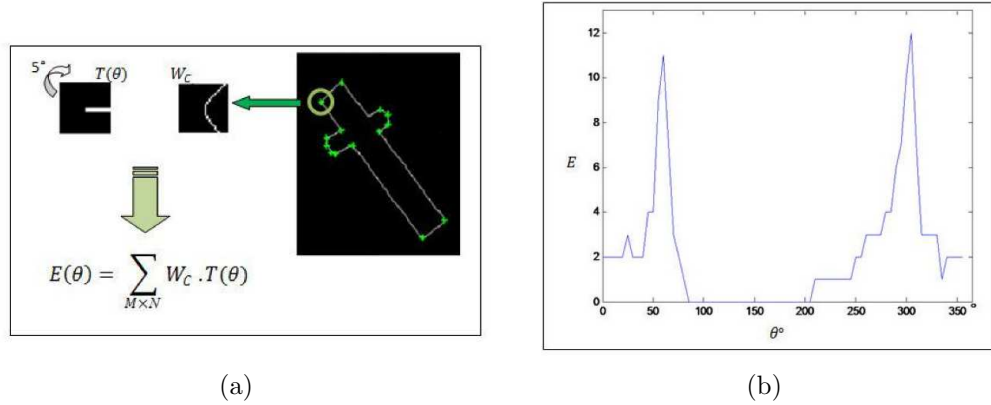


Figure 5: Example of the directional correlation obtained at one chosen candidate corner on the studied edge image. (a)Subfigure 5(a)subfigure.5.1 Directional correlation between a window W_C of size 27×27 pixels centered at one chosen corner and a line template $T(\theta)$ with $\theta \in [0, 360^\circ[$. (b)Subfigure 5(b)subfigure.5.2 Directional correlation function E at the chosen corner, with two major peaks.

2.4.1. Extracting the salient corners by line template correlation with their associated edges

The basic idea is to match line templates T_θ of size $M \times N$ pixels oriented from $\theta = 0^\circ$ to 360° , with a step $\delta\theta = 5^\circ$ in this experiment. Then, to compute the directional correlation function E , as seen in figure 5Example of the directional correlation obtained at one chosen candidate corner on the studied edge image. (a)Subfigure 5(a)subfigure.5.1 Directional correlation between a window W_C of size 27×27 pixels centered at one chosen corner and a line template $T(\theta)$ with $\theta \in [0, 360^\circ[$. (b)Subfigure 5(b)subfigure.5.2 Directional correlation function E at the chosen corner, with two major peaksfigure.5, between a window W_C of same size centered at a candidate corner C and all templates T_θ as follows:

$$\forall \theta \in [0, 5^\circ, 10^\circ, \dots, 360^\circ[: E(\theta) = \sum_{x=1}^M \sum_{y=1}^N W_C(x, y) T_\theta(x, y) \quad (2)$$

The candidate corner C will be classified as a salient one C_s , if the directional correlation function $E(\theta)$ calculated at C has only two major peaks, that exceed a threshold t , which correspond to its associated edges (see figure 5Example of the directional correlation obtained at one chosen candidate corner on the studied edge image. (a)Subfigure 5(a)subfigure.5.1 Directional correlation between a window W_C of size 27×27 pixels centered at one chosen corner and a line template $T(\theta)$ with $\theta \in [0, 360^\circ[$. (b)Subfigure 5(b)subfigure.5.2 Directional correlation function E at

the chosen corner, with two major peaks (figure.5). Junctions give more than two dominant peaks over t , whereas the directional correlation function at the isolated points is near zero with no significant peaks. False corners (corners that are located on one edge due to the digitization problem, noise sensitivity and etc.) have correlation functions with only one dominant peak above the threshold t . Consequently, all candidate corners that have less or more than two dominant peaks are rejected directly as non salient ones.

2.4.2. Salient corner location refinement

The goal is to find the accurate locations of the salient corners, because some of the candidate corners that are detected from the gray tone image do not fit the right location on the edge image. This problem always exists in image processing. A neighboring window W of size 5×5 pixels centered at each detected salient corner is used, then the directional correlation function (see Eq. 2 Extracting the salient corners by line template correlation with their associated edges equation.2.2) is calculated at each pixel inside it. Let $\{P_k\}_{k < N_w} \in W$, ($N_w = 25$ is the number of pixels inside W), be all the pixels whose two dominant peaks above the threshold t such that:

$$P_k = \{(x_k, y_k, \vec{u}_{k1}, \vec{u}_{k2}) : E(\theta_k) \geq t \wedge E(\varphi_k) \geq t\} \quad (3)$$

then,

$$C_s = \{(x_s, y_s, \vec{u}_{s1}, \vec{u}_{s2}) : (\theta_s, \varphi_s) = \operatorname{argmax}_{k < N_w} (E(\theta_k) \geq t, E(\varphi_k) \geq t)\} \quad (4)$$

is the best salient corner scored in W .

2.4.3. Salient corner orientation refinement

The orientation refinement process is the final step of the salient corner detection method, which aims to accurately re-calculate the two directions (θ_1, θ_2) of each detected salient corner.

Two line templates, denoted $\tilde{T}_{\varphi_1}, \tilde{T}_{\varphi_2}$, of larger size ($\tilde{M} \times \tilde{N}$ pixels) are used to calculate the directional correlation at the salient corner C_s . Each \tilde{T}_{φ_1} and \tilde{T}_{φ_2} are rotated from $\theta_1 - 10^\circ$ to $\theta_1 + 10^\circ$, $\theta_2 - 10^\circ$ to $\theta_2 + 10^\circ$, respectively, with a finer step $\delta\varphi = 1^\circ$. Thus, two new directional correlations $\tilde{E}(\varphi_1), \tilde{E}(\varphi_2)$ related to $\tilde{T}_{\varphi_1}, \tilde{T}_{\varphi_2}$ will be calculated at C_s . $\tilde{E}(\varphi_1)$ and $\tilde{E}(\varphi_2)$ will have a maximum value at the directions $\tilde{\theta}_1, \tilde{\theta}_2$ respectively, which thus identify the accurate directions obtained for C_s as follows:

$$\begin{aligned}
\tilde{E}(\varphi_1) &= \sum_{\substack{0 \leq x < \tilde{M} \\ 0 \leq y < \tilde{N}}} W_{C_s}(x, y) \cdot \tilde{T}_{\varphi_1}(x, y) \\
\tilde{E}(\varphi_2) &= \sum_{\substack{0 \leq x < \tilde{M} \\ 0 \leq y < \tilde{N}}} W_{C_s}(x, y) \cdot \tilde{T}_{\varphi_2}(x, y)
\end{aligned} \tag{5}$$

where $\tilde{T}_{\varphi_1}, \tilde{T}_{\varphi_2}$ are two linear templates of size $\tilde{M} \times \tilde{N}$, ($\tilde{M} \gg M, \tilde{N} \gg N$) with directions $\varphi_1 \in [\theta_1 - 10^\circ : 1^\circ : \theta_1 + 10^\circ]$ and $\varphi_2 \in [\theta_2 - 10^\circ : 1^\circ : \theta_2 + 10^\circ]$ respectively. This yields the result:

$$\begin{aligned}
\tilde{\theta}_1 &= \operatorname{argmax}_{\theta_1 - 10^\circ \leq \varphi_1 \leq \theta_1 + 10^\circ} \tilde{E}(\varphi_1) \\
\tilde{\theta}_2 &= \operatorname{argmax}_{\theta_2 - 10^\circ \leq \varphi_2 \leq \theta_2 + 10^\circ} \tilde{E}(\varphi_2)
\end{aligned} \tag{6}$$

A summary of the salient corner detection steps is proposed in the synthetic diagram of figure 6. The result of the salient corner detection method is shown on a real example of gray tone image containing of ammonium oxalate crystals, see figure 7. The salient corner detection method applied on an in situ particles gray tone image. (a) Subfigure 7(a) subfigure.7.1 Original image. (b) Subfigure 7(b) subfigure.7.2 Salient corners are superimposed on the original image figure.7. The list of salient corners is considered as the input to the clustering procedure which will group the corners satisfying geometric conditions for recognizing the final polygonal shape.

3. Clustering of salient corners

The clustering technique is based on the geometric properties of the studied particles to find the correspondence between the salient corners. It depends on a priori knowledge of the particle's shapes which are supposed to be rectangles, or regular/irregular projected 2D prisms. A simple example of two different overlapped polygonal shapes has been established (see figure 8. Two overlapped polygonal shapes, one is a 2D prism and the second is a parallelogram figure.8) to illustrate the steps of the proposed clustering algorithm accompanied with a direct illustration on the selected example.

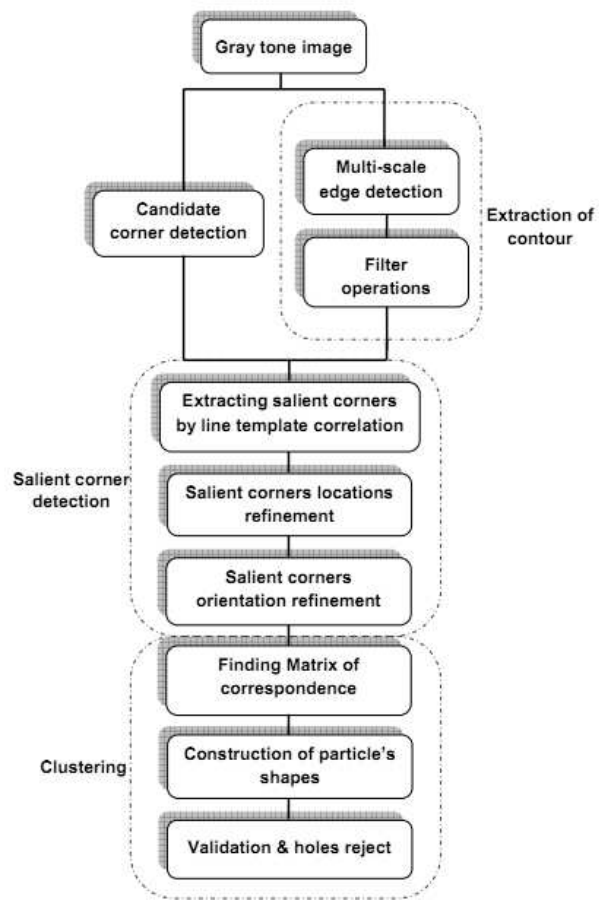


Figure 6: Diagram of the salient corner detection and clustering method

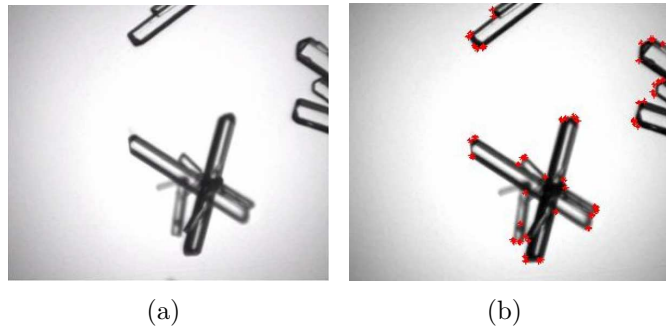


Figure 7: The salient corner detection method applied on an in situ particles gray tone image. (a)Subfigure 7(a)subfigure.7.1 Original image. (b)Subfigure 7(b)subfigure.7.2 Salient corners are superimposed on the original image.

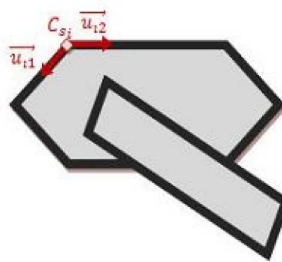


Figure 8: Two overlapped polygonal shapes, one is a 2D prism and the second is a parallelogram.

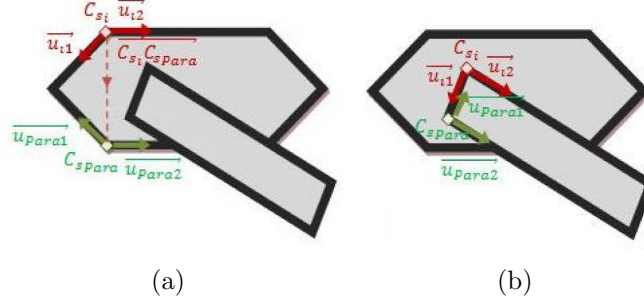


Figure 9: Find C_{sPara} which is correspondent with C_{s_i} . (a)Subfigure 9(a)subfigure.9.1 Case of projected prismatic shape. (b)Subfigure 9(b)subfigure.9.2 Case of projected rectangular shape.

3.1. Finding the matrix of correspondence between salient corners

For each salient corner $\{C_{s_i}(x_i, y_i, \vec{u}_{i1}, \vec{u}_{i2})\}_{1 \leq i \leq N_c}$, (N_c denotes the number of detected salient corners), the correspondence with other salient corners involves two main steps:

3.1.1. Find salient corners, $\{C_{sPara}\}_K$ that lies on lines parallel to the lines including

C_{s_i}
Let $C_{sPara}(x_{Para}, y_{Para}, \vec{u}_{Para1}, \vec{u}_{Para2})$ be any salient corner that has one of its directional vectors parallel to one of C_{s_i} directional vectors (as the example illustrated in figure 9). Find C_{sPara} which is correspondent with C_{s_i} . (a)Subfigure 9(a)subfigure.9.1 Case of projected prismatic shape. (b)Subfigure 9(b)subfigure.9.2 Case of projected rectangular shape. Then C_{sPara} satisfies the following equation:

$$\vec{u}_{i2} \cdot \vec{u}_{Para2} \geq \alpha \quad (7)$$

where $\alpha > 0$ is a positive specific threshold close to 1 (In the current study $\alpha = 0.9$). C_{sPara} must satisfy certain conditions to be assumed as correspondent to C_{s_i} . In the case where the desired shape is the rectangular one, a line segment $\overline{C_{s_i}C_{sPara}}$ joining both C_{s_i} and C_{sPara} (see figure 9(b)Subfigure 9(b)subfigure.9.2) could be obtained or already exists, if the normalized vector $\overline{C_{s_i}C_{sPara}}$ satisfies the following equations:

$$\begin{aligned} \vec{u}_{i1} \cdot \overline{C_{s_i}C_{sPara}} &\geq \alpha \\ \vec{u}_{Para1} \cdot \overline{C_{s_i}C_{sPara}} &\leq -\alpha \end{aligned} \quad (8)$$

In the case where the desired shape is a prismatic one, then, two lines oriented by $(\vec{u}_{i1}, \vec{u}_{Para1})$ and passing through C_{s_i}, C_{sPara} , respectively, must intersect in a unique common pixel P . Also, the pairs of unit vectors $(\vec{u}_{i1}, \vec{u}_{i2}), (\vec{u}_{Para1}, \vec{u}_{Para2})$ must be

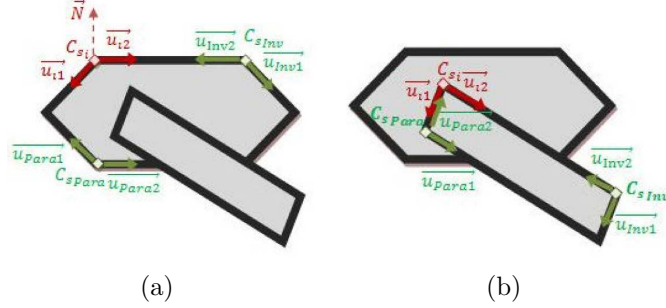


Figure 10: Find $C_{s_{Inv}}$ which is correspondent with C_{s_i} . (a)Subfigure 10(a)subfigure.10.1 Case of projected prismatic shape. (b)Subfigure 10(b)subfigure.10.2 Case of projected rectangular shape.

opposite to each other (see figure 9(a)Subfigure 9(a)subfigure.9.1). This could be described as follows:

$$\begin{aligned} & \left(\overrightarrow{u_{i1}} \cdot \overrightarrow{C_{s_i} C_{s_{Para}}} > \beta \right) \wedge \left(\overrightarrow{u_{Para1}} \cdot \overrightarrow{C_{s_i} C_{s_{Para}}} < -\beta \right) \\ & \left(\overrightarrow{u_{i1}} \cdot \overrightarrow{u_{i2}} < -\beta \right) \wedge \left(\overrightarrow{u_{Para1}} \cdot \overrightarrow{u_{Para2}} < -\beta \right) \end{aligned} \quad (9)$$

where $\beta \geq 0$ is a positive specific threshold close to 0 (In the current study $\beta = 0.1$). The typical value of β equals 0.

A list of salient corners $\{C_{s_{Para}}\}_{K=\{1, \dots, N_{Para}\}}$ is obtained at the end of the first search procedure, where N_{Para} is the length of the list $\{C_{s_{Para}}\}$.

3.1.2. Find salient corners $\{C_{s_{Inv}}\}_J$ that have edges collinear to the edges of C_{s_i} with opposite directions

The salient corner $C_{s_{Inv}}(x_{Inv}, y_{Inv}, \overrightarrow{u_{Inv1}}, \overrightarrow{u_{Inv2}})$ is collinear to C_{s_i} if one of its associated edges is collinear with any of the edges associated with C_{s_i} . See the example in figure 10 Find $C_{s_{Inv}}$ which is correspondent with C_{s_i} . (a)Subfigure 10(a)subfigure.10.1 Case of projected prismatic shape. (b)Subfigure 10(b)subfigure.10.2 Case of projected rectangular shape figure.10. Then, $C_{s_{Inv}}$ might be correspondent to C_{s_i} when the directional unit vectors $\overrightarrow{u_{Inv2}}, \overrightarrow{u_{i2}}$ are opposite to each other, as described in the equations below:

$$\begin{aligned} & \overrightarrow{u_{i2}} \cdot \overrightarrow{C_{s_i} C_{s_{Inv}}} \geq \alpha \\ & \overrightarrow{u_{Inv2}} \cdot \overrightarrow{C_{s_i} C_{s_{Inv}}} \leq -\alpha \end{aligned} \quad (10)$$

Besides the collinearity and opposition conditions, $C_{s_{Inv}}$ should satisfy additional geometric constraints. Firstly, the angles between the unit vectors associated with

each of $C_{s_{\text{Inv}}}$ and C_{s_i} must equal 90° for rectangular polygons and must be more than 90° for the prismatic ones. Secondly, the directional vectors, \vec{u}_{i_1} and \vec{u}_{Inv_1} of C_{s_i} and $C_{s_{\text{Inv}}}$ respectively, must have the same directions according to the norm \vec{N} on $\overline{C_{s_i}C_{s_{\text{Inv}}}}$ (see figure 10(a)Subfigure 10(a)subfigure.10.1, 10(b)Subfigure 10(b)subfigure.10.2), as described below:

$$\begin{aligned} & (\vec{u}_{i_2} \cdot \vec{u}_{i_1} \leq -\beta) \wedge (\vec{u}_{\text{Inv}_2} \cdot \vec{u}_{\text{Inv}_1} \leq -\beta) \\ & \text{sign}(\vec{u}_{i_1} \cdot \vec{N}) \cdot \text{sign}(\vec{u}_{\text{Inv}_1} \cdot \vec{N}) > 0 \end{aligned} \quad (11)$$

where $\vec{N} \perp \overline{C_{s_i}C_{s_{\text{Inv}}}}$.

All corners $\{C_{\text{Inv}_J}\}_{J=\{1, \dots, N_{\text{Inv}}\}}$, (N_{Inv} is the total number of $\{C_{s_{\text{Inv}}}\}_J$), are registered in a list denoted $\{C_{\text{Inv}}\}$.

3.1.3. Computing the geometric matrix Mat_C

The lists $\{C_{s_{\text{Para}}}\}$ and $\{C_{s_{\text{Inv}}}\}$ are sorted according to their nearest elements to C_{s_i} . Then, the two nearest salient corners $C_{s_{\text{Para}}}$ and $C_{s_{\text{Inv}}}$, that are adjacent to each other, are classified as correspondent to C_{s_i} . The adjacency condition is identified when $C_{s_{\text{Para}}}$ and $C_{s_{\text{Inv}}}$ lie on parallel lines and their directional vectors are opposite (see figures 10(a)Subfigure 10(a)subfigure.10.1, 10(b)Subfigure 10(b)subfigure.10.2):

$$\begin{aligned} & \vec{u}_{\text{Inv}_2} \cdot \vec{u}_{\text{Para}_2} \leq -\alpha \\ & \text{sign}(\vec{u}_{\text{Para}_1} \cdot \vec{N}) \cdot \text{sign}(\vec{u}_{\text{Inv}_1} \cdot \vec{N}) < 0 \end{aligned} \quad (12)$$

Three correspondent salient corners are clustered, $(C_{s_i}, C_{s_{\text{Para}}}, C_{s_{\text{Inv}}})$, and assumed to belong to the same particle. The previous search steps are done for each salient corner C_{s_i} , and a matrix of correspondence denoted Mat_C of size $4 \times d$ is obtained, where d denotes the number of all adjacent triplet salient corners. Each row contains the correspondent salient corners $(C_{s_i}, C_{s_{\text{Para}}}, C_{s_{\text{Inv}}})$, and in the fourth column, a flag of value 0/1 will refer to the shape of the desired polygon (i.e. *rectangle/prism*).

3.2. Construction of particle's shape

Following the extraction of the correspondent salient corners, the polygonal shape relating with a particle could be constructed by calculating the rest of its corners, denoted C_m , C_{A1} and C_{A2} , for the prismatic shapes, and the only C_m for rectangles and parallelograms, from the clustered salient corners.

C_m , is calculated from the intersection between lines L_1, L_2 , that are determined by $C_{s_{\text{Para}}}$, C_{s_i} and $C_{s_{\text{Inv}}}$ for each shape (see figure 11Calculating C_m of rectangular

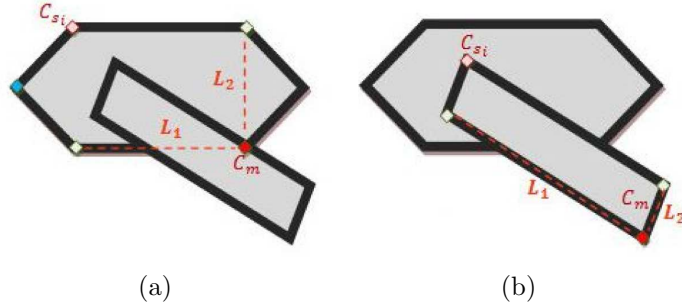


Figure 11: Calculating C_m of rectangular and prismatic shapes. (a)Subfigure 11(a)subfigure.11.1 Intersection between L_1, L_2 in the case of prismatic shape. (b)Subfigure 11(b)subfigure.11.2 Intersection between L_1, L_2 in the case of rectangular shape.

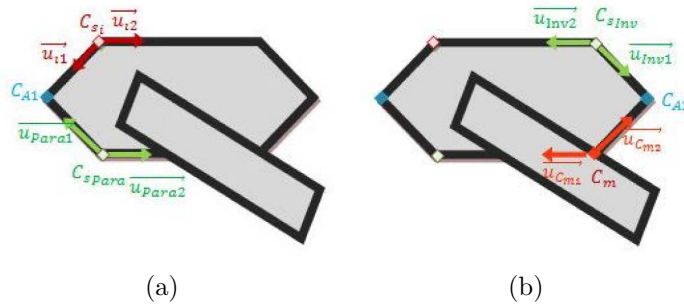


Figure 12: Computing the apexes of the prismatic particles. (a)Subfigure 12(a)subfigure.12.1 First apex C_{A1} computation from C_{si} , and C_{sPara} . (b)Subfigure 12(b)subfigure.12.2 Second apex C_{A2} computation from C_{sInv} , and C_m .

and prismatic shapes. (a)Subfigure 11(a)subfigure.11.1 Intersection between L_1, L_2 in the case of prismatic shape. (b)Subfigure 11(b)subfigure.11.2 Intersection between L_1, L_2 in the case of rectangular shapefigure.11). The fourth column in the matrix of correspondence Mat_C indicates the shape of each particle, which has a value 0 for rectangular shapes and 1 for the prismatic ones. For rectangular-shaped particles, only the corner C_m is required to recognize them. Whereas besides C_m , the apexes are needed for recognizing the prismatic-shaped ones.

The first apex C_{A1} is computed using C_{sPara} and C_{si} , see figure 12(a)Subfigure 12(a)subfigure.12.1. The second apex C_{A2} is computed using C_m and C_{sInv} , see figure 12(b)Subfigure 12(b)subfigure.12.2.

3.3. Validation

A validation test is performed to ensure that the recognized particle truly exists in the gray tone image and does not relate to a hole. The validation test involves checking the filling ratio condition and rejecting holes.

3.3.1. Filling ratio condition

The constructed convex polygon is related to a true particle if it completely fills the real particle, so all its vertexes match the ones of a single real particle. This condition is checked by using the filling ratio τ which determines if the recognized polygon fills a particle in the gray tone image. The gray tone image is thresholded to a binary one, and the filling ratio $\tau = A_{binary}/A_{Recognized}$ is calculated. Where A_{binary} denotes the area of the binary region inside the detected polygon by the proposed method, and $A_{Recognized}$ denotes the area of the polygon itself. Therefore, the polygon is valid when $\tau \approx 1$.

3.3.2. Rejecting holes

A hole is defined as the internal closed region H within the recognized particles that has both an average intensity I_{av} lower than a specific threshold thr_1 , and the standard deviation of the intensity values σ_H inside H is smaller than threshold thr_2 as described below:

$$I_{av} = \frac{1}{n_H} \sum_{(x,y) \in H} I(x,y) \leq thr_1$$
$$\sigma_H = \frac{1}{n_H} \sqrt{\sum_{(x,y) \in H} [I(x,y) - I_{av}]^2} \leq thr_2$$

where n_H is the total number of pixels inside H .

The detected polygons that satisfy the previous conditions are considered as holes and are consequently removed.

4. Results

To evaluate the performance of the proposed geometric-based method, two types of tests are carried out. First, it is applied on a set of artificial images generated by a computer software. The second test is achieved on three sets of real images acquired during a crystallization experiment. A comparison between visual and automatic recognitions is performed for quantifying the performance of the present method.

4.1. Results on overlapped artificial particles

Synthesized images of size 256×256 pixels are built to test the proposed geometric-based method. Each image contains a combination of rectangular and prismatic overlapping particles (see figures 13(a)Subfigure 13(a)subfigure.13.1, 13(b)Subfigure 13(b)subfigure.13.2). A uniformly distributed random numbers of points are generated and assigned as centers of the desired polygons. Two kinds of polygons are generated randomly: rectangular and regular prismatic polygons, as shown in figure 13Example of two artificial gray tone images containing two kinds of overlapping particles. (a)Subfigure 13(a)subfigure.13.1, (b)Subfigure 13(b)subfigure.13.2 Artificial images of 10 and 20 overlapping polygons, respectively. (c)Subfigure 13(c)subfigure.13.3, (d)Subfigure 13(d)subfigure.13.4 The recognized polygons by the proposed geometric-based method are marked by red (for rectangles) and green (for prisms) colorsfigure.13.3. The rectangles are built from a set of uniformly distributed random values of three parameters namely, width, length and orientation at the previously determined centers. The prisms are generated using four uniformly distributed random parameters, namely width, length, top and orientation. The designed polygons are filled in gray and their borders are marked in white in order to recognize their edges. The results of applying the geometric-based method on the two examples are illustrated in figure 13(c)Subfigure 13(c)subfigure.13.3, 13(d)Subfigure 13(d)subfigure.13.4. The green boundaries refer to the polygons that are recognized as prisms, and the red ones refer to the polygons recognized as rectangles. The geometric-based method is tested on ten artificial images containing varied numbers of overlapping particles. The results were very satisfactory on all the synthesized images.

4.2. Results on ammonium oxalate particles

The proposed geometric-based method is applied on real images acquired during an ammonium oxalate crystallization experiment at different periods of crystals agglomeration and aggregation. The gray tone images are acquired by an *in situ* probe imaging system consisting of a transmitted light illumination and a monochrome CCD camera of type (*EZProbesensor*) as explained in Presles et al. (2010), who used this imaging system for monitoring the size distribution of the crystal particles. However, the method was not sufficient to evaluate the accurate size of the particles since a cluster of overlapped particles is detected as one individual particle. In the present work, separating agglomerated crystals will be necessary for measuring the size of the particles accurately. Different examples of images are acquired to validate the proposed geometric method. In these examples, the gray tone images contain particles with different levels of overlap (see figures 14Examples of images of overlapped ammonium oxalate crystals. (a)Subfigure 14(a)subfigure.14.1-(c)Subfigure

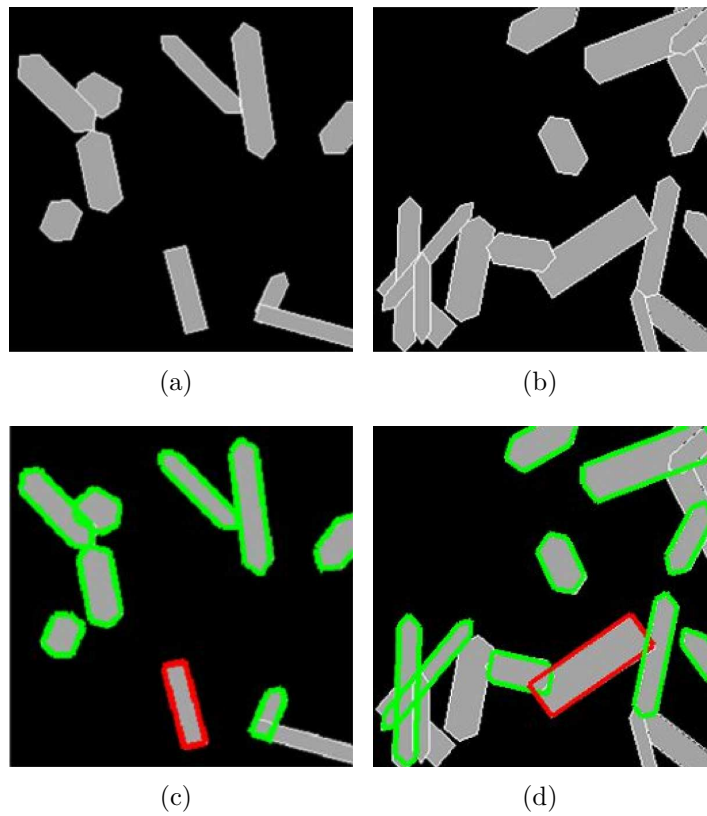


Figure 13: Example of two artificial gray tone images containing two kinds of overlapping particles. (a)Subfigure 13(a)subfigure.13.1, (b)Subfigure 13(b)subfigure.13.2 Artificial images of 10 and 20 overlapping polygons, respectively. (c)Subfigure 13(c)subfigure.13.3, (d)Subfigure 13(d)subfigure.13.4 The recognized polygons by the proposed geometric-based method are marked by red (for rectangles) and green (for prisms) colors.

14(c)subfigure.14.3, (g)Subfigure 14(g)subfigure.14.7-(i)Subfigure 14(i)subfigure.14.9: original images. (d)Subfigure 14(d)subfigure.14.4-(f)Subfigure 14(f)subfigure.14.6, (j)Subfigure 14(j)subfigure.14.10-(l)Subfigure 14(l)subfigure.14.12: the recognized particlesfigure.14(c,g-i)). The results are shown in figures 14Examples of images of overlapped ammonium oxalate crystals. (a)Subfigure 14(a)subfigure.14.1-(c)Subfigure 14(c)subfigure.14.3, (g)Subfigure 14(g)subfigure.14.7-(i)Subfigure 14(i)subfigure.14.9: original images. (d)Subfigure 14(d)subfigure.14.4-(f)Subfigure 14(f)subfigure.14.6, (j)Subfigure 14(j)subfigure.14.10-(l)Subfigure 14(l)subfigure.14.12: the recognized particlesfigure.14(d-f,j-l), whereas the boundaries of the detected prismatic particles are marked by a green color and the rectangular particles are marked by a red color. The results show that the proposed geometric method is effective for recognizing the particles that have three correspondent salient corners. However, the present method is limited by the complexity of the agglomeration problem in high overlapping levels, as illustrated in the example in figure 15Result of the particle's geometric recognition method in one example with a high level of overlapfigure.15. It can be noticed that some particles could not be recognized, because they have only two correspondent salient corners to be clustered, which is not sufficient for the present grouping method, and some particles have only one salient corner whereas the others are hidden by overlapping particles. Results show that it could be useful to repeat the method after removing the recognized particles, hence hidden corners will be revealed and more particles will be recognized. However, the iterative process will increase the time processing.

4.3. Quantitative comparison with the human expert visual

To test the performance of the proposed geometric-based method on this real application, its results are compared with the recognition realized by a human expert. 150 images are taken during the crystallization process for performing this comparison. The quantitative results are depicted in table 1Quantitative comparison between automatic recognition and human visual recognition by an expert for 150 images of overlapped ammonium oxalate particles:table.1, which represents the number of recognized particles automatically (N_A) and visually (N_V), for three levels of overlapping particles (low, intermediate and high levels). The number of right (N_R), missed (N_M) and false particles (N_F), that are recognized in the whole 150 images, are also illustrated in the table. Right particles are those that are recognized automatically and that correspond with the particles recognized visually by the human expert. Whereas, false particles refer to the recognized ones by the automatic method, but not by the human expert. Missed particles refer to those that are not recognized automatically comparing with the human visual recognition. Missed particles are identified by the ones that are strongly unfocused by the camera or

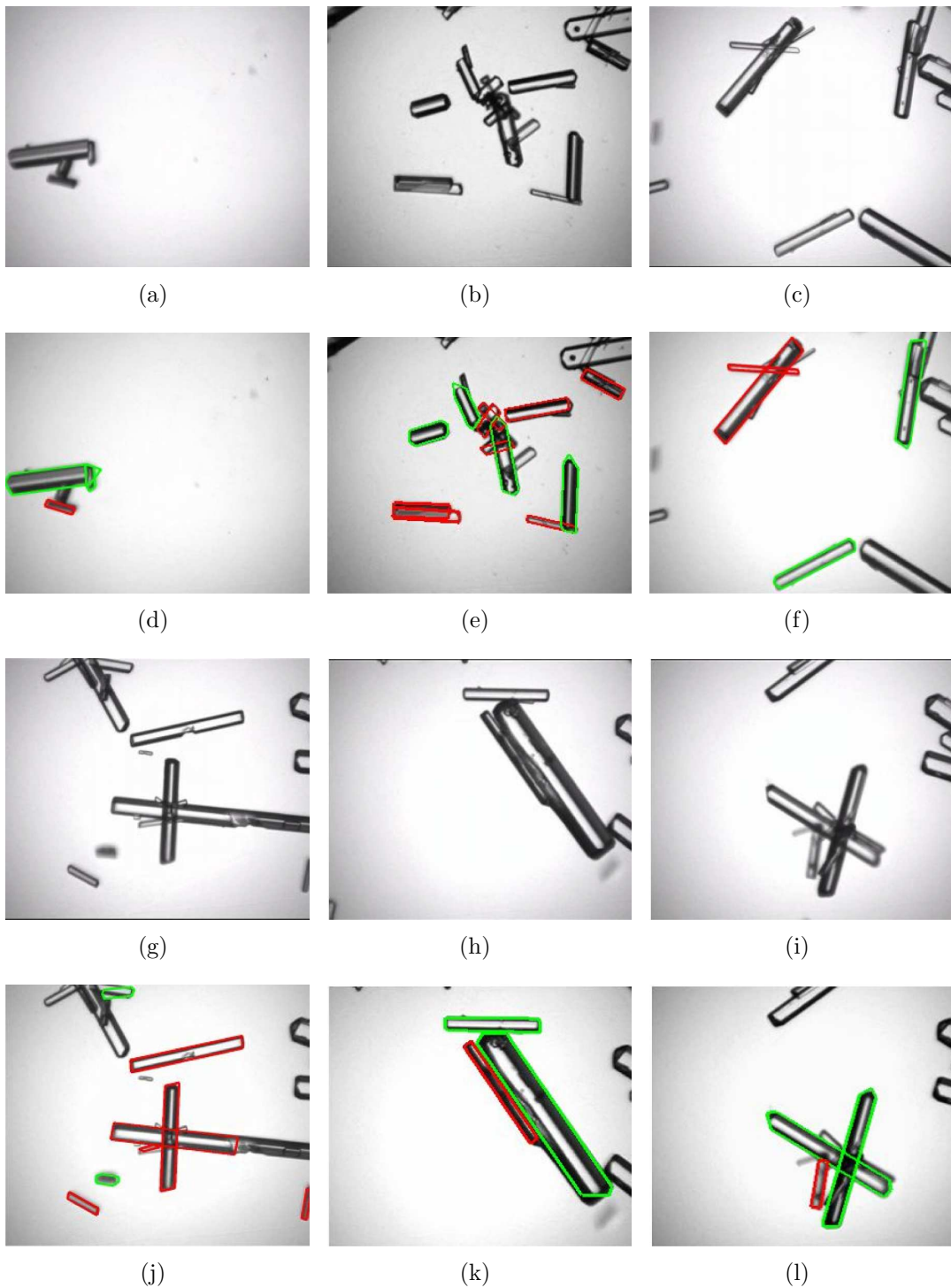


Figure 14: Examples of images of overlapped ammonium oxalate crystals. (a)Subfigure 14(a)subfigure.14.1-(c)Subfigure 14(c)subfigure.14.3, (g)Subfigure 14(g)subfigure.14.7- (i)Subfigure 14(i)subfigure.14.9: original images. (d)Subfigure 14(d)subfigure.14.4-(f)Subfigure 14(f)subfigure.14.6, (j)Subfigure 14(j)subfigure.14.10-(l)Subfigure 14(l)subfigure.14.12: the recognized particles

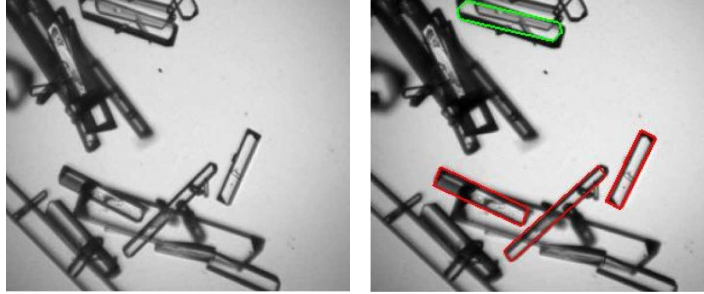


Figure 15: Result of the particle's geometric recognition method in one example with a high level of overlap.

that have only two salient correspondent corners because of high agglomeration (see figure 15Result of the particle's geometric recognition method in one example with a high level of overlapfigure.15).

The table shows that the number of automatically recognized particles decreases with the increasing of the overlapping level. This result could be seen as normal in high agglomerations because of decreasing the possibility of finding three correspondent salient corners belonging to the same particle. In figure 16Comparison between visual and automatic recognition. The overlapping levels are different for each line of the figure. *Column (a)*. Original images. *Column (b)*. Human visual recognition. *Column (c)*. Automatic recognitionfigure.16, one can observe different examples of overlapping particles and the results of the visual and automatic recognitions. The first row of figure 16Comparison between visual and automatic recognition. The overlapping levels are different for each line of the figure. *Column (a)*. Original images. *Column (b)*. Human visual recognition. *Column (c)*. Automatic recognitionfigure.16 shows that the method recognized all the particles recognized visually by human expert. In the second row, one particle is missed by the proposed geometric-based method which was occluded by two overlapping ones. The third row shows an example of high level of overlapping, thus the method missed several particles whose less than three salient corners. Furthermore, during the final stage of the crystallization process, some particle's faces might be broken by the shock with each other during the mixing or by the mixing itself. Thus, the particle's shape will be distorted as obvious in figure 16Comparison between visual and automatic recognition. The overlapping levels are different for each line of the figure. *Column (a)*. Original images. *Column (b)*. Human visual recognition. *Column (c)*. Automatic recognitionfigure.16. There is a particle which has been recognized automatically and did not marked by the human expert since it is hardly to decide the ends of this broken crystal.

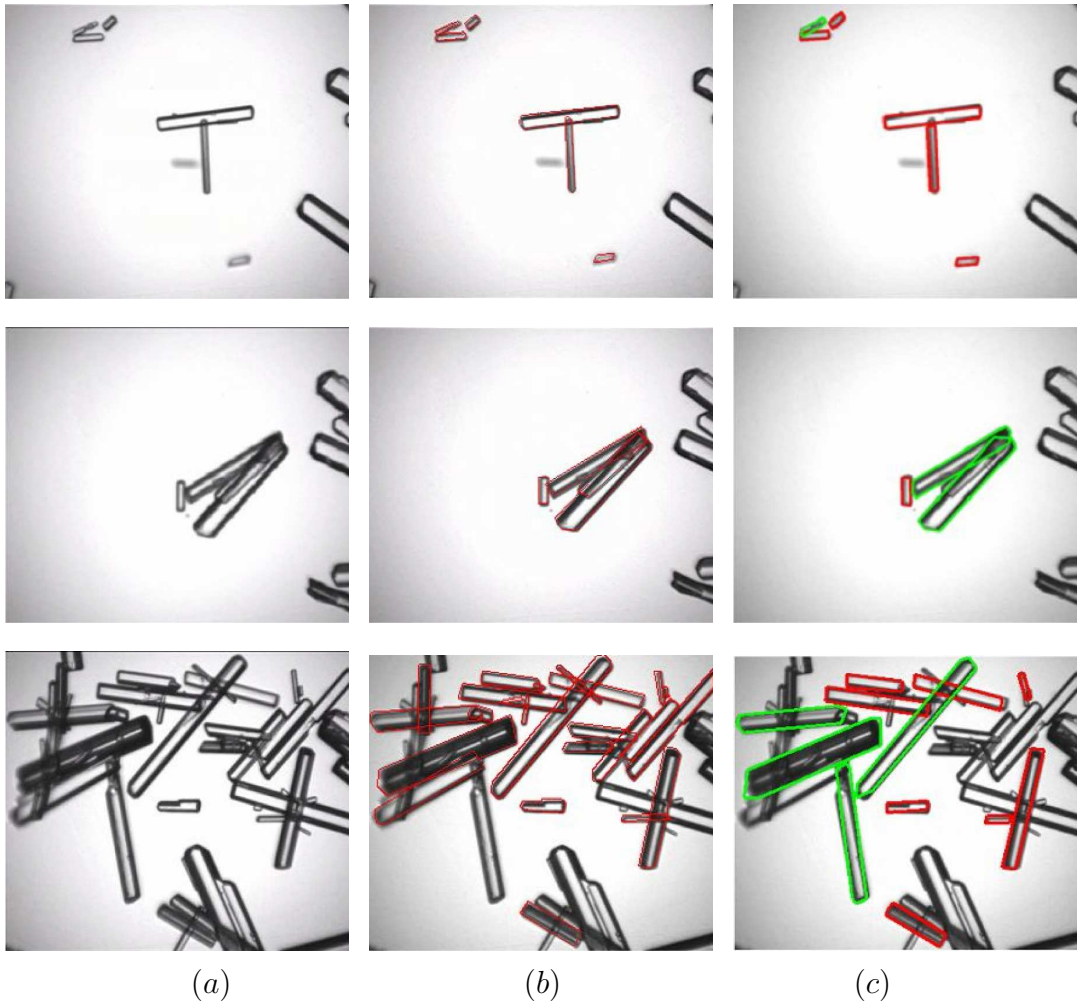


Figure 16: Comparison between visual and automatic recognition. The overlapping levels are different for each line of the figure. *Column (a)*. Original images. *Column (b)*. Human visual recognition. *Column (c)*. Automatic recognition.

Table 1: Quantitative comparison between automatic recognition and human visual recognition by an expert for 150 images of overlapped ammonium oxalate particles:

Particles (numbers)	Overlapping level		
	Low	Intermediate	High
Visually recognized (N_V)	130	149	374
Automatically recognized (N_A)	125	137	327
Right N_R	125	122	281
Missed $N_M = N_V - N_A$	5	12	47
False $N_F = N_A - N_R$	0	15	46
Right to automatic recognition ratio in percentage (N_R/N_A)%	100%	89.1%	85.9%
Missed to visual recognition ratio in percentage (N_M/N_V)%	3.9%	8.1%	12.6%
False to automatic recognition ratio in percentage (N_F/N_A)%	0%	10.9%	14.1%
Right to visual recognition ratio in percentage (N_R/N_V)%	96.2%	81.9%	75.2%

5. Concluding discussion and perspectives

A novel geometric-based recognition method of overlapped particles based on detection and grouping of salient corners is developed. The method is proposed to recognize rectangular, regular and irregular prismatic shapes. The results show that the method can automatically recognize more than 75% of the particles, even in high overlap cases, that could be recognized by human vision. This method could be generalized to detect parallelograms or other convex quadrilateral shapes. It could be modified for detecting other geometric polygons because clustering the correspondent corners is based on the geometric properties of the desired shape. The average CPU time required to perform the whole method on one gray level image is about 45s. The computational performance of the proposed geometric-based method could be improved using a parallel computer implementation. In certain cases, when the image contains a large number of overlapping particles, it will be difficult to recognize accurately the particles. Therefore, the future work is to improve the method by estimating the shape basing on the maximum likelihood function and the joint propability of two or three corners that have certain geometric relations to be classified as rectangles or prisms.

Acknowledgments

Financial support from French Research Agency ANR is partly provided for the project IPAPI (Improving the Properties of Active Pharmaceutical Ingredients), ref. 07-BLAN-0183.

References

- Anda, J. C. D., Wang, X., Roberts, K., 2005. Multi-scale segmentation image analysis for the in-process monitoring of particle shape with batch crystallisers. *Chemical Engineering Science* 60 (4), 1053–1065.
- Beucher, S., 1991. The watershed transformation applied to image segmentation. In: *Proceedings of the 10th Pfefferkorn conference on signal and image processing in microscopy and microanalysis*. Vol. 6. pp. 299–314.
- Burns, J., Hanson, A., Riseman, E., 1986. Extracting straight lines. *IEEE Transactions on Pattern Analysis and Machine Intelligence* 8, 425–455.
- Canny, J., 1986. A computational approach to edge detection. *IEEE Transactions on Pattern Analysis and Machine Intelligence* 8, 679–698.
- Dosch, P., Masini, G., Tombre, K., universit De Nancy, L., 2000. Improving arc detection in graphics recognition. In: *15th IEEE International Conference on Pattern Recognition, Proceedigs*. Vol. 2. pp. 243–246.
- Harris, C., Stephens, M., 1988. A combined corner and edge detection. In: *Proceedings of The Fourth Alvey Vision Conference*. pp. 151, 147.
- Illingworth, J., Kittler, J., 1988. A survey of the hough transform. *Computer Vision, Graphics, and Image Processing* 44 (1), 87–116.
- Jang, J., Hong, K., 2002. Fast line segment grouping method for finding globally more favorable line segments. *Pattern Recognition* 35 (10), 2235–2247.
- Larsen, P., Rawlings, J., Ferrier, N., 2006. An algorithm for analyzing noisy, in situ images of high-aspect-ratio crystals to monitor particle size distribution. *Chemical Engineering Science* 61 (16), 5236–5248.
- Larsen, P., Rawlings, J., Ferrier, N., 2007. Model-based object recognition to measure crystal size and shape distributions from in situ video images. *Chemical Engineering Science* 62 (5), 1430–1441.

- Liu, Y., Ikenaga, T., Goto, S., 2007. An MRF model-based approach to the detection of rectangular shape objects in color images. *Signal Processing* 87 (11), 2649–2658.
- Presles, B., Debayle, J., Fevotte, G., Pinoli, J. C., 2010. Novel image analysis method for in situ monitoring the particle size distribution of batch crystallization processes. *Journal of Electronic Imaging* 19 (3), 1–7.
- Rosten, E., Drummond, T., 2005. Fusing points and lines for high performance tracking. In: *Proceedings of the Tenth IEEE International Conference on Computer Vision*. Vol. 2. IEEE Computer Society, pp. 1508–1515.
- Shen, F., Wang, H., 2002. Corner detection based on modified hough transform. *Pattern Recognition Letters* 23 (8), 1039–1049.
- Smith, S. M., Brady, J. M., 1995. A new approach to low level image processing. *International Journal of Computer Vision* 23, 45–78.
- Soille, P., 2003. *Morphological image analysis: principles and applications*. Second Edition. Springer-Verlag Berlin Heidelberg.
- Su, M.-C., Hung, C.-H., 2007. A neural-network-based approach to detecting rectangular objects. *Neurocomputing* 71 (1-3), 270–283.
- Teh, C. H., Chin, R. T., 1989. On the detection of dominant points on digital curves. *IEEE Transactions on Pattern Analysis and Machine Intelligence* 11 (8), 859–872.
- Wan, J., Ma, C. Y., Wang, X. Z., 2008. A method for analyzing on-line video images of crystallization at high-solid concentrations. *Particuology* 6 (1), 9–15.
- Yu, Z., Bajaj, C., 2004. Detecting circular and rectangular particles based on geometric feature detection in electron micrographs. *Journal of Structural Biology* 145 (1-2), 168–180.
- Zhang, X., Wang, H., Hong, M., Xu, L., Yang, D., Lovell, B. C., 2009. Robust image corner detection based on scale evolution difference of planar curves. *Pattern Recognition Letters* 30 (4), 449–455.