

Kean University

## Kean Digital Learning Commons

---

Memorabilia Yearbooks

---

1954

### Memorabilia 1954

New Jersey State Teachers College Newark

Follow this and additional works at: [https://digitalcommons.kean.edu/ua\\_memorabilia\\_yearbooks](https://digitalcommons.kean.edu/ua_memorabilia_yearbooks)

---

#### Recommended Citation

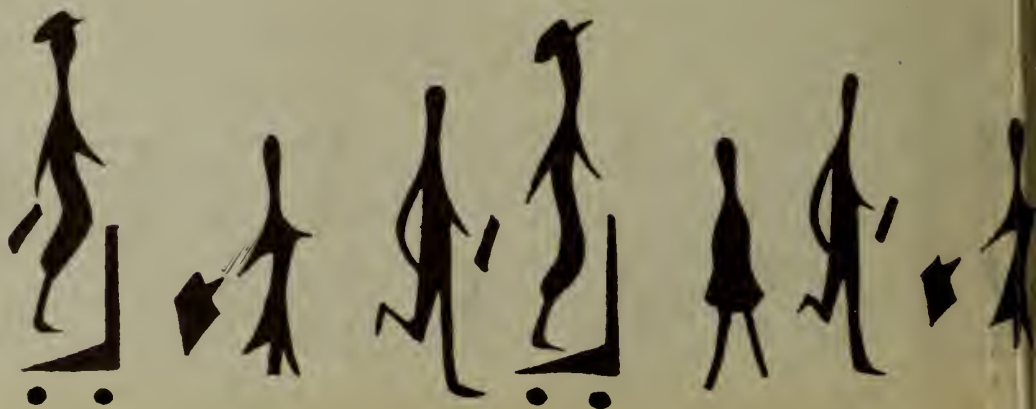
New Jersey State Teachers College Newark, "Memorabilia 1954" (1954). *Memorabilia Yearbooks*. 59. [https://digitalcommons.kean.edu/ua\\_memorabilia\\_yearbooks/59](https://digitalcommons.kean.edu/ua_memorabilia_yearbooks/59)

This Book is brought to you for free and open access by Kean Digital Learning Commons. It has been accepted for inclusion in Memorabilia Yearbooks by an authorized administrator of Kean Digital Learning Commons. For more information, please contact [learningcommons@kean.edu](mailto:learningcommons@kean.edu).

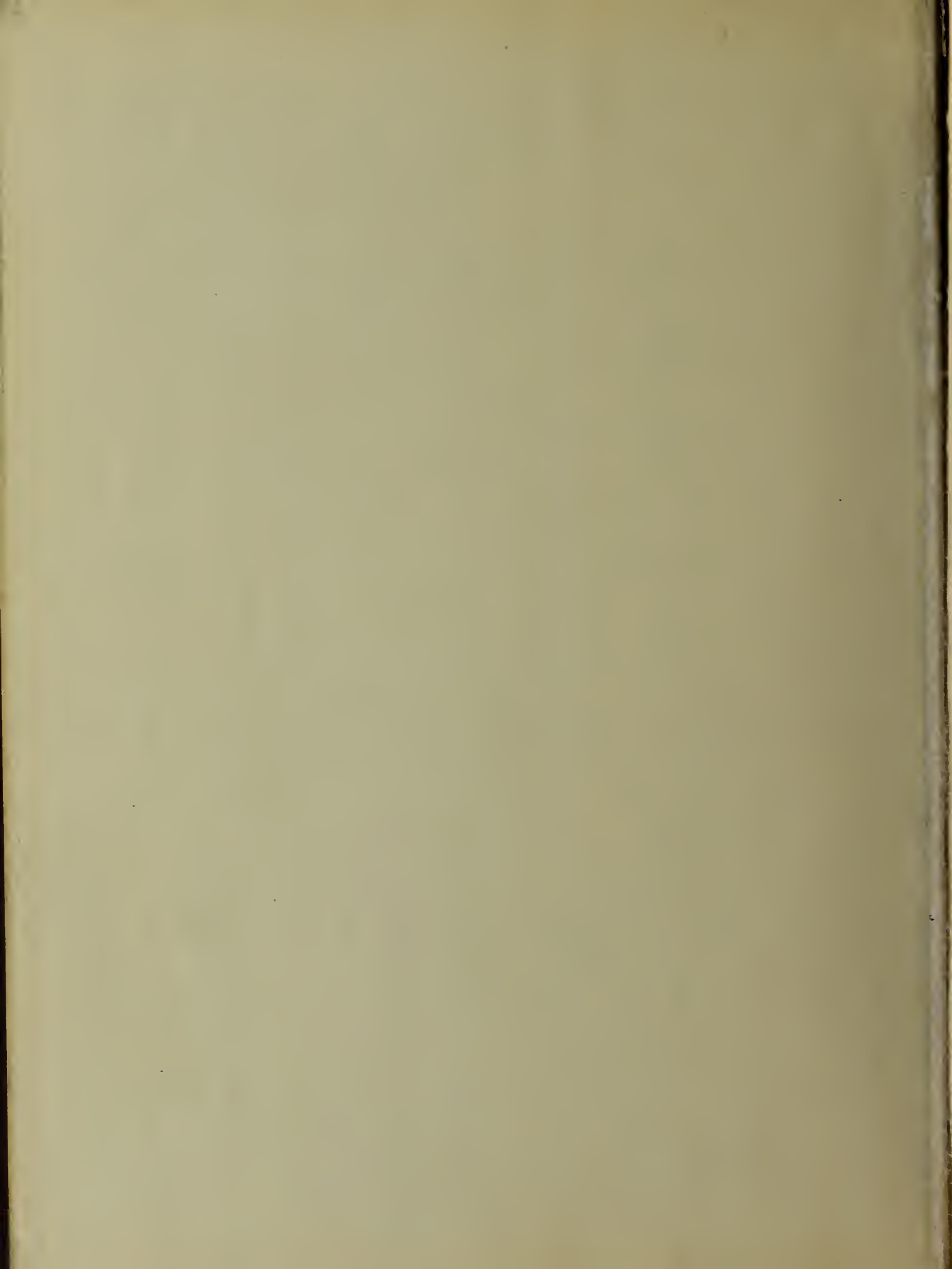
MEMORABILIA

54

Library  
New Jersey  
State Teachers College  
Newark







# MEMORABILIA

9

4

5



WHO DARES TO

TEACH

MUST

NEVER

CEASE

TO

LEARN

NEW JERSEY STATE TEACHERS COLLEGE



AT

NEWARK

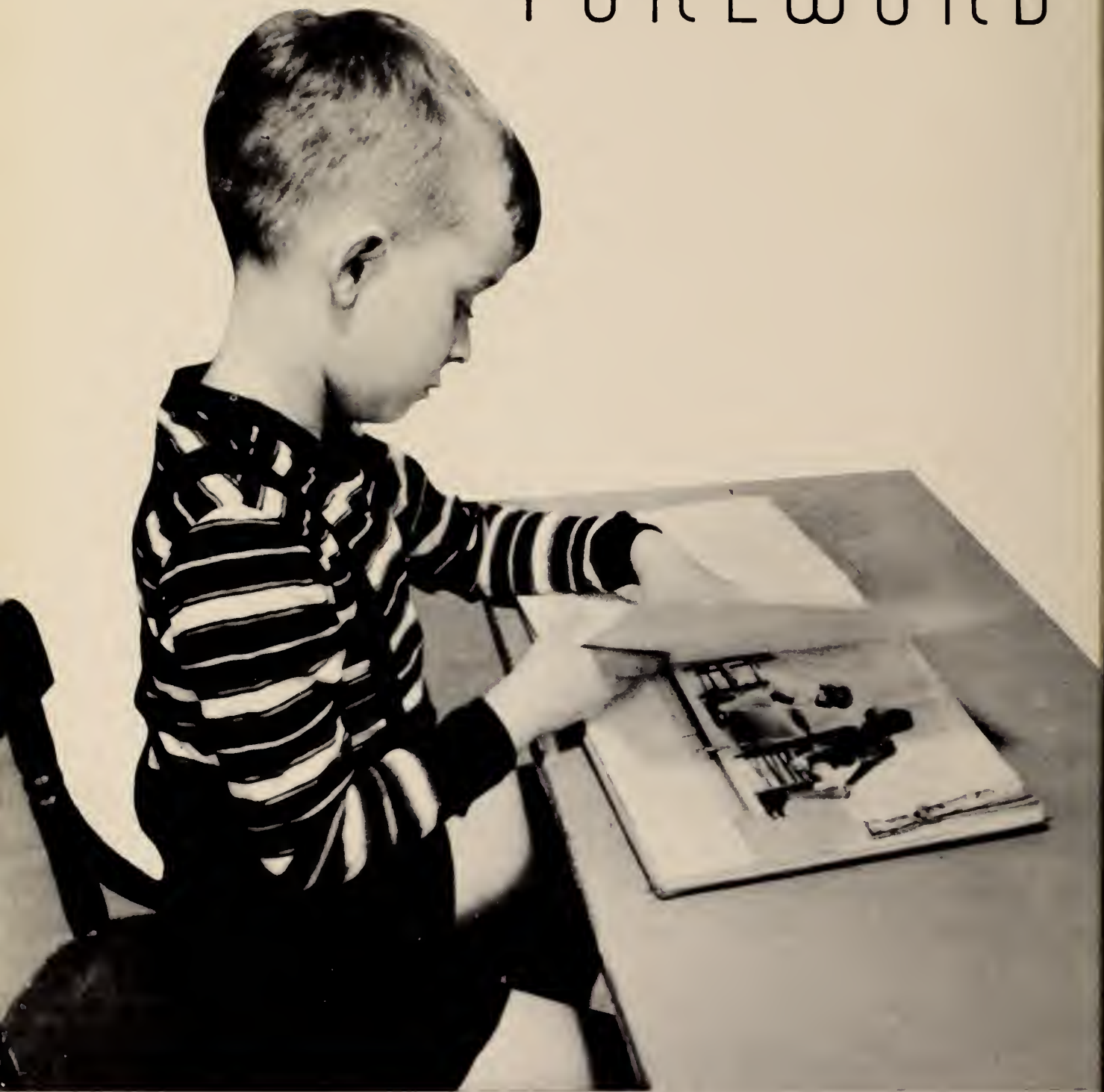


# CONTENTS



FOREWORD	Page 7
DEDICATION	Page 9
FACULTY	Page 11
SENIORS	Page 23
CLASSES	Page 65
COMMITTEES	Page 73
CLUBS	Page 81
FRATERNAL SOCIETIES	Page 99
ATHLETICS	Page 109
INFORMALS	Page 115
DIRECTORY	Page 119

# FOREWORD



In these pages, the MEMORABILIA staff have endeavored to record both in pictures and in prose some of the many every-day scenes and extra-curricular programs which have become so much a part of college activity to the class of 1954.

Newark State's philosophy of teaching has helped to shape the teacher personalities of this class. Many learning experiences shared here have become vital and livable as they have become the professional equipment of these seniors.

College, however, has meant much more than the preparation for a professional life. Four years have now become a shadow of classes, dances, field trips, NJEA conventions, lab antics, Student Org and the #13 bus.

The MEMORABILIA staff in this annual have tried to record faithfully Newark State in pictures as a type of memory gauge. May this book represent to each senior a composite reminder of his college days at Newark State.

# DEDICATION



We, as the ninety-ninth graduating class from New Jersey State Teachers' College at Newark, dedicate the 1954 MEMORABILIA to our good friend and able faculty member, Dr. David G. Scanlon. Though he has only been with us for three years, his genuine warmth and sincerity have truly made him outstanding. We will long hold his example of fine teaching as our ultimate goal.





# LETTERS







**EUGENE G. WILKINS**  
President



**MARIE BALDRIGE**  
Instructor in Education



**MARY M. BARTLETT**  
Associate Professor of English



**RUTH BRISTOL**  
Assistant Professor of Education



**VERA H. BROOKS**  
Associate Professor of Health Education



**GUY V. BRUCE**  
Professor of Science



**ANITA D'ANGOLA**  
Instructor in Physical Education



**LILLIAN A. CALCIA**  
Professor of Fine Arts



**JOSEPH A. D'ANGOLA**  
Assistant Professor of Physical Education

**JOHN W. DICKEY**  
Associate Professor of Mathematics  
and Education





**GEORGE H. DITLOW**  
Instructor in Industrial Arts



**JAMES M. DYSART**  
Instructor in Education



**MATTHEW DOLKEY**  
Instructor in English



**ARTHUR W. EARL**  
Assistant Professor of Industrial Arts



**JAMES E. DOWNES**  
Associate Professor of Social Science



**LOIS MEREDITH FRENCH**  
Associate Professor of Education



**RYCHARD FINK**  
Instructor in Education



**CARL E. FRANKSON**  
Professor of Industrial Arts



**GEORGE W. GENS**  
Professor of Education



**JOHN O. GERRISH**  
Assistant Professor of Education



**GIFFORD G. HALE**  
Associate Professor of Education



**GRACE C. HANKINS**  
Instructor in Social Science



**ELIZABETH A. HIGGINS**  
Assistant Instructor in Education



**JOHN C. HUTCHINSON**  
Associate Professor of Education



**RUTH E. KANE**  
Instructor in English and Director of  
Publicity



**JOHN S. KORLEY**  
Business Manager



**MINNIE LIPSON**  
Assistant Librarian



**HERMAN I. LEPP**  
Assistant Professor of Science



**CHARLOTTE LOCKWOOD**  
Instructor in Fine Arts

**IRVING F. LUSCOMBE**  
Instructor in Social Science





**GENEVIEVE MARKHOLM**  
Instructor in Fine Arts



**ALTON D. O'BRIEN**  
Dean of Instruction and Director of  
College Extension Division



**GEORGE H. McMEEN**  
Associate Professor of Mathematics



**MARION L. PARSONS**  
Assistant Registrar and Alumni Secretary



**VERA F. MINKIN, Registrar**  
Instructor in Social Science



**EVAN C. RICHARDSON**  
Assistant Professor of Science



**DONALD R. RAICHLÉ**  
Instructor in Social Science



**JOSEPH W. RENDELL**  
Assistant Professor of English and  
Assistant Librarian



**DOROTHY D. RIGGS**  
Assistant Professor in Education



**LAURA E. ROGERS**  
Assistant Professor of Music





EDNA DeBOLT SALT  
Instructor in Education



DAVID G. SCANLON  
Assistant Professor of Education



MARION E. SHEA  
Professor of English



DOUGLAS W. TATTON  
Assistant Professor in Fine Arts



EDWIN N. THOMASON  
Instructor in English



LENORE H. VAUGHN-EAMES  
Professor of English



HARRIET E. WHITEMAN  
Professor of Education

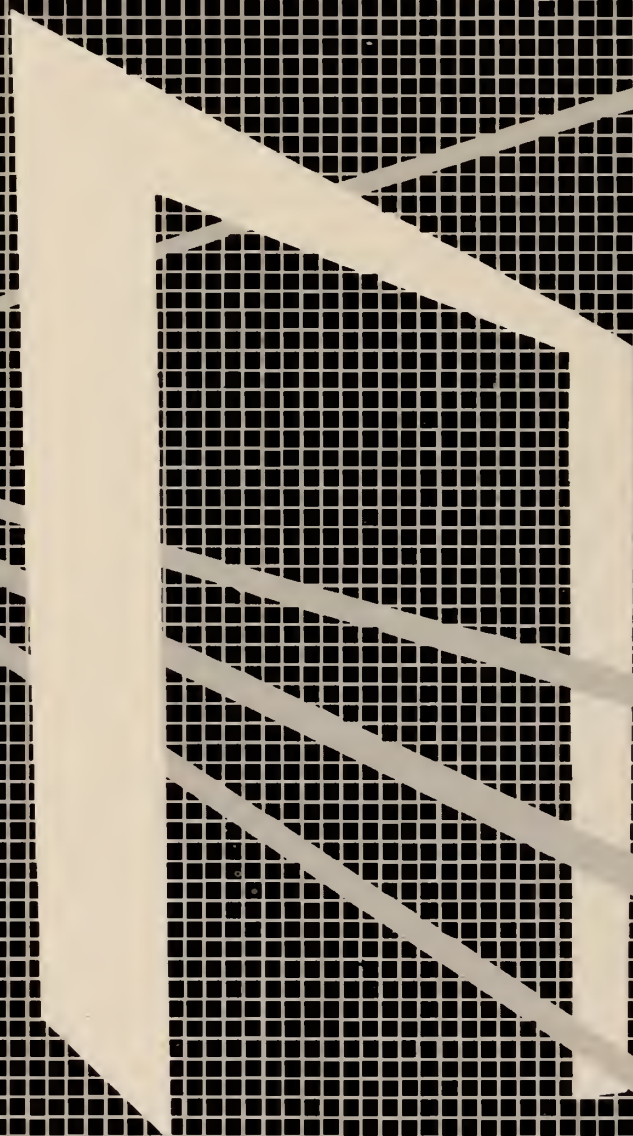


JANE A. WITHERELL  
Instructor in Mathematics



WILLARD E. ZWEIDINGER  
Assistant Professor of Physical Education

# SENIORS





# OUTSTANDING SENIORS



FRANCIS J. KORFMANN



JAY H. CISER



PATRICIA M. BURKE



ARTHUR L. FRIELINGHAUS



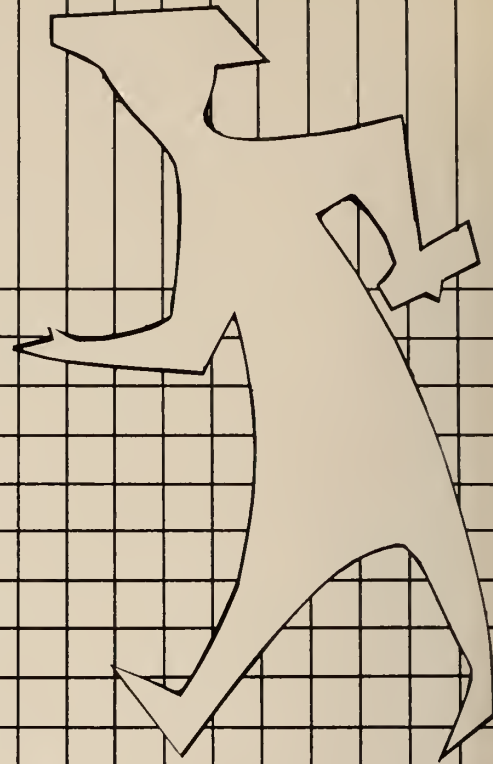
JO-ANN C. CARELL



JOSEPH V. CHAGNON



EILEEN M. De COURSEY





# CLASS HISTORY

We, as the class of '54, entered Newark State in September of 1950 as the typical shaking freshmen. Having found our way to the third floor and the gym, we tried to hide in the crowds and behind our flutophones; but this was not to be our fate; the sophomores had other ideas. We donned our placards, frosh hats (with brims down) and our shopping bags and proceeded to be accepted as part of the college. This was the year for bio field trips, "Gaie Paree", getting acquainted and art in the auditorium. Our semi-formal dance began our careers as social reformers.

Once again we returned, but now we were sophomores. We really had something to work for this year—the Bond Issue. How could we forget the posters, the speeches, and Dr. Wilkins on TV; but, best of all, that it went through. Of course, just to keep changing things, we had a musical comedy instead of the usual variety show. This was the year of Moby Dick, the Grey Ladies, Dr. Gens, concerts, field trips, INTRODUCTION TO AMERICAN EDUCATION and last but not least our picnic.

Now we were juniors at last; the end was in sight. This was the year of practicum, "The Circus", boat ride around the harbor, prom at the Winfield Scott, engagement rings, another picnic and the April Fool REFLECTOR.

We returned in September as seniors, looking forward to graduation and teaching. We had a year of practice teaching, "Seniorama", wedding rings, contracts, Senior dance, senior court, and/or ———



LEONA G. ABRAHAMS



CONRAD C. ANGEBRANDT



CONSTANCE M. ARENA

LEONA GOLDBLATT ABRAHAMS • General Elementary — Student Council 1; Omega Phi 2, 3, 4; Class Show 1, 2, 3; Bond Issue Show 2. • Married to her "little boy," Norman . . . remembered for her singing in class shows . . . Mama to twin girls . . . bridge keeps her busy . . . personality reflects charm and intelligence.

CONRAD C. ANGEBRANDT • Industrial Arts — State Teachers College at Trenton 1, 2, 3; Industrial Arts Guild 4; A.O.B. 4. • Korean vet . . . loves his camera . . . proud of his new car . . . one of the married set.

CONSTANCE M. ARENA • General Elementary — Future Teachers of America 1, 2, 3; Camera Club 2, 3, 4, President 4; Newman Club 1, 2, 3, 4, Librarian 4; REFLECTOR 4; A.C.E.I. 3, 4; Class Show 1; MEMORABILIA Photographer 4. Capable and efficient . . . our Gal Friday . . . "Smile, please" . . . avid camera fan . . . lover of the arts . . . coffee cloche.



EVA AUSLANDER



RAYMOND J. BANACH

EVA AUSLANDER • General Elementary — Nu Lambda Kappa 1; College Forum 1, 2, 3, 4, Treasurer 2, President 4; C.C.U.N. 4; MEMORABILIA 4; Class Show 1, 3, 4; Democrats for Stevenson President 3. • Has the most beautiful eyes in the school . . . that continental accent . . . bookstore fixture . . . hasn't taken a note in four years . . . always expressing her views.

RAYMOND J. BANACH • Industrial Arts — Industrial Arts Guild 1, 2, 3, 4; Camera Club 4; Sigma Theta Chi 3, 4, Secretary 4; A.O.B. 1, 2, 3, 4. • Hear that boy play the accordion! . . . NSTC's TV personality . . . publicity agent for Sigma Theta Chi . . . those ties!



HILDA B. BARRETT



MARILYN J. BAUMISTER

HILDA D. BARRETT • General Elementary — Dance Study Club 1, 2; College Forum 4; Class Shows 1, 3. • Bubbling personality . . . real "George" all the way . . . seen in the halls . . . lunches with the "gang" . . . peppy and effervescent.

MARILYN J. BAUMISTER • General Elementary (Curriculum for the Teaching of Handicapped Children) — Newman Club 1, 2, 3, 4; Nu Sigma Tau 2, 3, 4; Class Show 3, 4; F.T.A. 3. • Sweet and blonde . . . everybody's friend . . . "just wild about Harry" . . . cheerful optimist with a love for life . . . footprints by the locker . . . a social merry-mixup.

CHARLOTTE CURTIS BERGER • Fine Arts — Student Council 1; Social Committee 1, 2; Dance Study Club 1, 2, 3, 4, President 3, 4; Kappa Delta Pi 3, 4; Alpha Theta Pi 1, 2; Class Show 1; Bond Issue Show 2. • Modern dance expert . . . spicy look . . . Fashion Show keynoter . . . perfectionist . . . "Big Sister is watching you."

LEONA De BATES BERNI • Kindergarten-Primary — Bowling Club 1; Rifle Club 1, 2, 3, 4; Sigma Kappa Phi 2, 3, 4; A.C.E.I. 3, 4. • Newark State romance . . . husband and wife team . . . sports enthusiast . . . seen at her locker on the second floor.

DORIS OVERMAN BIELEN • Kindergarten-Primary — Norms Theatre Guild 1; Visual Experimentation Club 2. • Talkative . . . interesting to know . . . bubbling personality . . . art enthusiast Bob in the limelight.



CHARLOTTE CURTIS BERGER



LEONA De BATES BERNI



DORIS OVERMAN BIELEN





JEAN W. BLACK



VIRGINIA R. BLACKWOOD



JOAN F. BLANCHARD



NORMA KOESTER BORK

JEAN W. BLACK • General Elementary — Women's Basketball Club 2, 3; F.T.A. 2; Arts and Crafts Club 2; Sigma Kappa Phi 3, 4; Class Show 1; A.C.E.I. 3; IVCF 4. • Quiet . . . lives in Kearny . . . likes sports . . . inseparable from Barbara . . . has a second floor locker

VIRGINIA R. BLACKWOOD • General Elementary — F.T.A. 2, 3, 4; A.C.E.I. 3; Norms Theatre Guild 1; Arts and Crafts Club 3. • One of the inseparable five . . . "tassle top" . . . locker resembles a cosmetic counter . . . epitome of femininity . . . D L and W commuter from Hackettstown.

JOAN F. BLANCHARD • General Elementary — Newman Club 1, 4; F.T.A. 1, 4; Class Prom Committee 3; Norms Theatre Guild. • Goes with Sparky . . . one of the Tudor Room kids . . . knits . . . happy-go-lucky . . . "Deah Lawd!" favorite expression.

NORMA KOESTER BORK • General Elementary (Curriculum for the Teaching of Handicapped Children) — Washington Missionary College, Washington, D.C. 1, 2; A.C.E.I. 3, 4; F.T.A. 4. • Sparkles with sincerity and truth . . . lively and likable with a dash of good sense . . . a genuine "Good Samaritan" . . . radiates when speaking of Paul . . . "I'm in favor of everyone getting away from home."



CHARLES W. BOYCE

CHARLES W. BOYCE • Industrial Arts — Industrial Arts Guild 1, 2, 3, 4; Epsilon Pi Tau 3, 4, Treasurer 4; Sigma Theta Chi 4; A.O.B. 1, 2, 3, 4. • Always eating . . . "Have you heard?" . . . sits on the print shop steps . . . Daddy to Chuck and Linda.

**DOROTHY SERSON BRUNO** • Women's Basketball 1, 2; Arts and Crafts 1, 2; Class Show 4; Alpha Beta Pi 3, 4. • Married to bill . . . loves spaghetti and camping . . . "If I could only gain a pound." . . . always running for the bus.



**DOROTHY SERSON BRUNO**

**PATRICIA H. BURKE** • General Elementary — F.T.A. 2, 3, 4; Arts and Crafts Club 3; A.C.E.I. 3, 4; Sigma Kappa Phi 3, 4. • Known as "Patti" . . . constantly confused with the other Pat Burke . . . engaged to Jimmy . . . Charleston champion . . . one of the inseparable five.

**PATRICIA M. BURKE** • General Elementary (Curriculum for the Teaching of Handicapped Children) — REFLECTOR 1, 2, 3, 4, Associate Editor 2, Editor-in-Chief 3, 4; Newman Club 1, 2, 3, 4, Vice-President 2; MEMORABILIA 2, 3, 4, Assistant Business Manager 3, Associate Editor 4; N.S.A. 3, 4, Congress Delegate 3, Regional Recording Secretary 4; Kappa Delta Pi 3, 4; W.U.S. Committee 3; NEWARK STATER 3, 4, College Editor 3, 4. • The REFLECTOR Pat . . . NSTC her second home . . . "Have you seen Jo-Ann?" . . . sincerity, her by-line . . . sparkles with a happy giggle.

**BETTY F. CALAMUSA** • General Elementary — F.T.A. 3, 4; A.C.E. 3, 4; REFLECTOR 2; Nu Sigma Tau 2, 3, 4 — Kind and sympathetic . . . gentle femininity . . . carries two schedules for quick reference . . . the perfect girl for the perfect fellow . . . there's a wedding in her future.



**PATRICIA H. BURKE**

**ANTHONY S. CAMARA** • Industrial Arts — Norms Theatre Guild 1, 2; Industrial Arts Guild 1, 2, 3, 4; A.O.B. 1, 2, 3, 4; Sigma Theta Pi 3, 4. • Tony or better known as Mein Herr Schultze . . . lunches at Scotty's . . . carries a big black umbrella . . . Kidde Company slave.



**PATRICIA M. BURKE**



**BETTY F. CALAMUSA**



**ANTHONY S. CAMARA**



JO-ANN C. CARELL



GERALDINE M. CARNEY

JO-ANN C. CARELL • General Elementary — REFLECTOR 2, 3, 4, Assistant Business Manager 2, Business Manager 3; MEMORABILIA 2, 3, 4, Assistant Editor 3, Editor-in-Chief 4; Rifle Club 2, 3; Women's Basketball 1, 3, 4; Norms Theatre Guild 1; Class Show 1, 2, 3, 4; A.O.B. 3, 4; Prom Committee 3, 4; Deck Tennis 1, 2, 3, 4; Volleyball 1; Senior Court Juror. • Supports Scotty's, along with Pat and Joan . . . seen everywhere and in everything . . . virtually opens college in the morning and locks it up at night . . . has permanent back strain from locker leaning . . . either in the midst of or recovering from a hand, arm or leg sprain.

GERALDINE M. CARNEY • General Elementary (Curriculum for the Teaching of Handicapped Children) — Women's Basketball 1, 2, 3; College Forum 2; Class Recording Secretary 2; Class Vice-President 3; Nu Sigma Tau 2, 3, 4, Treasurer 3, President 4; Inter Sorority-Fraternity Council 4, Chairman 4; Newman Club 1, 2, 3, 4; Social Committee 1, 2, 3, Corresponding Secretary 4. • Effervescent redhead with a gift for speech . . . staunch bridge fan but Joe is "trump" . . . memories of a Christmas dance . . . Nu Sigma's Gippetto . . . "May I have your attention, please!"



BARBARA T. CARUSO



JOSEPH V. CHAGNON



DONALD W. CHAMBERLIN

BARBARA T. CARUSO • Kindergarten-Primary — Women's Glee Club 1; Newman Club 1, 2, 3, 4; Mixed Chorus 2, 3; Alpha Theta Pi 3, 4, Vice-President 4; A.C.E.I. 3, 4; REFLECTOR 1, 2, 3; Class Show 1, 3, 4; Social Committee 3, 4; College Planning Committee 4; Class Recording Secretary 4. • Kitten on the keys . . . earnest and industrious . . . effervescent and lively . . . heart belongs to the Navy . . . always bustling.

JOSEPH V. CHAGNON • General Elementary (Curriculum for the Teaching of Handicapped Children) — Rifle Club 1; F.T.A. 3; General Elementary Men's Guild 1, 2, 3, 4; Newman Club 1, 2, 3, 4; C.C.U.N. 3, 4; Basketball 1; Sigma Theta Chi 2, 3, 4, Secretary 3, President 4; Student Council 1, 3, Vice-President 3; Class President 2, 4. • Mr. President to the seniors . . . B.M.O.C. . . . ex-Marine . . . affable and lively . . . gets things done . . . the man to know.

DONALD W. CHAMBERLIN • Industrial Arts — Nu Sigma Phi 3, 4, President 4; Industrial Arts Guild 1, 2, 3, 4; Basketball 1, 2, 3, 4; A.O.B. 1, 2, 3, 4. • Relaxed and easy-going . . . can tell you about Japan . . . strives for the "professional look" . . . a threat on the basketball court.

CAROL CHANENSON • General Elementary — Union Junior College 1, 2; Camera Club 3; Omega Phi 3, 4; Class Shows 3, 4. • Modern dancer . . . an ooh-la-la redhead . . . Sorry, boys —she's engaged to Howie . . . Arthur Murray dance instructor . . . makes "s'mores" in her youth group . . . "Now, about those 'elites'."

MARIE CHIRICO • General Elementary — Kappa Delta Pi 3, 4; Newman Club 1, 2, 3, 4. • Conscientious . . . keen mind . . . lover of history and political science . . . member of the coffee cloche.

LUCILLE R. CHRISTIANA • General Elementary — Quiet . . . long brown hair . . . sweet femininity . . . comes in from Moonachie every day.



CAROL CHANENSON



MARIE CHIRICO



LUCILLE R. CHRISTIANA

JAY H. CISER • Fine Arts — Student Council 1; Nu Lambda Kappa 1, 2, 3; College Forum 1, 2; Sigma Theta Chi 2, 3, 4, Corresponding secretary 3, 4; Kappa Delta Pi 3, 4, President 4. • Versatile . . . individualistic . . . succeeds in all he undertakes . . . worrier of the hour . . . those large lunches!

PAULA MANDEL COHEN • General Elementary — Norms Theatre Guild 1; Arts and Crafts Club 2; F.T.A. 4; Class Shows 2, 3. • "She says what she means and she means what she says" . . . smiles from ear to ear . . . one dimple—on the left . . . "How? Why?" . . . always watching the waterfront.



JAY H. CISER



PAULA MANDEL COHEN



JOSEPHINE M. CORBO



CARMELA J. CORRENTE



EDITH R. DANZIG

JOSEPHINE M. CORBO • General Elementary — Newman Club 1, 2, 3, 4, Corresponding Secretary 3, Historian 4; College Forum Club 3, 4; Norms Theatre Guild 1, 2, Corresponding secretary 2; Class Corresponding secretary 2. • Jo and energy are synonymous . . . has something to add to the discussion . . . usually seen with Connie . . . half of a sister act.

CARMELA J. CORRENTE • General Elementary (Curriculum for the Teaching of Handicapped Children) — Kappa Delta Pi 3, 4, Treasurer 4; Nu Sigma Tau 2, 3, 4; Inter Sorority-Fraternity Council 3, Vice-President 3; Student Council 2, 3, Assistant Treasurer 2, Treasurer 3; Class secretary 3; Newman Club 2, 3. • Alert student . . . aims to see Europe . . . her own seamstress . . . witty imagination . . . always on the go.

EDITH R. DANZIG • General Elementary (Curriculum for the Teaching of Handicapped Children) — Cheerleaders 1, 2, 3, 4, Captain 3, 4; F.T.A. 1, 2, 4; Class Show 1, 3, 4, Choreographer 1, 3, 4; Deck Tennis 1, 2, 3; Volleyball 1. • "Eadie" . . . loves to dance . . . "Let's give with a cheer" . . . good sport . . . always falling . . . eats only in Scotty's.



JAQUITH A. DEADY



EILEEN M. De COURSEY

JAQUITH A. DEADY • Kindergarten-Primary — Park College, Parkville, Missouri 1, 2, 3; A.C.E.I. 3, 4; Glee Club 3. • Noted for her red M.G. . . . unusual name . . . transfer student.

EILEEN M. De COURSEY • General Elementary (Curriculum for the Teaching of Handicapped Children) — Newman Club 1, 2, 3, 4, Recording Secretary 3; Women's Basketball 1, 2, 3, Captain 2; REFLECTOR 1, 2, 3, News Editor 2; Norms Theatre Guild 1; Class President 3; Student Council 2, 4, Recording Secretary 2, President 4; Kappa Delta Pi 3, 4; Nu Sigma Tau 2, 3, 4; S.T.I.R.C. 4; N.S.A. 3, 4; Deck Tennis 1, 2, 3. • Superior leader . . . known to all . . . industrious student . . . best all around . . . vivacious and charming.



CATHARINE A. De STEFANO



HERMINE BILLER DIAMOND

CATHARINE A. De STEFANO • General Elementary (Curriculum for the Teaching of Handicapped Children) — Newman Club 2, 3, 4; Class Show 3, 4. • Two o'clock scholar . . . loves the leisure life . . . constantly confused . . . generosity combined with a mirthful soul . . . Married Ernie Zarro.

HERMINE BILLER DIAMOND • General Elementary • Individualistic . . . black-rimmed glasses . . . drives her father's red Oldsmobile . . . those shoes! . . . seen with Betty.

ROSE MARIE Di NAPOLI • General Elementary — Newman Club 1, 2, 3; Camera Club 2; Arts and Crafts Club 1, 3; F.T.A. 2; A.C.E.I. 4. • Drives her own car . . . N.C.E. dance fan . . . sparkling eyes.

LORRAINE E. DISTEFANO • General Elementary (Curriculum for the Teaching of Handicapped Children) — Newman Club 3, 4; A.C.E.I. 3, 4; Class Show 3, 4; F.T.A. 2, 4. • Knits in classes . . . chorus girl in class shows . . . distinctive laugh . . . car owner.

BERNADETTE P. DOWD • Kindergarten-Primary — A.C.E.I. 3, 4; Dance Study Club 1; Newman Club 1, 2, 3, 4; Arts and Crafts 3; F.T.A. 2, 3, 4. • Connie's shadow . . . those nylon blouses! . . . "our artiste" . . . sweet, sincere smile . . . engaged to Gene.



ROSE MARIE Di NAPOLI



LORRAINE E. DISTEFANO



BERNADETTE P. DOWD



DORIS L. DUFEK



LORRAINE T. FARLEY



PHYLLIS FELDMAN



JUNE FENDRICK

DORIS L. DUFEK • General Elementary — F.T.A. 1; Swimming Club 3, 4; House Committee 3, 4, Treasurer 4; A.C.E. 3, 4; Arts and Crafts 3; Student Council 4. • Cheerful disposition . . . "Where's June?" . . . cheery smile . . . goes swimming every Wednesday . . . happy-go-lucky.

LORRAINE T. FARLEY • General Elementary — Newman Club 1, 2, 3, 4; F.T.A. 3; A.C.E.I. 3. • Mostly seen in the library . . . rarely on time . . . vacations at the shore . . . witty . . . neat.

PHYLLIS FELDMAN • Kindergarten-Primary — Glee Club 1; A.C.E.I. 3, 4. • Attended Juilliard School of Music for two years . . . a good friend . . . ambitious and dependable . . . musically inclined . . . engaged to Cy.

JUNE FENDRICK • Kindergarten-Primary — Glee Club 1, 2; Arts and Crafts 3; House Committee 3; A.C.E.I. 3; Swimming 4 • Heart belongs to Bob in the Navy . . . long black tresses . . . sincere and thoughtful . . . seen with Doris and Sally.



BARBARA FELDMAN FISCHER

BARBARA FELDMAN FISCHER • Kindergarten-Primary — F.T.A. 1, 2; Arts and Crafts 1, 2. • Sandy's sister . . . left in January . . . one of the married set . . . another bridge player . . . married to Herb.

MARLENE MARCUS FLEISCHER • General Elementary — F.T.A. 1, 2, Recording secretary 2; A.C.E.I. 4. • "Anyone for bridge?" . . . flight to Kentucky . . . ready smile and vibrant personality . . . industrious and conscientious.



MARLENE MARCUS FLEISCHER

DOLORES J. FREDA • General Elementary — F.T.A. 2, 3, 4; REFLECTOR 2; A.C.E.I. 3, 4. • Has a second floor locker . . . quiet and unassuming . . . industrious, earnest student.

MARELLEN P. FRENCH • General Elementary — Mixed Chorus 1; Class Show 2; A.C.E.I. 3, 4. • Likes to sing . . . industrious worker . . . sincere and unaffected . . . constantly with Lu.

ARTHUR L. FRIELINGHAUS • General Elementary (Curriculum for the Teaching of Handicapped Children) — Nu Sigma Phi 2, 3, 4, Vice President 4; Kappa Delta Pi 3, 4; Baseball 1; Class President 2; Bond Issue Show 2; Class Show 1, 2, 3; Bowling 4; Inter-Fraternity-Sorority Council 4; REFLECTOR 1, 2, 3; Assembly Committee 1; Orchestra 1, 2, 3, 4, President 4; Mixed Chorus 1, 2, 3, 4, President 2, 3; General Elementary Men's Guild 1, 2, 3, 4, Corresponding Secretary 2, Recording Secretary 4; Swimming Club 2, 3. • Music, music, music . . . wrote Soph show . . . mentally retarded — so what! . . . always around Newark . . . charter member of Ancient Instruments Society.



DOLORES J. FREDA

JEAN M. GILDAY • Kindergarten-Primary — Newman Club 1, 2, 3, 4; A.C.E.I. 3, 4; Arts and Crafts Club 3; Dance Study 1; F.T.A. 2, 3, 4. • Capable and efficient . . . found at the bookstore . . . "the legs" . . . able, willing "Chevy" chauffeur.



MARELLEN P. FRENCH



ARTHUR L. FRIELINGHAUS



JEAN M. GILDAY





LOUIS R. GIORDANO



HARLENE N. GOLAT

LOUIS R. GIORDANO • General Elementary — Mixed Chorus 1, 2; Kappa Delta Pi 3, 4, Vice President 4; G.E. Men's Guild 1, 2, 3, 4; Student Council 1, 4. • Always a gentleman . . . serious and studious . . . never caught napping . . . a friend in need.

HARLENE N. GOLAT • General Elementary — Glee Club 1, 3, 4; A.C.E.I. 4. • Everyone's favorite bridge partner . . . sings like an alto bird . . . outstanding blonde hair . . . crazy about Jeffrey.



ESTHER GOLDMAN



ELIZABETH A. GOODYEAR



MYRTLE E. GREEN

ESTHER GOLDMAN • General Elementary — REFLECTOR 1; College Forum 1, 4; Class Show 1, 2, 3, 4; Omega Phi 2, 3, 4; Visual Experimentation Club 2; Student Council 3; Norms Theatre Guild 3. • Infrequent, but penetrating, remarks . . . excellent doodler . . . knows all about silver . . . member of a professional family . . . there when needed.

ELIZABETH A. GOODYEAR • Fine Arts — Dance Study Club 1, 2, 3, 4; Rifle Club 1, 2; Wapalanne Club 3, 4, Secretary 3, 4; Nu Theta Chi 2, 3, 4; Inter-Sorority-Fraternity Council 4; Class Show 1, 2, 3, 4. • Ford-Sayre girl . . . farmer's daughter . . . active in all class shows . . . always ready to help . . . thoughtful.

MYRTLE E. GREEN • General Elementary — Women's Glee Club 1; Mixed Chorus 2, 3. • Brilliant, expressive eyes . . . industrious worker . . . pinochle player . . . "Plop on a stick" . . . always ready for a good time.

EMMA T. GROSS • General Elementary. • Hard-working . . . "Well, from my experience with my children—" . . . a catching sense of humor . . . well informed and intelligent.

NANCY DONLEY HALBIG • General Elementary — Dance Study Group 1. • Married to Willie . . . always helping others . . . bridge player . . . takes good care of the Black Bug (her '39 Ford).

CHARLES H. HANSON • Industrial Arts — Nu Sigma Phi 3, 4; Industrial Arts Guild 1, 2, 3, 4; A.O.B. 1, 2, 3, 4. • Lives up the road a piece in Hibernia . . . "Time out for a cigarette" . . . Oh, that frat initiation . . . One of the married set.



EMMA T. GROSS



NANCY DONLEY HALBIG



CHARLES H. HANSON

ALISON HARRIS • General Elementary College — Forum 1; Student Council 1; Camera Club 3; Assembly Committee 2, 3; Alpha Kappa Alpha Sorority 2, 3, 4; F.T.A. 3, 4. • An attractive girl with a friendly smile . . . calmness personified . . . a friend to all . . . gay personality . . . Harold, her N.S.T.C. sweetheart.

EILEEN A HASTINGS • Elementary — Union Junior College 1, 2; F.T.A. 3; Camera Club 3; Newman Club 3, 4; REFLECTOR 3, 4; Omega Phi 3. • Peppy and sparkling . . . dependable and efficient . . . sincere and unaffected . . . REFLECTOR interviewer . . . interested and interesting student.



ALISON HARRIS



EILEEN A. HASTINGS



GERTRUDE HAYES



AUDREY HEBERLING



FANNY HELFIN

GERTRUDE HAYES • Kindergarten-Primary, General Elementary, and Curriculum for the Teaching of Handicapped Children — House Committee 1, 2, 3, 4, Vice President 2, President 3, 4; Mixed Chorus 1, 2, 3, 4, Vice President 4; REFLECTOR 1, 2, 3, 4; Sigma Kappa Phi 3, 4, Recording secretary 4; Class show 1, 3; Bond Issue Show 2; Delegate to Atlantic City Teachers Convention 3, 4. • Miss Minkin's office . . . always on the go . . . "As a member of the House Committee, may I tell you that you can't—" . . . her guy, Bill . . . charming and delightful to know.

AUDREY HEBERLING • General Elementary. • Likes a good game of bridge . . . excellent swimmer . . . large lunches . . . contagious laugh . . . ready smile.

FANNY HELFIN • General Elementary (Curriculum for the Teaching of Handicapped Children) —House Committee 3, 4; Glee Club 3; Pi Eta Sigma 3, 4; REFLECTOR 3, 4. • Skilled speech therapist with inborn "know-how" . . . friendly, frank and quick to laugh . . . cigarettes and black coffee . . . distinctive giggle . . . "Hm-m-"



SALLY A. HENRY



MARGARET L. HERGENHAN

SALLY A. HENRY • Kindergarten-Primary — Glee Club 1, 2; College Forum 2, Executive Committee 2; ACEI 3, 4; Arts and Crafts Club 3; House Committee 3, 4; FTA 4; Swimming Club 3, 4. • Flaming hair . . . friendly and sincere . . . pug nose . . . train-conscious.

MARGARET L. HERGENHAN • Kindergarten-Primary — Glee Club 1, 2, 3, 4, Librarian 3, Vice-president 4; Basketball Club 1, 2, 3, 4, Secretary-treasurer 2, President 3; Student Council 3, 4; Alpha Theta Pi 2, 3, 4, Treasurer 3; ACEI 3, 4; Newman Club 3, 4; United Appeals Drive Chairman 4; Class Show 3, 4. • Good humor and good sense blended with a gift for leadership . . . Basketball Club strongest advocate . . . noted for her variety of interests . . . possessor of unlimited potentiality.



BETSY T. HOEHN



HARRIET R. HOFFMAN

BETSY T. HOEHN • General Elementary (Curriculum for the Teaching of Handicapped Children) — Basketball Club 1; Dance Study Club 1; REFLECTOR 2, 3, 4; Newman Club 1, 2, 3, 4, Public Relations Chairman 4. • Traveling, her pastime . . . has seen twenty-two states . . . noted for her giggle . . . enthusiastic and friendly . . . always a cheery hello.

HARRIET R. HOFFMAN • Fine Arts — Syracuse University 1, 2; Omega Phi 3, 4, Secretary 4; Dance Study Club 4; MEMORABILIA 4; Class Show 3, 4. • Newcomer but in the midst of everything . . . "Syracuse was never like this" . . . "I mean it really" . . . cooperative gal.

JOAN B. HUENEKE • Fine Arts — Dance Study Club 1, 2, 3, Treasurer 2; Social Committee 1; Kappa Delta Pi 3, 4; Student Council 2, 3, 4; MEMORABILIA 4; Class Shows 1, 3, 4; Senior Court; Swimming Club 2. • Tall, tall, tall . . . brains plus . . . Tip-Top enthusiast . . . deep thinker . . . good listener.

BEATRICE KRETZMER HUMPHRIS • Fine Arts — Arts and Crafts Club 1; Class Show 4; Bowling Club 2. • Noted for her caricatures . . . give her the simple life . . . she sings? . . . gingerbread girl . . . "Beat and Pete".

MILLICENT BOFFARD IRIS • Fine Arts — Norms Theatre Guild 1; Kappa Delta Pi 3, 4; Athletic Association 2, 3; Women's Basketball Club 1, 2, 3, 4; MEMORABILIA 4, Art Editor 4; Class Show 3, 4, Director 3. • Fun to know . . . efficient and dependable . . . good sport . . . she trips to Washington . . . likes the unusual and the modern.



JOAN B. HUENEKE



BEATRICE K. HUMPHRIS



MILLICENT BOFFARD IRIS



ANN U. KAHRMANN



LINDA BUDIN KALNITSKY



RONA F. KARP



VIVIAN KEE

ANN UNDERWOOD KAHRMANN • Kindergarten-Primary — Norms Theatre Guild 1, 2, 3, 4; A.C.E.I. 3, 4; Student Council 1, 2; Class Show 1, 2, 3. • Sophisticated socialite . . . New Brunswick commuter . . . honorary F.A. . . stresses the creative and the unusual . . . lively sense of humor.

LINDA BUDIN KALNITSKY • General Elementary — Ohio University 1, 2; Camera Club 3. • Terrific story teller . . . married to Gene . . . loves to gab over a cup of coffee . . . plays bridge . . . fun to be with.

RONA F. KARP • Kindergarten-Primary — A.C.E.I. 3, 4; Omega Phi 2, 3, 4, Recording Secretary 3, Chancellor 4. • Jackie, her best friend . . . noted for her sportsmanship . . . Tudor Room fan . . . camp counselor for three years.

VIVIAN KEE • Kindergarten-Primary — Jersey City State Teachers College 1, 2; Mixed Chorus 3, 4; F.T.A. 3, 4; A.C.E.I. 3, 4. • Vivacious . . . ambitious and active . . . friendly . . . pinochle whiz . . . "Chuse and Ruse."



BARBARA A. KIRCHER

BARBARA A. KIRCHER • General Elementary — Alpha Theta Pi 2, 3, 4; Arts and Crafts Club 2, 3; Class Show 4; Norms Theatre Guild 1. • Comes from Hasbrouck Heights . . . friendly . . . Girl Scout leader . . . cheerful smile . . . devil in her eyes.



ANN LEW KIRSCHNER • Fine Arts — Norms Theatre Guild 1, 2; Class Show 1, 3, 4; Christmas Play 1; Omega Phi 2, 3, 4; Dance Study Club 4; Inter-Sorority-Fraternity Council 4; MEMORABILIA 4. • Petite . . . dynamic . . . has definite ideas and states them . . . elfin charm . . . it's a long reach to husband, Billy.

ANN LEW KIRSCHNER

MIGNON L. KOCH • General Elementary — A.C.E.I. 3; Newman Club 1, 3; Arts and Crafts Club 3; Class Shows 3, 4; Student Council 4. • Many aliases . . . currently, it's Sally . . . Anthony's girl . . . dreamy expression . . . talented seamstress.



IRENE L. KOHEN • Kindergarten-Primary — Rifle Club 1; A.C.E.I. 3, 4; Pi Eta Sigma 3, 4, Vice Chancellor 4; F.T.A. 4. • Bowls about 130 . . . happy when dancing . . . engaged to Artie . . . her heart at N.C.E.

MIGNON L. KOCH

BARBARA A. KOLLARIK • General Elementary — Mixed Chorus 1, 2, 3, 4; Women's Basketball Club 1, 2, 3, 4; Alpha Theta Pi 2, 3, 4; Class Show 1, 4. • Basketball, basketball . . . one half of a sister combination . . . sports enthusiast.

JOAN F. KOLLARIK • General Elementary — Norms Theatre Guild 1; Mixed Chorus 1, 2, 3, 4; Alpha Theta Pi 3, 4; Class Shows 1, 4. • Stylish seamstress . . . melodic singer . . . class show duo with her sister . . . engaged to Marcell.



IRENE L. KOHEN



BARBARA A. KOLLARIK



JOAN F. KOLLARIK



MILDREN PENN KORBMAN



FRANCIS J. KORFMANN

MILDRED PENN KORBMAN

FRANCIS J. KORFMANN • Industrial Arts — Nu Sigma Phi 2, 3, 4, Treasurer 3; Epsilon Pi Tau 2, 3, 4, President 4; Industrial Arts Guild 1, 2, 3, 4; Basketball 2, 3; REFLECTOR 3; Athletic Association 3; A.O.B. 1, 3, 4, Vice President 4; Camera Club 3, 4; Class Show 1, 4. • Frank alias "The All American Boy" . . . pride of Epsilon Pi Tau . . . sweat socks . . . dancing cigarette pack.



ANN M. LATERZA



CAROLYN A. LATERZA



JOHN R. LEGG

ANN M. LATERZA • Kindergarten-Primary — REFLECTOR 1; Newman Club 2; College Forum 2; A.C.E.I. 3, 4. • Enjoys dancing . . . The Mambo King . . . Talking in class . . . Cadillacs . . . usually seen with Carol.

CAROLYN A. LATERZA • Kindergarten-Primary — REFLECTOR 1; Newman Club 1, 2; College Forum 2; A.C.E.I. 3, 4; F.T.A. 4. • Enjoys sports . . . The Tudor Room . . . loves coffee . . . all Republican . . . usually happy . . . always with Ann.

JOHN R. LEGG • Industrial Arts — Industrial Arts Guild 1, 2, 3, 4, Vice-President 3; Class President 1; A.A. Committee 1, 3, 4, President 4; Norms Theatre Guild 1; Sigma Theta Chi 2, 3, 4, President 3; Baseball 2, 3; Bond Issue Show 2; Mixed Chorus 2, 3; Class Show 2, 4; A.O.B. 1, 2, 3, 4; Curriculum Revision Committee 3; Bowling Team 2, 3, 4. • Official class jokester . . . crew cut . . . guaranteed to break up rehearsals and classes . . . Daddy to Dean and Jackie . . . one of the married set.

LEONARD J. LESHO • Industrial Arts — Nu Sigma Phi 3, 4, Corresponding Secretary 4; Industrial Arts Guild 1, 2, 3, 4; A.O.B. 1, 2, 3, 4; Newman Club 1, 2; Camera Club 1, 2, 3, 4; Bowling Club 4; Arts and Crafts 2; Class Show. • Scotty's for coffee every morning . . . "Let's go, let's go" . . . N.S.T.C.'s St. George . . . runs gratis taxi service . . . trying to wear out the lower corridor.

BEVERLY LEVINE • General Elementary — Women's Glee Club 1; Mixed Chorus 2, 3, 4; House Committee 2, 3, 4, Assistant Secretary 2; F.T.A. 2, 3, 4; A.C.E.I. 4; REFLECTOR 2, 3, 4, Circulation Manager 3; MEMORABILIA 4, Business Manager 4; Class Show 2, 3, 4. • Pert and efficient . . . Gal Friday for the REFLECTOR . . . dark, expressive eyes . . . holds the purse for MEMORABILIA . . . member of Headred Club with Honey and Jo-Ann.

BEVERLY N. LEVINE • General Elementary — Pi Eta Sigma 2, 3, 4, Recording secretary 3; Arts and Crafts Club 3, 4; A.C.E.I. 4. • "Please, it's Beverly NANCY" . . . plays bridge . . . drives her father's car . . . "I had a wonderful weekend."



LEONARD J. LESHO



BEVERLY LEVINE



BEVERLY N. LEVINE

NORMA LEVINE • General Elementary — Dance Study 1; Norms Theatre Guild 2; F.T.A. 3.  
• Big brown eyes . . . seen in Ohrbach's . . . "Let's eat" . . . plays bridge . . . friendly.

ENID BRODY LEVY • Kindergarten-Primary — F.T.A. 1, 2, 4, Treasurer 2; Arts and Crafts Club 3; A.C.E.I. 3, 4. • Married to Fred . . . pleasant disposition . . . drives Chevy Bel-Air . . . natural blonde tresses . . . easy to get along with.



NORMA LEVINE



ENID BRODY LEVY





JANET A. LEWINE



BARBARA BLOCH LEWIS



HELENE FIELD LEWIS

JANET A. LEWINE • General Elementary — Pi Eta Sigma 2, 3, Vice-President 3; Kappa Delta Pi 3, 4; Forum Club 3; Norms Theatre Guild 1; Wapalane Nature Study Club 3, 4. • Appreciates the esthetic . . . responsible and dependable . . . loves knowledge . . . sincere.

BARBARA BLOCH LEWIS • General Elementary (Curriculum for the Teaching of Handicapped Children)—Women's Glee Club 1, 2; Class Show 2. • Speech conscious . . . neat dresser . . . carefree . . . partial to the Tudor Room . . . Philadelphia express.

HELENE FIELD LEWIS • General Elementary (Curriculum for the Teaching of Handicapped Children) — Bond Issue Show 2. • Sophisticated Mrs. . . . "Lainie" . . . witty . . . clothes conscious.



RUTH REICH LISS



RONALD A. LITTLE

RUTH REICH LISS •

RONALD A. LITTLE • Industrial Arts — Industrial Arts Guild 1, 2, 3, 4; A.O.B. 1, 2, 3, 4; Nu Sigma Phi 2, 3, 4, Secretary 3, Treasurer 4; Mixed Chorus 2, 3; Rifle Club 1, 2; Bond Issue Show 2; Class Show 1, 2, 3, 4; Senior Court 4, Sergeant-at-arms 4. • Has 9:10 classes . . . loves to sing . . . our pet "dragon" . . . sergeant in the Army Reserves . . . helps run basketball team.



JOSEPH M. LYNCH



CONSTANCE B. MAINERO

JOSEPH M. LYNCH • Industrial Arts— Industrial Arts Guild 1, 2, 3, 4, Treasurer 2, President 4; Camera Club 1, 2, 3, 4; Nu Sigma Phi 3, 4; Epsilon Pi Tau 3, 4; A.O.B. 1, 2, 3, 4; Arts and Crafts 2. • Ex-gob . . . arrives about ten times a day . . . lives right up the street . . . "I'll do it when I come back."

CONSTANCE B. MAINERO • Kindergarten-Primary — Newman Club 1, 2, 3, 4; A.C.E.I. 3, 4; Dance Study Club 1; Arts & Crafts Club 3; Class Show 4; F.T.A. 2, 3, 4. • Seashore summers . . . vivacious . . . always hungry . . . math enthusiast . . . whizzes by in her Chrysler.

JOHN H. MALMQUIST • General Elementary — Norms Theatre Guild 1, 2, 3, Treasurer 2, President 3; General Elementary Men's Guild 3, 4, Publicity 4; Nu Sigma Phi 2, 3; Wapalanne Club 3, 4. • Enjoys Stokes State Forest . . . worked with Norms . . . seen with Larry.

ROSEMIREL POLLACK MANDEL • General Elementary (Curriculum for the Teaching of Handicapped Children) — Arts and Crafts 1, 2, 3; F.T.A. 4; Pi Eta Sigma 2, 3, 4; MEMORABILIA 4. • Quiet and unassuming . . . gentle sparkle in her manner . . . fine artist . . . beautiful black hair . . . earnest student.

KATHERINE MASCIA • General Elementary — Graduate of Hyannus Normal School; Mixed Chorus 3. • "My husband is the handsomest man" . . . "You ought to see my Vincent" . . . well-informed . . . consistent in her beliefs . . . excellent professional background.



JOHN H. MALMQUIST



ROSEMIREL POLLACK MANDEL



KATHERINE MASCIA



CORINNE P. MASKALERIS



JOSEPH W. MAYRON



JOAN KELSON McALLISTER



DORIS A. MCGARRY

CORINNE PAPPAS MASKALERIS • General Elementary — Norms Theatre Guild 1; Orchestra 1; Class Show 1; Mixed Chorus 2; Curriculum Revision Committee 3; A.C.E.I. 3; Prom Committee 3; Arts and Crafts Club 3; F.T.A. 4; MEMORABILIA 4. • Loves a legal mind . . . bless that sneeze! . . . excellent seamstress.

JOSEPH W. MAYRON • Industrial Arts — F.T.A. 1; Epsilon Pi Tau 3, 4, Vice President 4; Nu Sigma Phi 2, 3, 4, Recording Secretary 3; Athletic Association 2, 3, 4, President 3; Bowling 1, 2, 3, 4, Captain 2, 3; Baseball 2; Basketball 2, 3, 4; Industrial Arts Guild 1, 2, 3, 4; Camera Club 3; Mixed Chorus 2, 3; Student Council 3, 4; Class Show 1, 2, 3, 4; Bond Issue Show 2; A.O.B. 1, 2, 3, 4, Sgt. Arms 3; Norms 1. • Always smiling . . . ready with a needed hand . . . a hall pacer . . . bristle bean . . . mainstay of the basketball team.

JOAN KELSON McALLISTER • Kindergarten-Primary — Norms Theatre Guild 1; Dance Study Club 2; Arts and Crafts 3; A.C.E.I. 3. • Mother of Sharon . . . pleasant personality . . . typical homemaker . . . hurries home to get Mac's supper.

DORIS A. MCGARRY • General Elementary (Curriculum for the Teaching of Handicapped Children) — Arts and Crafts Club 2, 3; Newman Club 1, 2, 3, 4; Norms Theatre Guild 2; Dance Study Club 1; REFLECTOR 2; MEMORABILIA 4. • Efficient and industrious . . . well versed in library work . . . always ready for fun . . . friendly.



ANTHONY J. MEGARO

ANTHONY J. MEGARO • General Elementary — Air Raid Wardens 1, 2, 3, 4, Captain 1, 2, 3, 4; G.E. Men's Guild 1, 2, 3, 4, Vice-president 4; REFLECTOR 2, 3, 4; Camera Club 3; Public Relations 3; Student Council 1, 2. • Consistent in his opinions . . . very practical and down-to-earth . . . has an intimate knowledge of practical politics . . . understanding to the boys down on the corner.

SUE MENDLESOHN • General Elementary (Curriculum for the Teaching of Handicapped Children) — Cedar Crest College 1, 2; Omega Phi 3, 4; C.C.U.N. 4. • Drives her own car . . . London and Paris in European travels . . . newcomer to our midst but liked by all.



SUE MENDLESOHN

WALTER E. MERRILL • General Elementary — Glassboro State Teachers College 1, 2, 3; General Elementary Men's Guild 4. • Ronnie Barnard's roommate . . . usually seen with Larry . . . such long lashes . . . engaged to Mary Lee.



WALTER E. MERRILL

HELEN MEYERS • General Elementary (Curriculum for the Teaching of Handicapped Children) — Arts and Crafts Club 2; A.C.E.I. 4. • Resourceful and well-informed . . . effervescent personality . . . appreciates humor . . . up to date on current happenings . . . inseparable from Norma.

BERNARD W. MILLER • General Elementary — College Forum 2; Camera Club 3, 4, Treasurer 4; General Elementary Men's Guild 1, 2, 3, 4. • Married to one of our freshman year classmates . . . enthusiast about current happenings . . . deep throated masculine voice . . . library and cafeteria.

RUTH WRIGHT MORPETH • Fine Arts — Norms Theatre Guild 1; Rifle Club 3; Social Committee 1, 3; Class Shows 3, 4. • Up and down girl at Hahne's . . . find Bea and Claire and you'll know that Ruth is there . . . buddy to all . . . soft-spoken . . . industrious worker.



HELEN MEYERS



BERNARD W. MILLER



RUTH WRIGHT MORPETH



BARBARA L. MUZIK



IRENE PASHYTNUK NELSON

BARBARA L. MUZIK • General Elementary — Dance Study 1; Alpha Theta Pi 2, 3, 4, Recording secretary 3, President 4; Women's Basketball Club 1, 2, 3, 4, Vice-President 2; Student Council 2; Arts and Crafts 2, 3, Secretary 2; A.C.E.I. 4; Athletic Committee 4; MEMORABILIA 4; Class Corresponding Secretary 4; Deck Tennis 1, 2, 3. • Call her Bobbie Lou . . . cute, curvacious blonde . . . always a friendly smile . . . happy-go-lucky . . . at home on a basketball court.

IRENE PASHYTNUK NELSON • Fine Arts — Dance Study 1; Camera Club 2; Social Committee 1; Assembly Committee 2; Cheerleading 1, 2; Class Show 4; Alpha Theta Pi 3, 4. • Clothes conscious . . . "Sourville" traveler . . . conscientious . . . industrious . . . naive?



COLUMBIA G. NICASTRO



NANCY P. NICOLAYSEN



MARIE J. NUCERA

COLUMBIA G. NICASTRO • General Elementary — Newman Club 1, 2, 3, 4, Membership Chairman 4; F.T.A. 4; Glee Club 4; A.C.E.I. 3. • Even-tempered disposition . . . hidden vocal talent . . . serene and sincere . . . usually seen with Yolanda.

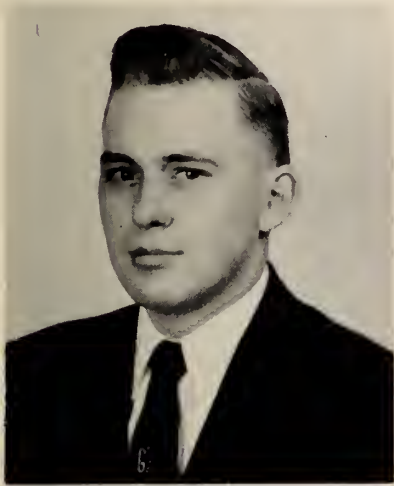
NANCY PETERSEN NICOLAYSEN • Fine Arts — Dance Study Club 1, 2, Secretary 2; Alpha Theta Pi 1, 2, 3; Visual Experimentation Club 2; Class Show 1, 4; Mixed Chorus 3. • Scandinavian enthusiast . . . proud owner of two Great Danes . . . town and country . . . Princeton commuter . . . loves to chatter . . . tall and willowy.

MARIE J. NUCERA • General Elementary — Newman Club 1, 2, 3, 4; Basketball Club 1, 2, 3, 4; Bowling 4; Norms Theatre Guild 1; F.T.A. 1. • Very friendly . . . basketball and bowling . . . interests all over the globe . . . Tudor Room kid.

GEORGE A. OLSEN • Industrial Arts — Industrial Arts Guild 1, 2, 3, 4; Epsilon Pi Tau 3, 4, Secretary 4; Nu Sigma Phi 2, 3, 4, Sergeant-at-Arms 4; A.O.B. 1, 2, 3, 4; Rifle Club 1, 2, 3, 4, President 2, Instructor 3, 4; Bond Issue Show 2; Class Show 1, 2, 3; Senior Court Juror 4. • Pipe smoker . . . Smitty's man Friday . . . doesn't wake up until lunch time . . . Marine Reservist . . . Chevalier in the De Molay.

GLORIA C. ORLANDO • Kindergarten-Primary — Maryland College for Women 1; Glee Club 3; Class Show 3, 4; Curriculum Planning Committee 4; Nu Theta Chi 4; A.C.E.I. 3, 4. • Fun-loving . . . makes a terrific horse or mouse (proven by class shows).

ANNE L. OTTEN • Fine Arts — Norms Theatre Guild 1; Visual Experimentation Club 1, 2; Class Show 1; Rifle Club 1, 2, 3. • New car every year . . . a redhead with a temper . . . sports enthusiast . . . "Come one, let's cut" . . . Hilda's team-mate.



GEORGE A. OLSEN



GLORIA C. ORLANDO



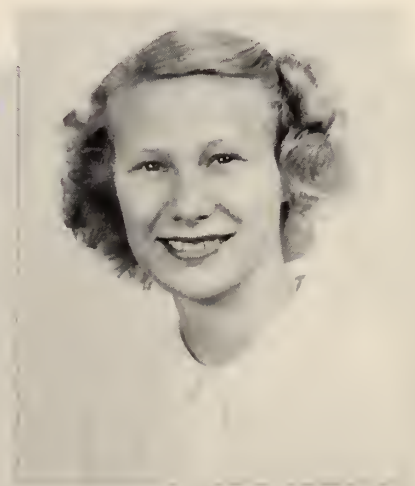
ANNE L. OTTEN

M. CLAIRE PERCIVAL • Fine Arts — Basketball 1, 2, 3, 4; Sigma Kappa Phi 3, 4. • Always with Bea and Ruth . . . conscientious worker . . . sweet to know . . . quick, witty comebacks . . . "Florida, anyone?"

JANICE L. PILLSBURY • Kindergarten-Primary — F.T.A. 4. • Transferred from Kent Union in Ohio . . . sweet personality . . . heart belongs to the Signal Corps . . . sports white bucks.



M. CLAIRE PERCIVAL



JANICE L. PILLSBURY



ELEANOR L. PLESCIA



JANE M. POPELKA



HELEN POULOS

ELEANOR L. PLESCIA • General Elementary — Dance Study Club 1; Visual Experimental Club 2; Art Club 3; Sigma Kappa Phi 2, 3, 4; A.C.E.I. 3; F.T.A. 1. • "Nole" to friends . . . typical co-ed . . . sunny disposition . . . always late.

JANE M. POPELKA • General Elementary — Norms Theatre Guild 1; F.T.A. 2, 3, 4; Sigma Kappa Phi 3, 4; A.C.E.I. 3, 4; Arts and Crafts 3. • Personality kid . . . loves anything red . . . talks a blue streak . . . rides the DL and W to and from Dover

HELEN POULOS • General Elementary — Engaged to Lou . . . unpredictable . . . "What's at Loew's?" . . . loves to eat . . . one of the inseparable five . . . commutes on the D.L. and W. from Dover.



THERESA SCALERA QUEENAN



BARBARA PECK RACZ

THERESA SCALERA QUEENAN • General Elementary — Basketball Club 2, 4; Alpha Theta Pi 3, 4. • Seen in Ohrbach's . . . hurries home to Joe . . . short hair . . . quiet and unaffected.

BARBARA PECK RACZ • General Elementary (Curriculum for the Teaching of Handicapped Children) — F.T.A. 3, 4; College Forum 1, 2; A.C.E.I. 3, 4. • Good things come in small packages . . . petite . . . earnest and hard working . . . speech major.



BLANCHE RAMPICHINI



JOAN T. REAGAN

BLANCHE RAMPICHINI • General Elementary (Curriculum for the Teaching of Handicapped Children) — Energy, enthusiasm, enjoyment mark her every mood . . . bobby sox and white bucks . . . likes to do things in a hurry . . . memories of those Rhode Island summers . . . "Oh me? — I'm hard-of-hearing."

JOAN T. REAGAN • General Elementary — Newman Club 1, 2, 4; Future Teachers of America 1, 4; Norms Theatre Guild 1. • Look for her in the Tudor Room . . . drives her father's Buick . . . long nails . . . always the latest in style . . . can be found with Eadie, Marie and the other Joan.

JOAN M. REMINGTON • General Elementary — Rifle Club 2, 3, 4; REFLECTOR 2, 3, 4; MEMORABILIA 4; A.O.B. 3, 4; Newman Club 4. • Owns a canoe . . . helps support Scotty's . . . cheers the Dodgers . . . Miss Moneybags for the cafeteria . . . usually seen with Jo-Ann and/or Pat.

SANDRA FELDMAN RICE • General Elementary (Curriculum for Teaching of Handicapped Children)—Paterson State Teachers College 1; Omega Phi 2, 3, 4; Arts & Crafts 2; A.C.E.I. 4. • Neil, the man in her life . . . cheerful personality . . . always ready to help . . . sparkling and effervescent.

LOIS E. RIES • Kindergarten-Primary — A.C.E.I. 3, 4; Mixed Chorus 1, 2, 3, 4; Kappa Delta Pi 3, 4; Class Show 1, 2, 4; Swimming Club 4; MEMORABILIA 4. • Petite . . . sweet melodic voice . . . twinkling eyes . . . efficient . . . dependable.



JOAN M. REMINGTON



SANDRA FELDMAN RICE



LOIS E. RIES





ELINOR BLAKE ROBB



GLORIA ARLEIN ROSENFELD



IRENE FINKLE ROSENTHAL



REINA ROSS

ELINOR BLAKE ROBB • Fine Arts — Mixed Chorus 2, 3, 4; Arts and Crafts Club 1; Athletic Association 1, 2, 4; Women's Basketball Club 1, 2, 3, 4; Class Show 3, 4. • Independent but cooperative . . . pert . . . always working for the school . . . baby sitter for Corky . . . thoughtful person.

GLORIA ARLEIN ROSENFELD • General Elementary — Omega Phi 2, 3, 4, Vice Chancellor 3; Assembly Committee 1, 2, Treasurer 1; Norms Theatre Guild 1, 2, 3; Class Show 1. • Dynamic and delightful . . . bridge every Tuesday . . . witty and whimsical . . . De Soto convertible.

IRENE FINKLE ROSENTHAL • General Elementary — Women's Glee Club 1, 4; College Forum 2, 3; MEMORABILIA 4; Student Council 4; Women's Volleyball 2. • In freshman year, wrote to Artie, sophomore year, was engaged to Artie, junior year, married Artie, and senior year, wrote to Artie . . . sharp-witted . . . always on the other end of a knitting bag . . . right hand of the education department.

REINA ROSS • General Elementary — Engaged to Curly . . . always with Ann . . . interested in politics . . . seen at the Terrace Room in the Mosque . . . merry mix-up.



BETTY SOLTYSIK RUFALO

BETTY SOLTYSIK RUFALO • General Elementary — F.T.A. 1, 4; Glee Club 2. • Sophistication is her trademark . . . "Joe, what have you got to eat?" . . . one of the happy foursome . . . "Brother and sister?"

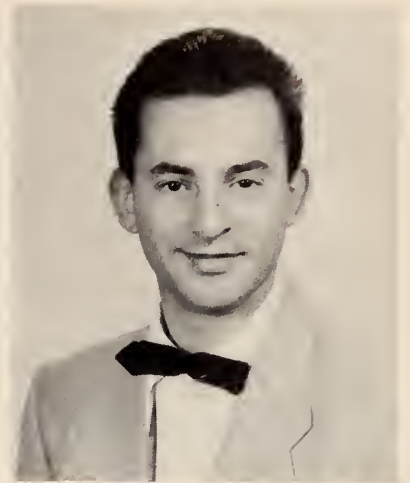
JOSEPH T. RUFALO • General Elementary — Orchestra 1, 2, 3, 4, Vice-President 3. • "No, husband and wife!" . . . dig that crazy flute . . . I disagree . . . alumnus of Louis Prima.

MARY E. RUFFING • General Elementary (Curriculum for the Teaching of Handicapped Children) — Athletic Committee 1, 2, 3, Recording Secretary 2, Vice-President 3; Mixed Chorus 3, 4, Executive Secretary 4; Women's Basketball 1, 2, 3. • Joan's other half . . . reliable . . . socialite . . . to know her is to like her . . . for style in clothes see Mary.

VINCENT J. RUSSO • Industrial Arts — Nu Sigma Phi 3, 4; Epsilon Pi Tau 3, 4; Industrial Arts Guild 1, 2, 3, 4; Camera Club 3, 4; A.O.B. 1, 2, 3, 4; Arts and Crafts Club 2; Bowling 3, 4. • Vinnie and a ready smile go together . . . available to chauffeur . . . comes in from the "Mahwah Reservation" every day.

GLORIA F. SALZBURG • Kindergarten-Primary — Norms Theatre Guild 1, 2, 3, 4; Recording secretary 3; All-college Meetings Committee 2, 3, Treasurer 3; Kappa Delta Pi 3, 4; Omega Phi 2, 3, 4, Treasurer 3, 4; Class Shows 1, 2, 3, 4; A.C.E.I. 3; Bond Issue Show 2; F.T.A. 3; Bowling Club 1; Student Council 4. • Gay and smiling . . . friendly . . . full of charm and personality . . . very active in social affairs, clubs, organizations, and class functions.

YOLANDA SANSONE • General Elementary — Norms Theatre Guild 1; Class Show 1, 2, 3; College Forum 3, 4; Newman Club 1, 2, 3, 4, President 4; Eastern States Association delegate 1, 2. • Devout person . . . dramatic expression . . . devoted to her convictions . . . understanding . . . always a "lady" . . . coffee cloche.



JOSEPH T. RUFALO



MARY E. RUFFING



VINCENT J. RUSSO



GLORIA F. SALZBURG



YOLANDA SANSONE



ANTHONY J. SAPORITO



NANCY ROY SAUNDERS

ANTHONY J. SAPORITO • Industrial Arts — College Forum 1; Mixed Chorus 2, 3; Industrial Arts Guild 1, 2, 3, 4, Recording secretary 3; Epsilon Pi Tau 3, 4; Nu Sigma Phi 4; REFLECTOR 1, 2, 3, 4; A.O.B. 1, 2, 3, 4. • Better known as "Tuni" . . . Shop Talk columnist . . . always in a hurry . . . Daddy to Cynthia and Cheryl . . . Navy vet . . . sociable and friendly.

NANCY ROY SAUNDERS • General Elementary (Curriculum for the Teaching of Handicapped Children) — House Committee 1, 2, 3, Treasurer 3; Women's Glee Club 1; F.T.A. 3; Class Vice-President 4; Nu Sigma Tau 2, 3, 4; Student Council 1, 2. • Bubbling personality . . . bulletin board schedules . . . argyle socks . . . pretty as well as witty!



CARMELLA SCANNELLI



MYRNA B. SCHENKEL



SUSAN M. SCHIPPER

CARMELLA SCANNELLI • Kindergarten-Primary — Women's Glee Club 1; Visual Experimentation Club 2; Nu Sigma Tau 2, 3, 4, Recording secretary 3; Newman Club 2; House Committee 1, 2. • Charmingly poised and sweetly sophisticated . . . one of the Tudor Room bridge fans . . . can claim Annapolis as her home away from home . . . Anchors aweigh for Don and Millie in the near future.

MYRNA B. SCHENKEL • General Elementary — Dance Study Club 1; Deck Tennis 1, 2; Class Show 2, 4; Norms Theatre Guild 2; Delta Sigma Pi 2, 3, 4, Chancellor 3, 4; Glee Club 3, 4; Future Teachers of America 3; MEMORABILIA 4; Student Council 2. • Glee Club enthusiast . . . nicknamed Kelly . . . class show songbird . . . found at bridge in Tudor Room . . . fun-loving.

SUSAN M. SCHIPPER • General Elementary (Curriculum for the Teaching of Handicapped Children) — Adelphi College 1; New Jersey College for Women 2; F.T.A. 3, 4; Norms Theatre Guild 3; REFLECTOR 3, 4; Class Show 3; Pi Eta Sigma 3, 4. • Fashionable . . . talented knitter . . . earnest student . . . enjoys good salads.

BETTY A. SCHULZE • General Elementary — Student Council 3, 4, Corresponding secretary 4; Arts and Crafts Club 1, 2, 3, President 2, Vice-President 3; Class Show 3, 4; Senior Court; Women's Basketball 2; Deck Tennis 2; MEMORABILIA 4; Sigma Kappa Phi 3, 4. • Efficient worker . . . the future sees her teaching in far away places . . . lively and full of fun . . . thoughtful and dependable . . . pleasing personality.

WILLIAM SCHUSTRIN • Fine Arts — Class Vice-President 2; Visual Experimentation 1, 2; Nu Lambda Kappa 1, 2, 3; Basketball 1, 2, 3; Class Show 1. • Big-hearted chap . . . here and there . . . but mostly there . . . What's he selling this year? . . . has a philosophy.

ROSEMERYL DENBURG SHAPIRO • General Elementary — Omega Phi 2, 3, 4; F.T.A. 2, 3. • Member of bridge players . . . anonymous . . . left in January . . . tall lass . . . gleaming black hair.



BETTY A. SCHULZE



WILLIAM SCHUSTRIN



ROSEMERYL D. SHAPIRO

FLORENCE GOLDBLATT SIMON • General Elementary. • Member of Bridge Players Anonymous . . . married to Al . . . always showing snapshots of Steven, her son . . . Tudor Room fan.

BARBARA M. SINCLAIR • Fine Arts — Class Recording Secretary 1; Arts and Crafts Club 1; Student Council 2, 3, 4; Kappa Delta Pi 3, 4; Alpha Theta Pi 3, 4; Inter Sorority-Fraternity Council, Treasurer 4; MEMORABILIA 4; Mixed Chorus 3; Rifle Club 1, 2, 3; Class Show 4; College Planning Committee 4. • A finger in every pie . . . "I have an announcement" . . . always "Sin"cere . . . all-around person . . . forceful, dynamic leader.



FLORENCE G. SIMON



BARBARA M. SINCLAIR



NICHOLAS SIVOLELLA



LILA R. SLADE



NANCY J. SMITH

NICHOLAS SIVOLELLA • General Elementary — Baseball 1, 2, 3, 4; Norms Theatre Guild 1; Nu Sigma Phi 2, 3, 4; Athletic Association 2, 3, 4; Class Officer 1, 2, 4; General Elementary Men's Guild 1, 2, 3, 4; Camera Club 1, 2, 3; REFLECTOR 2; Basketball Manager 2; Bowling 2, 4. • Nick and friendliness go together . . . initialed shirts . . . baseball pitcher . . . brown hair and brown eyes.

LILA R. SLADE • General Elementary — Upsala College 1, 2; Arts and Crafts Club 3; F.T.A. 3, 4. • Sweet and blonde . . . the right word for the right occasion . . . lucky transfer because she's one in a million . . . well liked . . . noted for her good taste in clothes.

NANCY J. SMITH • General Elementary — Arts and Crafts Club 1, 2; F.T.A. 3, 4; A.C.E.I. 4. • Always running for her train . . . engaging twinkle in her eye . . . arts and crafts, her hobby . . . marriage in the near future . . . enterprising teacher.



MARCIA COHEN SOLOMON



AGNES M. SPINA

MARCIA COHEN SOLOMON • General Elementary — Mixed Chorus 1, 2. • Individualistic . . . married to Victor . . . new mama . . . plays bridge.

AGNES M. SPINA • Kindergarten-Primary — F.T.A. 2, 3, 4; A.C.E.I. 3, 4. • One of the second floor locker set . . . long black tresses . . . always with Betty and Stella.



JACLYN DRAZIN SPINNER



RICHARD W. STIER

JACLYN DRAZIN SPINNER • Kindergarten-Primary • Seasoned European traveler . . . friendly and cheerful . . . conscientious . . . lots of fun.

RICHARD W. STIER • Industrial Arts —Industrial Arts Guild 1, 2, 3, 4, Treasurer 4; Norms Theatre Guild 1, 2, 3, 4, Treasurer 3, 4; Nu Sigma Phi 3, 4; A.O.B. 1, 2, 3, 4. • Locks up Newark at night . . . just makes it to class . . . money bags for Norms . . . "Did the guys go for lunch yet?" . . . former No. 13 bus strap hanger.

PEGGY A. SYNDOR • General Elementary. • Friendly nature . . . lovable character . . . sweet, demure . . . loved by all.

JULIA E. TERRY • General Elementary (Curriculum for the Teaching of the Handicapped Children) — State Teachers College at Jersey City 1, 2; House Committee 3, 4; Arts and Crafts Club 4; Nu Theta Chi 3, 4, President 4; REFLECTOR 4; MEMORABILIA 4. • Always talking about her brothers . . . enjoys life . . . wonderful person . . . eats lunch with Pat . . . Gert, her inseparable friend.

CHARLOTTE K. THOMPSON • General Elementary — Sigma Kappa Phi 3, 4; Arts and Crafts Club 3; Prom Committee 3; Class Show 3; Student Council 3. • Serious and efficient . . . blonde and blue-eyed . . . member of the P.R.R. commuting club . . . "Live for today, plant for tomorrow."



PEGGY A. SYNDOR



JULIA E. TERRY



CHARLOTTE K. THOMPSON



ARLENE D. TOLCHINSKY



LAWRENCE TOMAS



STELLA M. TORELLI



ROBERT W. TRAVIS

ARLENE DIAMOND TOLCHINSKY • Kindergarten-Primary — Women's Glee Club 1; Arts and Crafts Club 2; F.T.A. 2, 3, 4; A.C.E.I. 3, 4. • Sweet, pleasant disposition . . . ready smile . . . quiet and unassuming . . . always found in the library . . . seen with Enid.

LAWRENCE TOMAS • General Elementary — Mixed Chorus 1; College Forum 2, 3, 4, Vice-President 3; G.E. Men's Guild 1, 2, 3, 4, Treasurer 2, President 3; Nu Sigma Phi 3, 4; Swim Club 1, 2, 3, 4; Class Show 1, 2, 3; F.T.A. 4. • Married to Alice . . . another N.S.T.C. romance . . . white bucks.

STELLA M. TORELLI • General Elementary — Future Teachers of America 1, 2, 3; REFLECTOR 2; Women's Glee Club 3; A.C.E.I. 3, 4; Sigma Kappa Phi 3, 4. • Always cheerful . . . long brown locks . . . her heart belongs to Art.

ROBERT W. TRAVIS • Fine Arts — Class Show 1, 2, 3, 4; Basketball 1, 2, 3, 4; Nu Sigma Phi 3, 4; Recording Secretary 4; Mixed Chorus 2, 3, 4; Senior Court Bailiff 4. • Long and lanky . . . acrobatically inclined . . . underclassmen's casanova . . . athlete and party goer.



HELEN VAN LENTEN

HELEN VAN LENTEN • Kindergarten-Primary • Mother of three . . . good sport . . . rates high with the girls.

RONA B. WALDORF • General Elementary (Curriculum for the Teaching of Handicapped Children) — F.T.A. 3; Norms Theatre Guild 1, 2; Women's Basketball Club 1, 2, 3, 4, Captain 2; REFLECTOR 1, 2, 3, 4, Sports Editor 4; Class Show 3, 4; Student Council 1; MEMORABILIA 4; Pi Eta Sigma 2, 3, 4, Treasurer 3, 4; Bowling Club 4. • Bubbles over with enthusiasm . . . sincerely interested in college . . . hard worker for the REFLECTOR . . . Women's Basketball Club holds memories for her . . . oh, that giggle!



RONA B. WALDORF

MARYANN WALSH • Kindergarten-Primary — REFLECTOR 1; Dance Study 1; Glee Club 1, 3, 4; Rifle Club 2; Newman Club 1, 2; F.T.A. 4; Nu Sigma Tau 2, 3, 4; Class Show 1, 3; A.C.E.I. 3, 4. • "George" all the way . . . Larry, her favorite subject . . . Mr. Richardson's right hand girl . . . voice like an angel . . . Irish lass.



MARYANN WALSH

CAROL RIEMAN WARNER • General Elementary — N.J.C. 1; Arts and Crafts 2; Class Show 4; Senior Court; A.C.E.I. 3, 4; Alpha Theta Pi 4. • Lively and full of fun . . . a true friend . . . always willing to help . . . genuine and sincere.

DOLORES T. WEBORG • Kindergarten-Primary—Glee Club 1, 2, 3, 4; A.C.E.I. 3, 4; Class Show 1, 2, 3, 4. • "We" . . . Plainfield's prize pet . . . eats huge lunches . . . class show song bird . . . driver's menace.

HILDEGARDE WEISS • Fine Arts — Women's Basketball 1, 2, 3; Rifle Club 1, 2; Norms Theatre Guild 1, 2. • Roots for Lehigh . . . sports fiend . . . cheerful personality . . . party goer . . . "Why worry!"



CAROL RIEMAN WARNER



DOLORES T. WEBORG



HILDEGARDE WEISS





JOAN G. WHITE

JOAN G. WHITE • General Elementary (Curriculum for the Teaching of Handicapped Children) —Basketball Club 1; Mixed Chorus 1, 2, 3, 4; Class Show 1; Sigma Kappa Phi 2, Historian 3, President 4; Newman Club 1. • Melodic soprano . . . witty . . . seen with Mary . . . enthusiastic speech major.



ALFRED G. WILLIAMS

ALFRED G. WILLIAMS • Industrial Arts — Rifle Club 1, 2, 3, 4, Instructor 4; Wapalanne Club 3, 4, President 3, 4; Sigma Theta Chi 4; Class Show 3, 4; A.O.B. 1, 2, 3, 4; Basketball 2; Industrial Arts Guild 1, 2, 3, 4; Men's Singles Deck Tennis Champ 3; Kappa Delta Pi 4. • Master mind of Wapalanne . . . our official acrobat . . . drives a red convertible . . . Daddy to Valerie . . . one of the married set.



C. LYNNE WILLIAMS

C. LYNNE WILLIAMS • Kindergarten-Primary — Norms Theatre Guild 1; Dance Study Club 2; A.C.E.I. 3, 4; Bowling 4; Class Show 1, 4; Alpha Theta Pi 3, 4. • Breathless . . . talented knitter . . . good worker . . . considerate of others . . . sweet to know.



DOLORES M. WILLIAMS

DOLORES M. WILLIAMS • Kindergarten-Primary — Glee Club 1, 2; Mixed Chorus 3, 4; Future Teachers of America 3, 4; A.C.E.I. 3, 4. • Waits for the return of the Air Force from Japan . . . loves pinochle . . . fashionable . . . wonderful personality



CORINNE K. WILSON

CORINNE K. WILSON • General Elementary — Dance Study 1, 2; College Forum 2; Mixed Chorus 3. • Always a ready smile . . . reserved and friendly . . . sings beautifully . . . soft-spoken and quiet . . . library worker.



PATRICIA WARD WINTER

PATRICIA WARD WINTER • Kindergarten-Primary — Baldwin-Wallace College 1, 2; Glee Club 3, 4; Nu Theta Chi 3, 4; Class Show 3, 4; Student Council 4; Basketball 4; Eastern States Conference 3; Kentucky Aid Committee 4, Chairman 4; Deck Tennis Tournament 3 • Sweetness and sincerity are her trademarks . . . displays an amazing capacity for work . . . Army wife . . . capable and efficient leader . . . deservedly popular.



CORINNE WOLKSTEIN

CORINNE WOLKSTEIN • Fine Arts — REFLECTOR 1; Student Council 1; Class Show 3, 4. • Art and drama intellectual . . . a "new dealer" . . . "My name is Louella" . . . pert and petite . . . angular doodles.



MARILYN BLOCK WYDEN

MARILYN BLOCK WYDEN • Fine Arts — Norms Theatre Guild 1; Omega Phi 2, 3, 4; Dance Study Club 4; MEMORABILIA 4; Class Shows 3, 4. • Big, brown eyes . . . "Where's Milly?" . . . infectious laugh . . . "You wore that two weeks ago today!" . . . finally married to Dick.



MICHAEL R. ZARRO

MICHAEL R. ZARRO • General Elementary — F.T.A. 1; Orchestra 1, 2, 3, 4; Newman Club 1, 2; Mixed Chorus 1, 2, 3; G.E. Men's Guild 1, 2, 3, 4, President 4; Class Show 3. • Forceful leader . . . born to succeed . . . Louise and he are permanent fixtures . . . dynamic teacher . . . well-known and popular.



BARBARA ZECKENDORF

BARBARA ZECKENDORF • General Elementary (Curriculum for the Teaching of Handicapped Children) — Dance Study Club 1, 2; Social Committee 1, 2; Class Show 1. • Patron of Scotty's . . . engaged to Seymour . . . Tudor Room fan . . . bridge enthusiast.



MYRNA F. ZIMETBAUM

MYRNA F. ZIMETBAUM • General Elementary — Norms Theatre Guild 1, 2, 3, 4, President of Little Theatre 2, Vice-President 4; Future Teachers of America 2; Omega Phi 2, 3, 4, Recording secretary 3; Kappa Delta Pi 3, 4, Recording secretary 4; Class Show 2, 3, Director 2, Co-Director, Corresponding secretary 3. • "Everyone on stage, take places" . . . a finger in every pie . . . engaged to Paul . . . waits for letters from the Army.



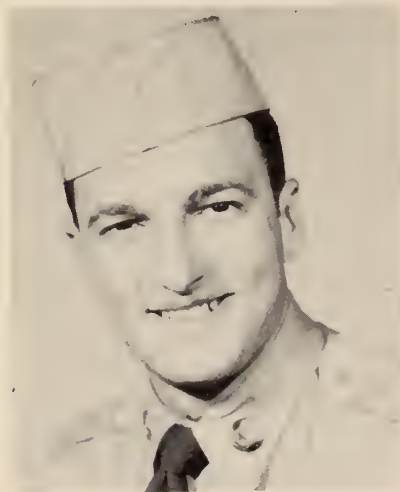
RONALD BARNARD  
U.S. Army



ERNEST FRINO  
U.S. Army



WILLIAM La RUSSO  
U.S. Army



ROBERT LEONARD  
U.S. Army



HARRY MORSCH  
U.S. Marines

# CLASS OFFICERS



From left to right: Barbara Muzik, Barbara Caruso, Joseph Chagnon, Nancy Roy Saunders and Nicholas Sivoella.



CHARLOTTE LOCKWOOD  
Adviser

# CLASSES







### JUNIOR I

From left to right: Row 1—G. Barbier, D. Beviano, A. Cascella, L. D'Andrea, M. Cayo, D. Emmons. Row 2—P. Germann, R. Hulin, M. Missina, M. Mollimock, V. Ferguson. Row 3—J. Reis, M. Russomano, R. Suppa, M. Nebesnak, L. Scurzo, M. Mueller, F. Slocum, D. Ferricola, H. Otto.

# JUNIORS..



### JUNIOR 2A

From left to right: Row 1—J. Schror, D. Neubert, M. Martucci. Row 2—V. Gruber, B. Thompson, J. Loria, I. Zazeela. Row 3—N. Applegate, A. Sonnenschein, R. Cilli, C. Decker, I. McManman.

### JUNIOR II B

From left to right: Row 1—M. Murphy, B. Ciavara, M. Barnhard, J. Abrams, H. Conford. Row 2—A. Tomas, C. Hahn, A. Bodino, H. Risack, G. Rubin. Row 3—P. Pellicane, C. Poindexter, A. Johnson, M. Sathmary, H. Friz, L. Wasserman, M. Spiegel, M. Convetz, M. Geddis.





#### JUNIOR III AND IV

From left to right: Row 1—M. Zwillman, J. Halliday, S. Shaw, C. Anthes, L. Dodson. Row 2—D. Gracey, B. Hedden, P. Lee, R. Pardee. Row 3—H. Hummel, J. Hoenig, G. Hughes.

# CLASS OF 1955

#### JUNIOR V

From left to right: Row 1—J. Dudik, E. Andie, M. Schneider, J. Davidson. Row 2—R. Kursgaard, J. Grandy, E. Brown, E. Wundling, S. Katz. Row 3 — M. Dreyer, M. Mercner, H. Seifer, F. Gajewski, H. Jones. Row 4—B. Kettenberg, M. Sweeting, H. Laiver, V. Yademick, P. Boyle. Row 5—H. Barna, A. Goldfarb, B. Harned, M. Peterson, D. Fenstermaker.



#### JUNIOR VI

From left to right: Row 1—D. English, L. Lacher, P. Fries, M. Asman. Row 2—A. Chapman, L. Greenberg, A. Niemczyk, D. Mignon. Row 3—S. Klugman, P. Schrier, E. Literate, E. Fornorato. Row 4—P. Thompson, S. Sallitt, D. Salliey, M. Wheeler. Row 5—L. Napolitano, E. Kuretich, L. Del Grasso, J. Alvarez, H. Scherman.







### SOPHOMORE I

From left to right: Row 1—C. Stubits, M. O'Brien, A. Latori, N. Littlewood, S. Buskin. Row 2—M. Cashill, E. Harris, Z. Wilcox, Z. Bratsbis, J. Fear. Row 3—A. Apgar, M. Salerno, B. Smith, J. Micelli, M. Bastian, C. Fisher. Row 4—E. Frino, B. Taylor, L. Sckerko, J. Sevito, C. Stein, A. La Gasse, C. Lochner.

# SOPHOMORES...

### SOPHOMORE II

From left to right: Row 1—B. Cheponis, J. Hanson, J. Melillo, A. Siegel. Row 2—S. Cassell, M. Gajewski, S. Marayno, S. Pittman, B. Perry. Row 3—E. Smith, M. Ferraro, J. Wechter, R. Levine, T. Donahue. Row 4—P. Burns, C. Falco, L. Jacobitti, J. Oliverie, L. Moss. Row 5—J. Kessel, B. Brodesser, H. Weinberg, C. Iannelli, L. Griffin, S. Manheim.



### SOPHOMORE III AND IV

From left to right: Row 1—R. Gepfert, V. Engstrom, H. Horowitz, I. Ward. Row 2—J. Vollmer, E. J. Watts, B. Styler, L. Brettell, B. Sokloski. Row 3—L. Molinari, J. Keegal, R. Hartman, E. Knecht, J. Streichler. Row 4—F. Walker, R. Reinhart, C. Murray, A. Beveridge, L. Gay, M. Butler.





SOPHOMORE V

From left to right: Row 1—N. Sheffield, M. Liesinger, B. Raimo, B. Walsh. Row 2 — G. Imparato, J. Lang, S. O'Brien, A. Porter. Row 3—S. Elko, D. Kremski, C. Newmark, A. Verostek. Row 4—G. Tice, C. Jacobitti, A. Micchelli, R. Smith. Row 5—J. Citerelli, V. Manno, J. Drury, C. Hourihan, W. Horten, P. McCarthy.

# CLASS OF 1956

SOPHOMORE VI

From left to right: Row 1 —B. Koppleman, R. Horowitz, R. Eisenberg, B. Totten, M. Koenig. Row 2— E. Rothausen, N. Monte, M. Gillin, L. Copensky, R. Gabin. Row 3—P. Sarno, R. Hamlin, S. Gallagher, A. Larcom, J. Smith. Row 4—N. Borowick, A. Burns, N. Salerno, V. Kastner, M. Petriccione, G. Di Nardo.



SOPHOMORE VII

From left to right: Row 1—F. Lefkowitz, H. Zarra, M. Wacks, C. Adams, E. Miner. Row 2—E. Stetts, L. McLaughlin, S. Vogel, E. Smith, A. Compalattaro. Row 3—I. Shaw, D. Bergquist, A. Feldman, J. Nicastro, R. Celebre, E. Hartley. Row 4—L. Bressler, M. Straitman, C. Gagliano, A. Yavner, R. Burns, J. Comfort, E. Baessler, C. Blanow, D. Mauriello.



### FRESHMAN I

Left to right: Row 1—S. Rawlins, E. Kagan, J. Gluck, R. Buscemi, J. Collins, V. Sytko. Row 2—P. Muldoon, V. Mulligan, P. Semple, C. La Croix, B. Hampton, E. Epstein. Row 3—A. Hoepfner, M. Diegnan, M. Sichel, B. Gibbons, R. Nelson, P. Ehrenberg. Row 4—R. Koch, P. Kipp, B. Jentis, E. Goss, A. Brown, K. Ehret, R. McKenna, D. Norwood, Y. Mintz, E. Fine, C. Littman, C. Fruchter.



# FRESHMEN...



### FRESHMAN II

From left to right: Row 1—D. Bilarczyk, E. Pavlenik, R. Eisner, A. Spear. Row 2—A. Babbit, B. Beckmann, F. Toronto, R. Goldberg. Row 3—J. Sironi, B. Vanderminde, D. Valentine, I. Stercho, S. Statvitsky. Row 4—Y. Frasca, B. Bausch, A. Smith, L. Hover, Mr. Richardson, D. Sacco, J. Oliver, D. Millatz, J. Williams, J. Smith.

### FRESHMAN III AND IV

From left to right: Row 1—C. Van der Hoof, E. D'Arruzzio, E. Knecht, M. Greene. Row 2—L. Worrell, J. Lesnik, I. Lerner, P. Lesnik. Row 3—W. Castellano, L. Thomas, D. Cisco, B. Hampson, E. Kelsey, N. Koedras, J. Jennings, F. Capello, P. Hughes, R. Quackenbush, H. Smalley, E. Greenwalde. Row 4—L. Roode, J. Agna, J. Morello, H. Kobik.





#### FRESHMAN V

From left to right: Row 1—R. McCartney, M. Wilke, S. Mayer, M. Malanga, F. Auerbach. Row 2—D. Davis, B. Schoellner, J. Dante, L. Friedman, E. Goodstein, J. Rosamelia, P. Rhenbottom. Row 3—J. Brown, P. Patrocini, R. Kanoff, M. Carluccio, J. Taylor, T. Sepe, B. Senerchia. Row 4—S. Hochman, K. Bergmann, P. Heintz, G. Delavechia, H. Rice, N. Scarpa, J. Smith. Row 5—P. Hare, A. Sternfeld, J. Paradiso, R. Celebre, R. Giacobbe.

# CLASS OF 1957

#### FRESHMAN VI

From left to right: Row 1—G. Hover, B. Greene, C. Osview, H. Johnson. Row 2—G. Glaser, R. Fahey, M. Carnegie, R. Antelman, J. Robertson. Row 3—M. Smith, C. Dourney, S. Zimmerman, C. Horowitz, L. Marino, M. Murphy, S. Skinner, D. Salvia. Row 4—M. Bernstein, G. Livelli, L. Darby, K. Sergel, P. Keating, L. Sweeny, S. Cooper, J. Sapienza. Row 5—M. Turner, P. McDonnell, J. Spenzos, G. McElwee.



#### FRESHMAN VII

From left to right: Row 1—C. Butler, O. Hardy, B. Klein, R. Rusznak. Row 2—C. Casterline, M. Hemsworth, A. McKenna, P. Salzberg. Row 3—R. Dowling, B. Herman, K. Ptedisco, E. Wilson. Row 4—A. Gately, S. Hoffman, B. Zotte, M. White. Row 5—M. Kunz, C. Nash, A. Robinson, D. Hansen, L. Appel, A. Balough, S. Wilner, E. Winet, M. Jacobs, J. Rappa, Y. Johnson.





# COMMITTEES



# EXECUTIVE COMMITTEE

From left to right: Row 1—G. Hughes, B. Harris, E. De Coursey, M. Podilipsky, D. Neubert.  
Row 2—C. Gagliano, L. Worell, B. Schulze, A. Sonnenschein.





From left to right: Row 1  
—B. Styler, J. Vollmer, B.  
Sinclair, E. De Coursey, J.  
Sapienza, N. Mintz, C.  
Stubits. Row 2—M. Cayo,  
D. Salley, M. Barnhard, P.  
Winter, M. Mercner, A.  
Sonnenschein, D. Neubert,  
J. Gluck, R. Pardee. Row  
3—B. Perry, M. Koch, L.  
Williams, B. Schulze, L.  
Worrell, C. Gagliano. Row  
4 — M. Hergenhan, O.  
Hardy, G. Hughes, S.  
Hochman, M. Podlipsky, J.  
Ferrara.

# STUDENT COUNCIL



# SOCIAL COMMITTEE

From left to right: Row 1—B. Taylor, A. Bodino, S. Hoffman. Row 2—B. Goodyear, Mrs. Parsons, B. Caruso. Row 3—H. Friz, E. Watts, D. Neubert, I. Ward, J. Casterlin. Row 4—S. Shaw, P. Hare, Mrs. Witherall, P. Lee.





From left to right: Row 1 —I. Brown, B. Raimo, M. Koenig. Row 2—F. Helfin, P. Rheubottom, Z. Bratspis. Row 3—B. Levine, D. Mignone, D. Dufek, G. Hayes. Row 4 — J. Terry, M. Greene, Dr. Whiteman, A. Niemczyk.

# HOUSE COMMITTEE

# ASSEMBLY COMMITTEE

From left to right: Row 1—N. Coxe, P. Sempel, M. Barnhard, L. Dodson, L. Scurzo. Row 2—E. Gibbons, N. Mundy, Mrs. Bartlett, B. Kettenberg, M. Brown. Row 3—E. Rothäuser, B. Stetts, J. Walsh, P. Sarno, Y. Del Grasso. Row 4—T. Donahue, Mr. Rendell, M. Black, P. Kingston.





From left to right: Row 1  
—E. Knecht, E. Wundling,  
B. Muzik, J. Kessel, J.  
Legg, Mr. D'Angola. Row  
2—H. Otto, N. Sivollela,  
J. Mayron, E. Robb, J.  
Oakes, P. Heintz. Row 3  
—M. Bastian, B. Zotte, J.  
Mellilo, R. Waldorf.

# ATHLETIC COMMITTEE

# CLUBS







F. Jankowski, H. Barna, C. Popparlardo, L. Dodson, D. Milatz, S. Pittman, E. Sabold, B. N. Levine, N. Sheffield, M. Hemsworth.

## ARTS AND CRAFTS





From left to right: Row 1—A. Porter, C. Arena, B. Miller. Row 2—  
S. Hochman, J. Barnitt, Miss Kane.

# CAMERA CLUB







From left to right: Row 1—J. Corbo, N. Mintz, Mr. Luscombe, E. Auslander. Row 2—L. Worell, P. Lee, B. Heddon, M. Murphy, E. Knecht, V. Ferguson, A. Goldfarb. Row 3—Y. Sansone, N. Siaysa, P. Hare, V. Yademic, L. Tomas, J. Citarelli.



# COLLEGE FORUM



From left to right: Row 1—J. Hanson, P. Rheubottom, M. Martucci, A. Kirschner, M. Wyden, M. Petersen, A. Siegel, V. Johnson, M. Bastian, B. Zotti, S. Jones, A. Burnstein. Row 2—M. Turner, M. Black, J. Melillo, N. Oxey, H. Hoffman, S. Rawlins, J. Oliver, G. Lesniak, M. Jacobs, P. Semple, P. Muldoon, R. Antelman, R. Eisenberg, P. Patrisino, J. Dante.

## DANCE STUDY



Second row, left to right: P. Fries, L. McLaughlin,  
B. Harnid, H. Rothstein, A. Apgar, M. Cahill.

F. T. A.





From left to right: Row 1—A. Megaro, Dr. Hale, M. Zarro, A. Frielinghaus. Row 2—J. Hanson, E. Frino, L. Tomas, J. Malmquist, N. Scarpa, J. Ferrara, J. Chagnon, L. Giordano, W. Merrill, R. Otto.



# G. E. MEN'S GUILD



From left to right: Row 1—R. Pardee, A. Saporito, R. Stier, J. Lynch, J. Streichler, R. Banach.  
 Row 2—Mr. Earl, F. Korfman, J. Hoenig, C. Murray, A. Williams, H. Hummel, A. Beveridge,  
 C. Boyce, D. Cisco, R. Hartman, R. Reinhart, V. Coliguiri, D. Chamberlin, M. Butler, G. Olsen, R.  
 Little, C. Angebrandt, L. Roode, L. Lesho, H. Kobik, J. Mayron, B. Hampson, R. Quackenbusch,  
 Dr. Frankson, Mr. Ditlow.



# I. A. GUILD



From left to right: Row 1—A. Sternfeld, J. Choplick, I. McManman, J. White, Mrs. French, E. Robb, R. Travis. Row 2—I. Bergmann, D. Festenmaker, L. Reis, M. Sathmary, B. Levine, M. Ruffing, G. Hayes, M. Wheeler. Row 3—J. Gerrish, H. Weinberg, R. Otto, A. Frielinghaus, Mr. Gerrish.



# MADRIGAL SOCIETY



From left to right: Row 1—J. Remington, R. Waldorf, C. Wolkstein, H. Hoffman, M. Wyden.  
 Row 2—C. Arena, B. Muzik, A. Johnson, E. DeCoursey, H. Seifer, B. Levine, S. Henry. Row 3—  
 F. Heflin, H. Friz, D. Neubert, B. Hoehn, J. Carell, P. M. Burke, M. Gower, J. Chagnon, J. Terry.



# MEMORABILIA



From left to right: Row 1—J. Corbo, J. Choplik, J. Dante, J. Remington, A. Balogh, J. Rappa. Row 2—P. Sarno, Sweeney, Y. Sansone, Rev. T. Smith, Miss Balling, Dr. Scanlon, C. Adams, G. McElwee. Row 3—J. Attanasio, G. Imparato, D. Dufek, R. Di Napoli, B. Rampichini, J. Dudik, C. Nicastro, E. Rothausser. Row 4—C. Arena, M. Murphy, K. Hourihan, P. Kingston, B. Hoehn, P. McCarthy, M. Wilke, M. Gillin, G. Nitti.



# NEWMAN CLUB





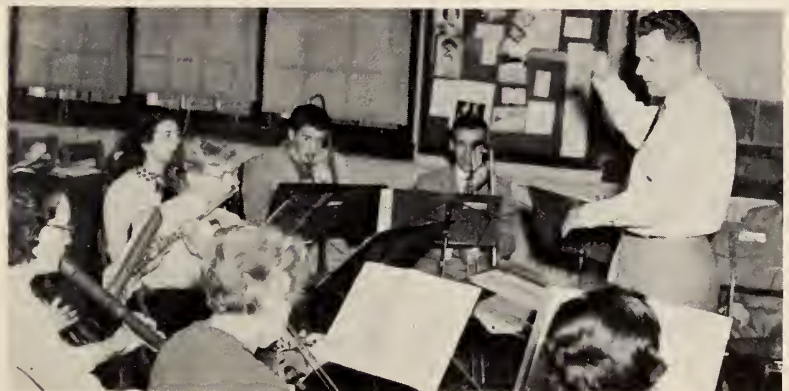
From left to right: Row 1—E. J. Watts, J. Vollmer, B. Sokolwski, L. Napolitano. Row 2—E. Goss, J. Hansen, E. Andie, J. Oakes, K. Bergmann, R. Otto.

## NORMS





From left to right: Row 1—A. Frielinghaus, S. O'Brien, C. Ovsiew. Row 2—G. DiNardo, Mrs. French, Mrs. Witherehl, H. Weinberg, Mr. Gerrish, M. Zarro, J. Ferrara, W. Merrill, J. Gerrish.



# ORCHESTRA



From left to right: Row 1—J. Remington, J. Loria, M. Barnhard, R. Waldorf, B. Walsh, R. Cilli. Row 2—F. Helfin, G. Schutzman, H. Weinberg, B. Levine, L. Dodson, I. McManman, G. Hayes. Row 3—M. Gower, P. M. Burke, J. Carell, H. Friz, H. Seifer, J. Terry.



# REFLECTOR



From left to right: Row 1—l. Tidesco, E. Wundling. Row 2 — L. Thomas, C. Hahn, J. Hoffman, E. Seaman. Row 3 —G. Olsen, R. Hartman, A. Beveridge, A. Williams.



# RIFLE CLUB



From left to right: Row 1—A. Williams, E. Knecht, R. Hartmann. Row 2—E. Wundling, C. Anthes, L. Thomas, E. Knecht, L. Worrell, B. Goodyear.



# WAPPALANE



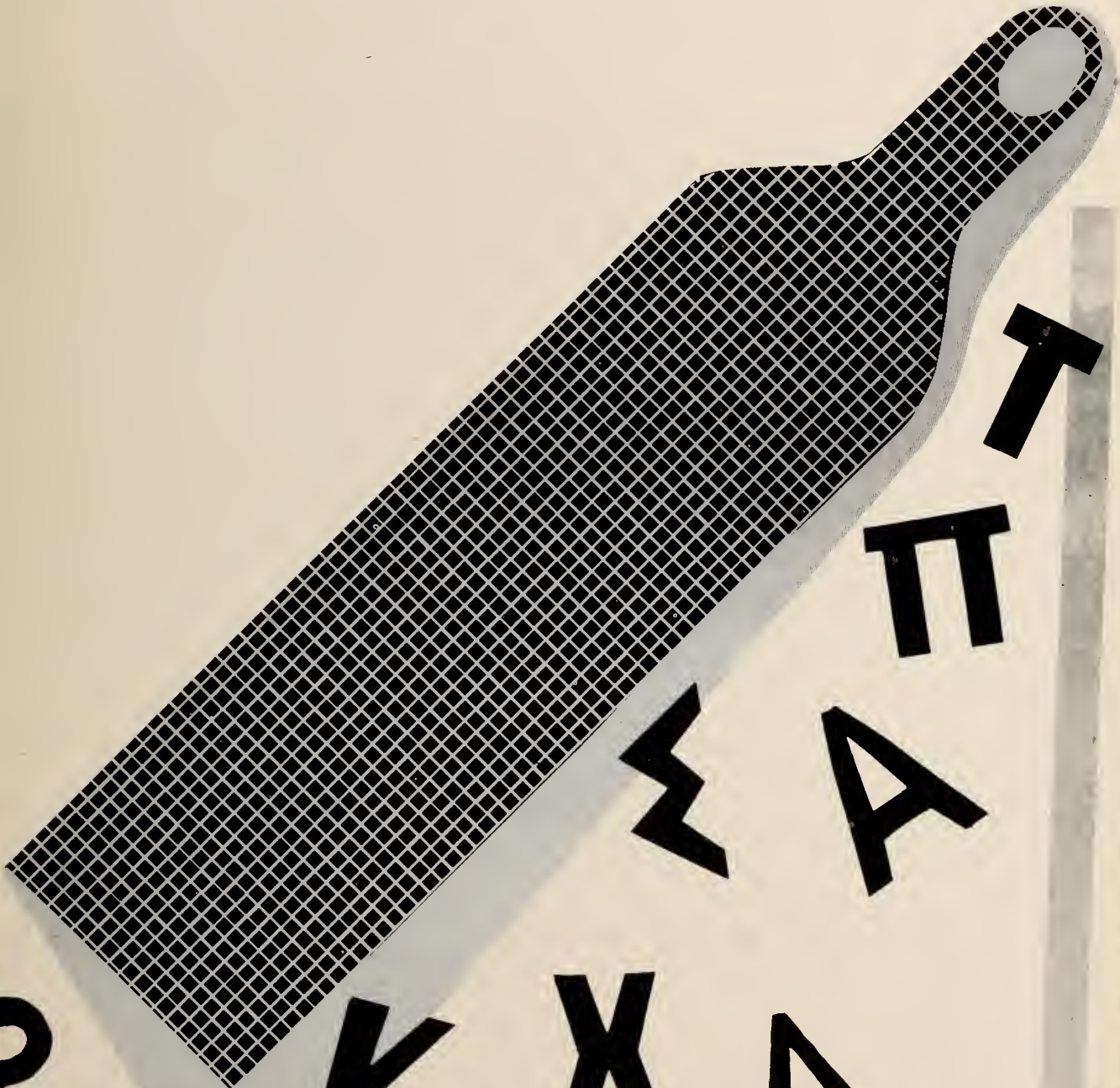
# WOMEN'S GLEE CLUB



FEDERAL  
SOCIETIES

MANA T

**N**



**T**

**Π**

**Σ**

**A**

**Φ**

**K**

**X**

**Δ**



# KAPPA DELTA PI



From left to right: Row 1—M. Chirico, C. Corrente, M. Boffard, L. Reis, M. Zimetbaum, A. Kirshner, J. Corbo, B. Harned. Row 2—D. Freda, A. Tomas, B. Rampichini, B. Schulze, E. De Coursey, B. Sinclair, B. Goodyear, C. Warner, L. Lachner, N. Applegate, N. Mundy, J. Dudik, M. Podlipsky, M. Mueller, M. Margoczy, H. Barna, M. Masarsky. Row 3—R. Sica, V. Gruber, A. Williams, P. M. Burke, L. Thomas, Mr. Fink, J. Walsh, G. Hughes, H. Hummel, P. Lee, D. English, J. Hansen, M. Geddis, A. Goldfarb, C. Berger, J. Heunecke, F. Korfman, J. Mayron, L. Giordano, A. Frielinghaus, Dr. Vaughn-Eames.

# EPSILON PI TAU



From left to right: Row 1—C. Boyce, F. Korfmann, Dr. Frankson, J. Mayron, G. Olsen. Row 2—H. Hummel, Mr. Ditlow, J. Lynch, V. Russo, A. Saporito.

# ALPHA THETA PI



From left to right: Row 1—B. Caruso, B. Muzik, T. Keenan, B. Sinclair, J. Kollarik, D. Bruno. Row 2—J. Wilderotter, L. Williams, C. Anthes, I. Nelson, B. Kircher. Row 3—M. Geddis, A. Niemczk, M. Murphy, B. Kollarik, K. Decker, M. Hergenhan, Dr. Shea, C. Warner, C. Berger, P. McCarthy.

# DELTA SIGMA PI



From left to right: Row 1—Z. Bratspis, N. Mintz, Mrs. French, A. Siegel. Row 2—H. Weinberg, T. Donahue, A. Feldman.

# NU SIGMA PHI

From left to right: Row 1—R. Travis, R. Little, D. Chamberlin, Dr. Hutchinson, A. Frielinghaus, L. Lesho, G. Olsen. Row 2—M. Butler, J. Citarelli, J. Keegal, R. Pardee, L. Tomas, V. Coliguiri, R. Hartman, H. Otto. Row 3—R. Stier, A. Beveridge, J. Hanson, N. Sivoletta, J. Mayron, L. Molinari, E. Knecht, V. Russo, F. Korfmann, J. Lynch.



# NU SIGMA TAU



From left to right: Seated—G. Carney, J. Davidson, M. Cayo, H. Friz. Standing: M. Manno, A. Johnson, C. Scannelli, M. Walsh, M. Dillon, R. Suppa, E. De Coursey, C. Gagliano, D. Neubert, E. Sabold, J. Schror, N. Saunders.

# NU THETA CHI



From left to right: Row 1—F. Norelli, M. Pettrecciene, V. Manno, M. Martucci. Row 2—M. Molimock, P. Messina, M. Lo Tori, B. Harris. Row 3—A. Michelli, P. Ward, B. Goodyear, P. Pellicane. Row 4—C. Dunekack, J. Terry, L. D'Andrea, N. Salerno.

# OMEGA PHI



From left to right: Row 1—G. Schutzman, A. Kirschner, M. Barnhard. Row 2 — M. Zimetbaum, J. Spinner, E. Goldman. Row 3—G. Salzburg, M. Podlipsky, A. Goldfarb.

# PI ETA SIGMA

From left to right: Row 1—H. Seifer, I. Kohen, Miss Minkin, H. Conford, M. Asman. Row 2—E. Andie, R. Horowitz, S. Wielkotz, B. Levine, R. Levine, F. Lefkowitz, L. Moss. Row 3—M. Straitman, A. Yavener, M. Wacks, R. Gabin, E. Bressler.



# SIGMA KAPPA PHI



From left to right: Row 1—V. Gruber, L. Mizelle, G. Hayes, B. Schulze. Row 2—J. Popelka, J. Black, P. H. Burke.

# SIGMA THETA CHI



From left to right: Row 1—J. Hanson, H. Romeo, J. Chagnon, C. Boyce, R. Banach. Row 2—Mr. Earl, B. Miller, J. Ferrara, G. Hughes, L. Gay.

# IFS COUNCIL



From left to right: Row 1—H. Conford, G. Carney, B. Sinclair. Row 2—V. Gruber, G. Schutzman, B. Goodyear, H. Friz.







# ATHLETICS





# MEN'S BASKETBALL

From left to right: Seated—J. Drury, R. Rhinehart, E. Frino, D. Chamberlin, M. Butler, R. Travis. Standing: Coach Jannerone, D. Cisco, J. Citerelli, H. Kobig, W. Castelani, P. Small, Mr. D'Angola.





JOHN DRURY



MIKE SMALL



HANK KOBIK

DON CHAMBERLIN

BILL CASTELLANO





# WOMEN'S BASKETBALL

First row, left to right: M. Cayo, E. Dixon, B. Zotti, P. Kipp, R. Waldorf, C. Anthes, L. Dodson, J. Dante. Second row: B. Glazer, Zimmermann, Murphy, P. McCarthy, F. Meehan, J. Kessel, E. Wundling, B. Muzik, J. Davidson. Third row: B. Schnerder, Petricinnio, R. Koch, C. Nash, D. Norwood, A. Robinson, E. Watts, E. Knecht, L. Worell, J. Oakes, M. Hergenhan, J. Kollarik, H. Jones, H. Friz, A. Porter, M. Nucera.





From left to right: Row 1—  
M. Murphy, C. Gagliano, D.  
Voglino, A. Fornarotto. Row  
2—R. Horowitz, F. Helfin, B.  
Rampichini, S. Stavitsky, B.  
Harned, H. Gibbons, J.  
Rappa. Row 3—E. Knecht, R.  
Koch, R. Waldorf, J. Kessell.  
Row 4: J. Oakes, E. Knecht,  
E. Robb, E. Wundling. Row 5  
—J. Mayron, R. Otto, J.  
Legg, N. Sivoletta.



# BOWLING

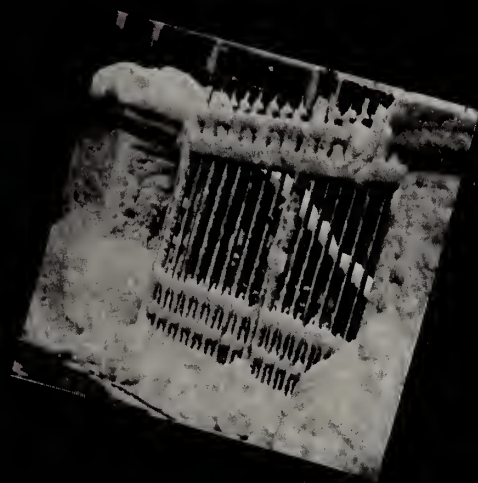


# CHEERLEADERS



From left to right: Row 1—I. Brown, A. Complitarro, B. Zotte. Row 2—  
A. Burns, F. Auerbach, E. Danzig, captain, P. Burns, M. Bastian.

# INFORMALS







#### CAFETERIA STAFF

From left to right: E. Apfelbaum, F. Ciccotti, H. Smith, R. Workman, H. Campbell, M. Anderson.



#### CUSTODIANS

From left to right: A. Brillante, P. Fuerderer, W. Daly, A. Bentley, F. Pellegrino, J. Whitaker, W. Davis.



#### SECRETARIES

From left to right: Row 1—L. Handschuh, P. Clyburn, N. Ginsberg, Z. Weilkotz. Row 2—A. Kurick, L. Sneed, M. Salvadori, M. Toohey, K. Strooper, A. Nelson, A. Spitola.





# DIRECTORY

## FACULTY

Wilkins, Dr. Eugene.....53 Whitney Road, Short Hills  
 Baldrige, Marie.....Military Park Hotel, Newark  
 Bartlett, Mary M.....269 Bay Avenue, Glen Ridge  
 Bristol, Ruth.....5 Green Acres Drive, Verona  
 Brooks, Vera H.....84 Second Avenue, Newark  
 Bruce, Guy V.....5 Lorraine Road, Summit  
 Calcia, Dr. Lillian.....Rea Avenue Extension, Hawthorne  
 D'Angola, Anita.....32 Oakland Road, Maplewood  
 D'Angola, Joseph.....32 Oakland Road, Maplewood  
 Dickey, John W.....6 River Lane, Millburn  
 Ditlow, George H.....64 Pierson Road, Maplewood  
 Dolkey, Matthew.....212 East 35th Street, New York 16, N. Y.  
 Downes, James E.....5 Hillside Ave., Florham Park, Madison  
 Dysart, Dr. James M.....1 Washington Avenue, Morristown  
 Earl, Arthur W.....451 Essex Avenue, Bloomfield  
 Fink, Rychard.....183 Davey Street, Bloomfield  
 Frankson, Dr. Carl E. 12 Williams Rd., Chatham Twp., Chatham  
 French, Lois.....98 Alexander Avenue, Nutley  
 Gens, Dr. George W.....31 Melrose Drive, Livingston  
 Gerrish, John O.....114 North Essex Avenue, Orange  
 Hale, Dr. Gifford G.....112 So. Maple Avenue, Springfield  
 Hankins, Grace C.....112 Lincoln Street, East Orange  
 Higgins, Elizabeth A.....60 So. Munn Avenue, East Orange  
 Hutchinson, Dr. John C.....11 Hillside Avenue, Madison  
 Kane, Ruth E.....372 Mt. Prospect Avenue, Newark  
 Lepp, Herman I.....10 Glannon Road, Livingston  
 Lockwood, Charlotte.....249 Belleville Avenue, Bloomfield  
 Luscombe, Irving F.....11 Irving Place, Nutley  
 Markholm, Genevieve.....Apt. 105, 1 Marshall St., Irvington  
 McMeen, Dr. George H.....21 Seaman Road, West Orange  
 Minkin, Vera F.....366 Mt. Prospect Avenue, Newark  
 O'Brien, Dr. Alton D.....5 Edgewood Rd., Oak Hills, Metuchen  
 Parsons, Marion.....191 West Milton Avenue, Rahway  
 Raichle, Donald R.....727 Prospect Street, Maplewood  
 Richardson, Evan C.....32 Oak Street, Belleville  
 Riggs, Dorothy.....129 North Arlington Avenue, East Orange  
 Robinson, Dr. Bruce B.....16 Park Place, Newark  
 Rogers, Laura E.....465 Van Dyk Ave., Haledon, Paterson 2  
 Salt, Edna D.....88 Westland Road, Cedar Grove  
 Scanlon, Dr. David G.....1 Clover Hill Place, Montclair  
 Shea, Dr. Marion E.....Stoney Brook Rd., Lake Valhalla, Montville

## STUDENT DIRECTORY

### A

Abrahams, Leona.....50 Summit Road, Elizabeth  
 Abrahms, Judith.....34 Decker Avenue, Elizabeth  
 Adams, Cecilia.....832 Meacham Avenue, Linden  
 Aigner, Joseph.....1124 Farm Road, Secaucus  
 Allen, Robert.....531 Lillian Terrace, Union  
 Alvarez, Jeanette.....23 Briarcliffe Road, West Englewood  
 Andie, Eleanor.....192 Chadwick Avenue, Newark  
 Angebrandt, Conrad.....42 Lenox Avenue, Irvington  
 Angell, Eleanor.....41 Yantecaw Avenue, Bloomfield  
 Antelman, Renee.....25 Chester Avenue, Irvington  
 Anthes, Carol.....125 Mount Pleasant Avenue, Newark  
 Apgar, Alice.....Hamilton Avenue, Leonardo  
 Appel, Lita.....118 Grumman Avenue, Newark  
 Applegate, Nancy.....385 Livingston Avenue, New Brunswick  
 Arena, Connie.....218 Littleton Avenue, Newark  
 Asman, Mildred.....18 Millington Avenue, Newark  
 Attanasio, Josephine.....235 Adams Street, Newark  
 Auslander, Eva.....23 Treacy Avenue, Newark  
 Averbach, Florence.....534 South Seventeenth Street, Newark

### B

Babbitt, Alrene.....16 Koewing Place, West Orange  
 Baessler, Ellinor.....59 Birch Street, Bloomfield  
 Balogh, Ann.....211 Washington Avenue, Union

Tatton, Douglas W.....146 Ridge Road, Rahway  
 Thomason, Edwin N.....429 52nd St., West New York, N. J.  
 Vaughn-Eames, Dr. Lenore 526 Woodland Ave., Mountainside  
 Whiteman, Dr. Harriet E.....708 Northfield Ave., W. Orange  
 Witherall, Jane.....108 Virginia Avenue, Jersey City  
 Zweidinger, Willard E.....871 Ridgewood Road, Millburn

## LIBRARY

Lipson, Minnie.....7 Chestnut Street, East Orange  
 Rendell, Joseph W.....43 McKinley Avenue, Trenton 9  
 Salvadori, Mary.....666 Bloomfield Avenue, Montclair  
 Thompson, Nancy.....97 Fourth Avenue, Newark 4

## BUSINESS

Korley, John S.....132 Osborne Terrace, Newark

## SECRETARIAL

Clyburn, Peredian N.....288 Garden Street, Englewood  
 Ginsberg, Nada.....214 Wainright Street, Newark  
 Handschuh, Lois A.....220 Burgess Place, Passaic  
 Kuruc, Anna M.....17 Howard Place, Nutley  
 Sneed, Lucretia L.....18 Kearny Street, Newark 4  
 Spatola, Alice.....9 Main Terrace, Bloomfield  
 Strophe, Kathryn.....121 Lincoln Place, Irvington 11  
 Toohey, Margaret M.....219 Garside Street, Newark 4  
 Wendel, Anna P.....91 Cedar Lane, Lockwood Village, Roselle  
 Wielkotz, Zelma.....21 Parkview Place, Passaic

## CAFETERIA

Anderson, Margaret.....1132 Wooley Avenue, Union  
 Apfelbaum, Emma J.....61 So. Munn Avenue, East Orange  
 Campbell, Helen.....519 Post Avenue, Lyndhurst  
 Liccotti, Florence.....182 Broad Street, Newark  
 Smith, Helene C.....379 Meadowbrook Lane, South Orange  
 Workman, Rosella.....366 Kearny Avenue, Kearny

## CUSTODIAL

Bentley, Alfred.....32 Shepherd Place, Arlington  
 Brillante, Armand.....1023 East 19th Street, Paterson  
 Daly, William B.....49 Leslie Street, East Orange  
 Fantasia, Pellegrino.....101 Newark Avenue, Bloomfield  
 Fuerderer, Peter.....71 South 22nd Street, Irvington  
 Hughes, Theresa.....153 Dewey Street, Newark  
 Whitaker, John A.....36 Burnett Street, Newark  
 Davis, Willis.....90 Peabody Place, Newark

Banach, Raymond.....48 Napoleon Street, Newark  
 Barbier, Grace.....64 North Seventh Street, Newark  
 Barna, Helen.....173 Liberty Street, Fords  
 Barnhard, Marilyn.....115 Parkview Terrace, Newark  
 Barnitt, Joan.....17 Glenview Road, Nutley  
 Barrett, Hilda.....67 Clay Street, Newark  
 Bastian, Marilyn.....26 Montrose Terrace, Irvington  
 Baumister, Marilyn.....164 Academy Street, Belleville  
 Beckman, Barbara.....130 No. Fourteenth Street, East Orange  
 Bembry, Robbie.....23 Rutgers Street, Newark  
 Berger, Charlotte.....1174 Clinton Avenue, Irvington  
 Bergquist, Doris.....524 Lake Avenue, Lyndhurst  
 Bergmann, Kenneth.....447 Weart Avenue, Lyndhurst  
 Berni, Leona.....231 Ottawa Avenue, Hasbrouck Heights  
 Bernstein, Alice.....25 Eighteenth Avenue, Paterson  
 Berstein, Miriam.....106 Park Avenue, Passaic  
 Berstein, Rochelle.....400 Belmont Avenue, Newark  
 Beveridge, Austin.....209 Mountain Avenue, Summit  
 Beviano, Dorothy.....2301 Northwood Avenue, Roselle  
 Bielen, Doris.....40-D Bruan Place, Clifton  
 Biggs, Elizabeth.....322 Oswald Place, Union  
 Bilarczyk, Dorothy.....375 Union Street, Rahway  
 Black, Jean.....253 Forest Street, Kearny  
 Black, Maureen.....5 Windsor Street, Kearny  
 Blackwood, Virginia.....409 Lafayette Street, Hackettstown  
 Blanchard, Joan.....105 Hay Avenue, Fords

Blanos, Constance ..... 580 Gregory Avenue, Clifton  
 Block, Marilyn ..... 845 Sanford Avenue, Newark  
 Bodino, Ann ..... 482 Norwood Street, East Orange  
 Bork, Norma ..... 69-12 Fresh Meadow Lane, Flushing, New York  
 Borowick, Florence ..... 581 Harding Avenue, Perth Amboy  
 Boyce, Charles ..... 114 Madison Avenue, Irvington  
 Boyle, Patricia ..... 59 Whittlesey Avenue, East Orange  
 Brant, Arthur ..... 9 Vanderpool Street, Newark  
 Brantley, Marie ..... 234 Orange Street, Newark  
 Bratspis, Zeld ..... 123 Sunset Avenue, Newark  
 Bressler, Liese ..... 123 Acme Street, Elizabeth  
 Brettell, Lucy ..... 171 Boulevard, Mountain Lakes  
 Brodesser, Betty ..... 446 Union Avenue, Elizabeth  
 Brown, Almorian ..... 70 East Walnut Street, Metuchen  
 Brown, Elaine ..... 993 Bryon Avenue, Elizabeth  
 Brown, Irene ..... 591 Belmont Avenue, Newark  
 Brown, Marie ..... 13 Ridgewood Avenue, Newark  
 Bruno, Dorothy ..... 2376 Saint George Avenue, Rahway  
 Buchalter, Hannah ..... 60 Lyons Avenue, Newark  
 Burke, Patricia H. .... 40 Liberty Street, Fords  
 Burke, Patricia M. .... 1373 Alina Street, Elizabeth  
 Burns, Alicia ..... 565 Summer Avenue, Newark  
 Burns, Patricia ..... 565 Summer Avenue, Newark  
 Burns, Ruth ..... 262 North Grove Street, East Orange  
 Buscemi, Rosemary ..... 330 Stuyvesant Avenue, Lyndhurst  
 Buskin, Susanne ..... 265 Conklin Avenue, Hillside  
 Butler, Claudette ..... 33 South Twenty-third Street, Kenilworth  
 Butler, Marshall ..... 17 Glenwood Road, Upper Montclair

C

Calamusa, Betty ..... 401 South Tenth Street, Newark  
 Camara, Anthony ..... 6 Yale Street, Nutley  
 Campolattaro, Ann ..... 278½ Garside Street, Newark  
 Canavan, Diane ..... 25 Grove Street, Kearny  
 Capello, Frank ..... 37 Pine Grove Terrace, Newark  
 Carell, Jo-Ann ..... 5 Van Winkle Street, Bloomfield  
 Carluccio, Marie ..... 120 Floyd Street, Belleville  
 Carnegie, Marilyn ..... 277 Amherst Street, East Orange  
 Carney, Geraldine ..... 515 Davis Avenue, Harrison  
 Caruso, Barbara ..... 161 Livingston Street, Elizabeth  
 Cascella, Annette ..... 87 Heller Parkway, Newark  
 Cashill, Mary ..... Box 221, Route 1, Englishtown  
 Cassell, Sallio ..... 307 Stout Avenue, Scotch Plains  
 Castellano, William ..... 13 Awashawaugh Road, Park Ridge  
 Casterlin, Joan ..... 210 Central Avenue, Orange  
 Cayo, Maxine ..... 13 Grant Street, Morristown  
 Celebre, Rosemarie ..... 32 Hay Street, Nutley  
 Celebre, Ralph ..... 32 Hay Street, Nutley  
 Cevetto, Josephine ..... 12 Gotthart Street, Newark  
 Chamberlin, Donald ..... 23 Robert Place, Irvington  
 Chanenson, Carol ..... 711 Livingston Road, Elizabeth  
 Chagnon, Joseph ..... 23 Hunter Street, Newark  
 Chapman, Adelaide ..... 425 Washington Street, Westfield  
 Cheponis, Elizabeth ..... 195 Watchung Terrace, Scotch Plains  
 Chirico, Marie ..... 166 Parker Street, Newark  
 Choplick, Joseph ..... 74 Broad Street, Newark  
 Christiana, Lucille ..... 16 Union Street, Moonachie  
 Ciavarra, Barbara ..... 222 Mount Prospect Avenue, Newark  
 Cilli, Rosella ..... 11 Park Street, Belleville  
 Cisco, Douglas ..... 104 Houston Street, Newark  
 Ciser, Jay ..... 63 Prospect Terrace, East Rutherford  
 Citarelli, John ..... 14 Wellington Avenue, West Orange  
 Cohen, Paula ..... 674 Scotland Road, Orange  
 Colagiuri, Vincent ..... 70 Lincoln Street, Passaic  
 Collins, Donald ..... 10 Broad Street, Newark  
 Collins, Jean ..... 27 Lincoln Avenue, Lake Hiawatha  
 Comfort, Janet ..... 55 East Maple Street, Metuchen  
 Conford, Harriet ..... 142 Fleming Avenue, Newark  
 Cooper, Suzanne ..... 63 Robbinwood Terrace, Linden  
 Copensky, Lillian ..... 17 Spring Street, Dover  
 Corbo, Josephine ..... 159 Parker Street, Newark  
 Corrente, Carmella ..... 29 Stone Street, New Brunswick  
 Coxey, Nancy ..... 41 Macopin Avenue, Upper Montclair  
 Crescenzi, Ethel ..... 266 Pomona Avenue, Newark  
 Cunningham, Joan ..... 425 Crooks Avenue, Paterson  
 Cymansky, Walter ..... 518 South Fifteenth Street, Newark

D

D'Andrea, Louise ..... 377 Lincoln Avenue, Newark  
 Dante, Joan ..... 14 Berkeley Road, Millburn  
 Danzig, Edith ..... 14 Maple Avenue, Irvington  
 D'Araujo, Elaine ..... 9 Skytop Terrace, Upper Montclair  
 Darby, Louise ..... 12 Caldwell Terrace, West Orange  
 Davidson, Jean ..... 21 Vernon Place, East Orange  
 Davis, Delores ..... 67 Clay Street, Newark  
 Deady, Jaquith ..... Long Valley, R. D.  
 Decker, Catherine ..... 5 Lynwood Road, Verona  
 De Coursey, Eileen ..... 6 Twin Oak Road, Livingston  
 Del Grosso, Yolanda ..... 139 Smith Street, Newark  
 Della Vecchia, Gene ..... 236 North Eleventh Street, Newark  
 Denburg, Rosemary ..... 190 Midland Place, Newark  
 DeStefano, Catherine ..... 231 Lake Street, Newark  
 Diamond, Arlene ..... 16 Osborne Place, Irvington  
 Diamond, Hermine ..... 56 Bock Avenue, Newark  
 Diegnan, Maureen ..... 144 Hamilton Blvd., South Plainfield  
 DiNapoli, Rose Marie ..... 255 South Eighth Street, Newark  
 DiNardo, Grace ..... 430 Roseville Avenue, Newark  
 Distefano, Lorraine ..... 711 Chancellor Avenue, Irvington  
 Dixon, Eurcelle ..... 359 Marion Street, Union  
 Dodson, Ethelyn ..... 80 Mount Pleasant Avenue, Newark  
 Donohue, Therese ..... 73 Berkeley Avenue, Belleville  
 Dougherty, Irene ..... 70 Fourth Avenue, Newark  
 Dourney, Clare ..... 716 Eagle Rock Avenue, West Orange  
 Dowd, Bernadette ..... 28 Poe Avenue, Newark  
 Dowling, Roberta ..... 21 Boyden Parkway, Maplewood  
 Dreher, Marilyn ..... 470 Park Avenue, East Orange  
 Drury, John ..... 400 Central Avenue, Newark  
 Dudik, Jeanne ..... 34 Ryan Street, Fords  
 Dufek, Doris ..... 1095 Thomas Street, Hillside

E

Ehrenberg, Phyllis ..... 35 Watson Avenue, Elizabeth  
 Ehret, Kathleen ..... 1545 Bond Street, Hillside  
 Eisenberg, Ruth ..... 1582 Leslie Street, Hillside  
 Eisne, Ruby ..... 18 William Street, Dover  
 Elko, Shirley ..... 4 Sharot Street, Carteret  
 Emmons, Dorothy ..... 234 Allen Place, Long Branch  
 English, Dorothy ..... 511 Walnut Street, Dunellen  
 Engstrom, Virginia ..... 49 Hinsdale Place, Newark  
 Epstein, Elissa ..... Old Brookside Road, Mount Freedom

F

Fahey, Anne ..... 57 Kirk Street, West Orange  
 Falco, Christina ..... 72 Garside Street, Newark  
 Farley, Lorraine ..... 176 Smith Street, Newark  
 Fear, Joan ..... 32 Hartshorn Terrace, West Orange  
 Feldman, Audrey ..... 365 Wainwright Street, Newark  
 Feldman, Phyllis ..... 565 Tillman Street, Hillside  
 Fendrick, June ..... Adamston  
 Fenstermaker, David ..... 1046 Byron Avenue, Elizabeth  
 Ferguson, Violet ..... 58 Frances Street, Clifton  
 Fernicola, Dorothy ..... 40 Jefferson Street, Nutley  
 Ferrara, Gerald ..... 583 North Sixth Street, Newark  
 Ferraro, Marguerite ..... 251 Santiago Avenue, Rutherford  
 Filenbaum, Jacklyn ..... 56 State Street, Perth Amboy  
 Fine, Eileen ..... 1563 Wainwright Street, Hillside  
 Fischer, Barbara ..... 163 Eastern Parkway, Newark  
 Fischer, Carol ..... 516 Norwood Street, East Orange  
 Fleischer, Marlene ..... 891 Bergen Street, Newark  
 Fornarotto, Edith ..... 97 Franklin Street, Bloomfield  
 Foster, Charles ..... 116 Willow Place, Garwood  
 Frasca, Yvonne ..... 106 Washington Street, Perth Amboy  
 Freda, Dolores ..... 197 Lafayette Street, Newark  
 French, Marellen ..... 288 Main Street, East Rutherford  
 Friedman, Lois ..... 39 Irving Avenue, Newark  
 Frielinghaus, Arthur ..... 30 Cortland Street, Newark  
 Fries, Patricia ..... 106 Stonehouse Road, Glen Ridge  
 Frino, Ernest ..... 18 Norfolk Street, Newark  
 Friz, Helen ..... 7 Krotik Place, Irvington  
 Fruchter, Claire ..... 135 Edgewood Road, Linden

G

Gabin, Rhona ..... 544 South Sixteenth Street, Newark  
 Gagliano, Catherine ..... 2195 Alpine Avenue, Union  
 Gajewski, Florence ..... 197 Ninth Street, Passaic

Gajewski, Monica Parsippany Boulevard, Parsippany  
 Gallagher, Susan 15 Berwyn Street, East Orange  
 Gallo, Betty-Lee 809 South Street, Elizabeth  
 Gately, Agnes 85 Manor Drive, Newark  
 Gay, Leland 335 Thirteenth Avenue, Newark  
 Geddis, Madge 181 North Sixth Street, Newark  
 Geppert, Rosalyn 9 Baldwin Avenue, Newark  
 Germann, Patricia 49 Waverly Street, Jersey City  
 Giacobbe, Raymond 66 Park Avenue, Newark  
 Gibbons, Betty 838 South Eighteenth Street, Newark  
 Gilday, Jean 57 Winthrop Street, Newark  
 Gillin, Mary 163 Renner Avenue, Newark  
 Giordano, Louis 655 North Seventh Street, Newark  
 Giuliano, Christine 535 North Sixth Street, Newark  
 Glaser, Virginia 271 Boulevard, Summit  
 Gluck, Joyce 49 Demarest Street, Newark  
 Gold, Rhoda 143 Schuyler Avenue, Newark  
 Goldberg, Ronnie 11-D Village Magie Avenue, Elizabeth  
 Goldfarb, Arlene 65 Kuna Terrace, Irvington  
 Goldman, Esther 74 Treacy Avenue, Newark  
 Golembieski, Marie 354 Third Street, Lyndhurst  
 Goodstein, Elayne 200 Franklin Street, Bloomfield  
 Goodyear, Elizabeth Church Rd., R.D. No. 1, Moorestown  
 Goss, Elaine 136 North Livingston Avenue, Livingston  
 Gower, Marian 33½ Broadway, Newark  
 Gracey, Dorothy 6506 Dewey Avenue, West New York  
 Grandy, Janet 102 Komorn Street, Newark  
 Gravatt, Carolyn 615 Corlies Avenue, West Allenhurst  
 Green, Myrtle 1031 William Street, Elizabeth  
 Greenberg, Lillian 319 Chadwick Avenue, Newark  
 Greene, Barbara 35 Mohawk Avenue, White Meadow  
 Lake, Rockaway  
 Greene, Mary Jane 265 Hickory Street, Orange  
 Greenwald, Ellen 738 Hunterdon Street, Newark  
 Gross, Emma 123 Ellery Avenue, Newark  
 Gruber, Virginia 134 Alexander Street, Newark

#### H

Hahn, Carol 53 Montrose Avenue, Verona  
 Halbig, Nancy 338 Springdale Avenue, East Orange  
 Halliday, Joyce 50 Chestnut Street, Midland Park  
 Hamlin, Rosa 22-F Delaney Homes, Perth Amboy  
 Hampson, Bruce 407 Roseville Avenue, Newark  
 Hampton, Beverly 34 Gray Street, Montclair  
 Hansen, Dorothy 1398 Bryant Street, Rahway  
 Hansen, John 231 North Fourth Street, Newark  
 Hanson, Charles Greenpond Road, Hibernia  
 Hanson, Jane 381 Lincoln Avenue, Rutherford  
 Hardy, Olive Route No. 10, Whippany  
 Hare, Peter 502 Lynwood Place, Westfield  
 Harned, Barbara 151 Downing Street, Woodbridge  
 Harris, Alison 138 Pearl Street, Elizabeth  
 Harris, Betty 267 Chadwick Avenue, Newark  
 Hartley, Betty 66 Palmer Street, Passaic  
 Hartman, Roland 1748 King Street, Fanwood  
 Hastings, Eileen 428 West Fifth Avenue, Roselle  
 Hayes, Gertrude 102 Camden Street, Newark  
 Heberling, Audrey 130 Rutgers Place, Nutley  
 Hedden, Barbara 125 Mount Pleasant Avenue, Newark  
 Heintz, Paul 21 Berkshire Place, Irvington  
 Helfin, Fanny 69 Stengel Avenue, Newark  
 Hemsworth, Mary 54 Beech Street, Kearny  
 Henry, Sara 255 Morgan Avenue, South Amboy  
 Hergenhan, Margaret 116 Gesner Street, Linden  
 Herman, Bonnie 205 West Curtis Street, Linden  
 Hochman, Sidney 159 Ridge Road, North Arlington  
 Hoehn, Betsy 919 South Nineteenth Street, Newark  
 Hoepener, Augusta 4 Myrtle Avenue, Metuchen  
 Hoffman, Harriet 130 Milton Place, South Orange  
 Hoffman, Jane Clover Hill Road, Millington  
 Hoffman, Sandra 750 Broadway, Newark  
 Holmes, Verdell 95 South Sixteenth Street, East Orange  
 Honig, Jack 322 Belmont Avenue, Newark  
 Horowitz, Carole 28 Harvard Street, Montclair  
 Horowitz, Helen 154 Liberty Avenue, Belleville  
 Horowitz, Rita 1225 Oak Place, Union  
 Horton, William 133 Mount Pleasant Avenue, Newark  
 Hourihan, Kathleen 54 Llewellyn Avenue, West Orange

Hover, Gloria 151 Midland Boulevard, Maplewood  
 Hover, Lorraine 151 Midland Boulevard, Maplewood  
 Hueneke, Joan 66 Fortieth Street, Irvington  
 Hughes, Gilbert 188 Rutherford Place, North Arlington  
 Hughes, Phyllis 944 Sheridan Avenue, Elizabeth  
 Hulin, Roberta 363 Ridgewood Avenue, Kearny  
 Hummel, Henry 6613 Madison Street, West New York  
 Humphris, Beatrice 5 Manor Drive, Apartment 9-L, Newark

#### I

Iannelli, Catherine 210 Heckel Street, Belleville  
 Imperato, Gloria 806 East Jersey Street, Elizabeth  
 Iris, Millicent 168 Hamilton Avenue, Passaic

#### J

Jacobitti, Cynthia 115 Richelieu Terrace, Newark  
 Jacobitti, Leona 76 Dover Street, Newark  
 Jacobs, Marcia 244 Washington Street, Orange  
 Jankowski, Freda 319 Washington Street, Perth Amboy  
 Jennings, John 257 Grove Street, Jersey City  
 Jentis, Bernice 10 Custer Place, Newark  
 Jernick, Bernadette 127 Midland Boulevard, Maplewood  
 Johnson, Audrey Pennisula House, Sea Bright  
 Johnson, Harriet 11 So. Seventeenth Street, East Orange  
 Johnson, Viola 198 Orange Street, Newark  
 Jones, Helene 241 Boulevard, Hasbrouck Heights  
 Jones, Sandra 119 Hillside Avenue, Newark

#### K

Kagan, Elsie 22 Charles Street, East Orange  
 Kahrman, Ann 28 Lee Avenue, New Brunswick  
 Kalnitsky, Linda 628 Belmont Avenue, Newark  
 Kanoff, Rochelle 131 Van Houten Avenue, Passaic  
 Kaptein, Marie 25 Branch Brook Place, Newark  
 Kargen, Ruby 34 Berkley Street, Maplewood  
 Karp, Rona 197 Grumman Avenue, Newark  
 Kastner, Virginia 272 Nesbitt Terrace, Irvington  
 Katz, Sondra 514 Prospect Street, Maplewood  
 Keating, Pat 123 Harriott Street, Woodbridge  
 Kee, Vivian 67 Clay Street, Newark  
 Keegal, James 437 Lakeside Avenue, Pompton Lakes  
 Kelsey, Elissa 429 Howe Avenue, Passaic  
 Kennedy, Jean Apt. 311, 60 So. Munn Avenue, East Orange  
 Kettenburg, Barbara 31 Washington Street, East Orange  
 Kingston, Phyllis 34 Forest Drive, Bloomfield  
 Kipp, Patricia 12 Madison Avenue, Old Bridge  
 Kircher, Barbara 120 Raymond Street, Hasbrouck Heights  
 Kirschner, Ann 83 Wainwright Street, Newark  
 Kjersgaard, Ruth 414 Amboy Avenue, Perth Amboy  
 Klein, Barbara 326 Hobson Street, Newark  
 Klein, Muriel 83 Vassar Avenue, Newark  
 Klugman, Sheila 421 Leslie Street, Newark  
 Knecht, Edwin 444 Stuyvesant Avenue, Irvington  
 Knecht, Esther Mount Laurel Road, Moorestown  
 Kobnik, Henry 385 Grove Street, Jersey City  
 Koch, Mignon 478 Lincoln Street, Orange  
 Koch, Ruth 478 Lincoln Street, Orange  
 Koenig, Marlene 238 Bordentown Avenue, South Amboy  
 Kohen, Irene 80 Milford Avenue, Newark  
 Kollarik, Barbara 110 Kipp Avenue, Hasbrouck Heights  
 Kollarik, Joan 110 Kipp Avenue, Hasbrouck Heights  
 Konvitz, Miriam 608 Thirteenth Avenue, Belmar  
 Koppelman, Bernice 147 Grumman Avenue, Newark  
 Korbman, Mildred 296 Wainwright Street, Newark  
 Korfmann, Francis 28 West End Avenue, Newark  
 Kremski, Dolores 57 North Grove Street, East Orange  
 Kunz, Muriel 17 Valley Way, West Orange  
 Kuretich, Eleanor 157 Roessler Street, Boonton  
 Kvederas, Nan W. Sixth Street and Rock Avenue, Plainfield

#### L

Lacher, Lillian 154 North Sixth Avenue, Highland Park  
 LaCroix, Carolyn 29 Burnett Avenue, Maplewood  
 LaGasse, Aurora 395 Berkeley Avenue, Bloomfield  
 Lainer, Harriet 20 Marshall Street, Apt. 10-L, Irvington  
 Lamson, Johanna 35 Johnson Avenue, West Caldwell  
 Lang, Joan 118 Pomona Avenue, Newark  
 Larcom, Anne R. F. D. Box 58, Parsippany  
 Laterza, Ann 332 Division Avenue, Hasbrouck Heights

Laterza, Caroyln ..... 76 William Street, Nutley  
 Latori, Amelia ..... 720 North Sixth Street, Newark  
 Lee, Patricia ..... 24 South Oraton Parkway, East Orange  
 Lefkowitz, Felice ..... 37 Shanley Avenue, Newark  
 Legg, John ..... 5 Evergreen Avenue, Sea Girt  
 Lerner, Irma ..... 192 Chadwick Avenue, Newark  
 Lesho, Leonard ..... 3 Horatio Court, Newark  
 Lesnick, Grace ..... 478 Marlboro Road, Woodbridge  
 Lesnik, Joan ..... 18 Crestwood Drive, West Orange  
 Lesnik, Phyllis ..... 18 Crestwood Drive, West Orange  
 Levine, Beverly ..... 124 Sheppard Avenue, Newark  
 Levine, Beverly N. .... 25 Shaw Avenue, Newark  
 Levine, Norma ..... 132 Dewey Street, Newark  
 Levine, Rona ..... 21 Fern Avenue, Irvington  
 Levy, Enid ..... 254 Williamson Avenue, Hillside  
 Lewine, Janet ..... 17 Treacy Avenue, Newark  
 Lewis, Barbara ..... 1484 Orchard Terrace, Hillside  
 Lewis, Helene ..... 166 Chancellor Avenue, Newark  
 Liesinger, Marian ..... 41 Cattler Avenue, Springfield  
 Linett, Claire ..... 74 Brighton Avenue, Perth Amboy  
 Literate, Eleanor ..... 101 Church Street, Woodbridge  
 Little, Ronald ..... 37 Essex Court, Maywood  
 Littlewood, Nancy ..... 24 Newfield Street, East Orange  
 Littman, Carole ..... 26 Finlay Place, Newark  
 Livelli, Gloria ..... 213 Adams Street, Rahway  
 Lochner, Charles ..... 21 Hazel Avenue, West Orange  
 Loria, Josephine ..... 530 Jefferson Avenue, Elizabeth  
 Lynch, Joseph ..... 26 Kearney Street, Newark

M

Madnick, Harriet ..... 415 Burlington Avenue, Bradley Beach  
 Mainero, Constance ..... 60 Poe Avenue, Newark  
 Malanga, Millicent ..... 36 Westview Road, Verona  
 Malmquist, John ..... 424 Sheridan Street, Orange  
 Manheim, Sylvia ..... 125 Davey Street, Bloomfield  
 Manno, Mary Ann ..... 115 Bloomfield Avenue, Newark  
 Nanno, Vita ..... 900 Ridgewood Road, Millburn  
 Marayno, Sheila ..... 190 Paine Avenue, Irvington  
 Margoczy, Margaret ..... 104 Hornsby Avenue, Fords  
 Marino, Loretta ..... 225 Malcolm Avenue, Garfield  
 Martine, Carol ..... 73 Stockman Place, Irvington  
 Matucci, Marilyn ..... 478 Grove Street, Irvington  
 Mascio, Katherine ..... 290 Montclair Avenue, Newark  
 Mauriello, Dolores ..... 231 North Fourth Street, Newark  
 Mayer, Sandra ..... 183 Osborne Terrace, Newark  
 Mayron, Joseph ..... 70 Ackerman Avenue, East Paterson  
 Mazzuca, Ralph ..... 123 Parker Street, Newark  
 McAllister, Joan ..... 262 Main Street, Belleville  
 McCarthy, Margaret ..... 72 Central Avenue, Montclair  
 McCartney, Roberta ..... 290 West Blanke Street, Linden  
 McDonnell, Patricia ..... 15 Sixth Street, Port Reading  
 McElwee, Grace ..... 91 Wakeman Avenue, Newark  
 McEvoy, Doris ..... 184 Rutledge Avenue, East Orange  
 McGarry, Doris ..... 162 South Ninth Street, Newark  
 McKenna, Audrey ..... 211 Seymour Avenue, Newark  
 McKenna, Rosemary ..... 242 Summer Avenue, Newark  
 McLaughlin, Lois ..... 1820 Laurel Terrace, South Belmar  
 McManman, Irene ..... 228 Baldwin Terrace, Orange  
 Meehan, Florence ..... 18 Eastern Parkway, Newark  
 Megaro, Anthony ..... 145 Seventh Avenue, Newark  
 Melillo, Joan ..... 260 Springfield Avenue, Summit  
 Mendelsohn, Sue ..... 17 Tudor Court, Elizabeth  
 Mercner, Marilyn ..... 23 Madison Avenue, Arlington  
 Merrill, Walter ..... 453 Second Avenue, Garwood  
 Messina, Margaret ..... 102 Park Avenue, West Caldwell  
 Metz, Sandra ..... 70 North Bath Avenue, Long Branch  
 Meyer, Nancy ..... 155 North Fifteenth Street, East Orange  
 Meyers, Helen ..... 195 Keer Avenue, Newark  
 Micchelli, Angela ..... 31 Eastern Parkway, Newark  
 Miceli, Jo ..... 24 Norwood Place, Newark  
 Mignone, Dorothy ..... 202 Highland Avenue, Newark  
 Mignone, Raymond ..... 202 Highland Avenue, Newark  
 Milatz, Dolores ..... 499 Windsor Road, Woodridge  
 Miller, Linda ..... 82 Paulison Avenue, Passaic  
 Miner, Elizabeth ..... 142 East Passaic Avenue, Bloomfield  
 Mintz, Norma ..... 5 Girard Place, Maplewood  
 Mintz, Yvette ..... 11 Temple Place, Irvington  
 Mizelle, Lorraine ..... 202 Beech Street, Arlington

Molimock, Anna Marie ..... 502 Benner Street, Highland Park  
 Molinari, Louis ..... 614 Broad Avenue, Ridgefield  
 Monte, Frances ..... 531 North Sixth Street, Newark  
 Morello, John ..... 95 Ann Street, Newark  
 Moss, Lillian ..... 310 South Fifth Street, Elizabeth  
 Mueller, Marilyn ..... 356 Murray Street, Elizabeth  
 Muldoon, Patricia ..... 12 Hillview Avenue, Morris Plains  
 Mulligan, Virginia ..... 276 Sussex Avenue, Newark  
 Mundy, Nancy ..... 84 Devine Street, Newark  
 Munson, Joan ..... 27 First Street, Dover  
 Murphy, Mary ..... 107 North Seventeenth Street, East Orange  
 Murphy, Maureen ..... 1229 Golf Terrace, Union  
 Murray, Charles ..... 10 Cannon Road, Old Bridge  
 Muzik, Barbara ..... 2031 Dill Avenue, Linden

N

Napolitano, Louise ..... 93 Ashwood Avenue, Summit  
 Nash, Carolyn ..... 955 Salem Road, Union  
 Neblett, Constance ..... 121-A Myrtle Avenue, Jersey City  
 Neher, Evelyn ..... 24 Broadview Avenue, Maplewood  
 Nelson, Irene ..... 90 Washington Road, Sayreville  
 Nelson, Ruth ..... 70 Lincoln Street, Passaic  
 Nesbesnak, Barbara ..... 41 Spencer Place, Garfield  
 Neubert, Dorothy ..... 78 Finlay Place, Newark  
 Newark, Charlotte ..... 445 Neville Street, Perth Amboy  
 Nicasro, Columbia ..... 4 Drift Street, Newark  
 Nicasro, Jean ..... 4 Drift Street, Newark  
 Nicolaysen, Nancy ..... R.D. No. 2, Cherry Valley Rd., Princeton  
 Niemczyk, Alfred ..... 70 Boyden Avenue, Maplewood  
 Nitti, Grace ..... 390 Walnut Street, Newark  
 Norelli, Frances ..... 312 Park Avenue, Orange  
 Norwood, Dolores ..... 276 South Clinton Street, East Orange  
 Nucera, Marie ..... 334 Fern Avenue, Lyndhurst

O

Oakes, Jean ..... 71 Hackensack Street, East Rutherford  
 O'Brien, Peggy ..... 149 Pershing Avenue, Carteret  
 O'Brien, Sally ..... 35 Central Avenue, Cranford  
 Oliphant, Kathleen ..... 60 Brookdale Gardens, Bloomfield  
 Oliver, Jean ..... 44 Maple Avenue, Montclair  
 Oliverie, Jean ..... 45 Continental Avenue, Belleville  
 Olsen, George ..... 1215 Eighty-First Street, North Bergen  
 Orlando, Gloria ..... 136 Summer Avenue, Plainfield  
 Otten, Anne ..... Highview Avenue, Woodcliff Lake  
 Otto, Herman ..... 203 Underhill Road, South Orange  
 Ovsiew, Cyrelle ..... 1025 Boudinot Place, Elizabeth

P

Pappalardo, Camille ..... 23 Norwood Street, Newark  
 Pappas, Corinne ..... 151 Centre Street, South Orange  
 Paradiso, Jerry ..... 42 Seventh Avenue, Newark  
 Pardee, Roger ..... 3315 Pleasant Avenue, Union City  
 Parente, Fernanda ..... 252 Van Buren Street, Newark  
 Patrocino, Palma ..... 429 Eighteenth Avenue, Newark  
 Pavlinik, Eleanore ..... 264 Lakeview Avenue, Clifton  
 Peck, Barbara ..... 191 Terrace Avenue, Lodi  
 Pellicane, Marguerite ..... 55 Codwise Avenue, New Brunswick  
 Percival, Claire ..... 144 Whittle Avenue, Bloomfield  
 Perry, Barbara ..... 495 Wilson Avenue, Lyndhurst  
 Peterson, Marilyn ..... 20 Jackson Avenue, Chatham  
 Petriccione, Mariette ..... 26 Chelsea Place, East Orange  
 Pillsbury, Janice ..... 121 Passaic Avenue, Summit  
 Pittman, Shirley ..... 80 South Thirteenth Street, Newark  
 Plescia, Eleanor ..... 113 West Main Street, Rahway  
 Podlipsky, Mildred ..... 919 Jefferson Avenue, Elizabeth  
 Poindexter, Carol ..... 65 North Willow Street, Montclair  
 Pollack, Rosemirel ..... 17 Somerset Avenue, Bernardsville  
 Popelka, Jane ..... 18 De Hart Avenue, Dover  
 Porter, Arlene ..... 197 Twenty-First Street, Irvington  
 Poulos, Helen ..... 40 Central Avenue, Dover

Q

Quackenbush, Robert ..... 155 Demarest Avenue, Hillside  
 Queenan, Theresa ..... 188 Norwood Street, Newark  
 Raino, Barbara ..... 151 North Sixteenth Street, Bloomfield  
 Rampichini, Blanche ..... 47 Bloomfield Avenue, Newark  
 Rappa, Josephine ..... 1301-B Virginia Street, Elizabeth  
 Rawlins, Shirlee ..... 32 Carnegie Avenue, East Orange  
 Reagan, Joan ..... 524 Bayway Avenue, Elizabeth

Rees, Joan ..... 45 Courtland Street, Newark  
 Reich, Ruth ..... 177 Grove Road, South Orange  
 Reinhart, Patricia ..... 477 Prospect Street, South Orange  
 Reinhart, Richard ..... 477 Prospect Street, South Orange  
 Remington, Joan ..... 170 Raab Avenue, Bloomfield  
 Rheubottom, Phyllis ..... 39 Spruce Street, Newark  
 Rice, Sandra ..... 369 Sanford Avenue, Hillside  
 Ries, Lois ..... 328 Post Avenue, Lyndhurst  
 Risack, Harriet ..... 1573 Wainwright Street, Hillside  
 Robb, Elinor ..... 17 Van Winkle Avenue, Passaic  
 Robertson, Joan ..... 11 Terry Lane, Clark Township, Rahway  
 Robinson, Anita ..... 6 Emily Avenue, Vaux Hall  
 Romeo, Harry ..... 357 Bordentown Avenue, South Amboy  
 Roode, Larry ..... 1 Cedar Street, Cranford  
 Rosamilia, Joyce ..... 534 Parker Street, Newark  
 Rosenfeld, Gloria ..... 300 Goldsmith Avenue, Newark  
 Rosenthal, Irene ..... 35 Beech Street, East Orange  
 Ross, Reina ..... 162 Midland Place, Newark  
 Roszel, Barbara ..... 138 Jerome Place, Bloomfield  
 Rothausen, Elaine ..... 44 Ball Terrace, Maplewood  
 Rothstein, Helaine ..... 376 Paulson Avenue, Passaic  
 Rubin, Gloria ..... 121 Renner Avenue, Newark  
 Rubin, Sandra ..... 139 Park Street, Orange  
 Rufalo, Betty ..... 37 Norman Road, Newark  
 Rufalo, Joseph ..... 37 Norman Road, Newark  
 Ruffing, Mary ..... 663 Valley Road, Upper Montclair  
 Ruscito, Allen ..... 298 Ellis Avenue, Irvington  
 Russo, Vincent ..... 22 Long Avenue, Mahwah  
 Russomano, Mildred ..... 600 North Eighth Street, Newark  
 Rusznak, Rose Marie ..... 55 Christopher Street, Carteret

S

Sabold, Eleanor ..... 59 Pine Grove Terrace, Newark  
 Sacco, Dolores ..... 184 North Twelfth Street, Newark  
 Salerno, Marie ..... 97 Clifton Avenue, Newark  
 Salerno, Nancy ..... 12 Warrington Place, East Orange  
 Salley, Dorothy ..... 133 South Ninth Street, Newark  
 Sallit, Sina ..... 134 First Avenue, Fords  
 Salvato, Theresa ..... 207 North Thirteenth Street, Newark  
 Salvia, Dolores ..... 329 South Street, Newark  
 Salzberg, Gloria ..... 201 Ivy Street, Newark  
 Salzberg, Phyllis ..... 201 Ivy Street, Newark  
 Sansone, Yolanda ..... 213 South Tenth Street, Newark  
 Sapienza, Jacqueline ..... 166 No. Seventeenth St., East Orange  
 Saporito, Anthony ..... 119 Third Street, Elizabeth  
 Sarno, Patricia ..... 224 Clifton Avenue, Newark  
 Sathmary, Mavdalene ..... 493 Amboy Avenue, PerthAmboy  
 Saunders, Nancy ..... 27 Lafayette Avenue, East Orange  
 Scanelli, Carmella ..... 20 Hatfield Street, Caldwell  
 Scarpa, Nicholas ..... 928 Caldwell Avenue, Union  
 Schenkel, Myrna ..... 109 Huntington Terrace, Newark  
 Schipper, Susan ..... 83 Farley Avenue, Newark  
 Schneider, Marjorie ..... 154 Garfield Place, Maplewood  
 Schoellner, Barbara ..... Beacon Hill Road, Leonardo  
 Schreier, Phyllis ..... 829 Vine Street, Elizabeth  
 Schror, Jean ..... 19 Norwood Avenue, Irvington  
 Schulze, Betty ..... 703 West Scott Avenue, Rahway  
 Schustrin, William ..... 68 Sherman Avenue, Jersey City  
 Schutzman, Gloria ..... 1036 North Avenue, Elizabeth  
 Scudese, Mary ..... 112 Chester Avenue, Newark  
 Scuzo, Louise ..... 80 Jefferson Street, Newark  
 Seaman, Betty ..... 314 Second Street, South Amboy  
 Seifer, Han'ita ..... 216 Williamson Avenue, Hillside  
 Semple, Patricia ..... 74 South Munn Avenue, East Orange  
 Senerchia, Betty Ann ..... 240 Highland Avenue, Newark  
 Sepe, Vivian ..... 441 North Sixth Street, Newark  
 Sergel, Katherine ..... 254 South Seventh Street, Newark  
 Shapiro, Rosemary ..... 190 Midland Place, Newark  
 Shaw, Isabel ..... 64 Halstead Street, Kearny  
 Shaw, Sally ..... 225 East Third Avenue, Roselle  
 Sheffield, Norma ..... 431 South Tenth Street, Newark  
 Sica, Rose Marie ..... 130 North Tenth Avenue, Highland Park  
 Sichel, Marjorie ..... 83 Greenwood Drive, Millburn  
 Siegel, Arlene ..... 96 Midland Boulevard, Maplewood  
 Simon, Florence ..... 200 Franklin Street, Bloomfield  
 Sinclair, Barbara ..... 840 Kilsythe Road, Elizabeth  
 Sinigaliano, Joy ..... 488 Broadway, Newark  
 Sironi, Janice ..... 47 Rose Avenue, Springfield

Sivolella, Nicholas ..... 614 New York Avenue, Lyndhurst  
 Skerko, Lucille ..... 73 Wakeman Avenue, Newark  
 Skinner, Shirley ..... 1034 William Street, Elizabeth  
 Slade, Lila ..... 159 Linden Avenue, Irvington  
 Slocum, Gwendolyn ..... 62 Ashland Avenue, East Orange  
 Small, Michael ..... 7 Ursino Place, Elizabeth  
 Smalley, Harold ..... 136 High Street, Closter  
 Smith, Ann Marie ..... 266 Amherst Street, East Orange  
 Smith, Elizabeth C. ..... 538 Summer Avenue, Newark  
 Smith, Elizabeth S. ..... 119 East Lindsley Road, Cedar Grove  
 Smith, Esther ..... 167 Dunham Place, Woodbridge  
 Smith, Janet ..... 220 Lincoln Place, Irvington  
 Smith, Joyce B. ..... 158 Park Street, East Orange  
 Smith, Joyce F. ..... 112 Sussex Avenue, Newark  
 Smith, Marlene ..... 85 North Seventh Street, Newark  
 Smith, Nancy ..... 337 Wells Avenue, Elberon  
 Smith, Ruth ..... 800 Ridge Street, Newark  
 Snyder, Iris ..... 143 Weequahic Avenue, Newark  
 Sokloski, Beatrice ..... 629 Chetwood Street, Elizabeth  
 Sonnenschein, Anne ..... 53 Welland Avenue, Irvington  
 Spear, Anne ..... 25 William Street, Dover  
 Spenzos, Joanne ..... 153 Gregory Avenue, West Orange  
 Spiegel, Marlene ..... 280 Goldsmith Avenue, Newark  
 Spina, Agnes ..... 8 Harrison Avenue, West Orange  
 Spinner, Jaclyn ..... 10 Crescent Avenue, Newark  
 Sproha, Robert ..... 16 Theodore Street, Wharton  
 Staviitsky, Sonya ..... 1309 Clinton Avenue, Irvington  
 Stein, Carol ..... 8 Goodwin Avenue, Newark  
 Stercho, Irene ..... 1426 West Blancke Street, Linden  
 Sternfeld, Allan ..... 120 Catherine Street, Elizabeth  
 Stetts, Elizabeth ..... 1601 Orchard Terrace, Linden  
 Stier, Richard ..... 35 Princeton Street, Nutley  
 Straitman, Marlene ..... 23 Victor Place, Irvington  
 Streichler, Jerry ..... 105 Seth Boyden Terrace, Newark  
 Stubits, Catherine Ann ..... 432 Darrow Avenue, Plainfield  
 Styler, Barbara ..... R. D. No. 1, Flemington  
 Suppa, Rosina ..... 106 Newfield Street, East Orange  
 Sweeney, Lynn ..... 1301-B Virginia Street, Elizabeth  
 Sweid, Beverly ..... 594 Sandford Avenue, Newark  
 Swenson, Nancy ..... 38 Rowe Street, Bloomfield  
 Sydnor, Peggy Ann ..... 154 North Fifteenth Street, Bloomfield  
 Sytko, Val Jean ..... 30 Hennessy Place, Irvington

T

Taylor, Barbara ..... 54 Fernwood Road, Maplewood  
 Taylor, Judith ..... 17 Hathaway Place, Glen Ridge  
 Tedesco, Catherine ..... 161 Summer Avenue, Newark  
 Terry, Julia ..... 106 Third Street, Fair Haven  
 Thomas, Marilyn ..... 18 Fourth Avenue, Seaside Park  
 Thompson, Barbara ..... 25 Sherman Place, Irvington  
 Thompson, Charlotte ..... 152 Old Road, Sewaren  
 Thompson, Patricia ..... 310 North Lake Drive, Belmar  
 Tice, Gail ..... 550 Ayres Avenue, North Plainfield  
 Tieback, Patricia ..... 203 First Street, Dunellen  
 Tolchinsky, Arlene ..... 272 Hawthorne Avenue, Newark  
 Tomas, Lawrence ..... 821 North Sixteenth Street, Newark  
 Torelli, Stella ..... 81 Prospect Street, Newark  
 Toronto, Frances ..... 138 Kipp Avenue, Lodi  
 Totten, Bernice ..... 1138 Church Street, Hillside  
 Travis, Robert ..... 138 Passaic Avenue, Hasbrouck Heights  
 Turner, Maude ..... 93 Main Street, South Bound Brook

V

Valentine, Dorothy ..... 132 Palm Street, Newark  
 Vanderhoof, Colleen ..... 16 Kenny Street, Madison  
 Vanderminde, Barbara ..... 2113 Oliver Street, Rahway  
 Van Lenten, Helen ..... 66 West Oldis Street, Rochelle Park  
 Virostek, Anna Marie ..... 21 Delmar Place, Irvington  
 Voglino, Dolores ..... 22 Hudson Street, Newark  
 Vollmer, Julie ..... 21 Ryerson Avenue, Paterson

W

Wacks, Marian ..... 466 Belgrove Drive, Arlington  
 Waldorf, Rona ..... 158 Maple Avenue, Irvington  
 Walsh, Barbara ..... 897 South Nineteenth Street, Newark  
 Walsh, Jean ..... 26 Richelieu Place, Newark  
 Walsh, Maryann ..... 366 Seymour Avenue, Newark  
 Ward, Irene ..... 26 Coeyman Avenue, Bloomfield  
 Warner, Carol ..... 23 River Lawn, Fair Haven



Washington, Betty ..... 70 Hollywood Avenue, East Orange  
 Wasserman, Lois ..... 29 Porter Avenue, Newark  
 Watts, Emma Jane ..... 13 Summer Avenue, Dover  
 Weborg, Dolores ..... 328 Park Avenue, Plainfield  
 Wechter, Janet ..... 22 Mapes Terrace, Newark  
 Weinberg, Hannelte ..... 234 Clinton Place, Newark  
 Weiss, Hildegard ..... 33 Old Road, Livingston  
 Wheeler, Mable ..... 11 Spring Street, Newark  
 Whitaker, Joyce ..... 680 Franklin Avenue, Nutley  
 White, Ethel ..... 1021 Bergen Avenue, Linden  
 White, Joan ..... 21 Union Avenue, Maplewood  
 White, Mary ..... 118 Bank Street, Newark  
 Wilke, Margaret ..... 75 Merchant Street, Newark  
 Wilkots, Selma ..... 540 South Seventeenth Street, Newark  
 Williams, Alfred ..... Alpine Road, Lake Parsippany  
 Williams, C. Lynne ..... 153 Franklin Street, Bloomfield  
 Williams, Dolores ..... 36 Bedford Street, East Orange  
 Williams, Juanita ..... 290 Commercial Avenue, New Brunswick  
 Willner, Sally ..... 47 Norwood Avenue, Irvington  
 Wilson, Corinne ..... 58 Crawford Street, Newark  
 Wilson, Yvonne ..... 235 Telliff Avenue, Newark

Winet, Esther ..... 29 Porter Avenue, Newark  
 Winter, Patricia ..... 125 Mount Pleasant Avenue, Newark  
 Wolkstein, Corinne ..... 643 South Eighteenth Street, Newark  
 Worrall, Liane ..... 188 Main Street, Vincentown  
 Wright, Ruth ..... 508 Norwood Street, East Orange  
 Wundling, Eleanor ..... 240 Webster Avenue, Lyndhurst  
 Wyden, Marilyn ..... 305 Leslie Street, Newark

Y

Yadamiec, Victoria ..... 363 South Seventh Street, Newark  
 Yavener, Ann ..... 411 Union Avenue, Irvington

Z

Zarra, Hannah ..... 60 Lyons Avenue, Newark  
 Zarro, Michael ..... 123 Seventh Avenue, Newark  
 Zeckendorf, Barbara ..... 11 Rainbow Terrace, West Orange  
 Zeller, Blanche ..... 520 Parker Street, Newark  
 Zimetbaum, Myrna ..... 1481 Maple Avenue, Hillside  
 Zimmerman, Shirley ..... 1311 Broadway, Hillside  
 Zizza, Edna ..... 31 Florence Avenue, Irvington  
 Zotte, Bridget ..... 13 North Street, Summit  
 Zwillman, Marilyn ..... 177 Goodwin Avenue, Newark

## Acknowledgments

The editorial board wishes to extend its thanks to:

Edward B. Rae of Rae Publishing Company of Montclair.

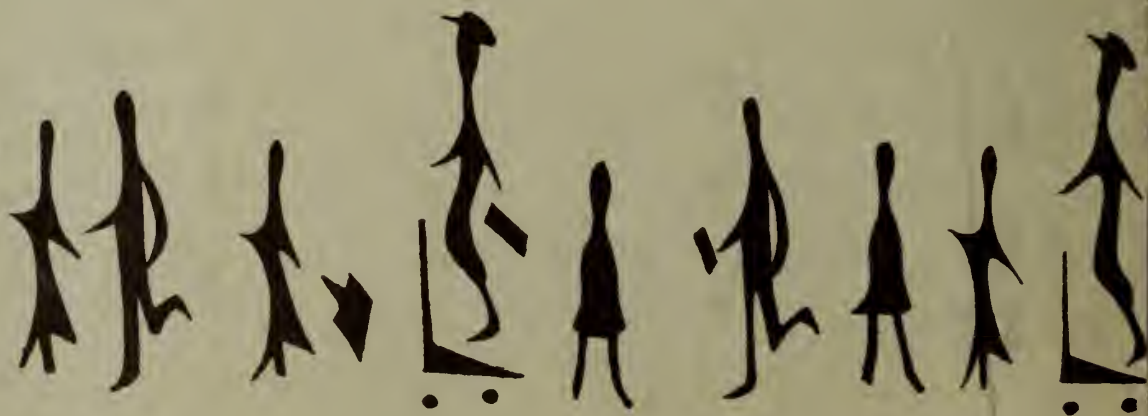
REFLECTOR editorial board for the use of its picture file.

Mr. Douglas Tatton and the senior Fine Arts.

And our able and long suffering photographers Connie Arena  
 and Joan Remington.

Lithographed by  
 RAE PUBLISHING CO.  
 22 Frink Street  
 Montclair, N. J.





Library  
Newark  
James F. Johnson  
Newark

