



UvA-DARE (Digital Academic Repository)

Organization and dynamics of the SpoVAEa protein and its surrounding inner membrane lipids, upon germination of *Bacillus subtilis* spores

Wen, J.; Vischer, N.O.E.; de Vos, A.L.; Manders, E.M.M.; Setlow, P.; Brul, S.

DOI

[10.1038/s41598-022-09147-3](https://doi.org/10.1038/s41598-022-09147-3)

Publication date

2022

Document Version

Final published version

Published in

Scientific Reports

License

CC BY

[Link to publication](#)

Citation for published version (APA):

Wen, J., Vischer, N. O. E., de Vos, A. L., Manders, E. M. M., Setlow, P., & Brul, S. (2022). Organization and dynamics of the SpoVAEa protein and its surrounding inner membrane lipids, upon germination of *Bacillus subtilis* spores. *Scientific Reports*, *12*(1), [4944]. <https://doi.org/10.1038/s41598-022-09147-3>

General rights

It is not permitted to download or to forward/distribute the text or part of it without the consent of the author(s) and/or copyright holder(s), other than for strictly personal, individual use, unless the work is under an open content license (like Creative Commons).

Disclaimer/Complaints regulations

If you believe that digital publication of certain material infringes any of your rights or (privacy) interests, please let the Library know, stating your reasons. In case of a legitimate complaint, the Library will make the material inaccessible and/or remove it from the website. Please Ask the Library: <https://uba.uva.nl/en/contact>, or a letter to: Library of the University of Amsterdam, Secretariat, Singel 425, 1012 WP Amsterdam, The Netherlands. You will be contacted as soon as possible.

UvA-DARE is a service provided by the library of the University of Amsterdam (<https://dare.uva.nl>)



OPEN

Organization and dynamics of the SpoVAEa protein and its surrounding inner membrane lipids, upon germination of *Bacillus subtilis* spores

Juan Wen¹, Norbert O. E. Vischer¹, Arend L. de Vos¹, Erik. M. M. Manders², Peter Setlow³ & Stanley Brul¹✉

The SpoVA proteins make up a channel in the inner membrane (IM) of *Bacillus subtilis* spores. This channel responds to signals from activated germinant receptors (GRs), and allows release of Ca²⁺-DPA from the spore core during germination. In the current work, we studied the location and dynamics of SpoVAEa in dormant spores. Notably, the SpoVAEa-SGFP2 proteins were present in a single spot in spores, similar to the IM complex formed by all GRs termed the germinosome. However, while the GRs' spot remains in one location, the SpoVAEa-SGFP2 spot in the IM moved randomly with high frequency. It seems possible that this movement may be a means of communicating germination signals from the germinosome to the IM SpoVA channel, thus stimulating CaDPA release in germination. The dynamics of the SpoVAEa-SGFP2 and its surrounding IM region as stained by fluorescent dyes were also tracked during spore germination, as the dormant spore IM appeared to have an immobile germination related functional microdomain. This microdomain disappeared around the time of appearance of a germinated spore, and the loss of fluorescence of the IM with fluorescent dyes, as well as the appearance of peak SpoVAEa-SGFP2 fluorescent intensity occurred in parallel. These observed events were highly related to spores' rapid phase darkening, which is considered as due to rapid Ca²⁺-DPA release. We also tested the response of SpoVAEa and the IM to thermal treatments at 40–80 °C. Heat treatment triggered an increase of green autofluorescence, which is speculated to be due to coat protein denaturation, and 80 °C treatments induce the appearance of phase-grey-like spores. These spores presumably have a similar intracellular physical state as the phase grey spores detected in the germination but lack the functional proteins for further germination events.

Bacillus subtilis, the model Gram-positive bacterium, has multiple complex responses to environmental stress and nutrient depletion. Notably, it can generate different subsets of cells, such as persisters, spores, and biofilms to promote survival in harsh environmental conditions¹. Spores in particular are capable of maintaining metabolic dormancy for very long times by protecting their chromosomal DNA through its location in the low water environment of the spore core and its surrounding by multiple protective macromolecular layers². From the outside in, these spore layers are the coat, outer membrane (OM), peptidoglycan (PG) cortex, germ cell wall, inner membrane (IM) and core². Despite their potential long period of dormancy, these spores can be revived or germinated by many environmental cues, primarily small molecules termed germinants that signal the presence of a growth friendly environment, and they then resume cell growth².

The SpoVA channel is located in the IM, and has a crucial role in spore germination^{3–7}. This channel functions to release the large pool of the 1:1 complex of Ca²⁺ and dipicolinic acid (Ca²⁺-DPA) from the spore core during germination^{5,8}. Upon release of the Ca²⁺-DPA, water is taken up and hydrolysis of the PG cortex begins. When

¹Molecular Biology and Microbial Food Safety, Swammerdam Institute for Life Sciences, University of Amsterdam, Science Park 904, 1098 XH Amsterdam, The Netherlands. ²Confocal.NI B.V., Science Park 106, 1098 XG Amsterdam, The Netherlands. ³Department of Molecular Biology and Biophysics, UConn Health, 263 Farmington Avenue, Farmington, CT 06030-3305, USA. ✉email: s.brul@uva.nl

the latter is complete the core water content has returned to the levels observed in vegetative cells^{2,8}. Multiple signals can trigger the opening of the SpoVA channel, including activated germinant receptors (GRs), hydrolysis of the cortex PG and high hydrostatic pressure². The SpoVA channel has seven subunits, A, B, C, D, Eb, Ea and F^{6,9}. SpoVAA, -B, -C, -Eb and -F are transmembrane IM proteins, one of which, SpoVAC, is a pressure-sensitive membrane channel protein^{6,7,10,11}. SpoVAD and -Ea are hydrophilic proteins, located on the outer surface of the IM. Somehow there must be signal transduction from activated GRs to the SpoVA channel, but while there is some evidence for physical interaction between GRs and some SpoVA proteins^{6,12}, how signal transduction takes place is not clear. *B. subtilis* spores have an estimated level of ~7000 molecules of SpoVA proteins, which is 7–10 times higher than the level of GRs¹³. Notably, all GRs in spores are in a complex in the IM that is generally present in only one or two immobile spots/spore termed germinosomes^{14–17}. In contrast, by averaging hundreds of consecutive images, previous work indicated that SpoVAEa seems uniformly distributed throughout the IM¹⁷. In the current work, we created a SpoVAEa-SGFP2 reporter protein. The fusion protein was expressed in *B. subtilis* from the native *spoVAEa* locus and super resolution rescanning confocal microscopy (RCM) was used to analyze SpoVAEa-SGFP2 location in spores.

As mentioned above, GRs are present in foci in the dormant spore IM, and our previous work found that *B. subtilis* spores' GerKB-SGFP2 foci, the *gerKB* gene encodes the B subunit of the GerK GR, reached peak fluorescence intensity around the 'time to germination', followed by the dispersion of the spots in a short time window in germinated spores¹⁸. The 'time to germination' was defined as the time needed for the spore to complete half of its rapid decline in phase brightness. The rapid decline of phase brightness is due to the refractility change of spores induced by Ca²⁺DPA release and water uptake, and results in the change of a phase bright spore (dormant spore) into a phase dark spore (germinated spore) upon examination under a phase contrast microscope. The molecular basis of GR functioning in spore germination is still not resolved. However, we speculated that the increased GerKB-SGFP2 fluorescence is due to a relatively 'dramatic' environmental change in the physical state of the IM near the fusion protein¹⁸. Because both GRs and SpoVA proteins are IM proteins, we were curious to assess the dynamic response of SpoVAEa-SGFP2 fluorescence to the environmental changes occurring during germination. Time-lapse imaging was used to track both the refractility change of spores, and the dynamics of SpoVAEa-SGFP2 fluorescence during GR-triggered germination using phase contrast and widefield microscopy. The IM is undergoing dramatic modifications during spore germination, including a 1.3 fold increase in its encompassed volume and the restoration of its full lipid mobility^{2,19}. Consequently, we also tracked changes in the IM during germination. In addition, because previous work²⁰ showed that 40–80 °C heat treatments of *B. subtilis* dormant spores resulted in spore heat activation of germination at temperatures ≤ 65 °C, caused a combination of heat activation and heat damage at 70–75 °C, and led to full heat inactivation at 80 °C, we also studied thermal effects on SpoVAEa-SGFP2 and membrane dye related fluorescence.

Results

Location and the dynamics of SpoVAEa protein in dormant spores. While previous analyses had indicated for SpoVAEa-SGFP2 no discrete fluorescence foci in spores expressing the fusion protein¹⁷, our wide-field microscopy indicated that the spore surface area did not have a uniform level of SpoVAEa-SGFP2 (data not shown). Possibly the different microscopical magnifications used as well as the use of an SGFP reporter rather than GFP lead to these differing results. Next, we employed Rescan Confocal Microscopy (RCM) with a scanning time of 2 s per frame to obtain more detailed structural information²¹. Surprisingly, clusters of GFP fluorescence were observed, which clearly stood out from the background in dormant PS832 (wild-type) SpoVAEa-SGFP2 spores (Fig. 1A, left panel). By enlarging one of the spores, two spots were observed in the spore labelled 'a' (Fig. 1A, right panel). The full width at half maximum (FWHM) of the pronounced spot of spore 'a' was 220 nm (Fig. 1C). Due to the fact that the visualization of germination proteins can be interfered with by heavy autofluorescence^{17,22} from the spore coat, we also imaged SpoVAEa-SGFP2 in spores with a severely defective coat²³. Similar fluorescent spot structures were found in the coat defective double mutant PS4150 SpoVAEa-SGFP2 spores (Fig. 1B,C). These spots were, however, not more pronounced indicating that our observations in wild-type spores were not majorly obscured by coat layers.

Two obvious questions about the results with spores carrying the *spoVAEa-SGFP2* fusion are: (1) could the fact that the fusion eliminates *spoVAF* expression modulate the effects of the fusion protein; and (2) is fusion protein functional? It seems most likely that the answer to question 1 is "very unlikely", since a *spoVAF* mutation has no effect on AGFK germination⁶. However, the answer to question 2 is "yes", since a *spoVAEa* deletion mutation decreases rates of AGFK germination ~ threefold⁶, and the spores with the SpoVAEa-SGFP2 fusion germinated identically to wild-type spores with AGFK (data not shown and see "Materials and methods").

Previously, we showed that GerKB-SGFP2 proteins, one class of GRs, also presented themselves as 1–3 spots per spore¹⁸. These spots 'oscillated' at high frequency, but were confined only to a small area of the IM¹⁸. Here, the crucial question is whether SpoVAEa-SGFP2 is also at least somewhat mobile in the IM. To address this query, RCM microscopy was applied for high frequency imaging with a scanning time of 22.2 ms per frame. Even more surprisingly, a single spot, traveling around the IM, i.e. not confined to a small area, was observed in the PS832 SpoVAEa-SGFP2 dormant spores when the spore was tracked for 1000 frames and imaged at very high time resolution, and the movement of the SpoVAEa-SGFP2 fluorescent spot in the spore appeared in different random positions. Figure 1D shows eight frames with a pronounced fluorescent spot, and the location differs in each frame. The measured Fluorescence Width at Half Maximum (FWHM) of the spot in different frames varied from 96 to 263 nm. Hence, the observed high frequency movement with longer exposure time, could explain why not all the spores in Fig. 1A,B, showed a spot structure, as well as the uniform distribution of SpoVAEa, most likely SpoVAEa, in previous work¹⁷. It is, however, not clear how SpoVAEa is able to move at such a high frequency in an otherwise 'rigid' inner membrane^{19,24}, although SpoVAEa appears to be on the outer

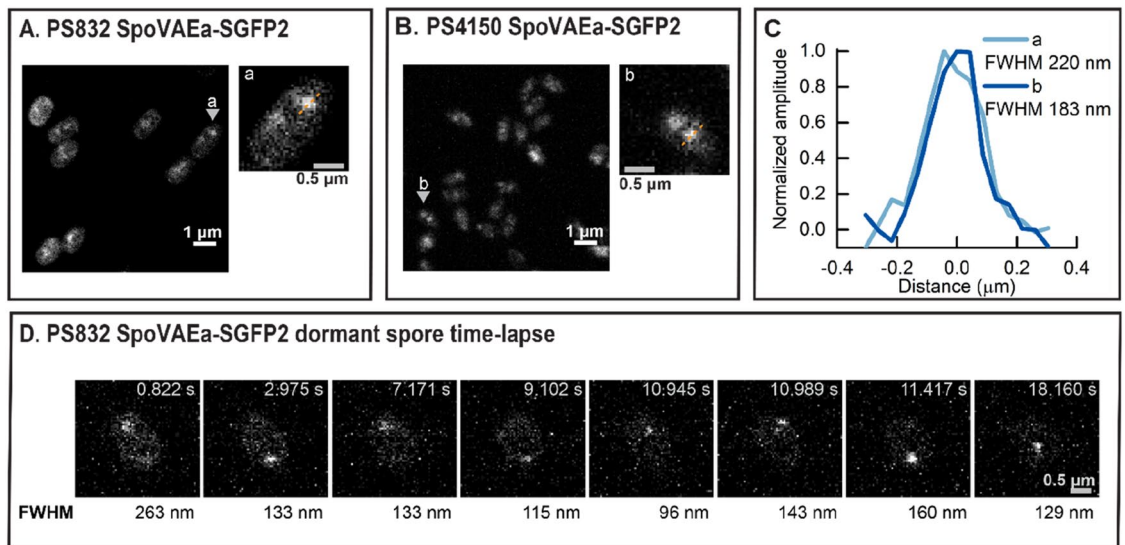


Figure 1. Organization of SpoVAEa-SGFP2 in dormant spores in a region of increased fluorescence (a fluorescent ‘spot’). **(A)** The RCM fluorescence image of PS832 SpoVAEa-SGFP2 spores. The spore in the inset ‘a’ is the enlarged view of the spore indicated by the grey arrow in the left panel. **(B)** The RCM fluorescence image of PS4150 SpoVAEa-SGFP2 spores. The spore in the inset ‘b’ is the enlarged view of the spore indicated by the grey arrow in the left panel. **(C)** The plot profiles of the pronounced SpoVAEa-SGFP2 spot of spores ‘a’ and ‘b’. **(D)** The RCM high frequency time-lapse images (22.2 ms/frame) of a PS832 SpoVAEa-SGFP2 dormant spore. The presented images represent frames in which the strong SpoVAEa-SGFP2 spot appears during the high frequency time-lapse track. The relative FWHM of the SpoVAEa-SGFP2 spot in each frame is indicated at the bottom of each image.

surface of the IM⁶. Moreover, we cannot exclude that there are some ‘free’ SpoVAEa proteins distributed over the IM outside of the spot.

Dynamics of SpoVAEa in the IM of *B. subtilis* spores during GR-triggered spore germination. Previously, we found that during spore germination GerKB-SGFP2 spots gradually increased in fluorescence intensity¹⁸. This phenomenon is potentially related to the change of the spore’s physical state in general and the IM in particular upon germination, because no new protein synthesis was observed¹⁸. It could be linked, for instance, to the increase in core water content and core pH due to the release of Ca²⁺-DPA and cortex hydrolysis. Here we used widefield microscopy to track the overall mean intensity of SpoVAEa-SGFP2 in spores during germination via GerB and GerK GRs by supplying the AGFK nutrient germinant cocktail (L-asparagine, glucose, fructose, and potassium chloride).

The phase brightness and SpoVAEa-SGFP2 fluorescence history of a single spore is shown in the time-lapse image montage in Fig. 2A,C. By analyzing the brightness and fluorescence profiles of this spore, we observed that the peak fluorescence intensity of SpoVAEa-SGFP2 was reached before the appearance of the phase dark spore, followed by a slow decline of fluorescence intensity in the phase dark spore (Fig. 2A–D). The initiation of SpoVAEa-SGFP2 fluorescence increase was at the same time as the start of the spore’s brightness rapid decline, which is considered as the start of rapid Ca²⁺-DPA release (Fig. 2B,D,E). In order to confirm the observed dynamics in the population, we synchronized SpoVAEa-SGFP2 fluorescence profiles by defining the $t = 0$ as the ‘time to germination’, which is the time needed for the spore to complete half of its rapid decline in phase brightness (Fig. 2E). In the averaged trace of 418 germinating spores, the SpoVAEa-SGFP2 intensity increased sharply and the peak was around the ‘time to germination’ (Fig. 2F), while no SpoVAEa-SGFP2 synthesis was detected by western blot analysis (Fig. S1). Two independent batches of spores were analysed in this experiment. Thus, the increase of SpoVAEa-SGFP2 fluorescence intensity during germination is correlated with the rapid release of Ca²⁺-DPA. Western blot analysis in the current work, as well as previous work, did not detect a significant decrease of SpoVAEa level in germinated spores compared to dormant spores (Fig. S1), however, a decrease of SpoVAEa-SGFP2 fluorescence was observed in germinated spores (Fig. 2D,F)⁶. Subsequently, we found that photobleaching had a role in the observed fluorescence decrease (Figs. S2, S3), and photochemical alteration of both spore coat and SGFP2 potentially contributed to the photobleaching. A spore coat defective strain with no autofluorescence will likely be necessary in the future to study the dynamics of SpoVAEa-SGFP2 in germinated spores^{22,23}.

Changes in IM structure upon triggering spore germination via GRs. It is known that lipids in the *B. subtilis* dormant spore IM are largely immobile^{2,19}. Still, this IM is capable of increasing its surface area ~1.3 fold upon the spore swelling due to spore core water uptake and cortex hydrolysis². As indicated above, SpoVAEa-SGFP2 fluorescence reached peak intensity around ‘time to germination’. Consequently, we decided to probe for a putative correlation between the SpoVAEa-SGFP2 peak fluorescence intensity and the change in

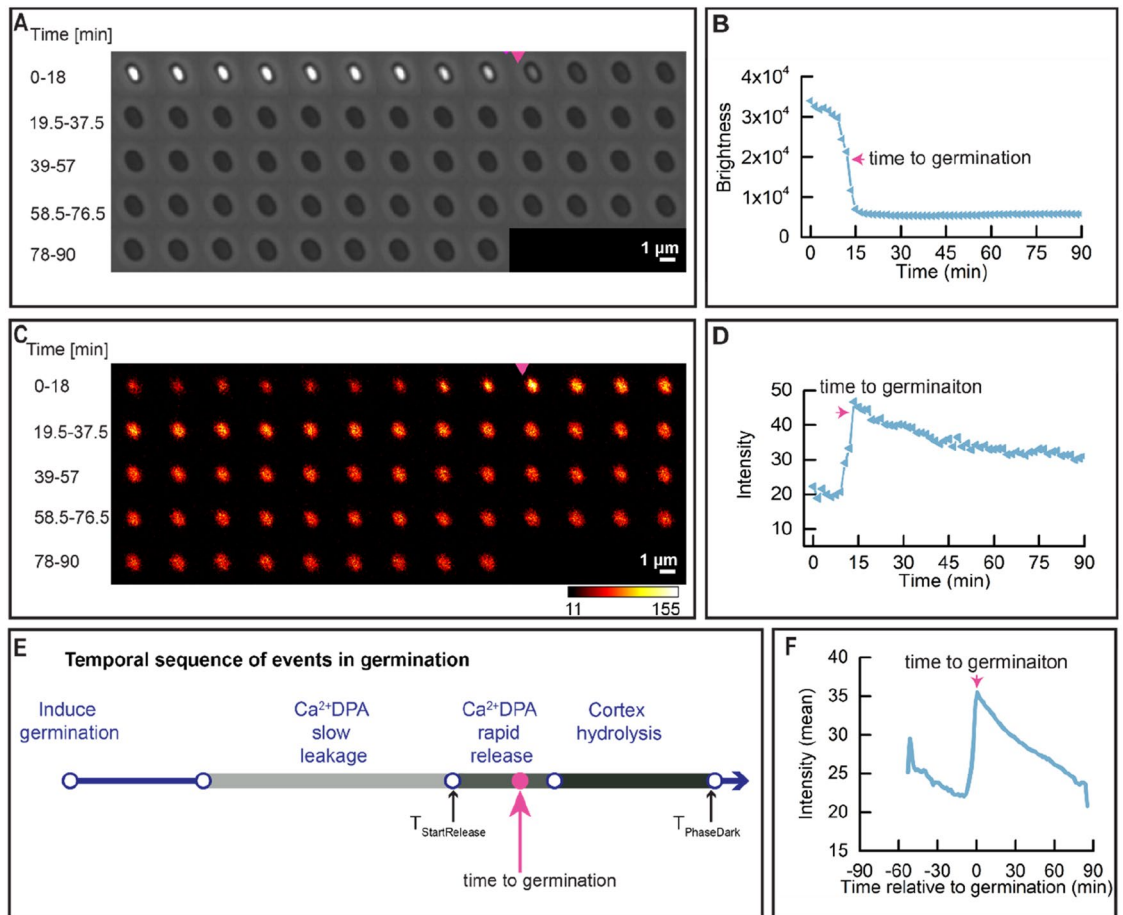


Figure 2. Dynamic behaviour of SpoVAEa-SGFP2 during spore germination. Spore germination was triggered by (10 mM each) AGFK without heat activation treatment. **(A)** Phase contrast time lapse images of a single PS832 SpoVAEa-SGFP2 spore. **(B)** The brightness profile corresponding to the images shown in panel **(A)**. **(C)** The fluorescence time lapse images of the same spore shown in panel **(A)**. **(D)** The SpoVAEa-SGFP2 fluorescence intensity profile corresponding to images in panel **(C)**. **(E)** Parameters detected by SporeTrackerX, and their corresponding positions in spore germination. As shown in the schematic, upon germination commitment, slow leakage of Ca^{2+} DPA from the spore core begins, followed by the rapid release of the remaining Ca^{2+} DPA and then spore cortex hydrolysis²⁵. The latter two events result in the rapid decline in the brightness of spores in phase contrast microscopy. Here, SporeTrackerB_06K detected the $T_{\text{StartRelease}}$ (time of initiation of the rapid decline in spore brightness) and $T_{\text{PhaseDark}}$ (time of completion of spore brightness rapid decline) in the brightness profile, and further calculated the ‘time to germination’ for presenting data for the population. Here, the ‘time to germination’ is defined as the time needed for the spore to complete half of its rapid decline in phase brightness. The magenta arrow here and in **(A)** indicates the ‘time to germination’. **(F)** Average of 418 synchronized single SpoVAEa-SGFP2 spore fluorescence intensity traces. Synchronization defines $t=0$ min as the ‘time to germination’. 613 spores were tracked by microscopy for 90 min and 68.2% of them completed germination.

mobility of the IM lipids. To that end, the IM of PS832 spores was stained with either the carbocyanine dye DiIC₁₂ or the styryl dye FM5-95, which were added to a sporulating culture and hence incorporated into the IM upon the formation of the forespore, as has been shown in previous studies^{16,19}. Any lipid probe present in the OM could be removed by extensive washing during spore purification¹⁹.

We again used widefield microscopy to track the change in IM staining during germination. The fluorescence intensity of DiIC₁₂ and FM5-95 stained spores dropped dramatically upon the start of the rapid decline in spore brightness, and the drop was completed around the ‘time to germination’ (Figs. 3, 4). In a word, just as with the dynamics of SpoVAEa-SGFP2, the change of the IM during germination is also highly correlated with the rapid Ca^{2+} -DPA release and cortex hydrolysis, which lead to the increase of spore core pH, and water content^{26,27}. The FM5-95 stained spore also had a fluorescent spot, whereas DiIC₁₂ spores had relative uniform staining (Figs. 3C, 4C). Regarding the fact that the FM5-95 dye was almost invisible in the germinated spore (Fig. 4C), we note that the hydrophobicity and affinity of FM5-95 for the IM lipids seems lower than that of DiIC₁₂. This implies also that FM5-95 prefers to bind in lipid domains with higher fluidity. Hence, the FM5-95 spot area could well be a fluid membrane domain, instead of the compressed IM. The disappearance of the FM5-95 spot in the phase dark spore, suggests that this region might be a germination related functional membrane microdomain (Fig. 4C).

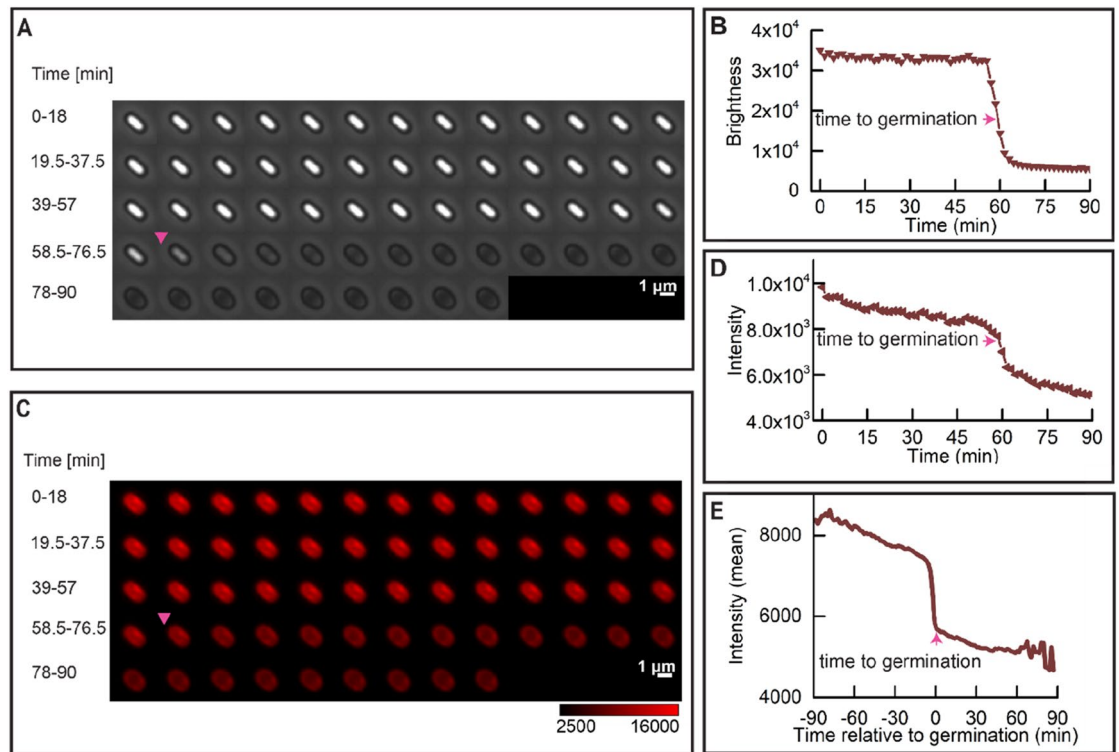


Figure 3. Dynamic behavior of the DiIC₁₂ stained wild-type spore IM during germination. Spore germination was triggered by (10 mM each) AGFK as described in “Materials and methods”. (A) Phase brightness of a PS832 (DiIC₁₂) spore; the magenta triangle denotes the ‘time to germination’. (B) The spore brightness profile corresponding to the images shown in panel (A). (C) The fluorescence time lapse images of the spore shown in panel (A). (D) The DiIC₁₂ stained IM intensity profile corresponding to images in panel (C); the magenta arrow indicates the ‘time to germination’. (E) Average of 170 synchronized single DiIC₁₂ spore fluorescence intensity traces. Synchronization defines t = 0 min as the ‘time to germination’. 289 spores were tracked by microscopy for 90 min, and 58.8% of them completed germination.

Response of SpoVAEa and probe stained IM to thermal treatments. Our previous work showed that heating *B. subtilis* spores at 40–65 °C promotes spore germination in a positive time/temperature dependent manner, higher heat temperatures resulted in both heat activation and heat damage, and eventually led to heat inactivation at 80 °C²⁰. The germination proteins and their surrounding IM are potential targets of the heat treatments. Here we studied whether heat treatments change the states of the spore’s, SpoVAEa and the IM after 5 h of heat treatment at 40–80 °C.

Significant drops of spore’s absorbance at the population (Figs. 5A, 7A,E) and refractive index at single spore level (Figs. 5C,E, 7C,G) were detected in spores treated at 80 °C, and in some cases also in 75 °C treated spores. Spores treated at 40–70 °C morphologically looked similar upon the microscopical examination. Hence, we only present images of 65, 75, and 80 °C heated spores as representative images (Figs. 6, 8). As shown in the phase contrast images (Figs. 6, 8), a subpopulation of phase-grey-like spores appeared in 80 °C treated groups. These phase-grey-like spores are potentially spores that have lost Ca²⁺-DPA, as reported previously^{28,29}.

Heat treatments at 40–80 °C led to a decrease of fluorescence intensity of coat defective PS4150 SpoVAEa-SGFP2 spores (Figs. 5F, 6D). However, we cannot exclude the possibility that the decreased SpoVAEa-SGFP2 spore fluorescence was caused by heat denaturation of SGFP2³⁰. This denaturation seems reversible at temperatures ≤ 65 °C, due to the fact that 65 °C treated PS832 SpoVAEa-SGFP2 spores still exhibited similar fluorescence profiles as untreated spores during spore germination (Figs. 2, S2). However, it is not clear how spores maintain functionally active channel proteins during the heat activation process. Clearly, a pH and thermal stable fluorescent reporter will be important for future spore related research^{31–33}. Notably, we tested the response of SpoVAEa-SGFP2 to heat in coat defective spores, because the change of SpoVAEa-SGFP2 fluorescence was masked by the enhanced green autofluorescence of the spore coat (Figs. 5, 6). The increase of autofluorescence had a positive correlation with the heat treatment temperature. We speculate the enhanced autofluorescence is likely related to coat protein denaturation, since studies showed that a lethal thermal treatment induced significant protein denaturation in *B. subtilis*, *B. cereus*, and *B. megaterium* spores^{28,29}, but there could also be reorganization of coat surface proteins. Indeed, the observed increased autofluorescence in PS4510 spores treated at 80 °C is considered due to the response of either the residual outer coat or the inner coat layers to heat (Fig. 6C).

Compared to the untreated (ut) DiIC₁₂ labeled spores, spores heated at 40–80 °C exhibited slightly decreased fluorescence intensity (Figs. 7B,D, 8A). However, no correlation was detected between the drop of the phase contrast image brightness and changes in DiIC₁₂ fluorescence (Table S2). In contrast, FM5-95 stained spores showed a continuous fluorescence decrease upon treatment at 70, 75, and 80 °C (Figs. 7F,H, 8B). The FM5-95

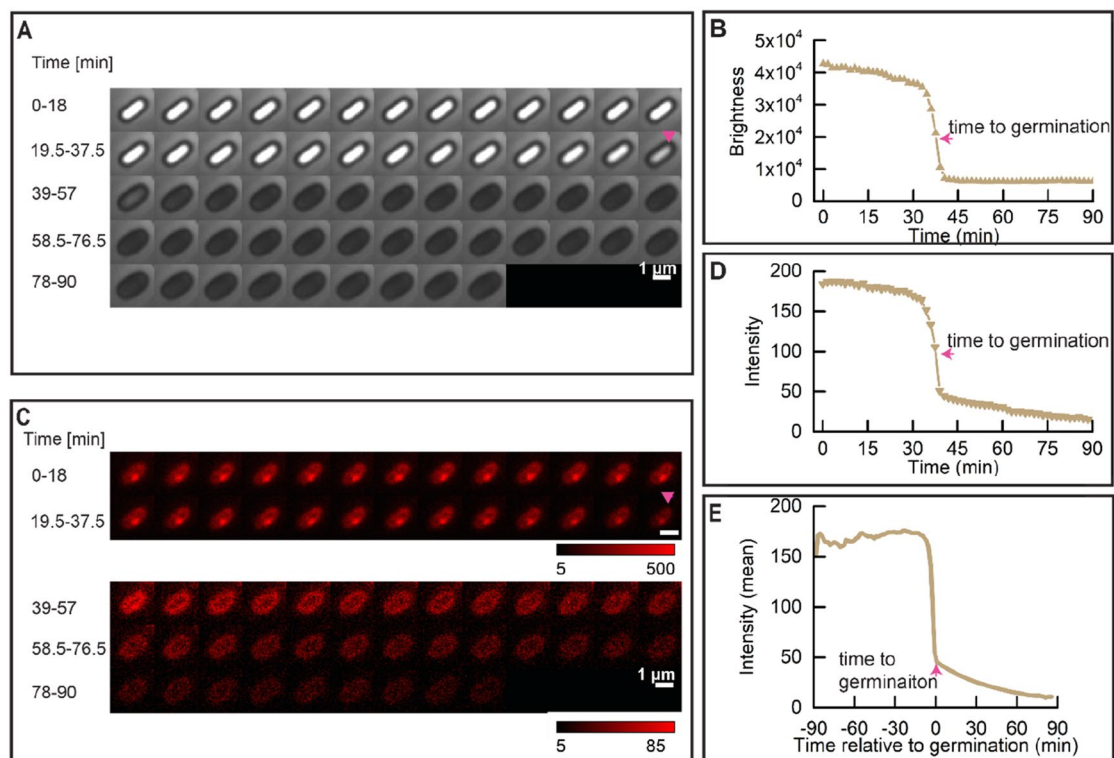


Figure 4. Dynamic behavior of the FM5-95 stained IM during wild-type spore germination. Spore germination was triggered by (10 mM each) AGFK as described in “Materials and methods”. (A) Phase brightness of a PS832 (FM5-95) spore; the magenta arrow denotes the ‘time to germination’. (B) The spore brightness profile corresponding to the images shown in panel (A). (C) The fluorescence time lapse images of the same spore shown in panel (A). (D) The FM5-95 stained IM intensity profile corresponding to images in the panel (C); the magenta arrow indicates the ‘time to germination’. (E) Average of 277 synchronized single FM5-95 spore fluorescence intensity traces. Synchronization defines $t=0$ min as the ‘time to germination’. 369 spores were tracked by microscopy for 90 min, and 75.1% of them completed germination.

fluorescence had a positive correlation with the spore brightness of 70 and 75 °C heated spores (Table S2), Pearson correlation coefficients of 0.54 and 0.76, respectively, and it was minimal in spores heated at 80 °C. As mentioned above, we speculate that spores with decreased brightness are potentially spores that have lost Ca^{2+} -DPA. Hence, the decrease of FM5-95 intensity presumably correlated with the release of Ca^{2+} -DPA, and the subsequent physiological state changes in spores.

Discussion

Our work shows that at least one SpoVA subunit SpoVAEa, clustered in the IM as a spot undergoing high frequency movement in dormant *B. subtilis* spores. A germination related microdomain with higher fluidity was also observed in the spore IM. The rapid phase darkening of IM labeled spores, caused by the rapid release of Ca^{2+} -DPA and by cortex hydrolysis, is accompanied by the loss of fluorescence in the IM, the disappearance of the IM fluid microdomain, and an increase in SpoVAEa-SGFP2 fluorescence intensity. Heat treatment at 65–80 °C resulted in a temperature dependent increase in green autofluorescence, potentially caused by the degradation of coat proteins. Dormant spores heat treated at 80 °C have a sub-population of phase-grey-like spores.

As mentioned above, a FM5-95 stained microdomain was observed in dormant spores, and this domain disappeared upon the appearance of the phase dark germinated spore. In addition, the microdomain likely has higher fluidity compared to the rest of the IM, and remains in a confined location in the IM before dispersing upon germination. This immobile behavior is likely in line with the ‘germinosome’ spot, in which GRs and their scaffold protein GerD are clustered together and are immobile¹⁷. In addition, our previous work showed that following spore germination the ‘germinosome’ agglomerates and diffuses in the same location of the IM, and gradually disperses^{15,18}. Hence, there is a potential link between the germinosome and the fluid microdomain. To better understand this germination related membrane domain, efforts can take aim at answering the following questions. (1) Is the ‘germinosome’ spot truly located in the microdomain? (2) Does GerD have a function in recruiting the specific disordered lipids into this microdomain, as it does play such a role in maintaining the ‘germinosome’ spot? (3) When and how does the fluid microdomain form during sporulation?

Except for the microdomain in the IM, the spore IM itself still remains mysterious. Our current work, as well as previous publications showed that there is an expansion of the IM surrounded area and a reduced staining by lipid dyes in the IM during germination¹⁹. Notably, it has long been known that this dramatic increase of the

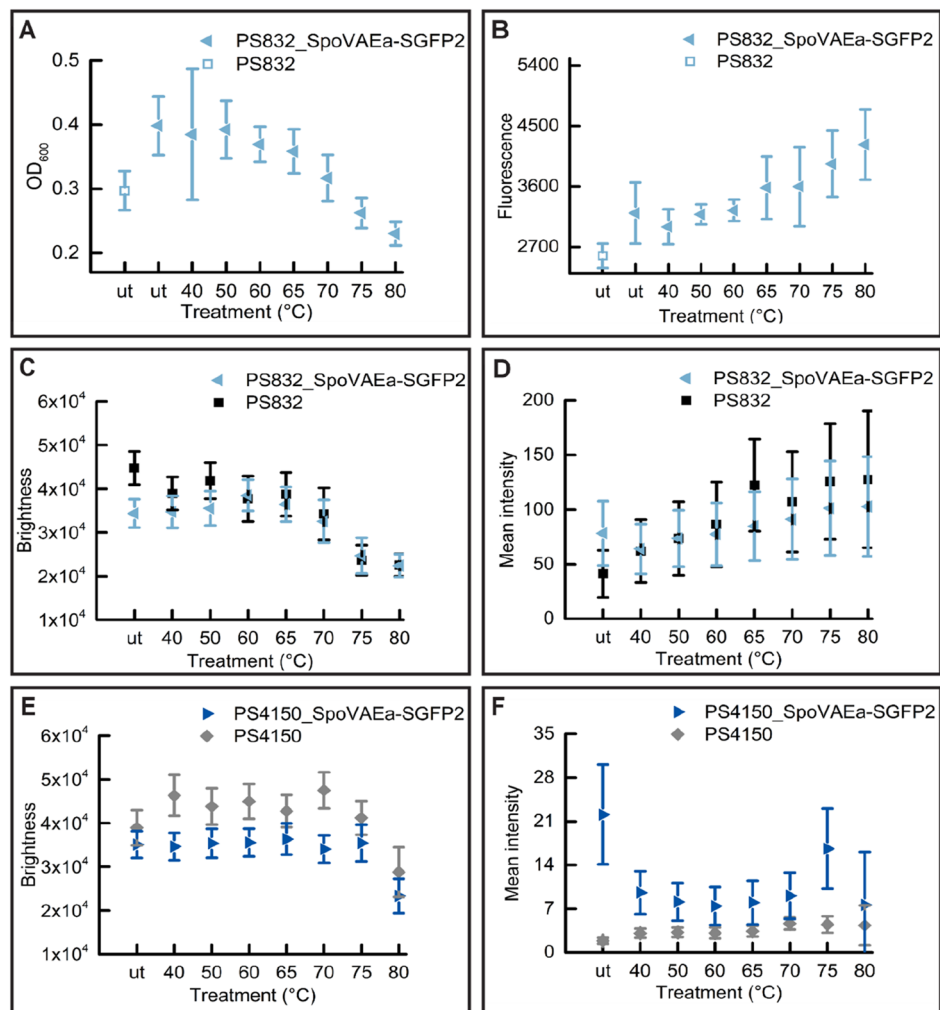


Figure 5. Changes in SpoVAEa-SGFP2 dormant spore refractility and fluorescence intensity at population and single spore levels after 5 h of heat treatment at various temperatures. **(A)** The change in OD at 600 nm of a PS832 SpoVAEa-SGFP2 dormant spore population measured by a plate reader. Untreated PS832 spores were used as control. **(B)** The corresponding fluorescence intensity of spores in panel (A). **(C)** The change of brightness of PS832 SpoVAEa-SGFP2 dormant spores at the single spore level measured by phase contrast microscopy. Here, PS832 spores with different heat treatments were employed as controls and ≥ 444 spores were examined in each group. **(D)** The corresponding intensity of spores in panel (C) measured by widefield microscopy. **(E)** The brightness of PS4150 SpoVAEa-SGFP2 dormant spores at the single spore level. Here, PS4150 spores with different treatments were employed as control and ≥ 937 spores were examined in each group. **(F)** The corresponding fluorescence intensity of spores in panel (E). The number of spores detected by microscopy is presented in Table S1.

IM surrounded area takes place without new lipid synthesis, and a recent electron microscopy study revealed an intracellular membrane structure in dormant spores below the IM^{19,34}. This membrane structure, which contains at least one SpoVA protein, disappears upon spore core hydration, most likely due to integration with the IM³⁴. The integration of the IM lipids during germination might have a role in the decline of the dye staining in the IM. A technique with better temporal and spatial resolution might reveal the specifics of the integration. Current work showed that SpoVAEa clusters in the IM as a spot, and is capable of moving in the ‘gel state’ IM randomly with high frequency. This movement of the SpoVAEa spot might facilitate a physical interaction with both the immobile GR spots as well as the entire SpoVA protein channel, and thus communicate signals from the germinosome to the SpoVA CaDPA release channel. However, it is not clear how the SpoVA channel proteins interact with GRs, nor whether this interaction requires the integration of all SpoVA proteins either in the spot or dissociated in the IM, or even from the intracellular membrane structure. In addition, SpoVA channel proteins, synthesized in the developing forespores, are also crucial for import of Ca²⁺-DPA during sporulation^{6,35}. Revealing the mechanism of SpoVA spot formation in the forespore will contribute to the knowledge of both Ca²⁺-DPA uptake and release processes, as well as perhaps to an understanding of signal transduction between the germinosome and SpoVA channels.

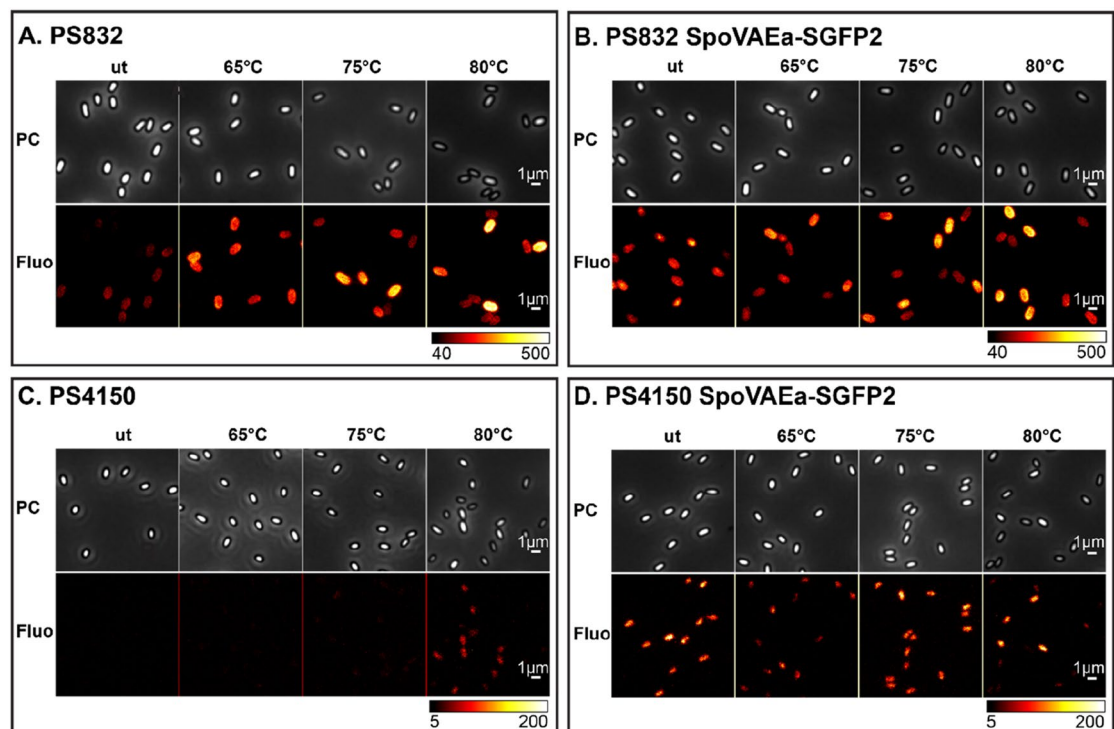


Figure 6. The effect of 5 h of heat-treatment on PS832 SpoVAEa-SGFP2 spores. The phase contrast (PC) and widefield fluorescence (Fluo) images of spores of wild type strain PS832 (A), PS832 SpoVAEa-SGFP2 (B), PS4150 (C), and PS4150 SpoVAEa-SGFP2 (D) after different heat treatments. (A,B) are the images corresponding to Fig. 5C,D. (B,C) are the images corresponding to Fig. 5E,F. The fluorescent image intensity display range for each strain is the same.

We also made efforts to check the response of SpoVAEa-SGFP2 and the dye stained IM to heat treatments, which induced either heat activation or heat inactivation to spores. The thermal inactivation resulted in the appearance of phase-grey-like spores. However, no clear changes were observed in spores treated at heat activation temperatures (40–65 °C). Interestingly, the green autofluorescence, related to the proteinaceous coat, increased with the elevated heat temperatures. We speculate this phenomenon likely relates to coat protein denaturation. Studying spore proteins' thermal stability profile on the proteome scale might provide a way to understand heat activation and inactivation at the molecular level.

Materials and methods

Bacterial strains, and culture conditions. *B. subtilis* PS832 is a prototrophic 168 laboratory strain. Strain PS4150 is derived from PS832, carries *cotE* and *gerE* deletion mutations and is a coat defective mutant with greatly reduced coat autofluorescence²³. Strains PS832 SpoVAEa-SGFP2 and PS4150 SpoVAEa-SGFP2 were derived from PS832 and PS4150, respectively. These two strains contain a SpoVAEa-C-terminal SGFP2 fusion, integrated at the *spoVAEa* locus, and expressed under the control of the *spoVA* operon's promoter essentially as previously described for the germinant receptor GerKB-SGFP2^{18,36}. In short, primers were designed to separately amplify *spoVAEa*-GCAGGT *sGFP2* and *kanR*. Then by overlap extension PCR the construct *spoVAEa*-GCAGGT-*sGFP2*-*kanR* was amplified. The full construct was then ligated into a T-vector to create pFLXS *spoVAEa*-GCAGGT-*sGFP2*-*kanR*. The GCAGGT triplets encode alanine-glycine which we used as a short linker between *spoVAEa* and the fluorescent reporter protein. The resulting vector was propagated in *E. coli* XL-1 and transformed by selection for Km^r into *B. subtilis* PS832 and PS4150 for genomic integration at the *spoVAEa* locus by a single cross-over event. The latter was confirmed by sequencing of the region. Note that the integration event will separate the *spoVAEa*-SGFP2 locus from the intact *spoVAEa* *spoVAF* genes by the plasmid sequence as well as the *kanR* gene, almost certainly eliminating the expression of these two genes in developing spores. Spores of all strains were prepared in 2 × SG sporulation medium at 37 °C as described previously³⁷. If required, the fluorescent dyes DiI_{C12} (1 µg/ml, ThermoFisher) or FM5-95 (2 µg/mL, ThermoFisher) were added to the sporulating culture, when it reached the peak optical density at 600 nm (OD₆₀₀). Spores were harvested and purified, including centrifugation through Histodenz as described previously¹⁶. Spores (OD₆₀₀ ~ 60, in MilliQ water) used in the current work had ≥ 98% dormant spores, and were essentially free of germinated spores, cells or cell debris as verified by phase contrast microscopy.

Measuring the fluorescence of SpoVAEa-SGFP2 and the dye stained IM in heated spore populations. Spores (OD₆₀₀ = ~ 1, in MilliQ water) were heated for 5 h at 40, 50, 60, 65, 70, 75 or 80 °C, followed by cooling in a water–ice bath (≥ 15 min). Spores (OD₆₀₀ = ~ 1, 150 µl/well) were added to a 96-well flat-bottomed

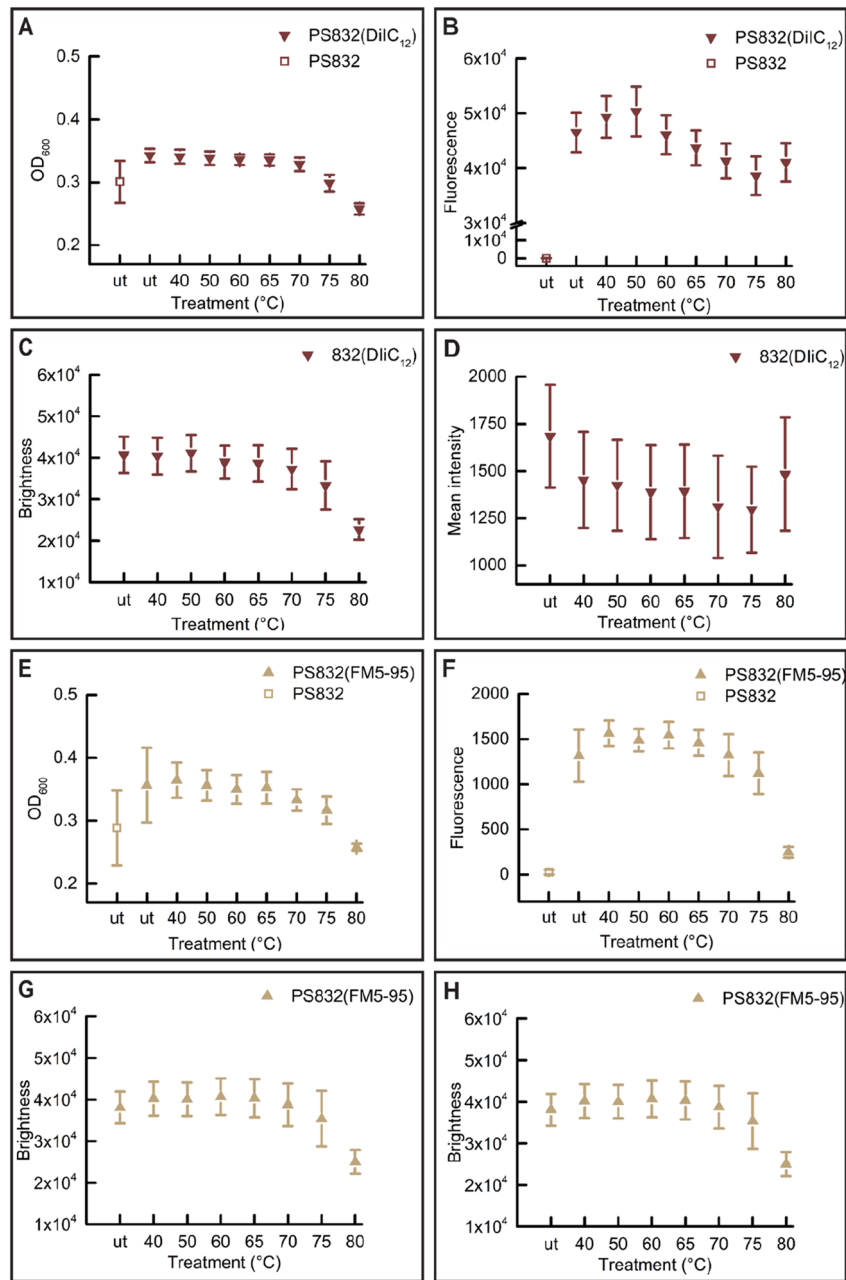


Figure 7. The change of lipid probe stained dormant spore refractility and fluorescence intensity at population and single spore levels after 5 h of treatment at various temperatures. **(A)** The change in OD_{600} of PS832 ($DiIC_{12}$) dormant spore populations measured by a plate reader. Untreated PS832 spores were used as control. **(B)** The corresponding fluorescence intensity of spores in panel **(A)**. **(C)** The change of individual PS832 ($DiIC_{12}$) spores' brightness measured by a phase contrast microscopy ≥ 612 spores were examined in each group. **(D)** The corresponding fluorescence intensity of spores in panel **(C)**. **(E)** The brightness of individual PS832 (FM5-95) dormant spores ≥ 932 spores were examined in each group. **(F)** The corresponding fluorescence intensity of spores in panel **(E)**. The numbers of individual spores examined by microscopy are given in Table S2.

microtiter plate (black wall, Greiner Bio-One), and the optical density and fluorescence intensity were measured by a BioTek plate reader. Data were collected from at least two independent tests, each of them had three biological repeats.

Imaging and image analysis. In current work, two microscopes were employed for imaging. The wide-field microscope had a Nikon Ti Microscope, a NA1.45 plan Apo λ 100 \times Oil Ph3 DM objective, and the rescan confocal microscope was equipped with a Nikon Ti Microscope and a NA1.49 SR Apo TIRF 100 \times objective. Spores were stabilized on a 1.5% agarose pad sealed in an air containing chamber as described previously³⁸. If

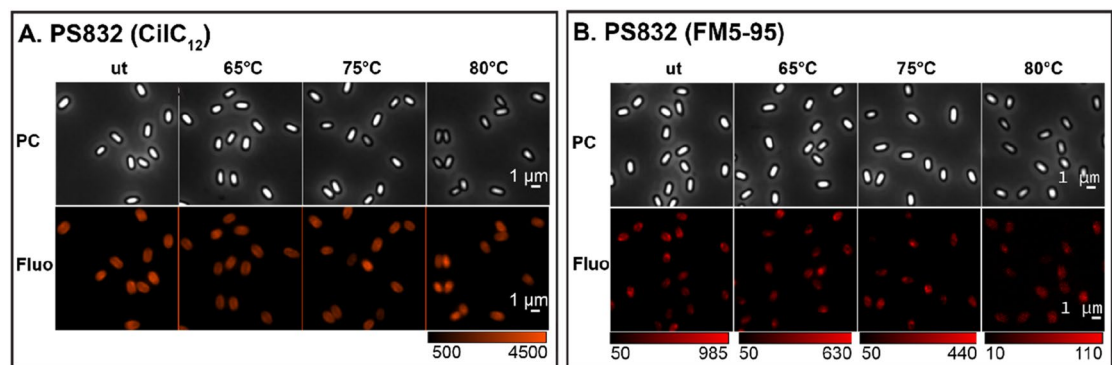


Figure 8. The effect of 5 h of heat-treatment on the fluorescence intensity of IM probe stained spores. The phase contrast (PC) and widefield fluorescence (Fluo) images of wild type PS832 spores stained by DiIC₁₂ (A), and FM5-95 (B) after different heat treatments: (A) images corresponding to Fig. 7C,D; and (B) images corresponding to Fig. 7G,H. The fluorescence images displayed for DiIC₁₂ spores are all in the same range, whereas, the FM5-95 fluorescence images displayed are in different ranges due to the big decline in brightness at higher temperatures.

necessary, spores were heated for 5 h at 40, 50, 60, 65, 70, 75 and 80 °C, followed by cooling in a water–ice bath (≥ 15 min). In case of tracking spores' germination, HEPES buffer (25 mM) supplemented with AGFK (L-asparagine, glucose, fructose, and potassium chloride, 10 mM each) were provided in the agarose pad. The time lapse images were captured once every 1.5 min for 90 min.

Time lapse images were analyzed by the ImageJ macro SporeTrackerB_06k³⁹. In brief, spores were detected and marked in the first-time frame of the phase contrast images. For each spore, a phase contrast and a fluorescence montage stack were created to present the phase contrast brightness history, and the fluorescent dynamics of this spore (Fig. 2A,C). The phase contrast brightness profile and fluorescent profile of the spore were detected and stored by SporeTrackerB_06k for display and further analysis (Fig. 2B,D). Subsequently, the time of start ($T_{\text{RapidRelease}}$) and ($T_{\text{PhaseDark}}$) end of the rapid decline in the brightness profile were detected, and further the 'time to germination' was calculated for presenting the averaged fluorescence profile in the population (Fig. 2E)²². Here, the 'time to germination' = $1/2 \times (T_{\text{RapidRelease}} + T_{\text{PhaseDark}})$. In order to present the fluorescent profile of the population, each spore's fluorescence profile was synchronized by defining $t = 0$ min as the 'time to germination'. Eventually, averaged fluorescence traces vs time relative to germination were created to show the fluorescence profile in the population (Fig. 2F). Two channel images (phase contrast and fluorescent image) with single time frames were analyzed by ImageJ macro SporeAnalyzer. Spores were detected and marked in the phase contrast channel, followed by the detection of spore brightness and fluorescence intensity of each spore. Both macro runs in the background of ImageJ plugin ObjectJ.

Western blot analysis. *B. subtilis* PS832 SpoVAEa-SGFP2 spores were heat activated for 30 min at 70 °C, followed by cooling in a water–ice bath (≥ 15 min). Subsequently, spore germination (OD₆₀₀ = ~30, 100 μ l) was triggered by L-asparagine, glucose, fructose, and potassium chloride, 10 mM each (AGFK) in 5 ml MOPS medium. Spores were collected after incubation at 37 °C for 0, 15, 30, and 60 min with continuous rotation at 200 rpm. Spore lysates were obtained by the procedure of Troiano et al.¹⁵. Proteins from equal aliquots of the same amounts of spores were run on a Tricine-SDS-PAGE gel, and probed with rabbit polyclonal anti-GFP antibody (Abcam) and HRP-conjugated goat anti-rabbit IgG H&L (Abcam) on a PDVDF membrane⁴⁰.

Received: 1 February 2022; Accepted: 17 March 2022

Published online: 23 March 2022

References

- Lopez, D., Vlamakis, H. & Kolter, R. Generation of multiple cell types in *Bacillus subtilis*. *FEMS Microbiol. Rev.* **33**, 152–163 (2009).
- Setlow, P., Wang, S. & Li, Y.-Q. Germination of spores of the orders Bacillales and Clostridiales. *Annu. Rev. Microbiol.* **71**, 459–477 (2017).
- Zheng, L. et al. *Bacillus subtilis* spore inner membrane proteome. *J. Proteome. Res.* **15**, 585–594 (2016).
- Korza, G. & Setlow, P. Topology and accessibility of germination proteins in the *Bacillus subtilis* spore inner membrane. *J. Bacteriol.* **195**, 1484–1491 (2013).
- Francis, M.B. & Sorg, J.A. Dipicolinic acid release by germinating spores occurs through a mechanosensing mechanism. *mSphere*. **1**, e00306–16 (2016).
- Perez-Valdespino, A. et al. Function of the SpoVAEa and SpoVAF proteins of *Bacillus subtilis* spores. *J. Bacteriol.* **196**, 2077–2088 (2014).
- Vepachedu, V. R. & Setlow, P. Localization of SpoVAD to the inner membrane of spores of *Bacillus subtilis*. *J. Bacteriol.* **87**, 5677–5682 (2005).
- Vepachedu, V. R. & Setlow, P. Role of SpoVA proteins in release of dipicolinic acid during germination of *Bacillus subtilis* spores triggered by dodecylamine or lysozyme. *J. Bacteriol.* **189**, 1565–1572 (2007).

9. Fort, P. & Errington, J. Nucleotide sequence and complementation analysis of a polycistronic sporulation operon, spoVA *Bacillus subtilis*. *J. Gen. Microbiol.* **131**, 1091–1105 (1985).
10. Wang, G., Yi, X., Li, Y.-Q. & Setlow, P. Germination of individual *Bacillus subtilis* spores with alterations in the GerD and SpoVA proteins, which are important in spore germination. *J. Bacteriol.* **193**, 2301–2311 (2011).
11. Velázquez, J., Schuurman-Wolters, G., Birkner, J. P., Abee, T. & Poolman, B. *Bacillus subtilis* spore protein SpoVAC functions as a mechanosensitive channel. *Mol. Microbiol.* **92**, 813–823 (2014).
12. Vepachedu, V. R. & Setlow, P. Analysis of interactions between nutrient germinant receptors and SpoVA proteins of *Bacillus subtilis* spores. *FEMS Microbiol. Lett.* **274**, 42–47 (2007).
13. Stewart, K.-A.V. & Setlow, P. Numbers of individual nutrient germinant receptors and other germination proteins in spores of *Bacillus subtilis*. *J. Bacteriol.* **195**, 3575–3582 (2013).
14. Wang, Y., de Boer, R., Vischer, N., van Haastrecht, P., Setlow, P. & et al. Visualization of germination proteins in putative *Bacillus cereus* germinosomes. *Int. J. Mol. Sci.* **21**, 5198 (2020).
15. Troiano, A. J. Jr., Zhang, J., Cowan, A. E., Yu, J. & Setlow, P. Analysis of the dynamics of a *Bacillus subtilis* spore germination protein complex during spore germination and outgrowth. *J. Bacteriol.* **197**, 252–261 (2015).
16. Wen, J., Pasman, R., Manders, E.M.M., Setlow, P. & Brul, S. Visualization of germinosomes and the inner membrane in *Bacillus subtilis* spores. *J. Vis. Exp.* e59388. (2019).
17. Griffiths, K. K., Zhang, J., Cowan, A. E., Yu, J. & Setlow, P. Germination proteins in the inner membrane of dormant *Bacillus subtilis* spores colocalize in a discrete cluster. *Mol. Microbiol.* **81**, 1061–1077 (2011).
18. Breedijk, R. M. P. *et al.* A live-cell super-resolution technique demonstrated by imaging germinosomes in wild-type bacterial spores. *Sci. Rep.* **10**, 5312 (2020).
19. Cowan, A.E., Olivastro, E.M., Koppel, D.E., Loshon, C.A., Setlow, B. *et al.* Lipids in the inner membrane of dormant spores of *Bacillus* species are largely immobile. *Proc. Natl. Acad. Sci.* **101**, 7733–7738 (2004).
20. Wen, J., Smelt, J.P.P.M., Vischer, N.O.E., de Vos, A.L. *et al.* Heat activation and inactivation of bacterial spores. Is there an overlap? *Appl. Environ. Microbiol.* (2022); in press.
21. De Luca, G. M. R. *et al.* Re-scan confocal microscopy: scanning twice for better resolution. *Biomed. Opt. Express.* **4**, 2644–2656 (2013).
22. Magge, A., Setlow, B., Cowan, A. E. & Setlow, P. Analysis of dye binding by and membrane potential in spores of *Bacillus* species. *J. Appl. Microbiol.* **106**, 814–824 (2009).
23. Ghosh, S. *et al.* Characterization of spores of *Bacillus subtilis* that lack most coat layers. *J. Bacteriol.* **190**, 6741–6748 (2008).
24. Loison, P. *et al.* Direct investigation of viscosity of an atypical inner membrane of *Bacillus* spores: a molecular rotor/FLIM study. *Biochim. Biophys. Acta.* **1828**, 2436–2443 (2013).
25. Wang, S., Setlow, P. & Li, Y.-Q. Slow leakage of Ca-dipicolinic acid from individual *Bacillus* spores during initiation of spore germination. *J. Bacteriol.* **197**, 1095–1103 (2015).
26. van Beilen, J. W. A. & Brul, S. Compartment-specific pH monitoring in *Bacillus subtilis* using fluorescent sensor proteins: a tool to analyze the antibacterial effect of weak organic acids. *Front. Microbiol.* **4**, 157 (2013).
27. Setlow, B. & Setlow, P. Measurements of the pH within dormant and germinated bacterial spores. *Proc. Natl. Acad. Sci.* **77**, 2474–2476 (1980).
28. Coleman, W. H., Chen, D., Li, Y.-Q., Cowan, A. E. & Setlow, P. How moist heat kills spores of *Bacillus subtilis*. *J. Bacteriol.* **189**, 8458–8466 (2007).
29. Coleman, W. H., Zhang, P., Li, Y.-Q. & Setlow, P. Mechanism of killing of spores of *Bacillus cereus* and *Bacillus megaterium* by wet heat. *Letts. Appl. Microbiol.* **50**, 507–514 (2010).
30. Alkaabi, K. M., Yafea, A. & Ashraf, S. S. Effect of pH on thermal- and chemical-induced denaturation of GFP. *Appl. Biochem. Biotechnol.* **126**, 149–156 (2005).
31. Cava, F. *et al.* Expression and use of superfolder green fluorescent protein at high temperatures in vivo: a tool to study extreme thermophile biology. *Environ. Microbiol.* **10**, 605–613 (2008).
32. Frenzel, E., Legebeke, J., van Stralen, A., van Kranenburg, R. & Kuipers, O. P. In vivo selection of sfGFP variants with improved and reliable functionality in industrially important thermophilic bacteria. *Biotechnol. Biofuels.* **11**, 1–19 (2018).
33. Doherty, G. P., Bailey, K. & Lewis, P. J. Stage-specific fluorescence intensity of GFP and mCherry during sporulation in *Bacillus subtilis*. *BMC Res. Notes.* **3**, 303 (2010).
34. Laue, M., Han, H.-M., Dittmann, C. & Setlow, P. Intracellular membranes of bacterial endospores are reservoirs for spore core membrane expansion during spore germination. *Sci. Rep.* **8**, 11388 (2018).
35. Ramírez-Guadiana, F.H., Meeske, A.J., Rodrigues, C.D.A., Barajas-Ornelas, R.D.C., Kruse, A.C. & et al. A two-step transport pathway allows the mother cell to nurture the developing spore in *Bacillus subtilis*. *PLoS Genet.* **13**, e1007015 (2017).
36. Kremers, G.-J., Goedhart, J., van den Heuvel, D.J., Gerritsen, H.C. & Gadella, T.W.J. Jr. Improved green and blue fluorescent proteins for expression in bacteria and mammalian cells. *Biochemistry.* **46**, 3775–3783 (2007).
37. Abhyankar, W. R. *et al.* The influence of sporulation conditions on the spore coat protein composition of *Bacillus subtilis* spores. *Front. Microbiol.* **7**, 1636 (2016).
38. Pandey, R., Ter Beek, A., Vischer, N.O.E., Smelt, J.P.P.M., Brul, S. *et al.* Live cell imaging of germination and outgrowth of individual *Bacillus subtilis* spores; the effect of heat stress quantitatively analyzed with SporeTracker. *PLoS One.* **8**, e58972 (2013).
39. Omaidien, S. *et al.* Evaluating novel synthetic compounds active against *Bacillus subtilis* and *Bacillus cereus* spores using Live imaging with SporeTrackerX. *Sci. Rep.* **8**, 9128 (2018).
40. Schägger, H. Tricine-SDS-PAGE. *Nat. Protoc.* **1**, 16–22 (2006).

Acknowledgements

We thank the Van Leeuwenhoek Centre for Advanced Microscopy (LCAM) at the University of Amsterdam for the use of the widefield microscope, and the Confocal.nl for the use of the RCM microscope. We thank Ronald Breedijk from LCAM for the assistance for imaging. We thank Jeroen Kole from Confocal.nl for the RCM imaging. Juan Wen acknowledges the China Scholarship Council for a PhD fellowship.

Author contributions

J.W. (data analysis and interpretation, manuscript writing), N.O.E.V. (image analysis), A.D.V. (data analysis and interpretation), E.M.M.M. (RCM microscopy), P.S. (data interpretation and manuscript editing) and S.B. (data analysis, manuscript interpretation, editing and project supervision).

Funding

This article was funded by China Scholarship Council, Universiteit van Amsterdam, Confocal.nl, UConnHealth.

Competing interests

The authors declare no competing interests.

Additional information

Supplementary Information The online version contains supplementary material available at <https://doi.org/10.1038/s41598-022-09147-3>.

Correspondence and requests for materials should be addressed to S.B.

Reprints and permissions information is available at www.nature.com/reprints.

Publisher's note Springer Nature remains neutral with regard to jurisdictional claims in published maps and institutional affiliations.



Open Access This article is licensed under a Creative Commons Attribution 4.0 International License, which permits use, sharing, adaptation, distribution and reproduction in any medium or format, as long as you give appropriate credit to the original author(s) and the source, provide a link to the Creative Commons licence, and indicate if changes were made. The images or other third party material in this article are included in the article's Creative Commons licence, unless indicated otherwise in a credit line to the material. If material is not included in the article's Creative Commons licence and your intended use is not permitted by statutory regulation or exceeds the permitted use, you will need to obtain permission directly from the copyright holder. To view a copy of this licence, visit <http://creativecommons.org/licenses/by/4.0/>.

© The Author(s) 2022