



Article

Presence of β -Lactamase-producing Enterobacterales and *Salmonella* Isolates in Marine Mammals

Olivia M. Grünzweil ¹, Lauren Palmer ², Adriana Cabal ³, Michael P. Szostak ¹ , Werner Ruppitsch ³, Christian Kornschöber ⁴, Maciej Korus ⁵, Dusan Misić ⁵ , Tanja Bernreiter-Hofer ^{1,6}, Anna D. J. Korath ¹, Andrea T. Feßler ⁷, Franz Allerberger ³ , Stefan Schwarz ⁷ , Joachim Spergser ¹, Elke Müller ^{8,9}, Sascha D. Braun ^{8,9}, Stefan Monecke ^{8,9,10}, Ralf Ehrlich ^{8,9,11} , Chris Walzer ^{12,13} , Hrvoje Smodlaka ¹⁴ and Igor Lončarić ^{1,*}

- ¹ Institute of Microbiology, University of Veterinary Medicine, 1210 Vienna, Austria; 01245128@students.vetmeduni.ac.at (O.M.G.); michael.szostak@vetmeduni.ac.at (M.P.S.); tanja.bernreiter-hofer@vetmeduni.ac.at (T.B.-H.); koratha@staff.vetmeduni.ac.at (A.D.J.K.); joachim.spergser@vetmeduni.ac.at (J.S.)
- ² Marine Mammal Care Center, Los Angeles, CA 90731, USA; lpalmer@marinemammalcare.org
- ³ Austrian Agency for Health and Food Safety (AGES), Institute of Medical Microbiology and Hygiene, 1090 Vienna, Austria; adriana.cabal-rosel@ages.at (A.C.); werner.ruppitsch@ages.at (W.R.); franz.allerberger@ages.at (F.A.)
- ⁴ Austrian Agency for Health and Food Safety (AGES), National Reference Centre for Salmonella, 8010 Graz, Austria; christian.kornschober@ages.at
- ⁵ Department of Functional Food Products Development, Faculty of Biotechnology and Food Science, Wrocław University of Environmental and Life Sciences, 51-630 Wrocław, Poland; maciej.korus@upwr.edu.pl (M.K.); dusan.misic@upwr.edu.pl (D.M.)
- ⁶ Department for Farm Animals and Veterinary Public Health, University Clinic for Swine, University of Veterinary Medicine, 1210 Vienna, Austria
- ⁷ Centre for Infection Medicine, Department of Veterinary Medicine, Institute of Microbiology and Epizootics, Freie Universität Berlin, 14163 Berlin, Germany; andrea.fessler@fu-berlin.de (A.T.F.); stefan.schwarz@fu-berlin.de (S.S.)
- ⁸ Leibniz Institute of Photonic Technology (IPHT), 07745 Jena, Germany; elke.mueller@leibniz-ipht.de (E.M.); sascha.braun@leibniz-ipht.de (S.D.B.); stefan.monecke@leibniz-ipht.de (S.M.); ralf.ehrlich@leibniz-ipht.de (R.E.)
- ⁹ InfectoGnostics Research Campus, 07743 Jena, Germany
- ¹⁰ Institute for Medical Microbiology and Hygiene, Technical University of Dresden, 01307 Dresden, Germany
- ¹¹ Institute of Physical Chemistry, Friedrich Schiller University Jena, 07743 Jena, Germany
- ¹² Research Institute of Wildlife Ecology, University of Veterinary Medicine, 1160 Vienna, Austria; cwalzer@wcs.org
- ¹³ Health Program, Wildlife Conservation Society, Bronx, New York City, NY 10460, USA
- ¹⁴ College of Veterinary Medicine, Western University of Health Sciences, Pomona, CA 91766-1854, USA; hsmodlaka@westernu.edu
- * Correspondence: igor.loncaric@vetmeduni.ac.at; Tel.: +43-125-077-2115



Citation: Grünzweil, O.M.; Palmer, L.; Cabal, A.; Szostak, M.P.; Ruppitsch, W.; Kornschöber, C.; Korus, M.; Misić, D.; Bernreiter-Hofer, T.; Korath, A.D.J.; et al. Presence of β -Lactamase-producing Enterobacterales and *Salmonella* Isolates in Marine Mammals. *Int. J. Mol. Sci.* **2021**, *22*, 5905. <https://doi.org/10.3390/ijms22115905>

Academic Editor: Baltasar Mayo

Received: 30 April 2021

Accepted: 28 May 2021

Published: 31 May 2021

Publisher's Note: MDPI stays neutral with regard to jurisdictional claims in published maps and institutional affiliations.



Copyright: © 2021 by the authors. Licensee MDPI, Basel, Switzerland. This article is an open access article distributed under the terms and conditions of the Creative Commons Attribution (CC BY) license (<https://creativecommons.org/licenses/by/4.0/>).

Abstract: Marine mammals have been described as sentinels of the health of marine ecosystems. Therefore, the aim of this study was to investigate (i) the presence of extended-spectrum β -lactamase (ESBL)- and AmpC-producing Enterobacterales, which comprise several bacterial families important to the healthcare sector, as well as (ii) the presence of *Salmonella* in these coastal animals. The antimicrobial resistance pheno- and genotypes, as well as biocide susceptibility of Enterobacterales isolated from stranded marine mammals, were determined prior to their rehabilitation. All *E. coli* isolates ($n = 27$) were screened for virulence genes via DNA-based microarray, and twelve selected *E. coli* isolates were analyzed by whole-genome sequencing. Seventy-one percent of the Enterobacterales isolates exhibited a multidrug-resistant (MDR) pheno- and genotype. The gene *bla*_{CMY} ($n = 51$) was the predominant β -lactamase gene. In addition, *bla*_{TEM-1} ($n = 38$), *bla*_{SHV-33} ($n = 8$), *bla*_{CTX-M-15} ($n = 7$), *bla*_{OXA-1} ($n = 7$), *bla*_{SHV-11} ($n = 3$), and *bla*_{DHA-1} ($n = 2$) were detected. The most prevalent non- β -lactamase genes were *sul2* ($n = 38$), *strA* ($n = 34$), *strB* ($n = 34$), and *tet(A)* ($n = 34$). *Escherichia coli* isolates belonging to the pandemic sequence types (STs) ST38, ST167, and ST648 were identified. Among *Salmonella* isolates ($n = 18$), *S. Havana* was the most prevalent serotype. The present study

revealed a high prevalence of MDR bacteria and the presence of pandemic high-risk clones, both of which are indicators of anthropogenic antimicrobial pollution, in marine mammals.

Keywords: antimicrobial resistance; ESBL/AmpC; wildlife; *E. coli*; *K. pneumoniae*

1. Introduction

Antimicrobial resistance (AMR) in bacteria is an emerging public health concern worldwide. Particularly, AMR among Enterobacterales is globally widespread and constitutes a public health threat due to a high prevalence of multidrug-resistant (MDR) strains [1,2]. MDR Gram-negative bacteria may complicate antimicrobial therapy. In addition to resistance classification of bacteria (multidrug resistance (MDR), extensive drug resistance (XDR), and pandrug resistance (PDR)) in the last decade, several novel classification criteria that correlate well with clinical outcomes were introduced (e.g., difficult-to-treat resistance (DTR)). This additional classification criterion will lead to significant benefits in assessing the significance of bacterial resistance in therapeutics [3,4].

Extended-spectrum beta (β)-lactamases (ESBL) and AmpC β -lactamases (AmpC) are the most common enzymes imparting broad-spectrum cephalosporin resistance in Enterobacterales [5,6]. Many enterobacterial species, e.g., *Citrobacter* spp. and *Enterobacter* spp., harbor inducible chromosomally-encoded AmpC β -lactamases, whose production can be triggered by exposure to β -lactam antibiotics, especially strong inducers (benzylpenicillin, ampicillin, amoxicillin, and cephalosporins (cefazolin and cephalothin)) [6–8]. In contrast, β -lactamase (*bla*) genes of *Escherichia* (*E.*) *coli*, *Klebsiella* spp., and *Salmonella* spp. are mainly carried on mobile genetic elements, such as plasmids, which are considered to be primarily responsible for the rapid spread of β -lactam resistances among these Enterobacterales [6,8,9].

Despite the intensively studied occurrence of AMR in bacteria from humans and domestic animals, there is a lack of knowledge about the distribution of AMR among bacteria from marine mammals. The Northeastern Pacific Ocean is a rich habitat that sustains a massive amount of phytoplankton, zooplankton, krill, and fish, all of which support a diverse and abundant community of more than 30 species of marine mammals [10]. Previous observations indicate that the marine environment may act as a reservoir of antimicrobial resistance genes [11–14]. Different mechanisms can lead to the presence of antimicrobial-resistant bacteria in the oceans: first, anthropogenic antimicrobial-containing runoff, challenging native bacteria to become resistant; second, coastal runoff of already resistant bacteria from terrestrial sources; and third—although less important in this context—antimicrobial production by marine microorganisms [11,15].

Wildlife sampled in habitats impacted by livestock production, solid waste disposal, wastewater treatment, and other anthropogenic influences have been found to result in a higher prevalence of antimicrobial-resistant bacteria compared to less influenced habitats [16]. The global use of antimicrobial agents reaching the oceans via municipal sewage, commercial fish farms, and hospitals [17,18] is likely to increase AMR in bacteria from marine mammals and marine microbial communities [19]. It has been reported that wildlife, in general, might act as an indicator of the burden of resistance within a local environment and could help to identify sources of anthropogenic contamination with antimicrobial resistance determinants [16,20–22]. For these reasons, marine mammals, such as pinnipeds and dolphins residing in coastal waters, have been described as sentinels of the health of coastal marine ecosystems and, consequently, also the health of humans living in or visiting these areas [23–25]. Nevertheless, information on AMR in bacteria from marine mammals remains scarce [19,26–30].

The present study aimed to determine the occurrence and to characterize ESBL- and AmpC β -lactamase-producing Enterobacterales, including non-resistant *Salmonella* spp., in stranded marine mammals temporarily housed in the Marine Mammal Care Center

Los Angeles (MMCCLA), California. Included in this study were California sea lions (*Zalophus californianus*), northern fur seals (*Callorhinus ursinus*) and one Guadalupe fur seal (*Arctocephalus townsendi*) representing Otariid seals, northern elephant seals (*Mirounga angustirostris*) and harbor seals (*Phoca vitulina*) representing Phocid seals, and a long-beaked common dolphin (*Delphinus capensis*) and a pygmy sperm whale (*Kogia breviceps*) representing Cetaceans.

2. Results

2.1. β -Lactamase Producing Isolates, Species Identification and Phenotypic Resistance

Out of a total of 283 samples, 62 β -lactamase-producing Enterobacterales were obtained and identified as *E. coli* ($n = 27$), *Klebsiella* (*K.*) *pneumoniae* ($n = 12$), *Citrobacter* (*C.*) *freundii* complex and *C. koseri* (each $n = 9$), *Enterobacter* (*En.*) *cloacae* complex and *En. cancerogenus* (each $n = 1$), *Lelliottia* (*L.*) *amnigena* ($n = 2$), and *Proteus* (*P.*) *mirabilis* ($n = 1$). Most of them ($n = 51$) displayed an AmpC phenotype, whereas all *Citrobacter* and *Enterobacter* isolates were identified as stably de-repressed AmpC-producers. Five *E. coli* isolates (IDs 41, 68, 183, 209, and 234) displayed an ESBL phenotype, and two *E. coli* (IDs 21, 90) and the two *L. amnigena* isolates (IDs 130 and 132) displayed both AmpC and ESBL phenotypes (Tables 1 and 2).

In addition to β -lactam resistance, resistance to trimethoprim-sulfamethoxazole ($n = 47$; 75.81%), tetracycline ($n = 42$; 67.74%), chloramphenicol ($n = 32$; 51.61%), gentamicin ($n = 30$; 48.39%), tobramycin ($n = 25$; 40.32%), ciprofloxacin ($n = 12$; 19.35%), and fosfomycin ($n = 9$; 14.52%) were expressed by the enterobacterial isolates. Forty-four isolates exhibited a multidrug-resistant phenotype [31]. All of the isolates were susceptible to carbapenems.

Seventeen of the 18 *Salmonella* isolates obtained in this study were susceptible to all tested antimicrobial agents. One *Salmonella* isolate (ID 42 S.) displayed an AmpC phenotype, but no further resistance to non- β -lactam antibiotics was observed.

Biocide susceptibility testing revealed elevated minimal inhibitory concentration (MIC) values for chlorhexidine in 45 out of the 62 enterobacterial isolates (79%) and in all *Salmonella* isolates (18/18). MIC values for isopropanol were elevated in 23 Enterobacterales (31%) and two *Salmonella* isolates. One *Salmonella* isolate (ID 245 S.) exhibited an elevated MIC value for glutardialdehyde. For all but one isolate (ID 230b; MIC 0.000125%), the MICs of benzalkonium chloride ranged between 0.001% and 0.002% (Supplementary Table S1).

2.2. Characterization of Genotypic Resistance

Within the group of β -lactamase genes, *bla*_{CMY} ($n = 51$) was the most prevalent and was detected solely ($n = 13$) or together with *bla*_{CTX-M}, *bla*_{OXA}, *bla*_{SHV}, and/or *bla*_{TEM}. All sequenced *bla*_{CMY} genes were identified as *bla*_{CMY-2}, except one *E. coli* isolate (ID 171) harboring *bla*_{CMY-4}. Sequencing of *bla*_{CMY} was not carried out in intrinsically AmpC-producing Enterobacterales, such as *Citrobacter* spp. and *Enterobacter* spp. The gene *bla*_{TEM} was detected in 38 isolates—solely ($n = 1$) or together with *bla*_{CMY}, *bla*_{CTX-M}, *bla*_{OXA}, and/or *bla*_{SHV}. All *bla*_{TEM} genes were identified as *bla*_{TEM-1}. *bla*_{SHV} genes were detected in 13 different isolates. The broad-spectrum β -lactamase genes *bla*_{SHV-11} ($n = 3$) and *bla*_{SHV-33} ($n = 8$) were detected in 11 of the 12 *K. pneumoniae* isolates, together with *bla*_{TEM} and *bla*_{CMY} ($n = 8$) or together with *bla*_{TEM}, *bla*_{CMY}, and *bla*_{OXA} ($n = 3$). The ESBL gene *bla*_{SHV-12} ($n = 2$) was harbored by the two *L. amnigena* isolates (IDs 130, 132), which also carried the gene *bla*_{DHA-1}. The genes *bla*_{CTX-M-15} and *bla*_{OXA-1} were observed in seven isolates, respectively (Tables 1 and 2).

Table 1. Characterization of ESBL-/AmpC-producing *Escherichia (E.) coli* isolated from marine mammals.

Isolate	Animal ¹	Species	Phylo-Group	CH-Clonotype	ESBL/AmpC	Phenotype ²	Genotype	Virulence Genes	ampC-Promoter ³	QRDR GyrA ⁴	QRDR ParC ⁴
3	Zc	<i>E. coli</i>	B1	CH65-26	AmpC	AMP, AMC, PIP, CFZ		<i>fimH</i>	39	n.d.	n.d.
8/2	Zc	<i>E. coli</i>	A	CH65-26	AmpC	AMP, AMC, PIP, CFZ, CTX, CAZ	<i>bla</i> _{CMY-2}	<i>fimH</i>	39	n.d.	n.d.
11/1	Ma	<i>E. coli</i>	F	CH88-145	AmpC	AMP, AMC, PIP, CFZ	<i>bla</i> _{TEM-1} , <i>bla</i> _{CMY-2} , <i>sul2</i> , <i>dfrA1</i> , <i>aadA1</i> , <i>strA</i> , <i>strB</i>	<i>fimH</i> , <i>astA</i>	w.t.	n.d.	n.d.
17	Pv	<i>E. coli</i>	B2	CH103-212	AmpC	AMP, AMC, PIP, CFZ, FOF	<i>bla</i> _{CMY-2} , <i>dfrA14</i> , <i>dfrA19</i>	<i>fimH</i> , <i>cnf1</i> , <i>hlyA</i>	58	n.d.	n.d.
21	Zc	<i>E. coli</i>	B1	CH65-38	AmpC and ESBL	AMC, PIP, CFZ, CTX, CAZ, ATM, SXT, TET, CHL, GEN, TOB, CIP	<i>bla</i> _{CTX-M-15} , <i>bla</i> _{OXA-1} , <i>sul1</i> , <i>dfrA17</i> , <i>tet(B)</i> , <i>cmlA</i> , <i>aadA4</i> , <i>aadA5</i> , <i>aac(6')-Ib</i>	<i>fimH</i> , <i>iucD</i> , <i>papC</i>	39	Ser83Leu, Asp87Asn	Ser80Ile
41	Zc	<i>E. coli</i>	B1	CH29-31	ESBL	AMC, PIP, CFZ, CTX, CAZ, SXT	<i>bla</i> _{CTX-M-15} , <i>dfrA17</i> , <i>aadA4</i>	<i>fimH</i> , <i>astA</i>	n.a.	n.d.	n.d.
53/1	Zc	<i>E. coli</i>	E	CH148-25	AmpC	AMC, PIP, CFZ, CTX, CAZ, SXT, TET, CHL	<i>bla</i> _{TEM-1} , <i>bla</i> _{CMY-2} , <i>dfrA17</i> , <i>tet(B)</i> , <i>catA</i> , <i>strA</i> , <i>strB</i>	<i>fimH</i> , <i>iucD</i> , <i>papC</i> , <i>bfpA</i> , <i>cdtA</i> , <i>tcdAp2</i>	n.a.	n.d.	n.d.
90	Zc	<i>E. coli</i>	F	CH4-153	AmpC and ESBL	AMC, PIP, CFZ, CTX, CAZ, ATM, SXT	<i>bla</i> _{CTX-M-15} , <i>bla</i> _{CMY-2} , <i>sul2</i> , <i>dfrA14</i> , <i>strA</i> , <i>strB</i> , <i>qnrS</i>	<i>fimH</i>	n.a.	n.d.	n.d.
92	Zc	<i>E. coli</i>	E	CH148-25	AmpC	AMC, PIP, CFZ, CTX, CAZ, SXT, TET	<i>bla</i> _{TEM-1} , <i>bla</i> _{CMY-2} , <i>sul2</i> , <i>dfrA17</i> , <i>tet(B)</i> , <i>aadA4</i> , <i>strA</i> , <i>strB</i>	<i>fimH</i> , <i>iucD</i> , <i>papC</i>	w.t.	n.d.	n.d.
117	Zc	<i>E. coli</i>	B2	CH103-9	AmpC	AMC, PIP, CFZ, CTX, CAZ	<i>bla</i> _{CMY-2}	<i>fimH</i> , <i>cnf1</i>	n.a.	n.d.	n.d.
147a	Zc	<i>E. coli</i>	A	CH7-0	AmpC	AMC, PIP, CFZ, CTX, CAZ, ATM, TET	<i>bla</i> _{TEM-1} , <i>bla</i> _{CMY-2} , <i>dfrA5</i> , <i>tet(A)</i>	<i>fimH</i>	w.t.	n.d.	n.d.
147b	Zc	<i>E. coli</i>	B2	CH40-21	AmpC	AMC, PIP, CFZ, CTX, CAZ, SXT, TET, CHL, GEN, TOB	<i>bla</i> _{TEM-1} , <i>bla</i> _{CMY-2} , <i>sul1</i> , <i>sul2</i> , <i>dfrA1</i> , <i>tet(A)</i> , <i>catA</i> , <i>cmlA</i> , <i>floR</i> , <i>aadB</i> , <i>strA</i> , <i>strB</i>	<i>fimH</i> , <i>astA</i> , <i>cnf1</i>	w.t.	n.d.	n.d.
149a	Ma	<i>E. coli</i>	A	CH7-0	AmpC	AMC, PIP, CFZ, CTX, CAZ, ATM, TET	<i>bla</i> _{TEM-1} , <i>bla</i> _{CMY-2} , <i>tet(A)</i>	<i>fimH</i>	n.a.	n.d.	n.d.

Table 1. Cont.

Isolate	Animal ¹	Species	Phylo-Group	CH-Clonotype	ESBL/AmpC	Phenotype ²	Genotype	Virulence Genes	ampC-Promoter ³	QRDR GyrA ⁴	QRDR ParC ⁴
156	Zc	<i>E. coli</i>	A	CH11-0	AmpC	AMC, CFZ, CTX, CAZ, SXT, TET, CIP	<i>bla</i> _{CMY-2} , <i>sul1</i> , <i>dfrA17</i> , <i>tet(B)</i> , <i>aadA4</i>	<i>fimH</i> , <i>astA</i> , <i>iucD</i> , <i>papC</i>	w.t.	Ser83Leu, Asp87Asn	Ser80Ile
158	Zc	<i>E. coli</i>	E	CH148-25	AmpC	AMC, PIP, CFZ, CTX, CAZ, ATM, SXT, TET, CHL	<i>bla</i> _{TEM-1} , <i>bla</i> _{CMY-2} , <i>sul2</i> , <i>dfrA17</i> , <i>tet(B)</i> , <i>catA</i> , <i>aadA4</i> , <i>strA</i> , <i>strB</i>	<i>fimH</i> , <i>iucD</i> , <i>papC</i>	w.t.	n.d.	n.d.

¹ Abbreviations: Ma, *Mirounga angustirostris*; Pv, *Phoca vitulina*; Zc, *Zalophus californianus*. ² Abbreviations: AMC, amoxicillin/clavulanate; ATM, aztreonam; CAZ, ceftazidime; CHL, chloramphenicol; CIP, ciprofloxacin; CFZ, cefazolin; CTX, cefotaxime; FOF, fosfomicin; FOX, cefoxitin; GEN, gentamicin; PIP, piperacillin; SXT, trimethoprim/sulfamethoxazole; TET, tetracycline; TOB, tobramycin. ³ n.a., not amplifiable; w.t., wild type. ⁴ QRDR, quinolone resistance-determining region; n.d., not done.

Table 2. Characterization of ESBL-/AmpC-producing Enterobacterales, other than *E. coli*, isolated from marine mammals.

Isolate	Animal ¹	Species ²	ST (<i>Klebsiella</i>) ³	ESBL/AmpC	Phenotype ⁴	Genotype	QRDR GyrA ⁵	QRDR ParC ⁵
8/1	Zc	<i>K. pneumoniae</i>	466	AmpC	AMC, PIP, CFZ, CTX, CAZ, SXT, TET, CHL, GEN, TOB, FOF, NIT	<i>bla</i> _{SHV-33} , <i>bla</i> _{TEM-1} , <i>bla</i> _{CMY-2} , <i>sul1</i> , <i>sul2</i> , <i>dfrA1</i> , <i>tet(A)</i> , <i>catA</i> , <i>cmlA</i> , <i>floR</i> , <i>aadB</i> , <i>strA</i> , <i>strB</i>	n.d.	n.d.
10	Zc	<i>K. pneumoniae</i>	466	AmpC	AMC, PIP, CFZ, CTX, CAZ, SXT, TET, CHL, GEN, TOB, FOF, NIT	<i>bla</i> _{SHV-33} , <i>bla</i> _{TEM-1} , <i>bla</i> _{CMY-2} , <i>sul1</i> , <i>sul2</i> , <i>dfrA1</i> , <i>tet(A)</i> , <i>catA</i> , <i>cmlA</i> , <i>floR</i> , <i>aadB</i> , <i>strA</i> , <i>strB</i>	n.d.	n.d.
11/2	Ma	<i>K. pneumoniae</i>	466	AmpC	AMC, PIP, CFZ, CTX, CAZ, SXT, TET, CHL, GEN, TOB, FOF, NIT	<i>bla</i> _{SHV-33} , <i>bla</i> _{TEM-1} , <i>bla</i> _{CMY-2} , <i>sul1</i> , <i>sul2</i> , <i>dfrA1</i> , <i>tet(A)</i> , <i>catA</i> , <i>cmlA</i> , <i>floR</i> , <i>aadB</i> , <i>strA</i> , <i>strB</i>	n.d.	n.d.
14	Pv	<i>K. pneumoniae</i>	466	AmpC	AMC, PIP, CFZ, CTX, CAZ, SXT, TET, CHL, GEN, TOB, FOF, NIT	<i>bla</i> _{SHV-33} , <i>bla</i> _{TEM-1} , <i>bla</i> _{CMY-2} , <i>sul1</i> , <i>sul2</i> , <i>dfrA1</i> , <i>tet(A)</i> , <i>catA</i> , <i>cmlA</i> , <i>floR</i> , <i>aadB</i> , <i>strA</i> , <i>strB</i>	n.d.	n.d.
16	Pv	<i>K. pneumoniae</i>	466	AmpC	AMC, PIP, CFZ, CTX, CAZ, SXT, TET, CHL, GEN, TOB, FOF, NIT	<i>bla</i> _{SHV-33} , <i>bla</i> _{TEM-1} , <i>bla</i> _{CMY-2} , <i>sul1</i> , <i>dfrA1</i> , <i>tet(A)</i> , <i>catA</i> , <i>cmlA</i> , <i>floR</i> , <i>aadB</i> , <i>strA</i> , <i>strB</i>	n.d.	n.d.
19	Pv	<i>K. pneumoniae</i>	466	AmpC	AMC, PIP, CFZ, CTX, CAZ, SXT, TET, CHL, GEN, TOB, FOF, NIT	<i>bla</i> _{SHV-33} , <i>bla</i> _{TEM-1} , <i>bla</i> _{CMY-2} , <i>sul1</i> , <i>sul2</i> , <i>dfrA1</i> , <i>tet(A)</i> , <i>catA</i> , <i>cmlA</i> , <i>floR</i> , <i>aadB</i> , <i>strA</i> , <i>strB</i>	n.d.	n.d.
154a	Zc	<i>K. pneumoniae</i>	466	AmpC	AMC, PIP, CFZ, CTX, CAZ, SXT, TET, CHL, GEN, TOB	<i>bla</i> _{SHV-33} , <i>bla</i> _{TEM-1} , <i>bla</i> _{CMY-2} , <i>sul1</i> , <i>sul2</i> , <i>dfrA1</i> , <i>tet(A)</i> , <i>catA</i> , <i>cmlA</i> , <i>floR</i> , <i>aadB</i> , <i>strA</i> , <i>strB</i>	n.d.	n.d.

Table 2. Cont.

Isolate	Animal ¹	Species ²	ST (<i>Klebsiella</i>) ³	ESBL/AmpC	Phenotype ⁴	Genotype	QRDR GyrA ⁵	QRDR ParC ⁵
160	Zc	<i>K. pneumoniae</i>	466	AmpC	AMC, PIP, CTX, CAZ, SXT, TET, CHL, GEN, TOB	<i>bla</i> _{TEM-1} , <i>bla</i> _{CMY-2} , <i>sul1</i> , <i>sul2</i> , <i>dfrA1</i> , <i>tet(A)</i> , <i>catA</i> , <i>cmlA</i> , <i>floR</i> , <i>aadB</i> , <i>strA</i> , <i>strB</i>	n.d.	n.d.
161	Pv	<i>K. pneumoniae</i>	405	AmpC	AMC, PIP, SXT, TET, CHL, GEN, TOB, CIP	<i>bla</i> _{SHV-11} , <i>bla</i> _{TEM-1} , <i>bla</i> _{OXA-1} , <i>bla</i> _{CMY-2} , <i>sul1</i> , <i>sul2</i> , <i>dfrA1</i> , <i>dfrA14</i> , <i>tet(A)</i> , <i>catA</i> , <i>cmlA</i> , <i>floR</i> , <i>aac(6')-Ib</i> , <i>aadB</i> , <i>strA</i> , <i>strB</i> , <i>qnrB</i>	w.t.	w.t.
164	Zc	<i>K. pneumoniae</i>	466	AmpC	AMC, PIP, CFZ, CTX, CAZ, SXT, TET, CHL, GEN, TOB	<i>bla</i> _{SHV-33} , <i>bla</i> _{TEM-1} , <i>bla</i> _{CMY-2} , <i>sul2</i> , <i>dfrA1</i> , <i>tet(A)</i> , <i>catA</i> , <i>cmlA</i> , <i>floR</i> , <i>aadB</i> , <i>strA</i> , <i>strB</i>	n.d.	n.d.
173	Ma	<i>K. pneumoniae</i>	405	AmpC	AMC, PIP, CFZ, CTX, CAZ, SXT, TET, CHL, GEN, TOB, CIP	<i>bla</i> _{SHV-11} , <i>bla</i> _{TEM-1} , <i>bla</i> _{OXA-1} , <i>bla</i> _{CMY-2} , <i>sul1</i> , <i>sul2</i> , <i>dfrA1</i> , <i>dfrA14</i> , <i>tet(A)</i> , <i>catA</i> , <i>cmlA</i> , <i>floR</i> , <i>aac(6')-Ib</i> , <i>aadB</i> , <i>strA</i> , <i>strB</i> , <i>qnrB</i>	w.t.	n.a.
175	Zc	<i>K. pneumoniae</i>	405	AmpC	AMC, PIP, CFZ, CTX, CAZ, SXT, TET, CHL, GEN, TOB, CIP	<i>bla</i> _{SHV-11} , <i>bla</i> _{TEM-1} , <i>bla</i> _{OXA-1} , <i>bla</i> _{CMY-2} , <i>sul1</i> , <i>sul2</i> , <i>dfrA1</i> , <i>dfrA14</i> , <i>tet(A)</i> , <i>catA</i> , <i>cmlA</i> , <i>floR</i> , <i>aac(6')-Ib</i> , <i>aadB</i> , <i>strA</i> , <i>strB</i> , <i>qnrB</i>	w.t.	n.a.
9	Zc	<i>C. koseri</i>	n.a.	AmpC de-repression	intrinsic + CTX, CAZ, TET, CHL	<i>bla</i> _{CMY} , <i>sul2</i> , <i>tet(A)</i> , <i>cmlA</i> , <i>floR</i> , <i>strA</i> , <i>strB</i>	n.d.	n.d.
28	Zc	<i>C. koseri</i>	n.a.	AmpC de-repression	intrinsic + CTX, CAZ, SXT, TET, CHL, GEN, TOB, FOF, CIP	<i>bla</i> _{TEM-1} , <i>bla</i> _{OXA-1} , <i>bla</i> _{CMY} , <i>sul1</i> , <i>sul2</i> , <i>dfrA1</i> , <i>dfrA14</i> , <i>tet(A)</i> , <i>cmlA</i> , <i>aadB</i> , <i>aac(6')-Ib</i> , <i>strA</i> , <i>strB</i> , <i>qnrB</i>	w.t.	w.t.
30	Zc	<i>C. koseri</i>	n.a.	AmpC de-repression	intrinsic + CTX, CAZ, SXT	<i>bla</i> _{CMY} , <i>sul2</i>	w.t.	n.a.
35	Zc	<i>C. koseri</i>	n.a.	AmpC de-repression	intrinsic + CTX, CAZ, SXT, TET, CHL, GEN, TOB, FOF, CIP	<i>bla</i> _{TEM-1} , <i>bla</i> _{OXA-1} , <i>bla</i> _{CMY} , <i>sul1</i> , <i>sul2</i> , <i>dfrA1</i> , <i>dfrA14</i> , <i>tet(A)</i> , <i>cmlA</i> , <i>aadB</i> , <i>aac(6')-Ib</i> , <i>strA</i> , <i>strB</i> , <i>qnrB</i>	w.t.	w.t.
53/2	Zc	<i>C. koseri</i>	n.a.	AmpC de-repression	intrinsic + CTX, CAZ, SXT, TET, CHL	<i>bla</i> _{TEM-1} , <i>bla</i> _{CMY} , <i>sul2</i> , <i>dfrA14</i> , <i>tet(A)</i> , <i>tet(B)</i> , <i>catA</i> , <i>cmlA</i> , <i>floR</i> , <i>strA</i> , <i>strB</i> , <i>qnrB</i>	n.d.	n.d.
149b	Ma	<i>C. freundii</i> complex	n.a.	AmpC de-repression	AMC, PIP, CFZ, CTX, CAZ, SXT, TET, CHL, GEN, TOB	<i>bla</i> _{TEM-1} , <i>bla</i> _{CMY} , <i>sul1</i> , <i>dfrA12</i> , <i>dfrA19</i> , <i>tet(A)</i> , <i>aadA2</i> , <i>aac(6')-IIc</i> , <i>strA</i> , <i>strB</i>	n.d.	n.d.
151	Zc	<i>C. freundii</i> complex	n.a.	AmpC de-repression	AMC, PIP, CFZ, CTX, CAZ, SXT, TET, CHL, GEN	<i>bla</i> _{TEM-1} , <i>bla</i> _{CMY} , <i>sul1</i> , <i>dfrA12</i> , <i>dfrA19</i> , <i>tet(A)</i> , <i>aadA2</i> , <i>aac(6')-IIc</i> , <i>strA</i> , <i>strB</i>	n.d.	n.d.
154b	Zc	<i>C. freundii</i> complex	n.a.	AmpC de-repression	AMC, PIP, CFZ, CTX, CAZ, SXT, TET, CHL, GEN	<i>bla</i> _{TEM-1} , <i>bla</i> _{CMY} , <i>sul1</i> , <i>sul2</i> , <i>dfrA12</i> , <i>dfrA19</i> , <i>tet(A)</i> , <i>aadA2</i> , <i>aac(6')-IIc</i> , <i>strA</i> , <i>strB</i>	n.d.	n.d.

Table 2. Cont.

Isolate	Animal ¹	Species ²	ST (<i>Klebsiella</i>) ³	ESBL/AmpC	Phenotype ⁴	Genotype	QRDR GyrA ⁵	QRDR ParC ⁵
163	Zc	<i>C. freundii</i> complex	n.a.	AmpC de-repression	AMC, PIP, CFZ, CTX, CAZ, SXT, TET, CHL, GEN, TOB, CIP	<i>bla</i> _{TEM-1} , <i>bla</i> _{CMY} , <i>sul1</i> , <i>sul2</i> , <i>dfrA12</i> , <i>dfrA19</i> , <i>tet(A)</i> , <i>aadA2</i> , <i>strA</i> , <i>strB</i> , <i>qnrB</i>	n.a.	n.a.
165	Zc	<i>C. freundii</i> complex	n.a.	AmpC de-repression	AMC, PIP, CFZ, CTX, CAZ, SXT, TET, CHL, GEN, TOB	<i>bla</i> _{TEM-1} , <i>bla</i> _{CMY} , <i>sul1</i> , <i>sul2</i> , <i>dfrA12</i> , <i>dfrA19</i> , <i>tet(A)</i> , <i>aadA2</i> , <i>strA</i> , <i>strB</i>	n.d.	n.d.
169	Zc	<i>C. koseri</i>	n.a.	AmpC de-repression	AMC, PIP, CFZ, CTX, CAZ, SXT, TET, GEN	<i>bla</i> _{TEM-1} , <i>bla</i> _{CMY} , <i>sul2</i> , <i>dfrA14</i> , <i>tet(A)</i> , <i>strA</i> , <i>strB</i>	n.d.	n.d.
179	Zc	<i>C. koseri</i>	n.a.	AmpC de-repression	AMC, PIP, CFZ, CTX, CAZ, SXT, TET, GEN	<i>bla</i> _{TEM-1} , <i>bla</i> _{CMY} , <i>sul2</i> , <i>dfrA14</i> , <i>tet(A)</i> , <i>strA</i> , <i>strB</i>	n.d.	n.d.
192/1	Zc	<i>C. freundii</i> complex	n.a.	AmpC de-repression	AMC, PIP, FOX, CFZ, CAZ, CTX, SXT, TET	<i>bla</i> _{TEM-1} , <i>bla</i> _{CMY} , <i>sul1</i> , <i>sul2</i> , <i>dfrA12</i> , <i>tet(A)</i>	n.d.	n.d.
213	Kb	<i>C. freundii</i> complex	n.a.	AmpC de-repression	AMC, PIP, FOX, CFZ, CTX, CAZ, SXT, TET	<i>bla</i> _{CMY} , <i>sul1</i> , <i>dfrA12</i> , <i>tet(A)</i>	n.d.	n.d.
215	Kb	<i>C. freundii</i> complex	n.a.	AmpC de-repression	AMC, PIP, FOX, CFZ, CTX, CAZ, SXT	<i>bla</i> _{CMY} , <i>sul1</i> , <i>dfrA12</i>	n.d.	n.d.
224b	Ma	<i>C. freundii</i> complex	n.a.	AmpC de-repression	AMC, PIP, FOX, CFZ, CTX, CAZ, SXT, TET, CHL, GEN, TOB	<i>bla</i> _{TEM-1} , <i>bla</i> _{CMY} , <i>sul1</i> , <i>sul2</i> , <i>dfrA1</i> , <i>cmlA</i> , <i>floR</i> , <i>aadB</i> , <i>strA</i> , <i>strB</i>	n.d.	n.d.
226	Zc	<i>C. koseri</i>	n.a.	AmpC de-repression	AMC, PIP, FOX, CFZ, CTX, CAZ, SXT, TET, CHL, GEN, TOB	<i>bla</i> _{CMY} , <i>sul2</i> , <i>tet(A)</i> , <i>tet(D)</i> , <i>floR</i> , <i>strA</i> , <i>strB</i>	n.d.	n.d.
230c	Zc	<i>C. koseri</i>	n.a.	AmpC de-repression	AMC, PIP, FOX, CFZ, CTX, CAZ, SXT, TET, GEN	<i>bla</i> _{TEM-1} , <i>bla</i> _{CMY} , <i>sul2</i> , <i>dfrA14</i> , <i>tet(D)</i> , <i>strA</i> , <i>strB</i>	n.d.	n.d.
43	Zc	<i>En. cloacae</i> complex	n.a.	AmpC de-repression	intrinsic + CTX, CAZ, TET, SXT	<i>bla</i> _{TEM-1} , <i>sul2</i> , <i>dfrA14</i> , <i>tet(D)</i> , <i>strA</i> , <i>strB</i>	n.d.	n.d.
66	Zc	<i>En.</i> <i>cancerogenus</i>	n.a.	AmpC de-repression	intrinsic + CTX, CAZ		n.d.	n.d.
130	Ma	<i>L. amnigena</i>	n.a.	AmpC and ESBL	AMC, PIP, CFZ, CTX, CAZ, SXT, CHL	<i>bla</i> _{DHA-1} , <i>bla</i> _{SHV-12} , <i>sul1</i> , <i>sul2</i> , <i>dfrA14</i> , <i>cmlA</i> , <i>floR</i> , <i>aac(6')-Ib</i> , <i>qnrB</i>	n.d.	n.d.
132	Ma	<i>L. amnigena</i>	n.a.	AmpC and ESBL	AMC, PIP, CFZ, CTX, CAZ, SXT, CHL	<i>bla</i> _{DHA-1} , <i>bla</i> _{SHV-12} , <i>sul1</i> , <i>sul2</i> , <i>dfrA14</i> , <i>cmlA</i> , <i>floR</i> , <i>aac(6')-Ib</i> , <i>qnrB</i>	n.d.	n.d.
197/2	Zc	<i>P. mirabilis</i>	n.a.	AmpC	AMC, PIP, CAZ, CTX, SXT, CHL, GEN	<i>bla</i> _{TEM-1} , <i>bla</i> _{CMY-2} , <i>sul1</i> , <i>sul2</i> , <i>dfrA1</i> , <i>catA</i> , <i>cmlA</i> , <i>floR</i> , <i>aadB</i> , <i>strA</i> , <i>strB</i>	n.d.	n.d.

¹ Abbreviations: Kb, *Kogia breviceps*; Ma, *Mirounga angustirostris*; Pv, *Phoca vitulina*; Zc, *Zalophus californianus*. ² Abbreviations: C., *Citrobacter*; En., *Enterobacter*; K., *Klebsiella*; L., *Lelliottia*; P., *Proteus*. ³ n.a., not applicable. ⁴ Abbreviations: AMC, amoxicillin/clavulanate; ATM, aztreonam; CAZ, ceftazidime; CHL, chloramphenicol; CIP, ciprofloxacin; CFZ, cefazolin; CTX, cefotaxime; FOF, fosfomycin; FOX, cefoxitin; GEN, gentamicin; PIP, piperacillin; SXT, trimethoprim/sulfamethoxazole; TET, tetracycline; TOB, tobramycin. ⁵ QRDR: quinolone resistance-determining region; n.a., not amplifiable; n.d., not done; w.t., wild type.

The gene *bla*_{CMY-2} was detected in the *Salmonella* isolate 42 S.

In two of the *E. coli* isolates (IDs 3 and 202) displaying an AmpC phenotype, no β -lactamase gene was detected, but mutations in the promoter and attenuator region of the chromosomal *ampC* gene were found at positions -18 (G \rightarrow A), -1 (C \rightarrow T) and $+58$ (C \rightarrow T) in *E. coli* isolate 3 and at position -32 (T \rightarrow A) in *E. coli* isolate 202. Further, mutations were found at position -18 (G \rightarrow A), -1 (C \rightarrow T), and $+58$ (C \rightarrow T) of the *ampC* gene of *E. coli* isolates 8/2 and 21, at positions -18 (G \rightarrow A) and -1 (C \rightarrow T) in *E. coli* 192/2, at position $+58$ (C \rightarrow T) in *E. coli* 17, and at position -28 (G \rightarrow A) of the *ampC* gene of *E. coli* isolates 197/1 and 224a.

The most prevalent non- β -lactamase genes detected were *sul2* ($n = 38$), *strA* ($n = 34$), *strB* ($n = 34$), *tet(A)* ($n = 34$), and *sul1* ($n = 33$).

The analysis of the quinolone resistance-determining regions (QRDR) of *gyrA* and *parC* revealed mutations that resulted in amino acid exchanges at positions 83 (Ser \rightarrow Leu) and 87 (Asp \rightarrow Asn) in GyrA of five ciprofloxacin-resistant isolates and at position 80 (Ser \rightarrow Ile) in ParC of six ciprofloxacin-resistant isolates.

Even though phenotypic resistance to tetracycline was present, none of the tested *tet* genes were detected in *C. freundii* complex isolate 224b.

Antimicrobial resistance phenotypes and genes are summarized in Tables 1 and 2.

2.3. Molecular Typing Methods

The most common *E. coli* phylogenetic group was A ($n = 8$). Four *E. coli* isolates each were assigned to the groups B1, B2, D, and F, while three isolates represented phylogroup E (Tables 1 and 3).

The *fumC* and *fimH* (CH) typing divided the *E. coli* isolates into 19 distinct CH clonotypes and revealed clonal relatedness of *E. coli* isolates 147a and 149a (CH7-0); 3 and 8/2 (CH65-26); 117 and 202 (CH103-9); 53/1, 92 and 158 (CH148-25); and 68, 156, 183, and 230b (CH11-0) (Figure 1).

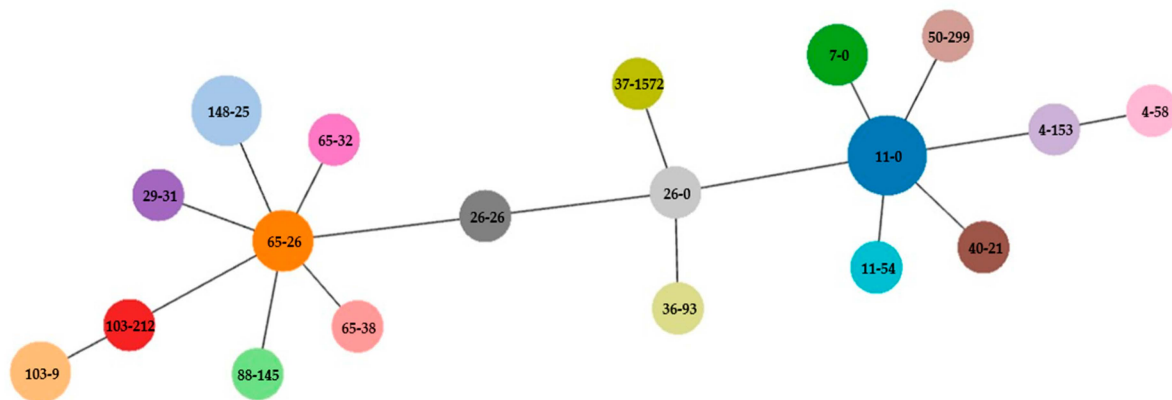


Figure 1. Clonal phylogeny characterized by goeBURST diagram of the CH clonotyping data set of *E. coli* isolates. An eBURST diagram was calculated using PHYLOViZ with the goeBURST algorithm. *E. coli* isolates were grouped according to their CH profiles.

Multilocus sequence typing (MLST) of *Klebsiella pneumoniae* identified two different types among the tested isolates: ST466 ($n = 9$) and ST406 ($n = 3$).

2.4. Characterization of *E. coli* Virulence Genes

The most common *E. coli* virulence genes determined via microarray were *fimH* (15/15), *iucD* and *papC* (each 5/15), *astA* (4/15), and *cnf1* (3/15) (Table 1). The gene *hlyA* was detected in one isolate (ID 17) accompanied by *cnf1*. The genes *iucD* and *papC* were detected simultaneously in five *E. coli* isolates. Those five *E. coli* isolates (IDs 21, 53/1, 92, 156, and 158) were assigned to extraintestinal pathogenic *E. coli* (ExPEC)/uropathogenic *E. coli* (UPEC) pathotype due to the presence of the virulence genes *fimH*, *iucD*, and *papC* [32].

Table 3. Characterization of ESBL/AmpC-producing *E. coli* isolated from marine mammals via whole-genome sequencing.

Isolate	Animal ¹	Phylo-Group	CH-Clono-Typing	SEROGENO-TYPE ²	ST	ESBL/AmpC	Phenotype ³	Genotype	Virulence Genes	<i>ampC</i> Promoter ⁴	QRDR ⁵ GyrA ⁴	QRDR ParC ⁴	ParE ⁴
68	Zc	A	CH11-0	O _{NT} :H9	167	ESBL	AMC, PIP, CFZ, CTX, CAZ, ATM, SXT, TET, GEN, TOB, CIP	<i>bla</i> _{CTX-M-15} , <i>bla</i> _{OXA-1} , <i>sul1</i> , <i>dfrA17</i> , <i>tet(A)</i> , <i>tet(B)</i> , <i>catB3</i> , <i>aadA4</i> , <i>aadA5</i> , <i>aac(3)-IIa</i> , <i>aac(6')-Ib-cr</i> , <i>mdfA</i>	<i>astA</i> , <i>capU</i> , <i>fyuA</i> , <i>irp2</i> , <i>iss</i> , <i>iucC</i> , <i>iutA</i> , <i>sitA</i> , <i>terC</i>	w.t.	Ser83Leu, Asp87Asn	Ser80Ile	S458A
171	Pv	D	CH50-299	O _{NT} :H1	5748	AmpC	AMC, PIP, CFZ, CTX, CAZ	<i>bla</i> _{CMY-4} , <i>mdfA</i>	<i>air</i> , <i>chuA</i> , <i>cia</i> , <i>eilA</i> , <i>lpfA</i> , <i>terC</i> , <i>traT</i>	w.t.	w.t.	w.t.	w.t.
183	Zc	A	CH11-0	O _{NT} :H9	167	ESBL	AMC, PIP, CFZ, CTX, CAZ, ATM, SXT, TET, TOB, CIP	<i>bla</i> _{CTX-M-15} , <i>sul1</i> , <i>sul2</i> , <i>dfrA17</i> , <i>tet(A)</i> , <i>tet(B)</i> , <i>catB3</i> , <i>aadA5</i> , <i>aph(3'')-Ib</i> , <i>aph(6)-Id</i> , <i>aac(6')-Ib-cr</i> , <i>mdfA</i>	<i>astA</i> , <i>capU</i> , <i>fyuA</i> , <i>irp2</i> , <i>iss</i> , <i>iucC</i> , <i>iutA</i> , <i>sitA</i> , <i>terC</i> , <i>traT</i>	w.t.	Ser83Leu, Asp87Asn	Ser80Ile	S458A
192/2	Zc	B1	CH65-32	O9:H10	1431	AmpC	AMC, PIP, FOX, CFZ, CAZ, CTX, SXT, CIP	<i>bla</i> _{TEM-1B} , <i>bla</i> _{CMY-2} , <i>sul2</i> , <i>dfrA5</i> , <i>aph(3'')-Ib</i> , <i>aph(6)-Id</i> , <i>mdfA</i>	<i>capU</i> , <i>cba</i> , <i>cia</i> , <i>cma</i> , <i>cvaC</i> , <i>etsC</i> , <i>fyuA</i> , <i>hlyF</i> , <i>iroN</i> , <i>irp2</i> , <i>iss</i> , <i>iucC</i> , <i>iutA</i> , <i>lpfA</i> , <i>mchF</i> , <i>ompT</i> , <i>sitA</i> , <i>terC</i> , <i>traT</i>	-19	Ser83Leu, Asp87Asn	Ser80Ile	S458A
197/1	Zc	F	CH4-58	O _{NT} :H42	648	AmpC	AMC, PIP, FOX, CFZ, CAZ, CTX, ATM, SXT, TET, CHL, GEN, TOB	<i>bla</i> _{TEM-1B} , <i>bla</i> _{CMY-2} , <i>sul1</i> , <i>sul2</i> , <i>dfrA1</i> , <i>tet(A)</i> , <i>cmlA1</i> , <i>floR</i> , <i>aph(3'')-Ib</i> , <i>aph(6)-Id</i> , <i>ant(2'')-Ia</i> , <i>mdfA</i>	<i>air</i> , <i>cea</i> , <i>celb</i> , <i>chuA</i> , <i>focCsfA</i> , <i>focG</i> , <i>fyuA</i> , <i>iroN</i> , <i>irp2</i> , <i>kpsE</i> , <i>kpsMIII</i> , <i>lpfA</i> , <i>mchB</i> , <i>mchC</i> , <i>mchF</i> , <i>mcmA</i> , <i>sfaD</i> , <i>sitA</i> , <i>terC</i> , <i>yfcV</i>	-28	w.t.	w.t.	w.t.
202	Zc	B2	CH103-9	O _{NT} :H31	372	AmpC	AMC, PIP, FOX, CFZ	<i>mdfA</i>	<i>cea</i> , <i>chuA</i> , <i>cnf1</i> , <i>focCsfA</i> , <i>focG</i> , <i>focI</i> , <i>fyuA</i> , <i>hra</i> , <i>ibeA</i> , <i>iroN</i> , <i>irp2</i> , <i>iss</i> , <i>mchB</i> , <i>mchC</i> , <i>mchF</i> , <i>mcmA</i> , <i>ompT</i> , <i>papA</i> , <i>papC</i> , <i>sitA</i> , <i>terC</i> , <i>usp</i> , <i>vat</i> , <i>yfcV</i>	-32	w.t.	w.t.	w.t.
206	Zc	D	CH26-26	O _{NT} :H18	963	AmpC	AMC, PIP, FOX, CFZ, CTX, CAZ	<i>bla</i> _{CMY-2} , <i>mdfA</i>	<i>air</i> , <i>astA</i> , <i>chuA</i> , <i>eilA</i> , <i>fyuA</i> , <i>irp2</i> , <i>kpsE</i> , <i>senB</i> , <i>sitA</i> , <i>terC</i> , <i>traT</i>	w.t.	w.t.	w.t.	w.t.
209	Zc	D	CH26-0	O _{NT} :H15	38	ESBL	AMC, PIP, FOX, CFZ, CTX, CAZ	<i>bla</i> _{CTX-M-15} , <i>bla</i> _{TEM-1B} , <i>qnrS1</i> , <i>mdfA</i>	<i>air</i> , <i>chuA</i> , <i>eilA</i> , <i>iss</i> , <i>kpsE</i> , <i>kpsMIII</i> , <i>terC</i>	w.t.	w.t.	w.t.	w.t.
224a	Ma	F	CH37-1572 *	O _{NT} :H28	4957	AmpC	AMC, PIP, FOX, CFZ, CTX, CAZ, SXT, TET, CHL, GEN, TOB	<i>bla</i> _{TEM-1B} , <i>bla</i> _{CMY-2} , <i>sul1</i> , <i>sul2</i> , <i>dfrA1</i> , <i>tet(A)</i> , <i>cmlA1</i> , <i>floR</i> , <i>aph(3'')-Ib</i> , <i>aph(6)-Id</i> , <i>ant(2'')-Ia</i> , <i>mdfA</i>	<i>air</i> , <i>chuA</i> , <i>cia</i> , <i>cvaC</i> , <i>etsC</i> , <i>hlyF</i> , <i>iroN</i> , <i>iss</i> , <i>lpfA</i> , <i>mchF</i> , <i>ompT</i> , <i>sitA</i> , <i>terC</i> , <i>traT</i> , <i>usp</i> , <i>yfcV</i>	-28	w.t.	w.t.	w.t.

Table 3. Cont.

Isolate	Animal ¹	Phylo-Group	CH-Clono-Typing	SEROGENO-TYPE ²	ST	ESBL/AmpC	Phenotype ³	Genotype	Virulence Genes	<i>ampC</i> Promoter ⁴	QRDR ⁵ GyrA ⁴	QRDR ParC ⁴	ParE ⁴
230a	Zc	D	CH36-93	O _{NT} :H15	349	AmpC	AMC, FOX, CFZ, CAZ	<i>bla</i> _{CMY-2} , <i>mdfA</i>	<i>cba</i> , <i>chuA</i> , <i>cia</i> , <i>cma</i> , <i>eilA</i> , <i>fyuA</i> , <i>hra</i> , <i>irp2</i> , <i>kpsE</i> , <i>terC</i> , <i>traT</i>	w.t.	w.t.	w.t.	S458A
230b	Zc	A	CH11-0	O _{NT} :H9	167	AmpC	AMC, FOX, CFZ, CTX, CAZ, SXT, TET, FOF, CIP	<i>bla</i> _{CMY-2} , <i>sul1</i> , <i>dfrA17</i> , <i>tet(A)</i> , <i>tet(B)</i> , <i>aadA5</i> , <i>mdfA</i>	<i>astA</i> , <i>capU</i> , <i>cba</i> , <i>cia</i> , <i>cma</i> , <i>fyuA</i> , <i>irp2</i> , <i>iss</i> , <i>iucC</i> , <i>iutA</i> , <i>sitA</i> , <i>terC</i> , <i>traT</i>	w.t.	w.t.	Ser80Ile	w.t.
234	Zc	A	CH11-54	O _{NT} :H4	484	ESBL	AMP, CFZ, CTX	<i>bla</i> _{CTX-M-15} , <i>qnrS1</i> , <i>mdfA</i>	<i>aap</i> , <i>astA</i> , <i>iss</i> , <i>kpsE</i> , <i>kpsMII</i> , <i>ompT</i> , <i>terC</i> , <i>traT</i>	w.t.	w.t.	w.t.	I355T

¹ Abbreviations: Ma, *Mirounga angustirostris*; Pv, *Phoca vitulina*; Zc, *Zalophus californianus*. ² NT, not typeable. ³ Abbreviations: AMC, amoxicillin/clavulanate; ATM, aztreonam; CAZ, ceftazidime; CHL, chloramphenicol; CIP, ciprofloxacin; CFZ, cefazolin; CTX, cefotaxime; FOF, fosfomicin; FOX, ceftiofur; GEN, gentamicin; PIP, piperacillin; SXT, trimethoprim/sulfamethoxazole; TET, tetracycline; TOB, tobramycin. ⁴ w.t., wild type. ⁵ QRDR: quinolone resistance-determining region. * new allele.

2.5. Whole-Genome Sequencing (WGS) of Selected *E. coli* Isolates

Of the 12 whole-genome sequenced *E. coli* isolates, eleven originated from California sea lions and one from a northern elephant seal. Three isolates (IDs 68, 183, and 230b) belonged to the sequence type (ST)167 and clustered together by core genome multilocus sequence-based typing (cgMLST), which suggested clonal relatedness between them. Other sequence types obtained were ST38, ST349, ST372, ST484, ST648, ST963, ST1431, ST4957, and ST5748. *E. coli* predicted serotype (somatic O and flagellar H antigens) was clearly determined in one isolate (ID 192/2) as O9:H10 (Table 3).

The multidrug transporter gene *mdfA*, which confers resistance to a diverse group of biocides and antimicrobial agents [33], was detected in all 12 isolates analyzed by WGS.

The genes associated with biocide resistance *emrK* ($n = 12$), *mdtE* ($n = 12$), *mdtF* ($n = 12$), *tolC* ($n = 12$), *acrF* ($n = 12$), *acrE* ($n = 9$), and *emrE* ($n = 5$), which impart decreased susceptibility to benzalkonium chloride, were identified. Furthermore, the genes *cpxA* ($n = 10$) and *qacEΔ1* ($n = 5$), conferring decreased susceptibility to benzalkonium chloride and chlorhexidine, were detected. Biocide susceptibility phenotypes and genes associated with elevated biocide MICs are summarized in Supplementary Table S1.

WGS revealed that different virulence genes were present in the *E. coli* isolates with the tellurite resistance gene *terC* ($n = 12$), the increased serum survival gene *iss*, the serum-resistance associated gene *traT*, the yersiniabactin encoding gene *irp2*, the yersiniabactin receptor encoding gene *fyuA*, and the iron and manganese transport gene *sitA* (each $n = 8$) being predominant (Table 3).

The determination of plasmids via the PlasmidFinder software revealed that the predominant plasmid was IncFIB ($n = 7$). In the *E. coli* isolate 209, the *bla*_{TEM-1B} gene was carried by an IncI1- α plasmid (Supplementary Tables S2 and S3).

The mlplasmids analyses predicted that the majority of the antimicrobial resistance genes might be plasmid-encoded, whereas most virulence genes appeared to be chromosomally-encoded (Supplementary Tables S3 and S4). The *bla*_{CTX-M-15} gene might be located in the chromosomal DNA of two isolates (IDs 209 and 234). In *E. coli* 68 and 183, a prediction for the location of the *bla*_{CTX-M-15} gene could not be made. A chromosomally-encoded *bla*_{CMY-2} gene might have been obtained in *E. coli* 206 and 230a, and a chromosomally-encoded *bla*_{CMY-4} in *E. coli* 171.

2.6. Characterization of *Salmonella* Isolates

The most common serotypes among the 18 analyzed *Salmonella* isolates were *Salmonella* (S.) Havana (antigenic formula: 1,13,23 : f,g : -) ($n = 8$) and *S. Reading* (antigenic formula: 1,4,5,12 : e,h : 1,5) ($n = 3$). Furthermore, *S. Albany* ($n = 2$), *S. Newport* ($n = 2$), *S. Saintpaul* ($n = 2$), and *S. Braenderup* ($n = 1$) were identified. (Table 4).

In all *Salmonella* isolates ($n = 18$) the transcriptional regulator gene *hilA* and *Salmonella* enterotoxin gene *stn* were detected. The virulence gene *tviA* was not found.

Table 4. Characterization of *Salmonella* isolated from marine mammals.

Isolate	Animal ¹	Serotype ²	Phenotype ³	Genotype	Virulence Genes
8. S.	Zc	<i>S. Saintpaul</i> (antigenic formula: 1,4,5,12 : e,h : 1,2)	n.r.		<i>hilA</i> , <i>stn</i>
27 S.	Zc	<i>S. Newport</i> (antigenic formula 6,8 : e,h : 1,2)	n.r.		<i>hilA</i> , <i>stn</i>
42 S.	Zc	AmpC <i>S. Saintpaul</i> (antigenic formula 1,4,5,12 : e,h : 1,2)	AMC, PIP, CFZ, CTX, CAZ	<i>bla</i> _{CMY-2}	<i>hilA</i> , <i>stn</i>
56 S.	Zc	<i>S. Havana</i> (antigenic formula 1,13,23 : f,g : -)	n.r.		<i>hilA</i> , <i>stn</i>

Table 4. Cont.

Isolate	Animal ¹	Serotype ²	Phenotype ³	Genotype	Virulence Genes
62 S.	Zc	S. Havana (antigenic formula 1,13,23 : f,g : -)	n.r.		<i>hilA, stn</i>
91 S.	Zc	S. Havana (antigenic formula 1,13,23 : f,g : -)	n.r.		<i>hilA, stn</i>
113 S.	Zc	S. Havana (antigenic formula 1,13,23 : f,g : -)	n.r.		<i>hilA, stn</i>
115 S.	Ma	S. Havana (antigenic formula 1,13,23 : f,g : -)	n.r.		<i>hilA, stn</i>
125 S.	Ma	S. Newport (antigenic formula 6,8 : e,h : 1,2)	n.r.		<i>hilA, stn</i>
127 S.	Ma	S. Havana (antigenic formula 1,13,23 : f,g : -)	n.r.		<i>hilA, stn</i>
135 S.	Ma	S. Reading (antigenic formula 1,4,5,12 : e,h : 1,5)	n.r.		<i>hilA, stn</i>
226 S.	Zc	S. Braenderup (antigenic formula 6,7 : e,h : e,n,z15)	n.r.		<i>hilA, stn</i>
245 S.	Zc	S. Reading (antigenic formula 1,4,5,12 : e,h : 1,5)	n.r.		<i>hilA, stn</i>
255 S.	Zc	S. Reading (antigenic formula 1,4,5,12 : e,h : 1,5)	n.r.		<i>hilA, stn</i>
273 S.	Zc	S. Albany (antigenic formula 8,20 : z4,z24 : -)	n.r.		<i>hilA, stn</i>
277 S.	Ma	S. Albany (antigenic formula 8,20 : z4,z24 : -)	n.r.		<i>hilA, stn</i>
279 S.	Ma	S. Havana (antigenic formula 1,13,23 : f,g : -)	n.r.		<i>hilA, stn</i>
281 S.	Zc	S. Havana (antigenic formula 1,13,23 : f,g : -)	n.r.		<i>hilA, stn</i>

¹ Abbreviations: Ma, *Mirounga angustirostris*; Zc, *Zalophus californianus*. ² S., *Salmonella*. ³ Abbreviations: n.r., non-resistant; AMC, amoxicillin/clavulanate; CAZ, ceftazidime; CFZ, cefazolin; CTX, cefotaxime; PIP, piperacillin.

3. Discussion

In this study, we investigated the phenotypic and genotypic characteristics of ESBL- and AmpC-producing Enterobacterales, as well as the presence of *Salmonella* isolates in stranded marine mammals prior to their rehabilitation. The majority of the investigated β -lactamase-producing Enterobacterales exhibited an AmpC phenotype, an ESBL phenotype was observed in five *E. coli* isolates, and both AmpC and ESBL phenotypes were present in two *E. coli* and two *L. amnigena* isolates. In the scope of this study, three types of AmpC resistance mechanisms have been identified: plasmid-mediated AmpC (pAmpC) genes, overexpression of chromosomal AmpC in *E. coli*, and de-repressed AmpC in *Citrobacter* spp. and *Enterobacter* spp. AmpC-producers have been reported as particularly common in North America, whereas in Europe, β -lactamases are primarily represented by ESBLs [34]. Among the *bla* genes investigated in this study, the pAmpC gene *bla*_{CMY} was detected most frequently. It was in all *K. pneumoniae* and *P. mirabilis* isolates, in one *Salmonella* isolate, and in 18 *E. coli* isolates identified as *bla*_{CMY-2}, which encodes the most prevalent pAmpC enzyme in humans, livestock, and companion animals worldwide [7,9]. Moreover, *bla*_{CMY-2} has been detected in different wildlife species [35–38]. In two *E. coli* isolates (IDs 206 and 230a), *bla*_{CMY-2} is predicted to be encoded chromosomally, which was described in 2015 for the first time in *E. coli* [39]. In addition, we obtained a high number of isolates exhibiting

*bla*_{TEM-1} (*n* = 38) and, less frequently, *bla*_{OXA-1} (*n* = 7). Both *bla* genes were recently detected in *E. coli* isolates from harbor seals and grey seals (*Halichoerus grypus*) in Ireland [40], in which, in contrast to the findings of the present study, *bla*_{OXA-1} was more frequently represented than *bla*_{TEM-1}. All but one (ID 160) *K. pneumoniae* isolates carried a *bla*_{SHV} gene. The broad-spectrum β -lactamase genes *bla*_{SHV-11} and *bla*_{SHV-33} were detected exclusively in ST466 *K. pneumoniae* and ST405 *K. pneumoniae*, respectively. Chaves et al. were the first to detect the novel SHV-type variant SHV-33 in *K. pneumoniae*, and they hypothesized that the ancestor of SHV-1 β -lactamase originated from the *K. pneumoniae* chromosomal DNA [41]. Furthermore, the pAmpC gene *bla*_{DHA-1}, which was detected in the two *L. amnigena* isolates (IDs 130 and 132), was previously also obtained in a *K. pneumoniae* isolate originating from a free-living mouflon in Austria [42].

Besides resistance to β -lactam antibiotics, resistance to other antibiotic classes was common among the investigated Enterobacterales. In total, 71% of the isolates exhibited a MDR phenotype and genotype. The study on *E. coli* in seals in Ireland determined a high proportion of MDR bacteria (66.6%) in the animals tested [40]. Already in the 1990s, AMR in Enterobacterales appeared widespread among Californian pinnipeds [26]. Wallace et al. [19] observed an increase of AMR in bacteria of stranded pinnipeds of the Northwest Atlantic over a period of 6 years (2004–2010). *E. coli* especially displayed a considerable increase in resistance to β -lactams, sulfonamides, and aminoglycosides, while *Klebsiella* spp. exhibited an increase in resistance to aminoglycosides and fluoroquinolones [19].

Biocide susceptibility testing revealed a high proportion of elevated MIC values for chlorhexidine (79%) and isopropanol (31%). Information regarding biocide susceptibility of Enterobacterales isolated from wildlife is scarce. A recent study on *K. pneumoniae* from Californian pinnipeds investigated environmental persistence, as well as disinfectant susceptibility, of these bacteria [43]. Commonly recommended concentrations of chlorine and hydrogen peroxide turned out to be ineffective in eradication of the biofilm formed by hypermucoviscous *K. pneumoniae*, whereas ethanol and chloramine-T effectively eradicated *K. pneumoniae*, irrespective of whether formed in biofilm or not [43].

Furthermore, sublethal concentrations of biocidal agents, in particular, benzalkonium chloride, chlorhexidine, and triclosan, may enhance antimicrobial tolerance and resistance in Gram-negative bacteria [44,45].

Among the *E. coli* isolates, six different phylogenetic groups were determined, with the most common being phylogroup A (*n* = 8), described as being widespread among human commensal *E. coli* strains [46]. Contrary to our findings, investigations in Australia revealed the human-associated phylogroups B2 and D as the predominating *E. coli* phylotypes in pinnipeds [47–49].

cgMLST revealed that three *E. coli* clones (IDs 68, 183, and 230b) belonged to A-_{ONT}:H9-ST167-CH11-0. These isolates were obtained from different individuals over a time-span of several months and exhibited in part highly diverse resistance phenotypes and genotypes. This could indicate that these clones were already circulating for an extended period of time within the tested population of marine mammals and in their environment. Therefore, several resistance gene exchanges with other bacteria could have taken place. Related investigations have been reported regarding interspecies transmission of an *E. coli* ST410 clone between wildlife, humans, companion animals and the environment within several years in Berlin, Germany [50].

E. coli ST167 is considered a pandemic clone of significant public health concern due to its ESBL-producing strains [9]. Rising numbers of ST167 strains carrying the *bla*_{NDM} carbapenemase gene were being reported and highlighted the threat emanating from this clone [51–53]. Guenther et al. were the first to report occurrence of ST167 ESBL-*E. coli* in wildlife [54]. Moreover, *E. coli* ST167 was detected in cloacal samples of silver gulls in Australia [55].

The MDR AmpC-producing *E. coli* isolate 197/1 belonged to ST648, a pandemic high risk clone combining MDR and high-level virulence [56], which has already been isolated from wild birds in Germany [50,57] and zoo animals in Israel [58].

E. coli isolate 209 was identified as ST38, a prevalent human clinical pathogen that has also been reported in wild birds of prey in Mongolia [59], rats in Africa [60], and silver gulls in Australia [61]. Furthermore, ST38 has had an entry in the Enterobase Escherichia/Shigella Database, whose corresponding isolate originated from a sea lion in Ecuador, South America (<https://enterobase.warwick.ac.uk/species/index/ecoli>, accessed on 21 March 2021) [62]. Both *E. coli* ST38 and ST648 are known as emerging ExPEC worldwide [63,64].

E. coli ST349, ST963, and ST1431 have also been detected in samples from wild birds [65], and an ST372 *E. coli*, isolated from a straw-coloured fruit bat in the Republic of Congo, has previously been detected and classified as ExPEC [66]. Additionally, *E. coli* ST372 has had an entry in the aforementioned database and the respective originated from a common bottlenose dolphin (*Tursiops truncatus*) in Mexico. There are no reports describing the isolation of *E. coli* ST484, ST4957, and ST5748 from wildlife to the authors knowledge.

An alarmingly high prevalence of different *E. coli* virulence genes was found in the isolates investigated. Most of these virulence genes could be put into context with ExPEC and/or UPEC, e.g., *cnf1*, *fimH*, *fyuA*, *iroN*, *iss*, *iucD*, *iutA*, *kpsMII*, *papA*, *papC*, *sitA*, and *traT* [67,68]. *E. coli* virulence genes associated with ExPEC were also detected in seals in Ireland [40] and in marine sediments from coasts of the Adriatic Sea [69].

K. pneumoniae is a nosocomial pathogen with increasing MDR rates and global dissemination of high risk clones [70]. Although several studies have previously focused on *K. pneumoniae* in farm and companion animals [71–74], information about this pathogen in wildlife is still scarce [42,55,75–78]. Nevertheless, there are some reports about the isolation of *K. pneumoniae* from marine mammals along the U.S. Pacific Coast [19,79–81]. Among the *K. pneumoniae* isolates in the present study, two distinct sequence types were obtained: ST405 ($n = 3$) and ST466 ($n = 9$). The three *K. pneumoniae* isolates (IDs 161, 173, and 175) belonging to ST405 displayed indistinguishable resistance pheno- and genotypes and exhibited 17 different resistance genes each. This might indicate the importance of this clone in the investigated environment. *K. pneumoniae* ST405 strains isolated from humans have been reported worldwide to harbor ESBL and carbapenemase genes [82–85]. However, reports about *K. pneumoniae* ST466 are scarce. One study revealed a context of *K. pneumoniae* ST466 harboring *bla*_{CTX-M-15} with causing neonatal sepsis [86].

Salmonella spp. have been previously isolated from marine mammals in California [87–90]. Within the scope of the present study, 18 *Salmonella* isolates belonging to six different serotypes (*S. Havana*, *S. Reading*, *S. Albany*, *S. Newport*, *S. Saintpaul*, *S. Braenderup*) were obtained, and one isolate exhibited AMR. Our findings regarding *Salmonella* are in general accordance with those of Stoddard et al. [82]. They investigated the prevalence and antimicrobial susceptibility of *Salmonella* spp. in northern elephant seals on the Californian coast. They further determined a higher prevalence and higher antimicrobial resistance rates of *Salmonella* in stranded seals than in young pinnipeds that had never entered the seawater on their natal beaches, presumably because stranded animals are more susceptible to infection by pathogens in the marine environment from terrestrial sources [87]. Furthermore, another study on *Salmonella* in Californian seals revealed that the amount of precipitation within the immediate pre-sampling period correlates positively with the presence of fecal *Salmonella* spp. [90].

As previously reported, marine mammals living in coastal habitats as predatory species with long lifespans can serve as sentinels of the health of the ocean and its inhabitants [24,91]. The high burden of AMR bacteria among marine mammals reported in this study might be the result of increasing anthropogenic pollution of the marine environment with antimicrobial agents, biocides, and already resistant bacteria. To get more detailed insights into the broad field of possible environmental risk factors and to identify notable sources of contamination, further comparative studies are needed.

4. Materials and Methods

4.1. Bacterial Isolates

Samples were collected from April 2019 to December 2020 upon admission of the stranded marine mammals to the Marine Mammal Care Center Los Angeles (MMCCLA) as part of diagnostic health evaluation. In all but four cases, samples were collected prior to any antimicrobial treatment. Overall, 145 rectal swabs, 130 oral swabs, four wound swabs, two swabs of a blow hole, and two swabs of the nictitating membrane were sampled from 148 individual animals, including 122 California sea lions (*Zalophus californianus*), 15 northern elephant seals (*Mirounga angustirostris*), six harbor seals (*Phoca vitulina*), two northern fur seals (*Callorhinus ursinus*), one Guadalupe fur seal (*Arctocephalus townsendi*), one long-beaked common dolphin (*Delphinus capensis*), and one pygmy sperm whale (*Kogia breviceps*).

Each sample was preincubated at 37 °C overnight in buffered peptone water (BPW) (Merck, Germany). For selective isolation of β -lactamase-producing Enterobacterales, 200 μ L of the incubated sample were cultured at 37 °C overnight in BPW supplemented with cefotaxime (1 mg/L) (BPWCTX) and then cultivated at 37 °C overnight on MacConkey agar (Oxoid, Basingstoke, United Kingdom) supplemented with cefotaxime (1 mg/L) (MacCTX). In parallel, another 200 μ L of the preincubated sample were cultured at 42 °C overnight in Rappaport–Vassiliadis-broth (RV) (Oxoid, Basingstoke, UK) and in Selenit-broth (Merck, Darmstadt, Germany) and then cultivated at 37 °C on BD™ XLD Agar (Xylose-Lysine-Desoxycholate Agar) (BD, Heidelberg, Germany) for selective isolation of *Salmonella* sp. After incubation on MacCTX, one colony representing a distinct colony morphotype was regrown on BD MacConkey II Agar (MC) at 37 °C overnight. After incubation on XLD, the respective colonies of *Salmonella* isolates showed the typical colony appearance of *Salmonella* and were selected for further characterization. Colonies selected from MacCTX and XLD were identified to the species level by matrix-assisted laser desorption/ionization-time-of-flight (MALDI-TOF) mass spectrometry (Bruker Daltonik, Heidelberg, Germany). Isolates, which grew on MacCTX and were confirmed as belonging to Enterobacterales, were examined for ESBL production by combination disk tests using cefotaxime and ceftazidime with and without clavulanic acid (Becton Dickinson, Heidelberg, Germany) according to the Clinical and Laboratory Standards Institute (CLSI) standards [92]. Furthermore, ceftaxitin (30 μ g) (BD, Heidelberg, Germany) was added to this test to detect AmpC phenotypes.

4.2. Antimicrobial and Biocide Susceptibility Testing

Antimicrobial susceptibility testing of β -lactamase-producing Enterobacterales and *Salmonella* isolates was carried out by agar disk-diffusion according to the CLSI standards [92]. *Escherichia coli* ATCC®25922 served as the quality control strain. Disks containing the following antimicrobial agents were used: amoxicillin-clavulanate (20/10 μ g), piperacillin (10 μ g), cefotaxime (30 μ g), ceftazidime (30 μ g), ceftaxitin (30 μ g), aztreonam (30 μ g), imipenem (10 μ g), meropenem (10 μ g), gentamicin (10 μ g), tobramycin (10 μ g), amikacin (30 μ g), ciprofloxacin (5 μ g), trimethoprim-sulfamethoxazole (1.25/23.75 μ g), tetracycline (30 μ g), doxycycline (30 μ g), chloramphenicol (30 μ g), and fosfomycin (200 μ g) (Becton Dickinson, Heidelberg, Germany). AmpC-hyperproducing isolates (stably de-repressed) of *Enterobacter* sp. and *Citrobacter* sp. were defined as those with a cefotaxime and ceftazidime MIC of ≥ 32 mg/L without ESBL production, and the boronic acid inhibition test was performed by the standard disk diffusion method, using cefotaxime disks alone and in combination with 300 μ g of 3-aminophenylboronic acid [93].

Biocide susceptibility testing was performed according to the previously established protocol of Schug et al. [94]. Benzalkonium chloride (Acros Organics, Geel, Belgium, 21541), representing the quaternary ammonium compounds, was tested at concentration ranges 0.000015%–0.016%, chlorhexidine (Sigma-Aldrich, Schnellendorf, Germany, 55-56-1), representing cationic compounds, was tested at concentration ranges 0.000015%–0.002%, glutardialdehyde (Chempur, Piekary Slaskie, Poland, 424610240), representing aldehydes,

was tested at concentration ranges 0.0075%–1%, and isopropanol (99.9%, PHPU Eurochem BGD, Tarnow, Poland), representing alcohols, was tested at concentration ranges 1–14%. The method was performed in 96-wells U-bottom polystyrene microtiter plates (Sarstedt, Numbrecht, Germany, 82.1582.001). The bacterial inoculum was prepared according to the CLSI standards [92] using Trypticasein soy broth (Biomaximna, Lublin, Poland, PS 23–500). The final concentration of bacteria inoculated into the wells was $2.5\text{--}5 \times 10^5$ CFU/mL.

4.3. Characterization of Genotypic Resistance

Resistance genes were analyzed by CarbDetect-AS-2 Kit microarray (Alere, Jena, Germany) [95]. Since CarbDetect-AS-2 Kit was not available to analyze all isolates, the following resistance genes were screened via PCRs: *bla*_{CMY}, *bla*_{CTX-M}, *bla*_{OXA-1}, *bla*_{OXA-2}, *bla*_{SHV}, *bla*_{TEM}, *sul1*, *sul2*, *sul3*, *dfrA1*, *dfrA12*, *dfrA14*, *dfrA17*, *dfrA19*, *strA*, *strB*, *aadA1*, *aadA2*, *aadA4*, *aadB*, *qepA*, *qnrA*, *qnrB*, *qnrC*, *qnrD*, *qnrS*, and *aac(6')-Ib* [96–107], depending on their resistance phenotype and those genes that responded positively in the array. If resistance genes were not included in the array kit (i.e., *catA*, *cfr*, *cmIA*, *floR*, *aadA5*, *tet(A)*, *tet(B)*, *tet(C)*, *tet(D)*, *tet(E)*, *tet(G)*), they were analyzed by PCRs as described elsewhere [104,108]. A list of all primers and PCR conditions used in this study is provided in Supplementary Table S5. Multiplex PCR for detection of AmpC genes was performed in *L. amnigena* and *Enterobacter* spp. isolates [109,110]. In addition, the genes *bla*_{CMY}, *bla*_{CTX-M}, *bla*_{SHV}, and *bla*_{TEM} were sequenced after PCR amplification. All amplicons in the present study were sequenced at LGC Genomics, Berlin, Germany. Sequences were aligned with BLAST (<https://blast.ncbi.nlm.nih.gov/Blast.cgi>, accessed on 30 April 2021) and compared with reference sequences available in GenBank and the National Center for Biotechnology Information (NCBI) database (<http://www.ncbi.nlm.nih.gov/pathogens/beta-lactamase-data-resources/>, accessed on 30 April 2021). The quinolone resistance-determining regions (QRDR) of *gyrA* and *parC* in ciprofloxacin-resistant isolates were amplified by PCR and sequenced [111]. *E. coli* isolates displaying an AmpC phenotype were also analyzed for mutations in the chromosomal *ampC* promoter/attenuator region as described previously [112].

4.4. Molecular Typing Methods

The phylogroup of the *E. coli* isolates was determined by the revisited Clermont method [113]. Clonal relatedness of *E. coli* isolates was assessed by two-locus sequence typing of combined data of *fumC* and *fimH* sequences, as described by Weissman et al. [114], using CHTyper hosted at Center for Genomic Epidemiology (<https://cge.cbs.dtu.dk/services/chtyper/>, accessed on 30 April 2021) [115]. Allele and CH clonotype numbers were used for goeBURST analysis using PHYLOViZ [116]. Clonal relatedness of *Klebsiella pneumoniae* isolates was characterized by MLST database available at Institute Pasteur MLST (<https://bigsd.bpasteur.fr/klebsiella/klebsiella.html>, accessed on 30 April 2021) [117,118].

4.5. Virulence Genes

Detection and analysis of virulence genes was performed using primer and probe sets derived from microarray-based methods, as described previously [119,120], and used in custom made microarrays from INTER-ARRAY (INTER-ARRAY by fzmb GmbH, Bad Langensalza, Germany) according to manufacturers instructions. The list of virulence-associated genes is available at INTER-ARRAY website (<https://www.inter-array.com/#microarrays>, accessed on 30 April 2021) upon request.

4.6. Whole-Genome Sequencing (WGS)

Selected *E. coli* isolates were analyzed by WGS, which was performed by isolating bacterial DNA using the MagAttract HMW DNA Kit (Qiagen, Hilden, Germany). Ready-to-sequence libraries were prepared using Nextera XT DNA Library Preparation Kit (Illumina, San Diego, United States). Isolates were paired-end-sequenced using the Illumina MiSeq platform with a read length of 2×300 bp [121]. De novo assembly of

raw reads was performed using SPAdes v.3.9.0 [122], and WGS data analysis was performed with SeqSphere+ software (Ridom, Münster, Germany). To assess the genetic relatedness between the *E. coli* isolates, MLST and cgMLST were performed as previously described [123]. *E. coli* phylotypes were extracted from WGS by Clermontyping (<http://clermontyping.iame-research.center/>, accessed on 30 April 2021) [124,125]. To identify acquired resistance genes and/or chromosomal mutations, Comprehensive Antibiotic Resistance Database (CARD; <https://card.mcmaster.ca/home>, accessed on 30 April 2021) [126], as well as ResFinder 4.1 (<https://cge.cbs.dtu.dk/services/ResFinder/>, accessed on 30 April 2021) [127,128], were used. Genes associated with biocide resistance were compared with BacMet database (Antibacterial Biocide and Metal Resistance Genes Database, <http://bacmet.biomedicine.gu.se/>, accessed on 30 April 2021) [129]. Virulence genes were identified using VirulenceFinder 2.0 (<https://cge.cbs.dtu.dk/services/VirulenceFinder/>, accessed on 30 April 2021) [130,131], CH types were characterized as mentioned above, and serogenotypes were analyzed by SerotypeFinder (<https://cge.cbs.dtu.dk/services/SerotypeFinder/>, accessed on 30 April 2021) [132]. The presence of plasmids was determined using PlasmidFinder 2.1 (<https://cge.cbs.dtu.dk/services/PlasmidFinder/>, accessed on 30 April 2021) [133]. Probability prediction of the location of a given antimicrobial resistance gene or virulence gene was achieved by applying mlplasmids trained on *E. coli* [134]. Posterior probability scores >0.7 and a minimum contig length of 1000 bp indicate that a given contig is plasmid-derived. For resistance and virulence genes with ppp scores below 0.7 but above 0.5, BLAST searches for the respective contig sequence were performed. If the BLAST search listed only plasmids for the first 30 entries with 100% coverage and identities, a plasmid location was assumed. The genomes of WGS isolates were deposited under PRJNA725684 in the NCBI BioProject database.

4.7. Characterization of *Salmonella* Isolates

The antigenic formula of all *Salmonella* isolates was determined by the National Reference Centre for *Salmonella* Austria using standard agglutination methods (ISO/TR 6579-3, 2014), and the serotype name was assigned according to the White–Kauffmann–Le Minor scheme [135].

The following virulence genes associated with *Salmonella* spp. were analyzed by PCRs: *hilA*, *stn*, and *toiA* [136,137].

5. Conclusions

In conclusion, the present study contributes to the growing evidence that β -lactamase-producing and multidrug-resistant Enterobacterales, as well as *Salmonella*, are currently part of the microbiome of wild animals. The presence of pandemic clones in samples originating from marine mammals demonstrates the complexity in the dissemination of antimicrobial drug resistance and highlights the public health threats. Furthermore, the resistance and virulence genes frequently encoded on mobile genetic elements can easily be transferred horizontally and also between different species in such a habitat and ecosystem, emphasizing the need of a One Health approach to tackling the global AMR crisis.

Supplementary Materials: The following are available online at <https://www.mdpi.com/article/10.3390/ijms22115905/s1>.

Author Contributions: Conceptualization, L.P., C.W., H.S., and I.L.; methodology, O.M.G., L.P., A.C., M.P.S., W.R., C.K., D.M., A.T.F., S.S., J.S., E.M., S.D.B., S.M., R.E., H.S., and I.L.; validation, O.M.G., L.P., A.C., M.P.S., W.R., C.K., S.S., S.D.B., S.M., R.E., C.W., and I.L.; formal analysis, O.M.G., L.P., A.C., M.P.S., W.R., C.K., M.K., D.M., T.B.-H., A.D.J.K., E.M., and I.L.; investigation, O.M.G., L.P., A.C., M.P.S., W.R., C.K., M.K., D.M., T.B.-H., A.D.J.K., E.M., H.S., and I.L.; resources, L.P., D.M., F.A., S.S., J.S., R.E., C.W., and H.S.; data curation, O.M.G., L.P., A.C., M.P.S., W.R., C.K., M.K., D.M., T.B.-H., A.D.J.K., A.T.F., S.S., E.M., S.D.B., H.S., and I.L.; writing—original draft preparation, O.M.G., L.P., D.M., C.W., H.S., and I.L.; writing—review and editing, O.M.G., L.P., A.C., M.P.S., W.R., C.K., D.M., A.T.F., F.A., S.S., S.D.B., S.M., R.E., C.W., H.S., and I.L.; visualization, O.M.G. and I.L.; supervision,

L.P., C.W., H.S., and I.L.; project administration, L.P. and I.L.; funding acquisition, L.P., F.A., R.E., C.W., and I.L. All authors have read and agreed to the published version of the manuscript.

Funding: This research received no external funding.

Institutional Review Board Statement: Ethical review and approval were waived for this study, because all clinical samples were obtained within the scope of routine diagnostic health assessments and only subsequently evaluated within the scope of this study and, therefore, not subject to reporting obligations of the Ethics and Animal Welfare Commission of the University of Veterinary Medicine in Vienna.

Informed Consent Statement: Not applicable.

Data Availability Statement: All data is contained within the article or supplementary material.

Acknowledgments: We thank the CHTyper curators Louise Roer and Henrik Hasman of the Statens Serum Institut for curating the data and making them publicly available at <https://cge.cbs.dtu.dk/services/chtyper/>, accessed on 30 April 2021. We would also like to express our thanks to Michael Steinbrecher, Barbara Tischler, and Anna Stöger for technical assistance. Open Access Funding by the University of Veterinary Medicine Vienna.

Conflicts of Interest: The authors declare no conflict of interest.

References

- Bassetti, M.; Pecori, D.; Sibani, M.; Corcione, S.; Rosa, F.G.d. Epidemiology and Treatment of MDR Enterobacteriaceae. *Curr. Treat. Options Infect. Dis.* **2015**, *7*, 291–316. [CrossRef]
- Wilson, H.; Török, M.E. Extended-Spectrum B-Lactamase-Producing and Carbapenemase-Producing Enterobacteriaceae. *Microb. Genom.* **2018**, *4*, e000197. [CrossRef]
- Gajdács, M.; Bátor, Z.; Ábrók, M.; Lázár, A.; Burián, K. Characterization of Resistance in Gram-Negative Urinary Isolates Using Existing and Novel Indicators of Clinical Relevance: A 10-Year Data Analysis. *Life* **2020**, *10*, 16. [CrossRef]
- Kadri, S.S.; Adjemian, J.; Lai, Y.L.; Spaulding, A.B.; Ricotta, E.; Prevots, D.R.; Palmore, T.N.; Rhee, C.; Klompas, M.; Dekker, J.P.; et al. Difficult-to-Treat Resistance in Gram-Negative Bacteremia at 173 US Hospitals: Retrospective Cohort Analysis of Prevalence, Predictors, and Outcome of Resistance to All First-line Agents. *Clin. Infect. Dis.* **2018**, *67*, 1803–1814. [CrossRef]
- Jacoby, G.A.; Muñoz-Price, L.S. The New Beta-Lactamases. *N. Engl. J. Med.* **2005**, *352*, 380–391. [CrossRef] [PubMed]
- Bush, K. Past and Present Perspectives on β -Lactamases. *Antimicrob. Agents Chemother.* **2018**, *62*, e01076-18. [CrossRef] [PubMed]
- Jacoby, G.A. AmpC Beta-Lactamases. *Clin. Microbiol. Rev.* **2009**, *22*, 161–182. [CrossRef]
- Tamma, P.D.; Doi, Y.; Bonomo, R.A.; Johnson, J.K.; Simner, P.J. A Primer on AmpC β -Lactamases: Necessary Knowledge for an Increasingly Multidrug-Resistant World. *Clin. Infect. Dis.* **2019**, *69*, 1446–1455. [CrossRef] [PubMed]
- Ewers, C.; Bethe, A.; Semmler, T.; Guenther, S.; Wieler, L.H. Extended-Spectrum β -Lactamase-Producing and AmpC-Producing *Escherichia coli* from Livestock and Companion Animals, and Their Putative Impact on Public Health: A Global Perspective. *Clin. Microbiol. Infect.* **2012**, *18*, 646–655. [CrossRef]
- Karl, H.A.; Chin, J.L.; Ueber, E.; Stauffer, P.H.; Hendley, J.W., II (Eds.) *Beyond the Golden Gate—Oceanography, Geology, Biology, and Environmental Issues in the Gulf of the Farallones*; U.S. Geological Survey: Reston, VA, USA; USGS Information Services: Denver, CO, USA, 2001.
- Hatosy, S.M.; Martiny, A.C. The Ocean as a Global Reservoir of Antibiotic Resistance Genes. *Appl. Environ. Microbiol.* **2015**, *81*, 7593–7599. [CrossRef] [PubMed]
- Yang, Y.; Liu, G.; Song, W.; Ye, C.; Lin, H.; Li, Z.; Liu, W. Plastics in the Marine Environment Are Reservoirs for Antibiotic and Metal Resistance Genes. *Environ. Int.* **2019**, *123*, 79–86. [CrossRef] [PubMed]
- Cohen, R.; Paikin, S.; Rokney, A.; Rubin-Blum, M.; Astrahan, P. Multidrug-Resistant Enterobacteriaceae in Coastal Water: An Emerging Threat. *Antimicrob. Resist. Infect. Control* **2020**, *9*, 169. [CrossRef]
- Nappier, S.P.; Liguori, K.; Ichida, A.M.; Stewart, J.R.; Jones, K.R. Antibiotic Resistance in Recreational Waters: State of the Science. *Int. J. Environ. Res. Public Health* **2020**, *17*, 8034. [CrossRef]
- Shallcross, L.J.; Howard, S.J.; Fowler, T.; Davies, S.C. Tackling the Threat of Antimicrobial Resistance: From Policy to Sustainable action. *Philos. Trans. R. Soc. Lond. B Biol. Sci.* **2015**, *370*, 20140082. [CrossRef]
- Ramey, A.M.; Ahlstrom, C.A. Antibiotic Resistant Bacteria in Wildlife: Perspectives on Trends, Acquisition and Dissemination, Data Gaps, and Future Directions. *J. Wildl. Dis.* **2020**, *56*, 1–15. [CrossRef]
- Hocquet, D.; Muller, A.; Bertrand, X. What Happens IN Hospitals Does Not Stay in Hospitals: Antibiotic-Resistant Bacteria in Hospital Wastewater Systems. *J. Hosp. Infect.* **2016**, *93*, 395–402. [CrossRef]
- Muziasari, W.I.; Pitkänen, L.K.; Sørum, H.; Stedtfeld, R.D.; Tiedje, J.M.; Virta, M. The Resistome of Farmed Fish Feces Contributes to the Enrichment of Antibiotic Resistance Genes in Sediments below Baltic Sea Fish Farms. *Front. Microbiol.* **2017**, *7*, 2137. [CrossRef]

19. Wallace, C.C.; Yund, P.O.; Ford, T.E.; Matassa, K.A.; Bass, A.L. Increase in antimicrobial resistance in bacteria isolated from stranded marine mammals of the Northwest Atlantic. *EcoHealth* **2013**, *10*, 201–210. [[CrossRef](#)] [[PubMed](#)]
20. Carroll, D.; Wang, J.; Fanning, S.; McMahon, B.J. Antimicrobial Resistance in Wildlife: Implications for Public Health. *Zoonoses Public Health* **2015**, *62*, 534–542. [[CrossRef](#)]
21. Furness, L.E.; Campbell, A.; Zhang, L.; Gaze, W.H.; McDonald, R.A. Wild Small Mammals as Sentinels for the Environmental Transmission of Antimicrobial Resistance. *Environ. Res.* **2017**, *154*, 28–34. [[CrossRef](#)] [[PubMed](#)]
22. Plaza-Rodríguez, C.; Alt, K.; Grobbel, M.; Hammerl, J.A.; Irrgang, A.; Szabo, I.; Stingl, K.; Schuh, E.; Wiehle, L.; Pfefferkorn, B.; et al. Wildlife as Sentinels of Antimicrobial Resistance in Germany? *Front. Vet. Sci.* **2021**, *7*, 627821. [[CrossRef](#)] [[PubMed](#)]
23. Wells, R.; Rhinehart, H.; Hansen, L.; Sweeney, J.; Townsend, F.; Stone, R.; Casper, D.R.; Scott, M.; Hohn, A.; Rowles, T. Bottlenose Dolphins as Marine Ecosystem Sentinels: Developing a Health Monitoring System. *EcoHealth* **2004**, *1*, 246–254. [[CrossRef](#)]
24. Bossart, G.D. Marine Mammals as Sentinel Species for Oceans and Human Health. *Vet. Pathol.* **2011**, *48*, 676–690. [[CrossRef](#)]
25. Reif, J.S. Animal Sentinels for Environmental and Public Health. *Public Heal. Rep.* **2011**, *126*, 50–57. [[CrossRef](#)]
26. Johnson, S.P.; Nolan, S.; Gulland, F.M. Antimicrobial Susceptibility of Bacteria Isolated from Pinnipeds Stranded in Central and Northern California. *J. Zoo Wildl. Med.* **1998**, *29*, 288–294.
27. Thornton, S.M.; Nolan, S.; Gulland, F.M. Bacterial Isolates from California Sea Lions (*Zalophus californianus*), Harbor Seals (*Phoca vitulina*), and Northern Elephant Seals (*Mirounga angustirostris*) Admitted to a Rehabilitation Center Along the Central California Coast, 1994–1995. *J. Zoo Wildl. Med.* **1998**, *29*, 171–176.
28. Stoddard, R.A.; Atwill, E.R.; Conrad, P.A.; Byrne, B.A.; Jang, S.; Lawrence, J.; McCowan, B.; Gulland, F.M.D. The Effect of Rehabilitation of Northern Elephant Seals (*Mirounga angustirostris*) on Antimicrobial Resistance of Commensal *Escherichia coli*. *Vet. Microbiol.* **2009**, *133*, 264–271. [[CrossRef](#)]
29. Lockwood, S.K.; Chovan, J.L.; Gaydos, J.K. Aerobic Bacterial Isolations from Harbor Seals (*Phoca vitulina*) Stranded in Washington: 1992–2003. *J. Zoo Wildl. Med.* **2006**, *37*, 281–291. [[CrossRef](#)]
30. Santestevan, N.A.; Angelis Zvoboda, D.d.; Prichula, J.; Pereira, R.I.; Wachholz, G.R.; Cardoso, L.A.; Moura, T.M.d.; Medeiros, A.W.; Amorin, D.B.d.; Tavares, M.; et al. Antimicrobial Resistance and Virulence Factor Gene Profiles of *Enterococcus* spp. Isolates from wild *Arctocephalus australis* (South American Fur Seal) and *Arctocephalus tropicalis* (Subantarctic Fur Seal). *World J. Microbiol. Biotechnol.* **2015**, *31*, 1935–1946. [[CrossRef](#)] [[PubMed](#)]
31. Sweeney, M.T.; Lubbers, B.V.; Schwarz, S.; Watts, J.L. Applying Definitions for Multidrug Resistance, Extensive Drug Resistance and Pandrug Resistance to Clinically Significant Livestock and Companion Animal Bacterial Pathogens. *J. Antimicrob. Chemother.* **2018**, *73*, 1460–1463. [[CrossRef](#)]
32. Sarowska, J.; Futoma-Koloch, B.; Jama-Kmiecik, A.; Frej-Madrzak, M.; Ksiazczyk, M.; Bugła-Ploskonska, G.; Choroszy-Krol, I. Virulence Factors, Prevalence and Potential Transmission of Extraintestinal Pathogenic *Escherichia coli* Isolated from Different Sources: Recent Reports. *Gut Pathog.* **2019**, *11*, 10. [[CrossRef](#)]
33. Edgar, R.; Bibi, E. MdfA, an *Escherichia coli* Multidrug Resistance Protein with an Extraordinarily Broad Spectrum of Drug Recognition. *J. Bacteriol.* **1997**, *179*, 2274–2280. [[CrossRef](#)]
34. Liebana, E.; Carattoli, A.; Coque, T.M.; Hasman, H.; Magiorakos, A.-P.; Mevius, D.; Peixe, L.; Poirel, L.; Schuepbach-Regula, G.; Torneke, K.; et al. Public Health Risks of Enterobacterial Isolates Producing Extended-Spectrum β -Lactamases or AmpC β -Lactamases in Food and Food-Producing Animals: An EU Perspective of Epidemiology, Analytical Methods, Risk Factors, and Control Options. *Clin. Infect. Dis.* **2013**, *56*, 1030–1037. [[CrossRef](#)]
35. Darwich, L.; Vidal, A.; Seminati, C.; Albamonte, A.; Casado, A.; López, F.; Molina-López, R.A.; Migura-García, L. High Prevalence and Diversity of Extended-Spectrum β -Lactamase and Emergence of OXA-48 Producing Enterobacteriales in Wildlife in Catalonia. *PLoS ONE* **2019**, *14*, e0210686. [[CrossRef](#)] [[PubMed](#)]
36. Athanasakopoulou, Z.; Tsilipounidaki, K.; Sofia, M.; Chatzopoulos, D.C.; Giannakopoulos, A.; Karakousis, I.; Giannakis, V.; Spyrou, V.; Touloudi, A.; Satra, M.; et al. Poultry and Wild Birds as a Reservoir of CMY-2 Producing *Escherichia coli*: The First Large-Scale Study in Greece. *Antibiotics* **2021**, *10*, 235. [[CrossRef](#)]
37. Poirel, L.; Potron, A.; La Cuesta, C.d.; Cleary, T.; Nordmann, P.; Munoz-Price, L.S. Wild Coastline Birds as Reservoirs of Broad-Spectrum- β -Lactamase-Producing Enterobacteriaceae in Miami Beach, Florida. *Antimicrob. Agents Chemother.* **2012**, *56*, 2756–2758. [[CrossRef](#)] [[PubMed](#)]
38. Skarżyńska, M.; Zając, M.M.; Bomba, A.; Bocian, Ł.; Kozdruń, W.; Polak, M.; Wiącek, J.; Wasyl, D. Antimicrobial Resistance Glides in the Sky—Free-Living Birds as a Reservoir of Resistant *Escherichia coli* With Zoonotic Potential. *Front. Microbiol.* **2021**, *12*, 656223. [[CrossRef](#)]
39. Fang, L.-X.; Sun, J.; Li, L.; Deng, H.; Huang, T.; Yang, Q.-E.; Li, X.; Chen, M.-Y.; Liao, X.-P.; Liu, Y.-H. Dissemination of the Chromosomally Encoded *Cmy-2* Cephalosporinase Gene in *Escherichia coli* Isolated from Animals. *Int. J. Antimicrob. Agents* **2015**, *46*, 209–213. [[CrossRef](#)]
40. Vale, A.P.; Shubin, L.; Cummins, J.; Leonard, F.C.; Barry, G. Detection of blaOXA-1, blaTEM-1, and Virulence Factors in *E. coli* Isolated From Seals. *Front. Vet. Sci.* **2021**, *8*, 583759. [[CrossRef](#)]
41. Chaves, J.; Ladona, M.G.; Segura, C.; Coira, A.; Reig, R.; Ampurdanés, C. SHV-1 Beta-Lactamase Is Mainly a Chromosomally Encoded Species-Specific Enzyme in *Klebsiella pneumoniae*. *Antimicrob. Agents Chemother.* **2001**, *45*, 2856–2861. [[CrossRef](#)] [[PubMed](#)]

42. Loncaric, I.; Beiglböck, C.; Feßler, A.T.; Posautz, A.; Rosengarten, R.; Walzer, C.; Ehrlich, R.; Monecke, S.; Schwarz, S.; Spargser, J.; et al. Characterization of ESBL- and AmpC-Producing and Fluoroquinolone-Resistant Enterobacteriaceae Isolated from Mouflons (*Ovis orientalis musimon*) in Austria and Germany. *PLoS ONE* **2016**, *11*, e0155786. [[CrossRef](#)]
43. Soto, E.; Abdelrazek, S.M.R.; Basbas, C.; Duignan, P.J.; Rios, C.; Byrne, B.A. Environmental Persistence and Disinfectant Susceptibility of *Klebsiella pneumoniae* Recovered from Pinnipeds Stranded on the California Coast. *Vet. Microbiol.* **2020**, *241*, 108554. [[CrossRef](#)]
44. Kampf, G. Biocidal Agents Used for Disinfection Can Enhance Antibiotic Resistance in Gram-Negative Species. *Antibiotics* **2018**, *7*, 110. [[CrossRef](#)] [[PubMed](#)]
45. Behzadi, P.; Baráth, Z.; Gajdács, M. It's Not Easy Being Green: A Narrative Review on the Microbiology, Virulence and Therapeutic Prospects of Multidrug-Resistant *Pseudomonas aeruginosa*. *Antibiotics* **2021**, *10*, 42. [[CrossRef](#)]
46. Escobar-Páramo, P.; Le Menac'h, A.; Le Gall, T.; Amorin, C.; Gouriou, S.; Picard, B.; Skurnik, D.; Denamur, E. Identification of Forces Shaping the Commensal *Escherichia coli* Genetic Structure by Comparing Animal and Human Isolates. *Environ. Microbiol.* **2006**, *8*, 1975–1984. [[CrossRef](#)]
47. Delpont, T.C.; Harcourt, R.G.; Beaumont, L.J.; Webster, K.N.; Power, M.L. Molecular Detection of Antibiotic-Resistance Determinants in *Escherichia coli* Isolated from the Endangered Australian Sea Lion (*Neophoca cinerea*). *J. Wildl. Dis.* **2015**, *51*, 555–563. [[CrossRef](#)] [[PubMed](#)]
48. Fulham, M.; Power, M.; Gray, R. Comparative ecology of *Escherichia coli* in Endangered Australian Sea Lion (*Neophoca cinerea*) Pups. *Infect. Genet. Evol.* **2018**, *62*, 262–269. [[CrossRef](#)]
49. Fulham, M.; Power, M.; Gray, R. Diversity and Distribution of *Escherichia coli* in Three Species of Free-Ranging Australian Pinniped Pups. *Front. Mar. Sci.* **2020**, *7*, 571171. [[CrossRef](#)]
50. Schaufler, K.; Semmler, T.; Wieler, L.H.; Wöhrmann, M.; Baddam, R.; Ahmed, N.; Müller, K.; Kola, A.; Fruth, A.; Ewers, C.; et al. Clonal Spread and Interspecies Transmission of Clinically Relevant ESBL-Producing *Escherichia coli* of ST410—Another Successful Pandemic Clone? *FEMS Microbiol. Ecol.* **2016**, *92*, fiv155. [[CrossRef](#)] [[PubMed](#)]
51. Giufrè, M.; Errico, G.; Accogli, M.; Monaco, M.; Villa, L.; Distasi, M.A.; Del Gaudio, T.; Pantosti, A.; Carattoli, A.; Cerquetti, M. Emergence of NDM-5-Producing *Escherichia coli* Sequence Type 167 Clone in Italy. *Int. J. Antimicrob. Agents* **2018**, *52*, 76–81. [[CrossRef](#)] [[PubMed](#)]
52. Huang, Y.; Yu, X.; Xie, M.; Wang, X.; Liao, K.; Xue, W.; Chan, E.W.-C.; Zhang, R.; Chen, S. Widespread Dissemination of Carbapenem-Resistant *Escherichia coli* Sequence Type 167 Strains Harboring blaNDM-5 in Clinical Settings in China. *Antimicrob. Agents Chemother.* **2016**, *60*, 4364–4368. [[CrossRef](#)]
53. Dadashi, M.; Yaslianifard, S.; Hajikhani, B.; Kabir, K.; Owlia, P.; Goudarzi, M.; Hakemivala, M.; Darban-Sarokhalil, D. Frequency Distribution, Genotypes and Prevalent Sequence Types of New Delhi Metallo- β -Lactamase-Producing *Escherichia coli* among Clinical Isolates around the World: A Review. *J. Glob. Antimicrob. Resist.* **2019**, *19*, 284–293. [[CrossRef](#)]
54. Guenther, S.; Aschenbrenner, K.; Stamm, I.; Bethe, A.; Semmler, T.; Stubbe, A.; Stubbe, M.; Batsajkhan, N.; Glupczynski, Y.; Wieler, L.H.; et al. Comparable High Rates of Extended-Spectrum-Beta-Lactamase-Producing *Escherichia coli* in Birds of Prey from Germany and Mongolia. *PLoS ONE* **2012**, *7*, e53039. [[CrossRef](#)]
55. Dolejska, M.; Masarikova, M.; Dobiasova, H.; Jamborova, I.; Karpiskova, R.; Havlicek, M.; Carlile, N.; Priddel, D.; Cizek, A.; Literak, I. High Prevalence of *Salmonella* and IMP-4-Producing Enterobacteriaceae in the Silver Gull on Five Islands, Australia. *J. Antimicrob. Chemother.* **2016**, *71*, 63–70. [[CrossRef](#)]
56. Schaufler, K.; Semmler, T.; Wieler, L.H.; Trott, D.J.; Pitout, J.; Peirano, G.; Bonnedahl, J.; Dolejska, M.; Literak, I.; Fuchs, S.; et al. Genomic and Functional Analysis of Emerging Virulent and Multidrug-Resistant *Escherichia coli* Lineage Sequence Type 648. *Antimicrob. Agents Chemother.* **2019**, *63*, e00243-19. [[CrossRef](#)]
57. Guenther, S.; Grobbel, M.; Beutlich, J.; Bethe, A.; Friedrich, N.D.; Goedecke, A.; Lübke-Becker, A.; Guerra, B.; Wieler, L.H.; Ewers, C. CTX-M-15-Type Extended-Spectrum Beta-Lactamases-Producing *Escherichia coli* from Wild Birds in Germany. *Environ. Microbiol. Rep.* **2010**, *2*, 641–645. [[CrossRef](#)] [[PubMed](#)]
58. Shnaiderman-Torban, A.; Steinman, A.; Meidan, G.; Paitan, Y.; Abu Ahmad, W.; Navon-Venezia, S. Petting Zoo Animals as an Emerging Reservoir of Extended-Spectrum β -Lactamase and AmpC-Producing Enterobacteriaceae. *Front. Microbiol.* **2019**, *10*, 2488. [[CrossRef](#)]
59. Guenther, S.; Semmler, T.; Stubbe, A.; Stubbe, M.; Wieler, L.H.; Schaufler, K. Chromosomally Encoded *Esbl* Genes in *Escherichia coli* of ST38 from Mongolian Wild Birds. *J. Antimicrob. Chemother.* **2017**, *72*, 1310–1313. [[CrossRef](#)]
60. Schaufler, K.; Nowak, K.; Düx, A.; Semmler, T.; Villa, L.; Kourouma, L.; Bangoura, K.; Wieler, L.H.; Leendertz, F.H.; Guenther, S. Clinically Relevant ESBL-Producing *K. pneumoniae* ST307 and *E. coli* ST38 in an Urban West African Rat Population. *Front. Microbiol.* **2018**, *9*, 150. [[CrossRef](#)] [[PubMed](#)]
61. Mukerji, S.; Stegger, M.; Truswell, A.V.; Laird, T.; Jordan, D.; Abraham, R.J.; Harb, A.; Barton, M.; O'Dea, M.; Abraham, S. Resistance to critically important antimicrobials in Australian silver gulls (*Chroicocephalus novaehollandiae*) and evidence of anthropogenic origins. *J. Antimicrob. Chemother.* **2019**, *74*, 2566–2574. [[CrossRef](#)]
62. Zhou, Z.; Alikhan, N.F.; Mohamed, K.; Achtman, M.; the Agama Study Group. The Enterobase User's Guide, with Case Studies on *Salmonella* Transmissions, *Yersinia pestis* Phylogeny and *Escherichia coli* core Genomic Diversity. *Genome Res.* **2020**, *30*, 138–152. [[CrossRef](#)] [[PubMed](#)]

63. Pitout, J.D.D. Extraintestinal Pathogenic Escherichia coli: A Combination of Virulence with Antibiotic Resistance. *Front. Microbiol.* **2012**, *3*, 9. [[CrossRef](#)] [[PubMed](#)]
64. Chattaway, M.A.; Jenkins, C.; Ciesielczuk, H.; Day, M.; DoNascimento, V.; Day, M.; Rodríguez, I.; van Essen-Zandbergen, A.; Schink, A.-K.; Wu, G.; et al. Evidence of Evolving Extraintestinal Enterococcal Escherichia coli ST38 Clone. *Emerg. Infect. Dis.* **2014**, *20*, 1935–1937. [[CrossRef](#)]
65. Wang, J.; Ma, Z.-B.; Zeng, Z.-L.; Yang, X.-W.; Huang, Y.; Liu, J.-H. The Role of Wildlife (Wild Birds) in the Global Transmission of Antimicrobial Resistance Genes. *Zool. Res.* **2017**, *38*, 55–80. [[CrossRef](#)]
66. Nowak, K.; Fahr, J.; Weber, N.; Lübke-Becker, A.; Semmler, T.; Weiss, S.; Mombouli, J.-V.; Wieler, L.H.; Guenther, S.; Leendertz, F.H.; et al. Highly Diverse and Antimicrobial Susceptible Escherichia coli Display a Naïve Bacterial Population in Fruit Bats from the Republic of Congo. *PLoS ONE* **2017**, *12*, e0178146. [[CrossRef](#)]
67. Johnson, T.J.; Wannemuehler, Y.; Johnson, S.J.; Stell, A.L.; Doetkott, C.; Johnson, J.R.; Kim, K.S.; Spanjaard, L.; Nolan, L.K. Comparison of Extraintestinal Pathogenic Escherichia coli Strains from Human and Avian Sources Reveals a Mixed Subset Representing Potential Zoonotic Pathogens. *Appl. Environ. Microbiol.* **2008**, *74*, 7043–7050. [[CrossRef](#)]
68. Singer, R.S. Urinary Tract Infections Attributed to Diverse ExPEC Strains in Food Animals: Evidence and Data Gaps. *Front. Microbiol.* **2015**, *6*, 28. [[CrossRef](#)]
69. Luna, G.M.; Vignaroli, C.; Rinaldi, C.; Pusceddu, A.; Nicoletti, L.; Gabellini, M.; Danovaro, R.; Biavasco, F. Extraintestinal Escherichia coli Carrying Virulence Genes in Coastal Marine Sediments. *Appl. Environ. Microbiol.* **2010**, *76*, 5659–5668. [[CrossRef](#)]
70. Navon-Venezia, S.; Kondratyeva, K.; Carattoli, A. Klebsiella Pneumoniae: A Major Worldwide Source and Shuttle for Antibiotic Resistance. *FEMS Microbiol. Rev.* **2017**, *41*, 252–275. [[CrossRef](#)] [[PubMed](#)]
71. Loncaric, I.; Cabal Rosel, A.; Szostak, M.P.; Licka, T.; Allerberger, F.; Ruppitsch, W.; Spersger, J. Broad-Spectrum Cephalosporin-Resistant Klebsiella spp. Isolated from Diseased Horses in Austria. *Animals* **2020**, *10*, 332. [[CrossRef](#)] [[PubMed](#)]
72. Marques, C.; Belas, A.; Aboim, C.; Cavaco-Silva, P.; Trigueiro, G.; Gama, L.T.; Pomba, C. Evidence of Sharing of Klebsiella pneumoniae Strains between Healthy Companion Animals and Cohabiting Humans. *J. Clin. Microbiol.* **2019**, *57*, e01537-18. [[CrossRef](#)] [[PubMed](#)]
73. Cheng, F.; Li, Z.; Lan, S.; Liu, W.; Li, X.; Zhou, Z.; Song, Z.; Wu, J.; Zhang, M.; Shan, W. Characterization of Klebsiella pneumoniae Associated with Cattle Infections in Southwest China Using Multi-Locus Sequence Typing (MLST), Antibiotic Resistance and Virulence-Associated Gene Profile Analysis. *Braz. J. Microbiol.* **2018**, *49*, 93–100. [[CrossRef](#)]
74. Yang, F.; Deng, B.; Liao, W.; Wang, P.; Chen, P.; Wei, J. High Rate of Multiresistant Klebsiella pneumoniae from Human and Animal Origin. *Infect. Drug Resist.* **2019**, *12*, 2729–2737. [[CrossRef](#)]
75. Bonnedahl, J.; Hernandez, J.; Stedt, J.; Waldenström, J.; Olsen, B.; Drobni, M. Extended-Spectrum β -Lactamases in Escherichia coli and Klebsiella pneumoniae in Gulls, Alaska, USA. *Emerg. Infect. Dis.* **2014**, *20*, 897–899. [[CrossRef](#)]
76. Janatova, M.; Albrechtova, K.; Petrzalkova, K.J.; Dolejska, M.; Papousek, I.; Masarikova, M.; Cizek, A.; Todd, A.; Shutt, K.; Kalousova, B.; et al. Antimicrobial-Resistant Enterobacteriaceae from Humans and Wildlife in Dzanga-Sangha Protected Area, Central African Republic. *Vet. Microbiol.* **2014**, *171*, 422–431. [[CrossRef](#)] [[PubMed](#)]
77. Du, Y.; Luo, J.; Wang, C.; Wen, Q.; Duan, M.; Zhang, H.; He, H. Detection of Drug-Resistant Klebsiella pneumoniae in Chinese Hares (Lepus sinensis). *J. Wildl. Dis.* **2014**, *50*, 109–112. [[CrossRef](#)]
78. Bachiri, T.; Bakour, S.; Lalaoui, R.; Belkebla, N.; Allouache, M.; Rolain, J.M.; Touati, A. Occurrence of Carbapenemase-Producing Enterobacteriaceae Isolates in the Wildlife: First Report of OXA-48 in Wild Boars in Algeria. *Microb. Drug Resist.* **2018**, *24*, 337–345. [[CrossRef](#)]
79. Seguel, M.; Gottdenker, N.L.; Colegrove, K.; Johnson, S.; Struve, C.; Howerth, E.W. Hypervirulent Klebsiella pneumoniae in California Sea Lions (Zalophus californianus): Pathologic Findings in Natural Infections. *Vet. Pathol.* **2017**, *54*, 846–850. [[CrossRef](#)]
80. Whitaker, D.M.; Reichley, S.R.; Griffin, M.J.; Prager, K.; Richey, C.A.; Kenelty, K.V.; Stevens, B.N.; Lloyd-Smith, J.O.; Johnson, C.K.; Duignan, P.; et al. Hypermucoviscous Klebsiella pneumoniae Isolates from Stranded and Wild-Caught Marine Mammals of the US Pacific Coast: Prevalence, Phenotype, and Genotype. *J. Wildl. Dis.* **2018**, *54*, 659–670. [[CrossRef](#)]
81. Jang, S.; Wheeler, L.; Carey, R.B.; Jensen, B.; Crandall, C.M.; Schrader, K.N.; Jessup, D.; Colegrove, K.; Gulland, F.M.D. Pleuritis and Suppurative Pneumonia Associated with a Hypermucoviscosity Phenotype of Klebsiella pneumoniae in California Sea Lions (Zalophus californianus). *Vet. Microbiol.* **2010**, *141*, 174–177. [[CrossRef](#)] [[PubMed](#)]
82. Lepuschitz, S.; Schill, S.; Stoeger, A.; Pekard-Amenitsch, S.; Huhulescu, S.; Inreiter, N.; Hartl, R.; Kerschner, H.; Sorschag, S.; Springer, B.; et al. Whole Genome Sequencing Reveals Resemblance between ESBL-Producing and Carbapenem Resistant Klebsiella pneumoniae Isolates from Austrian Rivers and Clinical Isolates from Hospitals. *Sci. Total Environ.* **2019**, *662*, 227–235. [[CrossRef](#)]
83. Liapis, E.; Pantel, A.; Robert, J.; Nicolas-Chanoine, M.-H.; Cavalié, L.; van der Mee-Marquet, N.; Champs, C.d.; Aissa, N.; Eloy, C.; Blanc, V.; et al. Molecular Epidemiology of OXA-48-Producing Klebsiella pneumoniae in France. *Clin. Microbiol. Infect.* **2014**, *20*, O1121–O1123. [[CrossRef](#)] [[PubMed](#)]
84. Gharout-Sait, A.; Alsharapy, S.-A.; Brasme, L.; Touati, A.; Kermas, R.; Bakour, S.; Guillard, T.; de Champs, C. Enterobacteriaceae Isolates Carrying the New Delhi Metallo- β -Lactamase Gene in Yemen. *J. Med. Microbiol.* **2014**, *63*, 1316–1323. [[CrossRef](#)] [[PubMed](#)]
85. López-Camacho, E.; Paño-Pardo, J.R.; Ruiz-Carrascoso, G.; Wesselink, J.-J.; Lusa-Bernal, S.; Ramos-Ruiz, R.; Ovalle, S.; Gómez-Gil, R.; Pérez-Blanco, V.; Pérez-Vázquez, M.; et al. Population Structure of OXA-48-Producing Klebsiella pneumoniae ST405 Isolates During a Hospital Outbreak Characterised by Genomic Typing. *J. Glob. Antimicrob. Resist.* **2018**, *15*, 48–54. [[CrossRef](#)]

86. Ballén, V.; Sáez, E.; Benmessaoud, R.; Houssain, T.; Alami, H.; Barkat, A.; Kabiri, M.; Moraleda, C.; Bezaad, R.; Vila, J.; et al. First Report of a Klebsiella pneumoniae ST466 Strain Causing Neonatal Sepsis Harboring the blaCTX-M-15 Gene in Rabat, Morocco. *FEMS Microbiol. Lett.* **2015**, *362*, 1–4. [[CrossRef](#)]
87. Stoddard, R.A.; Gulland, M.D.F.; Atwill, E.R.; Lawrence, J.; Jang, S.; Conrad, P.A. Salmonella and Campylobacter spp. in Northern Elephant Seals, California. *Emerg. Infect. Dis.* **2005**, *11*, 1967–1969. [[CrossRef](#)]
88. Stoddard, R.A.; DeLong, R.L.; Byrne, B.A.; Jang, S.; Gulland, F.M.D. Prevalence and Characterization of Salmonella spp. among Marine Animals in the Channel Islands, California. *Dis. Aquat. Organ.* **2008**, *81*, 5–11. [[CrossRef](#)] [[PubMed](#)]
89. Berardi, T.; Shapiro, K.; Byrne, B.A.; Miller, W. Prevalence and Characterization of Salmonella Shed by Captive and Free-Range California Sea Lions (*Zalophus californianus*) from a Rehabilitation Center and Three State Reserves along the California Coast. *J. Zoo Wildl. Med.* **2014**, *45*, 527–533. [[CrossRef](#)]
90. Stoddard, R.A.; Atwill, E.R.; Gulland, F.M.D.; Miller, M.A.; Dabritz, H.A.; Paradies, D.M.; Worcester, K.R.; Jang, S.; Lawrence, J.; Byrne, B.A.; et al. Risk Factors for Infection with Pathogenic and Antimicrobial-Resistant Fecal Bacteria in Northern Elephant Seals in California. *Public Heal. Rep.* **2008**, *123*, 360–370. [[CrossRef](#)]
91. Aguirre, A.A.; Tabor, G. Introduction: Marine Vertebrates as Sentinels of Marine Ecosystem Health. *EcoHealth* **2004**, *1*, 236–238. [[CrossRef](#)]
92. CLSI. *Performance Standards for Antimicrobial Susceptibility Testing, CLSI Supplement M100*, 30th ed.; Clinical and Laboratory Standards Institute: Wayne, PA, USA, 2020.
93. Kohlmann, R.; Bähr, T.; Gatermann, S.G. Species-Specific Mutation Rates for AmpC Derepression in Enterobacterales with Chromosomally Encoded Inducible AmpC β -Lactamase. *J. Antimicrob. Chemother.* **2018**, *73*, 1530–1536. [[CrossRef](#)]
94. Schug, A.R.; Bartel, A.; Scholtzek, A.D.; Meurer, M.; Brombach, J.; Hensel, V.; Fanning, S.; Schwarz, S.; Feßler, A.T. Biocide Susceptibility Testing of Bacteria: Development of a Broth Microdilution Method. *Vet. Microbiol.* **2020**, *248*, 108791. [[CrossRef](#)] [[PubMed](#)]
95. Braun, S.D.; Jamil, B.; Syed, M.A.; Abbasi, S.A.; Weiß, D.; Slickers, P.; Monecke, S.; Engelmann, I.; Ehricht, R. Prevalence of Carbapenemase-Producing Organisms at the Kidney Center of Rawalpindi (Pakistan) and Evaluation of an Advanced Molecular Microarray-Based Carbapenemase Assay. *Future Microbiol.* **2018**, *13*, 1225–1246. [[CrossRef](#)] [[PubMed](#)]
96. Sandvang, D.; Aarestrup, F.M. Characterization of Aminoglycoside Resistance Genes and Class 1 Integrons in Porcine and Bovine Gentamicin-Resistant Escherichia coli. *Microb. Drug Resist.* **2000**, *6*, 19–27. [[CrossRef](#)] [[PubMed](#)]
97. Boerlin, P.; Travis, R.; Gyles, C.L.; Reid-Smith, R.; Janecko, N.; Lim, H.; Nicholson, V.; McEwen, S.A.; Friendship, R.; Archambault, M. Antimicrobial Resistance and Virulence Genes of Escherichia coli Isolates from Swine in Ontario. *Appl. Environ. Microbiol.* **2005**, *71*, 6753–6761. [[CrossRef](#)]
98. Gay, K.; Robicsek, A.; Strahilevitz, J.; Park, C.H.; Jacoby, G.; Barrett, T.J.; Medalla, F.; Chiller, T.M.; Hooper, D.C. Plasmid-Mediated Quinolone Resistance in Non-Typhi Serotypes of Salmonella enterica. *Clin. Infect. Dis.* **2006**, *43*, 297–304. [[CrossRef](#)] [[PubMed](#)]
99. Park, C.H.; Robicsek, A.; Jacoby, G.A.; Sahm, D.; Hooper, D.C. Prevalence in the United States of Aac(6′)-Ib-cr Encoding a Ciprofloxacin-Modifying Enzyme. *Antimicrob. Agents Chemother.* **2006**, *50*, 3953–3955. [[CrossRef](#)]
100. Yamane, K.; Wachino, J.; Suzuki, S.; Arakawa, Y. Plasmid-Mediated qepA Gene among Escherichia coli Clinical Isolates from Japan. *Antimicrob. Agents Chemother.* **2008**, *52*, 1564–1566. [[CrossRef](#)]
101. Cavaco, L.M.; Hasman, H.; Xia, S.; Aarestrup, F.M. qnrD, a Novel Gene Conferring Transferable Quinolone Resistance in Salmonella enterica Serovar Kentucky and Bovismorbificans Strains of Human Origin. *Antimicrob. Agents Chemother.* **2009**, *53*, 603–608. [[CrossRef](#)]
102. Szczepanowski, R.; Linke, B.; Krahn, I.; Gartemann, K.-H.; Gützkow, T.; Eichler, W.; Pühler, A.; Schlüter, A. Detection of 140 Clinically Relevant Antibiotic-Resistance Genes in the Plasmid Metagenome of Wastewater Treatment Plant Bacteria Showing Reduced Susceptibility to Selected Antibiotics. *Microbiology* **2009**, *155*, 2306–2319. [[CrossRef](#)]
103. Šeputienė, V.; Povilonis, J.; Ružauskas, M.; Pavilonis, A.; Sužiedėlienė, E. Prevalence of Trimethoprim Resistance Genes in Escherichia coli Isolates of Human and Animal Origin in Lithuania. *J. Med. Microbiol.* **2010**, *59*, 315–322. [[CrossRef](#)] [[PubMed](#)]
104. Dolejska, M.; Frolkova, P.; Florek, M.; Jamborova, I.; Purgertova, M.; Kutilova, I.; Cizek, A.; Guenther, S.; Literak, I. CTX-M-15-Producing Escherichia coli Clone B2-O25b-ST131 and Klebsiella spp. Isolates in Municipal Wastewater Treatment Plant Effluents. *J. Antimicrob. Chemother.* **2011**, *66*, 2784–2790. [[CrossRef](#)]
105. Miranda, A.; Ávila, B.; Díaz, P.; Rivas, L.; Bravo, K.; Astudillo, J.; Bueno, C.; Ulloa, M.T.; Hermosilla, G.; Del Canto, F.; et al. Emergence of Plasmid-Borne dfrA14 Trimethoprim Resistance Gene in Shigella sonnei. *Front. Cell. Infect. Microbiol.* **2016**, *6*, 77. [[CrossRef](#)]
106. Wang, M.; Guo, Q.; Xu, X.; Wang, X.; Ye, X.; Wu, S.; Hooper, D.C.; Wang, M. New Plasmid-Mediated Quinolone Resistance Gene, qnrC, Found in a Clinical Isolate of Proteus mirabilis. *Antimicrob. Agents Chemother.* **2009**, *53*, 1892–1897. [[CrossRef](#)]
107. Dierikx, C.M.; van Duijkeren, E.; Schoormans, A.H.W.; van Essen-Zandbergen, A.; Veldman, K.; Kant, A.; Huijsdens, X.W.; van der Zwaluw, K.; Wagenaar, J.A.; Mevius, D.J. Occurrence and Characteristics of Extended-Spectrum- β -Lactamase- and AmpC-Producing Clinical Isolates Derived from Companion Animals and Horses. *J. Antimicrob. Chemother.* **2012**, *67*, 1368–1374. [[CrossRef](#)] [[PubMed](#)]
108. Kehrenberg, C.; Schwarz, S. Distribution of Florfenicol Resistance Genes fexA and cfr among Chloramphenicol-Resistant Staphylococcus isolates. *Antimicrob. Agents Chemother.* **2006**, *50*, 1156–1163. [[CrossRef](#)]

109. Dallenne, C.; Da Costa, A.; Decré, D.; Favier, C.; Arlet, G. Development of a Set of Multiplex PCR Assays for the Detection of Genes Encoding Important Beta-Lactamases in Enterobacteriaceae. *J. Antimicrob. Chemother.* **2010**, *65*, 490–495. [[CrossRef](#)] [[PubMed](#)]
110. Pérez-Pérez, F.J.; Hanson, N.D. Detection of Plasmid-Mediated AmpC Beta-Lactamase Genes in Clinical Isolates by Using Multiplex PCR. *J. Clin. Microbiol.* **2002**, *40*, 2153–2162. [[CrossRef](#)] [[PubMed](#)]
111. Everett, M.J.; Jin, Y.F.; Ricci, V.; Piddock, L.J. Contributions of Individual Mechanisms to Fluoroquinolone Resistance in 36 *Escherichia coli* Strains Isolated from Humans and Animals. *Antimicrob. Agents Chemother.* **1996**, *40*, 2380–2386. [[CrossRef](#)]
112. Caroff, N.; Espaze, E.; Bérard, I.; Richet, H.; Reynaud, A. Mutations in the AmpC Promoter of *Escherichia coli* Isolates Resistant to Oxyiminocephalosporins without Extended Spectrum Beta-Lactamase Production. *FEMS Microbiol. Lett.* **1999**, *173*, 459–465. [[CrossRef](#)]
113. Clermont, O.; Christenson, J.K.; Denamur, E.; Gordon, D.M. The Clermont *Escherichia coli* Phylo-Typing Method Revisited: Improvement of Specificity and Detection of New Phylo-Groups. *Environ. Microbiol. Rep.* **2013**, *5*, 58–65. [[CrossRef](#)] [[PubMed](#)]
114. Weissman, S.J.; Johnson, J.R.; Tchesnokova, V.; Billig, M.; Dykhuizen, D.; Riddell, K.; Rogers, P.; Qin, X.; Butler-Wu, S.; Cookson, B.T.; et al. High-Resolution Two-Locus Clonal Typing of Extraintestinal Pathogenic *Escherichia coli*. *Appl. Environ. Microbiol.* **2012**, *78*, 1353–1360. [[CrossRef](#)]
115. Roer, L.; Johannesen, T.B.; Hansen, F.; Stegger, M.; Tchesnokova, V.; Sokurenko, E.; Garibay, N.; Allesøe, R.; Thomsen, M.C.F.; Lund, O.; et al. CHTyper, a Web Tool for Subtyping of Extraintestinal Pathogenic *Escherichia coli* Based on the *fumC* and *fimH* Alleles. *J. Clin. Microbiol.* **2018**, *56*, e00063-18. [[CrossRef](#)] [[PubMed](#)]
116. Francisco, A.P.; Vaz, C.; Monteiro, P.T.; Melo-Cristino, J.; Ramirez, M.; Carriço, J.A. PHYLOViZ: Phylogenetic Inference and Data Visualization for Sequence Based Typing Methods. *BMC Bioinform.* **2012**, *13*, 1–10. [[CrossRef](#)]
117. Brisse, S.; Fevre, C.; Passet, V.; Issenhuth-Jeanjean, S.; Tournebize, R.; Diancourt, L.; Grimont, P. Virulent Clones of *Klebsiella pneumoniae*: Identification and Evolutionary Scenario Based on Genomic and Phenotypic Characterization. *PLoS ONE* **2009**, *4*, e4982. [[CrossRef](#)]
118. Diancourt, L.; Passet, V.; Verhoef, J.; Grimont, P.A.D.; Brisse, S. Multilocus Sequence Typing of *Klebsiella pneumoniae* Nosocomial Isolates. *J. Clin. Microbiol.* **2005**, *43*, 4178–4182. [[CrossRef](#)]
119. Braun, S.D.; Ziegler, A.; Methner, U.; Slickers, P.; Keiling, S.; Monecke, S.; Ehricht, R. Fast DNA Serotyping and Antimicrobial Resistance Gene Determination of *Salmonella enterica* with an Oligonucleotide Microarray-Based Assay. *PLoS ONE* **2012**, *7*, e46489. [[CrossRef](#)]
120. Geue, L.; Schares, S.; Mintel, B.; Conraths, F.J.; Müller, E.; Ehricht, R. Rapid Microarray-Based Genotyping of Enterohemorrhagic *Escherichia coli* Serotype O156:H25/H-/Hnt Isolates from Cattle and Clonal Relationship Analysis. *Appl. Environ. Microbiol.* **2010**, *76*, 5510–5519. [[CrossRef](#)]
121. Lepuschitz, S.; Huhulescu, S.; Hyden, P.; Springer, B.; Rattai, T.; Allerberger, F.; Mach, R.L.; Ruppitsch, W. Characterization of a Community-Acquired-MRSA USA300 Isolate from a River Sample in Austria and Whole Genome Sequence Based Comparison to a Diverse Collection of USA300 Isolates. *Sci. Rep.* **2018**, *8*, 1–9. [[CrossRef](#)]
122. Bankevich, A.; Nurk, S.; Antipov, D.; Gurevich, A.A.; Dvorkin, M.; Kulikov, A.S.; Lesin, V.M.; Nikolenko, S.I.; Pham, S.; Pribelski, A.D.; et al. SPAdes: A New Genome Assembly Algorithm and Its Applications to Single-Cell Sequencing. *J. Comput. Biol.* **2012**, *19*, 455–477. [[CrossRef](#)] [[PubMed](#)]
123. Wirth, T.; Falush, D.; Lan, R.; Colles, F.; Mensa, P.; Wieler, L.H.; Karch, H.; Reeves, P.R.; Maiden, M.C.J.; Ochman, H.; et al. Sex and Virulence in *Escherichia coli*: An Evolutionary Perspective. *Mol. Microbiol.* **2006**, *60*, 1136–1151. [[CrossRef](#)] [[PubMed](#)]
124. Beghain, J.; Bridier-Nahmias, A.; Le Nagard, H.; Denamur, E.; Clermont, O. ClermonTyping: An Easy-to-Use and Accurate in Silico Method for *Escherichia* Genus Strain Phylotyping. *Microb. Genom.* **2018**, *4*, e000192. [[CrossRef](#)]
125. Clermont, O.; Dixit, O.V.A.; Vangchhia, B.; Condamine, B.; Dion, S.; Bridier-Nahmias, A.; Denamur, E.; Gordon, D. Characterization and Rapid Identification of Phylogroup G in *Escherichia coli*, a Lineage with High Virulence and Antibiotic Resistance Potential. *Environ. Microbiol.* **2019**, *21*, 3107–3117. [[CrossRef](#)]
126. Alcock, B.P.; Raphenya, A.R.; Lau, T.T.Y.; Tsang, K.K.; Boucharad, M.; Edalatmand, A.; Huynh, W.; Nguyen, A.-L.V.; Cheng, A.A.; Liu, S.; et al. CARD 2020: Antibiotic Resistome Surveillance with the Comprehensive Antibiotic Resistance Database. *Nucleic Acids Res.* **2020**, *48*, D517–D525. [[CrossRef](#)] [[PubMed](#)]
127. Bortolaia, V.; Kaas, R.S.; Ruppe, E.; Roberts, M.C.; Schwarz, S.; Cattoir, V.; Philippon, A.; Allesøe, R.L.; Rebelo, A.R.; Florensa, A.F.; et al. ResFinder 4.0 for Predictions of Phenotypes from Genotypes. *J. Antimicrob. Chemother.* **2020**, *75*, 3491–3500. [[CrossRef](#)]
128. Zankari, E.; Allesøe, R.; Joensen, K.G.; Cavaco, L.M.; Lund, O.; Aarestrup, F.M. PointFinder: A Novel Web Tool for WGS-Based Detection of Antimicrobial Resistance Associated with Chromosomal Point Mutations in Bacterial Pathogens. *J. Antimicrob. Chemother.* **2017**, *72*, 2764–2768. [[CrossRef](#)]
129. Pal, C.; Bengtsson-Palme, J.; Rensing, C.; Kristiansson, E.; Larsson, D.G.J. BacMet: Antibacterial Biocide and Metal Resistance Genes Database. *Nucleic Acids Res.* **2014**, *42*, D737–D743. [[CrossRef](#)] [[PubMed](#)]
130. Joensen, K.G.; Scheutz, F.; Lund, O.; Hasman, H.; Kaas, R.S.; Nielsen, E.M.; Aarestrup, F.M. Real-Time Whole-Genome Sequencing for Routine Typing, Surveillance, and Outbreak Detection of Verotoxigenic *Escherichia coli*. *J. Clin. Microbiol.* **2014**, *52*, 1501–1510. [[CrossRef](#)]
131. Tetzschner, A.M.M.; Johnson, J.R.; Johnston, B.D.; Lund, O.; Scheutz, F. In Silico Genotyping of *Escherichia coli* Isolates for Extraintestinal Virulence Genes by Use of Whole-Genome Sequencing Data. *J. Clin. Microbiol.* **2020**, *58*, e01269-20. [[CrossRef](#)]

132. Joensen, K.G.; Tetzschner, A.M.M.; Iguchi, A.; Aarestrup, F.M.; Scheutz, F. Rapid and Easy In Silico Serotyping of *Escherichia coli* Isolates by Use of Whole-Genome Sequencing Data. *J. Clin. Microbiol.* **2015**, *53*, 2410–2426. [[CrossRef](#)]
133. Carattoli, A.; Zankari, E.; García-Fernández, A.; Voldby Larsen, M.; Lund, O.; Villa, L.; Møller Aarestrup, F.; Hasman, H. In Silico Detection and Typing of Plasmids Using PlasmidFinder and Plasmid Multilocus Sequence Typing. *Antimicrob. Agents Chemother.* **2014**, *58*, 3895–3903. [[CrossRef](#)] [[PubMed](#)]
134. Arredondo-Alonso, S.; Rogers, M.R.C.; Braat, J.C.; Verschuuren, T.D.; Top, J.; Corander, J.; Willems, R.J.L.; Schürch, A.C. Mlplasmids: A User-Friendly Tool to Predict Plasmid- and Chromosome-Derived Sequences for Single Species. *Microb. Genom.* **2018**, *4*, e000224. [[CrossRef](#)] [[PubMed](#)]
135. Grimont, P.; Weill, F.X. *Antigenic Formulae of the Salmonella Serovars*; WHO: Paris, France, 1997.
136. Ziemer, C.J.; Steadham, S.R. Evaluation of the Specificity of Salmonella PCR Primers Using Various Intestinal Bacterial Species. *Lett. Appl. Microbiol.* **2003**, *37*, 463–469. [[CrossRef](#)] [[PubMed](#)]
137. Hashimoto, Y.; Itho, Y.; Fujinaga, Y.; Khan, A.Q.; Sultana, F.; Miyake, M.; Hirose, K.; Yamamoto, H.; Ezaki, T. Development of Nested PCR Based on the *ViaB* Sequence to Detect *Salmonella typhi*. *J. Clin. Microbiol.* **1995**, *33*, 775–777. [[CrossRef](#)]