

Assessing human and environmental pressures of global land-use change 2000–2010

Felix Creutzig^{1,2}, Christopher Bren d'Amour^{1,2}, Ulf Weddige¹, Sabine Fuss^{1,3}, Tim Beringer^{1,4}, Anne Gläser¹, Matthias Kalkuhl^{1,5}, Jan Christoph Steckel^{1,2,6}, Alexander Radebach^{1,2} and Ottmar Edenhofer^{1,2,6}

Review

Cite this article: Creutzig F *et al* (2019). Assessing human and environmental pressures of global land-use change 2000–2010. *Global Sustainability* 2, e1, 1–17. <https://doi.org/10.1017/sus.2018.15>

Received: 17 February 2018
Revised: 22 October 2018
Accepted: 2 November 2018

Keywords:

agriculture; earth systems (land, water and atmospheric); land use; natural resources (biological and non-biological); urban systems

Author for correspondence: F. Creutzig,
E-mail: creutzig@mcc-berlin.net

¹Mercator Research Institute on Global Commons and Climate Change, Torgauer Straße 12–15, 10829 Berlin, Germany; ²Technische Universität Berlin, Straße des 17 Juni 135, 10623 Berlin, Germany; ³Geographical Institute, Humboldt-University of Berlin, Unter den Linden 6, 10099 Berlin, Germany; ⁴Integrative Research Institute on Transformations of Human Environment Systems (IRI THESys), Humboldt-Universität zu Berlin, Berlin, Germany; ⁵Universität Potsdam, Faculty of Economic and Social Sciences, August-Bebel-Straße 89, 14482 Potsdam, Germany and ⁶Potsdam Institute for Climate Impact Research, PO Box 601203, 14412 Potsdam, Germany

Non-technical summary. Global land is turning into an increasingly scarce resource. We here present a comprehensive assessment of co-occurring land-use change from 2000 until 2010, compiling existing spatially explicit data sources for different land uses, and building on a rich literature addressing specific land-use changes in all world regions. This review systematically categorizes patterns of land use, including regional urbanization and agricultural expansion but also globally telecoupled land-use change for all world regions. Managing land-use change patterns across the globe requires global governance.

Technical summary. Here we present a comprehensive assessment of the extent and density of multiple drivers and impacts of land-use change. We combine and reanalyze spatially explicit data of global land-use change between 2000 and 2010 for population, livestock, cropland, terrestrial carbon and biodiversity. We find pervasive pressure on biodiversity but varying patterns of gross land-use changes across world regions. Our findings enable a classification of land-use patterns into three types. The ‘consumers’ type, displayed in Europe and North America, features high land footprints, reduced direct human pressures due to intensification of agriculture, and increased reliance on imports, enabling a partial recovery of terrestrial carbon and reducing pressure on biodiversity. In the ‘producer’ type, most clearly epitomized by Latin America, telecoupled land-use links drive biodiversity and carbon loss. In the ‘mover’ type, we find strong direct domestic pressures, but with a wide variety of outcomes, ranging from a concurrent expansion of population, livestock and croplands in Sub-Saharan Africa at the cost of natural habitats to strong pressure on cropland by urbanization in Eastern Asia. In addition, anthropogenic climate change has already left a distinct footprint on global land-use change. Our data- and literature-based assessment reveals region-specific opportunities for managing global land-use change.

1. Introduction

Demand for land is continuously rising globally (Foley *et al.*, 2005). This is characterized by both intensification and extensification of food production (FAO, 2014), by urbanization (Seto *et al.*, 2012), by the onset of modern bioenergy (Chum *et al.*, 2011; Creutzig *et al.*, 2015), by preservation of nature and biodiversity (Wilson, 2016) and, more recently, by afforestation to sequester CO₂ on land (Canadell & Raupach, 2008). Projected latent land demand, added up from individual studies, could exceed available land by a factor of 3–7 by 2050 (Canadell & Schulze, 2014). Even when accounting for plausible multi-purpose allocation, this future demand is unlikely to be matched by available land resources (Davis *et al.*, 2016), raising normative and ethical questions (Risse, 2008; Creutzig, 2017). While a few studies have investigated total area demands for various purposes and have provided long-term outlooks (Smith *et al.*, 2010; Hurr *et al.*, 2011; Lambin & Meyfroidt, 2011), a holistic understanding of geographical patterns of the most recent land system dynamics with respect to location and density of land-use changes for human needs (food, shelter) and biophysical stability (biodiversity, climate stabilization) across scales is missing.

Land-use change has been associated with human activities for millennia and, prior to industrialization, was dominated by deforestation induced by population pressure and corresponding demand for cropland, closely following the ascent and descent of civilizations (Kaplan *et al.*, 2009). With the industrialization, fossil fuel substituted for wood fuel, and the nexus between population pressure and deforestation was broken, at least regionally (Krausmann *et al.*, 2008). However, current trends indicate that the re-transition to more

© The Author(s) 2019. This is an Open Access article, distributed under the terms of the Creative Commons Attribution-NonCommercial-ShareAlike licence (<http://creativecommons.org/licenses/by-nc-sa/4.0/>), which permits non-commercial re-use, distribution, and reproduction in any medium, provided the same Creative Commons licence is included and the original work is properly cited. The written permission of Cambridge University Press must be obtained for commercial re-use.

land-use intensive economies may exceed global biophysical limits (Rockström et al., 2009; Steffen et al., 2015). First, at the current rate of technological change, croplands may need to increase by 10–25% by 2050 to feed a growing and more affluent population demanding more land-intensive nutrition (Schmitz et al., 2014). Second, human settlements expand, demanding an unprecedented area of land that is on average about twice as agriculturally productive as world average cropland (Bren d'Amour et al., 2017). Third, energy production has started to shift back from fossil- to land-intensive fuels, a development potentially desirable to reduce counterfactual greenhouse gas emissions (Creutzig et al., 2015) or to even generate so-called negative emissions (Fuss et al., 2014; Smith et al., 2016). Fourth, land could provide the space for an enhanced terrestrial carbon sink, for example, by afforestation, thus contributing to the mitigation of climate change (Minx et al., 2018). Fifth, ecosystems need to be stabilized across the globe to avoid unprecedented human-made biodiversity loss (Newbold et al., 2015). As decision-makers become aware of climate change and biodiversity concerns, previously low-value residual land increases in value, limiting the availability for other purposes. At the same time, anthropogenic climate change itself affects the 'supply side' of land use, for example, by changing temperature and precipitation patterns or CO₂ fertilization, in part reducing crop yields (Lobell, 2011), especially at higher levels of warming and at lower latitudes affecting developing countries most (Rosenzweig et al., 2014). In short, developing human land pressures encounter global biophysical constraints and threaten global commons, such as biodiversity and climate.

This paper investigates global land-use change for different purposes and perspectives between 2000 and 2010 with harmonized metrics. It investigates effects of direct and telecoupled land demand (defined as socioeconomic and environmental interaction over long distances, including trade and climate change (Liu et al., 2013)) presenting a comprehensive, but spatially and regionally differentiated picture of global demand for land. Rather than providing a synthesis of existing land cover change data sets (Lepers et al., 2005), this paper uses a range of data sets to map and hence visualize land-use changes and validate the findings with a region-specific literature review. Land-use changes have been previously and comprehensively studied, even on century-long time scales (Lambin & Geist, 2008). Here we focus on assessing land-use changes between 2000 and 2010 and pose the following questions:

- How did land use change for population, livestock, cropland, carbon and biodiversity between 2000 and 2010? We map and evaluate land-use changes at 50 × 50 km resolution in terms of changes of density in land use (e.g. change in population density).
- Did land use change more in regimes of high or low use densities? We graphically evaluate changes in land use for different density regimes.
- Where did what kind of land-use changes occur simultaneously? We statistically evaluate spatial co-occurrences globally, and for ten different world regions, and perform a principal component analysis on co-occurring land-use changes.
- What are the underlying land-use change dynamics? We perform a world-region specific and systematic literature review to interpret the observed land-use changes, and develop a typology of land-use change patterns across world regions.

This assessment is relevant in that there is an emerging class of global land assessments, including the *Global Land Outlook* (UNCCD, 2017), the upcoming *IPBES Global Assessment*, and the

upcoming *IPCC's special report on climate change, desertification, land degradation, sustainable land management, food security, and greenhouse gas fluxes in terrestrial ecosystems (SRCCCL)*. It is our intention to provide input and background to these assessment processes.

2. Methods and data

The data analysis makes use of the highest quality data available for 2000–2010 (see Table 1 for an overview). In the following we explain data, data processing, their limitations and computational methods chosen.

2.1. Data and data processing

This study combines gridded datasets of different land-use dimensions and their respective intensities. Data selection is based on quality and availability for the year 2000 and 2010. All data are processed and mapped into a 30 arc-minute (0.5 degree) grid, corresponding to ≈50 × 50 km at equator, and finer resolution at higher latitudes. The sample size ensures statistically relevant measurements of co-occurrences of land-use change and statistical analysis on a world region scale. All data were read in, re-sampled (if applicable), and compiled into a single dataset for subsequent analysis, using zonal statistics in ArcGIS.

Additional processing steps were required for the data used in livestock and biodiversity dimensions as well as for carbon:

2.2. Livestock data

Livestock datasets of the most important livestock types (poultry, pigs, goats, sheep and cattle) were read in as layers and re-sampled to 2.5' arc minute. The aggregate Livestock Unit (LU) Layer was generated with the raster calculator tool using the Livestock Layers and Livestock Unit Conversion Factors (poultry: 0.01, pigs: 0.225, goats: 0.1, sheep: 0.1 and cattle: 0.7; derived from <http://www.lrrd.org/lrrd18/8/chil18117.htm>).

2.3. Biodiversity data

Biodiversity is defined as the stock of plants (including trees) and animals (including fish), fungi and bacteria (e.g. for food, fuels, fibre and medicine, genetic resources for developing new crops or medicines, or as a tourism asset, etc.) following the official SEEA (System of Environmental Economic Accounting) definition (United Nations, 2014). The focus of our study is terrestrial biodiversity, thus including fish (in rivers, lakes, etc.), but not off-shore marine life. We use the map of species richness by UNEP/WCMC, which covers the taxonomic groups of birds, mammals and amphibians, based on the PREDICTS project (Hudson et al., 2014). PREDICTS has collated a large dataset from published studies on how biodiversity responds to human impacts, particularly land use. It extrapolates diversity metrics such as species richness across spatial scales using global and regional statistical models. That is especially true in regions with fewer data points, such as Sub-Saharan Africa (SSA), which to a large extent depends on extrapolated data. Species richness can be interpreted as the potential number of different species in one grid cell, thus measuring actual diversity and not absolute numbers. From species richness, we compute 'intactness' as proxy for the biodiversity dimension. The intactness of a grid cell is an index of how much of the initial species richness of a grid cell (untouched, i.e. in 100% 'primary' vegetation) is impacted by other land uses (road

Table 1. Overview of datasets. Data selection was based on quality and availability for the years 2000 and 2010. Modelled data is only used if alternatives were unavailable. See Supplementary Information for more details.

Dimension	Name of dataset	Units	Points in time
Population	SEDAC's Gridded Population of the World (GPW), v3	Total population, population density (pop/km ²)	2000 and 2010 (projected)
Livestock	Gridded Livestock of the World (GLW) (Wint <i>et al.</i> , 2007; Robinson <i>et al.</i> , 2014b)	Livestock units, livestock density (LU/km ²)	2000 and 2005
Cropland	History Database of the Global Environment (HYDE) (Klein Goldewijk <i>et al.</i> , 2016)	Crop area fraction, i.e. percentage of a grid cell	2000 and 2010
	Global Agro-Ecological Zones (GAEZ) (IIASA, 2012)	Suitability Index (from 0–1)	2000 (for suitability)
Carbon storage	Lund-Potsdam-Jena managed Land model (LPJ) (Bondeau <i>et al.</i> , 2007)	tC stored (total, and per ha)	2000 and 2010
	Deforestation Forest canopy from Global Forest Watch (GFW)		2001–2010 (GFW)
Biodiversity	Predicts database (Hudson <i>et al.</i> , 2014)	Species richness	n/a
	Newbold <i>et al.</i> (2015) (Supplementary Information)	Intactness	n/a
	LUHa_u2t1 Land Use Harmonization (Hurtt <i>et al.</i> , 2011)	Land uses	2000 and 2010
Land embodied in trade	Kastner <i>et al.</i> (2014) (Supplementary Information)	Net share of croplands used for exports	2000 and 2009
Land footprint	Weinzettel <i>et al.</i> (2013)	Global hectares (gha) per capita	2004

construction and pasture expansion are explicitly considered, among others). The intactness for a given year is computed by factoring in gridded land-use data (for both 2000 and 2010). We use land-use information from the 'Land-Use Harmonization 2' project (Hurtt *et al.*, 2011) (version LUH2 v2 h), which uses agriculture and urban land-use data from HYDE 3.2 (Klein Goldewijk *et al.*, 2016) and other land-use information to create annual maps of human land use. Every land-use type in a grid cell (in fractions of a grid cell) gets assigned a different impact on the original, initial species richness in that cell, methodologically following Newbold *et al.* (2015) (see Supplementary Information, Table S1 in Newbold *et al.*, 2015). For instance, Newbold *et al.* assign cropland (light use) an effect size of 61.9 on species richness, indicating that the intactness of a grid cell containing only cropland is 61.9 compared to 100 under natural primary vegetation. Newbold *et al.* also differentiate between different intensities of land-use types (minimal, light, intense use) and, in the case of secondary vegetation, different maturities (young, intermediate, mature). These will have an impact on the effect of the land-use type on the species richness. In our calculations, the density of the land-use type is assumed to be light (not minimal or intense). The light density allows for relatively high species richness, independent of the land-use type it is associated with. The resulting estimate can be regarded as relatively conservative since it would be in the lower range of the potential effects on species richness. Using these inputs, the intactness of each grid cell is computed. The resulting intactness is weighted with the species richness of the cell and divided by the corresponding area of the cell. In other words, if intactness is considerably impacted in a region with very low species richness, the intactness density metric will be comparatively low. The resulting biodiversity density metric is intactness weighted by species richness/km².

2.4. Land carbon data

We use the process-based dynamic global vegetation model LPJmL 3.2 (Sitch *et al.*, 2003; Gerten *et al.*, 2004; Bondeau

et al., 2007) to estimate land carbon stocks in vegetation and soils. LPJmL is a global, grid-based biogeography–biogeochemistry model, which simulates terrestrial carbon pools and fluxes and the biogeographical distribution of natural vegetation. The representation of agricultural land driven by land-use data allows for the quantification of the impacts of land use on water and carbon cycles. Here we used observation-based monthly temperature and cloud cover time series provided by the Climatic Research Unit (CRU TS version 3.21) (University of East Anglia Climatic Research Unit, 2013; Harris *et al.*, 2014) and monthly gridded precipitation data based on the Global Precipitation Climatology Centre (GPCC) Full Data Reanalysis Version 6.0 (Becker *et al.*, 2013). We calculate terrestrial carbon storage as the sum of all above- and below-ground carbon stocks in vegetation and soil.

We use land-use information from the LUH2 v2 h which, as already indicated, includes data from HYDE 3.2. HYDE 3.2 does not directly estimate deforestation, for example, using satellite data time series, and will therefore likely underestimate forest loss (Klein Goldewijk *et al.*, 2016) during our assessment period. This is a serious shortcoming, as the period 2000–2012 witnessed 2.3 million square kilometers of forest loss and 0.8 square kilometers of forest gain (Hansen *et al.*, 2013). Therefore, we combined the LUH2 data with spatially explicit estimates of recent deforestation from the Global Forest Watch (GFW) project. Following the approach of Zarin *et al.* (2016) we use only deforestation data within the tropical latitudes because most recent conversion of natural forest to a new land use occurs within the tropics (FAO, 2016; Gibbs *et al.*, 2010).

We calculated the annual increase of tropical cropland and pastures in each cell of LUH2 and compared these changes to the amount of deforestation observed by GFW. Where GFW observes more deforestation than LUH2 we added the difference between the two to the LUH2 data for LPJmL. We used average land-use composition (cropland area and types of crops as well as pasture area) from neighbouring cells, where GFW indicates deforestation but no agricultural areas exist in the cell according to LUH2. We are aware that we directly compare and combine gross deforestation measured by GFW with net deforestation in

LUH2, but we believe this is a valid approach to reduce the overall deforestation bias in the underlying HYDE 3.2 data.

2.5. Limitations

Data quality limits the scope of this analysis. Data on vegetation and soil carbon stocks, and cropland suitability are modelled, and the biodiversity data are downscaled proxy data. Estimates of land carbon stock (LPJmL) are uncertain due to modelled CO₂ fertilization, and only partially empirically validated for 2010 (see above). LPJmL also relies, *inter alia*, on HYDE data, and hence is not completely independent of cropland data. Hence, our data analysis is likely to miss some land-use changes dynamics that have occurred between 2000 and 2010. Specifically, this is a major concern in that our data insufficiently reflect deforestation dynamics from 2000 until 2010. To account for this, we include empirical data from GFW for the major deforestation regions, and corrected LPJmL data accordingly (see above).

Data are only partially available for 2010. Specifically, established datasets on livestock (Robinson *et al.*, 2014b) only go as far as 2005. Some data (e.g. population, livestock) are based on census data. Not all countries provide frequently updated censuses, therefore some of the estimates are based on a single census year, while others have had adjustments applied to normalize the data from different census years to a common set of boundaries.

The resolution is insufficiently high for reporting shifts in land-use change on identical patches of land. Instead, the analysis reveals co-occurring land-use changes in particular regions, and by this, statistical inference of cross effects.

Data should be taken with care in inter-annual comparisons as changes can result from adjustments or reflections of national or regional growth rates rather than reflecting, for example, net migration or population growth. Hence, differences between the observed points in time, 2000 and 2010, should be seen as indicators rather than fixed values. That is especially true for the modelled data on biodiversity and carbon stocks. Both the biodiversity and the LPJmL model use land-use information from LUH2 v2 h, which draws on HYDE 3.2 data, that is, the same data we use for the cropland dimension. Observed co-occurrences between cropland and the biodiversity and carbon dimensions are hence expected.

The reason for choosing HYDE 3.2 for our cropland dimension lies in its temporal availability and the compatibility. While higher resolution cropland maps à la Ramankutty *et al.* (2008) or Fritz *et al.* (2015) are likely to be more accurate, there are trade-offs in terms of temporal availability and compatibility. HYDE 3.2, which was recently upgraded, provides consistent cropland layers for both 2000 and 2010, while the other products are only available for 2000 (Ramankutty *et al.*, 2008) and 2005 (Fritz *et al.*, 2015). In addition, using cropland products from different sources would raise concerns regarding the compatibility. Fritz *et al.*, for example, have compared their findings to the product from Ramankutty *et al.* and found that “the size of disagreeing areas between the two products is significantly larger than any change in cropland extent between 2000 and 2005 for the majority of countries” (Fritz *et al.*, 2016). Overall, there are considerable differences between different cropland extent datasets (Anderson *et al.*, 2015; Fritz *et al.*, 2015).

LPJmL models uncertain CO₂ fertilization. However, previous studies indicate that LPJ reproduces the magnitude of observed changes in forest productivity due to rising CO₂ concentrations (Hickler *et al.*, 2008). Effects of continuous forest management on vegetation and soil carbon stocks are not included, because

spatially explicit, global data on forest management are not available (e.g. small-scale or selective logging). To capture relevant dynamics, we hence consider large area deforestation recorded in the GFW data in the simulations, thus putting our estimates into the right magnitude. This study combines gridded datasets of different land-use dimensions and their respective intensities. It focuses exclusively on land-use dynamics and does not cover water as an additional component, which is beyond the scope of this study. By focusing on a rather limited time period only (2000–2010), more recent dynamics are not captured in our data analysis.

Importantly, while some data points of the image maps might be wrong, all messages reported in the text manuscripts were cross-validated with the systematic review in Table 3 and the associated text.

2.6. Density curves

Density curves are constructed to depict the distribution of the land-use dimensions in terms of area and density. To this end, area (in km²) of grid cells that fall into the respective density bins were aggregated. To measure the spatial concentration of land use we computed the Gini coefficient of the five dimensions.

For most dimensions we use a density metric (including a ‘productivity’ dimension), such as livestock units per unit area. For croplands, the corresponding metric would have been cropland area fraction (the percentage of a unit area/grid cell that is covered by croplands). However, this would not account for quality of the respective cropland, which we consider an essential component in the context of croplands. To account for this, we include the GAEZ cropland suitability index as metric for cropland when calculating the distribution of changes in the density of land use. For the rest of the analysis, we use the cropland area fraction.

2.7. Density change

Density change refers to the respective land-use dimension (Tables S1, S4 & S5) in a grid cell between 2000 and 2010, for example, the change in population density (population/km²) in a grid cell. First, we calculate the density for each land-use dimension. Second, we compute the change for each grid cell between 2000 and 2010. We calculate both relative and absolute density change to identify where and to what extent specific changes occurred, respectively, and how much area was affected and at what magnitude.

2.8. Principle component analysis

Principle component analysis (PCA) was performed using STATA 14 to identify major underlying patterns of land-use changes. The PCA is a statistical technique to reduce the dimensions of large datasets by orthogonal transformations to a lower-dimensional space (Jolliffe, 2002). Particularly, we are interested in the first principal component which accounts for the largest variance in the data when considering only one dimension. The first component is the eigenvector of the correlation matrix, which corresponds to the largest eigenvalue. The results are shown in Table S2.

The first component (Figure S1A) indicates that the variables can be grouped into those with positive signs (population density, crop area and livestock density) and with negative signs (carbon, biodiversity). These two groups have a clear interpretation as they

correspond to direct human pressures (positive sign) and the nature-related residual (negative sign) which means that categorizing dynamics among this dimension allows to explain the largest share of the variability in the data. Adding additional orthogonal components (e.g. component 2; Figure S1B) would increase explanatory power; the second component is, however, difficult to interpret. We therefore restrict to only the first component, which has high statistical power as well as a clear interpretation.

In order to visualize overall land-use dynamics according to the first principal component (the ‘human-vs-nature’ dimension), the corresponding eigenvector is multiplied with the normalized data. The normalization to zero mean and one standard deviation variance is necessary to convert the different variables and dimensions to one comparable metric. The resulting scores indicate whether overall land-use changes are related to human drivers (high positive score) or to the nature residual (large negative score). As the scores result from the normalized data, they must be interpreted relative to the overall land-use dynamics. Hence, a negative score does not mean that nature-related land-use changes are ‘stronger’ than human-related land-use changes. Rather, large positive and negative values indicate regions where human or natural forces are particularly strong.

For interpretation and in-depth understanding of observed co-occurring global land-use change between 2000 and 2010, we perform an in-depth literature research on regional drivers of land-use dynamics, explaining hotspots and their regional and global relevance (see Supplementary Information and associated online material).

2.9. Land embodied in crop trade

Our detailed spatial analysis focuses on local dynamics. For discussing the results, referring to spatial linkages particularly through trade is useful because trade in agricultural products links local land-use decisions to far-distant or global demand changes. Trade in agricultural products involves implicit trade of the production factors that are used to produce the traded goods. The concept of factors embodied in trade is particularly used for analyzing virtual water trade (Hoekstra & Hung, 2005; Dalin *et al.*, 2012), carbon emissions embodied in trade (Peters & Hertwich, 2008) and, more recently, also for quantifying crop land that is associated with trade (Kastner *et al.*, 2014). Based on bilateral virtual land trade data (Kastner *et al.*, 2014), we calculate in Table S3 the share of the cropland in our world regions that is associated with net exports in the years 2000 and 2009. The Oceania region is, for example, a large land exporter as roughly 70% of the cropland is associated with net exports of crops. Hence, local land-use dynamics can be expected to be strongly influenced by international markets. On the contrary, Sub-Saharan Africa, South Eastern Asia and Southern Asia are largely land self-sufficient. Note that this can be consistent with large food trade flows (as we look only at exports net of imports) and trade deficits or surpluses that are measured in monetary terms and quantities of particular food items (and not land). Finally, Europe, Eastern Asia, the Middle East and North Africa rely on large land imports. For these three regions, dependency on imported land has substantially increased.

2.10. Systematic review

We cross-validated our results – co-occurring land-use change patterns in particular regions and cross effects – with a detailed

systematic review of region-specific literature, both in the manuscript and in more detail in the Supplementary Information. The systematic review builds on the query: “land use change” AND “[world region]” AND “2000” AND “2010” excluding publications published before 2011. We read the first 30 publications for each query in Google Scholar in detail. We designed additional targeted queries if our data analysis indicated hotspots of specific issues in some particular region. Observations of our data analysis are systematically summarized in Table 3 and verified by detailed analysis in the systematic review of the Supplementary Information. Table 3 also lists observations, which could not be verified by the systematic literature review.

3. Results

3.1. Mapping change in global land use

We first investigated the change in density of land use for human pressures from population growth, expanding livestock production and croplands, as well as their impacts on the biophysical metrics carbon density and biodiversity (Figure 1 & Table 2). Underlying data sources are in several instances (carbon and biodiversity in particular, see Methods and data section) based on numeric models. The ‘changes’ we describe here hence need to be understood against this background and should mainly be understood as model-based estimates. We validate the model-driven results with (data-driven) literature results in a separate section. We rely on density metrics, here always understood as units (population, livestock unit, cropland area fraction, carbon storage by using tonnes of terrestrial carbon stored and biodiversity intactness weighted by species richness) per area (km²), see Methods and data section. We designated *hotspots* as areas where 10% of the highest absolute changes in density occur, and *notable change areas* where 80% of the highest absolute changes in density occur, filtering out land-use change of low magnitudes. When not explicitly described as hotspots, land-use dynamics are represented by notable change areas.

Population density is increasing on 76% of land (within notable change areas), and on 91% of the hotspot areas (Table 2 & Figure 1A). Population density growth is most substantial on the Indian subcontinent, Northern Africa and Western Asia, West Africa, the Lake Victoria region and around the Sao Paulo mega-urban region (Figure 1A). In parts of Eastern Europe, and rural China, population density is decreasing. The cropland area fraction is increasing in hotspot areas (on 61% of hotspot area), but overall, cropland area fraction is decreasing in a slight majority of places (53%; Table 2). Cropland is expanding most prominently in Mato Grosso, Brazil, the Guinean Savannah zone and Sumatra (South East Asia), but is declining across large parts of the Northern hemisphere (Figure 1C). Sub-Saharan Africa is the region showing greatest human pressures as population density increased on average by 27%, and cropland expanded by 18%, between 2000 and 2010 (Table S5). Next to population, the greatest increase is in livestock (on 62% of land). The most notable increases in livestock density appear in China, Brazil and parts of Sub-Saharan Africa, but there are decreases in parts of Europe (Figure 1B). Worldwide, a small majority of places display an increase in land carbon stock (55%), notably in the Northern hemisphere and in tropical rain forests (parts of the Amazon, Congo and Indonesia) (Figure 1D). By contrast, decreases occur in most of

World maps of intensity changes in land use and principal component analysis Between 2000 and 2010

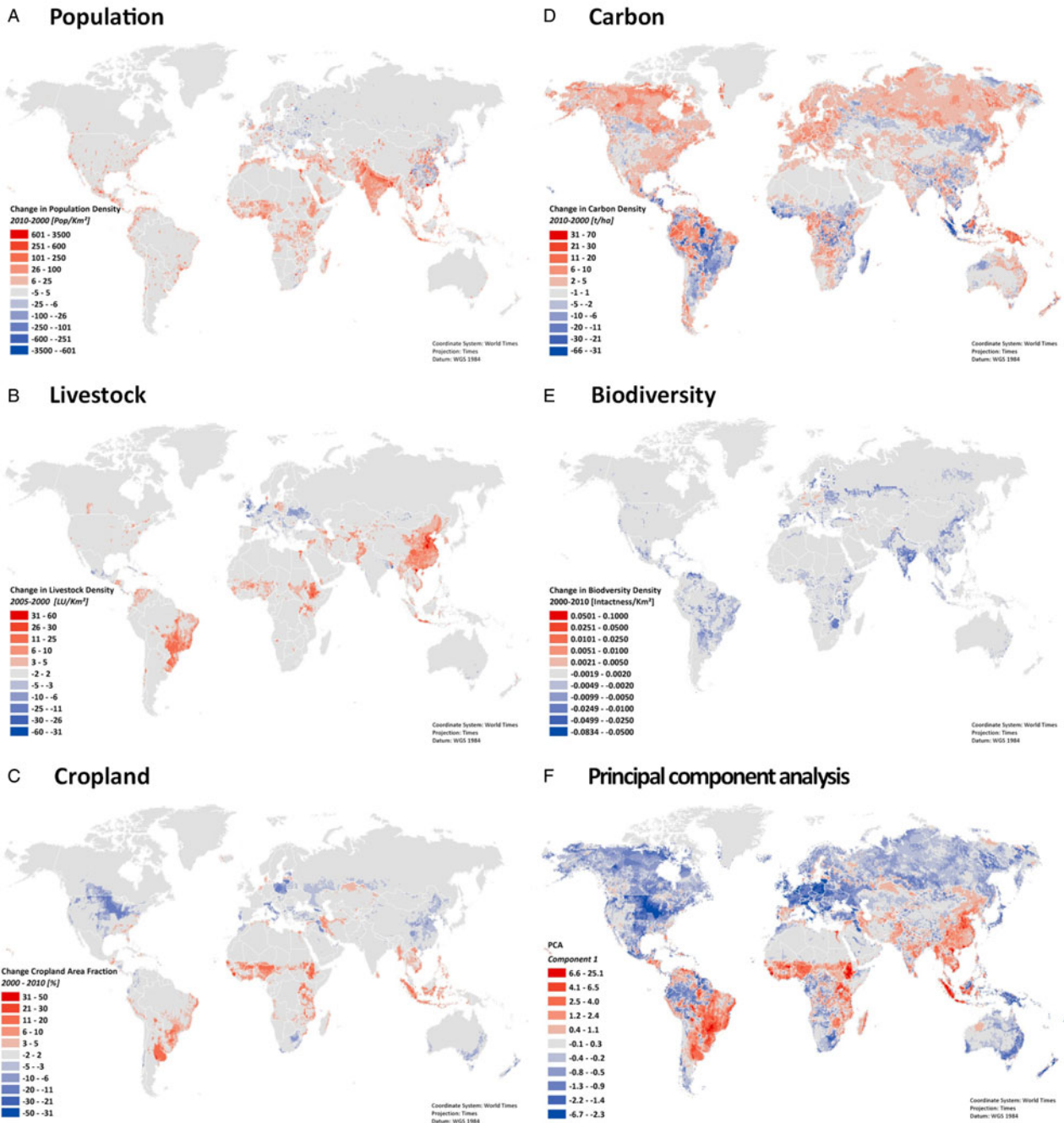


Fig. 1. Change in density of land use between 2000 and 2010. (A) Population density; (B) Livestock density (for 2000 and 2005); (C) Cropland area fraction; (D) Terrestrial carbon density; (E) Biodiversity intactness (proxy for biodiversity); (F) Principal component analysis Z-scores from the product of the first eigenvector with the standardized data of density changes. Blue colors indicate that increases in carbon stocks and biodiversity are relatively strong while red colors indicate that population, cropland and livestock gains dominate (relative to the mean change). All data are processed and mapped into a 30 arc-minute (0.5 degree) grid (63879 data points), corresponding to $\approx 50 \times 50$ km at equator, and finer resolution at higher latitudes. Data sources are summarized in Table S1.

South America, Sub-Saharan Africa, Sumatra and some North-American regions (e.g. Alberta). Notably, 57% of global net terrestrial carbon loss took place in Sub-Saharan Africa and Latin America, together with 68% of global net cropland expansion (Table S5). With rare exceptions, biodiversity is decreasing worldwide (90%; and 98% of hotspots).

3.2. Shifts in density of land uses

Changes of land use are concentrated in specific density bands (Figure 2). An analysis of the magnitude of density shift for all land areas reveals that more than 90% of the shifts have an absolute value of <10% of their respective scales as presented in

Table 2. Gain/loss per land-use dimension with density change above threshold between 2000 and 2010 (2000 and 2005 for livestock). Density units: 1) Population: population/km²; 2) Livestock: livestock units/km²; 3) Cropland: cropland area fraction (here defined as percentage of cropland in a grid cell); 4) Carbon: tC/ha; 5) Biodiversity: intactness/km² (weighted with species richness). *Intactness* measures the degree to which the original biodiversity of a terrestrial site remains unimpaired in the face of human land use and related pressures. Threshold refers to changes in density between 2010 (2005 for livestock) and 2000: Top 10% = hotspot areas of density change; Top 80% = areas with notable changes.

Dimension	Threshold (only cells with absolute changes above threshold considered)	Share of area with gain	Share of area with loss	Average density 2000	Average density change for areas with gain	Average density change for areas with loss	Average density 2010 (and change compared to 2000)
Population	Top 10%	91%	9%	311.2	55.3 (+18%)	-29.2 (-9%)	357.2 (+15%)
	Top 80%	76%	24%	64.6	12.0 (+19%)	-2.7 (-4%)	72.1 (+12%)
Livestock	Top 10%	86%	14%	45.0	7.2 (+16%)	-5.7 (-13%)	49.8 (+11%)
	Top 80%	62%	38%	12.5	1.8 (+14%)	-0.8 (-6%)	13.2 (+5%)
Cropland	Top 10%	61%	39%	0.46	0.1 (+21%)	-0.09 (-19%)	0.47 (+4%)
	Top 80%	47%	53%	0.21	0.03 (+13%)	-0.02 (-10%)	0.21 (-0.1%)
Carbon	Top 10%	46%	54%	254.6	9.6 (+3%)	-10.1 (+4%)	256.4 (-1%)
	Top 80%	56%	44%	259	3.8 (+1%)	-4.1 (-2%)	259.8 (-1%)
Biodiversity	Top 10%	2%	98%	0.14	0.004 (+3%)	-0.0065 (-5%)	0.13 (-4%)
	Top 80%	10%	90%	0.11	0.0005 (+0.4%)	-0.0016 (-1%)	0.11 (-1%)

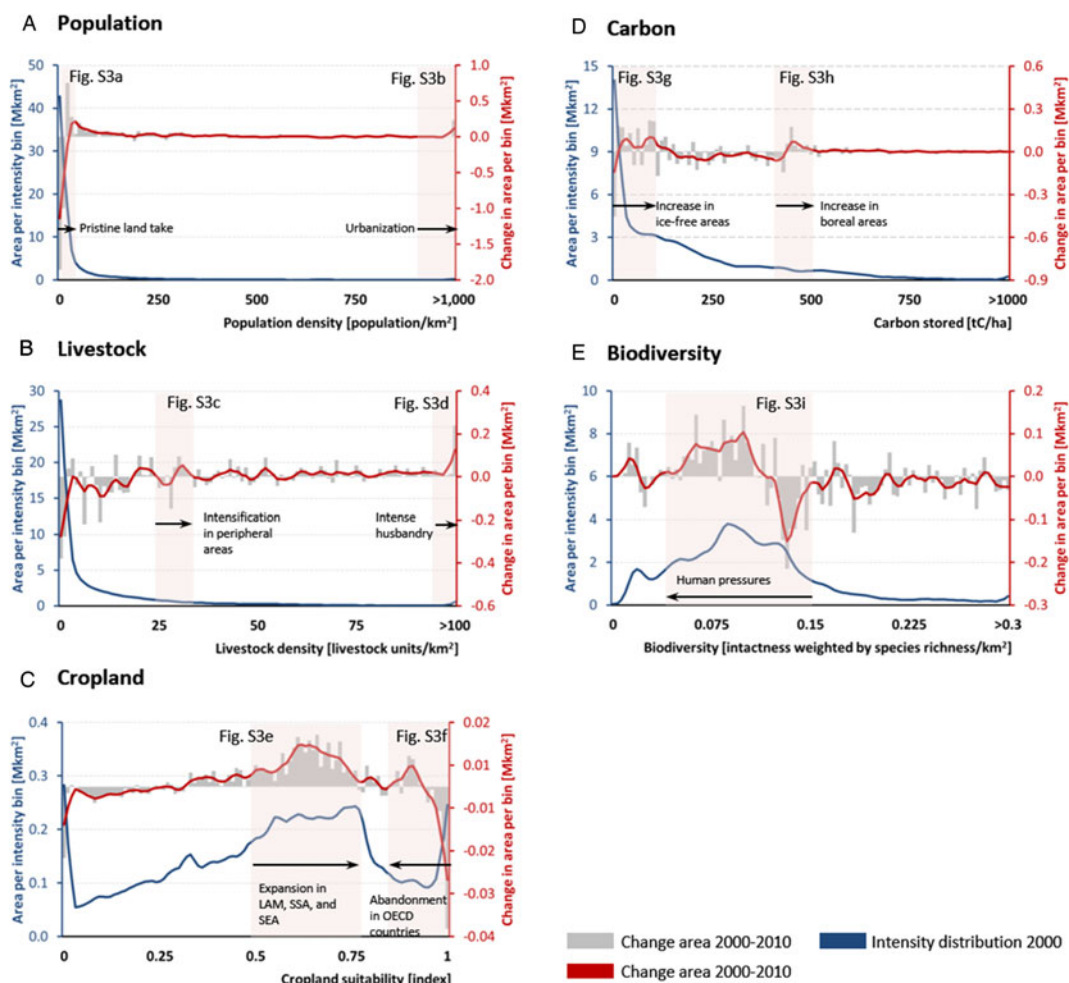


Fig. 2. Distribution of changes in the density of land use between 2000 and 2010 for population (A), livestock (B), cropland (C), carbon (D), and biodiversity (E). Bin sizes are 0.01. Lines represent five-bin weighted mean average. The blue lines represent frequency of land (total area) within each bin; the red lines changes in frequency. Red boxes indicate density bins of special interest and are substantiated with maps in Figure S3 in the Supplementary Information for analysis of spatial patterns, and by the world-region specific review (Tables 2 & 3, & Tables S4 & S5 in the Supplementary Information).

Figure 2; population and livestock shifts tend to be positive, while biodiversity shifts are strongly negative (Figure S2). We cross-validated results from Figure 2 with a world-region specific literature review (Table 3). Remote land becomes more populated, reflecting human land take in sub-Saharan Africa, the Arabian Peninsula and in a few scarcely populated areas of the Americas (Figure 2A, Figure S3A & Table 3). The area of high population concentration (>900 pop/km²) increases, reflecting urbanization in the Bengal delta, coastal China, the Nile delta and Java (Figure 2A, Figure S3B & Table 3). Livestock land area declines exponentially with density: with large areas of land being used for very low-intensive husbandry (Figure 2B). Livestock is increasing in areas of very low density, that is, mostly in Brazil, Northern China, and the Guinean Savannah, but there is less husbandry in Eastern Europe (Figure 2B, Figure S3C & Table 3). Livestock is also increasing in areas of higher density, reflecting industrial livestock breeding in Shandong, Hebei and Henan provinces in China, and around Sao Paulo, Brazil (Figure 1, Figure 2B, Figure S3D & Table 3). There is an expansion of cropland of medium suitability in the Guinean Savannah and South America, but there is a loss of cropland in the USA and Eastern Europe (Figure 2, Figure S3E & Table 3). Land of very high suitability was utilized less for agriculture in the US Mid-West in 2010, while cropland has expanded in the highly suitable Chaco region of Argentina producing soybean for exports (Figure 2C, Figure S3F & Table 3). At the same time, some land of low suitability has been abandoned (Figure 2C). Most of this land has less than 50tC/ha carbon stock, which is low compared to the peak value of 1850tC/ha (Keith *et al.*, 2009) (Figure 2D). The change in density of terrestrial carbon is complex, but there is a distinct increase in carbon stored by land at <100tC/ha, particularly close to the Arctic Circle (Figure 2D & Figure S3G). There is also an increase of terrestrial carbon stored at around 400tC/ha in boreal areas and in the tropics (Figure 2D, Figure S3H & Table 3). Areas of medium-high species intactness are lost, particularly in South Asia (India and Pakistan) and the Chaco region, Argentina (Figure 2E, Figure S3I & Table 3).

3.3. Identifying co-occurrence in land-use changes

Next, we analyzed the spatial co-occurrence of land-use changes by aggregating the area of grid cells on which land-use changes co-occur (Figure 3A). We found that human activities (population, livestock, cropland) tend to grow together, as confirmed by PCA. The first PCA eigenvector, explaining the largest share of data variation, clearly distinguishes between increasing human direct pressures and negative impact on biophysical dimensions (Figure 1F, Figure S1, Figure S2 & Table S2). The second eigenvector describes that increases in population density and terrestrial carbon tend to co-occur with losses in cropland area, biodiversity and, to a lower extent, livestock. This reflects on the one hand cropland and biodiversity reduction due to urban expansion (Bren d'Amour *et al.*, 2017) and population growth (India), and on the other hand increased carbon stocks in Europe, the US and in remote areas of the boreal and tropical biomes due to reduced agricultural activity (US, Europe) and CO₂ fertilization, respectively.

Biodiversity reduction co-occurs pervasively with density increases for all other land uses (Figure 3A); an observation that is partially a result of the modelling underlying the biodiversity loss data. The highest co-occurrence decrease in land use appears between biodiversity and land carbon stock

(Figure 3A). There is an increase in land carbon stock in other areas most likely related to CO₂ fertilization, longer growing periods or increased precipitation. In the aggregate perspective of our co-occurrence analysis, in hotspots, population and livestock increase, but carbon stock and especially biodiversity is reduced (Figure 3A). Population exerts a dominant pressure over all land-use changes (Figure 3A). Increases in population where densities are high (urbanization) lead to cropland losses measurable on a global scale. In other locations, cropland expansion coincides with biodiversity loss.

4. Literature review to validate results

4.1. Archetypes of world regions

A world-region specific analysis of co-occurring land-use changes (Figure 3B), substantiated by literature review (Table 3 & Supplementary Information for detailed discussion) and an analysis of the increasingly important role of international trade (Table S3) reveals that regions can be associated with at least one of three types of land-use dynamics (Figure 4). Archetype A is characterized by a large land footprint – but at most moderate population growth (we denote this type as ‘consumers’). Europe fits best into this archetype, with stagnating population, intensification of agriculture and increased reliance on imported foods. Europe outsourced land-intensive food production at a scale corresponding to up-to-half of its domestic cropland use (Figure 4 & Table S3). This enabled a partial recovery of terrestrial carbon and biodiversity. North America and Oceania have high footprints as well, but also feature moderate population growth and high biocapacity enabling exports of its agricultural surplus. Human pressure and losses of ecosystem services have decoupled in only a few instances: land carbon stock and biodiversity are partially co-improving in Europe and Oceania. A possible explanation for the improvement in Europe and Oceania is the emergence of new institutions and policies as, for example, in European Union accession countries from Eastern Europe.

Archetype B is defined by significant export shares (>10% of land is used for export) as enabled by high capacity relative to overall population (‘producers’). Notably, this involves Latin America that increasingly serves the consumer needs of Europe and Eastern Asia. Specifically, South America and Russia increased their cropland embedded in net exports by 24 and 16 percentage points, respectively (Table S3). Importantly, telecoupled and trade-induced land-use links drive biodiversity and carbon loss, epitomized by Latin America, notably in parts of Brazil and the Argentinian Chaco region (Table 3 & Table S3). Also, export of palm oil from Indonesia is a major driver for biodiversity loss and deforestation in South East Asia (Table 3 & Table S3). Overall, exports are responsible for 17% of species loss, with the highest impact embodied in exports from Indonesia to the US and China (Chaudhary & Kastner, 2016). These insights correspond to the high co-occurrence of decreasing biodiversity and land carbon stock observed in Figure 3A (world) and Figure 3B (especially Latin America, South East Asia). Also, Eastern Europe and Central Asia, witnessing decreasing population, see an increasing share of land used for exports. The consumer world regions of North America and Oceania belong simultaneously to the producers, exporting high margins to other world regions.

Archetype C is characterized by high population growth (>5%) (hence labelled ‘movers’) and limited land used for export (export

Table 3. Land-use change dynamics in world regions 2000–2010. Key observations were verified by systematic literature review for each world region. See methods for search query, systematic review results in Supplementary Information text, and key references for each world region in Table S7.

World region	Key observations	Gaps between data observations and literature
Europe (without Eastern Europe)	<ul style="list-style-type: none"> • Low population pressures go along with an abandonment of cropland and co-occur with increases in land carbon stock (84% of area), declines in biodiversity • Increases in biodiversity occur in some places such as Germany (Figure 3) • Livestock density is decreasing by 94% in hotspots and 76% in areas with notable changes (Table S4 & Table S5) 	
Eastern Europe and Central Asia	<ul style="list-style-type: none"> • The stock of terrestrial carbon increases in many areas (with the exception of South East Siberia) (Figure 1D), including, at low intensities, close to the Arctic Circle (Figure 3D & Figure S3G/H) • At the top decile, carbon stock gains outweigh losses by 517MtCO₂ in Eastern Europe and Central Asia (Table S4). Those effects co-occur with cropland and livestock declines (Figure 3) • Cropland density in Eastern Europe and Central Asia dropped by 18% in hotspots (Table S4), despite the region having become an effective exporter of crops (Table S3) 	
South Asia	<ul style="list-style-type: none"> • Strong concurrent increases in population, cropland and livestock are combined with a loss in biodiversity at hotspots (Figure 3) • Population increases by 18% (India, North East Pakistan), cropland expands by 17% (Pakistan, Afghanistan) and livestock by 3% (North East Pakistan) at hotspots (Figure 1 & Table S4) • Cropland decreases with urbanization, but increases in wider urban regions • Biodiversity density loss amounts to 8% at hotspots and 3% at notable changes all over India and East Pakistan. Global share in biodiversity density loss is 13% 	
South East Asia	<ul style="list-style-type: none"> • Strong co-occurring density increases in human settlements (14%), cropland (18%), livestock (14%) and, less so, carbon stocks (1%), abundant losses of biodiversity (–2%) (Figure 4 & Table S5) • South East Asia accommodates 19% of global cropland expansion – high contributions from Sumatra, Vietnam and Myanmar (Table S5 & Figure 1) • Human activities have triggered increasing pressure on biodiversity (Figure 3) • 97% of all land with biodiversity change show loss, concentrated in Sumatra, the North of Thailand, Cambodia and Vietnam (Table S4 & Figure 1) 	
East Asia	<ul style="list-style-type: none"> • Population and livestock expand, partially co-occurring, while cropland and biodiversity losses are massive • Terrestrial carbon dynamics are mixed (Figure 3) • East Asia shows 15% of population and 30% of livestock growth as global shares (Table S5, Figure 3B & Figure S3D) • Ongoing urbanization in East Asia leads to high population decreases mainly in rural areas (44% of global total negative, Table S5) • Loss of cropland is 19% of global cropland loss; loss of biodiversity is 9% of global biodiversity loss (Table S5 & Figure 1) 	
Middle East and North Africa	<ul style="list-style-type: none"> • Increasing population (Figure 3 & Figure S3B) is associated with growing livestock densities at the expense of biodiversity (Figure 3) • The region records high relative population density growth (20%), and accounts for 9% of total global positive changes in population • 6% of global positive livestock changes, mainly concentrated at Nile river delta and South west Yemen. (Table S4, Table S5 & Figure 1) • The region depicts cropland loss (7% of global total) in Morocco, East Iraq and Turkey • Cropland gain (4% of global total) in the Nile river delta, North of Syria and Mediterranean Algeria (Table S4, Table S5 & Figure 1) 	<ul style="list-style-type: none"> • Increase in livestock density along Nile river and Yemen • Cropland losses in Morocco and Turkey could not be unambiguously verified by independent literature
Sub-Saharan Africa	<ul style="list-style-type: none"> • Population is increasing strongly in the Lake Victoria region and in West Africa (Figure 1 & Figure S3A) • Cropland expansion is pervasive across the entire Guinean Savannah (Figure 1 & Figure S3E), representing 25% of the world's fastest changing croplands (hotspots, Table S4) and 39% of global cropland expansion (Table S5) • Livestock expansion is concentrated in East Africa (Ethiopia, Lake Victoria region) but also semi-arid regions of West Africa • Biodiversity is decreasing pervasively (Figures 1E & S3I), with major losses across Zimbabwe, the Ethiopian Rift Valley, Kenya and Tanzania (Figure S3I) • Population growth, cropland and livestock expansion are strongly co-occurring with associated carbon loss and biodiversity loss due to habitat loss, deforestation and forest degradation (Figure 3) 	<ul style="list-style-type: none"> • Minor increases in species intactness in Uganda and Nigeria (Figure 1) could be verified by independent studies

(Continued)

Table 3. (Continued.)

World region	Key observations	Gaps between data observations and literature
Oceania	<ul style="list-style-type: none"> • Cropland density decreased by 11% (Table S5) • Cropland reduction appears more pervasively than biodiversity or carbon loss (Figure 3) 	
Latin and Central America	<ul style="list-style-type: none"> • Despite increases in crop and livestock densities (by 16% and 24%, respectively, in Latin American hotspot areas between 2000 and 2010), intensities of biodiversity and carbon fell, reflecting (export-led) expansions of cropland and pastures (Table S4, Figure 3 & Figure S3I). • 28% of global land area with notable reduction in biodiversity located in Latin America, but there is regional heterogeneity and changes in dynamics – e.g. lower rates of deforestation in Brazil – are partially observable (Table S5) • Areas with lower carbon stocks more prone to carbon losses (Figure S3) • Co-occurrence of human pressures in Central and Latin America, and partial recovery of ecosystems in the North (Figure 3) 	
North America	<ul style="list-style-type: none"> • North America records increasing population densities, accompanied by urbanization, partly at the expense of livestock and cropland area (Figure 3 & Table S5) • Average cropland area fraction decreased by 10%. Overall, 31% of areas with decreasing croplands were located in North America (Table S4) • North America is a large land-exporting region, with 34% (2000) and 31% (2009) of croplands dedicated to exports (Table S3) • 19% of global areas with increasing carbon stock were located in North America, most notably in Alaska, Canada and the Mid-West USA (Table S5 & Figure 1) • Carbon increase coincides with cropland abandonment, afforestation and cropland intensification (Figures 1 & 3) • Biodiversity remains largely unchanged (Table S5 & Figure 1) 	<ul style="list-style-type: none"> • The increase of land carbon stocks as related to cropland abandonment could be verified by independent studies

share of land <5% and increased imports in 2009 compared to 2000). We denote this type as ‘movers’ reflecting their dynamic population and economic growth, and their expected future global influence on global land-use change. Land-use change is dominated by direct regional demands, feeding a growing and more affluent population. A total of 83% of species loss is attributed to agriculture devoted to domestic consumption (Chaudhary & Kastner, 2016), and demand is increasingly driven by growing affluence and dietary change rather than population growth (Kastner *et al.*, 2012). Most of Asia and Africa belongs to this archetype. But the variety of ‘mover’ world regions is considerable, ranging from a concurrent expansion of population, livestock and croplands in Sub-Saharan Africa at the cost of natural habitats to strong pressure on cropland by urbanization in Eastern Asia (Figure 3). In fact, a detailed companion study finds that urbanization consumes around 2–3% of global agricultural land between 2000 and 2030, mostly in East Asia; this is prime agricultural land and is nearly twice as productive as average agricultural land, implying a productivity loss of 4–5% (Bren d’Amour *et al.*, 2017). Eastern Asia, the Middle East and North Africa import a high proportion of land-based products from elsewhere, similar to Europe. The Middle East and North Africa (MENA) are in the most precarious situation with high population growth and strong reliance on imported food and other land produce (Figure 4).

4.2. Drivers of land-use changes

Here, we report the insights of the systematic literature review on drivers of land-use change helping to interpret the data-based archetypes of world regions and explaining the data-based observations in Table 3. For detailed world-region specific evidence, we

refer to Table S7 of the Supplementary Information, and the Supplementary Information text. We identify four robust underlying drivers of land-use changes throughout all regions and strands of literature: population growth and urbanization, institutional drivers, international trade and climate change.

4.3. Population growth and urbanization

Population growth and urbanization is a key driver of land-use changes in many world regions. Population growth and urbanization is closely related to economic growth (Seto *et al.*, 2011), and the separation of demographic and economic drivers of land-use change is an important question for further research. In East Asia, rapid urbanization and population growth around big metropolitan and urban centres between 2000 and 2010 squeezed other land-use types, for example, by consuming productive croplands (Chen, 2007; Galli *et al.*, 2015; Bren d’Amour *et al.*, 2017). In India, urban land expansion reduced the harvested area of rice by 4% – but yields increased by 15% (Supplementary Information). In South East Asia, growth in population in cities (>31%) as well as urban land (22%) is high, and dominated by Malaysia, Vietnam, Cambodia, the Philippines and Laos (Schneider *et al.*, 2015). The expansion of urban areas and intensification of agriculture has led to cropland loss in the US (Sleeter *et al.*, 2013). However, in other parts of the Americas, especially in parts of the Caribbean and Central America, rural inhabitants abandoned land and migrated to cities, enabling ecosystem recovery (Grau & Aide, 2008). In MENA, human and economic activities congregate around the available, but scarce water resources, such as rivers, oases, or deltas. As a result, human activities compete fiercely for land: by the Nile river in Egypt, urban area expansion is forecast to engulf more than a quarter of valuable croplands (Bren

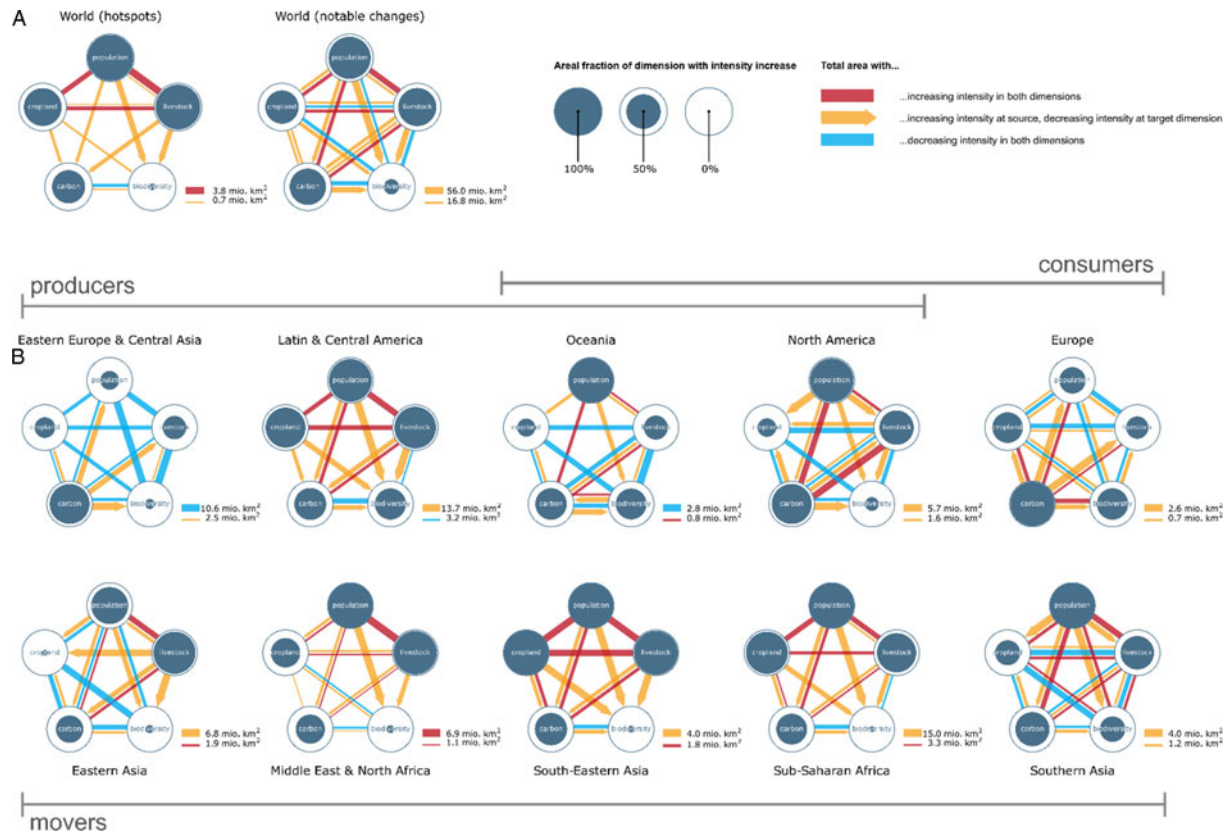


Fig. 3. Co-occurrences of land-use changes between 2000 and 2010 (population, cropland, carbon, biodiversity) and 2000 and 2005 (livestock), respectively, within grid cells for (A) world (hotspots and notable changes), and (B) world regions (notable changes). Solid circle filling represents the area that experienced density increases or decreases within each type of land use. Links between types of land use depict pair-wise co-occurrences. Undirected red (blue) links represent mutual increase (decrease) in density. Reported are gross changes. For example, in some parts of the world, both cropland and livestock decrease simultaneously. In others, they increase simultaneously. This results in both red and blue lines between cropland and livestock. Directed yellow links represent a density increase in source land use, and decrease in target land use. Co-occurrences measured at 0.5° grid resolution. Width of the links shows the respective total area of pair-wise co-occurrence. Links smaller than 2% of total co-occurrence area were omitted.

d'Amour *et al.*, 2017). Pristine land take in the Arabian Peninsula is closely related to population growth, and agricultural expansion, fostered by unsustainable reliance on fossil water reserves (Odhiambo, 2016). In SSA, population dynamics are characterized by high fertility rates and rural–urban migration (Buhag & Urdal, 2013), driven by population growth in resource constrained rural areas rather than urban agglomeration pull (Holden & Otsuka, 2014). Local cropland losses in South Africa coincides with expansion of horticulture (Liebenberg & Pardey, 2010).

Urbanization has also been an important driver of biodiversity losses. For example, in the Pearl River delta, 26% of natural habitat and 42% of local wetlands have been prey to increasing urban land (He *et al.*, 2014). In India, urbanization also emerged as a key pressure affecting biodiversity loss, but conservation programs and a switch away from traditional fuels ameliorated the loss of biodiversity (Nagendra *et al.*, 2013; Reddy *et al.*, 2015). In Turkey, biodiversity loss appears where important wetlands, grasslands and even rivers are disappearing due to human activities (Şekercioglu *et al.*, 2011).

The co-occurring population and crop yield growth in the Guinean Savannah is in line with existing evidence on Boserupian intensification in Sub-Saharan Africa (Jayne *et al.*, 2014). Cropland expansion, however, also results in a reduction in land carbon stock (cf. Searchinger *et al.*, 2015) and land-use emissions for savannah burning exceed those of fossil fuels in

Sub-Saharan Africa (Ciais *et al.*, 2011). By contrast, carbon fertilization and increased precipitation generated an increase in land carbon stock in forest areas (Ciais *et al.*, 2011).

4.4. The role of institutions

Analysis of drivers from the literature reveals the importance of institutional drivers, including agricultural policies in Europe and North America, afforestation programs in China, conservation programs in India, forest protection in the Amazon and the legal underpinnings of international trade (see subsequent section).

Land-use change does not inevitably result from population growth and economic dynamics. Instead, institutions and governance usually make the difference. In Europe, changes in the European Common Agricultural Policy explain location-specific reductions in agricultural land use (van Vliet *et al.*, 2015).

Energy policy, and specifically biofuel mandates, became a novel driver of land-use change in the 2000s. Biofuel production was responsible for about half the global cropland expansion of about 44Mha between 2000 and 2010; it increased more than four-fold between 2000 and 2010 and, by 2010, biofuels required about 30Mha of land (Bruinsma, 2009; Lambin & Meyfroidt, 2011). This expansion has mostly taken place on pasture land in Brazil (Lapola *et al.*, 2014) and, in total, >8Mha of palm oil

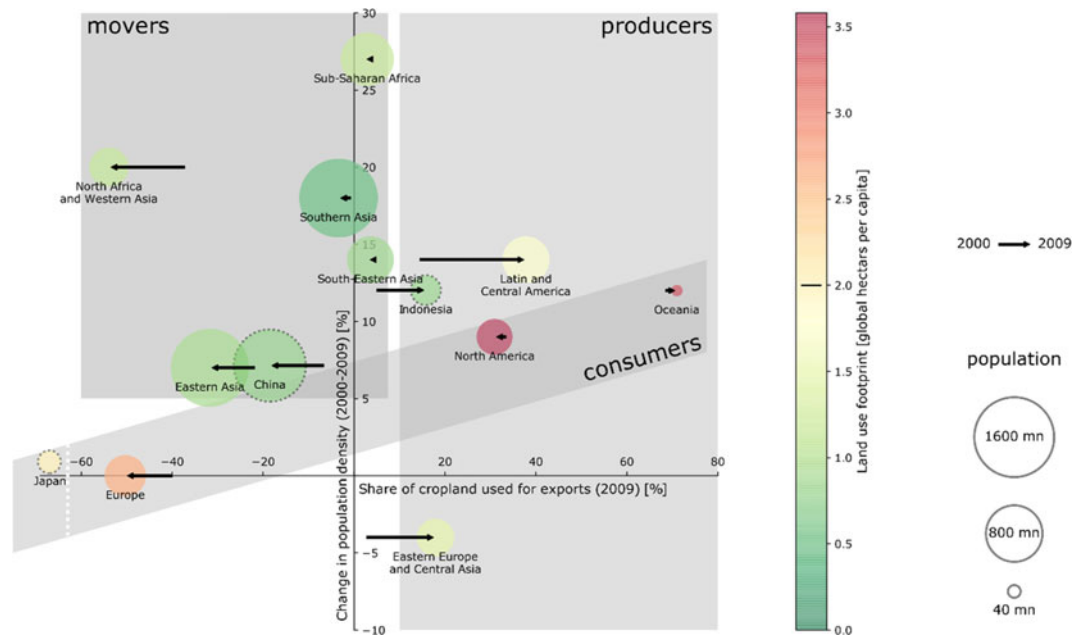


Fig. 4. Land-use change across world regions belongs to different archetypes. Type A (consumers): High land footprint, moderate population growth (Europe, North America, Oceania). Type B (producers): High biocapacity and institutional capacity that enables a share of cropland >10% being exported (Eastern Europe and Central Asia, Latin America, North America, Oceania, South East Asia). Type C (movers): population growth >5% and export share <5%: (North Africa and Western Asia, Southern Asia, Eastern Asia, Sub-Saharan Africa, South Eastern Asia). Data from Kastner *et al.* (2014) and Weinzettel *et al.* (2013), see also Table S6 for more detail.

(only partially used as fuel) in Sumatra, Borneo and Malaysia (Koh *et al.*, 2011). Biofuel mandates also provided new incentives to expand crop production in the US (Wright & Wimberly, 2013), correlating with about 2.3Mha biodiversity-rich prairie land loss in the US from 2008–2012 (Lark *et al.*, 2015). Wide-spread conversion of grasslands, shrublands and wetlands to agricultural uses (mainly corn and soybean (Faber *et al.*, 2012; Wallander *et al.*, 2011)) reappeared across the country with hotspots of change located in the Corn Belt and the Lake States.

Better monitoring and more rigorous enforcement in Brazil led to declining deforestation rates after 2005 (Nepstad *et al.*, 2014); The Low-Carbon Agriculture Program and other policies simultaneously supported intensified cattle ranching, especially in the Brazilian subtropics, decoupling husbandry from deforestation (Lapola *et al.*, 2014). However, in some Brazilian states, institutional failures enable further deforestation by soy producers (Celentano *et al.*, 2017; Silva & Lima, 2017).

Targeted intentional policies leave a visible mark on global carbon maps. A prime example is China's afforestation policy: afforestation and restored grassland on degraded agricultural land in rural areas (e.g. Tibet, Inner Mongolia) increased terrestrial carbon stock (Deng *et al.*, 2014) (even as cropland extensification, e.g. in the Sichuan basin and Heilongjiang, increased emissions from land-use change (Zhang *et al.*, 2015)).

Institutional change can be a highly important driver of land-use change, even when not intended. As a side effect of the Soviet collapse, rural emigrants abandoned farms enabling reforestation (>30Mha) (Kuemmerle *et al.*, 2016) in former socialist countries. Land-use change varied however between former socialist countries, which has been attributed to strong differences in market reform (Alcantara *et al.*, 2013). In European Russia the gain amounts to more than 44tCO₂/ha during our observation period, which makes it outstanding as a sink in the boreal region and comparable to sinks in the temperate biome (Pan *et al.*, 2011).

Varied patterns exist in carbon stock changes, partially depending on the timing of land abandonment (Schierhorn *et al.*, 2013).

4.5. International trade

As a specific institutional driver, emerging literature increasingly emphasizes globalized markets for land-use changes, which dramatically shifts the interpretation of regionally observed land-use changes. As a prime case, Europe outsources land-intensive crop production through international trade: the share of 'imported' cropland, driven by dietary change (Galli *et al.*, 2017), grew by 20% from 2000 to 2009 and by then corresponded to more than half of the cropland under domestic production (Table S3). Both agricultural intensification of the most productive lands (e.g. in Denmark) and farmland abandonment in marginal, less competitive regions are driven by the globalization of agricultural markets (van Vliet *et al.*, 2015; Kuemmerle *et al.*, 2016).

The MENA region is also found to outsource land-intensive production by imports, which have increased substantially between 2000 and 2010 (Galli *et al.*, 2017) (Table S3), increasing the risk for telecoupled food supply shocks (Bren d'Amour *et al.*, 2016). A major driver is large population growth; in Morocco, for example, food demand multiplied driven by population growth (160% in 1961–2009) and per capita demand (>50% in 1961–2009) (Galli, 2015).

Economic growth in East Asia resulted in telecoupled land-use changes. For example, Chinese demand for timber has driven deforestation and hence carbon-loss in South East Siberia (Liang *et al.*, 2016). While meat demand resulting from increasing incomes and economic growth in East Asia (Thornton, 2010) is mostly satisfied by industrialized livestock breeding, particularly in urban areas (Bai *et al.*, 2014), increasing fodder imports to East Asia, particularly maize and soybean, for livestock

production have raised land-use pressures elsewhere (particularly in Latin America and South East Asia) as the proportion of indirect cropland imports grew (Table S3).

Land-use change for exported goods is pervasive in tropical regions. In Latin America, farmers and companies increasingly produced and exported soy and maize for markets in Europe and East Asia (Kastner *et al.*, 2014), driven by a combination of the availability of fertile land and low production costs, especially in the peripheral Amazon basin (Grau & Aide, 2008) and the Argentinian Chaco region (Gasparri & Grau, 2009) (Figure 1). In South East Asia palm oil production drives deforestation (Hosonuma *et al.*, 2012) (>30% for international markets (Wilcove *et al.*, 2013)). In addition, it is sometimes related to large-scale land acquisitions (Davis *et al.*, 2015) and causes severe losses of biodiversity in South East Asia. The draining and burning of peatland releases large amounts of carbon, especially in Sumatra, and to a lesser degree in Borneo (Wilcove *et al.*, 2013). To understand the scale: in 2015, peak emissions from deforestation and fires in South East Asia exceeded those of the European Union fossil fuel burning (Huijnen *et al.*, 2016).

In Sub-Saharan Africa cropland dynamics have largely been driven by local factors rather than by international trade (Table S3). Rural densification and biodiversity loss is most strongly associated with population pressure, but also with cropland expansion (Searchinger *et al.*, 2015). Lack of infrastructure and low investment rates resulting from poor institutional quality have thus far impeded a further integration of SSA in international agricultural markets (Barrett, 2008; Kalkuhl, 2016)

4.6. Anthropogenic climate change

Region-specific dynamics demonstrate that anthropogenic climate change already affects land-use change. Carbon fertilization has especially affected carbon stocks in the intact tropical rainforests, such as in Congo, and the boreal zone, including Siberia (Zhu *et al.*, 2016). Increased precipitation in the Sahel zone (Park *et al.*, 2016) and Central Africa enabled higher carbon stocks, while salinization and droughts, partially attributed to anthropogenic climate change (Gallant *et al.*, 2012), compromised more than half of the farmland and crop production in Australia (MSEIC, 2010) (see also Table S5).

5. Discussion and conclusion: towards managing global land-use change


In this paper, we investigated data on global land use between 2000 and 2010, and reviewed the corresponding land-use change. We fill an important gap as other literature is either focused on one land-use dimension, such as food (Bruinsma, 2009) or biodiversity (Newbold *et al.*, 2015), or investigates century-long time scales (Hurtt *et al.*, 2011). We find that human-related activities – population growth, and agricultural and livestock intensification – co-occur on coarse spatial scales, and that biodiversity is under pressure worldwide. Our data and literature-based assessment also reveals that the regionally diverging patterns of global land-use change are grounded in direct human pressures, domestic institutions, telecoupled land demand by international trade and varying climate change impacts. We identify three archetypes of world regions: (A) ‘consumers’, characterized by high per capita land footprint, such as Europe; (B) ‘producers’, characterized by a significant export share of land, such as Latin America; and (C) ‘movers’, characterized by high population

growth and increasing demand for land outside their own regions, such as South Asia. Due to its population and dynamic change, the ‘movers’ will have the most important role in future global land-use change. These results are useful for global assessments of land-use change and are a baseline for further research. Our data comparison ends in 2010, but more recent dynamics further underline the importance of continuously capturing the human-related activities across scales as the example of deforestation shows: in the period from 2010–2015, tropical forest continued to decrease by 5.5Mha/year, while temperate forest increased by 2.2Mha/year (Keenan *et al.*, 2015).

The results also provide motivation and orientation for governing global land use. We complement other scientific findings (e.g. Lepers *et al.*, 2005; Lambin & Geist, 2008) in providing further evidence and spatial information on the force and direction of anthropogenic land-use change. Both the global importance of biodiversity and food security, and the telecoupled nature of land-use change drivers point to the importance of international coordination to manage global land use. Managing global land-use change requires an explicit consideration of the socio-economic, biophysical and institutional differences between world regions. The strong telecoupling, both by international trade and climate change, substantiate the need for international cooperation to manage global land (Magalhães *et al.*, 2016; Creutzig, 2017), supporting national and local policies. In consumer regions, such as Europe, sustainability certificates and dietary change could foster a shift to sustainable land use on the demand side (Tayleur *et al.*, 2016; Galli *et al.*, 2017). In producer regions, in particular those with rich biodiversity, harmonization of ecosystem protection measures and financing of nature conservation (le Polain de Waroux *et al.*, 2016), and an upscaling of international payment for ecosystem services schemes (Rands *et al.*, 2010) would be a key component of protecting intact ecosystems. As carbon stock movements are not always related to biodiversity, it is crucial for the design of environmental policies to differentiate between land carbon stocks and biodiversity (Phelps *et al.*, 2012). Complementing payments for ecosystems, land taxes are discussed as a new policy instrument that would reduce pressure on ecosystems (Kalkuhl, & Edenhofer, 2017; Kalkuhl *et al.*, 2018; Tahvonen & Rautiainen, 2017). Our data reveals that in Sub-Saharan Africa and Latin America rural population growth is accompanied by an increase in cropland and a reduction in biodiversity (Figures 1 & 3), pointing to potential expansions in agricultural production due to population pressure (cf. Boserup, 2005). Specific measures to further improve efficient land use involve intensification that complies with the protection of important ecosystems, soil carbon and water resources (Garnett *et al.*, 2013); multi-purpose systems that integrate several land uses, an approach called land sharing (Lambin & Meyfroidt, 2011; Fischer *et al.*, 2014); and compact urbanization that preserves cropland (Bren d’Amour *et al.*, 2017). Improved land tenure and property rights can facilitate adoption of sustainable land-use management with positive impacts on carbon stocks and biodiversity (Abdulai *et al.*, 2011; Abdulai & Goetz, 2014; Robinson *et al.*, 2014a; Etongo *et al.*, 2015). Prioritizing a small set of leverage points could greatly increase the sustainability and efficiency of food production (West *et al.*, 2014).

Improving institutional capacity emerges as a key factor for realizing nature conservation and efficient land use. It will be an important task of further research to identify the most effective options for both local action and international cooperation to sustainably manage global land-use change.

Supplementary material. The supplementary material for this article can be found at <https://doi.org/10.1017/sus.2018.15>

Author ORCIDs.  Felix Creutzig 0000-0002-5710-3348

Acknowledgements. The authors thank Global Forest Watch for sharing data and Tim Newbold for help with interpreting data. The authors also thank Jan Minx and Annika Marxen for support in early stages of this project.

Author contributions. F. C. designed the project with inputs from all authors. C. B. D. A., U. W., T. B., A. G., A. R., M. K. and F. C. performed data analysis. All authors contributed to reviewing the literature and writing.

Financial support. None.

Conflict of interest. None.

Ethical standards. This research and article complies with Global Sustainability's publishing ethics guidelines.

References

- Abdulai, A., & Goetz, R. (2014). Time-related characteristics of tenancy contracts and investment in soil conservation practices. *Environmental and Resource Economics*, 59(1), 87–109.
- Abdulai, A., Owusu, V., & Goetz, R. (2011). Land tenure differences and investment in land improvement measures: Theoretical and empirical analyses. *Journal of Development Economics*, 96(1), 66–78.
- Alcantara, C., Kuemmerle, T., Baumann, M., Bragina, E. V., Griffiths, P., Hostert, P., Knorn, J., Müller, D., Prishchepov, A. V., & Schierhorn, F. (2013). Mapping the extent of abandoned farmland in Central and Eastern Europe using MODIS time series satellite data. *Environmental Research Letters*, 8, 035035.
- Anderson, W., You, L., Wood, S., Wood-Sichra, U., & Wu, W. (2015). A comparative analysis of global cropping systems models. *Global Ecology and Biogeography*, 24, 180–191.
- Bai, Z. H., Ma, L., Qin, W., Chen, Q., Oenema, O., & Zhang, F. S. (2014). Changes in pig production in China and their effects on nitrogen and phosphorus use and losses. *Environmental Science & Technology*, 48(21), 12742–12749.
- Barrett, C. B. (2008). Smallholder market participation: Concepts and evidence from eastern and southern Africa. *Food Policy*, 33(4), 299–317.
- Becker, A., Finger, P., Meyer-Christoffer, A., Rudolf, B., Schamm, K., Schneider, U., & Ziese, M. (2013). A description of the global land-surface precipitation data products of the Global Precipitation Climatology Centre with sample applications including centennial (trend) analysis from 1901–present. *Earth System Science Data*, 5(1), 71–99.
- Bondeau, A., Smith, P. C., Zaehle, S., Schaphoff, S., Lucht, W., Cramer, W., Gerten, D., Lotze-Campen, H., Müller, C., Reichstein, M., & Smith, B. (2007). Modelling the role of agriculture for the 20th century global terrestrial carbon balance. *Global Change Biology*, 13(3), 679–706.
- Boserup, E. (2005). *The conditions of agricultural growth: the economics of agrarian change under population pressure*. NJ, USA: Transaction Publishers.
- Bren d'Amour, C., Reitsma, F., Baiocchi, G., Barthel, S., Güneralp, B., Erb, K.-H., Haberl, H., Creutzig, F., & Seto, K. C. (2017). Future urban land expansion and implications for global croplands. *Proceedings of the National Academy of Sciences*, 114(34), 8939–8944.
- Bren d'Amour, C., Wenz, L., Kalkuhl, M., Steckel, J. C., & Creutzig, F. (2016). Teleconnected food supply shocks. *Environmental Research Letters*, 11(3), 035007.
- Bruinsma, J. (2009). The resource outlook to 2050: by how much do land, water and crop yields need to increase by 2050? Presented at the FAO Expert Meeting, 24–26 June on “How to Feed the World in 2050”, Rome, Italy. Retrieved from <http://www.fao.org/docrep/pdf/012/ak542e/ak542e06.pdf>
- Buhaug, H., & Urdal, H. (2013). An urbanization bomb? Population growth and social disorder in cities. *Global Environmental Change*, 23(1), 1–10.
- Canadell, J. G., & Schulze, E. D. (2014). Global potential of biospheric carbon management for climate mitigation. *Nature Communications*, 5, 5282.
- Canadell, J., & Raupach, M. (2008). Managing forests for climate change mitigation. *Science*, 320(5882), 1456–1457.
- Celentano, D., Rousseau, G. X., Muniz, F. H., van Deursen Varga, I., Martinez, C., Carneiro, M. S., Miranda, M. V., Barros, M. N., Freitas, L., & da Silva Narvaes, I. (2017). Towards zero deforestation and forest restoration in the Amazon region of Maranhão state, Brazil. *Land Use Policy*, 68, 692–698.
- Chaudhary, A., & Kastner, T. (2016). Land use biodiversity impacts embodied in international food trade. *Global Environmental Change*, 38, 195–204.
- Chen, J. (2007). Rapid urbanization in China: A real challenge to soil protection and food security. *CATENA*, 69(1), 1–15.
- Chum, H., Faaij, A., Moreira, J., Berndes, G., Dhamija, P., Dong, H., Gabrielle, B., Goss Eng, G., Lucht, W., Mapako, M., Maserà Cerutti, O., McIntyre, T., Minowa, T., & Pingoud, K. (2011). Bioenergy. In O. Edenhofer, R. Pichs-Madruga, Y. Sokona, K. Seyboth, P. Matschoss, S. Kadner, T. Zwickel, P. Eickemeier, G. Hansen, S. Schlömer, C. von Stechow (eds), *IPCC Special Report on renewable energy sources and climate change mitigation*. Cambridge, United Kingdom and New York, NY, USA: Cambridge University Press.
- Ciais, P., Bombelli, A., Williams, M., Piao, S., Chave, J., Ryan, C., Henry, M., Brender, P., & Valentini, R. (2011). The carbon balance of Africa: synthesis of recent research studies. *Philosophical Transactions of the Royal Society of London A: Mathematical, Physical and Engineering Sciences*, 369(1943), 2038–2057.
- Creutzig, F. (2017). Govern land as a global commons. *Nature*, 546(7656), 28–29.
- Creutzig, F., Ravindranath, N. H., Berndes, G., Bolwig, S., Bright, R., Cherubini, F., Chum, H., Corbera, E., Delucchi, M., & Faaij, A. (2015). Bioenergy and climate change mitigation: an assessment. *GCB Bioenergy*, 7, 916–944.
- Dalin, C., Konar, M., Hanasaki, N., Rinaldo, A., & Rodriguez-Iturbe, I. (2012). Evolution of the global virtual water trade network. *Proceedings of the National Academy of Sciences of the USA*, 109(16), 5989–5994.
- Davis, K. F., Gephart, J. A., Emery, K. A., Leach, A. M., Galloway, J. N., & D'Odorico, P. (2016). Meeting future food demand with current agricultural resources. *Global Environmental Change*, 39, 125–132.
- Davis, K. F., Yu, K., Rulli, M. C., Pichdara, L., & D'Odorico, P. (2015). Accelerated deforestation driven by large-scale land acquisitions in Cambodia. *Nature Geoscience*, 8(10), 772–775.
- Deng, L., Liu, G., & Shangquan, Z. (2014). Land-use conversion and changing soil carbon stocks in China's 'Grain-for-Green' program: a synthesis. *Global Change Biology*, 20(11), 3544–3556.
- Etongo, D., Djenontin, I. N. S., Kanninen, M., Fobissie, K., Korhonen-Kurki, K., & Djoudi, H. (2015). Land tenure, asset heterogeneity and deforestation in Southern Burkina Faso. *Forest Policy and Economics*, 61, 51–58.
- Faber, S., Rundquist, S., & Male, T. (2012). Plowed under: how crop subsidies contribute to massive habitat loss. Environmental Working Group. Retrieved from http://static.ewg.org/pdf/plowed_under.pdf
- FAO (2014). *The State of Food Insecurity in the World 2014. Strengthening the enabling environment for food security and nutrition*. Rome, Italy: FAO.
- FAO (2016). *State of the World's Forests 2016. Forests and agriculture: land-use challenges and opportunities*. Rome, Italy: FAO.
- Fischer, J., Abson, D. J., Butsic, V., Chappell, M. J., Ekroos, J., Hanspach, J., Kuemmerle, T., Smith, H. G., & von Wehrden, H. (2014). Land sparing versus land sharing: moving forward. *Conservation Letters*, 7(3), 149–157.
- Foley, J. A., DeFries, R., Asner, G. P., Barford, C., Bonan, G., Carpenter, S. R., Chapin, F. S., Coe, M. T., Daily, G. C., Gibbs, H. K., Helkowski, J. H., Holloway, T., Howard, E. A., Kucharik, C. J., Monfreda, C., Patz, J. A., Prentice, I. C., Ramankutty, N., & Snyder, P. K. (2005). Global consequences of land use. *Science*, 309(5734), 570–574.
- Fritz, S., See, L., McCallum, I., You, L., Bun, A., Moltchanova, E., Duerauer, M., Albrecht, F., Schill, C., Perger, C., Havlik, P., Mosnier, A., Thornton, P., Wood-Sichra, U., Herrero, M., Becker-Reshef, I., Justice, C., Hansen, M., Gong, P., Abdel Aziz, S., Cipriani, A., Cumani, R., Cecchi, G., Conchedda, G., Ferreira, S., Gomez, A., Haffani, M., Kayitakire, F., Malanding, J., Mueller, R., Newby, T., Nonguierma, A., Olusegun, A., Ortner, S., Rajak, D. R., Rocha, J., Schepaschenko, D., Schepaschenko, M., Terekhov, A., Tiangwa, A., Vancutsem, C.,

- Vinrou, E., Wenbin, W., Velde, M., Dunwoody, A., Kraxner, F., & Obersteiner, M. (2015). Mapping global cropland and field size. *Global Change Biology*, 21, 1980–1992.
- Fuss, S., Canadell, J. G., Peters, G. P., Tavoni, M., Andrew, R. M., Ciais, P., Jackson, R. B., Jones, C. D., Kraxner, F., & Nakicenovic, N. (2014). Betting on negative emissions. *Nature Climate Change*, 4(10), 850–853.
- Gallant, A., Kiem, A., Verdon-Kidd, D., Stone, R., & Karoly, D. (2012). Understanding hydroclimate processes in the Murray–Darling Basin for natural resources management. *Hydrology and Earth System Sciences*, 16(7), 2049–2068.
- Galli, A. (2015). On the rationale and policy usefulness of Ecological Footprint Accounting: The case of Morocco. *Environmental Science & Policy*, 48, 210–224.
- Galli, A., Halle, M., & Grunewald, N. (2015). Physical limits to resource access and utilisation and their economic implications in Mediterranean economies. *Environmental Science & Policy*, 51, 125–136.
- Galli, A., Iha, K., Halle, M., El Bilali, H., Grunewald, N., Eaton, D., Capone, R., Debs, P., & Bottalico, F. (2017). Mediterranean countries' food consumption and sourcing patterns: An Ecological Footprint viewpoint. *Science of The Total Environment*, 578, 383–391.
- Garnett, T., Appleby, M. C., Balmford, A., Bateman, I. J., Benton, T. G., Bloomer, P., Burlingame, B., Dawkins, M., Dolan, L., Fraser, D., Herrero, M., Hoffmann, I., Smith, P., Thornton, P. K., Toulmin, C., Vermeulen, S. J., & Godfray, H. C. J. (2013). Sustainable intensification in agriculture: premises and policies. *Science*, 341, 33–34.
- Gasparri, N. I., & Grau, H. R. (2009). Deforestation and fragmentation of Chaco dry forest in NW Argentina (1972–2007). *Forest Ecology and Management*, 258(6), 913–921.
- Gerten, D., Schaphoff, S., Haberlandt, U., Lucht, W., & Sitch, S. (2004). Terrestrial vegetation and water balance—hydrological evaluation of a dynamic global vegetation model. *Journal of Hydrology*, 286(1–4), 249–270.
- Gibbs, H. K., Ruesch, A. S., Achard, F., Clayton, M. K., Holmgren, P., Ramankutty, N., & Foley, J. A. (2010). Tropical forests were the primary sources of new agricultural land in the 1980s and 1990s. *Proceedings of the National Academy of Sciences of the USA*, 107(38), 16732–16737.
- Grau, H. R., & Aide, M. (2008). Globalization and land-use transitions in Latin America. *Ecology and Society*, 13(2), 16.
- Hansen, M. C., Potapov, P. V., Moore, R., Hancher, M., Turubanova, S. A., Tyukavina, A., Thau, D., Stehman, S., Goetz, S., & Loveland, T. (2013). High-resolution global maps of 21st-century forest cover change. *Science*, 342(6160), 850–853.
- Harris, I., Jones, P., Osborn, T., & Lister, D. (2014). Updated high-resolution grids of monthly climatic observations – the CRU TS3.10 Dataset. *International Journal of Climatology*, 34, 623–642.
- He, C., Liu, Z., Tian, J., & Ma, Q. (2014). Urban expansion dynamics and natural habitat loss in China: a multiscale landscape perspective. *Global Change Biology*, 20(9), 2886–2902.
- Hickler, T., Smith, B., Prentice, I. C., Mjöfors, K., Miller, P., Arneth, A., & Sykes, M. T. (2008). CO₂ fertilization in temperate FACE experiments not representative of boreal and tropical forests. *Global Change Biology*, 14(7), 1531–1542.
- Hoekstra, A. Y., & Hung, P. Q. (2005). Globalisation of water resources: international virtual water flows in relation to crop trade. *Global Environmental Change*, 15(1), 45–56.
- Holden, S. T., & Otsuka, K. (2014). The roles of land tenure reforms and land markets in the context of population growth and land use intensification in Africa. *Food Policy*, 48, 88–97.
- Hosonuma, N., Herold, M., De Sy, V., De Fries, R. S., Brockhaus, M., Verchot, L., Angelsen, A., & Romijn, E. (2012). An assessment of deforestation and forest degradation drivers in developing countries. *Environmental Research Letters*, 7(4), 044009.
- Hudson, L. N., Newbold, T., Contu, S., Hill, S. L. L., Lysenko, I., De Palma, A., Phillips, H. R. P., Senior, R. A., Bennett, D. J., Booth, H., Choimes, A., Correia, D. L. P., Day, J., Echeverría-Londoño, S., Garon, M., Harrison, M. L. K., Ingram, D. J., Jung, M., Kemp, V., Kirkpatrick, L., Martin, C. D., Pan, Y., White, H. J., Aben, J., Abrahamczyk, S., Adum, G. B., Aguilar-Barquero, V., Aizen, M. A., Ancrenaz, M., Arbeláez-Cortés, E., Armbricht, I., Azhar, B., Azpiroz, A. B., Baeten, L., Báldi, A., Banks, J. E., Barlow, J., Batáry, P., Bates, A. J., Bayne, E. M., Beja, P., Berg, Á., Berry, N. J., Bicknell, J. E., Bihn, J. H., Böhning-Gaese, K., Boekhout, T., Boutin, C., Bouyer, J., Brearley, F. Q., Brito, I., Brunet, J., Buczkowski, G., Buscardo, E., Cabra-García, J., Calviño-Cancela, M., Cameron, S. A., Cancellato, E. M., Carrizo, T. F., Carvalho, A. L., Castro, H., Castro-Luna, A. A., Cerda, R., Cerezo, A., Chauvat, M., Clarke, F. M., Cleary, D. F. R., Connop, S. P., D'Aniello, B., da Silva, P. G., Darvill, B., Dauber, J., Dejean, A., Diekötter, T., Dominguez-Haydar, Y., Dormann, C. F., Dumont, B., Dures, S. G., Dynesius, M., Edenius, L., Elek, Z., Entling, M. H., Farwig, N., Fayle, T. M., Felicioli, A., Felton, A. M., Ficetola, G. F., Filgueiras, B. K. C., Fonte, S. J., Fraser, L. H., Fukuda, D., Furlani, D., Ganzhorn, J. U., Garden, J. G., Gheler-Costa, C., Giordani, P., Giordano, S., Gottschalk, M. S., Goulson, D., Gove, A. D., Grogan, J., Hanley, M. E., Hanson, T., Hashim, N. R., Hawes, J. E., Hébert, C., Helden, A. J., Henden, J.-A., Hernández, L., Herzog, F., Higuera-Díaz, D., Hilje, B., Horgan, F. G., Horváth, R., Hylander, K., Isaacs-Cubides, P., Ishitani, M., Jacobs, C. T., Jaramillo, V. J., Jauker, B., Jonsell, M., Jung, T. S., Kapoor, V., Kati, V., Katovai, E., Kessler, M., Knop, E., Kolb, A., Kőrösi, Á., Lachat, T., Lantschner, V., Le Féon, V., LeBuhn, G., Légaré, J.-P., Letcher, S. G., Littlewood, N. A., López-Quintero, C. A., Louhaichi, M., Lövei, G. L., Lucas-Borja, M. E., Luja, V. H., Maeto, K., Magura, T., Mallari, N. A., Marin-Spiotta, E., Marshall, E. J. P., Martínez, E., Mayfield, M. M., Mikusinski, G., Milder, J. C., Miller, J. R., Morales, C. L., Muchane, M. N., Muchane, M., Naidoo, R., Nakamura, A., Naoe, S., Nates-Parra, G., Navarrete Gutierrez, D. A., Neuschulz, E. L., Noreika, N., Norfolk, O., Noriega, J. A., Nöske, N. M., O'Dea, N., Oduro, W., Ofori-Boateng, C., Oke, C. O., Osgathorpe, L. M., Paritsis, J., Parra-H, A., Pelegrin, N., Peres, C. A., Persson, A. S., Petanidou, T., Phalan, B., Philips, T. K., Poveda, K., Power, E. F., Presley, S. J., Proença, V., Quaranta, M., Quintero, C., Redpath-Downing, N. A., Reid, J. L., Reis, Y. T., Ribeiro, D. B., Richardson, B. A., Richardson, M. J., Robles, C. A., Römbke, J., Romero-Duque, L. P., Rosselli, L., Rossiter, S. J., Roulston, T. H., Rousseau, L., Sadler, J. P., Sáfian, S., Saldaña-Vázquez, R. A., Samnegård, U., Schüepp, C., Schweiger, O., Sedlock, J. L., Shahabuddin, G., Sheil, D., Silva, F. A. B., Slade, E. M., Smith-Pardo, A. H., Sodhi, N. S., Sommariva, E. J., Sosa, R. A., Stout, J. C., Struebig, M. J., Sung, Y.-H., Threlfall, C. G., Tonietto, R., Tóthmérész, B., Tscharnkte, N., Turner, E. C., Tylianakis, J. M., Vanbergen, A. J., Vassilev, K., Verboven, H. A. F., Vergara, C. H., Vergara, P. M., Verhulst, J., Walker, T. R., Wang, Y., Watling, J. I., Wells, K., Williams, C. D., Willig, M. R., Woinarski, J. C. Z., Wolf, J. H. D., Woodcock, B. A., Yu, D. W., Zaitsev, A. S., Collen, B., Ewers, R. M., Mace, G. M., Purves, D. W., Scharelemann, J. P. W., & Purvis, A. (2014). The PREDICTS database: a global database of how local terrestrial biodiversity responds to human impacts. *Ecology and Evolution*, 4(24), 4701–4735.
- Huijnen, V., Wooster, M. J., Kaiser, J. W., Gaveau, D. L. A., Flemming, J., Parrington, M., Inness, A., Murdiyaro, D., Main, B., & van Weele, M. (2016). Fire carbon emissions over maritime southeast Asia in 2015 largest since 1997. *Scientific Reports*, 6, 26886.
- Hurt, G. C., Chini, L. P., Frolking, S., Betts, R. A., Feddema, J., Fischer, G., Fisk, J. P., Hibbard, K., Houghton, R. A., & Janetos, A. (2011). Harmonization of land-use scenarios for the period 1500–2100: 600 years of global gridded annual land-use transitions, wood harvest, and resulting secondary lands. *Climatic Change*, 109(1–2), 117–161.
- IIASA (2012). *Global agro-ecological zones (GAEZ v3.0)*. Laxenburg, Austria: IIASA and Rome, Italy: FAO.
- Jayne, T., Chamberlin, J., & Headey, D. D. (2014). Land pressures, the evolution of farming systems, and development strategies in Africa: A synthesis. *Food Policy*, 48, 1–17.
- Jolliffe, I. T. (2002). Graphical representation of data using principal components. In *Principal Component Analysis* (pp. 78–110). Springer.
- Kalkuhl, M. (2016). How strong do global commodity prices influence domestic food prices in developing countries? A global price transmission and vulnerability mapping analysis. In *Food price volatility and its implications for food security and policy* (pp. 269–301). Berlin, Germany: Springer.
- Kalkuhl, M., & Edenhofer, O. (2017). Ramsey meets Thünen: the impact of land taxes on economic development and land conservation. *International Tax and Public Finance*, 24(2), 350–380.

- Kalkuhl, M., Milan, B. F., Schwerhoff, G., Jakob, M., Hahnen, M., & Creutzig, F. (2018). Can land taxes foster sustainable development? An assessment of fiscal, distributional and implementation issues. *Land Use Policy*, 78, 338–352.
- Kaplan, J. O., Krumhardt, K. M., & Zimmermann, N. (2009). The prehistoric and preindustrial deforestation of Europe. *Quaternary Science Reviews*, 28(27), 3016–3034.
- Kastner, T., Erb, K.-H., & Haberl, H. (2014). Rapid growth in agricultural trade: effects on global area efficiency and the role of management. *Environmental Research Letters*, 9(3), 034015.
- Kastner, T., Rivas, M. J. I., Koch, W., & Nonhebel, S. (2012). Global changes in diets and the consequences for land requirements for food. *Proceedings of the National Academy of Sciences of the USA*, 109(18), 6868–6872.
- Keenan, R. J., Reams, G. A., Achard, F., de Freitas, J. V., Grainger, A., & Lindquist, E. (2015). Dynamics of global forest area: Results from the FAO Global Forest Resources Assessment 2015. *Forest Ecology and Management*, 352, 9–20.
- Keith, H., Mackey, B. G., & Lindenmayer, D. B. (2009). Re-evaluation of forest biomass carbon stocks and lessons from the world's most carbon-dense forests. *Proceedings of the National Academy of Sciences of the USA*, 106(28), 11635–11640.
- Klein Goldewijk, K., Beusen, A., Doelman, J., & Stehfest, E. (2016). New anthropogenic land use estimates for the Holocene; HYDE 3.2. *Earth System Science Data*, 2016, 1–40.
- Koh, L. P., Miettinen, J., Liew, S. C., & Ghazoul, J. (2011). Remotely sensed evidence of tropical peatland conversion to oil palm. *Proceedings of the National Academy of Sciences of the USA*, 108(12), 5127–5132.
- Krausmann, F., Schandl, H., & Sieferle, R. P. (2008). Socio-ecological regime transitions in Austria and the United Kingdom. *Ecological Economics*, 65(1), 187–201.
- Kuemmerle, T., Levers, C., Erb, K., Estel, S., Jepsen, M. R., Müller, D., Plutzer, C., Stürck, J., Verkerk, P., & Verborg, P. H. (2016). Hotspots of land use change in Europe. *Environmental Research Letters*, 11(6), 064020.
- Lambin, E. F., & Geist, H. J. (2008). *Land-use and land-cover change: local processes and global impacts*. Berlin, Germany: Springer Science & Business Media.
- Lambin, E. F., & Meyfroidt, P. (2011). Global land use change, economic globalization, and the looming land scarcity. *Proceedings of the National Academy of Sciences of the USA*, 108(9), 3465–3472.
- Lapola, D. M., Martinelli, L. A., Peres, C. A., Ometto, J. P. H. B., Ferreira, M. E., Nobre, C. A., Aguiar, A. P. D., Bustamante, M. M. C., Cardoso, M. F., Costa, M. H., Joly, C. A., Leite, C. C., Moutinho, P., Sampaio, G., Strassburg, B. B. N., & Vieira, I. C. G. (2014). Pervasive transition of the Brazilian land-use system. *Nature Climate Change*, 4(1), 27–35.
- Lark, T. J., Salmon, J. M., & Gibbs, H. K. (2015). Cropland expansion outpaces agricultural and biofuel policies in the United States. *Environmental Research Letters*, 10(4), 044003.
- Lepers, E., Lambin, E. F., Janetos, A. C., DeFries, R., Achard, F., Ramankutty, N., & Scholes, R. J. (2005). A synthesis of information on rapid land-cover change for the period 1981–2000. *AIBS Bulletin*, 55(2), 115–124.
- le Polain de Waroux, Y., Garrett, R. D., Heilmayr, R., & Lambin, E. F. (2016). Land-use policies and corporate investments in agriculture in the Gran Chaco and Chiquitano. *Proceedings of the National Academy of Sciences of the USA*, 113(15), 4021–4026.
- Liang, S., Guo, S., Newell, J. P., Qu, S., Feng, Y., Chiu, A. S. F., & Xu, M. (2016). Global drivers of Russian timber harvest. *Journal of Industrial Ecology*, 20(3), 515–525.
- Liebenberg, F., & Pardey, P. G. (2010). South African agricultural production and productivity patterns. In *The shifting patterns of agricultural production and productivity worldwide*. Ames, Iowa: The Midwest Agribusiness Trade Research and Information Center, Iowa State University.
- Liu, J., Hull, V., Batistella, M., DeFries, R., Dietz, T., Fu, F., Hertel, T., Izaurralde, R. C., Lambin, E., Li, S., Martinelli, L., McConnell, W., Moran, E., Naylor, R., Ouyang, Z., Polenske, K., Reenberg, A., de Miranda Rocha, G., Simmons, C., Verborg, P., Vitousek, P., Zhang, F., & Zhu, C. (2013). Framing sustainability in a telecoupled world. *Ecology and Society*, 18(2), 26.
- Lobell, D. B. (2011). Climate trends and global crop production since 1980. *Science*, 333, 616–620.
- Magalhães, P., Steffen, W., Bosselmann, K., Aragão, A., & Soromenho-Marques, V. (2016). *The safe operating space treaty*. Cambridge, UK: Cambridge Scholars Publishing. Retrieved from <http://www.cambridgescholars.com/the-safe-operating-space-treaty>
- Minx, J. C., Lamb, W. F., Callaghan, M. W., Fuss, S., Hilaire, J., Lenzi, D., Nemet, G., Creutzig, F., Amann, T., Beringer, T., de Oliveira Garcia, W., Hartmann, J., Khanna, T., Luderer, G., Nemet, G. F., Rogelj, J., Rogers, S., Smith, P., & del Mar Zamora, M. (2018). Negative emissions: Part 1 – Research landscape, ethics and synthesis. *Environmental Research Letters*, 13(6), 063001.
- MSEIC (2010). *Australia and food security in a changing world*. Australia: The Prime Minister's Science, Engineering and Innovation Council.
- Nagendra, H., Sudhira, H. S., Katti, M., & Schewenius, M. (2013). Sub-regional assessment of India: Effects of urbanization on land use, biodiversity and ecosystem services. In T. Elmqvist, M. Fragkias, J. Goodness, B. Güneralp, P. J. Marcotullio, R. I. McDonald, S. Parnell, M. Schewenius, M. Sendstad, K. C. Seto, C. Wilkinson (eds), *Urbanization, biodiversity and ecosystem services: challenges and opportunities* (pp. 65–74). Netherlands: Springer. Retrieved from http://link.springer.com/chapter/10.1007/978-94-007-7088-1_6
- Nepstad, D., McGrath, D., Stickler, C., Alencar, A., Azevedo, A., Swette, B., Bezerra, T., DiGiano, M., Shimada, J., Motta, R. S. da, Armijo, E., Castello, L., Brando, P., Hansen, M. C., McGrath-Horn, M., Carvalho, O., & Hess, L. (2014). Slowing Amazon deforestation through public policy and interventions in beef and soy supply chains. *Science*, 344(6188), 1118–1123.
- Newbold, T., Hudson, L. N., Hill, S. L., Contu, S., Lysenko, I., Senior, R. A., Börger, L., Bennett, D. J., Choimes, A., & Collen, B. (2015). Global effects of land use on local terrestrial biodiversity. *Nature*, 520(7545), 45–50.
- Odhiambo, G. O. (2016). Water scarcity in the Arabian Peninsula and socio-economic implications. *Applied Water Science*, 7(5), 2479–2492.
- Pan, Y., Birdsey, R. A., Fang, J., Houghton, R., Kauppi, P. E., Kurz, W. A., Phillips, O. L., Shvidenko, A., Lewis, S. L., Canadell, J. G., Ciais, P., Jackson, R. B., Pacala, S. W., McGuire, A. D., Piao, S., Rautiainen, A., Sitch, S., & Hayes, D. (2011). A large and persistent carbon sink in the world's forests. *Science*, 333(6045), 988–993.
- Park, J., Bader, J., & Matei, D. (2016). Anthropogenic Mediterranean warming essential driver for present and future Sahel rainfall. *Nature Climate Change*, 6, 941–945.
- Phelps, J., Webb, E. L., & Adams, W. M. (2012). Biodiversity co-benefits of policies to reduce forest-carbon emissions. *Nature Climate Change*, 2, 497–503.
- Peters, G. P., & Hertwich, E. G. (2008). CO₂ embodied in international trade with implications for global climate policy. *Environmental Science & Technology*, 42(5), 1401.
- Ramankutty, N., Evan, A. T., Monfreda, C., & Foley, J. A. (2008). Farming the planet: 1. Geographic distribution of global agricultural lands in the year 2000. *Global Biogeochemical Cycles*, 22(1), 1–19.
- Rands, M. R., Adams, W. M., Bennun, L., Butchart, S. H., Clements, A., Coomes, D., Entwistle, A., Hodge, I., Kapos, V., Scharlemann, J.P., Sutherland, W. J., & Vira, B. (2010). Biodiversity conservation: challenges beyond 2010. *Science*, 329(5997), 1298–1303.
- Reddy, C. S., Jha, C. S., Dadhwal, V. K., Krishna, P. H., Pasha, S. V., Satish, K. V., Dutta, K., Saranya, K. R. L., Rakesh, F., Rajashekar, G., & Diwakar, P. G. (2015). Quantification and monitoring of deforestation in India over eight decades (1930–2013). *Biodiversity and Conservation*, 25(1), 93–116.
- Risse, M. (2008). *Original ownership of the earth: a contemporary approach*. MA, USA: John F. Kennedy School of Government, Harvard University.
- Robinson, B. E., Holland, M. B., & Naughton-Treves, L. (2014a). Does secure land tenure save forests? A meta-analysis of the relationship between land tenure and tropical deforestation. *Global Environmental Change*, 29, 281–293.
- Robinson, T. P., Wint, G. R. W., Conchedda, G., Boeckel, T. P. V., Ercoli, V., Palamara, E., Cinardi, G., D'Aiotti, L., Hay, S. I., & Gilbert, M. (2014b). Mapping the global distribution of livestock. *PLOS ONE*, 9(5), e96084.
- Rockström, J., Steffen, W., Noone, K., Persson, Å., Chapin, F. S., Lambin, E. F., Lenton, T. M., Scheffer, M., Folke, C., Schellnhuber, H. J., Nykvist, B., de Wit, C. A., Hughes, T., van der Leeuw, S., Rodhe, H., Sörlin, S.,

- Snyder, P. K., Costanza, R., Svedin, U., Falkenmark, M., Karlberg, L., Corell, R. W., Fabry, V. J., Hansen, J., Walker, B., Liverman, D., Richardson, K., Crutzen, P., & Foley, J. A. (2009). A safe operating space for humanity. *Nature*, *461*(7263), 472–475.
- Rosenzweig, C., Elliott, J., Deryng, D., Ruane, A. C., Müller, C., Arneth, A., Boote, K. J., Folberth, C., Glotter, M., Khabarov, N., Neumann, K., Piontek, F., Pugh, T. A. M., Schmid, E., Stehfest, E., Yang, H., & Jones, J. W. (2014). Assessing agricultural risks of climate change in the 21st century in a global gridded crop model intercomparison. *Proceedings of the National Academy of Sciences of the USA*, *111*(9), 3268–3273.
- Schierhorn, F., Müller, D., Beringer, T., Prishchepov, A. V., Kuemmerle, T., & Balmann, A. (2013). Post-Soviet cropland abandonment and carbon sequestration in European Russia, Ukraine, and Belarus. *Global Biogeochemical Cycles*, *27*(4), 1175–1185.
- Schmitz, C., van Meijl, H., Kyle, P., Nelson, G. C., Fujimori, S., Gurgel, A., Havlik, P., Heyhoe, E., d’Croz, D. M., Popp, A., Sands, R., Tabeau, A., van der Mensbrugge, D., von Lampe, M., Wise, M., Blanc, E., Hasegawa, T., Kavallari, A., & Valin, H. (2014). Land-use change trajectories up to 2050: insights from a global agro-economic model comparison. *Agricultural Economics*, *45*(1), 69–84.
- Schneider, A., Mertes, C. M., Tatem, A. J., Tan, B., Sulla-Menashe, D., Graves, S. J., Patel, N. N., Horton, J. A., Gaughan, A. E., Rollo, J. T., Schelly, I. H., Stevens, F. R., & Dastur, A. (2015). A new urban landscape in East-Southeast Asia, 2000–2010. *Environmental Research Letters*, *10*(3), 034002.
- Searchinger, T. D., Estes, L., Thornton, P. K., Beringer, T., Notenbaert, A., Rubenstein, D., Heimlich, R., Licker, R., & Herrero, M. (2015). High carbon and biodiversity costs from converting Africa’s wet savannahs to cropland. *Nature Climate Change*, *5*(5), 481–486.
- Şekercioğlu, Ç. H., Anderson, S., Akçay, E., Bilgin, R., Can, Ö. E., Semiz, G., Tavşanoğlu, Ç., Yokeş, M. B., Soyumert, A., & Ipekdal, K. (2011). Turkey’s globally important biodiversity in crisis. *Biological Conservation*, *144*(12), 2752–2769.
- Seto, K. C., Fragkias, M., Güneralp, B., & Reilly, M. K. (2011). A meta-analysis of global urban land expansion. *PLOS ONE*, *6*(8), e23777.
- Seto, K. C., Güneralp, B., & Hutyrá, L. R. (2012). Global forecasts of urban expansion to 2030 and direct impacts on biodiversity and carbon pools. *Proceedings of the National Academy of Sciences of the USA*, *109*(40), 16083–16088.
- Silva, C. A., & Lima, M. (2017). Soy moratorium in Mato Grosso: Deforestation undermines the agreement. *Land Use Policy*, *71*, 540–542.
- Sitch, S., Smith, B., Prentice, I. C., Arneth, A., Bondeau, A., Cramer, W., Kaplan, J. O., Levis, S., Lucht, W., Sykes, M. T., Thonicke, K., & Venevsky, S. (2003). Evaluation of ecosystem dynamics, plant geography and terrestrial carbon cycling in the LPJ dynamic global vegetation model. *Global Change Biology*, *9*, 161–185.
- Sleeter, B. M., Sohl, T. L., Loveland, T. R., Auch, R. F., Acevedo, W., Drummond, M. A., Sayler, K. L., & Stehman, S. V. (2013). Land-cover change in the conterminous United States from 1973 to 2000. *Global Environmental Change*, *23*(4), 733–748.
- Smith, P., Davis, S. J., Creutzig, F., Fuss, S., Minx, J., Gabrielle, B., Kato, E., Jackson, R. B., Cowie, A., Kriegl, E., van Vuuren, D. P., Rogelj, J., Ciais, P., Milne, J., Canadell, J. G., McCollum, D., Peters, G., Andrew, R., Krey, V., Shrestha, G., Friedlingstein, P., Gasser, T., Grübler, A., Heidug, W. K., Jonas, M., Jones, C. D., Kraxner, F., Littleton, E., Lowe, J., Moreira, J. R., Nakicenovic, N., Obersteiner, M., Patwardhan, A., Rogner, M., Rubin, E., Sharifi, A., Torvanger, A., Yamagata, Y., Edmonds, J., & Yongsung, C. (2016). Biophysical and economic limits to negative CO₂ emissions. *Nature Climate Change*, *6*(1), 42–50.
- Smith, P., Gregory, P. J., Van Vuuren, D., Obersteiner, M., Havlik, P., Rounsevell, M., Woods, J., Stehfest, E., & Bellarby, J. (2010). Competition for land. *Philosophical Transactions of the Royal Society B: Biological Sciences*, *365*(1554), 2941–2957.
- Steffen, W., Richardson, K., Rockström, J., Cornell, S. E., Fetzer, I., Bennett, E. M., Biggs, R., Carpenter, S. R., de Vries, W., de Wit, C. A., Folke, C., Gerten, D., Heinke, J., Mace, G. M., Persson, L. M., Ramanathan, V., Rayers, B., & Sörlin, S. (2015). Planetary boundaries: Guiding human development on a changing planet. *Science*, *347*(6223), 1259855.
- Tahvonen, O., & Rautiainen, A. (2017). Economics of forest carbon storage and the additionality principle. *Resource and Energy Economics*, *50*, 124–134.
- Tayleur, C., Balmford, A., Buchanan, G. M., Butchart, S. H., Ducharme, H., Green, R. E., Milder, J. C., Sanderson, F. J., Thomas, D. H., Vickery, J., & Phalan, B. (2016). Global coverage of agricultural sustainability standards, and their role in conserving biodiversity. *Conservation Letters*, *10*(5), 610–618.
- Thornton, P. K. (2010). Livestock production: Recent trends, future prospects. *Philosophical Transactions of the Royal Society B: Biological Sciences*, *365*(1554), 2853–2867.
- University of East Anglia Climatic Research Unit, Jones, P. D., & Harris, I. C. (2013). CRU TS3.21: Climatic Research Unit (CRU) Time-Series (TS) Version 3.21 of High Resolution Gridded Data of Month-by-month Variation in Climate (Jan. 1901–Dec. 2012). NCAS British Atmospheric Data Centre, 24 September 2013. Retrieved from <http://dx.doi.org/10.5285/D0E1585D-3417-485F-87AE-4FCECF10A992>
- UN, EU, FAO, IMF, OECD, & the World Bank (2014). System of environmental-economic accounting 2012: central framework. New York: United Nations.
- UNCCD (2017). The global land outlook (GLO). Retrieved from <http://www2.unccd.int/actions/global-land-outlook-glo>
- van Vliet, J., de Groot, H., Rietveld, P., & Verburg, P. H. (2015). Manifestations and underlying drivers of agricultural land use change in Europe. *Landscape and Urban Planning*, *133*, 24–36.
- Wallander, S., Claassen, R., & Nickerson, C. (2011). The ethanol decade: an expansion of US corn production, 2000–09 (EIB-79, U.S. Department of Agriculture, Economic Research Service). Retrieved from http://papers.ssrn.com/sol3/papers.cfm?abstract_id=2131399
- Weinzettel, J., Hertwich, E. G., Peters, G. P., Steen-Olsen, K., & Galli, A. (2013). Affluence drives the global displacement of land use. *Global Environmental Change*, *23*(2), 433–438.
- West, P. C., Gerber, J. S., Engstrom, P. M., Mueller, N. D., Brauman, K. A., Carlson, K. M., Cassidy, E. S., Johnston, M., MacDonald, G. K., Ray, D. K., & Siebert, S. (2014). Leverage points for improving global food security and the environment. *Science*, *345*(6194), 325–328.
- Wilcove, D. S., Giam, X., Edwards, D. P., Fisher, B., & Koh, L. P. (2013). Navjot’s nightmare revisited: logging, agriculture, and biodiversity in Southeast Asia. *Trends in Ecology & Evolution*, *28*(9), 531–540.
- Wilson, E. O. (2016). *Half-earth: our planet’s fight for life*. NY, USA: Liveright.
- Wint, W., Robinson, T., de Obschatko, E., Foti, M., Román, M., Saba, S., Battro, P., Chaves Solera, M., Rodríguez Rodríguez, M., & Alfaro Portuguez, R. (2007). *Gridded livestock of the world 2007*. Rome, Italy: FAO.
- Wright, C. K., & Wimberly, M. C. (2013). Recent land use change in the Western Corn Belt threatens grasslands and wetlands. *Proceedings of the National Academy of Sciences of the USA*, *110*(10), 4134–4139.
- Zarin, D. J., Harris, N. L., Baccini, A., Aksenov, D., Hansen, M. C., Azevedo-Ramos, C., Azevedo, T., Margono, B. A., Alencar, A. C., Gabris, C., Allegrretti, A., Potapov, P., Farina, M., Walker, W. S., Shevade, V. S., Loboda, T. V., Turubanova, S., & Tyukavina, A. (2016). Can carbon emissions from tropical deforestation drop by 50% in 5 years?. *Global Change Biology*, *22*, 1336–1347.
- Zhang, M., Huang, X., Chuai, X., Yang, H., Lai, L., & Tan, J. (2015). Impact of land use type conversion on carbon storage in terrestrial ecosystems of China: A spatial-temporal perspective. *Scientific Reports*, *5*, 10233.
- Zhu, Z., Piao, S., Myneni, R. B., Huang, M., Zeng, Z., Canadell, J. G., Ciais, P., Sitch, S., Friedlingstein, P., Arneth, A., Cao, C., Cheng, L., Kato, E., Koven, C., Li, Y., Lian, X., Liu, Y., Liu, R., Mao, J., Pan, Y., Peng, S., Peñuelas, J., Poulter, B., Pugh, T. A. M., Stocker, B. D., Viovy, N., Wang, X., Wang, Y., Xiao, Z., Yang, H., Zaehle, S., & Zeng, N. (2016). Greening of the Earth and its drivers. *Nature Climate Change*, *6*(8), 791–795.