

2 **Towards network-guided neuromodulation for epilepsy**

3
4 Rory J. Piper,^{1,2} R. Mark Richardson,³ Gregory Worrell,⁴ David W. Carmichael,⁵ Torsten
5 Baldeweg,² Brian Litt,⁶ Timothy Denison⁷ and Martin M. Tisdall^{1,2}

6
7 1 Department of Neurosurgery, Great Ormond Street Hospital, London, UK

8 2 Developmental Neurosciences, UCL Great Ormond Street Institute of Child Health,
9 University College London, London, UK

10 3 Department of Neurosurgery, Massachusetts General Hospital and Harvard Medical
11 School, Boston, USA

12 4 Department of Neurology, Mayo Clinic, Rochester, USA

13 5 Department of Biomedical Engineering, King's College London, London, UK

14 6 Department of Neurology and Bioengineering, University of Pennsylvania, Philadelphia,
15 USA

16 7 MRC Brain Networks Unit, University of Oxford, Oxford, UK

17
18 Correspondence to: Dr Rory J. Piper

19 Developmental Neurosciences, UCL Great Ormond Street Institute of Child Health,
20 University College London, 30 Guilford Street, London, UK, WC1N 1EH

21 E-mail: Rory.Piper.20@ucl.ac.uk

22
23 **Running title:** Network-guided neuromodulation for epilepsy

24 **Keywords:** epilepsy; deep brain stimulation; responsive neurostimulation; networks;
25 connectivity

26 **Abbreviations:** ANT = anterior nucleus of the thalamus. CMT = centromedian nucleus of
27 the thalamus. DBS = deep brain stimulation. DRE = drug-resistant epilepsy. fMRI =
28 functional magnetic resonance imaging. iEEG = intracranial electroencephalography. LFP =
29 local field potential. LGS = Lennox-Gastaut syndrome. PC = piriform cortex. RNS =
30 responsive neurostimulation. SA = septal area. SOZ = seizure-onset zone. SEEG = stereo-
31 encephalography. TLE = temporal lobe epilepsy

32

1 Abstract

2 Epilepsy is well-recognized as a disorder of brain networks. There is a growing body of
3 research to identify critical nodes within dynamic epileptic networks with the aim to target
4 therapies that halt the onset and propagation of seizures. In parallel, intracranial
5 neuromodulation, including deep brain stimulation and responsive neurostimulation, are well-
6 established and expanding as therapies to reduce seizures in adults with focal epilepsy; and
7 there is emerging evidence for their efficacy in children and generalized seizure disorders.
8 The convergence of these advancing fields is driving an era of ‘*network-guided*
9 *neuromodulation*’ for epilepsy. In this review we distil the current literature on network
10 mechanisms underlying neurostimulation for epilepsy. We discuss the modulation of key
11 *propagation points* in the epileptogenic network, focusing primarily on thalamic nuclei
12 targeted in current clinical practice. These include (a) the anterior nucleus of thalamus, now a
13 clinically approved and targeted site for open loop stimulation, and increasingly targeted for
14 responsive neurostimulation; and (b) the centromedian nucleus of the thalamus, a target for
15 both deep brain stimulation and responsive neurostimulation in generalized-onset epilepsies.
16 We discuss briefly the networks associated with other emerging neuromodulation targets,
17 such as the pulvinar of the thalamus, piriform cortex, septal area, subthalamic nucleus,
18 cerebellum and others. We report synergistic findings garnered from multiple modalities of
19 investigation that revealed structural and functional networks associated with these
20 propagation points – including scalp and invasive electroencephalography, diffusion and
21 functional magnetic resonance imaging. We also report on intracranial recordings from
22 implanted devices which provide us data on the dynamic networks we are aiming to
23 modulate. Finally, we review the continuing evolution of network-guided neurostimulation
24 for epilepsy to accelerate progress towards two major goals: (1) to use pre-surgical network
25 analyses to determine patient candidacy for neurostimulation for epilepsy by providing
26 network biomarkers that predict efficacy; and (2) to deliver precise, personalized and
27 effective antiepileptic stimulation to prevent and arrest seizures, limit seizure propagation
28 through mapping and modulation of each patients’ individual epileptogenic networks.

29

1 Introduction

2 We now understand that epilepsy is a neurological disorder that alters the normal
3 connectivity of the brain ¹⁻⁶. Advances in brain connectivity ('network neuroscience' or
4 'connectomics') research over the last few decades ^{7,8} have driven the study of epilepsy as a
5 network disorder. The propagation of abnormal brain activity both during (ictal) and between
6 (inter-ictal) seizures alters widespread networks in generalized-onset epilepsy, but we also
7 now understand that focal epilepsy subtypes have a wider implicated network than previously
8 considered ^{9,10}.

9
10 A persistent group of around 30% of patients with epilepsy will develop drug-resistant
11 epilepsy (DRE) and require alternative forms of therapy ¹¹. Not all patients with DRE,
12 however, are eligible for surgical resection of the seizure-onset zone (SOZ). Whilst
13 traditional epilepsy surgical options – including resections and disconnections – have the
14 potential to decouple the epileptogenic network from the normal networks of the brain ^{12,13},
15 they are limited by their morbidity and irreversibility. Stimulation therapies provide a greater
16 degree of control and reversibility while being minimally-invasive, potentially offering a
17 more accurate and controllable treatment option. Intracranial neurostimulation interventions,
18 such as deep brain stimulation (DBS) and responsive neurostimulation (RNS), have become
19 effective and available treatment options to reduce seizure burden for selected patients with
20 DRE ¹⁴⁻¹⁶. Although not further discussed in this review, vagus nerve (extracranial)
21 stimulation also delivers neuromodulation in order to reduce seizure frequency by altering
22 brain networks via the afferent innervation of the vagus nerve ¹⁷.

23
24 The convergence of advances in brain network analyses and the fortuitous availability of data
25 gathered from long-term implants in the human epileptic brain has enabled a cascade of
26 research in the field of 'network-guided neuromodulation' ¹⁸⁻²¹. Our understanding of how
27 neurostimulation works on a network level has been made possible by studying and
28 combining multiple complimentary methods such as diffusion and functional magnetic
29 resonance imaging (fMRI) ²²⁻²⁵, scalp electroencephalography (EEG) and intracranial
30 electroencephalography (iEEG) ²⁶.

31
32 Whilst there have been recent reviews that have summarized the current availability and
33 efficacy of intracranial neurostimulation therapies for epilepsy ^{14-16,27,28}, we here approach

1 these therapies from a network neuroscience perspective. A network-guided neuromodulation
2 framework for epilepsy allows us to ask questions that may advance the treatment options
3 and efficacy that we can offer to patients. These include but are not limited to:

4
5 (1) What is the mechanism through which current neurostimulation therapies inhibit
6 epileptic activity in brain networks?

7
8 (2) What are the network properties of the thalamic regions currently implanted with
9 antiepileptic devices that make them useful targets for neurostimulation?

10
11 (3) Are there other potential stimulation targets and what are the network properties
12 associated with these?

13
14 (4) Are there properties of epileptic networks (biomarkers) that predict their
15 responsiveness to neurostimulation before device implantation?

16
17 (5) How do we optimize and personalize neurostimulation to maximize its efficacy?
18

19 This review of intracranial neuromodulation approaches these questions, draws on the latest
20 research, and suggests future research that may help us to advance in this field.

21 22 **The mechanistic role of network modulation in** 23 **neurostimulation for epilepsy**

24
25 From a connectivity perspective, all epilepsy surgery interventions are an attempt to
26 sufficiently disrupt the epileptogenic network to prevent seizures and to prevent the alteration
27 of 'healthy' brain networks²⁹. Surgical resection and thermal ablation directly target and
28 destroy the putative seizure-onset zone (SOZ) and hemispherotomy or corpus callosotomy
29 surgeries structurally 'disconnect' the white matter bridging the epileptogenic and normal
30 networks. DBS instead targets the most influential downstream '*propagation points*' within
31 the epileptogenic network and aims to prevent onward spread of seizure activity. RNS aims
32 to suppress seizure generation by stimulating the SOZ in *response* to epileptiform activity
33 recorded at the SOZ. These concepts are illustrated in **Figure 1**.

1
2 This review does not attempt to describe all of the hypotheses that have been postulated to
3 explain the efficacy of DBS and RNS. Other articles have specifically set out to summarize
4 these approaches across multiple scales and modes³⁰⁻³². These include, but are not limited to
5 mechanisms of DBS at the local/target level; for example, high-frequency stimulation has
6 been suggested to prevent onward propagation of seizures by either direct inhibition
7 ('functional lesioning') of the target or activation disrupting pathological activity in circuits
8 ('jamming theory'³³. In addition, studies have suggested that DBS disrupts pathological
9 oscillations as a therapeutic mechanism³⁴. At the cellular level, for example, it has been
10 suggested that thalamic stimulation causes glutamate^{34,35} and adenosine³⁵ release that may
11 reduce thalamic oscillations. Since these mechanisms have already been reviewed in detail,
12 our review summarizes and questions the main contributions that intracranial
13 neurostimulation may offer in terms of wider *network* modulation.

15 **[1] Neurostimulation desynchronizes the epileptogenic network**

16
17 Desynchronization of epileptogenic neural networks has been shown in multiple
18 investigations as a responsible mechanism for the efficacy of neurostimulation, rather than a
19 global reduction in excitability³⁶. In 1954 Penfield and Jasper commented on the hyper-
20 synchronization of brain activity occurring during epileptiform activity³⁷ and this
21 observation remains corroborated in the literature³⁸⁻⁴³. For example, Stypulkowski et al's
22 study in sheep compared the network alterations in the Papez circuit between ANT
23 ('indirect') and hippocampal ('direct') stimulation⁴⁴. Both indirect and direct high-frequency
24 stimulation suppressed theta-band power of local field potentials in the hippocampus, but
25 only direct stimulation caused a 'post-ictal suppression' (defined as a higher threshold to
26 produce further discharges from the hippocampus following stimulation). A more recent in-
27 human study by Yu et al investigated nine patients with temporal lobe epilepsy undergoing
28 intracranial EEG through inclusion of an electrode in the ANT⁴². They showed that high-
29 frequency stimulation of the ANT lead caused the broadband local field potentials measured
30 in the ANT to become desynchronized with LFTs in the ipsilateral hippocampus and
31 neocortex. A subsequent study by Scherer et al supported these findings of desynchronization
32 in 14 patients with temporal lobe epilepsy with intermittent ANT DBS investigated with
33 scalp EEG⁴¹. They found that stimulation caused desynchronization of scalp-recorded theta

1 and alpha band activity in responders, but not in non-responders, which supports this finding
2 as an important therapeutic mechanism⁴¹.

3
4 DBS therefore uses high-frequency stimulation to prevent so-called *propagation points*
5 (stimulation targets, e.g. the thalamus) from allowing seizure activity from the SOZ to
6 propagate to and synchronize with the unaffected networks of the brain (**Figure 1**). DBS may
7 prevent seizure propagation by suppressing the local generation of seizure activity through
8 common projections, for example along the Circuit of Papez (to be discussed) in the case of
9 anterior nucleus of the thalamus (ANT) stimulation (**Figure 2**). In comparison, RNS offers a
10 closed-loop system in which the receiving and delivering electrodes are both located in the
11 SOZ, and RNS suppresses synchronization locally or regionally during the occurrence of ictal
12 and inter-ictal epileptiform activity.

13
14 The concept of desynchronization is relatively straightforward to apply to focal-onset
15 epilepsies (**Figure 1**) but more challenging to understand in generalized-onset or multifocal-
16 onset epilepsies. Bilateral thalamic stimulation may desynchronize cortically driven
17 epileptiform activity from the subcortical networks, as suggested by studies that have shown
18 that Lennox-Gastaut syndrome (LGS) is a cortically-driven network disorder⁴⁵. However,
19 there is also evidence for the thalamus as primary source of seizures in idiopathic generalized
20 epilepsy⁴⁶.

22 **[2] Can neurostimulation normalize brain networks?**

23
24 We question if electrically disrupting the epileptogenic network and restoring a more
25 physiological functional connection allows restoration of normal cortical network
26 functioning. This concept of ‘neural hijacking’ has been postulated before by Cheney et al
27 who suggest that ‘high-frequency stimulation eliminates and replaces natural activity’.
28 However, whilst functional network normalization has been shown in resective epilepsy
29 surgery⁴⁷, antiseizure medication therapy^{48,49}, and in DBS for other conditions such as
30 Parkinson’s disease⁵⁰, there remains a lack of evidence and need for investigation for this
31 effect in neurostimulation for DRE.

32

1 There is an understandable focus within the current neurostimulation literature on seizure
2 frequency reduction as the primary outcome measure for neurostimulation strategies. There
3 have been a number of studies, however, that have investigated the neuropsychological
4 improvement associated with neurostimulation for epilepsy, most comprehensively covered
5 by Chan et al in their review ⁵¹. Longer-term data at five ⁵² and nine years ⁵³ following the
6 SANTE trial of DBS for DRE showed patients gained neuropsychological improvement –
7 including improvement in attention, executive function, mood (including depression, tension
8 and anxiety) and subjective cognitive function. Similarly, a study that examined cognitive
9 outcomes two-years following the RNS trial identified a small yet significant improvement in
10 cognition ⁵⁴. Of significance, there has recently been a prospective clinical trial examining the
11 cognitive effects of DBS of the anterior nucleus of the thalamus for epilepsy ⁵⁵. Heminghyt et
12 al randomized eight adults to active stimulation and 10 adults to no stimulation for six-
13 months following implantation but did not show any cognitive differences between the
14 groups at the six-months endpoint. However, at one year (the open-label phase) there was a
15 reduction in the proportion of patients experiencing executive dysfunction.

16
17 It may be, however, that a mechanism that allows these neuropsychological improvements is
18 the relief from seizures or weaning of antiseizure medications, but some have argued that this
19 may not be the only mechanism ⁵⁶. In addition, neurostimulation may allow
20 neuropsychological improvements by normalizing brain networks. Regardless,
21 neurostimulation may be of particular therapeutic value in the developing brains of children –
22 in whom the comorbidities of epilepsy may be equally or more concerning than seizures.
23 Data to shed light on pediatric outcomes is likely to soon become available owing to a recent
24 increase in DBS and RNS studies in children ⁵⁷⁻⁵⁹.

25
26 Lastly, neurostimulation approaches must consider the risk of iatrogenic and negative
27 implications to the normal brain network(s). Adverse events are not uncommon in
28 neurostimulation therapies – for example, the SANTÉ trial of DBS reported that 18.2% of
29 participants had a paresthesia and 16.4% withdrew due to adverse effects. Studies of
30 diffusion MRI in patients undergoing DBS for movement disorders have demonstrated that it
31 is possible to model optimal electrode positioning that allows for targeting efficacious white
32 matter connections (tracts) but avoiding those associated with adverse effects ²⁰. Other
33 adverse effects that remain uninvestigated from a network perspective include the potential
34 effects of neurostimulation on cognition, mood and sleep ⁶⁰.

1 [3] Neurostimulation alters temporally dynamic brain networks

2
3 As well as considering stationary (single time point) brain networks, there is a need to
4 consider that brain networks are dynamic over time. Patients with epilepsy demonstrate
5 temporally organized seizure occurrences that respect either circadian (in the course of a
6 day), multidien (over multiple days) or circannual (over years) patterns^{61,62}. The opportunity
7 to study the longer-term data recorded from intracranial devices, such as patients undergoing
8 intracranial EEG for pre-surgical assessment, has demonstrated changing ‘seizure pathways’
9 within the epileptogenic network of individual patients across time⁶³. Whilst RNS is
10 responsive to seizure activity in real-time, both DBS and RNS therapy may be refined by
11 further ‘*adaptive*’ stimulation regimes that account for cyclical seizure patterns.
12

13 The ability of RNS and more recent DBS technologies to detect local-field potentials (LFPs)
14 within the epileptogenic network over time allows for further investigation of the
15 neurophysiological impact of stimulation on the patient’s epileptic network. There is a
16 growing consensus that the efficacy of RNS is likely due to an long-term neuromodulatory
17 effect on the epileptogenic network, rather than only arresting seizures⁶⁴. Sisterson et al
18 proposed this temporal effect to result from progressive disruption of epileptogenic network
19 connectivity and reduction of the core synchronized population, rendering the clinical
20 manifestation of seizures less severe⁶⁵, rather than RNS just being a ‘defibrillator for the
21 brain’. In a recent key in-human study, Khambhati et al used the long-term data from 51
22 patients with RNS (either mesial temporal or neocortical) to examine the dynamics in
23 functional interictal epileptiform connectivity over time by constructing a network using
24 device-recorded local field potentials. In patients with RNS electrodes in two seizure-onset
25 zones the inter-electrode network was temporally plastic, meaning that they were able to
26 detect alterations in functional connectivity (measured as ‘phase locking values’) between
27 these electrodes over time, and particularly within the first year post-implantation. For
28 patients with neocortical electrodes, they found that functional connectivity was decreased in
29 alpha and beta bands but increased in gamma bands between seizure-onset zones in ‘super’
30 responders (>90% reduction in seizures) compared to poor responders (<50% reduction in
31 seizures)⁶⁶. This led the authors to propose a ‘spark-on-kindling’ hypothesis, suggesting that
32 RNS desynchronizes the epileptogenic network (‘kindling’) and reduces the risk of a seizure
33 generation caused by inter-ictal epileptiform discharges (‘spark’). This may provide a

1 mechanistic explanation for the observations from both RNS and DBS long-term clinical
2 studies showing that seizure frequency often gradually decreases over time^{53,67}. This concept
3 of stimulation-induced plasticity agrees with the observations from the literature on dystonia
4 showing gradual improvement in symptoms with DBS over a number of months³⁰.

5
6 It is conceptually plausible that closed-loop RNS, with both sensing and stimulation
7 electrodes in the SOZ, may induce plastic change in the SOZ and reduce the number of focal-
8 onset seizures. However, it is intriguing to consider how this mechanism might occur during
9 DBS to reduce the frequency of focal-onset seizures. This raises the question as to whether
10 DBS also has a ‘plastic’ influence on the SOZ as well as working to isolate/desynchronize the
11 SOZ from the rest of the brain’s network. However, the data from Yu et al’s aforementioned
12 study⁴², showed that ANT stimulation decreased the rate of inter-ictal epileptiform
13 discharges and high-frequency oscillations, supporting the plasticity concept. A provisional
14 longer-term study has been reported in one patient who first had RNS with receiving and
15 stimulating leads in the seizure onset and who then went on to have ANT DBS⁶⁸. In this
16 patient, over 1.5 years, ANT DBS progressively suppressed hippocampal epileptiform
17 activity. Overall, however, further research is required into the effects of stimulation on brain
18 networks and their dynamics.

20 ***Propagation points within the epileptogenic network***

21
22 In this section, we focus on network studies concerning the current clinical intracranial
23 targets for neuromodulation for epilepsy. We have focused primarily on the regions of the
24 thalamus – the anterior nucleus of the thalamus (ANT) and centromedian nucleus of the
25 thalamus (CMT) that are DBS and RNS targets in current clinical practice. We also highlight
26 hypothetical targets that either have previously been targeted or may bring future
27 opportunities, including the pulvinar of the thalamus, piriform cortex, the septal area,
28 subthalamic nucleus and cerebellum.

30 **Thalamus**

31
32 The notion that the thalamus is a critical hub in the propagation of seizures is not a new
33 concept. Following the dawn of Penfield’s ‘Montreal Procedure’ for epilepsy in 1930s,

1 during which patients with epilepsy undergoing awake craniotomy would have cortical
2 stimulation followed by ablation, attention was turned to deeper structures⁶⁹. The thalamus
3 became a target of therapeutic neurostimulation in the animal studies by Penfield and Jasper
4 as early as 1949^{37,70,71}. The thalamus is responsible for the mediation of reciprocal cortical to
5 subcortical connections and thus defined as an ‘integrative hub’ for functional brain networks
6⁷². The thalamus has classically been implicated as a propagation point in generalized-onset
7 seizures^{73,74} and focal-onset seizures with secondary generalization on account of the onward
8 bilateral cortical spread of epileptiform activity and connection to the brainstem. However,
9 more recent evidence suggests that the thalamus also has a significant network role in focal-
10 onset epilepsies without generalization. From a clinical perspective, in the landmark SANTÉ
11 trial of DBS for adult DRE there was also significant improvement in seizure frequency seen
12 in those patients with focal-onset epilepsy⁷⁵.

13
14 The role of the thalamus has been a particular focus in studying the epileptogenic network of
15 TLE⁴⁰, partly due to the relative amenability to group studies owing to the homogeneity of
16 the epileptic network in this condition. He et al demonstrated that patients who were not
17 rendered seizure-free following temporal lobe resection surgery for TLE were more likely to
18 have a higher functional connectivity of the thalami on preoperative resting-state fMRI,
19 suggesting that patients with particular thalamic ‘hubness’ within their epileptogenic network
20 were less likely to have seizure freedom after resective surgery⁷⁶.

21
22 The thalamus is a complex structure with nuclei that each have distinct connectivity profiles.
23 The two common targets of DBS are the anterior nucleus (ANT) and centromedian nucleus
24 (CMT) of the thalamus (shown in **Figure 2**). Of note, ANT stimulation remains the only
25 Food and Drug Administration (USA) and National Institute for Health and Care Excellence
26 (UK) approved stimulation target for adults with DRE. The pulvinar is another nucleus of the
27 thalamus that has been shown to be a component in the epileptogenic network^{77 78}, but has
28 been less well studied.

30 **Anterior nucleus of the thalamus**

31
32 The ANT has been a stimulation target for epilepsy for several decades. Early studies in
33 humans include lesioning of the ANT in the 1960s⁷⁹ and a small cohort reported by Upton

1 and Cooper of six adults who underwent ANT stimulation in the 1980s⁸⁰. The *SANTÉ trial*
2 validated the efficacy of ANT stimulation, in which adults with focal-onset (TLE or extra-
3 TLE) DRE underwent bilateral ANT DBS⁷⁵. Despite this early success of clinical translation,
4 subsequent and ongoing research continues in order to further understand the network
5 mechanics that explain the efficacy of this therapy and to refine neurostimulation strategies.
6

7 The ANT has been described as a component of the ‘extended hippocampal system’⁸¹ as it
8 receives inputs from the mamillary body (via the mammillothalamic tract), subicular and
9 retrosplenial cortex, whilst it has outputs to the medial prefrontal cortex (detailed in **Figure**
10 **3**). These brain regions connected to the ANT are components of the so-called *Papez circuit*
11⁸². This network of cortical and subcortical structures gives a route of seizure propagation
12 between the hippocampus and thalamus by connections through the mammillothalamic tract
13 and the fornix. The ANT feeds back to the hippocampus via the cingulum to the
14 parahippocampal gyrus and entorhinal cortex⁸³. Neurostimulation that targets nodes
15 (including the ANT) within the Papez circuit may desynchronize, or even recalibrate, this
16 network.
17

18 The ANT is composed the anteroventral, anterodorsal and anteromedial subnuclei. There are
19 ANT subnucleus-specific differences in connectivity^{81,84}, and studies have investigated the
20 differences in lead placement between patients who have and have not responded to ANT
21 DBS. Multiple retrospective studies have shown that stimulation of the anterior-ventral and
22 anterior-medial ANT is more associated with responder status^{85–88}, but the wider network
23 substrates that underpins this more efficacious target have not yet been demonstrated. A
24 recent connectivity study by Schaper et al looked at 20 patients undergoing ANT DBS and
25 found that responders (>50% seizure reduction) had a shorter distance of the contacts to the
26 junction of the ANT and mammillothalamic tract⁸⁹.

27
28 Stereo-EEG has offered an opportunity to probe the mechanism of ANT in the epileptogenic
29 network, as demonstrated in the aforementioned study by Yu et al⁴². Another interesting
30 SEEG study by Chaitanya et al has examined 26 seizures in seven patients with drug-resistant
31 TLE and investigated the dynamic changes in synchronization between the SOZ and ANT⁹⁰.
32 They showed that there was an increase in coupling between the amplitude of high gamma
33 band in the SOZ and the phases of low-frequency oscillations (alpha, delta and theta) in the
34 ANT. They also showed, however, that the synchronization between the ANT and the

1 epileptic network preceded seizure-onset, suggesting that the ANT has a key role in the
2 ictogenesis as well as seizure propagation. A further study by Toth et al used an
3 epileptogenicity index based on SEEG data and found that seizures that had an onset in the
4 mesial temporal lobe (compared to other seizure-onset zones) had a higher and faster rate of
5 ANT recruitment and that ANT recruitment preceded clinical onset. They also found that
6 seizures that recruited the ANT lasted longer. The authors suggest that the ANT has a key
7 role in the early organization and maintenance of seizure activity. Also, data from local-field
8 potentials captured from DBS devices with sensing capabilities (e.g. the *Medtronic Percept*)
9 are beginning to emerge that may provide further information on long-term network effects
10 of ANT stimulation in DRE ⁹¹.

11
12 The synchronization of thalamo-cortical seizure activity and altered connectivity has been
13 best studied in the TLE paradigm. The results from the SANTÉ trial suggest that patients
14 with TLE are more likely to respond to DBS than extratemporal epilepsy or generalized
15 epilepsy cases ⁷⁵. The SANTÉ trial showed that although patients with TLE had a median of
16 44% seizure frequency reduction from baseline, there was no significant difference in seizure
17 frequency reduction in patients with seizures with onset in the frontal, parietal or occipital
18 lobes. That said, the SANTE trial was not statistically powered to compare rates of efficacy
19 according to different seizure-onset zones, and other studies have identified connectivity
20 alterations that are suggestive of a role of the ANT in a wider cortical network. For example,
21 in a study of five patients with epilepsy undergoing ANT DBS measured a transient reduction
22 in intracortical inhibition within the motor cortex, determined by increases in motor
23 thresholds during transcranial magnetic stimulation ⁹². Additionally, in a study of five
24 patients with either multifocal or generalized epilepsy undergoing ANT stimulation, time-
25 locked cortical responses (estimated using scalp EEG and source modelling) during ANT
26 stimulation were increased in ipsilateral cingulate gyrus, insular cortex and lateral temporal
27 cortices ⁴³. Lastly, a study of 10 patients with idiopathic generalized epilepsy were studied
28 with paired EEG-fMRI which showed that the ANT (as well as centromedian nucleus) was
29 activated during spike-and-wave discharges ⁹³, suggesting ANT synchrony with the
30 generalized epileptogenic network and thus a potential propagation point.

31
32 RNS has been used to treat generalized epilepsy, with a receiving detector on the cortex and
33 the stimulation contacts in the ANT ⁹⁴. Further studies are required to understand the network
34 mechanisms by which extratemporal epileptogenic networks may benefit from ANT

1 stimulation. Lastly, further studies are also required in order to determine the potential for
2 ANT stimulation to be of benefit in children with epilepsy^{57,58,95}.

4 **Centromedian nucleus of the thalamus**

6 The centromedian nucleus of the thalamus (CMT) (shown in **Figure 2**) is an intralaminar
7 nucleus sited at the lateral wall of the third ventricle⁹⁶. The CMT has been a
8 neurostimulation target for 30-years, particularly for the treatment of generalized-onset
9 epilepsies, namely LGS. The earlier works⁹⁷⁻¹⁰³ identified the CMT as a potentially
10 efficacious stimulation target, later confirmed by clinical trials¹⁰⁴ and recently (December
11 2021) by the DBS of thalamic centromedian nucleus for Lennox-Gastaut syndrome (the
12 ESTEL trial)¹⁰⁵. Although the CMT has been a target since at least the 1990s¹⁰²,
13 corresponding in-vivo human studies investigating the network substrates of the CMT are
14 only beginning to emerge.

16 A study by Torres Diaz et al used both diffusion and functional MRI acquired in 10 adults
17 with generalized epilepsy undergoing CMT DBS¹⁰⁶. Although the cohort was small, the
18 clinical effect was striking – with 8/10 achieving at least 50% seizure frequency reduction.
19 The structural (diffusion tractography) and functional (fMRI) networks of the CMT were
20 determined using the lead contacts as seeds – ‘*volume of tissue activated*’. Improved
21 outcomes were associated with increased connectivity between the volume of tissue activated
22 and the reticular system, supporting the hypothesis that the brainstem is an important
23 component of CMT network¹⁰⁷. The functional connections of the CMT, derived from
24 resting-state fMRI, involved the anterior cingulate, pre-frontal, pre-central, post-central,
25 insular, medial temporal and occipital cortices. Similarly, results from simultaneous EEG-
26 fMRI in young adults with Lennox-Gastaut syndrome in the ESTEL trial identified
27 significant connectivity with the basal ganglia, brainstem, cerebellum, sensorimotor cortex,
28 premotor cortex and limbic cortex¹⁰⁸. The same group have published two other paired EEG-
29 fMRI studies showing that, in both adults and children with Lennox-Gastaut syndrome,
30 generalized paroxysmal fast activity starts in the cortex and involves the CMT only after a
31 delay¹⁰⁹, perhaps propagating to the brainstem via cortico-reticular pathways first before
32 involving the CMT afterwards¹⁰⁸. A study by Kim et al, using both diffusion MRI and EEG
33 and in a cohort of 10 patients undergoing DBS for either generalized or multifocal epilepsy,

1 also showed that the anterior cingulate gyrus and frontotemporal regions had significant
2 connections with the CMT ¹¹⁰.

3
4 A recently published study, also from the ESTEL trial¹⁰⁵, used probabilistic mapping,
5 structural connectivity (tractography) and functional connectivity (simultaneous EEG-fMRI)
6 to refine the ‘sweet spot’ (the target of area of maximal efficacy) for CMT DBS in 20 young
7 adults with Lennox-Gastaut syndrome¹¹¹. The study identified that DBS lead localization in
8 the anterior-inferior-lateral CMT border (the parvocellular region) was associated with
9 patients with higher seizure frequency reduction. Structural connectivity profiles associated
10 with greater seizure frequency reduction showed higher connectivity with the premotor
11 cortex, frontal operculum, putamen, globus pallidus, hippocampus, cerebellum and
12 brainstem. Posterior (parietal, occipital and temporal) cortical connectivity was, in contrast,
13 associated with lesser seizure frequency reduction.

14
15 Lastly, so far, only a few reports exist of efficacy of RNS for the treatment of drug-resistant
16 idiopathic generalized epilepsy. For example, a recent retrospective cohort of four patients
17 with idiopathic generalized epilepsy treated with CMT RNS demonstrated seizure frequency
18 reductions ranging between 75-99%, seizure duration reduction and quality of life
19 improvements. Another group have reported that bilateral RNS was used to detect seizure
20 activity from and deliver neurostimulation to the CMT in a 16-year-old boy with primary
21 generalized epilepsy ¹¹². It will be intriguing to review the results from the upcoming RNS
22 trial for patients with Lennox-Gastaut syndrome that detects seizure activity at the cortex and
23 uses the CMT as the stimulation target ¹¹³.

25 **Alternate and prospective stimulation targets**

26
27 Whilst we will not discuss these in such detail as currently targeted propagation points, there
28 are several other stimulation targets that have been or could be explored for the treatment of
29 epilepsy. We have chosen to discuss also the piriform cortex and septal area, which may be
30 emerging as potential therapeutic stimulation targets.

1 **Pulvinar of the thalamus**

2
3 The pulvinar of the thalamus has received lesser attention than ANT and CMT. The pulvinar
4 is a large region of the thalamus that has distinct zones with differing connectivity profiles.
5 The inferior and lateral subregions are considered the 'visual pulvinar' with strong
6 connectivity to the occipital lobe¹¹⁴ and has been a suggested stimulation target for patients
7 with posterior quadrant seizure-onset zones⁷⁸.

8
9 The medial pulvinar has connections with the frontal and medial temporal lobes^{115 116}. A
10 study of eight patients with TLE undergoing SEEG showed that seizures triggered by
11 hippocampal stimulation were rendered less severe with high-frequency medial pulvinar
12 stimulation than those without¹¹⁵. This study noted that reduction in severity was noted to
13 occur with an improvement of awareness during seizures. A follow-on study of the same data
14 measured functional connectivity (correlation in broad band SEEG) between temporal and
15 extratemporal regions and compared connectivity differences between (a) between
16 stimulation on and stimulation off; and (b) responders and non-responders¹¹⁷. 'Synchrony'
17 (i.e. connectivity) was found to be lower during stimulation in responders. The authors
18 hypothesized that 'reducing global synchrony' caused by medial pulvinar stimulation may
19 relate to improved awareness during TLE seizures.

21 **Piriform cortex**

22
23 The piriform cortex (PC) is a region of paleocortex that bridges the medial temporal and
24 inferior frontal lobes superficial to the limen insulae (**Figure 4**). Whilst in health the PC is a
25 primary olfactory cortex, the PC has been implicated as a key zone of seizure propagation
26 and kindling for several decades now¹¹⁸⁻¹²⁰. An early study in rats identified the 'deep
27 prepiriform' cortex as a potent seizure zone¹²¹, leading to a deep zone of the PC named as
28 'area tempestas' (Latin for 'storm area')¹²². There has been a recent renewal of interest in
29 the PC's role in epilepsy which has been made possible by the availability of non-invasive
30 (scalp EEG, MRI & PET) and invasive (intracranial EEG) modalities to investigate the
31 functional network of the human PC in-vivo¹²³. The PC has been demonstrated as an
32 important node within the epileptogenic network in independent cohort studies showing that
33 extent of PC resection was associated with a higher rate of seizure freedom following anterior

1 temporal lobe resection^{124,125}. This raises the question as to whether the PC is not only a
2 seizure propagation zone, but, as previously thought, a site of epileptogenesis in TLE.

3
4 Laufs et al used simultaneous EEG-fMRI in adults with focal epilepsy to demonstrate
5 increased activity of the frontal component of the PC ipsilateral to the putative SOZ was
6 associated with interictal epileptiform discharges and using PET showed that GABA_A
7 binding was decreased in this region¹²⁶. Another EEG-fMRI study in 27 patients with either
8 TLE or ETE showed that the PC was a common connectivity node¹²⁷, supported also by a
9 resting-state fMRI study in ETE by Pedersen¹²⁸. The PC may, therefore, be implicated as a
10 propagation point within the epileptogenic network of focal epilepsies and could thus serve as
11 a stimulation target¹¹⁸. Again, it is interesting that the PC is a common node amongst
12 multiple forms of epilepsies. The PC is a structural and functional connection between the
13 temporal lobe and the limbic system¹¹⁸. As such, the PC is connected to the medial temporal
14 lobe and its associated network – including the hippocampus, amygdala, entorhinal and
15 perirhinal cortices¹²⁹, orbitofrontal cortex¹³⁰, and the circuit of *Papez*. Studies of olfaction
16 using fMRI have shown functional connectivity between the PC and the mediodorsal
17 thalamus¹³⁰. The PC has also been implicated in generalized-onset epilepsies¹¹⁸, but this has
18 been less studied.

19
20 Focus now turns to how the piriform cortex may be modulated for the treatment of DRE,
21 particularly within TLE which seems to be the most related epilepsy type thus far. Further
22 studies to refine our understanding of the network of the PC are required¹²³, and movement
23 towards ultra-high-field imaging (7-Tesla MRI) may facilitate studies of small structures such
24 as the PC. As it stands, there is currently a shortage of network-based analyses analogous to
25 those described above for other stimulation targets.

27 **Septal area**

28
29 The septal area (SA) (also termed the ‘medial septum’ or ‘medial frontal zone’) is a small
30 region of the cortex at the most posterior and deep portion of the frontal lobe (**Figure 4**).
31 Although less well explored, there has been an interest in the septal area as a
32 neurostimulation zone for epilepsy¹³¹.

33

1 The SA has been an area of particular interest in the context of TLE considering the septo-
2 hippocampal structural and functional connectivity. There is coupling of epileptiform activity
3 between the SA and hippocampus¹³² and SA stimulation inhibits hippocampal neuronal
4 activity¹³³. An MRI study showed that patients with TLE (but without mesial temporal
5 sclerosis) have higher volumes of the SA nuclei compared to patients with extratemporal
6 epilepsy and controls¹³⁴. The authors stated that this finding was ‘evidence of
7 neuroplasticity/augmentation of the septal-hippocampal system in TLE’.

8
9 As it stands, studies performing neurostimulation of the SA to treat epilepsy have been
10 limited to animal models. A study by Takeuchi et al demonstrated that closed-loop
11 stimulation of the medial septum was able to terminate seizures in Long-Evans rats with TLE
12¹³⁵. A study by Izadi et al showed that continuous stimulation of the medial septum in
13 Sprague-Dawley rats with pilocarpine-induced TLE was able to raise the seizure threshold
14 and improve cognitive performance measured using the Barnes maze¹³⁶. Further studies are
15 required in order to determine the role of the SA in the epileptogenic network of both TLE
16 and ETE and its potential as a propagation point and stimulation target.

18 **The subthalamic nucleus**

19
20 The subthalamic nucleus (STN), more typically a target for DBS in Parkinson’s disease, has
21 also been proposed as a stimulation target in epilepsy^{137–139}. The STN has connections with
22 the cortex, both directly and via the thalamus¹⁴⁰. Following reports in animal models¹⁴¹,
23 Chabardès, Benabid and colleagues first performed STN DBS in a child with focal cortical
24 dysplasia¹⁴² followed by four other patients¹⁴³. They hypothesized that stimulation of the
25 STN acts on a ‘cortico-subcortical network’ by anti-dromic neuromodulation of the cortex¹⁴³,
26 but data available in the study could not corroborate this and the network mechanism of STN
27 stimulation in epilepsy remains unknown.

28
29 We found one study that used SEEG to investigate the role of the STN in seven patients with
30 epilepsy undergoing presurgical evaluation and who had seizure-onset zone in the motor
31 area¹³⁸. The investigators reported a downstream propagation of epileptiform activity from
32 the motor cortex to the ipsilateral STN. Furthermore, the study used trials of high-frequency
33 stimulation to the STN to show reductions in interictal spiking and high-frequency

1 oscillations, leading to their conclusion that the STN is a key node / propagation point in the
2 network for these patients and thus a potential stimulation target.

4 **The cerebellum**

6 In 1976, Cooper and colleagues published their results on using stimulation at the cerebellar
7 cortex to inhibit seizures in 10 of 15 human subjects¹⁴⁴. Whilst the results suggested that
8 anterior cerebellar lobe stimulation was more efficacious than posterior cerebellar lobe
9 stimulation, there was no further data to refine our network understanding of this clinical
10 effect. A small number of further human studies^{101,145,146} have not convincingly replicated
11 the finding of seizure reduction with cerebellar stimulation¹⁴⁷ and subsequently the
12 cerebellum has not been further explored like other targets have.

14 **Others**

16 Alternate targets include the central lateral thalamus^{148,149}, pontine nucleus oralis¹⁴⁹,
17 hypothalamus¹⁵⁰ and caudate nucleus¹⁵¹, as well as others^{15,152}. Further pre-clinical
18 (including network analyses) and clinical evidence are required to investigate these potential
19 seizure propagation points.

21 **Towards personalized, network-guided neurostimulation**

23 This review has so far discussed the mechanisms by which network augmentation delivers
24 therapeutic effect to patients with epilepsy, the network properties of particular propagation
25 points within the epileptogenic network and how network differences are related to varying
26 degrees of therapeutic benefit of neuromodulation (seizure frequency reduction). This section
27 discusses how we may be able to employ pre-implantation network metrics to guide our
28 clinical decision making in neurostimulation and personalize therapies to maximize the
29 delivered clinical impact to our patients.

31 The next translational step in network-guided neuromodulation for epilepsy is to apply the
32 patient's epileptogenic network to a candidacy algorithm – i.e. can we use preoperative

1 network data to predict which patients will benefit from neurostimulation? Studies have
2 predicted postoperative seizure freedom based on preoperative multi-modal network data in
3 patients undergoing resective surgery^{153–158} and VNS implantation¹⁵⁹ for DRE. For example,
4 a study by Li et al developed the network-based concept of *neural fragility* to predict surgical
5 failure in 43 of 47 patients undergoing resective surgery for epilepsy¹⁶⁰. Only recently a
6 small number of published studies have reported the ability of pre-implantation networks to
7 predict response to intracranial neurostimulation for epilepsy.

8
9 Whilst we await prospective studies of network-predicted DBS or RNS efficacy in epilepsy, a
10 number of retrospective studies have been performed that speak to the ability of preoperative
11 data to be associated with response to neurostimulation. For example, a study by
12 Middlebrooks et al showed that, in six patients undergoing ANT DBS for DRE, the volume
13 of tissue activated (by stimulation) in responders was hyperconnected to the default mode
14 network (derived within a normative dataset from resting-state fMRI data) when compared to
15 non-responders¹⁶¹. A recent study by Charlebois et al concluded that higher structural
16 connectivity of the volume of tissue activated (VTA) was correlated with greater seizure
17 reduction in patients treated with hippocampal RNS¹⁶². These studies raise the possibility
18 that preoperative network measures may provide biomarkers to determine stimulation
19 candidacy and tailor targeting to the individual patient's network. Furthermore, Scheid et al.
20 used pre-RNS functional network data derived from 30 patients undergoing iEEG²⁶. They
21 tested the hypothesis that wide-scale networks (i.e. those that incorporate nodes beyond the
22 SOZ) can be identified as a predictive marker of RNS responder rate. They found that,
23 compared to non-responders, responders to RNS had a smaller decrease in the functional
24 connectivity (high- γ band (95–105 Hz)) measured between iEEG contacts. iEEG could
25 therefore be used as a pre-neurostimulation investigation, but there is still a need to determine
26 whether predictive network signatures can be identified non-invasively.

27
28 As well as predicting patient responsiveness to neurostimulation and determining candidacy,
29 a future objective of this field is to use preoperative measures of brain connectivity to deliver
30 personalized and network-guided neurostimulation^{106,163,164} (**Figure 5**). As one would
31 expect, it has been clearly demonstrated that brain connectivity is to some degree individual
32 in health¹⁶⁵, as well as in disease paradigms such as epilepsy, so stimulation targeting must
33 be individualized which is at odds with the likely necessity of individualizing associated with
34 epilepsies inherent heterogeneity. There has recently been a significant drive towards these

1 ‘precision’ DBS approaches within the context of adult movement disorders such as
2 Parkinson’s disease ²⁰, but epilepsy remains a step behind in terms of available evidence.
3 There are moves to provide ‘adaptive’ neurostimulation, such as alteration of stimulation
4 paradigms in response to temporally-variant neurophysiological (e.g. local field potentials in
5 RNS) or manual programming based on clinical feedback (seizure frequency).

6
7 Although invasive, SEEG offers a clinically-viable opportunity for network-guided and
8 individualized neuromodulation planning, and has already begun transitioning in routine
9 clinical practice^{18,42,166,167}. Richardson’s review of paradigm shifts in closed-loop
10 neuromodulation suggests that by augmenting the current ‘(seizure) focus-guided’ decision-
11 making framework with a ‘network-orientated’ framework, SEEG implantation that includes
12 potential propagation points may identify both sites for seizure detection in RNS and sites for
13 the delivery of neuromodulation (DBS or RNS) ¹⁸. Similarly, the latest *DBS Think Tank*
14 report describes ‘reassessing the purpose of SEEG’ by moving away from a ‘node based
15 philosophy’ towards a ‘network based philosophy’ ¹⁶⁸. The authors challenge the notion that
16 ‘one size fits all’ in thalamic stimulation and suggest that SEEG may allow quantitative
17 determination of the optimal stimulation target per patient. A retrospective study of 74
18 patients undergoing thalamic SEEG supports an individualized and data-driven approach to
19 thalamic connectivity – they revealed that thalamic epileptogenicity was different according
20 to epilepsy localization and was correlate with the extent of the epileptogenic network ⁷⁷.
21 Further retrospective studies claim that SEEG can be used to optimally place the receiving
22 RNS lead ¹⁶⁶ and that graph theory metrics can identify the most ‘controllable’ node(s) within
23 the epileptogenic network ¹⁶⁹. However, further prospective evidence for the utility of SEEG-
24 guided neuromodulation is required – including proof of concept for the network-guided
25 placement of the stimulating RNS (or DBS) leads. Stimulation during SEEG investigation
26 may also provide further inferences to the optimal stimulation target(s) ¹⁷⁰.

27
28 The intent of network-guided neurostimulation for epilepsy would be to isolate an
29 individual’s unique epileptogenic network and to identify key locations responsible for
30 generating seizures, perhaps the SOZ, and an optimal propagation point in order to normalize
31 brain connectivity. As stated in the *DBS Think Tank* report, this would require integrating
32 neuroimaging and network data to deliver ‘precision DBS’ ¹⁶⁴. Whilst many of the network-
33 based neurostimulation studies in adult disorders outside of epilepsy predominantly use
34 structural data, such as diffusion tractography, epilepsy would more than likely require a

1 more advanced and multi-modality approach that incorporates functional connectivity (inc.
2 EEG and fMRI) in order to incorporate data describing the dynamic and temporal network
3 properties. Seizure occurrences in epilepsy are not random, but hold a chronotype – a
4 temporal variation that respects cyclical patterns and may eventually allow for seizure
5 forecasting in some patients ^{61,171,172}.

6
7 We suggest that existing data could be used to, at first, retrospectively test the idea that the
8 preoperative and individual network can identify the patient's optimal stimulation target.
9 Simulated lesioning (a.k.a. 'virtual resection') has been used in neuroimaging studies of
10 patients with DRE in attempts to manipulate the preoperative epileptogenic network ^{154,173,174}.
11 A small number of studies have similarly attempted 'virtual stimulation' experiments that
12 computationally abate seizures ^{175–177}, but further clinical validation and prospective studies
13 are required. As mentioned, the availability of network data following implantation and
14 during stimulation would be a powerful addition to allow validation of these models'
15 predictions in terms of network modulation and outcome. For example, the recording of local
16 field potentials simultaneous to whole-brain connectivity measures, for example fMRI or
17 scalp EEG, could further explain the network effects of neurostimulation at different targets
18 or stimulation regimes ^{178,179}.

19
20 The availability of normative datasets – for example structural normative networks in the
21 Human Connectome Project ¹⁸⁰ or epilepsy-specific data such as stereo-EEG datasets – may
22 allow for the identification of key propagation points in the individual ¹⁸¹. A recent example
23 of applying normative data is in the study by Vetkas et al, who used the normative functional
24 (fMRI) dataset from 1000 adults to derive the nodes that are common to the networks of three
25 clinically-used neurostimulation targets – the ANT, CMT and hippocampus ¹⁵². They used
26 graph theory to show that the anterior cingulate and other regions of the default mode and
27 salience networks were common nodes connected with these stimulation targets. The ultimate
28 goal is to use the pre-operative and non-invasively derived network to identify the particular
29 propagation point (stimulation target) where DBS would produce the greatest effect for an
30 individual patient.

31
32 Lastly, unlike movement disorders where the effect of stimulation alteration can be measured
33 quickly, the clinical effects of such augmentations on seizure patterns can take days to weeks

1 to become apparent. Whilst we have so far discussed pre-implantation investigations that
2 could inform of DBS or RNS efficacy, another potential application of network analyses is to
3 determine how alterations in stimulation regimes will affect seizure control. A catalyst in this
4 regard could be the capability to perform neuroimaging studies with these implanted
5 stimulation devices in-situ, to measure how stimulation alters network dynamics^{178,179,182}.
6 For example, Middlebrooks et al used fMRI during active ANT DBS to demonstrate the
7 network differences of patients with high (145 Hz) versus low (35 Hz) stimulation frequency
8 regimes. Provided safety risks can be managed^{183,184}, observations of acute and chronic
9 effects of DBS modulation can substantially improve our understanding of their mechanism
10 of action and ultimately clinical efficacy.

11

12 **Conclusions**

13

14 The convergence of the fields of network neuroscience and neurostimulation are leading
15 towards an exciting opportunity for personalized, network-guided approaches to
16 neurostimulation for patients with epilepsy. The opportunity to combine data derived from
17 implanted neuromodulation devices and studies of whole-brain networks gives us the
18 opportunity to work towards this goal. Further studies are required to (1) determine the
19 mechanistic role of network modulation; (2) define the critical nodes within the epileptogenic
20 network (at disease paradigm, syndrome and individual levels); and (3) to use preoperative
21 network data to deliver precision neurostimulation to individual patients; and (4) validate
22 markers and models with post-operative data including imaging. As always, we need
23 prospective clinical trials of these technologies and philosophies in order to demonstrate their
24 clinical utility. This will require a multi-site, international and coordinated effort.

25

26 **Funding**

27 This work is supported by the NIHR GOSH BRC. The views expressed are those of the
28 author(s) and not necessarily those of the NHS, the NIHR or the Department of Health. **RJP**
29 is funded by the Great Ormond Street Hospital Children's Charity Lewis Spitz Surgeon-
30 Scientist PhD programme. **BL** is funded by National Institutes of Health grants 1DP1
31 OD029758-01, R56 NS 099348-05A1, The Pennsylvania Health Research Formula Fund,

1 and the Mirowski Family Foundation. **DWC** is supported by the Wellcome Centre for
2 Medical Engineering. **RMR** is funded by National Institutes of Health grant R01 NS110424.
3 **GW** supported by National Institutes of Health (UH2/UH3 NS95495 and R01 NS09288203).

4

5 **Competing interests**

6 **DWC** – provides consultancy on device safety in MRI. **RMR** – provides consultancy to
7 NeuroPace, Inc. **TD** has provided consulting services for Cortec Neuro, Inspire, and
8 Synchron, and device-related intellectual property licensed with Medtronic and Bioinduction.
9 **GW** declares intellectual property licensed to Cadence Neuroscience Inc. and NeuroOne, Inc.
10 **GW** is an investigator for the Medtronic Deep Brain Stimulation Therapy for Epilepsy Post-
11 Approval Study (EPAS). Otherwise, the authors report no competing interests.

12

ACCEPTED MANUSCRIPT

References

1. Fisher RS, Cross JH, French JA, et al. Operational classification of seizure types by the International League Against Epilepsy: Position Paper of the ILAE Commission for Classification and Terminology. *Epilepsia*. 2017;58(4):522-530. doi:10.1111/epi.13670
2. Richardson MP. Large scale brain models of epilepsy: dynamics meets connectomics. *J Neurol Neurosurg Psychiatry*. 2012;83(12):1238-1248. doi:10.1136/jnnp-2011-301944
3. Spencer SS. Neural networks in human epilepsy: evidence of and implications for treatment. *Epilepsia*. 2002;43(3):219-227. <http://www.ncbi.nlm.nih.gov/pubmed/11906505>
4. Van Diessen E, Diederer SJHH, Braun KPJJ, Jansen FE, Stam CJ. Functional and structural brain networks in epilepsy: What have we learned? *Epilepsia*. 2013;54(11):1855-1865. doi:10.1111/epi.12350
5. Centeno M, Carmichael DW. Network Connectivity in Epilepsy: Resting State fMRI and EEG-fMRI Contributions. *Front Neurol*. 2014;5:93. doi:10.3389/fneur.2014.00093
6. Royer J, Bernhardt BC, Larivière S, et al. Epilepsy and brain network hubs. *Epilepsia*. 2022;63(3):537-550. doi:10.1111/epi.17171
7. Bullmore E, Sporns O. Complex brain networks: graph theoretical analysis of structural and functional systems. *Nat Rev Neurosci*. 2009;10(3):186-198. doi:10.1038/nrn2575
8. Bassett DS, Sporns O. Network neuroscience. *Nat Neurosci*. 2017;20(3):353-364. doi:10.1038/nn.4502
9. Larivière S, Bernasconi A, Bernasconi N, Bernhardt BC. Connectome biomarkers of drug-resistant epilepsy. *Epilepsia*. 2021;62(1):6-24. doi:10.1111/epi.16753
10. Laufs H. Functional imaging of seizures and epilepsy: evolution from zones to networks. *Curr Opin Neurol*. 2012;25(2):194-200. doi:10.1097/WCO.0b013e3283515db9
11. Kwan P, Brodie MJ. Early identification of refractory epilepsy. *N Engl J Med*. 2000;342(5):314-319. doi:10.1056/NEJM200002033420503
12. Dwivedi R, Ramanujam B, Chandra PS, et al. Surgery for Drug-Resistant Epilepsy in

- 1 Children. *N Engl J Med*. 2017;377(17):1639-1647. doi:10.1056/NEJMoa1615335
- 2 13. Wiebe S, Blume WT, Girvin JP, Eliasziw M, Effectiveness and Efficiency of Surgery
3 for Temporal Lobe Epilepsy Study Group. A randomized, controlled trial of surgery
4 for temporal-lobe epilepsy. *N Engl J Med*. 2001;345(5):311-318.
5 doi:10.1056/NEJM200108023450501
- 6 14. Fisher RS, Velasco AL. Electrical brain stimulation for epilepsy. *Nat Rev Neurol*.
7 2014;10(5):261-270. doi:10.1038/nrneurol.2014.59
- 8 15. Sprengers M, Vonck K, Carrette E, Marson AG, Boon P. Deep brain and cortical
9 stimulation for epilepsy. *Cochrane Database Syst Rev*. Published online July 18, 2017.
10 doi:10.1002/14651858.CD008497.pub3
- 11 16. Ryvlin P, Rheims S, Hirsch LJ, Sokolov A, Jehi L. Neuromodulation in epilepsy:
12 state-of-the-art approved therapies. *Lancet Neurol*. 2021;20(12):1038-1047.
13 doi:10.1016/S1474-4422(21)00300-8
- 14 17. Hachem LD, Wong SM, Ibrahim GM. The vagus afferent network: emerging role in
15 translational connectomics. *Neurosurg Focus*. 2018;45(3):E2.
16 doi:10.3171/2018.6.FOCUS18216
- 17 18. Richardson RM. Closed-Loop Brain Stimulation and Paradigm Shifts in Epilepsy
18 Surgery. *Neurol Clin*. 2022;40(2):355-373. doi:10.1016/j.ncl.2021.12.002
- 19 19. Horn A, Fox MD. Opportunities of connectomic neuromodulation. *Neuroimage*.
20 2020;221:117180. doi:10.1016/j.neuroimage.2020.117180
- 21 20. Hollunder B, Rajamani N, Siddiqi SH, et al. Toward personalized medicine in
22 connectomic deep brain stimulation. *Prog Neurobiol*. 2021;(September 2021):102211.
23 doi:10.1016/j.pneurobio.2021.102211
- 24 21. Denison T, Morrell MJ. Neuromodulation in 2035. *Neurology*. 2022;98(2):65-72.
25 doi:10.1212/WNL.00000000000013061
- 26 22. Tavakol S, Royer J, Lowe AJ, et al. Neuroimaging and connectomics of drug-resistant
27 epilepsy at multiple scales: From focal lesions to macroscale networks. *Epilepsia*.
28 2019;60(4):593-604. doi:10.1111/epi.14688
- 29 23. Middlebrooks EH, Domingo RA, Vivas-Buitrago T, et al. Neuroimaging advances in
30 deep brain stimulation: Review of indications, anatomy, and brain connectomics. *Am J*
31 *Neuroradiol*. 2020;41(9):1558-1568. doi:10.3174/ajnr.A6693
- 32 24. Foit NA, Bernasconi A, Ladbon-Bernasconi N. Contributions of Imaging to
33 Neuromodulatory Treatment of Drug-Refractory Epilepsy. *Brain Sci*.
34 2020;10(10):700. doi:10.3390/brainsci10100700

- 1 25. Wu C, Ferreira F, Fox M, et al. Clinical applications of magnetic resonance imaging
2 based functional and structural connectivity. *Neuroimage*. 2021;244:118649.
3 doi:10.1016/j.neuroimage.2021.118649
- 4 26. Scheid BH, Bernabei JM, Khambhati AN, et al. Intracranial electroencephalographic
5 biomarker predicts effective responsive neurostimulation for epilepsy prior to
6 treatment. *Epilepsia*. Published online January 7, 2022. doi:10.1111/epi.17163
- 7 27. Starnes K, Miller K, Wong-Kisiel L, Lundstrom BN. A Review of Neurostimulation
8 for Epilepsy in Pediatrics. *Brain Sci*. 2019;9(10):283. doi:10.3390/brainsci9100283
- 9 28. Touma L, Dansereau B, Chan AY, et al. Neurostimulation in people with drug-
10 resistant epilepsy: Systematic review and meta-analysis from the ILAE Surgical
11 Therapies Commission. *Epilepsia*. Published online April 18, 2022:0-3.
12 doi:10.1111/epi.17243
- 13 29. Chari A, Thornton RC, Tisdall MM, Scott RC. Microelectrode recordings in human
14 epilepsy: a case for clinical translation. *Brain Commun*. 2020;2(2).
15 doi:10.1093/braincomms/fcaa082
- 16 30. Ashkan K, Rogers P, Bergman H, Ughratdar I. Insights into the mechanisms of deep
17 brain stimulation. *Nat Rev Neurol*. 2017;13(9):548-554.
18 doi:10.1038/nrneurol.2017.105
- 19 31. Laxpati NG, Kasoff WS, Gross RE. Deep brain stimulation for the treatment of
20 epilepsy: circuits, targets, and trials. *Neurotherapeutics*. 2014;11(3):508-526.
21 doi:10.1007/s13311-014-0279-9
- 22 32. Lozano AM, Lipsman N, Bergman H, et al. Deep brain stimulation: current challenges
23 and future directions. *Nat Rev Neurol*. 2019;15(3):148-160. doi:10.1038/s41582-018-
24 0128-2
- 25 33. Carlson JD, Cleary DR, Cetas JS, Heinricher MM, Burchiel KJ. Deep Brain
26 Stimulation Does Not Silence Neurons in Subthalamic Nucleus in Parkinson's
27 Patients. *J Neurophysiol*. 2010;103(2):962-967. doi:10.1152/jn.00363.2009
- 28 34. Lee KH, Hitti FL, Chang S-Y, et al. High frequency stimulation abolishes thalamic
29 network oscillations: an electrophysiological and computational analysis. *J Neural*
30 *Eng*. 2011;8(4):046001. doi:10.1088/1741-2560/8/4/046001
- 31 35. Tawfik VL, Chang S-Y, Hitti FL, et al. Deep Brain Stimulation Results in Local
32 Glutamate and Adenosine Release. *Neurosurgery*. 2010;67(2):367-375.
33 doi:10.1227/01.NEU.0000371988.73620.4C
- 34 36. Medeiros D de C, Moraes MFD. Focus on desynchronization rather than excitability:

- 1 A new strategy for intraencephalic electrical stimulation. *Epilepsy Behav.* 2014;38:32-
2 36. doi:10.1016/j.yebeh.2013.12.034
- 3 37. Penfield W, Jasper H. *Epilepsy and the Functional Anatomy of the Human Brain.*;
4 1954.
- 5 38. Kramer MA, Cash SS. Epilepsy as a Disorder of Cortical Network Organization.
6 *Neurosci.* 2012;18(4):360-372. doi:10.1177/1073858411422754
- 7 39. Chaitanya G, Toth E, Pizarro D, et al. Anterior Nucleus of Thalamus Gates
8 Progression of Mesial Temporal Seizures by Modulating Thalamocortical
9 Corresponding. *bioRxiv.* 2020;132(4):100363.
10 <https://doi.org/10.1101/2020.09.17.301812>
- 11 40. Guye M, Régis J, Tamura M, et al. The role of corticothalamic coupling in human
12 temporal lobe epilepsy. *Brain.* 2006;129(Pt 7):1917-1928. doi:10.1093/brain/awl151
- 13 41. Scherer M, Milosevic L, Guggenberger R, et al. Desynchronization of temporal lobe
14 theta-band activity during effective anterior thalamus deep brain stimulation in
15 epilepsy. *Neuroimage.* 2020;218:116967. doi:10.1016/j.neuroimage.2020.116967
- 16 42. Yu T, Wang X, Li Y, et al. High-frequency stimulation of anterior nucleus of thalamus
17 desynchronizes epileptic network in humans. *Brain.* 2018;141(9):2631–2643.
18 doi:10.1093/brain/awy187
- 19 43. Zumsteg D, Lozano AM, Wieser HG, Wennberg RA. Cortical activation with deep
20 brain stimulation of the anterior thalamus for epilepsy. *Clin Neurophysiol.*
21 2006;117(1):192-207. doi:10.1016/j.clinph.2005.09.015
- 22 44. Stypulkowski PH, Stanslaski SR, Jensen RM, Denison TJ, Giftakis JE. Brain
23 stimulation for epilepsy - Local and remote modulation of network excitability. *Brain*
24 *Stimul.* 2014;7(3):350-358. doi:10.1016/j.brs.2014.02.002
- 25 45. Warren AEL, Simon Harvey A, Vogrin SJ, et al. The epileptic network of Lennox-
26 Gastaut syndrome: Cortically driven and reproducible across age. *Neurology.*
27 2019;93(3):E215-E226. doi:10.1212/WNL.00000000000007775
- 28 46. Martín-López D, Jiménez-Jiménez D, Cabañés-Martínez L, Selway RP, Valentín A,
29 Alarcón G. The Role of Thalamus Versus Cortex in Epilepsy: Evidence from Human
30 Ictal Centromedian Recordings in Patients Assessed for Deep Brain Stimulation. *Int J*
31 *Neural Syst.* 2017;27(7):1750010. doi:10.1142/S0129065717500101
- 32 47. Boerwinkle VL, Cediél EG, Mirea L, et al. Network-targeted approach and
33 postoperative resting-state functional magnetic resonance imaging are associated with
34 seizure outcome. *Ann Neurol.* 2019;86(3):344-356. doi:10.1002/ana.25547

- 1 48. Xiao F, Koepp MJ, Zhou D. PharmacofMRI: A Tool to Predict the Response to
2 Antiepileptic Drugs in Epilepsy. *Front Neurol.* 2019;10.
3 doi:10.3389/fneur.2019.01203
- 4 49. Wandschneider B, Stretton J, Sidhu M, et al. Levetiracetam reduces abnormal network
5 activations in temporal lobe epilepsy. *Neurology.* 2014;83(17):1508-1512.
6 doi:10.1212/WNL.0000000000000910
- 7 50. Horn A, Wenzel G, Irmen F, et al. Deep brain stimulation induced normalization of the
8 human functional connectome in Parkinson's disease. *Brain.* 2019;142(10):3129-3143.
9 doi:10.1093/brain/awz239
- 10 51. Chan AY, Rolston JD, Rao VR, Chang EF. Effect of neurostimulation on cognition
11 and mood in refractory epilepsy. *Epilepsia Open.* 2018;3(1):18-29.
12 doi:10.1002/epi4.12100
- 13 52. Salanova V, Witt T, Worth R, et al. Long-term efficacy and safety of thalamic
14 stimulation for drug-resistant partial epilepsy. *Neurology.* 2015;84(10):1017-1025.
15 doi:10.1212/WNL.0000000000001334
- 16 53. Nair DR, Laxer KD, Weber PB, et al. Nine-year prospective efficacy and safety of
17 brain-responsive neurostimulation for focal epilepsy. *Neurology.* 2020;95(9):e1244-
18 e1256. doi:10.1212/WNL.0000000000010154
- 19 54. Loring DW, Kapur R, Meador KJ, Morrell MJ. Differential neuropsychological
20 outcomes following targeted responsive neurostimulation for partial-onset epilepsy.
21 *Epilepsia.* 2015;56(11):1836-1844. doi:10.1111/epi.13191
- 22 55. Heminghyt E, Herrman H, Skogan AH, et al. Cognitive change after DBS in refractory
23 epilepsy: A randomized-controlled trial. *Acta Neurol Scand.* 2022;145(1):111-118.
24 doi:10.1111/ane.13539
- 25 56. Spencer D. Responsive Neurostimulation and Cognition. *Epilepsy Curr.*
26 2016;16(2):98-100. doi:10.5698/1535-7511-16.2.98
- 27 57. Khan M, Paktiawal J, Piper RJ, Chari A, Tisdall MM. Intracranial neuromodulation
28 with deep brain stimulation and responsive neurostimulation in children with drug-
29 resistant epilepsy: a systematic review. *J Neurosurg Pediatr.* 2022;29(2):208-217.
30 doi:10.3171/2021.8.PEDS21201
- 31 58. Nagahama Y, Zervos TM, Murata KK, et al. Real-World Preliminary Experience With
32 Responsive Neurostimulation in Pediatric Epilepsy: A Multicenter Retrospective
33 Observational Study. *Neurosurgery.* 2021;0(0):1-8. doi:10.1093/neuros/nyab343
- 34 59. Kerezoudis P, Gyftopoulos A, Alexander AY, et al. Safety and efficacy of responsive

- 1 neurostimulation in the pediatric population: Evidence from institutional review and
2 patient-level meta-analysis. *Epilepsy Behav.* 2022;129:108646.
3 doi:10.1016/j.yebeh.2022.108646
- 4 60. Voges BR, Schmitt FC, Hamel W, et al. Deep brain stimulation of anterior nucleus
5 thalami disrupts sleep in epilepsy patients. *Epilepsia.* 2015;56(8):e99-e103.
6 doi:10.1111/epi.13045
- 7 61. Karoly PJ, Rao VR, Gregg NM, et al. Cycles in epilepsy. *Nat Rev Neurol.*
8 2021;17(5):267-284. doi:10.1038/s41582-021-00464-1
- 9 62. Baud MO, Kleen JK, Mirro EA, et al. Multi-day rhythms modulate seizure risk in
10 epilepsy. *Nat Commun.* 2018;9(1):1-10. doi:10.1038/s41467-017-02577-y
- 11 63. Schroeder GM, Diehl B, Chowdhury FA, et al. Seizure pathways change on circadian
12 and slower timescales in individual patients with focal epilepsy. *Proc Natl Acad Sci.*
13 2020;117(20):11048-11058. doi:10.1073/pnas.1922084117
- 14 64. Kokkinos V, Sisterson ND, Wozny TA, Richardson RM. Association of Closed-Loop
15 Brain Stimulation Neurophysiological Features With Seizure Control Among Patients
16 With Focal Epilepsy. *JAMA Neurol.* 2019;76(7):800-808.
17 doi:10.1001/jamaneurol.2019.0658
- 18 65. Sisterson ND, Wozny TA, Kokkinos V, Constantino A, Richardson RM. Closed-Loop
19 Brain Stimulation for Drug-Resistant Epilepsy: Towards an Evidence-Based Approach
20 to Personalized Medicine. *Neurotherapeutics.* 2019;16(1):119-127.
21 doi:10.1007/s13311-018-00682-4
- 22 66. Khambhati AN, Shafi A, Rao VR, Chang EF. Long-term brain network reorganization
23 predicts responsive neurostimulation outcomes for focal epilepsy. *Sci Transl Med.*
24 2021;13:6588. <http://stm.sciencemag.org/>
- 25 67. Salanova V, Sperling MR, Gross RE, et al. The SANTÉ study at 10 years of follow-
26 up: Effectiveness, safety, and sudden unexpected death in epilepsy. *Epilepsia.*
27 2021;62(6):1306-1317. doi:10.1111/epi.16895
- 28 68. Silva AB, Khambhati AN, Speidel BA, Chang EF, Rao VR. Effects of anterior
29 thalamic nuclei stimulation on hippocampal activity: Chronic recording in a patient
30 with drug-resistant focal epilepsy. *Epilepsy Behav Reports.* 2021;16:100467.
31 doi:10.1016/j.ebr.2021.100467
- 32 69. Gardner J. A history of deep brain stimulation: Technological innovation and the role
33 of clinical assessment tools. *Soc Stud Sci.* 2013;43(5):707-728.
34 doi:10.1177/0306312713483678

- 1 70. Jasper H, Naquet R, King EE. Thalamocortical recruiting responses in sensory
2 receiving areas in the cat. *Electroencephalogr Clin Neurophysiol*. 1955;7(1):99-114.
3 doi:10.1016/0013-4694(55)90063-8
- 4 71. Hunter J, Jasper HH. Effects of thalamic stimulation in unanaesthetised animals.
5 *Electroencephalogr Clin Neurophysiol*. 1949;1(1-4):305-324. doi:10.1016/0013-
6 4694(49)90196-0
- 7 72. Hwang K, Bertolero MA, Liu WB, D'Esposito M. The Human Thalamus Is an
8 Integrative Hub for Functional Brain Networks. *J Neurosci*. 2017;37(23):5594-5607.
9 doi:10.1523/JNEUROSCI.0067-17.2017
- 10 73. Blumenfeld H. The thalamus and seizures. *Arch Neurol*. 2002;59(1):135-137.
11 doi:10.1001/archneur.59.1.135
- 12 74. Norden AD, Blumenfeld H. The role of subcortical structures in human epilepsy.
13 *Epilepsy Behav*. 2002;3(3):219-231. <http://www.ncbi.nlm.nih.gov/pubmed/12662601>
- 14 75. Fisher R, Salanova V, Witt T, et al. Electrical stimulation of the anterior nucleus of
15 thalamus for treatment of refractory epilepsy. *Epilepsia*. 2010;51(5):899-908.
16 doi:10.1111/j.1528-1167.2010.02536.x
- 17 76. He X, Doucet GE, Pustina D, Sperling MR, Sharan AD, Tracy JJ. Presurgical thalamic
18 "hubness" predicts surgical outcome in temporal lobe epilepsy. *Neurology*.
19 2017;88(24):2285-2293. doi:10.1212/WNL.0000000000004035
- 20 77. Pizzo F, Roehri N, Giusiano B, et al. The Ictal Signature of Thalamus and Basal
21 Ganglia in Focal Epilepsy: A SEEG Study. *Neurology*. 2021;96(2):e280-e293.
22 doi:10.1212/WNL.00000000000011003
- 23 78. Burdette D, Mirro EA, Lawrence M, Patra SE. Brain-responsive corticothalamic
24 stimulation in the pulvinar nucleus for the treatment of regional neocortical epilepsy:
25 A case series. *Epilepsia Open*. 2021;6(3):611-617. doi:10.1002/epi4.12524
- 26 79. Mullan S. Thalamic Lesions for the Control of Epilepsy. *Arch Neurol*. 1967;16(3):277.
27 doi:10.1001/archneur.1967.00470210053006
- 28 80. Upton ARM, Amin I, GARNETT S, SPRINGMAN M, NAHMIAS C, COOPER IS.
29 Evoked Metabolic Responses in the LimbicStriate System Produced by Stimulation of
30 Anterior Thalamic Nucleus in Man. *Pacing Clin Electrophysiol*. 1987;10(1):217-225.
31 doi:10.1111/j.1540-8159.1987.tb05952.x
- 32 81. Child ND, Benarroch EE. Anterior nucleus of the thalamus: functional organization
33 and clinical implications. *Neurology*. 2013;81(21):1869-1876.
34 doi:10.1212/01.wnl.0000436078.95856.56

- 1 82. Papez JW. A Proposed mechanism of emotion. *Arch Neurol Psychiatry*.
2 1937;38(4):725. doi:10.1001/archneurpsyc.1937.02260220069003
- 3 83. Li DH, Yang XF. Remote modulation of network excitability during deep brain
4 stimulation for epilepsy. *Seizure*. 2017;47:42-50. doi:10.1016/j.seizure.2017.02.016
- 5 84. Aggleton JP, O'Mara SM. The anterior thalamic nuclei: core components of a tripartite
6 episodic memory system. *Nat Rev Neurosci*. Published online April 27, 2022.
7 doi:10.1038/s41583-022-00591-8
- 8 85. Krishna V, King NKK, Sammartino F, et al. Anterior Nucleus Deep Brain Stimulation
9 for Refractory Epilepsy: Insights Into Patterns of Seizure Control and Efficacious
10 Target. *Neurosurgery*. 2016;78(6):802-811. doi:10.1227/NEU.0000000000001197
- 11 86. Lehtimäki K, Möttönen T, Järventausta K, et al. Outcome based definition of the
12 anterior thalamic deep brain stimulation target in refractory epilepsy. *Brain Stimul*.
13 2016;9(2):268-275. doi:10.1016/j.brs.2015.09.014
- 14 87. Koeppen JA, Nahravani F, Kramer M, et al. Electrical Stimulation of the Anterior
15 Thalamus for Epilepsy: Clinical Outcome and Analysis of Efficient Target.
16 *Neuromodulation*. 2019;22(4):465-471. doi:10.1111/ner.12865
- 17 88. Gross RE, Fisher RS, Sperling MR, Giftakis JE, Stypulkowski PH. Analysis of Deep
18 Brain Stimulation Lead Targeting in the Stimulation of Anterior Nucleus of the
19 Thalamus for Epilepsy Clinical Trial. *Neurosurgery*. 2021;89(3):406-412.
20 doi:10.1093/neuros/nyab186
- 21 89. Schaper FLWVJ, Plantinga BR, Colon AJ, et al. Deep Brain Stimulation in Epilepsy:
22 A Role for Modulation of the Mammillothalamic Tract in Seizure Control?
23 *Neurosurgery*. 2020;87(3):602-610. doi:10.1093/neuros/nyaa141
- 24 90. Chaitanya G, Toth E, Pizarro D, Irannejad A, Riley K, Pati S. Precision mapping of the
25 epileptogenic network with low- and high-frequency stimulation of anterior nucleus of
26 thalamus. *Clin Neurophysiol*. 2020;131(9):2158-2167.
27 doi:10.1016/j.clinph.2020.05.036
- 28 91. Gregg NM, Marks VS, Sladky V, et al. Anterior nucleus of the thalamus seizure
29 detection in ambulatory humans. *Epilepsia*. 2021;62(10). doi:10.1111/epi.17047
- 30 92. Molnar GF, Sailer A, Gunraj CA, et al. Changes in motor cortex excitability with
31 stimulation of anterior thalamus in epilepsy. *Neurology*. 2006;66(4):566-571.
32 doi:10.1212/01.wnl.0000198254.08581.6b
- 33 93. Tyvaert L, Chassagnon S, Sadikot A, LeVan P, Dubeau F, Gotman J. Thalamic nuclei
34 activity in idiopathic generalized epilepsy: an EEG-fMRI study. *Neurology*.

- 2009;73(23):2018-2022. doi:10.1212/WNL.0b013e3181c55d02
94. Herlopian A, Cash SS, Eskandar EM, Jennings T, Cole AJ. Responsive neurostimulation targeting anterior thalamic nucleus in generalized epilepsy. *Ann Clin Transl Neurol.* 2019;6(10):2104-2109. doi:10.1002/acn3.50858
95. Piper RJ, Tangwiriyasakul C, Shamshiri EA, et al. Functional Connectivity of the Anterior Nucleus of the Thalamus in Pediatric Focal Epilepsy. *Front Neurol.* 2021;12:670881. doi:10.3389/fneur.2021.670881
96. Warsi NM, Yan H, Suresh H, et al. The anterior and centromedian thalamus: Anatomy, function, and dysfunction in epilepsy. *Epilepsy Res.* 2022;182:106913. doi:10.1016/j.eplepsyres.2022.106913
97. Fisher RS, Uematsu S, Krauss GL, et al. Placebo-controlled pilot study of centromedian thalamic stimulation in treatment of intractable seizures. *Epilepsia.* 1992;33(5):841-851. doi:10.1111/j.1528-1157.1992.tb02192.x
98. Velasco F, Velasco M, Jiménez F, et al. Predictors in the Treatment of Difficult-to-control Seizures by Electrical Stimulation of the Centromedian Thalamic Nucleus. *Neurosurgery.* 2000;47(2):295-305. doi:10.1097/00006123-200008000-00007
99. Velasco AL, Velasco F, Jimenez F, et al. Neuromodulation of the Centromedian Thalamic Nuclei in the Treatment of Generalized Seizures and the Improvement of the Quality of Life in Patients with Lennox–Gastaut Syndrome. *Epilepsia.* 2006;47(7):1203-1212. doi:10.1111/j.1528-1167.2006.00593.x
100. Velasco M, Velasco F, Velasco AL, Jiménez F, Brito F, Márquez I. REVIEW ARTICLE Acute and Chronic Electrical Stimulation of the Centromedian Thalamic Nucleus. *Arch Med Res.* 2000;31(3):304-315. doi:10.1016/S0188-4409(00)00085-0
101. Velasco F, Carrillo-Ruiz JD, Brito F, et al. Double-blind, Randomized Controlled Pilot Study of Bilateral Cerebellar Stimulation for Treatment of Intractable Motor Seizures. *Epilepsia.* 2005;46(7):1071-1081. doi:10.1111/j.1528-1167.2005.70504.x
102. Velasco F, Velasco M, Velasco AL, Jimenez F, Marquez I, Rise M. Electrical Stimulation of the Centromedian Thalamic Nucleus in Control of Seizures: Long-Term Studies. *Epilepsia.* 1995;36(1):63-71. doi:10.1111/j.1528-1157.1995.tb01667.x
103. Velasco AL, Velasco F, Velasco M, Trejo D, Castro G, Carrillo-Ruiz JD. Electrical Stimulation of the Hippocampal Epileptic Foci for Seizure Control: A Double-Blind, Long-Term Follow-Up Study. *Epilepsia.* 2007;48(10):1895-1903. doi:10.1111/j.1528-1167.2007.01181.x
104. Valentín A, García Navarrete E, Chelvarajah R, et al. Deep brain stimulation of the

- 1 centromedian thalamic nucleus for the treatment of generalized and frontal epilepsies.
2 *Epilepsia*. 2013;54(10):1823-1833. doi:10.1111/epi.12352
- 3 105. Dalic LJ, Warren AEL, Bulluss KJ, et al. DBS of Thalamic Centromedian Nucleus for
4 Lennox-Gastaut Syndrome (ESTEL Trial). *Ann Neurol*. 2022;91(2):253-267.
5 doi:10.1002/ana.26280
- 6 106. Torres Diaz C V., González-Escamilla G, Ciolac D, et al. Network Substrates of
7 Centromedian Nucleus Deep Brain Stimulation in Generalized Pharmacoresistant
8 Epilepsy. *Neurotherapeutics*. 2021;18(3):1665-1677. doi:10.1007/s13311-021-01057-
9 y
- 10 107. Warren AEL, Harvey AS, Vogrin SJ, et al. The epileptic network of Lennox-Gastaut
11 syndrome. *Neurology*. 2019;93(3):e215-e226. doi:10.1212/WNL.00000000000007775
- 12 108. Warren AEL, Dalic LJ, Thevathasan W, Roten A, Bulluss KJ, Archer J. Targeting the
13 centromedian thalamic nucleus for deep brain stimulation. *J Neurol Neurosurg
14 Psychiatry*. 2020;91(4):339-349. doi:10.1136/jnnp-2019-322030
- 15 109. Dalic LJ, Warren AEL, Young JC, et al. Cortex leads the thalamic centromedian
16 nucleus in generalized epileptic discharges in Lennox-Gastaut syndrome. *Epilepsia*.
17 2020;61(10):2214-2223. doi:10.1111/epi.16657
- 18 110. Kim SH, Lim SC, Yang DW, et al. Thalamo-cortical network underlying deep brain
19 stimulation of centromedian thalamic nuclei in intractable epilepsy: a multimodal
20 imaging analysis. *Neuropsychiatr Dis Treat*. 2017;13:2607-2619.
21 doi:10.2147/NDT.S148617
- 22 111. Warren AE. L, Dalic LJ, Bulluss KJ, Roten A, Thevathasan W, Archer JS. The optimal
23 target and connectivity for DBS in Lennox-Gastaut syndrome. *Ann Neurol*. Published
24 online April 15, 2022. doi:10.1002/ana.26368
- 25 112. Welch WP, Hect JL, Abel TJ. Case Report: Responsive Neurostimulation of the
26 Centromedian Thalamic Nucleus for the Detection and Treatment of Seizures in
27 Pediatric Primary Generalized Epilepsy. *Front Neurol*. 2021;12:656585.
28 doi:10.3389/fneur.2021.656585
- 29 113. NeuroPace. NeuroPace Awarded Five-Year NIH Grant Funding of More than \$9M to
30 Study RNS System in Patients with Lennox-Gastaut Syndrome.
31 <https://www.neuropace.com/>. Published 2021. Accessed December 8, 2021.
32 <https://www.neuropace.com/neuropace-awarded-five-year-nih-grant-funding/>
- 33 114. Bridge H, Leopold DA, Bourne JA. Adaptive Pulvinar Circuitry Supports Visual
34 Cognition. *Trends Cogn Sci*. 2016;20(2):146-157. doi:10.1016/j.tics.2015.10.003

- 1 115. Filipescu C, Lagarde S, Lambert I, et al. The effect of medial pulvinar stimulation on
2 temporal lobe seizures. *Epilepsia*. 2019;60(4):e25-e30. doi:10.1111/epi.14677
- 3 116. Homman-Ludiye J, Bourne JA. The medial pulvinar: function, origin and association
4 with neurodevelopmental disorders. *J Anat*. 2019;235(3):507-520.
5 doi:10.1111/joa.12932
- 6 117. Deuschová B, Pizzo F, Giusiano B, et al. Ictal connectivity changes induced by
7 pulvinar stimulation correlate with improvement of awareness. *Brain Stimul*.
8 2021;14(2):344-346. doi:10.1016/j.brs.2021.01.021
- 9 118. Young JC, Vaughan DN, Paolini AG, Jackson GD. Electrical stimulation of the
10 piriform cortex for the treatment of epilepsy: A review of the supporting evidence.
11 *Epilepsy Behav*. 2018;88:152-161. doi:10.1016/j.yebeh.2018.09.004
- 12 119. Vaughan DN, Jackson GD. The piriform cortex and human focal epilepsy. *Front*
13 *Neurol*. 2014;5:259. doi:10.3389/fneur.2014.00259
- 14 120. Löscher W, Ebert U. The role of the piriform cortex in kindling. *Prog Neurobiol*.
15 1996;50(5-6):427-481. doi:10.1016/s0301-0082(96)00036-6
- 16 121. Piredda S, Gale K. A crucial epileptogenic site in the deep prepiriform cortex. *Nature*.
17 1985;317(6038):623-625. doi:10.1038/317623a0
- 18 122. Gale K. Progression and generalization of seizure discharge: anatomical and
19 neurochemical substrates. *Epilepsia*. 1988;29 Suppl 2:S15-34. doi:10.1111/j.1528-
20 1157.1988.tb05795.x
- 21 123. Koepp M, Galovic M. Functional imaging of the piriform cortex in focal epilepsy. *Exp*
22 *Neurol*. 2020;330:113305. doi:10.1016/j.expneurol.2020.113305
- 23 124. Borger V, Schneider M, Taube J, et al. Resection of piriform cortex predicts seizure
24 freedom in temporal lobe epilepsy. *Ann Clin Transl Neurol*. 2021;8(1):177-189.
25 doi:10.1002/acn3.51263
- 26 125. Galovic M, Baudracco I, Wright-Goff E, et al. Association of Piriform Cortex
27 Resection With Surgical Outcomes in Patients With Temporal Lobe Epilepsy. *JAMA*
28 *Neurol*. 2019;76(6):690. doi:10.1001/jamaneurol.2019.0204
- 29 126. Laufs H, Richardson MP, Salek-Haddadi A, et al. Converging PET and fMRI evidence
30 for a common area involved in human focal epilepsies. *Neurology*. 2011;77(9):904-
31 910. doi:10.1212/WNL.0b013e31822c90f2
- 32 127. Flanagan D, Badawy RAB, Jackson GD. EEG-fMRI in focal epilepsy: Local
33 activation and regional networks. *Clin Neurophysiol*. 2014;125(1):21-31.
34 doi:10.1016/j.clinph.2013.06.182

- 1 128. Pedersen M, Curwood EK, Vaughan DN, Omidvarnia AH, Jackson GD. Abnormal
2 Brain Areas Common to the Focal Epilepsies: Multivariate Pattern Analysis of fMRI.
3 *Brain Connect.* 2016;6(3):208-215. doi:10.1089/brain.2015.0367
- 4 129. Vismar MS, Forcelli PA, Skopin MD, Gale K, Koubeissi MZ. The piriform, perirhinal,
5 and entorhinal cortex in seizure generation. *Front Neural Circuits.* 2015;9:27.
6 doi:10.3389/fncir.2015.00027
- 7 130. Plailly J, Howard JD, Gitelman DR, Gottfried JA. Attention to Odor Modulates
8 Thalamocortical Connectivity in the Human Brain. *J Neurosci.* 2008;28(20):5257-
9 5267. doi:10.1523/JNEUROSCI.5607-07.2008
- 10 131. Fisher RS. Stimulation of the medial septum should benefit patients with temporal lobe
11 epilepsy. *Med Hypotheses.* 2015;84(6):543-550. doi:10.1016/j.mehy.2015.02.016
- 12 132. Sinel'nikova V V, Popova IY, Kichigina VF. Correlational relationships between the
13 hippocampus and medial septal area and their changes during epileptogenesis.
14 *Neurosci Behav Physiol.* 2009;39(7):619-623. doi:10.1007/s11055-009-9189-4
- 15 133. Vinogradova OS, Brazhnik ES, Kitchigina VF, Stafekhina VS. Acetylcholine, theta-
16 rhythm and activity of hippocampal neurons in the rabbit—IV. Sensory stimulation.
17 *Neuroscience.* 1993;53(4):993-1007. doi:10.1016/0306-4522(93)90484-W
- 18 134. Butler T, Zaborszky L, Wang X, et al. Septal nuclei enlargement in human temporal
19 lobe epilepsy without mesial temporal sclerosis. *Neurology.* 2013;80(5):487-491.
20 doi:10.1212/WNL.0b013e31827f0ed7
- 21 135. Takeuchi Y, Harangozó M, Pedraza L, et al. Closed-loop stimulation of the medial
22 septum terminates epileptic seizures. *Brain.* 2021;144(3):885-908.
23 doi:10.1093/brain/awaa450
- 24 136. Izadi A, Pevzner A, Lee DJ, Ekstrom AD, Shahlaie K, Gurkoff GG. Medial septal
25 stimulation increases seizure threshold and improves cognition in epileptic rats. *Brain*
26 *Stimul.* 2019;12(3):735-742. doi:10.1016/j.brs.2019.01.005
- 27 137. Benabid AL, Koudsié A, Benazzouz A, et al. Deep brain stimulation of the corpus
28 luysi (subthalamic nucleus) and other targets in Parkinson's disease. Extension to new
29 indications such as dystonia and epilepsy. *J Neurol.* 2001;248(S3):37-47.
30 doi:10.1007/PL00007825
- 31 138. Ren L, Yu T, Wang D, et al. Subthalamic Nucleus Stimulation Modulates Motor
32 Epileptic Activity in Humans. *Ann Neurol.* 2020;88(2):283-296.
33 doi:10.1002/ana.25776
- 34 139. Handforth A, DeSalles AAF, Krahl SE. Deep Brain Stimulation of the Subthalamic

- 1 Nucleus as Adjunct Treatment for Refractory Epilepsy. *Epilepsia*. 2006;47(7):1239-
2 1241. doi:10.1111/j.1528-1167.2006.00563.x
- 3 140. Benarroch EE. Subthalamic nucleus and its connections: Anatomic substrate for the
4 network effects of deep brain stimulation. *Neurology*. 2008;70(21):1991-1995.
5 doi:10.1212/01.wnl.0000313022.39329.65
- 6 141. Dybdal D, Gale K. Postural and Anticonvulsant Effects of Inhibition of the Rat
7 Subthalamic Nucleus. *J Neurosci*. 2000;20(17):6728-6733.
8 doi:10.1523/JNEUROSCI.20-17-06728.2000
- 9 142. Benabid AL, Minotti L, Koudsié A, de Saint Martin A, Hirsch E. Antiepileptic Effect
10 of High-frequency Stimulation of the Subthalamic Nucleus (Corpus Luysi) in a Case
11 of Medically Intractable Epilepsy Caused by Focal Dysplasia: A 30-month Follow-up:
12 Technical Case Report. *Neurosurgery*. 2002;50(6):1385-1392. doi:10.1097/00006123-
13 200206000-00037
- 14 143. Chabardès S, Kahane P, Minotti L, Koudsie A, Hirsch E, Benabid A-L. Deep brain
15 stimulation in epilepsy with particular reference to the subthalamic nucleus. *Epileptic*
16 *Disord*. 2002;4 Suppl 3:S83-93. <http://www.ncbi.nlm.nih.gov/pubmed/12495878>
- 17 144. Cooper IS. Chronic Cerebellar Stimulation in Epilepsy. *Arch Neurol*. 1976;33(8):559.
18 doi:10.1001/archneur.1976.00500080037006
- 19 145. Van Buren JM, Wood JH, Oakley J, Hambrecht F. Preliminary evaluation of cerebellar
20 stimulation by double-blind stimulation and biological criteria in the treatment of
21 epilepsy. *J Neurosurg*. 1978;48(3):407-416. doi:10.3171/jns.1978.48.3.0407
- 22 146. Wright GD, McLellan DL, Brice JG. A double-blind trial of chronic cerebellar
23 stimulation in twelve patients with severe epilepsy. *J Neurol Neurosurg Psychiatry*.
24 1984;47(8):769-774. doi:10.1136/jnnp.47.8.769
- 25 147. Kellinghaus C, Loddenkemper T. Double-blind, Randomized Controlled Study of
26 Bilateral Cerebellar Stimulation. *Epilepsia*. 2006;47(7):1247-1247.
27 doi:10.1111/j.1528-1167.2006.00598_4.x
- 28 148. Redinbaugh MJ, Phillips JM, Kambi NA, et al. Thalamus Modulates Consciousness
29 via Layer-Specific Control of Cortex. *Neuron*. 2020;106(1):66-75.e12.
30 doi:10.1016/j.neuron.2020.01.005
- 31 149. Kundishora AJ, Gummadavelli A, Ma C, et al. Restoring Conscious Arousal During
32 Focal Limbic Seizures with Deep Brain Stimulation. *Cereb Cortex*. 2017;27(3):1964-
33 1975. doi:10.1093/cercor/bhw035
- 34 150. Benedetti-Isaac JC, Torres-Zambrano M, Vargas-Toscano A, et al. Seizure frequency

- 1 reduction after posteromedial hypothalamus deep brain stimulation in drug-resistant
2 epilepsy associated with intractable aggressive behavior. *Epilepsia*. 2015;56(7):1152-
3 1161. doi:10.1111/epi.13025
- 4 151. Šramka M, Chkhenkeli SA. Clinical Experience in Intraoperative Determination of
5 Brain Inhibitory Structures and Application of Implanted Neurostimulators in
6 Epilepsy. *Stereotact Funct Neurosurg*. 1990;54(1-8):56-59. doi:10.1159/000100190
- 7 152. Vetkas A, Germann J, Elias G, et al. Identifying the neural network for
8 neuromodulation in epilepsy through connectomics and graphs. *Brain Commun*.
9 2022;4(3). doi:10.1093/braincomms/fcac092
- 10 153. Gleichgerrcht E, Munsell B, Bhatia S, et al. Deep learning applied to whole-brain
11 connectome to determine seizure control after epilepsy surgery. *Epilepsia*.
12 2018;59(9):1643-1654. doi:10.1111/epi.14528
- 13 154. Kini LG, Bernabei JM, Mikhail F, et al. Virtual resection predicts surgical outcome for
14 drug-resistant epilepsy. *Brain*. 2019;142(12):3892-3905. doi:10.1093/brain/awz303
- 15 155. Taylor PN, Sinha N, Wang Y, et al. The impact of epilepsy surgery on the structural
16 connectome and its relation to outcome. *NeuroImage Clin*. 2018;18:202-214.
17 doi:10.1016/j.nicl.2018.01.028
- 18 156. Hutchings F, Han CE, Keller SS, Weber B, Taylor PN, Kaiser M. Predicting Surgery
19 Targets in Temporal Lobe Epilepsy through Structural Connectome Based
20 Simulations. Sporns O, ed. *PLOS Comput Biol*. 2015;11(12):e1004642.
21 doi:10.1371/journal.pcbi.1004642
- 22 157. Johnson GW, Cai LY, Narasimhan S, et al. Temporal lobe epilepsy lateralisation and
23 surgical outcome prediction using diffusion imaging. *J Neurol Neurosurg Psychiatry*.
24 Published online March 28, 2022. doi:10.1136/jnnp-2021-328185
- 25 158. Morgan VL, Sainburg LE, Johnson GW, et al. Presurgical temporal lobe epilepsy
26 connectome fingerprint for seizure outcome prediction. *Brain Commun*. Published
27 online May 17, 2022. doi:10.1093/braincomms/fcac128
- 28 159. Workewych AM, Arski ON, Mithani K, Ibrahim GM. Biomarkers of seizure response
29 to vagus nerve stimulation: A scoping review. *Epilepsia*. 2020;61(10):2069-2085.
30 doi:10.1111/epi.16661
- 31 160. Li A, Huynh C, Fitzgerald Z, et al. Neural fragility as an EEG marker of the seizure
32 onset zone. *Nat Neurosci*. 2021;24(10):1465-1474. doi:10.1038/s41593-021-00901-w
- 33 161. Middlebrooks EH, Grewal SS, Stead M, Lundstrom BN, Worrell GA, Van Gompel JJ.
34 Differences in functional connectivity profiles as a predictor of response to anterior

- 1 thalamic nucleus deep brain stimulation for epilepsy: a hypothesis for the mechanism
2 of action and a potential biomarker for outcomes. *Neurosurg Focus*. 2018;45(2):E7.
3 doi:10.3171/2018.5.FOCUS18151
- 4 162. Charlebois CM, Anderson DN, Johnson KA, et al. Patient-specific structural
5 connectivity informs outcomes of responsive neurostimulation for temporal lobe
6 epilepsy. *Epilepsia*. 2022;Online ahe. doi:10.1111/epi.17298
- 7 163. Denison T, Koubeissi M, Krook-Magnuson E, Mogul D, Worrell G, Schevon C.
8 Stimulating Solutions for Intractable Epilepsy. *Epilepsy Curr*. 2021;21(5):315-319.
9 doi:10.1177/15357597211012466
- 10 164. Vedam-Mai V, Deisseroth K, Giordano J, et al. Proceedings of the Eighth Annual
11 Deep Brain Stimulation Think Tank: Advances in Optogenetics, Ethical Issues
12 Affecting DBS Research, Neuromodulatory Approaches for Depression, Adaptive
13 Neurostimulation, and Emerging DBS Technologies. *Front Hum Neurosci*. 2021;15.
14 doi:10.3389/fnhum.2021.644593
- 15 165. Finn ES, Shen X, Scheinost D, et al. Functional connectome fingerprinting: identifying
16 individuals using patterns of brain connectivity. *Nat Neurosci*. 2015;18(11):1664-
17 1671. doi:10.1038/nn.4135
- 18 166. Feldman L, Krishnan B, Alexopoulos A, Mackow M, Taylor K, Bulacio J. Brain-
19 Responsive Neurostimulation Guided by Stereo-EEG. In: *American Epilepsy Society*. ;
20 2018.
- 21 167. Gadot R, Korst G, Shofty B, Gavvala JR, Sheth SA. Thalamic
22 stereoelectroencephalography in epilepsy surgery: a scoping literature review. *J*
23 *Neurosurg*. Published online March 1, 2022:1-16. doi:10.3171/2022.1.JNS212613
- 24 168. Wong JK, Deuschl G, Wolke R, et al. Proceedings of the Ninth Annual Deep Brain
25 Stimulation Think Tank: Advances in Cutting Edge Technologies, Artificial
26 Intelligence, Neuromodulation, Neuroethics, Pain, Interventional Psychiatry, Epilepsy,
27 and Traumatic Brain Injury. *Front Hum Neurosci*. 2022;16.
28 doi:10.3389/fnhum.2022.813387
- 29 169. Scheid BH, Ashourvan A, Stiso J, et al. Time-evolving controllability of effective
30 connectivity networks during seizure progression. *Proc Natl Acad Sci*. 2021;118(5).
31 doi:10.1073/pnas.2006436118
- 32 170. George DD, Ojemann SG, Drees C, Thompson JA. Stimulation Mapping Using
33 Stereoelectroencephalography: Current and Future Directions. *Front Neurol*. 2020;11.
34 doi:10.3389/fneur.2020.00320

- 1 171. Gregg NM, Nasser M, Kremen V, et al. Circadian and multiday seizure periodicities,
2 and seizure clusters in canine epilepsy. *Brain Commun.* 2020;2(1).
3 doi:10.1093/braincomms/fcaa008
- 4 172. Toth R, Zamora M, Ottaway J, et al. DyNeuMo Mk-2: An Investigational Circadian-
5 Locked Neuromodulator with Responsive Stimulation for Applied Chronobiology.
6 *Conf proceedings IEEE Int Conf Syst Man, Cybern.* 2020;2020:3433-3440.
7 doi:10.1109/SMC42975.2020.9283187
- 8 173. Chari A, Seunarine KK, He X, et al. Drug-resistant focal epilepsy in children is
9 associated with increased modal controllability of the whole brain and epileptogenic
10 regions. *Commun Biol.* 2022;5(1):394. doi:10.1038/s42003-022-03342-8
- 11 174. Khambhati AN, Davis KA, Lucas TH, Litt B, Bassett DS. Virtual Cortical Resection
12 Reveals Push-Pull Network Control Preceding Seizure Evolution. *Neuron.*
13 2016;91(5):1170-1182. doi:10.1016/j.neuron.2016.07.039
- 14 175. Taylor PN, Thomas J, Sinha N, et al. Optimal control based seizure abatement using
15 patient derived connectivity. *Front Neurosci.* 2015;9. doi:10.3389/fnins.2015.00202
- 16 176. Kramer MA, Lopour BA, Kirsch HE, Szeri AJ. Bifurcation control of a seizing human
17 cortex. *Phys Rev E.* 2006;73(4):041928. doi:10.1103/PhysRevE.73.041928
- 18 177. Ashourvan A, Pequito S, Khambhati AN, et al. Model-based design for seizure control
19 by stimulation. *J Neural Eng.* 2020;17(2):026009. doi:10.1088/1741-2552/ab7a4e
- 20 178. Middlebrooks EH, Jain A, Okromelidze L, et al. Acute Brain Activation Patterns of
21 High- Versus Low-Frequency Stimulation of the Anterior Nucleus of the Thalamus
22 During Deep Brain Stimulation for Epilepsy. *Neurosurgery.* 2021;89(5):901-908.
23 doi:10.1093/neuros/nyab306
- 24 179. Middlebrooks EH, Lin C, Okromelidze L, et al. Functional Activation Patterns of
25 Deep Brain Stimulation of the Anterior Nucleus of the Thalamus. *World Neurosurg.*
26 2020;136:357-363.e2. doi:10.1016/j.wneu.2020.01.108
- 27 180. Toga AW, Clark KA, Thompson PM, Shattuck DW, Van Horn JD. Mapping the
28 Human Connectome. *Neurosurgery.* 2012;71(1):1-5.
29 doi:10.1227/NEU.0b013e318258e9ff
- 30 181. Taylor PN, Papasavvas CA, Owen TW, et al. Normative brain mapping of interictal
31 intracranial EEG to localize epileptogenic tissue. *Brain.* Published online January 24,
32 2022. doi:10.1093/brain/awab380
- 33 182. Saenger VM, Kahan J, Foltynie T, et al. Uncovering the underlying mechanisms and
34 whole-brain dynamics of deep brain stimulation for Parkinson's disease. *Sci Rep.*

- 1 2017;7(1):9882. doi:10.1038/s41598-017-10003-y
- 2 183. Carmichael DW, Pinto S, Limousin-Dowsey P, et al. Functional MRI with active, fully
3 implanted, deep brain stimulation systems: safety and experimental confounds.
4 *Neuroimage*. 2007;37(2):508-517. doi:10.1016/j.neuroimage.2007.04.058
- 5 184. Carmichael DW, Thornton JS, Rodionov R, et al. Feasibility of simultaneous
6 intracranial EEG-fMRI in humans: a safety study. *Neuroimage*. 2010;49(1):379-390.
7 doi:10.1016/j.neuroimage.2009.07.062
- 8 185. Amunts K, Lepage C, Borgeat L, et al. BigBrain: An ultrahigh-resolution 3D human
9 brain model. *Science (80-)*. 2013;340(6139):1472-1475. doi:10.1126/science.1235381
- 10 186. Horn A, Kühn AA. Lead-DBS: A toolbox for deep brain stimulation electrode
11 localizations and visualizations. *Neuroimage*. 2015;107:127-135.
12 doi:10.1016/j.neuroimage.2014.12.002
- 13 187. Horn A, Li N, Dembek TA, et al. Lead-DBS v2: Towards a comprehensive pipeline
14 for deep brain stimulation imaging. *Neuroimage*. 2019;184:293-316.
15 doi:10.1016/j.neuroimage.2018.08.068
- 16 188. Su JH, Thomas FT, Kasoff WS, et al. Thalamus Optimized Multi Atlas Segmentation
17 (THOMAS): fast, fully automated segmentation of thalamic nuclei from structural
18 MRI. *Neuroimage*. 2019;194:272-282. doi:10.1016/j.neuroimage.2019.03.021
- 19 189. Saranathan M, Iglehart C, Monti M, Tourdias T, Rutt B. In vivo high-resolution
20 structural MRI-based atlas of human thalamic nuclei. *Sci Data*. 2021;8(1):275.
21 doi:10.1038/s41597-021-01062-y
- 22 190. Horn A, Kühn AA, Merkl A, Shih L, Alterman R, Fox M. Probabilistic conversion of
23 neurosurgical DBS electrode coordinates into MNI space. *Neuroimage*. 2017;150:395-
24 404. doi:10.1016/j.neuroimage.2017.02.004
- 25 191. Setsompop K, Kimmlingen R, Eberlein E, et al. Pushing the limits of in vivo diffusion
26 MRI for the Human Connectome Project. *Neuroimage*. 2013;80:220-233.
27 doi:10.1016/j.neuroimage.2013.05.078
- 28 192. Mai JK, Majtanik M, Paxinos G. *Atlas of the Human Brain*. 3rd ed.; 2015.
- 29 193. Ewert S, Plettig P, Li N, et al. Toward defining deep brain stimulation targets in MNI
30 space: A subcortical atlas based on multimodal MRI, histology and structural
31 connectivity. *Neuroimage*. 2018;170:271-282. doi:10.1016/j.neuroimage.2017.05.015
- 32
33

1 **Figure legends**

2 **Figure 1 Potential network modulation mechanisms of resective surgery, deep brain**
 3 **stimulation (DBS) and responsive neurostimulation (RNS) using mesial temporal lobe**
 4 **epilepsy as an example of a focal epileptogenic network.** This annotation uses a coronal
 5 section of an ex-vivo brain from the BigBrain Project (open-source;
 6 <https://bigbrainproject.org/>) ¹⁸⁵. SOZ = seizure onset zone. iEEG = intracranial
 7 electroencephalography.

8
 9 **Figure 2 Demonstration of the anatomical locations of the current propagation**
 10 **points/stimulation targets: (a) the anterior nucleus of the thalamus (ANT; red) and (b)**
 11 **centromedian nucleus of the thalamus (CMT; blue).** The images were created using
 12 *LeadDBS* ^{186,187} using simulated trajectories within the BigBrain backdrop ¹⁸⁵. The ANT
 13 (anteroventral). and CMT regions-of-interest (ROI) and respective MNI coordinates were
 14 taken from the *THOMAS* atlas ^{188,189}. The MNI coordinates are derived according to the
 15 centre of the ROIs of the THOMAS atlas: anteroventral (right, 5,-5,12; left, -5,-6,12) and
 16 CMT (right, 10,-19,3; left, -10,-20,3). (c) Unconstrained fibers were seeded from each target
 17 using the normative fiber-tracking dataset of 32 adult participants from the Human
 18 Connectome Project ^{190,191}.

19
 20 **Figure 3 A simplified schematic of the connections of the current and potential**
 21 **propagation points/stimulation targets.** This figure demonstrates the common connections
 22 between these current and potential stimulation targets, including the *Circuit of Papez*.
 23 Current targets: anterior nucleus of the thalamus (ANT; red), centromedian nucleus of the
 24 thalamus (CMT; blue). Potential targets: piriform cortex (PC; yellow), septal area (SA;
 25 green), pulvinar (PUL; purple) and subthalamic nucleus (STN; orange). Connections with
 26 multiple colours show common connections with the respective stimulation targets.

27
 28 **Figure 4 Demonstration of the anatomical locations of some of the potential propagation**
 29 **points/stimulation targets: the piriform cortex (PC; yellow), septal area (SA; green),**
 30 **pulvinar of thalamus (PUL; purple) and subthalamic nucleus (STN; orange).** The
 31 images were created using *LeadDBS* ^{186,187} using simulated trajectories within the BigBrain
 32 backdrop ¹⁸⁵. The PC was manually segmented according to the Mai et al atlas ¹⁹², the SA

1 was manually segmented, the PUL is a reconstruction from the THOMAS atlas^{188,189} within
2 *LeadDBS* and the STN is a reconstruction from the DISTAL atlas¹⁹³ within *LeadDBS*.

3

4 **Figure 5 Future directions of network-guided neuromodulation for epilepsy.** (A)

5 Seizures begin in the seizure-onset zone and propagate to a wider seizure network.

6 Neurostimulation at stimulation targets prevent or limit the spread of seizure activity from the

7 seizure-onset zone to the wider network. Panels (B), (C) and (D) ask forward-thinking

8 questions in network-guided neuromodulation epilepsy and draw on recent key

9 studies^{26,77,111,154,160–162,169,175,177}. ANT = anterior nucleus of the thalamus. DBS = deep brain

10 stimulation. RNS = responsive neurostimulation.

11

12

13

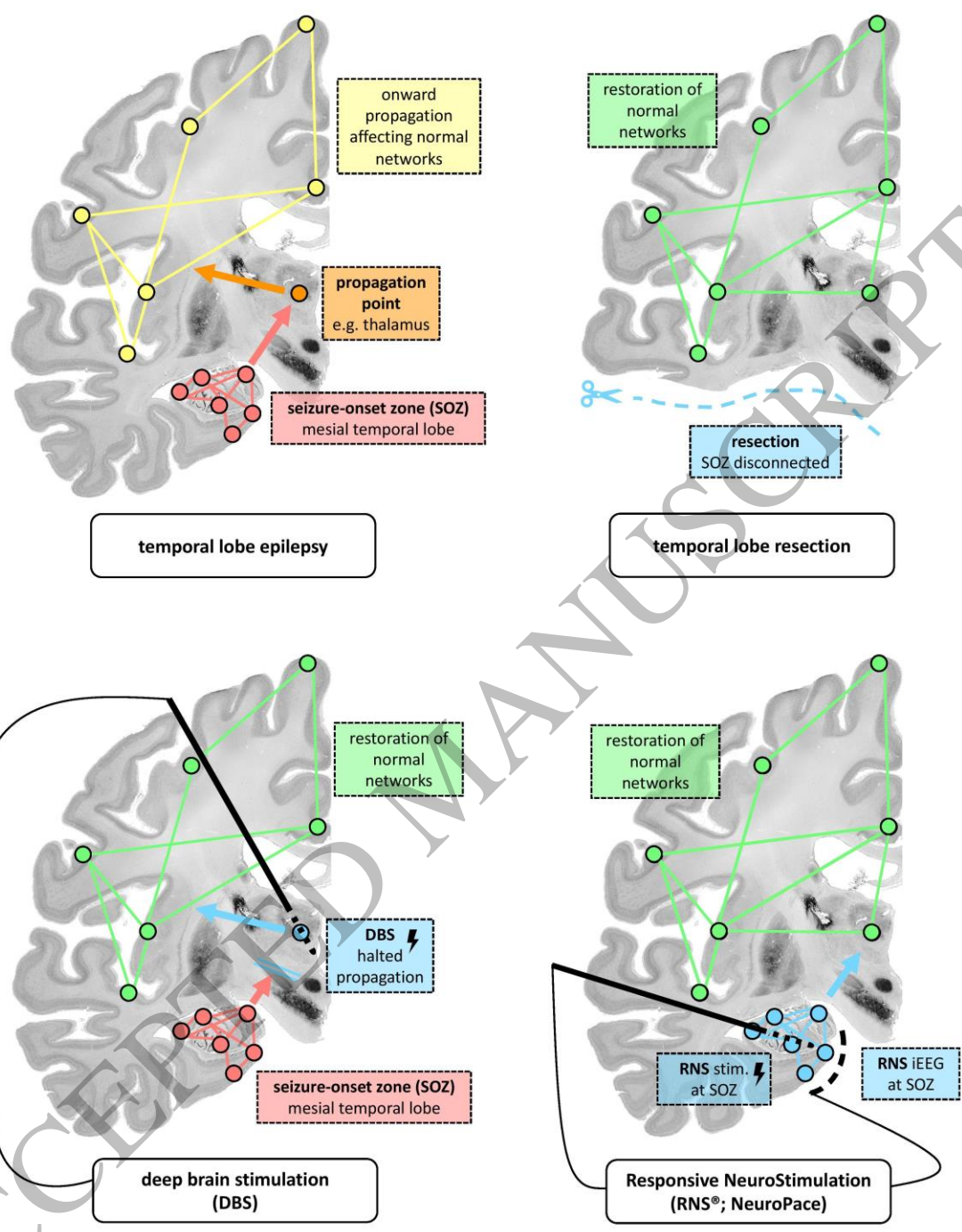
ACCEPTED MANUSCRIPT

1
2

Term	Definition
Neuromodulation	“The alteration of nerve activity through targeted delivery of a stimulus, such as electrical stimulation or chemical agents, to specific neurological sites in the body.” (The International Neuromodulation Society definition) (International Neuromodulation Society, 2021)
Connectivity	Connectivity refers to the relationship that a region(s) has with another(s). In terms of brain connectivity, there is a common reference to ‘structural connectivity’ (e.g. white matter connections between regions) and ‘functional connectivity’ (e.g. similarity in brain activity (EEG or fMRI signal) between brain regions.
Network	A group of interconnected entities. Networks exist in different scales – for example a whole brain network, or epileptic network.
Synchrony	A functional connectivity measure determined as the similarity or correlation between the temporal signal (e.g. electroencephalography or functional magnetic resonance imaging) of two or more regions.
Node	A specific point or region within a network. Connections (or ‘edges’) may be measured between nodes.
Seizure-onset zone (‘SOZ’)	A brain region or network (of multiple regions) that are responsible for the development of seizures.

3
4
5
6

Glossary. Key definitions in ‘network-guided neuromodulation’.



1
2
3
4

Figure 1
159x193 mm (.44 x DPI)

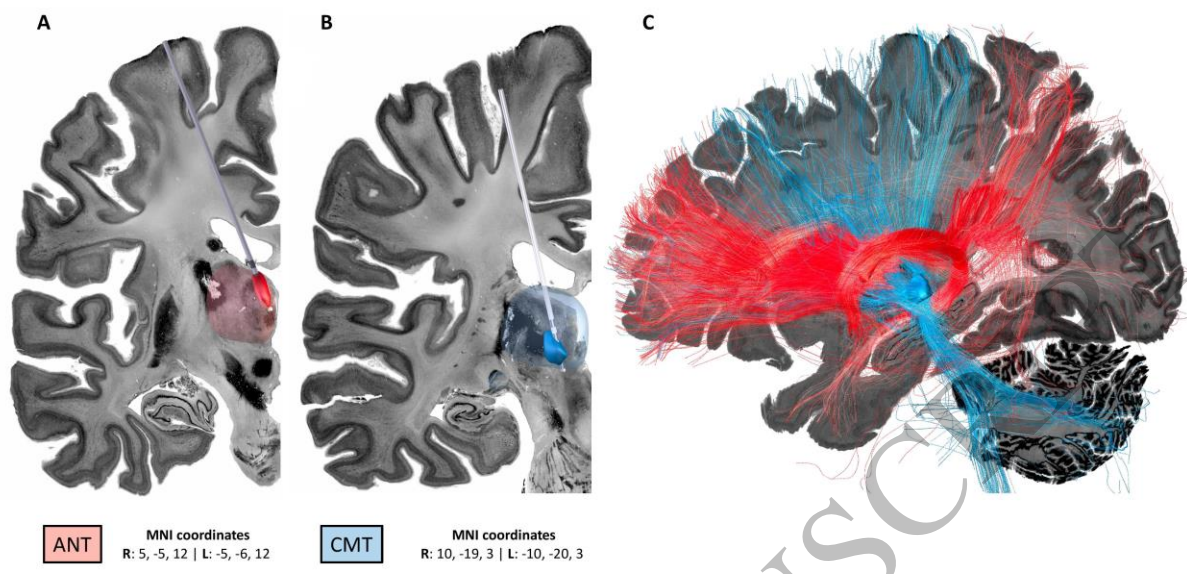


Figure 2
159x89 mm (.44 x DPI)

1
2
3
4
5
6

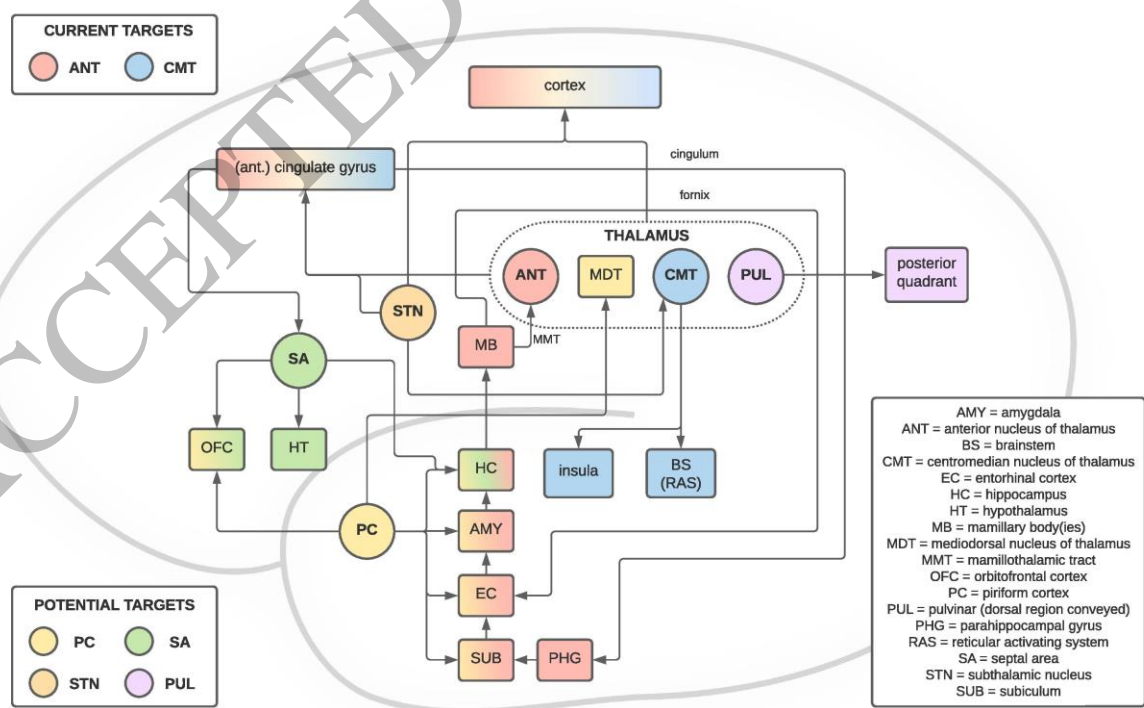


Figure 3
159x105 mm (.44 x DPI)

7
8
9

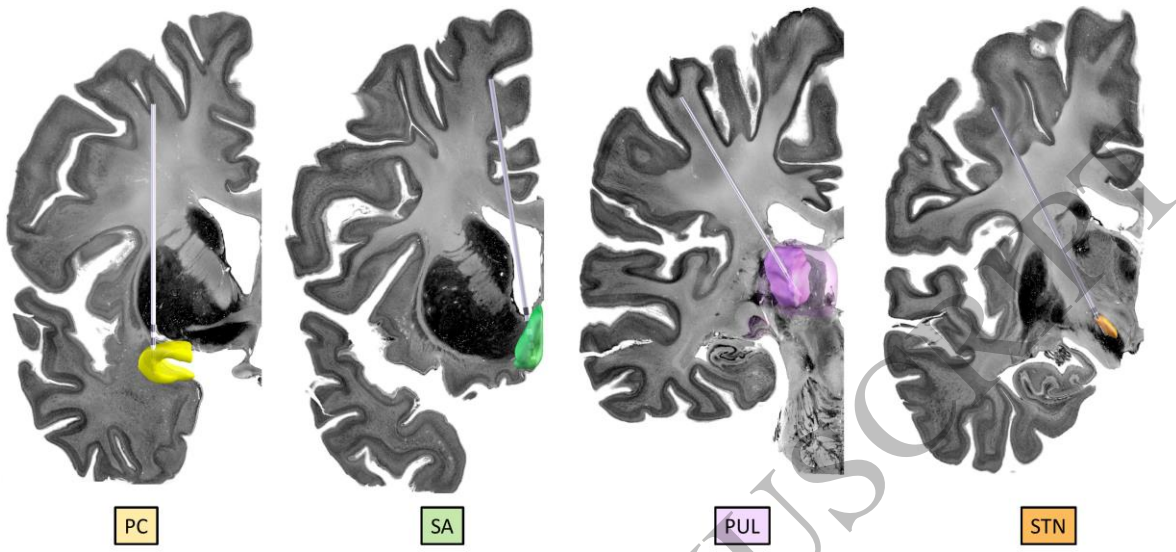


Figure 4
159x89 mm (.44 x DPI)

1

2

3

4

5

ACCEPTED MANUSCRIPT

FUTURE DIRECTIONS OF NETWORK-GUIDED NEUROMODULATION FOR EPILEPSY

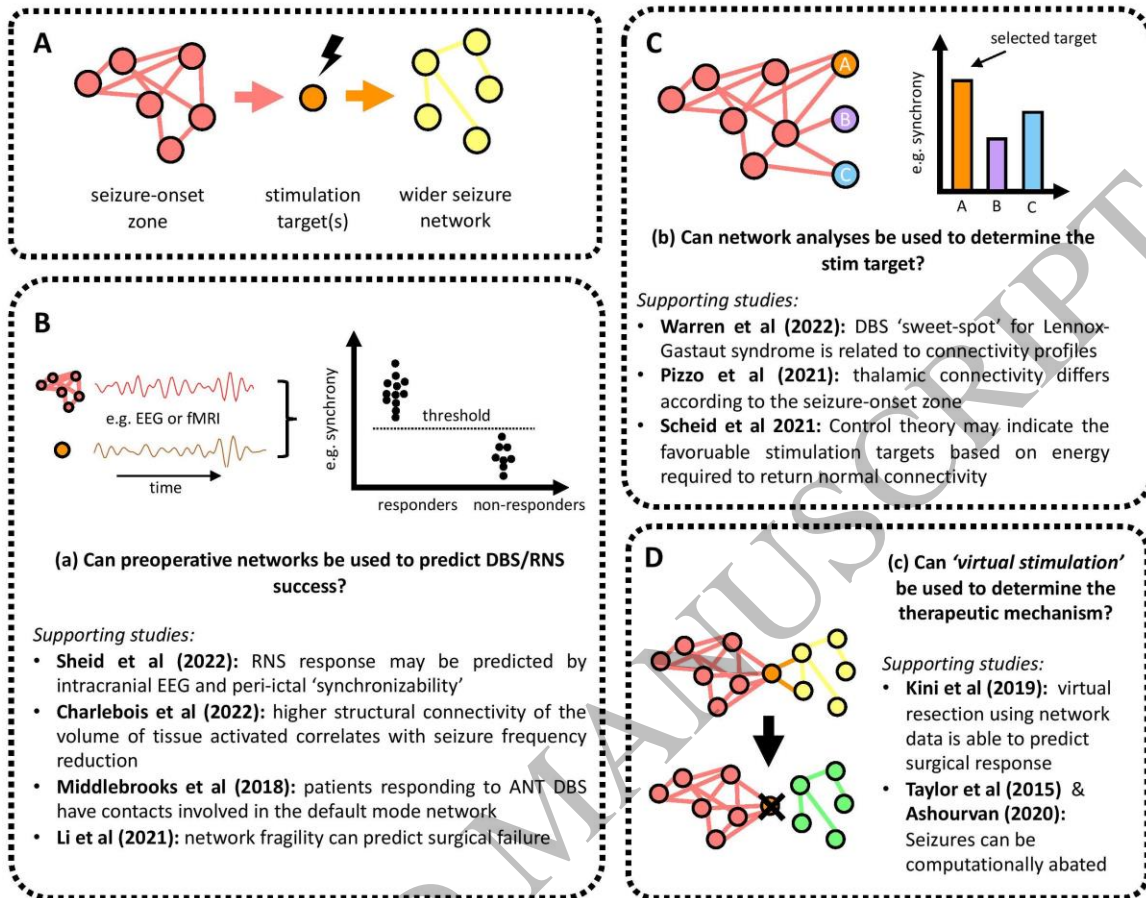


Figure 5
159x134 mm (.44 x DPI)

1
2
3
4