

4-28-2022

New York: A Health-Focused Landscape Analysis

Katherine Ahrens PhD*University of Southern Maine, Muskie School of Public Service, Maine Rural Health Research Center***Amanda Burgess MPPM, MPH***University of Southern Maine, Muskie School of Public Service, Maine Rural Health Research Center***Carly Milkowski MPH***University of Southern Maine, Muskie School of Public Service, Maine Rural Health Research Center***Louisa Munk MPH***University of Southern Maine, Muskie School of Public Service, Maine Rural Health Research Center***Yvonne Jonk PhD***University of Southern Maine, Muskie School of Public Service, Maine Rural Health Research Center**See next page for additional authors*Follow this and additional works at: https://digitalcommons.usm.maine.edu/population_healthPart of the [Health Policy Commons](#), [Health Services Research Commons](#), [Public Policy Commons](#), and the [Social Statistics Commons](#)

Recommended Citation

Ahrens, K., Burgess, A., Milkowski, C., Munk, L., Jonk, Y., & Ziller, E. (2022). New York: A Health-Focused Landscape Analysis [Chartbook]. University of Southern Maine, Maine Rural Health Research Center.

This Chartbook is brought to you for free and open access by the Maine Rural Health Research Center (MRHRC) at USM Digital Commons. It has been accepted for inclusion in Population Health by an authorized administrator of USM Digital Commons. For more information, please contact jessica.c.hovey@maine.edu.

Authors

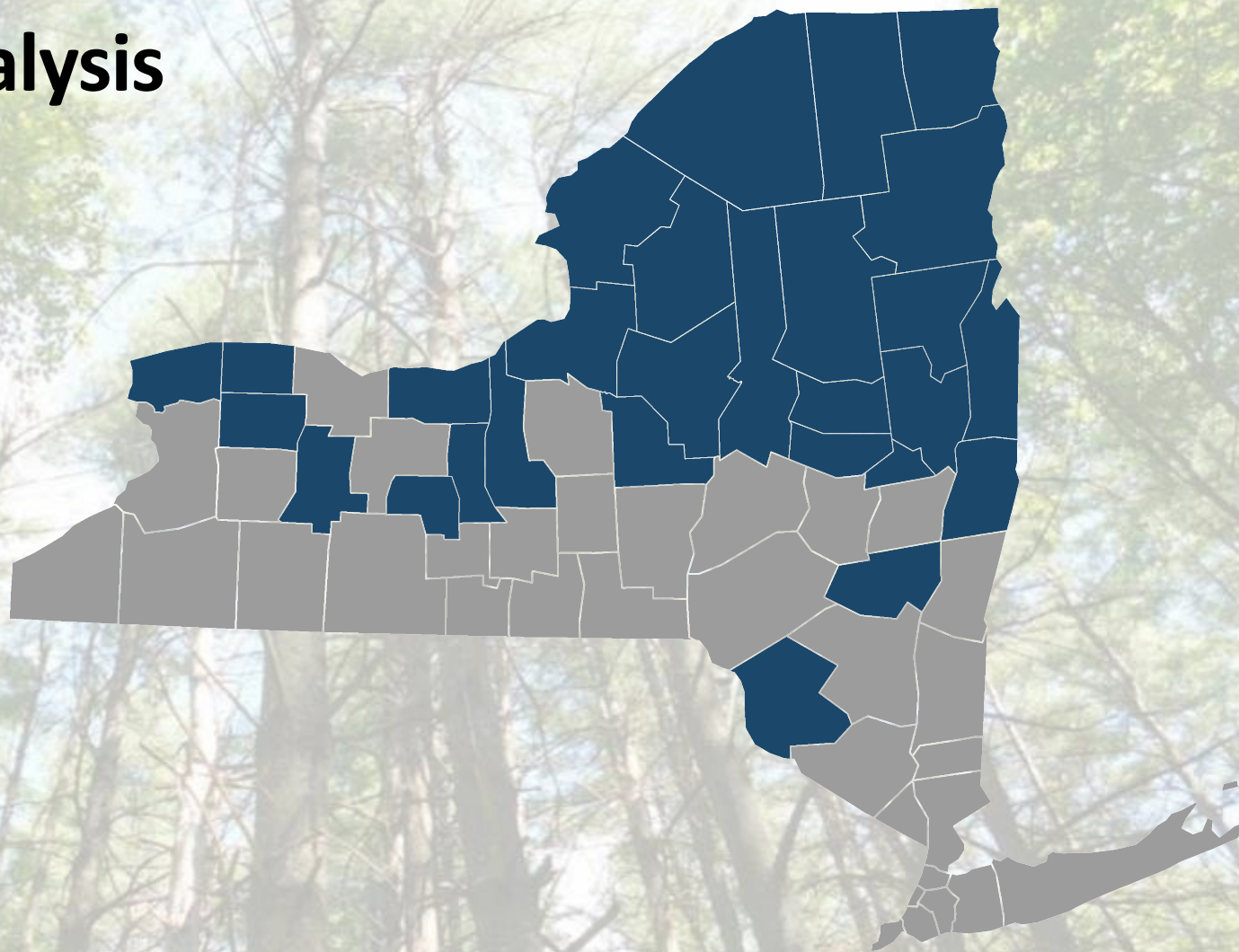
Katherine Ahrens PhD; Amanda Burgess MPPM, MPH; Carly Milkowski MPH; Louisa Munk MPH; Yvonne Jonk PhD; and Erika Ziller PhD

New York: A Health-Focused Landscape Analysis

APRIL 2022

Prepared by:

Katherine Ahrens, PhD
Amanda Burgess, MPPM
Carly Milkowski, MPH
Louisa Munk, MPH
Yvonne Jonk, PhD
Erika Ziller, PhD



Maine
Rural Health
Research Center



**Northern Border
Regional Commission**

TABLE OF CONTENTS

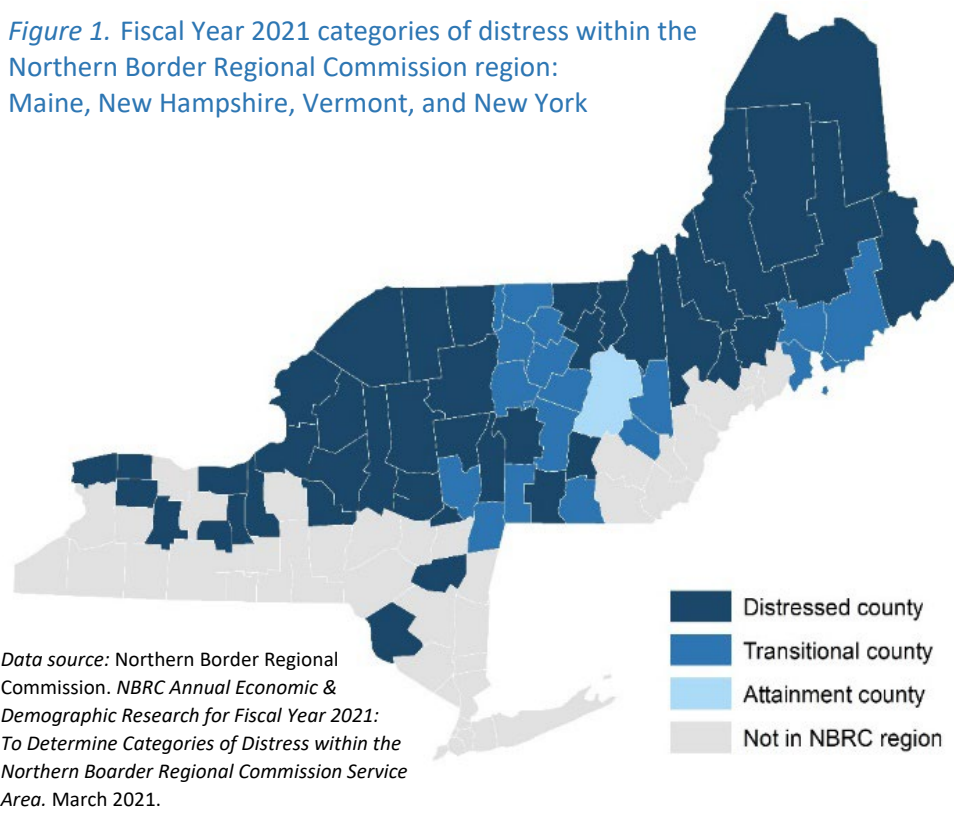
INTRODUCTION	1
KEY TAKEAWAYS	2
SECTION I. Demographic Characteristics.....	3
SECTION II. Socioeconomic Characteristics	5
SECTION III. Access to Healthcare	7
SECTION IV. Health Outcomes.....	9
SECTION V. Health Behaviors and Access.....	11
SECTION VI. Community Safety and Physical Environment	13
SECTION VII. Death Rates per 100,000 Population, Cause Specific	15
SECTION VIII. Top Five Causes of Death	17
SECTION IX. Internet Access	19
SECTION X. Summary of Health Measures	21
SECTION XI. Health Professional Shortage Areas	23
SECTION XII. Rural Health Clinics.....	24
SECTION XIII. Federally Qualified Health Centers.....	25
SECTION XIV. Hospitals.....	26
SECTION XV. Drug Poisoning Mortality	27
SECTION XVI. Substance Use Treatment	28
METHODS NOTE	29
APPENDIX I. New York County Map	30
APPENDIX II. Data Sources	31
APPENDIX III. Additional Resources.....	35

INTRODUCTION

The Northern Border Regional Commission (<https://www.nbrc.gov/>) is a Federal-State partnership formed by Congress in 2008. Its purpose is to fund economic and community development projects in economically distressed and (primarily) rural counties located in four northeastern border states: Maine, New Hampshire, New York, and Vermont.

Counties within the Northern Border Regional Commission Region (NBRC) are categorized annually as “distressed” (have high rates of poverty, unemployment, and outmigration with severe and persistent economic distress and underdevelopment), “transitional” (have recently experienced high rates of poverty, unemployment, and outmigration, with economic distress and underdevelopment), or “attainment counties” (neither distressed nor transitional) (Figure 1).

Figure 1. Fiscal Year 2021 categories of distress within the Northern Border Regional Commission region: Maine, New Hampshire, Vermont, and New York



Counties designated as distressed and transitional are eligible for Northern Border Regional Commission awards, with a 20% match required for distressed counties and a 50% match required for transitional counties. Counties designated as attainment counties are not eligible for awards, but projects might be eligible if they are located within sub-county areas designated as isolated areas of distress, are part of a multi-county or multi-state project, or if the project is of significant benefit to distressed or transitional counties outside that county. Annual appropriation is divided equally among Maine, New Hampshire, New York, and Vermont.

Since 2010, the Northern Border Regional Commission has provided more than \$90 million in funding for economic and infrastructure development projects in Maine, New Hampshire, New York, and Vermont. In addition, the Commission has leveraged matched funds from the federal government and state governments.

The 2021 Federal Appropriations package included an increase in funding for the Northern Border Regional Commission (from \$25 million to \$30 million) and a temporary waiver of the matching funds requirement for grantees. To be eligible for grant consideration, projects must fall within specific categories. One category is “basic health care and other public services to assist economically distressed areas.”

In order to inform the distribution of Northern Border Regional Commission funds, the Maine Rural Health Research Center conducted a landscape analysis of population health and healthcare access for each state and for the region overall.

The measures presented in this chartbook may assist in the planning and selection of high impact projects for rural counties in greatest need of economic and infrastructure development investments to improve population health and healthcare access in New York.

KEY TAKEAWAYS

The analyses in this chartbook identify strengths and assets of the state of New York, as well as opportunities for improvement, across a comprehensive set of population health and health care access measures. These data are intended to inform strategic initiatives to support health and health care in the state, particularly in rural counties and counties in the Northern Border region. Key findings include:

Most counties in New York face shortages of primary care, mental health, and/or dental health professionals.

- Two New York counties outside of the Northern Border region are designated whole county primary care health professional shortage areas, and nine counties (six within the Northern Border region) are designated whole county mental health professional shortage areas (*see page 23*).
- Fifty-four New York counties are designated partial primary care health professional shortage areas, 46 are designated partial mental health professional shortage areas, and 43 are designated partial dental health professional shortage areas (*see page 23*).

New York counties perform well on measures of access to health insurance.

- Ranked alongside the 102 counties in the Northern Border region states of Maine, New Hampshire, and Vermont, New York counties perform well on measures of insurance coverage (*see pages 7-8*).
- New York's uninsured rate among residents ages 0-64 is 6.3%, lower than the US average of 10.4% (*see pages 7-8*).

Some of New York's Northern Border counties perform poorly on health outcomes measures.

- Five of New York's Northern Border counties rank among the bottom 10% of all counties in the Northern Border states on the measure of child mortality (*see pages 9-10*).
- Six of New York's Northern Border counties have a high proportion of residents with diabetes when ranked alongside all counties in the Northern Border states (*see pages 9-10*).

Injury-related death rates were lower in New York than in other Northern Border states and the US overall.

- No New York counties were ranked in the bottom 10% of counties in the Northern Border states for overall injury-related deaths (*see pages 15-16*).
- New York's 2018 drug poisoning mortality rate was 18.9 per 100,000, lower than the US rate of 20.6 per 100,000 and lower than any other state in the Northern Border region (*see page 27*).

SECTION I. Demographic Characteristics

Geography	Population (N)	Rurality	Age		Sex	Race/ethnicity ¹						Language
		Living in a rural area (%)	Below 18 years of age (%)	Age 65 and older (%)	Female (%)	Non-Hispanic white (%)	Non-Hispanic Black (%)	Hispanic (%)	American Indian & Alaska Native (%)	Asian (%)	Native Hawaiian/ Other Pacific Islander (%)	Not proficient in English (%)
United States	328,239,523	19.3%	22.3%	16.5%	50.8%	60.1%	12.5%	18.5%	1.3%	5.9%	0.2%	4.3%
New York	19,453,561	12.1%	20.7%	16.9%	51.4%	55.3%	14.5%	19.3%	1.0%	9.0%	0.1%	6.9%
Albany County	305,506	9.7%	18.3%	17.4%	51.6%	71.6%	12.8%	6.3%	0.3%	6.8%	0.1%	1.8%
Allegany County	46,091	78.7%	20.1%	19.6%	49.2%	94.3%	1.3%	1.7%	0.3%	1.3%	<0.1%	0.6%
Bronx County	1,418,207	0.0%	24.6%	13.3%	52.8%	9.0%	29.2%	56.4%	2.9%	4.6%	0.4%	15.6%
Broome County	190,488	26.1%	19.3%	19.4%	50.7%	82.7%	5.6%	4.4%	0.3%	4.4%	0.1%	1.3%
Cattaraugus County	76,117	61.8%	21.9%	19.7%	50.3%	90.4%	1.3%	2.1%	3.6%	0.8%	<0.1%	0.7%
Cayuga County*	76,576	55.8%	19.5%	19.8%	48.7%	89.9%	4.0%	3.1%	0.5%	0.7%	0.1%	0.4%
Chautauqua County	126,903	43.9%	20.2%	20.7%	50.7%	87.1%	2.2%	7.8%	0.7%	0.7%	0.1%	1.2%
Chemung County	83,456	24.2%	21.2%	19.5%	50.5%	86.1%	5.9%	3.2%	0.4%	1.5%	<0.1%	0.4%
Chenango County	47,207	83.4%	20.6%	20.9%	49.9%	94.5%	0.9%	2.3%	0.4%	0.6%	<0.1%	0.5%
Clinton County*	80,485	64.2%	17.9%	17.7%	48.6%	90.0%	3.9%	3.0%	0.4%	1.4%	<0.1%	0.4%
Columbia County	59,461	73.3%	17.0%	24.4%	50.0%	86.1%	4.7%	5.0%	0.3%	2.0%	0.1%	1.6%
Cortland County	47,581	44.3%	19.2%	16.9%	51.1%	92.3%	1.8%	2.8%	0.4%	1.1%	<0.1%	0.3%
Delaware County	44,135	78.4%	16.3%	25.2%	49.4%	91.8%	1.7%	4.0%	0.4%	1.1%	0.1%	1.0%
Dutchess County	294,218	25.4%	18.7%	18.1%	50.3%	70.7%	10.6%	12.9%	0.5%	3.7%	0.1%	2.1%
Erie County	918,702	9.4%	20.2%	18.4%	51.6%	75.0%	13.1%	5.8%	0.7%	3.8%	<0.1%	1.8%
Essex County*	36,885	74.9%	16.0%	24.3%	48.3%	92.3%	2.4%	3.0%	0.5%	0.8%	0.1%	0.5%
Franklin County*	50,022	62.7%	19.2%	17.4%	44.9%	81.7%	5.6%	3.6%	7.6%	0.5%	<0.1%	0.5%
Fulton County*	53,383	50.4%	20.1%	20.1%	50.3%	92.2%	1.9%	3.5%	0.3%	0.7%	<0.1%	0.4%
Genesee County*	57,280	59.9%	20.3%	19.3%	50.2%	90.2%	2.8%	3.5%	1.2%	0.7%	<0.1%	0.6%
Greene County*	47,188	73.1%	16.2%	22.7%	47.9%	84.8%	5.4%	6.3%	0.5%	1.3%	<0.1%	0.8%
Hamilton County*	4,416	100.0%	13.7%	31.9%	50.0%	94.5%	1.0%	2.0%	0.3%	0.8%	0.1%	1.3%
Herkimer County*	61,319	51.8%	20.4%	21.2%	50.4%	94.2%	1.3%	2.3%	0.3%	0.6%	<0.1%	0.6%
Jefferson County*	109,834	48.0%	24.0%	14.2%	47.5%	81.3%	6.0%	7.8%	0.7%	1.7%	0.3%	0.5%
Kings County	2,559,903	0.0%	22.7%	14.4%	52.6%	36.8%	29.7%	18.9%	0.9%	12.7%	0.1%	11.9%
Lewis County*	26,296	86.8%	22.8%	19.0%	49.3%	95.9%	0.6%	1.8%	0.3%	0.4%	0.1%	0.6%
Livingston County*	62,914	54.7%	17.6%	18.3%	49.8%	90.5%	2.5%	3.9%	0.5%	1.4%	0.1%	0.7%
Madison County*	70,941	58.9%	19.0%	18.9%	50.6%	92.9%	1.8%	2.3%	0.7%	1.0%	<0.1%	0.3%
Monroe County	741,770	6.4%	20.6%	17.9%	51.8%	70.1%	14.6%	9.2%	0.4%	3.7%	0.1%	2.6%
Montgomery County*	49,221	40.9%	22.9%	18.9%	50.7%	80.2%	2.1%	15.0%	0.6%	0.9%	0.1%	2.1%
Nassau County	1,356,924	0.2%	21.4%	18.2%	51.2%	58.5%	11.7%	17.5%	0.5%	10.9%	0.1%	5.2%

New York County	1,628,706	0.0%	14.3%	17.0%	52.6%	47.2%	12.4%	25.6%	1.2%	12.8%	0.2%	8.9%
Niagara County*	209,281	22.4%	19.9%	19.5%	51.2%	84.9%	7.1%	3.3%	1.2%	1.1%	0.1%	0.7%
Oneida County*	228,671	33.0%	21.3%	19.2%	50.2%	81.3%	6.2%	6.2%	0.4%	4.1%	0.1%	2.6%
Onondaga County	460,528	12.6%	21.1%	17.5%	51.8%	76.5%	11.0%	5.2%	0.9%	3.9%	0.1%	1.9%
Ontario County	109,777	47.5%	19.9%	20.6%	51.1%	89.5%	2.2%	5.1%	0.4%	1.4%	<0.1%	0.9%
Orange County	384,940	22.3%	25.5%	14.3%	49.9%	62.7%	10.6%	21.6%	0.9%	3.0%	0.1%	4.3%
Orleans County*	40,352	60.9%	19.3%	18.4%	50.1%	86.3%	5.7%	5.1%	0.8%	0.6%	0.1%	1.0%
Oswego County*	117,124	61.8%	20.9%	16.8%	49.9%	93.7%	1.0%	2.7%	0.5%	0.7%	<0.1%	0.4%
Otsego County	59,493	70.6%	15.7%	21.7%	51.5%	91.0%	2.1%	3.8%	0.3%	1.5%	0.1%	0.6%
Putnam County	98,320	20.5%	19.4%	18.0%	50.1%	77.1%	2.9%	16.4%	0.5%	2.3%	0.1%	2.2%
Queens County	2,253,858	0.0%	20.0%	16.3%	51.5%	24.9%	17.9%	28.2%	1.3%	26.9%	0.2%	15.0%
Rensselaer County†	158,714	30.5%	19.3%	17.5%	50.6%	82.6%	7.1%	5.2%	0.3%	2.8%	0.1%	0.9%
Richmond County	476,143	0.0%	21.8%	16.7%	51.4%	59.6%	9.4%	18.6%	0.7%	10.9%	0.1%	5.0%
Rockland County	325,789	0.7%	28.4%	15.9%	50.9%	62.7%	11.2%	18.4%	0.6%	6.2%	0.1%	8.2%
St. Lawrence County*	107,740	62.0%	20.1%	18.0%	49.0%	92.0%	2.2%	2.4%	1.0%	1.1%	0.1%	0.9%
Saratoga County†	229,863	30.0%	19.7%	18.8%	50.6%	90.1%	1.8%	3.4%	0.2%	2.9%	<0.1%	0.6%
Schenectady County	155,299	8.2%	21.6%	17.3%	51.2%	72.5%	11.2%	7.4%	0.7%	5.0%	0.2%	1.4%
Schoharie County	30,999	82.8%	17.3%	22.7%	49.9%	92.9%	1.2%	3.4%	0.3%	0.8%	<0.1%	0.4%
Schuyler County	17,807	81.2%	18.6%	22.0%	50.2%	94.6%	1.0%	2.0%	0.3%	0.7%	<0.1%	0.4%
Seneca County*	34,016	58.7%	20.0%	19.6%	47.5%	88.6%	4.9%	3.7%	0.5%	0.8%	<0.1%	0.9%
Steuben County	95,379	60.4%	21.3%	20.1%	50.2%	93.4%	1.6%	1.7%	0.3%	1.6%	<0.1%	0.6%
Suffolk County	1,476,601	2.6%	20.9%	17.3%	50.8%	66.6%	7.5%	20.2%	0.6%	4.2%	0.1%	3.7%
Sullivan County*	75,432	74.2%	21.0%	19.3%	48.7%	70.7%	8.2%	16.8%	0.8%	2.0%	0.1%	2.5%
Tioga County	48,203	65.7%	20.6%	20.9%	50.3%	94.7%	0.9%	2.1%	0.3%	0.8%	<0.1%	0.3%
Tompkins County	102,180	43.3%	14.7%	15.1%	50.9%	77.0%	4.0%	5.4%	0.5%	10.4%	0.1%	1.1%
Ulster County	177,573	46.0%	17.4%	20.4%	50.4%	78.8%	6.0%	10.6%	0.5%	2.1%	0.1%	1.7%
Warren County*	63,944	33.9%	18.1%	22.9%	50.9%	93.3%	1.3%	2.8%	0.3%	1.0%	<0.1%	0.5%
Washington County*	61,204	67.9%	18.6%	20.1%	48.3%	92.0%	3.0%	2.9%	0.3%	0.6%	<0.1%	0.9%
Wayne County*	89,918	60.7%	21.2%	19.5%	50.3%	89.5%	2.9%	4.7%	0.4%	0.7%	<0.1%	0.6%
Westchester County	967,506	3.3%	21.7%	17.4%	51.5%	52.6%	13.8%	25.5%	1.0%	6.5%	0.1%	6.1%
Wyoming County	39,859	64.1%	18.7%	18.6%	45.8%	89.9%	5.1%	3.3%	0.5%	0.5%	<0.1%	0.7%
Yates County*	24,913	71.2%	22.0%	21.3%	51.3%	94.8%	0.9%	2.3%	0.3%	0.8%	<0.1%	0.8%

Data sources: Census Population Estimates, 2010 and 2019; American Community Survey, 2015–2019 5-year estimates.

Note: Rural counties are in bold font. * = NBRC distressed county; † = NBRC transitional county, ‡ = NBRC attainment county.

¹Race/ethnicity data may not sum to 100% due to missing data.

SECTION II. Socioeconomic Characteristics

Geography	Employment			Income				Social support	Education	
	Employed full time, ages 16 to 64 (%)	Unemployed, ages 16 and older seeking work (%)	Employed in healthcare and social assistance (%)	Median household income (\$)	Population in poverty (%)	Children in poverty (%)	Children eligible for free or reduced-price lunch (%)	Children in single-parent households (%)	High school graduation rate (%)	Adults with some college completion (%)
United States	66.4%	3.7%	15.8%	65,712	12.3%	16.8%	52.2%	25.5%	85.0%	66.1%
New York	66.4%	4.0%	19.9%	72,038	13.1%	18.2%	53.9%	27.0%	82.4%	68.7%
Albany County	62.9%	3.6%	20.1%	69,408	11.7%	16.0%	40.6%	31.1%	84.9%	77.1%
Allegany County	54.5%	5.5%	15.8%	49,411	17.9%	26.8%	49.9%	22.7%	88.7%	62.5%
Bronx County	63.6%	5.4%	39.5%	41,470	26.2%	36.5%	85.6%	50.2%	67.2%	51.9%
Broome County	57.8%	4.7%	22.8%	52,179	17.8%	24.9%	52.3%	26.7%	83.5%	66.7%
Cattaraugus County	63.5%	5.1%	14.9%	50,783	14.7%	21.5%	49.1%	25.4%	85.9%	55.6%
Cayuga County*	62.6%	4.3%	22.0%	58,055	13.8%	20.5%	46.4%	24.7%	84.2%	57.8%
Chautauqua County	61.3%	4.7%	19.0%	50,143	16.3%	24.4%	52.3%	27.0%	84.1%	58.1%
Chemung County	65.3%	4.2%	22.0%	58,400	14.1%	20.3%	48.7%	24.0%	76.3%	60.7%
Chenango County	65.3%	4.4%	12.9%	51,894	13.7%	20.1%	49.7%	21.4%	85.5%	56.3%
Clinton County*	61.6%	4.4%	21.2%	59,069	14.8%	16.8%	45.2%	22.4%	88.3%	53.3%
Columbia County	64.7%	3.2%	28.7%	71,563	10.1%	15.4%	50.5%	22.9%	83.6%	60.4%
Cortland County	58.0%	4.9%	21.8%	55,143	17.3%	19.3%	51.2%	22.0%	89.0%	62.0%
Delaware County	56.5%	4.7%	16.6%	51,038	12.6%	19.1%	48.5%	28.1%	88.8%	54.7%
Dutchess County	63.3%	3.6%	19.9%	84,564	8.6%	9.8%	35.2%	21.9%	86.0%	68.2%
Erie County	64.3%	4.3%	18.1%	60,620	13.3%	19.3%	46.3%	29.5%	84.5%	73.0%
Essex County*	62.3%	4.7%	21.5%	55,091	12.4%	17.1%	45.6%	18.9%	88.5%	55.8%
Franklin County*	62.8%	4.9%	32.2%	48,943	18.1%	25.1%	56.5%	28.0%	87.2%	51.1%
Fulton County*	67.8%	5.0%	25.7%	50,061	16.4%	26.4%	48.3%	32.9%	78.7%	55.6%
Genesee County*	67.1%	3.9%	17.3%	62,570	10.5%	13.6%	45.3%	20.8%	91.8%	65.2%
Greene County*	66.0%	4.5%	11.1%	54,746	12.6%	18.5%	43.1%	19.8%	90.0%	48.2%
Hamilton County*	61.3%	6.0%	3.0%	60,148	9.8%	17.7%	44.8%	13.6%	NA	59.3%
Herkimer County*	62.2%	4.9%	18.1%	55,778	13.7%	19.0%	52.5%	18.0%	85.0%	61.0%
Jefferson County*	68.0%	5.6%	21.6%	53,829	14.6%	20.6%	51.2%	23.1%	85.8%	63.9%
Kings County	67.4%	4.1%	36.0%	66,501	17.7%	24.7%	74.4%	31.0%	74.7%	68.2%
Lewis County*	64.5%	5.5%	20.0%	56,599	12.4%	18.6%	48.3%	16.2%	90.2%	56.8%
Livingston County*	60.8%	4.2%	15.0%	60,268	13.8%	16.4%	41.1%	22.4%	92.5%	63.7%
Madison County*	64.6%	4.5%	17.5%	61,713	9.8%	13.2%	43.2%	17.5%	86.1%	63.1%
Monroe County	62.4%	4.2%	19.6%	62,159	12.7%	18.9%	49.7%	32.6%	83.3%	73.6%
Montgomery County*	64.1%	5.1%	27.2%	52,092	15.9%	25.5%	56.2%	26.7%	76.4%	58.6%
Nassau County	68.6%	3.4%	21.9%	117,767	5.6%	6.5%	29.1%	15.1%	90.8%	75.8%

New York County	70.5%	3.5%	11.0%	93,007	14.1%	17.3%	65.6%	35.2%	74.6%	84.3%
Niagara County*	64.4%	5.0%	20%	56,371	12.4%	16.9%	48.2%	27.2%	85.1%	66.8%
Oneida County*	65.3%	4.3%	22.7%	56,516	14.6%	19.3%	53.6%	26.3%	84.3%	62.7%
Onondaga County	64.0%	3.9%	18.2%	61,597	13.8%	18.7%	47.7%	29.9%	84.1%	71.7%
Ontario County	64.3%	3.9%	18.6%	66,754	8.1%	10.4%	36.8%	23.1%	90.6%	75.1%
Orange County	67.4%	3.8%	19.6%	83,188	12.3%	18.0%	42.6%	17.5%	87.2%	62.6%
Orleans County*	65.4%	4.7%	16.3%	53,115	13.2%	19.2%	50.4%	23.4%	90.8%	54.1%
Oswego County*	58.6%	5.4%	17.9%	57,640	15.6%	25.0%	43.1%	25.4%	84.0%	58.6%
Otsego County	54.8%	4.2%	33.5%	52,414	16.2%	18.6%	40.1%	23.2%	87.2%	66.0%
Putnam County	64.9%	3.7%	23.7%	105,600	5.2%	5.6%	23.8%	12.8%	93.2%	68.6%
Queens County	70.4%	3.5%	26.1%	72,975	11.0%	14.4%	70.5%	25.6%	78.0%	65.2%
Rensselaer County†	65.3%	3.8%	19.4%	70,688	11.5%	15.1%	42.1%	22.9%	87.0%	71.3%
Richmond County	71.6%	3.9%	31.1%	86,624	9.1%	13.9%	58.5%	21.5%	79.3%	69.7%
Rockland County	62.8%	3.6%	26.1%	99,831	12.5%	21.6%	41.1%	12.5%	85.0%	63.2%
St. Lawrence County*	56.3%	5.5%	24.1%	51,742	18.9%	27.1%	51.7%	21.5%	85.1%	57.3%
Saratoga County†	67.2%	3.4%	15.6%	89,071	6.0%	7.2%	24.6%	15.4%	90.3%	77.6%
Schenectady County	66.5%	3.8%	22.1%	64,960	12.1%	19.6%	44.7%	27.4%	80.9%	66.7%
Schoharie County	60.8%	4.7%	18.1%	58,927	12.1%	16.6%	42.9%	25.0%	83.5%	60.7%
Schuyler County	61.1%	4.7%	21.5%	52,215	15.7%	22.3%	49.1%	15.3%	89.8%	57.4%
Seneca County*	63.6%	3.8%	11.7%	51,064	13.7%	19.4%	51.8%	15.7%	82.2%	49.1%
Steuben County	64.5%	4.6%	25.6%	53,167	15.0%	21.8%	46.9%	20.6%	87.3%	62.1%
Suffolk County	68.2%	3.7%	18.3%	105,241	6.8%	9.3%	37.3%	18.5%	89.9%	67.8%
Sullivan County*	64.7%	4.0%	30.7%	58,851	16.1%	26.2%	58.7%	22.7%	79.1%	54.5%
Tioga County	64.8%	4.1%	13.3%	60,699	9.4%	13.8%	48.9%	18.4%	88.9%	60.7%
Tompkins County	48.4%	3.6%	12.0%	59,176	16.9%	14.3%	39.3%	24.4%	82.5%	82.5%
Ulster County	62.5%	3.8%	20.3%	64,090	12.0%	16.1%	46.2%	22.8%	86.5%	64.4%
Warren County*	63.7%	4.6%	19.2%	63,240	10.1%	15.0%	29.9%	23.2%	89.7%	67.0%
Washington County*	65.2%	4.1%	16.3%	56,897	11.9%	17.2%	42.6%	21.9%	79.9%	55.1%
Wayne County*	64.9%	4.0%	14.8%	61,989	11.4%	15.8%	46.7%	20.5%	87.8%	64.2%
Westchester County	65.9%	3.8%	21.8%	101,741	8.4%	10.1%	33.3%	20.9%	89.9%	72.5%
Wyoming County	64.7%	4.4%	14.5%	58,214	9.9%	12.6%	42.0%	19.7%	92.5%	56.4%
Yates County*	63.0%	3.7%	17.0%	60,612	13.9%	26.2%	55.7%	14.5%	79.6%	54.4%

Data sources: American Community Survey, 2015-2019 5-year estimates; Bureau of Labor Statistics, 2019; Business Dynamics Statistics, Center for Economic Studies, US Census Bureau, 2018; Small Area Income and Poverty Estimates, 2019; National Center for Education Statistics, 2018-2019; EDStats, 2017-2018.

Note: Rural counties are in bold font. * = NBRC distressed county; † = NBRC transitional county, ‡ = NBRC attainment county. NA = Not available.

SECTION III. Access to Healthcare

Geography	Access to care							Quality of care			County performance indicator
	Uninsured among ages 0-64 (%)	Uninsured among adults ages 18-64 (%)	Uninsured among children ages 0-18 (%)	Ratio of population to primary care physicians (N:1)	Ratio of population to primary care providers other than physicians (N:1)	Ratio of population to dentists (N:1)	Ratio of population to mental health providers (N:1)	Preventable hospital stays per 100,000 Medicare enrollees (N)	Mammography screening among female Medicare enrollees ages 65-74 (%)	Flu vaccinations among fee-for-service Medicare enrollees (%)	
United States	10.4%	12.4%	5.2%	1,319	942	1,405	383	4,236	42.0%	48.0%	
New York	6.3%	7.7%	2.5%	1,194	787	1,174	329	4,043	42.0%	50.0%	
Albany County	4.2%	4.8%	2.0%	1,027	479	1,080	266	3,983	46.0%	55.0%	✓
Allegany County	5.7%	6.7%	3.1%	2,211	1,213	2,881	423	5,154	49.0%	49.0%	✓
Bronx County	8.7%	11.3%	2.2%	1,642	805	1,830	465	5,474	32.0%	40.0%	⚠
Broome County	5.2%	6.2%	2.3%	1,213	499	1,411	442	3,987	46.0%	53.0%	✓
Cattaraugus County	6.5%	7.7%	3.3%	2,328	1,072	2,057	705	4,970	45.0%	47.0%	✓
Cayuga County*	4.8%	5.5%	2.6%	3,857	1,049	2,127	517	5,700	55.0%	56.0%	⚠
Chautauqua County	5.5%	6.4%	3.0%	1,802	984	1,715	569	3,788	47.0%	53.0%	✓
Chemung County	4.1%	5.0%	1.9%	1,316	679	1,636	343	5,813	53.0%	52.0%	✓
Chenango County	4.9%	5.8%	2.4%	2,796	963	2,777	502	4,142	44.0%	50.0%	✓
Clinton County*	5.0%	5.9%	2.5%	1,441	925	1,610	353	4,837	50.0%	51.0%	✓
Columbia County	5.8%	6.6%	2.9%	2,497	1,213	2,478	566	4,070	46.0%	53.0%	✓
Cortland County	4.4%	5.1%	2.3%	2,517	933	2,974	273	4,854	52.0%	53.0%	✓
Delaware County	5.8%	6.6%	3.2%	2,968	1,103	4,012	788	3,286	44.0%	47.0%	✓
Dutchess County	5.1%	6.1%	2.3%	1,440	914	1,368	341	4,126	44.0%	53.0%	✓
Erie County	4.4%	5.3%	2.0%	1,255	565	1,148	306	3,797	43.0%	48.0%	✓
Essex County*	4.5%	5.1%	2.3%	2,664	1,230	3,074	605	3,453	44.0%	55.0%	✓
Franklin County*	6.8%	8.2%	3.2%	1,676	794	2,274	350	4,520	54.0%	48.0%	✓
Fulton County*	5.1%	6.0%	2.2%	2,821	1,136	4,106	460	4,436	46.0%	51.0%	✓
Genesee County*	4.5%	5.3%	2.3%	3,383	1,245	2,864	629	4,748	47.0%	49.0%	✓
Greene County*	5.6%	6.4%	2.9%	2,638	1,210	2,622	1,151	4,121	40.0%	46.0%	⚠
Hamilton County*	6.3%	6.9%	3.5%	4,434	1,104	NA	1,472	2,522	48.0%	53.0%	⚠
Herkimer County*	4.9%	5.8%	2.5%	3,092	1,804	2,555	1,752	4,789	53.0%	50.0%	⚠
Jefferson County*	4.8%	5.8%	2.4%	1,961	526	1,087	465	4,579	50.0%	54.0%	✓
Kings County	7.8%	9.8%	2.4%	1,479	1,287	1,485	431	4,561	33.0%	39.0%	⚠
Lewis County*	5.1%	5.9%	3.0%	1,469	1,384	5,259	453	4,654	55.0%	55.0%	✓
Livingston County*	4.5%	5.2%	2.4%	2,432	1,534	1,798	839	4,625	49.0%	51.0%	✓
Madison County*	4.8%	5.5%	2.9%	1,646	1,013	2,838	476	4,149	50.0%	48.0%	✓
Monroe County	4.3%	5.1%	2.1%	943	448	1,161	340	4,910	44.0%	53.0%	✓
Montgomery County*	5.3%	6.3%	2.7%	1,902	1,025	1,697	1,145	5,111	45.0%	49.0%	⚠
Nassau County	4.6%	5.6%	2.1%	700	632	803	319	3,422	45.0%	55.0%	✓

New York County	6.1%	6.9%	2.9%	731	395	539	111	2,947	39.0%	49.0%	✔
Niagara County*	4.4%	5.3%	2.1%	2,338	1,598	1,974	796	4,755	44.0%	46.0%	✔
Oneida County*	5.0%	5.9%	2.4%	1,350	650	1,786	577	4,520	51.0%	50.0%	✔
Onondaga County	4.7%	5.7%	2.1%	1,062	442	1,276	367	4,326	52.0%	55.0%	✔
Ontario County	4.3%	5.0%	2.3%	1,308	851	1,663	434	4,472	52.0%	54.0%	✔
Orange County	5.4%	6.7%	2.5%	1,431	1,018	1,415	406	4,487	43.0%	53.0%	✔
Orleans County*	5.3%	6.2%	2.6%	13,537	3,104	4,484	1,614	4,593	43.0%	47.0%	⊘
Oswego County*	5.3%	6.4%	2.3%	2,508	1,105	2,252	677	4,461	52.0%	49.0%	✔
Otsego County	5.5%	6.3%	2.9%	866	348	1,803	500	3,937	47.0%	53.0%	✔
Putnam County	4.2%	4.9%	2.2%	2,018	1,725	1,666	270	3,545	42.0%	54.0%	✔
Queens County	10.1%	12.2%	3.1%	1,529	1,356	1,299	582	3,704	34.0%	44.0%	✔
Rensselaer County†	4.2%	5.0%	2.0%	2,098	1,095	2,204	586	4,369	44.0%	52.0%	✔
Richmond County	5.3%	6.3%	2.5%	1,024	840	1,461	424	3,929	40.0%	46.0%	✔
Rockland County	5.3%	6.8%	2.7%	1,135	1,544	978	361	3,625	44.0%	54.0%	✔
St. Lawrence County*	5.5%	6.5%	2.9%	1,896	764	2,506	485	5,113	52.0%	54.0%	✔
Saratoga County†	4.1%	4.7%	2.2%	1,457	1,064	1,455	554	3,729	50.0%	56.0%	✔
Schenectady County	4.8%	5.7%	2.3%	1,214	758	1,223	430	4,238	45.0%	55.0%	✔
Schoharie County	5.2%	6.0%	2.8%	3,455	3,100	3,444	721	3,318	45.0%	52.0%	⚠
Schuyler County	5.1%	5.9%	2.8%	1,990	1,619	4,452	574	4,846	46.0%	51.0%	✔
Seneca County*	5.6%	6.2%	3.8%	3,811	1,417	3,402	523	5,682	52.0%	56.0%	⚠
Steuben County	5.2%	6.2%	2.5%	1,742	908	2,725	507	4,288	49.0%	50.0%	✔
Suffolk County	4.9%	5.9%	2.1%	1,379	962	1,169	360	4,251	42.0%	55.0%	✔
Sullivan County*	6.2%	7.3%	3.1%	2,904	1,676	2,433	524	4,133	37.0%	49.0%	⚠
Tioga County	4.6%	5.4%	2.3%	3,237	1,418	5,356	699	4,990	48.0%	50.0%	⚠
Tompkins County	4.8%	5.3%	2.8%	1,195	774	1,732	255	3,160	47.0%	54.0%	✔
Ulster County	6.0%	7.0%	2.7%	1,476	1,571	1,571	277	4,252	41.0%	50.0%	✔
Warren County*	4.9%	5.7%	2.4%	824	429	1,048	262	3,938	52.0%	53.0%	✔
Washington County*	5.4%	6.2%	2.8%	2,914	1,800	4,372	712	4,422	46.0%	50.0%	⚠
Wayne County*	4.8%	5.7%	2.4%	3,916	1,763	1,998	947	5,551	42.0%	51.0%	⊘
Westchester County	5.8%	7.0%	2.6%	719	1,096	885	248	3,678	46.0%	54.0%	✔
Wyoming County	4.6%	5.5%	2.1%	3,340	1,661	2,214	453	5,002	44.0%	50.0%	⚠
Yates County*	8.4%	9.3%	6.2%	2,070	1,311	2,076	859	3,454	52.0%	54.0%	⚠

Data sources: Small Area Health Insurance Estimates, 2018; Area Health Resource File, American Medical Association, 2018; Center for Medicare & Medicaid Services, National Provider Identification, 2020; Area Health Resource File, National Provider Identification, 2019; Mapping Medicare Disparities Tool, 2018.

Note: Rural counties are in bold font. * = NBRC distressed county; † = NBRC transitional county; ‡ = NBRC attainment county. If a cell is highlighted in light blue, the county in that row is in the bottom 10% of all counties in NBRC states (ME, NH, NY, VT) for that measure. NA = Not available.

Performance indicator key: ✔ = county is in bottom 10% of all counties for fewer than 2 measures; ⚠ = county is in bottom 10% of all counties for 2-3 measures; ⊘ = county is in bottom 10% of all counties for 4 or more measures.

SECTION IV. Health Outcomes

Geography	Length of life			Quality of life			County performance indicator
	Life expectancy (years)	Premature age-adjusted mortality (deaths among residents under age 75 per 100,000 population)	Child mortality (number of deaths among children under age 18 per 100,000 population)	Frequent physical distress (% of adults)	Frequent mental distress (% of adults)	Diabetes prevalence (% of adults aged 20+)	
United States	79.2	339.2	49.1	11.4%	12.7%	10.5%	
New York	81.4	276.3	38.5	10.6%	11.1%	10.1%	
Albany County	79.9	305.7	45.3	10.0%	12.4%	9.7%	✓
Allegany County	77.9	367.7	39.7	13.4%	14.8%	11.3%	✓
Bronx County	80.9	345.6	42.5	15.7%	14.8%	12.7%	✓
Broome County	78.6	356.6	51.4	12.5%	14.2%	10.6%	✓
Cattaraugus County	77.6	389.9	42.4	14.4%	15.5%	14.3%	⊘
Cayuga County*	79.8	325.5	40.9	12.5%	14.0%	11.6%	✓
Chautauqua County	78.0	376.2	49.7	13.1%	15.2%	12.6%	✓
Chemung County	76.5	421.8	57.7	12.6%	14.8%	12.7%	⚠
Chenango County	77.4	370.4	63.0	13.6%	15.4%	13.6%	⚠
Clinton County*	79.4	325.5	53.4	12.5%	14.6%	11.3%	✓
Columbia County	79.9	319.3	42.9	11.9%	12.9%	9.5%	✓
Cortland County	78.4	371.4	38.0	12.2%	14.3%	11.6%	✓
Delaware County	79.2	353.6	NA	13.4%	14.8%	10.6%	✓
Dutchess County	80.7	291.8	33.5	10.7%	12.6%	9.7%	✓
Erie County	78.7	343.9	46.2	12.2%	13.9%	11.3%	✓
Essex County*	80.2	306.3	NA	12.2%	13.0%	10.6%	✓
Franklin County*	79.2	338.3	25.6	13.3%	14.8%	13.5%	✓
Fulton County*	78.4	363.3	46.2	13.8%	15.5%	13.8%	✓
Genesee County*	78.1	358.1	42.4	12.3%	14.2%	13.3%	✓
Greene County*	78.4	374.9	51.0	13.2%	14.4%	11.0%	✓
Hamilton County*	78.9	345.6	NA	12.5%	14.9%	12.7%	✓
Herkimer County*	79.4	323.7	38.9	13.0%	14.5%	11.1%	✓
Jefferson County*	78.0	356.4	61.1	12.4%	13.7%	10.9%	✓
Kings County	82.9	265.5	37.2	11.7%	12.8%	9.7%	✓
Lewis County*	79.1	314.6	53.4	12.9%	14.9%	14.0%	✓
Livingston County*	79.6	307.5	46.6	12.5%	13.7%	12.6%	✓
Madison County*	81.5	262.0	29.3	11.0%	14.0%	10.7%	✓
Monroe County	79.8	305.5	54.2	11.3%	13.0%	9.1%	✓
Montgomery County*	77.8	373.8	55.5	14.2%	15.3%	12.2%	✓
Nassau County	83.1	212.5	25.4	9.1%	10.9%	8.5%	✓

New York County	85.3	210.6	34.3	10.2%	11.4%	6.8%	✓
Niagara County*	78.1	362.7	42.6	12.8%	15.0%	14.1%	✓
Oneida County*	78.2	373.5	54.1	13.3%	14.5%	14.2%	✓
Onondaga County	79.7	314.9	50.8	11.4%	13.8%	11.4%	✓
Ontario County	80.0	297.9	33.7	10.3%	12.7%	10.6%	✓
Orange County	80.5	286.6	32.6	11.6%	12.7%	9.4%	✓
Orleans County*	77.6	384.0	65.6	14.2%	15.2%	15.7%	⊘
Oswego County*	77.9	373.4	48.2	13.3%	15.3%	10.8%	✓
Otsego County	79.6	325.2	44.3	12.4%	14.0%	9.3%	✓
Putnam County	82.8	223.2	22.8	9.8%	11.3%	7.0%	✓
Queens County	84.1	223.6	35.0	11.5%	11.4%	11.2%	✓
Rensselaer County†	79.2	329.0	52.7	11.3%	13.6%	10.1%	✓
Richmond County	81.0	282.9	32.8	11.3%	13.0%	11.2%	✓
Rockland County	83.2	223.9	29.7	11.0%	12.2%	8.6%	✓
St. Lawrence County*	78.9	337.8	68.1	13.6%	15.1%	11.7%	✓
Saratoga County†	81.3	254.9	26.4	10.3%	12.2%	9.1%	✓
Schenectady County	79.1	331.5	50.0	11.2%	13.4%	11.5%	✓
Schoharie County	80.8	312.0	NA	13.0%	14.3%	12.2%	✓
Schuyler County	78.8	328.2	NA	12.7%	14.8%	12.1%	✓
Seneca County*	77.9	353.1	79.9	12.9%	14.6%	12.8%	✓
Steuben County	78.8	342.6	45.8	12.7%	14.8%	13.7%	✓
Suffolk County	80.9	273.4	35.1	10.6%	12.1%	9.2%	✓
Sullivan County*	78.3	374.1	43.9	13.8%	14.1%	11.9%	✓
Tioga County	80.6	300.8	48.8	12.1%	14.2%	12.0%	✓
Tompkins County	81.0	259.2	39.3	10.4%	12.7%	6.5%	✓
Ulster County	80.2	304.2	36.2	11.7%	13.4%	9.6%	✓
Warren County*	79.1	318.8	53.0	11.7%	13.3%	9.6%	✓
Washington County*	78.7	330.0	60.1	12.7%	14.2%	13.5%	✓
Wayne County*	79.0	336.1	49.0	12.8%	14.7%	13.2%	✓
Westchester County	83.6	214.0	29.8	9.8%	10.9%	7.9%	✓
Wyoming County	79.2	296.0	NA	12.9%	14.3%	11.9%	✓
Yates County*	77.7	341.8	81.8	12.4%	14.3%	14.1%	⚠

Data sources: National Center for Health Statistics-Mortality Files, 2016-2019; Behavioral Risk Factor Surveillance System, 2018; United States Diabetes Surveillance System, 2017.

Note: Rural counties are in bold font. * = NBRC distressed county; † = NBRC transitional county; ‡ = NBRC attainment county. If a cell is highlighted in light blue, the county in that row is in the bottom 10% of all counties in NBRC states (ME, NH, NY, VT) for that measure. NA = Not available.

Performance indicator key: ✓ = county is in bottom 10% of all counties for fewer than 2 measures; ⚠ = county is in bottom 10% of all counties for 2-3 measures; ⊘ = county is in bottom 10% of all counties for 4 or more measures.

SECTION V. Health Behaviors and Access

Geography	Tobacco use	Food access, physical activity, and obesity				Alcohol use		Sexual health		County performance indicator
	Adult smoking (%)	Adult obesity (%)	Food environment index ¹	Physical inactivity ² (%)	Access to exercise opportunities ³ (%)	Excessive drinking ⁴ (%)	Alcohol-impaired driving deaths (as % of driving deaths) (%)	Sexually transmitted infections (Chlamydia cases per 100,000 population)	Teen births (# per 1,000 female population 15-19)	
United States	16.6%	29.7%	7.8	22.7%	84.2%	19.2%	27.0%	539.9	20.9	
New York	13.0%	26.4%	9.0	23.4%	93.2%	19.2%	20.6%	602.4	13.9	
Albany County	16.6%	27.8%	8.4	19.7%	92.1%	22.1%	27.4%	624.0	9.8	✓
Allegany County	22.3%	36.6%	8.0	27.8%	62.4%	20.2%	31.3%	336.9	13.9	✓
Bronx County	18.2%	28.5%	7.4	29.9%	100.0%	16.5%	13.0%	1,202.4	24.0	⊘
Broome County	22.1%	30.1%	8.0	22.7%	89.5%	22.3%	33.8%	321.7	15.0	✓
Cattaraugus County	23.8%	38.9%	8.1	28.5%	63.1%	21.1%	26.2%	279.3	22.2	⚠
Cayuga County*	22.7%	33.8%	8.6	25.1%	79.6%	22.5%	33.3%	333.7	17.9	✓
Chautauqua County	23.7%	34.0%	7.7	27.0%	80.0%	22.1%	18.2%	469.6	24.1	✓
Chemung County	23.6%	35.1%	7.9	29.6%	82.6%	20.1%	12.5%	372.9	27.3	⚠
Chenango County	22.9%	39.3%	8.2	24.2%	74.2%	19.9%	16.0%	206.8	22.3	✓
Clinton County*	21.9%	35.7%	7.6	27.5%	74.3%	21.7%	13.8%	374.2	12.5	✓
Columbia County	20.2%	26.5%	8.4	22.1%	74.2%	22.1%	22.5%	331.7	13.9	✓
Cortland County	21.5%	34.4%	8.3	25.3%	87.1%	21.2%	27.8%	424.8	11.8	✓
Delaware County	22.9%	31.5%	8.3	26.3%	61.4%	22.1%	27.3%	211.1	11.1	✓
Dutchess County	15.7%	27.9%	8.6	20.3%	85.7%	21.8%	22.6%	395.5	7.7	✓
Erie County	18.8%	29.5%	8.1	23.7%	96.3%	22.8%	20.5%	588.7	17.0	✓
Essex County*	18.8%	29.6%	8.6	22.9%	100.0%	21.0%	29.4%	218.7	16.2	✓
Franklin County*	23.3%	39.0%	7.5	26.0%	65.4%	22.0%	30.0%	209.3	22.2	⚠
Fulton County*	24.0%	35.5%	8.1	27.5%	80.8%	20.4%	20.0%	395.3	27.1	⚠
Genesee County*	22.6%	34.1%	8.7	31.0%	63.8%	19.9%	31.1%	269.2	14.6	✓
Greene County*	23.4%	31.3%	8.1	25.9%	77.9%	22.0%	19.5%	307.6	12.4	✓
Hamilton County*	21.2%	29.7%	7.4	20.7%	100.0%	24.1%	0.0%	89.2	NA	⚠
Herkimer County*	24.9%	33.8%	7.9	26.5%	73.9%	24.6%	14.8%	266.7	19.1	⚠
Jefferson County*	20.2%	36.0%	7.7	25.1%	59.8%	20.8%	40.5%	764.5	34.6	⚠
Kings County	15.3%	23.8%	8.0	24.0%	100.0%	18.2%	11.1%	817.6	16.4	✓
Lewis County*	21.9%	36.4%	8.0	28.2%	57.8%	21.7%	53.3%	229.7	19.2	✓
Livingston County*	21.4%	37.0%	8.4	24.4%	74.4%	19.6%	20.0%	266.5	7.2	✓
Madison County*	20.3%	31.4%	8.8	22.6%	73.9%	22.8%	21.4%	283.2	10.2	✓
Monroe County	18.0%	30.9%	8.1	20.7%	94.8%	21.1%	19.6%	715.2	15.2	✓
Montgomery County*	22.6%	35.2%	7.4	29.4%	60.6%	20.1%	9.5%	310.6	29.3	⚠
Nassau County	12.1%	24.2%	9.7	20.4%	98.9%	19.4%	16.7%	349.3	6.8	✓

New York County	11.9%	15.6%	8.4	16.8%	100.0%	23.9%	9.5%	1,034.3	10.0	⚠️
Niagara County*	22.6%	32.1%	8.2	27.8%	84.5%	20.4%	9.1%	470.4	18.2	✅
Oneida County*	20.6%	33.4%	8.1	24.8%	88.2%	19.2%	36.1%	396.4	21.8	✅
Onondaga County	17.2%	31.5%	8.3	21.3%	95.2%	21.9%	30.7%	689.9	15.8	✅
Ontario County	18.1%	31.6%	8.6	21.4%	80.9%	21.3%	22.2%	300.3	10.1	✅
Orange County	17.2%	28.7%	8.6	26.4%	87.9%	20.5%	24.4%	409.2	14.0	✅
Orleans County*	24.6%	36.9%	8.0	32.3%	76.3%	20.3%	8.7%	400.2	23.6	⊘
Oswego County*	23.6%	36.6%	8.0	25.6%	66.1%	21.6%	32.5%	276.8	20.4	✅
Otsego County	20.1%	28.7%	7.9	22.6%	66.8%	22.9%	28.6%	366.1	7.0	✅
Putnam County	14.8%	23.4%	9.2	19.4%	88.2%	21.6%	32.3%	188.3	3.0	✅
Queens County	14.1%	24.4%	8.9	27.9%	98.0%	16.1%	16.7%	596.1	13.1	✅
Rensselaer County†	20.4%	29.9%	8.4	21.3%	66.3%	24.9%	20.0%	503.4	13.6	✅
Richmond County	18.6%	29.2%	9.0	25.5%	99.8%	19.0%	13.5%	357.3	10.3	✅
Rockland County	14.5%	23.1%	8.7	24.0%	96.7%	18.0%	8.8%	336.0	11.8	✅
St. Lawrence County*	21.6%	35.8%	7.6	28.4%	58.3%	22.5%	26.0%	268.2	12.7	✅
Saratoga County†	17.7%	27.6%	9.0	18.2%	91.8%	24.1%	27.6%	238.0	7.5	✅
Schenectady County	17.2%	31.3%	8.3	21.4%	95.7%	20.1%	32.5%	525.2	20.0	✅
Schoharie County	22.4%	35.7%	8.0	25.5%	49.4%	20.8%	2.7%	213.2	11.4	✅
Schuyler County	21.7%	32.0%	8.2	26.3%	66.7%	22.8%	18.2%	133.3	22.9	✅
Seneca County*	23.7%	38.3%	8.2	29.9%	68.3%	20.8%	39.1%	243.5	18.1	⚠️
Steuben County	20.8%	34.6%	8.2	26.1%	56.7%	19.8%	30.4%	274.2	20.2	✅
Suffolk County	14.8%	26.1%	9.2	21.7%	93.3%	21.2%	24.1%	343.4	10.5	✅
Sullivan County*	24.0%	35.8%	8.2	29.3%	66.8%	18.8%	19.6%	361.7	19.5	⚠️
Tioga County	21.3%	32.2%	8.6	25.0%	65.1%	21.4%	16.7%	189.4	21.0	✅
Tompkins County	16.6%	23.0%	8.3	14.6%	86.2%	22.1%	14.6%	438.0	4.5	✅
Ulster County	18.0%	29.3%	8.0	20.4%	82.1%	21.3%	18.3%	335.0	10.1	✅
Warren County*	20.8%	30.1%	8.4	21.7%	98.0%	22.3%	22.2%	316.1	14.5	✅
Washington County*	24.5%	35.0%	8.4	26.0%	66.0%	21.4%	17.6%	222.3	23.3	✅
Wayne County*	22.8%	37.3%	8.5	30.6%	61.9%	18.2%	16.4%	320.9	17.7	⚠️
Westchester County	12.6%	21.6%	9.2	19.4%	99.6%	19.0%	19.4%	400.4	8.3	✅
Wyoming County	22.7%	37.9%	8.3	26.2%	69.0%	22.5%	21.7%	135.8	11.5	✅
Yates County*	18.7%	31.6%	8.9	28.8%	49.4%	19.9%	30.0%	220.4	12.1	⚠️

Data sources: Behavioral Risk Factor Surveillance System, 2018; United States Diabetes Surveillance System, 2017; United States Department of Agriculture Food Environment Atlas, 2015 and Map the Meal Gap from Feeding America, 2018; Business Analyst, Delorme map data, ESRI, & US Census Tigerline Files, 2010 and 2019; Fatality Analysis Reporting System, 2015-2019; National Center for HIV/AIDS, Viral Hepatitis, STD, and TB Prevention, 2018; National Center for Health Statistics - Natality files, 2013-2019.

Note: Rural counties are in bold font. * = NBRC distressed county; † = NBRC transitional county; ‡ = NBRC attainment county. If a cell is highlighted in light blue, the county in that row is in the bottom 10% of all counties in NBRC states (ME, NH, NY, VT) for that measure. NA = Not available.

¹The food environment index is a measure of food security and access to healthy food and ranges from 0 (worst) to 10 (best). ²Physical inactivity is a measure of the percentage of adults reporting no leisure-time physical activity in the past month. ³Access to exercise opportunities is a measure of the percentage of individuals in a county who live reasonably close to a location for physical activity (a census block within a half mile of a park, an urban census block within one mile of a recreational facility, or a rural census block within three miles of a recreational facility). ⁴Excessive drinking is a measure of the percentage of a county's adult population that reports binge or heavy drinking in the past 30 days.

Performance indicator key: ✅ = county is in bottom 10% of all counties for fewer than 2 measures; ⚠️ = county is in bottom 10% of all counties for 2-3 measures; ⊘ = county is in bottom 10% of all counties for 4 or more measures.

SECTION VI. Community Safety and Physical Environment

Geography	Community safety	Housing		Environmental quality	County performance indicator
	Violent crime (# of offenses per 100,000 population)	Severe housing problems (% of households)	Homeownership (% of occupied units owned)	Air pollution - particulate (micrograms per cubic meter)	
United States	386.5	17.5%	64.0%	7.2	
New York	379.0	23.5%	53.9%	6.6	
Albany County	348.2	15.4%	56.4%	6.6	⚠️
Allegany County	195.0	14.0%	76.2%	6.6	✅
Bronx County	586.1	38.7%	19.7%	8.2	❌
Broome County	315.0	15.7%	65.2%	7.4	✅
Cattaraugus County	197.2	14.2%	71.7%	7.2	✅
Cayuga County*	241.4	12.8%	71.3%	6.5	✅
Chautauqua County	271.4	15.6%	69.3%	5.8	✅
Chemung County	192.9	14.0%	68.3%	6.9	✅
Chenango County	183.4	13.8%	74.5%	6.6	✅
Clinton County*	157.3	13.6%	66.5%	5.9	✅
Columbia County	145.5	14.8%	73.7%	6.9	✅
Cortland County	89.5	13.6%	65.6%	6.3	✅
Delaware County	193.1	17.1%	73.9%	6.6	✅
Dutchess County	203.7	20.0%	68.8%	7.9	✅
Erie County	427.5	14.9%	64.6%	6.8	✅
Essex County*	166.8	12.6%	75.4%	3.6	✅
Franklin County*	183.5	13.7%	71.4%	6.8	✅
Fulton County*	204.1	14.0%	70.7%	6.1	✅
Genesee County*	220.0	11.6%	72.3%	7.1	✅
Greene County*	225.0	17.7%	74.8%	6.6	✅
Hamilton County*	74.3	13.7%	86.7%	5.2	✅
Herkimer County*	210.9	11.5%	73.6%	6.2	✅
Jefferson County*	212.6	13.8%	56.5%	6.6	✅
Kings County	586.2	34.2%	30.1%	7.9	❌
Lewis County*	131.6	11.9%	80.8%	5.6	✅
Livingston County*	122.6	15.1%	74.7%	6.7	✅
Madison County*	151.4	11.6%	77.4%	6.2	✅
Monroe County	326.3	16.4%	63.5%	6.3	✅
Montgomery County*	142.3	16.4%	68.4%	6.3	✅
Nassau County	143.7	20.8%	80.7%	8.5	⚠️

New York County	586.4	24.2%	24.1%	9.0	⊘
Niagara County*	394.6	12.6%	70.7%	8.5	⚠
Oneida County*	283.3	14.6%	67.5%	6.3	✅
Onondaga County	317.6	14.9%	64.7%	5.2	✅
Ontario County	153.3	12.4%	73.8%	6.7	✅
Orange County	244.9	21.8%	66.9%	6.2	✅
Orleans County*	171.9	13.6%	75.6%	7.2	✅
Oswego County*	211.6	15.4%	73.7%	6.3	✅
Otsego County	148.1	16.2%	72.2%	6.3	✅
Putnam County	48.4	17.2%	81.8%	8.0	✅
Queens County	597.8	31.6%	44.8%	7.0	⚠
Rensselaer County†	305.0	14.3%	62.8%	6.9	✅
Richmond County	597.9	24.3%	69.3%	7.2	⚠
Rockland County	121.3	26.7%	68.3%	8.5	⚠
St. Lawrence County*	146.0	15.4%	73.0%	7.3	✅
Saratoga County†	102.6	11.0%	72.2%	7.0	✅
Schenectady County	429.5	14.8%	65.7%	6.8	✅
Schoharie County	89.5	14.2%	75.8%	6.0	✅
Schuyler County	71.1	15.2%	75.2%	6.3	✅
Seneca County*	201.4	11.5%	73.9%	6.5	✅
Steuben County	177.5	12.3%	72.7%	4.7	✅
Suffolk County	124.0	22.3%	80.6%	6.6	✅
Sullivan County*	261.2	17.8%	68.3%	7.3	✅
Tioga County	115.2	11.3%	76.9%	7.4	✅
Tompkins County	122.8	20.6%	54.9%	6.5	✅
Ulster County	173.9	19.8%	68.3%	7.5	✅
Warren County*	138.3	14.3%	70.7%	6.3	✅
Washington County*	141.1	14.7%	74.0%	6.5	✅
Wayne County*	178.4	11.7%	76.4%	6.7	✅
Westchester County	220.6	23.5%	61.4%	9.0	⚠
Wyoming County	111.0	10.1%	76.9%	6.8	✅
Yates County*	76.0	14.9%	80.0%	6.1	✅

Data sources: Uniform Crime Reporting – Federal Bureau of Investigation, 2014 and 2016; Comprehensive Housing Affordability Strategy (CHAS) data, 2013-2017; American Community Survey, 2015-2019 5-year estimates; Environmental Public Health Tracking Network, 2016.

Note: Rural counties are in bold font. * = NBRC distressed county; † = NBRC transitional county; ‡ = NBRC attainment county. If a cell is highlighted in light blue, the county in that row is in the bottom 10% of all counties in NBRC states (ME, NH, NY, VT) for that measure.

Performance indicator key: ✅ = county is in bottom 10% of all counties for fewer than 2 measures; ⚠ = county is in bottom 10% of all counties for 2-3 measures; ⊘ = county is in bottom 10% of all counties for 4 or more measures.

SECTION VII. Death Rates per 100,000 Population, Cause Specific

Geography	Length of life	Injury-related deaths	Injury-related death subcategories				County performance indicator
	Premature death (years of potential life lost before age 75, # per 100,000)	All injury deaths (# per 100,000)	Suicide deaths (# per 100,000)	Firearm deaths (# per 100,000)	Drug overdose deaths (# per 100,000)	Motor vehicle crash deaths (# per 100,000)	
United States	6,906.6	72.3	13.8	11.9	21.2	11.4	
New York	5,406.3	50.5	8.1	4.2	19.1	5.7	
Albany County	6,039.4	48.4	9.7	5.5	17.1	5.1	✓
Allegany County	7,433.4	58.6	15.6	12.4	12.9	7.9	✓
Bronx County	6,710.5	49.2	5.4	4.3	27.0	3.6	✓
Broome County	7,178.9	71.3	11.0	5.1	26.9	6.2	✓
Cattaraugus County	7,626.7	69.7	15.8	9.1	18.2	9.9	✓
Cayuga County*	6,392.1	59.9	10.5	3.1	20.3	10.1	✓
Chautauqua County	7,431.9	73.9	12.9	8.1	25.5	7.5	✓
Chemung County	8,545.3	85.1	12.5	6.1	32.0	7.3	✓
Chenango County	7,735.5	56.2	13.0	9.2	9.1	13.6	✓
Clinton County*	6,166.2	54.6	12.2	6.4	12.0	6.2	✓
Columbia County	6,700.3	74.4	15.7	9.6	22.2	12.2	✓
Cortland County	7,085.1	62.1	12.3	4.2	23.0	9.5	✓
Delaware County	7,171.4	71.5	15.6	9.8	18.7	12.9	✓
Dutchess County	5,892.9	64.6	11.9	6.0	29.2	8.1	✓
Erie County	6,828.3	70.0	10.9	7.3	24.3	5.1	✓
Essex County*	5,654.9	61.5	12.5	6.4	8.9	6.8	✓
Franklin County*	6,137.4	55.0	11.2	5.5	13.2	7.0	✓
Fulton County*	6,887.4	57.3	15.2	7.4	13.7	11.7	✓
Genesee County*	7,581.0	73.8	10.8	4.1	28.4	10.3	✓
Greene County*	8,215.9	77.5	18.8	6.7	24.6	14.1	✓
Hamilton County*	6,209.3	48.7	NA	NA	NA	NA	✓
Herkimer County*	6,297.6	55.0	11.7	6.1	13.5	7.3	✓
Jefferson County*	6,983.4	63.6	13.4	6.5	15.5	9.2	✓
Kings County	5,068.3	35.3	5.3	3.9	13.1	3.6	✓
Lewis County*	7,110.2	71.4	20.5	9.8	29.0	9.6	✓
Livingston County*	6,208.8	62.4	12.4	7.2	20.0	9.4	✓
Madison County*	5,103.1	55.1	11.7	6.2	11.8	9.4	✓
Monroe County	6,582.8	75.4	10.5	6.6	29.4	5.9	✓
Montgomery County*	7,406.4	64.0	11.9	7.7	16.2	9.8	✓
Nassau County	4,150.5	42.8	6.4	2.5	15.3	5.9	✓

New York County	3,938.8	38.3	7.2	1.5	17.5	2.5	✓
Niagara County*	7,249.7	67.8	12.7	6.9	23.1	8.3	✓
Oneida County*	7,391.8	69.1	11.1	6.2	22.9	8.1	✓
Onondaga County	6,398.3	72.6	10.6	7.3	23.3	7.3	✓
Ontario County	6,090.7	61.9	13.4	5.8	20.3	7.2	✓
Orange County	5,739.1	57.8	8.6	5.8	26.7	8.2	✓
Orleans County*	7,796.0	56.6	9.8	7.3	13.9	13.1	✓
Oswego County*	7,431.3	67.2	14.6	6.1	21.8	13.1	✓
Otsego County	6,389.1	64.7	11.2	7.0	15.1	6.6	✓
Putnam County	4,470.8	50.4	6.8	2.6	24.6	4.9	✓
Queens County	4,307.3	34.0	5.9	2.1	11.8	4.1	✓
Rensselaer County†	6,458.6	52.2	11.4	4.0	14.4	6.6	✓
Richmond County	5,541.3	48.3	6.8	3.1	25.1	4.1	✓
Rockland County	4,362.8	42.1	6.7	2.5	14.2	4.7	✓
St. Lawrence County*	6,690.7	52.7	10.1	5.9	8.3	8.7	✓
Saratoga County†	4,783.5	45.6	11.7	5.5	9.6	7.0	✓
Schenectady County	6,690.2	56.2	9.3	4.5	21.4	6.2	✓
Schoharie County	6,093.6	56.4	14.1	9.0	10.7	13.2	✓
Schuyler County	6,239.1	55.6	19.3	NA	NA	10.2	✓
Seneca County*	7,782.1	77.7	11.9	NA	13.6	9.9	✓
Steuben County	6,660.0	58.9	12.8	7.9	14.3	9.6	✓
Suffolk County	5,652.5	63.9	8.5	3.7	26.9	9.2	✓
Sullivan County*	7,978.4	88.5	12.6	9.6	43.7	13.6	✓
Tioga County	5,948.1	64.1	12.0	7.8	17.2	9.6	✓
Tompkins County	5,152.7	57.4	12.8	3.3	18.7	7.0	✓
Ulster County	6,073.4	70.8	13.4	6.1	29.5	9.1	✓
Warren County*	6,689.1	51.9	12.0	7.8	10.4	8.8	✓
Washington County*	6,537.0	53.9	10.4	5.5	9.2	11.3	✓
Wayne County*	6,852.6	67.8	12.5	5.1	15.5	14.1	✓
Westchester County	4,221.0	41.2	6.7	2.6	14.5	3.9	✓
Wyoming County	6,046.1	67.7	14.5	9.9	19.1	8.8	✓
Yates County*	7,689.6	68.2	10.3	NA	18.7	6.9	✓

Data source: National Center for Health Statistics – Mortality Files, 2013-2019.

Note: Rural counties are in bold font. * = NBRC distressed county; † = NBRC transitional county; ‡ = NBRC attainment county. If a cell is highlighted in light blue, the county in that row is in the bottom 10% of all counties in NBRC states (ME, NH, NY, VT) for that measure. NA = Not available.

Performance indicator key: ✓ = county is in bottom 10% of all counties for fewer than 2 measures; △ = county is in bottom 10% of all counties for 2-3 measures; ⊗ = county is in bottom 10% of all counties for 4 or more measures.

SECTION VIII. Top Five Causes of Death

Geography	Top five causes of death (Age-adjusted rate of death per 100,000 population)					County performance indicator
	Heart disease	Cancer	Accidents (unintentional injuries)	Chronic lower respiratory diseases	Stroke (cerebrovascular diseases)	
United States	164.8	152.3	47.5	40.2	37.3	
New York	173.7	141.5	33.7	28.6	24.9	
Albany County	167.3	155.1	23.6	32.2	26.6	✓
Allegany County	187.6	169.3	38.5	67.5	23.6	✓
Bronx County	192.5	141.4	35.4	24.2	25.4	✓
Broome County	170.6	158.0	53.1	44.7	30.0	✓
Cattaraugus County	231.2	157.4	50.3	58.3	33.0	⚠
Cayuga County*	176.5	159.3	45.4	43.2	32.9	✓
Chautauqua County	199.2	165.6	52.1	47.3	35.0	✓
Chemung County	208.1	180.7	59.0	50.6	37.5	⚠
Chenango County	256.7	159.8	39.6	57.8	33.4	⚠
Clinton County*	157.9	158.3	34.9	48.9	32.3	✓
Columbia County	176.7	151.0	44.6	42.1	23.5	✓
Cortland County	157.5	154.6	48.7	45.9	33.1	✓
Delaware County	194.8	159.3	52.7	47.7	31.0	✓
Dutchess County	174.7	141.2	46.4	36.8	23.6	✓
Erie County	175.6	164.9	46.8	39.3	35.6	✓
Essex County*	145.4	174.3	34.4	43.8	22.9	✓
Franklin County*	172.2	167.2	37.3	52.3	26.5	✓
Fulton County*	197.9	164.1	31.4	54.1	27.9	✓
Genesee County*	168.2	163.2	52.8	42.7	29.2	✓
Greene County*	195.8	172.2	43.5	33.7	26.7	✓
Hamilton County*	159.7	199.4	NA	35.1	21.5	✓
Herkimer County*	178.2	158.5	30.5	49.7	26.7	✓
Jefferson County*	189.0	174.4	48.7	49.6	40.2	✓
Kings County	195.1	131.6	22.8	16.5	18.7	✓
Lewis County*	168.7	154.0	49.5	34.9	33.9	✓
Livingston County*	140.5	167.7	45.4	42.8	31.4	✓
Madison County*	137.8	150.1	41.0	47.1	31.3	✓
Monroe County	141.3	153.1	50.3	26.1	30.3	✓
Montgomery County*	207.1	165.8	43.1	44.3	27.7	✓
Nassau County	185.5	127.8	30.9	20.8	23.1	✓

New York County	136.4	122.2	23.3	16.3	17.4	✓
Niagara County*	217.9	168.3	47.1	50.3	33.3	✓
Oneida County*	188.8	165.7	48.8	48.2	30.2	✓
Onondaga County	153.7	151.3	49.6	35.6	30.6	✓
Ontario County	141.3	158.6	40.4	39.9	29.6	✓
Orange County	165.3	151.6	46.1	37.2	26.4	✓
Orleans County*	194.2	179.9	40.5	57.7	35.1	✓
Oswego County*	190.3	170.4	48.4	50.7	31.6	✓
Otsego County	174.2	148.7	37.7	41.4	24.8	✓
Putnam County	162.6	146.0	41.2	26.1	21.3	✓
Queens County	175.7	121.6	21.9	16.6	20.9	✓
Rensselaer County†	180.7	161.0	25.3	49.0	28.4	✓
Richmond County	239.5	150.5	35.2	27.5	15.5	✓
Rockland County	144.3	123.0	29.2	25.9	24.2	✓
St. Lawrence County*	190.0	159.6	38.0	52.3	30.1	✓
Saratoga County†	147.7	153.6	22.3	40.5	29.7	✓
Schenectady County	184.9	154.8	21.5	39.6	31.7	✓
Schoharie County	162.7	160.6	29.4	42.2	25.1	✓
Schuyler County	161.9	182.0	36.0	55.9	42.5	⚠
Seneca County*	158.9	168.8	51.1	47.4	29.1	✓
Steuben County	185.5	169.4	40.1	52.5	31.5	✓
Suffolk County	174.9	142.1	49.0	29.8	25.1	✓
Sullivan County*	170.1	164.8	67.6	45.5	28.4	✓
Tioga County	167.3	143.7	45.8	35.8	25.0	✓
Tompkins County	135.5	142.4	43.1	38.0	29.9	✓
Ulster County	167.8	155.0	44.3	38.8	26.7	✓
Warren County*	155.7	172.0	27.4	54.6	29.8	✓
Washington County*	160.9	173.1	31.8	60.3	29.2	✓
Wayne County*	152.9	172.8	46.8	41.4	30.8	✓
Westchester County	144.1	125.2	28.0	21.6	22.5	✓
Wyoming County	178.6	162.9	42.3	47.4	30.6	✓
Yates County*	147.4	158.0	49.8	53.9	38.3	✓

Data source: National Center for Health Statistics – Mortality Files, 2015-2019.

Note: Rural counties are in bold font. * = NBRC distressed county; † = NBRC transitional county; ‡ = NBRC attainment county. If a cell is highlighted in light blue, the county in that row is in the bottom 10% of all counties in NBRC states (ME, NH, NY, VT) for that measure. NA = Not available.

Performance indicator key: ✓ = county is in bottom 10% of all counties for fewer than 2 measures; ⚠ = county is in bottom 10% of all counties for 2-3 measures; ⓧ = county is in bottom 10% of all counties for 4 or more measures.

SECTION IX. Internet Access

Geography	Household access to the internet			Household access to broadband	County performance indicator
	Access with an internet subscription (%)	Access without an internet subscription ¹ (%)	No internet access (%)	Access with broadband of any type (%)	
United States	86.6%	2.5%	10.9%	86.4%	
New York	83.2%	2.9%	13.9%	82.8%	
Albany County	83.9%	3.4%	12.7%	83.5%	✓
Allegany County	76.2%	3.4%	20.3%	75.1%	✓
Bronx County	75.9%	4.2%	19.9%	75.7%	✓
Broome County	82.2%	3.0%	14.8%	81.8%	✓
Cattaraugus County	72.4%	4.1%	23.4%	71.7%	⚠
Cayuga County*	80.4%	2.8%	16.8%	79.7%	✓
Chautauqua County	77.0%	4.4%	18.6%	76.2%	✓
Chemung County	80.9%	3.6%	15.5%	80.4%	✓
Chenango County	79.0%	4.4%	16.6%	78.1%	✓
Clinton County*	80.2%	3.7%	16.1%	79.8%	✓
Columbia County	80.5%	3.0%	16.6%	79.7%	✓
Cortland County	74.4%	8.6%	17.1%	73.8%	✓
Delaware County	76.6%	3.5%	19.9%	76.0%	✓
Dutchess County	88.4%	2.2%	9.4%	88.1%	✓
Erie County	81.5%	3.1%	15.4%	81.2%	✓
Essex County*	79.0%	4.9%	16.1%	78.1%	✓
Franklin County*	74.5%	4.3%	21.3%	73.9%	⚠
Fulton County*	77.9%	3.2%	18.9%	77.0%	✓
Genesee County*	81.0%	2.5%	16.5%	80.6%	✓
Greene County*	74.3%	3.5%	22.2%	73.5%	⚠
Hamilton County*	75.8%	7.3%	16.9%	75.2%	✓
Herkimer County*	80.6%	3.1%	16.3%	79.9%	✓
Jefferson County*	84.2%	2.3%	13.5%	83.8%	✓
Kings County	80.3%	2.4%	17.3%	80.0%	✓
Lewis County*	79.4%	2.0%	18.6%	78.4%	✓
Livingston County*	84.2%	3.3%	12.5%	83.7%	✓
Madison County*	82.0%	3.8%	14.2%	81.7%	✓
Monroe County	84.5%	2.9%	12.6%	84.0%	✓
Montgomery County*	76.9%	3.7%	19.4%	76.0%	✓
Nassau County	90.0%	2.0%	8.0%	89.8%	✓

New York County	85.4%	3.1%	11.5%	85.2%	✓
Niagara County*	80.5%	2.5%	17.0%	79.7%	✓
Oneida County*	81.3%	2.9%	15.9%	80.7%	✓
Onondaga County	80.5%	4.7%	14.8%	80.2%	✓
Ontario County	85.3%	2.5%	12.3%	84.8%	✓
Orange County	80.3%	5.6%	14.1%	80.1%	✓
Orleans County*	81.4%	2.0%	16.6%	80.7%	✓
Oswego County*	85.0%	2.4%	12.6%	84.5%	✓
Otsego County	80.1%	3.1%	16.9%	79.3%	✓
Putnam County	92.2%	1.9%	6.0%	91.8%	✓
Queens County	83.7%	2.1%	14.2%	83.5%	✓
Rensselaer County†	85.3%	2.9%	11.8%	85.0%	✓
Richmond County	82.2%	2.8%	15.0%	81.7%	✓
Rockland County	82.6%	2.4%	15.0%	82.2%	✓
St. Lawrence County*	80.5%	2.7%	16.8%	80.0%	✓
Saratoga County†	89.6%	2.3%	8.1%	89.3%	✓
Schenectady County	83.9%	3.8%	12.3%	83.8%	✓
Schoharie County	76.0%	4.0%	20.0%	75.0%	⚠
Schuyler County	80.0%	3.4%	16.6%	78.8%	✓
Seneca County*	80.1%	2.3%	17.6%	79.6%	✓
Steuben County	79.0%	2.7%	18.3%	78.2%	✓
Suffolk County	88.6%	2.7%	8.7%	88.4%	✓
Sullivan County*	80.8%	2.6%	16.7%	80.2%	✓
Tioga County	84.1%	1.6%	14.3%	83.3%	✓
Tompkins County	85.6%	5.5%	8.9%	85.3%	✓
Ulster County	86.5%	2.2%	11.3%	86.1%	✓
Warren County*	83.8%	2.5%	13.7%	83.1%	✓
Washington County*	80.2%	2.9%	16.9%	79.7%	✓
Wayne County*	81.5%	2.9%	15.6%	80.7%	✓
Westchester County	86.4%	3.2%	10.4%	86.2%	✓
Wyoming County	78.4%	3.8%	17.8%	77.3%	✓
Yates County*	75.9%	1.6%	22.5%	75.4%	✓

Data source: American Community Survey, 2015-2019 5-year estimates.

Note: Rural counties are in bold font. * = NBRC distressed county; † = NBRC transitional county; ‡ = NBRC attainment county. If a cell is highlighted in light blue, the county in that row is in the bottom 10% of all counties in NBRC states (ME, NH, NY, VT) for that measure. For this table, only two measures (“No internet access” and “Access with broadband of any type”) were used to assess the bottom 10% of all counties in NBRC states. The “Household access to the internet” measures sum to 100%.

¹Respondents reported accessing the internet without paying a cell phone company or internet service provider.

Performance indicator key: ✓ = county is in bottom 10% of all counties for fewer than 2 measures; ⚠ = county is in bottom 10% of all counties for 2-3 measures; ⓧ = county is in bottom 10% of all counties for 4 or more measures.

SECTION X. Summary of Health Measures

County	Access to healthcare	Health outcomes	Health behaviors and access	Community safety and physical environment	Death rates per 100,000 population	Top five causes of death	Internet access
Albany County	✓	✓	✓	⚠	✓	✓	✓
Allegany County	✓	✓	✓	✓	✓	✓	✓
Bronx County	⚠	✓	✗	✗	✓	✓	✓
Broome County	✓	✓	✓	✓	✓	✓	✓
Cattaraugus County	✓	✗	⚠	✓	✓	⚠	⚠
Cayuga County*	⚠	✓	✓	✓	✓	✓	✓
Chautauqua County	✓	✓	✓	✓	✓	✓	✓
Chemung County	✓	⚠	⚠	✓	✓	⚠	✓
Chenango County	✓	⚠	✓	✓	✓	⚠	✓
Clinton County*	✓	✓	✓	✓	✓	✓	✓
Columbia County	✓	✓	✓	✓	✓	✓	✓
Cortland County	✓	✓	✓	✓	✓	✓	✓
Delaware County	✓	✓	✓	✓	✓	✓	✓
Dutchess County	✓	✓	✓	✓	✓	✓	✓
Erie County	✓	✓	✓	✓	✓	✓	✓
Essex County*	✓	✓	✓	✓	✓	✓	✓
Franklin County*	✓	✓	⚠	✓	✓	✓	⚠
Fulton County*	✓	✓	⚠	✓	✓	✓	✓
Genesee County*	✓	✓	✓	✓	✓	✓	✓
Greene County*	⚠	✓	✓	✓	✓	✓	⚠
Hamilton County*	⚠	✓	⚠	✓	✓	✓	✓
Herkimer County*	⚠	✓	⚠	✓	✓	✓	✓
Jefferson County*	✓	✓	⚠	✓	✓	✓	✓
Kings County	⚠	✓	✓	✗	✓	✓	✓
Lewis County*	✓	✓	✓	✓	✓	✓	✓
Livingston County*	✓	✓	✓	✓	✓	✓	✓
Madison County*	✓	✓	✓	✓	✓	✓	✓
Monroe County	✓	✓	✓	✓	✓	✓	✓
Montgomery County*	⚠	✓	⚠	✓	✓	✓	✓
Nassau County	✓	✓	✓	⚠	✓	✓	✓

New York County	✓	✓	⚠	⊘	✓	✓	✓
Niagara County*	✓	✓	✓	⚠	✓	✓	✓
Oneida County*	✓	✓	✓	✓	✓	✓	✓
Onondaga County	✓	✓	✓	✓	✓	✓	✓
Ontario County	✓	✓	✓	✓	✓	✓	✓
Orange County	✓	✓	✓	✓	✓	✓	✓
Orleans County*	⊘	⊘	⊘	✓	✓	✓	✓
Oswego County*	✓	✓	✓	✓	✓	✓	✓
Otsego County	✓	✓	✓	✓	✓	✓	✓
Putnam County	✓	✓	✓	✓	✓	✓	✓
Queens County	✓	✓	✓	⚠	✓	✓	✓
Rensselaer County†	✓	✓	✓	✓	✓	✓	✓
Richmond County	✓	✓	✓	⚠	✓	✓	✓
Rockland County	✓	✓	✓	⚠	✓	✓	✓
St. Lawrence County*	✓	✓	✓	✓	✓	✓	✓
Saratoga County†	✓	✓	✓	✓	✓	✓	✓
Schenectady County	✓	✓	✓	✓	✓	✓	✓
Schoharie County	⚠	✓	✓	✓	✓	✓	⚠
Schuyler County	✓	✓	✓	✓	✓	⚠	✓
Seneca County*	⚠	✓	⚠	✓	✓	✓	✓
Steuben County	✓	✓	✓	✓	✓	✓	✓
Suffolk County	✓	✓	✓	✓	✓	✓	✓
Sullivan County*	⚠	✓	⚠	✓	✓	✓	✓
Tioga County	⚠	✓	✓	✓	✓	✓	✓
Tompkins County	✓	✓	✓	✓	✓	✓	✓
Ulster County	✓	✓	✓	✓	✓	✓	✓
Warren County*	✓	✓	✓	✓	✓	✓	✓
Washington County*	⚠	✓	✓	✓	✓	✓	✓
Wayne County*	⊘	✓	⚠	✓	✓	✓	✓
Westchester County	✓	✓	✓	⚠	✓	✓	✓
Wyoming County	⚠	✓	✓	✓	✓	✓	✓
Yates County*	✓	⚠	⚠	✓	✓	✓	✓

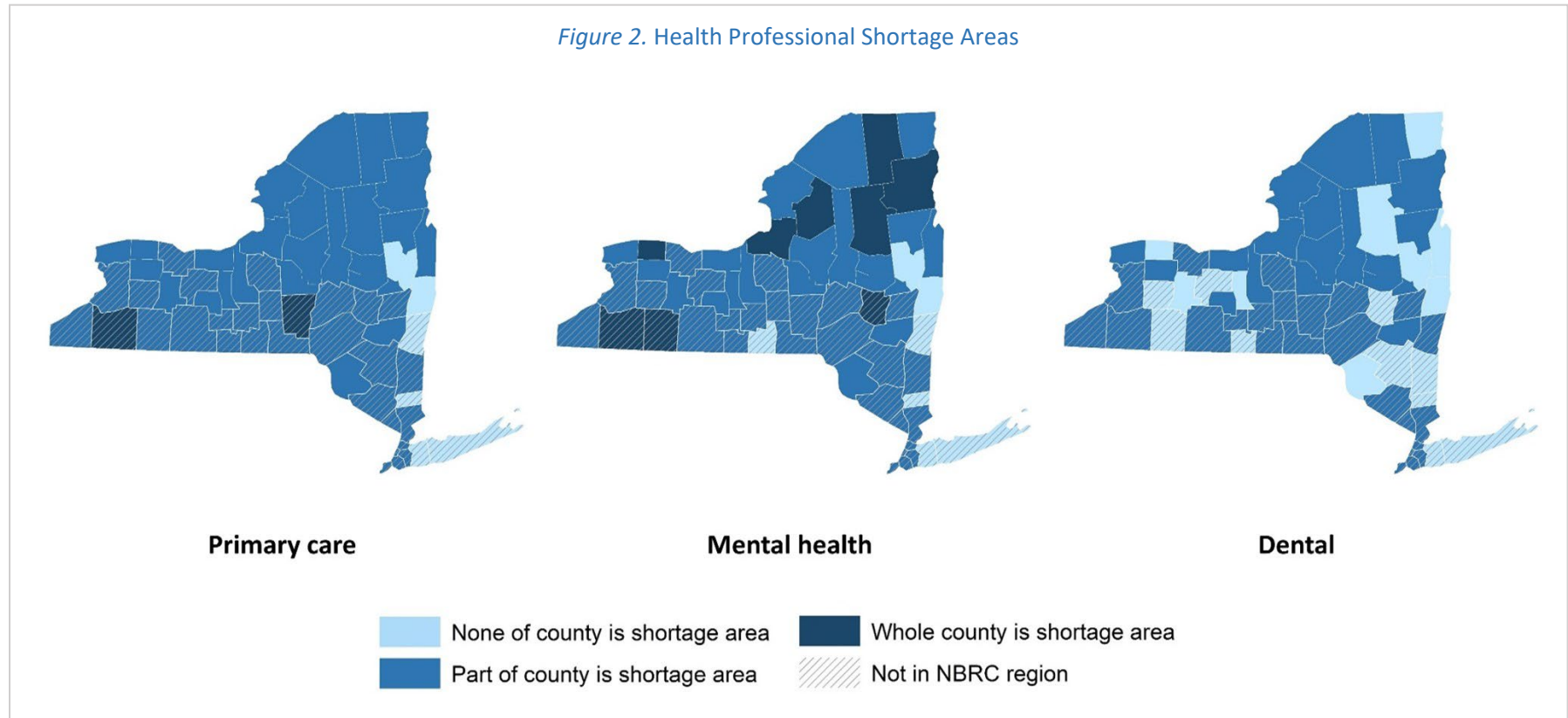
Note: Rural counties are in bold font; * = NBRC distressed county; † = NBRC transitional county; ‡ = NBRC attainment county.

Performance indicator key: ✓ = county is in bottom 10% of all counties for fewer than 2 measures; ⚠ = county is in bottom 10% of all counties for 2-3 measures; ⊘ = county is in bottom 10% of all counties for 4 or more measures.

SECTION XI. Health Professional Shortage Areas

Health Professional Shortage Areas reflect areas and populations that experience a shortage of health professionals in three domains: primary care, mental health, and dental health. At the county level, Health Professional Shortage Areas indicate whether all, part (“partial”), or none of the county is a shortage area. The Health Resources & Services Administration designates these areas on an annual basis.

- Fifty-four New York counties are designated *partial* primary care professional shortage areas and two counties are designated as *whole* primary care professional shortage areas. Six counties have no primary care health professional shortage areas (Figure 2, left).
- Forty-six New York counties are designated *partial* mental health professional shortage areas, and nine counties are designated *whole* mental health professional shortage areas. Seven counties have no designated mental health professional shortage areas (Figure 2, middle).
- Forty-three New York counties are designated *partial* dental health professional shortage areas and 19 counties have no dental health professional shortage areas. There are no counties designated as *whole* dental health professional shortage areas (Figure 2, right).



Data source: Health Resources & Services Administration, Area Health Resources Files, 2020-2021. *Note:* For a map of the state with county names, see Appendix I.

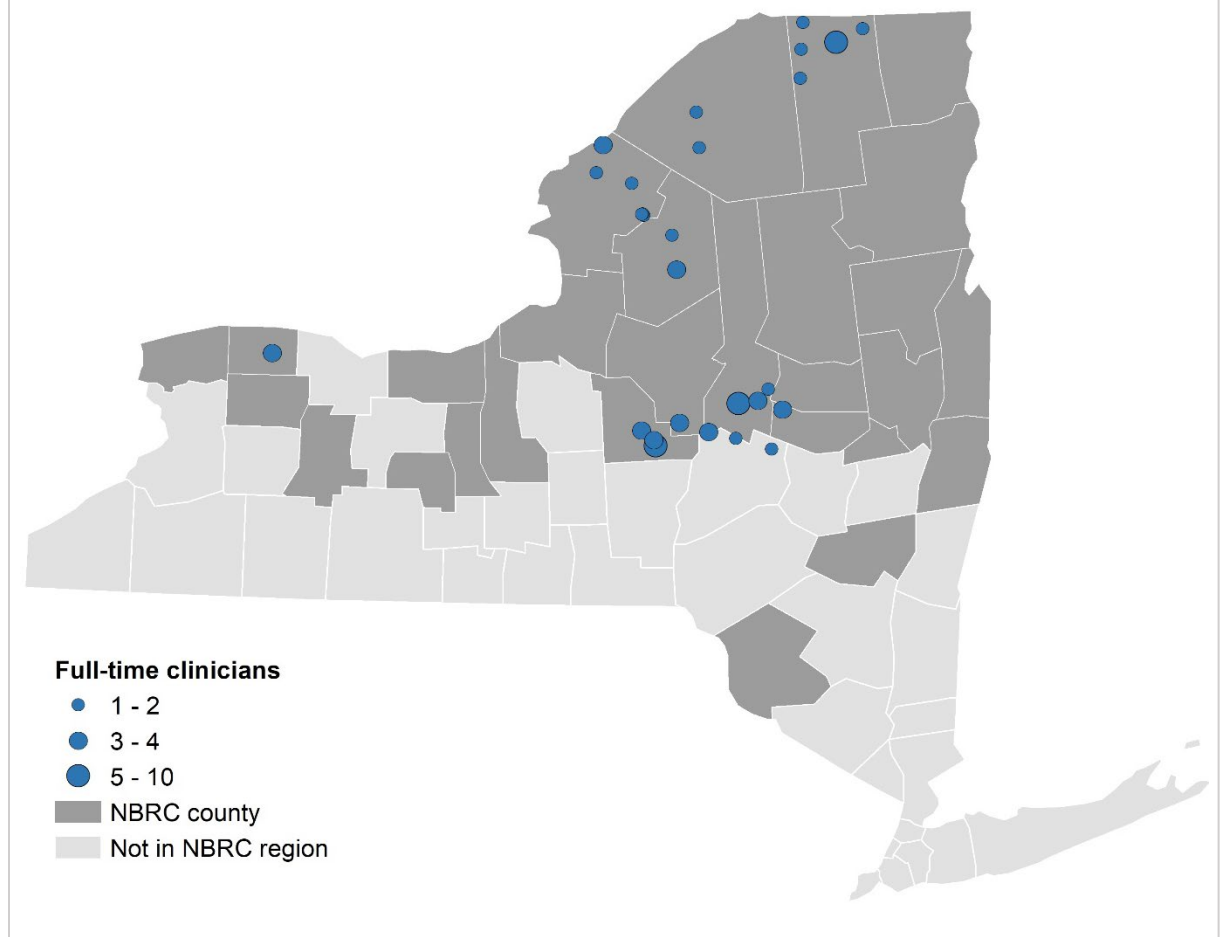
SECTION XII. Rural Health Clinics

Rural Health Clinics provide primary care services and preventative services in underserved rural communities. Centers for Medicare & Medicaid Services (CMS) certified Rural Health Clinics must be located in a rural underserved area, have a team of physician and non-physician clinicians, and provide outpatient primary care services and basic laboratory services. Rural Health Clinics receive enhanced reimbursement for Medicare and Medicaid services.

As of March 2021, New York had 27 Rural Health Clinic locations:

- 25 Rural Health Clinics are located in Northern Border Region counties
- 23 Rural Health Clinics are hospital based
- Clinician full-time equivalents (FTE):
 - 1 FTE is equal to a single person working 40 hours a week
 - Clinicians: physicians, physician assistants, and nurse practitioners
 - New York Rural Health Clinics range from 0.8 to 9.8 clinician FTEs

Figure 3. Rural Health Clinic locations and clinician staffing levels



Data source: Centers for Medicare & Medicaid Services (CMS), Provider of Services file, March 2021.

Note: For a map of the state with county names, see Appendix I.

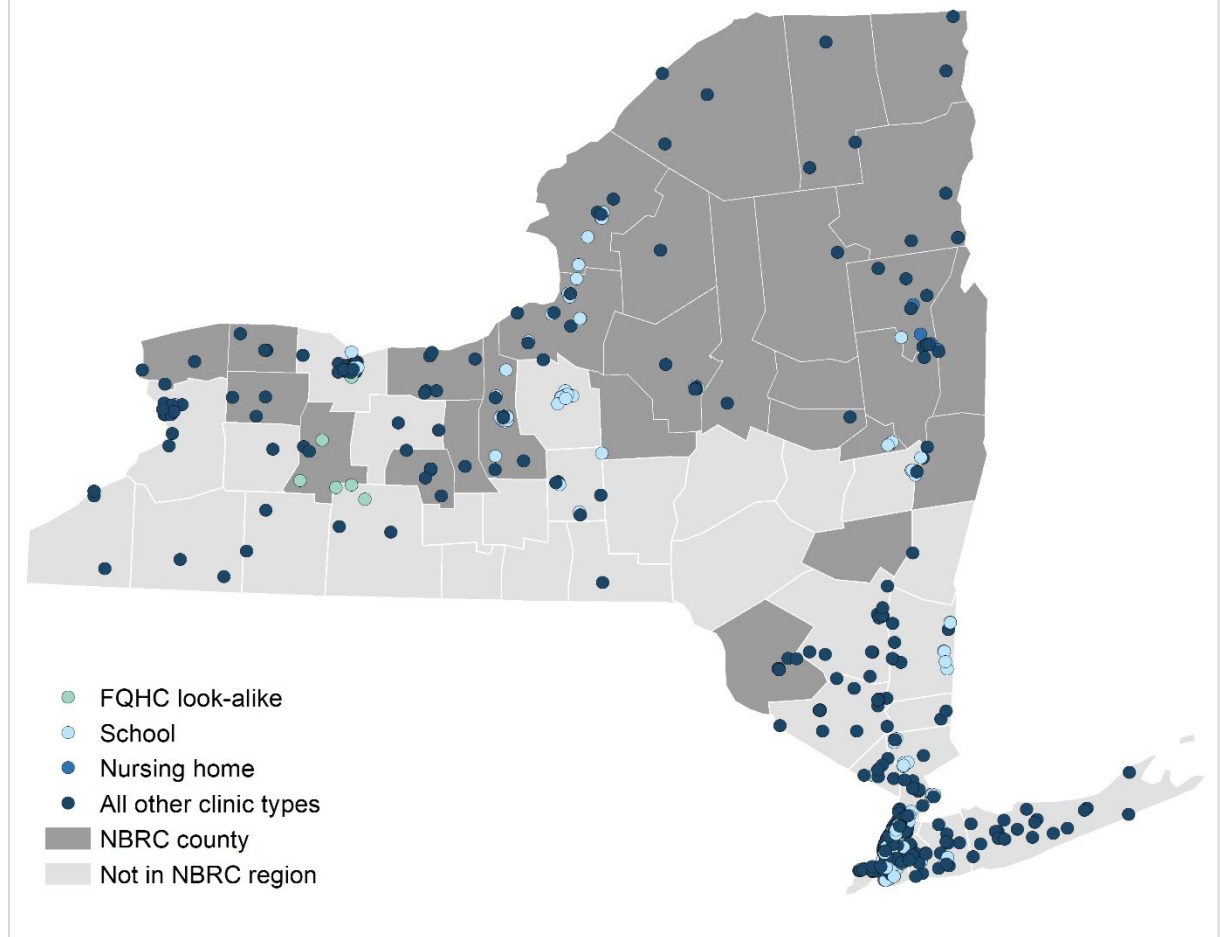
SECTION XIII. Federally Qualified Health Centers

Federally Qualified Health Centers (FQHCs) are community health centers that provide primary care to underserved populations. Health centers can receive federal grant funding through Section 330 of the Public Health Service Act. Health centers that are look-alikes meet the Health Resources & Services Administration's health center requirements, serve similar populations, but do not receive federal grant funding. The Centers for Medicare & Medicaid Services certify participants in the Health Center program as FQHCs for payment purposes.

As of June 2021, there were 123 FQHCs or look-alikes in New York's Northern Border counties, and 855 total in the state including:

- 16 FQHC look-alikes
- 219 FQHC school clinics
- 7 FQHC nursing home clinic
- 613 other FQHC service delivery clinics

Figure 4. Federally Qualified Health Centers and look-alikes



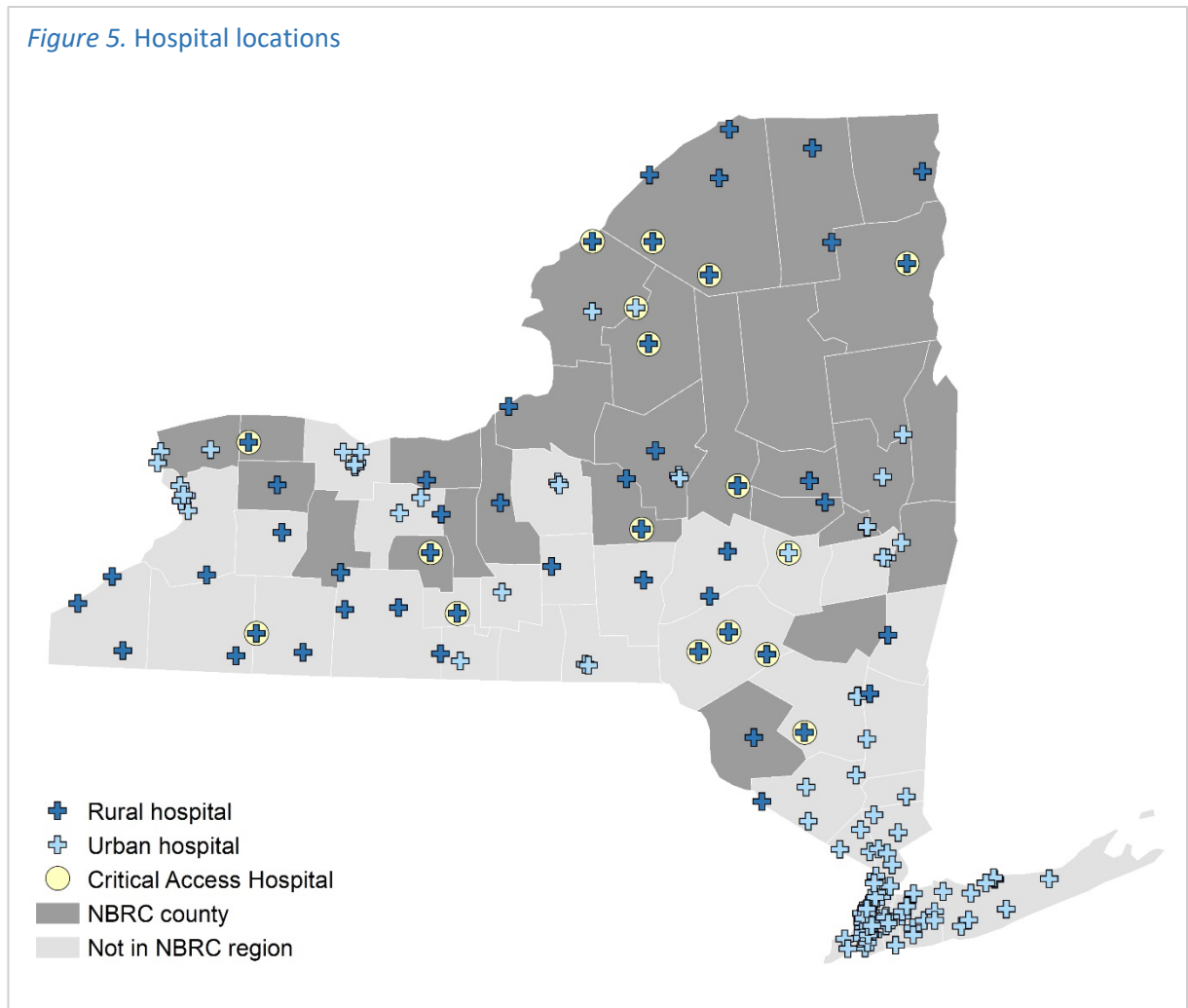
Data source: Health Resources & Services Administration, June 2021.

Note: For a map of the state with county names, see Appendix I.

SECTION XIV. Hospitals

There are 161 general acute hospitals in New York.¹ One hundred and twelve are in urban areas and 49 are in rural areas.² Of the rural hospitals in the state, 15 are Critical Access Hospitals, which is a designation given to eligible rural hospitals by the Centers for Medicare & Medicaid Services. Eligible hospitals must have 25 or fewer acute care inpatient beds, provide 24/7 emergency care, and generally must be located more than 35 miles from another hospital.

Figure 5. Hospital locations



Data sources: Health Resources & Services Administration, 2021.

Note: For a map of the state with county names, see Appendix I.

¹ Includes short-term and Critical Access Hospitals; specialty hospitals (e.g., children's, psychiatric, rehabilitation, transplant, Veterans Affairs) are not captured.

² As defined by the Federal Office of Rural Health Policy, 2020.

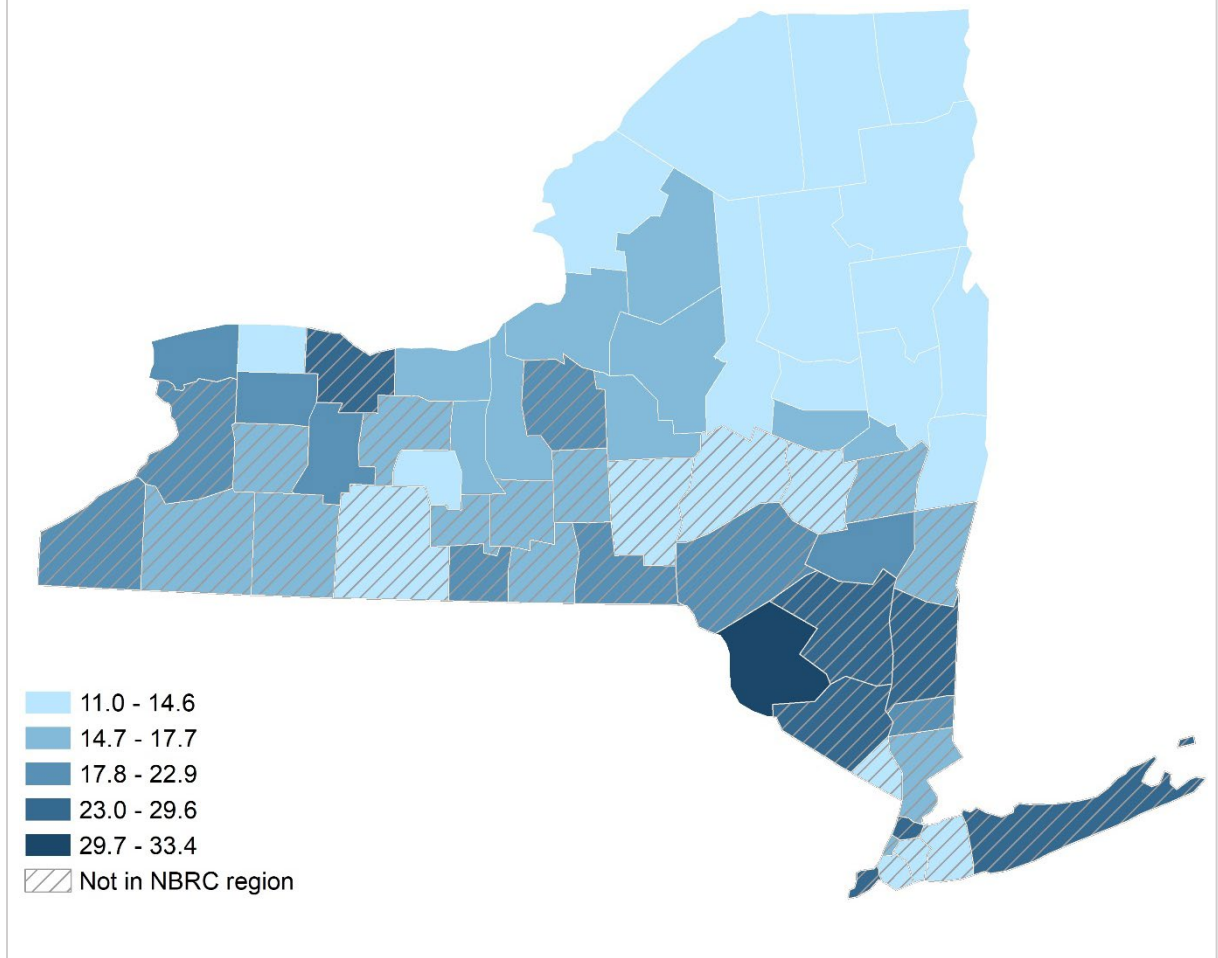
SECTION XV. Drug Poisoning Mortality

New York's 2018 drug poisoning mortality rate was 18.9 per 100,000, lower than the US rate of 20.6 per 100,000 and lower than any other state in the Northern Border region.³

County-level model-based estimates of drug poisoning mortality:⁴

- Lowest in Washington County (11.0 per 100,000)
- Highest in Sullivan County (33.4 per 100,000)

Figure 6. Model-based drug poisoning mortality per 100,000 population, 2018



Data source: National Center for Health Statistics (NCHS), Drug Poisoning Mortality in the United States, 1999-2018. September 2020.

Note: For a map of the state with county names, see Appendix I.

³ Drug poisoning deaths are classified using the International Classification of Diseases, Tenth Revision (ICD-10). Drug-poisoning deaths with the following underlying causes of death are included in the rate: unintentional, suicide, homicide, or undetermined intent. Drug-poisoning deaths include overdose deaths from all types of medications and drugs.

⁴ Model-based death rates are smoothed, county-level crude death rates. These estimates borrow strength across counties to provide stable estimates where data are sparse due to small population sizes. For more information, see the NCHS documentation: <https://www.cdc.gov/nchs/data-visualization/drug-poisoning-mortality/>.

SECTION XVI. Substance Use Treatment

As of August 2021, there were 760 substance use treatment facilities in New York and 4,221 licensed buprenorphine practitioners. Counties in the NBRC region had 117 treatment facilities and 373 buprenorphine practitioners. Of counties in the region, Hamilton County was the only county with no substance use treatment facilities or buprenorphine practitioners. Niagara County had the most treatment facilities (n=19) and Oneida and Schenectady counties were tied for the most buprenorphine practitioners (n=38) among New York's Northern Border counties.

Figure 7. Substance use treatment facilities

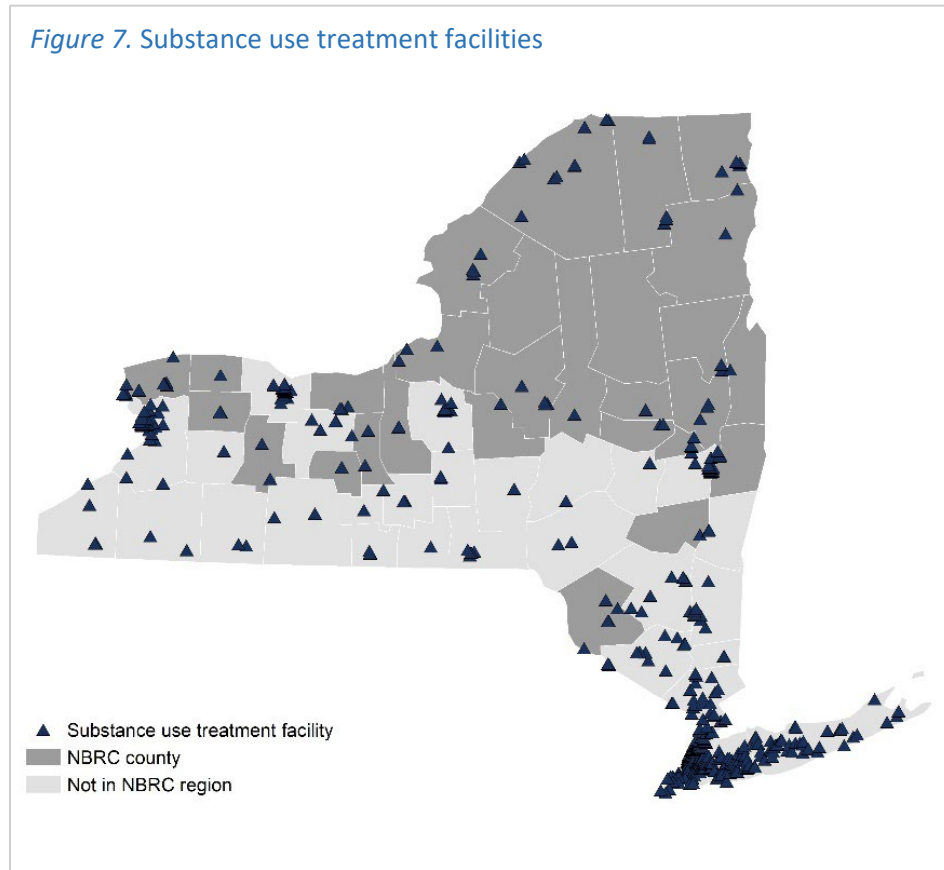
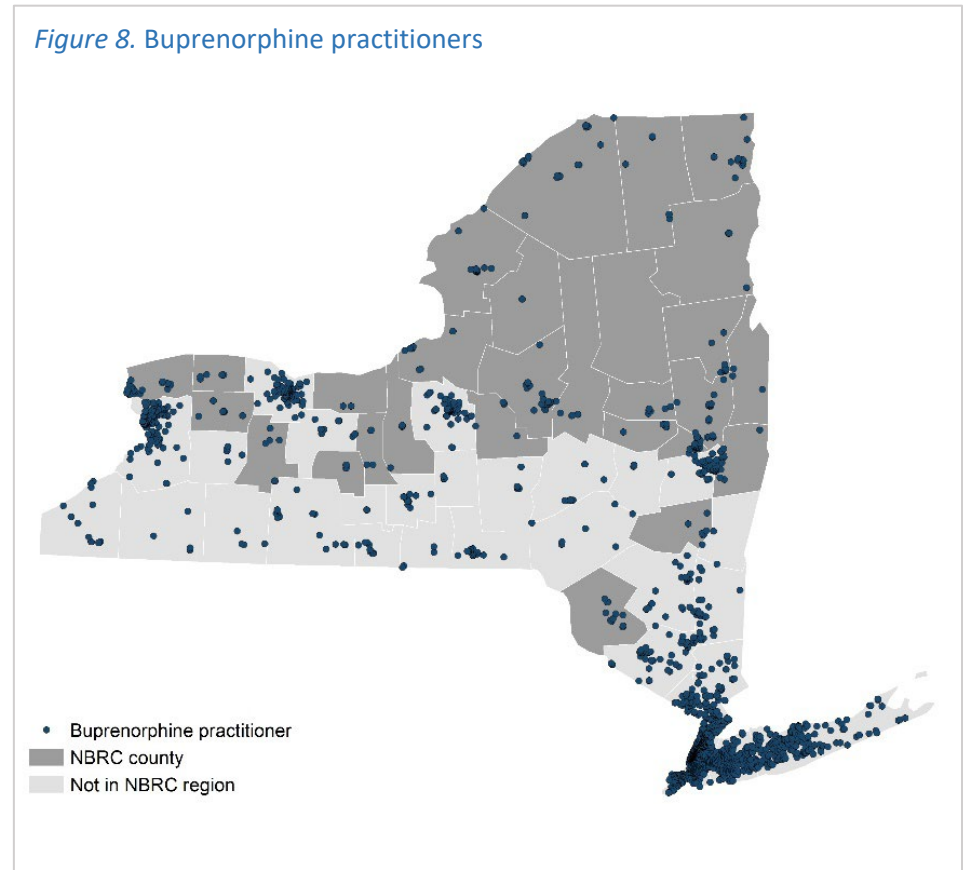


Figure 8. Buprenorphine practitioners



Data source: Substance Abuse and Mental Health Services Administration, Behavioral Health Treatment Locator, 2021.

Note: For a map of the state with county names, see Appendix I.

METHODS NOTE

This chartbook compiled the most recent publicly available data at the county-level and state-level for New York.

We used 2021 published county- and state-level health-related measures, aggregated by the County Health Rankings (Robert Wood Johnson Foundation), along with the additional data sources (see Appendix II. Data Sources for specific data sources). All data sources are publicly available and free of charge.

Rural status of hospitals was based on the definition used by the Federal Office of Rural Health Policy (FORHP). FORHP defines an area as rural if it is not part of a Metropolitan Statistical Area. FORHP considers census tracts (which can be inside Metropolitan counties) with a Rural-Urban Commuting Area code of 4 or greater as rural as well as tracts with RUCA codes 2 or 3 that are at least 400 square miles in area with a population density of no more than 35 people per square mile.⁵

We used the 2013 Rural-Urban Continuum Codes to label counties as metropolitan “urban” (codes 1-3) or nonmetropolitan “rural” (codes 4-9) in this chartbook’s data tables.⁶

To label counties according to the current Northern Border Regional Commission categories (distressed, transitional, attainment counties with an isolated area(s) of distress, attainment counties without an isolated area of distress) we used the March 2021 report, “NBRC Annual Economic & Demographic Research for Fiscal Year 2021: To Determine Categories of Distress within the Northern Boarder Regional Commission Service Areas.”

We identified counties that ranked near the bottom (worst performing) for each health-related measure examined using all 102 counties in Maine, New Hampshire, New York, and Vermont for comparison. We assigned the following county performance indicators based on the number of times each county fell into the bottom 10th percentile ranking for each health-related topic:

✔ = county is in bottom 10% of all counties for fewer than 2 measures

⚠ = county is in bottom 10% of all counties for 2-3 measures

⊘ = county is in bottom 10% of all counties for 4 or more measures

We used ArcGIS to map locations of facilities within each state. NBRC state and county shapefiles were sourced from the US Census Bureau.⁷

⁵ Health Resources & Services Administration (2021, January). "Defining Rural Population." Retrieved July 9, 2021, from <https://www.hrsa.gov/rural-health/about-us/definition/index.html>.

⁶ USDA United States Department of Agriculture Economic Research Service (2003). Rural Urban Continuum Codes (RUCC). Retrieved September 16, 2021, from <https://www.ers.usda.gov/data-products/rural-urban-continuum-codes/>.

⁷ US Census Bureau (2018). Cartographic Boundary Files – Shapefile. Retrieved June 7, 2021, from <https://www.census.gov/geographies/mapping-files/time-series/geo/carto-boundary-file.html>.

APPENDIX II. Data Sources

American Community Survey, US Census Bureau

- Adults with some college completion: Percentage of adults ages 25-44 with some post-secondary education, 2015-2019 5-year estimates
- Children in single-parent households: Percentage of children that live in a household headed by single parent, 2015-2019 5-year estimates
- Employed full time: Population 16 to 64 years old who worked full-time, year-round, 2015-2019 5-year estimates
- Homeownership: Percentage of occupied housing units that are owned, 2015-2019 5-year estimates
- Households with an internet subscription: Percentage of households with an internet subscription, 2015-2019 5-year estimates
- Households with broadband of any type: Percentage of households with broadband of any type, 2015-2019 5-year estimates
- Internet access without a subscription: Percentage of households with internet access without a subscription, 2015-2019 5-year estimates
- No internet access: Percentage of households with no internet access, 2015-2019 5-year estimates
- % Not proficient in English: 2015-2019 5-year estimates

Area Health Resources Files, American Medical Association

- Ratio of population to primary care physicians: Ratio of population to primary care physicians, 2018

Area Health Resources Files, County Level Data

- Health Professional Shortage Areas, 2020-2021

Area Health Resources Files, National Provider Identification file

- Ratio of population to dentists: Ratio of population to dentists, 2019

Behavioral Risk Factor Surveillance System

- Adult smoking: Percentage of adults who are current smokers, 2018
- Excessive drinking: Percentage of adults reporting binge or heavy drinking, 2018
- Frequent mental distress: Percentage of adults reporting 14 or more days of poor mental health per month, 2018
- Frequent physical distress: Percentage of adults reporting 14 or more days of poor physical health per month, 2018

Bureau of Labor Statistics

- Unemployed: Percentage of population ages 16 and older unemployed but seeking work, 2019

Business Analyst, Delorme map data, ESRI, & US Census Tigerline Files

- Access to exercise opportunities: Percentage of population with adequate access to locations for physical activity, 2010 and 2019

Business Dynamics Statistics, Center for Economic Studies, US Census Bureau

- Employment in health care and social assistance: Percentage of workforce employed in the healthcare and social assistance sector, 2018

Census Population Estimates

- Age: Percentage of population age 65 and older, 2019
- Age: Percentage of population below 18 years of age, 2019
- Living in a rural area: Percentage of population living in a rural area, 2010
- Population: Total population, 2019
- Race/ethnicity: Percentage of population that is American Indian and Alaska Native, 2019
- Race/ethnicity: Percentage of population that is Asian, 2019
- Race/ethnicity: Percentage of population that is Hispanic, 2019
- Race/ethnicity: Percentage of population that is Native Hawaiian/Other Pacific Islander, 2019
- Race/ethnicity: Percentage of population that is non-Hispanic Black, 2019
- Race/ethnicity: Percentage of population that is non-Hispanic white, 2019
- Sex: Percentage of population that is female, 2019

Centers for Medicare & Medicaid Services, National Provider Identification

- Ratio of population to mental health providers: Ratio of population to mental health providers, 2020
- Ratio of population to primary care providers other than physicians: Ratio of population to primary care providers other than physicians, 2020

Centers for Medicare & Medicaid Services (CMS), Provider of Services file

- Rural Health Clinic clinician staffing, March 2021
- Rural Health Clinic locations, March 2021
- Rural Health Clinic physician staffing, March 2021

Comprehensive Housing Affordability Strategy (CHAS) data

- Severe Housing problems: Percentage of households with at least 1 of 4 housing problems: overcrowding, high housing costs, lack of kitchen facilities, or lack of plumbing facilities, 2013-2017

ED Facts

- High school graduation rate: Percentage of ninth-grade cohort that graduates in four years, 2017-2018

Environmental Public Health Tracking Network

- Air pollution-particulate: Average daily density of fine particulate matter in micrograms per cubic meter (PM2.5), 2016

Fatality Analysis Reporting System

- Alcohol-impaired driving deaths: Percentage of driving deaths with alcohol involvement, 2015-2019

Health Resources & Services Administration

- Federally Qualified Health Center locations and designations, June 2021
- Hospital locations, June 2021

Mapping Medicare Disparities Tool

- Flu vaccinations among fee-for-service Medicare enrollees: Percentage of fee-for-service Medicare enrollees that had an annual flu vaccination, 2018
- Mammography screening among female Medicare enrollee ages 65-74: Percentage of female Medicare enrollees ages 65-74 that received an annual mammography screening, 2018
- Preventable hospital stays per 100,000 Medicare enrollees: Rate of hospital stays for ambulatory-care sensitive conditions per 100,000 Medicare enrollees, 2018

National Center for Education Statistics

- Children eligible for free or reduced-price lunch: Percentage of children enrolled in public schools that are eligible for free or reduced-price lunch, 2018-2019

National Center for Health Statistics – Drug Poisoning Mortality in the United States, 1999-2018

- Age-adjusted drug poisoning mortality per 100,000 population, 2018
- County-level model-based drug poisoning mortality per 100,000 population, 2018

National Center for Health Statistics – Mortality Files

- Accidents (unintentional injury): Age-adjusted rate of death per 100,000 population, 2015-2019
- Cancer: Age-adjusted rate of death per 100,000 population, 2015-2019
- Child mortality: Number of deaths among children under age 18 per 100,000 population, 2016-2019
- Chronic lower respiratory diseases: Age-adjusted rate of death per 100,000 population, 2015-2019
- Drug overdose deaths: Number of drug poisoning deaths per 100,000 population, 2017-2019
- Firearm deaths: Number of deaths due to firearms per 100,000 population, 2015-2019
- Heart disease: Age-adjusted rate of death per 100,000 population, 2015-2019
- Injury deaths: Number of deaths due to injury per 100,000 population, 2015-2019
- Life expectancy: Average number of years a person can expect to live, 2017-2019
- Motor vehicle crash deaths: Number of motor vehicle crash deaths per 100,000 population, 2013-2019
- Premature death: Years of potential life lost before age 75 per 100,000 population (age-adjusted), 2017-2019
- Stroke (cerebrovascular diseases): Age-adjusted rate of death per 100,000 population, 2015-2019
- Suicide deaths: Number of deaths due to suicide per 100,000 population, 2015-2019

National Center for Health Statistics - Natality files

- Teen births: Number of births per 1,000 female population ages 15-19, 2013-2019

National Center for HIV/AIDS, Viral Hepatitis, STD, and TB Prevention

- Sexually transmitted infections: Number of newly diagnosed chlamydia cases per 100,000 population, 2018

Substance Abuse and Mental Health Services Administration, Behavioral Health Treatment Locator

- Substance use treatment facilities, 2021
- Buprenorphine practitioners per county, 2021

Small Area Income and Poverty Estimates

- Children in poverty: Percentage of people under age 18 in poverty, 2019
- Median household income: The income where half of households in a county earn more and half of households earn less, 2019

Small Area Health Insurance Estimates

- Uninsured, ages 0-64: Percentage of population under age 65 without health insurance, 2018
- Uninsured adults, age <65: Percentage of adults under age 65 without health insurance, 2018
- Uninsured children: Percentage of children under age 19 without health insurance, 2018

Uniform Crime Reporting – Federal Bureau of Investigation

- Violent crime: Number of reported violent crime offenses per 100,000 population, 2014 and 2016

United States Department of Agriculture Food Environment Atlas and Map the Meal Gap from Feeding America

- Food environment index: Index of factors that contribute to a healthy food environment, from 0 (worst) to 10 (best), 2015 and 2018

United States Diabetes Surveillance System

- Adult obesity: Percentage of the population aged 20 and older that reports a body mass index (BMI) of greater than or equal to 30kg/m², 2017
- Diabetes prevalence: Percentage of adults aged 20 and above with diagnosed diabetes, 2017
- Physical inactivity: Percentage of adults aged 20 and older reporting no leisure-time physical activity, 2017

APPENDIX III. Additional Resources

- [New York State Community Health Indicator Reports, 2021](#) – The New York State Department of Health maintains a dashboard of County Health Assessment Indicators for all New York counties. The dashboard includes measures of New Yorkers’ health status, social determinants of health, disease incidence, health behaviors, demographics, and more.



FUNDING ACKNOWLEDGEMENT

This study was funded by a cooperative agreement between the US Federal Office of Rural Health Policy, Health Resources & Services Administration, Department of Health and Human Services (CA#U1CRH03716) and the University of Southern Maine. The findings and conclusions expressed in this report are those of the authors and do not necessarily represent the official position of the US Federal Office of Rural Health Policy.