

Mountain tourism facing climate change. Assessing risks and opportunities in the Italian Alps.

*Original*

Mountain tourism facing climate change. Assessing risks and opportunities in the Italian Alps / Pede, Elena; Barbato, Giuliana; Buffa, Alessandra; Ellena, Marta; Mercogliano, Paola; Ricciardi, Guglielmo; Staricco, Luca. - In: TEMA. - ISSN 1970-9870. - ELETTRONICO. - 15:1(2022), pp. 25-47. [10.6093/1970-9870/8841]

*Availability:*

This version is available at: 11583/2962345 since: 2022-04-30T22:55:55Z

*Publisher:*

Laboratory of Land Use Mobility and Environment DICEA - Department of Civil, Architectural and

*Published*

DOI:10.6093/1970-9870/8841

*Terms of use:*

openAccess

This article is made available under terms and conditions as specified in the corresponding bibliographic description in the repository

*Publisher copyright*

(Article begins on next page)

# TeMA

Journal of  
Land Use, Mobility and Environment

The climatic, social, economic and health phenomena that have increasingly affected our cities in recent years require the identification and implementation of adaptation actions to improve the resilience of urban systems. The three issues of the 15th volume will collect articles concerning the challenges that the complexity of the phenomena in progress imposes on cities through the adoption of mitigation measures and the commitment to transforming cities into resilient and competitive urban systems.

TeMA is the Journal of Land Use, Mobility and Environment and offers papers with a unified approach to planning, mobility and environmental sustainability. With ANVUR resolution of April 2020, TeMA journal and the articles published from 2016 are included in the A category of scientific journals. From 2015, the articles published on TeMA are included in the Core Collection of Web of Science. It is included in Sparc Europe Seal of Open Access Journals, and the Directory of Open Access Journals.



THE CITY CHALLENGES AND EXTERNAL AGENTS.  
METHODS, TOOLS AND BEST PRACTICES

# TeMA

Journal of  
Land Use, Mobility and Environment

## THE CITY CHALLENGES AND EXTERNAL AGENTS. METHODS, TOOLS AND BEST PRACTICES

1 (2022)

### **Published by**

Laboratory of Land Use Mobility and Environment  
DICEA - Department of Civil, Architectural and Environmental Engineering  
University of Naples "Federico II"

TeMA is realized by CAB - Center for Libraries at "Federico II" University of Naples using Open Journal System

Editor-in-chief: Rocco Papa  
print ISSN 1970-9889 | on line ISSN 1970-9870  
Licence: Cancelleria del Tribunale di Napoli, n° 6 of 29/01/2008

### **Editorial correspondence**

Laboratory of Land Use Mobility and Environment  
DICEA - Department of Civil, Architectural and Environmental Engineering  
University of Naples "Federico II"  
Piazzale Tecchio, 80  
80125 Naples  
web: [www.tema.unina.it](http://www.tema.unina.it)  
e-mail: [redazione.tema@unina.it](mailto:redazione.tema@unina.it)

The cover image shows redeveloped building in the Garibaldi neighbourhood in the city of Milano (Picture by Fastweb, retrieved from: <https://www.facebook.com/Fastweb/photos/10158794132149472>).



TeMA. Journal of Land Use, Mobility and Environment offers researches, applications and contributions with a unified approach to planning and mobility and publishes original inter-disciplinary papers on the interaction of transport, land use and environment. Domains include: engineering, planning, modeling, behavior, economics, geography, regional science, sociology, architecture and design, network science and complex systems.

With ANVUR resolution of April 2020, TeMA Journal and the articles published from 2016 are included in A category of scientific journals. From 2015, the articles published on TeMA are included in the Core Collection of Web of Science. TeMA Journal has also received the *Sparc Europe Seal* for Open Access Journals released by *Scholarly Publishing and Academic Resources Coalition* (SPARC Europe) and the *Directory of Open Access Journals* (DOAJ). TeMA is published under a Creative Commons Attribution 4.0 License and is blind peer reviewed at least by two referees selected among high-profile scientists. TeMA has been published since 2007 and is indexed in the main bibliographical databases and it is present in the catalogues of hundreds of academic and research libraries worldwide.

## **EDITOR IN-CHIEF**

Rocco Papa, University of Naples Federico II, Italy

## **EDITORIAL ADVISORY BOARD**

Mir Ali, University of Illinois, USA  
Luca Bertolini, University of Amsterdam, Netherlands  
Luuk Boelens, Ghent University, Belgium  
Dino Borri, Polytechnic University of Bari, Italy  
Enrique Calderon, Polytechnic University of Madrid, Spain  
Roberto Camagni, Polytechnic University of Milan, Italy  
Pierluigi Coppola, Politecnico di Milano, Italy  
Derrick De Kerckhove, University of Toronto, Canada  
Mark Deakin, Edinburgh Napier University, Scotland  
Carmela Gargiulo, University of Naples Federico II, Italy  
Aharon Kellerman, University of Haifa, Israel  
Nicos Komninos, Aristotle University of Thessaloniki, Greece  
David Matthew Levinson, University of Minnesota, USA  
Paolo Malanima, Magna Græcia University of Catanzaro, Italy  
Agostino Nuzzolo, Tor Vergata University of Rome, Italy  
Rocco Papa, University of Naples Federico II, Italy  
Serge Salat, Urban Morphology and Complex Systems Institute, France  
Mattheos Santamouris, National Kapodistrian University of Athens, Greece  
Ali Soltani, Shiraz University, Iran

## **ASSOCIATE EDITORS**

Rosaria Battarra, National Research Council, Institute of Mediterranean studies, Italy  
Gerardo Carpentieri, University of Naples Federico II, Italy  
Luigi dell'Olio, University of Cantabria, Spain  
Isidoro Fasolino, University of Salerno, Italy  
Romano Fistola, University of Sannio, Italy  
Thomas Hartmann, Utrecht University, Netherlands  
Markus Hesse, University of Luxembourg, Luxembourg  
Seda Kundak, Technical University of Istanbul, Turkey  
Rosa Anna La Rocca, University of Naples Federico II, Italy  
Houshmand Ebrahimpour Masoumi, Technical University of Berlin, Germany  
Giuseppe Mazzeo, National Research Council, Institute of Mediterranean studies, Italy  
Nicola Morelli, Aalborg University, Denmark  
Enrica Papa, University of Westminster, United Kingdom  
Dorina Pojani, University of Queensland, Australia  
Floriana Zucaro, University of Naples Federico II, Italy

## **EDITORIAL STAFF**

Gennaro Angiello, Ph.D. at University of Naples Federico II, Italy  
Stefano Franco, Ph.D. at Luiss University Rome, Italy  
Federica Gaglione, Ph.D. at University of Naples Federico II, Italy  
Carmen Guida, Ph.D. at University of Naples Federico II, Italy  
Sabrina Sgambati, Ph.D. student at University of Naples Federico II, Italy

# TeMA

Journal of  
Land Use, Mobility and Environment

THE CITY CHALLENGES AND EXTERNAL AGENTS.  
METHODS, TOOLS AND BEST PRACTICES

1 (2022)

## Contents

**3** EDITORIAL PREFACE  
Rocco Papa

### FOCUS

**5** **Multiple components in GHG stock of transport sector: Technical improvements for SECAP Baseline Emissions Inventory assessment**  
Luigi Santopietro, Francesco Scorza, Beniamino Murgante

**25** **Mountain tourism facing climate change. Assessing risks and opportunities in the Italian Alps**  
Elena Camilla Pede, Giuliana Barbato, Alessandra Buffa, Marta Ellena, Paola Mercogliano, Guglielmo Ricciardi, Luca Staricco

### LUME (Land Use, Mobility and Environment)

**49** **Municipal finance, density, and economic development. Empirical evidence from a global sample of cities**  
Marco Kamiya, Raffaele Scuderi, Giuseppe Tesoriere

**67** **Mobility infrastructures as public spaces. A reconnection project**  
Giulio Giovannoni

**79** **About non-knowledge in knowledge management for planning: Towards an applied ontological approach**  
Maria Rosaria Stufano Melone, Domenico Camarda

**89 Sustainable urban regeneration in port-cities. A participatory project for the Genoa waterfront**

Francesca Pirlone, Ilenia Spadaro, Marco De Nicola, Martina Sabattini

**111 Investigation of extreme reflections of metal ceilings and salty soils using object oriented satellite image processing Sentinel-2 L1C using SVM classification method**

Bahram Imani, Jafar Jafarzadeh

Covid-19 vs City-22

**125 A sustainable approach for planning of urban pedestrian routes and footpaths in a pandemic scenario**

R. Antonio Comi, Francis M. M. Cirianni, Angelo S. Luongo

REVIEW NOTES

**141 Climate adaptation in the Mediterranean: Where are we?**

Carmen Guida

**149 Accelerating sustainable urban transition: European Climate Action**

Federica Gaglione

**157 European cities embracing digital nomads**

Gennaro Angiello

**163 Towards the achievement of SDGs: Evidence from European cities**

Stefano Franco

**167 The interventions of the Italian Recovery and Resilience Plan: Urban regeneration of the Italian cities**

Sabrina Sgambati

TeMA 1 (2022) 25-47

print ISSN 1970-9889, e-ISSN 1970-9870

DOI: 10.6092/1970-9870/8841

Received 5<sup>th</sup> January 2022, Accepted 5<sup>th</sup> April 2022, Available online 30<sup>th</sup> April 2022

Licensed under the Creative Commons Attribution – Non Commercial License 4.0

[www.tema.unina.it](http://www.tema.unina.it)

## Mountain tourism facing climate change. Assessing risks and opportunities in the Italian Alps

**Elena Camilla Pedè<sup>a\*</sup>, Giuliana Barbato<sup>b</sup>, Alessandra Buffa<sup>a</sup>, Marta Ellena<sup>b</sup>, Paola Mercogliano<sup>b</sup>, Guglielmo Ricciardi<sup>b,c</sup>, Luca Staricco<sup>a</sup>**

<sup>a</sup> Interuniversity Department of Regional and Urban Studies and Planning, Politecnico di Torino, Torino, Italy  
e-mail: [elena.pede@polito.it](mailto:elena.pede@polito.it)

ORCID: <https://orcid.org/0000-0002-0616-2962>

\* Corresponding author

e-mail: [alessandra.buffa@polito.it](mailto:alessandra.buffa@polito.it)

ORCID: <https://orcid.org/0000-0002-6107-0200>

e-mail: [luca.staricco@polito.it](mailto:luca.staricco@polito.it)

ORCID: <https://orcid.org/0000-0003-0397-4073>

<sup>b</sup> Regional Models and geo-Hydrological Impacts (REMHI) Division, Fondazione Centro Euro-Mediterraneo sui Cambiamenti Climatici (CMCC), Caserta, Italy

e-mail: [giuliana.barbato@cmcc.it](mailto:giuliana.barbato@cmcc.it)

ORCID: <https://orcid.org/0000-0001-5892-1062>

e-mail: [marta.ellena@cmcc.it](mailto:marta.ellena@cmcc.it)

ORCID: <https://orcid.org/0000-0003-3272-556X>

e-mail: [paola.mercogliano@cmcc.it](mailto:paola.mercogliano@cmcc.it)

ORCID: <https://orcid.org/0000-0001-7236-010X>

<sup>c</sup> Department of Architecture and Design  
Politecnico di Torino, Torino

e-mail: [guglielmo.ricciardi@polito.it](mailto:guglielmo.ricciardi@polito.it)

ORCID: <https://orcid.org/0000-0001-5294-7499>

### Abstract

The Alps are an interesting case for studying the relationship between tourism and climate change. Despite a growing number of studies, the impacts of climate change on the tourism sector remain uncertain, when the regional and local scale or seasonality are considered. This article presents a risk methodology to assess the spatial distribution of the main challenges and opportunities for winter and summer tourism due to climate change at the sub-regional level on a 2021-2050 scenario. This methodology has been tested on an Italian Alpine area, which consists of very different landscapes from plain to high mountains. The results show that high-altitude municipalities will face the stronger risks for winter touristic activities, due to reduced snow cover duration, but also opportunities to attract in summer tourists escaping from the hotter temperatures of the plain. At the same time, climate change could have secondary negative effects in these areas, as it will increase the frequency and the magnitude of extreme events. The results show that impacts of CC cannot be generalised, even in a limited area; same hazards due to changes in temperature and precipitation patterns can generate very different risk scores, because of local conditions related to exposure and vulnerability factors.

### Keywords

Climate change; European Alps; Tourism; Risk; Seasonality; Vulnerability.

### How to cite item in APA format

Pedè, E.C., Barbato, G., Buffa, A., Ellena, M., Mercogliano, P., Ricciardi, G., Staricco, L. (2022). Mountain tourism facing climate change. Assessing risks and opportunities in the Italian Alps. *Tema. Journal of Land Use, Mobility and Environment*, 15 (1), 25-47. <http://dx.doi.org/10.6092/1970-9870/8841>

## 1. Introduction

The academic debate on the relationship between tourism and climate change has grown dramatically in the last twenty years and has become a distinct branch of knowledge (Ali, 2016; Becken, 2013). The carbon footprint of the tourism sector accounts for about 8% of global greenhouse gas emissions (Lenzen et al., 2018). At the same time, tourism is one of the human activities which have been and will be more threatened by climate change (Mora et al., 2018), either because of its direct effects such as variations in temperatures and precipitations (Wilkins et al., 2018), but also due to secondary effects such as the increase in frequency and extent of natural disasters (Rosselló et al., 2020).

The European Alps are an interesting case study within the relationship between tourism and climate change. In fact, the Alps have been identified as one of the most vulnerable areas to impacts of climate change in Europe (Hock et al., 2019). In recent decades, the impacts of observed climate change have been of different types and intensity (IPCC, 2022), and a significant further intensification of climate change is predicted by the major climate models for the coming decades in terms of increased temperatures, intensity and variation of seasonal precipitation, elevation of minimum snowfall and ice retreat (Ballarin-Denti et al., 2015). These trends are foreseen to have relevant impacts on tourism, which plays a crucial role in the economy of this region (Agrawala, et al., 2007).

Despite a growing number of studies in the field, the impacts of climate change to the Alpine tourism sector remain uncertain, especially when at the regional and at the local scale (Pütz et al., 2011; Steiger et al., 2020) when seasonality is taken into consideration (Serquet & Rebetz, 2011). In addition, the Alpine region includes areas that are extremely heterogeneous – even over a very short distance – in terms of elevation, landscape, socio-economic and environmental systems, etc. Therefore, the touristic attractiveness of these areas can be affected by climate change to a very different extent, especially when distinguishing between winter and summer tourism (Pröbstl-Haider et al., 2015).

For these reasons, this article presents a spatial risk methodology to assess the main challenges for winter and summer tourism to climate change at the sub-regional level. This methodology used as a case study the so-called Homogeneous Zone of Pinerolo (HZP), which is characterized by very different landscapes, from flatland to high mountains. The results achieved as well as the methodology here implemented could be used as a spatial decision support system for public administration and local stakeholders to identify where winter and summer tourism is most threatened (or favoured), and which adaptation measures need to be implemented to face these expected risks.

Section 2 describes the literature state-of-the-art in relation to the impacts of climate change on the Alpine tourism. Section 3 introduced the case study, while Section 4 focuses on the analytical methods adopted to estimate the present and future climate, by explaining in depth which climate indicators have been used to determine not only the observed anomalies, but also the future trends (2021-2050). Section 5 presents and discusses the main results and, finally, a concluding session explores the implications and possible uses of the proposed research in terms of climate change adaptation policies for tourism.

## 2. Literature review

### 2.1 Climate trends and expected hazards in the Alps

The European Alps have experienced significant damages from climate change in the last decades, and further intensifying of these trends is foreseen by regional climate projections by the end of this century (Gobiet & Kotlarski, 2020). During the 20th century, the Alps registered increases in minimum temperatures of up to 2°C, and a more modest increase in maximum temperatures. This trend was particularly strong after the mid 1970s, and since mid 1980s warming observed in the Alps has been about three times higher than the global average, particularly in summer and spring seasons (Auer et al., 2007; Beniston, 2005; Ceppi et al., 2012). In



a comprehensive review of climate projections for the Alps, Gobiet et al. (2014) explained how a warming of 1.5°C is expected in the first half of the 21<sup>st</sup> century, compared to the reference period 1961–1990. This trend is supposed to increase up to 3.3°C in the second half. With regards to precipitations, changes have been subject to larger uncertainties and varied greatly from region to region. In relation to the future, the annual precipitation are expected to remain rather constant, while winter precipitations are expected to increase. The most negative consequences on precipitation pattern are expected within summer, but changes are possible due to the model uncertainty range. Nevertheless, extreme precipitation events are expected to intensify in all seasons (Gobiet et al., 2014). It is also important to highlight that long-time range projected changes considerably depend on the greenhouse-gas scenario under consideration. Specifically, the most prominent changes are associated to the worst Representative Concentration Pathway (IPCC, 2014a), the RCP8.5 scenario, by the end of the 21<sup>st</sup> century, while in relation to the mid-century these impacts are expected to vary slightly depending on the selected scenario (i.e., RCP4.5 or RCP8.5) (Gobiet & Kotlarski, 2020). Looking at the snowfall phenomenon, a reduction of 36% in winter it is expected, with a complete disappearance below 500 metres of altitude (EEA, 2009). On the contrary, extreme events are expected to intensify, particularly in the fall season (Rajczak et al., 2013).

These past and future climatic changes in temperatures and precipitations directly affected the comfort conditions for tourism, but they also have serious side effects. In fact, together with accelerated retreat in glacier cover and permafrost, these phenomena can lead to an increase of the frequency and the magnitude of natural hazards such as landslides, rock falls, debris flows, avalanches and floods (Keiler et al., 2010; Schindelegger & Kanonier, 2019). Table 1 summarises these hazards and their potential impacts on infrastructures, socio-economic and cultural activities related to the tourism in mountain regions.

Natural hazard	Description	Potential impact level	Sources
Desertification	Higher aridity of agricultural, forestry and pastoral areas with consequent rise in erosion and loss of organic matter in forest areas as a result of increased fire risk in connection with drought-related events.	Low	Corrado et al., eds., 2014 Matasci and Altamirano - Cabrera, 2010 Probst et al., 2013
Ecosystem changes (land and aquifer)	Changes in the phenological cycle and inland water and ecosystem transition (i.e. shift) due to habitat and soil mutations.	High	Beniston, 2012 Cannone et al. 2008 Cantonati et al., 2006 Ianni et al., 2015 Mourier et al., 2010 Revermann et al., 2012 Wieser et al., 2008
Forest fires	Expected increase in the danger of forest fires throughout the year, mainly in the spring season.	Medium	Dupire et al., 2019 Moriondo et al., 2006 Moser et al., 2010 Schumacher and Bugmann, 2006 Wastl et al., 2012
Hydro-geological and hydraulic instability	Variation in seasonality and magnitude of phenomena associated with snow dynamics, instability of rock complexes, debris flows and surface landslides.	High	Ellena et al., 2020 Palladino et al., 2018 Probst et al., 2013 Prudent-Richard et al., 2008 Winkler and Reichl, 2014
Water scarcity	Decrease in the availability and quality of water resources related to the reduction of precipitation in winter and summer seasons.	Medium-high	Brunner et al., 2019 Hohenwallner et al., 2011 Klug, 2011 Mastrotheodoros et al., 2020 Zampieri et al., 2016

**Tab.1 Predicted natural hazards due to climate change and their potential impact levels on tourism**

## 2.2 Impacts of climate change on winter and summer tourism in the Alps

The Alpine regions are visited each year by 60-80 million people (four to six times the local population), accounting for 386 million commercial overnight stays (14.4% of the European total) of which 43.3% of the are concentrated in winter (from November 1<sup>st</sup> to April 30<sup>th</sup>) 126 million euros relates to the non-commercial stays. In the region, tourism generates an annual turnover close to 50 billion euros, and it provides 10-12% of employment (Agrawala et al., 2007; Future Mountain International, 2016).

As briefly explained before, tourism in the Alps is mainly dependent on natural resources and climate, therefore it is particularly vulnerable to climate change both in winter and in summer seasons, with impacts which diverge substantially (Balbi, 2012).

With regards to ski tourism, the Alps account for 37% of ski resorts worldwide and 80% of major resorts (i.e., 1 million skier visits per winter season). In fact, the region is the biggest ski destination in the world, capturing 43% of skier visits in the 2018/19 ski season (Vanat, 2020). Since snow is the key attraction in the Alps (Bausch & Gartner, 2020; Unbehaun et al., 2008), the evolution of natural snow conditions due to climate change is considered as a major threat (Elsasser & Bürki, 2002; Spandre et al., 2019). A recent review by Steiger et al. (2019) has comprehensively highlighted the main consequences resulting from these impacts. These were summarised as a decreased reliability of slopes dependent on natural snow, an increased snowmaking requirement, a shorter and more variable ski seasons, a contraction in the number of operational ski areas, altered competitiveness between and within regional ski markets, and related implications for ski tourism employment and holiday property values.

The first studies on the impact of climate change on winter tourism in the Alps appeared in the 1990s, mainly because of three consecutive snow-deficient winters at the end of the 1980s, which revealed the dependence of the Alpine tourism industry on snow cover (Koenig & Abegg, 1997).

In the early 2000s, a few studies tried to quantify the snow reliability of ski resorts based on the "100 days" rule, first suggested by Witmer (1986), which states that to successfully operate a ski area, natural snow cover should exceed 30 cm at least 100 days per season. The snow reliability line - i.e., the elevation above which these conditions are met - is supposed to rise by 150 m per each +1°C warming. Abegg et al. (2007) calculated that under present climate conditions, 91% of the current 666 Alpine ski areas can be considered as naturally snow-reliable. Under future climate change this percentage could drop to 75% with a +1°C warming, to 61% with a +2°C warming and to 30% with a +4°C warming. In other words, global warming could determine a process of concentration of ski and snow activities in areas at higher altitude with reliable snow cover (Elsasser & Messerli, 2001). Much less attention has been paid so far to the impacts of climate change on summer tourism in the Alps. In this case, the expected impacts seem less critical or might even be positive in some cases. According to Pröbstl-Haider et al. (2015), the Alps will attract more tourists in the summer, because this area is characterized by a more comfortable range of temperatures compared to lowlands during summer. On the other hand, the Alps will become more appealing for activities such as mountaineering, climbing, hiking and lake tourism thanks to additional days with sunshine.

Serquet & Rebetez (2011) analysed the relationship between temperature and overnight stays in 40 Alpine resorts, finding significant correlations between the number of nights spent in mountain resorts and hot temperatures at lower elevations (where most domestic tourists live). This correlation is stronger for Alpine resorts nearest to major cities. These results suggest that if climate change increases heat waves in frequency and intensity, domestic tourists will go to mountain resorts more frequently or for longer periods.

Conversely, negative effects could derive from natural hazards (e.g., landslides) related to the loss of permafrost, melting glaciers and heavy rain events, which could lead to dangerous situations for summer activities (such as mountaineering, etc.) and damage the infrastructures that ensure accessibility to Alpine areas (Pröbstl-Haider et al., 2015).

Overall, the positive economic effects of climate change on summer tourism will not necessarily offset the negative economic effects on winter tourism. For instance, Müller and Weber (2008) estimated the effects of climate change on tourism revenues in the Swiss region of Bernese Oberland in 2030.

Results showed that the increase of the revenues for the summer season (7%) would not be sufficient to avoid a comprehensive loss of about 7% (4% in case of implementation of adaptation measures) per year.

### 3. Aims and case study

#### 3.1 Aims

Climate change impacts are related to changes of the average patterns of temperature and precipitation, but also to changes in frequency, intensity, spatial extent, duration, and timing of extreme weather and climate events (IPCC, 2012).

Therefore, these impacts vary according to factors such as elevation, geomorphological features, socioeconomic structures, etc. As Elsasser and Messerli (2001) state, in relation to tourism these impacts can induce a spatial division into “winners” (positively affected) and “losers” areas (negatively affected). Notwithstanding, the literature reviewed in section 2.2 shows how the debate has mainly been focused on analysing climate change impacts on tourism at the level of the whole Alpine region, or at specific sub-levels such as supra-national (e.g., the Eastern Alps), national (e.g., the Swiss Alps), or regional (e.g., the Bernese Oberland). Much less attention was paid to examining how risks for tourism due to climate change are distributed at the intra-regional level, i.e., between the different municipalities included in a specific Alpine region. This is a key driver in the elaboration of strategies for climate change adaptation, which are usually defined at sub-regional level (Agrawala et al., 2007) and implemented at the local level (Bonzanigo et al., 2016).

This paper aims to propose a reproducible methodology for analysing how climate change risks for tourism can differ through locations within a regional case study, in order to identify where adaptation measures need to be prioritize (Oppenheimer et al., 2014; Schindelegger & Kanonier, 2019).

#### 3.2 Selection of the case study

To test the proposed methodology (illustrated in section 4) a case study was selected in the Western Italian Alps. It is the Homogeneous Zone of Pinerolo (HZP) (Figure 1), which is one of the 11 so-called homogeneous areas in which the Metropolitan City of Turin is articulated.

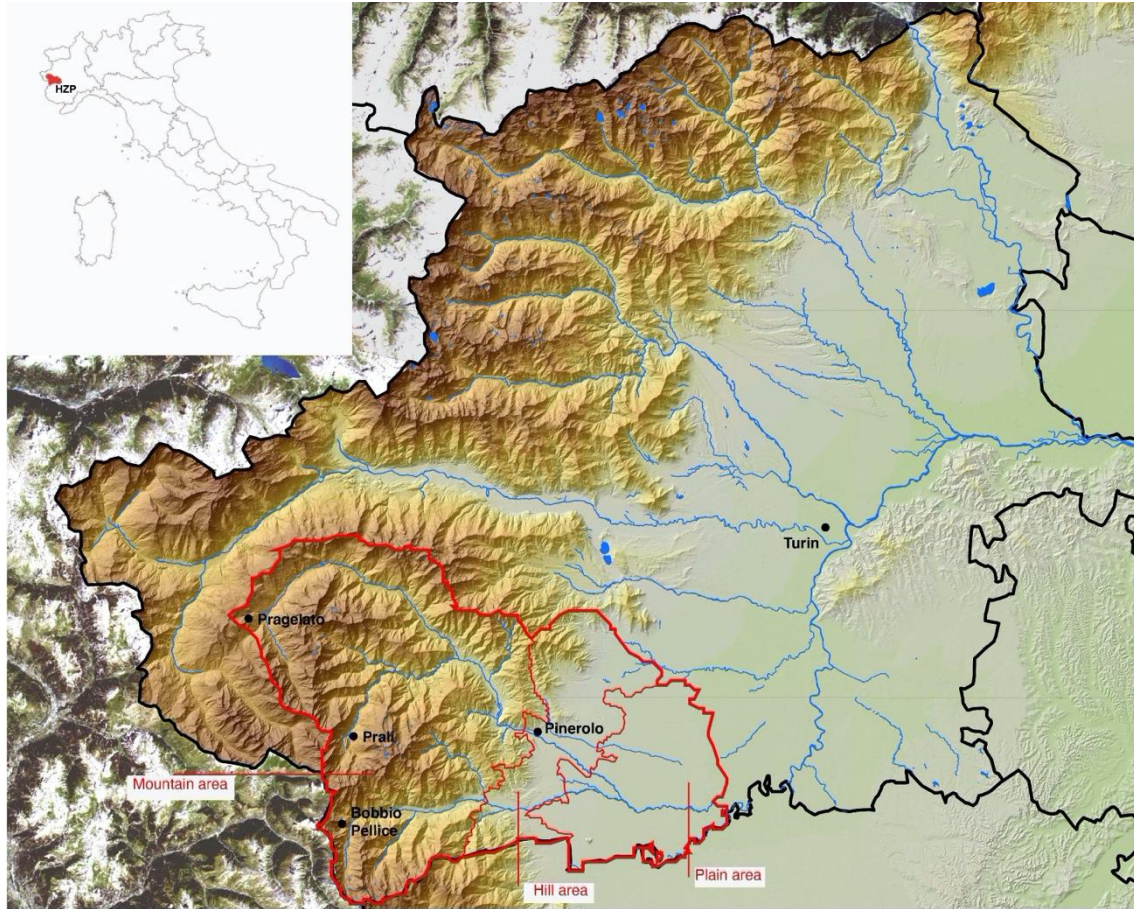
The HZP can be considered an interesting case for several reasons. First, despite the adjective “homogenous”, the HZP is quite heterogeneous both in terms of socioeconomic factors and geographical structure. It includes 45 municipalities: a medium-size city, Pinerolo, which has over 35,000 inhabitants; 4 municipalities which have between 5,000 and 10,000 inhabitants; 25 municipalities between 1,000 and 5,000 inhabitants, and 15 small villages that have less than 1,000 inhabitants.

From a geomorphological point of view, the HZP can be divided into three parts: (i) an agricultural plain (12 municipalities), (ii) a hilly area around Pinerolo (10 municipalities) and (iii) a mountainous area bordering France and comprising three valleys stretching from one end to the other (Val Pellice, Val Germanasca and Val Chisone) (23 municipalities).

Tourism is a key sector for the HZP. While the highest mountain areas of the HZP are mainly a winter tourist destination, the hilly belt and the lower mountain areas are especially attractive for summer tourists (thanks to the proximity to the City of Turin).

In 2018, the HZP recorded over 460,000 overnight stays (60% more than ten years earlier); 45% of these stays were concentrated in the summer season (June-September), and 33% in the winter season (December-March). Mountain municipalities accounted for about three quarters of the stays. Finally, the HZP matches one

of the 33 Integrated Territorial Areas (AIT), that Piedmont Region in its regional Strategy for adaptation to climate change has identified as the more suitable administrative dimension to elaborate ad hoc adaptation measures.



**Fig.1 The Homogeneous Zone of Pinerolo**

### 3.3 Climate, climate change and extreme events in the HZP

To analyse the climate changes, assessments and studies of its impacts are required for a length of at least 30 years (Bocchiola & Diolaiuti, 2010).

In the HZP, temperature and precipitation data have been regularly recorded from a local network of 13 meteorological stations, active since 1988.

The observed seasonal cycles of minimum and maximum temperatures from these records show that temperatures reach lower values in December and January, with a variable minimum temperature ( $T_{min}$ ) ranging between  $-5^{\circ}$  and  $0^{\circ}\text{C}$  and a maximum temperature ( $T_{max}$ ) between  $0$  and  $8^{\circ}\text{C}$ . The maximum values are recorded between July and August, with the  $T_{max}$  around  $30^{\circ}\text{C}$  and a  $T_{min}$  of  $18^{\circ}\text{C}$  for the plain. Spring and autumn show intermediate and comparable values. Furthermore, the annual time series of maximum and minimum temperatures show an increasing trend with annual peaks of  $1,5/2^{\circ}\text{C}$  above the average level for the  $T_{max}$  in some areas.

On the other hand, precipitation levels turn out to be very consistent in spring and autumn (with an average value over the area of about 300 mm), while winter is characterized by low rainfall of about 130 mm. Thus, while average values seem to follow the seasonal climatic trends, extreme values highlight critical issues in terms of magnitude and impacts on the territory.

For such reason, it is interesting to highlight some recent catastrophic events that affected the HZP. Since the 20th century, the area has been affected by seven major floods, listed in Table 2. These phenomena fell mainly in autumn and spring and have often resulted in landslides.

Date	Event
Oct - Nov 1945	Flood events combined with slope activities in the hilly area of the HZP. Impacts have affected the settlements, the infrastructures, the adjustments of defence to watercourses and roads, and have caused 2 deaths.
May 1949	A flood event due to an exceptional rainfall amount (it rained for over 5 days, with daily amounts up to 500 mm and a tip of 842 mm) mainly in the lower part of the HZP. The terminal sections of the Pellice and Chisone streams suffered the worst damage, in terms of arrangement and defence of waterways, agricultural land and roads.
May 1977	A violent flood event affected all the valleys of the HZP, destroying many city canal crossings and flooding many areas in the valleys. Several municipalities in the mountain zone recorded several damages on settlements, buildings, arrangements and defences of waterways, roads, and crossing-works. The event made 7 deaths, several injured and dozens of displaced persons.
Nov 1994	A flood event and the related slope activity affected all areas bathed by streams of the HZP, both in the plain and in the highest part of the territory. Damages on infrastructures, accommodations and water-defences, agricultural fields, roads, and public works were recorded.
Jun 1998	Several floods and landslides impacted on the hilly area of the HZP, with severe damages on the settlements, public spaces and infrastructures. The event made 9 deaths and several injured people.
Oct 2000	The flood event affected most of the HZP, with disastrous impacts on the infrastructures, accommodations, watercourse defences, agricultural fields, roads and yards.
May 2008	A stream flood with landslides provoked by intense rainfall hit part of the hilly and mountain areas of the HZP, with remarkable impacts on buildings, roads, infrastructures, sewer networks and sport facilities. The phenomenon made 12 deaths, 3 injured and more than 12 displaced persons.
Nov 2016	Flash flood events in the valley and part of hilly areas of the HZP affected the infrastructures, the watercourse-defences, agricultural land, roads and buildings, causing 1 death.

**Tab.2 Main flood events in the last decades in the HZP, with associated local impacts**

Regarding landslide and debris flow phenomena, some several active mass movements have been recorded in the HZP. These debris flows mainly affect mountain municipalities, but also the lower part of the valleys is threatened by conspicuous debris-masses. Moreover, the mountain portion of the HZP presents several areas at risk of avalanches. The database of Piedmont Region shows that the most numerous avalanche phenomena were recorded in 1969 (88 events), 1972 (73), 2008 (126) and 2009 (133), with an increasing trend in recent decades. Lastly, in relation to forest fires, the database of the Piedmont Region (which collects data from 1997 to 2016) recorded 211 events in this timespan, with an average annual value of 12.3 fires in the HZP, especially in the hilly zones. Despite a decreasing trend of events between 2007 and 2016, data highlight that January, February and November are the months with the highest average amount of burnt area due to fire events. This pattern is probably related to particularly dry autumns and winters.

## 4. Methodology

### 4.1 The risk assessment methodology

Based on the most reliable guidelines of institutions and organizations such as IPCC, United Nations, Covenant of Mayors for Climate & Energy EUROPE and the Alpine Convention (Bertoldi et al., 2018; Oppenheimer et al., 2014; Schindelegger & Kanonier, 2019; Zollner, 2018), the methodology here proposed identifies risks related to climate change as a function of hazard (H), exposure (E) and vulnerability (V) factors. The latter one is in turn divided into sensitivity (S) and adaptive capacity (AC). Each factor is here operationalised through specific indicators referred to tourism (Ellena et al., 2020; GIZ, 2017; Oppenheimer et al., 2014). In the case of winter tourism, the variation of the hazard related to climate change (H) is due to the increase in average temperatures as well as the decrease in snow precipitations (Croce et al., 2018). On the other hand, for the summer tourism exposed sample, the focus is on the increase of heatwaves, which will (indirectly) lead to longer stays in higher altitudes. The exposure samples (E) include indicators that consider the tourist offer as well as the main attraction capacities in relation to the analysed seasonal tourism. This to consider the link between tourism and economic flows together with the exploitation of existing natural resources in the area. Finally, Sensitivity (S) and adaptive capacity (CA), which refer to vulnerability (V), reflect respectively the



degree to which a system can be unfavourably (or beneficially) affected by climate change and the ability of this system to adapt or to cope with its consequences (Oppenheimer et al., 2014).

The following sections show in detail the indicators that have been measured at the municipal level for operationalizing each risk factor (Figures 2 and 3).

**Framework 1**  
**Risks for winter tourism**

Assessment area: **mountain**  
Indicator aggregation:  
**Municipal level**



**Theme**




winter tourism

**Total indicators assessed**


**18**

**HAZARD (H)** indicator **1**

 *period:*  
- NWIO/ 1981-2010 on observed period 1988-2018  
- 2021-2050 (scenario RCP 4.5 and RCP 8.5)

CLIMATE HAZARD	INDICATOR	UNIT-SOURCE
snow cover duration	SCD	days/year - CMCC


**EXPOSURE (E)** indicators **4**



PHYSICAL INDICATORS	UNIT-SOURCE
- Accommodation sites for tourists	number - Regione Piemonte, 2019
- Alpine infrastructures and facilities with a high landscape value	number - Regione Piemonte, 2019
- Tourist information and reception offices	number - Regione Piemonte, 2019
- Winter sports centres	number - Regione Piemonte, 2019


**VULNERABILITY (V)**

**SENSITIVITY (S)** indicators **6**



PHYSICAL INDICATORS	UNIT-SOURCE
- Arrivals	number - Osservatorio Turismo Regione Piemonte
- Presences (at night)	number - Osservatorio Turismo Regione Piemonte
- Tourist flow	% - Osservatorio Turismo Regione Piemonte
- Receptive capacity	number - Osservatorio Turismo Regione Piemonte
- Tourist Pressure	number - Osservatorio Turismo Regione Piemonte
- Tourist flow variations	% - Osservatorio Turismo Regione Piemonte

**ADAPTIVE CAPACITY (AC)** indicators **7**



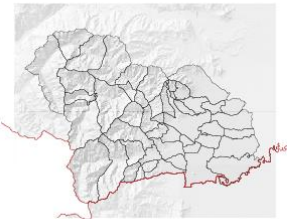
PHYSICAL INDICATORS	UNIT-SOURCE
- Climate change initiatives	number - Covenant of Mayor, 2019
- Non-skiing activities	number - on-line result
- Agriculture networks	number - on-line result
- Eco museums	number - on-line result
- Artistic, social and cultural activities	number - on-line result
- Voluntarism	number - ISTAT, 2011
- Openness to sustainability	number - ISTAT, 2011

**Fig.2 Hazard, Exposure and Vulnerability indicators for WINTER TOURISM**



**Framework 2**  
**Risks for summer tourism**

Assessment area: HZP  
Indicator aggregation:  
Municipal level



Theme



summer tourism

Total indicators assessed

**22**

**HAZARD (H)** indicators **3**

**period:**  
- NWIOI 1981-2010 on observed period 1988-2018  
- 2021-2050 (scenario RCP 4.5 and RCP 8.5)

CLIMATE HAZARD	INDICATOR	UNIT-SOURCE
Increase of heatwaves in urban areas	TR, HW, HUMIDEX	days/year - CMCC

**EXPOSURE (E)** indicators **5**

PHYSICAL INDICATORS	UNIT-SOURCE
- Accommodation sites for tourists	number - Regione Piemonte, 2019
- Alpine infrastructures and facilities with a high landscape value	number - Regione Piemonte, 2019
- Tourist information and reception offices	number - Regione Piemonte, 2019
- Main and secondary routes, classified as cycling or hiking paths	number - Regione Piemonte, 2019
- Existing cycling infrastructures (paths and trails in green areas)	number - Regione Piemonte, 2019

**VULNERABILITY (V)**

**SENSITIVITY (S)** indicators **6**

PHYSICAL INDICATORS	UNIT-SOURCE
- Arrivals	number - Osservatorio Turismo Regione Piemonte
- Presences (at night)	number - Osservatorio Turismo Regione Piemonte
- Tourist flow	% - Osservatorio Turismo Regione Piemonte
- Receptive capacity	number - Osservatorio Turismo Regione Piemonte
- Tourist Pressure	number - Osservatorio Turismo Regione Piemonte
- Tourist flow variations	% - Osservatorio Turismo Regione Piemonte

**ADAPTIVE CAPACITY (AC)** indicators **8**

PHYSICAL INDICATORS	UNIT-SOURCE
- Climate change initiatives	number - Covenant of Mayor, 2019
- Water scarcity measures	number - on-line result
- Agriculture networks	number - on-line result
- Eco museums	number - on-line result
- Artistic, social and cultural activities	number - on-line result
- Fortification systems	number - on-line result
- Voluntarism	number - ISTAT, 2011
- Openness to sustainability	number - ISTAT, 2011

**Fig.3 Hazard, Exposure and Vulnerability Indicators for SUMMER TOURISM**

**4.2 Hazard indicators**

For climate hazards, reference climate periods and climate projections have been analysed using very high-resolution climate models. The evaluation of the historical period was carried out by using a subset of climate indicators based on temperature and precipitation, defined by the Expert Team on Climate Change Detection and Indices (ETCCDI) (Karl et al.,1999; Peterson et al., 2001).

Additionally, for the climate analyses, the observed daily gridded dataset NWIOI (resolution of 14 km) (Ronchi et al., 2008) over the 1981-2010 reference period was also considered to assess the observed values of these

indicators. Climate variations were evaluated comparing the values of the 2021-2050 period, with respect to the baseline period (1981-2010).

The analyses have been carried out using an ensemble of high resolution simulations (about 12 km) from climatic models available in the framework of the program EURO-CORDEX (Ellena et al., 2020; Jacob et al., 2014, Jacob et al., 2020 ; Kotlarski et al., 2014). The representative concentration pathway (RCP) scenarios considered here were the IPCC RCP4.5 and RCP8.5 scenarios (IPCC 2014a). Table 2 shows the indicators identified as a proxy to evaluate the climate hazards. For winter tourism, changes in average temperature (TG) and decrease in snow precipitation (PRCPTOT) have been considered.

Additionally, the snow cover duration (SCD) was included in the analyses to evaluate the total number of days with snow depth higher than 30 cm between November and March (Durand et al., 2009; Marcolini et al., 2017; Valt & Cianfarra, 2010).

As explained in section 2.2, this indicator has been largely used in literature to evaluate the impact of climate change on the winter tourism (Scott et al., 2006). SCD is a key factor to characterize the decrease of snow cover for cross-country skiing (Marty, 2008) and it is an interesting indicator (mainly) for the municipalities of Prali and Pragelato, where there are downhill and cross-country ski slopes. Nevertheless, due to the very high correlation reported between the SCD and the previous indicators for winter tourism (TG and PRCPTOT) (i.e., 0.88, figure 4), it was decided to use only SCD to characterize the hazard for the winter tourism.

For summer tourism, the indicators that have been considered corresponded to those related to heat waves events such as HUMIDEX, HW, and TR (see descriptions in Table 3 for further details).

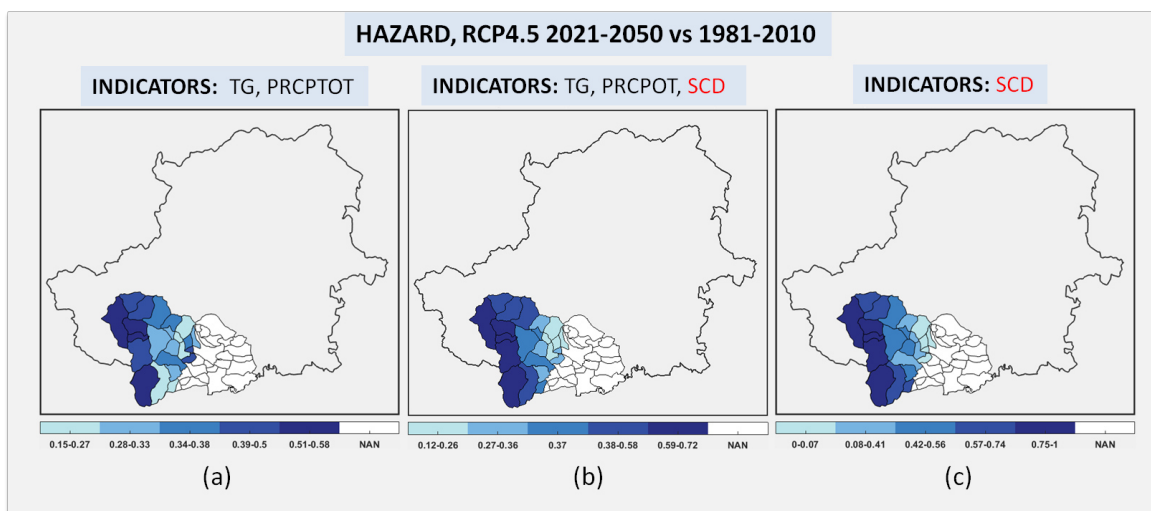


Fig.4 Hazard maps resulting from different sets of indicators: a) TG, PRCPTOT; b) TG, PRCPTOT, SCD; c) SCD

Season	Indicator	Description
Winter	Snow cover duration (SCD)	N° of days in a given snow season (from 1st Nov of a given year to the 31th Mar of the following year) with snow depth higher than 30 cm.
	[Annual total precipitation in wet days (PRCPTOT)]	Annual precipitation sum in wet days (days with precipitation greater than or equal to 1 mm).
	[Daily average temperature (TG)]	Average daily temperature per year (in °C).
Summer	Heat Waves (HW)	N° of days per year in which the daily maximum temperature is higher than 35 °C.
	Tropical nights (TR)	N° of days per year in which the daily minimum temperature is higher than 20 °C.
	HUMIDEX	N° of days per year in which the perceived temperature is greater than 45 °C.

Tab.3 - Hazards indicators for winter and summer tourism

### 4.3 Exposure indicators

For the exposure index, several tourist assets under climatic threats have been analysed (Emanuelsson et al., 2014; Oppenheimer et al., 2014). More specifically, the analysis considered the elements and the activities which could be directly or indirectly damaged by future hazard variations (Emanuelsson et al., 2014; Marzocchi et al., 2012). In the case of direct impacts for tourism, damages may affect tourism accommodations, winter-sports facilities, tourism activities and infrastructures. On the other hand, indirect impacts may refer also to interdependencies between assets (Ashley et al., 2005).

Table 4 shows the exposure indicators used as a proxy to evaluate the presence of touristic accommodation sites, services and sport structures and infrastructures.

Season	Indicator	Description
Winter and summer*	Accommodations	N° of accommodation sites for tourists
	Facilities	N° of infrastructures and facilities with a high landscape value
	Information	N° of information and reception offices for tourists
Winter	Sport activities	N° of winter sport centres
Summer	Hiking paths	Km of main and secondary routes, classified as cycling or hiking paths
	Cycling paths	Km of existing cycling infrastructures (paths and trails in green areas)

**Tab. 4 Exposure indicators for winter and summer tourism**

(\*) This category belongs to indicators related to both winter and summer tourism

### 4.4 Vulnerability indicators

According to the IPCC (2014a, 2014b), in a risk-based conceptual framework, vulnerability can be assumed as a combination of sensitivity (S) and adapting capacity (AC). Consistently, within the current research context, both physical and non-material indicators (i.e., institutional adaptive capacity) have been considered, in coherence with local data availability (GIZ, 2017).

In the study, sensitivity indicators refer to the quantifiable physical touristic attributes of the selected area and correspond for the two seasonal scenarios (see Table 5).

Due to progressive data update, the latter refer to changes in tourist numbers from 2016 to 2017, since at the time of data processing the 2017 was the most updated year containing all data series for each HZP municipality. With regards to adaptive capacity, the indicators cover several aspects (Boyd & Juhola, 2015; GIZ, 2017; Master Adapt, 2018; Parry et al., 2007) such as: (i) knowledge, intended as general levels of education and awareness about climate issues; (ii) technology and engineering, meaning options that could ameliorate the adaptation process of a system; (iii) institutions, by looking at their role and capacity in guaranteeing sustainable resources-management and public participation; and, finally, (iv) socio-economic issues (e.e., GDP distribution, employment/unemployment rate, etc).

Accordingly, adaptive capacity indicators refer to these different aspects and are visible in Table 6.

Season	Indicator	Description
Winter and summer*	Arrivals	N° of clients hosted in the accommodation sites
	Presences	N° of nights spent by clients in the accommodation sites
	Duration of stay	Ratio between night stays and arrivals
	Tourist intensity	Ratio between number of arrivals and residents
	Receptive capacity	Maximum number of people that the accommodation sites can accommodate in one day or in the whole opening period
	Tourist flow variations	Changes in tourist visitors from 2016 to 2017

**Tab. 5 Sensitivity indicators for winter and summer tourism**

\* This category belongs to indicators related to both winter and summer tourism

Season	Indicator	Description
Winter and summer*	Climate change initiatives	N° of local governments adherent to sustainability protocols
	Agriculture networks	N° of local agricultural networks where farmhouses, restaurants, bio-markets and urban gardens propose biological, traditional, good and equal products, food and social activities
	Eco museums	N° of eco museums with touristic proposals and guided tours
	Voluntarism	N° of institutions with volunteers
	Openness to sustainability	Sum of activities, bodies and initiatives related to sustainability. In particular, this indicator may include: institutions; municipal administrations; mountain communities or union of municipalities; national health service companies or bodies; public universities; non-economic public bodies; other legal forms.
Winter	Non-skiing activities	N° of tourist activities in the ZOP not related to skiing activities
	Artistic, social and cultural activities	N° of activities designed to satisfy various cultural and entertainment interests for the public, including live shows, museum management, games and betting, sports and leisure activities
Summer	Water scarcity measures	N° of provincial plans or strategies to tackle water scarcity in this season
	Fortification systems	N° of original fortification systems with touristic proposals and guided tours

**Tab. 6 Adaptive capacity indicators for winter and summer tourism**

\* This category belongs to indicators related to both winter and summer tourism

## 4.5 Calculation of risk values

All the indicators described in previous sections were calculated for each of the 46 municipalities within the HZP. To be aggregated in Hazard, Exposure and Vulnerability indexes, all indicators were firstly normalised. Following the GIZ (2017) approach, there are three categories of scales that can be used to assess risk and vulnerability: metric, ordinal and nominal scale. Within this study, the metric scale was adopted.

The indicators were normalized by applying the Min-Max method (Ellena et al., 2020; GIZ, 2017; Master Adapt, 2018; OECD, 2007), so as to translate all values into a score between 0 and 1.

For some indicators, lower values reflect positive conditions (i.e., sensitivity), while in other cases lower values reflect negative conditions (i.e. adaptation).

In the latter case, an operation of "conversion" was made by reversing the direction of the value range in order to have all indicators in the same normalization ranking. Hazard, Exposure, Sensitivity and Adaptation Capacity indexes were calculated as a weighted average of their normalized indicators, while Vulnerability was calculated as the average of Sensitivity and Adaptation Capacity.

At the end, the final risk value for each municipality corresponded to the product of the values of Hazard, Exposure and Vulnerability.

## 5. Results

### 5.1 The 2050 scenarios

As mentioned in section 4.2, risk simulations were obtained according to the IPCC RCP4.5 and RCP8.5 scenarios, both for winter and summer tourism (IPCC, 2014a). The climate variations were assessed over the 2021-2050 period, compared to the 1981-2010 period.

For the winter tourism (Fig.5), the application of the methodology described in section 4 (limited to mountain and hilly municipalities, in which most touristic activities in winter are concentrated) highlighted two trends in the HZP.

In the 1981-2010 time-slot, the evolution of precipitation regimes and thermal increase (described in section 3.3) affected with more emphasis the municipalities in the lower valleys, which had to deeply reduce their ski touristic offer.

In addition, to provide more information on the current climate conditions, the calculation of the *snow cover duration* index (described in section 4.2) has been performed over the 1988-2018 period, based on observational data made available from ARPA Piemonte (2019) by in situ stations concerning daily snow depth. Only stations with information covering at least 75% of the reference period were retained, i.e., Pragelato-Traverses and Colle Barant.

The total number of days with snow depth higher than 30 cm between November and March is about 74 days for Pragelato – Traverses station, while the mean value is 38 days for Colle Barant station.

The future climate change in the 2021-2050 RCP4.5 scenario, conversely, will determine the major risks for the municipalities on the higher part of the valleys, with a further reduction in precipitations and an increase in temperatures.

These results are confirmed by the reduction of the snow cover duration index. In particular, the municipalities of Pragelato, Prali and Bobbio Pellice – which host the main ski activities of the HZP – will face the higher level of risks, due to both significant hazard and exposure.

It is interesting how, in the case of Prali and Bobbio Pellice, the risk is projected to be high despite a medium-low level of vulnerability (which is instead high in Pragelato). Moving down from these municipalities to the medium and lower portion of the valleys, the risk levels progressively decrease. However, in absolute terms, middle valley municipalities will be affected by growing climate hazards.

Results do not significantly change for the RCP8.5 scenario. These data therefore confirm a situation of increasing climatic risks for the upper valleys, mainly related to a decrease in snow cover duration (which in turn is due to an increase of average temperatures and reduction in precipitations). These trends pose the need for identifying diversified forms of alternative and sustainable tourism in winter, since to date the main activities focused on skiing.

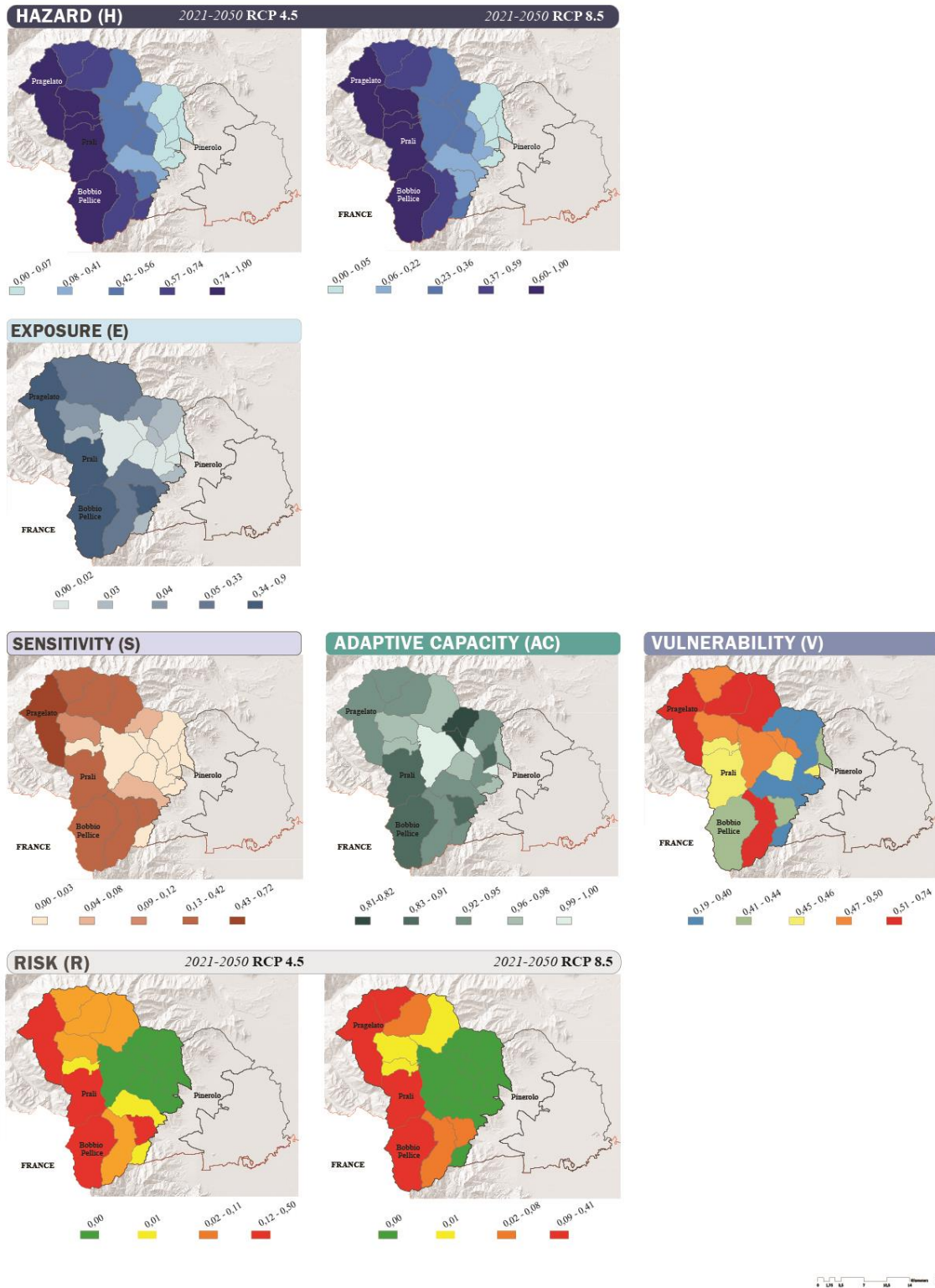
With regard to summer tourism (see Fig.6), most of the relevant hazards related to temperature increases and heat-waves occurred in the hilly and flat part of the HZP during the 1981-2010 period. At the same time, mountain locations were significantly less affected.

Moving to the 2021-2050 period under the RCP4.5 scenario, climate projections show a progressive extension of the climatic risks to municipalities within the flat area, due to the temperature increase. On the contrary, for the mountainous zones, the levels of risk remain very low, despite the higher scores of exposure and vulnerability. This result is because hazard indicators are projected to stay unchanged for the mountain municipalities, while they will worsen substantially in the plain.

For example, the former will not record any increase in the number of days having a daily maximum temperature higher than 35°C, while this number will increase by 4-5 days in the latter. Even more evident is the trend related to tropical nights: their number will nearly remain unchanged in the mountain municipalities but will increase by 9-11 units in the municipalities within the plain.

In contrast, for mountain municipalities, the number of days having a daily maximum temperature higher than 35 °C is about 1 day/year, while the tropical nights are at most 2 days/year. Results for the scenario RCP8.5 do not significantly change by the previous estimates.

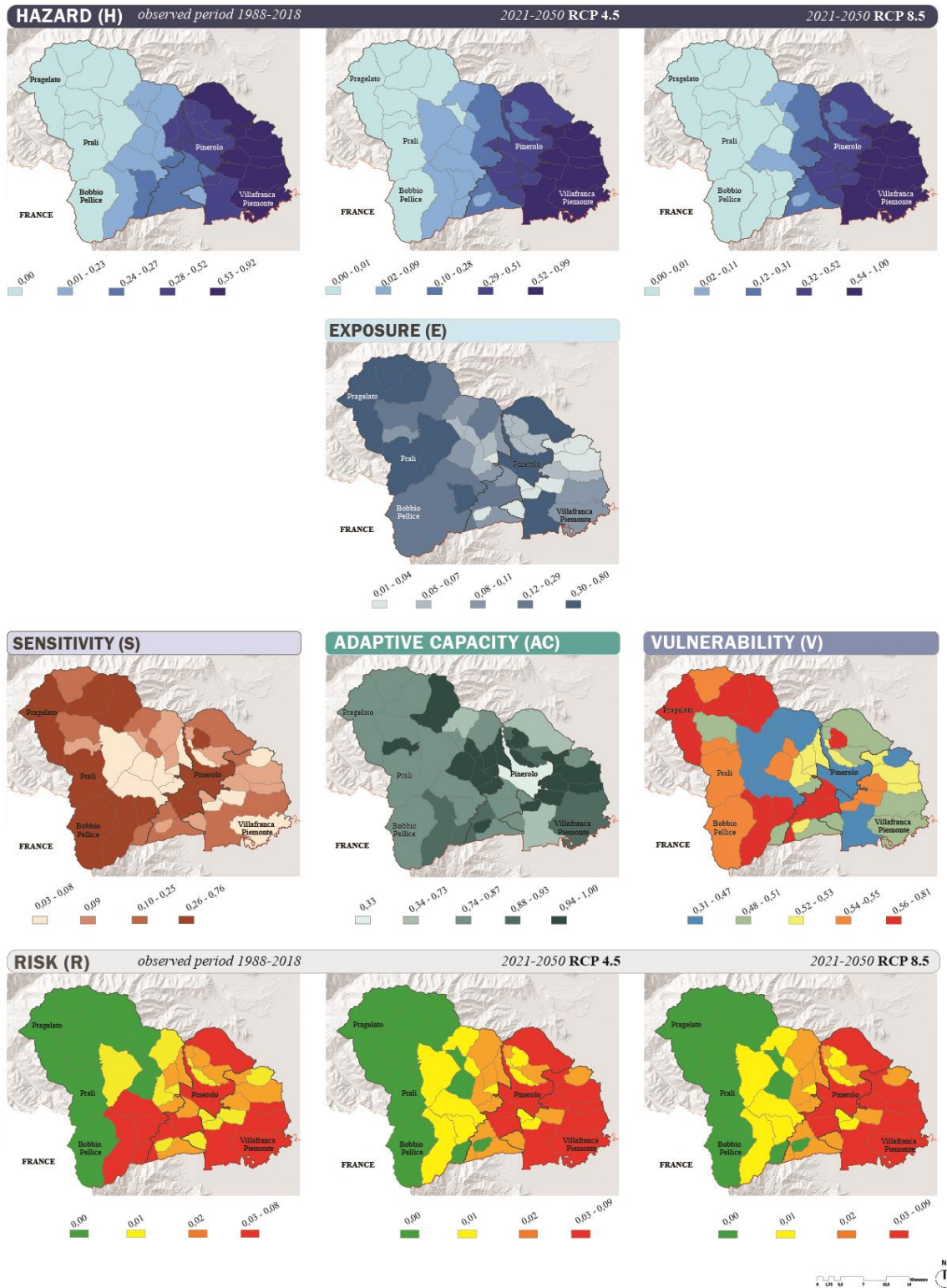
**Framework 1**  
**Risks for winter tourism**



**Fig. 5 Results for winter tourism**



**Framework 2**  
Risks for summer tourism



**Fig.6 Results for summer tourism**

These results indicate that an understandable increase in the duration of the stays in high altitude areas (less affected by heat waves) is expected for the summer season, at least partially compensating for the winter reduction. Therefore, these changes will increase the pressure on the to-date available resources (especially water and electricity).

## 5.2 Overlapping with extreme events related to climate change

A previous paper by Ellena et al. (2020) already analysed how hydrogeological hazards – such as flood, avalanches and landslides – are likely to change in the next decades in the HZP, leading to increased risks in the area for built settlements and infrastructural systems. In this section, implications of those risks for the tourism sector are examined. In general terms, hydrogeological instability will worsen due to two main trends: on the one hand, a general increase in maximum daily precipitation and maximum precipitation for 5 consecutive days, especially under RCP8.5 scenario; on the other hand, an increase in the number of days per year with a minimum temperature above 20°C, 25°C and 35°C. For what it may concern the risks for the built settlements due to flood, the higher risks are observed in the flat and hilly part of the HZP, while in the 2050 scenario the risk will change in particular in the mountain areas, following opposite trajectories. In fact, the risk will increase in Chisone valley (in particular in Pragelato), while it will decrease in Germanasca and Pellice valleys. These differences are mainly related to the exposure, which in these cases is very high in Chisone valley and much lower in the other two valleys. On the contrary, the risks related to flood for the infrastructural systems will increase mainly in the plain and on the hills of the HZP, which turned out to be more vulnerable to these hazards. In this case, the more touristic municipalities in the mountain part of the HZP are not significantly affected by risks. However, they could be indirectly affected, as their accessibility depends on the availability of transport infrastructures in the plain. Namely, if a flood makes these infrastructures unusable, tourists cannot reach the HZP valleys.

As pointed out in *section 3.3*, flood events tend to concentrate in spring and autumn, i.e. the seasons in which the presence of tourists in the area is lower. However, the damages that these events can cause are often relevant and cannot be repaired in a short amount of time. Therefore, floods can have significantly negative impacts on both winter and summer tourism.

Looking at landslides and avalanches, to date the maximum level of risk both for built settlements and infrastructures is concentrated in the medium part of the mountain valley, while in the 2021-2050 scenario this risk will move to the higher part of these valleys, where most touristic activities take place. Avalanches pose a serious danger for ski mountaineering and other outdoor sports in the winter, while an increased frequency of landslides could discourage activities in the summer, as well as interrupt roads and transport services that ensure accessibility in the HZP. Finally, also the hazard related to forest fires – until now stronger on the hilly part of the HZP – will progressively move in the next decades toward the mountain municipalities. In this case, however, risks for the built settlement will become very high in Pellice valleys, while they will remain low in Chisone and Germanasca valleys thanks to the reduced levels of exposure.

## 6. Discussion and conclusion

This paper develops and tests a risk assessment methodology to analyse how potential positive and negative impacts of climate change on winter and summer tourism will spatially distribute on a 2021-2050 scenario within the HZP. Since a singular case study was considered, any claim of exhaustiveness and systematicity must be excluded; however, some interesting issues emerged from the results of the application, both in substantial terms and regarding methodological aspects. Overall, the elaborated risk maps are consistent with the review of the literature carried out in section 2. The high-altitude municipalities are going to face the greatest impacts due to climate change, although in opposite directions when considering seasonality. This scenario has direct consequences for the mountain landscape, environment, and tourism. In winter, reduced snow cover duration will threaten ski activities, which are the main attraction for tourists in this season. After the '80, this reduction already involved the dismantling of ski facilities in the medium part of the HZP valleys. In the next decades, also Pragelato and Prali will need to concentrate skiing activities at altitude over 1,500 meters. Moreover, the inter-annual and intra-annual variability of snow fall and cover will increase, intensifying the complexity in managing ski activities. Nowadays, snowmaking and its related investments are the most

widely implemented adaptation measures to face climate change for winter tourism sector. However, its environmental and economic sustainability is limited. Even if many snowmaking facilities are improving their resource consumption (in water and energy), the deterioration of landscapes and changes in natural ecosystems are inevitable side effects of this activity. Damages are caused by the creation of additional pressure on water reservoirs, water plumping, slope expansion, soil erosion and other issues. The climate projections and their direct and indirect impacts on risk assessment could help authorities and stakeholders to build new long-period visions of winter tourism for these territories. In this sense, it will be crucial to promote diversified winter attractions for tourists less focused on snow.

The negative risks for the winter season could be partially balanced for the high-elevation municipalities by increased opportunities related to the summer tourism. In fact, in the summer months the tourism is projected to become more appealing in the higher valleys due to the milder temperature. Moreover, these areas will be less hit by heat waves than the hills and the plain.

As a consequence, HZP mountains could become the destination of tourists from the near metropolitan area of Turin during weekends, especially during the hottest months (i.e. July and August). This sort of "renaissance" of the Alpine summer tourism (Abegg, 2011), which might be pushed further by the current COVID-19 pandemic (De Luca et al., 2020), could however also lead to an increased pressure on local water resources.

Therefore, there could not be sufficient water to fulfil the demand along the tourism seasonal peaks, although melting glaciers may compensate for short-term hydrological scarcity (Hohenwallner et al., 2011). These direct primary effects could be exacerbated by secondary effects of climate change, which will likely increase frequency and magnitude of extreme natural events just in those high-elevation parts of the HZP. A foreseen intensification of flood events in spring and autumn could cause damages to the built settlement of these areas, as well as to the infrastructures that ensure accessibility for tourist flows. These results should support local authorities in strengthening the traditional policies applied in terms of urban planning, building materials, architecture, distribution of green spaces, public services, etc. Avalanches and landslides will determine major risks not only for settlement and infrastructure systems, but also for winter and summer tourism activities like skiing, free-ride, hiking, climbing, mountain biking, and so on. Also, wildfires seem likely to be intensified due to extreme temperature and precipitation conditions. If it is true that these results are broadly in line with the main literature findings, it emerged from this study how they cannot be easily generalised, even within an area with limited extension, such as the HZP.

The same climatic hazard levels can lead to very different levels of risk even in neighbouring municipalities, if they show different conditions of exposure, sensitivity and adaptive capacity. This was found in many simulation results, particularly when comparing risks between the upper and middle parts of mountain valleys, but also among the upper municipalities themselves in relation to flooding and forest fires. In this sense, the proposed methodology can be a useful decision support system for identifying priorities in adaptation strategies and plans, especially in cases such as the HZP, which is in charge of the elaboration and implementation of these plans within its boundaries (Francini et al., 2021). A consideration of expected trends in climate hazards, combined with analyses of local exposure and vulnerability levels, can help to recognise how risks and opportunities are spatially distributed within a given Alpine area. A multi-level approach can indeed help to answer the following questions: i) which municipalities require urgent interventions? (ii) which ones, on the contrary, present low levels of risk, so that their tourist offer can be immediately promoted and valorised to support the overall attractiveness of the area? Alongside to these points, some limits of the proposed methodology have to be acknowledged. In the analysis, the collection of exposure indicators was affected by the lack of complete and reliable data-series on local tourism.

This deficiency somehow limited a broader collection of touristic elements/activities<sup>1</sup> which could be directly or indirectly affected by climate change hazards.

First, the inclusion of some indicators in the calculation of exposure, sensitivity and adaptation capacity indexes was not possible because of the lack of data availability. To exploit all its potential benefits, the proposed methodology requires rich bases of municipal or even sub-municipal data, which are often poorly available, especially for rural and mountain areas outside urban agglomerations. Second, the selected indicators have been aggregated in hazard, exposure, and vulnerability indexes, without being weighted according to their relative importance. The inclusion of different weights (possibly defined through participatory approaches that involve local stakeholders) would improve the significance of the indexes used in the calculation of the risk levels. Finally, in a view of determine which area to prioritize, the risk values are not expressed in absolute values, but in relatives, therefore the maps show how much a certain municipality is more/less "at risk" than another one. This imply difficulties to compare how risks increase or decrease based on different future time periods and RCP scenarios. Therefore, further research is welcome to overcome these limits and improve a methodology that can help to identify trans-sectorial adaptation measures to face challenges and seize opportunities for the Alpine tourism, according to that "policy integration" called for by Becken et al. (2020) just in relation to tourism and climate change.

## References

- Abegg, B. (2011). Tourism in climate change. CIPRA Compact, 1.
- Abegg, B., Agrawala, S., Crick, F., de Montfalcon, A. (2007) Climate change impacts and adaptation in winter tourism. In: Agrawala, S. (Ed.), *Climate change in the European Alps: Adapting winter tourism and natural hazards management*. OECD, Paris, pp. 25-58.
- Agenzia Regionale di Protezione Ambientale del Piemonte (ARPA). (2019). Banche dati meteorologiche. Retrieved from: [https://www.arpa.piemonte.it/rischinaturali/accesso-ai-dati/annali\\_meteoidrologici/annali-meteo-idro/banca-dati-meteorologica.html](https://www.arpa.piemonte.it/rischinaturali/accesso-ai-dati/annali_meteoidrologici/annali-meteo-idro/banca-dati-meteorologica.html).
- Agrawala, S. (Ed.). (2007). *Climate change in the European Alps: Adapting winter tourism and natural hazards management*. OECD, Paris.
- Ali, M. (2016). Editorial Preface. Planning for livable and safe cities: Extreme weather events caused by climate change. *TeMA - Journal of Land Use, Mobility and Environment*, 9 (1), 3-5. <https://doi.org/10.6092/1970-9870/3894>
- Ashley, R.M., Balmforth, D.J., Saul, A.J., Blanskby, J.D. (2005). Flooding in the future—predicting climate change, risks and responses in urban areas. *Water Science & Technology*. 52 (5), 265-273. <https://doi.org/10.2166/wst.2005.0142>
- Auer, I., Böhm, R., Jurkovic, A., Lipa, W., Orlik, A., Potzmann, R., ... Nieplova, E. (2007). HISTALP—historical instrumental climatological surface time series of the Greater Alpine Region. *International Journal of Climatology* 27 (1), 17-46. <https://doi.org/10.1002/joc.1377>
- Balbi, S. (2012). Climate change and tourism in the Alps: a position paper in view of the upcoming Alpine Convention Fourth Report on the State of the Alps on Sustainable Tourism. *CMCC Research Paper*, 127. <https://dx.doi.org/10.2139/ssrn.2014045>
- Ballarin-Denti, A., Cetara, L., Idone, M.T. (2015). *Guidelines for Climate Change Adaptation at the Local Level in the Alps*. Alpine Convention.
- Bausch, T., Gartner, W.C. (2020). Winter tourism in the European Alps: Is a new paradigm needed? *Journal of Outdoor Recreation and Tourism* 31, 100297. <https://doi.org/10.1016/j.jort.2020.100297>
- Becken, S., (2013). A review of tourism and climate change as an evolving knowledge domain. *Tourism Management Perspectives* 6, 53-62. <http://dx.doi.org/10.1016/j.tmp.2012.11.006>
- Becken, S., Whittlesea, E., Loehr, J., Scott, D. (2020). Tourism and climate change: evaluating the extent of policy integration. *Journal of Sustainable Tourism* 28 (10), 1603-1624. <https://doi.org/10.1080/09669582.2020.1745217>

---

<sup>1</sup> In case of a broader availability of data on local tourism, other exposure indicators may include: the tourism climatic index (TCI) proposed by Mieczkowski (1985), the tourism contribution to local economy (% of GDP), the workforce (% of total employees in local tourism activities), the percentage of employees in the sector with low education, the trade balance in travel (to the HZP) (% of GDP), etc.

- Beniston, M. (2005). Mountain climates and climatic change: An overview of processes focusing on the European Alps. *Pure and Applied Geophysics* 162 (8), 1587-1606. <https://doi.org/10.1007/s00024-005-2684-9>
- Beniston, M. (2012). Impacts of climatic change on water and associated economic activities in the Swiss Alps. *Journal of Hydrology* 412, 291-296. <https://doi.org/10.1016/j.jhydrol.2010.06.046>
- Bertoldi, P. (Ed.) (2018). *How to develop a Sustainable Energy and Climate Action Plan (SECAP) – Part 2 - Baseline Emission Inventory (BEI) and Risk and Vulnerability Assessment (RVA)*. Publications Office of the European Union, Luxembourg. <https://doi.org/10.2760/118857>
- Bocchiola, D., Diolaiuti, G. (2010). Evidence of climate change within the Adamello Glacier of Italy. *Theoretical and Applied Climatology* 100 (3), 351-369. <https://doi.org/10.1007/s00704-009-0186-x>
- Bonzanigo, L., Giupponi, C., Balbi, S., (2016). Sustainable tourism planning and climate change adaptation in the Alps: A case study of winter tourism in mountain communities in the Dolomites. *Journal of Sustainable Tourism* 24 (4), 637-652. <https://doi.org/10.1080/09669582.2015.1122013>
- Boyd, E., Juhola, S., (2015). Adaptive climate change governance for urban resilience. *Urban studies* 52 (7), 1234-1264. <https://doi.org/10.1177/0042098014527483>
- Brunner, M.I., Gurung, A.B., Zappa, M., Zekollari, H., Farinotti, D., Stähli, M. (2019). Present and future water scarcity in Switzerland: Potential for alleviation through reservoirs and lakes. *Science of the Total Environment* 666, 1033-1047. <https://doi.org/10.1016/j.scitotenv.2019.02.169>
- Cannone, N., Diolaiuti, G., Guglielmin, M., Smiraglia, C. (2008). Accelerating climate change impacts on alpine glacier forefield ecosystems in the European Alps. *Ecological Applications* 18 (3), 637-648. <https://doi.org/10.1890/07-1188.1>
- Cantonati, M., Gerecke, R., Bertuzzi, E. (2006). Springs of the Alps—sensitive ecosystems to environmental change: from biodiversity assessments to long-term studies. *Hydrobiologia* 562 (1), 59-96. <https://doi.org/10.1007/s10750-005-1806-9>
- Ceppi, P., Scherrer, S.C., Fischer, A.M., Appenzeller, C. (2012). Revisiting Swiss temperature trends 1959–2008. *International Journal of Climatology* 32 (2), 203-213. <https://doi.org/10.1002/joc.2260>
- Corrado, F., Dematteis, G., Di Gioia, A. (Eds.) (2014). *Nuovi montanari. Abitare le Alpi nel XXI secolo*. FrancoAngeli, Milano.
- Croce, P., Formichi, P., Landi, F., Mercogliano, P., Bucchignani, E., Dosio, A., Dimova S. (2018). The snow load in Europe and the climate change. *Climate Risk Management* 20, 138-154. <https://doi.org/10.1016/j.crm.2018.03.001>
- De Luca, C., Tondelli, S., & Åberg, H. E. (2020). The Covid-19 pandemic effects in rural areas. *TeMA-Journal of Land Use, Mobility and Environment*, 119–132. <https://doi.org/10.6092/1970-9870/6844>
- Durand, Y., Giraud, G., Laternser, M., Etchevers, P., Mérindol, L., Lesaffre, B. (2009). Reanalysis of 47 years of climate in the French Alps (1958–2005): climatology and trends for snow cover. *Journal of Applied Meteorology and Climatology* 48 (12), 2487-2512. <https://doi.org/10.1175/2009JAMC1810.1>
- Dupire, S., Curt, T., Bigot, S., Fréjaville, T. (2019). Vulnerability of forest ecosystems to fire in the French Alps. *European Journal of Forest Research* 138 (5), 813-830. <https://doi.org/10.1007/s10342-019-01206-1>
- EEA (2009). *Regional climate change and adaptation. The Alps facing the challenge of changing water resources*. EEA, Copenhagen. <https://doi.org/10.2800/12552>
- Ellena, M., Ricciardi, G., Barbato, G., Buffa, A., Villani, V., Mercogliano, P. (2020). Past and future hydrogeological risk assessment under climate change conditions over urban settlements and infrastructure systems: the case of a sub-regional area of Piedmont, Italy. *Natural Hazards* 102, 275–30. <https://doi.org/10.1007/s11069-020-03925-w>
- Elsasser, H., Messerli, P., (2001). The vulnerability of the snow industry in the Swiss Alps. *Mountain Research and Development*. 21 (4), 335-339. [https://doi.org/10.1659/0276-4741\(2001\)021\[0335:TVOTSI\]2.0.CO;2](https://doi.org/10.1659/0276-4741(2001)021[0335:TVOTSI]2.0.CO;2)
- Elsasser, H., Bürki, R., (2002). Climate change as a threat to tourism in the Alps. *Climate Research* 20 (3), 253-257. <https://doi.org/10.3354/cr020253>
- Emanuelsson, M.A.E., Mcintyre, N., Hunt, C.F., Mawle, R., Kitson, J., Voulvoulis, N. (2014). Flood risk assessment for infrastructure networks. *J. Flood Risk Management* 7 (1), 31-41. <https://doi.org/10.1111/jfr3.12028>
- Francini, M., Chieffallo, L. & Gaudio, S. (2021). Climate change as stressor in rural areas. *Tema. Journal of Land Use, Mobility and Environment*, (1), 53-71. <http://dx.doi.org/10.6092/1970-9870/7422>
- Future Mountain International (2016). *The future of winter travelling in the Alps*. Retrieved from: <https://www.alp-net.eu/wp-content/uploads/2020/04/TheALPS-study-2016-Future-of-Winter-Tourism.pdf>
- GIZ (2017). *Risk supplement to the vulnerability sourcebook. Guidance on How to Apply the Vulnerability Sourcebook's Approach with the New IPCC AR5 Concept of Climate Risk*. Retrieved from: <https://climate-adapt.eea.europa.eu/metadata/guidances/risk-supplement-to-the-vulnerability-sourcebook-guidance-on-how-to-apply-the-vulnerability-sourcebook2019s-approach-with-the-new-ipcc-ar5-concept-of-climate-risk>
- Gobiet, A., Kotlarski, S., Beniston, M., Heinrich, G., Rajczak, J., Stoffel, M., (2014). 21st century climate change in the European Alps. A review. *Science of the Total Environment*. 493, 1138-1151.

<https://doi.org/10.1016/j.scitotenv.2013.07.050>

Gobiet, A., Kotlarski, S. (2020). *Future Climate Change in the European Alps*. In: Oxford Research Encyclopedia of Climate Science. <https://doi.org/10.1093/acrefore/9780190228620.013.767>

Hock, R., Rasul, G., Adler, C., Cáceres, B., Gruber, S., Hirabayashi, Y., ... Zhang, Y. (2019). *High Mountain Areas*. In: Pörtner, H.-O., Roberts, D.C., Masson-Delmotte, V., Zhai, P., Tignor, M., Poloczanska, E., ... Weyer, N.M. (Eds.), IPCC Special Report on the Ocean and Cryosphere in a Changing Climate, pp. 131-202.

Hohenwallner, D., Saulnier, G.M., Brancelj, A., Bertoncelj, I., Brencic, M., Brun, A., ... Castaings, W. (2011). AlpWaterScarce: water resources management and water scarcity In *the Alps: recommendations for water resources managers and policy-makers*. Retrieved from: [https://www.sbg.ac.at/zgis/alpwaterscarce/03\\_Work/WP03\\_InformationAndPublicity/3.2\\_AWS\\_Website\\_Documents/Recommendations/WEB\\_Recommendation\\_E\\_alp\\_water\\_scarce.pdf](https://www.sbg.ac.at/zgis/alpwaterscarce/03_Work/WP03_InformationAndPublicity/3.2_AWS_Website_Documents/Recommendations/WEB_Recommendation_E_alp_water_scarce.pdf)

Ianni, E., Geneletti, D., Ciolli, M. (2015). Revitalizing traditional ecological knowledge: A study in an alpine rural community. *Environmental Management*. 56 (1), 144-156. <https://doi.org/10.1007/s00267-015-0479-z>

IPCC (2012). Summary for Policymakers. In: Field, C.B., Barros, V., Stocker, T.F., Qin, D., Dokken, D.J., Ebi, K.L., Midgley, P.M. (Eds.), *Managing the Risks of Extreme Events and Disasters to Advance Climate Change Adaptation*. Cambridge University Press, Cambridge, UK, and New York, NY, USA, pp. 1-19.

IPCC, (2014a). *Climate change 2014: mitigation of climate change. Contribution of working Group III to the fifth assessment report of the intergovernmental panel on climate change*. Cambridge University Press, Cambridge, UK, and New York, NY, USA.

IPCC, (2014b). *Summary for policymakers in climate change 2014: impacts, adaptation, and vulnerability. Contribution of Working Group II to the Fifth Assessment Report of the Intergovernmental Panel on Climate Change*. Cambridge University Press, Cambridge, UK, and New York, NY, USA.

IPCC. (2022). Chapter 6: Cities, Settlements and Key Infrastructure. In *Climate Change 2022: Impacts, Adaptation and Vulnerability. Contribution of Working Group II to the Sixth Assessment Report of the Intergovernmental Panel on Climate Change*. Cambridge University Press.

Jacob, D., Petersen, J., Eggert, B., Alias, A., Christensen, O. B., Bouwer, L. M., Yiou, P. (2014). EURO-CORDEX: new high-resolution climate change projections for European impact research. *Regional Environmental Change* 14 (2), 563-578. <https://doi.org/10.1007/s10113-013-0499-2>

Jacob, D., Teichmann, C., Sobolowski, S., Katragkou, E., Anders, I., Belda, M., Benestad, R., Boberg, F., Buonomo, E., & Cardoso, R. M. (2020). Regional climate downscaling over Europe: Perspectives from the EURO-CORDEX community. *Regional Environmental Change*, 20(2), 1–20. <https://doi.org/10.1007/s10113-020-01606-9>

Karl, T.R., Nicholls, N., Ghazi, A. (1999). CLIVAR/GCOS/WMO Workshop on Indices and Indicators for Climate Extremes Workshop Summary. In: Karl, T.R., Nicholls, N., Ghazi, A. (Eds.), *Weather and Climate Extremes*. Springer, Dordrecht, pp. 3-7. [https://doi.org/10.1007/978-94-015-9265-9\\_2](https://doi.org/10.1007/978-94-015-9265-9_2)

Keiler, M., Knight, J., Harrison, S. (2010). Climate change and geomorphological hazards in the eastern European Alps. *Philosophical Transactions of the Royal Society A* 368 (1919), 2461-2479. <https://doi.org/10.1098/rsta.2010.0047>

Klug, H. (2011). Water Management Strategies against Water Scarcity in the Alps: The Project Alp-Water-Scarce. *EarthZine Magazine*. Retrieved from: <https://earthzine.org/water-management-strategies-against-water-scarcity-in-the-alps-the-project-alp-water-scarce-2/>

Koenig, U., Abegg, B. (1997). Impacts of climate change on winter tourism in the Swiss Alps. *Journal of Sustainable Tourism* 5(1), 46-58. <https://doi.org/10.1080/09669589708667275>

Kotlarski, S., Keuler, K., Christensen, O.B., Colette, A., Déqué, M., Gobiet, A., ... Wulfmeyer, V., (2014). Regional climate modeling on European scales: a joint standard evaluation of the EURO-CORDEX RCM ensemble. *Geoscientific Model Development* 7 (4), 1297-1333. <https://doi.org/10.5194/gmd-7-1297-2014>, 2014

Lenzen, M., Sun, Y.Y., Faturay, F., Ting, Y.P., Geschke, A., Malik, A. (2018). The carbon footprint of global tourism. *Natural Climate Change* 8 (6), 522-528. <https://doi.org/10.1038/s41558-018-0141-x>

Marcolini, G., Bellin, A., Disse, M., Chiogna, G. (2017). Variability in snow depth time series in the Adige catchment. *Journal of Hydrology: Regional Studies* 13, 240-254. <https://doi.org/10.1016/j.ejrh.2017.08.007>

Marty, C., (2008) Regime shift of snow days in Switzerland. *Geophysical Research Letters*. 35 (12). <https://doi.org/10.1029/2008GL033998>

Marzocchi, W., Garcia-Aristizabal, A., Gasparini, P., Mastellone, M.L., Di Ruocco, A. (2012). Basic principles of multi-risk assessment: a case study in Italy. *Natural Hazards* 62 (2), 551–573. <https://doi.org/10.1007/s11069-012-0092-x>

Master Adapt (2018). *Linee guida, principi e procedure standardizzate per l'analisi climatica e la valutazione della vulnerabilità a livello regionale e locale*. Regione Autonoma della Sardegna, Cagliari. Retrieved from: <https://masteradapt.t.eu/wordpress/wp-content/uploads/2018/03/MA-linee-guida-A1-1.pdf>.



- Mastrotheodoros, T., Pappas, C., Molnar, P., Burlando, P., Manoli, G., Parajka, J., ... Fatichi, S., (2020). More green and less blue water in the Alps during warmer summers. *Natural Climate Change* 10 (2), 155-161. <https://doi.org/10.1038/s41558-019-0676-5>
- Matasci, C., Altamirano-Cabrera, J.C. (2010). *The vulnerability of Switzerland towards climate change: the case of tourism*. Belpasso International Summer School.
- Mieczkowski, Z., (1985). The tourism climatic index: a method of evaluating world climates for tourism. The *Canadian Geographer*. 29 (3), 220-233. <https://doi.org/10.1111/j.1541-0064.1985.tb00365.x>
- Mora, C., Spirandelli, D., Franklin, E.C., Lynham, J., Kantar, M.B., Miles, W., ... Hunter, C.L., (2018). Broad threat to humanity from cumulative climate hazards intensified by greenhouse gas emissions. *Natural Climate Change* 8 (12), 1062-1071. <https://doi.org/10.1038/s41558-018-0315-6>
- Moriondo, M., Good, P., Durao, R., Bindi, M., Giannakopoulos, C., Corte-Real, J. (2006). Potential impact of climate change on fire risk in the Mediterranean area. *Climate Research* 31(1), 85-95. <https://doi.org/10.3354/cr031085>
- Moser, B., Temperli, C., Schneiter, G., Wohlgenuth, T. (2010). Potential shift in tree species composition after interaction of fire and drought in the Central Alps. *European Journal of Forest Research* 129 (4), 625-633. <https://doi.org/10.1007/s10342-010-0363-6>
- Mourier, B., Poulenard, J., Carcaillet, C., Williamson, D. (2010). Soil evolution and subalpine ecosystem changes in the French Alps inferred from geochemical analysis of lacustrine sediments. *Journal of Paleolimnology*. 44 (2), 571-587. <https://doi.org/10.1007/s10933-010-9438-0>
- Müller, H., Weber, F. (2008). Climate change and tourism – scenario analysis for the Bernese Oberland in 2030. *Tourism Review* 63 (3), 57–71. <https://doi.org/10.1108/16605370810901580>
- OECD (2007). *Changements climatiques dans les Alpes européennes: adapter le tourisme d'hiver et la gestion des risques naturels*. Retrieved from: <https://www.oecd.org/fr/environnement/cc/changementsclimatiquesdanslesalpeuropeennesadapterletourismedhiveretlagestiondesrisquesnaturels.htm>
- Oppenheimer, M., Campos, M., Warren, R., Birkmann, J., Luber, G., O'Neill, B., Takahashi, K. (2014). Emergent risks and key vulnerabilities. In: Field, C.B., Barros, V., Stocker, T.F., Qin, D., Dokken, D.J., Ebi, K.L., Midgley, P.M. (Eds.), *Managing the Risks of Extreme Events and Disasters to Advance Climate Change Adaptation*. Cambridge University Press, Cambridge, UK, and New York, NY, USA, pp. 1039-1099.
- Palladino, M.R., Viero, A., Turconi, L., Brunetti, M.T., Peruccacci, S., Melillo, M., ... Guzzetti, F. (2018). Rainfall thresholds for the activation of shallow landslides in the Italian Alps: the role of environmental conditioning factors. *Geomorphology* 303, 53-67. <https://doi.org/10.1016/j.geomorph.2017.11.009>
- Parry, M., Parry, M.L., Canziani, O., Palutikof, J., Van der Linden, P., Hanson, C. (Eds.) (2007). *Climate change 2007-impacts, adaptation and vulnerability: Working group II contribution to the fourth assessment report of the IPCC (Vol. 4)*. Cambridge University Press, Cambridge, UK, and New York, NY, USA.
- Peterson, T., Folland, C., Gruba, G., Hogg, W., Mokssit, A., Plummer, N. (2001). *Report on the activities of the working group on climate change detection and related rapporteurs*. World Meteorological Organization, Geneva.
- Pröbstl-Haider, U., Haider, W., Wirth, V., Beardmore, B. (2015). Will climate change increase the attractiveness of summer destinations in the European Alps? A survey of German tourists. *Journal of Outdoor Recreation and Tourism*. 11, 44-57. <http://dx.doi.org/10.1016/j.jort.2015.07.003>
- Probst, T., Wicki, W., Zischg, A., Pichler, A., (2013). *Alpine strategy for adaptation to climate change in the field of natural hazards*. Platform on Natural Hazards of the Alpine Convention (PLANALP).
- Prudent-Richard, G., Gillet, M., Vengeon, J.M., Descotes-Genon, S., Einhorn, B., Bourjot, L., ... Gillet, F. (2008). *Changement climatique dans les Alpes: impacts et risques naturels*. Rapport Technique No 1, ONERC (Observatoire National sur les Effets du Réchauffement Climatique), Pôle Grenoblois d'études et de recherche pour la prévention des Risques Naturels (PGRN), Région Rhône-Alpes
- Pütz, M., Gallati, D., Kytzia, S., Elsasser, H., Lardelli, C., Teich, M., ... Rixen, C. (2011). Winter tourism, climate change, and snowmaking in the Swiss Alps: tourists' attitudes and regional economic impacts. *Mountain Research and Development* 31 (4), 357-362. <https://doi.org/10.1659/MRD-JOURNAL-D-11-00039.1>
- Rajczak, J., Pall, P., Schär, C., (2013). Projections of extreme precipitation events in regional climate simulations for Europe and the Alpine Region. *Journal of Geophysical Research: Atmospheres*. 118 (9), 3610-3626. <https://doi.org/10.1002/jgrd.50297>
- Ronchi, C., De Luigi, C., Ciccarelli, N., Loglisci, N. (2008). *Development of a daily gridded climatological air temperature dataset based on a optimal interpolation of ERA-40 reanalysis downscaling and a local high resolution thermometers network*. In: 8th EMS Annual Meeting and 7th European Conference on Applied Climatology, Amsterdam, The Netherlands, EMS8/ECAC7 Abstracts (Vol. 5).
- Rosselló, J., Becken, S., Santana-Gallego, M. (2020). The effects of natural disasters on international tourism: A global analysis. *Tourism Management* 79, 104080. <https://doi.org/10.1016/j.tourman.2020.104080>

Schindelegger, A., Kanonier, A., (2019). *Natural Hazard Risk Governance: Status Quo in the EUSALP Region*. EUSALP Action Group 8.

Schumacher, S., Bugmann, H., (2006). The relative importance of climatic effects, wildfires and management for future forest landscape dynamics in the Swiss Alps. *Global Change Biology* 12 (8), 1435-1450. <https://doi.org/10.1111/j.1365-2486.2006.01188.x>

Scott, D., McBoyle, G., Minogue, A., Mills, B., (2006). Climate change and the sustainability of ski-based tourism in eastern North America: a reassessment. *Journal of Sustainable Tourism*. 14, 376–398. <https://doi.org/10.2167/jost550.0>

Serquet, G., Rebetez, M. (2011). Relationship between tourism demand in the Swiss Alps and hot summer air temperatures associated with climate change. *Climatic Change* 108 (1), 291-300. <https://doi.org/10.1007/s10584-010-0012-6>

Spandre, P., François, H., Verfaillie, D., Pons, M., Vernay, M., Lafaysse, M., ... Morin, S. (2019). Winter tourism under climate change in the Pyrenees and the French Alps: relevance of snowmaking as a technical adaptation. *Cryosphere* 13 (4), 1325-1347. <https://doi.org/10.5194/tc-13-1325-2019>

Steiger, R., Scott, D., Abegg, B., Pons, M., Aall, C. (2019). A critical review of climate change risk for ski tourism. *Current Issues in Tourism* 22 (11), 1343-1379. <https://doi.org/10.1080/13683500.2017.1410110>

Steiger, R., Damm, A., Prettenthaler, F., Pröbstl-Haider, U. (2020). Climate change and winter outdoor activities in Austria. *Journal of Outdoor Recreation and Tourism* 34/100330. <https://doi.org/10.1016/j.jort.2020.100330>

Unbehaun, W., Pröbstl, U., Haider, W. (2008). Trends in winter sport tourism: challenges for the future. *Tourism Review* 63 (1), 36-47. <https://doi.org/10.1108/16605370810861035>

Valt, M., Cianfarra, P. (2010). Recent snow cover variability in the Italian Alps. *Cold Regions Science and Technology* 64 (2), 146-157. <https://doi.org/10.1016/j.coldregions.2010.08.008>

Vanat, L. (2020). *2020 International Report on Snow & Mountain Tourism. Overview of the key industry figures for ski resorts*. Retrieved from: <https://www.vanat.ch/international-report-on-snow-mountain-tourism>

Wastl, C., Schunk, C., Leuchner, M., Pezzatti, G.B., Menzel, A. (2012). Recent climate change: long-term trends in meteorological forest fire danger in the Alps. *Agricultural and Forest Meteorology* 162, 1-13. <https://doi.org/10.1016/j.agrformet.2012.04.001>

Wieser, G., Hammerle, A., Wohlfahrt, G. (2008). The water balance of grassland ecosystems in the Austrian Alps. *Arctic Antarctic, and Alpine Research* 40 (2), 439-445. [https://doi.org/10.1657/1523-0430\(07-039\)\[WIESER\]2.0.CO;2](https://doi.org/10.1657/1523-0430(07-039)[WIESER]2.0.CO;2)

Wilkins, E., de Urioste-Stone, S., Weiskittel, A., Gabe, T. (2018). Effects of weather conditions on tourism spending: implications for future trends under climate change. *Journal of Travel Research* 57 (8), 1042-1053. <https://doi.org/10.1177/0047287517728591>

Winkler, G., Reichl, P. (2014). Scale dependent hydraulic investigations of faulted crystalline rocks—Examples from the Eastern Alps, Austria. In: Sharp, J.M. (Ed.), *Fractured Rock Hydrogeology*, vol. 20. Taylor & Francis, London, pp181-196.

Witmer, U., (1986). *Erfassung, Bearbeitung und Kartierung von Schneedaten in der Schweiz*. Geographisches Institut der Universität, Bern.

Zampieri, M., Russo, S., di Sabatino, S., Michetti, M., Scoccimarro, E., Gualdi, S., (2016). Global assessment of heat wave magnitudes from 1901 to 2010 and implications for the river discharge of the Alps. *Science of Total Environment* 571, 1330-1339. <https://doi.org/10.1016/j.scitotenv.2016.07.008>

Zollner, K., (2018). United Nations Platform for Space-based Information for Disaster Management and Emergency Response (UN-SPIDER). In: Brünner, C., Königsberger G., Mayer H., Rinner A. (Eds.), *Satellite-Based Earth Observation*. Springer, Cham, pp. 235-242. [https://doi.org/10.1007/978-3-319-74805-4\\_24](https://doi.org/10.1007/978-3-319-74805-4_24).

## Image Sources

All figures are authors' elaborations

## Author's profile

### Elena Camilla Pede

Elena Camilla Pede is Assistant Professor in Spatial Planning at the Interuniversity Department of Regional and Urban Studies and Planning of Politecnico di Torino where she teaches Seismic risk and Spatial Planning. Besides the topics of risk, climate change and resilience, her research activity focuses on urban regeneration and developments. She has recently published, in addition to articles in journals, *Planning for Resilience. New Paths for Managing Uncertainty* (Springer, 2020).

### Giuliana Barbato

Giuliana Barbato is Electronic Engineer for Automation and Telecommunication, Research associate in the Regional Model and geo-hydrological impacts division at Fondazione Centro Euro-Mediterraneo sui Cambiamenti Climatici. Expert on developing post-processing tools for the analysis of climate data of different types (simulated, in situ and satellite). Her

main research activities mainly concern the climatic hazard assessment using different tools and data provided by different platforms and sensors.

**Alessandra Buffa**

Alessandra Buffa is Urban and Spatial Planner and PhD Fellow at Inter-university Department of Regional & Urban Studies and Planning (DIST) of Polytechnic of Turin. Her main research topics are analysis and management of the impacts of the climate change at local, metropolitan and territorial level and the support to the definition of adaptation strategies in territorial governance, urban planning and design practices.

**Marta Ellena**

Marta Ellena is PhD Candidate in Science and Management of Climate Change (Ca' Foscari University) and Junior Researcher at Fondazione Centro Euro-Mediterraneo sui Cambiamenti Climatici (REMHI division). Her research interests relate to the temperature-health nexus at the urban scale looking at social inequalities and built environment characteristics, but also to risk assessment methodologies applied to different context and systems exposed. Over the last years, she is providing support to the Ministry of Ecological Transition (IT) within the actions foreseen for the international negotiations of the United Nations Framework Convention on Climate Change (UNFCCC).

**Paola Mercogliano**

Paola Mercogliano is Climalogist, Director of the Regional Model and geo-hydrological impact at Fondazione Centro Euro-Mediterraneo sui Cambiamenti climatici. Her main research topics are assessment of the climate scenarios at local levels using numerical model and statistical tools, evaluation of the impacts of the climate change and support to the definition of adaptation strategies from local up national level.

**Guglielmo Ricciardi**

Guglielmo Ricciardi is Urban Planner and Designer, PhD Researcher at Department of Architecture and Design of Polytechnic of Turin and Research collaborator for Regional Model and geo-hydrological impact at Fondazione Centro Euro-Mediterraneo sui Cambiamenti climatici. His main research topics are vulnerability assessment and risk analysis of the impacts of the climate change at local, territorial and national level and the development of integration of mitigation and adaptation strategies in urban planning and design practices.

**Luca Staricco**

Luca Staricco is Associate professor in Spatial Planning at Politecnico di Torino, where he teaches Regional planning. His main areas of research are the coordination of land use and transport planning, transit oriented development, sustainable mobility, urban resilience and adaptation to climate change. He authored several publications on these topics and took part to international research projects, among which the EU FP7 POCACITO – POst Carbon Cities of Tomorrow, the INTERREG ALCOTRA ARTACLIM – Adaptation and resilience to climate change in mountain areas, and ESPON URRUC – Urban-Rural Connectivity in Non-Metropolitan Regions.