

Inspection planning by defect prediction models and inspection strategy maps

Original

Inspection planning by defect prediction models and inspection strategy maps / Verna, Elisa; Genta, Gianfranco; Galetto, Maurizio; Franceschini, Fiorenzo. - In: PRODUCTION ENGINEERING. - ISSN 0944-6524. - ELETTRONICO. - 15:6(2021), pp. 897-915. [10.1007/s11740-021-01067-x]

Availability:

This version is available at: 11583/2913952 since: 2021-10-13T14:30:25Z

Publisher:

Springer

Published

DOI:10.1007/s11740-021-01067-x

Terms of use:

openAccess

This article is made available under terms and conditions as specified in the corresponding bibliographic description in the repository

Publisher copyright

(Article begins on next page)



Inspection planning by defect prediction models and inspection strategy maps

Elisa Verna¹ · Gianfranco Genta¹ · Maurizio Galetto¹ · Fiorenzo Franceschini¹ 

Received: 10 March 2021 / Accepted: 21 June 2021 / Published online: 1 July 2021
© The Author(s) 2021

Abstract

Designing appropriate quality-inspections in manufacturing processes has always been a challenge to maintain competitiveness in the market. Recent studies have been focused on the design of appropriate in-process inspection strategies for assembly processes based on probabilistic models. Despite this general interest, a practical tool allowing for the assessment of the adequacy of alternative inspection strategies is still lacking. This paper proposes a general framework to assess the effectiveness and cost of inspection strategies. In detail, defect probabilities obtained by prediction models and inspection variables are combined to define a pair of indicators for developing an inspection strategy map. Such a map acts as an analysis tool, enabling positioning assessment and benchmarking of the strategies adopted by manufacturing companies, but also as a design tool to achieve the desired targets. The approach can assist designers of manufacturing processes, and particularly low-volume productions, in the early stages of inspection planning.

Keywords Quality control · Inspection planning · Inspection strategy map · Inspection design · Assembly · Low-volume production

1 Introduction

Manufacturing companies are increasingly focused on producing high-quality and fault-free products that meet customer needs. Defects in the final product, particularly those generated during the production process, can significantly affect the product itself, both in terms of quality and cost [1–3]. In this regard, designing effective and cost-efficient inspection strategies for the detection of defects and the reduction of quality-related costs has always been a great challenge and a crucial factor for achieving market competitiveness [4–8].

A distinction between in-process and offline inspection strategies should be considered when designing inspections [9]. In in-process inspections, units are inspected during the production process [10–13], while in offline inspections, finished products are inspected after the production process is completed [10, 14]. Although in-process inspections are considered more economical and effective than offline inspections, in some situations, they are impossible to perform, not adequate or not affordable [7, 10].

Several methods have been adopted in literature to design quality-inspections in mass productions, including simulations [15–17], cost–benefit models [18], optimisation and mathematical programming models [19–21]. However, when dealing with low-volume productions [22], such techniques may not be appropriate [23–28]. In literature, few studies investigated the design of offline inspection strategies which can be also suitable for low-volume manufacturing productions. In a recent study, a methodology to select the best compromise between the effectiveness and the affordability of alternative offline inspection strategies in a low-volume Additive Manufacturing (AM) production was proposed [7]. Regarding the design of in-process inspections, existing methods rely on the decomposition of the manufacturing process of interest into several steps, in which specific

✉ Fiorenzo Franceschini
fiorenzo.franceschini@polito.it

Elisa Verna
elisa.verna@polito.it

Gianfranco Genta
gianfranco.genta@polito.it

Maurizio Galetto
maurizio.galetto@polito.it

¹ Department of Management and Production Engineering,
Politecnico Di Torino, Corso Duca degli Abruzzi 24,
10129 Turin, Italy

defects can occur [4, 29, 30]. Such models, apart from being used in mass production, are particularly relevant and beneficial for low volume production. In detail, Franceschini et al. (2018) proposed a practical methodology to guide quality designers in selecting the most effective and economically convenient inspection procedures. The proposed approach was applied to a structured case study concerning the low-volume production of hardness testing machines [4]. Despite the originality and the practical implications of this study, suitable models for supporting the estimation of the variables involved, especially the probabilities of occurrence of defects in each process step, have not been closely examined. This limitation was overcome in the work of Genta et al. (2018), where models linking the assembly complexity with the operator-induced defect rate [30, 31] were implemented in order to get a priori predictions of the probability of occurrence of defects [29]. Such probabilities were then adopted for designing effective inspection procedures in the manufacturing of hardness testing machines. Nevertheless, a detailed analysis of the economic effects of the proposed inspection design was not addressed. Thus, a comprehensive study including the use of defect generation models and the assessment of inspection strategies effectiveness and cost-efficiency is still lacking. The purpose of this paper is to address this gap by proposing a general framework to quantitatively assess the adequacy of in-process inspection strategies from the point of view of the effectiveness and cost. The following research question (RQ) is specifically addressed:

RQ: How to develop a tool to support designers in choosing the most appropriate inspection strategy from an effectiveness and cost standpoint?

It should be pointed out that, in this study, an inspection strategy is defined as the combination of inspection methods used to perform quality controls in the different workstations of the assembly process. For instance, a strategy may require all workstations to be inspected or only some of them. Besides, workstations can be inspected using alternative methods, e.g., visual checks or mechanical tests. Therefore, adopting one strategy rather than another involves choosing which workstations to inspect and by which inspection method.

The approach herein proposed is based on the joint use of defect prediction models and specific "inspection maps". In detail, a pair of indicators depicting the effectiveness and cost of inspection strategies is used to construct a new support tool named "Inspection Strategy Map (ISM)". Two are the main purposes of ISM:

- (i) analysing the positioning of different inspection strategies on the map, in terms of effectiveness and cost, allowing the designer to compare more alternatives (analysis tool);

- (ii) supporting the designer in determining the conditions of effectiveness and cost to allow an a priori inspection strategy positioning.

The framework and the tool proposed in this study were applied to the assembly of wrapping machines. Such a process can be classified as a low-volume production, being the total number of customised machines produced in a year, typically, of about 50 units.

This study may provide an opportunity to advance the understanding of the inspection planning process, especially for low-volume productions where traditional techniques are not exploitable. By ISM, engineers are driven to identify alternative inspection procedures in order to make the inspection strategy more effective and cost-efficient.

The remainder of the paper is organised into four sections. Section 2 summarises the major contributions related to the topic of the paper. In Sect. 3, the ISM tool is presented and discussed in detail. Section 4 describes an application of ISM to a case study related to the assembly of wrapping machines. Finally, Sect. 5 summarises the original contributions of this research.

2 Conceptual background

2.1 Defect prediction models in inspection planning

Several models were developed in the literature to predict defects of a final assembled product [30–39]. A large part of these models relies on the close relationship between assembly complexity and defectiveness rate related to each process step, also called workstation. These models can be used in a wide variety of applications, ranging from the electromechanical to the automotive sector.

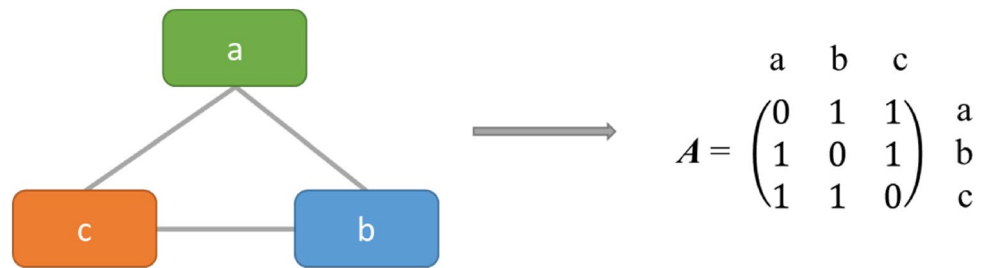
In this study, a defect prediction model, developed for a low-volume production of wrapping machines, is adopted. It relies on the relationship between structural complexity and *Defects Per Unit* occurring in each *i*th workstation (DPU_i) [38]. The predictor of this model is the product complexity related to the *i*th workstation, evaluated according to the approach proposed by Alkan [40] and Sinha [41]:

$$C_i = C_{1,i} + C_{2,i} \cdot C_{3,i} \quad (1)$$

In Eq. (1), $C_{1,i}$ represents the sum of complexities of individual product parts in each *i*th workstation. $C_{1,i}$ is calculated as shown in Eq. (2):

$$C_{1,i} = \sum_{p=1}^{N_i} \gamma_{pi} \quad (2)$$

Fig. 1 Connectivity structure of a product composed of three parts and its associated adjacency matrix A



where, for each i th workstation ($i = 1, \dots, m$), N_i is the total number of product parts and γ_{pi} is the handling complexity of part p , which can be estimated as a function of the standard handling time [40].

$C_{2,i}$ is defined as the complexity of connections related to the i th workstation. It is the sum of the complexities of pairwise connections that exist in the product structure assembled in the i th workstation, as follows:

$$C_{2,i} = \sum_{p=1}^{N_i-1} \sum_{r=p+1}^{N_i} \varphi_{pri} \cdot A_{pr} \tag{3}$$

where φ_{pri} is the complexity in achieving a connection between parts p and r of the i -th workstation. φ_{pri} can be estimated through the standard completion time of the connection between parts p and r in isolated conditions. Besides, A_{pri} defines the binary adjacency matrix representing the connectivity structure of the system, as indicated in Eq. (4):

$$A_{pri} = \begin{cases} 1 & \text{if there is a connection between } p \text{ and } r \text{ in the } i\text{th workstation} \\ 0 & \text{otherwise} \end{cases} \tag{4}$$

Finally, $C_{3,i}$ is the topological complexity of the i -th workstation and represents the complexity related to the architectural pattern of the assembled product. It can be obtained from the matrix energy E_{Ai} of the adjacency matrix related to the i -th workstation, which is designated by the sum of the corresponding singular values δ_{pi} [41, 42], as follows:

$$C_{3,i} = \frac{E_{Ai}}{N_i} = \frac{\sum_{p=1}^{N_i} \delta_{pi}}{N_i} \tag{5}$$

where E_{Ai} stands for graph energy (or matrix energy) and N_i stands for the number of parts in the i -th workstation (i.e., the number of nodes). It has to be clarified that, since the adjacency matrix is a symmetric matrix of size N_i with the diagonal elements being all zeros, the singular values correspond to the absolute eigenvalues of the adjacency matrix [41, 43].

A pedagogical example referring to an assembly process made up of a single workstation is provided. The product to be assembled is composed of $N = 3$ identical parts (a, b and

c), see Fig. 1. The standard handling time of each p -th part ($p = 1, 2, 3$) is $\gamma_p = 40$ s. According to Eq. (2), the handling complexity is $C_1 = \sum_{p=1}^3 \gamma_p = 2$ min. The standard completion time of the connection between parts p and r ($p = 1, 2$ and $r = p + 1, 2, 3$) is $\varphi_{pr} = 80$ s. By implementing Eq. (3), the complexity of connections is $C_2 = \sum_{p=1}^2 \sum_{r=p+1}^3 \varphi_{pr} \cdot A_{pr} = 4$ min, since there are 3 connections between the parts. From the adjacency matrix A (see Fig. 1), the related graph energy is computed as the sum of its singular values, that are the absolute eigenvalues in case of symmetric matrix. In detail, two different eigenvalues of A are obtained, i.e., -1 with multiplicity of 2 and 2. Thus, being the singular values the absolute eigenvalues of A , then $E_A = 1 + 1 + 2 = 4$. According to Eq. (5), $C_3 = \frac{E_A}{N} = \frac{4}{3} = 1.33$. Finally, by Eq. (1), the structural complexity is $C = C_1 + C_2 \cdot C_3 = 7.33$ min.

As an example, Table 1 reports, for each i -th workstation of the pre-stretching device of a wrapping machine (see next Sect. 4.1), the complexities $C_{1,i}$, $C_{2,i}$ and $C_{3,i}$, according

respectively to Eqs. (2), (3) and (5), and the final assembly complexity C_i derived by Eq. (1). DPU_i and C_i are related by the following power-law regression model [44]:

$$DPU_i = 3.05 \cdot 10^{-3} \cdot (C_i)^{1.58} \tag{6}$$

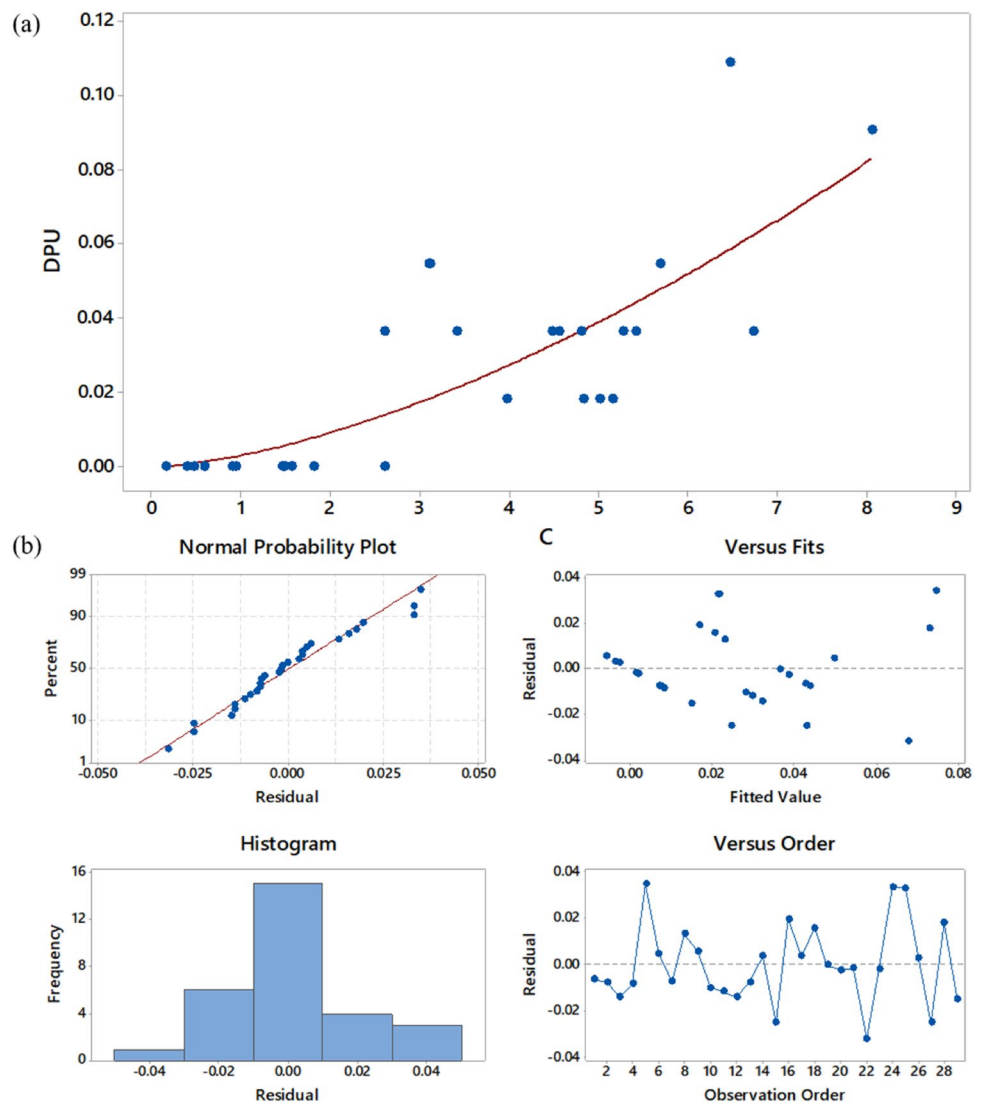
Figure 2 illustrates the defect prediction model defined in Eq. (6) and the corresponding residual plots.

Identifying suitable defect prediction models is a key factor for providing practical assistance in the design, improvement and optimisation of an assembled product [31]. The adoption of reliable defect rate estimates can also successfully guide inspection designers in planning inspection strategies from early design phases [4, 7]. Recent studies by the authors investigated the use of defect prediction models to obtain reliable estimates of the probability of occurrence of defective-workstation-outputs in assembly processes, particularly suitable for low-volume productions [29, 36, 38]. A workstation-output consists of a set of all units that goes thorough the workstation. The workstation-output is considered defective if at least one defect is found, regardless of

Table 1 Subdivision of the assembly process of the pre-stretching device of wrapping machines into workstations with indication of the variables related to the defect prediction model (see Eqs. (6) and (7))

No. workstation	Workstation description	$N_{a,i}$	Experimental DPU_i	$C_{1,i}$ [min]	$C_{2,i}$ [min]	N_j	$E(A_j)$	$C_{3,i}$	C_i [min]	Predicted DPU_i	P_i [%]
1	Motor no. 1 bench assembly	6	0.0364	2.19	5.11	14	8.40	0.60	5.27	0.0424	4.16
2	Motor no. 2 bench assembly	6	0.0364	2.28	5.33	14	8.26	0.59	5.41	0.0443	4.34
3	Support plate of motor no. 2 bench assembly	3	0.0182	1.19	4.77	10	8.00	0.80	5.01	0.0391	3.86
4	Spindle bench assembly	3	0.0000	0.78	3.14	3	0.75	0.25	1.57	0.0062	0.62
5	Rubber tyres bench assembly	12	0.1091	1.24	11.13	14	6.58	0.47	6.47	0.0587	5.71
6	Idle rolls bench assembly	12	0.0545	1.63	6.53	12	7.44	0.62	5.68	0.0478	4.67
7	Rubberised pads bench assembly	3	0.0000	0.73	2.91	4	1.00	0.25	1.46	0.0055	0.55
8	Belt tensioner device bench assembly	3	0.0364	0.25	2.22	8	15.20	1.90	4.47	0.0327	3.23
9	Driven wheels of transmission system bench assembly	2	0.0000	0.08	0.33	4	1.00	0.25	0.16	0.0002	0.02
10	Pre-stretch frame plate preparation	3	0.0182	0.99	3.97	11	8.25	0.75	3.97	0.0271	2.68
11	Rubber rollers on pre-stretch frame plate assembly	4	0.0182	1.07	4.27	26	22.88	0.88	4.83	0.0369	3.64
12	Idle rollers on pre-stretch frame plate assembly	6	0.0182	1.19	4.77	39	32.37	0.83	5.15	0.0409	4.02
13	Motor no. 1 on frame plate assembly	1	0.0000	0.74	2.96	5	1.25	0.25	1.48	0.0057	0.57
14	Transmission system of motor no. 1 assembly	2	0.0000	0.19	0.78	2	1.00	0.50	0.58	0.0013	0.13
15	Motor no. 2 on frame plate assembly	4	0.0182	1.73	6.90	16	7.68	0.48	5.01	0.0391	3.86
16	Transmission system of motor no. 2 assembly	2	0.0364	0.09	0.80	2	6.28	3.14	2.60	0.0139	1.38
17	Motor no. 1 bracket on pre-stretch frame plate assembly	1	0.0000	0.20	0.78	3	0.75	0.25	0.39	0.0007	0.07
18	Belt tensioner on pre-stretch frame plate assembly	2	0.0364	0.18	1.64	5	9.85	1.97	3.41	0.0213	2.12
19	Transmission system of motor no. 1 calibration	2	0.0364	1.74	4.05	12	8.28	0.69	4.55	0.0336	3.33
20	Transmission system of motor no. 2 calibration	2	0.0364	1.90	4.43	12	7.92	0.66	4.81	0.0366	3.63
21	Spindle preparation for assembly on pre-stretch frame plate	2	0.0000	0.45	1.79	15	3.75	0.25	0.90	0.0026	0.26
22	Spindle group on pre-stretch frame plate assembly	6	0.0364	1.36	12.23	34	14.96	0.44	6.730	0.0625	6.09
23	Rubber pads on pre-stretch frame plate assembly	2	0.0000	0.47	1.89	5	1.25	0.25	0.94	0.0028	0.28
24	Motor assembly no. 1 final steps	1	0.0545	0.12	1.04	3	8.64	2.88	3.09	0.0182	1.82
25	Motor assembly no. 2 final steps	1	0.0545	0.12	1.08	3	8.31	2.77	3.11	0.0184	1.84
26	Spindle release lever bench assembly	1	0.0000	0.24	0.95	6	1.50	0.25	0.48	0.0009	0.09
27	Spindle release lever on pre-stretch frame plate assembly	3	0.0000	0.80	7.20	6	1.50	0.25	2.60	0.0139	1.38
28	Compensation arm bench assembly	9	0.0909	1.26	11.32	20	12.00	0.60	8.05	0.0830	8.00
29	Compensation arm on pre-stretch frame plate assembly	3	0.0000	0.56	5.00	4	1.00	0.25	1.81	0.0078	0.78

Fig. 2 *DPU* vs *C*: **a** Regression model and experimental data, and **b** Residual plots



whether these defects are distributed among the workstation units. Accordingly, the probability of occurrence of at least one defect in each workstation i represents the probability of occurrence of a defective-workstation-output (p_i). In detail, knowing the DPU_i (see Eq. 6) and the number of elementary operations $N_{a,i}$ (also called job elements) performed by operators in each i th workstation, the probability of occurrence of a defective-workstation-output p_i can be defined as [29]:

$$p_i = 1 - \left(1 - \frac{DPU_i}{N_{a,i}}\right)^{N_{a,i}} \quad (7)$$

Table 1 shows the predicted DPU_i and p_i values for each i -th workstation of the pre-stretching device of a wrapping machine.

2.2 Inspection strategy performances (effectiveness and total cost)

As highlighted in the previous section, an overall assembly manufacturing process, in optimal settings condition, may be modelled by decomposing it into several process steps, also called workstations [4, 29, 30, 36]. Each of such workstations produces an outcome, henceforth called workstation-output, whose conformity can be tested through different inspection activities. Quality control activities are performed on the workstation-output according to the specific kind of defect to be detected. They include, for instance, dimensional verifications, visual checks, comparison with reference exemplars, mechanical tests, etc. [5, 45, 46]. The combination of the inspection activities performed on the workstations defines an

inspection strategy for the assembly process. Inspection designers can choose between several alternative strategies to inspect an overall manufacturing process. For example, a strategy may require all workstations to be inspected or only some of them. Alternatively, the choice may concern a strategy where all workstations are inspected by visual checks or another one where only mechanical tests are performed, and so on.

When performing an inspection activity, two types of inspection errors may occur: there are a risk of detecting a defect when it is not present (type I error) and a risk of not detecting the defect when it is actually present (type II error). Although such risks can be reduced through sophisticated quality monitoring techniques, manual and/or automatic, they should not be neglected [47–49].

In the modelling of a manufacturing process and inspection strategy, each i th workstation (where $i = 1, \dots, m$) can be associated to three variables [4]:

- p_i : probability of occurrence of a defective-workstation-output in optimal operating conditions;
- α_i : probability of erroneously detecting as defective a non-defective-workstation-output (i.e., type-I inspection error);
- β_i : probability of erroneously not detecting a defective-workstation-output (i.e., type-II inspection error).

The first variable, p_i , is strictly related to the quality of the process related to the i th workstation. It should be emphasised that such defect probability is due to a physiological condition of the process; therefore, it is not affected by occasional failures or errors. On the other hand, the inspection errors α_i and β_i depend on the quality of the inspection activity, that involves the inspection typology and procedure, the technical skills and experience of the operators, the environmental conditions, etc. [10, 14, 49, 50]. In practical applications, the variable p_i may be estimated by using the defect prediction model shown in Eq. (7). On the other hand, α_i and β_i can be estimated by the use of simulations, prediction models and/or empirical methods, based on historical data, previous experience on similar processes, and process knowledge [4, 29, 51].

A typical inspection strategy performance may be assessed by two inspection indicators which depict the overall effectiveness and economic convenience of an inspection strategy [5, 7, 52, 53]. As explained in authors' recent studies [4, 29, 51], the inspection effectiveness of an inspection strategy may be represented using a practical indicator, D_{tot} , defining the mean total number of defective-workstation-outputs which are erroneously not detected after completing the overall inspection strategy, as follows [4, 29]:

$$D_{tot} = \sum_{i=1}^m D_i = \sum_{i=1}^m p_i \cdot \beta_i \quad (8)$$

where D_i represents the mean number of actual defective-workstation-outputs undetected in the i -th workstation. The indicator D_{tot} is obtained by assuming that the variables p_i , α_i and β_i related to both the same workstations and to different ones are uncorrelated.

The total cost related to the inspection strategy may be estimated by the total cost indicator, C_{tot} , that includes the cost of the specific inspection activity, the necessary- and the unnecessary-repair costs, and the cost of undetected defects, as shown in Eq. (9) [4, 51]. Since such indicator assesses the total cost related to the inspection strategy in use, it can be used as a proxy for the affordability of the inspection strategy.

$$\begin{aligned} C_{tot} &= \sum_{i=1}^m C_{tot,i} \\ &= \sum_{i=1}^m [c_i + NRC_i \cdot p_i \cdot (1 - \beta_i) \\ &\quad + URC_i \cdot (1 - p_i) \cdot \alpha_i + NDC_i \cdot p_i \cdot \beta_i] \end{aligned} \quad (9)$$

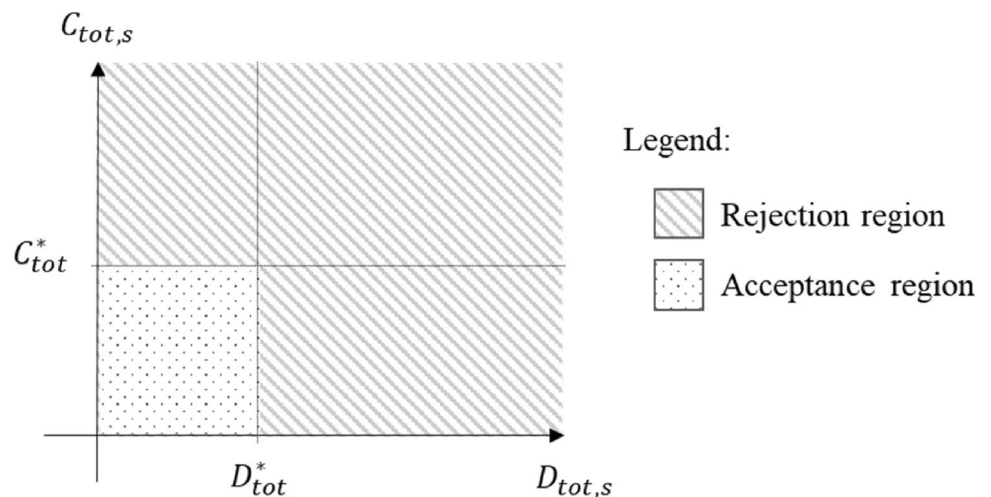
where:

- $C_{tot,i}$ is the total cost related to the i th workstation;
- c_i is the cost of the control performed in the i th workstation;
- NRC_i is the Necessary-Repair Cost, namely the necessary cost for repairing/removing the defective-workstation-outputs (or in some cases the cost of rejection);
- URC_i is the Unnecessary-Repair Cost, i.e., the cost incurred when identifying false defective-workstation-outputs; e.g., despite there is no cost required for defective-workstation-outputs removal, the overall process can be slowed down, with a consequent extra cost.
- NDC_i is the cost of undetected defective-workstation-outputs, namely the external failure costs related to the missing detection of defective-workstation-outputs, including legal fees related to customer lawsuits, loss of future sales from dissatisfied customers, product recalls, product return costs, after-sales repair costs, etc. [7].

Even this indicator is obtained under the assumption of absence of statistical correlation between the variables p_i , α_i and β_i related both to the same workstations and to different ones.

The reliability of the two indicators of performance can be assessed by providing a quantitative estimation of their variability. To this aim, the method provided by the GUM (Guide to the expression of Uncertainty in Measurement) is used [54]. According to this approach, the uncertainty

Fig. 3 Schematic representation of an inspection strategy map



affecting all the model variables, i.e. $p_i, \alpha_i, \beta_i, c_i, NRC_i, URC_i$ and NDC_i can be combined and propagated to the resulting indicators D_{tot} and C_{tot} [54, 55]. A detailed description and implementation of the method is provided in the recent study of the authors [51]. Accordingly, the uncertainty, expressed in terms of variance, VAR , of the indicators of effectiveness and total cost is, respectively:

$$VAR(D_{tot}) = \sum_{i=1}^m [\beta_i^2 \cdot VAR(p_i) + p_i^2 \cdot VAR(\beta_i)] \quad (10)$$

$$VAR(C_{tot}) \approx \sum_{i=1}^m \left[(NRC_i - NRC_i \cdot \beta_i - URC_i \cdot \alpha_i + NDC_i \cdot \beta_i)^2 \cdot VAR(p_i) + (URC_i - URC_i \cdot p_i)^2 \cdot VAR(\alpha_i) + (-NRC_i \cdot p_i + NDC_i \cdot p_i)^2 \cdot VAR(\beta_i) + VAR(c_i) + (p_i - p_i \cdot \beta_i)^2 \cdot VAR(NRC_i) + (\alpha_i - p_i \cdot \alpha_i)^2 \cdot VAR(URC_i) + (p_i \cdot \beta_i)^2 \cdot VAR(NDC_i) \right] \quad (11)$$

3 Inspection strategy maps (ISM)

Overall, for each inspection strategy to be assessed and compared, the two performance indicators may be calculated by Eqs. (8) and (9). According to the scientific literature about Multi-Criteria Decision-Making (MCDM), several methods may be implemented to choose from different alternatives when multiple criteria and trade-offs are involved [56–59]. In the present study, a more straightforward and practical methodology is proposed to support quality inspection planning by Inspection Strategy Maps (ISMs). ISMs are defined on a plan whose axes are the two indicators D_{tot} and C_{tot} (see Fig. 3). Each inspection strategy may be described by a point on the ISM.

A pair of thresholds (respectively D_{tot}^* and C_{tot}^*) defined by the designer limits the values of the two indicators. D_{tot}^* can be seen as a guarantee for the consumer because it represents the maximum average number of acceptable defective-workstation output remaining in the final product. The

second threshold, C_{tot}^* , is a cost limit for the company, i.e. the maximum cost that the producer is willing to pay for the inspection strategy. Then, the following rules can be used to support inspection designers in the choice of the most appropriate inspection strategy according to their requirements.

For each s -th inspection strategy (where $s = 1, \dots, k$), a comparison between the upper limit of the 95% confidence interval¹ of $D_{tot,s}$ and $C_{tot,s}$ identified as $D_{tot,s}^U$ and $C_{tot,s}^U$ is made with the thresholds D_{tot}^* and C_{tot}^* :

(1) if $D_{tot,s}^U < D_{tot}^*$ and $C_{tot,s}^U < C_{tot}^*$, the strategy may be selected: the strategy is therefore in the acceptance region (see Fig. 3);

(2) if $D_{tot,s}^U > D_{tot}^*$ or $C_{tot,s}^U > C_{tot}^*$, the strategy is located in the rejection region (see Fig. 3).

If more strategies lie in the acceptance region, and therefore their values of D_{tot} and C_{tot} are below the imposed thresholds, the designer can decide which strategy should be adopted. The preferred strategy is the one that minimises both D_{tot} and C_{tot} . However, if among the alternatives no strategy minimises both indicators, the designer can choose whether minimising one or the other. Such choice strictly depends on the product specifications and the certification constraints imposed by the product application sector. For example, in medical or aerospace

¹ A confidence interval gives an estimated range of values which is likely to include an unknown population parameter. In this study, the conventional 95% confidence level is adopted in the analysis.

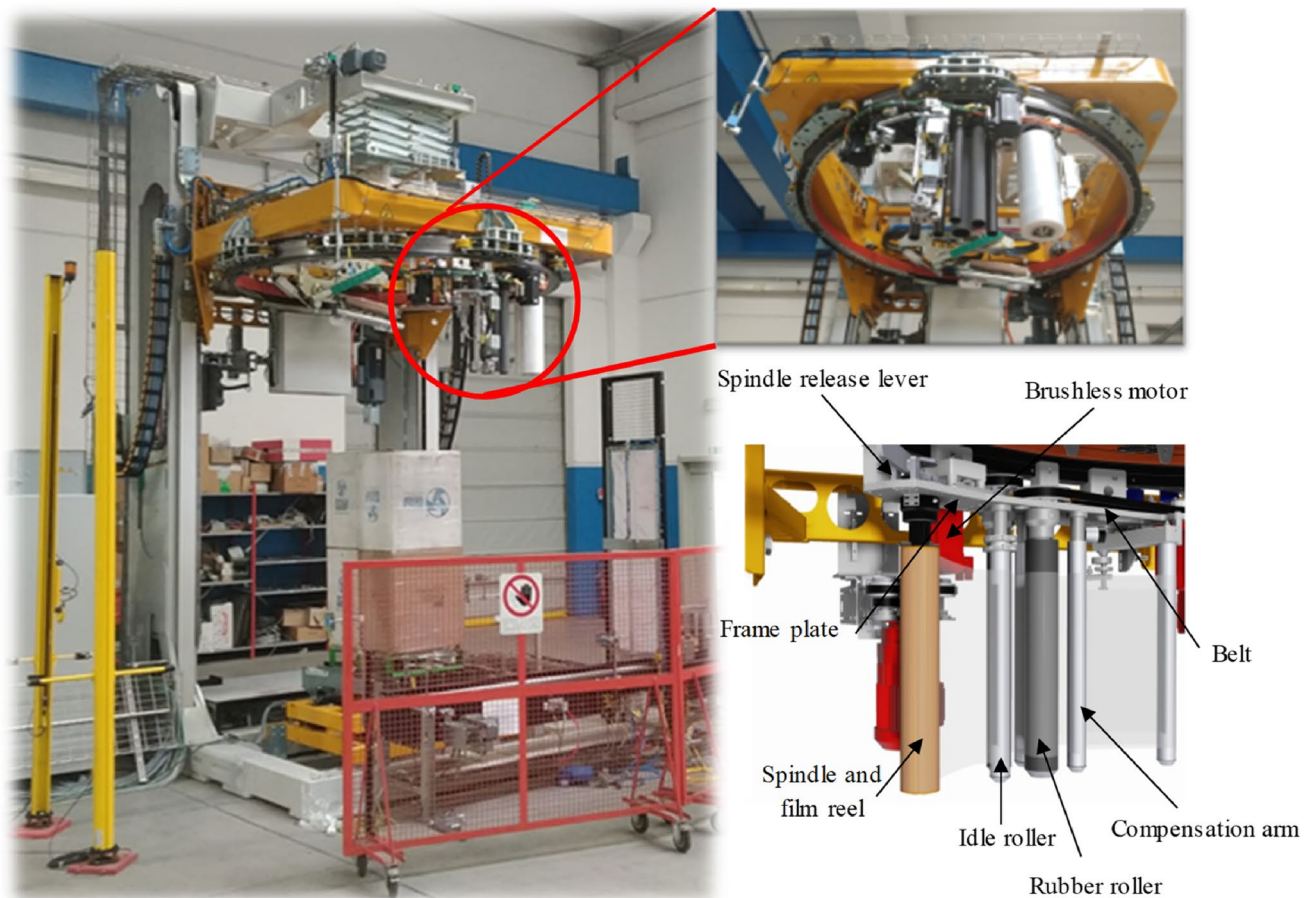


Fig. 4 Rotating ring wrapping machine produced by Tosa Group S.p.A. (Italy) with a focus on the pre-stretching device: bottom-frame image and front view of 3D CAD model with the indication of the main components

sectors, the producer may be more inclined to select the strategy that minimises D_{tot} instead of choosing the most cost-efficient one, because of the significant consequences external failures could have. Conversely, if the specifications are not stringent, the manufacturer may be driven to choose the most economical strategy.

The first aim of an ISM is to enable the analysis and positioning of the inspection strategies implemented by a manufacturing company. Indeed, according to a cost–benefit logic, the combined use of the inspection indicators and their uncertainty allows the positioning of alternative inspection strategies into the map and, consequently, designers are guided in choosing the most appropriate one. ISM may also be adopted to compare more alternative inspection strategies, such as partial inspections in selected workstations, or strategies in which current control activities are modified or improved. Apart from being an analysis tool, the ISM can also be used as a design tool. In other words, by setting an objective point on the map, it is possible to determine which conditions

of effectiveness and cost may guarantee its achievement. Thus, ISM can represent a powerful and practical decision tool to assist the inspection designers in quality assessment and improvement. An example of the use of ISM for both functionalities is discussed in the next Sect. 4.

4 Case study: wrapping machines assembly

4.1 Manufacturing process modelling

The proposed modelling of the manufacturing process was applied to the assembly process of wrapping machines for the packaging of palletised loads. In this study, the rotating ring wrapping machine was considered, specifically a single part of this machine, namely the pre-stretching device, produced by the Italian company Tosa Group S.p.A. (see Fig. 4). This device is common to all rotating ring wrapping machines, although each machine is customised and differs from the others for some details. In a typical year,

Table 2 Variables related to the inspection strategy IS-0 of the pre-stretching device

No. workstation	α_i [%]	β_i [%]	c_i [€]	NRC_i [€]	URC_i [€]	NDC_i [€]
1	0.5	0.8	0.12	0.37	0.37	1584.00
2	0.5	0.8	0.32	0.73	0.73	1592.00
3	0.3	0.5	0.25	0.37	0.37	87.00
4	0.2	0.5	0.76	0.86	0.86	569.00
5	0.4	0.8	0.56	2.02	2.02	483.00
6	0.4	0.8	0.45	2.20	2.20	273.00
7	0.1	0.1	0.14	0.18	0.18	11.00
8	0.3	1.0	0.04	0.75	0.75	31.00
9	0.4	0.6	0.08	0.09	0.09	47.00
10	0.5	0.3	1.06	1.83	1.83	224.00
11	0.2	0.2	0.29	0.15	0.15	11.67
12	0.2	0.2	0.27	0.15	0.15	17.50
13	0.3	0.3	0.26	0.05	0.05	8.75
14	0.4	0.8	0.10	0.37	0.37	66.00
15	0.3	0.3	0.31	0.12	0.12	5.83
16	0.4	0.8	0.17	0.37	0.37	99.00
17	0.2	0.2	0.13	0.02	0.02	6.00
18	0.5	0.9	0.10	0.02	0.02	5.83
19	0.2	0.2	0.37	0.05	0.05	5.83
20	0.2	0.2	0.35	0.10	0.10	5.83
21	0.5	0.7	0.32	0.18	0.18	5.83
22	0.5	0.7	0.91	0.29	0.29	11.67
23	0.2	0.2	0.04	0.07	0.07	5.83
24	0.5	1.2	0.08	0.43	0.43	5.83
25	0.5	1.2	0.12	0.43	0.43	5.83
26	0.3	0.3	0.29	0.56	0.56	25.00
27	0.2	0.2	0.34	0.09	0.09	5.83
28	0.8	1.2	0.26	0.31	0.31	106.00
29	0.5	0.5	0.17	0.07	0.07	5.83

about 50 pre-stretching devices are assembled on different wrapping machines (low-volume production). Such an electromechanical device is designed to pull/unroll, pre-stretch and place the plastic film and finally to carry out the necessary number of windings on the pallet. The pre-stretching device assembly can be decomposed into 29 workstations: in the first 9 workstations, the assembly is performed on the bench by the operator, while in the last 20 workstations the subassemblies are assembled on the frame plate. For a detailed process decomposition, see Table 1 and Fig. 4. As mentioned in Sect. 2.1, the defect prediction model suitable for wrapping machines, reported in Eq. (6), was derived in a previous study by the authors [44]. This model was obtained from experimental DPU_i occurring under stable process conditions in each workstation (see Table 1), collected over the last five years by the company. From the predicted DPU_i values, the probability of occurrence of defective-workstation-outputs in optimal operating conditions, p_i , may be obtained

by Eq. (7). The resulting values are reported in Table 1 and will be used to evaluate the inspection strategy performances in the next Sect. 4.2.

4.2 Inspection strategies positioning using the ISM

The current inspection strategy carried out by the company requires each workstation to be checked through an inspection activity, needing specific equipment depending on the workstation-output (see Table 5). Each control is affected by inspection errors. The estimates of α_i and β_i (see Table 2) were obtained by the inspectors basing on historical data and empirical values referring to the assembly of pre-stretching devices. The two inspection strategy indicators of effectiveness and total cost are evaluated for the current inspection strategy, denoted as IS-0. Table 2 also reports the cost values used for estimating inspection total cost. Precisely, the estimates of c_i were calculated considering the time

Table 3 Mean values and 95% confidence intervals of inspection performance indicators D_{tot} and C_{tot} for inspection strategies IS-0, IS-1 and IS-2

Inspection strategy	$D_{tot} (\times 10^{-3})$	95% confidence interval of $D_{tot} (\times 10^{-3})$	C_{tot} [€]	95% confidence interval of C_{tot} [€]
IS-0	4.80	(3.45; 6.15)	10.74	(9.95; 11.53)
IS-1	378.61	(217.32; 539.91)	10.13	(7.43; 12.83)
IS-2	1.51	(0.64; 2.37)	11.41	(11.08; 11.75)

required for the inspection activity and the labour cost of operators/inspectors. NRC_i and URC_i , considered identical as a first approximation, were estimated starting from the time required for identifying and repairing possible defects (necessary or unnecessary) and the respective labour cost. Finally, NDC_i was estimated considering the after-sales repair costs, calculated as the time for the repairs/substitutions and the operator labour costs.

Moreover, the estimates of the inspection performances are complemented by an estimation of their uncertainty. To this aim, Table 6 reports the estimates of the variances of the probabilities and costs of the model. Specifically, the variance of probabilities p_i is obtained by composing the uncertainties of the two regression models parameters shown in Eq. (6) by using the approach proposed in Verna et al. [51]. Besides, the variances of inspection errors (α_i and β_i) and the costs (c_i , NRC_i , URC_i and NDC_i) are estimated by the inspectors based on previous experience.

Table 3 shows the indicators of effectiveness D_{tot} and total cost C_{tot} calculated according to Eqs. (8) and (9) and variable estimates listed in Tables 1 and 2. Furthermore, the 95% confidence intervals of the indicator estimates are provided in Table 3, according to Eqs. (10) and (11) and variable uncertainties reported in Table 6.

As can be observed in Table 3, the mean number of defective-workstation-outputs which are not detected by the adopted inspection strategy, is nearly 5 units, considering a production of one thousand pre-stretching devices. As mentioned before, being the production of such devices of only 50 units per year, the number of defective-workstation-outputs that are erroneously not identified by the inspection strategy may be considered very little, i.e. 5 every 20 years. Moreover, by separately comparing the D_i values, the most critical workstations in terms of residual defectiveness may be identified. In particular, the workstations with the highest values of D_i are the number 28, 5 and 24 respectively. For these workstations, the producer could design and adopt more effective inspection activities (see next Sect. 4.3).

Regarding the economic perspective, considering that the total cost of the pre-stretching device, including labour costs and materials, amounts to 3000 €, the cost of the current

inspection strategy is less than 1%. Even for this indicator, individual $C_{tot,i}$ values can be compared with each other to identify the most expensive workstations (in this case, numbers 5, 10 and 22 respectively). Therefore, the inspection in the workstation 5 is not only the worst in terms of effectiveness, but it is also the most expensive for the company. It should be noted that such a workstation is also the one with the highest value of p_i . As a consequence, due to the high number of defects, the sum of the cost components related to the repair ($NRC_i \cdot p_i \cdot (1 - \beta_i)$) and to the defects remaining in the pre-stretching device ($NDC_i \cdot p_i \cdot \beta_i$) are higher than those in the other workstations.

As shown in Fig. 5, for the pre-stretching device, the two thresholds imposed by the company designer are $D_{tot}^* = 4.00 \cdot 10^{-3}$ and $C_{tot}^* = 15$ €. IS-0 is represented in Fig. 5 as a region delimited by the confidence intervals of both indicators, while the central point of the region corresponds to their average value. It can be noted that IS-0 region belongs only for a small part to the acceptance region and the central point falls in the rejection region. Thus, being this strategy not acceptable by the producer, two alternative strategies are analysed: IS-1 (Inspection Strategy 1) and IS-2 (Inspection Strategy 2).

In IS-1, only the workstations whose cost of undetected defects (NDC_i) is considered expensive by the manufacturer (more than 50 €) are inspected. In detail, these are the workstations number 1–6, 10, 14, 16 and 28, respectively. Control methods performed in such workstations are the same as those adopted in the current strategy IS-0, and described in Table 5. Accordingly, the inspection variables related to such workstations have the same values of those reported in Tables 1 and 2. For the other workstations that are not subject to inspection, the corresponding inspection variables are $\alpha_i = 0$, $\beta_i = 1$, $c_i = 0$, $NRC_i = 0$ and $URC_i = 0$. In addition, for all the workstations, the probability p_i and the cost NDC_i do not change compared to IS-0, being not affected by the inspection strategy adopted. Table 7 reports the complete list of variables for IS-1.

In IS-2, selected workstations that are critical in terms of defectiveness (shown in Table 8) are accurately inspected through dedicated equipment and carried out by appointed staff. As a result, the cost of inspection activity c_i for such workstations slightly increases because of an increase of hourly cost of dedicated equipment—due to the fixed cost of purchasing/obtaining the dedicated equipment—and inspection time by approximately 40%. On the other hand, inspection errors decrease by about 85% with compared to IS-0. The remaining workstations are inspected using the same control methods carried out in the current strategy IS-0 and, therefore, the inspection variables for these workstations are set equal to the values of IS-0 shown in Tables 1 and 2. It should be noted that p_i , NRC_i , URC_i and NDC_i remain unchanged from IS-0 for all the workstations, being irrespective of the strategy implemented. Table 8 provides the complete list of variables for the strategy IS-2.

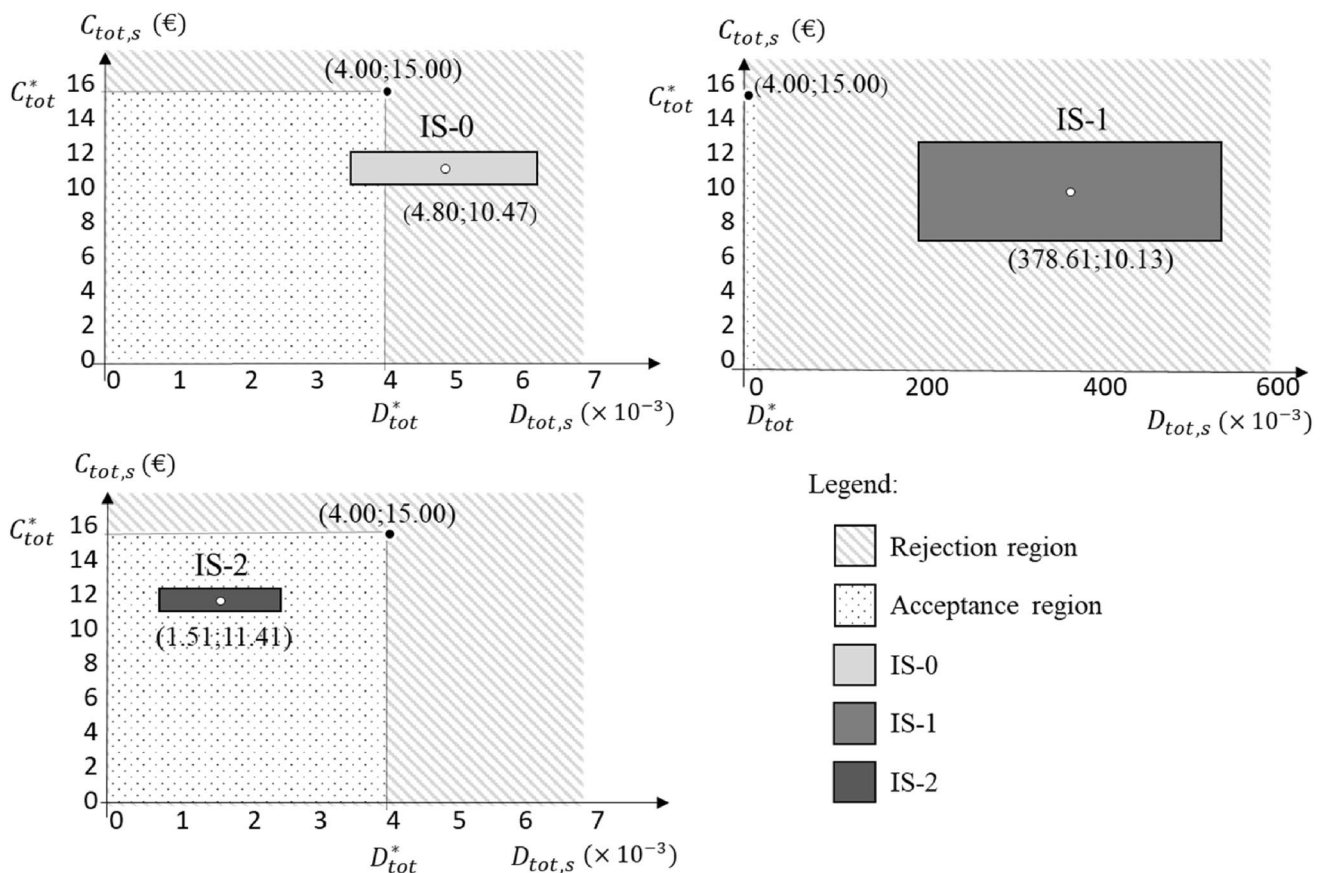


Fig. 5 Representation of the ISM for the inspection strategies IS-0, IS-1 and IS-2

Table 3 shows the mean values of the indicators D_{tot} and C_{tot} of the two alternative inspection strategies IS-1 and IS-2 and their 95% confidence intervals.

4.3 Comparison and analysis of alternative inspection strategies

Given the results shown in Fig. 5, the strategy IS-1 is out of the acceptance region. The indicator D_{tot} is about two orders of magnitude higher than the threshold, although C_{tot} is in line with the manufacturer’s requirements. Indeed, performing IS-1 leads to a significant increase in the indicator of effectiveness, caused by the non-inspection of selected workstations and, therefore, by leaving defects in the final pre-stretching device. However, the inspection total cost of such a strategy remains affordable and comparable with the cost of the other two strategies because the absence of inspection in the workstations with the lowest values of NDC_i does not entail inspection and repair costs, but only costs of undetected defects, which remain minimal.

Regarding strategies IS-0 and IS-2, the comparison of the corresponding indicators is shown in the ISM illustrated in Fig. 6.

The strategy to be preferred is IS-2. It is the only strategy that allows for a residual defectiveness lower than the threshold D_{tot}^* imposed by the producer. From an economic point of view, both strategies lead to comparable costs, although IS-2 is on average slightly more expensive than IS-0. Besides, as shown in Fig. 6, inspection indicators D_{tot} and C_{tot} obtained for IS-2 are affected by less uncertainty compared to those obtained for IS-0. Accordingly, the estimates of the two indicators are more accurate for IS-2 than IS-0. Furthermore, it has to be highlighted that when no inspection is performed in all the workstations, the total cost will be $C_{tot} = \sum_{i=1}^m NDC_i \cdot p_i = 202.40\text{€}$ (see Eq. (9) in which $\alpha_i = 0$, $\beta_i = 1$ and $c_i = NRC_i = URC_i = 0$). In light of this, since in this case study the higher costs are those of undetected defective-workstation-outputs and not performing inspections leads to a very high cost, i.e., 202.40 €, it is advisable choosing an inspection strategy that minimises

Fig. 6 Comparison of the inspection strategies IS-0 and IS-2 using the ISM

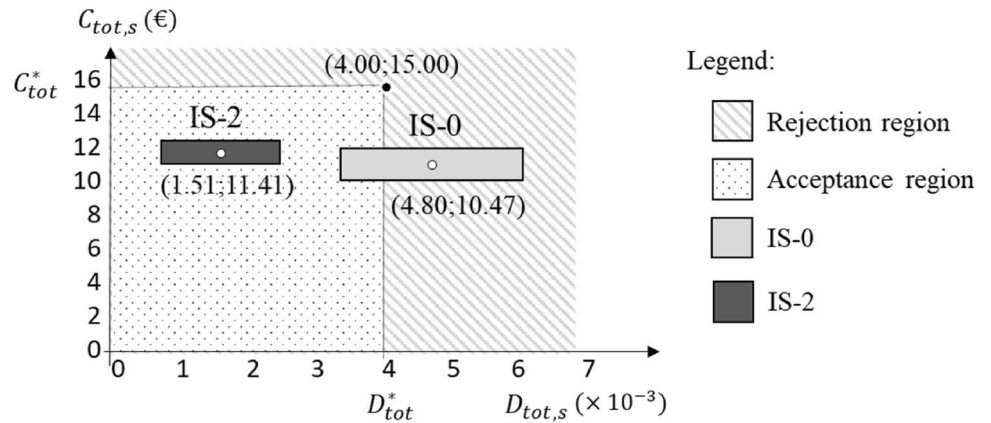
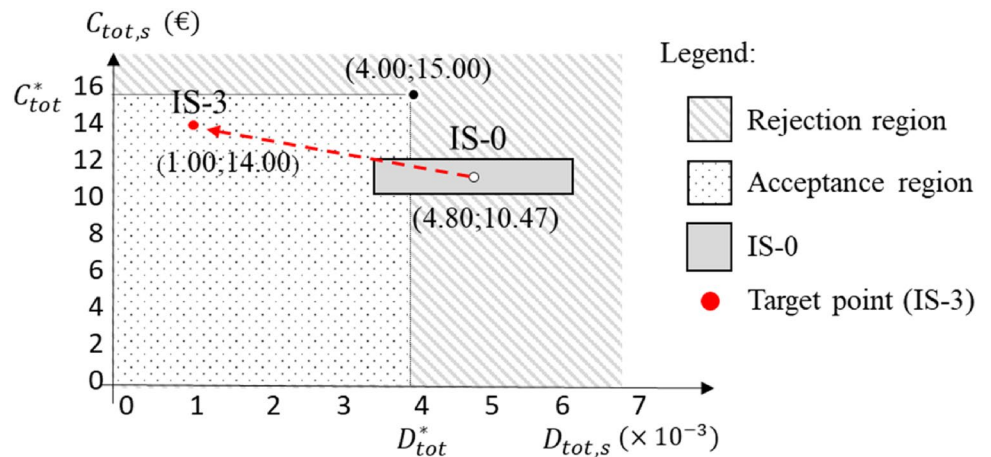


Fig. 7 Representation in the ISM of the “target point” (IS-3) to be achieved starting from the condition IS-0



such a cost component through high-performance inspections, without, however, significantly increasing the costs of inspection activities, as in the case of the strategy IS-2.

4.4 ISM for designing inspections

ISM can also be used in a reverse way to the approach discussed in Sect. 4.3. In other words, when the designer wants to achieve effectiveness and cost objective, represented by a “target point” on ISM, this tool can guide designer choices. Indeed, when the target values of indicators D_{tot} and C_{tot} are known, the conditions for their implementation can be determined. For instance, suppose that the wrapping machines company aims to set as target values of the indicators D_{tot} and C_{tot} respectively $1.00 \cdot 10^{-3}$ and 14 € (IS-3). This situation is represented in Fig. 7. In order to reach the target point, since probabilities p_i are physiological characteristics of the production process, and being NRC_i , URC_i and NDC_i costs irrespective of the strategy adopted, the only variables to be addressed are inspection errors α_i and β_i and the costs of

inspection activities c_i . A possible strategy involves reducing inspection errors by 80% compared to the strategy IS-0 by improving quality controls in all the workstation (e.g. using dedicated equipment and training inspectors). As a consequence, it is assumed that inspection costs will increase by 50% (see Table 4). In this case, the resulting indicators D_{tot} and C_{tot} becomes respectively $0.96 \cdot 10^{-3}$ and 13.76€. It should be noted that, although the cost c_i is increased for all the workstations by 50%, the strategy total cost is approximately 30% higher than that of IS-0 owing to the 80% reduction in both the cost of undetected defects and unnecessary repairs.

5 Conclusions

The design of effective and cost-efficient quality-inspection strategies in manufacturing processes may be extremely challenging, mainly for low-volume productions due to the non-applicability of traditional statistical techniques.

Table 4 Variables α_i , β_i and c_i related to the inspection strategy IS-3 of the pre-stretching device

No. workstation	α_i [%]	β_i [%]	c_i [€]
1	0.10	0.16	0.18
2	0.10	0.16	0.48
3	0.06	0.10	0.38
4	0.04	0.10	1.15
5	0.08	0.16	0.84
6	0.08	0.16	0.67
7	0.02	0.02	0.21
8	0.06	0.20	0.06
9	0.08	0.12	0.12
10	0.10	0.06	1.60
11	0.04	0.04	0.43
12	0.04	0.04	0.40
13	0.06	0.06	0.39
14	0.08	0.16	0.15
15	0.06	0.06	0.46
16	0.08	0.16	0.25
17	0.04	0.04	0.20
18	0.10	0.18	0.16
19	0.04	0.04	0.55
20	0.04	0.04	0.52
21	0.10	0.14	0.48
22	0.10	0.14	1.37
23	0.04	0.04	0.06
24	0.10	0.24	0.12
25	0.10	0.24	0.18
26	0.06	0.06	0.44
27	0.04	0.04	0.51
28	0.16	0.24	0.39
29	0.10	0.10	0.25

Inspection designer may adopt a variety of inspection strategies indicating the workstations to inspect and the inspection method to be used. Recent studies proposed the use of defect prediction models to plan in-process inspections in early design phases. Nonetheless, a decision

support tool for designers enabling the assessment of the adequacy of alternative inspection strategies has not yet been addressed. Considering this literature gap, this paper proposes a strategic tool, named Inspection Strategy Map (ISM), able to guide inspection designers in the inspection planning process from the early design phases. The proposed tool relies on defect generation models and uses a pair of practical indicators depicting the effectiveness and total cost of an inspection strategy to map the company’s scenario. ISM can support inspection designers for:

- enabling positioning assessment and benchmarking of different inspection strategies;
- driving designer choices to achieve desired specification targets.

The approach is described through a practical case study concerning the assembly of wrapping machines (low-volume production). The current inspection strategy, IS-0, is compared with other two potential alternatives, IS-1 and IS-2. In the former, only selected workstations are inspected using the same controls currently adopted. In the latter, all the workstations are inspected, but in some of them the controls are enhanced by dedicated equipment and staff. The use of the ISM allowed to identify the best strategy for the company, i.e. IS-2, because it satisfies both effectiveness and cost constraints. In addition, the ISM is used to guide inspectors by showing how to achieve the target strategy (i.e., IS-3) from the current condition IS-0. In detail, the most appropriate solution is to improve quality controls in all the workstations, e.g., by training inspectors, leading to a significant increase in inspection effectiveness with a slight increase in costs. Regarding the future, authors are planning to extend the use of ISMs to online monitoring of inspection activities.

Appendices

See Tables 5, 6, 7, 8.

Table 5 Current inspection strategy of the pre-stretching device: description of the controls performed in the workstations and the equipment used

No. workstation	Control type	Control description	Equipment
1	Visual and manual	Cleaning of motor shaft 1, alignment of groups pulley-motor shaft 1 and clamping ring-motor shaft 1	Hands
2	Visual, manual and dimensional	Cleaning of motor shaft 2, correct dimensions of the groups shrink disk-crankshaft 2 and pulley-crankshaft 2	Hands, caliper, bench vice
3	Visual and manual	Surface cleaning of motor support plate 2 and correct assembly of the upper and lower plate	Hands
4	Visual, manual and mechanical	Presence of all the components for the spindle subassembly and spindle spring operation	Hands
5	Visual, manual and mechanical	Cleaning of the wheeled roller shaft and correct rotation of the wheeled roller assembly	Hands
6	Visual, manual and mechanical	Cleaning of idle rolls shaft and correct rotation of idle rollers assembly	Hands
7	Visual and geometric	Correct positioning of the rubber pad assembly 1 and 2 and hexagonal support of the rubber pad assembly 1 and 2	Hands
8	Visual and mechanical	Alignment of the belt tensioning device group and correct rotation of the belt tensioning device roller	Hands
9	Visual and mechanical	Penetration of the protective on the surface of the driven wheels and correct positioning of the clamping rings in the transmission-driven wheels	Hands
10	Visual	Aesthetic appearance of the surface plate of the pre-stretch frame	Hands
11	Mechanical and geometric	Correct rotation of the rubber rolls and alignment of the rubber rollers on the pre-stretch frame plate	Hands
12	Mechanical and geometric	Correct idle roller rotation and alignment of the idle rollers on the pre-stretch frame plate	Hands
13	Mechanical	Correct tightening of the motor bolts 1 on the frame plate	Hands
14	Visual	Correct positioning of the components	Hands
15	Visual and mechanical	Correct tightening of motor bolts 2 on the frame plate	Hands
16	Visual	Correct positioning of components	Hands
17	Visual	Correct positioning of the motor casing 1	Hands
18	Mechanical and geometric	Correct alignment of the belt tensioner assembly and rotation of the belt tensioning device roller	Hands
19	Mechanical and geometric	Movement of the motor drive belt 1	Hands
20	Mechanical and geometric	Movement of the motor drive belt 2	Hands
21	Visual and mechanical	Check the number of screws removed from the component and correct operation of the internal spindle spring	Hands
22	Mechanical and geometric	Correct spindle rotation on the pre-stretch frame plate and alignment of the spindle assembly on the pre-stretch frame plate	Hands
23	Geometric	Correct alignment of the pads on the pre-stretch frame plate	Hands
24	Manual and mechanical	Correct operation of the motor 1, final check of the motor 1 drive belt tension and final alignment check of the motor 1 transmission assembly	Hands
25	Manual and mechanical	Correct operation of the motor 2, final check of the motor 2 drive belt tension and final alignment check of the motor 2 transmission assembly	Hands
26	Visual and mechanical	Alignment and correct movement of spindle release lever assembly	Hands
27	Mechanical and geometric	Correct movement and alignment of the spindle release lever on the pre-stretch frame plate	Hands
28	Visual, geometric, mechanical and dimensional	Correct rotation of the compensation arm roller and alignment of the cam system	Hands, caliper, metallic ruler, Gauge block
29	Visual and mechanical	Correct movement of the compensation arm assembly on the pre-stretch frame plate and correct rotation of the compensation arm roller	Hands

Table 6 Variances of the variables related to the process and the current inspection strategy of the pre-stretching device (IS-0)

No. workstation	$VAR(p_i)$ ($\times 10^{-4}$)	$VAR(\alpha_i)$ ($\times 10^{-7}$)	$VAR(\beta_i)$ ($\times 10^{-7}$)	$VAR(c_i)$ ($\times 10^{-4}$) [ϵ^2]	$VAR(NRC_i)$ ($\times 10^{-4}$) [ϵ^2]	$VAR(URC_i)$ ($\times 10^{-4}$) [ϵ^2]	$VAR(NDC_i)$ ($\times 10^1$) [ϵ^2]
1	3.30	0.63	1.60	0.36	3.42	3.42	2.50
2	3.29	0.63	1.60	2.56	13.32	13.32	2.50
3	3.35	0.23	0.63	1.56	3.42	3.42	1.89
4	3.40	0.10	0.63	14.44	18.49	18.49	2.50
5	3.38	0.40	1.60	7.84	102.01	102.01	2.50
6	3.27	0.40	1.60	5.06	121.00	121.00	2.50
7	3.40	0.03	0.03	0.49	0.81	0.81	0.03
8	3.39	0.23	2.50	0.04	14.06	14.06	0.24
9	3.33	0.40	0.90	0.16	0.20	0.20	0.55
10	3.43	0.63	0.23	28.09	83.72	83.72	2.50
11	3.34	0.10	0.10	2.10	0.56	0.56	0.03
12	3.30	0.10	0.10	1.82	0.56	0.56	0.08
13	3.42	0.23	0.23	1.69	0.06	0.06	0.02
14	3.34	0.40	1.60	0.25	3.42	3.42	1.09
15	3.33	0.23	0.23	2.40	0.36	0.36	0.01
16	3.48	0.40	1.60	0.72	3.42	3.42	2.45
17	3.34	0.10	0.10	0.42	0.01	0.01	0.01
18	3.48	0.63	2.03	0.25	0.01	0.01	0.01
19	3.42	0.10	0.10	3.42	0.06	0.06	0.01
20	3.41	0.10	0.10	3.06	0.25	0.25	0.01
21	3.36	0.63	1.23	2.56	0.81	0.81	0.01
22	3.49	0.63	1.23	20.70	2.10	2.10	0.03
23	3.36	0.10	0.10	0.04	0.12	0.12	0.01
24	3.55	0.63	3.60	0.16	4.62	4.62	0.01
25	3.55	0.63	3.60	0.36	4.62	4.62	0.01
26	3.34	0.23	0.23	2.10	7.84	7.84	0.16
27	3.46	0.10	0.10	2.89	0.20	0.20	0.01
28	4.48	1.60	3.60	1.69	2.40	2.40	2.50
29	3.42	0.63	0.63	0.72	0.12	0.12	0.01

Table 7 Variables related to the inspection strategy IS-1 of the pre-stretching device

No. workstation	α_i [%]	β_i [%]	c_i [€]	NRC_i [€]	URC_i [€]	NDC_i [€]
1	0.5	0.8	0.12	0.37	0.37	1584.00
2	0.5	0.8	0.32	0.73	0.73	1592.00
3	0.3	0.5	0.25	0.37	0.37	87.00
4	0.2	0.5	0.76	0.86	0.86	569.00
5	0.4	0.8	0.56	2.02	2.02	483.00
6	0.4	0.8	0.45	2.20	2.20	273.00
7	0.0	100.0	0.00	0.00	0.00	11.00
8	0.0	100.0	0.00	0.00	0.00	31.00
9	0.0	100.0	0.00	0.00	0.00	47.00
10	0.5	0.3	1.06	1.83	1.83	224.00
11	0.0	100.0	0.00	0.00	0.00	11.67
12	0.0	100.0	0.00	0.00	0.00	17.50
13	0.0	100.0	0.00	0.00	0.00	8.75
14	0.4	0.8	0.10	0.37	0.37	66.00
15	0.0	100.0	0.00	0.00	0.00	5.83
16	0.4	0.8	0.17	0.37	0.37	99.00
17	0.0	100.0	0.00	0.00	0.00	6.00
18	0.0	100.0	0.00	0.00	0.00	5.83
19	0.0	100.0	0.00	0.00	0.00	5.83
20	0.0	100.0	0.00	0.00	0.00	5.83
21	0.0	100.0	0.00	0.00	0.00	5.83
22	0.0	100.0	0.00	0.00	0.00	11.67
23	0.0	100.0	0.00	0.00	0.00	5.83
24	0.0	100.0	0.00	0.00	0.00	5.83
25	0.0	100.0	0.00	0.00	0.00	5.83
26	0.0	100.0	0.00	0.00	0.00	25.00
27	0.0	100.0	0.00	0.00	0.00	5.83
28	0.8	1.2	0.26	0.31	0.31	106.00
29	0.0	100.0	0.00	0.00	0.00	5.83

Workstations subject to inspection are written in bold type

Table 8 Variables related to the inspection strategy IS-2 of the pre-stretching device

No. workstation	α_i [%]	β_i [%]	c_i [€]	NRC_i [€]	URC_i [€]	NDC_i [€]
1	0.07	0.10	0.17	0.37	0.37	1584.00
2	0.07	0.10	0.43	0.73	0.73	1592.00
3	0.04	0.07	0.34	0.37	0.37	87.00
4	0.03	0.07	1.03	0.86	0.86	569.00
5	0.04	0.08	0.76	2.02	2.02	483.00
6	0.04	0.08	0.60	2.20	2.20	273.00
7	0.10	0.10	0.14	0.18	0.18	11.00
8	0.30	1.00	0.04	0.75	0.75	31.00
9	0.40	0.60	0.08	0.09	0.09	47.00
10	0.50	0.30	1.06	1.83	1.83	224.00
11	0.03	0.03	0.39	0.15	0.15	11.67
12	0.20	0.20	0.27	0.15	0.15	17.50
13	0.04	0.04	0.35	0.05	0.05	8.75
14	0.05	0.10	0.13	0.37	0.37	66.00
15	0.04	0.04	0.41	0.12	0.12	5.83
16	0.40	0.80	0.17	0.37	0.37	99.00
17	0.20	0.20	0.13	0.02	0.02	6.00
18	0.07	0.12	0.14	0.02	0.02	5.83
19	0.03	0.03	0.50	0.05	0.05	5.83
20	0.03	0.03	0.47	0.10	0.10	5.83
21	0.05	0.07	0.43	0.18	0.18	5.83
22	0.07	0.09	1.23	0.29	0.29	11.67
23	0.20	0.20	0.04	0.07	0.07	5.83
24	0.50	1.20	0.08	0.43	0.43	5.83
25	0.50	1.20	0.12	0.43	0.43	5.83
26	0.30	0.30	0.29	0.56	0.56	25.00
27	0.20	0.20	0.34	0.09	0.09	5.83
28	0.08	0.12	0.35	0.31	0.31	106.00
29	0.07	0.07	0.22	0.07	0.07	5.83

Workstations accurately inspected by appointed staff through dedicated equipment are written in bold type

Acknowledgements The authors gratefully acknowledge Tosa Group S.p.A. (Italy) for the fruitful collaboration.

Funding Open access funding provided by Politecnico di Torino within the CRUI-CARE Agreement. This work has been partially supported by the “Italian Ministry of Education, University and Research”, Award “TESUN-83486178370409 finanziamento dipartimenti di eccellenza CAP. 1694 TIT. 232 ART. 6”.

Open Access This article is licensed under a Creative Commons Attribution 4.0 International License, which permits use, sharing, adaptation, distribution and reproduction in any medium or format, as long as you give appropriate credit to the original author(s) and the source, provide a link to the Creative Commons licence, and indicate if changes were made. The images or other third party material in this article are included in the article’s Creative Commons licence, unless indicated otherwise in a credit line to the material. If material is not included in the article’s Creative Commons licence and your intended use is not permitted by statutory regulation or exceeds the permitted use, you will need to obtain permission directly from the copyright holder. To view a copy of this licence, visit <http://creativecommons.org/licenses/by/4.0/>.

References

- Schmidt C, Hocke T, Denkena B (2019) Deep learning-based classification of production defects in automated-fiber-placement processes. *Prod Eng* 13:501–509
- Stellin T, van Tijum R, Engel U (2016) Modelling and experimental study of a microforging process from metal strip for the reduction of defects in mass production. *Prod Eng* 10:103–112
- Galetto M, Verna E, Genta G (2021) Effect of process parameters on parts quality and process efficiency of fused deposition modeling. *Comput Ind Eng* 156:107238. <https://doi.org/10.1016/j.cie.2021.107238>
- Franceschini F, Galetto M, Genta G, Maisano DA (2018) Selection of quality-inspection procedures for short-run productions. *Int J Adv Manuf Technol* 99:2537–2547
- Savio E, De Chiffre L, Carmignato S, Meinertz J (2016) Economic benefits of metrology in manufacturing. *CIRP Ann Manuf Technol* 65:495–498
- Tirkel I, Rabinowitz G (2014) Modeling cost benefit analysis of inspection in a production line. *Int J Prod Econ* 147:38–45

7. Verna E, Genta G, Galetto M, Franceschini F (2020) Planning offline inspection strategies in low-volume manufacturing processes. *Qual Eng* 32:705–720
8. Galetto M, Genta G, Maculotti G, Verna E (2020) Defect probability estimation for hardness-optimised parts by selective laser melting. *Int J Precis Eng Manuf* 21:1739–1753
9. Genta G, Galetto M, Franceschini F (2020) Inspection procedures in manufacturing processes: recent studies and research perspectives. *Int J Prod Res* 58:4767–4788
10. Tzimerman A, Herer YT (2009) Off-line inspections under inspection errors. *IIE Trans* 41:626–641
11. Tirkel I, Rabinowitz G, Price D, Sutherland D (2016) Wafer fabrication yield learning and cost analysis based on in-line inspection. *Int J Prod Res* 54:3578–3590
12. Azadeh A, Sangari MS, Sangari E, Fatehi S (2015) A particle swarm algorithm for optimising inspection policies in serial multistage production processes with uncertain inspection costs. *Int J Comput Integr Manuf* 28:766–780
13. Wang W (2009) An inspection model for a process with two types of inspections and repairs. *Reliab Eng Syst Saf* 94:526–533
14. Kang CW, Ramzan MB, Sarkar B, Imran M (2018) Effect of inspection performance in smart manufacturing system based on human quality control system. *Int J Adv Manuf Technol* 94:4351–4364
15. Neu H, Hanne T, Münch J, et al (2002) Simulation-based risk reduction for planning inspections. In: International Conference on Product Focused Software Process Improvement PROFES 2002. Springer, 9–11 December, Rovaniemi, Finland, pp 78–93
16. Neu H, Hanne T, Münch J, et al (2003) Creating a code inspection model for simulation-based decision support. In: 4th International Workshop on Software Process Simulation and Modeling ProSim'03. May 3–4, Portland State University, Oregon, USA, pp 1–10
17. Münch J, Berlage T, Hanne T, et al (2002) Simulation-based evaluation and improvement of software development processes. *SEV Prog Rep No 1, Tech Rep No 04802/E*
18. Savio E (2012) A methodology for the quantification of value-adding by manufacturing metrology. *CIRP Ann Technol* 61:503–506
19. Hanne T, Nickel S (2005) A multiobjective evolutionary algorithm for scheduling and inspection planning in software development projects. *Eur J Oper Res* 167:663–678
20. Shiau Y-R (2003) Inspection allocation planning for a multiple quality characteristic advanced manufacturing system. *Int J Adv Manuf Technol* 21:494–500
21. Mohammadi M, Siadat A, Dantan J-Y, Tavakkoli-Moghaddam R (2015) Mathematical modelling of a robust inspection process plan: Taguchi and Monte Carlo methods. *Int J Prod Res* 53:2202–2224
22. Burggräf P, Wagner J, Lück K, Adlon T (2017) Cost-benefit analysis for disruption prevention in low-volume assembly. *Prod Eng* 11:331–342
23. Trovato E, Castagliola P, Celano G, Fichera S (2010) Economic design of inspection strategies to monitor dispersion in short production runs. *Comput Ind Eng* 59:887–897
24. Celano G, Castagliola P, Trovato E, Fichera S (2011) Shewhart and EWMA t control charts for short production runs. *Qual Reliab Eng Int* 27:313–326
25. Marques PA, Cardeira CB, Paranhos P et al (2015) Selection of the most suitable statistical process control approach for short production runs: a decision-model. *Int J Inf Educ Technol* 5:303
26. Del Castillo E, Grayson JM, Montgomery DC, Runger GC (1996) A review of statistical process control techniques for short run manufacturing systems. *Commun Stat Methods* 25:2723–2737
27. Pillet M (1996) A specific SPC chart for small-batch control. *Qual Eng* 8:581–586
28. Khoo MBC, Quah SH (2002) Proposed short runs multivariate control charts for the process mean. *Qual Eng* 14:603–621
29. Genta G, Galetto M, Franceschini F (2018) Product complexity and design of inspection strategies for assembly manufacturing processes. *Int J Prod Res* 56:4056–4066
30. Shibata H (2002) Global assembly quality methodology: a new methodology for evaluating assembly complexities in globally distributed manufacturing. PhD dissertation, Mechanical Engineering Department, Stanford University
31. Su Q, Liu L, Whitney DE (2010) A systematic study of the prediction model for operator-induced assembly defects based on assembly complexity factors. *IEEE Trans Syst Man Cybern Part A Syst Hum* 40:107–120
32. Hinckley CM (1994) A global conformance quality model. A new strategic tool for minimizing defects caused by variation, error, and complexity. PhD dissertation, Mechanical Engineering Department, Stanford University
33. Antani KR (2014) A Study of the effects of manufacturing complexity on product quality in mixed-model automotive assembly. PhD dissertation, Mechanical Engineering Department, Clemson University
34. Krugh M, Antani K, Mears L, Schulte J (2016) Prediction of defect propensity for the manual assembly of automotive electrical connectors. *Procedia Manuf* 5:144–157
35. Falck A-C, Örtengren R, Rosenqvist M, Söderberg R (2017) Proactive assessment of basic complexity in manual assembly: development of a tool to predict and control operator-induced quality errors. *Int J Prod Res* 55:4248–4260
36. Galetto M, Verna E, Genta G (2020) Accurate estimation of prediction models for operator-induced defects in assembly manufacturing processes. *Qual Eng* 32:595–613
37. Le Y, Qiang S, Liangfa S (2012) A novel method of analyzing quality defects due to human errors in engine assembly line. In: Information Management, Innovation Management and Industrial Engineering (ICIII), 2012 International Conference on Information Management, Innovation Management and Industrial Engineering (ICIII). IEEE, 20–21 October 2012, Sanya, China, pp 154–157
38. Verna E, Genta G, Galetto M, Franceschini F (2021) Defect prediction models to improve assembly processes in low-volume productions. *Procedia CIRP* 97:148–153
39. Psarommatis F, May G, Dreyfus P-A, Kiritsis D (2020) Zero defect manufacturing: state-of-the-art review, shortcomings and future directions in research. *Int J Prod Res* 58:1–17
40. Alkan B (2019) An experimental investigation on the relationship between perceived assembly complexity and product design complexity. *Int J Interact Des Manuf* 13:1145–1157
41. Sinha K (2014) Structural complexity and its implications for design of cyber-physical systems. PhD dissertation, Engineering Systems Division, Massachusetts Institute of Technology
42. Nikiforov V (2007) The energy of graphs and matrices. *J Math Anal Appl* 326:1472–1475
43. Li X, Shi Y, Gutman I (2012) Hyperenergetic and Equienergetic Graphs. *Graph energy*. Springer, New York, pp 193–201
44. Verna E, Genta G, Galetto M, Franceschini F (2021) Defect prediction for assembled products: a novel model based on the structural complexity paradigm. Submitted to *J Intell Manuf*
45. See JE (2012) Visual inspection: a review of the literature. Sandia Rep SAND2012–8590, Sandia Natl Lab Albuquerque, New Mex
46. Bress T (2017) Heuristics for managing trainable binary inspection systems. *Qual Eng* 29:262–272
47. Ko J, Nazarian E, Wang H, Abell J (2013) An assembly decomposition model for subassembly planning considering

- imperfect inspection to reduce assembly defect rates. *J Manuf Syst* 32:412–416
48. Sarkar B, Saren S (2016) Product inspection policy for an imperfect production system with inspection errors and warranty cost. *Eur J Oper Res* 248:263–271
 49. Tang K, Schneider H (1987) The effects of inspection error on a complete inspection plan. *IIE Trans* 19:421–428
 50. Duffuaa SO, Khan M (2005) Impact of inspection errors on the performance measures of a general repeat inspection plan. *Int J Prod Res* 43:4945–4967
 51. Galetto M, Verna E, Genta G, Franceschini F (2020) Uncertainty evaluation in the prediction of defects and costs for quality inspection planning in low-volume productions. *Int J Adv Manuf Technol* 108:3793–3805
 52. De Ruyter AS, Cardew-Hall MJ, Hodgson PD (2002) Estimating quality costs in an automotive stamping plant through the use of simulation. *Int J Prod Res* 40:3835–3848
 53. Avinadav T, Perlman Y (2013) Economic design of offline inspections for a batch production process. *Int J Prod Res* 51:3372–3384
 54. JCGM 100:2008 (2008) Evaluation of Measurement Data—guide to the Expression of Uncertainty in Measurement (GUM). JCGM, Sèvres, France
 55. Ver Hoef JM (2012) Who invented the delta method? *Am Stat* 66:124–127
 56. Zeleny M (2011) Multiple criteria decision making (MCDM): from paradigm lost to paradigm regained? *J Multi-Criteria Decis Anal* 18:77–89
 57. Guo S, Zhao H (2017) Fuzzy best-worst multi-criteria decision-making method and its applications. *Knowledge Based Syst* 121:23–31
 58. Ishizaka A, Nemery P (2013) Multi-criteria decision analysis: methods and software. Wiley, Hoboken
 59. Bhushan N, Rai K (2007) Strategic decision making: applying the analytic hierarchy process. Springer, London

Publisher's Note Springer Nature remains neutral with regard to jurisdictional claims in published maps and institutional affiliations.