

Augustana College

## Augustana Digital Commons

---

Building Speech and Quantifying Complexity

Communication Sciences and Disorders

---

5-2022

### Building Speech Pattern 3: Picture Stimuli

Kathy J. Jakielski

Augustana College, Rock Island Illinois, kathyjakielski@augustana.edu

Follow this and additional works at: <https://digitalcommons.augustana.edu/csdbuildingspeech>



Part of the [Development Studies Commons](#), [Early Childhood Education Commons](#), [Linguistics Commons](#), and the [Speech and Hearing Science Commons](#)

---

#### Recommended Citation

Jakielski, Kathy J.. "Building Speech Pattern 3: Picture Stimuli" (2022). *Building Speech and Quantifying Complexity*.

<https://digitalcommons.augustana.edu/csdbuildingspeech/4>

This Pattern 3 is brought to you for free and open access by the Communication Sciences and Disorders at Augustana Digital Commons. It has been accepted for inclusion in Building Speech and Quantifying Complexity by an authorized administrator of Augustana Digital Commons. For more information, please contact [digitalcommons@augustana.edu](mailto:digitalcommons@augustana.edu).

The background of the image is a vibrant green color, filled with a pattern of light green circles of various sizes, creating a bubbly or polka-dot effect. A solid blue horizontal band runs across the middle of the image, containing the word "WORDS" in white, bold, sans-serif capital letters.

**WORDS**



**papa**





**paw-paw**





**people**





**PB**



**peewee**



**puma**





**pow-wow**





**baby**





**beeper**





**bobber**





**bye-bye**





**mama**



**maybe**





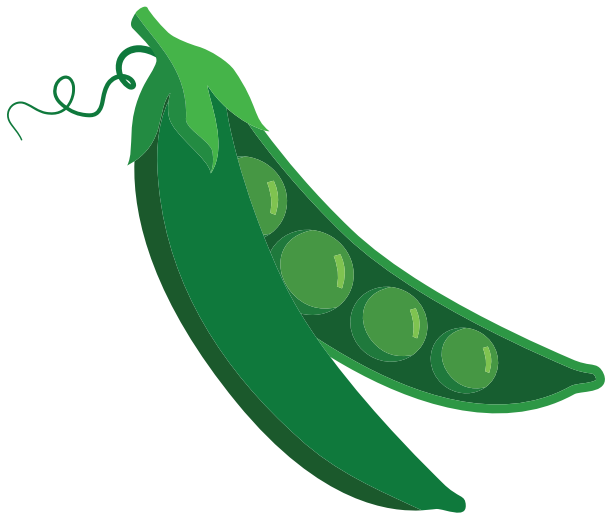
**whee-whee**







**weepy**



**pea**





**pay**





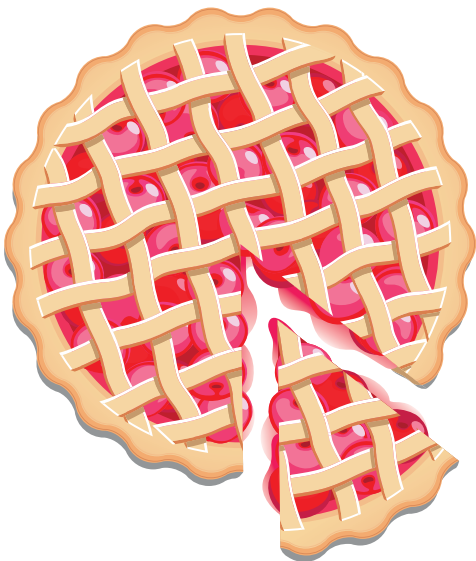
**pa**





**paw**





**pie**





**purr**





**bye**







**boo**





**bow**





**bow**



**boy**



**bough**





**ball**



**burr**





**me**



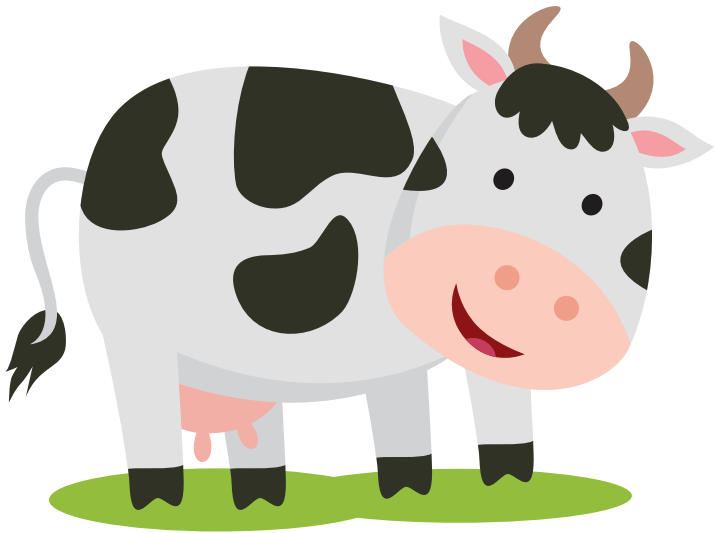


**may**





**ma**



**moo**





**mow**





**my**





**we**





**wee**





**wh ee**





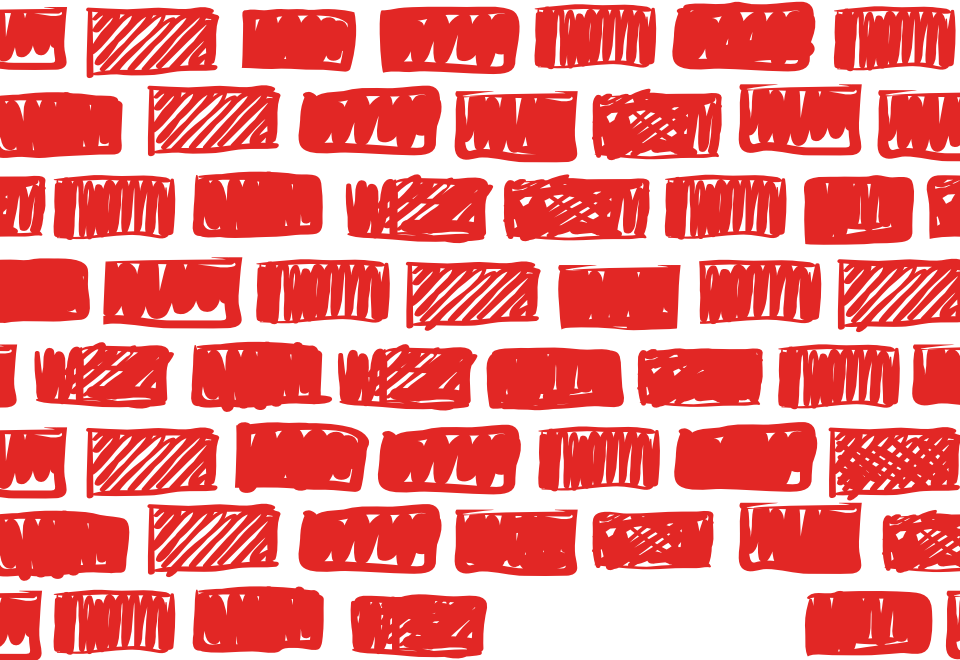


**weigh**





**whoa**



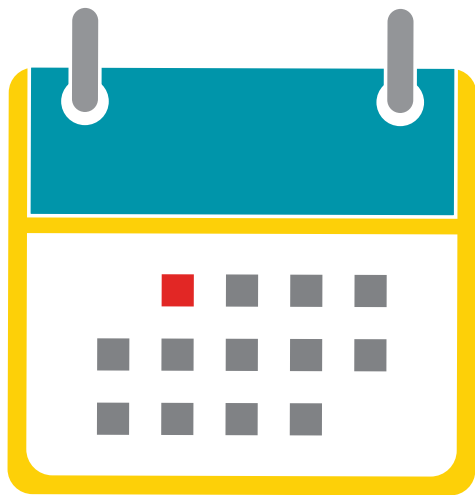
wall





**tutu**





**today**

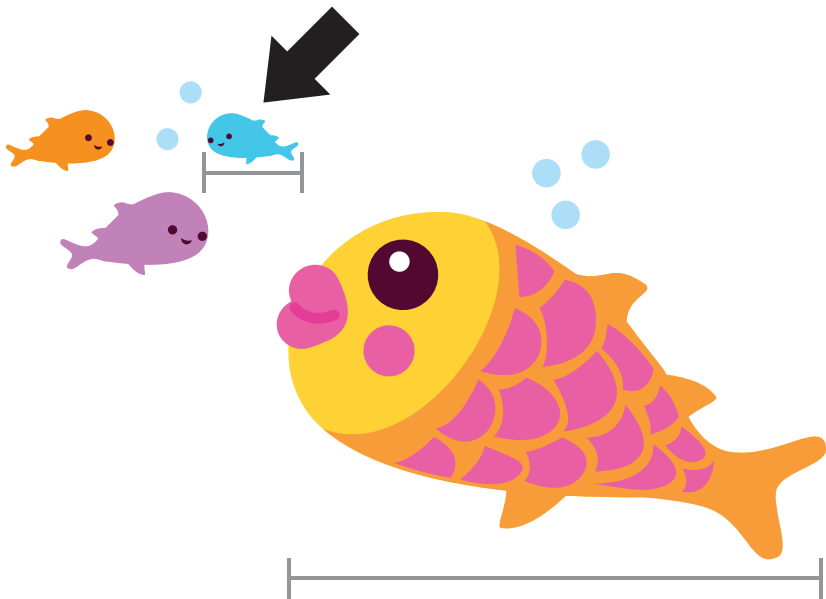




**teddy**



**teeny**



**tiny**







**dada**



**dodo**





**ditty**





**daddy**



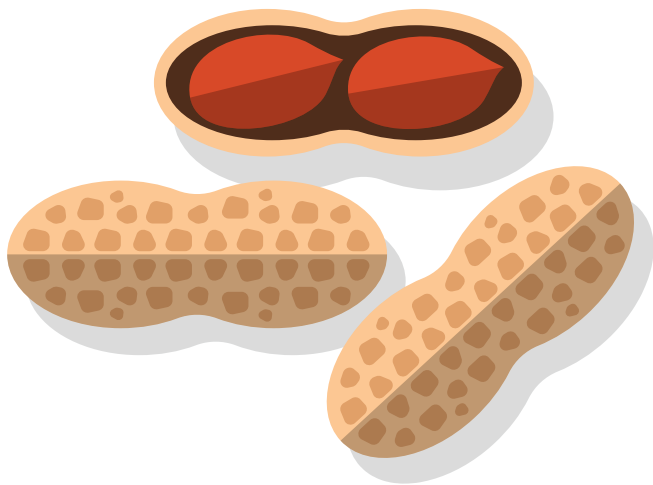


**no-no**



**needy**





**nutty**





**naughty**







**nightie**



**cookie**



**cougar**





**goo-goo**





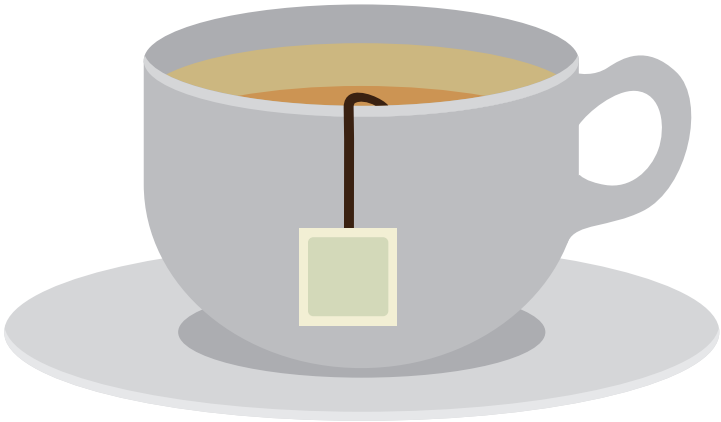
**gaga**





**gecko**





**tea**









**tee**





**two**





**toe**





**tall**



**day**



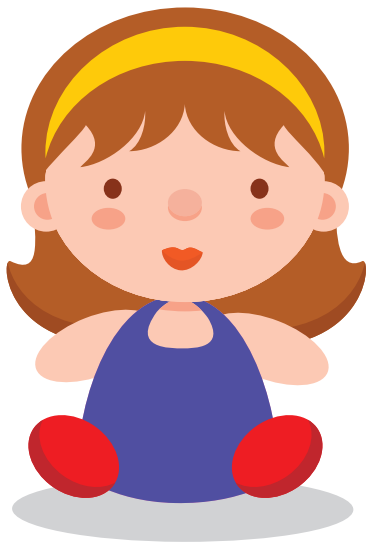
**do**





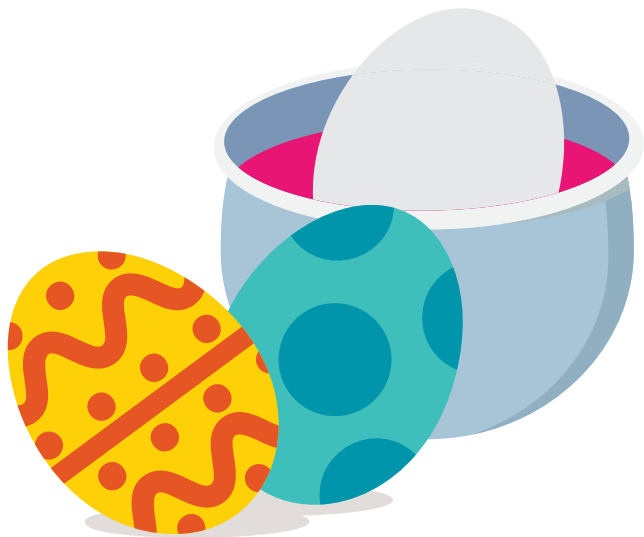
**dough**





**doll**





**dye**





**knee**



**neigh**





**new**





**no**



**now**





**key**



A large, stylized letter 'K' composed of two overlapping shapes. The front shape is a teal-colored 'K' with a purple shadow behind it, creating a 3D effect. The letter is positioned in the upper center of the page.

**K**







**COW**



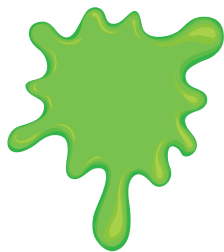


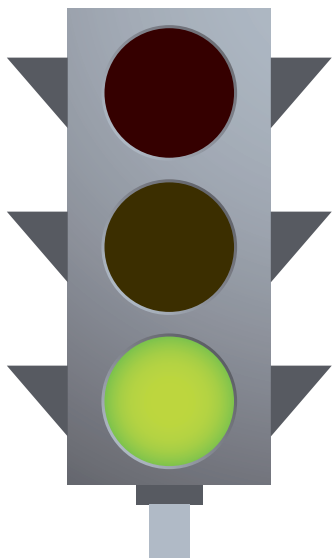
**car**





**goo**





**go**





**guy**



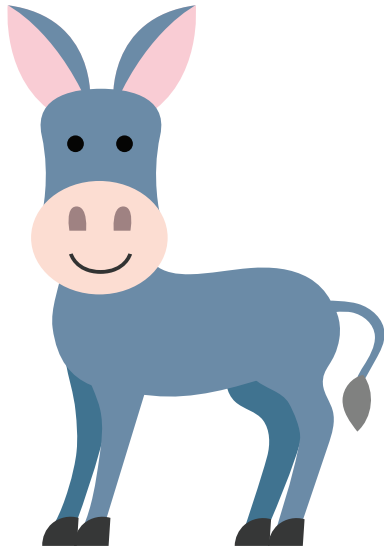
**hee-hee**





**ha-ha**





**hee-haw**





**uh-uh (no)**





**uh-oh**



**uh-huh**





**pee-pee**





**poo-poo**





T-T





**PHRASES**

**bye** \_\_\_\_\_





**boy** \_\_\_\_\_



**my** \_\_\_\_\_



**whoa \_\_\_\_\_**



**whee \_\_\_\_\_**



**do** \_\_\_\_\_



**new** \_\_\_\_\_



**now** \_\_\_\_\_



**no** \_\_\_\_\_





**go**

