




Review

A Comprehensive Review on the Techniques for Extraction of Bioactive Compounds from Medicinal Cannabis

Hebah Muhsien Sabiah AL Ubeed ^{1,*} , Deep Jyoti Bhuyan ^{2,*} , Muhammad A. Alsherbiny ^{2,3} , Amrita Basu ⁴ and Quan V. Vuong ⁵

¹ School of Science, College of Sciences, Engineering, Computing Technologies and Health and Medical Sciences, RMIT University, Bundoora, Melbourne, VIC 3083, Australia

² NICM Health Research Institute, Western Sydney University, Penrith, NSW 2751, Australia; M.Alsherbiny@westernsydney.edu.au

³ Department of Pharmacognosy, Faculty of Pharmacy, Cairo University, Cairo 11562, Egypt

⁴ Complex Carbohydrate Research Centre, University of Georgia, 315 Riverbend Road, Athens, GA 30602, USA; Amrita.Basu@uga.edu

⁵ School of Environmental and Life Sciences, College of Engineering, Science, and Environment, The University of Newcastle, 10 Chittaway Road, Ourimbah, NSW 2258, Australia; vanquan.vuong@newcastle.edu.au

* Correspondence: hebah.al.ubeed@rmit.edu.au (H.M.S.A.U.); D.Bhuyan@westernsydney.edu.au (D.J.B.)

Abstract: *Cannabis* is well-known for its numerous therapeutic activities, as demonstrated in pre-clinical and clinical studies primarily due to its bioactive compounds. The *Cannabis* industry is rapidly growing; therefore, product development and extraction methods have become crucial aspects of *Cannabis* research. The evaluation of the current extraction methods implemented in the *Cannabis* industry and scientific literature to produce consistent, reliable, and potent medicinal *Cannabis* extracts is prudent. Furthermore, these processes must be subjected to higher levels of scientific stringency, as *Cannabis* has been increasingly used for various ailments, and the *Cannabis* industry is receiving acceptance in different countries. We comprehensively analysed the current literature and drew a critical summary of the extraction methods implemented thus far to recover bioactive compounds from medicinal *Cannabis*. Moreover, this review outlines the major bioactive compounds in *Cannabis*, discusses critical factors affecting extraction yields, and proposes future considerations for the effective extraction of bioactive compounds from *Cannabis*. Overall, research on medicinal marijuana is limited, with most reports on the industrial hemp variety of *Cannabis* or pure isolates. We also propose the development of sustainable *Cannabis* extraction methods through the implementation of mathematical prediction models in future studies.

Keywords: *Cannabis*; medicinal cannabis; cannabinoids; extraction techniques



Citation: AL Ubeed, H.M.S.; Bhuyan, D.J.; Alsherbiny, M.A.; Basu, A.; Vuong, Q.V. A Comprehensive Review on the Techniques for Extraction of Bioactive Compounds from Medicinal Cannabis. *Molecules* **2022**, *27*, 604. <https://doi.org/10.3390/molecules27030604>

Academic Editor: Michelle Roche

Received: 20 December 2021

Accepted: 14 January 2022

Published: 18 January 2022

Publisher's Note: MDPI stays neutral with regard to jurisdictional claims in published maps and institutional affiliations.



Copyright: © 2022 by the authors. Licensee MDPI, Basel, Switzerland. This article is an open access article distributed under the terms and conditions of the Creative Commons Attribution (CC BY) license (<https://creativecommons.org/licenses/by/4.0/>).

1. Introduction

There has been an increased interest in medical applications of cannabis over the last decades. *Cannabis* can be classified based on genetics, phenotypic properties, and chemical composition. All these types are rich in bioactive phytochemicals. However, the phytochemical composition varies in different types. For instance, *Cannabis sativa* or industrial hemp has a higher cannabidiol (CBD) level than *Cannabis indica* and *Cannabis ruderalis*, whereas *Cannabis indica* has a higher level of the psychoactive cannabinoid delta-9-tetrahydrocannabinol (Δ^9 -THC), and *Cannabis ruderalis* has a lower level of Δ^9 -THC as compared to *Cannabis sativa* [1]. Most of the cannabinoids in *Cannabis* are derived from cannabigerolic acid (CBGA) via olivetolate geranyl transferase [2]. CBGA is then converted to major cannabinoids, such as Δ^9 -tetrahydrocannabinolic acid (THCA), cannabidiolic acid (CBDA), and cannabichromenic acid (CBCA) by oxide cyclase enzymes, including THCA synthase, CBDA synthase, and CBCA synthase in trichomes [3]. A nonenzymatic reaction caused by drying, heating, or combustion can further produce other active compounds (Figure 1). For instance, tetrahydrocannabinol (THC) can be converted to Δ^8 -THC,

cannabinol (CBN), and cannabinolic acid (CBNA). CBD and cannabichromene (CBC) can be converted to cannabicyclic (CBL), cannabicyclic acid (CBLA), and cannabigerol (CBG) [4].

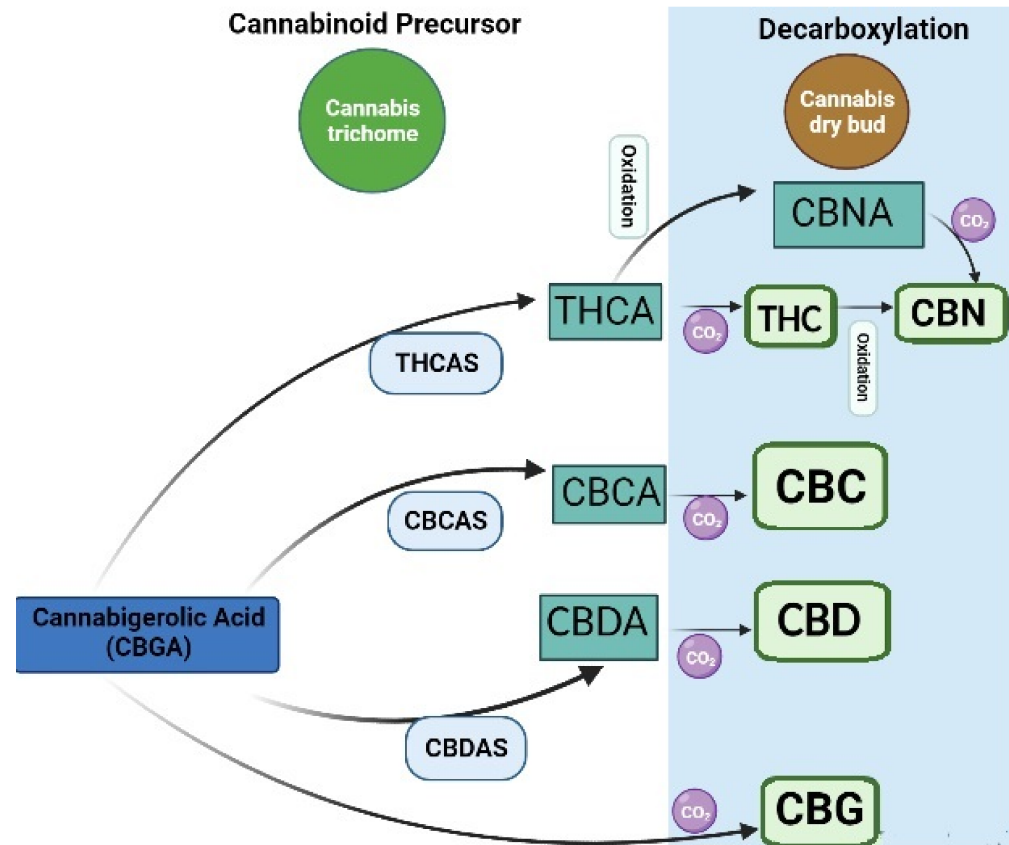


Figure 1. Biosynthesis of cannabinoids: cannabigerolic acid; CBGA, tetrahydrocannabinolic acid synthase; THCAS, cannabidiolic acid synthase; CBDAS, cannabichromene acid synthase; CBCAS, tetrahydrocannabinolic acid, THCA; cannabidiolic acid; CBDA, cannabichromenic acid; CBCA, cannabinolic acid; CBNA, cannabichromene; CBC, cannabidiol; CBD, cannabigerol; CBG, cannabinol; CBN, tetrahydrocannabinol; THC.

Cannabis has been traditionally used worldwide as herbal medicine for many years. Recently, commercial products have been developed for convenient uses [5]. In Australia, the two products registered at the Australian Therapeutic Goods (TGA) are Epidyolex[®] (CBD) and Sativex Oromucosal Spray (nabiximols[®]). Various pharmaceutical products are available in the form of tablets, capsules, and sprays, which can only be obtained via prescription, and unregistered drugs require special approval under the TGA special scheme or Authorised Prescriber Scheme [6]. *Cannabis* is a rich source of phytochemicals with over 125 types of cannabinoids and 400 non-cannabinoids like flavonoids, alkaloids, phenols, and terpenes [7]. These phytochemicals have been linked to various health benefits. For example, Δ^9 -THC and CBD are associated with inflammation and pain reduction [8]. CBD is known to have antipsychotic, anxiolytic, and antiepileptic properties [9]. CBD is also reported to associate with the prevention of Alzheimer's disease [10], Parkinson's disease [11], schizophrenia and psychosis [12], and various types of cancer [13]. In addition, other compounds, such as THC, CBG, CBC, and CBN, have also been linked with various health benefits. THC has shown therapeutic activity against arthritic and inflammatory conditions [14], autism [15], Parkinson's [16], glaucoma [17], and cardiovascular disorders [18,19]. CBG and CBC have strong antibacterial and antifungal effects [20], along with the potential effect of CBN on insomnia and sleep disorders [21]. Despite the

current evidence on *Cannabis*, further research is still warranted to explore the interaction of other drugs with medicinal *Cannabis* [22].

The extraction of *Cannabis* phytochemicals is a vital step to separate bioactive molecules from the plant matrix and to enhance the diverse applications of these compounds in the pharmaceutical and food industries. Extraction can be conducted using conventional and advanced techniques. The efficiencies of conventional and advanced methods mainly depend on the critical input parameters. Therefore, understanding the nature of the plant matrix and the chemistry of bioactive compounds is necessary [23]. Conventional and advanced techniques have also been studied to maximise the extraction of phytochemicals from *Cannabis* [24,25]. However, due to the high demand for medicinal *Cannabis* in recent years, a deeper understanding of the *Cannabis* chemical space and how to effectively reduce the costs of extraction and phytochemical isolation is crucial for further applications. This review portrays the knowledge for extraction and isolation of phytochemicals from *Cannabis* by outlining major phytochemicals in *Cannabis*, discussing the factors affecting the extraction efficiencies of phytochemicals, reviewing the current extraction techniques, which have been applied for *Cannabis*-derived phytochemicals, and proposing considerations for future studies.

2. Major *Cannabis* Phytochemicals and Their Therapeutic Effects

Cannabis exists in a variety of forms; of those, hemp and marijuana are the most well-known types. A hemp variety of *Cannabis* may grow taller and faster, but it does not generate as much THC, the psychoactive ingredient of marijuana. Marijuana strains are rich in THC and CBD and are used for medical and recreational purposes [26]. Different strains of *Cannabis* are available, either pure *Cannabis* genus, including *C. sativa*, *C. indica*, and *C. ruderalis*, or hybrid varieties. Chemotaxonomically, *Cannabis* is classified based on the phytocannabinoids (PCs) content, including THC and CBD in particular [27]. The most commonly grown *Cannabis* species are *sativa* and *indica*, where *ruderalis* is short and produces trace THC amount and is thereby not commonly grown for medicinal or industrial purposes [28]. *C. sativa* is an energising strain with common psychoactivity, so it is known for being a 'head high', whereas *indica* is more commonly used for relaxation as a sedative and is regarded as 'body high or couch lock' [29,30].

Over 320 phytochemical compounds have been identified in *Cannabis*; of those, 125 cannabinoids and 198 non-cannabinoids have been found in *Cannabis* (Figure 2) [7]. PCs are produced in the glandular hairs of the *Cannabis* plant (Figures S1–S3) [7]. THC and CBD are the most common psychoactive and non-psychoactive cannabinoids, respectively, which are derived from cannabigerol acid (CBGA) [2] and from the decarboxylation of their respective acids, such as THCA, CBDA, and CBCA (Figure 1). Intriguingly, recent advances in analytical platforms enable the subnanomolar detection and quantitation of cannabinoids in different biological matrices [31]. THCs are the primary psychoactive lipids with an incredibly low water solubility (0.003 mg mL^{-1}) [32]. Therefore, various solubilizers or emulsifiers and advanced nanosized drug delivery systems have been applied to increase their bioavailability [33–38]. In addition, some formulations are employed to minimise the pharmacokinetic and pharmacodynamic variabilities of cannabinoids [39]. However, different behavioural effects in rats were reported for different pharmaceutical preparations of Δ^9 -THC [40].

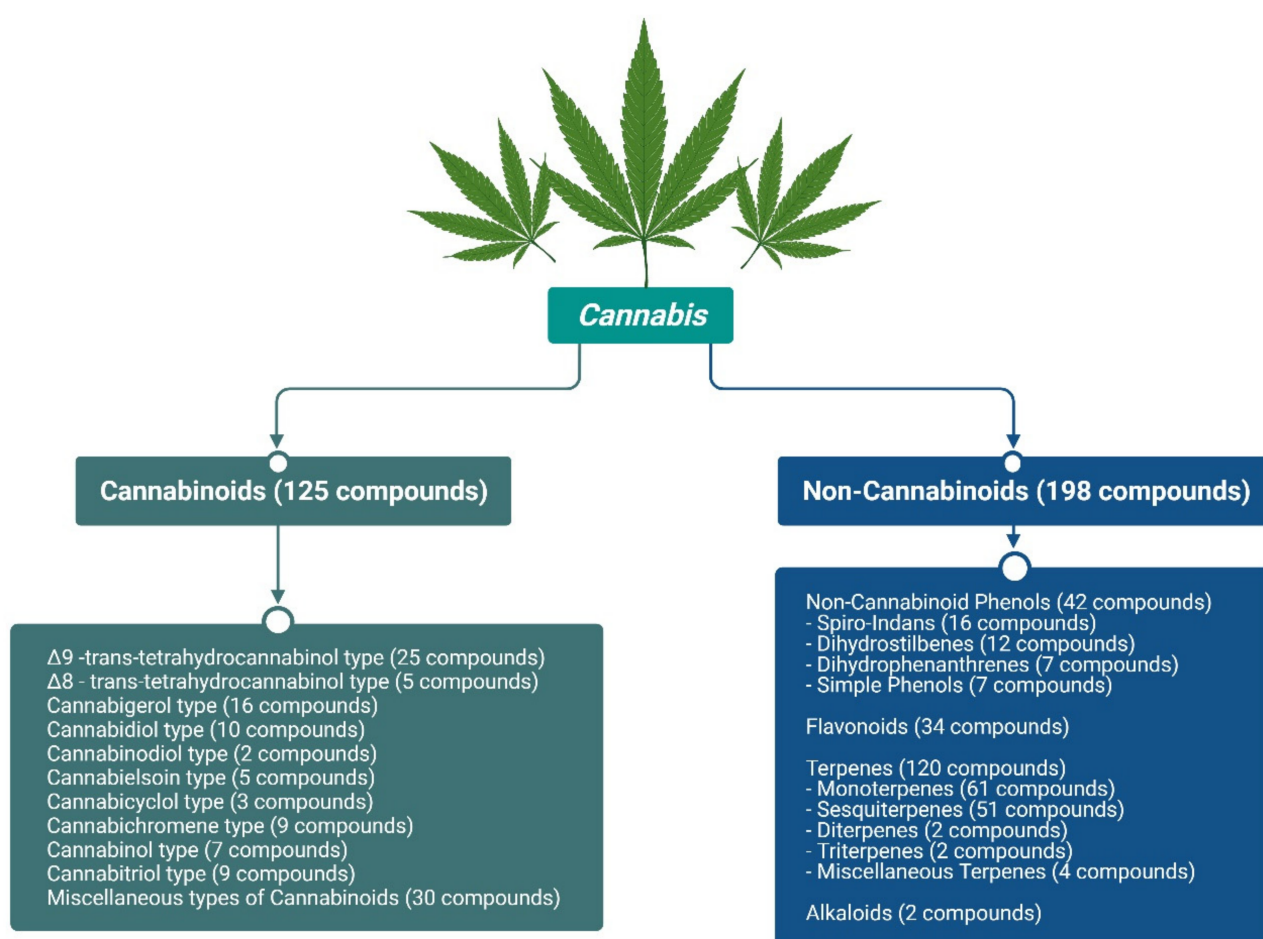


Figure 2. Major phytochemicals identified from cannabis.

CBG, CBD, CBND, cannabielsoin (CBE), cannabicyclol (CBL), cannabinol (CBN), cannabitrinol (CBT), and cannabichromene (CBC)-like cannabinoids have also been isolated and fully characterised from *Cannabis* extracts. CBG can interact with 5-hydroxytryptamine (5-HT_{1A}) and α -2 adrenoreceptors to have therapeutic potential in Parkinson's, Huntington's, inflammatory bowel diseases, and multiple sclerosis [41]. The lucrative non-psychoactive CBD displayed potential therapeutic effects in neuropsychiatric disorders, cancers, and pain management with diverse molecular targets and signalling pathways [42–48]. Cannabielsoin (CBE) was recently reported to control neuropathic pain via the modulation of the Wnt/ β -catenin pathway [49]. Moreover, nine CBC-type and eleven CBN-type PCs were also identified. The potential neuroprotective effect of minor PCs such as CBG, CBDV, CBC, CBN, Δ^9 -THCV, and Δ^9 -THCA was recently reviewed [50]. Thirty miscellaneous PCs, together with nine cannabitrinol (CBT)-type PCs, were also isolated and characterised.

Forty-two NC phenols were identified in *Cannabis* and are subclassified into 16 spiroindans, 12 dihydrostilbenes, 7 dihydrophenanthrenes, and 7 simple phenols [7]. In addition, 34 *Cannabis* flavonoids were also isolated and fully characterised [7]. On the other hand, the second major subclass of NCs is terpenes, where 61 monoterpenes (C₁₀) and 51 sesquiterpenes (C₁₅) were isolated from *Cannabis* with a few reported di- or triterpenoids, as recently reviewed by Radwan et al. [7]. The anticancer effects of *Cannabis* flavonoids and terpenes were reviewed [51] alongside the different biological activities of *Cannabis* phenolics [52]. Various preclinical or in silico studies have outlined the antioxidant, antiparasitic, anti-inflammatory, neuroprotective, and antiviral potential of cannflavins [53].

Alkaloid is another non-cannabinoid subclass that has been detected in *Cannabis* roots. Briefly, two spermidine alkaloids have been isolated and identified—namely, cannabissativine [54] and anhydrocannabissativine [55] in the methanolic root extract or ethanolic leaves/roots extract

of *C. Sativa*, respectively. Notably, *Cannabis* roots are not a significant source of cannabinoids, and the currently available data on roots support their ethnobotanical potential in inflammation and pain [56].

3. Factors Affecting the Extraction Efficiency of Phytochemicals from Plant Materials

Numerous factors have influenced the extraction efficiency of phytochemicals from plant materials, including *Cannabis*. The major influencing factors affecting the extraction efficiency of phytochemicals from plant materials are shown in Figure 3. Understanding these factors can help establish the optimal conditions for the cost-effective extraction of the target compounds from the plant matrix. Plant materials play an important role in the extraction efficiency of their bioactive compounds. Each plant material has specific matrix, structure, and phytochemicals; therefore, the extractability of the phytochemicals varies depending on the type of material. With the same plant material, different parts, such as leaves, stems, roots, and flowers, have different extractability of the target compounds [57]. In addition, fresh, dried, or ground plant materials with small particle sizes have different extraction efficiencies when the extraction is performed under the same conditions [58,59]. Although no specific studies have been reported to compare the impact of different drying conditions and particle sizes on bioactive compounds from *Cannabis*, it is worthwhile to consider future studies for the better selection and preparation of starting materials for the extraction of bioactive compounds.

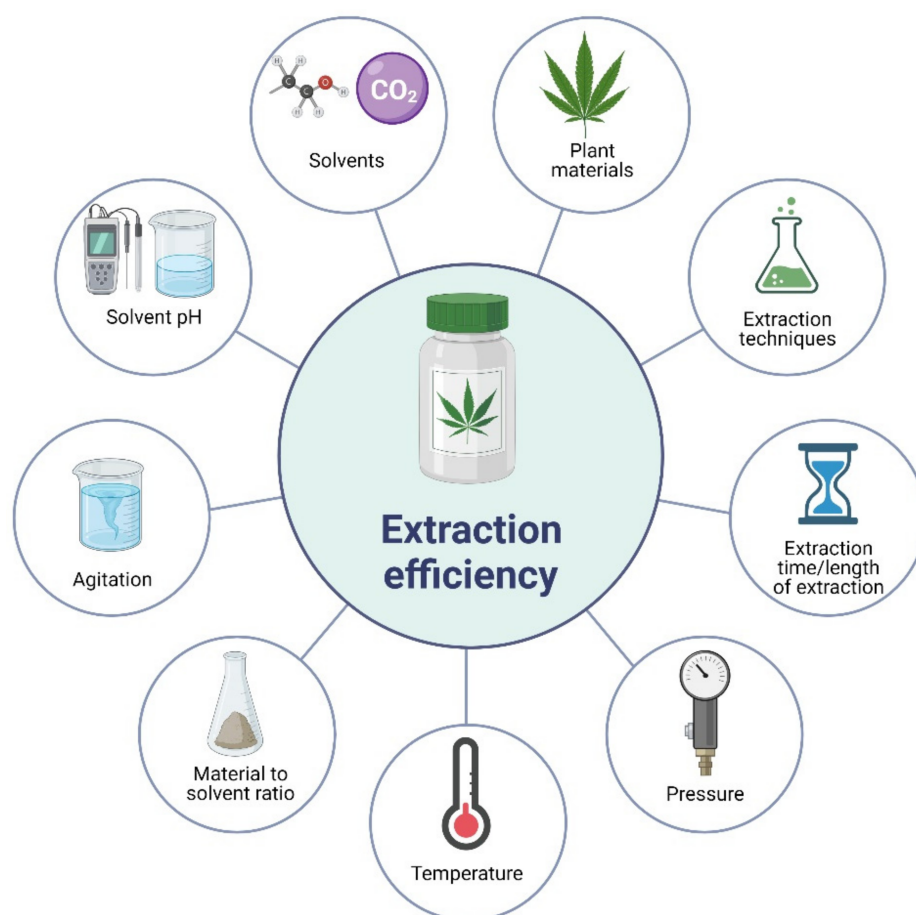


Figure 3. Factors affecting the extraction efficiency of plant bioactive compounds.

Solvents are known to directly affect the extraction efficiency of phytochemicals from plant materials. With a range of solvents from polar to nonpolar, various compounds with corresponding polarities can be extracted into solvents, depending on the polarities of the solvents and target compounds. Typically, a combination of polar and less polar solvents

is more effective in extracting phytochemicals from plant materials [60]. The volume of solvents or materials and the solvent ratio has been reported to affect the extraction efficiency of phytochemicals from plant materials. Theoretically, the less volume of solvents used, the less extraction efficiency can be obtained because of the saturation [61]. However, a suitable material-to-solvent ratio needs to be applied for cost-effective purposes as more energy is needed to heat the larger volume. In addition, more energy is required to remove water for further concentration or the production of powder.

In some cases, the pH of the solvent has been found to influence the extraction efficiency of the target compounds, as acidic solvents are believed to disrupt the cell walls faster, thus increasing the extraction efficiency. In addition, bioactive compounds are more stable under acidic conditions [61]. Therefore, comprehensive studies are warranted to identify the right solvents, solvent-to-material ratios, and pH for the maximum extraction of phytochemicals from *Cannabis*.

Temperature and length of extraction have been reported to affect the extraction efficiency of phytochemicals from plant materials. A higher temperature with a longer extraction time usually leads to a higher extraction efficiency. However, the stability of phytochemicals can decrease when they are exposed to high temperatures for a long time because most phytochemicals are sensitive to heat [58,61]. Therefore, it is important to determine the most suitable temperature and length of extraction to extract a high level of phytochemicals with minimum degradation. Agitation and pressure have been found to influence the extraction efficiency of phytochemicals from plant materials. Studies have reported that agitation significantly increases the extraction efficiency of phytochemicals compared to non-agitation [62]. Extraction with high pressure has improved the extraction efficiency of phytochemicals [63]. The number of extractions or extraction time has been found to affect the extraction efficiency. The more extraction time is applied for the same quantity of the sample, the more phytochemicals can be extracted [58]. It is similar to the material-to-sample ratio, the use of more solvents for extraction leads to more phytochemicals in plant matrixes that can be released into solvents. However, it should be considered carefully, as more energy is required to heat up the larger solvent volume as well as to remove solvents. Finally, extraction techniques have been reported to significantly affect the extraction efficiency of phytochemicals from plant materials. Extraction techniques can be categorised into two major groups, including conventional extraction techniques and advanced techniques. In some cases, advanced extraction techniques show more efficiency than conventional techniques [64,65]. However, the cost of setting up on a commercial scale is a major limitation for the advanced techniques. Conventional and advanced techniques have been applied for the extraction of phytochemicals from *Cannabis* and are summarised in Table 1 and are further discussed in Section 4.

Table 1. Extraction of phytochemicals from *Cannabis*.

Extraction Technique	Extraction Conditions/Procedures	Advantages and Limitations	References
Solvent extraction	The plant materials (0.9–1.1 g) were crushed and extracted in 45-mL ethanol for 15 min with the agitation of 400 rpm. Extracts were centrifuged briefly for 30 s at 2000 rpm. The supernatant was collected and filtered.	A simple technique, but not very efficient	[66]
Solvent extraction	Samples were extracted in hexane and ethanol mixture at 7:3 (<i>v/v</i>) and shaken for 45 min at 225 rpm in a TU-400 orbital shaker incubator at room temperature to obtain the extract.	A simple technique, but not very effective	[67]

Table 1. Cont.

Extraction Technique	Extraction Conditions/Procedures	Advantages and Limitations	References
Solvent extraction	Samples were extracted in ethanol at room temperature for 45 min to obtain the extract.	A simple technique, but not very effective	[68]
Solvent extraction	The plant material (100 g) was Pulverised and extracted with 500-mL petrol ether acidified with acetic acid (0.5-mL CH ₃ COOH in 500-mL PE). The filtrated extract was re-extracted 3 times with 400 mL of NaOH and Na ₂ SO ₃ (2% each). These combined extracts were acidified with 500 mL of 5% sulfuric acid until pH reached 3 and immediately extracted 3 times with 400-mL TBME. These combined organic extracts were dried with Na ₂ SO ₄ , filtrated, and concentrated in a rotary evaporator at 25–30 °C with cryostatic cooling of the vapours. The concentrate was dried overnight at vacuum conditions, yielding 1.71-g brown amorphous material.	A simple technique, but not effective and difficult for commercial production	[69]
Soxhlet extraction	Ground dried samples (2 g) were extracted using Soxhlet extractor for 1, 2, or 3 h with 75 mL of n-hexane or methanol then cooled to room temperature to obtain the extract.	A simple technique, but not effective	[70]
Sonication	The dried and pulverised plant material (50 g) was extracted by sonication and periodic shaking (30 min) with 250-mL petroleum ether, which was acidified with 0.5-mL concentrated acetic acid. The extract was further extracted 3 times with 200 mL of an aqueous solution (2% w/v each) of sodium hydroxide and sodium sulphite. The combined and cooled water phases were acidified with about 250-mL cooled sulphuric acid to pH 3 and immediately extracted 5 times with 200-mL diethyl ether. The combined organic phases were dried with sodium sulphate and evaporated to dryness.	Quite effective advanced technique, but it is challenging to apply on a commercial scale	[71]
Sonication	Samples (1 g) were extracted with 10 mL of the extraction solution (100 µg/mL of n-Tridecane in ethyl acetate) by sonication for 15 min to obtain the extract.	An advanced technique, but not under optimal conditions	[72]
Ultrasound-assisted extraction (UAE)	A small amount (0.25 g) of the sample was mixed with 10 mL of ethanol and was then extracted 3 times using UAE at 40 °C for 15 min. The solution was then filtered through a paper filter to obtain the final extract.	An advanced technique, but not under optimal conditions	[73]

Table 1. Cont.

Extraction Technique	Extraction Conditions/Procedures	Advantages and Limitations	References
Pressurized liquid extraction (PLE)	Samples of <i>Cannabis</i> (0.3 g) were mixed with sand and then placed into a 22-mL stainless-steel extraction cell with a cellulose filter. The sample cells were then closed and placed into the carousel of the ASE 200 system. Methanol or n-hexane was used as extraction solvents. Extractions were carried out at 25, 50, 75, 100, 125, and 150 °C at a pressure of 40 bar. Extractions were performed for 5, 10, 15, or 20 min. After the extraction process, the extraction cell content was flushed with the same solvent in the amount equal to 60% of the extraction cell volume and purged for 60 s by applying pressurized nitrogen (at 150 psi) to obtain the final extracts.	An advanced technique, but it has not been operated under optimal conditions.	[70]
Ultrasound-assisted extraction (UAE)	A small amount (0.25 g) of sample was mixed with 10 mL of ethanol and was then extracted 3 times using UAE at 40 °C for 15 min. The solution was then filtered through a paper filter to obtain the final extract.	An advanced technique, but not under optimal conditions	[73]
Pulse electric field extraction (PEF)	The seeds were treated by the PEF process (0, 3, and 6 kV/cm). The PEF process was conducted with a capacity of a process chamber of 4 L. Maximum voltage of the instrument was 7 Kv, and its capacitance was 8 µF.	An advanced technique, but not under optimal conditions	[74]

4. Current Techniques for Extraction of Phytochemicals from *Cannabis*

4.1. Conventional Extraction of Phytochemicals from *Cannabis*

Cannabis is chemically diverse, with cannabinoids, phenolic compounds, and terpenes being the most important phytochemicals [75]. Several conventional extraction techniques have been applied to extract phytochemicals from *Cannabis* using various solvents [75–83]. Different conventional extraction methods, including Soxhlet extraction, maceration, and dynamic maceration, have been employed to extract phytochemicals from *Cannabis* [68,75,76,80,82]. However, studies have also revealed the caveats of using conventional extraction methods, such as the extraction of unwanted substances and degradation of heat-sensitive compounds due to extraction under high temperature [84]. As cannabinoids, phenolic compounds, and terpenes are the three main classes of secondary metabolites in *Cannabis*, the conventional extraction of these main classes is discussed further in the following subsections. The extraction of phytochemicals from *Cannabis* are summarised in Table 1.

4.1.1. Conventional Extraction of Cannabinoids

Cannabis contains 125 individual cannabinoids, but Δ^9 -THCA and CBDA are the most predominant [81]. These two compounds undergo decarboxylation to produce Δ^9 -THC and CBD [81,85] (Figure 1). Ethanol has been found as an effective solvent in extracting cannabinoids using hot maceration [68,75] as well as Soxhlet extraction [86]. However, the extraction efficiency of these two conventional techniques was significantly lower than that of the advanced microwave-assisted extraction [86]. Although conventional extraction techniques have advantages such as simple procedures, easy operations, and affordability, these conventional techniques have several drawbacks, including longer extraction times and the demand for larger solvent volumes, leading to an inclined overall operation cost and harmful environmental impact compared to modern techniques [80]. Furthermore,

a stable high temperature of Soxhlet extraction has also been reported to accelerate the degradation of THCA to THC and, finally, to CBN, leading to high levels of THC and CBN in the extract [70,80]. A recent study extracted CBD from inflorescences of *C. sativa* using the methanol solvent maceration technique and supercritical fluid extraction technique and found that conventional extraction obtained a higher oil yield but lower CBD in comparison with supercritical fluid extraction [81].

Another conventional extraction technique called dynamic maceration has also been applied to extract cannabinoids, mostly from industrial hemp [79,80]. Dynamic maceration is a solid-lipid extraction procedure where a sample is soaked in organic solvents that were selected based on the polarity of the target compounds at a specific temperature for a specific time and then agitated [79,80]. Ethanol, acetonitrile, and hexane are the common solvents used to extract cannabinoids [87–89]. Ethanol was reported to be more efficient in extracting acidic cannabinoids using dynamic maceration than other organic solvents (hexane, acetone, and methanol); however, for neutral cannabinoids, ethanol is on par with other organic solvents [79]. Ethanol was also found to be more effective than other organic solvents in different studies [73,90]. Furthermore, organic solvent mixtures such as methanol and chloroform at 9:1 (*v/v*) were effective to recover cannabinoids from *C. sativa* under constant agitation [91]. Interestingly, Romano and Hazekamp [92] discovered that olive oil is more effective in extracting *Cannabis* oils containing cannabinoids and terpenes than ethanol, which also extracts chlorophylls, imparting a distinct green colour and unpleasant taste in the final product. The cannabinoid degradation rate was found to be much slower in olive oil extracts as compared to ethanolic extracts [80,93].

4.1.2. Conventional Extraction of Phenolic Compounds

Three major classes of phenolic compounds, flavonoids, stilbenoids, and lignans, have been identified in *Cannabis* [52,75,94]. Acetone, methanol, ethanol, and their aqueous mixtures are the common organic solvents to extract phenolic compounds from industrial hemp. Most of these studies quantified the phenolic compounds of the hemp extracts by the overall determination of the total phenolic content and total flavonoid content. In addition, several studies have quantified individual phenolic compounds, such as caffeic acid, gallic acid, rosmarinic acid, *p*-OH-benzoic acid, ferulic acid, 3,4-dihydroxybenzoic acid, *p*-coumaric acid, syringic acid, quercetin, luteolin, canniprene, cannflavin A, cannflavin B, catechin, naringenin, isorhamnetin, resveratrol, rutin trihydrate, apigenin, and apigenin 7-glucoside in the extracts [95–98]. Of note, most conventional extraction was conducted at room temperature and not under optimal conditions [99–103]. Furthermore, an aqueous solution of 2-hydroxypropyl- β -cyclodextrin (a green solvent) has also been applied to recover phenolic compounds from the by-products of industrial hemp oil processing [103].

4.1.3. Conventional Extraction of Terpenes

Terpenes such as α -pinene, β -pinene, β -myrcene, limonene, terpinolene, linalool, α -terpineol, β -caryophyllene, α -humulene, and caryophyllene oxide are known as the major constituents of *Cannabis* essential oils [72,75]. Similar to cannabinoids and phenolic compounds, most studies reported in the literature have been performed on the industrial hemp variety of *C. sativa* [104–106]. Distillation techniques such as hydro-distillation and steam distillation have been implemented to extract essential oils (terpenes) from *Cannabis*. However, they were less effective than the advanced supercritical fluid extraction at a lower temperature [105]. Interestingly, the GS-MS analyses in the same study revealed that the steam distillation at 130 °C and hydro-distillation at 110 °C showed 37 and 35 terpenes, respectively, in the essential oil of *C. Sativa*, whereas essential oil extracted with supercritical fluid at 45 °C showed only 30 terpenes [105], indicating the generation of terpenoid artefacts.

Solvent-based (both polar and nonpolar) conventional extraction methods have also been implemented to isolate terpenes from *Cannabis* [66,67,75,107,108]. For example, Ibrahim et al. [72] used an ethyl acetate, ethanol, methanol, and chloroform/methanol

(1:9; v/v) mixture and reported that ethyl acetate was the best solvent to recover terpenes from *Cannabis* [72]. However, mixtures of organic solvents are generally more effective for extracting terpenes from *Cannabis* than individual solvents. For instance, a study on the inflorescences of *C. sativa* found that the hexane and ethanol mixture at 7:3 (v/v) is more efficient in extracting terpenes compared to hexane or ethanol alone [67].

Fischedick et al. [66] used ethanol as the extraction solvent to recover both terpenes and cannabinoids, and 36 compounds were identified in 11 varieties of *C. sativa* [66]. Conventional ethanolic extraction was also used by A. Hazekamp and Fischedick [88] to isolate monoterpenes (α -pinene, myrcene, and terpinolene); sesquiterpenes ((*E*)-caryophyllene and α -humulene) [88]; and oxygenated terpenes (guaiol, γ -eudesmol, and α -bisabolol) from marijuana and medical *Cannabis* inflorescences [82].

Six different preparation methods were employed in a recent study to obtain *Cannabis* oils with high cannabinoids and terpene contents [109]. In this study, conventional extraction with olive oil or ethanol, along with steam distillation, was included. In conclusion, it was recommended that *Cannabis* should be macerated at room temperature to obtain the optimal terpene and cannabinoid yields in *Cannabis* oil [109]. Interestingly, a previous study reported that drying methods also influence the terpene composition of *Cannabis* extract, and gentle drying with a nitrogen stream can retain monoterpenes and sesquiterpenes in the *Cannabis* extract [82]. Thus, the dehydration of samples before extraction should be optimised to prevent the degradation of terpenes.

In summary, although various conventional extraction techniques have been applied to extract terpenes, cannabinoids, and phenolic compounds from *Cannabis*, most studies have primarily focused on the industrial hemp variety without optimisation. Therefore, further investigations are needed to optimise the conventional extraction parameters, such as type of solvent, sample-to-solvent ratio, temperature, and time, which could benefit the recovery of these compounds from both industrial hemp and medicinal marijuana. The implementation of mathematical prediction models is also recommended to facilitate the optimisation process to obtain greater yields of bioactive compounds in *Cannabis* extracts. Impacts of the variations related to season; geographical location; and *Cannabis* type (strain, chemotypes, and chemovars) on the recovery of these compounds in *Cannabis* extracts or oils should also be considered while designing future studies.

4.2. Advanced Extraction Techniques

Open-loop and closed-loop systems with butane hash oil (BHO) have been applied to extract terpenes with more flavours and aroma from *Cannabis*. However, the closed-loop system is often used, as it is much safer and with more advantages than the open-loop setting [110]. BHO is one of the cheapest and efficient solvents that offer the most desired final product. However, its most common disadvantage is being hard to handle in bigger batches, as it is highly flammable, colourless, and odourless [111]. Therefore, the legal use of BHO is restricted to licensed producers [112]. The closed-loop system consists of a butane reservoir, trim tube, evaporation chamber, vacuum pump, recovery pump, vacuum oven, and gas detectors. This system provides a more stable and environmentally friendly platform for dealing with volatile BHO.

A multi-solvent extraction system, such as PX 40, has been applied to effectively extract phytochemicals from *Cannabis*. PX 40 typically functions using either butane or propane or a mixture of both. Despite its high cost, it is a productive system [113]. In addition, the pressurised liquid extraction (PLE) technique has been applied to extract phytochemicals from *Cannabis*. Common solvents like water, methanol, acetone, and hexane have been applied to extract the phytochemicals for a short time under high temperature and pressure (temperature range of 75–150 °C and pressure of usually 10.4 MPa). In this technique, when increasing the temperature, the internal pressure in the cell is consequently increased and push the components to the outside of the cell through the cell wall pores [114]. Sub-critical carbon dioxide (CO₂) extraction systems with specialised pressure and controlled temperature have also been applied to extract high-quality cannabinoids, terpenes, and

flavonoids. This technique is an effective nonpolar extraction method [115]. In addition, carbon (IV) oxide is also an effective method to extract CBD oil, with up to a 90% extraction efficiency [116].

Supercritical fluid extraction with CO₂ (SFE-CO₂) has been applied to extract phytochemicals from *Cannabis*. This technique is more effective compared to subcritical CO₂ extraction systems [115]. It should be noted that solvents used and other factors, such as temperature, pressure, and sample types, can affect the extraction yield of this technique. The best conditions for extracting phytochemicals were found with a back pressure of 12 MPa, a flow rate of 10 mL/min CO₂, and a pump rate of 1 mL/min, with a temperature of 25 °C. The solvent gradient conditions were 100–50% solvent A and 0–50% solvent B, and the time was 0–25 min, and all the extractions were run in two cycles [117–119]. When scaling up in a pilot-scale using SFE-CO₂ (SCF100 model 3 PLC-GR-DLMP, Separeco S.r.l, Pinerolo, Italy), 10 MPa pressure and a temperature of 40 °C were the best conditions [120].

Other advanced extraction techniques, such as dynamic maceration (DM), ultrasound-assisted extraction (UAE), and microwave-assisted extraction (MAE), have been applied to extract phytochemicals from *Cannabis* [73]. The DM technique focuses on maceration of the *Cannabis* in organic solvent, then concentrating the extracted solution by removing the solvent under reduced pressure, high temperature, and acid. However, the chemical structures of the final target compounds can change during the extraction process [68].

MAE and UAE have been found to effectively extract phytochemicals from *Cannabis* [73,121]. Different factors can influence the extraction efficiency of phytochemicals from *Cannabis* using UAE and MAE, such as the type of solvent, sample size, sample-to-solvent ratio, time, and power. However, none of the previous studies comprehensively compared and established the optimal conditions for these two techniques when extracting cannabinoids, phenolics, or terpenes from *Cannabis*.

The nonthermal pulsed electric field-assisted technique (PEF) has been applied to extract oil from *Cannabis* seeds. This method is effective, with less risk of thermal degradation of the phytochemicals [122]. PEF has been found to have higher extraction efficiency with better oil quality [74,123,124]. However, the main disadvantage is that PEF requires high-voltage pulses [125].

The enzyme-assisted extraction technique (EAE) has also been utilised to extract oil from *Cannabis*. Enzymes like pectinase or cellulase, either alone or in mixtures, are applied during the extraction process to release phytochemicals from the plant cells [126] Kitrytė et al. [127] reported that EAE increased the recovery of cannabinoids from *Cannabis* by 20.2% (*w/w*) of the water-soluble constituents and 94% of mono- and disaccharides [127]. There are two EAE techniques, including enzyme-assisted cold pressing and enzyme-assisted aqueous extraction [128]. Although EAE is an expensive technique, it is very promising for the effective extraction of phytochemicals from *Cannabis*. The extraction of phytochemicals from *Cannabis* are summarised in Table 1.

5. Future Considerations for Effective Extraction of Bioactive Compounds from *Cannabis*

As *Cannabis* is a rich and diversified source of phytochemicals, it would be challenging to have an optimal extraction technique or condition to recover all bioactive molecules from it. Although numerous conventional and advanced techniques have been employed to extract phytochemicals from *Cannabis*, as discussed in Section 4, there are still gaps for future studies to understand more about the materials, the impact of different extraction parameters, and the stability of phytochemicals derived from *Cannabis*. Therefore, future studies should focus on the gaps summarised in Figure 4. As discussed in Section 4, no comprehensive studies have compared the phytochemicals, including cannabinoids, phenolics, and terpenes, between different species and their different parts, such as leaves stems, flowers, and roots. In addition, the influence of geographical locations, harvesting season, harvesting time, and cultivation methods on the *Cannabis* phytochemicals needs to be considered to have high-quality starting materials for extraction. Systematic investiga-

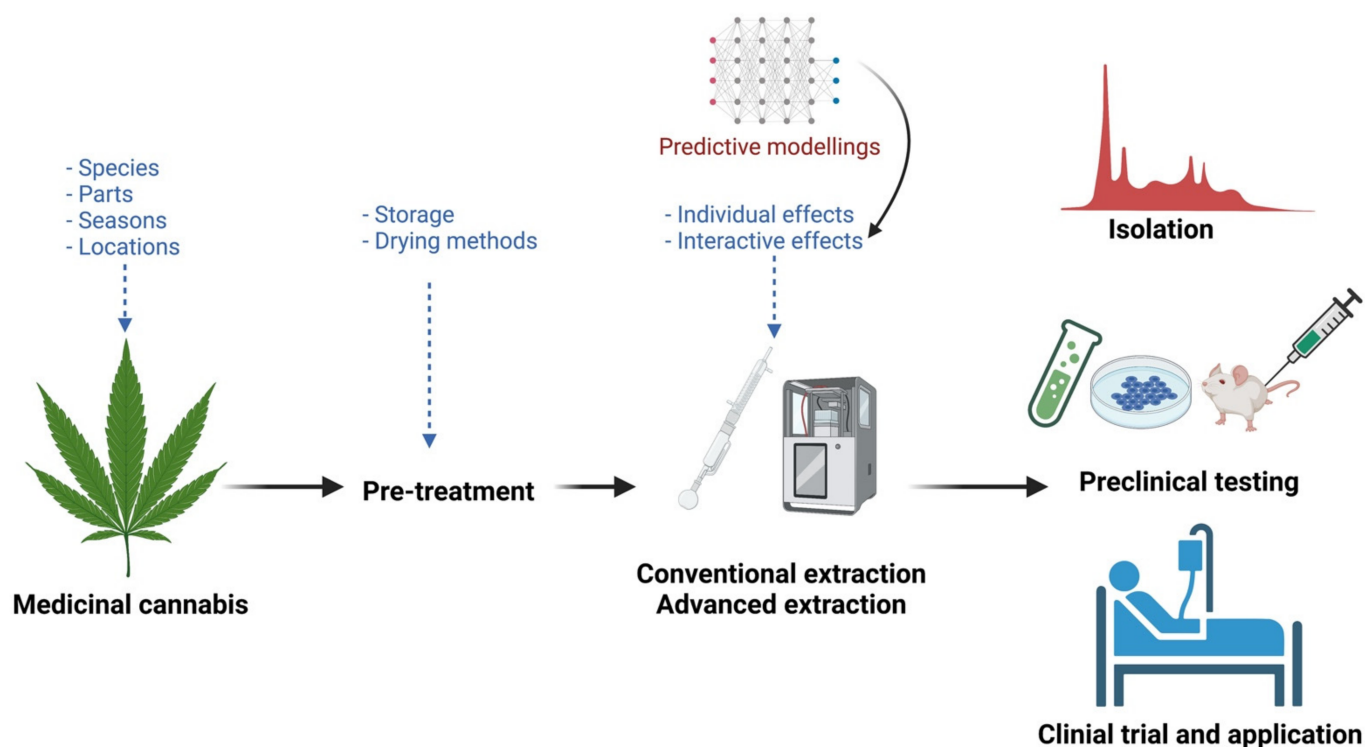


Figure 4. Proposed gaps for future studies.

Various conventional and advanced techniques have been applied to extract phytochemicals from *Cannabis*. However, most of these studies have focused on the individual impact of a few extraction parameters and have not considered all the possible factors and their interactive effects. Future studies are recommended to consider all possible parameters, as discussed in Section 3, and determine their individual and interactive effects on the extraction efficiencies of different phytochemicals from *Cannabis*. A comparison of the effectiveness of different extraction techniques under their optimal conditions is also needed to generate clear scientific evidence on the most effective extraction techniques and conditions.

It is typically complicated to study multiple factors and their interactive effects. Therefore, mathematical models such as response surface methodology are recommended to design, predict, and obtain the desired outcomes. Future studies should consider the cost-effectiveness of extraction techniques as well for commercial applications. We highlighted that extraction efficiency is not the sole criteria for the selection of the appropriate extraction technique, where the cost for extraction is equally important. Finally, more studies are needed to isolate compounds in groups or individually from *Cannabis*, test their properties, and propose further applications as therapeutic agents or functional ingredients.

6. Conclusions

Despite the growing interest in *Cannabis* and its bioactivity, as demonstrated in several preclinical and clinical studies, reports optimising the extraction techniques and factors to recover bioactive compounds such as terpenes, cannabinoids, and phenolic compounds from the medicinal marijuana variety of *C. sativa* are limited in the literature, with most stud-

ies utilising the industrial hemp variety. This limitation might be attributed to the limited availability of medicinal marijuana due to the regulations imposed in different countries on its cultivation and utilisation. However, previous studies have demonstrated that the yield and bioactivity of phytochemicals are primarily influenced by the extraction techniques implemented. As aforementioned, several factors such as the types of plant materials, extraction techniques/time, solvents, pH, temperature, pressure, and material-to-solvent ratio can influence the extraction efficiency of bioactive compounds from plant matrices. Therefore, further investigations to optimise these factors could be advantageous to recover bioactive compounds from both industrial hemp and medicinal marijuana. As the optimisation of these factors can be highly expensive, time-consuming, and labour-intensive, the utilisation of mathematical prediction models could accelerate the optimisation process for both conventional (e.g., Soxhlet extraction, maceration, hydro-distillation, and steam distillation) and advanced extraction techniques. The most common extracted methods used in the *Cannabis* industry are pressurised liquid extraction, subcritical CO₂ extraction, supercritical fluid CO₂ extraction, nonthermal pulsed electric field-assisted, MAE, UAE, and enzyme-assisted extraction. Furthermore, the impacts of the variations related to season; geographical location; and *Cannabis* type (strain, chemotypes, and chemovars) on the recovery of phytochemicals in *Cannabis* extracts or oils should also be considered whilst designing future studies.

Author Contributions: Conceptualisation and design, H.M.S.A.U. and Q.V.V.; writing—original draft preparation, abstract, introduction, and advanced extraction techniques, H.M.S.A.U.; major bioactive compounds in cannabis, M.A.A.; factors affecting the extraction efficiency of bioactive compounds, Q.V.V.; abstract, conclusions, conventional extraction of *Cannabis sativa*, and future considerations for the effective extraction of bioactive compounds from cannabis, D.J.B.; abstract, introduction, and future considerations for the effective extraction of bioactive compounds from cannabis, A.B.; figure design, Q.V.V., D.J.B. and H.M.S.A.U.; and writing—review and editing, Q.V.V., D.J.B., H.M.S.A.U. and M.A.A. All authors have read and agreed to the published version of the manuscript.

Funding: H.M.S.A.U. Research was funded by MGC Pharmaceuticals Limited, Australia.

Institutional Review Board Statement: Not applicable.

Informed Consent Statement: Not applicable.

Data Availability Statement: Not applicable.

Acknowledgments: Figures 1–4 were created with [Biorender.com](https://www.biorender.com).

Conflicts of Interest: There are no conflict of interest to declare.

References

1. Gloss, D. An overview of products and bias in research. *Neurotherapeutics* **2015**, *12*, 731–734. [[CrossRef](#)] [[PubMed](#)]
2. Fellermeier, M.; Eisenreich, W.; Bacher, A.; Zenk, M.H. Biosynthesis of cannabinoids. Incorporation experiments with (13)c-labeled glucoses. *Eur. J. Biochem.* **2001**, *268*, 1596–1604. [[CrossRef](#)] [[PubMed](#)]
3. Taura, F.; Sirikantaramas, S.; Shoyama, Y.; Yoshikai, K.; Shoyama, Y.; Morimoto, S. Cannabidiolic-acid synthase, the chemotype-determining enzyme in the fiber-type *Cannabis sativa*. *FEBS Lett.* **2007**, *581*, 2929–2934. [[CrossRef](#)]
4. Thomas, B.F.; Elsohly, M. *The Analytical Chemistry of Cannabis: Quality Assessment, Assurance, and Regulation of Medicinal Marijuana and Cannabinoid Preparations*; Elsevier: Amsterdam, The Netherlands, 2015.
5. Abuhassira, R.; Shbiro, L.; Landschaft, Y. Medical use of cannabis and cannabinoids containing products—regulations in europe and north america. *Eur. J. Intern. Med.* **2018**, *49*, 2–6. [[CrossRef](#)] [[PubMed](#)]
6. Arnold, J.C.; Nation, T.; McGregor, I.S. Prescribing medicinal cannabis. *Aust. Prescr.* **2020**, *43*, 152. [[CrossRef](#)] [[PubMed](#)]
7. Radwan, M.M.; Chandra, S.; Gul, S.; ElSohly, M.A. Cannabinoids, phenolics, terpenes and alkaloids of cannabis. *Molecules* **2021**, *26*, 2774. [[CrossRef](#)] [[PubMed](#)]
8. Pellati, F.; Brighenti, V.; Sperlea, J.; Marchetti, L.; Bertelli, D.; Benvenuti, S. New methods for the comprehensive analysis of bioactive compounds in *Cannabis sativa* L. (hemp). *Molecules* **2018**, *23*, 2639. [[CrossRef](#)]
9. Rong, C.; Lee, Y.; Carmona, N.E.; Cha, D.S.; Ragguetti, R.-M.; Rosenblat, J.D.; Mansur, R.B.; Ho, R.C.; McIntyre, R.S. Cannabidiol in medical marijuana: Research vistas and potential opportunities. *Pharmacol. Res.* **2017**, *121*, 213–218. [[CrossRef](#)] [[PubMed](#)]
10. Watt, G.; Karl, T. In vivo evidence for therapeutic properties of cannabidiol (cbd) for alzheimer’s disease. *Front. Pharmacol.* **2017**, *8*, 20. [[CrossRef](#)]

11. Bassi, M.S.; Sancesario, A.; Morace, R.; Centonze, D.; Iezzi, E. Cannabinoids in parkinson's disease. *Cannabis Cannabinoid Res.* **2017**, *2*, 21–29. [[CrossRef](#)]
12. McGuire, P.; Robson, P.; Cubala, W.J.; Vasile, D.; Morrison, P.D.; Barron, R.; Taylor, A.; Wright, S. Cannabidiol (cbd) as an adjunctive therapy in schizophrenia: A multicenter randomized controlled trial. *Am. J. Psychiatry* **2018**, *175*, 225–231. [[CrossRef](#)]
13. Scott, K.A.; Dalgleish, A.G.; Liu, W.M. Anticancer effects of phytocannabinoids used with chemotherapy in leukaemia cells can be improved by altering the sequence of their administration. *Int. J. Oncol.* **2017**, *51*, 369–377. [[CrossRef](#)] [[PubMed](#)]
14. Schley, M.; Legler, A.; Skopp, G.; Schmelz, M.; Konrad, C.; Rukwied, R. Delta-9-thc based monotherapy in fibromyalgia patients on experimentally induced pain, axon reflex flare, and pain relief. *Curr. Med. Res. Opin.* **2006**, *22*, 1269–1276. [[CrossRef](#)] [[PubMed](#)]
15. Hadland, S.E.; Knight, J.R.; Harris, S.K. Medical marijuana: Review of the science and implications for developmental behavioral pediatric practice. *J. Dev. Behav. Pediatr. JDBP* **2015**, *36*, 115. [[CrossRef](#)] [[PubMed](#)]
16. Zeissler, M.-L.; Eastwood, J.; McCorry, K.; Hanemann, C.O.; Zajicek, J.P.; Carroll, C.B. Delta-9-tetrahydrocannabinol protects against mpp+ toxicity in sh-sy5y cells by restoring proteins involved in mitochondrial biogenesis. *Oncotarget* **2016**, *7*, 46603. [[CrossRef](#)]
17. Tomida, I.; Pertwee, R.G.; Azuara-Blanco, A. Cannabinoids and glaucoma. *Br. J. Ophthalmol.* **2004**, *88*, 708–713. [[CrossRef](#)]
18. Izzo, A.A.; Borrelli, F.; Capasso, R.; Di Marzo, V.; Mechoulam, R. Non-psychoactive plant cannabinoids: New therapeutic opportunities from an ancient herb. *Trends Pharmacol. Sci.* **2009**, *30*, 515–527. [[CrossRef](#)] [[PubMed](#)]
19. Rhee, M.-H.; Vogel, Z.; Barg, J.; Bayewitch, M.; Levy, R.; Hanuš, L.; Breuer, A.; Mechoulam, R. Cannabinol derivatives: Binding to cannabinoid receptors and inhibition of adenylyl cyclase. *J. Med. Chem.* **1997**, *40*, 3228–3233. [[CrossRef](#)]
20. Eisohly, H.N.; Turner, C.E.; Clark, A.M.; Eisohly, M.A. Synthesis and antimicrobial activities of certain cannabichromene and cannabigerol related compounds. *J. Pharm. Sci.* **1982**, *71*, 1319–1323. [[CrossRef](#)]
21. Usami, N.; Kobana, K.; Yoshida, H.; Kimura, T.; Watanabe, K.; Yoshimura, H.; Yamamoto, I. Synthesis and pharmacological activities in mice of halogenated δ 9-tetrahydrocannabinol derivatives. *Chem. Pharm. Bull.* **1998**, *46*, 1462–1467. [[CrossRef](#)] [[PubMed](#)]
22. Alsherbiny, M.A.; Li, C.G. Medicinal cannabis—Potential drug interactions. *Medicines* **2019**, *6*, 3. [[CrossRef](#)]
23. Azmir, J.; Zaidul, I.S.M.; Rahman, M.M.; Sharif, K.; Mohamed, A.; Sahena, F.; Jahurul, M.; Ghafoor, K.; Norulaini, N.; Omar, A. Techniques for extraction of bioactive compounds from plant materials: A review. *J. Food Eng.* **2013**, *117*, 426–436. [[CrossRef](#)]
24. Challa, S.K.R.; Misra, N.; Martynenko, A. Drying of cannabis—State of the practices and future needs. *Dry. Technol.* **2020**, 2055–2064. [[CrossRef](#)]
25. Valizadehderakhshan, M.; Shahbazi, A.; Kazem-Rostami, M.; Todd, M.S.; Bhowmik, A.; Wang, L. Extraction of cannabinoids from *Cannabis sativa* L. (hemp)—Review. *Agriculture* **2021**, *11*, 384. [[CrossRef](#)]
26. King, J. Cannabis Strains: Effects, Species, History and Growing. Available online: <https://www.cannabisplace.com.au/learn/cannabis-strains-guide-australia#medicinal-cannabis-strains-effects-and-uses> (accessed on 25 October 2021).
27. Mandolino, G.; Bagatta, M.; Carboni, A.; Ranalli, P.; de Meijer, E. Qualitative and quantitative aspects of the inheritance of chemical phenotype in cannabis. *J. Ind. Hemp* **2003**, *8*, 51–72. [[CrossRef](#)]
28. Small, E.; Cronquist, A. A practical and natural taxonomy for cannabis. *Taxon* **1976**, *25*, 405–435. [[CrossRef](#)]
29. Hillig, K.W.; Mahlberg, P.G. A chemotaxonomic analysis of cannabinoid variation in cannabis (cannabaceae). *Am. J. Bot.* **2004**, *91*, 966–975. [[CrossRef](#)] [[PubMed](#)]
30. White, J. Cannabis Types. Available online: <https://www.cnbs.org/cannabis-types/> (accessed on 25 October 2021).
31. Abd-Elsalam, W.H.; Alsherbiny, M.A.; Kung, J.Y.; Pate, D.W.; Löbenberg, R. Lc–ms/ms quantitation of phytocannabinoids and their metabolites in biological matrices. *Talanta* **2019**, *204*, 846–867. [[CrossRef](#)]
32. Garrett, E.R.; Hunt, C.A. Physicochemical properties, solubility, and protein binding of delta9-tetrahydrocannabinol. *J. Pharm. Sci.* **1974**, *63*, 1056–1064. [[CrossRef](#)] [[PubMed](#)]
33. Stella, B.; Baratta, F.; Della Pepa, C.; Arpicco, S.; Gastaldi, D.; Dosio, F. Cannabinoid formulations and delivery systems: Current and future options to treat pain. *Drugs* **2021**, *81*, 1513–1557. [[CrossRef](#)]
34. Koch, N.; Jennotte, O.; Gasparrini, Y.; Vandenbroucke, F.; Lechanteur, A.; Evrard, B. Cannabidiol aqueous solubility enhancement: Comparison of three amorphous formulations strategies using different type of polymers. *Int. J. Pharm.* **2020**, *589*, 119812. [[CrossRef](#)] [[PubMed](#)]
35. Millar, S.A.; Maguire, R.F.; Yates, A.S.; O'Sullivan, S.E. Towards better delivery of cannabidiol (cbd). *Pharmaceuticals* **2020**, *13*, 219. [[CrossRef](#)] [[PubMed](#)]
36. Murty, S.B.; Murty, R.B. Oral Gastrointestinal Dosage Form Delivery System of Cannabinoids and/or Standardized Marijuana Extracts. U.S. Patent US20160184258A1, 30 June 2016.
37. Bruni, N.; Della Pepa, C.; Oliaro-Bosso, S.; Pessione, E.; Gastaldi, D.; Dosio, F. Cannabinoid delivery systems for pain and inflammation treatment. *Molecules* **2018**, *23*, 2478. [[CrossRef](#)] [[PubMed](#)]
38. Tijani, A.O.; Thakur, D.; Mishra, D.; Frempong, D.; Chukwunyere, U.I.; Puri, A. Delivering therapeutic cannabinoids via skin: Current state and future perspectives. *J. Control Release* **2021**, *334*, 427–451. [[CrossRef](#)]
39. Badowski, M.E. A review of oral cannabinoids and medical marijuana for the treatment of chemotherapy-induced nausea and vomiting: A focus on pharmacokinetic variability and pharmacodynamics. *Cancer Chemother. Pharm.* **2017**, *80*, 441–449. [[CrossRef](#)] [[PubMed](#)]

40. Rohleder, C.; Pahlisch, F.; Graf, R.; Endepols, H.; Leweke, F.M. Different pharmaceutical preparations of delta(9) -tetrahydrocannabinol differentially affect its behavioral effects in rats. *Addict. Biol.* **2020**, *25*, e12745. [[CrossRef](#)] [[PubMed](#)]
41. Nachnani, R.; Raup-Konsavage, W.M.; Vrana, K.E. The pharmacological case for cannabigerol. *J. Pharm. Exp.* **2021**, *376*, 204–212. [[CrossRef](#)] [[PubMed](#)]
42. Bonaccorso, S.; Ricciardi, A.; Zangani, C.; Chiappini, S.; Schifano, F. Cannabidiol (cbd) use in psychiatric disorders: A systematic review. *Neurotoxicology* **2019**, *74*, 282–298. [[CrossRef](#)]
43. Elsaid, S.; Kloiber, S.; Le Foll, B. Effects of cannabidiol (cbd) in neuropsychiatric disorders: A review of pre-clinical and clinical findings. *Prog. Mol. Biol. Transl. Sci.* **2019**, *167*, 25–75. [[PubMed](#)]
44. White, C.M. A review of human studies assessing cannabidiol's (cbd) therapeutic actions and potential. *J. Clin. Pharm.* **2019**, *59*, 923–934. [[CrossRef](#)]
45. de Almeida, D.L.; Devi, L.A. Diversity of molecular targets and signaling pathways for cbd. *Pharm. Res. Perspect.* **2020**, *8*, e00682. [[CrossRef](#)] [[PubMed](#)]
46. Seltzer, E.S.; Watters, A.K.; MacKenzie, D., Jr.; Granat, L.M.; Zhang, D. Cannabidiol (cbd) as a promising anti-cancer drug. *Cancers* **2020**, *12*, 3203. [[CrossRef](#)] [[PubMed](#)]
47. Urits, I.; Gress, K.; Charipova, K.; Habib, K.; Lee, D.; Lee, C.; Jung, J.W.; Kassem, H.; Cornett, E.; Paladini, A.; et al. Use of cannabidiol (cbd) for the treatment of chronic pain. *Best Pract. Res. Clin. Anaesthesiol.* **2020**, *34*, 463–477. [[CrossRef](#)] [[PubMed](#)]
48. Alsherbiny, M.A.; Bhuyan, D.J.; Low, M.N.; Chang, D.; Li, C.G. Synergistic interactions of cannabidiol with chemotherapeutic drugs in mcf7 cells: Mode of interaction and proteomics analysis of mechanisms. *Int. J. Mol. Sci.* **2021**, *22*, 10103. [[CrossRef](#)] [[PubMed](#)]
49. Monroe, A.Z.; Gordon, W.H.; Wood, J.S.; Martin, G.E.; Morgan, J.B.; Williamson, R.T. Structural revision of a wnt/beta-catenin modulator and confirmation of cannabielsoin constitution and configuration. *Chem. Commun.* **2021**, *57*, 5658–5661. [[CrossRef](#)]
50. Stone, N.L.; Murphy, A.J.; England, T.J.; O'Sullivan, S.E. A systematic review of minor phytocannabinoids with promising neuroprotective potential. *Br. J. Pharmacol.* **2020**, *177*, 4330–4352. [[CrossRef](#)]
51. Tomko, A.M.; Whynot, E.G.; Ellis, L.D.; Dupre, D.J. Anti-cancer potential of cannabinoids, terpenes, and flavonoids present in cannabis. *Cancers* **2020**, *12*, 1985. [[CrossRef](#)]
52. Pollastro, F.; Minassi, A.; Fresu, L.G. Cannabis phenolics and their bioactivities. *Curr. Med. Chem.* **2018**, *25*, 1160–1185. [[CrossRef](#)]
53. Bautista, J.L.; Yu, S.; Tian, L. Flavonoids in *Cannabis sativa*: Biosynthesis, bioactivities, and biotechnology. *ACS Omega* **2021**, *6*, 5119–5123. [[CrossRef](#)] [[PubMed](#)]
54. Latter, H.L.; Abraham, D.J.; Turner, C.E.; Knapp, J.E.; Schiff, P.L.; Slatkin, D.J. Cannabissativine, a new alkaloid from *Cannabis sativa* L. Root. *Tetrahedron Lett.* **1975**, *16*, 2815–2818. [[CrossRef](#)]
55. Elsohly, M.A.; Turner, C.E.; Phoebe, C.H., Jr.; Knapp, J.E.; Schiff, P.L., Jr.; Slatkin, D.J. Anhydrocannabissativine, a new alkaloid from *Cannabis sativa* L. *J. Pharm. Sci.* **1978**, *67*, 124. [[CrossRef](#)] [[PubMed](#)]
56. Ryz, N.R.; Remillard, D.J.; Russo, E.B. Cannabis roots: A traditional therapy with future potential for treating inflammation and pain. *Cannabis Cannabinoid Res.* **2017**, *2*, 210–216. [[CrossRef](#)] [[PubMed](#)]
57. Nguyen, K.Q.; Scarlett, C.J.; Vuong, Q.V. Assessment and comparison of phytochemicals and antioxidant properties from various parts of the Australian maroon bush (*Scaevola spinescens*). *Heliyon* **2021**, *7*, e06810. [[CrossRef](#)] [[PubMed](#)]
58. Vuong, Q.V.; Golding, J.B.; Stathopoulos, C.E.; Nguyen, M.H.; Roach, P.D. Optimizing conditions for the extraction of catechins from green tea using hot water. *J. Sep. Sci.* **2011**, *34*, 3099–3106. [[CrossRef](#)] [[PubMed](#)]
59. Nguyen, K.Q.; Vuong, Q.V.; Nguyen, M.H.; Roach, P.D. The effects of drying conditions on bioactive compounds and antioxidant activity of the Australian maroon bush, *Scaevola spinescens*. *J. Food Processing Preserv.* **2018**, *42*, e13711. [[CrossRef](#)]
60. Dailey, A.; Vuong, Q.V. Effect of extraction solvents on recovery of bioactive compounds and antioxidant properties from macadamia (*Macadamia tetraphylla*) skin waste. *Cogent Food Agric.* **2015**, *1*, 1115646. [[CrossRef](#)]
61. Vuong, Q.V.; Golding, J.B.; Stathopoulos, C.E.; Roach, P.D. Effects of aqueous brewing solution pH on the extraction of the major green tea constituents. *Food Res. Int.* **2013**, *53*, 713–719. [[CrossRef](#)]
62. Ahmed, M.; Ramachandraiah, K.; Jiang, G.-H.; Eun, J.B. Effects of ultra-sonication and agitation on bioactive compounds and structure of amaranth extract. *Foods* **2020**, *9*, 1116. [[CrossRef](#)]
63. Xi, J. Ultrahigh pressure extraction of bioactive compounds from plants—A review. *Crit. Rev. Food Sci. Nutr.* **2017**, *57*, 1097–1106. [[CrossRef](#)]
64. Saifullah, M.; McCullum, R.; McCluskey, A.; Vuong, Q.V. Comparison of conventional extraction technique with ultrasound assisted extraction on recovery of phenolic compounds from lemon scented tea tree (*Leptospermum petersonii*) leaves. *Heliyon* **2020**, *6*, e03666. [[CrossRef](#)]
65. Bhuyan, D.J.; Vuong, Q.V.; Chalmers, A.C.; van Altena, I.A.; Bowyer, M.C.; Scarlett, C.J. Development of the ultrasonic conditions as an advanced technique for extraction of phenolic compounds from eucalyptus robusta. *Sep. Sci. Technol.* **2017**, *52*, 100–112. [[CrossRef](#)]
66. Fishedick, J.T.; Hazekamp, A.; Erkelens, T.; Choi, Y.H.; Verpoorte, R. Metabolic fingerprinting of *Cannabis sativa* L., cannabinoids and terpenoids for chemotaxonomic and drug standardization purposes. *Phytochemistry* **2010**, *71*, 2058–2073. [[CrossRef](#)]
67. Namdar, D.; Mazuz, M.; Ion, A.; Koltai, H. Variation in the compositions of cannabinoid and terpenoids in *Cannabis sativa* derived from inflorescence position along the stem and extraction methods. *Ind. Crops Prod.* **2018**, *113*, 376–382. [[CrossRef](#)]

68. Ramirez, C.L.; Fanovich, M.A.; Churio, M.S. Chapter 4—cannabinoids: Extraction methods, analysis, and physicochemical characterization. In *Studies in Natural Products Chemistry*; Attaur, R., Ed.; Elsevier: Amsterdam, The Netherlands, 2019; Volume 61, pp. 143–173.
69. Dussy, F.E.; Hamberg, C.; Luginbühl, M.; Schwerzmann, T.; Briellmann, T.A. Isolation of δ^9 -thca-a from hemp and analytical aspects concerning the determination of δ^9 -thc in cannabis products. *Forensic Sci. Int.* **2005**, *149*, 3–10. [[CrossRef](#)]
70. Wianowska, D.; Dawidowicz, A.L.; Kowalczyk, M. Transformations of tetrahydrocannabinol, tetrahydrocannabinolic acid and cannabinol during their extraction from *Cannabis sativa* L. *J. Anal. Chem.* **2015**, *70*, 920–925. [[CrossRef](#)]
71. Lehmann, T.; Brenneisen, R. A new chromatographic method for the isolation of (–)- δ^9 -(trans)-tetrahydrocannabinolic acid a. *Phytochem. Anal.* **1992**, *3*, 88–90. [[CrossRef](#)]
72. Ibrahim, E.A.; Wang, M.; Radwan, M.M.; Wanas, A.S.; Majumdar, C.G.; Avula, B.; Wang, Y.-H.; Khan, I.A.; Chandra, S.; Lata, H. Analysis of terpenes in *Cannabis sativa* L. Using gc/ms: Method development, validation, and application. *Planta Med.* **2019**, *85*, 431–438. [[CrossRef](#)] [[PubMed](#)]
73. Brighenti, V.; Pellati, F.; Steinbach, M.; Maran, D.; Benvenuti, S. Development of a new extraction technique and hplc method for the analysis of non-psychoactive cannabinoids in fibre-type *Cannabis sativa* L. (hemp). *J. Pharm. Biomed. Anal.* **2017**, *143*, 228–236. [[CrossRef](#)]
74. Haji-Moradkhani, A.; Rezaei, R.; Moghimi, M. Optimization of pulsed electric field-assisted oil extraction from cannabis seeds. *J. Food Process. Eng.* **2019**, *42*, e13028. [[CrossRef](#)]
75. Isidore, E.; Karim, H.; Ioannou, I. Extraction of phenolic compounds and terpenes from *Cannabis sativa* L. By-products: From conventional to intensified processes. *Antioxidants* **2021**, *10*, 942. [[CrossRef](#)]
76. Addo, P.W.; Brousseau, V.D.; Morello, V.; MacPherson, S.; Paris, M.; Lefsrud, M. Cannabis chemistry, post-harvest processing methods and secondary metabolite profiling: A review. *Ind. Crops Prod.* **2021**, *170*, 113743. [[CrossRef](#)]
77. Baranauskaitė, J.; Marksa, M.; Ivanauskas, L.; Vitkevicius, K.; Liaudanskas, M.; Skyrius, V.; Baranauskas, A. Development of extraction technique and gc/fid method for the analysis of cannabinoids in *Cannabis sativa* L. spp. *santicha* (hemp). *Phytochem. Anal.* **2020**, *31*, 516–521. [[CrossRef](#)] [[PubMed](#)]
78. Drinić, Z.; Vladoić, J.; Koren, A.; Zeremski, T.; Stojanov, N.; Tomić, M.; Vidović, S. Application of conventional and high-pressure extraction techniques for the isolation of bioactive compounds from the aerial part of hemp (*Cannabis sativa* L.) assortment helena. *Ind. Crops Prod.* **2021**, *171*, 113908. [[CrossRef](#)]
79. Fathordoobady, F.; Singh, A.; Kitts, D.D.; Singh, A.P. Hemp (*Cannabis sativa* L.) extract: Anti-microbial properties, methods of extraction, and potential oral delivery. *Food Rev. Int.* **2019**, *35*, 664–684. [[CrossRef](#)]
80. Lazarjani, M.P.; Young, O.; Kebede, L.; Seyfoddin, A. Processing and extraction methods of medicinal cannabis: A narrative review. *J. Cannabis Res.* **2021**, *3*, 32. [[CrossRef](#)] [[PubMed](#)]
81. Marzorati, S.; Friscione, D.; Picchi, E.; Verotta, L. Cannabidiol from inflorescences of *Cannabis sativa* L.: Green extraction and purification processes. *Ind. Crops Prod.* **2020**, *155*, 112816. [[CrossRef](#)]
82. Micalizzi, G.; Vento, F.; Alibrando, F.; Donnarumma, D.; Dugo, P.; Mondello, L. *Cannabis sativa* L.: A comprehensive review on the analytical methodologies for cannabinoids and terpenes characterization. *J. Chromatogr.* **2021**, *1637*, 461864. [[CrossRef](#)] [[PubMed](#)]
83. Nuapia, Y.; Tutu, H.; Chimuka, L.; Cukrowska, E. Selective extraction of cannabinoid compounds from cannabis seed using pressurized hot water extraction. *Molecules* **2020**, *25*, 1335. [[CrossRef](#)] [[PubMed](#)]
84. Radoiu, M.; Kaur, H.; Bakowska-Barczak, A.; Splinter, S. Microwave-assisted industrial scale cannabis extraction. *Technologies* **2020**, *8*, 45. [[CrossRef](#)]
85. Sirikantaramas, S.; Taura, F. Cannabinoids: Biosynthesis and biotechnological applications. In *Cannabis sativa* L.—*Botany and Biotechnology*; Springer: Berlin/Heidelberg, Germany, 2017; pp. 183–206.
86. Lewis-Bakker, M.M.; Yang, Y.; Vyawahare, R.; Kotra, L.P. Extractions of medical cannabis cultivars and the role of decarboxylation in optimal receptor responses. *Cannabis Cannabinoid Res.* **2019**, *4*, 183–194. [[CrossRef](#)]
87. Ciolino, L.A.; Ranieri, T.L.; Taylor, A.M. Commercial cannabis consumer products part 1: Gc–ms qualitative analysis of cannabis cannabinoids. *Forensic Sci. Int.* **2018**, *289*, 429–437. [[CrossRef](#)]
88. Hazekamp, A.; Fishedick, J.T. Cannabis from cultivar to chemovar. *Drug Test. Anal.* **2012**, *4*, 660–667. [[CrossRef](#)] [[PubMed](#)]
89. Stefanidou, M.; Athanaselis, S.; Aleviopoulos, G.; Papoutsis, J.; Koutselinis, A. Δ^9 -tetrahydrocannabinol content in cannabis plants of greek origin. *Chem. Pharm. Bull.* **2000**, *48*, 743–745. [[CrossRef](#)]
90. Namdar, D.; Charuvi, D.; Ajampura, V.; Mazuz, M.; Ion, A.; Kamara, I.; Koltai, H. Led lighting affects the composition and biological activity of *Cannabis sativa* secondary metabolites. *Ind. Crops Prod.* **2019**, *132*, 177–185. [[CrossRef](#)]
91. Hazekamp, A. *Cannabis: Extracting the Medicine*; Leiden University: Leiden, The Netherlands, 2007; pp. 1–188.
92. Romano, L.L.; Hazekamp, A. Cannabis oil: Chemical evaluation of an upcoming cannabis-based medicine. *Cannabinoids* **2013**, *1*, 1–11.
93. Citti, C.; Ciccarella, G.; Braghiroli, D.; Parenti, C.; Vandelli, M.A.; Cannazza, G. Medicinal cannabis: Principal cannabinoids concentration and their stability evaluated by a high performance liquid chromatography coupled to diode array and quadrupole time of flight mass spectrometry method. *J. Pharm. Biomed. Anal.* **2016**, *128*, 201–209. [[CrossRef](#)] [[PubMed](#)]
94. Izzo, L.; Castaldo, L.; Narváez, A.; Graziani, G.; Gaspari, A.; Rodríguez-Carrasco, Y.; Ritieni, A. Analysis of phenolic compounds in commercial *Cannabis sativa* L. Inflorescences using uhplc-q-orbitrap hrms. *Molecules* **2020**, *25*, 631. [[CrossRef](#)] [[PubMed](#)]

95. Allegrone, G.; Pollastro, F.; Magagnini, G.; Tagliatalata-Scafati, O.; Seegers, J.; Koeberle, A.; Werz, O.; Appendino, G. The bibenzyl canniprene inhibits the production of pro-inflammatory eicosanoids and selectively accumulates in some *Cannabis sativa* strains. *J. Nat. Prod.* **2017**, *80*, 731–734. [CrossRef] [PubMed]
96. Babiker, E.E.; Uslu, N.; Al Juhaimi, F.; Mohamed Ahmed, I.A.; Ghafoor, K.; Özcan, M.M.; Almusallam, I.A. Effect of roasting on antioxidative properties, polyphenol profile and fatty acids composition of hemp (*Cannabis sativa* L.) seeds. *LWT* **2021**, *139*, 110537. [CrossRef]
97. Palmieri, S.; Pellegrini, M.; Ricci, A.; Compagnone, D.; Lo Sterzo, C. Chemical composition and antioxidant activity of thyme, hemp and coriander extracts: A comparison study of maceration, soxhlet, uae and rslde techniques. *Foods* **2020**, *9*, 1221. [CrossRef]
98. Teh, S.-S.; Bekhit, A.E.-D.; Birch, J. Antioxidative polyphenols from defatted oilseed cakes: Effect of solvents. *Antioxidants* **2014**, *3*, 67–80. [CrossRef]
99. Ahmed, M.; Ji, M.; Qin, P.; Gu, Z.; Liu, Y.; Sikandar, A.; Iqbal, M.; Javeed, A. Phytochemical screening, total phenolic and flavonoids contents and antioxidant activities of *Citrullus colocynthis* L. and *Cannabis sativa* L. *Appl. Ecol. Environ. Res.* **2019**, *17*, 6961–6979. [CrossRef]
100. Drnić, Z.; Vidović, S.; Vladić, J.; Koren, A.; Kiprovska, B.; Sikora, V. Effect of extraction solvent on total polyphenols content and antioxidant activity of *Cannabis sativa* L. *Lek. Sirovine* **2018**, *38*, 17–21. [CrossRef]
101. Lesma, G.; Consonni, R.; Gambaro, V.; Remuzzi, C.; Roda, G.; Silvani, A.; Vece, V.; Visconti, G.L. Cannabinoid-free *Cannabis sativa* L. Grown in the po valley: Evaluation of fatty acid profile, antioxidant capacity and metabolic content. *Nat. Prod. Res.* **2014**, *28*, 1801–1807. [CrossRef]
102. Mkpennie, V.; Essien, E.; Udoh, I. Effect of extraction conditions on total polyphenol contents, antioxidant and antimicrobial activities of *Cannabis sativa* L. *Electron. J. Environ. Agric. Food Chem.* **2012**, *11*, 300–307.
103. Mourtzinou, I.; Menexis, N.; Iakovidis, D.; Makris, D.P.; Goula, A. A green extraction process to recover polyphenols from byproducts of hemp oil processing. *Recycling* **2018**, *3*, 15. [CrossRef]
104. Fiorini, D.; Molle, A.; Nabissi, M.; Santini, G.; Benelli, G.; Maggi, F. Valorizing industrial hemp (*Cannabis sativa* L.) by-products: Cannabidiol enrichment in the inflorescence essential oil optimizing sample pre-treatment prior to distillation. *Ind. Crops Prod.* **2019**, *128*, 581–589. [CrossRef]
105. Naz, S.; Hanif, M.A.; Bhatti, H.N.; Ansari, T.M. Impact of supercritical fluid extraction and traditional distillation on the isolation of aromatic compounds from cannabis indica and *Cannabis sativa*. *J. Essent. Oil Bear. Plants* **2017**, *20*, 175–184. [CrossRef]
106. Zheljajkov, V.D.; Sikora, V.; Semerdjieva, I.B.; Kačaniová, M.; Astatkie, T.; Dincheva, I. Grinding and fractionation during distillation alter hemp essential oil profile and its antimicrobial activity. *Molecules* **2020**, *25*, 3943. [CrossRef] [PubMed]
107. Booth, J.K.; Page, J.E.; Bohlmann, J. Terpene synthases from *Cannabis sativa*. *PLoS ONE* **2017**, *12*, e0173911. [CrossRef]
108. Casano, S.; Grassi, G.; Martini, V.; Michelozzi, M. Variations in Terpene Profiles of Different Strains of *Cannabis sativa* L. In Proceedings of the XXVIII International Horticultural Congress on Science and Horticulture for People (IHC2010), A New Look at Medicinal and 925, Lisbon, Portugal, 22–27 August 2010; pp. 115–121.
109. Ternelli, M.; Brighenti, V.; Anceschi, L.; Poto, M.; Bertelli, D.; Licata, M.; Pellati, F. Innovative methods for the preparation of medical cannabis oils with a high content of both cannabinoids and terpenes. *J. Pharm. Biomed. Anal.* **2020**, *186*, 113296. [CrossRef]
110. Rosenthal, E.; Bho, G. Butane hash oil-shatter, wax, sauce and beyond, quick american. In *Beyond Buds: Next Generation-marijuana Extracts and Cannabis Infusions*; Blythe, D.T., Ed.; Quick American: Piedmont, CA, USA, 2018; pp. 87–115.
111. Pubchem Compound Summary for Cid 7843, Butane. Available online: <https://pubchem.ncbi.nlm.nih.gov/compound/Butane> (accessed on 1 January 2022).
112. Stogner, J.M.; Miller, B.L.J.S. The dabbing dilemma: A call for research on butane hash oil and other alternate forms of cannabis use. *Subst. Abus.* **2015**, *36*, 393–395. [CrossRef]
113. Gegax, K. *Gegax Hemp Financial Research*; California State University San Marcos: San Marcos, CA, USA, 2020.
114. Mustafa, A.; Turner, C. Pressurized liquid extraction as a green approach in food and herbal plants extraction: A review. *Anal. Chim. Acta* **2011**, *703*, 8–18. [CrossRef]
115. Rosenthal, E.; Zeman, G. CO₂ extraction. In *Beyond Buds: Next Generation-Marijuana Extracts and Cannabis Infusions*; Rolph Blythe, D.T., Ed.; Quick American: Piedmont, CA, USA, 2018; pp. 149–167.
116. Perrotin-Brunel, H. *Sustainable Production of Cannabinoids with Supercritical Carbon Dioxide Technologies*; University of Technology of Compiègne Geboren te Rouen: Rouen, France, 2011.
117. Hanuš, L.O.; Meyer, S.M.; Muñoz, E.; Tagliatalata-Scafati, O.; Appendino, G. Phytocannabinoids: A unified critical inventory. *Nat. Prod. Rep.* **2016**, *33*, 1357–1392. [CrossRef] [PubMed]
118. Cascio, M.G.; Pertwee, R.G. Known pharmacological actions of nine nonpsychotropic phytocannabinoids. In *Handbook of Cannabis*; Pertwee, R., Ed.; Oxford University Press: Oxford, UK, 2014; Volume 137, pp. 137–156.
119. Lucas, P.G. Regulating compassion: An overview of Canada’s federal medical cannabis policy and practice. *Harm Reduct. J.* **2008**, *5*, 1–13. [CrossRef] [PubMed]
120. Da Porto, C.; Decorti, D.; Natolino, A. Separation of aroma compounds from industrial hemp inflorescences (*Cannabis sativa* L.) by supercritical CO₂ extraction and on-line fractionation. *Ind. Crops Prod.* **2014**, *58*, 99–103. [CrossRef]
121. Cravotto, G.; Boffa, L.; Mantegna, S.; Perego, P.; Avogadro, M.; Cintas, P. Improved extraction of vegetable oils under high-intensity ultrasound and/or microwaves. *Ultrason. Sonochem.* **2008**, *15*, 898–902. [CrossRef] [PubMed]

122. Syed, Q.A.; Ishaq, A.; Rahman, U.; Aslam, S.; Shukat, R. Pulsed electric field technology in food preservation: A review. *J. Nutr. Health Food Eng.* **2017**, *6*, 168–172.
123. Boussetta, N.; Soichi, E.; Lanoisellé, J.-L.; Vorobiev, E. Valorization of oilseed residues: Extraction of polyphenols from flaxseed hulls by pulsed electric fields. *Ind. Crops Prod.* **2014**, *52*, 347–353. [[CrossRef](#)]
124. Sarkis, J.; Vorobiev, E. Application of pulsed electric energies for oil and polyphenol extraction from sesame cake and sesame seeds. In *Handbook of Electroporation*; Miklavcic, D., Ed.; Springer: Cham, Switzerland, 2019; pp. 1–13.
125. Yu, X.; Bals, O.; Grimi, N.; Vorobiev, E. A new way for the oil plant biomass valorization: Polyphenols and proteins extraction from rapeseed stems and leaves assisted by pulsed electric fields. *Ind. Crops Prod.* **2015**, *74*, 309–318. [[CrossRef](#)]
126. Rosenthal, A.; Pyle, D.; Niranjana, K. Aqueous and enzymatic processes for edible oil extraction. *Enzym. Microb. Technol.* **1996**, *19*, 402–420. [[CrossRef](#)]
127. Kitrytė, V.; Bagdonaitė, D.; Venskutonis, P.R. Biorefining of industrial hemp (*Cannabis sativa* L.) threshing residues into cannabinoid and antioxidant fractions by supercritical carbon dioxide, pressurized liquid and enzyme-assisted extractions. *Food Chem.* **2018**, *267*, 420–429. [[CrossRef](#)] [[PubMed](#)]
128. Latif, S.; Anwar, F. Physicochemical studies of hemp (*Cannabis sativa*) seed oil using enzyme-assisted cold-pressing. *Eur. J. Lipid Sci.* **2009**, *111*, 1042–1048. [[CrossRef](#)]