



2021

## Pharmacy History exhibit (2021)

Thomas J. Long School of Pharmacy and Health Sciences

Anne Marie Bergthold Yee  
abergthold@pacific.edu

Follow this and additional works at: <https://scholarlycommons.pacific.edu/cs-pharmacy>

---

### Recommended Citation

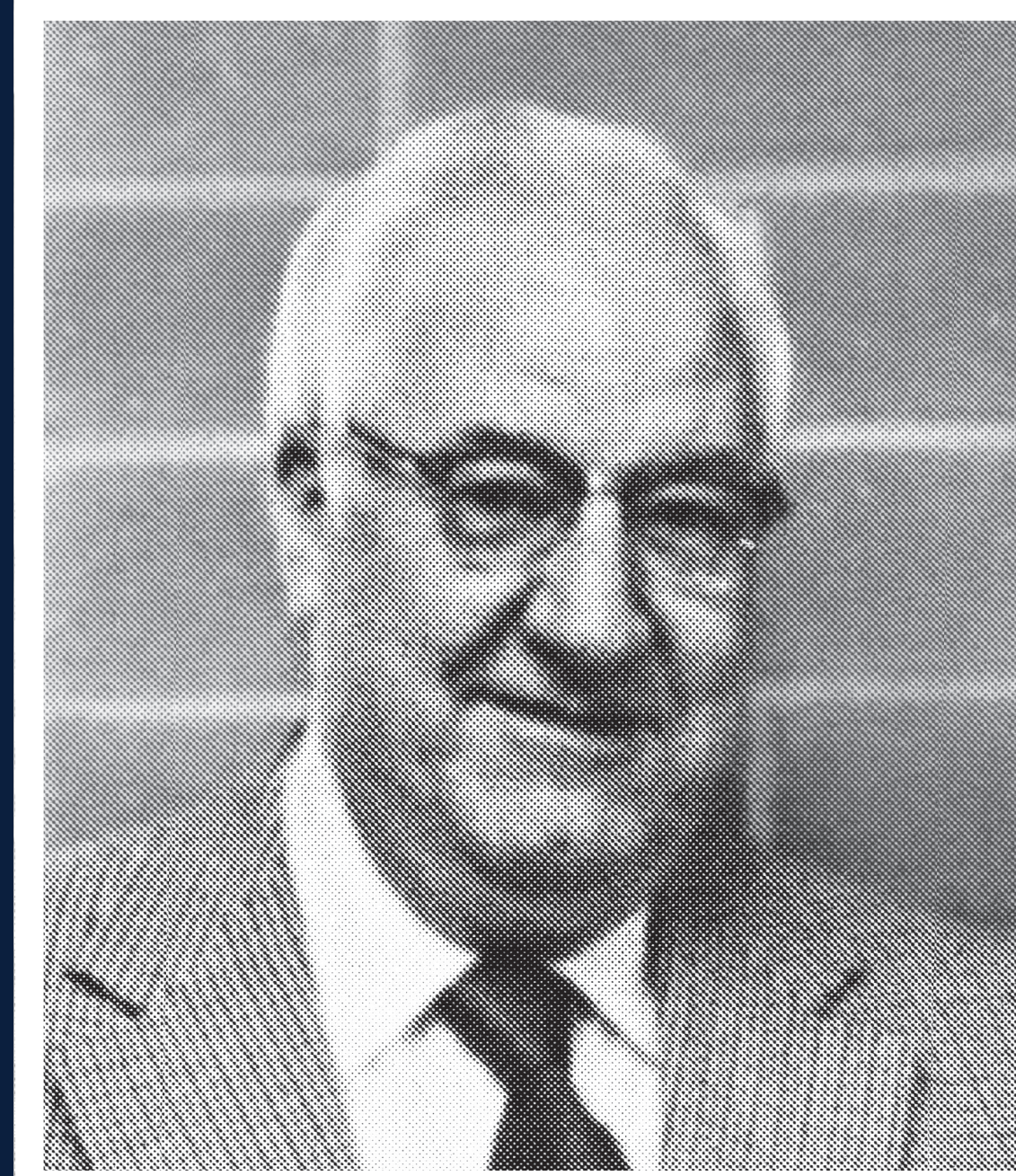
Thomas J. Long School of Pharmacy and Health Sciences and Yee, Anne Marie Bergthold, "Pharmacy History exhibit (2021)" (2021). *Thomas J. Long School of Pharmacy*. 1.  
<https://scholarlycommons.pacific.edu/cs-pharmacy/1>

This Poster is brought to you for free and open access by the Colleges and Schools at Scholarly Commons. It has been accepted for inclusion in Thomas J. Long School of Pharmacy by an authorized administrator of Scholarly Commons. For more information, please contact [mgibney@pacific.edu](mailto:mgibney@pacific.edu).



A spirit of innovation led President Robert E. Burns '31, PhD to establish the third pharmacy school in California.

Under the visionary leadership of Dean **Ivan W. Rowland**, PhD the School reached peak enrollment within five years and Pacific's North Campus was developed.



**1955** The first class was held in Weber Hall.



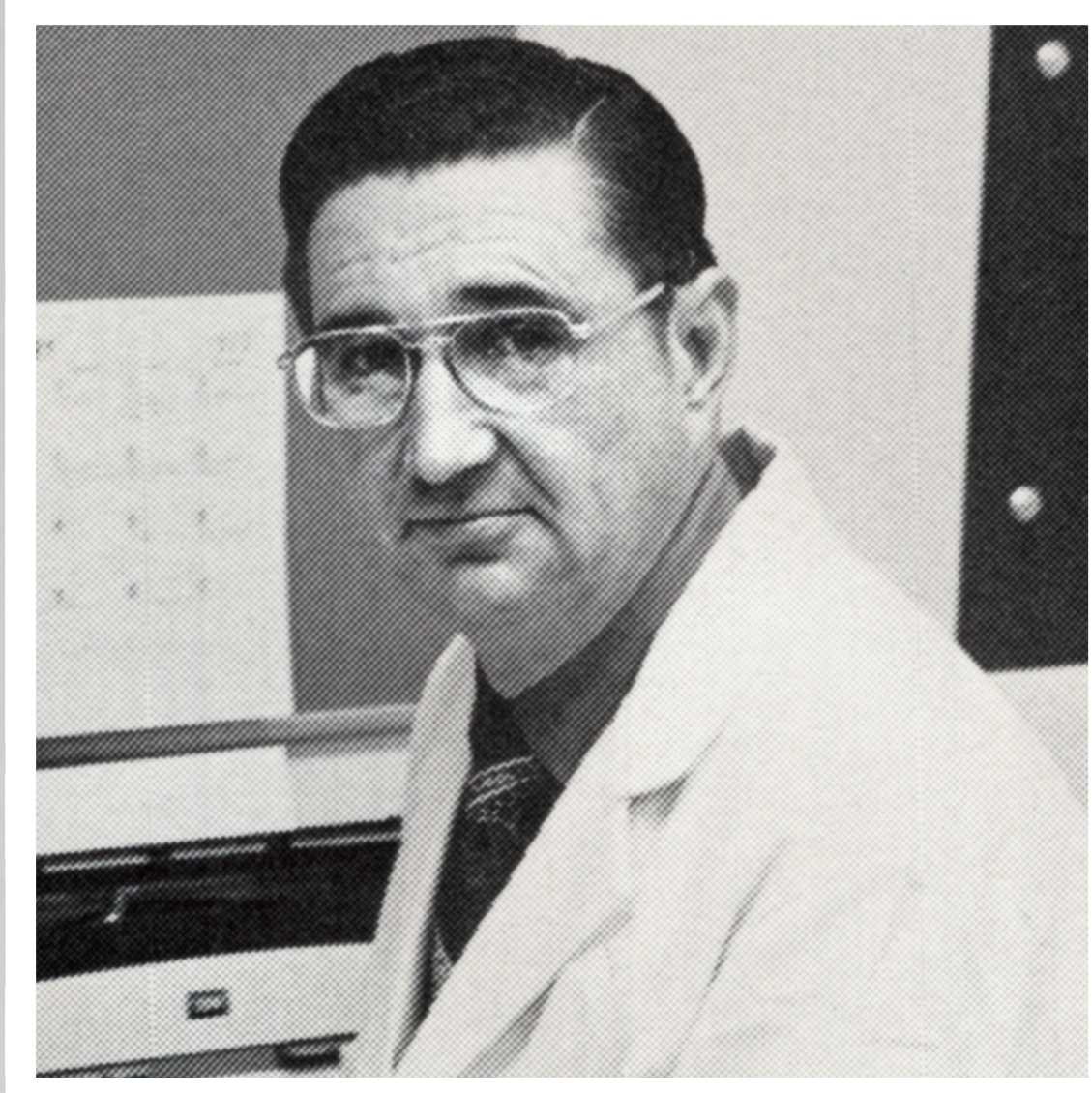
**1960** Gamma Nu chapter of Kappa Psi was established.

**1950**

**1960**



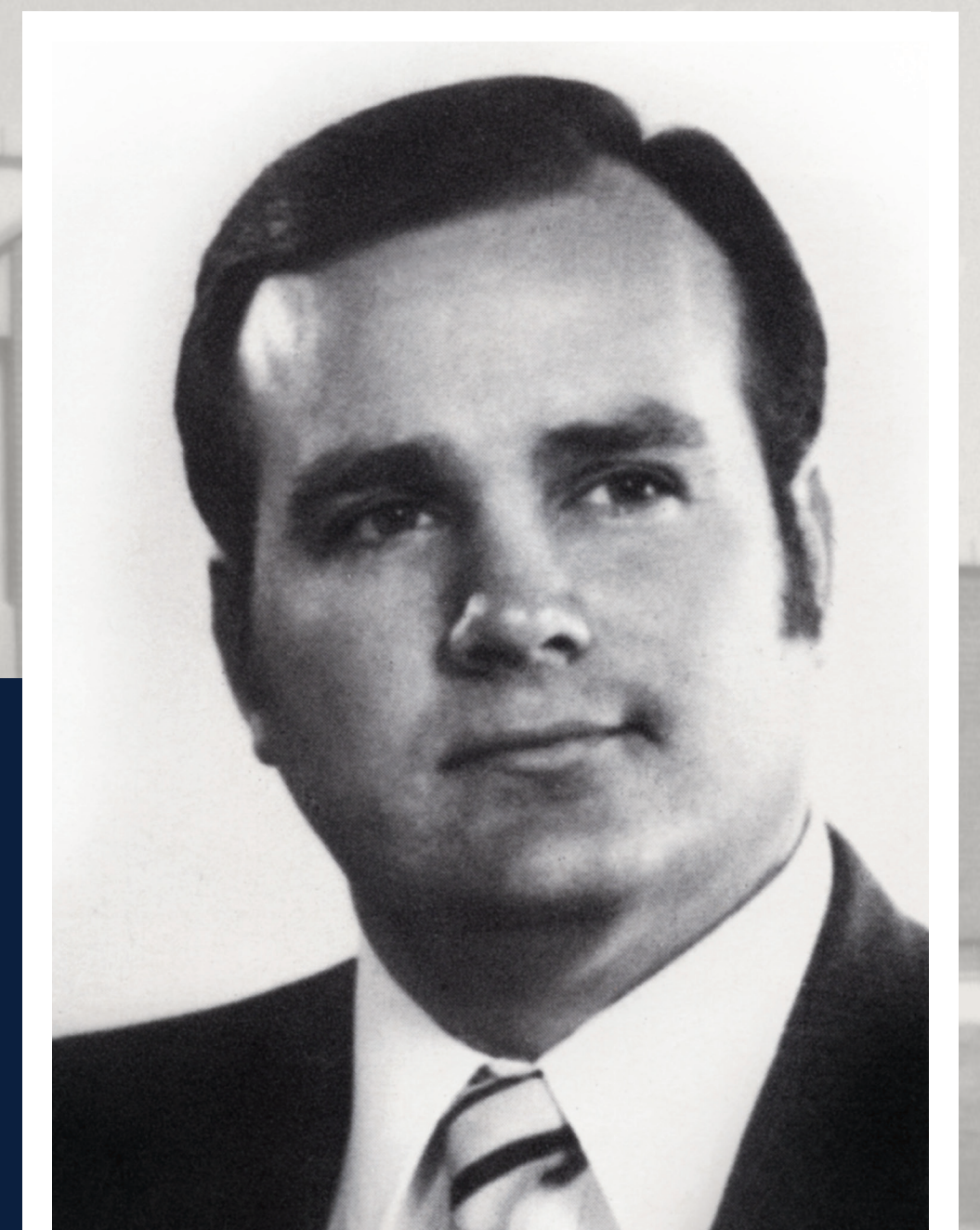
**1970** The School initiated the first accelerated, 3-year trimester program in the nation and the Preceptor-Intern Program was established.



**1977** Lt. Col. William Christopherson Jr., PhD established a partnership with the Veterans Affairs health care system.



**1992** Lambda Sigma chapter of Rho Pi Phi was established.



**1995** Robert Supernaw '72, PharmD was named interim dean.

**1970**

**1980**

**1990**

**2000** The Pharmaceutical and Chemical Sciences Program was established.



**2001** The Regents accepted a \$13 million grant from the Thomas J. Long Foundation. The name Thomas J. Long School of Pharmacy recognizes more than \$20 million of support from the Foundation and the Long family over the course of the School's history.

**2002** Construction was completed on Brookside Hall, which was refurbished and renamed Chan Family Hall in 2014.

**2003** The Chan Family Health Sciences Learning Center and Clinics was completed. Renovations were completed in 2018, adding additional classrooms, offices and study spaces.



**2000**

**2010**

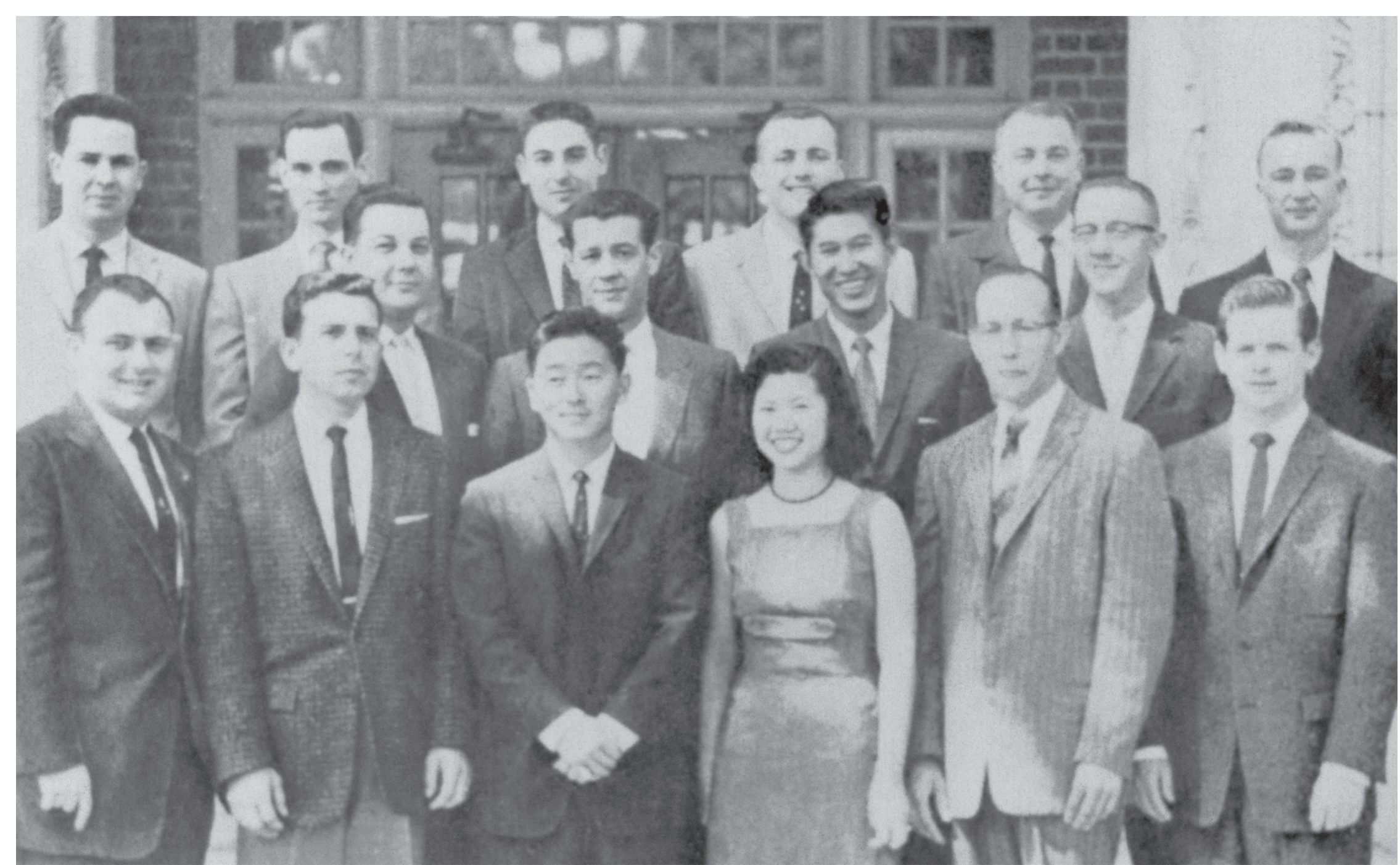
**2020**



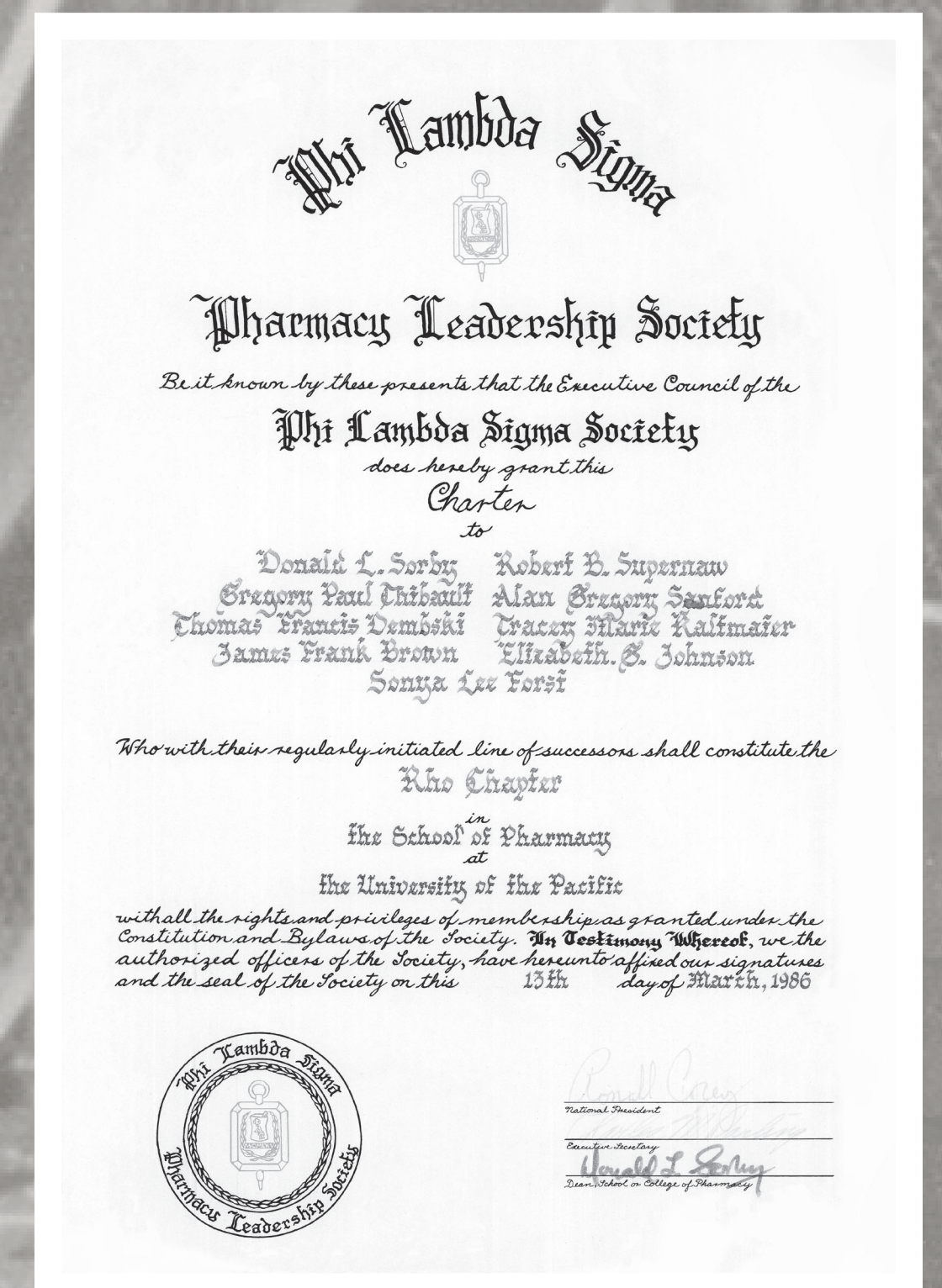
**19** Alpha Psi chapter of Phi  
**56** Delta Chi was established.



**19** Beta Omega chapter  
**64** of Rho Chi was established.



**19** The inaugural class  
**59** graduated.



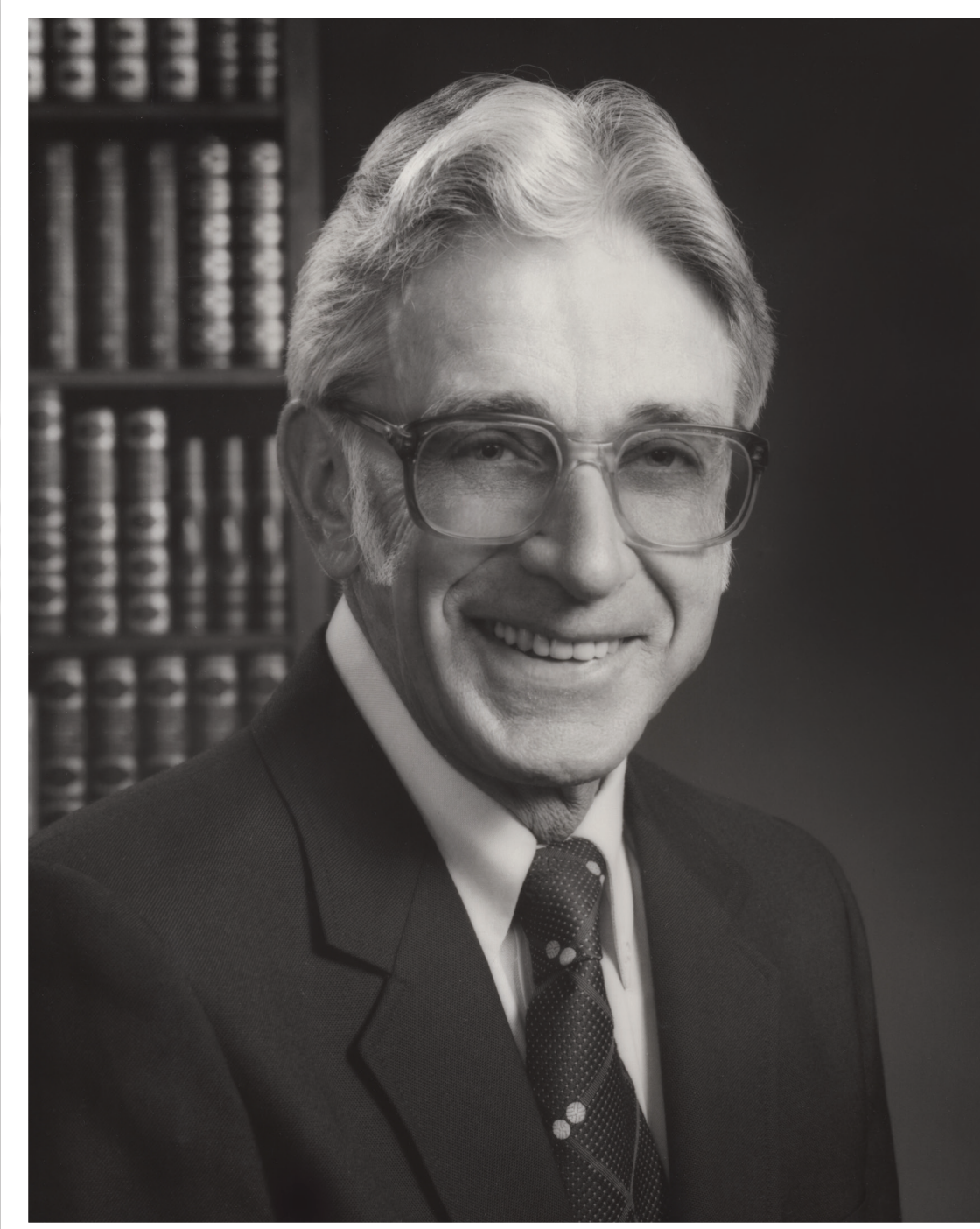
**19** Rho chapter of Phi  
**65** Lambda Sigma was established.



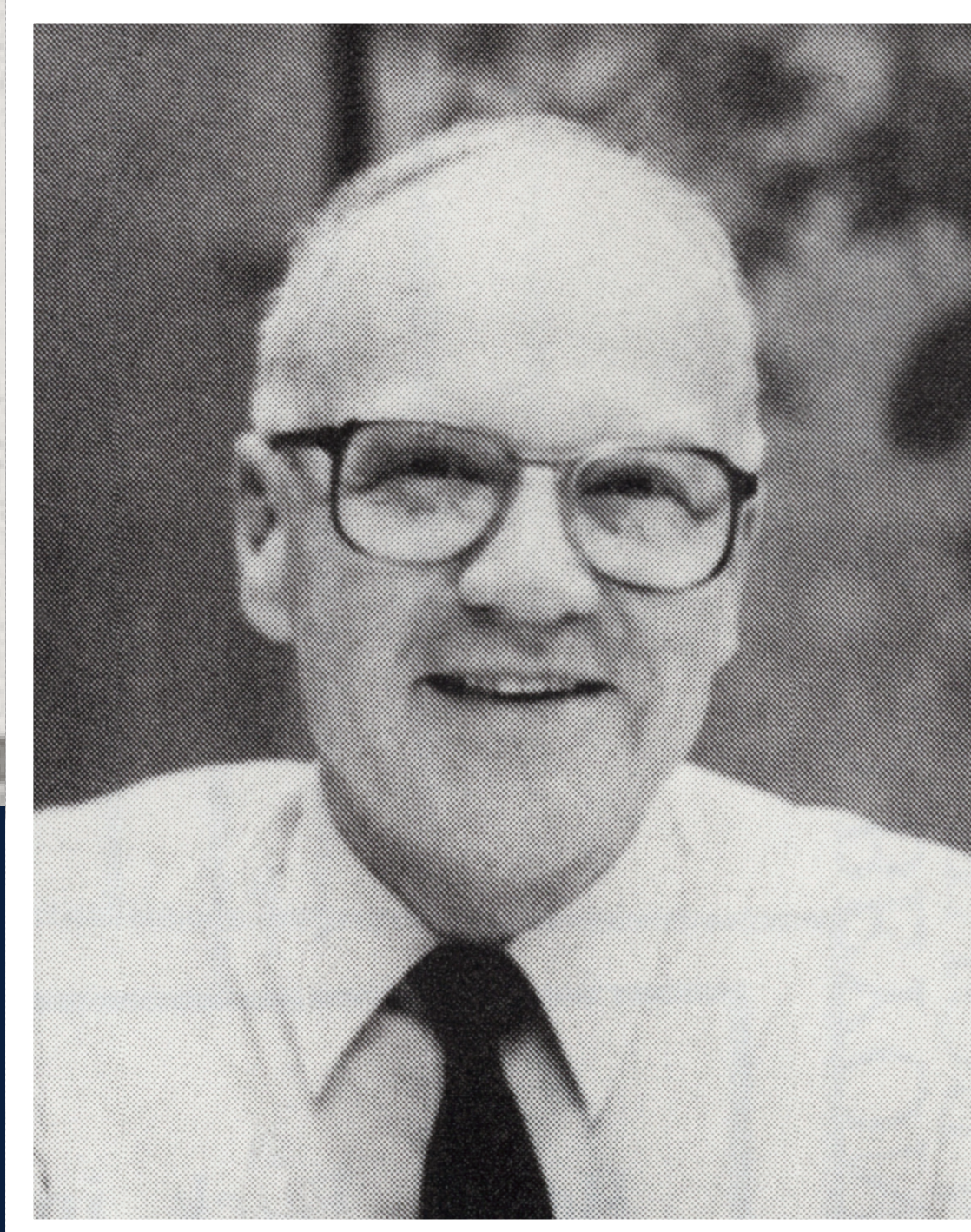
**19** Alpha Xi chapter of Lambda  
**59** Kappa Sigma was established.



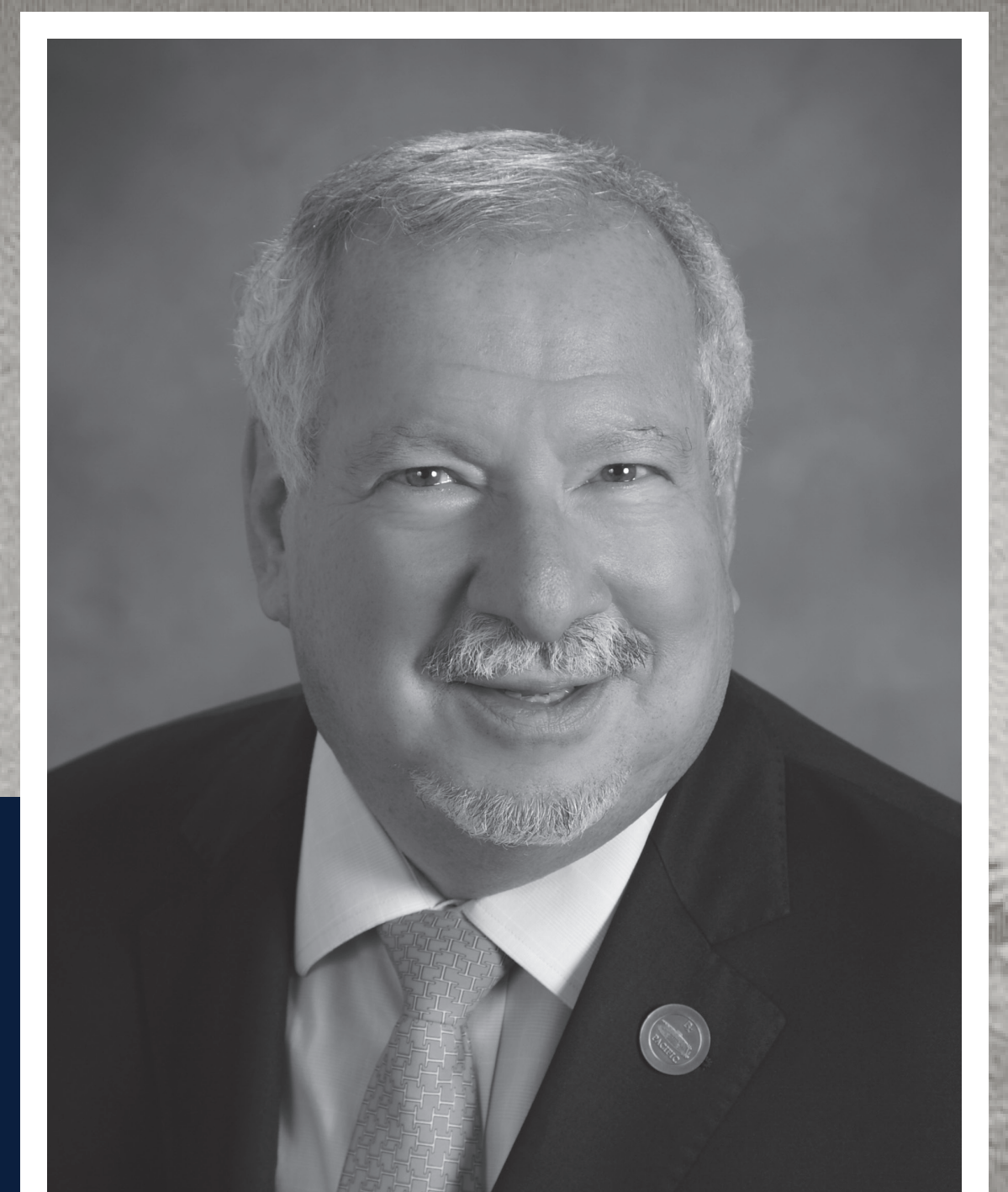
**1969** The Edward and Alice Long Memorial Hall was completed.



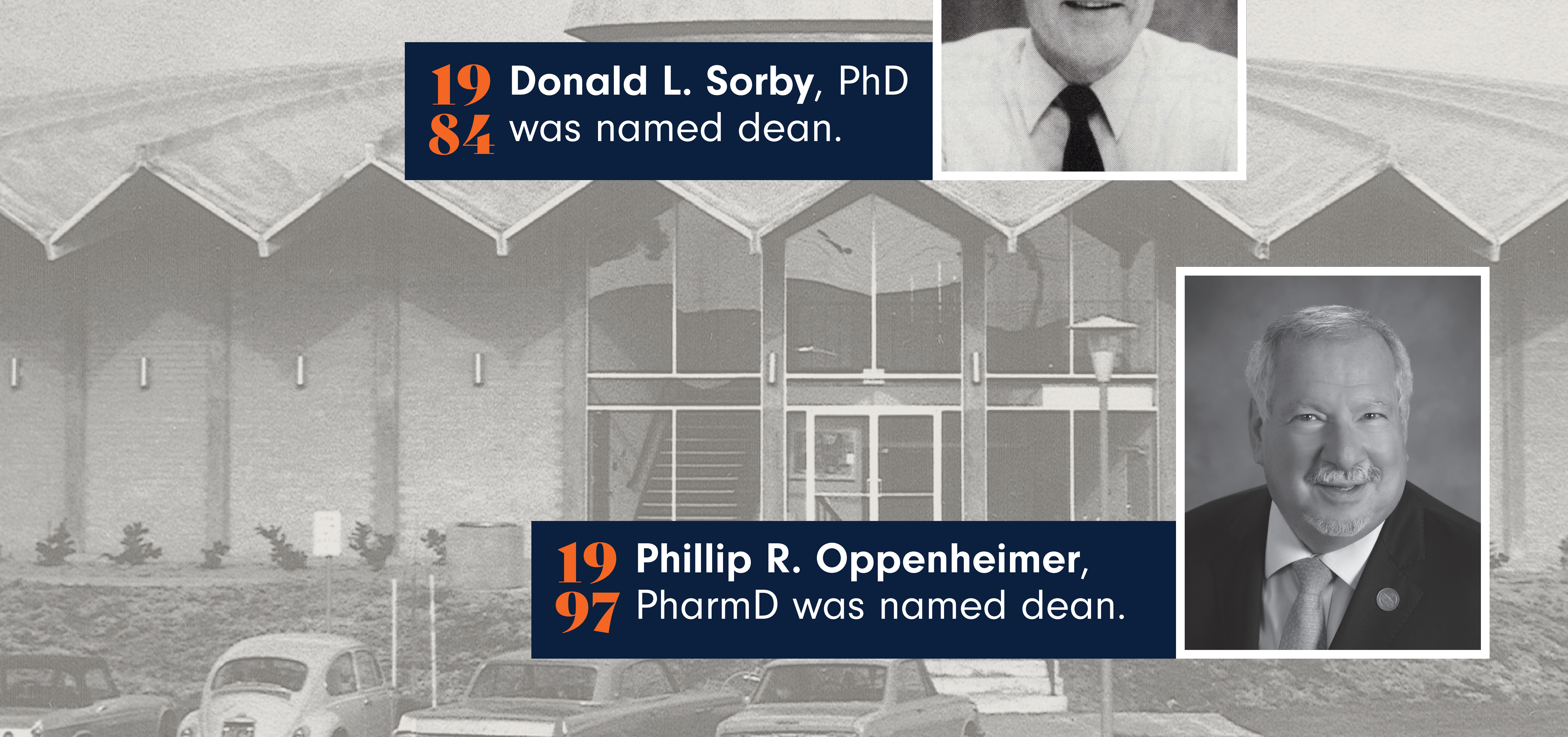
**1983** Warren J. Schneider, PhD, DVM was named dean.



**1984** Donald L. Sorby, PhD was named dean.



**1997** Phillip R. Oppenheimer, PharmD was named dean.





**2005** The pharmaceutical care lab was dedicated to professor emeritus **Donald Y. Barker, PhD.**

**2013** A combined master of science in pharmaceutical sciences and fellowship in pharmacy practice was launched.

**2017** The Fellowship in Industry Program was established.



**2007** **Rajul Arvind Patel** '01, '06, PharmD, PhD launched the Medicare Part D Outreach Clinics.



**2020** **Rae R. Matsumoto, PhD** was named dean.

**2020** The Jie Du Center for Innovation and Excellence for Drug Development was established.



**2021** Renovations were completed on the Rotunda.