

# Molecular Genetics of Pulmonary Hypertension in Children

Fatima Taha<sup>1</sup>, Laura Southgate<sup>1,\*</sup>

## ***Affiliations:***

<sup>1</sup> Molecular and Clinical Sciences Research Institute, St George's University of London, London, UK

## ***\*Corresponding author:***

Dr Laura Southgate

Address: Genetics Research Section, Molecular and Clinical Sciences Research Institute, St George's University of London, Cranmer Terrace, London SW17 0RE, United Kingdom

Tel: +44 2087252621

Email: [lasouthg@sgul.ac.uk](mailto:lasouthg@sgul.ac.uk)

## ***Author contributions:***

Fatima Taha: Investigation, Visualization, Writing – Original Draft; Laura Southgate: Conceptualization, Formal analysis, Visualization, Writing – Original Draft, Writing – Reviewing & Editing

## **Abstract**

Until recently, the molecular aetiology of paediatric pulmonary hypertension was relatively poorly understood. While the TGF- $\beta$ /BMP pathway was recognised as central to disease progression, genetic analyses in children were largely confined to targeted screening of risk genes in small cohorts, with clinical management extrapolated from adult data. In recent years, next-generation sequencing has highlighted notable differences in the genetic architecture underlying childhood-onset cases, with a higher genetic burden in children partly explained by co-morbidities such as congenital heart disease. Here, we review recent genetic advances in paediatric pulmonary hypertension and highlight important risk factors such as dysregulation of the transcription factors SOX17 and TBX4. Given the poorer prognosis in paediatric cases, molecular diagnosis offers a vital tool to enhance clinical care of children with pulmonary hypertension.

## Introduction

Pulmonary arterial hypertension (PAH) is a rare, progressive and usually fatal disorder with an estimated annual incidence of 4–10 cases/million and a prevalence of 20–40 cases/million in children [1]. It is defined as a mean pulmonary arterial pressure >20 mmHg and pulmonary vascular resistance  $\geq 3$  Wood Units [2]. Paediatric PAH is often associated with a more severe clinical course, particularly in the presence of other congenital defects. However, early treatment in children can significantly improve overall outcomes resulting in transplant-free 5-year survival rates over 80%, depending on PAH aetiology and WHO functional class at diagnosis [3-5].

PAH has a complex aetiology with different factors precipitating disease presentation in adult- and childhood-onset disease, resulting in a varied pathobiology, disease severity and genetic background (Figure 1). The disorder is classified into several subgroups, which include idiopathic (IPAH), heritable (HPAH) and associated forms (APAH) (Table 1). In childhood-onset disease, the vast majority of patients are diagnosed with IPAH, HPAH or PAH associated with congenital heart disease (APAH-CHD) [6].

In this review, we summarise the key genes and pathways dysregulated in paediatric PAH with a focus on recent advances that highlight the applicability of molecular insights to clinical management.

## BMP/TGF- $\beta$ signalling in paediatric PAH

### Dysregulation of the canonical BMP/TGF- $\beta$ pathway

The significance of canonical BMP/TGF- $\beta$  signalling in the pathogenesis of both adult and paediatric PAH has been well documented [7,8]. Following the identification of *BMPR2* haploinsufficiency as a molecular mechanism of disease, additional causal variants were described in genes encoding the ALK1 (*ACVRL1*) and Endoglin (*ENG*) receptors, which have been observed in association with hereditary haemorrhagic telangiectasia (HHT). By contrast, initial reports of pathogenic variation in the type I receptor ALK6 (*BMPR1B*) have not been robustly validated, indicating a limited role for this gene in paediatric PAH [7–9] (Table 2).

Children with pathogenic variants in *BMPR2* or *ACVRL1*, with or without HHT, have poor clinical outcomes by comparison to non-carriers, typically experiencing a marked limitation of physical activity (WHO functional class III) within 3 years of diagnosis, highlighting the need for rapid mutation detection and treatment [6,10]. Of note, 14-16% of deleterious variation in *BMPR2* comprises structural variants that require additional analysis beyond targeted exonic sequencing [7,8]. Whilst this has traditionally been conducted by multiplex ligation-dependent probe amplification, more innovative technologies include the use of mate-pair sequencing and MinION sequencing to comprehensively screen for intronic variants [11,12].

Additional risk factors impacting BMP/TGF- $\beta$  signalling in PAH include SMAD8 (*SMAD9*) and caveolin-1 (*CAV1*), identified by candidate gene screening and whole-exome sequencing, respectively. SMAD8 is a BMP-specific signalling intermediary whereas CAV1 plays an important role in regulation of the TGF- $\beta$  signalling system. Heterozygous variants in these genes have been reported to cause PAH in some paediatric-onset cases [9]. *CAV1* may additionally be associated with a neonatal onset lipodystrophy syndrome [13].

## BMP ligands in PAH pathogenesis

BMP9 and BMP10 are circulating ligands that specifically activate the ALK1/BMPRII receptor complex. Rare heterozygous variants in the BMP9 (*GDF2*) gene are significantly enriched in adult-onset disease, based on exome-wide gene burden testing, and represent between 0.8–6.6% of all PAH cases with over 60 pathogenic variants reported to date [14–18]. Of interest, the pathophysiology in children indicates a potential semi-dominant inheritance for this gene in PAH; three reports have identified biallelic variants leading to early-onset disease, including one case with PAH-HHT [19,20]. Evidence for a role of heterozygous *BMP10* variation is also starting to emerge with four likely deleterious variants described, of which two were detected in childhood-onset PAH [17,18,21]. Of interest, plasma levels of both ligands are markedly reduced in *GDF2* mutation carriers, likely due to impaired cellular processing and secretion [15,18,19].

## Pathogenic variation in non-BMP/TGF- $\beta$ pathway genes

### Identification of *ATP13A3* variants in childhood-onset cases

*ATP13A3* encodes a member of the P5B subfamily of integral membrane ATPases, most recently reported to be a polyamine transporter [22]. Polyamines are polycations with numerous functions in cellular processes that include a cardioprotective role. The *ATP13A3* gene was first identified as a risk factor for PAH by large-scale whole-genome sequencing. Likely pathogenic heterozygous variants were significantly enriched in adult PAH cases and were predicted to disrupt ATPase activity [14]. Subsequent whole-exome sequencing (WES) analysis in a paediatric cohort detected a novel *ATP13A3* missense variant in a child with PAH and atrial septal defect [21]. Most recently, Machado *et al.* performed next-generation sequencing (NGS) in three families with childhood-onset PAH [23]. Analysis of *ATP13A3* identified one homozygous and two compound heterozygous variants, of which p.Met850Ilefs\*13 had been previously reported as heterozygous in an adult-onset case [16]. Whilst the majority of variants are anticipated to be null alleles, a nonsense variant in the final exon was predicted to evade nonsense-mediated decay, likely leading to the formation of an abnormal protein product. This study supports a model of dose-dependent, semi-dominant inheritance for this gene, wherein heterozygous variants predominantly underlie adult-onset disease and deleterious biallelic *ATP13A3* variants cause a severe, autosomal recessive form of paediatric PAH [23].

### Potassium ion transporters implicated in PAH

*KCNK3* was one of the first non-BMP pathway genes to be identified as a novel cause of autosomal dominant PAH by WES in a predominantly adult-onset I/HPAH cohort. The gene encodes a hypoxia-sensitive potassium channel involved in the regulation of the resting membrane potential of pulmonary arterial smooth muscle cells and pulmonary vascular tone [24]. While its contribution to paediatric disease remains limited [9,25], Navas Tejedor *et al.* have reported a homozygous missense variant in a child diagnosed with an aggressive form of HPAH at 2 months of age [26]. The variant is located in a highly conserved amino acid and has been demonstrated to significantly reduce channel current [27]. A loss-of-function mechanism of disease is supported by the *Kcnk3* rat model, which demonstrates pulmonary vascular abnormalities consistent with PAH [28].

*ABCC8* is a member of the ABC family which encodes sulfonylurea receptor 1 (SUR1) protein, a regulatory subunit of the  $K_{ATP}$  channel that controls channel function and potassium ion ( $K^+$ ) transport [29]. Using WES in a cohort of childhood- and adult-onset PAH patients, Bohnen *et al.* identified a novel, predicted deleterious missense variant in a child with IPAH [30]. Screening of a larger cohort detected 11 further likely pathogenic variants, of which six were missense variants in

paediatric cases with IPAH, HPAH or APAH-CHD. All the missense variants lie in critical functional domains and patch-clamp experiments confirmed a loss of ATP-sensitive potassium channel function, which was rescued by the ABCC8 activator diazoxide [30]. This gene has recently been independently replicated with the detection of likely damaging heterozygous variants in >30 PAH patients, including six children diagnosed between 1–18 years [16,21,25].

The identification of loss-of-function variants of *KCNK3* and *ABCC8* in PAH provide novel exploratory avenues for molecular pathogenesis and may point to complementary or redundant functions of *KCNK3* and  $K_{ATP}$  [30]. Variants in *KCNA5* have also been implicated as potential modifiers in PAH pathogenesis, including in an early-onset case of severe PAH with a pathogenic *BMPP2* variant [31], but this has not yet been convincingly replicated. The implication of potassium channels in the pathophysiology of PAH is discussed elsewhere [29].

### Recent gene discoveries

Recent novel gene discoveries include independent reports of heterozygous loss-of-function variants in kinase insert domain receptor (*KDR*), which is characterised by PAH with low diffusing capacity for carbon monoxide (DLCO) [32–34]. Additionally, two substantive PAH study cohorts comprising patients from the National Biological Sample and Data Repository for PAH (PAH Biobank), Columbia University Irving Medical Center, and the UK NIHR BioResource Rare Diseases Study have used NGS-based gene burden testing for novel gene detection [16,34]. Each study identified likely deleterious variants in two genes, namely tissue kallikrein 1 (*KLK1*) and gamma glutamyl carboxylase (*GGCX*) [16], fibulin 2 (*FBLN2*) and platelet-derived growth factor D (*PDGFD*) [34]. Of note, whilst only three paediatric variant carriers were detected in these genes, child-parent trio analyses highlighted a significant enrichment of predicted damaging *de novo* variants in additional genes, potentially explaining ~15% of paediatric PAH cases in their cohort. Given the limited time since initial discovery, further studies will be required to fully elucidate the role of these newly described genes in the pathogenesis of paediatric PAH.

### Associated and syndromic forms of PAH

A particular consideration in neonatal- and paediatric-onset pulmonary hypertension (PH) is the presence of complex comorbidities, often influenced by early developmental impacts on lung growth. The most common cause of transient PAH in neonates is persistent pulmonary hypertension of the newborn (PPHN), a failure of immediate postnatal cardiopulmonary transition with an annual incidence of 30.1 cases/million [1,35]. The genetic aetiology of PPHN is unclear; although potential susceptibility variants have been recently reported in *CPS1*, *NOTCH3*, *SMAD9* and the hypoxia-related genes *TLL3* and *ITGAM*, these remain to be independently validated [36,37].

PH is also seen in children with connective tissue disease (APAH-CTD) or developmental lung diseases such as alveolar capillary dysplasia, bronchopulmonary dysplasia and congenital diaphragmatic hernia [1,38]. Less frequent syndromic causes of PAH include ischiocoxopodopatellar syndrome (see *TBX4* below) and Adams-Oliver syndrome [39].

### PAH and congenital heart disease

Childhood forms of PAH are frequently associated with congenital heart disease (CHD), which forms Group 1.4.4 of the 6th World Symposium on Pulmonary Hypertension classification (Table 1). Germline variants in established risk genes such as *BMPP2*, *ENG*, *SMAD9*, *CAV1* and *BMP10* have been linked to progressive PAH in children or young adults [9,16,17]. In 2018, *SOX17* was identified

as a PAH risk gene by gene burden testing in an IPAH cohort [14]. Initial analysis of a family harbouring a p.Tyr137\* nonsense mutation suggested that this variant may underlie an early-onset form of PAH associated with an atrial septal defect. Subsequently, WES in an independent cohort of 256 cases confirmed *SOX17* as a major cause of APAH-CHD, with the identification of rare deleterious missense variants in 9/13 paediatric cases [40]. Other reports of childhood-onset disease include four likely pathogenic variants in a cohort of 2,572 PAH cases from a North American PAH biobank [16], plus a Japanese case diagnosed at 2 years of age with IPAH and patent foramen ovale, who carried heterozygous variants in *SOX17* and *TBX4*, both inherited from an unaffected parent [41].

*SOX17* encodes an endothelial transcription factor belonging to the SRY-related HMG box gene family involved in vascular development. *SOX17* and its homologue *SOX18* are crucial during embryonic development in processes such as angiogenesis, arterial specification and pulmonary vascular morphogenesis [42]. Pathogenic variants identified in PAH predict loss-of-function due to haploinsufficiency, in turn impacting *SOX17*-related pathways such as Wnt/ $\beta$ -catenin and Notch signalling [43,44]. Of interest, variants in both *NOTCH1* and *NOTCH3* have been described in childhood-onset PAH. *NOTCH1* haploinsufficiency is a major cause of both non-syndromic CHD and Adams-Oliver syndrome; the identification of rare *NOTCH1* variants in children with APAH-CHD would therefore be consistent with a secondary form of PAH, albeit in relatively few cases [34,45,46]. By contrast, although dysregulated *NOTCH3* signalling is well documented to play an important role during vascular remodelling in PAH, the evidence for a deleterious impact of inherited *NOTCH3* variation remains limited [47].

#### TBX4 in childhood PAH

The *TBX4* gene encodes a member of the T-box family of transcription factors that, together with *TBX5*, has an essential role in development of the limbs and respiratory system [48,49]. Both genes are co-expressed throughout the pulmonary mesenchyme and *TBX4* has recently been shown to positively regulate phospho-SMAD1/5, indicating potential crosstalk with BMP signalling [50]. Heterozygous *TBX4* variants cause ischiocoxopodopatellar syndrome (ICPPS; OMIM #147891), also known as small patella syndrome, whilst homozygous loss-of-function variants underlie posterior amelia with pelvic and pulmonary hypoplasia syndrome (PAPPAS; OMIM #601360). Heterozygous *TBX4*-containing deletions or likely pathogenic *TBX4* variants have been confirmed as a substantial cause of paediatric PAH, accounting for up to 8% of familial and idiopathic disease, with or without ICPPS [6,25]. Of note, the mean age-of-onset in heterozygous *TBX4* carriers is younger than *BMPR2* carriers, demonstrating a significant enrichment in childhood- vs adult-onset cases [16,25] (Table 2). Genetic variation of *TBX4* ranges from single nucleotide variants to large (>2 Mb) deletions, encompassing multiple genes. The latter are more commonly associated with developmental delay and additional neurological and psychomotor defects, whereas PAH is typically caused by protein-truncating or deleterious missense variants [51,52]. Whilst early reports indicated a milder presentation in some PAH patients, it is now recognised that the clinical phenotypes associated with *TBX4* disruption represent a broad spectrum, ranging from transient neonatal PH to severe developmental lung disorders and progressive or biphasic PH, which may be associated with skeletal, cardiac and/or neurological anomalies. Moreover, *TBX4* variants underlie a wide spectrum of clinicopathological outcomes. Neonatal respiratory failure has been reported due to lethal lung hypoplasia, such as acinar dysplasia or congenital alveolar dysplasia. By contrast, chronic PH can be diagnosed later in infancy and may recur in children previously recovered from PPHN [51–54]. Taken together, the concept of a “*TBX4* syndrome” characterised by severe pre-capillary PH points to a complex aetiology and disease progression that should be supported by regular cardiopulmonary assessment and multisystem imaging [9,55].

## Pulmonary veno-occlusive disease and pulmonary capillary haemangiomas

Pulmonary veno-occlusive disease (PVOD2; OMIM #234810) and pulmonary capillary haemangiomas (PCH) are clinically similar subtypes of PAH with autosomal recessive inheritance. Although histologically distinct, PCH and PVOD include venous and/or capillary abnormalities that are now clinically classified under PAH Group 1.6 [2] (Table 1). Despite most cases of PVOD/PCH being acquired, biallelic variants in the eukaryotic translation initiation factor 2 alpha kinase 4 (*EIF2AK4*) gene have been described in children and young adults [6,7,56]. The majority of variants are predicted to lead to premature protein truncation, consistent with a loss-of-function mechanism of disease. Experimental models of *EIF2AK4* loss-of-function have been reported to negatively regulate BMP-dependent SMAD1/5/8 signalling and proliferation of pulmonary arterial endothelial cells was reversed by exogenous BMP9, highlighting a potential therapeutic avenue [57].

*EIF2AK4* variants are associated with low DLCO, which is a characteristic feature of PVOD/PCH [58]. Importantly, PVOD and PCH are often misclassified as HPAH or IPAH as accurate diagnosis requires microscopic examination of lung tissue biopsy, which may be unsafe in some patients. Of note, some H/IPAH patients have been described with heterozygous variants in *EIF2AK4*. However, it remains unclear whether these variants are a rare cause of autosomal dominant PAH or potential genetic modifiers. Cases of clinically diagnosed PAH in whom biallelic *EIF2AK4* variants have been detected are likely to represent previously misdiagnosed PVOD/PCH [17,56]. Although some patients may respond well to PAH-targeted therapy [59,60], pulmonary vasodilator agents can cause fatal pulmonary oedema in PVOD/PCH so should be used with caution. Genetic testing is therefore highly recommended to support accurate diagnosis; given the rapid disease progression in paediatric patients, an early referral for lung transplantation would also be beneficial [61,62].

## Conclusions

Recent advances from large-scale sequencing studies have identified multiple new risk genes in PAH (Figure 2). Whereas pathogenic *BMPR2* variation remains the predominant cause, the vast majority of newly reported genes each describe less than 3% of paediatric cases (Table 2). A notable exception is *TBX4*, which contributes to 7.7% of IPAH and 4.9% of APAH-CHD cases in children, highlighting a significant divergence between adult- and childhood-onset disease [9]. Of interest, the examination of severe, early-onset cases has also highlighted a new paradigm of semi-dominant inheritance for some genes, namely *ATP13A3* and *GDF2*, which may impact genetic counselling in at-risk individuals.

While these novel findings provide unique opportunities, challenges remain. Firstly, independent validation of new gene discoveries is critical to ensure robust interpretation of identified variants in a clinical context. This has important implications for the design of molecular diagnostic testing panels to best drive clinical management decisions. Secondly, the phenotypic heterogeneity in paediatric PH may complicate interpretations of pathogenicity. Combining clinical and molecular genetic data into a detailed investigation of genotype-phenotype correlations will provide greater confidence for diagnosis and disease prognosis.

Finally, this expanded genetic architecture highlights new molecular pathways important in the pathogenesis of paediatric PAH. Elucidating the molecular networks that link established and recently identified risk pathways will ultimately provide mechanistic insights to support future pre-clinical testing of repurposed or novel therapeutics.

## Funding

This work was supported by the Springboard Scheme Funders, namely the Academy of Medical Sciences (AMS), the Wellcome Trust, the Government Department of Business, Energy and Industrial Strategy (BEIS), the British Heart Foundation and Diabetes UK [SBF005\1115]. For the purpose of Open Access, the author has applied a CC BY public copyright licence to any Author Accepted Manuscript (AAM) version arising from this submission.

## Declarations of interest

The authors declare no conflict of interest.

## References and recommended reading

Papers of particular interest, published within the period of review, have been highlighted as:

- of special interest
- of outstanding interest

1. Rosenzweig EB, Abman SH, Adatia I, Beghetti M, Bonnet D, Haworth S, Ivy DD, Berger RMF: **Paediatric pulmonary arterial hypertension: updates on definition, classification, diagnostics and management.** *Eur Respir J* 2019, **53**:1801916.
2. Simonneau G, Montani D, Celermajer DS, Denton CP, Gatzoulis MA, Krowka M, Williams PG, Souza R: **Haemodynamic definitions and updated clinical classification of pulmonary hypertension.** *Eur Respir J* 2019, **53**:1801913.
3. Frank BS, Ivy DD: **Diagnosis, evaluation and treatment of pulmonary arterial hypertension in children.** *Children (Basel)* 2018, **5**:44
4. Haarman MG, Douwes JM, Ploegstra MJ, Roofthoof MTR, Vissia-Kazemier TR, Hillege HL, Berger RMF: **The clinical value of proposed risk stratification tools in pediatric pulmonary arterial hypertension.** *Am J Respir Crit Care Med* 2019, **200**:1312–1315.
5. Jeremiasen I, Naumburg E, Westöö C, Weismann CG, Tran-Lundmark K. **Vasodilator therapy for pulmonary hypertension in children: a national study of patient characteristics and current treatment strategies.** *Pulm Circ* 2021, **11**:20458940211057891.
6. Levy M, Eyries M, Szezepanski I, Ladouceur M, Nadaud S, Bonnet D, Soubrier F: **Genetic analyses in a cohort of children with pulmonary hypertension.** *Eur Respir J* 2016, **48**:1118–1126.
7. Machado RD, Southgate L, Eichstaedt CA, Aldred MA, Austin ED, Best DH, Chung WK, Benjamin N, Elliott CG, Eyries M, et al.: **Pulmonary arterial hypertension: a current perspective on established and emerging molecular genetic defects.** *Hum Mutat* 2015, **36**:1113–1127.
8. Southgate L, Machado RD, Gräf S, Morrell NW: **Molecular genetic framework underlying pulmonary arterial hypertension.** *Nat Rev Cardiol* 2020, **17**:85–95.
9. Welch CL, Chung WK: **Genetics and genomics of pediatric pulmonary arterial hypertension.** *Genes (Basel)* 2020, **11**:E1213.

• *This review outlines the current knowledge in paediatric PAH and summarises data from sequence analysis of 443 children, providing a detailed overview of the relative contribution of 18 PAH risk genes to disease in this cohort.*

10. Yuan S-M: **Pulmonary artery hypertension in childhood: The transforming growth factor- $\beta$  superfamily-related genes.** *Pediatr Neonatol* 2018, **59**:112–119.
11. Chalmers SJ, Murphy SJ, Thompson LL, Hoppman NL, Smadbeck JB, Balcom JR, Harris FR, Frantz RP, Vasmatazis G, E Wylam M: **Mate-pair sequencing identifies a cryptic BMPR2 mutation in hereditary pulmonary arterial hypertension.** *Pulm Circ* 2020, **10**:2045894020933081.
12. Takashima T, Brisset S, Furukawa A, Taniguchi H, Takeyasu R, Kawamura A, Tamura Y: **Case report: BMPR2-targeted MinION sequencing as a tool for genetic analysis in patients with pulmonary arterial hypertension.** *Front Cardiovasc Med* 2021, **8**:711694.
13. Garg A, Kircher M, Del Campo M, Amato RS, Agarwal AK, University of Washington Center for Mendelian Genomics: **Whole exome sequencing identifies de novo heterozygous CAV1 mutations associated with a novel neonatal onset lipodystrophy syndrome.** *Am J Med Genet A* 2015, **167A**:1796–1806.
14. Gräf S, Haimel M, Bleda M, Hadinnapola C, Southgate L, Li W, Hodgson J, Liu B, Salmon RM, Southwood M, et al.: **Identification of rare sequence variation underlying heritable pulmonary arterial hypertension.** *Nat Commun* 2018, **9**:1416.
15. Wang X-J, Lian T-Y, Jiang X, Liu S-F, Li S-Q, Jiang R, Wu W-H, Ye J, Cheng C-Y, Du Y, et al.: **Germline BMP9 mutation causes idiopathic pulmonary arterial hypertension.** *Eur Respir J* 2019, **53**:1801609.
  - *This gene discovery paper identified mutations in BMP9 by exome-wide gene burden analysis. IPAH patients had lower plasma levels of BMP9 and functional studies demonstrated reduced secretion of mutant BMP ligands.*
16. Zhu N, Pauciulo MW, Welch CL, Lutz KA, Coleman AW, Gonzaga-Jauregui C, Wang J, Grimes JM, Martin LJ, He H, et al.: **Novel risk genes and mechanisms implicated by exome sequencing of 2572 individuals with pulmonary arterial hypertension.** *Genome Med* 2019, **11**:69.
17. Eyries M, Montani D, Nadaud S, Girerd B, Levy M, Bourdin A, Trésorier R, Chaouat A, Cottin V, Sanfiorenzo C, et al.: **Widening the landscape of heritable pulmonary hypertension mutations in paediatric and adult cases.** *Eur Respir J* 2019, **53**:1801371.
  - *This paper assesses targeted NGS analysis in PAH and PVOD/PCH for prospective molecular diagnosis. The authors outline genotype-phenotype correlations and identify BMP10 as a new PAH risk gene.*
18. Hodgson J, Swietlik EM, Salmon RM, Hadinnapola C, Nikolic I, Wharton J, Guo J, Liley J, Haimel M, Bleda M, et al.: **Characterization of GDF2 mutations and levels of BMP9 and BMP10 in pulmonary arterial hypertension.** *Am J Respir Crit Care Med* 2020, **201**:575–585.
19. Hodgson J, Ruiz-Llorente L, McDonald J, Quarrell O, Ugonna K, Bentham J, Mason R, Martin J, Moore D, Bergstrom K, et al.: **Homozygous GDF2 nonsense mutations result in a loss of circulating BMP9 and BMP10 and are associated with either PAH or an “HHT-like” syndrome in children.** *Mol Genet Genomic Med* 2021, **9**:e1685.
20. Gallego N, Cruz-Utrilla A, Guillén I, Bonora AM, Ochoa N, Arias P, Lapunzina P, Escribano-Subias P, Nevado J, Tenorio-Castaño J: **Expanding the evidence of a semi-dominant inheritance in GDF2 associated with pulmonary arterial hypertension.** *Cells* 2021, **10**:3178.



21. Gelinias SM, Benson CE, Khan MA, Berger RMF, Trembath RC, Machado RD, Southgate L: **Whole exome sequence analysis provides novel insights into the genetic framework of childhood-onset pulmonary arterial hypertension.** *Genes (Basel)* 2020, **11**:E1328.
22. Hamouda NN, Van den Haute C, Vanhoutte R, Sannerud R, Azfar M, Mayer R, Cortés Calabuig Á, Swinnen JV, Agostinis P, Baekelandt V, et al.: **ATP13A3 is a major component of the enigmatic mammalian polyamine transport system.** *J Biol Chem* 2021, **296**:100182.
23. Machado RD, Welch CL, Haimel M, Bleda M, Colglazier E, Coulson JD, Debeljak M, Ekstein J, Fineman JR, Golden WC, et al.: **Biallelic variants of ATP13A3 cause dose-dependent childhood-onset pulmonary arterial hypertension characterised by extreme morbidity and mortality.** *J Med Genet* 2021, doi:10.1136/jmedgenet-2021-107831 [Epub ahead of print].
24. Olschewski A, Li Y, Tang B, Hanze J, Eul B, Bohle RM, Wilhelm J, Morty RE, Brau ME, Weir EK, et al.: **Impact of TASK-1 in human pulmonary artery smooth muscle cells.** *Circ Res* 2006, **98**:1072–1080.
25. Zhu N, Gonzaga-Jauregui C, Welch CL, Ma L, Qi H, King AK, Krishnan U, Rosenzweig EB, Ivy DD, Austin ED, et al.: **Exome sequencing in children with pulmonary arterial hypertension demonstrates differences compared with adults.** *Circ Genom Precis Med* 2018, **11**:e001887.
  - *In this paper, the authors identify a significant enrichment of TBX4 mutations in paediatric PAH and highlight important differences in the genetic architecture of PAH in children and adults.*
26. Navas Tejedor P, Tenorio Castaño J, Palomino Doza J, Arias Lajara P, Gordo Trujillo G, López Meseguer M, Román Broto A, Lapunzina Abadía P, Escribano Subía P: **An homozygous mutation in KCNK3 is associated with an aggressive form of hereditary pulmonary arterial hypertension.** *Clin Genet* 2017, **91**:453–457.
27. Cunningham KP, Holden RG, Escribano-Subias PM, Cogolludo A, Veale EL, Mathie A: **Characterization and regulation of wild-type and mutant TASK-1 two pore domain potassium channels indicated in pulmonary arterial hypertension.** *J Physiol* 2019, **597**:1087–1101.
28. Lambert M, Capuano V, Boet A, Tesson L, Bertero T, Nakhleh MK, Remy S, Anegon I, Pechoux C, Hautefort A, et al.: **Characterization of Kcnk3-mutated rat, a novel model of pulmonary hypertension.** *Circ Res* 2019, **125**:678–695.
29. Le Ribeuz H, Capuano V, Girerd B, Humbert M, Montani D, Antigny F: **Implication of potassium channels in the pathophysiology of pulmonary arterial hypertension.** *Biomolecules* 2020, **10**:E1261.
30. Bohnen MS, Ma L, Zhu N, Qi H, McClenaghan C, Gonzaga-Jauregui C, Dewey FE, Overton JD, Reid JG, Shuldiner AR, et al.: **Loss-of-function ABCC8 mutations in pulmonary arterial hypertension.** *Circ Genom Precis Med* 2018, **11**:e002087.
31. Wang G, Knight L, Ji R, Lawrence P, Kanaan U, Li L, Das A, Cui B, Zou W, Penny DJ, et al.: **Early onset severe pulmonary arterial hypertension with “two-hit” digenic mutations in both BMPR2 and KCNA5 genes.** *Int J Cardiol* 2014, **177**:e167-169.
32. Eyries M, Montani D, Girerd B, Favrolt N, Riou M, Faivre L, Manaud G, Perros F, Gräf S, Morrell NW, et al.: **Familial pulmonary arterial hypertension by KDR heterozygous loss of function.** *Eur Respir J* 2020, **55**:1902165.
33. Swietlik EM, Greene D, Zhu N, Megy K, Cogliano M, Rajaram S, Pandya D, Tilly T, Lutz KA, Welch CCL, et al.: **Bayesian inference associates rare KDR variants with specific phenotypes in pulmonary arterial hypertension.** *Circ Genom Precis Med* 2020, **14**:e003155.

34. Zhu N, Swietlik EM, Welch CL, Pauciulo MW, Hagen JJ, Zhou X, Guo Y, Karten J, Pandya D, Tilly T, et al.: **Rare variant analysis of 4241 pulmonary arterial hypertension cases from an international consortium implicates FBLN2, PDGFD, and rare de novo variants in PAH.** *Genome Med* 2021, **13**:80.
35. Hilgendorff A, Apitz C, Bonnet D, Hansmann G: **Pulmonary hypertension associated with acute or chronic lung diseases in the preterm and term neonate and infant. The European Paediatric Pulmonary Vascular Disease Network, endorsed by ISHLT and DGPK.** *Heart* 2016, **102 Suppl 2**:ii49-56.
36. Liu X, Mei M, Chen X, Lu Y, Dong X, Hu L, Hu X, Cheng G, Cao Y, Yang L, et al.: **Identification of genetic factors underlying persistent pulmonary hypertension of newborns in a cohort of Chinese neonates.** *Respir Res* 2019, **20**:174.
37. Wang M, Zhuang D, Mei M, Ma H, Li Z, He F, Cheng G, Lin G, Zhou W: **Frequent mutation of hypoxia-related genes in persistent pulmonary hypertension of the newborn.** *Respir Res* 2020, **21**:53.
38. Hansmann G: **Pulmonary hypertension in infants, children, and young adults.** *J Am Coll Cardiol* 2017, **69**:2551–2569.
39. Hassed S, Li S, Mulvihill J, Aston C, Palmer S: **Adams-Oliver syndrome review of the literature: refining the diagnostic phenotype.** *Am J Med Genet A* 2017, **173**:790–800.
40. Zhu N, Welch CL, Wang J, Allen PM, Gonzaga-Jauregui C, Ma L, King AK, Krishnan U, Rosenzweig EB, Ivy DD, et al.: **Rare variants in SOX17 are associated with pulmonary arterial hypertension with congenital heart disease.** *Genome Med* 2018, **10**:56.
  - *This novel gene discovery identifies SOX17 as a new risk gene and highlights an important genotype-phenotype correlation with PAH-CHD.*
41. Hiraide T, Kataoka M, Suzuki H, Aimi Y, Chiba T, Kanekura K, Satoh T, Fukuda K, Gamou S, Kosaki K: **SOX17 mutations in Japanese patients with pulmonary arterial hypertension.** *Am J Respir Crit Care Med* 2018, **198**:1231–1233.
42. Lilly AJ, Lacaud G, Kouskoff V: **SOXF transcription factors in cardiovascular development.** *Semin Cell Dev Biol* 2017, **63**:50–57.
43. Saba R, Kitajima K, Rainbow L, Engert S, Uemura M, Ishida H, Kokkinopoulos I, Shintani Y, Miyagawa S, Kanai Y, et al.: **Endocardium differentiation through Sox17 expression in endocardium precursor cells regulates heart development in mice.** *Sci Rep* 2019, **9**:11953.
44. Wang T-M, Wang S-S, Xu Y-J, Zhao C-M, Qiao X-H, Yang C-X, Liu X-Y, Yang Y-Q: **SOX17 loss-of-function mutation underlying familial pulmonary arterial hypertension.** *Int Heart J* 2021, **62**:566–574.
45. Southgate L, Sukalo M, Karountzos ASV, Taylor EJ, Collinson CS, Ruddy D, Snape KM, Dallapiccola B, Tolmie JL, Joss S, et al.: **Haploinsufficiency of the NOTCH1 receptor as a cause of Adams-Oliver syndrome with variable cardiac anomalies.** *Circ Cardiovasc Genet* 2015, **8**:572–581.
46. Meester J a. N, Verstraeten A, Alaerts M, Schepers D, Van Laer L, Loeys BL: **Overlapping but distinct roles for NOTCH receptors in human cardiovascular disease.** *Clin Genet* 2019, **95**:85–94.
47. Morris HE, Neves KB, Montezano AC, MacLean MR, Touyz RM: **Notch3 signalling and vascular remodelling in pulmonary arterial hypertension.** *Clin Sci (Lond)* 2019, **133**:2481–2498.

48. Sheeba CJ, Logan MPO: **The roles of T-box genes in vertebrate limb development.** *Curr Top Dev Biol* 2017, **122**:355–381.
49. Uchida K, Yoshida Y, Kodo K, Yamagishi H: **Roles of Tbx4 in the lung mesenchyme for airway and vascular development.** In *Molecular Mechanism of Congenital Heart Disease and Pulmonary Hypertension*. Edited by Nakanishi T, Baldwin HS, Fineman JR, Yamagishi H. Springer Singapore; 2020:79–81.
50. Cai Y, Yan L, Kiehl MJ, Cogan JD, Hedges LK, Nunley B, West J, Austin ED, Hamid R: **TBX4 transcription factor is a positive feedback regulator of itself and phospho-SMAD1/5.** *Am J Respir Cell Mol Biol* 2021, **64**:140–143.
51. Galambos C, Mullen MP, Shieh JT, Schwerk N, Kiehl MJ, Ullmann N, Boldrini R, Stucin-Gantar I, Haass C, Bansal M, et al.: **Phenotype characterisation of TBX4 mutation and deletion carriers with neonatal and paediatric pulmonary hypertension.** *Eur Respir J* 2019, **54**:1801965.
  - This article defines the spectrum of clinical and histopathological features associated with TBX4 variants in neonates and children with PH and identifies a new form of developmental lung disease.
52. Thoré P, Girerd B, Jaïs X, Savale L, Ghigna M-R, Eyries M, Levy M, Ovaert C, Servettaz A, Guillaumot A, et al.: **Phenotype and outcome of pulmonary arterial hypertension patients carrying a TBX4 mutation.** *Eur Respir J* 2020, **55**:1902340.
53. Hernandez-Gonzalez I, Tenorio J, Palomino-Doza J, Martinez Meñaca A, Morales Ruiz R, Lago-Docampo M, Valverde Gomez M, Gomez Roman J, Enguita Valls AB, Perez-Olivares C, et al.: **Clinical heterogeneity of pulmonary arterial hypertension associated with variants in TBX4.** *PLoS One* 2020, **15**:e0232216.
54. Haarman MG, Kerstjens-Frederikse WS, Berger RMF: **TBX4 variants and pulmonary diseases: getting out of the “Box.”** *Curr Opin Pulm Med* 2020, **26**:277–284.
55. Austin ED, Elliott CG: **TBX4 syndrome: a systemic disease highlighted by pulmonary arterial hypertension in its most severe form.** *Eur Respir J* 2020, **55**:2000585.
56. Haarman MG, Kerstjens-Frederikse WS, Vissia-Kazemier TR, Breeman KTN, Timens W, Vos YJ, Roofthoof MTR, Hillege HL, Berger RMF: **The genetic epidemiology of pediatric pulmonary arterial hypertension.** *J Pediatr* 2020, **225**:65-73.e5.
57. Manaud G, Nossent EJ, Lambert M, Ghigna M-R, Boët A, Vinhas M-C, Ranchoux B, Dumas SJ, Courboulin A, Girerd B, et al.: **Comparison of human and experimental pulmonary veno-occlusive disease.** *Am J Respir Cell Mol Biol* 2020, **63**:118–131.
58. Montani D, Girerd B, Jaïs X, Levy M, Amar D, Savale L, Dorfmueller P, Seferian A, Lau EM, Eyries M, et al.: **Clinical phenotypes and outcomes of heritable and sporadic pulmonary veno-occlusive disease: a population-based study.** *Lancet Respir Med* 2017, **5**:125–134.
59. Navas Tejedor P, Palomino Doza J, Tenorio Castaño JA, Enguita Valls AB, Rodríguez Reguero JJ, Martínez Meñaca A, Hernández González I, Bueno Zamora H, Lapunzina Badía PD, Escribano Subías P: **Variable expressivity of a founder mutation in the EIF2AK4 gene in hereditary pulmonary veno-occlusive disease and its impact on survival.** *Rev Esp Cardiol (Engl Ed)* 2018, **71**:86–94.
60. Liang L, Su H, Ma X, Zhang R: **Good response to PAH-targeted drugs in a PVOD patient carrying biallelic EIF2AK4 mutation.** *Respir Res* 2018, **19**:192.

61. Zeng X, Chen F, Rathinasabapathy A, Li T, Adnan Ali Mohammed Mohammed A, Yu Z: **Rapid disease progress in a PVOD patient carrying a novel EIF2AK4 mutation: a case report.** *BMC Pulm Med* 2020, **20**:186.
62. Pfluger M, Humpl T: **Pulmonary veno-occlusive disease in childhood-a rare disease not to be missed.** *Cardiovasc Diagn Ther* 2021, **11**:1070–1079.
63. Le Ribeuz H, Masson B, Capuano V, Dutheil M, Gooroochurn H, Boët A, Ghigna MR, De Montpreville V, Girerd B, Lambert M, et al.: **SUR1 as a new therapeutic target for pulmonary arterial hypertension.** *Am J Respir Cell Mol Biol* 2022, doi: 10.1165/rcmb.2021-01800C [Epub ahead of print].
  - *This study uses rat models of PH to examine the potential for pharmacological activation of SUR1, providing a proof-of-concept pre-clinical model of restoration of ABCC8 activity.*
64. Zhang X, Zhang C, Li Q, Piao C, Zhang H, Gu H: **Clinical characteristics and prognosis analysis of idiopathic and hereditary pulmonary hypertension patients with ACVRL1 gene mutations.** *Pulm Circ* 2021, **11**:20458940211044577.
65. Stevens L, Colglazier E, Parker C, Amin EK, Nawaytou H, Teitel D, Reddy VM, Welch CL, Chung WK, Fineman JR: **Genetics dictating therapeutic decisions in pediatric pulmonary hypertension? A case report suggesting we are getting closer.** *Pulm Circ* 2022, **12**:e12033.

## Tables

**Table 1. Clinical classification of pulmonary hypertension**

<b>Group 1</b>	<b>Pulmonary arterial hypertension (PAH)</b>
1.1	Idiopathic PAH (IPAH)
1.2	Heritable PAH (HPAH)
1.3	Drug- and toxin-induced PAH
1.4	Associated PAH (APAH)
1.4.1	<i>PAH associated with connective tissue disease (APAH-CTD)</i>
1.4.2	<i>PAH associated with human immunodeficiency virus infection (APAH-HIV)</i>
1.4.3	<i>PAH associated with portal hypertension</i>
1.4.4	<i>PAH associated with congenital heart disease (APAH-CHD)</i>
1.4.5	<i>PAH associated with schistosomiasis</i>
1.5	PAH long-term responders to calcium channel blockers
1.6	PAH with overt features of venous/capillaries (pulmonary veno-occlusive disease (PVOD) / pulmonary capillary haemangiomas (PCH)) involvement
1.7	Persistent pulmonary hypertension of the newborn (PPHN) syndrome
<b>Group 2</b>	<b>Pulmonary hypertension (PH) due to left heart disease</b>
2.1	PH due to heart failure with preserved left ventricular ejection fraction
2.2	PH due to heart failure with reduced left ventricular ejection fraction
2.3	Valvular heart disease
2.4	Congenital/acquired cardiovascular conditions leading to post-capillary PH
<b>Group 3</b>	<b>Pulmonary hypertension due to lung diseases and/or hypoxia</b>
3.1	Obstructive lung disease
3.2	Restrictive lung disease
3.3	Other lung disease with mixed restrictive/obstructive pattern
3.4	Hypoxia without lung disease
3.5	Developmental lung disorders
<b>Group 4</b>	<b>Pulmonary hypertension due to pulmonary artery obstructions</b>
4.1	Chronic thromboembolic pulmonary hypertension (CTEPH)
4.2	Other pulmonary artery obstructions
<b>Group 5</b>	<b>Pulmonary hypertension with unclear and/or multifactorial mechanisms</b>
5.1	Haematological disorders
5.2	Systemic and metabolic disorders
5.3	Others
5.4	Complex congenital heart disease

Updated clinical classification according to the 6<sup>th</sup> World Symposium on Pulmonary Hypertension [2]. Group 1 comprises subgroups of pulmonary arterial hypertension (PAH), within which idiopathic PAH (1.1), heritable PAH (1.2) and PAH associated with congenital heart disease (1.4.4) are most common in children.

**Table 2. Summary of main clinical findings associated with genetic variants in paediatric PAH**

Gene (protein) symbol	OMIM reference	PAH group (%)	Inheritance pattern(s)	Associated clinical features	Probands reported (n)	Age of diagnosis (y)	mPAP (mmHg)	PVR (WU) or PVRi (WU·m <sup>2</sup> )	mPWP (mmHg)	CI (L/min/m <sup>2</sup> )	Drug response	Recent key references
<i>ABCC8</i> (SUR1)	600509	IPAH (62%); APAH-CHD (23%); HPAH (15%)	AD	> Gene also linked to familial hyperinsulinaemic hypoglycaemia, transient/permanent neonatal diabetes mellitus > A nonsense variant has been reported in one patient with PPHN and hypoglycaemia	13	8.0 ± 6.0 (n=11)	51.2 ± 8.0 (n=5)	20.1 ± 6.6 WU·m <sup>2</sup> (n=5)	8.0 ± 0 (n=3)	2.8 ± 0.61 (n=4)	> Activation of SUR1 may be a potential therapeutic target for PAH > Diazoxide may resolve symptoms in adults but can lead to PH in hypoglycaemic infants	[29,30,63]
<i>ACVRL1</i> (ALK1)	601284	PAH-HHT (44%); IPAH (38%); HPAH (18%)	AD	HHT type 2 (epistaxis, mucocutaneous telangiectases, visceral AVMs)	40	8.2 ± 5.4 (n=40)	67.0 ± 17.8 (n=30)	22.4 ± 12.5 WU (n=12); 20.0 ± 12.2 WU·m <sup>2</sup> (n=16)	9.0 ± 3.6 (n=23)	3.2 ± 1.0 (n=28)	96% (23/24) have no response to acute vasodilator test	[10,64]
<i>ATP13A3</i>	610232	HPAH (50%); IPAH (25%); APAH-CHD (25%)	AD; AR	> Biallelic variants are linked to a severe, early-onset form of PAH > A heterozygous variant has been reported in one child with PAH and secundum ASD	4	2.7 ± 3.0 (n=6)	46 ± 9.7 (n=4)	19.3 ± 10.6 WU (n=3)	nd	1.7 (n=1)	> Biallelic variants are associated with rapidly progressive refractory PAH > Pre-emptive Potts shunt has been used successfully in one case	[21,23,65]
<i>BMP10</i>	608748	IPAH (50%); APAH-CHD (50%)	AD	-	2	7.0 ± 4.0 (n=2)	35 (n=1)	nd	nd	3.5 (n=1)	-	[17,18,21]
<i>BMPR1B</i>	603248	IPAH (75%); APAH-CHD (25%)	AD	> Gene also linked to brachydactyly > One paediatric case has been reported with PAH and ASD	4	10.3 ± 2.7 (n=4)	88.5 ± 22.5 (n=2)	nd	9 (n=1)	2.8 ± 0.8 (n=2)	-	-
<i>BMPR2</i>	600799	IPAH (51%); HPAH (39%);	AD	-	>130	10.2 ± 5.0 (n=109)	69.8 ± 15.0 (n=31)	19.0 ± 10.8 WU (n=6); 22.1 ± 11.9 WU·m <sup>2</sup> (n=21)	9.4 ± 2.6 (n=20)	3.2 ± 1.4 (n=24)	75% (12/16) have no response to acute vasodilator test	[10,16,56]

APAH-CHD (10%)												
<i>CAV1</i>	601047	HPAH (60%); IPAH (20%); APAH (20%)	AD	> Gene also linked to congenital lipodystrophies > A <i>de novo</i> variant has been reported in one case of neonatal lipodystrophy, PAH and PAVM	5	4.2 ± 3.0 (n=5)	50.5 ± 10.4 (n=4)	11.1 ± 4.7 WU·m <sup>2</sup> (n=4)	11 (n=1)	3.2 ± 0.05 (n=3)	100% (4/4) paediatric cases responsive to acute vasodilator challenge (but adult relatives with the same variant were not)	-
<i>EIF2AK4</i> (GCN2)	609280	PVOD/PCH (91%); IPAH (9%)	AR	Some reports of biallelic <i>EIF2AK4</i> variants in clinically diagnosed paediatric PAH	11	15.1 ± 2.0 (n=8)	52.3 ± 20.1 (n=7)	11.3 ± 6.1 WU·m <sup>2</sup> (n=3)	6.3 ± 1.7 (n=3)	2.6 ± 1.3 (n=3)	Use of vasodilators associated with life-threatening pulmonary oedema	[58,62]
<i>ENG</i>	131195	PAH-HHT (60%); IPAH (20%); APAH-CHD (20%)	AD	HHT type 1 (telangiectasia and PAVMs, epistaxis)	5	8.2 ± 6.7 (n=5)	46.3 ± 5.0 (n=3)	10.5 ± 4.3 WU (n=3)	7.3 ± 3.3 (n=3)	3.2 ± 0.5 (n=3)	-	[10]
<i>GDF2</i> (BMP9)	605120	IPAH (78%); PAH-HHT (22%)	AD; AR	> HHT type 5 (telangiectasia, AVMs, epistaxis); PAVMs > Homozygous variants are also associated with "HHT-like" facial telangiectases and diffuse PAVMs	9	8.4 ± 5.6 (n=7)	58.8 ± 21.3 (n=6)	13.4 ± 10.9 WU (n=6)	7.0 ± 0.8 (n=3)	4.5 ± 2.0 (n=6)	-	[15,17,19,20]
<i>KCNK3</i> (TASK1)	603220	IPAH (57%); HPAH (43%)	AD	-	9	6.4 ± 3.8 (n=6)	97.0 ± 10.0 (n=2)	44 ± 8.0 WU (n=2)	10 (n=1)	2.4 ± 0.3 (n=2)	-	[26,27,29]
<i>NOTCH3</i>	600276	IPAH	AD	> Heterozygous variants are major cause of CADASIL > Gene is also linked to lateral meningocele syndrome	4	4.0 ± 0 (n=2)	68.5 ± 1.5 (n=2)	nd	12 (n=1)	2.9 (n=1)	-	-

<i>SMAD9</i> (SMAD8)	603295	IPAH (43%); APAH-CHD (43%); HPAH (14%)	AD	-	7	5.7 ± 4.6 (n=7)	70.0 ± 17 (n=2)	24.9 ± 12.5 WU·m <sup>2</sup> (n=2)	6.0 ± 0 (n=2)	3.2 ± 1.1 (n=2)	-	-
<i>SOX17</i>	610928	APAH-CHD (63%); IPAH (25%); HPAH (12%)	AD	> Strongly linked to PAH associated with congenital heart disease > Gene may also be associated with vesicoureteral reflux	15	4.9 ± 3.6 (n=18)	34.5 ± 2.5 (n=2)	8.0 ± 1.0 WU (n=2)	5.5 ± 0.5 (n=2)	nd	-	[40,44]
<i>TBX4</i>	601719	IPAH (33%); APAH-CHD (31%); PAH- SPS (29%); HPAH (8%); other (4%)	AD	> Small patella syndrome with/without PAH > Abnormal distal lung development > Cardiac and skeletal malformations > CNVs are more commonly associated with developmental delay	60 (incl. 10 cases with PPHN)	4.3 ± 4.8 (n=52)	59.8 ± 24.4 (n=24)	17.5 ± 15.5 WU·m <sup>2</sup> (n=25)	9.5 ± 4.5 (n=18)	3.9 ± 2.2 (n=24)	35% (8/23) patients demonstrate partial vasoreactivity	[25,51–53]

Table summarising the clinical features, onset and severity of disease related to genes reported to cause paediatric pulmonary arterial hypertension (PAH). Haemodynamic data are provided as mean ± standard deviation at diagnosis for *n* patients (includes some related individuals). AD: autosomal dominant; APAH-CHD: PAH associated with congenital heart disease; AR: autosomal recessive; ASD: atrial septal defect; AVMs: arteriovenous malformations; CADASIL: cerebral autosomal dominant arteriopathy with subcortical infarcts and leukoencephalopathy; CI: cardiac index; IPAH: idiopathic PAH; HPAH: heritable PAH; mPAP: mean pulmonary artery pressure; mPWP: mean pulmonary wedge pressure; nd: no data available; OMIM: Online Mendelian Inheritance in Man (<https://www.omim.org>); PAH-HHT: PAH associated with hereditary haemorrhagic telangiectasia; PAVMs: pulmonary arteriovenous malformations; PCH: pulmonary capillary haemangiomas; PPHN: persistent pulmonary hypertension of the newborn; PVOD: pulmonary veno-occlusive disease; PVR(i): pulmonary vascular resistance (index); WU: Wood units.



## Figure legends

### Figure 1. Pathobiology of pulmonary arterial hypertension

**A.** Cross-sectional representation of a healthy pulmonary artery. **B.** Early stages of PAH include vasoconstriction due to pulmonary endothelial dysfunction and medial hypertrophy. **C.** Progressive vascular remodelling of distal pulmonary arteries is characterised by proliferation and migration of smooth muscle cells, endothelial cells and fibroblasts. **D.** Plexiform lesions, due to endothelial dysfunction, proliferation and apoptotic resistance are a hallmark feature of late-stage PAH.

### Figure 2. Genes underlying pulmonary hypertension in children

Schematic highlighting independently validated genes and protein clusters in paediatric PAH. Connecting lines denote indicative relationships between proteins, for example based on text-mining, database, co-expression and protein interaction data. Multiple lines indicate stronger evidence for a causal relationship. Network image was created using STRING (<https://string-db.org/cgi/input>).

**Figure 1.**

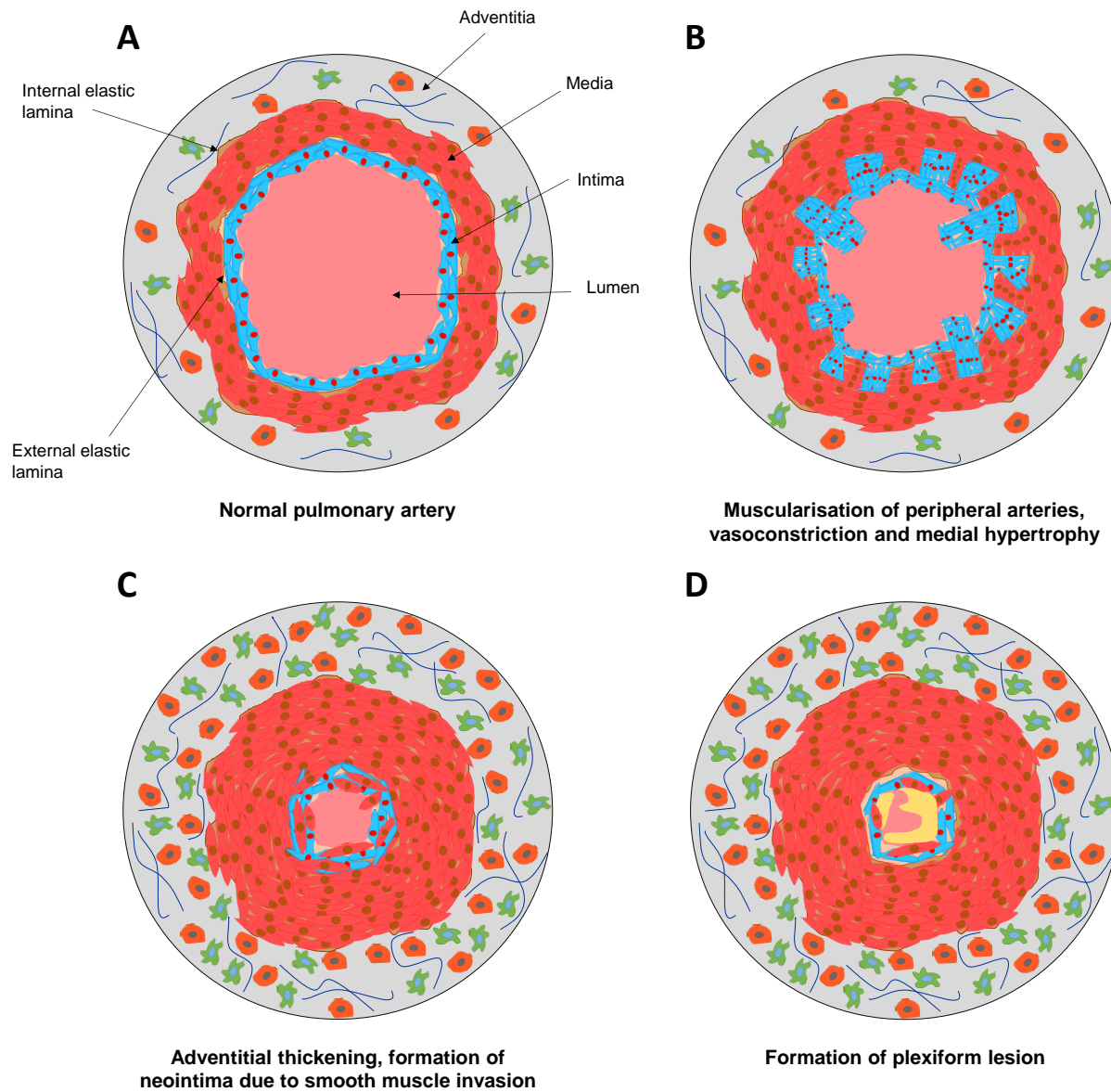


Figure 2.

