

Labour Market Power and the Quest for an Optimal Minimum Wage: Evidence from Italy

Mauro Caselli (University of Trento), Jasmine Mondolo (LIUC), Stefano Schiavo (University of Trento)



headed by

ifo INSTITUTE

Leibniz Institute for Economic Research
at the University of Munich



CPB Netherlands Bureau for Economic
Policy Analysis



INSTITUT FÜR HÖHERE STUDIEN
INSTITUTE FOR ADVANCED STUDIES
Vienna

KOF

KOF Konjunkturforschungsstelle
KOF Swiss Economic Institute



RESEARCH IN
ECONOMICS AND
MATHEMATICS



Toulouse
School of
Economics



UNIVERSITY
OF TRENTO



WZL
WIRTSCHAFTS UNIVERSITÄT
WIEN VIENNA UNIVERSITY OF
ECONOMICS

ZEW



EconPol WORKING PAPER

A publication of EconPol Europe

European Network of Economic and Fiscal Policy Research

Publisher and distributor: ifo Institute

Poschingerstr. 5, 81679 Munich, Germany

Telephone +49 89 9224-0, Telefax +49 89 9224-1462, Email Dolls@ifo.de

Editors: Mathias Dolls, Clemens Fuest

Reproduction permitted only if source is stated and copy is sent to the ifo Institute.

EconPol Europe: www.econpol.eu

Labour Market Power and the Quest for an Optimal Minimum Wage: Evidence from Italy*

Mauro Caselli[†] Jasmine Mondolo[‡] Stefano Schiavo[§]

October 18, 2021

Abstract

This study investigates the recent trends in labour market power in Italy and assesses the impact of a potential minimum wage using a large sample of manufacturing firms. We show that, despite an average shift of labour market power from the owners to the workers, monopsony power is still widespread, especially in some sectors and regions. The introduction of a minimum wage would be beneficial to workers and the economy as it reduces the monopsony power of highly productive firms paying low wages; however, it may also have a negative impact, since firms with low wages and low labour productivity may react by reducing the number of their employees or even by exiting the market. Finally, we find that an optimal minimum wage, which minimises the negative effect and maximises the positive effect for the economy, ranges between 8.25 and 9.65 euro per hour.

Keywords: minimum wage, monopsony, market power, market imperfections.

JEL Classification: J23, J38, J42, L13.

*Financial support from Fondazione Caritro (Project 2018.0258) is gratefully acknowledged. We thank participants to the workshop “Firms and Workers at the Crossroad: Automation and Market Power” for their comments, and Ispat for help accessing firm-level data. All remaining errors are our own.

[†]School of International Studies and Department of Economics & Management, University of Trento, via Tommaso Gar 14, 38122 Trento (Italy). E-mail: mauro.caselli@unitn.it

[‡]LIUC, Corso Matteotti 22, 21053 Castellanza (Italy). Email: jmondolo@liuc.it

[§]School of International Studies and Department of Economics & Management, University of Trento, via Tommaso Gar, 14 - 38122 Trento (Italy), and OFCE SciencesPo (France). E-mail: stefano.schiavo@unitn.it

1 Introduction

Over the last two decades, economists’ attitude toward minimum wages has substantially changed. Starting from [Card and Krueger \(1995\)](#), a long-standing scepticism based on the notion that an increase in labour costs inevitably leads to lower demand has given way to a more nuanced approach ([Dube, 2019](#); [Manning, 2021](#)), despite the persistence of disagreement in the profession ([O’Neill, 2015](#)). On one hand, the recognition that deviations from perfect competition are both larger and more common in the labour market than in other parts of the economic system implies that a “textbook model” analysis of the minimum wage does not apply. On the other hand, increased data availability and advances in empirical research have shown that the introduction of wage floors (or their increase) generally have a little or no negative effect on employment. What is more, this conclusion holds true even when focusing on the groups of workers more likely to be affected by minimum wages ([Cengiz et al., 2019](#); [Manning, 2021](#)). These results are generally robust across countries ([Dube, 2019](#)), while some heterogeneity exists across industries, with tradeable sectors and manufacturing experiencing somehow stronger effects ([Harasztosi and Lindner, 2019](#)).

One key message from the recent literature is that the effects of minimum wages on employment crucially depend on the context. For instance, results by [Clemens and Wither \(2019\)](#) suggest that the impact on employment may differ if minimum wage spikes take place during expansionary phases of the economic cycle or during recessions. In more general terms, the context shapes the way firms react to wage floors and the margins along which they adjust to the policy change. In this regard, [Clemens \(2021\)](#) highlights that labour demand is just one of the possible adjustment mechanisms, and firms can (and will) adapt also by changing prices ([Harasztosi and Lindner, 2019](#)), compressing profits ([Draca et al., 2011](#)), increasing productivity ([Dube, 2019](#)) or even by means of non-compliance ([Garnero and Lucifora, 2021](#)).

One of the factors that significantly affect the implications of a minimum wage is the existence of imperfections in the labour market. In the presence of monopsony power, a minimum wage does not necessarily lead to higher unemployment, since the legislation would simply push wages kept artificially low by monopsony back to where they would be in a market where supply and demand were matching each other freely. Moreover, it may also boost both output and labour demand (see [Dube, 2019](#), who reviews more than 50 recent empirical studies on wage floors).

In this paper, we build on recent empirical work documenting product and labour market imperfections ([De Loecker and Warzynski, 2012](#); [Dobbelaere and Mairesse, 2013](#); [Dobbelaere and Kiyota, 2018](#); [Caselli et al., 2021](#)) to examine the patterns of labour market power in the Italian manufacturing sector. We then propose a novel approach that links a potential minimum wage to firm-level product and labour market power to assess the impact of this policy measure on a representative sample of manufacturing firms. This empirical strategy also allows us to estimate an *optimal* minimum wage, that is, the value that minimises the negative effect and maximises the positive effect of this policy on the economy.

Italy represents an interesting case study on several grounds. First, although some proposals on the matter have been put forward in recent years, it is one of the few European countries where no statutory minimum wage exists, and wage floors are provided

by collective agreements that only apply to signatory firms. Second, [Garnero and Lucifora \(2021\)](#) document a significant phenomenon of non-compliance, which is facilitated by the large number of often (partly) overlapping agreements. Third, the Italian economy exhibits some worrying macro-trends, such as slow output growth, low business turnover, and increasing income inequality, which have been regarded as symptoms of widespread market power ([De Loecker et al., 2020](#)), such as slow output growth, low business turnover, and increasing inequality.

To preview our main results, we find that, while the share of firms paying wages that are below the marginal revenue product of labour (namely, monopsonist firms) has fallen significantly over time (from above 50% in 2011 to below 38% in 2018), their number is still high, especially in some regions. A minimum wage would positively affect the economy by reducing the monopsony power of highly productive firms paying low wages, but also hinder low-productivity firms, and the optimal value that maximises the net effect on the economy ranges between 8.25 and 9.65 euro per hour.

The remaining of the paper is organised as follows. Section 2 briefly describes the procedure to estimate labour market power and the data. Section 3 illustrates the trends and distribution of labour market power in the Italian manufacturing sector. Section 4 assesses the potential impact of the introduction of national minimum wage in Italy and calculates the values of an optimal minimum wage. Finally, Section 5 concludes.

2 Analytical Framework and Data

2.1 Production Function Estimation

To measure frictions in the labour market, we build on work by [De Loecker and Warzynski \(2012\)](#), [Dobbelaere and Mairesse \(2013\)](#) and [Caselli et al. \(2021\)](#). This approach assumes that firms minimise costs and at least one input (in this case materials) is adjusted freely, while the other factors (capital and labour) may show some frictions in their adjustment. An advantage of this setup is that it requires no specific assumptions on either demand or market structure, nor does it need the computation of the user cost of capital. Moreover, it provides firm-level, time-varying estimates while controlling for unobserved productivity.

We define our measure of labour market power, ϕ , as the ratio between the average labour cost paid by firms (w), which we observe in the data, and the marginal revenue product of labour MRP^L :

$$\phi_{it} = \frac{w_{it}}{MRP_{it}^L}, \quad (1)$$

where i is the subscript for firms and t for years. The parameter ϕ captures the wedge between the cost of an additional unit of labour and the revenue it generates (both in nominal terms) and, thus, it is a measure of market power on the side of firms' employees. If $\phi = 1$, the wage is equal to the marginal revenue product of labour and the labour market is competitive. This labour market regime is labelled "competition" or "right-to-manage" (PR). On the other hand, any departure from unity signals frictions, stemming from either the existence of labour market power owned by the firms, resulting in $\phi < 1$ and implying that the marginal revenue of labour is higher than the wage, or from some degree of market power by firms' employees, which results in $\phi > 1$. The labour market

regimes associated with $\phi < 1$ and $\phi > 1$ are termed “monopsony” (MO) and “efficient bargaining” (EB), respectively. Possible sources of monopsony power are employer collusion (employer use of non-compete agreements), “job lock” mechanisms, regulatory barriers, market concentration and other labour market frictions such as search costs arising from limited information, application costs and barriers to workers’ mobility due to housing costs or family constraints.

As [Mertens \(2020\)](#) and [Caselli et al. \(2021\)](#) show, ϕ can be expressed in terms of the ratio of the output elasticity of materials over the revenue-based materials share and the output elasticity of labour over the revenue-based labour share:

$$\phi_{it} = \frac{\theta_{it}^M / \alpha_{it}^M}{\theta_{it}^L / \alpha_{it}^L} = \mu_{it} \cdot \frac{\alpha_{it}^L}{\theta_{it}^L}, \quad (2)$$

where θ^M and θ^L are the output elasticities of materials, M , and labour, L , and α^M and α^L are the revenue-based materials and labour share, and μ represents firms’ product market power (markup) as defined by [De Loecker and Warzynski \(2012\)](#), namely the ratio of the output elasticity of materials over the revenue-based materials share.

While revenue shares can be easily computed using data from firms’ balance sheets, the output elasticities need to be estimated.¹ In order to get unbiased estimates of θ_{it}^M and θ_{it}^L , we estimate a production function and employ the methodology developed by [Wooldridge \(2009\)](#) and implemented in [Petrin and Levinsohn \(2012\)](#) to address the simultaneity bias. We adopt a translog specification, which yields firm-level time-varying output elasticities, and perform estimations sector by sector, to account for differences in technology. We assume that labour is a variable input, and instrument current labour and materials and their interactions with the first and second lags of labour as well as the second lags of capital and materials. We proxy output using deflated revenues, as we do not have information on firm output prices. Additional details on the methodology used to estimate the production function are provided in [Appendix A](#).

2.2 Data

We use data on a large panel of Italian manufacturing firms. The data come from the commercial database AIDA by Bureau van Dijk and cover the decade 2010–2019, but information for both 2010 and 2019 features a large number of missing values; therefore, the analysis is restricted to the period 2011–2018.

The database collects balance sheet information for around 1 million limited-liability Italian companies. We retrieve information on revenues, labour costs, number of employees, book value of the capital stock, expenditures on intermediate inputs (i.e., materials), plus the industrial sector of activity, and the year of birth of the firm. We merge these firm-level data with industry-level deflators for value added, intermediate inputs and tangible assets compiled by the National Statistical Office (Istat) and OECD-Stan.

¹Following [De Loecker and Warzynski \(2012\)](#), we apply a correction to the revenue shares due to the fact that we have data on firm output including an error unobservable to both the econometrician and the firm. Hence, we run a first step in which we regress output on a third-order polynomial of all inputs, which we use to remove the random-error term from output and to obtain estimates of expected output. We then correct the revenue shares by multiplying them by the error term. This adjustment cleans the revenue shares from any variations in output that is not related to variables affecting input demand.

The raw data require cleaning to net out the influence of measurement errors and extreme values.² We restrict the analysis to manufacturing firms and exclude firms that remain in the sample for less than five consecutive years. The resulting dataset contains 235,428 observations.

3 Labour market power in Italian manufacturing

3.1 Descriptive statistics

Table 1 presents the average values of the estimated output elasticities of labour, materials and capital derived at the sectoral level from the translog production function as well as the measure of labour market power. The estimated average factor elasticities θ^M and θ^L amount to 0.71 and 0.28, respectively. As expected, the mean parameter estimates vary across manufacturing sectors, which engage in different production processes and thus typically employ different combinations of factors. Specifically, the sector “Food, beverages and tobacco” exhibits the lowest level of θ^L (i.e., 0.172) and the highest level of θ^M (i.e., 0.776); conversely, the sector “Basic metals and fabricated metal products” displays the largest θ^L (i.e., 0.317) and the smallest θ^M (i.e., 0.667). This sectoral heterogeneity is also displayed in our measure of labour market power. Most industries exhibit an average labour market power parameter above 1, implying that firms and workers engage in efficient bargaining resulting in some degree of market power that favours firms’ employees, with the exception of the “Chemicals and pharmaceuticals” industry. However, mean values mask substantial heterogeneity across firms in the same sector.

We are also interested in the evolution of labour market imperfections over time. Figure 1 illustrates the trend of average ϕ weighted by the firms’ revenue shares (solid black line). Over the period 2011–2018, ϕ experienced an 11% increase, from about 1.05 to 1.17, indicating a shift of labour market power from firms towards their employees. The overall picture does not significantly vary if we use the firms’ employment shares as weights.

3.2 Decomposition of ϕ

To shed light on the documented increase in bargaining power, we follow Caselli et al. (2021) and decompose ϕ into four fundamental dimensions: observed wages, the price-cost margin, the marginal product of labour, and prices. To see this, notice that MRP_{it}^L is the product between the marginal product of labour, MP_{it}^L , and the marginal revenue, MR_{it} . Given that, in equilibrium, the latter equals the marginal cost ($MR_{it} = MC_{it}$), and exploiting the definition of the markup as the ratio between price and marginal cost ($\mu_{it} = P_{it}/MC_{it}$), ϕ_{it} can be written as:

$$\phi_{it} = \frac{P_{it}^L}{MRP_{it}^L} = \frac{P_{it}^L \cdot \mu_{it}}{P_{it} \cdot MP_{it}^L}, \quad (3)$$

²We delete all observations with missing values on revenues and the three inputs, labour, materials and capital, those exhibiting growth rates for all these variables in excess of 400% or below -80%, and those for which revenues are lower than the sum of labour costs and expenditures on materials.

Table 1: Production function estimates and labour market power

Sector	No obs	θ^L	θ^M	θ^K	ϕ
Food, beverages and tobacco (10-12)	21 975	0.172	0.776	0.038	1.276
Textiles, apparel and leather (13-15)	26 604	0.296	0.678	0.031	1.099
Wood and paper products (16-18)	24 710	0.289	0.706	0.014	1.019
Chemicals and pharmaceuticals (20-21)	8 700	0.237	0.764	0.025	0.924
Rubber and plastic products (22-23)	11 024	0.259	0.735	0.030	1.176
Basic metals and fabricated metal products (24-25)	78 360	0.317	0.667	0.028	1.088
Computer, electronic and optical products (26)	4 614	0.291	0.715	0.019	1.151
Electrical equipment (27)	8277	0.235	0.772	0.014	1.246
Machinery and equipment (28)	26 095	0.282	0.709	0.027	1.064
Transport equipment (29-30)	3 602	0.266	0.730	0.030	1.149
Other manufacturing (31-33)	21 467	0.306	0.688	0.016	1.116
Total	235 428	0.284	0.701	0.026	1.106

Notes: The sectoral averages of the parameters are unweighted. We estimate the production function for each of the eleven manufacturing sectors listed in the table. To define such sectors, we follow the classification by NACE divisions used by Istat. We combine observations corresponding to NACE codes 20 and 21 in a single sector (Chemicals and Pharmaceutical products) due to the limited number of observations. Moreover, we exclude NACE sector 19 (Coke and refined petroleum products) due to its very small size and its peculiarities.

where P_{it} denotes firm-year specific prices on the product market. Since we do not have direct information on firm-level prices and quantities, the terms P_{it} and MP_{it}^L are unobserved, and cannot be separately identified when deflating revenues ($Q_{it}P_{it}$) by means of an industry price index (P_t^D) as a proxy for physical output.

We define $PMP_{it}^L = \theta_{it}^L \frac{Q_{it}}{L_{it}} \frac{P_{it}}{P_t^D} = MP_{it}^L \frac{P_{it}}{P_t^D}$ and substitute for $P_{it} \cdot MP_{it}^L$ in equation (3) to obtain the following expression, in which all elements are measurable

$$\phi_{it} = \frac{P_{it}^L \cdot \mu_{it}}{PMP_{it}^L \cdot P_t^D}. \quad (4)$$

Taking logs of equation (4) leads to the following expression:

$$\log(\phi_{it}) = \log(P_{it}^L) + \log(\mu_{it}) - \log(PMP_{it}^L) - \log(P_t^D). \quad (5)$$

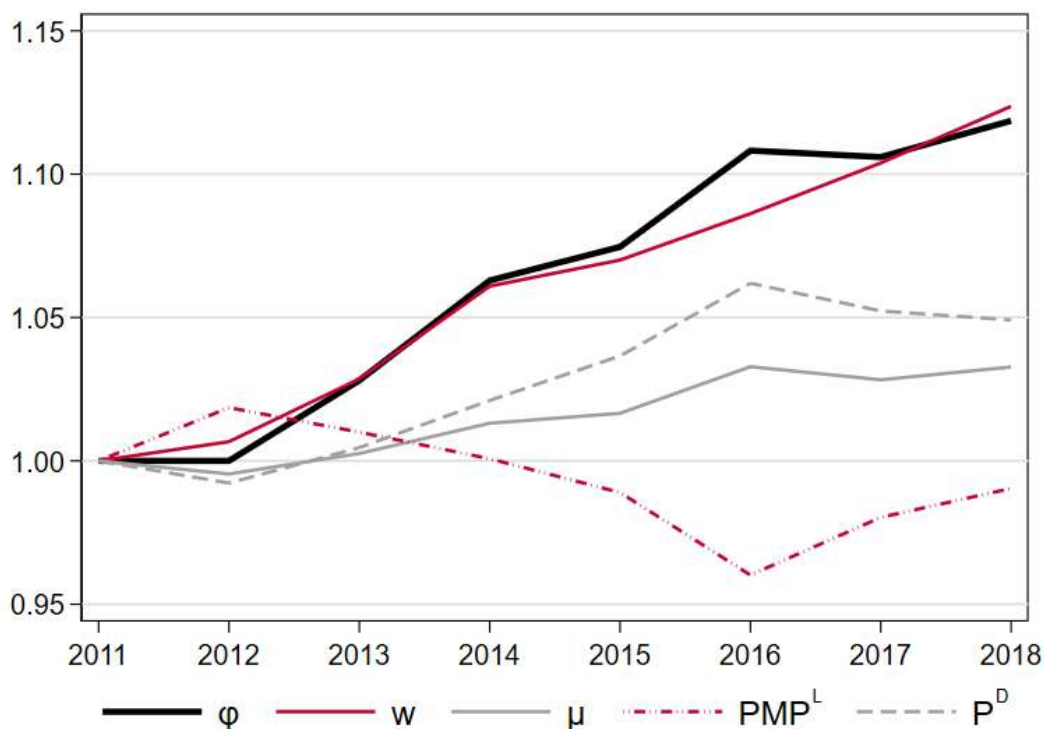
Along with ϕ , Figure 1 also shows its components based on the decomposition just illustrated. We observe that the overall positive trend of our indicator of labour market power is related to the (muted) increase in product market power and, primarily, to the rise in the average nominal gross wage, which more than compensates for the contraction of the value of the marginal productivity of labour that occurred between 2012 and 2016.³

3.3 Labour Market Regimes

From the previous section, it emerges that, even though, on average, bargaining power and gross wages have risen in recent years, there are still relevant income differences across

³Further analysis reveals that the rise in labour costs is driven by an increase in the compensation of employees, while social security contributions and other charges change very little.

Figure 1: Decomposition of labour market power (ϕ) (2011 = 1)



workers. Moreover, the overall picture of increasing bargaining power may hide relevant sectoral and geographical heterogeneity. To uncover further information on the distribution of labour market power in the Italian manufacturing sector, we use the estimates of ϕ to classify each firm-year observation into different labour market regimes depending on whether the average wage is above/below the marginal revenue product of labour (see Section 2.1).⁴

Table 2 reports, for each sector, the shares of firm-year observations that fall within each regime. Overall, we see that labour market frictions are pervasive in the Italian economy, with almost 95% of firms in our sample being classified either in monopsony or in efficient bargaining. Thus, although wages and bargaining power have been on the rise over the 2011–2018 period, many manufacturing firms enjoy some degree of monopsony power. The sectors where this market setting is more widespread are *Chemicals and pharmaceuticals* and *Wood and other products*, whereas *Food, beverages and tobacco*, *Transport equipment*, *Rubber and plastic*, and *Electrical equipment* present the highest shares of firms in which, on average, the wage is higher than the marginal revenue product of labour.

Even though we do not show it, significant heterogeneity is observed at the geographical level too. In particular, in Central and Southern Italy there is a higher number of firms with monopsony power compared to Northern Italy.

Finally, the distribution of labour market regimes has changed over time. Consistent with the positive average trend of ϕ , Figure 2 shows that, between 2011 and 2018, the

⁴The classification of each firm-year observation in the different regimes follows [Dobbelaere and Mairesse \(2013\)](#) and [Caselli et al. \(2021\)](#), and is based on a 5% confidence interval around $(\theta_{it}^M/\alpha_{it}^M - \theta_{it}^L/\alpha_{it}^L)$.

Table 2: Labour market regimes by sector

Sector	PR	EB	MO
Food, beverages and tobacco (10-12)	18.1%	56.4%	25.6%
Textiles, apparel and leather (13-15)	8.6%	46.7%	44.7%
Wood and paper products (16-18)	8.7%	39.1%	52.2%
Chemicals and pharmaceuticals (20-21)	8.6%	26.2%	65.2%
Rubber and plastic products (22-23)	11.0%	58.6%	30.4%
Basic metals and fabricated metal products (24-25)	3.4%	52.3%	44.3%
Computer, electronic and optical products (26)	15.9%	51.7%	32.4%
Electrical equipment (27)	13.2%	66.5%	20.2%
Machinery and equipment (28)	4.9%	49.7%	45.4%
Transport equipment (29-30)	16.2%	56.7%	27.1%
Other manufacturing (31-33)	8.7%	48.6%	42.7%
Total manufacturing	7.9%	49.9%	42.2%

number of observations that falls into the MO category declined from 50.3% to 37.9%, while the number of observations characterized by efficient bargaining increased from 44% to 56.5%.

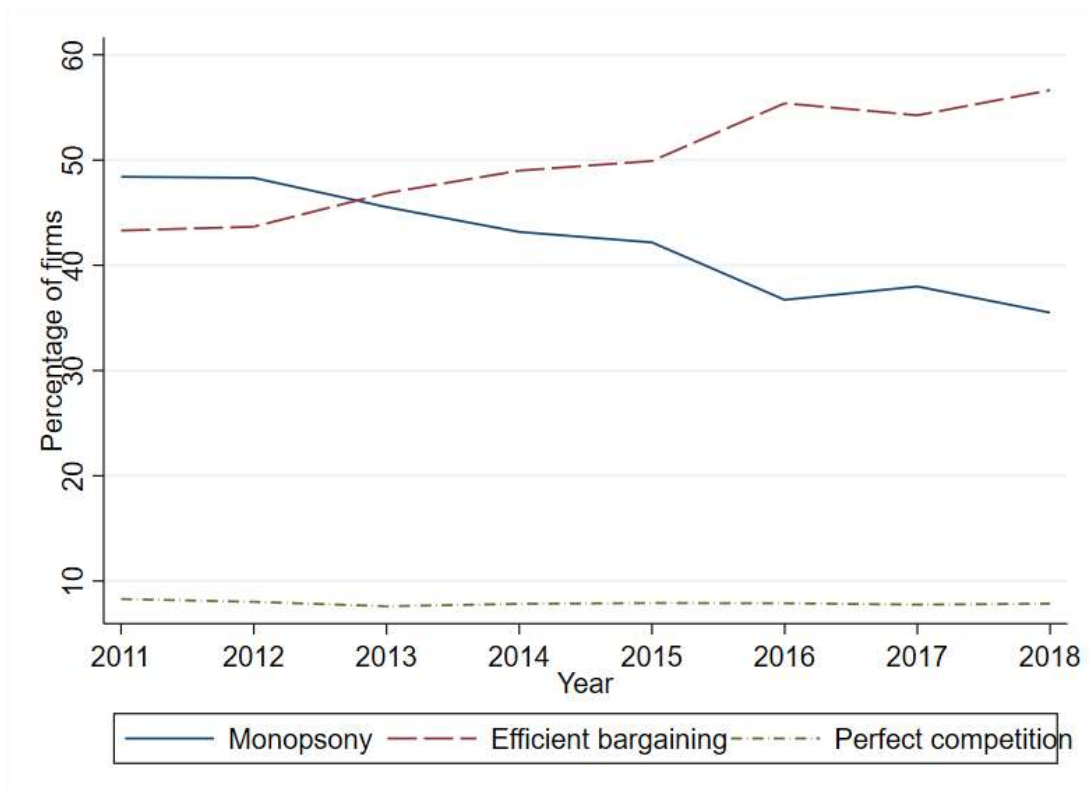
This brief overview of the labour market regimes offers a more nuanced picture compared to the preliminary analysis of the evolution of ϕ . In particular, it shows that, although, on average, there is a rise in employees' labour market power to the detriment of the employers, the presence of monopsony power is still widespread, especially in some manufacturing sectors and in Central and Southern Italy. These labour market frictions may be attenuated by the introduction of a legal minimum wage, which may prevent monopsonistic firms in a strong negotiating position from squeezing their workers.

4 A firm's perspective on the minimum wage

In this section, we take advantage of our measure of labour market power and the definitions of labour market regimes at the firm-year level to assess the potential impact of the introduction of a national minimum wage in Italy from the firm's perspective.

The premise of our novel approach is that firms paying an average wage below the statutory minimum will be affected by the introduction of a minimum wage as they will face higher labour costs. Among these firms, those that pay an average wage above their marginal revenue product of labour (i.e., those with lower labour productivity) may reduce employment or be driven out of the market since the gap between wages and productivity will increase further after the introduction of a minimum wage. This is clearly to be considered a negative effect on the economy, at least in the short run before resources are reallocated to other (potentially more-productive) firms. On the other hand, highly productive firms with a marginal revenue product of labour above the average wage they pay will start paying higher wages after the introduction of the minimum wage. This can be regarded as a positive effect on the economy, as it is supposed to reduce firms'

Figure 2: Labour market power and regimes over time



monopsony power and it may increase employment levels.

4.1 Definition of a minimum wage and a classification of firms

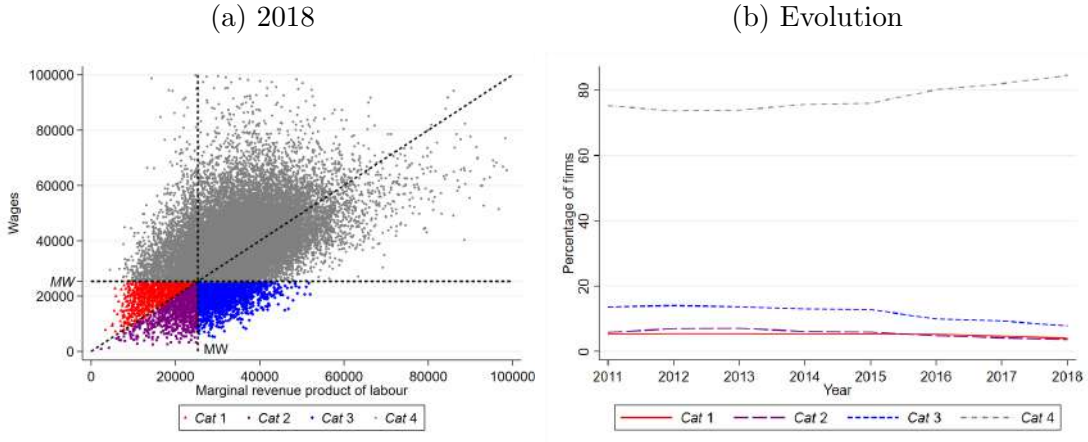
In order to conduct our assessment, we first need to define a hypothetical minimum wage and classify our firms in different categories based on their degree of labour market power and whether their average wage and marginal revenue product of labour are above or below the chosen minimum wage.

We choose a minimum wage of 9 euro per hour, which is similar to the level set in Germany in 2015 and corresponds to the value discussed by the Italian Parliament. This hourly wage is intended to be gross of income tax but net of social security contributions (as minimum wages are generally computed this way). To reconcile this definition with our firm-level data on labour costs, which are expressed on a yearly basis and include social charges, we proceed as follows: first, we compute the average share of social security contributions (SSC) in the total wage bill for firms with labour costs around the average $\pm 10\%$; this amounts to 28.4%. Then, we obtain the yearly minimum wage (MW) as the hourly minimum wage times the average number of hours worked (168 hours per month times 12 months) divided by $(1 - SSC)$:

$$MW = \frac{9\text{€} \times 168 \times 12}{1 - SSC} = 25,332\text{€}.$$

Next, we use this hypothetical minimum wage, together with data on ϕ , average wages and MRP^L (with the latter being derived as the ratio between wages and ϕ) to classify

Figure 3: Classification of firms by average wages, MRPL and minimum wage



firms in four categories (*Cat*).

- *Cat 1*: firms with low wages, low labour productivity, and with workers holding some degree of market power (i.e., $w < MW$, $MRP^L < MW$ and $\phi \geq 1$). The impact of a minimum wage on these firms is likely to be negative, as imposing a wage that exceeds the marginal revenue product that workers provide may reduce firms' labour demand and, in extreme cases, push them out of the market;
- *Cat 2*: monopsonist firms with low wages and low labour productivity (i.e., $w < MW$, $MRP^L < MW$ and $\phi < 1$). The effect of the minimum wage on firms and workers is ambiguous: on one hand, as in the case of *Cat 1*, it may induce exit or a fall in employment; on the other hand, it would attenuate firms' monopsony power by leading to higher wages and thus be beneficial to workers and the economy;
- *Cat 3*: firms with low wages but high labour productivity (i.e., $w < MW$, $MRP^L > MW$ and $\phi > 1$). By definition, these firms enjoy monopsony power; a minimum wage can reduce market imperfections, benefit workers and increase efficiency.
- *Cat 4*: firms already paying wages equal or higher than the minimum wage (i.e., $w \geq MW$). The impact of the minimum wage is likely to be negligible.

Accordingly, the introduction of a minimum wage would cause two concomitant opposite effects on the workers and the economy: on one hand, there would be a negative effect, since firms with low wages and low labour productivity may respond by reducing the number of their employees or even by exiting the market; on the other hand, there would be a positive effect which is attributable to the reduction of monopsony power.

The distribution of all our sampled firms in 2018 across the four aforementioned categories is illustrated in Panel(a) of Figure 3, from which it can be noticed that the majority of the firms fall into *Cat 4*. Moreover, as it can be observed in Panel (b) of Figure 3, this group expanded between 2011 and 2018, while the shares of firms in categories 2 and 3 decreased. Nonetheless, in 2018 the remaining categories still account for more than 15% of the sampled firms, suggesting that the introduction of a minimum wage may have a significant impact on the labour market.

Moreover, relevant differences in the distribution of firms across categories emerge at the geographical level. As illustrated in Figure B1 in Appendix B, firms whose average wage is below the hypothesised minimum wage are mainly located in Southern Italy and, to a lesser extent, in Central Italy. Thus, we expect the introduction of a minimum wage to mainly affect the regions belonging to these two macro-areas.

4.2 Regression Analysis

In this section, we study how our classification of firms relates to a number of firm-level characteristics. To this purpose, focusing on year 2018, we employ a multinomial probit (MNP) specification to estimate the following equation:

$$MWcat_{ik} = \beta_{0k} + \beta_{\omega k}\omega_{-3,i} + \beta_{\mu k}\mu_{-3,i} + \beta_{Xk}X_{-3,i} + \epsilon_{ik} \quad (6)$$

where $MWcat_{ik}$ is the MW category of firm i in 2018, $\omega_{-3,i}$ is the TFP of firm i in 2015, μ is the markup, X is a vector of other firm characteristics (i.e., number of employees, age and a dummy indicating if the firm engaged in outward FDI), and ϵ_{ik} is the error term. While we refrain from interpreting the results below in causal terms, we still wish to mitigate potential endogeneity issues. Thus, we observe the firm-level characteristics at time $t-3$ (i.e., in 2015). Since the explanatory variables μ and ω are estimated rather than observed, we compute bootstrapped standard errors.

Table 3 displays the marginal effects from the MNP regressions. Two main considerations prompted by the results are the following. First, as it can be expected, firms with high TFP (in the past) are more likely to fall in *Cat 4*, namely, to pay high wages. Second, firms with high markups are more likely to be in *Cat 1* or in *Cat 2* compared to the omitted category. This less anticipated finding suggests that, interestingly, some firms compress wages to compensate for low labour productivity and still earn high rents via higher margins.

4.3 Optimal minimum wage

We saw that the net effect of the introduction of a minimum wage on workers and the economy is ambiguous as two concomitant opposite effects unfold. In light of these considerations, we present a simple comparative statics exercise where we define an *optimal* minimum wage, namely the value that minimises the share of firms in *Cat 1* (i.e., those with low wages and low labour productivity that would be negatively affected by the introduction of a minimum wage) and maximises the share of firms in *Cat 3* (namely, the firms with high labour productivity paying low wages which would experience a reduction in monopsony power).⁵ Accordingly, we calculate the difference between the share of firms in *Cat 1* and the share of firms in *Cat 3* for distinct values of the minimum wage for every year between 2011 and 2018.

As displayed in Panel (a) of Figure 4, the value that minimises this difference for 2018 (based on the unweighted share of firms) equals 23,260 euro (or 8.25 euro per hour net of SSC), and thus it is 8.5% lower than the hypothesised minimum wage. When we weight observations using employment shares, we get a higher value (27,160 euro or 9.65 euro

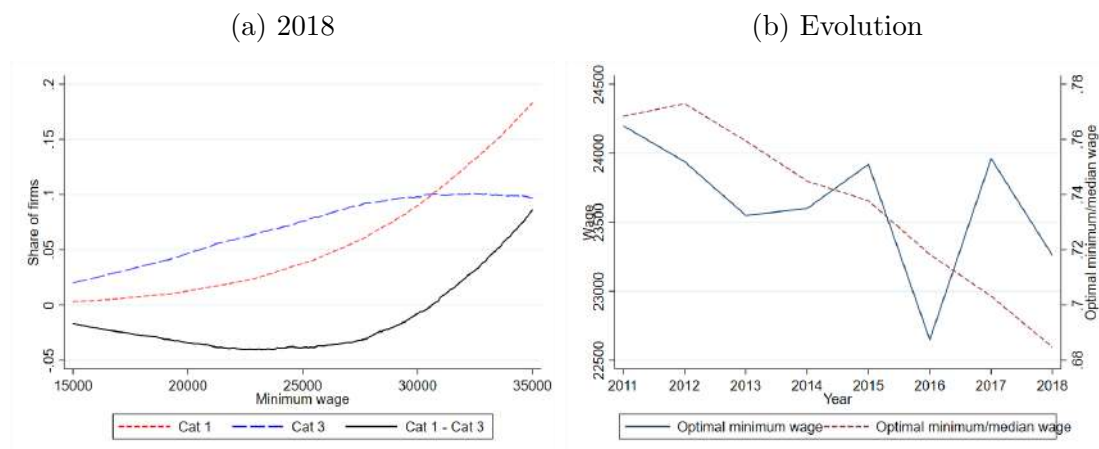
⁵As these two opposite effects on firms can be both observed in *Cat 2*, thus making the final result ambiguous, we decide to exclude these companies from the analysis.

Table 3: Marginal effects of firm characteristics on minimum wage category, 2018

	(1)	(2)	(3)	(4)
<i>Cat 1. Low w, low MRP^L, $\phi \geq 1$</i>				
TFP_{t-3}	-0.730 (0.547) [0.079]	-0.438 (0.363) [0.080]	-0.547*** (0.223) [0.050]	-0.379*** (0.088) [0.049]
$markup_{t-3}$			0.215*** (0.023) [0.007]	0.193*** (0.015) [0.007]
<i>Cat 2. Low w, low MRP^L, $\phi < 1$</i>				
TFP_{t-3}	-0.441 (0.364) [0.065]	-0.298*** (0.135) [0.055]	-0.441* (0.228) [0.054]	-0.364*** (0.095) [0.053]
$markup_{t-3}$			0.169*** (0.021) [0.007]	0.132*** (0.010) [0.007]
<i>Cat 3. Low w, high MRP^L</i>				
TFP_{t-3}	-0.314 (0.255) [0.080]	-0.142 (0.277) [0.087]	-0.354 (0.360) [0.099]	-0.102 (0.239) [0.116]
$markup_{t-3}$			-0.141*** (0.031) [0.016]	-0.254*** (0.030) [0.019]
Additional controls	no	yes	no	yes
Sector FE	yes	yes	yes	yes
NUTS-1 FE	yes	yes	yes	yes
Observations	28,537	28,531	28,537	28,531

Notes: The regressions are estimated via multinomial probit. The baseline category is high-wage firms (*Cat 4*). Standard errors in parenthesis are bootstrapped and clustered at the firm level, while standard errors in squared brackets are robust. ***, ** and * indicates coefficients significantly different from zero at 1, 5 and 10% level respectively.

Figure 4: Optimal minimum wage



per hour net of SSC), which is 7% above the reference of 9 euro per hour, but still falling in the same range (see Figure B2 in Appendix B). Consequently, the minimum wage of 25,332 euro used in this analysis and discussed in the Italian Parliament falls within this range.

We also show how the optimal minimum wage has evolved between 2011 and 2018. Panel (b) of Figure 4 indicates that the optimal minimum wage (left y-axis) has remained relatively stable, with just a slightly declining trend during the period under scrutiny. This is consistent with the shift of labour market power from the employers to their employees, which implies a decline in the magnitude of the (positive) impact of the minimum wage and a limited consequent reduction in monopsony power. Finally, it can be noticed that the optimal minimum wage calculated for 2018 corresponds to about 63-73% of the median manufacturing wage observed in our sample for that year (right y-axis), a value that lies within the range (60–67%) considered by Dube (2019) to be unlikely to have a negative impact on employment.

5 Conclusions

Building on recent empirical work on the estimation of labour market imperfections, we investigate the recent trends in labour market power in a large sample of Italian manufacturing firms. We document a significant overall shift of labour market power from the employers to their employees, which is mainly associated with an increase in the average gross nominal wage. However, this somehow reassuring picture hides relevant wage inequality across workers, and also relevant sectoral and geographical heterogeneity in terms of the diffusion of monopsony power, which is still a significant phenomenon in some sectors and regions. By comparing the (average) wage paid by each firm with its estimated marginal revenue product of labour and a hypothetical minimum wage, we classify our sampled firms in four distinct categories, and see whether and how they would be affected by this policy. We show that firms with low wage and low marginal productivity of labour would be hindered, with negative implications also for the workers and the economy, while, for highly productive firms that pay a wage lower than the marginal revenue product of labour, a statutory wage would yield a reduction in monopsony power,

thus increasing the efficiency of the economic system. Interestingly, we also see that low-productivity firms paying low wages typically exhibit relatively high markups, suggesting that wage compression is used to achieve high rents despite the low marginal productivity of labour. Also, as it can be expected, the firms paying high wages perform well in terms of total factor productivity.

Accordingly, the introduction of a potential minimum wage based on the one recently discussed in the Italian Parliament would have a beneficial impact on the economy, but also a negative effect due to those firms that would react by reducing the number of their employees or even by leaving the market. In light of these considerations, we finally calculate the minimum wage level that minimises the share of firms that may be harmed and that reduces the market power of high-productivity firms paying low wages. The “optimal” minimum wage calculated for the most recent year available (2018) ranges between 8.25 and 9.65 euro per hour and is in line with the values discussed in policy circles. Moreover, it corresponds to around 63-73% of the 2018 median manufacturing wage observed in the sample, a value that lies at the higher end of the range suggested by Dube (2019).

This work presents some limitations. For instance, the time-frame of our empirical analysis is limited, data on labour costs are observed only at the firm level and the identification of the optimal minimum wage is based on a simple exercise of comparative statistics. Despite that, by bridging the strand of literature on the analysis of firm-level product and labour market power with the stream of research on the implications of a minimum wage, this study provides recent evidence on two relevant topics that have often been the object of discussion in the Italian context, but which have not yet been thoroughly scrutinised together. Moreover, to the best of our knowledge, this contribution is the first one to calculate an optimal minimum wage starting from a firm’s classification and based on a firm’s (average) wage, its estimated marginal revenue product of labour and a hypothetical minimum wage. On top of that, the debate concerning the implementation of a legal minimum wage has recently gained new momentum, and our findings can provide useful directions to policy makers.

References

- Akerberg, D. A., Caves, K., Frazer, G., 2015. Identification properties of recent production function estimators. *Econometrica* 83 (6), 2411–2451.
- Card, D., Krueger, A. B., 1995. *Myth and Measurement: The New Economics of the Minimum Wage*. Princeton University Press, Princeton.
- Caselli, M., Nesta, L., Schiavo, S., 2021. Imports and labour market imperfections: Firm-level evidence from France. *European Economic Review* 131 (C), 103632.
- Cengiz, D., Dube, A., Lindner, A., Zipperer, B., 05 2019. The Effect of Minimum Wages on Low-Wage Jobs. *The Quarterly Journal of Economics* 134 (3), 1405–1454.
- Clemens, J., February 2021. How do firms respond to minimum wage increases? understanding the relevance of non-employment margins. *Journal of Economic Perspectives* 35 (1), 51–72.
- Clemens, J., Wither, M., 2019. The minimum wage and the Great Recession: Evidence of effects on the employment and income trajectories of low-skilled workers. *Journal of Public Economics* 170 (C), 53–67.
- De Loecker, J., Eeckhout, J., Unger, G., 2020. The Rise of Market Power and the Macroeconomic Implications. *Quarterly Journal of Economics* 135 (2), 561–644.
- De Loecker, J., Warzynski, F., October 2012. Markups and Firm-Level Export Status. *American Economic Review* 102 (6), 2437–71.
- Dobbelaere, S., Kiyota, K., 2018. Labor market imperfections, markups and productivity in multinationals and exporters. *Labour Economics* 53, 198 – 212.
- Dobbelaere, S., Mairesse, J., 01 2013. Panel data estimates of the production function and product and labor market imperfections. *Journal of Applied Econometrics* 28 (1), 1–46.
- Draca, M., Machin, S., Van Reenen, J., 2011. Minimum wages and firm profitability. *American Economic Journal: Applied Economics* 3 (1), 129–151.
- Dube, A., 2019. Impacts of minimum wages: Review of international evidence. Tech. rep., Report prepared for Her Majesty’s Treasury (UK).
- Garnero, A., Lucifora, C., 2021. Turning a “blind eye”? Compliance with minimum wage standards and employment. Discussion Paper 14456, IZA Institute of Labor Economics.
- Harasztoni, P., Lindner, A., 2019. Who pays for the minimum wage? *American Economic Review* 109 (8), 2693–2727.
- Levinsohn, J., Petrin, A., 2003. Estimating Production Functions Using Inputs to Control for Unobservables. *Review of Economic Studies* 70 (2), 317–341.

- Manning, A., February 2021. The elusive employment effect of the minimum wage. *Journal of Economic Perspectives* 35 (1), 3–26.
- Mertens, M., 2020. Labour market power and the distorting effects of international trade. *International Journal of Industrial Organization* 68, 102562.
- O’Neill, D., 2015. Divided opinion on the fair minimum wage act of 2013: Random or systematic differences? *Economics Letters* 136, 175–178.
- Petrin, A., Levinsohn, J., 2012. Measuring aggregate productivity growth using plant-level data. *RAND Journal of Economics* 43 (4), 705–725.
- Wooldridge, J. M., 2009. On estimating firm-level production functions using proxy variables to control for unobservables. *Economics Letters* 104 (3), 112–114.

Appendix

A Estimation procedure: production function coefficients

We consider the following general production function Q for firm i at time t :

$$Q_{it} = Q(L_{it}, M_{it}, K_{it}, \omega_{it}), \quad (\text{A7})$$

where L_{it} , M_{it} and K_{it} are the firm inputs (i.e., labour, materials and capital) and ω_{it} represents productivity. Unobserved shocks to ω_{it} are potentially correlated with input choices, and if not controlled for, can lead to inconsistent estimates of the production function. Accordingly, we employ the Wooldridge-Levinsohn-Petrin (WLP) estimator, as derived from [Wooldridge \(2009\)](#) and implemented in [Petrin and Levinsohn \(2012\)](#). The WLP estimator does not assume constant returns to scale, is robust to the [Akerberg et al. \(2015\)](#) criticism and is programmed as a simple instrumental variable estimator. The potential endogeneity issues related to the simultaneous determination of inputs and unobserved productivity are addressed by introducing lagged values of specific inputs as proxies for productivity. Specifically, the estimation strategy used in this paper consists in two steps.

First, we use a third-order polynomial on all inputs to remove the random-error term ε_{it} from observed output and hence obtain an estimate of the expected output (\hat{Q}_{it}). Then, we use a general production function of the following type:

$$\hat{q}_{it} = f_s(l_{it}, k_{it}, m_{it}, B) + \omega_{it} + \varepsilon_{it} \quad (\text{A8})$$

where \hat{q}_{it} is the natural log of expected (deflated) sales of firm i at time t , l_{it} , k_{it} and m_{it} are the logs labour, capital and materials used by the firm, B is the parameter vector to be estimated in order to calculate output elasticities, ω_{it} is the firm-level productivity term that is observable by the firm but not by the econometrician, and ε_{it} an error term that is unobservable to both the firm and the econometrician.

Productivity is, thus, assumed to be Hicks neutral and specific to the firm, as in the approach using inputs to control for unobservables in production function estimations ([Levinsohn and Petrin, 2003](#); [Akerberg et al., 2015](#)). We assume that labour is a variable input, and instrument current labour and materials and their interactions with the first and second lags of labour as well as the second lags of capital and materials. To control for time-variant shocks common to all plants, we add year fixed effects.

We adopt a translog specification, which, unlike the Cobb-Douglas, permits us to recover firm-level time-variant output elasticities. The production function is a revenue function, since data on firms' output prices are not available, and is allowed to change across different sectors, as implied by the subscript s . Leaving subscripts i and t aside for simplicity, the translog function f_s can be written as:

$$f_s = \alpha + \beta_L l + \beta_K k + \beta_M m + \beta_{L^2} l^2 + \beta_{K^2} k^2 + \beta_M^2 m^2 + \beta_{KL} kl + \beta_{KM} km + \beta_{LM} lm. \quad (\text{A9})$$

Thus, the parameter vector is made up of nine parameters for each sector. The estimated parameters of the translog production function allow us to compute the output

elasticity of materials. Using the estimates of the output elasticity and the calculated revenue shares of materials, we can now compute labour market power according to equation markups at the firm-year level based on equation (2).

B Additional Figures and Tables

Figure B1: Percentage of firms by category and region, 2018

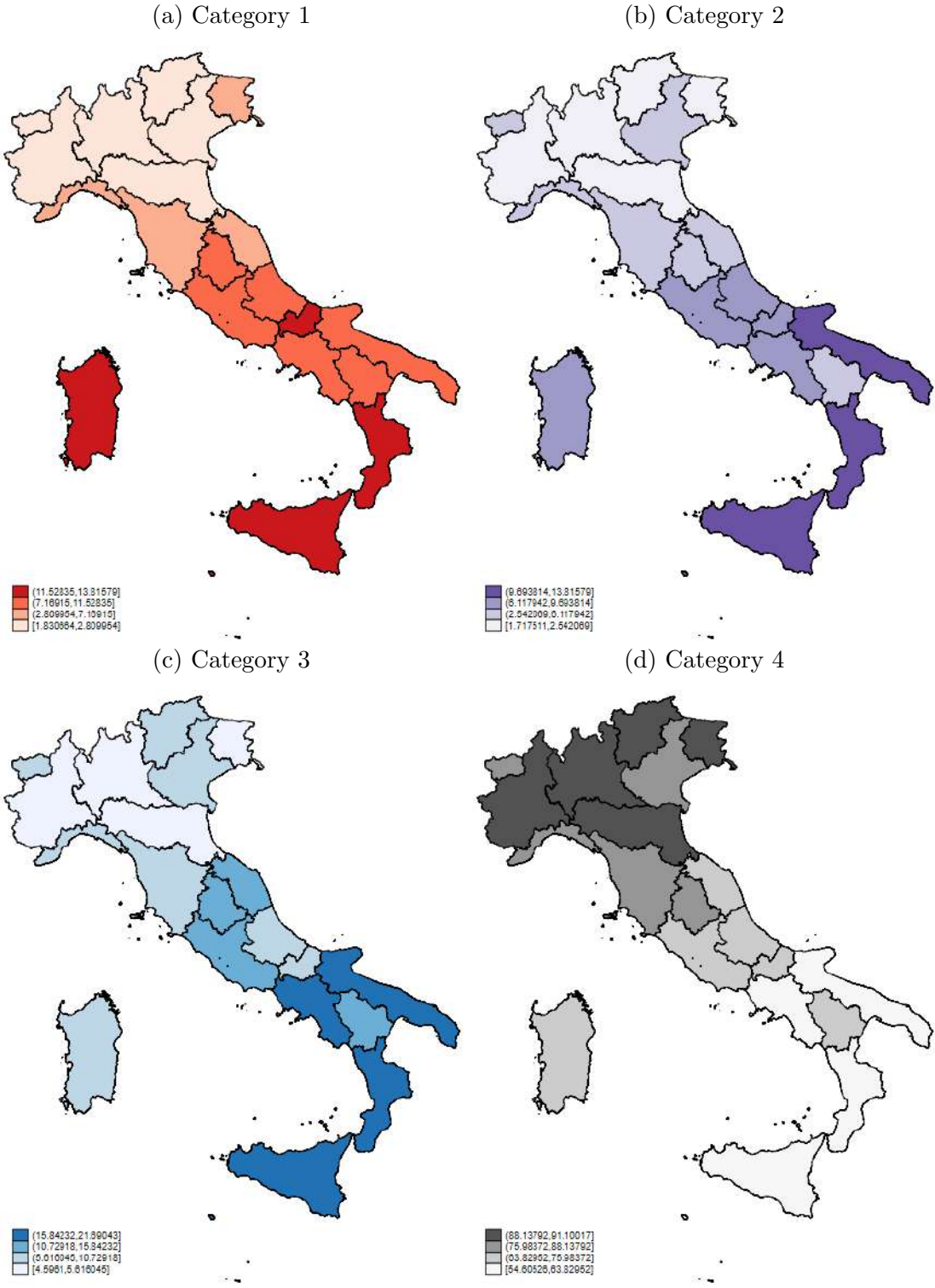
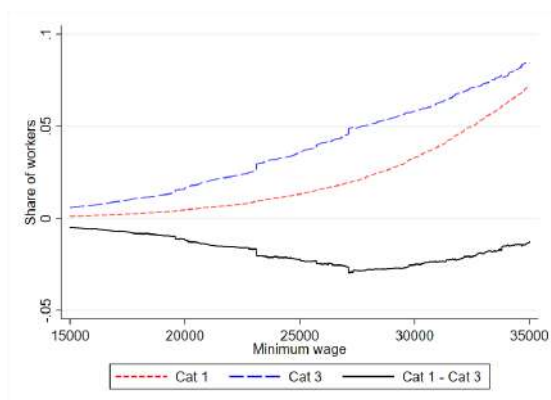
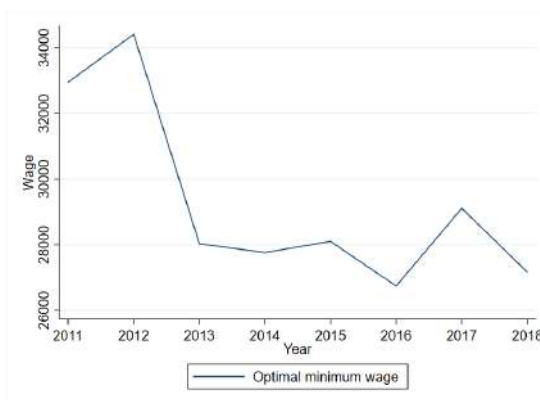


Figure B2: Optimal minimum wage, weighted by employment

(a) 2018



(b) Trend



EconPol Europe

EconPol Europe - The European Network for Economic and Fiscal Policy Research is a unique collaboration of policy-oriented university and non-university research institutes that will contribute their scientific expertise to the discussion of the future design of the European Union. In spring 2017, the network was founded by the ifo Institute together with eight other renowned European research institutes as a new voice for research in Europe. A further five associate partners were added to the network in January 2019.

The mission of EconPol Europe is to contribute its research findings to help solve the pressing economic and fiscal policy issues facing the European Union, and thus to anchor more deeply the European idea in the member states. Its tasks consist of joint interdisciplinary research in the following areas

- 1) sustainable growth and 'best practice',
- 2) reform of EU policies and the EU budget,
- 3) capital markets and the regulation of the financial sector and
- 4) governance and macroeconomic policy in the European Monetary Union.

Its task is also to transfer its research results to the relevant target groups in government, business and research as well as to the general public.