



# University of HUDDERSFIELD

## University of Huddersfield Repository

Morris, Gordon and Ralet, M.C.

The effect of neutral sugar distribution on the dilute solution conformation of sugar beet pectin

### Original Citation

Morris, Gordon and Ralet, M.C. (2012) The effect of neutral sugar distribution on the dilute solution conformation of sugar beet pectin. *Carbohydrate Polymers*, 88 (4). pp. 1488-1491. ISSN 0144-8617

This version is available at <http://eprints.hud.ac.uk/13411/>

The University Repository is a digital collection of the research output of the University, available on Open Access. Copyright and Moral Rights for the items on this site are retained by the individual author and/or other copyright owners. Users may access full items free of charge; copies of full text items generally can be reproduced, displayed or performed and given to third parties in any format or medium for personal research or study, educational or not-for-profit purposes without prior permission or charge, provided:

- The authors, title and full bibliographic details is credited in any copy;
- A hyperlink and/or URL is included for the original metadata page; and
- The content is not changed in any way.

For more information, including our policy and submission procedure, please contact the Repository Team at: [E.mailbox@hud.ac.uk](mailto:E.mailbox@hud.ac.uk).

<http://eprints.hud.ac.uk/>

# **The effect of neutral sugar distribution on the dilute solution conformation of sugar beet pectin**

Gordon A. Morris<sup>1,2,✉</sup> and Marie-Christine Ralet<sup>2</sup>

<sup>1</sup>Department of Chemical & Biological Sciences, School of Applied Sciences, University of Huddersfield, Queensgate, Huddersfield, HD1 3DH, UK (present address)

<sup>2</sup>INRA, UR1268 Biopolymères Interactions Assemblages, Rue de la Géraudière, B.P. 71627, F-44300 Nantes, France.

✉Corresponding author

Tel: +44 (0) 1484 473871

Fax: +44 (0) 1484 472182

Email: [g.morris@hud.ac.uk](mailto:g.morris@hud.ac.uk)

## **Abstract**

A partially degraded sugar beet pectin (C) was found to be heterogeneous in composition with neutral sugar-rich fractions of both high and low hydrodynamic radii. A neutral sugar-poor fraction was found at intermediate hydrodynamic radii. In this paper we demonstrate using both conformation zoning and the global analysis method that fractions of sugar beet pectin rich in neutral sugar side chains (RG-I regions) are less flexible than those rich in galacturonic acid (HG regions).

**Key words:** Sugar beet (*Beta vulgaris*) pectin; neutral sugar distribution; conformation; persistence length ( $L_p$ ); mass-per-unit length ( $M_L$ )

## 1. Introduction

Dilute solution properties of pectins such as viscosity also depend on chemical composition, degree of esterification, solvent environment (*i.e.* salt concentration, sugar concentration and pH) together with temperature (Oakenfull, 1991). Hydrodynamic studies based on intrinsic viscosity ( $[\eta]$ ), sedimentation coefficient ( $s_{20,w}^0$ ), radius of gyration ( $r_g$ ) and weight average molecular weight ( $M_w$ ) have focussed on qualitative/ semi-quantitative methods of estimating the overall conformation based around “power law” Mark-Houwink-Kuhn-Sakurada relations which link intrinsic viscosity, sedimentation coefficient and radius of gyration with molar mass  $[\eta] \propto M^a$ ,  $s_{20,w}^0 \propto M^b$  and  $r_g \propto M^c$ , where a, b and c have defined values for specific conformation types. The translational frictional ratio,  $ff_o$ , conformation zoning (Pavlov, Rowe, & Harding, 1997; Pavlov, Harding, & Rowe, 1999) and the persistence length,  $L_p$  (Kratky and Porod, 1949) have also been used to estimate dilute solution conformation. A picture of a semi-flexible conformation for citrus pectins irrespective of degree of esterification (and charge) has emerged from these studies (Anger and Berth, 1985; Axelos, Lefebvre, & Thibault; Axelos, & Thibault, 1991, Berth, Anger, & Linow, 1977; Harding, Berth, Ball, Mitchell, & García de la Torre., 1991; Garnier, Axelos & Thibault, 1993; Malovikova, Rinaudo, & Milas, 1993; Cros, Garnier, Axelos, Imbery, & Perez, 1996; Braccini, Grasso, & Perez, 1999; Morris, Foster, & Harding, 2000, 2002; Morris, García de la Torre, Ortega, Castille, Smith, & Harding, 2008; Fishman, Chau, Kolpak, & Brady, 2001; Fishman, Chau, Hoagland, & Hotchkiss, 2006; Noto, Martorana, Bulone, & San Biagio, 2005). Sugar beet, apple and flax pectins have also been demonstrated to have semi-flexible structures (Ralet, Crépeau, Lefebvre, Mouille, Höfte, & Thibault, 2008; Axelos, & Thibault, 1991; Cros, *et al.*, 1996; Morris, Ralet, Bonnin, Thibault, & Harding, 2010), however a purified RG-I fraction has a random coil conformation (Morris, *et al.*, 2010). Pectin molecular weight and chain flexibility are also important in mucoadhesive interactions and pharmaceutical applications (Nafee, Ismail, Boraie, & Mortada, 2007; Morris, Kök, Harding, & Adams, 2010).

In an earlier paper (Morris & Ralet, 2012) we have demonstrated the use of size exclusion chromatography coupled to refractive index (RI) and UV detectors (SEC-RI-UV) to visualise heterogeneity in the neutral sugar content of pectin fractions. This suggests that the overall conformation approach may not be applicable to heterogeneous pectins *e.g.* sugar beet; apple

and flax and in this second paper in the series we will estimate the dilute solution conformation of fractions of different chemical composition.

## **2. Experimental**

### **2.1. Materials and Methods**

#### **2.1.1. Acid extraction of sugar beet pulp (Pectin C)**

The alcohol insoluble residue (AIR) (5 g) from sugar beet pulp was obtained as described in Levigne, Ralet, & Thibault (2002) and the resultant pectin (yield 350 mg/g) will be referred to as pectin C.

#### **2.1.2. SEC-MALLS-RI-UV-DPV**

High performance size exclusion chromatography (HPSEC) was performed at room temperature on a system consisting of a Shodex OH SB-G guard column (Showa Denko, Tokyo, Japan) followed by in series (Shodex OH-Pak SB-805 HQ and Shodex OH-Pak SB-804 HQ) eluted with 50 mM sodium nitrate buffer containing 0.02 % sodium azide as an antibacterial agent at a flow rate of 42 ml/h. The eluent was detected on-line by:

1. SpectroMonitor 3000 variable wavelength UV detector at 325 nm (LDC/Milton Roy, Paris, France)
2. MiniDawn light scattering (LS) detector (Wyatt, Santa Barbara, U.S.A.)
3. T-50A differential pressure viscometer (DPV) (Viscotek, Huston, U.S.A.)
4. ERC 7515A differential refractometer (RI) (Sopares, Gentilly, France)

The refractive index increment,  $dn/dc$  was taken to be 0.146 ml/g (Chapman, Morris, Selvendran, & O'Neill, 1987).

### 3. Results and Discussion

#### 3.1. Physical characterisation of pectin C

Acid extracted pectin is heterogeneous with respect to molar mass, intrinsic viscosity and composition (Oosterveld, Beldman, Schols & Voragen, 1996; Morris, *et. al.*, 2010; Morris & Ralet, 2012) (see **Figure 2** Morris & Ralet, 2012). The use of UV absorbance (325 nm) allows the visualisation of those populations of pectic molecules, which are substituted with ferulic acid *i.e.* the arabinan, galactan or arabinogalactan side chains present on the RG-I region of sugar beet pectin as has been shown previously (Oosterveld, *et al.*, 1996; Morris, *et. al.*, 2010; Morris & Ralet, 2012). In the previous paper in this series (Morris & Ralet, 2012) we demonstrated using on-line RI and UV detection how the neutral sugar composition of a pectin molecule varies during elution. We will now demonstrate how this change in chemical composition affects the physical properties (*e.g.* molar mass and intrinsic viscosity) of the pectin and how this impacts on conformation.

##### 3.1.1. Molar mass and intrinsic viscosity

A molar mass and intrinsic viscosity of 270000 g/mol and 375 ml/g, respectively (**Table 1**) are in general agreement with previous studies on sugar beet pectins (Levigne, *et. al.*, 2002; Morris, *et. al.*, 2010). Furthermore, pectin C is polydisperse ( $M_w/M_n = 2.15$ , where  $M_w$  and  $M_n$  are the weight and number average molar masses, respectively) and there are wide range of different conformations (**Figures 1 and 2**). In this case the slope of this Mark-Houwink-Kuhn-Sakurada (MHKS) plot has no sensible meaning as this approach is only valid for a series of homologous (or pseudo-homologous) polymers. However what we can do is estimate the conformation at randomly selected points (indicated in red in **Figure 2**) and correlate this information with the chemical composition at each point.

##### 3.1.2. Global analysis method (HYDFIT)

The linear flexibility of polymer chains can also be represented quantitatively in terms of the persistence length,  $L_p$  of equivalent *worm-like chains* (Kratky, & Porod, 1949) where the persistence length is defined as the average projection length along the initial direction of the polymer chain. In the case of a theoretical perfect random coil  $L_p = 0$  and for the equivalent extra-rigid rod  $L_p = \infty$ , although in practice limits of  $\sim 1$  nm for random coils (*e.g.* pullulan) and 200 nm for a extra-rigid rod (*e.g.* xanthan) are more appropriate (Harding, 1997).

The persistence length,  $L_p$  and mass per unit length,  $M_L$  can be estimated using Multi-HYDFIT program (Ortega, & García de la Torre, 2007) which considers data sets of intrinsic viscosity and molar mass. It then performs a minimisation procedure (see Ortega, & García de la Torre, 2007) finding the best values of  $M_L$  and  $L_p$  satisfying the Bushin-Bohdanecky (Bushin, Tsvetkov, Lysenko, & Emel'yanov, 1981; Bohdanecky, 1983) equation (equation 1).

$$\left(\frac{M_w^2}{[\eta]}\right)^{1/3} = A_0 M_L \Phi^{-1/3} + B_0 \Phi^{-1/3} \left(\frac{2L_p}{M_L}\right)^{-1/2} M_w^{1/2} \quad (1)$$

where  $\Phi$  is the Flory-Fox constant ( $2.86 \times 10^{23} \text{ mol}^{-1}$ ) and  $A_0$  and  $B_0$  are tabulated coefficients (Bohdanecky, 1983)

$$M_L = \frac{m}{l} \quad (2)$$

$m$  and  $l$  are the average molar mass and length of the average monomeric unit.

Flexibility can be estimated from the ratio of  $L_p/M_L$  ( $\text{nm}^2\text{mol/g}$ ) which decreases with increasing flexibility (Patel, Morris, Ebringerová, Vodenicarová, Velebny, Ortega, García de la Torre, & Harding, 2008; Morris, *et al.*, 2010). The “average” conformation for pectin C is shown in **Table 1**. These results are consistent with previous findings which suggest that sugar beet; apple and flax pectins have flexible structures (Axelos, & Thibault, 1991; Cros, *et al.*, 1996; Ralet, *et al.*, 2008; Morris, *et al.*, 2010). In order to further demonstrate the differences in conformation across the elution profile we have superimposed the Mark-Houwink-Kuhn-Sakurada plot for this pectin if we were to assume the entire population had the same “average” conformation (**Figure 2**). The slope of the plot is 0.61 indicating a semi-flexible conformation.

When we go on to look at the pectin conformation at each of the 20 selected slices we can see that fractions rich in neutral sugars are more flexible than those richer in galacturonic acid (**Table 2**). This is consistent with the findings that HG-rich regions are considerably stiffer (Cros, *et al.*, 1996; Braccini, *et al.*, 1999; Noto, *et al.*, 2005; Morris, *et al.*, 2010).

### 3.1.3. Conformation zoning (Normalised scaling relations)

Pavlov, Harding & Rowe (1999) described a procedure to represent the conformation of polymers in solution based on the relationship between their molar mass, intrinsic viscosity and mass per unit length,  $M_L$ . A plot of  $\log [\eta]M_L$  versus  $10^8 M_w/M_L$  enables an estimate of the overall solution conformation of a macromolecule in solution: where Zone A represents an extra rigid rod, Zone B a rigid rod, Zone C a semi-flexible coil, Zone D a random coil and Zone E a globular or branched structure. In this case we have taken the mass per unit length calculated previously using the HYDFIT algorithm (Ortega, & García de la Torre, 2007). As we can see from **Figure 3** the pectins with higher neutral sugars are generally more flexible and those which are richer in HG fractions are less flexible this is in agreement with findings on sugar beet pectin sub-fractions (Morris, *et. al.*, 2010), although all fractions are less flexible than we expected. This is most likely due the estimation of flexibility relying solely on the variation of intrinsic viscosity with molar mass rather than using a suite of hydrodynamic techniques (Morris, Patel, Picout, Ross-Murphy, Ortega, Garcia de la Torre, & Harding, 2008; Kök, Abdelhameed, Ang, Morris, & Harding, 2009). There also seems to be a semi-quantitative relationship between  $L_p/M_L$  ( $\text{nm}^2\text{mol/g}$ ) and the conformation as estimated by conformation zoning in that the transition from rigid rod to semi-flexible coil seems to occur at  $\sim 0.01 \text{ nm}^2\text{mol/g}$  (**Figure 4** and **Table 2**). The only exception to this is shown in italics in **Table 2**.

## 4. Conclusions

In this paper we demonstrate using both conformation zoning (Pavlov, *et. al.*, 1999) and the global analysis method (Ortega, & García de la Torre, 2007) that fractions of sugar beet pectin rich in neutral sugar side chains (RG-I regions) are more compact than those rich in galacturonic acid (HG regions). Therefore as a consequence we should be aware that any measurements on a non-fractionated material will only give the “weight-average” molar mass, intrinsic viscosity or conformation and may not necessarily be representative of the distribution of pectin molecules. This has repercussions for their functional properties.

## 5. Acknowledgements

We thank Mrs M-J. Crépeau and Mrs S. Daniel for their technical help and finally Gordon Morris would like to thank the Région Pays de la Loire for their financial support.



## 6. References

Anger, H. and Berth, G. (1985). Gel-permeation chromatography of sunflower pectin. *Carbohydrate Polymers*, **5**, 241-250.

Axelos, M. A. V. Lefebvre, J. and Thibault, J-F. (1987). Conformation of a low methoxyl citrus pectin in aqueous solution, *Food Hydrocolloids*, **1**, 569-570.

Axelos, M. A. V. and Thibault, J-F. (1991). Influence of the substituents of the carboxyl groups and of the rhamnose content on the solution properties and flexibility of pectins. *International Journal of Biological Macromolecules*, **13**, 77-82.

Berth, G., Anger, H. and Linow, F. (1977). Scattered-light photometric and viscosimetric studies of molecular mass determination of pectins in aqueous-solutions. *Nahrung-Food*, **31**, 939-950.

Bohdanecky, M. (1983). New method for estimating the parameters of the wormlike chain model from the intrinsic viscosity of stiff-chain polymers. *Macromolecules*, **16**, 1483-1492.

Braccini, I., Grasso, R. P. and Perez, S. (1999). Conformational and configurational features of acidic polysaccharides and their interactions with calcium ions: a molecular modeling investigation *Carbohydrate Research*, **317**, 199-130.

Bushin, S. V., Tsvetkov, V. N., Lysenko, Y. B. and Emel'yanov, V. N. (1981). Conformational properties and rigidity of molecules of ladder polyphenylsiloxane in solutions according the data of sedimentation-diffusion analysis and viscometry. *Vysokomolekulyarnye Soedineniya, seriya A*, **23**, 2494-2503.

Chapman, H. D., Morris, V. J., Selvendran, R. R. and O'Neill, M. A. (1987). Static and dynamic light scattering studies of pectic polysaccharides from the middle lamellae and primary cell walls of cider apples. *Carbohydrate Research*, **165**, 53-68.

Cros, S. C., Garnier, C., Axelos, M. A. V., Imbery, A. and Perez, S. (1996). Solution conformations of pectin polysaccharides: determination of chain characteristics by small angle neutron scattering, viscometry and molecular modeling. *Biopolymers*, **39**, 339-352.

Fishman, M. L., Chau, H. K., Hoagland, P. D., and Hotchkiss, A. T. (2006). Microwave assisted extraction of lime pectin. *Food Hydrocolloids*, **20**, 1170-1177.

Fishman, M. L., Chau, H. K., Kolpak, F. and Brady, J. (2001). Solvent effects on the molecular properties of pectins. *Journal of Agricultural and Food Chemistry*, **49**, 4494-4501.

Garnier, C., Axelos M. A. V. and Thibault, J-F. (1993). Phase-diagrams of pectin-calcium systems - influence of pH, ionic-strength, and temperature on the gelation of pectins with different degrees of methylation. *Carbohydrate Research*, **240**, 219-232.

Harding, S. E. (1997). the intrinsic viscosity of biological macromolecules. Progress in measurement, interpretation and application to structure in dilute solution. *Progress in Biophysics and Molecular Biology*, **68**, 207-262.

Harding, S. E., Berth, G., Ball, A., Mitchell, J. R. and Garcia de la Torre, J. (1991). The molecular weight distribution and conformation of citrus pectins in solution studied by hydrodynamics. *Carbohydrate Polymers*, **16**, 1-15.

Kratky, O. and Porod, G. (1949). Röntgenuntersuchung gelöster fadenmoleküle. *Recueil Des Travaux Chimiques Des Pays-Bas*, **68**, 1106-1109.

Kök, M. S., Abdelhameed, A. S., Ang, S., Morris, G. A., and Harding, S. E. (2009). A novel global hydrodynamic analysis of the molecular flexibility of the dietary fibre polysaccharide konjac glucomannan. *Food Hydrocolloids*, **23**, 1910-1917.

Levigne, S., Ralet, M-C. and Thibault, J-F. (2002). Characterisation of pectins extracted from fresh sugar beet under different conditions using an experimental design. *Carbohydrate Polymers*, **49**, 145-153.

Malovikova, A., Rinaudo, M. and Milas, M. (1993). On the characterization of polygalacturonate salts in dilute-solution. *Carbohydrate Polymers*, **22**, 87-92.

Morris, G. A., Foster, T. J. and Harding, S. E. (2000). The effect of degree of esterification on the hydrodynamic properties of citrus pectin. *Food Hydrocolloids*, **14**, 764-767.

Morris, G. A., Foster, T. J. and Harding, S. E. (2002). A hydrodynamic study of the depolymerisation of a high methoxy pectin at elevated temperatures. *Carbohydrate Polymers*, **48**, 361-367.

Morris, G. A., García de la Torre, J., Ortega, A., Castille, J., Smith, A. and Harding, S. E. (2008). Molecular flexibility of citrus pectins by combined sedimentation and viscosity analysis. *Food Hydrocolloids*, **22**, 1435-1442.

Morris, G. A., Kök, M. S., Harding, S. E. and Adams, G. G. (2010). Polysaccharide drug delivery systems based on pectin and chitosan. *Biotechnology and Genetic Engineering Reviews*, **27**, 257-284.

Morris, G. A., Patel, T. R., Picout, D. R., Ross-Murphy, S. B., Ortega, A., Garcia de la Torre, J. and Harding S. E. (2008). Global hydrodynamic analysis of the molecular flexibility of galactomannans. *Carbohydrate Polymers*, **72**, 356-360.

Morris, G. A. and Ralet, M-C. (2012). A copolymer analysis approach to estimate the neutral sugar distribution of sugar beet pectin using size exclusion chromatography. *Carbohydrate Polymers*, **87**, 1139-1143.

Morris, G. A., Ralet, M-C., Bonnin, E., Thibault, J-F. and Harding, S. E. (2010). Physical characterisation of the rhamnogalacturonan and homogalacturonan fractions of sugar beet (*beta vulgaris*) pectin. *Carbohydrate Polymers*, **82**, 1161-1167.

Nafee, N. A., Ismail, F. A., Boraie, N. A. and Mortada, L. M. (2004). Mucoadhesive delivery systems. I. Evaluation of mucoadhesive polymers for buccal tablet formulation. *Drug Development and Industrial Pharmacy*, **30**, 985-993.

Noto, R., Martorana, V., Bulone, D. and San Biagio, B. L. (2005). Role of charges and solvent on the conformational properties of poly(galacturonic acid) chains: a molecular dynamics study. *Biomacromolecules*, **6**, 2555-2562.

Oakenfull, D. G. (1991). The chemistry of high-methoxyl pectins. In: Walter RH (Ed.) *The Chemistry and Technology of Pectin*, pp 87-108. Academic Press, San Diego.

Oosterveld, A., Beldman, G., Schols, H. A. and Voragen, A.G.J. (1996). Arabinose and ferulic acid rich pectic polysaccharides extracted from sugar beet pulp. *Carbohydrate Research*, **288**, 143-153.

Ortega, A. and García de la Torre, J. (2007). Equivalent radii and ratios of radii from solution properties as indicators of macromolecular conformation, shape, and flexibility. *Biomacromolecules*, **8**, 2464-2475.

Patel, T. R., Morris, G. A., Ebringerová, A., Vodenicarová, M., Velebny, V., Ortega, A., García de la Torre, J. and Harding, S. E. (2008). Global conformation analysis of irradiated xyloglucans. *Carbohydrate Polymers*, **74**, 845-851.

Pavlov, G. M., Harding, S. E. and Rowe, A. J. (1999). Normalized scaling relations as a natural classification of linear macromolecules according to size. *Progress in Colloid and Polymer Science*, **113**, 76-80.

Pavlov, G. M., Rowe, A. J., and Harding, S. E. (1997). Conformation zoning of large molecules using the analytical ultracentrifuge. *Trends in Analytical Chemistry*, **16**, 401-405.

Ralet, M-C., Crépeau, M-J., Lefebvre, J., Mouille, G., Höfte, H. and Thibault, J-F. (2008). Reduced number of homogalacturonan domains in pectins of an Arabidopsis mutant enhances the flexibility of the polymer. *Biomacromolecules*, **9**, 1454-1460.

## Legends to Figures

**Figure 1** The change in molar mass (—) and intrinsic viscosity (—) with elution volume for sugar beet pectin C.

**Figure 2** Mark-Houwink-Kuhn-Sakurada plot ( $\blacktriangle$ ) for sugar beet pectin C. Twenty points on this plot were chosen at random for further conformational analysis ( $\blacksquare$ ). We have superimposed the corresponding plot for this pectin ( $\blacksquare$ ) if we were to assume the entire population had the same “average” conformation. The slope of the plot is 0.61 consistent with a semi-flexible conformation.

**Figure 3** Normalised scaling plot of  $[\eta]M_L$  versus  $M_w/M_L$  (adapted from Pavlov, *et. al.*, 1999) where the neutral sugar content for each pectin C fraction is indicated (in red). Zone A: extra rigid rod; Zone B: rigid rod; Zone C: semi-flexible; Zone D: random coil and Zone E: globular or branched.

**Figure 4** A plot of  $L_p/M_L$  versus estimated neutral sugar content. On this plot a larger value of  $L_p/M_L$  is consistent with a less flexible conformation. Based on the conformation as estimated by conformation zoning there seems to be a semi-quantitative relationship and the transition from rigid rod to semi-flexible coil seems to occur at  $\sim 0.01 \text{ nm}^2 \text{ mol/g}$ .

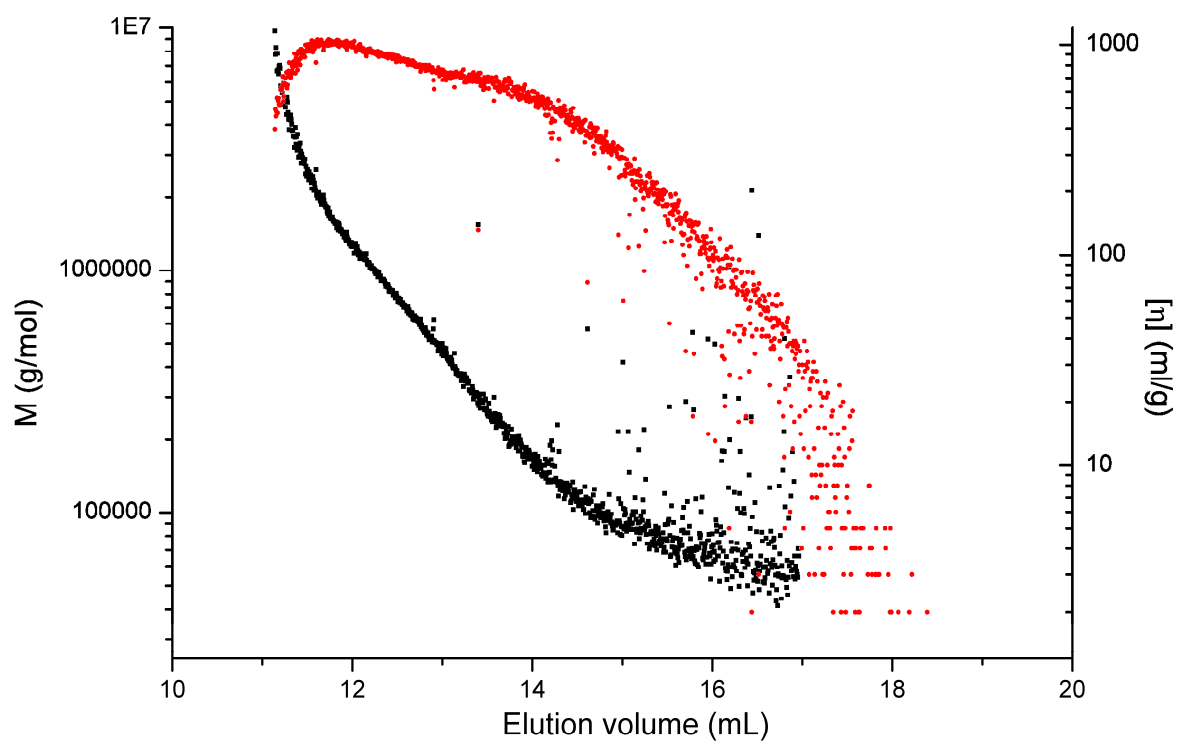
**Table 1** Physical and conformational properties of sugar beet pectin C

<b>Pectin</b>	<b>M<sub>w</sub>, g/ mol (MALLS)</b>	<b>[η]<sub>w</sub>, ml/ g (DPV)</b>	<b>M<sub>L</sub>, g/ mol nm</b>	<b>L<sub>p</sub>, nm</b>	<b>L<sub>p</sub>/M<sub>L</sub>, nm<sup>2</sup>mol/ g</b>	<b>Zone (A- E)</b>
<b>C</b>	(2.7 ± 0.2) x 10 <sup>5</sup>	375 ± 10	330 ± 30	3.9 ± 0.4	0.012 ± 0.002	<b>C</b>

**Table 2** Chemical, physical and conformational properties for randomly selected pectin fractions

<b>Elution Volume, ml</b>	<b>M, g/mol</b>	<b>[<math>\eta</math>], ml/g</b>	<b>L<sub>p</sub>, nm</b>	<b>M<sub>L</sub>, g/mol nm</b>	<b>Neutral sugars, mol %</b>	<b>L<sub>p</sub>/M<sub>L</sub>, nm<sup>2</sup>mol/g</b>	<b>Zone (A-E)</b>
11.19	9.68 x 10 <sup>6</sup>	398	2.0	630	59.2	0.0032	C/D
11.22	7.26 x 10 <sup>6</sup>	506	3.4	810	60.1	0.0042	C
11.26	5.81 x 10 <sup>6</sup>	605	3.4	670	64.9	0.0051	C
11.27	4.85 x 10 <sup>6</sup>	707	1.5	260	67.6	0.0058	D
11.28	6.30 x 10 <sup>6</sup>	542	3.4	740	66.8	0.0046	C
11.39	3.88 x 10 <sup>6</sup>	757	5.4	750	66.7	0.0072	C
11.50	2.92 x 10 <sup>6</sup>	883	5.4	610	68.9	0.0088	C
11.59	2.43 x 10 <sup>6</sup>	935	8.3	800	69.4	0.0104	B/C
11.81	1.64 x 10 <sup>6</sup>	1042	9.8	720	66.5	0.0135	B
12.31	9.83 x 10 <sup>5</sup>	901	13	800	59.9	0.0163	B
12.51	7.83 x 10 <sup>5</sup>	873	16	820	56.8	0.0195	B
13.00	5.00 x 10 <sup>5</sup>	716	16	760	47.4	0.0209	B
13.04	4.52 x 10 <sup>5</sup>	751	22	840	46.1	0.0263	B
13.16	4.04 x 10 <sup>5</sup>	713	26	880	43.3	0.0294	B
13.46	3.08 x 10 <sup>5</sup>	636	4.4	280	37.8	0.0157	C
13.55	2.60 x 10 <sup>5</sup>	671	18	610	36.8	0.0294	B
14.35	1.30 x 10 <sup>5</sup>	467	11	430	31.9	0.0256	B
14.93	9.23 x 10 <sup>4</sup>	307	24	600	28.4	0.0397	B
16.09	7.17 x 10 <sup>4</sup>	86	4.9	520	33.6	0.0094	C
16.71	5.50 x 10 <sup>4</sup>	50	5.4	650	53.3	0.0083	C

\*errors in all estimates are approximately 10%



**Figure 1**



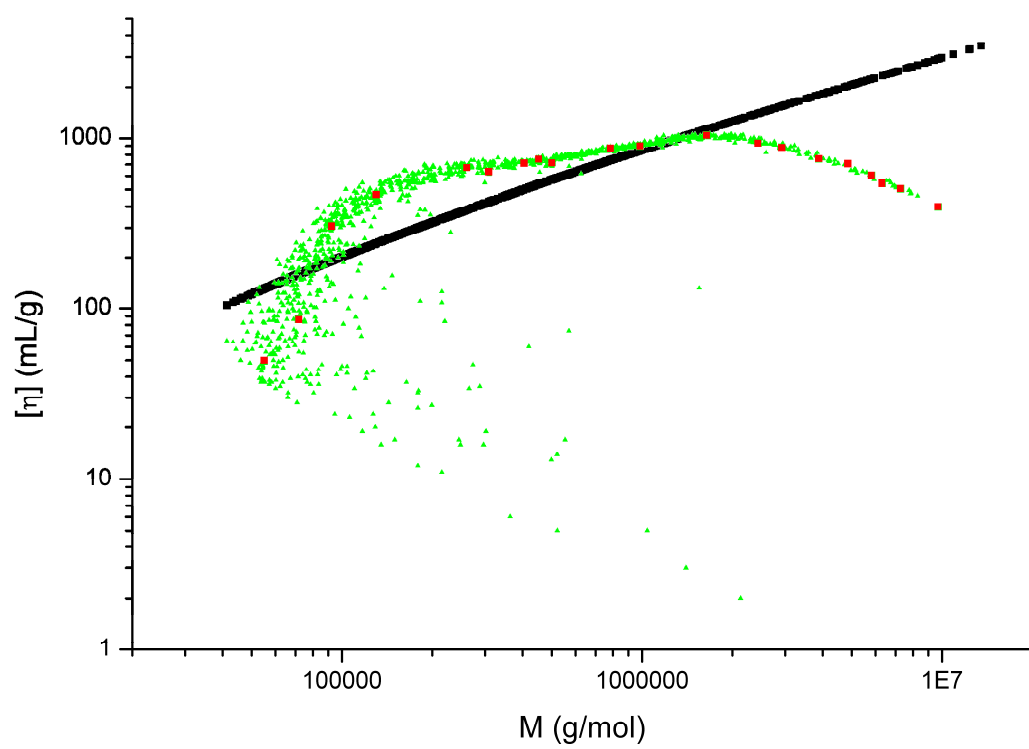


Figure 2

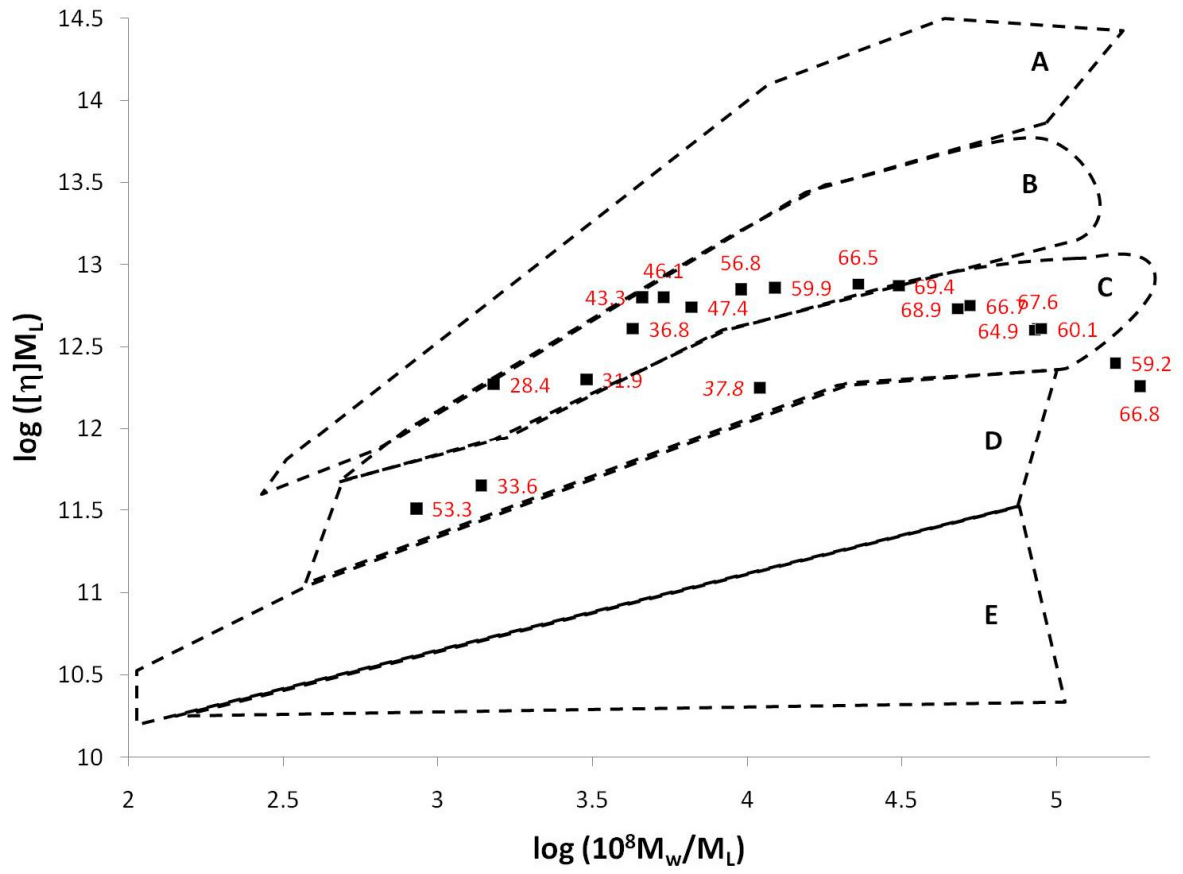
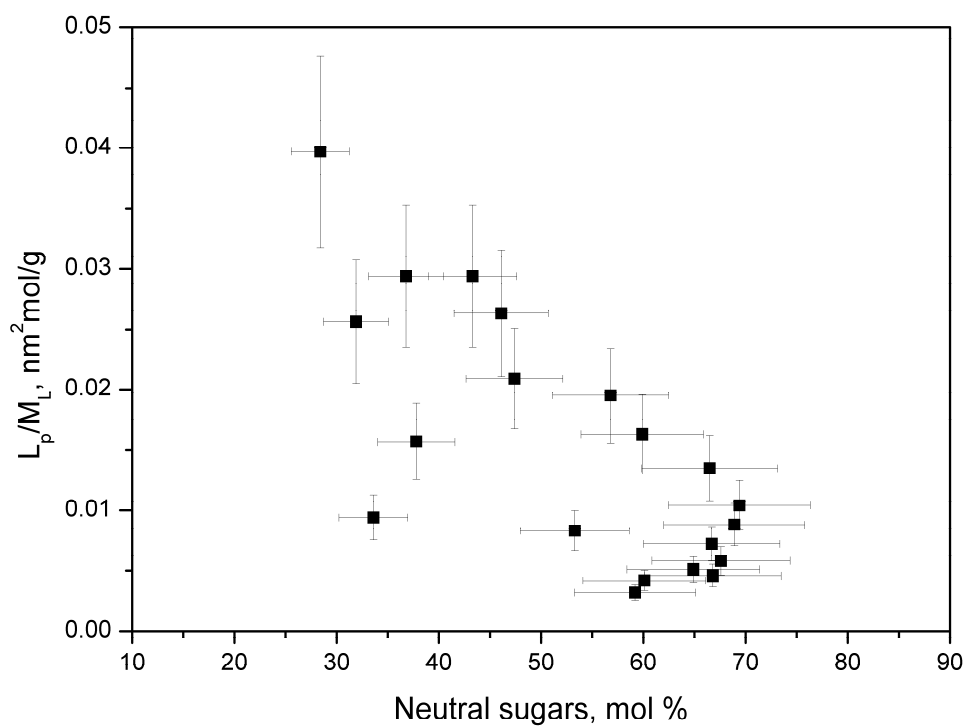


Figure 3



**Figure 4**