



Acute Gravitational Stress Selectively Impairs Dynamic Cerebrovascular Reactivity in the Anterior Circulation Independent of Changes to the Central Respiratory Chemoreflex

Hironori Watanabe¹, Shotaro Saito¹, Takuro Washio^{1,2}, Damian Miles Bailey^{2,3} and Shigehiko Ogoh^{1,3*}

¹Department of Biomedical Engineering, Toyo University, Kawagoe, Japan, ²Research Fellow of Japan Society for the Promotion of Science, Tokyo, Japan, ³Neurovascular Research Laboratory, University of South Wales, Pontypridd, United Kingdom

OPEN ACCESS

Edited by:

Hanns-Christian Gunga,
Charité University Medicine Berlin,
Germany

Reviewed by:

Olga Vinogradova,
Institute of Biomedical Problems,
Russian Academy of Sciences (RAS),
Russia

Julien Vincent Brugniaux,
Université Grenoble Alpes, France

*Correspondence:

Shigehiko Ogoh
ogoh@toyo.jp

Specialty section:

This article was submitted to
Environmental, Aviation and Space
Physiology,
a section of the journal
Frontiers in Physiology

Received: 29 July 2021

Accepted: 03 December 2021

Published: 06 January 2022

Citation:

Watanabe H, Saito S, Washio T,
Bailey DM and Ogoh S (2022) Acute
Gravitational Stress Selectively
Impairs Dynamic Cerebrovascular
Reactivity in the Anterior Circulation
Independent of Changes to the
Central Respiratory Chemoreflex.
Front. Physiol. 12:749255.
doi: 10.3389/fphys.2021.749255

Cerebrovascular reactivity (CVR) to changes in the partial pressure of arterial carbon dioxide (PaCO₂) is an important mechanism that maintains CO₂ or pH homeostasis in the brain. To what extent this is influenced by gravitational stress and corresponding implications for the regulation of cerebral blood flow (CBF) remain unclear. The present study examined the onset responses of pulmonary ventilation (\dot{V}_E) and anterior middle (MCA) and posterior (PCA) cerebral artery mean blood velocity (V_{mean}) responses to acute hypercapnia (5% CO₂) to infer dynamic changes in the central respiratory chemoreflex and cerebrovascular reactivity (CVR), in supine and 50° head-up tilt (HUT) positions. Each onset response was evaluated using a single-exponential regression model consisting of the response time latency [CO₂-response delay (t_0)] and time constant (τ). Onset response of \dot{V}_E and PCA V_{mean} to changes in CO₂ was unchanged during 50° HUT compared with supine (τ : \dot{V}_E , $p = 0.707$; PCA V_{mean} , $p = 0.071$ vs. supine) but the MCA V_{mean} onset response was faster during supine than during 50° HUT (τ : $p = 0.003$ vs. supine). These data indicate that gravitational stress selectively impaired dynamic CVR in the anterior cerebral circulation, whereas the posterior circulation was preserved, independent of any changes to the central respiratory chemoreflex. Collectively, our findings highlight the regional heterogeneity underlying CBF regulation that may have translational implications for the microgravity (and hypercapnia) associated with deep-space flight notwithstanding terrestrial orthostatic diseases that have been linked to accelerated cognitive decline and neurodegeneration.

Keywords: anterior cerebral blood flow, posterior cerebral blood flow, respiratory chemoreflex, head-up tilt, hypercapnia

INTRODUCTION

Numerous enzymatic and ion channels that influence neural activity are modulated by changes in pH (Chesler, 2003). Since the regulation of carbon dioxide (CO₂) helps maintain constant pH (Ogoh, 2019), cerebrovascular CO₂ reactivity (CVR), an indicator of the compensatory dilatory capacity of blood flow in the brain in response to vasoactive stimuli, plays an important

role in cerebral CO₂ regulation in order to preserve and maintain stable brain pH. Importantly, a reduction in CVR is associated with impaired cognition in patients with Alzheimer's disease (Silvestrini et al., 2006; Richiardi et al., 2015), dementia (Silvestrini et al., 2006; Lee et al., 2007), and cerebrovascular endothelial dysfunction (Lavi et al., 2006; Kim et al., 2021), indirectly supporting a "pH-sensitive" regulatory role. Equally, the cerebrovascular responses to altered brain pH also impact central chemoreflex sensitivity (Siesjo, 1972). Since intravascular CO₂ concentration influences the CO₂ concentration gradient from the brain, the central respiratory chemoreflex, as well as CVR, collectively contributes to maintaining stable brain pH (Ainslie and Duffin, 2009; Ogoh, 2019). Indeed, our previous studies (Ogoh et al., 2008, 2009, 2013) demonstrated that CVR interacts with the central respiratory chemoreflex to maintain cerebral CO₂ homeostasis. These data collectively justify the need to better phenotype the functional interaction between the central respiratory chemoreflex and CVR modulation.

This pathway is especially relevant during the microgravity of space since astronauts need to adapt to multiple environmental stressors including hypercapnia, hypoxia, and physical deconditioning, notwithstanding the endogenous challenges posed by pronounced cephalad fluid shifts (Bailey et al., 2021). Our previous study (Ogoh et al., 2013) demonstrated that compared to supine, orthostatic stress-induced reduction in cerebral blood flow (CBF) attenuated the "washout" of CO₂ from the brain causing hyperpnea subsequent to autochemoactivation of the central chemoreflex. This finding indicates that gravitational stress (microgravity) modified CO₂ regulation *via* the central respiratory chemoreflex and CVR, and that both CO₂ regulatory mechanisms are functionally interactive. Importantly, these findings provide the possibility that CO₂ homeostasis in the brain may be altered *via* modified CO₂ regulatory mechanisms in space. Indeed, it has been reported that long-term microgravity decreased cognitive function (Salazar et al., 2020, 2021) and that this is associated with impaired CVR (Kim et al., 2021).

In contrast, the CVR and central respiratory chemoreflex were unchanged during orthostatic stress-induced *via* lower negative pressure (LBNP) and head-up tilt (HUT; Ogoh et al., 2013; Tymko et al., 2015). However, these previous studies (Ogoh et al., 2013; Tymko et al., 2015) have been constrained to the steady-state characteristics of CVR and central respiratory chemoreflex and have not considered the dynamic responses. Early reports (Shapiro et al., 1965) indicated that the elevation in CBF proceeds within 30s of CO₂ inhalation and that less than 2min were required to achieve peak perfusion (Ellingsen et al., 1987). Since the cerebrovascular and respiration regulatory systems interact *via* the same mediator (i.e., CO₂), whereas the respiratory response to CO₂ is slower than that of the cerebrovasculature (Ogoh, 2019), the onset of the cerebrovascular response may be isolated from the respiratory response. This highlights the potential mechanistic importance of the CBF "onset" that is different from that of the traditional steady-state CVR (Rasmussen et al., 2006; Ogoh et al., 2008, 2009, 2020). Furthermore, to what extent altered gravitational stress impacts the corresponding kinetics underlying the dynamic

cerebrovascular responses to hypercapnia remains to be investigated.

Cerebrovascular regulation is also subject to considerable regional heterogeneity. Traditionally, studies have focused on changes in perfusion to the anterior circulation employing middle cerebral artery blood velocity (MCA V) as a surrogate for CBF (Ogoh and Ainslie, 2009a,b; Willie et al., 2011). However, it is noteworthy that MCA V response to orthostatic stress differs compared to the posterior circulation (Sato et al., 2012a; Ogoh et al., 2015; Washio et al., 2018). In the anterior cerebral circulation, neural activity and metabolism are closely related to regional CBF, termed neurovascular coupling, the vascular beds supplying more metabolically active brain regions are likely to be dilated to maintain perfusion (Nakagawa et al., 2009). On the other hand, the territories supplied by the posterior circulation (i.e., brain stem, medulla oblongata, visual cortex, cerebellum, and vestibular regions) are robustly and constantly activated during orthostatic stress due to sympathoexcitation, visual stimulation, postural control, and gravitational stress. This would place the posterior territories in a state of continuous vasodilatation relative to the internal carotid territories (Haubrich et al., 2004; Nakagawa et al., 2009) highlighting site-specific regulation. These observations are consistent with previous studies (Sato et al., 2012b; Skow et al., 2013) demonstrating that CVR in the anterior circulation is higher relative to the posterior.

Given this knowledge and in contrast to what would be expected during steady-state CVR, we hypothesized that the onset of CBF response to changes in CO₂ (dynamic CVR) would be altered by gravitational stress subsequent to changes in the central respiratory chemoreflex (Ogoh et al., 2009). Also, given the preferential defense of cerebral substrate delivery to the phylogenetically older, evolutionary conserved hindbrain (supplied by the posterior circulation; Bailey et al., 2020; Calverley et al., 2020), we further hypothesized that these interactive changes would be more pronounced in the anterior circulation subserved by the MCA. To test these hypotheses, the present study sought to characterize the onset responses of the respiratory chemoreflex and middle cerebral artery (MCA) and posterior cerebral artery (PCA) mean blood velocity (V_{mean}) to hypercapnia incorporating HUT-induced orthostasis as a terrestrial spaceflight analogue of gravitational stress.

MATERIALS AND METHODS

Participants

Thirteen healthy participants participated in this study (10 men and 3 women; mean age, 24±4 years; stature, 167.4±6.9 cm; body mass, 62.0±12.1 kg). All participants were non-smokers, free of any cerebrovascular or cardiovascular disease and were not taking any over-the-counter or prescribed medication. Before the experiment, participants were required to abstain from caffeinated beverages, strenuous exercise, and alcohol for 24h. Furthermore, the participants were instructed to consume a light meal 4h prior to the start of the experiment in order to minimize the potential effect of individual meals on cardiorespiratory and cerebrovascular responses.

Design

All measurements were performed on the same day for each participant. This study was conducted using the following two body position: supine and 50° HUT conditions. Participants did not move their head in an attempt to prevent any potential confounds associated with vestibular activation (Hume and Ray, 1999; Ogoh et al., 2018). After instrumentation, participants were placed on the tilt table. To characterize cerebral blood velocities and respiratory responses to hypercapnia, the participants breathed through a face mask and inspired a selected gas mixture from a Douglas bag containing 5.0% CO₂, 21.0% O₂ balanced with N₂ [inspired CO₂ (F_ICO₂) = 5%] during supine and 50° HUT. After 20 min rest at either position, 8 min of baseline data were recorded while breathing room air. After baseline recording, the hypercapnia trial was induced by a rapid change in the F_ICO₂ and lasted for 9 min. It takes a few minutes for fluid shifts to reach equilibrium following a change in body position (Ogoh et al., 2003). Equally, positional changes alter pulmonary ventilation (Ogoh et al., 2013) taking *circa* 7–8 min to reach steady-state subsequent to chemoreflex activation (Poon and Greene, 1985). Thus, we allowed a 20 min period that we considered adequate for steady-state equilibration. After each trial, body position was changed, and the participants rested for at least 20 min while inspiring room air. Following that, the other trial was conducted in the same manner. The order of the supine and 50° HUT trials was randomized for each participant. The room temperature was set at 24–25°C.

Measurements

Heart rate (HR) was measured using a lead II electrocardiogram (bedside monitor, BMS-3400; Nihon Kohden, Tokyo, Japan). Beat-to-beat arterial blood pressure (ABP) was monitored continuously using a finger photoplethysmography (Finapres Medical Systems, Amsterdam, Netherlands) with a cuff placed on the middle finger of the left hand. Stroke volume (SV) and cardiac output (Q) were determined from the ABP waveform using a Modelflow software program, which incorporates the sex, age, stature, and body mass of the participants (Beat Scope1.1; Finapres Medical Systems). MCA V and PCA V were measured as surrogate metrics for regional CBF through the right and left temporal windows, respectively, using transcranial Doppler ultrasonography (TCD) system (DWL Doppler Box-X; Compumedics, Singen, Germany). The TCD probe was fixed and held in a measurement position using a dedicated headband (Elastic headband, DWL) to maintain a constant insonation angle throughout the experiment. For characterization of respiratory responses to hypercapnia, participants breathed through a leak-free respiratory mask attached to a flowmeter and two-way valve. The valve mechanism allowed participants to inspire room air or a gas mixture from a 300-liter Douglas bag. Pulmonary ventilation (\dot{V}_E), tidal volume (V_t), and end-tidal partial pressure of CO₂ (P_{ET}CO₂) were measured breath-by-breath using an automated gas analyzer (AE-310S, Minato Medical Science Co., Osaka, Japan).

Data Analysis

All data were sampled continuously at 1 kHz using an analog-to-digital converter (Power Lab 16s; AD Instruments, Sydney, Australia) and stored on a laboratory computer for offline analysis. Mean arterial pressure (MAP), mean MCA V (MCA V_{mean}), and mean PCA V (PCA V_{mean}) were obtained from each waveform and resampled at 1 Hz. The predicted partial pressure of arterial CO₂ (PaCO₂) was derived from P_{ET}CO₂ to V_t using the following equation (Jones et al., 1979).

$$\text{Predicted PaCO}_2 = 5.5 + 0.9 * P_{ET}CO_2 - 0.0021 * V_t$$

Importantly, a previous study (Miyamoto et al., 2014) demonstrated that the relationship between P_{ET}CO₂ and PaCO₂ was unchanged by differential changes in central blood volume shifts. During supine and 50° HUT, all variables were averaged over 60 s immediately before CO₂ administration and end of hypercapnia trial for baseline and steady-state measurements.

Dynamic responses of \dot{V}_E , predicted PaCO₂, MCA V_{mean}, and PCA V_{mean} were evaluated using a one-compartment nonlinear least-squares optimization method. The remaining data of onset responses of predicted PaCO₂, MCA V_{mean}, PCA V_{mean}, and \dot{V}_E were fitted to the following single-exponential regression equation consisting of the response time latency [CO₂-response delay (t_0)], baseline value, gain term (G), and time constant (τ) fitted to the CO₂ administration protocol:

$$y = G * \{1 - \exp[-(t - t_0) / \tau]\} + y_0$$

where y is the response, t is time, and y_0 is a baseline value. Time 0 reflects start of CO₂ administration (Figure 1).

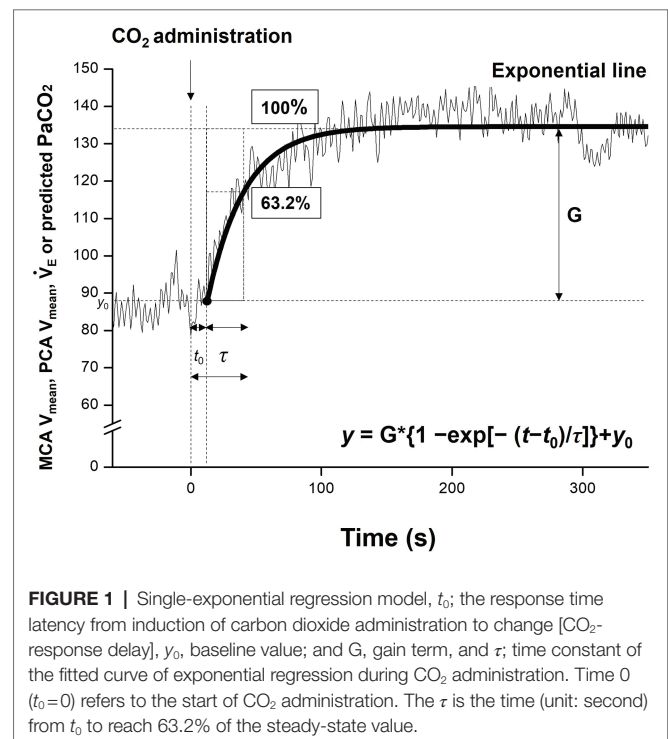


FIGURE 1 | Single-exponential regression model, t_0 : the response time latency from induction of carbon dioxide administration to change [CO₂-response delay], y_0 , baseline value; and G, gain term, and τ ; time constant of the fitted curve of exponential regression during CO₂ administration. Time 0 ($t_0=0$) refers to the start of CO₂ administration. The τ is the time (unit: second) from t_0 to reach 63.2% of the steady-state value.

Statistical Analysis

Data from our pilot study ($n=5$) were used to perform prospectively power analysis in this study with an assumed type 1 error of 0.05 and statistical power of 80% to detect differences in τ assessed by MCA V_{mean} between supine and 50° HUT conditions. This power analysis indicated that the critical sample size was estimated to be 10 participants.

All data were analyzed using SPSS (IBM SPSS Statistics Version 27.0) and expressed as mean \pm standard deviation (SD). A linear mixed model with fixed effects for Condition (supine vs. 50° HUT) or Time (baseline vs. hypercapnia) was used to compare steady-state data. Before the analysis for dynamic responses of the respiratory chemoreflex and CVR to hypercapnia during supine and 50° HUT, the Shapiro–Wilk's test was applied to verify the normal distribution for each variable. The distribution normality was confirmed in variables ($W \geq 0.870$, $p \geq 0.081$), excluding t_0 of \dot{V}_E , MCA V_{mean} and PCA V_{mean} , τ of MCA V_{mean} and PCA V_{mean} , $\tau + t_0$ of PaCO₂, and G of predicted MCA V_{mean} , PCA V_{mean} , and PaCO₂ ($W \geq 0.713$, $p \leq 0.045$). To compare normally distributed outcomes between conditions, we incorporated paired samples t -tests. Wilcoxon matched-pairs signed ranks tests were employed where appropriate as a non-parametric equivalent. Statistical significance was set at $p < 0.05$.

RESULTS

Loss to Follow-Up

Steady-state \dot{V}_E and PCA V signals were not acquired in one participant. Thus, overall data analyzes included a sample size of 12 participants.

Steady-State Responses to CO₂ at Supine and 50° HUT

Table 1 outlines the hemodynamic and respiratory responses during supine and 50° HUT. During 50° HUT, SV and MCA V_{mean} decreased ($p < 0.006$), whereas HR and MAP increased

compared to supine ($p < 0.049$). During hypercapnia, MAP, Q, MCA V_{mean} , PCA V_{mean} , \dot{V}_E , V_t , P_{ET}CO₂, and predicted PaCO₂ were elevated throughout both supine and 50° HUT conditions ($p < 0.010$).

Dynamic Response to CO₂ Administration at Supine and 50° HUT

The onset of response of predicted PaCO₂ to CO₂ administration was faster than that of other variables (i.e., MCA V_{mean} , PCA V_{mean} , and \dot{V}_E), but this response did not differ between supine and 50° HUT (G: predicted PaCO₂, $p = 0.754$ and $t_0 + \tau$: predicted PaCO₂, $p = 0.489$, **Figure 2**).

Following the change in predicted PaCO₂, change in MCA V_{mean} , PCA V_{mean} , and \dot{V}_E also fitted to the similar exponential onset curve during hypercapnia (**Figure 3**). Despite different steady-state MCA V_{mean} , PCA V_{mean} and \dot{V}_E during hypercapnia between conditions, G and t_0 , the fitting curve variable of MCA V_{mean} , PCA V_{mean} , and \dot{V}_E did not differ between supine and 50° HUT (G: MCA V_{mean} , $p = 0.182$; PCA V_{mean} , $p = 0.530$ and \dot{V}_E , $p = 0.838$; t_0 : MCA V_{mean} , $p = 0.413$; PCA V_{mean} , $p = 0.350$ and \dot{V}_E , $p = 0.139$). In contrast, the average of τ of MCA V_{mean} was elevated compared to supine, indicating that the onset of MCA V_{mean} response was slower during 50° HUT ($p = 0.003$) while that of PCA V_{mean} , \dot{V}_E did not differ between conditions (PCA V_{mean} , $p = 0.071$; \dot{V}_E , $p = 0.707$).

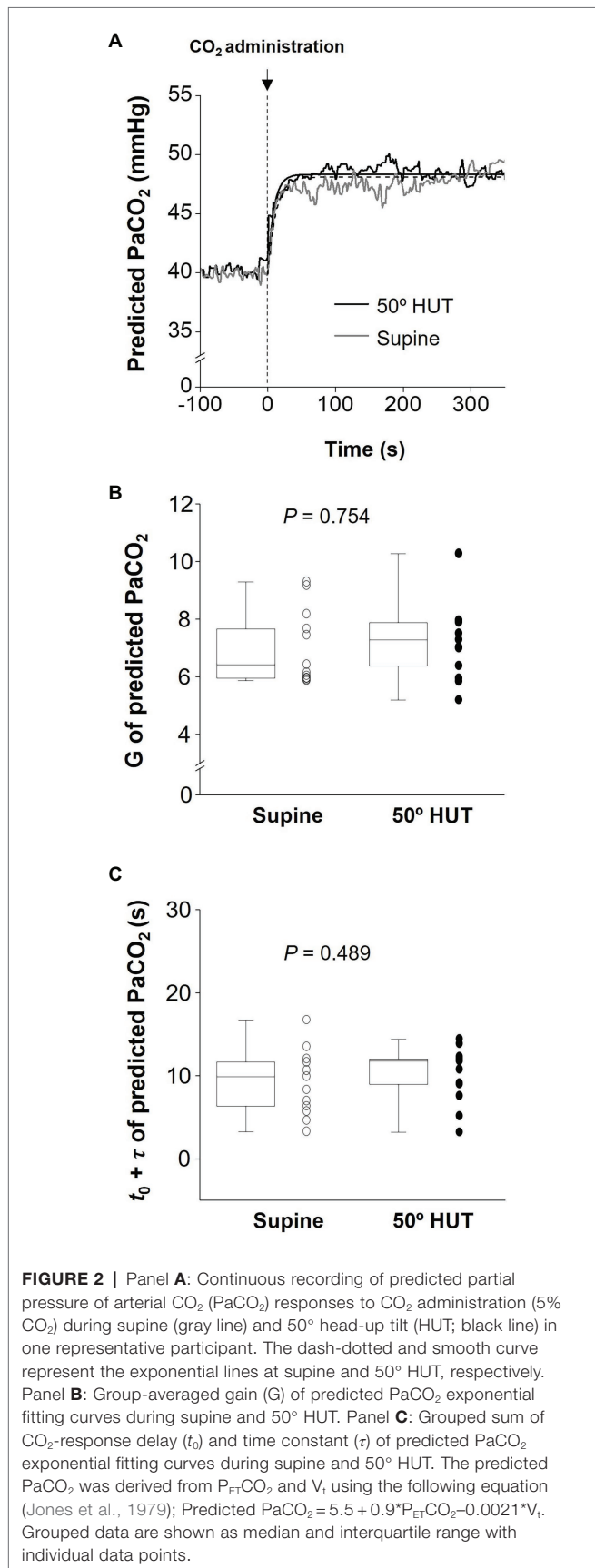
DISCUSSION

The present study has identified two novel findings. First and consistent with our original hypothesis, acute gravitational stress selectively impaired dynamic CVR in the anterior cerebral circulation, whereas the posterior circulation was preserved. Second, albeit contrary to original expectations, this impairment was independent of any changes to the central respiratory chemoreflex. Collectively, these findings further highlight the regional heterogeneity underlying CBF autochemoregulation

TABLE 1 | Hemodynamic and respiratory variables during baseline and hypercapnia.

Condition time	Supine		50° HUT		Time	Values of p	
	Baseline	Hypercapnia	Baseline	Hypercapnia		Condition	Interaction
HR, beats/min	63 \pm 10	64 \pm 9	75 \pm 14	77 \pm 15	0.157	<0.001	0.811
MAP, mmHg	94 \pm 6	96 \pm 6	95 \pm 8	99 \pm 6	0.005	0.049	0.489
SV, ml	95 \pm 14	99 \pm 14	80 \pm 19	87 \pm 23	0.113	<0.001	0.598
Q, l/min	5.9 \pm 1.0	6.3 \pm 0.8	5.7 \pm 0.8	6.3 \pm 1.0	0.010	0.578	0.462
MCA V_{mean} , cm/s	81 \pm 19	96 \pm 25	77 \pm 19	91 \pm 17	<0.001	0.006	0.075
PCA V_{mean} , cm/s	44 \pm 8	55 \pm 15	43 \pm 7	52 \pm 12	<0.001	0.115	0.453
\dot{V}_E , l/min	9.1 \pm 1.5	17.6 \pm 3.6	9.0 \pm 1.7	17.6 \pm 4.6	<0.001	0.911	0.979
V_t , ml	632 \pm 133	1,163 \pm 302	573 \pm 117	1,105 \pm 318	<0.001	0.224	0.985
P _{ET} CO ₂ , mmHg	40.1 \pm 2.3	48.6 \pm 1.8	39.4 \pm 2.4	48.3 \pm 2.5	<0.001	0.238	0.716
Predicted PaCO ₂ , mmHg	40.0 \pm 2.0	46.7 \pm 1.6	39.5 \pm 2.0	46.3 \pm 2.0	<0.001	0.155	0.892

Value are means \pm SD. HR, heart rate; MAP, mean arterial pressure; SV, stroke volume; Q, cardiac output; MCA V_{mean} , mean middle cerebral artery blood velocity; PCA V_{mean} , mean posterior cerebral artery blood velocity; \dot{V}_E , minute ventilation; V_t , tidal volume; P_{ET}CO₂, end-tidal partial pressure of carbon dioxide; and predicted PaCO₂, predicted partial pressure of arterial carbon dioxide.

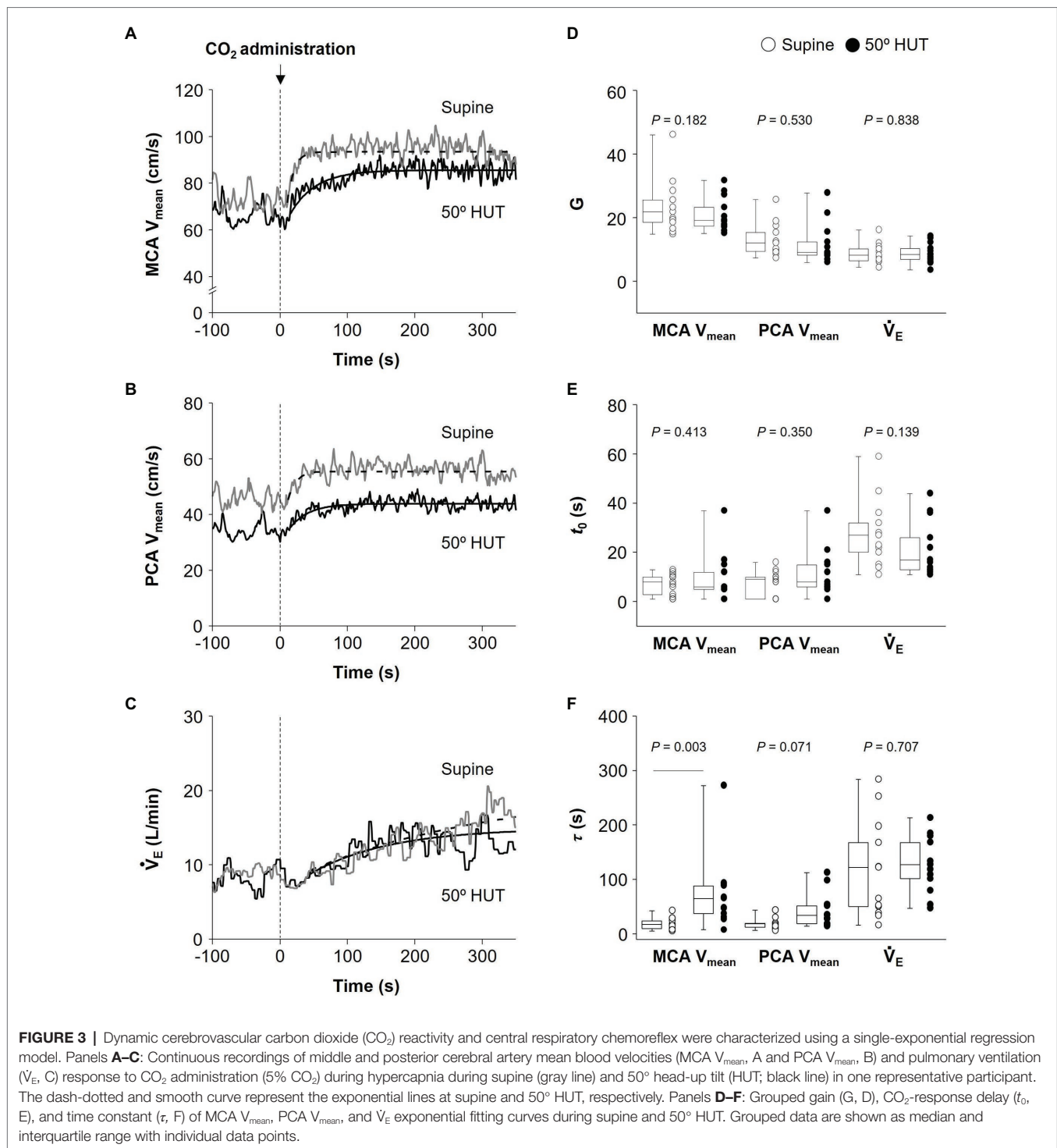


that may have translational implications for the microgravity (and hypercapnia) associated with deep-space flight notwithstanding terrestrial orthostatic diseases that have been linked to accelerated cognitive decline and neurodegeneration.

Prior studies have identified that changes in central blood volume (CBV) modify ventilation (Miyamoto et al., 2014). For example, increased CBV through water immersion causes hypoventilation, in contrast, a lower body negative pressure-induced decrease in CBV causes hyperventilation. This modification may be linked to a CBV-induced change in CBF (Ogoh et al., 2013). In support, Ogoh et al. (2013) demonstrated that an orthostatic stress-mediated reduction in CBF induced a leftward shift of the central respiratory chemoreflex (\dot{V}_E -P_{ET}CO₂ relationship) without altering its sensitivity (Miyamoto et al., 2014), indicating an elevated \dot{V}_E for any given P_{ET}CO₂. This finding indicates that the gravitational stress-induced reduction in CBF likely attenuated cerebral CO₂ (elimination) “washout” causing hyperpnea following autochemoactivation of the central respiratory chemoreflex. Given such conflict, we herein speculated that the onset (dynamic) response of ventilation to hypercapnia would be altered *via* a gravitational stress-induced change in CBV since orthostatic stress causes hyperventilation (Ogoh et al., 2013) *via* an interaction between CBF regulation and respiratory response (Ogoh et al., 2008, 2009, 2019). However, contrary to our original expectations, HUT failed to alter the onset response of ventilation to hypercapnia. Importantly, these findings indicate that alteration in CBF regulation was independent of the central chemoreflex.

In contrast to published data indicating that orthostatic stress failed to alter steady-state CVR (Tymko et al., 2015), our findings indicate that the (dynamic) onset of CVR was attenuated by gravitational stress and selectively constrained to the anterior circulation. This apparent contradiction clearly highlights the importance of the “on-kinetic” when exploring the physiological response to hypercapnia. In addition, a steady-state data determined CVR includes central respiratory chemoreflex, indicating that steady-state CVR may not reflect a purely cerebrovascular response (Ogoh et al., 2009). Indeed, it has been reported the different response between steady-state and onset dynamic response of CVR, for example, exercise enhanced the steady-state CVR (Rasmussen et al., 2006), in contrast, the onset response of CVR unchanged during exercise (Ogoh et al., 2009). Similarly to the previous study, the finding of the present study indicates that the onset (dynamic) cerebrovascular response to CO₂ is different from the traditional steady-state CVR against gravitational stress. However, further research is warranted to identify the underlying mechanisms.

In contrast, the posterior cerebrovascular response to CO₂ was unchanged during HUT, replicating traditional steady-state CVR data of MCA V_{mean} and PCA V_{mean} responses (Tymko et al., 2015). Several observations may indirectly explain these differential findings. The posterior circulation is characterized by lower dynamic cerebral autoregulation compared to the anterior circulation (Sato et al., 2012a) notwithstanding other factors including some reports of comparatively lower sympathetic innervation (Edvinsson, 1975) and CO₂ vasoreactivity (Sato et al., 2012b) and thus better equipped to “defend” CBF against acute changes in



CBV. This makes teleological sense given that the territories the vertebral-basilar system feeds, notably the medulla oblongata, cerebellum, hypothalamus, thalamus, and brainstem, are phylogenetically older with priority over other (younger, more anterior) regions for O_2 and glucose supply given their arguably more critical roles in maintaining homeostasis (Bailey, 2019). However, the mechanism of the effect of gravitational

stress on regional differences in dynamic cerebrovascular response to CO_2 between anterior and posterior cerebral arteries remains unknown and warrants further consideration in follow-up studies. One possible mechanism is the different CBF responses between anterior and posterior cerebral arteries to HUT. It has been reported that the decrease in posterior CBF during gravitational stress is lower than that of anterior

CBF (Ogoh et al., 2015). It is possible that gravitational stress-induced CBF reduction in the anterior cerebral artery may be associated with an attenuation in the cerebrovascular response to CO₂.

LIMITATIONS

Potential limitations of the present study warrant careful consideration. First, the TCD-determined MCA V_{mean} and PCA V_{mean} are widely used as an index of anterior and posterior (intracranial) CBF, respectively (Tymko et al., 2015; Washio et al., 2020). While this approach provides excellent continuous high-resolution sampling of CBF kinetics, it would have been interesting to “map” perfusion through other intra/extracranial vessels given the aforementioned perfusion heterogeneity and site-specific differences in autochemoregulation, e.g., MCA vs. anterior cerebral artery (Jorgensen et al., 1992; Linkis et al., 1995), and PCA vs. vertebral artery (Washio et al., 2017). In addition, this methodological technique can identify a transient change in CBF, albeit limited by the misplaced assumption that artery diameter remains constant. Previous work (Willie et al., 2011) clearly demonstrates that there is likely to be some degree of vasodilation induced by the increases in $P_{\text{ET}}\text{CO}_2$ stimulated in the present study. Indeed, Al-Khazra et al. (Al-Khazraji et al., 2021) demonstrated that step changes in CO₂ altered the MCA diameter despite no change in MCA diameter during the ramp CO₂ stimulation, indicating that the protocol of the present study may have potentially underestimated CVR but it is unclear whether orthostatic stress modifies this limitation. The human brain has evolved heightened sensitivity to PaCO₂/H⁺ (more so than PaO₂) that extends throughout the cerebrovasculature, from the large extracranial and intracranial conduit and middle cerebral arteries through to the smallest pial arterioles and parenchymal vessels, prioritizing the buffering of brain tissue pH for stabilization of chemosensory and autonomic control at the level of the brainstem (Bailey et al., 2017). In addition, orthostatic stress causes hypocapnia subsequent to hyperventilation effecting a reduction in CBF (Ogoh et al., 2013, 2019). However, in the present study, V_E was unchanged during orthostatic stress ($p=0.871$). Furthermore, the definitely addressing how varying degrees of gravity notwithstanding differences in age, sex, race, medication, altitude acclimatization, atmospheric pressure, physical training, etc. on CVR may be important for the space physiology but it remains unclear in the present study. Finally, we observed differences in MAP between the two trials highlighting two distinct mechanisms that could potentially influence CBF; mechanical (pressure-induced) and chemo (CO₂-induced) autoregulation, with ongoing controversy as to which mechanism “dominates.” Evidence suggests that nitric oxide (NO) is more important for chemo as opposed to the mechanoregulation of CBF (Weiss et al., 1979; Buchanan and Phillis, 1993; Thompson et al., 1996). Indeed, low doses of a NO donor, without causing major systemic hemodynamic perturbations, have been shown to blunt hyperventilation-mediated cerebral vasoconstriction and enhance the vasodilatory effect of hypercapnia, shifting

the vasomotor CO₂-reactivity slope to the left. Furthermore, rapid changes in pH that occur during hypercapnia serve as an important modulator of NO synthase. Equally, pharmacological manipulation of opiate receptors, prostaglandins, ATP-dependent K⁺ channel activation, and free radicals modulates the CO₂-NO axis and underlying cerebral vasomotor reactivity (Lavi et al., 2003). To what extent redox-sensitive mechanisms activated by the shear stress imparted by HUT-induced CBV shifts contribute to the observed findings cannot be ignored and warrants further consideration in follow-up research.

CONCLUSION

In contrast to steady-state CVR, the onset of cerebrovascular to CO₂ during gravitational stress was selectively impaired in the anterior but not posterior cerebral circulation. These findings indicate that dynamic CBF regulation may contribute to microgravity-induced cognitive dysfunction.

DATA AVAILABILITY STATEMENT

The raw data supporting the conclusions of this article will be made available by the authors, without undue reservation.

ETHICS STATEMENT

The studies involving human participants were reviewed and approved by the Institutional Review Board at Toyo University. The patients/participants provided their written informed consent to participate in this study.

AUTHOR CONTRIBUTIONS

HW and SO conceptualized and designed the research. HW, SS, TW, and SO performed the experiments. HW and SS analyzed the data. HW, DB, and SS interpreted the results of experiments. HW prepared the figures. HW, SO, and DB drafted the manuscript. All authors edited, revised, and approved final version of manuscript.

FUNDING

SO is supported by a Grant-in-Aid for Scientific Research [Grant Number 15H003098] from the Japanese Ministry of Education, Culture, Sports, Science and Technology. DB was supported by a Royal Society Wolfson Research Fellowship (#WM170007) and Japan Society for the Promotion of Science (#JSPS/OF317).

ACKNOWLEDGMENTS

We appreciate the commitment of all participants.

REFERENCES

- Ainslie, P. N., and Duffin, J. (2009). Integration of cerebrovascular CO₂ reactivity and chemoreflex control of breathing: mechanisms of regulation, measurement, and interpretation. *Am. J. Physiol. Regul. Integr. Comp. Physiol.* 296, R1473–R1495. doi: 10.1152/ajpregu.91008.2008
- Al-Khazraji, B. K., Buch, S., Kadem, M., Matuszewski, B. J., Norozi, K., Menon, R. S., et al. (2021). Protocol-dependence of middle cerebral artery dilation to modest hypercapnia. *Appl. Physiol. Nutr. Metab.* 46, 1038–1046. doi: 10.1139/apnm-2021-0220
- Bailey, D. M. (2019). Oxygen, evolution and redox signalling in the human brain: quantum in the quotidian. *J. Physiol.* 597, 15–28. doi: 10.1113/JP276814
- Bailey, D. M., Ainslie, P. N., Petersen, L., and Zu Eulenburg, P. (2021). Jumping at a chance to control cerebral blood flow in astronauts. *Exp. Physiol.* 106, 1407–1409. doi: 10.1113/EP089648
- Bailey, D. M., Laneelle, D., Trihan, J. E., Marchi, N., Stacey, B. S., Tamiya, K., et al. (2020). Gravitational transitions increase posterior cerebral perfusion and systemic oxidative-nitrosative stress: implications for neurovascular unit integrity. *Neuroscience* 441, 142–160. doi: 10.1016/j.neuroscience.2020.05.048
- Bailey, D. M., Willie, C. K., Hoiland, R. L., Bain, A. R., Macleod, D. B., Santoro, M. A., et al. (2017). Surviving without oxygen: how low can the human brain go? *High Alt. Med. Biol.* 18, 73–79. doi: 10.1089/ham.2016.0081
- Buchanan, J. E., and Phillis, J. W. (1993). The role of nitric oxide in the regulation of cerebral blood flow. *Brain Res.* 610, 248–255. doi: 10.1016/0006-8993(93)91408-K
- Calverley, T. A., Ogoh, S., Marley, C. J., Steggall, M., Marchi, N., Brassard, P., et al. (2020). HIITing the brain with exercise: mechanisms, consequences and practical recommendations. *J. Physiol.* 598, 2513–2530. doi: 10.1113/JP275021
- Chesler, M. (2003). Regulation and modulation of pH in the brain. *Physiol. Rev.* 83, 1183–1221. doi: 10.1152/physrev.00010.2003
- Edvinsson, L. (1975). Neurogenic mechanisms in the cerebrovascular bed. Autonomic nerves, amine receptors and their effects on cerebral blood flow. *Acta Physiol. Scand. Suppl.* 427, 1–35.
- Ellingsen, I., Hauge, A., Nicolaysen, G., Thoresen, M., and Walloe, L. (1987). Changes in human cerebral blood flow due to step changes in PaO₂ and PaCO₂. *Acta Physiol. Scand.* 129, 157–163. doi: 10.1111/j.1748-1716.1987.tb08054.x
- Haubrich, C., Wendt, A., Diehl, R. R., and Klotzsch, C. (2004). Dynamic autoregulation testing in the posterior cerebral artery. *Stroke* 35, 848–852. doi: 10.1161/01.STR.0000120729.99039.B6
- Hume, K. M., and Ray, C. A. (1999). Sympathetic responses to head-down rotations in humans. *J. Appl. Physiol.* 86, 1971–1976. doi: 10.1152/jappl.1999.86.6.1971
- Jones, N. L., Robertson, D. G., and Kane, J. W. (1979). Difference between end-tidal and arterial PCO₂ in exercise. *J. Appl. Physiol. Respir. Environ. Exerc. Physiol.* 47, 954–960. doi: 10.1152/jappl.1979.47.5.954
- Jorgensen, L. G., Perko, G., and Secher, N. H. (1992). Regional cerebral artery mean flow velocity and blood flow during dynamic exercise in humans. *J. Appl. Physiol.* 73, 1825–1830. doi: 10.1152/jappl.1992.73.5.1825
- Kim, D., Hughes, T. M., Lipford, M. E., Craft, S., Baker, L. D., Lockhart, S. N., et al. (2021). Relationship between cerebrovascular reactivity and cognition among people with risk of cognitive decline. *Front. Physiol.* 12:645342. doi: 10.3389/fphys.2021.645342
- Lavi, S., Egbarya, R., Lavi, R., and Jacob, G. (2003). Role of nitric oxide in the regulation of cerebral blood flow in humans: chemoregulation versus mechanoregulation. *Circulation* 107, 1901–1905. doi: 10.1161/01.CIR.0000057973.99140.5A
- Lavi, S., Gaitini, D., Milloul, V., and Jacob, G. (2006). Impaired cerebral CO₂ vasoreactivity: association with endothelial dysfunction. *Am. J. Physiol. Heart Circ. Physiol.* 291, H1856–H1861. doi: 10.1152/ajpheart.00014.2006
- Lee, S. T., Jung, K. H., and Lee, Y. S. (2007). Decreased vasomotor reactivity in Alzheimer's disease. *J. Clin. Neurol.* 3, 18–23. doi: 10.3988/jcn.2007.3.1.18
- Linkis, P., Jorgensen, L. G., Olesen, H. L., Madsen, P. L., Lassen, N. A., and Secher, N. H. (1995). Dynamic exercise enhances regional cerebral artery mean flow velocity. *J. Appl. Physiol.* 78, 12–16. doi: 10.1152/jappl.1995.78.1.12
- Miyamoto, T., Bailey, D. M., Nakahara, H., Ueda, S., Inagaki, M., and Ogoh, S. (2014). Manipulation of central blood volume and implications for respiratory control function. *Am. J. Physiol. Heart Circ. Physiol.* 306, H1669–H1678. doi: 10.1152/ajpheart.00987.2013
- Nakagawa, K., Serrador, J. M., Larose, S. L., Moslehi, F., Lipsitz, L. A., and Sorond, F. A. (2009). Autoregulation in the posterior circulation is altered by the metabolic state of the visual cortex. *Stroke* 40, 2062–2067. doi: 10.1161/STROKEAHA.108.545285
- Ogoh, S. (2019). Interaction between the respiratory system and cerebral blood flow regulation. *J. Appl. Physiol.* 127, 1197–1205. doi: 10.1152/jappphysiol.00057.2019
- Ogoh, S., and Ainslie, P. N. (2009a). Cerebral blood flow during exercise: mechanisms of regulation. *J. Appl. Physiol.* 107, 1370–1380. doi: 10.1152/jappphysiol.00573.2009
- Ogoh, S., and Ainslie, P. N. (2009b). Regulatory mechanisms of cerebral blood flow during exercise: new concepts. *Exerc. Sport Sci. Rev.* 37, 123–129. doi: 10.1097/JES.0b013e3181aa64d7
- Ogoh, S., Ainslie, P. N., and Miyamoto, T. (2009). Onset responses of ventilation and cerebral blood flow to hypercapnia in humans: rest and exercise. *J. Appl. Physiol.* 106(3), 880–886. doi: 10.1152/jappphysiol.91292.2008
- Ogoh, S., Hayashi, N., Inagaki, M., Ainslie, P. N., and Miyamoto, T. (2008). Interaction between the ventilatory and cerebrovascular responses to hypo- and hypercapnia at rest and during exercise. *J. Physiol.* 586, 4327–4338. doi: 10.1113/jphysiol.2008.157073
- Ogoh, S., Marais, M., Lericollais, R., Denise, P., Raven, P. B., and Normand, H. (2018). Interaction between graviception and carotid baroreflex function in humans during parabolic flight-induced microgravity. *J. Appl. Physiol.* 125(2), 634–641. doi: 10.1152/jappphysiol.00198.2018
- Ogoh, S., Nakahara, H., Okazaki, K., Bailey, D. M., and Miyamoto, T. (2013). Cerebral hypoperfusion modifies the respiratory chemoreflex during orthostatic stress. *Clin. Sci. (Lond.)* 125, 37–44. doi: 10.1042/CS201200335
- Ogoh, S., Sato, K., Okazaki, K., Miyamoto, T., Hirasawa, A., Sadamoto, T., et al. (2015). Blood flow in internal carotid and vertebral arteries during graded lower body negative pressure in humans. *Exp. Physiol.* 100, 259–266. doi: 10.1113/expphysiol.2014.083964
- Ogoh, S., Shibata, S., Ito, G., and Miyamoto, T. (2020). Dynamic characteristics of cerebrovascular reactivity or ventilatory response to change in carbon dioxide. *Exp. Physiol.* 105, 1515–1523. doi: 10.1113/EP088800
- Ogoh, S., Volianitis, S., Nissen, P., Wray, D. W., Secher, N. H., and Raven, P. B. (2003). Carotid baroreflex responsiveness to head-up tilt-induced central hypovolaemia: effect of aerobic fitness. *J. Physiol.* 551, 601–608. doi: 10.1113/jphysiol.2003.046029
- Poon, C. S., and Greene, J. G. (1985). Control of exercise hyperpnea during hypercapnia in humans. *J. Appl. Physiol.* 59, 792–797. doi: 10.1152/jappl.1985.59.3.792
- Rasmussen, P., Stie, H., Nielsen, B., and Nybo, L. (2006). Enhanced cerebral CO₂ reactivity during strenuous exercise in man. *Eur. J. Appl. Physiol.* 96, 299–304. doi: 10.1007/s00421-005-0079-3
- Richiardi, J., Monsch, A. U., Haas, T., Barkhof, F., Van De Ville, D., Radu, E. W., et al. (2015). Altered cerebrovascular reactivity velocity in mild cognitive impairment and Alzheimer's disease. *Neurobiol. Aging* 36, 33–41. doi: 10.1016/j.neurobiolaging.2014.07.020
- Salazar, A. P., Hupfeld, K. E., Lee, J. K., Banker, L. A., Tays, G. D., Beltran, N. E., et al. (2021). Visuomotor adaptation brain changes during a spaceflight analog with elevated carbon dioxide (CO₂): A pilot study. *Front. Neural Circuits* 15:659557. doi: 10.3389/fncir.2021.659557
- Salazar, A. P., Hupfeld, K. E., Lee, J. K., Beltran, N. E., Kofman, I. S., De Dios, Y. E., et al. (2020). Neural working memory changes during a spaceflight analog With elevated carbon dioxide: A pilot study. *Front. Syst. Neurosci.* 14:48. doi: 10.3389/fnsys.2020.00048
- Sato, K., Fisher, J. P., Seifert, T., Overgaard, M., Secher, N. H., and Ogoh, S. (2012a). Blood flow in internal carotid and vertebral arteries during orthostatic stress. *Exp. Physiol.* 97, 1272–1280. doi: 10.1113/expphysiol.2012.064774
- Sato, K., Sadamoto, T., Hirasawa, A., Oue, A., Subudhi, A. W., Miyazawa, T., et al. (2012b). Differential blood flow responses to CO₂ in human internal and external carotid and vertebral arteries. *J. Physiol.* 590, 3277–3290. doi: 10.1113/jphysiol.2012.230425
- Shapiro, E., Wasserman, A. J., and Patterson, J. L. Jr. (1965). Human cerebrovascular response time to elevation of arterial carbon dioxide tension. *Arch. Neurol.* 13, 130–138. doi: 10.1001/archneur.1965.00470020020003

- Siesjo, B. K. (1972). Symposium on acid-base homeostasis. The regulation of cerebrospinal fluid pH. *Kidney Int.* 1, 360–374. doi: 10.1038/ki.1972.47
- Silvestrini, M., Pasqualetti, P., Baruffaldi, R., Bartolini, M., Handouk, Y., Matteis, M., et al. (2006). Cerebrovascular reactivity and cognitive decline in patients with Alzheimer disease. *Stroke* 37, 1010–1015. doi: 10.1161/01.STR.0000206439.62025.97
- Skow, R. J., Mackay, C. M., Tymko, M. M., Willie, C. K., Smith, K. J., Ainslie, P. N., et al. (2013). Differential cerebrovascular CO₂ reactivity in anterior and posterior cerebral circulations. *Respir. Physiol. Neurobiol.* 189, 76–86. doi: 10.1016/j.resp.2013.05.036
- Thompson, B. G., Pluta, R. M., Girton, M. E., and Oldfield, E. H. (1996). Nitric oxide mediation of chemoregulation but not autoregulation of cerebral blood flow in primates. *J. Neurosurg.* 84, 71–78. doi: 10.3171/jns.1996.84.1.0071
- Tymko, M. M., Skow, R. J., Mackay, C. M., and Day, T. A. (2015). Steady-state tilt has no effect on cerebrovascular CO₂ reactivity in anterior and posterior cerebral circulations. *Exp. Physiol.* 100, 839–851. doi: 10.1113/EP085084
- Washio, T., Sasaki, H., and Ogoh, S. (2017). Transcranial Doppler-determined change in posterior cerebral artery blood flow velocity does not reflect vertebral artery blood flow during exercise. *Am. J. Physiol. Heart Circ. Physiol.* 312, H827–H831. doi: 10.1152/ajpheart.00676.2016
- Washio, T., Vranish, J. R., Kaur, J., Young, B. E., Katayama, K., Fadel, P. J., et al. (2018). Acute reduction in posterior cerebral blood flow following isometric handgrip exercise is augmented by lower body negative pressure. *Physiol. Rep.* 6:e13886. doi: 10.14814/phy2.13886
- Washio, T., Watanabe, H., and Ogoh, S. (2020). Dynamic cerebral autoregulation in anterior and posterior cerebral circulation during cold pressor test. *J. Physiol. Sci.* 70:1. doi: 10.1186/s12576-020-00732-7
- Weiss, M. H., Spence, J., Apuzzo, M. L., Heiden, J. S., McComb, J. G., and Kurze, T. (1979). Influence of nitroprusside on cerebral pressure autoregulation. *Neurosurgery* 4, 56–59. doi: 10.1227/00006123-197901000-00011
- Willie, C. K., Colino, F. L., Bailey, D. M., Tzeng, Y. C., Binsted, G., Jones, L. W., et al. (2011). Utility of transcranial Doppler ultrasound for the integrative assessment of cerebrovascular function. *J. Neurosci. Methods* 196, 221–237. doi: 10.1016/j.jneumeth.2011.01.011

Conflict of Interest: DB is Chair of the Life Sciences Working Group and *ex-officio* member of the Human Spaceflight and Exploration Science Advisory Committee to the European Space Agency and Member of the Space Exploration Advisory Committee to the UK Space Agency.

The remaining authors declare that the research was conducted in the absence of any commercial or financial relationships that could be construed as a potential conflict of interest.

Publisher's Note: All claims expressed in this article are solely those of the authors and do not necessarily represent those of their affiliated organizations, or those of the publisher, the editors and the reviewers. Any product that may be evaluated in this article, or claim that may be made by its manufacturer, is not guaranteed or endorsed by the publisher.

Copyright © 2022 Watanabe, Saito, Washio, Bailey and Ogoh. This is an open-access article distributed under the terms of the Creative Commons Attribution License (CC BY). The use, distribution or reproduction in other forums is permitted, provided the original author(s) and the copyright owner(s) are credited and that the original publication in this journal is cited, in accordance with accepted academic practice. No use, distribution or reproduction is permitted which does not comply with these terms.