

# Sex Differences in Instantaneous Wave-Free Ratio or Fractional Flow Reserve-Guided Revascularization Strategy



Chee Hae Kim, MD,<sup>a</sup> Bon-Kwon Koo, MD, PhD,<sup>b,c</sup> Hakim-Moulay Dehbi, PhD,<sup>d</sup> Joo Myung Lee, MD, MPH, PhD,<sup>e</sup> Joon-Hyung Doh, MD, PhD,<sup>f</sup> Chang-Wook Nam, MD, PhD,<sup>g</sup> Eun-Seok Shin, MD, PhD,<sup>h</sup> Christopher M. Cook, MBBS, PhD,<sup>i</sup> Rasha Al-Lamee, MBBS, PhD,<sup>i</sup> Ricardo Petraco, MD, PhD,<sup>i</sup> Sayan Sen, MBBS, PhD,<sup>i</sup> Iqbal S. Malik, PhD,<sup>i</sup> Sukhjinder S. Nijjer, MChB, PhD,<sup>i</sup> Hernán Mejía-Rentería, MD,<sup>j</sup> Eduardo Alegria-Barrero, MD, PhD,<sup>k</sup> Ali Alghamdi, MD,<sup>l</sup> John Altman, MD,<sup>m</sup> Sérgio B. Baptista, MD, PhD,<sup>n</sup> Ravinay Bhindi, MB, BS, PhD,<sup>o</sup> Waldemar Bojara, MD,<sup>p</sup> Salvatore Brugaletta, MD, PhD,<sup>q</sup> Pedro Canas Silva, MD,<sup>r</sup> Carlo Di Mario, MD, PhD,<sup>s,t</sup> Andrejs Erglis, MD, PhD,<sup>u</sup> Robert T. Gerber, PhD,<sup>v</sup> Olaf Going, MD,<sup>w</sup> Tobias Härle, MD,<sup>x</sup> Farrel Hellig, MB, BS,<sup>y</sup> Ciro Indolfi, MD,<sup>z</sup> Luc Janssens, MD,<sup>aa</sup> Allen Jeremias, MD,<sup>bb</sup> Rajesh K. Kharbanda, MD, PhD,<sup>cc</sup> Ahmed Khashaba, MD,<sup>dd</sup> Yuetsu Kikuta, MD,<sup>ee</sup> Florian Krackhardt, MD,<sup>ff</sup> Mika Laine, MD, PhD,<sup>gg</sup> Sam J. Lehman, MB, BS, PhD,<sup>hh</sup> Hitoshi Matsuo, MD, PhD,<sup>ii</sup> Martijin Meuwissen, MD, PhD,<sup>jj</sup> Giampaolo Niccoli, MD, PhD,<sup>kk</sup> Jan J. Piek, MD, PhD,<sup>ll</sup> Flavio Ribichini, MD,<sup>mm</sup> Habib Samady, MD,<sup>nn</sup> James Sapontis, MB, BS,<sup>oo</sup> Arnold H. Seto, MD, MPA,<sup>pp</sup> Murat Sezer, MD,<sup>qq</sup> Andrew S.P. Sharp, MD,<sup>rr</sup> Jasvinder Singh, MD,<sup>ss</sup> Hiroaki Takashima, MD, PhD,<sup>tt</sup> Suneel Talwar, MB, BS, MD,<sup>uu</sup> Nobuhiro Tanaka, MD, PhD,<sup>vv</sup> Kare Tang, MD,<sup>ww,xx</sup> Eric Van Belle, MD, PhD,<sup>yy,zz</sup> Niels van Royen, MD, PhD,<sup>aaa</sup> Hugo Vinhas, MD,<sup>bbb</sup> Christiaan J. Vrints, MD, PhD,<sup>ccc</sup> Darren Walters, MB, BS,<sup>ddd</sup> Hiroyoshi Yokoi, MD,<sup>eee</sup> Bruce Samuels, MD,<sup>fff</sup> Christopher Buller, MD,<sup>ggg</sup> Manesh R. Patel, MD,<sup>hhh</sup> Patrick W. Serruys, MD, PhD,<sup>i</sup> Javier Escaned, MD, PhD,<sup>j</sup> Justin E. Davies, MD, PhD<sup>i</sup>

## ABSTRACT

**OBJECTIVES** This study sought to evaluate sex differences in procedural characteristics and clinical outcomes of instantaneous wave-free ratio (iFR)- and fractional flow reserve (FFR)-guided revascularization strategies.

**BACKGROUND** An iFR-guided strategy has shown a lower revascularization rate than an FFR-guided strategy, without differences in clinical outcomes.

**METHODS** This is a post hoc analysis of the DEFINE-FLAIR (Functional Lesion Assessment of Intermediate stenosis to guide Revascularization) study, in which 601 women and 1,891 men were randomized to iFR- or FFR-guided strategy. The primary endpoint was 1-year major adverse cardiac events (MACE), a composite of all-cause death, nonfatal myocardial infarction, or unplanned revascularization.

**RESULTS** Among the entire population, women had a lower number of functionally significant lesions per patient ( $0.31 \pm 0.51$  vs.  $0.43 \pm 0.59$ ;  $p < 0.001$ ) and less frequently underwent revascularization than men (42.1% vs. 53.1%;  $p < 0.001$ ). There was no difference in mean iFR value according to sex ( $0.91 \pm 0.09$  vs.  $0.91 \pm 0.10$ ;  $p = 0.442$ ). However, the mean FFR value was lower in men than in women ( $0.83 \pm 0.09$  vs.  $0.85 \pm 0.10$ ;  $p = 0.001$ ). In men, an FFR-guided strategy was associated with a higher rate of revascularization than an iFR-guided strategy (57.1% vs. 49.3%;  $p = 0.001$ ), but this difference was not observed in women (41.4% vs. 42.6%;  $p = 0.757$ ). There was no difference in MACE rates between iFR- and FFR-guided strategies in both women (5.4% vs. 5.6%, adjusted hazard ratio: 1.10; 95% confidence interval: 0.50 to 2.43;  $p = 0.805$ ) and men (6.6% vs. 7.0%, adjusted hazard ratio: 0.98; 95% confidence interval: 0.66 to 1.46;  $p = 0.919$ ).

**CONCLUSIONS** An FFR-guided strategy was associated with a higher rate of revascularization than iFR-guided strategy in men, but not in women. However, iFR- and FFR-guided strategies showed comparable clinical outcomes, regardless of sex. (Functional Lesion Assessment of Intermediate Stenosis to guide Revascularization [DEFINE-FLAIR]; [NCT02053038](https://doi.org/10.1016/j.jcin.2019.06.035)) (J Am Coll Cardiol Intv 2019;12:2035-46) © 2019 by the American College of Cardiology Foundation.

**ABBREVIATIONS  
AND ACRONYMS**

- CI** = confidence interval
- FFR** = fractional flow reserve
- HR** = hazard ratio
- iFR** = instantaneous wave-free ratio
- MACE** = major adverse cardiac events
- MI** = myocardial infarction
- PCI** = percutaneous coronary intervention

Ischemia-guided coronary revascularization is a standard approach for patients with coronary artery disease (1,2). Fractional flow reserve (FFR) is a hyperemic physiologic index used to identify ischemia-causing stenoses in the cardiac catheterization laboratory (3-5). As an alternative to FFR, the instantaneous wave-free ratio (iFR) is a resting physiologic index that does not require hyperemia (6). Two large randomized clinical trials, DEFINE-FLAIR (Functional Lesion Assessment of Intermediate Stenosis to Guide Revascularization) and iFR-SWEDEHEART (Instantaneous Wave-Free Ratio Versus Fractional Flow Reserve in Patients with

Stable Angina Pectoris or Acute Coronary Syndrome) have recently compared iFR- and FFR-guided revascularization strategies and demonstrated that the iFR-guided approach is noninferior to the FFR approach (7,8).

SEE PAGE 2047

A previous study showed that mean FFR value was higher in women than men for the same stenosis severity (9). In addition, the resting coronary flow and response to hyperemic agents can differ according to sex, and sex is reported as an independent factor for discordance between iFR and FFR (10-12). Therefore, iFR- and FFR-guided strategies might result in different revascularization rates and clinical

From the <sup>a</sup>Division of Cardiology, Department of Internal Medicine, VHS Medical Center, Seoul, South Korea; <sup>b</sup>Division of Cardiology, Department of Internal Medicine, Seoul National University Hospital, Seoul National University, Seoul, South Korea; <sup>c</sup>Institute on Aging, Seoul National University, Seoul, South Korea; <sup>d</sup>Cancer Research UK and University College London Cancer Trials Centre, University College London, London, United Kingdom; <sup>e</sup>Division of Cardiology, Department of Internal Medicine, Heart Vascular Stroke Institute, Samsung Medical Center, Sungkyunkwan University School of Medicine, Seoul, South Korea; <sup>f</sup>Department of Medicine, Inje University Ilsan Paik Hospital, Daehwa-dong, South Korea; <sup>g</sup>Department of Medicine, Keimyung University Dongsan Medical Center, Daegu, South Korea; <sup>h</sup>Division of Cardiology, Department of Internal Medicine, Ulsan Medical Center, Ulsan Hospital, Ulsan, South Korea; <sup>i</sup>Hammersmith Hospital, Imperial College London, London, United Kingdom; <sup>j</sup>Hospital Clínico San Carlos, Instituto de Investigación Sanitaria San Carlos, Universidad Complutense de Madrid, Madrid, Spain; <sup>k</sup>Hospital Universitario de Torrejón, Universidad Francisco de Vitoria, Madrid, Spain; <sup>l</sup>King Abdulaziz Medical City Cardiac Center, Riyadh, Saudi Arabia; <sup>m</sup>Colorado Heart and Vascular, Lakewood, Colorado; <sup>n</sup>Hospital Prof. Doutor Fernando Fonseca, Amadora, Portugal; <sup>o</sup>Royal North Shore Hospital, Sydney, Australia; <sup>p</sup>Gemeinschaftsklinikum Mittelrhein, Kemperhof Koblenz, Koblenz, Germany; <sup>q</sup>Cardiovascular Institute, Hospital Clinic, Institut d'Investigacions Biomèdiques August Pi i Sunyer, Barcelona, Spain; <sup>r</sup>Hospital Santa Maria, Lisbon, Portugal; <sup>s</sup>Royal Brompton Hospital, Imperial College London, London, United Kingdom; <sup>t</sup>University of Florence, Florence, Italy; <sup>u</sup>Pauls Stradins Clinical University Hospital, Riga, Latvia; <sup>v</sup>Conquest Hospital, St Leonards-on-Sea, United Kingdom; <sup>w</sup>Sana Klinikum Lichtenberg, Lichtenberg, Germany; <sup>x</sup>Klinikum Oldenburg, European Medical School, Carl von Ossietzky University, Oldenburg, Germany; <sup>y</sup>Sunninghill Hospital, Johannesburg, South Africa; <sup>z</sup>University Magna Graecia, Catanzaro, Italy; <sup>aa</sup>Imelda Hospital, Bonheiden, Belgium; <sup>ab</sup>Stony Brook University Medical Center, New York, New York; <sup>ac</sup>John Radcliffe Hospital, Oxford University Hospitals Foundation Trust, Oxford, United Kingdom; <sup>ad</sup>Ain Shams University, Cairo, Egypt; <sup>ae</sup>Fukuyama Cardiovascular Hospital, Fukuyama, Japan; <sup>af</sup>Charite Campus Virchow Klinikum, Universitaetsmedizin, Berlin, Germany; <sup>ag</sup>Helsinki University Hospital, Helsinki, Finland; <sup>ah</sup>Flinders University, Adelaide, Australia; <sup>ai</sup>Gifu Heart Center, Gifu, Japan; <sup>aj</sup>Amphia Hospital, Breda, the Netherlands; <sup>ak</sup>Catholic University of the Sacred Heart, Rome, Italy; <sup>al</sup>AMC Heart Center, Academic Medical Center, Amsterdam, the Netherlands; <sup>am</sup>University Hospital Verona, Verona, Italy; <sup>an</sup>Emory University, Atlanta, Georgia; <sup>ao</sup>MonashHeart, Monash University, Melbourne, Australia; <sup>ap</sup>Veterans Affairs Long Beach Healthcare System, Long Beach, California; <sup>aq</sup>Istanbul University, Istanbul Faculty of Medicine, Istanbul, Turkey; <sup>ar</sup>Royal Devon and Exeter Hospital, University of Exeter, Exeter, United Kingdom; <sup>as</sup>Washington University School of Medicine in St. Louis, St. Louis, Missouri; <sup>at</sup>Aichi Medical University Hospital, Aichi, Japan; <sup>au</sup>Royal Bournemouth General Hospital, Bournemouth, United Kingdom; <sup>av</sup>Tokyo Medical University, Tokyo, Japan; <sup>aw</sup>Essex Cardiothoracic Centre, Basildon, United Kingdom; <sup>ax</sup>Anglia Ruskin University, Chelmsford, United Kingdom; <sup>ay</sup>Institut Coeur Poumon, Lille University Hospital, Lille, France; <sup>az</sup>UMR INSERM 1011, Centre Hospitalier Universitaire de Lille et de Institut Pasteur de Lille, Université de Lille, Lille, France; <sup>aaa</sup>VU University Medical Center, Amsterdam, the Netherlands; <sup>bbb</sup>Hospital Garcia de Horta, Lisbon, Portugal; <sup>ccc</sup>Antwerp University Hospital, Antwerp, Belgium; <sup>ddd</sup>Prince Charles Hospital, Brisbane, Australia; <sup>eee</sup>Fukuoka Sannou Hospital, Fukuoka, Japan; <sup>fff</sup>Cedars-Sinai Heart Institute, Los Angeles, California; <sup>ggg</sup>St. Michaels Hospital, Toronto, Canada; and the <sup>hhh</sup>Duke University, Durham, North Carolina. The DEFINE-FLAIR trial was supported by unrestricted educational grants from Philips (formerly Volcano Corporation) to Imperial College Trials Unit. This study received no additional funding. Dr. Bon-Kwon Koo received institutional research grant support from St. Jude Medical (Abbott Vascular) and Philips Volcano. Dr. Joo Myung Lee received a research grant support from St. Jude Medical (Abbott Vascular) and Philips Volcano. Drs. Al-Lamee, Cook, Di Mario, Kikuta, and Petraco has received personal fees from Philips Volcano. Dr. Baptista has received grants and consulting fees from Abbott; and has received personal fees from Boston Scientific and Philips Volcano, OpSens Medical, Abbott, and Heartflow. Dr. Härle has received technical support of experimental studies from Philips Volcano. Dr. Jeremias has received personal fees from St. Jude Medical and Philips Volcano. Dr. Khashaba has received other support from Volcano Corporation. Dr. Laine has received grants from Imperial College London. Dr. Nijjer has received grants from the Medical Research Council (United Kingdom); and has received personal fees and nonfinancial support from Philips Volcano. Dr. Buller is a consultant to Abbott Vascular, Philip Volcano, Teleflex Inc., and Soundbite Medical. Dr. Patel has received grants and personal fees from Volcano, AstraZeneca, and Janssen; and has received and personal fees from Bayer. Dr. Piek has received grants and personal fees from Abbott Vascular, Philips Volcano, and Miracor. Dr. Samady has served on the Medical Advisory Board for Philips Volcano; has received institutional research grants from Abbott Vascular, Medtronic, Gilead,

outcomes according to sex, but these differences have not yet been investigated. The current study sought to evaluate sex differences in procedural characteristics and prognostic implications of iFR- or FFR-guided strategy.

## METHODS

**STUDY POPULATION AND PROCEDURE.** The current study is a post hoc analysis of the DEFINE-FLAIR trial, which was designed to investigate noninferiority of an iFR-guided strategy compared with an FFR-guided strategy (Figure 1) (7). The trial was a multicenter, international, randomized, blinded trial performed at 49 interventional sites in 19 countries. Detailed study protocol and clinical outcomes at 1 year have been previously published (7). In brief, patients who had intermediate coronary artery disease (40% to 70% stenosis of the diameter on visual assessment) with in at least 1 native artery were eligible for inclusion. A full list of inclusion and exclusion criteria is provided in Online Table 1. The study protocol was approved by the Institutional Review Board or Ethics Committee at each participating center and all patients provided written informed consent.

Eligible patients were randomly assigned 1:1 to either an iFR- or FFR-guided revascularization strategy. iFR and FFR measurements were obtained in the routine manner with the use of a coronary pressure guidewire (Philips Volcano, San Diego, California) in all vessels with intermediate angiographic stenoses. Revascularization was performed according to pre-specified treatment thresholds of iFR  $\leq 0.89$  or FFR  $\leq 0.80$ .

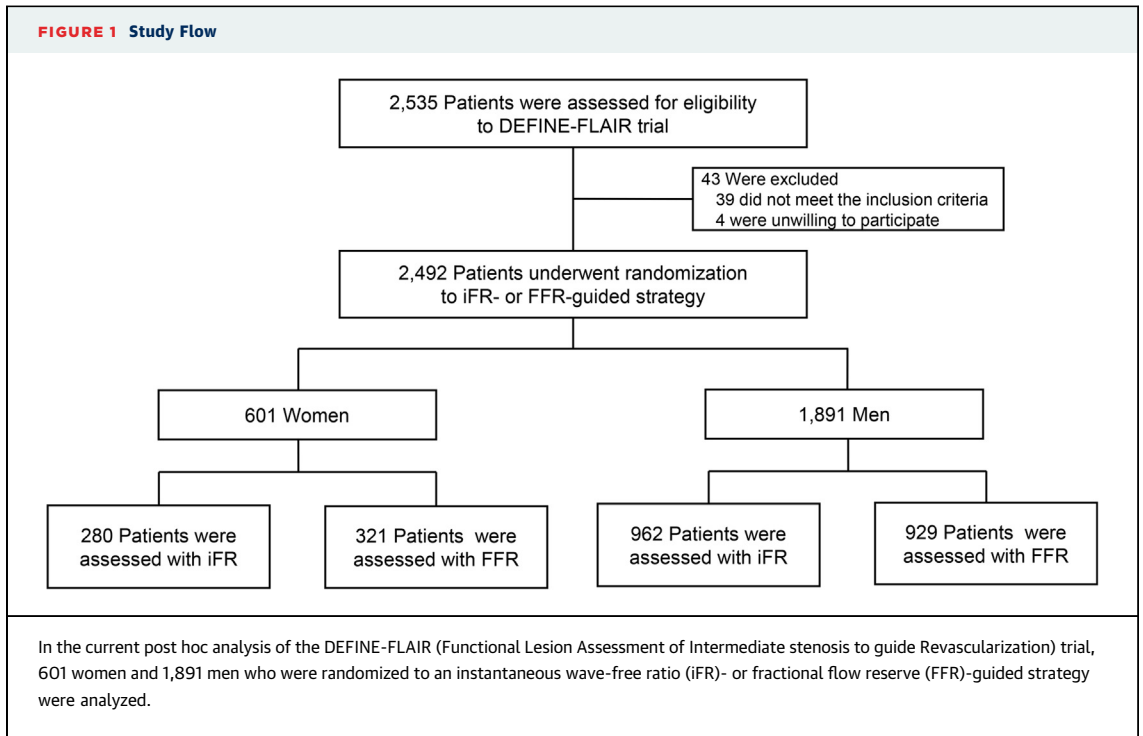
**ENDPOINTS.** The primary endpoint was 1-year major adverse cardiac events (MACE), a composite of death,

nonfatal myocardial infarction (MI), or unplanned revascularization. Death was considered to be from cardiovascular causes unless a definite non-cardiovascular cause could be established. Revascularization was considered to be unplanned when it was not the index procedure and was not scheduled at the time of the index procedure as a staged procedure to occur within 60 days. Endpoint events were adjudicated by an independent committee of experts who were unaware of patient identities and their treatment group.

**STATISTICAL ANALYSIS.** Continuous variables were presented as mean  $\pm$  SD or median (interquartile range), as appropriate, and were compared using Student's *t*-test. Categorical variables were presented as numbers with proportions and compared with the chi-square test. The time-to-event analysis was conducted with the use of the Kaplan-Meier method. A Cox proportional hazards regression model was used to calculate hazard ratio (HR) and 2-sided 95% confidence interval (CI). The validity of the proportional hazards assumption was tested with Schoenfeld and there were no signs of violation of the proportional hazards assumption. Patients who withdrew from the study before 1 year of clinical follow-up and event-free until the last visit were excluded from the risk difference analysis for the primary endpoint. Data from these patients were censored at the last follow-up for the time-to-event analysis (7). For a multivariable adjusted analysis, adjustment for age, clinical presentation, Canadian Cardiovascular Society class for grading of angina pectoris, hypertension, diabetes mellitus, hyperlipidemia, previous MI, and previous percutaneous coronary intervention (PCI) was performed.

---

and Philips Volcano; and owns equity in SIG and Covanos. Dr. Sen has received grants from Volcano Corporation, AstraZeneca, Medtronic, and Philips; served on the Speakers Bureau for AstraZeneca and Philips; and has received speaker fees from Philips and Pfizer. Dr. Seto has received grant support from and served on the Speakers Bureau for Volcano Corporation, Abbott, and Philips. Dr. Sharp has received personal fees from Philips Volcano and Medtronic. Dr. Singh has received personal fees from Volcano Corporation. Dr. Tanaka has received personal fees from Volcano Corporation (Japan), St. Jude Medical, and Boston Scientific. Dr. Van Belle has received personal fees from Philips Volcano; and has served as a consultant for St. Jude Medical. Dr. van Royen has received grants and personal fees from Abbott, Philips, AstraZeneca, Biotronik, Boston Scientific, Microport, Amgen, Volcano Corporation, and St. Jude Medical. Dr. Vinhas has received personal fees from Volcano Corporation. Dr. Samuel has received consulting/speaker fees from Philips Medical and Abbott Vascular. Dr. Patel has received research grant support from Philips Volcano, Bayer, and Janssen; and served on the advisory board for Bayer and Janssen. Dr. Serruys has received personal fees from Abbott, AstraZeneca, Biotronik, Cardialysis, GLG Research, Medtronic, Sinomedical, Societe Europa Digital, and Publishing, Stentys, Svelte, Philips Volcano, St. Jude Medical, Qualimed, and Xeltis. Dr. Escaned has received personal fees from Philips Volcano, Boston Scientific, and Abbott/St. Jude Medical. Dr. Davies has received grants and personal fees from Volcano Corporation, Medtronic, and ReCor Medical; has received personal fees from Imperial College London and AstraZeneca; and has patents WO201110817 A2, US9339348 B2, WO2015013134 A3, EP3021741 A2, and US20150025330 A1 issued to Imperial College London and licensed to Volcano Corporation. All other authors have reported that they have no relationships relevant to the contents of this paper to disclose.



**TABLE 1 Baseline Clinical Characteristics**

	Total Population			Women			Men		
	Women (n = 601)	Men (n = 1,891)	p Value	iFR (n = 280)	FFR (n = 321)	p Value	iFR (n = 962)	FFR (n = 929)	p Value
Age, yrs	69.4 (62.3-75.3)	64.6 (56.9-72.1)	<0.001	70.5 (62.2-76.3)	68.8 (62.3-74.8)	0.199	65.0 (57.0-72.2)	64.1 (56.9-71.9)	0.470
Clinical diagnosis			0.043			0.358			0.724
STEMI	17 (2.8)	74 (3.9)		10 (3.6)	7 (2.2)		39 (4.1)	35 (3.8)	
ACS	71 (11.8)	299 (15.8)		35 (12.5)	36 (11.2)		151 (15.7)	148 (15.9)	
Stable disease	506 (84.2)	1,492 (78.9)		230 (82.1)	276 (86.0)		756 (78.6)	736 (79.2)	
Diabetes mellitus	185 (30.8)	573 (30.3)	0.519	80 (28.6)	105 (32.7)	0.547	302 (31.4)	271 (29.2)	0.334
Hypertension	469 (78.0)	1,288 (68.1)	<0.001	223 (79.6)	246 (76.6)	0.661	650 (67.6)	638 (68.7)	0.636
Hypercholesterolemia	395 (65.7)	1,191 (63.0)	0.477	185 (66.1)	210 (65.4)	0.389	609 (63.3)	582 (62.6)	0.213
Current smoker	94 (15.6)	411 (21.7)	<0.001	43 (15.4)	51 (15.9)	0.188	395 (41.1)	376 (40.5)	0.699
Previous MI	121 (20.1)	613 (32.4)	<0.001	49 (17.5)	72 (22.4)	0.302	309 (32.1)	304 (32.7)	0.118
Previous PCI	204 (33.9)	812 (42.9)	<0.001	88 (31.4)	116 (36.1)	0.186	401 (41.7)	411 (44.2)	0.147
CCS angina class			0.196			0.637			0.093
I	141 (23.5)	511 (27.0)		73 (26.1)	68 (21.2)		274 (28.5)	237 (25.5)	
II	202 (33.6)	542 (28.7)		92 (32.9)	110 (34.3)		282 (29.3)	260 (28.0)	
III	72 (12.0)	209 (11.1)		34 (12.1)	38 (11.8)		93 (9.7)	116 (12.5)	
IV	37 (6.2)	116 (6.1)		15 (5.4)	22 (6.9)		66 (6.9)	50 (5.4)	
Systolic blood pressure, mm Hg	137.0 (121.0-150.0)	130.0 (120.0-144.0)	<0.001	137.0 (122.0-150.0)	136.0 (121.0-150.0)	0.949	130.0 (120.0-144.0)	131.0 (120.0-143.0)	0.693
Diastolic blood pressure, mm Hg	72.0 (65.0-80.0)	75.0 (68.0-82.0)	0.001	72.0 (65.0-80.0)	73.0 (65.0-81.0)	0.309	75.0 (68.0-82.0)	75.0 (68.0-82.0)	0.800
Heart rate, beats/min	70.0 (61.0-78.0)	67.0 (60.0-76.0)	<0.001	70.0 (60.0-78.0)	70.0 (62.0-78.0)	0.455	67.0 (60.0-76.0)	66.0 (60.0-75.0)	0.605

Values are median (interquartile range) or n (%).

ACS = acute coronary syndrome; CCS = Canadian Cardiovascular Society; FFR = fractional flow reserve; iFR = instantaneous wave-free ratio; MI = myocardial infarction; PCI = percutaneous coronary intervention; STEMI = ST-segment elevation myocardial infarction.

**RESULTS**

**PATIENT CHARACTERISTICS.** Of the total 2,492 participants included in the analysis, 601 (24%) were women. Baseline patient characteristics are shown in **Table 1**. Women were older, presented more frequently with stable coronary disease, and showed a higher prevalence of hypertension than men. Conversely, current smoking, history of previous MI, or PCI were less frequent in women. Compared with men, women had higher systolic blood pressure, lower diastolic blood pressure, and higher heart rate. In both women and men, clinical characteristics were well balanced between the iFR and FFR strategies.

**PROCEDURAL CHARACTERISTICS.** **Table 2** shows procedural characteristics according to sex. Women had a significantly lower number of functionally significant lesions per patient, a lower prevalence of patients with at least ≥1 functionally significant lesion, and less frequently underwent revascularization. **Table 3** and the **Central Illustration** show procedural characteristics between iFR- and FFR-guided strategies in each sex. The type or number of evaluated vessels per patients was not different between iFR and FFR strategies in both sexes. Regarding physiologic assessment, mean iFR value was not different between women and men (0.91 ± 0.09 vs. 0.91 ± 0.10; p = 0.442). However, mean FFR value was lower in men than in women (0.83 ± 0.09 vs. 0.85 ± 0.10; p = 0.001). Among women, there were no differences in number of functionally significant lesions per patient, proportion of patients with at

**TABLE 2 Procedural Characteristics According to Sex**

	Women	Men	p Value
Type of vessel evaluated			
Left anterior descending artery	398 (53.6)	1,291 (52.9)	0.764
Left circumflex artery	142 (19.1)	514 (21.1)	0.249
Right coronary artery	189 (25.4)	578 (23.7)	0.329
Other	14 (1.9)	57 (2.3)	0.380
Vessels evaluated or treated per patient	1.44 ± 0.74	1.56 ± 0.79	<0.001
Functionally significant lesions per patient	0.31 ± 0.51	0.43 ± 0.59	<0.001
≥1 functionally significant lesions per patient	175 (29.1)	737 (39.0)	<0.001
Revascularization performed	253 (42.1)	1,004 (53.1)	<0.001
Stents placed per patient	0.56 ± 0.85	0.74 ± 0.97	<0.001
Stent length per patient, mm	28.0 (18.0–40.0)	28.0 (18.0–44.0)	0.148
Stent diameter, mm	2.96 (2.58–3.08)	3.00 (2.75–3.25)	0.027

Values are n (%), mean ± SD, or median (interquartile range).  
 Abbreviations as in **Table 1**.

least ≥1 functionally significant lesion, or rate of revascularization between iFR- and FFR-guided strategies. In men, an FFR-guided strategy was associated with a higher number of functionally significant lesions per patient, higher prevalence of patients with at least ≥1 functionally significant lesion, and more frequent revascularization (57.1% vs. 49.3%; p = 0.001) in comparison with an iFR-guided strategy.

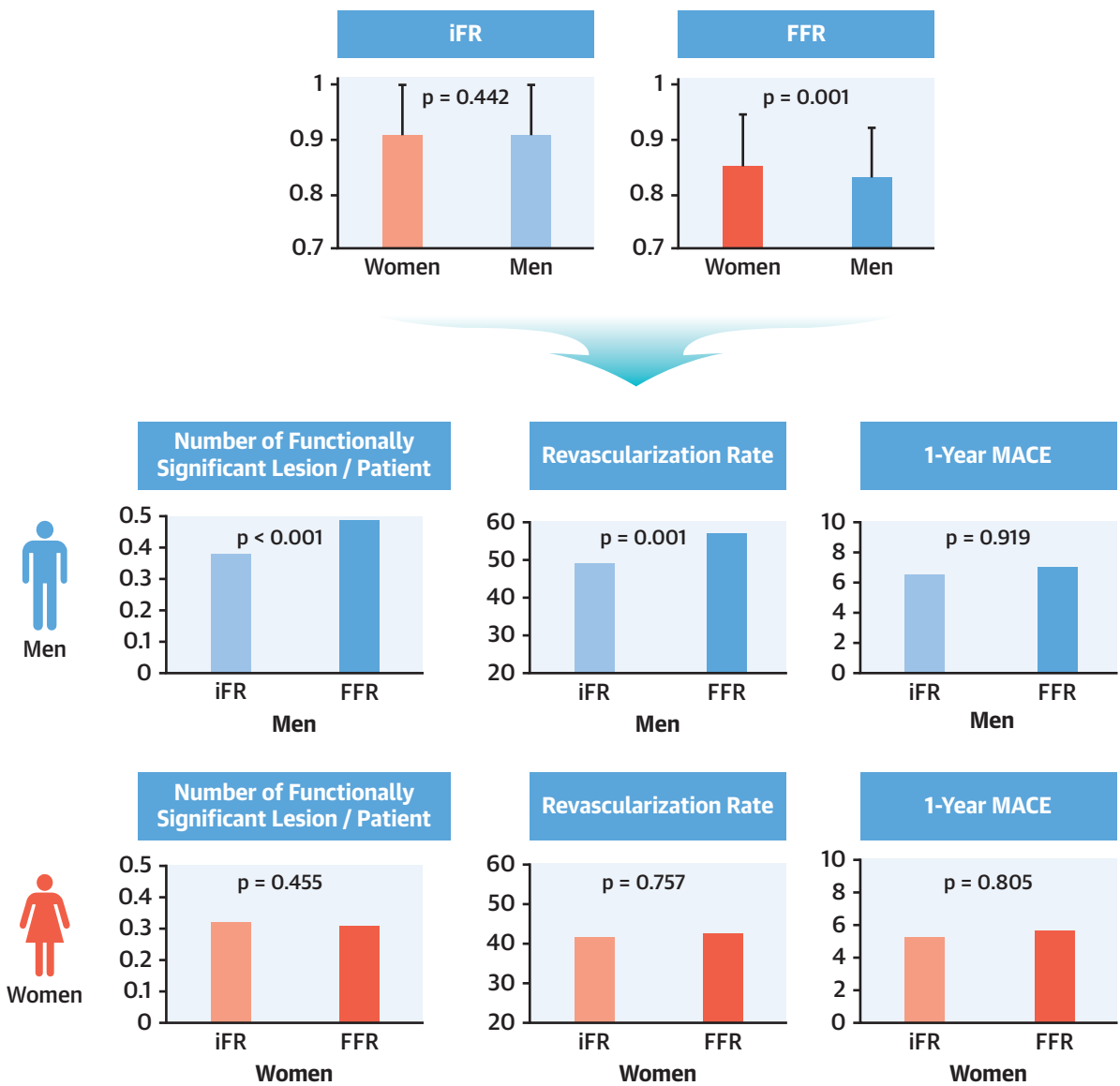
**CLINICAL OUTCOMES.** Patients were followed for a median of 365 (interquartile range: 365 to 365) days. At 1 year, MACE rate was not different according to sex (women vs. men, 5.49% vs. 6.77%; adjusted hazard ratio [HR]: 0.82; 95% confidence interval [CI]: 0.53 to 1.28; p = 0.380) (**Figure 2**, **Online Table 2**).

**TABLE 3 Procedural Characteristics According to iFR- or FFR-Guided Strategy**

	Women			Men		
	iFR	FFR	p Value	iFR	FFR	p Value
Type of vessel evaluated						
Left anterior descending artery	189 (55.3)	209 (52.1)	0.392	655 (53.1)	636 (52.7)	0.832
Left circumflex artery	58 (17.0)	84 (20.9)	0.168	265 (21.5)	249 (20.6)	0.601
Right coronary artery	90 (26.3)	99 (24.7)	0.612	284 (23.0)	294 (24.4)	0.442
Other	5 (1.5)	9 (2.2)	0.760	29 (2.4)	28 (2.3)	0.629
Vessels evaluated or treated per patient	1.41 ± 0.73	1.47 ± 0.74	0.211	1.54 ± 0.76	1.58 ± 0.82	0.672
iFR or FFR value	0.91 ± 0.09	0.85 ± 0.10		0.91 ± 0.10	0.83 ± 0.09	
Functionally significant lesions per patient	0.32 ± 0.48	0.31 ± 0.53	0.455	0.38 ± 0.53	0.49 ± 0.63	<0.001
≥1 functionally significant lesions per patient	87 (31.1)	88 (27.4)	0.325	339 (35.2)	398 (42.8)	0.001
Revascularization performed	116 (41.4)	137 (42.6)	0.757	474 (49.3)	530 (57.1)	0.001
Stents placed per patient	0.57 ± 0.87	0.54 ± 0.83	0.719	0.69 ± 0.94	0.79 ± 1.00	0.021
Stent length per patient, mm	30.0 (18.0–41.0)	25.0 (16.0–38.0)	0.416	28.0 (18.0–42.5)	28.0 (18.0–46.0)	0.409
Stent diameter, mm	2.92 (2.50–3.00)	2.96 (2.75–3.13)	0.409	3.00 (2.75–3.25)	3.00 (2.75–3.25)	0.588

Values are n (%), mean ± SD, or median (interquartile range).  
 Abbreviations as in **Table 1**.

**CENTRAL ILLUSTRATION** Sex Differences in Procedural Characteristics and Clinical Outcomes of iFR- or FFR-Guided Strategy

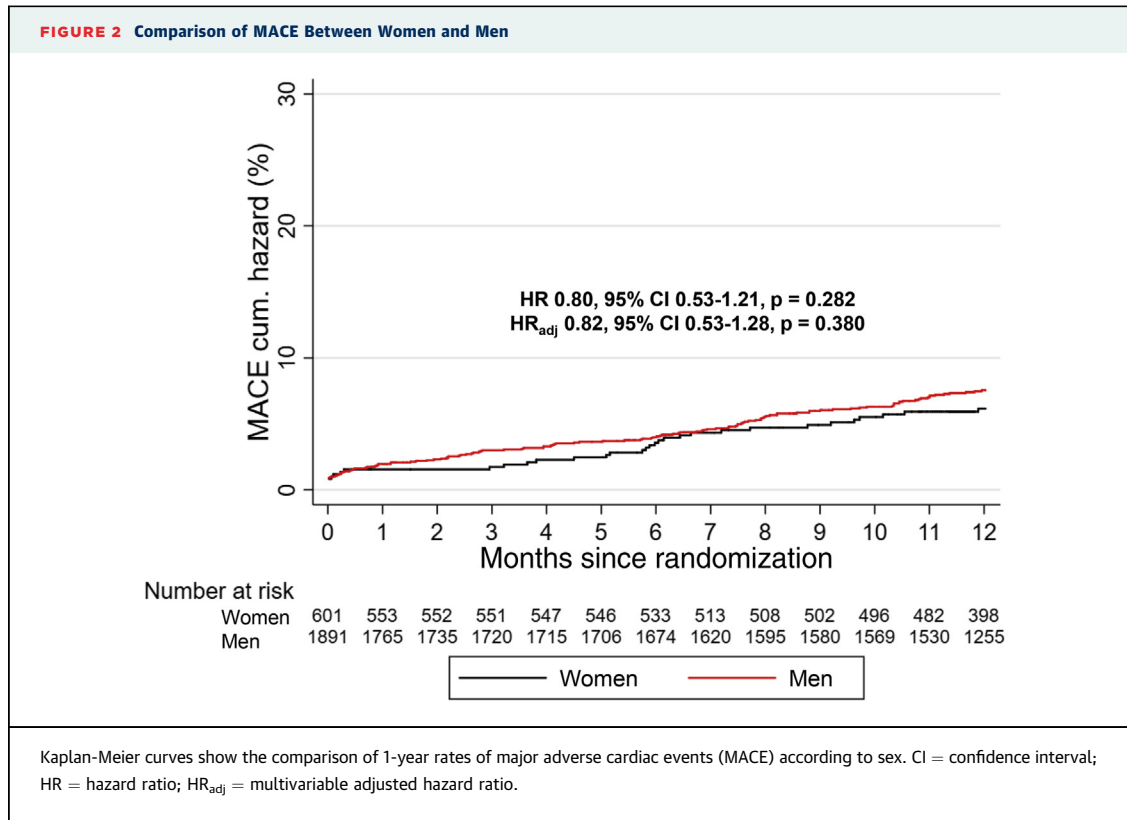


Kim, C.H. et al. *J Am Coll Cardiol Intv.* 2019;12(20):2035-46.

The current study is a post hoc analysis of DEFINE-FLAIR (Functional Lesion Assessment of Intermediate stenosis to guide Revascularization) trial focusing on sex differences in instantaneous wave-free ratio (iFR)- and fractional flow reserve (FFR)-guided strategies. Mean iFR value was not different according to sex, but mean FFR value was lower in men. Among women, there were no differences in number of functionally significant lesions per patient or rate of revascularization between iFR- and FFR-guided strategies. In men, FFR-guided strategy was associated with a higher number of functionally significant lesions per patient and more frequent revascularization in comparison with iFR-guided strategy. Despite these differences, iFR- and FFR-guided strategies showed comparable clinical outcomes at 1 year in women and men. Height of the bars indicates the mean value or proportion, and error bars indicate the standard deviation.

The individual rates of death from any cause, nonfatal MI, and unplanned revascularization were not significantly different between sexes (Online Table 2).

When patients were stratified according to sex, iFR- and FFR-guided strategies showed comparable risk of MACE in both women (5.36% vs. 5.61%; adjusted HR: 1.10; 95% CI: 0.50 to 2.43; p = 0.805)



and men (6.55% vs. 7.00%; adjusted HR: 0.98; 95% CI: 0.66 to 1.46; p = 0.919) (Table 4, Online Table 3, Figure 3). There was no significant interaction between treatment strategy and sex in death from any cause, cardiovascular death, nonfatal MI, and unplanned revascularization (Table 4). These findings were consistent among patients in which revascularization was deferred

based on iFR or FFR (Table 5, Online Table 4, Figure 4).

### DISCUSSION

The current study evaluated the sex differences in iFR- and FFR-guided treatment strategies. The main findings are as follows: 1) among the entire

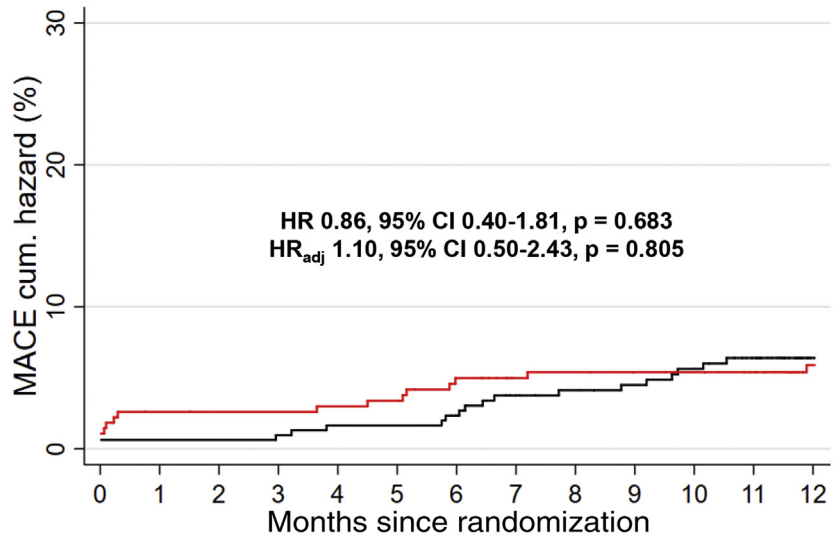
**TABLE 4 Multivariable-Adjusted Clinical Outcomes at 1 Year Between iFR- and FFR-Guided Strategies According to Sex**

	Women				Men				Interaction p Value
	iFR (n = 280)	FFR (n = 321)	HR <sub>adj</sub> (95% CI)	p Value	iFR (n = 962)	FFR (n = 929)	HR <sub>adj</sub> (95% CI)	p Value	
Primary endpoint: MACE*	15 (5.36)	18 (5.61)	1.10 (0.50-2.43)	0.805	63 (6.55)	65 (7.00)	0.98 (0.66-1.46)	0.919	0.820
Cardiac death, MI, or unplanned revascularization	13 (4.64)	17 (5.30)	0.97 (0.42-2.23)	0.937	52 (5.41)	57 (6.14)	0.92 (0.60-1.43)	0.719	0.898
Death from any cause, MI	11 (3.93)	5 (1.56)	2.32 (0.65-8.25)	0.192	39 (4.05)	36 (3.88)	1.04 (0.58-1.88)	0.885	0.285
Death from any cause	5 (1.79)	2 (0.62)	2.96 (0.55-16.07)	0.208	17 (1.77)	11 (1.18)	1.22 (0.51-2.91)	0.657	0.361
Death from cardiovascular causes	1 (0.36)	1 (0.31)	1.39 (0.01-169.4)	0.892	6 (0.62)	3 (0.32)	1.25 (0.28-5.63)	0.774	0.936
Death from noncardiovascular causes	4 (1.43)	1 (0.31)	10.97 (0.70-172.2)	0.088	11 (1.14)	8 (0.86)	1.20 (0.41-3.51)	0.735	0.295
Nonfatal myocardial infarction	8 (2.86)	3 (0.93)	4.14 (0.69-24.84)	0.120	23 (2.39)	25 (2.69)	0.97 (0.47-2.00)	0.944	0.173
Unplanned revascularization	9 (3.21)	16 (4.98)	0.99 (0.41-2.41)	0.988	37 (3.85)	47 (5.06)	0.89 (0.56-1.41)	0.609	0.855

Values are n (%), unless otherwise indicated. The included covariates into multivariable adjusted model were age, clinical presentation, CCS class for grading of angina pectoris, hypertension, diabetes, hyperlipidemia, previous MI, and previous PCI. \*Composite of death from any cause, nonfatal MI, or unplanned revascularization.  
 CI = confidence interval; HR<sub>adj</sub> = adjusted hazard ratio; MACE = major adverse cardiac event; MI = myocardial infarction; other abbreviations as in Table 1.

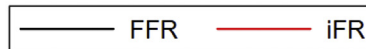
**FIGURE 3** Comparison of MACE Between iFR- and FFR-Guided Strategies According to Sex

**A Women**

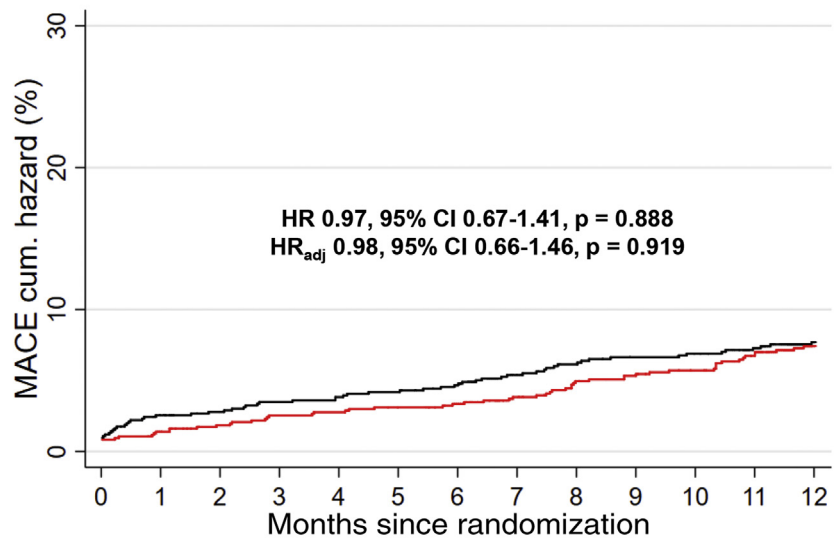


Number at risk

FFR	321	295	295	294	292	292	286	274	270	267	262	252	213
iFR	280	258	257	257	255	254	247	239	238	235	234	230	185

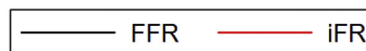


**B Men**



Number at risk

FFR	929	874	861	855	852	849	833	807	796	788	784	765	633
iFR	962	891	874	865	863	857	841	813	799	792	785	765	622



Kaplan-Meier curves show the comparison of 1-year rates of MACE between iFR- and FFR-guided strategies in **(A)** women and **(B)** men. Abbreviations as in [Figures 1 and 2](#).



**TABLE 5 Multivariable-Adjusted Clinical Outcomes at 1 Year Between iFR- and FFR-Guided Strategies in Deferred Patients**

	Women				Men				Interaction p Value
	iFR (n = 164)	FFR (n = 184)	HR <sub>adj</sub> (95% CI)	p Value	iFR (n = 489)	FFR (n = 400)	HR <sub>adj</sub> (95% CI)	p Value	
Primary endpoint: MACE*	5 (3.05)	7 (3.80)	0.68 (0.20-2.38)	0.551	21 (4.29)	20 (5.00)	0.83 (0.41-1.66)	0.593	0.878
Cardiac death, MI, or unplanned revascularization	4 (2.44)	6 (3.26)	0.65 (0.16-2.56)	0.535	17 (3.48)	17 (4.25)	0.81 (0.38-1.72)	0.582	0.943
Death from any cause, MI	2 (1.22)	1 (0.54)	0.93 (0.00-418)	0.981	9 (1.84)	12 (3.00)	0.58 (0.18-1.84)	0.354	0.285
Death from any cause	2 (1.22)	1 (0.54)	2.23 (0.01-843.6)	0.791	5 (1.02)	3 (0.75)	0.62 (0.08-4.75)	0.645	0.564
Death from cardiovascular causes	1 (0.61)	0 (0.00)	—	—	1 (0.20)	0 (0.00)	—	—	—
Death from noncardiovascular causes	1 (0.61)	1 (0.54)	—	—	4 (0.82)	3 (0.75)	0.62 (0.08-4.75)	0.645	—
Nonfatal myocardial infarction	0 (0.00)	0 (0.00)	—	—	4 (0.82)	9 (2.25)	0.51 (0.14-1.86)	0.310	—
Unplanned revascularization	3 (1.83)	6 (3.26)	0.53 (0.12-2.37)	0.409	16 (3.27)	16 (4.00)	0.82 (0.38-1.73)	0.595	0.804

Values are n (%), unless otherwise indicated. The included covariates into multivariable adjusted model were age, clinical presentation, CCS class for grading of angina pectoris, hypertension, diabetes, hyperlipidemia, previous MI, and previous PCI. \*Composite of death from any cause, nonfatal MI, or unplanned revascularization.  
 Abbreviations as in Tables 1 and 4.

population, women had a lower number of functionally significant lesions per patient and less frequently underwent revascularization than men; 2) the mean iFR value was not different according to sex, but the mean FFR value was lower in men; 3) in men, an FFR-guided strategy was associated with a higher revascularization rate than iFR-guided strategy, but there was no difference in revascularization rates between the 2 physiologic indices in women; 4) MACE rate was not different according to sex in the entire population; and 5) despite the difference in baseline and procedural characteristics according to sex, both iFR- and FFR-guided strategies showed comparable risk of MACE in women and men.

**DIFFERENCE IN FFR AND iFR BETWEEN WOMEN AND MEN.** Higher FFR values in women than in men are consistently reported in previous studies (9,13), and the differences in microvascular function (14), myocardial mass (15), coronary height (16), vessel size (17), plaque characteristics (18,19), and diastolic function (20) have been suggested as potential mechanisms for this effect. Those factors can cause higher hyperemic coronary flow and lower FFR in men than in women for the same epicardial stenosis. However, the influence of sex on resting pressure indices has not been well defined. In a CONTRAST (Can Contrast Injection Better Approximate FFR Compared to Pure Resting Physiology?) substudy, although the number of functionally significant lesions defined by FFR was higher in men than in women, mean FFR and iFR values were not different (21). In our study, mean FFR was higher in women than in men and no difference was observed in the mean iFR value according to sex. This lack of difference in iFR values between women

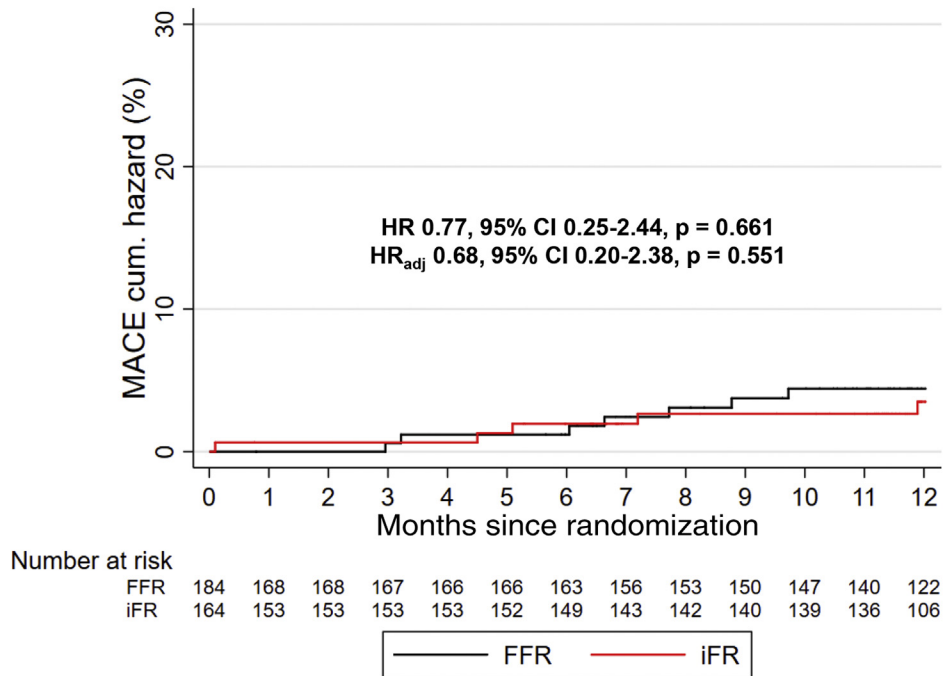
and men, in contrast to FFR, can be due to relatively higher resting flow in women. In our study, women were older and showed higher prevalence of hypertension, higher systolic blood pressure, and higher heart rate than men, and these factors can cause higher resting coronary flow in women than in men.

Microvascular dysfunction assessed by coronary flow reserve (CFR) was reported to be more frequent in women (14). Accordingly, a blunted hyperemic response is considered to be an important reason for the higher FFR values often observed in women (11). However, a recent study on sex differences in invasive measurements of microvascular function showed that the hyperemic coronary flow and index of microcirculatory resistance were not different according to sex (10). Rather, resting coronary flow was noted to be higher in women, thereby potentially accounting for a low CFR (10). Therefore, further studies on how sex difference in microvascular function and physiologic response to epicardial stenosis affects iFR and FFR values are needed, as this study does not have data on coronary flow, microvascular dysfunction, and quantitative assessment for epicardial disease severity.

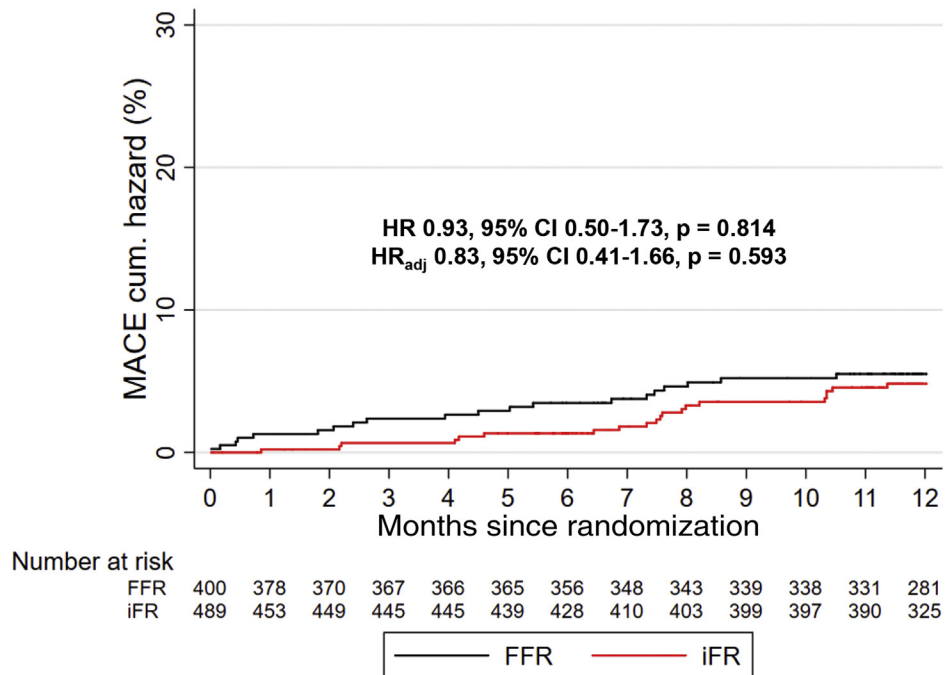
**DIFFERENCE IN PROCEDURAL CHARACTERISTICS AND ITS INFLUENCE ON OUTCOMES.** In the DEFINE-FLAIR and iFR-SWEDEHEART studies, an FFR-guided strategy was associated with higher revascularization rate than an iFR-guided strategy (7,8). In our study, revascularization was performed in 49.3% and 57.1% in the iFR and FFR-guided strategies, respectively, in men, similar to that shown in previous studies (7,8,22,23). However, this difference in revascularization rate did not translate into a difference in

**FIGURE 4** Comparison of MACE Between iFR- and FFR-Guided Strategies in Deferred Patients

**A Women**



**B Men**



Kaplan-Meier curves show the comparison of 1-year rates of MACE of deferred patients according to iFR- and FFR-guided strategies in (A) women and (B) men. Abbreviations as in Figures 1 and 2.

clinical outcomes. This might be due to recent advances in revascularization techniques, stent technology and medical therapies and the relatively low-risk population of this study. In women, the revascularization rate was not noted to be different between the 2 physiologic strategies. As shown in previous studies, both the stent size and the number of stents implanted were smaller in women than in men in our study. Despite all these differences in procedural characteristics, clinical outcomes of iFR- and FFR-guided strategies were similar in both women and men. This result implies that both iFR and FFR can be effectively used to guide revascularization, regardless of sex, despite the physiologic backgrounds for the difference between women and men.

**STUDY LIMITATIONS.** First, this was a post hoc analysis of the DEFINE-FLAIR trial which may introduce bias. Second, invasive measurement of microvascular dysfunction was not performed, which means we cannot definitely understand the differences in FFR values between men and women. Third, as the DEFINE-FLAIR trial followed exclusive allocation into iFR- or FFR-guided strategy, paired data of iFR and FFR in the same patient were not available. As a results, comparisons of physiologic indices between groups were performed based on group data, assuming similar stenosis severity between groups. Fourth, data on angiographic disease severity were not available in this study. Therefore, the association between angiographic stenosis severity and iFR or FFR according to sex could not be presented. Fifth, neither the physicians nor the patients were not blinded to the iFR and FFR results and whether or not revascularization was performed. However, patients and physicians who were responsible for the follow-up care were blinded to the group assignments. Last, as the DEFINE-FLAIR trial included a relatively low-risk population, event rates were also relatively

low and may be insufficient to determine the difference in clinical outcomes according to sex.

## CONCLUSIONS

From this post hoc analysis of the DEFINE-FLAIR trial, an FFR-guided strategy was associated with a higher rate of revascularization than iFR-guided strategy in men, but not in women. Despite this, both iFR- and FFR-guided treatment strategies showed comparable clinical outcome, regardless of sex.

**ADDRESS FOR CORRESPONDENCE:** Dr. Bon-Kwon Koo, Division of Cardiology, Department of Internal Medicine, Seoul National University Hospital, 101 Daehang-ro, Chongno-gu, Seoul, 03080, Korea. E-mail: [bkkoo@snu.ac.kr](mailto:bkkoo@snu.ac.kr).

## PERSPECTIVES

**WHAT IS KNOWN?** An iFR-guided strategy has shown relatively lower rates of revascularization than an FFR-guided strategy, without differences in clinical outcomes between the 2 strategies.

**WHAT IS NEW?** Mean iFR value was not different according to sex. In contrast, mean FFR value was lower in men. In men, FFR-guided strategy resulted in higher revascularization rate than iFR-guided strategy. However, no difference in revascularization rate according to physiologic indices was observed in women. Despite these differences, iFR- and FFR-guided strategies showed comparable risk of clinical outcomes at 1 year in both women and men.

**WHAT IS NEXT?** Further studies on how sex difference in microvascular function affects iFR and FFR values, and clinical implications of iFR-FFR discordance according to sex, are needed.

## REFERENCES

1. Levine GN, Bates ER, Blankenship JC, et al. 2011 ACCF/AHA/SCAI guideline for percutaneous coronary intervention: a report of the American College of Cardiology Foundation/American Heart Association Task Force on Practice Guidelines and the Society for Cardiovascular Angiography and Interventions. *J Am Coll Cardiol* 2011;58:e44-122.
2. Authors/Task Force members, Windecker S, Kolh P, et al. 2014 ESC/EACTS guidelines on myocardial revascularization: the Task Force on Myocardial Revascularization of the European Society of Cardiology (ESC) and the European Association for Cardio-Thoracic Surgery (EACTS) developed with the special contribution of the European Association of Percutaneous Cardiovascular Interventions (EAPCI). *Eur Heart J* 2014;35:2541-619.
3. Tonino PA, De Bruyne B, Pijls NH, et al. Fractional flow reserve versus angiography for guiding percutaneous coronary intervention. *N Engl J Med* 2009;360:213-24.
4. De Bruyne B, Pijls NH, Kalesan B, et al. Fractional flow reserve-guided PCI versus medical therapy in stable coronary disease. *N Engl J Med* 2012;367:991-1001.
5. Sousa-Uva M, Neumann F-J, Ahlsson A, et al. 2018 ESC/EACTS guidelines on myocardial revascularization. *Eur J Cardiothorac Surg* 2018;55:4-90.
6. Sen S, Escaned J, Malik IS, et al. Development and validation of a new adenosine-independent index of stenosis severity from coronary wave-intensity analysis: results of the ADVISE (Adenosine Vasodilator Independent Stenosis Evaluation) study. *J Am Coll Cardiol* 2012;59:1392-402.
7. Davies JE, Sen S, Dehbi H-M, et al. Use of the instantaneous wave-free ratio or fractional flow reserve in PCI. *N Engl J Med* 2017;376:1824-34.
8. Götzberg M, Christiansen EH, Gudmundsdottir IJ, et al. Instantaneous wave-free ratio versus fractional flow reserve to guide PCI. *N Engl J Med* 2017;376:1813-23.

9. Kim H-S, Tonino PA, De Bruyne B, et al. The impact of sex differences on fractional flow reserve-guided percutaneous coronary intervention: a FAME (Fractional Flow Reserve Versus Angiography for Multivessel Evaluation) substudy. *J Am Coll Cardiol Intv* 2012;5:1037–42.
10. Kobayashi Y, Fearon WF, Honda Y, et al. Effect of sex differences on invasive measures of coronary microvascular dysfunction in patients with angina in the absence of obstructive coronary artery disease. *J Am Coll Cardiol Intv* 2015;8:1433–41.
11. Crystal GJ, Klein LW. Fractional flow reserve: physiological basis, advantages and limitations, and potential gender differences. *Curr Cardiol Rev* 2015;11:209–19.
12. Lee JM, Shin E-S, Nam C-W, et al. Discrepancy between fractional flow reserve and instantaneous wave-free ratio: clinical and angiographic characteristics. *Int J Cardiol* 2017;245:63–8.
13. Kim CH, Koo BK, Lee JM, et al. Influence of Sex on Relationship Between Total Anatomical and Physiologic Disease Burdens and Their Prognostic Implications in Patients With Coronary Artery Disease. *J Am Heart Assoc* 2019;8:e011002.
14. Reis SE, Holubkov R, Smith AC, et al. Coronary microvascular dysfunction is highly prevalent in women with chest pain in the absence of coronary artery disease: results from the NHLBI WISE study. *Am Heart J* 2001;141:735–41.
15. Kim HY, Lim H-S, Doh J-H, et al. Physiological severity of coronary artery stenosis depends on the amount of myocardial mass subtended by the coronary artery. *J Am Coll Cardiol Intv* 2016;9:1548–60.
16. Härle T, Luz M, Meyer S, et al. Effect of coronary anatomy and hydrostatic pressure on intracoronary indices of stenosis severity. *J Am Coll Cardiol Intv* 2017;10:764–73.
17. Sheifer SE, Canos MR, Weinfurt KP, et al. Sex differences in coronary artery size assessed by intravascular ultrasound. *Am Heart J* 2000;139:649–52.
18. Ahmadi A, Stone GW, Leipsic J, et al. Association of coronary stenosis and plaque morphology with fractional flow reserve and outcomes. *JAMA Cardiol* 2016;1:350–7.
19. Lansky AJ, Ng VG, Maehara A, et al. Gender and the extent of coronary atherosclerosis, plaque composition, and clinical outcomes in acute coronary syndromes. *J Am Coll Cardiol Intv* 2012;5:562–72.
20. Leonardi RA, Townsend JC, Patel CA, et al. Left ventricular end-diastolic pressure affects measurement of fractional flow reserve. *Cardiovasc Revasc Med* 2013;14:218–22.
21. Shah SV, Zimmermann FM, Johnson NP, et al. Sex differences in adenosine-free coronary pressure indexes: a CONTRAST substudy. *J Am Coll Cardiol Intv* 2018;11:1454–63.
22. Escaned J, Ryan N, Mejía-Rentería H, et al. Safety of the deferral of coronary revascularization on the basis of instantaneous wave-free ratio and fractional flow reserve measurements in stable coronary artery disease and acute coronary syndromes. *J Am Coll Cardiol Intv* 2018;11:1437–49.
23. Lee JM, Hwang D, Park J, et al. Exploring coronary circulatory response to stenosis and its association with invasive physiologic indexes using absolute myocardial blood flow and coronary pressure. *Circulation* 2017;136:1798–808.

---

**KEY WORDS** clinical outcome, fractional flow reserve, instantaneous wave-free ratio, sex

---

**APPENDIX** For supplemental tables, please see the online version of this paper.