

Conversion of TeV photons in realistic extragalactic magnetic field

Daniele Montanino¹, Franco Vazza^{2,3}, Alessandro Mirizzi⁴ Matteo Viel^{5,6,7}

¹Università del Salento, and INFN, sezione di Lecce, Italy

²INAF, Istituto di Radio Astronomia di Bologna, Italy

³Universität Hamburg, Germany

⁴Università di Bari and INFN, sezione di Bari, Italy

⁵International School for Advanced Studies, Trieste, Italy

⁶INAF, Osservatorio Astronomico di Trieste, Italy

⁷INFN, sezione di Trieste, Italy

DOI: http://dx.doi.org/10.3204/DESY-PROC-2017-02/montanino_daniele

Very High Energy (TeV) photons can evade absorption by conversion into axion-like (ALPs) particles in the extragalactic magnetic field (EMF). We show that using realistic simulations of the EMF we obtain an even stronger conversion than those obtained with the simplified cell model. This effect would be probed with the upcoming Cherenkov Telescope Array detector.

1 Photon-ALP conversion in Extragalactic Magnetic Field

Axion-like particles (ALPs) are ultralight pseudo-scalar bosons a with a two-photon vertex $a\gamma\gamma$, predicted by several extensions of the Standard Model. In the presence of an external magnetic field, the $a\gamma\gamma$ coupling leads to the phenomenon of photon-ALP mixing [1]. This effect allows for the possibility of direct searches of ALPs in laboratory experiments.

Due to the $a\gamma\gamma$ coupling, ultra-light ALPs can also play an important role in astrophysical observations. In particular, an intriguing hint for ALPs has been recently suggested by Very High-Energy (VHE) γ -ray experiments. In this respect, recent observations of cosmologically distant γ -ray sources by ground-based γ -ray Imaging Atmospheric Cherenkov Telescopes have revealed a surprising degree of transparency of the Universe to VHE photons [2, 3], where one would have expected a significant absorption of VHE photons by pair-production processes ($\gamma_{\text{VHE}} + \gamma_{\text{EBL}} \rightarrow e^+e^-$) on the extragalactic background light (EBL).

However, the range of the parameters where ALPs would impact the cosmic transparency is constrained from other observations as shown in Fig. 1. In particular, for ALPs with masses $m_a \leq 10^{-9}$ eV, the strongest bound on $g_{a\gamma}$ is derived from the absence of γ -rays from SN 1987A (see [4] for a review).

Anyway, the distribution of the extragalactic magnetic fields has been poorly characterized in previous works on ALP conversions. In particular, a cell-like structure (hereafter the *cell* model) has been adopted with many domains of equal size ($l \sim 1$ Mpc) in which the magnetic

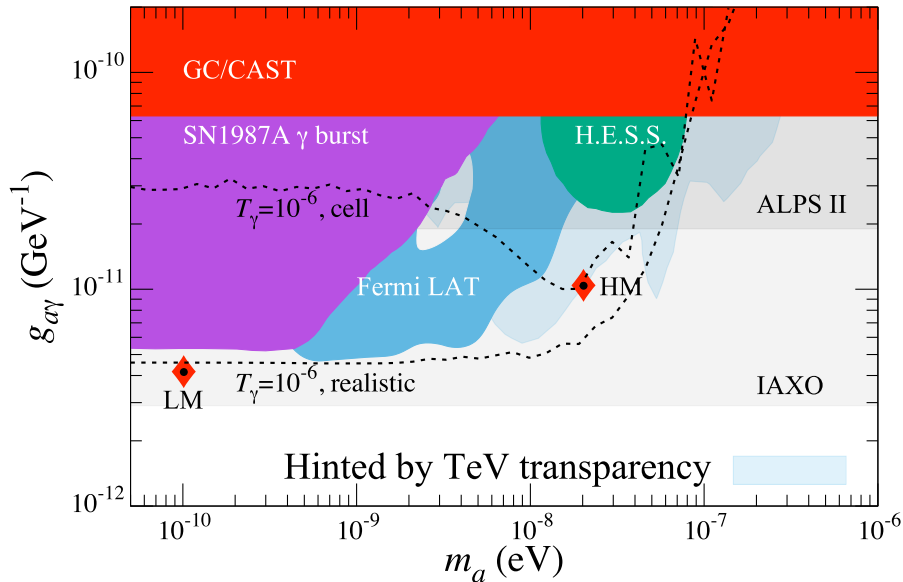


Figure 1: Limits on ALP parameter space in the plane $(m_a, g_{a\gamma})$. The parameter space where ALPs could explain the low γ -ray opacity is shown in light blue. The horizontal grey bands represent the sensitivity of future ALPS-II and IAXO experiments. The two small squares represent cases of low-mass (LM, $m_a = 10^{-10}$ eV and $g_{a\gamma} = 4 \times 10^{-12}$ GeV^{-1}) and high-mass (HM, $m_a = 2 \times 10^{-8}$ eV and $g_{a\gamma} = 10^{-11}$ GeV^{-1}) ALPs where conversions in realistic extragalactic magnetic fields would affect the TeV photon transparency. Contour lines corresponding to $T_\gamma = 10^{-6}$ for the cell and realistic models are also shown. See the text for more details.

field has (constant) random values and directions [5]. Only recently it has been pointed out that in more realistic situations, the magnetic field direction would vary continuously along the propagation path, and this would lead to sizable differences in the ALP conversions with respect to the cell model.

We have studied for the first time the photon conversions into ALPs using recent magneto-hydrodynamical cosmological simulations [6, 7]. In this more realistic case the magnetic fields can locally fluctuate in filaments of matter up to two orders of magnitude larger than what found in the cell model and photon-ALP conversions are enhanced compared to previous estimates. Indeed, significant conversions are found both in the low-mass region below the SN 1987A bound both in the high-mass region on the right of the recent Fermi-LAT bound. These two ranges are indicated with small squares in Fig. 1.

In Fig. 1 dashed lines represent the contour lines corresponding to the photon transfer function $T_\gamma = 10^{-6}$ for the cell model and simulated model of the extragalactic B -field for a source at $z = 0.3$ and at energy $E = 20$ TeV. Each contour corresponds to the 95th percentile of the distribution of T_γ . In other words, there is a 5% probability that T_γ is larger than the indicated value. From these curves is evident the enhancement of the area probed with the realistic model at a fixed value of T_γ as we will see in the following section.

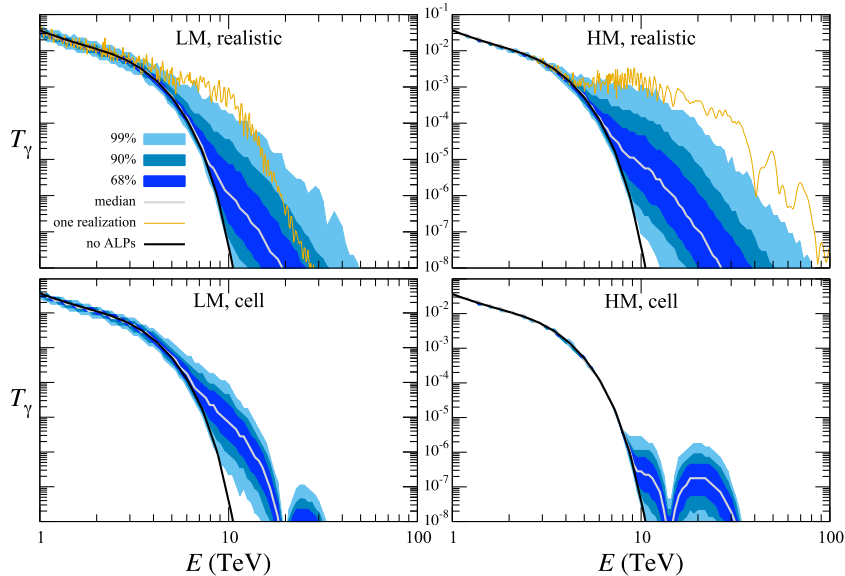


Figure 2: Photon transfer function $T_\gamma(E)$ for a source at redshift $z = 0.3$ for LM and HM cases. Upper panels refer to realistic models of extragalactic magnetic field, while lower panels are for the cell model. See the text for details.

We have solved the propagation equation for the photon-ALP ensemble, both with a random cell model and with the realistic magnetic field. In the first case denoting \mathbf{b}_k a random unit vector inside each cell, during their path with a total length L along the line of sight, the beam crosses $n = L/l_c$ domains, where l_c is the size of each domain: The set $\{\mathbf{B}_k\}_{1 \leq k \leq n} = \{B_0 \cdot \mathbf{b}_k\}_{1 \leq k \leq n}$ represents a given random realization of the beam propagation. We have used a fixed (comoving) value of $B_0 = 1.9$ nG which corresponds to the r.m.s. of the strength of the realistic magnetic field on all configurations and a fixed size of $l = 1.4$ Mpc per cell, which is the typical coherence length of magnetic fields in the realistic model, based on spectral analysis.

2 Results

In Fig. 2 we present the photon transfer function $T_\gamma(E)$ in function of the photon energy E for a source at redshift $z = 0.3$. In the left panels we consider, the parameters corresponding to LM parameters while in the right panels we the HM parameters marked in Fig. 1. Upper panels refer to realistic simulations for magnetic field, while lower ones are for the cell model. The black solid curve represents the T_γ expected in the presence of only absorption onto EBL. The solid grey curve represents the median T_γ in the presence of ALPs conversions. The orange curve corresponds to conversions for a particular realization of the extragalactic magnetic field. The shaded band is the envelope of the results on all the possible realizations of the extragalactic magnetic field at 68 % (dark blue), 90 % (blue) and 99 % (light blue) C.L., respectively by simulating 10^3 different realizations of the extragalactic magnetic field in the cell case, or

extracting an equivalent number of 1-dimensional beams of cells randomly extracted from the outputs of the cosmological simulation at increasing redshift. According to conventional physics, it turns out that the T_γ gets dramatically suppressed at high energies ($E > 2$ TeV). As expected, including ALP conversions with cell magnetic fields, the enhancement of T_γ with respect to the standard case is modest since it is suppressed by the small coupling (left panel) or the high ALP mass (right panel). However, when we consider ALP conversions in realistic magnetic fields the enhancement of T_γ is striking.

ALP conversions in such models would produce a considerable hardening of the spectrum at high enough energies, thereby making it possible to detect VHE photons in a range where no observable signal would be expected according to conventional physics or to conversions with cell magnetic fields. An example of a particular realization is shown by the orange curve. In this specific case we see that the observable photon flux at high energies can be significantly larger than the average one. On this specific line of sight the enhancement of T_γ with respect to the standard case would reach 3 order of magnitudes.

Depending on the particular magnetic realization crossed by the photons, it is also possible to observe a suppression of the photon flux stronger than in the presence of conventional physics. Nevertheless, from Fig. 2 one infers that the cases in which T_γ is enhanced at high energies are much more probable. From these results it is evident that using realistic models of the extragalactic magnetic fields has a strong impact on the mechanism of photon-ALP conversions to reduce the cosmic opacity.

3 Conclusions

We have studied the conversions of VHE photons into ALPs proposed as a mechanism to reduce the absorption onto EBL, using for the first time realistic models of extragalactic magnetic fields, obtained from magneto-hydrodynamical cosmological simulations. We find an enhancement of the magnetic field with respect to what predicted in the naive cell model, due to the fact that simulated magnetic fields display larger fluctuations, correlated with density fluctuations of the cosmic web. This effect would give a significant boost to photon-ALP conversions. Notably, using the cell model the parameter space for photon-ALP conversions at VHE energies was strongly constrained by SN 1987A and Fermi-LAT data. However, using realistic models of the magnetic field we have found significant conversions also in regions of the parameter space consistent with previous bounds. This mechanism can produce a significant hardening of the VHE photon spectrum from faraway sources and we expect such signature to emerge at energies $E \geq 1$ TeV. Therefore, this scenario is testable with the present generation of Imaging Atmospheric Cherenkov Telescope, covering energies in the range from ~ 50 GeV to ~ 50 TeV.

References

- [1] G. Raffelt and L. Stodolsky, *Phys. Rev. D* **37**, 1237 (1988).
- [2] F. Aharonian *et al.* [H.E.S.S. Collaboration], *Nature* **440**, 1018 (2006).
- [3] D. Horns and M. Meyer, *JCAP* **1202**, 033 (2012).
- [4] M. Meyer, D. Horns and M. Raue, *Phys. Rev. D* **87**, no. 3, 035027 (2013).
- [5] A. De Angelis, O. Mansutti and M. Roncadelli, *Phys. Rev. D* **76**, 121301 (2007).
- [6] F. Vazza, M. Brüggen, C. Gheller and P. Wang, *Mon. Not. Roy. Astron. Soc.* **445**, no.4, 3706 (2014).
- [7] D. Montanino, F. Vazza, A. Mirizzi and M. Viel, *Phys. Rev. Lett.* **119**, no. 10, 101101 (2017).