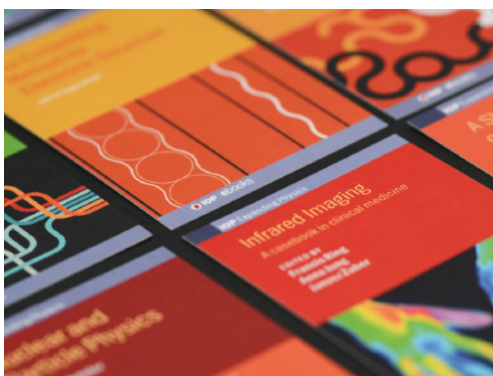


PAPER • OPEN ACCESS

$\text{La}_{1-x}\text{Mn}_{1-y}\text{O}_{3\pm\delta}$ buffer layers on inclined substrate deposited MgO templates for coated conductors

To cite this article: Oleksiy Troshyn *et al* 2021 *Supercond. Sci. Technol.* **34** 035006

View the [article online](#) for updates and enhancements.





IOP | ebooks™

Bringing together innovative digital publishing with leading authors from the global scientific community.

Start exploring the collection—download the first chapter of every title for free.

La_{1-x}Mn_{1-y}O_{3±δ} buffer layers on inclined substrate deposited MgO templates for coated conductors

Oleksiy Troshyn^{1,2}, Christian Hoffmann³, Veit Große², Jens Hänisch⁴, Lucas Becker² and Rudolf Gross^{1,5}

¹ Physik-Department, Technische Universität München, 85748 Garching, Germany

² THEVA Dünnschichttechnik GmbH, Rote-Kreuz-Str. 8, 85737 Ismaning, Germany

³ Ceraco Ceramic Coating GmbH, Rote-Kreuz-Str. 8, 85737 Ismaning, Germany

⁴ Institute for Technical Physics, Karlsruhe Institute of Technology (KIT), PO Box 36 40, 76021 Karlsruhe, Germany

⁵ Walther-Meißner-Institut, Bayerische Akademie der Wissenschaften, 85748 Garching, Germany

E-mail: oleksiy.troshyn@gmail.com

Received 20 September 2020, revised 19 November 2020

Accepted for publication 22 December 2020

Published 29 January 2021



CrossMark

Abstract

Most commercial high-temperature superconducting coated conductors based on ion beam assisted MgO deposited templates use LaMnO₃ (LMO) films as the terminating buffer layer. In contrast, coated conductors based on inclined substrate deposition (ISD)-MgO technology are still produced with homoepitaxial (homoepi)-MgO as the cap layer. In this work we report on the deposition of LMO buffer layers on ISD-MgO/homoepi-MgO by electron beam physical vapor deposition. The growth parameters of textured LMO films were studied systematically and their properties were optimized regarding the critical current density (J_c) of the subsequently deposited DyBa₂Cu₃O_{7-δ} (DyBCO) superconducting films. LMO films without outgrowths at the surface were obtained at growth rates of up to 4 Å s⁻¹. Despite the formation of non-stoichiometric LMO films containing 59% La, single-phase films were obtained at substrate temperatures below 775 °C and at oxygen partial pressures of up to 4 × 10⁻⁴ mbar due to a large homogeneity region towards La. The J_c values of DyBCO films deposited on LMO were found to be independent of the LMO thickness in a range from 50 nm to 450 nm. DyBCO films on LMO reach $J_c = 0.83$ MA cm⁻² at 77 K in zero applied field. This value is up to 30% higher than those of DyBCO films grown directly on homoepi-MgO. The wide range of LMO growth parameters and higher J_c values of DyBCO on LMO compared to DyBCO on homoepi-MgO make this material attractive for its use in manufacturing coated conductors based on ISD-MgO technology.

Keywords: LaMnO₃, buffer layers, EB-PVD, ISD-MgO, REBCO, coated conductors

(Some figures may appear in color only in the online journal)

1. Introduction

Coated conductor (CC) tapes based on REBa₂Cu₃O_{7-δ} (RE, rare earth) (REBCO) high temperature superconductors (HTS) have unique properties at low temperatures that can be used in electrical power transmission cables, high-field magnets and rotating electrical machines [1, 2]. The enabling property for



Original content from this work may be used under the terms of the [Creative Commons Attribution 4.0 licence](https://creativecommons.org/licenses/by/4.0/). Any further distribution of this work must maintain attribution to the author(s) and the title of the work, journal citation and DOI.

such applications is the high critical current density (J_c) of these REBCO films, which primarily can be achieved through epitaxial growth on biaxially textured buffer layers. The most popular technique for texture creation, which is used by the majority of manufacturing companies of HTS-CC, is the ion beam assisted MgO deposition (IBAD-MgO) of the template [3]. An alternative texturing technique is the inclined substrate deposition (ISD) which also generates a biaxially textured MgO layer [4, 5]. For the manufacturing of CC tapes, the ISD-MgO technique is attractive due to its simplicity and the high deposition rates that can be achieved. However, the mismatch of the lattice parameters between the MgO template and the REBCO layer, which is usually grown directly on top of it, can decrease the achievable critical current density [6].

In order to reduce this lattice mismatch and therefore increase J_c , an additional interlayer can be deposited between REBCO and MgO, regardless of the texturing method [7]. SrRuO₃ [8], SrTiO₃ [9, 10], LaMnO₃ (LMO) [11, 12] and CeO₂ [13] have been investigated as materials for such a final buffer layer on the IBAD architecture using, e.g. pulsed laser deposition (PLD) and rf-sputtering. On ISD-MgO templates, so far SrRuO₃ [14, 15] and YSZ/CeO₂ [16, 17] films were deposited as cap layers via PLD, whereas only LMO or LMO/CeO₂ architectures are used on IBAD templates in commercial CC manufacturing. Commercial tapes based on the ISD technology are still produced without any additional cap layer [18]. According to Xiong *et al* [19], LMO not only yields high J_c values but also allows for a large window of deposition parameters. This ensures a stable and reliable film growth, which is crucial when choosing a suitable cap layer. Until today there are only a few publications describing the parameter boundaries for the LMO growth and their effect on REBCO properties [11, 12]. In particular there is no prior work that provides information on the deposition of the LMO buffer layer on the ISD-MgO template and on the evaporation of an LMO granulate by an electron beam.

For the first time we demonstrate here the epitaxial growth of LMO films on a template consisting of ISD-MgO covered with a homoepitaxial (homoepi)-MgO layer by the electron beam physical vapor deposition (EB-PVD). We discuss the morphology and the texture of the fabricated LMO layers depending on their thickness and deposition parameters. We report the successful growth of DyBCO films on such ISD-MgO templates with LMO cap layer. At optimized deposition parameters of LMO, an increase of J_c by up to 30% is achieved for DyBCO films grown on LMO compared to DyBCO films grown on homoepi-MgO layers.

2. Experimental procedure

2.1. ISD MgO templates

Biaxially aligned MgO templates, which consist of ISD-MgO/homoepi-MgO layers deposited on 12 mm wide Hastelloy C276 metal tape, were used as substrates. Details of the substrate preparation and the ISD-MgO texturing technique have been published previously [20]. ISD-MgO and homoepi-MgO layers have been deposited on a continuously processed

tape with optimized growth conditions. All substrates used in the experiments were cut from the same tape with uniform MgO texture. This ensures the elimination of any influence of the substrate on the properties of the layers that were deposited on top of it. The in-plane and out-of-plane texture values of ISD-MgO (200) are 9.5° and 4.5°, respectively.

2.2. LMO buffer layers

The LMO buffer layers were deposited on the MgO templates by evaporating an LMO granulate with a grain size of <0.5 mm by means of EB-PVD. The deposition system and the measurement of the substrate temperature (T_{sub}) are described in detail in [21].

For LMO film growth the substrate temperature and the oxygen pressure were varied from 500 °C to 900 °C and from 3×10^{-5} mbar to 1.1×10^{-3} mbar, respectively. The LMO film thickness was varied in the range from 50 nm to 450 nm and the average growth rate was varied from 2 \AA s^{-1} to 5 \AA s^{-1} .

2.3. DyBCO films

The DyBCO films were deposited on LMO as well as directly on MgO buffer layers by evaporating a DyBCO granulate with a grain size of <0.5 mm by EB-PVD. Unlike for the LMO deposition, the substrates were placed on a rotating substrate holder. By rotating the substrates continuously between a deposition zone with a pressure of 2×10^{-4} mbar and an oxygen pocket with an oxygen pressure of about 5×10^{-3} mbar at a frequency of 5 Hz, a subsequent vapor condensation and oxidation take place during film growth. The substrates were radiation-heated to 700 °C for the DyBCO deposition. More details of the setup can be found in [22]. The evaporation rate was measured by a quartz crystal monitor and was kept at 3 \AA s^{-1} . The thickness of the DyBCO films was 1 \mu m .

The deposition of DyBCO films was used as a quick test to qualify the LMO buffer layers. A readily available DyBCO granulate, not optimized regarding the stoichiometry yielding the highest J_c values, of Dy:Ba:Cu = 20:25:55 was used for this purpose. It is known that J_c values of DyBCO films depend strongly on their composition [23] and can sharply decrease outside the optimal composition range [21, 24, 25]. Therefore, in the following discussion it has to be kept in mind that in the present work the DyBCO composition was not carefully optimized for yielding the highest J_c .

2.4. Sample characterization

The surface morphology and the thickness of the samples were analyzed by scanning electron microscopy (SEM) using a Hitachi SU8000. The composition of the film constituents was analyzed by energy dispersive x-ray spectroscopy (EDX), performed on an FEI Titan transmission electron microscope (TEM). Specimens for TEM were prepared by focused ion beam. The sample stoichiometry was measured by inductively coupled plasma atomic emission spectroscopy (ICP). As

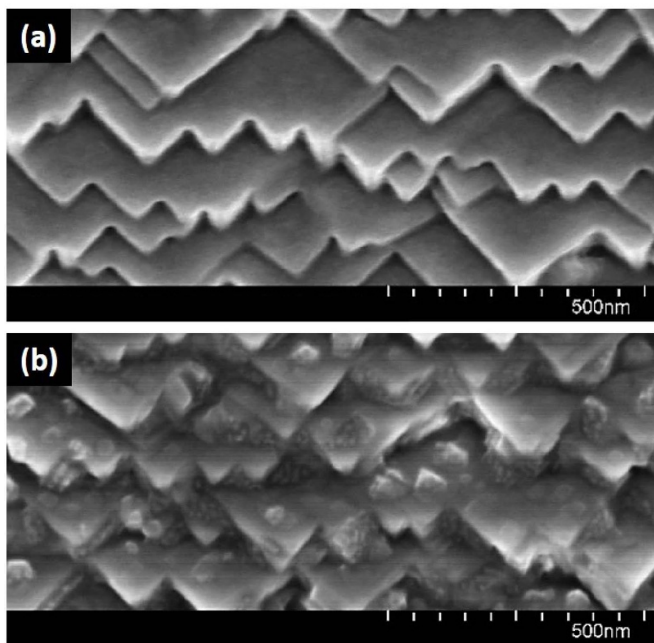


Figure 1. Surface morphology of 100 nm thick LMO films deposited at $T_{\text{sub}} = 750$ °C and $p(\text{O}_2) = 4 \times 10^{-4}$ mbar. The average deposition rate is (a) 2 \AA s^{-1} and (b) 5 \AA s^{-1} . In contrast to (a) where the layer surface is smooth, outgrowths can be found in (b).

Hastelloy C276 contains manganese, the use of the metal substrate would introduce a significant error in the measurement of the LMO film composition. Hence, LMO films designated for ICP measurements were deposited on MgO single crystals. It was assumed that the layer stoichiometry does not significantly depend on the substrate material and its temperature. The structural properties of the LMO and DyBCO films were characterized by x-ray diffraction using a Philips X'Pert x-ray Diffractometer with Cu-K α radiation. The texture was qualified using x-ray ω -rocking curves of the (200) LMO reflection. The full width at half maximum (FWHM) of the rocking curve peak is noted as $\Delta\omega$. The critical temperature (T_c) and critical current density values of the DyBCO samples were measured inductively (77 K, self-field) with a setup described in [26].

3. Results and discussion

3.1. Deposition rate

A basic parameter in thin film deposition is the deposition rate. Therefore we first studied the dependence of the film properties on the deposition rate by growing 100 nm thick LMO films at average evaporation rates of 2 \AA s^{-1} and 5 \AA s^{-1} on tapes with ISD-MgO/homoepi-MgO architecture (figure 1).

The surface morphology of the LMO films deposited with the rate of 2 \AA s^{-1} is similar to that of the homoepi-MgO layer. It consists of terraces that are aligned in the same way as the MgO surface. Every terrace has a smooth surface with sharp edges and corners. Such terraces are also visible at an average deposition rate of 5 \AA s^{-1} , but their surfaces are disturbed by

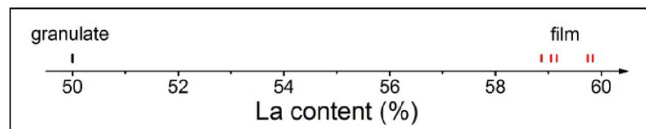


Figure 2. La content in the evaporated LMO granulate and in a series of five different deposited films (measured by ICP analysis). The reproducibility of the film stoichiometry is in the range of 1.5%.

the presence of outgrowths, which form predominantly within the terraces.

Notable during the deposition were occasional short-term rate bursts of up to 4 \AA s^{-1} at an average rate of 2 \AA s^{-1} , and beyond 10 \AA s^{-1} at an average rate of 5 \AA s^{-1} . These rate bursts originate from the formation of large droplets of the melt in the evaporation zone and their subsequent sudden evaporation. Such droplet formation is common for the EB-PVD method and appears to an increasing degree with higher evaporation rates, as more grains are fed into the evaporation zone.

Apparently, the rate bursts beyond 10 \AA s^{-1} are the limiting factor for a smooth surface morphology rather than the average rate of 5 \AA s^{-1} . As an LMO layer with many outgrowths offers a poor base for the epitaxial growth of REBCO, the LMO films described in the following were produced at an average deposition rate of 2 \AA s^{-1} to ensure that the inevitable rate bursts are below the critical value.

3.2. Film stoichiometry

When stoichiometric LMO granulate is evaporated during the EB-PVD process, the deposited LMO films have an excess of La of about 9% compared to the composition of the original granulate (figure 2). The precursor stoichiometry is therefore not exactly transferred into the deposited film by using EB-PVD. This is caused by the decomposition of the LMO powder and the formation of La- and Mn-rich droplets during evaporation. The evaporation characteristic of these different droplets is varying, resulting in the observed film stoichiometry [27].

The film stoichiometry was found to be reproducible with an accuracy of 1.5%. The observed variation in stoichiometry is mainly caused by an incomplete evaporation of the granulate. In case of good thermal coupling, droplets containing La and Mn can coagulate on the water cooled copper crucible and the EB power then is too low to evaporate these droplets. They are visible as residues on the crucible after deposition. In addition, the variation in stoichiometry transfer can also arise due to non-optimized electron beam settings and the granulate track geometry, since an occasional splashing of droplets from the evaporation zone was observed during the deposition.

In order to deposit stoichiometric LMO films, a granulate with MnO_z excess has been evaporated. As a result, films with the surface morphology shown in figure 1(b) were obtained due to the formation and rapid evaporation of large droplets from the melt, leading to evaporation rates beyond 10 \AA s^{-1} . Thus, an increased manganese content in the granulate affected the stability of the evaporation rate. Since the

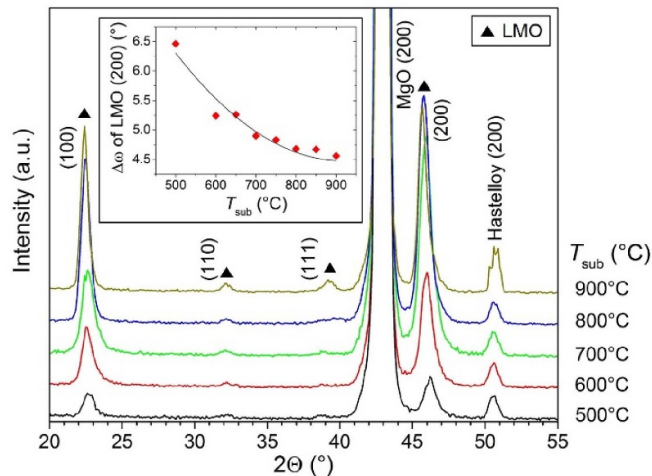


Figure 3. ω - 2θ diffractograms of LMO films grown at different substrate temperatures. The insert shows the rocking curve width $\Delta\omega$ of the (200) LMO reflections. All LMO layers were deposited at $p(\text{O}_2) = 4 \times 10^{-4}$ mbar.

observed effect could not be eliminated, the stoichiometric LMO granulate was used in all depositions described below.

3.3. Substrate temperature

In order to find the optimal temperature range for the growth of high-quality LMO buffer layers suitable for the subsequent REBCO deposition, the substrate temperature was varied from 500 °C to 900 °C and its influence on morphology and crystallinity was studied. For simplicity only the samples deposited at an oxygen partial pressure of 4×10^{-4} mbar are described here, since a preliminary parameter screening showed that at this pressure high-quality LMO buffer layers can be grown.

The 100 nm thick LMO films grown on the homoepi-MgO layer were found to be epitaxially textured in the entire investigated temperature range, which is evident from the intense ($h00$) LMO peaks in the ω - 2θ diffractograms (figure 3) and sharp pole figures (not shown here) of these films. The FWHM of the LMO (200) rocking curve, $\Delta\omega$, decreases (inset in figure 3) with growing temperature, indicating a steady improvement of the film crystallinity. The improved texturing/alignment can be explained by an increased surface diffusion at higher temperatures. The adsorbed atoms then have a sufficiently high energy to reach and occupy the most energetically favorable positions on the crystal surface, i.e. kink and step sites. Hence, the number of defects in the LMO crystal structure decreases. Nevertheless, high substrate temperatures also favor the growth of misoriented crystallites corresponding to the LMO (111) reflection.

The surfaces of all LMO films consist of terraces, thus replicating the MgO underlayer over a wide temperature range (figure 4). However, pronounced differences in the layer morphology can be distinguished at a closer inspection. For instance, an increase in substrate temperature from 500 °C to 700 °C leads to smoother terrace surfaces with sharper edges and corners. They can be explained by an increased surface diffusion of deposited atoms at higher temperatures. In the

temperature range from 700 °C to 775 °C the morphology of the films does not change noticeably. At 800 °C bright spots can be observed in the SEM images of the layer surface. With a further temperature increase to 900 °C, the size of these defects increases and the sharp edges and corners of the terraces fade.

High resolution TEM EDX elemental maps of LMO films deposited at $T_{\text{sub}} = 700$ °C and $T_{\text{sub}} = 850$ °C, accordingly without and with bright spots visible in SEM images in figure 4, were taken to analyze the composition of the precipitates, which correspond to these bright spots (figure 5). While La and Mn atoms are homogeneously distributed in the film grown at 700 °C (figure 5(a)), the film in figure 5(b) ($T_{\text{sub}} = 850$ °C) obviously contains precipitates with a La excess and a Mn deficiency. They are evenly distributed across the entire film thickness and have likely been formed during the film growth. Thus, the bright spots in the SEM images of films deposited at temperatures above 800 °C correspond to La-rich precipitates.

The absence of these precipitates at low substrate temperatures, their formation at high temperatures and their increasing size with increasing substrate temperature can be explained using the phase diagram of $1/2\text{La}_2\text{O}_3\text{-MnO}_z$ shown in figure 6. It was calculated in [28] in air, i.e. at an oxygen partial pressure of 210 mbar, and is used as a rough guideline since it can notably change at the LMO deposition conditions ($p(\text{O}_2) \leq 1.1 \times 10^{-3}$ mbar) [29]. In the LaMnO system a congruently melting, non-stoichiometric perovskite $(\text{La}_{1-d}\text{Mn}_d)_{1-x}\text{Mn}_{1-y}\text{O}_{3\pm\delta}$ [29] with a wide homogeneity range extending mainly in the La direction is formed. For a La-rich sample, as in our case, $d \approx 0$. The red arrow marks the path for a temperature rise in a La-rich LMO compound with 56% La. According to the phase diagram, only a single phase, i.e. the perovskite, forms for such a composition at temperatures below 760 °C (region ①). At about 760 °C, the La_2O_3 phase is crystallized from the perovskite at the two-phase boundary (point ②). With growing temperature, the amount of La_2O_3 increases at the expense of perovskite according to the lever rule, thus changing the composition of the perovskite (region ③).

The described sequence of the phase separation in the phase diagram with increasing temperature is in good agreement with our experimental observations. The La-rich inclusions appear in LMO films with 59% La at $T_{\text{sub}} = 800$ °C and grow with increasing substrate temperature. Therefore, the observed precipitates can be attributed to the La_2O_3 phase. In contrast to the phase diagram, we observe a wider homogeneity region towards La, which is probably a result of different experimental conditions.

The following experiment confirms the assumption of the phase separation in the LMO film with increasing substrate temperature. An LMO film with a La content of 59%, deposited at 700 °C and 4×10^{-4} mbar oxygen, was annealed for 30 min at $T_{\text{sub}} = 900$ °C and $p(\text{O}_2) = 4 \times 10^{-4}$ mbar and then quickly cooled down to room temperature. While initially no precipitates were visible on the surface (figure 7(a)), bright spots appeared after the annealing procedure mainly at the terrace boundaries (figure 7(b)). In a further annealing step

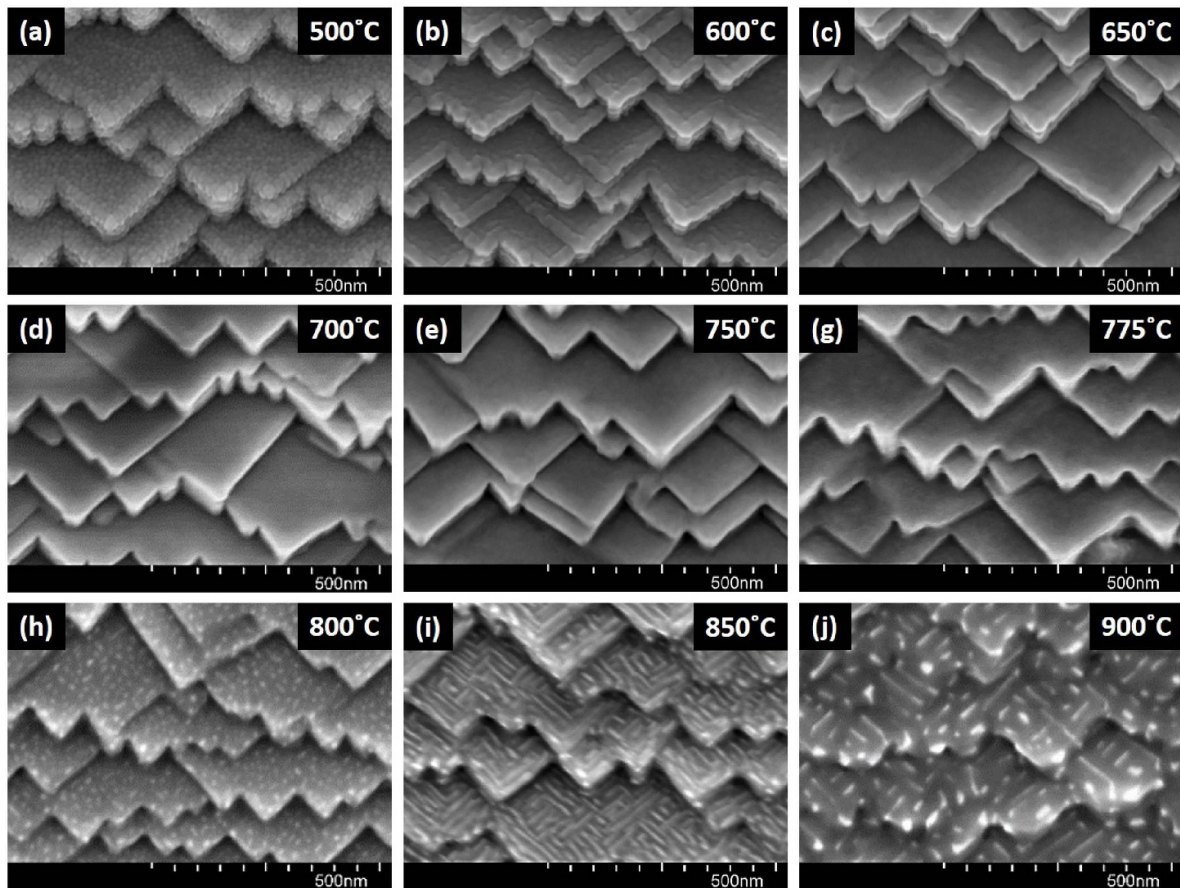


Figure 4. Surface morphology of 100 nm thick LMO films grown in the temperature range from 500 °C to 900 °C.

up to 900 °C, these precipitates could not be dissolved by a slow cool-down at an oxygen pressure of 210 mbar. Therefore, an irreversible reaction with the formation of the La_2O_3 phase has taken place at high temperatures. According to this experiment, the $\frac{1}{2}\text{La}_2\text{O}_3\text{-MnO}_2$ phase diagram can be used as a scheme to describe the growth of the single-phase LMO films at $p(\text{O}_2) \leq 1.1 \times 10^{-3}$ mbar.

The critical current density of the DyBCO films on LMO changes significantly with LMO growth temperature (figure 8). In particular the J_c value of DyBCO increases with the LMO deposition temperature until it reaches a maximum at $T_{\text{sub}} = 700$ °C. On further increasing the temperature to 800 °C, J_c decreases slightly and then sharply drops at $T_{\text{sub}} > 800$ °C. The observed J_c distribution strongly correlates with the surface roughness of the LMO buffer layers. We determined the surface roughness from SEM images (cf figure 4) since it is not possible to measure it with an atomic force microscope due to the morphology of the film surface consisting of inclined terraces. The LMO surface is rough at temperatures less than 650 °C due to low surface diffusion of adsorbed particles, and at temperatures above 800 °C due to the formation of the La_2O_3 precipitates. Though the La_2O_3 precipitates form already at 800 °C, they do not seem to disturb the DyBCO growth, probably due to their size being still small.

In summary, LMO buffer layers for the subsequent growth of DyBCO (or in general REBCO) films with a high critical current density can be deposited in a wide temperature range from 650 °C to 800 °C despite the excess of La. Such a large temperature window for the deposition process makes LMO an attractive candidate for application in the production of HTS-CC.

3.4. Oxygen partial pressure

In [27] and [30], it has been shown that during EB-PVD evaporation of both REBCO and MgO a vaporization of the constituent oxides, with their partial decomposition into metal and oxygen atoms, occurs. These metal atoms and oxides are adsorbed on the substrate surface and consequently additional oxygen is required for the formation of a fully oxidized epitaxial film. It is reasonable to assume that this is also the case during LMO evaporation. Both manganese and lanthanum atoms and oxides are evaporated and adsorbed on the sample. The additional oxygen is provided by the background oxygen atmosphere in the vacuum chamber.

Unexpectedly crystalline LMO films grow textured on MgO even at extremely low oxygen partial pressures and thus in the entire investigated range from $p(\text{O}_2) = 3 \times 10^{-5}$ mbar to $p(\text{O}_2) = 1.1 \times 10^{-3}$ mbar. This becomes evident from

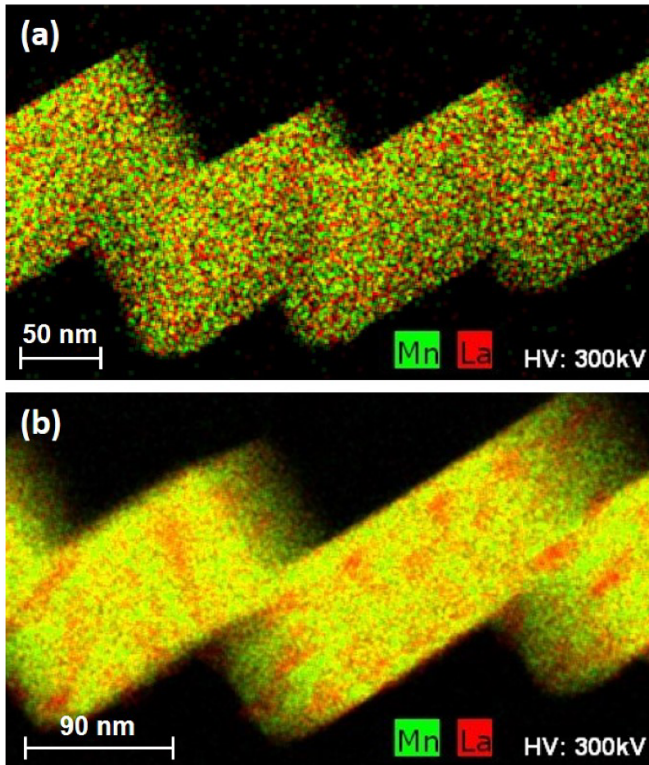


Figure 5. High resolution TEM EDX of LMO films deposited at a substrate temperature of (a) 700 °C and (b) 850 °C. In (b) the formation of precipitates with a La excess and a Mn deficiency is revealed.

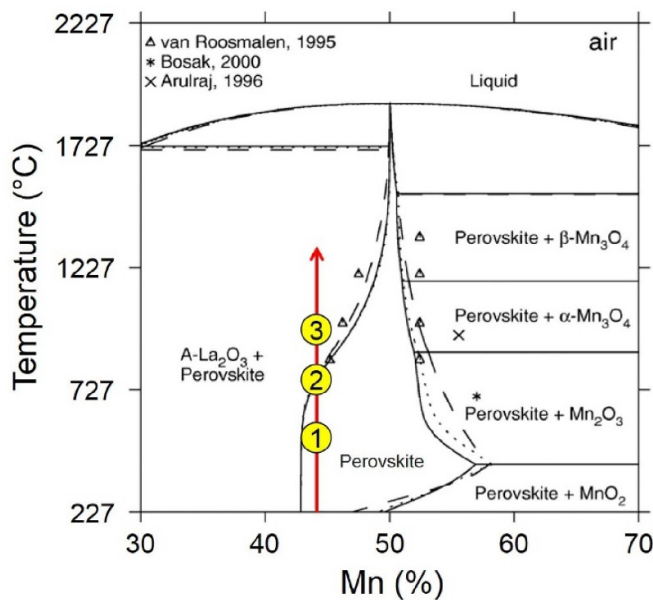


Figure 6. The phase diagram of $1/2\text{La}_2\text{O}_3\text{-MnO}_z$ calculated in air in [28]. Point 2 marks the boundary between two different phase regions, labeled with numbers 1 and 3. Reproduced with permission from [28].

the intense ($h00$) LMO reflections in the diffractogram (figure 9(a)). The formation of the LMO phase even at the low pressure of $p(\text{O}_2) = 3 \times 10^{-5}$ mbar implies that either

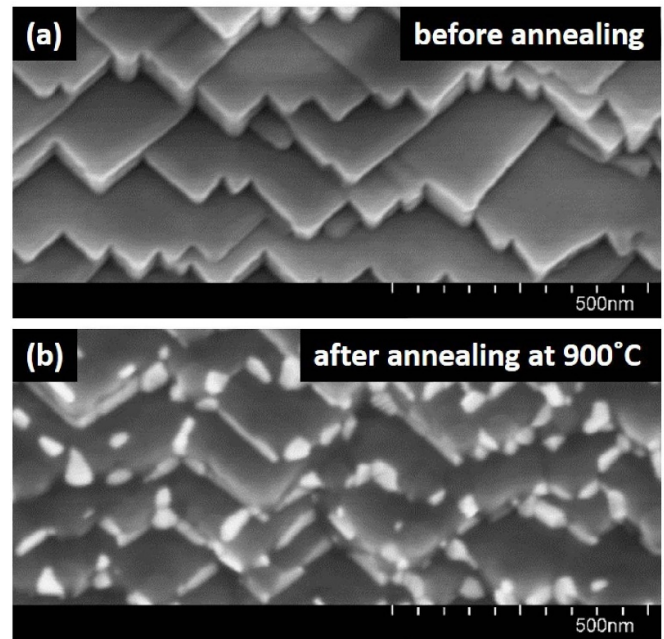


Figure 7. (a) Surface morphology of the 100 nm thick LMO film deposited at $T_{\text{sub}} = 700^\circ\text{C}$ and $p(\text{O}_2) = 4 \times 10^{-4}$ mbar. (b) Morphology of the same sample after annealing for 30 min at $T_{\text{sub}} = 900^\circ\text{C}$ and $p(\text{O}_2) = 4 \times 10^{-4}$ mbar.

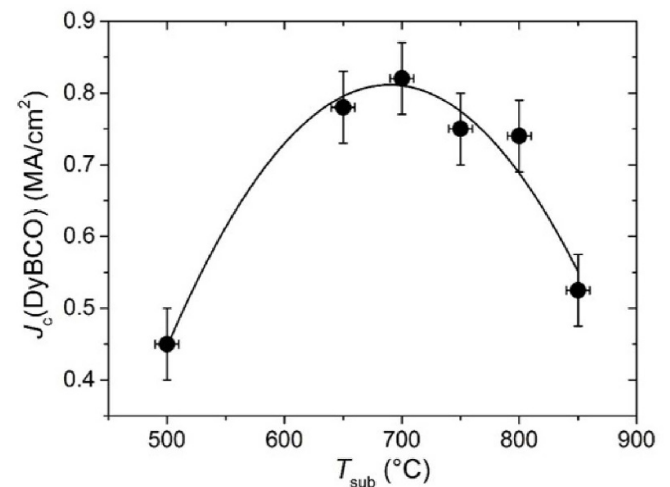


Figure 8. Critical current density J_c of 1 μm thick DyBCO films grown on LMO buffer layers plotted versus the substrate temperature during LMO deposition. All LMO layers were grown at $p(\text{O}_2) = 4 \times 10^{-4}$ mbar.

particles containing lanthanum and manganese mainly vaporize as oxides, or that crystalline LMO films can also be formed at a significant oxygen deficiency as reported in [31, 32]. When studying the impact of oxygen partial pressure on the growth of LMO buffer layers, their quality is again evaluated regarding the J_c values achieved for the subsequently deposited DyBCO superconducting films.

As shown in figure 9(b), the highest critical current densities were achieved for DyBCO films on LMO buffers deposited

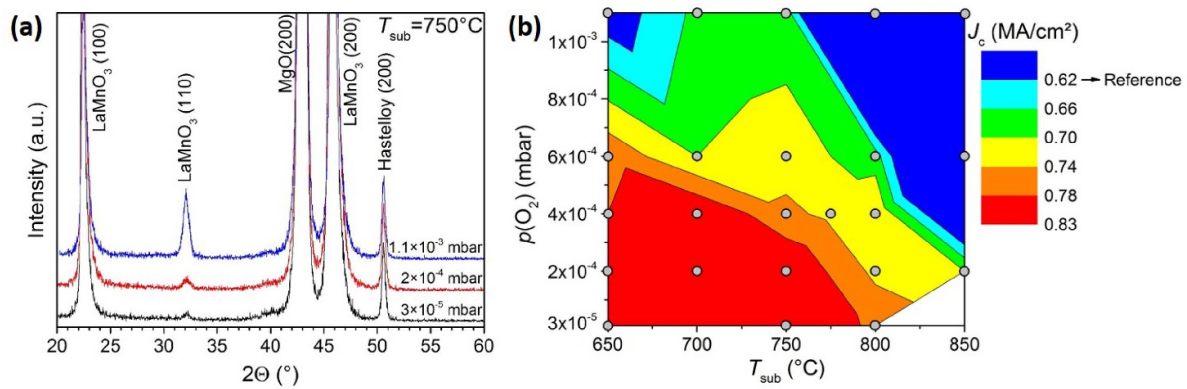


Figure 9. (a) ω - 2θ diffractograms of LMO films grown at $T_{\text{sub}} = 750^\circ\text{C}$. The increasing intensity of the (110) LMO peak with increasing oxygen partial pressure indicates the favored growth of the misoriented grains. (b) Critical current density J_c of DyBCO films deposited on 100 nm thick LMO buffer layers at varying oxygen partial pressures and substrate temperatures.

at oxygen pressures of $p(\text{O}_2) \leq 4 \times 10^{-4}$ mbar and at temperatures from 650°C to approximately 750°C . The achieved J_c values on the LMO buffer layers with optimized process parameters are consistently higher than for a reference DyBCO sample grown directly on an MgO template. Possible reasons for this observation are discussed in the next paragraph. With increasing temperature and/or oxygen pressure beyond this optimal process parameter window the J_c values decrease significantly.

The decrease in quality of DyBCO films on LMO layers that were deposited at temperatures above 800°C is not surprising. The formation of La_2O_3 precipitates at these temperatures and their impact was already discussed above. However, such crystallites are formed already at a substrate temperature of 750°C and an oxygen pressure of $p(\text{O}_2) = 1.1 \times 10^{-3}$ mbar, as can be seen in the corresponding SEM image in figure 10. Furthermore, an increase of oxygen pressure intensifies the formation of the La_2O_3 crystallites with regard to their density and size, as clearly seen on the samples deposited at 850°C . This result suggests a shrinkage of the La solubility range in the perovskite under oxidizing conditions similar to increasing temperature (figure 6). The dependence of the Mn solubility in LMO on oxygen partial pressures has been studied in [32, 33]. However, for La it is reported here to our knowledge for the first time. Interestingly, both the number of La_2O_3 precipitates in SEM images and the intensity of the (110) LMO peak in the ω - 2θ diffractogram increase with increasing oxygen pressure (figure 9(a)), although the in-plane and out-of-plane texture of LMO does not depend on $p(\text{O}_2)$ and is 8.9° and 5.0° , respectively. Since the intensity of the (110) peak is proportional to the number of misoriented grains in the LMO buffer layer, the J_c values of the DyBCO films deposited on top of them are expected to decrease, which is in agreement with the experimental observation.

3.5. Film thickness

So far our results indicate that the critical current density of DyBCO layers can be improved by more than 30% using LMO cap layers with a thickness of 100 nm. In order to determine

the minimal and maximal LMO layer thickness, still allowing for an increase in J_c , we investigated the J_c values of DyBCO films on LMO buffer layer with a thickness between 50 nm and 450 nm. The LMO was deposited at $p(\text{O}_2) = 2 \times 10^{-4}$ mbar and $T_{\text{sub}} = 700^\circ\text{C}$.

The surface morphology of the 50 nm thick film has sharp edges and smooth terraces (figure 11(a)). The terraces and the steps of MgO are completely covered by LMO with homogeneously distributed thickness (figure 11(b)), a coverage which could not be clearly seen at smaller thicknesses. In contrast, for a 300 nm thick film the uniform and flat alignment of terraces on the surface is no longer maintained and the edges of the terraces are curved or show facets, which can be seen in both SEM top view and cross-section of this layer (see figures 11(c) and (d)). The surface area of the terraces with a smooth surface is therefore decreased.

The origin of the development of the observed surface morphology with increasing film thickness is not exactly known. However, there is evidence for a change of growth conditions with increasing thickness indicated by an increasing blackening of thick layers. While a 50 nm thick LMO film still appears white or transparent, the films thicker than 300 nm look dark grey. This color change can affect the sample temperature at a constant heating power due to radiant heating of only the rear side of the substrate. A change of the emission coefficient in the Stefan-Boltzmann law, associated with the surface blackening, leads to a higher radiation loss of the film with growing thickness and thus a decreasing substrate temperature. The resulting reduction of the surface diffusion length of the adsorbed particles might lead to the observed development of the film morphology.

The J_c and T_c values of DyBCO on LMO are independent of the LMO thickness in the studied range (figure 12). It implies, that the observed morphology change of LMO films with increasing thickness does not have a strong influence on the superconducting properties of DyBCO. The absence of any dependence of J_c of REBCO films on the LMO buffer layer thickness in the range from 30 nm to 240 nm was also found for DyBCO films grown on IBAD-MgO templates [12].

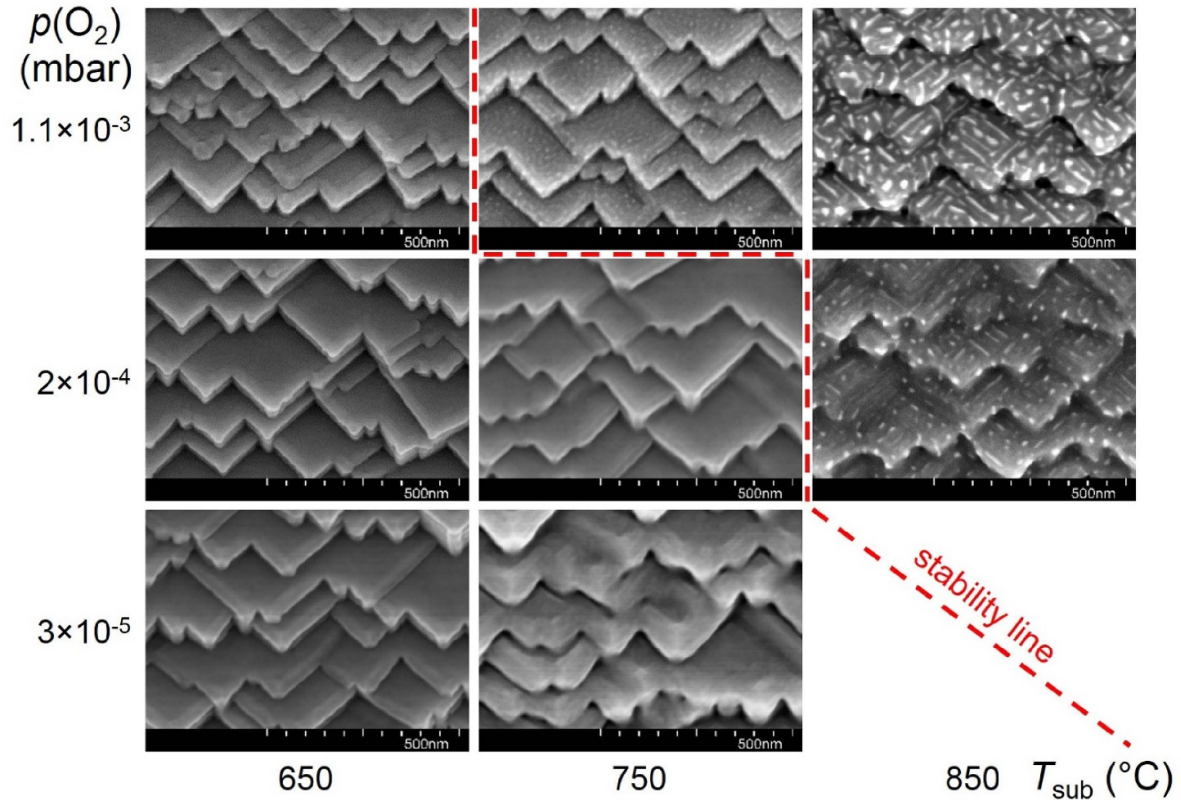


Figure 10. Surface morphology of 100 nm thick LMO buffer layers deposited at various temperatures and oxygen partial pressures. The red dotted line indicates the stability line of the LMO phase. An increase of the oxygen partial pressure and/or the substrate temperature favors the formation of La_2O_3 precipitates.

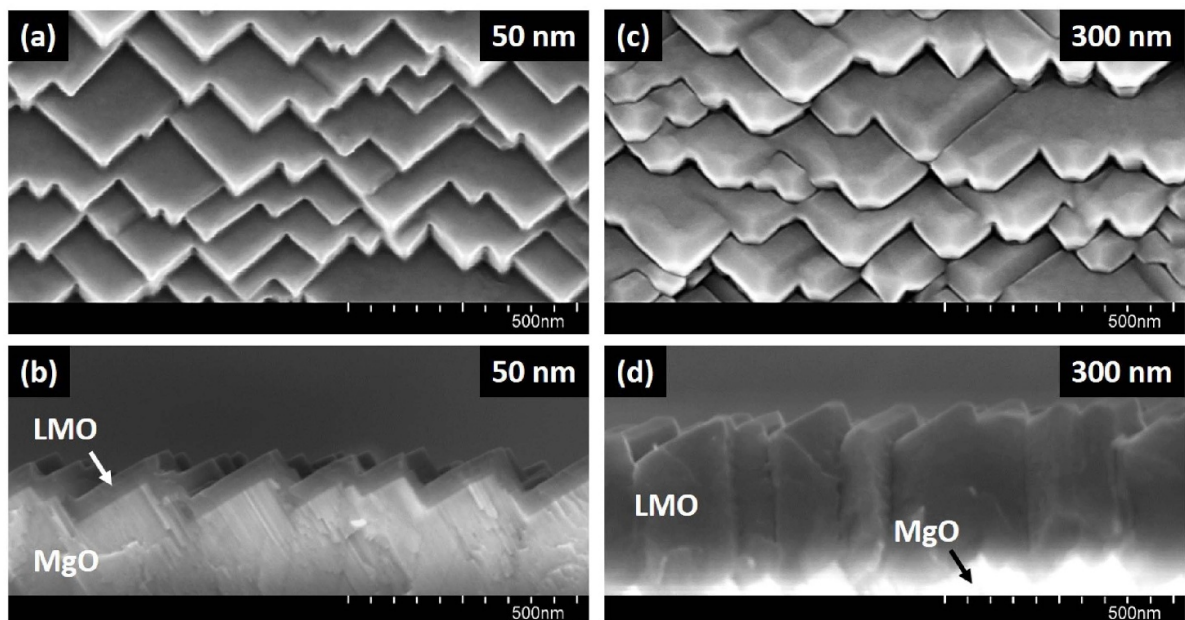


Figure 11. Surface morphology (a), (c) and SEM cross-sections (b), (d) of the 50 nm and the 300 nm thick LMO layers deposited at $T_{\text{sub}} = 700 \text{ }^\circ\text{C}$ and $p(\text{O}_2) = 2 \times 10^{-4} \text{ mbar}$ on homoepi-MgO. The MgO terraces are fully covered with LMO already at layer thickness of 50 nm. The sharp edges of the 50 nm thick film are shown in contrast to the rounded edges of the 300 nm thick film.

The J_c and T_c values of DyBCO films on LMO buffers are higher compared to the reference sample, DyBCO grown on a homoepi-MgO layer. We found no correlation between J_c

and the in-plane texture of DyBCO (measured at the (103) peak) on these buffer layers. Hence there should be other reasons for this observation. There may be a different strain

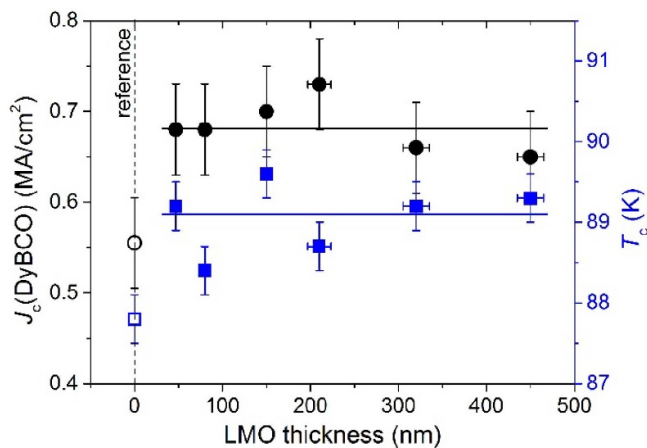


Figure 12. J_c (circles) and T_c (squares) of DyBCO films plotted versus the thickness of the underlying LMO buffer layers. For comparison, J_c and T_c values of a reference sample with a DyBCO film grown on a homoepi-MgO layer are shown.

state of DyBCO on LMO due to a smaller lattice mismatch of about 1% between these two materials compared to 8% between DyBCO and MgO [11]. As a result, a larger stoichiometry window might be expected when growing DyBCO on LMO compared to homoepi-MgO. Or there may be a slight Mg poisoning of DyBCO grown on MgO, which reduces T_c [34]. Meanwhile, Mn possibly diffusing into DyBCO grown on LMO would not poison it [35]. Also assuming a similar $J_c(T/T_c)$ dependence for all these samples, higher T_c values easily explain higher J_c values.

We note that the highest J_c values of DyBCO, grown on LMO and homoepi-MgO in this work are lower than the state-of-the-art J_c values, which for DyBCO on ISD-MgO/homoepi-MgO reach $J_c \approx 2 \text{ MA cm}^{-2}$ [23, 36]. Taking into account an optimized ISD-texture, similar to [23], and further assuming that relevant deposition parameters of DyBCO such as substrate temperature, oxygen pressure, and deposition rate were close to optimal, we believe that the low J_c is caused by the non-optimized DyBCO composition and does not represent the limit for these buffer layers. Nevertheless, we were able to optimize the LMO growth parameters regarding the change of the critical current density of the subsequently deposited DyBCO films.

4. Conclusions

For the first time, LMO buffer layers were deposited on ISD-MgO templates using EB-PVD. LMO films with 59% La are formed when evaporating a stoichiometric LMO granulate by an electron beam. Despite this LMO films grow epitaxially on MgO in a very wide range of temperatures from 500 °C to 900 °C and partial oxygen pressures from 3×10^{-5} mbar to 1.1×10^{-3} mbar. Due to non-stoichiometry of LMO and its large homogeneity region towards La, single-phase films were obtained at temperatures $T_{\text{sub}} \leq 775$ °C and pressures $p(\text{O}_2) \leq 4 \times 10^{-4}$ mbar. The limitations of LMO growth with EB-PVD include the formation of outgrowths at the film

surface at evaporation rates above approximately 5 \AA s^{-1} as well as misorientations at high temperatures and oxygen partial pressures. In the latter case the LMO misorientations are correlated to the formation of La_2O_3 precipitates due to La excess in the samples and may be eliminated by a deposition of stoichiometric films.

DyBCO films grown on LMO buffer layers with thickness above 50 nm have up to 30% higher self-field J_c values at 77 K compared to DyBCO grown directly on the homoepi-MgO layer. This shows that LMO buffer layer grown on top of ISD-MgO template is a promising candidate for usage in industrially produced HTS-CC.

Acknowledgments

The authors thank colleagues at THEVA Dünnschichttechnik GmbH for technical assistance and Dr. Werner Prusseit for supporting this research.

ORCID iDs

Oleksiy Troshyn <https://orcid.org/0000-0002-5195-2728>
 Jens Hänisch <https://orcid.org/0000-0003-2757-236X>

References

- [1] Thomas H, Marian A, Chervyakov A, Stückrad S, Salmieri D and Rubbia C 2016 Superconducting transmission lines—sustainable electric energy transfer with higher public acceptance? *Renew. Sustain. Energy Rev.* **55** 59–72
- [2] Haran K S *et al* 2017 High power density superconducting rotating machines—development status and technology roadmap *Supercond. Sci. Technol.* **30** 123002
- [3] Jin H J, Moon H K, Yoon S, Jo W, Kim K, Kim M, Ko R K, Jo Y S and Ha D W 2016 Microstructural investigation of phases and pinning properties in $\text{M}\text{Ba}_2\text{Cu}_3\text{O}_{7-x}$ ($\text{M} = \text{Y}$ and/or Gd) coated conductors produced by scale-up facilities *Supercond. Sci. Technol.* **29** 035016
- [4] Bauer M, Metzger R, Semerad R, Berberich P and Kinder H 2000 Inclined substrate deposition by evaporation of magnesium oxide for coated conductors *Mater. Res. Soc. Symp. Proc.* **585** 35–44
- [5] Kinder H, Bauer M and Schwachulla J 2001 Device and method for producing a multilayered material *US Pat.* 6265353B1
- [6] Ma B, Li M, Jee Y A, Koritala R E, Fisher B L and Balachandran U 2002 Inclined-substrate deposition of biaxially textured magnesium oxide thin films for YBCO coated conductors *Physica C* **366** 270–6
- [7] Myoren H, Nishiyama Y, Miyamoto N, Kai Y, Yamanaka Y, Osaka Y and Nishiyama F 1990 Crystalline qualities and critical current densities of as-grown $\text{Ba}_2\text{YCu}_3\text{O}_x$ thin films on silicon with buffer layers *Japan. J. Appl. Phys.* **29** L955–7
- [8] Jia Q X, Foltyn S R, Arendt P N, Groves J R, Holesinger T G, Hawley M E and Lu P 2002 Role of SrRuO_3 buffer layers on the superconducting properties of $\text{YBa}_2\text{Cu}_3\text{O}_7$ films grown on polycrystalline metal alloy using a biaxially oriented MgO template *Appl. Phys. Lett.* **81** 4571–3
- [9] Wang H, Foltyn S R, Arendt P N, Jia Q X, MacManus-Driscoll J L, Stan L, Li Y, Zhang X and Dowden P C 2004 Microstructure of SrTiO_3 buffer layers and its

- effects on superconducting properties of $\text{YBa}_2\text{Cu}_3\text{O}_{7-\delta}$ coated conductors *J. Mater. Res.* **19** 1869–75
- [10] Wang H, Foltyn S R, Arendt P N, Jia Q X, Li Y and Zhang X 2005 Thickness effects of SrTiO_3 buffer layers on superconducting properties of $\text{YBa}_2\text{Cu}_3\text{O}_{7-\delta}$ coated conductors *Physica C* **433** 43–49
- [11] Paranthaman M, Aytug T, Christen D K, Arendt P N, Foltyn S R, Groves J R, Stan L, DePaula R F, Wang H and Holesinger T G 2003 Growth of thick $\text{YBa}_2\text{Cu}_3\text{O}_{7-\delta}$ films carrying a critical current of over 230 A/cm on single LaMnO_3 -buffered ion-beam assisted deposition MgO substrates *J. Mater. Res.* **18** 2055–9
- [12] Polat O, Aytug T, Paranthaman M, Kim K, Zhang Y, Thompson J R, Christen D K, Xiong X and Selvamianickam V 2008 Direct growth of LaMnO_3 cap buffer layers on ion-beam-assisted deposition MgO for simplified template-based $\text{YBa}_2\text{Cu}_3\text{O}_{7-\delta}$ -coated conductors *J. Mater. Res.* **23** 3021–8
- [13] Li X et al 2003 High critical current MOD *ex situ* YBCO films on RABiTS™ and MgO-IBAD templates *Physica C* **390** 249–53
- [14] Xu Y, Lei C H, Ma B, Evans H, Efstathiadis H, Rane M, Massey M, Balachandran U and Bhattacharya R 2006 Growth of textured MgO through e-beam evaporation and inclined substrate deposition *Supercond. Sci. Technol.* **19** 835–43
- [15] Ma B, Uprety K K, Fisher B L, Koritala R E, Dorris S E and Balachandran U 2004 YBCO-coated conductors fabricated by inclined substrate deposition technique *Supercond. Sci. Technol.* **17** S477–81
- [16] Ma B, Li M, Koritala R E, Fisher B L, Markowitz A R, Erck R A, Baurceanu R, Dorris S E, Miller D J and Balachandran U 2003 Pulsed laser deposition of YBCO films on ISD MgO buffered metal tapes *Supercond. Sci. Technol.* **16** 464–72
- [17] Ma B, Koritala R E, Fisher B L, Uprety K K, Baurceanu R, Dorris S E, Miller D J, Berghuis P, Gray K E and Balachandran U 2004 High critical current density of YBCO coated conductors fabricated by inclined substrate deposition *Physica C* **403** 183–90
- [18] Prusseit W, Hoffmann C, Nemetschek R, Sigl G, Handke J, Lümkmann A and Kinder H 2006 Reel to reel coated conductor fabrication by evaporation *IEEE Trans. Appl. Supercond.* **16** 996–8
- [19] Xiong X, Lenseith K P, Reeves J L, Rar A, Qiao Y, Schmidt R M, Chen Y, Li Y, Xie Y Y and Selvamianickam V 2007 High throughput processing of long-length IBAD MgO and Epi-buffer templates at SuperPower *IEEE Trans. Appl. Supercond.* **17** 3375–8
- [20] Prusseit W, Nemetschek R, Hoffmann C, Sigl G, Lümkmann A and Kinder H 2005 ISD process development for coated conductors *Physica C* **426–431** 866–71
- [21] Troshyn O, Hoffmann C, Große V, Hänisch J and Holzapfel B 2020 Parameter boundaries for the heteroepitaxial growth of REBCO films by e-beam quantitative evaporation on inclined substrate deposited MgO buffered Hastelloy tapes *J. Phys. Conf. Ser.* **1559** 012035
- [22] Kinder H, Berberich P, Prusseit W, Rieder-Zecha S, Semerad R and Utz B 1997 YBCO film deposition on very large areas up to $20 \times 20 \text{ cm}^2$ *Physica C* **287** 282–7
- [23] Prusseit W, Bauer M, Große V, Semerad R, Sigl G, Dürrschnabel M, Aabdin Z and Eibl O 2012 Working around HTS thickness limitations—towards 1000+ A/cm—class coated conductors *Phys. Proc.* **36** 1417–22
- [24] Oh S S et al 2008 Development of long-length SmBCO coated conductors using a batch-type reactive co-evaporation method *Supercond. Sci. Technol.* **21** 034003
- [25] Kim H S, Oh S S, Ha H S, Youm D, Moon S H, Kim J H, Dou S X, Heo Y U, Wee S H and Goyal A 2014 Ultra-high performance, high-temperature superconducting wires via cost-effective, scalable, co-evaporation process *Sci. Rep.* **4** 4744
- [26] Claassen J H, Reeves M E and Soulen J R J 1991 A contactless method for measurement of the critical current density and critical temperature of superconducting films *Rev. Sci. Instrum.* **62** 996–1004
- [27] Hoffmann C 2003 YBCO-Dauerbeschichtung auf sehr großen Flächen PhD Technische Universität München
- [28] Grundy A N, Hallstedt B and Gauckler L J 2004 $\text{La}_{1-x}\text{Mn}_{1-y}\text{O}_{3-z}$ perovskites modelled with and without antisite defects using the CALPHAD approach *Solid State Ion.* **173** 17–21
- [29] Grundy A N, Chen M, Hallstedt B and Gauckler L J 2005 Assessment of the La-Mn-O system *J. Phase Equilib. Diffus.* **26** 131–51
- [30] Sigl G 2009 Herstellung von technischen Substraten mit biaxial texturierten Pufferschichten für supraleitende Bauelemente der 2. Generation PhD Technische Universität München
- [31] Arulraj A, Mahesh R, Subbanna G N, Mahendiran R, Raychaudhuri A K and Rao C N R 1996 Insulator-metal transitions, giant magnetoresistance, and related aspects of the cation-deficient LaMnO_3 compositions $\text{La}_{1-\delta}\text{MnO}_3$ and $\text{LaMn}_{1-\delta'}\text{O}_3$ *J. Solid State Chem.* **127** 87–91
- [32] Zachau-Christiansen B 1997 Oxygen stoichiometry in cation deficient $(\text{La,Sr})_{1-z}\text{MnO}_3$ SOFC cathode materials *ECS Proc.* **97–18** 795–804
- [33] Bosak A A, Gorbenko O Y, Kaul A R, Graboy I E, Dubourdieu C, Senateur J P and Zandbergen H W 2000 Cation and oxygen nonstoichiometry in R-Mn-O (R = La, Nd) bulk samples and thin films *J. Magn. Magn. Mater.* **211** 61–66
- [34] Raffo L, Caciuffo R, Rinaldi D and Licci F 1995 Effects of Mg doping on the superconducting properties of $\text{YBa}_2\text{Cu}_3\text{O}_{7-\delta}$ and $\text{La}_{1.85}\text{Sr}_{0.15}\text{CuO}_4$ systems *Supercond. Sci. Technol.* **8** 409–14
- [35] Regnier S, Alfred-Duplan C, Vacquier G and Marfaing J 1996 Effect of Mn inclusion in superconducting YBCO-based composites *Appl. Supercond.* **4** 41–51
- [36] Dürrschnabel M, Aabdin Z, Bauer M, Semerad R, Prusseit W and Eibl O 2012 $\text{DyBa}_2\text{Cu}_3\text{O}_{7-x}$ superconducting coated conductors with critical currents exceeding 1000 A cm^{-1} *Supercond. Sci. Technol.* **25** 105007