

The replicability of ICD-11 Complex Posttraumatic Stress Disorder symptoms in adults. A cross-cultural analysis of its network structure in representative population samples from Germany, Israel, the UK, and the US.

Matthias Knefel\*, Thanos Karatzias, Menachem Ben-Ezra, Marylene Cloitre, Brigitte Lueger-Schuster, Andreas Maercker

\* Corresponding author

word count: 3996

## Abstract

**Background:** The 11th revision of the World Health Organization's International Classification of Diseases (ICD-11) includes a new disorder, Complex Posttraumatic Stress Disorder (CPTSD). A network approach to CPTSD will enable investigation of the structure of the disorder at symptom level, which may inform the development of treatments that target specific symptoms to accelerate clinical outcomes.

**Aims:** To test whether similar networks of ICD-11 CPTSD replicate across culturally different samples and to investigate possible differences, using a network analysis.

**Method:** We investigated the network models of four nationally representative, community-based cross-sectional samples drawn from Germany, Israel, the UK, and the US (total  $N=6417$ ). CPTSD symptoms were assessed with the International Trauma Questionnaire in all samples. Only those participants who reported significant functional impairment by CPTSD symptoms were included ( $N=1591$  included in analysis; age:  $M=43.55$  years,  $SD=15.10$ , range=[14;99]; 67.7% women). Regularized partial correlation networks were estimated for each sample and the resulting networks were compared.

**Results:** Despite differences in traumatic experiences, symptom severity, and symptom profiles, the networks were very similar across the four countries. The symptoms within dimensions were strongly associated with each other in all networks, except for the two symptom indicators assessing aspects of affective dysregulation. The most central symptoms were 'feelings of worthlessness' and 'exaggerated startle response'.

**Conclusion:** The structure of CPTSD symptoms appears very similar across countries. Addressing symptoms with the strongest associations in the network, such as negative self-worth and startle reactivity, will likely result in rapid treatment response.

**Key words:** Complex Posttraumatic Stress Disorder, ICD-11, network approach, replicability, cross cultural, nationally representative;

## THE CROSS-CULTURAL NETWORK STRUCTURE OF CPTSD

Declaration of interest: AM and MC were members of the WHO ICD-11 Working Group on the Classification of Disorders Specifically Associated with Stress, reporting to the WHO International Advisory Group for the Revision of ICD-10 Mental and Behavioural Disorders. The views expressed in this article are those of the authors and do not represent the official policies or positions of the International Advisory Group or the WHO.

We do not have any other conflicts of interest to disclose.

### Introduction

The 11th revision of the World Health Organization's International Classification of Diseases (ICD-11) has taken a new approach to diagnose disorders of traumatic stress.<sup>1</sup> The ICD-11 includes two sibling disorders, Posttraumatic Stress Disorder (PTSD) and Complex PTSD (CPTSD; see<sup>2</sup> for a review). PTSD features symptoms reflecting three clusters: re-experiencing of the trauma in the present, avoidance of traumatic reminders, and a persistent sense of threat. CPTSD includes the core PTSD symptoms plus additional symptoms that identify 'disturbances in self-organization' (DSO) which may result from sustained, repeated, and multiple forms of traumatic exposures. There are three DSO symptom categories including affective dysregulation, negative self-concept, and disturbances in relationships. The recently promoted network approach to psychopathology defines mental disorders as sets of interacting symptoms.<sup>3</sup> It assumes that symptoms can be associated with external factors, such as a traumatic event. Once triggered, a symptom may lead to other symptoms (e.g. flashbacks may lead to sense of threat which may lead to anger problems) and maybe even activate symptom loops.<sup>4</sup> Network analysis allows for a visual representation of symptom interaction and can illustrate which symptoms are more central than others. These symptoms are arguably the most important elements in a disorder and clinicians could prioritize central over non-central symptoms in their treatment approach to enable rapid response to therapy. The symptom "worthlessness" was found to be the most central ICD-11 CPTSD symptom in one study.<sup>5</sup> Network analysis explores the interplay of symptoms and promotes a comprehensive understanding of CPTSD. However, it is not yet clear whether the network structure and centrality of symptoms is specific to certain groups or generalizes across different populations with CPTSD. Although studies corroborate the stability of psychopathological networks, their replicability was recently debated.<sup>6-8</sup> With the present study we broaden the knowledge about CPTSD as a new diagnosis by analysing its network structure across different countries and providing researchers and clinicians the opportunity to better understand the symptom interactions underlying this condition.

## THE CROSS-CULTURAL NETWORK STRUCTURE OF CPTSD

This study aimed to investigate and compare for the very first time the network structure and symptom centrality of ICD-11 CPTSD in four nationally representative samples from Germany, Israel, the UK, and the US.

### Methods

#### Participants

Participants came from four nationally representative samples from Germany, Israel, the UK, and the US (total N=6417). Reporting the experience of at least one potentially traumatic event in a screening tool was an inclusion criterion for the UK and US studies. This inclusion criterion was not required for the Israeli sample, as recent armed conflicts along with terror attacks put almost the entire Israeli population under direct or potential threat to life, corresponding with exposure to a traumatic event. Experience of a traumatic event was not an inclusion criterion in the German study; however, the trauma-specific symptom measures were only administered to those participants who reported such an experience. In the present study, those participants who reported the experience of a potentially traumatic event and showed functional impairment by symptoms of CPTSD were included. This inclusion criterion was administered to investigate the network structure of CPTSD only in participants who are actually impaired in their daily functioning by CPTSD symptoms and exclude those who experienced a potentially traumatic event but are not impaired by any related symptom. Functional impairment was assessed with six queries in the International Trauma Questionnaire (ITQ), three assessing functional impairment as related to the PTSD symptoms and three as related to the DSO symptoms (German study: five items). All individuals who reported at least “moderate” (a value of two or higher) functional impairment in one or more of the queries were included in the present study. This resulted in a total sample size of N=1591 (24.8%). The mean age for this sample was 43.55 years ( $SD=15.10$ , range=[14;99]) and the majority of the sample were women (67.6%). The higher rate of female participants represents the frequently reported gender differences in the prevalence of many anxiety and mood disorders.<sup>9</sup> The German sample was assessed using paper-and-pencil questionnaires, while all three other samples were assessed using online versions of the questionnaires. The estimates of a probable PTSD and CPTSD diagnosis in the included sample were 12.9% and 20.6%, respectively; these rates may vary from

## THE CROSS-CULTURAL NETWORK STRUCTURE OF CPTSD

the original studies due to differences in applied diagnostic algorithms and subsamples selected for analyses (Table 1). The Institutional Review Board (IRB) of the respective institutions approved all studies (German study: IRB at Department of Medical Psychology, University of Leipzig; Israeli study: IRB at Ariel University; UK study and US study: National College of Dublin Ethics Committee) and all participants gave written informed consent.

The first sample consisted of 280 participants from a representative sample of the German general population.<sup>10</sup> The sample was representative in terms of age, sex, and residence in Germany. A trained study assistant visited each participant and supported their self-report if they had any difficulties understanding the questions. Potentially traumatic events (PTEs) were assessed with a checklist including eight events (e.g., “threatened to be physically attacked”, “sexual abuse prior to the age of 14”), one question on “witnessing a traumatic event”, and an open question about “another terrible event or a catastrophe”. In the subsample used for the present study, the most prevalent type of events were “witnessing a traumatic event” (39.6%), “physical violence” (27.5%), “severe accident” (25.7%), “life-threatening illness” (21.8%), and “rape” (13.2%).

The second sample consisted of 336 Israeli adults.<sup>11</sup> The sample was recruited with stratified and random sampling methods from an internet panel that represent the general Israeli population. PTEs were assessed with the Life Events Checklist, revised version (LEC-R<sup>12</sup>). The LEC-R assesses exposure to 18 traumatic events, two of which specifically inquire about childhood trauma and the 19th item can be used to indicate exposure to a trauma that is not listed. The most prevalent PTEs in this sample were “physical assault as adult” (43.8%), “transportation accident” (42.0%), “combat or exposure to a war zone” (36.6%), and “other unwanted or uncomfortable sexual experience” (32.7%).

The third sample consisted of 447 adults from the UK.<sup>13</sup> The sample was drawn through probability-based sampling from an online research panel that is representative of the entire UK adult population. PTEs were assessed with the Life Events Checklist for DSM-5 (LEC-5<sup>14</sup>), assessing exposure to 16 traumatic events and one item can be used to indicate exposure to a trauma that is not listed. The LEC-5 was used twice, one time referring to childhood and the second time referring to adulthood. The most prevalent PTEs during childhood in this sample

## THE CROSS-CULTURAL NETWORK STRUCTURE OF CPTSD

were “physical assault” (45.0%), “other unwanted or uncomfortable sexual experiences” (34.2%), “sudden, unexpected death of a close person” (32.0%), and “sexual assault during childhood” (23.5%). In adulthood, the most prevalent events were “sudden, unexpected death of a close person” (49.2%), “physical assault” (40.0%), “other unwanted or uncomfortable sexual experiences” (31.3%), and “transportation accident” (30.2%). Additionally, ten adverse childhood experiences (ACE) were assessed.<sup>15</sup> The most prevalent ACE were “emotional neglect” (55.0%), “verbal or physical threats” (52.1%), “physical assault” (48.3%), and “parental divorce/separation” (43.4%).

The fourth sample consisted of 528 adults from the US.<sup>16</sup> The participants for this study were a nationally representative household sample of adults currently residing in the US. Data were collected using an existing online research panel that is representative of the entire US population. Panel members were randomly recruited through probability-based sampling. PTEs were assessed with a 14 items version of the LEC-5.<sup>14</sup> The LEC-5 was used twice for PTEs in childhood and in adulthood. In childhood, the most prevalent events were “sudden, unexpected death of a close person” (42.6%), “natural disaster” (41.1%), “transportation accident” (38.4%), and “physical assault not by caregiver” (30.9%). The most prevalent events in adulthood were “sudden, unexpected death of a close person” (62.1%), “transportation accident” (59.7%), “natural disaster” (43.2%), and “physical assault” (32.4%). Additionally, ten ACE were assessed.<sup>15</sup> The most prevalent ACE in this study were “parental divorce/separation” (45.8%), “drug/alcohol problems in the home” (41.9%), “emotional neglect” (40.0%), and “verbal or physical threats” (39.4%).

### Measures

All four studies used the International Trauma Questionnaire<sup>13</sup> to assess the symptoms of ICD-11 PTSD and CPTSD. The ITQ is a self-report measure of the ICD-11 symptoms of PTSD and CPTSD (see<sup>17</sup> for a recent review). The final version of the ITQ includes 12 items assessing symptoms and six items assessing functional impairment in the areas of relationships and social life, work, and other important parts of life such as parenting or school.<sup>13</sup> Six of the symptom indicators measure three PTSD clusters (two items for each cluster): Re-experiencing in the here and now, deliberate avoidance of traumatic reminders (internal or external), and a sense of

current threat. Further six symptom indicators measure the three DSO clusters (two items for each cluster): Affective dysregulation (hyperactivation and hypoactivation), negative self-concept, and difficulties in relationships.

Respondents are instructed to respond in relation to how much they have been bothered by each PTSD symptom in the past month and are instructed to answer the DSO items in relation to how they typically feel, think about themselves, and relate to others. All items are answered on a five-point scale anchored by “Not at all” (0) and “Extremely” (4). Criteria for a probable PTSD diagnosis require a score of  $\geq 2$  (“Moderately”) for at least one of the two symptom indicators from each of the three PTSD clusters plus endorsement of functional impairment associated with these symptoms (a score of  $\geq 2$  - “Moderately”). A probable CPTSD diagnosis requires that the PTSD criteria are met and additionally a score of  $\geq 2$  (“Moderately”) for at least one of two symptom indicators from each of the three DSO clusters plus endorsement of functional impairment associated with these symptoms. The ICD-11’s taxonomic structure means that an individual can only be diagnosed with PTSD or CPTSD, not both. The studies in English speaking countries used the English version of the ITQ,<sup>13</sup> the German study used the German version,<sup>18</sup> and the Israeli study used the Israeli version of the ITQ.<sup>11</sup> All versions have proved good psychometric properties (English Version;<sup>19</sup> German version;<sup>5</sup> Israeli version<sup>20</sup>). Cronbach’s alpha of the total scale was good in all samples ranging from  $\alpha=0.87$  to  $\alpha=0.90$  and in the total sample  $\alpha=0.89$ .

### Data Analysis

We conducted four steps of analysis, following the statistical procedure described by Fried et al.:<sup>8</sup> network estimation, network inference, network stability, and network comparison. We used the R statistical environment<sup>21</sup> for all analyses and the package qgraph<sup>22</sup> to visualize the networks. The statistical procedure is described in more detail in the supplementary materials.

### Missing values

We excluded participants who had 20% or more missing values in the 12 ITQ items. In the German sample, two persons were excluded, resulting in the final number of 280 participants, and ten persons from the US sample were excluded, resulting in the final number of 528 participants. No person from the Israeli or the UK sample was excluded. In the final four



## THE CROSS-CULTURAL NETWORK STRUCTURE OF CPTSD

datasets, there were only a few missing values (0.52% of all data points were missing). We used pairwise complete observations to estimate the correlations among the symptoms in these four datasets. To rule out a possible bias introduced by excluding twelve individuals and using pairwise complete observations for the analysis, we additionally used a multiple imputation technique to estimate missing values. There were no relevant differences between the correlation matrices based on the imputed and the non-imputed data (see supplementary materials section “Data Analysis: Missing values” for more details).

### Network estimation

Symptom networks consist of nodes, representing symptoms, and edges, reflecting the pairwise relations between two nodes. We used the fused graphical lasso to jointly estimate the network structures of the four samples. Since CPTSD symptoms can be considered ordered-categorical, the estimation of the 12-items networks are based on the polychoric correlations among symptoms (see supplementary materials section “Data Analysis: Network estimation” for more details).

### Network inference

We used three parameters to describe the connectedness of each node in the four jointly estimated networks: the centrality index node strength, the predictability of each node, and the bridge strength of each node. Strength refers to the sum of all edges connected to a specific node.<sup>23</sup> Predictability refers to the estimated shared variance of each node with all of its neighbors.<sup>24</sup> Bridge strength is defined as the sum of all edges that exist between each PTSD node and all six DSO nodes and vice-versa. (see supplementary materials section “Data analysis: Network inference” for more details).

### Network stability

We examined the stability of the individually estimated networks,<sup>8</sup> including estimating 95%-CIs around the edge weights and estimating a correlation-stability coefficient for strength centrality (see supplementary materials section “Data analysis: Network stability” for more details).

### Network comparison

We compared the networks across the four samples in several ways: We correlated the edge weights across the four networks and then used an overall test to investigate whether all edges

in all pairs of networks were identical. With post hoc comparisons, we identified the number of edges that significantly differed between each pair of networks. We tested the extent to which the similarity of the global strength (sum of all edge weights within each network) differed across the networks. Finally, we estimated a network across all four samples with the data from only those participants who fulfilled the criteria for PTSD or CPTSD as per ITQ algorithm (n=512) and compared the results to a network of those with significant functional impairment but without a diagnosis (n=1079) to investigate possible differences between these groups (see supplementary materials section “Data analysis: Network comparison” for more details).

## Results

### Descriptive Statistics

Participants from the four samples reported different profiles of symptom distress (Table 1). The similarity of the symptom profiles varied, ranging from rather similar to unrelated to quite dissimilar: The Spearman rank correlation between the mean values of the 12 items ranged from  $\rho=0.71$  (German and Israeli sample) to  $\rho=0.06$  (Israeli and UK sample) to  $\rho=-0.34$  (German and UK sample). The mean symptom profile correlation was  $\rho=0.31$ .

[Table 1]

### Network estimation

Figure 1 depicts the results of the four jointly estimated networks. In the German, Israeli, UK, and US sample, 43, 46, 45, and 48 of all possible 66 edges were estimated to be above zero (65.2%, 69.7%, 68.2%, and 72.7%, respectively), indicating that the symptoms had substantial connections with each other. The visual inspection of the four networks shows many consistent edges, such as strong connections between *dream-flshb*, *hyper-strtl*, *avdin-avdex*, *fail-worth*, and *dist-close* (see Table 1 for full symptom names).

[Figure 1]

### Network inference

The standardized strength centrality estimates are presented in Figure 2. These estimates were very similar across the four networks with Spearman correlations ranging from  $\rho=0.80$  (German

and UK sample) to  $\rho=0.99$  (UK and US sample). *Worth* and *avdex* were among the nodes with the highest strength metric in all samples and *upset* was the node with the smallest centrality value in all networks. The average predictability of the nodes is graphically presented in Figure 1 and ranged from 0.51 (German sample) to 0.56 (UK sample), with a total mean of 0.53. This indicates that on average 51% to 56% of the variation of each symptom could be explained by its neighboring symptoms. Strength and predictability were closely related (correlations from  $\rho=0.78$  to  $\rho=0.86$ ), reflecting their conceptual similarity. The two nodes with the highest bridge strength were *strtl* and *upset*, which means that *strtl* was the PTSD symptom with the strongest average connection to DSO symptoms and *upset* was the DSO symptom with the strongest average connection to PTSD symptoms.

[Figure 2]

### Network stability

Overall, the stability analyses provided support for the robustness and moderate accuracy of our results based on the correlation-stability coefficient and the bootstrapped confidence intervals around the estimated edges. The confidence intervals around the edge weights were moderately large, indicating a moderate accuracy of the network estimation. Small edges should be interpreted cautiously (see supplementary materials section “Results: Network stability” and Figure S1 for more details).

### Network comparison

Spearman correlations of the edge weights between the samples ranged from 0.78 (German and US sample) to 0.86 (Israeli and UK sample), indicating strong similarities. The NCT is an overall test of network similarity. We compared all six pairs of networks and found that three of these comparisons showed significant differences: between the German and Israeli ( $p=0.028$ ), the German and the US ( $p=0.007$ ), and the UK and the US ( $p=0.001$ ) networks. The three other comparisons did not detect any difference between the edge weights across the networks (i.e., the German and UK, Israeli and UK, and Israeli and US networks). We then used a post hoc test comparing all edges between the networks and found only one significantly differing edge in the comparison of the German and the US networks (the edge connecting *upset-numb*), between the Israeli and the US networks (*fail-dist*), and between the UK and the US networks (*hyper-*

*strtl*). The global strength of the networks, which is a measure of the overall connectivity within a network, was 5.18 for the German, 5.32 for the Israeli, 5.31 for the UK, and 5.18 for the US network. The NCT showed no significant difference for the comparison of the overall connectivity between any two networks. Collectively, these results suggest a strong similarity between the networks.

Next, we estimated a network for the total sample of 1591 persons (Figure 3a), which was similar to the structures of the four jointly estimated networks. *Worth* had the highest strength, followed by *strtl*, and *dist*. The least central symptom in this network was *upset* (Figure 3c). Finally, we compared the network of those individuals who fulfilled the criteria for PTSD or CPTSD to the network of those who did not. The overall network comparison test revealed a significant result. Post hoc analysis showed significant differences in three edges: *dream-flshb*, *avdin-avdex*, and *hyper-strtl*, with larger edges in the group without diagnosis (Figure 3b). The Spearman correlation of the edge weights between the two groups was 0.62. The global strength of the networks was not significantly different (4.97 for the group with a diagnosis and 5.14 for the group without a diagnosis). The centrality estimates were similar between the groups (Figure 3c).

[Figure 3]

## Discussion

In the present study, we investigated the network structure of ICD-11 CPTSD using the newly developed ITQ in four national representative samples from Germany, Israel, the UK, and the US. The samples varied in their cultural background, demographic characteristics, trauma experiences, and symptom severity. Overall, we found that the symptoms comprising a cluster according to the ICD-11 classification were strongly associated with each other in all networks, except for the two symptoms assessing affective dysregulation. The estimated networks were sufficiently stable and “feelings of worthlessness” and “exaggerated startle response” were consistently among the most central symptoms. The latter also showed the strongest connections among the PTSD symptoms with DSO and “long time upset” showed the strongest

connections among the DSO symptoms with PTSD. The networks showed strong similarity across the four samples and across the subsamples with and without a probable PTSD/CPTSD diagnosis.

Previous research also found that negative trauma-related cognitions such as “worthlessness” play a central role in the network structure of ICD-11 CPTSD<sup>5</sup> and DSM-5 PTSD<sup>6</sup> and are predictive of non-remittance.<sup>25</sup> Negative self-appraisals can be considered as vulnerability to develop PTSD after traumatic experiences<sup>26</sup> and as maintaining cognitive factor.<sup>27</sup> Our results confirm the central role of a negative self-concept in the symptom network of CPTSD. Another core feature of PTSD is ongoing sense of threat,<sup>1</sup> which is reflected by the central role of “exaggerated startle response” in the symptom networks. PTSD has fear or horror at its heart, based on the patient’s challenges to separate the “here and now” from the “there and then”.<sup>28</sup> Finally, challenges to calm down after being upset showed the strongest connection from DSO to PTSD, supporting the potential value of incorporating adaptive emotion regulation strategies into treatment.<sup>29</sup> A number of interventions have been found effective in addressing similar symptoms.<sup>30,31</sup> Taken together, the present results suggest the potential value of cognitive, exposure-based, and emotion regulation interventions in the treatment of CPTSD.<sup>32</sup>

Our results provide evidence of the robustness of CPTSD. The network of those individuals who had a probable PTSD/CPTSD diagnosis was very similar to the network of those who showed functional impairment by PTSD/CPTSD symptoms but did not fulfill all criteria. Only three edges differed between these groups, with stronger connections in the group without probable diagnosis. The symptoms seem to be weaker connected in those with a diagnosis suggesting that PTSD and CPTSD represent more stable conditions with fewer plasticity compared to subthreshold conditions. However, these findings require further replication. Furthermore, each symptom was closely associated with the other symptom of their respective symptom cluster. This is similar to factor analytical studies, where symptoms within a factor are strongly related to each other.<sup>33</sup> Network models and factor models are mathematically similar.<sup>34</sup> However, while factor models assume the presence of underlying latent factors, the network model emphasizes the mutual interaction between symptoms. Only the affective dysregulation symptoms did not show a strong association with each other in any of the networks. This is

understood as consistent with the goals of the measure's development: these symptoms cover two types of problems in the regulation of affects, hyperactivation and hypoactivation, reflecting both under- and overregulation of affect. It is likely that a specific person does present with either one feature or the other, not both, which can explain the small correlation between these symptoms. The closer association of the symptoms reflecting the other clusters can be explained by the conceptual similarity of the symptoms or by a direct causal interaction of these symptoms. For example, the two symptoms of re-experiencing might covary strongly because both reflect the involvement of an involuntary perceptual memory system that is distinct from ordinary episodic memory on a psychological level<sup>28</sup> or reflect specific alterations in the neural basis related to memory on a neurological level.<sup>35</sup> It is also possible that the experience of repeated flashbacks during the day directly influences the experience of nightmares during the night, and vice-versa, on symptom level. The most central symptoms provide a good starting point for symptom-specific interventions.<sup>36</sup> The networks in this study are cross-sectional and it is thus also possible that central symptoms are a consequence rather than the cause of other symptoms in the network.<sup>37</sup> Future research should investigate the association of cross-sectional (between-persons) networks with longitudinal (within-person) networks. Treatment studies should explore the treatment response rapidity by addressing central nodes with specific interventions.

Our findings add support to the questioned replicability of network analytical studies. Although the samples showed differences in symptom profiles and participant characteristics that might reflect cultural differences, we found very similar networks across the samples.<sup>6-8</sup> Nevertheless, this work is limited in a number of ways. First, the ITQ is a self-report measure. Second, the samples differed in some respects; the assessment procedure was not the same in all studies (online vs. paper-pencil) and the response rates differed between the four original studies (Germany: 52% of all valid addresses who were contacted; Israel: 31% of those who were sent an e-mail invitation; UK: 39.6% of the participants who were screened for inclusion; US: 46.3% of the participants who were screened for inclusion), possibly biasing between-group comparisons. Third, the study findings in community samples may not generalize to treatment-seeking, clinical samples. Even though some of the participants in the present study may be accessing treatment, from our data it was not possible to differentiate their symptom networks

## THE CROSS-CULTURAL NETWORK STRUCTURE OF CPTSD

from those who do not access treatment. Fourth, the accuracy of the individual networks was limited based on the smaller sample sizes. Fifth, the cross-sectional nature of the samples does not allow for any causal inference. Finally, even though samples came from three different continents, all represent high income countries. It is not clear whether our results would generalize to samples from low- and middle-income countries.

In conclusion, this study supports the generalizability and construct validity of ICD-11 CPTSD. Future research should investigate the network structure of CPTSD in diverse populations who are also culturally and socioeconomically diverse.

## Author contribution

TK and MK conceptualized the manuscript. MK made the statistical analysis and wrote the first draft of the manuscript. All authors contributed to and have approved the final manuscript.

## Funding sources

Internal research grant awarded to MB from Ariel University RA1700000037; The sponsor had no involvement in study design, data collection, analysis, interpretation of the results, writing of the report, or the decision to submit the article for publication.



## References

- 1 Maercker A, Brewin CR, Bryant RA, Cloitre M, van Ommeren M, Jones LM et al. Diagnosis and classification of disorders specifically associated with stress: Proposals for ICD-11. *World Psychiatry* 2013; **12** (3): 198–206.
- 2 Brewin CR, Cloitre M, Hyland P, Shevlin M, Maercker A, Bryant RA et al. A review of current evidence regarding the ICD-11 proposals for diagnosing PTSD and complex PTSD. *Clin Psychol Rev* 2017; **58**: 1–15.
- 3 Borsboom D. A network theory of mental disorders. *World Psychiatry* 2017; **16** (1): 5–13.
- 4 Cramer AOJ, van Borkulo CD, Giltay EJ, van der Maas HLJ, Kendler KS, Scheffer M et al. Major depression as a complex dynamic system. *PLoS ONE* 2016; **11** (12): e0167490.
- 5 Knefel M, Tran US, Lueger-Schuster B. The association of posttraumatic stress disorder, complex posttraumatic stress disorder, and borderline personality disorder from a network analytical perspective. *J Anxiety Disord* 2016; **43**: 70–8.
- 6 Stockert SHH von, Fried EI, Armour C, Pietrzak RH. Evaluating the stability of DSM-5 PTSD symptom network structure in a national sample of U.S. military veterans. *J Affect Disord* 2018; **229**: 63–8.
- 7 Borsboom D, Fried EI, Epskamp S, Waldorp LJ, van Borkulo CD, van der Maas HLJ et al. False alarm? A comprehensive reanalysis of "Evidence that psychopathology symptom networks have limited replicability" by Forbes, Wright, Markon, and Krueger (2017). *J Abnorm Psychol* 2017; **126** (7): 989–99.
- 8 Fried EI, Eidhof MB, Palic S, Costantini G, Huisman-van Dijk HM, Bockting, CLH et al. Replicability and generalizability of Posttraumatic Stress Disorder (PTSD) networks: A cross-cultural multisite study of PTSD symptoms in four trauma patient samples. *Clin Psychol Sci* 2018. doi:10.1177/2167702617745092.
- 9 Seedat S, Scott KM, Angermeyer MC, Berglund P, Bromet EJ, Brugha TS et al. Cross-national associations between gender and mental disorders in the World Health Organization World Mental Health Surveys. *Arch Gen Psychiatry* 2009; **66** (7): 785–95.

## THE CROSS-CULTURAL NETWORK STRUCTURE OF CPTSD

- 10 Maercker A, Hecker T, Augsburger M, Kliem S. ICD-11 prevalence rates of Posttraumatic Stress Disorder and Complex Posttraumatic Stress Disorder in a German nationwide sample. *J Nerv Ment Dis* 2018; **206** (4): 270–6.
- 11 Ben-Ezra M, Karatzias T, Hyland P, Brewin CR, Cloitre M, Bisson JI et al. Posttraumatic stress disorder (PTSD) and complex PTSD (CPTSD) as per ICD-11 proposals: A population study in Israel. *Depress Anxiety* 2018; **35** (3): 264–74.
- 12 Gray MJ, Litz BT, Hsu JL, Lombardo TW. Psychometric properties of the life events checklist. *Assessment* 2004; **11** (4): 330–41.
- 13 Cloitre M, Shevlin M, Brewin CR, Bisson JI, Roberts NP, Maercker A et al. The International Trauma Questionnaire: development of a self-report measure of ICD-11 PTSD and complex PTSD. *Acta Psychiatr Scand* 2018. doi:10.1111/acps.12956.
- 14 Weathers FW, Litz BT, Keane TM, Palmieri PA, Marx BP, Schnurr PP. *The Life Events Checklist for DSM-5 (LEC-5)*. (Scale available from the National Center for PTSD at [www.ptsd.va.gov](http://www.ptsd.va.gov)), 2013.
- 15 Felitti VJ, Anda RF, Nordenberg D, Williamson DF, Spitz AM, Edwards V et al. Relationship of childhood abuse and household dysfunction to many of the leading causes of death in adults. *Am J Prev Med* 1998; **14** (4): 245–58.
- 16 Shevlin M, Hyland P, Roberts NP, Bisson JI, Brewin CR, Cloitre M. A psychometric assessment of Disturbances in Self-Organization symptom indicators for ICD-11 Complex PTSD using the International Trauma Questionnaire. *Eur J Psychotraumatol* 2018; **9** (1): 1419749.
- 17 Karatzias T, Cloitre M, Maercker A, Kazlauskas E, Shevlin M, Hyland P et al. PTSD and Complex PTSD: ICD-11 updates on concept and measurement in the UK, USA, Germany and Lithuania. *Eur J Psychotraumatol* 2018; **8** (sup7): 1418103.
- 18 Knefel M, Lueger-Schuster B, Maercker A. *Internationaler Traumafragebogen, Forschungsversion: deutsche Version [International Trauma Questionnaire, research version, German version]* (Unpublished manuscript), 2013.
- 19 Karatzias T, Shevlin M, Fyvie C, Hyland P, Efthymiadou E, Wilson D et al. An initial psychometric assessment of an ICD-11 based measure of PTSD and complex PTSD (ICD-TQ): Evidence of construct validity. *J Anxiety Disord* 2016; **44**: 73–9.

- 20** Gilbar O, Hyland P, Cloitre M, Dekel R. ICD-11 complex PTSD among Israeli male perpetrators of intimate partner violence: Construct validity and risk factors. *J Anxiety Disord* 2018; **54**: 49–56.
- 21** R Core Team. *R: A Language and Environment for Statistical Computing*. R Foundation for Statistical Computing, 2016.
- 22** Epskamp S, Cramer AOJ, Waldorp LJ, Schmittmann VD, Borsboom D. qgraph: Network visualizations of relationships in psychometric data. *J Stat Softw* 2012; **48** (4).
- 23** Opsahl T, Agneessens F, Skvoretz J. Node centrality in weighted networks: Generalizing degree and shortest paths. *Soc Networks* 2010; **32** (3): 245–51.
- 24** Haslbeck JMB, Fried EI. How predictable are symptoms in psychopathological networks? A reanalysis of 18 published datasets. *Psychol Med* 2017; **47** (16): 2767–76.
- 25** Galatzer-Levy IR, Karstoft K-I, Statnikov A, Shalev AY. Quantitative forecasting of PTSD from early trauma responses: a Machine Learning application. *J Psychiatr Res* 2014; **59**: 68–76.
- 26** Bryant RA, Guthrie RM. Maladaptive self-appraisals before trauma exposure predict posttraumatic stress disorder. *J Consult Clin Psychol* 2007; **75** (5): 812–5.
- 27** Dunmore E, Clark DM, Ehlers A. A prospective investigation of the role of cognitive factors in persistent Posttraumatic Stress Disorder (PTSD) after physical or sexual assault. *Behav Res Ther* 2001; **39**: 1063–84.
- 28** Brewin CR. Episodic memory, perceptual memory, and their interaction: foundations for a theory of posttraumatic stress disorder. *Psychol Bull* 2014; **140** (1): 69–97.
- 29** Cloitre M, Koenen KC, Cohen LR, Han H. Skills training in affective and interpersonal regulation followed by exposure: A phase-based treatment for PTSD related to childhood abuse. *J Consult Clin Psychol* 2002; **70** (5): 1067–74.
- 30** Foa EB. Prolonged exposure therapy: past, present, and future. *Depress Anxiety* 2011; **28** (12): 1043–7.
- 31** Ehlers A, Clark DM, Hackmann A, McManus F, Fennell M. Cognitive therapy for post-traumatic stress disorder: development and evaluation. *Behav Res Ther* 2005; **43** (4): 413–31.
- 32** Schnyder U, Ehlers A, Elbert T, Foa EB, Gersons BPR, Resick PA et al. Psychotherapies for PTSD: What do they have in common? *Eur J Psychotraumatol* 2015; **6**.

- 33** Hyland P, Shevlin M, Brewin CR, Cloitre M, Downes AJ, Jumbe S et al. Validation of post-traumatic stress disorder (PTSD) and complex PTSD using the International Trauma Questionnaire. *Acta Psychiatr Scand* 2017; **136** (3): 313–22.
- 34** Kruis J, Maris G. Three representations of the Ising model. *Sci Rep* 2016; **6**: 34175.
- 35** Whalley MG, Kroes MCW, Huntley Z, Rugg MD, Davis SW, Brewin CR. An fMRI investigation of posttraumatic flashbacks. *Brain Cogn* 2013; **81** (1): 151–9.
- 36** McNally RJ, Robinaugh DJ, Wu GWY, Wang L, Deserno MK, Borsboom D. Mental disorders as causal systems. *Clin Psychol Sci* 2015; **3** (6): 836–49.
- 37** Bos FM, Snippe E, Vos S de, Hartmann JA, Simons CJP, van der Krieke L et al. Can We Jump from Cross-Sectional to Dynamic Interpretations of Networks?: Implications for the Network Perspective in Psychiatry. *Psychother Psychosom* 2017; **86** (3): 175–7.

THE CROSS-CULTURAL NETWORK STRUCTURE OF CPTSD

Table 1. Descriptive sample characteristics and symptoms profiles.

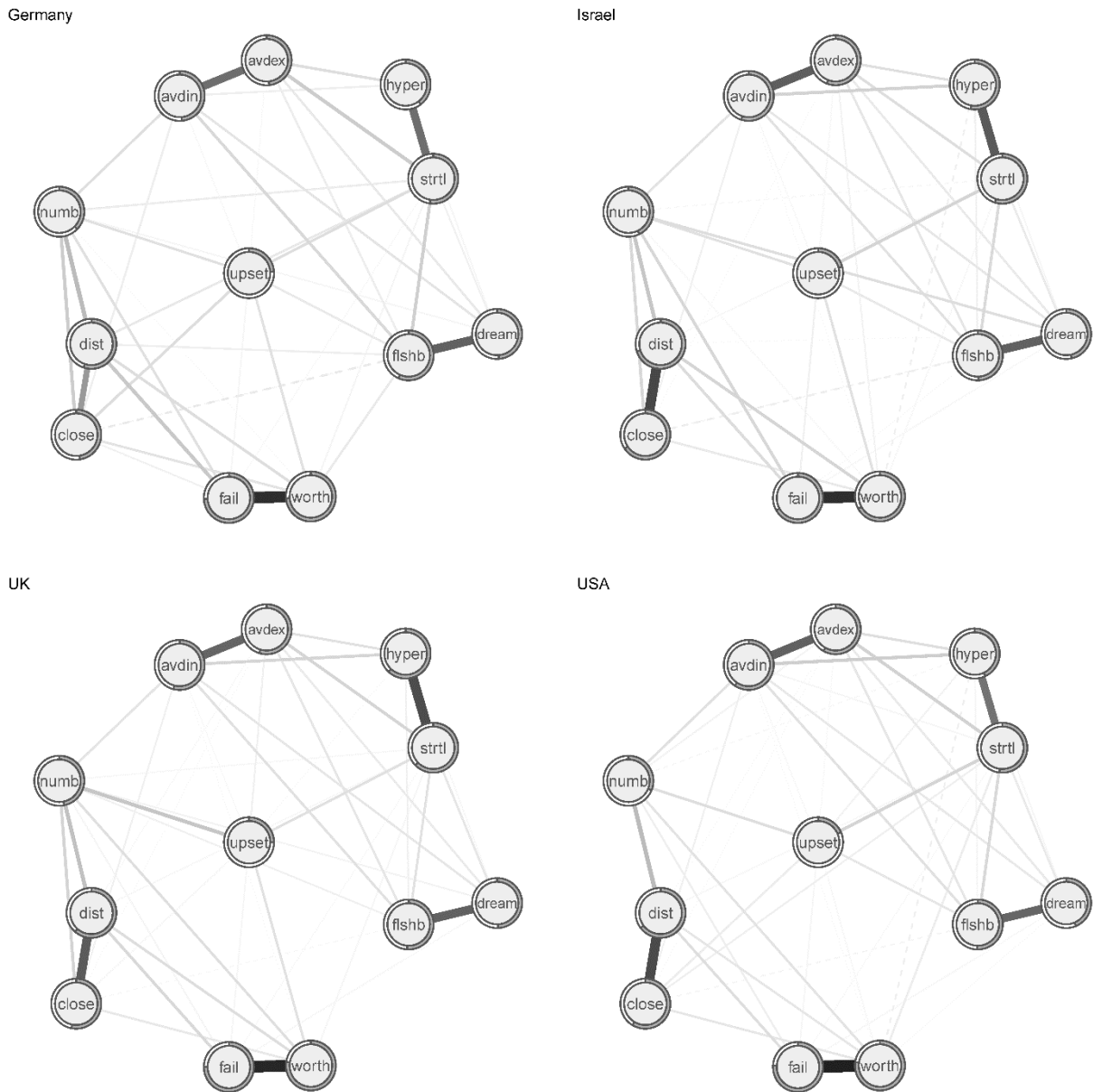
| <b>Sample characteristics</b>                  | Sample 1          | Sample 2                 | Sample 3         | Sample 4         |
|--|-------------------|--------------------------|------------------|------------------|
| Country  | Germany           | Israel                   | UK               | US               |
| Sample size                                    | 280               | 336                      | 447              | 528              |
| Age mean (SD)                                  | 49.71<br>(17.41)  | 39.30<br>(13.97)         | 41.64<br>(13.61) | 44.59<br>(14.51) |
| Age range [min;max]                            | [14;99]           | [18;70]                  | [18;78]          | [18;70]          |
| Women (%)                                      | 60.0              | 56.8                     | 74.0             | 76.6             |
| Relationship status                            |                   |                          |                  |                  |
| In a committed relationship                    | 30.8              | 65.2                     | 70.5             | 51.7             |
| Not in a committed relationship                | 69.2              | 34.8                     | 29.5             | 48.3             |
| Highest level of education                     |                   |                          |                  |                  |
| Primary school or less                         | 74.6              | 2.4                      | 1.8              | 9.3              |
| High school/secondary school                   | 12.5              | 31.0                     | 35.8             | 34.5             |
| College/university                             | 12.9              | 66.7                     | 62.4             | 56.3             |
| Employment                                     |                   |                          |                  |                  |
| Employed (full-time, part-time, self-employed) | 40.1 <sup>1</sup> | 84.2                     | 54.8             | 61               |
| Not employed: seeking work/not seeking work    | 13.1/42.0         | 8.0/7.7                  | 5.6/36.0         | 31.3             |
| Other  | 4.7               | -                        | 3.6              | 7.8              |
| Ethnicity/Citizenship                          |                   |                          |                  |                  |
| German/non-German citizenship                  | 93.2/6.8          |                          |                  |                  |
| Israeli citizenship [emigrated, not emigrated] |                   | 100.0<br>[29.8,<br>70,2] |                  |                  |
| UK citizenship                                 |                   |                          | 100.0            |                  |
| White, Non-Hispanic                            |                   |                          |                  | 40.0             |
| Black, Non-Hispanic                            |                   |                          |                  | 22.9             |

THE CROSS-CULTURAL NETWORK STRUCTURE OF CPTSD

|   |             |             |             |             |
|---|-------------|-------------|-------------|-------------|
| Other, Non-Hispanic                                 |             |             |             | 1.1         |
| Hispanic  |             |             |             | 33.3        |
| 2+ Races, Non-Hispanic                              |             |             |             | 2.7         |
| Probable ICD-11 PTSD % (n) <sup>2</sup>             | 16.1 (45)   | 19.9 (67)   | 12.5 (56)   | 11.7 (62)   |
| Probable ICD-11 CPTSD % (n) <sup>2</sup>            | 9.6 (27)    | 14.6 (49)   | 30.4 (136)  | 13.3 (70)   |
| <b>Symptoms M (SD)</b>                              |             |             |             |             |
| 1 Distressing dreams (dream)                        | 1.18 (1.07) | 0.98 (1.16) | 1.57 (1.31) | 1.23 (1.30) |
| 2 Intrusive recollections/flashbacks (flshb)        | 1.22 (1.07) | 1.34 (1.19) | 1.73 (1.32) | 1.22 (1.25) |
| 3 Internal avoidance (avdin)                        | 1.34 (1.04) | 1.54 (1.23) | 2.05 (1.34) | 1.56 (1.28) |
| 4 External avoidance (avdex)                        | 1.45 (1.12) | 1.45 (1.29) | 2.03 (1.39) | 1.49 (1.30) |
| 5 Hypervigilance (hyper)                            | 1.46 (1.28) | 1.76 (1.36) | 2.07 (1.42) | 1.87 (1.46) |
| 6 Exaggerated startle response (strtl)              | 1.12 (1.14) | 1.57 (1.32) | 1.85 (1.45) | 1.38 (1.34) |
| 7 Long time upset (upset)                           | 1.69 (1.09) | 2.12 (1.12) | 2.25 (1.27) | 1.81 (1.15) |
| 8 Emotional numbing (numb)                          | 0.86 (1.08) | 1.26 (1.18) | 2.18 (1.31) | 1.53 (1.22) |
| 9 Feelings of failure (fail)                        | 0.73 (1.06) | 1.11 (1.15) | 2.26 (1.43) | 1.54 (1.32) |
| 10 Feelings of worthlessness (worth)                | 0.76 (1.08) | 1.02 (1.13) | 2.19 (1.44) | 1.36 (1.31) |
| 11 Feeling distant or cut-off from others<br>(dist) | 0.92 (1.10) | 1.43 (1.15) | 2.32 (1.30) | 1.84 (1.28) |
| 12 Difficulties feeling close to others (close)     | 1.12 (1.09) | 1.43 (1.23) | 2.20 (1.32) | 1.87 (1.32) |
| Total Mean <sup>3</sup>                             | 1.12 (0.67) | 1.42 (0.75) | 2.06 (0.89) | 1.57 (0.82) |

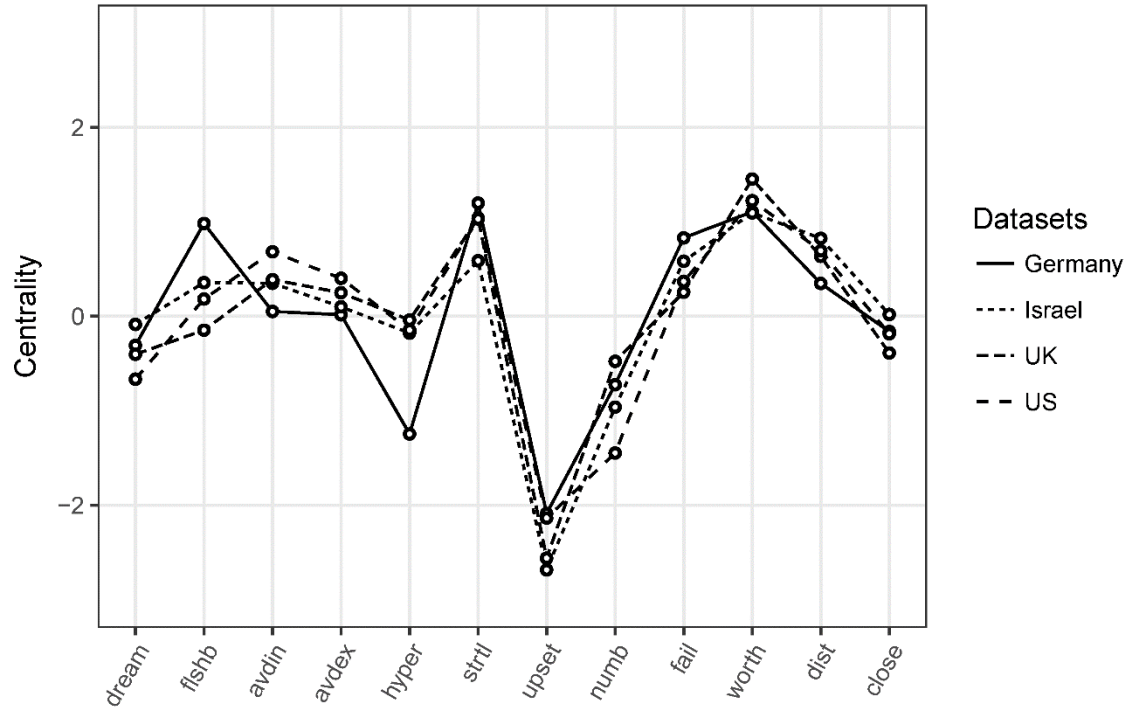
Note. Symptoms assessed with the International Trauma Questionnaire. <sup>1</sup>Based on N = 274 for the German sample. <sup>2</sup>Estimates of probable PTSD and CPTSD may differ from the original studies based on differences in the used items, diagnostic algorithms, and subsample selected for analyses. <sup>3</sup>T-tests comparing total means: Germany < Israel < US < UK, all t-values > 2.78, all p-values < 0.006;

## THE CROSS-CULTURAL NETWORK STRUCTURE OF CPTSD



**Figure 1. Regularized partial correlation networks across the four samples.** Edge thickness represents the degree of association, solid edges indicate positive relations, and dashed edges indicate negative relationships. The gray area in the rings around the nodes depicts predictability (the variance of a given node explained by all its neighbors). dream=Distressing dreams, flshb=Intrusive recollections/flashbacks, avdin=Internal avoidance, avdex=External avoidance, hyper=Hypervigilance, strtl=Exaggerated startle response, upset=Long time upset, numb=Emotional numbing, fail=Feelings of failure, worth=Feelings of worthlessness, dist=Feeling distant or cut-off from others, close=Difficulties feeling close to others;

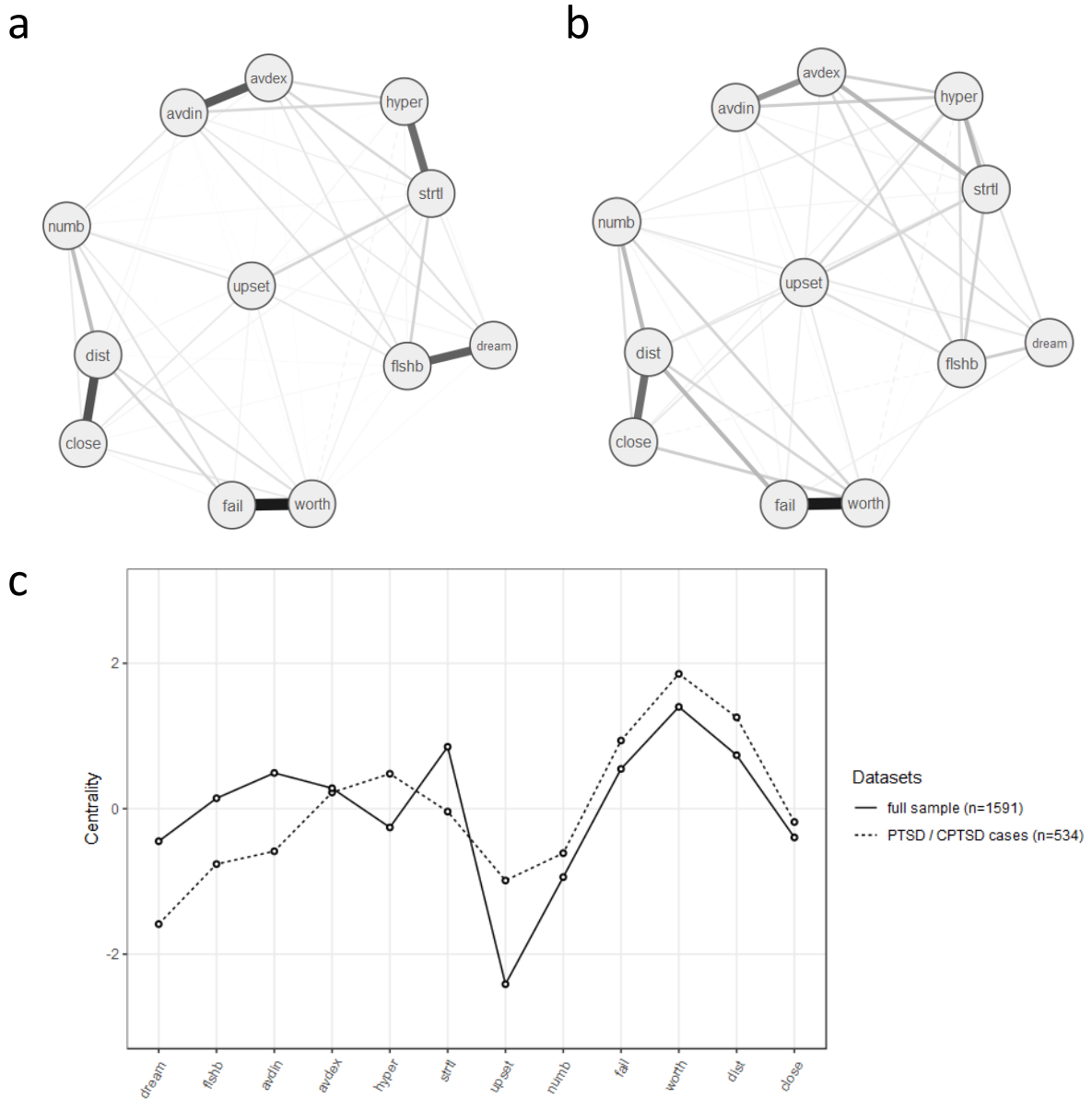
# THE CROSS-CULTURAL NETWORK STRUCTURE OF CPTSD



**Figure 2.** Standardized node strength centrality of the 12 CPTSD symptoms across the four samples. See Table 1 for full symptom names.



# THE CROSS-CULTURAL NETWORK STRUCTURE OF CPTSD



**Figure 3. Network analysis in the combined data set.** (a) Cross-sample network (n=1591) depicts the average of the four individual networks; (b) Cross-sample network of sub-group who meet diagnostic criteria for PTSD or CPTSD (n=512). (c) Standardized node strength centrality for the cross-sample networks. See Table 1 for full symptom names.

## Full Author Information

Matthias Knefel, PhD<sup>\*1</sup>, Thanos Karatzias, PhD<sup>2,3</sup>, Menachem Ben-Ezra, PhD<sup>4</sup>, Marylene Cloitre, PhD<sup>5,6</sup>, Brigitte Lueger-Schuster, PhD<sup>7</sup>, Andreas Maercker, MD PhD<sup>8</sup>

<sup>1</sup>Post Doc Researcher; Faculty of Psychology, University of Vienna, Vienna, Austria

<sup>2</sup>Professor of Mental Health; School of Health & Social Care, Edinburgh Napier University, Edinburgh, Scotland

<sup>3</sup>Clinical & Health Psychologist; Rivers Centre for Traumatic Stress, NHS Lothian, Edinburgh, Scotland

<sup>4</sup>Full Professor; School of Social Work, Ariel University, Ariel, Israel

<sup>5</sup>Associate Director of Research; National Center for PTSD, Veterans Affairs Palo Alto Health Care System, Palo Alto, CA, USA

<sup>6</sup>Clinical Professor; Department of Psychiatry and Behavioral Sciences, Stanford University, Stanford, California, USA

<sup>7</sup>Professor; Faculty of Psychology, University of Vienna, Vienna, Austria

<sup>8</sup>Professor of Psychopathology and Clinical Intervention; Division of Psychopathology, Department of Psychology, University of Zurich, Zurich, Switzerland

\* Correspondence to [Matthias.knefel@univie.ac.at](mailto:Matthias.knefel@univie.ac.at)

Department of Applied Psychology: Health, Development, Enhancement and Intervention

Faculty of Psychology, University of Vienna, Vienna, Austria

Liebiggasse 5, 1010 Vienna, Austria