



The Local Effects of Ovarian Diathermy in an Ovine Model of Polycystic Ovary Syndrome

Fiona Connolly¹, Michael T. Rae², Mairead Butler³, Alexander L. Klibanov⁴, Vassilis Sboros³, Alan S. McNeilly¹, W. Colin Duncan^{1*}

1 Medical Research Council Centre for Reproductive Health, University of Edinburgh, Edinburgh, United Kingdom, **2** School of Health, Life and Social Sciences, Edinburgh Napier University, Edinburgh, United Kingdom, **3** Institute of Biophysics, Biochemistry and Bio-Engineering, Heriot Watt University, Edinburgh, United Kingdom, **4** Department of Biomedical Engineering, University of Virginia, Charlottesville, Virginia, United States of America

Abstract

In order to develop a medical alternative to surgical ovarian diathermy (OD) in polycystic ovary syndrome (PCOS) more mechanistic information is required about OD. We therefore studied the cellular, molecular and vascular effects of diathermy on the ovary using an established ovine model of PCOS. Pregnant sheep were treated twice weekly with testosterone propionate (100 mg) from day 30–100 gestation. Their female offspring (n = 12) were studied during their second breeding season when the PCOS-like phenotype, with anovulation, is fully manifest. In one group (n = 4) one ovary underwent diathermy and it was collected and compared to the contralateral ovary after 24 hours. In another group a treatment PCOS cohort underwent diathermy (n = 4) and the ovaries were collected and compared to the control PCOS cohort (n = 4) after 5 weeks. Ovarian vascular indices were measured using contrast-enhanced ultrasound and colour Doppler before, immediately after, 24 hours and five weeks after diathermy. Antral follicles were assessed by immunohistochemistry and ovarian stromal gene expression by quantitative RT-PCR 24 hours and 5 weeks after diathermy. Diathermy increased follicular atresia ($P < 0.05$) and reduced antral follicle numbers after 5 weeks ($P < 0.05$). There was an increase in stromal *CCL2* expression 24 hours after diathermy ($P < 0.01$) but no alteration in inflammatory indices at 5 weeks. Immediately after diathermy there was increased microbubble transit time in the ovarian microvasculature ($P = 0.05$) but this was not seen at 24 hours. However 24 hours after diathermy there was a reduction in the stromal Doppler blood flow signal ($P < 0.05$) and an increased ovarian resistance index ($P < 0.05$) both of which persisted at 5 weeks ($P < 0.01$; $P < 0.05$). In the ovine model of PCOS, OD causes a sustained reduction in ovarian stromal blood flow with an increased ovarian artery resistance index associated with atresia of antral follicles.

Citation: Connolly F, Rae MT, Butler M, Klibanov AL, Sboros V, et al. (2014) The Local Effects of Ovarian Diathermy in an Ovine Model of Polycystic Ovary Syndrome. PLoS ONE 9(10): e111280. doi:10.1371/journal.pone.0111280

Editor: Wei Shen, Qingdao Agricultural University, China

Received: August 18, 2014; **Accepted:** September 30, 2014; **Published:** October 24, 2014

Copyright: © 2014 Connolly et al. This is an open-access article distributed under the terms of the Creative Commons Attribution License, which permits unrestricted use, distribution, and reproduction in any medium, provided the original author and source are credited.

Data Availability: The authors confirm that all data underlying the findings are fully available without restriction. All relevant data are within the paper.

Funding: This research was funded by the Medical Research Council (G0901807) and WCD was supported by a Senior Clinical Fellowship from the Scottish Funding Council. The funders had no role in study design, data collection and analysis, decision to publish, or preparation of the manuscript.

Competing Interests: The authors have declared that no competing interests exist.

* Email: W.C.Duncan@ed.ac.uk

Introduction

Polycystic ovary syndrome (PCOS), the most prevalent endocrine disorder in women of reproductive age [1,2], is the leading cause of anovulatory related infertility [2,3]. Several treatment options to induce ovulation are available, the first-line treatment being the anti-estrogen clomifene citrate (CC). Although CC is successful at inducing ovulation in approximately 50–80% of cases, pregnancy rates are suboptimal. This is thought to arise due to the anti-estrogenic effects of CC on the endometrium and luteinising hormone surge [4,5]. Second-line treatment options are used for women who fail to ovulate and/or conceive in response to CC.

Ovulation induction using gonadotrophins is an effective second-line treatment following CC resistance or failure [6]. Indeed it has been reported that follicle stimulating hormone therapy results in higher pregnancy rates than CC treatment [7,8]. However such treatment is expensive, requires enhanced monitoring to reduce ovarian hyperstimulation and multiple pregnancy

rates and it is not available in all secondary care settings. Therefore, in the UK, laparoscopic ovarian diathermy/drilling (LOD) is also recommended as a second-line treatment for anovulatory PCOS by the National Institute for Health and Care Excellence (NICE).

LOD involves puncturing the ovarian surface in several sites, under direct visualisation, either by diathermy or laser [9]. It can be successful at inducing unifollicular ovulation and pregnancy without the drawback of endometrial thinning, ovarian hyperstimulation and multiple pregnancies [10,11]. It has the added benefit of being a single treatment that can improve ovulation for many months, and sometimes years, subsequently [12]. However, as an invasive procedure it requires a general anaesthetic and abdominal surgery, which presents increased risks and additional morbidity. We therefore hypothesised that a medical diathermy paradigm, which mimicked the mode of action of surgical diathermy and encompassed the benefits of LOD, without the pitfalls of surgery, would be an advantageous therapeutic option for PCOS.

There are two key requirements needed to develop pharmaceutical strategies to replicate the effects of diathermy on the ovary. The first is a deeper understanding of the acute and chronic effects of surgical diathermy on the polycystic ovary to increase insights into its mechanism of action. Mechanistic insights are lacking as the human ovary is not accessible for *in vitro* investigation following diathermy. The second is a clinically realistic preclinical model of anovulatory PCOS to develop and test novel medical strategies for ovulation induction. We aimed to assess the cellular, molecular and vascular effects of ovarian diathermy on the ovary using a large animal model of PCOS.

Herein we report the effects of ovarian diathermy in an established ovine model of anovulatory PCOS. We used the paradigm of prenatal androgenisation from day 30 to day 100 of gestation in sheep to create offspring who develop a robust PCOS-like condition. We studied these offspring in the second breeding season when the anovulatory PCOS-like phenotype is fully established [13–19].

Materials and Methods

Ethical Statement

Studies were reviewed by University of Edinburgh Animal Research Ethics Committee and conducted under Project Licence approved by the UK Home Office.

Reagents

All reagents and chemicals were obtained from Sigma-Aldrich (Dorset, United Kingdom), unless stated otherwise. Progesterone was measured in weekly plasma samples by radioimmunoassay as described previously [20]. This was used to confirm anovulation prior to diathermy and assess the effect of ovarian diathermy on the induction of ovulation.

Animal treatments

Scottish Greyface ewes (*Ovis aries*) of comparable body condition score were cycle-synchronised using progesterone sponges and mated with Texel rams. Pregnant ewes received intramuscular injections of 100 mg testosterone propionate (TP; AMS Biotechnology Ltd, Abingdon, United Kingdom) in vegetable oil twice weekly, from day (d) 30 to 100 of gestation (d147) and delivered normally. After weaning, the resulting female offspring were housed together in spacious pens and hay was available *ad libitum*, with Excel Ewe Nuts (0.5–1.0 kg/day; Carrs Billington, Lancashire, UK) and Cystalayx Extra High Energy Lick (Caltech Solway Mills, Cumbria, UK). These offspring (n = 12) were maintained until they were adults in their second breeding season (22 months of age) after confirmation of anovulation by serial progesterone assessment for eight weeks prior to randomisation.

The sheep were then randomly divided into three PCOS cohorts (Table 1). The acute cohort (n = 4) were used to investigate the early cellular, molecular and vascular effects of diathermy on the ovary. They underwent mini-laparotomy, ovarian assessment and unilateral ovarian diathermy, allowing the other ovary to serve as an internal control. Twenty four hours later they underwent mini-laparotomy, ovarian assessment and ovarian collection under terminal anaesthesia. The chronic cohort (n = 8) studied the later effects of diathermy on the ovary. A treatment group (n = 4) underwent mini-laparotomy, ovarian assessment and bilateral ovarian diathermy whilst the control group (n = 4) underwent mini-laparotomy and ovarian assessment without diathermy. Five weeks later they underwent mini-laparotomy, ovarian assessment and ovarian collection under terminal anaesthesia. The study was completed in the last month of the breeding season when ovulation would still be expected.

Table 1. Summary of treatment and investigation including contrast enhances ultrasound (CEUS) and reverse transcription polymerase chain reaction (RT-PCR).

	Acute (n = 4)		Chronic (n = 4)		Chronic (n = 4)	
	Ovary 1	Ovary 2	Ovary 1	Ovary 2	Ovary 1	Ovary 2
	Diathermy	Control	Diathermy	Diathermy	Control	Control
Pre-Treatment						
CEUS	✓	✓				
Doppler	✓	✓	✓	✓	✓	✓
Resistance Index	✓	✓	✓	✓	✓	✓
Post- Immediate						
CEUS	✓	✓				
Post- 24 hours						
CEUS	✓	✓				
Doppler	✓	✓				
Resistance Index	✓	✓				
Histology	✓	✓				
RT-PCR	✓	✓				
Post- 5 weeks						
Doppler			✓	✓	✓	✓
Resistance Index			✓	✓	✓	✓
Histology			✓	✓	✓	✓
RT-PCR			✓	✓	✓	✓

doi:10.1371/journal.pone.0111280.t001

Table 2. List of the primer pairs used in SYBR Green quantitative real-time PCR.

Gene	Forward Sequence (5'-3')	Reverse Sequence (5'-3')
<i>GAPDH</i>	GGCGTGAACCCAGAGAAGTATAA	AAGCAGGGATGATGTTCTGG
<i>IL1</i>	CAGCCGTGCAGTCAGTAAAA	GAAGCTCATGCAGAACACCA
<i>IL6</i>	AAATGACACCACCCCAAGCA	CTCCAGAAGACCAGCAGTGG
<i>IL8</i>	CAGCAGAGCTCACAAGCATC	TGTGGCCCACTCTCAATAACT
<i>IL10</i>	CCAGGATGGTGACTCGACTAGAC	TGGCTCTGCTCTCCAGAAC
<i>TNF</i>	GGTGCCTCAGCCTCTTCT	GAACCAGAGGCTGTTGAAG
<i>CCL2</i>	GCTCCCACGCTGAAGCTTGAAT	GATTGTCTTTAGACTCTGGGTTGTGGAG
<i>SOCS3</i>	CTTCAGCTCCAAGAGCGAGT	ACGCTGAGGGTGAAAAAGTG
<i>VEGF</i>	TCTTCAAGCCATCCTGTGTG	TGCATTACATTTGTTGTGC

doi:10.1371/journal.pone.0111280.t002

Diathermy protocol

A mini-laparotomy was performed with sterile technique under general anaesthesia, induced using isoflourane (Isoflo, Abbott Animal Health, Maidenhead, UK). A midline incision exposed the ovaries that were stabilised with a clamp to the uterine fundus. Ovarian diathermy was performed using a needle probe with monopolar coagulation current (Surgitran, STW-100). The coagulation current was applied to the ovary at four separate sites of approximately 4 mm in depth for 10 seconds. Ovarian blood flow and ovarian artery resistance index were assessed prior to and after diathermy. Following surgery, all sheep received antibiotics (Penicillin and Dihydrostreptomycin), analgesics and they were carefully monitored during their rapid recovery.

In vivo measurement: Contrast enhanced ultrasound (CEUS) of ovarian capillary bed

All ultrasound imaging was undertaken using a Philips iU22 ultrasound scanner (Philips Medical Systems, Bothwell, WA, USA) with linear array transducers L9-3 and L15-7. Using microbubbles along with ultrasound scanning provides a novel method to assess the capillary bed of the ovary. A well-established house contrast agent [21] was utilised. Briefly decafluorobutane microbubbles were prepared by a standard sonication protocol from an aqueous micellar dispersion of phosphatidylcholine (2 mg/ml; Avanti Lipids) and PEG stearate (2 mg/ml; Stepan Kesso). Following two days incubation under fluorocarbon atmosphere in the refrigerator, microbubbles floated to the top of the reaction vessel

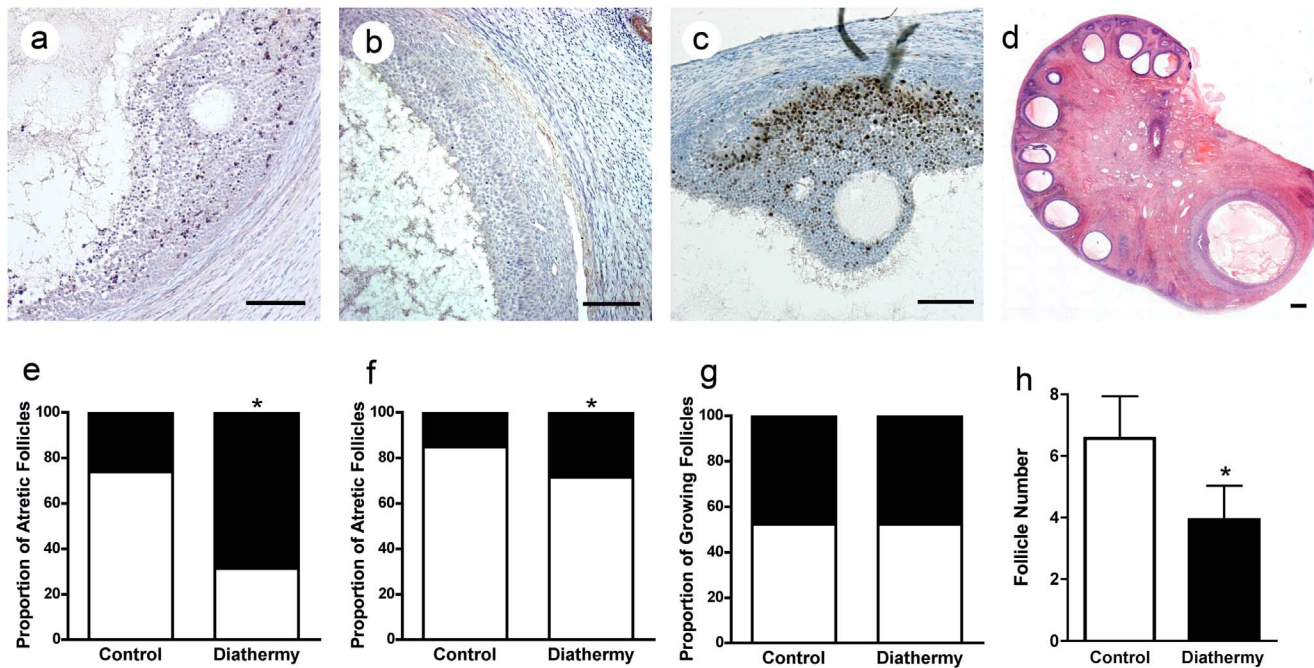
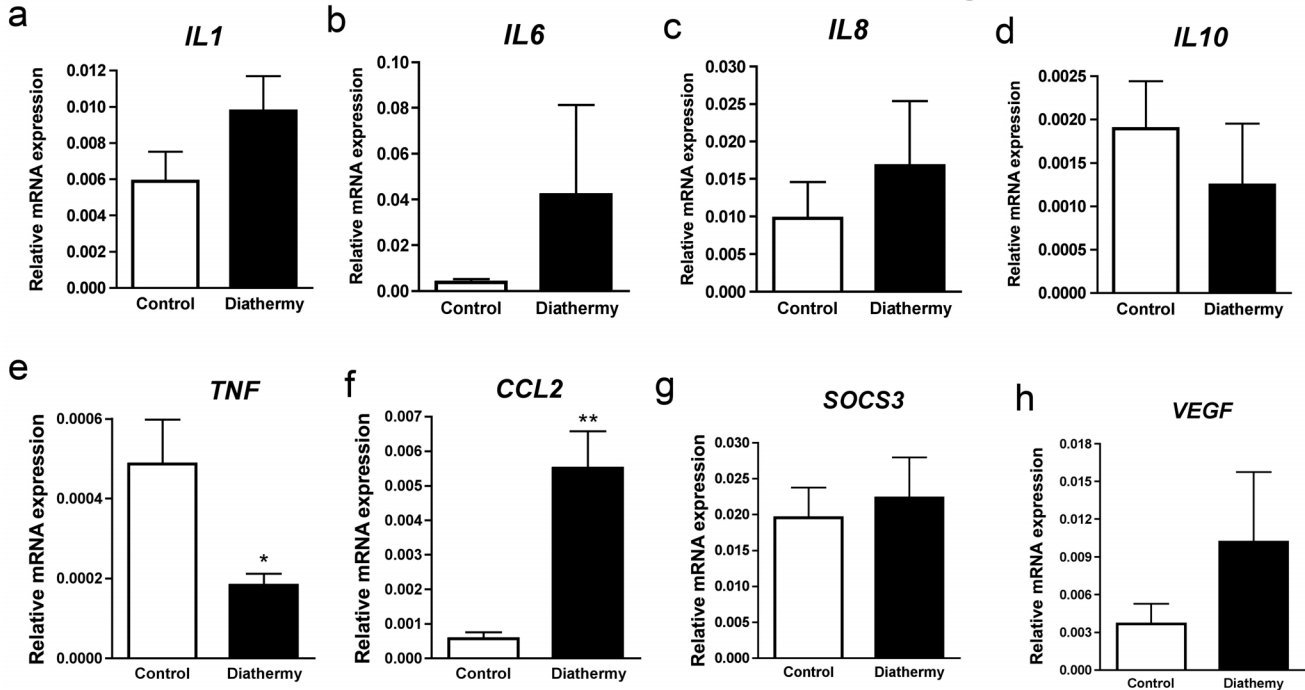


Figure 1. The effect of ovarian diathermy on antral follicles. Immunohistochemistry for activated caspase 3 (brown) in antral follicle showing positive staining (a) and negative staining for atresia (b). (c) Immunohistochemistry for Ki67 showing positive staining for proliferation (brown) in an antral follicle. (d) H&E stained mid ovarian section showing antral follicles. The proportion atretic follicles (black) and healthy follicles (white) in control and diathermy ovaries after 24 hours (e) and 5 weeks (f). (g) The proportion of follicles positive (black) and negative (white) for Ki67 (black) proliferation marker (g) and the number of antral follicles (h) in control and diathermy ovaries after 5 weeks. * $P < 0.05$. Scale bar = 100 μ m (a-c), 1 mm (d).

doi:10.1371/journal.pone.0111280.g001

24 Hours after Ovarian Diathermy



5 Weeks after Ovarian Diathermy

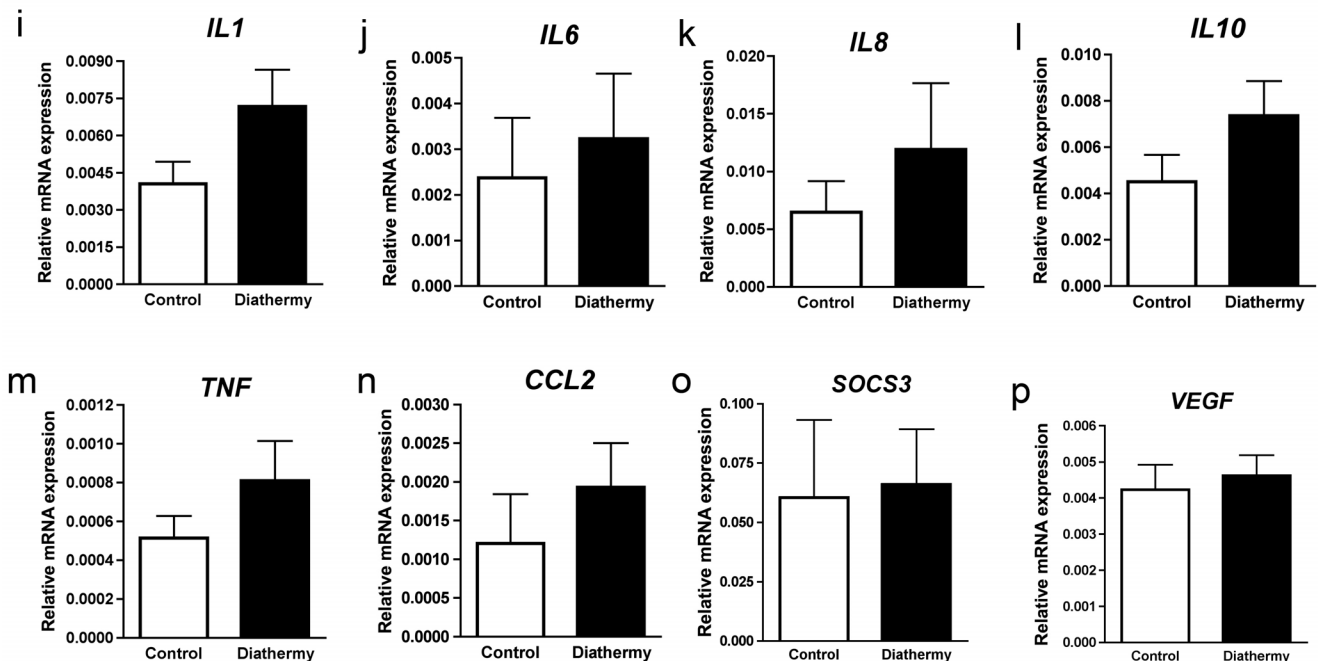


Figure 2. The effect of diathermy on the expression of candidate genes in the ovarian stroma. Twenty four hours after diathermy ($n = 4$) there was no change in a) *IL1*, b) *IL6*, c) *IL8*, d) *IL10*, g) *SOCS3*, h) *VEGF* when compared to paired control ovaries ($n = 4$). There was decrease in e) *TNF* and an increase in f) *CCL2* expression. Five weeks after diathermy ($n = 4$ paired ovaries) there was no difference in the expression of i) *IL1*, j) *IL6*, k) *IL8*, l) *IL10*, m) *TNF*, n) *CCL2*, o) *SOCS3* and p) *VEGF* when compared to control ($n = 4$ paired ovaries). * $P < 0.05$; ** $P < 0.01$. doi:10.1371/journal.pone.0111280.g002

forming a thick cake. Infranant containing micellar lipid was removed and replaced with degassed perfluorocarbon-saturated saline. Larger bubbles (in excess of 8–10 μm size) were removed

from the preparation by flotation in normal gravity. Microbubbles in aqueous saline were then packaged in glass vials with Teflon-lined rubber stoppers and sealed under perfluorocarbon atmo-

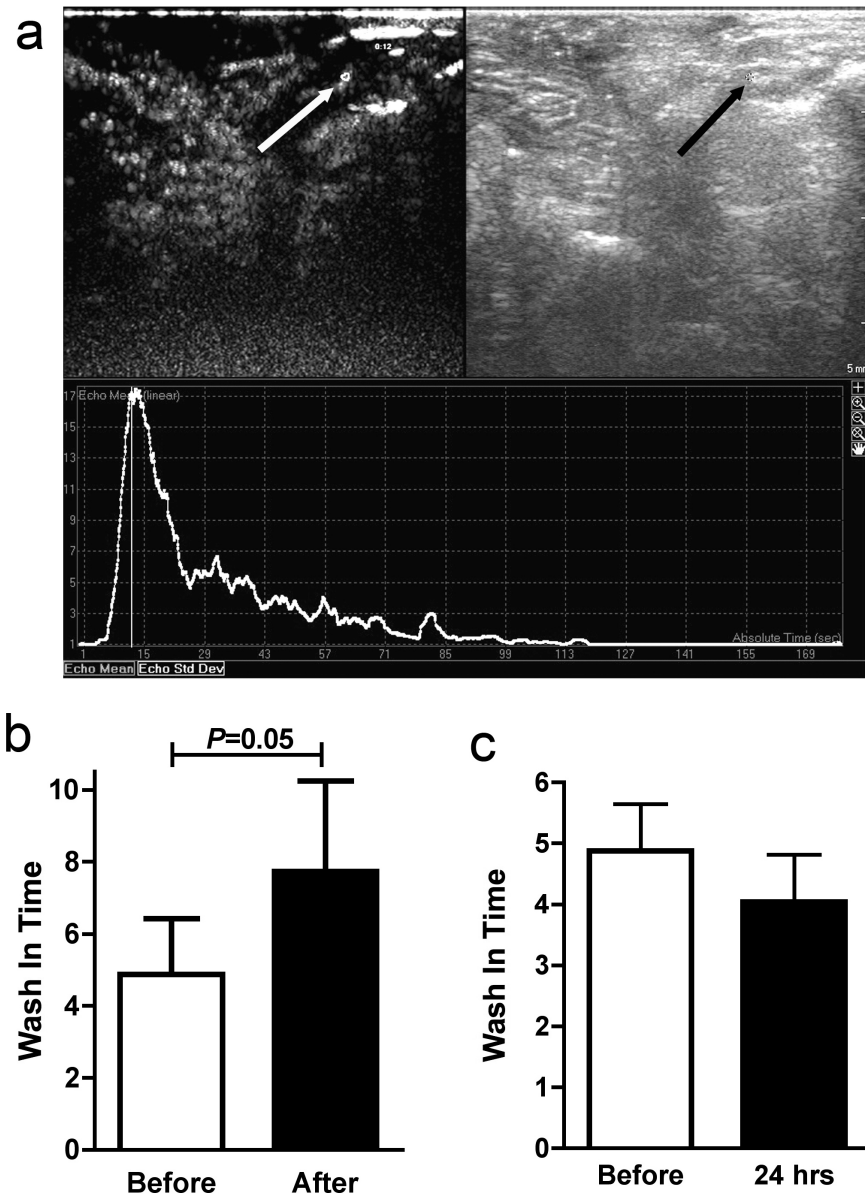


Figure 3. The effect of Diathermy on ovarian stromal microbubble transit time. A) Representative microbubble and greyscale scan with area of interest in the stroma highlighted (arrow) and the transit time graphically illustrated. The wash in time before and immediately after (b) diathermy ($n=4$) and 24 hours after (c) diathermy. doi:10.1371/journal.pone.0111280.g003

sphere. This preparation has a concentration of 10^9 microbubbles per ml with a $2\ \mu\text{m}$ average size.

A bolus (0.2 ml volume) was injected into a jugular vein catheter followed by a 10 ml saline flush to ensure all contrast agent was administered. This protocol provides good contrast in the ovary while avoiding signal saturation at peak contrast. CEUS was carried out in sheep destined for the acute analysis. The wash in time (WIT) was recorded for contrast before diathermy, immediately after diathermy and 24 hours after diathermy in triplicate. This is considered a reproducible measurement in the literature [22–24]. Details of the protocol for calculating the WIT under these conditions have been reported elsewhere [24].

In vivo measurement: Ovarian Blood Flow

The whole ovary was scanned in the longitudinal plane in colour Doppler mode with fixed thresholding and video images stored. Doppler scans were replayed back on the quantification software (Q-LAB v6, Philips Healthcare, Andover, MA, USA) and three images per ovary with the greatest area of blood flow were chosen for quantification by two observers blinded to the treatment groups. Using Image J software (<http://rsbweb.nih.gov/ij/>) the area of total Doppler signal flow for each image was quantified and averaged per ovary.

In vivo measurement: Resistance Index

The ovarian artery was identified using colour Doppler assessment with an L15-7 ultrasound probe. Resistance index (RI) of the ovarian artery was assessed using automatic RI

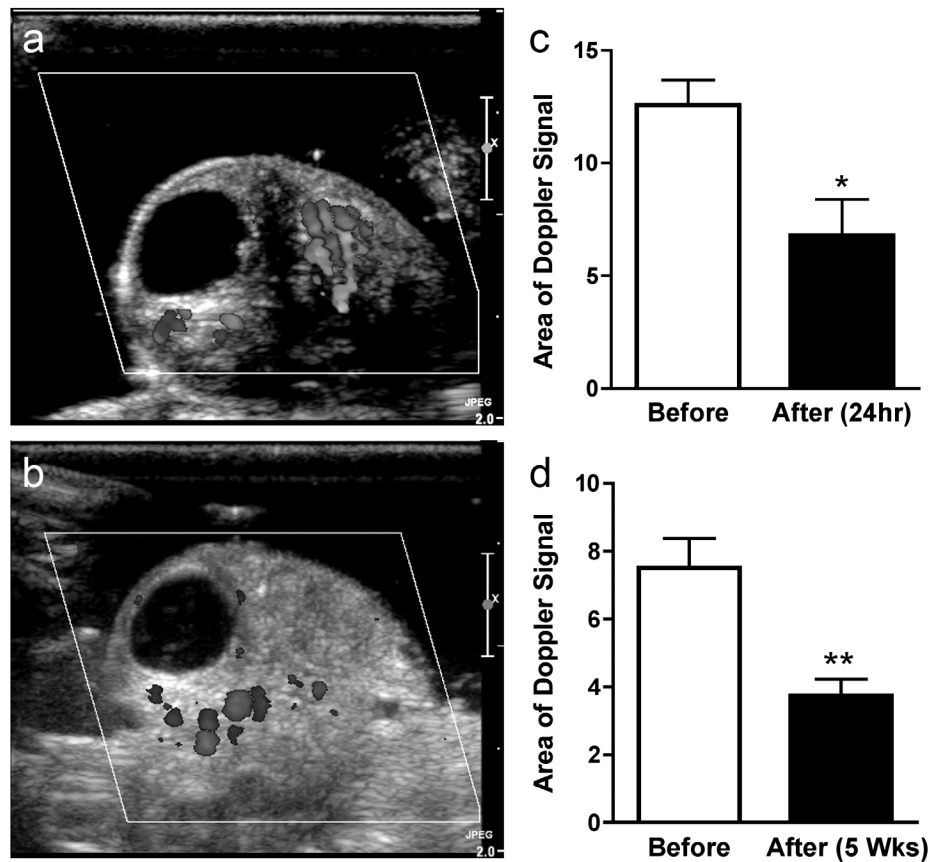


Figure 4. The effect of diathermy on Colour Doppler signal in the ovarian stroma. Representative ovarian scans with fixed threshold Colour Doppler signals visible before (a) and 24 hours after ovarian diathermy (b). Area of fixed threshold Colour Doppler signal in the ovary before and 24 hours (c) and 5 weeks (d) after diathermy. * $P < 0.05$; ** $P < 0.01$. doi:10.1371/journal.pone.0111280.g004

measurements calculated on the Philips iU22 Ultrasound system backed up with manual measurement confirmation. A continuous wave of at least five peaks was obtained and three separate measurements were taken to give an average value. This was repeated three times and the mean of the averaged values per ovary used for analysis.

Tissue Collection

At the end of the study ewes were sacrificed. Ovaries were collected and cut longitudinally into two sections (two thirds and one third of the ovary). The smaller section was snap frozen and stored at -80°C for subsequent dissection of an area of stroma (1 mm^3), from the inner aspect of the outer third at least 1 mm from the ovarian surface, with no visible antral follicles, for RNA extraction and gene analysis studies. The larger, two third portion of the ovary was fixed in Bouin's solution for 24 hours before transferral to 70% ethanol for paraffin wax embedding, sectioning and immunohistochemical study.

Immunohistochemistry

Ovarian sections ($5\text{ }\mu\text{m}$) from the middle of the ovary were analysed. A representative section with maximal ovarian diameter, informed by our previous study on the assessment of follicle number in the ewe [20], underwent haematoxylin and eosin (H&E) staining for subsequent antral follicle counting. Immunohistochemical analysis was also performed for markers of cell proliferation (Ki67) and apoptosis (activated caspase 3). Ovarian

tissue sections were dewaxed and rehydrated. Sections then underwent antigen retrieval in a decloaking chamber (Biocare Medical, Concord, California) containing sodium citrate retrieval buffer (0.01M, pH 6.0). Peroxidase quenching and blocking steps were performed via incubation in 3% H_2O_2 for 10 minutes, avidin and biotin blocking (Vector Laboratories Ltd, Peterborough, United Kingdom) and finally 5% BSA diluted in 20% normal serum from the host species of the secondary antibody. Primary antibodies, diluted in appropriate serum were applied to sections overnight at 4°C . After washing, secondary antibody was applied to slides for 1 hour, followed by Vectastain ABC Elite tertiary complex (PK-1600 series; Vector Laboratories) for 1 hour. Binding was visualised with 3,3'-diaminobenzidine (Dako, Cambridge, United Kingdom) for 30 seconds. Sections were counterstained with hematoxylin and mounted. Negative controls consisted of either primary antibody incubated with a blocking peptide or, in the absence of a specific blocking peptide, non-immune serum of equivalent immunoglobulin concentrations.

Analysis of tissue sections

Two independent examiners, blinded to treatment, counted the number of follicles with a clear fluid-filled antrum ($\geq 500\text{ }\mu\text{m}$) from a mid-section of the ovary [20]. The average antral follicle count per ovarian section was recorded. Immunohistochemical staining of whole ovary sections stained for proliferation (Ki67) and atresia (activated caspase 3) were blindly examined by two independent expert examiners. Each antral follicle was examined and staining

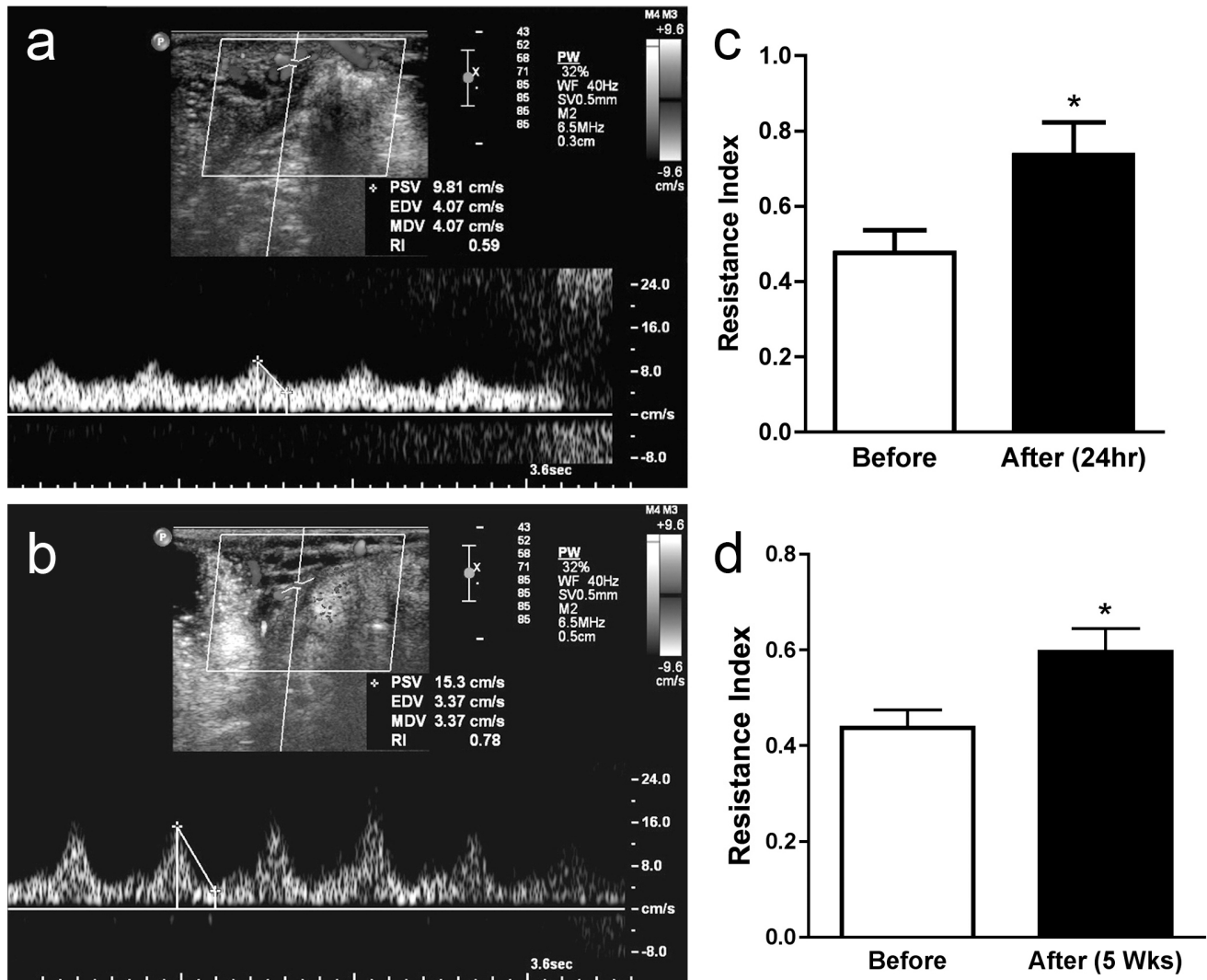


Figure 5. The effect of diathermy on the ovarian artery resistance index (RI). Representative RI scans with Colour Doppler signal wave quantification before (a) and 24 hours after ovarian diathermy (b). Quantified RI of the ovarian artery before and 24 hours (c) and 5 weeks (d) after diathermy. * $P < 0.05$.

doi:10.1371/journal.pone.0111280.g005

was divided into two classifications, positive (clearly positive immunostaining present in multiple cells) and negative (scant/absent immunopositive cells). Number of follicles per classification was used for proportional analysis.

Quantitative Real Time (qRT) PCR

RNA was extracted from tissue using RNeasy mini spin columns following manufacturer's protocol and concentration measured using NanoDrop 1000 Spectrophotometer. Complementary DNA (cDNA) was synthesised from 200 ng RNA in accordance with manufacturer's protocol (Applied Biosystems, California, USA). Subsequently, qRT-PCR was performed using SYBR Green as previously described [25]. Primer3 Input version 0.4, online software, was used to design forward and reverse primers (Table 2) from DNA sequences obtained from Ensembl Genome Browser, sequences were checked for specificity using Basic Local Alignment Search Tool and validity confirmed as previously described [26]. Real-time PCR reactions were carried out in duplicate 10 μ l reactions, negative controls consisted of cDNA reaction without reverse transcriptase and a reaction replacing cDNA with

nuclease-free water. Melt curve analysis revealed a single amplicon in all cases. *GAPDH* has been reported as a suitable internal control for ovarian stromal gene expression [27] and target gene expression was analysed relative to *GAPDH* and quantified using the Δ Ct method.

Statistical analysis

Proportional analysis was conducted using a Fishers exact test. The means of two groups were compared with non-paired or paired t-test where appropriate when the data was parametric with equal variance and the Mann Whitney test when not. Where the distribution was not normal logarithmic transformation was used prior to statistical testing. A P value of less than 0.05 was considered statistically significant.

Results

The effect of diathermy on antral follicles

We first assessed whether diathermy could induce atresia of antral follicles. Using immunostaining for activated caspase 3 as a

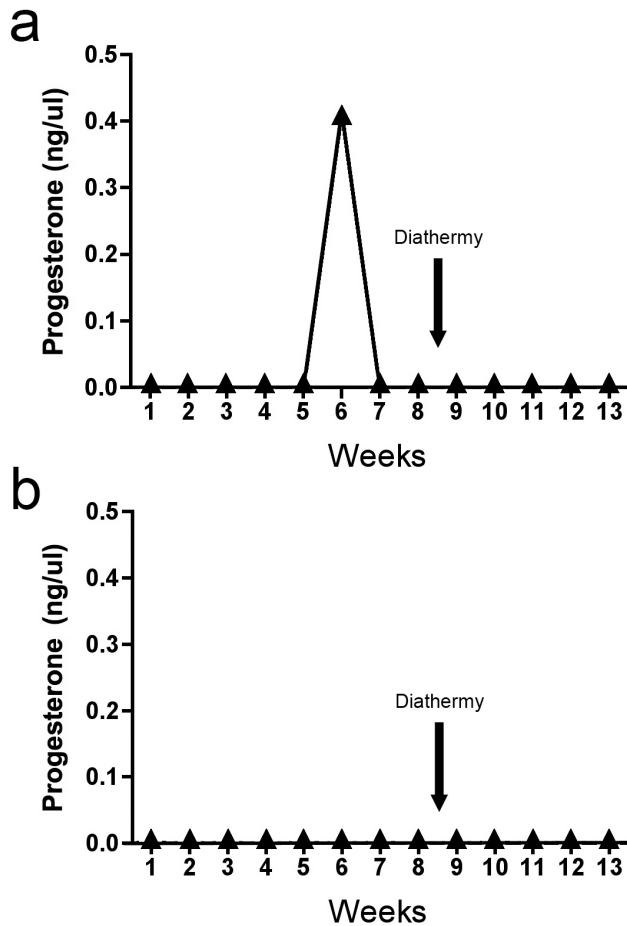


Figure 6. Representative serial plasma progesterone assessment in the sheep with oligoovulation (a) and a representative sheep with anovulation (b). The timing of diathermy is indicated by the arrow.

doi:10.1371/journal.pone.0111280.g006

marker of atresia each follicle in the tissue section was classified as positive (Fig. 1a) or negative (Fig. 1b) for atresia. The proportion of intact antral follicles with marked caspase 3 immunostaining increased more than four-fold ($P < 0.05$) 24 hours after diathermy (Fig. 1e). Five weeks after diathermy the proportion of atretic follicles was less (Fig. 1f) but there was still a significantly increased proportion of follicles undergoing atresia ($P < 0.05$). We then investigated whether diathermy altered follicular proliferation in the long term. Using immunostaining for the proliferation marker Ki67 (Fig. 1c) we classified each follicle as negative or positive. The proportion of antral follicles with marked Ki67 staining was not altered five weeks after diathermy (Fig. 1g). However the overall number of antral follicles per ovarian tissue section (Fig. 1d) was reduced five weeks after diathermy ($P < 0.05$) (Fig. 1h).

Expression of inflammatory markers in the ovarian stroma

We next assessed the early and late effects of diathermy on the expression of genes associated with inflammation in the ovarian stroma. Expression of *IL1* tended to increase 24 hours after diathermy but this did not reach statistical significance ($P = 0.06$) (Fig. 2a). At this time point there was no difference in the expression of *IL6* (Fig. 2b), *IL8* (Fig. 2c) or *IL10* (Fig. 2d).

However, twenty-four hours after diathermy *TNF* expression was reduced ($P < 0.05$) (Fig. 2e) while the macrophage chemokine *CCL2* was up-regulated ($P < 0.01$) (Fig. 2f). There was no difference in the cytokine regulator *SOCS3* (Fig. 2g) or the expression of *VEGF* (Fig. 2h) 24 hours after diathermy. Five weeks after diathermy there was no difference in *IL1* (Fig. 2i) ($P = 0.09$), *TNF* (Fig. 2m), *CCL2* (Fig. 2n) or any of the other genes analysed (Fig. 2).

The effect of diathermy on vascular indices

In order to assess flow in the ovarian microvasculature we assessed the wash in time (WIT) of sub-capillary sized microbubbles using CEUS (Fig. 3a). Immediately after diathermy there was a strong trend towards increased time for the microbubbles to wash through the ovarian microvasculature (Fig. 3b) ($P = 0.05$). However this was not evident 24 hours after diathermy (Fig. 3c). Interestingly there was an effect on larger vessels evident after 24 hours. The area of Doppler flow measurement was quantified in scanned ovaries before diathermy (Fig. 4a) and 24 hours (Fig. 4b) and five weeks after diathermy. There was no difference in coloured Doppler signal area in control ovaries after 24 h hours and five weeks. After diathermy there was a significant reduction in Doppler signal area after 24 hours ($P < 0.05$) (Fig. 4c) that persisted after five weeks ($P < 0.01$) (Fig. 4d), suggesting a persistent reduction in vascular volume of larger ovarian vessels. This was associated with an increase in ovarian arterial resistance index (Fig. 5a, b) that was present after 24 hours ($P < 0.05$) (Fig. 5c) and persisted at five weeks ($P < 0.05$) (Fig. 5d).

The effect of diathermy on ovarian function

Serial progesterone measurements were used to determine whether diathermy could induce ovulation in the anovulatory ovine model of PCOS. Although prior to randomisation the sheep were anovulatory, one ovulation was detected in a single sheep before diathermy was conducted (Fig. 6a). Interestingly no sheep ovulated after treatment in either the control PCOS or diathermy PCOS groups (Fig. 6b).

Discussion

The aim of this study was to identify the cellular, molecular and vascular effects of ovarian diathermy on the ovary in order to inform development of a potential novel therapeutic target to stimulate ovulation in PCOS. We found that diathermy increases follicular atresia and thus decreased the number of antral follicles in the ovary. There is a putative early increase in local inflammation but the most striking findings were the effects on the intra-ovarian vasculature. There were immediate effects on the microvasculature and prolonged effects on the ovarian Doppler signal and arterial resistance index.

A hallmark of PCOS is increased synthesis and secretion of ovarian androgens [1]. The theca cells of the follicle are the source of these androgens and in the polycystic ovary these cells have an enhanced capacity for androgen synthesis [20,28,29]. In addition, a polycystic ovary has multiple functional antral follicles that contain a viable oocyte [30,31] but are not proliferating or undergoing atresia [32,33]. This means that, in addition to enhanced theca cell function, there is increased theca cell mass in the polycystic ovary. As androgens promote the polycystic ovarian morphology and inhibit the growth of dominant follicles [34], the increased functional mass of theca cells promotes ovarian dysfunction.

It has been proposed that diathermy works by decreasing the load of androgen producing cells within the ovary [35] and our

study supports this hypothesis. We observed that increased follicular atresia and thus decreased numbers of antral follicles in the ovary as a consequence of diathermy, thereby reducing theca cell mass within the ovary. In women diathermy can induce systemic hormone changes within days of surgery, including reduced systemic androgen concentrations [12,36]. A decrease in androgen production would presumably decrease androgen inhibition on follicular maturation beyond the antral stage [12,34,36]. Our data would be consistent with one key effect of diathermy at the level of the ovary being the induction of atresia of the accumulated functional follicles.

We wondered if this induced follicular atresia was due to induction of inflammation locally that is detrimental to the health of neighbouring follicles. Diathermy to any tissue induces inflammation and it is therefore unsurprising that we report alterations in the expression of selected inflammatory genes in the ovarian stroma. In a study investigating diathermy in a normal sheep ovary, the authors report an early neutrophil response followed by a macrophage response [37]. We report early increased expression of the macrophage chemottractant *CCL2* [38] that would suggest stimulation of macrophage influx. However TNF, a major macrophage product [39], was significantly reduced suggesting that at 24 hours the inflammatory response was still developing.

In the diathermy study of the normal ovine ovary increased inflammatory processes remained apparent at 19 days post-treatment and was suggested to continue beyond this timeframe [37]. In women, increased ovarian volume post diathermy was attributed to inflammation and as ovarian volume decreased at 3 weeks post-treatment it was suggested that inflammation was resolving at that stage [40]. In our study we could find no evidence of ongoing inflammation at a molecular level after five weeks. This would be consistent with diathermy causing early but transient inflammation within the ovary.

We know that macrophages and macrophage products are involved in removing steroidogenic cells from the ovary. The corpus luteum is a transient steroidogenic gland in the ovary that is removed during luteolysis [41]. This involves an influx of macrophages [42] as well as an increase in chemokines and inflammatory markers [41,43]. These products can inhibit steroidogenic cell function and survival [44,45]. It is therefore possible that inflammation itself is responsible for the loss of theca cell mass. However it should be noted that self-limiting inflammation is common in the normal ovary as a part of normal ovarian physiology [46,47].

It is more plausible that it is the effect on the ovarian blood supply rather than inflammation *per se* that is key to increasing follicular atresia and thus theca cell mass. Ovarian stromal blood supply is increased in women with PCOS [48–50]. The ovarian artery resistance index was lower in women with PCOS when compared to matched controls [51,52] suggesting less impedance to blood flow and ultimately increased ovarian vascularity. It is likely that increased blood supply is important in maintenance of the increased follicular mass of the polycystic ovary.

Using CEUS in the anovulatory ovary for the first time we showed that diathermy had an immediate effect on the microvascular circulation. The wash in time is similar to the mean transit time and proportional to the ratio of volume to flow [23]. Considering the significant reduction of volume, the initial WIT increase implies a significant decrease in flow immediately after diathermy. Further, assuming that the vascular volume is not recovered within 24 hours, the decrease in wash in time shows at least a partial recovery of microvascular flow within 24 hours. Colour Doppler showed there was an effect on the stromal

vascular volume, which is derived from bigger vessels, that persists for the five weeks analysed. This is corroborated by the associated increased arterial vascular resistance index, which confirms a persistent reduction in intraovarian blood circulation. In women ovarian diathermy has been shown to increase the ovarian artery resistance index [53]. These results are consistent with diathermy having an immediate effect on the vasculature that is maintained for the five weeks of this study.

Thus it might be that targeting the ovarian vasculature would be a possible therapeutic strategy in PCOS. VEGF, a potent angiogenic factor is increased in women with PCOS [50,54] and may be responsible for the increased vascularisation. Serum VEGF is reduced by diathermy in women [55]. We saw no changes in stromal VEGF expression, which is not surprising as the follicles are the primary source of VEGF in the ovary [56]. Blocking VEGF using VEGF Trap or monoclonal antibodies has utility in blocking angiogenesis in ovarian cancer [57]. In the normal primate ovary it reduces theca cell angiogenesis [58] and induces antral follicle atresia [56]. Indeed we have previously suggested its use as a possible treatment in PCOS [59]. Recently it was reported that VEGF Trap may benefit ovarian function in a rodent model of PCOS [60].

Unfortunately in our model diathermy did not induce ovulation. We did not look in detail at the endocrine changes induced by diathermy in this model as they have been well described in women and were outside the aims of this study. It may be the diathermy strategy or the ovine PCOS model induced by prenatal programming that requires refinement for further study. With regards to the diathermy strategy there is some evidence that the adjustment of thermal dose to ovarian volume may be better than the fixed dose regimen used in this study [61]. There may be an increased hypothalamic pituitary contribution to the anovulatory phenotype in the prenatally androgenised ewe. In this model we used the conventional treatment where prenatal androgens are started at d30 that has a more extreme phenotype [19] than our refined model where androgens are started at d60 gestation [20,62]. In addition we have not assessed the effect of diathermy on ovaries from ovulatory sheep not programmed to have PCOS. While this has been done previously the effect of diathermy on ovulation was not an outcome of that study [37].

It is however clear that diathermy works best in women who are slim without marked metabolic abnormalities [12,63,64]. We and others have shown insulin resistance and other metabolic abnormalities in the ovine PCOS model [17,26,62]. It could be therefore speculated that the sheep model parallels the more obese women with PCOS with metabolic dysfunction. Indeed insulin sensitisers improve outcomes in these women with PCOS [65–67], and in an ovine PCOS model rosiglitazone prevented the cycle deterioration that is characteristic of these sheep as the breeding season progresses [68].

A medical alternative to surgical diathermy remains attractive. It is possible that targeting the increased ovarian vasculature in PCOS may have utility. However we have shown that the ovine PCOS model does not respond to conventional diathermy by ovulating. This means that a preclinical model to assess novel diathermy-like treatments is not currently established.

Acknowledgments

The authors would like to acknowledge the staff of the Marshall building for their excellent animal husbandry skills. We would like to thank Lyndsey Boswell and Siyu Liu for technical help.

Author Contributions

Conceived and designed the experiments: WCD MTR ASMcN. Performed the experiments: WCD ASMcN VS MTR MB FC. Analyzed

the data: FC WCD MB. Contributed reagents/materials/analysis tools: VS ALK. Contributed to the writing of the manuscript: FC MTR MB ALK VS WCD.

References

- Franks S (1995) Polycystic ovary syndrome. *N Engl J Med* 333: 853–861.
- Azziz R, Woods KS, Reyna R, Key TJ, Knochenhauer ES, et al. (2004) The prevalence and features of the polycystic ovary syndrome in an unselected population. *J Clin Endocrinol Metab* 89: 2745–2749.
- Goodarzi MO, Dumesic DA, Chazenbalk G, Azziz R (2011) Polycystic ovary syndrome: etiology, pathogenesis and diagnosis. *Nat Rev Endocrinol* 7: 219–231.
- Gonen Y, Casper RF (1990) Sonographic determination of a possible adverse effect of clomiphene citrate on endometrial growth. *Hum Reprod* 5: 670–674.
- Homburg R (2005) Clomiphene citrate - end of an era? A mini-review. *Hum Reprod* 20: 2043–2051.
- Li RHW, Van Esch M, De Vries J, Duncan WC, Anderson RA (2010) Gonadotrophin ovulation induction is a successful treatment for World Health Organisation Group II anovulatory subfertility in women aged up to 40 and with body mass index up to 34. *Hum Fert* 13: 35–40.
- Lopez E, Gunby J, Daya S, Parrilla JJ, Abad L, et al. (2004) Ovulation induction in women with polycystic ovary syndrome: randomized trial of clomiphene citrate versus low-dose recombinant FSH as first line therapy. *Reprod Biomed Online* 9: 382–390.
- Homburg R, Hendriks ML, Konig TE, Anderson RA, Balen AH, et al. (2012) Clomifene citrate or low-dose FSH for the first-line treatment of infertile women with anovulation associated with polycystic ovary syndrome: a prospective randomized multinational study. *Hum Reprod* 27: 468–473.
- Duncan WC, Jenkins JM, Mathur RS, Li TC (1994). Ovulation induction by human menopausal gonadotrophin. *Contemp Rev Obstet Gynaecol* 6: 154–160.
- Gjonnaess H (1994) Ovarian electrocautery in the treatment of women with polycystic ovary syndrome (PCOS). Factors affecting the results. *Acta Obstet Gynecol Scand* 73: 407–412.
- Liguori G, Tolino A, Moccia G, Scognamiglio G, Nappi C (1996) Laparoscopic ovarian treatment in infertile patients with polycystic ovarian syndrome (PCOS): endocrine changes and clinical outcome. *Gynecol Endocrinol* 10: 257–264.
- Amer SA, Banu Z, Li TC, Cooke ID (2002) Long-term follow-up of patients with polycystic ovary syndrome after laparoscopic ovarian drilling: endocrine and ultrasonographic outcomes. *Hum Reprod* 17: 2851–2857.
- Birch RA, Padmanabhan V, Foster DL, Unsworth WP, Robinson JE (2003) Prenatal programming of reproductive neuroendocrine function: fetal androgen exposure produces progressive disruption of reproductive cycles in sheep. *Endocrinology* 144: 1426–1434.
- Recabarren SE, Padmanabhan V, Codner E, Lobos A, Duran C, et al. (2005) Postnatal developmental consequences of altered insulin sensitivity in female sheep treated prenatally with testosterone. *Am J Physiol Endocrinol Metab* 289: E801–806.
- Manikkam M, Steckler TL, Welch KB, Inskoop EK, Padmanabhan V (2006) Fetal programming: prenatal testosterone treatment leads to follicular persistence/luteal defects; partial restoration of ovarian function by cyclic progesterone treatment. *Endocrinology* 147: 1997–2007.
- Padmanabhan V, Manikkam M, Recabarren S, Foster D (2006) Prenatal testosterone excess programs reproductive and metabolic dysfunction in the female. *Mol Cell Endocrinol* 246: 165–174.
- Veiga-Lopez A, Ye W, Phillips DJ, Herkimer C, Knight PG, et al. (2008) Developmental programming: deficits in reproductive hormone dynamics and ovulatory outcomes in prenatal, testosterone-treated sheep. *Biol Reprod* 78: 636–47.
- Padmanabhan V, Veiga-Lopez A, Abbott DH, Recabarren SE, Herkimer C (2010) Developmental programming: impact of prenatal testosterone excess and postnatal weight gain on insulin sensitivity index and transfer of traits to offspring of overweight females. *Endocrinology* 151: 595–605.
- Padmanabhan V, Veiga-Lopez A (2013) Sheep models of polycystic ovary syndrome phenotype. *Mol Cell Endocrinol* 373: 8–20.
- Hogg K, Young JM, Oliver EM, Souza CJ, McNeilly AS, et al. (2012) Enhanced thecal androgen production is prenatally programmed in an ovine model of polycystic ovary syndrome. *Endocrinology* 153: 450–461.
- Klibanov AL, Rasche PT, Hughes MS, Wojdyla JK, Galen KP, et al. (2004) Detection of individual microbubbles of ultrasound contrast agents: imaging of freefloating and targeted bubbles. *Investigative Radiology* 39: 187–195.
- Averkiou M, Lampaskis M, Kyriakopoulou K, Skarlos D, Klouvas G, et al. (2010) Quantification of tumor microvascularity with respiratory gated contrast enhanced ultrasound for monitoring therapy. *Ultrasound Med Biol* 36: 68–77.
- Strouthos C, Lampaskis M, Sboros V, McNeilly A, Averkiou M (2010) Indicator dilution models for the quantification of microvascular blood flow with bolus administration of ultrasound contrast agents. *IEEE Trans Ultrason Ferroelectr Freq Control* 57: 1296–1310.
- Sboros V, Averkiou M, Lampaskis M, Thomas DH, Silva N, et al. (2011) Imaging of the ovine corpus luteum microcirculation with contrast ultrasound. *Ultrasound Med Biol* 37: 59–68.
- Connolly F, Rae MT, Bittner L, Hogg K, McNeilly AS, et al. (2013) Excess androgens in utero alters fetal testis development. *Endocrinology* 154: 1921–1933.
- Hogg K, Wood C, McNeilly AS, Duncan WC (2011) The in utero programming effect of increased maternal androgens and a direct fetal intervention on liver and metabolic function in adult sheep. *PLoS One* 6: e24877.
- Schmidt J, Weijdegård B, Mikkelsen AL, Lindenberg S, Nilsson L, et al. (2014) Differential expression of inflammation-related genes in the ovarian stroma and granulosa cells of PCOS women. *Mol Hum Reprod* 20: 49–58.
- Gilling-Smith C, Willis DS, Beard RW, Franks S (1994) Hypersecretion of androstenedione by isolated thecal cells from polycystic ovaries. *J Clin Endocrinol Metab* 79: 1158–1165.
- Nelson VL, Legro RS, Strauss JF 3rd, McAllister JM (1999) Augmented androgen production is a stable steroidogenic phenotype of propagated theca cells from polycystic ovaries. *Mol Endocrinol* 13: 946–957.
- Anderson RA, Groome NP, Baird DT (1998) Inhibin A and inhibin B in women with polycystic ovarian syndrome during treatment with FSH to induce mono-ovulation. *Clin Endocrinol (Oxf)* 48: 577–584.
- Tan SL, Child TJ (2002) In vitro maturation of oocytes from unstimulated polycystic ovaries. *Reprod Biomed Online* 4: Suppl 1 18–23.
- Takayama K, Fukaya T, Sasano H, Funayama Y, Suzuki T, et al. (1996) Immunohistochemical study of steroidogenesis and cell proliferation in polycystic ovarian syndrome. *Hum Reprod* 11: 1387–1392.
- Homburg R, Amsterdam A (1998) Polycystic ovary syndrome—loss of the apoptotic mechanism in the ovarian follicles? *J Endocrinol Invest* 21: 552–557.
- Vendola KA, Zhou J, Adesanya OO, Weil SJ, Bondy CA (1998) Androgens stimulate early stages of follicular growth in the primate ovary. *J Clin Invest* 101: 2622–2629.
- Keckstein J (1989) Laparoscopic treatment of polycystic ovarian syndrome. *Baillieres Clin Obstet Gynaecol* 3: 563–581.
- Amer SA, Li TC, Cooke ID (2003) Repeated laparoscopic ovarian diathermy is effective in women with anovulatory infertility due to polycystic ovary syndrome. *Fertil Steril* 79: 1211–1215.
- Tozawa H, Branstrom M, Petrucco O, Walker S, Chambers H, et al. (1995) Distribution of leukocyte subtypes in the sheep ovary after laser drilling. *Hum Reprod* 10: 544–550.
- Deshmane SL, Kremlev S, Amini S, Sawaya BE (2009) Monocyte chemoattractant protein-1 (MCP-1): an overview. *J Interferon Cytokine Res* 29: 313–326.
- Baer M, Dillner A, Schwartz RC, Sedon C, Nedospasov S, et al. (1998) Tumor necrosis factor alpha transcription in macrophages is attenuated by an autocrine factor that preferentially induces NF-KB p50. *Mol Cell Biol* 18: 5678–5689.
- Tulandi T, Watkin K, Tan SL (1997) Reproductive performance and three-dimensional ultrasound volume determination of polycystic ovaries following laparoscopic ovarian drilling. *Int J Fertil Womens Med* 42: 436–440.
- Duncan WC, Myers M, Dickinson RE, van den Driesche S, Fraser HM (2009) Luteal development and luteolysis in the primate corpus luteum. *Animal Reprod* 6: 34–46.
- Duncan WC, Rodger FE, Illingworth PJ (1998) The human corpus luteum: reduction in macrophages during maternal recognition of pregnancy. *Hum Reprod* 13: 2435–2442.
- Peluffo MC, Young KA, Hennebold JD, Stouffer RL (2009) Expression and regulation of tumor necrosis factor (TNF) and TNF-receptor family in the macaque corpus luteum during the menstrual cycle. *Mol Reprod Dev* 76: 367–378.
- Pate JL, Toyokawa K, Walusimbi S, Brzezicka E (2010) The interface of the immune and reproductive systems in the ovary: lessons learned from the corpus luteum of domestic animal models. *Am J Reprod Immunol* 64: 275–286.
- Yoshioka S, Acosta TJ, Okuda K (2012) Roles of cytokines and progesterone in the regulation of the nitric oxide generating system in bovine luteal endothelial cells. *Mol Reprod Dev* 79: 689–696.
- Brännström M, Wang L, Norman RJ (1993) Ovulatory effect of interleukin-1 beta on the perfused rat ovary. *Endocrinology* 132: 399–404.
- Richards JS, Russell DL, Ochsner S, Espey LL (2002) Ovulation: new dimensions and new regulators of the inflammatory-like response. *Annu Rev Physiol* 64: 69–92.
- Zaidi J, Campbell S, Pittrof R, Kyei-Mensah A, Shaker A, et al. (1995) Ovarian stromal blood flow in women with polycystic ovaries - a possible new marker for diagnosis? *Hum Reprod* 10: 1992–1996.
- Aleem FA, Predanic M (1996) Transvaginal color Doppler determination of the ovarian and uterine blood flow characteristics in polycystic ovary disease. *Fertil Steril* 65: 510–516.
- Agrawal R, Sladkevicius P, Engmann L, Conway GS, Payne NN, et al. (1998) Serum vascular endothelial growth factor concentrations and ovarian stromal blood flow are increased in women with polycystic ovaries. *Hum Reprod* 13: 651–655.

51. Battaglia C, Artini PG, D'Ambrogio G, Genazzani AD, Genazzani AR (1995) The role of color Doppler imaging in the diagnosis of polycystic ovary syndrome. *Am J Obstet Gynecol* 172: 108–113.
52. Ozkan S, Vural B, Caliskan E, Bodur H, Turkoz E, et al. (2007) Color Doppler sonographic analysis of uterine and ovarian artery blood flow in women with polycystic ovary syndrome. *J Clin Ultrasound* 35: 305–313.
53. Amin AF, Abd El-Aal DE, Darwish AM, Meki AR (2003) Evaluation of the impact of laparoscopic ovarian drilling on Doppler indices of ovarian stromal blood flow, serum vascular endothelial growth factor, and insulin-like growth factor-1 in women with polycystic ovary syndrome. *Fertil Steril* 79: 938–941.
54. Tulandi T, Saleh A, Morris D, Jacobs HS, Payne NN, et al. (2000) Effects of laparoscopic ovarian drilling on serum vascular endothelial growth factor and on insulin responses to the oral glucose tolerance test in women with polycystic ovary syndrome. *Fertil Steril* 74: 585–588.
55. El Behery MM, Diab AE, Mowafy H, Ebrahim MA, Shehata AE (2011) Effect of laparoscopic ovarian drilling on vascular endothelial growth factor and ovarian stromal blood flow using 3-dimensional power Doppler. *Int J Gynecol Obstet* 112: 119–121.
56. Fraser HM, Duncan WC (2009) SRB Reproduction, Fertility and Development Award Lecture 2008. Regulation and manipulation of angiogenesis in the ovary and endometrium. *Reprod Fertil Dev* 21: 277–392.
57. Duncan WC, Nio-Kobayashi J (2013) Targeting angiogenesis in the pathological ovary. *Reprod Fertil Dev* 25: 362–371.
58. Wulff C, Wilson H, Wiegand SJ, Rudge JS, Fraser HM (2002) Prevention of thecal angiogenesis, antral follicular growth, and ovulation in the primate by treatment with vascular endothelial growth factor Trap R1R2. *Endocrinology* 143: 2797–2807.
59. Fraser HM, Duncan WC (2005) Vascular morphogenesis in the primate ovary. *Angiogenesis* 8: 101–116.
60. Abramovich D, Irusta G, Bas D, Cataldi NI, Parborell F, et al. (2012) Angiopoietins/TIE2 system and VEGF are involved in ovarian function in a DHEA rat model of polycystic ovary syndrome. *Endocrinology* 153: 3446–3456.
61. Sunj M, Canic T, Baldani DP, Tandara M, Jeronic A, et al. (2013) Does unilateral laparoscopic diathermy adjusted to ovarian volume increase the changes of ovulation in women with polycystic ovary syndrome? *Hum Reprod* 28: 2417–2424.
62. Rae M, Grace C, Hogg K, Wilson LM, McHaffie SL, et al. (2013) The pancreas is altered by in utero androgen exposure: implications for clinical conditions such as polycystic ovary syndrome (PCOS). *PLoS One* 8: e56263.
63. Dale PO, Tanbo T, Ertzeid G, Bjercke S, Oldereid N, et al. (2004) The impact of insulin resistance on the outcome of laparoscopic ovarian electrocautery in infertile women with the polycystic ovary syndrome. *Gynecol Endocrinol* 19: 182–189.
64. Amer S, Li TC, Samuelson C, Ledger W (2011) The impact of insulin resistance on the outcome of laparoscopic ovarian diathermy in women with polycystic ovarian syndrome. *Acta Obstet Gynecol Scand* 90: 338–343.
65. Dunaif A (2008) Drug insight: insulin-sensitizing drugs in the treatment of polycystic ovary syndrome—a reappraisal. *Nat Clin Pract Endocrinol Metab* 4: 272–283.
66. Nieuwenhuis-Ruifrok AE, Kuchenbecker WK, Hoek A, Middleton P, Norman RJ (2009) Insulin sensitizing drugs for weight loss in women of reproductive age who are overweight or obese: systematic review and meta-analysis. *Hum Reprod Update* 15: 57–68.
67. Palomba S, Falbo A, Russo T, Orio F, Tolino A, et al. (2010) Systemic and local effects of metformin administration in patients with polycystic ovary syndrome (PCOS): relationship to the ovulatory response. *Hum Reprod* 25: 1005–1013.
68. Veiga-Lopez A, Lee JS, Padmanabhan V (2010) Developmental programming: insulin sensitizer treatment improves reproductive function in prenatal testosterone-treated female sheep. *Endocrinology* 151: 4007–17.