

# Noninvasive Testing and Surrogate Markers in Invasive Fungal Diseases

George R. Thompson III,<sup>1,2</sup> David R. Boulware,<sup>3,6</sup> Nathan C. Bahr,<sup>4</sup> Cornelius J. Clancy,<sup>5,6</sup> Thomas S. Harrison,<sup>7,8,9</sup> Carol A. Kauffman,<sup>10</sup> Thuy Le,<sup>11,12</sup> Marisa H. Miceli,<sup>13</sup> Eleftherios Mylonakis,<sup>14</sup> M. Hong Nguyen,<sup>5,15</sup> Luis Ostrosky-Zeichner,<sup>16,6</sup> Thomas F. Patterson,<sup>17</sup> John R. Perfect,<sup>11,18</sup> Andrej Spec,<sup>19,6</sup> Dimitrios P. Kontoyiannis,<sup>20</sup> and Peter G. Pappas<sup>21</sup>

<sup>1</sup>Division of Infectious Diseases, Department of Internal Medicine, University of California-Davis Medical Center, Sacramento California, USA, <sup>2</sup>Department of Medical Microbiology and Immunology, University of California-Davis, Davis, California, USA, <sup>3</sup>Division of Infectious Diseases, Department of Internal Medicine, University of Minnesota, Minneapolis, Minnesota, USA, <sup>4</sup>Division of Infectious Diseases, Department of Medicine, University of Kansas, Kansas City, Kansas, USA, <sup>5</sup>Department of Medicine, University of Pittsburgh, Pittsburgh, Pennsylvania, USA, <sup>6</sup>VA Pittsburgh Healthcare System, Pittsburgh, Pennsylvania, USA, <sup>7</sup>Centre for Global Health, Institute of Infection and Immunity, St George's University of London, London, United Kingdom, <sup>8</sup>Clinical Academic Group in Infection, St George's Hospital NHS Trust, London, United Kingdom, <sup>9</sup>MRC Centre for Medical Mycology, University of Exeter, Exeter, United Kingdom, <sup>10</sup>VA Ann Arbor Healthcare System and University of Michigan, Ann Arbor, Michigan, USA, <sup>11</sup>Division of Infectious Diseases and International Health, Duke University School of Medicine, Durham, North Carolina, USA, <sup>12</sup>Oxford University Clinical Research Unit, Ho Chi Minh City, Vietnam, <sup>13</sup>University of Michigan, Ann Arbor, Michigan, USA, <sup>14</sup>Division of Infectious Diseases, Warren Alpert Medical School, Brown University, Providence, Rhode Island, USA, <sup>15</sup>University of Pittsburgh Medical Center, Pittsburgh, Pennsylvania, USA, <sup>16</sup>Division of Infectious Diseases, McGovern Medical School, Houston, Texas, USA, <sup>17</sup>Division of Infectious Diseases, Department of Medicine, The University of Texas Health Science Center, San Antonio, Texas, USA, <sup>18</sup>Division of Infectious Diseases, Department of Molecular Genetics and Microbiology, Duke University, Durham, North Carolina, USA, <sup>19</sup>Division of Infectious Diseases, Department of Medicine, Washington University in St. Louis, School of Medicine, St. Louis, Missouri, USA, <sup>20</sup>Department of Infectious Diseases, Infection Control and Employee Health, The University of Texas MD Anderson Cancer Center, Houston, Texas, USA, and <sup>21</sup>Division of Infectious Diseases, Department of Medicine, University of Alabama at Birmingham, Birmingham, Alabama, USA

Invasive fungal infections continue to increase as at-risk populations expand. The high associated morbidity and mortality with fungal diseases mandate the continued investigation of novel antifungal agents and diagnostic strategies that include surrogate biomarkers. Biologic markers of disease are useful prognostic indicators during clinical care, and their use in place of traditional survival end points may allow for more rapid conduct of clinical trials requiring fewer participants, decreased trial expense, and limited need for long-term follow-up. A number of fungal biomarkers have been developed and extensively evaluated in prospective clinical trials and small series. We examine the evidence for these surrogate biomarkers in this review and provide recommendations for clinicians and regulatory authorities.

**Keywords.** diagnosis; fungal infections; mycology.

The use of surrogate end points through the use of indirect markers known as biomarkers has the potential to replace clinical end points in large-scale licensing therapeutic trials and to provide additional prognostic information when used during routine clinical care. Use of biomarkers can avoid the delay of days to weeks for fungal growth in blood or tissue and may obviate the need for invasive diagnostic procedures. To be useful as surrogate end points, however, there must be evidence that these biomarkers correlate with clinically meaningful outcomes. Substantial evidence has been generated pertaining to the use of fungal biomarkers over the last decade. We review the available evidence on the use of fungal biomarkers as surrogate end points in this manuscript.

## CRYPTOCOCCOSIS

Surrogate biomarkers for cryptococcosis can be used for diagnosis, prognosis, and treatment decisions. Standard diagnostics are India ink microscopy, cryptococcal antigen (CrAg), and culture [1]. Culture and microscopy techniques date to 1894 [2] and are still used. India ink testing for visualization of the capsule can detect  $\sim 10^3$  CFU yeasts/mL in centrifugated cerebrospinal fluid (CSF) and has a sensitivity of  $\sim 60\%$ – $80\%$  in HIV-infected patients [3] and  $\sim 50\%$  in non-HIV cryptococcal meningitis. The change in quantitative CSF microscopy yeast counts correlates poorly with changes in quantitative culture and cannot be used as a surrogate marker [4].

### Cryptococcal Antigen

Cryptococcal antigen tests using latex agglutination, enzyme immunoassay (EIA), or lateral flow assays (LFAs), have been integrated into clinical practice and have  $>95\%$  sensitivity and specificity in CSF, serum, plasma, and whole blood [5, 6]. The CrAg LFA by IMMY (Norman, OK, USA) has the best diagnostic performance of any current point-of-care assay [3], with detection of both *C. neoformans* and *C. gattii* species but without the ability to distinguish between species. Internationally, other non-Food and Drug Administration

Received 7 December 2021; editorial decision 23 February 2022; accepted 2 March 2022; published online 4 March 2022.

Correspondence: George R. Thompson, MD, FIDSA, Department of Medicine, 4150 V Street, Suite G500, UC-Davis Medical Center, Sacramento, CA 95817 (grthompson@ucdavis.edu).

Open Forum Infectious Diseases® 2022

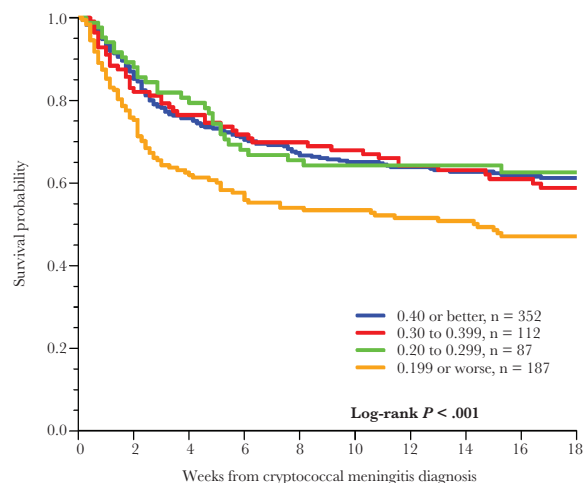
© The Author(s) 2022. Published by Oxford University Press on behalf of Infectious Diseases Society of America. This is an Open Access article distributed under the terms of the Creative Commons Attribution-NonCommercial-NoDerivs licence (<https://creativecommons.org/licenses/by-nc-nd/4.0/>), which permits non-commercial reproduction and distribution of the work, in any medium, provided the original work is not altered or transformed in any way, and that the work is properly cited. For commercial re-use, please contact journals.permissions@oup.com <https://doi.org/10.1093/ofid/ofac112>

(FDA)-approved CrAg LFAs exist with substantially worse diagnostic performance [7–9]. Serum or plasma CrAg LFAs are >99.9% sensitive for detecting meningitis in HIV-infected persons with meningitis, although if central nervous system symptoms are present despite negative serum testing assessment of the CSF should be pursued [10, 11]. False-negative tests are more common with CrAg latex agglutination and in HIV-negative persons, where ~20% may have a false-negative CrAg in serum with disseminated disease [3, 12]. False-negative CrAg LFAs are possible due to a prozone effect at CrAg titers >1:1 million by serial dilution; however, a new semiquantitative CrAg LFA has been developed that eliminates prozone [11]. The ability to provide a semiquantitative CrAg titer provides prognostic information, as high titers are correlated with high burden of disease and predict poor prognosis [13, 14]. However, serial changes in CSF titers or serum CrAg titers following treatment are not associated with antifungal activity, change in CSF quantitative culture, or survival [15, 16]; thus, longitudinal CrAg titer change is not a useful surrogate biomarker.

### Early Fungicidal Activity

The slope of cryptococcal yeast clearance rate of serial CSF quantitative cultures, termed early fungicidal activity (EFA) [17, 18], is now a frequently used tool in clinical trials as a direct marker of antifungal activity and a surrogate marker for mortality [1, 19, 20]. In a 2020 meta-analysis of 738 cryptococcal meningitis participants from 3 sequential trials who received the same background induction regimen of amphotericin B deoxycholate and fluconazole, those with an EFA <0.20 log<sub>10</sub> CFU/mL/d had an increased 18-week mortality compared with those with an EFA >0.20 (Figure 1) [19].

Furthermore, the association of EFA with mortality in HIV-associated cryptococcal meningitis is built on previous separate prospective studies. Bicanic and colleagues used pooled data from 4 trials in persons with HIV-associated cryptococcal meningitis undergoing induction with amphotericin B-based combination therapy or fluconazole monotherapy and found that a slower rate of clearance was associated with 10-week mortality [20]. Those who survived >10 weeks had mean EFAs of 0.41 log<sub>10</sub> CFU/mL/d, vs 0.27 log<sub>10</sub> CFU/mL/d in those who died. A 2016 systematic review of 27 trials including 2854 participants (EFAs measured with different statistical techniques) also found an association between mean EFA and 10-week survival [21], although this analysis excluded inferior regimens with poor EFAs, such as fluconazole monotherapy. While there are many contributors to cryptococcal meningitis mortality, EFA is a validated surrogate marker for antifungal activity in humans and for all-cause mortality, particularly when the EFA is <0.20 log<sub>10</sub> CFU/mL/d. As *Cryptococcus* quantitative cultures take 3–7 days



EFA group	Number at risk				
≥0.40	352	245	216	190	160
0.30–0.39	112	81	74	65	56
0.20–0.29	87	64	52	45	37
<0.20	187	104	88	75	64

**Figure 1.** Association between EFA of CSF *Cryptococcus* yeast clearance rate and mortality. Increased mortality was observed among those with an EFA <0.20 log<sub>10</sub> CFU/mL CSF/d when receiving amphotericin B combination therapy in Uganda. Above this EFA threshold could be a target for phase II trials. Reproduced with permission from Pullen et al. [19]. Abbreviations: CFU, colony-forming units; CSF, cerebrospinal fluid; EFA, early fungicidal activity.

to grow on standard fungal media [18], EFA is a delayed metric that cannot be used in real time for clinical decision-making. Quantitative CSF culture methodology has been published and cross-validated [18].

### Other Potential Biomarkers

Insufficient data exist for other surrogate markers for cryptococcal meningitis. Both CSF (1→3)-β-D-glucan (BDG) and FilmArray polymerase chain reaction (PCR) testing (BioFire, Salt Lake City, UT, USA) are potential diagnostic markers in cryptococcosis, but both are suboptimal compared with CrAg for diagnosis [22–25]. The rapid decay of CSF BDG and the change in PCR cycle threshold (Ct) value for *C. neoformans* DNA during antifungal therapy make these interesting potential surrogate biomarkers.

### Summary and Recommendations for Surrogate Biomarkers in Cryptococcosis

CrAg is an established diagnostic biomarker that is more sensitive than culture. CrAg LFA is most sensitive. CrAg is preferred over BDG or PCR testing for diagnosis, but sequential CSF CrAg titers should not be used for monitoring response to therapy. The CSF clearance rate of *Cryptococcus* from serial quantitative CSF cultures (EFA) is a direct marker of antifungal activity and a surrogate biomarker of mortality and is now routinely used to evaluate novel antifungal strategies in cryptococcal meningitis clinical trials (Table 1).

**Table 1. Summary of Fungal Biomarkers and Their Use for Diagnosis, Prognosis, or as Surrogate End Points in Clinical Trials**

Fungus	Diagnostic Biomarkers	Prognostic Biomarkers	Surrogate End Points for Treatment Trials
<i>Cryptococcus</i>	CrAg, PCR	CrAg titer Quantitative CSF culture CSF BDG	Early fungicidal activity of serial quantitative CSF cultures is an established end point
<i>Candida</i>	PCR, T2Candida BDG (nonspecific)	None validated	Possible: change in BDG, change in PCR Ct value, or time to T2Candida negativity
<i>Aspergillus</i>	Blood galactomannan, blood LFA for galactomannan, BDG, PCR	Quantitative galactomannan value	Possible: change in blood galactomannan
Other molds	None	None	None
<i>Blastomyces</i>	Serum or urine antigen	Quantitative antigen possible	Possible: change in antigen or CRP
<i>Coccidioides</i>	Serology, PCR, antigen	CF IgG titer	Possible: change in CF IgG titer
<i>Histoplasma</i>	Serum or urine antigen	Quantitative antigen	Possible: change in antigen titer
<i>Paracoccidioides</i>	IgG detection, antigen	IgG titer	Possible: change in IgG titer
<i>Sporothrix</i>	PCR	None	None
<i>Talaromyces</i>	Serum or urine antigen PCR	Quantitative blood culture	Early fungicidal activity based on serial quantitative blood cultures

Abbreviations: BDG, 1,3- $\beta$ -D-glucan; CF, complement fixation; CrAg, cryptococcal antigen; CRP, c-reactive protein; IgG, immunoglobulin G; LFA, lateral flow assay; PCR, polymerase chain reaction.

## INVASIVE CANDIDIASIS

Invasive candidiasis includes bloodstream infections by *Candida* spp. (candidemia), which may be complicated by end-organ infections from hematogenous dissemination, and noncandidemic infections of organs or submucosal tissues. Blood culture analysis is the gold standard and most common approach for identifying candidemia. Noncandidemic invasive candidiasis (deep-seated candidiasis) is typically diagnosed by culture, staining, and/or histopathology of samples acquired by biopsy or aspiration of involved tissue. Newer technologies and commercially available methods have been developed for more rapid diagnosis than the delay observed with cultures.

The average time to detection for culture-based systems ranges from 14 to 38 hours and varies depending on the culture conditions used (most *Candida* spp. grow more rapidly in aerobic than in anaerobic bottles) [26], the *Candida* species, and the number of circulating yeast per mL of sample. Moreover, limitations in the sensitivity, reliability, and timeliness of automated blood culture methods exist. The sensitivity of these assays decreases with the inocula (79% sensitivity with 1000 yeast cells/bottle, 73% with 100 yeast cells/bottle, and 70% sensitivity with 10 yeast cells/bottle). The mean detection time for *C. albicans* is 20–30 hours depending on bottle type and inoculum concentration [27]. Non-*albicans* species such as *C. glabrata* may take considerably longer for growth (~80 hours).

Using culture-based diagnostic molecular assays, clinicians are now able to decrease the time to organism identification and improve antimicrobial agent selection and patient outcomes [28]. For example, matrix-assisted laser desorption/ionization mass spectrometry (MALDI-TOF MS) is based on characteristic

mass spectral fingerprints unique to different microorganisms. This technique requires growth of the organism on solid culture media before assessment. Other recently developed rapid diagnostics performed directly on positive blood culture samples include Biofire Direct from Blood Culture, GenMark Yeast ID from Blood Culture, Accelerate Pheno, and PNA Fish [29–31]. The FilmArray blood culture identification panel, a multiplexed assay able to identify 24 different pathogens (BioFire Diagnostics, Salt Lake City, UT, USA), provides results in ~1 hour with reported sensitivity of 96%–100% and specificity of 88%–100% [31, 32].

Limitations of culture techniques have spurred development of culture-independent diagnostic tests for invasive candidiasis, although uncertainty about test performance, costs, and utility remains [33]. Traditional culture-based methods may be less sensitive than newer methodologies and thus result in the erroneous interpretation that newer methodologies are less specific than the traditional “gold standard” cultures despite detection of more true-positive results (Table 2). Data are most robust for 3 culture-independent diagnostic tests: (1→3)- $\beta$ -D-glucan, *Candida* polymerase chain reaction (PCR), and T2Candida assays of blood-based samples. Culture-independent diagnostic test-guided patient management strategies have not been validated in clinical trials. We propose that patient populations within the dark lines in Table 2 might be targeted for such future trials to identify whether patients with “false-positive” culture-independent diagnostic tests that are culture negative benefit from antifungal therapy and thus are true positives. Below we discuss how these assays can be rationally incorporated into patient care using current knowledge.

**Table 2. Performance Characteristics of Culture-Independent Diagnostic Tests for Candidemia as Compared With Culture as the Imperfect Reference Standard**

Prevalence	Corresponding Patient Populations	Beta-D-Glucan (60%/80%)		Beta-D-Glucan (80%/80%)		PCR, T2Candida (70%/90%)		PCR, T2Candida (90%/90%)	
		PPV, %	NPV, %	PPV, %	NPV, %	PPV, %	NPV, %	PPV, %	NPV, %
~0.4%	Any patient for whom a blood culture is collected	1	99.8	1	99.9	3	99.8	3	>99.9
~1%	Patient in ICU with fever	3	99.5	4	99.7	7	99.7	8	99.9
~3%	Patients with sepsis, septic shock, in ICU for >3–7 d	8.5	98.5	11	99.2	18	99	22	99.6
~10%	ICU patient at increased risk for candidemia based on clinical prediction score	25	94.7	31	97	44	96	50	98.8

Table 2 adapted from Clancy and Nguyen [34]. BDG sensitivity/specificity for diagnosing candidemia are taken from meta-analyses cited in the text. PCR and T2Candida sensitivity/specificity for diagnosing candidemia are taken from a meta-analysis and DIRECT and DIRECT2 clinical trials [40, 42, 43]. In order to make rational use of culture-independent diagnostic tests, clinicians must be familiar with test performance and prevalence of various types of invasive candidiasis locally. Culture-independent diagnostic test-guided patient management strategies have not been validated in clinical trials. We propose that patient populations with PPV > 15% might be targeted for such trials to better identify the clinical benefit of response to antifungal therapy. These “false positives” among high-risk patient populations may represent deep-seated invasive candidiasis that is negative by blood and other cultures.

Abbreviations: BDG: 1,3-beta-D-glucan; ICU, intensive care unit; NPV, negative predictive value; PCR, *Candida* polymerase chain reaction; PPV, positive predictive value.

### (1→3)-β-D-Glucan (BDG)

BDG is a cell wall constituent of *Candida* and most pathogenic fungi. There is no conclusive evidence for the superiority of an assay by any particular manufacturer [34]. The majority of the data are for the FDA-approved Fungitell assay (Associates of Cape Cod, Cape Cod, MA, USA). Positive BDG results do not identify *Candida* species or distinguish between *Candida* and other fungi. Performance improves if 2 or more sequential samples are positive for BDG (>80 pg/mL) [35]. False positives can occur with intravenous immunoglobulin, albumin, beta-lactam antibiotics, or bacterial infections [36].

In meta-analyses, serum BDG sensitivity and specificity for invasive candidiasis (primarily candidemia) are ~75%–80% and ~60%–80%, respectively [37–40]. Performance varies greatly in individual reports, with sensitivities ranging from 27% to 100% and specificities ranging from 0% to 100% [41]. In studies of deep-seated candidiasis (predominantly intra-abdominal candidiasis), sensitivities and specificities (interquartile range [IQR]) were 65% (60%–77%) and 75% (64%–75%), respectively (Table 3) [42–46]. A recent Cochrane report was unable to perform a meta-analysis or estimate BDG diagnostic accuracy for invasive candidiasis due to heterogeneity in performance and study design [41]. Serial BDG measurements are not generally assessed in invasive candidiasis, although a negative slope (eg, decline) in BDG levels has been correlated with successful treatment outcomes [47]; more data on longitudinal BDG change are needed.

### PCR

PCR offers potential advantages over BDG by specifically targeting *Candida* spp. and allowing concurrent identification to the species level. Most PCR assays target *C. albicans*, *C. glabrata*, *C. parapsilosis* complex, *C. tropicalis*, and *C. krusei*, which account for >95% of cases of invasive candidiasis at most centers. In a meta-analysis, PCR sensitivity was 95% and specificity was 92% for proven/probable invasive candidiasis (predominantly candidemia) [48]. Sensitivity and specificity for proven/probable/possible invasive candidiasis were 73% and 95% respectively. Higher sensitivity was observed with whole blood (as opposed to serum), and *Candida*- or fungal-specific rather than broader multiplex assays. There was a trend toward lower specificity among patients colonized by *Candida* [48]. Another meta-analysis investigated LightCycler SeptiFast (Roche Diagnostics, Mannheim, Germany), a real-time multiplex PCR assay for the 5 most common *Candida* spp. and 20 other bacterial pathogens, among patients with presumed sepsis [49]. In this study, the sensitivity and specificity for candidemia were 61% and 99%, respectively. In studies of deep-seated candidiasis (predominantly intra-abdominal candidiasis), PCR sensitivity and specificity vary from 25% to 91% and 33% to 97%, respectively [42–45].

**Table 3. Anticipated Performance of BDG, PCR, and T2Candida in Various Populations at Risk for Intra-abdominal Candidiasis**

Prevalence, %	Representative Patient Populations	PPV, %	NPV, %	PPV, %	NPV, %
5	- Low- to moderate-risk peritoneal dialysis patient with peritonitis	12	97.6	37	97
10	- Patient with emergent surgery for intra-abdominal infection - Patient with colonic perforation	22	95	56	94
20	- Patient with high-risk severe acute or necrotizing pancreatitis - Patient with small bowel perforation - Patient with emergent surgery for nosocomial intra-abdominal infection	39	90	74	87
30	- Patient who has undergone high-risk GI/hepatobiliary surgery - Patient with a biliary leak - Patient with a gastric/duodenal perforation	53	83	83	80

Table 3 adapted from Clancy and Nguyen [34]. BDG sensitivity/specificity values for diagnosing intra-abdominal candidiasis (the most common type of deep-seated candidiasis) are median values from studies cited in the text. PCR and T2Candida sensitivity and specificity for diagnosis are representative of recently published studies, as cited in the text. In order to make rational use of culture-independent diagnostic tests, clinicians must be familiar with test performance and prevalence of various types of invasive candidiasis locally.

PPVs and NPVs >15–30% and >85%, respectively, signify patients in whom nonculture testing may have the greatest clinical utility, assuming that antifungal treatment is justified at a threshold likelihood of candidemia ≥15%–30%.

Abbreviations: BDG: 1,3-beta-D-glucan; GI, gastrointestinal tract; NPV, negative predictive value; PCR, *Candida* polymerase chain reaction; PPV, positive predictive value.

### T2Candida

T2Candida (T2 Biosystems, Lexington, MA, USA) is an FDA-approved diagnostic for candidemia, which detects the 5 most common *Candida* species within whole blood by an automated process in which amplified DNA targets are detected by T2 magnetic resonance. In multicenter studies, T2Candida was 89%–91% sensitive and 98% specific for candidemia by targeted species [50, 51]. The mean time to *Candida* detection and species identification was  $4.4 \pm 1.0$  hours. Data for T2Candida in clinical practice have shown this methodology as 65%–83% sensitive and 93%–96% specific for candidemia [52, 53]. For the diagnosis of deep-seated candidiasis (predominantly intra-abdominal candidiasis), studies have found this system 33%–45% sensitive and 93%–96% specific [53–55].

In small studies of intensive care unit patients at risk for invasive candidiasis, treatment strategies based on serum BDG and T2Candida results were effective in shortening the time to appropriate treatment of invasive candidiasis, safely reducing unnecessary empiric antifungal use, and reducing costs [56–60]. In a multicenter study from Spain of patients treated for candidemia, positive T2Candida (but not BDG) within the first 5 days after a positive *Candida* blood culture was an independent risk factor for either attributable mortality or development of deep-seated candidiasis [61]. In a companion multicenter study, positive T2Candida after institution of empiric therapy was an independent predictor of death or proven candidiasis, whereas BDG results were not predictive of mortality [62]. Clinical trials of culture-independent diagnostic test–guided therapeutic strategies are needed to validate impact on patient outcomes, antifungal utilization, and health care costs. The results of the CandiSep trial (NCT02734550, discussed below) will hopefully increase our understanding of these tests and their impact on antifungal prescribing.

Culture-independent diagnostic tests have the potential to be useful as inclusion criteria for candidiasis trials. It is apparent that culture alone detects only a subset of clinical disease. Culture positivity should be an important a priori subgroup in clinical trials, but limiting enrollment to culture-positive cases leads to delays in enrollment and artificial populations not reflective of current clinical practice. The CandiSep prospective randomized multicenter trial is evaluating whether the decision to prescribe antifungals guided by (1,3)- $\beta$ -D-glucan in comparison with standard of care shortens time to antifungal therapy and reduces mortality. The results of this trial should inform inclusion criteria for future candidiasis trials. Most probably, culture positivity/negativity should be a standard a priori subgroup analysis in future clinical trials, not restriction for an inclusion criterion.

There is also a need to validate the clinical role of serial changes of surrogate markers such as BDG or PCR Ct value, or time to T2Candida negativity. With the exception of 1 BDG study, associations are lacking between faster reduction in surrogate markers and clinical survival [47]. Validation of surrogate marker kinetics would allow for smaller phase II trials for new agents or combination therapies. A starting point would be to use existing cohorts with stored specimens to study longitudinal changes in biomarkers.

### Summary and Recommendations for Surrogate Biomarkers in Candidiasis

Cultures remain the mainstay of candidiasis diagnostics yet should not be the limiting inclusion criterion for invasive candidiasis trials. Documented clearance of candidemia is a marker of successful antifungal treatment. We recommend using diagnostic molecular assays on positive cultures to accurately and rapidly identify organisms to species level. Culture-independent diagnostic tests may be useful in selected clinical

scenarios to initiate or de-escalate antifungal therapy. Positive PCR or T2Candida testing in patients with risk factors for candidiasis warrants enrollment in clinical trials. Multiple possible biomarkers exist that could be used in phase II trials to quantify antifungal activity, but these biomarkers have not been validated.

## ASPERGILLOSIS

*Aspergillus* spp. are ubiquitous in the environment and frequently inhaled into the airways [63]. Diagnosis of invasive aspergillosis requires an appropriate host and compatible clinical syndrome when cultures from the airway return positive to differentiate colonization from infection. Only culture of the organism from a sterile site or demonstration of the organism with hyphal invasion on histopathology is confirmatory of proven disease [64]. The *Aspergillus* cell wall contains polysaccharides, BDG, chitin, and other components that may be utilized for detection in patient samples. Galactomannan and BDG are the most well studied of these cell wall constituents.

### Galactomannan Kinetics

The kinetic profile of serum galactomannan is complex and depends on multiple factors including production and secretion, the fungal burden, the presence and function of neutrophils, the patient's renal and hepatic function, and exposure to antifungal agents with activity against *Aspergillus* spp. Galactomannan presence in the circulation correlates with invasive growth of *Aspergillus* through the pulmonary capillaries, and angio-invasion has been correlated with fungal burden and galactomannan production [65, 66]. Together these findings help explain the variable performance of serum galactomannan in different patient populations (Table 4) [67]. For example, serum galactomannan is detectable in patients with hematological malignancies and allogeneic hematopoietic stem cell transplant recipients who have a higher burden of disease [68]. In contrast, the performance of serum galactomannan for the diagnosis of invasive aspergillosis (IA) in solid organ transplant patients, who typically have a lower burden of disease, is relatively poor [69, 70].

There has also been interest in determining if baseline serum galactomannan values correlate with patient outcome and whether the slope of serial galactomannan optical density

index readings correlates with survival. Multiple studies have evaluated the role of baseline serum galactomannan as a predictor of treatment response and outcome of aspergillosis. In a recent review of these studies, Mercier et al. found a correlation between serum galactomannan level and survival at 42 and 180 days of treatment among patients with positive serum galactomannan (defined as cutoff >0.5 optical density index), while serum galactomannan  $\geq 2.0$  optical density index at baseline was associated with poor outcome [71]. In a recent randomized controlled trial comparing anidulafungin in combination with voriconazole vs voriconazole alone, baseline serum galactomannan was also an independent predictor of 6-week survival [72].

The role of measuring serial galactomannan in patients with IA has been evaluated in several studies [68, 73–76]. Despite the heterogeneity among these studies regarding outcome definition and galactomannan evaluation time points, the data suggest that a declining serum galactomannan value is a predictor of survival, whereas persistently elevated serum galactomannan correlates with death. One study reported that every 0.1-unit increase in galactomannan optical density index from baseline to week 2 corresponded to a 21% higher rate of an unsatisfactory clinical response [77].

Data on the effect of specific antifungal agents on serum galactomannan kinetics are conflicting and remain a subject of investigation. Some studies have shown a distinct kinetic profile depending on the antifungal agent, while others have shown no effect [78–80].

Galactomannan kinetics in bronchoalveolar lavage (BAL) fluid are poorly understood and should be interpreted with caution, as this test is plagued with caveats including sampling error, nonstandardized BAL fluid collection, and site of infection [81].

Based on the available data, current Infectious Diseases Society of America guidelines recommend the use of serial serum galactomannan only in patients with hematologic malignancies and hematopoietic stem cell transplant recipients who have an elevated galactomannan at baseline to monitor disease progression, therapeutic response, and prediction of patient outcomes with IA [82].

The development of lateral flow assays has aided in the diagnosis of aspergillosis, although their role in sequential sampling has not been defined thus far [83–85].

### (1→3)- $\beta$ -D-Glucan (BDG)

The utility of BDG testing in the therapeutic monitoring of patients with IA has been poorly characterized. Pazos et al. first evaluated BDG compared with galactomannan testing in a retrospective cohort of 40 high-risk neutropenic patients (5 proven, 3 probable, and 3 possible) [86]. The sensitivity, specificity, and positive and negative predictive values of galactomannan and BDG testing were almost identical; however, BDG was positive earlier than galactomannan. In the evaluation of BDG testing as

**Table 4. Summary of Galactomannan Performance Characteristics in Serum or Plasma Using a Cutoff ODI of 1.0**

Population	Sensitivity, %	Specificity, %
Hematologic malignancy	58	95
Hematopoietic stem cell transplantation	65	65
Solid organ transplant	41	85

Table modified from Scott et al. [146].  
Abbreviation: ODI, optical density index.

a prognostic tool, plasma concentrations showed a consistent increase before clinical and microbiologic evidence of disease but decreased and became negative following a response to antifungal treatment. In contrast, those nonresponsive to antifungal therapy showed a persistence of BDG positivity. Others have similarly observed a decrease in BDG values following a response to therapy [87].

Others have compared BDG and galactomannan directly in the prognosis of IA. In a study of 51 evaluable patients, there was an association between changes from baseline to week 12 when BDG and galactomannan were summed; however, the use of BDG alone was not statistically significant. Others have described similar findings, with most patients having BDG values through 6–12 weeks persistently >80 pg/mL, and with the trajectory not predictive of 6- or 12-week outcomes [88]. BDG kinetics are slow and may require >4–6 weeks after treatment initiation to appreciably change [75]. These limitations, and the inpatient variability of BDG testing, prompt the authors to not recommend serial BDG [89].

### PCR

Availability of *Aspergillus* PCR testing in the United States remains limited; PCR is performed in reference laboratories only (although *Aspergillus* PCR testing is commercially available in Europe) [90]. The reported performance characteristics of PCR vary given the different technologies, cycle thresholds for positivity, microbial targets, and study populations that have been assessed [91]. A meta-analysis evaluating 25 studies found a pooled sensitivity and specificity of 84% and 76%, respectively [92]. In patients with 2 positive PCR results, the sensitivity was found to be 64%, although specificity improved to 95% [93].

Few studies have evaluated sequential PCR testing for prognosis; however, quantitative PCR as copies/mL of serum at the time of diagnosis has been found to be predictive of 90-day mortality. The persistence of positivity or the development of a negative test was predictive of 30- or 90-day mortality. Those who became PCR negative between days 14 and 20 were all alive at day 30, while those with PCR persistence exhibited 80% mortality at day 30 [94]. Time to PCR negativity with weekly sampling as an end point may be a future area to investigate.

*Aspergillus fumigatus* quantitative PCR from BAL has been evaluated for the diagnosis and prognosis of both invasive and noninvasive aspergillosis. In a 4-year retrospective study assessing 613 at-risk patients, the fungal burden (copies/mL) at time of diagnosis was predictive of 90-day mortality with 23% mortality for patients with <500 copies/mL, vs 68% for patients with >500 copies/mL ( $P < .05$ ) [95].

### Summary and Recommendations for Surrogate Biomarkers in Aspergillosis

Galactomannan, BDG, and PCR are standard diagnostic tests used in clinical practice, and some PCR assays have the advantage of also detecting mutations conveying antifungal drug

resistance. BDG has the least specificity and is insufficient as a diagnostic biomarker for enrollment of patients into clinical trials. For prognostic markers of response to antifungals, the change in blood galactomannan values over time is a promising serial surrogate marker. PCR negativity over time is also promising for use as a surrogate marker of patient outcomes.

### OTHER MOLDS

Non-*Aspergillus* invasive mold infections caused by Mucorales, *Fusarium*, *Scedosporium* spp., and others are increasingly encountered in an expanding population of severely immunosuppressed patients, accounting for 10%–25% of invasive mold infections in autopsy studies [96], and are more common among those receiving antifungal prophylaxis [97]. These molds are characterized by resistance to multiple antifungals, high potential for tissue invasion, and early dissemination with poor outcomes [98]. Although host-related factors (activity of underlying disease, comorbidities) are important for mortality [99], early diagnosis can prevent the evolution of the infection to multifocal or disseminated infection.

As symptoms, signs, and radiologic findings of non-*Aspergillus* invasive mold infections lack sensitivity and specificity, diagnosis is often delayed, resulting in delayed treatment and poor outcomes. The importance of early effective therapy in these mold infections is poorly understood, with the exception of mucormycosis, for which early therapy with anti-*Mucorales* agents has been shown to improve survival [100]. Conventional diagnostic confirmation requires invasive procedures such as biopsy or BAL, which are often not feasible in ill patients with severe pancytopenia [101].

The performance of commercially available biomarkers for these pathogens is also problematic. In addition to *Aspergillus* species, galactomannan is produced by several non-*Aspergillus* molds [102], particularly other hyalohyphomycetes such as *Fusarium* spp. [103]. Galactomannan is negative in patients with mucormycosis. Most non-*Aspergillus* invasive mold infections in high-risk patients are breakthrough infections in those already receiving anti-*Aspergillus* antifungals [104]. Finally, while BDG cannot identify organisms to the species level, a positive BDG can suggest the presence of molds. More data are needed on longitudinally prognostic data in non-*Aspergillus* molds [105, 106].

The development of culture-independent biomarkers for the early diagnosis of these important organisms is critically important. The field of PCR-based diagnostics in serum and/or BAL that target Mucorales are the most developed. Several small studies show promising high sensitivity and specificity that could lead to earlier diagnosis, although detailed comparisons to standard microbiologic methods are lacking [107]. In a small study using targeted screening for the detection of circulating Mucorales DNA by real-time quantitative PCR in seriously ill

burn patients to identify invasive wound mucormycosis, a mortality benefit was suggested [108]. Other innovative approaches are needed and may involve serologic assessment, detection of volatile organic compounds or other metabolomics, and validation of antigen testing, immunohistochemistry, PCR, and metagenomic sequencing in selected cases of non-*Aspergillus* invasive mold infections.

The best example of diagnostic and prognostic use to date was in the *Exserohilum rostratum* meningitis outbreak, where PCR and BDG were utilized for CSF diagnosis and CSF BDG levels could be used to monitor response to antifungal therapy [106, 109]. More data are needed on response to therapy for other molds.

#### Summary and Recommendations for Surrogate Biomarkers in Non-*Aspergillus* Molds

Diagnostics for non-*Aspergillus* molds require further development, and specific biomarkers for these organisms would be helpful in disease management. Insufficient data exist on the utility of using any surrogate end points in clinical trials.

## BLASTOMYCOSIS

End points for successful outcomes of treatment in blastomycosis classically have been clinical improvement together with resolution of skin lesions or radiologic findings. A standard assay for the diagnosis of probable blastomycosis is a *Blastomyces* antigen, which measures the cell wall polysaccharide (galactomannan) of *Blastomyces dermatitidis* (Mira Vista Laboratories, Indianapolis, IN, USA) in urine, serum, or body fluids (Table 5) [64, 110–112]. However, longitudinal antigen measurement to follow the course of infection has been infrequently reported [113–115]. Three children with blastomycosis had serial urine antigen tests performed during treatment [113]. Fall in antigen levels to undetectable occurred in 2 who were cured, but the third did not respond to antifungal therapy and antigen positivity persisted [114].

A more systematic approach to the use of *Blastomyces* antigen detection to follow the disease course included 19 patients with serial urine antigen tests performed [115]. Antigen levels declined, but time to a negative result varied greatly among 16 patients who were successfully treated. In 3 patients who failed therapy, urine antigen levels increased.

#### Summary and Recommendations for Surrogate Biomarkers in Blastomycosis

There are insufficient data to recommend biomarkers for the prognosis of blastomycosis or as surrogate end points in clinical trials. Longitudinal change in serum *Blastomyces* antigen requires further investigation. Surrogate markers for prognosis of the more severe disease manifestations of acute respiratory distress syndrome in blastomycosis are needed.

## COCCIDIOIDOMYCOSIS

Past studies of coccidioidomycosis have used combined clinical score, radiologic results, and serologic results to determine a composite score for clinical severity [116]. Serologic testing may be performed using a number of methodologies (Figure 2). EIA appears to have the highest sensitivity, although it is prone to false positives and results should be confirmed with immunodiffusion testing [117, 118]. A newly developed lateral flow assay exhibited poor sensitivity (31%) [119]. Coccidioidal complement fixation (CF) testing for quantitative detection of immunoglobulin G has prognostic utility in both serum and CSF samples (Table 5) [120]. Serial serum samples correlate with patient symptoms and are useful for monitoring the course of therapy. It is imperative to recognize the differences in types of coccidioidal infection and the impact this plays in the kinetics of serology in determining a response to therapy, as serologic decline is slower in those with chronic pulmonary or disseminated coccidioidomycosis compared with those with primary pulmonary coccidioidomycosis [120, 121].

Serial serologic testing of CSF in cases of coccidioidal meningitis has shown a correlation with other CSF indices, including cell count, protein, and glucose; however, both serology and routine CSF parameters respond more slowly than clinical signs and symptoms of disease, and clinical decisions should be based on symptoms, CSF parameters, and serology results together [122].

A real-time PCR assay has been developed for detection of *Coccidioides* in lower respiratory specimens [123]. Coccidioidal antigen testing is also commercially available and may be useful in highly immunocompromised patients who are serologically negative [124]. BDG has been found to have 44% sensitivity and 91% specificity in coccidioidomycosis [125]. Serial antigen and BDG testing of the serum, urine, or CSF are not routinely performed due to a lack of data supporting this approach.

#### Summary and Recommendations for Surrogate Biomarkers in Coccidioidomycosis

Serologic testing is useful for the diagnosis of coccidioidomycosis, and EIA results should be confirmed by immunodiffusion. Longitudinal assessment using CF serology is useful to monitor the response to antifungal therapy. However, insufficient data exist on their utility as surrogate end points for use in clinical trials.

## HISTOPLASMOSIS

Historically, the first prognostic marker for histoplasmosis was duration of positive blood cultures in patients with HIV who were receiving antifungal therapy [126]. In studies performed during the early AIDS era, recurrence of disease was associated with positive or persistently positive blood cultures [127–130]. Blood cultures are infrequently positive in patients who are HIV-negative [131], and the time to positivity (average of >2



**Table 5. Comparison of Diagnostic Tests Utilized in the Diagnosis of Endemic Mycoses**

Diagnostic Test	Sensitivity, %	Specificity, %	Strengths	Limitations
<b><i>Histoplasma</i></b>				
Sputum/BAL culture [10, 11, 15, 16, 19, 20]	15–84	Inadequate data but presumed ~100 in most studies based on reference standard definitions	More useful in SPH and CPH	Slow growth, 4–8 wk Less useful in APH
Cytopathologic examination [8, 16, 17, 19, 20]	9–50	Inadequate data available, generally considered fairly specific but presence of <i>Histoplasma</i> in tissue may indicate past rather than current infection; may also be misidentified	Rapid results (hours) More likely to be positive in SPH and CPH	Sensitivity and specificity vary based on pathologist experience Requires invasive procedures Less useful in pulmonary disease without dissemination
Serum antigen [13, 19, 21–23]	30–87	98	Fast results (days) Improving availability Most useful in APH	Cross-reacts with other fungi Less useful in SPH and CPH
Urine antigen [8, 13, 15, 17, 19, 21, 24]	40–95	95–99	Fast results (days) Improving availability Most useful in APH	Cross-reacts with other fungi Less useful in SPH and CPH
Antibody [8–10, 13, 14]	40–95	91	Fast results (days) More useful in SPH and CPH	Take 4–8 wk to develop antibodies Can be negative in immunocompromised individuals Cross-reacts with other endemic mycoses
<b><i>Blastomyces</i></b>				
Sputum/BAL culture [1, 25–28]	66–90	Inadequate data but presumed ~100 in most studies based on reference standard definitions	Gold standard for diagnosis  Commercial DNA (AccuProbe; GenProbe Inc., San Diego, CA, USA) testing can provide rapid results once there is sufficient growth	Slow growth, up to 5 wk  Diagnostic yield varies based on site  DNA probe can cross-react with <i>Paracoccidioides</i>
Histologic or cytopathologic examination [26–30]	38–93	Inadequate data, generally considered highly specific, but misidentification may occur;  presence of <i>Blastomyces</i> in tissue typically indicates active infection	Rapid results (hours)	Sensitivity varies based on pathologist experience  Atypical forms of <i>B. dermatitidis</i> may require special stains
Potassium hydroxide smear [25, 27, 28]	48–90	No data available, generally considered highly specific but false positives possible	Rapid results	Varied sensitivity
Serum EIA antigen [1, 25, 29, 31, 32]	36–82	99 compared with nonfungal infections or healthy controls but 95.6% cross-reactivity with 90 cases of histoplasmosis	EDTA heat treatment improves sensitivity	Cross-reacts with other fungi Only available at reference labs
Urine EIA antigen [1, 27, 29, 31–33]	76–93	79–99	Can be utilized to monitor response to treatment	Cross-reacts with other fungi Only available at reference labs
Antibody testing via complement fixation [28, 34, 35]	16–77	30–100	Fast results (days)	Difficult to perform, variable performance
Antibody testing via immunodiffusion [28, 29, 34, 36]	32–80	100 in 1 study, possibility for cross-reaction remains	Fast results (days)	Can be negative in immunocompromised patients
Antibody testing via EIA (BAD-1) [33, 36]	88	94–99	Low rate of cross-reactivity Increased sensitivity when combined with antigen testing	May be negative early in infection and in immunocompromised individuals Not commercially available
<b><i>Coccidioides</i></b>				
Culture [37]	56–60	100	Grows well on most media in 2–7 d, specificity	Biohazard to laboratory staff

Table 5. Continued

Diagnostic Test	Sensitivity, %	Specificity, %	Strengths	Limitations
Histologic or cytopathologic examination [37, 38]	22–55	99.6	Rapid results	Requires invasive procedures Endospores may be mistaken for <i>Histoplasma</i> , <i>Blastomyces</i> , or <i>Cryptococcus</i>
Serum antigen [39, 40]	28–73	90–100	Most useful in immunocompromised and severe disease	Cross-reactivity with <i>Histoplasma</i> and <i>Blastomyces</i>
Urine antigen [39, 41, 42]	50–71	90–98	Most useful in immunocompromised and severe disease	Cross-reactivity with <i>Histoplasma</i> and <i>Blastomyces</i>
Immunodiffusion antibody assays (IDTP and IDCF) [42, 43]	60.2–71	98.8	Quantitative titers correlated to disease severity and can monitor treatment response Commonly used as confirmatory test	Only available at reference labs Less useful in immunosuppressed patients May be negative early in disease
EIA antibody assay [40, 43–49]	83–100	75–98.5	Commercially available Faster results	Needs confirmatory testing Not quantitative IgM cross-reacts with other mycoses Less useful in immunosuppressed patients May be negative early in disease
Skin testing (Spherusol) [50]	>98	>98 for prior exposure	Negative test may mean <i>Coccidioides</i> infection less likely	Only indicates prior exposure, unclear role in active infection
<b>Paracoccidioides</b>				
Culture [51]	25–44	100	Specificity	Requires 2–4 wk to grow, infrequently used
Histologic or cytopathologic examination [52, 53]	55–97	Presumed highly specific but inadequate data and misclassification possible	Gold standard test, results in hours–days	Requires invasive procedures
Double immunodiffusion antibody assay [52–56]	80–90	>90, inadequate data	Most commonly utilized antibody test	Cross-reactivity with other fungi Less useful for diagnosis of <i>P. lutzii</i>
ELISA antibody assay [52, 57, 58]	95.7	85–100	Simple to perform Fast results Antibodies can be detected at low concentrations	Cross-reacts with other fungi Requires confirmatory DID Ab Less useful for diagnosis of <i>P. lutzii</i>
Latex agglutination antibody testing [56]	69.5–84.3	81.1	Simple to perform	Poor reproducibility Limited availability Less useful for diagnosis of <i>P. lutzii</i>
<b>Talaromyces</b>				
Blood culture [59–62]	72.8–83	100	Gold standard Highly specific May culture other sterile sites as well	Takes up to 4 wk to grow More likely to be positive in late stages of infection
Sputum culture [59, 60, 63]	11–34	Inadequate data, presumed highly specific	Highly specific	Takes up to 4 wk to grow
Culture from other tissues [59–61]		Inadequate data, presumed highly specific	High specificity, for some tissues high sensitivity	
-Skin	6–90			-Yield only accurate if the area is involved, slow growth
-Bone marrow	17–100			-Painful, variable sensitivity–invasive, variable sensitivity
-Lymph node	34–100			-Invasive, small numbers studied
-Cerebrospinal fluid	15			-Invasive, small numbers studied
-Palatal/pharynx papule	10			-Painful, small numbers studied
-Liver	5			-Invasive, small numbers studied
-Pleural fluid	5			-Invasive, small numbers studied
Cytology [63]	46	Inadequate data, presumed highly specific, but misidentification may occur	Specificity	Small numbers in studies, requires invasive procedures in most cases
Lateral flow immunochromatographic antigen assay (4D1) [64]	87.9	100	Rapid results Easy to perform	Not commercially available Urine testing only

**Table 5. Continued**

Diagnostic Test	Sensitivity, %	Specificity, %	Strengths	Limitations
Antigen via EIA (Mp1p antigen) [62]	86.3	98.1	Rapid results Sensitivity further increased when both urine and serum tested	Not commercially available
Mab 4D1 inhibitory ELISA antigen assay [65]	100	100	Low cross-reactivity Can be utilized on serum	Only tested on small sample size (n = 45), results need confirmation

Adapted from Poplin et al. [159].

Abbreviations: Ab, antibody; APH, acute pulmonary histoplasmosis; CPH, subacute pulmonary histoplasmosis; DID, double immunodiffusion; EIA, enzyme immunoassay; ELISA, enzyme-linked immunosorbent assay; IDCF, immunodiffusion complement fixation; IDTP, immunodiffusion tube precipitin; SPH, subacute pulmonary histoplasmosis.

weeks) limits their applicability during the care of patients in clinical practice or during the conduct of clinical trials.

The most widely used surrogate marker for histoplasmosis diagnosis is the *Histoplasma* polysaccharide galactomannan antigen, which can be detected in urine or serum (Figure 3) [132–135]. *Histoplasma* antigen assays have been developed by MiraVista (Indianapolis, IN, USA) and IMMY (Norman, OK, USA), among others. Only 1 study has compared the MiraVista lateral flow assay and IMMY galactomannan enzyme immunoassay on 391 urine samples (n = 104 proven disseminated histoplasmosis) in persons with HIV; it reported similar sensitivity (90%–91%) and specificity (91%–92%) (Table 5) [136]. The *Histoplasma* antigen decreases during successful antifungal therapy [137, 138]. Antigenemia decreases more rapidly than antigenuria in successfully treated patients with HIV, although failure of antigen to decline during the first 2 weeks of therapy does not predict treatment failure [133]. Among those with clinical relapse, 86% had a significant increase in their longitudinal antigen levels [139].

Antibody testing is most useful for nonimmunosuppressed patients with chronic or subacute pulmonary histoplasmosis

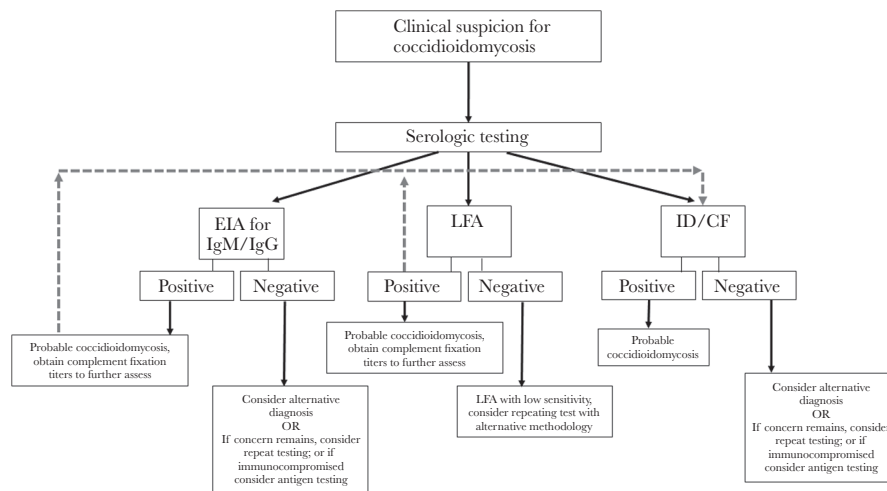
and may be negative in those with severe immunosuppression (Figure 4). Negative testing should be repeated in 1–2 months if suspicion is high. While antibodies do appear to decay following acute disease, there is no evidence that changes, or lack thereof, in antibody titers predict mortality, treatment success, or recurrence [137].

#### Summary and Recommendations for Surrogate Biomarkers in Histoplasmosis

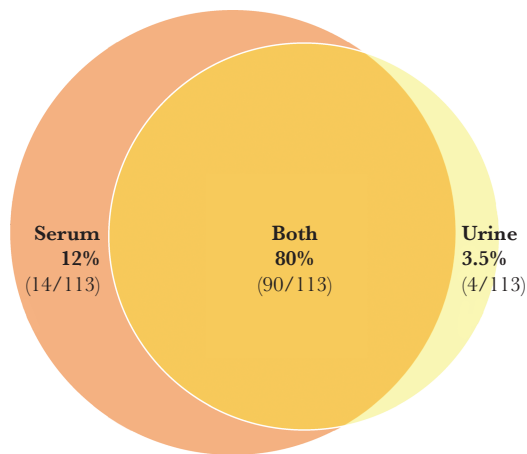
Urine *Histoplasma* antigen is well studied in patients with HIV and is useful in diagnosis, patient management, and as a potential end point in clinical trials. In other populations, further studies should be performed to define the usefulness of longitudinal antigen testing to determine prognosis.

#### PARACOCCIDIOIDOMYCOSIS

Serologic testing is frequently used in the diagnosis of paracoccidioidomycosis and is highly specific (>95%) and sensitive (~80%) [140–142]. Numerous methodologies have been investigated, including in-house assays, although a commercial immunodiffusion test is now available. A previous study



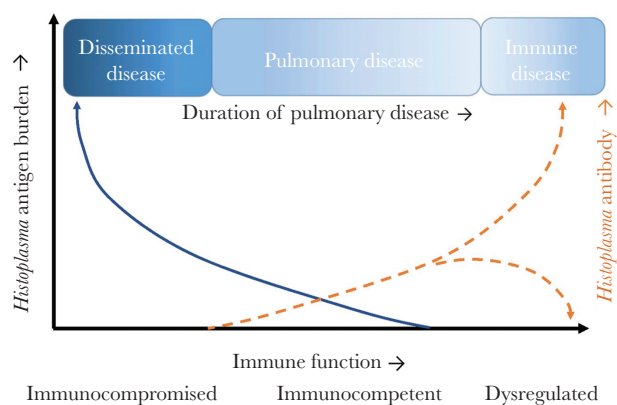
**Figure 2.** Serologic testing in coccidioidomycosis. Abbreviations: EIA, enzyme immunoassay; IgG, immunoglobulin G; IgM, immunoglobulin M; LFA, lateral flow assay.



**Figure 3.** Diagnostic overlap in histoplasmosis antigen by specimen type. Data are drawn from 113 total cases consisting of 56 disseminated histoplasmosis, 32 acute pulmonary histoplasmosis, 1 subacute pulmonary histoplasmosis, 6 chronic pulmonary histoplasmosis, 1 granulomatous mediastinitis, 15 unknown, and 5 cases not detected in either specimen type [132–135]. Antigen sensitivity is higher in disseminated histoplasmosis and/or in immunocompromised hosts than in acute pulmonary histoplasmosis or in immunocompetent hosts.

found longitudinal serologic assessment useful to monitor response to therapy [143]. This analysis of 43 patients with acute or chronic paracoccidioidomycosis found a decline in antibody levels using counter-immuno-electrophoresis, complement fixation, or enzyme-linked immunosorbent assay testing during a follow-up period of 2 years coincident with patient clinical improvement. Clearance of antibody occurred only in those with single-site disease over 12 months of follow-up. Patients with relapsed disease had an increase in serum titer levels, exhibiting the utility of serial monitoring. However, serology antibody titer in some cases may increase following initiation of antifungal therapy, thereby complicating using serology as a practical surrogate marker.

Antigen testing has also been examined as an adjunct to the diagnosis of paracoccidioidomycosis (Table 5) [142, 144, 145].



**Figure 4.** Conceptual framework for histoplasmosis. The relationship between host immunosuppression, type of disease, and antigen or antibody titers.

In a cohort of 23 patients followed for 8–12 months, antigen decreased during therapy with itraconazole and was undetectable in all patients after 12 months of treatment [144]. Unfortunately, this test is not commercially available.

#### Summary and Recommendations for Surrogate Biomarkers in Paracoccidioidomycosis

Serologic testing is useful for the diagnosis of paracoccidioidomycosis and is useful to monitor the response to antifungal therapy. However, insufficient data exist on serology as a surrogate end point for use in clinical trials.

#### SPOROTRICHOSIS

Serologic testing is infrequently used in the diagnosis of sporotrichosis despite the availability of a commercial assay. A latex agglutination assay was previously evaluated to assist with the diagnosis of meningeal sporotrichosis [146]; however, this assay is no longer available, and serologic testing is generally not helpful in other forms of sporotrichosis. Newer assays have been studied and exhibit reasonable sensitivity and specificity but are limited by availability [146–148]. The utility of serology to assess a response to antifungal therapy variably correlates with clinical response, and this test is not routinely recommended or commercially available [149, 150].

#### Summary and Recommendations for Surrogate Biomarkers in Sporotrichosis

Several assays are in development that may offer promise in the diagnosis of sporotrichosis, and they may be useful biomarkers during future clinical trials following validation. Currently, there are no biomarkers that can be used as a surrogate end point in clinical trials.

#### TALAROMYCOSIS

The current culture-based diagnosis for talaromycosis is suboptimal due to prolonged incubation (3–14 days) and low yield during the early stage of infection (Table 5) [151]. Several real-time PCR assays performed in blood have shown promising diagnostic performance in small clinical studies [152, 153]. An antigen detection EIA targeting the *Talaromyces marneffe*-specific cell wall mannoprotein Mp1p is highly sensitive (86%) and specific (98%) in comparison with blood cultures (73% and 86%, respectively) [151, 154, 155]. A commercial Mp1p EIA was approved in China in 2019, and an Mp1p LFA is being developed by IMMY (Norman, OK, USA).

Assessment of therapeutic response in talaromycosis has historically been based on a composite clinical and microbiological end point of resolution of fever, skin lesions, and/or fungemia [156, 157]. Mp1p concentrations have been

shown to decline to undetectable levels over 12 to 16 weeks on antifungal therapy (Thuy Le, unpublished), and the role of Mp1p in treatment monitoring and prognosis is a subject of active research.

A new and simple fungal culture technique to serially quantify *T. marneffei* CFUs in blood was recently developed to measure the quantitative early fungicidal activity (EFA) [158]. The EFA quantified the reduction of blood CFUs/mL/day during the first 14 days. In a multicenter trial of itraconazole vs amphotericin B for talaromycosis, EFA decline was 4-fold faster in the amphotericin B group compared with the itraconazole group, corresponding to an absolute reduction in 24-week mortality from 21.0% to 11.3% ( $P = .006$ ). Baseline fungal CFUs were an independent predictor of 24-week mortality [158]. These data indicate that EFA in blood is a strong surrogate marker of mortality and is a useful end point to evaluate therapeutic response.

### Summary and Recommendations for Surrogate Biomarkers in Talaromycosis

Culture remains the mainstay of diagnosis for talaromycosis. Antigen testing may be useful in future clinical trials following validation, but currently cannot be recommended as a surrogate end point in clinical trials. The longitudinal change in quantitative blood CFUs has been found useful to quantify the EFA in a recent clinical trial and should be a standard metric in future clinical trials.

### FUTURE DIRECTIONS

There have been significant advances utilizing surrogate markers of fungal infections to predict patient outcomes. These tests have been a welcome advance; however, numerous challenges remain. The development of affordable, readily available, and rapid in-house diagnostic tests is critically important. Cryptococcosis and talaromycosis are the only fungal infections with established surrogate end points, and further investigation of surrogate markers for other invasive fungal infections is urgently needed to aid in both diagnosis and prognosis. The burden of invasive candidiasis and aspergillosis mandates urgent attention to these diseases. Finally, a concerted effort to evaluate promising diagnostic tests as surrogate markers to measure response to therapy through the conduct of testing well-documented clinical samples is essential to move this field forward and to optimize patient care.

### Acknowledgments

**Financial support.** Existing departmental funding and the Burden Family Gift Fund for Coccidioidomycosis Research supported this work.

**Potential conflicts of interest.** All authors: no potential conflicts of interest. All authors have submitted the ICMJE Form for Disclosure of Potential Conflicts of Interest. Conflicts that the editors consider relevant to the content of the manuscript have been disclosed.

### References

- Jarvis JN, Bicanic T, Loyse A, et al. Determinants of mortality in a combined cohort of 501 patients with HIV-associated cryptococcal meningitis: implications for improving outcomes. *Clin Infect Dis* **2014**; 58:736–45.
- Busse O. Uber parasitare Zelleinschlusse und ihre Zuchtung. *Zentralbl Bakteriol* **1894**; 16:175–80.
- Boulware DR, Rolfes MA, Rajasingham R, et al. Multisite validation of cryptococcal antigen lateral flow assay and quantification by laser thermal contrast. *Emerg Infect Dis* **2014**; 20:45–53.
- Robertson EJ, Najjuka G, Rolfes MA, et al. *Cryptococcus neoformans* ex vivo capsule size is associated with intracranial pressure and host immune response in HIV-associated cryptococcal meningitis. *J Infect Dis* **2014**; 209:74–82.
- Hansen J, Slechta ES, Gates-Hollingsworth MA, et al. Large-scale evaluation of the immuno-mycology lateral flow and enzyme-linked immunoassays for detection of cryptococcal antigen in serum and cerebrospinal fluid. *Clin Vaccine Immunol* **2013**; 20:52–5.
- Binnicker MJ, Jespersen DJ, Bestrom JE, Rollins LO. Comparison of four assays for the detection of cryptococcal antigen. *Clin Vaccine Immunol* **2012**; 19:1988–90.
- Kwizera R, Omali D, Tadeo K, et al. Evaluation of the Dynamiker cryptococcal antigen lateral flow assay for the diagnosis of HIV-associated cryptococcosis. *J Clin Microbiol* **2021**; 59:e02421–20.
- Mpoza E, Mukaremera L, Kundura DA, et al. Evaluation of a point-of-care immunoassay test kit “StrongStep” for cryptococcal antigen detection. *PLoS One* **2018**; 13:e0190652.
- Skipper C, Tadeo K, Martyn E, et al. Evaluation of serum cryptococcal antigen testing using two novel semiquantitative lateral flow assays in persons with cryptococcal antigenemia. *J Clin Microbiol* **2020**; 58:e02046–19.
- Williams DA, Kiiza T, Kwizera R, et al. Evaluation of fingerstick cryptococcal antigen lateral flow assay in HIV-infected persons: a diagnostic accuracy study. *Clin Infect Dis* **2015**; 61:464–7.
- Tadeo KK, Nimwesiga A, Kwizera R, et al. Evaluation of the diagnostic performance of a semiquantitative cryptococcal antigen point-of-care assay among HIV-infected persons with cryptococcal meningitis. *J Clin Microbiol* **2021**; 59:e0086021.
- Hevey MA, George IA, Rauseo AM, et al. Performance of the lateral flow assay and the latex agglutination serum cryptococcal antigen test in cryptococcal disease in patients with and without HIV. *J Clin Microbiol* **2020**; 58:e01563–20.
- Dromer F, Mathoulin-Pelissier S, Launay O, et al. Determinants of disease presentation and outcome during cryptococcosis: the CryptoA/D study. *PLoS Med* **2007**; 4:e21.
- Singh N, Lortholary O, Alexander BD, et al. Antifungal management practices and evolution of infection in organ transplant recipients with *Cryptococcus neoformans* infection. *Transplantation* **2005**; 80:1033–9.
- Kabanda T, Siedner MJ, Klausner JD, et al. Point-of-care diagnosis and prognostication of cryptococcal meningitis with the cryptococcal antigen lateral flow assay on cerebrospinal fluid. *Clin Infect Dis* **2014**; 58:113–6.
- Powderly WG, Cloud GA, Dismukes WE, Saag MS. Measurement of cryptococcal antigen in serum and cerebrospinal fluid: value in the management of AIDS-associated cryptococcal meningitis. *Clin Infect Dis* **1994**; 18:789–92.
- Brouwer AE, Rajanuwong A, Chierakul W, et al. Combination antifungal therapies for HIV-associated cryptococcal meningitis: a randomised trial. *Lancet* **2004**; 363:1764–7.
- Dyal J, Akampurira A, Rhein J, et al. Reproducibility of CSF quantitative culture methods for estimating rate of clearance in cryptococcal meningitis. *Med Mycol* **2016**; 54:361–9.
- Pullen MF, Hullsiek KH, Rhein J, et al. Cerebrospinal fluid early fungicidal activity as a surrogate endpoint for cryptococcal meningitis survival in clinical trials. *Clin Infect Dis* **2020**; 71:e45–9.
- Bicanic T, Muzoora C, Brouwer AE, et al. Independent association between rate of clearance of infection and clinical outcome of HIV-associated cryptococcal meningitis: analysis of a combined cohort of 262 patients. *Clin Infect Dis* **2009**; 49:702–9.
- Montezuma-Rusca JM, Powers JH, Follmann D, et al. Early fungicidal activity as a candidate surrogate endpoint for all-cause mortality in cryptococcal meningitis: a systematic review of the evidence. *PLoS One* **2016**; 11:e0159727.
- Rhein J, Bahr NC, Morawski BM, et al. Detection of high cerebrospinal fluid levels of (1→3)- $\beta$ -D-glucan in cryptococcal meningitis. *Open Forum Infect Dis* **2014**; 1:ofu105.
- Liesman RM, Strasburg AP, Heitman AK, et al. Evaluation of a commercial multiplex molecular panel for diagnosis of infectious meningitis and encephalitis. *J Clin Microbiol* **2018**; 56:e01927–17.
- Bridge S, Hullsiek KH, Nerima C, et al. Evaluation of the BioFire(R) FilmArray(R) meningitis/encephalitis panel in an adult and pediatric Ugandan population. *J Mycol Med* **2021**; 31:101170.

25. Van TT, Kim TH, Butler-Wu SM. Evaluation of the Biofire FilmArray meningitis/encephalitis assay for the detection of *Cryptococcus neoformans/gattii*. *Clin Microbiol Infect* **2020**; 26:1375–9.
26. George BJ, Horvath LL, Hospenthal DR. Effect of inoculum size on detection of *Candida* growth by the BACTEC 9240 automated blood culture system using aerobic and anaerobic media. *J Clin Microbiol* **2005**; 43:433–5.
27. Horvath LL, George BJ, Hospenthal DR. Detection of fifteen species of *Candida* in an automated blood culture system. *J Clin Microbiol* **2007**; 45:3062–4.
28. Pliakos EE, Andreatos N, Shehadeh F, et al. The cost-effectiveness of rapid diagnostic testing for the diagnosis of bloodstream infections with or without antimicrobial stewardship. *Clin Microbiol Rev* **2018**; 31:e00095–17.
29. Forrester GN, Mankes K, Jabra-Rizk MA, et al. Peptide nucleic acid fluorescence in situ hybridization-based identification of *Candida albicans* and its impact on mortality and antifungal therapy costs. *J Clin Microbiol* **2006**; 44:3381–3.
30. Altun O, Almuhayawi M, Ullberg M, Ozenci V. Clinical evaluation of the FilmArray blood culture identification panel in identification of bacteria and yeasts from positive blood culture bottles. *J Clin Microbiol* **2013**; 51:4130–6.
31. Salimnia H, Fairfax MR, Lephart PR, et al. Evaluation of the FilmArray blood culture identification panel: results of a multicenter controlled trial. *J Clin Microbiol* **2016**; 54:687–98.
32. Simor AE, Porter V, Mubareka S, et al. Rapid identification of *Candida* species from positive blood cultures by use of the FilmArray blood culture identification panel. *J Clin Microbiol* **2018**; 56:e01387–18.
33. Clancy CJ, Nguyen MH. Finding the “missing 50%” of invasive candidiasis: how nonculture diagnostics will improve understanding of disease spectrum and transform patient care. *Clin Infect Dis* **2013**; 56:1284–92.
34. Clancy CJ, Nguyen MH. Rapid diagnosis of invasive candidiasis: ready for prime-time? *Curr Opin Infect Dis* **2019**; 32:546–52.
35. Hanson KE, Pfeiffer CD, Lease ED, et al. Beta-D-glucan surveillance with preemptive anidulafungin for invasive candidiasis in intensive care unit patients: a randomized pilot study. *PLoS One* **2012**; 7:e42282.
36. Sulhian A, Porcher R, Bergeron A, et al. Use and limits of (1-3)- $\beta$ -d-glucan assay (Fungitell), compared to galactomannan determination (Platelia *Aspergillus*), for diagnosis of invasive aspergillosis. *J Clin Microbiol* **2014**; 52:2328–33.
37. He S, Hang JP, Zhang L, et al. A systematic review and meta-analysis of diagnostic accuracy of serum 1,3-beta-D-glucan for invasive fungal infection: focus on cutoff levels. *J Microbiol Immunol Infect* **2015**; 48: 351–61.
38. Karageorgopoulos DE, Vouloumanou EK, Ntziora F, et al. Beta-D-glucan assay for the diagnosis of invasive fungal infections: a meta-analysis. *Clin Infect Dis* **2011**; 52:750–70.
39. Onishi A, Sugiyama D, Kogata Y, et al. Diagnostic accuracy of serum 1,3-beta-D-glucan for *Pneumocystis jirovecii* pneumonia, invasive candidiasis, and invasive aspergillosis: systematic review and meta-analysis. *J Clin Microbiol* **2012**; 50:7–15.
40. Haydour Q, Hage CA, Carmona EM, et al. Diagnosis of fungal infections. A systematic review and meta-analysis supporting American Thoracic Society practice guideline. *Ann Am Thorac Soc* **2019**; 16:1179–88.
41. White SK, Schmidt RL, Walker BS, Hanson KE. (1-->3)-beta-D-glucan testing for the detection of invasive fungal infections in immunocompromised or critically ill people. *Cochrane Database Syst Rev* **2020**; 7:CD009833.
42. Fortun J, Buitrago MJ, Gioia F, et al. Roles of the multiplex real-time PCR assay and beta-D-glucan in a high-risk population for intra-abdominal candidiasis (IAC). *Med Mycol* **2020**; 58:789–96.
43. Fortun J, Meije Y, Buitrago MJ, et al. Clinical validation of a multiplex real-time PCR assay for detection of invasive candidiasis in intensive care unit patients. *J Antimicrob Chemother* **2014**; 69:3134–41.
44. Leon C, Ruiz-Santana S, Saavedra P, et al. Contribution of *Candida* biomarkers and DNA detection for the diagnosis of invasive candidiasis in ICU patients with severe abdominal conditions. *Crit Care* **2016**; 20:149.
45. Nguyen MH, Wissel MC, Shields RK, et al. Performance of *Candida* real-time polymerase chain reaction, beta-D-glucan assay, and blood cultures in the diagnosis of invasive candidiasis. *Clin Infect Dis* **2012**; 54:1240–8.
46. Tissot F, Lamoth F, Hauser PM, et al. Beta-glucan antigenemia anticipates diagnosis of blood culture-negative intraabdominal candidiasis. *Am J Respir Crit Care Med* **2013**; 188:1100–9.
47. Jajjakul S, Vazquez JA, Swanson RN, Ostrosky-Zeichner L. (1,3)-beta-D-glucan as a prognostic marker of treatment response in invasive candidiasis. *Clin Infect Dis* **2012**; 55:521–6.
48. Avni T, Leibovici L, Paul M. PCR diagnosis of invasive candidiasis: systematic review and meta-analysis. *J Clin Microbiol* **2011**; 49:665–70.
49. Chang SS, Hsieh WH, Liu TS, et al. Multiplex PCR system for rapid detection of pathogens in patients with presumed sepsis - a systemic review and meta-analysis. *PLoS One* **2013**; 8:e62323.
50. Clancy CJ, Pappas PG, Vazquez J, et al. Detecting Infections Rapidly and Easily for Candidemia Trial, Part 2 (DIRECT2): a prospective, multicenter study of the T2Candida panel. *Clin Infect Dis* **2018**; 66:1678–86.
51. Mylonakis E, Clancy CJ, Ostrosky-Zeichner L, et al. T2 magnetic resonance assay for the rapid diagnosis of candidemia in whole blood: a clinical trial. *Clin Infect Dis* **2015**; 60:892–9.
52. Bomkamp JP, Sulaiman R, Hartwell JL, et al. Evaluation of a rapid fungal detection panel for identification of candidemia at an academic medical center. *J Clin Microbiol* **2020**; 58:e01408–19.
53. Arendrup MC, Andersen JS, Holten MK, et al. Diagnostic performance of T2Candida among ICU patients with risk factors for invasive candidiasis. *Open Forum Infect Dis* **2019**; 6:ofz136.
54. Lamoth F, Clancy CJ, Tissot F, et al. Performance of the T2Candida panel for the diagnosis of intra-abdominal candidiasis. *Open Forum Infect Dis* **2020**; 7:ofaa075.
55. Mylonakis E, Zacharioudakis IM, Clancy CJ, et al. Efficacy of T2 magnetic resonance assay in monitoring candidemia after initiation of antifungal therapy: the Serial Therapeutic and Antifungal Monitoring Protocol (STAMP) trial. *J Clin Microbiol* **2018**; 56:e01756-17.
56. Nucci M, Nouer SA, Esteves P, et al. Discontinuation of empirical antifungal therapy in ICU patients using 1,3-beta-d-glucan. *J Antimicrob Chemother* **2016**; 71:2628–33.
57. Posteraro B, Tumbarello M, De Pascale G, et al. (1,3)-beta-d-Glucan-based antifungal treatment in critically ill adults at high risk of candidaemia: an observational study. *J Antimicrob Chemother* **2016**; 71:2262–9.
58. Patch ME, Weisz E, Cubillos A, et al. Impact of rapid, culture-independent diagnosis of candidaemia and invasive candidiasis in a community health system. *J Antimicrob Chemother* **2018**; 73:iv27–30.
59. De Pascale G, Posteraro B, D'Arrigo S, et al. (1,3)-beta-D-glucan-based empirical antifungal interruption in suspected invasive candidiasis: a randomized trial. *Crit Care* **2020**; 24:550.
60. Kritikos A, Poissy J, Croxatto A, et al. Impact of the beta-glucan test on management of intensive care unit patients at risk for invasive candidiasis. *J Clin Microbiol* **2020**; 58:6.
61. Munoz P, Vena A, Machado M, et al. T2MR contributes to the very early diagnosis of complicated candidaemia. A prospective study. *J Antimicrob Chemother* **2018**; 73:iv13–9.
62. Munoz P, Vena A, Machado M, et al. T2Candida MR as a predictor of outcome in patients with suspected invasive candidiasis starting empirical antifungal treatment: a prospective pilot study. *J Antimicrob Chemother* **2018**; 73:iv6–12.
63. Thompson GR 3rd, Young JH. Aspergillus infections. *N Engl J Med* **2021**; 385:1496–509.
64. Donnelly JP, Chen SC, Kauffman CA, et al. Revision and update of the consensus definitions of invasive fungal disease from the European Organization for Research and Treatment of Cancer and the Mycoses Study Group Education and Research Consortium. *Clin Infect Dis* **2020**; 71:1367–76.
65. Hope WW, Kruhlak MJ, Lyman CA, et al. Pathogenesis of *Aspergillus fumigatus* and the kinetics of galactomannan in an in vitro model of early invasive pulmonary aspergillosis: implications for antifungal therapy. *J Infect Dis* **2007**; 195:455–66.
66. Sheppard DC, Marr KA, Fredricks DN, et al. Comparison of three methodologies for the determination of pulmonary fungal burden in experimental murine aspergillosis. *Clin Microbiol Infect* **2006**; 12:376–80.
67. Mennink-Kersten MA, Donnelly JP, Verweij PE. Detection of circulating galactomannan for the diagnosis and management of invasive aspergillosis. *Lancet Infect Dis* **2004**; 4:349–57.
68. Maertens J, Buve K, Theunissen K, et al. Galactomannan serves as a surrogate endpoint for outcome of pulmonary invasive aspergillosis in neutropenic hematology patients. *Cancer* **2009**; 115:355–62.
69. Ledoux MP, Guffroy B, Nivoix Y, et al. Invasive pulmonary aspergillosis. *Semin Respir Crit Care Med* **2020**; 41:80–98.
70. Miceli MH, Maertens J. Role of non-culture-based tests, with an emphasis on galactomannan testing for the diagnosis of invasive aspergillosis. *Semin Respir Crit Care Med* **2015**; 36:650–61.
71. Mercier T, Guldentops E, Lagrou K, Maertens J. Galactomannan, a surrogate marker for outcome in invasive aspergillosis: finally coming of age. *Front Microbiol* **2018**; 9:661.
72. Marr KA, Schlamm HT, Herbrecht R, et al. Combination antifungal therapy for invasive aspergillosis: a randomized trial. *Ann Intern Med* **2015**; 162:81–9.
73. Woods G, Miceli MH, Graziutti ML, et al. Serum *Aspergillus galactomannan* antigen values strongly correlate with outcome of invasive aspergillosis: a study of 56 patients with hematologic cancer. *Cancer* **2007**; 110:830–4.
74. Nouer SA, Nucci M, Kumar NS, et al. Earlier response assessment in invasive aspergillosis based on the kinetics of serum *Aspergillus galactomannan*: proposal for a new definition. *Clin Infect Dis* **2011**; 53:671–6.
75. Neofytos D, Raikar R, Mullane KM, et al. Correlation between circulating fungal biomarkers and clinical outcome in invasive aspergillosis. *PLoS One* **2015**; 10:e0129022.

76. Park SH, Choi SM, Lee DG, et al. Serum galactomannan strongly correlates with outcome of invasive aspergillosis in acute leukaemia patients. *Mycoses* **2011**; 54:523–30.
77. Chai LY, Kullberg BJ, Johnson EM, et al. Early serum galactomannan trend as a predictor of outcome of invasive aspergillosis. *J Clin Microbiol* **2012**; 50:2330–6.
78. Chai LY, Kullberg BJ, Earnest A, et al. Voriconazole or amphotericin B as primary therapy yields distinct early serum galactomannan trends related to outcomes in invasive aspergillosis. *PLoS One* **2014**; 9:e90176.
79. Koo S, Bryar JM, Baden LR, Marty FM. Prognostic features of galactomannan antigenemia in galactomannan-positive invasive aspergillosis. *J Clin Microbiol* **2010**; 48:1255–60.
80. Petraitiene R, Petraitis V, Groll AH, et al. Antifungal activity and pharmacokinetics of posaconazole (SCH 56592) in treatment and prevention of experimental invasive pulmonary aspergillosis: correlation with galactomannan antigenemia. *Antimicrob Agents Chemother* **2001**; 45:857–69.
81. Racil Z, Kocmanova I, Toskova M, et al. Galactomannan detection in bronchoalveolar lavage fluid for the diagnosis of invasive aspergillosis in patients with hematological diseases—the role of factors affecting assay performance. *Int J Infect Dis* **2011**; 15:e874–81.
82. Patterson TF, Thompson GR 3rd, Denning DW, et al. Practice guidelines for the diagnosis and management of aspergillosis: 2016 update by the Infectious Diseases Society of America. *Clin Infect Dis* **2016**; 63:e1–60.
83. Hoenigl M, Eigl S, Heldt S, et al. Clinical evaluation of the newly formatted lateral-flow device for invasive pulmonary aspergillosis. *Mycoses* **2018**; 61:40–3.
84. Marr KA, Datta K, Mehta S, et al. Urine antigen detection as an aid to diagnose invasive aspergillosis. *Clin Infect Dis* **2018**; 67:1705–11.
85. White PL, Parr C, Thornton C, Barnes RA. Evaluation of real-time PCR, galactomannan enzyme-linked immunosorbent assay (ELISA), and a novel lateral-flow device for diagnosis of invasive aspergillosis. *J Clin Microbiol* **2013**; 51:1510–6.
86. Pazos C, Ponton J, Del Palacio A. Contribution of (1->3)-beta-D-glucan chromogenic assay to diagnosis and therapeutic monitoring of invasive aspergillosis in neutropenic adult patients: a comparison with serial screening for circulating galactomannan. *J Clin Microbiol* **2005**; 43:299–305.
87. Senn L, Robinson JO, Schmidt S, et al. 1,3-beta-D-glucan antigenemia for early diagnosis of invasive fungal infections in neutropenic patients with acute leukemia. *Clin Infect Dis* **2008**; 46:878–85.
88. Koo S, Baden LR, Marty FM. Post-diagnostic kinetics of the (1->3)-beta-D-glucan assay in invasive aspergillosis, invasive candidiasis and *Pneumocystis jirovecii* pneumonia. *Clin Microbiol Infect* **2012**; 18:E122–7.
89. Ellis M, Al-Ramadi B, Finkelman M, et al. Assessment of the clinical utility of serial beta-D-glucan concentrations in patients with persistent neutropenic fever. *J Med Microbiol* **2008**; 57:287–95.
90. White PL, Wingard JR, Bretagne S, et al. *Aspergillus* polymerase chain reaction: systematic review of evidence for clinical use in comparison with antigen testing. *Clin Infect Dis* **2015**; 61:293–303.
91. White PL, Bretagne S, Caliendo AM, et al. *Aspergillus* polymerase chain reaction—an update on technical recommendations, clinical applications, and justification for inclusion in the second revision of the EORTC/MSGERC definitions of invasive fungal disease. *Clin Infect Dis* **2021**; 72:S95–101.
92. Arvanitis M, Ziakas PD, Zacharioudakis IM, et al. PCR in diagnosis of invasive aspergillosis: a meta-analysis of diagnostic performance. *J Clin Microbiol* **2014**; 52:3731–42.
93. Cruciani M, Mengoli C, Loeffler J, et al. Polymerase chain reaction blood tests for the diagnosis of invasive aspergillosis in immunocompromised people. *Cochrane Database Syst Rev* **2015**; 9:CD009551.
94. Imbert S, Gauthier L, Joly I, et al. *Aspergillus* PCR in serum for the diagnosis, follow-up and prognosis of invasive aspergillosis in neutropenic and nonneutropenic patients. *Clin Microbiol Infect* **2016**; 22:562.e1–8.
95. Imbert S, Meyer I, Palous M, et al. *Aspergillus* PCR in bronchoalveolar lavage fluid for the diagnosis and prognosis of aspergillosis in patients with hematological and non-hematological conditions. *Front Microbiol* **2018**; 9:1877.
96. Lewis RE, Cahyame-Zuniga L, Leventakos K, et al. Epidemiology and sites of involvement of invasive fungal infections in patients with hematological malignancies: a 20-year autopsy study. *Mycoses* **2013**; 56:638–45.
97. Lamoth F, Chung SJ, Damonti L, Alexander BD. Changing epidemiology of invasive mold infections in patients receiving azole prophylaxis. *Clin Infect Dis* **2017**; 64:1619–21.
98. Lamoth F, Kontoyiannis DP. Therapeutic challenges of non-*Aspergillus* invasive mold infections in immunosuppressed patients. *Antimicrob Agents Chemother* **2019**; 63:e01244–19.
99. Campo M, Lewis RE, Kontoyiannis DP. Invasive fusariosis in patients with hematologic malignancies at a cancer center: 1998–2009. *J Infect* **2010**; 60:331–7.
100. Chamilos G, Lewis RE, Kontoyiannis DP. Delaying amphotericin B-based frontline therapy significantly increases mortality among patients with hematologic malignancy who have zygomycosis. *Clin Infect Dis* **2008**; 47:503–9.
101. Kontoyiannis DP. Rational approach to pulmonary infiltrates in leukemia and transplantation. *Best Pract Res Clin Haematol* **2013**; 26:301–6.
102. Korem M, Polacheck I, Michael-Gayego A, Strahilevitz J. Galactomannan testing for early diagnosis of *Exserohilum rostratum* infection. *J Clin Microbiol* **2013**; 51:2800–1.
103. Nucci M, Barreiros G, Reis H, et al. Performance of 1,3-beta-D-glucan in the diagnosis and monitoring of invasive fusariosis. *Mycoses* **2019**; 62:570–5.
104. Lionakis MS, Lewis RE, Kontoyiannis DP. Breakthrough invasive mold infections in the hematology patient: current concepts and future directions. *Clin Infect Dis* **2018**; 67:1621–30.
105. Pickering JW, Sant HW, Bowles CA, et al. Evaluation of a (1->3)-beta-D-glucan assay for diagnosis of invasive fungal infections. *J Clin Microbiol* **2005**; 43:5957–62.
106. Litvinseva AP, Lindsley MD, Gade L, et al. Utility of (1-3)-beta-D-glucan testing for diagnostics and monitoring response to treatment during the multistate outbreak of fungal meningitis and other infections. *Clin Infect Dis* **2014**; 58:622–30.
107. Dadwal SS, Kontoyiannis DP. Recent advances in the molecular diagnosis of mucormycosis. *Expert Rev Mol Diagn* **2018**; 18:845–54.
108. Legrand M, Gits-Muselli M, Boutin L, et al. Detection of circulating *Mucorales* DNA in critically ill burn patients: preliminary report of a screening strategy for early diagnosis and treatment. *Clin Infect Dis* **2016**; 63:1312–7.
109. Gade L, Grgurich DE, Kerkering TM, et al. Utility of real-time PCR for detection of *Exserohilum rostratum* in body and tissue fluids during the multistate outbreak of fungal meningitis and other infections. *J Clin Microbiol* **2015**; 53:618–25.
110. Durkin M, Witt J, Lemonte A, et al. Antigen assay with the potential to aid in diagnosis of blastomycosis. *J Clin Microbiol* **2004**; 42:4873–5.
111. Connolly P, Hage CA, Bariola JR, et al. Blastomyces dermatitidis antigen detection by quantitative enzyme immunoassay. *Clin Vaccine Immunol* **2012**; 19:53–6.
112. Bariola JR, Hage CA, Durkin M, et al. Detection of *Blastomyces dermatitidis* antigen in patients with newly diagnosed blastomycosis. *Diagn Microbiol Infect Dis* **2011**; 69:187–91.
113. Mongkolrattanothai K, Peev M, Wheat LJ, Marciniak J. Urine antigen detection of blastomycosis in pediatric patients. *Pediatr Infect Dis J* **2006**; 25:1076–8.
114. Tarr M, Marciniak J, Mongkolrattanothai K, et al. Blastomyces antigen detection for monitoring progression of blastomycosis in a pregnant adolescent. *Infect Dis Obstet Gynecol* **2007**; 2007:89059.
115. Frost HM, Novicki TJ. Blastomyces antigen detection for diagnosis and management of blastomycosis. *J Clin Microbiol* **2015**; 53:3660–2.
116. Catanzaro A, Friedman PJ, Schillaci R, et al. Treatment of coccidioidomycosis with ketoconazole: an evaluation utilizing a new scoring system. *Am J Med* **1983**; 74:64–9.
117. Kaufman L, Sekhon AS, Moledina N, et al. Comparative evaluation of commercial Premier EIA and microimmunodiffusion and complement fixation tests for *Coccidioides immitis* antibodies. *J Clin Microbiol* **1995**; 33:618–9.
118. Bays DJ, Thompson GR 3rd. Coccidioidomycosis. *Infect Dis Clin North Am* **2021**; 35:453–69.
119. Donovan FM, Ramadan FA, Khan SA, et al. Comparison of a novel rapid lateral flow assay to enzyme immunoassay results for early diagnosis of coccidioidomycosis. *Clin Infect Dis* **2021**; 73:e2746–53.
120. McHardy IH, Dinh BN, Waldman S, et al. Coccidioidomycosis complement fixation titer trends in the age of antifungals. *J Clin Microbiol* **2018**; 56:e01318–18.
121. Galgiani JN, Blair JE, Ampel NM, Thompson GR. Treatment for early, uncomplicated coccidioidomycosis: what is success? *Clin Infect Dis* **2020**; 70:2008–12.
122. Galgiani JN, Catanzaro A, Cloud GA, et al. Fluconazole therapy for coccidioid meningitis. The NIAID-Mycoses Study Group. *Ann Intern Med* **1993**; 119:28–35.
123. Saubolle MA, Wojack BR, Wertheimer AM, et al. Multicenter clinical validation of a cartridge-based real-time PCR system for detection of *Coccidioides* spp. in lower respiratory specimens. *J Clin Microbiol* **2018**; 56:e01277–17.
124. Durkin M, Connolly P, Kuberski T, et al. Diagnosis of coccidioidomycosis with use of the *Coccidioides* antigen enzyme immunoassay. *Clin Infect Dis* **2008**; 47:e69–73.
125. Thompson GR 3rd, Bays DJ, Johnson SM, et al. Serum (1->3)-beta-D-glucan measurement in coccidioidomycosis. *J Clin Microbiol* **2012**; 50:3060–2.
126. Baddley JW, Sankara IR, Rodriguez JM, et al. Histoplasmosis in HIV-infected patients in a southern regional medical center: poor prognosis in the era of highly active antiretroviral therapy. *Diagn Microbiol Infect Dis* **2008**; 62:151–6.
127. Wheat LJ, Connolly P, Haddad N, et al. Antigen clearance during treatment of disseminated histoplasmosis with itraconazole versus fluconazole in patients with AIDS. *Antimicrob Agents Chemother* **2002**; 46:248–50.
128. Wheat LJ, Connolly P, Smedema M, et al. Emergence of resistance to fluconazole as a cause of failure during treatment of histoplasmosis in patients with acquired immunodeficiency disease syndrome. *Clin Infect Dis* **2001**; 33:1910–3.

129. Wheat LJ, Connolly P, Smedema M, et al. Activity of newer triazoles against *Histoplasma capsulatum* from patients with AIDS who failed fluconazole. *J Antimicrob Chemother* **2006**; 57:1235–9.
130. Wheat J, MaWhinney S, Hafner R, et al. Treatment of histoplasmosis with fluconazole in patients with acquired immunodeficiency syndrome. National Institute of Allergy and Infectious Diseases Acquired Immunodeficiency Syndrome Clinical Trials Group and Mycoses Study Group. *Am J Med* **1997**; 103:223–32.
131. Franklin A, Larson L, Rutjanawech S, et al. 1699. Presentations and outcomes of *Histoplasma capsulatum* infection vary by immune status: a retrospective cohort study. *Open Forum Infect Dis* **2019**; 6(Suppl 2):S622.
132. Swartzentruber S, Rhodes L, Kurkjian K, et al. Diagnosis of acute pulmonary histoplasmosis by antigen detection. *Clin Infect Dis* **2009**; 49:1878–82.
133. Hage CA, Kirsch EJ, Stump TE, et al. Histoplasma antigen clearance during treatment of histoplasmosis in patients with AIDS determined by a quantitative antigen enzyme immunoassay. *Clin Vaccine Immunol* **2011**; 18:661–6.
134. Libert D, Procop GW, Ansari MQ. Histoplasma urinary antigen testing obviates the need for coincident serum antigen testing. *Am J Clin Pathol* **2018**; 149:362–8.
135. Williams B, Fojtasek M, Connolly-Stringfield P, Wheat J. Diagnosis of histoplasmosis by antigen detection during an outbreak in Indianapolis, Ind. *Arch Pathol Lab Med* **1994**; 118:1205–8.
136. Martinez-Gamboa A, Niembro-Ortega MD, Torres-Gonzalez P, et al. Diagnostic accuracy of antigen detection in urine and molecular assays testing in different clinical samples for the diagnosis of progressive disseminated histoplasmosis in patients living with HIV/AIDS: a prospective multicenter study in Mexico. *PLoS Negl Trop Dis* **2021**; 15:e0009215.
137. Wheat LJ, Azar MM, Bahr NC, et al. Histoplasmosis. *Infect Dis Clin North Am* **2016**; 30:207–27.
138. Wheat LJ, Connolly-Stringfield P, Blair R, et al. Effect of successful treatment with amphotericin B on *Histoplasma capsulatum* variety capsulatum polysaccharide antigen levels in patients with AIDS and histoplasmosis. *Am J Med* **1992**; 92:153–60.
139. Wheat LJ, Connolly-Stringfield P, Blair R, et al. Histoplasmosis relapse in patients with AIDS: detection using *Histoplasma capsulatum* variety capsulatum antigen levels. *Ann Intern Med* **1991**; 115:936–41.
140. Shikanai-Yasuda MA, Telles Filho Fde Q, Mendes RP, et al. Guidelines in paracoccidioidomycosis. *Rev Soc Bras Med Trop* **2006**; 39:297–310.
141. Perenha-Viana MC, Gonzales IA, Brockelt SR, et al. Serological diagnosis of paracoccidioidomycosis through a Western blot technique. *Clin Vaccine Immunol* **2012**; 19:616–9.
142. de Camargo ZP. Serology of paracoccidioidomycosis. *Mycopathologia* **2008**; 165:289–302.
143. Negro G, Pereira CN, Andrade HF, et al. Evaluation of tests for antibody response in the follow-up of patients with acute and chronic forms of paracoccidioidomycosis. *J Med Microbiol* **2000**; 49:37–46.
144. Marques da Silva SH, Queiroz-Telles F, Colombo AL, Blotta MH, Lopes JD, Pires De Camargo Z. Monitoring gp43 antigenemia in paracoccidioidomycosis patients during therapy. *J Clin Microbiol* **2004**; 42:2419–24.
145. Gomez BL, Figueroa JI, Hamilton AJ, et al. Use of monoclonal antibodies in diagnosis of paracoccidioidomycosis: new strategies for detection of circulating antigens. *J Clin Microbiol* **1997**; 35:3278–83.
146. Scott EN, Kaufman L, Brown AC, Muchmore HG. Serologic studies in the diagnosis and management of meningitis due to *Sporothrix schenckii*. *N Engl J Med* **1987**; 317:935–40.
147. Barros MB, de Almeida Paes R, Schubach AO. *Sporothrix schenckii* and sporotrichosis. *Clin Microbiol Rev* **2011**; 24:633–54.
148. Bernardes-Engemann AR, Costa RC, Miguens BR, et al. Development of an enzyme-linked immunosorbent assay for the serodiagnosis of several clinical forms of sporotrichosis. *Med Mycol* **2005**; 43:487–93.
149. Macedo PM, Lopes-Bezerra LM, Bernardes-Engemann AR, Orofino-Costa R. New posology of potassium iodide for the treatment of cutaneous sporotrichosis: study of efficacy and safety in 102 patients. *J Eur Acad Dermatol Venereol* **2015**; 29:719–24.
150. Costa RO, Bernardes-Engemann AR, Azulay-Abulafia L, et al. Sporotrichosis in pregnancy: case reports of 5 patients in a zoonotic epidemic in Rio de Janeiro, Brazil. *An Bras Dermatol* **2011**; 86:995–8.
151. Le T, Wolbers M, Chi NH, et al. Epidemiology, seasonality, and predictors of outcome of AIDS-associated *Penicillium marneffeii* infection in Ho Chi Minh City, Viet Nam. *Clin Infect Dis* **2011**; 52:945–52.
152. Hien HTA, Thanh TT, Thu NTM, et al. Development and evaluation of a real-time polymerase chain reaction assay for the rapid detection of *Talaromyces marneffeii* MP1 gene in human plasma. *Mycoses* **2016**; 59:773–80.
153. Li X, Zheng Y, Wu F, et al. Evaluation of quantitative real-time PCR and Platelia galactomannan assays for the diagnosis of disseminated *Talaromyces marneffeii* infection. *Med Mycol* **2020**; 58:181–6.
154. Thu NTM, Chan JFW, Ly VT, et al. Superiority of a Novel Mp1p antigen detection enzyme immunoassay compared to standard BACTEC blood culture in the diagnosis of talaromycosis. *Clin Infect Dis* **2021**; 73:e330–6.
155. Ly VT, Thanh NT, Thu NTM, et al. Occult *Talaromyces marneffeii* infection unveiled by the novel Mp1p antigen detection assay. *Open Forum Infect Dis* **2020**; 7:ofaa502.
156. Supparatpinyo K, Chiewchanvit S, Hirunsri P, Uthammachai C, Nelson KE, Sirisanthana T. *Penicillium marneffeii* infection in patients infected with human immunodeficiency virus. *Clin Infect Dis* **1992**; 14:871–4.
157. Sirisanthana T, Supparatpinyo K, Perriens J, Nelson KE. Amphotericin B and itraconazole for treatment of disseminated *Penicillium marneffeii* infection in human immunodeficiency virus-infected patients. *Clin Infect Dis* **1998**; 26:1107–10.
158. Le T, Kinh NV, Cuc NTK, et al. A trial of itraconazole or amphotericin B for HIV-associated talaromycosis. *N Engl J Med* **2017**; 376:2329–40.
159. Poplin V, Smith C, Milsap D, Zabel L, Bahr NC. Diagnosis of pulmonary infections due to endemic fungi. *Diagnostics (Basel)* **2021**; 11:856.