

The University of Maine

DigitalCommons@UMaine

Vocal Popular Sheet Music Collection

Public domain (may be downloaded in full)

1926

Who Wouldn't?

May Singhi Breen
Arranger

Walter Donaldson
Composer

Kahn
Lyricist

Follow this and additional works at: <https://digitalcommons.library.umaine.edu/mmb-vp>

Recommended Citation

Breen, May Singhi; Donaldson, Walter; and Kahn, "Who Wouldn't?" (1926). *Vocal Popular Sheet Music Collection*. Score 6033.

<https://digitalcommons.library.umaine.edu/mmb-vp/6033>

This Book is brought to you for free and open access by DigitalCommons@UMaine. It has been accepted for inclusion in Vocal Popular Sheet Music Collection by an authorized administrator of DigitalCommons@UMaine. For more information, please contact um.library.technical.services@maine.edu.

WHO WOULDN'T



Words by
Gus Kahn

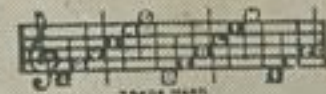
Music by
Walter Donaldson



MADE IN
USA

Vp. 015500
1926
WHO

ing Berlin, Inc.
MUSIC PUBLISHERS
Broadway New York



ORDER CODE
"WOULDN'T"

Who Wouldn't?

Words by
GUS KAHN

Tune Ukulele
A D F# B

Music by
WALTER DONALDSON

Moderato

The piano introduction consists of two staves. The right hand plays a melody of eighth and quarter notes, while the left hand provides a steady accompaniment of eighth notes. The tempo is marked 'Moderato'.

Till ready

This section features a piano accompaniment for the instrumental part. It includes a treble clef staff with rests and a grand staff with piano accompaniment. The tempo remains 'Moderato'.

VOICE

The first vocal line is written on a treble clef staff with lyrics underneath. The piano accompaniment is shown in a grand staff below. The lyrics are: "Hon - ey Ros - y I'm tell - ing you say ev - 'ry - thing's hon - ey ros - y The skies are so So com - fy and".

The second vocal line continues the melody with lyrics: "sun - ny since I met you co - zy since I met you". The piano accompaniment continues below.

Ukulele Arr. by MAY SINGHI BREEN

Copyright MCMXXVI by IRVING BERLIN, Inc., 1607 B'way, N. Y.

International Copyright Secured Made in U. S. A. All Rights Reserved

Hap - py, I'm cer - tain - ly hap - py I ought to be
Gloom - y, I used to be gloom - y, Till you whis - pered

hap - py since I met you, you
to me, "I love you, too"

My lit - tle heart — won't be - have
I'm like a bird — in the spring —

Am I to blame — if I rave?
Love is a won - der - ful thing —

CHORUS

I like your size — I like your eyes —
I lost my heart — I lost my soul —

p-f

That's no sur - prise — who would - n't?
I lost con - trol — who would - n't?

I like to go — just where you go —
I looked at you — you looked at me —

I'd like to know — who would - n't?
Could - n't you see? — who could - n't?

Down by your gar-den gate_ a hun-dred fel-lows wait_
 I nev-er sleep at night_ I lost my ap-pe-tite,_

But on a cer-tain date_ they'll be a lit-tle too late and
 It does-n't seem just right_ when you keep say-ing you might, if

just wait and see_ they're "gon-na" be_ jeal-ous of me_
 you say "good-bye"_ Oh how I'll cry_ may-be I'll die_

who would-n't?_ would-n't._
 who would-n't?_ would-n't._



THE SONG THAT IS DIFFERENT

POOR PAPA

HE'S GOT NOTHIN' AT ALL

Words by
BILLY ROSE

Music by
HARRY WOODS

CHORUS

Ma - ma's got shoes, ma - ma's got clothes, Ma - ma's got these and
Ma - ma eats ham, ma - ma eats lamb, Ma - ma eats bread and

ma ma's got those, But poor pa - pa, poor pa - pa,
straw - ber - ry jam, But poor pa - pa, poor pa - pa,

He's got noth - in' at all. — Ma - ma goes here
He eats noth - in' at all. — Ma - ma says Ooh

Copyright MCMXXVI by IRVING BERLIN Inc., 1607 Broadway, N. Y. C.
International Copyright Secured Made in U.S.A. All Rights Reserved

COPIES ON SALE WHEREVER MUSIC IS SOLD

This Number can also be had for your Phonograph and Player Piano