

The University of Maine

DigitalCommons@UMaine

Vocal Popular Sheet Music Collection

Public domain (may be downloaded in full)

1924

Waitin' Around

Benny Davis
Composer

James F Hanley
Composer

Follow this and additional works at: <https://digitalcommons.library.umaine.edu/mmb-vp>

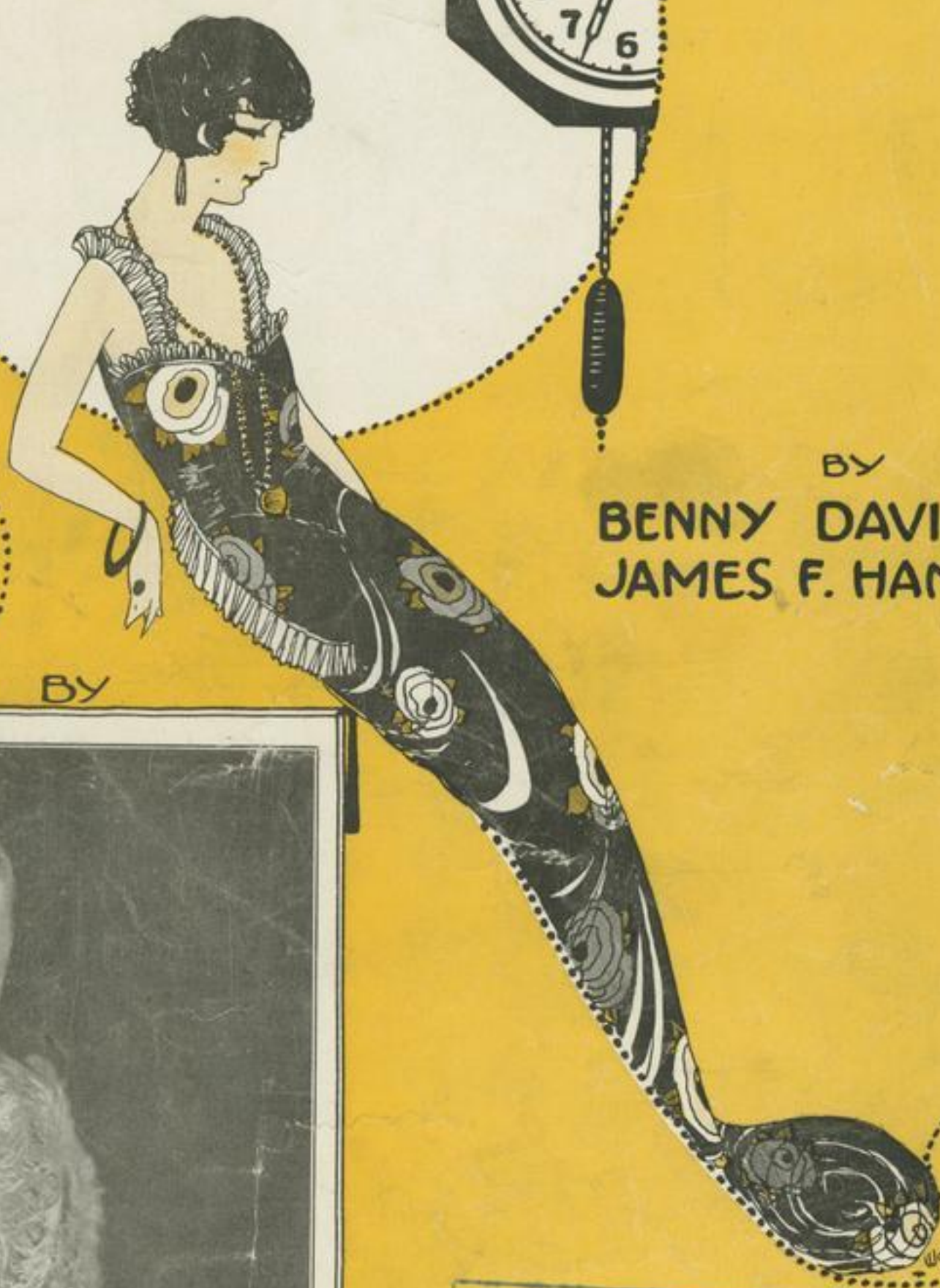
Recommended Citation

Davis, Benny and Hanley, James F, "Waitin' Around" (1924). *Vocal Popular Sheet Music Collection*. Score 5845.

<https://digitalcommons.library.umaine.edu/mmb-vp/5845>

This Book is brought to you for free and open access by DigitalCommons@UMaine. It has been accepted for inclusion in Vocal Popular Sheet Music Collection by an authorized administrator of DigitalCommons@UMaine. For more information, please contact um.library.technical.services@maine.edu.

WAITIN' AROUND




BY
**BENNY DAVIS AND
JAMES F. HANLEY**

INTRODUCED BY



DOLLY KAY

Bagaduce Music
Lending Library 
Brooksville, Maine
Donor: 25 Coll: _____

Published by *Shapiro, Bernstein & Co.* MUSIC PUBLISHERS
COR. BROADWAY & 47th STREET
New York
Reg. U.S. Pat. Off.

MADE IN U.S.A.

Sp. 005889
1924
Wai

Try this over on your Piano.

Stay Home, Little Girl, Stay Home

By LEW BROWN and
JAMES F HANLEY

CHORUS

Stay home lit-tle girl, stay home _____ Don't roam, lit-tle girl, don't
roam, _____ The one who would lure you from those you love so, Will
take you and fool you and then let you go, The girl who stays
home is a fool they may say, But she's just the kind that they

p-f

Copyright MCMXXIII by Shapiro, Bernstein & Co. Inc. Cor. Broadway & 47th Street, New York
International Copyright Secured All Rights Reserved
Propiedad Asegurada Para La Republica Mexicana MCMXXIII Todos Los Derechos Reservados

Complete Copies may be had where you bought this

Waitin' Around

3

By BENNY DAVIS
and JIMMY HANLEY

Moderato

f

sfz

The piano introduction consists of two staves. The right hand features a rhythmic pattern of eighth notes with accents, while the left hand provides a steady bass line. The tempo is marked 'Moderato' and the dynamics range from *f* to *sfz*.

Vamp

VOICE

I'll tell the world that I'm lone - ly_ I sit a-round by my
I al-ways try to be hum - ble_ No-bo-dy gives me a

mp

The vamp section is marked 'Vamp' and 'VOICE'. It features a piano accompaniment with a steady eighth-note pattern in the right hand and a bass line in the left hand. The dynamics are marked *mp*. The vocal line begins with the lyrics: 'I'll tell the world that I'm lone - ly_ I sit a-round by my I al-ways try to be hum - ble_ No-bo-dy gives me a'.

on - ly Won-der - ing_ What the mor-row will bring_ I keep on
tum - ble Tell me why_ They keep pass-in' me by_ I won - der

The first line of the verse features a vocal melody with lyrics: 'on - ly Won-der - ing_ What the mor-row will bring_ I keep on tum - ble Tell me why_ They keep pass-in' me by_ I won - der'. The piano accompaniment continues with the same eighth-note pattern in the right hand and a bass line in the left hand.

wait-in' for some-thin' to hap - pen Hop-in' that some - one comes rap - pin'
what real-ly can be the mat - ter Is it my looks or my chat - ter

The second line of the verse features a vocal melody with lyrics: 'wait-in' for some-thin' to hap - pen Hop-in' that some - one comes rap - pin' what real-ly can be the mat - ter Is it my looks or my chat - ter'. The piano accompaniment continues with the same eighth-note pattern in the right hand and a bass line in the left hand.

Copyright MCMXXIV by Shapiro, Bernstein & Co. Inc. Cor. Broadway & 47th Street, New York
Propiedad Asegurada Para La Republica Mexicana MCMXXIV Todos Los Derechos Reservados
Derechos De Reproduccion Reservados En Cuba y Sud y Central America

International Copyright Secured

ALL RIGHTS RESERVED
Including Public Performance For Profit

Made in U.S.A.

On my door, — for I've in store — A world of love and ev-ry - thing: I'm al-ways
I don't know — I must be slow — I guess I'll have to try and try: I'm al-ways

CHORUS

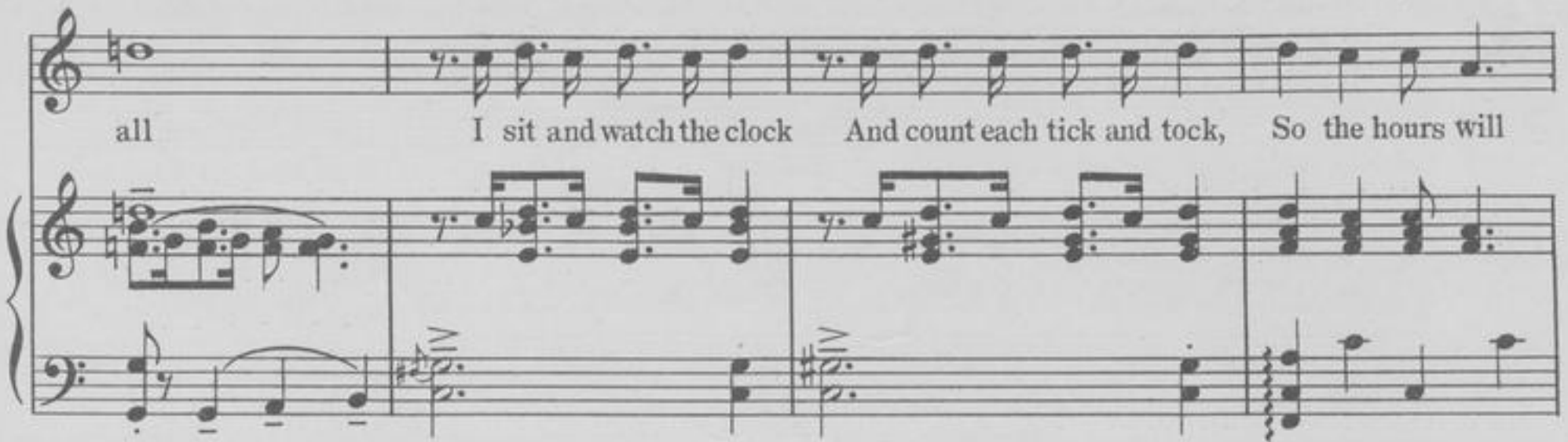
Wait-in' a-round — wait-in' a-round — for some - one — But some-how, no no no-one,

mf

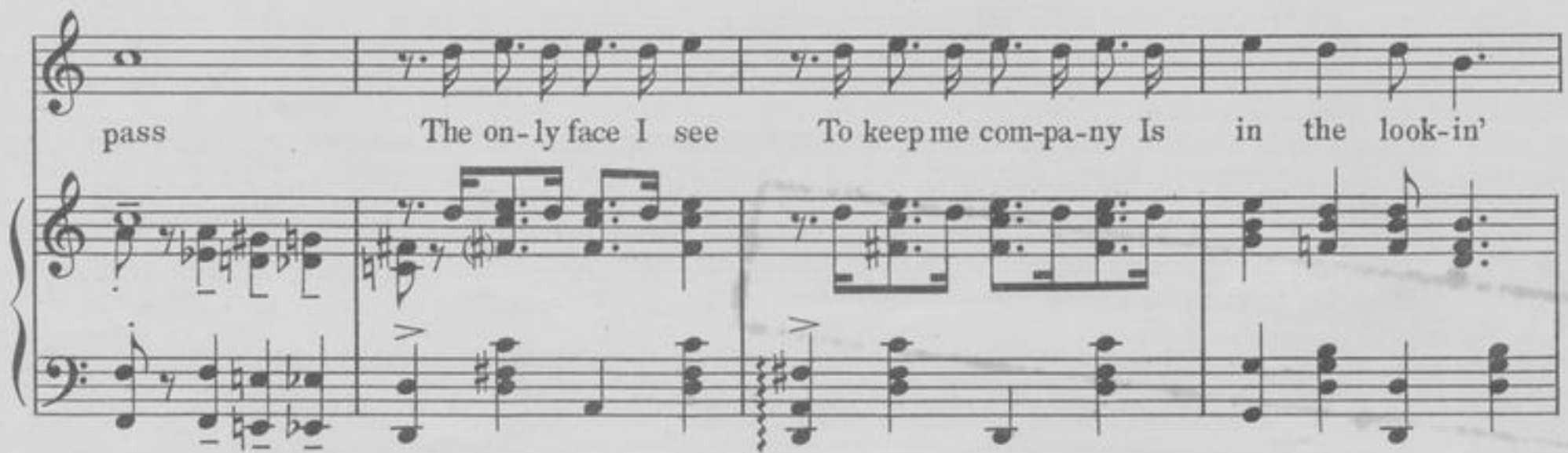
is ev-er wait-in' for me — I'm ve - ry eas-i - ly found — eas-i - ly found — But

no one pays me a call, Gee! but I'm blue — What'll I do — I'm on-ly hu-man af-ter

all I sit and watch the clock And count each tick and tock, So the hours will



pass The on-ly face I see To keep me com-pa-ny Is in the look-in'



glass, I'm al-ways wait-in' a-round_ Wait-in' a-round_ for some - one_ But some-how



no no no-one, is ev-er wait-in' for me.



TRY THESE OVER

YOUR MUSIC DEALER CARRIES THESE SONG HITS
for **YOUR PIANO, PHONOGRAPH**
or **YOUR PLAYER PIANO.**

LAST NIGHT ON THE BACK PORCH

(I LOVED HER BEST OF ALL)

The Big College Song Hit

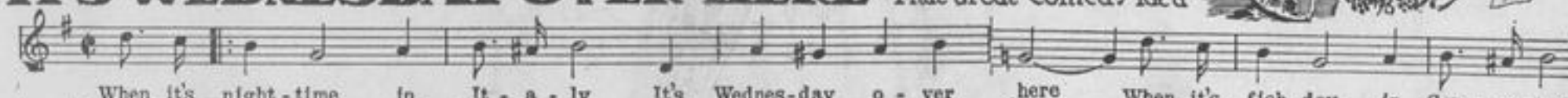


I love her in the morn - ing And I love her at night I love her, yes I love her

Copyright MCMXXIII by Skidmore Music Co. Inc.

WHEN IT'S NIGHT-TIME IN ITALY IT'S WEDNESDAY OVER HERE

That Great Comedy Idea

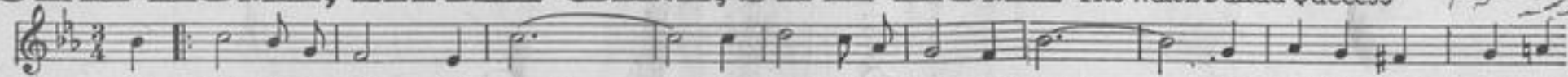


When it's night-time in It - a - ly It's Wednes-day o - ver here When it's fish day in Ger - ma - ny

Copyright MCMXXIII by Shapiro, Bernstein & Co. Inc.

STAY HOME, LITTLE GIRL, STAY HOME

The Waltz Ballad Success



Stay home lit-tle girl, stay home Don't roam, lit-tle girl, don't roam, The one who would lure you

Copyright MCMXXIII by Shapiro, Bernstein & Co. Inc.

SWEET PAL

A Song That Touches The Heart

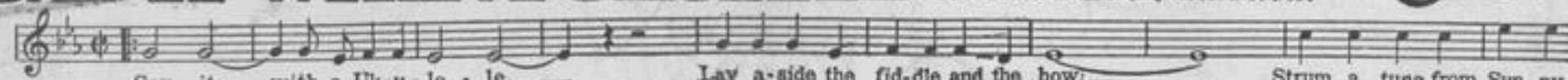


You've been faith - ful and true thru the years sweet Pal, Tho' time left its mark on your

Copyright MCMXXIII by Shapiro, Bernstein & Co. Inc.

SAY IT WITH A UKULELE

The Hit of "Artists and Models"

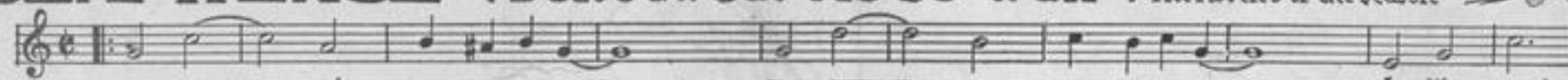


Say it with a Uk - u - le - le, Lay a-side the fid-dle and the bow, Strum a tune from Sun - ny

Copyright assigned MCMXXIII to Skidmore Music Co. Inc.

CLA-WENCE (Don't Tweak Me So Wuff)

The Novelty of the Season



Cla - WENCE, don't tweak me so wuff, Cla - WENCE, e - nough is e - nough, I like speed

Copyright MCMXXIII by Shapiro, Bernstein & Co. Inc.

DOWN ON THE FARM

(THEY ALL ASK FOR YOU)

A Country-wide Sensation



Down on the farm They all feel blue Ev - 'ry day, while you're a - way They all ask for you

Copyright MCMXXIII by Skidmore Music Co. Inc.

MISSISSIPPI RIPPLES

MARY EARL'S ANNUAL WALTZ CREATION.

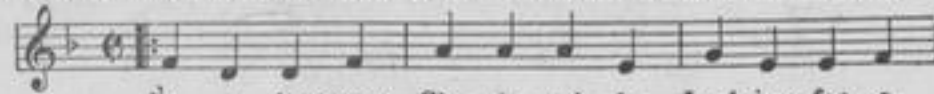


Mis - sis - - - sip - pi, rip - pling on your way, Mis - sis - - - sip - pi

Copyright MCMXXII by Shapiro, Bernstein & Co. Inc.

LONESOME CINDERELLA

FANNY BRICE'S HIT in the ZIEGFELD FOLLIES

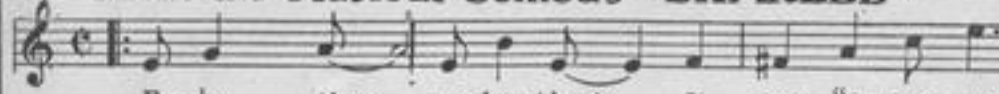


I'm a lone - some Cin - do - rel - la Look - ing for a

Copyright MCMXXIII by Shapiro, Bernstein & Co. Inc.

HEART BEATS

From the Musical Comedy "SHARLEE"



Ev - 'ry time, my heart beats, It says "I love you

Copyright MCMXXIII by Shapiro, Bernstein & Co. Inc.

THE

GEM DANCE FOLIO

America's Standard

for Piano Solo only

1924

JUST PUBLISHED
Price 50¢ Postpaid.