

The neutral hydrogen properties of galaxies in gas-rich groups

Robert Džudžar,¹★ Virginia Kilborn,¹ Gerhardt Meurer,² Sarah M. Sweet^{1,3},
 Michael Drinkwater⁴, Kenji Bekki,² Fiona Audcent-Ross,² Baerbel Koribalski⁵,
 Ji Hoon Kim⁶, Mary Putman,⁷ Emma Ryan-Weber,^{1,3} Martin Zwaan,⁸
 Joss Bland-Hawthorn⁹, Michael Dopita¹⁰, Marianne T. Doyle-Pegg,¹¹
 Ed Elson¹², Kenneth Freeman,¹⁰ Dan Hanish,¹³ Tim Heckman,¹⁴
 Robert Kennicutt,¹⁴ Pat Knezek,¹⁵ Martin Meyer,^{2,3} Chris Smith,¹⁶
 Lister Staveley-Smith², Rachel Webster¹⁷ and Jessica Werk¹⁸

Affiliations are listed at the end of the paper

Accepted 2018 December 19. Received 2018 December 18; in original form 2018 September 4

ABSTRACT

We present an analysis of the integrated neutral hydrogen (HI) properties for 27 galaxies within nine low-mass, gas-rich, late-type dominated groups which we denote ‘Choirs’. We find that majority of the central Choir galaxies have average HI content: they have a normal gas-mass fraction with respect to isolated galaxies of the same stellar mass. In contrast, we find more satellite galaxies with a lower gas-mass fraction than isolated galaxies of the same stellar mass. A likely reason for the lower gas content in these galaxies is tidal stripping. Both the specific star formation rate and the star formation efficiency of the central group galaxies are similar to galaxies in isolation. The Choir satellite galaxies have similar specific star formation rate as galaxies in isolation, therefore satellites that exhibit a higher star formation efficiency simply owe it to their lower gas-mass fractions. We find that the most HI massive galaxies have the largest HI discs and fall neatly on to the HI size–mass relation, while outliers are galaxies that are experiencing interactions. We find that high specific angular momentum could be a reason for galaxies to retain the large fraction of HI gas in their discs. This shows that for the Choir groups with no evidence of interactions, as well as those with traces of minor mergers, the internal galaxy properties dominate over the effects of residing in a group. The probed galaxy properties strengthen evidence that the Choir groups represent the early stages of group assembly.

Key words: galaxies: evolution – galaxies: general – galaxies: groups: general – galaxies: groups: individual: HIPASSJ1250-20 – galaxies: interactions – galaxies: ISM.

1 INTRODUCTION

Today, we observe the hierarchical structure of the Universe (Press & Schechter 1974; White & Rees 1978) ranging from sparse voids to the densest of galaxy clusters. Small groups are the most common environment where galaxies reside (e.g. Tully 1987; Eke et al. 2004; Knobel et al. 2015; Saulder et al. 2016). Since environment has an impact on galaxy evolution, it is important to understand how galaxies evolve within such structures. Environmental impact can be traced via galaxy properties such as the observed

morphology–density relation (the decline of the fraction of late-type galaxies with increasing environmental density) in clusters (Dressler 1980; Goto et al. 2003) as well as in groups (Postman & Geller 1984; Serra et al. 2012). Furthermore, studies have shown that galaxy’s colour and morphology are connected with the galaxy environment (Whitmore, Gilmore & Jones 1993; Kauffmann et al. 2004; Blanton et al. 2005; Brough et al. 2006; Melnyk, Mitronova & Karachentseva 2014), and that the star formation rate (SFR) suppression becomes evident at group densities (Lewis et al. 2002; Gómez et al. 2003; Davies et al. 2015; Barsanti et al. 2018). Nevertheless, the relative contribution of nature versus nurture (internal properties of a galaxy versus an environment in which galaxy resides) in small gas-rich groups remains an open question with arguments on both sides (e.g. Serra et al. 2012; Knobel et al. 2015; Brown et al. 2017;

* E-mail: rdzudzar@swin.edu.au

Carollo et al. 2016; Odekon et al. 2016; Janowiecki et al. 2017; Spindler et al. 2018)

Environmental effects can be probed by mapping the distribution of the neutral hydrogen (HI) content. The HI gas in spiral galaxies usually extends from 1.5 to 2 times the size of their observed stellar disc measured at the R -band 25 mag arcsec⁻² surface brightness level (e.g. Bosma 1981; Hoffman et al. 1996; Pisano, Wilcots & Elmegreen 2000; Bigiel & Blitz 2012). Due to the extent of the HI disc, it is more susceptible than the stellar disc to disturbances via external gravitational (tidal interactions, galaxy mergers) and hydrodynamical (ram-pressure stripping) interactions. These properties make the HI gas an excellent tracer of the physical processes that are affecting galaxies (e.g. Gunn & Gott 1972; Yun, Ho & Lo 1994; Barnes et al. 2001; Verdes-Montenegro et al. 2001; Hess et al. 2017).

Tidal interactions and galaxy–galaxy mergers are often observed in galaxy groups (e.g. Rots et al. 1990; Yun et al. 1994). Such features are prominent in Hickson Compact Groups (HCG; compact configurations with four or more galaxy members within a magnitude difference of 3.0, obtained using red prints from the Palomar Observatory Sky Survey, Hickson 1982) and theoretically they are often connected to a transformation of late-type galaxies into early-type galaxies (Coziol & Plauchu-Frayn 2007). Galaxy interactions are also observed in small (fewer members, Barnes et al. 2001) and loose (sparser, Oosterloo et al. 2018) groups. There are also indications that ram-pressure stripping can remove gas from galaxies in galaxy groups (Rasmussen, Ponman & Mulchaey 2006; Westmeier, Braun & Koribalski 2011; Wolter et al. 2015; Brown et al. 2017; Stevens & Brown 2017) and not just in clusters (Gunn & Gott 1972; Chung et al. 2009). Enormous effort is aimed towards understanding how such interactions relate to the observed HI content in galaxies and conversely how HI distribution and kinematics uncover the physics of interaction (e.g. Bekki 2008; Pisano et al. 2011; Mihos et al. 2012; Bosma 2017 and references therein; Elagali et al. 2018).

Spiral galaxies have a lower HI fraction in high-density environments, for instance, near the centres of galaxy clusters (Giovanelli & Haynes 1985; Chung et al. 2009) or in HCGs (Verdes-Montenegro et al. 2001), than spiral galaxies that reside in the field. Verdes-Montenegro et al. (2001) proposed an evolutionary path for gas in compact galaxy groups. They proposed that the HI gas evolution in the compact groups occurs through a gradual removal of the gas from galaxies, increasing its content in the intragroup medium. This evolutionary picture should be expanded since gas-poor galaxies are also found in intermediate density environments (Hess & Wilcots 2013; Dénes et al. 2016) as well as in loose groups (Kilborn et al. 2005, 2009). With the observations of the gas content in group galaxies we are gathering evidence that gas pre-processing starts to be evident. However, it is still unclear at which density scale the environment starts affecting the gas content of galaxies.

Referring back to hierarchical structure formation theory, a galaxy embedded in the centre of a dark matter halo (central galaxy) grows as it accretes satellite galaxies, over time becoming the most massive and the brightest galaxy (White & Rees 1978; Brough et al. 2006). In this scenario, the satellite galaxies are moving with respect to the centre of group potential and experiencing environmental effects, thus in theory they are going through a different evolutionary path from that of the central galaxy (White & Rees 1978; White & Rees 1978; Brough et al. 2006; Yang et al. 2007; Brown et al. 2017; Stevens & Brown 2017). Observationally, and in simulations, it is often difficult to distinguish between the central and satellite galaxy, especially in small groups (Berlind et al. 2006; Campbell et al. 2015).

Comparing central galaxies in groups with isolated galaxies, Janowiecki et al. (2017) found that in low-mass groups, central galaxies have a higher gas content than similar galaxies in isolation which they attributed either to inflows of gas from the cosmic web, or, mergers with HI-rich galaxies; whilst in higher mass groups central galaxies have similar gas content as galaxies in isolation. This picture is consistent with the HI-rich galaxies from the Bluedisc sample (Wang et al. 2015) for which they found that HI-rich galaxies are embedded within HI-rich environments. Whether accretion from gas-rich mergers or accretion from the cosmic web is the main reservoir from where galaxies accrete the majority of their gas is still unclear. The contribution from gas-rich mergers is thought to be rather small (Sancisi et al. 2008; Di Teodoro & Fraternali 2014), and the current observations are not sensitive enough (Popping et al. 2009) to probe the cold mode accretion from cosmic web filaments, which in theoretical models is the dominant reservoir from where galaxies obtain their gas (Kereš et al. 2005).

In this paper we investigate the extent to which the galaxy group environment influences evolution of the galaxies in small gas-rich groups, through a comparison of the group galaxies to a sample of isolated galaxies.

This paper is structured as follows. Section 2 describes our Choirs sample and shows Choir group HIPASSJ1250–20 in detail, describes the selection of isolated galaxies and summarizes the observations of group galaxies and data reduction. Section 3 describes the main results of this paper: comparison of group galaxies with isolated galaxies in terms of gas-mass fraction, specific SFR, star formation efficiency, atomic depletion time, and deficiency. This section also presents the size–mass relation and examines global stability parameter of the Choir galaxies. Section 4 discusses the implications of the obtained results, and Section 5 summarizes the results and concludes.

Throughout this paper the assumed cosmology is $H_0 = 70$ km s⁻¹ Mpc⁻¹, $\Omega_m = 0.3$, and $\Omega_\Lambda = 0.7$.

2 SAMPLE AND DATA

In this work we make use of resolved interferometric HI data for nine Choir groups, obtained with the Australia Telescope Compact Array (ATCA) and the Karl G. Jansky Very Large Array (VLA). A brief summary of the observations is provided in Table 1. We examine the properties of the individual galaxies within the Choir groups and compare them to the sample of isolated galaxies.

2.1 Choir group galaxies

Our groups are selected from the Survey of Ionization in Neutral Gas Galaxies (SINGG), the H α narrow-band imaging follow-up program (Meurer et al. 2006) for the HI Parkes All Sky Survey (HIPASS; Barnes et al. 2001). Galaxies for the SINGG survey were selected based on their HI mass and thus the sample is biased towards more distant, massive galaxies (Meurer et al. 2006; Sweet et al. 2013). The HIPASS galaxies were separated into $\log(M_{\text{HI}})$ bins with width of 0.2 dex and then the nearest galaxies in each $\log(M_{\text{HI}})$ bin were selected. Additional cuts were made in the selection: galaxies were required to have a HIPASS flux with S/N larger than 3.8; galaxies with Galactic latitude lower than 30 deg were not selected to avoid Galactic plane; galaxies with systemic velocities smaller than 200 km s⁻¹ were not selected to avoid the Milky Way and high-velocity clouds. Detailed explanations can be found in Meurer et al. (2006), Audcent-Ross et al. (2018), and Meurer et al. (in preparation).

Table 1. Summary of the ATCA and VLA HI observations used in this paper. Columns: (1) Group name (HIPASS + ID); (2) Time on the source for given ATCA and VLA array configuration; (3) Used phase calibrator; (4) Central frequency of band in MHz. (5) Synthesized beam size minor and major axis, respectively; (6) rms in the created data cube. Galaxy groups observed with the VLA in 2013 May are part of the project 13A-207, all of the ATCA observations were carried out in the project C2440, observed in 2011, 2015 (PI Kilborn); except J0205–55, which was observed in the projects: C1239 (750 m Array) and C1294 (1.5 km Array and EW Array) in 2004. Additionally, 1.5 km baseline for J1250–20 was observed in 2017 (C2440, PI Dzudzar).

Group ID (1)	1.5/750/EW (h) (2)	Phase Calibrator (3)	f_c (MHz) (4)	$\theta_{\min} \times \theta_{\text{maj}}$ (arcsec) (5)	rms (mJy beam ⁻¹) (6)
J0205–55	10.49/8.45/9.22	PKS 0252-712	1391	45.12 × 58.94	1
J0258–74	3.52/3.45/3.95	PKS 0252-712	1398	37.49 × 45.57	1.5
J0400–52	6.49/3.85/6.12	PKS 0420-625	1371	44.96 × 56.76	1.2
J1051–17	8.84/2.46/4.34	PKS 1127-145	1393	29.77 × 108.53	1.3
J1250–20	7.09/2.07/3.74	PKS 1245-197	1384	30.79 × 102.8	2
J2027–51	5.15/1.50/2.76	PKS 1933-587	1393	37.52 × 50.53	1.65
VLA:DnC					
J1059–09	3.18	J1130–1449	1383	26.27 × 44.04	1.6
J1026–19	2.98	J1130–1449	1379	26.10 × 46.34	1.4
J1408–21	2.98	J1337–1257	1380	28.62 × 46.44	1.4

27 per cent of the HIPASS detections in the SINGG sample correlate with multiple H α emitting galaxies¹ (due to the large beamsize of the Parkes telescope at 21cm). We are investigating those cases where four or more H α emitting galaxies were detected within a SINGG field of view (around 7 per cent of the SINGG fields). 15 groups were denoted as SINGG Choirs in Sweet et al. (2013) and they are small groups of four to 10 members. Choir groups masses range between 10^{11} and $10^{12} M_{\odot}$ (measured as the sum of HI mass and stellar mass). Choir group properties such as total group mass, specific SFR, surface brightness, H α equivalent width, and group HI deficiency were examined with respect to the entire SINGG sample in Sweet et al. (2013). They show that the galaxies in the Choir groups are very similar to the overall SINGG sample. This paper focuses on the integrated properties of nine Choir groups for which neutral hydrogen content was mapped.

2.2 Isolated SINGG galaxies

In order to examine whether the galaxies within the Choir groups are affected by the group environment, we compile a sub-sample of SINGG galaxies that are isolated and thus unlikely to have been affected by neighbouring galaxies within the past few Gyr. We compile such a sample because we found that outside the SINGG field of view (14.7 arcmin), single detected galaxies are members of different environments ranging from being isolated to being in clusters. Galaxies can reside in the different environments due to the fact that nearby groups may breakup into multiple HI detections and may in part be captured in SINGG as single galaxies (Sweet et al. 2013).

Multiple catalogues of isolated galaxies exist; these have been created by imposing different isolation criteria. The Catalogue of Isolated Galaxies (CIG; Karachentseva 1973) imposed the criteria that a galaxy is isolated if it is a single galaxy within a projected distance relative to neighbours diameter: $D_p/4 \leq D_i \leq 4D_p$, where D_p diameter of the primary galaxy, D_i is diameter of the neighbouring galaxies; thus, the projected distance should satisfy criteria: $R_{i,p} \geq 20D_i$. Applying similar criteria to the one from CIG sample, albeit using Ks -band (instead of Zwicky magnitudes) for determining galaxy angular diameters, Karachentseva et al. (2010) made

the 2MIG catalogue of isolated galaxies. Verdes-Montenegro et al. (2005) created the AMIGA (Analysis of the interstellar Medium of Isolated GALaxies) sample of isolated galaxies which have not been affected by other galaxies in the past 3 Gyr (assuming a field velocity of 190 km s^{-1} , as adapted from Tonry et al. 2000). The AMIGA sample was later revised by Argudo-Fernández et al. (2013) who imposed additional constraints to those from Karachentseva (1973) and Verdes-Montenegro et al. (2005) with the advantage of having the photometric SDSS-DR9 catalogue, thus creating a sample of 636 isolated galaxies. The SIGRID sample (the Small Isolated Gas-Rich Irregular Dwarfs), compiled by Nicholls et al. (2011), catalogued galaxies that have not had interactions within the last 5 Gyr. Using their own isolation criteria, Reda et al. (2004) created a sample of isolated early-type galaxies with the constraints that there are no galaxies within 700 km s^{-1} in recession velocity, within 0.67 Mpc in the plane of the sky, and within 2 B -band magnitudes of the isolated galaxy.

To compare the Choir group galaxies to those in isolation, we compiled a catalogue of isolated galaxies from the SINGG sample. Our isolation criteria closely follows those found in the literature, including a projected distance from the neighbouring galaxies, recession velocity difference with neighbouring galaxies, as well as proximity to a galaxy cluster. For each SINGG galaxy we first determine galaxies which are single within 0.67 Mpc in the plane of the sky and within a velocity of $\pm 750 \text{ km s}^{-1}$, as imposed in Reda et al. (2004). For this analysis we used NED (NASA/IPAC Extragalactic Database) to find all known galaxies with redshifts around each galaxy from the SINGG sample, thus the data varies in sensitivity. Applying restrictions on projected distance and velocity offset we obtained a sample of 25 galaxies. We can approximate the time since the last encounter for these galaxies, assuming that the galaxy perturber has an average diameter $D_a \sim 38 \text{ kpc}$ and field velocity of $\sim 190 \text{ km s}^{-1}$. Thus a perturber of the same size would need $\sim 4 \text{ Gyr}$ to traverse the distance equal to $20 D_a$. This time is similar to the one found for the AMIGA, SIGRID, and 2MIG samples (we do find that some galaxies from our sample are also members of the 2MIG Karachentseva et al. (2010) and SIGRID Melnyk, Karachentseva & Karachentsev (2015) samples). Secondly, we remove six galaxies which are within the projected radius of the Virgo cluster and within two times its velocity dispersion, adopting properties of the Virgo cluster given by Nicholls et al. (2011). By removing galaxies which are in the vicinity of the cluster we discarded possible interlopers

¹It should be noted that the number of the single and multiple detections relates only to the field of view of 14.7 arcmin.

which could be infalling cluster galaxies. We additionally flagged three galaxies, one with a noisy HI spectrum that could lead to an error in the HI mass estimation, one due to large uncertainty in its stellar mass, and one with three H α clumps spreading outside of its stellar disc. With this procedure we created a sample of 16 isolated galaxies. The isolated galaxies and their properties are shown in Table A2. We acknowledge that it is possible, in spite of these isolation criteria, to have contamination in a sample of isolated galaxies due to low surface brightness galaxies. However within the 14.7 arcmin FOV of these galaxies in SINGG, emission line galaxies below R-band apparent magnitude of ~ 20 were not detected (Meurer et al. 2006), thus contaminants should have negligible effects.

2.3 ATCA and VLA observations and data reduction

In this paper, we utilize observations obtained with the CFB 64M-32k (34 kHz resolution), CFB 1M-0.5k (0.5 kHz resolution) correlator configuration on the Compact Array Broad-band Backend (CABB; Wilson et al. 2011) as well as a set of observations (HIPASSJ0205–55a) with the previous correlator (16 kHz resolution).

We also utilize observations obtained with the VLA (project 13A-207) in the hybrid DnC configuration, having a total bandwidth of 4 MHz, divided into 1024 channels with a width of 3.906 kHz.

The ATCA and VLA data were reduced using standard procedures with the MIRIAD (Sault, Teuben & Wright 1995) and CASA (McMullin et al. 2007) software packages, respectively. For the ATCA data we first removed radio frequency interference and then calibrated (bandpass, flux, and phase) each data set separately. In the next step, we performed a continuum subtraction using a linear fit to line-free channels in each observational data set. We combined all baseline configurations for each data set in the Fourier transformation using task INVERT. This task was utilized excluding antenna six (CA06), using Briggs’s robust parameter of 0.5 and a channel width of 5 km s $^{-1}$. The resulting cube for each data set was cleaned, restored, and primary beam corrected. With the task MOMENT we created moment 0, 1, and 2 maps with a 3σ clipping.

The VLA data were reduced in the same manner as the ATCA data using CASA. First, we flagged data, calibrated the observations, and then subtracted the continuum. Secondly, we cleaned our data cubes using a robust parameter of 0.5 and then we corrected each data cube for the primary beam. Finally, we created moment 0, 1, and 2 maps with a 3σ clipping.

In this work we utilize the obtained integrated galaxy properties: HI fluxes, masses and diameters, and we show ATCA HI intensity distribution of Choir HIPASSJ1250–20. The full sample of the moments maps will be published and analysed in a subsequent paper.

3 RESULTS

3.1 The HIPASSJ1250–20 group

We present the HIPASSJ1250–20 (hereafter J1250) Choir group and its complexity as an illustration for our discussion throughout this work. The optical observations of J1250 were carried out with the Dark Energy Camera (DECam) on the CTIO Blanco 4-m telescope in the g , r , i , and z bands. The exposure times of the observations were 3000, 1920, 3000, and 6486 s, respectively; these are the deepest optical images of this group (based solely on the exposure time calculator, these images reach ~ 26 mag arcsec $^{-2}$ with S/N ~ 3). The optical images of similar depth for eight Choir

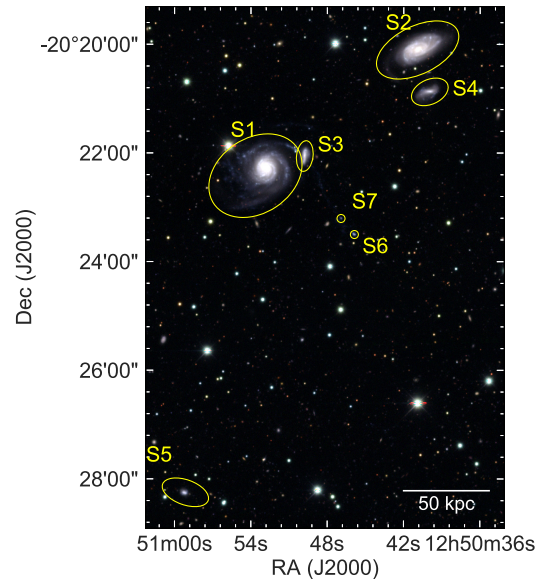


Figure 1. The DECam g , r , and i band colour composite of the Choir group HIPASSJ1250–20. Galaxies within the yellow ellipses are the group members, marked from S1 to S7 as in Sweet et al. (2013). The scale bar in the bottom right corner shows 50 kpc. North is up, east is to the left.

groups will be included in the next paper. In Fig. 1, we show the DECam g , r , and i colour composite image of J1250 group and labels of the group members from S1 to S7. These members were presented in Sweet et al. (2013): two large spiral galaxies (S1 and S2; respectively ESO575-G006 and ESO575-G004), three dwarf galaxies (S3, S4, and S5) and two small and compact H α emitters that they note as tidal dwarf candidates (S6 and S7).

We observed J1250 group with the ATCA and mapped its HI content. The HI observations are described in Section 2.3 and summarized in Table 1. Fig. 2 shows the HI column density overlaid on the optical colour composite image of J1250. The lowest shown HI column density, the white contour, is a 3σ detection and the HI distribution reveals a possible interaction between S1 and S2 galaxy; we find similar interaction through HI distribution in the HIPASSJ1408–21 group. We must note that because of the large elongation of the synthesized beam (as the source is at -20 deg in Declination), this could be a result of the beam smearing. We find no evidence of interaction between S1 and S2 galaxy in the optical or H α imaging at the sensitivity with which they were imaged (while we do find interaction in optical and H α in the HIPASSJ1059–09 and HIPASSJ1026–19 group). We find that the HI emission is off centre in S2 galaxy. The total HI mass of J1250 is $\log M_{\text{HI}} [M_{\odot}] = 10.51 \pm 0.11$ (Sweet et al. 2013), which is in agreement with the mass quoted in the HIPASS catalogue: $\log M_{\text{HI}} [M_{\odot}] = 10.39 \pm 0.11$ (Meyer et al. 2004). The slight difference in obtained mass is due to the difference in adopted group distance, Meyer et al. (2004) use 100 Mpc, while we are using 114 Mpc as in Sweet et al. (2013). With our ATCA observations we recover the HI flux detected with the single dish telescope and the sum of the masses of (S1 + S2) is $\log M_{\text{HI}} [M_{\odot}] = 10.53 \pm 0.2$. Using the ATCA data we can separate the HI flux in S1 (HI emission between 7630 and 7860 km s $^{-1}$) and S2 (HI emission between 7685 and 7880 km s $^{-1}$) galaxies and we find that the HIPASS source is mistakenly assigned to S2 galaxy in the HyperLeda data base. We show that the majority of the HI gas appears to be associated with S1 galaxy, moreover the S1 is an HI-rich galaxy whilst S2 is

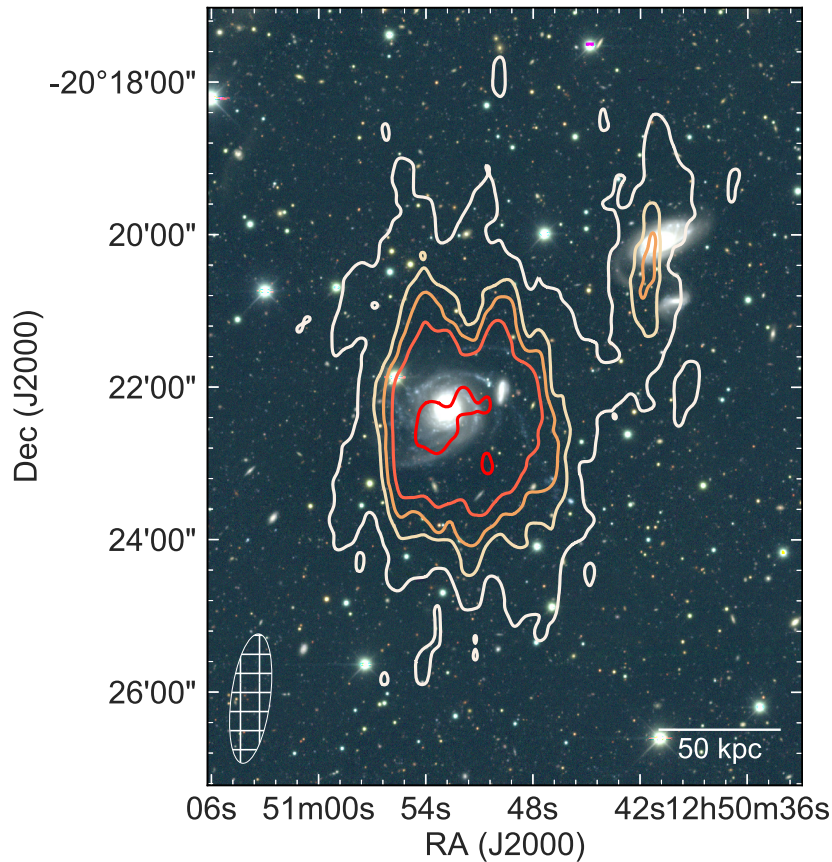


Figure 2. ATCA H I intensity distribution of HIPASSJ1250–20 galaxy group shown by the contours overlaid on the DECam *g*, *r*, and *i* colour composite image. The white contour is the lowest shown H I column density and corresponds to a 3σ detection over a velocity width of 15 km s^{-1} , equal to $3.5 \times 10^{19} \text{ cm}^{-2}$ (0.1 Jy km s^{-1}). The other contours shown correspond to the H I column density of 14, 20, 28, and $45 \times 10^{19} \text{ cm}^{-2}$ (0.4, 0.57, 0.8, $1.26 \text{ Jy km s}^{-1}$). The synthesized beam is shown in the bottom left corner. The scale bar in the bottom right corner shows 50 kpc. North is up, east is to the left.

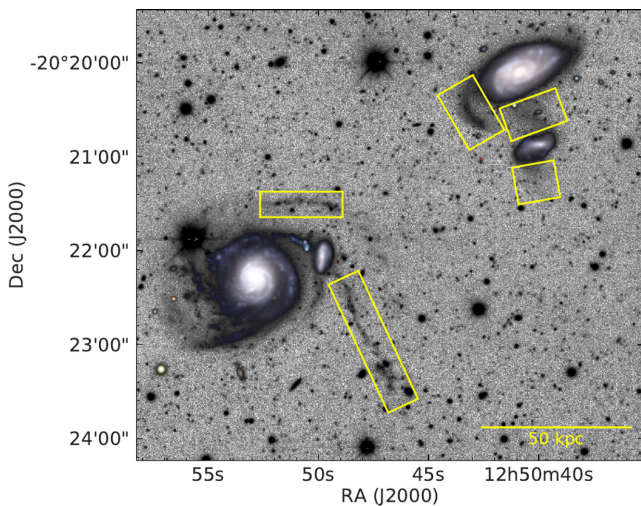


Figure 3. The DECam *g*-band image, adaptively smoothed to show the faint stellar streams and the diffuse light around galaxies in HIPASSJ1250–20 group. We show a colour inset to enhance the disc of each galaxy. The yellow rectangles mark the faint stellar streams. The scale bar in the bottom right corner shows 50 kpc. North is up, east is to the left.

an H I-poor galaxy. The dwarf galaxies S3, S6, and S7 are within the H I envelope associated with S1 galaxy. A small H I component associated with S2 galaxy coincides also with S4 dwarf galaxy (top right part in Fig. 2). Galaxy marked S5 is not detected within

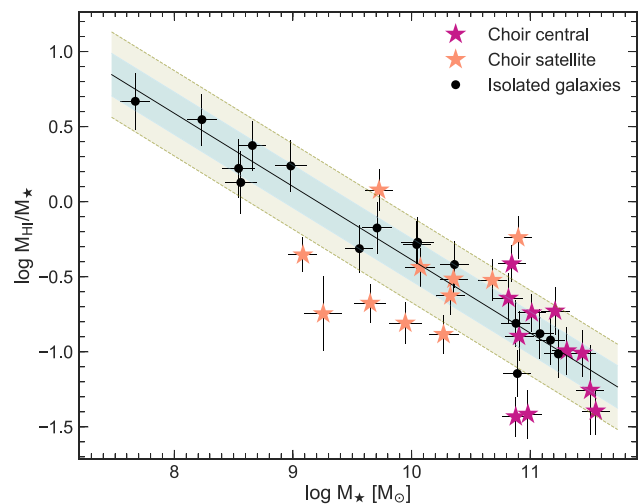


Figure 4. H I fraction versus stellar mass. The black dots are isolated galaxies. The magenta and orange stars correspond to the central and satellite galaxies in Choir groups, respectively. The solid line is a fit to the isolated galaxies, the blue shaded area corresponds to 1σ scatter, while the yellow shaded area shows 2σ scatter from the fit.

the ATCA primary beam. We do not have spectra of S3, S4, S5, and S6 galaxies however they are assumed to be the group members as they are detected in SINGG H α imaging. This imaging used filters with a bandwidth of ~ 30 Å which corresponds to ~ 3000 km s $^{-1}$ (Meurer et al. 2006; Sweet et al. 2013).

Both, S1 and S2 galaxies have comparable stellar masses, while the H I mass of S1 is ~ 7.6 times larger than the H I mass of S2. This is one of the groups where two galaxies have an equal probability of being the central galaxy (see next Section). The gas-mass fraction of S1 is -0.73 dex and it is within the 2σ scatter from the fit to the isolated galaxies while the gas-mass fraction of S2 is -1.42 dex, and it is more than 2σ lower from the fit to the isolated galaxies (see Fig. 4).

Fig. 3 shows the DECam g -band image which we adaptively smoothed to enhance the faint stellar streams around the galaxies in J1250 (illustrating the discussion in Section 3.6). The stellar streams around S1 galaxy (bottom left side in Fig. 3) have a blue colour and they are visible in the H α emission (fig. B10 in Sweet et al. 2013), also S6 and S7 galaxies are detected in GALEX All Sky Survey far-ultraviolet and near ultraviolet images. The stellar streams around S1 galaxy are possibly caused by a disrupted satellite galaxy. The streams around S2 galaxy (top right side in Fig. 3) have a red colour, they do not show emission in the H α imaging and they are possibly caused by a tidal interaction with S4 galaxy.

In this paper we present results from the analysis of similar quality H I data (listed in Table 1) for the other eight groups.

3.2 Galaxy properties

Analysing the interferometric observations from ATCA and VLA, we detected H I in 27 galaxies within nine Choir groups. For each galaxy we obtain their H I mass from their H I spectra using the standard formula:

$$M_{\text{HI}} [M_{\odot}] = 2.365 \times 10^5 D^2 F_{\text{HI}}, \quad (1)$$

where D is the distance to the galaxy (Mpc) and F_{HI} is the integrated flux density (Jy km s $^{-1}$). The distance to the each galaxy is assumed to be equal to the galaxy's group distance, as used in Meurer et al. (2006) and Sweet et al. (2013), based on the multipole attractor model (Mould et al. 2000). To determine the errors on the integrated flux density we follow the prescriptions by Koribalski et al. (2004), whilst we assume a 10 per cent error on the distance following Meurer et al. (2006). We use standard error propagation on the integrated flux density and the distance to determine the uncertainty of the H I mass. The Choir galaxy H I properties are summarized in Table A1.

We use dust-corrected R -band AB magnitudes (Meurer et al. 2006) to determine stellar masses (M_{\star}) using the relation between M_{\star}/L_R and absolute R -band magnitude, as derived for the SINGG sample, equation (4) in Wong et al. (2016). We note that using near-infrared bands for obtaining stellar masses would be more precise since they are less affected by dust extinction and recent star formation, however we do not have K_s fluxes for the entire sample of galaxies. In order to check the reliability of R -band stellar masses, we compute K_s stellar masses where possible, using images from the 2 Micron All Sky Survey (2MASS; Skrutskie et al. 2006) and deriving stellar masses as prescribed by Wen et al. (2013). On average, there is good agreement between the stellar masses obtained with the R band and K_s band, with a mean difference of 0.3 dex.

We derive the SFR, as in Sweet et al. (2013), using the H α luminosities which are corrected for Galactic extinction and [N II] contamination (see details of the flux measurement in Meurer et al.

2006). To check for any Active Galactic Nuclei (AGNs) contamination we identify the dominant source of ionization in the Choir galaxies using the 'BPT' emission line diagnostic diagram of Baldwin, Phillips & Terlevich (1981). Using the emission line fluxes from Sweet et al. (2014), we examine the position of the Choir galaxies in BPT diagram using the line ratios: [N II]/H α versus [O III]/H β (Kewley et al. 2001; Kauffmann et al. 2003) and identify four galaxies whose emission is dominated by AGNs. We also use available classifications from Sweet et al. (2013) which is noted from the NED and find three more galaxies dominated by AGNs radiation. We excluded these galaxies from the analysis of the specific star formation.

We show the relations between our sample of isolated galaxies and Choir galaxies in terms of gas-mass fraction (M_{HI}/M_{\star}), specific star formation rate (sSFR = SFR/ M_{\star}) and star formation efficiency (SFE = SFR/ M_{HI}). These relations are analysed by dividing Choir galaxies into group central and satellite galaxies. We denote the brightest group galaxy (based on R -band absolute magnitude) as the central galaxy. For groups with two galaxies of similar R -band magnitudes within uncertainties: HIPASSJ1051–17, HIPASSJ2027–51, and HIPASSJ1250–20, two galaxies have an equal probability to be central galaxy. In these three cases we denote both galaxies as centrals. All other galaxies within the same group are treated as satellites.

Fig. 4 presents the H I fraction versus stellar mass relation for the sample of isolated galaxies. We fit the isolated galaxies in this plane with HYPERFIT² package (Robotham & Obreschkow 2015) and use the dispersion about this fit (vertical scatter) to parametrize how far off of this relationship the Choir galaxies deviate. In terms of gas-mass fraction, only one Choir central galaxy has a higher gas-mass fraction than the isolated galaxies. There are two centrals with smaller gas-mass fraction than the isolated galaxies (that is, which deviate more than 2σ from the fitted relation) however, these two central galaxies are special cases. These two galaxies are part of groups (HIPASSJ1051–17 and HIPASSJ1250–20) where we have two central galaxies with similar stellar mass thus they have 50 per cent probability of being central galaxies in the first place. Satellites are more scattered around the relation; we find seven satellite galaxies (63 per cent) more than 2σ from the relation. Five of these satellite galaxies have lower H I content, and two have higher H I content with respect to the similar mass isolated galaxies. These are indications that in groups with one central galaxy, the H I gas will be depleted first in galaxies with the lower stellar masses (such satellites are in HIPASSJ1059–09, HIPASSJ0258–74, and HIPASSJ1026–19 group). In HIPASSJ1026–19 there is an ongoing tidal interaction between S1 and S2 thus tidal stripping maybe the main gas removal mechanism that is acting on S2. In groups with two central galaxies the gas consumption is more complicated; central galaxies can have similar or vastly different gas content.

Fig. 5 shows the specific SFR for the entire Choirs sample and isolated galaxies, where colours represent morphological classification of Choir galaxies. We show the HYPERFIT fit to the isolated galaxies and the associated 1σ and 2σ scatter. It has been shown that the suppression of star formation begins at group densities (Lewis et al. 2002). We do find that the majority of the dwarf satellite galaxies ($M_{\star} < 10^{9.5} M_{\odot}$) have lower specific SFR than the isolated dwarf galaxies. Comparing the star formation of central and satellite galaxies, we find that central galaxies are less scattered, only one deviate more than 2σ from the fit. We find the galaxies

²hyperfit.icrar.org

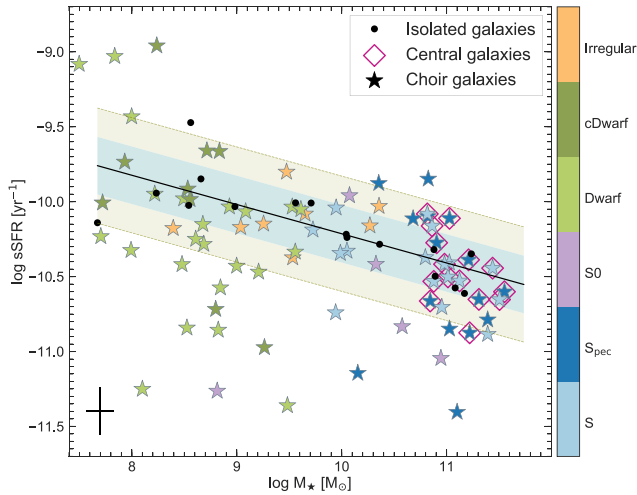


Figure 5. Specific SFR versus stellar mass for all Choir galaxies. The black dots are isolated galaxies. The star symbols are all galaxies within Choir groups coloured by their morphology as indicated on colour bar (from top to bottom: Spiral, Spiral peculiar, Lenticular, Dwarf, Compact Dwarf, and Irregular). The magenta diamonds around star symbols are central Choir galaxies. The solid line is a fit to the isolated galaxies; the blue shaded area corresponds to 1σ scatter, while the yellow shaded area shows 2σ scatter from the fit. The average error bar is shown in the bottom left corner. The morphologies of the isolated galaxies are shown in Table A2.

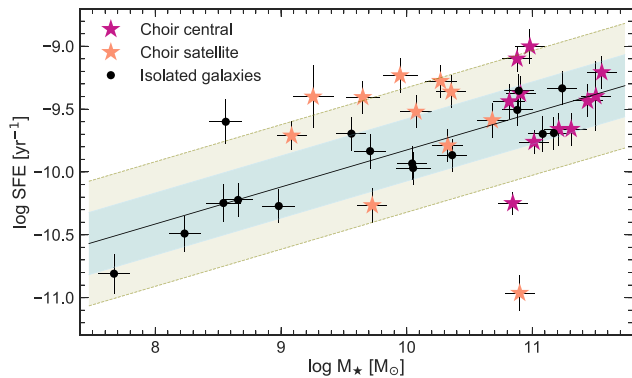


Figure 6. Star formation efficiency, defined as SFR divided by H I mass. The black dots are isolated galaxies. The magenta and orange stars correspond to the central and satellite galaxies in Choir groups, respectively. The solid line is a fit to the isolated galaxies; the blue shaded area corresponds to 1σ scatter, while the yellow shaded area shows 2σ scatter from the fit.

that deviate more than 2σ from the relation and have a high specific SFR are three dwarf satellites and two peculiar spirals. However, we find larger number of galaxies with a lower specific SFR (compared to galaxies of the same stellar mass found in isolation). These galaxies are mostly dwarf satellite galaxies, as well as lenticular and spirals satellite galaxies.

The star formation efficiency for Choirs and isolated galaxies is shown in Fig. 6. We fit the isolated galaxies using the HYPERFIT package. Two central galaxies (HIPASSJ1051–17:S1 and HIPASSJ1250–20:S2) deviate more than 2σ from the fit. HIPASSJ1051–17:S1 exhibits lower star formation efficiency due to a higher gas-mass fraction, and HIPASSJ1250–20:S2 has higher specific star formation efficiency due to a lower gas-mass fraction. We illustrate H I fraction offset versus specific SFR offset in Fig. 7.

On the x-axis the galaxy’s offset from the fit to the specific SFR ($\Delta \log \text{sSFR}$) and on the y-axis the galaxy’s offset from the fit to the H I fraction ($\Delta \log M_{\text{HI}}/M_*$). The best-fitting relations are placed in Table 2.

We summarize the mean properties of the Choir central, Choir satellite, and isolated galaxies in Table 3. The mean properties of isolated galaxies are separated into three bins of stellar mass which are matched to correspond to the stellar mass limits of Choir satellites ($8.8 < \log M_* [M_\odot] < 10.5$) and Choir central galaxies ($\log M_* [M_\odot] > 10.5$). The mean value of the gas-mass fraction for satellite galaxies and the ones in isolation differ, they are -0.52 and -0.28 dex respectively; however, due to the large scatter these values are in agreement within 1σ . Although there is no difference in the mean values, the scatter is considerably larger for the group galaxies, and actually $\sim 1/3$ are somewhat H I deficient (as described in Section 3.5). Examining the H I fraction, specific SFR and star formation efficiency of Choir galaxies yielded a number of galaxy outliers which should be investigated on a group by group basis, which we will do in a future paper.

3.3 Size–mass relation

There is a tight correlation between the H I diameter of a galaxy defined at a surface density of $1 M_\odot \text{ pc}^{-2}$ and H I mass (Broeils & Rhee 1997; Verheijen & Sancisi 2001). The derived size–mass relation by Broeils & Rhee (1997) for 108 galaxies; $\log D_{\text{HI}} = 0.51 \log(M_{\text{HI}}) - 3.32$ was recently updated by Wang et al. (2016) using a sample of 562 galaxies who found roughly the same result: $\log D_{\text{HI}} = 0.506 \log(M_{\text{HI}}) - 3.293$. It has been shown that the $D_{\text{HI}}-M_{\text{HI}}$ relation holds for different galaxy morphologies and for H I-rich or relatively H I-poor galaxies (Broeils & Rhee 1997; Wang et al. 2016).

We examine Choir galaxies and their position on the $D_{\text{HI}}-M_{\text{HI}}$ relation. We measure the H I diameter from the H I column density maps following prescriptions by Wang et al. (2016). First we deproject H I column density maps by multiplying them by $\cos i \sim b/a$, where i is the inclination angle of the galaxy’s disc and b/a is its axial ratio obtained from R-band imaging (Meurer et al. 2006; Sweet et al. 2013). We map the contour density of $1.2 \times 10^{20} \text{ cm}^{-2}$ equal to $1 M_\odot \text{ pc}^{-2}$, and measure the diameter of the contour by fitting it with an ellipse using the KMPFIT of the KAPTEYN PYTHON package (Terlou & Vogelaar 2015), see Appendix B for example maps and the obtained fit for HIPASSJ1250–20 group. We use standard error propagation of the uncertainties given by the fit to place errors on the H I diameter. We then correct the obtained H I diameters ($D_{\text{HI},0}$) for beam smearing effects (the best suitable for circular beam shape), as described in Wang et al. (2013, 2016):

$$D_{\text{HI}} = \sqrt{D_{\text{HI},0}^2 - B_{\text{maj}} \times B_{\text{min}}}$$

where the B_{maj} and B_{min} are, respectively, synthesized beam sizes of the major and minor axes, $D_{\text{HI},0}$ is uncorrected and D_{HI} is corrected H I diameter. The correction for most of the Choir galaxies is small and it reduces the diameter up to 5 per cent. The only exception is the galaxy HIPASSJ1250–20:S2 for which the correction amounts to ~ 32 per cent. This large correction is due to the fact that the major axis of the synthesized beam is larger than the measured H I diameter at a surface density of $1 M_\odot \text{ pc}^{-2}$. There were several galaxies for which the H I diameter is not measured, these are small satellite galaxies and one small central galaxy HIPASSJ1051–17:S2 – which is part of a group with two centrals. These galaxies were excluded from Fig. 8 because their H I emission was not detected at a surface density of $1 M_\odot \text{ pc}^{-2}$.

Fig. 8 shows the relation between the total H I mass and the diameter of the H I disc of the measured Choir galaxies. The H I size–mass

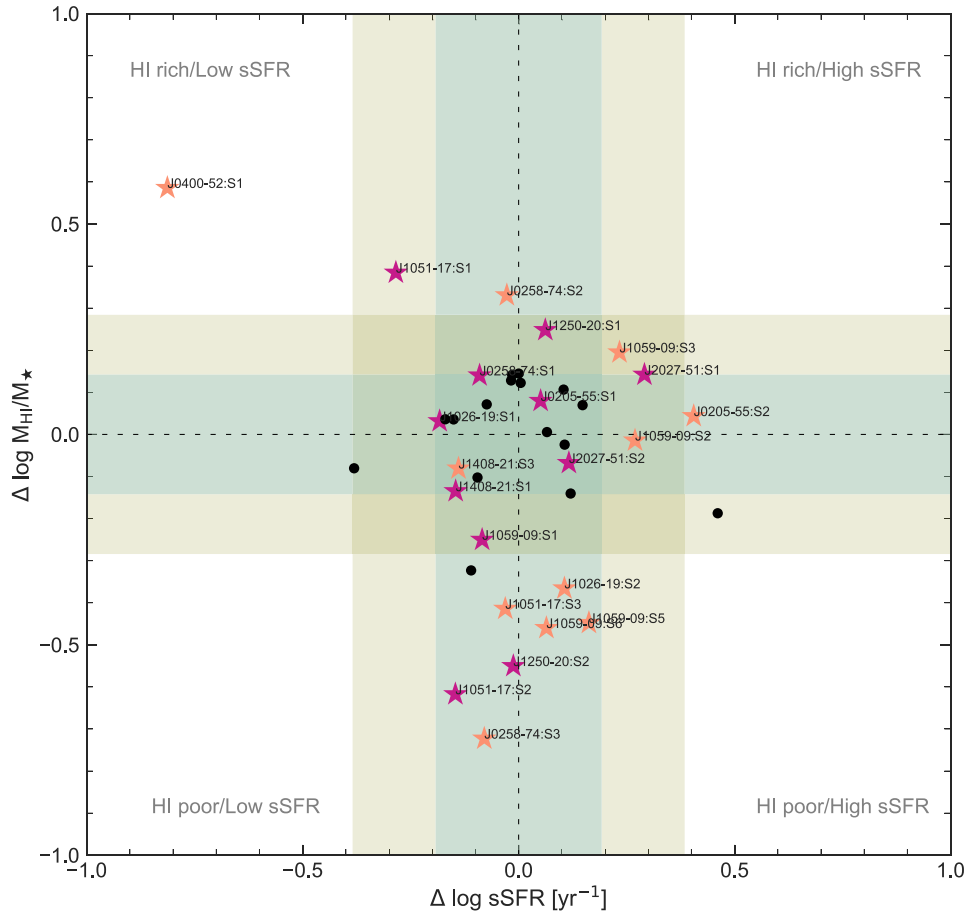


Figure 7. H I fraction offset versus specific SFR offset. The magenta and orange stars correspond to the central and satellite galaxies in Choir groups, respectively (galaxy labels are truncated versions of their ID names). The black dots are isolated galaxies. The dashed lines show zero lines, which correspond to the best-fitting lines of gas-mass fraction and specific SFR, for the control sample of isolated galaxies (see Figs 4 and 5). The blue shaded area shows 1σ scatter, while the yellow shaded area shows 2σ scatter from the corresponding fit. Each galaxy is shown by its distance from the fit line to the H I fraction and specific SFR. Figure has four quadrants as indicated in the corners. In the bottom part of the Figure we find gas-poor galaxies, we can see that they have average specific SFR, which complements our discussion in Section 3, illustrating that high star formation efficiency of these galaxies is due to their lower gas-mass fraction. In contrast, galaxies that have low specific star formation efficiency (see Fig. 6) in this figure are in the upper left quadrant. The only outlier in the both properties is galaxy J0400-52:S1 (galaxy’s morphology: SA(rs)cd pec), this is an H I-rich galaxy with a low specific SFR (Džudžar et al. in preparation).

Table 2. The best-fitting relations.

HYPERFIT relation	1σ
$\log(M_{\text{HI}}/M_*) = (4.49 \pm 0.28) - (0.49 \pm 0.03) \times \log M_*$	0.14
$\log \text{sSFR} = (-8.26 \pm 0.39) - (0.195 \pm 0.039) \times \log M_*$	0.19
$\log \text{SFE} = (-12.77 \pm 0.50) + (0.29 \pm 0.05) \times \log M_*$	0.25
$\log M_{\text{HI}} = (4.59 \pm 0.28) - (0.25 \pm 0.01) \times M_R$	0.143

The best-fitting relations as obtained from HYPERFIT and 1σ scatter about the fit. The relations are respectively: H I fraction versus stellar mass (Fig. 4); Specific SFR versus stellar mass (Fig. 5); Star formation efficiency versus stellar mass (Fig. 6), and the measured H I mass versus the R -band magnitude (Fig. 10).

relation prescribed by Wang et al. (2016) is shown as a solid line in Fig. 8, and the dashed lines correspond to their 3σ scatter which translates into 0.18 dex. We find three out of 15 measured Choir galaxies to be scattered outside 3σ of the relation, and all three outliers are disturbed systems (black star symbols in Fig. 8). The two systems with the largest diameters: HIPASSJ1408-21:S1+S3 and HIPASSJ1026-19:S1+S2 are merging galaxies and cannot be

separated into individual galaxies at a surface density of $1 M_{\odot} \text{pc}^{-2}$. Thus the measured H I diameter encompasses both of them. HIPASSJ0400-52:S1 is also disturbed, it shows an H I offset from the stellar centre and has a large asymmetry of the H I distribution (Džudžar et al. in preparation). Outliers from Wang et al. (2016) also show a broad range of abnormalities, such as highly H I deficient galaxies, merger events and galaxies with an asymmetric H I distribution within a disc. On the other hand, galaxies that have such abnormalities do not necessarily have to reside off the H I size–mass relation. HIPASSJ1250-20:S2 and HIPASSJ1059:S1+S3 are such examples. The H I distribution of HIPASSJ1250-10:S2 is offset from the stellar centre, and extends towards the larger companion (see Fig. 2), and HIPASSJ1059:S1+S3 are tidally interacting galaxies.

The mean value of the D_{HI} for the central Choir galaxies is ~ 72 kpc, while for the satellites it is ~ 51 kpc. The three largest central galaxies are HIPASSJ1250-20:S1, HIPASSJ1051-17:S1, and HIPASSJ0205-55:S1 with D_{HI} sizes of 106, 100, and 98 kpc, respectively; their size is comparable to the largest galaxies from the Bluedisc sample from Wang et al. (2013).

Table 3. The mean properties of the Choir satellite, Choir central, and isolated galaxies.

Property	Choir central galaxies	Choir satellite galaxies	$\log M_\star (M_\odot) < 8.8$	$8.8 < \log M_\star (M_\odot) < 10.5$	$M_\star (M_\odot) > 10.5$
$\langle \log \text{SFE} \rangle (yr^{-1})$	-9.5 ± 0.3	-9.68 ± 0.49	-10.27 ± 0.39	-9.93 ± 0.18	-9.52 ± 0.16
$\langle \log(M_{\text{HI}}/M_\star) \rangle (\text{dex})$	-0.99 ± 0.33	-0.52 ± 0.27	0.37 ± 0.19	-0.28 ± 0.21	-0.92 ± 0.12
$\langle \log \text{sSFR} \rangle (yr^{-1})$	-10.47 ± 0.17	-10.21 ± 0.34	-9.89 ± 0.23	-10.14 ± 0.12	-10.47 ± 0.12
$\langle t_{\text{dep}} \rangle (\text{Gyr})$	4.3 ± 4.5^a	12.7 ± 25.5^a	26.7 ± 20.7	9.3 ± 4.4	3.5 ± 1.2

$\langle \log \text{SFE} \rangle$ – The mean star formation efficiency; $\langle \log(M_{\text{HI}}/M_\star) \rangle$ – The mean gas-mass fraction; $\langle \log \text{sSFR} \rangle$ – The mean specific star formation rate. Uncertainties quoted in the table are standard deviations from the mean value. Isolated galaxies are separated into three bins based on their stellar mass. The bin with the $\log M_\star [M_\odot] < 8.8$ contains five low-mass isolated galaxies, these galaxies can be compared to low-mass Choir galaxies only in terms of specific SFR, however we do not have Choir galaxies of such stellar masses that are detected in HI. The medium-mass isolated galaxies, six galaxies in the $8.8 < \log M_\star [M_\odot] < 10.5$ bin are comparable (based on their stellar mass) to the Choir satellite galaxies. The bin with the $\log M_\star [M_\odot] > 10.5$ contains five isolated galaxies that are comparable (based on their stellar mass) to the Choir central galaxies.

^aQuoted standard deviation is larger than the mean value due to a small number of galaxies and their large scatter.

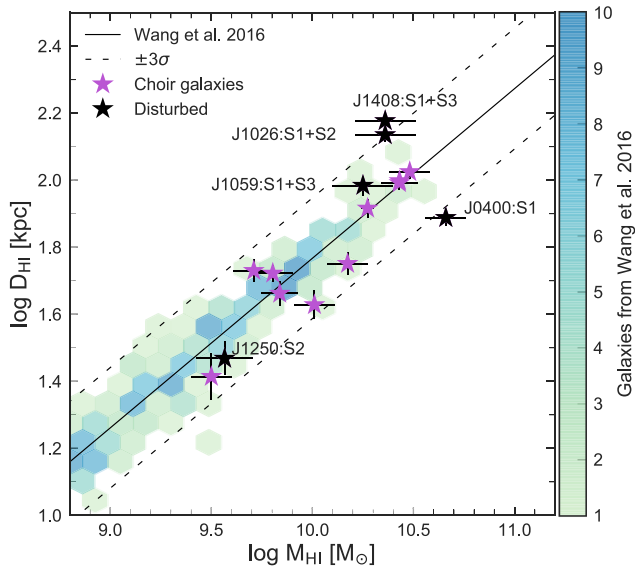


Figure 8. Size–mass relation. The hexagonal bins in the background represent galaxies from Wang et al. (2017), where colour bar shows how many galaxies are within the bin. The solid line (Wang et al. 2016) shows HI size–mass relation with dashed lines that mark 3σ scatter. The Choir galaxies are marked with stars, where black stars are identified disturbed systems (galaxy labels are truncated versions of their ID names). The outliers of the 3σ scatter are systems where at a surface density of $1 M_\odot \text{pc}^{-2}$ individual galaxies could not be resolved thus measurement includes two galaxies marked as J1408:S1+S3 and J1026:S1+S2. We identify one other disturbed galaxy: J0400:S1 which is just outside 3σ limit. J1059:S1+S3 are two galaxies which are tidally interacting and yet are within size-mass scatter, as well as possible interacting galaxy J1250:S2, described in Section 3.1.

3.4 Atomic gas depletion time

Assuming continuous gas consumption with the current rate of the star formation determined as measured by $H\alpha$, we determined atomic gas depletion time (t_{dep}) for Choir galaxies:

$$t_{\text{dep}} = M_{\text{HI}}/\text{SFR}. \quad (2)$$

Fig. 9 shows that all except one central and two satellite Choir galaxies have atomic depletion times smaller than the Hubble time (13.5 Gyr). Overall, the mean gas depletion time of all Choir galaxies (~ 8.5 Gyr) is smaller than that obtained for the sample of isolated galaxies (~ 12.9 Gyr), two thirds of the isolated galaxies have depletion times smaller than the Hubble time. We did not find any starburst time-scales (smaller than 1 Gyr) that would indicate fast gas exhaus-

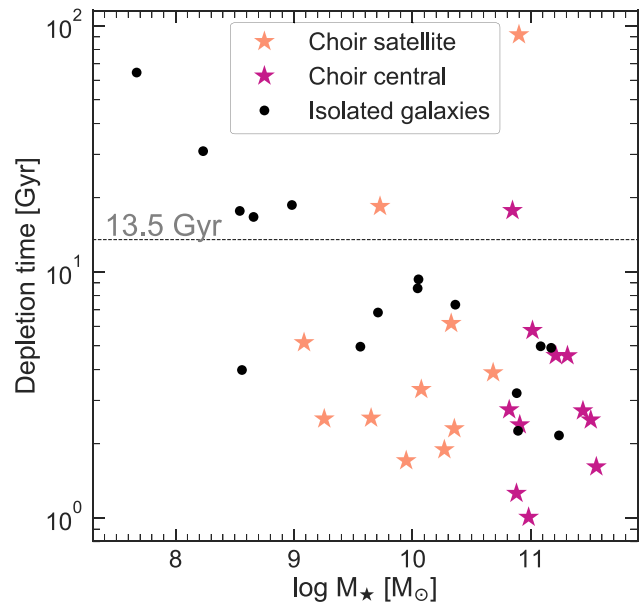


Figure 9. The HI depletion time versus stellar mass. The black dots are isolated galaxies. The magenta and orange stars correspond to the central and satellite galaxies in Choir groups, respectively. The horizontal dashed line marks Hubble time (13.5 Gyr).

tion and thus relatively rapid transformation of a gas-rich galaxy into a gas-poor one. The two centrals that have the smallest depletion time are HIPASSJ1250–20:S2 and HIPASSJ1051–17:S2, having depletion times of 1.0 Gyr and 1.3 Gyr, respectively. The short depletion times of HIPASSJ1250–20:S2 and HIPASSJ1051–17:S2 are attributed to their low gas-mass fraction (as seen in Fig. 4: $\log(M_{\text{HI}}/M_\star) \sim -1.4$ dex), whilst their specific SFR are comparable to those of isolated galaxies of the same stellar mass.

3.5 HI deficiency

We probe the HI content of the Choir galaxies to determine whether it differs from the HI content of the isolated galaxies. It has been shown that spiral galaxies have less HI in high density environments, for instance, near a galaxy cluster centre (Chung et al. 2009) or in HCG (Verdes-Montenegro et al. 2001), than spiral galaxies that reside in the field. However, gas-poor galaxies are also found in intermediate density environments (Hess & Wilcots 2013; Dénes et al. 2016) as well as in loose groups (Kilborn et al. 2005, 2009). The HI deficiency in high and intermediate density

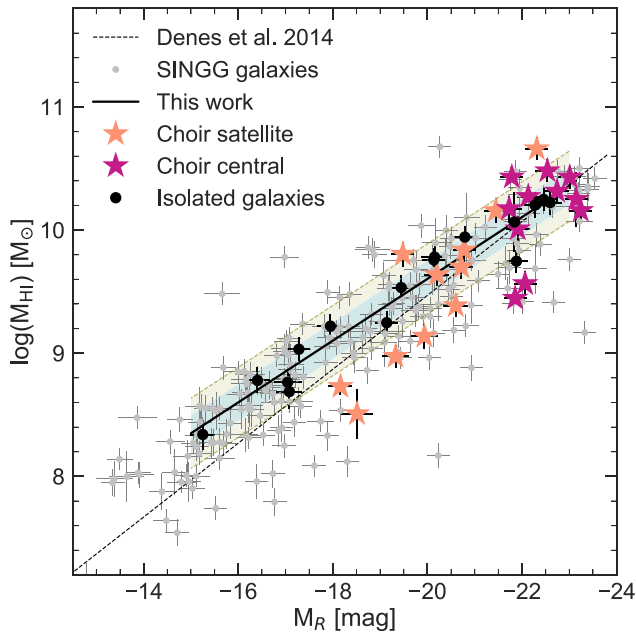


Figure 10. The measured H I mass versus the R -band magnitudes for the SINGG galaxies. The grey points represent SINGG galaxy sample (single detected galaxies in the SINGG field of view). The black points are isolated galaxies. The magenta and orange stars correspond to the central and satellite galaxies in Choir groups, respectively. The solid line is the fit to the sample of isolated galaxies, the blue shaded area corresponds to 1σ scatter, while the yellow shaded area shows 2σ scatter. The dashed line shows the scaling relation prescribed by Dénes et al. (2014). The 1σ scatter from the scaling relation amounts to 0.143 dex.

environments is related to the gas removal mechanisms either by gravitational interactions (tidal stripping e.g. Yun et al. 1994), or hydrodynamical interactions (ram-pressure stripping e.g. Gunn & Gott 1972; Rasmussen et al. 2006).

The H I deficiency is defined as the difference between the derived H I mass from a scaling relation and the observed H I mass (Haynes & Giovanelli 1984):

$$\text{DEF}_{\text{HI}} = \log \left(M_{\text{HI}}^{\text{expected}} \right) - \log \left(M_{\text{HI}}^{\text{observed}} \right), \quad (3)$$

where $\log(M_{\text{HI}}^{\text{expected}})$ is the logarithm of the derived H I mass based on the optical properties of a galaxy and $\log(M_{\text{HI}}^{\text{observed}})$ is the logarithm of the measured H I mass. A galaxy is considered to be H I excess or H I deficient with deficiency values below -0.3 dex or above 0.3 dex (Verdes-Montenegro et al. 2001; Kilborn et al. 2009). Lutz et al. (2017) use a slightly higher value of ± 0.4 dex whilst Dénes et al. (2016) and Wolfinger et al. (2016) use ± 0.6 dex to define the most H I deficient and the most H I excess, respectively.

The global H I deficiency of Choir groups, based on the total H I group mass obtained from HIPASS, was studied by Sweet et al. (2013) and they found that these groups are not significantly H I deficient. This is in contrast to HCG where Verdes-Montenegro et al. (2001) obtained average H I deficiency of 0.4 dex (although HCGs are optically selected groups and morphologically more evolved). Sweet et al. (2013) concluded that the Choir groups represent an early stage of a group assembly, similar to the M81 group.

In contrast, we derive the H I deficiency for the individual Choir galaxies, comparing H I masses obtained from the resolved ATCA and VLA imaging with the presumed H I masses based on the SINGG R -band magnitudes. We obtain the H I deficiency through the scaling relation from the HYPERFIT fit to the SINGG galaxies,

see Fig. 10. The obtained scaling relation is

$$\log(M_{\text{HI}}) = (4.59 \pm 0.28) - (0.25 \pm 0.01)M_R. \quad (4)$$

We find that our relation is slightly shallower than the scaling relation of Dénes, Kilborn & Koribalski (2014) which was based on the optical photometry from HOPCAT (optical counterparts for H I Parkes All Sky Survey Catalogue from Doyle et al. 2005). The difference in slope could be due to several reasons: (a) An intrinsic difference between HOPCAT R -band magnitude (from SuperCosmos plates Doyle et al. 2005) and SINGG R -band magnitudes (from digital recordings Meurer et al. 2006); (b) We are using more strict isolation criteria than Dénes et al. (2014), thus it is less contaminated than the HOPCAT sample.

We compare the optical and H I properties of Choir galaxies to the entire SINGG galaxy sample and find that the Choir galaxies are scattered within its overall distribution (see Fig. 10). We adopt the H I deficiency criteria from the literature, where galaxies with DEF_{HI} above -0.3 dex are H I excess, and below 0.3 dex are H I deficient. We find that 52 per cent of our galaxies have normal H I content (between -0.3 and 0.3 dex). We find that one Choir central galaxy out of 11 is H I excess galaxy, ($\text{DEF}_{\text{HI}} = -0.38$ dex, as seen in Fig. 10). Two centrals are H I deficient, having DEF_{HI} of 0.56 and 0.62 dex. We find that two satellites are H I excess, four are within the scatter and five are H I deficient. HIPASSJ0258–74:S3 has more than four times less H I than expected from the scaling relation, which makes it the most H I deficient galaxy in our sample. Analysing separately central and satellite galaxies, we obtain average deficiency values for galaxies within Choir groups: $\text{DEF}_{\text{HI}} = 0.06$ dex and $\text{DEF}_{\text{HI}} = 0.13$ dex, respectively.

The deficiency of the entire SINGG sample is shifted towards being more gas poor with the mean deficiency of 0.11 dex. The obtained result for the SINGG sample is expected since galaxies in the sample are within different environments, while isolated galaxies are ‘nurture-free’ and thus their gas content is not influenced by the environment. Choir satellite galaxies have a similar or lower H I mass than isolated galaxies of the same absolute magnitude, with two exceptions. Conversely, Choir central galaxies have similar H I mass than isolated galaxies of the same absolute magnitude, with three exceptions. The mean deficiency of the isolated galaxies is similar to that of the Choir central galaxies, while satellites are on average more H I deficient. This difference in H I deficiency is indicating that satellites are going to be depleted first in gas-rich groups, and likely reason for H I deficiency in Choir groups is tidal stripping.

3.6 Physical processes

What physical processes could be acting in Choir groups? We find groups which are showing signs of past or ongoing gravitational interactions as well as groups without evidence of interaction. We comment on a possible gas accretion from the gas-rich mergers and gas refuelling from the cosmic web. We also determine the global stability parameter of the Choir galaxies to determine whether the angular momenta (an internal galaxy process) is responsible for keeping gas in the disc of gas-rich galaxies.

3.6.1 Galaxy interactions and gas accretion

We visually examined deep³ optical DECAM g -band images and we found stellar streams as possible tracers of recent accretion of

³Preliminary surface brightness limits, based on the DECAM exposure time calculator is between 25 – 27 mag arcsec⁻².

gas from minor gas-rich mergers (e.g. see Fig. 3). In two groups faint stellar streams are visible: HIPASSJ0400–51 has faint features with g -band magnitude of ~ 22 mag and surface brightness ~ 25 mag arcsec $^{-2}$; HIPASSJ1250–20 has faint features with g -band magnitude of ~ 23 mag and surface brightness ~ 26 mag arcsec $^{-2}$, thus it is possible that they accreted gas through past gas-rich mergers. We presented HIPASSJ1250–20 group in Section 3.1 as an example of a possible accretion on to S1 galaxy. Gas accretion from minor mergers is shown not to be significant source of refuelling the gas content in galaxies (Sancisi et al. 2008; Di Teodoro & Fraternali 2014) since it solely cannot be enough to sustain long star formation. Thus, the largest source of accretion in theory is the ‘cold mode’ accretion (Kereš et al. 2005), where gas is accreted from the cosmic web filaments. However, the current observations are not sensitive enough to probe this extremely low HI column density $\sim 10^{16}$ cm $^{-2}$ (Popping et al. 2009) at which HI gas within filaments is expected to be detected.

In four Choir groups (HIPASSJ1026–19, HIPASSJ1059–09, HIPASSJ1250–20, and HIPASSJ1408–21), tidal interactions are evident either in optical images or in HI gas distribution or both, and yet these groups do not show extreme gas depletion. Groups with evident tidal interactions have galaxies with lower gas-mass fractions which could have experienced tidal stripping in the past. The best cases for ongoing tidal stripping as a main mechanism for gas removal is in group HIPASSJ1250–20 and HIPASSJ1026–19. Since the amount of the gas is not heavily depleted we can assume that these interactions are in an early phase. We will present in depth analysis of these groups in a subsequent paper.

3.6.2 Global stability parameter q

Rather than invoking accretion as gas replenishment, since Choir groups are in an early stage of group formation, we can ask ourselves are the Choir galaxies instead retaining their gas content due to their intrinsic properties? Obreschkow et al. (2016) show that angular momentum regulates the HI content of a galaxy, and show a relation between the mass fraction and the global stability parameter for a sample of isolated disc galaxies. Murugesan et al. (2019) show that the HI spirals in low density environments are HI deficient due to their low specific angular momenta. Using a sample of HI eXtreme (HIX) galaxies, Lutz et al. (2017) have shown that extremely gas-rich galaxies accumulate and retain gas (building up large HI discs) due to high baryonic specific angular momentum which makes them less efficient in forming stars.

We evaluate the global stability parameter for eight Choir galaxies: six centrals and two satellites using the approximation given by Obreschkow et al. (2016) in order to determine whether gas-rich group galaxies are governed by this property. Obreschkow et al. (2016) define the global stability parameter q as: $q = j\sigma/(GM)$, where j is the baryonic specific angular momentum of the disc and its value can be approximated as $r_{\text{HI}}v_{\text{max}}$; σ is a velocity dispersion and as in Lutz et al. (2018) we assume its value of 11 km s $^{-1}$; G is the gravitational constant and M is the baryonic mass. The baryonic mass is defined as sum of the stellar mass, HI mass and the H $_2$ mass: $M = M_{\star} + 1.35(M_{\text{HI}} + M_{\text{H}_2})$. The factor 1.35 accounts for the helium and the H $_2$ fraction (M_{H_2}/M) is assumed to be 4 per cent (Obreschkow et al. 2016). In order to evaluate where galaxies lie on the mass fraction versus global stability parameter diagram we need the following galaxy properties: K_s -band stellar mass, rotational velocities, and the galaxy HI radius. With the available data we can calculate stability parameter for eight Choir galax-

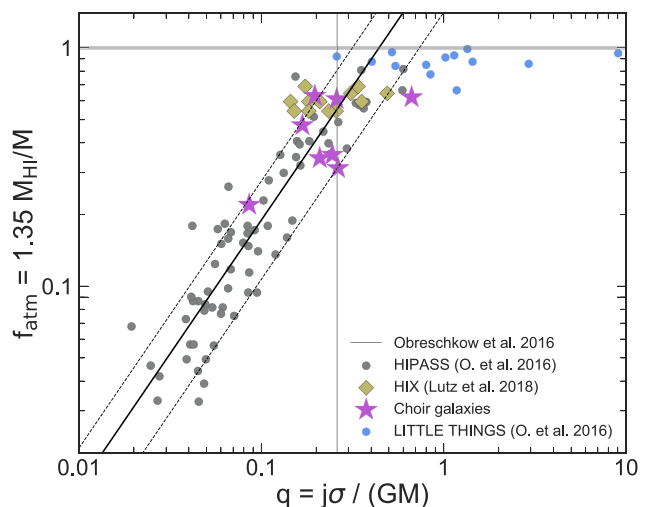


Figure 11. Mass fraction ($f_{\text{atm}} = 1.35M_{\text{HI}}/M$) as a function of a global stability parameter $q = j\sigma/(GM)$. The Choir galaxies are marked as purple stars. The black solid line corresponds to the relation given by Obreschkow et al. (2016) with a 40 per cent scatter marked with the dashed lines. The vertical line shows limit where for values of $q > 1/(2^{1/2}e)$ and dwarf galaxies are close to $f_{\text{atm}} = 1$ (Obreschkow et al. 2016). The grey diamonds are galaxies from the HIX sample (Lutz et al. 2018). Galaxies from the HIPASS and LITTLE THINGS from Obreschkow et al. (2016) are shown with the grey and blue points, respectively.

ies. We derive the K_s -band magnitudes from the 2MASS images (Skrutskie et al. 2006), and calculate stellar masses following Wen et al. (2013). We determine the rotational velocities using the 20 per cent widths of HI emission line profiles following the prescription of Meyer et al. (2008). The measurement of the HI radius is described in the Section 3.3.

In Fig. 11 we show that all gas-rich Choir galaxies follow the analytical model derived by Obreschkow et al. (2016) for isolated disc galaxies, and are in agreement with the central, star-forming, disc-dominated galaxies from the semi-analytic model of galaxy formation (DARK SAGE; Stevens et al. 2018). The Choir galaxies with high HI mass fractions have similar q values to the HIX galaxies.

In the DARK SAGE semi-analytic model galaxies are seen to lie below the $f_{\text{atm}}-q$ relation due to merger-queenching (central galaxies) and ram-pressure stripping (satellite galaxies). These effects drastically reduce f_{atm} in galaxies while q is only slightly affected (Stevens et al. 2018), which would cause galaxies to move downwards on the Fig. 11. Observationally, the study of the $f_{\text{atm}}-q$ relation in compact groups and clusters have not been performed yet.

We conclude that, at least partially, the gas-rich Choir galaxies are keeping their gas in the disc due to higher specific angular momenta. This result shows that in small gas-rich groups, such as Choirs, the internal galaxy properties are dominating over a group impact on gas-rich galaxies since they follow the $f_{\text{atm}}-q$ relation.

4 DISCUSSION

The main cause of disturbances in galaxy groups is tidal interactions, and it is still an open question whether ram-pressure stripping occurs in groups (Westmeier et al. 2011; Rasmussen et al. 2012; Brown et al. 2017; Stevens & Brown 2017). Studying individual galaxies in large loose groups, Kilborn et al. (2009) found that the HI deficient galaxies are likely to be within a projected distance of 1 Mpc from

the group centre. As galaxy groups grow in number of members they are more likely to have H I deficient galaxies (Hess & Wilcots 2013). Based on the degree of H I disturbance and deficiency in 72 systems, Verdes-Montenegro et al. (2001) proposed an evolutionary scenario for HCG in phases: phase one is the least evolved and shows a relatively unperturbed H I distribution; in phase two, tidal features become apparent due to galaxy interactions; and in phase three, H I is stripped from some galaxies, ending up either in the intragroup medium or forming a large envelope around the group. Combining observations from the Very Large Array and Green Bank Telescope of 22 HCGs, Borthakur, Yun & Verdes-Montenegro (2010) found that the amount of detected diffuse gas was larger in the final phase of the group evolution with respect to phase one or two. We are starting to combine the puzzle of galaxy group evolutionary stages, from young gas-rich groups that are coming together for the first time (Stierwalt et al. 2017), all the way to the old fossil groups with a large central elliptical galaxy but no obvious companions (Ponman et al. 1994; Jones et al. 2003).

Our H I selected ‘Choirs’ groups usually consist of one or two large spiral galaxies and a number of smaller galaxies. The central galaxies have on average normal gas content, unlike that typically found in more compact groups or clusters. Here we have been considering possible scenarios that can explain their H I gas content. H I-rich central galaxies could be a result of H I-rich mergers and/or gas accretion from the intrafilament medium (Wang et al. 2015; Janowiecki et al. 2017; Kleiner et al. 2017). However, gas accretion from minor mergers is thought not to be significant, Sancisi et al. (2008) and Di Teodoro & Fraternali (2014) estimate (for spiral galaxies from the WHISP sample) a maximum gas accretion rate to be 0.1–0.2 and 0.28 $M_{\odot} \text{ yr}^{-1}$, respectively, which is not enough to sustain star formation. We find a number of dwarf galaxies around the large Choir spiral galaxies, however we do not detect H I gas in all these dwarf galaxies. The H I flux from the HIPASS survey yielded the total flux of each group. By a comparison of the total flux from the HIPASS and the resolved H I fluxes of each detected galaxy in a group from the ATCA, we find that the majority of the H I content is within the central galaxies.

Sweet et al. (2013) stated that eight groups from the Choir sample can be considered as Local Group (LG) analogous in terms of their morphology and magnitude. They note that in terms of compactness Choirs are more compact than the LG and in terms of H I content Choirs are more gas-rich than LG. Our resolved study of H I content is in agreement with Sweet et al. (2013). We make a hypothesis of how LG would look like if it was placed at a mean Choir distance of 87 Mpc. The sum of the H I masses of Andromeda, M33, Milky Way, and neglecting all other dwarf galaxies would be $\sim 13.4 \times 10^9 M_{\odot}$ (Cram, Roberts & Whitehurst 1980; Carignan et al. 2006; Tavakoli 2012; Nakanishi & Sofue 2016) which is above the 3σ detection limit in HIPASS (Sweet et al. 2013). In order to detect both large spiral galaxies, Andromeda and Milky Way within the SINGG FOV, they would have to have a certain orientation in space. The separation between them is ~ 784 kpc (Stanek & Garnavich 1998) which is ~ 34 arcmin (face-on), at the distance of 87 Mpc, thus the separation is larger than SINGG FOV (~ 15 arcmin). We would be able to see them within a single SINGG FOV if we are viewing the Milky Way - Andromeda system under angle between ~ 55 and ~ 85 deg, because in this case the projected separation between the galaxies would be between 2 and 13 arcmin. Only in the stated case, the LG would be considered as a group with two central galaxies, since Milky Way and Andromeda have similar *R*-band magnitudes (Sweet et al. 2013). We would be able to see one smaller satellite M33 and a dwarf satellite Large Magellanic

Cloud (LMC) in SINGG because they are massive enough and are star-forming galaxies (Gratier et al. 2010; Garrison-Kimmel et al. 2018), although we would probably not resolve H I in LMC with our ATCA observations. In all other cases, we would observe Milky Way and Andromeda as single galaxies, (or they would be aligned one in front of the other) and their detection would be below the detection limit of 3σ in HIPASS.

We compare our gas-rich galaxies to gas-rich galaxies from the H IX sample (Lutz et al. 2018) in terms of their global stability parameter q . We find that the Choir galaxies with the higher global stability parameter, comparable to that of H IX galaxies, have stabilized the gas against the gravitational collapse which led to a build-up of their large H I sizes and masses. This led us to conclude that the evolution of these Choir galaxies is primarily governed by their internal properties and not by the group environment.

With upcoming surveys, such as WALLABY (Koribalski 2015), the number of gas-rich galaxy groups will increase and we will be able to conduct an in depth statistical study in order to understand the most common environment in the Universe.

5 SUMMARY AND CONCLUSIONS

In this paper we present an analysis of integrated H I properties for 27 galaxies within nine low-mass, gas-rich, late-type dominated groups denoted ‘Choirs’. We compare the Choir group galaxies to a sample of isolated galaxies in terms of gas-mass fraction, specific SFR, star formation efficiency, depletion time, and H I deficiency.

We find that central Choir galaxies have on average normal gas-mass fraction with respect to the isolated galaxies of the same stellar mass. The specific SFR of these central galaxies are similar to the galaxies in isolation. Using the H I size–mass relation we find that the most massive galaxies have the largest H I discs and fall neatly on to the Wang et al. (2016) relation. We find that all outliers are disturbed systems that are experiencing interactions. We find that satellite Choir galaxies have on average lower gas-mass fraction with respect to the isolated galaxies of the same stellar mass, with a number of exceptions. The specific SFR of Choir satellite galaxies is scattered with respect to the ones in isolation and we find that the majority of the dwarf satellite galaxies ($M_{*} < 10^{9.5} M_{\odot}$) have lower specific SFR than the isolated dwarf galaxies.

We comment on the physical processes that are acting in Choir groups:

(a) We find possible traces of recent or ongoing minor mergers in HIPASSJ0400–51:S1 and HIPASSJ1250–20:S1 (see Fig. 3) which could be responsible for an overall increase in their H I content. We find traces of past interactions in HIPASSJ1051–17 as the S1 galaxy is a polar ring galaxy (Kilborn et al. in preparation).

(b) In four galaxy groups: HIPASSJ1026–19, HIPASSJ1059–09, HIPASSJ1250–20, and HIPASSJ1408–21, tidal interactions are evident either in optical images, $H\alpha$ images or H I gas distribution or in some groups all of them. Tidal interactions maybe the main gas removal mechanism in galaxies HIPASSJ1026–19:S2 and HIPASSJ1250–20:S2.

(c) We do not find evidence of current tidal interactions in HIPASSJ0205–55, HIPASSJ0258–74, and HIPASSJ0207–51.

We determine the specific angular momentum for eight Choir galaxies (see Fig. 11) and find that seven of them have comparable values to the galaxies from the H IX sample (Lutz et al. 2018). It is possible that a higher specific angular momentum could explain how galaxies retain the large fraction of H I gas in their discs. We find that Choir galaxies lie on the $f_{\text{atm}}-q$ relation thus it is possible

that normal secular evolution is prevailing over the environmental influences on these galaxies.

We provided further evidence that the Choirs are in the early stages of a group assembly as stated in Sweet et al. (2013). This scenario is supported by the fact that we find galaxies with average gas content and specific SFR comparable to those galaxies found in isolation. In groups with two large galaxies of similar stellar mass, we find that either the HI gas content is evenly distributed amongst them or the HI gas content is vastly different: one galaxy being gas-rich, other galaxy being gas-poor. In groups with one large spiral galaxy and a number of smaller galaxies, we see that the HI-poor galaxies are those of a smaller stellar mass. These are indications that the HI gas will be depleted first in galaxies with the lower stellar mass. The overall HI content of Choir groups is higher than that of HCGs; nevertheless, we use the proposed evolutionary scenario for HCGs by Verdes-Montenegro et al. (2001), and we see that some Choir groups presented in this paper would be placed into phase 1: groups that contain average gas content (and gas-rich galaxies) and do not exhibit signs of interaction; and early phase 2: groups that contain galaxies that interact and contain HI deficient galaxies. We find no phase 3 Choir groups.

In a subsequent paper we will present an analysis of each group individually and we will discuss outliers, galaxy interactions, and the distribution of atomic and molecular gas in Choir groups. The majority of galaxies in the local Universe are within environments such as Choirs thus it is important to study this group regime in order to have a complete understanding of a galaxy evolution.

ACKNOWLEDGEMENTS

We thank the anonymous referee whose very detailed and constructive comments and suggestions improved this paper.

RD is supported by a Swinburne University Postgraduate Award (SUPRA) scholarship.

RD would like to thank Katinka Gereb for her help with the Very Large Array (VLA) data reduction using CASA; Katharina Lutz for providing values of the global stability parameter and mass fraction for the HIX galaxies; and Chandrashekar Murugesan for the helpful discussions.

This work benefited from the trip to The Kavil Institute for Astronomy and Astrophysics (KIAA) conference, RD would like to thank the Astronomical Society of Australia for providing a student grant for this trip.

The Australia Telescope Compact Array is part of the Australia Telescope National Facility which is funded by the Australian Government for operation as a National Facility managed by CSIRO.

This paper includes archived data obtained through the Australia Telescope Online Archive (<http://atoa.atnf.csiro.au>).

Parts of this research were conducted by the Australian Research Council Centre of Excellence for All Sky Astrophysics in 3 Dimensions (ASTRO 3D), through project number CE170100013.

The National Radio Astronomy Observatory is a facility of the National Science Foundation operated under cooperative agreement by Associated Universities, Inc.

Based on observations at Cerro Tololo Inter-American Observatory, National Optical Astronomy Observatory (NOAO Prop. AAT/13A/02; PI: Sarah M. Sweet), which is operated by the Association of Universities for Research in Astronomy (AURA) under a cooperative agreement with the National Science Foundation.

This research has made use of the NASA/IPAC Extragalactic Database (NED), which is operated by the Jet Propulsion Laboratory,

California Institute of Technology, under contract with the National Aeronautics and Space Administration.

This publication makes use of data products from the Two Micron All Sky Survey, which is a joint project of the University of Massachusetts and the Infrared Processing and Analysis Center/California Institute of Technology, funded by the National Aeronautics and Space Administration and the National Science Foundation.

This research has made use of the NASA/IPAC Infrared Science Archive, which is operated by the Jet Propulsion Laboratory, California Institute of Technology, under contract with the National Aeronautics and Space Administration.

This research has made use of the VizieR catalogue access tool, CDS, Strasbourg, France. The original description of the VizieR service was published in A&AS 143, 23.

This research has made use of PYTHON <https://www.python.org> and PYTHON packages: ASTROPY (Astropy Collaboration 2013), MATPLOTLIB <http://matplotlib.org/> (Hunter 2007), APLPY <https://aplp.github.io/>, NUMPY <http://www.numpy.org/> (Van Der Walt, Colbert & Varoquaux 2011) and SCIPY <https://www.scipy.org/> (Jones et al. 2001).

REFERENCES

- Argudo-Fernández M. et al., 2013, *A&A*, 560, A9
 Astropy Collaboration, 2013, *A&A*, 558, A33
 Audcent-Ross F. M. et al., 2018, *MNRAS*, 480, 119
 Baldwin J. A., Phillips M. M., Terlevich R., 1981, *PASP*, 93, 5
 Barnes D. G. et al., 2001, *MNRAS*, 322, 486
 Barsanti S. et al., 2018, *ApJ*, 857, 71
 Bekki K., 2008, *MNRAS*, 390, L24
 Berlind A. A. et al., 2006, *ApJS*, 167, 1
 Bigiel F., Blitz L., 2012, *ApJ*, 756, 183
 Blanton M. R., Eisenstein D., Hogg D. W., Schlegel D. J., Brinkmann J., 2005, *ApJ*, 629, 143
 Borthakur S., Yun M. S., Verdes-Montenegro L., 2010, *ApJ*, 710, 385
 Bosma A., 1981, *AJ*, 86, 1791
 Bosma A., 2017, in Knapen J. H., Lee J. C., Gil de Paz A., eds, *Astrophysics and Space Science Library*, Vol. 434. *Outskirts of Galaxies*. Springer-Verlag, Berlin, p. 209
 Broeils A. H., Rhee M.-H., 1997, *A&A*, 324, 877
 Brough S., Forbes D. A., Kilborn V. A., Couch W., 2006, *MNRAS*, 370, 1223
 Brown T. et al., 2017, *MNRAS*, 466, 1275
 Campbell D., van den Bosch F. C., Hearin A., Padmanabhan N., Berlind A., Mo H. J., Tinker J., Yang X., 2015, *MNRAS*, 452, 444
 Carignan C., Chemin L., Huchtmeier W. K., Lockman F. J., 2006, *ApJ*, 641, L109
 Carollo C. M. et al., 2016, *ApJ*, 818, 180
 Chung A., van Gorkom J. H., Kenney J. D. P., Crowl H., Vollmer B., 2009, *AJ*, 138, 1741
 Coziol R., Plauchu-Frayn I., 2007, *AJ*, 133, 2630
 Cram T. R., Roberts M. S., Whitehurst R. N., 1980, *A&AS*, 40, 215
 Davies L. J. M. et al., 2015, *MNRAS*, 452, 616
 Di Teodoro E. M., Fraternali F., 2014, *A&A*, 567, A68
 Doyle M. T. et al., 2005, *MNRAS*, 361, 34
 Dressler A., 1980, *ApJ*, 236, 351
 Dénes H., Kilborn V. A., Koribalski B. S., 2014, *MNRAS*, 444, 667
 Dénes H., Kilborn V. A., Koribalski B. S., Wong O. I., 2016, *MNRAS*, 455, 1294
 Eke V. R. et al., 2004, *MNRAS*, 348, 866
 Elagali A., Wong O. I., Oh S.-H., Staveley-Smith L., Koribalski B. S., Bekki K., Zwaan M., 2018, *MNRAS*, 476, 5681
 Garrison-Kimmel S. et al., 2018, preprint ([arXiv:1806.04143](https://arxiv.org/abs/1806.04143))
 Giovanelli R., Haynes M. P., 1985, *ApJ*, 292, 404

- Goto T., Yamauchi C., Fujita Y., Okamura S., Sekiguchi M., Smail I., Bernardi M., Gomez P. L., 2003, *MNRAS*, 346, 601
- Gratier P. et al., 2010, *A&A*, 522, A3
- Gunn J. E., Gott J. R., III, 1972, *ApJ*, 176, 1
- Gómez P. L. et al., 2003, *ApJ*, 584, 210
- Haynes M. P., Giovanelli R., 1984, *AJ*, 89, 758
- Hess K. M., Cluver M. E., Yahya S., Leisman L., Serra P., Lucero D. M., Passmoor S. S., Carignan C., 2017, *MNRAS*, 464, 957
- Hess K. M., Wilcots E. M., 2013, *AJ*, 146, 124
- Hickson P., 1982, *ApJ*, 255, 382
- Hoffman G. L., Salpeter E. E., Farhat B., Roos T., Williams H., Helou G., 1996, *ApJS*, 105, 269
- Hunter J. D., 2007, *Comput. Sci. Eng.*, 9, 90
- Janowiecki S., Catinella B., Cortese L., Saintonge A., Brown T., Wang J., 2017, *MNRAS*, 466, 4795
- Jones E., Oliphant T., Peterson P. et al., 2001, SciPy: Open source scientific tools for Python
- Jones L. R., Ponman T. J., Horton A., Babul A., Ebeling H., Burke D. J., 2003, *MNRAS*, 343, 627
- Karachentseva V. E., 1973, *Soobshch. Spets. Astrofiz. Obs.*, 8, 72
- Karachentseva V. E., Mitronova S. N., Melnyk O. V., Karachentsev I. D., 2010, *Astrophys. Bull.*, 65, 1
- Kauffmann G., White S. D. M., Heckman T. M., Ménard B., Brinchmann J., Charlot S., Tremonti C., Brinkmann J., 2004, *MNRAS*, 353, 713
- Kauffmann G. et al., 2003, *MNRAS*, 346, 1055
- Kereš D., Katz N., Weinberg D. H., Davé R., 2005, *MNRAS*, 363, 2
- Kewley L. J., Dopita M. A., Sutherland R. S., Heisler C. A., Trevena J., 2001, *ApJ*, 556, 121
- Kilborn V. A., Forbes D. A., Barnes D. G., Koribalski B. S., Brough S., Kern K., 2009, *MNRAS*, 400, 1962
- Kilborn V. A., Koribalski B. S., Forbes D. A., Barnes D. G., Musgrave R. C., 2005, *MNRAS*, 356, 77
- Kleiner D., Pimblett K. A., Jones D. H., Koribalski B. S., Serra P., 2017, *MNRAS*, 466, 4692
- Knobel C., Lilly S. J., Woo J., Kovač K., 2015, *ApJ*, 800, 24
- Koribalski B. S., 2015, in Ziegler B. L., Combes F., Dannerbauer H., Verdugo M., eds, *Proc. IAU Symp. 309, Galaxies in 3D across the Universe*. Kluwer, Dordrecht, p. 39
- Koribalski B. S. et al., 2004, *AJ*, 128, 16
- Lewis I. et al., 2002, *MNRAS*, 334, 673
- Lutz K. A. et al., 2017, *MNRAS*, 467, 1083
- Lutz K. A. et al., 2018, *MNRAS*, 476, 3744
- McMullin J. P., Waters B., Schiebel D., Young W., Golap K., 2007, in Shaw R. A., Hill F., Bell D. J., eds, *ASP Conf. Ser. Vol. 376, Astronomical Data Analysis Software and Systems XVI*. Astron. Soc. Pac., San Francisco, p. 127
- Melnyk O., Karachentseva V., Karachentsev I., 2015, *MNRAS*, 451, 1482
- Melnyk O., Mitronova S., Karachentseva V., 2014, *MNRAS*, 438, 548
- Meurer G. R. et al., 2006, *ApJS*, 165, 307
- Meyer M. J., Zwaan M. A., Webster R. L., Schneider S., Staveley-Smith L., 2008, *MNRAS*, 391, 1712
- Meyer M. J. et al., 2004, *MNRAS*, 350, 1195
- Mihos J. C., Keating K. M., Holley-Bockelmann K., Pisano D. J., Kassim N. E., 2012, *ApJ*, 761, 186
- Mould J. R. et al., 2000, *ApJ*, 529, 786
- Murugesan C., Kilborn V., Obreschkow D., Glazebrook K., Lutz K., Džudžar R., Dénes H., 2019, *MNRAS*, 483:2398–2412
- Nakanishi H., Sofue Y., 2016, *PASJ*, 68, 5
- Nicholls D. C., Dopita M. A., Jerjen H., Meurer G. R., 2011, *AJ*, 142, 83
- Obreschkow D., Glazebrook K., Kilborn V., Lutz K., 2016, *ApJ*, 824, L26
- Odekon M. C. et al., 2016, *ApJ*, 824, 110
- Oosterloo T. A., Zhang M.-L., Lucero D. M., Carignan C., 2018, preprint ([arXiv:1803.08263](https://arxiv.org/abs/1803.08263))
- Pisano D. J., Barnes D. G., Staveley-Smith L., Gibson B. K., Kilborn V. A., Freeman K. C., 2011, *ApJS*, 197, 28
- Pisano D. J., Wilcots E. M., Elmegreen B. G., 2000, *AJ*, 120, 763
- Ponman T. J., Allan D. J., Jones L. R., Merrifield M., McHardy I. M., Lehto H. J., Luppino G. A., 1994, *Nature*, 369, 462
- Popping A., Davé R., Braun R., Oppenheimer B. D., 2009, *A&A*, 504, 15
- Postman M., Geller M. J., 1984, *ApJ*, 281, 95
- Press W. H., Schechter P., 1974, *ApJ*, 187, 425
- Rasmussen J., Ponman T. J., Mulchaey J. S., 2006, *MNRAS*, 370, 453
- Rasmussen J. et al., 2012, *ApJ*, 747, 31
- Reda F. M., Forbes D. A., Beasley M. A., O'Sullivan E. J., Goudfrooij P., 2004, *MNRAS*, 354, 851
- Robotham A. S. G., Obreschkow D., 2015, *PASA*, 32, e033
- Rots A., Bosma A., M. van der Hulst J., Athanassoula E., C. Crane P., 1990, *AJ*, 100, 387
- Sancisi R., Fraternali F., Oosterloo T., van der Hulst T., 2008, *A&AR*, 15, 189
- Saulder C., van Kampen E., Chilingarian I. V., Mieske S., Zeilinger W. W., 2016, *A&A*, 596, A14
- Sault R. J., Teuben P. J., Wright M. C. H., 1995, in Shaw R. A., Payne H. E., Hayes J. J. E., eds, *ASP Conf. Ser. Vol. 77, Astronomical Data Analysis Software and Systems IV*. Astron. Soc. Pac., San Francisco, p. 433
- Serra P. et al., 2012, *MNRAS*, 422, 1835
- Skrutskie M. F. et al., 2006, *AJ*, 131, 1163
- Spindler A. et al., 2018, *MNRAS*, 476, 580
- Stanek K. Z., Garnavich P. M., 1998, *ApJ*, 503, L131
- Stevens A. R. H., Brown T., 2017, *MNRAS*, 471, 447
- Stevens A. R. H., Lagos C. d. P., Obreschkow D., Sinha M., 2018, *MNRAS*, 481, 5543
- Stierwalt S., Liss S. E., Johnson K. E., Patton D. R., Privon G. C., Besla G., Kallivayalil N., Putman M., 2017, *Nature Astron.*, 1, 0025
- Sweet S. M., Drinkwater M. J., Meurer G., Bekki K., Dopita M. A., Kilborn V., Nicholls D. C., 2014, *ApJ*, 782, 35
- Sweet S. M. et al., 2013, *MNRAS*, 433, 543
- Tavakoli M., 2012, preprint ([arXiv:1207.6150](https://arxiv.org/abs/1207.6150))
- Terlouw J. P., Vogelaar M. G. R., 2015, *Kapteyn Package*, version 2.3. Kapteyn Astronomical Institute, Groningen
- Tonry J. L., Blakeslee J. P., Ajhar E. A., Dressler A., 2000, *ApJ*, 530, 625
- Tully R. B., 1987, *ApJ*, 321, 280
- Van Der Walt S., Colbert S. C., Varoquaux G., 2011, *Comput. Sci. Eng.*, 13, 22
- Verdes-Montenegro L., Sulentic J., Lisenfeld U., Leon S., Espada D., Garcia E., Sabater J., Verley S., 2005, *A&A*, 436, 443
- Verdes-Montenegro L., Yun M. S., Williams B. A., Huchtmeier W. K., Del Olmo A., Perea J., 2001, *A&A*, 377, 812
- Verheijen M. A. W., Sancisi R., 2001, *A&A*, 370, 765
- Wang J. et al., 2013, *MNRAS*, 433, 270
- Wang J., Koribalski B. S., Serra P., van der Hulst T., Roychowdhury S., Kamphuis P., Chengalur J. N., 2016, *MNRAS*, 460, 2143
- Wang J., Koribalski B. S., Serra P., van der Hulst T., Roychowdhury S., Kamphuis P., Chengalur J. N., 2017, *VizieR Online Data Catalog*, 746
- Wang J. et al., 2015, *MNRAS*, 453, 2399
- Wen X.-Q., Wu H., Zhu Y.-N., Lam M. I., Wu C.-J., Wicker J., Zhao Y.-H., 2013, *MNRAS*, 433, 2946
- Westmeier T., Braun R., Koribalski B. S., 2011, *MNRAS*, 410, 2217
- White S. D. M., Rees M. J., 1978, *MNRAS*, 183, 341
- Whitmore B. C., Gilmore D. M., Jones C., 1993, *ApJ*, 407, 489
- Wilson W. E. et al., 2011, *MNRAS*, 416, 832
- Wolfinger K., Kilborn V. A., Ryan-Weber E. V., Koribalski B. S., 2016, *PASA*, 33, e038
- Wolter A., Esposito P., Mapelli M., Pizzolato F., Ripamonti E., 2015, *MNRAS*, 448, 781
- Wong O. I., Meurer G. R., Zheng Z., Heckman T. M., Thilker D. A., Zwaan M. A., 2016, *MNRAS*, 460, 1106
- Yang X., Mo H. J., van den Bosch F. C., Pasquali A., Li C., Barden M., 2007, *ApJ*, 671, 153
- Yun M. S., Ho P. T. P., Lo K. Y., 1994, *Nature*, 372, 530

APPENDIX A: ADDITIONAL TABLES: PROPERTIES OF THE CHOIR AND ISOLATED GALAXIES

Table A1. HI properties of the Choir galaxies obtained with the ATCA observations.

Galaxy ID HIPASS + (1)	R.A. (hh mm ss.s) (2)	Dec. (dd mm ss.s) (3)	D (Mpc) (4)	M_R (mag) (5)	$\log M_*$ (M_\odot) (6)	$\log M_{\text{HI}}$ (M_\odot) (7)	DEF _{HI} (dex) (8)	SFR ($M_\odot \text{ yr}^{-1}$) (9)	t_{dep} (Gyr) (10)	D_{HI} (kpc) (11)	q (12)	Morphology (13)
J0205-55:51	02 05 05.48	-55 06 42.54	93	-23.01 ± 0.32	11.44 ± 0.16	10.43 ± 0.09	-0.07	9.9 ± 1.9	2.7	98.5 ± 4.9	0.09	SAB(r)bc
J0205-55:52	02 04 50.78	-55 13 01.55	93	-20.77 ± 0.26	10.35 ± 0.13	9.84 ± 0.09	-0.04	2.99 ± 0.61	2.3	47.6 ± 3.6	0.2	SB(s)cd pec
J0258-74:51	02 58 06.48	-74 27 22.79	70	-22.13 ± 0.24	11.01 ± 0.12	10.27 ± 0.03	-0.13	3.2 ± 0.6	5.8	82.4 ± 5.3	0.26	SAB(rs)bc HI
J0258-74:52	02 58 52.43	-74 25 53.25	70	-19.48 ± 0.27	9.73 ± 0.12	9.8 ± 0.1	-0.33	0.35 ± 0.07	18.4	52.8 ± 2.9		S
J0258-74:53	02 58 42.76	-74 26 03.55	70	-18.51 ± 0.33	9.26 ± 0.16	8.5 ± 0.2	0.72	0.13 ± 0.03	2.5			S
J0400-52:51	04 00 40.82	-52 44 02.71	151	-22.31 ± 0.25	11.10 ± 0.12	10.66 ± 0.09	-0.48	0.5 ± 0.4	91.9	77.3 ± 3.8	0.26	SA(rs)cd pec
J1250-20:51	12 50 52.84	-20 22 15.65	114	-22.54 ± 0.24	11.21 ± 0.12	10.48 ± 0.09	-0.24	6.6 ± 1.3	4.6	106.4 ± 4.7	0.17	SA(s)bc pec HI
J1250-20:52	12 50 40.91	-20 20 06.22	114	-22.06 ± 0.24	10.98 ± 0.12	9.6 ± 0.1	0.56	3.7 ± 0.8	1.0	29.2 ± 9.1		S
J2027-51:51	20 28 06.39	-51 41 29.83	87	-21.73 ± 0.25	10.82 ± 0.13	10.2 ± 0.1	-0.14	5.4 ± 1.1	2.7	56.4 ± 4.2	0.24	(R')SA(s)bc
J2027-51:52	20 27 31.97	-51 39 20.81	87	-21.91 ± 0.24	10.91 ± 0.12	10.0 ± 0.1	0.07	4.3 ± 0.9	2.4	42.4 ± 3.8	0.21	SAB(s)bc pec
J2027-51:53m*	20 28 08.4	-51 28 31	87			9.49 ± 0.13				25.9 ± 3.8		[Irr]
J1051-17:51	10 51 37.45	-17 07 29.23	83	-21.78 ± 0.25	10.84 ± 0.12	10.43 ± 0.02	-0.38	1.5 ± 0.3	17.7	99.6 ± 6.3	0.67	(R? + PR?)
J1051-17:52	10 51 15.11	-17 00 29.44	83	-21.85 ± 0.24	10.88 ± 0.12	9.45 ± 0.05	0.62	2.2 ± 0.4	1.3			SABb?
J1051-17:53	10 51 35.94	-16 59 16.80	83	-18.16 ± 0.26	9.08 ± 0.13	8.73 ± 0.07	0.41	0.104 ± 0.021	5.2			ds
J1051-17:NED1*	10 52 15.9	-17 07 48.6	83			9.48 ± 0.03						SA(s)a
J1051-17:NED6*	10 50 49.6	-17 14 07	83			9.01 ± 0.03						[Irr?]
J1059-09:51	10 59 16.25	-09 47 38.16	122	-23.24 ± 0.24	11.55 ± 0.12	10.16 ± 0.10	0.26	8.9 ± 1.8	1.6	96.3 ± 6.3 ^b		SAB(rs)bc pec
J1059-09:52	10 59 06.77	-09 45 04.38	122	-20.20 ± 0.24	10.07 ± 0.13	9.6 ± 0.1	0.02	1.3 ± 0.3	3.3	50.4 ± 3.8		Irr
J1059-09:53	10 59 15.61	-09 48 59.41	122	-21.45 ± 0.25	10.68 ± 0.12	10.2 ± 0.1	-0.19	3.7 ± 0.7	3.9			Sab pec sp
J1059-09:55	10 59 30.98	-09 44 25.26	122	-19.94 ± 0.28	9.95 ± 0.14	9.1 ± 0.1	0.45	0.8 ± 0.2	1.7			S
J1059-09:56	10 59 08.46	-09 43 14.49	122	-19.33 ± 0.28	9.65 ± 0.14	8.9 ± 0.1	0.46	0.37 ± 0.07	2.5			Irr
J1026-19:51	10 26 40.81	-19 03 04.01	135	-22.74 ± 0.25	11.31 ± 0.12	10.3 ± 0.1	-0.02	4.5 ± 0.9	4.6	136.4 ± 6.5 ^b		SAB(s)bc; pec Sbrst
J1026-19:52	10 26 50.07	-19 04 31.77	135	-20.60 ± 0.26	10.27 ± 0.13	9.4 ± 0.1	0.37	1.3 ± 0.3	1.9			Irr
J1026-19:55 ^a	10 26 42.07	-19 07 35.07	135	-16.94 ± 0.41	8.5 ± 0.2	9.3 ± 0.1	-0.44	0.03 ± 0.01				dIrr
J1408-21:51	14 08 42.04	-21 35 49.82	128	-23.15 ± 0.24	11.51 ± 0.12	10.25 ± 0.22	0.14	7.1 ± 1.4	2.5	134.7 ± 3.7 ^b		SB(r)bc
J1408-21:53	14 08 41.04	-21 37 40.97	128	-20.72 ± 0.25	10.33 ± 0.12	9.7 ± 0.1	0.08	0.8 ± 0.2	6.2			S0
J1408-21:53m*	14 08 46.6	-21 27 09	128			9.5 ± 0.2						[Edge-on]

Columns: (1) Galaxy ID as assigned in SINGG (Meurer et al. 2006; Sweet et al. 2013); (2) Right Ascension (J2000); (3) Declination (J2000); (4) Group distance (Sweet et al. 2013); (5) Absolute dust-corrected R-band magnitude (see Meurer et al. 2006 for details); (6) Stellar mass, derived from the R-band magnitude, following Wong et al. (2016), equation (4); (7) HI mass measured from the ATCA/VLA data cubes (see equation 1); (8) The HI deficiency parameter (see equation 3 in the text); (9) The SFR, derived from the H α fluxes obtained from the SINGG survey (as in Meurer et al. 2006 and Sweet et al. 2013); (10) Atomic gas depletion time (see equation 2 in the text); (11) The measured galaxy's H I diameter at a surface density of $1 M_\odot \text{ pc}^{-2}$ (described in Section 3.3); (12) The global stability parameter derived as described in the Section 3.6.2; (13) Adopted morphology from Sweet et al. (2013), for new members classification is based on the NED classification where available, or [our classification].

*Discovered new group member based on the HI emission.

^aGalaxy detected only with natural weighted cubes, thus not used in the analysis.

^bMeasured HI diameters of HIPASS1059-09:51+S3, HIPASS11026-19:51+S2 and HIPASS11408-21:51+S3, respectively, as described in Section 3.3.

Table A2. The sample of isolated galaxies and their properties.

Galaxy ID HIPASS + (1)	R.A. (hh mm ss.s) (2)	Dec. (dd mm ss) (3)	D (Mpc) (4)	$\log M_{\text{HI}}$ (M_{\odot}) (5)	M_R (mag) (6)	$\log M_*$ (M_{\odot}) (7)	DEF_{HI} (dex) (8)	SFR ($M_{\odot} \text{ yr}^{-1}$) (9)	t_{dep} (Gyr) (10)	Morphology (11)
J0328–08 ^a	03 28 05.6	–08 23 28	17.4	9.78 ± 0.09	-20.15 ± 0.28	10.05 ± 0.14	–0.14	0.65 ± 0.13	9.3	SA(s)cd
J0412+02	04 12 47.3	+02 22 44	70.6	10.2 ± 0.1	-22.27 ± 0.24	11.08 ± 0.12	–0.03	3.211 ± 0.643	5.0	SB(s)b
J0430–01 ^b	04 30 55.8	–01 59 13	36.1	9.5 ± 0.1	-19.45 ± 0.26	9.71 ± 0.12	–0.07	0.501 ± 0.101	6.8	SAB(s)b pec
J0512–57	05 12 09.8	–57 24 34	19.3	9.25 ± 0.09	-19.14 ± 0.24	9.56 ± 0.12	0.14	0.357 ± 0.07	5.0	SB(s)m
J0515–41	05 15 01.9	–41 21 33	14.5	9.03 ± 0.09	-17.28 ± 0.24	8.66 ± 0.12	–0.11	0.065 ± 0.013	16.7	IB(s)m
J1019–17	10 19 39.0	–17 43 48	11	8.34 ± 0.12	-15.25 ± 0.26	7.67 ± 0.13	0.07	0.003 ± 0.01	64.5	Sm
J1051–19	10 51 24.6	–19 53 07	31	9.76 ± 0.09	-20.14 ± 0.24	10.04 ± 0.12	–0.12	0.67 ± 0.13	8.6	SB(s)cd
J1120–21	11 20 12.3	–21 28 32	18.3	9.22 ± 0.09	-17.95 ± 0.27	8.98 ± 0.13	–0.13	0.089 ± 0.018	18.7	(R')SAc pec
J1123–08	11 23 28.1	–08 38 52	56.5	10.22 ± 0.09	-22.59 ± 0.24	11.24 ± 0.12	–0.03	7.732 ± 1.547	2.2	SB(r)bc
J1558–10	15 58 22.3	–10 31 48	14.8	8.78 ± 0.11	-16.41 ± 0.25	8.23 ± 0.12	–0.08	0.019 ± 0.039	30.9	BCD
J1621–02 ^{a, b}	16 21 45.8	–02 16 34	26.3	9.75 ± 0.09	-21.88 ± 0.24	10.89 ± 0.12	0.33	2.476 ± 0.495	2.3	SA(s)cd
J1954–58	19 54 23.4	–58 42 47	31.1	10.07 ± 0.09	-21.85 ± 0.24	10.88 ± 0.12	0.18	3.63 ± 0.73	3.2	SAB(rs)c
J2039–63 ^c	20 39 07.3	–63 48 50	23.6	8.69 ± 0.14	-17.08 ± 0.27	8.56 ± 0.13	–0.14	0.122 ± 0.024	4.0	dS0p
J2127–60	21 27 23.2	–60 01 22	24.9	9.94 ± 0.09	-20.79 ± 0.25	10.36 ± 0.12	–0.03	1.195 ± 0.239	7.3	SAB(rs)c
J2152–55	21 52 12.3	–55 35 12	43.5	10.25 ± 0.09	-22.46 ± 0.25	11.17 ± 0.12	0.1	3.621 ± 0.724	4.9	SAB(rs)bc
J2157–60	21 57 52.4	–60 18 27	24.2	8.76 ± 0.12	-17.04 ± 0.29	8.54 ± 0.14	–0.06	0.033 ± 0.007	17.7	IB(s)m

Columns: (1) Galaxy ID as assigned in SINGG (Meurer et al. 2006; Sweet et al. 2013); (2) Right Ascension (J2000); (3) Declination (J2000); (4) Galaxy distance, adopted from SINGG (Meurer et al. in preparation); (5) H I mass from the HIPASS data, adapted from Meurer et al. (2006); (6) Absolute dust-corrected R -band magnitude; (7) Stellar mass, derived from the R -band magnitude, following Wong et al. (2016); (8) The H I deficiency parameter (equation 3, described in Section 3.5); (9) The SFR, derived from the SINGG H α fluxes (as in Meurer et al. 2006 and Sweet et al. 2013); (10) Atomic gas depletion time (see equation 2 in the text); (11) Morphology based on the NED classification.

^aPart of the 2MIG (2MASS Isolated Galaxies) sample (Karachentseva et al. 2010).

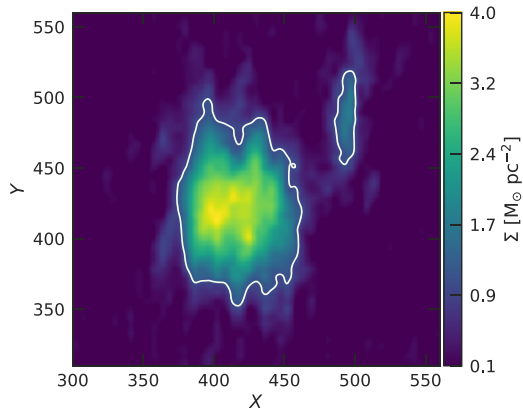
^bPart of the CIG sample (Karachentseva 1973).

^cPart of the SIGRID sample (Nicholls et al. 2011).

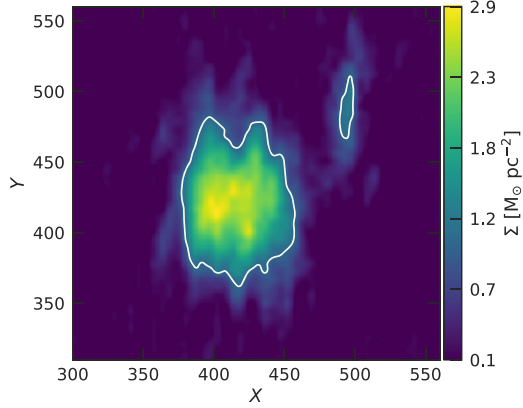
APPENDIX B: THE DEPROJECTION AND MEASUREMENT OF THE H I DIAMETERS IN HIPASSJ1250–20 GROUP

The method of measuring H I diameters is described in Section 3.3, here we show the observed and deprojected intensity maps (Fig. B1 (a) and (b), respectively) of HIPASSJ1250–20 group and the results from the measurement of the H I diameters (Fig. B2: (a) HIPASSJ1250–20:S1; (b) HIPASSJ1250–20). In Figs B1 and B2,

images have pixel scale (X and Y), where one pixel corresponds to ~ 1 kpc. Images used here are regridded using DECam optical image as a map, this was performed in MIRIAD with the task REGRID. The measured D_{HI} without the regridding has larger uncertainty, also the smaller galaxies (such as S2) due to larger beam size, have large beam corrections. The measured D_{HI} using normal and regridded images are in agreement: $D_{\text{HI}}[\text{S1}_{\text{normal}}] = 105.7 \pm 8.7$; $D_{\text{HI}}[\text{S1}_{\text{regrid}}] = 106.4 \pm 4.7$; $D_{\text{HI}}[\text{S2}_{\text{normal}}] = 24.1 \pm 15.2$; $D_{\text{HI}}[\text{S2}_{\text{regrid}}] = 29.2 \pm 9.1$.



(a) The observed HIPASSJ1250-20 intensity map.



(b) The deprojected HIPASSJ1250-20 intensity map.

Figure B1. The H I intensity maps of the HIPASSJ1250–20: (a) Observed; (b) Deprojected (as described in Section 3.3). The white contour shows the H I surface density of $1 M_{\odot} \text{pc}^{-2}$. The colour bar shows the H I surface density from the lowest value above 3σ detection ($0.1 M_{\odot} \text{pc}^{-2}$) to the maximum value.

¹Centre for Astrophysics and Supercomputing, Swinburne University of Technology, PO Box 218, Hawthorn, VIC 3122, Australia

²International Centre for Radio Astronomy Research, ICRAR M468, 35 Stirling Highway, Crawley, WA 6009, Australia

³ARC Centre of Excellence for All Sky Astrophysics in 3 Dimensions (ASTRO 3D), Weston Creek, ACT 2611, Australia

⁴School of Mathematics and Physics, University of Queensland, Brisbane, QLD 4072, Australia

⁵Australia Telescope National Facility, CSIRO, PO Box 76, Epping, NSW 1710, Australia

⁶Subaru Telescope, National Astronomical Observatory of Japan, 650 North A'ohoku Place, Hilo, HI 96720, USA

⁷Department of Astronomy, Columbia University, 550 West 120th Street, New York, NY 10027, USA

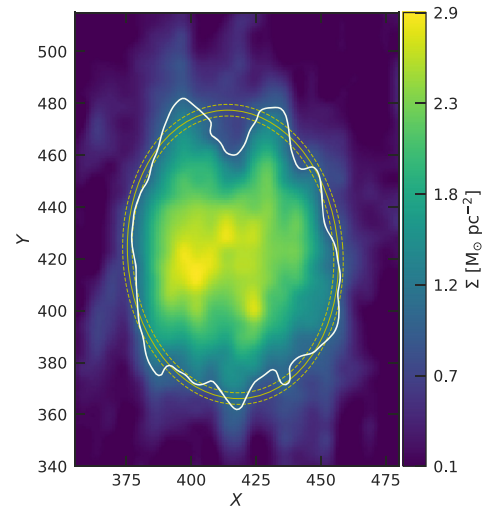
⁸European Southern Observatory, Karl-Schwarzschild-Strasse 2, D-85748 Garching bei München, Germany

⁹Sydney Institute for Astronomy, University of Sydney, Sydney, NSW 2006, Australia

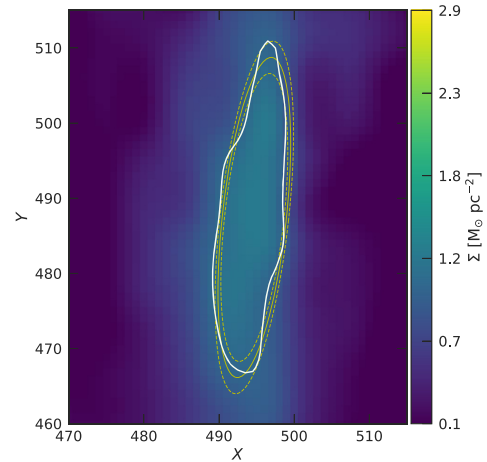
¹⁰Research School of Astronomy and Astrophysics (RSAA), Australian National University, Cotter Road, Weston Creek, ACT 2611, Australia

¹¹Department of Physics, University of Queensland, Brisbane, QLD 4072, Australia

¹²Department of Physics & Astronomy, University of the Western Cape, Cape Town 7535, South Africa



(a) HIPASSJ1250-20:S1



(b) HIPASSJ1250-20:S2

Figure B2. The measurement of the H I diameter at a surface density of $1 M_{\odot} \text{pc}^{-2}$ using deprojected intensity maps. The white contour shows the H I surface density of $1 M_{\odot} \text{pc}^{-2}$. The yellow solid ellipse is the fit result from the KMPFIT package with the uncertainty shown as dashed ellipses. The colour bar shows the H I surface density from the lowest value above 3σ detection ($0.1 M_{\odot} \text{pc}^{-2}$) to the maximum value ($2.9 M_{\odot} \text{pc}^{-2}$).

¹³Department of Physics and Astronomy, John Hopkins University, 3400 North Charles Street, Baltimore, MD 21218, USA

¹⁴Institute of Astronomy, University of Cambridge, Madingley Road, Cambridge CB3 0HA, UK

¹⁵National Science Foundation, 4201 Wilson Boulevard, Arlington, VA 22230, USA

¹⁶Cerro Tololo Inter-American Observatory (CTIO), Casilla 603, La Serena, Chile

¹⁷School of Physics, University of Melbourne, Melbourne, VIC 3010, Australia

¹⁸Astronomy Department, University of Washington, 3910 15th Avenue NE, Seattle, WA 98195-0002, USA

This paper has been typeset from a $\text{\TeX}/\text{\LaTeX}$ file prepared by the author.