


Preclinical Testing of Nalfurafine as an Opioid-sparing Adjuvant that Potentiates Analgesia by the Mu Opioid Receptor-targeting Agonist Morphine^S

Shane W. Kaski, Allison N. White, Joshua D. Gross, Kristen R. Trexler, Kim Wix, Aubrie A. Harland, Thomas E. Prisinzano, Jeffrey Aubé, Steven G. Kinsey, Terry Kenakin,  David P. Siderovski, and Vincent Setola

Departments of Physiology and Pharmacology (S.W.K., A.N.W., J.D.G., K.W., D.P.S., V.S.), Neuroscience, and Behavioral Medicine and Psychiatry (V.S.), West Virginia University School of Medicine, Morgantown, West Virginia; Department of Psychology, West Virginia University Eberly College of Arts and Sciences, Morgantown, West Virginia (K.R.T., S.G.K.); Department of Medicinal Chemistry, The University of Kansas School of Pharmacy, Lawrence, Kansas (T.E.P.); Division of Chemical Biology and Medicinal Chemistry, The University of North Carolina Eshelman School of Pharmacy, Chapel Hill, North Carolina (A.A.H., J.A.); and Department of Pharmacology, The University of North Carolina School of Medicine, Chapel Hill, North Carolina (T.K.)

Received December 6, 2018; accepted July 16, 2019

ABSTRACT

Mu opioid receptor (MOR)-targeting analgesics are efficacious pain treatments, but notorious for their abuse potential. In preclinical animal models, coadministration of traditional kappa opioid receptor (KOR)-targeting agonists with MOR-targeting analgesics can decrease reward and potentiate analgesia. However, traditional KOR-targeting agonists are well known for inducing antitherapeutic side effects (psychotomimesis, depression, anxiety, dysphoria). Recent data suggest that some functionally selective, or biased, KOR-targeting agonists might retain the therapeutic effects of KOR activation without inducing undesirable side effects. Nalfurafine, used safely in Japan since 2009 for uremic pruritus, is one such functionally selective KOR-targeting agonist. Here, we quantify the bias of nalfurafine and several other KOR agonists relative to an unbiased reference standard (U50,488) and show that nalfurafine and EOM-salvinorin-B demonstrate marked G protein-signaling bias. While nalfurafine (0.015 mg/kg)

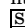
and EOM-salvinorin-B (1 mg/kg) produced spinal antinociception equivalent to 5 mg/kg U50,488, only nalfurafine significantly enhanced the supraspinal analgesic effect of 5 mg/kg morphine. In addition, 0.015 mg/kg nalfurafine did not produce significant conditioned place aversion, yet retained the ability to reduce morphine-induced conditioned place preference in C57BL/6J mice. Nalfurafine and EOM-salvinorin-B each produced robust inhibition of both spontaneous and morphine-stimulated locomotor behavior, suggesting a persistence of sedative effects when coadministered with morphine. Taken together, these findings suggest that nalfurafine produces analgesic augmentation, while also reducing opioid-induced reward with less risk of dysphoria. Thus, adjuvant administration of G protein-biased KOR agonists like nalfurafine may be beneficial in enhancing the therapeutic potential of MOR-targeting analgesics, such as morphine.

Introduction

Opioid use disorder is an American health crisis (Manchikanti et al., 2012; Koh, 2015; Volkow and Collins, 2017). Use of prescription opioids, such as morphine and oxycodone, has contributed significantly to the opioid use disorder problem (Jones, 2013). Morphine, the prototypical opioid analgesic, is a mainstay for treating moderate to severe pain, as may occur postoperatively. While prescription opioids are effective painkillers, currently there exists no facile way to use them without the prospect of inducing addiction. One plausible solution is to use morphine (and other MOR-targeting

This work was supported, in part, by the E.J. Van Lier Medicine Professor Endowment (to D.P.S.) and by research grants from the National Institutes of Health National Institute on Drug Abuse to T.E.P. [R01 DA018151], to D.P.S. [R01 DA048153], and to S.G.K. [R03 DA039335]. J.D.G. and S.W.K. each acknowledge prior support from an National Institute of General Medical Sciences Behavioral & Biomedical Sciences training grant [T32 GM081741] and current support from National Institute on Drug Abuse predoctoral NRSA fellowships [F31 DA043331 and F30 DA044711, respectively].

<https://doi.org/10.1124/jpet.118.255661>.

 This article has supplemental material available at jpet.aspetjournals.org.

ABBREVIATIONS: CI, confidence interval; CPA, conditioned place aversion; CPP, conditioned place preference; EOM salvinorin B, ethoxymethyl ether salvinorin B; KOR, kappa opioid receptor; MOR, mu opioid receptor; MPE, maximum possible effect.

analgesics) in a way that increases drug-induced analgesia, thereby requiring lower doses (an approach known as dose-sparing) or in a way that reduces addictive potential. In this vein, if the antinociceptive potential of MOR-targeting analgesics could be enhanced via a dose-sparing, antiaddictive adjuvant that does not induce therapeutically limiting side effects, then their use in treating pain could be continued.

Kappa opioid receptor (KOR)-targeting agonists, when given with MOR-targeting analgesics, not only produce additive analgesia (Sutters et al., 1990; Negus et al., 2008; Briggs and Rech, 2009), reduced tolerance (He and Lee, 1997; Khotib et al., 2004), and reduced respiratory depression (Verborgh et al., 1997), but also can reduce the rewarding properties of MOR-targeting analgesics (Kuzmin et al., 1997; Tsuji et al., 2001; Tao et al., 2006). However, clinical use of some KOR agonists, such as ketocyclazocine (Kumor et al., 1986) or salvinorin A (MacLean et al., 2013), has largely failed due to poor tolerability. In rats and mice, traditional KOR agonists produce anxiety- and depression-associated behaviors (Carlezon et al., 2006; Bruchas et al., 2009; Ehrich et al., 2015), as well as locomotor suppression (Kunihara et al., 1993; Narita et al., 1993; Ehrich et al., 2015; Brust et al., 2016). In humans, the highly selective KOR agonist salvinorin A produces similar therapeutically limiting effects (MacLean et al., 2013; Maqueda et al., 2015; Johnson et al., 2016).

Thus, it is not surprising that initial enthusiasm for KOR agonists as adjuvants to MOR-targeting analgesics was reduced by early preclinical and clinical findings using mixed MOR/KOR agonists. For example, while nalbuphine studies in rats demonstrated reduced conditioned place preference (CPP) to morphine and enhanced morphine-induced analgesia (Tao et al., 2006), human studies demonstrated dose-dependent increases in dysphoria (Jasinski and Mansky, 1972; Preston et al., 1989; Walsh and Babalonis, 2017). Similarly, pentazocine and butorphanol also induce the classic dysphoric effects of traditional KOR-targeting agonists in humans, especially at higher doses (Preston et al., 1987; Zacny et al., 1994; Greenwald and Stitzer, 1998; Walsh et al., 2008; Walsh and Babalonis, 2017), limiting their therapeutic potential.

Recent efforts to develop nonaddictive opioids, however, have renewed interest in KOR ligands with specific emphasis on developing functionally selective (or biased) KOR agonists (Urban et al., 2007; Rankovic et al., 2016). G protein-biased KOR agonists demonstrate reduced potencies for signaling through the GRK/ β -arrestin pathway (Bohn and Aube, 2017). While G protein-dependent signaling through KOR is well established as producing the primary therapeutic outcome of analgesia (Chavkin, 2011; Brust et al., 2016; Schattauer et al., 2017), the role of GRK/ β -arrestin signaling in producing dysphoria downstream of KOR activation is less clear. Some have shown that aversive behavior toward KOR agonists requires GRK3 (and p38 MAPK) activation (Bruchas et al., 2007; Chavkin et al., 2014; Ehrich et al., 2015), while others have observed little effect of *Arrb2* (β -arrestin-2) genetic ablation on the aversion produced by a variety of KOR agonists (White et al., 2015). Conversely, recent work with triazole 1.1 (Brust et al., 2016) and nalfurafine (Liu et al., 2019) suggests that these G protein-biased KOR agonists may lack dysphoric effects at doses that produce analgesia, supporting the role of β -arrestin signaling in the dysphoric effects of traditional KOR agonists. G protein-biased KOR

agonists may, thus, present a strategy for reducing the rewarding properties of MOR-targeting analgesics while avoiding the pitfalls of traditional KOR agonists. This notion is supported by a recent preclinical study in rats (Townsend et al., 2017) showing that nalfurafine reduces intravenous self-administration of the MOR-targeting analgesic oxycodone while also potentiating its analgesic effect.

Nalfurafine is a G protein functionally selective KOR-targeting agonist with high translational potential given its safe use in Japan since 2009 to treat uremic pruritis, and, importantly, the drug does not produce psychotomimesis (Inui, 2015). Therefore, we aimed to assess the therapeutic efficacy of nalfurafine in both potentiating the analgesic effect and reducing the rewarding properties of the MOR-targeting analgesic morphine, while also assessing the biased signaling properties of nalfurafine in vitro compared with other reported G protein-biased KOR agonists.

Methods

Animal Subjects. All experiments were conducted using male and female C57BL/6J mice (RRID: IMSR_JAX:000664) between 8 and 14 weeks of age and 17–35 g; the sexes were used in similar proportions across all experiments. Original breeding pairs were obtained from The Jackson Laboratory (Bar Harbor, ME). Mice were group housed in an Association for Assessment and Accreditation of Laboratory Animal Care International-accredited facility, with free access to food and water. All procedures were carried out in accordance with the National Research Council's *Guide to the Care and Use of Laboratory Animals (Eighth Edition)* and were approved by West Virginia University's Institutional Animal Care and Use Committee.

Study Design. Mice were randomly assigned to treatment conditions after being balanced for sex. Mice were acclimated to the test room for at least 30 minutes prior to any study. All mice were used for a single experimental assay. Sample size for each experiment was determined by power analysis using effect sizes derived from literature, power value of 0.8, and an alpha value of 0.05. All experiments were done by personnel who were blinded to treatment conditions.

Drugs. (\pm)U50,488 [(2-(3,4-dichlorophenyl)-N-methyl-N-((1R,2R)-2-pyrrolidin-1-ylcyclohexyl)acetamide)], GR 89696 [methyl 4-[2-(3,4-dichlorophenyl)acetyl]-3-(pyrrolidin-1-ylmethyl)piperazine-1-carboxylate], and ICI 199,441 [2-(3,4-dichlorophenyl)-N-methyl-N-((1S)-1-phenyl-2-pyrrolidin-1-ylethyl)acetamide)] were all purchased from Tocris Biosciences (Minneapolis, MN). Nalfurafine hydrochloride was purchased from Medchem Express (Monmouth Junction, NJ). Morphine sulfate salt pentahydrate was purchased from Sigma Aldrich (St. Louis, MO). Salvinorin A, ethoxymethyl ether salvinorin B (EOM salvinorin B), and triazole 1.1 were prepared as previously described (Zhou et al., 2013; Ewald et al., 2017). All drugs were dissolved in 100% DMSO and diluted in saline to the desired concentration (no DMSO concentration exceeded 5% v/v final). In drug combination experiments, nalfurafine was injected subcutaneously as described in the limited literature available regarding this compound's use in mice (Endoh et al., 1999; Tsuji et al., 2001; Liu et al., 2019), whereas U50,488, EOM salvinorin B and morphine were delivered by intraperitoneal injection as commonly described (Rada et al., 1996; McLaughlin et al., 2006; Koo et al., 2012; Muschamp et al., 2012; Laman-Maharg et al., 2017; Robinson et al., 2017). Dose ranges for nalfurafine, EOM salvinorin B, and U50,488 were chosen based upon existing conditioned place preference and tail immersion data in the literature (Tsuji et al., 2001; Land et al., 2009; Ehrich et al., 2015). The morphine dose was chosen to produce consistent place preference, while allowing for high sensitivity to detect potentiation in the hot plate assay of analgesia (Mueller et al., 2002; Raehal and Bohn, 2011; Ewald et al., 2017).

Measurement of Signaling Bias. Quantification of G protein signaling-dependent changes in intracellular cyclic AMP (cAMP) levels was conducted using a GloSensor luciferase-based assay in HEK293T cells transiently transfected with 5 μ g of KOR expression vector DNA (3 \times HA-hKOR; www.cDNA.org) and 5 μ g of pGloSensor-22F cAMP biosensor expression vector DNA (Promega, Madison, WI). Quantification of β -arrestin recruitment was conducted using the luciferase-based Tango assay (Barnea et al., 2008; Allen et al., 2011) in HTLA cells (generously provided by Dr. Gilad Barnea) transiently transfected with 5 μ g of KOR-V2-TEV-tTA expression vector DNA (Addgene plasmid #66462 donated by Dr. Bryan Roth). The appropriate masses of expression vector DNAs transfected was empirically determined prior to acquisition of the data contained herein. Transfections were performed in 10-cm dishes using the calcium phosphate-based method (Jordan et al., 1996). Culture media was replaced 16 hour after transfection, and cells then plated on 96-well plates approximately 24 hours after transfection. All cells were serum-starved with 1% dialyzed serum-containing medium for 8–16 hours before assaying. For assays of cAMP inhibition, medium was replaced with GloSensor detection reagent dissolved in HEPES (20 mM)-buffered Hank's balanced saline solution, and cells were incubated for 2 hours at room temperature. KOR-selective agonists were applied for 15 minutes prior to a 15-minute stimulation with 100 nM isoproterenol (to induce endogenous β -adrenergic receptor-mediated and G_{α_s} -dependent production of cAMP) and subsequent quantification of luminescence. For Tango assays of β -arrestin recruitment, drug stimulation was performed overnight in 1% dialyzed serum-containing medium. Medium was removed the following morning, the cells lysed with BrightGlo reagent (Promega) and luminescence was quantified using a FlexStation 3 multi-mode plate reader (Molecular Devices).

Calculation of Bias Factor. Bias factors were calculated using the method previously described (Kenakin, 2017). Briefly, $\text{Log}(E_{\text{max}}/EC_{50})$ values for both GloSensor and Tango assays were separately generated for each ligand using potency (EC_{50}) and maximal efficacy (E_{max}) values obtained from these assays. $\Delta\text{Log}(E_{\text{max}}/EC_{50})$ was calculated in each assay as the difference in $\text{Log}(E_{\text{max}}/EC_{50})$ for each ligand from the reference ligand (the unbiased KOR agonist U50,488). $\Delta\Delta\text{Log}(E_{\text{max}}/EC_{50})$ was then calculated as the difference in $\Delta\text{Log}(E_{\text{max}}/EC_{50})$ between GloSensor and Tango assays for each ligand. The 95% confidence interval (CI) for each bias factor was calculated using the E_{max} and EC_{50} values generated in individual experiments for each ligand in each assay.

Warm Water Tail Withdrawal. The warm water tail withdrawal test was conducted as described previously (Schattauer et al., 2017). Briefly, mice were gently wrapped in cloth before immersing the distal 2 cm of the tail in 55°C water and recording the latency for the mouse to withdraw its tail from the water. Baseline latencies were recorded 30 minute after administration of vehicle. Mice were then injected with drug and latencies were recorded after 30 minute. A maximum cutoff of 10 seconds was used to avoid tissue damage. As the relevant comparison is to the analgesic effect of morphine alone, data are presented as latency to tail-withdrawal in seconds (Fig. 4) as well as percent maximum possible effect (%MPE; Supplemental Fig. S1) following the equation: $\%MPE = (\text{latency} - \text{baseline}) / (10 \text{ second} - \text{baseline}) * 100\%$.

Hot Plate Analgesia Test. To assess integrated pain perception, the hot plate test of nociception was performed as described previously (Raehal and Bohn, 2011) with minor modification. Nociceptive latency after vehicle injection was measured on day 1. On day 2, mice were injected with drug and response latencies were measured after 30 minutes. Individual mice were placed onto a 53°C hot plate (IITC Life Science Inc., Woodland Hills, CA) inside of a clear, open-bottom acrylic cylinder. A maximum cutoff of 30 seconds was used to avoid tissue damage. Time until the first nociceptive sign (i.e., licking of the hind paw, flicking of the hind paw, or jumping) was recorded by a trained observer to the nearest 0.1 second and reported as percent maximum possible effect [$\%MPE = (\text{latency} - \text{baseline}) / (30 \text{ seconds} - \text{baseline}) * 100\%$]. Data in the inset of Fig. 5B were normalized to the average %MPE of 5 mg/kg morphine.

Locomotion. Locomotor activity was assessed using a 16 \times 16 open-field infrared photobeam activity system from San Diego Instruments (San Diego, CA), as described previously (Gross et al., 2018). Briefly, locomotion was quantified as total beam breaks in the x and y coordinates in 5-minute bins. Spontaneous locomotion was assessed by administering drug or vehicle immediately before placing the mouse in the locomotor chamber for 60 minutes. Morphine-induced locomotion was assessed in a 3-day procedure. On day 1, mice were habituated to the locomotor chamber for 60 minute. On day 2, mice were habituated to the locomotor chamber for 30 minutes before receiving an injection of vehicle and returning to the chamber for an additional 60 minutes. On day 3, mice were habituated to the locomotor chamber for 30 minutes before receiving an injection of either morphine with vehicle or morphine with KOR agonist and returning to the chamber for an additional 60 minutes. Data plotted over time were normalized to the average vehicle locomotion in the first 5-minute bin for novelty-induced locomotion and to the average locomotion of each subject during the 30 minutes prior to injection for morphine-suppressed locomotion. For total novelty-induced locomotion, data are normalized to the average total locomotor activity of the vehicle condition over the full 60-minute trial. For total morphine-stimulated locomotion, data are normalized to the average total locomotor activity during the 60 minutes post vehicle injection on Day 2.

Conditioned Place Preference/Aversion. CPP and CPA studies were conducted as described previously (Redila and Chavkin, 2008) with the following modifications. A two-chambered place preference apparatus with differential floor grating in the white and black chambers was used. Baseline preference was established on day 1 by allowing the mouse free access to both chambers for 30 (for U50,488 and EOM salvinorin B studies) or 50 minutes [for nalfurafine studies, given prior evidence of time-of-effect for this compound (Tsuji et al., 2001)] and recording the amount of time spent in each chamber. The conditioning phase occurred on Days 2 and 3 in 30-minute (U50,488, EOM salvinorin B) or 50-minute (nalfurafine) sessions. Vehicle was administered in the morning session and drug in the afternoon session with a 4-hour interval between sessions. For CPP, drug was administered in the least-preferred chamber to override the initial preference of the mouse. Drug was administered in the most-preferred chamber for CPA. Preference was assessed on day 4 by allowing the mouse free access to both chambers for 30 minutes (U50,488, EOM salvinorin B) or 50 minutes (nalfurafine) and recording the amount of time spent in each chamber. ANY-maze video tracking software (Stoelting Co., Wood Dale, IL) was used to track movement and time spent in each chamber. Data are presented as the difference in time spent in the drug-paired chamber for each mouse. Data were analyzed by two-way ANOVA with Dunnett's post hoc test to compare with vehicle controls and Holm-Sidak's post hoc test to compare across genotypes, each run using Prism 7 software (GraphPad).

Rotarod. Motor coordination was assessed using the rotational rod assay (Ugo Basile, Gemonio, Italy) as previously described (White et al., 2015) with minor adjustment. The rod was set to begin rotating at 4 rpm and accelerate to 40 rpm over the course of 5 minutes. Mice were trained on the rotarod on day 1 in two 5-minute sessions. On day 2, the baseline latency to fall off the rod was determined and then mice were injected with either vehicle or drug. Mice were then assessed at 10, 30, and 60 minutes postinjection. Data are reported as percent of baseline performance.

Results

Selection of Nalfurafine and EOM Salvinorin B as KOR-Biased Agonists under Consideration as Possible Morphine Adjuvants. Before launching our assessment of the efficacy of G protein-biased KOR agonists in reducing the addictive properties of morphine, we characterized the signaling properties of a variety of KOR-selective compounds to identify suitably functionally selective KOR agonists. Using

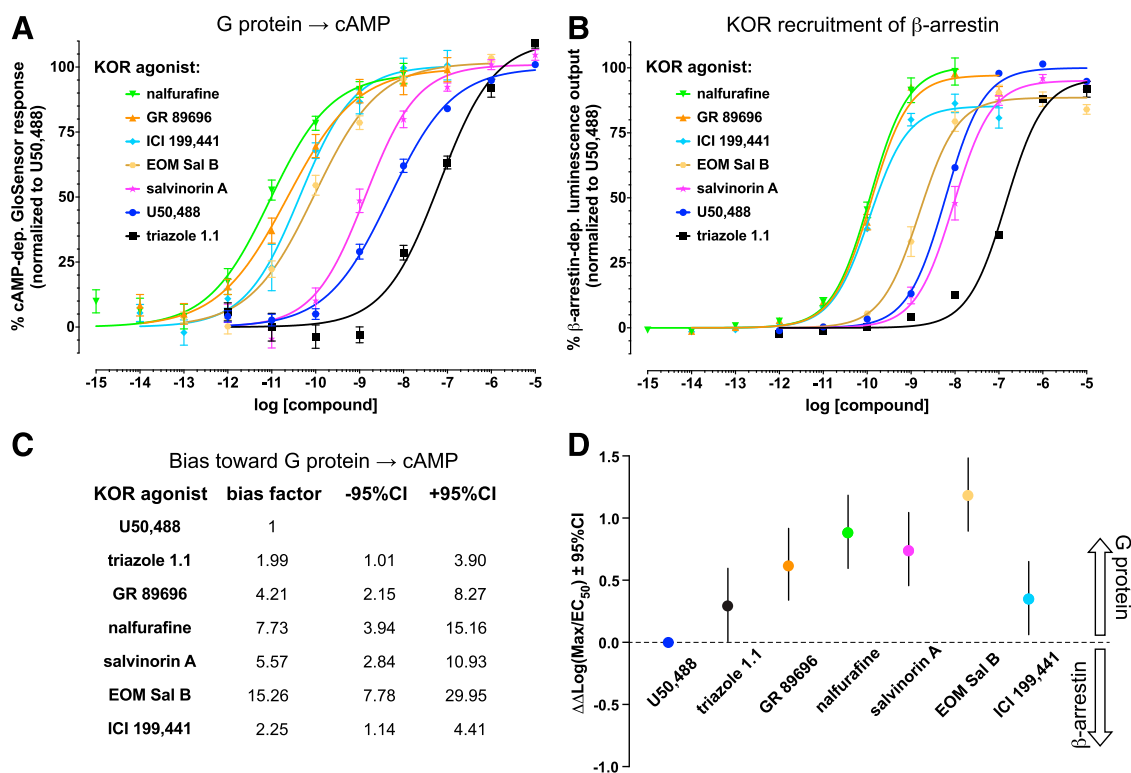


Fig. 1. Nalfurafine is a potent G protein-biased KOR agonist. Comparison of G protein and β -arrestin signaling outcomes with a variety of KOR ligands (at indicated concentrations) compared with the reference standard U50,488. (A) G protein signaling was assessed with a GloSensor assay of cyclic AMP inhibition. (B) β -arrestin recruitment to the activated KOR was assessed via the Tango assay. (C and D) Results from GloSensor and Tango assays used to calculate bias factors for each compound from observed maximal efficacy (E_{max} or “Max”) and potency (EC_{50}) values. $\Delta\Delta\log(\text{Max}/\text{EC}_{50})$ values, with their 95% confidence intervals (CIs), are plotted in (D) for each compound to indicate relative (to U50,488) bias toward G protein signaling. All compounds were tested in triplicate alongside the reference standard U50,488. $N \geq 3$ for all compounds.

the GloSensor-based cAMP assay to determine G protein signaling and the Tango assay to determine β -arrestin recruitment, we identified EOM salvinorin B (bias factor = 15.26, +95% CI = 29.95, -95% CI = 7.78) and nalfurafine (bias factor = 7.73, +95% CI = 15.16, -95% CI = 3.94) as strongly G protein-biased KOR agonists compared with U50,488 (Fig. 1), the latter consistent with prior findings (Schattauer et al., 2017).

Preclinical Evaluation of EOM Salvinorin B. After identifying EOM salvinorin B as having the most bias toward G protein signaling (Fig. 1), we tested it in mouse preclinical assays of antinociception, analgesia, and potential confounding side effects. We confirmed the prior literature (Ewald et al., 2017) that EOM salvinorin B has a spinal antinociception effect (tail immersion efficacy) at 1 mg/kg (paired t test, $P < 0.001$, $t = 4.487$, $\text{df} = 11$; Fig. 2A). However, this same dose did not show supraspinal analgesia (hot plate efficacy) or any statistically significant additive effect with 5 mg/kg morphine (one-way ANOVA: $F(2,31) = 10.33$, $P = 0.0004$; Dunnett’s post hoc test, $P > 0.05$; Fig. 2B). This dose of EOM salvinorin B was observed to be aversive on its own (two-way ANOVA: drug effect $F(1,16) = 8.578$, $P = 0.0098$; time effect, $F(1,16) = 11.57$, $P = 0.0037$; interaction effect, $F(1,16) = 3.832$, $P = 0.0680$; subject effect, $F(16,16) = 1.015$, $P = 0.4886$; Sidak’s post hoc test, $P = 0.0031$; Fig. 2C) and was also seen to reduce conditioned place preference when coadministered with 5 mg/kg morphine (two-way ANOVA: drug effect, $F(1,10) = 3.299$, $P = 0.0994$; time effect, $F(1,10) = 41.00$, $P < 0.0001$; interaction effect, $F(1,10) = 14.43$, $P = 0.0035$;

subject effect, $F(10,10) = 3.922$, $P = 0.0209$; Sidak’s post hoc test, $P = 0.0066$; Fig. 2D). This same dose of EOM salvinorin B was also found to reduce both novelty-induced locomotion (unpaired t test, $P < 0.01$, $t = 4.128$, $\text{df} = 13$; Fig. 2E) and morphine-induced hyperlocomotion (unpaired t test, $P < 0.01$, $t = 4.031$, $\text{df} = 14$; Fig. 2F).

Rotarod testing also revealed that this dose of EOM salvinorin B suppressed mouse motoric stability/balance after 10 minutes of administration (Fig. 3). Data were analyzed by two-way ANOVA: time effect, $F(1,799, 62.95) = 5.478$, $P = 0.0082$; drug effect, $F(3,35) = 5.283$, $P = 0.0041$; interaction effect, $F(6,70) = 3.096$, $P = 0.0095$; subject effect, $F(35,70) = 1.945$, $P = 0.0092$. Dunnett’s post hoc analysis revealed significant inhibition of motor coordination with administration of either 0.015 mg/kg nalfurafine, 5 mg/kg U50,488 or 1 mg/kg EOM salvinorin B at 10 minutes postinjection only ($P < 0.01$, $P < 0.01$, and $P < 0.0001$, respectively). Especially given this latter finding of acute inhibition of motor coordination by EOM salvinorin B, we moved to testing the second-most G protein-biased drug, nalfurafine. Furthermore, nalfurafine has been used successfully for nearly a decade in Japanese patients for the treatment of uremic pruritus (Ueno et al., 2013; Inui, 2015) and therefore (at the present time) has greater translational potential as a viable pharmaceutical adjuvant than EOM salvinorin B.

Spinal Antinociception by Nalfurafine. We next assessed the efficacy of the G protein-biased KOR agonist nalfurafine in the mouse warm water tail immersion test

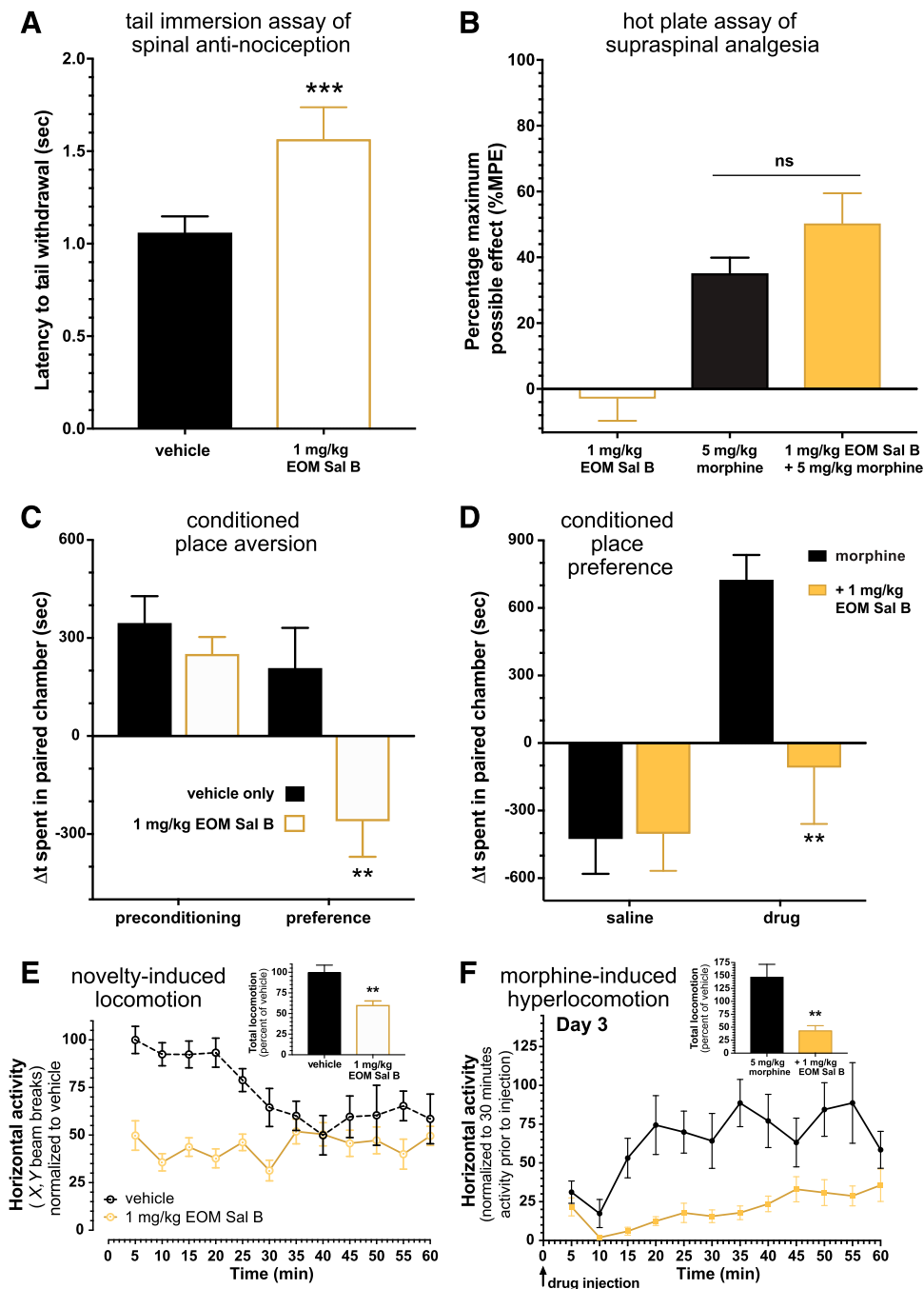


Fig. 2. Evaluation of EOM salvininorin B as a potential dose-sparing adjuvant for morphine. (A) EOM salvininorin B (1 mg/kg) produced spinal antinociception as measured by warm water tail withdrawal latencies significantly increased over vehicle control ($n = 12$). Data were analyzed by paired t test, *** $P < 0.001$. (B) EOM salvininorin B did not significantly augment the analgesic effect of morphine, $n = 8-15$ for all groups. Data were analyzed by one-way ANOVA. (C and D) EOM salvininorin B produced significant conditioned place aversion (C) and significantly reduced morphine-induced conditioned place preference (D) ($n = 6-11$ for all groups). Data were analyzed by two-way ANOVA, ** $P < 0.01$. (E and F) EOM salvininorin B suppressed both novelty-induced (E) and morphine-stimulated locomotion (F) ($n = 7$ or 8 for all groups). Data were analyzed by unpaired t test, ** $P < 0.01$.

(relative to the unbiased KOR agonist U50,488) to produce spinal antinociception, an outcome of KOR agonism known to be G protein-dependent (Hernandez et al., 1995; Berg et al., 2011; White et al., 2015; Abraham et al., 2018). Tail withdrawal latencies for U50,488 and nalfurafine were analyzed by one-way ANOVA: $F(6,152) = 29.97$, $P < 0.0001$. All three doses of nalfurafine tested produced significant increases in withdrawal latency compared with vehicle (Fig. 4A; $P < 0.0001$ for each; Dunnett's post hoc test). Administration of 1.25 and 5 mg/kg U50,488 also increased tail withdrawal latency compared with vehicle (Fig. 4A; $P < 0.001$ and $P < 0.0001$, respectively); while no significant difference was observed between 2.5 mg/kg U50,488 and vehicle (Holm-Sidak post hoc test, $P > 0.05$), 5 mg/kg

U50,488 elicited significantly more analgesia than 2.5 mg/kg U50,488 (Holm-Sidak post hoc test, $P < 0.05$). No significant difference was observed between 1.25 and 5 mg/kg doses of U50,488 (Holm-Sidak post hoc test, $P > 0.05$). Both 0.015 and 0.03 mg/kg doses of nalfurafine elicited comparable antinociception to 5 mg/kg U50,488 (Holm-Sidak post hoc test, $P = 0.61$ for both).

In addition to single administration of each KOR agonist (Fig. 4A), coadministration with morphine was performed to assess antinociceptive interactions at the spinal level (Fig. 4B). Warm water tail withdrawal latencies were analyzed by one-way ANOVA: $F(3,124) = 27.36$, $P < 0.0001$. Morphine alone at 5 mg/kg produced increased latency compared with vehicle that was augmented with coadministration

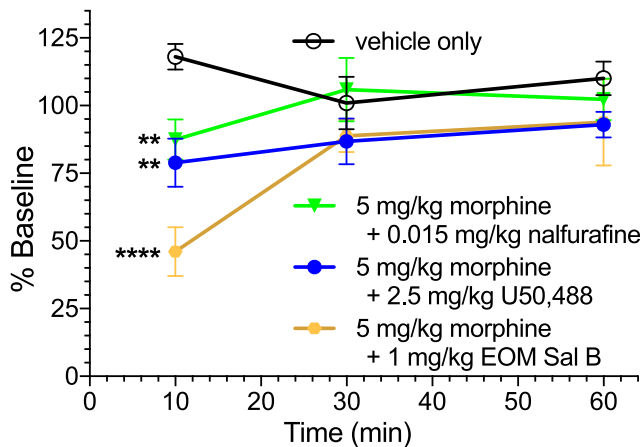


Fig. 3. Rotarod assay of motoric effects of tested KOR agonists as adjuvants to morphine. The rotating rod was set to begin rotating at 4 rpm and accelerate to 40 rpm over the course of 5 minutes. Mice were trained on the rotarod on day 1 in two 5-minute sessions. On day 2, the baseline latency to fall off the rod was determined and then mice were injected with either vehicle or drug as indicated in the line-graph's legend. Mice were then assessed at 10, 30, and 60 minutes postinjection. Data are reported as percent of baseline performance. Adding U50,488 (5 mg/kg), nalfurafine (0.015 mg/kg), or EOM salvinorin B (1 mg/kg) to 5 mg/kg morphine each produced a decrease in the time on the rod 10 minute after coadministration, but not at 30 or 60 minutes postinjection. $n = 8-11$ for all groups. Data were analyzed by two-way ANOVA; ** $P < 0.01$; **** $P < 0.0001$.

of either U50,488 (5 mg/kg) or nalfurafine (0.015 mg/kg) (Dunnett post hoc test, $P < 0.01$, $P < 0.01$, and $P < 0.05$, respectively; Fig. 4B). Resultant data are also displayed as percentage of maximal possible effect (%MPE) in Supplemental Fig. S1.

Enhancement of Morphine-Induced Supraspinal Analgesia by Nalfurafine Coadministration. To probe the effect of KOR agonism by nalfurafine on nociceptive response, we assessed nalfurafine coadministration on morphine-induced supraspinal analgesia via the hot plate test. First, nociceptive latency with administration or coadministration of

the reference standard U50,488 was measured and analyzed by one-way ANOVA: $F(6,68) = 8.975$, $P < 0.0001$. Only the highest dose of U50,488 (5 mg/kg) produced significant augmentation of nociceptive latency compared with that produced by 5 mg/kg morphine alone (Dunnett's post hoc test, $P < 0.001$; Fig. 5A).

Nociceptive latency with coadministration of nalfurafine and morphine was also analyzed by one-way ANOVA: $F(6,86) = 30.19$, $P < 0.0001$. Coadministration of all three doses of nalfurafine tested with 5 mg/kg morphine significantly increased analgesia compared with 5 mg/kg morphine alone (Dunnett's post hoc test, $P < 0.0001$; Fig. 5B). Furthermore, coadministration of 0.015 mg/kg nalfurafine with 2.5 mg/kg morphine produced nociceptive latencies equivalent to those produced by 5 mg/kg morphine alone [one-way ANOVA: $F(3,41) = 4.479$; $P = 0.0083$; Dunnett's post hoc test, $P > 0.05$; Fig. 5B,inset].

Locomotor Effects upon Nalfurafine Administration and Coadministration with Morphine. Open-field locomotion represents a behavioral outcome of mesolimbic dopamine release and is increased by movement of mice into a novel environment, as well as by administration of many drugs of abuse to mice (Bardo et al., 1990; Sellings and Clarke, 2003; Bromberg-Martin et al., 2010; Fields and Margolis, 2015). Traditional KOR agonists suppress both spontaneous as well as opioid analgesic-induced locomotion (Narita et al., 1993; Chefer et al., 2005; Bruijnzeel, 2009). Suppression of total novelty-induced locomotion was analyzed by one-way ANOVA: $F(6,104) = 19.28$; $P < 0.0001$. We found that total spontaneous locomotion was significantly reduced upon administration of 2.5 and 5 mg/kg U50,488 (Dunnett's post hoc test; $P < 0.0001$ and $P < 0.01$, respectively), as well as 0.015, 0.03 and 0.06 mg/kg nalfurafine (Dunnett's post hoc test; $P < 0.001$ and $P < 0.0001$, respectively) compared with vehicle (Fig. 6A, inset). No significant difference in locomotor suppression was seen between 5 mg/kg U50,488 and 0.015 or 0.03 mg/kg nalfurafine (Tukey's post hoc test, $P = 0.93$ and $P = 0.94$, respectively).

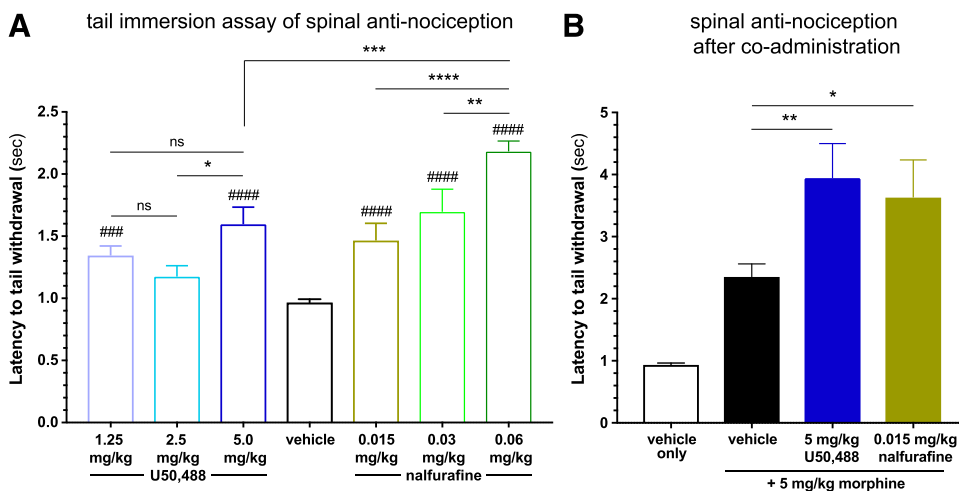


Fig. 4. Spinal nociception in C57BL/6J mice is blunted by the KOR agonists U50,488 and nalfurafine, and both KOR agonists enhance the antinociceptive effect of morphine. (A) Mice were treated with vehicle 30 minutes prior to establishing baseline latencies, then treated with indicated doses of nalfurafine or U50,488 30 minutes prior to testing. Data were analyzed by one-way ANOVA with Dunnett's multiple comparison post hoc test to assess for differences from the pooled vehicle. Holm-Sidak multiple comparison post hoc test was used to assess for differences between treatment groups ($n = 10-22$ for all treatment conditions; ns, nonsignificant; * $P < 0.05$; ** $P < 0.01$; *** $P < 0.001$; **** $P < 0.0001$; ### $P < 0.001$; #### $P < 0.0001$; ##### $P < 0.0001$). (B) Mice were treated with 5 mg/kg morphine alone or in combination with either 5 mg/kg U50,488 or 0.015 mg/kg nalfurafine. Data were analyzed by one-way ANOVA with Dunnett's multiple comparison post hoc test to assess for differences from morphine alone ($n = 21$ to 22 for all treatment groups). Data in Fig. 4 are also represented as percent of maximal possible effect (%MPE) in Supplemental Fig. S1.

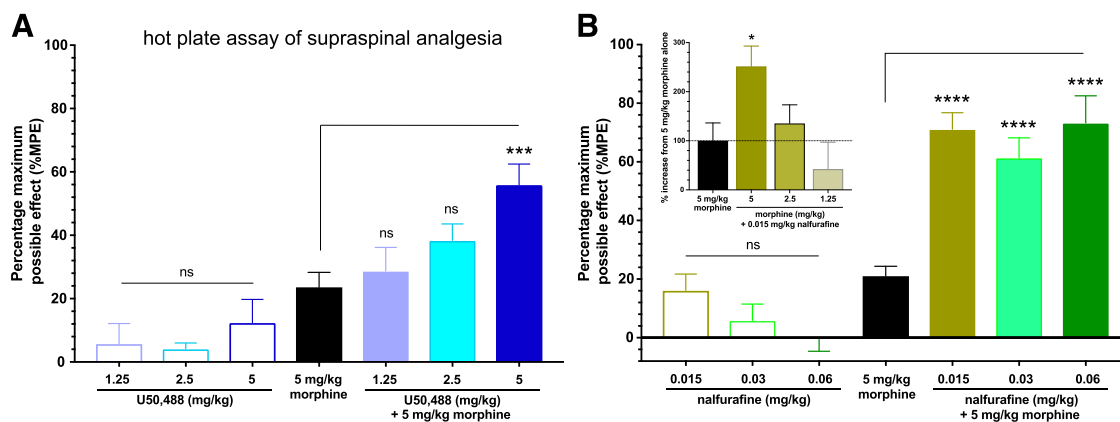


Fig. 5. Nalfurafine coadministration potentiates morphine-induced supraspinal analgesia in C57BL/6J mice. Mice were treated with indicated doses of morphine, nalfurafine, U50,488, or a combination of morphine (5 mg/kg) with either nalfurafine or U50,488. Latency to nociceptive response was recorded and compared with the response to saline [%MPE = (test response – baseline)/(30 seconds – baseline); thus, 100% MPE = 30 seconds with no sign of nociception]. All data sets were analyzed by one-way ANOVA with Dunnett' multiple comparison post hoc test to assess differences from 5 mg/kg morphine. * $P < 0.05$; *** $P < 0.001$; **** $P < 0.0001$. (A) Tests of the reference standard U50,488: $n = 18$ for 5 mg/kg morphine; $n = 7$ –16 for all other conditions. (B) Tests of the G protein-biased nalfurafine: $n = 27$ for 5 mg/kg morphine; $n = 8$ –18 for all other conditions. Inset shows %MPE values for administration of 0.015 mg/kg nalfurafine with 1.25, 2.5, or 5 mg/kg morphine normalized to 5 mg/kg morphine alone ($n = 8$ –15 for all groups).

Modulation of total morphine-stimulated locomotion by U50,488 was analyzed by one-way ANOVA: $F(3,32) = 6.142$, $P = 0.002$. Modulation by nalfurafine was also analyzed by one-way ANOVA: $F(3,27) = 30.11$, $P < 0.0001$. Suppression of locomotion was seen with coadministration of 5 mg/kg morphine with 5 mg/kg U50,488 (Dunnett's post hoc test, $P < 0.01$; Fig. 6D, inset), as well as with all doses of nalfurafine (Dunnett's post hoc test, $P < 0.0001$; Fig. 6E, inset).

Dose-Dependent Conditioned Place Aversion by Nalfurafine. To help assess the level of antitherapeutic liability presented by the G protein-biased KOR agonist nalfurafine, we also measured its ability to produce conditioned place aversion in mice (Fig. 7), a behavior linked to β -arrestin signaling downstream of KOR activation (Bruchas et al., 2007; Ehrich et al., 2015) and a therapeutically limiting effect of traditional KOR agonists like U50,488 (Jasinski and Mansky, 1972; Preston and Bigelow, 1993; Siebert, 1994; Greenwald and Stitzer, 1998). U50,488-induced CPA was analyzed by two-way ANOVA: test day effect, $F(1,39) = 20.41$, $P < 0.0001$; treatment effect, $F(3,39) = 8.940$, $P = 0.0001$; interaction effect, $F(3,39) = 4.648$, $P = 0.0072$; subject effect, $F(39,39) = 0.8332$, $P = 0.7143$. Nalfurafine-induced CPA was also analyzed by two-way ANOVA: test day effect, $F(1,56) = 13.83$, $P = 0.0005$; treatment effect, $F(3,56) = 1.058$, $P = 0.3741$; interaction effect, $F(3,56) = 2.443$, $P = 0.0736$; subjects effect, $F(56,56) = 1.097$, $P = 0.3651$. We found that all doses of U50,488 produced aversion compared with vehicle (Dunnett's post hoc test, 1.25 mg/kg: $P < 0.01$, 2.5 mg/kg: $P < 0.0001$, and 5 mg/kg: $P < 0.001$; Fig. 7A), whereas only the 0.03 mg/kg dose of nalfurafine produced statistically significant aversion compared with vehicle (Dunnett's post hoc test, $P < 0.01$; Fig. 7B).

Modulation of Morphine-Induced Conditioned Place Preference by Nalfurafine. As coadministration of unbiased KOR agonists has been observed to reduce the rewarding properties of various drugs of abuse, including morphine (Kuzmin et al., 1997; Tao et al., 2006), we evaluated the ability of nalfurafine coadministration in mice to reduce the conditioned place preference produced by morphine. U50,488 results were analyzed by two-way ANOVA: test

day effect, $F(1,80) = 231.0$, $P < 0.0001$; treatment effect, $F(3,80) = 0.9979$, $P = 0.3983$; interaction effect, $F(3,80) = 3.547$, $P = 0.0181$; subject effect, $F(80,80) = 1.041$, $P = 0.4286$. Nalfurafine results were also analyzed by two-way ANOVA: test day effect, $F(1,85) = 169$, $P < 0.0001$; treatment effect, $F(3,85) = 5.049$, $P = 0.0029$; interaction effect, $F(3,85) = 1.209$, $P = 0.3116$; subjects effect, $F(85,85) = 0.9096$, $P = 0.6683$. All coadministrations with 5 mg/kg morphine displayed preference for the drug-paired chamber compared with preconditioning ($P < 0.0001$ for all groups for U50,488 and nalfurafine; Fig. 8).

Morphine alone (5 mg/kg) produced place preference compared with preconditioning (Sidak post hoc test, $P < 0.0001$; Fig. 8). U50,488 coadministration (at 1.25 and 5 mg/kg) reduced preference for morphine (Dunnett post hoc test, $P < 0.05$; Fig. 8A), although there was no significant difference between the three U50,488 doses tested (Holm-Sidak post hoc test, $P > 0.05$). Nalfurafine coadministration showed no effect on morphine-induced preference at 0.03 mg/kg, but produced a significant reduction in morphine preference at both the 0.015 and 0.06 mg/kg doses (Dunnett post hoc test, $P < 0.05$ and $P < 0.01$, respectively; Fig. 8B).

Discussion

Our results support nalfurafine as a G protein-biased KOR agonist that can beneficially modulate both the analgesic and rewarding properties of morphine in vivo upon coadministration; however, nalfurafine was also observed to produce aversion and locomotor suppression in mice. EOM salvinorin B, a KOR agonist showing greater G protein bias than nalfurafine, failed to augment morphine-induced analgesia to the same degree as nalfurafine, but shared the ability to produce aversion and reduce morphine-induced CPP. The clinical viability of KOR agonists has been hampered by dysphoric effects in patients (Jasinski and Mansky, 1972; Preston and Bigelow, 1993; Siebert, 1994; Greenwald and Stitzer, 1998)—effects linked to signaling downstream of β -arrestin mobilization (Bruchas et al., 2007; Ehrich et al., 2015). As a result, it has been hypothesized that G protein-biased KOR agonists may lack dysphoric properties (Brust

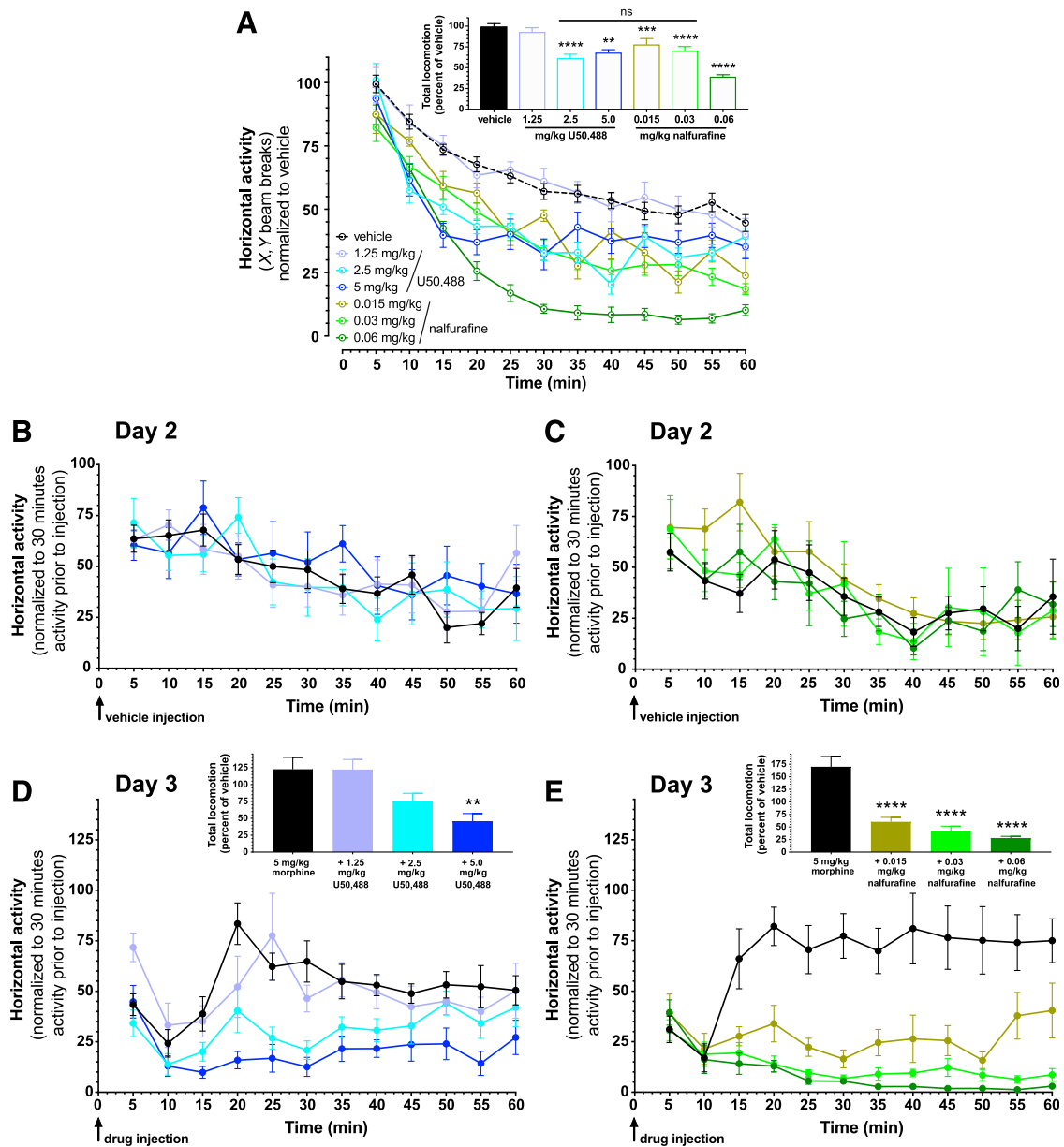


Fig. 6. Nalfurafine administration affects both spontaneous and morphine-induced locomotion. Assessment of open-field locomotion as elicited by environmental novelty or morphine administration. (A) For assessment of spontaneous locomotion, mice were administered vehicle or indicated single drug and immediately placed into the open-field chamber for 60 minutes. (B and C) To acclimate mice to drug administration, on day 2, mice were injected with vehicle only and immediately placed into the open-field chamber for 60 minutes. (D and E) For assessment of morphine-induced locomotion, mice were again habituated to the chamber for 30 minutes (on day 3) before receiving 5 mg/kg morphine with vehicle, or 5 mg/kg morphine with 1.25, 2.5 or 5 mg/kg U50,488 (D), or 5 mg/kg morphine with 0.015, 0.03, or 0.06 mg/kg nalfurafine (E) and assessed for locomotor behavior for an additional 60 minutes. Locomotion was measured by number of IR-beam breaks per 5 minutes. Data are presented as percent of pooled vehicle locomotion over the 60 minutes postinjection for suppression of novelty-induced locomotion. Total locomotion data were analyzed by one-way ANOVA with a Dunnett's post hoc analysis to compare treatment groups with the vehicle alone or vehicle + morphine condition and Tukey's post hoc analysis to assess difference between treatment conditions for novelty locomotion. Novelty-induced locomotion n : vehicle = 41, all other conditions, n = 7–16. Morphine suppressed locomotion n = 7–11 for all conditions. ns, not significant; $**P < 0.01$; $***P < 0.001$; $****P < 0.0001$.

et al., 2016; Liu et al., 2019), restoring their clinical viability. Our data demonstrate that, while nalfurafine and EOM salvinorin B retain the ability to produce conditioned place aversion, nalfurafine's augmentation of the analgesic effect of morphine persists at lower doses, providing evidence that G protein-biased KOR agonists may have increased clinical utility as dose-sparing agents compared with unbiased KOR agonists. Proper dose combinations may provide augmented analgesia while avoiding dysphoria and minimizing sedation.

Initial in vitro screening identified both nalfurafine and EOM salvinorin B as potent G protein-biased KOR agonists. Having the greatest bias factor, our initial experiments focused evaluation of EOM salvinorin B. Dosing at 1 mg/kg EOM salvinorin B, however, did not significantly augment morphine-induced analgesia in the hot plate assay. In addition, EOM salvinorin B produced CPA, reduced morphine-induced CPP when coadministered, and suppressed both novelty and morphine-stimulated locomotion. Of note is the rapid onset of suppressive action seen in the assay of novelty-induced

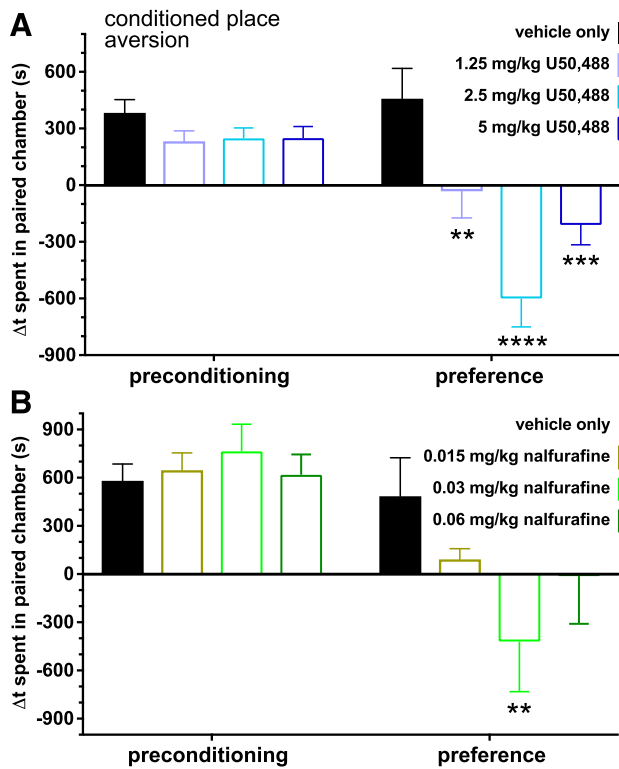


Fig. 7. Dose-dependent production of conditioned place aversion (CPA) in C57BL/6J mice by nalfurafine administration. Mice were acclimated to the two-chambered apparatus and allowed to display a side preference. Then, mice were treated with saline (in their nonpreferred chamber) or drug (in their preferred chamber) and confined to that chamber. Vehicle and drug were given on alternate days for 4 days. On test day, the mice were allowed free access to either chamber. The preference for the drug-paired chamber was measured as the time spent in the drug-paired chamber minus the time spent in the vehicle-paired chamber. (A) Mice treated with the reference standard U50,488 displayed a significantly reduced preference for the drug-paired chamber (** $P < 0.01$; **** $P < 0.0001$, *** $P < 0.0004$, $n = 8-15$ for all groups). (B) Mice treated with 0.03 mg/kg nalfurafine, but not 0.015 or 0.06 mg/kg nalfurafine, displayed reduced preference for the drug-paired chamber. Data were analyzed by one-way ANOVA with a Dunnett's multiple comparisons test comparing with vehicle (*) or a Sidak test to compare between doses of U50,488 or nalfurafine. ** $P < 0.01$; *** $P < 0.001$; **** $P < 0.0001$, $n = 8-26$ for all groups).

locomotion upon EOM salvinorin B administration. Significant reductions were present within the first 5 minutes postinjection of 1 mg/kg EOM salvinorin B that returned to baseline approximately 30 minutes later (Fig. 2E). In contrast, no dose of U50,488 or nalfurafine significantly suppressed locomotion within the first 5 minutes compared with vehicle administration (Fig. 6A). Although analgesic effects were seen at 30 minutes postinjection of EOM salvinorin B in our present study, as well as by others (Ewald et al., 2017), the lack of analgesic augmentation seen in the hot plate assay upon coadministration of EOM salvinorin B and morphine may be due to kinetic factors (i.e., shorter half-life of EOM salvinorin B vs. nalfurafine). Interrogation of these earlier time points, however, is confounded by the significant inhibition of locomotor coordination observed 10 minutes postinjection of EOM salvinorin B in the rotarod assay (Fig. 3), potentially complicating the interpretation of hot plate results using a shorter post-injection interval. For these reasons, we chose to focus our efforts on nalfurafine. Whereas EOM salvinorin B has only been used preclinically, nalfurafine has been used safely in

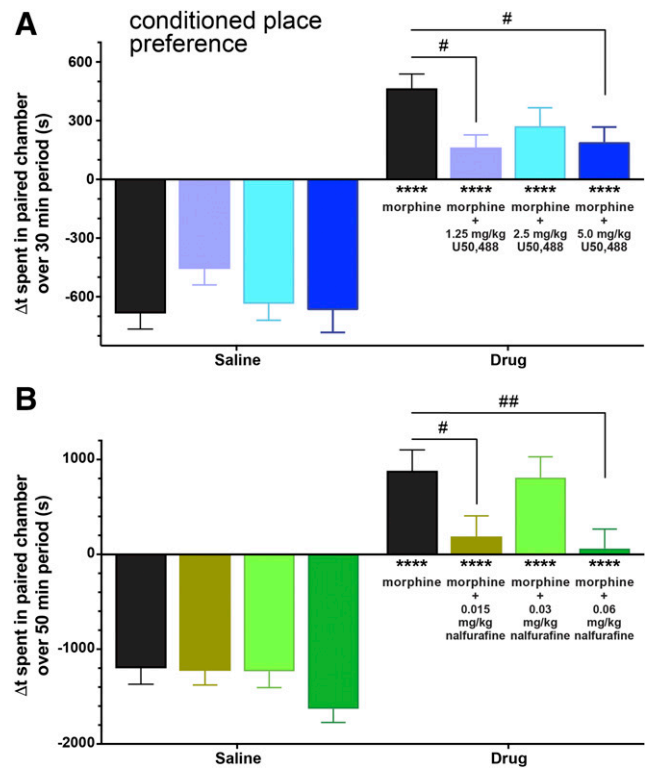


Fig. 8. Nalfurafine, like the conventional KOR agonist U50,488, reduces morphine-induced conditioned place preference (CPP) in C57BL/6J mice. Mice were acclimated to the two-chambered apparatus and allowed to display a side preference. Then, mice were treated with vehicle (in their preferred chamber) or drug (in their nonpreferred chamber) and confined to that chamber for 30 or 50 minutes (for U50,488 or nalfurafine, respectively). Vehicle or morphine was given on alternate days for 4 days. On test day, the mice were allowed free access to both chambers. The preference for the drug-paired chamber was measured as the time spent in the drug-paired chamber minus the time spent in the vehicle-paired chamber. (A) Mice coadministered morphine (5 mg/kg) and U50,488 (1.25 or 5 mg/kg) displayed reduced preference for the drug-paired chamber ($n = 18-25$ for all groups). (B) Mice coadministered morphine (5 mg/kg) and nalfurafine (0.015 or 0.06 mg/kg) displayed reduced preference for the drug-paired chamber ($n = 18-25$ for all groups). Data were analyzed by two-way ANOVA with a Sidak's multiple comparisons test comparing with preconditioning (*), and a Dunnett's test comparing with morphine alone (#): # $P < 0.05$; ## $P < 0.01$; **** $P < 0.0001$.

Japan since 2009 (Inui, 2015), giving it greater translational potential.

As previous studies have demonstrated that KOR agonist-induced increases in spinal antinociception are G protein-signaling dependent (Hernandez et al., 1995; Berg et al., 2011; White et al., 2015; Abraham et al., 2018), our use of the warm water tail immersion assay allowed for comparison of in vivo G protein-signaling between nalfurafine and the reference standard U50,488 at selected doses. A dose of 5 mg/kg U50,488 produced antinociception in this assay that was statistically equivalent to both the 0.015 and 0.03 mg/kg doses of nalfurafine. This finding suggests that KOR-mediated G protein signaling is equivalent in vivo between the higher dose of U50,488 and the lowest tested doses of nalfurafine. Furthermore, we found that coadministration of 5 mg/kg U50,488 or 0.015 mg/kg nalfurafine with 5 mg/kg morphine produced augmented antinociception that was equivalent between the two KOR agonists, supporting the idea of their equiefficacious spinal-level G protein signaling at these two doses.

As the supraspinal analgesia produced by MOR-targeting analgesics represents a major factor in their clinical success (Kanjhan, 1995; Jensen, 1997), we also assessed the effect of coadministration in a nonreflexive assay of nociception (the hot plate assay). While no significant analgesic effect of U50,488 or nalfurafine alone was observed in the hot plate assay compared with morphine alone, there was a significant effect of nalfurafine upon coadministration with morphine. In contrast, only the highest dose of U50,488 (5 mg/kg) produced an augmentation of morphine-induced analgesia. To assess the dose-sparing potential of a morphine-plus-nalfurafine combination, we reduced the dose of morphine while coadministering 0.015 mg/kg nalfurafine. Coadministration of 2.5 mg/kg morphine with 0.015 mg/kg nalfurafine produced analgesia equivalent to 5 mg/kg morphine alone, suggesting that a combination of morphine and nalfurafine may reduce the dose of morphine required to achieve similar analgesia by half.

A potential explanation of the observed analgesic effects of nalfurafine is that the locomotor-suppressing property of nalfurafine might hinder expression of nociceptive behaviors (e.g., jumping or paw flicking/licking), thereby falsely increasing nociceptive latency measurements. However, in our measurements of morphine-stimulated hyperlocomotion, 5 mg/kg U50,488 was observed to suppress locomotion to a similar extent as both 0.015 and 0.03 mg/kg doses of nalfurafine (Fig. 6), yet nalfurafine produced greater augmentation of analgesia (Fig. 5). In addition, rotarod assays revealed decreased locomotor coordination upon coadministration of morphine with either U50,488 or nalfurafine at 10 minutes postinjection only; these locomotor coordination effects were not present at 30 minutes postinjection: namely, the time point at which hot plate assessment of nociceptive behaviors was conducted. As morphine-stimulated hyperlocomotion in mice is strongly linked with mesolimbic dopamine release (Bromberg-Martin et al., 2010; Fields and Margolis, 2015), the effects seen in this locomotion assay upon coadministration likely reflect a reduction in the motivating effects of morphine. In contrast, the rotarod assay provides a direct stimulus for locomotion (not falling from the rotating rod) and thereby more directly evaluates locomotor coordination, suggesting that the ability of these mice to locomote at 30 minutes postinjection is not significantly disrupted and making a locomotor confound to nociception less likely. In this light, future studies are planned to investigate the effects of nalfurafine and MOR agonist coadministration on pain-suppressed behaviors to further investigate this potential confound and better characterize the analgesic interactions of nalfurafine with MOR-targeting drugs.

As 5 mg/kg U50,488 or 0.015 mg/kg nalfurafine each produced equivalent analgesic augmentation when coadministered with 5 mg/kg morphine in the spinal antinociception (tail withdrawal) assay, the increased ability of nalfurafine to augment morphine-induced analgesia in the supraspinal (hot plate) assay may indicate a beneficial supraspinal interaction between morphine and nalfurafine. Early work with site-specific administration of MOR and KOR agonists demonstrated analgesic synergism when given intrathecally but not intracerebroventricularly (Ren et al., 1985; Sutters et al., 1990; Miaskowski et al., 1992, 1993). Importantly, these studies used unbiased KOR agonists such as dynorphin and U50,488. These findings suggest that the

beneficial analgesic interaction seen with administration of nalfurafine and morphine may stem from a reduced engagement of β -arrestin at supraspinal sites, rather than a difference in G protein-signaling per se.

To assess the potential clinical viability of this coadministration paradigm, we evaluated doses of nalfurafine and U50,488 for sedation and dysphoria. In the present study, statistically significant reductions in spontaneous locomotion were seen with all KOR agonists tested except 1.25 mg/kg U50,488. This observation of sedation persisted when these KOR agonists were co-administered with morphine. However, postmarketing surveillance of nalfurafine reports a low incidence of somnolence (1%) at doses safe and efficacious for antipruritus in human patients (Kozono et al., 2018; Siderovski and Setola, 2018), suggesting that sedation may not necessarily prove to be an antitherapeutic effect of nalfurafine coadministration with a MOR-targeting analgesic.

Aversion to KOR agonists in the conditioned place aversion assay (a rodent-based metric of dysphoria) has been linked to signaling downstream of β -arrestin (Bruchas et al., 2007; Ehrich et al., 2015), and previous work has demonstrated a lack of CPA to nalfurafine (Tsuji et al., 2001; Liu et al., 2019). In our CPA assays with nalfurafine, only 0.03 mg/kg produced significant aversion compared with U50,488, which produced significant aversion at all doses tested. Observed decreases in aversion with high doses of KOR agonist has been demonstrated in a previous study (Robles et al., 2014) and could reflect the appearance of cognitive deficits dependent on the high dosing (Castellano et al., 1988; Daumas et al., 2007; Carey et al., 2009; Paris et al., 2011). Of note is our finding that 0.03 mg/kg nalfurafine produced significant conditioned place aversion. This result is congruent with recent work demonstrating that the G protein-biased KOR agonist RB-64 produces aversion in both wild-type and β -arrestin-2 knockout mice [in addition to the unbiased KOR agonists U69,593 and salvinorin A (White et al., 2015)], suggesting that aversion to KOR agonists may be produced in part through mechanisms independent of β -arrestin-dependent signaling. G protein-biased KOR agonists might thus retain the ability to produce aversion, although less potently than unbiased agonists.

KOR agonists are known to reduce the rewarding properties of a variety of drugs of abuse (Kuzmin et al., 1997; Lindholm et al., 2001; Tsuji et al., 2001; Tao et al., 2006; Morani et al., 2009; Ewald et al., 2017; Townsend et al., 2017), presenting a second possible benefit of combination KOR and MOR agonist therapy. Using the CPP assay, we found that nalfurafine reduces the rewarding properties of 5 mg/kg morphine at 0.015 and 0.06 mg/kg, while 0.03 mg/kg produced no effect on morphine-induced place preference. Although a dose of 0.03 mg/kg was reported to reduce morphine CPP in a previous study (Tsuji et al., 2001), a potential source of this difference could be our use of inbred C57BL/6J mice, as opposed to outbred ddY male mice used by Tsuji and colleagues. Indeed, strain differences in response to KOR agonists, as well as to psychostimulant drugs of abuse, were previously documented (e.g., Castellano et al., 1988; Mouri et al., 2012).

Administration of U50,488 displayed a similar pattern in CPP assays, with doses of 1.25 and 5 mg/kg U50,488 suppressing morphine-induced place preference, while 2.5 mg/kg U50,488 did not result in a statistically significant suppression of CPP. Similar to results seen in CPA, the reduction in morphine-induced CPP at the highest doses of each KOR

agonist may be explained in part by cognitive disruption. Paris et al. (2011) previously showed that U50,488, at a dose that reduces CPP for cocaine, produces deficits in normal object recognition. In addition, U50,488 injected bilaterally into the CA3 region of the hippocampus is reported to attenuate context-induced fear conditioning as well as the ability to identify a new platform location in the water maze task (Daumas et al., 2007). The results from these prior studies suggest that a reduced ability to pair stimulus with context may be responsible for the decreased conditioned place preference for morphine seen with the highest doses of KOR agonists used in our study.

Effects seen with the low and middle dose of each KOR agonist tested were opposite of those expected. Interestingly, the doses of both drugs producing the greatest level of aversion produced the least suppression of morphine-induced CPP. While extensive prior work has focused on KOR agonist effects on cocaine CPP (Suzuki et al., 1992; Redila and Chavkin, 2008; Morani et al., 2009), there is a paucity of published work investigating their effects on opioid analgesic-induced CPP, with few (if any) studies using multiple doses of a KOR agonist. Outside of the work by Tsuji and colleagues referenced above (Tsuji et al., 2001), another group demonstrated that 1 mg/kg U50,488 reduced CPP for 5 mg/kg morphine, although other doses of U50,488 were not assessed (Funada et al., 1993). A drawback of the CPP procedure is its relatively low sensitivity to dose magnitude (Napier et al., 2013), making dose-response relationships difficult to properly establish; however, the effects reported here indicate an interaction between the dose of KOR agonist and the rewarding properties of morphine. As pretreatment with U50,488 has been shown to increase CPP for cocaine (McLaughlin et al., 2006; Ehrich et al., 2014), it is possible that differences in the timing of KOR agonist effects at different doses in relation to the rewarding effects of morphine play a role in the observed U-shaped dose-response pattern. A more detailed interrogation of the effects seen in CPP with an expanded dose range of nalfurafine and varied pretreatment intervals could aid in determining the pharmacodynamic and pharmacokinetic factors involved.

Taken together, our data suggest that nalfurafine may be an effective dose-sparing adjuvant for traditional MOR-targeting analgesics. As all doses of nalfurafine tested provided similar augmentation of morphine's analgesic effect, lower doses than implemented here may provide adequate analgesic synergism while avoiding dysphoria and sedation. Nalfurafine is used in the treatment of uremic pruritus at doses that produce low rates of sedation, insomnia, constipation, psychosis, and other common KOR related side effects (Kozono et al., 2018; Siderovski and Setola, 2018). The antipruritic dose in mice extends as low as 5 μ g/kg (Liu et al., 2019). As a dose of 0.015 mg/kg effectively reduces morphine CPP without significant aversion, it is possible that doses already used in human subjects to treat pruritus may produce the benefits of coadministration described herein while avoiding significant antitherapeutic effects. Although the signaling pathways involved in both the intended and unintended effects of KOR agonism require further investigation, the reduced side-effect profile of nalfurafine compared with unbiased KOR agonists suggests that G protein-biased KOR agonists may become clinically relevant adjuvants for opioid-based pain therapies, particularly for acute pain. Additional studies

are planned to investigate the effects of chronic coadministration on analgesic tolerance-, withdrawal-, and reward-related behaviors.

Acknowledgments

We thank Dr. Gilad Barnea (Brown University) for furnishing HTLA cells for Tango assays and Dr. Liz Engler-Chiurazzi for access to, and advice with, the WVU Rodent Behavioral Core facility.

Authorship Contributions

Participated in research design: Kaski, White, Gross, Trexler, Kinsey, Siderovski, Setola.

Conducted experiments: Kaski, White, Gross, Trexler, Wix, Setola.

Contributed new reagents or analytic tools: Harland, Prisinzano, Aubé, Kenakin.

Performed data analysis: Kaski, White, Gross, Kenakin, Siderovski, Setola.

Wrote or contributed to the writing of the manuscript: Kaski, White, Gross, Kinsey, Kenakin, Siderovski, Setola.

References

- Abraham AD, Schattauer SS, Reichard KL, Cohen JH, Fontaine HM, Song AJ, Johnson SD, Land BB, and Chavkin C (2018) Estrogen regulation of GRK2 inactivates kappa opioid receptor signaling mediating analgesia, but not aversion. *J Neurosci* **38**:8031–8043.
- Allen JA, Yost JM, Setola V, Chen X, Sassano MF, Chen M, Peterson S, Yadav PN, Huang XP, Feng B, et al. (2011) Discovery of β -arrestin-biased dopamine D2 ligands for probing signal transduction pathways essential for antipsychotic efficacy. *Proc Natl Acad Sci USA* **108**:18488–18493.
- Bardo MT, Bowling SL, and Pierce RC (1990) Changes in locomotion and dopamine neurotransmission following amphetamine, haloperidol, and exposure to novel environmental stimuli. *Psychopharmacology (Berl)* **101**:338–343.
- Barnea G, Strapps W, Herrada G, Berman Y, Ong J, Kloss B, Axel R, and Lee KJ (2008) The genetic design of signaling cascades to record receptor activation. *Proc Natl Acad Sci USA* **105**:64–69.
- Berg KA, Rowan MP, Sanchez TA, Silva M, Patwardhan AM, Milam SB, Hargreaves KM, and Clarke WP (2011) Regulation of κ -opioid receptor signaling in peripheral sensory neurons in vitro and in vivo. *J Pharmacol Exp Ther* **338**:92–99.
- Bohn LM and Aubé J (2017) Seeking (and finding) biased ligands of the kappa opioid receptor. *ACS Med Chem Lett* **8**:694–700.
- Briggs SL and Rech RH (2009) Antinociceptive interactions of micro- and kappa-opioid agonists in the colorectal distension assay in rats. *Pharmacol Biochem Behav* **92**:343–350.
- Bromberg-Martin ES, Matsumoto M, and Hikosaka O (2010) Dopamine in motivational control: rewarding, aversive, and alerting. *Neuron* **68**:815–834.
- Bruchas MR, Land BB, Aita M, Xu M, Barot SK, Li S, and Chavkin C (2007) Stress-induced p38 mitogen-activated protein kinase activation mediates kappa-opioid-dependent dysphoria. *J Neurosci* **27**:11614–11623.
- Bruchas MR, Land BB, Lemos JC, and Chavkin C (2009) CRF1-R activation of the dynorphin/kappa opioid system in the mouse basolateral amygdala mediates anxiety-like behavior. *PLoS One* **4**:e8528.
- Bruijnzeel AW (2009) kappa-Opioid receptor signaling and brain reward function. *Brain Res Brain Res Rev* **62**:127–146.
- Brust TF, Morgenweck J, Kim SA, Rose JH, Locke JL, Schmid CL, Zhou L, Stahl EL, Cameron MD, Scarry SM, et al. (2016) Biased agonists of the kappa opioid receptor suppress pain and itch without causing sedation or dysphoria. *Sci Signal* **9**:ra117.
- Carey AN, Lyons AM, Shay CF, Dunton O, and McLaughlin JP (2009) Endogenous kappa opioid activation mediates stress-induced deficits in learning and memory. *J Neurosci* **29**:4293–4300.
- Carlezon WA Jr, Béguin C, DiNieri JA, Baumann MH, Richards MR, Todtenkopf MS, Rothman RB, Ma Z, Lee DY, and Cohen BM (2006) Depressive-like effects of the kappa-opioid receptor agonist salvinorin A on behavior and neurochemistry in rats. *J Pharmacol Exp Ther* **316**:440–447.
- Castellano C, Ammassari-Teule M, Libri V, and Pavone F (1988) Effects of kappa-opioid receptor agonists on locomotor activity and memory processes in mice. *Pol J Pharmacol Pharm* **40**:507–513.
- Chavkin C (2011) The therapeutic potential of κ -opioids for treatment of pain and addiction. *Neuropsychopharmacology* **36**:369–370.
- Chavkin C, Schattauer SS, and Levin JR (2014) Arrestin-mediated activation of p38 MAPK: molecular mechanisms and behavioral consequences. *Handb Exp Pharmacol* **219**:281–292.
- Chefer VI, Czyzyk T, Bolan EA, Moron J, Pintar JE, and Shippenberg TS (2005) Endogenous kappa-opioid receptor systems regulate mesoaccumbal dopamine dynamics and vulnerability to cocaine. *J Neurosci* **25**:5029–5037.
- Daumas S, Betourne A, Halley H, Wolfer DP, Lipp HP, Lassalle JM, and Francés B (2007) Transient activation of the CA3 Kappa opioid system in the dorsal hippocampus modulates complex memory processing in mice. *Neurobiol Learn Mem* **88**:94–103.
- Ehrich JM, Messenger DI, Knakal CR, Kuhar JR, Schattauer SS, Bruchas MR, Zweifel LS, Kieffer BL, Phillips PE, and Chavkin C (2015) Kappa opioid receptor-induced aversion requires p38 MAPK activation in VTA dopamine neurons. *J Neurosci* **35**:12917–12931.

- Ehrich JM, Phillips PE, and Chavkin C (2014) Kappa opioid receptor activation potentiates the cocaine-induced increase in evoked dopamine release recorded in vivo in the mouse nucleus accumbens. *Neuropsychopharmacology* **39**:3036–3048.
- Endoh T, Matsuura H, Tajima A, Izumimoto N, Tajima C, Suzuki T, Saitoh A, Suzuki T, Narita M, Tseng L, et al. (1999) Potent antinociceptive effects of TRK-820, a novel kappa-opioid receptor agonist. *Life Sci* **65**:1685–1694.
- Ewald AWM, Bosch PJ, Culverhouse A, Crowley RS, Neuenswander B, Prisinzano TE, and Kivell BM (2017) The C-2 derivatives of salvinorin A, ethoxymethyl ether Sal B and β -tetrahydroxyran Sal B, have anti-cocaine properties with minimal side effects. *Psychopharmacology (Berl)* **234**:2499–2514.
- Fields HL and Margolis EB (2015) Understanding opioid reward. *Trends Neurosci* **38**: 217–225.
- Funada M, Suzuki T, Narita M, Misawa M, and Nagase H (1993) Blockade of morphine reward through the activation of κ -opioid receptors in mice. *Neuropharmacology* **32**:1315–1323.
- Greenwald MK and Stitzer ML (1998) Butorphanol agonist effects and acute physical dependence in opioid abusers: comparison with morphine. *Drug Alcohol Depend* **53**: 17–30.
- Gross JD, Kaski SW, Schroer AB, Wix KA, Siderovski DP, and Setola V (2018) Regulator of G protein signaling-12 modulates the dopamine transporter in ventral striatum and locomotor responses to psychostimulants. *J Psychopharmacol* **32**: 191–203.
- He L and Lee NM (1997) DynorphinA-(2-17) restores spinal/supraspinal morphine synergy in morphine-tolerant mice. *J Pharmacol Exp Ther* **280**:1210–1214.
- Hernandez A, Soto-Moyano R, Mestre C, Eschaliere A, Pelissier T, Paile C, and Contreras E (1995) Intrathecal pertussis toxin but not cyclic AMP blocks kappa opioid-induced antinociception in rat. *Int J Neurosci* **81**:193–197.
- Inui S (2015) Nalfurafine hydrochloride to treat pruritus: a review. *Clin Cosmet Investig Dermatol* **8**:249–255.
- Jasinski DR and Manksy PA (1972) Evaluation of nalbuphine for abuse potential. *Clin Pharmacol Ther* **13**:78–90.
- Jensen TS (1997) Opioids in the brain: supraspinal mechanisms in pain control. *Acta Anaesthesiol Scand* **41**:123–132.
- Johnson MW, MacLean KA, Caspers MJ, Prisinzano TE, and Griffiths RR (2016) Time course of pharmacokinetic and hormonal effects of inhaled high-dose salvinorin A in humans. *J Psychopharmacol* **30**:323–329.
- Jones CM (2013) Heroin use and heroin use risk behaviors among nonmedical users of prescription opioid pain relievers - United States, 2002-2004 and 2008-2010. *Drug Alcohol Depend* **132**:95–100.
- Jordan M, Schallhorn A, and Wurm FM (1996) Transfecting mammalian cells: optimization of critical parameters affecting calcium-phosphate precipitate formation. *Nucleic Acids Res* **24**:596–601.
- Kanjhan R (1995) Opioids and pain. *Clin Exp Pharmacol Physiol* **22**:397–403.
- Kenakin T (2017) A scale of agonism and allosteric modulation for assessment of selectivity, bias, and receptor mutation. *Mol Pharmacol* **92**:414–424.
- Khotib J, Narita M, Suzuki M, Yajima Y, and Suzuki T (2004) Functional interaction among opioid receptor types: up-regulation of mu- and delta-opioid receptor functions after repeated stimulation of kappa-opioid receptors. *Neuropharmacology* **46**: 531–540.
- Koh H (2015) Community approaches to the opioid crisis. *JAMA* **314**:1437–1438.
- Koo JW, Mazei-Robison MS, Chaudhry D, Juarez B, LaPlant Q, Ferguson D, Feng J, Sun H, Scobie KN, Damez-Werno D, et al. (2012) BDNF is a negative modulator of morphine action. *Science* **338**:124–128.
- Kozono H, Yoshitani H, and Nakano R (2018) Post-marketing surveillance study of the safety and efficacy of nalfurafine hydrochloride (Remitch[®] capsules 2.5 μ g) in 3,762 hemodialysis patients with intractable pruritus. *Int J Nephrol Renovasc Dis* **11**:9–24.
- Kumor KM, Haertzen CA, Johnson RE, Kocher T, and Jasinski D (1986) Human psychopharmacology of ketocyclazocine as compared with cyclazocine, morphine and placebo. *J Pharmacol Exp Ther* **238**:960–968.
- Kunihara M, Ohyama M, and Nakano M (1993) Effects of spiradoline mesylate, a selective kappa-opioid-receptor agonist, on the central dopamine system with relation to mouse locomotor activity and analgesia. *Jpn J Pharmacol* **62**: 223–230.
- Kuzmin AV, Semenova S, Gerrits MA, Zvartau EE, and Van Ree JM (1997) Kappa-opioid receptor agonist U50,488H modulates cocaine and morphine self-administration in drug-naive rats and mice. *Eur J Pharmacol* **321**:265–271.
- Laman-Maharg AR, Copeland T, Sanchez EO, Campi KL, and Trainor BC (2017) The long-term effects of stress and kappa opioid receptor activation on conditioned place aversion in male and female California mice. *Behav Brain Res* **332**:299–307.
- Land BB, Bruchas MR, Schattauer S, Giardino WJ, Aita M, Messinger D, Hnasko TS, Palmiter RD, and Chavkin C (2009) Activation of the kappa opioid receptor in the dorsal raphe nucleus mediates the aversive effects of stress and reinstates drug seeking. *Proc Natl Acad Sci U S A* **106**:19168–19173.
- Lindholm S, Werme M, Brené S, and Franck J (2001) The selective kappa-opioid receptor agonist U50,488H attenuates voluntary ethanol intake in the rat. *Behav Brain Res* **120**:137–146.
- Liu JJ, Chiu YT, DiMattio KM, Chen C, Huang P, Gentile TA, Muschamp JW, Cowan A, Mann M, and Liu-Chen LY (2019) Phosphoproteomic approach for agonist-specific signaling in mouse brains: mTOR pathway is involved in κ opioid aversion. *Neuropsychopharmacology* **44**:939–949.
- MacLean KA, Johnson MW, Reissig CJ, Prisinzano TE, and Griffiths RR (2013) Dose-related effects of salvinorin A in humans: dissociative, hallucinogenic, and memory effects. *Psychopharmacology (Berl)* **226**:381–392.
- Manchikanti L, Helm S II, Fellows B, Janata JW, Pampati V, Grider JS, and Boswell MV (2012) Opioid epidemic in the United States. *Pain Physician* **15** (3 Suppl): ES9–ES38.
- Maqueda AE, Valle M, Addy PH, Antonijoan RM, Puentes M, Coimbra J, Ballester MR, Garrido M, González M, Claramunt J, et al. (2015) Salvinorin-A induces intense dissociative effects, blocking external sensory perception and modulating interoception and sense of body ownership in humans. *Int J Neuropsychopharmacol* **18**:pvp065.
- McLaughlin JP, Land BB, Li S, Pintar JE, and Chavkin C (2006) Prior activation of kappa opioid receptors by U50,488 mimics repeated forced swim stress to potentiate cocaine place preference conditioning. *Neuropsychopharmacology* **31**:787–794.
- Miaskowski C, Sutters KA, Taiwo YO, and Levine JD (1992) Antinociceptive and motor effects of delta/mu and kappa/mu combinations of intrathecal opioid agonists. *Pain* **49**:137–144.
- Miaskowski C, Taiwo YO, and Levine JD (1993) Antinociception produced by receptor selective opioids. Modulation of supraspinal antinociceptive effects by spinal opioids. *Brain Res* **608**:87–94.
- Morani AS, Kivell B, Prisinzano TE, and Schenk S (2009) Effect of kappa-opioid receptor agonists U69593, U50488H, spiradoline and salvinorin A on cocaine-induced drug-seeking in rats. *Pharmacol Biochem Behav* **94**:244–249.
- Mouri A, Koseki T, Narusawa S, Niwa M, Mamiya T, Kano S, Sawa A, and Nabeshima T (2012) Mouse strain differences in phencyclidine-induced behavioural changes. *Int J Neuropsychopharmacol* **15**:767–779.
- Mueller D, Perdikaris D, and Stewart J (2002) Persistence and drug-induced reinstatement of a morphine-induced conditioned place preference. *Behav Brain Res* **136**:389–397.
- Muschamp JW, Nemeth CL, Robison AJ, Nestler EJ, and Carlezon WA Jr (2012) Δ FosB enhances the rewarding effects of cocaine while reducing the pro-depressive effects of the kappa-opioid receptor agonist U50488. *Biol Psychiatry* **71**:44–50.
- Napier TC, Herrold AA, and de Wit H (2013) Using conditioned place preference to identify relapse prevention medications. *Neurosci Biobehav Rev* **37** (9 Pt A): 2012–2086.
- Narita M, Takahashi Y, Takamori K, Funada M, Suzuki T, Misawa M, and Nagase H (1993) Effects of kappa-agonist on the antinociception and locomotor enhancing action induced by morphine in mice. *Jpn J Pharmacol* **62**:15–24.
- Negus SS, Schrode K, and Stevenson GW (2008) Micro/kappa opioid interactions in rhesus monkeys: implications for analgesia and abuse liability. *Exp Clin Psychopharmacol* **16**:386–399.
- Paris JJ, Reilly KJ, and McLaughlin JP (2011) Kappa opioid receptor-mediated disruption of novel object recognition: relevance for psychostimulant treatment. *J Addict Res Ther* **5**:7.
- Preston KL and Bigelow GE (1993) Differential naltrexone antagonism of hydro-morphone and pentazocine effects in human volunteers. *J Pharmacol Exp Ther* **264**:813–823.
- Preston KL, Bigelow GE, Bickel WK, and Liebson IA (1989) Drug discrimination in human postaddicts: agonist-antagonist opioids. *J Pharmacol Exp Ther* **250**: 184–196.
- Preston KL, Bigelow GE, and Liebson IA (1987) Comparative evaluation of morphine, pentazocine and ciramadol in postaddicts. *J Pharmacol Exp Ther* **240**: 900–910.
- Rada PV, Mark GP, Taylor KM, and Hoebel BG (1996) Morphine and naloxone, i.p. or locally, affect extracellular acetylcholine in the accumbens and prefrontal cortex. *Pharmacol Biochem Behav* **53**:809–816.
- Raehal KM and Bohn LM (2011) The role of beta-arrestin2 in the severity of antinociceptive tolerance and physical dependence induced by different opioid pain therapeutics. *Neuropharmacology* **60**:58–65.
- Rankovic Z, Brust TF, and Bohn LM (2016) Biased agonism: an emerging paradigm in GPCR drug discovery. *Bioorg Med Chem Lett* **26**:241–250.
- Redila VA and Chavkin C (2008) Stress-induced reinstatement of cocaine seeking is mediated by the kappa opioid system. *Psychopharmacology (Berl)* **200**:59–70.
- Ren MF, Lu CH, and Han JS (1985) Dynorphin-A-(1-13) antagonizes morphine analgesia in the brain and potentiates morphine analgesia in the spinal cord. *Peptides* **6**:1015–1020.
- Robinson SA, Erickson RL, Browne CA, and Lucki I (2017) A role for the mu opioid receptor in the antidepressant effects of buprenorphine. *Behav Brain Res* **319**: 96–103.
- Robles CF, McMackin MZ, Campi KL, Doig IE, Takahashi EY, Pride MC, and Trainor BC (2014) Effects of kappa opioid receptors on conditioned place aversion and social interaction in males and females. *Behav Brain Res* **262**:84–93.
- Schattauer SS, Kuhar JR, Song A, and Chavkin C (2017) Nalfurafine is a G-protein biased agonist having significantly greater bias at the human than rodent form of the kappa opioid receptor. *Cell Signal* **32**:59–65.
- Sellings LH and Clarke PB (2003) Segregation of amphetamine reward and locomotor stimulation between nucleus accumbens medial shell and core. *J Neurosci* **23**:6295–6303.
- Siderovski DP and Setola V (2018) F1000Prime Recommendation of [Kozono H et al., *Int J Nephrol Renovasc Dis* 2018 11:9-24]. *F1000Prime*; doi: 10.34101/f.734401763.793552765/2051-9796
- Siebert DJ (1994) Salvia divinorum and salvinorin A: new pharmacologic findings. *J Ethnopharmacol* **43**:53–56.
- Sutters KA, Miaskowski C, Taiwo YO, and Levine JD (1990) Analgesic synergy and improved motor function produced by combinations of mu-delta- and mu-kappa-opioids. *Brain Res* **530**:290–294.
- Suzuki T, Shiozaki Y, Masukawa Y, Misawa M, and Nagase H (1992) The role of mu- and kappa-opioid receptors in cocaine-induced conditioned place preference. *Jpn J Pharmacol* **58**:435–442.
- Tao PL, Liang KW, Sung WY, Wu YT, and Huang EY (2006) Nalbuphine is effective in decreasing the rewarding effect induced by morphine in rats. *Drug Alcohol Depend* **84**:175–181.
- Townsend EA, Naylor JE, Negus SS, Edwards SR, Qureshi HN, McLendon HW, McCurdy CR, Kapanda CN, do Carmo JM, da Silva FS, et al. (2017) Effects of nalfurafine on the reinforcing, thermal antinociceptive, and respiratory-depressant effects of oxycodone: modeling an abuse-deterrent opioid analgesic in rats. *Psychopharmacology (Berl)* **234**:2597–2605.
- Tsuji M, Takeda H, Matsumiya T, Nagase H, Narita M, and Suzuki T (2001) The novel kappa-opioid receptor agonist TRK-820 suppresses the rewarding and locomotor-enhancing effects of morphine in mice. *Life Sci* **68**:1717–1725.

- Ueno Y, Mori A, and Yanagita T (2013) One year long-term study on abuse liability of nalfurafine in hemodialysis patients. *Int J Clin Pharmacol Ther* **51**:823–831.
- Urban JD, Clarke WP, von Zastrow M, Nichols DE, Kobilka B, Weinstein H, Javitch JA, Roth BL, Christopoulos A, Sexton PM, et al. (2007) Functional selectivity and classical concepts of quantitative pharmacology. *J Pharmacol Exp Ther* **320**: 1–13.
- Verborgh CM, Camu F, and Meert TF (1997) Interaction between sufentanil and U-50488H with respect to antinociception and respiratory depression in rats. *Acta Anaesthesiol Scand* **41**:895–902.
- Volkow ND and Collins FS (2017) The role of science in addressing the opioid crisis. *N Engl J Med* **377**:391–394.
- Walsh SL and Babalonis S (2017) The abuse potential of prescription opioids in humans-closing in on the first century of research. *Curr Top Behav Neurosci* **34**: 33–58.
- Walsh SL, Chausmer AE, Strain EC, and Bigelow GE (2008) Evaluation of the mu and kappa opioid actions of butorphanol in humans through differential naltrexone blockade. *Psychopharmacology (Berl)* **196**:143–155.
- White KL, Robinson JE, Zhu H, DiBerto JF, Polepally PR, Zjawiony JK, Nichols DE, Malanga CJ, and Roth BL (2015) The G protein-biased κ -opioid receptor agonist RB-64 is analgesic with a unique spectrum of activities in vivo. *J Pharmacol Exp Ther* **352**:98–109.
- Zacny JP, Lichtor JL, Thapar P, Coalson DW, Flemming D, and Thompson WK (1994) Comparing the subjective, psychomotor and physiological effects of intravenous butorphanol and morphine in healthy volunteers. *J Pharmacol Exp Ther* **270**:579–588.
- Zhou L, Lovell KM, Frankowski KJ, Slauson SR, Phillips AM, Streicher JM, Stahl E, Schmid CL, Hodder P, Madoux F, et al. (2013) Development of functionally selective, small molecule agonists at kappa opioid receptors. *J Biol Chem* **288**: 36703–36716.

Address correspondence to: Dr. Vincent Setola, Department of Neuroscience, West Virginia University School of Medicine, 8 Biomedical Road, Morgantown, WV 26506-9303. E-mail: vssetola@hsc.wvu.edu