



OPEN

Persistent pulmonary pathology after COVID-19 is associated with high viral load, weak antibody response, and high levels of matrix metalloproteinase-9

Tøri Vigeland Lerum^{1,2,✉}, Niklas Nyboe Maltzahn^{3,4}, Pål Aukrust^{2,5,23}, Marius Trøseid^{2,5}, Katerina Nezvalova Henriksen^{6,7}, Trine Kåsine⁸, Anne-Ma Dyrhol-Riise^{10,9}, Birgitte Stiksrud⁹, Mette Haugli¹⁰, Bjørn Blomberg^{11,12}, Bård Reiakvam Kittang¹³, Asgeir Johannessen^{2,14}, Raisa Hannula¹⁵, Saad Aballi¹⁶, Anders Benjamin Kildal¹⁷, Ragnhild Eiken¹⁸, Tuva Børresdatter Dahl^{18,23}, Fridtjof Lund-Johansen¹⁹, Fredrik Müller^{2,20}, Jezabel Rivero Rodriguez²¹, Carin Meltzer²¹, Gunnar Einvik^{2,22}, Thor Ueland^{2,23}, Inge Christoffer Olsen²⁴, NOR-SOLIDARITY Consortium*, Andreas Barratt-Due^{8,25}, Trond Mogens Aaløkken^{2,21} & Ole Henning Skjøsberg^{1,2}

The association between pulmonary sequelae and markers of disease severity, as well as pro-fibrotic mediators, were studied in 108 patients 3 months after hospital admission for COVID-19. The COPD assessment test (CAT-score), spirometry, diffusion capacity of the lungs (DL_{CO}), and chest-CT were performed at 23 Norwegian hospitals included in the NOR-SOLIDARITY trial, an open-labelled, randomised clinical trial, investigating the efficacy of remdesivir and hydroxychloroquine (HCQ). Thirty-eight percent had a CAT-score ≥ 10 . DL_{CO} was below the lower limit of normal in 29.6%. Ground-glass opacities were present in 39.8% on chest-CT, parenchymal bands were found in 41.7%. At admission, low pO₂/F_iO₂ ratio, ICU treatment, high viral load, and low antibody levels, were predictors of a poorer pulmonary outcome after 3 months. High levels of matrix metalloproteinase (MMP)-9 during hospitalisation and at 3 months were associated with persistent CT-findings. Except for a negative effect of remdesivir on CAT-score, we found no effect of remdesivir or HCQ on long-term

¹Department of Pulmonary Medicine, Oslo University Hospital Ullevål, Nydalen, Postboks 4950, 0424 Oslo, Norway. ²Institute of Clinical Medicine, University of Oslo, Blindern, Postboks 1171, 0318 Oslo, Norway. ³Oslo Centre for Biostatistics and Epidemiology, Oslo University Hospital, Oslo, Norway. ⁴Department of Biostatistics, Oslo Centre for Biostatistics and Epidemiology, University of Oslo, Oslo, Norway. ⁵Section of Clinical Immunology and Infectious Diseases, Oslo University Hospital, Oslo, Norway. ⁶Department of Haematology, Oslo University Hospital, Oslo, Norway. ⁷Hospital Pharmacies of South-Eastern Norway Enterprise, Oslo, Norway. ⁸Division of Critical Care and Emergencies, Oslo University Hospital, Oslo, Norway. ⁹Department of Infectious Diseases, Oslo University Hospital, Ullevål, Oslo, Norway. ¹⁰Infectious Diseases Department, Sørlandet Hospital SSK, Kristiansand, Norway. ¹¹Department of Medicine, Haukeland University Hospital, Bergen, Norway. ¹²Department of Clinical Science, University of Bergen, Bergen, Norway. ¹³Department of Medicine, Haraldsplass Deaconess Hospital, Bergen, Norway. ¹⁴Department of Infectious Diseases, Vestfold Hospital Trust, Tønsberg, Norway. ¹⁵Department of Infectious Diseases, Trondheim University Hospital, Trondheim, Norway. ¹⁶Department of Infectious Diseases, Østfold Hospital Trust Kalnes, Grålum, Norway. ¹⁷Department of Anaesthesiology and Intensive Care, University Hospital of North Norway, Tromsø, Norway. ¹⁸Department of Infectious Diseases, Innlandet Hospital Trust, Lillehammer, Norway. ¹⁹Division of Laboratory Medicine, Department of Immunology, Oslo University Hospital, Oslo, Norway. ²⁰Department of Microbiology, Oslo University Hospital, Oslo, Norway. ²¹Department of Radiology and Nuclear Medicine, Oslo University Hospital Ullevål, Oslo, Norway. ²²Department of Pulmonary Medicine, Akershus University Hospital, Lørenskog, Norway. ²³Research Institute for Internal Medicine, Oslo University Hospital, Oslo, Norway. ²⁴Department of Research Support for Clinical Trials, Oslo University Hospital, Oslo, Norway. ²⁵Department of Immunology, University of Oslo, Oslo, Norway. *A list of authors and their affiliations appears at the end of the paper. ✉email: tori.lerum@gmail.com

pulmonary outcomes. Three months after hospital admission for COVID-19, a high prevalence of respiratory symptoms, reduced DL_{CO}, and persistent CT-findings was observed. Low pO₂/F_iO₂ ratio, ICU-admission, high viral load, low antibody levels, and high levels of MMP-9 were associated with a worse pulmonary outcome.

The abrupt spread of SARS-CoV-2, leading to the COVID-19 pandemic, has had a devastating impact on the entire world's population¹. With the lungs as the primary target, knowledge about the prevalence and causes of long-term pulmonary sequelae in COVID-19 survivors is paramount.

We recently reported that 50% of COVID-19 survivors struggle with dyspnoea 3 months following hospital admission, with 25% presenting with reduced diffusion capacity of the lungs for carbon monoxide (DL_{CO}), and 20% having signs of early pulmonary fibrosis on chest computed tomography (CT)². Similar results have been reported by others³. With various drugs emerging as possible therapeutic candidates against SARS-CoV-2, long-term pulmonary function following treatment and potential targets for preventing pulmonary sequelae warrant elucidation⁴.

The NOR-SOLIDARITY trial is an independent add-on study to the WHO SOLIDARITY trial, evaluating the effects of remdesivir and hydroxychloroquine (HCQ) compared to standard of care (SoC) in hospitalised COVID-19 patients, assessed by in-hospital mortality, the need for mechanical ventilation and the length of hospital stays⁵. To explore end-organ deterioration following the infection, the NOR-SOLIDARITY trial included biobanking during hospital stay and at a 3-month follow-up visit⁶.

Studies of patients hospitalised for SARS, caused by another beta coronavirus (SARS-CoV) with high similarity to SARS-CoV-2, have highlighted the role of an overwhelming host response in mediating lung injury and subsequent development of pulmonary fibrosis⁷. In other forms of pulmonary fibrosis, several mediators are under investigation as markers and potential mediators of disease severity and prognosis, such as various matrix metalloproteinases (MMP), surfactant protein D (SP-D), and vascular endothelial growth factor (VEGF) A, as a key regulator of angiogenesis^{8–10}. Some of these mediators have also been reported to be elevated in the acute phase of COVID-19^{11,12}. However, the association between these regulators of extracellular matrix remodelling and the development of persistent lung parenchyma pathology and reduced pulmonary function following COVID-19, has not been fully elucidated.

We aimed to investigate pulmonary function through COPD Assessment Test Score (CAT-score), spirometry, DL_{CO}, and chest CT 3 months after hospital admission for COVID-19, and whether there was a difference in these variables between participants treated with remdesivir, HCQ, or local SoC alone. As explorative outcomes, we evaluated associations between clinical characteristics during hospital admission, including viral load in oropharynx and the presence of antibodies against SARS-CoV-2, with the pulmonary outcomes. In addition, we examined if plasma levels of factors suspected to be involved in development of pulmonary fibrosis (i.e., MMP-9, SP-D, and VEGF-A), obtained during hospital admission and after 3 months, were related to patient-reported outcome measures, as well as pulmonary function and persistent findings on chest CT.

Materials and methods

Design. The NOR-SOLIDARITY trial is an adaptive, multicentred, randomised, open-labelled clinical trial based on the WHO trial SOLIDARITY, where the target was to evaluate the efficacy and safety of remdesivir and HCQ versus their respective SoC group in hospital-admitted COVID-19 patients. A 3-month follow-up visit was organized to evaluate lung function by spirometry, DL_{CO}, and chest CT. Peripheral blood was collected both during hospital stay and at the 3-month follow up. Biobanking material from oropharynx was collected during hospital admission. Recent work by the SOLIDARITY and NOR-SOLIDARITY consortia describes in detail the design of the trial, the recruitment of participants, the randomisation process, interventions, and secondary outcomes^{5,6}. The study was approved by the Committee for Medical Research Ethics Region South East Norway (REK 118684) and registered on ClinicalTrials.gov on the 25.03.2020 (NCT04321616). Monitors from the Clinical Trial Unit at Oslo University Hospital monitored the conduct of the trial. Good clinical practice was followed throughout the study. All participants gave informed consent prior to inclusion, either themselves or by a legally authorised representative.

Outcomes. The outcomes of this sub-study were CAT-score, spirometry, DL_{CO}, and chest CT-findings 3 months following hospital admission for COVID-19, and the effect of remdesivir and HCQ versus their respective SoC on these variables. Explorative outcomes were to correlate clinical characteristics during hospital admission with the pulmonary outcomes. These included pO₂/F_iO₂ (P/F)-ratio, respiratory rate (RR), admission to an intensive care unit (ICU), the receipt of mechanical ventilation, as well as plasma levels of C-reactive protein (CRP), lactate dehydrogenase (LDH), D-dimer, ferritin, viral load in oropharynx, and antibodies against the receptor binding domain (RBD) of SARS-CoV-2¹³. Secondary explorative outcomes were to correlate the levels of MMP-9, SP-D, and VEGF-A during hospital admission and at 3 months following discharge for COVID-19, with the pulmonary outcomes.

Participants. Twenty-three Norwegian hospitals participated in the NOR-SOLIDARITY trial. Adult patients (≥ 18 years) admitted to hospital with a PCR-confirmed SARS-CoV-2 infection from March 28th until October 5th 2020 were eligible for participation. The exclusion criteria are described in detail in a recently published report⁶. For the purpose of this report, participants having completed the 3-month follow-up visit by the 15th of October 2020 were included (n = 108). Participants were randomised to receive remdesivir, HCQ or SoC. During the trial period, the availability of the drugs varied, implying that some participants served as SoC con-

trol subjects for one drug, while others served as SoC control subjects for both remdesivir and HCQ. This might give the impression that there are more than 108 participants included. An overview of missing parameters (i.e., CT scans, blood analyses, and pulmonary function tests) are presented in Supplementary Table S1.

Intervention. In the NOR-SOLIDARITY trial, the participants were allocated to one of three treatment arms; SoC, remdesivir (200 mg day 1, then 100 mg daily up to nine days), or HCQ (800 mg twice daily day 1, then 400 mg twice daily up to nine days). All trial regimens were discontinued at discharge. Unintended effects are described in a previous report⁶.

Patient-reported outcome measures. CAT-score is an eight-item questionnaire designed to assess and quantify the impact of COPD symptoms on health status on a scale from 0 (low) to 40 (very high)¹⁴. The eight items cover respiratory symptoms (cough, mucus, tightness in chest) and impaired quality of life (limitations in daily activities, sleep impairment, loss of energy). Scores ≥ 10 , indicating a moderate to very high symptom impact on health status, were used as a cut-off¹⁵. Participants responded to the questionnaire at the 3-month follow-up visit.

Pulmonary function tests. Pulmonary function tests consisted of spirometry (Jaeger, Höecheberg, Germany and Carefusion, Yorba Linda, CA, USA) and DL_{CO} , and were performed according to the European Respiratory Society's and the American Thoracic Society's guidelines, thoroughly described in detail in a previously published report^{2,16–19}.

Acquisition and review of chest CT images. Low-dose, thin-section chest CT images were obtained in supine and prone position during breath-holding in deep inspiration. Supplementary expiratory scans were obtained in 18 (17.6%) participants to differentiate between air trapping and hypoperfusion in areas with decreased attenuation on inspiratory scans. The CT protocol and method of interpretation according to the Fleischner Society, are described in detail in a previously published report^{2,20,21}. For the purpose of this report, we assessed the prevalence of any ground-glass opacities (GGO), $GGO \geq 10\%$ in at least one of the four lung zones, or any mosaic pattern (classified as potentially reversible changes and grouped together), any consolidations, reticular pattern, parenchymal bands, interlobular septal thickening, or any bronchiectasis (classified as irreversible changes and grouped together).

Routine laboratory analyses and measurements of SARS-COV-2 viral load and antibodies. Routine blood samples (CRP, LDH, ferritin, D-dimer, white blood cell counts, the number of neutrophils, lymphocytes, and platelets, and haemoglobin levels) were analysed by the routine laboratory at each participating centre. Viral load in oropharynx was analysed by RT-PCR, and SARS-CoV-2 receptor binding domain (RBD) IgG antibodies were detected by multiplexed bead-based flow cytometric assay, referred to as microsphere affinity proteomics as previously described⁶.

Measurement of MMP-9, tissue inhibitor of metalloproteinase (TIMP) 2, SP-D, AND VEGF-A. Per protocol, biobanking was performed during hospital admission and at the 3-month follow up visit. Plasma was collected in sterile EDTA containing tubes, put on melting ice and centrifuged at $2000 \times g$ for 20 min to obtain platelet-poor plasma, before storage at $-80^\circ C$. The samples were thawed only once. Plasma levels of MMP-9, TIMP-2, SP-D, and VEGF-A were measured in duplicate by enzyme immunoassays (EIA) using commercially available reagents (Cat#DY911, DY971, DY1920, DY293B; RnD systems, Stillwater, MN, USA) in a 384-well format. Absorption was read at 450 nm with wavelength correction set to 540 nm using an EIA plate reader (BioTek). Intra- and inter-assay coefficients of variation were $< 10\%$ for all EIAs. Levels of MMP-9, TIMP-2, SP-D, and VEGF-A in the plasma of 24 healthy blood donors (15 (62.5%) males, mean age 44 years, one (4.2%) former smoker, one (4.2%) taking statins), were also measured to establish a point of reference.

Statistics. The primary outcome of the study design has already been published, and analyses in this report are to be considered as secondary and explorative analyses^{5,6}. Demographic data were described by median (25th and 75th percentile (IQR)) and percentages. CAT-score, pulmonary function tests, and CT-findings at the 3-months follow-up are presented as median values and IQR. We assessed the difference in pulmonary function, defined by FEV_1 and DL_{CO} in percent of predicted ($DL_{CO}\%$) as continuous variables, CAT-score, and CT-findings between the intervention groups and their respective SoC-group 3 months following treatment for COVID-19 by 95% confidence intervals from the two-sample t-distribution, or p-value from the 2×2 Chi-squared distribution. To evaluate participants' symptom load to pulmonary function, we associated CAT-score ≥ 10 with $DL_{CO}\%$, and the presence of any reversible, and any irreversible CT-findings using logistic regression.

Associations between clinical characteristics during hospital stay and pulmonary outcomes after 3 months, were performed by logistic and linear regression, and adjusted by age, sex, treatment, and history of smoking. As an explorative outcome we wanted to study whether these clinical characteristics could predict pulmonary dysfunction after 3 months, defined by CAT-score ≥ 10 , $DL_{CO}\%$, and the presence of either GGO in more than $\geq 10\%$ of at least one of four lung zones as a measure of possible reversible changes, and irreversible changes on chest CT.

Further explorative outcomes were associations between the maximum plasma levels of MMP-9, TIMP-2, SP-D, and VEGF-A during hospital stay and at the 3-month follow-up visit, with $DL_{CO}\%$, and the predefined changes on chest CT. Comparisons of pro-fibrotic mediators between the healthy control group, the maximum levels during admission and at the 3-months follow-up, were performed with Mann–Whitney U test

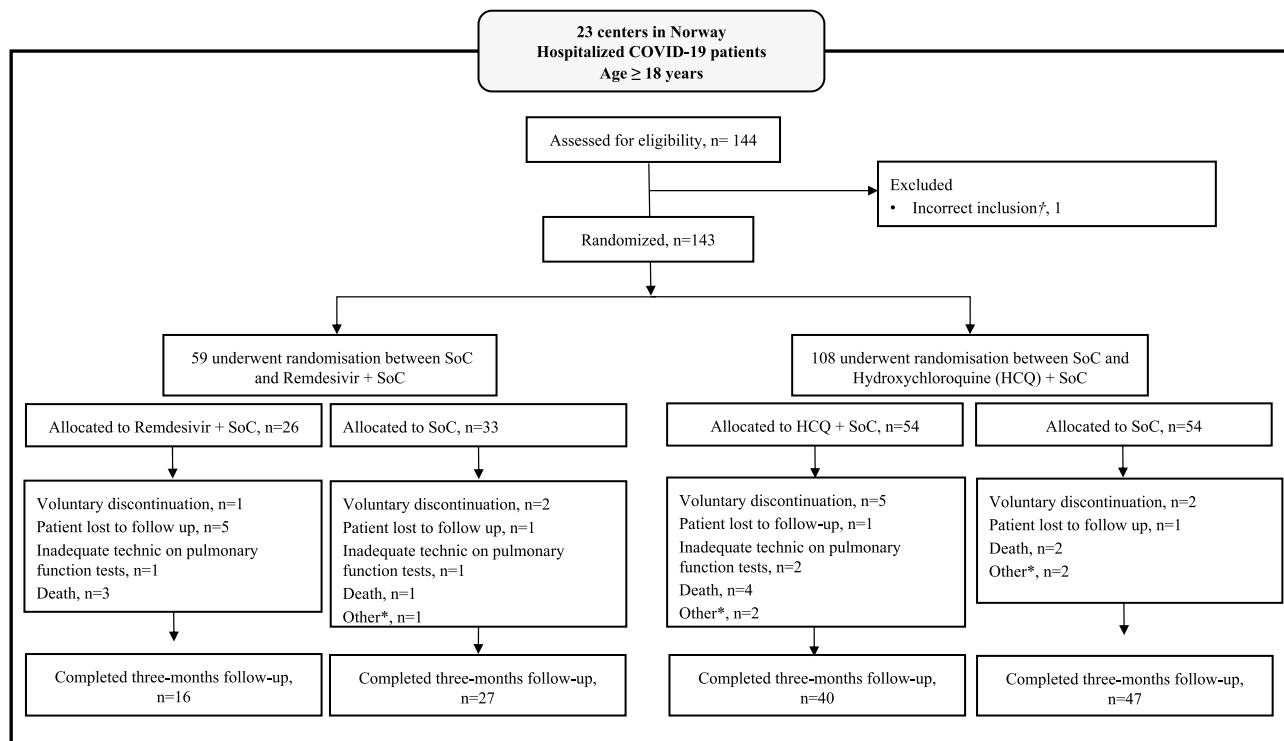


Figure 1. Flow chart of the participant flow. *Other: Emigration, progression of cancer diseases, general health deterioration, prolonged corrected QT-time during treatment with HCQ; [†]Excluded from the full analysis set. HCQ hydroxychloroquine.

and Wilcoxon paired test. Statistical analyses were performed using the statistical software R (version 4.0.2, 2020.06.22, R Core Team (2020). R: A language and environment for statistical computing. R Foundation for Statistical Computing, Vienna, Austria. URL <https://www.R-project.org/>) and SPSS (IBM Corp. released 2019. IBM SPSS Statistics for Windows, Version 26.0. Armonk, NY: IBM Corp). Figures were produced using Prism 9 (GraphPad Software, LCC, version 9.1.0., San Diego, California, USA).

Results

Participant flow. Hospitalised COVID-19 patients were included from 23 Norwegian hospitals from the 28th of March 2020. For the purpose of this paper, the data collection from the 3-month follow up visit was ended on the 15th of October, 2020. As demonstrated in Fig. 1, 108 participants completed the 3-month follow-up visit, with a median time of 93.5 (IQR 88, 106) days from hospital admission. Missing parameters are presented in Supplementary Table S1.

Demographics. Demographic and clinical characteristics from the hospital admission for all participants and treatment groups with their respective SoC-group are presented in Table 1. Overall, the median age was 58 years (range 27.4, 89.8), 41 (38%) were female, few were current smokers (1.9%), and the median body mass index (BMI) was 27.6 (IQR 25.3, 30.7). Of comorbidities, hypertension (31.5%), diabetes mellitus (15.7%), and obesity (25.9%) were the most common. Overall, 40 (37.0%) presented with respiratory failure at inclusion, defined as $P/F\text{-ratio} \leq 40$ kPa. The median duration of symptoms prior to hospital admission was eight days (IQR 5, 10).

CAT-score, pulmonary function tests, and chest ct-findings 3 months following treatment for COVID-19. Table 2 presents CAT-score, pulmonary function tests, and all registered CT-findings 3 months following hospital admission for the total COVID-19 population, as well as the distribution between the intervention groups and their respective SoC groups. As demonstrated in Table 3, there was a higher prevalence of self-reported symptoms in the remdesivir group than in the corresponding SoC group. Otherwise, there were no significant differences between the intervention groups and their respective SoC groups with regard to pulmonary function tests or CT-findings 3 months following inclusion. Forty-one (38.0%) participants had a CAT-score ≥ 10 , indicating a moderate to high symptom burden 3 months following hospitalisation (Table 2), with dyspnoea on exertion and loss of energy being the most prominent symptoms (Fig. 2).

For the pulmonary function tests, the majority of participants had values within the limits of normal. For FVC and FEV_1 , 13 (12%) and 15 (13.9%) of the overall population had values below LLN, respectively. Thirty-two (29.6%) had DL_{CO} below LLN.

	All participants	Remdesivir versus its control		HCQ versus its control	
	(N = 108)	Remdesivir + SoC (n = 16)	SoC (n = 27)	HCQ + SoC (n = 40)	SoC (n = 47)
Demographics					
Age, years	58.0 (50.0, 65.3)	58.0 (52.3, 62.0)	61.0 (47.5, 68.5)	55.0 (50.8, 74.0)	61.0 (47.5, 69.5)
Female, n (%)	41 (38.0)	6 (37.5)	6 (22.2)	17 (42.5)	18 (38.3)
Body Mass Index (kg/m ²)	27.6 (25.3, 30.7)	27.3 (22.9, 32.6)	27.2 (25.3, 28.3)	27.8 (26.7, 31.8)	27.2 (25.0, 28.9)
Smoking history					
Current, n (%)	2 (1.9)	1 (6.2)	0 (0)	1 (2.5)	0 (0)
Previous, n (%)	40 (37.0)	6 (37.5)	12 (44.4)	14 (35.0)	18 (38.3)
Never, n (%)	62 (57.4)	7 (43.7)	14 (51.8)	25 (62.5)	27 (57.4)
Comorbidities					
Chronic pulmonary disease, n (%)	5 (4.6)	2 (12.5)	0 (0)	2 (5.0)	1 (2.1)
Hypertension, n (%)	34 (31.5)	5 (31.2)	9 (33.3)	11 (27.5)	17 (36.2)
Diabetes mellitus, n (%)	17 (15.7)	4 (25.0)	1 (3.7)	6 (15.0)	7 (14.9)
Obesity (BMI > 30 kg/m ²), n (%)	28 (25.9)	6 (37.5)	2 (7.4)	14 (35.0)	8 (17.0)
Baseline characteristics					
Duration of symptoms prior to baseline (days)	8 (5.0, 10.0)	8 (6.7, 9.5)	8.0 (4.5, 9.0)	8.0 (5.0, 10.0)	8.0 (4.5, 9.5)
P/F-ratio at admission (kPa)	42.4 (32.5, 49.6)	42.8 (30.4, 52.2)	45.2 (36.9, 50.8)	45.2 (31.6, 48.1)	43.2 (35.8, 51.9)
P/F-ratio < 40 kPa, n (%)	40 (37.0)	6 (37.5)	10 (37.0)	18 (45.0)	14 (29.8)
Respiration rate per minute	21 (18, 24)	21 (17.5, 24.0)	20 (18.5, 24.0)	20.5 (16.0, 24.0)	21 (18.5, 24.0)
Temperature (°C)	37.3 (36.8, 38.0)	37.1 (36.7, 37.6)	37.3 (36.7, 37.8)	37.5 (36.9, 38.2)	37.2 (36.9, 37.9)
Admission to ward, n (%)	100 (92.6)	14 (87.5)	27 (100.0)	35 (87.5)	46 (97.9)
Admission to ICU, n (%)	8 (7.4)	2 (12.5)	0 (0)	5 (12.5)	1 (2.1)
Biochemical presentation					
Hemoglobin (g/dL)	13.4 (12.2, 14.1)	13.4 (12.2, 14.1)	13.6 (12.5, 14.2)	13.3 (12.2, 14.7)	13.3 (12.4, 14.1)
White blood cell count (× 10 ⁹ per L)	6.1 (4.6, 8.9)	5.5 (3.0, 6.6)	6.2 (4.8, 8.4)	6.7 (4.5, 9.4)	6.1 (4.9, 8.3)
Lymphocytes (× 10 ⁹ per L)	1.1 (0.8, 1.4)	1.0 (0.7, 1.53)	1.0 (0.7, 1.9)	1.0 (0.8, 1.3)	1.1 (0.9, 1.4)
Platelet count (× 10 ⁹ per L)	205 (163, 292)	194 (171, 294)	216 (162, 272)	198 (155, 292)	206 (165, 273)
Creatinine (μmol/L)	73.0 (57.0, 86.5)	62.0 (53.0, 77.0)	78.0 (59.0, 89.0)	73.0 (58.0, 90.0)	73.0 (56.5, 83.5)
Ferritin (μg/L)	627 (322, 1190)	637 (386, 1420)	627 (320, 1060)	710 (276, 1390)	532 (322, 990)
Lactate dehydrogenase (U/L)	275 (209, 357)	280 (223, 321)	214 (188, 357)	276 (228, 367)	255 (192, 353)
CRP (mg/L)	70.0 (34.8, 124.0)	79.5 (24.8, 141.0)	84.0 (31.5, 126)	71.5 (46.8, 122.0)	66.0 (30.5, 119.0)
Viral load (oropharynx)					
Viral load (log ₁₀ counts/1000 cells)	1.73 (0.00, 0.48)	1.85 (0.00, 4.51)	1.36 (0.00, 4.83)	1.88 (0.00, 4.27)	1.53 (0.00, 4.83)
Anti-SARS-CoV-2 antibodies					
Seroconverted (RBD ≥ 5), n (%)	42 (24.1)	5 (31.2)	11 (40.7)	13 (32.5)	20 (42.6)
RBD (AU/mL)	5.87 (2.26, 35.1)	2.65 (1.79, 7.33)	5.87 (2.41, 37.2)	3.07 (2.38, 28.6)	6.31 (2.21, 37.3)

Table 1. Characteristics of population at baseline. Median values (25th–75th percentile) unless otherwise specified. *HCQ* hydroxychloroquine, *SoC* standard of care, *ICU* intensive care unit, *P/F ratio* arterial oxygen pressure (pO₂) divided by fraction of inspired oxygen (f_iO₂), *CRP* C-reactive protein, *RBD* receptor binding domain.

The most dominant finding on chest CT was parenchymal bands, a potential sign of pulmonary fibrosis, present in 45 (41.7%) participants. GGO, suggesting sustained inflammation, were also a prevalent finding in the total study population; 43 participants (39.8%). GGO present in ≥ 10% in one of the four lung zones, were found in 19 (17.6%) participants in the overall population.

CAT-score associated with DL_{CO}% and chest CT-findings. No association between pulmonary-related symptomatology at 3 months, determined by CAT-score, and pulmonary function tests and pathology on chest CT at the same point, was observed (Supplementary Table S2).

Association between clinical characteristics during hospital admission and pulmonary outcomes. Table 4 presents explorative associations between demographic, clinical and biochemical character-

	All patients	Remdesivir versus its control		HCQ versus its control	
	(n = 108)	Remdesivir + SoC (n = 16)	SoC (n = 27)	HCQ + SoC (n = 40)	SoC (n = 47)
CAT-score					
Score	8.0 (3.8, 12.3)	13.0 (8.5, 21.5)	7.0 (2.5, 10.5)	6.5 (2.25, 13.8)	8.0 (4.25, 10.0)
Score \geq 10, n (%)	41 (41.3%)	9 (56.2)	7 (25.9)	13 (32.5)	11 (23.4)
Spirometry					
FVC, L	3.68 (2.89, 4.48)	3.73 (3.07, 4.61)	4.25 (3.29, 4.57)	3.62 (2.84, 4.45)	3.60 (2.85, 4.37)
FVC, % of predicted	91.4 (81.3, 102.0)	89.4 (77.2, 97.0)	94.5 (83.9, 105.0)	90.3 (80.9, 98.3)	92.8 (83.0, 106.0)
FVC < LLN, n (%)	13.0 (12.0)	2 (12.5)	3 (11.1)	6 (15)	5 (10.6)
FEV ₁ , L	2.92 (2.32, 3.51)	2.97 (2.39, 3.51)	3.10 (2.55, 3.57)	2.87 (2.37, 3.53)	2.84 (2.22, 3.45)
FEV ₁ , % of predicted n (%)	90.3 (81.5, 100.0)	87.3 (79.9, 91.9)	98.0 (83.8, 102.0)	90.4 (82.0, 99.9)	92.5 (82.1, 102.0)
FEV ₁ < LLN, n (%)	15 (13.9)	2 (12.5)	3 (11.1)	6 (15.0)	6 (12.8)
FEV ₁ /FVC, %	79.0 (74.0, 82.0)	79.0 (74.5, 81.0)	78.0 (73.0, 81.0)	80.0 (76.0, 82.8)	78.0 (73.0, 83.0)
Diffusion capacity					
DL _{CO} , mmol/kPa/min	6.82 (5.51, 8.42)	6.88 (5.45, 7.88)	7.56 (5.86, 8.71)	6.97 (5.82, 8.50)	6.48 (5.42, 8.19)
DL _{CO} , % of predicted	84.7 (72.2, 94.1)	77.6 (67.3, 86.9)	83.4 (72.7, 95.9)	88.4 (71.4, 95.1)	85.1 (72.7, 93.1)
DL _{CO} < LLN, n (%)	32 (29.6)	6 (37.5)	7 (25.9)	12 (30.0)	14 (29.8)
KCO, mmol/kPa/min/L	1.39 (1.23, 1.55)	1.36 (1.15, 1.52)	1.31 (1.15, 1.51)	1.43 (1.30, 1.54)	1.31 (1.10, 1.59)
KCO, % of predicted	97.4 (84.1, 107.0)	96.1 (78.1, 99.8)	92.8 (83.2, 104.0)	102.0 (92.0, 108.0)	92.8 (79.4, 107.0)
KCO < LLN, n (%)	14 (13.0)	3 (18.8)	4 (14.8)	3 (7.5)	8 (17.0)
Computed tomography					
Possible reversible changes					
GGO, any, n (%)	43 (39.8)	6 (37.5)	13 (48.1)	17 (42.5)	17 (36.2)
GGO > 10%, n (%)	19 (17.6)	2 (12.5)	4 (14.8)	11 (27.5)	6 (12.8)
Mosaic pattern, any	26 (24.1)	7 (25.9)	1 (6.2)	11 (27.6)	12 (25.5)
Possible irreversible changes					
Parenchymal bands, any, n (%)	45 (41.7)	6 (37.5)	14 (51.9)	16 (40.0)	20 (42.6)
Reticular pattern, any, n (%)	10 (9.3)	1 (6.2)	0 (0)	5 (12.5)	4 (8.5)
Interlobular septal thickening, n (%)	16 (14.8)	2 (12.5)	3 (11.1)	9 (22.5)	4 (8.5)
Consolidations, any, n (%)	5 (4.6)	2 (12.5)	0 (0)	2 (5.0)	1 (2.1)
Bronchiectasis, any, n (%)	5 (4.6)	1 (6.2)	0 (0)	3 (7.5)	1 (2.1)

Table 2. Presentation of lung function and CT findings 3 months after treatment for COVID-19. Median (25th–75th percentile) unless otherwise specified. HCQ hydroxychloroquine, SoC standard of care, FVC forced vital capacity, LLN lower limit of normal, FEV₁ forced expiratory volume in the 1st second, DL_{CO} diffusion capacity of the lungs for carbon monoxide, KCO transfer coefficient of the lungs for carbon monoxide, CAT-score the COPD assessment test, GGO ground-glass opacities. GGO \geq 10% in \geq one lung zone.

istics at baseline and the pulmonary outcomes after 3 months, adjusted for age, sex, treatment, and a history of smoking.

CAT-score \geq 10 demonstrated a significant positive correlation with a history of smoking. Three-months' values of DL_{CO}%, the most frequently affected pulmonary function test variable, were positively correlated with P/F-ratio, negatively correlated with admission to ICU, negatively correlated with viral load at baseline, and positively correlated with the presence of IgG antibodies against SARS-CoV-2 RBD at baseline. Both the presence of GGO in \geq 10% in at least one of the lung zones and the presence of irreversible CT-findings at 3 months were negatively correlated with female sex and positively correlated with age. Notably, we found no association between markers of inflammation during hospital admission (i.e., CRP, LDH, D dimer, and ferritin) and pulmonary outcomes at 3 months (Table 4).

Association of pro-fibrotic mediators with DL_{CO}% and chest CT-findings. The maximum levels of both MMP-9 and VEGF-A during the hospital stay were significantly higher among participants, than in the healthy control group (Fig. 3). All mediators showed a significant decrease from the acute phase to the 3-month follow-up. At the 3-month follow-up visit, only VEGF-A levels were significantly higher than in the healthy control subjects. In this explorative part of the study, a significant correlation between maximum levels of MMP-9 during hospital stay and the presence of mosaic pattern on chest CT, as well as parenchymal bands, was observed (Table 5). The levels of TIMP-2, a known inhibitor of MMP-9 activity, were not increased during the study period, compared to healthy control subjects (Fig. 3).

Remdesivir vs its SoC	Remdesivir + SoC (n = 16)	SoC (n = 27)	Coefficient estimate (95% confidence interval)
Lung function			
FEV ₁ (%)	87.3 (79.9, 91.9)	98.0 (83.8, 102.0)	1.54 (−0.02, 0.15)
DL _{CO} (%)	77.6 (67.3, 86.9)	83.4 (72.7, 95.9)	1.44 (−3.03, 17.80)
CT findings			
Reversible (%)	3 (18.8)	4 (14.8)	Chi squared 0.40. df=2, p=0.82
Irreversible (%)	14 (51.9)	14 (51.9)	
Patient reported outcomes			
CAT-score	13.0 (4.0, 28.0)	7.0 (0, 22.0)	−3.36 (−12.63, −3.00)**
HQC vs its SoC			
Lung function			
FEV ₁ (%)	90.4 (82.0, 99.9)	92.5 (82.1, 102.0)	0.66 (−0.04, 0.08)
DL _{CO} (%)	88.4 (71.4, 95.1)	85.1 (72.7, 93.1)	0.06 (−7.83, 8.34)
CT findings			
Reversible (%)	8 (20.0)	7 (14.9)	Chi squared 0.90, df 2, p=0.64
Irreversible (%)	19 (47.5)	22 (46.8)	
Patient reported outcomes			
CAT-score	6.5 (2.25, 13.8)	8.0 (4.25, 10.0)	−0.66 (−3.74, 1.89)

Table 3. Effect of medication on patient reported outcomes, lung function and CT-findings 3 months after intervention. Median values (25th, 75th percentile) unless otherwise specified. Comparison done by Welch t-test for continuous variables and Pearson's Chi squared test for categorical variables. Reversible CT findings defined as presence of any ground glass opacities and any mosaic pattern. Irreversible CT findings defined as presence of any parenchymal bands, consolidations, reticular pattern, interlobular septal thickening, or bronchiectasis. SoC standard of care, FEV₁ forced expiratory volume in 1 s, in percent of predicted, DL_{CO} diffusion capacity of the lungs for carbon monoxide, in percent of predicted, CT computed tomography, CAT the COPD assessment test, HCQ hydroxychloroquine, df degrees of freedom. **p < 0.01.

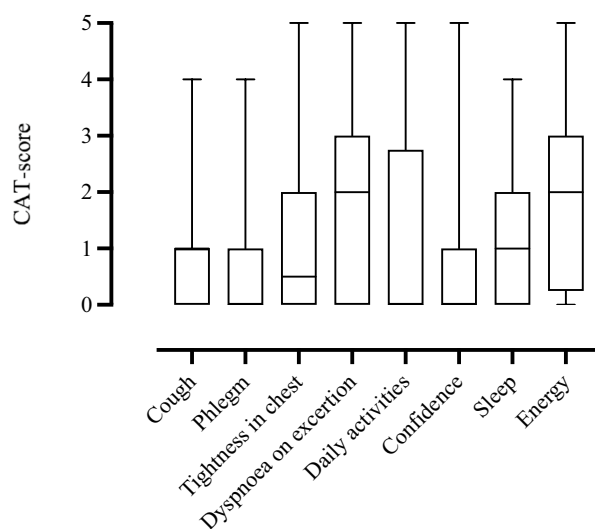


Figure 2. The CAT-score results for the overall population 3 months following hospital admission for COVID-19. CAT-score is an eight-item questionnaire designed to assess and quantify the impact of COPD symptoms on health status. The items comprise symptoms of cough, phlegm, feeling of chest tightness, breathlessness, limitations in activities, confidence, sleep problems, and energy. Each item ranging from 0 = no symptoms, to 5 = high symptom burden. CAT-score COPD Assessment Test score, COPD chronic obstructive pulmonary disease.

Discussion

In this sub-study of the NOR-SOLIDARITY trial, nearly 40% of the participants reported persistent airway symptoms, and nearly 30% had DL_{CO} below LLN 3 months following hospital admission and treatment for COVID-19. Findings on chest CT were also common, with 40% presenting with GGO and a similar percentage with parenchymal bands 3 months after hospital admission. We did not find significant differences between

	Respiratory symptoms (CAT-score ≥ 10) [‡]	DL _{CO} (% of predicted) [‡]	GGO (> 10% in ≥ 1 lung zone) [‡]	Irreversible CT findings (yes vs no) [‡]
	Coefficient estimate (95% CI)	Coefficient estimate (95% CI)	Coefficient estimate (95% CI)	Coefficient estimate (95% CI)
Female	-0.30 (-1.23, 0.59)	-1.11 (-8.05, 5.83)	-1.56 (-3.21, -0.24)*	-0.95 (-1.90, -0.04)*
Age	-0.02 (-0.06, 0.01)	-0.40 (-0.65, -0.16)**	0.07 (0.02, 0.13)**	0.07 (0.03, 0.11)***
History of smoking	1.14 (0.26, 2.06)*	3.99 (-2.79, 10.77)	0.15 (-1.00, 1.27)	0.23 (-0.66, 1.12)
P/F ratio	< -0.01 (-0.03, 0.03)	0.31 (0.05, 0.57)*	-0.03 (-0.08, 0.01)	-0.01 (-0.05, 0.02)
RR	0.75 (-0.18, 1.70)	0.59 (-6.57, 7.75)	0.66 (-0.51, 1.85)	-0.24 (-1.19, 0.69)
Mechanical ventilation	-0.56 (-2.20, 0.83)	-10.21 (-20.76, 0.34)	0.66 (-0.93, 2.14)	0.49 (-0.88, 2.01)
ICU admission	1.50 (-0.24, 3.58)	-14.66 (-27.65, -1.68)*	1.46 (-0.20, 3.17)	1.11 (-0.55, 3.15)
CRP	< -0.01 (-0.01, <0.01)	0.01 (-0.03, 0.06)	< 0.01 (< -0.01, 0.01)	< -0.01 (-0.01, <0.01)
D-dimer	0.09 (-0.14, 0.53)	0.05 (-1.57, 1.66)	0.31 (-0.01, 1.00)	0.05 (-0.16, 0.37)
LDH	< 0.01 (< -0.01, <0.01)	-0.01 (-0.04, 0.01)	< 0.01 (< -0.01, 0.01)	< 0.01 (< -0.01, 0.01)
Ferritin	< 0.01 (< -0.01, <0.01)	< -0.01 (< -0.01, <0.01)	< -0.01 (< -0.01, <0.01)	< 0.01 (< -0.01, <0.01)
Viral load	0.19 (-0.20, 0.59)	-3.61 (-6.15, -1.08)**	-0.40 (-1.06, 0.15)	-0.13 (-0.54, 0.26)
SARS-CoV-2 antibodies (RBD ≥ 5)	-0.03 (-1.06, 1.00)	13.54 (6.17, 20.90)***	0.32 (-1.20, 1.88)	0.10 (-0.92, 1.10)

Table 4. Association of respiratory symptoms, DL_{CO}, ground glass opacities, and irreversible CT-findings, with clinical and demographic characteristics during hospital admission. Main effect linear logistic regression analyses, adjusted for treatment, sex, age, and history of smoking. Biochemical markers are baseline values. Irreversible CT findings defined as any finding of parenchymal bands, consolidations, reticular pattern, or interlobular septal thickening. DL_{CO} diffusion capacity of the lungs for carbon monoxide, CAT score the COPD Assessment Test score, RR respiratory rate, p/f ratio pO₂/FiO₂ ratio, ICU intensive care unit, CRP C-reactive protein, LDH lactate dehydrogenase, RBD receptor binding domain, GGO ground glass opacities, CT computed tomography. *p < 0.05, **p < 0.01, ***p < 0.001. [‡]Dependent variable.

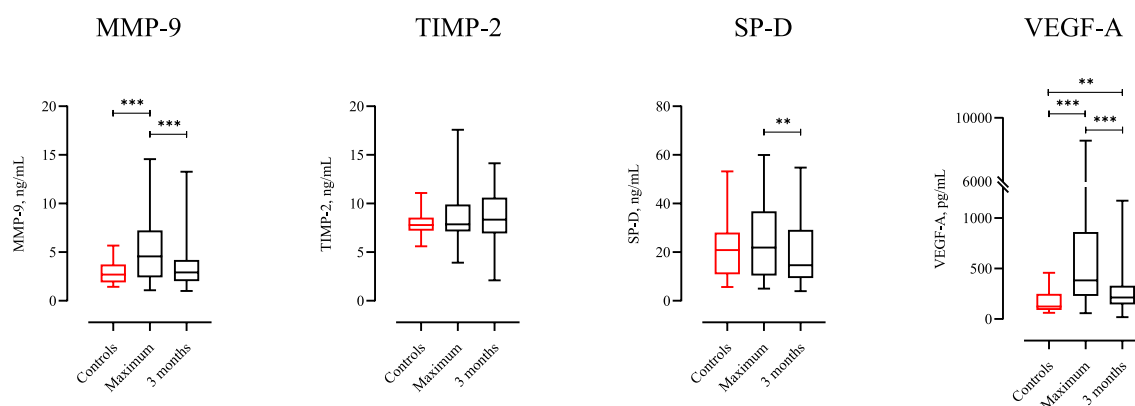


Figure 3. Group comparison of pro-fibrotic markers between 24 healthy control subjects, and all participants' maximum plasma levels during hospital stay and at the 3-months follow-up evaluation, performed with Mann–Whitney U test and Wilcoxon paired test. Controls, 24 healthy control subjects. Maximum, maximum plasma levels during the hospital stay. 3 months, plasma levels at the 3-month follow-up. MMP-9 matrix metalloproteinase 9, TIMP-2 tissue inhibitor of metalloproteinases 2, SP-D surfactant protein D, VEGF-A vascular endothelial growth factor. Median MMP-9 level healthy control subjects: 2.70 ng/mL, median maximum level MMP-9: 3.83 ng/mL, median MMP-9 level at 3 months: 2.93 ng/mL. Median TIMP-2 level healthy control subjects: 7.78 ng/mL, median maximum level TIMP-2: 7.85 ng/mL, median TIMP-2 level at 3 months: 8.76 ng/mL. Median SP-D level healthy control subjects: 20.9 ng/mL, median maximum level SP-D 16.4, median SP-D level at 3 months: 14.1 ng/mL. Median VEGF-A level healthy control subjects: 125 pg/mL, median maximum VEGF-A level: 277 pg/mL, median VEGF-A level at 3 months: 216 pg/mL. *p < 0.05, **p < 0.01, ***p < 0.001.

participants randomised to remdesivir and HCQ, and their respective SoC, with regard to pulmonary function and CT-findings, except for a somewhat higher symptom burden in the remdesivir group compared to the SoC group. Of the clinical characteristics during hospitalisation, a low P/F-ratio, the need for ICU admission, a high viral load, and low levels of IgG antibodies to SARS-CoV-2 seemed to predict reduced DL_{CO}% at 3 months. Finally, high plasma levels of MMP-9, both during hospital stay and 3 months after hospitalisation, were associated with signs of both reversible and irreversible changes on chest CT.

	Max MMP-9 Coefficient estimate (95% CI)	MMP-9 3 months Coefficient estimate (95% CI)	Max SP-D Coefficient estimate (95% CI)	SP-D 3 months Coefficient estimate (95% CI)	Max VEGF-A Coefficient estimate (95% CI)	VEGF-A 3 months Coefficient estimate (95% CI)
DL _{CO}	0.25 (-0.85, 1.35)	1.02 (0.71, 2.75)	-0.02 (-0.25, 0.21)	-0.03 (0.30, 0.23)	<0.01 (<-0.01, <0.01)	0.02 (<-0.01, 0.03)
GGO	0.09 (-0.04, 0.22)	0.05 (-0.15, 0.25)	0.01 (-0.02, 0.03)	0.01 (-0.02, 0.04)	<0.01 (<-0.01, <0.01)	<0.01 (<-0.01, <0.01)
GGO ≥ 10%	0.16 (0.01, 0.33)*	-0.03 (-0.32, 0.21)	0.01 (-0.02, 0.04)	-0.01 (-0.05, 0.03)	<0.01 (<-0.01, <0.01)	<-0.01 (<-0.01, <0.01)
Mosaic	0.14 (<0.01, 0.28)	0.24 (0.03, 0.50)*	0.02 (-0.01, 0.05)	<0.01 (-0.03, 0.04)	<-0.01 (<-0.01, <0.01)	<-0.01 (<-0.01, <0.01)
Parenchymal bands	0.19 (0.05, 0.33)**	0.258 (0.04, 0.51)*	0.02 (<-0.01, 0.05)	0.03 (<-0.01, 0.06)	<0.01 (<-0.01, <0.01)	<-0.01 (<-0.01, <0.01)
Reticular pattern	0.04 (-0.19, 0.24)	-0.06 (-0.49, 0.25)	0.01 (-0.03, 0.06)	0.04 (-0.01, 0.08)	<-0.01 (<-0.01, <0.01)	<-0.01 (<-0.01, <0.01)
Interlobular septal thickening	0.10 (-0.07, 0.26)	-0.36 (-0.86, 0.01)	0.02 (-0.01, 0.06)	0.01 (-0.03, 0.05)	<0.01 (<-0.01, <0.01)	<-0.01 (<-0.01, <0.01)
Consolidations	-0.53 (-1.62, 0.04)	-0.01 (-0.57, 0.35)	-0.09 (-0.29, 0.02)	-0.02 (-0.11, 0.05)	<-0.01 (<-0.01, <0.01)	<0.01 (<-0.01, <0.01)
Bronchiectasis	0.05 (-0.29, 0.34)	0.18 (-0.253, 0.52)	-0.03 (-0.13, 0.04)	-0.07 (-0.24, 0.02)	<-0.01 (<-0.01, <0.01)	<-0.01 (<-0.01, <0.01)

Table 5. Association of pro-fibrotic markers during hospital admission and after 3 months, with CT findings 3 months after hospital admission for COVID-19. GGO ≥ 10%, ground-glass-opacities in ≥ 10% of ≥ 1 lung zone. Mosaic, any mosaic pattern. Parenchymal bands, any parenchymal bands. Reticular pattern, any reticular pattern. Interlobular septal thickening, any interlobular thickening. Consolidations, any consolidations. Bronchiectasis, any bronchiectasis. MMP9 matrix metalloproteinase 9, SP-D surfactant protein D, VEGF-A vascular endothelial growth factor A, GGO ground glass opacities, CT computed tomography, DL_{CO} in percent of predicted, GGO any ground-glass opacities. *p < 0.05, **p < 0.01.

The majority of our study participants were men, and the most common comorbidities were hypertension, diabetes mellitus, and obesity, which is consistent with findings in other studies²². Former smoking was relatively common, but very few were current smokers. The participants had a duration of symptoms of 8 days prior to admission, and nearly 40% tested positive for SARS-CoV-2 IgG antibodies at admission, reflecting the natural course of COVID-19 infection described by others²³. Nearly 40% of the participants presented with respiratory failure, defined by P/F-ratio < 40 kPa, and the majority had moderately elevated inflammatory markers, which is in accordance with studies from other countries^{24–26}. Although previously described as a marker of COVID-19 severity, lymphopenia was not a common trait in our population at baseline²⁷. Käsine et al. recently characterised the leukocyte subpopulations in our participants, demonstrating neutrophilia as more dominant than lymphopenia during the first week of hospitalisation in our cohort, along with an association between high neutrophil counts and disease severity²⁸.

In accordance with the WHO SOLIDARITY study and the NOR-SOLIDARITY sub study demonstrating no effect on in-hospital mortality, the need for ICU treatment, or P/F ratio, we show that treatment with remdesivir and HCQ for COVID-19 had no significant effect on pulmonary function test results 3 months following discharge for COVID-19, compared to SoC^{5,6}. However, participants treated with remdesivir reported a higher CAT-score 3 months after hospital admission for COVID-19 than those receiving SoC.

We have previously reported decreased pulmonary function and persistent CT pathology in COVID-19 patients admitted to hospital, with results comparable to those presented in the current study². However, by extending the analyses, we show a relationship between disease severity during hospital admission, as indicated by both low P/F-ratio and ICU admission, and impaired pulmonary function 3 months after discharge, as shown by reduced DL_{CO}% in the fully adjusted model. The positive correlation between P/F-ratio during hospitalisation and DL_{CO}% at the follow-up indicates that a reduced diffusion capacity of the lungs may persist at least 3 months after hospital admission.

Currently, it is not known how viral load affects the long-term pulmonary outcome following COVID-19. Another study found no difference in viral load between mild and severe disease in the acute phase²⁹. Here we present a significant negative association between viral load in the oropharynx at hospital admission and DL_{CO}% 3 months following hospitalisation. We also found a positive correlation between the presence of IgG antibodies to SARS-CoV-2 during the acute phase, and preserved diffusion capacity. Taken together, a low viral load combined with a robust and early antibody response against SARS-CoV-2 seem to protect against long-term impairment of pulmonary function. Finally, although COVID-19 seems to be characterized by sustained inflammation, plasma levels of inflammatory markers such as CRP and ferritin during hospital admission did not seem to predict a poorer pulmonary outcome at 3 months²⁶.

In the present study, we also showed that nearly 40% of the participants had a CAT-score ≥ 10, which indicates a medium to high symptom burden after 3 months. The most prevalent symptoms were dyspnoea on exertion and loss of energy. Smokers are known to have a more severe course of COVID-19, and we found a higher symptom burden among participants with a history of smoking³⁰. Interestingly, we found no association between CAT-score, and the pulmonary outcomes DL_{CO}%, and chest CT-findings in these participants.

As an explorative outcome, we investigated the association between known pro-fibrotic mediators and the set of pulmonary outcomes. MMP-9 and VEGF-A were significantly elevated during the acute phase in these COVID-19 patients compared with healthy control subjects. From a hypothesis-generating point of view, it

was interesting to see that MMP-9 levels, both during the acute phase and after 3-months, were significantly associated with persistent CT changes. Investigations have found MMP-9 in several cell types of the lung, such as alveolar macrophages, airway epithelium, and in neutrophils recruited to the lung during inflammatory processes^{31,32}, but the major cellular sources of circulating MMP-9 in COVID-19 patients are still not evident. MMP-9 is involved in the complex process of extracellular matrix remodelling within the lung, and its activity is regulated by different TIMPs, including TIMP-2³³. Increased levels of MMP-9, combined with our finding of TIMP-2 levels within normal limits throughout the observation period, suggest enhanced MMP-9 activity in these COVID-19 patients. Based on the role of MMP-9 in the inflammatory process of acute lung injury, as well as its role in the development of pulmonary fibrosis³⁴, MMP-9 has been suggested as a therapeutic target in the treatment of interstitial and acute inflammatory lung diseases^{35,36}. Our findings may indicate that a similar approach could be of interest in COVID-19-induced lung injury, as well.

Our cohort had significantly elevated plasma levels of VEGF-A compared to healthy control subjects, both during hospital admission and 3 months after hospitalisation. Alveolar epithelial cells are claimed to be a major source of VEGF-A in humans, and VEGF-A has for long been a mediator of interest in understanding the pathophysiology in acute lung injury and ARDS, as well as in interstitial lung diseases, like idiopathic pulmonary fibrosis (IPF)³⁷. This is reflected by the fact that an existing anti-fibrotic agent for treatment of IPF is targeting VEGF-A³⁸. Even though we found no association between the increased VEGF-A levels and persistent findings on chest CT, it was interesting to observe that the level of VEGF-A was still elevated 3 months after hospitalisation. Other studies have found similar results, with significantly elevated VEGF-A levels in plasma of moderate to severe COVID-19 patients^{39,40}. These findings might indicate that VEGF-A plays a role in the development of COVID-19 sequelae.

Our findings are limited by a small sample size, both regarding the evaluation of treatment effects and the interpretation of sub-analyses. Although we did not find significant effects of remdesivir and HCQ, except for a negative effect of remdesivir on CAT score, we cannot firmly exclude any treatment effects. Moreover, the participants' pulmonary status prior to inclusion was not known, and established chronic lung disease prior to COVID-19 might have influenced the results. Due to a lack of additional plasma aliquots, we were not able to pursue our findings on matrix regulating mediators by analysing MMP-9 activity, other MMPs, and additional TIMPs. Moreover, the explorative part of this study presents data of descriptive nature and we lack data on the cellular sources of MMP-9 in these COVID-19 patients. Finally, associations do not necessarily reflect a causal relationship.

Conclusion

In this sub study of the NOR-SOLIDARITY trial, a high prevalence of respiratory symptoms, diffusion capacity impairment, and persistent chest CT-findings were observed 3 months after hospital admission for COVID-19. CAT-score seemed to be negatively influenced by treatment with remdesivir, while no difference in pulmonary function tests and CT-findings between remdesivir and HCQ, and their respective SoC group was found. A high viral load, low P/F-ratio, and admission to ICU seemed to predict reduced diffusion capacity in the lungs at 3 months, whereas high antibody levels at baseline had a positive effect on pulmonary function. The association between the pro-fibrotic mediator MMP-9 and persistent CT-findings highlights the need for more knowledge about the development of pulmonary fibrosis following hospitalisation for COVID-19.

Data availability

De-identified patient level data for participants in this study, statistical analysis plan and statistical coding can be made available after the approval of the institutional review board. Requests should be made to the corresponding author.

Received: 12 July 2021; Accepted: 18 November 2021

Published online: 01 December 2021

References

- Zhou, P. *et al.* A pneumonia outbreak associated with a new coronavirus of probable bat origin. *Nature* **579**, 270–273. <https://doi.org/10.1038/s41586-020-2012-7> (2020).
- Lerum, T. V. *et al.* Dyspnoea, lung function and CT findings 3 months after hospital admission for COVID-19. *Eur. Respir. J.* <https://doi.org/10.1183/13993003.03448-2020> (2020).
- Guler, S. A. *et al.* Pulmonary function and radiological features four months after COVID-19: First results from the national prospective observational Swiss COVID-19 lung study. *Eur. Respir. J.* **57**, 2003690. <https://doi.org/10.1183/13993003.03690-2020> (2021).
- Salvi, R. & Patankar, P. Emerging pharmacotherapies for COVID-19. *Biomed. Pharmacother.* **128**, 110267. <https://doi.org/10.1016/j.biopha.2020.110267> (2020).
- WHO Solidarity Trial Consortium. Repurposed antiviral drugs for covid-19—Interim WHO solidarity trial results. *N. Engl. J. Med.* <https://doi.org/10.1056/NEJMoa2023184> (2020).
- Barratt-Due, A. *et al.* Evaluation of the effects of remdesivir and hydroxychloroquine on viral clearance in COVID-19: A randomized trial. *Ann. Intern. Med.* <https://doi.org/10.7326/M21-0653> (2021).
- Venkataraman, T. & Frieman, M. B. The role of epidermal growth factor receptor (EGFR) signaling in SARS coronavirus-induced pulmonary fibrosis. *Antiviral Res.* **143**, 142–150. <https://doi.org/10.1016/j.antiviral.2017.03.022> (2017).
- Davey, A., McAuley, D. F. & O'Kane, C. M. Matrix metalloproteinases in acute lung injury: Mediators of injury and drivers of repair. *Eur. Respir. J.* **38**, 959–970. <https://doi.org/10.1183/09031936.00032111> (2011).
- Ikeda, K. *et al.* Serum surfactant protein D predicts the outcome of patients with idiopathic pulmonary fibrosis treated with pirfenidone. *Respir. Med.* **131**, 184–191. <https://doi.org/10.1016/j.rmed.2017.08.021> (2017).
- Ando, M. *et al.* Significance of serum vascular endothelial growth factor level in patients with idiopathic pulmonary fibrosis. *Lung* **188**, 247–252. <https://doi.org/10.1007/s00408-009-9223-x> (2010).

11. Ueland, T. *et al.* Distinct and early increase in circulating MMP-9 in COVID-19 patients with respiratory failure. *J. Infect.* **81**, e41–e43. <https://doi.org/10.1016/j.jinf.2020.06.061> (2020).
12. Kerget, B. *et al.* Are serum interleukin 6 and surfactant protein D levels associated with the clinical course of COVID-19? *Lung* **198**, 777–784. <https://doi.org/10.1007/s00408-020-00393-8> (2020).
13. Brown, S. M. *et al.* Nonlinear imputation of PaO₂/FIO₂ from SpO₂/FIO₂ among mechanically ventilated patients in the ICU: A prospective. Observational study. *Crit. Care Med.* **45**, 1317–1324. <https://doi.org/10.1097/CCM.0000000000002514> (2017).
14. Jones, P. W. *et al.* Development and first validation of the COPD assessment test. *Eur. Respir. J.* **34**, 648–654. <https://doi.org/10.1183/09031936.00102509> (2009).
15. Ghobadi, H., Ahari, S. S., Kameli, A. & Lari, S. M. The relationship between COPD assessment test (CAT) scores and severity of airflow obstruction in stable COPD patients. *Tanaffos* **11**, 22–26 (2012).
16. Graham, B. L. *et al.* 2017 ERS/ATS standards for single-breath carbon monoxide uptake in the lung. *Eur. Respir. J.* <https://doi.org/10.1183/13993003.00016-2016> (2017).
17. Graham, B. L. *et al.* Standardization of spirometry 2019 update. An Official American Thoracic Society and European Respiratory Society Technical Statement. *Am. J. Respir. Crit. Care Med.* **200**, e70–e88. <https://doi.org/10.1164/rccm.201908-1590ST> (2019).
18. Quanjer, P. H. *et al.* Multi-ethnic reference values for spirometry for the 3–95-yr age range: The global lung function 2012 equations. *Eur. Respir. J.* **40**, 1324–1343. <https://doi.org/10.1183/09031936.00080312> (2012).
19. Stanojevic, S. *et al.* Official ERS technical standards: Global lung function initiative reference values for the carbon monoxide transfer factor for Caucasians. *Eur. Respir. J.* <https://doi.org/10.1183/13993003.00010-2017> (2017).
20. Hansell, D. M. *et al.* Fleischner society: Glossary of terms for thoracic imaging. *Radiology* **246**, 697–722. <https://doi.org/10.1148/radiol.2462070712> (2008).
21. Soyseth, V. *et al.* Diagnosis of biopsy verified usual interstitial pneumonia by computed tomography. *Respir. Med.* **109**, 897–903. <https://doi.org/10.1016/j.rmed.2015.05.008> (2015).
22. Richardson, S. *et al.* Presenting characteristics, comorbidities, and outcomes among 5700 patients hospitalized with COVID-19 in the New York City area. *JAMA* **323**, 2052–2059. <https://doi.org/10.1001/jama.2020.6775> (2020).
23. Zhao, J. *et al.* Antibody responses to SARS-CoV-2 in patients with novel coronavirus disease 2019. *Clin. Infect. Dis.* **71**, 2027–2034. <https://doi.org/10.1093/cid/ciaa344> (2020).
24. Zhou, F. *et al.* Clinical course and risk factors for mortality of adult inpatients with COVID-19 in Wuhan, China: A retrospective cohort study. *Lancet* **395**, 1054–1062. [https://doi.org/10.1016/S0140-6736\(20\)30566-3](https://doi.org/10.1016/S0140-6736(20)30566-3) (2020).
25. Cummings, M. J. *et al.* Epidemiology, clinical course, and outcomes of critically ill adults with COVID-19 in New York City: A prospective cohort study. *Lancet* **395**, 1763–1770. [https://doi.org/10.1016/S0140-6736\(20\)31189-2](https://doi.org/10.1016/S0140-6736(20)31189-2) (2020).
26. Tay, M. Z., Poh, C. M., Renia, L., MacAry, P. A. & Ng, L. F. P. The trinity of COVID-19: Immunity, inflammation and intervention. *Nat. Rev. Immunol.* **20**, 363–374. <https://doi.org/10.1038/s41577-020-0311-8> (2020).
27. Tan, L. *et al.* Lymphopenia predicts disease severity of COVID-19: A descriptive and predictive study. *Signal Transduct. Target Ther.* **5**, 33. <https://doi.org/10.1038/s41392-020-0148-4> (2020).
28. Kasine, T. *et al.* Neutrophil count predicts clinical outcome in hospitalized covid-19 patients: Results from the NOR-Solidarity trial. *J. Intern. Med.* <https://doi.org/10.1111/joim.13377> (2021).
29. Yilmaz, A. *et al.* Upper respiratory tract levels of severe acute respiratory syndrome coronavirus 2 RNA and duration of viral RNA shedding do not differ between patients with mild and severe/critical coronavirus disease 2019. *J. Infect. Dis.* **223**, 15–18. <https://doi.org/10.1093/infdis/jiaa632> (2021).
30. Reddy, R. K. *et al.* The effect of smoking on COVID-19 severity: A systematic review and meta-analysis. *J. Med. Virol.* **93**, 1045–1056. <https://doi.org/10.1002/jmv.26389> (2021).
31. Vermeer, P. D. *et al.* MMP9 modulates tight junction integrity and cell viability in human airway epithelia. *Am. J. Physiol. Lung Cell Mol. Physiol.* **296**, 751–762. <https://doi.org/10.1152/ajplung.90578.2008> (2009).
32. Wong, S., Birrell, M. A. & Belvisi, M. G. *Matrix Metalloproteinases in Tissue Remodelling and Inflammation* 1–20 (Springer, 2008).
33. Cabral-Pacheco, G. A. *et al.* The roles of matrix metalloproteinases and their inhibitors in human diseases. *Int. J. Mol. Sci.* <https://doi.org/10.3390/ijms21249739> (2020).
34. Elkington, P. T. & Friedland, J. S. Matrix metalloproteinases in destructive pulmonary pathology. *Thorax* **61**, 259–266. <https://doi.org/10.1136/thx.2005.051979> (2006).
35. Espindola, M. S. *et al.* Differential responses to targeting matrix metalloproteinase 9 in idiopathic pulmonary fibrosis. *Am. J. Respir. Crit. Care Med.* **203**, 458–470. <https://doi.org/10.1164/rccm.201910-1977OC> (2021).
36. Solun, B. & Shoenfeld, Y. Inhibition of metalloproteinases in therapy for severe lung injury due to COVID-19. *Med. Drug Discov.* **7**, 100052. <https://doi.org/10.1016/j.medidd.2020.100052> (2020).
37. Medford, A. R. & Millar, A. B. Vascular endothelial growth factor (VEGF) in acute lung injury (ALI) and acute respiratory distress syndrome (ARDS): Paradox or paradigm? *Thorax* **61**, 621–626. <https://doi.org/10.1136/thx.2005.040204> (2006).
38. Grimminger, F., Gunther, A. & Vancheri, C. The role of tyrosine kinases in the pathogenesis of idiopathic pulmonary fibrosis. *Eur. Respir. J.* **45**, 1426–1433. <https://doi.org/10.1183/09031936.00149614> (2015).
39. Syed, F. *et al.* Excessive matrix metalloproteinase-1 and hyperactivation of endothelial cells occurred in COVID-19 patients and were associated with the severity of COVID-19. *J. Infect. Dis.* **224**, 60–69. <https://doi.org/10.1093/infdis/jiab167> (2021).
40. Kristensen, M. K., Plovsing, R. R., Berg, R. M. G., Krogh-Madsen, R. & Ronit, A. Cell adhesion molecules and vascular endothelial growth factor at the systemic and alveolar level in coronavirus disease 2019 acute respiratory distress syndrome. *J. Infect. Dis.* **224**, 1101–1103. <https://doi.org/10.1093/infdis/jiab347> (2021).

Author contributions

P.A., A.B.D., A.M.D.R., I.C.O., T.K., K.N.H., and M.T. were responsible for the management, coordination, research activity planning, and execution of the NOR-SOLIDARITY trial. The 3-month follow-up protocol for pulmonary function and chest CT imaging was designed by T.M.A., P.A., A.B.D., G.E., T.V.L., and O.H.S. in collaboration. Patient data collection was performed by T.V.L., B.S., B.B., B.R.K., M.H., A.J., R.H., S.A., A.B.K., R.E., and the NOR-SOLIDARITY Consortium. T.M.A., J.R.R. and C.M. interpreted and analysed the CT images. T.B.D. was responsible for the biobank. F.L.J. was responsible for the antibody analyses, and F.M. for the viral analyses. Biomarkers were analysed by T.U. Statistical analyses were performed by N.N.M., I.C.O., and T.V.L. The first draft of the article was written by T.V.L., P.A., A.B.D., and O.H.S. All authors contributed with critical review of the manuscript and approval of the final version.

Funding

Gunnar Einvik reports Grants from Boehringer Ingelheim in relation to previous work, unrelated to the submitted report. The National Program of Clinical Therapy Research in the Specialist Health Services, Norway (Grant no. 2020201), contributed with funding to the NOR-SOLIDARITY trial. The program had no role in the collection, analysis, or interpretation of the data in this sub-study.

Competing interests

Gunnar Einvik reports grants from Boehringer Ingelheim in relation to previous work, unrelated to the submitted report. The other authors declare no competing interests.

Additional information

Supplementary Information The online version contains supplementary material available at <https://doi.org/10.1038/s41598-021-02547-x>.

Correspondence and requests for materials should be addressed to T.V.L.

Reprints and permissions information is available at www.nature.com/reprints.

Publisher's note Springer Nature remains neutral with regard to jurisdictional claims in published maps and institutional affiliations.



Open Access This article is licensed under a Creative Commons Attribution 4.0 International License, which permits use, sharing, adaptation, distribution and reproduction in any medium or format, as long as you give appropriate credit to the original author(s) and the source, provide a link to the Creative Commons licence, and indicate if changes were made. The images or other third party material in this article are included in the article's Creative Commons licence, unless indicated otherwise in a credit line to the material. If material is not included in the article's Creative Commons licence and your intended use is not permitted by statutory regulation or exceeds the permitted use, you will need to obtain permission directly from the copyright holder. To view a copy of this licence, visit <http://creativecommons.org/licenses/by/4.0/>.

© The Author(s) 2021

NOR-SOLIDARITY Consortium

Frank Olav Pettersen²⁶, Aleksander Rygh Holten²⁶, Kristian Tonby²⁶, Dag Henrik Reikvam²⁶, Kjerstin Røstad²⁶, Synne Jenum²⁶, Liv Hesstvedt²⁶, Eline Brenno Vaage²⁶, Anette Kolderup²⁶, Trung Tran²⁶, Jan Terje Andersen²⁶, Mona Holberg-Petersen²⁶, Simreen Kaur Johal²⁶, Åse Berg²⁷, Anders Tveita²⁸, Gernot Ernst²⁸, Lars Heggelund²⁸, Lars Thoresen²⁸, Karl Erik Müller²⁸, Dag Arne Lihaug Hoff²⁹, Roy Bjørkholt Olsen³⁰, Ane-Kristine Finbråten³¹, Hedda Hoel³¹, Alexander Mathiessen³², Leif Erik Vinge³², Lena Bugge Nordberg³², Ravinea Manotheepan³², Grethe-Elisabeth Stenvik³², Hans Schmidt Rasmussen³², Ruth Foseide Thorkildsen³², Pawel Mielnik³³, Lan Ai Kieu Le³⁴, Carl Magnus Ystrøm³⁵, Richard Alexander Molvik³⁵, Nina Vibeche Skei³⁶, Olav Dalgard³⁷, Bjørn Åsheim-Hansen³⁸, Anne Marie Halstensen³⁹, Jorunn Brynhildsen³⁹, Waleed Ghanima³⁹, Vegard Skogen⁴⁰, Krisine Greve Isdahl Mohn⁴¹, Reidar Kvåle⁴¹, Nina Langeland⁴¹, Lise Tuset Gustad³⁶, Lars Mølgaard Saxhaug³⁶, Cathrine Fladeby²⁶, Susanne Dudman² & Anne Steffensen²

²⁶Oslo University Hospital, Nydalen, Postboks 4950, 0424 Oslo, Norway. ²⁷Stavanger University Hospital, Helse Stavanger HF, Postboks 8100, 4068 Stavanger, Norway. ²⁸Vestre Viken Hospital Trust, Vestre Viken HF, Postboks 800, 3004 Drammen, Norway. ²⁹Ålesund Hospital, Postboks 1600, 6026 Ålesund, Norway. ³⁰Sørlandet Hospital, Sørlandet Sykehus HF, Lundsiden, Postboks 416, 4604 Kristiansand, Norway. ³¹Lovisenberg Diaconal Hospital, Nydalen, Postboks 4970, 0440 Oslo, Norway. ³²Diakonhjemmet Hospital, Vindern, Postboks 23, 0319 Oslo, Norway. ³³Førde Hospital, Helse Førde HF, Postboks 1000, 6807 Førde, Norway. ³⁴Haugesund Hospital, Helse Fonna, Postboks 2170, 5504 Haugesund, Norway. ³⁵Innlandet Hospital Trust, Sykehuset Innlandet, Postboks 104, 2381 Brumunddal, Norway. ³⁶Nord-Trøndelag Hospital Trust, Helse Nord-Trøndelag HF, Postboks 333, 7601 Levanger, Norway. ³⁷Akershus University Hospital, Akershus Universitetssykehus HF, Postboks 1000, Lørenskog, Norway. ³⁸Vestfold Hospital Trust, Vestfold HF, Postboks 2168, 3103 Tønsberg, Norway. ³⁹Østfold Hospital Trust, Sykehuset Østfold, Postboks 300, 1714 Grålum, Norway. ⁴⁰University Hospital of North-Norway, Sykehusveggen 38, 9091 Tromsø, Norway. ⁴¹Haukeland University Hospital, Haukeland Universitetssykehus, Postboks 1400, 5021 Bergen, Norway.