



Huang, W. K., Hosoi, S., Čulo, M., Kasahara, S., University, K., Hussey, N. E., & et, A. (2020). Non-Fermi liquid transport in the vicinity of the nematic quantum critical point of superconducting FeSe<sub>1-x</sub>S<sub>x</sub>. *Physical Review Research*, 2(3), [033367].  
<https://doi.org/10.1103/PhysRevResearch.2.033367>

Publisher's PDF, also known as Version of record

License (if available):  
CC BY

Link to published version (if available):  
[10.1103/PhysRevResearch.2.033367](https://doi.org/10.1103/PhysRevResearch.2.033367)

[Link to publication record in Explore Bristol Research](#)  
PDF-document

This is the final published version of the article (version of record). It first appeared online via American Physical Society at <https://doi.org/10.1103/PhysRevResearch.2.033367>. Please refer to any applicable terms of use of the publisher.

## University of Bristol - Explore Bristol Research

### General rights

This document is made available in accordance with publisher policies. Please cite only the published version using the reference above. Full terms of use are available:  
<http://www.bristol.ac.uk/red/research-policy/pure/user-guides/ebr-terms/>

## Non-Fermi liquid transport in the vicinity of the nematic quantum critical point of superconducting $\text{FeSe}_{1-x}\text{S}_x$

W. K. Huang,<sup>1</sup> S. Hosoi<sup>2,\*</sup>, M. Čulo,<sup>3</sup> S. Kasahara<sup>1,†</sup>, Y. Sato,<sup>1</sup> K. Matsuura,<sup>2</sup> Y. Mizukami,<sup>2</sup> M. Berben,<sup>3</sup> N. E. Hussey,<sup>3,5</sup> H. Kontani,<sup>4</sup> T. Shibauchi,<sup>2</sup> and Y. Matsuda<sup>1,‡</sup>


<sup>1</sup>Department of Physics, Kyoto University, Sakyo-ku, Kyoto 606-8502, Japan

<sup>2</sup>Department of Advanced Materials Science, University of Tokyo, Kashiwa, Chiba 277-8561, Japan

<sup>3</sup>High Field Magnet Laboratory (HFML-EMFL) and Institute for Molecules and Materials, Radboud University, 6525 ED Nijmegen, The Netherlands

<sup>4</sup>Department of Physics, Nagoya University, Nagoya 464-8602, Japan

<sup>5</sup>H. H. Wills Physics Laboratory, University of Bristol, Tyndall Avenue, BS8 1TL, United Kingdom

 (Received 3 June 2020; revised 11 August 2020; accepted 11 August 2020; published 8 September 2020)

Non-Fermi liquids are strange metals whose physical properties deviate qualitatively from those of conventional metals due to strong quantum fluctuations. In this paper, we report transport measurements on the  $\text{FeSe}_{1-x}\text{S}_x$  superconductor, which has a quantum critical point of a nematic order without accompanying antiferromagnetism. We find that in addition to a linear-in-temperature resistivity  $\rho_{xx} \propto T$ , which is close to the Planckian limit, the Hall angle varies as  $\cot \theta_H \propto T^2$  and the low-field magnetoresistance is well scaled as  $\Delta \rho_{xx} / \rho_{xx} \propto \tan^2 \theta_H$  in the vicinity of the nematic quantum critical point. This set of anomalous charge transport properties show striking resemblance with those reported in cuprate, iron-pnictide, and heavy fermion superconductors, demonstrating that the critical fluctuations of a nematic order with  $q \approx 0$  can also lead to a breakdown of the Fermi liquid description.

DOI: [10.1103/PhysRevResearch.2.033367](https://doi.org/10.1103/PhysRevResearch.2.033367)

### I. INTRODUCTION

One of the most prominent features in many strongly correlated superconductors is that critical antiferromagnetic (AFM) fluctuations emanating from an AFM quantum critical point (QCP) seriously modify the quasiparticle masses and scattering cross section of the Fermi liquid, leading to non-Fermi liquid (NFL) behaviors [1,2]. In these systems, the highest superconducting transition temperature  $T_c$  is often observed near the QCP. Therefore, understanding the role of critical fluctuations on the transport properties is an outstanding challenge in condensed matter physics. The resistivity, Hall coefficient, and magnetoresistance are the most fundamental transport parameters. It has been reported that all these quantities exhibit striking deviations from the expected Fermi liquid behavior near the AFM QCP. In conventional metals, the resistivity at low temperatures is often dominated by inelastic electron-electron scattering. The resistivity from this mechanism varies as  $\rho_{xx} \propto T^2$ , which is taken as an experimental

hallmark of a Fermi liquid. One of the most famous anomalies in the transport properties of the cuprate and iron-pnictide superconductors as well as the archetypal heavy-fermion systems is a resistivity that evolves linearly with temperature  $\rho_{xx} \propto T$  [2–7], and is close to the Planckian limit [8–10]. Moreover, both a strongly  $T$ -dependent Hall coefficient and a violation of the Kohler’s rule in magnetoresistance have been observed in iron pnictides, such as  $\text{BaFe}_2(\text{As}_{1-x}\text{P}_x)_2$  [6], the two-dimensional (2D) heavy fermion superconductors  $\text{CeMIn}_5$  ( $M = \text{Co}$  and  $\text{Rh}$ ) [7] near the AFM QCP [2], and cuprates within the optimally doped and underdoped regimes [4,5], which have been discussed in terms of NFL properties [11–13].

Recently, electronic nematicity that spontaneously breaks the rotational symmetry of the underlying crystal lattice has been a growing issue in strongly correlated electron systems [14], including cuprates [15–18], iron pnictides and chalcogenides [19–21], and heavy fermion compounds [22]. Understanding the role of the critical quantum fluctuations of nematic order on the normal and superconducting states is of utmost importance [19,23]. The layered compound  $\text{FeSe}_{1-x}\text{S}_x$  offers a fascinating opportunity to study this issue [24].  $\text{FeSe}$  is a compensated semimetal which exhibits a structural transition from tetragonal to orthorhombic symmetry at  $T_s \approx 90$  K. Below  $T_s$ , no magnetic order occurs, in contrast to the other iron-based compounds [25,26]. The nematicity can be tuned continuously by isoelectronic sulfur substitution. At  $x \approx 0.17$ ,  $T_s$  vanishes and the nematic susceptibility diverges, indicating the presence of a nematic QCP [27]. The AFM fluctuations are also suppressed by the substitution and no

\*Present address: Graduate School of Engineering Science, Osaka University.

†kasa@scphys.kyoto-u.ac.jp

‡matsuda@scphys.kyoto-u.ac.jp

Published by the American Physical Society under the terms of the [Creative Commons Attribution 4.0 International](https://creativecommons.org/licenses/by/4.0/) license. Further distribution of this work must maintain attribution to the author(s) and the published article’s title, journal citation, and DOI.

sizable AFM fluctuations are observed near the nematic QCP [28].

Although the Fermi surface changes smoothly when crossing the nematic QCP in  $\text{FeSe}_{1-x}\text{S}_x$  [29,30], the nematic QCP has a significant impact on both the superconducting [30,31] and normal state properties [10,32–34]. The superconducting gap structure exhibits a dramatic change at the QCP. The in-plane resistivity exhibits a  $T$ -linear behavior,  $\rho_{xx} \propto T$  [10,32,33], at low temperature in the vicinity of the nematic QCP, suggesting that the critical fluctuations of nematic order can give rise to deviations from Fermi liquid behavior [23,35]. However, the  $T$ -linear  $\rho_{xx}$  alone cannot be simply taken as conclusive evidence for the NFL behavior because it can appear as a result of multiband effects (see the Appendix). Therefore, measurements of the Hall coefficient and magnetoresistance across the nematic QCP of  $\text{FeSe}_{1-x}\text{S}_x$  are of pivotal importance in understanding the role of the nematic critical fluctuations on the transport properties [7,23,35–37].

In this paper, we measured the low-field transport properties of  $\text{FeSe}_{1-x}\text{S}_x$  for  $0 \leq x \leq 0.22$ . In the vicinity of the nematic QCP at  $x \approx 0.17$ , the linear-in-temperature resistivity is observed below  $\approx 40$  K, as reported in Ref. [10]. In these same  $x$  and  $T$  regimes, the Hall coefficient and magnetoresistance exhibit characteristic behaviors that bear resemblance to the anomalous transport behaviors reported in iron-pnictide and heavy fermion superconductors in the vicinity of the AFM QCP [2,7,21] and in cuprates in the optimally and underdoped regimes [3,8–10]. These similarities appear to suggest that essentially different types of critical quantum fluctuations give rise to several common deviations from conventional Fermi liquid behavior near the QCP.

## II. EXPERIMENTAL

High-quality single crystals of  $\text{FeSe}_{1-x}\text{S}_x$  were grown by the chemical vapor transport method. We determined  $x$  values by energy-dissipative x-ray analysis. The crystals in the orthorhombic regime ( $0 \leq x \leq 0.18$ ) are heavily twinned. Most of the measurements were performed on samples with typical dimensions of  $2 \times 1 \times 0.05$  mm<sup>3</sup>. The electrical current is applied along the  $ab$  plane. The Hall effect and transverse magnetoresistance were measured simultaneously. We obtained the Hall resistivity  $\rho_{xy}$  from the transverse resistance by subtracting the positive ( $H \parallel c$ ) and negative magnetic field ( $H \parallel -c$ ) data.

## III. RESULTS

### A. Resistivity

As shown in Fig. 1(a),  $\rho_{xx}$  shows a kink at  $T_s$ . With increasing  $x$ ,  $T_s$  decreases to lower temperature and no kink anomaly is observed at  $x \geq 0.17$ , indicating that the system is in the tetragonal phase. The Fermi surface of  $\text{FeSe}_{1-x}\text{S}_x$  consists of hole cylinders around the zone center and compensating electron cylinders around the zone corner [38,39]. In FeSe in the nematic phase, the Fermi energies of both the hole and the electron pockets are extremely small:  $\varepsilon_F^h \approx 10$  meV and  $\varepsilon_F^e \sim 5$  meV, respectively [38]. With sulfur substitution,  $\varepsilon_F^h$  increases gradually without exhibiting an abrupt change at the nematic QCP [30]. In the tetragonal phase at  $x \geq 0.17$ ,

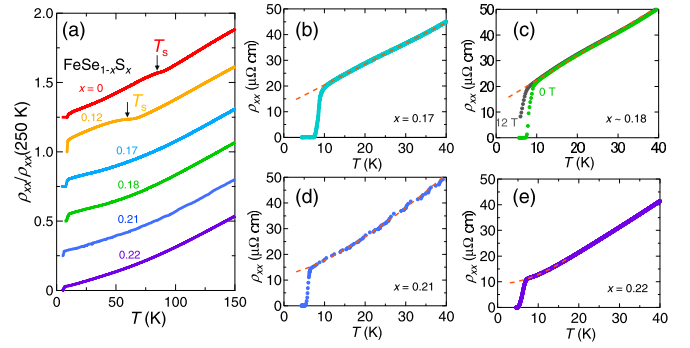


FIG. 1. (a) Temperature dependence of the resistivity  $\rho_{xx}$  normalized by  $\rho_{xx}$  at 250 K in zero field of  $\text{FeSe}_{1-x}\text{S}_x$  for various S substitution levels. Arrows indicate the nematic transition temperature  $T_s$ . (b) Temperature dependence of  $\rho_{xx}$  at low temperatures in zero field for  $x = 0.17$ . The red dashed line represents a line fitted by  $\rho_{xx} \propto T$ . (c) The same plot in zero field and at  $\mu_0 H = 12$  T applied parallel to the  $ab$  plane for  $x = 0.18$ . The red dashed line represents a line fitted by  $\rho_{xx} \propto T$ . (d) The same plot in zero field for  $x = 0.21$ . The red dashed curve represents a fitting curve  $\rho_{xx} \propto T^{1.5}$ . (e) The same plot in zero field for  $x = 0.22$ . The red dashed curve represents a fitting curve  $\rho_{xx} \propto T^2$ .

the Fermi surfaces consist of two hole and two electron pockets. Recent angle-resolved-photoemission-spectroscopy (ARPES) measurements report  $\varepsilon_F^h \approx 14$  meV for both hole pockets. Although direct measurements of the electron pockets by ARPES is lacking,  $\varepsilon_F^e$  is speculated to be of order of 5–15 meV for both electron pockets. This is because the electronic specific heat coefficient in the tetragonal phase is close to that in the nematic phase [31], suggesting no dramatic change of the effective electron mass. We therefore focus on the transport properties below  $\approx 40$  K [Figs. 1(b)–1(d)], where the temperature is sufficiently below the Fermi energy of each pocket. To study the  $T$  dependence of  $\rho_{xx}$  on lower temperatures, a magnetic field is applied parallel to the  $ab$  plane to suppress the superconductivity. In this configuration, magnetoresistance arising from the orbital motion of the electrons is negligibly small, as reported in Ref. [10]. The most distinct feature is the linear-in-temperature resistivity typical to NFL behavior down to low temperatures at  $x = 0.17$  and 0.18, at or slightly above the nematic QCP. For  $x = 0.22$ ,  $T$ -linear dependence of the resistivity changes to approximately  $T^2$  dependence, as expected for a Fermi liquid at lower temperatures. Similar behavior has been reported now by several groups [10,32,33].

Figure 2 shows the color plot of the exponent  $\alpha$  in the  $T$  dependence of the resistivity

$$\rho_{xx} = \rho_0 + AT^\alpha. \quad (1)$$

Blue and red show the region in which Fermi liquid ( $\alpha \approx 2$ ) and NFL ( $\alpha \approx 1$ ) behaviors are observed, respectively. In the nematic regime below  $T_s$ , the  $T$  dependence of  $\rho_{xx}$  exhibits a concave downward curvature, which is likely to be caused by a change in the carrier scattering time  $\tau$  associated with orbital ordering at  $T_s$ . We do not discuss the  $T$  dependence of  $\rho_{xx}$  below  $T_s$  in detail. The Fermi liquid regime with  $\alpha \approx 2$  is seen in the low-temperature regime at large  $x$  values [10]. The phase diagram also includes a funnel of  $T$ -linear

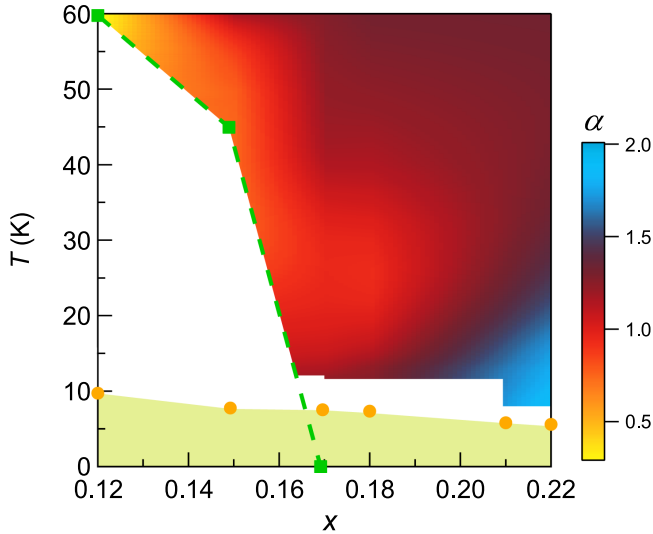


FIG. 2. Phase diagram of  $\text{FeSe}_{1-x}\text{S}_x$ . Colors in the tetragonal state represent evolution of the exponent  $\alpha$  in resistivity fitted by Eq. (1). The green dashed line represents the tetragonal-orthorhombic (nematic) transition temperature  $T_s$  determined by the resistivity measurements. The green square is the nematic QCP. Orange solid circles represent the superconducting transition temperature.

resistivity centered on  $x \approx 0.17$ , indicating that the critical fluctuations originating from the nematic QCP extend up to a finite temperature.

It has been discussed previously that in cuprates and other correlated systems, the  $T$ -linear  $\rho_{xx}$  appears in the Planckian limit, where  $\hbar/\tau = \Lambda k_B T$  with  $\Lambda \approx 1$  is fulfilled [8,9]. To examine whether  $\text{FeSe}_{1-x}\text{S}_x$  is in the Planckian limit, we calculate  $A$  per 2D sheet  $A^\square = A/d$  ( $d$  is interlayer distance), which is given as  $\Sigma_i A^\square \varepsilon_F^i / k_B = \Lambda (\hbar/2e^2)$ . From the  $T$ -linear  $\rho_{xx}$  in the vicinity of nematic QCP, we obtain  $A \approx 1.0 \mu\Omega \text{ cm/K}$ . As discussed above, the electronic specific heat coefficient in the tetragonal phase does not change dramatically from that in the nematic phase [31]. Therefore, by simply assuming  $\varepsilon_F^{e,h} \approx 10\text{--}15 \text{ meV}$  for all pockets,  $\Lambda = 0.7\text{--}0.9$  is obtained. An earlier analysis of the coefficient of the  $T$ -linear resistivity using a multiband Drude model also found  $\Lambda \approx 1$  [10], implying that scattering within the quantum critical fan of a nematic QCP is indeed close to the Planckian limit.

### B. Hall effect

The Hall coefficient  $R_H$  is determined largely by the Fermi surface topology and carrier density. In the simple case of a Fermi liquid, if there is a single species of charge carrier and  $\tau$  is the same at all points on the Fermi surface,  $R_H = 1/ne$ , where  $n$  is the carrier number and  $R_H$  is independent of temperature. Figure 3(a) and its inset depict the  $T$  dependence of  $R_H$  ( $\equiv d\rho_{xy}/dH$  at  $H \rightarrow 0$ ) at various  $x$ . In the nematic regime,  $\rho_{xy}$  shows nonlinear  $H$  dependence, while in the tetragonal regime,  $\rho_{xy}$  exhibits nearly perfect  $H$ -linear dependence. As shown in the main panel of Fig. 3(a),  $R_H$  is positive in the tetragonal regime at  $x \geq 0.17$ , indicating the dominant contribution of holes. As the temperature is lowered,  $R_H$  increases rapidly with increasing slope. Slightly above  $T_c$ ,

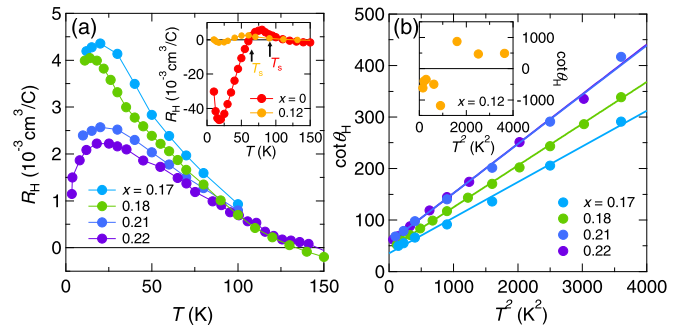


FIG. 3. (a) Temperature dependence of the Hall coefficient  $R_H$  for  $x \geq 0.17$ . The inset shows  $R_H$  for  $x < 0.17$ . Arrows indicate the tetragonal-orthorhombic transition temperature. (b) Cotangent of the Hall angle plotted as a function of  $T^2$  in the tetragonal regime of  $\text{FeSe}_{1-x}\text{S}_x$  ( $x \geq 0.17$ ). The inset shows the same plot in the nematic regime for  $x = 0.12$ .

$R_H$  peaks and decreases. A salient feature is that the enhancement of  $R_H$  at low temperatures becomes more pronounced upon approaching  $x \approx 0.17$ , suggesting that the Hall effect is strongly influenced by the critical nematic fluctuations.

In cuprates [4], iron-pnictides [6], and heavy fermion compounds [7] in the vicinity of AFM QCP,  $|R_H|$  increases rapidly with decreasing temperature. It has been pointed out that the Hall problem in cuprates and in  $\text{CeMIn}_5$  can be simplified by analyzing the Hall response in terms of the Hall angle,  $\theta_H \equiv \tan^{-1}(\rho_{xy}/\rho_{xx})$  [4,7] as

$$\cot \theta_H = a + bT^2, \quad (2)$$

where  $a$  and  $b$  are constants. This Hall angle behavior, when combined with the  $T$ -linear resistivity, is an important hallmark of the deviations from Fermi liquid transport.

In Fig. 3(b), we plot  $\cot \theta_H$  of  $\text{FeSe}_{1-x}\text{S}_x$  as a function of  $T^2$ . For  $x < 0.17$ ,  $\cot \theta_H$  displays nonmonotonic behavior due to the (multiple) sign changes in  $R_H$ . In contrast, in the tetragonal regime at  $x \geq 0.17$ ,  $\cot \theta_H$  follows a  $T^2$  dependence in the regime where  $\rho_{xx}$  is approximately  $T$  linear. We note that the quadratic  $T$  dependence of  $\cot \theta_H$  implies that the temperature dependence of  $R_H$  observed for  $x = 0.17$  and  $0.18$  is unlikely to be due to the multiband effect (see the Appendix). Thus, the observed  $T^2$  dependence of  $\cot \theta_H$ , when combined with the  $T$ -linear  $\rho_{xx}$ , leads us to consider that critical nematic fluctuations are responsible for the deviations from Fermi liquid behavior of the Hall effect.

### C. Magnetoresistance

The orbital magnetoresistance arises from a bending of the electron trajectory by the Lorentz force. A finite magnetoresistance is a measure of the deviations from a perfectly isotropic Fermi surface, providing unique information on the variation of the electron mean free path around the Fermi surface [40]. The magnetoresistance of conventional metals is often analyzed in terms of Kohler's rule. According to the semiclassical transport theory based on the Boltzmann equation, Kohler's rule holds when the system has a single carrier and  $\tau$  is uniform on the Fermi surface. The field dependence of  $\rho_{xx}$  is expressed by  $\omega_c \tau$ , where  $\omega_c$  is the frequency at which

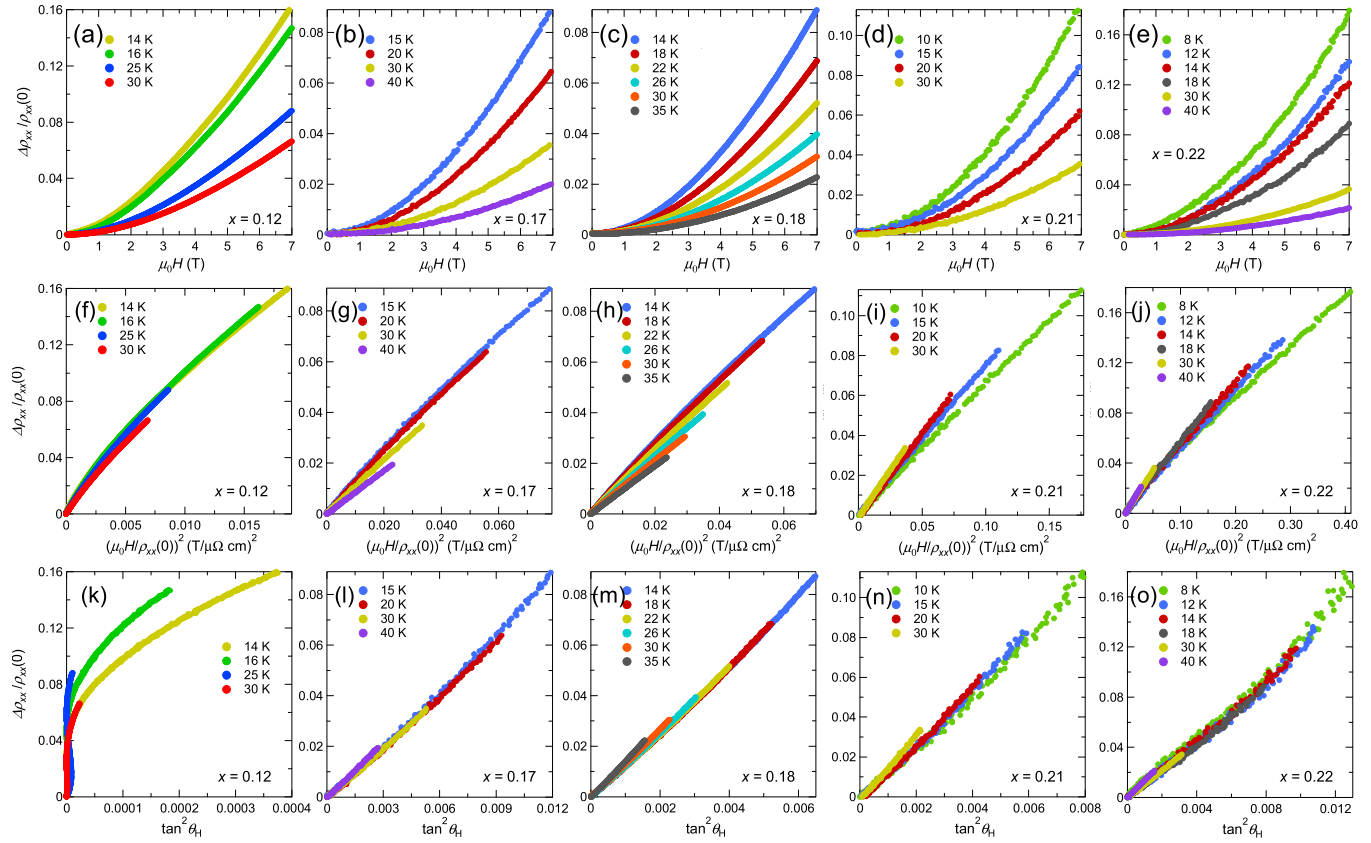


FIG. 4. [(a)–(e)] Magnetoresistance  $\Delta\rho_{xx}(T, H)/\rho_{xx}(T, 0)$  of  $\text{FeSe}_{1-x}\text{S}_x$  at different doping S substitution levels. [(f)–(j)]  $\Delta\rho_{xx}(T, H)/\rho_{xx}(T, 0)$  plotted as a function of  $[\mu_0H/\rho_{xx}(T, 0)]^2$ . [(k)–(o)]  $\Delta\rho_{xx}(T, H)/\rho_{xx}(T, 0)$  plotted as a function of the square of the tangent of the Hall angle  $(\tan^2 \theta_H)^2$ .

the magnetic field causes the electrons to sweep across the Fermi surface. Since the resistivity in zero field  $\rho_{xx}(T, 0)$  is inversely proportional to  $\tau$ , the magnetoresistance of systems with different  $\tau$ , either due to different impurity levels or temperature, is related to  $H$  and  $\rho_{xx}(T, 0)$ . Thus, the orbital magnetoresistance  $\Delta\rho_{xx}(T, H) \equiv \rho_{xx}(T, H) - \rho_{xx}(T, 0)$  obeys the relation

$$\frac{\Delta\rho_{xx}(T, H)}{\rho_{xx}(T, 0)} = F \left[ \frac{H}{\rho_{xx}(T, 0)} \right], \quad (3)$$

where  $F(x)$  is a function which depends on details of the Fermi surface. A violation of Kohler’s rule is observed even in conventional metals when the Fermi surface consists of several different bands and  $\tau$  is strongly band dependent.

Figures 4(a)–4(e) depict the transverse magnetoresistance of  $\text{FeSe}_{1-x}\text{S}_x$  for various  $x$  values for  $H \parallel c$  below 40 K. To search for Kohler’s rule scaling, it is necessary to extract the orbital part of the magnetoresistance. The orbital part is obtained by subtracting the longitudinal magnetoresistance measured in the geometry  $H \parallel j \parallel ab$  from the transverse one. As reported in Ref. [10], the longitudinal magnetoresistance is negligibly small for  $x \geq 0.17$  [see also Fig. 1(c)], indicating that the transverse magnetoresistance is essentially dominated by the orbital contribution.

Figures 4(f)–4(j) depict the transverse magnetoresistance below 40 K plotted as a function of  $[\mu_0H/\rho_{xx}(T, 0)]^2$  for various  $x$  values. At  $x = 0.12$  in the nematic regime, the magnetoresistance collapses onto a single curve below 25 K,

indicating that Kohler’s rule is obeyed at low temperatures. On the other hand, for  $x \geq 0.17$  in the tetragonal regime,  $\Delta\rho_{xx}(T, H)/\rho_{xx}(T, 0)$  is not scaled by  $\mu_0H/\rho_{xx}(T, 0)$ , indicating an apparent violation of Kohler’s rule.

In cuprates,  $\text{BaFe}_2(\text{As}_{1-x}\text{P}_x)_2$  and  $\text{CeMIn}_5$  near the AFM QCP, the magnetoresistance strongly violates Kohler’s rule and a new scaling relation,

$$\frac{\Delta\rho_{xx}(T, H)}{\rho_{xx}(T, 0)} = p \tan^2 \theta_H, \quad (4)$$

where  $p$  is a constant, has been shown to hold [5–7]. This modified Kohler’s rule states that the  $T$  and  $H$  dependencies of  $\Delta\rho_{xx}/\rho_{xx}$  collapse onto a single straight line as a function of  $\tan^2 \theta_H$ . Figures 4(f)–4(g) display  $\Delta\rho_{xx}/\rho_{xx}$  plotted as a function of  $\tan^2 \theta_H$  for various  $x$  values. For  $x = 0.12$ ,  $\Delta\rho_{xx}/\rho_{xx}$  is not scaled by  $\tan^2 \theta_H$ . Two remarkable features are found in  $\Delta\rho_{xx}/\rho_{xx}$  for  $x = 0.17, 0.18$ , and  $0.21$ , however. First,  $\Delta\rho_{xx}/\rho_{xx}$  is well scaled by  $\tan^2 \theta_H$ . Second, the scaling function is almost perfectly linear in  $\tan^2 \theta_H$ . These results demonstrate that the low-field magnetoresistance obeys the modified Kohler’s rule. Thus, in the regime where deviations from Fermi liquid behavior are observed in the resistivity and Hall effect, the magnetoresistance violates Kohler’s rule and can be well described by the modified Kohler’s rule. With increasing  $x$ , Kohler’s rule begins to be recovered at low fields as seen in  $x = 0.22$  [Fig. 4(j)]. This is consistent with the recovery of a Fermi liquid ground state as manifest in the  $T^2$  dependence of  $\rho_{xx}$  (the blue region in Fig. 2).



#### IV. DISCUSSION

Several notable attempts have been made to explain these anomalous deviations from Fermi liquid transport, but mostly in systems that display magnetic quantum criticality. Among others, one may invoke different electron scattering times at different parts of the Fermi surface. However, as the Fermi surface smoothly changes when crossing the nematic QCP [29,30], it is unlikely that the electron scattering time dramatically changes at  $x \approx 0.17$ . An important effect may arise from vertex corrections to the longitudinal and transverse conductivities due to large AFM fluctuations, which modify the current at the Fermi surface spots connected via the nesting vectors  $q_{AF}$  [11–13]. This effect is pronounced in the vicinity of the AFM QCP, where the critical AFM fluctuations are enhanced. It has been shown that such vertex corrections give rise to the  $T$ -linear  $\rho_{xx}$ , an inverse Hall angle that is proportional to  $T^2$ , and a magnetoresistance that is scaled by  $\tan \theta_H$ . This scenario requires a large amplitude of  $q_{AF}$ . In cuprates, iron-pnictides, and  $CeMIn_5$ , AFM spin fluctuations are peaked at  $q_{AF}$  connecting certain points on the Fermi surface. In  $FeSe_{1-x}S_x$ , however, the nematic fluctuations are peaked at  $q_{nem} \approx 0$  as its ordered state breaks the rotational symmetry while preserving translational symmetry. Thus, it is an open question whether the nematic fluctuations in  $FeSe_{1-x}S_x$  can give rise to the observed deviations from Fermi liquid behavior through vertex corrections alone.

Near a nematic QCP, the effective electron-electron interactions are believed to become long ranged, rendering the whole of the Fermi surface “hot,” the electronic states incoherent, and the transport properties NFL-like [41]. It has been argued, however, that a correct treatment of the electron-phonon coupling in such systems will preserve the integrity of the quasiparticles and recover Fermi liquid behavior [36,37]. Our results suggest that such considerations are not applicable to  $FeSe_{1-x}S_x$ , possibly due to a diminishing role of electron-phonon coupling in the presence of strong electron correlations. Indeed, a common set of anomalous charge transport properties observed in strongly correlated electron systems having essentially different types of critical quantum fluctuations appears to capture an universal feature of the NFL transport properties near the QCP. Further investigation is required to clarify this issue.

#### V. CONCLUSION

In summary, we demonstrate anomalous low-field transport properties in  $FeSe_{1-x}S_x$  superconductor, which has a QCP of an electronic nematic order that is not accompanied by sizable magnetic fluctuations. The set of anomalous transport properties resemble those reported in other correlated materials in the vicinity of AFM QCP. The common noticeable features of the anomalous transport behavior observed in correlated electron systems having essentially different types of critical quantum fluctuations capture a universality of NFL behavior near the QCP.

#### ACKNOWLEDGMENTS

We thank N. Barišić, E. Berg, A. I. Coldea, E.-G. Moon, R. Peters, and Y. Yamakawa for fruitful discussions.

This work is supported by Grants-in-Aid for Scientific Research (KAKENHI) (No. JP15H03688, No. JP15KK0160, No. JP18H01175, No. JP18H01177, No. JP18H05227, No. JP19H00649, No. JP20H02600, No. JP20H05162, and No. JP20K21139) and on Innovative Areas “Topological Material Science” (No. JP15H05852) and “Quantum Liquid Crystals” (No. JP19H05824) from Japan Society for the Promotion of Science (JSPS). This work is also supported by Japan Science and Technology Agency (JST) CREST program (Grant No. JPMJCR19T5). We also acknowledge the support by the High Field Magnet Laboratory (HFML) at Radboud University (RU), members of the European Magnetic Field Laboratory (EMFL), and the former Foundation for Fundamental Research on Matter (FOM), which is financially supported by the Netherlands Organisation for Scientific Research (NWO) (Grant No. 16METL01), “Strange Metals.” Part of this work was also supported by the European Research Council (ERC) under the European Union’s Horizon 2020 research and innovation programme (Grant Agreement No. 835279-Catch-22).

W.K.H. and S.H. contributed equally to this work.

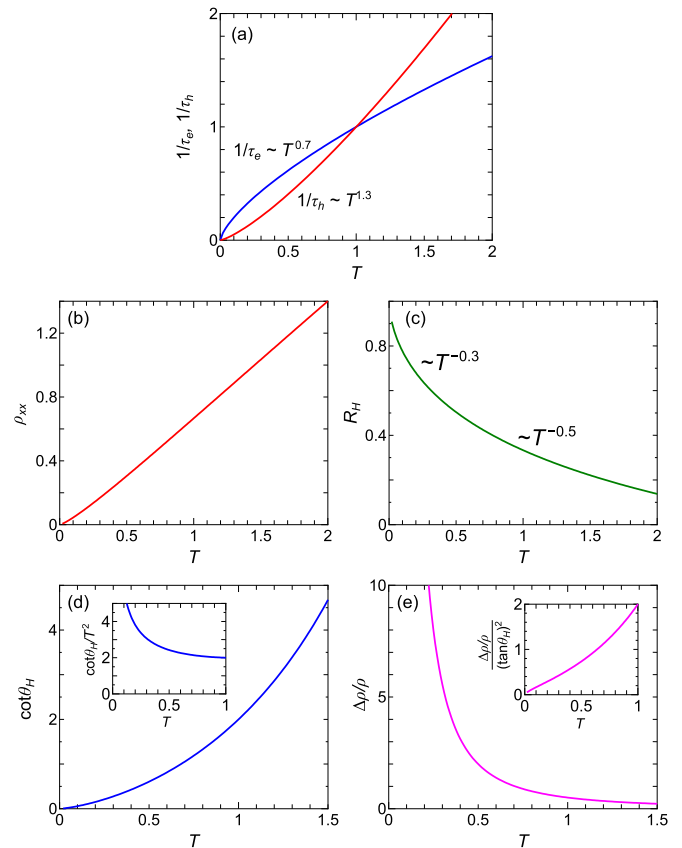


FIG. 5. Transport coefficients in a two-band model. (a) Temperature dependences of  $1/\tau_e$  and  $1/\tau_h$ , (b)  $\rho_{xx}$ , (c)  $R_H$ , (d)  $\cot \theta_H$ , and (e)  $\Delta \rho_{xx} / \rho_{xx}(0)$ , calculated by using  $\eta = 0.7$ ,  $\zeta = 1.3$ ,  $m_e = 2m_0$ , and  $m_h = m_0$ . The inset in panel (d) shows a plot of  $\cot \theta_H / T^2$  as a function of  $T$ . The inset in panel (e) shows a plot of  $(\Delta \rho / \rho) / (\tan \theta_H)^2$  as a function of  $T$ . Note that  $\cot \theta_H$  strongly deviates from a  $T^2$  dependence. Moreover,  $(\Delta \rho / \rho) / (\tan \theta_H)^2$  changes with temperature, demonstrating the violation of the modified Kohler’s rule in this two-band picture.

### APPENDIX: TRANSPORT COEFFICIENTS CALCULATED BY A TWO BAND MODEL

Here, we demonstrate that the anomalous transport properties observed in the vicinity of the nematic QCP in  $\text{FeSe}_{1-x}\text{S}_x$  cannot be ascribed to a simple multiband effect.  $\text{FeSe}_{1-x}\text{S}_x$  is a compensated metal, whose Fermi surface consists of hole and electron pockets. By taking this situation into account, we calculate the transport coefficients assuming a two-band model with circular electron and hole pockets. In the relaxation time approximation, the electrical conductivity  $\sigma_{xx}$ , Hall conductivity  $\sigma_{xy}$ , and magnetoconductivity  $\Delta\sigma_{xx}$  are respectively given as

$$\sigma_{xx} = ne^2 \left( \frac{\tau_h}{m_h} + \frac{\tau_e}{m_e} \right), \quad (\text{A1})$$

$$\sigma_{xy} = ne^3 \left( \frac{\tau_h^2}{m_h^2} - \frac{\tau_e^2}{m_e^2} \right) H, \quad (\text{A2})$$

$$\Delta\sigma_{xx} = -ne^4 \left( \frac{\tau_h^3}{m_h^3} + \frac{\tau_e^3}{m_e^3} \right) H^2, \quad (\text{A3})$$

where  $n$  is the carrier number of each hole and electron pocket,  $\tau_h$  ( $\tau_e$ ) is the scattering time, and  $m_h$  ( $m_e$ ) is the effective mass of the hole (electron) pocket. Then, Hall coefficient, the cotangent of the Hall angle, and the magnetoresistance are respectively given as

$$R_H = \frac{\sigma_{xy}}{\sigma_{xx}^2}, \quad (\text{A4})$$

$$\cot \theta_H = \frac{\sigma_{xx}}{\sigma_{xy}}, \quad (\text{A5})$$

$$\frac{\Delta\rho_{xx}}{\rho_{xx}(0)} = -\frac{\Delta\sigma_{xx}}{\sigma_{xx}} - \left( \frac{\sigma_{xy}}{\sigma_{xx}} \right)^2. \quad (\text{A6})$$

To examine the temperature dependences of these transport coefficients, we assume power-law temperature dependences of the scattering times,  $1/\tau_e \propto T^\eta$  and  $1/\tau_h \propto T^\zeta$ . As  $R_H$  becomes temperature independent for the exponents  $\eta = \zeta$ , we assume  $\eta \neq \zeta$ . To reproduce the observed  $T$ -linear resistivity, the relations  $\eta < 1$  and  $\zeta > 1$  are required. In addition, to reproduce the experimental  $T$  dependence of  $R_H$ ,  $\tau_h/m_h \sim \tau_e/m_e$  is required at high temperatures ( $R_H \sim 0$ ) and  $\tau_h/m_h \gg \tau_e/m_e$  at low temperatures ( $R_H > 0$ ).

To satisfy these constraints, here we set  $\eta = 0.7$ ,  $\zeta = 1.3$ ,  $m_e = 2m_0$ , and  $m_h = m_0$ , where  $m_0$  is the bare electron mass. Figure 5(a) shows the  $T$  dependences of  $1/\tau_e$  and  $1/\tau_h$ , and Figs. 5(b)–5(e) show the obtained  $T$  dependences of  $\rho_{xx}$ ,  $R_H$ ,  $\cot \theta_H$ , and  $\Delta\rho_{xx}/\rho_{xx}(0)$ , respectively. As shown in Figs. 5(b) and 5(c), the observed  $T$ -linear resistivity and the low-temperature enhancement of  $R_H$  can be reproduced qualitatively using these parameters. However, as shown in Fig. 5(d) and its inset,  $\cot \theta_H$  strongly deviates from a  $T^2$  dependence. Moreover, as shown in Fig. 5(e) and its inset,  $\Delta\rho_{xx}/\rho_{xx}(0)$  cannot be scaled by  $\tan^2 \theta_H$ . Thus, these calculations demonstrate that the modified Kohler's rule is strongly violated for the simple two-band model with a  $T$ -linear resistivity and a low-temperature enhancement of  $R_H$ .

To summarize, the observed transport properties,  $\rho_{xx} = \rho_0 + AT$ ,  $\cot \theta_H = a + bT^2$ , and  $\Delta\rho_{xx}/\rho_{xx}(0) = p \tan^2 \theta_H$  cannot be satisfied simultaneously within the relaxation time approximation. These results indicate the possible role of vertex corrections in explaining experimental non-Fermi liquid transport coefficients.

- 
- [1] H. v. Löhneysen, A. Rosch, M. Vojta, and P. Wolfle, Fermi-liquid instabilities at magnetic quantum phase transitions, *Rev. Mod. Phys.* **79**, 1015 (2007).
- [2] T. Shibauchi, A. Carrington, and Y. Matsuda, A quantum critical point lying beneath the superconducting dome in iron pnictides, *Annu. Rev. Condens. Matter Phys.* **5**, 113 (2014).
- [3] S. Martin, A. T. Fiory, R. M. Fleming, L. F. Schneemeyer, and J. V. Waszczak, Normal-state transport properties of  $\text{Bi}_{2+x}\text{Sr}_{2-y}\text{CuO}_{6+\delta}$  crystals, *Phys. Rev. B* **41**, 846(R) (1990).
- [4] T. R. Chien, Z. Z. Wang, and N. P. Ong, Effect of Zn Impurities on the Normal-State Hall Angle in Single-Crystal  $\text{YBa}_2\text{Cu}_{3-x}\text{Zn}_x\text{O}_{7-\delta}$ , *Phys. Rev. Lett.* **67**, 2088 (1991).
- [5] J. M. Harris, Y. F. Yan, P. Matl, N. P. Ong, P. W. Anderson, T. Kimura, and K. Kitazawa, Violation of Kohler's Rule in the Normal-State Magnetoresistance of  $\text{YBa}_2\text{Cu}_3\text{O}_{7-\delta}$  and  $\text{La}_2\text{Sr}_x\text{CuO}_4$ , *Phys. Rev. Lett.* **75**, 1391 (1995).
- [6] S. Kasahara, T. Shibauchi, K. Hashimoto, K. Ikada, S. Tonegawa, R. Okazaki, H. Ikeda, H. Takeya, K. Hirata, T. Terashima, and Y. Matsuda, Evolution from non-Fermi-to Fermi-liquid transport via isovalent doping in  $\text{BaFe}_2(\text{As}_{1-x}\text{P}_x)_2$  superconductors, *Phys. Rev. B* **81**, 184519 (2010).
- [7] Y. Nakajima, H. Shishido, H. Nakai, T. Shibauchi, K. Behnia, K. Izawa, M. Hedo, Y. Uwatoko, T. Matsumoto, R. Settai, Y. Onuki, H. Kontani, and Y. Matsuda, Non-Fermi liquid behavior in the magnetotransport of  $\text{CeMIn}_5$  ( $M$ : Co and Rh): Striking similarity between quasi-two-dimensional heavy fermion and high- $T_c$  cuprates, *J. Phys. Soc. Jpn.* **76**, 024703 (2007).
- [8] J. A. N. Bruin, H. Sakai, R. S. Perry, and A. P. Mackenzie, Similarity of scattering rates in metals showing  $T$ -linear resistivity, *Science* **339**, 804 (2013).
- [9] A. Legros, S. Benhabib, W. Tabis, F. Laliberté, M. Dion, M. Lizaire, B. Vignolle, D. Vignolles, H. Raffy, Z. Z. Li, P. Auban-Senzier, N. Doiron-Leyraud, P. Fournier, D. Colson, L. Taillefer, and C. Proust, Universal  $T$ -linear resistivity and Planckian dissipation in overdoped cuprates, *Nat. Phys.* **15**, 142 (2019).
- [10] S. Licciardello, J. Buhot, J. Lu, J. Ayres, S. Kasahara, Y. Matsuda, T. Shibauchi, and N. E. Hussey, Electrical resistivity across a nematic quantum critical point, *Nature (London)* **567**, 213 (2019).
- [11] B. P. Stojkovic and D. Pines, Theory of the longitudinal and Hall conductivities of the cuprate superconductors, *Phys. Rev. B* **55**, 8576 (1997).
- [12] H. Kontani, K. Kanki, and K. Ueda, Hall effect and resistivity in high- $T_c$  superconductors: The conserving approximation, *Phys. Rev. B* **59**, 14723 (1999).

- [13] H. Kontani, Anomalous transport phenomena in Fermi liquids with strong magnetic fluctuations, *Rep. Prog. Phys.* **71**, 026501 (2008).
- [14] E. Fradkin, S. A. Kivelson, M. J. Lawler, J. P. Eisenstein, and A. P. Mackenzie, Nematic Fermi fluids in condensed matter physics, *Annu. Rev. Condens. Matter Phys.* **1**, 153 (2010).
- [15] Y. Sato, S. Kasahara, H. Murayama, Y. Kasahara, E.-G. Moon, T. Nishizaki, T. Loew, J. Porras, B. Keimer, T. Shibauchi, and Y. Matsuda, Thermodynamic evidence for a nematic phase transition at the onset of the pseudogap in  $\text{YBa}_2\text{Cu}_3\text{O}_y$ , *Nat. Phys.* **13**, 1074 (2017).
- [16] H. Murayama, Y. Sato, R. Kurihara, S. Kasahara, Y. Mizukami, Y. Kasahara, H. Uchiyama, A. Yamamoto, E.-G. Moon, J. Cai, J. Freyermuth, M. Greven, T. Shibauchi, and Y. Matsuda, Diagonal nematicity in the pseudogap phase of  $\text{HgBa}_2\text{CuO}_{4+\delta}$ , *Nat. Commun.* **10**, 3282 (2019).
- [17] K. Ishida, S. Hosoi, Y. Teramoto, T. Usui, Y. Mizukami, K. Itaka, Y. Matsuda, T. Watanabe, and T. Shibauchi, Divergent nematic susceptibility near the pseudogap critical point in a cuprate superconductor, *J. Phys. Soc. Jpn.* **89**, 064707 (2020).
- [18] N. Auvray, B. Loret, S. Benhabib, M. Cazayous, R. D. Zhong, J. Schneeloch, G. D. Gu, A. Forget, D. Colson, I. Paul, A. Sacuto, and Y. Gallais, Nematic fluctuations in the cuprate superconductor  $\text{Bi}_2\text{Sr}_2\text{CaCu}_2\text{O}_{8+\delta}$ , *Nat. Commun.* **10**, 5209 (2019).
- [19] R. M. Fernandes, A. V. Chubukov, and J. Schmalian, What drives nematic order in iron-based superconductors? *Nat. Phys.* **10**, 97 (2014).
- [20] J.-H. Chu, J. G. Analytis, K. D. Greve, P. L. McMahon, Z. Islam, Y. Yamamoto, and I. R. Fisher, In-plane resistivity anisotropy in an underdoped iron arsenide superconductor, *Science* **329**, 824 (2010).
- [21] S. Kasahara, H. J. Shi, K. Hashimoto, S. Tonegawa, Y. Mizukami, T. Shibauchi, K. Sugimoto, T. Fukuda, T. Terashima, A. H. Nevidomskyy, and Y. Matsuda, Electronic nematicity above the structural and superconducting transition in  $\text{BaFe}_2(\text{As}_{1-x}\text{P}_x)_2$ , *Nature (London)* **486**, 382 (2012).
- [22] F. Ronning, T. Helm, K. R. Shirer, M. D. Bachmann, L. Balicas, M. K. Chan, B. J. Ramshaw, R. D. McDonald, F. F. Balakirev, M. Jaime, E. D. Bauer, and P. J. W. Moll, Electronic in-plane symmetry breaking at field-tuned quantum criticality in  $\text{CeRhIn}_5$ , *Nature (London)* **548**, 313 (2017).
- [23] S. Lederer, Y. Schattner, E. Berg, and S. A. Kivelson, A. superconductivity and non-Fermi liquid behavior near a nematic quantum critical point, *Proc. Natl Acad. Sci. USA* **114**, 4905 (2017).
- [24] T. Shibauchi, T. Hanaguri, and Y. Matsuda, Exotic superconducting states in FeSe-based materials, [arXiv:2005.07315](https://arxiv.org/abs/2005.07315) [J. Phys. Soc. Jpn. (to be published)].
- [25] S.-H. Baek, D. V. Efremov, J. M. Ok, J. S. Kim, Jeroen van den Brink, and B. Büchner, Orbital-driven nematicity in FeSe, *Nat. Mater.* **14**, 210 (2015).
- [26] A. E. Böhmer, T. Arai, F. Hardy, T. Hattori, T. Iye, T. Wolf, H. v. Löhneysen, K. Ishida, and C. Meingast, Origin of the Tetragonal-to-Orthorhombic Phase Transition in FeSe: A Combined Thermodynamic and NMR Study of Nematicity, *Phys. Rev. Lett.* **114**, 027001 (2015).
- [27] S. Hosoi, K. Matsuura, K. Ishida, H. Wang, Y. Mizukami, T. Watashige, S. Kasahara, Y. Matsuda, and T. Shibauchi, Nematic quantum critical point without magnetism in  $\text{FeSe}_{1-x}\text{S}_x$  superconductors, *Proc. Natl. Acad. Sci. USA* **113**, 8139 (2016).
- [28] P. Wiecki, K. Rana, A. E. Böhmer, Y. Lee, S. L. Bud'ko, P. C. Canfield, and Y. Furukawa, Persistent correlation between superconductivity and antiferromagnetic fluctuations near a nematic quantum critical point in  $\text{Fe}_{1-x}\text{Se}_x$ , *Phys. Rev. B* **98**, 020507(R) (2018).
- [29] A. I. Coldea, S. F. Blake, S. Kasahara, A. A. Haghighirad, M. D. Watson, W. Knafo, E. S. Choi, A. McCollam, P. Reiss, T. Yamashita, M. Bruma, S. Speller, Y. Matsuda, T. Wolf, T. Shibauchi, and A. J. Schofield, Evolution of the Fermi surface of the nematic superconductors  $\text{FeSe}_{1-x}\text{S}_x$ , *npj Quant. Mater.* **4**, 2 (2019).
- [30] T. Hanaguri, K. Iwaya, Y. Kohsaka, T. Machida, T. Watashige, S. Kasahara, T. Shibauchi, and Y. Matsuda, Two distinct superconducting pairing states divided by the nematic end point in  $\text{FeSe}_{1-x}\text{S}_x$ , *Sci. Adv.* **4**, eaar6419 (2018).
- [31] Y. Sato, S. Kasahara, T. Taniguchi, X. Z. Xing, Y. Kasahara, Y. Tokiwa, Y. Yamakawa, H. Kontani, T. Shibauchi, and Y. Matsuda, Abrupt change of the superconducting gap structure at the nematic critical point in  $\text{FeSe}_{1-x}\text{S}_x$ , *Proc. Natl. Acad. Sci. USA* **115**, 1227 (2018).
- [32] M. Bristow, P. Reiss, A. A. Haghighirad, Z. Zajicek, S. J. Singh, T. Wolf, D. Graf, W. Knafo, A. McCollam, and A. I. Coldea, Anomalous high-magnetic field electronic state of the nematic superconductors  $\text{FeSe}_{1-x}\text{S}_x$ , *Phys. Rev. Research* **2**, 013309 (2020).
- [33] T. Urata, Y. Tanabe, K. K. Huynh, H. Oguro, K. Watanabe, and K. Tanigaki, Non-Fermi liquid behavior of electrical resistivity close to the nematic critical point in  $\text{Fe}_{1-x}\text{Co}_x\text{Se}$  and  $\text{FeSe}_{1-y}\text{S}_y$ , [arXiv:1608.01044](https://arxiv.org/abs/1608.01044).
- [34] S. Licciardello, N. Maksimovic, J. Ayres, J. Buhot, M. Čulo, B. Bryant, S. Kasahara, Y. Matsuda, T. Shibauchi, V. Nagarajan, J. G. Analytis, and N. E. Hussey, Coexistence of orbital and quantum critical magnetoresistance in  $\text{FeSe}_{1-x}\text{S}_x$ , *Phys. Rev. Research* **1**, 023011 (2019).
- [35] E. Berg, S. Lederer, Y. Schattner, and S. Trebst, Monte Carlo studies of quantum critical metals, *Annu. Rev. Condens. Matter Phys.* **10**, 63 (2019).
- [36] I. Paul and M. Garst, Lattice Effects on Nematic Quantum Criticality in Metals, *Phys. Rev. Lett.* **118**, 227601 (2017).
- [37] V. S. de Carvalho and R. M. Fernandes, Resistivity near a nematic quantum critical point: Impact of acoustic phonons, *Phys. Rev. B* **100**, 115103 (2019).
- [38] S. Kasahara, T. Watashige, T. Hanaguri, Y. Kohsaka, T. Yamashita, Y. Shimoyama, Y. Mizukami, R. Endo, H. Ikeda, K. Aoyama, T. Terashima, S. Uji, T. Wolf, H. v. Löhneysen, T. Shibauchi, and Y. Matsuda, Field-induced superconducting phase of FeSe in the BCS-BEC cross-over, *Proc. Natl. Acad. Sci. USA* **111**, 16309 (2014).
- [39] M. Yi, H. Pfau, Y. Zhang, Y. He, H. Wu, T. Chen, Z. R. Ye, M. Hashimoto, R. Yu, Q. Si, D.-H. Lee, Pengcheng Dai, Z.-X. Shen, D. H. Lu, and R. J. Birgeneau, The Nematic Energy Scale and the Missing Electron Pocket in FeSe, *Phys. Rev. X* **9**, 041049 (2019).
- [40] A. Pippard, *Magnetoresistance in Metals*, Cambridge Studies in Low Temperature Physics (Cambridge University Press, Cambridge, UK, 1989).
- [41] C. H. Mousatov, E. Berg, and S. A. Hartnoll, Theory of the strange metal  $\text{Sr}_3\text{Ru}_2\text{O}_7$ , *Proc. Natl Acad. Sci. USA* **117**, 2852 (2020).