

BMJ Open Association of social isolation, loneliness and genetic risk with incidence of dementia: UK Biobank Cohort Study

Marko Elovainio ,^{1,2,3} Jari Lahti,¹ Matti Pirinen,^{4,5,6} Laura Pulkki-Råback,^{1,7} Anni Malmberg,¹ Jari Lipsanen,¹ Marianna Virtanen ,⁸ Mika Kivimäki,^{4,9} Christian Hakulinen^{1,3}

To cite: Elovainio M, Lahti J, Pirinen M, *et al.* Association of social isolation, loneliness and genetic risk with incidence of dementia: UK Biobank Cohort Study. *BMJ Open* 2022;**12**:e053936. doi:10.1136/bmjopen-2021-053936

► Prepublication history and additional supplemental material for this paper are available online. To view these files, please visit the journal online (<http://dx.doi.org/10.1136/bmjopen-2021-053936>).

Received 28 May 2021
Accepted 30 January 2022

ABSTRACT

Background Social isolation and loneliness have been associated with increased risk of dementia, but it is not known whether this risk is modified or confounded by genetic risk of dementia.

Methods We used the prospective UK Biobank study with 155 070 participants (mean age 64.1 years), including self-reported social isolation and loneliness. Genetic risk was indicated using the polygenic risk score for Alzheimer's disease and the incident dementia ascertained using electronic health records.

Results Overall, 8.6% of participants reported that they were socially isolated and 5.5% were lonely. During a mean follow-up of 8.8 years (1.36 million person years), 1444 (0.9% of the total sample) were diagnosed with dementia. Social isolation, but not loneliness, was associated with increased risk of dementia (HR 1.62, 95% CI 1.38 to 1.90). There were no interaction effects between genetic risk and social isolation or between genetic risk and loneliness predicting incident dementia. Of the participants who were socially isolated and had high genetic risk, 4.4% (95% CI 3.4% to 5.5%) were estimated to developed dementia compared with 2.9% (95% CI 2.6% to 3.2%) of those who were not socially isolated but had high genetic risk. Comparable differences were also in those with intermediate and low genetic risk levels.

Conclusions Socially isolated individuals are at increased risk of dementia at all levels of genetic risk.

INTRODUCTION

The rapidly rising numbers of people with dementia¹ is a significant health policy and health service concern in many high-income countries. Although considerable share of the dementia risk is due to genetic factors,^{2,3} major efforts have been directed towards the identification of potentially modifiable risk factors that could prevent or delay the onset of dementia.⁴ Higher levels of social support have been suggested to protect from dementia,⁵ with both social isolation and feelings of loneliness being associated with increased risk of dementia,⁶⁻⁸ although

Strengths and limitations of the study

- The strengths of the study were its large sample size and a genome-wide study using a well-established polygenic risk score for dementia.
- Despite the large sample size, the sample was not representative of the UK population.
- As dementia was derived from hospital records, people with non-diagnosed dementia may have been missed.
- Reverse causation may have affected the findings by making people with preclinical dementia more socially isolated.
- Future research should examine the mechanistic pathways whereby social isolation is associated with dementia.

mixed findings have been reported between loneliness and dementia risk.^{9,10} However, it remains unclear whether there is an interplay between genetic factors and social isolation and loneliness (ie, whether the association of social isolation and loneliness with dementia is evident only at high or low levels of genetic risk) or whether the associations of genetic factors and social network characteristics with dementia are independent and additive.

The polygenic risk score (PRS) for Alzheimer's disease (AD), describing the polygenic burden captured by the most recent genome-wide studies,¹¹ allows to estimate the size of the genetic risk and the extent to which the associations of social isolation and loneliness with dementia are modified by genetic risk. Existing studies have included Apolipoprotein E (APOE) genotype as the genetic risk, focused on wider psychosocial characteristics,¹² relied on small samples,¹³ and provided limited evidence for the interplay of genetic risk and social relations predicting the increased risk of incident dementia. In the



© Author(s) (or their employer(s)) 2022. Re-use permitted under CC BY. Published by BMJ.

For numbered affiliations see end of article.

Correspondence to

Dr Marko Elovainio;
marko.elovainio@helsinki.fi



present study, we used data from UK Biobank study to examine whether genetic risk may intensify and attenuate the associations of social isolation and loneliness with the risk of dementia. In addition to estimating relative risk, we will provide estimates of absolute risk,¹⁴ as they are important information for risk communication and clinical risk prediction.¹⁵

METHODS

Study design and participants

In this analysis of the UK Biobank study, we used baseline data and obtained information of incident dementia at follow-up via linked electronic health records.¹⁶ UK National Health Service (NHS) registers maintain records of all individuals legally registered as residents in the UK. In the UK Biobank study, these records were used to invite around 9.2 million individuals aged 40–69 years living within a sensible travelling distance of the 22 assessment centres across Great Britain 2007–2010.¹⁶ At the study baseline, participants completed multiple touchscreen computer-based questionnaires followed by a face-to-face interview with trained research staff. Physical measures were also taken. Details of these assessments and variables are publicly available from the UK Biobank website: <https://biobank.ndph.ox.ac.uk/ukb/>.

In total, 502 656 individuals were recruited (5.4% of the eligible population). Of those, individuals that were 60 years or older and had complete data on social isolation, loneliness, dementia and genetic data were included in the present analysis (N=147 614–152 070). There were 7459 (4.8%) missing values in loneliness measures and 2351 (1.5%) missing values in isolation measures. We also repeated the analyses using imputed data in those with missing information on social isolation, loneliness or other explanatory variables but had information on genetic risk score (N=155 063).

Ascertainment of incident dementia

Dementia was ascertained using hospital inpatient records which contains data on admissions and diagnoses from the Hospital Episode Statistics for England, Scottish Morbidity Record data for Scotland, and the Patient Episode Database for Wales. Additional cases were detected through linkage to death register data provided by the NHS Digital for England and Wales and the Information and Statistics Division for Scotland. Diagnoses were recorded using the International Classification of Diseases (ICD) coding system. Participants with dementia were identified as having a primary/secondary diagnosis (hospital records) or underlying/contributory cause of death (death register) using ICD-9 and ICD-10 codes for AD and other dementia classifications (see online supplemental file for details).

Measurement of social isolation and loneliness

Social isolation and loneliness were measured using the same scale as in our two previous UK Biobank studies.^{17 18}

Social isolation scale was defined using the following three questions: (1) ‘Including yourself, how many people are living together in your household? Include those who usually live in the house such as students living away from home during term, partners in the armed forces or professions such as pilots’ (one point for living alone); (2) ‘How often do you visit friends or family or have them visit you?’ (one point for friends and family visits less than once a month), and (3) ‘Which of the following [leisure/social activities] do you attend once a week or more often? You can select more than one’, (one point for no participation in social activities at least weekly). This resulted in scale with a range from 0 to 3, where an individual was defined as socially isolated if he/she had two or more of those points and those who scored 0 or 1 were classified as not isolated. Other studies in the UK have used similar measures.¹⁸

Loneliness scale was constructed from two questions: ‘Do you often feel lonely?’ (no=0, yes=1) and ‘How often are you able to confide in someone close to you?’ (0=almost daily—once every few months 1=once every few months to never or almost never). An individual was defined as lonely if he/she responded positively to both questions (score 2) and not lonely if he or she responded negatively to one or both of the questions (score 0–1). Similar questions have been used in longer loneliness scales, such as the Revised UCLA Loneliness Scale.¹⁹

PRS of dementia

From the genotyped UK Biobank samples, we included 155 070 unrelated white British participants after removal of participants based on heterozygosity and missingness of outliers, sex chromosome aneuploidies and mismatches, withdrawals and those that UK Biobank had excluded from the relatedness calculations. The genotypes were imputed against Haplotype Reference Consortium and UK10K haplotype resources containing ~96M variants.¹¹ We calculated PRS for AD based on a genome-wide association study by Kunkle *et al*² with 35 274 AD cases and 59 163 controls that do not overlap with UK Biobank samples (for details, see the online supplemental file). We used Plink 1.9²⁰ for the genotype QC and clumping. The following parameters were used for the clumping of the genotype data: p-value threshold 0.5, LD threshold (r^2) 0.5, and clumping window width of 250 kilobases. Prior to clumping, we excluded all single-nucleotide polymorphisms (SNPs) with minor allele frequency (MAF) <0.001, genotyping rate <0.1, Hardy-Weinberg equilibrium p-value <1e-6 and missingness per person >0.1. We used PRSice 2.2.8²¹ for calculating the PRS with the genotype QC settings that have been recommended by the software developers.²² In the main analyses, we applied a p-value threshold of 0.5, which resulted in including 626 623 SNPs in the PRS. This threshold was chosen as previous work has reported that it provided an optimal set of variants for predicting dementia and AD.^{23 24} While this set is likely to include a number of variants which are not associated with AD, it also includes a number of variants

that at present do not have sufficient statistical evidence to meet the criteria for being genome-wide significant (ie, p value $< 5 \times 10^{-8}$) but are expected to be associated in future larger studies. The univariate associations between genetic risks score with 10 different cut-off points and incident dementia is reported in the online supplemental SFigure 1. Last, based on two single nucleotide polymorphisms (rs7412 and rs429358), we additionally genotyped APOE (none, one, or two $\epsilon 4$ alleles).

The PRSs were then z-standardised to have mean 0 and variance 1, and divided into tertiles and categorised as low-risk, intermediate-risk and high-risk tertiles.

Assessment of potential explanatory factors

Following information was used in the current study: sex, age in years, socioeconomic factors (educational attainment and Townsend deprivation index, which is an area-level composite measure of deprivation based on unemployment, non-home ownership, non-car ownership, and household overcrowding), chronic diseases (diabetes, cardiovascular disease, cancer, and other long-standing illness, disability or infirmity), cigarette smoking (smoker (yes/no); ex-smoker (yes/no)), physical activity (moderate and vigorous physical activity), alcohol intake frequency (three or four times a week or more vs once or twice a week or less), and the frequency of depressed mood in the past 2 weeks (Patient Health Questionnaire²⁵).

Statistical analyses

Study participants were followed from the study baseline (2006–2010) for incident dementia until the date of first dementia diagnosis, death, or to the end of the follow-up, whichever came first. The associations of social isolation, loneliness and PRS with incident dementia were examined using Cox proportional hazard regression models where age was used as a time scale. Results from these analyses were reported as HRs (relative risk) and their 95% CIs and the models were adjusted for age, sex and 10 first principal components of genetic structure from UK Biobank to control for possible population stratification, and additionally for education, social deprivation index, having long-term illness, physical activity, smoking status, alcohol consumption and depressive symptoms. In these analyses, PRS was used both as a categorical and as a continuous variable. Additional adjustments were also made for APOE genotype. Cumulative incidence (absolute risk) of dementia associated with combined categories of social isolation, loneliness and genetic risk was estimated using competing-risk regression,^{26 27} with death being treated as competing event.

For the sensitivity analyses, missing data on social isolation, loneliness and all explanatory factors were imputed using multiple imputation by chained equations to generate five imputed datasets. Imputation model included age, sex, social isolation, loneliness, all covariates, the Nelson-Aalen estimate of cumulative hazard, and survival status.²⁸ Cox proportional hazards models were

fitted within each imputed dataset and combined using Rubin's rules.

P values were two sided with statistical significance set at less than 0.05. All analyses were performed using Stata (V.15.1) and R (V.4.2.1).

Role of the funding source

The sponsors of the study had no role in study design, data collection, data analysis, data interpretation, or writing of the report. Elovainio and Hakulinen had full access to the data. Elovainio and Hakulinen take final responsibility for the decision to submit for publication.

Patient involvement

These results are based on existing data. We were not involved in the recruitment of the participants. As far as we know, no patients were engaged in designing the present research question or the outcome measures. They were also not involved in developing plans for recruitment, design or implementation of the study, and were not asked to advise on interpretation or writing up of results. Results from UK Biobank are disseminated to study participants via the study website and social media outlets.

RESULTS

Descriptive statistics of the study participants are shown in table 1. Genetic risk score data were available for 155 070 participants (51.9% women; mean age 64.1 years). Overall, 8.6% of participants (n=13 103) were classified as socially isolated and 5.5% were lonely (N=8102). Of those who reported themselves to be socially isolated, 14.3% were also lonely. During a total of 1.36 million person years (mean follow-up time 8.8 years), 1444 participants (0.9% of the total sample) were diagnosed with all-cause dementia.

As expected, a higher PRS for AD was associated with an increased risk of dementia. Using continuous PRS, the HR per 1 SD increase in the score was 1.27 (95% CI 1.21 to 1.34) in an analysis adjusted for age, sex and 10 principal components. The associations between genetic risk categories (low, intermediate and high) with incidence of dementia shown in table 2. In comparison to the participants in the low genetic risk category, the HR of incident dementia was 1.49 (95% CI 1.28 to 1.73) in participants with intermediate risk and 1.71 (95% CI 1.47 to 1.98) in those with high genetic risk in the fully adjusted model. There were no interaction effects between sex and intermediate genetic risk ($p=0.15$) or between sex and high genetic risk ($p=0.20$) predicting incident dementia (online supplemental Stable 1a).

Social isolation was associated with increased risk of dementia (HR adjusted for age and sex=1.62, 95% CI 1.39 to 1.90). The associations attenuated but remained statistically significant after adjusting for additional covariates including sociodemographics, health-related factors and genetic risk score and principal components (HR=1.34,

**Table 1** Baseline characteristics of participants according to diagnosed dementia at follow-up

Variables		Dementia		P value
		No	Yes	
Age at baseline	Mean (SD)	64.1 (2.8)	65.8 (2.7)	<0.001
Sex	Female	79 816 (52.0)	631 (43.7)	<0.001
	Male	73 803 (48.0)	813 (56.3)	
Education	Lower	40 575 (26.7)	536 (38.2)	<0.001
	Intermediate	71 838 (47.4)	606 (43.2)	
	Higher	39 304 (25.9)	261 (18.6)	
Long-term illness	No	57 734 (38.7)	319 (23.3)	<0.001
	Yes	91 264 (61.3)	1053 (76.7)	
Physical activity	Low	45 961 (30.7)	479 (34.9)	0.001
	High	103 933 (69.3)	893 (65.1)	
Current smoker	No	140 640 (92.0)	1281 (89.4)	<0.001
	Yes	12 264 (8.0)	152 (10.6)	
Alcohol consumption	Lower	81 237 (52.9)	866 (60.1)	<0.001
	Higher	72 281 (47.1)	575 (39.9)	
Depressive symptoms	Low	121 502 (82.5)	1014 (75.8)	<0.001
	Low medium	21 350 (14.5)	245 (18.3)	
	High medium	2788 (1.9)	42 (3.1)	
	High	1639 (1.1)	37 (2.8)	
Townsend deprivation index	Mean (SD)	-1.7 (2.8)	-1.1 (3.3)	<0.001
Socially isolated	No	138 407 (91.5)	1208 (87.3)	<0.001
	Yes	12 922 (8.5)	175 (12.7)	
Feeling lonely	No	138 250 (94.5)	1253 (92.5)	0.001
	Yes	7999 (5.5)	102 (7.5)	
Genetic dementia risk	Low	51 355 (33.4)	333 (23.1)	<0.001
	Intermediate	51 171 (33.3)	517 (35.8)	
	High	51 093 (33.3)	594 (41.1)	
Apolipoprotein E genotype	None	113 994 (74.2)	707 (49.0)	<0.001
	One e4 allele	36 103 (23.5)	568 (39.3)	
	Two e4 alleles	3522 (2.3)	169 (11.7)	

95% CI 1.12 to 1.60). Loneliness was also associated with higher risk of dementia (HR=1.47, 95% CI 1.20 to 1.80), but this association was lost when adjusted for sociodemographics, health-related factors, PRS and principal

components (HR=1.03, 95% CI 0.81 to 1.30). Both social isolation (HR=1.58, 95% CI 1.34 to 1.86) and loneliness (HR=1.28, 95% CI 1.03 to 1.59) were associated with incident dementia when added simultaneously into the

Table 2 Association between genetic risk and risk of incident dementia

Predictor	Model 1		Model 2	
	HR (95% CI)	P value	HR (95% CI)	P value
Intermediate genetic risk versus low	1.56 (1.36 to 1.79)	<0.001	1.49 (1.28 to 1.73)	<0.001
High genetic risk versus low	1.79 (1.56 to 2.04)	<0.001	1.71 (1.47 to 1.98)	<0.001
Observations	155 063		139 345	

Model 1. Adjusted for age and sex.

Model 2. Adjusted for age, sex, education, social deprivation, health behaviours, long-term illness, depressive symptoms and 10 principal components.

The values are HR and 95% CI.

Table 3 Associations of loneliness and isolation with incident dementia

Predictor	Model 1		Model 2		Model 3	
	HR (95% CI)	P value	HR (95% CI)	P value	HR (95% CI)	P value
Separate analyses						
Lonely versus not lonely	1.47 (1.20 to 1.80)	<0.001	1.03 (0.81 to 1.30)	0.817	1.04 (0.82 to 1.32)	0.752
Isolated versus no isolated	1.62 (1.39 to 1.90)	<0.001	1.34 (1.12 to 1.60)	0.002	1.34 (1.12 to 1.60)	0.002
Combined analyses						
Lonely versus not lonely	1.28 (1.03 to 1.59)	0.024	0.95 (0.74 to 1.22)	0.689	0.96 (0.75 to 1.23)	0.716
Isolated versus no isolated	1.58 (1.34 to 1.86)	<0.001	1.33 (1.11 to 1.60)	0.002	1.33 (1.11 to 1.60)	0.003
Observations	147 604/152 712		133 885/1 37 894		133 885/137 894	

Model 1. Adjusted for age and sex.

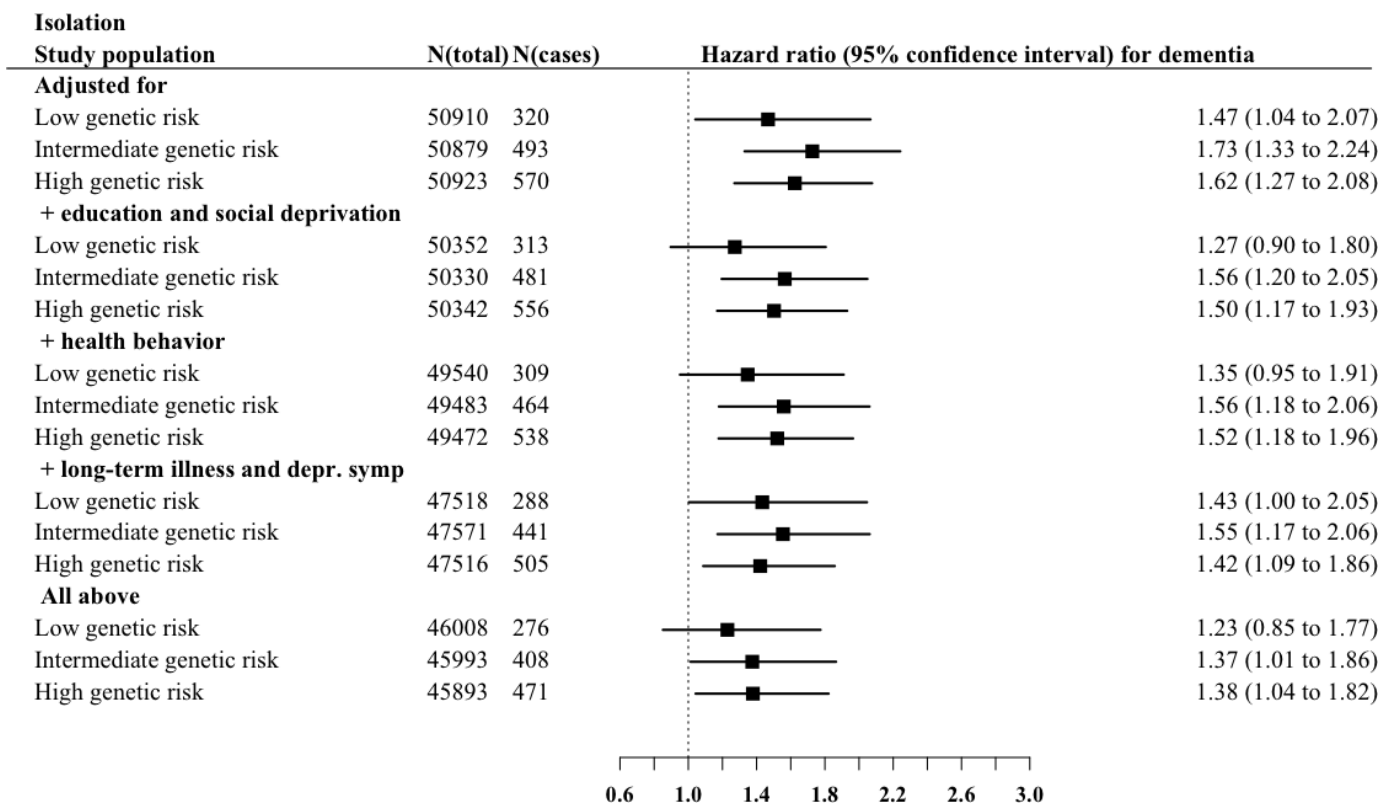
Model 2. Adjusted for age, sex, education, social deprivation, health behaviours, long-term illness, depressive symptoms, genetic risk and 10 principal components.

Model 3. Adjusted for age, sex, education, social deprivation, health behaviours, long-term illness, depressive symptoms and apolipoprotein E genotype.

The values are HRs and 95% CI.

model but only the association between social isolation and dementia was robust to adjusting for additional covariates (HR=1.33, 95 % CI 1.11 to 1.60). Adjusting the models for APOE produced similar associations (table 3). No interaction effects between sex and isolation (p=0.53) or between sex and loneliness (p=0.14) predicting incident dementia were found (online supplemental Stable 1b).

Although no significant interaction effects in the associations between social isolation and genetic risk categories (p values range 0.45–0.62) or loneliness and genetic risk categories (p values range 0.59–0.95) with incident dementia were found (online supplemental Stable 1c), we illustrated the interplay between genetic risk with social isolation and loneliness by presenting associations at all genetic risk levels adjusting for potential confounders


Figure 1 Associations of social isolation with incident dementia risk in low, intermediate and high genetic risk groups.

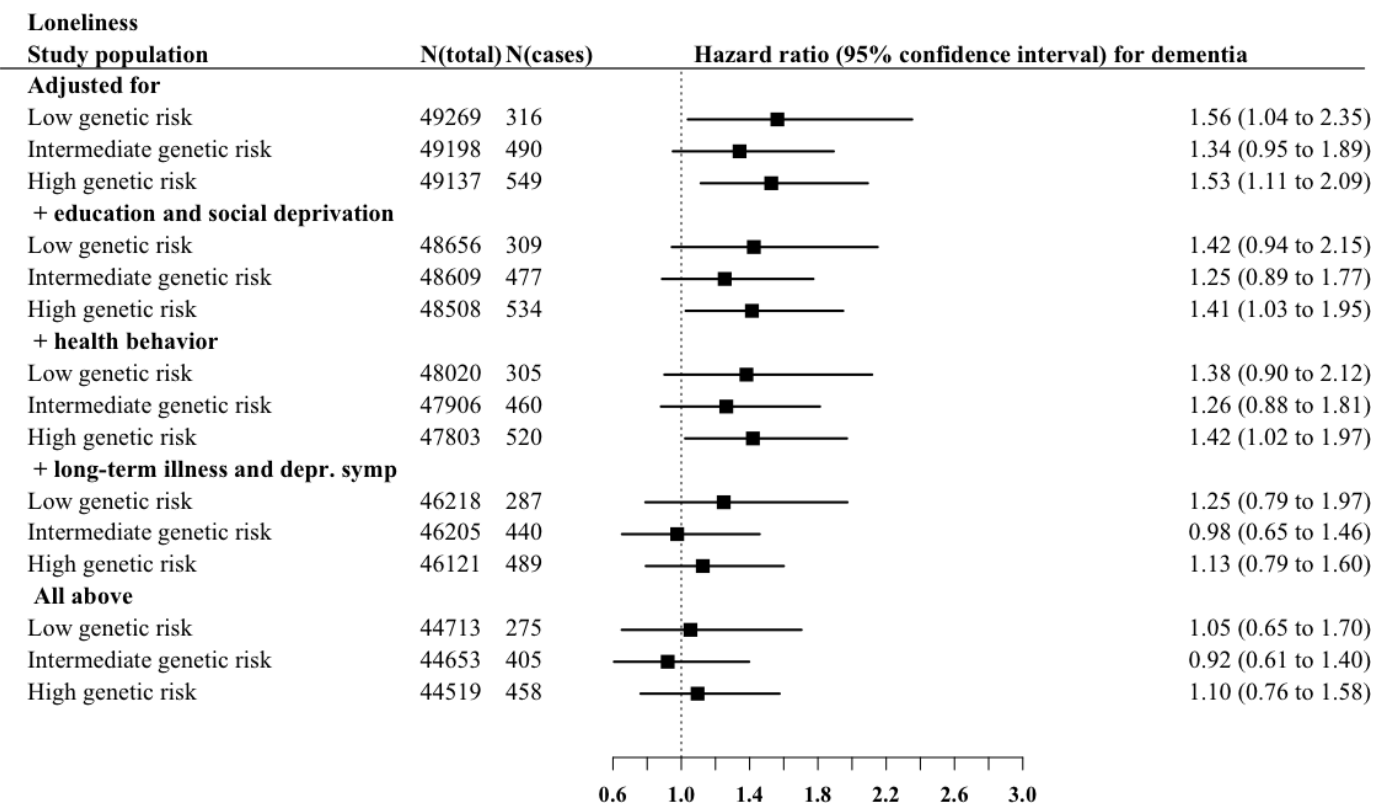


Figure 2 Associations of loneliness with incident dementia risk in low, intermediate and high genetic risk groups.

(figures 1 and 2). Social isolation was associated with increasing dementia risk in all genetic risk levels. At intermediate and high genetic risk levels, these associations were robust to adjusting for all potential confounders or mediators (HR=1.37, 95% CI 1.01 to 1.86; HR=1.38, 95% CI 1.04 to 1.82). The results for loneliness were less consistent, and the risk of dementia was similar in lonely participants at low and at high levels of genetic risk, when compared with those who reported no loneliness. In the high genetic risk group, for example, the hazard ratios were 1.53 (95% CI 1.11 to 2.09) in low and 1.56 (95% CI 1.04 to 2.35) in high loneliness group (figure 2). All these associations were attenuated when adjusted for long-term illness and depressive symptoms and in the fully adjusted model.

In terms of absolute risk (cumulative incidence), of those who were socially isolated and had high genetic risk, 4.4% (95% CI 3.4% to 5.5%) were estimated to develop dementia compared with 2.9% (95% CI 2.6% to 3.2%) of those who were not socially isolated but had high genetic risk (figure 3). The corresponding absolute risk estimates in the socially isolated and not isolated were 4.1 (95% CI 3.1% to 5.1%) and 2.5% (95% CI 2.2% to 2.8%) in participants with intermediate genetic risk and 2.3% (95% CI 1.5% to 3.0%) and 1.6% (95% CI 1.4% to 1.9%) in those with low genetic risk.

As sensitivity analyses, we repeated all the main analyses with AD as the outcome (online supplemental STables 2 and 3), and with missing explanatory variables imputed (online supplemental STable 4). The results did not

materially change. To detect whether the associations with incident dementia were due to reverse causation, we additionally repeated the fully adjusted models using data where those dementia cases occurring in the first 3 years of the follow-up were excluded. The association between isolation and incident dementia (HR=1.30, 95% CI 1.08 to 1.58) and between loneliness and incident dementia (HR=1.06, 95% CI 0.82 to 1.36) were similar.

DISCUSSION

In this UK Biobank study of 155 063 men and women, social isolation was associated with increased risk of all-cause dementia and AD at intermediate and high levels of genetic risk of AD. No interaction effects were found between genetic risk levels and isolation predicting incident dementia. The incidence of dementia was estimated to reach over 4% in isolated high-genetic risk individuals compared with approximately 3% in non-isolated individuals with similar genetic risk. The difference between these groups was comparable also among those with intermediate and low genetic risk. This means that among individuals with similar genetic risk for dementia, those who are socially isolated are more likely to have incidence of the disease, suggesting an effect by social isolation over and above that of genetic risk. The association between loneliness and dementia was attributable to other dementia risk factors, such as health behaviours and depressive symptoms.

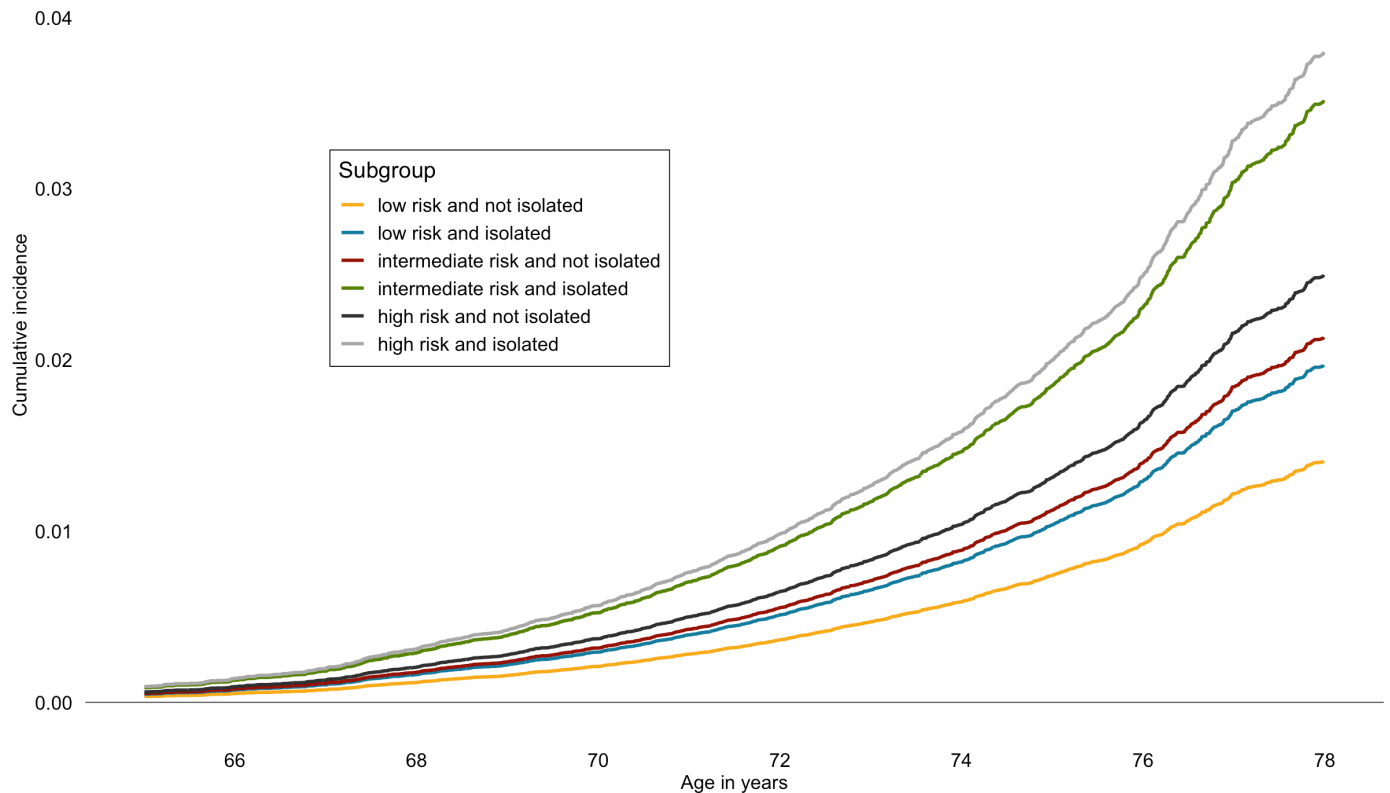


Figure 3 Estimated cumulative incidence of dementia in combined genetic risk and social isolation groups.

The relative risk of dementia across the genetic risk categories was at the same magnitude as in a previous UK Biobank study²⁹ that used data from an older GWAS.³⁰ Our findings also support other studies—most of which with follow-ups from 5 to 11 years—showing an association of social isolation with increased risk of dementia.^{6,8,10} A 28-year follow-up of 10 000 Whitehall II study participants found that less frequent social contacts at ages 50, 60 and 70 were associated with approximately 10% higher dementia risk, independent of socioeconomic and other lifestyle factors.³¹ While previous studies have produced mixed findings on whether loneliness is associated with increased risk of dementia or not,^{9,10} our findings show that the association between loneliness and dementia is mostly likely explained by other factors and present only at high levels of genetic risk.

Our results should be interpreted in a context of disease aetiology. Dementia is characterised by a 10–20 year preclinical or prodromal stage during which changes in biomarkers and cognitive abilities increasingly occur.³² With a follow-up less than 10 years, it is likely that we assessed social isolation for dementia cases during this preclinical period. This could result to reverse causality, that is, increased prevalence of social isolation during the 8-year period could have resulted from preclinical changes in social activity leading to a spurious association between social isolation and dementia.

Several mechanisms through which social isolation may causally affect dementia risk have been proposed. Social isolation and loneliness have been suggested to increase stress reactivity which is associated with prolonged

activation of the hypothalamic–pituitary–adrenal axis and the sympathoadrenal system.³³ This process may further lead to sleep deprivation, dysregulation of the immune system and even increased levels of oxidative stress,³⁴ all potentially harmful for cognitive health. It has also been shown that socially isolated and lonely individuals more often engage in health-damaging behaviours,¹⁸ which may affect cognition either directly via biophysiological mechanisms or increased incidence of cardiometabolic diseases which accelerate neurodegeneration.³⁵ Socially isolated or lonely individuals are also at an increased risk of depression,³⁶ a potential risk factor for cognitive decline and dementia.³⁷ Participation in social activities and social interaction stimulates neural plasticity by building and maintaining cognitive reserve.³⁸ Poor cognitive reserve is a further pathway through which social isolation and loneliness could increase dementia risk.³⁹ Fewer social contacts with reduced exercising of memory and language adversely affect cognitive reserve, thereby accelerating dementia onset.³⁹ Cognitive ability was not assessed in the present study and a small share of the found association between social isolation and subsequent dementia risk may be attributable to lower initial cognitive reserve.

Strengths and limitations

The major strengths of the current study include the large sample size of UK Biobank participants, which enabled us to study the combination of genetic risk, social isolation and loneliness in detail. In addition, we used the largest



genome-wide association study of dementia to date to derive the genetic risk for AD.²

There are also some important limitations. Although our analyses were adjusted for multiple potential sources of bias, the possibility of unmeasured confounding and reverse causation cannot be ruled out. However, the results were basically unchanged when excluding those with incident dementia during the first three-year follow-up time. Both frequency of social contacts and loneliness were self-reported and measured by relatively short and crude measures. As we were able to cover the genetic risk for AD—not all-cause dementias—based on the Kunkle *et al*,² we may have missed some of the genetic variance related to non-AD dementias. Dementia cases were derived from medical records or death registers, and thus some cases might have been missed. However, good agreement of dementia case determination with primary care record data has been shown.⁴⁰ This sample was restricted to volunteers of European ancestry aged 60–73 years at baseline and, therefore, further research is needed to ensure generalisability of our findings. As the mean age of participants was only 72 years at the end of the follow-up period, the incidence of dementia remained low. As noted previously, the response rate of the UK Biobank study survey was very low, 5.5%, and UK Biobank is not representative of the sampling population.⁴¹ However, many etiological findings from UK Biobank appear to be generalisable to England and Scotland.⁴²

CONCLUSIONS

The present findings suggest an association between social isolation and increased risk of dementia across the spectrum of genetic risk. Further research is needed to determine the extent social isolation is a modifiable risk factor rather than a part of the dementia prodrome.

Author affiliations

¹Department of Psychology and Logopedics, University of Helsinki, Helsinki, Finland

²Research Program Unit, Faculty of Medicine, University of Helsinki, Helsinki, Finland

³Finnish Institute for Health and Welfare, Helsinki, Finland

⁴Department of Public Health, University of Helsinki, Helsinki, Finland

⁵Institute for Molecular Medicine Finland, Helsinki Institute of Life Sciences, University of Helsinki, Helsinki, Finland

⁶Helsinki Institute for Information Technology and Department of Mathematics and Statistics, University of Helsinki, Helsinki, Finland

⁷Research Centre of Child Psychiatry, Faculty of Medicine, University of Turku, Turku, Finland

⁸School of Educational Sciences and Psychology, University of Eastern Finland, Joensuu, Finland

⁹Department of Epidemiology and Public Health, University College London, London, UK

Acknowledgements This research has been conducted using the UK Biobank Resource under Application Number 14801. Open access funded by Helsinki University Library. We thank the International Genomics of Alzheimer's Project (IGAP) for providing summary results data for these analyses. The investigators within IGAP contributed to the design and implementation of IGAP and/or provided data but did not participate in analysis or writing of this report. IGAP was made possible by the generous participation of the control subjects, the patients, and their families. The i-Select chips was funded by the French National Foundation

on Alzheimer's disease and related disorders. EADI was supported by the LABEX (laboratory of excellence program investment for the future) DISTALZ grant, Inserm, Institut Pasteur de Lille, Université de Lille 2 and the Lille University Hospital. GERAD/PERADES was supported by the Medical Research Council (Grant no. 503480), Alzheimer's Research UK (Grant no. 503176), the Wellcome Trust (Grant no. 082604/2/07/Z) and German Federal Ministry of Education and Research (BMBF): Competence Network Dementia (CND) grant no. 01GI0102, 01GI0711, 01GI0420. CHARGE was partly supported by the NIH/NIA grant R01 AG033193 and the NIA AG081220 and AGES contract N01-AG-12100, the NHLBI grant R01 HL105756, the Icelandic Heart Association, and the Erasmus Medical Center and Erasmus University. ADGC was supported by the NIH/NIA grants: U01 AG032984, U24 AG021886, U01 AG016976, and the Alzheimer's Association grant ADGC-10-196728.

Contributors ME and CH designed the study and conducted the statistical analyses. ME wrote the first draft of the manuscript. JL and AM calculated the polygenic risk score with the help of MP. All authors contributed to the interpretation of the results and critical revision of the manuscript for important intellectual content and approved the final version of the manuscript. ME and CH are the guarantors.

Funding ME and CH were supported by the Academy of Finland (339390 (ME)/310591 (CH)). MK was supported by NordForsk (70521), the UK Medical Research Council (MRC S011676), the Academy of Finland (311492), and the US National Institutes on Ageing (NIA R01AG056477). LP-R was supported by the Jenny and Antti Wihuri Foundation. GERAD/PERADES was supported by the Medical Research Council (Grant no. 503480), Alzheimer's Research UK (Grant no. 503176), the Wellcome Trust (Grant no. 082604/2/07/Z) and German Federal Ministry of Education and Research (BMBF): Competence Network Dementia (CND) grant no 01GI0102, 01GI0711, 01GI0420. CHARGE was partly supported by the NIH/NIA grant R01 AG033193 and the NIA AG081220 and AGES contract N01-AG-12100, the NHLBI grant R01 HL105756, the Icelandic Heart Association, and the Erasmus Medical Center and Erasmus University. ADGC was supported by the NIH/NIA grants: U01 AG032984, U24 AG021886, U01 AG016976, and the Alzheimer's Association grant ADGC-10-196728.

Competing interests None declared.

Patient consent for publication Consent obtained directly from patient(s)

Ethics approval This study was conducted under generic approval from the NHS National Research Ethics Service (17 June 2011, Ref 11/NW/0382). Participants gave informed consent to participate in the study before taking part.

Provenance and peer review Not commissioned; externally peer reviewed.

Data availability statement Data are available upon reasonable request. The genetic and phenotypic UK Biobank data are available on application to the UK Biobank (www.ukbiobank.ac.uk). Summary statistics from the meta-analysis of genome wide association studies in dementia are available from <https://www.niagads.org/datasets/ng00075>.

Supplemental material This content has been supplied by the author(s). It has not been vetted by BMJ Publishing Group Limited (BMJ) and may not have been peer-reviewed. Any opinions or recommendations discussed are solely those of the author(s) and are not endorsed by BMJ. BMJ disclaims all liability and responsibility arising from any reliance placed on the content. Where the content includes any translated material, BMJ does not warrant the accuracy and reliability of the translations (including but not limited to local regulations, clinical guidelines, terminology, drug names and drug dosages), and is not responsible for any error and/or omissions arising from translation and adaptation or otherwise.

Open access This is an open access article distributed in accordance with the Creative Commons Attribution 4.0 Unported (CC BY 4.0) license, which permits others to copy, redistribute, remix, transform and build upon this work for any purpose, provided the original work is properly cited, a link to the licence is given, and indication of whether changes were made. See: <https://creativecommons.org/licenses/by/4.0/>.

ORCID iDs

Marko Elovainio <http://orcid.org/0000-0002-1401-1910>

Marianna Virtanen <http://orcid.org/0000-0001-8361-3301>

REFERENCES

- 1 Ahmadi-Abhari S, Guzman-Castillo M, Bandosz P, *et al*. Temporal trend in dementia incidence since 2002 and projections for

- prevalence in England and Wales to 2040: modelling study. *BMJ* 2017;358:j2856.
- 2 Kunkle BW, Grenier-Boley B, Sims R, *et al*. Genetic meta-analysis of diagnosed Alzheimer's disease identifies new risk loci and implicates A β , tau, immunity and lipid processing. *Nat Genet* 2019;51:414–30.
 - 3 Andrews SJ, Fulton-Howard B, Goate A. Interpretation of risk loci from genome-wide association studies of Alzheimer's disease. *Lancet Neurol* 2020;19:326–35.
 - 4 Soto-Gordoa M, Arrospe A, Moreno-Izco F, *et al*. Projecting burden of dementia in Spain, 2010–2050: impact of modifying risk factors. *JAD* 2015;48:721–30.
 - 5 Livingston G, Sommerlad A, Orgeta V, *et al*. Dementia prevention, intervention, and care. *The Lancet* 2017;390:2673–734.
 - 6 Kuiper JS, Zuidersma M, Oude Voshaar RC, *et al*. Social relationships and risk of dementia: a systematic review and meta-analysis of longitudinal cohort studies. *Ageing Res Rev* 2015;22:39–57.
 - 7 Lara E, Caballero FF, Rico-Urbe LA, *et al*. Are loneliness and social isolation associated with cognitive decline? *Int J Geriatr Psychiatry* 2019;34:1613–22.
 - 8 Lara E, Martín-María N, De la Torre-Luque A, *et al*. Does loneliness contribute to mild cognitive impairment and dementia? A systematic review and meta-analysis of longitudinal studies. *Ageing Res Rev* 2019;52:7–16.
 - 9 Penninkilampi R, Casey A-N, Singh MF, *et al*. The association between social engagement, loneliness, and risk of dementia: a systematic review and meta-analysis. *JAD* 2018;66:1619–33.
 - 10 Sundström A, Adolfsson AN, Nordin M, *et al*. Loneliness increases the risk of all-cause dementia and Alzheimer's disease. *J Gerontol B Psychol Sci Soc Sci* 2020;75:919–26.
 - 11 Bycroft C, Freeman C, Petkova D, *et al*. The UK Biobank resource with deep phenotyping and genomic data. *Nature* 2018;562:203–9.
 - 12 Licher S, Ahmad S, Karamujić-Čomić H, *et al*. Genetic predisposition, modifiable-risk-factor profile and long-term dementia risk in the general population. *Nat Med* 2019;25:1364–9.
 - 13 Wu J, Hasselgren C, Zettergren A, *et al*. The impact of social networks and APOE ϵ 4 on dementia among older adults: tests of possible interactions. *Ageing Ment Health* 2020;24:395–404.
 - 14 Torkamani A, Wineinger NE, Topol EJ. The personal and clinical utility of polygenic risk scores. *Nat Rev Genet* 2018;19:581–90.
 - 15 Sugrue LP, Desikan RS. What are polygenic scores and why are they important? *JAMA* 2019;321:1820–1.
 - 16 Palmer LJ. UK Biobank: bank on it. *The Lancet* 2007;369:1980–2.
 - 17 Elovainio M, Hakulinen C, Pulkki-Råback L, *et al*. Contribution of risk factors to excess mortality in isolated and Lonely individuals: an analysis of data from the UK Biobank cohort study. *Lancet Public Health* 2017;2:e260–6.
 - 18 Hakulinen C, Pulkki-Råback L, Virtanen M, *et al*. Social isolation and loneliness as risk factors for myocardial infarction, stroke and mortality: UK Biobank cohort study of 479 054 men and women. *Heart* 2018;104:1536–42.
 - 19 Hughes ME, Waite LJ, Hawkey LC, *et al*. A short scale for measuring loneliness in large surveys: results from two population-based studies. *Res Aging* 2004;26:655–72.
 - 20 Purcell S, Neale B, Todd-Brown K, *et al*. PLINK: a tool set for whole-genome association and population-based linkage analyses. *Am J Hum Genet* 2007;81:559–75.
 - 21 Choi SW, O'Reilly PF. PRSice-2: polygenic risk score software for biobank-scale data. *Gigascience* 2019;8:giz082.
 - 22 Euesden J, Lewis CM, O'Reilly PF. PRSice: polygenic risk score software. *Bioinformatics* 2015;31:1466–8.
 - 23 Escott-Price V, Sims R, Bannister C, *et al*. Common polygenic variation enhances risk prediction for Alzheimer's disease. *Brain* 2015;138:3673–84.
 - 24 Escott-Price V, Myers A, Huentelman M, *et al*. Polygenic risk score analysis of Alzheimer's disease in cases without ApoE4 or APOE2 alleles. *J Prev Alzheimers Dis* 2019;6:16–19.
 - 25 Spitzer RL, Kroenke K, Williams JB. Validation and utility of a self-report version of PRIME-MD: the PHQ primary care study. primary care evaluation of mental disorders. patient health questionnaire. *JAMA* 1999;282:1737–44.
 - 26 Andersen PK, Geskus RB, de Witte T, *et al*. Competing risks in epidemiology: possibilities and pitfalls. *Int J Epidemiol* 2012;41:861–70.
 - 27 Andersen PK, Keiding N. Interpretability and importance of functionals in competing risks and multistate models. *Stat Med* 2012;31:1074–88.10.1002/sim.4385
 - 28 White IR, Royston P. Imputing missing covariate values for the COX model. *Stat Med* 2009;28:1982–98.
 - 29 Lourida I, Hannon E, Littlejohns TJ, *et al*. Association of lifestyle and genetic risk with incidence of dementia. *JAMA* 2019;322:430.
 - 30 Lambert J-C, Ibrahim-Verbaas CA, Harold D, *et al*. Meta-analysis of 74,046 individuals identifies 11 new susceptibility loci for Alzheimer's disease. *Nat Genet* 2013;45:1452–8.
 - 31 Sommerlad A, Sabia S, Singh-Manoux A, *et al*. Association of social contact with dementia and cognition: 28-year follow-up of the Whitehall II cohort study. *PLoS Med* 2019;16:e1002862.
 - 32 Jack CR, Knopman DS, Jagust WJ, *et al*. Tracking pathophysiological processes in Alzheimer's disease: an updated hypothetical model of dynamic biomarkers. *Lancet Neurol* 2013;12:207–16. Jr.
 - 33 McEwen BS. Allostasis, allostatic load, and the aging nervous system: role of excitatory amino acids and excitotoxicity. *Neurochem Res* 2000;25:1219–31.
 - 34 Cacioppo S, Grippo AJ, London S, *et al*. Loneliness: clinical import and interventions. *Perspect Psychol Sci* 2015;10:238–49.
 - 35 Kivimäki M, Singh-Manoux A, Pentti J, *et al*. Physical inactivity, cardiometabolic disease, and risk of dementia: an individual-participant meta-analysis. *BMJ* 2019;365:l1495.
 - 36 Cacioppo JT, Hawkey LC, Thisted RA. Perceived social isolation makes me sad: 5-year cross-lagged analyses of loneliness and depressive symptomatology in the Chicago health, aging, and social relations study. *Psychol Aging* 2010;25:453–63.
 - 37 Diniz BS, Butters MA, Albert SM, *et al*. Late-life depression and risk of vascular dementia and Alzheimer's disease: systematic review and meta-analysis of community-based cohort studies. *Br J Psychiatry* 2013;202:329–35.
 - 38 Scarmeas N, Stern Y. Cognitive reserve and lifestyle. *J Clin Exp Neuropsychol* 2003;25:625–33.
 - 39 Berkman LF, support S. Social support, social networks, social cohesion and health. *Soc Work Health Care* 2000;31:3–14.
 - 40 Wilkinson T, Schnier C, Bush K, *et al*. Identifying dementia outcomes in UK Biobank: a validation study of primary care, hospital admissions and mortality data. *Eur J Epidemiol* 2019;34:557–65.
 - 41 Fry A, Littlejohns TJ, Sudlow C, *et al*. Comparison of sociodemographic and health-related characteristics of UK Biobank participants with those of the general population. *Am J Epidemiol* 2017;186:1026–34.
 - 42 Batty GD, Gale CR, Kivimäki M, *et al*. Comparison of risk factor associations in UK Biobank against representative, general population based studies with conventional response rates: prospective cohort study and individual participant meta-analysis. *BMJ* 2020;368:m131.

Supplement: Elovainio, M, Lahti, J., Pirinen, M., Pulkki-Råback, L., Lipsanen, J., Virtanen, M., Kivimäki, M., & Hakulinen, C. The association between social isolation, loneliness, and genetic risk with incidence of dementia: UK Biobank cohort study

Table of content

- 1) Additional information of dementia assessment
- 2) Additional information of genetic risk score
- 3) The associations between genetic risk score and incident dementia using 10 various genetic risk score cut-off points
- 4) Interaction effects
- 5) The associations of social isolation, loneliness and genetic risk score with specific Alzheimer's disease
- 6) The associations of social isolation, loneliness and genetic risk score with incident dementia using imputed data

1) Additional information of dementia assessment

Incident all-cause dementia was defined using the following ICD-9 and ICD-10 codes:

ICD-9: 290.2, 290.3, 290.4, 291.2, 294.1, 331.0, 331.1, 331.2, 331.5

ICD-10: A81.0, F00, F00.0, F00.1, F00.2, F00.9, F01, F01.0, F01.1, F01.2, F01.3, F01.8, F01.9, F02, F02.0, F02.1, F02.2, F02.3, F02.4, F02.8, F03, F05.1, F10.6, G30, G30.0, G30.1, G30.8, G30.9, G31.0, G31.1, G31.8, I67.3

Incident Alzheimer's disease was defined using the following ICD-9 and ICD-10 codes:

ICD-9: 331.0

ICD-10: F00, F00.0, F00.1, F00.2, F00.9, G30, G30.0, G30.1, G30.8, G30.9

For more information of the dementia assessment see:

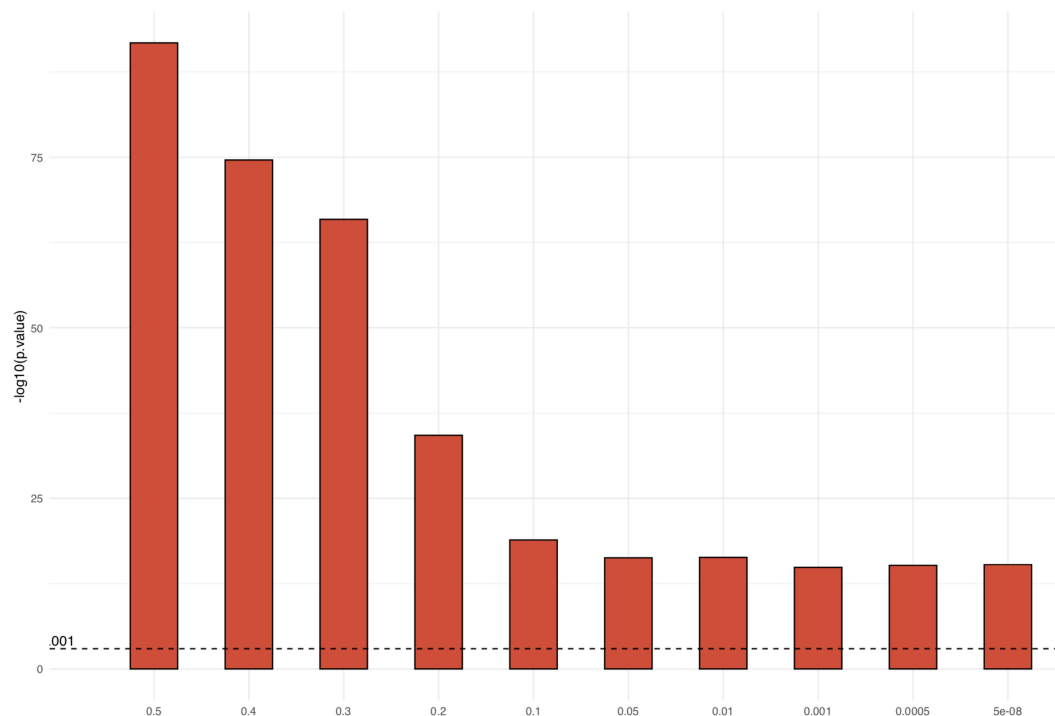
http://biobank.ndph.ox.ac.uk/showcase/showcase/docs/alg_outcome_dementia.pdf

2) Additional information of genetic risk score

International Genomics of Alzheimer's Project (IGAP) is a large three-stage study based upon genome-wide association studies (GWAS) on individuals of European ancestry. In stage 1, IGAP used genotyped and imputed data on 11,480,632 single nucleotide polymorphisms (SNPs) to meta-analyse GWAS datasets consisting of 21,982 Alzheimer's disease cases and 41,944 cognitively normal controls from four consortia: The Alzheimer Disease Genetics Consortium (ADGC); The European Alzheimer's disease Initiative (EADI); The Cohorts for Heart and Aging Research in Genomic Epidemiology Consortium (CHARGE); and The Genetic and Environmental Risk in AD Consortium Genetic and Environmental Risk in AD/Defining Genetic, Polygenic and Environmental Risk for Alzheimer's Disease Consortium (GERAD/PERADES). In stage 2, 11,632 SNPs were genotyped and tested for association in an independent set of 8,362 Alzheimer's disease cases and 10,483 controls. Meta-analysis of variants selected for analysis in stage 3A (n = 11,666) or stage 3B (n = 30,511) samples brought the final sample to 35,274 clinical and autopsy-documented Alzheimer's disease cases and 59,163 controls.

3) The associations between genetic risk score and incident dementia using 10 various genetic risk score cut-off points

The associations between continuous PRS and incident dementia with various cut-off points is reported in SFigure 1 below. The bars are negative log₁₀ -transformed p-values of the PRS-dementia association.



4) Interaction effects

**Stable1a : Sex -genetic risk -interactions (adjusted for main effects).
Figures and Hazar Ratios (HR) and 95 % confidence intervals (95% CI)**

<i>Predictor</i>	All dementia		Alzheimer's disease	
	<i>HR (95% CI)</i>	<i>P-Value</i>	<i>HR (95% CI)</i>	<i>P-Value</i>
Sex (male) * intermediate genetic risk	0.82 (0.62 – 1.08)	0.151	0.76 (0.48 – 1.20)	0.238
Sex (male) * high genetic risk	0.84 (0.64 – 1.10)	0.197	0.74 (0.48 – 1.14)	0.168
Observations	155070		155070	

**Stable 1b : Sex - loneliness and sex -isolation -interactions (adjusted for main effects).
Figures and Hazar Ratios (HR) and 95 % confidence intervals (95% CI)**

<i>Predictor</i>	All dementia		Alzheimer's disease	
	<i>HR (95% CI)</i>	<i>P-Value</i>	<i>HR (95% CI)</i>	<i>P-Value</i>
Sex (male) * lonelyd	1.36 (0.90 – 2.04)	0.143	2.63 (1.18 – 5.90)	0.019
Sex (male) * isolated	0.90 (0.66 – 1.24)	0.533	1.13 (0.68 – 1.90)	0.640
Observations	147610 /152719		147610 / 152719	

**STable 1c: Genetic risk - loneliness and genetic risk -isolation -interactions
(adjusted for age, sex and main effects). Figures and Hazar Ratios (HR) and
95 % confidence intervals (95% CI)**

<i>Predictor</i>	All dementia		Alzheimer's disease	
	<i>HR (95%CI)</i>	<i>P-Value</i>	<i>HR (95%CI)</i>	<i>P-Value</i>
Intermediate genetic risk *lonelyd	0.86 (0.51 – 1.47)	0.586	1.71 (0.45 – 6.62)	0.431
High genetic risk * lonelyd	0.98 (0.58 – 1.65)	0.945	3.25 (0.94 – 11.28)	0.063
Observations	147610		147610	

<i>Predictor</i>	All dementia		Alzheimer's disease	
	<i>HR (95%CI)</i>	<i>P-Value</i>	<i>HR (95%CI)</i>	<i>P-Value</i>

Intermediate genetic risk * isolated	1.18 (0.77 – 1.81)	0.449	1.22 (0.59 – 2.52)	0.587
High genetic risk * isolated	1.11 (0.73 – 1.69)	0.624	1.15 (0.58 – 2.31)	0.682
Observations	152719		152719	

5) The associations of social isolation, loneliness and genetic risk score with specific Alzheimer's disease

We repeated all the analyses using specific Alzheimer's disease as the outcome instead of incident dementia and the results were materially the same, although there were, of course, much less Alzheimer's disease cases.

STable 2. Risk of Incident Alzheimers' Disease According to Genetic Risk

<i>Genetic risk</i>	Model 1		Model 2	
	<i>HR</i> <i>95 % CI</i>	<i>P-Value</i>	<i>HR</i> <i>95 % CI</i>	<i>P-Value</i>
Intermediate	1.51 (1.20 – 1.90)	<0.001	1.42 (1.11 – 1.82)	<0.001
High	1.98 (1.59 – 2.45)	<0.001	1.91 (1.51 – 2.41)	<0.001
Observations	155063		139345	

Model 1. Adjusted for age, sex, and 10 principal components

Model 2. Adjusted for age, sex, 10 principal components, education, social deprivation, depressive symptoms, health behaviors, loneliness and social isolation

STable 3. Associations of loneliness and isolation with Alzheimer' disease. The figures are Hazard ratios (HR) and 95% confidence intervals (95% CI)

	Model 1		Model 2		Model 3	
Separate analyses						
<i>Predictor</i>	<i>HR (95% CI)</i>	<i>P-Value</i>	<i>HR (95% CI)</i>	<i>P-Value</i>	<i>HR (95% CI)</i>	<i>P-Value</i>
Lonely vs not lonely	1.05 (0.72 – 1.52)	0.809	0.85 (0.55 – 1.31)	0.450	0.86 (0.55 – 1.33)	0.503
Isolated vs no isolated	1.56 (1.21 – 2.02)	<0.001	1.40 (1.05 – 1.88)	0.024	1.41 (1.05 – 1.89)	0.021
Combined analyses						
	<i>HR (95% CI)</i>	<i>P-Value</i>	<i>HR (95% CI)</i>	<i>P-Value</i>	<i>HR (95% CI)</i>	<i>P-Value</i>
Lonely vs not lonely	0.95 (0.64 – 1.40)	0.774	0.84 (0.51 – 1.26)	0.346	0.81 (0.52 – 1.27)	0.716
Isolated vs no isolated	1.54 (1.18 – 2.02)	0.002	1.41 (1.04 – 1.91)	0.025	1.42 (1.05 – 1.93)	0.022
Observations	147604 /152712		133885 /137894		133885 /137894	

Model 1. Adjusted for age and sex

Model 2. Adjusted for age, sex, education, social deprivation, health behaviours, long-term illness, depressive symptoms, genetic risk and 10 principal components

Model 3. Adjusted for age, sex, education, social deprivation, health behaviours, long-term illness, depressive symptoms, and apolipoprotein E genotype.

6) The associations of social isolation, loneliness and genetic risk score with incident dementia using imputed data

The number of missing values was relatively small (only less the 5% had missing values), but we repeated the final models using five imputed data sets and, not surprisingly, the results were materially not changed (sTable 4).

STable 4. Associations of loneliness and isolation with incident dementia with imputed data. The figures are Hazard ratios (HR) and 95% confidence intervals (95% CI)

	Model 1		Model 2		Model 3	
Separate analyses						
<i>Predictor</i>	<i>HR (95% CI)</i>	<i>P-Value</i>	<i>HR (95% CI)</i>	<i>P-Value</i>	<i>HR (95% CI)</i>	<i>P-Value</i>
Lonely vs not lonely	1.44 (1.17 – 1.77)	<0.001	1.01 (0.81 – 1.27)	0.901	1.02 (0.82 – 1.28)	0.832
Isolated vs no isolated	1.63 (1.39 – 1.92)	<0.001	1.34 (1.14 – 1.58)	0.001	1.34 (1.14 – 1.58)	0.001
Combined analyses						
	<i>HR (95% CI)</i>	<i>P-Value</i>	<i>HR (95% CI)</i>	<i>P-Value</i>	<i>HR (95% CI)</i>	<i>P-Value</i>
Lonely vs not lonely	1.32 (1.08 – 1.63)	0.013	0.97 (0.78 – 1.21)	0.804	0.98 (0.78 – 1.22)	0.844
Isolated vs no isolated	1.58 (1.35 – 1.86)	<0.001	1.35 (1.14 – 1.59)	0.002	1.35 (1.15 – 1.60)	0.003
Observations	155063		155063		155063	

Model 1. Adjusted for age and sex

Model 2. Adjusted for age, sex, education, social deprivation, health behaviours, long-term illness, depressive symptoms, genetic risk and 10 principal components

Model 3. Adjusted for age, sex, education, social deprivation, health behaviours, long-term illness, depressive symptoms, and apolipoprotein E genotype.