

## Article

# An Online Experiment of NHS Information Framing on Mothers' Vaccination Intention of Children against COVID-19

Audrey L. Van Hoecke \* and Jet G. Sanders

Department of Psychological and Behavioural Science, The London School of Economics and Political Science, London WC2A 3PH, UK; j.g.sanders@lse.ac.uk

\* Correspondence: a.l.van-hoecke@lse.ac.uk

**Abstract:** Children under the age of 5, will likely all be offered vaccination against SARS-CoV-2 soon. Parental concerns over vaccination of children are long standing and could impede the success of a vaccination campaign. In the UK, a trusted source to inform vaccination choices is the NHS website. Here we used a randomized controlled experiment of framing effects in NHS information content for COVID-19 and flu with 550 mothers under the age of 5. We compared both vaccination offers following two commonly used frames in vaccination informational campaigns: alerting to the risks of no vaccination for the child itself vs. those in their community. We find that vaccination intention was twice as high when risks to the child are emphasized, relative to risks to the community. Exploratory analyses suggest that these effects may differ between white and non-white mothers. Whilst communication directed at adult vaccination against COVID-19 generally focuses on risks of infecting others, communication about vaccination of children may benefit from emphasizing risks to the children themselves. This pattern is in line with flu vaccination research from pre-COVID-19 times.

**Keywords:** COVID-19; flu; children; mothers; parents; vaccination intention; vaccination attitude; risk framing; vaccination hesitancy



**Citation:** Van Hoecke, A.L.; Sanders, J.G. An Online Experiment of NHS Information Framing on Mothers' Vaccination Intention of Children against COVID-19. *Vaccines* **2022**, *10*, 720. <https://doi.org/10.3390/vaccines10050720>

Academic Editor: Silvio Tafuri

Received: 23 March 2022

Accepted: 27 April 2022

Published: 4 May 2022

**Publisher's Note:** MDPI stays neutral with regard to jurisdictional claims in published maps and institutional affiliations.



**Copyright:** © 2022 by the authors. Licensee MDPI, Basel, Switzerland. This article is an open access article distributed under the terms and conditions of the Creative Commons Attribution (CC BY) license (<https://creativecommons.org/licenses/by/4.0/>).

## 1. Introduction

As of February 2022, more than 5.9 million people have died from COVID-19 [1]. According to UNICEF, 4 out of 1000 COVID-19 deaths were children [2]. With the adult population being immunized and preventive measures coming to an end, uptake of vaccines among young children may be crucial both to protect them from the disease and, indirectly, to protect the rest of the population [3]. Therefore, understanding the factors that drive and affect parental intention to vaccinate their children is essential. This is important in particular for mothers, as they are likely to spend more time with their under 5 years old children (78% more than men), especially during the pandemic [4].

Three main categories of factors play a significant role in maternal vaccine hesitancy (1) external factors, including fake news and conspiracy theories, which have been central to research [5–7], (2) increased urge to be involved in their children's healthcare decisions [8] and (3) idiosyncratic factors such as the parental cognitive strain, lack of numerical literacy and cognitive biases [7–10]. Most of this literature is based on recommended childhood vaccines, mainly the influenza vaccine [11].

This evidence shows that parents struggle to make sense of the abundance of information available on vaccination, often leading them to make predictable mistakes about vaccination [12–14]. Therefore, campaigns often aim at simplifying information and providing parents with a clear take-home message coming from familiar and trusted sources. Studies have shown that such campaigns positively impact the parental decision process [15,16].

Prior to the pandemic, one common strategy to formulate a campaign was disputing the perceived dangers of immunization. This approach often turned out ineffective for two

main reasons: first, following principles of confirmation bias, vaccine hesitant individuals are unlikely to make a swift transition to contradictory beliefs [15,17,18]. Second, offering undeniable proof for the absence of risk can prove difficult [15,19,20].

For this reason, recent behavioral strategies in childhood vaccination communication have focused on providing a unified frame, replacing an existing fear (e.g., vaccination side effects) with an alternative one (e.g., illness), as opposed to countering the existing fear [9,19–22]. Alternative frames often focus on risks to the individual, and sometimes on risks to the immediate community or society.

A frequent object of debate is whether to describe risks to the individual or community. Several studies prior to and during COVID-19 have been found to increase vaccination intention when vaccination is framed as a public good that helps create a layer of protection for vulnerable groups [23–29]. With regards to parental intentions as well, ‘benefit to others’ has been established as an important motivating factor [30].

The frame also presents one major drawback: benefits to others highlight that individuals could profit from free-riding in a well-vaccinated community, without contributing to the collective effort [30]. This drawback can be particularly visible under circumstances where a perceived vulnerable group (e.g., children) is asked to support the community. Unsurprisingly then, this frame has also led to decreased children immunization intentions [31].

Similarly, there are limitations to using an individual level risk frame for invitations to vaccination of children. This frame is more commonly used for diseases with severe consequences for children [32]. However, both COVID-19 and the flu present relatively low (flu) or very low (COVID-19) risks for children. This may make the personal benefit less clear and the frame less appropriate for these types of disease.

With this in mind, we set out to test the effectiveness of these two frames on a frequently visited informational source for parents, the NHS website. In the experiment we compared vaccination intention and vaccination attitude for parents viewing the vaccination information webpage. The information was framed either by the risks that not vaccinating represent for the children themselves or by alerting to risks for others in the community [23] for two vaccine-preventable respiratory and airborne diseases of relevance to the current times: the common flu and COVID-19. This to (1) verify whether transferability of results exists between different types of disease, and (2) corroborate results with those prior to the COVID-19 pandemic [5,6,33].

To validate our sample, we will start by looking at the effects of person characteristics on vaccination intention and attitude. We predicted that we would (i) observe differences between the two psychological frames on the vaccination attitude and the mothers’ intention to vaccinate their children for the two disease types. In particular, (ii) we expected that the ‘community frame’ would be more effective the lesser the threat to the child, posing that the child frame would be more effective in a flu context while the community frame would be more effective in a COVID-19 context. By means of exploratory analyses, we will review treatment effects by person characteristics which differently impact vaccination intention and attitude in our sample.

## 2. Methods

### 2.1. Participants and Sample

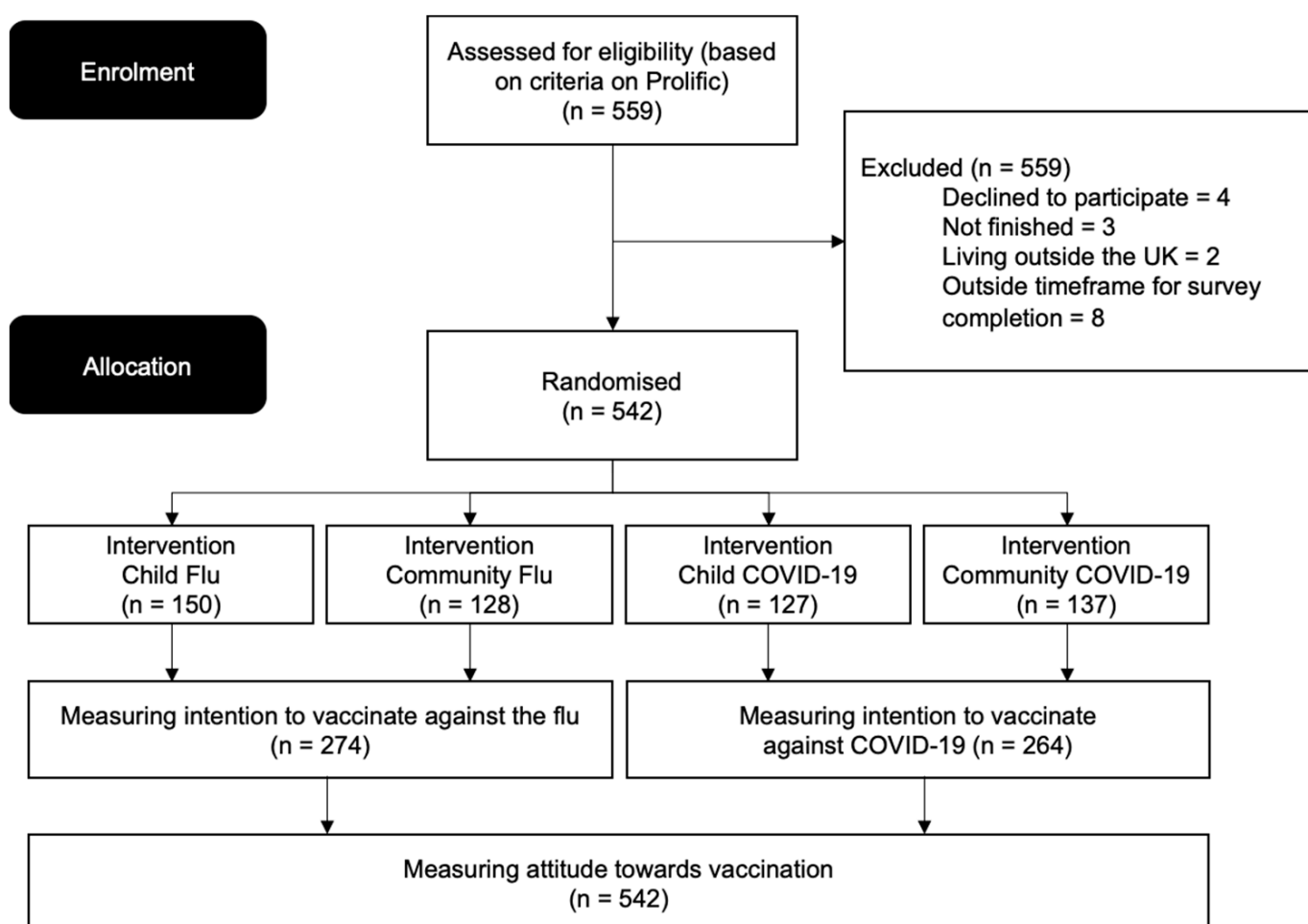
To recruit our sample, we used Prolific Academic [34] an online crowdsourcing platform that has been proven suitable in recruiting participants for social science experiments and has been validated for use of surveys experiments of general populations and marginalized groups [35]. The platform aims to reach out to as broad a sample of qualifying participants as possible and engages with its participants and researchers to cultivate a constructive research environment [36]. For this study, the criteria for selecting participants were the following: (i) being a mother above 18 years old, (ii) living in the UK, and (iii) having at least one child under 5 years old. The survey was created using Qualtrics and took

6 min to complete on average. Participants were offered financial compensation of £1.13 to ensure completion rates.

Sample size calculations (based on 80% power, an alpha of 0.05 and sample to accommodate small to medium effect size [30,36]), estimated 550 participants using G\*power. To accommodate participation (i) completion rates, (ii) exclusions post allocation and (iii) failing of attention questions, we established that at least 91 participants were required per group to achieve the point of stability [37–39].

## 2.2. Design

We ran a  $2 \times 2$  between-subjects experiment, comparing information about two types of airborne infectious diseases (Flu or COVID-19, IV1) by two types of risk frames (risks to the child or the community, IV2) on mothers' intention to vaccinate their child(ren) under the age of 5, DV). Participants were randomly assigned to one of the four conditions (See Figure 1).



**Figure 1.** Consort flow diagram of experimental groups.

## 2.3. Materials

We created National Health Services (NHS)-like online informative pages on the benefits of vaccination against the flu and against COVID-19. The NHS is deemed a likeable and honest messenger for health-related information in the UK [4,16,40]. A webpage on vaccinating children against the flu was adapted to (i) minimize the duration of the experiment and (ii) increase the comparability between COVID-19 and Flu information.

Across conditions, articles appeared to be written by the NHS (see Figure 2) and included (i) a headline on the role of parents (ii) statistics about the number of deaths caused by the specific disease in the UK (annual figure for the Flu and the absolute figure

for COVID-19) and (iii) a picture and text relevant to the specific psychological frame used. The text for the Flu condition was: *“Flu—or Influenza—is a very common, highly infectious disease, caused by a virus. The worry is that certain groups of people—the elderly, pregnant women, children under five and those with long-term health conditions—are at greater risk of becoming seriously ill from flu. And while many healthy people can fight off the flu, there can be complications leading to death. It is estimated that around 11,000 in England and Wales are attributed to influenza infections annually. During the 2017–2018 season that number increased to 22,000”*.

Under the Flu condition, the two psychological frame conditions varied in the following ways:

**Child frame:** *“Parents should worry about the flu this winter [headline]. Children under the age of 5 face risk of extreme illness or death. If your child is under the age of 5, they are in the high-risk group for flu and can develop deadly flu-related complications, most commonly a bacterial chest infection, which can develop in pneumonia. Not vaccinating your child puts them at risk of life-threatening complications they can get from flu including meningitis and septic shock. It has been estimated that in the United States, flu-related hospitalizations among children younger than 5 years old can go up to 26,000 every year.”*

**Community frame:** *“As members of a community, parents need to worry about the flu this winter [headline]. If you don’t get your child vaccinated, you put your community at risk. Children are ‘super-spreaders’ who can pass the deadly virus to their grand-parents or other vulnerable people. This can have serious consequences on their health and can even lead to their death. Not vaccinating your child puts your entire community at risk, especially those who are at extreme risk of having deadly flu illness, like babies and young children, older people, healthcare professionals and people with certain long term health problems.”*

The text for the COVID-19 condition was: *“COVID-19 is a highly infectious disease, caused by a virus. The worry is that certain groups of people, the elderly, pregnant women, healthcare staff and those with long-term health conditions—are at greater risk of becoming seriously ill from COVID-19. And while many healthy people can fight off COVID-19, there can be complications leading to death. It is estimated that more than 44,000 deaths in the UK are attributed to COVID-19 since March 2020.”* It is worth noting that information provided under this condition, was based on the UK’s first coronavirus variant, Alpha.

**Child frame:** *“Parents should worry about COVID-19 this winter [headline]. Young children face the risk of hospitalization. Most reported infections in children are asymptomatic or mild. Less is known about severe COVID-19 cases in children leading to hospitalization. Analysis of COVID-19 hospitalization data in the US found that one in three hospitalized children was admitted to an intensive care unit. Not vaccinating your child, once a vaccine becomes available, puts them at risk of serious hospitalization and life-threatening complications. The hospitalization rate among children from early March 2020 to the end of July 2020 was 8 cases per 100,000, with the highest rate among children under 2 years old.”*

**Community frame:** *“As members of a community, parents need to worry about COVID-19 this winter [headline]. If you don’t get your child vaccinated, you put your community at risk. Children are ‘super-spreaders’ who can pass the deadly virus to their grand-parents or other vulnerable people. This can have serious consequences on their health and can even lead to their death. Not vaccinating your child, once a vaccine becomes available, puts your entire community at risk, especially those who are at extreme risk of having deadly COVID-19 illness, like older people, healthcare professionals and people with certain long term health problems.”*

To facilitate the salience [41] of the differential risk frames and disease context, we used a vivid image in all 4 contexts [17,42,43] (See Figure 2).



**NHS**

Health A-Z Live Well Care and support Health news

[Home](#) > [Health A to Z](#) > [Coronavirus \(COVID-19\)](#) > [People at higher risk from coronavirus](#)

## Parents should worry about the flu this winter


Flu – or influenza – is a very common, highly infectious disease, caused by a virus. The worry is that certain groups of people – the elderly, pregnant women, children under five and those with long-term health conditions – are at greater risk of becoming seriously ill from flu.

And while many healthy people can fight off the flu, there can be complications leading to death.

It is estimated that around 11,000 deaths in England and Wales are attributed to influenza infections, annually. During the 2017 – 2018 season, that number increased to 22,000.

**Important**

Children under the age of 5 face the risk of extreme illness or death. If your child is under the age of 5, they are in the high risk group for flu and can develop deadly flu-related complications, most commonly a bacterial chest infection, which can develop into pneumonia.



Not vaccinating your child puts them at risk of life threatening complications they can get from flu including meningitis and septic shock. It has been estimated that in the United States, among children younger than 5 years old, there can be up to 26,000 flu-related hospitalisations every year.

**NHS**

Health A-Z Live Well Care and support Health news

[Home](#) > [Health A to Z](#) > [Coronavirus \(COVID-19\)](#) > [People at higher risk from coronavirus](#)

## As members of a community, parents need to worry about the flu this winter


Flu – or influenza – is a very common, highly infectious disease, caused by a virus. The worry is that certain groups of people – the elderly, pregnant women, children under five and those with long-term health conditions – are at greater risk of becoming seriously ill from flu.

And while many healthy people can fight off the flu, there can be complications leading to death.

It is estimated that around 11,000 deaths in England and Wales are attributed to influenza infections, annually. During the 2017 – 2018 season, that number increased to 22,000.

**Important**

If you don't get your child vaccinated, you put your community at risk. Children are 'super-spreaders' who can pass the deadly virus to their grand-parents or other vulnerable people. This can have serious consequences on their health and can even lead to their death.



Not vaccinating your child puts your entire community, especially those who are at extreme risk of having deadly flu illness, like babies and young children, older people, healthcare professionals and people with certain health problems.

**Figure 2.** Schematic display of two of the NHS-like articles: flu with risks to child (**left**) and flu with risks to the community (**right**).

#### 2.4. Measures

##### 2.4.1. Intention to Vaccinate

To assess vaccination intention, items by Myers & Goodwin, 2011; Quinn, Parmer, 2013, were adapted [44,45]. Participants were asked “Will you vaccinate your child (ren) against the flu/influenza this year?” in the Flu condition. Participants could select responses “Yes, I would like to vaccinate all my children (1) or some of my children (2) this year”, “Yes, I have already vaccinated some or all of my children this year”(3), “No, I will not vaccinate any of my children this year by choice”(4), “I am still undecided”(5), “I refuse to answer”(6).

For the analysis, the first (1–3) and latter three (4–6) response options were joined to create a binary outcome variable (Yes and No/Don't know), as done by Shmueli in 2021 [46].

As the COVID-19 vaccination was yet to become available at the time of the survey, participants were asked: "Would you want to vaccinate your child against COVID-19, should a vaccine be made available to them?" This question was answered on a five-point Likert scale from "Most definitely not" (1), "Probably not" (2) "Don't know yet/Unsure" (3) "Probably" (4) "Most definitely" (5). Here too, the first three (1–3) and latter two (4,5) response options were joined to create a binary outcome variable (Yes and No/Don't know) for analysis.

In both conditions, participants also had the option to select "No, my child is medically exempt" (Flu), "My child would probably be medically exempt" (COVID-19). These participants were excluded from further analysis (See Figure 1).

#### 2.4.2. Attitude towards Vaccination

To assess attitude toward vaccination we used two common scales. The Vaccine Confidence Index (VCI) [47,48] measures the participant's perception of three key aspects of vaccine uptake shown to predict influenza vaccination amongst adults and children [16,48,49] and COVID-19 vaccination amongst adults [50]: importance ("Vaccines are important for children to have"), safety ("Vaccines are safe"), and effectiveness ("Vaccines are effective") of vaccines. Responses are coded on a 7 Likert-scale from strongly disagree (1) to strongly agree (7).

The 5C measures attitude toward vaccination with 5 subscales: Calculation ("Engagement in extensive information searching"), Collective responsibility ("Inclination to protect others through herd immunity"), Complacency ("Perceived risks and threats of vaccine-preventable diseases and low desire for preventive action"), Confidence ("Trust in safety and effectiveness of vaccines") and Constraints ("Affordability and accessibility barriers") [47,51,52]. Due to the hypothetical nature of the COVID-19 scenario, we omitted the constraints statement, which we deemed more relevant during the implementation stage of vaccination [53]. Participants responded on a 7 Likert-scale from strongly disagree (1) to strongly agree (7).

#### 2.5. Procedure

The survey took 6 min to complete on average [range 1.96–121.81]. All participants provided informed consent at the beginning of the survey and were randomly assigned to view one of the four NHS-like articles. To ensure validity of the survey, an attention check question followed the articles asking participants to select from three response options what the article had been about. Next, participants were asked to indicate their intention to vaccinate and attitude towards vaccination. To close, participants provided some demographic information (age, gender, ethnic group, employment and relationship status, number of children, level of education, household income, and residency). As part of the debrief participants were notified that the information provided in the NHS article, although scientifically accurate, had been modified for the purpose of the study.

#### 2.6. Ethical Approval

Ethical approval was obtained from the LSE Psychological and Behavioural Science Department and submitted [Ref:12236]. The study was pre-registered on an internal database placed on the Open Science Framework (10.17605/OSF.IO/Y9VUA).

#### 2.7. Statistical Analysis

Intention to vaccinate (Yes and No/Don't know) was used as our primary outcome variable. As our secondary outcome variable, we first used a binomial logistic regression analysis to identify any demographic effects on vaccination intention. Next, we used chi-squared analyses of disease and risk frame on vaccination intention. Finally, we included

disease and risk frame into the logistic regression model to estimate the effects of the intervention controlling for observed demographic differences between groups.

Vaccination attitude was the second dependent variable in the experiment. We averaged the four facets of the VCI into one measure, and the four measured facets of the 5C (hereafter 4C) (Confidence, Complacency, Calculation and Community) into another. For both measures we first ran multinomial linear regression to check for demographic effects on vaccination attitude. Next, we used a  $2 \times 2$  between-subjects ANOVA of risk and disease type to assess the effect of the intervention on VCI and 4C respectively. As with vaccination intention, we followed up by including the disease type variable and risk frame into the linear regression model to estimate the effects of intervention, whilst controlling for observed demographic differences between groups.

By means of an exploratory analysis, we followed up on differences observed between white and non-white mothers using a 3-way binomial logistic regression analysis of disease type, risk frame, and ethnicity for vaccination intention.

### 3. Results

#### 3.1. Exclusion Criteria

Eight participants were excluded for failing to complete the survey in a given time-frame, i.e., between 2 and 20 min and one participant for selecting “outside the UK” as place of residence. No participants failed the attention check question.

#### 3.2. Demographic Characteristics of Participants

All participants (all mothers of at least one child under the age of 5) were female (93% between 25–44 years old; 85% white, 89% in a relationship). On average, mothers had 1.3 children under 5 (range = 1–4) and 87% lived in England. Participants were somewhat more highly educated (62% at least a Bachelor’s degree), working as much as (74%, 35% part-time and 8% self-employed), somewhat higher in income (61% above £40,000) and more likely to be in a relationship (89%) than the UK average (£29,900 household income, 75% working mothers, 43% mothers with degree, 14.7% parents not in a relationship) [54–57].

##### 3.2.1. In Relation to Vaccination Intention

Out of all participants ( $n = 542$ ), 538 provided their vaccination intention. 399 intended to vaccinate or had vaccinated their child(ren) (Yes) and 139 did not or unsure (No/Don’t know). A binomial logistic regression of the above participant characteristics on child vaccination intention (DV) indicates that no characteristics significantly predicted vaccination intention, aside from ethnicity: non-white mothers reported a lower vaccination intention than white mothers in the sample (see Table 1 for details). The non-white group is made up of 36% black/African/Caribbean/black British, 25% Asian/Asian British, 21% mixed or multiple ethnic identities, 9% Other.

**Table 1.** Logistic of demographics on (i) vaccination intention (n = 538) and multinomial linear regression of demographics on (ii) Vaccine Confidence Index (VCI) and (iii) the 4C (Confidence, Complacency, Calculation and Community) attitude measures (n = 542).

Demographic Factors	Vaccination Intention			Demographic Factors	VCI			4C		
	OR	95% CI	p-Value		Stand. Est	95% CI	p-Value	Stand. Est	95% CI	p-Value
<b>Ethnicity</b>										
White (n = 455)		Reference		White (n = 459)		Reference			Reference	
Non-white (n = 83)	0.381	0.224–0.649	<0.001	Non-white (n = 83)	−0.440	−0.679–−0.202	<0.001	−0.457	−0.695–−0.218	<0.001
<b>Relationship status</b>										
In a relationship (n = 480)		Reference		In a relationship (n = 484)		Reference			Reference	
Not in a relationship (n = 58)	0.661	0.346–1.263	0.21	Not in a relationship (n = 58)	−0.237	−0.525–0.050	0.106	−0.162	−0.450–0.126	0.270
<b>Education</b>										
Higher education (n = 333)		Reference		Higher education (n = 335)		Reference			Reference	
Secondary education (n = 205)	0.821	0.535–1.259	0.391	Secondary education (n = 207)	0.005	−0.170–0.179	0.958	−0.106	−0.281–0.068	0.232
<b>Region</b>										
London (n = 60)		Reference		London (n = 61)		Reference			Reference	
England outside London (n = 408)	1.288	0.659–2.517	0.458	England outside London (n = 411)	0.156	−0.122–0.435	0.27	0.174	−0.105–0.453	0.220
Other UK (n = 68)	1.276	0.544–2.992	0.575	Other UK (n = 68)	0.190	−0.157–0.537	0.282	0.233	−0.115–0.580	0.189
<b>Employment</b>										
Employed Full-time (n = 164)		Reference		Employed Full-time (n = 166)		Reference			Reference	
Employed Part-time (n = 191)	1.012	0.600–1.709	0.963	Employed Part-time (n = 192)	0.067	−0.137–0.271	0.518	0.08	−0.124–0.285	0.440
Not working (n = 139)	0.845	0.486–1.469	0.551	Not working (n = 140)	0.078	−0.147–0.304	0.494	0.206	−0.002–0.432	0.074



Table 1. Cont.

Demographic Factors	Vaccination Intention			Demographic Factors	VCI			4C		
	OR	95% CI	<i>p</i> -Value		Stand. Est	95% CI	<i>p</i> -Value	Stand. Est	95% CI	<i>p</i> -Value
Mother age										
18-24 (n = 34)		Reference		18-24 (n = 34)		Reference			Reference	
25-34 (n = 273)	1.211	0.529–2.769	0.651	25-34 (n = 276)	0.072	0.421–0.277	0.686	0.02	−0.329–0.370	0.909
35 or more (n = 231)	1.467	0.633–3.401	0.372	35 or more (n = 232)	0.038	−0.314–0.391	0.831	0.221	0.132–0.574	0.220
Number of children										
1 (n = 391)		Reference		1 (n = 395)		Reference			Reference	
2 or more (n = 147)	0.73	0.468–1.138	0.165	2 or more (n = 147)	−0.193	−0.379–−0.007	0.042	−0.241	−0.427–−0.055	0.011
Household income										
Below £30K (n = 149)		Reference		Below £30K (n = 151)		Reference			Reference	
From £30K to £50K (n = 193)	1.523	0.888–2.611	0.126	From £30K to £50K (n = 194)	0.416	0.191–0.642	<0.001	0.361	0.135–0.587	0.002
From £50K to £70K (n = 103)	1.506	0.782–2.898	0.22	From £50K to £70K (n = 104)	0.499	0.231–0.769	<0.001	0.474	0.205–0.744	<0.001
More than £70K (n = 93)	1.699	0.842–3.429	0.139	More than £70K (n = 93)	0.598	0.216–0.781	<0.001	0.398	0.115–0.681	0.006

### 3.2.2. In Relation to Vaccination Attitude

All participants ( $n = 542$ ) provided their vaccination attitude (VCI:  $M = 18.3$ ,  $SE = 0.147$ ,  $95\% CI = 18.0\text{--}18.6$ ); 4C:  $M = 45.9$ ,  $SE = 0.411$ ,  $95\% CI = 45.1\text{--}46.7$ ). A linear regression of the participant characteristics on each of the attitude measures respectively indicates a consistent pattern. For both measures about 8% of the variance is explained by participant characteristics (VCI:  $F = 4.54$ ,  $p < 0.001$ , Adjusted  $R^2 = 0.0842$ ; 4C:  $F = 4.39$ ,  $p < 0.001$ ; Adjusted  $R^2 = 0.081$ ). In both cases it was driven by ethnicity, number of children and household income (see Table 1 for details).

### 3.3. Treatment Effects

#### 3.3.1. On Vaccination Intention

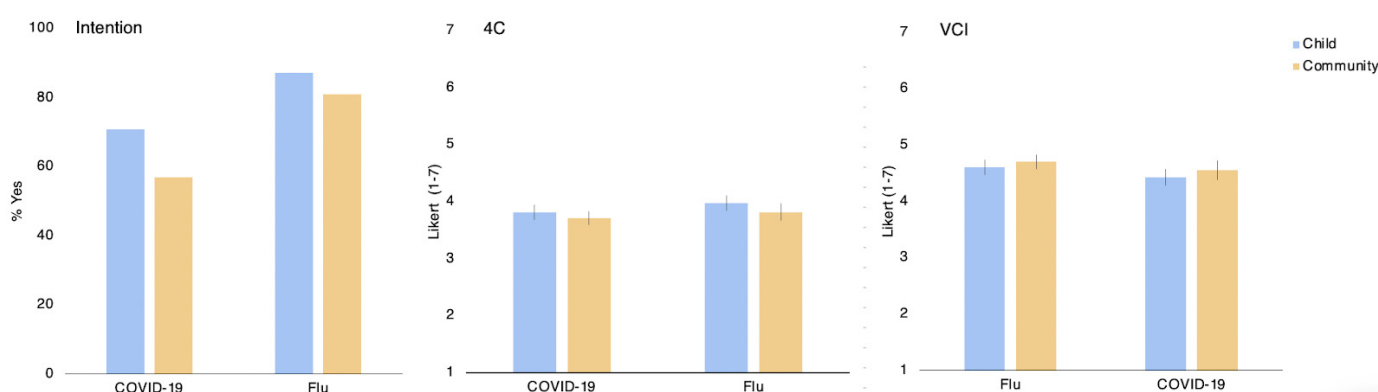
The chi-squared of type of risk by type of disease on vaccination intention indicates that parents were more likely to report vaccinating or wanting to vaccinate when the type of risk is to the child (79.63% of mothers) compared to the community (68.44% of mothers); [main effect of risk type:  $Z = 2.705$ ,  $p = 0.007$ ,  $OR = 2.135$ ]. Parents were also more likely to vaccinate children against the Flu (84.3% of mothers) than against COVID-19 (63.6% of mothers; main effect of disease type [ $Z = 3.977$ ,  $p < 0.001$ ,  $OR = 3.271$ ]. There was no interaction effect [ $Z = -0.551$ ,  $p = 0.733$ ] (see Figure 2 left panel).

#### 3.3.2. On Vaccination Attitude

Using a  $2 \times 2$  between-subjects ANOVA of disease type and risk frame on VCI [ $F(3, 542) = 2.37$ ,  $p = 0.070$ ], we found a significant main effect of type of risk where those who received a frame emphasizing the risk to the child showed more positive attitude toward vaccination VCI [ $F(1, 542) = 4.339$ ;  $p = 0.038$ ,  $\eta^2 = 0.008$ ]. We found no main effect disease type [ $F(1, 542) = 2.374$ ,  $p = 0.124$ ,  $\eta^2 = 0.004$ ], nor an interaction effect [ $F(1, 542) = 0.002$ ,  $p = 0.964$ ,  $\eta^2 < 0.001$ ].

Despite similar directionality of results, the same  $2 \times 2$  between-subjects ANOVA for 4C showed no significant effect [main effect risk frame:  $F(1, 542) = 3.82$ ,  $p = 0.051$ ,  $\eta^2 = 0.007$ ; main effect disease type:  $F(1, 542) = 3.62$ ,  $p = 0.057$ ,  $\eta^2 = 0.007$ ; interaction:  $F(1, 542) = 0.161$ ,  $p = 0.689$ ,  $\eta^2 = 0.001$ ].

(See Figure 3 middle and left panel for details and Supplementary Materials Table S1 for descriptives).



**Figure 3.** The effect of type of risk frame (child vs. community) by type of disease (Flu vs. COVID-19) discussed on vaccination intention (left) and attitude (4C middle, VCI right). Error bars display 95% Confidence Intervals.

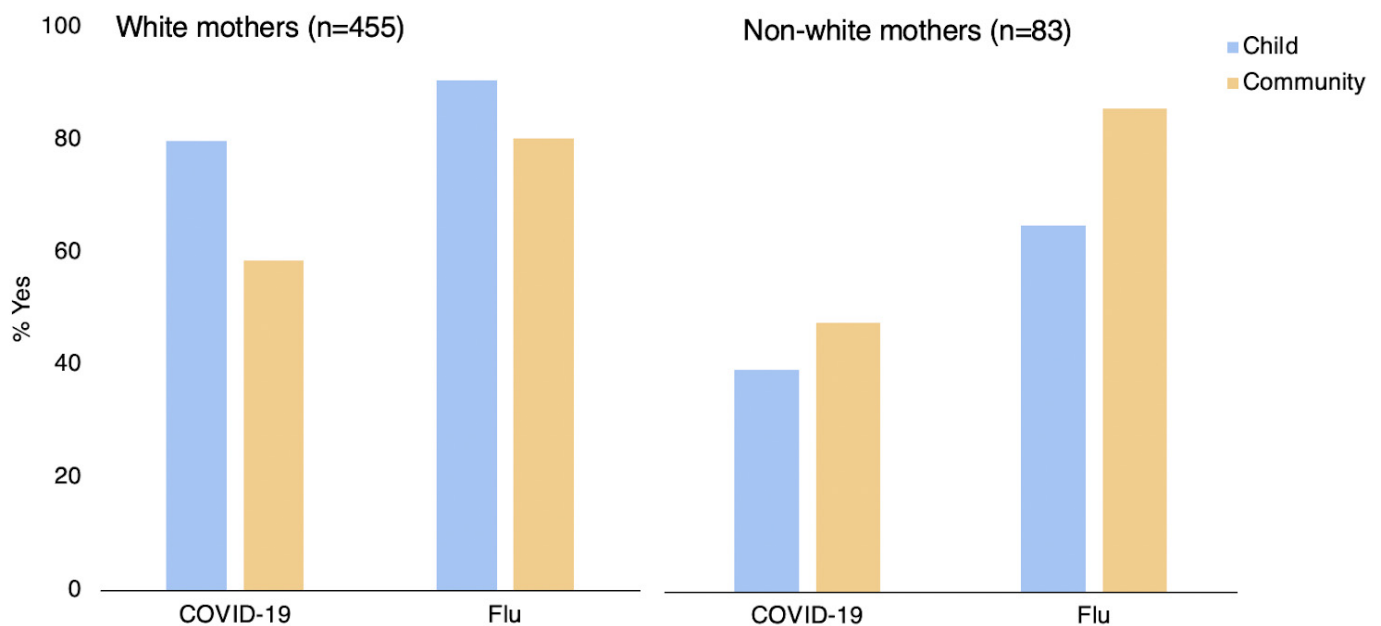
#### 3.3.3. Effect on Vaccination Intention & Attitude Controlling for Demographic Factors

To control for demographic factors, we added type of disease and risk frames into the binomial logistic regression on vaccination intention (DV: Yes vs. no/don't know) and linear regressions for VCI and 4C. This confirms greater vaccination intention when risks to the

child were highlighted [OR = 2.1, 95% CI = 1.23–3.70,  $p = 0.007$ ], and a stronger vaccination intention against Flu than against COVID-19 [OR = 3.1, 95% CI = 1.82–5.866,  $p < 0.001$ ], when controlling for demographic factors. Results remain largely unchanged (see Table 2).

### 3.4. Exploratory Analysis

As our study demonstrated consistent differences in vaccination intention and attitude for white and non-white mothers, we followed up on treatment effects for vaccination intention separately for these two groups (see Figure 4).



**Figure 4.** The effect of type of risk frame (child vs. community) by type of disease (Flu vs. COVID-19) on vaccination intention separated by white (**left**) and non-white (**right**) mothers.

Using a binomial logistic regression with disease type, risk frame, ethnicity on vaccination intention [ $\chi^2 = 63.2$ ,  $p < 0.001$ ], we found a main effect of type of risk [ $Z = 3.272$ ;  $p = 0.001$ , OR = 2.78], a main effect for disease type [ $Z = 3.49$ ,  $p < 0.001$ , OR = 0.288], no main effect for ethnicity [ $Z = -0.932$ ,  $p = 0.351$ , OR = 0.642], and an interaction effect between type of risk and ethnicity [ $Z = -2.06$ ,  $p = 0.039$ , OR = 0.255], no interaction effect between type of disease and ethnicity [ $Z = 0.888$ ,  $p = 0.374$ , OR = 2.286], and no interaction effect between all variables [ $Z = -0.566$ ,  $p = 0.572$ , OR = 0.513]. In sum, white mothers showed a higher vaccination intention when given the child risk frame, whilst non-white mothers showed higher vaccination intention when given a community risk frame across both COVID-19 and Flu conditions (see Figure 4 for details).

**Table 2.** Logistic of disease type and risk frame on (i) vaccination intention (n = 538) and multinomial linear regression of demographics on (ii) Vaccine Confidence Index (VCI) and (iii) the 4C (Confidence, Complacency, Calculation and Community) attitude measures (n = 542) controlling for person characteristics.

Intervention Effects and Demographic Variables	Vaccination Intention			Intervention Effects and Demographic Variables	VCI			4C		
	OR	95% CI	p-Value		Stand. Est	95% CI	p-Value	Stand. Est	95% CI	p-Value
<b>Risk (IV1)</b>										
Community frame (n = 263)		Reference		Community frame (n = 265)		Reference		Reference		
Child frame (n = 275)	2.135	1.232–3.698	0.007	Child frame (n = 277)	0.241	0.006–0.476	0.044	0.175	−0.060–0.411	0.143
<b>Disease (IV2)</b>										
COVID-19 (n = 264)		Reference		COVID-19 (n = 264)		Reference		Reference		
Flu (n = 274)	3.271	1.824–5.866	<0.001	Flu (n = 278)	0.119	−0.113–0.352	0.314	0.139	−0.094–0.372	
<b>Interaction</b>										
IV1–IV2	0.783	0.327–1.871	0.582	IV1–IV2	−0.071	−0.398–0.255	0.666	−0.004	−0.331–0.323	0.982
<b>Ethnicity</b>										
White (n = 455)		Reference		White (n = 459)		Reference		Reference		
Non-white (n = 83)	0.368	0.210–0.645	<0.001	Non-white (n = 83)	−0.453	−0.453–−0.692	<0.001	−0.459	−0.684–−0.208	<0.001
<b>Relationship status</b>										
In a relationship (n = 480)		Reference		In a relationship (n = 484)		Reference		Reference		
Not in a relationship (n = 58)	0.624	0.315–1.238	0.177	Not in a relationship (n = 58)	−0.254	−0.542–0.033	0.083	−0.169	−0.458–0.119	0.249
<b>Education</b>										
Higher education (n = 333)		Reference		Higher education (n = 335)		Reference		Reference		
Secondary education (n = 205)	0.792	0.507–1.239	0.307	Secondary education (n = 207)	0.004	0.169–0.179	0.956	−0.108	−0.282–0.066	0.222
<b>Region</b>										
London (n = 60)		Reference		London (n = 61)		Reference		Reference		
England outside London (n = 408)	1.062	0.526–2.143	0.742	England outside London (n = 411)	0.124	−0.154–0.402	0.383	0.141	−0.138–0.419	0.321
Other UK (n = 68)	1.016	0.416–2.482	0.899	Other UK (n = 68)	0.150	−0.197–0.497	0.397	0.193	−0.155–0.541	0.277

Table 2. Cont.

Intervention Effects and Demographic Variables	Vaccination Intention			Intervention Effects and Demographic Variables	VCI			4C		
	OR	95% CI	p-Value		Stand. Est	95% CI	p-Value	Stand. Est	95% CI	p-Value
<b>Employment</b>										
Employed Full-time (n = 164)		Reference		Employed Full-time (n = 166)		Reference		Reference		
Employed Part-time (n = 191)	1.077	0.624–1.857	0.790	Employed Part-time (n = 192)	0.078	−0.126–0.282	0.452	0.088	−0.117–0.292	0.399
Not working (n = 139)	0.933	0.525–1.659	0.815	Not working (n = 140)	0.088	−0.137–0.314	0.442	0.217	−0.009–0.443	0.060
<b>Mother age</b>										
18-24 (n = 34)		Reference		18-24 (n = 34)		Reference		Reference		
25-34 (n = 273)	1.156	0.564–2.234	0.739	25-34 (n = 276)	−0.087	−0.435–0.261	0.624	0.002	−0.347–0.351	0.990
35 or more (n = 231)	1.443	0.438–2.562	0.409	35 or more (n = 232)	0.025	−0.326–0.377	0.888	0.204	−0.149–0.556	0.257
<b>Number of children</b>										
1 (n = 391)		Reference		1 (n = 395)		Reference		Reference		
2 or more (n = 147)	0.738	0.463–1.176	0.202	2 or more (n = 147)	−0.172	−0.358–−0.001	0.069	−0.224	−0.410–−0.038	0.019
<b>Household income</b>										
Below £30K (n = 149)		Reference		Below £30K (n = 151)		Reference		Reference		
From £30K to £50K (n = 193)	1.659	0.943–2.919	0.079	From £30K to £50K (n = 194)	0.421	0.196–0.646	<0.001	0.368	0.143–0.594	0.001
From £50K to £70K (n = 103)	1.588	0.806–3.130	0.181	From £50K to £70K (n = 104)	0.500	0.232–0.768	<0.001	0.477	0.209–0.745	<0.001
More than £70K (n = 93)	1.725	0.830–3.586	0.144	More than £70K (n = 93)	0.504	0.223–0.786	<0.001	0.399	0.117–0.682	0.006



#### 4. Discussion

We predicted to observe differences between the two psychological frames on the vaccination attitude and the mothers' intention to vaccinate their children for the two disease types. In particular, we expected that the 'community frame' would be more effective the lesser the threat to the child, posing that the child frame would be more effective in a flu context while the community frame would be more effective in a COVID-19 context. This is not entirely what we found. Our results showed that emphasizing risks of non-vaccination associated with the child's health results in intention to vaccinate twice as high than when emphasizing risks to their community, for two types of disease contexts. We put forth a three-part explanation: first, a key barrier to vaccinating children is the perceived concerns about vaccine safety to the child's health [58]. By emphasizing the risks of non-vaccination to the child's health, parents who held this belief may have, at least temporarily, shifted their focus of their attention from the risk of vaccinating towards the risk of not vaccinating their child, increasing the intention to vaccinate [16].

Second, it is possible that mothers in our study may have underestimated the risks posed by both viruses to children under the age of 5 relative to the risks to the community. This is likely because the media emphasize the likelihood of health risks (greater in adult populations [NHS.UK]) than the size of the risk (significant in both adult and child populations) [24].

Third, and most consistent with literature prior to the COVID-19 pandemic, the social contract that binds parents to their children seems to have precedence over other social contracts in the community [25,31,59].

As a second contribution, our study provides evidence that emphasizing the risk for the child showed a demonstrably larger effect size in a COVID-19 context relative to the flu context in October 2020. We note that this was during a time where COVID-19 vaccinations were not yet on the market. Although the risks of severe illness posed to children by the common flu are greater than the ones posed by COVID-19, one possibility is that being in the middle of a pandemic, made COVID-19 highly salient in people's minds in 2020 [20,60].

From our exploratory analyses, we also consistently find differences in vaccination intention and attitude between white compared to non-white mothers in our sample. We observed that more white mothers intended to vaccinate when exposed to a frame emphasizing the risk for the child than mothers who were non-white. These mothers seemed to respond better to the community frame. These exploratory findings may be worth pursuing with a larger sample size. We recognize that the exploratory analysis of racial differences is limited by the dichotomous distinction between white and non-white participants, due to its explorative nature. We suggest that follow up research looking at effects of the intervention across different ethnicities provides for a useful next step. There could be many reasons for the difference between groups, for one, the picture used in the Child articles, was displaying a white child with a white parent. Arguably, one hypothesis is that images of people from a different ethnicity might not have the same impact for non-white mothers [17]. Another could be that non-white population may be more community oriented [61]. A third may be to do with the NHS as the choice of messenger: ethnic minorities' reportedly feel more rejected from public and political bodies such as the NHS, which is thought to contribute to a decrease of vaccination uptake and increased skepticism among those groups [62]. These findings highlight the importance of heterogeneous evaluations of risk in health [63] and heterogeneous behavioral design [64].

We also note several limitations to this experiment. First, at the time of the survey, COVID-19 vaccination hadn't started in the UK, placing participants in front of a hypothetical scenario. Since the completion of the survey, much has changed in our understanding of COVID-19 variants and effects of vaccination amongst adults. This may explain a lower vaccination intention for COVID-19 relative to the common flu. A follow up may be able to observe the impact of more recent knowledge on COVID-19 vaccination intention.

Nonetheless the risks of COVID-19 for children relative to the rest of the community, as well as the risks of vaccination have remained stable.

Second, it remains unclear whether highlighting the risk to the community has a positive impact on vaccination intention or whether it may have backfired due to free-riding motives [34,65], relative to a neutral frame. A follow up experiment could introduce a control group. Similarly, a follow up study would ideally measure behavioral outcomes, with regards to vaccination, to avoid the intention-behavior gap [16,37].

Third, we recognize that our sample consisted of participants who were—on average more highly educated than the general population of UK mothers, as these may share different attitudes toward scientific evidence in general [66]. To review the effectiveness of the intervention we compared vaccination attitude and intervention effects by education level and we found no significant differences.

Overall, our study supports that dealing with parental vaccine hesitancy benefits from an emphasis on the risk to the child rather than betting on their citizens' altruistic behavior. Our findings add that this recommendation may apply to various vaccine-preventable childhood diseases, irrespective of the level of risk to children that are associated with the disease. In the low-risk case for COVID-19 and flu, we find vaccination intention to be twice as high when discussing risk to the child compared to risk to the community. Indeed, similar messages may demonstrate to be even more effective for diseases associated with higher dangers for children.

## 5. Conclusions

Alerting parents to the risks that non-vaccination poses to the children increases vaccination intention more than alerting parents to the risks to others, both in their community and across two vaccine-preventable diseases with low risks to the child. In line with previous studies, this suggests that vaccination campaigns benefit from emphasizing the risk to the child, without discarding the benefit that can come from emphasizing the risk to the community. Future research could aim to compare the effectiveness of both frames in a different cultural context where individualism is not as prevalent [67]. Future research could also consider testing the intervention effects with different caregiver compositions such as fathers or single parents.

**Supplementary Materials:** The following supporting information can be downloaded at: <https://www.mdpi.com/article/10.3390/vaccines10050720/s1>. Table S1. Descriptive Statistics for DV: Vaccine Confidence Index (VCI) by IV1: risk frame and IV2: disease type. Table S2. Descriptive Statistics for the DV: 4C (Calculation, Collective Responsibility, Complacency, Confidence) by IV1: risk frame and IV2: disease type.

**Author Contributions:** Conceptualization, A.L.V.H. and J.G.S.; methodology, A.L.V.H. and J.G.S.; validation, A.L.V.H. and J.G.S.; investigation, A.L.V.H.; data curation, A.L.V.H. and J.G.S.; writing—original draft preparation, A.L.V.H.; writing—review and editing, J.G.S.; visualization, A.L.V.H.; supervision, J.G.S. All authors have read and agreed to the published version of the manuscript.

**Funding:** This research received no external funding.

**Institutional Review Board Statement:** All subjects gave their informed consent for inclusion before they participated in the study. The study was conducted in accordance with the Declaration of Helsinki, and the protocol was approved by the Ethics Committee of LSE (Ref:12236).

**Informed Consent Statement:** Informed consent was obtained from all subjects involved in the study.

**Data Availability Statement:** Data is contained within Supplementary Materials. The data presented in this study are available in the Supplementary Materials.

**Conflicts of Interest:** The authors declare no conflict of interest.

## References

1. Worldmeters. COVID-19 Coronavirus Pandemic. 2022. Available online: <http://www.worldmeters.info/Coronavirus> (accessed on 28 February 2022).
2. UNICEF. Child Mortality and COVID-19. 2022. Available online: <https://data.unicef.org/topic/child-survival/covid-19/> (accessed on 15 March 2022).
3. Han, B.; Song, Y.; Li, C.; Yang, W.; Ma, Q.; Jiang, Z.; Li, M.; Lian, X.; Jiao, W.; Wang, L.; et al. Safety, tolerability, and immunogenicity of an inactivated SARS-CoV-2 vaccine (CoronaVac) in healthy children and adolescents: A double-blind, randomised, controlled, phase 1/2 clinical trial. *Lancet Infect. Dis.* **2021**, *21*, 1645–1653. [[CrossRef](#)]
4. UK Government; Office of National Statistics. Parenting in lockdown: Coronavirus and the effects on Work-Life Balance. Available online: <https://www.ons.gov.uk/> (accessed on 15 February 2022).
5. Gowda, C.; Dempsey, A.F. The rise (and fall?) of parental vaccine hesitancy. *Hum. Vaccines Immunother.* **2013**, *9*, 1755–1762. [[CrossRef](#)] [[PubMed](#)]
6. Osterholm, M.T.; Kelley, N.S.; Sommer, A.; Belongia, E.A. Efficacy and effectiveness of influenza vaccines: A systematic review and meta-analysis. *Lancet Infect. Dis.* **2012**, *12*, 36–44. [[CrossRef](#)]
7. Roozenbeek, J.; Schneider, C.R.; Dryhurst, S.; Kerr, J.; Freeman, A.L.J.; Recchia, G.; van der Bles, A.M.; van der Linden, S. Susceptibility to misinformation about COVID-19 around the world. *R. Soc. Open Sci.* **2020**, *7*, 201199. [[CrossRef](#)]
8. Reich, J.A. Neoliberal Mothering and Vaccine Refusal: Imagined Gated Communities and the Privilege of Choice. *Gend. Soc.* **2014**, *28*, 679–704. [[CrossRef](#)]
9. Jolley, D.; Douglas, K.M. The Effects of Anti-Vaccine Conspiracy Theories on Vaccination Intentions. *PLoS ONE* **2014**, *9*, e89177. [[CrossRef](#)]
10. Damjanović, K.; Graeber, J.; Ilić, S.; Lam, W.Y.; Lep, Ž.; Morales, S.; Pulkkinen, T.; Vingerhoets, L. Parental Decision-Making on Childhood Vaccination. *Front. Psychol.* **2018**, *9*, 735. [[CrossRef](#)]
11. Kempe, A.; Saville, A.W.; Albertin, C.; Zimet, G.; Breck, A.; Helmkamp, L.; Vangala, S.; Dickinson, L.M.; Rand, C.; Humiston, S.; et al. Parental Hesitancy About Routine Childhood and Influenza Vaccinations: A National Survey. *Pediatrics* **2020**, *146*, e20193852. [[CrossRef](#)]
12. Shelby, A.; Ernst, K. Story and science. *Hum. Vaccines Immunother.* **2013**, *9*, 1795–1801. [[CrossRef](#)]
13. Laskowski, M. Nudging towards Vaccination: A Behavioral Law and Economics Approach to Childhood Immunization Policy. *Tex. Law Rev.* **2016**, *94*, 601.
14. Tversky, A.; Kahneman, D. The framing of decisions and the psychology of choice. *Science* **1981**, *211*, 453–458. [[CrossRef](#)] [[PubMed](#)]
15. Brewer, N.T.; Chapman, G.B.; Rothman, A.J.; Leask, J.; Kempe, A. Increasing Vaccination: Putting Psychological Science into Action. *Psychol. Sci. Public Interest* **2017**, *18*, 149–207. [[CrossRef](#)] [[PubMed](#)]
16. Dolan, P.; Hallsworth, M.; Halpern, D.; King, D.; Metcalfe, R.; Vlaev, I. Influencing behaviour: The mindspace way. *J. Econ. Psychol.* **2012**, *33*, 264–277. [[CrossRef](#)]
17. Castelfranchi, C. Towards a Cognitive Memetics: Socio-Cognitive Mechanisms for Memes Selection and Spreading. *J. Memet.-Evol. Models Inf. Transm.* **2001**, *2001*, 5.
18. Kestenbaum, L.A.; Feemster, K.A. Identifying and Addressing Vaccine Hesitancy. *Pediatr. Ann.* **2015**, *44*, e71–e75. [[CrossRef](#)]
19. Horne, Z.; Powell, D.; Hummel, J.E.; Holyoak, K.J. Countering antivaccination attitudes. *Proc. Natl. Acad. Sci. USA* **2015**, *112*, 10321–10324. [[CrossRef](#)] [[PubMed](#)]
20. Nyhan, B.; Reifler, J.; Richey, S.; Freed, G.L. Effective Messages in Vaccine Promotion: A Randomized Trial. *Pediatrics* **2014**, *133*, e835–e842. [[CrossRef](#)]
21. Healy, C.M.; Pickering, L.K. How to Communicate with Vaccine-Hesitant Parents. *Pediatrics* **2011**, *127*, S127–S133. [[CrossRef](#)]
22. Sadique, Z.; Devlin, N.; Edmunds, W.J.; Parkin, D. The Effect of Perceived Risks on the Demand for Vaccination: Results from a Discrete Choice Experiment. *PLoS ONE* **2013**, *8*, e54149. [[CrossRef](#)]
23. Isler, O.; Isler, B.; Kopsacheilis, O.; Ferguson, E. Limits of the social-benefit motive among high-risk patients: A field experiment on influenza vaccination behaviour. *BMC Public Health* **2020**, *20*, 240. [[CrossRef](#)]
24. Li, M.; Taylor, E.G.; Atkins, K.E.; Chapman, G.B.; Galvani, A.P. Stimulating Influenza Vaccination via Prosocial Motives. *PLoS ONE* **2016**, *11*, e0159780. [[CrossRef](#)] [[PubMed](#)]
25. Sanders, J.G.; Spruijt, P.; van Dijk, M.; Elberse, J.; Lambooi, M.S.; Kroese, F.M.; de Bruin, M. Understanding a national increase in COVID-19 vaccination intention, the Netherlands, November 2020–March 2021. *Eurosurveillance* **2021**, *26*, 2100792. [[CrossRef](#)] [[PubMed](#)]
26. Euser, S.; Kroese, F.M.; Derks, M.; de Bruin, M. Understanding COVID-19 vaccination willingness among youth: A survey study in the Netherlands. *Vaccine* **2022**, *40*, 833–836. [[CrossRef](#)] [[PubMed](#)]
27. Böhm, R.; Betsch, C.; Korn, L.; Holtmann, C. Exploring and Promoting Prosocial Vaccination: A Cross-Cultural Experiment on Vaccination of Health Care Personnel. *BioMed Res. Int.* **2016**, *2016*, 6870984. [[CrossRef](#)] [[PubMed](#)]
28. Luyten, J.; Bruyneel, L.; van Hoek, A.J. Assessing vaccine hesitancy in the UK population using a generalized vaccine hesitancy survey instrument. *Vaccine* **2019**, *37*, 2494–2501. [[CrossRef](#)]
29. Quadri-Sheriff, M.; Hendrix, K.S.; Downs, S.M.; Sturm, L.A.; Zimet, G.D.; Finnell, S.M.E. The Role of Herd Immunity in Parents' Decision to Vaccinate Children: A Systematic Review. *Pediatrics* **2012**, *130*, 522–530. [[CrossRef](#)]

30. Betsch, C.; Böhm, R.; Korn, L.; Holtmann, C. On the benefits of explaining herd immunity in vaccine advocacy. *Nat. Hum. Behav.* **2017**, *1*, 56. [CrossRef]
31. Hendrix, K.S.; Finnell, S.M.E.; Zimet, G.D.; Sturm, L.A.; Lane, K.A.; Downs, S.M. Vaccine Message Framing and Parents' Intent to Immunize Their Infants for MMR. *Pediatrics* **2014**, *134*, e675–e683. [CrossRef]
32. NHS Digital. *Childhood Vaccination Coverage Statistics. Childhood Vaccination Coverage Statistics—England 2018-19*; NHS Digital: Leeds, UK, 2019.
33. Verelst, F.; Willem, L.; Kessels, R.; Beutels, P. Individual decisions to vaccinate one's child or oneself: A discrete choice experiment rejecting free-riding motives. *Soc. Sci. Med.* **2018**, *207*, 106–116. [CrossRef]
34. Prolific. 2022. Available online: <https://www.prolific.co/> (accessed on 23 March 2022).
35. Palan, S.; Schitter, C. Prolific.ac—A subject pool for online experiments. *J. Behav. Exp. Financ.* **2018**, *17*, 22–27. [CrossRef]
36. Sheeran, P.; Harris, P.R.; Epton, T. Does heightening risk appraisals change people's intentions and behavior? A meta-analysis of experimental studies. *Psychol. Bull.* **2014**, *140*, 511–543. [CrossRef] [PubMed]
37. Lakens, D.D.; Evers, E.R.K. Sailing From the Seas of Chaos Into the Corridor of Stability. *Perspect. Psychol. Sci.* **2014**, *9*, 278–292. [CrossRef] [PubMed]
38. List, J.; Sadoff, S.; Wagner, M. So you want to run an experiment, now what? Some simple rules of thumb for optimal experimental design. *Exp. Econ.* **2011**, *14*, 439–457. [CrossRef]
39. Suresh, K.P. An overview of randomization techniques: An unbiased assessment of outcome in clinical research. *J. Hum. Reprod. Sci.* **2011**, *4*, 8–11. [CrossRef] [PubMed]
40. Appleby, J.; Nina, H.; David, M.; Jessica, M.; Laura, S.; Dan, W. *Public Satisfaction with the NHS and Social Care in 2019: Results and Trends from the British Social Attitudes Survey. British Social Attitudes: Public Satisfaction with the NHS and Social Care in 2019*; Nuffield Trust: London, UK, 2019. Available online: <https://www.nuffieldtrust.org.uk/research/public-satisfaction-with-the-nhs-and-social-care-in-2019-results-and-trends-from-the-british-social-attitudes-survey> (accessed on 26 April 2022).
41. Kahneman, D.; Thaler, R.H. Anomalies: Utility Maximization and Experienced Utility. *J. Econ. Perspect.* **2006**, *20*, 221–234. [CrossRef]
42. Cintulová, L.L. The impact of the emotions that frame mothers' decision-making about the vaccination of toddlers. *Kontakt* **2019**, *21*, 189–196. [CrossRef]
43. Schlochtermeyer, L.H.; Kuchinke, L.; Pehrs, C.; Urton, K.; Kappelhoff, H.; Jacobs, A.M. Emotional Picture and Word Processing: An fMRI Study on Effects of Stimulus Complexity. *PLoS ONE* **2013**, *8*, e55619. [CrossRef]
44. Myers, L.B.; Goodwin, R. Determinants of adults' intention to vaccinate against pandemic swine flu. *BMC Public Health* **2011**, *11*, 15. [CrossRef]
45. Quinn, S.C.; Parmer, J.; Freimuth, V.S.; Hilyard, K.M.; Musa, D.; Kim, K.H. Exploring Communication, Trust in Government, and Vaccination Intention Later in the 2009 H1N1 Pandemic: Results of a National Survey. *Biosecur. Bioterror. Biodef. Strat. Pract. Sci.* **2013**, *11*, 96–106. [CrossRef]
46. Shmueli, L. Predicting intention to receive COVID-19 vaccine among the general population using the health belief model and the theory of planned behavior model. *BMC Public Health* **2021**, *21*, 804. [CrossRef]
47. Betsch, C.; Schmid, P.; Heinemeier, D.; Korn, L.; Holtmann, C.; Böhm, R. Beyond confidence: Development of a measure assessing the 5C psychological antecedents of vaccination. *PLoS ONE* **2018**, *13*, e0208601. [CrossRef] [PubMed]
48. Gallup. Wellcome Global Monitor—First Wave Findings? 2019. Available online: <https://wellcome.ac.uk/reports/wellcome-global-monitor/2018> (accessed on 1 February 2022).
49. Chapman, G.B.; Coups, E.J. Predictors of Influenza Vaccine Acceptance among Healthy Adults. *Prev. Med.* **1999**, *29*, 249–262. [CrossRef] [PubMed]
50. Enticott, J.; Gill, J.S.; Bacon, S.L.; Lavoie, K.L.; Epstein, D.S.; Dawadi, S.; Teede, H.J.; Boyle, J. Attitudes towards vaccines and intention to vaccinate against COVID-19: A cross-sectional analysis—implications for public health communications in Australia. *BMJ Open* **2022**, *12*, e057127. [CrossRef] [PubMed]
51. The SAGE Working Group. *Report of the SAGE Working Group on Vaccine Hesitancy*; Sage Report; WHO SAGE Working Group: London, UK, 2014.
52. De Figueiredo, A.; Simas, C.; Karafillakis, E.; Paterson, P.; Larson, H.J. Mapping global trends in vaccine confidence and investigating barriers to vaccine uptake: A large-scale retrospective temporal modelling study. *Lancet* **2020**, *396*, 898–908. [CrossRef]
53. Elliot, A.J.; Devine, P.G. On the motivational nature of cognitive dissonance: Dissonance as psychological discomfort. *J. Pers. Soc. Psychol.* **1994**, *67*, 382–394. [CrossRef]
54. UK Government; Office for National Statistics. *Families and the Labour Market, UK: 2019*. 2019. Available online: <https://www.ons.gov.uk/employmentandlabourmarket/peopleinwork/employmentandemployeetypes/articles/familiesandthelabourmarketengland/2019> (accessed on 22 February 2022).
55. UK Government; Office for National Statistics. *Average Household Income, UK: Financial Year 2020*. 2021. Available online: <https://www.ons.gov.uk/peoplepopulationandcommunity/personalandhouseholdfinances/incomeandwealth/bulletins/householddisposableincomeandinequality/financialyear2020> (accessed on 22 February 2022).
56. UK Government; Office for National Statistics. *Mean Age of Mother at Birth of First Child, by Highest Achieved Educational Qualification, 1996 to 2016, England and Wales*. 2018. Available online: <https://www.ons.gov.uk/peoplepopulationandcommun>

- ity/birthsdeathsandmarriages/conceptionandfertilityrates/adhocs/008981meanageofmotheratbirthoffirstchildbyhighestachievededucationalqualification1996to2016englandandwales (accessed on 22 February 2022).
57. UK Government; Office for National Statistics. Families and Households, UK: 2022. 2019. Available online: <https://www.ons.gov.uk/peoplepopulationandcommunity/birthsdeathsandmarriages/families/bulletins/familiesandhouseholds/latest> (accessed on 23 April 2022).
  58. Karlsson, L.C.; Soveri, A.; Lewandowsky, S.; Karlsson, L.; Karlsson, H.; Nolvi, S.; Karukivi, M.; Lindfelt, M.; Antfolk, J. Fearing the disease or the vaccine: The case of COVID-19. *Personal. Individ. Differ.* **2021**, *172*, 110590. [CrossRef]
  59. Korn, L.; Böhm, R.; Meier, N.W.; Betsch, C. Vaccination as a social contract. *Proc. Natl. Acad. Sci. USA* **2020**, *117*, 14890–14899. [CrossRef]
  60. Kunreuther, H. Mitigating disaster losses through insurance. *J. Risk Uncertain.* **1996**, *12*, 171–187. [CrossRef]
  61. Willis, R. Individualism, Collectivism and Ethnic Identity: Cultural Assumptions in Accounting for Caregiving Behaviour in Britain. *J. Cross-Cult. Gerontol.* **2012**, *27*, 201–216. [CrossRef]
  62. Van Prooijen, J.-W.; Staman, J.; Krouwel, A.P. Increased conspiracy beliefs among ethnic and Muslim minorities. *Appl. Cogn. Psychol.* **2018**, *32*, 661–667. [CrossRef]
  63. Guenther, B.; Galizzi, M.M.; Sanders, J.G. Heterogeneity in Risk-Taking During the COVID-19 Pandemic: Evidence From the UK Lockdown. *Front. Psychol.* **2021**, *12*, 643653. [CrossRef] [PubMed]
  64. Bryan, C.J.; Tipton, E.; Yeager, D.S. Behavioural science is unlikely to change the world without a heterogeneity revolution. *Nat. Hum. Behav.* **2021**, *5*, 980–989. [CrossRef] [PubMed]
  65. Vietri, J.T.; Li, M.; Galvani, A.P.; Chapman, G.B. Vaccinating to Help Ourselves and Others. *Med. Decis. Mak.* **2011**, *32*, 447–458. [CrossRef] [PubMed]
  66. Prolific Team. What Are the Advantages and Limitations of an Online Sample? 2022. Available online: <https://researcher-help.prolific.co/hc/en-gb/articles/360009501473-What-are-the-advantages-and-limitations-of-an-online-sample> (accessed on 23 April 2022).
  67. Minkov, M.; Hofstede, G. Hofstede's Fifth Dimension: New evidence from the world values survey. *J. Cross-Cult. Psychol.* **2010**, *43*, 3–14. [CrossRef]