



This is a repository copy of *Hyperphosphorylated tau self-assembles into amorphous aggregates eliciting TLR4-dependent responses.*

White Rose Research Online URL for this paper:
<https://eprints.whiterose.ac.uk/187044/>

Version: Published Version

Article:

Meng, J.X., Zhang, Y., Saman, D. et al. (15 more authors) (2022) Hyperphosphorylated tau self-assembles into amorphous aggregates eliciting TLR4-dependent responses. *Nature Communications*, 13. 2692. ISSN 2041-1723

<https://doi.org/10.1038/s41467-022-30461-x>

Reuse

This article is distributed under the terms of the Creative Commons Attribution (CC BY) licence. This licence allows you to distribute, remix, tweak, and build upon the work, even commercially, as long as you credit the authors for the original work. More information and the full terms of the licence here:
<https://creativecommons.org/licenses/>













Takedown

If you consider content in White Rose Research Online to be in breach of UK law, please notify us by emailing eprints@whiterose.ac.uk including the URL of the record and the reason for the withdrawal request.



eprints@whiterose.ac.uk
<https://eprints.whiterose.ac.uk/>

Hyperphosphorylated tau self-assembles into amorphous aggregates eliciting TLR4-dependent responses

Jonathan X. Meng ^{1,2,12}, Yu Zhang^{1,3,4,12}, Dominik Saman ⁵, Arshad M. Haider^{2,6}, Suman De ^{1,7}, Jason C. Sang^{1,2}, Karen Brown^{3,4}, Kun Jiang¹, Jane Humphrey ¹, Linda Julian^{1,8}, Eric Hidari ², Steven F. Lee ¹, Gabriel Balmus ^{2,6}, R. Andres Floto ^{3,4}, Clare E. Bryant ⁹, Justin L. P. Benesch ⁵, Yu Ye ^{1,10,11} & David Klenerman ^{1,2}✉

Soluble aggregates of the microtubule-associated protein tau have been challenging to assemble and characterize, despite their important role in the development of tauopathies. We found that sequential hyperphosphorylation by protein kinase A in conjugation with either glycogen synthase kinase 3 β or stress activated protein kinase 4 enabled recombinant wild-type tau of isoform ON4R to spontaneously polymerize into small amorphous aggregates in vitro. We employed tandem mass spectrometry to determine the phosphorylation sites, high-resolution native mass spectrometry to measure the degree of phosphorylation, and super-resolution microscopy and electron microscopy to characterize the morphology of aggregates formed. Functionally, compared with the unmodified aggregates, which require heparin induction to assemble, these self-assembled hyperphosphorylated tau aggregates more efficiently disrupt membrane bilayers and induce Toll-like receptor 4-dependent responses in human macrophages. Together, our results demonstrate that hyperphosphorylated tau aggregates are potentially damaging to cells, suggesting a mechanism for how hyperphosphorylation could drive neuroinflammation in tauopathies.

¹Department of Chemistry, University of Cambridge, Cambridge, UK. ²UK Dementia Research Institute at Cambridge, Cambridge, UK. ³Molecular Immunity Unit, Department of Medicine, MRC Laboratory of Molecular Biology, University of Cambridge, Cambridge, UK. ⁴Cambridge Centre for AI in Medicine, University of Cambridge, Cambridge, UK. ⁵Department of Chemistry, University of Oxford, Oxford, UK. ⁶Department of Clinical Neurosciences, University of Cambridge, Cambridge, UK. ⁷Department of Neuroscience Sheffield Institute for Translational Neuroscience, University of Sheffield, Sheffield, UK. ⁸Cancer Research UK Cambridge Institute, University of Cambridge, Cambridge, UK. ⁹Medicine and Veterinary Medicine, University of Cambridge, Cambridge, UK. ¹⁰Department of Brain Sciences, Imperial College London, London, UK. ¹¹UK Dementia Research Institute at Imperial College London, London, UK. ¹²These authors contributed equally: Jonathan X. Meng, Yu Zhang. ✉email: dk10012@cam.ac.uk

Intracellular neurofibrillary tangles (NFTs) constituting hyperphosphorylated tau proteins are a pathological hallmark of several neurodegenerative diseases including Alzheimer's disease (AD)¹, Pick's disease, progressive supranuclear palsy, and corticobasal degeneration², collectively called "tauopathies". On the contrary, monomeric tau is highly soluble and intrinsically disordered, thereby showing little tendency in its native form for aggregation³. Thus, it is generally believed that tau proteins must undergo a sequence of biochemical and conformational changes before turning into misfolded substrates. Phosphorylation is the most common form of tau post-translational modifications found *in vivo*⁴ and has been suggested to be a pathological switch, leading to the formation of cytotoxic tau aggregates in NFTs⁵. On the other hand, when tau phosphorylation is inhibited, insoluble tau load and neurodegeneration are attenuated *in vivo*⁶, further implicating phosphorylation as a possible mechanism for the pathogenesis and progression of AD and other tauopathies.

However, the identification of phosphorylation sites responsible for neurotoxicity remains elusive, and the challenge mainly lies in the heterogeneous and combinatorial nature of tau phosphorylation. For instance, a 0N4R tau isoform harbors up to 71 potential phosphorylation sites, all of which can be modified by a multitude of kinases as well as phosphatases⁷.

Most of these potential sites are located in the vicinity of the microtubule-binding domains (R1–4) in the proline-rich region and in the C-terminus of the molecule except for Ser²⁶², Ser²⁹³, Ser³²⁴, and Ser³⁵⁶ (motif KXGS) in R1–4 domains⁸ (Fig. 1b). Out of these potential phosphorylation sites about 30 sites have been reported to be aberrantly phosphorylated in the AD brain but not in the healthy control⁹ and commonly associated with tau aggregation processes such as incomplete binding and destabilization of microtubules, causing the transition from pre-tangles to NFTs^{10–12}. Therefore, to examine the pathological consequences of tau (hyper)phosphorylation, we need to be able to reproducibly generate disease-relevant phospho-tau in quantities that meet the demand for subsequent structural and toxicity characterization studies.

An early study has demonstrated that prior phosphorylation with cAMP-dependent protein kinase A (PKA) can prime the tau proteins for other kinases by inducing conformational changes to allow further phosphorylation events¹³. Moreover, a recent study that screens for the effect of 352 human kinases has shown that glycogen synthase kinase 3 β (GSK-3 β) and stress-activated protein kinase 4 (SAPK4) were the most active protein kinases phosphorylating tau at AD-specific epitopes that were recognized by phospho-tau specific antibodies including AT8 (pSer²⁰² and

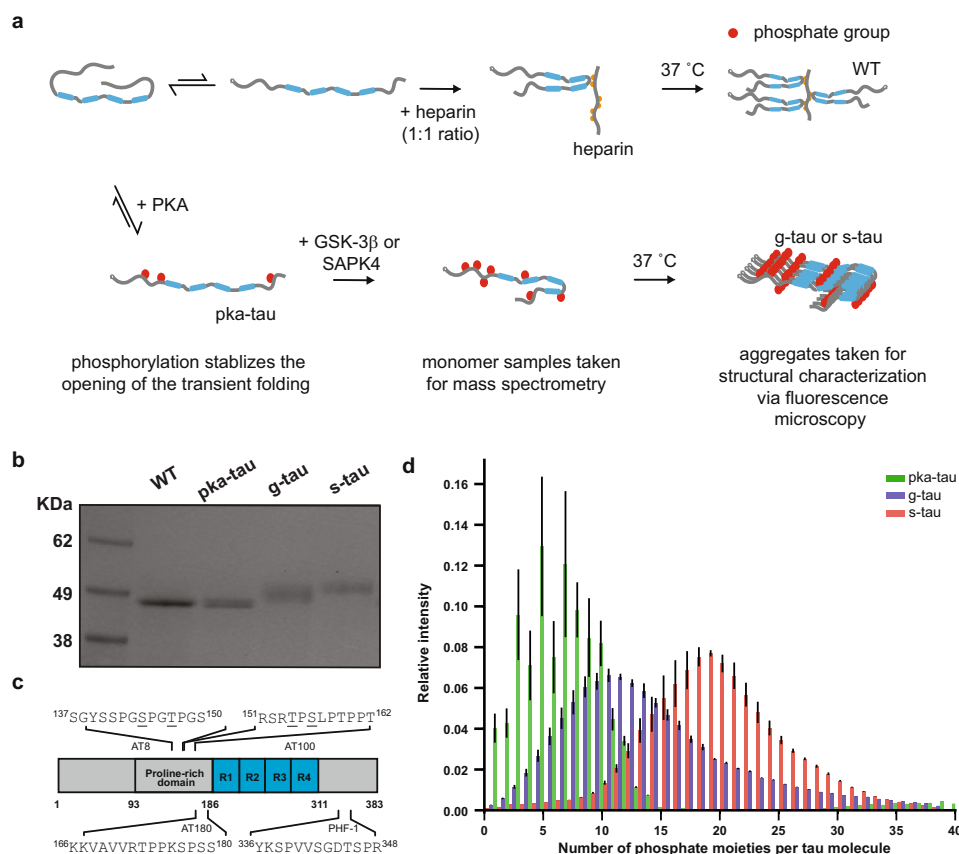


Fig. 1 Sequential hyperphosphorylation of tau *in vitro* generates AD-specific epitopes. **a** A pictorial representation of the experimental design: WT tau was sequentially hyperphosphorylated, first by PKA and then by either GSK-3 β or SAPK4 kinase. Hyperphosphorylation is shown to be able to cause an opening of such transient paperclip conformation⁵⁰ and simultaneously stabilizes the α -helical structures, which is associated to the aggregation process⁵¹. Recent cryo-EM structures and computational study reveals heparin can stabilize the interaction between R2 and R3 (repeat domain 2 and 3) and hyperphosphorylation lowers the free-energy landscape of R3 and R4 for forming aggregation^{15,55}. **b** Representative SDS-PAGE (4–12%, stained by Coomassie blue) across three independent experiments showed an upward shift of electrophoretic mobility for both g-tau and s-tau species, indicating successful phosphorylation reaction. **c** LC-MS/MS analysis revealed that both g-tau and s-tau tau were hyperphosphorylated at AD-specific epitopes, such as targeting sites of AT8, AT100, AT180, and PHF-1, highlighted along with the pictorial representation of WT tau. **d** High-resolution native mass spectrometry results indicated on average there were 7 phosphate groups per PKA-tau molecule, 11 phosphate groups per g-tau molecule and over 19 phosphate groups per s-tau molecule. Error bars represent \pm s.d. from MCMC analysis.

pThr²⁰⁵), AT180 (pThr²³¹), AT100 (pThr²¹² and pSer²¹⁴), and PHF-1 (pSer³⁹⁶ and pSer⁴⁰⁴)^{10,14} (the phospho-residues are numbered according to the longest 2N4R tau isoform). Thus, we used PKA followed by either GSK-3 β or SAPK4 in a sequential manner to generate hyperphosphorylated tau with AD-specific epitopes *in vitro*. We validated the modifications on tau proteins using liquid chromatography-tandem mass spectrometry and high-resolution native mass spectrometry. Applying super-resolution microscopy and transmission electron microscopy, we investigated the effects of hyperphosphorylation on the aggregation process and morphology. Our results demonstrated that hyperphosphorylated tau could spontaneously assemble into small amorphous aggregates at physiological concentrations without the use of any external inducer. This is important since the use of external inducers like heparin, the canonical method to generate *in vitro* tau aggregates, have recently been cast into doubt when examination of recombinant and AD-derived aggregates of tau found differences in their conformations, properties, and activities^{15,16}. We found that these hyperphosphorylated tau aggregates are more cytotoxic than the wild-type (WT) aggregates and can cause membrane destabilization and Toll-like receptor 4 (TLR4)-dependent responses in human macrophages. Our findings suggest that tau hyperphosphorylation produces cytotoxic aggregates through distinct mechanisms, offering potential explanations for how hyperphosphorylated tau contributes to the development and progression of AD and other tauopathies.

Results

AD-specific epitopes on *in vitro* hyperphosphorylated tau. Following a previously established protocol¹⁰, we performed *in vitro* phosphorylation assays, where recombinant WT tau of isoform 0N4R was sequentially phosphorylated by PKA and then either GSK-3 β or SAPK4 (Fig. 1a). We examined the phosphorylation reactions by SDS-PAGE to confirm that the modified tau proteins had a characteristic upward shift when compared to their non-phosphorylated control (Fig. 1b). To characterize the phosphorylation sites, we digested phosphorylated tau monomers with trypsin and analyzed the corresponding tryptic peptides with liquid chromatography-tandem mass spectrometry (LC-MS/MS). Phosphorylation sites of PKA-phosphorylated tau (PKA-tau), GSK-3 β phosphorylated tau (g-tau), and SAPK4 phosphorylated tau (s-tau) were mapped in greater detail in Supplementary Table 1. While both GSK-3 β and SAPK4 are *a priori* serine/threonine kinases, some tyrosine residues were found to be phosphorylated in g-tau and s-tau, suggesting that prior phosphorylation by PKA may alter the recognition of tau by GSK-3 β or SAPK4. Out of the 31 sites found to be phosphorylated in both g-tau and s-tau, our LC-MS/MS result revealed that both combinations of kinases afforded tau phosphorylation in AD-specific epitopes, including targeting sites of AT8, AT180, AT100, and PHF-1¹⁷ (Fig. 1c, Supplementary Fig. 1). By comparing with previous reports on AD-derived PHF tau⁹ and other (hyper) phosphorylated tau synthesized *in vitro*^{13,18–20}, our g-tau and s-tau were the most disease-relevant species in terms of their phosphorylation sites (Supplementary Table 1).

To further assess the extent of phosphorylation, we employed high-resolution native mass spectrometry, which allowed us to determine the average number of phosphate groups per tau protein. The deconvoluted mass distribution for unmodified WT tau had its highest peak at 39.9 kDa, which corresponded to the full-length tau without the N-terminal methionine (Supplementary Fig. 2). The deconvoluted mass distribution for PKA-tau ranged between 40.0 and 41.0 kDa with the highest peak at 40.5 kDa, corresponding to 7 phosphate groups (80 Da each) per

tau protein (Supplementary Fig. 2). The deconvoluted mass distribution for g-tau ranged between 40.0 and 42.0 kDa with the highest peak at 40.7 kDa, corresponding to 10 phosphate groups per tau protein (Supplementary Fig. 2). Furthermore, s-tau showed a mass distribution between 40.5 and 43.0 kDa with its highest peak at 41.4 kDa, equivalent to 19 phosphate groups per tau protein (Supplementary Fig. 2). Unlike tau characterized in control human brain tissues, which contains two to three phosphate groups, hyperphosphorylated tau in PHF derived from brain samples of AD patients harbor five to nine phosphate groups on average²¹. Therefore, both g-tau and s-tau can be considered hyperphosphorylated. We also found that PKA/SAPK4 had greater synergy than PKA/GSK-3 β , not only in adding phosphate groups at more possible sites, as previously measured by our LC-MS/MS, but also in incorporating more phosphate moieties per tau molecule while all other reaction conditions being controlled (Fig. 1d). Such observation may be due to the potential crosstalk and regulation between kinases, more especially the potential inhibition of GSK-3 β by PKA in this case as demonstrated previously²².

Hyperphosphorylated tau self-assembled to unstructured and amorphous oligomers. Several studies have characterized the self-assembly process of hyperphosphorylated tau *in vitro*, suggesting that soluble phosphorylated tau can undergo spontaneous liquid-liquid phase separation and ultimately form tau aggregates under cellular conditions^{23,24}. Therefore, both g-tau and s-tau were compared side-by-side with heparin-induced WT tau in order to examine the effect of hyperphosphorylation on the aggregation kinetics at neuronal tau concentration (2 μ M)²⁵. The pentameric oligothiophene pFTAA with a high affinity to tau aggregates was employed to follow the evolution of aggregation *in vitro*²⁶ (Supplementary Fig. 3a). Representative fluorescence images of tau aggregates at different time points are shown in Fig. 2d and Supplementary Fig. 3b. To obtain quantitative insights from our TIRF images, the apparent average length of pFTAA-positive aggregates was plotted as a function of time (Fig. 2a). The heparin-induced WT tau first elongated into fibrillar aggregates with an apparent average length of 2400 ± 500 nm and then slowly fragmented into smaller aggregates, in agreement with the aggregation-and-fragmentation pattern as previously observed²⁶. On the other hand, g-tau and s-tau slowly polymerized into small aggregates with apparent average lengths of 530 ± 220 nm and 670 ± 400 nm, respectively. Fibrils above 1 μ m were observed only rarely for s-tau. Critically, both these hyperphosphorylated tau species remained as small aggregates over 300 h of incubation. Hence, our results suggested that both hyperphosphorylated tau species could self-assemble to form pFTAA-active aggregates and that such aggregations of hyperphosphorylated tau were significantly slower than that of heparin-induced WT tau, consistent with previously reported study²³.

To further characterize the structure of tau aggregates, hyperphosphorylated tau aggregates were then prepared for super-resolution microscopy using a recently developed thioflavin-T (ThT) derivative, called Thioflavin-X (ThX)²⁷ (Supplementary Fig. 3a). The transient nature of ThX binding to the β -sheet motif and its low fluorescence quantum yield in solution creates the necessary blinking events which enable us to super-resolve the morphology of individual tau aggregates²⁷. Using this approach, we achieved a mean localization precision of 18.9 nm and an image resolution of 29.4 nm, determined by Fourier ring correlation analysis (Supplementary Fig. 4e, f). The samples were imaged after 96 h of incubation, the earliest timepoint at which self-assembled hyperphosphorylated tau and heparin-induced WT tau appeared to have distinctive structures.

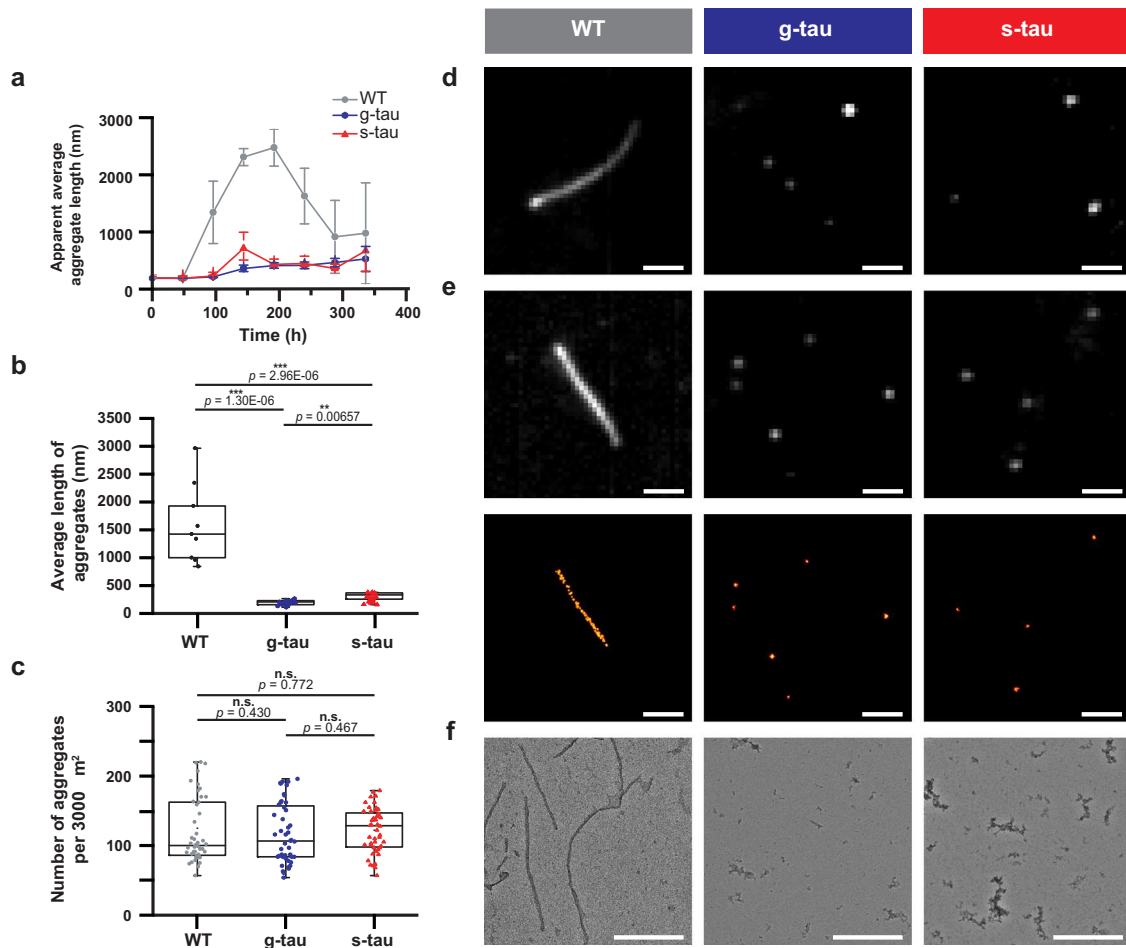


Fig. 2 Hyperphosphorylation enables WT tau to self-polymerize into small amorphous aggregates without external inducers. **a** The apparent average length of tau aggregates, monitored by fluorescence microscopy, was analyzed, and plotted as a function of time (data are presented as mean values \pm s.d. across three independent experiments for each tau species). **b** Summary plot based on our results from super-resolution microscopy indicated that at 96 h of incubation the average length of heparin-induced WT aggregates (1450 ± 700 nm) was significantly larger than both g-tau (190 ± 50 nm) and or s-tau (280 ± 90 nm) ($n = 9$ across three independent experiments for each tau species). **c** Summary plot based on our results from fluorescence microscopy indicated the number of aggregates was not significantly different among these three tau species ($n = 48$ across three independent experiments for each tau species). **d** Representative pFTAA diffraction-limited images of different tau species after 96 h of incubation: while WT tau under the induction of heparin grew into fibrillar aggregates, both g-tau and s-tau self-assembled into small, non-fibrillar aggregates which largely remained as diffraction-limited spots. Scale bar: 1.0 μm . **e** Representative ThX stacked and super-resolved images of different tau species after 96 h of incubation. Scale bar: 1.0 μm . **f** Morphological examination of all three tau species by TEM after 96 h of incubation. Scale bar: 500 nm. For **b** and **c**, boxplots represent median value and interquartile range (25–75% percentiles) excluding outliers. The P -values are based on unpaired two-sided Student's t -test: *** $p < 0.001$; * $p < 0.05$; n.s. non-significant. For **d–f**, images were representative across three independent experiments for each tau species. Source data are provided as a Source Data file.

Based on ThX-based fluorescence images, the average length for WT tau was 1450 ± 700 nm while g-tau and s-tau aggregates had average lengths of 190 ± 50 nm and 280 ± 90 nm, respectively (Fig. 2b). By comparison, the filament length of WT tau was significantly larger than those formed by g-tau and s-tau while the number of aggregates was comparable among different tau species at 96 h timepoint, further corroborating our pFTAA results above (Fig. 2c). The size distribution obtained from ThX fluorescence images further revealed morphological differences between WT tau and hyperphosphorylated tau: more than 25% of WT tau formed aggregates longer than 1000 nm, whereas no g-tau and only 1.2% of s-tau were over this size threshold. On the other hand, about 99% of g-tau and 89% of s-tau aggregates stayed below a length of 500 nm, while only 50% of WT tau aggregates were under that threshold (Supplementary Fig. 4d). Representative ThX images of tau aggregates are shown in Fig. 2e and Supplementary Fig. 4a–c.

As the integrated fluorescence intensity from probes such as pFTAA or ThX can be influenced by the structure of tau aggregates^{26,27}, samples of hyperphosphorylated tau aggregates were further investigated by transmission electron microscopy (TEM). TEM results showed that only non-fibrillar, amorphous aggregates were detected for both hyperphosphorylated species and abundant, relatively short fibrillar aggregates, for WT tau (Fig. 2f), supporting our previous observations. Together, these results showed that hyperphosphorylation was sufficient to induce tau aggregation.

To estimate the extent of aggregation at 96 h timepoint, we evaluated the bands from SDS-PAGE by densitometry, since high-order tau aggregates are SDS-stable and thereby unable to enter the gel^{28,29}. By running various concentrations of tau aggregates and the monomer, we ensured the selected concentrations were within the linear range of our densitometric detection. Then by comparing the band intensities between aggregates and

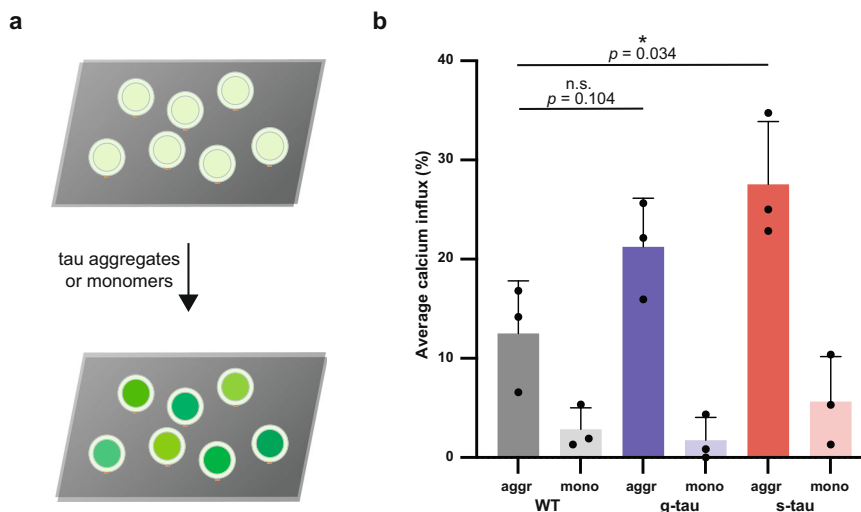


Fig. 3 Hyperphosphorylated tau amorphous aggregates disrupt membrane integrity more effectively than WT fibrillar aggregates. **a** The ability to disrupt membrane integrity, an important aspect that explains the toxicity of protein aggregates, was quantified by calcium influx caused by each tau species. The percentage of Ca^{2+} influx was normalized by the maximum Ca^{2+} influx induced by ionomycin. **b** Our results from the liposomal assay revealed that WT tau aggregates caused $12 \pm 2\%$ calcium influx, g-tau aggregates elicited $21 \pm 5\%$ calcium influx, and s-tau aggregates induced $28 \pm 6\%$ calcium influx. All of the monomeric controls caused less calcium influx than their corresponding aggregate samples. Hence, s-tau aggregates can better permeabilize synthetic lipid bilayer than WT aggregates (data are presented as mean values \pm s.d. of $n = 3$ for each tau species, the P -values are based on unpaired two-sided Student's t -test: $*p < 0.05$, n.s. non-significant). Source data are provided as a Source Data file.

monomer, our SDS-PAGE result demonstrated that about 2% of WT tau and 1% of g-tau and s-tau had formed SDS-stable aggregates (Supplementary Fig. 5a).

Hyperphosphorylated tau aggregates effectively disrupt lipid membrane. We next investigated whether such pronounced structural changes in tau aggregates might translate to a gain of toxic function for tau. To address this question, a high-throughput membrane destabilization assay was used to measure the ability of tau aggregates to disrupt lipid membrane integrity as a proxy of tau cytotoxicity³⁰. This approach allowed us to differentiate and quantify the membrane disruptive capability of different protein aggregates, including $\text{A}\beta^{31}$, α -synuclein³², tau³³, as well as those in human cerebrospinal fluid from AD patients³⁴ (Fig. 3a).

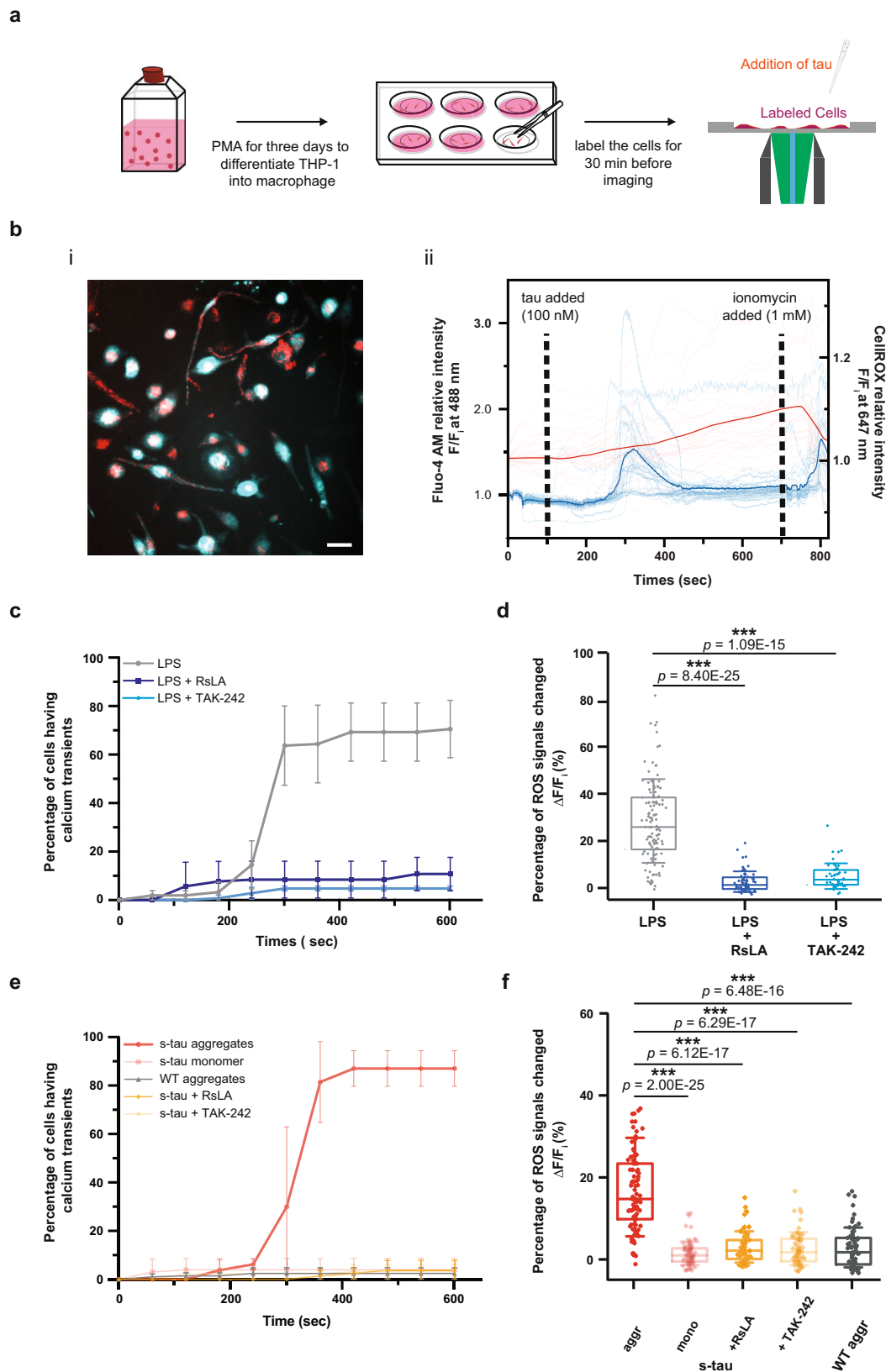
Heparin-induced WT tau aggregates and self-assembled hyperphosphorylated tau after 96 h of incubation along with respective monomer controls were applied at the same monomeric equivalent concentration (100 nM) to liposomal vesicles. The percentage of calcium influx was measured as an indication of membrane permeabilization capacity for different tau species. Our results showed s-tau aggregates induced $28 \pm 6\%$ calcium influx compared to ionomycin positive control, whereas WT tau aggregates caused $12 \pm 2\%$ calcium influx and g-tau aggregates elicited $21 \pm 5\%$ calcium influx in our liposomal assay (Fig. 3b). Therefore, s-tau aggregates were significantly more potent than both WT tau aggregates and s-tau monomer control ($6 \pm 5\%$ of calcium influx) at permeabilizing membrane vesicles. On the other hand, g-tau aggregates did not elicit any significant membrane disruption compared to WT aggregates. Such functional differences between g- and s-tau might be due to their differential phosphorylation patterns and conformations.

Hyperphosphorylated tau aggregates elicit inflammatory responses in human macrophages. In addition to intracellular hyperphosphorylated NFTs, neuroinflammation is also a prominent pathological feature of AD³⁵. Immune cells from different origins—including brain-resident macrophages as well as

bone-marrow-derived circulating monocytes—were recently observed to participate in the neurodegenerative process by secreting pro-inflammatory chemicals and cytokines which exert toxic effects on neurons³⁶. Hence, neuroinflammation was further hypothesized to be a key pathological cause that accelerated the disease progression. In order to investigate the interplay between tau pathology and the innate immune responses and gain a better understanding of tau toxicity induced by hyperphosphorylation, we devised a macrophage cell assay by detecting intracellular calcium transients and production of reactive oxygen species (ROS) as immediate-early readouts of macrophage activation³⁷.

In our assay, monocyte-derived macrophage cells THP-1 were first dual-labeled with Fluo-4 AM and CellROX DeepRed to simultaneously monitor the change of cytosolic calcium concentration and ROS level in real-time (Fig. 4a). To validate our assay, we treated our cells with lipopolysaccharides (LPS, 10 ng/mL), and we observed vigorous calcium transients and ROS production (Fig. 4c, d). To ensure that our results were not confounded by LPS contamination of the protein aggregate during the preparation of recombinant protein from bacterial cultures, the levels of LPS were quantified. (Supplementary Fig. 5b). The effective concentration of endotoxin in our tau samples when treating the cells was about 0.01–0.02 EU/mL, which was lower than our PBS buffer control.

To control for the variation in cell viability, signal traces were normalized to the basal intensity in each experiment, and ionomycin (1 μM) was perfused in the medium at the end of each trial as the positive control. Based on the results from our in vitro liposomal assay above (Fig. 3b), only s-tau aggregates taken at the 96 h timepoint were used and compared with WT tau fibrils in our subsequent investigation. Our data showed s-tau aggregates at 100 nM monomeric equivalent concentration caused strong characteristic peak-shaped calcium transients. As summarized in Fig. 4e, compared to WT aggregates which elicited calcium transients in $2.5 \pm 2\%$ of cells, self-assembled s-tau aggregates induced calcium transients in $85 \pm 10\%$ of the cells. The ROS level, on the other hand, gradually increased to $18 \pm 10\%$ upon the treatment of s-tau aggregates (Fig. 4b, Supplementary Fig. 6a). The application of WT tau aggregates,



however, did not induce any significant changes in the ROS level (Fig. 4c, d). A similar null observation was also found in the s-tau monomer condition (Fig. 4c, d). In particular, the s-tau monomer control consisted of an equivalent amount of the tau protein and corresponding kinases and phosphorylation reaction buffer that contained a nanomolar range of ATP. The macrophage can

respond to ATP in a concentration-dependent manner by activating purinergic receptors, providing a mechanism to perceive local cellular damage such as necrosis, which would release adenosine triphosphate into the extracellular domain. Therefore, the lack of response excluded the effect of purinergic receptors at the ATP concentration in our monomeric control,

Fig. 4 Hyperphosphorylated tau aggregates elicited calcium transient and stimulated ROS production in human macrophages in a TLR4-dependent manner. **a** A pictorial representation of the macrophage assay workflow. The cytosolic calcium and ROS level were simultaneously monitored as different tau aggregates were applied. **b** Representative image of dual-labeled macrophage (i) and calcium and ROS traces (ii) after the treatment of s-tau aggregates. Scale bar: 25.0 μm . **c, d** Summary plots of calcium transients (**c**) and ROX production (**d**) induced by LPS ($n = 123$). When treating the cells with RsLA ($n = 70$, $F_{(1,4)} = 40.78$) or TAK-242 ($n = 47$, $F_{(1,4)} = 84.62$), the LPS-induced calcium transients and ROS level elevation were significantly moderated. **e, f** Summary plots of calcium transients (**e**) and ROX production (**f**) induced by different tau species and treatment conditions. Compared to WT tau aggregates ($n = 63$), s-tau aggregates induced strong calcium transients and ROS production ($n = 83$, $F_{(1,4)} = 174.88$). Since s-tau monomer control did not elicit significant response ($n = 89$, $F_{(1,4)} = 110.14$), ATP and LPS contamination were controlled. The involvement of TLR4 was tested: by pre-treating the cells with RsLA ($n = 65$, $F_{(1,4)} = 184.60$) or TAK-242 ($n = 62$, $F_{(1,4)} = 170.11$), s-tau can no longer elicit significant response. For **c** and **e**, data are presented as mean values \pm s.d. of three independent experiments. The P -values are based on two-way mixed ANOVA: all $p < 0.001$ except the one between LPS and RsLA which is $p < 0.01$. For **d** and **f**, boxplots represent median value and interquartile range (25–75% percentiles) excluding outliers. The P -values are based on unpaired two-sided Student's t -test: *** $p < 0.001$. Source data are provided as a Source Data file.

ensuring the macrophage activation triggered by s-tau observed was due to the presence of amorphous aggregates.

To further test calcium transients/ROS production as early biomarkers of macrophage activation and, more importantly, to investigate the pro-inflammatory nature of these hyperphosphorylated tau aggregates, we performed enzyme-linked immunosorbent assay (ELISA) to measure the levels of pro-inflammatory cytokines triggered by different tau species in THP-1. To determine the optimal dosing condition, THP-1 cells were incubated with various monomeric equivalent concentrations of different tau aggregates and corresponding monomer samples for 24 h, and the level of TNF- α was then evaluated in the cell supernatant. As a positive control, various concentrations of LPS ranging from 10 pg/mL to 10 ng/mL were applied to elicit robust pro-inflammatory responses, resulting in the release of TNF- α in a dose-dependent manner as expected (Supplementary Fig. 7). Our results showed s-tau aggregates at 500 nM monomer equivalent concentration could induce 385 ± 20 pg/mL of TNF- α secretion. In comparison, the same concentration of WT aggregates and s-tau monomer only elicited 105 ± 40 pg/mL and 40 ± 8 pg/mL, respectively (Supplementary Fig. 7, Fig. 5). Hence, 500 nM monomeric equivalent concentration was chosen for the subsequent ELISA experiments.

We then conducted TNF- α , IL-1 β , and CCL5 ELISA assays to gain a more comprehensive understanding of the breadth and extent of pro-inflammatory responses mediated by tau aggregates on THP-1 cells. LPS and PBS served as the positive and negative controls, respectively, to verify the responsiveness of human macrophage cells under our treatment procedure. As demonstrated in Fig. 5a, s-tau aggregates induced significantly higher levels of all three pro-inflammatory cytokines than heparin-induced WT aggregates and its monomeric control. To verify whether s-tau aggregates had similar pathological effects on primary cells, we also applied different tau species onto primary macrophages derived from humans and our ELISA results again illustrated that hyperphosphorylated tau aggregates (s-tau) caused inflammatory responses more effectively than WT aggregates and its monomeric control (Fig. 5b).

To ensure such pro-inflammatory responses were directly caused by tau aggregates rather than as a secondary event induced by cell death or pyroptosis due to the presence of protein aggregates, we performed a cell viability assay and lactate dehydrogenase (LDH) assay on THP-1 cells when treated with different tau samples. Our results showed that tau aggregates and monomers of both species did not cause significant cellular death or compromise the membrane integrity compared to PBS buffer control under our 24 h treatment scheme (Supplementary Fig. 5c, d). A similar null observation has also been made by others³⁸ in which study LPS (up to 2 $\mu\text{g}/\text{mL}$) did not yield significant cytotoxicity to THP-1 cells. Together, these results corroborated our conclusion that s-tau aggregates can elicit inflammatory responses in human macrophages.

Hyperphosphorylated tau aggregates induce TLR4-dependent inflammatory responses. TLR4, a member of the Toll-like receptor family, has recently been demonstrated to play a crucial role in pro-inflammatory responses and ROS production triggered by α -synuclein and A β in immune cells³⁹. Our previous work also suggested that protofibrillar A β aggregates can induce temporary calcium transients in astrocytes and promote the production of inflammatory species via TLR4 signaling pathway⁴⁰. Therefore, to explore the underlying molecular mechanism of tau-induced pro-inflammatory responses, we utilized TLR4 inhibitors *Rhodobacter sphaeroides* lipid A (RsLA)^{41,42} and TAK-242^{43–45} to test its involvement in our macrophage assay. To first test the effectiveness of these TLR4 inhibitors, we demonstrated that pre-incubation of RsLA (5 $\mu\text{g}/\text{mL}$) or TAK-242 (1 μM) effectively mitigated the calcium transients, ROS elevation, and pro-inflammatory cytokine secretion in THP-1 cells induced by TLR4 agonist LPS (Fig. 4c, d, Supplementary Fig. 6b, c and Fig. 5a). These TLR4 inhibitors also effectively abated the production of TNF- α , IL-1 β , and CCL5 induced by LPS in primary human macrophages, further validating the efficacy of these TLR4 inhibitors (Fig. 5b). Subsequently, we incubated the culture with either RsLA or TAK-242 30 min prior to the application of different tau species. Our result showed both TLR4 inhibitors were able to significantly attenuate the calcium transients and ROS production in THP-1 macrophages (Fig. 4e, f, Supplementary Fig. 6b, c) and suppress the secretion of all three pro-inflammatory cytokines of interest (TNF- α , IL-1 β , and CCL5) in both THP-1 and primary human macrophage cells (Fig. 5). These results suggested that the observed proinflammation responses caused by tau aggregates were dependent upon the TLR4 receptor.

To further test the involvement of TLR4 we used reverse transcriptase quantitative PCR (RT-qPCR) to investigate the expression profile of inflammatory-related genes (*TNF- α* , *IL-6*, *IL-1 β* , *IFN β 1*, and *CCL5*) that are downstream of the canonical TLR4 signaling pathways. As shown in Fig. 6, our results demonstrated that both NF κ B target genes (*TNF- α* , *IL-6*, and *IL-1 β*) and IRF-3 target genes (*IFN β 1* and *CCL5*) were upregulated after treatment with s-tau aggregates but not after treatment with s-tau monomer, WT tau aggregates and monomer, or when s-tau aggregate treatment was inhibited by TLR4 inhibitors (RsLA and TAK-242). Positive and negative controls were LPS and PBS, respectively, and the data were normalized to the mean values of PBS gene expression for each gene of interest. More specifically, at 3 h, *TNF- α* , *IL-6*, *IL-1 β* , and *IFN β 1* were upregulated after s-tau aggregate treatment. At 24 h, all five target genes were upregulated following s-tau aggregate treatment, while *IL-1 β* and *IFN β 1* responses of THP-1 cells to LPS has no statistical difference compared to the PBS control. This suggests s-tau aggregates may have a prolonged effect on THP-1 cells, upregulating the expression of these inflammatory genes. The

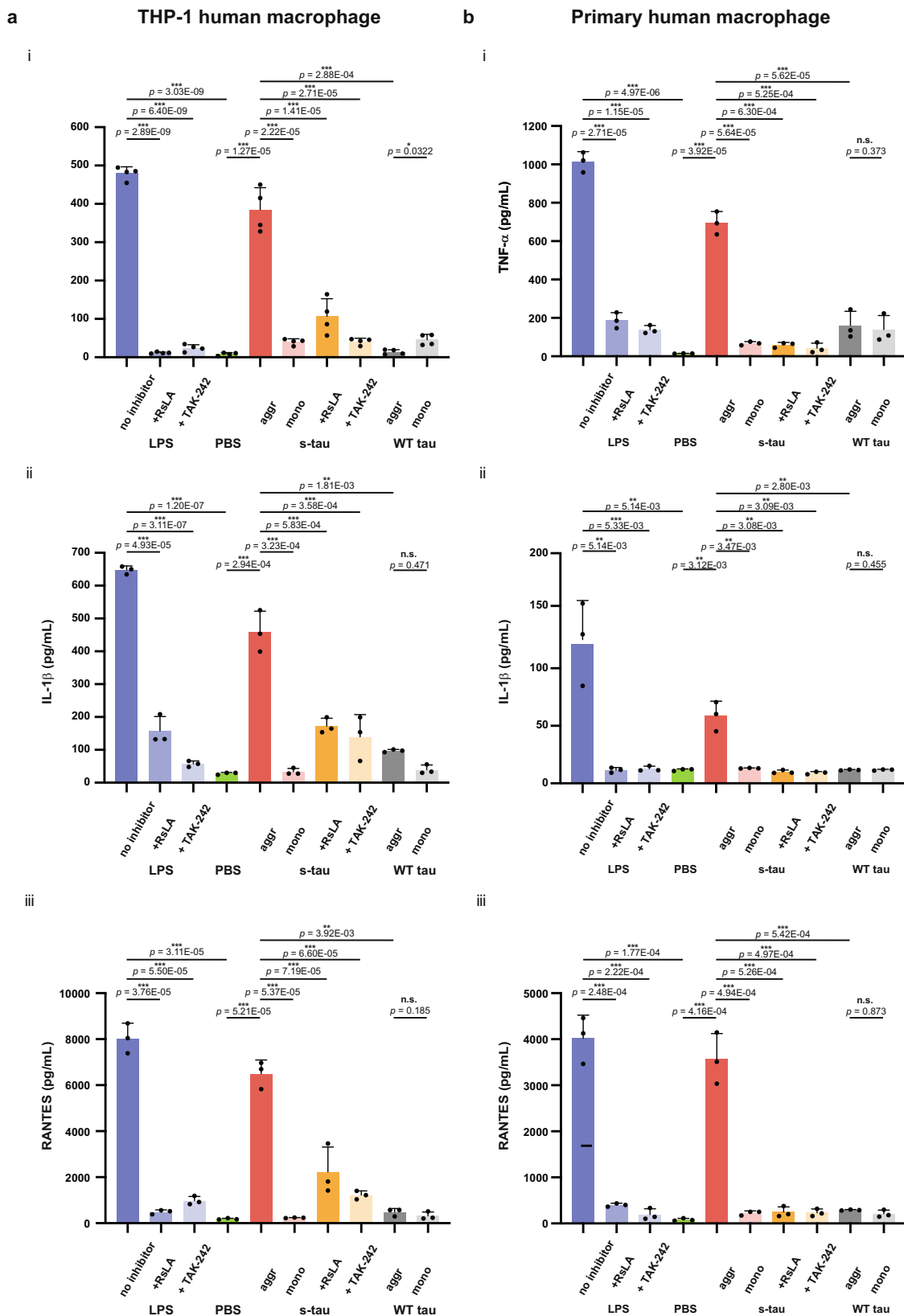
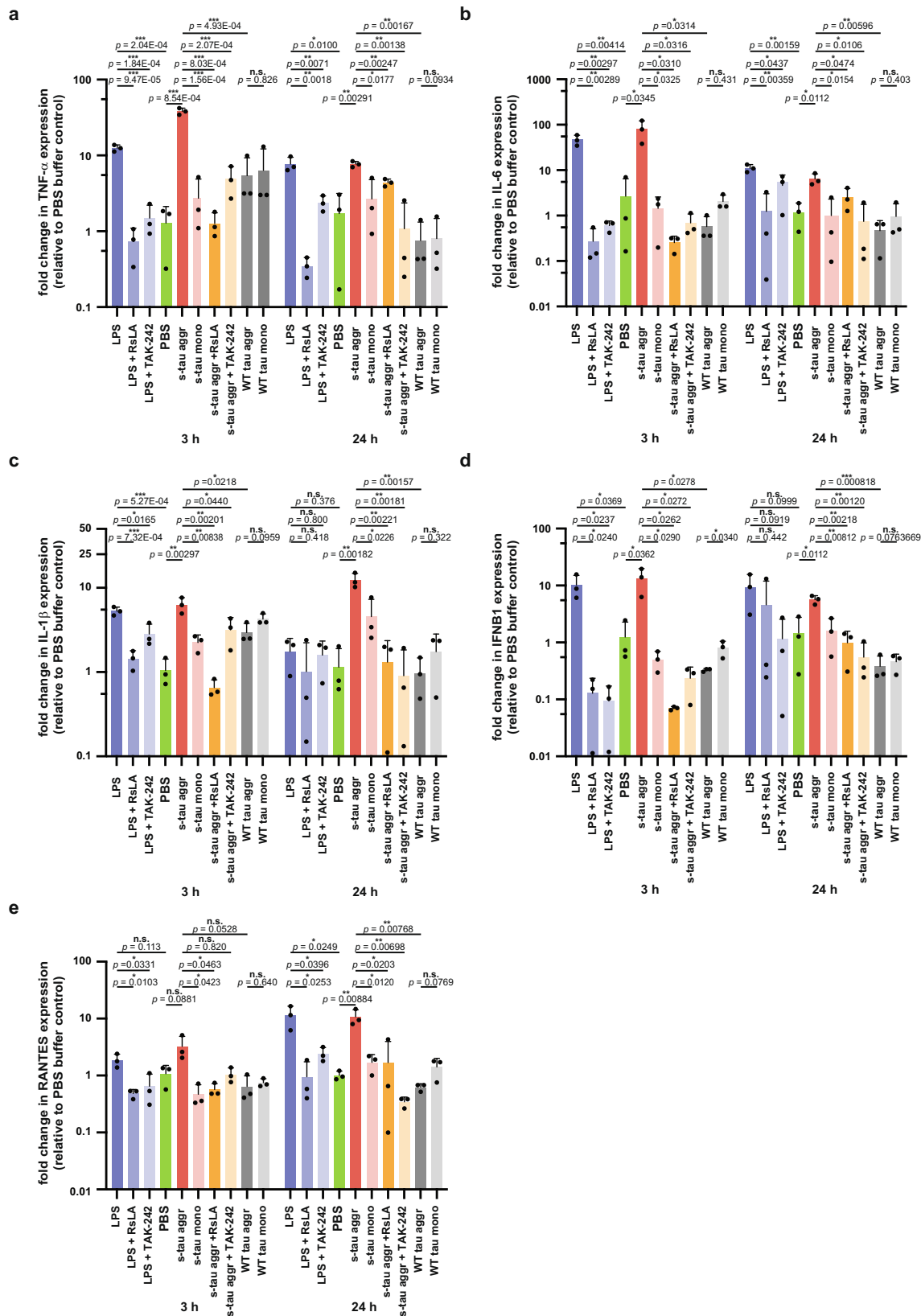


Fig. 5 Hyperphosphorylated tau aggregates induced significantly higher levels of all three pro-inflammatory cytokines than heparin-induced WT aggregates. (i) TNF-α, (ii) IL-1β, and (iii) CCL5 ELISA assays were conducted on both **a** THP-1 human macrophage cells and **b** primary human macrophage cells to determine the pro-inflammatory responses mediated treatment by LPS, s-tau monomer or aggregates or heparin-induced WT aggregates or its monomeric control with or without the TLR4 antagonists RsLA or Tak-242. LPS and PBS served as the positive and negative controls. The *P*-values are based on unpaired two-sided Student's *t*-test: ***p* < 0.01, ****p* < 0.001, n.s. non-significant. Data are presented as mean values ± s.d. of three independent experiments except for **a**-(i) which had four independent experiments. Source data are provided as a Source Data file.



only occasion where there was no significant difference between s-tau aggregates and its monomeric control/inhibition conditions was the *CCL5* response at 3 h, but there was also no significant difference observed between LPS and PBS controls, thus suggesting that *CCL5* gene expression was not activated during the 3 h timeframe. Nonetheless, *CCL5* gene expression levels were

elevated at the 24 h timepoint for both LPS and s-tau aggregate conditions.

The effectiveness of TLR4 inhibitors was demonstrated for each gene of interest: both antagonists RsLA and TAK-242 were able to block the action of LPS and reduce the gene expression of pro-inflammatory cytokines effectively and in most cases (37 out

Fig. 6 The expression of inflammatory-related genes *TNF- α* , *IL-6*, *IL-1 β* , *IFN β 1*, and *CCL5* were upregulated by hyperphosphorylated tau aggregates in THP-1 human macrophage and can be attenuated by TLR4 inhibitors. RT-qPCR measurements of the expression profile of inflammatory-related genes **a** *TNF- α* , **b** *IL-6*, **c** *IL-1 β* , **d** *IFN β 1*, **e** *CCL5* after 3 h and 24 h treatment by LPS, s-tau monomer or aggregates or heparin-induced WT aggregates or its monomeric control with or without the TLR4 antagonists RsLA or TAK-242. Positive and negative controls were LPS and PBS, respectively, and the data were normalized to the mean values of PBS gene expression for each gene of interest. The *P*-values are based on unpaired two-sided Student's *t*-test: **p* < 0.05, ***p* < 0.01, ****p* < 0.001, n.s. non-significant. Data are presented as mean values \pm s.d. of three independent experiments. Source data are provided as a Source Data file.

of 40 cases) to the basal levels. The only occasions where there was no significant difference between LPS and its inhibited conditions were *IL-1 β* and *IFN β 1* response at 24 h, but those were when no significant difference between LPS and PBS control was observed. This suggests that *IL-1 β* and *IFN β 1* response may have had passed their respective maximum response at 24 h, as LPS and its inhibited conditions had significant statistical differences for both *IL-1 β* and *IFN β 1* response at 3 h. Thus, our transcriptomic results indicated that not only s-tau aggregates could trigger canonical TLR4 signaling pathways as both sets of NF κ B target genes (*TNF- α* , *IL-6*, and *IL-1 β*) and IRF-3 target genes (*IFN β 1*, *CCL5*) were upregulated but also TLR4 inhibitors could effectively mitigate the elevated pro-inflammatory gene expressions mediated by hyperphosphorylated tau aggregates in human macrophages.

Discussion

Hyperphosphorylated tau self-assembled to unstructured and amorphous aggregates. Since monomeric tau shows little intrinsic tendency for aggregation *in vitro*³, external inducers such as heparin and other polyanionic molecules have commonly been used to induce aggregation *in vitro*^{46–48}. However, recent technological breakthroughs and developments of more sensitive biochemical assays suggest that heparin-induced tau and AD-derived tau have distinct conformations, properties, and bioactivities^{15,16}. For instance, as illustrated in Fig. 1a, heparin can neutralize the positively charged amino acid sequences in microtubule-binding domains, thereby stabilizing R2 and R3 to form the dimeric core of heparin-induced aggregates¹⁵. In comparison, AD-derived tau aggregates are found to rather have R3 and R4 enclosing themselves to form the filamentous core^{15,16}. Since these observations call the use of external inducers into question, more efforts have been focused on the impact of tau phosphorylation on its susceptibility to aggregation. At the molecular level, when monomeric tau is unmodified, the acidic N- and C-termini, as indicated by fluorescence resonance energy transfer and electron paramagnetic resonance experiments, fold over the vicinity of the microtubule-binding repeat domain, resulting in a paperclip conformation and thereby effectively preventing tau–tau intermolecular interaction⁴⁹. Phosphorylation events, on the other hand, can cause an opening of such paperclip conformation⁵⁰ and simultaneously stabilize α -helical structures, which is associated with the formation of tau aggregates⁵¹. Moreover, phosphorylation has been shown to affect not only the electrostatic properties⁴⁶, but also local structures⁵² and the global fold of tau⁵³. For instance, pseudophosphorylations (replacement of Ser and Thr residues by Glu residues) that reproduce AD-specific epitopes including AT8 (pSer²⁰² and pThr²⁰⁵), AT100 (pThr²¹² and pSer²¹⁴), and PHF-1 (pSer³⁹⁶ and pSer⁴⁰⁴) alone were able to induce tau monomer into the AD-specific conformation recognized by the conformational antibody MC-1⁵³.

Here we have shown that sequential phosphorylation by PKA/GSK-3 β or PKA/SAPK4 yielded hyperphosphorylated forms of tau with AD-specific epitopes that could self-assemble into small, amorphous aggregates. Similar to our observation, previous work showed that hyperphosphorylated tau (2N4R isoform) from Sf9 cells, which contains up to 20 phosphorylation sites on average

and can oligomerize spontaneously without external inducer¹⁹. Our observations are also consistent with the current understanding⁵⁰ that hyperphosphorylation can induce conformational changes at the monomeric level, as suggested by our SDS-PAGE results (Fig. 1b). According to a recent study⁵⁴, such differences in electrophoretic mobility are due not only to the different levels of phosphate group incorporation but more importantly to the different levels of SDS-resistant conformational changes induced by phosphorylation. Such structural reorganization of the molecular tau ultimately renders itself prone to aggregation, and more importantly, manifests as structural variations at the polymeric level, as evidenced by our morphological characterization of those different tau species (Fig. 2e–f, Supplementary Fig. 3b). Furthermore, a recent structural stimulation study shows the free-energy landscapes display two channels of tau aggregation⁵⁵, with one leading to more ordered fibrils and the other to amorphous phases. Phosphorylation is shown to both thermodynamically and kinetically facilitate the amorphous aggregate channel, therefore supporting our observation that both hyperphosphorylated tau species polymerize into non-fibrillar structures. More importantly, a previous study identifies the formation of non-fibrillar tau aggregates—much similar to our observation of hyperphosphorylated tau aggregates—as an early sign of brain aging and AD, further bolstering the pathological relevance of our hyperphosphorylated tau synthesized *in vitro*⁵⁶.

Hyperphosphorylated tau aggregates trigger calcium influx of liposome assay suggesting toxicity via disruption of the lipid membrane.

As mounting evidence suggests that mature filamentous deposits are not toxic, several studies begin to hint that non-fibrillar tau aggregates, an intermediate entity along the polymerization pathway, are more likely to be responsible for disease onset and progression⁵⁷. In particular, hyperphosphorylated pro-fibrillar tau has been implicated in memory deficits, neuronal loss, nucleocytoplasmic trafficking disruption, tau propagation, and seeding both *in vitro* and *in vivo*^{58,59}. Our membrane permeabilization liposome assay results are consistent with these previous studies demonstrating that smaller hyperphosphorylated tau aggregates are more efficient (with s-tau more efficient than g-tau) than heparin-induced mature filaments in disrupting lipid membranes. Several mechanistic frameworks have been proposed, hypothesizing that non-fibrillar tau structures might disrupt membrane integrity either by non-specific binding of amyloid oligomers to membrane surface⁶⁰ or forming transmembrane oligomeric porelike structures⁶¹, or a combination of both. Previous studies have also indicated that such pore formation ability might be universally shared by other amyloidogenic proteins, including A β , α -synuclein, and prion-derived peptides besides tau, providing a more general mechanism that underlies the deleterious effects of all amyloid oligomers on lipid membrane and cell viability^{62–64}.

Hyperphosphorylated tau oligomers trigger elevated calcium signal and ROS production, elicit inflammation via TLR4 receptors in human macrophages. Although the spatial

correlation between neuroinflammation and neurofibrillary tangle formation has been found in clinical data^{65,66}, the causal relationship and mechanisms remain elusive. The present study showed that hyperphosphorylated tau aggregates could trigger TLR4-dependent pro-inflammatory reactions in human macrophages (both THP-1 cell line and primary human cells). We observed that most of the macrophages were able to remove the excess calcium triggered by hyperphosphorylated tau aggregates and recover to the basal level subsequently. This suggests that any membrane disruption or pore formation caused by the aggregates must have been transient, further supported by our results from LDH assay. Despite its transient nature, however, such calcium dysregulation has been shown to act as a secondary messenger and be able to potentiate TLR4-mediated response both in human macrophages and *in vivo*⁶⁷. Previous studies have also demonstrated that TLR4 signaling in macrophages can enhance NADPH oxidase 2 (NOX2) activity which in turn promotes the production of ROS^{68,69} and stimulates the expression of pro-inflammatory cytokines such as IL-1 β , IL-6, and CCL5⁷⁰. Interestingly, calcium influx is also required for the activation of NOX2⁷¹. Hence, these earlier studies provide a potential mechanistic connection between calcium transient/ROS production of our immediate readouts and TLR4 activation as quantified by the cytokine expression and secretion. Moreover, tau aggregate-induced lipid membrane destabilizations as measured by the membrane permeabilization assay could also contribute to the calcium dysregulation observed in neurons and glial cells of AD brain⁷² and hence be an additional mechanism of toxicity in the cellular environment. Our results do not necessarily preclude the possibility that various mechanisms work synergistically to exert potential cellular damage. In future work it would be of interest to determine if human neurons and astrocytes also respond to tau aggregates and if the response is mediated by TLR4. Such studies will help determine if our observations are confined to only myeloid cells or would it be applicable to other cell types in the brain. In summary, our current work provides a potential mechanistic insight linking hyperphosphorylation-driven tau aggregation with neuroinflammation and neurodegeneration. These hyperphosphorylated tau aggregates are shown to be cytotoxic by diverse mechanisms, including destabilization of lipid membranes and TLR4-dependent macrophage inflammation. These mechanisms could contribute to the disruption of calcium homeostasis, induction of oxidative stress, and release of pro-inflammatory cytokines observed in tauopathies. It therefore becomes important to now establish if cytotoxic hyperphosphorylated tau aggregates, similar to those characterized in this work, are detected in tauopathies. This work may prove important for developing therapeutics for AD and other tauopathies, by either preventing the formation of hyperphosphorylated tau aggregates or reducing their neurotoxic effects.

Methods

Protein expression and purification. Human 0N4R tau was expressed as previously described²⁶. In brief, pRK172 plasmids (gift from Michel Goedert) expressing full-length tau (isoform 0N4R) wild-type were transformed in BL21(DE3) cells. Transformed *E. coli* BL21 cells were grown in Luria Broth media containing 100 μ g/mL ampicillin at 37 °C under shaking conditions until OD₆₀₀ of 0.6 was reached, and tau expression was induced by the addition of 1 mM IPTG for 4 h. Cells were then harvested by centrifugation at 4000 \times g (JA-20 rotor, Beckman Coulter) for 30 min at 4 °C, resuspended in lysis buffer (50 mM MES [pH 6.0] with 2.5 mM TCEP, 1 mM AEBSF), and lysed using a probe sonicator (1 \times 1.5 min, 5 s on, 10 s off, 40% amplitude). The cell debris was subsequently removed by centrifugation for 30 min at 18,000 \times g at 4 °C. RNase and DNase were added before the supernatant was filtered and loaded onto a Resource S ion exchange column (GE Healthcare). Protein was eluted over a linear NaCl gradient from 0 to 500 mM, and fractions containing tau protein (determined by SDS-PAGE) were pooled and precipitated with 20% ammonium sulfate at 4 °C for 1 h. The protein was pelleted at 15,000 \times g for 20 min at 4 °C. After the pellet was resuspended in SSPE buffer with 2.5 mM TECP and 0.1 mM PMSE, the protein was further purified using size-exclusion

chromatography with a Superdex 200 Increase 10/300 size-exclusion column (GE Healthcare Life Sciences). The fractions were collected and analyzed by SDS-PAGE, and those having the purest bands corresponding to tau were pooled. The protein concentration was then determined by measuring its absorbance at 280 nm on a Nanodrop 2000 using an extinction coefficient of 7450 M⁻¹ cm⁻¹ and by BCA assay (Thermo Fisher) following the manufacture protocol. Aliquots were flash-frozen in liquid nitrogen and stored at -80 °C.

In vitro phosphorylation of recombinant tau. Full-length recombinant tau (0N4R) was sequentially phosphorylated as described previously¹⁰. Monomeric tau was incubated at a final concentration of 50 μ M in 25 mM Tris-HCl buffer [pH 7.4] (Sigma-Aldrich) with 0.1 mM ethylene glycol tetraacetic acid (EGTA, Sigma-Aldrich), 2 mM AEBSF protease inhibitor (Sigma-Aldrich), 10 mM magnesium acetate, 2 mM ATP (Sigma-Aldrich). 0.018 U of the catalytic subunits of cAMP-dependent protein kinase A (PKA, BioVision) per nmol of tau was added and the reaction was incubated at 30 °C. After 24 h, the second kinase (GSK-3 β or SAPK4 from Abcam, 0.018 U per nmol of tau) was added and the reaction proceeded for an additional 24 h. One unit of the kinase is defined as the amount of enzyme that will transfer one nmol phosphate from ATP to the corresponding substrate per min at pH 7.4 at 30 °C, tested and reported by individual manufacturers. Phosphorylation was confirmed in sodium dodecyl sulfate-polyacrylamide gel electrophoresis (SDS-PAGE). Residual LPS is also known as endotoxin derived from the outer cell membrane of gram-negative bacteria can elicit TLR4 signaling. To ensure that our results were not confounded by the residual LPS in our tau proteins purified from bacterial cultures, LPS contamination was effectively eliminated after phosphorylation reactions by using high-capacity endotoxin removal spin columns (Thermo Fisher). This column has been shown to effectively remove contaminating endotoxins (i.e., residual lipopolysaccharides) in protein samples purified from bacterial cultures without introducing other bioactive species. Our endotoxin quantification results subsequently indicated that at 2 μ M WT tau contained 0.47 \pm 0.05 EU/mL, g-tau, 0.37 \pm 0.13 EU/mL, and s-tau 0.43 \pm 0.25 EU/mL with PBS buffer control 0.13 \pm 0.03 EU/mL. After endotoxin removal, the protein concentration was then determined by Nanodrop and by BCA assay as mentioned above. Aliquots at 40 μ M were flash-frozen in liquid nitrogen and stored at -80 °C.

Liquid chromatography-tandem mass spectrometry (LC-MS/MS). Detailed phosphorylation mapping was obtained from LC-MS/MS analysis conducted by Cambridge Center for Proteomics, and the measurements were repeated across three independent experiments for both g-tau and s-tau proteins to ensure reproducibility. Phosphorylation sites observed across three repeats were highlighted in Supplementary Table 1 for each species. Variations due to the behavior of the tryptic peptides in the instrument were minimal.

Protein solutions were reduced (DTT), alkylated (iodoacetamide), and enzymatically digested in 50 mM ammonium bicarbonate [pH 8] with trypsin overnight at 37 °C. After digestion, the supernatant was pipetted into a sample vial and loaded onto an autosampler for automated LC-MS/MS analysis.

All LC-MS/MS experiments were performed using a Dionex Ultimate 3000 RSLC nanoUPLC (Thermo Fisher Scientific Inc, Waltham, MA, USA) system and a QExactive Orbitrap mass spectrometer (Thermo Fisher Scientific Inc, Waltham, MA, USA). Separation of peptides was performed by reverse-phase chromatography at a flow rate of 300 nL/min and a Thermo Scientific reverse-phase nano Easy-spray column (Thermo Scientific PepMap C18, 2 μ m particle size, 100 A pore size, 75 μ m i.d. \times 50 cm length). Peptides were loaded onto a pre-column (Thermo Scientific PepMap 100 C18, 5 μ m particle size, 100 A pore size, 300 μ m i.d. \times 5 mm length) from the Ultimate 3000 autosampler with 0.1% formic acid for 3 min at a flow rate of 10 μ L/min. After this period, the column valve was switched to allow the elution of peptides from the pre-column onto the analytical column. Solvent A was water + 0.1% formic acid and solvent B was 80% acetonitrile, 20% water + 0.1% formic acid. The linear gradient employed was 2–40% B in 30 min.

The LC eluant was sprayed into the mass spectrometer by means of an Easy-Spray source (Thermo Fisher Scientific Inc.). All *m/z* values of eluting ions were measured in an Orbitrap mass analyzer, set at a resolution of 35,000, and was scanned between *m/z* 380 and 1500. Data-dependent scans (Top 20) were employed to automatically isolate and generate fragment ions by higher-energy collisional dissociation (HCD, NCE:25%) in the HCD collision cell and measurement of the resulting fragment ions was performed in the orbitrap analyzer, set at a resolution of 17,500. Singly charged ions and ions with unassigned charge states were excluded from being selected for MS/MS and a dynamic exclusion window of 20 s was employed.

Post-run, all MS/MS data were converted to mgf files, and the files were then submitted to the Mascot search algorithm (Matrix Science, London UK) and searched against the UniProt Human database (93,609 sequences; 37,041,084 residues) and a common contaminant sequence containing non-specific proteins such as keratins and trypsin (125 sequences; 41,129 residues). Variable modifications of oxidation (M), deamidation (NQ), and phosphorylation (S,T,Y) were applied as well as fixed modification of carbamidomethyl (C). The peptide and fragment mass tolerances were set to 20 ppm and 0.1 Da. A significance threshold value of *p* < 0.05 and a peptide cutoff score of 20 were also applied.

High-resolution native mass spectrometry. The protein samples were stored in phosphorylation reaction buffer at -80°C before being buffer exchanged into 200 mM ammonium acetate [pH 6.8] by multiple rounds of concentration and dilution using the Pierce™ protein concentrators (Thermo Fisher). Finally, the samples were diluted to a monomer equivalent concentration of 1 mM before the measurements. The data was collected using in-house gold-plated capillaries on a Q Exactive™ mass spectrometer in positive ion mode with a source temperature of 70°C and a capillary voltage of 1.2 kV. In-source trapping was set to -120 V to help with the dissociation of small ion adducts. Ion transfer optics and voltage gradient throughout the instruments were optimized for ideal transmission. Spectra were acquired with 10 microscans to increase the signal-to-noise ratio with transient times of 64 ms, corresponding to the resolution of 17,500 at $m/z = 200$, and AGC target of 1.0×10^6 . The noise threshold parameter was set to 3 and the scan ranges used were 346–14,147 and 1000–10,000 m/z for g- and s-tau, respectively.

The measurements were repeated across three independent experiments for both g-tau and s-tau proteins to ensure reproducibility. Mass deconvolution was achieved using the UniDec software as previously described⁷³. Before deconvolution, the data were pre-processed by setting the curved subtraction to ten, which resulted in significantly more baseline-resolved peaks. Further, the fitted peak FWHM was optimized for each spectrum (generally within 0.5 and 1 Th). All other UniDec parameters were left at their default values. The deconvolution was performed in the mass range of 40–44 kDa. The estimation of the degree of phosphorylation was complicated by small ion adducts present in the deconvoluted mass spectra, which extend the range of masses associated with any particular phosphorylation state, as well as possibly cause some mass overlap. To find the optimal distribution of phosphate groups that explained the deconvoluted mass spectrum, as well as the uncertainty of this assignment, a Markov Chain Monte Carlo assignment method was employed. This was done using the emcee python package as previously described⁷⁴ ([1202.3665] emcee: The MCMC Hammer (arxiv.org)). The masses of one phosphate group and one small ion adduct were set to 80 and 23 Da, respectively. The mass of the small ion adduct was chosen so that it is within the integration window of 10 Da. Two most probable adducts were the ammonium and sodium cations. The priors used for fitting were the number of the phosphate groups and small ion adducts which were kept below 50, independently. The limits were chosen for time efficiency and to keep make sure the combined mass of the phosphate groups was not likely to go above the 44 kDa limit of the deconvoluted mass spectrum. Six chains were run for 3000 steps each: the first 800 steps were discarded as a burn-in, and the rest was thinned by a factor of 100 to reduce any autocorrelation. The thinned chains were then used to estimate the extent of phosphorylation by summing the area under the curve (to account for the inherent broadness of the deconvoluted mass peaks, as well as the fact that there are two possible small adduct ions) in corresponding mass regions using a mass window of 10 Da.

Standard tau aggregation procedure. Unphosphorylated and phosphorylated tau protein was used. Monomers were incubated at $2\ \mu\text{M}$ in PBS buffer (137 mM NaCl, 3 mM KCl, 8 mM Na_2HPO_4 , 1.5 mM KH_2PO_4 , pH 7.3) with 0.01% NaN_3 at 37°C . Heparin (Fisher Scientific) was added at $10\ \mu\text{g}/\text{mL}$ (about $2\ \mu\text{M}$) to induce aggregation. Self-assembly reactions were rather carried out in the absence of heparin.

SDS-PAGE. Protein samples along with molecular weight marker (SeeBlue™ Plus 2 Pre-Stained Standard) were loaded into the wells of 4–12% gradient NuPAGE Bis-Tris precast gels or 10% self-cast SDS-PAGE gels and run in MOPS-based SDS running buffer for 55 min at 200 V. The proteins were visualized by Coomassie stain.

Single-molecule TIRF microscopy

Instrumentation. The samples were imaged using a home-built total internal reflection fluorescence (TIRF) microscope. The total internal reflection mode limits the fluorescence field to 200 nm from the sample slide. For pFTAA imaging, a 488 nm diode laser (TOPTICA iBeam smart, 175 mW) was aligned and directed to the optical axis at the edge of a TIRF objective (Apo TIRF 100 \times NA1.49 oil objective, Nikon) mounted on an inverted microscope (Eclipse Ti-S, Nikon). The emitted fluorescence was collected by the same objective, separated from the returning TIRF beam by a dichroic mirror (Di01-R405/488/532/635-25 \times 36, Semrock), and passed through an emission filter (FF552-Di02-25 \times 36, Semrock). For ThX super-res imaging, the same 488 nm laser was used, but a different set of emission filters (LP02-568RS-25, FF01-587/35-25, Semrock) was utilized to acquire the optimal super-resolution images. The control of the hardware was enabled by custom-written scripts for MicroManager (NIH). The signal was recorded on an Evolve Delta 512 EMCCD camera (Photometrics) Each pixel was 107.2 nm in length such that the dimensions of a single image taken were 54.8 by $54.8\ \mu\text{m}^2$.

The switch from TIRF to widefield mode was accomplished by altering the beam offset perpendicular to the optical axis. To simultaneously track calcium transients and ROS level changes, a 488 nm diode laser (TOPTICA iBeam smart, 175 mW) and a 638 nm laser (Cobolt 06-MLD, 180 mW) were aligned and directed to the optical axis of a $\times 20$ objective (Nikon) mounted on an inverted microscope (Eclipse Ti-S, Nikon). The emitted fluorescence was collected by the same

objective, separated from the returning beam by a dichroic mirror (Di01-R405/488/532/635-25 \times 36, Semrock), and passed through an emission filter (FF580-FDi01-25 \times 36, Semrock for 488 nm excitation and BLP01-635R-25, Semrock for 638 nm excitation). Each channel was recorded alternately at a 1 s temporal resolution, and each frame had an exposure time of 100 ms.

Sample preparation for TIRF imaging. Prior to imaging, Borosilicate glass coverslips ($\varnothing 50\ \text{mm}$, VWR International) were cleaned using an argon plasma cleaner (PDC-002, Harrick Plasma) for 1 h to remove any autofluorescent residue. Multiwell slide chambers (CultureWell chambered cover glass 50 well, Grace Bio-Laboratories) were affixed onto the cleaned coverslips. To stain the aggregates for diffraction-limited imaging, samples were diluted in PBS buffer containing 30 nM pFTAA (gift from Michel Goedert) to a final monomer equivalent concentration of 67 nM tau. Then $15\ \mu\text{L}$ of each sample was applied to each well on the coverslip for 15 min before imaging. Images were recorded for 100 frames, each with an exposure time of 50 ms. The image stacks were averaged using ImageJ (NIH) software for further analysis.

To super-resolve the structures of tau aggregates, especially the early aggregate species whose lengths are under 100–200 nm, ThX, a synthetic variant of well-documented Thioflavin T (ThT), was used. After the coverslips being plasma cleaned, the surface was washed with PBS buffer and coated with poly-L-lysine (PLL, 1 mg/mL) for 15 min to reduce non-specific binding events. After gently removing the excess PLL coating, gold nanoparticles with 200 nm diameter size were applied onto the surface for 5 min, serving as fiducial markers to correct thermal drift during imaging. The surface was then incubated with protein aggregates for 20 min. Subsequently, samples were imaged in the presence of $1\ \mu\text{M}$ ThX dye dissolved in PBS buffer. Note that one or two washes with PBS between each surface treatment procedure, i.e., PLL coating, gold nanoparticles application, and protein incubation, are recommended to obtain the optimal imaging condition. Images were recorded for 10,000 frames, each with an exposure time of 20 ms.

Diffraction-limited image analysis. For each sample, 16 fields of view were typically recorded. Individual image data were averaged overall the framed by ImageJ (NIH) software and then analyzed with a custom-written MATLAB script as previously described⁷⁵ (R2018b, MathWorks) to count the total number of fibrils and aggregates, the size, and fluorescence intensity. Since both the concentrations of protein and pFTAA were controlled in each experiment, the number and the intensity of fibrils and aggregates can be directly compared across different experiments. For particle identification, images were bandpass filtered to remove the modulated background and camera noise. To identify particle boundaries, the foreground was then blurred using a 2D-Gaussian filter with a threshold applied based on the pixel intensity with a criterion of 2% intensity above the background (median value of the whole image). The length of aggregates was measured by thinning boundaries of individual particles and then calculated with an image pixel size of 107.2 nm for our TIRF setup. To eliminate the background effect in our intensity calculation, signal-to-background ratio (SBR) was introduced to correct the intensity of pixels, where the SBR is defined as:

$$\text{SBR} = \frac{\text{Intensity above the background}}{\text{Background}} \quad (1)$$

For a given particle, its corrected intensity is the sum of each pixel's SBR values within its boundary.

Super-resolution image analysis. The raw image stacks were passed through a custom-written Python script as previously described⁷⁶. We defined a localization as 2D-Gaussian fit of a fluorescence signal in one image frame. The localizations were determined using the 'Peak Fit' plugin within Fiji (ImageJ)/GDSC Single Molecule Light Microscopy package (http://www.sussex.ac.uk/gdsc/intranet/microscopy/UserSupport/AnalysisProtocol/imagej/gdsc_plugins/). The adjustable parameters 'signal strength' and 'precision' were set to 3 and 30 nm, respectively. These values referred to the properties of the 2D-Gaussian fit and were set by visual inspection of the rendered localization images. The fiducial markers of the images were pinpointed as localizations that lasted more than 500 frames at the same location. Fiducial signals were first removed from the localization file from the subsequent analysis.

Then image stacks went through temporal grouping, which sorted localizations into bursts. Temporal grouping was achieved by (1) using DBSCAN clustering function (scikit-learn) on the spatial domain (XY coordinates) of the localizations, with a detection radius (epsilon) of 15 nm and minimum point threshold of 3. (2) using DBSCAN again on the temporal domain (frame number) with an epsilon of 21 ms and a minimal frame number of 2 to recognize individual bursts and remove single frame localizations. The rationale of the settings here is that many non-specific binding events are characterized by short transient signals that last less than the exposure time of the camera. Finally, the burst information was processed through a final DBSCAN cluster analysis on the spatial domain using an epsilon of 200 nm and a minimal burst number of 20 to group the bursts into clusters, which were interpreted as detections of individual super-resolved protein aggregates.

For each cluster analyzed, the number of bursts ranged from 34 to 3356. Subsequently, we structurally characterized the sizes of clusters by (1) scaling the spatial domain by eight times and rounding the coordinates to integers; (2) closing

the morphological space between bursts using the scikit-image ‘closing’ function; (3) skeletonizing the closed shape to a width of a single pixel using the scikit-image ‘skeletonize_3d’ function; (4) calculating the lengths by traversing the skeleton and recording the 8-connectivity distances. Finally, the clusters were loaded into the ‘Results Manager’ plugin in Fiji/GDSC SMLM and rendered into super-resolution images with each cluster labeled and characterized.

Fourier ring correlation analysis. The resolution was determined by plotting a Fourier ring correlation curve with the FIRE plugin⁷⁷ for ImageJ/Fiji and the spatial frequency was determined at which the curve drops below 1/7.

In vitro membrane permeabilization assay. Liposomal penetration assay was conducted as described previously³⁰. To prepare the lipid vesicles, 16:0–18:1 PC (10 mg/mL) and 18:1–12:0 Biotin PC (1 mg/mL) (Avanti Lipids) were mixed with 100:1 ratio. The lipid mixture was then hydrated in HEPES buffer (50 mM, pH 6.5) with 100 μ M Cal-520 (Strattech). Five freeze-and-thaw cycles were performed using a water bath and dry ice to acquire the unilamellarity. The lipid solution was extruded at least 10 times through a membrane with a size cutoff of 200 nm, and the size of the vesicles was measured using a Zetasizer (Zetasizer Nano ZSP). Free dyes were removed using size-exclusion chromatography.

To prepare the surface, glass coverslips (VWR International, product number 63 1-0122) were cleaned by sonicating in 2% (v/v) Hellmanex III (Hellma GmbH & Co. KG) in Milli-Q water for 10 min followed by sonicating twice in Milli-Q water and methanol for 10 min, respectively. Then the coverslips were dried under a stream of nitrogen gas, and plasma-etched using an argon plasma cleaner (PDC-002, Harrick Plasma) for 1 h to remove any fluorescent impurities. Each cover slide was fixed by frame-seal incubation chambers (Biorad, Hercules) and the surface was coated with 100:1 PLL-g-PEG and PLL-g-PEG biotin (SuSoS AG) (1 g/L) in 50 mM HEPES buffer. Then the coverslips were washed three times and 0.1 mg/mL neutravidin (Thermo Scientific) solution was added to the coverslips and incubated for 15 min and washed three times with reaction buffer. Then, a 50 μ L aliquot of the solution of purified biotinylated vesicles was added to the surface and incubated for 30 min before washing carefully at least five times with reaction buffer. Single vesicles tethered to borosilicate glass cover slides via biotin neutravidin linkage were incubated with 50 μ L Ca^{2+} containing buffer solution Leibovitz’s L-15 (phenol red-free) and a background image was recorded ($F_{\text{background}}$). Fifty microliters of the sample was added, images were acquired (F_{sample}), and care was taken to avoid moving the glass coverslips during the addition of each sample. Next, 10 μ L of a solution containing 1 mg/mL of ionomycin, an ionophore for Ca^{2+} ion, and subsequently images of Ca^{2+} saturated single vesicles in the same fields of view were acquired ($F_{\text{ionomycin}}$). For each field of view, 50 images were taken with an exposure time of 50 ms. The fields of view were chosen using an automated program via ImageJ Micromanager. The relative influx of Ca^{2+} into an individual vesicle due to aggregates of tau was then determined as

$$\text{Percent of } \text{Ca}^{2+} \text{ influx} = \frac{F_{\text{sample}} - F_{\text{background}}}{F_{\text{ionomycin}} - F_{\text{background}}} \quad (2)$$

The average calcium influx was calculated by averaging the Ca^{2+} influx into individual vesicles in each field of view.

TEM. To prepare samples for TEM experiments, protein solutions at an appropriate concentration (typically ~200 nM) were applied onto a carbon-coated 400-mesh copper grid (Agar Scientific) for 1 min, and then stained with 2% (v/v) uranyl acetate for another minute. The excess solution was removed from the grid by washing twice with Milli-Q water. After samples dried thoroughly, TEM images were acquired using Thermo Scientific (FEI) Talos F200X G2 microscope (Department of Chemistry, Cambridge) operated at 200 kV.

Live imaging of human macrophage THP-1 cells. Human monocytic THP-1 cells (ATCC-TIB-202 from LGC Ltd, Middlesex, UK) were cultured in Roswell Park Memorial Institute medium (RPMI-1640, Invitrogen) culture medium supplemented with 10% of heat-inactivated fetal bovine serum (Invitrogen) in 5% CO_2 humidified atmosphere at 37 °C. THP-1 monocytes were first seeded at 200,000 cells/mL on sterilized glass coverslips. Then THP-1 cells were differentiated into macrophages in the presence of 20 ng/mL phorbol 12-myristate 13-acetate (PMA, Sigma-Aldrich) for 3 days continuously. This was followed by a recovery period of 24 h in serum-supplemented RPMI-1640 medium without PMA. Cell differentiation was verified by evaluating cell adhesion and spreading under an optical microscope. For Fluo-4 AM and ROX epifluorescence imaging, differentiated THP-1 cells are washed three times with OPTI-MEM and then incubated with 7.5 μ M Fluo-4 AM and 6.25 μ M CellROX Deep Red Reagent in OPTI-MEM for 30 min. To remove the free dye thoroughly, the cells are washed with OPTI-MEM three times before imaging. CellROX DeepRed reagent, weakly fluorescent while in a reduced state and exhibits photostable fluorescence upon oxidation by reactive oxygen species (ROS), is a proprietary reagent from Life Technologies. CellROX Deep Red has been reported to robustly detect a wide range of pro-oxidants, including superoxide anion, hydroxyl radical, peroxyxynitrite, and to a lesser extent, nitric oxide^{78,79}.

Primary human macrophage cell culture. Blood samples were donated by healthy volunteers who had undertaken informed consent in accordance with local Research Ethics Committee approval. Peripheral blood mononuclear cells were isolated from citrated peripheral blood samples by density gradient separation using Lympholyte (Cedarlane Labs), and subsequent CD14+ positive selection using the MACS Miltenyi Biotec Human CD14 microbead protocol (Miltenyi Biotec). CD14+ cells (3×10^5 cells per well) were differentiated into macrophages using recombinant human granulocyte-macrophage colony-stimulating factor (200 ng/mL GM-CSF) and recombinant human interferon gamma (50 ng/ml IFN γ) (Peprotech) in standard tissue culture DMEM media containing 10% fetal calf serum.

The human primary monocytes were extracted from the blood from donors who gave their samples voluntarily without any compensation. They gave informed consent via a Good Clinical Practice registered member of staff from Royal Papworth Hospital NHS Foundation Trust Cambridge under local ethics committee approval (REC No. 12/WA/0148). No human-derived cells were stored after the experiments had been completed.

Macrophage calcium and ROS signal processing. Data were analyzed in MATLAB (MathWorks) using custom software. Cells were located by tracking local maxima and the intensity over time of a cell-sized disk surrounding the mean position of each cell was analyzed. The code is read in a single TIFF file representing a 3D time series. After background subtraction, flat-field correction, and Gaussian smoothing, local maxima in each frame were identified. Maxima from each frame were combined into tracks using a nearest-neighbor approach. If the standard deviation of the position was greater than half the cell radius, the track would be discarded. Otherwise, the mean position was assumed to be the location of a cell. The mean intensity of a cell-sized disk around each of these fixed positions was calculated, forming intensity traces for each cell. The noise was reduced by Gaussian smoothing. Sharp increases in calcium intensity were then identified from the first derivative and a user-defined threshold determined which of these were classified as calcium spikes. If a minimum spike intensity and/or minimum spike duration have been specified at the start, spikes not meeting these criteria were discarded. The percentage of ROS signals changed was calculated as:

$$\text{Percent of ROS signals changed} = \frac{F_{\text{final}} - F_{\text{initial}}}{F_{\text{initial}}} \quad (3)$$

The initial intensity was defined by averaging the DeepRed fluorescence intensities across 50 frames prior to the addition of tau aggregates, and the final intensity was determined by averaging the DeepRed fluorescence intensities across 50 frames prior to the addition of ionomycin. Further details and the source code are available at <https://github.com/janehumphrey/calciumStationaryCells>.

Cell viability measurements. Cell viability was assessed using Live-or-DyeTM fixable viability staining kit (Biotium, Live-or-DyeTM 750/777), following manufacture protocol. Briefly, human monocytic THP-1 cells (ATCC) were cultured and differentiated into macrophages as described above. After being treated with different tau species of 500 nM monomeric equivalent concentration for 24 h, cells were harvested using TrypLETM Express Enzyme (Thermo Fisher). Cells were subsequently pelleted by centrifugation at $350 \times g$ for 5 min and the supernatants were discarded. Cells were washed once in PBS and then resuspended in PBS at 1×10^6 cells/mL, followed by incubation at room temperature with the viability stain (diluted 1:1000 in PBS) for 30 min. Afterward, cells were washed and resuspended in PBS and then analyzed by flow cytometry in the 633 nm channel.

LDH assay. Levels of lactate dehydrogenase (LDH) were measured by CyQUANTTM LDH cytotoxicity assay kit (Invitrogen) as an indicator of cytotoxicity, following manufacturing protocol. Briefly, human monocytic THP-1 cells (ATCC) were cultured and differentiated into macrophages as described above. After being treated with different tau species of 500 nM monomeric equivalent concentration for 24 h, 50 μ L of conditioned media of each sample along with maximum LDH activity controls (generated using $10 \times$ lysis buffer) and spontaneous LDH activity controls (no treatment group) were incubated with 50 μ L LDH reaction mixture in a 96-well flat-bottom plate at room temperature for 30 min. Afterward, 50 μ L of stop solution was added to each sample well to quench the reaction. Absorbance was measured at 490 nm and 680 nm: before calculating the percentage of toxicity, the 680 nm absorbance value (background) must be subtracted from 490 nm absorbance, and then the percentage of cytotoxicity can be determined using the following formula:

$$\text{Percent of cytotoxicity} = \frac{\text{LDH}_{\text{sample}} - \text{LDH}_{\text{spontaneous}}}{\text{LDH}_{\text{maximum}} - \text{LDH}_{\text{spontaneous}}} \quad (4)$$

Enzyme-linked immunosorbent assay (ELISA). The levels of TNF- α , IL-1 β , and CCL5 secreted into the cell supernatant were measured by Abcam ELISA kits respectively (ab181421; ab214025; ab174446) following the manufacture protocol. Ultrapure LPS *E. coli* O111:B4 (Cayman Chemical, CAY-28872-10mg) was used as a positive control to elicit robust TLR4 activation, while small molecule inhibitors TAK-242 (Tocris Bioscience) and Ultrapure RsLA (InvivoGen) were employed to

block TLR4 activation and therefore to validate the involvement of TLR4 receptor. Total protein concentrations were then determined by Pierce BCA assay following the manufacture protocol to ensure the total protein concentrations were uniform and controlled across different treatment groups.

Reverse transcriptase quantitative PCR (RT-qPCR). Total RNA was isolated from differentiated THP-1 macrophages, using the Monarch[®] total RNA miniprep kit (New England BioLabs). Two hundred nanograms of total RNA was used in the cDNA synthesis reaction with the High-Capacity RNA-to-cDNA kit (Thermo Fisher Scientific), and the resulting cDNA was subsequently used to analyze gene expression on a QuantStudio 5 qPCR System (Thermo Fisher Scientific) by Taq-Man gene expression assays for TNF α (Hs00174128_m1), IL-6 (Hs00174131_m1), IL-1 β (Hs01555410_m1), IFN β 1 (Hs01077958_s1), and CCL5 (Hs99999048_m1). Amplification parameters were 50 °C for 2 min and then 95 °C for 10 min, followed by 40 cycles of 95 °C for 15 s alternating with 60 °C for 60 s. Relative Gene expression was determined based on the ΔC_t values between the gene of interest and housekeeping genes GAPDH (Hs02786624_g1) and 18 S rRNA (Hs03003631_g1) compared with the mean ΔC_t values for the PBS buffer control group.

Reporting summary. Further information on research design is available in the Nature Research Reporting Summary linked to this article.

Data availability

The mass spectrometry proteomics data in this study have been deposited to the ProteomeXchange Consortium via the PRIDE partner repository with the accession code PXD033127 (Human tau 0N4R isoform hyperphosphorylation LC-MS/MS). The remaining data are available within the Article, Supplementary Information, or Source Data file. Source data are provided with this paper.

Code availability

The super-resolution analysis code [10.5281/zenodo.4651484] is available at https://github.com/Eric-Kobayashi/SR_toolkit. The source code for the calcium/ros analysis [10.5281/zenodo.6390919] is available at <https://github.com/janehumphrey/calciumStationaryCells>.

Received: 8 April 2021; Accepted: 28 April 2022;

Published online: 16 May 2022

References

- Kosik, K. S., Joachim, C. L. & Selkoe, D. J. Microtubule-associated protein tau (T) is a major antigenic component of paired helical filaments in Alzheimer disease. *Proc. Natl. Acad. Sci. USA* **83**, 4044–4048 (1986).
- Lee, V. M.-Y., Goedert, M. & Trojanowski, J. Q. Neurodegenerative tauopathies. *Annu. Rev. Neurosci.* **24**, 1121–1159 (2001).
- Lim, S., Haque, M. M., Kim, D., Kim, D. J. & Kim, Y. K. Cell-based models to investigate Tau aggregation. *Comput. Struct. Biotechnol. J.* **12**, 7–13 (2014).
- Wang, Y. & Mandelkow, E. Tau in physiology and pathology. *Nat. Rev. Neurosci.* **17**, 22–35 (2016).
- Iqbal, K., Gong, C.-X. & Liu, F. Hyperphosphorylation-induced tau oligomers. *Front. Neurol.* **4**, 112 (2013).
- Noble, W. et al. Inhibition of glycogen synthase kinase-3 by lithium correlates with reduced tauopathy and degeneration in vivo. *Proc. Natl. Acad. Sci. USA* **102**, 6990–6995 (2005).
- Hanger, D. P., Anderton, B. H. & Noble, W. Tau phosphorylation: the therapeutic challenge for neurodegenerative disease. *Trends Mol. Med.* **15**, 112–119 (2009).
- Buée, L., Bussi ere, T., Bu e-Scherrer, V., Delacourte, A. & Hof, P. R. Tau protein isoforms, phosphorylation, and role in neurodegenerative disorders. *Brain Res. Rev.* **33**, 95–130 (2000).
- Hanger, D. P. et al. Novel phosphorylation sites in Tau from Alzheimer brain support a role for casein kinase 1 in disease pathogenesis. *J. Biol. Chem.* **282**, 23645–23654 (2007).
- Yoshida, H. & Goedert, M. Sequential phosphorylation of tau protein by cAMP-dependent protein kinase and SAPK4/p38 δ or JNK2 in the presence of heparin generates the AT100 epitope. *J. Neurochem.* **99**, 154–164 (2006).
- Lauckner, J., Frey, P. & Geula, C. Comparative distribution of tau phosphorylated at Ser262 in pre-tangles and tangles. *Neurobiol. Aging* **24**, 767–776 (2003).
- Rankin, C. A., Sun, Q. & Gambelin, T. C. Pseudo-phosphorylation of tau at Ser202 and Thr205 affects tau filament formation. *Mol. Brain Res.* **138**, 84–93 (2005).
- Liu, F. et al. PKA modulates GSK-3 β - and cdk5-catalyzed phosphorylation of tau in site- and kinase-specific manners. *FEBS Lett.* **580**, 6269–6274 (2006).
- Cavallini, A. et al. An unbiased approach to identifying tau kinases that phosphorylate tau at sites associated with Alzheimer disease. *J. Biol. Chem.* **288**, 23331–23347 (2013).
- Zhang, W. et al. Heparin-induced tau filaments are polymorphic and differ from those in Alzheimer’s and Pick’s diseases. *eLife* **8**, e43584 (2019).
- Fitzpatrick, A. W. P. et al. Cryo-EM structures of tau filaments from Alzheimer’s disease. *Nature* **547**, 185–190 (2017).
- Šimić, G. et al. Tau protein hyperphosphorylation and aggregation in Alzheimer’s disease and other tauopathies, and possible neuroprotective strategies. *Biomolecules* **6**, 2–28 (2016).
- Gong, C.-X., Liu, F., Grundke-Iqbal, I. & Iqbal, K. Post-translational modifications of tau protein in Alzheimer’s disease. *J. Neural Transm.* **112**, 813–838 (2005).
- Tepper, K. et al. Oligomer formation of tau protein hyperphosphorylated in cells. *J. Biol. Chem.* **289**, 34389–34407 (2014).
- Wesseling, H. et al. Tau PTM profiles identify patient heterogeneity and stages of Alzheimer’s Disease. *Cell* **183**, 1699–1713.e13 (2020).
- Kopke, E. et al. Microtubule-associated protein tau. Abnormal phosphorylation of a non-paired helical filament pool in Alzheimer disease. *J. Biol. Chem.* **268**, 24374–24384 (1993).
- Li, M. et al. Cyclic AMP promotes neuronal survival by phosphorylation of glycogen synthase kinase 3 β . *Mol. Cell. Biol.* **20**, 9356 (2000).
- Wegmann, S. et al. Tau protein liquid–liquid phase separation can initiate tau aggregation. *EMBO J.* **37**, e98049 (2018).
- Despres, C. et al. Major differences between the self-assembly and seeding behavior of heparin-induced and in vitro phosphorylated tau and their modulation by potential inhibitors. *ACS Chem. Biol.* **14**, 1363–1379 (2019).
- Gamblin, T. C., Berry, R. W. & Binder, L. I. Modeling tau polymerization in vitro: a review and synthesis. *Biochemistry* **42**, 15009–15017 (2003).
- Kundel, F. et al. Measurement of tau filament fragmentation provides insights into prion-like spreading. *ACS Chem. Neurosci.* **9**, 1276–1282 (2018).
- Needham, L. M. et al. ThX-a next-generation probe for the early detection of amyloid aggregates. *Chem. Sci.* **11**, 4578–4583 (2020).
- Sahara, N. et al. Assembly of two distinct dimers and higher-order oligomers from full-length tau. *Eur. J. Neurosci.* **25**, 3020–3029 (2007).
- Scott, C. W., Fieles, A., Sygowski, L. A. & Caputo, C. B. Aggregation of tau protein by aluminum. *Brain Res.* **628**, 77–84 (1993).
- Flagmeier, P. et al. Ultrasensitive measurement of Ca²⁺ influx into lipid vesicles induced by protein aggregates. *Angew. Chem. Int. Ed.* **56**, 7750–7754 (2017).
- De, S. et al. Different soluble aggregates of A β 42 can give rise to cellular toxicity through different mechanisms. *Nat. Commun.* **10**, 1–11 (2019).
- Varela, J. A. et al. Optical structural analysis of individual α -synuclein oligomers. *Angew. Chem. Int. Ed.* **57**, 4886–4890 (2018).
- Kundel, F. et al. Hsp70 inhibits the nucleation and elongation of tau and sequesters tau aggregates with high affinity. *ACS Chem. Biol.* **13**, 636–646 (2018).
- Drews, A. et al. Inhibiting the Ca²⁺ influx induced by human CSF. *Cell Rep.* **21**, 3310–3316 (2017).
- Ising, C. & Heneka, M. T. Functional and structural damage of neurons by innate immune mechanisms during neurodegeneration. *Cell Death Dis.* **9**, 120 (2018).
- Th erault, P., Elali, A. & Rivest, S. The dynamics of monocytes and microglia in Alzheimer’s disease. *Alzheimer’s Res. Ther.* **7**, 41 (2015).
- Schappe, M. S. et al. Chanzyme TRPM7 mediates the Ca²⁺ influx essential for lipopolysaccharide-induced Toll-like receptor 4 endocytosis and macrophage activation. *Immunity* **48**, 59–74.e5 (2018).
- Liu, X. et al. LPS-induced proinflammatory cytokine expression in human airway epithelial cells and macrophages via NF- κ B, STAT3 or AP-1 activation. *Mol. Med. Rep.* **17**, 5484–5491 (2018).
- Rannikko, E. H., Weber, S. S. & Kahle, P. J. Exogenous α -synuclein induces Toll-like receptor 4 dependent inflammatory responses in astrocytes. *BMC Neurosci.* **16**, 57 (2015).
- Hughes, C. et al. Beta amyloid aggregates induce sensitised TLR4 signalling causing long-term potentiation deficit and rat neuronal cell death. *Commun. Biol.* **3**, 1–7 (2020).
- Qureshi, N., Jarvis, B. W. & Takayama, K. Nontoxic RsDPLA as a potent antagonist of toxic lipopolysaccharide. *Endotoxin in Health and Disease* 687–698 (CRC Press, 2020).
- Abdelmageed, M. E., El-Awady, M. S., Abdelrahim, M. & Suddek, G. M. LPS-RS attenuation of lipopolysaccharide-induced acute lung injury involves NF- κ B inhibition. *Can. J. Physiol. Pharmacol.* **94**, 140–146 (2016).
- Matsunaga, N., Tsuchimori, N., Matsumoto, T. & Ii, M. TAK-242 (resatorvid), a small-molecule inhibitor of Toll-like receptor (TLR) 4 signaling, binds selectively to TLR4 and interferes with interactions between TLR4 and its adaptor molecules. *Mol. Pharmacol.* **79**, 34–41 (2011).

44. Ii, M. et al. A novel cyclohexene derivative, ethyl (6R)-6-[N-(2-Chloro-4-fluorophenyl)sulfamoyl]cyclohex-1-ene-1-carboxylate (TAK-242), selectively inhibits toll-like receptor 4-mediated cytokine production through suppression of intracellular signaling. *Mol. Pharmacol.* **69**, 1288–1295 (2006).
45. Takashima, K. et al. Analysis of binding site for the novel small-molecule TLR4 signal transduction inhibitor TAK-242 and its therapeutic effect on mouse sepsis model. *Br. J. Pharmacol.* **157**, 1250–1262 (2009).
46. Alonso, A. D. C., Zaidi, T., Novak, M., Grundke-Iqbal, I. & Iqbal, K. Hyperphosphorylation induces self-assembly of τ into tangles of paired helical filaments/straight filaments. *Proc. Natl Acad. Sci. USA* **98**, 6923–6928 (2001).
47. Goedert, M. et al. Assembly of microtubule-associated protein tau into Alzheimer-like filaments induced by sulphated glycosaminoglycans. *Nature* **383**, 550–553 (1996).
48. Pérez, M., Valpuesta, J. M., Medina, M., Montejo De Garcini, E. & Avila, J. Polymerization of τ into filaments in the presence of heparin: The minimal sequence required for τ - τ interaction. *J. Neurochem.* **67**, 1183–1190 (1996).
49. Jeganathan, S., von Bergen, M., Brutlach, H., Steinhoff, H. J. & Mandelkow, E. Global hairpin folding of tau in solution. *Biochemistry* **45**, 2283–2293 (2006).
50. Bibow, S. et al. Structural impact of proline-directed pseudophosphorylation at AT8, AT100, and PHF1 epitopes on 441-residue tau. *J. Am. Chem. Soc.* **133**, 15842–15845 (2011).
51. Kunjithapatham, R. et al. Role for the α -helix in aberrant protein aggregation. *Biochemistry* **44**, 149–156 (2005).
52. Rani, L. & Mallajosyula, S. S. Phosphorylation-induced structural reorganization in tau-paired helical filaments. *ACS Chem. Neurosci.* **12**, 1621–1631 (2021).
53. Jeganathan, S. et al. Proline-directed pseudo-phosphorylation at AT8 and PHF1 epitopes induces a compaction of the paperclip folding of tau and generates a pathological (MC-1) conformation. *J. Biol. Chem.* **283**, 32066–32076 (2008).
54. Rankin, C. A., Sun, Q. & Gamblin, T. C. Tau phosphorylation by GSK-3 β promotes tangle-like filament morphology. *Mol. Neurodegener.* **2**, 12 (2007).
55. Chen, X., Chen, M., Schafer, N. P. & Wolynes, P. G. Exploring the interplay between fibrillization and amorphous aggregation channels on the energy landscapes of tau repeat isoforms. *Proc. Natl Acad. Sci. USA* **117**, 4125–4130 (2020).
56. Maeda, S. et al. Increased levels of granular tau oligomers: an early sign of brain aging and Alzheimer's disease. *Neurosci. Res.* **54**, 197–201 (2006).
57. Spire-Jones, T. L., Kopeikina, K. J., Koffie, R. M., de Calignon, A. & Hyman, B. T. Are tangles as toxic as they look? *J. Mol. Neurosci.* **45**, 438–444 (2011).
58. Spire, T. L. et al. Region-specific dissociation of neuronal loss and neurofibrillary pathology in a mouse model of tauopathy. *Am. J. Pathol.* **168**, 1598–1607 (2006).
59. Wu, J. W. et al. Small misfolded tau species are internalized via bulk endocytosis and anterogradely and retrogradely transported in neurons. *J. Biol. Chem.* **288**, 1856–1870 (2013).
60. Jones, E. M. et al. Interaction of tau protein with model lipid membranes induces tau structural compaction and membrane disruption. *Biochemistry* **51**, 2539–2550 (2012).
61. Patel, N., Ramachandran, S., Azimov, R., Kagan, B. L. & Lal, R. Ion channel formation by tau protein: implications for Alzheimer's disease and tauopathies. *Biochemistry* **54**, 7320–7325 (2015).
62. Arispe, N., Pollard, H. B. & Rojas, E. β -amyloid Ca²⁺-channel hypothesis for neuronal death in Alzheimer Disease. *Mol. Cell. Biochem.* **140**, 119–125 (1994).
63. Kim, H. Y. et al. Structural properties of pore-forming oligomers of α -synuclein. *J. Am. Chem. Soc.* **131**, 17482–17489 (2009).
64. Kourie, J. I. & Farrelly, P. V. & Henry, C. L. Channel activity of deamidated isoforms of prion protein fragment 106-126 in planar lipid bilayers. *J. Neurosci. Res.* **66**, 214–220 (2001).
65. Bevan-Jones, W. R. et al. Neuroinflammation and protein aggregation co-localize across the frontotemporal dementia spectrum. *Brain* **143**, 1010–1026 (2020).
66. Dani, M. et al. Microglial activation correlates in vivo with both tau and amyloid in Alzheimer's disease. *Brain* **141**, 2740–2754 (2018).
67. Tang, S. et al. Extracellular calcium elicits feedforward regulation of the Toll-like receptor-Triggered innate immune response. *Cell. Mol. Immunol.* **14**, 180–191 (2017).
68. Huang, J. & Brumell, J. H. NADPH oxidases contribute to autophagy regulation. *Autophagy* **5**, 887–889 (2009).
69. Lv, J. et al. TLR4-NOX2 axis regulates the phagocytosis and killing of Mycobacterium tuberculosis by macrophages. *BMC Pulm. Med.* **17**, 1–9 (2017).
70. Bae, Y. S. et al. Macrophages generate reactive oxygen species in response to minimally oxidized low-density lipoprotein: Toll-like receptor 4- and spleen tyrosine kinase-dependent activation of NADPH oxidase 2. *Circ. Res.* **104**, 210–218 (2009).
71. Cathcart, M. K. Regulation of superoxide anion production by NADPH oxidase in monocytes/macrophages: contributions to atherosclerosis. *Arterioscler. Thromb. Vasc. Biol.* **24**, 23–28 (2004).
72. Bojarski, L., Herms, J. & Kuznicki, J. Calcium dysregulation in Alzheimer's disease. *Neurochem. Int.* **52**, 621–633 (2008).
73. Marty, M. T. et al. Bayesian deconvolution of mass and ion mobility spectra: from binary interactions to polydisperse ensembles. *Anal. Chem.* **87**, 4370–4376 (2015).
74. Foreman-Mackey, D., Hogg, D. W., Lang, D. & Goodman, J. emcee: The MCMC Hammer. *Publ. Astronom. Soc. Pac.* **125**, 306–312 (2013).
75. Sang, J. C. et al. Direct observation of murine prion protein replication in vitro. *J. Am. Chem. Soc.* **140**, 14789–14798 (2018).
76. Whiten, D. R. et al. Nanoscopic characterisation of individual endogenous protein aggregates in human neuronal cells. *ChemBioChem* **19**, 2033–2038 (2018).
77. Nieuwenhuizen, R. P. J. et al. Measuring image resolution in optical nanoscopy. *Nat. Methods* **10**, 557–562 (2013).
78. Do, T. H. T. et al. Arabidopsis ABCG28 is required for the apical accumulation of reactive oxygen species in growing pollen tubes. *Proc. Natl. Acad. Sci. USA* **116**, 12540–12549 (2019).
79. Grinberg, Y. Y., Dibbern, M. E., Levasseur, V. A. & Kraig, R. P. Insulin-like growth factor-1 abrogates microglial oxidative stress and TNF- α responses to spreading depression. *J. Neurochem.* **126**, 662 (2013).

Acknowledgements

J.X.M. is supported by Dr. Herchel Smith Fellowship from Williams College. Y.Z. is supported by the Wellcome Trust Grant (107032AIA, R.A.F.) and the Cambridge Cancer Center Pump Priming Grant and Royal Society University Research Fellowship to S.F.L. D.S. is supported by Clarendon Scholarship from Oxford University Press. A.M.H. is funded by Open Targets. G.B. and Y.Y. are supported by the UK Dementia Research Institute that receives contributions from UK DRI Ltd, the UK MRC, the Alzheimer's Society, and Alzheimer's Research UK. C.E.B. is supported by a Wellcome Trust Investigator award (108045/Z/15/Z, C.E.B.). This work is supported by the UK Dementia Research Institute which receives its funding from DRI Ltd, funded by the UK Medical Research Council, Alzheimer's Society and Alzheimer's Research UK and by the Royal Society (RP150066, DK). We acknowledge valuable conversations with members of the Klenerman Lab and the Lee Lab. Also, we acknowledge the Cambridge Center for Proteomics Services for assistance with the generation of LC-MS/MS data and the electron microscopy facility in the Department of Chemistry Cambridge and Dr. Heather Greer for assistance with the acquisition of TEM images.

Author contributions

J.X.M., Y.Z., C.E.B., Y.Y., and D.K. conceived the project and designed the experiments. J.X.M. performed the hyperphosphorylation reactions and carried out the subsequent endotoxin removal procedures. L.J. performed the endotoxin quantification assay. J.X.M., Y.Z., and J.C.S. performed the imaging experiments (including diffraction-limited/super-resolution microscopy and electron microscopy) to determine the structural details of different tau aggregates. J.X.M. and E.H. analyzed the super-resolution images using a Python script developed by E.H., J.X.M., D.S., J.L.P.B., and D.K. collaboratively designed the mass spectrometry experiments, and D.S. performed the experiments and analyzed the data. S.D. carried out the liposomal penetration assays and analyzed the data. J.X.M., Y.Z., and K.J. performed live cell imaging experiments using THP-1 cell line. J.X.M., Y.Z., and J.H. analyzed the calcium/ROS imaging data using a MATLAB script developed by J.H. K.B. collected blood samples from healthy volunteers and differentiated CD14⁺ monocytes into M1 macrophages. J.X.M. and Y.Z. conducted the ELISA experiments measuring the level of various cytokines released into the media. J.X.M. and A.M.H. performed the RT-qPCR experiments and analyzed the transcriptomic data. Y.Z. conducted the cell viability assay and LDH assay. J.X.M., Y.Z., Y.Y., G.B., R.A.F., C.E.B., S.F.L., and D.K. interpreted the results and stewarded the overall project. J.X.M., Y.Z., C.E.B., and D.K. co-wrote the manuscript. All authors discussed the results and commented on the manuscript.

Competing interests

The authors declare no competing interests.

Additional information

Supplementary information The online version contains supplementary material available at <https://doi.org/10.1038/s41467-022-30461-x>.

Correspondence and requests for materials should be addressed to David Klenerman.

Peer review information *Nature Communications* thanks Lothar Schermelleh, and the other, anonymous, reviewer(s) for their contribution to the peer review of this work

Reprints and permission information is available at <http://www.nature.com/reprints>

Publisher's note Springer Nature remains neutral with regard to jurisdictional claims in published maps and institutional affiliations.



Open Access This article is licensed under a Creative Commons Attribution 4.0 International License, which permits use, sharing, adaptation, distribution and reproduction in any medium or format, as long as you give appropriate credit to the original author(s) and the source, provide a link to the Creative Commons license, and indicate if changes were made. The images or other third party material in this article are included in the article's Creative Commons license, unless indicated otherwise in a credit line to the material. If material is not included in the article's Creative Commons license and your intended use is not permitted by statutory regulation or exceeds the permitted use, you will need to obtain permission directly from the copyright holder. To view a copy of this license, visit <http://creativecommons.org/licenses/by/4.0/>.

© The Author(s) 2022