

University of Groningen

Temporal trends in the quality of deceased donor kidneys and kidney transplant outcomes in Europe

Pippias, Maria; Stel, Vianda S.; Arnol, Miha; Bemelman, Frederike; Berger, Stefan P.; Buturovic Ponikvar, Jadranka Buturovic; Kramar, Reinhard; Magaz, Ángela; Nordio, Maurizio; Peters-Sengers, Hessel

Published in:

Nephrology, dialysis, transplantation : official publication of the European Dialysis and Transplant Association - European Renal Association

DOI:

[10.1093/ndt/gfab156](https://doi.org/10.1093/ndt/gfab156)

IMPORTANT NOTE: You are advised to consult the publisher's version (publisher's PDF) if you wish to cite from it. Please check the document version below.

Document Version

Publisher's PDF, also known as Version of record

Publication date:

2021

[Link to publication in University of Groningen/UMCG research database](#)

Citation for published version (APA):

Pippias, M., Stel, V. S., Arnol, M., Bemelman, F., Berger, S. P., Buturovic Ponikvar, J. B., Kramar, R., Magaz, A., Nordio, M., Peters-Sengers, H., Reisæter, A. V., Sørensen, S. S., Massy, Z. A., & Jager, K. J. (2021). Temporal trends in the quality of deceased donor kidneys and kidney transplant outcomes in Europe: an analysis by the ERA-EDTA Registry. *Nephrology, dialysis, transplantation : official publication of the European Dialysis and Transplant Association - European Renal Association*, 37(1), 175-186. <https://doi.org/10.1093/ndt/gfab156>

Copyright

Other than for strictly personal use, it is not permitted to download or to forward/distribute the text or part of it without the consent of the author(s) and/or copyright holder(s), unless the work is under an open content license (like Creative Commons).

The publication may also be distributed here under the terms of Article 25fa of the Dutch Copyright Act, indicated by the "Taverne" license. More information can be found on the University of Groningen website: <https://www.rug.nl/library/open-access/self-archiving-pure/taverne-amendment>.

Take-down policy

If you believe that this document breaches copyright please contact us providing details, and we will remove access to the work immediately and investigate your claim.



Temporal trends in the quality of deceased donor kidneys and kidney transplant outcomes in Europe: an analysis by the ERA-EDTA Registry

Maria Pippias^{1,2}, Vianda S. Stel³, Miha Arnol^{4,5}, Frederike Bemelman⁶, Stefan P. Berger⁷, Jadranka Buturovic Buturovic Ponikvar^{5,8}, Reinhard Kramar⁹, Ángela Magaz¹⁰, Maurizio Nordio¹¹, Hessel Peters-Sengers^{12,13}, Anna Varberg Reisæter¹⁴, Søren S. Sørensen¹⁵, Ziad A. Massy^{16,17} and Kitty J. Jager³

¹Department of Population Health Sciences, Bristol Medical School, University of Bristol, Bristol, UK, ²Renal Unit, North Bristol NHS Trust, Bristol, UK, ³Department of Medical Informatics, ERA-EDTA Registry, Amsterdam Public Health Research Institute, UMC-Location AMC, University of Amsterdam, Amsterdam, the Netherlands, ⁴Department of Nephrology, Centre for Kidney Transplantation, University Medical Centre Ljubljana, Ljubljana, Slovenia, ⁵Faculty of Medicine, University of Ljubljana, Ljubljana, Slovenia, ⁶Department of Nephrology, UMC-Location AMC, University of Amsterdam, Amsterdam, the Netherlands, ⁷Division of Nephrology, University Medical Center Groningen, University of Groningen, Groningen, the Netherlands, ⁸Department of Nephrology, University Medical Center Ljubljana, Ljubljana, Slovenia, ⁹Austrian Dialysis and Transplant Registry, Rohr im Kremstal, Austria, ¹⁰Unidad de Información Sobre Pacientes Renales de la Comunidad Autónoma del País Vasco (UNIPAR), Basque, Spain, ¹¹Nephrology, Dialysis and Transplantation Unit, Treviso General Hospital AULSS2, Treviso, Italy, ¹²Center for Experimental and Molecular Medicine, Amsterdam University Medical Centers, Location Academic Medical Center, University of Amsterdam, Amsterdam, the Netherlands, ¹³Amsterdam Institute for Infection and Immunity, Amsterdam University Medical Centers, Amsterdam, the Netherlands, ¹⁴Department of Transplantation Medicine, Oslo University Hospital, Rikshospitalet, Oslo, Norway, ¹⁵Department of Nephrology, Rigshospitalet, University Hospital of Copenhagen, Copenhagen, Denmark, ¹⁶Division of Nephrology, Ambroise Pare University Hospital, AP-HP, University of Paris Ouest-Versailles-St-Quentin-en-Yvelines (UVSQ), Boulogne, France and ¹⁷Institut National de la Santé et de la Recherche Médicale (INSERM) U1018, Team 5, CESP UVSQ, University Paris Saclay, Villejuif, France

Correspondence to: Maria Pippias; E-mail: maria.pippias@bristol.ac.uk



ABSTRACT

Background. We investigated 10-year trends in deceased donor kidney quality expressed as the kidney donor risk index (KDRI) and subsequent effects on survival outcomes in a European transplant population.

Methods. Time trends in the crude and standardized KDRI between 2005 and 2015 by recipient age, sex, diabetic status and country were examined in 24 177 adult kidney transplant recipients in seven European countries. We determined 5-year patient and graft survival probabilities and the risk of death and graft loss by transplant cohort (Cohort 1: 2005–06, Cohort 2: 2007–08, Cohort 3: 2009–10) and KDRI quintile.

Results. The median crude KDRI increased by 1.3% annually, from 1.31 [interquartile range (IQR) 1.08–1.63] in 2005 to 1.47

(IQR 1.16–1.90) in 2015. This increase, i.e. lower kidney quality, was driven predominantly by increases in donor age, hypertension and donation after circulatory death. With time, the gap between the median standardized KDRI in the youngest (18–44 years) and oldest (>65 years) recipients widened. There was no difference in the median standardized KDRI by recipient sex. The median standardized KDRI was highest in Austria, the Netherlands and the Basque Country (Spain). Within each transplant cohort, the 5-year patient and graft survival probability were higher for the lowest KDRI. There was no difference in the patient and graft survival outcomes across transplant cohorts, however, over time the survival probabilities for the highest KDRI improved.

Conclusions. The overall quality of deceased donor kidneys transplanted between 2005 and 2015 has decreased and varies

KEY LEARNING POINTS

What is already known about this subject?

- Deceased donor kidneys with higher kidney donor risk index (KDRI) scores have worse survival outcomes than those with lower KDRI scores.
- To meet demands, older and more marginal kidneys are being used. It is not known if the increased use of marginal kidneys has resulted in worse transplant outcomes over time.

What this study adds?

- Over a 10-year period, transplant recipients >45 years of age have received kidneys with increasingly higher KDRI, i.e. worse quality.
- These kidneys are increasingly coming from donors who are older and more likely to have a diagnosis of hypertension (HTN) and are retrieved from donors after circulatory death, though this varied between countries.
- This has not translated to poorer 5-year kidney transplant outcomes.

What impact this may have on practice or policy?

- As life expectancy in the general population increases and the prevalence of diabetes mellitus, HTN and obesity increases, it is likely that we will continue to see poorer-quality donor kidneys.
- To avoid this translating into worse kidney transplant outcomes, the transplant community should focus on identifying therapies and/or preventative strategies aimed at improving kidney transplant outcomes despite these lower-quality allografts.

between age groups and countries. Overall patient and graft outcomes remain unchanged.

Keywords: deceased donors, epidemiology, survival outcomes, transplantation

INTRODUCTION

In order to meet the demand for kidneys for transplantation, which continues to exceed the current supply [1, 2], an increasing number of marginal kidneys are being utilized [3, 4]. Marginal kidneys have been associated with worse graft survival outcomes [5]. The kidney donor risk index (KDRI), derived from 10 deceased donor factors, provides an estimate of how long a deceased donor kidney allograft can be expected to function relative to the 'median' deceased donor kidney retrieved in the USA in the previous calendar year [6]. The KDRI has now been validated in several European countries [7–9]. Lower KDRI scores represent a higher estimated graft survival time, whereas higher KDRI scores represent a lower estimated graft survival time [10]. A deceased kidney donor in 2017 with a standardized KDRI score of 1.5 equates to 1.5 times higher relative risk of allograft failure compared with the 'median' deceased donor kidney from 2016. Given that the KDRI is standardized to the median donor of the previous year, the reference group is changing on an annual basis and, as a consequence, a donor represented by a KDRI of 1.5 in 1 year may not be the same as a donor represented by a KDRI of 1.5 in previous years. By standardizing the KDRI over a number of years to the same reference donor, i.e. the median deceased donor in a chosen year, one has a quantitative measure with which to assess the quality of deceased donor kidneys in a given population and across populations over time.

Using data from kidney and transplant registries in seven European countries we investigated the trends in the quality of transplanted deceased donor kidneys between 2005 and 2015, expressed as KDRI scores and standardized to a reference KDRI score. We identified annual trends in standardized KDRI scores over a 10-year period by recipient sex, recipient age group, recipient diabetic status and country of transplantation. Furthermore, we assessed patient and graft survival outcomes by KDRI quintile over time.

MATERIALS AND METHODS

Data collection

Data from the European Renal Association–European Dialysis and Transplant Association (ERA-EDTA) Registry with additional data collection from nine individual kidney and transplant registries in seven countries were used: Austrian Dialysis and Transplant Registry, Eurotransplant, Danish Nephrology Registry, Scandiatransplant, Information unit about renal patients from the Basque Country, Dutch Transplant Foundation, Norwegian Renal Registry, Slovenian Renal Registry and the UK Transplant Registry held by NHS Blood and Transplant. The recipients included in the study were restricted to those ≥ 18 years of age at the time of the first kidney-only, ABO-compatible transplant performed during the period 1 January 2005–31 December 2015. No data were collected regarding deceased donors from whom kidneys were subsequently not recovered or discarded once recovered. All national and regional kidney registries contributing data to the ERA-EDTA Registry followed their national legislation regarding ethics committee approval.

Data analysis

Missing data. Overall, 80% of cases had complete donor details except for donor ethnicity and hepatitis C virus (HCV) status (Supplementary data, Table S1A and B). Where the donor ethnicity and HCV status were unavailable, we assumed that, in this European setting, the donor was Caucasian and HCV negative. Based on the differences between the complete cases and the cases with missing variables, it was concluded that with the exception of donor diabetes and hypertension (HTN) in Norway, the data were missing completely at random, therefore the missing variables were imputed in SAS software (SAS Institute, Cary, NC, USA) using the multiple imputation procedure (proc mi). The donor variables included in the imputation model were donor age, height, weight, prior diagnosis of HTN, prior diagnosis of diabetes mellitus (DM), creatinine, cause of death and donor type [donation after circulatory death (DCD) or donation after brain death (DBD)]. Five imputed datasets were created. Log transformations were used for non-normally distributed data, which were then transformed back to their original form before the analysis [11]. Missing variables were imputed by the country, for example, only donor and recipient data from Austria was used to impute Austria's missing data.

Evaluating time trends in the KDRI. Using the donor characteristics and the KDRI beta coefficients as determined by Rao *et al.* [6], we calculated the 'donor-only' KDRI for each individual donor (Box 1). We then determined the distribution of the crude KDRI for the years 2005, 2010 and 2015, overall and by recipient sex, recipient age group (18–44, 45–54, 55–64 and ≥65 years), recipient diabetic status and country. These data were presented as violin plots, which have the advantages of both box plots, thereby allowing the visualization of summary statistics, and density traces, thereby allowing visualization of the data distribution.

We examined for time trends in KDRI between 2005 and 2015. To have a meaningful comparison of the KDRI over time, a scaling factor was applied. In these analyses for all the years in question, we used the median KDRI from 2005 as the scaling factor, thereby giving the 2005 median KDRI of the whole group a score of 1. The same groups as for the distribution of the crude KDRI were examined, i.e. all countries/regions combined (overall and by recipient sex, recipient age group and recipient diabetic status) and time trends in the individual countries/regions. Time trends in the standardized KDRI were examined using Joinpoint regression [12]. The year was taken as the explanatory variable and the scaled median KDRI as the outcome. The average annual percentage change (AAPC) was computed using Poisson regression as provided by the Joinpoint regression programme [13].

Survival analysis. Kaplan–Meier and Cox regression were used to calculate 5-year patient and graft survival probabilities and the risk of death and graft loss, respectively, by transplant cohort and by KDRI. To allow for analysis of 5-year follow-up, the recipients were divided into three transplant cohorts: Cohort 1, 2005–06; Cohort 2, 2007–08; and Cohort 3, 2009–10.

Table 1. Deceased kidney donor details by year of transplantation for first kidney only transplants performed between 2005 and 2015 and the AAPC and 95% CI by donor factor for Austria, the Basque Country, Denmark, the Netherlands, Norway, Slovenia and the UK combined

Year	2005	2006	2007	2008	2009	2010	2011	2012	2013	2014	2015	AAPC (95% CI)
Number	1865	1837	1852	1927	2082	2204	2255	2417	2560	2593	2585	4.2 (3.5–4.9)*
Donor age (years), median (IQR)	50 (38–59)	50 (39–59)	52 (39–60)	51 (40–60)	52 (41–61)	53 (43–63)	55 (43–64)	55 (45–64)	54 (43–65)	55 (44–65)	55 (44–65)	1.1 (0.7–1.4)*
Donors with age <18 years, %	6	5	6	5	5	4	4	3	3	3	4	–6.3 (–9.1 to –3.5)*
Donors with age >50 years, %	51	51	55	53	56	59	63	63	63	64	64	2.6 (1.9–3.3)*
Height (cm), median (IQR)	170 (165–180)	170 (165–180)	172 (165–180)	172 (165–180)	170 (165–179)	171 (165–180)	170 (164–179)	171 (165–179)	171 (165–179)	171 (165–179)	171 (164–179)	0.0 (–0.1–0.1)
Weight (kg), mean (SD)	75 (16.2)	76 (15.6)	76 (16.5)	76 (16.3)	77 (16.7)	78 (17.8)	77 (17.6)	78 (17.3)	78 (18.3)	78 (18.6)	78 (18.5)	0.4 (0.3–0.5)*
BMI >35 kg/m ² , %	4	4	5	4	6	5	5	6	7	8	7	6.8 (4.1–9.6)*
History of HCV (yes), %	0.5	0.1	0.4	0.1	0.2	0.1	0.2	0.1	0.1	0.1	0.2	–11.8 (–20.8 to –1.8)*
History of HTN (yes), %	23	25	25	26	24	30	32	31	32	31	30	3.2 (1.7–4.8)*
History of DM (yes), %	4	4	5	5	6	6	7	6	7	7	8	6.5 (4.7–8.4)*
Cause of death CVA, %	59	64	64	60	62	65	63	61	57	60	56	–1.2 (–1.9 to –0.4)*
Creatinine (mg/dL), median (IQR)	0.9 (0.7–1.1)	0.8 (0.7–1.1)	0.8 (0.6–1.1)	0.8 (0.6–1.1)	0.8 (0.6–1.1)	0.8 (0.6–1.0)	0.8 (0.6–1.0)	0.8 (0.6–1.1)	0.8 (0.6–1.0)	0.8 (0.6–1.0)	0.8 (0.6–1.0)	–0.9 (–0.9 to –0.9)*
DCD status (yes), %	19	20	23	28	29	29	33	36	38	34	37	6.4 (3.4–9.5)*

The AAPC with a significance level of >0.05 is denoted by an asterisk (*). Data contain imputed values.

Thereafter the cohorts were further subdivided by KDRI quintiles, which had been standardized to the median 2005 KDRI. The KDRI quintiles were 0.45–<0.79; 0.79–<0.96; 0.96–<1.15; 1.15–<1.45; ≥ 1.45 . The date of transplantation was taken as the starting point and the patients were followed until the event of interest. For patient survival, the event of interest was death. For graft failure, the events of interest were either a return to dialysis, retransplantation or death with a functioning allograft. Patients were censored for loss to follow-up and the end of the study period was set as 31 December 2015. In the adjusted analysis, we adjusted for recipient age at transplantation, recipient sex, primary kidney diagnosis, cold ischaemia time (CIT), human leukocyte antigen (HLA) mismatch score and country of transplantation.

Sensitivity analysis. A sensitivity analysis of complete cases, i.e. only cases where all donor variables except for donor HCV status and ethnicity were available, was performed. To account for the increasing number of DCD transplants over time, the crude and standardized KDRI scores for DBD transplants were calculated.

A two-tailed P-value < 0.05 was considered statistically significant. Analyses were performed using SAS software version 9.4 and Joinpoint version 4.0.4 [14].

RESULTS

We included 24 177 recipients transplanted between 2005 and 2015. During this period the median recipient age rose from 53 years [interquartile range (IQR) 43.0–61.5] to 55 years (IQR 45.0–65.0) and the percentage of recipients with a diagnosis of DM rose from 12.5% to 17.0%. The median deceased kidney donor age rose from 50 years (IQR 38–59) in 2005 to 55 years (IQR 44–65) in 2015 (Table 1). The percentage of donors with a history of HTN (23–30%), DM (4–8%) and severe obesity [body mass index (BMI) > 35 kg/m²; 4–7%] increased.

Trends in crude KDRI

For all countries combined, the median crude KDRI was 1.31 (IQR 1.08–1.63), 1.41 (IQR 1.13–1.81) and 1.47 (IQR 1.16–1.90) in 2005, 2010 and 2015, respectively (Figure 1, top left). The median crude KDRI presented for all countries combined can be found in Figure 1 and Supplementary data, Table

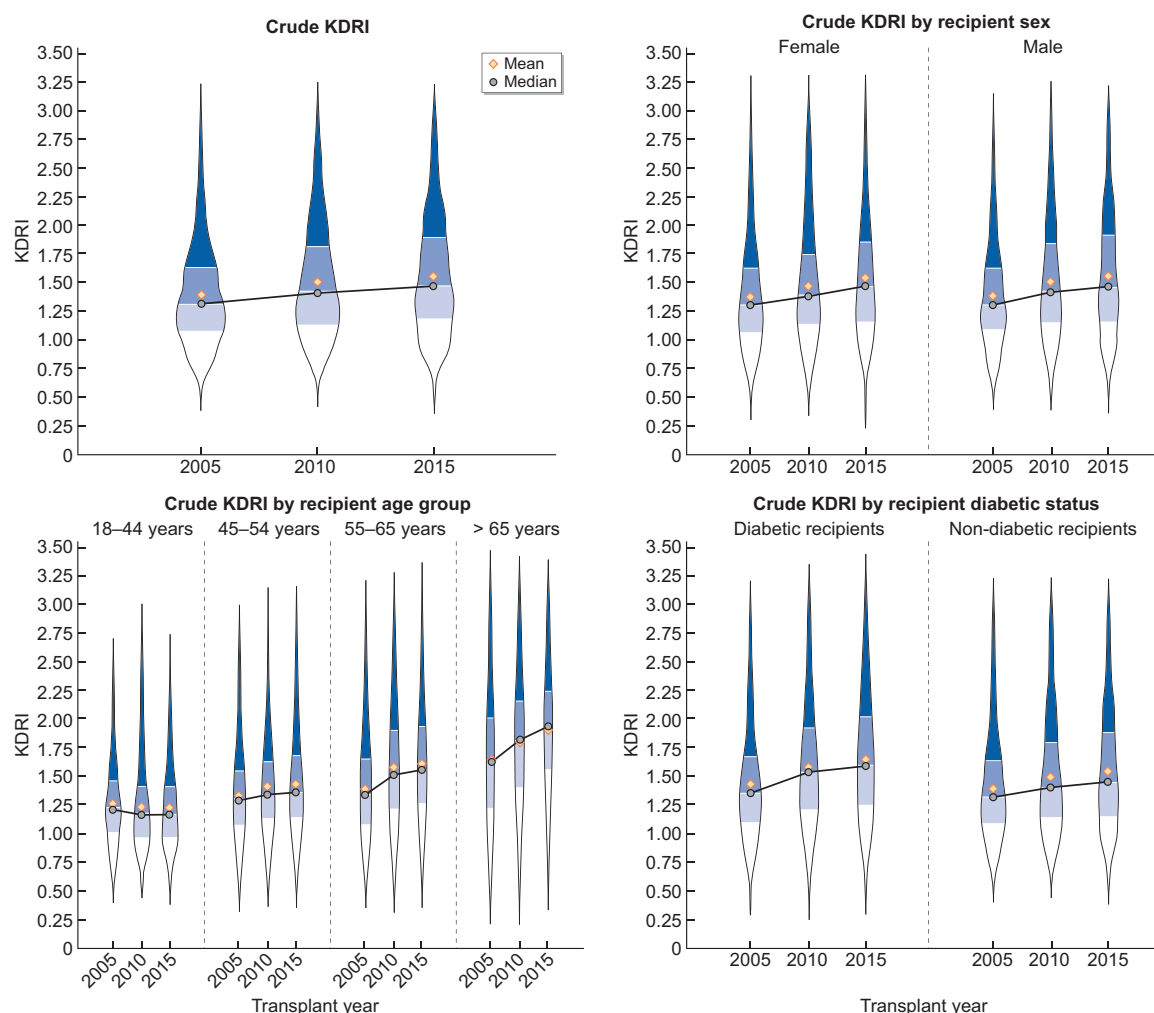
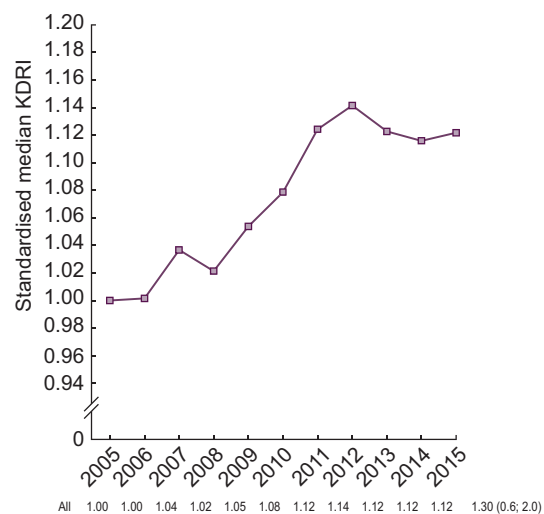
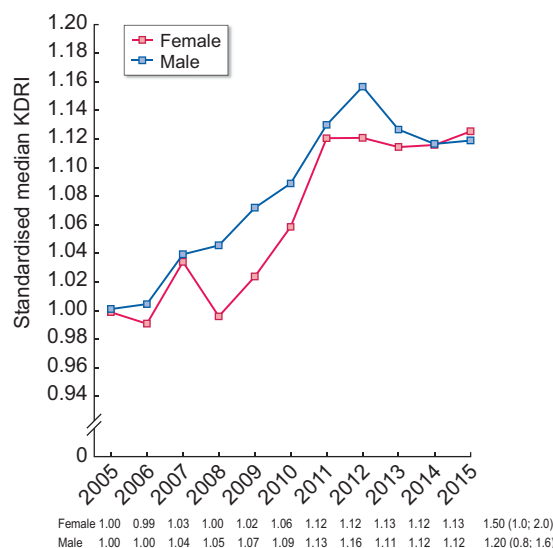


FIGURE 1: Violin plots of the crude KDRI for the transplant years 2005, 2010 and 2015 for all countries combined presented as overall (left upper panel), by recipient sex (right upper panel), by recipient age group (left lower panel) and by recipient diabetic status (right lower panel). Black circle indicates the median KDRI and the yellow diamond the mean KDRI.

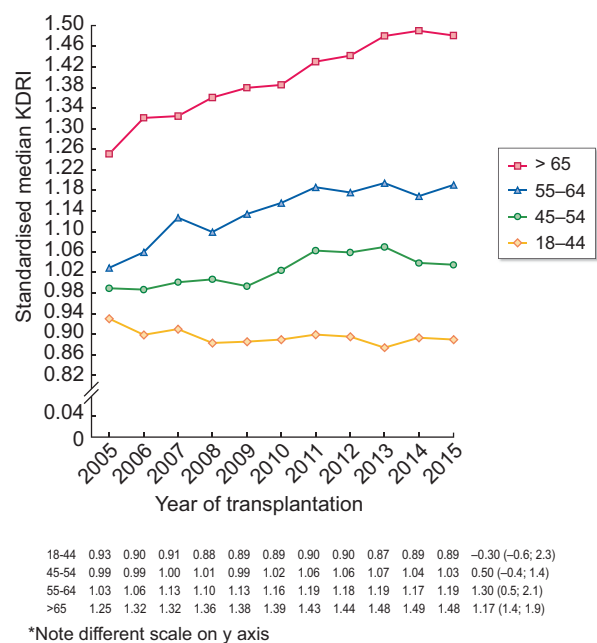
A Overall



B By recipient sex



C By recipient age group*



D By recipient diabetic status

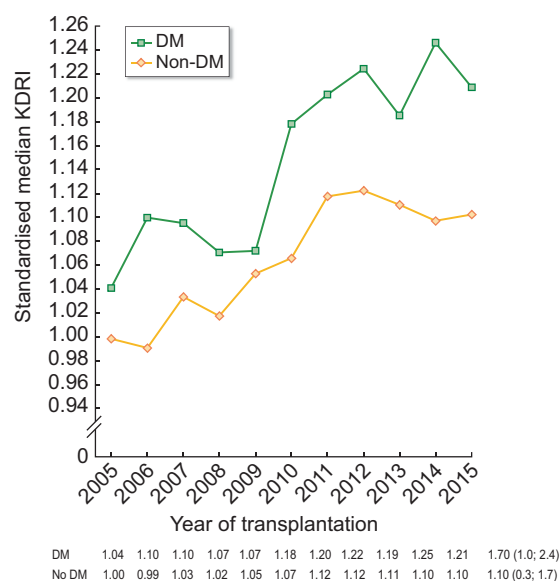


FIGURE 2: Standardized median KDRI and AAPC (95% CI) during the years 2005–15 for (A) all countries/regions combined and by (B) recipient sex, (C) recipient age group and (D) recipient diabetic status. The KDRI is scaled relative to the median kidney donor in 2005. AAPCs with a significance level <0.05 are denoted by an asterisk (*).

S2, and by individual country can be found in [Supplementary data, Figure S1](#) and [Table S2](#).

Trends in standardized KDRI

When standardized to the median KDRI from the total group in 2005 one can objectively visualize annual changes in the ‘median donor’ based on 10 deceased donor factors. Between 2005 and 2015 this standardized median donor KDRI increased from 1.00 to 1.13, giving an AAPC of 1.3% [95% confidence interval (CI) 0.6–2.0; [Figure 2A](#), [Supplementary data, Table S3](#)]. The standardized median donor KDRI increased for both female and male recipients by an

AAPC of 1.5% (95% CI 1.0–2.0) and by 1.2% (95% CI 0.8–1.6), respectively, with no differences between the sexes ($P = 0.851$; [Figure 2B](#)). There appeared to be a trend towards a decline in the standardized median KDRI for recipients ages 18–44 years [AAPC -0.3% (95% CI -0.6 – 2.3)]. Over time, the gap between the standardized KDRI in the youngest and oldest recipients widened. The standardized median KDRI in 2015 for recipients ages 18–44 years was 0.89, whereas for recipients ≥ 65 years of age it was 1.48 ([Figure 2C](#), [Supplementary data, Table S3](#)). Recipients with DM remained in receipt of lower-quality donor kidneys compared with recipients without DM throughout the 10-year period

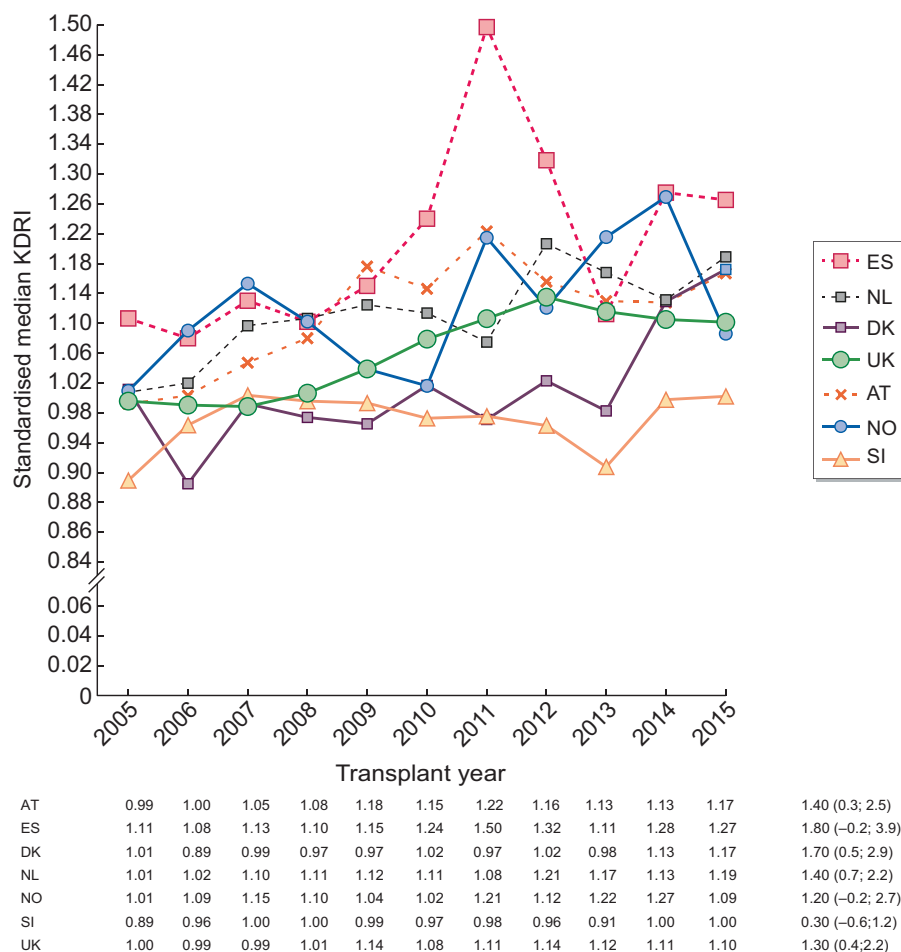


FIGURE 3: Standardized median KDRI and AAPC (95% CI) during the years 2005–15 by country/region. The KDRI is scaled relative to the median kidney donor in 2005 for all countries combined.

($P < 0.001$), although the KDRI increased for both diabetic and non-diabetic recipient groups (Figure 2D, Supplementary data, Table S3).

Overall Austria, the Basque Country (Spain) and the Netherlands had higher annual standardized median KDRI than Norway and Slovenia (Figure 3, Supplementary data, Table S3). Austria, the Basque Country and the Netherlands continued to have higher-than-average standardized KDRI when recipients were stratified by older age (Supplementary data, Figure S2). The driving factors behind these differences varied by country (Table 2). The high standardized KDRI in Austria, the Basque Country and the Netherlands was mainly driven by a higher proportion of deceased donors >50 years of age and donors with a diagnosis of DM. In addition, within the Netherlands and the UK almost 50% of donors were DCD donors, while they only made up 5% of donors in Norway and 0% of donors in Slovenia and Denmark.

Survival analysis was performed on 11 767 first transplant recipients transplanted between 2005 and 2010. Demographic data are given in Table 3, and Figure 4 presents the unadjusted patient and graft survival curves by time cohort and KDRI quintile. There was no change in the 5-year patient and graft survival probabilities between the time cohorts. Within each time cohort, patient and graft survival was higher at lower KDRI. Over time there appeared to be a narrowing in the

difference in the 5-year survival probabilities between the two highest KDRI quintiles due to an improvement in the outcomes from the highest KDRI category.

There was no difference in the unadjusted and adjusted risk of death across transplant cohorts [adjusted hazard ratio (aHR) 1.19 (95% CI 0.92–1.54) for 2007–08 and aHR 1.17 (95% CI 0.74–1.83) for 2009–10 compared with 2005–06; Figure 5]. In addition, there was no difference in the unadjusted and adjusted risk of graft failure across transplant cohorts [aHR 1.22 (95% CI 0.98–1.50) for 2007–08, aHR 1.22 (95% CI 0.84–1.79) for 2009–10 compared with 2005–06; Figure 5]. The risk of death or graft loss in patients transplanted with lower KDRI (i.e. better quality) allografts was lower, however, this effect was reduced when adjusting for recipient and transplant factors (Supplementary data, Figure S3).

Sensitivity analysis

Complete case analysis yielded similar results to those obtained with the imputed dataset (Supplementary data, Tables S2–S4). Analysis of only DBD kidneys revealed slightly lower KDRI scores for each time point, but the trend of increasing KDRI scores over time remained (Supplementary data, Tables S2 and S3).

Table 2. Deceased donor risk factors as presented in the KDRI equation by country/region and for the years 2005, 2010 and 2015

Factors	Transplantation year	Austria	The Basque Country	Denmark	The Netherlands	Norway	Slovenia	UK
Recipients, <i>n</i>	2005	237	102	91	335	104	30	956
Donors, <i>n</i>	2010	224	101	110	308	136	53	1259
	2015	218	104	126	355	145	54	1573
Donor age (years), median (IQR)	2005	51 (42–61)	55 (43–65)	53 (44–60)	50 (37–58)	55 (41–60.7)	42 (23–49)	49 (37–57)
	2010	56 (45–67)	62 (46–70)	51 (44–64)	55 (46–62)	55 (43.6–63)	48 (34–54)	52 (41–62)
	2015	57 (49–66)	62 (48–72)	58 (44–66)	57 (49–66)	55 (37–68)	53 (46–59)	54 (43–64)
Donors <18 years of age, %	2005	5	2	6	8	6	23	6
	2010	3	1	4	5	4	15	4
	2015	5	1	6	2	6	4	4
Donors >50 years of age, %	2005	54	66	64	52	63	23	48
	2010	68	67	56	65	62	45	56
	2015	70	70	64	73	61	61	61
Height (cm), median (IQR)	2005	175 (168–180)	165 (160–175)	170 (165–180)	174 (168–180)	175 (165–180)	170 (165–175)	170 (163–178)
	2010	170 (165–180)	168 (161–175)	175 (168–180)	175 (168–180)	175 (170–180)	170 (167–178)	170 (163–178)
	2015	172 (165–180)	170 (160–175)	172 (165–180)	173 (168–180)	171 (165–180)	175 (165–180)	171 (163–178)
Weight (kg), mean (SD)	2005	80 (16)	73 (13)	75 (17)	74 (15)	80 (21)	69 (23)	74 (16)
	2010	76 (16)	78 (11)	76 (16)	78 (18)	78 (19)	75 (13)	78 (19)
	2015	78 (20)	74 (13)	76 (18)	78 (18)	74 (17)	79 (14)	78 (19)
Donor diabetes, %	2005	3	3	0	6	8	7	4
	2010	8	9	4	5	4	0	6
	2015	12	12	2	9	3	9	8
Donor HTN, %	2005	33	39	27	3	25	20	20
	2010	36	33	31	30	35	38	29
	2015	41	35	33	29	27	30	28
Donor CVA, %	2005	60	56	75	57	54	87	68
	2010	68	70	81	61	61	83	63
	2015	68	65	63	49	67	52	54
Donor creatinine (mg/dL), median (IQR)	2005	0.90 (0.70–1.12)	0.80 (0.60–1.00)	0.81 (0.63–0.97)	0.86 (0.67–1.05)	0.78 (0.66–0.88)	0.74 (0.64–0.90)	0.92 (0.74–1.15)
	2010	0.80 (0.64–1.03)	0.74 (0.56–0.90)	0.68 (0.51–0.93)	0.77 (0.58–0.99)	0.73 (0.55–0.90)	0.90 (0.64–1.10)	0.83 (0.66–1.07)
	2015	0.90 (0.68–1.20)	0.70 (0.58–0.87)	0.72 (0.59–1.01)	0.75 (0.59–0.88)	0.75 (0.58–1.02)	0.89 (0.70–1.10)	0.76 (0.59–1.02)
DCD donor, %	2005	2	0	0	50	0	0	18
	2010	2	2	0	37	0	0	40
	2015	11	21	0	55	5	0	45

Table 3. Baseline characteristics of first kidney-only transplant recipients by transplant cohort: Cohort 1, transplanted during 2005–06; Cohort 2, transplanted during 2007–08; Cohort 3, transplanted during 2009–10

Characteristics	2005–06	2007–08	2009–10	% missing
Number	3702	3779	4286	
Male, %	62	63	63	0
Age at transplantation (years), median (IQR)	52 (42–61)	52 (41–61)	55 (44–63)	0
Dialysis time (years), median (IQR)	3 (2–4)	3 (2–5)	3 (2–5)	0
Primary kidney disease, %				
DM types I and II	10	10	12	–
HTN/renovascular disease	11	12	13	–
Glomerulonephritis/sclerosis	21	20	19	–
Other	26	26	24	–
Missing/unknown	31	32	32	32
Initial KRT modality, %				
Dialysis	79	81	81	–
Kidney transplant	12	15	18	–
Missing/unknown	9	4	0.7	4
CIT (hours), median (IQR)	17 (14–21)	16 (13–20)	16 (12–19)	13
Number of mismatches at HLA-A, B, DR				0.5
0	12	12	11	–
1	8	6	5	–
2	28	22	21	–
3	32	35	37	–
4	16	20	20	–
5	4	4	4.8	–
6	1	1	1.5	–
Panel reactive antibodies, %				58
0	78	78	77	–
>0–10	5	4	5	–
10–79	8	9	11	–
>79	2	3	2	–

DISCUSSION

We investigated trends in the quality of deceased donor kidneys, expressed as a standardized KDRI, transplanted between 2005 and 2015 in seven European countries and the effects of these trends on survival outcomes. During this 10-year period the overall quality of deceased donor kidneys decreased for every subgroup except for recipients 18–44 years of age. The decline in the overall kidney quality was evident as an increase in the standardized KDRI of $\sim 1.3\%$ /year, which is in line with changes seen in the USA [10]. The factors driving these temporal changes were predominantly the increased use of older deceased donors, donors with a prior diagnosis of HTN or DM and, for the Netherlands and the UK, the use of DCD donors. As the use of donors with these risk factors varied between countries, we saw that the median standardized KDRI varied between countries. In countries such as the Netherlands and the UK, where in 2015 almost 50% of deceased donors were DCD donors, the standardized KDRI was consistently higher than in Norway, where only 5% of deceased donors were DCD donors. Even with the exclusion of DCD kidneys, both the crude and standardized KDRI rose over time. Five-year patient and graft survival probabilities remained unchanged despite the decrease in the overall quality of deceased donor kidneys over time. This could be driven by overall improvements in recipient health, transplantation procedures and changes in immunosuppressive regimens. Alternatively, it is possible that the quality of deceased donor kidneys does not negatively affect transplantation outcomes in the medium term (of 5 years), but rather in the long term.

There are several factors that may drive the decline in the quality of deceased donor kidneys over time and may vary across countries; for example, the demand for deceased donor organ transplantation in terms of the number of patients commencing kidney replacement therapy (KRT), the number of patients listed on the transplant waiting list and the strength of the living donor transplant programme. It may be that the reduction in the quality of transplanted kidneys, by means of accepting more marginal deceased donors, is an attempt to counterbalance long waiting times faced by potential transplant recipients. Second, the duration and success of the use of marginal donors within a country is likely to affect the future number of these donors. Additionally, the overall organizational structure of a country's transplantation programme, down to who is responsible for organ procurement, may play a contributory role [15]. Finally, intercountry differences in KDRI could be influenced by background risk factors within the general population. Within all these countries the prevalence of DM, HTN and obesity within the general population varies [16], therefore the percentage of potential donors within each country with these features will vary. The increasing prevalence of these diseases [17–19] may well explain in part the trend towards increasing KDRI.

This study has shown that the poorest-quality kidneys are being transplanted into the oldest recipients, in keeping with a single-centre German study [9]. As we demonstrated, as the age of the recipient increases, the median standardized KDRI increases, whereas with time, the youngest recipients receive ever better-quality kidneys. It is clear that longevity matching,

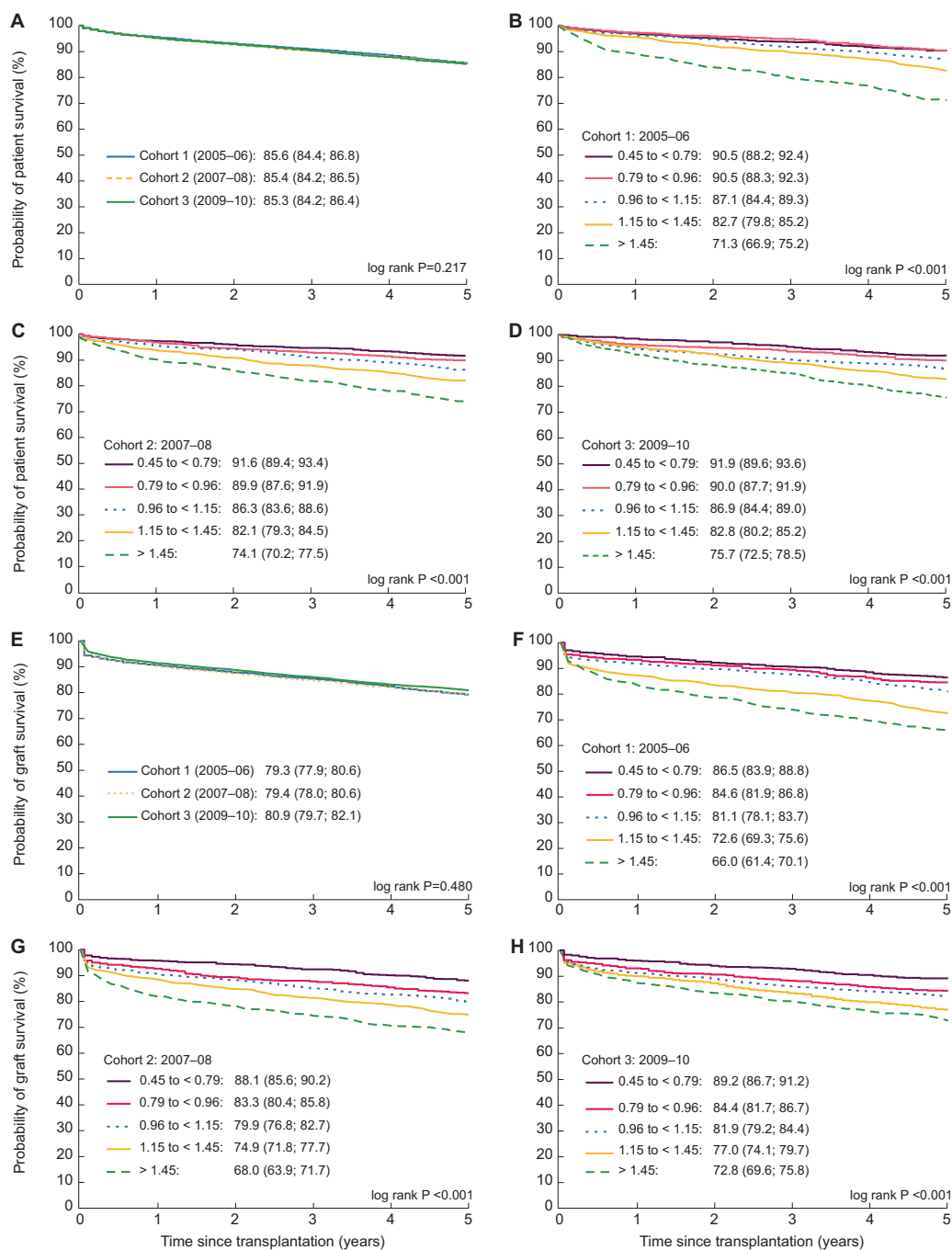


FIGURE 4: Five-year unadjusted patient survival curves for patients ≥ 18 years of age receiving their first deceased donor kidney-only transplant by (A) time cohort during 2005 and 2010 and by KDRI quintiles between (B) 2005 and 2006, (C) 2007 and 2008 and (D) 2009 and 2010 in all countries combined and 5-year unadjusted graft survival curves by (E) time cohort during 2005 and 2010 and by KDRI quintiles between (F) 2005 and 2006, (G) 2007 and 2008 and (H) 2009 and 2010 for all countries/regions combined.

and therefore utility, is appropriately occurring. The distinction between countries with the better- and worse-quality kidneys continued, even when stratified by recipient age group, thereby disputing the idea that kidney quality within a country is driven predominantly by recipient qualities.

Despite the decline in the quality of donor kidneys over the past 10 years, patient and graft survival remained unchanged. Several factors may have contributed to improving both recipient and graft survival, potentially counterbalancing the effects of the decline in the quality of donor kidneys. The risk of recipient death can be

decreased, for example, by reducing cardiovascular risk factors. Ceretta *et al.* [20] demonstrated that between 2005 and 2014 the proportion of Europeans commencing KRT with cardiovascular disease as a comorbidity declined. Furthermore, Boenink *et al.* [21] recently showed that the excess mortality risk in Europeans commencing KRT between 2002 and 2015 decreased in relation to the improved survival in the general population, in other words, the factors resulting in improved KRT outcomes are not limited to overall improvements in the health of the general population. It may be that overall improvements in the relative health of the

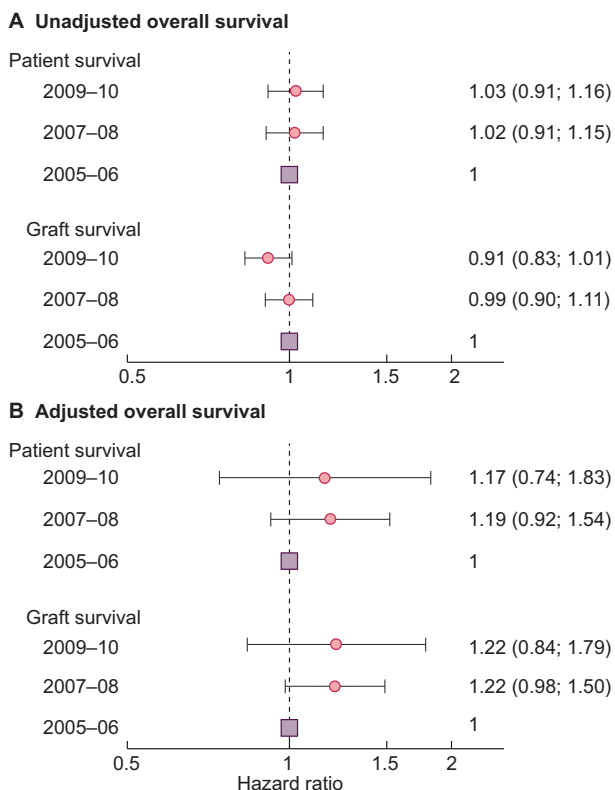


FIGURE 5: Five-year risk and 95% CI of (A) unadjusted and (B) adjusted death and 5-year risk of (A) unadjusted and (B) adjusted graft failure by time cohort (2005–06, 2007–08, 2009–10) for all countries/regions combined. Adjustments made for recipient age at transplantation, recipient sex, primary kidney disease, CIT, HLA mismatch score and the country of transplantation.

potential kidney transplant recipient may be playing a role in counterbalancing the effects of the higher KDRI transplant, although this remains speculative and to date there is no evidence that individuals are being transplanted in a state of relative improved health. In addition to potential improvement in pre-transplantation health, there is an increased emphasis from transplant groups on the post-transplant control of blood pressure and cardiovascular risk management [22], although again, whether this has translated to a decline in post-transplantation cardiovascular risk is unclear. Studies specifically assessing trends in the pre-transplantation health of European transplant recipients are needed to determine what is driving this apparent counterbalance in survival outcomes.

One of the factors driving both the increase and country difference in the median standardized KDRI over time was the use of DCD allografts, although it should be emphasized that both the crude and standardized KDRI rose over time even with the exclusion of DCD kidneys. The legal utilization of DCD donors and the policies relating to their procurement varies considerably throughout Europe [23]. Within the Netherlands and the UK, DCD donors now make up ~50% and 42%, respectively, of the deceased donors [24, 25]. Although DCD allografts are typically thought to have worse outcomes than DBD allografts, recent evidence is bringing this into question [26]. A Dutch study reported 5-year death-censored graft failure for recipients <65 years of age of DBD and DCD allografts from donors <65 years of age of 85.9% (95% CI 84.1–87.6) and 82.6% (95% CI 80.2–84.9), respectively [27]. Similarly, a UK study found equivalent graft outcomes between older controlled DCD and DBD allografts in the same age group [28], although controlled DCD allografts performed

Box 1. KDRI calculation, donor factors and model coefficients as described by Rao *et al.* [10]

$$\text{KDRI}_{\text{exp}} = \exp \left[-0.0194 \times I[\text{age} < 18 \text{ years}] \times [\text{age} - 18 \text{ years}] + 0.0128 \times [\text{age} - 40 \text{ years}] + 0.0107 \times I[\text{age} > 50 \text{ years}] \times [\text{age} - 50 \text{ years}] + 0.179 \times I[\text{race} = \text{African American}] + 0.126 \times I[\text{hypertensive}] + 0.130 \times I[\text{diabetes}] + 0.220 \times [\text{SCr} - 1 \text{ mg/dL}] - 0.209 \times I[\text{SCr} > 1.5 \text{ mg/dL}] \times [\text{SCr} - 1.5 \text{ mg/dL}] + 0.0881 \times I[\text{cause of death} = \text{CVA}] - 0.0464 \times [/ 10] - 0.0199 \times I[\text{weight} < 80 \text{ kg}] \times [(\text{weight} - 80 \text{ kg}) / 5] + 0.133 \times I[\text{donation after cardiac death}] + 0.240 \times I[\text{hepatitis C}] \right]$$
, where $I = 1$ if the condition is true and $I = 0$ if the condition is false.

Donor characteristic	Applies to:	KDRI coefficient ('Beta')	KDRI 'XBeta' component
Age (integer years)	All donors	0.0128	0.0128* (age-40)
	Donors <18 years of age	-0.0194	-0.0194* (age-18)
	Donors >50 years of age	0.0107	0.0107* (age-50)
Height (cm)	All donors	-0.0464	-0.0464* (hgt-170)/10
Weight (kg)	All donors with weight <80 kg	-0.0199	-0.0199* (wgt-80)/5
Ethnicity	African American donors	0.1790	0.1790
History of HTN	Hypertensive donors	0.1260	0.1260
History of DM	Diabetic donors	0.1300	0.1300
Cause of death	Donors with cause of death as a CVA	0.0881	0.0881
	All donors	0.2200	0.2200* (creat-1.0)
Serum creatinine	Donors with creatinine >1.5 mg/dL	-0.2090	-0.2090* (creat-1.5)
Hepatitis C status	Hepatitis C positive donors	0.2400	0.2400
Donation after circulatory status	DCD donors	0.1330	0.1330

less well than DBD allografts with increasing donor and recipient ages, longer CITs, repeat transplantation and poor HLA matches [29]. Perhaps given the survival improvement from DCD allografts with time, the higher KDRI seen as a result of the DCD allografts is no longer a true reflection of donor quality and hence survival is unchanged despite the higher KDRI scores.

Unlike the findings in our study, the median KDRI score in the USA has remained fairly low and static from 2005 to 2015 at ~ 1.24 [30]. Whereas in 2015, 55% of European deceased kidney donors died of a cerebrovascular accident (CVA), 64% were >50 years of age and 37% were donors after cardiac death, in the USA only 25% of kidney donors died of a CVA, 25% were >50 years of age and only 18% were DCD donors [30]. A recent study by Aubert *et al.* [31] demonstrated an almost double discard rate in the USA compared with France. A lower US discard rate similar to that of France would have resulted in an additional 132 445 allograft life-years. Despite the differences in the distribution of the KDRI score, the 5-year US and European graft survival outcomes remain similar at ~ 75 – 85% [30, 32].

The main strength of this study is its ability to compare the trends in the quality of deceased donor kidneys, by means of the standardized KDRI, across seven European countries within various subgroups over 10 years. The KDRI is an easily applicable scoring system that allows for standardization and comparison of deceased donor allografts between studies and over time. However, in the future, in light of improved outcomes of DCD allografts, the inclusion or weighting of DCD donors in the KDRI score may need to be reconsidered. The main limitation of this study is the lack of information regarding organ discard rates and the corresponding KDRI of these organs, thus we cannot form a complete picture of the potential donor kidneys available over this time period. Correlation with pre-implantation biopsy findings would have been useful, but this information was not available. To have a clearer picture we have only included first transplant recipients and thus we cannot comment on the quality of the donor kidney or outcomes of subsequent transplantations. The findings of this study are based on transplants occurring in seven European countries and thus we may not be able to generalize these results to the rest of Europe. The relative sizes of the countries/regions in this study are reflected in the findings, i.e. the overrepresentation of the UK and large swings in the country-specific results from smaller countries/regions. Furthermore, throughout most of Europe, data on ethnicity that are included in the KDRI score are not collected. Given that the prevalence of 'Black or African American' race in the Eurotransplant zone and the UK is low (1% in the UK [33]), we assumed all donors were Caucasian. This may have slightly underestimated the KDRI score.

CONCLUSION

Over the past 10 years the quality of deceased donor kidneys as expressed by standardized KDRI has decreased across all seven European countries examined by this study, although this did not translate to worse outcomes. A difference in the median kidney quality between countries and between the age groups was

seen. As life expectancy in the general population increases and the prevalence of DM, HTN and obesity increases, it is likely that we will continue to see poorer-quality donor kidneys. To avoid this translating into worse transplant outcomes, the transplant community should focus on identifying therapies and/or preventative strategies aimed at improving transplant outcomes despite these lower-quality allografts. This approach could further expand the pool of transplantable organs.

ACKNOWLEDGEMENTS

We would like to thank the patients and the staff of the dialysis and transplant units for contributing the data via their national and regional kidney registries. Furthermore, we gratefully acknowledge the following registries and persons for their contribution of data [Austrian Dialysis and Transplant Registry, Basque Country Registry (J. Aranzabal, M. Rodrigo and I. Moina), Danish Nephrology Registry (J.G. Heaf), Norwegian Renal Registry (A. Åsberg)] and the other ERA-EDTA registry committee members not mentioned above for their advice in the analysis and the drafting of this article: A. Więcek, F. J. Caskey, C. Couchoud, M. Evans, P. Finne, J. W. Groothoff, J. Harambat, J. G. Heaf, F. Jarraya and I. Rychlik; and A. Kramer in the AMC Registry office for data collection and management. We would also like to thank the following transplant registries for supplying data for use in this study: Nederlandse Orgaantransplantatie Registratie, Dutch Transplant Foundation (Cynthia Konijn-Janssen), UK transplant registry held by NHS Blood and Transplant (Lisa Mumford) and Scandiatransplant.

SUPPLEMENTARY DATA

Supplementary data are available at [ndt](https://academic.oup.com/ndt) online.

FUNDING

The ERA-EDTA Registry is funded by the ERA-EDTA. This article was written on behalf of the ERA-EDTA Registry, which is an official body of the ERA-EDTA. M.P. is currently funded by the National Institute for Health Research.

CONFLICT OF INTEREST STATEMENT

None declared.

DATA AVAILABILITY STATEMENT

The data underlying this article cannot be shared with any third party because the national and regional registries that provided data to the ERA-EDTA Registry remain the owners of the data.

REFERENCES

1. Eurotransplant. Eurotransplant. *Annual Report 2017*. 2015 <http://www.eurotransplant.org/wp-content/uploads/2019/12/Annual-Report-2017-HR.pdf> (15 November 2020, date late accessed)
2. NHS Blood and Transplant. Annual Report on *Kidney Transplantation 2015/16*, <https://nhsbt.dbe.blob.core.windows.net/umbraco-assetscorp/1313/>

- organ_specific_report_kidney_2016.pdf (15 November 2020, date last accessed)
3. Chan S, Campbell SB, Clayton PA *et al*. Temporal changes in deceased kidney donor characteristics in Australia. *Transplant Direct* 2016; 2: e112
 4. Johnson RJ, Bradbury LL, Martin K *et al*. Organ donation and transplantation in the UK—the last decade: a report from the UK national transplant registry. *Transplantation* 2014; 97(Suppl 1): S1–S27
 5. Aubert O, Kamar N, Vernerey D *et al*. Long term outcomes of transplantation using kidneys from expanded criteria donors: prospective, population based cohort study. *BMJ* 2015; 351: h3557
 6. Rao PS, Schaubel DE, Guidinger MK *et al*. A comprehensive risk quantification score for deceased donor kidneys: the kidney donor risk index. *Transplantation* 2009; 88: 231–236
 7. Del Moral Martin RMG, Retamero Diaz JA, Cava Molina M *et al*. Validation of KDRI/KDPI for the selection of expanded criteria kidney donors. *Nefrologia* 2017; 38: 297–303
 8. Peters-Sengers H, Heemskerk MBA, Geskus RB *et al*. Validation of the prognostic kidney donor risk index (KDRI) scoring system of deceased donors for renal transplantation in the Netherlands. *Transplantation* 2017; 102: 162–170
 9. Lehner LJ, Kleinstaub A, Halleck F *et al*. Assessment of the kidney donor profile index in a European cohort. *Nephrol Dial Transplant* 2018; 33: 1465–1472
 10. Organ Procurement and Transplantation Network. *A Guide to Calculating and Interpreting the Kidney Donor Profile Index (KDPI)*. https://optn.transplant.hrsa.gov/media/1512/guide_to_calculating_interpreting_kdpi.pdf (23 June 2021, date last accessed)
 11. Eurotransplant. *Eurotransplant 2015 Annual Report*. <http://www.eurotransplant.org/wp-content/uploads/2019/12/Annual-Report-2017-HR.pdf> (15 November 2020, date last accessed)
 12. Kim HJ, Fay MP, Feuer EJ *et al*. Permutation tests for joinpoint regression with applications to cancer rates. *Stat Med* 2000; 19: 335–351
 13. National Cancer Institute. Joinpoint Regression Program, Version 4.3.1.0. <https://surveillance.cancer.gov/joinpoint/> (23 June 2021, date last accessed)
 14. Joinpoint Regression Program version 4.5.0.1. Statistical Methodology and Applications Branch, *Surveillance Research Program*. Bethesda, MD: National Cancer Institute, 2017
 15. Matesanz R, Dominguez-Gil B, Coll E *et al*. How Spain reached 40 deceased organ donors per million population. *Am J Transplant* 2017; 17: 1447–1454
 16. Stel VS, Bruck K, Fraser S *et al*. International differences in chronic kidney disease prevalence: a key public health and epidemiologic research issue. *Nephrol Dial Transplant* 2017; 32: ii129–ii35
 17. Mills KT, Bundy JD, Kelly TN *et al*. Global disparities of hypertension prevalence and control: a systematic analysis of population-based studies from 90 countries. *Circulation* 2016; 134: 441–450
 18. Shaw JE, Sicree RA, Zimmet PZ. Global estimates of the prevalence of diabetes for 2010 and 2030. *Diabetes Res Clin Pract* 2010; 87: 4–14
 19. NCD Risk Factor Collaboration. Worldwide trends in body-mass index, underweight, overweight, and obesity from 1975 to 2016: a pooled analysis of 2416 population-based measurement studies in 128.9 million children, adolescents, and adults. *Lancet* 2017; 390: 2627–2642
 20. Ceretta ML, Noordzij M, Luxardo R *et al*. Changes in co-morbidity pattern in patients starting renal replacement therapy in Europe—data from the ERA-EDTA Registry. *Nephrol Dial Transplant* 2018; 33: 1794–1804
 21. Boenink R, Stel VS, Waldum-Grevbo BE *et al*. Data from the ERA-EDTA Registry were examined for trends in excess mortality in European adults on kidney replacement therapy. *Kidney Int* 2020; 98: 999–1008
 22. Heemann U, Abramowicz D, Spasovski G *et al*. Endorsement of the kidney disease improving global outcomes (KDIGO) guidelines on kidney transplantation: a European Renal Best Practice (ERBP) position statement. *Nephrol Dial Transplant* 2011; 26: 2099–2106
 23. Wind J, Faut M, van Smaalen TC, van Heurn EL. Variability in protocols on donation after circulatory death in Europe. *Crit Care* 2013; 17: R217
 24. NHS Blood and Transplant. Annual Report on Kidney Transplantation Report for 2018/2019. <https://nhsbt.dbe.blob.core.windows.net/umbraco-assets-corp/17289/kidney-annual-report-2018-19-november19.pdf> (15 November 2020, date last accessed)
 25. Nederlandse Transplantatie Stichting (Dutch Transplant Foundation). *Jaarverslag (annual report) 2016 De Kracht van de Keten*. <https://www.transplantatiestichting.nl/files/bestanden/NTS%20jaarverslagen%202000-nu/nts-jaarverslag-2016.pdf?caa47c3254> (15 November 2020, date last accessed)
 26. Nefrovisie. *Renal Replacement Therapy in the Netherlands, Annual Report 2018 [Nierfunctie veranging Nederland Jaarboek 2018]*. https://www.nefrovisie.nl/wp-content/uploads/2019/12/20191212_RENINE-annual-report-2018.pdf (15 November 2020, date last accessed)
 27. Peters-Sengers H, Berger SP, Heemskerk MB *et al*. Stretching the limits of renal transplantation in elderly recipients of grafts from elderly deceased donors. *J Am Soc Nephrol* 2017; 28: 621–631
 28. Summers DM, Johnson RJ, Hudson A *et al*. Effect of donor age and cold storage time on outcome in recipients of kidneys donated after circulatory death in the UK: a cohort study. *Lancet* 2013; 381: 727–734
 29. Summers DM, Johnson RJ, Allen J *et al*. Analysis of factors that affect outcome after transplantation of kidneys donated after cardiac death in the UK: a cohort study. *Lancet* 2010; 376: 1303–1311
 30. Hart A, Smith JM, Skeans MA *et al*. Annual data report: kidney. *Am J Transplant* 2017; 17: 21–116.
 31. Aubert O, Reese PP, Audry B *et al*. Disparities in acceptance of deceased donor kidneys between the United States and France and estimated effects of increased US acceptance. *JAMA Intern Med* 2019; 179: 1365
 32. Kramer A, Pippias M, Noordzij M *et al*. The European Renal Association–European Dialysis and Transplant Association (ERA-EDTA) registry annual report 2015: a summary. *Clin Kidney J* 2018; 11: 108–122
 33. NHS Blood and Transplant. *Organ Donation and Transplantation data for Black, Asian and Minority Ethnic (BAME) communities*. Report for 2018/2019. <https://nhsbt.dbe.blob.core.windows.net/umbraco-assets-corp/17882/organ-donation-and-transplantation-bame-activity-report-2018-2019.pdf> (15 November 2020, date last accessed)

Received: 11.12.2020; Editorial decision: 1.4.2021