

University of Groningen

Changes in the waterbird community of the Parc National du Banc d'Arguin, Mauritania, 1980-2017

Oudman, Thomas; Schekkerman, Hans; Kidee, Amadou; van Roomen, Marc; Camara, Mohamed; Smit, Cor; ten Horn, Job; Piersma, Theunis; El-Hacen, El-Hacen Mohamed

Published in:
Bird Conservation International

DOI:
[10.1017/S0959270919000431](https://doi.org/10.1017/S0959270919000431)

IMPORTANT NOTE: You are advised to consult the publisher's version (publisher's PDF) if you wish to cite from it. Please check the document version below.

Document Version
Publisher's PDF, also known as Version of record

Publication date:
2020

[Link to publication in University of Groningen/UMCG research database](#)

Citation for published version (APA):

Oudman, T., Schekkerman, H., Kidee, A., van Roomen, M., Camara, M., Smit, C., ten Horn, J., Piersma, T., & El-Hacen, E-H. M. (2020). Changes in the waterbird community of the Parc National du Banc d'Arguin, Mauritania, 1980-2017. *Bird Conservation International*, 30(4), 618-633. [0959270919000431]. <https://doi.org/10.1017/S0959270919000431>

Copyright

Other than for strictly personal use, it is not permitted to download or to forward/distribute the text or part of it without the consent of the author(s) and/or copyright holder(s), unless the work is under an open content license (like Creative Commons).

The publication may also be distributed here under the terms of Article 25fa of the Dutch Copyright Act, indicated by the "Taverne" license. More information can be found on the University of Groningen website: <https://www.rug.nl/library/open-access/self-archiving-pure/taverne-amendment>.

Take-down policy

If you believe that this document breaches copyright please contact us providing details, and we will remove access to the work immediately and investigate your claim.

Downloaded from the University of Groningen/UMCG research database (Pure): <http://www.rug.nl/research/portal>. For technical reasons the number of authors shown on this cover page is limited to 10 maximum.

Changes in the waterbird community of the Parc National du Banc d'Arguin, Mauritania, 1980–2017

THOMAS OUDMAN^{1,2} , HANS SCHEKKERMAN³, AMADOU KIDEE⁴,
MARC VAN ROOMEN³, MOHAMED CAMARA⁴, COR SMIT⁵, JOB TEN HORN¹,
THEUNIS PIERSMA^{1,6} and EL-HACEN MOHAMED EL-HACEN^{4,6*} 

¹NIOZ Royal Netherlands Institute for Sea Research, Department of Coastal Systems and Utrecht University, P.O. Box 59, 1790AD Den Burg, Texel, The Netherlands.

²current address: Centre for Biological Diversity, School of Biology, University of St Andrews, Fife, KY16 9TE, UK.

³Sovon Vogelonderzoek Nederland, Toernooiveld 1, 6525 ED Nijmegen, The Netherlands.

⁴Parc National du Banc d'Arguin (PNBA), Chami, Wilaya de Dakhlet Nouadhibou, B.P. 5355, R.I. de Mauritanie.

⁵Wageningen Marine Research, P.O. Box 57, 1780 AB Den Helder, The Netherlands; current address: Hogereind 23, 1793AD De Waal, The Netherlands.

⁶Conservation Ecology Group, Groningen Institute for Evolutionary Life Sciences (GELIFES), University of Groningen, P.O. Box 11103, 9700 CC Groningen, The Netherlands.

* Author for correspondence; email: e.h.m.el.hacen@rug.nl

(Received 01 April 2019; revision accepted 08 October 2019)

Summary

The Parc National du Banc d'Arguin in Mauritania hosts the largest concentrations of coastal waterbirds along the East Atlantic Flyway. In spite of this importance, a review of the changes in the numbers of waterbirds in the area is lacking since the first complete count in 1980. Here we analysed the seven complete waterbird counts made since then, and the additional yearly counts made in one subunit (Iwik region) since 2003. We present evidence for changes in the community composition of waterbirds over the past four decades. Total waterbird numbers showed a decrease between 1980 and 2017, with only Great White Pelican *Pelecanus onocrotalus* showing a significant increase in numbers. Five species showed significant declines: Long-tailed Cormorant *Phalacrocorax africanus*, Red Knot *Calidris canutus*, Bar-tailed Godwit *Circus aeruginosus*, Eurasian Curlew *Numenius arquata*, and Western Marsh Harrier *Circus aeruginosus*. In the remaining species, the variation in numbers between counts was too large, and the number of complete counts too small, for trends to be detected. The yearly counts at Iwik region also showed sharp decreases in the numbers of Red Knot, Bar-tailed Godwit, and Marsh Harrier, but not of Long-tailed Cormorant and Eurasian Curlew. A multivariate analysis revealed a significant change in species composition over time, which was caused mainly by changes in the species depending on the intertidal mudflats for feeding (generally in decline) *vs.* the species depending on fish and crustaceans in the sublittoral and offshore zones (often showing increases).

Keywords: Banc d'Arguin-Mauritania, Bird census, Global change, East Atlantic Flyway, NMDS, Population decline, Shorebirds, Waterbird community

Introduction

Long-distance migratory shorebirds are highly dependent on strings of adequate habitats for their survival, not least the wintering sites where they spend most of the year. Recent international counts have raised concerns about declines in shorebird populations along flyways worldwide (Conklin *et al.* 2014, van Roomen *et al.* 2015, Piersma *et al.* 2016). This includes the East Atlantic Flyway, where apparent problems occur at listed World Heritage Sites such as the Wadden Sea in western Europe and the Parc National du Banc d'Arguin in Mauritania (Boere and Piersma 2012, van Roomen *et al.* 2015). Much of the research and long-term surveys along the East Atlantic Flyway have been conducted at staging sites on the European coast; data from the sub-Saharan wintering sites are scarce.

The Banc d'Arguin (Figure 1) includes about 500 km² of intertidal mudflats and harbours more wintering shorebirds than any other place along the East Atlantic Flyway (Engelmoer *et al.* 1984, Delany *et al.* 2009); it also provides the resources for Arctic- and temperate-breeding shorebirds to prepare the fuelling for the first leg of the spring migration (Ens *et al.* 1990). The area also has the largest breeding colonies of seabirds in West Africa (Campredon 2000). Yet, little is known about the dynamics of bird populations at Banc d'Arguin.

Two different waterbird groups use the Banc d'Arguin either as a wintering or as a breeding area (see Table S1 in the online supplementary material for details): (1) birds that breed in the Arctic, subarctic, and temperate regions and spend the winter in the area, a group dominated by intertidal-feeding shorebirds (Charadrii) (Wymenga *et al.* 1990), and (2) Afrotropical birds that breed in the area and migrate south afterwards, most of which are fish-eaters. The latter group includes two endemic subspecies that remain at Banc d'Arguin throughout the year: The populations of Mauritanian Spoonbill *Platalea leucorodia balsaci* (Piersma *et al.* 2012) and Mauritanian Grey Heron *Ardea cinerea monicae*.

Since the first complete shorebird count in January/February 1980 (Altenburg *et al.* 1982), six more complete winter counts have been conducted: in 1997 (Zwarts *et al.* 1998a), 2000 (Hagemeyer *et al.* 2004), 2001, 2006 (Diagana and Dodman 2006), 2014 (van Roomen *et al.* 2015), and 2017 (Kidé and Diakhite 2017). In addition to the integral counts, in the Iwik region (sections C and D in Figure 1) winter counts were performed each year by NIOZ/PNBA teams from December 2003 onwards (see e.g. van Gils *et al.* 2013). Except for a comparison between the two counts of 1980 and 1997 (Zwarts *et al.* 1998a), the counts and possible changes in waterbird numbers since the 1980s have never been analysed.

Here, we report on the changes in waterbird numbers in the Banc d'Arguin over the last four decades. Our objectives were to evaluate changes in species abundances and bird community composition between 1980 and 2017, with a first discussion of possible local and global ecological drivers of these changes. We also reflect on the required frequency of future counts to allow better inferences on the cause of change in the waterbird community.

Methods

Study area

The Parc National du Banc d'Arguin, Mauritania (Figure 1) is the largest marine protected area in Africa with an area of 12,000 km². The marine part (half of the protected area) is characterised by shallow waters (< 20 m; Sevrin-Reyssac 1993), extensive intertidal flats (453 km²; calculation based on Murray *et al.* 2019), and over 15 differently sized uninhabited islands (Campredon 2000). Shorebirds find predictable intertidal feeding habitats adjacent to relatively undisturbed islands for roosting, while seabirds use these islands for breeding, and feed in the subtidal and offshore areas that are known to be rich in fish (Guénette *et al.* 2014) and shrimp (Schaffmeister *et al.* 2006). The area borders the Sahara, with no large alternative feeding grounds for shorebirds in the vicinity (the Bijagós Archipelago is 1,000 km to the south). This isolation emphasises the crucial importance of this area for waterbirds.

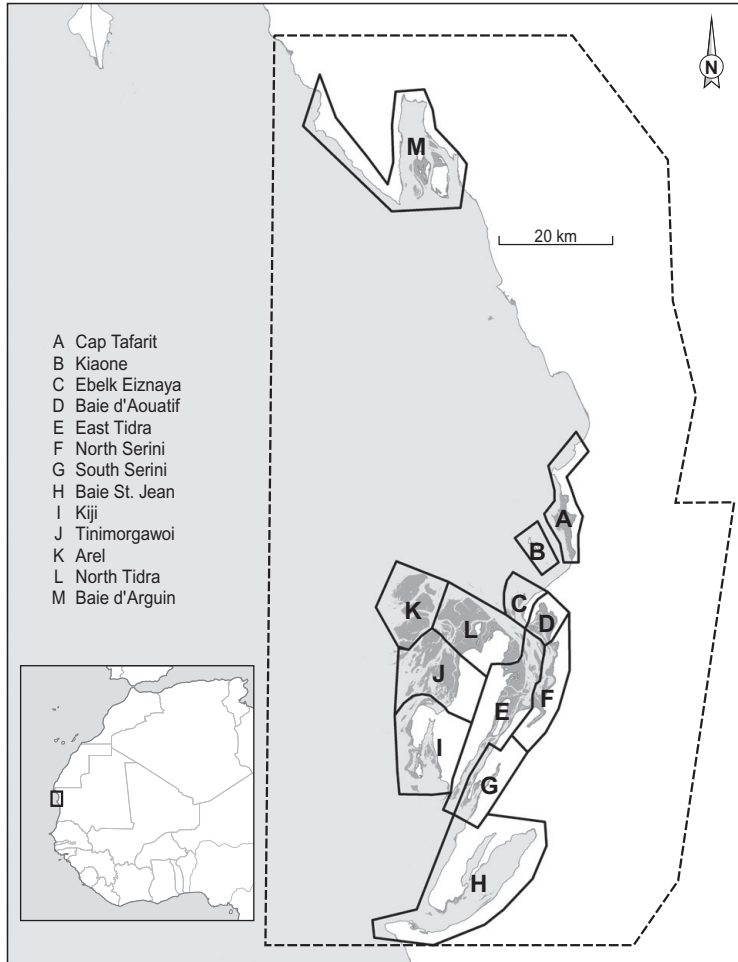


Figure 1. Map of Parc National du Banc d'Arguin, Mauritania, with dark grey representing intertidal flats, light grey depicting the sea, and white colour showing the land. The dashed line represents the Park boundary. The division into 12 sections (A to L) is based on Zwarts *et al.* (1998a). The underlying map is based on publicly available Landsat imagery. The Iwik region is defined as the combined sections C and D.

Our study area comprises the central part of Banc d'Arguin (Figure 1; about 1,500 km²). It includes > 90% of the intertidal area and > 95% of the total bird numbers in the Parc (Zwarts *et al.* 1998b). Baie d'Arguin (section M in Figure 1) was not visited on all counts and was not included in this analysis.

Bird surveys

The first bird count of Banc d'Arguin was carried out in 1973 and covered only part of the area (Knight and Dick 1975), as was the case during a second attempt in 1978 (Trotignon *et al.* 1980). Building on these experiences, seven more or less complete winter counts of the Banc d'Arguin

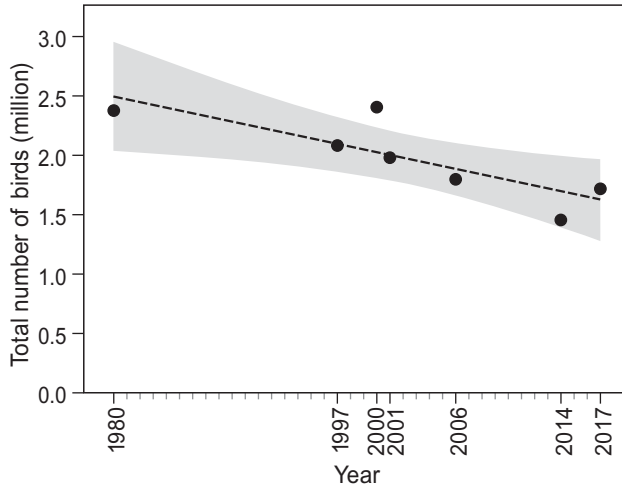


Figure 2. Total waterbird numbers over time in Banc d'Arguin based on seven complete counts in January and/or early February. Shaded area shows the 95% CI.

have been carried out in January/February, and are included in this analysis: 1980, 1997, 2000, 2001, 2006, 2014, and 2017.

All counts were carried out in periods centred on dates of spring tide and used similar tools (telescopes and binoculars) to estimate bird numbers at high-tide roosts. The study area was divided into twelve different sections (Figure 1; Zwarts *et al.* 1998a), each subdivided into 2–12 counting units. To minimise the influence of shifts in the use of high-tide roosts by individual birds, counting units within a section were usually counted on the same or successive dates. In the 2006 count, the channel between the mainland and the island of Tidra was not visited. In some of the other counts, a few counting units were not covered adequately. Bird numbers in these counting units were replaced by numbers observed there during the nearest successful count, corrected for between-year differences in the species' overall totals on the Banc d'Arguin. About 8% of the total waterbird number and between 3% and 25% (mean 8%) of the totals per species were thus imputed in 2017, and 3% (0–15% by species) in 2014. The slight dependency that this causes between data points reduces the accuracy of the statistical analysis, but we decided that this would be less problematic than using incomplete counts.

From December 2003 onward, annual complete counts were made in Baie d'Aouatif and Ebelk Eiznaya (sections C and D in Figure 1), hereafter collectively called the Iwik region (NIOZ, unpublished data). These counts were carried out on a single date close to spring tide in December or January.

Data analyses

In the analyses, we combined Western Reef Heron *Egretta gularis* and Little Egret *E. garzetta* as a single taxon, as they were not distinguished properly in most counts. For the same reason the following (sub)species were analysed together: all large falcons *Falco* spp. (Peregrine *F. peregrinus*, Barbary *F. peregrinoides*, Lanner *F. peregrinoides*, and Saker *F. cherrug*), Mauritanian Spoonbill *Platalea leucorodia balsaci* with Eurasian Spoonbill *leucorodia*, and the Mauritanian Grey Heron *Ardea cinerea monicae* with European Grey Heron *cinerea*. Little Tern *Sterna albifrons* was omitted from the analyses because its numbers fluctuated excessively, by more than a factor 10.

Changes in waterbird numbers over time were assessed by linear regressions on the totals of the seven complete counts as well as of each of the 32 common waterbird species in the area (Table S1). Trends in the yearly count in the Iwik region between the winters of 2003/2004 and 2016/2017 were inspected for linear trends in the same way and compared with the trends for the whole Banc d'Arguin. Furthermore, relative population growth rate (calculated as the slope of the linear regression of population size over time, divided by the mean population size) was calculated for both the seven complete counts and the Iwik yearly counts. Spearman's rank correlation test was performed to determine possible correlations between relative population growth rates in the Iwik region and in the whole Banc d'Arguin.

Permutational multivariate analysis of variance (PERMANOVA) was used to evaluate the effect of time and region (sections in Figure 1) on Euclidean distance matrix of species composition with 9,999 random permutations (Anderson 2017). Furthermore, factors that showed significance in the PERMANOVA were visualised with non-parametric multidimensional scaling (NMDS) based on Bray-Curtis distance matrices of species composition (Clarke 1993, Legendre and Legendre 2012). The count of Kiaone region (section B in Figure 1) was omitted from these analyses because of missing data. Sections C and D as well as G and F were combined to represent Iwik and Serini regions, respectively, because they were not counted separately in all years.

Finally, the effects of various ecological variables on population dynamics were explored by comparing the explanatory power of a series of linear models, using each of the common bird species as one sample. Relative population growth rate was used as the response variable. The explanatory values we chose were based on the lifestyle at Banc d'Arguin and during the rest of the annual cycle. For the time at Banc d'Arguin we considered habitat and diet, for the rest of the year we considered whether or not a species was migratory and the details of the staging and breeding grounds used. Specifically, the tested explanatory variables included "Habitat" (relating to the foraging habitat; either subtidal/pelagic or intertidal), "Diet" (the diet outside the breeding season, split into five categories: fish, molluscs, crustaceans, worms, algae, or mixed), and three two-level variables that together distinguish between different migratory strategies. These are "Breeding" (whether or not birds breed in Africa: Southern or Northern breeders), "Siberia" (whether or not Northern birds breed in Siberia), and "Wadden Sea" (whether or not birds migrate via the Wadden Sea). The categorisation of each variable in all species can be found in Table S1. We tested for dependency between all pairs of explanatory variables by calculating the Pearson correlation coefficient. We compared linear regression models with all potential combinations of these variables, using corrected Akaike's Information Criterion (AICc) to select the most parsimonious model (Burnham and Anderson 2002). To limit the number of models in the comparison, we did not consider any interactions between variables.

Results

Since the first count of 1980, which yielded an estimated total of 2.38 million waterbirds, the total number of birds has shown a significant decline ($F_{1,6} = 10.6$, $R^2 = 0.61$, $P = 0.02$; Figure 2). Over the study period, 22 species showed a negative trend, while nine other species showed an increase (Figure 3). However, trends were only significant in six species, five of which showed a decline (Long-tailed Cormorant *Phalacrocorax africanus*, Western Marsh Harrier *Circus aeruginosus*, Red Knot *Calidris canutus*, Eurasian Curlew *Numenius arquata*, and Bar-tailed Godwit *Limosa lapponica*), and one an increase (Great White Pelican *Pelecanus onocrotalus* ($F_{1,6} = 6.8$, $R^2 = 0.49$, $P = 0.048$; Table S1).

In the yearly counts of Iwik region, nine species showed significant trends (Table S2): three species increased (Grey Heron, Common Greenshank *Tringa nebularia*, and Whimbrel *Numenius phaeopus*), and six species decreased (Marsh Harrier, Osprey *Pandion haliaetus*, Oystercatcher *Haematopus ostralegus*, Curlew Sandpiper *Calidris ferruginea*, Red Knot, and Bar-tailed Godwit). We found a significant positive association between relative population growth rates in Iwik region and those of Banc d'Arguin as a whole (Spearman rank correlation, $r_s = 0.55$, $P = 0.001$; Figure 4).

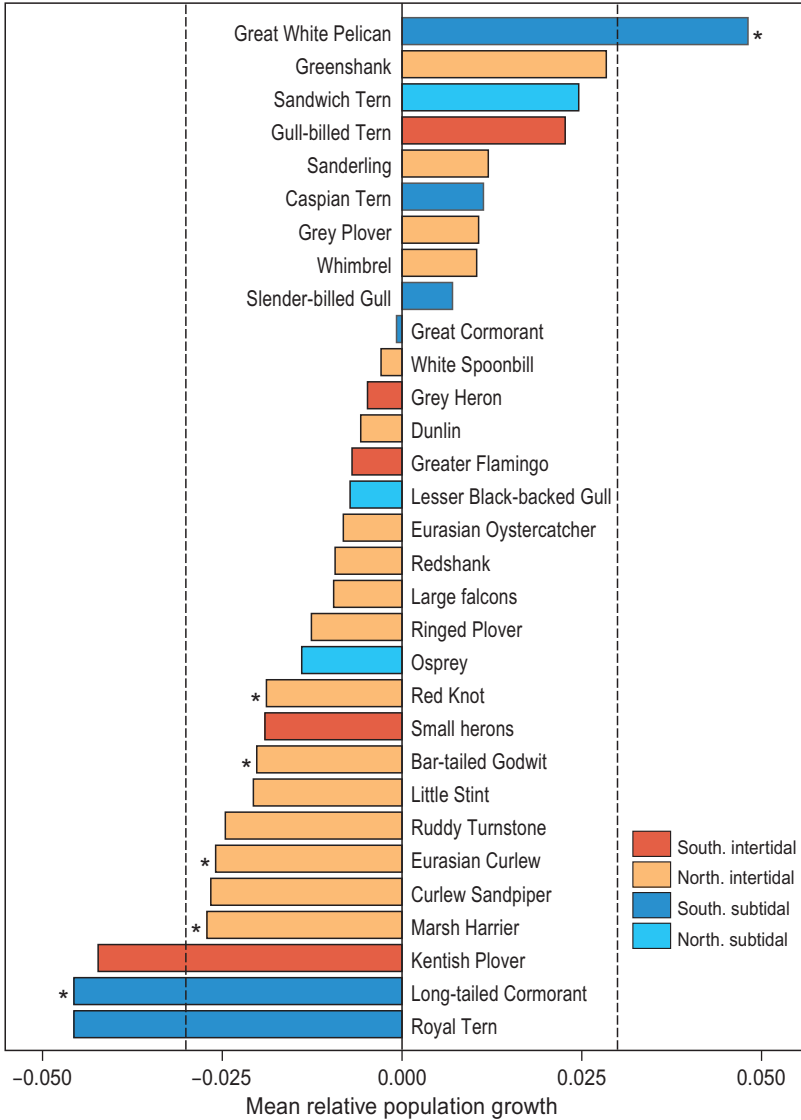


Figure 3. Waterbird dynamics, expressed as mean relative growth rate, in Banc d'Arguin between 1980 and 2017. The red bars represent Southern breeding intertidal foraging species, orange Northern breeding intertidal foragers, dark blue Southern breeding subtidal foragers, and turquoise bars represent Northern breeding subtidal foragers. Spoonbill includes the Mauritanian subspecies *Platalea leucorodia balsaci* with Eurasian Spoonbill *P. l. leucorodia*. Grey Heron includes the Mauritanian Grey Heron *Ardea cinerea monicae* with European Grey Heron *A. c. cinerea*. Small herons include Western Reef Heron *Egretta gularis* and Little Egret *E. garzetta*.

The PERMANOVA analysis revealed that species composition was significantly affected by both time ($F_{(6, 65)} = 1.2, P = 0.002$) and region (section; $F_{(8, 65)} = 9.2, P < 0.001$), but not their interaction ($P > 0.05$). These spatial and temporal dissimilarities in species composition were further corroborated with an NMDS ordination (Figure 5), which demonstrated a clear segregation between

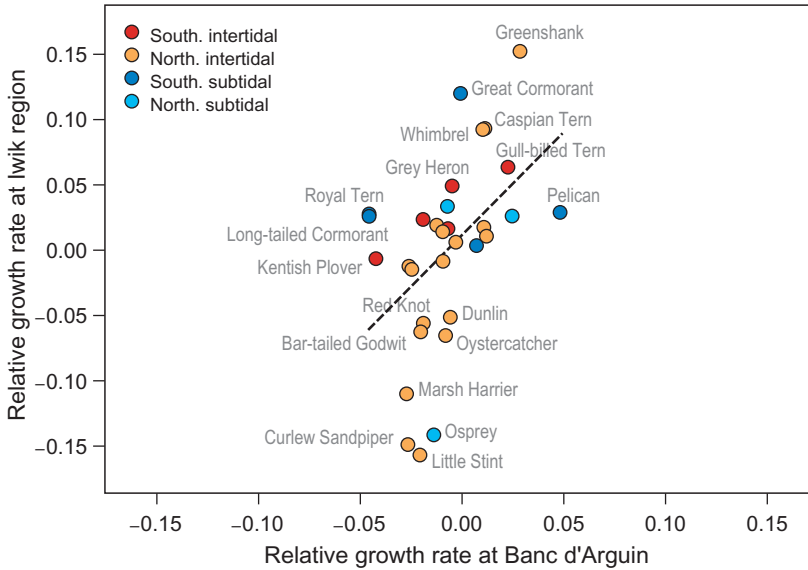


Figure 4. Correlative trends in population growth per species compared between the total Banc d'Arguin (x-axis) and the Iwik region (y-axis). Each point is one species. The red/orange points are intertidal foraging species and the blue/turquoise points are subtidal foragers. The two rates show a positive correlation (Spearman rank correlation, $r_s = 0.55$, $P = 0.001$, dashed line). Banc d'Arguin growth rates are measured from 1980 to 2017, and Iwik growth rates from 2003 to 2017.

regions (Figure 5a) as well as between the early counts and the more recent ones (Figure 5b). The observed segregations (stress = 0.09) were caused mainly by changes in communities of intertidal-dependent *vs.* sublittoral-dependent species (Figure 5).

The mean relative growth rate of all waterbird populations combined also showed a general decrease, but not significantly so (mean -0.007 , $SE = 0.003$, $P > 0.05$; model 1 in Table S3). The African-breeding subtidal bird populations showed a median relative growth rate just above zero, while northern-breeding subtidal birds and both northern- and African-breeding intertidal birds showed a negative median growth rate (Figure 6). These differences were not significant (Table S3). Other explanatory variables (Diet, Wadden Sea usage, and whether birds breed in Siberia or not) did not correlate with the observed growth rates (Table S3). None of the pairs of explanatory variables were highly correlated; all Pearson correlation coefficients were below 0.5, except for the pair Habitat-Diet, which was 0.57.

Discussion

Since the first complete count in 1980, the total number of waterbirds at Banc d'Arguin has been in decline. Red Knot, Bar-tailed Godwit, Eurasian Curlew and Marsh Harrier all decreased by 50% or more in less than four decades. The strongest decline was shown by the piscivorous Long-tailed Cormorant, which lost 70% of the population. In contrast, White Pelicans showed a tenfold increase (from 600 to 6,000 birds) in the course of the study period. Other species such as Curlew Sandpiper and Royal Tern *Thalasseus maximus* showed strong declines that were not statistically significant (Figure 3).

Sources of uncertainty

We must stress that the results should be interpreted with caution. The chance of the occurrence of a type I error (the observation of a significant change where in fact the population size did not

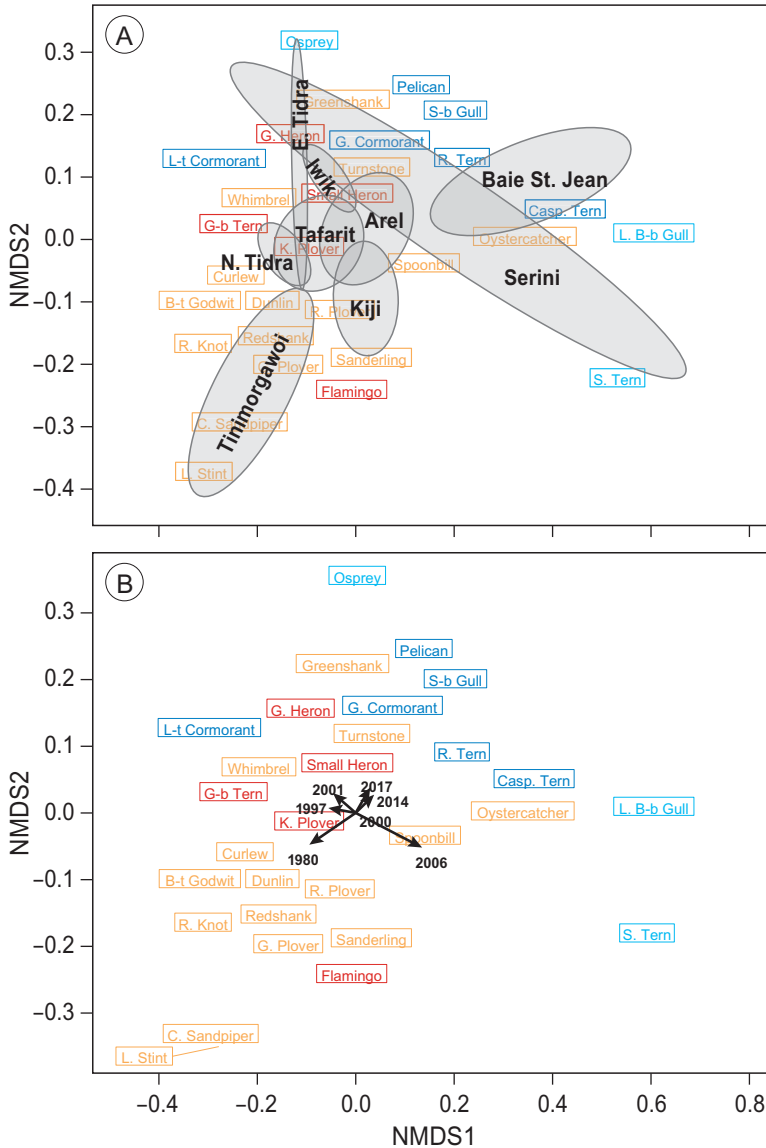


Figure 5. Non-parametric NMDS ordination analysis of all species per section in all seven years. Species that are plotted close together (centre of rectangle denotes position on the plane) tend to show the same spatial and temporal abundance patterns. Subtidal/pelagic foragers are shown in blue/turquoise and intertidal species in red/orange. (a) Mean positions of the different sections are shown in black including their convex hull. (b) Mean positions of the different counts are plotted including vectors indicating the position of the different years. Lengths of vectors indicate the significance of year parameter. Sections C and D as well as G and F (Figure 1) were combined to represent Iwik and Serini regions, respectively.

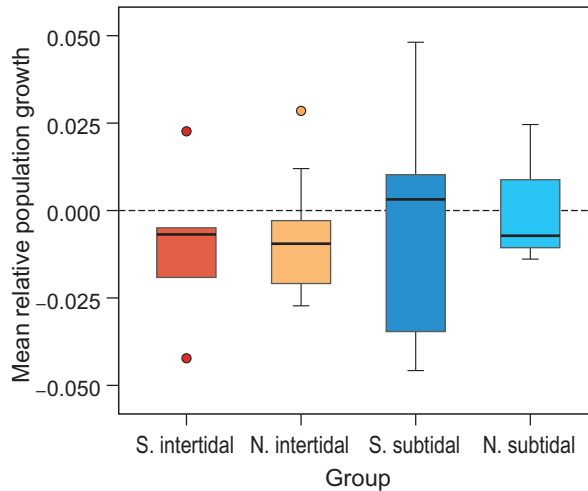


Figure 6. Mean relative growth rates per species guild. The average trend over all common species is significantly negative. This appears to be due to intertidal species (red/orange) and not the subtidal/pelagic fish eaters (red/turquoise). Northern (N.) and Southern (S.) breeding species show similar trends for both intertidal feeders and seabirds.

change) is high because we carried out many linear regressions (one for each species), as is the likelihood of a type II error (no significant change in population size observed, where in fact it has changed) due to low sample sizes (seven counts only). In addition, counting up to two million similar-looking waterbirds will always have a substantial error margin, especially in a large and logistically complex area where most high-tide roosts can only be reached by boat, and tidal height has a strong influence on the number and distribution of roosting birds. Consequently, the observed changes in numbers between separate counts may not always represent the true magnitude of changes, as the counts themselves are likely to have large error margins (see Rappoldt *et al.* 1985).

Firstly, the random error in the count estimate of large roosting bird flocks, even by experienced counters, is known to be high (Rappoldt *et al.* 1985 found an average random error of 37%). This error is expected to be cancelled out when counts consist of many counts of small flocks, but flocks on the Banc d'Arguin can be very large, and for several species the totals are dominated by a few large roosts (Altenburg *et al.* 1982, 1983). In 2014, for example, 16–43% (mean 27%) of the species totals (both of all common species and of 10 most abundant ones) occurred in the one counting unit with the highest numbers. In 2006, almost 1.1 million birds (more than half of the total count) were counted at Tinimorgawoi (Figure 1), a high sand bank roost west of Tidra.

Secondly, roosting waders at Banc d'Arguin often occur in mixed flocks, leading to potential misidentification of certain species. For instance, it is easy to underestimate less conspicuous and less common species that occur among common ones (e.g. Curlew Sandpipers and Little Stints among flocks of Dunlins). Varying experience of the observers may also influence the results. In addition, some fish-eating species may not be roosting during high tide but continue foraging far from the coast, leading to a variable degree of underestimation. An example is the Long-tailed Cormorant, in which the total observed at high-tide roosts was 2,900 birds in 2017, while 4,100 were seen arriving at their main night roost on the isle of Zira during one dedicated evening count.

Thirdly, combining resident and migratory populations into one taxon might have resulted in misleading outcomes. For example, total Spoonbill numbers (Mauritanian Spoonbill *Platalea leucorodia balsaci* plus Eurasian Spoonbill *P. l. leucorodia*) in Banc d'Arguin showed a decrease (Figure 3), while Eurasian Spoonbill numbers showed a profound increase over the last three decades throughout their breeding range (Lok *et al.* 2009, Oudman *et al.* 2017). Thus, the observed

decrease in Spoonbill numbers is probably due to a decline in the size of the population of Mauritanian Spoonbills.

Finally, flocks may be counted twice (or not at all) if different roosting areas used by the same birds over time are not counted simultaneously. This source of error is potentially important in Banc d'Arguin because of our limited knowledge of patterns in area use of individual birds in relation to the spatiotemporal variation in tidal levels. This applies particularly to outlying areas such as the region west of Tidra (Sections I and J in [Figure 1](#)), where the largest mudflat area and bird numbers occur at Tinimorgawoi. These problems are reduced by counting sections with presumably interconnected roosts on the same day as often as possible, but the scale of the area is such that this is not always feasible; counts of the entire Banc d'Arguin have taken between 10 and 25 days. For a few species, double counts may arise because it is difficult to assess in which counting unit they are. This mainly applies to Flamingos, which often stand far away in shallow water between counting areas, and to White Pelicans of which flocks sometimes spend much of the high-tide period in soaring flight.

However, the fact that similar trends were obtained for both the seven complete counts and the yearly monitoring in the Iwik region (i.e. over a shorter period but with a higher frequency of counts) substantiates our findings. Thus, we conclude that the overall results are likely to represent true changes in the numbers of waterbirds in the area and not changes inherited from the low sample size and counting errors. In addition, the yearly subunit counts prove to be useful in detecting global trends in the numbers of waterbirds, especially in remote and complex systems such as Banc d'Arguin. The yearly subunit counts can be optimized by increasing the number of units to compensate the lack of annual complete counts. Furthermore, some of the above-mentioned issues related to counting schemes may be partly resolved by using consistent counting techniques and by regular training of the observers.

Interpreting trends in bird numbers

From the seven complete counts of the Banc d'Arguin, it is clear that bird numbers are changing in the area, but also that the frequency as well as the accuracy of the counts since 1980 are too low to accurately determine temporal trends with great confidence for most species. Nonetheless, the average relative population growth rate is significantly negative (mean -0.007 , $SE = 0.003$; model 1 in [Table S3](#)) and tends to be lower (although not significantly) in intertidal foraging species than for species foraging at sea. This applies to both African breeders and northern migrants. More data are needed to validate this trend and determine whether species staging in the Wadden Sea during migration and breeding in Siberia have lower population growth than other migrants, as has been suggested earlier (e.g. [van Roomen et al. 2015](#)). The observed patterns in northern shorebirds and southern fish-eating migrants are likely caused by different mechanisms related variously to phenomena occurring at Banc d'Arguin or elsewhere along the migration routes.

For shorebirds, the decline within Banc d'Arguin is likely due to food availability changes ([van Gils et al. 2012](#)). Seagrass cover is known to affect the benthic assemblage in the area ([Honkoop et al. 2008](#)), and thus seagrass dynamics may affect shorebirds through a cascading effect on benthic community structure. Seagrass beds are the main primary producer, thus driving the functioning and stability of the intertidal flat communities ([Folmer et al. 2012](#), [van der Heide et al. 2012](#), [de Fouw et al. 2016](#)). Seagrass cover has increased in Banc d'Arguin since the early 1970s as a result of the Sahel drought, resulting in a shift in benthic community from a polychaete-dominated to a bivalve-dominated system ([El-Hacen et al. submitted](#)), with a sharp decline in worms and the bivalve *Dosinia isocardia*, and an increase in one prey species, the bivalve *Loripes orbiculatus* ([El-Hacen et al. submitted](#)). However, due to the sulphide-based metabolism of *Loripes*, foragers need other prey species to complement a diet of *Loripes* ([van Gils et al. 2013](#), [Oudman et al. 2014](#)). Indeed, Bar-tailed Godwits and Red Knots, two shorebird species that are known to depend heavily on polychaetes and *Dosinia* respectively, have declined in Banc d'Arguin according to both the total counts as the yearly Iwik ones. Other polychaete eaters such as Curlew Sandpiper, Kentish Plover,

and Ringed Plover have shown a decline as well (Figure 3). A contributing cause of a decline in shorebirds could be a cascading effect of human fisheries on the benthic community. The illegal fishing of Lusitanian Cownose Ray *Rhinoptera marginata* and Bull Ray *Pteromylaeus bovinus* is expected to have changed the dynamics of seagrass beds. These rays eat the large West African bloody Cockles *Senilia senilis*, which may outcompete the similarly suspension-feeding *Dosinia isocardia*, now that their stocks are so much greater (Sidi Yahya *et al.* in prep.). Previous research has shown that annual *Dosinia* densities explain year to year differences in the survival of Red Knots (van Gils *et al.* 2013).

Obviously, beyond local causes, simultaneous changes also occur in other areas along the flyway, yielding regulatory factors which may interact with the factors acting locally (van Roomen *et al.* 2018). For example, research on Red Knots and Bar-tailed Godwits has shown that rapid climate warming in the High Arctic region of Russia is involved in their population declines (van Gils *et al.* 2016, Rakhimberdiev *et al.* 2018). Also, habitat deterioration and disturbance at staging sites elsewhere along the flyway may contribute to population declines (Dias *et al.* 2006, Catry *et al.* 2011, van Roomen *et al.* 2012). For instance, in the 1990s Red Knots temporarily lost key food resources in the Wadden Sea in spatial and temporal association with the detrimental effects of mechanical dredging for shellfish (Kraan *et al.* 2007, 2010, Compton *et al.* 2016), previously shown to be an important staging area for Red Knots between Siberia and West Africa (Nebel *et al.* 2000).

For fish-eating birds the observed population changes may have resulted from food web alterations within or outside the Banc d'Arguin. For now, the effect of commercial fishing of rays and sharks in Banc d'Arguin on prey availability for seabirds remains unclear. However, the legal commercial fishing practices may also have affected the food web at Banc d'Arguin. They particularly aim at large-bodied fish, which in many cases leads to an increase in small-bodied fish of other species (Pauly *et al.* 1998, Jackson *et al.* 2001, Olden *et al.* 2007), and also of smaller size classes of the same species (van Leeuwen *et al.* 2008). In addition, elimination of top predators such as rays and sharks can release their prey from predatory control (Friedlander and DeMartini 2002, Worm and Myers 2003, Olden *et al.* 2007, Myers *et al.* 2007). Hence, piscivorous birds in Banc d'Arguin which forage mainly on small prey may have profited from both the removal of the top predators and commercial fisheries. This bird group, however, consists of species with different ecological requirements (Veen *et al.* 2018), so the specific reasons will differ between species.

Deterioration of the extent and quality of wetlands and changes in fishing practices outside Banc d'Arguin may have contributed to the observed increase in Afrotropical species within the Banc d'Arguin. For instance, the Senegal delta, just 350 km to the south, has experienced major ecological and hydrological changes over the last four decades (Triplet and Yésou 2000, Zwarts *et al.* 2009), especially the construction of the Diama (1986) and Manantali (1988) dams, which have destroyed important feeding habitats for waterbirds. The offshore area there has also been subjected to severe overfishing over the last few decades (Laurans *et al.* 2004), which may have affected the food availability of seabirds in the entire region. These pronounced changes in habitats and food availability may have pushed the more southern seabird populations to seek shelter and food in Banc d'Arguin. Hence, the tenfold increase in White Pelicans at Banc d'Arguin may at least partly be due to immigration and not to reproduction of the local population. In addition, White Pelicans have benefited from a special conservation program in the Senegal Delta over the last 20 years through controlled flooding, the construction of artificial nesting sites, and occasional food provisioning (personal communications). Thus, the observed increase of pelican numbers in Banc d'Arguin could also be a result of an overspill from the Senegal Delta region due to exceeding the carrying capacity over there.

Recommendations for improving the monitoring quality

We recognise that the occurrence of the above phenomena in Banc d'Arguin is mostly speculative and stress that precisely their speculative nature calls for more targeted research to unravel the causes underlying the population dynamics of the waterbirds at Banc d'Arguin. A first step is a

more precise quantification of the changes. Given the unavoidably substantial error margin associated with complete counts of Banc d'Arguin (see discussion above), the principal way to achieve this will be to conduct such complete counts more frequently, preferably employing a more permanent team of observers. Increasing the frequency of counts will allow better separation of the trends from the sampling noise. Repetition by the same team will help building experience on the terrain, tides, and bird movements, enabling to optimise the planning of the counts and standardise the methodology. A preliminary exploration of the potential to use annual counts of a sample of counting units as an index of changes in numbers of birds on the entire Banc d'Arguin suggested that this approach for now seems to have limited potential due to variation in bird distribution within the studied area and the substantial sampling error in the counting unit counts themselves.

Simultaneous with an increased frequency of counts, long-term studies of the functioning of the system (e.g. seagrass, benthos and fish) will improve our understanding of the causes behind the overall change in bird communities. Finally, we like to emphasise that a yearly count would also mean that all regions of the Banc d'Arguin ecosystem will be visited and inspected on a regular basis, which will improve the capacity to detect important ecological changes as early as possible.

Supplementary Materials

To view supplementary material for this article, please visit <http://dx.doi.org/10.1017/S0959270919000431>.

Acknowledgements

The Parc National du Banc d'Arguin, Programma Rijke Waddenzee, Fondation MAVA, Bird Life International, Royal NIOZ, Alterra, the Wadden Sea Flyway Initiative, a Prins Bernhard Cultuurfonds voor Natuurbehoud prize to TP, and the Waddenfonds project 'Metawad', all contributed pieces of the support (including funding, permissions, and logistics) that this research has built on over the years. We thank all the counters and field workers that made this work possible. Special thanks to Antonio Araujo for the valuable advice and facilitations that made many of these counts possible and also for his reflections on the paper. We are also indebted to Han Olff, who provided many of insights on the potential interactions between bird population dynamics and the entire ecosystem dynamics of the Banc d'Arguin, as well as advice on the multivariate analyses. The workshop at Iwik in January 2017, which triggered this analysis and publication, was made possible by Manon Tentij (Birdlife Netherlands and Programma Rijke Waddenzee). We thank the anonymous reviewers for constructive feedback. Dick Visser made the final drawings.

References

- Altenburg, W., Engelmoer, M., Mes, R and Piersma, T. (1982) Wintering waders at the Banc d'Arguin, Mauritania. *Report of the Netherlands Ornithological Expedition 1980*. Leiden, The Netherlands: Stichting Veth tot Steun aan Waddenonderzoek.
- Altenburg, W., Engelmoer, M., Mes, R. and Piersma, T. (1983) Recensement des limicoles et autres oiseaux aquatiques au Banc d'Arguin, Mauritanie. *Gerfaut* 73: 243–264.
- Anderson, M. J. (2017) Permutational Multivariate Analysis of Variance (PERMANOVA). Pp. 1–15 in *Wiley StatsRef: Statistics Reference Online*. Chichester, UK: John Wiley and Sons, Ltd.
- Boere, G. C. and Piersma, T. (2012) Flyway protection and the predicament of our migrant birds: a critical look at international conservation policies and the Dutch Wadden Sea. *Ocean and Coastal Manage.* 68: 157–168.
- Burnham, K. P. and Anderson, D. R. (2002) *Model selection and multimodel inference: a practical information-theoretic approach*. Second Edition. New York: Springer.

- Campredon, P. (2000) *Between the Sahara and the Atlantic: Banc d'Arguin National Park, Mauritania*. La Tour du Valat, Arles, France: FIBA.
- Catry, T., Alves, J. A., Andrade, J., Costa, H., Dias, M. P., Fernandes, P., Leal, A., Lourenco, P. M., Martins, R. C., Moniz, F., Pardal, S., Rocha, A., Santos, C. D., Encarnacao, V. and Granadeiro, J. P. (2011) Long-term declines of wader populations at the Tagus estuary, Portugal: a response to global or local factors? *Bird Conserv. Internatn.* 21: 438–453.
- Clarke, K. R. (1993) Non-parametric multivariate analyses of changes in community structure. *Austral. J. Ecol.* 18: 117–143.
- Compton, T. J., Bodnar, W., Koolhaas, A., Dekinga, A., Holthuisen, S., ten Horn, J., McSweeney, N., Van Gils, J. A. and Piersma, T. (2016) Burrowing behavior of a deposit feeding bivalve predicts change in intertidal ecosystem state. *Frontiers Ecol. Evol.* 4 (19). doi.org/10.3389/fevo.2016.00019
- Conklin, J. R., Verkuil, Y. I. and Smith, B. R. (2014) *Prioritizing migratory shorebirds for conservation action on the East-Asian Australasian Flyway*. Hong Kong: WWF-Hong Kong.
- De Fouw, J., Govers, L. L., van de Koppel, J., van Belzen, J., Dorigo, W., Sidi Cheikh, M. A., Christiansen, M. J. A., van der Reijden, K. J., van der Geest, M., Piersma, T., Smolders, A. J. P., Olf, H., Lamers, L. P. M., van Gils, J. A. and van der Heide, T. (2016) Drought, mutualism breakdown, and landscape-scale degradation of seagrass beds. *Curr. Biol.* 26: 1051–1056.
- Delany, S., Scott, D. A., Dodman, T. and Stroud, D. A. (2009) *An atlas of wader populations in Africa and western Eurasia*. Wageningen, The Netherlands: Wetlands International.
- Diagana, C. H. and Dodman, T. (2006) Coastal waterbirds in the West African seaboard/Oiseaux d'eau des Zones humides côtières de l'Afrique de l'Ouest January/Janvier 2006. Dakar: Wetlands International.
- Dias, M. P., Granadeiro, J. P., Lecoq, M., Santos, C. D. and Palmeirim, J. M. (2006) Distance to high-tide roosts constrains the use of foraging areas by dunlins: implications for the management of estuarine wetlands. *Biol. Conserv.* 131: 446–452.
- El-Hacen, E.-H. M., Sidi Cheikh, M. A., Bouma, T. J., Olf, H. and Piersma, T. (submitted) Correlated changes in seagrass and benthos at Banc d'Arguin, Mauritania, the premier intertidal system along the East Atlantic Flyway.
- Engelmoer, M., Piersma, T., Altenburg, W. and Mes, R. (1984) The Banc d'Arguin (Mauritania). Pp. 293–310 in: P. R. Evans, J. D. Goss-Custard and W. G. Hale, eds. *Coastal waders and wildfowl in winter*. Cambridge, UK: Cambridge University Press.
- Ens, B. J., Piersma, T., Wolff, W. J. and Zwarts, L. (1990) Homeward bound: problems waders face when migrating from the Banc d'Arguin, Mauritania, to their northern breeding grounds in spring. *Ardea* 78: 1–64.
- Folmer, E. O., van der Geest, M., Jansen, E., Olf, H., Anderson, M., Piersma, T. and van Gils, J. A. (2012) Seagrass–sediment feedback: an exploration using a non-recursive structural equation model. *Ecosystems* 15: 1380–1393.
- Friedlander, A. and Demartini, E. (2002) Contrasts in density, size, and biomass of reef fishes between the northwestern and the main Hawaiian islands: the effects of fishing down apex predators. *Mar. Ecol. Progr. Ser.* 230: 253–264.
- Guénette, S., Meissa, B., Gascuel, D., Froese, R. and Torres, F. (2014) Assessing the contribution of marine protected areas to the trophic functioning of ecosystems: a model for the Banc d'Arguin and the Mauritanian shelf. *PLoS ONE* 9: e94742.
- Hagemeijer, W., Smit, C., De Boer, P., Van Dijk, A., Ravenscroft, N., Van Roomen, M. and Wright, M. (2004) *Wader and waterbird census at the Banc d'Arguin, Mauritania, January 2000*. Beek-Ubbergen, The Netherlands: Foundation Working Group International Waterbird and Wetland Research (WIWO). (WIWO-report 81).
- Honkoop, P. J. C., Berghuis, E. M., Holthuisen, S., Lavaleye, M. S. S. and Piersma, T. (2008) Molluscan assemblages of seagrass-covered and bare intertidal flats on the Banc d'Arguin, Mauritania, in relation to characteristics of sediment and organic matter. *J. Sea Res.* 60: 255–263.

- Jackson, J. B., Kirby, M. X., Berger, W. H., Bjorndal, K. A., Botsford, L. W., Bourque, B. J., Bradbury, R. H., Cooke, R., Erlandson, J., Estes, J. A., Hughes, T. P., Kidwell, S., Lange, C. B., Lenihan, H. S., Pandolfi, J. M., Peterson, C. H., Steneck, R. S., Tegner, M. J. and Warner, R. R. (2001) Historical overfishing and the recent collapse of coastal ecosystems. *Science* 293: 629–637.
- Kidé, A. and Diakhite, Y. (2017) Denombrement des oiseaux d'eau du Parc National du Banc d'Arguin en Janvier 2017, Mauritanie. Pp. 8–13 in G. Agblonon, C. Nsabagasani, T. Langendoen and M. van Roomen, eds. *National census reports East Atlantic Africa 2017. Results of waterbird and wetland monitoring in the East Atlantic Flyway*. Wilhelmshaven: Common Wadden Sea Secretariat, Programma Naar een Rijke Waddenzee, Wetlands International and BirdLife International.
- Knight, P. J. and Dick, W. J. A. (1975) Recensement des limicoles au Banc d'Arguin (Mauritanie). *Alauda* 43: 363–385.
- Kraan, C., Van Gils, J. A., Spaans, B., Dekinga, A. and Piersma, T. (2010) Why Afro-Siberian red knots *Calidris canutus canutus* have stopped staging in the western Dutch Wadden sea during southward migration. *Ardea* 98: 155–160.
- Kraan, C., Piersma, T., Dekinga, A., Koolhaas, A. and Van Der Meer, J. (2007) Dredging for edible cockles (*Cerastoderma edule*) on intertidal flats: short-term consequences of fisher patch-choice decisions for target and non-target benthic fauna. *ICES J. Mar. Sci.* 64: 1735–1742.
- Laurans, M., Gascuel, D., Chassot, E. and Thiam, D. (2004) Changes in the trophic structure of fish demersal communities in West Africa in the three last decades. *Aquatic Living Resources* 17: 163–173.
- Legendre, P. and Legendre, L. (2012) *Numerical ecology*. Elsevier.
- Lok, T., Overdijk, O., Hor, H. and Piersma, T. (2009) The Spoonbill *Platalea leucorodia* population of the Wadden Sea islands: does population growth level off? *Limosa* 82: 149–157.
- Murray, N. J., Phinn, S. R., Dewitt, M., Ferrari, R., Johnston, R., Lyons, M. B., Clinton, N., Thau, D. and Fuller, R. A. (2019) The global distribution and trajectory of tidal flats. *Nature* 565: 222–225.
- Myers, R. A., Baum, J. K., Shepherd, T. D., Powers, S. P. and Peterson, C. H. (2007) Cascading effects of the loss of apex predatory sharks from a coastal ocean. *Science* 315: 1846–1850.
- Nebel, S., Piersma, T., Van Gils, J., Dekinga, A. and Spaans, B. (2000) Length of stopover, fuel storage and a sex-bias in the occurrence of red knots *Calidris c. canutus* and *C. c. islandica* in the Wadden Sea during southward migration. *Ardea* 88: 165–176.
- Olden, J. D., Hogan, Z. S., Zanden, M. and Vander, J. (2007) Small fish, big fish, red fish, blue fish: size-biased extinction risk of the world's freshwater and marine fishes. *Global Ecol. Biogeogr.* 16: 694–701.
- Oudman, T., Goeij, P. D., Piersma, T. and Lok, T. (2017) Colony-breeding Eurasian Spoonbills in the Netherlands: local limits to population growth with expansion into new areas. *Ardea* 105: 113–124.
- Oudman, T., Onrust, J., De Fouw, J., Spaans, B., Piersma, T. and Van Gils, J. A. (2014) Digestive capacity and toxicity cause mixed diets in red knots that maximize energy intake rate. *Am. Nat.* 183: 650–659.
- Pauly, D., Christensen, V. V., Dalsgaard, J., Froese, R. and Torres, F. J. (1998) Fishing down marine food webs. *Science* 279: 860–863.
- Piersma, T., Lok, T., Chen, Y., Hassell, C. J., Yang, H.-Y., Boyle, A., Slaymaker, M., Chan, Y.-C., Melville, D. S., Zhang, Z.-W. and Ma, Z. (2016) Simultaneous declines in summer survival of three shorebird species signals a Flyway at risk. *J. Appl. Ecol.* 53: 479–490.
- Piersma, T., Van Der Velde, M., El-Hacen, E.-H. M., Lok, T. and Overdijk, O. (2012) Molecular verification of the subspecies status of the Mauritanian Spoonbill *Platalea leucorodia balsaci*. *Ardea* 100: 131–136.
- Rakhimberdiev, E., Duijns, S., Karagicheva, J., Camphuysen, C. J., Castricum, V., Dekinga, A., Dekker, R., Gavrilov, A., Ten Horn, J., Jukema, J., Saveliev, A., Soloviev, M., Tibbitts, T. L., Van Gils, J. A. and Piersma, T. (2018) Fuelling conditions at staging sites

- can mitigate Arctic warming effects in a migratory bird. *Nature Communications* 9: 4263.
- Rappoldt, C., Kersten, M. and Smit, C. (1985) Errors in large-scale shorebird counts. *Ardea* 73: 13–24.
- Schaffmeister, B. E., Hiddink, J. G. and Wolff, W. J. (2006) Habitat use of shrimps in the intertidal and shallow subtidal seagrass beds of the tropical Banc d'Arguin, Mauritania. *J. Sea Res.* 55: 230–243.
- Sevrin-Reyssac, J. (1993) Hydrology and underwater climate of the Banc d'Arguin, Mauritania: a review. *Hydrobiologia* 258: 1–8.
- Triplet, P. and Yésou, P. (2000) Controlling the flood in the Senegal Delta: do waterfowl populations adapt to their new environment? *Ostrich* 71: 106–111.
- Trotignon, E. J., Baillou, M., Dejonghe, J.-F., Duhautois, L. and Lecomte, M. (1980) Recensement hivernal des limicoles et autres oiseaux aquatiques sur le Banc d'Arguin (Mauritanie) (hiver 1978-1979). *L'Oiseau et R.F.O.* 50: 323–343.
- van der Heide, T., Govers, L. L., De Fouw, J., Olf, H., van der Geest, M., van Kajwijk, M. M., Piersma, T., van de Koppel, J., Silliman, B. R., Smolders, A. J. P. and van Gils, J. A. (2012) A three-stage symbiosis forms the foundation of seagrass ecosystems. *Science* 336: 1432–1434.
- van Gils, J. A., Van der Geest, M., Jansen, E. J., Govers, L. L., De Fouw, J. and Piersma, T. (2012) Trophic cascade induced by molluscivore predator alters pore-water biogeochemistry via competitive release of prey. *Ecology* 93: 1143–1152.
- van Gils, J. A., van der Geest, M., Leyrer, J., Oudman, T., Lok, T., Onrust, J., De Fouw W., J., Van Der Heide, T., van den Hout, P. J., Spaans, B., Dekinga, A., Brugge, M. and Piersma, T. (2013) Toxin constraint explains diet choice, survival and population dynamics in a molluscivore shorebird. *Proc. Roy. Soc. London B: Biol. Sci.* 280: 20130861.
- van Gils, J. A., Lisovski, S., Lok, T., Meissner, W., Ozarowska, A., De Fouw, J., Rakhimberdiev, E., Soloviev, M. Y., Piersma, T. and Klaassen, M. (2016) Body shrinkage due to Arctic warming reduces red knot fitness in tropical wintering range. *Science* 352: 819–821.
- van Leeuwen, A., De Roos, A. M. and Persson, L. (2008) How cod shapes its world. *J. Sea Res.* 60: 89–104.
- van Roomen, M., Laursen, K., Van Turnhout, C., Van Winden, E., Blew, J., Eskildsen, K., Günther, K., Hälterlein, B., Kleefstra, R., Potel, P., Schrader, S., Luerssen, G. and Ens, B. J. (2012) Signals from the Wadden Sea: population declines dominate among waterbirds depending on intertidal mudflats. *Ocean and Coastal Manage.* 68: 79–88.
- van Roomen, M., Nagy, S., Citegetse, G. and Schekkerman, H. (2018) East Atlantic Flyway Assessment 2017: the status of coastal waterbird populations and their sites. Wilhelmshaven, The Netherlands: Wadden Sea Flyway Initiative; Wageningen, The Netherlands: Wetlands International; Cambridge, UK: BirdLife International.
- van Roomen, M., Nagy, S., Foppen, R., Dodman, T., Citegetse, G. and Ndiaye, A. (2015) *Status of coastal waterbird populations in the East Atlantic Flyway. With special attention to Flyway populations making use of the Wadden Sea.* Leeuwarden, The Netherlands: Programme Rich Wadden Sea; Nijmegen, The Netherlands: Sovon; Wageningen, The Netherlands: Wetlands International; Cambridge, UK: BirdLife International; Wilhelmshaven, Germany: Common Wadden Sea Secretariat.
- Veen, J., Dallmeijer, H. and Veen, T. (2018) Selecting piscivorous bird species for monitoring environmental change in the Banc d'Arguin, Mauritania. *Ardea* 106: 5–18.
- Worm, B. and Myers, R. A. (2003) Meta-analysis of cod-shrimp interactions reveals top-down control in oceanic food webs. *Ecology* 84: 162–173.
- Wymenga, E., Engelmoer, M., Smit, C. J. and Van Spanje, T. M. (1990) Geographical breeding origin and migration of wader wintering in West Africa. *Ardea* 78: 83–112.
- Zwarts, L., Bijlsma, R. G., Van Der Kamp, J. and Wymenga, E. (2009) *Living on the edge: Wetlands and birds in a changing Sahel.* Zeist, The Netherlands: KNNV publishing.

Zwarts, L., Van Der Kamp, J., Overdijk, O., Van Spanje, T. M., Veldkamp, R., West, R. and Wright, M. (1998a) Wader count of the Banc d'Arguin, Mauritania, in *January/February* 1997. *Wader Study Group Bull.* 86: 53–69.

Zwarts, L., Van Der Kamp, J., Overdijk, O., Van Spanje, T., Veldkamp, R., West, R. and Wright, M. (1998b). Wader count of the Baie d'Arguin, Mauritania, in February 1997. *Wader Study Group Bull.* 86: 70–73.