

University of Groningen

## European Liver Transplant Registry

European Liver, Intestine Transplant Association (ELITA); de Ville de Goyet, Jean; Baumann, Ulrich; Karam, Vincent; Adam, René; Nadalin, Silvio; Heaton, Nigel; Reding, Raymond; Branchereau, Sophie; Mirza, Darius

*Published in:*  
Hepatology

*DOI:*  
[10.1002/hep.32223](https://doi.org/10.1002/hep.32223)

**IMPORTANT NOTE:** You are advised to consult the publisher's version (publisher's PDF) if you wish to cite from it. Please check the document version below.

*Document Version*  
Publisher's PDF, also known as Version of record

*Publication date:*  
2022

[Link to publication in University of Groningen/UMCG research database](#)

*Citation for published version (APA):*

European Liver, Intestine Transplant Association (ELITA), de Ville de Goyet, J., Baumann, U., Karam, V., Adam, R., Nadalin, S., Heaton, N., Reding, R., Branchereau, S., Mirza, D., Klempnauer, J. L., Fischer, L., Kalicinski, P., Colledan, M., Lopez Santamaria, M., de Kleine, R. H., Chardot, C., Yilmaz, S., Kilic, M., ... Verkade, H. J. (2022). European Liver Transplant Registry: Donor and transplant surgery aspects of 16,641 liver transplantations in children. *Hepatology*, 75(3), 634-645. <https://doi.org/10.1002/hep.32223>

### Copyright

Other than for strictly personal use, it is not permitted to download or to forward/distribute the text or part of it without the consent of the author(s) and/or copyright holder(s), unless the work is under an open content license (like Creative Commons).

The publication may also be distributed here under the terms of Article 25fa of the Dutch Copyright Act, indicated by the "Taverne" license. More information can be found on the University of Groningen website: <https://www.rug.nl/library/open-access/self-archiving-pure/taverne-amendment>.

### Take-down policy

If you believe that this document breaches copyright please contact us providing details, and we will remove access to the work immediately and investigate your claim.

Downloaded from the University of Groningen/UMCG research database (Pure): <http://www.rug.nl/research/portal>. For technical reasons the number of authors shown on this cover page is limited to 10 maximum.



# A pre-specified analysis of the Dapagliflozin and Prevention of Adverse Outcomes in Chronic Kidney Disease (DAPA-CKD) randomized controlled trial on the incidence of abrupt declines in kidney function

see commentary on page 20  
OPEN

Hiddo J.L. Heerspink<sup>1,2,16</sup>, David Cherney<sup>3,16</sup>, Douwe Postmus<sup>4</sup>, Bergur V. Stefánsson<sup>5</sup>, Glenn M. Chertow<sup>6</sup>, Jamie P. Dwyer<sup>7</sup>, Tom Greene<sup>8</sup>, Mikhail Kosiborod<sup>2,9</sup>, Anna Maria Langkilde<sup>5</sup>, John J.V. McMurray<sup>10</sup>, Ricardo Correa-Rotter<sup>11</sup>, Peter Rossing<sup>12,13</sup>, C. David Sjöström<sup>5</sup>, Robert D. Toto<sup>14</sup> and David C. Wheeler<sup>2,15</sup>; on behalf of the DAPA-CKD Trial Committees and Investigators<sup>17</sup>

<sup>1</sup>Department of Clinical Pharmacy and Pharmacology, University of Groningen, University Medical Centre Groningen, Groningen, the Netherlands; <sup>2</sup>The George Institute for Global Health, Sydney, Australia; <sup>3</sup>Department of Medicine, Division of Nephrology, University Health Network and University of Toronto, Toronto, Canada; <sup>4</sup>Department of Epidemiology, University of Groningen, University Medical Centre Groningen, the Netherlands; <sup>5</sup>Late-Stage Development, Cardiovascular, Renal, and Metabolism, BioPharmaceuticals R&D, AstraZeneca, Gothenburg, Sweden; <sup>6</sup>Department of Medicine and Epidemiology and Population Health, Stanford University School of Medicine, Stanford, USA; <sup>7</sup>Division of Nephrology and Hypertension, Vanderbilt University Medical Center, Nashville, Tennessee, USA; <sup>8</sup>Study Design and Biostatistics Center, University of Utah Health Sciences, Salt Lake City, Utah, USA; <sup>9</sup>Saint Luke's Mid America Heart Institute, University of Missouri, Kansas City, Missouri, USA; <sup>10</sup>Institute of Cardiovascular and Medical Sciences, University of Glasgow, Glasgow, UK; <sup>11</sup>The National Medical Science and Nutrition Institute Salvador Zubiran, Mexico City, Mexico; <sup>12</sup>Steno Diabetes Center Copenhagen, Gentofte, Denmark; <sup>13</sup>Department of Clinical Medicine, University of Copenhagen, Copenhagen, Denmark; <sup>14</sup>Department of Internal Medicine, University of Texas Southwestern Medical Center, Dallas, Texas, USA; and <sup>15</sup>Department of Renal Medicine, University College London, London, UK

This pre-specified analysis of DAPA-CKD assessed the impact of sodium-glucose cotransporter 2 inhibition on abrupt declines in kidney function in high-risk patients based on having chronic kidney disease (CKD) and substantial albuminuria. DAPA-CKD was a randomized, double-blind, placebo-controlled trial that had a median follow-up of 2.4 years. Adults with CKD (urinary albumin-to-creatinine ratio 200–5000 mg/g and estimated glomerular filtration rate 25–75 mL/min/1.73m<sup>2</sup>) were randomized to dapagliflozin 10 mg/day matched to placebo (2152 individuals each). An abrupt decline in kidney function was defined as a pre-specified endpoint of doubling of serum creatinine between two subsequent study visits. We also assessed a post-hoc analysis of investigator-reported acute kidney injury-related serious adverse events. Doubling of serum creatinine between two subsequent visits (median time-interval 100 days) occurred in 63 (2.9%) and 91 (4.2%) participants in the dapagliflozin and placebo groups, respectively (hazard ratio 0.68 [95% confidence interval 0.49, 0.94]). Accounting for the competing risk of mortality

did not alter our findings. There was no heterogeneity in the effect of dapagliflozin on abrupt declines in kidney function based on baseline subgroups. Acute kidney injury-related serious adverse events were not significantly different and occurred in 52 (2.5%) and 69 (3.2%) participants in the dapagliflozin and placebo groups, respectively (0.77 [0.54, 1.10]). Thus, in patients with CKD and substantial albuminuria, dapagliflozin reduced the risk of abrupt declines in kidney function.

*Kidney International* (2022) **101**, 174–184; <https://doi.org/10.1016/j.kint.2021.09.005>

KEYWORDS: acute kidney injury; dapagliflozin; chronic kidney disease; SGLT2 inhibitors

Copyright © 2021, International Society of Nephrology. Published by Elsevier Inc. This is an open access article under the CC BY license (<http://creativecommons.org/licenses/by/4.0/>).

Acute kidney injury (AKI) occurs in approximately 13 million individuals globally per year, mainly in hospitalized patients.<sup>1</sup> Although more severe chronic kidney disease (CKD) is known to be associated with elevated AKI risk, emerging data from large epidemiologic studies have demonstrated that episodes of AKI also increase the risk of CKD progression.<sup>2–4</sup> Moreover, AKI is associated with adverse clinical outcomes, including dialysis, cardiovascular disease, and mortality, especially in patients with diabetes and those with significant albuminuria.<sup>4,5</sup>

Large randomized controlled trials in patients with type 2 diabetes have shown that sodium–glucose co-transporter

**Correspondence:** Hiddo J.L. Heerspink, Department of Clinical Pharmacy and Pharmacology, De Brug 50D-1-015; EB70, University Medical Centre Groningen, PO Box 30001, 9700 AD Groningen, the Netherlands. E-mail: [h.j.lambers.heerspink@umcg.nl](mailto:h.j.lambers.heerspink@umcg.nl)

<sup>16</sup>HJLH and DC are co-primary authors.

<sup>17</sup>The DAPA-CKD Trial Committees and Investigators are listed in the Appendix.

Received 19 April 2021; revised 26 August 2021; accepted 3 September 2021; published online 22 September 2021



2 (SGLT2) inhibitors slow progression of the decline in kidney function and reduce the risk of kidney failure. During the early stages of development of SGLT2 inhibitors, concerns were raised that these agents could increase the risk of AKI resulting from hypovolemia, treatment-induced acute reduction in glomerular filtration rate (GFR), and the potential to trigger kidney medullary hypoxic injury. These concerns were supported by early case reports suggesting that risk of AKI is higher among patients with type 2 diabetes mellitus and preserved kidney function who initiated SGLT2 inhibitors.<sup>6</sup> However, large cardiovascular and kidney outcome trials demonstrated that SGLT2 inhibitors could in fact reduce the risk of AKI. The consistency of this finding across multiple trials suggests that this is a class effect and not limited to a specific SGLT2 inhibitor. Moreover, subsequent work has identified biologically plausible mechanisms by which SGLT2 inhibition could reduce AKI risk.<sup>7,8</sup>

Understanding the relationship between SGLT2 inhibition and risk of AKI in patients with CKD and albuminuria is important, as patients with CKD experience higher rates of AKI than patients with normal or near-normal kidney function. The Dapagliflozin and Prevention of Adverse Outcomes in Chronic Kidney Disease (DAPA-CKD) trial demonstrated that the SGLT2 inhibitor dapagliflozin reduced the risk of kidney failure and heart failure hospitalization, and prolonged survival in patients with CKD with and without type 2 diabetes.<sup>9</sup> In this analysis, we report the effect of dapagliflozin on abrupt declines in kidney function. These events were captured in the DAPA-CKD trial as a pre-specified exploratory outcome, defined as the doubling of serum creatinine between 2 subsequent visits. We also compare the frequency of serious AKI adverse events (as reported by investigators) in patients randomized to receive either dapagliflozin or placebo.

## METHODS

### Study design and participants

DAPA-CKD was a randomized, double-blind, placebo-controlled, multicenter, international trial conducted in 21 countries at 386 study sites. The study design and the primary results have been published previously.<sup>9</sup> Briefly, DAPA-CKD participants were  $\geq 18$  years of age, with an estimated GFR (eGFR)  $\geq 25$  and  $< 75$  ml/min per  $1.73$  m<sup>2</sup>, and a urinary albumin:creatinine ratio (UACR)  $\geq 200$  and  $< 5000$  mg/g. Patients either with or without type 2 diabetes were eligible for participation. Patients with type 1 diabetes, polycystic kidney disease, lupus nephritis, or anti-neutrophil cytoplasmic antibody-associated vasculitis, as well as those receiving immunotherapy for primary or secondary kidney disease within 6 months prior to enrollment, were excluded. All participants were receiving treatment with a stable dose of an angiotensin-converting enzyme (ACE) inhibitor or angiotensin receptor blocker (ARB) for  $\geq 4$  weeks prior to randomization, unless they had a documented intolerance to these agents. The trial protocol was approved by a central or local ethics committee at each trial site, and all participants provided written informed consent. This study was prospectively registered on [ClinicalTrials.gov](https://www.clinicaltrials.gov) (NCT03036150) and was posted online on January 30, 2017, prior to enrollment of the first patient.

### Randomization and follow-up

Eligible participants were randomly assigned to receive either dapagliflozin, 10 mg daily, or matching placebo. This treatment was to be continued until the occurrence of diabetic ketoacidosis, pregnancy, receipt of disallowed therapy, or study completion. Following randomization, in-person study visits were performed after 2 weeks, at 2, 4, and 8 months, and at 4-month intervals thereafter. At each follow-up visit, vital signs were recorded, blood and urine samples were sent for laboratory assessment, and information on potential study endpoints, adverse events, concomitant therapies, and study drug adherence was collected.

### Outcomes

The primary pre-specified outcome of the current analysis was an abrupt decline in kidney function, defined as a doubling of serum creatinine (measured by either a local or central laboratory) compared with the most recent central laboratory serum creatinine value, assessed in the intent-to-treat population. The doubling of serum creatinine was adjudicated by the independent event-adjudication committee, which was blinded to study treatment allocation. The event adjudication committee determined whether the doubling of serum creatinine reflected progression of the underlying CKD or was an abrupt deterioration unrelated to the underlying disease, due rather to another cause, such as infection, volume depletion, or cardiovascular disease events. AKI reported by investigators as a serious adverse event (SAE; i.e., an adverse event that required hospitalization, led to prolongation of hospitalization, or was associated with death) was assessed in the safety population. SAEs were derived from a predefined list of kidney-related events from the preferred terms in the Medical Dictionary for Regulatory Activities. These events were not prospectively adjudicated by the event-adjudication committee. However, 2 independent reviewers who were blinded to study drug assignment determined the most likely cause of AKI SAEs by reviewing narratives submitted by study investigators. Any disagreement was resolved by a third reviewer. We also evaluated all episodes of dialysis, institution of maintenance dialysis (for at least 28 days), and mortality following a doubling of serum creatinine or an AKI SAE. Finally, we assessed the proportion of patients with end-stage kidney disease (ESKD) or renal death, and all-cause mortality from the time of an abrupt decline in kidney function event until the end of the trial.

### Statistical analyses

We performed all efficacy analyses in accordance with the intention-to-treat principle. We determined the risk of abrupt declines in kidney function (dapagliflozin vs. placebo) by calculating the time-to-first inter-visit doubling of serum creatinine, applying proportional hazards (Cox) regression, stratified by diabetes status and UACR ( $\leq 1000$  vs.  $> 1000$  mg/g). We tested for homogeneity of treatment effects across pre-specified subgroups, defined by patient's demographics and laboratory measurements, by adding interaction terms to the relevant Cox models. We assessed the validity of the proportional hazards assumption by inspection of the log-cumulative hazard function of each treatment group and by including a term for the interaction between treatment assignment and time as a time-varying covariate. We applied the Fine-Gray modification of the Cox model to determine the subdistribution hazard ratio (HR) of an abrupt decline in kidney function, with death as a competing risk. Factors associated with an abrupt decline in kidney function were collected during the trial and summarized by treatment groups. In addition, dialysis and death outcomes after



an abrupt decline in kidney function were collected and summarized by treatment group.

The relative hazard of ESKD or renal death, or mortality, following an abrupt decline in kidney function, was determined in a companion Cox model into which an indicator of the abrupt decline in kidney function event was fitted as a time-varying covariate (with follow-up time starting at the time of randomization). The period of risk prior to the abrupt decline in kidney function event was attributed to the group with no event, so that calculation of incidence rates would reflect patients' time-updated event status. The model was adjusted for treatment assignment, age, sex, race/ethnicity, HbA1c, eGFR, log-transformed UACR, systolic blood pressure, hemoglobin, body mass index, and history of cardiovascular disease.

In an additional analysis, we performed a causal mediation analysis to examine whether the effect of dapagliflozin in reducing the relative risks of ESKD or renal death, or all-cause mortality, could be explained by the prevention of abrupt declines in kidney function. We used study treatment as the exposure variable, and inter-visit doubling of serum creatinine as a binary mediator. We included age, sex, race, type 2 diabetes status, cardiovascular disease, eGFR, UACR, systolic and diastolic blood pressure, body mass index, and hemoglobin as additional covariates in both the outcome model (a Cox proportional hazards model) and the mediator model (a binary logistic regression model).<sup>10</sup> We determined point estimates for the natural direct effect, the natural indirect effect, and the total effect of dapagliflozin using the estimators provided by Valeri and VanderWeele.<sup>11</sup> We obtained 95% confidence intervals (CIs) through bootstrapping with 1000 bootstrap samples. Effects were calculated for the mean level of the continuous confounders and for the mode of the categorical confounders.

We performed all analyses with R, version 4.0.2 (R Foundation for Statistical Computing) or Stata, version 15 (StataCorp).

## RESULTS

### Study design and participants

A total of 4304 participants were enrolled in the DAPA-CKD trial, of whom 2152 were randomly assigned to receive dapagliflozin, 10 mg once daily, and 2152 to receive placebo, comprising the intent-to-treat population (Supplementary Figure S1). Three patients in each group were randomized but not treated, comprising the safety population (dapagliflozin,  $n = 2149$ ; placebo,  $n = 2149$ ). Mean (SD) age was 62 (12) years; 2906 of 4304 (68%) of the cohort had type 2 diabetes; mean eGFR was 43 (12) ml/min per 1.73 m<sup>2</sup>; and median UACR was 949 (interquartile range: 477 to 1885) mg/g. Baseline characteristics were balanced between the dapagliflozin and placebo groups (Table 1).

### Effects of dapagliflozin versus placebo on abrupt declines in kidney function

During a median of 2.4 years (interquartile range, 2.0–2.7 years) of follow-up, there were 166 abrupt decline in kidney-function events, with a median time interval between visits of 100 days (interquartile range, 48–130 days) recorded in 154 patients (Supplementary Figure S2)—63 of 2152 patients (2.9%; event rate 1.4 [95% CI, 1.1–1.7] per 100 patient-years) in the dapagliflozin group, and 91 of 2152 patients (4.2%; event rate 2.0 [95% CI, 1.6–2.5] per 100 patient-years) in the

**Table 1 | Baseline characteristics of patients randomized to receive dapagliflozin or placebo**

Variable	Dapagliflozin (n = 2152)	Placebo (n = 2152)
Age, yr, mean (SD)	61.8 (12.1)	61.9 (12.1)
≤65	1247 (57.9)	1239 (57.6)
>65	905 (42.1)	913 (42.4)
Sex		
Male	1443 (67.1)	1436 (66.7)
Female	709 (32.9)	716 (33.3)
Race		
White	1124 (52.2)	1166 (54.2)
Black or African American	104 (4.8)	87 (4)
Asian	749 (34.8)	718 (33.4)
Other	175 (8.1)	181 (8.4)
Type 2 diabetes	1455 (67.6)	1451 (67.4)
HbA1c, %, mean (SD)	7.1 (1.7)	7.0 (1.7)
Blood pressure, mm Hg, mean (SD)		
Systolic	136.7 (17.5)	137.4 (17.3)
Diastolic	77.5 (10.7)	77.5 (10.3)
eGFR, ml/min per 1.73 m <sup>2</sup> , mean (SD)	43.2 (12.3)	43.0 (12.4)
≥45	880 (40.9)	902 (41.9)
<45	1272 (59.1)	1250 (58.1)
Urinary albumin-to-creatinine ratio, mg/g, median (IQR)	965 (472–1903)	934 (482–1868)
≤1000	1104 (51.3)	1121 (52.1)
>1000	1048 (48.7)	1031 (47.9)
Cardiovascular disease diagnosis	813 (37.8)	797 (37.0)
Heart failure diagnosis	235 (10.9)	233 (10.8)
Diuretic use at baseline	928 (43.1)	954 (44.3)
ACEi or ARB use at baseline	2094 (97.3)	2080 (96.7)

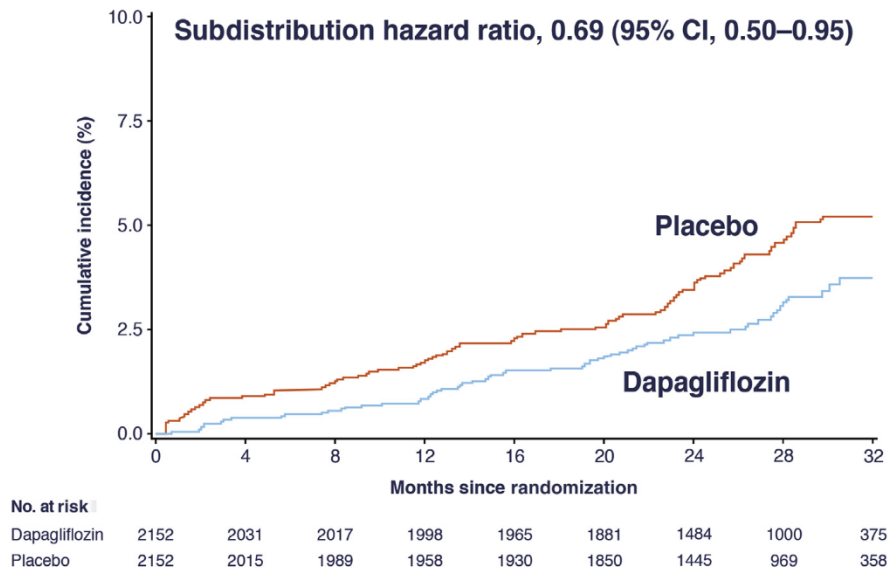
ACEi, angiotensin-converting enzyme inhibitor; ARB, angiotensin receptor blocker; eGFR, estimated glomerular filtration rate; IQR, interquartile range. Values are n (%), unless otherwise indicated.

placebo group (HR, 0.68 [95% CI, 0.49–0.94;  $P = 0.02$ ]; incidence rate difference 0.64 [95% CI, 0.09–1.20]). Results were similar using the Fine–Gray model, which accounted for the competing risk of death (subdistribution HR, 0.69 [95% CI, 0.50–0.95;  $P = 0.02$ ]; Figure 1). There was no heterogeneity in the effect of dapagliflozin, compared with placebo, on an abrupt decline in kidney function in pre-specified subgroups. Notably, the effects were consistent in patients with versus without type 2 diabetes and were remarkably similar in patients with a baseline eGFR above versus below 45 ml/min per 1.73 m<sup>2</sup>, and those with a UACR above versus below 1000 mg/g (Figure 2). Effects were also similar in subgroups created *post hoc*, of those with baseline diuretic use and those with presence of heart failure at baseline (Figure 2).

### Patient characteristics and conditions associated with abrupt declines in kidney function

Participants who developed abrupt declines in kidney function were more likely to be White and less likely to be Asian, had higher systolic blood pressure, HbA1c level, and UACR, were more likely to report a diagnosis of type 2 diabetes, have a history of cardiovascular disease or heart failure, and have a prescription for diuretics at baseline (Supplementary Table S1). During follow-up, volume depletion, dehydration, and infections were the most frequently reported factors associated with abrupt declines in kidney function (Table 2).





**Figure 1 | Shown is the cumulative incidence curve for an abrupt decline in kidney function (at least a doubling of serum creatinine between visits separated by a median of 100 days).** Presented are the Aalen–Johansen cumulative incidence estimates, taking into account the competing risk of mortality. CI, confidence interval.

### Abrupt decline in kidney function and risk of ESKD and mortality

Following an abrupt decline in kidney function, the rate of ESKD or renal death was 48.7 per 100 patient-years, compared with 2.7 per 100 patient-years for those who did not experience an abrupt decline in kidney function. The risk of death was also increased in those who experienced an abrupt decline in kidney function (Table 3). In a multivariable model including selected baseline variables and treatment assignment, the strong association persisted between doubling of serum creatinine and ESKD or renal death (HR, 13.7 [95% CI, 9.7–19.3]) and mortality (HR, 9.3 [95% CI, 6.6–13.2]; Table 3).

Given that there were fewer doubling of serum creatinine events in the dapagliflozin group compared to the placebo group, and that these events were associated with ESKD and mortality, we explored whether the beneficial effect of dapagliflozin on ESKD and mortality could be explained by its reduction in risk of abrupt declines in kidney function. In a causal mediation analysis model, the direct effect of dapagliflozin (transition from “No AKI” to “ESKD/renal death or mortality” in Figure 3) approximated the total effects, indicating that almost all of the benefit of dapagliflozin on these clinical endpoints occurred through mechanisms distinct from abrupt declines in kidney function (Figure 3).

### Effects on AKI-related SAEs

Overall, investigator-reported AKI-related SAEs occurred in 54 of 2149 participants (2.5%; event rate 1.2 per 100 patient-years) in the dapagliflozin group, and 69 of 2149 participants (3.2%; event rate 1.5 per 100 patient-years) in the placebo group (HR, 0.77 [95% CI, 0.54–1.10;  $P = 0.15$ ]; incidence rate difference 0.35 [95% CI, –0.14 to 0.86]). Accounting for

the competing risk of mortality did not alter our findings; the effect size for AKI-related SAEs using the Fine–Gray modification of the Cox model was identical (subdistribution HR, 0.77 [95% CI, 0.54–1.10;  $P = 0.16$ ]; Supplementary Figure S3).

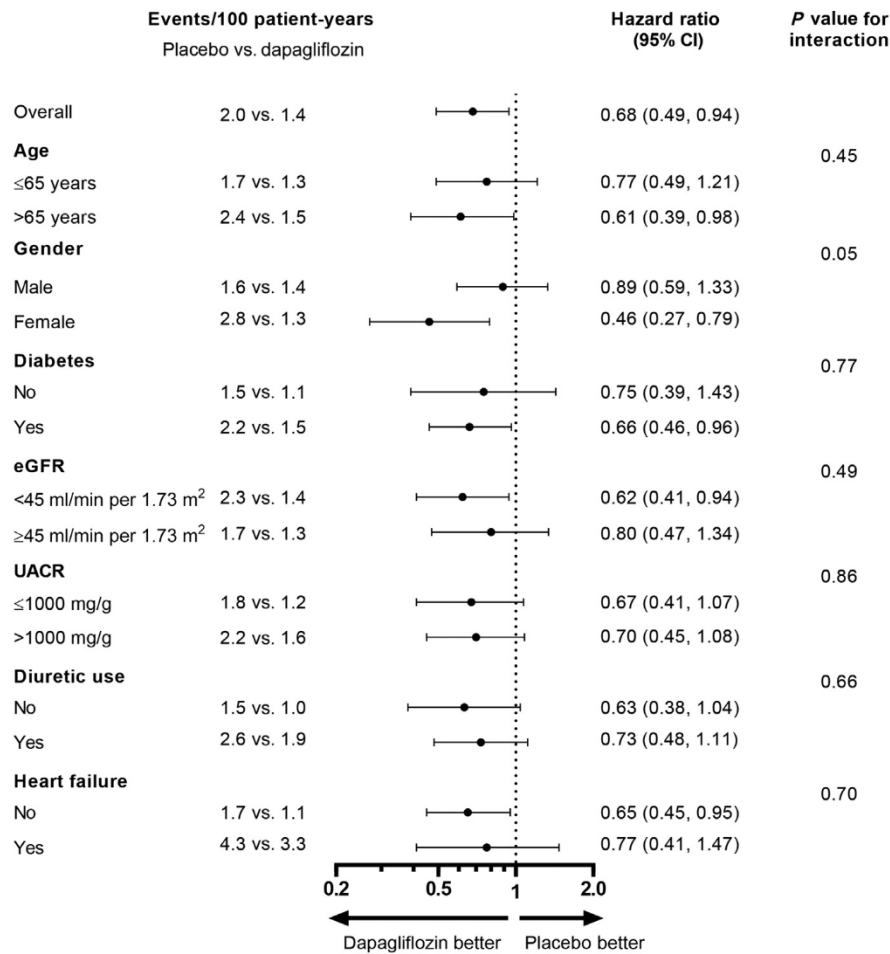
### DISCUSSION

Initiation of SGLT2 inhibitors is associated<sup>12,13</sup> with an abrupt rise in serum creatinine and a corresponding decline in eGFR of 3–5 ml/min per 1.73 m<sup>2</sup>. Prior to the availability of data from cardiovascular safety trials, there was concern among some clinicians that the abrupt rise in creatinine might be a signal of harm related to AKI that had a deleterious effect on survival—an effect amplified in the presence of CKD and increased albuminuria.<sup>4,5</sup> In this analysis from the DAPA-CKD trial, we demonstrated that dapagliflozin, compared with placebo, was associated with a lower risk of an abrupt decline in kidney function. In addition, investigator-reported AKI SAEs occurred less frequently with dapagliflozin, compared with placebo. These data support the favorable benefit–risk profile of dapagliflozin, and endorse the revised clinical practice guidelines recommending the use of SGLT2 inhibitors in patients with CKD.<sup>14</sup>

Long-term safety data from other cardiovascular outcome trials (starting with the Empagliflozin Cardiovascular Outcome Event Trial in Type 2 Diabetes Mellitus Patients [EMPA-REG OUTCOME] and subsequently endorsed by other cardiovascular outcome trials) have demonstrated the safety of SGLT2 inhibitors with respect to AKI, and in fact, they have suggested that AKI risk is reduced with these therapies in patients with type 2 diabetes and preserved kidney function.<sup>15</sup> Our observations are also consistent with analyses in patients with type 2 diabetes and CKD from the







**Figure 2 | Forest plot shows the incidence of an abrupt decline in kidney function (at least a doubling of serum creatinine between visits separated by a median of 100 days), by subgroups.** CI, confidence interval; eGFR, estimated glomerular filtration rate; UACR, urinary albumin-to-creatinine ratio.

Evaluation of the Effects of Canagliflozin on Renal and Cardiovascular Outcomes in Patients With Diabetic Nephropathy (CREDENCE) trial, in which the HR for AKI SAEs was 0.79 (95% CI, 0.52–1.19).<sup>15</sup> In addition, a network meta-analysis comparing the risk of AKI across different classes of glucose-lowering agents showed that, compared to placebo, SGLT2 inhibitors reduce the risk of AKI, whereas effects were neutral for glucagon-like peptide-1 receptor agonists and dipeptidyl peptidase-4 inhibitors.<sup>16</sup> Important to note is that the signal for protection against AKI risk was consistent across a range of subgroups, indicating that dapagliflozin is protective even in higher-risk patients, such as those with type 2 diabetes, heart failure, more severe albuminuria, or those already using diuretics. Our results are also in keeping with findings from analyses in the Study to Evaluate the Effect of Dapagliflozin on the Incidence of Worsening Heart Failure or Cardiovascular Death in Patients With Chronic Heart Failure (DAPA-HF) trial, in which dapagliflozin reduced the risk of AKI, defined as a doubling of serum creatinine between 2 subsequent visits, by 44%.<sup>17</sup> Finally, this signal of kidney safety in relation to AKI has been mirrored in “real-world

evidence” studies involving SGLT2 inhibitors, suggesting that safety in relation to AKI extends to patients who are taking these medications outside of the structure and monitoring integral to clinical trials.<sup>18–21</sup>

These findings have important clinical implications. Estimates indicate that 1,626,098 people in the US meet the DAPA-CKD trial eligibility criteria.<sup>22</sup> When we apply the absolute risk reduction for abrupt declines in kidney function observed in the DAPA-CKD trial to the US population, it would translate into the prevention of 9757 events each year. In the context of the consistent effects of dapagliflozin in preventing abrupt declines in kidney function across regions and patient characteristics, it is expected that many more events would be prevented globally if treatment with dapagliflozin were implemented in clinical practice.

Our data add to an emerging body of evidence demonstrating that acute episodes precede and predict accelerated irreversible decline in kidney function and mortality. DAPA-CKD trial participants who experienced abrupt declines in kidney function experienced an approximately 14-fold higher risk of ESKD or renal death, and a 9-fold higher risk of



**Table 2 | Factors associated with abrupt decline-in-kidney-function events**

	Total	Dapagliflozin	Placebo
Patients who had an event	154 (3.6)	63 (2.9)	91 (4.2)
<b>Predisposing factors associated with event<sup>a</sup></b>			
Event adjudicated to be related to underlying disease, n	38	13	25
Event adjudicated to be unrelated to underlying disease, <sup>b</sup> n	116	50	66
Dehydration/volume depletion	21 (20.2)	9 (21.4)	12 (19.4)
Medication-associated	11 (10.6)	2 (4.8)	9 (14.5)
Trauma	1 (1.0)	0 (0.0)	1 (1.6)
Cardiovascular event	6 (5.8)	2 (4.8)	4 (6.5)
Infection/septic shock	24 (23.1)	12 (28.6)	12 (19.4)
Acute exacerbation of existing kidney disease	2 (1.9)	1 (2.4)	1 (1.6)
Other	5 (4.8)	2 (4.8)	3 (4.8)
Unknown	50 (43.1)	22 (44.0)	28 (42.4)
<b>Event</b>			
Requiring dialysis	59 (38.3)	23 (36.5)	36 (39.6)
Requiring maintenance dialysis after AKI	32 (20.8)	13 (20.6)	19 (20.9)
Death after AKI	43 (27.9)	16 (25.9)	27 (29.7)
<b>Recovery of kidney function: Δ serum creatinine at next central laboratory measurement,<sup>c</sup> %</b>			
>25 (no recovery)	55 (56.1)	23 (54.8)	32 (57.1)
0 to ≤25 (partial recovery)	27 (27.6)	12 (28.6)	15 (26.8)
≥0 (full recovery)	16 (16.3)	7 (16.6)	9 (16.1)

AKI, acute kidney injury.

<sup>a</sup>Predisposing factors are reported for patients with available data and in whom the event was unrelated to underlying kidney disease as adjudicated by the independent event-adjudication committee.

<sup>b</sup>Four participants in the placebo group had more than 1 predisposing factor.

<sup>c</sup>Serum creatinine data at the next central laboratory measurement were available in 98 participants.

Seven patients (2 in the dapagliflozin and 5 in the placebo group) discontinued study medication within 28 days after the abrupt decline-in-kidney-function event. Values are n (%), unless otherwise indicated.

mortality, compared to those who did not. These findings are in accord with those from a meta-analysis of 13 cohort studies demonstrating that patients with AKI had a higher risk of ESKD and mortality.<sup>2</sup> Dedicated studies are needed to examine the possibility that SGLT2 inhibitors could be a viable therapeutic option to prevent AKI and subsequent outcomes for high-risk patients, including those undergoing major surgery, or those with infection at high risk of developing AKI.<sup>2</sup> The Dapagliflozin in Respiratory Failure in Patients with COVID-19 (DARE-19) trial demonstrated that dapagliflozin was well tolerated in hospitalized patients with COVID-19 infection, and AKI events were numerically lower in the dapagliflozin (3.4%) compared to the placebo group (5.5%), although this difference was not statistically significant.<sup>23</sup>

Although the mechanisms by which SGLT2 inhibitors reduce AKI risk are not known, several possibilities exist.<sup>8</sup> First, SGLT2 inhibitors reduce tubular ischemia by attenuating energy-intensive solute reabsorption, a process akin to

how beta-blockers reduce myocardial ischemia by reducing cardiac workload.<sup>24</sup> Second, SGLT2 inhibition is associated with a rise in hematocrit, which increases oxygen-carrying capacity and kidney oxygenation, thereby reducing ischemia. Renal oxygenation may be further preserved through optimization of left ventricular filling, thereby maintaining adequate kidney perfusion.<sup>25</sup> Third, SGLT2 inhibitor use is associated with a reduction in the use of loop diuretics, thereby avoiding circulating volume contraction and pre-renal ischemia.<sup>26</sup> Finally, SGLT2 inhibition may preserve capillary architecture and parenchymal perfusion, and protect against apoptosis and ischemia-reperfusion, thereby helping to preserve kidney perfusion and avoid AKI.<sup>27,28</sup>

It has been suggested that the progression of kidney function decline, in some instances, is not linear over time but rather involves multiple AKI episodes that eventually lead to chronic progression of disease.<sup>29</sup> Given that dapagliflozin reduced the incidence of abrupt declines in kidney function, we assessed whether the benefits of dapagliflozin on ESKD or

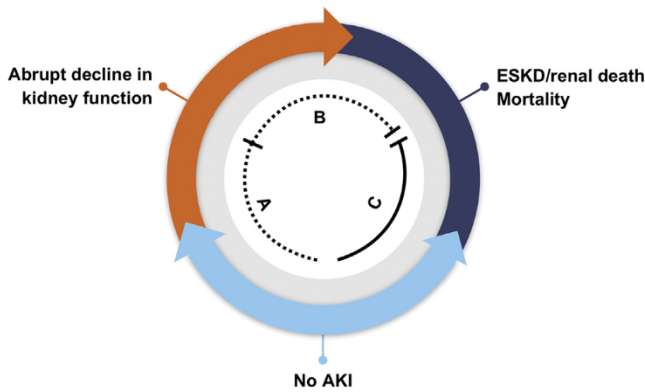
**Table 3 | Association between an abrupt decline in kidney function and ESKD/renal death and mortality**

Outcome	Without an abrupt decline in kidney function		With an abrupt decline in kidney function		Hazard ratio (95% CI)
	Events	Event rate, 95% CI (events per 100 patient-year)	Events	Event rate, 95% CI (events per 100 patient-year)	
ESKD or renal death	228	2.7 (2.4–3.1)	44	48.7 (35.4–65.4)	13.7 (9.7–19.3)
Mortality	204	2.2 (1.9–2.6)	43	33.3 (24.1–44.8)	9.3 (6.6–13.2)

CI, confidence interval; ESKD, end-stage kidney disease.

The multivariable adjusted hazard ratio for the association between doubling of serum creatinine events that were not attributed to the underlying disease (n = 116 patients) and subsequent ESKD or renal death was 7.0 (95% CI, 4.4–11.3) and 9.9 (95% CI, 6.8–14.3) for the association with mortality.





Hazard ratio (95% CI)	ESKD/renal death	Mortality
A + B: indirect effect	0.99 (0.95, 1.01)	0.98 (0.96, 1.01)
C: direct effect	0.60 (0.46, 0.75)	0.71 (0.55, 0.93)
Total effect	0.59 (0.45, 0.74)	0.70 (0.55, 0.91)

**Figure 3 | Shown is the mediation of effect of dapagliflozin treatment on end-stage kidney disease (ESKD) or all-cause mortality outcomes by abrupt declines in kidney function.** The overall effect of dapagliflozin on ESKD/renal death or all-cause mortality can be separated into the indirect effect (a,b) and the direct effect (c). The direct effect represents the effect of the intervention (dapagliflozin) on these outcomes through pathways unrelated to abrupt declines in kidney function. The indirect effect represents the effect of dapagliflozin on these outcomes as a consequence of its effect on abrupt declines in kidney function. Although the total effect of dapagliflozin can be estimated using the intent-to-treat analysis, estimation of indirect and direct effects requires control of confounding factors that jointly influence abrupt declines in kidney function and the outcomes of ESKD/renal death or all-cause mortality. AKI, acute kidney injury; CI, confidence interval.

renal death, and on mortality, could be explained through its beneficial effect on these acute events. In the multistate model, the direct effect of dapagliflozin on ESKD or renal death and mortality was of the same magnitude as the total effect on these outcomes reported previously, suggesting that the benefit of dapagliflozin on these clinical endpoints was largely independent of its effect on abrupt declines in kidney function.

In this analysis, dapagliflozin reduced the risk of doubling of serum creatinine between 2 subsequent visits. As part of the safety analysis, serious AKI SAEs were also nominally reduced with dapagliflozin. The consistent effects of dapagliflozin on both endpoints support the robustness of our results. This study does have limitations. First, studying AKI in the outpatient setting, in which laboratory testing is not uniform and is often driven by only signs, symptoms, or random tests, may lead to underreporting and differential reporting between groups; however, these limitations apply to any AKI study in the ambulatory setting. Second, although we used an objective definition of abrupt declines in kidney function, we may have missed some events if they occurred and were resolved within the ~3-month time interval between visits. Third, we did not measure biomarkers of AKI

and structural tubular damage, such as kidney injury molecular-1 or interleukin-18. Fourth, we recognize that the DAPA-CKD trial dataset does not permit mechanistic insight into why SGLT2 inhibitors reduce AKI risk. Future work should include biomarkers of kidney injury to better elucidate these potential pathways.<sup>23,30</sup> Finally, AKI SAEs were not adjudicated in the DAPA-CKD trial, but they are clinically important as they required hospitalization or prolonged hospitalization, or led to death.

In conclusion, dapagliflozin reduced the risk of an abrupt decline in kidney function in patients with CKD with albuminuria, with and without type 2 diabetes. In the context of similar observations with SGLT2 inhibitors involved in other trials and across different levels of cardiorenal risk, dapagliflozin may be a viable therapeutic option to prevent AKI, a possibility that needs to be confirmed in a dedicated randomized controlled trial.

**APPENDIX**  
**DAPA-CKD Trial Committees and Investigators**

**1. Members of the DAPA-CKD Executive Committee.** Hidde J.L. Heerspink (Co-chair; University Medical Center Groningen, Groningen, The Netherlands); David C. Wheeler (Co-chair; University College London, London, UK); Glenn Chertow (Stanford University School of Medicine, Palo Alto, California, USA); Ricardo Correa-Rotter (National Medical Science and Nutrition Institute Salvador Zubirán, Mexico City, Mexico); Tom Greene (University of Utah Health Sciences, Salt Lake City, Utah, USA); Fan Fan Hou (Southern Medical University, Guangzhou, China); John McMurray (University of Glasgow, Glasgow, UK); Peter Rossing (Steno Diabetes Centre, Gentofte, Denmark); Robert Toto (UT Southwestern Medical Center, Dallas, Texas, USA); Bergur Stefansson (AstraZeneca, Gothenburg, Sweden); and Anna Maria Langkilde (AstraZeneca, Gothenburg, Sweden).

**2. DAPA-CKD Investigators. Argentina.** L.E. Maffei, Centro Medico Dra Laura Maffei, Buenos Aires; P. Raffaele, Fundacion Favaloro, Ciudad Autonoma Buenos Aires; S.E. Solis, Centro Diabetologico, Cordoba; C.A. Arias, CEMEDIC, Ciudad Autonoma Buenos Aires; D. Aizenberg, Centro Medico Viamonte, CABA; C. Luquez, Centro Medico Luquez, Cordoba; C. Zaidman, CIPREC, CABA; N. Cluigt, Instituto de Investigaciones Clinicas Mar del Plata, Mar del Plata; M. Mayer, Centro de Salud e Investigaciones Medicas, Santa Rosa; A. Alvarisqueta, Centro de Investigaciones Medicas, Mar del Plata; A. Wassermann, FEPREVA, CABA; R. Maldonado, Clinica Privada Velez Sarsfield, Cordoba; J. Bittar, Renal SRL Centro Privado De Nefrologia, San Luis; M. Maurich, Instituto de Cardiologia de Corrientes 'J.F.Cabral', Corrientes; L.E. Gaitte, Clinica de Nefrologia, Santa Fe; N. Garcia, Blossom DMO, Cordoba; L. Sivak, GEMA Consultorios Medicos, Buenos Aires; P.O. Ramallo, Centro Modelo de Cardiologia, San Miguel de Tucuman; J.C. Santos, Investigaciones Clinicas Tucuman, San Miguel de Tucuman; R. Garcia Duran, Instituto de Investigaciones Clinicas San Nicolas, San Nicolas; J.A. Oddino, Insituto Medico de la Fundacion Estudios Clinicos, Rosario; and A. Maranon, Consultorios Medicos Belloni, Nueve de julio.

**Brazil.** L.N. Maia, Hospital de Base Sao Jose do Rio Preto, Sao Jose do Rio Preto; D. D Avila, Hospital Sao Lucas da PUCRS, Porto Alegre; E.J.G. Barros, Hospital de Clinicas de Porto Alegre, Porto Alegre; M.H. Vidotti, Loema - Instituto de Pesquisa Clinica, Campinas; D. Panarotto, IPCEM - Centro de Ciencias da Saude - Universidade de Caxias, Caxias do Sul; I.D.L. Noronha, Hospital das Clinicas da FMUSP, Sao Paulo; L.A.A. Turatti, CPQuali Pesquisa Clinica Ltda, Sao Paulo; L. Deboni, Fundacao Pro-Rim, Joinville; M.E. Canziani, Hospital do Rim e Hipertensao - UNIFESP, Sao Paulo; M.C. Riella, Instituto Scribner, Curitiba; M.R. Bacchi, Praxis Pesquisa Medica, Santo Andre; R.P. Paschoalin, Centro de Estudos Clinica Senhor do Bonfim, Salvador; R.J. Franco, Universidade Estadual de Sao Paulo, Botucatu; and J.C. Goldani, Irmandade Santa Casa de Misericordia de Porto Alegre, Porto Alegre.

**Canada.** E. St-Amour, Q and T Research Outaouais Incorporated, Gatineau; A.W. Steele, Lakeridge Health Oshawa, Oshawa; R. Goldenberg, LMC Clinical Research Inc. (Thornhill), Concord; S. Pandeya, Pandeya Kidney Centre, Oakville; H. Bajaj, LMC Clinical Research Inc, Brampton; D. Cherney, The Toronto Hospital, Toronto; S.M. Kaiser, Nova Scotia Health Authority, Halifax;



J.R. Conway, Diabetes Clinic, Smiths Falls; S.S. Chow, Stephen S. Chow Medicine Professional Corporation, Toronto; G. Bailey, Red Deer Medical Centre, Red Deer; J. Lafrance, CIUSSS de l'Est-de-l'Île-de-Montréal Hôpital Maisonneuve-Rosemont, Montreal; J. Winterstein, C-Health, Edmonton; S. Cournoyer, CISSMC - Hôpital Charles-Le Moyne, Greenfield Park; D. Gaudet, ECOGENE-21, Chicoutimi; F. Madore, Hôpital du Sacre-Coeur de Montreal, Montreal; R.L. Houlden, Kingston Health Sciences Centre, Kingston; A. Dowell, Dynamik Research Inc, Pointe-Clair; M. Langlois, CHUS - Hospital Fleurimont, Sherbrooke; N. Muirhead, London Health Sciences Centre, London; H. Khandwala, LMC Clinical Research Inc (Etobicoke), Etobicoke; and A. Levin, St. Paul's Hospital, Vancouver.

**China.** F. Hou, Nanfang Hospital of Nanfang Medical University, Guangzhou; Y. Xue, Nanfang Hospital of Nanfang Medical University, Guangzhou; L. Zuo, Peking University People's Hospital, Beijing; C. Hao, Huashan Hospital Affiliated to Fudan University, Shanghai; Z. Ni, Renji Hospital Affiliated to Shanghai Jiaotong University, Shanghai; C. Xing, NANJING, Nan Jin; N. Chen, Ruijin Hospital, Shanghai Jiaotong University of Medicine, Shanghai; Y. Dong, The First Affiliated Hospital of Sun Yatsen University, Guangzhou; R. Zhou, Yangpu Hospital, Shanghai; X. Xiao, Xiangya Hospital Central-South University, Changsha; Y. Zou, Sichuan Academy of Medical Science & Sichuan Provincial People's Hospital, Chengdu; C. Wang, The First Affiliated Hospital of Baotou Medical College, Baotou; B. Liu, Zhongda Hospital Southeast University, Nanjing; Q. Chen, The First Affiliated Hospital of Nanchang University, Nanchang; M. Lin, PuAi Hospital of Wuhan City, Wuhan; Q. Luo, HwaMei Hospital, University of Chinese Academy of Sciences, Ningbo; D. Zhang, Peking University International Hospital, Beijing; J. Wang, Lanzhou University Second Hospital, Lanzhou; M. Chen, General Hospital of Ningxia Medical University, Yinchuan; X. Wang, The First People's Hospital of YueYang, Yueyang; A. Zhong, Jiangxi Provincial People's Hospital, Nanchang; J. Dong, PuAi Hospital of Wuhan City, Wuhan; C. Zhu, Affiliated Hospital of Guizhou Medical University, Guiyang; T. Yan, Tianjin Medical University General Hospital, Tianjin; P. Luo, The Second Hospital of Jilin University, Changchun; Y. Ren, West China Hospital, Chengdu; P. Pai, The University of Hong Kong - Shenzhen Hospital, Shenzhen; D. Li, Shengjing Hospital of China Medical University, Shenyang; R. Zhang, Jilin Province People's Hospital, Changchun; J. Zhang, The First Affiliated Hospital of Beijing University, Beijing; M. Xu, Sun Yat-Sen Memorial Hospital, Guangzhou; Y. Zhuang, 900 Hospital of the Joint Logistics Team, Fuzhou; Y. Kong, Foshan First People's Hospital, Foshan; X. Yao, Jilin Central Hospital, Jilin; and X. Peng, The People's Hospital of Guangxi Zhuang Autonomous Region, Nanning.

**Denmark.** F.I. Persson, Steno Diabetes Center Copenhagen, Gentofte; T.K. Hansen, Aarhus Universitetshospital, Aarhus; R. Borg, Sjaellands Universitetshospital, Roskilde; U. Pedersen Bjerggaard, Nordsjaellands Hospital Hillerød, Hillerød; D. Hansen, Herlev Hospital, Herlev; and M. Hornum, Rigshospitalet, Copenhagen.

**Germany.** H. Haller, Medizinische Hochschule Hannover, Hannover; G. Klausmann, Studienzentrum Aschaffenburg, Aschaffenburg; D. Tschöpe, Herz- und Diabeteszentrum NRW, Bad Oeynhausen; T. Krüger, Gemeinschaftspraxis Karlstrasse, Düsseldorf; P. Gross, Studienzentrum Metabolisch-Vaskuläre Medizin, Dresden; C. Hugo, Universitätsklinikum Carl Gustav Carus der TU Dresden, Dresden; N. Obermüller, Klinikum der Johann Wolfgang Goethe Universität, Frankfurt am Main; L. Rose, Zentrum für Diabetes und, Münster; P. Mertens, Otto-von-Guericke Universität Magdeburg, Magdeburg; H. Zeller-Stefan, InnoDiab Forschung GmbH, Essen; A. Fritsche, Klinikum der Eberhard-Karls-Universität Tübingen, Tübingen; L. Renders, Klinikum rechts der Isar der Technischen Universität, München; J. Müller, Ambulanzentrum Dr. Müller Dr. Appelt, Schweinfurt; K. Budde, Charité - Universitätsklinikum Berlin, Berlin; and B. Schropfel, Universitätsklinikum Ulm, Ulm.

**Hungary.** I. Wittmann, Pecs Tudományegyetem, Pecs; P. Voros, Del-pesti Centrumkorház - Országos Hemat. és Infekt. Intézet, Budapest; M. Dudas, Bekes Megyei Kózponti Korház, Gyula; G.A. Tabak, Semmelweis Egyetem I. Belgyógyászati Klinika, Budapest; R. Kirschner, Flor Ferenc Korház, Kistarcsa; A. Letoha, SZTE AOK I. Belklinika, Szeged; I. Balku, Szabolcs-Szatmár-Bereg Megyei KHK és Egyetemi Oktatókorház, Nyíregyháza; Z. Hermányi, Bajcsy-Zsilinszky Korház-es Rendelőintézet, Budapest; G. Zakar, Velencei-tavi Jarobeteg Szakellátó Kórház Nonprofit Kft, Velence; I. Mezei, Markhot Ferenc Oktatókorház Csecsemo-es Gyermekgyógyászati, Eger; G.G. Nagy, Borsod-Abaúj-Egyetemi Oktatókorház, Nyíregyháza; Z. Hermányi, Bajcsy-Zsilinszky Korház-es Rendelőintézet, Budapest; and A. Nemeth, Kanizsai Dorottya Korház, Nagykanizsa.

**India.** D. Khullar, Max Super Speciality Hospital, New Delhi; P.K. Gowdaiah, Bangalore Medical College & Research Institute, Bangalore; E.

Fernando Mervin, Stanley Medical College and Hospital, Chennai; V.A. Rao, St. Theresa's Hospital, Hyderabad; D. Dewan, Ajanta Hospital and IVF Center, Lucknow; K. Gopani, B. J. Medical College and Civil Hospital, Ahmedabad; V.S.K. Maddi, Sunrise Hospitals, Vijayawada; M.S. Vyawahare, Government Medical College, Nagpur; R.K. Pulichikkat, Sree Narayana Institute of Medical Sciences, Ernakulam; R. Pandey, Institute of Post-Graduate Medical Education and Research, Kolkata; S.K. Sonkar, King George's Medical University, Lucknow; V.K. Gupta, Ganesh Shankar Vidyarthi Memorial Medical College, Kanpur; S. Agarwal, Ruby Hall Clinic, Pune; A.J. Asirvatham, Arthur Asirvatham Hospital, Madurai; A. Ignatius, Noble Hospital, Maharashtra; S. Chaubey, Meditrina Institute of Medical Sciences, Nagpur; S. Melemadathil, Calicut Medical College, Calicut; H. Alva, Vinaya Hospital and Research Centre, Mangalore; and Y. Kadam, CIMET's Inamdar Multispeciality Hospital, Pune.

**Japan.** H. Shimizu, Kojunkai Daido Clinic, Nagoya-shi; A. Sueyoshi, Uji-Tokushukai Medical Center, Uji-shi; H. Takeoka, Hyogo Prefectural Amagasaki General Medical Center, Amagasaki-shi; Y. Abe, Abe Diabetes Clinic, Oita-shi; T. Imai, JA Toride Medical Center, Toride-shi; Y. Onishi, The Institute for Adult Diseases, Asahi Life Foundation, Chuo-ku; Y. Fujita, Chubu Rosai Hospital, Nagoya-shi; Y. Tokita, Fujisawa City Hospital, Fujisawa-shi; M. Oura, Yaizu City Hospital; Y. Makita, Koshigaya Municipal Hospital, Koshigaya-shi; A. Idogaki, Medical Corporation Tokushukai Nozaki Tokushukai Hospital, Daito-shi; R. Koyama, Tsuchiura Kyodo General Hospital, Tsuchiura-shi; H. Kikuchi, National Hospital Organization Beppu Medical Center, Beppu-shi; N. Kashiwara, Kawasaki Medical School Hospital, Kurashiki; T. Hayashi, Osaka General Medical Center, Osaka-shi; Y. Ando, National Hospital Organization Osaka Minami Medical Center, Kawachinagano-shi; T. Tanaka, National Hospital Organization Mie Chuo Medical Center, Tsu-shi; M. Shimizu, National Hospital Organization Kobe Medical Center, Kobe-shi; S. Hidaka, Shonan Kamakura General Hospital, Kamakura-shi; T. Gohda, Juntendo University Hospital, Bunkyo-ku; K. Tamura, Yokohama City University Hospital, Yokohama-shi; M. Abe, Nihon University Itabashi Hospital, Itabashi-ku; Y. Kamijo, Shinshu University Hospital, Matsumoto-shi; T. Imasawa, National Hospital Organization Chiba East Hospital, Chiba-shi; Y. Takahashi, National Hospital Organization Shinshu Ueda Medical Center, Ueda-shi; M. Nakayama, National Hospital Organization Kyushu Medical Center, Fukuoka-shi; M. Tomita, National Hospital Organization Kumamoto Medical Center, Kumamoto-shi; F. Hirano, National Hospital Organization Asahikawa Medical Center, Asahikawa-shi; M. Nakayama, Nakayama Clinic, Nagoya-shi; Y. Fukushima, Fukuwa Clinic, Chuo-ku; A. Kiyosue, Tokyo Eki Center-Building Clinic, Chuo-ku; S. Kurioka, Medical Corporation Kyoujinkai Clinic Komatsu, Neyagawa-shi; E. Imai, Nakayama Imai Clinics, Takarazuka-shi; K. Kitagawa, National Hospital Organization Kanazawa Medical Center, Kanazawa-shi; M. Waki, Shizuoka City Shizuoka Hospital, Shizuoka-shi; J. Wada, Okayama University Hospital, Okayama-shi; K. Uehara, Naha City Hospital, Naha-shi; H. Iwatani, National Hospital Organization Osaka National Hospital, Osaka-shi; K. Ota, National Hospital Organization Okayama Medical Center, Okayama-shi; S. Shibasaki, National Hospital Organization Hokkaido Medical Center, Sapporo-shi; K. Tamura, Shinonoi General Hospital, Nagano-shi; K. Katayama, Mie University Hospital, Tsu-shi; I. Narita, Niigata University Medical and Dental Hospital, Niigata-shi; M. Iinuma, National Hospital Organization Mito Medical Center, Higashiibaraki-gun; S. Matsueda, National Hospital Organization Fukuoka-Higashi Medical Center, Kogashi; S. Sasaki, Iizuka Hospital, Iizuka-shi; A. Yokochi, JOHAS, Kanto Rosai Hospital, Kawasaki-shi; T. Tsukamoto, The TazukeKofukai Medical Research Institute Kitano Hospital, Osaka-shi; and T. Yoshimura, Saga-Ken Medical Centre Koseikan, Saga-shi.

**Korea.** S. Kang, Yonsei University Severance Hospital, Seoul; S. Lee, Ewha Womans University Mokdong Hospital, Seoul; C.S. Lim, SMG - SNU Boramae Medical Center, Seoul; H. Chin, Seoul National University Bundang Hospital, Seongnam-si; K.W. Joo, Seoul National University Hospital, Seoul; S.Y. Han, Inje University Ilsan Paik Hospital, Goyang-si; T.I. Chang, National Health Insurance Service Ilsan Hospital, Goyang-si; S. Park, Kyungpook National University Hospital, Daegu; H. Park, Gangnam Severance Hospital, Seoul; C.W. Park, The Catholic University of Korea, Seoul; B.G. Han, Wonju Severance Christian Hospital, Wonju-si; D.R. Cha, Korea University Ansan Hospital, Ansan-si; S.A. Yoon, Uijeongbu St. Mary's Hospital, Uijeongbu-si; W. Kim, Chonbuk National University Hospital, Jeonju-si; S.W. Kim, Chonnam National University Hospital, Gwangju; and D. Ryu, Ewha Womans University Seoul Hospital, Seoul.

**Mexico.** R. Correa Rotter, Instituto Nacional de Ciencias Médicas y Nutrición Salvador Zubirán, D.F.; S.S. Irizar Santana, C. para el desarrollo de la Med y la asistencia Médica Espec, Culiacán; G. Hernandez Llamas, Estudios Clínicos de Vanguardia, Mazatlán; R. Valdez Ortiz, Hospital General de México "Dr. Eduardo Liceaga", Mexico; N.C. Secchi Nicolas, Hospital General de Minatitlán, Minatitlán; G. Gonzalez Galvez, Instituto Jalisciense de Investigación en Diabetes y Obesidad, Guadalajara; J.R. Lazcano Soto, Instituto de





Investigaciones Aplicadas a la Neurociencia A.C., Durango; T. Bochicchio Riccardelli, Investigación Nefrológica S.C., Cuernavaca; E.A. Bayram Llamas, Fundación Cardiovascular de Aguascalientes, Aguascalientes; D.R. Ramos Ibarra, Centro de Estudios de Alta Especialidad de Sinaloa, Mazatlan; M.G.S. Melo, Clínica Quirúrgica de la Concepción, Saltillo; J.G. Gonzalez Gonzalez, Hospital Universitario “Dr. Jose Eleuterio Gonzalez”, Monterrey; J.H. Sanchez Mijangos, CAIFRC OMEGA SC, Mexico; M. Madero Robalo, Instituto Nacional de Cardiología, Mexico; and A. Garcia Castillo, CardioLink Clin Trials, Monterey.

**Peru.** H.A. Manrique, Centro de Expertos en Diabetes, Lima; J.C. Farfan, Centro Médico Monte Carmelo, Arequipa; R. Vargas, Centro de Investigación Endocrino y Transtornos Metabólicos, Piura; A. Valdivia, Hospital Militar Geriátrico, Chorrillos; A. Dextre, ENDOMED, San Miguel; E. Escudero, Hospital Nacional Arzobispo Loayza, Lima; J.R. Calderon Ticona, Servicio de Endocrinología y Metabolismo Clínica Señor de los M, Lima; L. Gonzales, Centro de Investigación de Enfermedades Metabólicas y Cardiológicas, Ica; J. Villena, Hospital Nacional Cayetano Heredia, Lima; L. Leon, Clínica Anglo Americana, Lima; G. Molina, Clínica San Pablo, Lima; A. Saavedra, Centro de Investigación Ricardo Palma, Lima; E. Garrido, Centro de Investigación en Endocrinología, San Isidro; H. Arbanil, Hospital Dos de Mayo, Lima; S. Vargas Marquez, Hospital Nacional Adolfo Guevara Velasco, Cusco; and J. Rodriguez, Hospital Alberto Sabogal Sologuren, Callao.

**Philippines.** R. Isidro, Healthlink Iloilo, Iloilo City; A.J. Villaflo, M3 Dialysis Center, Iloilo; M.A. Gumba, National Kidney and Transplant Institute, Quezon City; L. Tirador, St. Paul's Hospital, Iloilo City; R.S. Comia, Amang Rodriguez Medical Center, Marikina; R.A. Sy, Ospital ng Makati Medical Center, Makati City; M.L.V.V. Guanzon, Riverside Medical Center, Bacolod; G. Aquitania, Davao Doctors Hospital, Davao City; N.C. De Asis, Norzel Medical and Diagnostic Clinic, Cebu; A.A. Silva, De La Salle Health Sciences Institute, Dasmariñas City; C.M. Romero, Cebu Doctors' University Hospital, Cebu City; M.E. Lim, East Avenue Medical Center, Quezon City; and R.A. Danguilan, National Kidney and Transplant Institute, Quezon City.

**Poland.** M. Nowicki, SPZOZ Uniwersytecki Szpital Kliniczny, Lodz; H. Rudzki, NZOZ Przychodnia Specjalistyczna Andrzej Wittek, Ruda Slaska; K. Landa, LANDA, NZOZ DIABMED - Spolka Lekarzy Diabetologow, Krakow; I. Kucharczyk-Bauman, Centrum Usług Medycznych MaxMed Marek Maciaszek, Poznan; B. Gogola-Migdal, Osrodek Badan Klinicznych PARAGON, Bochnia; M. Golski, Ostrowieckie Centrum Medyczne S.C., Bielsko-Biala; A. Olech-Cudzik, Ostrowieckie Centrum Medyczne S.C. Anna Olech-Cudzik, Ostrowiec Swietokrzyski; T. Stompor, Wojewodzki Szpital Specjalistyczny w Olsztynie, Olsztyn; T. Szczepanik, Centrum Medyczne Pratia Katowice, Katowice; B. Miklaszewicz, CARDIAMED Beata Miklaszewicz i Dariusz Dabrowski S.J., Legnica; R. Sciborski, Zespól Opieki Zdrowotnej w Olawie SP ZOZ, Olawa; M. Kuzniewski, CENTERMED Sp. z o.o., Krakow; K. Ciechanowski, Samodzielny Publiczny Szpital Kliniczny Nr2 PUM w Szczecinie, Szczecin; D. Wronska, Profamilia Altera, Katowice; W. Klatko, Specjalistyczny Szpital Wojewodzki w Ciechanowie, Ciechanow; S. Mazur, NZOZ Centrum Medyczne MEDYK, Rzeszow; G. Popenda, NZOZ DIAB SERWIS S.C. Specjalistyczna Przychodnia Lekarska, Chorzow; and M. Myslicki, NZOZ Diaverum w Tczewie, Tczew.

**Russia.** L.Z. Bolieva, North-Ossetian State Medical Academy, Vladikavkaz; S. Berns, Kemerovo Cardiology Dispansery, Kemerovo; A. Galyavich, Kazan State Medical University, Kazan; T. Abissova, Yaroslavl Regional Clinical Hospital, Yaroslavl; I. Karpova, City Diabetology Centre, St. Petersburg; D. Platonov, Tver Regional Hospital, Tver; N. Koziolova, Perm State Medical Academy, Perm; L. Kvitkova, Regional Clinical Hospital, Kemerovo; R. Nilk, City Hospital #38 n.a. N.A.Semashko, Saint Petersburg; T. Medina, Clinical centre of FMBA city of Perm, Perm; A. Rebrov, Regional Clinical Hospital, Saratov; M. Rossovskaya, Karpovich City Clinical Hospital, Krasnoyarsk; I. Sinitsina, Russian Medical postgraduate academy, Moscow; E. Vishneva, City Clinical Hospital 14, Ekaterinburg; N. Zagidullin, Ufa city clinical hosp. 21, Ufa; T. Novikova, St. Petersburg Pokrovskaya City Hospital, Saint Petersburg; N. Krasnopeeva, Chelyabinsk Road Hospital of RRW, Chelyabinsk; O. Magnitskaya, Volgograd State Medical University, Volgograd; N. Antropenko, Clinical Hospital 1 named after A. N. Kabanov, Omsk; and M. Batiushin, Rostov State Medical University, Rostov-on-Don.

**Spain.** V. Escudero Quesada, Hospital Universitario Dr. Peset, Valencia; C. Barrios Barrea, Barcelona, H. del Mar, Nefrologia, Barcelona; E. Espinel Garauz, Barcelona, H. Vall d'Hebron, Nefrologia, Barcelona; J.M. Cruzado Garrit, H. Llobregat, L'Hospitalet de Llobregat; C. Morales Portillo, Hospital Universitario Virgen Macarena, Sevilla; J.L. Gorriaz Teruel, Hospital Clinico Universitario de Valencia, Valencia; S. Cigarran Guldris, Hospital Publico de Marina, Burela (Lugo); M. Praga Terente, Madrid, H. 12 de Octubre, Nefrologia, Madrid; N.R. Robles Perez-Monteoliva, Badajoz, H. Infanta Cristina, Nefrologia, Badajoz; F.J. Tinahones Madueno, Hospital Clinico Virgen de la Victoria, Malaga; A. Soto

Gonzalez, Complejo Hospitalario Universitario A Coruna, La Coruna; and C. Diaz Rodriguez, Hospital Clinico Universitario Santiago de Compostela, Santiago de Compostela.

**Sweden.** H. Furuland, Akademiska sjukhuset, Uppsala; A. Saeed, Sahlgrenska Universitetssjukhus, Goteborg; K. Dreja, Malmo Universitets sjukhus, Malmo; J. Spaak, Danderyds sjukhus AB, Stockholm; and A. Bruchfeld, KS Huddinge Hospital, Stockholm.

**Ukraine.** M. Kolesnyk, State Institution “Institute of Nephrology of AMS of Ukraine”, Kyiv; O. Levchenko, Municipal Institution “Odesa Regional Clinical Hospital”, Odesa; N. Pyvovarov, Vinnytsia Reg Clin Hospital M.I. Pyrogov - Nephrology, Vinnytsia; V. Stus, CI Regional Clinical Hospital n.a. I. I. Mechnikov, Dnipro; V. Doretsky, Municipal Enterprise Volyn Regional Clinical Hospital, Lutsk; N. Korobova, ME Rivne Regional Clinical Hospital, Rivne; O. Horoshko, MI of Kyiv Regional Council of Kyiv Regional Hospital #2, Kyiv; I. Katerenchuk, ME Poltava Regional Clinical Hospital, M. V. Skliphosovski Poltava Regional Clinical Hospital, Poltava; Y.M. Mostovoy, Private Enterprise, Vinnytsia; M. Orynychak, ME Central City Clinical Hospital of Ivano-Frankivsk City Council-Therapy, Ivano-Frankivsk; O. Legun, Ivano-Frankivsk Regional Clinical Hospital, Ivano-Frankivsk; I. Dudar, State Institution “Institute of Nephrology NAMS of Ukraine”, Kyiv; O. Bilchenko, ME Kharkiv City Clinic of Urgent and Emergency Care-Therapy, Kharkiv region; S. Andreychyn, ME Ternopil Municipal City Hospital No. 2, Ternopil; A. Levchenko, ME “Regional Clinical Specialized Dispensary for Radiation Protection”, Kharkiv region; L. Zub, Chernivtsi Regional Clinical Hospital - Internal Medicine, Chernivtsi; N. Tereshchenko, Municipal Institution Cherkasy Regional Hospital of “Cherkasy Regional Council-Nephrology”, Cherkasy; I. Topchii, Kharkiv Malaya Institute of Therapy-Nephrology, Kharkiv region; T. Ostapenko, CI Zaporizhzhya Regional Clinical Hospital-Nephrology, Zaporizhzhia; S. Bezuglova, Private Medical Centre “OkClinic”, Kyiv; M. Kopytsya, Kharkiv Malaya Institute of Therapy, Kharkiv region; and O. Turenko, ME Dnipropetrovsk City Multifield Clinical Hospital #4 - Nephrological Department, Dnipro.

**United Kingdom.** P. Mark, Queen Elizabeth University Hospital, Glasgow; J. Barratt, Leicester General Hospital, Leicester; S. Bhandari, Hull and East Yorkshire Hospitals NHS Trust, Hull; D. Fraser, UNIVERSITY HOSPITAL OF WALES, CARDIFF; P. Kalra, Salford Royal NHS Foundation Trust, Salford; S.P. Kon, King's College Hospital, London; K. McCafferty, Barts Health NHS Trust - St Bartholomew's Hospital, London; A. Mikhail, Morrison Hospital, Swansea; and S.P. Kon, Princess Royal University Hospital (GI), Kent.

**United States.** O.P. Alvarado, Texas Medical Group of Texas, Fort Worth; R. Anderson, VA Medical Center - NE, Omaha; N.S. Andrawis, Manassas Clinical Research Center, Manassas; A. Arif, Apex Medical Research of Flint PC, Flint; S.A. Benjamin, Universal Research Group, Tacoma; G. Bueso, Endocrine Associates, Houston; R.S. Busch, Albany Medical College, Albany; K.W. Carr, Kenneth W. Carr, MD, Blue Coast Cardiology, Vista; P. Crawford, Research by Design, LLC, Chicago; N. Daboul, Advanced Medical Research, Maumee; G.M. De La Calle, Premier Research Associates, Miami; B. Delgado, San Marcus Research Clinical Inc, Miami Lakes; J. Earl, PMG Research of Hickory, Hickory; M.A. El-Shahawy, Academic Medical Research Institute, Los Angeles; R.J. Graf, MultiCare Research Institute, Tacoma; G. Greenwood, Brookview Hills Research Associates, Winston-Salem; A. Guevara, Alex Guevara DO, Fort Worth; E.M. Wendland, Essentia Health-West Duluth Clinic, Duluth; R.K. Mayfield, Mountain View Clinical Research, Greer; M. Montero, Eastern Nephrology Associates, New Bern; D.J. Morin, Holston Medical Group, Kingsport; P. Narayan, Clinical Research Institute of Northern Virginia, Burke; V. Numrungroad, Suncoast Clinical Research, New Port Richey; A.C. Reddy, Permian Research Foundation, Odessa; R. Reddy, T&R Clinic, PA, Fort Worth; M.B. Samson, American Clinical Trials, Hawaiian Gardens; R. Trejo, Helix Biomedics LLC, Boynton Beach; M.B. Butcher, Sterling Research Group, Cincinnati; J.K. Wise, Crescent City Clinical Research Center, Metairie; L.R. Zemel, Creekside Endocrine Associates, Denver; M. Raikhel, Torrance Clinical Research, Lomita; D. Weinstein, Zasa Clinical Research, Boynton Beach; P. Hernandez, Elite Clinical Research, Miami; A. Wynne, Cotton O'Neil Clinical Research Center, Topeka; B.V. Khan, Atlanta Vascular Research Foundation (AVRF), Atlanta; G.A. Sterba, Leon Medical Research, Miami; A. Jamal, North America Research Institute, San Dimas; D. Ross, Kansas Nephrology Research Institute/Research Management Inc, Wichita; S.F. Rovner, Academy of Diabetes, El Paso; A. Tan, West Coast Research, San Ramon; F. Ovalle, University of Alabama, Birmingham; R.J. Patel, Locoming Internal Medicine Inc, Jersey Shore; J. Talano, SWICFT Institute, Naples; D.R. Patel, Southeastern Clinical Research Institute, Augusta; A. Burgner, Nephrology Clinical Trials Center, Nashville; N. Aslam, Mayo Clinic Cancer Center, Jacksonville; M. Elliott, Metrolina Nephrology Associates, Charlotte; S. Goral, University of Pennsylvania, Philadelphia; A. Jovanovich, University of Colorado, Aurora; J.A. Manley, Mountain Kidney & Hypertension Associates, Asheville; K.



Umanath, Henry Ford Hospital, Detroit; D. Waguespack, UT Houston - Texas Medical Center, Houston; D. Weiner, Tufts Medical Center, Boston; M. Yu, Stanford University School of Medicine, Palo Alto; L. Schneider, Tidewater Physicians Multispecialty Group, Newport News; and D. Jalal, University of Iowa Hospital & Clinic, Iowa City.

**Vietnam.** T. Le, T D, Binh Dan Hospital, Ho Chi Minh City; N. Nguyen, T, Thu Duc District Hospital, Ho Chi Minh City; H. Nguyen, T T, Dong Nai General Hospital, Bien Hoa; D. Nguyen, B T, Tam Duc Hospital, Ho Chi Minh City; V. Nguyen, D K, Bach Mai Hospital, Hanoi; T. Do, G, Bach Mai Hospital, Hanoi; P. Chu, T T, 115 People's Hospital, Ho Chi Minh City; D. Ta, P, 115 Hospital, Ho Chi Minh City; N. Tran, Q, UMC, Ho Chi Minh City; D. Nguyen, A, Director Board, Gia Dinh People Hospital, Ho Chi Minh City; and B. Pham, V, Nguyen Tri Phuong Hospital, Ho Chi Minh City.

**3. Members of the DAPA-CKD Independent Data Monitoring Committee.** Marc A. Pfeffer (Chair; Brigham and Women's Hospital, Boston, USA); Stuart Pocock, (London School of Hygiene and Tropical Medicine, London, UK); Karl Swedberg, (University of Gothenburg, Gothenburg, Sweden); Jean L. Rouleau (Montréal Heart Institute, Montreal, Québec, Canada); Nishi Chaturvedi (University College London, London, UK); Peter Ivanovich (Northwestern University, Chicago, USA); Andrew S. Levey (Tufts Medical School, Boston, USA); and Heidi Christ-Schmidt (Statistics Collaborative, Washington DC, USA).

**4. Members of the DAPA-CKD Event Adjudication Committee.** Claes Held, Professor (Chair; Uppsala Clinical Research Center, Sweden); Christina Christersson (Co-Chair; Uppsala Clinical Research Center, Sweden); Johannes Mann (Co-chair; University of Erlangen-Numberg, Munich, Germany); and Christoph Varenhorst (Co-chair; Uppsala Clinical Research Center, Sweden).

## DISCLOSURE

HJLH is consultant for AstraZeneca, Bayer, Boehringer Ingelheim, Chinook, CSL Pharma, Gilead, Janssen Pharmaceuticals, Merck, Mundipharma, Mitsubishi Tanabe, Novo Nordisk, and Retrophin; and has received research support from AbbVie, AstraZeneca, Boehringer Ingelheim, and Janssen Pharmaceuticals. DC has received honoraria from Boehringer Ingelheim, Lilly, Merck, AstraZeneca, Sanofi, Mitsubishi-Tanabe, AbbVie, Janssen Pharmaceuticals, Bayer, Prometic, Bristol Myers Squibb, and Novo Nordisk; and has received operational funding for clinical trials from Boehringer Ingelheim-Lilly, Merck, Janssen Pharmaceuticals, Sanofi, AstraZeneca, and Novo Nordisk. DP has nothing to declare. BVS, CDS, and AML are employees and stockholders of AstraZeneca. GMC has received fees from AstraZeneca for the DAPA-CKD trial steering committee, and research grants from the National Institute of Diabetes and Digestive and Kidney Diseases and Amgen; is on the board of directors for Satellite Healthcare; has received fees for advisory boards for Baxter, Cricket, DiaMedica, and Reata; holds stock options for Ardelyx, CloudCath, Durect, DxNow, and Outset; has received fees from Akebia, Sanifit, and Vertex for trial steering committees; and has received fees for Data Safety Monitoring Board service from Angion, Bayer, and ReCor. JPD has received fees from AstraZeneca for the conduct of this study; has received fees from Sanofi-Aventis and CSL Behring as part of a steering committee; has received fees from Novo Nordisk for outcome adjudication for a trial; has received fees from Goldfinch Bio, Birdrock Bio, and Boehringer Ingelheim for study design; and received personal fees from Bayer. TG has received grants for statistical consulting from AstraZeneca, CSL, and Boehringer Ingelheim; and personal fees from Janssen Pharmaceuticals, DURECT Corporation, and Pfizer for statistical consulting. MK reports receiving research grants from Boehringer Ingelheim and AstraZeneca; other research support from AstraZeneca; and honoraria from Boehringer Ingelheim, AstraZeneca, Sanofi, Amgen, Novo Nordisk, Merck (Diabetes), Janssen Pharmaceuticals, Bayer, GlaxoSmithKline, and Applied Therapeutics. JJVM reports payments to his employer, Glasgow University, for his work on clinical trials, consulting, and other activities from Alnylam, Amgen, AstraZeneca, Bayer, Bristol Myers Squibb, Cardurion, Cytokinetics, GlaxoSmithKline, Novartis, Pfizer, and Theracos; and personal lecture fees from the Corpus, Abbott, Hickma, Sun Pharmaceuticals, and Medsca. RC-R has received honoraria from AstraZeneca, GlaxoSmithKline, Medtronic, and Boehringer Ingelheim; has lectured for Amgen, Janssen Pharmaceuticals, and Boehringer Ingelheim; and has received research support from GlaxoSmithKline, Novo Nordisk, and AstraZeneca. PR has received honoraria paid to Steno Diabetes Center Copenhagen for consultancy from AstraZeneca, Bayer, Boehringer Ingelheim, Gilead, Novo Nordisk, Sanofi, Eli Lilly, and research support from AstraZeneca and Novo Nordisk. RDT is a consultant for AstraZeneca, Amgen, Akebia, Quest Diagnostic, Bayer, Boehringer Ingelheim, Reata, and Relypsa. DCW provides ongoing consultancy services to AstraZeneca and has received honoraria and/or consultancy fees

from Amgen, Astellas, AstraZeneca, Boehringer Ingelheim, Bayer, GlaxoSmithKline, Janssen Pharmaceuticals, Napp, Mundipharma, Merck Sharp and Dohme, Reata, Tricida, and Vifor Fresenius.

## DATA AVAILABILITY STATEMENT

Data underlying the findings described in this article may be obtained in accordance with AstraZeneca's data sharing policy described at <https://astrazenecagrouptrials.pharmacm.com/ST/Submission/Disclosure>.

## ACKNOWLEDGMENTS

The authors thank all investigators, trial teams, and patients for their participation in the trial. The authors thank David J Smeijer and Sjoukje van der Hoek for their assistance recording the precipitating factors for AKI. The authors acknowledge Nicola Truss and Marco Emanuele Favretto, from inScience Communications, London, UK, for assistance in editing and styling, preparation of figures, and submission of the manuscript—this support was funded by AstraZeneca. This study was funded by AstraZeneca.

## AUTHOR CONTRIBUTIONS

HJLH and DC were involved in the study design, conduct of the study, data analysis, and interpretation of the data; and they wrote the first draft of the manuscript. DCW, GMC, JJVM, TG, RC-R, PR, and RDT are members of the study's executive committee and were involved in the study design, data collection, and analysis/interpretation of the data. DP performed the data analyses. AML, CDS, and BVS were involved in the study design, conduct of the study, and interpretation of data. JPD was involved in data collection and interpretation. MK was involved in the interpretation of the data. All the authors reviewed the manuscript drafts for important intellectual content, provided approval of the final version for submission, and take responsibility for the accuracy and integrity of the data, including ensuring that any questions are appropriately investigated and resolved. HJLH is the guarantor and corresponding author, and as such accepts full responsibility for the overall content of the work and conduct of the study, had access to the data, and attests that all listed authors meet authorship criteria and that no others meeting the criteria have been omitted.

## SUPPLEMENTARY MATERIAL

[Supplementary File \(PDF\)](#)

**Figure S1.** Participant flow diagram. From *The New England Journal of Medicine*. Heerspink HJL, Stefánsson BV, Correa-Rotter R, Chertow GM, Greene T, Hou F-F, Mann JFE, McMurray JJV, Lindberg M, Rossing P, Sjöström CD, Toto RD, Langkilde AM, Wheeler DC, for the DAPA-CKD Trial Committees and Investigators. Dapagliflozin in patients with chronic kidney disease, volume 383, pages 1436–1446, Copyright © 2020 Massachusetts Medical Society. Reprinted with permission from Massachusetts Medical Society.

**Figure S2.** Distribution of time interval between 2 subsequent visits to determine doubling of serum creatinine. Exclusion of 16 patients for whom the time difference between 2 serum creatinine measurements was more than 8 months did not change the primary result (subdistribution hazard ratio for effect of dapagliflozin compared with placebo on abrupt declines in kidney function was 0.70 (95% confidence interval [CI], 0.50–0.98).

**Figure S3.** Cumulative incidence curve for the incidence of acute kidney injury (AKI), defined as a serious adverse event (SAE) of AKI.

**Table S1.** Baseline characteristics of patients with and without abrupt declines in kidney function during follow-up.



## REFERENCES

- Susantitaphong P, Cruz DN, Cerda J, et al. World incidence of AKI: a meta-analysis. *Clin J Am Soc Nephrol*. 2013;8:1482–1493.
- Coca SG, Singanamala S, Parikh CR. Chronic kidney disease after acute kidney injury: a systematic review and meta-analysis. *Kidney Int*. 2012;81:442–448.
- Thakar CV, Christianson A, Himmelfarb J, Leonard AC. Acute kidney injury episodes and chronic kidney disease risk in diabetes mellitus. *Clin J Am Soc Nephrol*. 2011;6:2567–2572.
- James MT, Grams ME, Woodward M, et al. A meta-analysis of the association of estimated GFR, albuminuria, diabetes mellitus, and hypertension with acute kidney injury. *Am J Kidney Dis*. 2015;66:602–612.
- Vallon V. Do tubular changes in the diabetic kidney affect the susceptibility to acute kidney injury? *Nephron Clin Pract*. 2014;127:133–138.
- Perlman A, Heyman SN, Matok I, et al. Acute renal failure with sodium-glucose-cotransporter-2 inhibitors: analysis of the FDA adverse event report system database. *Nutr Metab Cardiovasc Dis*. 2017;27:1108–1113.
- van Raalte DH, Cherney DZI. Sodium glucose cotransporter 2 inhibition and renal ischemia: implications for future clinical trials. *Kidney Int*. 2018;94:459–462.
- Sridhar VS, Tuttle KR, Cherney DZI. We can finally stop worrying about SGLT2 inhibitors and acute kidney injury. *Am J Kidney Dis*. 2020;76:454–456.
- Heerspink HJL, Stefansson BV, Correa-Rotter R, et al. Dapagliflozin in patients with chronic kidney disease. *N Engl J Med*. 2020;383:1436–1446.
- VanderWeele TJ. Causal mediation analysis with survival data. *Epidemiology*. 2011;22:582–585.
- Valeri L, VanderWeele TJ. SAS macro for causal mediation analysis with survival data. *Epidemiology*. 2015;26:e23–e24.
- Cherney DZI, Dekkers CCJ, Barbour SJ, et al. Effects of the SGLT2 inhibitor dapagliflozin on proteinuria in non-diabetic patients with chronic kidney disease (DIAMOND): a randomised, double-blind, crossover trial. *Lancet Diabetes Endocrinol*. 2020;8:582–593.
- Kraus BJ, Weir MR, Bakris GL, et al. Characterization and implications of the initial estimated glomerular filtration rate ‘dip’ upon sodium-glucose co-transporter-2 inhibition with empagliflozin in the EMPA-REG OUTCOME trial. *Kidney Int*. 2021;99:752–760.
- Kidney Disease: Improving Global Outcomes (KDIGO) Diabetes Work Group. KDIGO 2020 Clinical Practice Guideline for Diabetes Management in Chronic Kidney Disease. *Kidney Int*. 2020;98:S1–S115.
- Neuen BL, Young T, Heerspink HJL, et al. SGLT2 inhibitors for the prevention of kidney failure in patients with type 2 diabetes: a systematic review and meta-analysis. *Lancet Diabetes Endocrinol*. 2019;7:845–854.
- Zhao M, Sun S, Huang Z, et al. Network meta-analysis of novel glucose-lowering drugs on risk of acute kidney injury. *Clin J Am Soc Nephrol*. 2020;16:70–78.
- Jhund PS, Solomon SD, Docherty KF, et al. Efficacy of dapagliflozin on renal function and outcomes in patients with heart failure with reduced ejection fraction: results of DAPA-HF. *Circulation*. 2021;143:298–309.
- Iskander C, Cherney DZ, Clemens KK, et al. Use of sodium–glucose cotransporter-2 inhibitors and risk of acute kidney injury in older adults with diabetes: a population-based cohort study. *CMAJ*. 2020;192:E351–E360.
- Nadkarni GN, Ferrandino R, Chang A, et al. Acute kidney injury in patients on SGLT2 inhibitors: a propensity-matched analysis. *Diabetes Care*. 2017;40:1479–1485.
- Rampersad C, Kraut E, Whitlock RH, et al. Acute kidney injury events in patients with type 2 diabetes using SGLT2 inhibitors versus other glucose-lowering drugs: a retrospective cohort study. *Am J Kidney Dis*. 2020;76:471–479.e1.
- Cahn A, Melzer-Cohen C, Pollack R, et al. Acute renal outcomes with sodium-glucose co-transporter-2 inhibitors: real-world data analysis. *Diabetes Obes Metab*. 2019;21:340–348.
- Aggarwal R, Chiu N, Bhatt DL. Generalizability of DAPA-CKD to the United States. *Circ Cardiovasc Qual Outcomes*. 2021;14:007875.
- Kosiborod M, Berwanger O, Koch GG, et al. Effects of dapagliflozin on prevention of major clinical events and recovery in patients with respiratory failure because of COVID-19: design and rationale for the DARE-19 study. *Diabetes Obes Metab*. 2021;23:886–896.
- O'Neill J, Fasching A, Pihl L, et al. Acute SGLT inhibition normalizes O2 tension in the renal cortex but causes hypoxia in the renal medulla in anaesthetized control and diabetic rats. *Am J Physiol Renal Physiol*. 2015;309:F227–F234.
- Nassif ME, Qintar M, Windsor SL, et al. Empagliflozin effects on pulmonary artery pressure in patients with heart failure: results from the EMBRACE-HF Trial. *Circulation*. 2021;143:1673–1686.
- Fitchett D, Zinman B, Wanner C, et al. Heart failure outcomes with empagliflozin in patients with type 2 diabetes at high cardiovascular risk: results of the EMPA-REG OUTCOME(R) trial. *Eur Heart J*. 2016;37:1526–1534.
- Zhang Y, Nakano D, Guan Y, et al. A sodium-glucose cotransporter 2 inhibitor attenuates renal capillary injury and fibrosis by a vascular endothelial growth factor-dependent pathway after renal injury in mice. *Kidney Int*. 2018;94:524–535.
- Chang YK, Choi H, Jeong JY, et al. Dapagliflozin, SGLT2 inhibitor, attenuates renal ischemia-reperfusion injury. *PLoS One*. 2016;11:e0158810.
- Johnson RJ, Rodriguez-Iturbe B. Rethinking progression of CKD as a process of punctuated equilibrium. *Nat Rev Nephrol*. 2018;14:411–412.
- Lawler PR, Liu H, Frankfurter C, et al. Changes in cardiovascular biomarkers associated with the sodium-glucose cotransporter 2 (SGLT2) inhibitor ertugliflozin in patients with chronic kidney disease and type 2 diabetes. *Diabetes Care*. 2021;44:e45–e47.