

University of Groningen

Multicenter Study of Long-Term Safety of Tolvaptan in Later-Stage Autosomal Dominant Polycystic Kidney Disease

Torres, Vicente E; Chapman, Arlene B; Devuyst, Olivier; Gansevoort, Ron T; Perrone, Ronald D; Lee, Jennifer; Hoke, Molly E; Estilo, Alvin; Sergeyeva, Olga

Published in:
Clinical Journal of the American Society of Nephrology

DOI:
[10.2215/CJN.10250620](https://doi.org/10.2215/CJN.10250620)

IMPORTANT NOTE: You are advised to consult the publisher's version (publisher's PDF) if you wish to cite from it. Please check the document version below.

Document Version
Publisher's PDF, also known as Version of record

Publication date:
2021

[Link to publication in University of Groningen/UMCG research database](#)

Citation for published version (APA):

Torres, V. E., Chapman, A. B., Devuyst, O., Gansevoort, R. T., Perrone, R. D., Lee, J., Hoke, M. E., Estilo, A., & Sergeyeva, O. (2021). Multicenter Study of Long-Term Safety of Tolvaptan in Later-Stage Autosomal Dominant Polycystic Kidney Disease. *Clinical Journal of the American Society of Nephrology*, 16(1), 48-58. <https://doi.org/10.2215/CJN.10250620>

Copyright

Other than for strictly personal use, it is not permitted to download or to forward/distribute the text or part of it without the consent of the author(s) and/or copyright holder(s), unless the work is under an open content license (like Creative Commons).



The publication may also be distributed here under the terms of Article 25fa of the Dutch Copyright Act, indicated by the "Taverne" license. More information can be found on the University of Groningen website: <https://www.rug.nl/library/open-access/self-archiving-pure/taverne-amendment>.

Take-down policy

If you believe that this document breaches copyright please contact us providing details, and we will remove access to the work immediately and investigate your claim.

Downloaded from the University of Groningen/UMCG research database (Pure): <http://www.rug.nl/research/portal>. For technical reasons the number of authors shown on this cover page is limited to 10 maximum.

Multicenter Study of Long-Term Safety of Tolvaptan in Later-Stage Autosomal Dominant Polycystic Kidney Disease

Vicente E. Torres ¹, Arlene B. Chapman,² Olivier Devuyst,^{3,4} Ron T. Gansevoort,⁵ Ronald D. Perrone ⁶, Jennifer Lee,⁷ Molly E. Hoke,⁸ Alvin Estilo,⁹ and Olga Sergeeva¹⁰

Abstract

Background and objectives Tolvaptan slows kidney function decline in patients with autosomal dominant polycystic kidney disease (ADPKD) at risk of rapid progression. In the 3-year Tolvaptan Efficacy and Safety in Management of ADPKD and Its Outcomes (TEMPO) 3:4, 2-year extension to TEMPO 3:4 (TEMPO 4:4), and 1-year Replicating Evidence of Preserved Renal Function: An Investigation of Tolvaptan Safety and Efficacy in ADPKD (REPRISE) trials, aquaretic adverse events were common. Serum alanine aminotransferase (ALT) or aspartate aminotransferase (AST) elevations occurred in all three studies. Three patients met Hy Law criteria (ALT or AST more than three times and total bilirubin more than two times the upper limit of normal) for severe drug-induced liver injury (two in TEMPO 3:4 and one in TEMPO 4:4). In REPRISE, liver enzyme monitoring frequency was increased to monthly, with no Hy Law cases. A long-term, phase 3 safety study has further characterized tolvaptan safety.

Design, setting, participants, & measurements Subjects who completed TEMPO 4:4, REPRISE, or other tolvaptan trials could enroll in this prospective, multinational, open-label safety study. Assessments included monthly liver enzyme testing during the first 18 months of tolvaptan exposure and every 3 months thereafter.

Results Among 1803 subjects, median tolvaptan exposure during the extension was 651 days (interquartile range, 538–924), and cumulative exposure (extension and previous trials) was ≤ 11 years. Subjects entering from REPRISE placebo experienced more aquaretic adverse events compared with subjects from TEMPO 4:4 or REPRISE tolvaptan (*i.e.*, patients with prior long-term tolvaptan exposure). Liver enzyme elevations also occurred more frequently in subjects from REPRISE placebo. Percentages experiencing ALT $\geq 3/ \geq 5/ \geq 10/ \geq 20$ times the upper limit of normal were 3.2%/2.1%/0.9%/0.7%, respectively, in subjects from REPRISE placebo and 0.6%–1.1%/0.0%–0.1%/0%/0%, respectively, in those from REPRISE tolvaptan and TEMPO 4:4. Percentages experiencing AST $\geq 3/ \geq 5/ \geq 10/ \geq 20$ times the upper limit of normal were 6.9%/3.8%/2.3%/0.8%, respectively, in subjects from REPRISE placebo and 0.9%–2.0%/0.0%–1.0%/0%/0%, respectively, in those from REPRISE tolvaptan and TEMPO 4:4. No Hy Law cases occurred.

Conclusions No new safety signals emerged during this long-term extension. Monthly liver function testing for the first 18 months of treatment appeared to enable effective detection and management of transaminase elevations.

Clinical Trial registry name and registration number: Open Label Extension of TEMPO 3:4, NCT02251275

CJASN 16: 48–58, 2021. doi: <https://doi.org/10.2215/CJN.10250620>

Introduction

Autosomal dominant polycystic kidney disease (ADPKD) is the fourth leading cause of kidney failure, accounting for 5%–10% of cases globally (1,2). Tolvaptan, a selective antagonist of the arginine vasopressin receptor type 2, is the first approved treatment that targets a mechanism directly contributing to cyst development and growth (3,4). Tolvaptan slowed kidney function decline in patients at risk of rapid ADPKD progression in two pivotal trials, the 3-year Tolvaptan Efficacy and Safety in Management of Autosomal Dominant Polycystic Kidney Disease and

Its Outcomes (TEMPO) 3:4 trial (NCT00428948) and the 1-year Replicating Evidence of Preserved Renal Function: an Investigation of Tolvaptan Safety and Efficacy in Autosomal Dominant Polycystic Kidney Disease (REPRISE) trial (NCT02160145) (5,6).

TEMPO 3:4 completers could enroll in the open-label extension TEMPO 4:4 (NCT01214421), which provided at least 2 additional years of tolvaptan safety and efficacy data (7). As no hepatic safety signal had emerged previously for tolvaptan with use in other indications, liver enzyme monitoring was relatively infrequent in TEMPO 3:4 (every 4 months). An

Due to the number of contributing authors, the affiliations are listed at the end of this article.

Correspondence:

Dr. Vicente E. Torres, Division of Nephrology and Hypertension, Mayo Clinic, 200 First Street Southwest, Rochester, MN 55905. Email: torres.vicente@mayo.edu

imbalance was seen in TEMPO 3:4 in the proportion of subjects with alanine aminotransferase (ALT) more than three times the upper limit of normal (4.4% tolvaptan versus 1.0% placebo) (8). In addition, two subjects in TEMPO 3:4 and one subject in TEMPO 4:4 developed potentially severe drug-induced liver injury (*i.e.*, met Hy Law criteria, defined as ALT or aspartate aminotransferase [AST] more than three times the upper limit of normal and total bilirubin more than two times the upper limit of normal in the absence of cholestasis [alkaline phosphatase less than two times the upper limit of normal]) (5,7,8). The transaminase elevations resolved in all subjects within approximately 4 months after tolvaptan discontinuation (8). Liver function testing frequency in TEMPO 4:4 was originally once every 6 months; it was subsequently increased to every 3 months and, finally, to monthly (8). In REPRISÉ, liver function testing was conducted monthly for the entirety of the study. The frequency of elevated liver function tests (5.6% tolvaptan versus 1.2% placebo) in REPRISÉ was similar to that in the TEMPO program, but no additional Hy Law cases were reported, likely due to more frequent monitoring and timely interruption of study medication in subjects experiencing liver enzyme elevations (6). Aquaretic adverse events (AEs; *e.g.*, thirst, polyuria, and nocturia) related to the mechanism of action of tolvaptan were common and well tolerated (9).

Subjects who completed earlier tolvaptan trials in ADPKD could enroll in an open-label, long-term extension (NCT02251275), the results of which are reported here. Liver function testing was monthly until 18 months of tolvaptan exposure accumulated, and then every 3 months. The primary objective was to describe the long-term safety and tolerability of tolvaptan in the treatment of ADPKD.

Materials and Methods

Participants

Subjects were eligible if they had completed REPRISÉ (on either tolvaptan or placebo), the TEMPO 4:4 open-label extension, or a prior tolvaptan ADPKD trial (TEMPO 3:4 or the phase 2 NOCTURNE trial [NCT01451827]). Additionally, subjects who interrupted or discontinued treatment in a prior tolvaptan trial for reasons other than elevated transaminases (hepatic safety) could enroll.

Other inclusion criteria were age ≥ 18 years, confirmed diagnosis of ADPKD by Pei–Ravine criteria (10,11), and eGFR (on the basis of the Chronic Kidney Disease Epidemiology Collaboration equation) ≥ 20 ml/min per 1.73 m² within 3 months of the baseline visit. Subjects with eGFR < 20 ml/min per 1.73 m² could enroll with medical monitor and sponsor approval and more frequent monitoring to ensure safety.

Exclusion criteria were chronic diuretic use, liver function abnormalities other than those expected for ADPKD, or medical history or findings inconsistent with safety or trial compliance.

Study Design

This trial was a phase 3, multicenter, open-label extension. Supplemental Material has the principal investigators and study sites. The study commenced in September 2014 and completed in December 2018.

The trial was planned to continue until the last subject enrolled from REPRISÉ completed 18 months of tolvaptan treatment in the extension. In the United Kingdom, subjects were permitted to complete 18 months of treatment; elsewhere, subjects entering from trials other than REPRISÉ could transition to commercially available tolvaptan (if available) prior to completing 18 months of the extension. Enrollment was extended by 6 weeks for subjects who entered from REPRISÉ, but the end date was not extended; therefore, subjects enrolled in the last 6 weeks may have not completed 18 months of tolvaptan treatment.

Treatments

Subjects from TEMPO 4:4 stayed at the last dose level in TEMPO 3:4 and started at the same dose in this extension. Subjects from REPRISÉ or prior tolvaptan trials were initiated on tolvaptan at a split dose of 45/15 mg with upward titration every 3–4 days to 60/30 or 90/30 mg/d according to tolerability. For all subjects, downward titrations to 30/15 and 15/15 mg were permitted at the discretion of the investigator according to subject tolerability and with medical monitor notification. Further downward titrations to 30 or 15 mg once daily were made in subjects taking moderate or potent cytochrome P450 3A4 inhibitors.

Split-dose regimens were taken twice daily, once upon awakening and another approximately 8–9 hours later. Subjects were encouraged to drink enough water to prevent thirst.

Assessments

Monthly liver function testing was required for all subjects during the first 18 months of cumulative tolvaptan exposure, with monitoring every 3 months thereafter. Nearly all subjects from TEMPO 4:4 met the 18-month requirement before enrolling in the long-term extension. All subjects rolling over from REPRISÉ were monitored monthly in the long-term extension, irrespective of previous treatment assignment, as the blind from REPRISÉ was still in effect. After REPRISÉ was unblinded, subjects who had been randomized to tolvaptan and fulfilled the 18-month cumulative exposure threshold could switch to testing every 3 months.

A blinded, independent Hepatic Adjudication Committee (HAC) reviewed reported liver abnormalities to determine the probable cause(s) (6,8). To qualify for adjudication, events had to meet any of the five hepatic standardized Medical Dictionary for Regulatory Activities (MedDRA) queries with any of the following liver-related investigations: ALT more than three times the upper limit of normal and total bilirubin more than two times the upper limit of normal, AST more than three times the upper limit of normal and total bilirubin more than two times the upper limit of normal, and either ALT or AST more than five times the upper limit of normal (lowered in March 2016 to a more stringent level of more than three times the upper limit of normal). Events of interest were allocated on the basis of expert opinion into causality groups for the potential relationship with study drug, as defined using the five-point US Drug Induced Liver Injury Network classification system (12,13): “definite,” “highly likely,” “probable,” “possible,” and “unlikely” (8). Subjects who met any

Table 1. Subject disposition, demographics, and baseline clinical characteristics

Parameter	Prior Trial Participation			Total
	From Replicating Evidence of Preserved Renal Function: An Investigation of Tolvaptan Safety and Efficacy in Autosomal Dominant Polycystic Kidney Disease Tolvaptan	From Replicating Evidence of Preserved Renal Function: An Investigation of Tolvaptan Safety and Efficacy in Autosomal Dominant Polycystic Kidney Disease Placebo	From Tolvaptan Efficacy and Safety in Management of Autosomal Dominant Polycystic Kidney Disease and Its Outcomes 4:4 Tolvaptan	
Disposition				
Enrolled	506	570	718 ^a	1803 ^b
Completed	434	423	624	1488
Discontinued	72	147	95	316
Demographics				
Age, yr				
Mean (SD)	49 (8)	49 (8)	46 (8)	47 (8)
Sex				
Men	272 (54%)	280 (49%)	375 (52%)	929 (52%)
Women	234 (46%)	290 (51%)	343 (48%)	874 (48%)
Height, cm				
Mean (SD)	174 (11)	173 (10)	175 (11)	174 (11)
Weight, kg				
Mean (SD)	86 (19)	84 (21)	82 (19)	84 (19)
Race				
White	461 (91%)	525 (92%)	694 (97%)	1689 (94%)
Baseline clinical characteristics				
CKD stage				
CKD 1	1 (0.2%)	0 (0.0%)	77 (11%)	81 (4%)
CKD 2	35 (7%)	33 (6%)	264 (37%)	334 (19%)
CKD 3a	131 (26%)	146 (26%)	156 (22%)	434 (24%)
CKD 3b	189 (37%)	230 (40%)	132 (18%)	554 (31%)
CKD 4	150 (30%)	158 (28%)	82 (11%)	390 (22%)
CKD 5	0 (0.0%)	3 (0.5%)	7 (1.0%)	10 (0.6%)
eGFR (CKD-EPI), ml/min per 1.73 m ²				
>45	167 (33%)	179 (31%)	497 (69%)	849 (47%)
≤45	339 (67%)	391 (69%)	221 (31%)	954 (53%)
≥25	429 (85%)	486 (85%)	662 (92%)	1586 (88%)
<25	77 (15%)	84 (15%)	56 (8%)	217 (12%)
<p>CKD stages were from the time of entry into this trial, and they were defined as follows: stage 1≥90 ml/min per 1.73 m², stage 2=60–89 ml/min per 1.73 m², stage 3a=45–59 ml/min per 1.73 m², stage 3b=30–44 ml/min per 1.73 m², stage 4=15–29 ml/min per 1.73 m², and stage 5<15 ml/min per 1.73 m². CKD-EPI, Chronic Kidney Disease Epidemiology Collaboration.</p> <p>^aThe number of subjects enrolling from the Tolvaptan Efficacy and Safety in Management of Autosomal Dominant Polycystic Kidney Disease and Its Outcomes (TEMPO) 4:4 (<i>n</i>=718) trial is one less than the number who completed or discontinued (<i>n</i>=719) due to one subject with missing data that resulted in exclusion from the enrolled population.</p> <p>^bThe table has no column for subjects who entered the extension directly from TEMPO 3:4 or NOCTURNE due to the small number of subjects (<i>n</i>=9; four from TEMPO 3:4 tolvaptan, two from NOCTURNE tolvaptan, and three from TEMPO 3:4 placebo) from those trials. Data from these subjects are included in the total column.</p>				

of the following liver enzyme elevation criteria were to permanently discontinue study drug: transaminase level more than eight times the upper limit of normal, transaminase level more than five times the upper limit of normal for >2 weeks, or either ALT or AST more than three times the upper limit of normal with total bilirubin more than two times the upper limit of normal.

Subjects were asked about AEs by investigators at monitoring visits. Clinical laboratory assessments generally followed the same schedule as liver function testing and included vital signs, directed physical examination, dietary review, self-assessed drug tolerability, serum creatinine, serum sodium, and review of concomitant medications. Treatment-emergent AEs were defined as AEs that

started after the initiation of study drug or AEs that were continuous from baseline and serious, study drug related, or resulted in death, discontinuation, interruption, or reduction of study therapy.

Statistical Analyses

As an objective of this study was to obtain data to detect potential safety signals, sample size was not determined by formal computation to achieve a target power. Two datasets were established: enrolled population (all subjects who enrolled in this open-label study) and safety population (all subjects in the enrolled sample who took one or more doses of tolvaptan). Safety variables were summarized by

descriptive statistics, with no inferential statistical analyses performed.

Ethical Conduct

This study was conducted in compliance with the protocol, the International Council for Harmonization Good Clinical Practice Consolidated Guideline (14), and applicable local laws and regulatory requirements. Copies of the protocol, any amendments, and the informed consent form were reviewed and approved by the governing institutional review board or independent ethics committee for each investigational site or country as appropriate.

Results

Subject Characteristics, Disposition, and Tolvaptan Exposure

Of 1814 screened subjects, 1803 enrolled in the extension, 1800 received greater than or equal to one dose of tolvaptan and were analyzed for safety, and 1488 (83%) completed the extension. The most common reasons for discontinuation were subject withdrawal of consent ($n=113$ subjects; 6%) and AEs ($n=111$ subjects; 6%). Among completers, 165 (11%) had <18 months of exposure to tolvaptan in the extension, and 1323 (89%) had ≥ 18 months. Nearly all subjects had previously participated in REPRIS (1076 [60%] subjects) or TEMPO 4:4 (718 [40%] subjects). Nine subjects came from other trials.

The sex distribution was approximately even; most subjects were White and non-Hispanic/non-Latino, with a mean age of 47 years (Table 1). CKD stage rates were stage 2: 19%; stage 3: 55% (3a: 24%; 3b: 31%); and stage 4: 22%. REPRIS enrolled subjects who were slightly older and had more advanced disease compared with those from TEMPO 3:4 and TEMPO 4:4. Statins were taken concomitantly by 546 (30%) subjects enrolled in the extension.

A range of previous tolvaptan exposures was represented (Figure 1). Subjects entering from REPRIS placebo, who were newly exposed to long-term tolvaptan, had the lowest completion rate (74%) versus those entering from REPRIS tolvaptan (86%) and from TEMPO 4:4 (87%) (Table 1).

During the long-term extension, the range of duration of tolvaptan exposure was 1–1435 days, with median exposure of 651 days (mean = 697; SD = 334; interquartile range, 538–924); 1311 of 1800 (73%) subjects had >18 months of tolvaptan exposure (Figure 2). Overall cumulative tolvaptan exposure (extension and previous trials) per the protocol allowed at least 78 months but was in some patients as long as approximately 134 months. Average doses were similar across the previous trial groups, with subjects overall taking a dose of 96 mg/d.

Adverse Events

Frequencies of AEs overall were similar across the three main subgroups by previous trial enrollment (Table 2). Subjects newly exposed to tolvaptan long term (*i.e.*, from REPRIS placebo) reported more treatment-emergent AEs (3678) than those from REPRIS tolvaptan (2965) and TEMPO 4:4 (3297). The most commonly occurring treatment-emergent AEs overall were generally associated

with ADPKD or the tolvaptan mechanism of action (Supplemental Table 1). The frequencies of these common AEs in subjects newly exposed to tolvaptan in the long-term extension were comparable with those seen in TEMPO 3:4 and REPRIS (5,6). Aquaretic AEs were more frequent in subjects from REPRIS placebo (Figure 3).

Overall, 17 (0.9%) patients, including two with malignant melanoma, had skin malignant tumor (four of 505 [0.8%] in the REPRIS tolvaptan, six of 569 [1%] in the REPRIS placebo, and seven of 717 [1.0%] in the TEMPO 4:4 groups), and four (0.2%) had skin tumors of unspecified malignancy (one of 505 [0.2%] in the REPRIS tolvaptan, one of 569 [0.2%] in the REPRIS placebo, and two of 717 [0.3%] in the TEMPO 4:4 groups), with no appreciable differences in frequency among the three main subgroups by previous trial participation. Four (0.2%) subjects had glaucoma-related treatment-emergent AEs. In a cross-trial comparison of subjects with the same length of tolvaptan exposure (12 months), subjects who entered the long-term extension from the REPRIS placebo group experienced skin malignancies and glaucoma at low rates similar to those observed in the previous REPRIS, TEMPO 4:4, and TEMPO 3:4 trials (Supplemental Table 2).

The frequency of serious treatment-emergent AEs was similar across the three main subgroups (Table 2), with kidney and urinary disorders among the most common, occurring in 76 (4%) subjects overall. The most frequently reported MedDRA preferred terms within this system organ class were consistent with events expected in ADPKD: AKI, 20 subjects (1%); kidney impairment, 11 (0.6%); ESKD, 11 (0.6%); kidney pain and kidney cyst hemorrhage, each eight (0.4%) (Supplemental Tables 3 and 4).

Treatment-emergent AEs leading to discontinuation of tolvaptan occurred more often in subjects from REPRIS placebo than those from REPRIS tolvaptan or TEMPO 4:4 (Table 2). In an analysis by cumulative tolvaptan exposure, discontinuations were most frequent in subjects during the first 18 months of tolvaptan exposure (Supplemental Table 5). The most frequent treatment-emergent AEs leading to discontinuation in the overall study population by preferred term were blood creatinine increased ($n=22$ subjects), kidney impairment ($n=14$), ESKD ($n=10$), ALT increased ($n=8$), and polyuria ($n=7$).

Liver Safety

Adverse Event Reporting. In AE reporting by MedDRA preferred term, 2.8% subjects had ALT increased, 0.6% had AST increased, and 1.1% had γ -glutamyltransferase increased (Table 3). These frequencies are on the basis of reports by investigators and not on predefined criteria.

Ten (0.6%) subjects had treatment-emergent AEs reported under the “hepatic failure, fibrosis and cirrhosis, and other liver-damage-related conditions” standardized MedDRA query, including four (0.8%) REPRIS tolvaptan subjects, one (0.2%) REPRIS placebo subject, and five (0.7%) TEMPO 4:4 subjects (Table 4). Of the events listed, treatment-emergent AEs in two (0.1%) subjects, both related to ascites, were considered serious by the investigator and not related to tolvaptan. The events were adjudicated by HAC, which determined causality by tolvaptan as

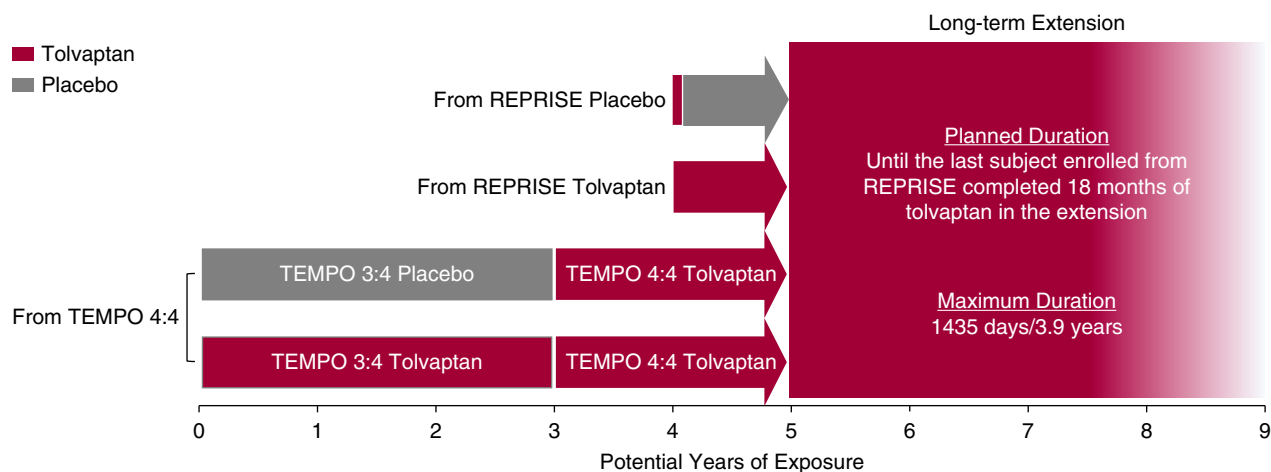


Figure 1. | Potential cumulative duration of tolvaptan exposure in subjects entering the long-term extension from the Replicating Evidence of Preserved Renal Function: An Investigation of Tolvaptan Safety and Efficacy in Autosomal Dominant Polycystic Kidney Disease (REPRISE) and the Tolvaptan Efficacy and Safety in Management of Autosomal Dominant Polycystic Kidney Disease and Its Outcomes (TEMPO) 4:4 trials. All subjects in REPRISE had a brief (5-week) tolvaptan run-in period at the start of that study, and those randomized to the REPRISE placebo arm received placebo for 12 months and reinitiated tolvaptan in the long-term extension. Subjects from the tolvaptan arm of REPRISE had approximately 13 months of previous exposure, and those entering from TEMPO 3:4 (tolvaptan arm)/TEMPO 4:4 had up to 5 years of previous exposure.

“unlikely.” Another event (subject 7 in Table 4) was reported under the MedDRA preferred term “drug-induced liver injury.” Previously (trial day 247), the subject had experienced elevated ALT (more than four times the upper limit of normal) and elevated AST (more than three times the upper limit of normal) while taking tolvaptan 60/30 mg/d. No corrective treatments were administered,

but tolvaptan was interrupted on day 248. The event resolved on day 283, and on day 289, the subject was restarted on tolvaptan at 30/15 mg/d. On trial day 540, the subject experienced ALT more than two times the upper limit of normal, which was reported as “drug-induced liver injury,” and discontinued tolvaptan. The event resolved 26 days later. Bilirubin levels were normal for this subject

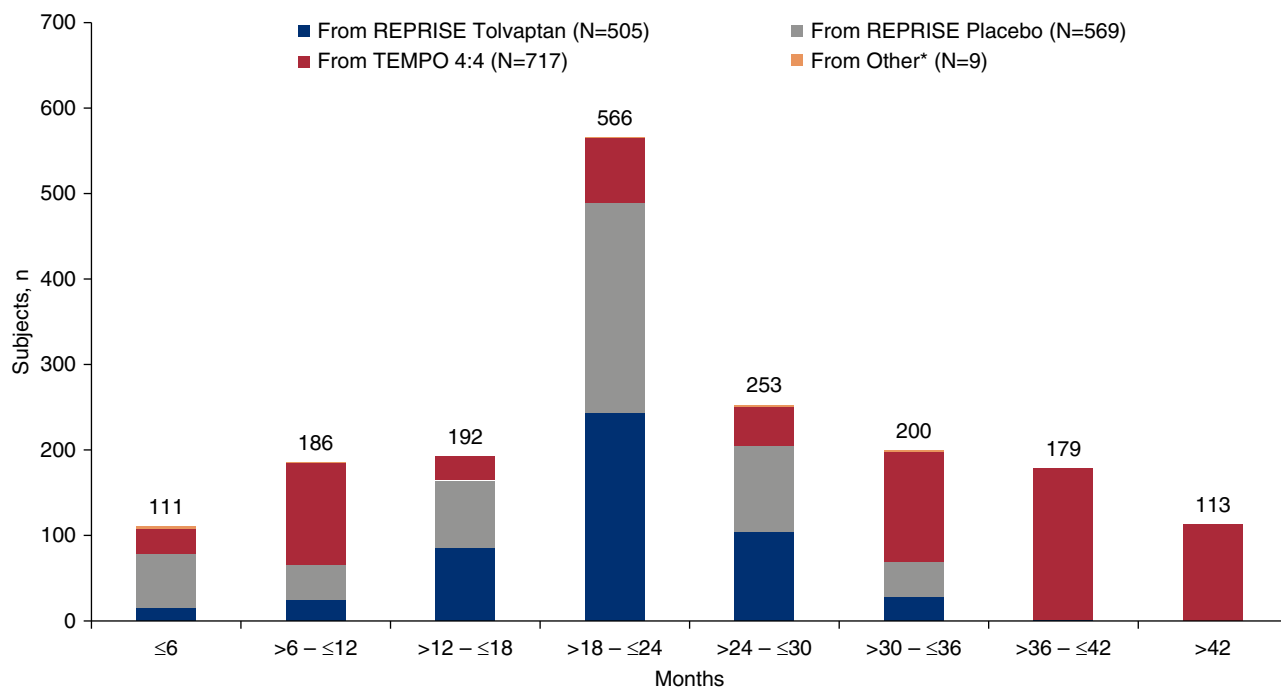


Figure 2. | Exposure to tolvaptan during the extension trial by previous trial participation. *Entered the long-term extension directly from TEMPO 3:4 or NOCTURNE ($n=9$; four from TEMPO 3:4 tolvaptan, two from NOCTURNE tolvaptan, and three from TEMPO 3:4 placebo).

Table 2. Overview of adverse events during tolvaptan treatment

Subjects and Adverse Events	Prior Trial Participation			Total, n=1800, n (%) ^a
	From Replicating Evidence of Preserved Renal Function: An Investigation of Tolvaptan Safety and Efficacy in Autosomal Dominant Polycystic Kidney Disease Tolvaptan, n=505, n (%)	From Replicating Evidence of Preserved Renal Function: An Investigation of Tolvaptan Safety and Efficacy in Autosomal Dominant Polycystic Kidney Disease Placebo, n=569, n (%)	From Tolvaptan Efficacy and Safety in Management of Autosomal Dominant Polycystic Kidney Disease and Its Outcomes 4:4 Tolvaptan, n=717, n (%)	
Subjects with AEs	473 (94)	531 (93)	643 (90)	1656 (92)
AEs	3567	4313	3963	11,932
Subjects with treatment-emergent AEs	473 (94)	531 (93)	640 (89)	1653 (92)
Treatment-emergent AEs	2965	3678	3297	10,019
Subjects with serious treatment-emergent AEs ^b	87 (17)	96 (17)	103 (14)	289 (16)
Subjects with severe treatment-emergent AEs ^c	74 (15)	78 (14)	83 (12)	238 (13)
Subjects with treatment-emergent AEs both serious and severe	43 (9)	40 (7)	44 (6)	128 (7)
Subjects discontinued trial drug due to AEs	33 (7)	65 (11)	38 (5)	137 (8)
Deaths ^d	1 (0.2)	5 (0.9)	3 (0.4)	9 (0.5)

AE, adverse event.
^aThe table has no column for subjects who entered the extension directly from the Tolvaptan Efficacy and Safety in Management of Autosomal Dominant Polycystic Kidney Disease and Its Outcomes (TEMPO) 3:4 or NOCTURNE trial due to the small number of subjects (n=9; four from TEMPO 3:4 tolvaptan, two from NOCTURNE tolvaptan, and three from TEMPO 3:4 placebo) from those trials. Data from these subjects are included in the total column.
^bSerious AEs were defined as those that resulted in any of the following outcomes: death; life-threatening risk in the opinion of the investigator; persistent or significant incapacity or substantial disruption of the ability to conduct normal life functions; requires inpatient hospitalization or prolongs hospitalization; congenital anomaly/birth defect; or other medically significant events that, on the basis of appropriate medical judgment, may jeopardize the subject and may require medical or surgical intervention.
^cAEs were graded as severe in cases resulting in an inability to work or perform normal daily activity.
^dCauses were tuberculosis in a subject from the Replicating Evidence of Preserved Renal Function: An Investigation of Tolvaptan Safety and Efficacy in Autosomal Dominant Polycystic Kidney Disease (REPRISE) tolvaptan trial; aortic dissection/cardiogenic shock, CKD/septic shock, meningeal metastases, acute respiratory distress syndrome, and sudden death in subjects from REPRISE placebo; and cardiac arrest, subarachnoid hemorrhage, and ruptured cerebral aneurysm in subjects from TEMPO 4:4.

throughout the trial. The investigator considered the event to be related to tolvaptan, and HAC adjudicated the relationship with tolvaptan as “possible.”

Laboratory Values and Adjudication Results. The number of subjects with ALT three or more times the upper limit of normal among subjects with greater than or equal to one postbaseline measurement was 29 of 1792 (1.6%), and that for AST three or more times the upper limit of normal was 12 of 340 (3.5%). Frequencies of specific levels of ALT/AST elevation, obtained from laboratory testing independently of investigator AE reporting, are shown in Figure 4, with further description of elevations ten or more times the upper limit of normal in Supplemental Table 6. No subject met Hy Law criteria during the study.

A total of 53 cases of liver enzyme elevations met trigger criteria for HAC adjudication, occurring a mean of 316 days

(SD=285) after the first dose of tolvaptan in the extension. Adjudication results (probability of relationship with study drug) were “definite” (>95%), zero; “highly likely” (75%–95%), zero; “probable” (50%–74%), two; “possible” (25%–49%), 24; “unlikely” (<25%), 23; and “insufficient data,” four.

Five subjects had ALT or AST elevations more than three times the upper limit of normal at >18 months of tolvaptan therapy. One case with elevations in both ALT (4.7 times the upper limit of normal) and AST (3.1 times the upper limit of normal) occurred at month 21; the subject discontinued tolvaptan, and the elevation resolved 11 days later. The relationship with tolvaptan was adjudicated as “unlikely.” Another subject (subject 10 in Table 4) had ALT 3.0 times the upper limit of normal and AST 2.4 times the upper limit of normal on trial day 460 (month 15) and discontinued tolvaptan on day 467, after which the event

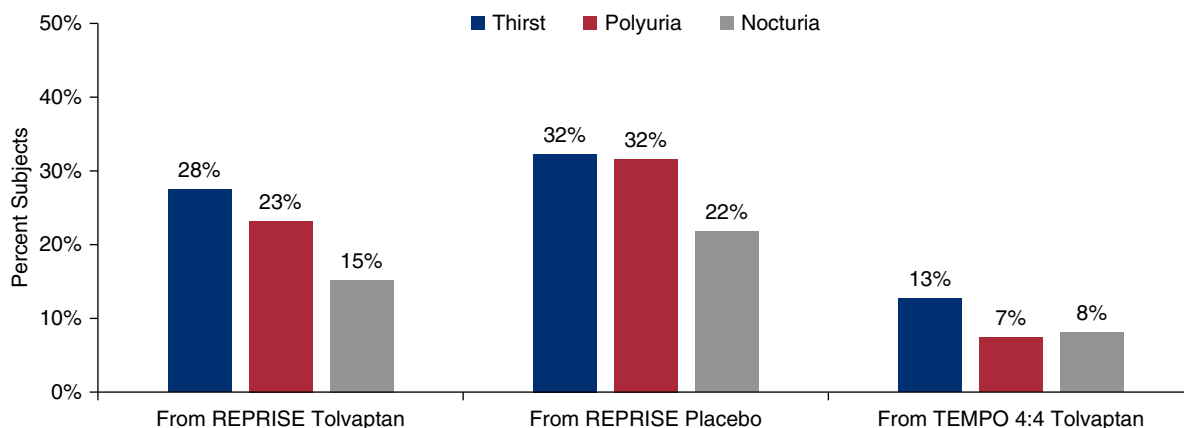


Figure 3. | Frequencies of common aquaretic adverse events by prior trial participation.

resolved by day 479. She did not resume tolvaptan. On day 536 (month 18), the subject had ALT 3.1 times the upper limit of normal and AST 2.9 times the upper limit of normal; she was diagnosed with nonalcoholic fatty liver disease. Her ALT level was elevated at day 628 (month 21) and had not normalized by the last trial follow-up visit on day 676 (month 22; ALT 3.3 times the upper limit of normal). The relationship with tolvaptan was adjudicated as “possible.” A case adjudicated as “unlikely” occurred at month 27 with elevated ALT (4.5 times the upper limit of normal)/AST (9.4 times the upper limit of normal), resulting in tolvaptan discontinuation and normalization of transaminases 55 days later. Two cases, both of which were in the range more than three to five times the upper limit of normal and adjudicated as “unlikely,” occurred at month 36. The first subject discontinued tolvaptan, and the event resolved 254 days later. The second subject, who had an underlying history of partial hepatectomy, hepatomegaly,

hepatic cysts, positive hepatitis A, and positive hepatitis B surface antibody, discontinued tolvaptan. The event did not resolve.

Deaths

Overall, nine subjects died (five from the REPRISE placebo group, one from the REPRISE tolvaptan group, and three from TEMPO 4:4) (Table 2). None of the deaths were considered related to study drug.

Discussion

In this multicenter, open-label extension study to evaluate the long-term safety of tolvaptan in subjects with ADPKD, tolvaptan was generally safe and well tolerated when administered twice daily in a split dose (*e.g.*, 45/15, 60/30, and 90/30 mg). Tolvaptan exposure was extensive, with 1311 subjects having >18 months of tolvaptan

Table 3. Hepatic enzyme elevations by prior trial participation on the basis of investigator adverse event reporting, Medical Dictionary for Regulatory Activities preferred term

Hepatic Enzyme Elevations	From Replicating Evidence of Preserved Renal Function: An Investigation of Tolvaptan Safety and Efficacy in Autosomal Dominant Polycystic Kidney Disease Tolvaptan, n=505, n (%)	From Replicating Evidence of Preserved Renal Function: An Investigation of Tolvaptan Safety and Efficacy in Autosomal Dominant Polycystic Kidney Disease Placebo, n=569, n (%)	From Tolvaptan Efficacy and Safety in Management of Autosomal Dominant Polycystic Kidney Disease and Its Outcomes 4:4 Tolvaptan, n=717, n (%)	Total, n=1800, n (%) ^a	Median Time to Elevation All Subjects, d (Interquartile Range)
ALT increased	10 (2.0)	23 (4.0)	17 (2.4)	51 (2.8)	245 (127–460)
Led to discontinuation	1 (0.2)	4 (0.7)	3 (0.4)	8 (0.4)	
AST increased	3 (0.6)	4 (0.7)	3 (0.4)	10 (0.6)	251 (129–460)
Led to discontinuation	0 (0.0)	1 (0.2)	1 (0.1)	2 (0.1)	
GGT increased	9 (1.8)	8 (1.4)	2 (0.3)	19 (1.1)	391 (116–653)
Led to discontinuation	0 (0.0)	1 (0.2)	0 (0.0)	1 (0.1)	

ALT, alanine aminotransferase; AST, aspartate aminotransferase; GGT, γ -glutamyltransferase.

^aThe table has no column for subjects who entered the extension directly from the Tolvaptan Efficacy and Safety in Management of Autosomal Dominant Polycystic Kidney Disease and Its Outcomes 3:4 or NOCTURNE trials due to the small number of subjects (n=9) from those trials. Data from these subjects were included in the total column and the calculation of median time to elevation.

Table 4. Investigator-reported treatment-emergent adverse events under the “hepatic failure, fibrosis and cirrhosis, and other liver-damage-related conditions” standardized Medical Dictionary for Regulatory Activities query by Medical Dictionary for Regulatory Activities preferred term

Subject	Preferred Term	Prior Treatment Subgroup	Serious (Yes/No), Relatedness to Study Drug per Investigator	Adjudicated Yes/No	Relatedness to Study Drug per Hepatic Adjudication Committee	Action Regarding Study Drug	Outcome
1	Ascites	REPRISE	No, not related	No		Continued	Not recovered/not resolved
	Ascites	TOL	No, not related	No		Continued	Not recovered/not resolved
2	Ascites ^a	REPRISE	Yes, not related	Yes	Unlikely	Continued	Recovered/resolved
	Ascites ^a	TOL	Yes, not related	Yes	Unlikely	Discontinued	Recovered/resolved
3	Ascites	REPRISE	No, not related	Yes	Unlikely	Continued	Not recovered/not resolved
	Portal hypertension	TOL	No, not related	No		Continued	Not recovered/not resolved
4	Ascites	REPRISE	Yes, not related	Yes	Unlikely	Discontinued	Recovered/resolved
	Portal hypertensive gastropathy	PLC	No, not related	No		Continued	Recovered/resolved
5	Varices esophageal	TEMPO	No, not related	No		Continued	Not recovered/not resolved
	Portal hypertension	4:4 TOL	No, not related	No		Continued	Not recovered/not resolved
6	Drug-induced liver injury	REPRISE	No, related	Yes	Possible	Discontinued	Recovered/resolved
	Hepatic steatosis	TOL	No, not related	No		Continued	Not recovered/not resolved
7	Liver injury	TEMPO	No, not related	Yes	Unlikely	Discontinued	Recovered/resolved
	Nonalcoholic fatty liver	4:4 TOL	No, not related	Yes	Possible	Not applicable ^b	Not recovered/not resolved

REPRISE, Replicating Evidence of Preserved Renal Function: An Investigation of Tolvaptan Safety and Efficacy in Autosomal Dominant Polycystic Kidney Disease; TOL, tolvaptan; PLC, placebo; TEMPO, Tolvaptan Efficacy and Safety in Management of Autosomal Dominant Polycystic Kidney Disease and Its Outcomes.

^aTwo cases were recorded in the clinical database because the event severity changed from moderate to severe. The Hepatic Adjudication Committee adjudicated the two events together.

^bDrug had been withdrawn prior to the event of nonalcoholic fatty liver, due to an earlier event of alanine aminotransferase increasing.

exposure during the extension itself. Cumulative tolvaptan exposure in the extension and preceding trials was up to 11 years. The average dose of approximately 96 mg/d in this trial was consistent with TEMPO 3:4 and REPRISE, in which the majority of subjects tolerated doses 90–120 mg/d (5,6). Results in this study were comparable with the known safety profile from previous tolvaptan clinical trials (5,6).

Given the potential for serious liver-related events associated with tolvaptan use in ADPKD, hepatic AEs were of particular interest. Fifty-one subjects (2.8%) experienced ALT increased and ten (0.6%) experienced AST increased as MedDRA preferred terms reported by the investigators, of whom eight subjects and two subjects, respectively, discontinued treatment. The percentage of subjects with ALT three or more times the upper limit of normal by laboratory testing was 1.6%, and the percentage of subjects with AST three or more times the upper limit of normal was 3.5%. Among subjects entering the extension from the REPRISE placebo arm, AST elevations three or

more times the upper limit of normal were more frequent (6.9%), but the reason for this is unknown. Fifty-three subjects met adjudication criteria, with the likelihood as “probable” in two subjects and “possible” in 24. A total of ten of 1800 (0.6%) subjects experienced treatment-emergent AEs considered under the “hepatic failure, fibrosis and cirrhosis, and other liver-damage-related conditions” standardized MedDRA query; only one was thought by the investigator to be related to tolvaptan. No Hy Law cases were reported.

In this study, previous exposure to tolvaptan varied largely on the basis of earlier trial enrollment. Subjects who enrolled in REPRISE had to be tolvaptan naïve, so placebo-treated subjects in REPRISE had limited (5 weeks) exposure to tolvaptan, whereas tolvaptan-treated subjects in REPRISE could have approximately 13 months of exposure before enrollment in the extension. Subjects enrolling from TEMPO 4:4 could have had up to 5 years of tolvaptan treatment. Transaminase elevations three or more times the

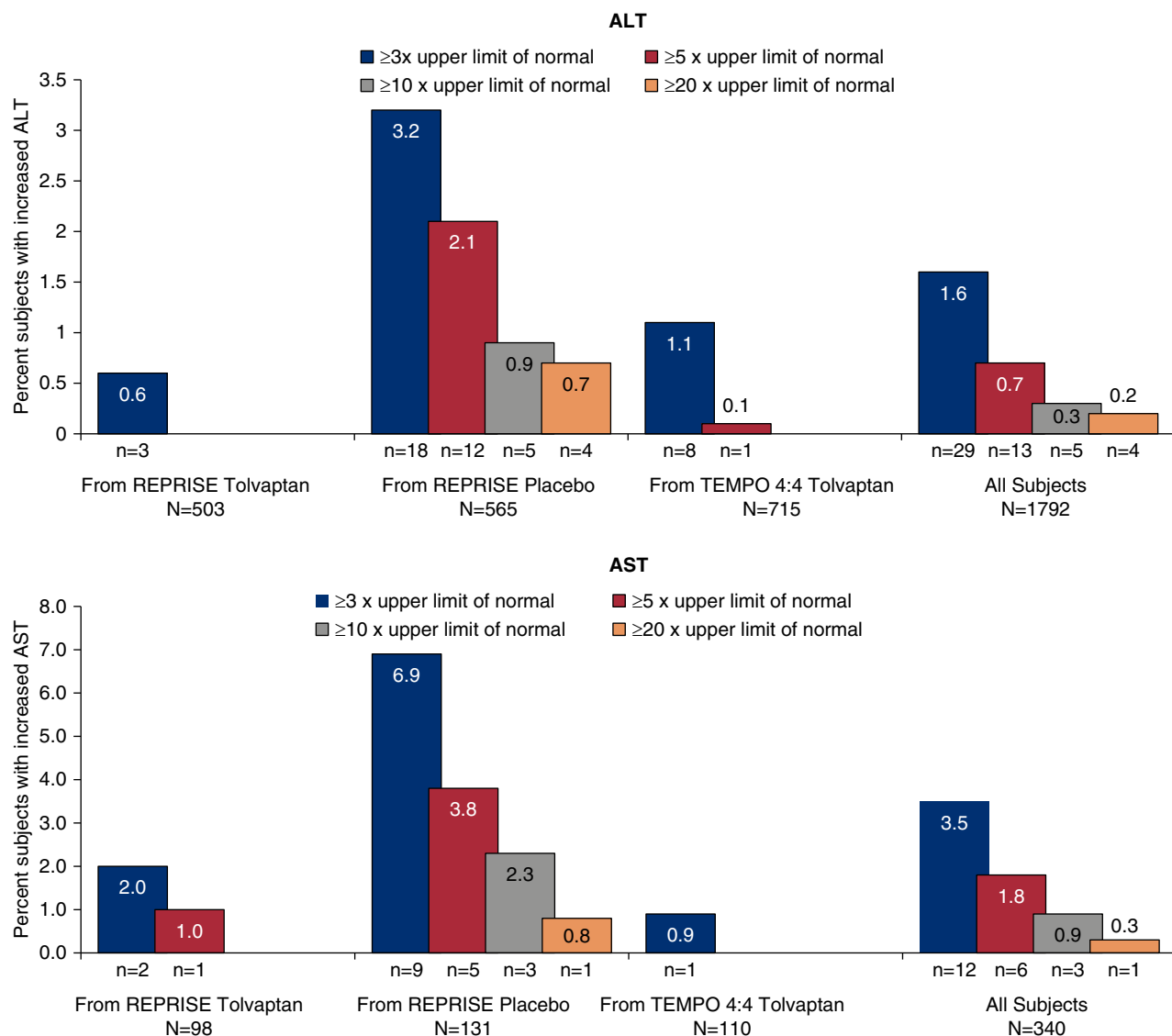


Figure 4. | Patients with alanine aminotransferase (ALT) and aspartate aminotransferase (AST) elevations by laboratory value threshold in the long-term extension, shown by prior trial participation. Denominators are the numbers of subjects with greater than or equal to one postbaseline measurement for the given laboratory test. Data from nine subjects entering from other trials are not shown. AST measurements were not required by protocol at the monthly visits, and as a result, the percentage of AST elevations might have been affected by selection bias.

upper limit of normal were notably less frequent in subjects entering from REPRISE tolvaptan and TEMPO 4:4 than in those entering from REPRISE placebo, which is consistent with a window of susceptibility, as previously described, within the first 18 months of tolvaptan therapy (8).

Similarly, aquaretic treatment-emergent AEs (*i.e.*, thirst, polyuria, and nocturia) were more frequent among subjects who had been receiving placebo in REPRISE (488 of 569; 86%) than in tolvaptan-treated subjects from REPRISE (333 of 505; 66%) and TEMPO 4:4 (202 of 717; 28%). Studies in patients without ADPKD have indicated that the aquaretic AEs of tolvaptan may diminish over time; alternatively, patients may get accustomed to them and may cease to report them as AEs (15,16).

Risk of skin malignancy may be elevated in ADPKD, particularly in patients with worsening kidney function (17). Skin malignant tumors (0.9%) and skin tumors of

unspecified malignancy (0.2%) occurred infrequently during this long-term extension. In TEMPO 3:4, AEs within the glaucoma standardized MedDRA query were seen in 20 of 961 (2%) patients receiving tolvaptan compared with five of 483 (1.0%) of those receiving placebo, whereas no glaucoma-related events were seen in REPRISE (data on file). Few subjects in this long-term extension (four of 1800; 0.2%) experienced glaucoma-related treatment-emergent AEs.

Limitations include the open-label trial design, with all subjects receiving tolvaptan. As there was no comparator arm, safety comparisons between tolvaptan and placebo over the long term cannot be assessed. At study sites outside the United Kingdom, subjects entering from studies other than REPRISE were permitted to transition to commercially available tolvaptan before completing 18 months of the extension, limiting the duration of study follow-up during the extension to <18 months for 11% of

subjects. Data on AEs in this study, including AKI and events related to liver injury, should be interpreted with caution, as the subjects consented to clinical trial participation and may not have experienced AEs at rates reflective of routine clinical practice.

In conclusion, safety results for tolvaptan in this study were consistent with the known safety profile on the basis of previous tolvaptan clinical trials. Monthly hepatic monitoring during the first 18 months of tolvaptan exposure and every 3 months thereafter enabled early detection of transaminase elevations and effective intervention (including drug interruption and discontinuation) during the period of greatest susceptibility to hepatic AEs. With this regimen, no new cases meeting Hy Law criteria were observed.

Disclosures

A.B. Chapman reports consultancy agreements with Janssen, Kadmon, Otsuka Pharmaceutical Development & Commercialization, Pfizer, Inc., Pfizer Pharmaceuticals, Reata, and Sanofi Pharmaceuticals; receiving research funding from the National Institutes of Health (NIH), Reata, and Sanofi Pharmaceuticals; receiving honoraria from Otsuka Pharmaceutical Development & Commercialization, Reata, and UpToDate; speakers bureau with Janssen and Otsuka Pharmaceutical Development & Commercialization; and serving on special emphasis and review panels for NIH/National Institute of Diabetes and Digestive and Kidney Diseases and Small Business Innovation Research. O. Devuyt reports consultancy agreements with Alnylam, Galapagos, Otsuka Pharmaceutical Development & Commercialization, and Sanofi Pharmaceuticals; receiving research funding from Otsuka Pharmaceutical Development & Commercialization and Roche; serving on the editorial boards for *CJASN*, *Kidney International*, *Nephrology Dialysis Transplantation*, *Orphanet Journal of Rare Diseases*, *Peritoneal Dialysis International*, and *Pfälters Archiv*; and serving on the steering committees for the Replicating Evidence of Preserved Renal Function: An Investigation of Tolvaptan Safety and Efficacy in ADPKD (REPRISE) and Tolvaptan Efficacy and Safety in Management of Autosomal Dominant Polycystic Kidney Disease and Its Outcomes (TEMPO) trials. A. Estilo reports employment with Otsuka Pharmaceutical Development & Commercialization. R.T. Gansevoort reports receiving several grants and consultancy fees from Galapagos, Ipsen, Ono Pharma, Otsuka Pharmaceutical Development & Commercialization, and Sanofi-Genzyme, all money was paid to the employing institution; consultancy agreements with AstraZeneca, Bayer, Galapagos, Otsuka Pharmaceutical Development & Commercialization, and Sanofi-Genzyme; receiving research funding from Bayer, Galapagos, Otsuka Pharmaceutical Development & Commercialization, and Sanofi-Genzyme; receiving honoraria from Bayer, Galapagos, Otsuka Pharmaceutical Development & Commercialization, and Sanofi-Genzyme; serving as a scientific advisor or member of *American Journal of Kidney Diseases*, *CJASN*, *Journal of Nephrology*, *Kidney360*, *Nephrology Dialysis Transplantation*, and *Nephron Clinical Practice*; and serving on the steering committees of the Developing Interventions to Halt Progression of ADPKD 1, REPRISE, STAGED-PKD, and TEMPO studies. M.E. Hoke reports employment with Otsuka Pharmaceutical Development & Commercialization, as well as serving as a member of the American Society of Nephrology and the National Kidney Foundation. J. Lee reports employment with Otsuka Pharmaceutical Development & Commercialization, as well as ownership interest in Apple Inc., Fidelity MSCI Energy Index ETF, and Wells Fargo & Co.

R.D. Perrone reports consultancy agreements with Goldfinch Bio, Otsuka Pharmaceutical Development & Commercialization, Palladiobio, Reata, Sanofi-Genzyme, and Vertex; receiving research funding from Kadmon, Otsuka Pharmaceutical Development & Commercialization, Reata, and Sanofi-Genzyme; receiving Department of Defense funding for the The Trial of Administration of Metformin to Tame PKD; receiving honoraria from Otsuka Pharmaceutical Development & Commercialization and Sanofi-Genzyme; serving as a scientific advisor or member of Otsuka Pharmaceutical Development & Commercialization, Sanofi-Genzyme, and UpToDate; other interests/relationships with UpToDate; and being a member of the steering committees for the REPRISE trial and the STAGED-PKD trial. O. Sergeyeva reports employment with Otsuka Pharmaceutical Development & Commercialization. V.E. Torres reports receiving grants from Blueprint Medicines, Mironid, Otsuka Pharmaceutical Development & Commercialization, Palladio Biosciences, and Sanofi-Genzyme, outside the submitted work, and receiving honoraria from UpToDate. All remaining authors have nothing to disclose.

Funding

This study was funded by Otsuka Pharmaceutical.

Acknowledgments

The authors thank Ms. Hui Li, Ms. Deborah Leung, Ms. Indra Agarwal, and Ms. Laurie Debuque (all Otsuka Pharmaceutical Development & Commercialization employees) for the support and expertise in development of the manuscript. Writing assistance, also funded by Otsuka Pharmaceutical Development & Commercialization, was provided by BioScience Communications, Inc. (New York).

Data Sharing Statement

To submit inquiries related to Otsuka Pharmaceutical Development & Commercialization clinical research or to request access to individual participant data (IPD) associated with any Otsuka Pharmaceutical Development & Commercialization clinical trial, please visit <https://clinical-trials.otsuka.com/>. For all approved IPD access requests, Otsuka Pharmaceutical Development & Commercialization will share anonymized IPD on a remotely accessible data sharing platform.

Supplemental Material

This article contains the following supplemental material online at <http://cjasn.asnjournals.org/lookup/suppl/doi:10.2215/CJN.10250620/-/DCSupplemental>.

Supplemental Material. List of principal investigators and study sites.

Supplemental Table 1. Incidence of treatment-emergent adverse events occurring in $\geq 2\%$ of subjects (safety sample).

Supplemental Table 2. Crosstrial comparison of treatment-emergent adverse events of skin malignancy and glaucoma over 12 months of tolvaptan exposure (long-term extension, REPRISE, TEMPO 4:4, and TEMPO 3:4 trials).

Supplemental Table 3. Serious treatment-emergent adverse events of AKI and kidney impairment.

Supplemental Table 4. Serious treatment-emergent adverse events of ESKD.

Supplemental Table 5. Overview of adverse events in the long-term extension by cumulative tolvaptan exposure (*i.e.*, exposure during prior trials and the long-term extension).

Supplemental Table 6. Subjects with elevations ten or more times the upper limit of normal in alanine aminotransferase or aspartate aminotransferase.

References

- Chebib FT, Torres VE: Autosomal dominant polycystic kidney disease: Core curriculum 2016. *Am J Kidney Dis* 67: 792–810, 2016
- Spithoven EM, Kramer A, Meijer E, Orskov B, Wanner C, Caskey F, Collart F, Finne P, Fogarty DG, Groothoff JW, Hoitsma A, Nogier MB, Postorino M, Ravani P, Zurriaga O, Jager KJ, Gansevoort RT; ERA-EDTA Registry; EuroCYST Consortium; WGKID; EuroCYST Consortium; WGKID: Analysis of data from the ERA-EDTA Registry indicates that conventional treatments for chronic kidney disease do not reduce the need for renal replacement therapy in autosomal dominant polycystic kidney disease. *Kidney Int* 86: 1244–1252, 2014
- van Gastel MDA, Torres VE: Polycystic kidney disease and the vasopressin pathway. *Ann Nutr Metab* 70(Suppl 1): 43–50, 2017
- Devuyst O, Torres VE: Osmoregulation, vasopressin, and cAMP signaling in autosomal dominant polycystic kidney disease. *Curr Opin Nephrol Hypertens* 22: 459–470, 2013
- Torres VE, Chapman AB, Devuyst O, Gansevoort RT, Grantham JJ, Higashihara E, Perrone RD, Krasa HB, Ouyang J, Czerwiec FS; TEMPO 3:4 Trial Investigators: Tolvaptan in patients with autosomal dominant polycystic kidney disease. *N Engl J Med* 367: 2407–2418, 2012
- Torres VE, Chapman AB, Devuyst O, Gansevoort RT, Perrone RD, Koch G, Ouyang J, McQuade RD, Blais JD, Czerwiec FS, Sergeyeva O; REPRISSE Trial Investigators: Tolvaptan in later-stage autosomal dominant polycystic kidney disease. *N Engl J Med* 377: 1930–1942, 2017
- Torres VE, Chapman AB, Devuyst O, Gansevoort RT, Perrone RD, Dandurand A, Ouyang J, Czerwiec FS, Blais JD; TEMPO 4:4 Trial Investigators: Multicenter, open-label, extension trial to evaluate the long-term efficacy and safety of early versus delayed treatment with tolvaptan in autosomal dominant polycystic kidney disease: The TEMPO 4:4 Trial. *Nephrol Dial Transplant* 33: 477–489, 2018
- Watkins PB, Lewis JH, Kaplowitz N, Alpers DH, Blais JD, Smotzer DM, Krasa H, Ouyang J, Torres VE, Czerwiec FS, Zimmer CA: Clinical pattern of tolvaptan-associated liver injury in subjects with autosomal dominant polycystic kidney disease: Analysis of clinical trials database. *Drug Saf* 38: 1103–1113, 2015
- Devuyst O, Chapman AB, Shoaf SE, Czerwiec FS, Blais JD: Tolerability of aquaretic-related symptoms following tolvaptan for autosomal dominant polycystic kidney disease: Results from TEMPO 3:4. *Kidney Int Rep* 2: 1132–1140, 2017
- Ravine D, Gibson RN, Walker RG, Sheffield LJ, Kincaid-Smith P, Danks DM: Evaluation of ultrasonographic diagnostic criteria for autosomal dominant polycystic kidney disease 1. *Lancet* 343: 824–827, 1994
- Pei Y, Obaji J, Dupuis A, Paterson AD, Magistrone R, Dicks E, Parfrey P, Cramer B, Coto E, Torra R, San Millan JL, Gibson R, Breuning M, Peters D, Ravine D: Unified criteria for ultrasonographic diagnosis of ADPKD. *J Am Soc Nephrol* 20: 205–212, 2009
- Rockey DC, Seeff LB, Rochon J, Freston J, Chalasani N, Bonacini M, Fontana RJ, Hayashi PH; US Drug-Induced Liver Injury Network: Causality assessment in drug-induced liver injury using a structured expert opinion process: Comparison to the Roussel-Uclaf causality assessment method. *Hepatology* 51: 2117–2126, 2010
- Fontana RJ, Watkins PB, Bonkovsky HL, Chalasani N, Davern T, Serrano J, Rochon J; DILIN Study Group: Drug-Induced Liver Injury Network (DILIN) prospective study: Rationale, design and conduct. *Drug Saf* 32: 55–68, 2009
- US Food and Drug Administration: International conference on harmonisation; good clinical practice: Consolidated guideline; availability. *Fed Regist* 62: 25692–25709, 1997
- Shoaf SE, Ohzone Y, Ninomiya S, Furukawa M, Bricmont P, Kashiyama E, Mallikaarjun S: *In vitro* P-glycoprotein interactions and steady-state pharmacokinetic interactions between tolvaptan and digoxin in healthy subjects. *J Clin Pharmacol* 51: 761–769, 2011
- Hauptman PJ, Zimmer C, Udelson J, Shoaf SE, Mallikaarjun S, Bramer SL, Orlandi C: Comparison of two doses and dosing regimens of tolvaptan in congestive heart failure. *J Cardiovasc Pharmacol* 46: 609–614, 2005
- Knight T, Schaefer C, Krasa H, Oberdhan D, Chapman A, Perrone RD: Medical resource utilization and costs associated with autosomal dominant polycystic kidney disease in the USA: A retrospective matched cohort analysis of private insurer data. *Clinicoecon Outcomes Res* 7: 123–132, 2015

Received: June 23, 2020 Accepted: October 29, 2020

Published online ahead of print. Publication date available at www.cjasn.org.

See related editorial, “Long-Term Safety of Tolvaptan in ADPKD: Where Do We Stand?” on pages 3–5.

AFFILIATIONS

¹Division of Nephrology and Hypertension, Mayo Clinic, Rochester, Minnesota

²Section of Nephrology, The University of Chicago School of Medicine, Chicago, Illinois

³Institute of Physiology, University of Zurich, Zurich, Switzerland

⁴Division of Nephrology, Université Catholique de Louvain Medical School, Brussels, Belgium

⁵Division of Nephrology, University Medical Center Groningen, Groningen, The Netherlands

⁶Division of Nephrology, Department of Medicine, Tufts Medical Center, Boston, Massachusetts

⁷Biostatistics, Otsuka Pharmaceutical Development & Commercialization, Rockville, Maryland

⁸Global Medical Affairs, Otsuka Pharmaceutical Development & Commercialization, Princeton, New Jersey

⁹Clinical Safety and Pharmacovigilance, Otsuka Pharmaceutical Development & Commercialization, Princeton, New Jersey

¹⁰Global Clinical Development, Otsuka Pharmaceutical Development & Commercialization, Princeton, New Jersey

Supplemental Content

List of Principal Investigators and Study Sites

Supplemental Table 1. Incidence of treatment-emergent adverse events occurring in $\geq 2\%$ of subjects (safety sample)

Supplemental Table 2. Cross-trial comparison of treatment-emergent adverse events of skin malignancy and glaucoma over 12 months of tolvaptan exposure (long-term extension, REPRISE, TEMPO 4:4, and TEMPO 3:4 trials)

Supplemental Table 3. Serious treatment-emergent adverse events of acute kidney injury and kidney impairment

Supplemental Table 4. Serious treatment-emergent adverse events of end-stage kidney disease

Supplemental Table 5. Overview of adverse events in the long-term extension by cumulative tolvaptan exposure (i.e., exposure during prior trials and the long-term extension)

Supplemental Table 6. Subjects with elevations ≥ 10 x upper limit of normal in alanine aminotransferase or aspartate aminotransferase

List of Principal Investigators and Study Sites

Argentina: Jorge Luis De La Fuente, Hospital Privado Centro Medico de Cordoba SA, Cordoba; Augusto Vallejos, Centro de Salud Renal Junin S.R.L., Buenos Aires; Hugo Miguel Beresan, CERHA, Cordoba; Hugo Carlos Diaz, CEMIC, Buenos Aires; Alfredo Wassermann, FEPREVA, Buenos Aires; Rodolfo Santiago Martin, Hospital Universitario Austral, Buenos Aires; Maria del Carmen Rial, Instituto de Nefrologia, Buenos Aires; Ana Maria Cusumano, Instituto de Nefrologia Pergamino SRL, Buenos Aires; Pablo Antonio Novoa, Sanatorio Allende, Cordoba; Pablo Raffaele, Fundacion Favaloro Hospital Universitario, Buenos Aires

Australia: Ian Fraser, Epworth Healthcare, Richmond, Victoria; Gopala Rangan, Westmead Hospital, Westmead, New South Wales; Mathew Mathew, Launceston General Hospital, Launceston, Tasmania; Bruce Cooper, Royal North Shore Hospital, St Leonards, New South Wales; Randall Faull, Royal Adelaide Hospital, Adelaide, South Australia; Stephen Holt, Royal Melbourne Hospital, Parkville, Victoria; Paul Snelling, Royal Prince Alfred Hospital, Camperdown, New South Wales; Mark Thomas, Royal Perth Hospital, Perth, Western Australia; David Packham, Melbourne Renal Research Group, Reservoir, Victoria; Eswari Vilayur, John Hunter Hospital, New Lambton Heights, New South Wales; David Johnson, Princess Alexandra Hospital, Woolloongabba, Queensland

Belgium: Patricia Van Der Niepen, Universitair Ziekenhuis Brussel, Brussels; Bert Bammens, UZ Leuven, Leuven; Olivier Devuyst, Cliniques Universitaires Saint-Luc, Brussels; Xavier Warling, C. H. R. de la Citadelle, Liège; Patrick Peeters, Universitair Ziekenhuis Gent, Gent; Bruno Van Vlem, O.L.V Ziekenhuis, Aalst; Peter Doubel, AZ Groeninge Campus Kennedylaan, Kortrijk; Rachel Hellemans and Daniel Abramowicz, Universitair Ziekenhuis Antwerpen, Edegem

Canada: Daniel Bichet, Centre Intégré Universitaire de Santé et de Services Sociaux du Nord-de-Île-de-Montréal, Montreal, Quebec; York Pei, University Health Network, Toronto, Ontario; Stephen Chow, Stephen S. Chow Medicine Professional Corporation, Toronto, Ontario; Alan McMahon, University of Alberta Hospital-SCC/WCM, Edmonton, Alberta; Sean Murphy, Health Sciences Centre, Mount Pearl, Newfoundland; Robert Ting, OTT Healthcare, Inc., Scarborough, Ontario

Czech Republic: Vladimir Tesar, Vseobecna fakultni nemocnice v Praze, Praha; Miroslav Ryba, Krajska nemocnice Liberec, a.s., Liberec; Marie Peskova, Nemocnice Ceske Budejovice, a.s., Ceske Budejovice; Alexandra Oplustilova, Masarykova mestska nemocnice Hemodialyzacni oddeleni, Jilemnice; Sylvie Dusilova Sulkova, Fakultni nemocnice Hradec Kralove Hemodialyzacni centrum, Hradec Kralove; Jaroslav Tocik, Nemocnice Jihlava p.o., Jihlava; Ondrej Viklicky, Institut klinicke a experimentalni mediciny, Praha; Jitka Rehorova, Fakultni nemocnice Brno Interni gastroenterologicka klinika, Brno; Ivo Valkovsky, Fakultni nemocnice Ostrava, Ostrava

Denmark: Henrik Birn, Aarhus Universitetshospital Skejby, Aarhus; Jesper Bech and Bjerregaard Pedersen, Holstebro Regionhospital, Holstebro; Jeppe Christensen, Aalborg University Hospital, Aalborg

Germany: Peter Gross, GWT-TUD GmbH Dresden, Dresden; Lutz Renders, Klinikum rechts der Isar der TU Muenchen, Muenchen, Bayern; Frank Dellanna, DaVita Deutschland AG, Duesseldorf, Nordrhein Westfalen; Klemens Budde, Charite Universitaetsmedizin Berlin, Berlin; Claudia Sommerer, Universitaetsklinikum Heidelberg, Heidelberg, Baden Wuerttemberg; Frank Strutz, Nierenzentrum Wiesbaden, Wiesbaden, Hessen; Christian Hugo, Universitaetsklinikum Carl Gustav

Carus TU Dresden, Dresden, Sachsen; Anja Gäckler and Hana Guberina, Universitaetsklinikum Essen, Essen; Michael Leidig, Universitaetsklinikum Erlangen, Nuremberg, Bayern

Hungary: Botond Csiky, COROMed-SMO Kft., Pecs; Agnes Haris, Szent Margit Korhaz, Budapest; Zoltan Ondrik, Aranyklinika Egészségügyi és Innovációs Korlátolt Felelőségu Tarsasag, Szeged

Israel: Olga Kukuy, Chaim Sheba Medical Center, Ramat-Gan; Iddo Ben-Dov, Hadassah University Hospital – Ein Kerem, Jerusalem; Yoram Yagil, Barzilai Medical Center, Ashkelon; Doron Schwartz, Tel Aviv Sourasky Medical Center, Tel Aviv; David van Dijk, Rabin Medical Center-Beilinson Campus, Petach Tikva; Ronit Geron and Batya Kristal, Galilee Medical Center, Nahariya

Italy: Paolo Manunta, Ospedale San Raffaele, Milano; Giovambattista Capasso, Seconda Università di Napoli, Napoli; Monica Limardo and Giuseppe Pontoriero, Ospedale "A. Manzoni" di Lecco, Lecco; Gianni Cappelli and Riccardo Magistroni, A.O.U. Policlinico di Modena, Modena; Francesco Scolari, Ospedale Civile di Montichiari, Montichiari, Brescia; Roberta Cerutti, Fondazione IRCCS CA' Granda Ospedale Maggiore Policlinico, Milano; Ciro Esposito, Fondazione Salvatore Maugeri IRCCS, Pavia; Loreto Gesualdo, Azienda Ospedaliero Universitaria Consorziale Policlinico di Bari, Bari

Netherlands: Ron Gansevoort, Universitair Medisch Centrum, Groningen; Joost Drenth, Radboudumc, Nijmegen; Marc Vervloet, VU Medisch Centrum, Amsterdam

Norway: Hans-Peter Marti, Nefrologisk seksjon Medisinsk avdeling Helse Bergen – Haukeland Universitetssykehus, Bergen

Poland: Michal Nowicki, SPZOZ Centralny Szpital Kliniczny UM w Lodzi, Lodz; Wladyslaw Sulowicz, Specjalistyczne Centrum Medyczne Chirurgii Małoinwazyjnej SCM, Krakow; Magdalena Krajewska and Marian Klinger, Uniwersytecki Szpital Kliniczny im. Jana Mikulicza-Radeckiego we Wrocławiu, Wrocław; Andrzej Ksiazek, Samodzielny Publiczny Szpital Kliniczny Nr 4 w Lublinie, Lublin; Robert Malecki, Miedzyleski Szpital Specjalistyczny, Warszawa; Marcin Tkaczyk, NZOZ TRI-medica, Łódź; Ryszard Trafny, B. Braun Avitum Poland Sp. z o.o., Golub Dobrzyn; Wieslaw Klatko, Specjalistyczny Szpital Wojewodzki w Ciechanowie, Ciechanow; Maria Debska-Slizien, Uniwersyteckie Centrum Kliniczne, Gdansk; Kazimierz Ciechanowski, SPSK nr 2 Pomorskiej Akademii Medycznej w Szczecinie, Szczecin

Romania: Gabriel Bako, Spitalul Clinic Municipal "Dr. Gavril Curteanu," Oradea; Raluca Bobeica and Mihai Voiculescu, Institutul Clinic Fundeni, Bucuresti; Radu Dragulete and Turkes Ablachim, Centrul Medical de Diagnostic si Tratament Ambulatoriu si Medicina Preventiva, Bucuresti; Gabriel Mircescu, Spitalul Clinic de Nefrologie "Dr. Carol Davila," Bucuresti

Russian Federation: Viacheslav Marasaev, SBIH of Yaroslavl region "Regional Clinical Hospital," Yaroslavl; Olga Barbarash, FSBI "Scientific-research Institute for Complex Problems of cardiovascular Disease," Kemerovo; Oleg Nagibovich, FSBMEI HPE "Military Medical Academy n.a. S.M. Kirov" of the MoD of the RF, Saint Petersburg; Maria Rossovskaya, TSBIIH "Krasnoyarsk Interdistrict Clinical Hospital of Emergency Medical Care n.a. N.S. Karpovich," Krasnoyarsk; Ashot Esayan, Saint-Petersburg SHI "City Clinical Hospital #31," St. Petersburg

South Africa: Brian Rayner, University of Cape Town E 13 and J46 Department of Medicine, Groote Schuur Hospital, Cape Town, Western Cape; Gulam Latiff, Latiff, GHVM, Durban, KwaZulu-Natal; Albert Muranda, University of Pretoria Clinical Research Unit, Pretoria, Gauteng

Spain: Ramon Peces Serrano, Hospital Universitario La Paz, Madrid; Javier Nieto Iglesias, Hospital General Universitario de Ciudad Real, Ciudad Real; Miguel Hueso Val, Hospital Universitari de Bellvitge, Barcelona; Manuel Praga Terente, Hospital Universitario 12 de Octubre, Madrid; Cristina Castro Alonso and Jose Luis Gorriz Teruel, Hospital Universitario Dr. Peset, Valencia

Sweden: Gregor Guron, Sahlgrenska Universitetssjukhuset, Göteborg; Jan Melin, Njurmottagningen 30C, Akademiska Sjukhuset, Uppsala; Olof Heimbürger and Peter Barany, Karolinska Universitetssjukhuset, Huddinge, Stockholm; Anders Fernström, Universitetssjukhuset Linköping, Linköping; Olof Heimbürger, Karolinska Universitetssjukhuset – Solna, Stockholm

United Kingdom: Neil Turner, Royal Infirmary of Edinburgh, Edinburgh; Coralie Bingham, Royal Devon and Exeter Hospital (Wonford), Exeter, Devon; Jonathan Barratt, Leicester General Hospital, Leicester, Leicestershire; Ashraf Mikhail, Morrision Hospital, Swansea, Wales; Asad Ullah, Royal Liverpool University Hospital, Liverpool, Merseyside; John Sayer, Freeman Hospital, Newcastle upon Tyne, Tyne & Wear; Timothy Shipley, James Cook University Hospital, Middlesbrough; Dominic De Takats, Royal Stoke University Hospital, Stoke on Trent, Staffordshire; Sunil Bhandari, Hull Royal Infirmary, Hull, East Riding of Yorkshire; Albert Ong, Northern General Hospital, Sheffield, South Yorkshire; Kate Hillman, Manchester Royal Infirmary, Manchester, Greater Manchester; Enric Vilar, Lister Hospital, Stevenage, Hertfordshire; Grahame Wood, Salford Royal Hospital, Salford, Greater Manchester; Daniel Gale, Royal Free Hospital, London, Greater London; Lukas Foggensteiner, Queen Elizabeth Hospital, Birmingham, West Midlands; John Kingswood, Royal Sussex County Hospital, Brighton, East Sussex; Peter Maxwell, Belfast City Hospital; Belfast, Belfast; Waqar Ayub, University Hospital Coventry & Warwickshire, Coventry, Warwickshire; Stewart Lambie, Raigmore Hospital, Inverness, Highland Region; Iain MacDougall, King's College Hospital, London, Greater London; Iain MacPhee, St. George's Hospital, London, Greater London

United States: Fahd Al-Saghir, Michigan Kidney Consultants, Pontiac, MI; Liqun Bai and Raul M. Rodelas, Arizona Kidney Disease and Hypertension Center, Phoenix, AZ; Vicente Torres, Mayo Clinic, Rochester, MN; Michael Koren, Jacksonville Center for Clinical Research, Jacksonville, FL; James Dilley, Brookview Hills Research Associates, LLC; Winston Salem, NC; Richard Lafayette, Department of Pediatric Nephrology, Stanford Hospital and Clinics, Stanford, CA; Ronald Perrone, Tufts Medical Center, Inc, Boston, MA; Clayton Smiley, Northwest Renal Clinic, Inc, Portland, OR; Jon Blumenfeld, The Rogosin Institute, New York, NY; David Scott, Scott Research Center, Laurelton, NY; Renuka Sothinathan, IntegraTrials, L.L.C, Arlington, VA; Bhasker Mehta, South Arlington Dialysis Center, Arlington, TX; Kianoosh Kaveh, Coastal Nephrology Associates Research Center, Port Charlotte, FL; Neera Dahl, Yale New Haven Health System, New Haven, CT; Nelson Kopyt, Northeast Clinical Research Center, LLC, Bethlehem, PA; Kimberly Harper, Scripps Clinic Torrey Pines, La Jolla, CA; Dennis Ross, Kansas Nephrology Research Institute, LLC, Wichita, KS; Mohamed El-Shahawy; Academic Medical Research Institute, Inc., Los Angeles, CA; Vimal Derebail, University of North Carolina at Chapel Hill, Chapel Hill, NC; Keith Bellovich, St. Clair Nephrology Research, Roseville, MI; James Drakakis and Shayan Shirazian, NYU Winthrop Nephrology Associates, Mineola, NY; Peta-Gay Jackson-Booth and Stephen Bart, Optimal Research, LLC, Rockville, MD; Stephen Fadem, Kidney Associates PLLC, Houston, TX; Terry Watnick, University of Maryland Medical Center, Baltimore, MD; Than Oo, Bronson Healthcare Nephrology Center; Kalamazoo, MI; Ramy Hanna and Anjay Rastogi, UCLA Medical Center, Los Angeles, CA; Arnold Silva, Pacific Renal Research Institute, Meridian, ID; James Sullivan, Sierra Nevada Nephrology Consultants, Reno, NV; Jeffrey Thomas, Centura Research Center, Denver, CO; Michal Mrug, University of Alabama at Birmingham, Birmingham, AL; A. Kaldun Nossuli, A. Kaldun Nossuli MD / Research, Greenbelt, MD; Kerri McGreal, University of Kansas Medical Center, Kansas City, KS; Srinivas Hariachar, Outcomes Research International, Inc, Hudson, FL; Kausik Umanath, Henry Ford Hospital, Detroit, MI;

Melchior Vernace, Doylestown Health Cardiology, Doylestown, PA; Stuart Goldstein, Cincinnati Children's Hospital Medical Center, Cincinnati, OH; Mitchell Rosner, University of Virginia Health System, Nephrology Clinical Research Center, Charlottesville, VA; George Newman, Knoxville Kidney Center, PLLC, Knoxville, TN; Gopal Chemiti and Theresa Levitski-Heikkila, Sanford Research, Fargo, ND; Mark Smith, Kidney Care Associates, LLC, Augusta, GA; Rebecca Schmidt, West Virginia University Dept. of Medicine – Nephrology, Morgantown, WV; Bharathi Reddy, University of Chicago Medical Center, Chicago, IL; Douglas Linfert, Nephrology Associates, PC, Nashville, TN; Michael Roppolo, Renal Associates of Baton Rouge, Baton Rouge, LA; Charles Edelstein, University of Colorado Health Sciences Center, Aurora, CO; Frederic Rahbari Oskoui, Emory University, Atlanta, GA; Michel Chonchol, University of Colorado at Denver and the Health Sciences, Aurora, CO; Michael Germain, Western New England Renal & Transplant Associates, PC, Springfield, MA; Kotagal Kant, University of Cincinnati College of Medicine, Cincinnati, OH; Seth Goldberg, Washington University, St. Louis, MO; Jorge Mordujovich, Kidney & Hypertension Specialist of Miami, Miami, FL; Sharon Turban, Johns Hopkins University School Of Medicine, Baltimore, MD; Jennifer Tuazon, Northwestern University School of Medicine, Chicago, IL; Moustafa Moustafa, SC Nephrology & Hypertension Center, Inc, Orangeburg, SC; Howard Lifland, Columbia Nephrology Associates, Columbia, SC; Udayan Bhatt and John Von Visger, Ohio State University Clinical Trials Management Office, Columbus, OH; Lavinia Negrea, University Hospitals of Cleveland, Cleveland, OH; Roy Culpepper, University of South Alabama, Mobile, AL; Simin Goral, Penn Medicine, Philadelphia, PA; Jai Radhakrishnan, Columbia University Medical Center, New York, NY; Jesus Navarro, Genesis Clinical Research Corporation, Tampa, FL; Jeffrey Ryu, Nevada Kidney Disease & Hypertension Centers, Las Vegas, NV; Edward Gould and Gerald Schulman, Vanderbilt University Medical Center, Nashville, TN; Richard Solomon, University of Vermont Medical Center, Burlington, VT; Rocco Venuto, Erie County Medical Center Corporation, Buffalo, NY; Roberto Pisoni, Medical University of South Carolina, Charleston, SC; Peale Chuang, Metrolina Nephrology Associates, Charlotte, NC; Robert Mangoo-Karim, South Texas Institutes of Health, McAllen, TX; Robert Cohen, Southwest Kidney Institute, Tempe, AZ; Meyeon Park, University of California San Francisco, San Francisco, CA; Michael DeLong, Arizona Kidney Disease and Hypertension Center, Tucson, AZ; Mabel Bodell, Wenatchee Valley Hospital & Clinics, Wenatchee, WA; Thomas McCune, Nephrology Associates Ltd, Norfolk, VA; Sreedhar Mandayam and Biruh Workeneh, Baylor College of Medicine, Houston, TX; John Foringer, University of Texas Health Science Center at Houston, Houston, TX; Rupesh Raina, Akron Nephrology Associates, Akron, OH; Joseph Pitone, Nephrology and Hypertension Associates of NJ, Voorhees, NJ; Michael Quadrini, Nephrology Consultants Huntsville, Huntsville, AL; Izuchukwu Nwakoby, Discovery Medical Research Group, Inc., Ocala, FL; Nam Vo, Mountain Kidney and Hypertension Associates, Asheville, NC; Kenneth Liss, Hypertension Nephrology Association, Eatontown, NJ; Keith Bellovich, St. Clair Nephrology Research - Grand Rapids, Grand Rapids, MI

SUPPLEMENTAL TABLES

Supplemental Table 1. Incidence of treatment-emergent adverse events occurring in $\geq 2\%$ of subjects (safety sample)

System Organ Class Preferred Term n (%)	From REPRISE Tolvaptan (N=505)	From REPRISE Placebo (N=569)	From TEMPO 4:4 Tolvaptan (N=717)	From Other Tolvaptan (N=6)	From Other Placebo (N=3)	Total (N=1800)
Blood and Lymphatic System Disorders						
Anemia	23 (4.6)	21 (3.7)	24 (3.3)	0 (0.0)	0 (0.0)	68 (3.8)
Gastrointestinal Disorders						
Abdominal Pain	25 (5.0)	25 (4.4)	28 (3.9)	0 (0.0)	0 (0.0)	78 (4.3)
Abdominal Pain Upper	21 (4.2)	19 (3.3)	12 (1.7)	1 (16.7)	0 (0.0)	53 (2.9)
Constipation	17 (3.4)	28 (4.9)	10 (1.4)	0 (0.0)	1 (33.3)	56 (3.1)
Diarrhea	38 (7.5)	38 (6.7)	33 (4.6)	0 (0.0)	1 (33.3)	110 (6.1)
Dry Mouth	22 (4.4)	38 (6.7)	3 (0.4)	0 (0.0)	0 (0.0)	63 (3.5)
Dyspepsia	17 (3.4)	27 (4.7)	10 (1.4)	1 (16.7)	0 (0.0)	55 (3.1)
Gastroesophageal Reflux Disease	11 (2.2)	20 (3.5)	18 (2.5)	0 (0.0)	1 (33.3)	50 (2.8)
Nausea	37 (7.3)	52 (9.1)	39 (5.4)	0 (0.0)	1 (33.3)	129 (7.2)
Umbilical Hernia	12 (2.4)	6 (1.1)	20 (2.8)	0 (0.0)	0 (0.0)	38 (2.1)
Vomiting	24 (4.8)	38 (6.7)	32 (4.5)	0 (0.0)	0 (0.0)	94 (5.2)
General Disorders and Administration Site Conditions						
Fatigue	48 (9.5)	74 (13.0)	34 (4.7)	0 (0.0)	0 (0.0)	156 (8.7)
Edema Peripheral	33 (6.5)	39 (6.9)	42 (5.9)	0 (0.0)	0 (0.0)	114 (6.3)
Pyrexia	21 (4.2)	19 (3.3)	27 (3.8)	0 (0.0)	0 (0.0)	67 (3.7)
Thirst	139 (27.5)	184 (32.3)	91 (12.7)	4 (66.7)	0 (0.0)	418 (23.2)
Infections and Infestations						
Bronchitis	23 (4.6)	29 (5.1)	31 (4.3)	1 (16.7)	0 (0.0)	84 (4.7)
Gastroenteritis	16 (3.2)	25 (4.4)	41 (5.7)	1 (16.7)	0 (0.0)	83 (4.6)
Influenza	34 (6.7)	43 (7.6)	39 (5.4)	0 (0.0)	0 (0.0)	116 (6.4)
Nasopharyngitis	92 (18.2)	100 (17.6)	94 (13.1)	0 (0.0)	1 (33.3)	287 (15.9)
Sinusitis	22 (4.4)	31 (5.4)	35 (4.9)	1 (16.7)	0 (0.0)	89 (4.9)

Upper Respiratory Tract Infection	58 (11.5)	53 (9.3)	86 (12.0)	1 (16.7)	0 (0.0)	198 (11.0)
Urinary Tract Infection	53 (10.5)	59 (10.4)	67 (9.3)	1 (16.7)	0 (0.0)	180 (10.0)
Investigations						
Alanine Aminotransferase Increased	10 (2.0)	23 (4.0)	17 (2.4)	1 (16.7)	0 (0.0)	51 (2.8)
Blood Creatinine Increased	78 (15.4)	90 (15.8)	71 (9.9)	0 (0.0)	1 (33.3)	240 (13.3)
Metabolism and Nutrition Disorders						
Gout	28 (5.5)	25 (4.4)	30 (4.2)	0 (0.0)	1 (33.3)	84 (4.7)
Hyperkalemia	13 (2.6)	15 (2.6)	10 (1.4)	0 (0.0)	0 (0.0)	38 (2.1)
Hyperuricemia	16 (3.2)	15 (2.6)	19 (2.6)	0 (0.0)	0 (0.0)	50 (2.8)
Metabolic Acidosis	12 (2.4)	17 (3.0)	8 (1.1)	0 (0.0)	0 (0.0)	37 (2.1)
Polydipsia	27 (5.3)	53 (9.3)	14 (2.0)	0 (0.0)	0 (0.0)	94 (5.2)
Vitamin D Deficiency	16 (3.2)	11 (1.9)	11 (1.5)	0 (0.0)	0 (0.0)	38 (2.1)
Musculoskeletal and Connective Tissue Disorders						
Arthralgia	33 (6.5)	25 (4.4)	26 (3.6)	0 (0.0)	0 (0.0)	84 (4.7)
Back Pain	53 (10.5)	57 (10.0)	51 (7.1)	1 (16.7)	0 (0.0)	162 (9.0)
Muscle Spasms	17 (3.4)	27 (4.7)	30 (4.2)	0 (0.0)	0 (0.0)	74 (4.1)
Myalgia	17 (3.4)	17 (3.0)	20 (2.8)	0 (0.0)	0 (0.0)	54 (3.0)
Pain in Extremity	18 (3.6)	27 (4.7)	12 (1.7)	0 (0.0)	0 (0.0)	57 (3.2)
Nervous System Disorders						
Dizziness	18 (3.6)	31 (5.4)	31 (4.3)	0 (0.0)	1 (33.3)	81 (4.5)
Headache	51 (10.1)	72 (12.7)	51 (7.1)	2 (33.3)	0 (0.0)	176 (9.8)
Psychiatric Disorders						
Insomnia	7 (1.4)	14 (2.5)	19 (2.6)	0 (0.0)	0 (0.0)	40 (2.2)
Renal and Urinary Disorders						
Acute Kidney Injury	11 (2.2)	14 (2.5)	13 (1.8)	0 (0.0)	0 (0.0)	38 (2.1)
Hematuria	27 (5.3)	52 (9.1)	48 (6.7)	0 (0.0)	2 (66.7)	129 (7.2)
Nocturia	77 (15.2)	124 (21.8)	58 (8.1)	3 (50.0)	1 (33.3)	263 (14.6)
Pollakiuria	27 (5.3)	35 (6.2)	12 (1.7)	2 (33.3)	0 (0.0)	76 (4.2)
Polyuria	117 (23.2)	180 (31.6)	53 (7.4)	2 (33.3)	0 (0.0)	352 (19.6)
Kidney Impairment	16 (3.2)	31 (5.4)	15 (2.1)	0 (0.0)	0 (0.0)	62 (3.4)
Kidney Pain	98 (19.4)	111 (19.5)	141 (19.7)	3 (50.0)	2 (66.7)	355 (19.7)

Respiratory, Thoracic and Mediastinal Disorders						
Cough	27 (5.3)	28 (4.9)	28 (3.9)	0 (0.0)	0 (0.0)	83 (4.6)
Oropharyngeal Pain	12 (2.4)	17 (3.0)	11 (1.5)	0 (0.0)	0 (0.0)	40 (2.2)
Skin and Subcutaneous Tissue Disorders						
Rash	12 (2.4)	16 (2.8)	12 (1.7)	0 (0.0)	0 (0.0)	40 (2.2)
Vascular Disorders						
Hypertension	87 (17.2)	77 (13.5)	140 (19.5)	4 (66.7)	1 (33.3)	309 (17.2)

Supplemental Table 2. Cross-trial comparison of treatment-emergent adverse events of skin malignancy and glaucoma over 12 months of tolvaptan exposure (long-term extension, REPRISE, TEMPO 4:4, and TEMPO 3:4 trials)

n (%)	Long-term Extension (From REPRISE Placebo) (N=569)	Tolvaptan Arm of REPRISE (N=681)	TEMPO 4:4 (From TEMPO 3:4 Placebo) (N=314)	Tolvaptan Arm of TEMPO 3:4 (N=961)
Skin malignant tumor	3 (0.5)	3 (0.4)	1 (0.3)	5 (0.5)
Skin tumors of unspecified malignancy	0 (0.0)	0 (0.0)	0 (0.0)	0 (0.0)
Glaucoma	0 (0.0)	0 (0.0)	0 (0.0)	1 (0.1)

Supplemental Table 3. Serious treatment-emergent adverse events of acute kidney injury and kidney impairment

Subject	Event	Prior Treatment Subgroup	Serum Creatinine Prior to the Event (mg/dL)	Time from Serum Creatinine Prior to the Event to Peak Serum Creatinine During the Event (Days)	Peak Serum Creatinine During the Event (mg/dL)	Serum Creatinine After the Event (mg/dL)	Action Regarding Study Drug	Outcome
1	Acute kidney injury	REPRISE placebo	2.04	n/a	Not available	1.90	Interrupted	Recovered/Resolved
2	Acute kidney injury	TEMPO 4:4 tolvaptan	3.53	79	4.59	Not available	Dose not changed	Not recovered/Not resolved
3	Acute kidney injury	TEMPO 4:4 tolvaptan	2.88	n/a	Not available	Not available	Dose not changed	Recovered/Resolved
4	Acute kidney injury	TEMPO 4:4 tolvaptan	3.72	n/a	Not available	3.25	Not applicable ^a	Recovered/Resolved
5	Acute kidney injury	REPRISE placebo	1.64	35	1.79	Not available	Withdrawn	Recovered/Resolved
6	Acute kidney injury	REPRISE tolvaptan	3.66	36	3.86	3.18	Interrupted	Recovered/Resolved
7	Acute kidney injury	TEMPO 4:4 tolvaptan	2.59	n/a	Not available	3.10	Not applicable ^a	Recovered/Resolved with sequelae
8	Acute kidney injury	TEMPO 4:4 tolvaptan	1.18	n/a	Not available	Not available	Not applicable ^a	Recovered/Resolved
9	Acute kidney injury	REPRISE placebo	2.84	n/a	Not available	2.94	Interrupted	Recovered/Resolved
10	Acute kidney injury	REPRISE placebo	2.73	n/a	Not available	2.40	Dose not changed	Recovered/Resolved
	Acute kidney injury	REPRISE placebo	3.01	n/a	Not available	4.47	Withdrawn	Recovered/Resolved with sequelae
11	Acute kidney injury	REPRISE placebo	1.48	n/a	Not available	Not available	Interrupted	Recovered/Resolved
12	Acute kidney injury	REPRISE placebo	4.00	n/a	Not available	3.44	Not applicable ^a	Recovered/Resolved
13	Acute kidney injury	REPRISE tolvaptan	2.87	102	3.09	Not available	Not applicable ^a	Recovered/Resolved
	Kidney impairment	REPRISE tolvaptan	2.87	n/a	Not available	3.09	Interrupted	Recovered/Resolved
14	Acute kidney injury	REPRISE tolvaptan	2.73	n/a	Not available	2.25	Interrupted	Recovered/Resolved
15	Acute kidney injury	REPRISE tolvaptan	2.46	34	2.37	2.38	Interrupted	Recovered/Resolved
16	Acute kidney injury	REPRISE tolvaptan	2.82	33	4.43	2.85	Interrupted	Recovered/Resolved with sequelae
17	Acute kidney injury	REPRISE placebo	1.55	28	1.62	Not available	Withdrawn	Recovered/Resolved
18	Acute kidney injury	TEMPO 4:4 tolvaptan	2.75	n/a	Not available	3.05	Interrupted	Recovered/Resolved
	Kidney impairment	TEMPO 4:4 tolvaptan	4.16	n/a	Not available	3.99	Interrupted	Recovered/Resolved with sequelae
19	Acute kidney injury ^b	TEMPO 4:4 tolvaptan	4.47	297	8.47	Not available	Dose not changed	Not recovered/Not resolved
20	Acute kidney injury	REPRISE placebo	1.61	n/a	Not available	1.43	Withdrawn	Recovered/Resolved
21	Kidney impairment	REPRISE tolvaptan	1.94	28	2.45	2.31	Withdrawn	Recovered/Resolved
22	Kidney impairment	REPRISE tolvaptan	2.33	74	2.62	Not available	Withdrawn	Not recovered/Not resolved
23	Kidney impairment	REPRISE tolvaptan	3.06	n/a	Not available	1.53	Withdrawn	Recovered/Resolved
24	Kidney impairment	REPRISE placebo	3.75	125	3.62	Not available	Withdrawn	Not recovered/Not resolved
25	Kidney impairment	REPRISE placebo	3.27	548	5.38	Not available	Interrupted	Not recovered/Not resolved
26	Kidney impairment	REPRISE tolvaptan	2.38	28	3.19	2.56	Interrupted	Recovered/Resolved
27	Kidney impairment	TEMPO 4:4 tolvaptan	5.43	91	7.13	Not available	Withdrawn	Not recovered/Not resolved
28	Kidney impairment	TEMPO 4:4 tolvaptan	4.48	54	4.14	Not available	Withdrawn	Not recovered/Not resolved
29	Kidney impairment	REPRISE tolvaptan	4.25	18	1.80	Not available	Withdrawn	Recovering/Resolving

^aIndicates that the event occurred after the trial drug stop date; as such, no further action to the drug applied, since the trial drug was no longer being administered at the time of event onset.

^bThe event was considered by the investigator to be unrelated to the trial drug. The subject later progressed to kidney failure, also considered unrelated to the trial drug, and discontinued participation in the trial.

n/a, not applicable (peak serum creatinine during the event not available).

Supplemental Table 4. Serious treatment-emergent adverse events of end-stage kidney disease

Subject	Prior Treatment Subgroup	Serum Creatinine at Study Baseline (mg/dL)	Time From Baseline to Last Creatinine Measurement on Trial (Days)	Last Serum Creatinine on Trial (mg/dL)	Action Regarding Study Drug	Outcome
1	REPRISE tolvaptan	2.14	591	1.46	Withdrawn	Not recovered/Not resolved
2	TEMPO 4:4 tolvaptan	4.95	646	8.40	Withdrawn	Not recovered/Not resolved
3	TEMPO 4:4 tolvaptan	2.91	556	1.47	Withdrawn	Recovered/Resolved
4	REPRISE tolvaptan	3.27	460	4.65	Withdrawn	Not recovered/Not resolved
5	REPRISE tolvaptan	2.60	534	3.97	Withdrawn	Not recovered/Not resolved
6	TEMPO 4:4 tolvaptan	2.53	379	3.17	Withdrawn	Not recovered/Not resolved
7	TEMPO 4:4 tolvaptan	3.18	575	5.36	Withdrawn	Not recovered/Not resolved
8	TEMPO 4:4 tolvaptan	3.77	476	6.02	Withdrawn	Not recovered/Not resolved
9	TEMPO 4:4 tolvaptan	3.62	396	3.89	Withdrawn	Not recovered/Not resolved
10	TEMPO 4:4 tolvaptan	3.01	372	3.49	Withdrawn	Not recovered/Not resolved
11	TEMPO 4:4 tolvaptan	4.46	457	6.01	Dose not changed	Recovered/Resolved

Supplemental Table 5. Overview of adverse events in the long-term extension by cumulative tolvaptan exposure (i.e., exposure during prior trials and the long-term extension)

n (% ^a)	Prior Trial Participation			Total ^b
	From REPRISE Tolvaptan	From REPRISE Placebo	From TEMPO 4:4 Tolvaptan	
Subjects treated	505	569	717	1800
<18 months	16	209	1	229
≥18 to <36 months	348	359	4	716
≥36 to <54 months	141	1	11	153
≥54 to <72 months	0	0	67	68
≥72 to <90 months	0	0	114	114
≥90 months	0	0	520	520
Subjects with AEs	473 (94)	531 (93)	643 (90)	1656 (92)
<18 months	14 (88)	194 (93)	1 (100)	212 (93)
≥18 to <36 months	321 (92)	336 (94)	3 (75)	665 (93)
≥36 to <54 months	138 (98)	1 (100)	9 (82)	148 (97)
≥54 to <72 months	0	0	63 (94)	64 (94)
≥72 to <90 months	0	0	101 (89)	101 (89)
≥90 months	0	0	466 (90)	466 (90)
AEs	3567	4313	3963	11932
<18 months	63	1266	8	1364
≥18 to <36 months	2237	3042	11	5350
≥36 to <54 months	1267	5	83	1355
≥54 to <72 months	0	0	539	541
≥72 to <90 months	0	0	431	431
≥90 months	0	0	2891	2891
Subjects with treatment-emergent AEs	473 (94)	531 (93)	640 (89)	1653 (92)
<18 months	14 (88)	194 (93)	1 (100)	212 (93)
≥18 to <36 months	321 (92)	336 (94)	3 (75)	665 (93)
≥36 to <54 months	138 (98)	1 (100)	9 (82)	148 (97)
≥54 to <72 months	0	0	63 (94)	64 (94)

≥72 to <90 months	0	0	100 (88)	100 (88)
≥90 months	0	0	464 (89)	464 (89)
Treatment-emergent AEs	2965	3678	3297	10019
<18 months	56	1099	6	1185
≥18 to <36 months	1860	2574	11	4499
≥36 to <54 months	1049	5	70	1124
≥54 to <72 months	0	0	431	432
≥72 to <90 months	0	0	362	362
≥90 months	0	0	2417	2417
Subjects with serious treatment-emergent AEs	87 (17)	96 (17)	103 (14)	289 (16)
<18 months	5 (31)	42 (20)	1 (100)	49 (21)
≥18 to <36 months	56 (16)	54 (15)	0	112 (16)
≥36 to <54 months	26 (18)	0	1 (9)	27 (18)
≥54 to <72 months	0	0	10 (15)	10 (15)
≥72 to <90 months	0	0	9 (8)	9 (8)
≥90 months	0	0	82 (16)	82 (16)
Subjects with severe treatment-emergent AEs	74 (15)	78 (14)	83 (12)	238 (13)
<18 months	2 (13)	38 (18)	1 (100)	42 (18)
≥18 to <36 months	47 (14)	40 (11)	1 (25)	90 (13)
≥36 to <54 months	25 (18)	0	3 (27)	28 (18)
≥54 to <72 months	0	0	13 (19)	13 (19)
≥72 to <90 months	0	0	8 (7)	8 (7)
≥90 months	0	0	57 (11)	57 (11)
Subjects with treatment-emergent AEs both serious and severe	43 (9)	40 (7)	44 (6)	128 (7)
<18 months	2 (13)	17 (8)	1 (100)	21 (9)
≥18 to <36 months	24 (7)	23 (6)	0	47 (7)
≥36 to <54 months	17 (12)	0	1 (9)	18 (12)
≥54 to <72 months	0	0	7 (10)	7 (10)
≥72 to <90 months	0	0	4 (4)	4 (4)
≥90 months	0	0	31 (6)	31 (6)

Subjects discontinued trial drug due to AEs	33 (7)	65 (11)	38 (5)	137 (8)
<18 months	7 (44)	59 (28)	1 (100)	67 (29)
≥18 to <36 months	22 (6)	6 (2)	1 (25)	30 (4)
≥36 to <54 months	4 (3)	0	1 (9)	5 (3)
≥54 to <72 months	0	0	3 (5)	3 (4)
≥72 to <90 months	0	0	1 (0.9)	1 (0.9)
≥90 months	0	0	31 (6)	31 (6)
Deaths	1 (0.2)	5 (0.9)	3 (0.4)	9 (0.5)
<18 months	0	3 (1)	0	3 (1)
≥18 to <36 months	1 (0.3)	2 (0.6)	0	3 (0.4)
≥36 to <54 months	0	0	0	0
≥54 to <72 months	0	0	0	0
≥72 to <90 months	0	0	0	0
≥90 months	0	0	3 (0.6)	3 (0.6)

^aPercentages are based on the number of subjects treated for each cumulative exposure period; ^bThe table has no column for subjects who entered the extension directly from TEMPO 3:4 or NOCTURNE due to the small number of subjects (n=9; 4 from TEMPO 3:4 tolvaptan and 2 from NOCTURNE tolvaptan; 3 from TEMPO 3:4 placebo) from those trials. Data from these subjects are included in the total column.
AE, adverse event.

Supplemental Table 6. Subjects with elevations ≥ 10 x upper limit of normal in alanine aminotransferase or aspartate aminotransferase

Subject	Prior Treatment Subgroup	Peak Fold Change x Upper Limit of Normal	Trial Day	Action Regarding Study Drug	Outcome
1	REPRISE PLC	ALT 22.6	189	Discontinued	Recovered/Resolved
2	REPRISE PLC	ALT 22.1 AST 18.5	204	Discontinued	Recovered/Resolved
3	REPRISE PLC	ALT 26.9 AST 17.7	35 49	Discontinued	Recovering/Resolving
4	REPRISE PLC	ALT 35.9 AST 23.3	539	Discontinued	Recovered/Resolved
5	REPRISE PLC	ALT 10.2	106	Discontinued	Recovered/Resolved

ALT, alanine aminotransferase; AST, aspartate aminotransferase; PLC, placebo.