

University of Groningen

Diattenuation Imaging reveals different brain tissue properties

Menzel, Miriam; Axer, Markus; Amunts, Katrin ; de Raedt, Hans; Michielsen, Kristel

Published in:
Scientific Reports

DOI:
[10.1038/s41598-019-38506-w](https://doi.org/10.1038/s41598-019-38506-w)

IMPORTANT NOTE: You are advised to consult the publisher's version (publisher's PDF) if you wish to cite from it. Please check the document version below.

Document Version
Publisher's PDF, also known as Version of record

Publication date:
2019

[Link to publication in University of Groningen/UMCG research database](#)

Citation for published version (APA):

Menzel, M., Axer, M., Amunts, K., de Raedt, H., & Michielsen, K. (2019). Diattenuation Imaging reveals different brain tissue properties. *Scientific Reports*, 9, [1939]. <https://doi.org/10.1038/s41598-019-38506-w>

Copyright

Other than for strictly personal use, it is not permitted to download or to forward/distribute the text or part of it without the consent of the author(s) and/or copyright holder(s), unless the work is under an open content license (like Creative Commons).

The publication may also be distributed here under the terms of Article 25fa of the Dutch Copyright Act, indicated by the "Taverne" license. More information can be found on the University of Groningen website: <https://www.rug.nl/library/open-access/self-archiving-pure/taverne-amendment>.

Take-down policy

If you believe that this document breaches copyright please contact us providing details, and we will remove access to the work immediately and investigate your claim.

Downloaded from the University of Groningen/UMCG research database (Pure): <http://www.rug.nl/research/portal>. For technical reasons the number of authors shown on this cover page is limited to 10 maximum.

SCIENTIFIC REPORTS

Corrected: Publisher Correction

OPEN

Diattenuation Imaging reveals different brain tissue properties

Miriam Menzel^{1,2}, Markus Axer¹, Katrin Amunts^{1,3}, Hans De Raedt⁴ & Kristel Michielsen^{5,2}

Received: 4 September 2018

Accepted: 27 December 2018

Published online: 13 February 2019

When transmitting polarised light through histological brain sections, different types of diattenuation (polarisation-dependent attenuation of light) can be observed: In some brain regions, the light is minimally attenuated when it is polarised parallel to the nerve fibres (referred to as D^+), in others, it is maximally attenuated (referred to as D^-). The underlying mechanisms of these effects and their relationship to tissue properties were so far unknown. Here, we demonstrate in experimental studies that diattenuation of both types D^+ and D^- can be observed in brain tissue samples from different species (rodent, monkey, and human) and that the strength and type of diattenuation depend on the nerve fibre orientations. By combining finite-difference time-domain simulations and analytical modelling, we explain the observed diattenuation effects and show that they are caused both by anisotropic absorption (dichroism) and by anisotropic light scattering. Our studies demonstrate that the diattenuation signal depends not only on the nerve fibre orientations but also on other brain tissue properties like tissue homogeneity, fibre size, and myelin sheath thickness. This allows to use the diattenuation signal to distinguish between brain regions with different tissue properties and establishes Diattenuation Imaging as a valuable imaging technique.

A detailed knowledge of the brain's nerve fibre architecture and tissue composition is essential to understand its structure and function. Several neuroinflammatory and -degenerative disorders, for example multiple sclerosis¹, multiple system atrophy^{2–4}, and leukodystrophies⁵, affect the integrity of neurons, axons, and dendrites. Therefore, it is important to study not only the long- and short-range connections between brain regions, but also the microstructure including axons and their myelin sheaths. In this paper, we show that the recently introduced technique *Diattenuation Imaging* (DI), which compares measurements of nerve fibre orientations to *diattenuation* (polarization-dependent attenuation), has the potential to provide new information about microstructural tissue properties.

The myelin content and connectivity patterns can be accessed *in vivo* by magnetic resonance imaging (MRI) techniques (T1, T2⁶ and diffusion-weighting^{7,8}) in the brains of healthy subjects and patients with a spatial resolution in the millimetre range⁹. To study the nerve fibre architecture at microscopic resolution as prerequisite for a better interpretation and validation of MRI data, *Three-dimensional Polarised Light Imaging* (3D-PLI) has been employed^{10–12}. In contrast to other microscopy techniques which are limited to smaller tissue samples, 3D-PLI allows to resolve three-dimensional nerve fibre pathways of unstained whole-brain sections at microscopic resolution: The spatial orientations of the nerve fibres are derived by measuring the birefringence of the histological brain sections with a polarimeter^{13,14}. The birefringence is caused by highly ordered arrangements of nerve fibres as well as by the regular molecular structure of the myelin sheath^{15–17} which surrounds most of the axons in the white matter¹⁸, leading to negative birefringence with respect to the fibre direction¹⁷. In the following, the term *nerve fibre* will restrictively be used for myelinated axons.

The same anisotropy that causes birefringence (anisotropic refraction) also leads to diattenuation (anisotropic attenuation)^{19,20}, which is caused by anisotropic absorption (*dichroism*) as well as by anisotropic scattering of light^{21,22}. The intensity of polarised light that is transmitted through a diattenuating medium depends on the direction of polarisation relative to the orientation of the optic axis (symmetry axis) in the medium: the transmitted light intensity becomes maximal for light polarised in a particular direction and minimal for light polarised in the corresponding orthogonal direction.

¹Institute of Neuroscience and Medicine (INM-1), Forschungszentrum Jülich GmbH, 52425, Jülich, Germany.

²Department of Physics, RWTH Aachen University, 52056, Aachen, Germany. ³Cécile and Oskar Vogt Institute for Brain Research, University Hospital Düsseldorf, University of Düsseldorf, 40204, Düsseldorf, Germany.

⁴Zernike Institute for Advanced Materials, University of Groningen, 9747AG, Groningen, The Netherlands. ⁵Jülich Supercomputing Centre, Forschungszentrum Jülich GmbH, 52425, Jülich, Germany. Correspondence and requests for materials should be addressed to M.M. (email: m.menzel@fz-juelich.de)

There exist several studies that investigate the diattenuation of different biological tissue types (biopsy tissue²³, skin^{21,24}, heart²⁵, muscle²⁶, tendon²⁶, collagen²⁷, eye²⁸, unmyelinated nerve fibres in the retina^{29,30}). Diattenuation has also been used to distinguish between healthy and pathological tissue (tissue from eye diseases^{29,30}, burned/injured tissue²⁴, cancerous tissue²³) and to quantify different tissue properties (e. g. concentration of glucose^{21,28}, thickness²⁹). It can therefore be assumed that diattenuation studies of brain tissue would also reveal valuable additional information, assisting in the future to identify pathological changes.

In our previous study (Menzel *et al.*³¹), we have explored the diattenuation of brain tissue for the first time. We have introduced Diattenuation Imaging (DI) as add-on to 3D-PLI: a combined measurement of diattenuation and birefringence compares the diattenuation signals of the brain section to the nerve fibre orientations obtained from 3D-PLI measurements. The developed measurement protocol allows to determine the diattenuation of whole unstained brain sections even with a low signal-to-noise ratio. By performing DI measurements of sagittal rat brain sections, we have found that there exist two different types of diattenuation that are regionally specific: in some brain regions, the transmitted light intensity becomes *maximal* when the light is polarised parallel to the nerve fibres (referred to as D^+), in other brain regions, it becomes *minimal* (referred to as D^-). Why this effect occurs and how the type of diattenuation depends on the tissue composition were still open questions.

In the present study, we modelled the observed diattenuation effects and provide an explanation for our previous results. We demonstrate in experimental studies that diattenuation of both types D^+ and D^- can be observed in brain tissue samples from different species (rodent, monkey, and human). By combining finite-difference time-domain simulations and analytical modelling, we explain the observed diattenuation effects and show that they are caused both by dichroism and by anisotropic light scattering. Our studies reveal that the diattenuation signal depends not only on the nerve fibre orientations and embedding time of the sample but also on tissue homogeneity, fibre size, and myelin sheath thickness. Thus, by comparing the diattenuation signals to the nerve fibre orientations, DI measurements allow to distinguish brain regions with different tissue composition. This helps not only to improve the reconstructed nerve fibre architecture but also to identify changes in brain tissue that are not visible in standard 3D-PLI measurements, making Diattenuation Imaging a valuable imaging technique in normal and pathologically altered tissue.

Results

First, we performed DI measurements on brain sections from different species to investigate how the observed diattenuation effects (D^+ and D^-) depend on the tissue structure. To better understand the observed diattenuation effects and to learn more about how the diattenuation depends on underlying tissue properties, we subsequently simulated the diattenuation signal for different nerve fibre configurations.

Experimental Studies. The DI measurements³¹ were performed on 60 μm thick brain sections as shown in Fig. 1 (see Methods for more details): First, a 3D-PLI measurement was performed with a polarimeter (see Fig. 1a) to derive the three-dimensional nerve fibre orientations in each image pixel, i.e. the in-plane orientation (*direction*) angle φ and the out-of-plane orientation (*inclination*) angle α , see Fig. 1b (middle). The direction angle corresponds to the phase φ_p of the measured birefringence signal, see Fig. 1b (left), the inclination angle is related to the amplitude $|\sin \delta_p|$ of the birefringence signal via: $\delta_p = (2\pi/\lambda) d \cos^2 \alpha_p$, where δ_p is the phase shift induced by the birefringent brain section, λ the wavelength, d the thickness of the birefringent brain section, and α_p the inclination angle of the nerve fibres. The diattenuation of the brain section was measured with the same polarimeter (using only a rotating polariser, see Fig. 1d). The amplitude (*strength of diattenuation*) $|\mathcal{D}|$ and phase φ_D of the measured diattenuation signal (see Fig. 1b, right) were computed from the maximum and minimum transmitted light intensities (I_{\max} and I_{\min}) via^{20,22}:

$$|\mathcal{D}| \equiv \frac{I_{\max} - I_{\min}}{I_{\max} + I_{\min}}, \quad \varphi_D \equiv \varphi(I = I_{\max}) \begin{cases} D^+: \varphi_D \approx \varphi_p \\ D^-: \varphi_D \approx \varphi_p + 90^\circ, \end{cases} \quad (1)$$

where φ_D denotes the direction of polarisation for which the transmitted light intensity becomes maximal. A pixel-wise comparison of φ_p and φ_D (see histogram in Fig. 1c) reveals that some brain regions show diattenuation of type D^+ (highlighted in green), i.e. the transmitted light intensity becomes maximal when the light is polarised *parallel* to the nerve fibre direction ($\varphi_D \approx \varphi_p$), while other brain regions show diattenuation of type D^- (highlighted in magenta), i.e. the transmitted light intensity becomes maximal when the light is polarised *perpendicularly* to the nerve fibre direction ($\varphi_D \approx \varphi_p + 90^\circ$). The values $\{\varphi_p, \varphi_D, |\mathcal{D}|\}$ were used to generate coloured *diattenuation images* (see middle image in Fig. 1c): all $|\mathcal{D}|$ values that belong to regions with $(\varphi_D - \varphi_p) \in [-20^\circ, 20^\circ]$ were coloured in green (D^+), regions with $(\varphi_D - \varphi_p) \in [-70^\circ, 110^\circ]$ were coloured in magenta (D^-). The angle ranges account for the uncertainties of φ_D due to the non-ideal optical properties of the *Large-Area Polarimeter (LAP)*³¹ that was used for most DI measurements (see Methods).

Diattenuation for different species and nerve fibre orientations. Figure 2 shows the diattenuation images of coronal and sagittal brain sections for three different species: mouse (a), rat (a), and vervet monkey (b). The section planes are oriented perpendicularly to each other. For reference, the coronal (sagittal) section planes are indicated by blue (red) lines in the respective other brain section. The diattenuation measurements were performed with the LAP with an effective object-space resolution of 14 $\mu\text{m}/\text{px}$ (a) and 27 $\mu\text{m}/\text{px}$ (b). The approximate orientation of the nerve fibres is known from brain atlases^{32,33} and 3D-PLI measurements³⁴.

Comparing the diattenuation images of coronal and sagittal brain sections to each other reveals that regions with diattenuation of type D^- (magenta) mostly belong to regions with *in-plane* fibre structures (coronal: cc, fi; sagittal: aci, cg, CPu), while regions with diattenuation of type D^+ (green) mostly belong to regions with

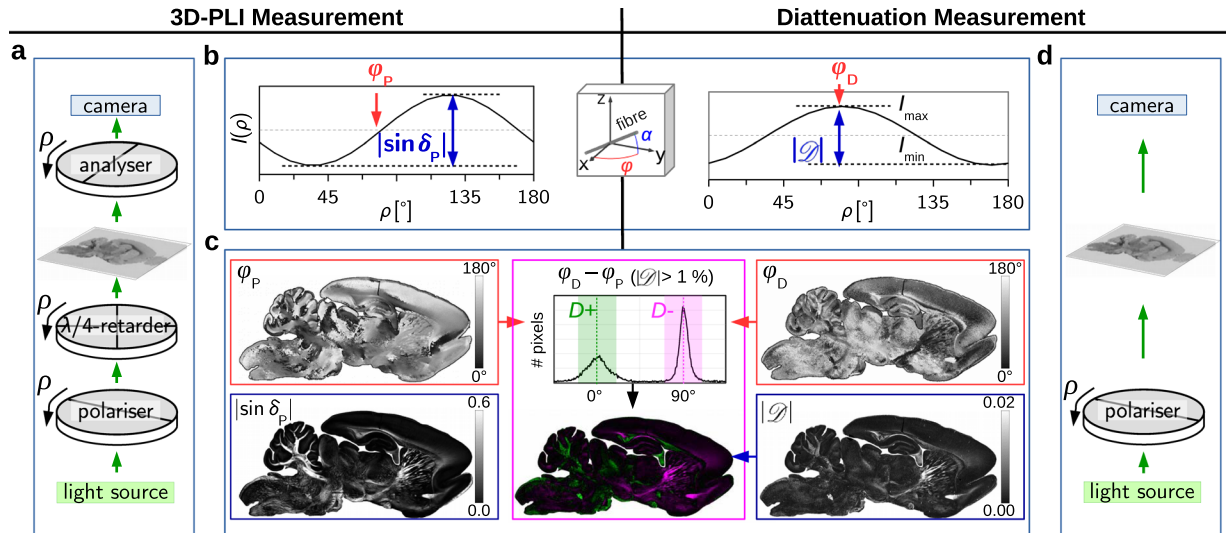


Figure 1. Diattenuation Imaging: combined measurement of 3D-PLI (left) and diattenuation (right), shown exemplarily for a sagittal rat brain section of $60\ \mu\text{m}$ thickness, measured with the LAP with an effective object-space resolution of $14\ \mu\text{m}/\text{px}$ (see Methods). (a,d) Measurement set-up consisting of a pair of crossed linear polarisers and a quarter-wave retarder rotated by angles $\rho = \{0, 10, \dots, 170\}^\circ$. (b) 3D-PLI and diattenuation signals (transmitted light intensities $I(\rho)$). The phase and amplitude of the 3D-PLI signal ($\varphi_P, |\sin \delta_P|$) are directly related to the in-plane and out-of-plane orientation angles (φ, α) of the nerve fibre, respectively. The phase and amplitude of the diattenuation signal ($\varphi_D, |D|$) are derived from the maximum and minimum transmitted light intensities (I_{\max}, I_{\min}) using equation (1). (c) The coloured diattenuation image (middle image) is computed from the strength of the diattenuation signal $|D|$, considering the phases $\{\varphi_P, \varphi_D\}$ of the 3D-PLI and diattenuation signals: all $|D|$ values belonging to regions with $(\varphi_D - \varphi_P) \in [-20^\circ, 20^\circ]$ are coloured in green (D^+), regions with $(\varphi_D - \varphi_P) \in [-70^\circ, 110^\circ]$ are coloured in magenta (D^-), see peaks in histogram. The average transmitted light intensity $I_T = \overline{I(\rho)}$ of the brain section is shown in Supplementary Fig. S3a.

out-of-plane fibre structures (coronal: cg, df, sm, CPU; sagittal: cc, fi). Fibre structures that show one type of diattenuation (D^+ or D^-) in one section plane (coronal or sagittal), are likely to show the other type of diattenuation in the other orthogonal section plane.

Measurements with a prototypic polarising microscope with $1.8\ \mu\text{m}/\text{px}$ yield similar D^+ and D^- regions (see Supplementary Fig. S1), i.e. the observed diattenuation effects do not depend on the optical resolution of the imaging system.

Dependence of diattenuation on embedding time. Prior to the measurements, the brain sections are embedded in glycerine solution (see Methods). To study how the diattenuation of a brain section changes with increasing time after tissue embedding, a coronal section of a vervet monkey brain was measured 1, 8, 18, 22, 30, 37, 51, and 87 days after tissue embedding with the LAP. Figure 3a shows the diattenuation maps 8 days and 51 days after embedding. The size of the regions with diattenuation of type D^+ (green) increases with increasing time after embedding, while the size of the regions with diattenuation of type D^- (magenta) decreases. The yellow arrows mark a region that is already of type D^+ directly after embedding (i), a region that is still of type D^- after 51 days (ii), and a region that changes from type D^- to D^+ (iii). Figure 3b shows the corresponding values for $(\varphi_D - \varphi_P)$ and $|D|$ for all eight measurements.

In regions that show diattenuation of type D^+ (D^-), the strength of the diattenuation signal $|D|$ increases (decreases). The same pattern was observed in brain sections from other species including the human brain (see Supplementary Fig. S2).

With increasing embedding time, the diattenuation signal becomes more similar to the measured birefringence signal (cf. Supplementary Fig. S2a,b). Brain sections with very long embedding times (several months) only show diattenuation of type D^+ (see Supplementary Fig. S3d).

Simulation Studies. To model and better understand the observed effects, we simulated the measured diattenuation signals for different artificial nerve fibre configurations. As mentioned in the beginning, diattenuation can be caused both by anisotropic scattering (D_S) and by anisotropic absorption (dichroism D_K).

Diattenuation caused by anisotropic scattering was investigated by performing *finite-difference time-domain* (FDTD) simulations and taking the optics of the polarimeter into account (see Methods). The FDTD algorithm computes the propagation of the polarised light wave through the sample by approximating Maxwell's equations by finite differences^{35–37}. In the diattenuation measurement, the polariser is rotated by 18 discrete angles. To save computing time, the diattenuation signal was approximately computed from only two simulation runs: from the transmitted intensity of light polarised along the x-axis (I_x) and from the transmitted intensity of light polarised along the y-axis (I_y), where the x-axis is aligned with the symmetry axis of the sample projected onto the xy-plane:

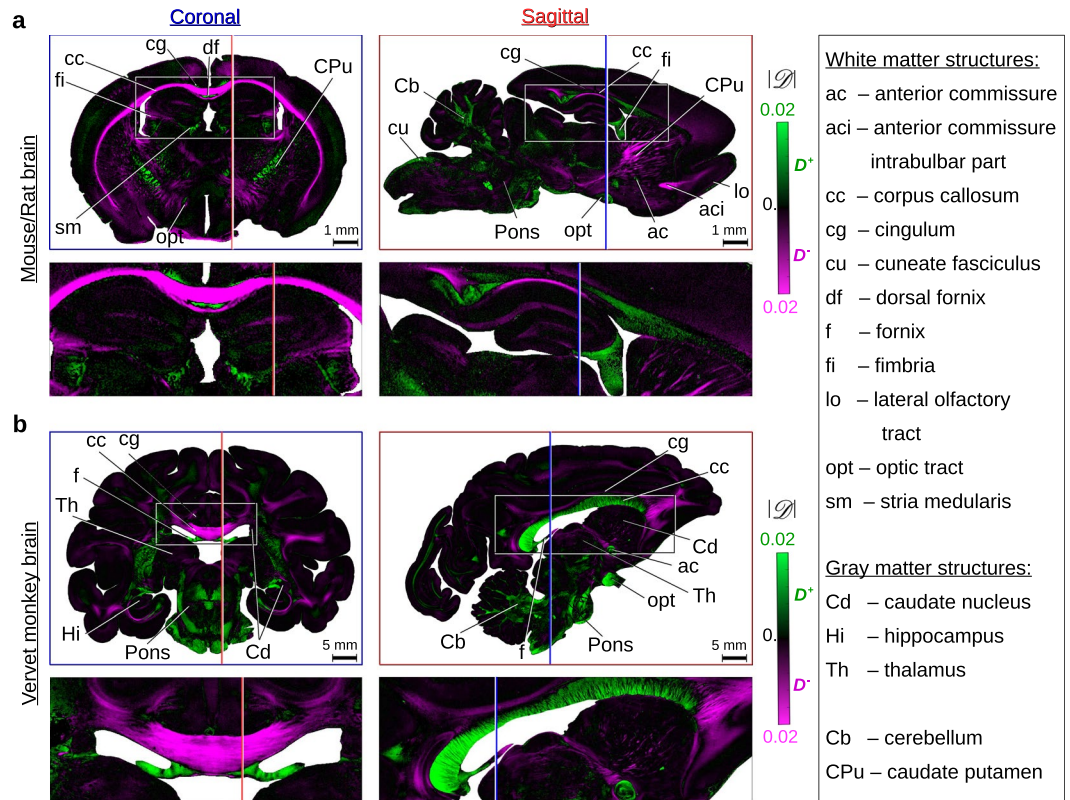


Figure 2. Diattenuation images of coronal and sagittal brain sections (60 μm thickness). **(a)** Mouse brain (left) and rat brain (right) measured with an effective object-space resolution of 14 μm/px. **(b)** Vervet monkey brain measured with an effective object-space resolution of 27 μm/px. The coronal (sagittal) section planes are indicated by blue (red) lines in the respective other brain section for reference. Regions surrounded by a white rectangle are shown as enlarged views. The strength of diattenuation $|\mathcal{D}|$ is shown in green (magenta) for regions with diattenuation of type D^+ (D^-), cf. Figure 1c. The measurements were performed with the LAP one day after tissue embedding (see Methods). Selected anatomical structures are labelled according to rat³² and vervet³³ brain atlases. Regions with D^- mostly belong to regions with flat fibre structures (with respect to the section plane), regions with D^+ mostly belong to regions with steep fibre structures (cf. also Menzel *et al.*³⁵ Fig. 1).

$$D_S \equiv \frac{I_x - I_y}{I_x + I_y}, \quad -1 \leq D_S \leq 1 \begin{cases} D_S > 0 \Leftrightarrow D^+: \varphi_D \approx \varphi_P, \\ D_S < 0 \Leftrightarrow D^-: \varphi_D \approx \varphi_P + 90^\circ. \end{cases} \quad (2)$$

The magnitude of D_S is related to the strength of the diattenuation ($|\mathcal{D}_S| \approx |\mathcal{D}|$), the sign indicates the phase φ_D (cf. equation (1)): Positive values ($D_S > 0 \Leftrightarrow I_x > I_y$) correspond to regions with D^+ and are shown in green (the transmitted light intensity becomes maximal when the light is polarised parallel to the fibre structure, i.e. in the x-direction). Negative diattenuation values ($D_S < 0 \Leftrightarrow I_x < I_y$) correspond to regions with D^- and are shown in magenta (the transmitted light intensity becomes maximal when the light is polarised perpendicularly to the fibre structure, i.e. in the y-direction).

The diattenuation caused by dichroism was described by an effective analytical model (see upper panel in Fig. 4c), assuming that birefringence and dichroism can be described by a complex retardance with shared principal axes (see Supplementary Note for derivation): $D_K \approx \tanh(-2\pi/\lambda)d \Delta\kappa \cos^2 \alpha$, where λ is the wavelength, d the thickness of the dichroic brain section, α the inclination angle of the nerve fibres, and $\Delta\kappa$ the anisotropic absorption (dichroism) of the brain tissue. As the birefringence of the brain sections does not change much with increasing embedding time (see Supplementary Fig. S3b), the dichroism is also expected to be mostly time-independent. In contrast, the diattenuation caused by anisotropic scattering is expected to decrease with increasing embedding time because brain sections with long embedding times become transparent, i.e. show less scattering (see Supplementary Fig. S3a). As brain sections with long embedding times only show diattenuation of type D^+ , dichroism was assumed to cause positive diattenuation: $D_K > 0 \Leftrightarrow \Delta\kappa < 0$.

Simulated diattenuation for different fibre configurations. To analyse how the diattenuation of brain tissue depends on the out-of-plane orientation (inclination angle) of the enclosed nerve fibres, we simulated the diattenuation images for fibre bundles with different inclination angles ($\alpha = \{0^\circ, 10^\circ, \dots, 90^\circ\}$): a bundle with broad fibre orientation distribution and a bundle of densely grown fibres (see Fig. 4a). Figure 4b shows the diattenuation images obtained from FDTD simulations for the bundle of densely grown fibres for $\alpha = 0^\circ$ and 80° . The

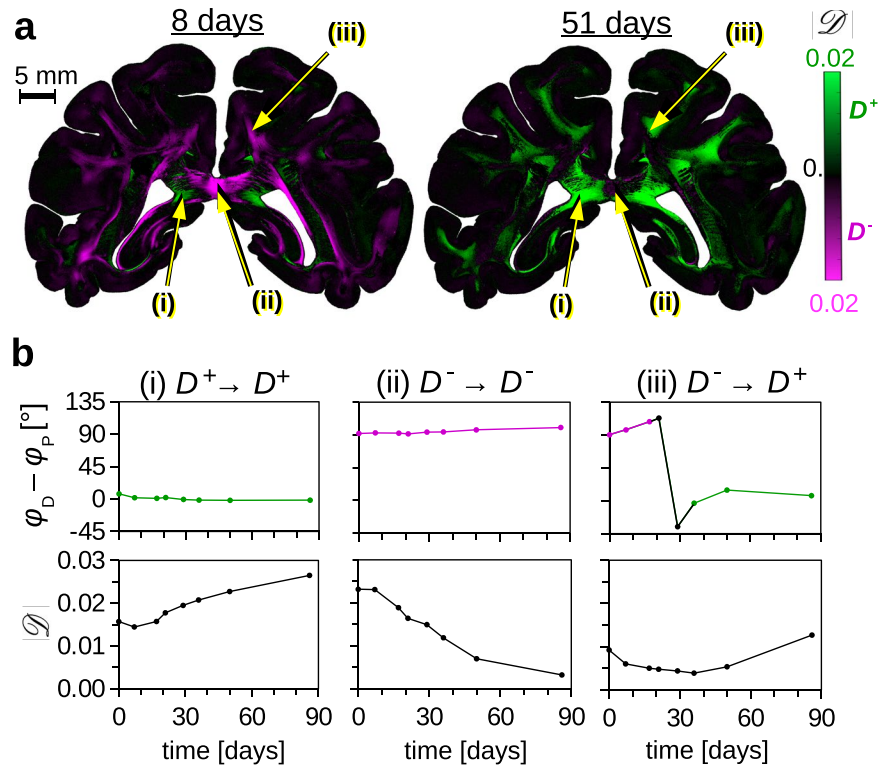


Figure 3. Dependence of diattenuation on embedding time (for a coronal vervet monkey brain section with $60\ \mu\text{m}$ thickness). **(a)** Diattenuation images measured 8 and 51 days after embedding the brain section in glycerine solution (effective object-space resolution: $43\ \mu\text{m}/\text{px}$). Diattenuation values $|D|$ that belong to regions with diattenuation of type D^+ ($\varphi_D - \varphi_P \in [-20^\circ, 20^\circ]$) are shown in green, diattenuation values that belong to regions with diattenuation of type D^- ($\varphi_D - \varphi_P \in [70^\circ, 110^\circ]$) are shown in magenta, cf. Figure 1c. The values $\{|D|, \varphi_D, \varphi_P\}$ were determined from polarimetric measurements with the LAP (see Methods). **(b)** Angle difference ($\varphi_D - \varphi_P$) and strength of the diattenuation signal $|D|$ evaluated exemplary for three different regions, see yellow arrows in **(a)**: a region that is already of type D^+ directly after tissue embedding (i), a region that is still of type D^- after 51 days (ii), and a region that changes from type D^- to D^+ over time (iii). In regions with D^+ (D^-), the strength of the diattenuation signal increases (decreases) with increasing time after tissue embedding.

diattenuation images for all inclination angles are shown in Supplementary Fig. S4. Regions with maximum and minimum diattenuation values are homogeneously distributed. The diattenuation is mostly negative (magenta) for flat fibres ($\alpha \leq 50^\circ$) and becomes more positive (green) for steep fibres ($\alpha > 60^\circ$). The histograms in Supplementary Fig. S4 show that the diattenuation values are almost symmetrically distributed around the mean value ($-17\% \pm 19\%$ for $\alpha = 0^\circ$ and $-22\% \pm 12\%$ for $\alpha = 50^\circ$). Thus, the mean value \overline{D}_S is a good parameter to describe the diattenuation images.

Figure 4c shows the simulated diattenuation curves (mean value of D_S plotted against α) for both fibre bundles: The mean diattenuation \overline{D}_S is negative for non-steep fibres ($\alpha \leq 60^\circ$), positive for steep fibres ($70^\circ < \alpha < 90^\circ$), and almost zero for vertical fibres. For the bundle with broad fibre orientation distribution (red curve), the values range from $\overline{D}_S \approx -12.4\%$ to 1.2% . For the bundle of densely grown fibres (orange curve), the range is much larger ($\overline{D}_S \approx -22\%$ to 10%).

The fibres were modelled with radii $r \in [0.5, 0.8]\ \mu\text{m}$, consisting of an inner axon and a surrounding myelin sheath with thickness $t_{\text{sheath}} = 0.35\ r$ (see Methods). To study how the diattenuation depends on the fibre properties, the bundle of densely grown fibres was also simulated for a broader distribution of fibre radii ($r \in [0.3, 1.0]\ \mu\text{m}$, brown curve), and the horizontal bundle ($\alpha = 0^\circ$) for thicker myelin sheaths ($t_{\text{sheath}} = 0.6\ r$, green star) and larger fibres ($r \in [2.5, 4.0]\ \mu\text{m}$, magenta star). While different fibre radii yield similar diattenuation curves, thicker myelin sheaths lead to more negative and larger fibres to less negative diattenuation values for $\alpha = 0^\circ$ (see also Supplementary Fig. S5). Hence, regions with strongly negative diattenuation belong most likely to strongly myelinated, relatively small, straight and horizontal fibres.

To estimate the combined diattenuation effect of anisotropic scattering and absorption, Fig. 4c shows the simulated diattenuation curves \overline{D}_S in direct comparison to the dichroism $D_K > 0$ plotted against the fibre inclination angle α (see Supplementary Note for derivation): For regions with non-steep fibres ($\alpha < 65^\circ$), both diattenuation of type D^+ and D^- are observed, depending on whether $D_K > 0$ or $D_S < 0$ dominates. Regions with steep fibres ($65^\circ < \alpha < 90^\circ$) only show diattenuation of type D^+ because both D_S and D_K are positive. As expected, regions with vertical fibres ($\alpha = 90^\circ$) show small diattenuation values ($|D_S|, |D_K| \ll 1$).

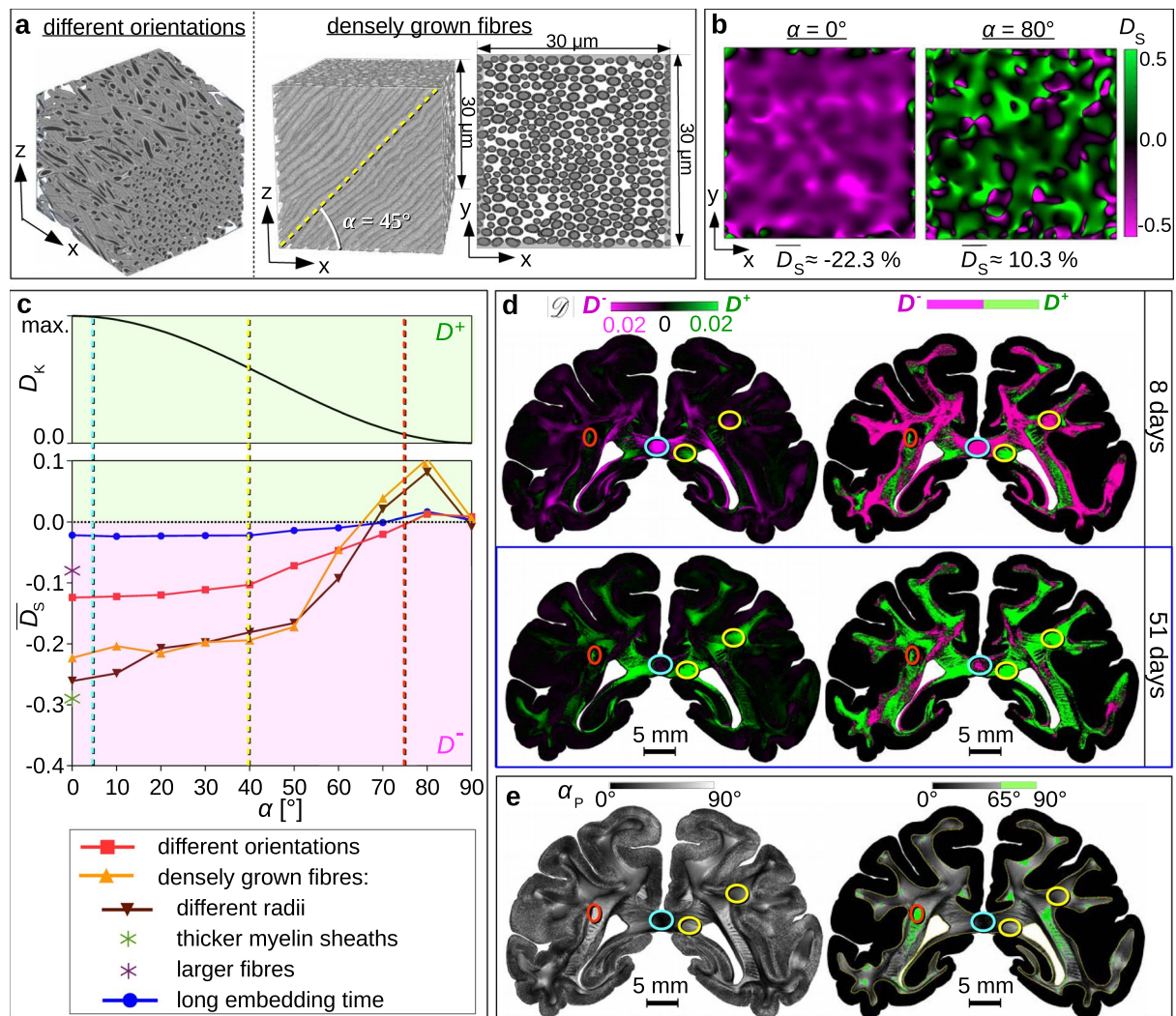


Figure 4. Comparison of simulated and measured diattenuation effects. **(a)** Fibre bundles used for FDTD simulations: a bundle with broad fibre orientation distribution (inclination $\alpha = 0^\circ$) and a bundle of densely grown fibres ($\alpha = 45^\circ$). **(b)** Simulated diattenuation images D_S and mean values $\overline{D_S}$ for the bundle of densely grown fibres for $\alpha = 0^\circ$ and 80° . **(c)** Diattenuation caused by dichroism (D_K) and anisotropic scattering (D_S) plotted against α . The curve for D_K was computed analytically using $D_K = \tanh(0.05 \cos^2 \alpha)$, see Supplementary Note for derivation. As the parameters depend on the exact fibre configuration and tissue composition, the curve is only qualitative and the maximum in arbitrary units. The curves for $\overline{D_S}$ were computed from FDTD simulations (see Methods) for the bundle with broad fibre orientation distribution (red curve) and the bundle of densely grown fibres (orange curve) for fibres with radii $r \in [0.5, 0.8] \mu\text{m}$, myelin sheath thickness $t_{\text{sheath}} = 0.35 r$, and myelin refractive index $n_m = 1.47$. The bundle of densely grown fibres was also simulated for a broader distribution of radii ($r \in [0.3, 1.0] \mu\text{m}$, brown curve) and for a sample with long embedding time ($n_m = 1.39$, blue curve). For the horizontal case ($\alpha = 0^\circ$), the bundle was also simulated for thicker myelin sheaths ($t_{\text{sheath}} = 0.6 r$, green star) and larger fibres ($r \in [2.5, 4.0] \mu\text{m}$, magenta star). Positive (negative) diattenuation values which correspond to type D^+ (D^-) are shown on a green (magenta) background. **(d)** Diattenuation images of a coronal vervet brain section measured 8 and 51 days after tissue embedding (adapted from Fig. 3a). Diattenuation values $|\mathcal{D}|$ that belong to regions with diattenuation of type D^+ (D^-) are shown in green (magenta), regions that cannot clearly be assigned are shown in black. The images on the left show the strength of the diattenuation signal $|\mathcal{D}|$ coloured according to the type of diattenuation. The images on the right separately show the D^+ and D^- regions in the white matter. **(e)** Corresponding inclination angles α_p obtained from a 3D-PLI measurement with tilting (see Methods). The image on the right only shows the inclination angles in the white matter and regions with $\alpha_p > 65^\circ$ are marked in green. The dashed vertical lines in **(c)** and the coloured circles in **(d)** and **(e)** highlight regions with flat, intermediate, and steep fibre inclinations: $\alpha = 5^\circ$ (cyan), $\alpha = 40^\circ$ (yellow), and $\alpha = 75^\circ$ (red).

Simulated dependence of diattenuation on embedding time. As mentioned above, scattering is expected to decrease with increasing embedding time, i.e. the refractive indices of the different tissue components become more similar to each other. A possible explanation for this behaviour is that the surrounding glycerine solution (with refractive index of 1.37) soaks into the myelin sheaths and reduces their effective refractive index. So far, the simulations were performed for a myelin refractive index of 1.47, corresponding to literature values of lipids/membranes³⁸. To model the diattenuation of brain tissue with long embedding time, the bundle of densely grown fibres was simulated for a reduced myelin refractive index of 1.39 (see Fig. 4c, blue curve): the strength of the simulated diattenuation signals is much less ($\overline{D}_S \approx -2.2\%$ to 1.6%). Supplementary Fig. S5d shows that $|D_S|$ decreases with decreasing myelin refractive index. This suggests that anisotropic scattering (D_S) decreases with increasing time after embedding the brain section. As dichroism (D_K) is expected to remain positive, the net observed diattenuation is expected to become more positive over time.

Discussion

In previous work (Menzel *et al.*³¹), we have shown that brain tissue exhibits two different types of diattenuation: in some regions, the light is minimally attenuated when it is polarised parallel to the nerve fibres (D^+), in others, it is maximally attenuated (D^-). Here, we investigated this effect both in experimental studies and simulations and demonstrated that it depends on nerve fibre orientation, tissue composition, and embedding time.

Our experimental studies show that the same diattenuation effects can be observed in brain sections from different species (mouse, rat, monkey, human) and at different optical resolutions (from 43 $\mu\text{m}/\text{px}$ to 1.8 $\mu\text{m}/\text{px}$): regions with out-of-plane fibres show almost exclusively diattenuation of type D^+ , while regions with in-plane fibres are more likely to show diattenuation of type D^- (see Fig. 2). With increasing time after embedding the brain sections in glycerine solution, the fraction of regions with diattenuation of type D^+ increases (see Fig. 3).

Using a combination of analytical modelling and FDTD simulations, we could explain these experimental observations. The diattenuation caused by anisotropic absorption (dichroism D_K) was described by an analytical model (see equation (19) in Supplementary Note): according to this model, the dichroism decreases with increasing out-of-plane inclination angle of the nerve fibres, only causes positive diattenuation (type D^+), and does not depend on the time after embedding the brain section. The diattenuation caused by anisotropic scattering (D_S) was simulated for various fibre bundles with different inclination angles: regions with flat fibres (with respect to the section plane) show diattenuation of type D^- while regions with steep fibres show diattenuation of type D^+ . The strength of the simulated diattenuation signal depends on tissue properties like fibre orientation distribution, fibre size, and myelin sheath thickness, and decreases with increasing embedding time (see Fig. 4c).

To directly compare our simulation results to the experimental observations, we evaluated the diattenuation maps of the coronal vervet brain section in Fig. 3a in regions with different fibre inclinations (see coloured circles in Fig. 4d,e). In order to better compare the type of diattenuation to the fibre inclination, the brain sections on the right separately show the D^+ and D^- regions in the white matter. Regions with diattenuation of type D^+ and regions with fibre inclinations $>65^\circ$ are shown in green, while regions with diattenuation of type D^- are shown in magenta. In freshly embedded brain sections, regions with steep fibres ($\alpha_p > 65^\circ$) show almost exclusively type D^+ : nearly all green regions in Fig. 4e are also green in Fig. 4d (see red circles). Regions with lower fibre inclinations show both types D^+ and D^- (see yellow circles). Regions with flat fibre inclinations are most likely to show type D^- (see cyan circles).

All these observations can be explained by the combined model of analytically computed and simulated diattenuation curves (the dashed vertical lines in Fig. 4c mark the inclination angles of the evaluated regions). It should be noted that the analytical model of dichroism only allows a qualitative description as it does not consider any details in the fibre configurations. In future work, a more complex model could be used to study the exact dependence of the diattenuation on the underlying tissue properties.

The dependence of the diattenuation signal on the time after embedding the brain sections could successfully be modelled by reducing the refractive index of the myelin sheaths: the simulations have shown that a reduced myelin refractive index leads to a reduced anisotropic scattering (cf. orange and blue curves in Fig. 4c), i.e. brain tissue with long embedding time shows a smaller fraction of regions with diattenuation of type D^- (cf. Figure 4d). The same model was used in Menzel *et al.*³⁵ to explain the increasing transparency of brain tissue samples with increasing embedding time (see also Supplementary Fig. 3a), demonstrating the validity of our model. A possible explanation for the equalisation of refractive indices is that the embedding glycerine solution soaks into the myelin sheaths of the nerve fibres and reduces the effective refractive index of myelin.

While the transmitted light intensity and diattenuation caused by anisotropic scattering are dominated by light scattering and decrease with increasing embedding time, birefringence and dichroism are mostly independent of the embedding time, i.e. they are probably caused by molecular effects. The finding that dichroism is positive ($D_K > 0$) means that the absorption becomes maximal when the light is polarised in the y -direction ($I_y < I_x$, see equation (2)), i.e. perpendicularly to the nerve fibre axis and in the plane of the lipid molecules in the myelin sheath. This suggests that the dichroism of brain tissue is mainly caused by the myelin lipids.

Our simulations show that the strength and type of diattenuation (D^+ or D^-) depend not only on the out-of-plane inclination angle of the nerve fibres in the investigated brain sections and on the time after tissue embedding, but also on other tissue properties like homogeneity, fibre size, or myelin sheath thickness (cf. Figure 4c and Supplementary Fig. S5b,c). A region with many small fibres, for example, is expected to show a stronger negative diattenuation than a region with few large fibres (see Supplementary Fig. 5c). This allows to distinguish regions with similar myelin densities, i.e. similar birefringence (3D-PLI) signals, but different tissue composition. How the measured type of diattenuation is exactly related to the underlying tissue properties needs to be investigated in future studies.

In conclusion, we could show that the diattenuation of brain tissue provides image contrasts between different tissue types and can therefore be used in addition to other imaging modalities to learn more about the brain's nerve fibre architecture and tissue composition, and to identify (pathological) changes. This makes Diattenuation Imaging a valuable imaging technique.

Methods

Preparation of brain sections. The investigated brain sections were obtained from healthy postmortem brains from different species: mouse (*C57BL/6*, male, six months old), rat (*Wistar*, male, three months old), vervet monkey (African green monkey: *Chlorocebus aethiops sabaues*, male, between one and two years old), and human (male, 87 years old). All animal procedures were approved by the institutional animal welfare committee at Forschungszentrum Jülich GmbH, Germany, and were in accordance with European Union (National Institutes of Health) guidelines for the use and care of laboratory animals. All methods were carried out in accordance with relevant guidelines and regulations. The postmortem human brain sample was acquired in accordance with the ethics committee at the Medical Faculty of the University of Rostock, Germany. The ethics committee at the Heinrich Heine University Düsseldorf, Germany, confirmed that such postmortem human brain studies do not require any additional approval if a written informed consent of the subject is available. For the human brain used in this study, such a consent is available.

The brains were removed from the skull within 24 hours after death, fixed with 4% buffered formaldehyde for several weeks, immersed in solutions of 10% and 20% glycerine combined with 2% Dimethyl sulfoxide for cryo-protection, and deeply frozen. The frozen brains were cut with a cryostat microtome (*Leica Microsystems*, Germany) into sections of 60 μm . This section thickness ensures both a good quality of the sections (i.e. reduced fissures/deformations) and a sufficient signal strength^{13,14}. The brain sections were mounted on glass slides, embedded in a solution of 20% glycerine, and cover-slipped. The glycerine solution can be used both as cryoprotectant and embedding medium because it does not impair the polarimetric measurements. The brain sections were measured one day after embedding (freshly embedded sections) or after several days to study the dependence of diattenuation on the embedding time.

Polarimetric measurements. The measurements were performed with the in-house developed *Large-Area Polarimeter (LAP)* which was also used for the diattenuation studies by Menzel *et al.*³¹. The LAP consists of a green light source, a pair of crossed linear polarisers, and a quarter-wave retarder and specimen stage mounted in between the polarisers (see Fig. 1a). The light source contains a matrix of 36×36 LEDs (*NSPG 510S*, *Nichia corporation*) and a diffuser plate (PMMA) and emits mostly incoherent and unpolarised light with a wavelength $\lambda = (525 \pm 25)$ nm. The polarisers (*XP38*) and the retarder (*WP140HE*) were manufactured by *ITOS*, Germany. During a measurement, the polarisers and the retarder were rotated simultaneously by angles $\rho = \{0^\circ, 10^\circ, \dots, 170^\circ\}$ and the transmitted light intensity $I(\rho)$ was recorded by a CCD camera (*AxioCam HRc* by *Zeiss*) with the microscanning procedure of the camera sensor, yielding 4164×3120 pixels with a resolution down to $14 \mu\text{m}/\text{px}$.

The in-plane orientation angles φ_p of the nerve fibres were obtained from 3D-PLI measurements^{13,14} with the above setup and by performing a discrete harmonic Fourier analysis on the measured light intensities per image pixel ($I_p(\rho) = a_{0p} + a_{2p} \cos(2\rho) + b_{2p} \sin(2\rho)$) and evaluating the phase of the signal: $\varphi_p = \text{atan2}(-a_{2p}, b_{2p})/2$. The amplitude of the signal $|\sin \delta_p|$ is related to the phase shift δ_p induced by the birefringent brain section¹⁷ ($|\sin \delta_p| = (a_{2p}^2 + b_{2p}^2)^{1/2}/a_{0p}$, $\delta_p \propto \cos^2 \alpha_p$) and was used to compute the out-of-plane inclination angles α_p of the fibres in Fig. 4e, making use of a tiltable specimen stage³⁹ to improve the determination of the inclination angles.

The diattenuation measurements³¹ were performed by removing the retarder and the second polariser from the light path and measuring the transmitted light intensities as described above (see Fig. 1d). To account for the lower signal-to-noise ratio, the image of the brain section was recorded 20 times for each filter position and averaged. The strength of the measured diattenuation signal $|\mathcal{D}|$ and the phase φ_D were determined from the amplitude and phase of the resulting light intensity profile ($I_D(\rho) = a_{0D} + a_{2D} \cos(2\rho) + b_{2D} \sin(2\rho)$): $|\mathcal{D}| = (a_{2D}^2 + b_{2D}^2)^{1/2}/a_{0D}$ and $\varphi_D = \text{atan2}(b_{2D}, a_{2D})/2$.

The Fourier coefficients of order zero $\{a_{0p}, a_{0D}\}$ were used to register the images of the 3D-PLI measurements onto the images of the diattenuation measurements using in-house developed software tools based on the software packages *ITK*, *elastix*, and *ANTS*^{40–44} which perform linear and non-linear transformations.

The resulting images $\{\varphi_p, \varphi_D, |\mathcal{D}|\}$ were used to generate the diattenuation images (see Fig. 1c): $|\mathcal{D}|$ values belonging to regions with $(\varphi_D - \varphi_p) \in [-20^\circ, 20^\circ]$ were colourised in green (referred to as D^+), regions with $(\varphi_D - \varphi_p) \in [-70^\circ, 110^\circ]$ were colourised in magenta (referred to as D^-). The angle ranges account for the uncertainties of φ_D due to the non-ideal optical properties of the LAP³¹: $\max |\varphi_D - \varphi_p| \approx 20^\circ (\pm 90^\circ)$ for $|\mathcal{D}| = 1\%$.

Measurements with prototypic polarising microscope. The prototypic polarising microscope has been described by Wiese *et al.*⁴⁵. It consists of a green light source ($\lambda = (532 \pm 5)$ nm), a rotatable polariser, a fixed circular analyser (quarter-wave retarder with linear polariser), and a CCD camera. The polarising filters are of higher quality than in the LAP. The microscope objective has a $4\times$ magnification and a numerical aperture of 0.2, yielding a pixel size in object space of about 1.8 μm . The measurements with the prototypic polarising microscope (see Supplementary Fig. S1) were performed as described above. Due to a superior signal-to-noise ratio, repeated diattenuation measurements were not necessary.

Model of nerve fibre configurations. The fibre bundles used for the FDTD simulations (cf. Figure 4a) were generated by in-house developed software similar to software used in other groups⁴⁶ allowing to create densely packed fibres without intersections: 700 straight fibres with different radii were randomly uniformly placed in an area of $45 \times 30 \mu\text{m}^2$ and divided into segments of 2–5 μm . The fibre segments were assigned a random

displacement in x, y, z: max. 10 μm for the bundle with broad fibre orientation distribution (Fig. 4a, left) and max. 1 μm for the bundle of densely grown fibres (Fig. 4a, right). The resulting fibre segments were split or merged until the length of each segment was again between 2–5 μm , ensuring that the maximum angle between adjacent segments was less than 20°. When a collision between two segments was detected, the segments were exposed to a small repelling force and the previous step was repeated until no more collisions were detected. The mode angle difference between the local fibre orientation vectors and the predominant orientation of the resulting fibre bundle is about 25° for the bundle with broad fibre orientation distribution and less than 10° for the bundle of densely grown fibres. To generate fibre bundles with different inclination angles, the bundles were rotated around the y-axis with respect to the center position and cropped to a volume of $30 \times 30 \times 30 \mu\text{m}^3$. To prevent fibres from touching each other after discretisation, all diameters were reduced by 5%.

Each fibre with radius r was modelled by an inner axon ($r_{\text{ax}} = 0.65 r$) and a surrounding myelin sheath with thickness $t_{\text{sheath}} = 0.35 r$, which contributes approximately one third to the overall fibre radius⁴⁷. In brain tissue, the myelin sheath consists of densely packed cell membranes, i.e. alternating layers of lipid bilayers (about 5 nm thickness) and intra- or extracellular space (about 3 nm thickness)^{18,48}. When the brain sections are embedded in glycerine solution (as described above), the extracellular space is expected to become filled with glycerine solution and increases^{18,49}. The myelin (lipid) and glycerine layers were therefore assumed to contribute 3/4 and 1/4 to the overall myelin sheath thickness, respectively. The simulations were performed for a simplified nerve fibre model, consisting of two myelin layers ($t_m = 3/7 t_{\text{sheath}}$) and a separating glycerine layer ($t_g = 1/7 t_{\text{sheath}}$). The refractive indices of axon, myelin and glycerine layers were estimated from literature values of cytoplasm⁵⁰ ($n_{\text{ax}} = 1.35$), lipids/membranes³⁸ ($n_m = 1.47$), and from refractive index measurements of the glycerine solution used for embedding the brain sections ($n_g = 1.37$, measured with digital refractometer). The surrounding medium was assumed to be homogeneous with a refractive index $n_{\text{sur}} = 1.37$, corresponding to the refractive index of gray matter⁵¹. The absorption coefficients of brain tissue are small^{52,53} and were therefore neglected. More details about the nerve fibre model can be found in Menzel *et al.*³⁵.

The fibres shown in Fig. 4a have radii between 0.5 μm and 0.8 μm and a myelin sheath thickness of 0.35 r . The bundle of densely grown fibres was also simulated for different values of r , t_{sheath} , and n_m (see Fig. 4c and Supplementary Fig. S5).

FDTD simulations. The propagation of the polarised light wave through the sample was computed by TDME3DTM—a massively parallel three-dimensional Maxwell Solver^{54–56} based on a finite-difference time-domain (FDTD) algorithm^{36,57}. The algorithm numerically computes the electromagnetic field components by discretising space and time and approximating Maxwell’s curl equations by finite differences³⁷.

The sample contains the fibre configuration ($30 \times 30 \times 30 \mu\text{m}^3$, see above) and 0.5 m thick layers of glycerine solution on top and at the bottom. The dimensions of the simulation volume are $30 \times 30 \times 35 \mu\text{m}^3$, including 1 μm thick uniaxial perfectly matched layer absorbing boundaries. The different components of the sample were modelled as dielectrics with real refractive indices n (defined above). The sample was illuminated by a plane monochromatic wave with linear polarisation (along the x- or y-axis). The simulations were performed on the supercomputer JUQUEEN⁵⁸ at Forschungszentrum Jülich GmbH, Germany, with 200 periods, a Courant factor of 0.8, and a Yee mesh size of 25 nm. Using an MPI grid of $16 \times 16 \times 16$, each simulation run (calculation of one configuration and one polarisation state) consumed between 7000–8000 core hours, required a minimum memory between 260–360 GB, and lasted between 1:45–2:00 hours.

The polarimeter used for the polarimetric measurements (LAP) has a broad wavelength spectrum and emits mostly incoherent light under different angles of incidence. As each simulation run is performed with coherent light with a certain wavelength and angle of incidence, the LAP is not well suited to be modelled by FDTD simulations. Instead, we performed the simulations for the imaging system of the *Polarising Microscope (PM)*^{13,14}, which has also been used to model the 3D-PLI measurement³⁵. The PM (manufactured by *Taorad GmbH*, Germany) contains higher quality components and uses more coherent and less diffusive light with $\lambda = (550 \pm 5) \text{ nm}$. As the polarising filters cannot be removed, the PM cannot be used for diattenuation measurements. However, the optics of the PM are similar to those of the prototypic polarising microscope (the microscope objective has a 5 \times magnification, a numerical aperture of 0.15, and yields an object-space resolution of 1.33 $\mu\text{m}/\text{px}$). Therefore, the diattenuation effects simulated for the optics of the PM are presumably similar to those observed in the measurements (cf. Supplementary Fig. S1).

The imaging system of the PM was simulated as described in Menzel *et al.*³⁵. The simulations were performed for normally incident light with 550 nm wavelength. The propagation of the light wave through the sample (fibre configuration) was computed by TDME3D, yielding a superposition of monochromatic plane waves with different wave vectors. The numerical aperture ($\text{NA} \approx 0.15$) was modelled by considering only wave vector angles $\leq \arcsin(\text{NA}) \approx 8.6^\circ$. The spherical microlenses of the camera sensor were modelled by applying a moving average over the area of the microlens with a diameter of 1.33 μm . The light intensity recorded by the camera was computed as the absolute squared value of the electric field vector (neglecting angle dependencies because of the small aperture). To obtain the intensity at a certain point in the image plane, the electric field vectors for different wave vectors were summed and averaged over time. More details about the simulation model and error analysis can be found in Menzel *et al.*³⁵.

To model the diattenuation measurement, the simulations were performed for light polarised along the x-axis and along the y-axis. The resulting light intensities (I_x and I_y) were used to compute the diattenuation images: $D_S = (I_x - I_y)/(I_x + I_y)$. Positive diattenuation values ($D_S > 0 \Leftrightarrow I_x > I_y$) correspond to regions with D^+ effect and were shown in green, regions with negative values ($D_S < 0 \Leftrightarrow I_x < I_y$) correspond to regions with D^- effect and were shown in magenta (cf. Figure 4b and Supplementary Fig. S4).

Code availability. Image processing and data analysis were performed with Fiji (<https://fiji.sc/Fiji>) and in-house developed software tools. The artificial fibre geometries were generated with in-house developed software (using Python 3 and C++) similar to software developed by Altendorf & Jeulin⁴⁶. The electric field vectors obtained from the Maxwell Solver were processed with in-house developed software using Python 2.7 and Numpy 1.12. All relevant program code, including the geometry parameters of the modelled fibre configurations, are available from the corresponding author upon reasonable request for purposes of academic research. For the FDTD simulations, we used TDME3D, a massively parallel Maxwell solver^{54–56}. The software is property of EMBD (European Marketing and Business Development BVBA).

Data Availability

All data supporting the findings of this study are available from the corresponding author on reasonable request.

References

- Lubetzki, C. & Stankoff, B. Chapter 4 - demyelination in multiple sclerosis. In Goodin, D. S. (ed.) *Multiple Sclerosis and Related Disorders*, vol. 122 of *Handbook of Clinical Neurology*, 89–99, <https://doi.org/10.1016/B978-0-444-52001-2.00004-2> (Elsevier, 2014).
- Wenning, G. K., Stefanova, N., Jellinger, K. A., Poewe, W. & Schlossmacher, M. G. Multiple system atrophy: A primary oligodendroglialopathy. *Annals Neurol.* **64**, 239–246, <https://doi.org/10.1002/ana.21465> (2008).
- Minnerop, M. *et al.* Callosal tissue loss in multiple system atrophy—a one-year follow-up study. *Mov. disorders* **25**, 2613–2620 (2010).
- Ferrer, I. Oligodendroglial pathology in neurodegenerative diseases with abnormal protein aggregates: The forgotten partner. *Prog. Neurobiol.* **169**, 24–54, <https://doi.org/10.1016/j.pneurobio.2018.07.004> (2018).
- van der Knaap, M. S. & Bugiani, M. Leukodystrophies: a proposed classification system based on pathological changes and pathogenetic mechanisms. *Acta neuropathologica* **134**, 351–382, <https://doi.org/10.1007/s00401-017-1739-1> (2017).
- Glasser, M. F. & Van Essen, D. C. Mapping human cortical areas *in vivo* based on myelin content as revealed by T1- and T2-weighted MRI. *J. Neurosci.* **31**, 11597–11616, <https://doi.org/10.1523/JNEUROSCI.2180-11.2011> (2011).
- Mori, S. & Zhang, J. Principles of diffusion tensor imaging and its applications to basic neuroscience research. *Neuron* **51**, 527–539, <https://doi.org/10.1016/j.neuron.2006.08.012> (2006).
- Tuch, D. S., Reese, T. G., Wiegell, M. R. & Wedeen, V. J. Diffusion MRI of complex neural architecture. *Neuron* **40**, 885–895, [https://doi.org/10.1016/S0896-6273\(2003\)00000-0](https://doi.org/10.1016/S0896-6273(2003)00000-0) (2003).
- Chang, H.-C. *et al.* Human brain diffusion tensor imaging at submillimeter isotropic resolution on a 3 Tesla clinical MRI scanner. *NeuroImage* **118**, 667–675, <https://doi.org/10.1016/j.neuroimage.2015.06.016> (2015).
- Zeineh, M. *et al.* Direct visualization and mapping of the spatial course of fiber tracts at microscopic resolution in the human hippocampus. *Cereb. Cortex*, <https://doi.org/10.1093/cercor/bhw010> (2016).
- Henssen, D. J. H. A. *et al.* *Ex vivo* visualization of the trigeminal pathways in the human brainstem using 11.7 T diffusion MRI combined with microscopy polarized light imaging. *Brain Struct. Funct.*, <https://doi.org/10.1007/s00429-018-1767-1> (2018).
- Caspers, S. & Axer, M. Decoding the microstructural correlate of diffusion MRI. *NMR in Biomed.* e3779, <https://doi.org/10.1002/nbm.3779> (2017).
- Axer, M. *et al.* A novel approach to the human connectome: Ultra-high resolution mapping of fiber tracts in the brain. *NeuroImage* **54**, 1091–1101, <https://doi.org/10.1016/j.neuroimage.2010.08.075> (2011).
- Axer, M. *et al.* High-resolution fiber tract reconstruction in the human brain by means of three-dimensional polarized light imaging. *Front. Neuroinformatics* **5**, 1–13, <https://doi.org/10.3389/fninf.2011.00034> (2011).
- Schmitt, F. O. & Bear, R. S. The ultrastructure of the nerve axon sheath. *Biol. reviews Camb. Philos. Soc.* **14**, 27–50 (1939).
- Koike-Tani, M., Tani, T., Mehta, S. B., Verma, A. & Oldenbourg, R. Polarized light microscopy in reproductive and developmental biology. *Mol. Reproduction Dev.* 1–15, <https://doi.org/10.1002/mrd.22221> (2013).
- Menzel, M. *et al.* A Jones matrix formalism for simulating three-dimensional polarized light imaging of brain tissue. *J. Royal Soc. Interface* **12**, 20150734, <https://doi.org/10.1098/rsif.2015.0734> (2015).
- Martenson, R. E. *Myelin: Biology and Chemistry* (CRC Press, USA, 1992).
- Mehta, S. B., Shribak, M. & Oldenbourg, R. Polarized light imaging of birefringence and diattenuation at high resolution and high sensitivity. *J. Opt.* **15**, 1–13, <https://doi.org/10.1088/2040-8978/15/9/094007> (2013).
- Chenault, D. B. & Chipman, R. A. Measurements of linear diattenuation and linear retardance spectra with a rotating sample spectropolarimeter. *Appl. Opt.* **32**, 3513–3519, <https://doi.org/10.1364/AO.32.003513> (1993).
- Ghosh, N. & Vitkin, I. A. Tissue polarimetry: concepts, challenges, applications, and outlook. *J. Biomed. Opt.* **16**, 110801, <https://doi.org/10.1117/1.3652896> (2011).
- Chipman, R. A. Polarimetry. In *Handbook of Optics, Vol. 2: Devices, Measurements, and Properties*, chap. 22, 22.1–22.37, 2 edn (McGraw-Hill, New York, 1994).
- Soni, J. *et al.* Quantitative fluorescence and elastic scattering tissue polarimetry using an Eigenvalue calibrated spectroscopic Mueller matrix system. *Opt. Express* **21**, 15475–15489, <https://doi.org/10.1364/OE.21.015475> (2013).
- Jiao, S., Yu, W., Stoica, G. & Wang, L. V. Contrast mechanisms in polarization-sensitive Mueller-matrix optical coherence tomography and application in burn imaging. *Appl. Opt.* **42**, 5191–5197, <https://doi.org/10.1364/AO.42.005191> (2003).
- Fan, C. & Yao, G. Imaging myocardial fiber orientation using polarization sensitive optical coherence tomography. *Biomed. Opt. Express* **4**, 460–465, <https://doi.org/10.1364/BOE.4.000460> (2013).
- Park, B. H., Pierce, M. C., Cense, B. & de Boer, J. F. Jones matrix analysis for a polarization-sensitive optical coherence tomography system using fiber-optic components. *Opt. Lett.* **29**, 2512–2514, <https://doi.org/10.1364/OL.29.002512> (2004).
- Swami, M. K. *et al.* Polar decomposition of 33 Mueller matrix: a tool for quantitative tissue polarimetry. *Opt. Express* **14**, 9324–9337, <https://doi.org/10.1364/OE.14.009324> (2006).
- Westphal, P., Kaltenbach, J. M. & Wicker, K. Corneal birefringence measured by spectrally resolved Mueller matrix ellipsometry and implications for non-invasive glucose monitoring. *Biomed. Opt. Express* **7**, 1160–74, <https://doi.org/10.1364/BOE.7.001160> (2016).
- Naoun, O. K., Dorr, V. L., Allé, P., Sablon, J.-C. & Benoit, A.-M. Exploration of the retinal nerve fiber layer thickness by measurement of the linear dichroism. *Appl. Opt.* **44**, 7074–7082, <https://doi.org/10.1364/AO.44.007074> (2005).
- Huang, X.-R. Polarization properties of the retinal nerve fiber layer. *Bull. de la Société belge d'ophtalmologie* **302**, 71–88 (2006).
- Menzel, M. *et al.* Diattenuation of brain tissue and its impact on 3D polarized light imaging. *Biomed. Opt. Express* **8**, 3163–3197, <https://doi.org/10.1364/BOE.8.003163> (2017).
- Paxinos, G. & Watson, C. *The Rat Brain in Stereotaxic Coordinates*, 6 edn (Academic Press, 2007).
- Woods, R. P. *et al.* A web-based brain atlas of the vervet monkey, chlorocebus aethiops. *NeuroImage* **54**, 1872–1880, <https://doi.org/10.1016/j.neuroimage.2010.09.070> (2011).
- Zilles, K. *et al.* High-resolution fiber and fiber tract imaging using polarized light microscopy in the human, monkey, rat, and mouse brain. In Rockland, K. S. (ed.) *Axons and Brain Architecture*, chap. 18, 369–389 (Elsevier Academic Press, San Diego, 2015).
- Menzel, M. *et al.* Transmittance assisted interpretation of 3D nerve fibre architectures. *Preprint at: https://arxiv.org/abs/1806.07157* (2018).

36. Taflove, A. & Hagness, S. C. *Computational Electrodynamics: The Finite-Difference Time-Domain Method*, 3 edn (Artech House, MA USA, 2005).
37. Menzel, M., Axer, M., De Raedt, H. & Michielsen, K. Finite-Difference Time-Domain Simulation for Three-Dimensional Polarized Light Imaging. In Amunts, K., Grandinetti, L., Lippert, T. & Petkov, N. (eds) *Brain-Inspired Computing. BrainComp 2015. Lecture Notes in Computer Science*, vol. 10087, chap. 6, 73–85, https://doi.org/10.1007/978-3-319-50862-7_6 (Springer International Publishing, Cham, 2016).
38. van Manen, H.-J. *et al.* Refractive index sensing of green fluorescent proteins in living cells using fluorescence lifetime imaging microscopy. *Biophys. Lett.* **94**, L67–69, <https://doi.org/10.1529/biophysj.107.127837> (2008).
39. Wiese, H., Grässel, D., Pietrzyk, U., Amunts, K. & Axer, M. Polarized light imaging of the human brain: a new approach to the data analysis of tilted sections. In Chenault, D. B. & Goldstein, D. H. (eds) *SPIE Proceedings, Polarization: Measurement, Analysis, and Remote Sensing XI*, vol. 9099 (2014).
40. Klein, S., Staring, M., Murphy, K., Viergever, M. A. & Pluim, J. P. W. elastix: A toolbox for intensity-based medical image registration. *IEEE Transactions on Med. Imaging* **29**, 196–205, <https://doi.org/10.1109/TMI.2009.2035616> (2010).
41. Shamonin, D. P. *et al.* Fast parallel image registration on CPU and GPU for diagnostic classification of Alzheimer's disease. *Front. Neuroinformatics* **7**, 50, <https://doi.org/10.3389/fninf.2013.00050> (2013).
42. Avants, B. B., Epstein, C. L., Grossman, M. & Gee, J. C. Symmetric diffeomorphic image registration with cross-correlation: Evaluating automated labeling of elderly and neurodegenerative brain. *Med. Image Analysis* **12**, 26–41, <https://doi.org/10.1016/j.media.2007.06.004> (2008).
43. Avants, B. B. *et al.* A reproducible evaluation of ANTs similarity metric performance in brain image registration. *NeuroImage* **54**, 2033–2044, <https://doi.org/10.1016/j.neuroimage.2010.09.025> (2011).
44. National library of medicine insight segmentation and registration toolkit (ITK), <https://itk.org/> (2018).
45. Wiese, H. *Enhancing the Signal Interpretation and Microscopical Hardware Concept of 3D Polarized Light Imaging*. Ph.D. thesis, University of Wuppertal (2016).
46. Altendorf, H. & Jeulin, D. Random walk based stochastic modeling of 3D fiber systems. *Phys. Rev. E: Stat. Nonlinear, Soft Matter Physics, Am. Phys. Soc.* **83**, <https://doi.org/10.1103/PhysRevE.83.041804> (2010).
47. Morell, P., Quarles, R. H. & Norton, W. T. Formation, structure, and biochemistry of myelin. In Siegel, G. J. (ed.) *Basic Neurochemistry—Molecular, Cellular, and Medical Aspects*, 109–136, 4 edn (Raven Press, New York, 1989).
48. Lee, H., Park, J. H., Seo, I., Park, S.-H. & Kim, S. Improved application of the electrophoretic tissue clearing technology, CLARITY, to intact solid organs including brain, pancreas, liver, kidney, lung, and intestine. *BMC Dev. Biol.* **14**, 781, <https://doi.org/10.1186/s12861-014-0048-3> (2014).
49. Quarles, R. H., Macklin, W. B. & Morell, P. Myelin formation, structure and biochemistry. In Siegel, G., Albers, R. W., Brady, S. & Price, D. (eds) *Basic Neurochemistry: Molecular, Cellular and Medical Aspects*, 51–71, 7 edn (Elsevier Academic Press, Burlington, MA, 2006).
50. Duck, F. A. *Physical Properties of Tissue: A Comprehensive Reference Book* (Academic Press, San Diego, 1990).
51. Sun, J., Lee, S. J., Wu, L., Sarntinoranont, M. & Xie, H. Refractive index measurement of acute rat brain tissue slices using optical coherence tomography. *Opt. Express* **20**, 1084–1095, <https://doi.org/10.1364/OE.20.001084> (2012).
52. Schwarzmaier, H.-J. *et al.* Optical properties of native and coagulated human brain structures. *SPIE* **2970**, 492–499, <https://doi.org/10.1117/12.275082> (1997).
53. Yaroslavsky, A. N. *et al.* Optical properties of selected native and coagulated human brain tissues *in vitro* in the visible and near infrared spectral range. *Phys. Medicine Biol.* **47**, 2059–2073 (2002).
54. Michielsen, K., De Raedt, H. & Stavenga, D. G. Reflectivity of the gyroid biophotonic crystals in the ventral wing scales of the Green Hairstreak butterfly, *Callophrys rubi*. *J. Royal Soc. Interface* **7**, 765–771, <https://doi.org/10.1098/rsif.2009.0352> (2010).
55. Wilts, B. D., Michielsen, K., De Raedt, H. & Stavenga, D. G. Sparkling feather reflections of a bird-of-paradise explained by finite-difference time-domain modeling. *Proc. Nat. Acad. Sci.*, <https://doi.org/10.1073/pnas.1323611111> (2014).
56. Wilts, B. D., Michielsen, K., Kuipers, J., De Raedt, H. & Stavenga, D. G. Brilliant camouflage: photonic crystals in the diamond weevil, *Entimus imperialis*. *Proc. Royal Soc. B: Biol. Sci.* **279**, 2524–2530, <https://doi.org/10.1098/rspb.2011.2651> (2012).
57. De Raedt, H. Advances in unconditionally stable techniques. In Taflove, A. & Hagness, S. C. (eds) *Computational Electrodynamics: The Finite-Difference Time-Domain Method*, chap. 18, 3 edn (Artech House, MA USA, 2005).
58. Jülich Supercomputing Centre, JUQUEEN: IBM Blue Gene/Q Supercomputer System at the Jülich Supercomputing Centre. *J. large-scale research facilities* **1**, A1, <https://doi.org/10.17815/jlsrf-1-18> (2015).

Acknowledgements

This project has received funding from the Helmholtz Association portfolio theme 'Supercomputing and Modeling for the Human Brain', from the European Union's Horizon 2020 Research and Innovation Programme under Grant Agreement No. 720270 (HBP SGA1) and 785907 (HBP SGA2), and from the National Institutes of Health under grant agreements No. R01MH092311 and 5P40OD010965. We gratefully acknowledge the computing time granted through JARA-HPC on the supercomputer JURECA and JUQUEEN at Forschungszentrum Jülich (FZJ). We thank our colleagues from the Institute of Neuroscience and Medicine (INM-1), FZJ: Markus Cremer, Christian Rademacher, and Patrick Nysten for the preparation of the histological brain sections, Julia Reckfort, Hasan Köse, David Gräßel, Isabelle Mafoppa Fomat, and Philipp Schlömer for the polarimetric measurements, and Felix Matuschke for providing the algorithm to generate the fibre configurations. Furthermore, we thank Taorad GmbH for providing the optical bench and equipment for the high-resolution diattenuation measurements, Andreas Wree (Institute for Anatomy, University of Rostock) for the human brain sample, and Karl Zilles (INM-1) and Roger Woods (UCLA Brain Mapping Center, Los Angeles) for collaboration in the vervet brain project.

Author Contributions

M.M. substantially contributed to the conception and design of the study as well as to the analysis and interpretation of the experimental and simulated data and to the theoretical considerations. She analysed the measurements, carried out the simulations, created the figures, and wrote the manuscript. M.A. participated in the conception and design of the study, contributed to the analysis and interpretation of the data, and to the revision of the manuscript. K.A. contributed to the anatomical content of the study and to the revision of the manuscript. H.D.R. contributed to the interpretation of the simulated data, to the theoretical considerations, and to the revision of the manuscript. K.M. participated in the design of the study, contributed to the interpretation of the simulated data, to the theoretical considerations, and to the revision of the manuscript. All authors read the final manuscript and gave approval for publication.

Additional Information

Supplementary information accompanies this paper at <https://doi.org/10.1038/s41598-019-38506-w>.

Competing Interests: The authors declare no competing interests.

Publisher's note: Springer Nature remains neutral with regard to jurisdictional claims in published maps and institutional affiliations.



Open Access This article is licensed under a Creative Commons Attribution 4.0 International License, which permits use, sharing, adaptation, distribution and reproduction in any medium or format, as long as you give appropriate credit to the original author(s) and the source, provide a link to the Creative Commons license, and indicate if changes were made. The images or other third party material in this article are included in the article's Creative Commons license, unless indicated otherwise in a credit line to the material. If material is not included in the article's Creative Commons license and your intended use is not permitted by statutory regulation or exceeds the permitted use, you will need to obtain permission directly from the copyright holder. To view a copy of this license, visit <http://creativecommons.org/licenses/by/4.0/>.

© The Author(s) 2019